

Special Elk Football Preview -- See Section II

City Eyes 'U'

Stratford City Councilmen will take up the possibility of removing the "No U-turn" sign at Main and Fourth streets, consider coinboxes for water fillup at the elevated tank, and perhaps take another whack at the proposed annual budget which they are scheduled to adopt before the end of October, during their regular session tonight.

Also on the agenda when the council meets at 8 p.m. in City Hall are discussion of establishing reserve accounts to cover necessary capital purchases in the future and signing of an audit agreement.

STREET'S of STRATFORD By the Coombes'

WITH just a week to go, the Sherman County Fair and Stratford Jamboree is shaping up fast and will offer something for just about anyone. Today officials are releasing details of the third annual Tip Top Trot, featuring a three mile run, a one mile run and a one mile walk. You will find the details on page 2 along with an entry blank to clip and submit for those interested in participating.

What really thrills us, and makes us very proud of our community and the fair officials, is the fact that all proceeds from the two runs and a walk will go to the Teena Vaughn funds to help the local teenager family with her fast mounting medical expenses brought on by the necessity for a series of pending treatments. I'm sure her many friends would like to see the community turn out en masse to participate in the Trot and show their support and encouragement to Teena in her fight against illness.

A SECOND request to local folk and anyone else who would like to participate--toys and dolls are still needed for the display of antique dolls and toys to be shown Tuesday, Sept. 7 between the hours of 9 a.m. and 5 p.m. in the Sherman House Museum. Those willing to loan antique dolls and or toys are assured by responsible officials that these precious items will be secured in showcases and will not be handled by viewers during the exhibit. Those willing to loan a doll or toys may call Janet Riffe at 5692 or Steve Dettle at 2426. For those local people willing to furnish dolls or toys for the display but unable to bring them to the museum, they will be picked up if you just call.

THE "Dirty Dan" Miller Dramer recently presented at the County Club before an appreciative audience will again be staged on Sept. 11 at two p.m. for the Old Timer's reunion. The oldtimers performance at Mary Allen Elementary School will also be open to the general public.

ROBBIE Yates, Evelyn Cooper of Stratford and Dorothy Kendall of Amarillo attended "The Pride of Texas" banquet honoring Mrs. Beulah Speer, Associated Grand Conduress Grand Chapter of Texas Order of The Eastern Star, at the Ko Ko Inn Palace in Lubbock Saturday evening.

Robbie reported 546 were in attendance, 12 past Grand Matrons and four past Grand Patrons coming from different parts of the state to honor the special lady on this special occasion Sunday afternoon from 2 to 4 p.m. A tea was given by the Chapters in District 2, section 2 at the Federated Women's Club in Amarillo--honoring all Grand Officers in Section 2, district 2. There were a large turnout in attendance with 38 Grand Officers attending. Robbie Yates attended the Tea.

Mrs. Dorothy Frizzell recently returned from a visit with her Granddaughter's family, Becky and Gary Hooker of Layton, Utah. Bill and June Frizzell of Stratford and Mrs. Winifred Goforth, a sister of Dorothy's, from Denver also accompanied her. The Hooker's have two children Kristi and Brent Capt. Gary Hooker is a F-16 pilot instructor stationed at Hill A.F.B. Utah.

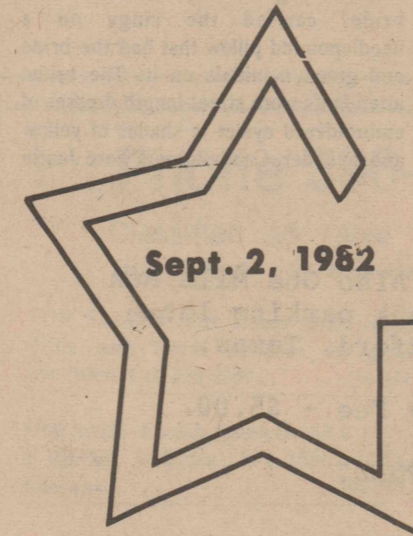
Chamber of Commerce to be Telephon center

Stratford Chamber of Commerce and other local volunteers will staff the local pledge center during the annual Jerry Lewis Labor Day Telethon to benefit the Muscular Dystrophy Association (MDA) Sept 5 and 6.

People of Stratford and other area residents can call 396-5559, throughout the 22½ hour telethon to make their pledges to benefit MDA.

The 17th annual Jerry Lewis Labor Day Telethon will be broadcast in the Panhandle by KFDD-TV 10, Sunday and Monday.

Originating from Las Vegas, the TV spectacular is held to raise funds to



The Stratford Star

Stratford/Sherman County/Texas/79084

"The Tip Top Town in Texas"

Fifteen Cents



CROWDS gathered around the many tables displaying during the big annual Collector's Show and Sale held in the County Barr.

Collectors Show-Sale draws big turnout

Thirty-two dealers from five states showed their wares and collections an almost steady stream of people who wandered from exhibit to exhibit during the Chamber of Commerce sponsored Collector's Show and Sale in the County Barn Saturday and Sunday.

Local Official helping conduct the show and sale reported a good attendance of people from Stratford and the surrounding area on both Saturday and Sunday. A number of the exhibitors expressed their appreciation for the way the show-sale was conducted and for the good turn out of Chamber officials after the two-day event ended Sunday evening.

In one of the highlights of the show and sale, Jack Frizzell's name was drawn the grand prize drawing. It climaxed the show and sale Sunday evening, although he could not be present, he won the anniversary clock which had been donated by V.O. Lasley and had been on display this past week in the lobby of First State Bank of Stratford.

Drawings were also held on the hour throughout both days of the sale.

Winners of the drawings on Saturday

and the firms providing the prizes included:

Audrinne Olson by Cottle's Boot Shop, Raymond Reynolds by Sherman Implement Co. Dale Meyer by Elk Pharmacy, Jim Evans by A&I Parts Center, Minnie Pepes by Consumer's Co. Don Gibson by Buckle and Bow Shoe Store, Jo June McDaniel by Stratford Printing, Cher Moore by Something Special, Barbara Walls by C's Male Box, Audrey Brown by True Value Hardware, JA's Fashions by Marcella Reynolds, Emery Elliott by Shelley's Lumber, Brent Grimes by Boston's Hardware, Jenny Fedric by Gary's Texaco, and Roberta Hopkins by Keener Oil Co.

Sunday drawing winners and firms supplying the prizes were:

Deam Richards by Headquarters Restaurant, Ronald Taylor by Queen O' Creme, Anita Henry by North Plains Savings and Loan, Ronda Matthews by Chamber of Commerce, Keith Borth by First State Bank of Stratford, Jon Englebrecht by Chamber of Commerce, Gary Palmer by Bylow Food Store, LeRayne Donelson by Two's Company, Edgar Duggan by Tip Top Hobby Shop, Albert Mackie by Chamber of Commerce, Bill Lasley by Yates Drug

and Robbie's Gift Shop, Bonnie Borth by Cut Rate Family Center and Shirley Plunk by Chamber of Commerce.

Door prize winners included Eloise Garza, who won a Christmas gift coin holder donated by Fred Kleffman of Guymon, Okla; Cher Moore, who won a 1934 silver dollar donated by Ernest Cummings of Amarillo Coin; and Jerry Grimes, who won a feather hat band donated by David Kleffman of Guymon.

By no means was all the traffic by the crowds turning out for the show and sale up and down the aisles viewing the displays. The concession stand serving enchilada dinner, homeade pie and other food items manned by the Fire Department Auxiliary, was another favorite stopping spot.

Chamber officials after the show expressed thanks to the local firms that donated prizes and otherwise contributed to the success of the show and sale to the fire department for the use of the fire truck to hang the sale and show banner at the corner of Hwy. 54 and 287; to the fire department auxiliary for operating the concession stand, to Stratford CB Club for providing guard service Friday and Saturday Nights and to Shelley's Lumber for donating wood for the tables.

Elks host Lynx in opener

The Stratford Elks launch their 1982 season Friday night as they host the beefy Spearman Lyn. The season opening kickoff is scheduled for 8 p.m.

Elk Head Coach-Athletic Director Jack Needham said the Lynx looked impressive in last week's scrimmage against White Deer, especially in running their 200-pound plus fullback Dennis Randall up the middle behind the blocking of their big offensive line.

Needham said the Spearman line weighs an average of better than 200 pounds per man and that the Lynx would have about 35 pounds per man weight advantage when their offensive line squares off with the Elk defensive line.

If the Elks are to succeed in their opener against the bigger Spearman squad, they must be quicker, "much quicker", Needham said. And the defensive players need to hit the big fullback early before he can get up momentum, he added.

Elks sharp in final tuneup with Vega

In the final tune-up for both teams before each opens their "real thing" regular season, the Stratford Elks and Vega Longhorns really got after it in a spirited, leather-popping scrimmage in Vega Friday night with the Elks outgaining and outscoring their Class A powerhouse opponents by a narrow margin.

Speedy halfback Sammy Gomez scored the scrimmage's only touchdown on a seven-yard run to the right side about mid-way through the scrimmage. It appeared as though the Longhorns also scored on a run of about 25 yards around right end, but the play was called back because of a clipping violation. On this play Vega was running against the Elks' second string defense with what was basically their first string offense because they did not have enough players suited up to effectively substitute.

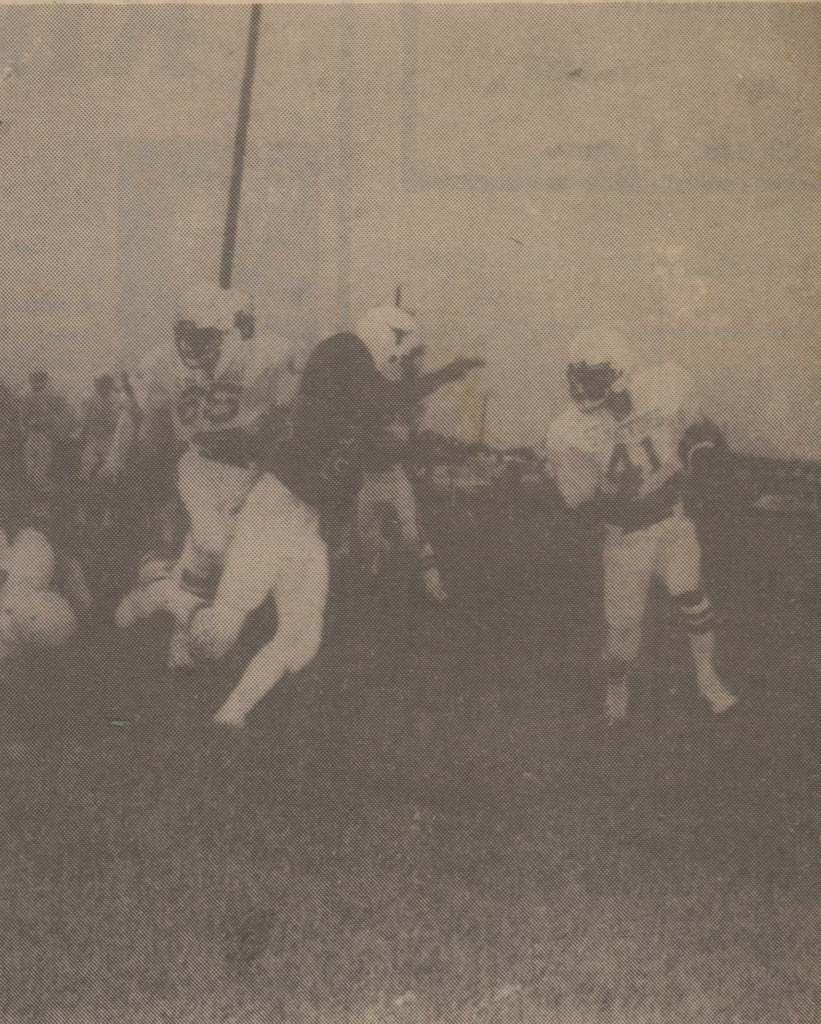
In all, the Elk first unit offense rolled up 206 yards in total offense, compared to 71 for the Vega first string, although the statistics would have been closer if they had been recorded for the times the Vega first string ran against the Elk first squad defense.

The Elk first string was in when Stratford mounted its scoring drive, mixing the slashing runs of Gomez and Albert Olivas with the passing of senior quarterback Jere Keener. Starting the series Olivas gained six up the middle. Gomez got two more the same way, then Keener kept and got to the 'Horn' 42. Next the quarterback rifled a quick out pass to split end Jonathan Coombes who carried it to the Vega 27 before being

overhauled by a trio of defenders. Three running plays netted only a yard or so, but Keener kept the drive alive by hitting split end David Naugle running as a wingback on the "twins" formation with a crucial fourth down pass. Naugle carried the ball to the seven for a first

down, and in two tries Gomez carried over for the TD.

The scrimmage closed with the Elk first string defense again in the game, this time completely shutting down and even throwing back Vega's last offensive series.



SAMMY Gomez [41] bolts around left end for valuable Elk yardage with a Longhorn defender in hot pursuit during the last pre-season football scrimmage in Vega Friday. The Elks open their regular season here Friday night against Spearman.

Processors honor Brown

Baskin Brown of Stratford has been elected to the Board of Directors of the American Association of Meat Processors.

Brown's election was announced by Stephen F. Krut, AAMP Executive Director, at the closing session of the Association's 43rd Convention held at the Denver Marriott - City Center in Denver, Colo.

Brown is the operator of Brown Meat Locker here.

AAMP is a 1,500-member trade association representing meat processors, food service operators, locker and freezer provisioners, hotel-restaurant-institution suppliers, packers, retailers, wholesalers, slaughterers, butchers, curers and their equipment and service suppliers. As a director, Brown will serve as an overseer and consultant to the association's operations and be involved in strategic planning for meat industry activities.



MEMBERS of Stratford CB Club are busy putting up "Welcome banners on business firms along Main Street and elsewhere in Stratford just one of the preparations for the big upcoming Sherman County Fair and Stratford Jamboree which will be next Thursday, Friday and Saturday, Sept. 9-10-11. Watch for the Stratford Star's big annual Fair edition next week. (STARphoto by Bob Coombes).

The Stratford Star

Second class postage paid at Stratford, Texas, 79084. Subscription rates are \$8.00 per year in Sherman and adjoining counties; all other areas \$11.00 per year

Bob Coombes Editor And Publisher



TEXAS PRESS ASSOCIATION

Coldwater Manor

COLDWATER MANOR MENUS

SUNDAY: Breakfast, choice of juice, Cream of Wheat, egg, bacon, buttered toast, jelly, coffee, milk; **Lunch**, turkey, dressing, giblet gravy, green beans, cranberry sauce, hot rolls, margarine, pumpkin pie, whipped cream, coffee, tea, milk; **Supper**, pimento cheese sandwich, homemade chicken noodle soup, crackers, fruit cocktail, coffee, tea, milk.

MONDAY: Breakfast, choice of juice, oatmeal, egg, bacon, buttered toast, jelly, coffee, milk; **Lunch**, Swiss steak, escalloped corn, cucumber salad, hot rolls, margarine, coconut surprise, coffee, tea, milk; **Supper**, baked bologna, hash browns, zucchini bake, bread, margarine, peanut butter cookies, coffee, tea, milk.

TUESDAY: Breakfast, choice of juice, malt-o-meal, egg, bacon, buttered toast, jelly, coffee, milk; **Lunch**, ham cubes, red beans, coleslaw, cornbread, oleo, bread pudding, lemon sauce, coffee, tea, milk; **Supper**, chicken and rice casserole, buttered peas, sliced cucumbers, bread, margarine, chocolate cake, coffee, tea, milk.

WEDNESDAY: Breakfast, choice of juice, cream of wheat, egg, bacon, buttered toast, jelly, coffee, milk;

Obituaries

William L. Browder

SUNRAY - William Luther Browder, 76, died Thursday, Aug. 28. Services were at 2 p.m. Saturday in First United Methodist Church with the Rev. Ken Metzger, pastor of the Spurlock Chapel and the Rev. Russell Byard, pastor, officiating. Burial was in the Stratford Cemetery in Stratford by Morrison Funeral Directors.

Mr. Browder was a longtime resident of the Sunray area. He was born in Hansford County. He was a farmer and a Methodist. He was a member of Spurlock Chapel in the Spurlock Community and a member of Stratford Masonic Lodge. He was president of Rita Blanca Electric Coop Inc., in Dalhart and a member of the board of directors of the Sunray Coop and Water District in Dumas.

Survivors include his wife, Ada Mae; a son, Billy L. Browder of Sunray; a daughter, Nancy Browder of Sunray; a brother, Roy Browder of Sunray; two sisters, Mrs. Thelma Eubank of Sunray and Mrs. Helen Sparks of Midland; and three grandchildren.

The family requests memorials be to favorite charities.

Lunch, beef liver and onion, gravy, fried potatoes, escalloped tomatoes, biscuits, oleo, plum cobbler, coffee, tea, milk; **Supper**, mackerel patties, corn casserole, lime jello salad, bread, oleo, peach crisp, coffee, tea, milk.

THURSDAY: Breakfast, choice of juice, cream of wheat, eggs, bacon, toast, jelly, coffee, milk; **Lunch**, beef stragoneff, buttered carrots, tossed salad, biscuits, butter, spice cake, coffee, tea, milk; **Supper**, barbecue wieners, baked beans, buttered squash, bread, oleo, pineapple bavarian, coffee, tea, milk.

FRIDAY: Breakfast, choice of juice, malt-o-meal, eggs, bacon, toast, jelly, coffee, milk; **Lunch**, porkettes, black-eyed peas, cabbage, sliced cucumbers, cornbread, butter, strawberry short-cake, coffee, tea, milk; **Supper**, hamburger patties, scalloped potatoes, peas and carrots, bread, butter, brownies, coffee, tea, milk.

SATURDAY: Breakfast, choice of juice, oatmeal, eggs, bacon, toast, jelly, coffee, milk; **Lunch**, chicken fried steak, gravy, mashed potatoes, spinach, hot rolls, butter, pudding, coffee, tea, milk; **Supper**, sausage and gravy, hash browns, scrambled eggs, biscuits, oleo, jello and fruit, coffee, tea, milk.

School Lunch Menus

MONDAY - Labor Day holiday
TUESDAY - Baked wieners, mustard, macaroni with cheese, green beans, hot rolls, butter, apple cobbler, chocolate or plain milk.

WEDNESDAY - Hamburger steaks, gravy, catsup, creamed potatoes, fried okra, hot biscuits, butter, pineapple upside down cake, chocolate or plain milk.

THURSDAY - Baked chicken with noodles, English peas, w/k corn, hot rolls, butter, peanut butter, spiced applesauce, chocolate or plain milk.

FRIDAY - Hamburgers, cheese, onions, lettuce, tomatoes, pickle relish, tater tots, catsup, mustard, mayonnaise, cinnamon rolls, chocolate or plain milk.

CARD OF THANKS

Thanks so much for all the lovely cards and flowers, for all the help given Sheryl at the flower shop and for your thoughts and prayers they were greatly appreciated. Thanks again.

Martha Ellison

Evelyn Crowover-Roger Hays exchange vows

Evelyn Kay Crowover and Roger Dale Hays were united in marriage Saturday, Aug. 14, at the Crowover home.

The early morning ceremony was officiated by Dr. Geona Goad. The bride is the daughter of Mr. and Mrs. L.M. Crowover of Stratford. The bridegroom is the son of Mr. and Mrs. W.R. Hayes of Amarillo.

The bride wore a street length dress of white eyelet, trimmed with bridal lace

and blue ribbon, which was sewn by her aunt, Mrs. M.E. Ford. The bride's headpiece was a white derby hat trimmed with blue ribbon and fresh baby's breath. She carried a small cascade of yellow, lavender and blue roses and daisies.

Evelyn's traditional "something old" was a handkerchief belonging to her mother's grandmother. Her "something new" was her dress, "something borrowed", a cameo necklace of her

mother's, and "something blue" was her garter.

Candy Cook, of Amarillo, served as maid-of-honor. The best man was Robert Hayes, brother of the groom, of Amarillo. Jagee Crowover, niece of the bride, carried the rings on a needlepointed pillow that had the bride and groom's initials on it. The bridal attendants wore street-length dresses of embroidered eyelet in shades of yellow and lavender. Candelighters were Justin

and Adam Crowover, nephews of the bride.

Mrs. Crowover, mother of the bride, wore a street-length dress of blue and lavender. Mrs. Hayes, mother of the bridegroom, chose a street-length dress of blue. Mrs. Evans, grandmother of the bridegroom, wore a street-length dress of blue and lavender floral.

A reception and barbecue was held immediately after the ceremony.

The table was covered with a hand crocheted tablecloth made by the bridegroom's grandmother. Appointments included a cut glass punch bowl that belonged to the bride's maternal grandparents, a centerpiece of blue, yellow and lavender roses, carnations and daisies. The three-tiered wedding cake was decorated with yellow, blue and lavender daisies and was topped with a prayer candle which the bride and groom lit.

The servers were Lucretia Hayes and Susan Kirkpatrick, both of Amarillo.

After the wedding trip to Colorado and Wyoming, the couple will make their home in Amarillo where the bride is employed by Cloth World, Inc. and the bridegroom will be attending Amarillo College. □

THIRD ANNUAL TIP TOP TROT

THREE MILE RUN THROUGH CITY OF STRATFORD. Also One Mile Run and One Mile Walk. Start at First State Bank parking lot on the corner of 4th and Main Street, Stratford, Texas.

DATE: September 11, 1982 at 9:00AM. Entry Fee - \$5.00.

ALL PROCEEDS WILL GO TO "THE TEENA VAUGHN FUND"

AGE DIVISIONS:

MEN: 14 and under; 15 to 35; 36 and over.

WOMEN: 14 and under; 15 to 35; 36 and over.

AWARDS: Trophies to the first finishers in each division of the 3-Mile Run. T-Shirts to EACH PARTICIPANT.

ENTRIES to be accepted at City Hall weekdays from 9 to 5 and in the Principals office at the school during school hours. Mail entries to be in by September 8th. Make checks to TIP TOP TROT. Pick up Race Packet between 8 and 8:30AM the day of the race. Registration will be accepted until 8:45 on the morning of the race.

CUT ON LINE AND MAIL TO BOX 188, Stratford, Texas 79084

AGE on September 11, 1982 _____

NAME: _____ ADDRESS: _____

CITY: _____ STATE: _____

I accept full responsibility for health problems encountered as a result of the Tip Top Trot.

DATE: _____ SIGNATURE _____

PARENT OR GUARDIAN IF UNDER 18: _____ SIGNATURE _____

CHECK T-SHIRT SIZE: (circle proper size)

ADULT: S M L XL

CHILD: S M L

CATHERINE D. TAYLOR CERTIFIED PUBLIC ACCOUNTANT

North Plains Building

401 N. 3rd.

396-2435

Monday - Friday 9 a.m. - 5 p.m.

did you know?



For 20 years, Southwestern Public Service Company has sponsored Future Farmers of America (FFA) electricity workshops. This year, 82 FFA boys and one FFA girl participated (She was Kathy Karber of Booker, Texas, the first girl ever to attend the workshop). The students learned how to wire buildings, how to install and use electric controls, or how to build electric motors. The five top students won SPS-sponsored trips to the National FFA Convention in Kansas City, Mo., in November.

Glenn Bickel, Agricultural Engineer, Plainview.

Anytime you see a downed electric power line, report it to SPS. Don't touch it. Let professional linemen — SPS employees — handle the problem. Sometimes a downed line will appear to be safe. Someone who doesn't know what he's doing may touch it or pick it up.

Ray Juarez, Lineman Journeyman, Artesia.

There is no guaranteed profit for regulated electric utilities. Investor-owned companies like Southwestern Public Service Company are allowed to seek a fair and reasonable profit, but there are no guarantees. Last year, for instance, SPS was authorized by the Public Utility Commission of Texas to earn an average 10.76% return on equity. The actual return was 8.35%. What we were able to earn for our shareholders was retained because we work hard to keep all our expenses down.



Charles Dammier, Manager Accounting Services, Amarillo.

For answers to your questions, call or write your SPS manager.

You and SPS, partners managing electricity, make the difference.



SOUTHWESTERN PUBLIC SERVICE COMPANY

Sniff gas? Snuff out the problem. Call 396-5681.

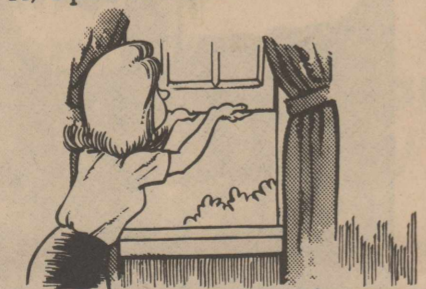
You know it the second you smell it. That special aromatic chemical added to natural gas to give it a unique smell.

When you smell it, even faintly, check your pilot lights. Look for a partially open burner valve. If the odor is strong, open a window, turn off open flames and leave your home immediately. Don't flip any

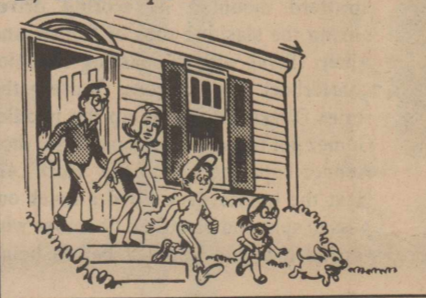
electrical switches or use your phone. And never strike a match. Use a neighbor's phone or a public phone to call us. We'll come out day or night to locate the problem.

So when you sniff trouble, give us a call. We'll snuff out the problem. Help us keep natural gas one of the safest energies available.

A) Open a window.



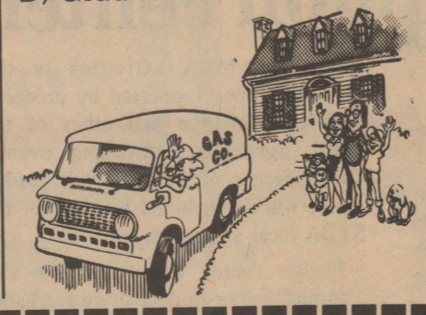
B) Leave your home.



C) Call us from a nearby phone.



D) Glad to be of service.



SOUTHERN UNION GAS COMPANY

Janna Newman weds Roberts in double ring St. Joseph rites



Mrs. Randy Roberts

Becky Jones - Cameron united in Andrews

Jimmy Cameron and Becky Jones, both of Andrews, were united in marriage on Friday, Aug. 20 at 6 p.m. in Means Memorial United Methodist Church. Jimmy is the son of Mr. and Mrs. James Cameron of Stratford.

The ceremony was performed by Rev. Keith Weisman of Big Springs, assisted

by Rev. Milton Jochetz, pastor at Means Memorial. The church gave the couple a reception and shower following the ceremony.

After a short wedding trip, the couple are at home in Andrews. Jimmy is Diaconal Minister of the church there. Becky is a registered nurse employed at Permian Basin Hospital in Odessa. □

Janna Newman and Randy Roberts were married in a double-ring ceremony July 31 at the St. Joseph's Catholic Church in Stratford, with the Rev. Stanley Crocchiola performing the late afternoon rites.

The bride is the daughter of Mr. and Mrs. James W. Newman of Mexia, formerly of Guymon, and the bridegroom is the son of Mr. and Mrs. Byron B. Roberts of Cal Farley's Boys Ranch, and recently of Dimmitt.

The church was decorated with pink and white silk flower arrangements and two candelabums at the altar. Traditional wedding music was provided by Mrs. Ronnie Engelbrecht, church organist, who accompanied Mrs. Dwight Reese of Stratford as she sang, "Sunrise, Sunset", "There Is Love", and "The Prayer of St. Francis."

Mrs. Leroy Kautz of Stratford was the lector. Chris and Kevin Stanely and Mr. Willie Artho, all of Stratford, assisted Rev. Stanley with the service.

The bride, escorted to the altar by her father, wore a gown of shimmering white organza, featuring a Queen Ann neckline bordered with Alencon lace and string seed pearls. The pleated A-line skirt with a matching chantilly lace border, gracefully flowed into a chapel-length train. A halo veil was added to complete the total ensemble. She carried an arm bouquet featuring a single red rose among a variety of pink and white spring flowers, tied with white lace and pink picate bow and streamers.

Her attendants, Mrs. Dennis Hudson of Boulder, Colo., Matron of Honor, and Mrs. Joel Hogue of Dalhart,

Prospectus Study Club will meet Friday, Sept. 3, at 10 a.m. with a pool side brunch at the home of Mrs. Lionel Robinson, 505 N. Pearl.

Mesdames Baskin Brown, Hartland Caraway and Bill Reed will serve as co-hostesses.

Betty Brown, year book chairman, will present the 1982-83 club-year yearbooks and conduct a club orientation.

The program is by the Education

Bridesmaid, wore identical gowns of pink organza with pleated skirts. They carried bouquets of pink roses, daisies and white baby breath to match their halo hair pieces and wore gold serpentine bracelets, gifts from the bride.

Attending the bridegroom were his brother, Monty Roberts of Sundown, as Best Man and Jack Stewart of Goodwell, Okla. as Groomsman. Ushers were Wade Pugh of Texhoma and Blake Oliphant of El Indio.

Miss Tana Gibson of Stinnett, cousin of the bridegroom, was sole candlelighter.

The mother of the bride and bridegroom and the maternal grandmother of the bride all chose street length dresses in pastel colors. Their corsages, gifts from the bridegroom, were pink sweetheart roses with white baby breath and lace.

The wedding reception was held in the activity center of the church. The bride's table featured a pair of pale green glass candlesticks and a matching cake knife that had belonged to the bride's paternal grandmother. The three-tiered white cake, decorated with miniature pink roses, was topped with a nostalgic bouquet of flowers.

Serving the cake and punch were Miss Kim Everson and Miss Millie Kautz of Stratford and Miss Susan Ewing of Wichita, Kans.

Presiding at the guest book table, which was covered with hand-crocheted lace cloth made by the bride's maternal great-grandmother, was Mrs. Mike Lahr of Stratford.

After a brief wedding trip, the couple will be at home in Goodwell, where the bridegroom is presently attending college. The bride is a graduate of Panhandle State University and recently received her Master's Degree at Southwestern State University, Weatherford, Okla. She teaches kindergarten in Stratford.

The groom's parents hosted the rehearsal dinner at the church's activity center on Friday night, July 30. □



- LUMBER
- PLUMBING
- SEED
- FEEDS
- HARDWARE
- SALT

TOP 'O TEXAS NO. 1 SUPPLIER

See us for all your canning supplies. We have Mason canning and freezing jars, and everything you'll need, including household lime.

Look for Shelley's low prices on anti-freeze in the next edition of The Star

LABOR DAY SALE

ALLSUP'S WILL BE OPEN LABOR DAY

FALL WAREHOUSE SALE

 DECKER FRANKS 12 OZ. PKG. 79¢	 ATKINS HAMBURGER SLICED DILL PICKLES 16 OZ. JAR 59¢
 REFRESHING COCA-COLA 2 LITER BTL. \$1.19	
<p style="text-align: center;"><i>HOME FOR THE HOLIDAYS SPECIALS</i></p> BORDEN'S HI-PROTEIN MILK 1/2 GAL. CTN. \$1.09	
 BORDEN'S ORANGE JUICE QUART 99¢	
 LADY BORDEN ASSORTED FLAVORS ICE CREAM 1/2 GAL. RD. CTN. \$2.29	

PRICES EFFECTIVE SEPT. 2-4, 1982 WHILE SUPPLIES LAST!



WE RESERVE THE RIGHT TO LIMIT QUANTITIES. LIMITED SUPPLIES!



HEY KIDS! JOIN THE ALLSUP'S DOORBELL BRIGADE FOR MDA! SEPTEMBER 5 AND SEPTEMBER 6, 1982

COME BY YOUR LOCAL ALLSUP'S CONVENIENCE STORE AND PICK-UP AN ALLSUP'S COKE CUP TO COLLECT MONEY FOR JERRY'S KIDS. BRING YOUR CUP IN AND TURN IN YOUR COLLECTION AND RECEIVE A FREE COKE! COMPLIMENTS OF ALLSUP'S CONVENIENCE STORES! GOOD SEPT. 5-6, 1982.

JOHN DEERE



SUPER TRACTOR SAVINGS

Purchase, or lease from Deere, any tractor model listed here and qualify for a John Deere money bonus

300-hp 8850: \$8,200	110-hp 4240: \$2,300
235-hp 8650: \$6,400	90-hp 4040: \$2,200
185-hp 8450: \$5,700	80-hp 2940: \$1,800*
228-hp 8640: \$4,500	80-hp 2940: \$1,400**
179-hp 8440: \$4,000	70-hp 2640: \$1,300
180-hp 4840: \$3,600	60-hp 2440: \$1,200
155-hp 4640: \$3,400	50-hp 2240: \$1,100
130-hp 4440: \$2,800	40-hp 2040: \$ 900

*without Sound-Gard[®] body
**with Sound-Gard body

PLUS

1 MAR. '83 WAIVER OFFER

Finance your new tractor with Deere and get a **second** bonus: finance charge can be waived to March 1, 1983. This waiver plus the money bonus is yours, from John Deere, over and above our new tractor discount. And we're making specially good trades on your older models—3020's, 4020's and other tractors of that age. (Financing and leasing subject to approved credit.)

Get our best deal... get a John Deere

WITH THIS COUPON

GOOD THRU SEPT. 8, 1982

SUPERMAN PEANUT BUTTER 18 oz.

\$1.19

(1 coupon per purchase)

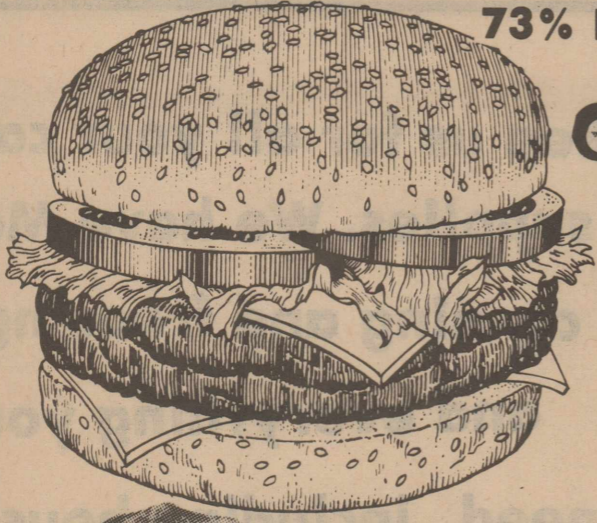
Cut Rate Grocery

New Summer Store Hours: Weekdays 7:00 a.m. to 9:00 p.m. Sunday 8:00 a.m. to 9:00 p.m.
Than Cut Rate Family Center-A Home Owned and Operated Business

(YOUR STORE NAME)
LABOR DAY
SPECIALS

DOUBLE
MANUFACTURERS'
COUPONS ON
WEDNESDAY
AND
SATURDAYS!

MEAT BUYS



73% LEAN-GUARANTEED FRESH

GROUND BEEF
\$1.19 lb.



HORMEL "SUPER SELECT"

SPARE RIBS
\$1.49 lb.

U.S.D.A. CHOICE
BONELESS
K.C. STRIP STEAKS lb. **\$3.99**

EXCELLENT FOR BBQing
SPLIT FRYERS lb. **.69¢**

WILSON'S VACCUM PACK
FRANKS 12 oz. pkg. **.99¢**
BOLOGNA 12 oz. **\$1.19**

SMOKED OR POLISH SAUSAGE
HILLSHIRE FARMS
\$2.09 lb.

KRAFT LIGHT'N'LIVELY SINGLES 12 oz. **\$1.79**
KRAFT PHILADELPHIA CREAM CHEESE 8 oz. **.95¢**



SHURFINE FROZEN **Frozen Foods** 16 oz. pkg.
Lemonade STILLWELL **.88¢**
BREADED ZUCCHINI

4/\$1.
6 oz. can



13 oz. **CHOCOLATE CREAM PIES**
14 oz. **LEMON CREAM PIES** each **.99¢**

FRESH **Fresh Fruits & Vegetables**

CARROTS
CALIFORNIA CALLO BAGS **.23¢** 1lb.

CALIFORNIA FRESH CAULIFLOWER **.69¢** HEAD

CALIFORNIA THOMPSON SEEDLESS GRAPES **.79¢** lb.

CALIFORNIA LEGRANDE NECTARINES **.59¢** LB.
RUSSET POTATOES **.99¢** 10 lb bag

Waldorf **.88¢** 4 roll pkg.
WALDORF BATHROOM TISSUE
KINGSFORD CHARCOAL **\$2.49** 10lb. bag

SHOWER SIZE **IRISH SPRING** (15¢ off label) **.59¢**



WESSON OIL 38 oz btl. **\$1.49**

DELICIOUS BROASTED CHICKEN & OTHER HOT FOODS TO GO FROM THE "DELI"
FOR SPECIAL CUT STEAKS & ROASTS CALL 396-5586
U.S.D.A. CHOICE FREEZER BEEF CUT & WRAPPED

WITH THIS COUPON GOOD THRU SEPT. 8, 1982
HUNT'S KETCHUP 32 oz. **.99¢** w/coupon
ONE COUPON PER PURCHASE
Cut Rate Grocery

WITH THIS COUPON GOOD THRU SEPT. 8, 1982
ZEE PAPER NAPKINS 60 ct. **.33¢** w/coupon
ONE COUPON PER PURCHASE
Cut Rate Grocery

We Reserve
the
Right
to Limit
Specials
Good
SEPT. 2-8, 1982

A
Good Place
to Meet Your
NEIGHBORS
&
FRIENDS

Cut Rate

GROCERY AND FAMILY CENTER

LOW,
LOW
EVERYDAY
PRICES

We will be
open for your
convenience
LABOR DAY
Monday Sept. 6

Have a nice
Holiday

Stratford, Texas YOUR PATRONAGE APPRECIATED OPEN SEVEN DAYS A WEEK

COCA COLA
2 liter btl. **.99¢**

TENDER CRUST HAMBURGER & HOT DOG BUNS 8 ct. pkg. **2/.88¢**

JELLO ASSORTED FLAVORS 3 oz. pkg. **3/.99¢**

FOLGER'S COFFEE ALL GRINDS 1 lb. can **\$2.09**

CHEEZ-IT 10 oz. pkg. **.79¢**

SUNSHINE CHEEZ-ITS 3/\$1

RANCH STYLE BEANS 300 can **3/\$1**

VANILLA SCHILLINGS 2 oz. btl. **\$1.79**

SOUR CREAM SHURFRESH 8 oz. ctn. **.49¢**

COMSTOCK APPLE PIE MIX 21 oz. can **.99¢**

ELBO RONI AMERICAN BEAUTY 24 oz. **.99¢**

SHURFRESH POTATO CHIPS REG OR DIP STYLE 8 oz. pkg. **.79¢**

FRANCO AMERICAN SPAGHETTIOS 300 can **3/\$1**

PARKAY SQUEEZE MARGARINE 1 lb. btl. **.88¢**

CONTADINA TOMATO SAUCE 8 oz. can **4/1.00**

KRAFT CHILLED ORANGE JUICE 1/2 gal. **\$1.89**

HALF-HALF SHURFRESH pint **.49¢**

PIONEER BISCUITS MIX BUTTERMILK/REGULAR 2 lb. pkg. **.99¢**

VIENNA SAUSAGE ARMOUR'S 5 oz. can **2/.99¢**

Discover **BEN FRANKLIN**
We bring variety to life!
ASSORTED SIZES

ALL COOLERS 20% OFF

BLUE ICE 20% OFF

LADY LITE DISPOSABLE FLASHLIGHT \$1.29
Reg. \$1.59

ON SALE NOW!
Beautiful, Fine Porcelain China
THIS WEEK'S FEATURE ITEM: SAUCER **99¢ EACH**

ABSORBINE JR. 1 oz. **\$1.09**

JOHNSON'S BABY LOTION 9 oz. **ONLY \$2.49**

JOHNSON'S BABY CORN STARCH 8 oz. **\$1.49**

MENNEN Speed Stick Deodorant—2.5 oz. **\$1.99**

MENNEN Skin Bracer After Shave—4 oz. **\$1.79**

ATKINS ICE CREAM 1/2 gal. **\$1.59**

ATKINS HAMBURGER SLICED DILL PICKLES 16 oz. jar **59¢**

HUNGRY JACK PILLSBURY BISCUITS 9 1/2 oz can **2/.99¢**

PINK GRAPEFRUIT JUICE TEXSUN 46 oz. can **.69¢**

WITH THIS COUPON
GOOD THRU SEPT. 8, 1982

TENDER CRUST BREAD
Ranch Style/Big Bag
.49¢
w/coupon 1 1/2 lb.

ONE COUPON PER PURCHASE
Cut Rate Grocery

WITH THIS COUPON
GOOD THRU SEPT. 8, 1982

EAGLE BRAND MILK
.99¢
14 oz.

(1 coupon per purchase)
Cut Rate Grocery

WITH THIS COUPON
GOOD THRU SEPT. 8, 1982

SUPERMAN PEANUT BUTTER 18 oz.
\$1.19

(1 coupon per purchase)
Cut Rate Grocery

Clock ticks Fair Countdown

As the clock ticks, time for the Sherman County Fair and Jamboree becomes closer and area residents are encouraged to participate in the Fair.

Two of the more popular categories, culinary and the 4-H Bake Show are discussed in this week's news column.

FOOD PRESERVATION NEWS

Common questions asked concerning food preservation are:

1. Should the microwave oven be used for food preservation? No, the food within the jar does not get hot enough to kill Clostridium Botulinum spores. Also metal can damage magnetron in the microwave. In most instances the use of a microwave for drying is not practical. Some of the dried products can ignite. It cooks too rapidly and cooks instead of drying.

CARD OF THANKS

I would like to thank everyone who sent flowers, gifts, and visited while I was in the hospital with Wesley. Also, I want to thank everyone who brought food over and helped me when I came home. It is nice having such wonderful friends.

The Yorks - Mellonce, Ted, and Wesley

2. Is it economical to preserve? Yes, if you have the high quality food items available (have them given to you or have home grown food) and the proper preservation equipment. Cost of fuel, food, containers and cost of equipment to can are determining factors. The equipment involved is a long term investment. Neighbors could share the first time to see if it is something they really want to do on a long term basis or it is one time venture. If you enjoy it - do it.
3. What is the most serious type of food poisoning? Clostridium Botulinum produces a deadly neurotoxin which can cause death within 36 hours.
4. How can the correct food storage save the homemaker money? Improper storage leads to wastage, spoilage and a decrease in the quality of the food. Use recommended equipment for the intended food preservation method. Thermophiles are not killed at the processing temperatures. These are bacteria that can grow at high temperatures. (Do not store canned foods in garage or attic.) Process pickles and jellies to prevent mold growth.
5. How practical is dehydrating foods at home? If you can use a dried product in your home, drying is a relatively inexpensive and simple process requiring equipment that can be made by the person. Dry small quantities at home in your oven or sun first. Do not invest in a dehydrator unless you know you will be using it enough to justify the expense of drying.

4-H BAKE SHOW

Sherman County 4-H'ers will have an opportunity to challenge their food preparation skills during the 4-H Bake Show.

Junior 4-H members will prepare Whole Wheat Muffins and Senior 4-H'ers will prepare Sourdough Yeast Bread. Both products are delicious and utilize an important Sherman County agricultural product, Wheat!

Tips & Topics

Suple Ehmman, CEA

For more information and recipes for the 4-H Bake Show, contact the County Extension Office at 396-2122.

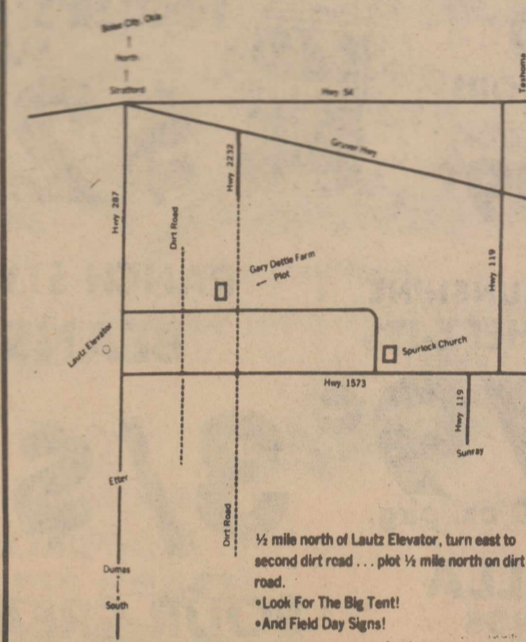
If anyone is interested in obtaining a copy of the Sherman County fairbook, the Extension office will be happy to send you a copy. □

**To All Farmers:
You Are Invited To A Funk And
CIBA Geigy Sorghum Field Day.**

**Date: Wednesday, September 8, 1982
Time: 12 Noon To 6 p.m.
Where: Gary Dettle's Farm, Sherman County**

**Barbecue And Beverages Will Be
Served All Afternoon... So Come
Anytime On Wednesday Afternoon
From 12 to 6 p.m.**

**Everyone Gets A FREE Cap! . . . And We Are Giving
Away A Winchester Rifle With Scope For A Door Prize**



**Come See All The
New Material . . .
Eat With Us . . . Win
The Winchester
Rifle And Get Your
FREE Cap! Call
Your Funk Or CIBA
Geigy Dealer For
Other Details.**

**Rain Date:
September 15**

INSUR-MATION Farmers Union Insurance



by Mike Vincent

Q. I'm going to have my first car along with my first auto insurance policy. What is a collision coverage deductible? How does it affect coverage?

A. Deductible eliminates policy coverage for minor losses or for the first dollars on a large loss and helps keep insurance premiums as low as possible. Deductible is usually found on both comprehensive and collision coverage. A policy with \$50 deductible collision means you would pay the first \$50 of damage while the insurance company pays the remainder, up to the limits as stated on the policy. As the amount of deductible increases, the policyholder becomes responsible for a greater part of a potential loss and insurance premiums decrease. Your agent will discuss with you the amount of responsibility you feel your financial situation will allow you to comfortably assume.

Griggs News



School is in full swing. Teachers this year are Kindergarten, Mrs. Ella Durham; 1st and 2nd, Mrs. Nancy Overton; 3rd and 4th, Mrs. Linda Caldwell; 5th and 6th, Miss Joyce Wells; 7th and 8th, Mr. Bill Shackelford; Principal, Mr. Jack Gilley.

Visitors last Monday and Tuesday with Mr. and Mrs. Howard Warren were Mr. and Mrs. Jim Peters and Mrs. Ruth Forcher of Ordway, Colo. Tuesday noon they all enjoyed dinner with the Ralph Warren family to celebrate Mr. and Mrs. Howard Warren's anniversary.

Saturday the Sam Hanes family enjoyed a cookout at Keyes at the Fred Burrows home.

Approximately 30 people attended a baby shower honoring Lupe and Justina Fierro last Thursday. Rena Oyler hosted

the shower and was assisted by Lana Hanes, Cherrie Brown, and Lorene Oyler.

Julie Warren had a slumber party Friday evening. Those attending were Janet Desbien and Debbie DeVors.

Friday afternoon Minnie Cox and Mildred Grabeal visited with Rhonda and Taryn Compton.

Mr. and Mrs. Baker Duggins of Friona and Philip Duggins of Dalhart visited Minnie Cox on Saturday and Sunday.

News writer for September will be Mary Desbien. Call her at 6357. It sure helps to have people call instead of doing all the calling and finding no one at home. Let's all help fill up the Griggs News! □

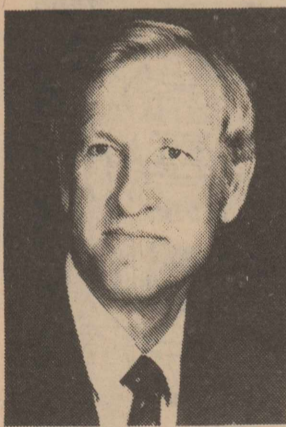
**We Will Be Closed
Sun. & Mon. Sept. 5-6
For LABOR DAY
HEADQUARTERS
RESTAURANT**

CARD OF THANKS

We would like to say Thank You to everyone who has sent cards, flowers, food and donations to Teena's fund. The many prayers from the people of Stratford have helped us get through the last 1 1/2 months and will help us get through what is ahead of us. A special thanks to the First Christian Church for starting the fund for Teena and to Mother and Grandmother, Bernice Stublefield, for stepping in and being mother to Diane and LaQuita.

Frank, Barbara, Teena,
Diane and LaQuita Vaughn

POLITICAL AD



Every election, we talk about education -- and we should, because it is the most important business in any community.

We have to continue to address the question of teacher salaries, to attract the most capable people into this vital profession AND KEEP THEM THERE!

We also have to encourage continuous honing and upgrading of their professional skills, while weeding out those who ought not to be teachers.

R.C. PORTER

★ Republican Candidate for
State Representative,
88th District.

(Pol adv paid for by R. C. Porter Campaign
Fund, R. C. Porter, Treas.
Rt 2, Box 5, Spearman, Texas 79081)

Community Calendar for the month of AUGUST & SEPT.

SUNDAY	MONDAY	TUESDAY	WEDNESDAY	THURSDAY	FRIDAY	SATURDAY
			1 8 p.m. City Council	2	3 2 p.m. EH Council 6 p.m. Mixed Golf Scramble, Country Club	4 7:30 p.m. Couples Bridge Country Club
5 Pronger Reunion	6 NO SCHOOL 1:30 p.m. Mixed Golf Scramble, Country Club	7 Order of Eastern Star		9 Sherman County Fair & Stratford Jamboree 8 p.m. Hospital Board 8 p.m. School Board	10 Sherman County Fair & Stratford Jamboree 6 p.m. Mixed Golf Scramble, Country Club	11 Sherman County Fair & Stratford Jamboree
	10 a.m. Commissioner's Court 8 p.m. Country Club Board	2:30 p.m. Historical Com. 2 p.m. Manor Birthday Party 5 p.m. Ladies Golf Scramble, Country Club 8 p.m. Farm Bureau Board of Directors	15	2 p.m. Ladies Bridge, Country Club 8 p.m. City Council 8 p.m. Masonic Lodge	17 6 p.m. Mixed Golf Scramble, Country Club	18
19	No Classes	8 a.m. Women's Division Chamber Board Meeting 5:30 p.m. Men's Night, Country Club 7:30 p.m. Fire Dept. Auxiliary Order of Eastern Star	22	23 Noon - SCOT	6 p.m. Mixed Golf Scramble, Country Club	25
26		28 Noon - Women's Division Chamber Luncheon	29			

C & C TEXACO PRODUCTS
Darrell Cotney

CIMARRON FEEDERS LTD
(405) 543-6383
Nights (405) 543-6375

CUT RATE GROCERY
Hwy. 54 East

A lot of people say that they have a difficult time praying. Certainly in times of crisis, most do cry out to God, but in times of ease prayer seems to "come hard." If nothing else seems to prompt prayer, maybe praise will. The Apostle Paul wrote: "Always give thanks for everything to our God and Father in the name of our Lord Jesus Christ." (Ephesians 5:20 TLB) When nothing seems to "come" when one tries to pray, just allow "thanks" to be the prayer.

Kenneth T. Metzger, Pastor
Stratford, First, and Spurlock Chapel
United Methodist Churches

FIRST STATE BANK
of Stratford

KING EQUIPMENT CO

WALTER LASLEY & SONS
TLU Feeding

NORTH PLAINS SAVINGS AND LOAN ASSOCIATION
Your Money Store.

SHERMAN IMPLEMENT CO
Your John Deere Dealer

Assembly of God Rev. Morie Lindsey Fulton and Purnell	Church of Christ Alfred White 3rd and Chestnut	First Baptist Rev. Genoa Good 3rd and Fulton	First Christian Rev. David Harker Main and 5th	Independent Baptist south Main	St. Joseph's Catholic Fr. Donald P. Rusch 519 S. Pearl	United Methodist Rev. Kenneth Metzger Main and 6th
--	---	---	---	--	---	---

LEGAL NOTICE

The Board of Trustees of the Stratford Independent School District will receive bids on the following equipment:

1 - 1983 Model Pickup, 1/2 ton, V-8 engine, large wheel base, wide box, automatic transmission, power steering.

The following equipment is to be traded in:

1 - GMC Pickup, 1/2 ton, 350 V-8 engine, automatic transmission.

Please submit two bids, one with a trade-in, and one without a trade-in, on or before **September 9, 1982**, stating approximate delivery date.

The Board reserves the right to reject any or all bids.

Don Riffe, President
Board of Trustees
Stratford ISD

(Published in The Stratford Star, Aug. 19 and Sept. 2, 1982)

NOTICE TO PUBLIC

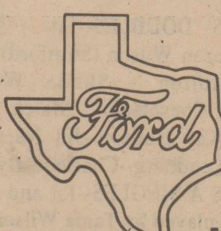
Notice is hereby given to citizens of Stratford that City Council will be in session in City Council Meeting Room of City Hall in Stratford, Texas, Thursday Sept. 16, 1982 at 8:00 p.m. for a proposed use hearing of Revenue Sharing Entitlement Funds. The amount of unused Revenue Sharing money is \$11,195.00 and the amount of

Entitlement Funds expected to be received during the 1983 fiscal year will be \$8,713.00. The Public will be given the opportunity to make oral and written suggestions regarding possible uses of Revenue Sharing Funds at this time.

Rohnny L. Baker
City Secretary

(Published in The Stratford Star Sept. 2, 1982)

A TEXAS TRADITION



**Pendleton Ford
Lincoln - Mercury**

Hwy 54 E DALHART, TEXAS



Better bindweed control with a Banvel herbicide Between Crops Application.

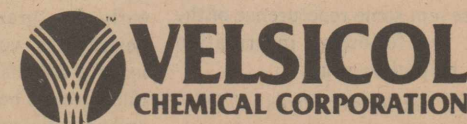
Want to end your bindweed problems once and for all? Start planning a Banvel® herbicide Between Crops Application now.

Banvel herbicide works right into your fallow/rotation program. Go in after crop harvest this fall with up to 2 quarts of Banvel herbicide per acre on fallow land.

The fall application kills bindweed that would otherwise have time to store up nutrients before the winter freeze. A follow-up application in the spring will catch seedlings and escapes.

In addition to cleaning out bindweed, a Banvel herbicide Between Crops Application controls many other annual, biennial and perennial weeds.

Make this season the last that you're wrapped up in bindweed. Ask your ag chem dealer for between crop weed control with Banvel herbicide.



Let us help you decide if an Interest Bearing Checking Account is what you need.

We pay the highest interest rate allowed and will compound it daily to give you the highest yield.

IOC (Interest On Checking) is a real plus! Come by The First State Bank and let Mary Lou Cotney help you take advantage of our IOC accounts today!

The FIRST State Bank of Stratford
INSURANCE CORPORATION

OGLESBY INTERNATIONAL GRAND OPENING



Come by, meet our staff, and have coffee and doughnuts with us.

GRAND OPENING WEEK
Schedule of Events

Monday - Sept. 6th-Holiday
Tuesday - Sept. 7th Grand Opening
Wednesday - Sept. 8th Combine Clinic
Thursday - Sept. 9th Red Power Showdown
Friday - Sept. 10th Field Day at Al Gallo place 2 miles south on U.S. 287 on east side of road.

5% PARTS DISCOUNT ALL WEEK—ADDITIONAL 5% on Cash Sales TRACTOR—COMBINE—IMPLEMENT

DISCOUNT — DISCOUNT — DISCOUNT

Ask about a Special Deal Tailored Just for You!

PARTS — SALES — SERVICE



Tourney draws wide field

The O Ki Hi-Tennis Tournament held Aug. 13-15 was open to the area and included some of the finest tennis players from a three-state region, according to a tourney spokesman.

Over 100 matches were played in both Singles and Doubles competition in the three days of the tournament. The money which was raised by the event will go towards the development of the new library wing, the spokesman said.

Results in the "A" division were as follows:
MENS DOUBLES--1st - Greg Plumlee (Kans.)-Shawn Ammons (Gruver); 2nd - Scott Duncan (Gruver) - David

Johnstone (Borger); Consolation - John Bass - Mario Martinez (Stratford);

MENS SINGLES --1st - David Johnstone (Borger), 2nd - Greg Plumlee (Kansas), Consolation - John Wilson (Stratford);

WOMENS DOUBLES--1st - Tania Wilson - Sharon Wilson (Stratford), 2nd - Molly Holton - Sheila Watley (Spearman), Consolation - Match to be played by Kay Hudson-Jill Needham vs. Elaine Lundberg-Charlene Dyess;

WOMENS A SINGLES--1st and 2nd - Match to be played by Tania Wilson and Sharon Wilson; Consolation - Pam Parker (Canyon);

MIXED DOUBLES--1st - Tania Wilson (Stratford) - Greg Plumlee (Kansas); 2nd - B.A. Donelson - Charlene Dyess (Stratford); Consolation - match to be played by Gary Lundberg - Sharon Wilson vs. Jill Needham - Jack Needham.

Several excellent Junior players competed in the "B" division, with the following results:
MENS "B" SINGLES--1st - Mitch Parker (Canyon); 2nd - Steve Duncan (Gruver); Consolation - Neil Smith (Stratford);

MENS "B" DOUBLES--1st - Mitch

Parker (Canyon) - Steve Duncan (Gruver); 2nd - Doug Pittman - Parker Johnson (Stratford); Consolation - Neil Smith - Brent Lane (Stratford);
WOMENS "B" SINGLES--1st - Nanette Boardman (Stratford); 2nd - Shawna Dettle (Stratford); Consolation - Roxanne Tillery (Stratford). □

Firms furnishing trophy awards for the O Ki Hi Tournament included:

First, second, and third place Men's singles--First State Bank;

Women's Singles, first, second and third--Stratford Auto Electric;

Men's Doubles--Brown's Meat Lock for each member of the first place and second place teams, Dairy Queen for each member of the third place team.

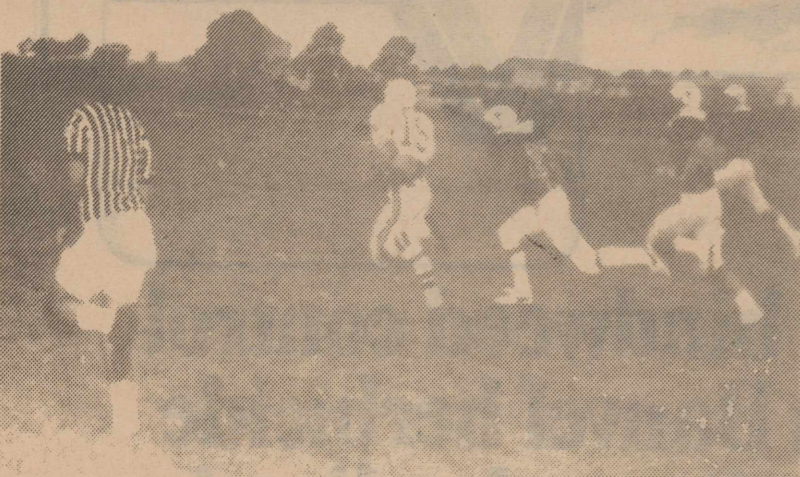
Women's Doubles--Sherman Implement for each of the first place duo; Stratford Grain Co. for both second place team members and Bylow Food Store will provide the two third place trophies;

Construction, second place; and Cut Rate Grocery and Family Center and Headquarters Restaurant, third place. □

The Mixed A trophies were furnished by Consumer's and C&D Body Shop, first place; Elk Pharmacy and Empire



BEHIND crisp blocking Joe Ollvas cuts back inside and finds running room for the Vega scrimmage.



After hauling in a pass Jonathan Coombes [15] sprints for Elk yardage before being overhauled by Vega defenders.

County Agents Report

of Sherman County by Jim Allison

Wheat Streak Mosaic Virus caused problems in wheat production across Sherman County in the 1982 wheat crop. To help prevent some recurrence of the problem, the following information might be helpful to you.

Wheat Streak Mosaic Virus (MSMV) is transmitted by the wheat curl mite. The mites and the virus must have year round living plants (wheat, native grass, volunteer wheat) for survival, if these host plants are destroyed either by a tillage operation of freezing weather the mite and virus soon perish. Since frost does not kill volunteer wheat plants,

they must be cleaned tilled in order to destroy this important host of the mite and virus. Those producers that plant early for grazing should not only destroy the volunteer wheat but also leave a 200-300 foot border of cleaned tilled ground between the planted wheat and potential mite and virus native grass hosts, especially on the south and west borders of the field. This cleaned tilled border would serve as a barrier to the migrating mite and reduce the potential for WSMV. The cleaned tilled border could then be planted after frost had killed the native grass.

LEGAL NOTICE

BUDGET HEARING

Notice of the City of Stratford, Texas Budget Hearing. In accordance with the laws of the State of Texas and provisions of the City of Stratford Charter, notice is hereby given that a Public Hearing will be held on the proposed 1982-1983 budget for the City of Stratford, Texas,

Thursday, September 16, 1982 at 8:00 p.m. The hearing will be held in City Council Meeting Room of City Hall in Stratford, Texas.

John M. Wilson, Mayor
City of Stratford

(Published in The Stratford Star Sept. 2, 1982)



Strake Talk

TWO TERMS IS ENOUGH

Texans have a healthy skepticism of their elected officials, a wariness of entrenched power that they have embodied in the state constitution. They have historically refused to keep top state officeholders more than a few terms.

Now my opponent comes along, having spent nearly ten years in the Lt. Governor's office, one of the top state policy-making offices. Mr. Hobby wants yet another term to make it 14 years in that crucial job. That is unprecedented. Never in Texas' history has any Lt. Governor served that long—or wanted to.

His desire, frankly, puzzles me. You would think he would have other goals, other challenges he might want to tackle. As his primary opponent this year said, "If he had anything to get done, you'd think he would have done it by now."

My opponent will tell you that experience is what counts. I think voters need

to look at the experience they have had with him. After ten years, our highways are in bad shape, the quality of education has declined, we still do not have a new, statewide water plan and he has refused to tackle the growing crime problem. We can't afford more of that kind of experience.

I have a long-held belief in what I call the citizen-politician: someone who holds a job, serves his country or state for a reasonable time, then returns to that job and private life. For that reason, the first order of business after I am elected will be to have a constitutional amendment introduced in the legislature limiting the Lt. Governor to two terms—eight years. That is enough time for anyone. Too great a concentration of power for too long is bad. That is a principle of democracy.

If you have any thoughts on this subject, please write me at 1213 W. 34th, Austin, 78705.

George W. Strake, Jr.
George W. Strake, Jr.

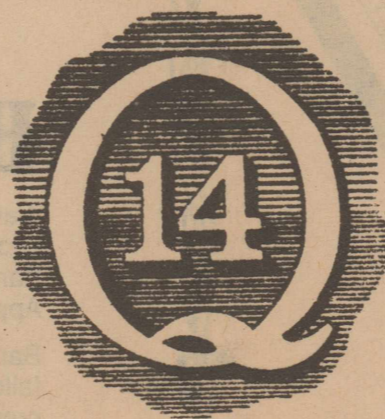
Paid Political Advertisement, Texans for Strake 1213 W 34th Street, Austin, Texas 78705. Bayard Friedman Treasurer.

Congratulations . . .

JOE P. FLORES
YOU HAVE QUALIFIED FOR THE

RECORDS INDICATE THAT THIS IS YOUR 14TH YEAR OF QUALIFICATION

AWARD WINNERS QUALIFYING FOR THE INTERVENING YEARS ARE RECEIVING THEIR YEAR SEAL WITH THIS MAILING. FURTHER RECOGNITION IS USUALLY BY THE LOCAL ASSOCIATION AT SOME EVENT PLANNED FOR THIS PURPOSE.



As evidence of your continued qualification for the National Quality Award, having previously won the Special National Quality Award plaque, the Life Insurance Marketing and Research Association and the National Association of Life Underwriters take pleasure in presenting to you this seal.

Partners make the difference.

You and SPS are partners. You, the customer, are the user of electricity, and we are the producer and distributor of that electricity. That makes us partners.

As partners, we work together toward common goals. We combine our talents and efforts to better manage electricity. And, we share ideas and responsibilities for a better way of life.

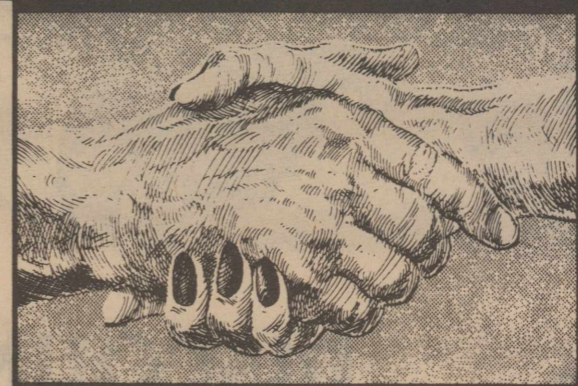
Partners make a difference. The difference is how efficiently electricity is used today and how its supply is managed, which affects its cost in the future.

Your role as a partner is to make the most efficient use of electricity.



Our role, as Southwestern Public Service Company, is to invest the money to build and operate plants, and to provide the skilled professionals who make sure safe, dependable electricity is available when needed.

We depend on each other. Without us, your life would be less comfortable and less productive. Without you, our services would not be needed. We're partners, working together to make the difference. Hand in hand.



You and SPS, partners managing electricity, make the difference.



SOUTHWESTERN PUBLIC SERVICE COMPANY

DO YOUR SHOPPING IN THE CLASSIFIEDS

BUYING OR SELLING, THE CLASSIFIEDS WORK FOR YOU!



Phone 396-5555 To Place Your Star Classified Ad

Classified ad rates 10 cents per word first insertion, 5 cents per word on subsequent insertions, (\$2.50 minimum.) Additional 25 cents if ad is billed.

FOR SALE
FOR SALE--New Holland 850 Round Baler, like new. \$5,500. 753-4432. 33-36p

PIANO IN STORAGE
Beautiful spinet-console stored locally. Reported like new. Responsible party can take at big saving on low payment balance. Write Joplin Piano, Inc., Joplin, Missouri 64801. Include home phone number.

FOR SALE--King coronet, excellent condition. Call 396-5325. 34-tfc

FOR SALE--Two story Brick Home. 601 N. Main, George Lovett. Call 396-5671 after 4 p.m. weekdays. 29tpc

FOR SALE--1980 Oldsmobile 98 (diesel), 2 door, all electric, air, power, 709 N. Maple. Call 396-2427.

FOR SALE--1977 Buick Riviera 2-door. Good condition. Loaded with extras. Call 396-2441 or after 5, 396-2407. 34-37c

FOR SALE--Super-20 Master King coronet. Call 396-5394 after 6 p.m. 34-35p

FOR SALE--Three-bedroom brick house with two baths, living room, den, two fireplaces, central air, patio, fence, two-car garage. Recently redecorated. Call 396-5628. After 6 p.m. call 396-5605.

FOR SALE--King Trombone with F-Trigger. Good Shape. Call 396-2471 or after 5 call 396-5373. 29tpc

FARM GIVE AWAY
Two (2) Center Pivots, 108 acre each, 1600 GPM well, Engine in pump, \$95,000 per pivot; also developed qtr., 1200 GPM well, no sprinkler, \$67,000, located 25 miles N.W. of Dalhart; must cash out.

PETE SCHAKEL BROKER, WESTERN LAND AND INVESTMENT CORP.
(303) 221-0090
(303) 484-0500

Responsible person needed. Wanted to own and operate candy or Confection vending route. Stratford and surrounding area. Pleasant business. High profit items. Can start part time. Age or experience not important. Requires car and \$3788 to 12,452 cash investment. For details call Eagle Industries, 1-800-328-0723

FOR SALE--3 John Deere 8300 wheat drills with Hitch for sale. In good condition. Call 396-2107. 34-35c

FOR SALE--Cocker spaniels, AKC Reg. 3 blacks, 2 buffs. 396-2866. Chip Caraway 34-35c

FOR SALE--71 Buick 4 door Skylark-less than 56,000-clean. Call 396-2205 or see at 610 S. Fulton. 32-33c

SERVICES

VETERANS- Needing assistance in applying for benefits from Veterans Administrations Service Officer at 396-5348. 27p

Auto's Paint and Body. For estimate call 396-2389. 23-tfc

Eddie Williams now local representative for Wallace Monument Co. Clarendon. Call Eddie at 396-5330. 13-tfc

"Singing Lessons", legitimate technique only. Experienced teacher, Texas-NYC trained. Dumas. 935-5282. 32tpc

THE TEXAS TRADESMEN- General Home maintenance and repair; new construction, remodeling, additions; concrete, fireplaces, roofing, etc. Will trade labor for anything of value. Phone 396-5970 or 396-2873. 16tpc

ALL CABINET WORK--custom built. Leo L. Scott, across from North Plaza Building, Ph. 396-2219. ttc

CUSTOM hay cutting, baling and hauling. Also short or long distance hauling. 806-659-3930. 33-36c

WANTED

HELP WANTED- CAREER Insurance Sales Opportunity..... Farm bureau seeks outstanding individual to sell and service established insurance accounts. Generous guarantee plus commission during two-year training period leading to management. \$15,000-plus average income for this area. No travel, 160 hours of company paid training. For personal interview call 396-5598.

WANTED--2 box springs & mattresses, twin bed size. In good condition. Call 396-5947 after 5 p.m. 34-tfc

NEEDED--Woman wanted to stay with my mother. 396-5973. 35p

WANTED CUSTOM HAY WORK - swathing, baling, and stacking. Call 505-487-2831 or 505-487-2435. 35-37c

Equipment Operators Needed to put corn in pit silo. Contact Jerry, 396-5501. 35-36c

WANTED- Housework to do and yards to mow. Call 396-5655 after 7 p.m. 32-35c

FRESH PRODUCE for sale--Black eye and crowder peas, okra, cucumbers, corn, and egg plants. Call 966-5221, 396-2577 or 396-5657. 34c

FOR RENT--2 bedroom apt. Call 396-5987 after 6 p.m. 33tpc

Adams Tillage Tools now available at Darco Welding. Call 396-2413. 23-tfc

FOR RENT--Three room furnished apartment for a married couple. Call 396-2105 21-tfc

REGISTERED CHILD CARE- Opening for one full time child between the ages of 2 and 8 years old. Contact Jani Tillery - 602. S. Pearl, 396-2508.

BUS DRIVERS NEEDED. Stratford Ind. School. Call E.L. Bass, Supt. 396-5571, or Frank Vaughn, 396-5600. 38-tfc

Give yourself a lift for fall! Try our "Liftelle" face treatment and fantastic collagen products, the natural protein for your skin. New fall colors in eyeshadows, lip and nail color and blushes. Call for a "free" makeup lesson of LADY FINELLE cosmetics. Marty Bain 396-2053. 35c

FARMS FOR RENT: On Gruver Highway, S 1/2 section 177 and E 1/2 206. Both level, tiled, 4 wells [one new] with return systems. Rent one and/or both. Consider. Allotted fall wheat only. Al Reznik. 3308 76th. Lubbock, Texas 79423 36p

COMPLETE HOME CARE--Repair, remodeling, restoration; interior-exterior painting; wall repair and removal; walls built or moved; paneling, wall papering, dry walling; window repair, caulking; closets built; doors hung; ceilings repaired or lowered; electrical fixtures installed; garage door repair. Call Jim at 396-2420. YOUR HOME CARE NEEDS FOR LESS. 20tfc

HOTEL APTS. - 1 and 2 bedroom furnished and unfurnished. All utilities paid but electric. Call Earl Phelps at 396-2577 or 396-5657. 32tpc

REDUCE! Trim extra pounds fast and easy with powerful Super Slenderite. Elk Pharmacy. 34-36c

FOR RENT- Pop-up Campers. Sleep 6. Daily or Weekly rates. Call 396-5644 after 6 p.m. 26tpc

Kick off with the Elks against Spearman in style. 30% off men's dress shirts. New supply of blue and white Elk socks [with blue Elk head], at C's Male Box. 35c

O-Ki-Hi Women's Study Club is continuing with the Branding Board Project during Sherman County Fair and Stratford Jubilee. Bring branding irons to county barn immediately after the parade. For information call Valerie McAllister at 396-2150 [before 5], 396-5857 [after 5] or Mickey Cottle at 396-5613. 32-36c

TOP QUALITY alfalfa and prairie hay delivered. 806-659-3930. 33-36c

FOR RENT--2 bedroom house, furnished, carpet and drapes. Couple or single only. Call 396-2067. 35-36c

SADAU SIGN SERVICE PAINTING BUILDING ERECTING

Owner-Kenneth Sadau
Ph. 249-6214
Dalhart, Texas 79022

Trenching-Light Backhoe-Work & Etc.

Plumbing and plastic line repair
DON McLAUGHLIN & SON
PHONE 806/396-5848
Box 558
301 N. 7th St.
STRATFORD, TX. 79084

\$1,000 AN ACRE FOR YOUR CORN

Let us turn your irrigated corn crop into \$1000.
DALHART FARM STORE
806-249-6757

BRONZING WORK

Bronzing work shown at the Stratford Collector Show & Sale. Bring your baby shoes, boots, hats and etc. We take orders-Bring pictures, announcements and so forth to be placed on china plates.

TRAYLER BRONZING

BOX 451
GUYMON, OKLA 73942
405-338-3158

ATTENTION
Serious Job Seekers!
Would you like to set your own hours with practically no limit on earnings and have vacations as desired? If so, then why not conveniently work with us sorting/bundling mail. Receive work and payments by mail. Start immediately! For information, a self-addressed, stamped envelope assures a prompt reply.
Mail Marketing Services, P.O. Box 2590, Ocala, Florida 32678. 28tpc

For The Ultimate In
STORM DOORS & WINDOWS
Custom Built, Designed, And In Colors To Fit Your Home...
Contact Howard Meyer at
Only Aluminum Industries
Guymon, OK 114 W. 1st 405-338-6966 or 73942 after 6 p.m. 338-6170

Darco Now in stock various sizes cultivators and wheatland sweeps, chisel points plow bolts. We offer 4 thru 8 sweeps
Orders Now Being Taken for Summer & Fall Tool Needs
Welding

JAMES H. PERKINS AND ASSOCIATES AUCTIONEERS
KEITH WATERS REPRESENTATIVE
INDUSTRIAL EQUIPMENT
OIL FIELD EQUIPMENT
FARM EQUIPMENT
806-396-5801 or In Texas WATS 806-396-5391 1-800-792-0027

HOW TO WIN AT THE LOSING GAME
DIET CENTER
NOW YOU CAN LOSE WEIGHT QUICKLY - SAFELY PERMANENTLY
DIET CENTER IS in Dalhart
CALL TODAY AND MAKE AN APPOINTMENT FOR A FREE CONSULTATION!
806-249-6194

RAINBOW WATER WELL SERVICE
Dalhart, Texas
{LEON LABRIER} Complete windmill service OWNER
.Submersible pump specialists
.Serving the entire rural area.
249-6120
Hwy 87 N.
WE STAND BEHIND OUR WORK

MASSIVE SAVINGS!
Biggest Cash Rebates in Massey History. Plus Waiver of Finance Charges Until January 1983.

 \$10,000 REBATE \$10,000 Rebate on MF 540 Combines...Massey's "Harvest Leaders" for mid-sized operations!	 \$6,000 REBATE \$6,000 Rebate on MF 550 Combines...ready to work in any field!	 \$9,800 REBATE \$9,800 Rebates on MF 860 and 850 Combines...our big-capacity machines!
--	---	---

Now...buy the equipment you need at never-before-equalled savings, thanks to Massey's big cash rebates up to \$18,200! Get a check back from Massey-Ferguson, or apply your rebate to the purchase price or down payment.
Plus...if you finance with MF, you'll pay no finance charges until January 1, 1983 with qualified credit and down payment.
So, save twice on the equipment you need. Check out the massive savings available on all eligible new models of MF combines, tractors, plus corn heads, hay tools...industrial equipment, too.
Hurry! Offers end October 31, 1982. See us today!

MF CASH REBATES

Agricultural Tractors: MF Compact Tractors* \$ 300 MF 230, 245, 154-4 \$ 1,500 MF 255, 265, 275, 184-4 \$ 2,400 MF 285 \$ 3,000 MF 2675, 2705 \$ 6,300 MF 2745, 2775, 2805 \$ 9,300 MF 4800, 4840 \$14,600 MF 4880, 4900 \$18,200	Corn Heads \$300 per row MF 35 PT Swather \$ 700 MF 775 Swather \$ 1,900 Rectangular Balers \$ 800 Round Balers \$ 1,200
Harvesting Equipment: MF 540 Combine \$10,000 MF 550 Combine \$ 6,000 MF 860, 850 Combines \$ 9,800 MF 851 PT Combine \$ 4,400	Industrial Tractors: MF 20-50 Tractors \$ 2,800 MF 20-50 Tractor Loaders \$ 3,900 MF 30-50 Backhoe Loaders* \$ 6,000 MF 60 Tractor Backhoe Loader \$ 7,400

*EXCEPTIONS: MF 1010 Compact Tractor and MF 50F Backhoe Loader

 \$18,200 REBATE \$18,200 Rebates on MF 4880 and 4900 4-Wheel-Drive Tractors. Pour on that power!	 \$9,300 REBATE Rebates to \$9,300 on MF 2000 Series Tractors. Get a check back from Massey!
---	--

MF Massey Ferguson
Moore Implement Co.
396-2101 The Ed Moores

BYLOW FOOD STORE



Open Monday Thru Saturday 8 a.m.-8 p.m.
 Sunday 9 a.m. -6 p.m.

Special Good Thru Sept. 2 to Sept. 8, 1982

Owens
Sausage
 \$1⁶⁹ 1 lb. \$3³⁵ 2 lb.

Owens Smoked
Sausage
 \$1⁹⁸ lb.

Wilson Boneless
Hams
 \$2²⁹ lb. 93% Lean

New York Strip
Steak
 \$3⁹⁹ lb.

Farmland Boneless
Pork Loin Roast
 \$1⁹⁸ lb.

Hormel Black Label
Bacon
 \$2⁴⁹

Fresh Water ¹⁹⁸²
Catfish Steaks \$1⁷⁹ lb.

Shop This Week for

LABOR DAY

Super SAVINGS

Super Savings
 Plains Valley
 Fresh
Milk
 \$1⁶⁹ gal.
 With one filled Super Savings booklet

Super Savings
 Kraft
Miracle Whip
 32 Oz. Jar
99¢
 With one filled Super Savings booklet.

Super Savings
 Post
Toasties
 18 oz.
45¢
 With one filled Super Savings booklet

Super Savings
 Kleenex Facial
Tissue
 280 ct.
29¢
 With one filled Super Savings booklet

Super Savings
 Freshe
Bread
15¢
 1 1/2 lb. Loaf
 With one filled Super Savings booklet

Super Savings
 Kraft Parkay
 Squeeze
Margarine
 16 oz. **29¢**
 With one filled Super Savings booklet

and a filled Gold Bond Super Savings booklet

GET YOUR Super Savings 1.

and a filled Gold Bond Super Savings booklet

2.

and a filled Gold Bond Super Savings booklet

3.

and a filled Gold Bond Super Savings booklet

4.

and a filled Gold Bond Super Savings booklet

4.

Selection and Savings

Nice & Soft
Tissue
 4 Roll Pkg. \$1⁰⁹

Betty Crocker
Cake Mixes
 Asst'd. 18.5 oz. Box **79¢**

Finish Auto Dishwasher
Detergent
 65 oz. 35¢ off **\$2²⁹**

Del Monte
Golden Corn
 Cream Style or Whole Kernel
 17 oz. Can **2/89¢**

Contidana
Tomato Sauce
 8 oz. can **4/\$1⁰⁰**

Gladiola
Flour
 5 lb. Bag **89¢**

Gaines
Burgers
 36 oz. **\$1⁴⁹**

Pace
Picante Sauce
 Mild, Med, Ex. Hot
 16 oz. **99¢**

Del Monte Cut
Green Beans
 16 oz. Can **2/79¢**

Del Monte
Catsup **89¢**
 32 oz.

Coca Cola
 or Tab **\$1⁴⁹**
 6 pk. 12 oz. Can

Frozen

Fisher Boy
Fish Sticks
 16 oz. **\$1⁰⁹**

Morton Glazed
Do Nuts
 9 oz. **79¢**

Stillwell
Cobbler
 Apple, Peach Cherry, Blackberry
\$1⁵⁹

Stillwell Cut
Okra
 10 oz. Bag **59¢**

Farm Fresh Produce

Calif
Tomatoes
49¢ lb.

Colorado
Cantaloupe
69¢

Washington
Apples
 Ex. Fancy Red Delicious
49¢ lb.

Carrots
 1 lb. Pkg. **4/\$1⁰⁰**

Shop Bylow; Double Stamps Every
 Wednesday & Sunday Open 7 Days A Week
 "We do it all for you" operated by your
 Friends and Neighbors

Shop with the Stratford
 Merchants who give and
 redeem Gold Bond Stamps.