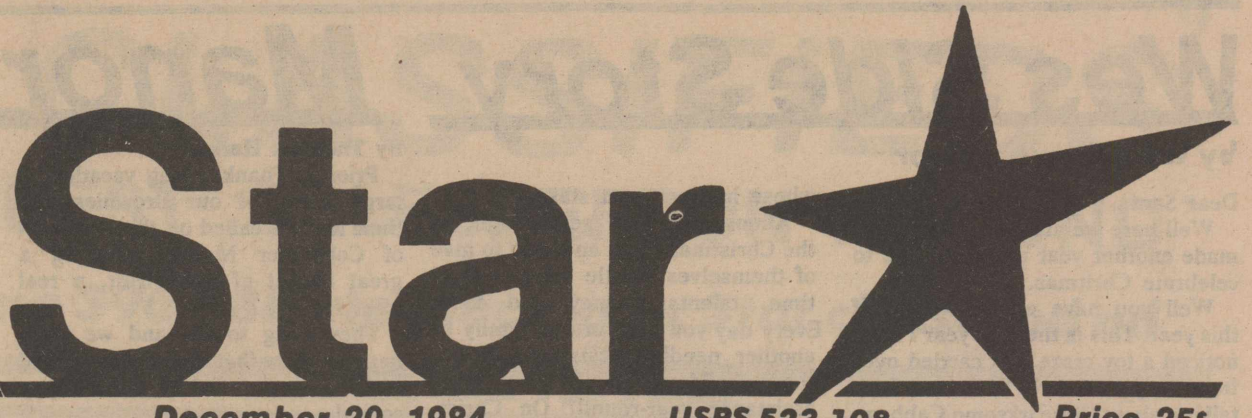


Serving the Pheasant Capitol of Texas since 1900

The Stratford Star



Our 84th year, Number 51

Stratford/Sherman County/Texas/79084

December 20, 1984

USPS 523-108

Price 25¢

Elks earn victory over Dalhart

The Stratford Elks earned their first victory Dec 11 after they tromped past Dalhart with a final score of 51-48. The Game was all Elks as they shaded Dalhart 12-3 in the first quarter, maintained their lead at the end of the half with 23-21 and ended the third quarter with 35-31.

Leading the scoring for the Elks was Doug Mires with 22 points, Kevin Long with next with 14, Justin Bailey with seven and Richard Cloyd with five points. Richard Cloyd led with 15 rebounds, Kevin Long had 14 and Doug Mires with nine.

This was the first win of the season for the Elks. The Elks played well and continue to improve each game.

In the first game of the Sunray Tournament, the Elks lost to Hartly with a final score of 41-35. The Elks led at the end of the first quarter with 9-8, but were taken in the second quarter with 21-14 from Hartley and Hartley remained out front 32-22.

Leading scores for the Elks were Kevin Long with 16 points, Doug Mires with seven and Richard Cloyd with seven. Richard Cloyd had nine rebounds, Kevin Long had seven and Doug Mires had five.

This was a tough loss for the Elks. They were not playing well during

the second and third quarters and couldn't pull out a victory.

In the second game of the Sunray tournament, the Elks took another loss from Sunray. The Elks led in the first two quarters. At the end of the first quarter, the Elks led 8-6. They held their lead at the end of the half with 22-20.

Leading the scoring for the Elks were Kevin Long with 14 point, Doug Mires with 7 and Richard Cloyd with 7. Richard also had seven rebounds and Kevin Long had six.

This was a tough loss to a fired up Sunray team. The Elks playing was still poor but they are getting better and hustling more.

In the final game of the Sunray Tournament, the Elks were left behind by Gruver with a final score of 84-56. Gruver led all four quarters with 20-17 at the end of the first quarter, at the half they led 39-28 and 60-40 at the end of the third quarter.

Doug Mires led the scoring with points, Kevin Long had 12 and Ron Oquin had nine. Justin Bailey had seven.

Gruver is probably one of the better teams faced by the Elks. They shoot well. The Elks are beginning to shoot better and improvement is more noticeable.



Miss Stratford Christy Lancaster, takes the role of Miss Merry Christmas and shows some of the items being auctioned at the something for Nothing auction

Palo Duro Water project progress

Johny Lee, mamnager of the Palo Duro Water Authority, was the guest speaker at the Sherman County Program Building Committee meeting on December 11. He gave an update on the progress of the Palo Duro Water Project and how it could be used for residents in Sherman County.

The reservoir could yeild 7.8 million gallons of water per day to the system when complete. This is sufficient for Ochiltree County, Stinnett and Moore County who have started the process of being accepted in the project. Sherman County could have the opportunity to join the project if Ochiltree County is not accepted; otherwise there would not be enough water to include Sherman County.

If Sherman County is not accepted, an alternative to benefit from this project would be to buy water from Dumas.

The dam would cost about \$20 million plus the cost of a conveyance system. This would be a tax increase

of 4-5 cents for the members of the water district plus an increase of about 50 cents per 1000 in water rates. If the conveyance system is to be included at the time of construction, the dam project would cost about \$55 million. This would represent a 10 cent tax increase increase plus a water rate of about \$2.14.

Lee gave a comparative figure from Canyon who did not get involved in the Lake Meridith project. They had to get in the system after it was completed, therefore costing more. Their rate is \$2.25 per 1000 gallons with a \$10

He also said that the longer the project i put off, the more it would cost. They are trying to get everything in order as quickly as possible to begin construction.

He concluded by saying that this is the last chance Sherman County has to get involved in a surface water project. The Palo Duro Water Project is the only site north of the Canadian river left to build a reservoir.

200 attend museum party

Sunday, December 16, 1984 was a beautiful day to the Sherman County Depot Museum (SCDM) Board. There was snow under foot, sun and blue sky overhead—an air of excitement and anticipation around the Museum.

Would folks come to the Museum Christmas Party? Did they ever come! Some came even before the hour appointed. At the end of the time set aside for the party, which was 2 to 5, 200 plus persons had signed our guest book. And who should be the 200th person other than former Stratford Mayor, the Honorable Nell Wall! All visitors were in high good humor and most appreciative in praise for the foundational steps made in establishing a Museum worthy of

Sherman County's past history, as well as the present and future.

We are very positive in calling attention to the fact that establishing and continuing the museum project is a concerted effort of every person in Sherman County. We have had great leadership, but without good followship, who do you lead? The physical facility is proof of both.

In reference to continuing and sustaining the museum, Stratford attorney, John Wood, is presently working to establish the ground work for an endowment fund through which the museum will have permanent financial support. Please consider this point carefully as one plans for the disposition of means and property.

Our special thanks for some jobs

immediately connected with the Christmas Party such as thanks to Marty Butler for clearing the deck of snow, to Wanda Riffe for assembling the Scrap Book, to Mary Hill making signs, to Santa who spent the whole afternoon with us.

Other than home town folks, guests registered from Texhoma, Canyon, Amarillo, Kerrick, San Marcos, Sunray, Guymon, Dalhart and Alaska. Our guest from Alaska, Lucille Paddon, is a special education teacher in Anchorage and Paul Chesmer's sister. Thank you, Lucille, for coming by.

Now, let's all bask in the warmth of a job well done and pause long enough to have a Merry, Merry Christmas.



Museum Board member Timmie rown takes a few minutes to visit with a long-time friend while at the Sherman County

Depot Museum Christmas party Sunday. Santa is seated in a horse-drawn buggy donated to the museum by Glenneta Dettle.

The Christmas edition of the Star will be published Saturday Dec. 22, due to Christmas falling on Tuesday. The next regularly scheduled Star will be Jan. 3, 1985

Music club hears Christmas chalk talk

The Stratford Federated Music Club enjoyed a delightful and interesting mid-day meeting in the home of Mrs. Michael Price. The seasonal decorations through-out the house made a charming background for the luncheon and ensuing program. Hostesses were past presidents of the club, namely Robbie Yates, Wilma Cameron, Marihoward Engelbrecht, Nell Ingham, who has moved away, Olinda Boardman, Jeannie Knight, Doris Pleyer, Jo June McDaniel.

Marylou McDaniel was program chairperson.

The Hymn of the month "Rejoice, the Lord is King" was introduced by Kathleen King, then members sang the song.

Our artist guest, Mary Hill, presented a chalk talk. While Mary drew a picture of children abed, looking for Santa, Marylou narrated Mary's original parody, take-off, on the poem "Twas the Night Before

Christmas". Everyone enjoyed the skit fully and we learned that Mary has other talents than using her paint bursh. Thanks, Mary, for the fun.

Following the chalk talk, Marylou announced the title of the more serious part of the program—"And Now, The Rest of the Story". In contrast to the religious side of caroling, Marylou, as the storyteller, gave us the background to some secular carols. With Doris playing the piano, Marylou led us in singing the following carols: "Here We Come a Caroling", "Deck the Halls", "Good King Wencelas", "God Rest You Merry, Gentlemen", and in closing "We Wish You a Merry Christmas".

Guests Mary Hill, Evelyn Cooper and Rosalee Coats and sixteen members were present to enjoy this truly merry occasion. To the absent members, we missed you and wish you too a Merry Christmas and a Happy 1985!

Christmas lighting winners

Winners of the 1984 Christmas Lighting Contest are:

Commercial Broad Area: First Place, Duncan Chevrolet, Inc.; Second Place, The First State Bank of Stratford; Third Place, Sherman Implement Company.

Commercial Single Area: First Place, Kids Korner; Second Place, Fresh Hair Beauty Salon; Third

Place, A Touch of Glass.

Residential Broad Area: First Place, Jeff Wiley; Second Place, Bill Riffe; Third Place, Don Ellison.

Residential Single Area: First Place, Dorothy Haile; Second Place, Billy Turner; Third Place, Ed Smith. Best decorated block--Butler Street.

Museum endowment fund established

The Sherman County Depot Museum Board has announced the establishment of an endowment fund. The purpose of the endowment fund is to insure funds for the continued operation of the museum, on into the future. Funds designated for the endowment fund may be in

any amount, large or small. These donations are tax exempt and meet the requirements as provided by IRS. Anyone having any questions may contact a board member, or Mr. B.A. Donelson, who has agreed to act as financial advisor for the board.

Middle School News

There are two groups of young men at Stratford Middle School that need to be recognized. The 7th and 8th grade basketball teams, under the coaching of first year coach Mike Cole, have had a great beginning to their basketball seasons.

The seventh grade team members are Brad McBryde, Chris Beattie, Robert Jeffries, Michael Lunt, Darren Pittman, Don Aduddell, Quinten Bennett, Chris Switzer, Loyd Willard, Scott Brooks, Heath Asher, Wade McKinney, Tim Hudson, Shannon O'Hair, Steve O'Brien, Kurt Altman, and Jerry Garza. The seventh grade boys are 7-0 at this time, and are averaging 35 points per game. Their next home game will be Monday January 7th, and will begin at 5 p.m. as they take on the Fritch Eagles 7th grade boys team.

The eighth grade team members are Chris Waters, Duane Mungia,

Wes Allison, Thad Parsons, Brady Schoonover, Craig Brooks, Malcolm Long, Marty Sutton, Lance Brooks, Jon Engelbrecht, Cody Haire, Jade Palmer, and Scott Riffe. The eighth grade boys are 5-2 at this time, and are averaging 28 points per game. Their next home game is also Monday, January 7th, and will begin at 6:00 p.m. as they will also take on the 8th grade team from Fritch.

At the Middle School, we are proud of all of our students and their accomplishments, and just wanted to point out to you that if you aren't coming to the 7th and 8th grade games, you're missing a real treat. Our girls are also very exciting to watch, and will be highlighted later in the season.

Here's hoping you and your family have the most enjoyable and meaningful Holiday Season. Remember, school starts after the holidays on January 2.



Postal worker Jean Moore sorts through the numerous packages coming through the Stratford post

office, a definat sign Christmas is not far off.

This Week ...
Stratford merchants open 'til 7pm for your convenience

Prayertown U.S.A., the Catholic sisters and their band will be at Coldwater Manor at 4 p.m. on Christmas Eve to perform and sing carols for the residents of Coldwater Manor. The Community is invited to attend this special program.

Inside the Star
Coldwater Manor residents keep busy see page three



Wes Side Story Manor News

by Wes Brown, Editor

Dear Santa,
Well here we are again. We have made another year and it is time to celebrate Christmas.

Well you have outdone yourself this year. This is the first year I have noticed a toy craze that carried over from the year before. Of course, I am talking about those irksome Cabbage Patch Kids. I thought I'd seen the last of them last year.

I was amazed that dolls got more and more realistic until it got to the point that they were adopted rather than bought.

My question is what makes the CPK so popular? They are not cute. They can be bought for love (and a great deal of) money. This action stumps me.

When I first saw one of those dolls, I thought the little girl's brother took it away from her and squashed its face in a vise.

Well, enough about CPK. As you may know each year about this time I wax philosophic about what is going on in this world of ours. Then I make out my Christmas list.

This was an election year. We elected some new officials, re-elected others. I am not saying the choices made were right or wrong. Perhaps as you make your famous rounds on Christmas Eve, if you gave a few of our elected officials a visit and share your insight, maybe they will remember who they represent and

whose interest is at stake.

Almost everyone gets caught in the Christmas spirit and tend to give of themselves a little more -- their time, talents, money and food. Every day you read of one family or another needing assistance during these holidays. Don't they need assistance year-round? On Christmas leave us all a piece of string so we can tie it around our finger to remember those in need after Christmas is past.

As for myself, a device (or devices) that would help to be quicker to smile and to compliment while making me slower to anger and to criticize. If I had such an item, I'd use it often. I would share it with others as well. If it worked maybe we could all get along with one another and take an important step toward peace in the world.

Now, a skeptic may say "Why don't you pray for peace rather than writing a letter to Santa Clause?"

Fact is, I do.
"How can it help to ask Santa Claus for peace?"

"How can it hurt?"

Respectfully
Wes Brown

P.S. As you may well know, it may seem odd someone my age believes in Santa Claus. Well, perhaps it is more what you stand for -- giving to others joyously without thought of anything in return. This indeed is the true meaning of Christmas.

By Thelman Harker

Prior to Thanksgiving vacation, a large group of our Brownies and their leaders called on the residents of Coldwater Manor, bringing a great basket of fresh fruit, a real treat for all.

They sang to us, and we were happy to note that each child seemed to know each word of their happy songs!

The final treat was a handshake or a hug or a kiss on the cheek, a delight to those of us who do not see our own Brownies very often.

Please come see us again! Even for those residents of Coldwater Manor who were not away for the holidays, for some, families were able to come visit them. We fed 22 guests who came to spend the day with their families.

There was a bountiful array of lovely food, beginning with two turkeys, cornbread dressing, mashed potatoes, gravy, yams, hot rolls, fruit salad and a choice of pecan or pumpkin pie, coffee or tea.

For an hour after dinner, those who enjoyed it played Bingo.

The gracious hospitality gave a great deal of pleasure to all.

On Thursday, November 29, 16 residents of Coldwater Manor went on a lovely morning for a drive to Boise City, Oklahoma, with Frank Sutton as our driver.

We hadn't been on our way very long before the weather turned very drab indeed; but, the tour of the countryside was pleasant anyway.

All the area seemed ready for winter. Not much traffic on the highways--everything seemed having a let-down.

Not many cattle on the farms. We did not go far into Boise City, but did drive around a nice-looking hospital, and a nursing home.

The roads in Oklahoma were rougher than we have in Sherman County.

As always on such a ride, we stopped for some snacks--cheese, crackers and soft drinks. Came home by way of Kerrick, and enjoyed our outing a great deal.

On a recent nice morning we took the bus to see how our world was looking, as we do not see it from outside very often.

A very pleasant ride to Boise City to see the beginning of the Cimarron Trail. Not many cars on the highway, not a great many cattle in the fields. Everything had the look of winter about it!

Came home by way of Kinton, and were nearly late for lunch.

On Sunday afternoon, December 9th, the Bereau Class of First Christian Church surprised the other class members at Coldwater Manor with a pleasant visit in the Board Meeting Room at the Manor.

Lovely Christmas corsages for each, and bright table decorations were used for serving ice cream, cake, and punch. It was very delicious and thoughtful for those who do not get to attend very often.

It made for a nice time for holiday visiting.

December 11th a very large group of Friends of the Manor "flung" one of their fabulous birthday parties for all Manor Residents who claim Christmas for a birthday month. A nice gift for each one. Mildred Carroll, Willie Bell Griffin, our own "Boss", Etna Bingham, Peggy Ownby and Mattie Austin were honored.

Janie Kirkpatrick accompanied Raymond Dyess and his guitar, while Jerry Dyess led the singing. All the well-loved Christmas songs were sung as well as Happy Birthday songs.

Later we were directed to the dining room for delightful white and chocolate cake. I am sure I counted several flavors of ice cream in my

servings. A bright and sparkling punch rounded out the refreshments.

It was such a pleasant afternoon, and we hope Friends of the Manor visit us again soon!

Because we had been warned that the good weather might not last much longer, 20 of the Manor residents loaded to go to Amarillo to "See the Lights".

We ate at Grandy's then drove down to see all the homes and

buildings decorated with large and small lights of every imaginable hue and size. I thought I had seen a great many Christmas decorations, but sure what we saw in the streets and valleys of Rolling Hills and Bishop Hills were downright fairyland itself!

If you saw the front page picture of today's Amarillo Daily News, please imagine we were one of those dots of light following other dots of light, which made for remarkable Christmas pleasure.

**All remaining
Christmas Merchandise
1/2 off!**

**We also have
\$12.50 & \$15.00
Christmas Centerpieces**

**Ellison's
Floral**



The Stratford Star

Second class postage paid at Stratford, Texas, 79084. Subscription rates are \$8.00 per year in Sherman and adjoining counties; all other \$15.00 per year

Wes Brown - Editor & Publisher

Lollis's celebrate The call of the South American bullbird sounds like a cow's moo.

60th anniversary

Mr. and Mrs. Lester Lollis invite you to join them in the celebration of their 60th wedding anniversary. They were married in Stratford December 27, 1924.

A reception in their honor will be December 30 in the fellowship hall of the First United Methodist Church from 3p.m. to 4:30 p.m.

Your friendship and presence are all that they ask of you.

**Happy
50th
Dec. 21**



**Your Friendly Dumas
Merchants Are ...**

OPEN LATE

... Until 9 p.m.

Thursdays and Fridays

LATE NIGHT SCHEDULE:

November 30-31,
Thursday and Friday, December 6, 7, 13 and 14

Monday-Friday December 17-21

Shop These Merchants:

- Smith's Fashion Corner
- Aldrich's Men's Wear
- C. R. Anthony
- Bailey's Furniture
- The Beauty Connection
- Brands Books
- Cooksey Jewelers
- Cut Rate Grocery of Dumas
- Dan's Shoes
- Dodson Sales & Service
- Double D Sports
- Exclusively Yours
- Georgia's
- Golden Spread Provision Co.
- Gifts & Etc.



- The Markae
- Scott's Hallmark
- Bob Self Shoes
- The Shoe Shack
- T G & Y
- Terre's Jewelry
- The Treehouse
- Western Auto
- Woody Furniture
- Trifles
- The Toggery
- One Hour Photo
- Merle Norman
- Penney's
- Roden's Furniture

Roundup Western Wear

**Retail Trade Committee of the Moore County
and Dumas Chamber of Commerce**

**OPEN CHRISTMAS
SHOP ALLSUP'S FOR YOUR HOLIDAY NEEDS**

ICE - MILK - BREAD - SOFT DRINKS - FRESH PRODUCE -
CHIPS & DIPS - BROWN & SERVE ROLLS - FILM & FLASH
HOT COOKED FOODS - DESERTS - SELF SERVE BAR
WHILE SUPPLIES LAST

**ALL SIZES & GREAT SELECTION OF FRESH
CHRISTMAS TREES**

SPRUCE, DALSAN
SCOTCH PINE & FIR **\$8.99**
AS LOW AS

Shurfine/Shasta
**SODA
6/\$1.00**

**REGULAR OR EX. CRISPY
ASSORTED FLAVORS DORITOS**

**TORTILLA
CHIPS** **\$1.19**

REG. \$1.49
SIZE BAG

**HITS FROM FAMOUS ARTIST
CASSETTE TAPES**

ROCK-COUNTRY
-SOUL **\$3.97**

YOUR CHOICE WHILE SUPPLIES LAST
ALSO GREAT SELECTION
OF CHRISTMAS MUSIC LP'S OR CASSETTE

**LARGE SELECTION OF CLASSIC TITLES
VIDEO CASSETTE MOVIES**

\$15.95

YOUR CHOICE VHS FORMAT
WHILE SUPPLIES LAST

Corn Dogs (Small) 3/99¢ **COOKED FOOD SPECIAL** **Boneless Spare**

BBQ on Bun 99¢ **Rib Sandwich \$1.49**

Chicken Pattie w/medium Fountain Drink \$1.40

**BRACH'S MEDALLION
CHOCOLATE COVERED
CHERRIES**

BRACH'S \$1.69
9 1/2 OZ. BOX

AF Christmas Spirit Sale

**PAPER
DELTA
TOWELS** **2 JUMBO ROLLS 89¢**

**MARGARINE
KRAFT
PARKAY** **1 LB. BOX 48¢**

Rath Luncheon Meat 79¢
Vienna Sausage 5 oz 2/79¢
Hill Bros Coffee \$1.95
Delmonte Tomato Sauce 8 oz 4/89¢

Home for the Holidays

**BORDEN'S
EGG
NOG** **QT. CTN. \$1.19**

**BORDEN'S
WHIPPING
CREAM** **1/2 PINT CTN. 59¢**

**BORDEN'S ASST. FLAVORS
ICE CREAM** **1/2 GAL. CTN. \$1.79**

Sugar 5 lb \$1.39
Decker or Hormel 1 lb Bacon \$1.79
Northern Bath Tissue 2/\$1.75
4 roll

**PRICES EFFECTIVE
DECEMBER 20-22, 1984**

**HAVE A HAPPY AND SAFE
HOLIDAY FROM YOUR FRIENDS AT ALLSUP'S**

**ALLSUP'S
CONVENIENCE STORES**

Star Dates

Thursday, December 20
 8:00 a.m. TOPS 897
 1-7 p.m. Santa Claus at First State Bank
 2:00 p.m. Ladies Bridge-Country Club
 2:30 p.m. Happy Hour Extension Homemakers
 5:00 p.m. 9th Boys/Girls vs. Sunray [here]
 5:30 p.m. TOPS 922
 7:00 p.m. City Council
 7:30 p.m. 4th Grade Christmas Program
 7:30 p.m. "Something for Nothing" Auction
 8:00 p.m. Masonic Lodge 874
 8:00 p.m. AA/Al-Anon

Friday, December 21
 Winter Begins
 2-4 p.m. Blood Pressure Clinic at First Christian Church

Saturday, December 22
 Shortest Day of the Year

Tuesday, December 25
 CHRISTMAS DAY

Thursday, December 27
 8:00 a.m. TOPS 897
 5:30 p.m. TOPS 922
 8:00 p.m. Shutterbugs, Ltd.

Friday, December 28
 2-4 Blood Pressure Clinic at First Christian Church
 3:00 p.m. JV/Varsity vs. Canadian [there]

Saturday, December 29
 Texas Admission Day [1845]

Monday, December 31
 Country Club New Year's Eve Celebration

Town Talk

The Mary Allen Elementary fourth grade will present their Christmas play at 7 p.m. Thursday December 20. It was incorrectly reported in last week's Star as being at 7:30. We apologize for the error.

The residents and staff at Coldwater manor would like to invite Stratford-area residents to come to their Christmas party Friday at 6 p.m. at Coldwater Manor for some fun and perhaps a few surprises.

Obituaries

RAYMOND A. WILLIAMS
 Raymond A. "Dutch" Williams, 74, died Tuesday in Amarillo.

Services were at 11 a.m. Friday in First United Methodist Church with the Rev. Kenneth Metzger, pastor, officiating. Burial was in Stratford Cemetery by Morrison Funeral directors.

Mr. Williams was born in Amarillo, and moved to Stratford in 1955 from Hereford. He was a farmer and a Methodist.

Survivors include his wife, Cecil; two sons, Claude of Gilliam, Mo. and Raymond of Amarillo; a daughter, Dorothy Thomas of Pasadena; two brothers, David of Ashville, N.C., and Howard of Melrose, N.M.; four sisters, Tinnie Padgett of Gainesville, Bertha Mae Dutton of Friona, Lucille Huddleston of Myra, and Emma Battles of House, N.M.; 10 grandchildren; and 10 great-grandchildren.

EMT classes offered

An E.M.T. Class will begin January 7, 1985 and will run through March 4, 1985. If you are interested in serving your community contact Leland Lewis at 396-2844 or come by Coldwater Manor for an application. We are primarily interested in acquiring help for the daytime hours. New Students will be limited to six.



FOR DRY HACKING COUGH AND NASAL CONGESTION TRY TRIAMINIC® EXPECTORANT.

©1984 Dorsey Laboratories, Division of Sandoz, Inc., Lincoln, Nebraska 68501.

TOPS 897 meet

TOPS 897 met Thursday, December 6 at 8 a.m. with 9 members present. Rose Wells called the meeting together with everyone saying the pledge. There was a loss of 9 1/4 lbs. and a gain of 3 1/4 lbs. Myrtle Ellison and Mildred Ingham tied for the fruit basket. Myrtle brought a program on "a dream diet".

Kathy Melton won the contest for most pounds lost. Thursday night at 5:00 p.m., nine members of the club left for Dumas

for dinner at the Charred Oak restaurant. Then back to Myrtle's house for the Christmas party.

On Thursday, December 13, TOPS 897 met at SCOT Hall with 7 members weighing in. After the pledge was said, Elsie Lasley gave a program on "The A-B-C of Dieting". Elsie also received the fruit basket. The club voted to send a love offering to Shirley Wooten and Esther Manz.

FCC has candle service

Beautiful and inspiring Christmas events are ahead for the members and friends of First Christian Church. The Christmas Carols and Candles Service will be held this Sunday, Dec. 23 at 6:30 p.m. This is a service of Scripture, carols and candlelighting by all those present. Nina Lavake has planned the service. Participants will include John Lavake, Orlanda Garoutte, Don Woolsey, Cathy Woolsey, Judy Oquin, Dana Craig, Lynda Hauser, Gara Garoutte, Joe Harker, Brent Grimes, Gary Garoutte, Garth Palmer, Kenny Palmer, Marihoward Engelbrecht, Kenneth Forthman, Claud Allen and James Young.

A Grilled Cheese Sandwich Supper will be shared by everyone at the close of the service. Valerie McAlister is in charge of these arrangements. Those bringing food or helping in the kitchen will include Dana Craig, Cathy Taylor, Sherry Phelps, Linda Forthman, Karen Pulliam, Jo June McDaniel, Gail Allen, Martha Mitts, Frank Sutton, Rita Harker and David Harker.

The annual Christmas Program will be held on Mon. Dec. 24, Christmas Eve, at 6 p.m. Nina Lavake is the Director for the program. She is being assisted by Gayle Rhoades, Paulette Palmer and Susie Young. Marcelle Sutton will be the pianist. Randy Williams will help

with the lighting. Participants in the program will include Jolina Garoutte, Amber Woolsey, Jack, Gayle, Jalane, Elly and Chancey Rhoades, Nick Phelps, Cara Lavake, Clint Craig, Dusty Palmer, Jared Schriber, Jason Schriber, Sheila Fedric, Kelly Grimes, Brandie Lavake, Ty Young, Marcus Lavake, Scott McAlister, Lori Young, Wendy Palmer, Aleacia McMillion, Ramey Cozart, Monique Smith, Jami Allen, Renne Allen, DeeDee McKee, Autumn Woolsey, Dean Hauser, Rene Reese, Brad Williams, Kyla Helmut, Colby Wheeler, Neal Hauser, Jennifer Schriber, Garth Palmer, Nick Cozart, Clay Wheeler, Brent Grimes, Jenny Fedric and Kenneth Forthman. There will be Scriptures, recitations, carols and songs, the Christmas tree, treats for everyone and a visit from Santa Claus!

Everyone is cordially invited to share in these activities according to David Harker, minister of First Christian Church.

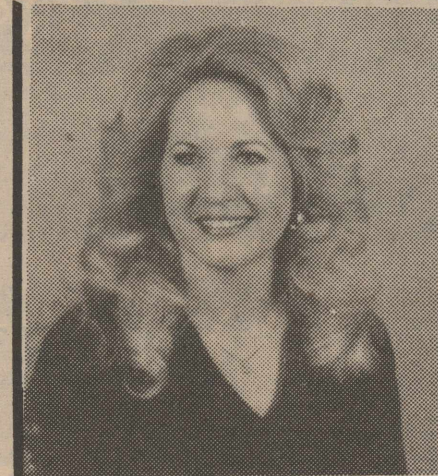
Methodist holiday worship schedule

Services for Christmas Sunday, December 23, will include Sunday School at 9:40 a.m., followed by Morning Worship at 10:50 a.m. There will be a special Christmas Eve Candlelight Service at 7 p.m. Monday, December 24. The public is cordially invited to attend these services.

Country club New Year

The Stratford Country Club will have a New Year's Eve buffet and dance. All Members of the Country Club are invited to this New Year's Eve buffet and dance from 9 p.m. to 1 a.m. Admission is \$20 per couple or \$10 single. RSVP 396-2259. Host

Hosts are Mr. and Mrs. Gary Dettle, Mr. and Mrs. Steve Dettle, Mr. and Mrs. Daryl Cotney, Mr. and Mrs. Dwight Brooks, Ronnie Pickens, Howard Etheridge, Jimmy Jackson, Jerry Dyess, James Young, Walter Lasley, Jr. and Rolger Moore.



yep - she's 40

Mr. and Mrs. James E. Smith

and

Mr. and Mrs. Everett R. Ewers

request the honour of your presence

at the marriage of their children

Brenda J.

and

Jerry A.

on Friday, the twenty-first of December

Nineteen hundred and eighty-four

at four o'clock in the afternoon

First Baptist Church

702 North Third

Stratford, Texas

and the Reception following

INSULATE your PIPES!
 PREVENT FREEZING IN BRIEF COLD SNAPS
 use WRAP-ON® 40 FIBER GLASS INSULATION
 35' ROLL
BOSTONS
 Hwy 54 396-2255

Hey Kids! Be one of the 21 winners in the Christmas coloring contest

Name _____

Grade _____

Phone _____



- RULES**
1. You must do your own work.
 2. Use only crayons, magic markers or colored pencils.
 3. Color as many as you like, but you may enter only one picture.
 4. Grades kindergarten through sixth are eligible to enter and win. First, second and third prizes will be awarded for EACH GRADE. A total of 21 prizes will be given away.
 5. Clip the entire section on the dotted line and bring it to the Star office or the Chamber of Commerce office by noon December 21.
 6. Pictures will be judged by an independent judging team.
 7. All pictures will be displayed in the windows of the Star office.
 8. All pictures may be picked up any time after December 28. All pictures not picked up by January 4 will be discarded.
 9. We reserve the right to use the names of the winners. Winners will be listed in the December 27 issue of the Star.
 10. Prizes will be awarded by December 22 and the winning entries will remain on display through December 28.

1st Prize - \$3⁰⁰

2nd Prize - \$2⁰⁰

3rd Prize - \$1⁰⁰

Sponsored by the Stratford Star

and the Stratford Chamber of Commerce

CHRISTMAS WORSHIP SCHEDULE

First United Methodist Church

Stratford, Texas

Sunday, December 23

9:40 am Sunday School

10:50 am Morning Worship

The Rev. Ken Metzger, preaching,

"To Us, Today, A Savior!" (Luke 2:11)

Monday, December 24

7:00 pm Christmas Eve

Candlelight Service.

The Rev. Gary Graham, preaching.

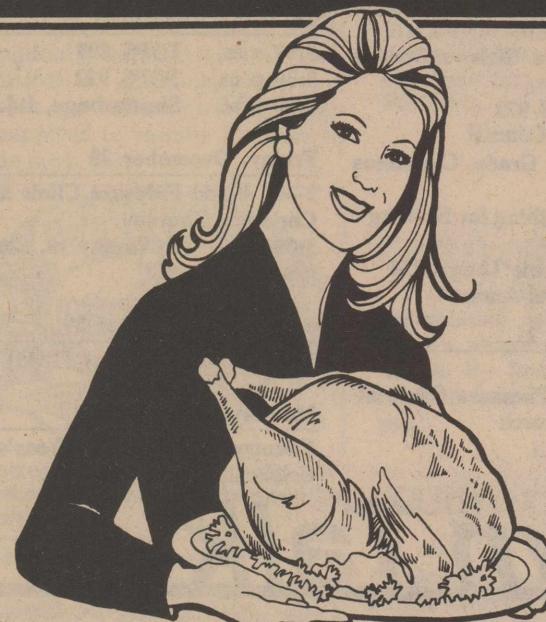


CUT RATE GROCERY & FAMILY CENTER

HWY 54 E. PHONE 396-5586
STRATFORD, TEXAS

A GOOD PLACE TO MEET YOUR NEIGHBORS & FRIENDS
LOW LOW EVERYDAY PRICES OPEN SEVEN DAYS A WEEK
YOUR PATRONAGE APPRECIATED

- We cash Payroll & personal checks ...
ABSOLUTELY NO CHARGE !!
- Travelers Express money orders
... only 39¢
- We welcome
Food Stamp customers



BETTY CROCKER ASST. SUPER MOIST CAKE MIXES 18 OZ. BOX	69¢	FISHER SPANISH PEANUTS 12 OZ. CAN	\$1.89
BETTY CROCKER RTS ASST. FROSTING 1 LB. CAN	\$1.39	HOLSUM STUF. THRN. OLIVES 7 OZ. JAR	\$1.09
LIBBY'S PUMPKIN 303 CAN	59¢	VLASIC SWEET PICKLES 16 OZ. JAR	\$1.19
DEL MONTE CRU/SLI/CHNK PINEAPPLE 15 1/2 OZ. CAN	59¢	SHURFINE RED MARACHINO CHERRIES 6 OZ. JAR	69¢
SHURFINE WHOLE SWEET POTATOES 23 OZ. CAN	69¢	KRAFT MAYONNAISE 32 OZ. JAR	\$1.89
SHURFINE WHOLE OR STRAINED CRANBERRIES 16 OZ. CAN	49¢	PEPPERIDGE FARM ASST. MIX FOR STUFFING 8 OZ. BAG	69¢
SWANSON CHICKEN BROTH 3 1/4 OZ. CANS	\$1	CHIFFON DINNER NAPKINS 50 CT. PKG.	89¢
REG./BTR. FLAVOR SHORTENING CRISCO 3 LB. CAN	\$2.49	DURACELL 9 VOLT BATTERY 2 PAK	\$2.99
EAGLE BRAND MILK 14 OZ. CAN	\$1.29	DURACELL AA & AAA BATTERIES 2 PAK	\$1.49
CAMPBELL'S CRM. OF MUSHROOM OR SOUP CREAM OF CHICKEN NO. ONE CAN	39¢	DURACELL AA BATTERIES 4 PAK	\$2.79

HEALTH & BEAUTY AIDS

SCOPE MOUTH- WASH 24 OZ. BTL.	\$2.69	REG. OR PUMP TOOTHPASTE COLGATE 4.5 OZ. BOX	\$1.29
		BIC DISPOSABLE LIGHTERS EACH	59¢

GRANULATED
**SHURFINE
SUGAR**

\$1.49

5 LB. BAG

SHURFRESH
WHIPPING
CREAM

3 1/2 PINT CTNS. \$1

ASST. FLAVORS GELATIN
JELLO

3 99¢

3 OZ. BOXES

MARGARINE QUARTERS
PARKAY

48¢

1 LB. BOX

BROWN & SERVE
**TENDER CRUST
ROLLS**

3 PKGS. \$1

SHURFRESH GRADE A
**LARGE
EGGS**

75¢

DOZEN

DELTA PAPER
TOWELS

2 JUMBO ROLLS 89¢

DEL MONTE WHOLE GREEN
BEANS

49¢

16 OZ. CAN

CENTRAL AMERICAN
BANANAS

4 LBS. \$1

EXTRA FANCY WASH. RED DELICIOUS APPLES or CALIF. SUNKIST NAVEL ORANGES LB.	39¢
CALIF. GREEN PASCAL CELERY STALK	39¢
PORTALES MARYLAND SWEET YAMS LB.	39¢
CALIFORNIA GREEN BROCCOLI LB.	69¢

FROZEN FOOD & DAIRY

SHURFRESH QUARTERED BUTTER 1 LB. BOX	\$1.89	MRS. SMITH PUMPKIN CUSTARD PIE 26 OZ. PKG.	\$1.69
KRAFT LOAF VELVEETA 1 LB. BOX	\$1.99	PET RITZ BIG PIE SHELLS 2 PAK	99¢
KRAFT CHEDDAR/COLBY CHEESE LONGHORN 10 OZ. HALF MOON PKG.	\$1.79	PET RITZ DEEP DISH PIE SHELLS 12 OZ. PKG.	99¢
PET RITZ APPLE PIE 26 OZ. PKG.	\$1.39	BIRDS EYE REG./EX. CREAMY COOL WHIP 8 OZ. TUB	79¢
PET RITZ CHERRY PIE 26 OZ. PKG.	\$1.69	PHILADELPHIA CREAM CHEESE 8 OZ. PKG.	89¢

CUT RATE'S DO IT YOURSELF COUPONS

CUT-RATE STRATFORD
25¢ OFF
THE ITEM OF YOUR CHOICE

LIMIT 4 COUPONS PER FAMILY PER WEEK.
CAN NOT EXCEED VALUE OF THE ITEM

GOOD THRU December 26, 1984

COUPON

CUT-RATE STRATFORD
25¢ OFF
THE ITEM OF YOUR CHOICE

LIMIT 4 COUPONS PER FAMILY PER WEEK.
CAN NOT EXCEED VALUE OF THE ITEM

GOOD THRU December 26, 1984

COUPON

CUT-RATE STRATFORD
25¢ OFF
THE ITEM OF YOUR CHOICE

LIMIT 4 COUPONS PER FAMILY PER WEEK.
CAN NOT EXCEED VALUE OF THE ITEM

GOOD THRU December 26, 1984

COUPON

CUT-RATE STRATFORD
25¢ OFF
THE ITEM OF YOUR CHOICE

LIMIT 4 COUPONS PER FAMILY PER WEEK.
CAN NOT EXCEED VALUE OF THE ITEM

GOOD THRU December 26, 1984

COUPON

We pay **DOUBLE** on manufacturer's coupons every Wed. & Sat.

Shop Stratford's only Home-owned & operated supermarket

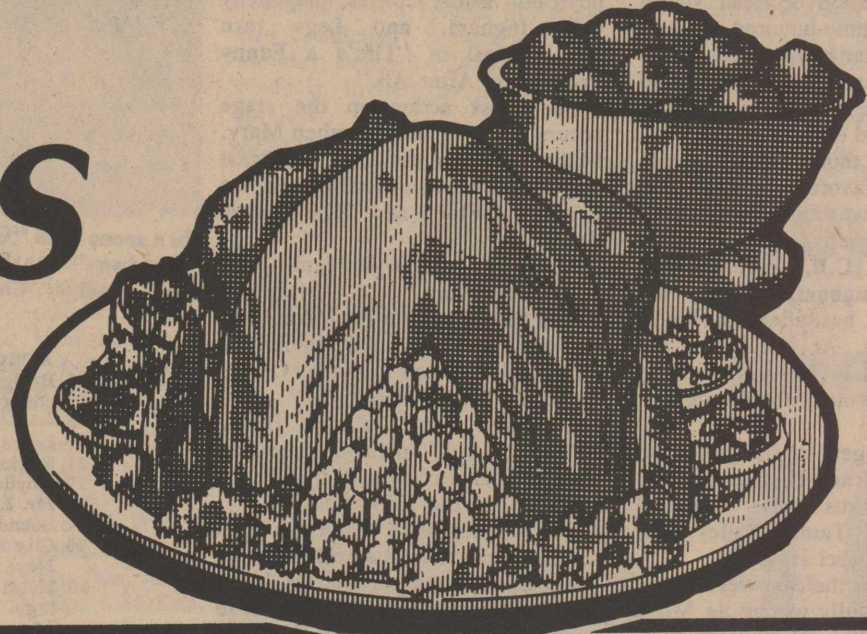
OFFERS EFFECTIVE DECEMBER 20, 1984 THRU 26, 1984
RESERVE THE RIGHT TO LIMIT

U.S.D.A. GRADE A
SHURFRESH SELF-BASTING

WILSON'S BONELESS
FULLY COOKED
**WHOLE
HAMS**
LB. \$1.99

WILSON'S
HALF HAMS
2-4 LB.
AVERAGE
LB. \$2.19

TURKEYS
WITH TENDER
TIMER
18-20 LB.
AVERAGE
LB. **79¢**



HOLIDAY GROCERY SPECIALS

Super Suds
SUPER
SUDS
DETERGENT
99¢
GIANT
BOX

HERSHEY ASST. CHOCOLATE
CHIPS 12 OZ. BAG **\$1.69**

IMPERIAL LIGHT BROWN/POWDERED
SUGAR 2 LB. BAG **99¢**

DEE & C PIECES OR HALVES
PECANS 8 OZ. BAG **\$1.69**

KRAFT MINI. OR JET PUFF
MARSHMALLOW 2 10 OZ. BAGS **99¢**

U.S.D.A. GRADE A
SHURFRESH BAKING
HENS 4-6 LB. AVERAGE LB. **79¢**

LOUIS RICH BONELESS
FULLY COOKED TURKEY 1 1/2-5 LB. AVERAGE LB. **\$1.79**

COUNTRY PRIDE FULLY
COOKED SMOKED
TURKEYS 10-12 LB. AVERAGE LB. **\$1.39**

HEAVY GRAIN FED
BEEF BONELESS CHUCK
ROAST LB. **\$1.69**

GUARANTEED 80% LEAN
EXTRA LEAN GROUND CHUCK
BEEF LB. **\$1.59**

HORMEL'S LITTLE SIZZLERS
PORK LINK
SAUSAGE 12 OZ. PKG. **99¢**

FRESH SHIPMENT
GULF COAST
OYSTERS 10 OZ. CTN. **\$2.39**

SUPER SELECT LEAN TRIM FRESH
SEMI-BONELESS PORK BUTT
ROAST LB. **\$1.39**

**HERE ARE MORE OF YOUR
FAVORITE SPECIALS**

BORDEN
round carton
**Ice Cream or
Sherbert**
1/2 gal **\$1.79**

Shurfresh
Homo
Milk
Reg/Lowfat
1 gal
\$2.19

Baker's
Angel Flake
Coconut
25¢ off Label
14 oz **\$1.45**

Tendercrust
Whole Wheat
BREAD
1 1/2 lb loaf
69¢

Doritos Brand
Tortilla Chips
All Types
\$1.99 1 lb

Whipped Topping Mix
Dream Whip
5 1/2 oz.
\$1.49

Baker's
Chocolate Flavored
Chips
12 oz. **\$1.19**
GOOD THRU December 26, 1984

Orange Drink Mix
Tang
9 qt. decorator jar
\$2.99
GOOD THRU December 26, 1984

CUT RATE
GROCERY & FAMILY CENTER

HWY 54 E. PHONE 396-5586
STRATFORD, TEXAS

A GOOD PLACE TO MEET YOUR NEIGHBORS & FRIENDS
LOW LOW EVERYDAY PRICES OPEN SEVEN DAYS A WEEK
YOUR PATRONAGE APPRECIATED

THS choir presents 'Broadway'

The cast of "Give My Regards to Broadway" earned a standing ovation from a near capacity crowd Nov. 15 after the second of two performances of the musical by the Texhoma High School choir.

The combination of fresh young talent and the time-honored tunes of George M. Cohan proved irresistible as songs such as "It's a Grand Old Flag," written in 1905, were sung with energy and enthusiasm in 1984.

In what must have been everybody's favorite scene, that Cohan classic was sung by the four male singing leads, Jon Sorensen, Jon Phillips, C.B. Ingham and Christopher Ingham, against the backdrop of a battlefield in World War I France. At one point the quartet leaned in for a little close barbershop harmony, to the delight of the crowd.

Principal singers for the girls were Chelle Hale, Tracy Lusk and Susan Harland. Chorus girls included Melinda Fraley, Tammy Bailey, Tobi Parsons and Darci Hass.

Rounding out the cast were Angie Clark, wonderfully witty as Mona Monroe; Jennifer Woodward, starstruck but solid as Millie; Robbie Mills, comically threatening as the gangster Mugsy; Audra Meyer, complementing Mugsy as his moll; and Chris Mostek, all business but with a sensitive streak as Donald Harper.

The story progresses as a financially strapped Broadway troupe struggles to get a musical on stage and bookie Legs Ruby seeks refuge in the theatre to escape some mobsters.

Christopher Ingham, as leading man Grant Cooper, opens the show with a bit of the Irish song "Harrigan," backed up by the girls of the chorus dancing the old soft shoe.

Then Sorensen, as director Dick Foster, explains to newcomer Mary Collins, played by Hale, that it's not close enough to be "Forty-five Minutes from Broadway". Mary puts her own words to the tune, and both soloists are helped out by the chorus.

Phillips, as Legs Ruby, and Lusk, as his girlfriend Trixie, reflect on the

Sorosis club

The Sorosis Club of Texhoma met in the home of Mrs. Art Twombly for their November meeting. The program, "Breaking Through... Women on the Move", was presented by Mrs. J.L. Hook. Members present were Mrs. Altha Brown, Mrs. Taylor Clark, Mrs. L.B. Field, Mrs. Rob Hensley, Mrs. J.L. Hook, Mrs. J.A. Palmer, Mrs. L.J. Russell, Mrs. Craig Swagerty, and Mrs. Art Twombly.

The December 5th luncheon was in the home of Mrs. J.D. Roberson and her program was "Joys of Christmas".

United States as the land of opportunity and Legs as "The Yankee Doodle Boy" born on the fourth of July.

Harland, as Betty, recalls her birth place in "Virginia Song," and her boyfriend Eddie Cowles, played by C.B. Ingham, and Legs turn philosophical in "Life's a Funny Proposition After All."

The most action on the stage occurs in the second act when Mary, Millie, Legs and the rest of the cast sing and dance to a medley of "It's a Grand Old Flag" and "The Yankee Doodle Boy."

Mary and the chorus team up for "So Long Mary" and "Mary's a Grand Old Name" in the second act, and the chorus gathers around the piano for "When Johnny Comes Marching Home Again."

The title song makes a fitting finale with solo spots for Sorensen and the chorus made up of all members of the THS choir.

The singers were uniformly good in what is probably the first full-scale musical ever staged by THS. An ambitious undertaking, it is a tribute to the school's music program that the production was well-staged and well-performed.

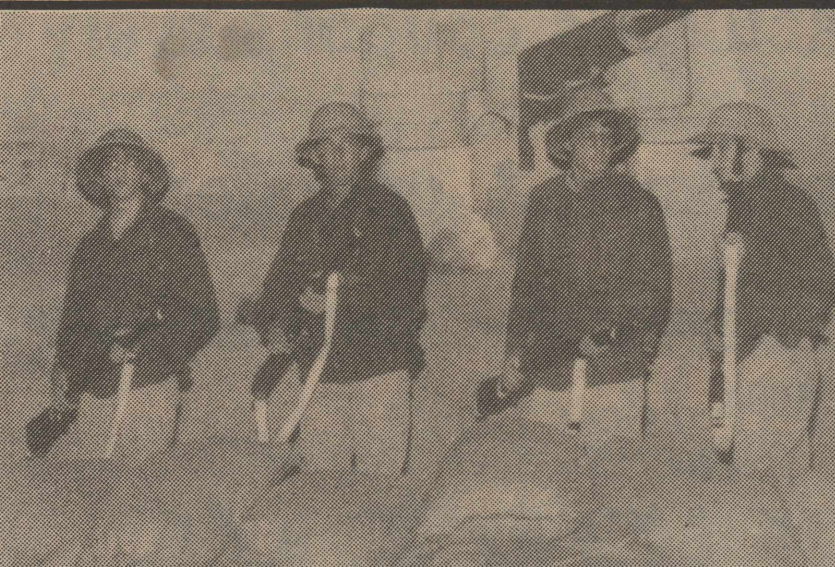
Accompanist Nancy Meyer and the pit band directed by Betty Ingham provided an added dimension with the opening overture and just the right balance with the singers during the performance.

Members of the pit band were Sheri Richardson, Wendell Beasley, Mickey Huddleston, Steven Wright, Monte Wallace, Nicol Harland and Mike Yates.

Director for the musical was Mima Hale. Choreographer was Jean Freeman. Sue Hollis painted the backdrop; Voncille Hale created wardrobe; and Carol Beck provided makeup.

Student stage managers were David Thrasher and Brandon Meyer, and sound and lighting technicians were Ty Berry, Brady Meyer and Corey Beasley.

Others in the cast included stagehand Becky Mostek, workmen Carson Adamson and David Berry and wounded soldiers Brad Harber and Karl Green.



In a scene from "Give My Regards to Broadway" are [l-r] C.B. Ingham, Jon Phillips, Christopher Ingham and Jon Sorensen. The musical was performed by members of the Texhoma High School Choir.

CROSSWORD

ACROSS

- Bridge charge
- _____
- Lorraine
- Region
- Mr. Ladd
- Sound
- City in Nevada
- Metal tags
- Light (Scott)
- River of Latvia
- Preposition
- Greek letter
- Fetch
- Confederation
- Forbid
- Flower
- Half an em
- Capital of Oregon
- Wan
- Prepare for publication
- Greatly
- Identical
- Young girl
- Mischievous ones
- Tatters
- Pin for meat

DOWN

- Arabian tambourine
- Voided esecutehon

ANSWER

- Thin
- Wool fat
- Close to
- Iroquoian dwelling
- Two-year-old salmon
- Boy's nickname
- Price
- Looks at
- Perform
- Deep-seated
- Wrap-yarn (Scott)
- Constellation
- Greek letter
- Garden tool
- Way-side tavern
- At home
- Act of retribution
- An. cient
- Ship
- Knave of clubs (poss.)
- Oriental nurse
- Den
- Moist
- Body of Kaffir warriors
- Examination
- Nova Scotia (abbr.)

Gift Ideas

"Books are the highest delight." Ralph Waldo Emerson

Buckling To

If you know someone who has a green thumb, or just a wish for one, you can help him or her show it off in style.

A limited edition of the American Gardener belt buckle has been produced. Each buckle features pewter finish, hand-crafted design and is individually numbered. It can look beautiful on anybody's belt and since it is a collector's item, it can be expected to rapidly increase in value each year.



The oldest known murals on man-made walls have been found in southern Turkey. They date back to 5500 B.C.



An attractive buckle commemorating the American gardener can be a fruitful gift.

Each buckle costs \$15 and the money will be used to help support National Gardening Week, which in 1985 will be the week of April twenty-first through twenty-seventh, reports the Ames Lawn and Garden Tools company.

The buckle can be a gift any gardener, including yourself, is likely to relish.

FREE BROCHURE

For a free brochure on the belt buckle or on National Gardening Week, you can write to Evans Baucom Display Co., 2037 Wales Road, N.E., Massillon, Ohio 44646.

CARD OF THANKS

I would like to express our appreciation for all your prayers, flowers, phone calls and visits while I was in the hospital and since my return home. May God Bless each of you.

J.D. & Betty Flanagan

CARD OF THANKS

I want to express my sincere thanks and deepest appreciation to all the concerned great friends and neighbors for their many kind acts of love shown me during my recent hospitalization.

A big special thanks for the warm welcome home, and to all that brought food to my home, also the many prayers given in my behalf. May God be with each and every one of you.

Love, Bill Harland

YOUR DOG NEEDS VITAMINS, TOO.



Sergeant's the pet care people



In 1965, Kenneth Palmer of England wrote the Lord's Prayer 25 times on a piece of paper the size of a small stamp. It consisted of nearly 7,000 letters.

EX-LAX: "The Family Friend" helps your body help itself.

Ex-Lax helps get your body's own natural rhythm going again. Gently. Dependably. Overnight. That's why more families use Ex-Lax—Chocolated or Pills—than any other brand. Make it your Family Friend.



Read label and follow directions. © Ex-Lax, Inc., 1983.

CONTEMPORARY PATCHWORK QUILTS

The medium is the message—as you can see in these 31 beautiful full-color quilts that reflect our life today. Discover how to make "Solar Energy," "Save the Whales," "Born Again," "No Deposit No Return," "Red Tape," "Morning Coffee," "Dieter's Fruit Plate" and many other contemporary quilts. Designed by Connie Major, who was inspired by today's themes exactly as our ancestors were when they created "The Little Red Schoolhouse" and "Log Cabin." The book is a unique masterpiece.



Fully half the book is devoted to techniques presented so simply even a beginner can understand (templates, yardage, piecing, etc.) plus easy-to-follow plans and patterns for each of the 31 new quilts. Best of all, every technique and pattern described is illustrated by clear diagrams along with full-color photos of every completed quilt. If you want to personalize the quilts you make or design your own contemporary quilts, the author reveals her secrets of design that anyone can master. She offers tips galore on how to design quilts for lawyers, musicians, sports fans, do-it-yourselfers and others, always explaining how to chart repeat patterns to form a design.

So don't delay, create the heirlooms of tomorrow... today—with CONTEMPORARY PATCHWORK QUILTS.

TO ORDER: Send your name, address, zip code and \$8.95 plus \$1.25 postage and handling to American Melody, 123 South Street, Oyster Bay, NY 11771. N.Y. residents add appropriate sales tax. Please print clearly.

SAVE! Order two for \$17.00 plus \$1.90 postage and handling.

SANTA CLAUS
Will be in Texhoma Dec. 20 at the SPS office



(if weather is bad, he will be at the Texhoma Community Center)

TEXHOMA INDEPENDENT SCHOOL DISTRICT Combined Balance Sheet - All Fund Types and Account Groups

	August 31, 1984		Totals (Memorandum Only)	
	104 General Fund	914 General Fund Fixed Assets	August 31, 1984	August 31, 1983
ASSETS:				
Cash	25,756.21		25,756.21	59,253.55
Temporary Investments, at Cost	480,000.00		480,000.00	450,000.00
Receivables:				
Property Taxes Delinquent (Note B)	9,526.61		9,526.61	11,443.59
Due from State Agencies	3,925.00		3,925.00	13,216.00
Allowance for Uncollectable Taxes (credit)	(952.66)		(952.66)	(1,144.36)
Accrued Interest	10,247.42		10,247.42	7,416.86
Land, Buildings and Equipment:				
Land		3,620.00	3,620.00	3,620.00
Buildings and Improvements		376,632.06	376,632.06	376,632.06
Furniture and Equipment		197,572.68	197,572.68	162,622.97
Total Assets	528,502.58	577,824.74	1,106,327.32	1,083,060.67
LIABILITIES:				
Current Liabilities:				
Accounts Payable	17.92		17.92	0.00
Deferred Revenues	8,573.95		8,573.95	10,299.23
Total Liabilities	8,591.87		8,591.87	10,299.23
FUND EQUITY:				
Unreserved Fund Balance	519,910.71		519,910.71	529,886.41
Invested Reserves:				
Investment in Fixed Assets		577,824.74	577,824.74	542,875.03
Total Fund Equity	519,910.71	577,824.74	1,097,735.45	1,072,761.44
Total Liabilities & Fund Equity	528,502.58	577,824.74	1,106,327.32	1,083,060.67

The accompanying notes are an integral part of this statement.

Prepared by Sheila L. Burkett
Certified Public Accountant
Canyon, Texas

Published in The Stratford Star 12/20/84

MONEY MARKET GUIDE

Certificates of Deposit
Rates Effective through December 26

Maturity	1 Month	3 Months	6 Months	1 Year	18 Months	INSURED MONEY MARKET ACCOUNT \$2500 MINIMUM DEPOSIT
\$2,500	8.80	9.0	9.20	9.40		
\$10,000	8.90	9.10	9.30	9.60		
\$100,000 (Subject to change daily)	9.10	9.30	9.50	9.75	9.50	8.00



TEXHOMA Rates subject to change Weekly

(405)423-7541
Member FDIC

NOTICE: As required by law, all certificates are subject to substantial penalty for early withdrawal.

Elkettes zap Gruver

The Stratford Varsity elkettes slid past Gruver Monday with a final score of 55-52. The teams took turns taking the lead. At the end of the first quarter, Gruver led 16-12; by the end of the half, the Elkettes were leading 25-24, but by the third quarter they were again behind 34-33.

Scoring for the Elkettes were: Sheila Cummings with 33 points, Stacy Rolan with 12, Christy Lancaster with four, Shawna Dettle with two, Mary Beth Spurlock with two and Christy Pittman with two.

Sheila led the Elkettes in rebounds with 11, Stacy with next with nine, Christy Lancaster with five, Mary Beth with five, Shelly Harrington with two and Kerry Boren with one. Kerry had nine assists, Mary Beth had 10, Shawna had four, Christy Lancaster had four, Stacy had three and Sheila had one, Christy Pittman had one and Shelly had one. Kerry had two steals and Stacy had one.

The Elkettes fell behind by as much as eight points during the first quarter. They came back and played well and were able to get ahead by one point at the end of the first half. I was really pleased with the patience we had on offense during the second half." Girls coach Morris said.

In other action, the Elkettes were edged out by Liberal Friday with a final score of 46-43. At the end of the first quarter Liberal had the lead with 16-12, by the half the Elkettes narrowed this lead to 29-27 and by the end of the third quarter Liberal only led by one point with 40-39. Scoring for the Elkettes were: Sheila Cummings with 22 points, Shawna

Dettle with nine, Christy Lancaster with six, Stacy Rolan with four and Kerry Boren had two.

Leading in the rebounds was Christy Lancaster with 12, Stacy had nine, Sheila had nine, Shawna and Kerry each had one, Mary Beth led in assists with four, Christy Lancaster had three, Shawna had two, Sheila had two, Stacy had two and Christy Pittman had three. Stacy had six steals, Shawna had two, Sheila had two, Christy Pittman had two, Christy Lancaster had one and Kerry had one.

Liberal had a quick team, their press hurt the Elkettes forcing 31 turn overs. They did a good job of running offense when they were able to get into it.

The Elkettes came back to defeat Sunray 44-37 to give the third place in the Sunray Tournament. The Elkettes were out front 19-5 at the end of the first quarter, they remained in front at the half with 29-14 and ended the third quarter with 35-25.

Sheila Cummings scored 23 points and was chosen to the all-tournament team. Stacy Rolan was next with eight, Shawna Dettle had seven, Kerry Boren had four and Christy Lancaster had two.

Sheila also led in rebounds with 12, Stacy had nine, Christy Lancaster had three, Christy Pittman had two, Shawna had one, Kerry had one, Deana Lane had one and Shelly Harrington had one.

Kerry had six assists, Shawna had four, Christy Lancaster had three, Mary Beth Spurlock had

three, Sheila had two, Stacy had one, Deana had one, Roxan had one and Christy Pittman had one.

Shawna had four, Sheila had four, Christy Lancaster had three, Stacy had three and Kerry had three.

The girls came out and played well during the first four minutes of the game, scoring 15 points in that time. They continued to play well through the first half. However, they seemed to become a little complacent during the second half, scoring enough to maintain the lead.

On December 12, the Elkettes had a resounding victory against Dalhart with a final score of 50-38. The Elkettes had a comfortable lead at the end of the first half with 15-8, but Dalhart closed the gap by the end of the half but the elkettes were still ahead 26-24. By the end of the third quarter both teams were tied a 33 each and the Elkettes bounced out for the victory.

Scoring for the Elkettes were Sheila Cummings with 30 points, Christy Lancaster had 13, Kerry Boren had five and Tscy Rolan had two.

Sheila led rebounds with 20, Chruty Lancaster had eight, Stacy had six, Kerry had three and Christy Pittman had one. Shawna Dettle had six assists, Stacy had four, Kerry had four, Christy Lancaster had one and Mary Beth had one.

Christy Lancaster led in steals with four, Shawna had two, Sheila had two, Stacy had two, Mary Beth had one and Roxan had one.

The Elkettes came out playing well and finished the game strong. They played well during the fourth quarter to bring forma a tie to a victory.

Happy Hour meets

Happy Hour home demonstration club met in the home of Elsie Pickens for our Christmas Party with a luncheon and exchange of gifts. A brief business meeting was held where it was decided to give Girlstown \$25.00 for Christmas.

Those attending were Dorothea Allen, Lena McWilliams, Myrtle Ellison, Elsie Pickens, Rose Wells, Dovie Fedric, Eskie Ritchie, Ruby Garoutte, and Rosalee Coats.

The next meeting will be January 3, 1985 with Dorothea Allen.



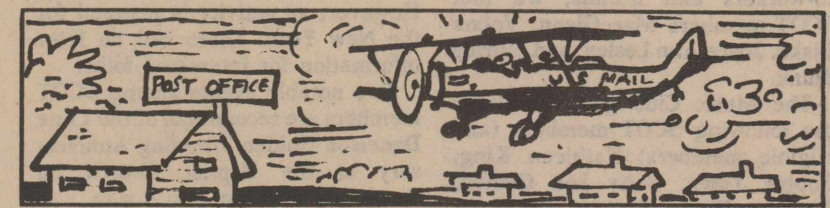
A bridal shower honoring Barrie Donelson, bride-elect of Jeff Breed was Saturday in the home of Mrs. Jerry Johnson. Hostesses included Mesdames Doug McBryde, Jack Dettle, E.R. Bell, REX Christian, Don Riffe, Ole Olson, Lynn Allen, Phillip Bain, Joe Flores, Jess Willard, Arlyn Halle, Steve Dettle, Raymond Wiley, Dwayne Plunk, Jack Vincent, Bill Sladek, Jerry Johnson

Star Club meets

Star Club met December 4 with Annell Wall for a lovely Christmas luncheon. The good food was enjoyed by Irene Wakefield, Doris Dyess, Emma Naylor, Jimmie Pronger, Gladys Kirkwood, Geneva Bell, Ava Keener, Leona Kelp, Sheryl Hayworth and grandson Bradley and the hostess, Annell Wall.

After lunch each member told about their holiday plans and the afternoon was spent playing Bingo.

The next meeting will be January 8, 1985 with Geneva Bell.



The first airmail service in the U.S. began on May 15, 1918. The first airmail stamp cost 24 cents in 1918, but was reduced to six cents by 1919.

Two on Dean's list

Two students from this area have been included in the seventh annual edition of THE NATIONAL DEAN'S LIST, the largest recognition publication honoring college students, published by Educational Communications, Inc., Lake Forest, Illinois.

Students are selected for recognition by their registrars or deans and are on their school's Dean's List. The 85,000 students included in the

current edition are from 2,500 colleges and universities nationwide and represent one half of one percent of the more than 8,000,000 college students in the country.

Local students selected include Rodney R. Robertson and Ruth L. Scarth both attending Panhandle State University in Goodwell, Oklahoma.

At press time, Matte Austin remains in serious condition in Dumas Memorial Hospital.

SAVE SAVE SAVE
Free delivery. All types cedar roofing, shakes and shingles \$60.00 to \$75.00 per square. cedar fencing 1x4x6 full jumbo. Picketts-full one inch thick-full 4 inch wide Full rough Real nice. Turnkey Roofing and Fencing. Free estimates.

LAKESIDE WHOLESALES
Drawer L Fritch, Texas 79036 (806) 857-2411

SPECIAL SALE! JUST IN TIME FOR CHRISTMAS

1984 Chevrolet Caprice Classic
1984 Chevrolet Camaro Z28

MUST GO! CLOSE OUT SALE!!!

We invite you to come by and see our selection of new and used cars and trucks. New inventory arriving everyday.

Stop and Save\$\$

HAVE A SAFE & HAPPY HOLIDAY SEASON

DUNCAN CHEVROLET CO., INC.

Bette's Cleaners

Door-to-door pickup weekly
Monday

812 Main 948-5611 Sunray, Texas



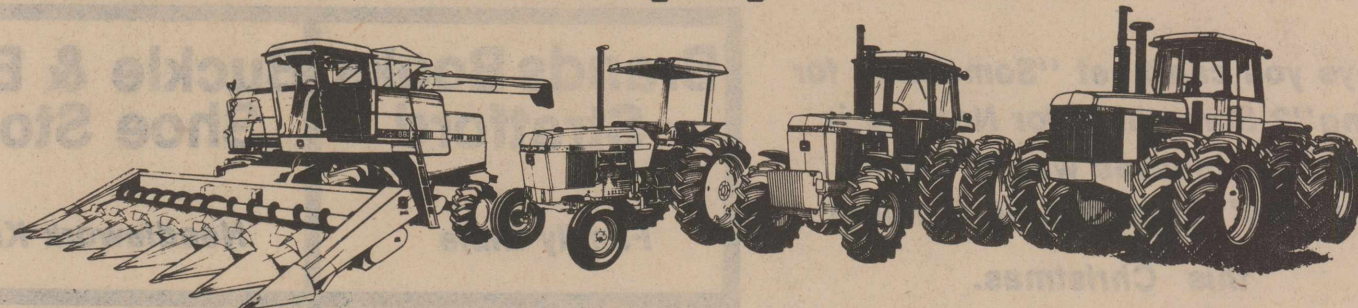
In honour of the
Fiftieth Wedding Anniversary of
Mr. and Mrs. Cone Donelson
their children and grandchildren
request the pleasure of your company
at a Reception

on Sunday, the twenty-third of December
nineteen hundred and eighty-four
from two until four in the afternoon
First Baptist Church Fellowship Hall

702 North Third
Stratford, Texas

No gifts please

Save Thousands on new John Deere Equipment... now!



John Deere has given us tremendous allowances on new equipment and we're passing those savings on to you. In addition to that there are many finance waiver discounts to sweeten the pot. Stop in now and choose your deal.

DEAL 1. 4WD TRACTORS

Thousands of dollars in pass-along savings on every new John Deere 4WD tractor in stock. No interest until June 1, 1985, with John Deere financing.* Or, in lieu of the finance waiver take these extra discounts.

MODEL	DISCOUNT IN LIEU OF WAIVER		
	During DEC	During JAN	During FEB
8450	\$2100	\$1725	\$1350
8650	2575	2100	1625
8850	3225	2625	2050
8440	1725	1400	1100
8640	2125	1725	1350

Outstanding savings on used 4WD tractors, too, with no interest to pay until June 1, 1985, with John Deere financing.*

DEAL 2. ROW CROP TRACTORS

Huge pass-along savings on units listed here plus interest-free financing until June 1, 1985.* If you prefer, take an extra discount in lieu of finance waiver.

MODEL	DISCOUNT IN LIEU OF WAIVER		
	During DEC	During JAN	During FEB
100-hp 4050	\$1000	\$ 825	\$ 650
120-hp 4250	1075	875	700
140-hp 4450	1200	975	750
165-hp 4650	1450	1175	925
190-hp 4850	1675	1375	1075

Huge savings with the same Deere financing interest-free offer on used equipment, also.

DEAL 3. UTILITY TRACTORS

Get unheard of savings that we're passing along from John Deere on new Utility tractors shown in this chart. Then, get interest-free John Deere financing until June 1, 1985. Or, take an additional discount in lieu of finance waiver.

MODEL	CUSTOMER DISCOUNT
40-hp 1250	\$ 550
50-hp 1450	625
60-hp 1650	700
45-hp 2150	650
50-hp 2255*	675
55-hp 2350	750
65-hp 2550	850
75-hp 2750	1400
2750 High Clearance	1000
85-hp 2950	2700

Used equipment also qualifies for the same interest free John Deere financing offer.

DEAL 4. COMBINES

The John Deere combines listed here are offered at fabulous off-season savings. Thousands of dollars off PLUS INTEREST FREE FINANCING TO THE FIRST OF THE 1985 USE SEASON. These prices apply when the combine is purchased with new header equipment.

MODEL	CUSTOMER DISCOUNT	
	SERIAL #600000 AND BELOW	SERIAL #610000 TO #610000
4420	\$ 5,000	\$ 3,500
6620	5,000	4,000
6620 (SIDEHILL)	6,000	4,500
6622	10,000	7,000
7720	7,000	4,500
7721	4,000	2,500
8820	10,000	5,500

If a new head or platform is purchased independent from the separator, a \$1,000 discount will apply. If the separator is sold without new header equipment, the discounts will be reduced by \$1,000.

Don't delay! Come in and make the deal of your choice.

*Availability of John Deere financing subject to approval of credit. These offers may be withdrawn at any time.

**This model is not available in Nebraska.

SHERMAN IMPLEMENT

Hwy 54 East



Phone 396-5561

SCOT Notes

by Timmie Brown

December 17! This date lands the Christian world and the Sherman County Older Texan's smaller world right smack into the middle of the most blessed and joyous season of the year.

Since the angels rejoiced and sang and God "gave" at this approximate date 2000 years ago, no wonder that we, God's children, want to express our joy and desire to give even if we are a little clumsy and extravagant in doing so. It takes time to evaluate joy and giving. Since each must make his own decision, we need three time periods to conclude what life is all about namely: one childhood and one adult period to learn and make judgments: one childlike period to appreciate. And so let us, who have been granted these three time periods sing, be happy and give to our hearts content. Life is beautiful!

Social activities abound. At Marilyn Alberts evening at home for co-workers and friends, we met SCOT members Mae Glenn, Velma Blake, Joyce Ann Lasley, and Shirley Plunk.

The Music Club group included the following SCOT members (and eligible members) Kathleen King, Robbie Yates, Betty Lou OBrien, Bonnie Flyr, Frances Watson, Kathryn Crabtree, Lillie Galloway, Geneva Haile, and Timmie Brown. All were present at the delightful Music Club program and luncheon.

The Bertha Smith Bible Study luncheon party is unique. We were delighted that three SCOTmembers gentlemen visited with us--Messers Galloway, Naylor and Leon Guthrie--Glenn Hart and James Lowe were unable to attend. The Bible Study Group consists of Joyce Hart, Teacher, Luzelle Lowe, Lillie Galloway, Jane Guthrie, Mildred Ingham, Geneva Bell, Emma Naylor, Timmie Brown, Corda Pleyer, a "FAITHFUL FEW"--SOME DATING THIRTEEN YEARS OF MEMBERSHIP. Another special guest was Lorelyn Powers who also serves as our "Man Friday" on many occasions.

Greetings for Christmas and otherwise are brightening our holiday season. Remembering us are the S.F. Flores; Pat and Clarence Graves from Germany and Greece (Pat nee Margaret Knudsen of Steven Community); Ada Wre and Arthur Foster sent word from Spain; Joe and Rose Brown from El Paso. They will visit here early in January; John, Ruth and Kimberly Fladalan from Montana. Schuler Donelsons, Clayton; the W.U. Prices from Sun City with greetings to everyone. Interesting information that thrill-

ed us was the item in the Texhoma news headed "Gets G.E.D. at 74" and finding the person was Bessie Smith Spradlin who was a student of ours about 1923 at Stevens, Tx. How we delight in your accomplishments, Bessie. Others in that class were Alta James, Hettie and Mabel Laird, Madeline and Leslie Fargen, and Irwin Knudsen. Irwin and Mabel are deceased. How we would love to hear of others.

We wish success to Lori Merrell in her music career at Panhandle State Word of Karen Pleyer, our Stratfordite exchange teacher in Ireland, says that she was happily reunited with her stolen luggage. It was found near a canal-dry and unharmed. The supposition is that the burglars were looking for money which Karen sensibly kept with her. Karen is excited about her work according to her mother, Doris Pleyer.

This is dead week at SCOT Hall. However, an activity is planned for the New Year. There will be later information for interested folks.

Two notable events among SCOT members are recognition of the Cone Donelson Golden Wedding Anniversary at the Baptist Church on December 23 from 2 to 4 p.m. Second, Alice and Lester Lollis will

celebrate their 60th Wedding Anniversary. A reception is being held at the Methodist Church on December 30. Time is 3 to 4:30 p.m. Mark your calendars for these special events and lets attend and make merry with them.

You are invited to come by Timmie Brown's house to wish Dorothy Vaughn "fair sailing" as the Vaughns are moving soon. The date is Friday, December 28. Time is 2 to 4 p.m. Y'all come!

Life is real and earnest, however the "grim reaper" has been busy among us again. He has claimed the lives of our friends Dutch Williams and Lola Beall, a long time Stratford resident. These two bring to 15 the number of loved people who have gone into eternity since October 18, 1984. To the recently bereaved families, the Williams and the Beall's five daughters especially, then to this community, there is a word of hope we think.

According to the Bible teachings of Dr. B.H. Carroll, a late great theologian, we find the following consolation for all. In John Chapter 17 where our Lord, Jesus, prays for himself before his crucifixion, He

asks five things of our Father God. (1) that his (Jesus) body be made live again.

(2) that the body be raised from the grave.

(3) that the body be reunited with the spirit.

(4) that the body and spirit be taken into heaven.

(5) that they, being in heaven should possess all promises made concerning them.

These are the consolations the Heavenly Father gives to all who believes. Praises to Him for His wonderful provisions for all who believe. Our love and prayers to all of you from all SCOT folk.

Our Christmas greeting to each one is;

May the Word of Jesus guide your way

May His Light brighten your path

May His Bread feed your soul

May His Living Water slack your thirst

May His Love enfold you every day

A Merry Christmas and Happy New Year



A bridal shower honoring Brenda Smith [second from right] bride-elect of Jerry Ewers. Guests included [L-R] Jane Smith - grandmother of

the bride, Mary Smith - Mother of the bride, Brenda Smith - the honoree, and Dixie Ewers - mother of the groom.

oJan mills®
THE NATION'S STUDIO



One 8 x 10 Color Portrait
\$30.00 Value for only .99¢

Your choice of family group or individual
One special offer per family, one per person

STRATFORD, TEXAS
RANGER MOTEL
THURSDAY, DECEMBER 27, 1984
HRS: 1:00 P.M. - 9:00 P.M.

B2 Minors must be accompanied by an adult.

Amarillo College and Dumas Independent School District SPRING SCHEDULE OF CLASSES 1985

Registration January 7, 1985 — 7:00-8:00 p.m. — Dumas High School Cafeteria
Classes start January 14, 1985

For more information contact the Community Education Office 935-2011.

COURSE NAME & NO.	COURSE TITLE	TIME	DAY	BLDG.
ACCTG 4323-809	Principles of Accounting II	6:30-10:00	Mon	DHS
BNK 3131-001	Product Knowledge (Meets Jan. 15-Feb. 12)	6:30-9:15	Tue	DHS
BNK 3121-101	Selling Bank Services (Meets Feb. 19-Mar. 26)	6:30-9:15	Tue	DHS
BUS 3603-005	Business Mathematics	7:00-9:45	Mon	DHS
CIS 3023-812*	Computer Concepts	7:00-9:45	Tue	DHS
CIS 3023-816*	Computer Concepts	7:00-9:45	Thur	DHS
CIS 4403-803*	Basic Programming Language	7:00-9:45	Thur	DHS
ENGL 3043-019	Freshman Composition I	7:00-9:45	Mon	DHS
ENGL 3053-028	Freshman Composition II	7:00-9:45	Mon	DHS
ENGL 4023-001	Masterworks of English Literature	7:00-9:45	Tue	DHS
GOVT 4343-012	Government of Texas & U.S.	7:00-9:45	Thur	DHS
HIST 3383-015	History of the U.S. II	7:00-9:45	Tue	DHS
MMGMT 3363-004+	Functions of a Supervisor	6:30-9:00	Thur	DHS
MMGMT 5222-708+	Management Training	5:30-8:20	Thur	DHS
MMGMT 5141-004+	Mid-Management Seminar	9:10-10:00	Thur	DHS
MUSIC 3093-003	Music Appreciation	7:00-9:45	Mon	DHS
PSYCH 3023-002	Psychology of Human Relations	7:00-9:45	Thur	DHS
PSYCH 3113-008	General Psychology	7:00-9:45	Thur	DHS
RE 4353-003	Real Estate Finance	7:00-9:45	Tue	DHS

*Requires three hours of laboratory attendance each week for this course in addition to the lecture time scheduled.
+PLEASE NOTE: Each Mid-Management course consists of a class, a seminar, and management training on the job. Mid-Management students must have four semesters of management training. Students should register for and meet the management training class on the night they attend regular class.

KEY TO BUILDING: DHS — Dumas High School

Something For Nothing

The following businesses are participating in this promotion and below their business name is the item donated for the Dec 20 Auction

Who says you can't get "Something for Nothing"? Something for Nothing is Stratford businesses way of saying "Thank You" for shopping at home this Christmas.

HERE'S HOW IT WORKS:

1. Participating Merchants have donated items to be auctioned off. Corporate sponsors have contributed to the cost of an item to be purchased for auction.

2. Shoppers making purchases in participating merchants' stores between November 23 and noon December 19, will save their cash receipts and bring them to the Chamber of Commerce office to be validated. The Chamber office will validate receipts from 1 p.m. until 5 p.m. on each Wednesday during the promotion.

3. The Chamber will verify the authenticity of the receipts and keep a continuous line of credit for each customer. Script will be issued for the amount of credit accumulated and will be used in place of money to bid on items at the auction. All receipts must be brought to the Chamber office by 5:30 p.m. Wednesday December 19.

4. Bidding card and script may be picked up beginning at 6 p.m. the evening of the auction.

5. "SOMETHING FOR NOTHING" AUCTION WILL BE 7:30 P.M. THURSDAY DECEMBER 20 IN THE NORTH COUNTY BARN

CORPORATE SPONSOR ITEMS TO BE AUCTIONED

10 in G.E. Porta-Color Television
Sharp Portable Stereo
[Mini-Ghetto Blaster]

CORPORATE SPONSORS

- Empire
- Stratford Feedyards
- Stratford Animal Hospital
- Moore Implement Co.
- Stratford Grain Co
- North Plains Savings & Loan
- Scottcable
- Ronnie Pickens Livestock Hauling

Brands Books Stratford Family Bible	Buckle & Bow Shoe Store Needlework Kit	The Initial Decision \$25 ⁰⁰ Monogramming	The First State Bank of Stratford (2) \$50 Savings Bonds
Duncan Oil Company Case-Trop Arctic 10/w/40	Duncan Chevrolet Case - Oil Filters	Elk Pharmacy Men's Seiko Watch	General Telephone Company Black Touch Call Candlestick Telephone
Kids Korner Baby Comforter	Phillip & Dennis Plunk, D.D.S. \$75 Dental Services	A & I Parts 1/4" Black & Decker Electric Drill	Ellison Floral Serving Dishes
C's Male Box The Girls Next Door Mens Sweaters Ladies Sweaters	A Touch of Glass 3D Stain Glass Butterfly	Cut Rate Family Center Ham or Turkey	Rafter 'J' Boot & Saddle \$25 Handmade Belt
Joyce Gifts Hand painted Skillet & Coffee Pot (blue enamel)	Stratford Printing Business Portfolio	True Value Hardware 10 Memory Computerized Telephone	Tip Top Hobby Shop 2 matching 8x10 frames/ framing costs
Something Special Isotoner Gloves Full Size Sheet Set	The Stratford Star (2) One-Year Subscriptions	Sherman Implement Collector Series John Deere Belt Buckle	IGA Foodliner 25 Pound Beef Pack

IT PAYS TO LOOK IN THE

Star

CLASSIFIEDS

'THE BEST SALESPERSON AROUND'

Phone 396-5885 to place your Star classified ad

Classified ad rates 12 cents per word first insertion, 6 cents per word on subsequent insertions. \$3.00 minimum. \$1.00 discount if paid in advance.

★ For Sale ★

FOR SALE--Used trampoline. Good condition. \$200.00--Call Doug McBryde at 396-5688. 1-3c

\$300 OFF THE STICKER PRICE of our Seth Thomas Grandfather Clocks. Now until Christmas. True Value 200 N. Main 396-2457. 12-20c

We are now carrying a large selection of carpet and floor tile. Come in and see all the many colorful samples we have in stock. We have a color pattern for every room in the house, so get your order in now. TRUE VALUE 2-161fn

FOR SALE--Three 10 acre Veteran Tracts out of S.W. Corner Sec. 165 BLK 1-T Sherman County. East side of Stratford on farm road 2677. Call 806-364-0442 or 364-2225. 1-10c

FOR SALE--Litton Meal in One Micro-wave oven, 3 yr. old. Call Mon. thru Fri. after 6 p.m. Anytime weekends. 948-5409. 10-11fn

FOR SALE--Beautiful solid oak roll top entertainment center. 1 year old. Call after 6 p.m. Mon. thru Fri., anytime weekends. 948-5409. 10-11fn

HAY FOR SALE--Call 396-2222. Hal Bennett 11-11fn

QUALITY TRAMPOLINE--Price includes delivery and set-up. Call 396-2489 or 733-2978. 12-20c

SACRIFICE! 1978 Thunderbird. Loaded, AM/FM cassette stereo, A/C, electric seats, automatic transmission, good tires. Green & white. Good condition. Call after 5 p.m., 727-4412. 9-20fn

CHRISTMAS SPECIAL ON KEROSENE HEATERS. You won't believe the Prices. Come see at Sherman Implement Company. 396-5561. 12-20c

FOR SALE--1976 14x80 Concheco Governor Mobil Home. 3 BR, 2 full baths. Excellent condition. Call [Kay] McDaniel, [806] 727-4522. 12-27p

FOR SALE--CHRISTMAS SPECIAL Doll Furniture--well made and sturdy. Doll beds, cradles, rocking chairs, straight chairs and rocking horses for a child. Can be seen at 602 S. Fulton, 9 a.m. thru 5 p.m. Phone 396-5626. 12-27p

FOR SALE--All types of hay. 396-2440. 12-22fn

CHRISTMAS TOYS--Come in and see our selection of Allis-Chalmers farm equipment toys. Priced to sell. King Equipment 12-20c

\$100 OFF G.E. SPACEMAKER MICROWAVES. Reg \$649--Now \$549 at True Value, 200 N. Main, 396-2457. 12-20c

FOR SALE OR RENT--3 bedroom, brick house. Fenced back yard, two storage buildings and cellar. Call Janice Brown after 5 p.m. at 396-2487. 12-20c

FOR SALE--Well travelled 1982 F150 4x4 Supercab. 351 automatic, power and air. Butane set-up with slamese twin tanks. Welding shop grille guard and bumper. \$8800 P.J. Pronger, Panhandle, Texas 537-3056 home. 12-20c

ALL REMAINING CHRISTMAS MERCHANDISE 1/2 OFF. We also have \$12.50 and \$15 Christmas centerpieces. Ellison Floral, call 396-2092. 12-20c

MAKE THIS A SPECIAL CHRISTMAS with toys that can be handed down to the next generation. Sherman Implement, your John Deere Dealer. Highway 54 east. 12-20c

FOR SALE--Red Dale Camper. Located at C & D Body Shop. 12-20c

POPCORN--Don't forget a good supply of popcorn for the holiday season. This years crop. Kansas farmer says, best crop for many years. Pops into large snowy white kernels. Can pick up at 602 S. Fulton or will deliver in town. Call in your order at 396-5626, any size order accepted. Special rates on order 50 lbs. or more. Popcorn is considered good food and nutritious. 12-27c

MANUFACTURER'S YEAR END CLEARANCE. Up to 40 percent off. Special discount prices on 35x50; 40x54; 46x90; 50x82; 55x102. All steel curvette buildings made of heavy 22 gauge steel complete with large doors. Ideal for crop and machinery storage, shops and warehouses. Save \$1000's on these national brand steel buildings. Call toll free 1-800-222-7885. 12-20p

MENS & BOYS SPORT JACKETS--25 percent off. SHOP AT HOME--C's Male Box. 12-20c

MENS SWEATERS \$5.00 off 'till Christmas. C's Male Box--Shop Stratford. 12-20c

STILL HAVE A LARGE SELECTION OF LADIES SWEATERS. Large sizes too. The Girls Next Door 12-20c

★ Houses for Sale ★

FOR SALE-1984 16x80 single-wide Nashua trailer house. Central air, 3 BR, 2 bath, large living area. Partially fenced and lot. 320 S. Maple. Return of equity and take up payments of \$385/month. Call 396-5508 or 396-2038 after 5. 7-26fn

FOR SALE--Across street from WTSU. Ready to move into. Furnished, two bedroom trailer. Ideal for college student, or would be good to move to lake--\$4500.00. Call 396-2143 after 4 p.m. 12-20p

FOR SALE--1979 Celtic Mobil Home, 14x68, 2 BR, 2 bath, new carpet throughout. See to appreciate. Call after 6 p.m. Mon. thru Fri. Anytime weekends. 948-5409. 10-11fn

★ For Sale ★

THE CHEAPEST FIRE INSURANCE is a halon fire extinguisher. Does your family own one? Let me show you a gift anyone would appreciate. Bill Riffe 396-5541. 11-29fn

I'LL GIVE YOU ONE MORE CHANCE to buy one of my Schwinn Scrambler Bicycles! Good Condition \$50.00 Call Sue Hudson, 396-5916. 12-20c

HOLIDAY MERCHANDISE--30 percent off. The Girls Next Door. 12-20c

ALL REMAINING CHRISTMAS MERCHANDISE 1/2 OFF. We also have \$12.50 and \$15 Christmas centerpieces. Ellison Floral, call 396-2092. 12-20c

CHRISTMAS SALE--Leather knitted sweaters and jewelry. Jungle jewelry or animal jewelry. 396-2099 or 1220. Butler. 12-20p

★ MISC ★

2 PUPPIES TO GIVE AWAY. 4 months old, will be large dogs. Also, 1 1/2 year old cocker spaniel. Need farm home for 3 year old dog. 396-5360 114 S. Fulton. 12-27p

We have Christmas trees to RENT Decorated to your specifications and delivered to your home or business. Ellison's Floral 396-2092 12-20c

JOHN DEERE TOYS--Replicas of the real thing. Low-price. A wide selection available. Sherman Implement, your John Deere Dealer. Highway 54 east 12-20c

BUSINESS OPPORTUNITY--Unique sales operation available in your area. Very exclusive food product that sells itself. Excellent for self starters. Small investment for income potential. Route sales person encouraged to call or write Billy Patton, Box 1471, Gaymon, Ok. 73942. [405] 338-1191 12-20p

TO GIVE AWAY--4 black and white poodle pups. About 6 weeks old. Can eat and drink. Call Lola Ward at 396-5312 12-20c

SALE--Everything goes for 20 percent off December 20 and 21. We will be closed December 24-25-26. Tip Top Hobby Shop. 12-20p

JUST IN TIME FOR CHRISTMAS--Eight-week-old puppies--Small, mixed breed--FREE! Male or female. Call 396-5907 or come by 406 S. Pearl. 12-20p

ALL REMAINING CHRISTMAS MERCHANDISE 1/2 OFF. We also have \$12.50 and \$15 Christmas centerpieces. Ellison Floral, call 396-2092. 12-20c

★ Lost & Found ★

LOST--Black Labrador Bld Dog. Last seen three miles North of Stevens. Has white streak between lets and red collar. 753-4479. 12-20c

★ Help Wanted ★

NEED PART-TIME TYPIST. Inquire at Stratford Star.

WANTED--Nurse's aid and cook at Coldwater Manor. Apply in person. 1-3c

SHERMAN COUNTY WILL ACCEPT APPLICATIONS for appointment of Justice of Peace, Precinct 3 for an unexpired term, until January 2, 1985 at 10 a.m. Applications should be placed with Commissioner Dale Hamilton or Judge Frizzell. 12-27c

NEW DOG BREEDERS NEEDED

Start now raising purebred dogs for PROFIT. Get highest national prices. We assist all new breeders if qualified. Possible to turn 1/2 acre of your idle ground into a \$10,000 income. Call or write (include your phone number)

UNITED KENNELS
P. O. Box 1155
Shreveport, LA 71163-1155
Phone: 1-318-742-1358

Stratford Lodge
No. 874
Ronald Tillery W.M.
V.O. Lasley Sec'y
Third Thursday
8 p.m.

★ For Rent ★

FOR RENT--Gillis Apts., 101 N. Main. 1 & 2 BR, Furn. & Unfurn. Call Ted Reynolds, 396-2004, or in emergency, Mrs. Garrison, 395-5657 11-1fn

COUNTRY HOME FOR RENT--free gas. Four bedroom. Phone 753-4426. 12-20p

FOR RENT--2 BR apt. 396-5936. 414 N. Maple. 7-7fn

We have Christmas trees to RENT Decorated to your specifications and delivered to your home or business. Ellison's Floral, 396-2092 12-20c

FOR RENT--Trailer Space. Call 727-4430 or 396-2102. 12-20fn

FOR RENT--Two bedroom house in Texhoma. [405] 338-2021 or [405] 545-3598. 12-20c

FOR RENT--Two bedroom unfurnished apartment with washer and dryer hook-ups. Call 396-2374. 12-20fn

★ Legal Notices ★

LEGAL NOTICE
THE STATE OF TEXAS
COUNTY OF SHERMAN
NOTICE OF SALE OF REAL
PROPERTY UNDER COURT
ORDER OF SALE

By virtue of an order of sale issued out of the District Court of Dallam County, Texas, on a judgment rendered in that court on August 17, 1984 in favor of CITIZENS STATE BANK OF DALHART, plaintiff, and against C.B. DODSON, JR., defendant, cause no. 7191, styled CITIZENS STATE BANK OF DALHART, plaintiff, vs. C.B. DODSON, JR., defendant, on the docket of the court, on December 7, 1984 I levied upon the following described real property situated in Sherman County, Texas, as the property described in said order of sale, specifically described as follows:

TRACT I:
All of Section 64, Block 1-C, G. H. & H. Ry. Company Survey, Sherman County, Texas, and containing 649 acres of land more or less.

TRACT II:
The South 320 acres of Section 63, Block 1-C, G. H. & H. Ry. Company Survey in Sherman County, Texas, and containing 320 acres of land more or less.

On January 1, 1985, which is the first Tuesday of the month, between the hours of 10:00 o'clock a.m. and 4:00 o'clock p.m., at the Courthouse door of Sherman County, Texas, the Sheriff of Sherman County, Texas will offer for sale and sell at public auction, for cash all of the right, title and interest of C.B. DODSON, JR., in and to the above described property as the same existed on December 22, 1982.

The property described in TRACT II will be sold subject to a first lien in favor of FEDERAL LAND BANK OF TEXAS.

The property described in Tract I will be sold subject to the right of YETIVE DODSON to receive one-eighth (1/8) of the income from this section of land for her lifetime.

DATED on December 7, 1984.
Clois Vaughn
Sheriff, Sherman County, Texas
This sale will begin at 10:30 a.m. on January 1, 1985.

(Published in The Stratford Star, December 13, 20, & 27)

NOTICE TO CREDITORS OF THE ESTATE OF HILLERY L. VINCENT AND NOTICE OF APPOINTMENT OF EXECUTORS

Notice is hereby given that on December 5, 1984, Letters Testamentary as Independent Co-Executors upon the Estate of Hillery L. Vincent, Deceased, were issued to Walter D. Vincent and Jack C. Vincent, by the Honorable County Court of Sherman County, Texas, in Cause No. 1705, now pending upon the Probate Docket of said Court. All persons having claims against said estate are hereby notified of such appointment and they are required to file their claims within the time and in the manner prescribed by law with us at our Post Office addresses listed below:

Walter D. Vincent
1200 NW 1st
Stratford, Texas 79084

Jack C. Vincent
401 N. Fulton
Stratford, Texas 79084

or in care of our attorney and agent,
John W. Woods
Attorney at Law
P.O. Box 53
Stratford, Texas 79084

Walter D. Vincent
Jack C. Vincent
(Published in The Stratford Star, December 20, 1984)

★ Services ★

ALL CABINET WORK--Custom built, Leo L. Scott, across from North Plains Building. Ph. 396-2219 tfn

Professional pruning of shrubs and evergreens; trimming of trees. Spraying and feeding of lawns & trees. Weed control. G. Carter. Custom Tree and Weed Service. Box 2705, Amarillo, TX 79102. 373-4593 8-30fn

NEW Pickup & Delivery Service Pickup Packages - Parts Etc. Deliver to your bus., home, or farm. Cover Panhandle Area! Call today! 396-2870

VETERANS--Expansion of outreach program and veteran counseling centers are some of the benefits available in addition to land and home purchase and pension benefits. For assistance in applying for these and other VA benefits call Max Stephenson VSO at 396-5348. 12-27p

Stratford Refrigeration

Refrigerators - Freezers
Gas - Electric ranges - Ice Makers
Dishwashers - Dryers
Repair
396-2129

LET ME DO YOUR HOLIDAY BAKING. Specializing in pies and cakes. 14 Karat Cake with cream cheese frosting, pecan pies and many other delicious choices. For prices or to order call Pat Boren at Kerrick 727-4677 12-20c

CARD OF THANKS

The family of Dutch Williams wishes to express our appreciation to all of those who responded to our recent loss with expressions of sympathy and help.

CARD OF THANKS

Deepest appreciation is extended to each of you who called, brought food, sent flowers or memorials, and expressed your condolences in so many ways. A special thanks to those who sang in the choir, and who furnished and served the family dinner.

The Family of Earl Albert, Richard Albert and family Russell Albert and family Raymond Albert and family

CARD OF THANKS

A big "thank you" to all my wonderful friends for your expression of love and concern during my recent illness. The cards, calls, visits, food, flowers, and blood all meant so much. Thanks to Mary Brannan for carrying on my business. How wonderful to live in a community where the SPIRIT of Christmas prevails all year long!

Glenna Malcolim

CARD OF THANKS

A very special Thank You to each of you who attended the Museum Christmas Party and viewed our new facility. To those who helped make this dream a reality, to those who worked so hard, to Santa who made the long trip from the North Pole, to Wes Brown for his excellent news coverage; THANK YOU. And to Sherri Butler and the Chamber of Commerce, a most sincere Thank You for all you have done. Make plans now to come back again as progress continues.

Museum Board

CARD OF THANKS

On behalf of my Dad, Onis Carter, I would like to say "Thank You" and God bless each and everyone who has given blood to the Stratford Community Fund. While Dad was in intensive care in N.W.T.H. in Amarillo, he received over 40 units of blood. The Community Fund replaced 34 of these units. When you give blood, it truly is the gift of life.

T.J. & Betty Carter

The Colosseum received its name not for its size, but for a colossal statue of Nero that stood close by.

If you want to drink That's your Problem! If you want to Stop That's our Business! ALCOHOLICS ANONYMOUS and AL-ANON meet each Thursday at 8:00 p.m. in the old County Barn

PASTURE · CATTLE · STORM INSURANCE
INSURE YOUR CATTLE WITH A CATTLEMAN
JOE FLORES
FARM BUREAU INSURANCE
396-5598 Night 396-2245

Christmas Specials
Twister beads \$1.00 per strand
One Group Ladies Shoes 40% off
Childrens Houseshoes 1/2 Price
Lots of Gift Items!
Buckle & Bow

Your Local Used Cow Dealer
Stratford Texas 79084
Seven days a Week Removal
Call 396-5350 or 1-800-692-4043 as soon as possible



Catherine D. Taylor
Certified Public Accountant
North Plains Building
401 N. 3 rd 396-2435
Monday - Friday 9 a.m. - 5 p.m.

WINTERIZE YOUR VEHICLES
Check with us for low prices on Antifreeze, Lubricants and Fuel
KEROSENE IN STOCK NOW
WISHING YOU A SAFE AND HAPPY HOLIDAY SEASON

DUNCAN OIL CO.
396-2835
A Wholesale Gasoline and Diesel Distributor.



Joyce's BEADS & GIFTS
STRATFORD STAR

14K 7mm Ear-ring \$15.50
10 mm add a beads \$7.50
11 mm add a beads \$9.50
Fossils Beads 6 strands \$5.00
VOTIVE CANDLES 3/1
Old Bobbin Candle Holders
Wreaths, Hats, Plant Stands
HANDMADE PILLOWS & TEDDY BEARS
Other handmade items

7th, 8th Boys, Girls B-Ball results

The 8th grade boys took an over time victory by sailing past Panhandle 29-26. Stratford led through the first three quarters. At the end of the first quarter they led 9-4, at the end of the second quarter they led 15-12 and kept their lead at 21-17 at the end of the third quarter. At the end of regular play, the teams were tied 24-24.

Scoring for the 8th grade were Craig Brooks with 11 points, Marty Sutton with 10, Lance Brooks with four, and Chris Waters with three points.

Also playing were Duane Mungia, Wes Allison, Thad Parsons Brady Schoonover, Cody Haire, Jade Palmer and Scott Riffe.

In other action, the 8th grade beat Stinnett in the first game of the Gruver tournament 35-20 and they lost to Gruver 25-23 to get second place in the tournament. On December 3 they added another victory to their list by beating Stinnett 37-34. They also beat Sunray on December 10 with a score of 29-17.

The 7th grade boys took Panhandle for a victory by trouncing them

29-13. Stratford led at all four quarters with 8-2 at the first quarter, 14-4 at the second and 22-12 at the third.

Scoring for the 7th grade were Wade McKinney with 13 points, Chris Beattie with six, Lloyd Willard with four, Brad McBryde with two, Tim Hudson with two, and Steve O'Brien with two points.

Also playing were Robert Jeffries, Michael Lunt, DAARREN Pittman, Don Aduddell, Quinton Bennett, Chris Switzer, Scott Brooks, Shannon O'haire, Kurt Altman, and Jerry Garza.

Recapping past games, the 7th grade boys defeated Stinnett 35-21 on December 3. In the first game of the Gruver tournament, they smashed Sunray 37-15 and bashed Stinnett 32-14 for first place in the tournament on December 7. They added another victory on December 10 by bumping out Sunray 37-21. The season record is 7-0.

The 8th grade girls edged Panhandle Monday with a score of 22-16. They jumped to a shut-out first quarter with 10-0, maintained ended the third quarter strong with 18-7.

Scoring for the 8th grade girls were Desine Melton with seven points, Vickie Rolan with five points, Michelle Decker with four, Amie Vincent with two, Sherri Bullock with two and Tony Dyess with two points.

Also playing were Melinda Decker, Carla Martinez, Isabell Ramos, Kari Parsons and Tamara Johnson.

They started the game strong and jumped to a 10-point lead. The girls played well and continued to build the lead. In the fourth quarter Panhandle attempted a run at the girls, but the 8th grade girls kept their composure and played tough to the end.

In other action the 8th grade girls defeated Stinnett Dec. 3 with a score of 18-11. In the first game of the Gruver tournament, they zapped Sunray 25-4, holding them scoreless through the first half. They were edged out by Stinnett in the finals of the tournament with a score of 23-19. On Dec. 10 the 8th grad girls blipped Sunray 26-4, holding them scoreless in the first, third and fourth quarters.

The 7th grade girls took a loss

from Panhandle with a score of 12-21. Stratford stayed close but Panhandle led three quarters with 3-2 at the end of the first quarter, but Stratford edged over the top at the end of the half with 5-4 and were down again at the end of the third quarter with 13-9.

Scoring were Charissa Bryson with four points, Kim Meil with three, Patty Sizemore with two, Katrina Plunk with two and Lisa White with one point.

Also playing were Yvette Childress, Trisha Tillery, Casie Cathy, Renee Allen, Angie Gore, Kim Sewell, Tammy Salmon, Jamie Randall, Heather Carter, Juanita Presley and Donna Robertson.

The girls played well in the first half. It was a physical game, but they stayed in Panhandle had them outsize in every position. They continue to improve with each game.

Scores from other game include a tough loss from Stinnett on Dec. 3. They had a close loss to Sunray in the first game of the Gruver Tournament with a score of 21-13. In the second round of the Gruver Tournament were thumped by Gruver 15-7. And on Dec. 11 the took another loss from Sunray with a score of 17-9.

Mr. and Mrs. B. A. Donelson
request the honour of your presence
at the marriage of their daughter
Barrie Lynn
to
Mr. William Jeffrey Breed
Saturday, the twenty-ninth of December
Nineteen hundred and eighty-four
at six o'clock in the evening
First Baptist Church
Stratford, Texas

Reception following

Legal Notice

IN THE UNITED STATES DISTRICT COURT FOR THE DISTRICT OF KANSAS

CIVIL ACTION NO. KC-1980 (CONSOLIDATED WITH CIVIL ACTIONS NOS. KC-1945, KC-1946, KC-1947, KC-1948 and KC-1969): NATIONAL HELIUM CORPORATION, Plaintiff, vs. PANHANDLE EASTERN PIPE LINE COMPANY, Defendant and Third-Party Plaintiff, RALPH GROUNDS, HENRY HITCH, Defendants, vs. ASHLAND OIL & REFINING COMPANY, et al., Third-Party Defendants.

CIVIL ACTION NO. W-4613: OLIVER S. BROWN, et al., Plaintiffs, vs. MOBILE OIL CORPORATION, et al., and CITIES SERVICE GAS CO., et al., Defendants.

NOTICE OF PROPOSED SETTLEMENT OF HELIUM CLASS ACTIONS AND OF HEARING THEREON

TO: Landowners, Royalty Owners, Mineral Owners, Oil & Gas Lessees And Producers Having An Interest In Helium Bearing Natural Gas Delivered By Panhandle Eastern Pipe Line Company To National Helium Corporation For Extraction And Sale. More Particularly Described Below.

TO: The Following Described Classes Of Landowners In The Above Cases:

(As described in Civil Action No. KC-1980)

"...persons, firms and corporations owning a mineral interest in land from which helium has been, or is being, or will be severed from the ground in connection with or because of production under oil and gas leases, which helium has been, is being or will be taken into possession by the United States of America in Seward County, Kansas at the delivery point described in that certain contract between the United States of America and plaintiff in interpleader National Helium Corporation dated October 13, 1961."

(As described in Civil Action No. W-4613)

"All persons and concerns who own or have owned a mineral interest in land as to which helium has been, is being or will be severed from the ground in connection with or because of production under oil and gas leases, which helium has been, is being, or will be removed from gaseous streams flowing from wells productive under such leases, with such removal being done in...(a plant) in Seward...(County), Kansas,...owned by National Helium Corporation, or who have been, are entitled to or will be entitled as lessors, to royalty payments by reason of the production or marketing of natural gas pursuant to such leases since the beginning of such removal of such helium from such streams in such...plant and the heirs, executors, administrators, trustees and assigns of such persons; the officers, successors, trustees, and assigns of any such concerns as are existing, dissolved or dormant corporations; the executors, administrators, trustees, successors and assigns of such persons or concerns as are or were partners or in partnership; the unknown guardians, conservators and trustees of such persons as are minors or are in anywise under legal disability."

TO: The following described classes of Lessee-Producers in the above cases:

(As described in Civil Action No. KC-1980)

"...the persons, firms and corporations denominated 'lessee-producers,' who are the owners of leasehold interests in the oil and gas leases (from which gas is produced

for delivery to Panhandle Eastern Pipe Line Company) and who deliver, have delivered or will deliver helium contained in gaseous streams directly or indirectly to Panhandle Eastern Pipe Line Company, which helium has been, is being or will be removed and delivered by plaintiff in interpleader National Helium Corporation into the possession of the United States of America at the delivery point described in that certain contract between the United States and National Helium Corporation dated October 13, 1961."

(As described in Civil Action No. W-4613)

"All persons, firms, corporations, or concerns who are or have been the owners of leasehold interest under the oil and gas leases covering the mineral interests in land owned by the members of the Landowner-Lessor Class above described (in the Landowner-Class definition in Civil Action No. W-4613) or who are or have been making, or required to make royalty payments to lessors by reason of natural gas production under such leases since the beginning of such removal of helium from such streams, or who are or have been the owners of unleased mineral interests in land from which and while helium has been so severed and removed, and the heirs, executors, administrators, trustees and assigns of such persons; the officers, successors, trustees and assigns of any such concerns as are existing, dissolved or dormant corporations; the executors, administrators, trustees, successors and assigns of such persons or concerns as are or were partners or in partnership; the unknown guardian, conservators and trustees of such persons as are minors or are in anywise under legal disability."

NOTICE IS HEREBY GIVEN that a hearing will be held before the United States District Court for the District of Kansas beginning on the 5 day of March, 1985, at 10:00 o'clock a.m., in the United States Court House, 401 North Market, Wichita, Kansas and continuing from time to time without further notice as the Court may direct.

The purpose of this hearing is to determine whether a proposed compromise and settlement in the above captioned actions should be approved by the Court. The proposed compromise and settlement involves two separate lawsuits, namely: (1) **National Helium Corporation vs. Panhandle Eastern Pipe Line Company, et al.**, being Civil Action No. KC-1980, (which action is an interpleader action consolidated with five (5) related interpleader cases, all pending on appeal in the United States Circuit Court for the Tenth Circuit; and as so consolidated are commonly referred to as "**The Consolidated Helium Cases**"); and (2) **Oliver S. Brown, et al., vs. Mobile Oil Corporation, et al.**, Civil Action No. W-4613, pending in the United States District Court for the District of Kansas. These cases involve conflicting claims respecting certain helium or rights relating thereto.

The helium involved in the proposed settlement is the helium commingled in helium bearing natural gas streams that came into the possession of Panhandle Eastern Pipe Line Company (Panhandle Eastern) which streams were in turn delivered by Panhandle Eastern to a plant owned and operated by National Helium Corporation (National Helium), where the helium was removed from the gas streams during the period from 1963 to 1973, inclusive. Most of such removed helium was delivered to the United States of America during such period and was paid pursuant to the contract between National Helium Corporation and the United States

dated October 13, 1961. Lesser quantities of the removed helium was sold to private purchasers during the period from 1966 through 1981, inclusive.

Case No. KC-1980 Involving Helium Sold By National Helium To The United States

A trial of the liability phase of Case No. KC-1980 was held during the latter part of 1968. On appeal the United States Court of Appeals for the Tenth Circuit found that Panhandle Eastern and National Helium were liable to the Lessee-Producer and Landowner Classes for the reasonable value at the time of sale and point of delivery by the producer of helium ultimately sold to the United States. As a result of subsequent appeals and further proceedings before the U.S. District Court for the District of Kansas, it has been determined that members of the Landowner Class are entitled to a fractional royalty (typically 1/8th under the terms of their leases) of such reasonable value. Following a trial held in November and December, 1982, the Court found that the value of helium for which Panhandle and National must account is \$3.82 per Mcf for helium extracted and sold. This decision has been appealed by various parties to the United States Circuit Court of Appeals for the Tenth Circuit. Case No. KC-1980 has been remanded to the United States District Court to consider the approval of the settlement.

Case No. W-4613 Involving Helium Sold By National Helium To Purchasers Other Than the United States

Case No. W-4613 is an action initiated on behalf of a landowner class against a lessee-producer class and against members of the Helix Group, which group includes Panhandle Eastern and National Helium. All of the persons and concerns who are parties to the Consolidated Helium Cases, except the United States of America, are also parties to Case No. W-4613 which case was originally filed as Case No. 4989 in the District Court of Stevens County, Kansas on the 29th day of April, 1971 and was removed to this Court on petitions by Panhandle Eastern, other members of the Helix group and the Lessee-Producer defendants. On June 3, 1971, the plaintiffs moved the Court for an order remanding the case to the state court on the grounds that the federal court had no jurisdiction of the subject matter of the case which motion was overruled. Plaintiffs filed a motion to amend the order denying remand in order to certify controlling questions of law so as to permit interlocutory appeal therefrom which motion was also overruled. The Landowners seek recovery for the value of helium sold to purchasers other than the United States and also urge in personam claims for cancellation of the leases based upon abandonment and breach of a covenant to market the helium for value and seek, alternatively, recovery for a reasonable royalty with respect to helium delivered and sold. (The payments received by National Helium from the government which are the subject matter of Case No. KC-1980 are payments for some such helium.) The Landowners have other such claims in Case No. W-4613 against pipe line companies and helium extractors other than Panhandle Eastern and National Helium and against Lessee-Producers as to helium which is not involved in the proposed compromise and settlement agreement.

The Lessee-Producers have filed cross-claims against Panhandle Eastern and National Helium for the value of helium sold to purchasers other than the United States. Panhandle Eastern and National Helium have denied any liability for all claims by the Landowners and Lessee-Producers. On January 5, 1984, the Court ruled that the liability principles established in

Case No. KC-1980 should apply in Case No. W-4613. Case No. W-4613 has not yet reached the trial stage.

The Settlement Agreement

The Terms of the proposed compromise and settlement are contained in an agreement denominated Helium Settlement Agreement, dated July 17, 1984, and executed by Panhandle Eastern and National Helium, on the one part, and individuals acting on their own behalf and on behalf of members of the Landowner Classes, on the second part, and by Lessee-Producers acting on their own behalf and on behalf of the Lessee-Producers Classes, on the third part.

The Helium Settlement Agreement and all other papers filed in these cases may be examined and copied during regular office hours at the office of the Clerk of the District Court, 401 North Market, Wichita, Kansas. While the entire Settlement Agreement must be examined for an understanding of the complete transaction, basically the agreement provides that Panhandle Eastern and National Helium will have deposited or will deposit with the Court Clerk a settlement fund based on a value of \$3.60 per Mcf. of helium actually extracted and sold by National Helium, plus interest. The settlement fund, after deduction of administrative and litigation expenses and attorney fees, is to be distributed among the members of the classes as their interest is determined in the manner hereinafter provided. The most significant portions of the Settlement Agreement are the following excerpts from paragraph (7):

"(7) For all purposes of the Helium Class Actions the value of helium at the wellhead which helium was delivered by Lessee-Producers to Panhandle is agreed to be \$3.60 per Mcf. The principal amounts ultimately due individual Lessee-Producers and Landowners shall bear interest according to the interest formula prescribed by the Court in the judgment of November 8, 1983, in the Consolidated Helium Cases calculated until November 18, 1983, on which date Panhandle deposited with the court clerk the Court Settlement Fund as ordered by the Court. For the period subsequent to November 18, 1983, the individual Landowners and Lessee Producers will be entitled to a share of the interest which the Court Settlement Fund has earned while in the hands of the court clerk in the proportion which the individual's share of the Court Settlement Fund bears to the total Court Settlement Fund. It is the intent of the parties that interest included in the portion of the Court Settlement Fund relating to the case of **Oliver Brown, et al. v. Mobil, et al.**, shall be calculated as if judgment had been entered in such case as of November 8, 1983 on the same basis as was entered in the Consolidated Helium Cases and as if the principal and interest required by such judgment had been deposited with the court clerk on November 18, 1983."

The interest formula prescribed by the Court in the judgment of November 8, 1983 is as follows:

"The rate of interest shall be 6 per cent per annum on each year's production of helium from the end of each year until November 12, 1974, with the total of such principal and accrued interest to bear interest at the rate of 8 per cent per annum from that date until July 1, 1980; and at 12 per cent per annum from July 1, 1980 to July 1, 1982; and at 15 per cent per annum from July 1, 1982, until the date of judgment. From the date of judgment, all principal and interest then accrued shall bear interest at the rate prescribed by the federal statute on judgments, as amended, 28 U.S.C. 1961."

Panhandle Eastern and National Helium contend in the litigation that interest should be calculated on a basis less favorable to the Landowners and Lessee-Producers than set out above. However, for the

purposes of the settlement, they have agreed to pay interest on the basis of such formula. As a result, interest calculated through November 17, 1983, adds approximately \$5.61 to the \$3.60 payment for contained helium at the wellhead, for a total payment of approximately \$9.21 per Mcf.

If the compromise and settlement as presently proposed is approved by the Court, the Court will determine the amount of helium extracted by National Helium and sold which shall be allocated to each input point on the Panhandle Eastern Pipe Line system and, based on such allocation, will further determine the amount of the total settlement which shall be attributable to each individual and concern having claims against Panhandle Eastern and National Helium.

It is also a condition of the Settlement Agreement that the Landowner Classes, through named representatives and their attorneys, relinquish all claims in Cases KC-1980 and W-4613 pertaining to or affecting the helium extracted by National Helium as helium applies to the oil and gas leases from which it was produced. By such consent and agreement, Landowners relinquish and release all claims arising prior to the date of the execution of the agreement and asserted in such cases against Lessee-Producers other than for the payment of royalties as provided therein.

If the proposed compromise and settlement agreement is approved by the Court, Case No. W-4613 will continue only as to claims in the cases against pipe line companies and helium extractors other than Panhandle Eastern and National Helium.

Further the Settlement Agreement provides that the Lessee-Producer and the Landowner Classes release Panhandle Eastern and National Helium from any claims to the funds recovered by National Helium for breach of contract from the United States in Action No. 158-75 in the United States Court of Claims.

Approval Proceedings

At the hearing to be held beginning on the 5th day of March, 1985, counsel for Landowners and Lessee-Producers will be awarded attorney fees and the Court will allow litigation expenses incurred by representatives of the classes. All such amounts will be paid from the settlement fund prior to distribution. The Court may also permit Court administrative expenses to be paid from the Settlement Fund.

Each member of the Landowner Classes and Lessee-Producer Classes described above is hereby notified that if any member of such classes wishes to show cause why his or her interests have not been adequately represented by the named representatives of the Classes or to object to the proposed settlement, such cause or objection must be made by the filing of an appropriate pleading on or before the 19th day of Feb., 1985, with the Clerk of this Court. All class members will be bound by all actions taken in these matters by the United States District Court for the District of Kansas. At the hearing on March 5th, 1985, any member of the classes represented in these cases may appear and present proper argument and evidence, but no person not a named party will be heard and no papers will be received unless notice of intention to appear and copies of such papers are filed with the Clerk of this Court on or before Feb. 19, 1985.

The form of this NOTICE is approved by the Court and ORDERED to be sent to each member of the classes above described who has not heretofore appeared in these actions and whose name and address can be determined reasonably.

Counsel for the representatives of Landowner and Lessee-Producer

Classes have recommended to their clients that the Settlement Agreement be accepted and such counsel will indicate to the Court at the settlement hearing that in their opinion the settlement is in the best interest of the members of their respective classes.

At The Time Of The Hearing, Neither The Parties Nor Counsel Will Have Sufficient Information To Advise Which Persons Are Entitled To Recover Under The Terms Of The Settlement Agreement Or Of The Amounts Of Money That Any Person Entitled To Payment Can Expect To Receive Under The Terms Of The Settlement Agreement. Because Calculations Will Need To Be Made To Effectuate The Settlement, Some Time Will Elnapse Before Those Persons Entitled To Recover Payments Will Receive Them.

DATED AND ENTERED at Wichita, Kansas, this 16 day of Oct., 1984.

/s/ WESLEY E. BROWN
WESLEY E. BROWN,
SENIOR JUDGE
UNITED STATES DIST. COURT

Approved by:

Andrew F. Walch
Department of Justice
Land and Natural Resources Division
10th & Pennsylvania
Washington, D.C. 20530
(202) 633-5286
Counsel for the United States

Gerrit H. Wormhoudt
Fleeson, Going, Coulson & Kitch
P.O. Box 997
Wichita, KS 67201
(316) 267-7361
Counsel for the Landowner classes

Jerome E. Jones
Robert J. O'Connor
Hershberger, Patterson, Jones & Roth
100 South Main, Suite 600
Wichita, KS 67202
(316) 263-7883
Counsel for Mobil Oil Corporation, Diamond Shamrock Corporation, Mapco Production Company and The Superior Oil Company and Counsel for the Lessee-Producer classes

Glenn D. Young, Jr.
Gott, Young & Bogle, P.A.
923 First National Bank Bldg.
Wichita, KS 67202
(316) 265-7841
Counsel for Amoco Production Company and Counsel for the Lessee-Producer classes

Gerald Sawatzky
Foulston, Siefkin, Powers & Eberhardt
700 Fourth Financial Center
Wichita, KS 67202
(316) 267-6371
Counsel for Ashland Oil, Inc., Atlantic Richfield Company, Cabot Corporation, Diamond Shamrock Corporation, Dorchester Gas Producing Company, Helmerich & Payne, Inc. and Texaco, Inc. and Counsel for the Lessee-Producer classes.

C.A. Conoley
Panhandle Eastern Corporation
P.O. Box 1348
Kansas City, Missouri 64141
(816) 753-5600

Robert Martin
Timothy E. McKee
Martin, Pringle, Davis, Oliver & Triplett
300 Page Court, 220 W. Douglas
Wichita, Kansas 67202
(316) 265-9311

Wendell J. Doggett
Vickrey & Doggett
3100 InterFirst Plaza
Houston, Texas 77002
(713) 650-0999
Counsel for Panhandle Eastern Pipe Line Company and National Helium Corporation

(Published in The Stratford Star, December 6-13-20-27)