

Serving the Pheasant Capitol of Texas

The Stratford Star

Number 51 25 Cents Publishing for 86 Years in Stratford, Sherman County, Texas 79084

USPS 523-108 Dec. 18, 1986

Reese Crowned Miss Lubbock



When Krisann Reese ran as a contestant in the Miss Lubbock pageant last year she didn't win, but undaunted, she returned for a second try-determined to show that she had what it takes to win the crown.

For the 19-year-old Texas Tech University sophomore, the road to success required a lot of hard work, she said, but the effort paid off Saturday night in the Municipal Auditorium when she was crowned Miss Lubbock 1987 amidst stage lights, flashing cameras and a round of congratulations.

"It was overwhelming," the hazel-eyed winner from Stratford said of her win, "I was so excited. Everything was kind of in slow motion. It was all a big blur."

Besides facing tough competition from seven other semi-finalists, Miss Reese said she had to contend with what she considered the two most challenging aspects of the pageant: the talent contest and the personal interview.

Never knowing what the judges will ask in an interview offers a big challenge, she said. And the possibility of a memory lapse during the talent competition is another potential land mine.

The year she devoted to improving herself paid off in the eyes of the judges, she said.

"I was not very experienced last year, so I decided to come back this year and work really hard," Miss Reese said. "I think the judges saw that the work I had done (on myself) had paid off."

Miss Reese's decision to first enter the Miss Lubbock pageant in 1985 was a natural one, she said. In

1983 she was crowned Miss Junior Stratford, and in 1985 she became Miss Stratford. Enrolling as a freshman at TTU in 1985, she decided to compete in the Miss Lubbock pageant.

A merchandising major, Miss Reese said she plans to enter the field as a buyer when she graduates. Meanwhile, she is honing her skills as a member of the fashion board, a student group that promotes fashion on campus.

Mall shopping is one of her hobbies, along with a passion for jogging and racquetball. She said she finds little time for such activities today.

However, Miss Reese said she loves to accompany her mother on the piano when she is home. The two share a love of Christian contemporary music, she said.

An off-and-on pianist since she was in second grade, Miss Reese said she likes playing Christian contemporary music for her own pleasure. But, she added, she favors "showy" pieces when playing in pageants.

Miss Reese plans to spend a short vacation with her family over the Christmas holidays before returning to prepare for the Miss Texas pageant. Preparation for the July competition, she said, will involve daily exercise, keeping up with current events, attending beauty pageants as a spectator and going to numerous luncheons.

"I'm relieved this pageant is over," she said. "After final exams are over, I just want to relax for a few weeks. I have a lot of hard work ahead of me."

[Editors Note: This article was written by John Rigg, Avalanche-Journal Staff.]

New Rates For Star

Due to the continues rising cost of our postage rates we will have to raise our subscription rates effective January 1, 1987. For in county and adjoining counties, the new rate will be

\$13.00. For outside the county it will be \$20.00. We hate to do this, as we do not enjoy rising costs either. We hope to be able to keep serving you as we do appreciate each and every one of you.

Johnson's Van Burns



Sunday evening a fire broke out in the engine of Pat Johnson's van. The cause of the fire is unknown at this time and there were no injuries.

A Very Beary Christmas



Ella Reed and Mary Wayne Spurlock are shown here with the beautiful bear display at the Depot Museum Open House held Sunday afternoon.

Ornaments Available At Museum

Several people visited the special exhibit at the Museum on Sunday afternoon. Bears of all ages were the attraction. Also available were the 1986 Christmas ornaments. These ornaments are available each year, numbered and dated. For those who purchased one previously, your same number has been reserved. You can pick the ornament up at the museum. This is a money

raising project to help fund the operation of the museum. Following the museum exhibit, Christmas carols were sung in a group, and the lighting of the community Christmas tree was a highlight of the event. This is the pine tree planted by the Boy Scouts for the Museum. Be sure to drive by and see the tree some evening.

Commissioners Court Minutes

December 8, 1986

On this the 8th day of December 1986, the Commissioners Court of Sherman County convened in regular session being open to the public, at the regular meeting place in the Courthouse in Stratford, Texas, with the following members of the Court present: W.S. Frizzell, Jr., County Judge, Wayne Cummings, Comm. Prec. 1, Boyd Spurlock, Comm. Prec. 2, Dale Hamilton, Comm. Prec. 3, Mike O'Brien, Comm. Prec. 4, M. L. Albert, County & District Clerk, Tom Wade, Sheriff, and Darrell Cotney, Comm.-Elect Prec. 4. Absent: 0

The above constituting a quorum, the following proceedings was had to wit:

It is ordered by the Court that the monthly reports of M.L. Albert, County & District Clerk; Linda R.

Keener, County Treasurer; Zelda Pickens, County Tax Assessor/Collector; Sheila Hart, Justice of the Peace Prec. 1; Robert Pierce, Justice of the Peace Prec. 3; John Woods, Justice of the Peace Prec. 4; Tom Wade, Sheriff; Jack Barton, County Attorney; be approved and all proper claims examined, approved and ordered paid. Fore going minutes read and approved.

Judge Robert Pierce met with the Court to discuss work load and salary adjustment for his office. Tabled to 1988 Budget preparation.

In considering Mozell Tillery's request, the court finds no jurisdiction that the matter can only be addressed by the legislative.

Motion by Commissioner Wayne Cummings seconded by Commissioner Dale

Spence Entertains



If you missed the "For Ladies Only" luncheon Saturday, you missed some excellent entertainment by Donna Spence of Pascagoula, Mississippi. If you were there you know the story behind the hat on her head.

NOTICE

There will be a puppet show at the Sherman County Library Saturday, December 20 at 11 a.m. Ages 4 and up are welcomed.

NOTICE

The Stratford Rifle and Pistol Club will be having an organizational meeting on Jan. 3rd at 10:00 am in the indoor range located on Hwy 54 E and Wall St.

The meeting will pertain to starting a Junior Rifle Program. All interested boys & girls, ages 12 and up, should contact David Brown, Frank Vaughn, or any club member.

NOTICE

Residential and commercial Christmas lights will be judged Thursday, December 18 between 6:30 and 9 p.m.

NOTICE

The Sherman County Farm Bureau Board of Directors will have a meeting with Dick Waterfield, representative, Tuesday December at 7:30 p.m. at the Farm Bureau Building. Everyone is invited to attend.

Good King Wenceslas

The fourth grade Christmas Musical this year is entitled "Good King Wenceslas, The King Who Knew The Joy of Giving". A dress rehearsal and performance

Hamilton that the jail roof repairs be tabled. All ayes. Motion carried.

Mr. Henry Davis with Doshier, Pickens & Francis presented the 1986 final audit report. A copy is on file with the County & District Clerk for public inspection.

Mr. Howard Holiday presented a hospitalization coverage for Sherman County employees. Mr. Holiday represented American Free Enterprise Health Care Plan. No action taken at this time.

Susie Spurlock met with Court to discuss cutting of postage allowed by the State of Texas to the extension office. The Court pledges additional funds for postage to support 4-H programs.

No action taken on D230 Copier. More information needed.

Motion by Commissioner Dale Hamilton seconded by Commissioner Boyd Spurlock that a special session of Commissioners Court be set for January 2, 1987 at 10:00

"SHOP STRATFORD" GIFT CERTIFICATE DRAWINGS

2:00 p.m.-Saturday, Dec. 20
5:30 p.m.-Monday, Dec. 22
5:30 p.m.-Tuesday, Dec. 23
North Third & Main

NOTICE

The Chancel Choir of The First United Methodist Church will present "A Special Kind Of Love," on Sunday, December 21, at 6 p.m.

This Christmas Cantata is by John Peterson. The choir is under the direction of Jim Taliaferro, with Lorraine Mehner at the piano, Sue Metzger at the organ. Soloists are Millie Hacker, Sharron Taliaferro, Gary Hudson and Steve Beattie.

The nursery is cordially invited. Nursery facilities are available.

NOTICE

Remember Project Christmas Card! Take your donation for Sherman County Library to The First State Bank now! Your greetings to local friends will then be in the Christmas issue of The Stratford Star.

for the student body will be held at 9:45 Thursday morning, December 18 at 7:00 p.m. at Mary Allen Elementary.

Motion by Commissioner Wayne Cummings seconded by Commissioner Mike O'Brien that Empire Construction be requested to present a proposal on an exit and exercise area to the County Jail as demanded by the State Jail Commission. All ayes. Motion carried.

Motion by Commissioner Dale Hamilton seconded by Commissioner Wayne Cummings that the County Judge be authorized to sign a Contract for Assessment and Collection services with Sherman County Appraisal District. All ayes. Motion carried. Copy on file in County Clerk's Office.

Motion by Commissioner Wayne Cummings seconded by Commissioner Mike O'Brien that LeRayne Donelson, Lonnie Robbins & Laura Spurlock be appointed

[continued on page 2]

Dear Readers

Dear Readers:

Well if you're not ready for Christmas yet you had better get moving, only one week left...remember kids to get your Santa letters in by noon Friday, December 19.

As most of you already know the weekend was filled with lots of going ons. Keeps a newspaper Editor busy. There is always plenty to do in Stratford.

If you were unable to attend one of the places that

Donna Spence was at this weekend you truly missed a fantastic lady. She is an excellent entertainer and I believe everyone was entertained that had a chance to see and hear her.

We hope all of the hunters got lots of pheasants and enjoyed their stay in our community over the weekend.

Marty

Obituaries

Nathan James Corbitt

Nathan James Corbitt, 2 1/2-month-old son of Mr. and Mrs. Joe Bob Corbitt, of 608 18th Street, Canyon, died Wednesday, December 10. The infant was born in Amarillo.

Services were held Friday at 10 a.m. in Palo Duro Baptist Church in Wildorado with the Rev. Cliff Hargrove, pastor, officiating. Private burial followed by Holley Funeral Home in Canyon.

Survivors in addition to the parents include grandparents, Mr. and Mrs. Jimmie Gwyn of Wildorado, Bobbie Corbitt of Stratford, Jerrell Corbitt of Canyon. Great Grandparents are Bob Burgess of Stratford and Dorris Corbitt of Amarillo and V.T. Corbitt of Dalhart, Texas.

Francis J. Burgess

Tulia-Francis J. Burgess, 89, died Thursday, December 11.

Services were held at 2 p.m. Saturday in First United Methodist Church with the Rev. Ernest McGaughey, pastor, officiating. Burial was in Rose Hill Cemetery by Wallace Funeral Home.

Mr. Burgess, born in Pilot Point, moved to Swisher County in 1924. He was a retired farmer and had been a member of several farm organizations. He was a 32nd Degree Mason and a Shriner. He was a member

and honorary steward of First United Methodist Church. He was married to Thelma Layton in 1924. She died in 1966. He was married to Sarah Agnes Bryant Taylor in 1967 in Tulia.

Survivors include his wife; a son, David of Tulia; two stepsons, Larry Taylor of Dallas and Lamar Taylor of Los Angeles; a stepdaughter, Sarah Ann Webb of Estherville, Iowa; a brother, Bob of Stratford; two sisters, Opal Anderson of Perryton and Mrs. Cecil Nelson of Oklahoma City; two grandchildren; five step-grandchildren; and three great-grandchildren.

Memorials may be to Tulia Cemetery Association or First United Methodist Church of Tulia.

Bertha E. Lasley

Bertha E. Lasley, 87 died Thursday, December 11.

Services were held at 3 p.m. Saturday at First Christian Church with the Rev. David Harker, pastor, and the Rev. Kenneth Metzger, pastor of First Methodist Church, officiating. Burial was in Stratford Cemetery by Morrison Funeral Directors.

Mrs. Lasley was born in Oklahoma. She had been a Stratford resident since 1969 and had been a Sherman County resident for many years. She previously resided in Amarillo. Her husband, Walter, died in

1943. She is also presided in death by a son Sam in 1961 and Son Gerald and Granddaughter Jerri in 1968. She was a member of First Christian Church.

Survivors include two sons, Walter and Orland, both of Stratford; 12 grandchildren; 22 great-grandchildren; and a great-great-grandson.

Memorials may be to the Coldwater Manor in Stratford.

James E. Samples

James E. Samples, 73 died Thursday, December 11, 1986.

Services were held at 2 p.m. Monday, December 15 in the Assembly of God Church at Sunray with the Rev. Larry Bradshaw, pastor of Assembly of God Church of Canadian, and the Rev. Scott Ballard, pastor, officiating. Burial was in Lane Memorial Cemetery by Morrison Funeral Directors.

Survivors include three sons, James Jr., and Lester E., both of Sunray and Gary W. of Lubbock; three daughters, Era Irene Zaricor of Stratford, Frances Zarecor of Sunray and Wilma Dean Samples of the home; three sisters, Pauline Hulen of Stratford, Lorene Snook of Fritch and Oleva Barnell of Porum, Okla.; a brother, Lester of West Monroe, La.; 14 grandchildren; and seven great-grandchildren.

RONNIE ARMES

Services for Ronnie Joe Armes, 48, of Shallowater were held at the First Baptist Church with the Rev. Walter Goodnight, pastor, officiating.

He was assisted by Paul Armes of Oakwood Baptist Church.

Burial was in the Resthaven Memorial Park under the direction of Sanders Funeral Home.

He died at his home. Justice of the Peace Dardie Williamson ruled natural causes in the death.

He was born in Slaton and grew up in Shallowater. He married Beth Roberts on Feb. 19, 1966, in Clovis, N.M. He was a farmer. He was a member of First

Commissioners Court Cont. From Pg. 1

as the new members of the Sherman County Child Welfare Board. All ayes. Motion carried.

The closing of Sherman County offices by department heads on unauthorized holidays will not be approved or defended by the Commissioners Court.

Motion by Commissioner Mike O'Brien seconded by Commissioner Wayne Cummings that the adoption of Optional Benefit Eligibility Plan for retirement system be approved. All ayes. Motion carried. (Copy on file in County & District Clerks, Office, Sherman County, Texas)

Grain Prices
MILO \$2.80
CORN \$1.80
WHEAT \$2.30

Baptist Church.

Survivors include his wife, Beth; two daughters, Stephanie, Tonya and Amy Bonita, both of Shallowater; and a sister, Mary Frances Brock of Lubbock.

Pallbearers were Wayland Burk, Bob Blackburn, Kenneth Lindsey, Charles Hohertz, Keith Kitchens and Jerry Brock.

Star★Dates

Thursday, December 18	7:00 p.m.	SCOT Game Night
Monday, December 22		
2:00 p.m.	Ladies Bridge Country Club	
2:30 p.m.	Happy Hour Extension Homemakers	1:00 p.m. SCOT Quilting Gift Certificate Drawing
7:00 p.m.	Mary Allen Elementary Christmas Program	5:30 p.m. SCOT Dance Lessons
8:00 p.m.	Masonic Lodge #874	
8:00 p.m.	AA & Al-Anon	
Tuesday, December 23		
Friday, December 19		
8:00 a.m.	TOPS 897	
2:00 p.m.	Southside Extension Homemakers	
9:00 a.m.	SCOT Quilting ELKS vs White Deer [T] Varsity/JV	5:30 p.m. TOPS 922 Gift Certificate Drawing
Saturday, December 20		
2:00 p.m.	Gift Certificate Drawing	7:30 p.m. Fire Department
Thursday, December 25		
MERRY CHRISTMAS!		

The Stratford Star

Second class postage paid at Stratford, Texas, 79084. Subscription rates are \$8.00 per year in Sherman and adjoining counties; all other \$15.00 per year.

M. Robertson
Janis Tillery

Editor & Publisher
Darkroom & Advertising

Member Texas Press Association

If it's Borden's... it's got to be good

BORDEN'S Buttermilk	1/2 GAL. CTN.	99¢	 <p>FILLED WITH FRESH HOT COFFEE ALLSUP'S Coffee Mugs</p> <p>REFILLED AT ALL ALLSUP'S LOCATIONS FOR ONLY 25¢</p>
BORDEN'S WHIPPING Cream	8 OZ. CTN.	69¢	
BORDEN'S SOUR CREAM OR Dips	2 8 OZ. CTNS.	99¢	
BORDEN'S REGULAR Egg Nog	QT. CTN.	99¢	
		99¢ EACH	

RUFFLES REGULAR/SOUR CREAM & ONION/BARBECUE/ BACON & SOUR CREAM/CHEDDAR & SOUR CREAM

Potato Chips	NOW ONLY	99¢	REG. \$1.39
--------------	----------	-----	-------------

ALLSUP'S

Hot Chocolate	8 OZ. CUP ONLY	30¢
		2/99¢
		CORN DOGS 2 FOR 89¢

FRESH CUT

Christmas Trees

- SCOTCH PINE
- FIR
- BLUE SPRUCE
- BALSAM

\$8.99

AS LOW AS

We've got the tree you want at Allsup's

WE WILL BE OPEN ALL DAY CHRISTMAS FOR YOUR SHOPPING CONVENIENCE

Merry Christmas

ALLSUP'S

CONVENIENCE STORES

From all of Your Friends at Allsup's

PRICES EFFECTIVE DECEMBER 18-19-20, 1986 WHILE SUPPLIES LAST



6 Pack Cans
PEPSI
\$2.09

MOVIE & VCR RENTALS

The Very Best in Home Video Entertainment!

ALL YOU NEED IS YOUR TV!

Hey Kids! Be one of the winners in the Christmas coloring contest

RULES

1. You must do your own work.
2. Use only crayons, magic markers or colored pencils.
3. Color as many as you like, but you may enter only one picture.
4. Grades kindergarten through fifth grade are eligible to enter and win. First, second and third prizes will be awarded for EACH GRADE. A total of 18 prizes will be given away.
5. Clip the entire section on the dotted line and bring it to the Star office or Chamber of Commerce office by Monday noon December 22.
6. Pictures will be judged by an independent judging team.
7. All pictures will be displayed in a downtown window.
8. All pictures may be picked up any time after December 31st. All pictures not picked up by January 5 will be discarded.
9. We reserve the right to use the names of the winners. Winners will be listed in the December 25 issue of the Star.
10. Winners will be notified by December 23 and the winning entries will remain on display through December 31st.



Name _____

Grade _____

Phone _____

Sponsored by the Stratford Star and the Chamber of Commerce

1st Prize- \$3⁰⁰ 2nd Prize- \$2⁰⁰ 3rd Prize - \$1⁰⁰

Star SOCIETY

Vows Exchanged



Vicki Ann Bell and Michael Naughton were united in marriage Saturday, November 29, 1986 at 7:30 p.m. in the St. Pius X Church of Tulsa, Oklahoma. Father Tim performed the double ring ceremony.

The bride is the daughter of Mr. and Mrs. E.R. Bell of Stratford. Parents of the groom are Mr. and Mrs. John A. Naughton of Tulsa.

Escorted by her father, the bride wore a gown of ivory satin, benise and schiff embroidery. Basque bodice with romantic neckline heavily encrusted with hand beaded sequins and pearls. Shirred inset lace adorned the royale pouf sleeves with long mitt. Full satin skirt fell to a cathedral train with alternate ruffles and elaborate cut work lace rising to a big satin bow at the waist. For her hair, she chose a delicate ivory wreath of silk flowers with a fingertip veil of imported illusion. She carried an airy cascade of pink roses and azealeas with accent on the ivory gardenias nestled into the center of her bouquet. Vicki's something new was her wedding dress, something old, her grandmother's pearls, something blue her garter and something borrowed, her wedding shoes.

The matron of honor was her sister, Terri Blevins of Gainesville, Florida. Bridesmaids were Kim McClung of Dallas, Texas; the groom's sisters, Zeanna Naughton of Tulsa, Allison Naughton of Norman, Okla. and Leslie Naughton of Oklahoma City, Okla.

The bridesmaids were dressed in matching gowns of teal satin with square necklines, draped puffed sleeves and brush train with back pick-up. They chose matching headpieces of lacey flowerettes and teal dangling pearls. To complete their ensemble, they wore teal alencon lace shoes. In their hands they carried mini cascades of silk flowers, pixie carnations, azealeas, ivory puffs and teal ribbons. The maid of honor carried pixie roses in her cascade of flowers.

Menu

SCHOOL LUNCH MENU
December 22-26

Monday-Frito pies, homney slaw, cowboy bread, milk.
Tuesday-Sandwiches, Chips fudge bars and milk.
Wednesday-Get Busy For Thursday.
Thursday-Merry Christmas
Friday-Collapse, See you next year.

Candlelighters were the bride's nephew, Ben Blevins of Gainesville, Fla. and Kevin Paul of Tulsa.

The groom was attired in ivory tails with pleated wing-tip shirt, bow tie and cummerbund. The groomsmen wore the black Pierre Cardin tuxedos with notched lapel, ivory wing-tip shirts, mauve ties and cummerbunds.

Wedding music was provided by organist Eileen Hinckley of Chicago, Illinois. The soloist was Pat Bennett of Tulsa who sang Theme from Ice Castles, Sunrise, Sunset, and The Wedding Song.

The church was decorated with two circular candelabras decorated with pink and teal bows and entwined with baby's breath and greenery. A unity candle stood to the side of the altar. The altar was decorated and entwined also with baby's breath, greenery and bows. Teal bows with greenery marked the pews for the parents, and special friends.

The champagne reception honoring the new Mr. and Mrs. Mike Naughton was held in the hall of the church. Atop the beautifully candlelight lace skirted tables was the traditional wedding cake and punch along with individual bacon quiches, chicken tassies, and assorted finger sandwiches garnished with olives and cheese. A champagne fountain and grooms cake were also featured at separate skirted tables. Lane Johnson registered guests and served at the reception along with Pam Naughton and Marsha Karns. Elizabeth Karns handed out scrolls to the approximately 250 guests who attended the wedding and reception.

An honored guest was the brides grandmother, Mrs. J. D. Sims of Perryton, Texas. Some of the out of town guests attending were Mr. and Mrs. Carrol Chaloupka, Mr. and Mrs. Johnny Summerour, Lori and Hilary Gallo, Mr. and Mrs. Harlon Gaskill, Mr. and Mrs. C.J. Kuper, and John Funk, all of Dalhart, Texas. Mr. and Mrs. Claud

Allen, Mr. and Mrs. Jerry B. Johnson of Stratford, Texas, Lane Johnson of Lubbock, Helen Crawford of Cisco, Texas, Mr. and Mrs. Steve Chaloupka and Mr. and Mrs. Tom Spencer of Houston, Texas, Mr. and Mrs. V.E. Bell and Mrs. and Mrs. Terrel Bell of Folett, Texas, Mr. and Mrs., Vernon Bell and Ray Lynn Bell of Woodward, Okla., Suzie Bell of Arlington, Heather Gallo of Ft. Worth, Texas, Mr. and Mrs. Lynn Brown and Mr. and Mrs. James McDall and family of Norman, Okla., Dr. and Mrs. Tom Karns of Stillwater, Okla., Mr. and Mrs. Mack Blevins of Bartlesville, Okla.

During the Christmas holidays the bride and groom will honeymoon in the Boca Raton, Florida area.

The bride graduated from the University of Oklahoma with a business degree in Petroleum Land Management. The groom graduated from the University of Tulsa with an accounting degree. He is employed as a corporate pilot for Oxley Petroleum of Tulsa. The couple will reside in Tulsa.

Prenuptial parties included a bridesmaids luncheon hosted by Kim McClung and Norma Kramer at the Utica 21 Club on Friday November 28th for the bridal attendants. A rehearsal dinner was hosted by the grooms parents Mr. and Mrs. John Naughton for the bridal party on Friday November 28th at Charlie Mitchells Club and restaurant in Tulsa. A luncheon was held Saturday, November 29th at the Gilcrease Museum for the ladies from out-of-town attending the wedding. The hostesses were Lori Gallo, JoWayne Summerour, Norva Kuper, Parkerlene Gentry and Janet Riffe. Each guest brought a Christmas ornament for Mike and Vicki's tree. The tables were beautifully decorated with the bride's chosen colors of teal blue and pink with centerpieces of wicker bells adorned with white doves and silk flowers. The place cards were bells with each guests name engraved on them along with the wedding date and the bride and grooms name. Approximately 45 guests attended.

oh baby



Mr. and Mrs. Matt Coble would like to announce the birth of their daughter Courtney Cay born at 8:58 a.m. December 1, 1986 at Northwest Hospital, Amarillo. She weighed 6 lbs 9 1/2 ozs.

Maternal Grandparents are Ron and Lela Hager of Amarillo and Paternal Grandparents are Clarence and Martha Coble also of Amarillo. Maternal Great Grandmother is Ethel Hampton of Stratford and Ida Hager of Texhoma. Paternal Great Grandparents are Mont and Ruth Hare, Jay, Okla. and Verna Coble, Amarillo. Maternal Great Grandmother is Sadie Hampton, Tyler, Texas.

Sign in the optometrist's window: "If you don't see what you want, you've come to the right place."

Music Club

The Stratford Federated Club met in regular session Tues. Nov. 25, 1986. The Club was entertained in the lovely country home of Caroline White who is a most gracious hostess. Vice president Shannon Taliaferro presided in the absence of elbrecht. They recited the club collect and Lorraine Mehner introduced the hymn of the month "God That Madest Earth & Heaven"


Marylou McDaniel, program director presented a lively, interesting interlude of "Early Musical Giants", namely George & Ira Gershwin, Vincent Youmans, and Richard Rodgers and Lorenz Hart. She has experienced many personal contacts and shared stories of same.

Hostesses for the occasion served tasty refreshments to those already mentioned and to Sue Metzger, Robbie Yates, Geneva Haile, Doris Pleyer, Lilly Galloway, Betty Lou O'Brien, Gail Hunsaker, Jeannie Knight and Timmie Brown.

*Mr. and Mrs. Hoy Harrison
request the honour of your presence
at the marriage of their daughter
Billie Denise*

*to
Mr. Russell Duane Osborne
on Saturday, the twentieth of December
nineteen hundred and eighty-six
at seven o'clock in the evening
First United Methodist Church
520 N. Main
Stratford, Texas*

*Reception
Stratford Country Club*

 **TURHAN BAYKAN, M.D.**
Specialist In
Obstetrics-Gynecology
Monday-Friday 9 a.m. - 6 p.m.
201 S. Bliss Avenue, Dumas
Appointments 935-6599, Emergencies 935-7171

*A Special
Kind of
Love*

A Christmas Musical
Composed by JOHN W. PETERSON
PRESENTED BY THE CHANCEL CHOIR OF
THE FIRST UNITED METHODIST CHURCH
Under the direction of Jim Taliaferro
SUNDAY, DECEMBER 21 6:00 P.M.

Mark Your Calendar!

**SANTA WILL BE IN THE
FIRST STATE BANK LOBBY
DECEMBER 19, 1986
1:00 until 7:00**

**Enjoy FREE cookies &
Coffee and have your
children's picture made
with Santa!**



FIRST STATE BANK

 **State Bank**
OF STRATFORD
STRATFORD, TEXAS
MEMBER FEDERAL DEPOSIT INSURANCE CORPORATION

Cards of Thanks

If you don't think this is the greatest place in the world-you just haven't lived her long enough-or you haven't looked around. Many thanks to our Fire Department and Police Department who was so quick, so efficient, in putting out my little van fire and checking on things when everyone else had gone home. Thanks also for all of the calls of concern.
Love You All
Pat Johnson

P.S. Merry Christmas To Everyone.

I want to thank everybody who brought, food, worked, cleaned up and attended and enjoyed the Depression Supper. I want to especially thank Minnie Reeder. Without all of you, there would not have been a successful evening. Thanks.
Ethel Hampton

To a great community, the family of Bertha E. Lasley want to thank you for all your kindness shown us at the time of her passing. To Coldwater manor and its staff-you'll have been fantastic. Dr. Harlow and his concern. For all the food, flowers, calls and prayers. To David Harker gracious words and for Ken Metzger-the choir that lifted their voices in song. God bless you all.

The Family of Bertha Lasley

Thanks to the Berean Sunday School Class and Frances Watson for the lovely corsage and the dinner. It was deeply appreciated.

God Bless You
Bertha Oquin

We wish to express to the many loving friends our deepest thanks and appreciation for the honor bestowed on our mother with her recent passing and for their condolences and concern for us.

We are thankful for our roots in Stratford. It was a privilege and blessing to have been a part of the community.

Jiggs & Stanley Ullom and families



North Plains Savings & Loan had their Christmas Open House Monday, December 15. Jerry Dyess is giving Sandy Williams a break after serving guests all day.

FAT ALBERTS

Fish Fry
Friday Night

5p.m.-9p.m. \$4.⁸⁹

All You Can Eat
All Winter



Stratford Feedyard along with Texas A&M University have shown through manure test plots and soil testing that manure can provide substantial benefits to soil and plants in Sherman Co. Livestock manure can improve soil physical properties such as porosity, soil structure, water infiltration rate and moisture retention capacity.

Manure is cost effective, readily available and ready for application.

Ask us about your cost per acre, it's going to be hard to beat.

**Call Stratford Feedyard
Ask for Jack or Kevin
396-5501**

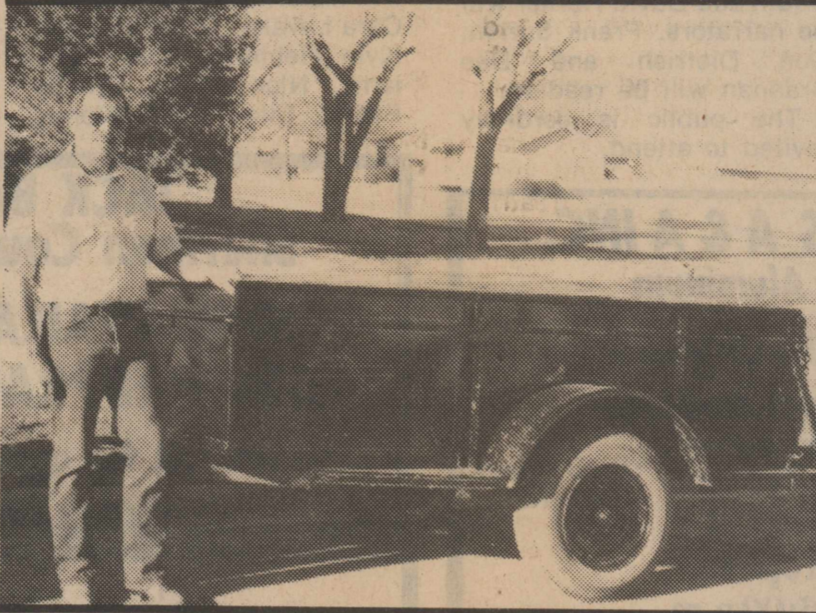
What's Happening !!



7th grade girls won First Place at The Gruver Tournament



The Grand Opening at The Spider's Web was held Saturday morning. Front row are the owners Mar Lou Cotney, Ella Reed and Lavell Haggard, back row, Marillyn Albert, Barbara Wiley, Martha Mitts, Max Stephenson and Leonda Fedric. Joyce Brown is also a partner in The Spider's Web but she was unable to attend.



We received a call from Wayne Merrill Sunday. He was happy to report that he is the very proud owner of a two wheel trailer built by Kevin Payne, Bobbie Randell, Allen Hamrick, Travis Melton, Doug Bullock, Justin Lane, Tino Garza, Harold Clevenger and Johnny Whitt. Kevin Payne had asked Wayne if he and his classmates could build the trailer for him. Wayne stated that he couldn't have asked for a more professional job.



The Grand Opening of Country Cuts Beauty Salon was held Saturday morning, those pictured are Martha Mitts, Marillyn Albert, Mary Lou Cotney, Ella Reed, Leonda Fedric, Lavell Haggard, Owner, Barbara Wiley and Max Stephenson.



Dick Albreski from Lubbock is the proud owner of the Pheasant Family painting by Mae Borth that was given away at the Lions Club Breakfast Saturday. Lani Merrill also received a silver dollar for selling the most tickets. Presenting the prizes was Raymond Dyess.



Raymond Dyess, Mac McMellian, Terry Schoonover and Johnny Pulliam were part of the entertainment at the SCOT Depression supper Saturday night.

Stratford Speech Team

Stratford Speech Team who participated include Chase Griffin, Brent Lane, Duane Mungia, Mike Powers and Jeremy Gibson-Me-n's Extemp; Christie Chumley and Carmen Canada--Women's Extemp; Katrina Plunk-Oratory; Boyd Dyess-prose, Leigh Bass-Poetry; and Bobby Chesher and Christie Willey-Duet Acting. The next tournament will be the Friona Open Jan. 10.



The Community Caroling at the Depot Museum Sunday was lead by Jim Tallafarro and Marihoward Engelbrecht accompanied on the piano.

North Plains Savings & Loan 396-5534	Scott Cable 396-2020	The Girls Next Door & C's Male Box 396-5971
Cimarron Feeders, Inc. 1-405-543-6383 Griggs	Elk Pharmacy 396-5505	Thriftway 396-5586
Consumers Company 396-2261	A & I Parts Center 396-5593	TECO 396-2300
Coldwater Manor 396-5568	Brooks Motor Company 396-2470	Stratford Star 396-5885
Walter Lasley & Sons, Inc. 753-4411	Stratford Grain Co. Stratford 396-5541 Lautz 769-4485	Olson Automotive 396-5572
Stratford Printing 396-5371		

Legal Notice

The City of Stratford, Texas will accept sealed bids on the following property:

Lots 1-2 & E 1/2 of 3 Block 62

O.T. Stratford, Texas

Any and all bids must be in the offices of the City of Stratford by 3:00 pm on Jan. 2, 1987. The City offices are located at 520 N. Third, P.O. Box 188, Stratford, Texas 79084. Bids will be opened at 7:30 pm on Jan. 2, 1987 at City Hall. The City of Stratford reserves the right to reject any and all bids.

Wayland E. Brown,
City Manager

(Published in The Stratford Star Dec. 11, 18, & 25, 1986.)

NOTICE TO CREDITORS

Notice is hereby given that Original Letters Testamentary for the Estate of Glenna Maxwell Malcolm, Deceased, were issued on December 10, 1986, in Docket No. 1,752, pending in the County Court of Sherman County, Texas to Charles Alan Maxwell.

The residence address of the Independent Executor is in Amarillo, Potter County, Texas, and the post office address is:

CHARLES ALAN
MAXWELL
2008 Westcliff Parkway
Amarillo, Tx 79124

All persons having claims against this Estate which is currently being administered are required to present them within the time and in the manner prescribed by law.

DATED the 12th day of December, 1986.

SELL AND GRIFFIN
504 South Polk,
Suite 101
Amarillo, Tx. 79101
(806) 374-3765

By Kerry Sullivan
State Bar No. 19487350
Attorney for the Estate

CRP FACTS by SCS 1987 News

Producers must turn in seed tags and invoices to receive cost share on grass seedings under the CRP.

WTSU Graduates

Three hundred seventy three students at West Texas State University are scheduled to graduate Thursday, Dec. 18, in ceremonies beginning at 7:30 p.m. in the WT Fieldhouse on the west side of campus.

The 373 graduates come from 50 towns in Texas, six other states, and Canada.

From Stratford is Paul A. Artho, BS In Biology. Paige Branham, BS in Finance and Manuel O. Rendon III a BS in PE Education and from Texhoma is Theresa A. Ross a BSN in Nursing.

Christmas Cantata

First Christian Church will have their Christmas cantata this Sunday, Dec. 21 during Morning Worship. Morning Worship begins at 10:45 a.m. "Everlasting Lord" is the title of this beautiful cantata by Mosie Lister. It features many different sounds, and is exciting, appealing, interesting and inspiring. The cantata will be presented by a specially-formed Cantata Choir, under the direction of Marihoward Engelbrecht, Choir Director of First Christian Church.

Soloists will include Sandy Newcomb, Lynda Hauser, Penny Whitson, Jo June McDaniel and Benita Keener. Marcelle Sutton will play the organ, the chimes and provide special effects. Marihoward Engelbrecht will play the piano. Harold Oquin and David Harker will be narrators. Frank Sutton, Don Dietrich and Dee Brannan will be readers.

The public is cordially invited to attend.

Christmas Eve Program

The 1986 Christmas Program at the First Christian Church will be held on Christmas Eve, Wed. Dec. 24 at 6 p.m. Benita Keener is the director of the Christmas Program. Marcelle Sutton is the pianist. There will be recitations and songs by the children, the lighting of the Advent Wreath, Mary and Joseph and Baby Jesus, Christmas songs by everybody, a visit by Santa Claus, the Christmas tree and treats for everyone.

Participants will include: Amber Woolsey, The Steve Pemberton Family (Advent Wreath), Jan Phelps, Erich Taylor, Brant Keener, Jennifer Rhoden, Mike McAlister, David Davis, Scott McAlister, Carrie Newcomb, Cara Lavake, Dusty Palmer, Kyla Helmuth, Brad Williams, Nick Cozart, Sheila Fedric, Clint Craig, Wendy

Living Nativity Scene

The youth of First Christian Church will present a Living Nativity Scene on Tuesday, Dec. 23. There will be two performances, one at 7:00 p.m. and the other at 8:00 p.m. The Living Nativity Scene will take place outdoors in front of the church, at the corner of Fifth and Main Streets. The birth of Jesus will be presented in Scripture and Christmas carols. The youth will take the parts of Mary and Joseph, the shepherds, the angels and the wisemen. Barbara Vaughn is the director of the Living Nativity Scene.

Participants will include: Gara Harbour, Jan Phelps, Diane Vaughn, Jenny Fedric, Neal Smith, Sam Hensley, Renne Allen, Brent Grimes, Shannon Blake, Garth Palmer, Monique Smith, Robert Williams, Ramey Cozart, Brandie Lavake, LaQuita Vaughn, Amber Woolsey, Jolina Garoutte, Neal Hauser, Rene Reese, Jalane Rhoades, Jami Allen, Shawnda Blake, Dean Hauser, Nick Phelps and Elly Rhoades.

The public is cordially invited to attend, according to David Harker, minister of First Christian Church.

Palmer, Roy Davis, Kelly Grimes, Marcus Lavake, Jennifer Newcomb, Clay Wheeler, Chancey Rhoades, Autumn Woolsey, Dean Hauser, Jami Allen, Jolina Garoutte, Neal Hauser, Brandie Ross, Shawnda Blake, Elly Rhoades, Jalane Rhoades, Jenny Fedric, Monique Smith, Garth

Palmer, Ramey Cozart and Brent Grimes, Valarie McAlister, and Karen Pulliam, and Santa Claus.

The public is cordially invited to attend this Christmas Program, according to David Harker, minister of First Christian Church.

CHRISTOPHER'S A & A INC. Formerly Only Aluminum

Still Supplying The Ultimate
In Custom Aluminum Products

•Storm Doors •Storm Windows •Patio Covers •Car Ports

"Our products are custom
made to fit you home"

COME IN OR CALL
Sam Christopher

8:00 a.m. to 5:00 p.m.

114 W. 1st Street Guymon, Ok OK (405)338-6966
After 5:00p.m. call (405)338-3097

Smith Financial Services

Tax Bookkeeping & Consulting
Professional & Customized Bookkeeping
Tax Planning & Preparation
806-827-7348
Texhoma

JACK BARTON Sherman County Attorney NOW AVAILABLE FOR THE GENERAL PRACTICE OF LAW

Please call for appointment - 396-2270
P.O.Box 986, Stratford

See the new 1987 Chevrolet Conversion Van at Duncan Chevrolet, Built by

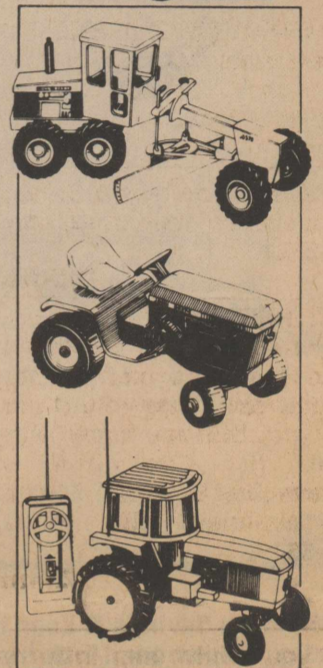
Crusade Conversions.
personally yours....

THE Crusade Conversions, personally yours, from the ground up, because you pick the chassis, you pick the colors, the features, the options the extras, and the price you control from start to finish.

DUNCAN CHEVROLET CO. INC.

Highway 287 S. Stratford, Texas
Phone 806-396-5557

Who's got the
greatest toys
around?
We do!



John Deere toys are authentic reproductions of the real thing... even have moving parts! Stock up now for Christmas.



YOUR JOHN DEERE DEALER
SHERMAN
IMPLEMENT CO.
Hwy 54 East Stratford, Tx

THE DOLLARS AND SENSE OF BUYING NOW!

Sales Tax Deduction Eliminated
Jan. 1, 1987

When January 1 rolls around, you will no longer be able to deduct the amount of state sales tax you pay on your new car from your income tax, even if you itemize deductions. So, if you're planning to buy a new car in the near future, buying it before the first of the year can help reduce your taxes.

"Sales taxes will not be deductible next year, so if you are planning any big-ticket purchases, such as a car, Jacuzzi, or Laliqve vase, do it this year." — FORTUNE MAGAZINE

"Tax experts advise that consumers make major purchases, such as automobiles and appliances, during 1986 while state and local sales taxes are still deductible." — NEWSWEEK

"Be prepared to speed up your plans to buy a car or boat before the year-end." — MONEY MAGAZINE

Consumer Interest To Be Phased Out

After 1986, car buyers who itemize their income tax deductions will no longer be allowed to deduct the full amount of personal interest (consumer interest) they pay on auto loans. The consumer loan interest deduction will be gradually phased out over five years.

The tax advantage of buying now allows you to deduct a greater amount of interest during the phase out period.

YEAR	% OF INTEREST DEDUCTIBLE
1986	100%
1987	65%
1988	40%
1989	20%
1990	10%
1991	0%

Don't let your glasses blur
your vision.



© 1984 The House of Seagram, Reprinted with Permission

Whether a glass holds 12 ounces of beer, 5 ounces of wine, or 1 1/4 ounces of spirits, the alcohol content is the same. It's important to know this because the size and shape of the glass can give people a distorted impression of how much alcohol they're actually drinking.

So when you're out to share some cheer with friends, remember how much alcohol is in your glass and that drinking sensibly lets you hold things in focus.

PUBLIC SERVICE ANNOUNCEMENT BY STRATFORD POLICE
DEPARTMENT AND THE STRATFORD STAR

MRS. TUCKER'S
SHORTENING
99¢ 42 OZ. CAN

SHURFINE GRANULATED
SUGAR
\$1.39 5 LB. BAG

SHURFRESH WHIPPING
CREAM
3 \$1 1/2 PT. CTNS.

ENRICHED FLOUR
GOLD MEDAL
89¢ 5 LB. BAG

Mitey Mizer

DOZ. SHURFRESH GRADE A Large Eggs 1¢	NO. 2 1/2 CAN SUGARY SAM Cut Yams 1¢	JUMBO ROLL PAPER TOWELS Bounty 1¢
1 LB. REG./HOT SHURFRESH WHOLE HOG PORK Sausage 59¢	32 OZ. JAR DEL MONTE TOMATO Catsup 29¢	24 OZ. TENDERCRUST Bread 2 LOAVES 1¢
GAL. JUG BLEACH Clorox 9¢	5 LB. BAG NO. 1 RUSSET Potatoes 1¢	15 1/2 OZ. JAR REG./MUSHROOM/MEAT SPAGHETTI SAUCE Prego 1¢

BETTY CROCKER SUPER MOIST
CAKE MIX
79¢ 18 OZ. BOX

BETTY CROCKER ASST. RTS FROSTING
\$1.39 1 LB. CAN

SHURFINE POWDERED OR BROWN
SUGAR
89¢ 2 LB. BAG

REYNOLD'S ECONOMY
FOIL
\$1.29 12x75' ROLL

QUARTERED MARGARINE
PARKAY
2 1 LB. \$1 BOXES

SHELF SPECIALS

INSTANT COFFEE CRYSTALS FOLGER'S	8 OZ. JAR	\$5.19
INSTANT DECAFF. COFFEE CRYSTALS FOLGER'S	8 OZ. JAR	\$6.19
HALVES/PIECES ELLIS PECANS	6 OZ. PKG.	\$1.49
CHOCOLATE FLAVORED CHOCOLATE BAKER'S CHIPS	12 OZ. PKG.	\$1.09
CONDENSED MILK EAGLE BRAND	14 OZ. CAN	\$1.29
SWANSON CHICKEN OR BEEF BROTH	2 14 1/2 OZ. CANS	79¢
DEL MONTE WHOLE GREEN BEANS	2 16 OZ. CANS	\$1.00
ASSTD. FLAVORS GELATIN JELL-O	3 3 OZ. BOXES	\$1.00
25" OFF LABEL BAKER'S ANGEL FLAKE COCONUT	14 OZ. PKG.	\$1.29
MINI. REG. KRAFT MARSHMALLOWS	10 OZ. PKG.	49¢
SHURFINE STRAINED/WHOLE CRANBERRY SAUCE	16 OZ. CAN	69¢
KRAFT MARSHMALLOW CREME	7 OZ. JAR	67¢
20" OFF LABEL CORN OIL MAZOLA	32 OZ. BTL.	\$1.49
LIPTON ONION SOUP MIX	2 CT. PAK	89¢
PLANTER'S W/ PEANUTS REGULAR MIXED NUTS	12 OZ. CAN	\$2.99
PLANTER'S HALVED WALNUTS	6 OZ. PKG.	\$1.39
PLANTER'S RAW SPANISH PEANUTS	8 OZ. CAN	89¢
WHITE FACIAL TISSUE KLEENEX	250 CT. BOX	\$1.39
RED HAWAIIAN PUNCH	46 OZ. CAN	\$1.09

TOTAL GROCERY SAVINGS

9 OZ. SOLO CUPS	24 CT. PKG.	69¢
6" SOLO PARTY PLATES	18 CT. PKG.	59¢
16 OZ. SOLO PARTY CUPS	20 CT. PKG.	99¢
12 OZ. SOLO PARTY BOWLS	12 CT. PKG.	49¢
9" SOLO PARTY PLATES	15 CT. PKG.	99¢

GROCERY SPECIALS

PURINA 100 TUNA/ASST. CAT FOOD	3 6 OZ. CANS	89¢
DURKEE STUFFED GREEN OLIVES	7 OZ. JAR	79¢
DURKEE LARGE RIPE OLIVES	6 OZ. CAN	99¢
REGULAR SYRUP LOG CABIN	24 OZ. BTL.	\$2.29
AUNT JEMIMA REG./WHITE CORN MEAL MIX	5 LB. BOX	\$1.09

COOL DAIRY BUYS

CITRUS HILL SELECT FROZ. ORANGE JUICE	16 OZ. CAN	99¢
CITRUS HILL SELECT CHILLED ORANGE JUICE	64 OZ. CTN.	\$1.79
SHURFRESH SOUR CREAM	2 8 OZ. PKGS.	\$1.00
SHURFRESH EGG NOG	QT. CTN.	99¢
EX-LARGE GRADE A SHURFRESH EGGS	DOZ.	69¢
REG./EX-CREAMY COOL-WHIP	8 OZ. TUB	79¢
BANQUET PUMPKIN OR MINCE PIES	20 OZ. PKG.	99¢

SUNKIST NAVEL ORANGES **3 \$1** LBS.

GOLDEN SWEET POTATOES **29¢** LB.

SUNKIST JUMBO TANGERINES	LB.	39¢
WASHINGTON EX-FANCY RED DELICIOUS APPLES	2 LBS.	89¢
CALIFORNIA FRESH CRISP CELERY	STALK	29¢
CALIFORNIA FRESH GREEN BROCCOLI	LB.	59¢
CALIFORNIA SNOW WHITE CAULIFLOWER	EA.	79¢
U.S. NO 1 YELLOW ONIONS	5 LBS.	\$1.00

Celebrate the Season with Kraft **KRAFT**

PILLSBURY CRESCENT DINNER ROLLS	8 OZ. PKG.	\$1.19
KRAFT HALFMOON CHEDDAR/COLBY CHEESE	16 OZ. PKG.	\$2.79
JALA./AVOCADO/FRENCH ONION/GREEN ONION KRAFT DIPS	8 OZ. CTN.	59¢
KRAFT AMERICAN STACK PAK SINGLES CHEESE	1 LB. PKG.	\$2.49
LUV'S 96 MED./64 LG./56 EX. LG. SUPER BABY PANTS	CONV. BOX	\$17.99
SUNSHINE VANILLA WAFERS	11 OZ. BOX	\$1.49

PARTY MIX TIME

PURINA WHEAT CHEX	15 OZ. BOX	\$1.79
PURINA RICE CHEX	12 OZ. BOX	\$1.79
PURINA CORN CHEX	12 OZ. BOX	\$1.79
JOLLY TIME HULLLESS YELLOW POPCORN	2 1 LB. PKGS.	\$1.00
OCEAN SPRAY CRANBERRY JUICE COCKTAIL	64 OZ. BTL.	\$2.99
BLACKBURN CRYSTAL WHITE SYRUP	32 OZ. BTL.	\$1.19
DOW HANDI-WRAP	100' ROLL	99¢
POST TOASTIES CEREAL	18 OZ. BOX	\$1.29
POST NATURAL RAISIN BRAN CEREAL	15 OZ. BOX	\$1.79
20" OFF LABEL LIQUID IVORY	22 OZ. BTL.	\$1.19
40" OFF LABEL DETERGENT TIDE	42 OZ. BOX	\$1.99

SHOP YOUR THRIFTWAY STORE FOR FRESH OYSTERS/GEESSE/DUCKS/ DRY CURED HAMS AND MANY OTHER CHRISTMAS NEEDS!!!

WILSON'S CERTIFIED SLICED **BACON** **\$1.49** 1 LB. PKG.

SHURFRESH BNLS. FULLY COOKED 93% FAT FREE **HAMS** **\$2.59** 4-8 LB. AVG. HALF/WHOLE LB.

10-12 LB. AVG. SMOKED FULLY COOKED **TURKEYS** **\$1.39** LB.

1 1/2 5 LB. AVG. LOUIS RICH BNLS. FULLY COOKED **TURKEY** **\$1.79** LB.

SUPER SELECT LEAN TRIM FRESH BUTT **HALF HAMS** **\$1.49** LB.

HEAVY GRAIN FED BEEF BNLS. LIP ON RIBEYE **PORK ROAST** **\$3.99** LB.

HORMEL LITTLE SIZZLERS PORK LINK **ROAST** **\$1.19** 12 OZ. PKG.

USDA GRADE A SHURFRESH SELF-BASTING FINEST QUALITY **TURKEYS** **79¢** LB.

HOLIDAY SPECIAL

Coca-Cola Classic Diet Coke **\$1.89** 12 OZ CANS 6PK

PHILADELPHIA CREAM CHEESE **CHEESE** **79¢** 8 OZ. PKG.

BATHROOM TISSUE **DELSEY** **88¢** 4 ROLL PKG.

ALL GRINDS BRICK BAG COFFEE **FOLGER'S** **\$2.49** 1 LB. BAG

Store Hours
Sun - 9 a.m. - 6 p.m.
Mon-Sat - 7 a.m. - 8 p.m.
We will be closed X-Mas Day.

AT AFFILIATED FOODS INC. We're proud to give you more!
WE ACCEPT FOOD STAMPS
WE RESERVE THE RIGHT TO LIMIT QUANTITIES

THRIFTWAY

PRICES EFFECTIVE DEC. 17-23, 1986

Thrifty McSaver