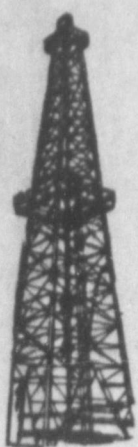


of Lub-
ral days
with his
S. San-
e North.
of Polar
business
its week.
Robert
on were
t friends
ring the
s.



THE JAYTON CHRONICLE



Volume 39 Number 49

Entered as Second Class Mail

Jayton, Texas 79528

Thursday, January 18, 1973



THIS
WEEK
IN
JAYTON

Any solid citizens of the State of Texas who expected the newly opened session of the Legislature to do a good job, was very likely disillusioned Tuesday morning to learn that some law makers are trying to get Texas to start a state lottery system. If this type of thinking is typical of the some 150 people in the House and 31 in the Senate, then the law makers are in a critical state of mind, and we might as well prepare ourselves for any eventuality. West Texas, which has had men in high places in the Legislature and State government for 20 years may get an opportunity this year to see just exactly what this means. Some people are so naive to think geography makes no difference, but before the 1973 Legislature closes up and goes home, people are going to realize how much people like Waggoner Carr and Preston Smith were really doing for our area of the country, while serving in high state office.

The quarter of a mile long freight train, powered by its coal-fed steam locomotive, was moving at a steady clip. The steam whistle moaned its sound, as the engineer gave it his special tone as he neared a grade crossing. Out of its smokestack poured a voluminous stream of black smoke, that rolled back over the path of the cars, than tenaciously followed the engine. I was a teenage boy in Young County. The railroad crossed our farm, and the train passed in a quarter of a mile from the house. Many times I stood and watched the train go by. But what amazed me about the whole thing was that within five minutes all of the black smoke was gone--not a single trace of it. What was actually happening, nature was purging its atmosphere of the polluting smoke.

Now days people don't seem to realize this valuable quality of nature. Just look at what they are doing to the American car and its owner. And, the experts tell us it is having very little effect on the influence to the environment. (Read Congressman Omar Burleson's column in the Banner this week). I think he is on the right track, and the Congress should take a stand and slow down some of this foolishness.

Only a very small percent of the population of our nation, in the downtown areas of the extremely big cities are being hurt by auto pollution; yet look at the way they are trying to price the car out of sight and cripple its performance, with measures that are not really helping the environment to any appreciable amount. Down with Nader!

A famous writer in the Wall Street Journal recently struck at the heart of the tax and inflation problem when he observed "Aman is often heard to complain that his income, though growing, has trouble rising fast enough to keep ahead of the climb in his taxes. Is there any reason why it is necessarily so? Say a man has ten dollars in income. And say he spends seven himself, and three through taxes in public outlays. Now, say he chooses, through his representative in government to spend four dollars of the ten on public services. Is it remarkable that he has only six dollars instead of seven? Until a new mathematics is invented that can make say two and two equal five, it will always be that way."

Are you one of the complainers who expects government to spend \$4 for every \$3 it takes from you and then wonders why there is inflation and why you can never make ends meet? If you are, you will continue to wonder until you've learned that the ancient rules of arithmetics apply to governments as well as to individuals.

FARMERS TAX GUIDE IS NOW AVAILABLE

The new "FARMER'S TAX GUIDE" is now available at the county extension offices, announces county Agent Mark Geeslin. The publication gives information on filing farm and ranch income tax returns.

Written in easily understood language, the guide contains a new section on investment credit which explains what property qualifies, the amount of credit available, limitations, and how to complete credit on used property and recapture information.

The guide also has a chapter on credit for gasoline and fuels used on a farm for farming purposes. Another chapter deals with self-employment taxes or social security. The booklet explains what income is and is not taxable for social security.

The tax guide is indexed so producers can easily find information on specific subjects such as selling farm, sale of breeding animals, depreciation, involuntary conversion and other topics.

Whether you have your return filed by a tax practitioner or do it yourself, go by Geeslin's file in the courthouse and pick up one of the new publications. He thinks it will be useful to you.

JAYTON BAPTIST CHURCH PLANNING WITNESS MISSION

John Hinsley of Vega, a wheat, feed grain and cattle farmer met with the First Baptist Church January 15th and previewed the lay witness mission program planned for February 9-11. Some 26 team members will be in Jayton working with Junior through adults these three days, states Joe Favor.

Plans were made for activities starting Friday, night and running through the noon meal Sunday. There will be a ladies luncheon Saturday and men's luncheon Saturday.

There will be prayer groups in several homes, prior to the meeting. Mr. Hinsley, who will act as coordinator has coordinated several such meetings, one in the Calvary Baptist Church in Stamford, Favor stated.

He comes from a small community like Jayton and understands the need of a small church, and he knows what dedication on the part of an individual can do, according to Favor. He urges that the prayers of each individual be with this program.

Each member of the First Baptist Church of Jayton are urged to set aside these days Feb. 9-11 for this important occasion and program.

THE MOD MOMS ARE COLLECTING OLD SHEETS

The Mod MOMS met Thursday, Jan. 11th at the community center. The program was given by Bert Stanaland on calorie conscious meals.

Those present were Nikki Phillips, Bonnie Bisbo, Peggy Gibson, Mary Jackson, Jeanette Seaton, and Bessie Trammel.

The club decided to collect old sheets for the resthome. They use them in so many ways. The members will go to deliver them on Feb. 8th after the regular club meeting adjourns.

Anyone who would like to send old sheets with the Mod MOMS can take them to Bert Stanaland's office or call any Mod MOM to come pick them up.

Nancy Cheyne and Sallie Hilton furnished the refreshments for the meeting.

IT'S A SMALL WORLD

CLOVIS, N. M. (Special)--After much consideration by New Mexico officials, the Clovis high school band was selected over all other bands to represent the State of New Mexico in the 1973 inaugural parade in Washington, D. C.

The band director is Norvil Howell. An interesting sidelight to Kent County residents is the tie that two drum majors of this band have to Jayton and Girard.

Tracy Sprouls is the son of Mr. and Mrs. Darwin M. Sprouls. Mr. Sprouls is a graduate of Jayton high school where he was a member of the Jayton Jaybird band.

Bruce Collins is the son of Mr. and Mrs. Dwain Collins. Mrs. Collins is the former Pauline Long, a graduate of Girard high school. Bruce's grand parents are Mr. and Mrs. Cliff Long of Jayton. As they say, it's a small world.

SCHOOL CALENDAR

January 18, Thursday
Jr. high basketball vs. Matador here 6:00
January, 19th Friday
High school basketball vs. Matador here 7:00
January 20th Saturday
Jr. high basketball tournament at McAdoo
January 23rd, Tuesday
High school basketball at Patton Springs 7:00
January 26th and 27th, Friday and Saturday
Science and math contests at Andrews.

FOOD PROJECTS MEETING

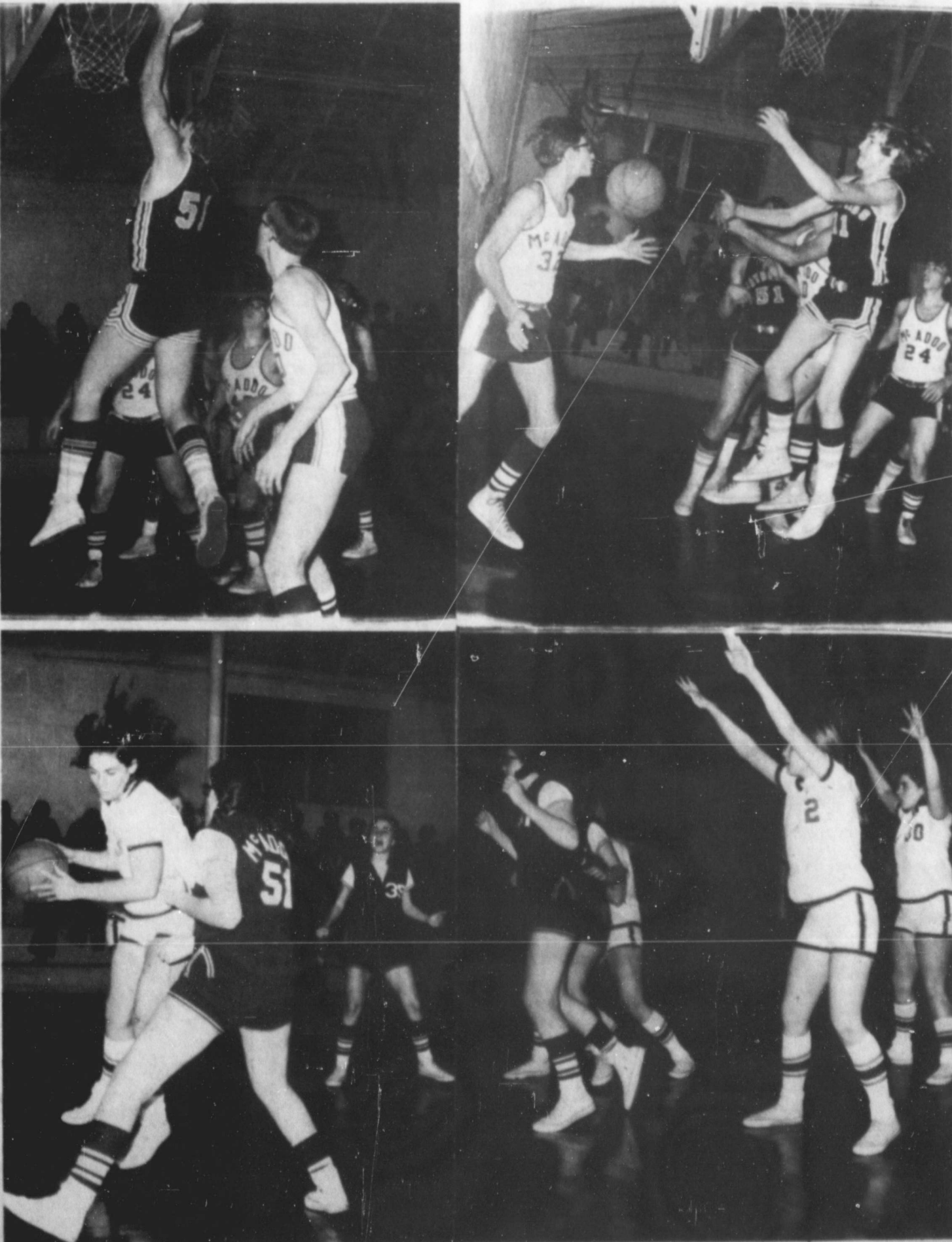
The Mod Maidens and the Clover girls 4-H club will meet at 4:00 p. m. Friday, Jan. 19th to discuss food project meetings.

All girls and boys who are interested are invited to attend.

RETURN FROM TRIP TO FLORIDA

Mr. and Mrs. Robert Harrison and Mr. and Mrs. Marvin Mayes have just returned from a two weeks vacation trip to Florida. They report the weather in Florida was just perfect.

After they arrived back in Texas on the way home they ran into the snow and ice. They reported that on Interstate 20 they saw a lot of cars and trucks in the ditch, and some of them turned over.



CANDID SHOTS FROM THE JAYTON-McADOO GAMES FRIDAY NIGHT

Federal Land Bank Loans Hit High Mark

E. H. Flournoy, Jr. Manager of the Federal Land Bank Association of Spur announced this week that the Federal Land Bank of Houston closed a total of 3,701 loans for more than 164 million dollars during 1972. "This has been a record year for new loans and represents an increase of more than sixty per cent." "This has been a record year for new loans and represents an increase of more than sixty per cent over 1971 which was the largest year in the history of the bank" Flournoy said.

"A number of factors accounted for this substantial increase in volume of new loans" said Flournoy. "Probably the greatest factor was the new lending authorities made possible the Farm Credit Act of 1971, which was implemented this year" he said.

He also reported that the interest in buying farm and ranch land sharply increased during the year. "This interest covered all facets of Texas agriculture, the part-time farm and the farm and ranch units, both large and small" he said.

The Federal Land Bank association of Spur which serves Crosby, Dickens, Kent, Stonewall and a portion of King counties closed 75 loans for \$2,696,500.00 during 1972.

The bank of Houston makes farm and ranch real-estate loans throughout the state and on December 31 at the end of the year had more than 675 million dollars in loans outstanding to over 35,000 farmers and ranchers.

Officers and directors of the local association are R. H. Farris, Donald Wooten, Coy Morris, M. V. Jay, and M. L. Bilberry.

The manager is E. H. Flournoy, Jr.

Farmers Union Plans Lubbock Meeting 25th

A meeting of Farmers Union leadership in this area has been called for Thursday, January 25, at 7:30 p. m. at the Furr's Cafeteria, 34th Street and Avenue H, Lubbock, by W. R. Sage, District II Director of Texas Farmers Union. The purpose of the meeting is to discuss state and national legislative issues. Jay Naman of Waco, Texas Farmers Union President, Joe Rankin of Ralls, Vice President, Kenneth Moss of Lubbock, Director of Field Operations, will be in charge

of the meeting. Naman stated, "We are calling this planning session at this time to get the grass roots viewpoint of our county leadership. We want to get first-hand the reactions of farmers and ranchers to the recent announcements by Administration trimming 1.5 billion dollars from an already "slim" agricultural budget." W. R. Sage, District II Director, states the strategy meeting is for county officer, members, Boards of Directors, and their wives.

WEST TEXAS UTILITIES SEEK RATE INCREASE

The West Texas Utilities Company presented the Jayton City Council with a request for rate increase Tues. Jan. 9th. This is the first request for rates in the 50-year history of the company, states local manager Dayton Jackson.

The company requested a six percent increase in each step of the residential, commercial and industrial rates, and the application of a fuel adjustment clause to municipal water pumping rates.

The increase will not apply to minimum bills, fuel adjustments, municipal rates and power interchange with other utility companies. "As a result" Jackson said "the increase in the company's total revenue will be less than five percent."

The increase will add about 2 2/3 cents per day. He pointed out that since 1952 the average residential cost has dropped from 3.64 cents per kilowatt hour to 2.59 cents, a decrease of 29 percent. During that same time, the average residential usage has increased more than three and a half times.

While this is WTU's first general rate increase the power company manager noted that WTU had voluntarily reduced rates 14 times. The firm's last major rate reduction was in 1964.

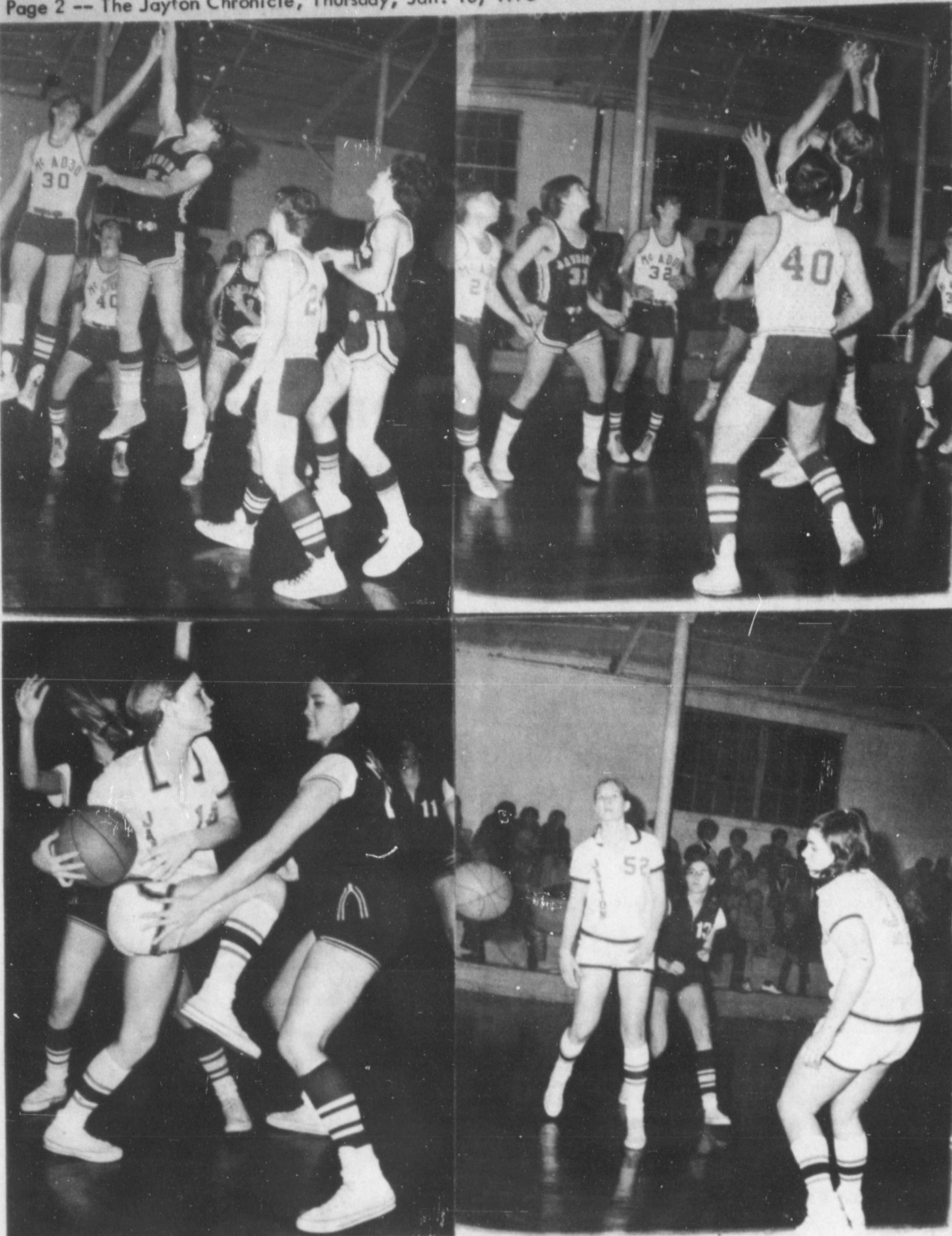
In asking the city's approval of the new electric rate schedule, the WTU manager said that the new rates would be applied to bills rendered on or about March first, this year.

Jackson pointed out that almost every electric utility company in Texas has found it necessary to request rate adjustments and that WTU is one of the last to make such a request.

"The spiraling cost of nearly everything we buy or use to provide electric service makes the rate adjustment essential." "The increase in rate is the minimum needed and nothing more" Jackson said.

He emphasized that WTU had been caught in the "Cost squeeze" as a result of the increases in the cost of equipment, services and labor, cost of new power plants, lines, and environmental controls.

With interest costs more than doubled, he pointed out that the cost of borrowing money was one of the major problems. To supply future needs, the company expects to spend about 77 million dollars for a new facility in the next five years.



BASKETBALL ACTION AT McADOO FRIDAY NIGHT

As It Looks From Here

By Rep. Omar Burleson
Member of Congress, Texas



WASHINGTON, D. C.-- IN AN EFFORT TO TAKE SOME OF THE SURPRISES and shock out of scientific developments suddenly sprung on the Congress requiring legislation, an Office of Technology Assessment was created in 1972.

INCREASINGLY THERE IS CONFUSION, MISUNDERSTANDING AND UNCERTAINTY about leaps in science leading to legislation before enough is understood about the problem and how to treat it.

A CASE IN POINT ARE THE SIDE EFFECTS OF ELIMINATING AIR POLLUTION from automobiles by 1975. For a starter, the price will probably be about \$300 more than this year. The expense of the emission control hardware does not stop there.

THE GAS BILL IS GOING TO CLIMB BECAUSE OF INCREASED COST OF PRODUCTION and increased consumption by the system, which is required to be in operation by the end of the next two years.

UNLEADED AND UNCONTAMINATED FUEL IS NECESSARY TO THE USE of smog equipment control. Refining facilities, pipelines, tank cars, and even gas station storage tanks may have to be replaced. Naturally, this is going to be reflected in the cost per gallon when you drive up to the pump.

THE EXPERTS SAY THAT SINCE SOMETHING AS SIMPLE AS A FOULED SPARK PLUG can break down the catalytic converter, maintenance cost on automobiles will be much greater.

EVIDENTLY THE STORY DOES NOT END HERE AT ALL. Automobiles will be harder to start, slower to maneuver, and just won't run as good as those now in operation.

COMMENTS FROM THE OFFICE OF TECHNOLOGY Assessment, which is just now beginning to operate, indicate that the small, compact, economy model car may not be able to accommodate the emission control mechanism because they do not have the power, and may be too weak to do the job.

THE NATIONAL ACADEMY OF SCIENCES, WHICH has the responsibility to report progress being made towards meeting the emission standards, holds out little hope that the expensive changes needed will make much of an impact on the quality of air in the immediate future. "The rate of decrease in emissions until about 1890" the report states "depends primarily on the retirement of pre-1968 uncontrolled vehicles from use." The report also concludes that "the effectiveness of a given system on a manufacturer's entire production line can, at present, only be inferred."

WHEN THE LAW was passed and the standards set, little, if any, thought was given to the burden they would place on the motorist. Now that some of the results are in from a vast body of research, the evidence of the burden is becoming obvious.

A FEW OTHER STUDIES ARE REVEALING. Present standards demand a 96% reduction in emission by 1975-76. Without any added costs, the tally for equipment alone is estimated at \$380.00. Seventy percent to eighty percent reduction, so an Environmental Protection Agency study shows, would cost about \$125.00 per car. Comments related to these estimates say that the difference in protection is very little.

WHILE EFFORTS IN NUMEROUS DIRECTIONS are being made to curb inflation, the cost of automobiles, their operation and upkeep, is going to be a lot more. Little consideration was given to this aspect when the law was passed, and the standards set. It was called a "tough bill" and it is -- on the motorist.

MAYBE THE ANSWER is to go back to the horse and buggy -- but there are problems for the ecology there, too. A bumper sticker says "Back to the bicycle." On a long trip the side effects here would come from a lot of pedaling.

these containers with the name and date, and store in zero degrees F. They may be stored at this temperature from six to 12 months.

Besides serving as a taste treat, dove and quail are nutritious. They are excellent sources of protein needed for growth and repair of body tissues, she explained.

Wild game birds can offer a refreshing and nutritious change in menu when hunting season arrives and afterwards, during holidays, when cooked or frozen properly.

Mrs. Ruby Matthews spent two weeks in Haskell visiting the Gerald Finchers.

Miss LaJuana Hamilton was visiting with her parents, Mr. and Mrs. Gordon Hamilton, recently.

Mrs. Odell Harrison took Mrs. G. H. Brown to Spur to the doctor this week.

SCREW WORM CASES SHOULD BE REPORTED

MISSION -- The majority of new screwworm cases being confirmed at the Screwworm eradication center here, are being collected from navel wounds in newly born calves. This work comes from Dr. M. E. Meadows, director of the center.

With calving season at hand, livestock owners would continue the alert for cases, when screwworms they continue to work in the wounds when the temperature drops, he said.

To prevent a spring build-up of cases, all livestock owners are urged to continue reporting all suspected cases, even though cold weather and sterile fly releases have sharply reduced the number of infestations.

Inadequate reporting of cases now could mean that sterile flies will not be released where they are needed most.

It is imperative that we know where to release the sterile flies now, and we can use this information in planning fly drop treatments for 1973, the USDA veterinarian emphasizes.

Mr. and Mrs. Larry Burks were visiting with Donna Carter this past week-end.

Mrs. Jackson East was in Spur Thursday seeing the doctor.

DOVE AND QUAIL MAKE TASTY WILD GAME DISH

Frances Reasonover, foods and nutrition specialist with the Texas agricultural extension service says that dove and quail make tasty wild game treats when properly dressed and prepared.

Age quail and dove at a temperature just above freezing for 24 to 28 hours to remove some of the gamey flavor which may detract from eating pleasure," she said.

She recommended dry-plucking the birds, rather than skinning them, to conserve the flavor and moisture. After they are plucked, singe them over a flame to remove the down.

Next, make a cut along or across the back to split the bird apart, and remove the entrails. Then remove the head, claws and feet. Wipe the body cavity clean with a damp cloth.

Once dressed, this way, it is ready for immediate use, or for the freezer.

"Frying is a popular way to prepare quail and dove," Miss Reasonover continued. First dredge the birds in flour, salt and pepper then fry in deep fat. "Brown each bird on both sides. Then lower the temperature, cover the skillet and cook slowly for about 20 minutes, turning once to brown evenly."

To freeze dressed birds for later use, place in a moisture-vapor proof bag or container. Label

USDA Eliminates Requirement Set Aside From 1973 Wheat Program - Lifts Grazing Band

HELP WANTED \$100.00 weekly possible addressing mail for firms-Full and part time at home-Send stamped self-addressed envelope to HOME WORK OPPORTUNITIES, Box 566 Ruidoso Downs, New Mexico 88346 48-2tp

DR. O.R. CLOUDE
CHIROPRACTOR
Spur, Texas

WANT TO BABY SIT? In my home, call 237-3481 Jayton, Mary Stanley

SEE ME FOR GRAVEL
Gravel and stucco or plaster sand for sale, delivered on your location or loaded on your truck at the pit.

CLAUD SENN

WASHINGTON, JAN. 10 -- In a move to assure an adequate supply of agricultural commodities to meet a growing market demand, the U. S. Department of Agriculture announced this week the elimination of the 86 percent mandatory set-aside requirements under the 1973 wheat program, except for those producers who elect to participate in the voluntary set-aside. In order to participate in the voluntary set-aside program, these producers will be required to comply with the mandatory set-aside as well as the voluntary program.

Also, the department announced that livestock grazing will be permitted on acreage set aside under the set aside provisions of the 1973 feed and grain and wheat programs.

These actions clearly demonstrate the flexibility of the set aside programs, USDA officials point out, in that it enables adjustments to rapid changes in market demands.

When the 1973 wheat program was announced in July 1972, the amount of set-aside land required for program participation was an acreage equal to 86 percent of a farm's domestic allotment.

Since announcement of the program, demand for wheat worldwide has developed following crop failures or reductions in grain harvest throughout much of Asia and in other portions of the world. Demand for other grain crops and for oilseed crops also has increased heavily, the report said.

The national wheat allotment for 1973 is 18.7 million acres, elimination of the required wheat set-aside acreage will free nearly 15 million acres for production of crops, including wheat, or forage, and it is expected to add to market income earned by farmers, the report said.

No other 1973 wheat program provisions were changed except for elimination of the required set-aside percentage, USDA reported, and program payments will not be affected in any way by the reduction in set-aside acreage, the statement said.

The decision to permit grazing on set-aside acreage was made, the report said, to prevent or to alleviate a shortage in the supply of livestock feed, and grazing privileges will assist livestock producers in meeting increased consumer demand for meat products by making additional forage available to supplement feed supplies for the production of livestock, the department spokesman said.

Previously, grazing of set-aside acreage was not permitted during any of the five principal months of the normal growing season.

The department stated that there will be a reduction in payments for the privilege of grazing the set-aside acreage. The county set-aside payments rate reduction for those producers electing to graze set-aside acreage will be available at all applicable county agricultural stabilization and conservation service offices, the statement concluded.

Mrs. Bobby Rackley spent a few days at home this past week with Mitchell and Michelle while their mother, Mary Stanley was sick.

Miss Holly Hahn, Lubbock, was home this past week-end, visiting her parents, Judge and Mrs. Norman Hahn.

Dr. John W. Kimble
OPTOMETRIST

In Rolling Plains Association Building in Spur each Tuesday afternoons.

Pickup --

and delivery service at
KENT COUNTY NURSING HOME
Mondays, Wednesdays and Fridays

Kenady Drug
ASPERMONT, TEXAS

NOW OPEN

See Us For Auto Supplies
Mufflers - Tail Pipes
Water Pumps - Generators

Jayton Auto Supply

Phone 237-4990 Jake Brooks

McCOY FUNERAL HOME

Dignified - Respectful - Understanding
Service in Time of Need
ASPERMONT, TEXAS

Phone 949-3535 Day or Night

MR. & MRS. CARLOS MIJARES OWNERS FOR RESERVATIONS DIAL SNYDER 573-2251



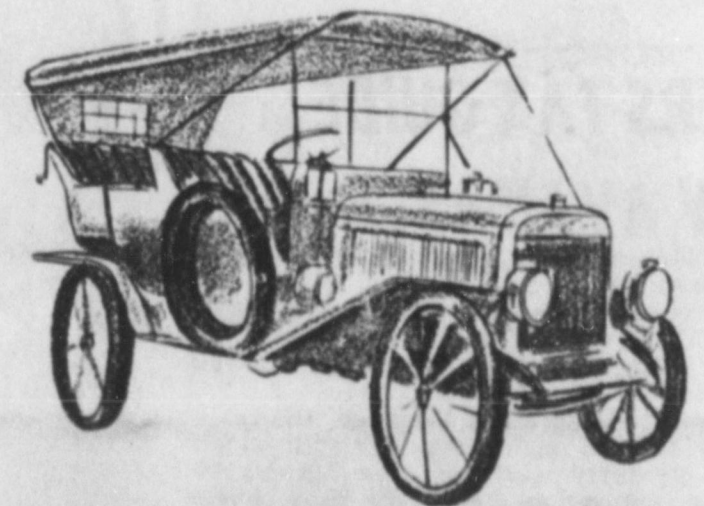
Mexican Food Steaks Fried Chicken
1703 College Ave. SNYDER, TEXAS

Foremost Milk and Ice Cream



121 W. 5th St. -- Spur
We Appreciate Your Business

Donnie Duboise, Owner



We've been handling auto loans for a long, long time at the

KENT COUNTY STATE BANK MEMBER F.D.I.C.



McAteer's Annual January

CLEARANCE

S
A
L
E

Store Closed
WEDNESDAY
To Prepare For Sale

SALE STARTS THURSDAY, JANUARY 18, 1973 9 a. m.

This is the Greatest
Sale We Have Ever
Put On.....

ALL PIECE GOODS



HALF PRICE

ONE GROUP MEN AND BOYS

WESTERN HATS HALF PRICE



MANY OTHER BARGAINS NOT LISTED IN THIS SALE BILL.

POSITIVELY

NO REFUNDS
NO EXCHANGES
NO LAY AWAYS
NO GIFT WRAPPING

MEN'S WORK SHOES AND BOOTS

- Reg. \$28.98 Sale \$17.98
- Reg. \$25.98 Sale \$16.98
- Reg. \$22.98 Sale \$15.98
- Reg. \$20.98 Sale \$14.98
- Reg. \$18.98 Sale \$13.98
- Reg. \$16.98 Sale \$11.98
- Reg. \$10.98 Sale \$7.98
- Reg. \$8.98 Sale \$6.98



HALF PRICE LADIES AND GIRLS

- | | |
|------------|--------------|
| DRESSES | GIRDLES |
| PANT SUITS | SLEEPWEAR |
| PANTS | ROBES |
| SKIRTS | PURSES |
| BLOUSES | CANVAS SHOES |
| COATS | HOUSE SHOES |
| SWEATERS | DRESS SHOES |
| BRA 'S | |

MEN AND BOYS

- | | |
|-------------|---------------|
| PANTS | CANVAS SHOES |
| SWEATERS | DRESS JACKETS |
| DRESS SHOES | DRESS COATS |
| | HOUSE SHOES |

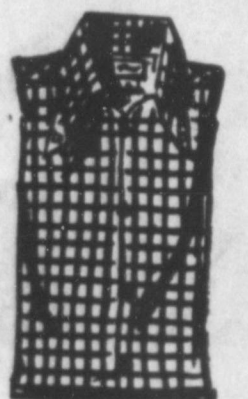


MEN'S WORK COATS

- Reg. \$29.98 Sale \$21.98
- Reg. \$22.98 Sale \$15.98
- Reg. \$20.98 Sale \$14.98
- Reg. \$17.98 Sale \$13.98
- Reg. \$12.98 Sale \$9.98
- Reg. 11.98 Sale \$8.98

MEN AND BOYS SHIRTS

- Reg. \$11.98 Sale \$7.98
- Reg. \$10.98 Sale \$7.28
- Reg. \$9.98 Sale \$6.98
- Reg. \$8.98 Sale \$6.28
- Reg. \$7.98 Sale \$5.68
- Reg. \$6.98 Sale \$4.48
- Reg. \$5.98 Sale \$4.28
- Reg. \$4.98 Sale \$3.98
- Reg. \$3.98 Sale \$2.98
- Reg. \$3.48 Sale \$2.48
- Reg. \$3.28 Sale \$2.28
- Reg. \$2.98 Sale \$1.98
- Reg. \$2.48 Sale \$1.68
- Reg. \$2.28 Sale \$1.38



Men and Boys

WESTERN SHIRTS



- Reg. \$9.98 Sale \$6.98
- Reg. \$8.98 Sale \$6.28
- Reg. \$7.98 Sale \$5.98
- Reg. \$6.98 Sale \$4.98
- Reg. \$5.98 Sale \$3.98

TONY LAMA BOOTS



- Reg. \$56.98 Sale \$40.98
- Reg. \$54.98 Sale \$39.98
- Reg. \$53.98 Sale \$38.98
- Reg. \$51.98 Sale \$37.98
- Reg. \$50.98 Sale \$36.98
- Reg. \$49.98 Sale \$35.98
- Reg. \$48.98 Sale \$34.98
- Reg. \$45.98 Sale \$33.98
- Reg. \$44.98 Sale \$32.98
- Reg. \$42.98 Sale \$29.98
- Reg. \$40.98 Sale \$28.98
- Reg. \$38.98 Sale \$21.98

MEN'S FELT HATS

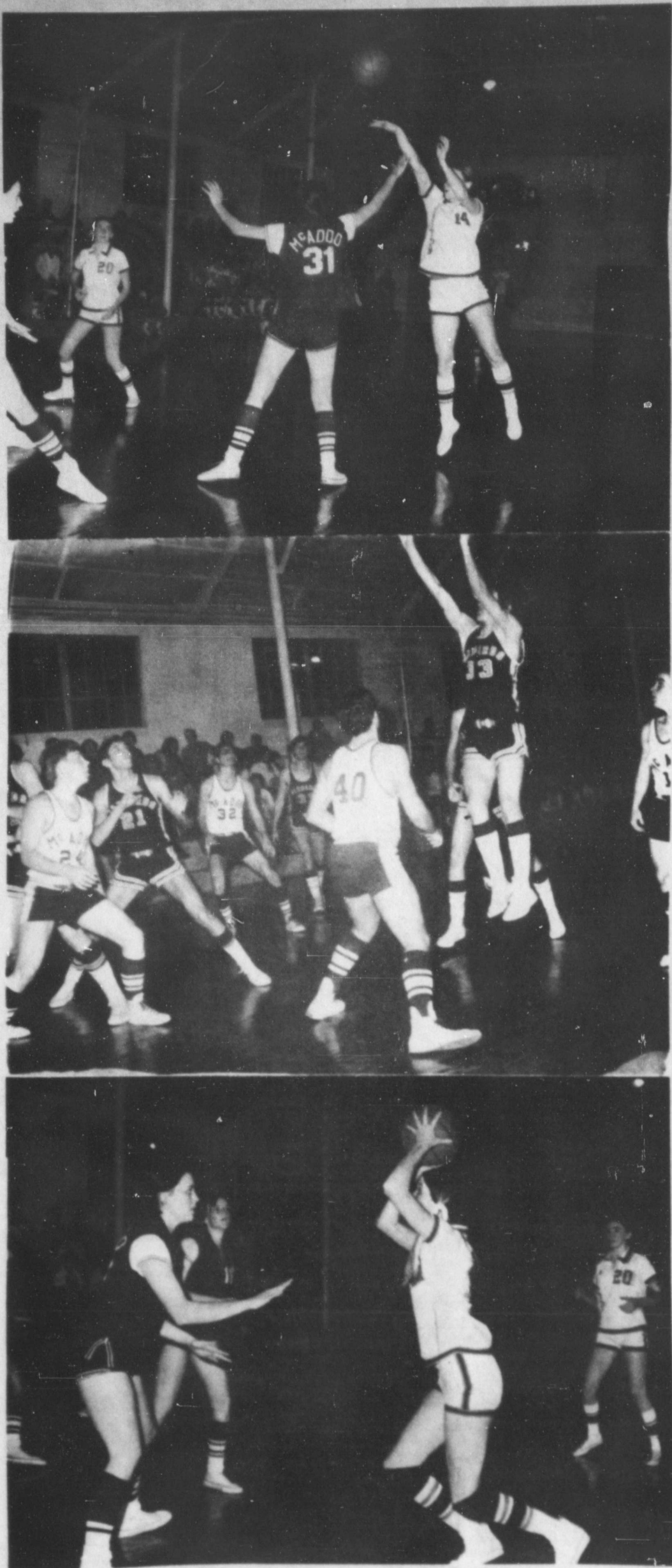
"RESISTOL"

- Reg. \$21.95 Sale \$13.98
- Reg. \$21.00 Sale \$12.98
- Reg. \$19.95 Sale \$11.98
- Reg. \$16.95 Sale \$10.98
- Reg. \$15.00 Sale \$9.98



McAteer's Dept. Store

JAYTON, TEXAS



JAYTON vs. McADOO FRIDAY NIGHT in McA doo

CONTRACTORS' NOTICE OF TEXAS HIGHWAY CONSTRUCTION

Sealed proposals for constructing 170,404 miles of Seal Coat

- From Martin County Line to 2 Miles W. of Big Spring
- From 5.6 Miles W. of Swanson to Kent County Line
- From Eighth Street in Rotan to Kent County Line
- In Roby From St. 70 to West City Limit
- In Roby From St. 70 to East City Limit
- From FM 670 to 5.2 Miles W.
- From Garza County Line to US 180 in Gail
- From US 180 in Gail to Howard County Line
- From 3.8 Miles N. of US 180 to US 180
- From Hermleigh to Mitchell County Line
- From US 180 to Hermleigh
- From Loop 377 in Colorado City, South to St. 163
- From St. 163 to St. 350
- From Dawson County Line to Howard County Line
- From US 180 to Scurry County Line
- From Glasscock County Line to FM 818
- From Garza County Line to US 180
- From St. 208 to FM 644
- From 3 Miles N. of Salt Fork of Brazos River to US 83
- From Dickens County Line to 4.8 Miles S.
- From I 20 to St. 163
- From FM 87 (St. 176) to I 20

On Highway Nos. I 20, US 380, St. 70, US 180, FM 1508, FM 669, FM 1094, FM 644, FM 1263, FM 1229, FM 1504, FM 1610, FM 461, FM 1269, FM 1922, FM 1263, FM 1081, FM 2836 and FM 2599, covered by C 5-2-49, C 106-4-22, C 263-3-21, C 296-2-19, C 296-3-23, C 518-1-7, C 558-2-4, C 558-1-12, C 933-5-11, C 966-1-6, C 966-4-5, C 1362-1-2, C 1362-2-12, C 1503-1-5, C 1511-1-8, C 1653-3-2, C 1573-2-13, C 1900-1-6, C 1983-1-7, C 2329-2-8, C 2331-1-3, and C 2997-1-2 in Howard, Stonewall, Fisher, Mitchell, Borden, Scurry and Kent Counties, will be received at the Highway Department, Austin, until 9:00 A.M., January 23, 1973, and then publicly opened and read.

Plans and specifications including minimum wage rates as provided by Law are available at the office of A. L. McKee, Resident Engineer, Abilene, Texas, and Texas Highway Department, Austin. Usual rights reserved.

TO DRILL IN ANTARCTIC

Washington - An international scientific team will drill a hole nearly a mile deep into the bedrock of Antarctica next year. The National Science Foundation said the project was intended to get information on how Antarctica, drifted over the last 200 million years to its present position.

SURPRISED SHOPPER

San Francisco - While shopping in a novelty store, Bonnie Tiller, a teacher, noticed a man inspecting a candle and looking suspiciously around. She alerted a clerk of the possible shoplifter and learned he was the store's security officer.

BUMPERS & INSURANCE

Washington - New bumper-resistant bumpers on 1973 cars have caused a drop in insurance rates. For the first time car owners will save in operating costs the equivalent of the price of the federally ordered safety feature.

NOTICE TO BIDDERS--

The State of Texas, the County of Kent:
Notice is hereby given that on Monday, February 12, 1973 at 10:00 A. M. the Commissioners' Court of Kent County, Texas will receive bids for a county depository from any bank, corporation, association, or individual banker. Such bids shall furnish a statement showing the financial condition of said bank at the date of said application and said application shall also be accompanied by a certified check for not less than one half of one percent of the county's revenue for the preceding year. If said bank is accepted as county depository, it will enter into bond as required by law to secure deposits of Kent County, Texas.

This notice is given in accordance with the provisions of Article 2544, Revised Civil Statutes of Texas, of 1925 as amended. Witness my hand this the 8th day of January, 1973. Norman Hahn, County Judge, Kent County, Texas. 49-2tc

FLOWERS
For Every Occasion
JAYTON FLOWER
and
GIFT SHOP
Mrs. F. O. Harrison
Phone 237-3965

Soviet launches eight Cosmos satellites.

NOTICE TO BIDDERS--

Notice is hereby given that the Commissioners' Court of Kent County, Texas, will receive bids for the purchase of the following described fuel and grader blades. Bids will be received until 10:00 A. M. Monday, the 12th day of February, 1973, this being the regular February term 1973, of said Court, at which time all bids will be opened and read aloud at the Kent County courthouse in Jayton, Texas. Said bids will be for the purchase of fuel and grader blades as follows:

Gasoline, regular and ethyl.
Diesel, most suited type for road machinery, and including diesel fuel for the court house.

Butane and propane.
Storage and pumps for gasoline and diesel to be furnished by successful bidder.

Grader blades for road department equipment to be delivered in Jayton.

All bids will be sealed when presented or filed and will be opened at the above time and place.

The court reserves the right to reject any and all bids.

Witness my hand this the 8th day of January A. D. 1973.

Norman Hahn, County Judge, Kent County, Texas. 49-2tc

Call Mary Stanley
237-3481 to
report news

NOTICE TO BIDDERS

Notice is hereby given to all persons interested, that the honorable Commissioners' Court of Kent County, Texas, will accept bids up until 10:00 a. m. of the 22nd of January 1973, at which time they will be opened and read aloud, for the following: Material to be used in the construction of three hangars at the Kent County Airstrip.

Labor for the construction of three hangars at the Kent County Airstrip. Labor and material for the construction of a store room at the Kent County courthouse in Jayton, Texas.

Anyone wishing to submit bids on one or all of these items may get specifications at the office of the Kent County Judge at the courthouse in Jayton, Texas.

The court reserves the right to reject any and all bids.

Witness my hand in office at Jayton, Texas, this 8th day of January, 1973.

Norman Hahn, County Judge, Kent County, Texas

Poor Husbands

Many a man is always on his toes because his wife is always on his heels.
-Times, Davenport, Ia.

MOBIL STATION FOR SALE: IN JAYTON. For more information, call 237-9603 or 237-4946. 49-1tc

GIVE A WIG PARTY in your home for a \$20.00 Skin top wig plus \$15.00 to \$50.00 cash. Write: Wig Party, 1115 E. Rittenhouse St., Phila., Pa. 19138. 49-6tc.

FOR SALE: 1969 Bel-Aire Chevrolet 4-door sedan. One car owner actual mileage, 14,000 miles. Contact Bill Autry, 253-2362, Ralls, after 5:00 p. m. 49-1tc

East Germans seeking to isolate churches.

CARD OF THANKS

May we take this opportunity to say, "Thank you", to everyone who was so kind and thoughtful during the illness and loss of our loved one. Thank you, especially for your prayers. The family of Mirtie Cox

Thoughtful and reverent tribute to those who leave blessed memories



WEATHERSBEE Funeral Home

Phone 915 735-2255 ROTAN, TEXAS

On getting to the top...

Take another look at these stairs. You're right, there are no landings! Risky business climbing stairs without landings. And stupid, too, since they don't go anywhere.

There are people who would sacrifice almost anything to get to the top. They talk excitedly about the ladder of success. But in their eagerness to climb, they often choose a stairway to nowhere.

One day the stone masons and cement-pourers will catch up with the structural-steel men. Then a building will enfold this stairway. It will have meaning and purpose. It will be a stairway to somewhere.

Our churches are busy building spiritual values into the structure of our society. As these spiritual values enfold man's quest for success, the man on his way to the top becomes a dedicated servant of God and the community.

Sunday	Monday	Tuesday	Wednesday	Thursday	Friday	Saturday
Acts 13:32-37	Psalms 85:8-13	Isaiah 26:1-11	Isaiah 61:1-6	Luke 10:1-9	Luke 19:41-48	Romans 14:19-23

Scriptures selected by the American Bible Society

Copyright 1972 Kestler Advertising Service, Inc., Strasburg, Virginia

- Cap Rock Telephone Co.
- Thos. Fowler Ins. Agency
- Vencil Lumber & Supply
- Bill Williams Service & Supply
- Lula's Beauty Shop
- Jayton Co-op Gin
- Goodall Ford Sales
- Cheyne Welding Shop



- McAteer's Dept. Store
- Robert Hall Chevrolet
- Kent Co. State Bank
- Jackson's Garage
- Jayton Chronicle
- The Teen Scene
- Spot Grocery

ATTEND CHURCH SUNDAY

CATHOLIC CHURCH
of the EPIPHANY
Mass 7:30 Saturday Eve.
Rev. Larry Hemp

FIRST UNITED METHODIST CHURCH
Jayton, Texas
Rev. Bill Perkins, Pastor
Church School, 10:00 a. m.
Morning Worship, 10:50 a. m.
Evening Worship, 7:00 p. m.
Wednesday Bible Study, 8:00 p. m.
Youth and Childrens Bible Study, 8:00 p. m.

FIRST BAPTIST CHURCH
Jayton, Texas
Truett Kuenstler, Pastor
Sunday School, 10 a. m.
Morning Worship, 11 a. m.
Training Union, 6 p. m.
Evening Worship, 7 p. m.
Wed. Prayer Meeting, 8:15
Choir Practice, 7:30 p. m.
FIRST ASSEMBLY OF GOD CHURCH
Jayton, Texas
Rev. A. D. Stewart, Pastor
Sunday School, 9:45 a. m.
Morning Worship, 11 a. m.
Youth Meeting, 6 p. m.
Evening Worship, 7 p. m.
Wed. Prayer Meeting 8 p. m.

CHURCH OF CHRIST
Jayton, Texas
Virgil Yoachum, Minister
Sunday School, 10 a. m.
Morning Service, 11 a. m.
Evening Service, 6 p. m.
Wed. Prayer Meeting, 7:30 p. m.
CHURCH OF CHRIST
Clard, Texas
Abe Martin, Minister
Morning Service, 10 a. m.
Evening Service, 6 p. m.
Wednesday Evening Bible Classes, 7 p. m.

From
SALMON P
1 1-lb. can s
1 c. saltine cr
1 tsp. mince
1 egg white
2/3 c. evapor
1/3 c. finely c
1 tsp. lemon
1 tsp. butter
Drain salmon
discard skin a
served liquid
crumbs, onion
lemon juice v
minutes. Shap
in butter in la
on each side c
4 servings.
Dill Sauce
2tbsp. butter
2tbsp. flour
1c. evaporate
1/3 c. water
1 egg yolk, bea
1/4 tsp. salt
Dash of pepper
1 tsp. dillweed
Melt butter in
from heat. Ble
evaporated mil
miring constar
comes to a boil
since into egg
remaining hot
stantly, until a
top with call,

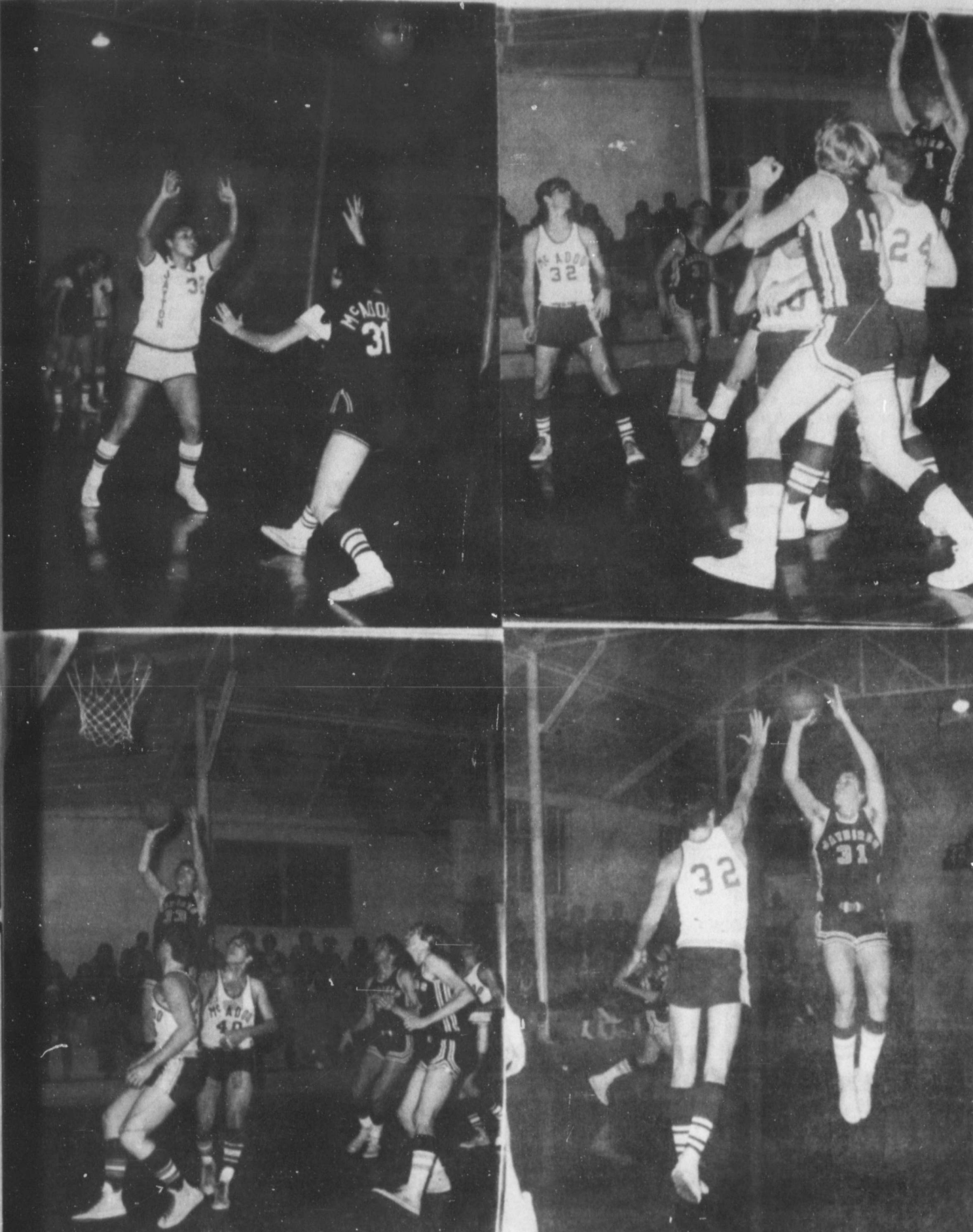
Form 549 (State) - Revised June, 1971

State Bank No. 1927

PUBLISHER'S COPY

Consolidated Report of Condition of "Kent County State Bank" of Jayton in the State of Kent and Domestic Subsidiaries at the close of business on December 31, 1972.

	DOLLARS	Cts.	
ASSETS			
1. Cash and due from banks (including \$11,345.06 unposted debits)	477,962	90	1
2. U.S. Treasury securities	1,073,403	44	2
3. Obligations of other U.S. Government agencies and corporations	none		3
4. Obligations of States and political subdivisions	11,447	96	4
5. Other securities (including \$ none corporate stocks)	none		5
6. Trading account securities	none		6
7. Federal funds sold and securities purchased under agreements to resell	970,000	00	7
8. Other loans	29,585	34	8
9. Bank premises, furniture and fixtures, and other assets representing bank premises	none		9
10. Real estate owned other than bank premises	none		10
11. Investments in subsidiaries not consolidated	none		11
12. Customer's liability to this bank on acceptances outstanding	none		12
13. Other assets	6,122	91	13
14. TOTAL ASSETS	2,619,502	11	14
LIABILITIES			
15. Demand deposits of individuals, partnerships, and corporations	979,239	70	15
16. Time and savings deposits of individuals, partnerships, and corporations	1,416,860	10	16
17. Deposits of United States Government	15,153	30	17
18. Deposits of States and political subdivisions	828,836	70	18
19. Deposits of foreign governments and official institutions	none		19
20. Deposits of commercial banks	129,135	25	20
21. Certified and officers' checks, etc.	12,292	79	21
22. TOTAL DEPOSITS	\$ 2,111,867.81		
(a) Total demand deposits	XXX XXX XX XX	(a)	22
(b) Total time and savings deposits	XXX XXX XX XX	(b)	22
23. Federal funds purchased and securities sold under agreements to repurchase	none		23
24. Other liabilities for borrowed money	none		24
25. Mortgage indebtedness	none		25
26. Acceptances executed by or for account of this bank and outstanding	none		26
27. Other liabilities	1,750	00	27
28. TOTAL LIABILITIES	2,115,617.81		28
29. MINORITY INTEREST IN CONSOLIDATED SUBSIDIARIES	none		29
RESERVES ON LOANS AND SECURITIES			
30. Reserve for bad debt losses on loans (set up pursuant to Internal Revenue Service rulings)	8,706	19	30
31. Other reserves on loans	none		31
32. Reserves on securities	none		32
33. TOTAL RESERVES ON LOANS AND SECURITIES	8,706	19	33
CAPITAL ACCOUNTS			
34. Capital notes and debentures (specify interest rate and maturity of each issue outstanding)	none		34
35. Equity capital, total	195,178	11	35
36. Preferred stock-total par value (No. shares outstanding none)	none		36
37. Common stock-total par value (No. shares authorized 750) (No. shares outstanding none)	75,000	00	37
38. Surplus	75,000	00	38
39. Undivided profits	45,178	11	39
40. Reserve for contingencies and other capital reserves	none		40
41. TOTAL CAPITAL ACCOUNTS	195,178	11	41
42. TOTAL LIABILITIES, RESERVES, AND CAPITAL ACCOUNTS	2,619,502	11	42
MEMORANDA			
1. Average of total deposits for the 15 calendar days ending with call date	2,361	153	00
2. Average of total loans for the 15 calendar days ending with call date	1,004	710	00
3. Unearned discount on instalment loans included in total capital accounts	14	275	00



ACTION IN THE JAYTON VS. MCADOO GAME FRIDAY NIGHT

I, Leona Kidd, Cashier, of the above-named bank, do solemnly [SWEAR] [AFFIRM] that this report of condition is true and correct, to the best of my knowledge and belief.

Correct-Attest: *Leona Kidd*, Cashier

R. L. Harrison
W. W. Marshall, Jr.
W. W. Marshall, Jr. } Directors

State of Texas, County of Kent, Notary Public

Sworn to and subscribed before me this 11th day of January, 1973.

My commission expires June 1, 1973

W. W. Marshall, Jr. Notary Public

"The world is full of willing people; some willing to work, the rest willing to let them." (Robert Frost)

"A jury consists of 12 persons chosen to decide who has the better lawyer." (Robert Frost)

Back Next Year

"Hey you! What's the idea of hunting with last year's license?"

"Oh, I'm only shooting at the birds I missed last year."

Rogers C. B. Morton, Interior Secretary:

"We are trying to get this department up so it can be absorbed into a DNR with the least amount of wrench and strain."

EARN UP TO \$750 PER MONTH

U.S. POSTAGE STAMP MACHINES

• Highest Return on Your Capital • NO Selling • Manage Your Own Business

We Obtain Mrs. Jake Fuller in Investment Of Midland visiting with Mr. \$1,595.00 and Mrs. R. D. Fuller, Equipment Planter's Peanut and Weich's Juice routes also available from \$495 up

• WOMEN OR MEN • ANY AGE • PART TIME, approximately 7 hrs. per month

• NO OVERHEAD • DEPRESSION PROOF • REPEAT INCOME

New Distributorships Still Available in Many Areas Throughout This State

Send References Name, Address and Phone No. to: POSTAGE STAMPS, INC. - Dept. B-1 300 Interstate North, N.W. / Atlanta, Georgia 30339 Interstate 1-75 and 1-285

Cotton---

COTTON IS THE MONEY CROP OF THE ROLLING PLAINS INCLUDING KENT COUNTY

HERE AT THE JAYTON FARMERS CO-OP GIN WE GIVE SPECIAL CARE TO EVERY BALE OF COTTON WE HANDLE. GOOD TURN OUTS, GOOD SAMPLES AND GOOD SERVICE. GIN WITH US ONCE AND YOU WILL BE A REGULAR CUSTOMER

Farmers Co-op Gin

MARJORIE'S SALMONETTES

1 tall can pink Salmon
1 egg
1/2 c. flour
1 heaping teaspoon of baking powder
Drain Salmon and save 1/4 cup juice. Add egg and flour to salmon and mix well. Add baking powder to juice and stir well. It will foam; add this to mixture and mix well. Cook by teaspoonful in deep fat.

Mary Stanley was in the Rotan hospital for a few days this week.

Mrs. Hartense North took Mrs. J. T. Leach to her sisters funeral, Mrs. Mandy Gardner at Loraine Saturday.

Mr. and Mrs. Gerald Fincher were recent visitors in the home of Mr. and Mrs. Billy Stanaland.

Mrs. L. E. Browning was taken to a Lubbock hospital, January 14.

From The Recipe Files Of Opal Richards



SALMON PATTIES

1 1-lb. can salmon
1 c. saltine crumbs
1 tsp. minced onion
1 egg white
2/3 c. evaporated milk
1/3 c. finely chopped celery
1 tsp. lemon juice
1 tsp. butter

NECTARINE-CUCUMBER MOUSSE

4 oz. Roquefort or bleu cheese
2 tsp. lime juice
1 tsp. salt
2 tsp. instant minced onion
1 c. grated cucumber, drained
1 c. sour cream
1 env. unflavored gelatin
1 c. sliced fresh nectarines

Drain salmon, reserve liquid. Remove and discard skin and bones. Flake salmon in reserved liquid in mixing bowl. Combine crumbs, onion, egg white, milk, celery and lemon juice with salmon. Let stand for 5 minutes. Shape into 8 patties. Saute patties in butter in large skillet for about 5 minutes on each side or until lightly browned. Yield: 4 servings.

Dill Sauce

2 tbsp. butter
2 tbsp. flour
1 c. evaporated milk
1/3 c. water
1 egg yolk, beaten
1/4 tsp. salt
Dash of pepper
1 tsp. dillweed

Melt butter in a small saucepan; remove from heat. Blend in flour smoothly; stir in evaporated milk and water slowly. Simmer, stirring constantly, until sauce thickens and comes to a boil. Stir a small amount of hot sauce into egg yolk. Pour egg mixture into remaining hot sauce. Cook, stirring constantly, until mixture comes to a boil. Season with salt, pepper and dillweed.

Blend cheese with lime juice. Mix salt, onion, cucumber and sour cream. Combine sour cream mixture and cheese mixture. Pour 1/4 cup cold water in cup; sprinkle gelatin over water to soften. Place cup in hot water until gelatin dissolves. Blend gelatin into cream mixture. Fold nectarines into gelatin mixture; pour into 4-cup mold. Chill for several hours or until firm. Unmold; garnish with salad greens and additional nectarine slices. Yield: 6-8 servings.



TO OUR CUSTOMERS

Our companies are offering a 10% discount on auto insurance upon completion of the National Safety Council's --

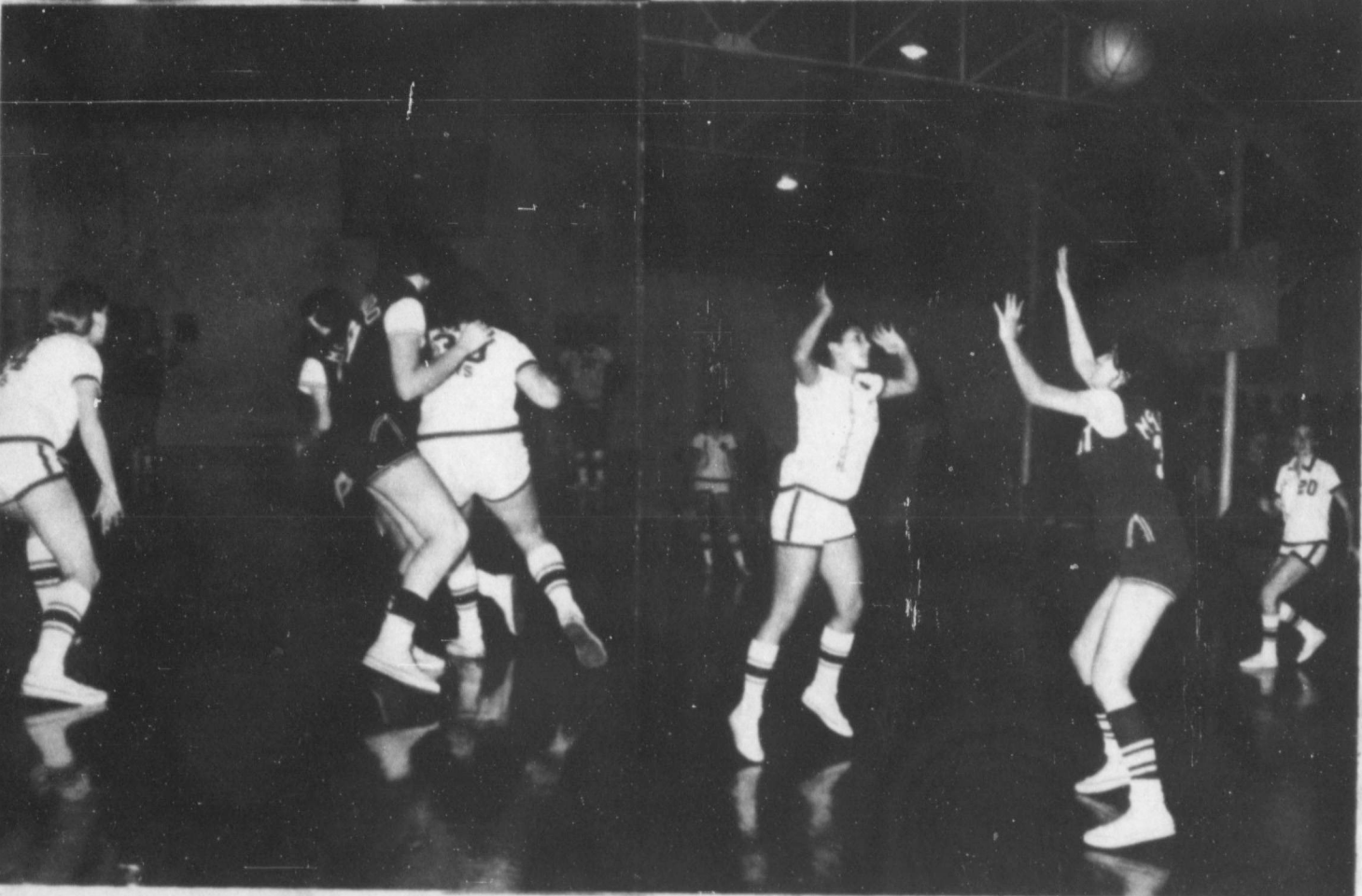
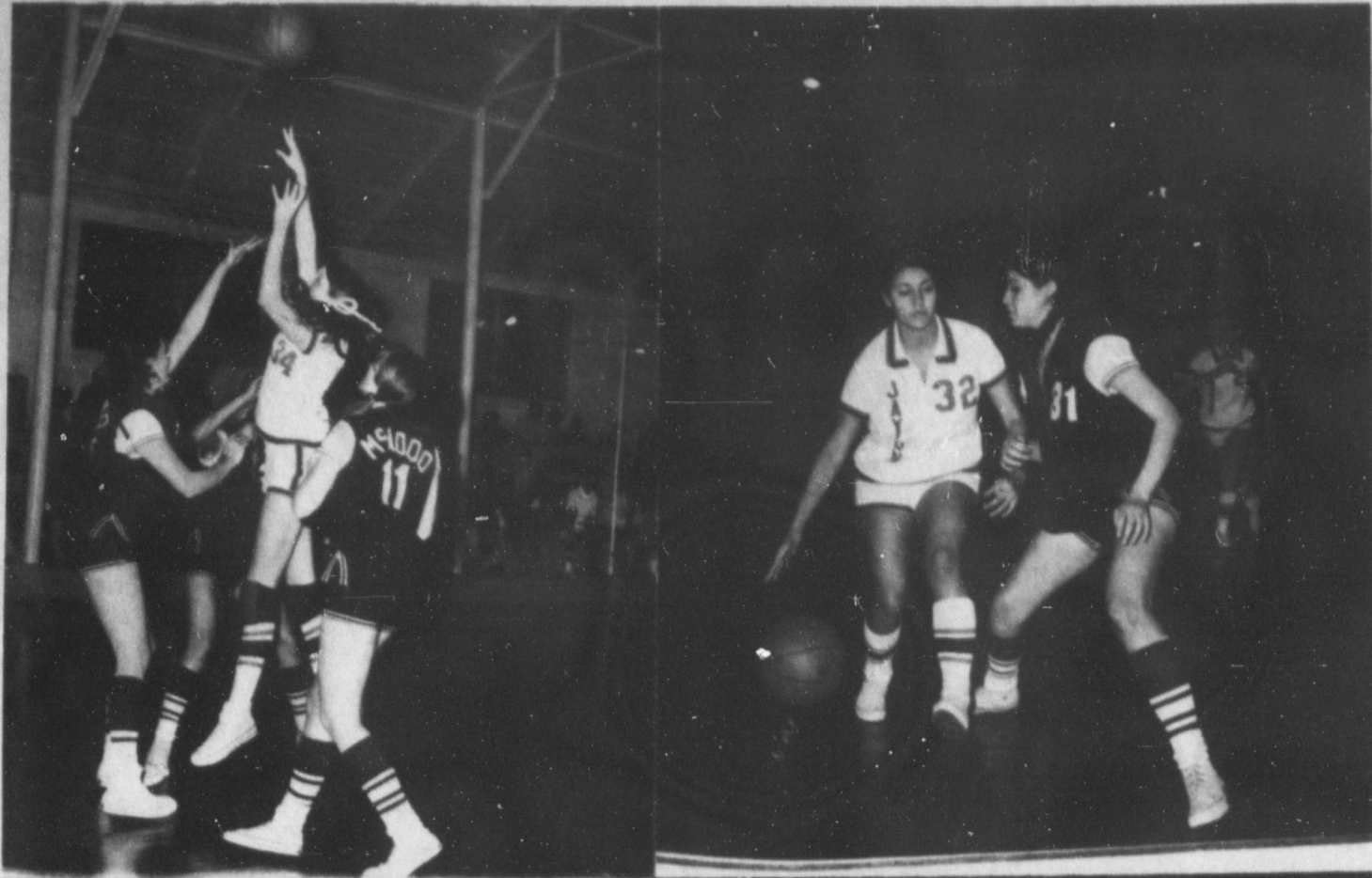
DEFENSIVE DRIVING COURSE

Credit applies to liability, medical payment, and collision insurance on personal autos only. It is not cumulative, and does not apply where student driver training credit is already applied.

We urge all of our customers to take this course if it is offered in this vicinity, and save money by becoming a safer driver.

THOS. FOWLER INSURANCE AGENCY

BOB E. HAMILTON, AGENT



ACTION IN THE JAYTON McADOO GAMES FRIDAY NIGHT

Mrs. Ruby Branch took a short trip to the valley for a few days vacation.

On The Button
Mr. Grouch--Woman, is nothing but a rag, a bone, and a hank of hair.
Mrs. Grouch--Man is nothing but a brag, a groan and a tank of air!

Renew your subscription

NOTICE TO PARENTS

Guidelines have been revised concerning the eligibility for free and reduced price lunches. Many additional students will now be eligible for this service due to the 25 percent additional income allowance. Please check the revised scale attached and if you qualify please fill out the form and return to Jarri Parker, the business manager of the Jayton-Girard Independent School district.

Applications will be handled privately and all information will be kept confidential.

JAYTON SCHOOL

FREE AND REDUCED PRICE ELIGIBILITY INCOME SCALE

Family Size	Family Annual Income	
	Free Meals	Reduced Price Meals
1	\$0-2660	\$2660-3190
2	0-3490	3490-4180
3	0-4320	4320-5170
4	0-5140	5140-6160
5	0-5900	5900-7080
6	0-6660	6660-8000
7	0-7350	7350-8820
8	0-8040	8040-9640
9	0-8670	8670-10,400
10	0-9290	9290-11,150
11	0-9910	9910-11,900
12	0-10,530	10,530-12,650

Additional Member \$620 \$750

The Jayton Chronicle

Box 227, Jayton, Tex. 79528 - 806-237-3591
Opal M. Richards, Editor

Published every Thursday at Jayton, Texas. Entered as Second Class mail at Jayton, Texas, under Act of Congress.

Subscriptions by mail in Kent County \$3.00 per year. Elsewhere \$4.00 per year.
Advertising rates: 84c per column inch, 5c per word the first issue, 4c per word each succeeding issue. \$1.00 minimum. cards of Thanks \$1.00.



The endurance record for staying in a cave is 365 days.

School Supplies

Veterinary Supplies
Cosmetics - Colognes
Come by for a cup of coffee

Jayton Drug



PRESCRIPTIONS

ACCURATELY FILLED

With Fresh Potent Ingredients
Complete Line of Gift Items For the Family and the Home

DAN'S PHARMACY

Phone 272-3394 -- Spur, Texas



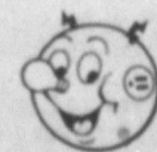
Portable Electric Heat

IS AS NEAR AS THE NEAREST ELECTRICAL OUTLET

Take a portable electric heater with you anywhere, or plug it in and leave it for a permanent source of heat.

Splendid idea for solving heating problems with little cost. Fast warmth, too!

Shop with any dealer where electrical appliances are sold. Or see West Texas Utilities.



West Texas Utilities Company

An Equal Opportunity Employer

BUCCANEER STAMPS DOUBLE ON WEDNESDAY

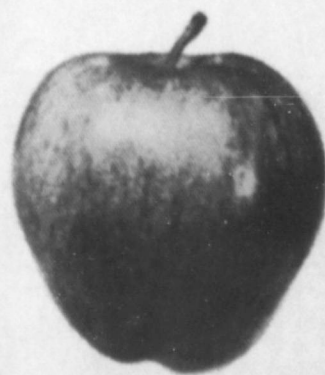
You Want Proof that Our Prices Are Lower?

HERE IT IS!

Campbell's
Chicken Noodle Soup 5 For .89

No. 300 can
Pork & Beans 5 FOR .89

Delicious
Apples 29¢ lb



Oleo
Shurfine
4 FOR 89¢

12 oz Kounty Kist

Corn 5 FOR .89

Shurfine
Vegatable Oil 79¢

Tomato Juice 46 oz can .39

Bananas lb 15¢

Carnation
Tuna 2 FOR .89

King Size
Cheer 1.19

Mc 2 half gallon
Liquid Detergent 39¢

Shurfine - 1 lb.
Crackers 3 For .89

Foremost
Mellorine HALF GALLON 39¢
FOREMOST --- PURE
Ice Cream HALF GAL. 69¢



Popcorn 35¢
2 lb bag Pops Rite

THE SPOT GROCERY

ON THE HIGHWAY IN SOUTH JAYTON