

WATER, SEWER BOND VOTE SAT.

\$231,000 Bond Issue Will Decide City Future Growth, Say Experts

Rockport property owners go to the polls Saturday to decide whether the municipal water and sewer systems should be expanded to keep up with the city's growth.

The question—chipped into four parts—is a \$231,000 water and sewer bond issue to finance the first major improvement program since the two systems were installed.

Voting will take place at the City Hall.

The polls will be open from 7 a.m. until 7 p.m.

Unlike many such issues, the water and sewer program is expected to draw a heavy vote.

If passed, the program will enable the City to spend \$195,500 for . . .

1. Expansion of the municipal water supply.

2. Rehabilitation of the municipal sewer system.

3. And expansion of both the water distribution and the sewage collection systems.

Expansion of the municipal water supply will call for drilling additional wells, increasing the water storage facilities from a present capacity of 100,000 gallons to 200,000 gallons, adding a new supply pump with a stand-by engine to keep the increased supply flowing into municipal mains, and improving conditions around both wells and storage tanks to gain State Health Department approval of the system.

The sewer system rehabilitation program will involve construction

of a new sewage treatment plant to replace the present plant that is completely out of working order. It will stop the daily flow of approximately 135,000 gallons of raw sewage from the plant into an open ditch and eventually into Tulle Lake.

The water distribution system will be expanded to serve additional customers and to provide a better flow of water to residences feeling a water pinch, because of inadequate mains.

The sewer collection improvements will include the installation of new lines and expansion of lift stations and pumps.

All Rockport residents who have paid their poll tax or have exemptions and who have real or personal property listed on the tax rolls will be eligible to vote.

The program to explain the bond issues fully to municipal voters came to a climax Tuesday night with a public meeting at which H. F. Shaper, a senior sanitarian for the Texas Health Department, told the gathering:

(Continued on Page 8)



Along The Waterfront

The water left and the fish went with it, so all the fishermen left too. The tide is coming in again and the fish too, but only one person has gone out (that the Pilot had heard of) to see.

Mr. Shirey of Fort Worth caught some trout Wednesday afternoon wading out in front of Floyd's Boat and Sales Company on the flats.

Mrs. Ann Rork Heads Red Cross Drive

A. L. Bachman, chairman of the Aransas County Red Cross Chapter called a meeting at the Chamber of Commerce building Friday afternoon to complete the arrangements for the annual Red Cross membership drive.

Mrs. John Rork is general chairman for the drive, the others working under her.

Mrs. W. B. Allen is the chairman in precinct No. 1. She will be assisted by R. F. McKnight, who will call on business houses.

Mrs. Mary Alice Gray, Mrs. Glen Ballis will call on the citizens of Aransas County who live in Aransas Pass, and Dollie Valdez will call on the Latin Americans.

Mrs. Tom Conner is chairman in the north part of Rockport. Her assistants are: Mrs. Jack Sparks, Mrs. A. C. Glass, Mrs. J. H. May, and Mrs. Walton Haynes.

Mrs. A. A. McLester has the Sparks Colony area and Mrs. I. E. Alleman will work at Copano Village.

Mrs. Mary Cooke and Mrs. Wm. Blevins have Fulton and those living on the beach road and Highway 35, north of Rockport.

Mrs. R. A. Johnson was appointed chairman in the Lamar area.

Merrill Swan Elected Commander of V.F.W.

The Stewart-Wendell post held their regular meeting at the hall Wednesday night and held election of officers for the ensuing year with the following officers elected:

Commander Merrill Swan; Sr. Vice Commander, James I. Brown; Jr. Vice Commander, Glyn Swann; Quartermaster, L. T. McElveen; Chaplain, Neal Jordan; Surgeon, E. W. Townsend; 3 Year Trustee, Otto Gunther; 2 Year Trustee, Walter Hensen; 1 Year Trustee, Charles Garrett.

A joint installation of officers with the Ladies Auxiliary will be held the last week in April. The Public will be invited to attend this meeting and every one is urged to attend and see the work of the Post and Auxiliary.

Mrs. Etta Greenburg

Mrs. Etta Greenburg, 66, died unexpectedly at 10:20 p.m. Tuesday of a heart attack at her home. She and her neighbors, Mr. and Mrs. Martin Pena were watching television when she suddenly passed away.

She was a resident here 18 years and a member of the Christian Science Church.

Survivors are a son, Leon Glasscock of San Antonio; a daughter, Miss Margaret Glasscock of Washington, D. C.; and three grandchildren.

Funeral services will be held at 10 a.m. Friday in the Porter Loring Chapel in San Antonio with burial in Mission Burial Park. The body was at the Cagle-Marshall Chapel here until 1 p.m. today.

Engineer Discusses Harbor Facilities Here Thursday

A meeting, called by the Navigation Commission, was held at 7:30 p.m. Thursday with consulting engineers from Lockwood and Andrews, and representative citizens of this area, to discuss the need of harbor facilities in Aransas County.

Those attending the meeting at the Chamber of Commerce building were: Homer C. Innis, head of the Corpus Christi office of Lockwood and Andrews, consulting engineers; Mr. Eddison of the Corpus Christi office; Frank H. Newman, Jr., and Dave Adair of their Houston office; Norvell Jackson, Dick Picton and Raymond Owens, local Navigation Commissioners; Mayor Seth H. Steele, Judge John D. Wendell, Carl Osborn, T. J. Johnson, Lawrence Diederich, Zeph Rouquette, Rufus Casterline, W. B. Hamblin, Ernest Bain, Matt Scott, Steirly Rozzell and Floyd Smith.

The need of more harbor space being a foregone conclusion, the meeting was conducted as an open forum and many suggestions were offered to help relieve the situation.

The engineers have made a survey of the coast for five miles both north and south of Rockport and wanted to hear what various people thought should constitute a long range master plan for harbor improvements in the area.

The completion of the Fulton Harbor, making a self-sustaining channel into it and using the spoil to build a beach seemed to be the most needed project at the present time. Commercial boats, which cannot enter the Fulton Harbor at the present time, and several pleasure craft from the Rockport harbor would then move to Fulton.

The commission estimated that this would increase the dockage space in the two harbors about 50 per cent. Raymond Owens reminded the group that there are four shrimp boats to be launched shortly, not to mention the large number of boats docked at Aransas Pass and Corpus Christi because of lack of harbor facilities here.

It was also suggested that a commercial harbor, north of the Cove (south of Rockport), be built, connecting the channel with the proposed Aransas Pass cut-off which will be a part of intra-coastal canal system from Brownsville, connecting with the Mississippi River and the east coast.

This harbor, as pictured in the master plan would be used by fishing and other commercial boats, and provide a location for fish houses, ice plants, and other types of business interests which would come to this area if there were a feasible location. It was also suggested and discussed that Rockport harbor could be extended either to the east, north or south and that a harbor could be built in Little Bay or some other point. The suggested improvements in the Rockport area are alternate proposals.

The problem of providing public beaches in addition to the harbor improvements was thoroughly discussed and a great deal of interest was expressed by those present.

The engineers took note of each of these suggestions and will in the near future deliver to the navigation commission their estimate on the cost of each of these projects, also the advisability of building them in regards to the way the wind and current will effect them.

Rockport Retains 25c Insurance Credit

Ed Beasley, local insurance man, has informed The Pilot that he had been notified by the State Insurance Board of Commissioners that Rockport will retain the 25 cent fire credit for the good fire insurance record which it has had for the past few years.

The record is based on earned percentage and loss occurred and is good for the next year, April 1, 1954 to March 31, 1955.

Present Sewer Could Contaminate School Water



Here's a picture that should make any Rockport parent stop and think.

The men are School Superintendent Pat Greene and Mayor Seth Steele.

In the background is the new Aransas County High School and one of the wells that provide drinking water for high school students.

Mr. Greene is pointing to the spot where water from Tulle Lake has backed onto the high school grounds on more than one recent occasion.

Tulle Lake is where the City of Rockport dumps approximately 135,000 gallons of raw sewage a day through an open ditch that meanders for about a mile around the northwest section of Rockport.

The reason the City dumps its raw sewage in Tulle Lake is because its ancient and outmoded sewage treatment plant has ceased to function.

Members of the official school family emphasize that their water supply is chlorinated and that every precaution is taken, but the possibility of contamination is possible, even with the best of care.

These are facts—facts that merit the attention of every citizen who will cast a ballot Saturday in the municipal water and sewer bond election which provides, among other things, for construction of a new municipal sewage treatment plant that will work.

Over 100 Attend Girl Scout Picnic In Sinton Friday

More than one hundred people from Rockport, including Girl Scouts and their families, attended the Tri-County Girl Scout Area "Family Picnic" held at Plymouth Park, near Sinton, Friday evening.

The picnic, honoring all Girl Scout leaders, was held on March 12, the 42nd anniversary of Girl Scouting in America.

Approximately 1,400 persons were present from Rockport, Beeville, Mathis, Taft, Sinton and Aransas Pass.

The highlight of the program was the lighting of the birthday candles. A representative Scout from each of the six communities lighted a candle representing her community on the six-tiered birthday cake. Immediately following each Girl Scout present, lighted the candle on her cupcake a concluded the program with the singing of "Taps."

Scouts representing their communities were: Mary Martha Shivers, Rockport; Nancy Jenkins, Sinton; Sue Busby, Taft; Louise Knolle, Mathis; Sandra Konvicka, Aransas Pass; Dawn Looker, Beeville.

Ward Crow of Sinton was master of ceremonies. Group singing was led by Mrs. George Flood of Sinton. Mrs. Ted Everitt of Beeville led a narration in which all the troops and parents participated. Mrs. C. A. Selby of Sinton welcomed the groups and explained the objectives of the Tri-County Area Development committee.

Court House and Jail Bond Election Defeated

The election Saturday for bonds to build a new court house and jail was defeated by a large majority, there being only 156 ballots cast for the bonds and 308 against.

The Commissioners Court met Monday morning and canvassed the election. There was only one box where the bond election carried and that was at the voting place in Aransas Pass. There were 11 for the issue and 10 against it.

The reports from other voting places were as follows: Fire Station: 37 for and 91 against; Court House: 66 for and 124 against; Fulton: 32 for and 72 against; Lamar: 10 for and 11 against.

Deborah Jean is the new daughter of Mr. and Mrs. Kint Weatherly, born Feb. 19.

HEEP OIL CORP. HITS IN ARANSAS

Heep Oil Corp. and others, Aransas County Frio Sand discovery two miles west of Rockport, was completed for a 24-hour flow of 188 barrels of estimated 41.5 gravity, pipeline oil.

Production was through 9-64 in choke from perforations at 8,294-90 feet in 5 1/2 inch casing which was set on bottom at 8,296 feet.

Gas-Oil ratio was 2,390-1. Flowing pressures were 1,500 pounds on the tubing and 3,000 pounds on the casing. The discovery is on a 300-acre lease in Lot 8, Block 1, C. B. Lucas Subdivision Puerto Bay Lands in John G. Smith Survey, A-239.

A Conroe Drilling Co. rig was moving in preparatory to spudding Renwar Oil Corp. No. 1 Travis Bailey, proposed 10,000-foot wildcat some 3,840 feet northeast of the discovery. The test, which was originally drilled to 7,510 feet and plugged in 1952, is on a 964.4 acre lease in Joseph Fessenden Survey, A-65. It was earlier reported that Renwar had paid \$150 an acre for 800 acres of the Bailey lease.

School Band to Enter Regional Contest

The Aransas County School Band will attend the Interscholastic Regional Contest, of Region 7, at Kingsville, next Saturday.

This is the first time that the local school band has entered a regional contest and the band director, Jerry Hoffman, is proud of the work the band has accomplished the past year and that they are qualified to go.

On March 25, 26, and 27, the Student Council of the Aransas County High School will attend the Interscholastic State meet at Laredo.

On March 26, there will be four one-act plays, given at the high school auditorium, here. The various schools entering this contest are Ingleside, Woodsboro, Gregory and Aransas County.

Three Boys Leave For Induction Monday

Three Rockport boys, Steve Atwood, Leo Prophet and Cristoval Pena left for Sinton Monday and were inducted into the army.

The boys were taken to San Antonio where they telephoned their parents that they were leaving for Fort Bliss Tuesday or Wednesday, for basic training.

J. V. Hughes, Night Watchman, Starts Duties March 15

J. V. Hughes, former City Marshal of Stockdale, Texas, was approved by the City Council as night watchman at their last meeting.

Before taking the position in Stockdale, Mr. Hughes was a special police officer in San Antonio for 11 years. He and his wife have moved to Rockport and his services started on March 15.

Arrangements have been made with the First National Bank whereby business houses desiring Mr. Hughes services may have their payments deducted from their accounts and credited to the Night Watchman Fund.

Mr. Hughes reports that practically the entire city's business houses have subscribed for his services and those who have not been contacted as yet are invited to do so.

Approximately 575 Pupils Have Had Patch Test

The T. B. patch test which is being given by the Parent-Teacher Associations to the pupils in the public schools who are under 14 years of age, have been put on approximately 575 pupils. There were 595 patches put on at the Rockport school Monday. These will be taken off Wednesday and the results read Friday.

The Fulton P.T.A. put patches on about 80 pupils last week.

Next Monday the children who did not have their slips to take the test and want it, and those who were absent this week, will receive the patches, also the high school students who are not old enough to have the T. B. mass x-ray.

As soon as the patch tests have all been made the attention will be turned toward the older group, and arrangements for the mass T. B. x-ray which will be given on April 21 and 22, will be completed.

Three Rockport Youths Register In February

Three more Rockport youths registered with the local draft board at Sinton during February. They were: Charles F. Garrett, son of Mr. and Mrs. Charlie Garrett; Durwood K. Lassiter, son of Mr. and Mrs. Lloyd Lassiter and Isham F. McElveen, son of Mr. and Mrs. M. E. McElveen.

HERE'S HOW TO VOTE

If You Favor Water, Sewer Bonds

Here's the way to cast your ballot in Saturday's election if you are FOR the \$231,000 municipal water and sewer bond issue.

All four propositions appearing on the ballot must be approved if the City Council's proposed improvement program is to be carried out in full.

Unless the two propositions for the recalling of outstanding water and sewer bonds are passed, the entire program will fail even if the two propositions for improvements are passed.

The issue was broken into four propositions to satisfy legal requirements.

PROPOSITION NUMBER 1
FOR The Issuance of \$20,000 Waterworks System Revenue Bonds, and Pledging the Revenues of the City's Combined Waterworks and Sanitary Sewer System to the Payment Thereof.

~~**AGAINST** The Issuance of \$20,000 Waterworks System Revenue Bonds, and Pledging the Revenues of the City's Combined Waterworks and Sanitary Sewer System to the Payment Thereof.~~

PROPOSITION NUMBER 2
FOR The Issuance of \$15,500 Sanitary Sewer System Revenue Bonds, and Pledging the Revenues of the City's Combined Waterworks and Sanitary Sewer System to the Payment Thereof.

~~**AGAINST** The Issuance of \$15,500 Sanitary Sewer System Revenue Bonds, and Pledging the Revenues of the City's Combined Waterworks and Sanitary Sewer System to the Payment Thereof.~~

PROPOSITION NUMBER 3
FOR The Issuance of \$109,500 Waterworks Revenue Bonds and Pledging the Revenues of the City's Combined Waterworks and Sanitary Sewer System to the Payment Thereof.

~~**AGAINST** The Issuance of \$109,500 Waterworks Revenue Bonds and Pledging the Revenues of the City's Combined Waterworks and Sanitary Sewer System to the Payment Thereof.~~

PROPOSITION NUMBER 4
FOR The Issuance of \$86,000 Sewer System Revenue Bonds, and Pledging the Revenues of the City's Combined Waterworks and Sanitary Sewer System to the Payment Thereof.

~~**AGAINST** The Issuance of \$86,000 Sewer System Revenue Bonds, and Pledging the Revenues of the City's Combined Waterworks and Sanitary Sewer System to the Payment Thereof.~~

The Rockport Pilot

Published Every Thursday

R. ROY WOODS and ROY V. ROGERO,
Owners and Publishers
MRS. ERMA CLOBERDANTS, Reporter

Entered as second-class matter June 30, 1927, at the postoffice at Rockport, Texas, under the Act of March 3, 1927.

Bond Forum

This week, Rockport voters will go to the polls to decide the fate of a \$231,000 municipal water and sewer bond issue.

We have attempted during the past three weeks to raise—and to answer questions in connection with this issue.

We hope you have found our forum helpful.

Below is the final set of questions. Study them carefully. Then go to the polls Saturday and cast your ballot according to the dictates of your judgement.

QUESTION: Why is it necessary for the City to have additional water wells at this time?

ANSWER: The City has nine wells. Consulting Engineer Irving Seligmann pointed out in a report prepared last December that those wells are capable of pulling up about 312,000 gallons of water a day. By next year, he estimates, Rockport will need a water supply capable of providing 377,000 gallons a day. And for 1960, he sets the daily supply requirement at 533,000 gallons. The additional wells will relieve the present pinch and provide for the immediate future.

QUESTION: Why, then, is it necessary to spend \$34,000 for a tank that will increase the City's water storage capacity from 100,000 to 200,000 gallons?

ANSWER: Simply because the demand for water at peak use periods—as Mr. Seligmann points out, sometimes reaches a 500,000-gallon a day rate for a space of hours. Unless there are adequate storage facilities, the water supply will continue to run short.

QUESTION: Why is an additional supply pump with a stand-by equipment necessary?

ANSWER: Because the expansion of the water supply means that more water will have to be pumped into the City's mains. The present pump just isn't adequate. Stand-by equipment carries the load in emergency.

QUESTION: Just exactly what work will be necessary for Rockport to secure State Health Department approval of the municipal water system.

ANSWER: Health Department requirements call principally for fencing well areas, and replacing clay sewers with cast iron pipe within 150 feet of water wells.

QUESTION: Why is it necessary to spend \$48,000 to expand our water distribution system?

ANSWER: An adequate water supply and storage space are essential to any water system. But no more so than adequate distribution facilities. Unless the City has mains that will carry enough water to serve its customers, the water problem—for many of our people—will continue. Right now, says Water Superintendent Tom Shults, we have inadequate pressure nine months a year in many homes. We have lines serving as many as 11 residences which should not, under any circumstance, serve more than one home. We have small lines that are stretched over a distance six times as far as they should be to provide adequate pressure. We have areas where we have no mains at all—and, certainly, where we should. That, of course, is from the standpoint of service. If the City is to realize the revenue and service it should from its water system, it must be able to provide water to its residents and in the amounts necessary to meet their needs.

QUESTION: About 15 per cent of the bond money proposed for water improvements—and for sewer improvements, too—is pegged for "engineering and contingencies." What does that mean?

ANSWER: It means that 8.5 per cent has been set aside to cover the incidental and unforeseen costs attached to the work, and 6.5 per cent to pay the engineers employed on the project. It does NOT mean that the entire 15 per cent will be paid for engineering services.

QUESTION: Why is it necessary to build a new sewage treatment plant?

ANSWER: First of all, because the present plant is completely out of working order. Each day, it pours approximately 135,000 gallons of raw sewage into an open ditch that empties into Tulle Lake. The ditch is about a mile long, circling the northwest section of the city. Tulle Lake is near the new Aransas County High School and, on occasions, backs onto the school grounds.

QUESTION: But why can't the present plant be rehabilitated?

ANSWER: It can—but at what engineers consider to be an exorbitant cost. They also consider rehabilitation to be impractical. The present non-functioning plant is a type that requires expensive mechanical equipment. Once back in operation, it still would require continuous attention and frequent replacement of parts. Engineer Seligmann's report shows it would require an expenditure of \$29,400 to put the present plant in condition to handle Rockport's present sewage treatment needs. That is without any thought of the future. To rehabilitate the plant and expand it to meet the needs of the next 10 years would, says Mr. Seligmann, involve a cost of \$47,700, only \$200 less than an entirely new non-mechanical plant of the type planned under the bond program. The non-mechanical type of plant, incidentally, re-

(Continued on page 7)



Meats



NO. 1 SMALL SIZE

FRYERS

POUND

39c

FRESH PORK

PICNIC ROAST

POUND

39c

PORK LIVER

POUND

29c

SWIFT'S PREMIUM

FRANKS

POUND

43c

RATH'S BLACK HAWK

SLICED BACON

POUND

75c

vegetables

FRESH POTEET

STRAWBERRIES, pt. 29c

NEW RED

POTATOES, 4 lbs. 19c

GREEN ONIONS, 2 bun. 9c

GOLDEN BANTAM

CORN, 4 ears 19c

DEL MONTE

LIMA BEANS 2 cans 49c

HONEY BOY PINK

SALMON 2 tall cans 73c

BAR-T RANCH

PEACHES No. 2½ can 25c

Specials

THURSDAY,

FRIDAY

and

SATURDAY

BORDEN'S CANNED

Biscuits 2 Cans 19c

FROZEN

FLOUNDER FILETS Lb. 59c

VERMONT MAID

SYRUP 12-oz. bottle 25c

SKINNER'S

SPAGHETTI or MACARONI 3 pkgs. 34c

HIC

ORANGEADE 46-oz. can 27c

LIBBY'S

FRUIT COCKTAIL No. 2½ can 39c

STOKELY'S ALL GREEN CUT

ASPARAGUS No. 300 Can 2 for 51c

LE GRANDE, CREAM STYLE

CORN 303 Can 2 For 29c

TEXAS

TOMATOES 303 Cans 2 for 27c

STA FLO STARCH ½ Gal. 39c

CUT RITE WAX

PAPER 2 rolls 49c

AUNT JEMIMA

20-Oz. Pkg.

Pan Cake MIX 27c

Pinto Beans

2 Lb. pkg 27c

GIANT

Tide 69c

IMPERIAL CANE

5 LBS.

Sugar 47c

NORTHERN

3 ROLLS

Tissue 25c

SWIFT'S JEWEL

SHORTENING

3 LB. CAN

With Coupon

75c

Each Can of Shortening Contains 5 10c Coupons

SWIFT'S JEWEL

OIL

With Coupon

59c

SWIFT'S

PEANUT BUTTER

With Coupon

25c

ALL SWEET

OLEO

With Coupon

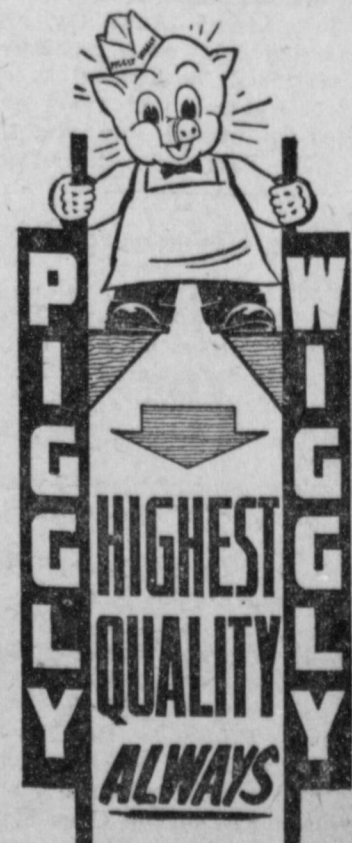
19c

SWIFT'S

PREM

With Coupon

39c



Mrs. Balena Honored With Bridal Shower

Mrs. Frank Balena, who before her marriage was Miss Lola Jean Ballou, was honored for a shower Friday night at the Woman's Club. The hostesses for the occasion were Mrs. C. E. McElveen, Mrs. C. R. Sparks and Mrs. R. A. Johnson.

A yellow and white color theme was used in all appointments. The lace cloth over yellow was centered with a reflector, outlined with yellow and white gladioli. A miniature bride and groom, descending from the altar, stood on the reflector. Yellow tapers in crystal candelabra flanked the centerpiece.

Miss Janet Washington served the cake and Miss Patti Ballou, sister of the honoree, poured the punch. Mrs. Josephine Johnson, of Goliad, was in charge of the guest book, which was placed on a table covered with a cut work cloth.

The guest list included 100 friends of the honoree.

Donna Ann Sparks Has Birthday Party

Donna Ann Sparks, was honored by her father and mother, Mr. and Mrs. Milton Sparks with a party at their home, Tuesday afternoon. The occasion was Donna Ann's third birthday.

The following guests were present: Nancy, Pama, Cindy and James Court, Courtney and Roy Johnson, Kay Sparks, Kathy Deason, Diane Shults, Mary Lou Little, Patricia Harrist and Chas. and Michael Caywood.

Mrs. Roy Court, Mrs. Bill Johnson, Mrs. Jack Sparks, Mrs. Edric Deason, Mrs. Gene Shults, Mrs. Ted Little, Mrs. Curtis Harrist and Mrs. Chuch Caywood, also attended.

The tea table was covered with a blue linen cloth and had the birthday cake with pink candles for the centerpiece. Mrs. Sparks served punch with the birthday cake.

The children enjoyed playing together and opening the many birthday gifts.

Mary Moore Circle Met With Mrs. Mullinax

On March 11, the Mary Moore Circle of the First Baptist Church met with Mrs. Roy Mullinax. Mrs. J. V. Ferguson, circle chairman, presided at the meeting.

Mrs. R. F. McKnight, Mrs. Ernest Bain, Mrs. Otto Key and Mrs. Mullinax each had a part on the program. The lesson on the book, "Woman of Destiny," was interesting and a good study.

Those present were: Mrs. Otto Key, Mrs. R. F. McKnight, Mrs. Ernest Bain, Mrs. Lillie Calvert, Mrs. J. V. Ferguson, Mrs. Reid Simmons, Mrs. Karl Geis, Mrs. Bostic and the hostess, Mrs. Mullinax.

Chicken Dinner For Steve Atwood

Mr. and Mrs. Floyd Huffman honored Steve Atwood, who left for induction into the Army Monday, with a barbecue chicken dinner at their home Sunday evening.

Those enjoying the occasion beside the hosts were: the honoree, Mr. and Mrs. Ted Atwood, Mr. and Mrs. J. H. Schleider, Faye Washington, Doris Jean Huffman and Johnny Atwood.

JAMES A. JARBOE

Registered Civil Engineer Licensed State Land Surveyor

10 Years In General Civil Engineering 13 Years In Design Construction, Operation and Maintenance of Natural Gas Systems

Phones 3522 - 504 P. O. Box 522 Rockport, Texas ctf



TRIM LOOK—The cardigan look for spring is shown in this navy Tambro rayon gabardine by Rojay. A navy and white check trim outlines this suit which is matched with a navy cap sporting a checked brim.

Mrs. Roe Entertains Circle No. 4

Mrs. Charles Roe, Jr. entertained Circle No. 4 of the Women of the Church Thursday afternoon at three o'clock at her home.

After a short prayer, Mrs. W. T. Suttles gave an interesting study of the 3rd and 4th chapters of Acts. The title of this study was "Boldness and Opposition."

A brief business session followed.

Mrs. Roe and Mrs. H. L. Morrison outlined the program on the Middle Ages, the Reformation and Church Government.

The hostess served pie, punch and coffee to seven members and two visitors.

First Baptist Y.W.A.'s Met Tuesday

The Y. W. A. of the First Baptist Church met Tuesday at the church with Lou Benningfield as hostess. A program on "Our Heritage" was given and refreshments served to the group at the close of the meeting.

The group will meet next week at the home of Wanda Corporon and have a Mexican supper.

Those present at the meeting Tuesday were: Ida Perkins, Ruth Torres, Nedra Ham, Wanda Corporon, Wanda Mundine, Lou Benningfield and Mrs. Ramsey.

Sacred Heart P. T. S. Met Monday Night

The Parent Teacher Society of the Sacred Heart Catholic School met at the parish school building Monday night with 17 members present.

Plans for the Easter Egg Hunt were discussed and Mrs. Roy V. Rogero was appointed chairman of the committee to make arrangement for it. This egg hunt is for all grade school children and pre-school children of the parish.

The Society decided to give the T. B. patch test to the pupils, the date for giving the test to be set later.

W.S.C.S. To Have Social Meeting, March 25

The W. S. C. S. of the First Methodist Church will have their monthly social meeting at the home of Mrs. B. W. Hamblin, Thursday afternoon, March 25. All members of the church and guests are invited.



Remember

"Better Quality" Means "Real Economy"

Specials for Thurs., Fri., & Sat., Mar. 18, 19, 20

SUN SPUN Bread Large Loaf 20c

RED & WHITE MILK Tall Can 12c

SUN SPUN Margarine 2 Lb. Carton 39c

TREND DEAL, 2 for 35c

CLOROX qt. 15c

TRUSTY DOG FOOD 4 Cans For 29c

Swiftning 3 Lbs. 69c

Frozen Foods ALL THRIFT-PAK VEGETABLES 17c

Garden Fresh Fruits and Vegetables RED DELICIOUS APPLES, 2 lbs. for 35c

CHARMIN TISSUE, 4 rolls for 29c

TREESWEET ORANGE JUICE 6 oz. can 10c

AVOCADOS 10c

NORTHERN TOWELS, roll 15c

BOOTH BREADED OYSTERS 49c

NO. 1 IDAHO RUSSET POTATOES, 5 lbs. 23c

EVERBEST Blackberry Jam 12 oz. jar 33c

MEATS SWIFT'S U. S. GOOD BABY BEEF

DEL MONTE PEACHES, No. 2 1/2 can 25c

FRYERS BARKLEY lb. 39c

DEL MONTE CORN 15c

Chuck Roast lb. 39c

DEL MONTE TOMATO JUICE 27c

SHOULDER Round Steak lb. 49c

DEL MONTE LIMA BEANS 29c

SWIFT'S U. S. GOOD BABY BEEF Stew Meat Short Rib or Brisket Portion lb. 29c

DEL MONTE SLICED PINEAPPLE 29c

BACON RATH'S SUNVALE lb. 59c

JELLO, 3 for 23c

SWIFT'S U. S. GOOD BABY BEEF Rib Chops lb. 59c

SKINNER'S Macaroni or Spaghetti 10c

FRESH GROUND Hamburger lb. 29c

RED & WHITE SHORTENING 3-Lb Can 77c

RED & WHITE PEAS No. 303 17c

GLADIOLA FLOUR, 5 lbs. 49c

DEL MONTE Catsup 15c

SUGAR 5 Lb. Bag 46c

Where You Get the Best West's

...Priced Lower!



Right Reserved to Limit Quantities

L. T. WARDROP

INSURANCE AGENCY

Fire - Auto - Casualty Life - Hospitalization

DEPENDABLE STOCK COMPANIES

PHONE 6175

Wood Street: 1 Block North Highway 35

Rockport ctf

Mr. and Mrs. E. J. Johnson had as a guest Monday, Mrs. Johnson's nephew, C. A. Benson, Jr., who has just returned from overseas duty.

Delicious HAMBURGERS Barbecue Sandwiches
On Your Way to the Drive-In Theatre
Get A Bag Full The Barbecue Pit
J. T. SLOCUM, Owner
CLOSED ON TUESDAYS

RIALTO THEATRE
Aransas Pass

THURSDAY & FRIDAY
March 18-19

Rock Hudson and Marcia Henderson
—In—

Back to God's Country

SATURDAY ONLY
March 20

DOUBLE FEATURE
John Wayne and Jean Arthur In

The Cowboy and The Girl

Also
Donald O'Connor and Debbie Reynolds In

I Love Melvin

SUNDAY & MONDAY
March 21-22

Jeff Chandler and Maureen O'Hara In

War Arrow

TUESDAY & WEDNESDAY
March 23-24

Robert Taylor and Deborah Kerr In

Quo Vadis

Dubose Store Building Burns At Aransas Pass

Aransas Pass had one of the worst fires in years Friday morning when the Dubose store building was completely destroyed by fire.

The Central Pharmacy occupied most of the main floor, with Jackson's Jewelry Store on the side and a barber shop in the rear of the drug store, all of which lost their entire stock of merchandise and furniture. There were a number of offices on the upper floor which were also completely destroyed.

Firemen with their trucks from Rockport, Sinton and Corpus Christi, were there to help the Aransas Pass Fire Department fight the fire and save the adjoining buildings.

It is understood that plans are already underway to rebuild the structure.

As a result of the fire, Kaufman's Department Store in Aransas Pass, is offering their \$50,000 stock at greatly reduced prices. Mr. Kaufman said that most of his merchandise was slightly damaged by smoke which has been "Airkemed" to remove all smoke odor. This merchandise is not discolored in any way, according to Kaufman. The sale will start Friday at 9 a.m. See Kaufman's ad on page 5.

Garden Club Plans Flower Show

The Rockport Garden Club met with Mrs. Fred Hunt Thursday morning at 8:30.

Instructions for the flower show were given by the flower show chairman, Mrs. Melvin Borchert. The flower show is to be presented on Saturday, April 10th. The public is invited to come and see the accomplishments of the Rockport Garden Club.

The club hopes to have the cooperation of everyone so the show will be successful. A schedule of the show along with the rules appear in the next issue of The Pilot.

Seniors to Gregory

The Senior Class of the Aransas County High School went to Gregory, Wednesday, March 17, to attend an area meeting.

Representatives from various colleges over the state were there and talked with the students, discussing their future in colleges and universities.

James Whistler signed his correspondence and paintings with a small drawing of a butterfly.

Fulton Baptists Will Hold Revival Services

The First Baptist Church of Fulton will begin a series of Revival Services March 23, at 7:30 p.m. These will continue through March 28 and possibly through April 4th.

Bro. Harvey W. Graham will do the preaching and the pastor, Bro. L. G. Rogers, will lead the singing.

An invitation is extended to everyone to attend any or all of these services.

This revival will be preceded by the Week of Prayer sponsored by the W. M. U. which is now in progress and has been an inspiration to all who have attended.

The message each night by the pastor on "The Lord Jesus Christ" is preparing each member for revival.

J. B. Calhoun Speaks To Study Group

James B. Calhoun, Driver's Education Instructor for Aransas County High School and Safety Instructor in Junior High, was the speaker for the study group for Home and Family Life, Tuesday afternoon. This group, sponsored by the Aransas County High School Parent Teacher Association, meet the 3rd Tuesday in each month at the home of the leader, Mrs. S. F. Jackson.

Problems discussed have been those of vital interest to parents of high school students, and the topic under discussion for this meeting was "Safety".

Fourteen members of the class were in attendance.

Warren E. Chilcoat Dies Of Heart Attack

Warren E. Chilcoat, 65, of Los Angeles, Calif., and a winter resident of Rockport, died of a heart attack at 3 p.m. Thursday while fishing at Rattle Snake Point.

Chilcoat was a retired railroad man, a veteran of World War I, and a member of the Christian Science Church.

He is survived by his wife, Mrs. Pauline Chilcoat.

The body was sent to Los Angeles for funeral services and burial. Cage-Marshall Funeral Home was in charge of local arrangements.

Mr. and Mrs. G. L. Kraemer and Goldman Kraemer, Jr., of Victoria, and Mr. and Mrs. E. P. Cox and daughter, of Alice, were weekend guests in the home of Mr. and Mrs. H. Staffa.

ROCKPORT P.-T.A. ELECTS OFFICERS

The Rockport Parent-Teacher Association met in the school auditorium Wednesday at 3:30 p.m.

James B. Calhoun gave a short talk on "Driving Safely," telling something of the course being given in school, and of the survey made by students, of traffic violations in Rockport.

Vocal selection by Mrs. G. A. West, accompanied by Mes. Bill Clark, included "Roses of Picardy," "Summertime," "Lover, Come Back to Me," "Deep Purple," "Little Boy Blue," and "Mighty Like-a Rose."

Mrs. James B. Jackson, the president presided at the meeting.

Mrs. Chas. Garrett gave the report of the nominating committee which Mrs. Seth Steele and Mrs. S. F. Jackson. Officers selected for the coming year were:

Mrs. James B. Jackson, president; Mrs. Harry Traylor, 2nd vice president; Mrs. Lillian Sorenson, 3rd vice president; Mrs. Malcolm Boquet, record secretary; Mrs. B. W. Hamblin, corresponding secretary; Mrs. R. Y. Ayers, treasurer.

The group accepted the recommendation of the executive committee to instruct the corresponding secretary to contact the legislators and let them know that the Rockport P.-T.A. urges them to pass the proposed bill on teachers' pay raise now before the legislature.

Mrs. Earle Thomas reported 168 visitors of schools during Public School Week and presented the prize to Mrs. Lillian Sorenson for the room having the most visitors.

In the absence of the health chairman the president, Mrs. J. B. Jackson, reported that the T. B. Patch Test had been made and notes of explanation will be sent to the parents. Plans are being made for the eye test this week.

Mrs. R. Y. Ayers reported that the First Aid course, under Civil Defense project had been completed. Sixteen completed the course directed by R. L. Harper of Taft, and will receive certificates. Mrs. Ayers stated that Richard Fox, Civil Defense chairman, asked that anyone who will do so, register his blood type with the committee.

Action was taken to amend the by-laws concerning a parliamentary, according to the State By-Laws.

The group voted to send the president or representative, and one delegate to the conference March 23 and 24, in Kingsville. All members who can, are urged to attend also.

The count of patrons gave the prize to Mrs. Vivian Calhoun's fourth grade.

The door prize, a 8-piece hostess set, went to Mrs. Eric Eller. The next meeting will be a night meeting, April 20, at 7:30 p.m.

Women of the Church To Meet Tonight

The Women of the First Presbyterian Church will have their regular quarterly night meeting in the assembly room at the church tonight, Thursday, March 18.

All members are urged to attend and guests are especially welcome.

Band Booster Club To Meet Thurs. Night

The regular monthly meeting of the Band Booster Club will be held at the High School building, Thursday night.

All members are urged to attend the meeting.

Cemetery Association to Meet March 22

The Rockport Cemetery Association will have its March meeting at the home of Mrs. W. B. Allen next Monday, March 22, in the afternoon.

All members are urged to attend.

About 35 members of the congregation of the First Presbyterian Church of Rockport attended church at the Woodsboro Presbyterian Church Sunday night and saw Rev. T. H. Pollard installed as its pastor. Ted R. Little was on the installation commission.

Fulton Lions Club Holds Regular Meeting

The Fulton Lions Club held its regular meeting Monday night with 17 members and two visitors, Paul Wilhelm and Ernest Tackette, present.

Lion Bachman gave a report on the street markers and the committee was given full authority to carry out the project.

Lion Raymond Owens asked the people to decide what type of lights they thought best to install at the Fulton harbor, so that the work on this project could proceed.

Lion Matt Scott reported on the navigation board meeting which he attended last week.

A committee was appointed to arrange for Ladies Night, which will be on Monday, March 29.

TRAIL DRIVE-IN THEATRE

Home Owned
WEST HIGHWAY 35
Aransas Pass, Texas

Two Shows Nightly
Commencing at Dusk

THURSDAY, MARCH 18



A Lippert Pictures Presentation
2 Color Cartoons

FRIDAY AND SATURDAY, MARCH 19-20

DOUBLE FEATURE



Howard DUFF and Eve BARTON in "SPACEWAYS"
—AN EXCLUSIVE FILMS PRODUCTION
A LIPPERT PICTURES Presentation
2 Color Cartoons

Special Saturday Midnight Show



Included in Regular Price of Admission

SUNDAY AND MONDAY, MARCH 21-22

THE PICTURE EVERYONE IS TALKING ABOUT!



starring WILLIAM HOLDEN DAVID NIVEN MAGGIE McNAMARA
Released thru United Artists
2 Color Cartoons & News

TUESDAY AND WEDNESDAY, MARCH 23-24

DOUBLE FEATURE



Plus
M-G-M
DESPERATE SEARCH FOR LOVE IN A RAW WILDERNESS
starring HOWARD KEEL JANE GREER-PATRICIA MEDINA
2 Color Cartoons

Kemper Williams Phone 812
Every INSURANCE Protection
301 VICTORIA BANK & TRUST Bldg., VICTORIA, TEXAS

Maitag
All Maytag Appliances On Display
ROCKPORT ELECTRIC CO.
Phone 412
Rockport, Texas

COVE DRIVE-IN THEATRE
ROCKPORT
THURSDAY & FRIDAY
March 18-19
Gary Cooper Loretta Young
Along Came Jones
SATURDAY
March 20
Great White Hunter
—with— Gregory Peck, Joan Bennett and
Captain Kidd
—with— Randolph Scott
SUNDAY & MONDAY
March 21-22
William Holden Eleanor Parker
Escape from Fort Bravo
TUESDAY & WEDNESDAY
March 23-24
Dean Martin Jerry Lewis
Jumping Jacks

SURF THEATRE
ROCKPORT
Program
THURSDAY & FRIDAY
March 18-19
Cease Fire
KOREAN WAR
SATURDAY, March 20
DOUBLE FEATURE
Trail of the Arrow
— also —
Los Tres Huastecos
SUNDAY & MONDAY, March 21-22
Richard Carlson Julia Adams
Creatures from the Black Lagoon
TUES. & WEDNESDAY
March 23-24
John Garfield Lili Palmer
Body and Soul

Tarpon Drive-In Theatre
SHOW STARTS AT 7:15 P.M.
HIGHWAY 632
ARANSAS PASS, TEXAS
2 COLOR CARTOONS EACH NIGHT FOR THE KIDDIES
THURSDAY & FRIDAY
March 18-19
L. THE JURY
SATURDAY
March 20
DOUBLE FEATURE
Casanova Brown
— Plus —
BLACK BART
YVONNE DE CARLO - DAN BURRYA JEFFREY LYNN
SUNDAY & MONDAY
March 21-22
Down Among the Sheltering Palms
LUNDIGAN GREEN GAYNOR WAYNE DEHAVEN
TUESDAY & WEDNESDAY
March 23-24
Mission Over Korea
John HODIAK John AUDREY Maureen TOTTIER O'SULLIVAN
VISIT OUR CONCESSION STAND

MITCHELL'S Jewelry
PHONE 542
WATCHES DIAMONDS JEWELRY ENGRAVING
Rockport

"Bob" Ayers Opens Sporting Center

R. Y. "Bob" Ayers, Jr., has announced the opening of The Sporting Center on the waterfront at Fulton and reports doing an active business.

The Sporting Center sells fresh and frozen foods, oysters on the half shell, boiled crabs and shrimp ready to eat in addition to beer and soft drinks.

Mr. Ayers carries a full supply of fishing tackle and hunting equipment and as a courtesy to his customers he will book fishing parties.

There are freezing and shipping facilities at the Sporting Center, making it a complete place for all the sportsman's needs.

"Teet M", Shrimp Boat Broken Into Monday

The Teet M, a shrimp boat belonging to Elva Mullinax was broken into Monday night, while lying in the Rockport Harbor.

The only items missing from the boat were five gallons of diesel oil, two cartons of cigarettes and a box of tools.

The Pilot is authorized to authorize to announce the candidacy of F. Iansen for re-election to the office of Justice of the Peace, Precinct No. 3.

St. Peter's Auxiliary to Sponsor Rummage Sale

The Auxiliary of the St. Peter's Episcopal Church will hold a rummage sale Saturday, Mar. 20, at the Barnard building, next door to the Surf Theatre.

The sale will start at 9 a.m. and continue through the day.

Band Concert Friday Night, Well Attended

The band concert, sponsored by the Band Booster Club, at the High School auditorium, Friday night, was well attended.

The numbers were all good and appreciated by the audience. There were several specialty numbers on the program.

U. S. postage stamps were first placed on sale July 1, 1847.

FRED M. PERCIVAL
Registered Civil Engineer and Licensed Land Surveyor for Texas
Aransas County Engineer, retired
MAPPING, SURVEYING, BLUE PRINTING AND GENERAL PRACTISE
Phone 3191 P. O. Box 422
Office at Residence

JOHNNY JOHNSTON REAL ESTATE
SALES - RENTALS - LOANS
We Want Listings - Have Ready Buyers
PHONES: Office 6362 Home 478
etf

NO DOWN PAYMENT REPAIR NOW!
FOR A BETTER HOME TODAY AND TOMORROW... USE OUR ABC EASY PAYMENT PLAN
ROOFING... SIDEWALLS...
It's true economy to bring the old house up-to-date with a colorful weatherproof roof and smart new sidewalls... there's actual dollars and cents savings in making these repairs.
Paying the bill? No problem at all with our ABC Budget Payment Plan... no red tape... you'll be agreeably surprised to find how easy it is to arrange payments to suit your income.
3 YEARS TO PAY
ROCKPORT LUMBER CO.
Phone 463

Woolly Worms PROTECT YOUR TREES
WE WILL START SPRAYING IN THIS AREA AROUND APRIL 1
Large Size Trees \$6.00 Each
Medium Size Trees \$5.00 Each
Small Size Trees \$4.00 Each
Special Price on 4 or More Trees
MINIMUM PRICE \$10.00
Specials Price on Motts
FOR SERVICE, MAIL A CARD TO
DYSART PEST CONTROL CO.
908 So. Staples St.
Corpus Christi, Texas
OR CALL
JOHNSON'S DRUG STORE
PHONE 252

B. W. Circle Met With Mrs. Mundine

The Business Women's Circle of the First Baptist Church met Thursday night with Mrs. Milton Mundine. Mrs. Mildred Jones completed the review of the mission study book.

Mrs. Mundine served refreshments to Mrs. Mildred Jones, Mrs. Eva Coaker, Mrs. Floy Rooke, Mrs. Albert Lee Ballou, Mrs. H. B. Ramsey and Mrs. John McLester.

TEXAS PRODUCES EVERYTHING, BUT COFFEE

College Station—Although Texans produce a little of everything, their chances for helping solve the present coffee squeeze are remote.

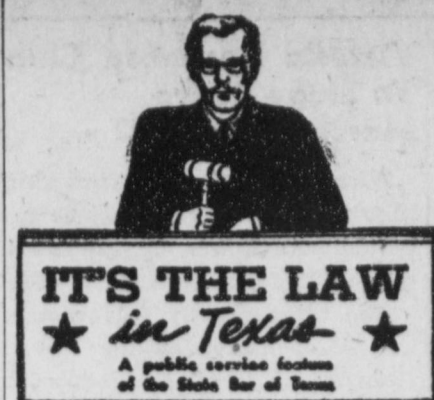
According to Dr. R. G. Reeves of the Texas Agricultural Experiment Station, the coffee tree just doesn't adapt itself to the climatic conditions of Texas. Despite the fact that some 40 species and many more varieties of coffee are known, he adds, none will withstand winter weather. Moreover, coffee trees do not tolerate a very hot climate.

In Central America where Dr. Reeves carried on experimental work with the trees, the crop thrives at altitudes of from 2,000 to 4,500 feet where there is no frost nor prolonged intense heat. The best crops are produced there on deep, volcanic soil with abundant moisture and good drainage.

Sometimes in the distant future, he adds, types of coffee may be developed which might be suited to South Texas conditions but great changes in the environmental requirements of existing varieties would need be made. A long-range research program would be required with chances for success slim. Trees are from three to four years old when they begin to bear and a normal crop is not produced until the age of seven to ten years is reached.

Dr. Reeves can't give much encouragement to the establishment of a coffee producing industry in Texas.

Felix Adler established the Society for Ethical Culture.



IT'S THE LAW
in Texas
A public service feature of the State Bar of Texas

Keep Records to Save Tax Headaches Next Year

There is no time like the present, while the great battle of Form 1040 is still fresh on your mind, to start a procedure that will aid you with next year's income tax calculations. That is to maintain a record of your income and outgo. Such a record can be simple and brief but it may save you tax dollars.

The average man who works for a wage or salary doesn't have to concern himself about keeping books and records — at least so he thinks. His employer keeps a reliable record of his earnings and Uncle Sam looks primarily to the employer for information on his earnings and for the withholding of various taxes out of his wages.

But whether or not you run a business of your own, you have a partner who each year is claiming a substantial interest in your personal income. And the law requires that you keep books for him in case he ever asks for an accounting.

Perhaps you own your home or are paying it out in installments. It's likely that some day you may sell that house. When you do you'll want to be able to prove whether you realized a gain or a loss on that sale. If a gain in capital resulted, it probably will add to your income tax. If a loss was suffered, it probably will reduce your income tax.

You may have made certain capital improvements on the house while you lived in it, but unless you can show what out-of-pocket expense you incurred while making them, you may not get credit for them in your cost basis so as to prove that you had no capital gain or that you had a loss.

Or perhaps you received that little summer cottage on the lake as a gift from your father. If you ever sell it, you should be able to show Uncle Sam not only the cost of improvements you made on it while you owned it, but also what its fair market value was at the time Dad gave it to you.

It may be that you are receiving an annuity on an insurance policy. If so, do you know how much that policy costs you and how much of that cost you have recovered tax-free to date?

There are many kinds of transactions you enter into that may some day affect the computation of your personal income tax. The best proof of the cost of anything you've purchased is a receipted bill or canceled check. If one of these pieces of evidence relates to any transaction that may affect your income in later years, it's a good idea to keep it. Your "partner" may some day ask to see it.

(This column, based on Federal law, is written to inform — not advise. No person should ever apply or interpret any law without the aid of an attorney who knows the facts because the facts may change the application of the law.)

THANK YOU

To the many good folks who brought me their Income Tax and Accounting problems; and to Prophet Furniture Co. for the use of their facilities I am very grateful. I hope we may continue our relationships again in 1955.

Robert J. Leth, M.S.,
Fulton, Texas and
Ida Grove, Iowa. p49

Lincoln Ellsworth was the first man to fly across the Antarctic continent.

Go to Church Sunday

ST. PETER'S EPISCOPAL CHURCH

Preacher, Harry Carter
Minister in charge
Holy Communion and sermon first Sunday each month at 7:30 p.m.
Morning prayer and sermon each Sunday thereafter at 9:00 o'clock.
Sunday School at 10:15 a.m.
Ladies Guild meets first Tuesday each month.

SACRED HEART CATHOLIC CHURCH

Fr. G. J. O'Doherty, Pastor
Sunday Masses, 7 and 9.
Holy Days same as Sundays.
Week-day Mass at 8:00 o'clock.
Friday night Novena devotions at 7:30.
Confessions: Saturdays, Vigils before Holy Days and Thursdays before First Fridays, 4:30 to 6:00 and 7:30 to 8:30.

FIRST BAPTIST CHURCH

Rev. Brad Ramsey
Pastor
Sunday School, 9:45 a.m.
Preaching Service, 10:45 a.m.
Training Union, 7:00 p.m.
Prayer Service, Wednesday at 8:00 p.m.
Women meet every Thursday.

CHURCH OF CHRIST

L. C. Owen, Minister
Sunday School, 10:00 a.m.
Morning Worship, 11:00 a.m.
Sunday Evening Class, 6:30.
Sunday Evening Worship, 7:30.
Wednesday Night Service, 7:30.
Ladies' Bible Class, Tuesday Evening, 3 to 4 p.m.

CHRISTIAN SCIENCE SERVICES

Wilson and McCampbell Sts.
Aransas Pass, Texas
Sunday Services, 11:00 a.m.
Wednesday Evening Service at 8 o'clock.
All are welcome.

FIRST BAPTIST CHURCH

Fulton, Texas
Rev. L. G. Rogers, Pastor
Sunday School at 9:45 a.m.
Preaching Service at 10:45 a.m.
Wednesday, and Saturday night services at 7:30 p.m.
B.T.U. Sunday, 7 p.m.; preaching service, 8 p.m.

ASSEMBLY OF GOD CHURCH

Rev. Lee Bateman, Pastor
Sunday School, 9:45 a.m.
Regular Service at 11 a.m.:
Evening Service at 8:00 p.m.
Tuesday Night Service, 8:00 p.m.
C.A. Service, 8 p.m. Thursday

FIRST PRESBYTERIAN CHURCH

Sunday School at 9:45.
Worship Service at 11:00.
Evening Service at 7:30.
Men's Meeting 2nd Monday of month, 7:30 p.m.
Pioneer Young People meet Tuesday, 7:30 p.m.
Senior Young People's Meeting, Wednesday at 7:30 p.m.
Women of the Church, Third Thursday, 3:00.
Evening Circle 2nd Monday at 7:30 p.m.
Circle 1 meets 1st Thursday at 3:00.
Circle 2 meets 1st Thursday at 3:00.

METHODIST CHURCH

Rev. Calvin Peterson, Pastor
Sunday School Services at 9:45 a.m.
Morning Church Service at 11:00 o'clock.
Evening Worship at 7:30 o'clock.
Methodist Men meet 2nd Thursday at 7:30 p.m.
Midweek Service, Wednesday, 7:30 p.m.
Choir practice, Wednesday night.
W.S.C.S. meets 1st and 4th Thursday at 3:00 o'clock.
Fellowship dinner, first Sunday at noon.
Young People's meetings before and after Sunday night service.

NORTHSIDE BAPTIST CHURCH

Rev. W. C. Pearce, Pastor
Sunday School, 9:45 a.m.
Preaching Service, 10:45 a.m.
Training Union, 6:30 p.m.
Prayer Service, Wednesday, 7:30 p.m.

FIRST CHRISTIAN CHURCH

Geo. F. Dennis, Minister
Rife and Nelson Sts.
Aransas Pass
Bible School, 9:45 a.m.
Morning Worship, 10:50 a.m.
Evening Worship, 7:30 p.m.
Prayer and Bible Study, Wednesday, 7:00 p.m.

The Above Directory of Churches Is sponsored by the Following Merchants

- Roaten Drug Store
- First National Bank
- Glass, Sorenson, McDavid
- Del Mar Grill
- Rockport Electric Co.
- Elkins Sinclair Station

Healthy Living Demands Adequate Sleep

Austin, Tex. — Sufficient sleep is an important part of healthy living. Adequate sleep helps you to feel well, and builds up your resistance to diseases declared Dr. Geo. W. Cox, state health officer. An occasional night of too little sleep will not hurt you. However, when you habitually go from day to day without enough sleep, damaging results are felt.

In addition to ruining your disposition, insufficient sleep plays havoc with your coordination and timing. Workers who are short of sleep and rest tend to be accident prone. Some men who try to hold an extra-time job to increase the family income, have paid a heavy penalty in damaged health and accidents.

Good sleeping habits take practice. It's like anything else you do. No one can learn to become an expert swimmer, just by reading about various strokes. You have to spend many hours practicing to become a good swimmer.

Listening to the radio, watching television, or working on hobbies that persons are loathe to quit are sometimes causes of staying up too late. Late entertaining also cuts out many hours of sleep. A regular time and routine for getting to bed will help put you in the mood for sleep. The routine may mean reading the evening paper or a light story after you are ready for bed. Or it may be listening to soft music just before you turn out the lights and snuggle under the covers.

A regular routine for getting children to bed also helps put them in the mood for sleep. It helps when mothers are relaxed and pleasant when it's the children's bedtime. After reading them a quiet, pleasant story, the children will probably be ready to turn out the light and fall asleep. This helps form good sleeping habits, which mean much to a child's

health. Young children need lots of sleep—about twelve hours for the pre-school youngsters, and nine to ten hours for older children.

Mrs. George Sorenson of Palacios is visiting her mother, Mrs. Manch Brundrett and other relatives in Rockport for a few weeks.

Whiskey will not age in a glass container.

READ THE CLASSIFIED ADS

CHRISTIAN SCIENCE SOCIETY
Aransas Pass, Texas

Cordially Invites You to Attend
A Free Christian Science Lecture
Entitled
'CHRISTIAN SCIENCE: ITS PREMISE AND ITS PRACTICE'
By
GRACE JANE NOEE, C. S.
of Chicago, Illinois

Member of the Board of Lectureship of the Mother Church, the First Church of Christ, Scientist, in Boston, Massachusetts

SUNDAY AFTERNOON, MARCH 28—3 O'CLOCK
LONE STAR PARK BUILDING
ARANSAS PASS, TEXAS

CALL 6118

FOR ALL YOUR PLUMBING NEEDS

L-S PLUMBING

Les Sorenson
ROCKPORT

MEMORY LANE

VITAMINS

Remember when vitamins were unknown? Considering their widespread use today, how did you ever live without them? Well, you got your vitamins alright, but fresh from the farm, three times a day, instead of in bottles from the corner drug store. Mother fed her family sensible and well on unrefined grains and other home-grown products. Remember.

A Cage-Marshall service is a lovely tribute to the departed and a source of much comfort to those who remain.

Cage-Marshall Funeral Homes
Phone 451

Seth H. Steele

Registered Civil Engineer
General Contractor

Complete Plan Service. Assistance in Obtaining Finances.
Specializing in Quality Construction.

FREE ESTIMATES

Phone 482 P. O. Box 595
Rockport

THE FIRST NATIONAL BANK OF ROCKPORT PRESENTS

INTERESTING FACTS ABOUT TEXAS



GOVERNOR JAMES S. HOGG AND WILLIAM JENNINGS BRYAN ON PANTHER HUNT IN 1899

Texas best hunting grounds are located in the eastern part of the Edwards Plateau, with its timbered hills and spring-fed streams. It is estimated that the total deer kill in Texas during the fiscal year ended August 31, 1950, was 38,720, and the turkey kill was 19,097. One of the most prolific and valuable of the game birds is the dove. Its annual kill is close to 3,750,000.

Member Federal Deposit Insurance Corporation
Federal Reserve System

PERRY HORINE



Your Singin' Great Southerner
500 Wilson Tower
Corpus Christi, Texas

When you invest your money in Life Insurance

Why not invest with THE BEST?

Call me collect for an appointment.
Phone Corpus Christi 3-9581

COLLEGE FUNDS, MORTGAGE CANCELLATIONS, ESTATE PLANNING

SAVE ON OUR Everyday LOW PRICES!

OLEO	ARMOUR'S BANNER POUND	19c
HUNT'S CATSUP, bottle	15c	COFFEE
EGGS, dozen	49c	FOLGER'S, lb. can 99c
DELIGHT DOG FOOD	3 Cans 19c	Yarborough's lb. pkg. 98c
COFFEE	H. & H. MASTER CHEF Pound Can 89c	Lb. Pkg. 87c
GLADIOLA FLOUR, 5 lbs.	45c	ARMOUR'S COLUMBIA BACON, lb. 59c
ARMOUR'S BOLOGNA, lb.	20c	HAMBURGER, lb. 29c
ARMOUR'S STAR, CELLO WRAPPED HENS lb.	45c	SUGAR, 5 lbs. 47c
Pinto Beans	2 POUNDS	25c

A FEW OF THE 62 ITEMS ON SPECIAL THIS WEEK

PAY CASH AND PAY LESS

PICK AND PAY GROCERY

Aransas Pass

PVT. TRAVIS L. SMITH STATIONED AT FT. BLISS

Fort Bliss, Texas—Pvt. Travis L. Smith, son of Mr. and Mrs. Somer Smith, of Rockport, recently began eight weeks of basic training in the Antiaircraft Artillery Replacement Training Center at Ft. Bliss.

Mr. and Mrs. Edwin Mundine have returned home from a ten days visit with relatives and friends at Elgin and Thrall, Texas.

A dog's normal body temperature is 101 degrees or more.

For Sale

Insured Title Available
5-room house and bath on 165 x115 foot lot, two blocks from high school on new street, large shade trees; also 85x115 foot lot for sale.
PHONE 820
JACK KELLER
ctf

Hugh Owens Dies In Aransas Pass

Hugh Owens, 64, died at his home in Aransas Pass at 7:45, March 5, after an illness of 12 years.

He was a retired government engineer and a veteran of World War I.

Survivors are his wife; a daughter, Mrs. J. M. Brittan; two brothers, Ransome and Arthur Owens; a sister, Miss Willie Owens, all of Aransas Pass.

Funeral services were held Saturday at 3 p.m. in the Cage-Marshall Funeral Chapel with the Rev. Burton Riddle, of the First Presbyterian Church officiating. Burial was in Prairie View Cemetery. Mr. Owens and his brothers and sisters were all raised at their home at the Oak Grove settlement and are well known in Rockport.

Seth Steele, Jr., a student at A. and I. College at Kingsville was in Rockport visiting his parents, Mr. and Mrs. Seth H. Steele Sunday.

There is more water than land on the earth's surface.



FAMILY TRADITION—Rin Tin Tin IV, the great-great-grandson of one of the silent screen's greatest money-makers, pays tribute to an oil painting of his famous ancestor. A new telefilm series will soon feature the three-year-old German Shepherd in the kind of adventure for which Rin Tin Tin I was noted.

Victoria Horsemen Club To Stage Rodeo March 25, 26, 27

Victoria—Victoria's first big-time rodeo since 1946 will be presented here March 25, 26 and 27 by the Victoria Horsemen's Club. The three nightly performances will be sponsored by the Victoria Horsemen's Club and produced by Henson and Janacek of Crosby, Texas, Edgar M. Gossett, club president has announced.

With \$1,250 added prize money, events will be bareback and saddle bronc riding, steer wrestling, bull riding, tie-down calf roping and ladies' barrel races. Arrangements are also being made for a cutting horse contest.

Among the features will be a downtown parade at 3:30 p.m. on opening day. The Texas Military Institute Honor Guard will appear in the parade and at the opening performance. Performances will begin at 8:00 p.m. each night at the club's arena in the Victoria City Park, near Riverside Baseball Field.

The Horsemen's Club, a non-profit organization of ropers and riders, will use proceeds to improve the arena and to expand its free instruction for youngsters interested in learning to ride.

Admission, with tax included, will be \$1.50 for adults and 75 cents for children, with those seven years and under being admitted free.

JESSE B. VALDEZ IS WITH MARINES IN CALIFORNIA

Santa Ana, Calif.—Marine Pfc. Jesse B. Valdez, son of Mr. and Mrs. Joe Valdez, of Rockport, is a member of Marine Instrument Training Squadron 10, at the El Toro Marine Corps Air Station. He is serving as an aircraft maintenance and repairman.

Steve Atwood, son of Mr. and Mrs. Ted Atwood went to Sinton Monday morning to be inducted into the Army. Steve was called last month, but was sent home because the quota was filled without him.

Church Group Met With Mrs. McNorton

The Darleer Elliot Circle of the First Baptist Church met in the home of Mrs. M. D. McNorton at 9:30 a.m. Thursday morning.

Mrs. C. N. Butler, the circle chairman presided and gave the devotional. The Bible study was under the direction of Mrs. John Roaten.

The hostess served Coke, coffee and cookies.

Mr. and Mrs. Bill Kell were here from Hebronville Sunday, to spend the day with her mother, Mrs. Manch Brundrett.

FOR SALE

MATERIALS and SERVICE

Fill Dirt, Cushion Sand, Sandy Loam
Black Dirt, Shell, Gravel and Building Sand

WINCH TRUCKS, DUMPS, HI-LIFTS AND DOZERS

HOT OR COLD
Asphalt Paving — Driveways

DUDLEY BRACHT TRUCKING CO.

PHONE 3341 ROCKPORT ctf

Tips on calling LONG DISTANCE



AN UP-TO-DATE LIST OF OUT-OF-TOWN NUMBERS MAKES LONG DISTANCE AS EASY AS A LOCAL CALL

Long distance calls go through twice as fast when you know the number. To help you call by number every time, the telephone business office will gladly give you a handy long distance numbers booklet so you can keep a list of out-of-town numbers. Write or call for your free copy this week.



Southwestern Bell Telephone Co.

Keep a list and CALL BY NUMBER

SALVAGE LUMBER FOR SALE AT NAVAL AIR STATION

Salvage lumber is available for sale on the Naval Air Station, Corpus Christi, at the established price of \$7.50 per ton. Sales will be made to everyone except naval personnel and naval employees.

The supply of scrap on hand includes wooden boxes which will be sold from 50 cents to \$1 depending on size and condition. Surplus lumber is made available to the public after the Navy has salvaged all it can use.

A minimum of \$7.50 per individual sale has been set. Those interested may inspect the lumber at the salvage yard on the station. Gate sentries will direct prospective buyers and the material will be sold on a first come, first served basis.

William H. Pollard, of Rockport, now stationed at Randolph Field, Texas, is among the 334 new students for the spring semester at Southwest Texas State Teachers College at San Marcos.

Linda Mills and Teresa Johnson Hostesses to Girl Scouts

Hostesses for the day of Girl Scout Troop 3, at the Hinton home were: Linda Mills and Teresa Johnson. The troop made identification tags for the "Family Night Picnic," in Sinton, the night of March 12th. Mary Martha Shivers is full Girl Scout Uniform, represented Rockport in the Tri-County County Girl Scout Area Ceremony.

Being the Nation Peanut Week, the troop made peanut bracelets. Songs were sung while this was in progress.

Linda and Teresa then invited Mrs. Herbert Mills and Mrs. B. C. Gregory, honor guests, into the dining room to join the girls in helping celebrate the 42nd birthday of Girl Scouting.

The two hostesses had made a huge white and green cake with 42 candles, and Happy Birthday Troop 3. The Trefoil symbol representing the three parts of the Girl Scout Promise centered the cake. The table decorations were in keeping with the Girl Scout colors. Two large balloons with "Happy Birthday Troop 3" was the centerpiece, with a yellow and green flower arrangement. Punch was served to their leaders Mrs. Roy Hinton, Mrs. Arley Shivers and Mrs. Clark Wren; also Linda Deason, Robbie Boequet, Mary Lucille Jackson, Mary Martha Shivers, Joy Hamblin, Heather Wren, Jerry Armstrong, Carla Eller, Kay Burnett, Bonnie Johnson, Sandra Williams, Nancy Court, Linda Clingman, Betty Armstrong, Lois Smyth and Merrily Johnson.

Girl Scouts Entertained

Hosts Sunday afternoon were Mr. and Mrs. Roy Hinton, Mr. and Mrs. Arley Shivers, Mr. and Mrs. Clark Wren, Mrs. Herb Mills and Mrs. Bob Ayers. They entertained the Girl Scouts of Troop 3. The group attended the matinee performance of Rip Van Winkle, a major production of the Junior Theatre in Corpus Christi, given in the Alameda Playhouse.

Costumes were early Dutch, with the play set in a small village in the Catskills in 1763-1783. The play adaptation of Washington Irving's famous short story, is by Emory Thompson of Houston, Texas. Walter Jensen directs the show and Mrs. Belba Henry, instructor of the children's group was stage manager. The twenty girls of troop 3 went back-stage and met the cast.

Stop Taking Harsh Drugs for Constipation

Avoid Intestinal Upset! Get Relief This Gentle Vegetable Laxative Way!

For constipation, never take harsh drugs. They cause brutal cramps and griping, disrupt normal bowel action, make repeated doses seem needed.

When you are temporarily constipated, get sure but gentle relief—without salts, without harsh drugs. Take Dr. Caldwell's Senna Laxative contained in Syrup Pepsin. The extract of Senna in Dr. Caldwell's is one of the finest natural laxatives known to medicine.

Dr. Caldwell's Senna Laxative tastes good, gives gentle, comfortable, satisfying relief of temporary constipation for every member of the family. Helps you get "on schedule" without repeated doses. Even relieves stomach sourness that constipation often brings.

Buy Dr. Caldwell's. Money back if not satisfied. Mail bottle to Box 280, New York 18, N. Y.

CLIP OUT THIS AD—PASTE ON PHONE BOOK FOR HANDY REFERENCE

Going to the City?
PLAN TO GO CONTINENTAL TRAILWAYS
NO TRAFFIC WORRIES! NO PARKING PROBLEMS!

NORTH BOUND DEPARTURES
5:39 a.m. 9:14 a.m.
1:13 p.m. 3:14 p.m. 6:44 p.m.
Turn-around Bus Leaves Corpus Christi for Rockport Only at 6:20 p.m.

SOUTH BOUND DEPARTURES
6:35 a.m. 10:07 a.m.
1:17 p.m. 5:24 p.m. 11:02 p.m.

Thursday, March 18, 1954

CONTINENTAL TRAILWAYS

When you plan a trip
PLAN TO GO CONTINENTAL TRAILWAYS.
Eliminate driving fatigue and save up to 6c a mile.

HAYNES COFFEE SHOP
On Yacht Basin Telephone 6282

FIRST TIME IN ROCKPORT

100% HOME LOANS To Veterans

ALSO

20 Percent Down Payments FOR F.H.A. LOANS TO \$15,000

AND

Special Small Down Payment Loans FOR \$6,000 and \$7,000 CLASS HOMES

SETH H. STEELE

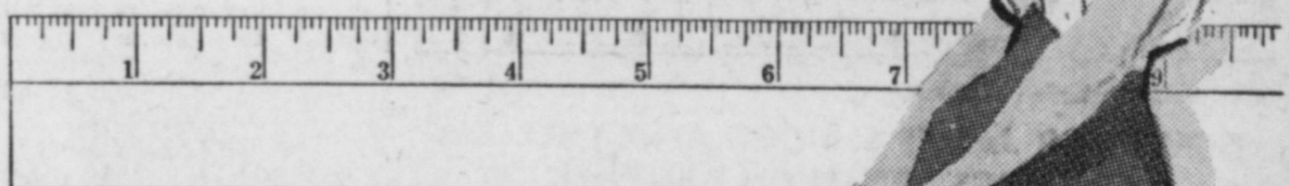
GENERAL CONTRACTOR

P. O. Box 595

ROCKPORT

Phone 482

Extra energy without added inches



eat **Borden's** cottage cheese

Borden's Cottage Cheese is a delicious high-protein food... yet it's low in calories... only 40 calories per ounce. Eat heartily, yet keep that waistline in line with Borden's delicious Cottage Cheese...

Low in calories High in proteins



Thomas McClelland of the U. S. Army, who has been stationed at Camp Polk, La., is here on a months leave visiting his sister and brother-in-law, Mr. and Mrs. E. E. Brown. He will leave about April 19 for Houston and fly to Tacoma, Wash. From there he will go to Japan and Korea. He has been in the army seven years and this will be his second tour to Japan and Korea.

Rockport Lions Club Attendance Swells

The Rockport Lions Club held their regular meeting at the Methodist Annex Tuesday, Mar. 16. The attendance was swelled by 8 guests: L. T. Wardrup, Tom Shults, Johnnie Johnston, Ellis L. Clark and Rev. D. S. Green, all of Rockport.

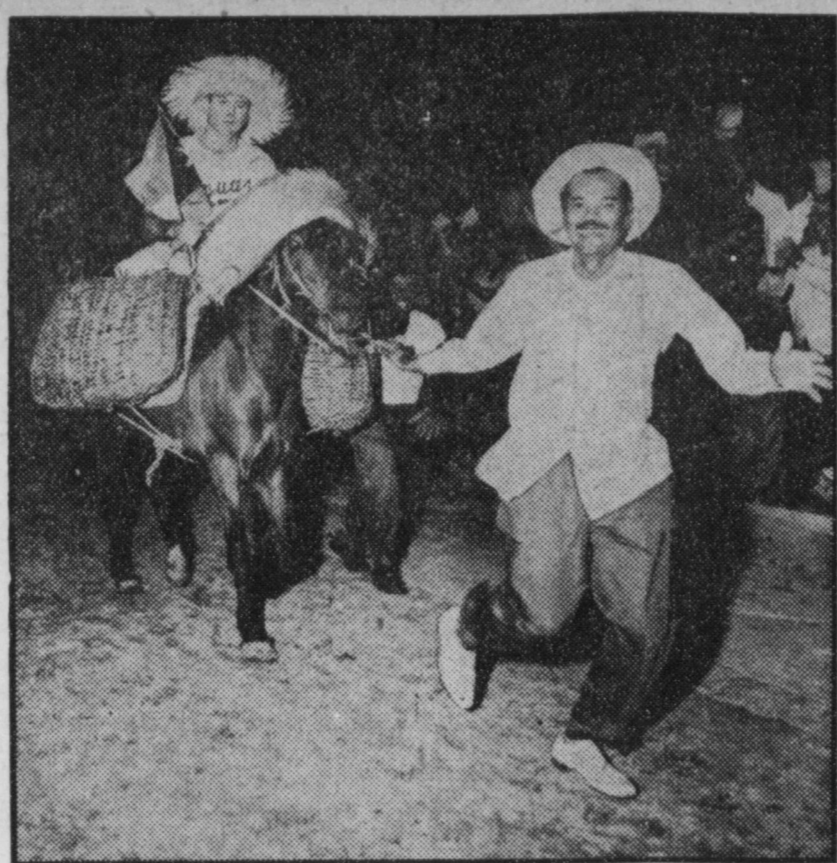
Mayor Seth Steele introduced Mr. F. Schaefer, of the State Health Department in Austin in addition to Harley Carswell, of San Antonio and Eugene Vinyard, of Corpus Christi, fiscal agents for the City of Rockport and Irving S. Seligmann, of San Antonio, consulting engineer for the city.

These men each gave a very good talk on why Rockport should have more water and a better sewerage system.

Lion President Roy Rogero announced the next Lions meeting to be held at the Methodist Annex as LADIES NIGHT. Those that want ticket for this dinner should contact Lynwood Eller at the Auto Service, phone 505.

JOIN!

Your Red Cross spent \$6,800,000 last year for disaster preparedness and relief. Over 25,000 families were aided in 319 disaster relief operations. When disaster struck, the Red Cross provided nursing services, blood supplies, motor service and emergency food and shelter. Disaster will strike again this year, so support the 1954 Red Cross campaign generously.



VICTORY RIDE—Mickey Owen, former catcher for the Brooklyn Dodgers, gets a victory ride through the Sixto Escobar Stadium in San Juan, Puerto Rico. Owen recently piloted his Puerto Rican team to victory in the Caribbean World Series against Panama, Cuba and Venezuela.

High School P.-T.A. Hears Former Missionary

The Rev. M. C. Brittain, of Taft, retired minister and former Baptist missionary to China, was the guest speaker for the meeting of the Aransas County High School P.-T.A., Thursday night. He discussed "Better Communities". He suggested that a community planning board, made up of civic, church and school leaders, so that programs of different organizations would not conflict.

The principal item on the agenda in the business session was the election of officers. They include Mrs. M. A. Cannon, president; Mrs. Marvin Bearden, 1st vice president; Mrs. J. R. DeForest, 2nd vice president; R. D. Torres, 3rd vice president; Mrs. Grady West, secretary; Mrs. C. L. Thomas, corresponding secretary; Mrs. J. D. Griggs, treasurer; Mrs. Birdie Cole, historian.

Delegates to the district convention in Kingsville include: Mrs. Harry Mills, president, Mrs. Cannon, president elect and Mrs. C. L. Thomas. Mrs. Mills has some more credentials for this district meeting if other members of the P.-T.A. wish to attend.

16 Ladies Complete First Aid Course

The Rockport P.-T.A. sponsored a first aid course under the committee on civil defense. Dick Fox is chairman of this committee and Mrs. Bob Ayers is the co-chairman. Mrs. Ayers was in charge of the first aid course.

R. L. Harper, of Taft, was the instructor. He complimented the ladies on the way they worked, even learning how to use the resuscitator of the Aransas County Emergency Corps, if so needed.

They 16 ladies were: Mrs. Edith Stevens, Mrs. Malcolm Bocquet, Mrs. J. B. Jackson, Mrs. Bob Ayers, Mrs. A. C. Shivers, Mrs. Leonard LeBlanc, Mrs. A. L. Taylor, Mrs. Earl Thomas, Mrs. Seth Steele, Mrs. H. B. Ramsey, Mrs. Katherine McLester, Mrs. Walter Heldenfels, Mrs. Hazel Happner, Mrs. Jane Eller, Mrs. J. D. Griggs and Mrs. Madaline Johnson, who received First Aid certificates, making them first aiders for three years.

Three members of the class gave their blood types to the class and these ladies will be glad to receive more blood types of those willing to give blood if necessary.

Sgt. and Mrs. Jimmy Hayden and Karen of Seguin and Cloyce Hayden from S.T.S.T.C., visited their parents, Mr. and Mrs. Clyde C. Hayden Sunday.

Mrs. Hannah Stone has returned to her home here after spending a year in California. He sister, Mrs. Nora Higgins, came home with her.

Mr. and Mrs. J. Robert Jones and Mr. and Mrs. Jimmy Jones went to Hempstead last week end to visit Mr. and Mrs. W. A. Loggins.

Alexandria, Egypt, was founded by Alexander the Great.

Cowboys call horseshoe pitching "barnyard golf."

Gutenberg was the first to print from movable type.

COUNT ON US TO DO THE JOB RIGHT!



When you want complete service for your car... you're talking our language... because our reputation is built on thoroughness.

ELKINS

Sinclair Service Station

PHONE 6150 Rockport, Texas

c51



\$2.00 to \$4.00

TRADE-IN ALLOWANCE ON **WIZARD BATTERIES**

CAGE'S INSURANCE

Pays Cash Anywhere in the United States

Policies written for every member of the family, from 1 month to 90 years of age. For \$50.00 to \$1,000.00

W. L. WILBURN, Mgr.

Telephone 63J Collect

Taft, Texas

or see **MRS. WALTER PAUGH**



ENTIRE STOCK MUST BE SOLD IN 14 DAYS
\$50,000 STOCK To Be Sacrificed In 14 Big Selling Days
Sale Starts Friday, March 19th, 9 a.m.
EVERY ITEM IN OUR STORE WILL CARRY A TREMENDOUS DISCOUNT.

Our store was slightly damaged by smoke from the Dubose Building and Central Pharmacy fire. Our entire stock was airkemed to eliminate all traces of smoke odor from our merchandise.

Let nothing keep you away from this mighty smoke damage sale - - now is the time to buy your Easter and Spring Merchandise at tremendous Savings - -

BE HERE WHEN THE DOORS OPEN FRIDAY AT 9 A. M.

<p>ALL PIECE GOODS</p> <p>In Our Store</p> <p>15%</p> <p>DISCOUNT</p>	<p>ONE LOT LADIES' DRESSES</p> <p>Values to \$16.95</p> <p>SALE PRICE</p> <p>\$3.50</p>	<p>Children's Seersucker BOXER SHORTS</p> <p>Regular 79c Values</p> <p>SALE PRICE</p> <p>35c</p>	<p>You Can Afford to Put Them Away Until Next Winter. BOYS JACKETS and COATS</p> <p>Values to \$9.95</p> <p>SALE PRICE</p> <p>\$4.95</p>	<p>LADIES DRESS SHOES</p> <p>Values to \$7.95</p> <p>SALE PRICE</p> <p>\$1.99</p>	<p>Men's New Spring Long Sleeve SPORT SHIRTS</p> <p>Regular \$3.95 Value</p> <p>SALE PRICE</p> <p>\$2.50</p>	<p>Men's Light Weight GABARDINE JACKETS</p> <p>Regular \$14.50 Values</p> <p>SALE PRICE</p> <p>\$5.95</p>	<p>Men's New Spring Roblee Nylon Mesh Dress SHOES</p> <p>Regular \$12.95 Values</p> <p>SALE PRICE</p> <p>\$8.95</p>	<p>Men's Long Sleeve Gabardine-Flannel and Knit SPORT SHIRTS</p> <p>Values to \$4.95</p> <p>SALE PRICE</p> <p>\$2.50</p>
<p>PURREY BLANKETS</p> <p>Pastel Colors. Size 72 x 90. 3 inch Satin Binding.</p> <p>\$10.95 Values</p> <p>\$6.75</p>	<p>MEN'S RIBBED UNION SUITS</p> <p>Ankle Length</p> <p>Regular \$2.45 Values</p> <p>SALE PRICE</p> <p>\$1.77</p>	<p>MEN'S JAYSON PAJAMAS</p> <p>Regular \$6.95 Values</p> <p>SALE PRICE</p> <p>\$4.29</p>	<p>LADIES' BLOUSE</p> <p>Values up to \$8.95</p> <p>SALE PRICE</p> <p>\$3.00</p>	<p>EXTRA SPECIAL Children's SHOES</p> <p>Values to \$5.95</p> <p>SALE PRICE</p> <p>\$2.00</p>	<p>EXTRA SPECIAL MEN'S FLORSHEIM SHOES</p> <p>\$17.95 to \$21.95 Values</p> <p>SALE PRICE</p> <p>\$12.50</p>	<p>Men's Leather HORSEHIDE COATS</p> <p>Regular \$32.50 Values</p> <p>SALE PRICE</p> <p>\$10.00</p>	<p>Men's Extra Heavy ARMY TWILL SHIRTS</p> <p>Regular \$3.98 Values</p> <p>SALE PRICE</p> <p>\$2.69</p>	<p>MEN'S WORK SHOES</p> <p>Regular \$4.85 Values</p> <p>SALE PRICE</p> <p>\$2.50</p>
<p>NOTE!</p> <p>Due to slight smoke damage to our store every item in our store will carry</p> <p>Tremendous Discounts</p>	<p>MEN'S DAVIS DRESS FELT HATS</p> <p>\$7.50 & \$8.50 Values</p> <p>SALE PRICE</p> <p>\$5.00</p>	<p>BOY'S DRESS OXFORDS</p> <p>Sizes 2 1/2 to 6</p> <p>Values to \$6.95</p> <p>SALE PRICE</p> <p>\$3.00</p>	<p>Men's McGregor CORDUROY SPORT COATS</p> <p>Regular \$22.95 Value</p> <p>SALE PRICE</p> <p>\$12.50</p>	<p>LADIES DRESS SHOES</p> <p>Values to \$5.95</p> <p>SALE PRICE</p> <p>\$1.00</p>	<p>Men's New Spring JAYSON DRESS SHIRTS</p> <p>Regular \$3.95 Values</p> <p>SALE PRICE</p> <p>\$2.87</p>	<p>MEN'S RAYON DRESS SOCKS</p> <p>Slightly Irregular</p> <p>46c Value</p> <p>SALE PRICE</p> <p>14c</p>	<p>MEN'S RIBBED UNDERSHIRTS and DRAWERS</p> <p>Regular \$1.79 Value</p> <p>SALE PRICE</p> <p>99c</p> <p>GARMENT</p>	<p>AT A GIVE-AWAY MEN'S DRESS SHOES</p> <p>\$9.95 to \$12.95 Values</p> <p>SALE PRICE</p> <p>\$5.00 pair</p> <p>Come early before they are picked over.</p>

KAUFMAN'S DEPT. STORE

ARANSAS PASS

\$5.00 pair

Come early before they are picked over.

HEART DISEASE IS NO. 1 KILLER IN TEXAS

Austin—Heart disease is the number one killer in Texas. "What kind of a heart have you?", asks Dr. Geo. W. Cox, State Health Officer. The periodic check-up with your physician will tell you. The Tuberculosis X-Ray Survey in the state conducted by the Texas State Department of Health has brought to light many non-tuberculous abnormalities, some of these have been heart conditions. The three present major forms of heart trouble are: rheumatic heart disease, high blood pressure and coronary heart disease. Rheumatic heart disease, the most common type of early life, occurs as the result of one or more attacks of rheumatic fever. It is a public health problem for which very little has been done, yet with early diagnosis and proper medical care during the acute and convalescent stages, children who develop rheumatic fever can be largely spared from rheumatic

Ten Pass Tests

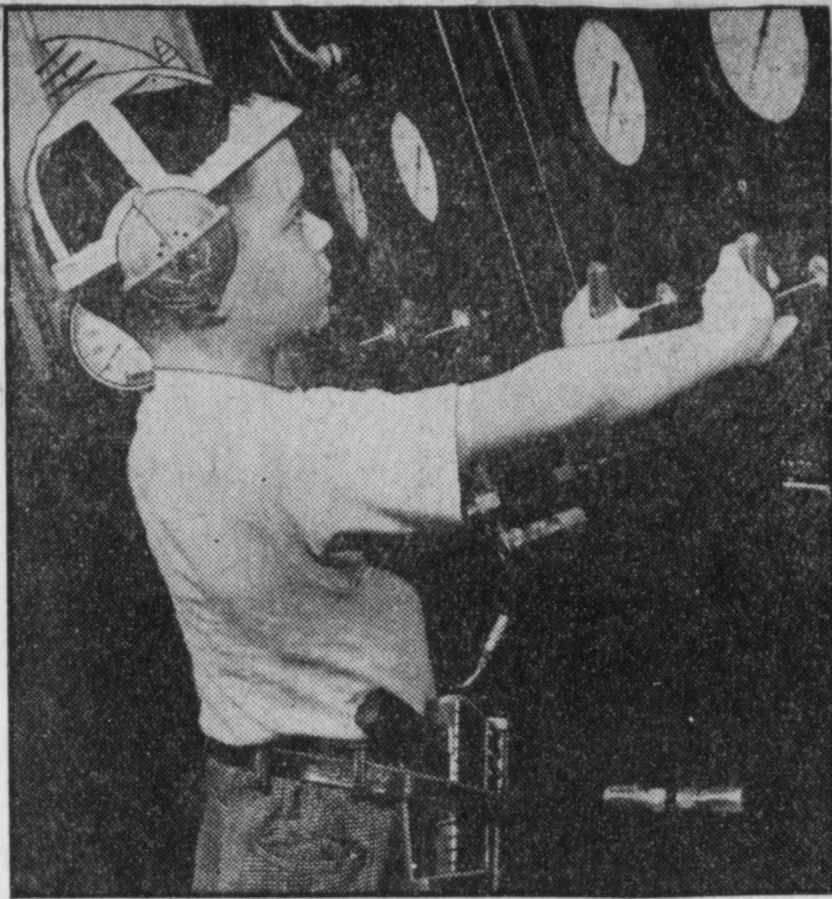
The following persons completed the examinations given for Texas drivers licenses on March 12: Karl Kerl, of Fulton, Mrs. Donnie Clark, C. O. Lutz, Raymond Jackson, Mrs. Alfred Courts, Preston McHugt, Melba Joyce Gwynn (beginner), Frankie Lee Scott and Wilma Stephens, all of Rockport and Mrs. John Reeves, Jr., of Belaire. The next examination will be given on March 26, at 9:00 a.m. at the county court house, by F. J. Rystad, examiner.

Mr. and Mrs. L. T. Wardrup and daughter, Mona, spent the week end in Cleveland, Texas.

heart disease in later life. Another major cause of heart trouble is high blood pressure or hypertension. This is the most common heart disease, but we do know that it is most common in people who are overweight, and that it is associated with long, continuous nervous strain, high tension and constant worry. Treatment of high blood pressure is fairly successful in the majority of cases.

Coronary heart disease is a disease of the arteries which supply the heart muscle itself with blood. A majority of persons survive the first attack, and with good medical care, rest and common sense precautions, may even live a normal life span. Syphilitic heart disease can be prevented by early and adequate care of the systemic disease, a problem which has been simplified by the use of penicillin.

Research in the medical sciences is constantly improving the outlook for the cardiac patient, yet each individual must assume the responsibility for obtaining the benefits of this knowledge from his physician for himself and family.



DREAM COME TRUE—ALMOST—A small boy's dream of piloting a rocket ship comes as nearly true as science permits for seven-year-old Neil Smith of Minneapolis, Minn. Neil got his big chance to operate ultra-advanced flight controls when an aeronautical engineering laboratory in Minneapolis invited the sons of technical employees to visit the plant.

Well, Scratch My Back, And Call Me Allergic

Being allergic is no joke. Allergy is defined as being sensitive to a substance touched, eaten, or breathed and may take the form of a skin "rash," hay fever, asthma, an upset stomach, or headaches. The allergic patient may be treated by his family doctor, or if his case is especially complex, may need the services of a dermatologist or allergist. A dermatologist is a skin expert, and an allergist specializes in the diagnosis and treatment of any allergy, whether it involves the skin, the food tract, or the respiratory system.

Regardless of what doctor tackles the problem of allergy, he must try to find out the offending substance and remove it from the patient's diet or surroundings. This may be easier said than done. Sometimes a careful history of the patient's life and habits must be taken, numerous skin tests carefully done and interpreted, and close observation of the patient carried out. In the case of foods, a rigid diet may be necessary. When basic food substances like milk, eggs, and wheat are concerned, the patient sometimes can be made less sensitive to these foods.

It is amazing the kinds of materials that can cause allergies. Patients may be sensitive not only to one food but a group such as the entire bean family. Contact dermatitis is a condition in which the skin shows sensitivity to something touching it; the condition has been caused by such commonplace things as face powder, leather, or rubber and by such rare ones as strike-anywhere matches or paint finishes on paring knives or toilet seats. Extrasensitive patients have been known to break out if they smell certain foods like eggs or fish, and others by com-

ing in contact with the hair lotion or perfume of a spouse! It is known that an allergic man or woman may have an allergic child, and if both are sensitive, the chances that their offspring will be sensitive are even greater. A dermatologic problem especially grave in Texas is that of skin cancer. Doctors in the state who discuss with their colleagues in other regions how much skin cancer they see and treat are accused politely of telling another "Texas tall tale," one Texas physician has remarked.

One forerunner of skin cancer is called "keratosis." By this is meant a thickened patch like a wart or callous appearing on the skin. Scientists have determined that people in the following categories are most likely to be affected with keratosis, and if several or all of these factors are present, the chances of getting skin cancer are increased: (1) those engaged in outdoor occupations and therefore exposed to the sun's rays, (2) those with blue eyes and blond or ruddy complexions, more especially men, (3) those in older age groups (40 years and older), (4) those in geographical regions getting relatively longer hours of sunshine with little dust or moisture, such as Texas and the Southwest, and (5) those working with irritating substances which are generally considered to be cancer-producing (soot, tar, pitch, crude petroleum).

Other conditions which perhaps may lead to cancer are moles, warts, burn scars, chronic ulcers, growths which are constantly rubbed, which bleed, or which change size or color, or other skin sores that refuse to heal. Because the forerunners of skin cancer (and skin cancer itself) can be easily seen and easily treated, there is no reason to be over-fearful of this condition unless there is too long a delay in seeking medical attention. Although the danger that skin cancer following keratosis may spread to other parts of the body (metastasis) is not great, early treatment guards against this possibility and in addition prevents too much scarring at the original site. Treatment may be by radium, surgery, or x-ray. The physician will decide upon the method of treatment according to the kind of growth present.

Mr. and Mrs. J. T. Alekna have a new daughter. She is the niece of Mr. and Mrs. Harold Alekna, of Rockport.

ROTARY CLUB

Merrit Huelett, of Saratoga Springs, N. Y., Ernest Simmons, of Lovington, N. M., and Rev. Dana Green, of Rockport, were guests at the regular meeting of the Rotary Club Wednesday noon.

The monthly letter from the District Governor, Percy Johnson, of Sinton, was read. It stated that the District Assembly for the presidents, secretaries and boards of directors and their Rotary Anns will be held in Kingsville, May 9 and 10.

Rev. Dana Green expressed his appreciation of Rockport and its people and the fine human relationship which he finds exceptionally high here.

Travis Bailey reported that the Rotary Club in Ingleside is sponsoring a Junior League Baseball Club this year and suggested that the Rockport Club also sponsor one. Leon Taylor, of Ingleside, will be invited to explain to the local club the details of the organization.

Ernest Simmons, of Lovington, N. M., told the club he visited the west coast two years before he came to Rockport. He liked the climate and beaches in California, but likes the people here better, so have bought a lot and expect to build a home here.

4,420 Texans Discharged From Service In February

Austin—A total of 4,420 Texans were reported as being separated from the armed forces in February, according to a State Selective Service headquarters report to Washington released Wednesday.

During the same month, a total of 4,091 Texans went into the service by both enlistment and draft route, the report showed. A little more than 3,000 of this number enlisted.

A total of 1,007 draftees were inducted in Texas, Brigadier General Paul L. Wakefield, state draft director said, and 57 Texas inductees were processed in other states.

Most of the Texans going into the service went into the army, 759 by enlistment and 1,064 through the draft board.

The Air Force got the most enlistees, 1,137.

State draft boards sent only 548 men for physical-mental examinations during February. Of this number, 285 were rejected by the armed forces.

G. A.'s of Fulton Baptist Church To Meet Monday

The G. A.'s of the Fulton Baptist Church will have a social meeting at the home of Opal Owens, at 7 p.m. Monday, Mar. 22.

Bluebonnets In Bloom At Cemetery

If you have not seen the bluebonnets at the Rockport cemetery, it will be worth your while to drive through the grounds now as they are in full bloom. The grounds are in excellent condition and the blossoms show to a good advantage and are most colorful.

— Read Classified Ads —

Mr. and Mrs. Staffa, Mrs. Alekna Return Home From Trip

Mr. and Mrs. H. Staffa and Mrs. Harold Alekna returned home Friday from a month's visit to North Miami, Fla., with Mr. and Mrs. Anthony Alekna, of So. Boston. On the trip they visited Mr. and Mrs. M. M. Prada, of Fort Lauderdale, Fla. and Cape Cod. They went fishing on the Prada's boat, Valerie, and Mrs. Alekna caught a 30-pound kingfish.

Mr. and Mrs. J. D. Kinsey and sons, Stephen and David, of Corpus Christi, were Sunday visitors at the homes of their parents, Mr. and Mrs. E. J. Johnson and Mr. and Mrs. I. E. Allemang.

M. W. Cochran

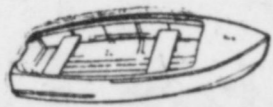
Planning Engineer
Property Development
Sound Values in Real Estate

AUSTIN ST. - DOWNTOWN

Rockport
PHONE 6335

ctf

Don't Wait For The Spring Rush



PROTECT AND REINFORCE THAT OLD BOTTOM

with

Fibre Glass
NOW

MAKE THAT OLD BOAT A NEW ONE

FULTON BOAT YARD

BILL JOHNSON, Owner

Phone 423

Fulton ctf



Lumber for Every Purpose

No matter what your requirements, we urge you to see us before you place a lumber order. Our gigantic stock all but eliminates the necessity for "substitutes" . . . guarantees top quality, carefully seasoned lumber at very moderate prices. Delivery without charge. Come over today.

Chas. T. Picton Lbr. Co.

Phone 254

Rockport

Nothing Compares with the **STA-NU** Finishing Process

Because Sta-Nu Makes Clothes Look and Feel Like New Again.

You'll look better, your clothes will last months longer with our expert dry cleaning and longer-lasting press!

Prompt, Courteous Service

PHONE 294

TRY STA-NU TODAY IT COSTS NO MORE

LASSITER'S
CLEANERS

Rockport, Texas

Have a **Pearl** LAGER BEER with your Oyster



Join the SWING to PEARL BECAUSE OF ITS CONSISTENT GOOD TASTE

ALWAYS SAY, "BOTTLE OF PEARL, PLEASE"

Bond Forum

(Continued from Page 2)

fires little attention and has practically no mechanical parts.

QUESTION: Will the proposed bond money for water distribution and sewage collection be spent to serve areas outside the Rockport city limits?

Answer: No.

QUESTION: Why wouldn't it be more desirable to build the new sewage treatment plant south of Rockport rather than north of the city?

ANSWER: Preliminary engineering studies show that it would be more costly to locate a plant south of the city. The sewage collection system was built to lead toward the present plant on the northwest side of Rockport. Too, the prevailing southeasterly breeze might well pose a problem if the treatment plant were south of the city.

PANTHER LOOSE

We see by the daily papers that Los Angeles is all hot and bothered by reports that one lonely little 140 pound panther is loose in that great big city. Pity poor Rockport! There have been 35 rampaging LIONS loose in this town for quite some time (some of them weighing nearly 300 pounds,) tackling the people on the streets, in their homes, and even in their churches and other meeting places, clawing at everybody's pocket-book, for this or that. You meet one of these Lions and his mouth is open and his "claws" out (with a ticket in it)—with a roar "Put it in the pot, boy!" Of course the things they want all this money for are silly. Why should needy children have eye glasses or hearing aids? Why should those kids, crippled by polio or other children's diseases, be expected to want to go to a two-weeks summer camp? Why, Oh! Why? . . . Are those rampaging LIONS trying to put the names of our streets on concrete markers? Who is going to look for who, except maybe some of those tourists who fill our courts, groceries, filling stations restaurants and fishing waters, to the tune of two and a half million dollars a year? . . . Lets either subscribe cheerfully to the never-ending roars—for us to do this or that, or have the sheriff throw us into our NEW jail. Nope, can't do that, he's a Lion, too, and we haven't any new jail, anyhow. xxx

Two Rockport Citizens Honored At Forum

Top awards in the Sixth Annual Forum, sponsored by the By-liners in Corpus Christi, went to Eva Willes Wangsgaard, of Ogden, Utah; Minnie Lee Shepard, Austin and Ardath Frances Hurst of Nachogdoches.

James D. Donaldson, of Rockport, was one of the runners-up for this award.

Among those receiving certificates of merit were Mrs. Emma H. S. Reese and James D. Donaldson.

Sixty poets registered for the workshops held in connection with the Forum and 129 poems were entered in the contest. James D. Donaldson's talk at the Forum Friday night was well received.

Mr. and Mrs. Virgil Mullan, Mrs. L. V. McLester, Mrs. Alice Smith and Mrs. T. C. Kelly returned Wednesday from San Antonio, where they attended the I.O.O.F. Grand Lodge and the Rebekah Assembly of Texas. The Grand Lodge and the Rebekah Assembly will meet in Corpus Christi in 1955.

Renwar Pays \$120,000 Cash For Bailey Aransas Lease

Renwar Oil Corp. of Corpus Christi has paid \$120,000 cash for 800 acres of the Travis Bailey lease 1 1/2 miles northwest of Rockport in Aransas County. This is at the rate of \$150 an acre.

Bailey retained 1/16 over ride and 3/16 royalty on the private commercial lease.

It was learned that Renwar turned 1/2 interest in the lease to Jack Modesett for \$60,000 together with a free well to 9,100 feet.

A Conroe Drilling Co. rig was moving in to deepen Renwar Oil Corp. No. 1 Travis Bailey, wild-cat drilled to 7,510 feet and plugged by Selby-Walker Corp. and Joseph T. Dawson in 1952, to 10,000 feet. Renwar holds the 964.4-acre Bailey lease in Joseph Fessenden Survey, A-65.

Heep Oil Corp. No. 1 Zeph Rouquette, oil discovery two miles west of Rockport and about 3,840 feet southwest of Renwar No. 1 Bailey, was flowing oil at the rate of 70 barrels daily through 1/8-inch choke from perforations at 8,284-90 feet. Tubing pressure was last reported to be around 1,500 pounds. With 5 1/2-inch casing on bottom at 8,296 feet, the test is on a 300-acre lease in John G. Smith Survey, A-239.

Mrs. Kater Lee Ammons and two daughters, Linda and Kay, of Kerrville, spent the week end with Mrs. Ammon's mother, Mrs. L. M. Bracht and other relatives.



SURFS HER RIGHT—Publicity men at St. Petersburg, Fla., are wondering why impish Ann Hart prefers a mooring stanchion to a swim. But they aren't complaining as long as she offers such a lovely portrait.

FLOWERS

FOR EVERY OCCASION

ELSIE HAWES

Floral Agent For

Erwin Flower Shop

PHONE 6345

Rockport, Texas ctf

SPINET PIANO

We are picking up in your near vicinity.

BEAUTIFUL SPINET PIANO

Will transfer balance. Take up monthly payments. TEN YEAR GUARANTEE. WRITE, WIRE OR PHONE COLLECT.

CREDIT DEPARTMENT

O'NEAL PIANO COMPANY

Phone 3-5611 or 3-5140

419 S. Staples Street
CORPUS CHRISTI, TEXAS

Cannon's

SUPER IGA MARKET

We Reserve the Right to Limit Quantity

Specials for Thurs., Fri., & Sat., Mar. 18, 19, 20

Produce Specials

- IDAHO POTATOES, 10 lbs. 49c
- WINESAP APPLES, 2 lbs. 29c
- PASCAL CELERY, stalk 12c
- VALENCIA ORANGES, lb. 6c
- CELLO CARROTS 2 bags 25c
- YELLOW ONIONS pound 3c

Frozen Foods

- BIRDSEYE Chicken Drum Sticks 1.25
- BIRDSEYE Chicken a-la-king 59c
- SWANSON Chicken Pot Pies 39c

DOLLAR SPECIAL
NYLON HOSE
60 Gauge, 15 Denier

SUN GOLD
Oleo
POUND
21c

PURE CANE
Sugar
5 POUNDS
47c

PILLSBURY
Flour
5 POUNDS
47c

SNOWDRIFT
SHORTENING
3 POUND TIN
79c

PILLSBURY
PANCAKE MIX
20 Oz. Size
2 for 35c

VAN CAMP'S
GRATED
TUNA FISH
No. 1/2 Can
23c

TRELLIS PEAS 2 for 29c

HUNT'S **TOMATO JUICE**, No. 300 can 3 for 25c

HUNT'S **GOLDEN CORN**, cream style, 2 for 35c

CAMPBELL'S SOUP **BEEF or BEEF NOODLE** 2 for 31c

CAMPBELL'S SOUP **VEGETARIAN VEGETABLE**, 2 for 25c

HUNT'S **TOMATOES**, solid pack, 300 can, 2 for 35c

ROTEL **COLLARD GREENS** No. 303 can 10c

QUICK COOKING **Minute Rice**, 15-oz. box 39c 5-oz. box 13c

HOMINY, yellow, DEL DIXIE No. 300 can 10c

ROTEL **BLACKEYE PEAS**, No. 303 can 17c

DOESKIN **TOILET TISSUE**, 4 roll package 50c

Hormel SPAM 12-Oz. Can 47c	Austex TAMALES No. 300 Can 25c	HORMEL'S DINTY MOORE STEW 1 1/2 Lb. Can 39c
--	--	--

QUALITY MEATS

CHUCK
ROAST lb. 39c

CHUCK
STEAK lb. 43c

CROWN
ROAST lb. 49c

SLICED
BACON lb. 63c

BABY BEEF
LIVER lb. 39c

Veal Chops lb. 49c

VEAL
Brisket lb. 29c

PAPER NAPKINS
HAV-A-NAP
Box of 100
2 For
25c

HUNT'S
Tomato Sauce
2 Cans
15c

HORMEL'S
VIENNA SAUSAGE
2 Small Cans
35c

