

Serving the Pheasant Capitol of Texas

The Stratford Star

Number 6 35 Cents Publishing for 86 Years in Stratford, Sherman County, Texas 79084

USPS 523-108 Feb. 5, 1987

1987 Pinewood Derby



Shown above is the Class 1 - 2nd Graders who won. Left to right is 3rd place - Nigal Kirkpatrick, 1st place - Dusty Palmer and 2nd place - Davy Brown. Standing behind is Queen Debbie Aduddell.

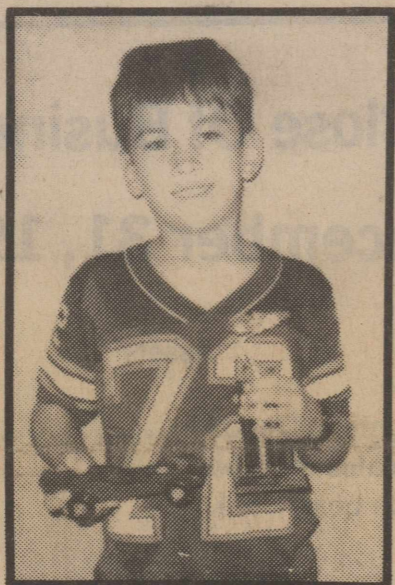
A good crowd was on hand Sat. night, Jan. 31, to watch the 1987 Cub Scout Pinewood Derby. The evening started with the crowning of the Pinewood Derby Queen, Debbie Aduddell. Twenty-nine Scouts enjoyed racing their cars to the finish line to see who would win 1st, 2nd and 3rd place trophies in two different classes.

Participants in Class 1 (2nd graders) were Brandon Aduddell, Davy Brown, Chris Haynes, Daniel Hunsaker, Nigal Kirkpatrick, Jackie Larence, Bo Lindenfeld, David Merrill, Billy Jo Newcomb, Dusty Palmer, J.B. Presley, Shane Roberts, Justin Sims, and Brad Williams. Winners were: 1st place-Dusty Palmer, 2nd place-Davy Brown and 3rd place-Nigal Kirkpatrick.

Those racing in class 2 (3rd and 4th graders) were Nick Cozart, Roy Davis, Teddy Dretske, Kyle Ellison, Josh Slater, Colby Jackson, Jeremy Jackson, Leeland Linderfeld, John Long, T.J. Miller, Ben Pigman, Jared Sims, Brandon Starnes, Marshall Strifler, and Ryan Swain. Winners were: 1st place-Jeremy Jackson, 2nd place-Nick Cozart, and 3rd place-Marshall Strifler.

Dusty Palmer won overall Grand Champion Trophy for the fastest car of the evening.

All cars were judged for craftsmanship before the race



Brad Williams won the Best Paint job at the Pinewood Derby Sat. Night.

He began. The trophies presented were Best Design-Justin Sims; Most Original-Brandon Aduddell; Best Paint Job-Brad Williams; and Most Unusual Nick Cozart.

All Cub Scout participants were awarded a medal to be worn on their shirt for being NUMBER 1 CUBBERS.

Don Riffe and Claude Fedric helped with weigh-in and registration. The Judges were Rev. Clark Tatum, Jerry Dyess, Don Williams, Darrell Cotney, and our Pinewood Derby Queen, Debbie Aduddell. Rhonda Matthews took care of our brackets for the races. A thank you goes to all these fine people for a job well done!



Class 2 - 3rd and 4th graders is left to right 3rd place - is Marshall Strifler, 1st place - Jeremy Jackson and 2nd place - Nick Cozart. Queen Debbie Aduddell is shown with the boys.



Queen Debbie Aduddell is shown with left to right Justin Sims who won Best Design, Brandon Aduddell, Most Original and Nick Cozart, Most Unusual.

Cargill Foundation Again Funds Scholarships For Farm Youths

One hundred and fifty high school seniors from farm families in 30 states will receive college scholarships of \$1,000 each in the second year of a program sponsored by the Cargill Foundation.

The \$150,000 Cargill Scholarship Program for Rural America is designed to recognize and encourage academic achievement, accomplishments and talents of young people from farm families, according to Cal Anderson, executive director of the foundation and a corporate vice president of

the Minneapolis-based agribusiness.

"Cargill began this program last year as a response to the high cost of post secondary education and its impact on farm families," said Anderson. "Due to the positive reception, we have increased the number of \$1,000 grants from 100 to 150 and the number of targeted states from 20 to 30."

To qualify, students must have full-time enrollment plans for the fall of 1987 at an accredited two or

Editors Note: Marcella McBryde found this in a magazine and Sharon Smith brought it in. I hope everyone enjoys reading it, we all can take a lesson from it.

HE IS ONLY A BOY

Please don't curse the boy down there,
He is my son, you see;
He's only just a boy, you know:
And means a lot to me.
I did not raise my son, sports fan:
For you to call him names;
He may not be a super star
But it's a high school game.
Please don't curse the boys down there,
They do the best they can:
They never tried to lose a game.
They're boys...and you're a man.
The game belongs to them, you see
And you are just a guest;
They do not need a fan like you,
They need the very best!
If you have nothing nice to say
Please leave the boys alone.
And if you can't enjoy the game
Why don't you stay at home?
So please don't curse those
Boys down there,
Each one's his parents son;
And win, or lose, or tie, you see,
To us they're NUMBER ONE!!!!!!!

Depot Museum

Planning Brand Books

The Depot Museum is going to be printing a handbook of all the brands registered in Sherman County. Everyone needs to check and see if their brand has been recorded. If it is not recorded by March 1, 1987 it will not appear in the Brand Book. The Museum will be doing this for a fund raiser.

The law for registering brands reads as follows: Not later than six months after August 30, 1981 and of every 10th year thereafter, each person who owns livestock shall have that person's marks and brands recorded with the County Clerk, regardless of whether or not the marks or brands have been previously recorded.

The person who, according to the records of the

county, first recorded the mark of brand in the county is entitled to have the mark or brand in that person's name. If the records do not show who first recorded the mark of brand in the county, the person who has been using the mark or brand the longest is entitled to have it recorded in that person's name.

This was published in the newspaper August 30, 1981 when the new law was in effect. The 10 year period for rerecording of all brands will be August 30, 1991.

For information on this you may call M.L. Albert, County Clerk, Janet Riffe, President of the Museum Board or Sherri Butler, Chamber of Commerce.

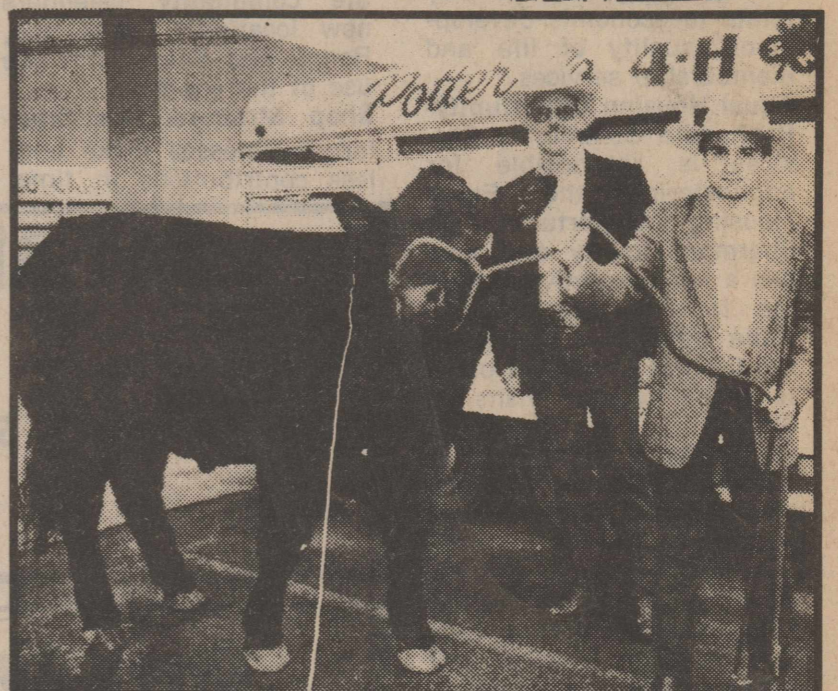
NOTICE

There will be a drive a barrow Friday morning Feb. 6 before the swine judging at 9 a.m. for kids who are prior to joining 4-H. You do not need to own your own barrow. For more information call: Dan Hembree at 396-2341 or 396-5981 or Jim Allison at 396-2081.

There will be two places exploring for the Stratford Hospital District Board of Directors. They are Scott Buckles and V.O. Lasley.

If you are interested, please come by Coldwater Manor to sign up between Feb. 3 and March 5.

Livestock Show



Staff photo by HENRY BARGAS

Editors Note: This picture and article appeared in the Amarillo Daily News Saturday, January 31, 1987. Vince Hernandez, showing with Potter Co. 4-H Club, received a \$1,900 bid for his 1,180 lb. Limousin Grand Champion steer from David Willis, representing Amarillo Bankers Association. Hernandez led a gentle heifer into the ring in the first round of competition and walked out with the Grand Champion Heifer trophy. The youth had to work a little harder controlling his steer in the next round of competition, but judge Jim Tucker of Dalhart had little trouble placing the feisty steer at the top of the class and awarding Hernandez the Grand Champion Steer trophy. Vince is a member of River Road FFA. Vince is the grandson of Mr. and Mrs. Bert Hernandez of Stratford. Shown above is David Willis, left who purchased the Grand Champion steer from Vince.

Pickens Attends Seminar

College Station-Sherman County Tax Assessor-Collector Zelda Pickens joined some 150 other tax officials for the fourth annual County Tax Assessor Collectors' Seminar January 11 thru 13. The theme of the seminar was "Together We Can Make It Happen."

"Working together is as important today as ever," said Zelda Pickens. "As tax officials, we're working with each other, in this seminar for instance, to develop more effective ways of running our offices."

This seminar is one for the educational programs of the V.G. Young Institute of County Government, a part of the Texas Agricultural Extension Service. The

institute provides a forum of support for county officials in Texas.

The program included presentations by representatives of various state agencies, including the State Department of Highways and Public Transportation, the Texas Parks and Wildlife Department, the Alcoholic Beverage Commission, the Secretary of State's office, the State Property Tax Board, and the Board of Tax Professional Examiners.

Major discussions covered upcoming legislation, consolidating tax collections, computer basics in the tax office, tax laws, voter registration, and Texas motor vehicle laws and procedures.

"The beginning is the most important part of the work."

Dear Readers

Dear Readers:

We have had some beautiful weather of late. Hope it continues for the Livestock Show this coming weekend. Good Luck Kids. It was a delight to see the pleasant write-up of Richard Albert in the Amarillo Paper Saturday. Now that what

makes Stratford as great as it is, is the majority of the people are hard-working and conscientious, of course, there are a few old sore-heads. Every town has them. Better start thinking what you are going to get your favorite Valentine. It's around the corner.

Legal Notice

PUBLIC NOTICE

The Commissioners Court of Sherman County, Texas, will convene in regular session on Monday, February 9, 1987, at 10:00 a.m., in the Commissioners Court Room, in the County Courthouse, to select a depository for county funds for March 1, 1987 through February 28, 1989, according to Article 2544, Texas Revised Civil Statutes. Any banking corporation, association, individual banker in Texas, desiring to be selected as County Funds Depository shall make application therefore and said application shall conform to the provisions of articles including Article 2544 through 2558-A, Texas Revised Civil Statutes.

W.S. Frizzell, Jr.
Sherman County Judge

(Published in the Stratford Star January 22, 1987, January 29, 1987, and February 5, 1987.)

LEGAL NOTICE

The Board of County Commissioners, Stratford, Texas invites qualified bidders to submit proposals for the lease of all oil, gas and other minerals on or under the following described tracts of land:
Tract 1: Block 1-T, T & N. R. Ry. Co. Survey, Section 179,

Block 51 Original Township, Stratford, Texas, Sherman County, Texas.

Tract 2: Block 1-T T & N.O. Ry. Co. Survey, Section 213, a 2.23 acre tract described as follows, beginning at a point 30 ft. west of and 1120 ft. south of the NE corner, thence in a southwesterly direction 380 ft., thence SE 340 ft., thence North 540ft. to the point of beginning.

Any and all bids must be in the offices of the County Courthouse by 12 noon Friday, February 13. The County Courthouse is located at 701 N. 3rd. P.O. Box 165, Stratford, Texas 79084. Bids will be opened at a public hearing held for that purpose at 3 p.m. Friday at 3 p.m. at the Sherman County Courthouse.

The Board of County Commissioners, reserves the right to waive any and all formalities of bidding, to reject any and all bids, and does not bind itself to accept the best bid or any proposal, and the Board shall have the right to ask for new bids should it desire to do so.

Signed this 20th day of January, 1987.

Sherman County Commissioners, Stratford, Texas.

Signed:
W.S. Frizzell,
County Judge

(Published in The Stratford Star, January 22, January 29 and February 5, 1987.)

Chamber Chatter

by Sherri Butler

Director Elections-The Stratford Chamber of Commerce is a voluntary organization of business and professional individuals who have joined together for the purpose of advancing the commercial, agricultural, industrial, civic and general interests of Stratford and Sherman County. The program of work for the Chamber is governed by a board of directors elected by the Chamber membership. New directors serving in 1987-88 are Elwyn L. "Sam" Bass, E.R. Bell, Eugene Griffin, Don Riffe and Patti Vincent. Holdover directors (1986-87) are Billy Bell, Lorel Haile, Martha Mitts and Chuck Wilson. This group will be planning and implementing the Chamber's activities for the upcoming year as they relate to economic development, quality of life and membership services.

Equal Housing Opportunity-Panhandle Community Services is responsible for administering the Equal Housing Opportunity in Sherman County and now has a representative available for Sherman County. Billie Heiskell is located in the Dalhart office and plans to make regular visits to Stratford. You may be eligible for a rental housing subsidy program (Federal government sponsored) if you and your family live on a low income or you are over 62 years of age or you are handicapped or permanently disabled. Ms Heiskell will schedule an appointment to discuss your needs and may be contacted at 249-5240.

Membership-Your Chamber dollar buys many things-the unity, cooperation and combined efforts of many people working together to make Stratford a better community. Thank you to the businesses and individuals renewing their investment in the past month. These are William Allen, Mr. and Mrs. H.H. Caraway, Elk Pharmacy, Hart Start, Headquarters Restaurant, Zeld Pickens,

Liz Sanders, Leila Shelley's Lumber, Ulysses Irrigation Pipe Company and Valuline.

Mark Your Calendar-Sherman County 4-H/FFA Livestock Show-February 5,6,7; "Taste of Texas" Chamber breakfast-February 19; Health Fair-March 3; Stratford's Mixed Volleyball Tournament-March 5,6,7 (contact Lonny Robbins); TFE22ASOAMID-March 10 & 11; Annual Chamber Banquet-March 27; 5-States Peace Officer's Association-April 15,16. Please contact the Chamber office with special activities of you club or organization and we will include these on the community calendar, which is published in The Stratford Star and the Bulletin window downtown. Have you noticed the community calendars new location? Thank you, Ronny and Esther, for the use of the windows.

Shop Stratford First-Stratford businesses make endless contributions in time,

The Stratford Star ★

Second Class postage paid at Stratford, Texas, 79084. Subscription rates are \$13.00 per year in Sherman and adjoining counties; all other \$20.00 per year.

M. Robertson
Janis Tillery

Editor & Publisher
Darkroom & Advertising

MEMBER 1987

TEXAS PRESS ASSOCIATION

Frontier Winter

By: Richie Brotherton, SCS



Strong self-reliant, independent people fashioned the early traditions of Sherman County. These early settlers were stalwart men of freedom. They had to be in order to withstand the size, ruggedness and magnificence of an unsettled county. The very breadth and greatness of the country required big men to settle it, and settle it they did.

These farsighted men and women carved their existence out of a wild frontier, and when they founded their homesteads they built homes from the materials at hand. This was a marked shortage of timber in Sherman County back in those days. Log cabins were not easy to find. In fact wood was so scarce that plainsmen used buffalo chips for their campfires. Settlers built their homes behind hills or in draws in an effort to escape the ruthless elements of Texas Panhandle winters.

Today, in Sherman County, homes dot the flat landscape. A good windbreak is an outstanding means of altering the effects of winters vicious winds and drifting snow. The trees will cut the wind and the snow will fall in and around the windbreak. This keeps the drifts away from houses and outbuildings. It is also an effective way to cut heating expenses during these storms.

The Sherman County Soil and Water Conservation District is now taking orders

services, merchandise and dollars which help support the activities and projects of the many youth, adult and civic organizations in our community. Without their support and interest, many activities and services which we often take for granted would not be possible. Before you start out-of-town to shop, try Stratford first! Give local businesses the opportunity to serve you.

for windbreak trees at the SCS office. Help in placing trees and windbreaks for maximum efficiency is also available if needed.

Star Dates

Thursday, February 5	Monday, February 9
SHERMAN COUNTY 4-H/FFA LIVESTOCK SHOW	9:30 a.m. Girl Scout Neighborhood Meeting
2:30 p.m. Happy Hour Extension Homemakers	10:00 a.m. Commissioner's Court
7:00 p.m. Lamb Judging Livestock Show City Council	Noon Lions Club
7:30 p.m. AA & Al-Anon	1:00 p.m. SCOT Quilting
8:00 p.m. AA & Al-Anon	2:00 p.m. Manor Friends
Friday, February 6	5:00 p.m. 7-8-9 vs Gruver Boys T Girls H Country Club Board
Stock Show Holiday No School!	7:00 p.m. Board
9:00 a.m. Swine Judging Livestock Show	Tuesday, February 10
1:00 p.m. SCOT Quilting Extension Homemakers Council	8:00 TOPS 897
2:00 p.m. Homemakers Council	Noon Chamber of Commerce Board
2:00 p.m. Rabbit Judging Livestock Show	2:00 p.m. Coldwater Manor Birthday Party
3:00 p.m. Helper Judging Livestock Show	2:00 p.m. Southside Extension Homemakers
4:00 p.m. Steer Judging Livestock show	2:30 p.m. Sherman County Historical Committee
ELKS vs. Panhandle [T] JV/Varsity	5:30 p.m. TOPS 922
Saturday, February 7	ELKS vs Gruver [H] JV/Varsity
9:00 a.m. Livestock Judging contest Premium Sale	7:00 p.m. Appraisal Board
1:00 p.m. Livestock Show Couples Bridge Country Club	7:00 p.m. Farm Bureau Board
7:00 p.m. Country Club	7:30 p.m. Fire Department
	Wednesday, February 11
	1:00 p.m. SCOT Quilting
	4:00 p.m. Lutz 4-H

Statement Of Condition

At Close Of Business On
December 31, 1986

Assets

Cash on Hand and Demand Deposits	\$ 5,704,024.13
Securities and Certificates of Deposit	13,253,590.56
Stock in Federal Home Loan Bank	394,100.00
Mortgage Loans	41,179,564.27
Other Loans	5,188,750.75
Real Estate Owned	1,883,461.15
Investment Real Estate	107,342.22
Office Building (net of depr.) and Land	1,897,152.91
Furniture, Fixtures, Equipment and Leasehold imp. (net)	393,296.23
Investment in Subsidiary Corporations	97,333.18
Deferred Charges and other Assets	4,880,395.30
TOTAL ASSETS	\$74,979,010.70

Liabilities

Deposit Accounts	\$ 68,110,193.19
Other Liabilities	2,973,812.07
TOTAL LIABILITIES	\$71,084,005.26

Equity Capital

Common Stock	\$250,000.00
Paid-in Surplus	2,500.00
Other Capital Accounts	1,887,022.00
Retained Earnings	1,755,483.44
TOTAL EQUITY CAPITAL	3,895,005.44
TOTAL LIABILITIES AND EQUITY CAPITAL	\$74,979,010.70

Directors

Gaston Wells
Byron Gossett
R. M. Keeney
Ken Morrison
Howard Smith

Certified to be true and correct by K. Erich Schaefer,
Vice-President

NORTH PLAINS SAVINGS AND LOAN ASSOCIATION

• Dumas • Stratford • Dalhart

600 East First

935-4184



FAT ALBERTS

Fish Fry
Friday Night

5p.m.-9p.m. \$4.89

All You Can Eat
All Winter

Olson Automotive

Dealer For



Welding Equipment and Supply Co.

OXYGEN & ACETYLENE CYLINDERS EXCHANGE

SCOT Notes

by Timmie Brown

"Top of the Morning" to you Sherman County Older Texans, friends, and neighbors on this Monday Feb. 2, 1987! The ground hog surely sees his shadow this day and we must abide by his decision about the weather. We say it is God's weather for his people-Let's enjoy it! Wasn't the beautiful picture of our Stratford Florist, Richard Albert, on the front page of the Amarillo News of Jan. 31 simply great!!! Just recognition of a worthy S.C.O. Timer Congratulations Richard!

We have not been able to contact director Ethel Hampton as to her state of health. Sorry! Bertha Oquin has been having painful trouble with her foot for some time, but is better.

Francis Watson had a wonderful vacation in south Texas, Houston, Calverd and San Antonio. She slowed down when the "flu bug" caught her. She is home again and well.

Lizzie Williams-wife of Rex Williams, who has helped supply Sherman County people with beef to eat via Brown's Locker for thirty years-has been having a rough time health-wise but is mending now.

Dovie Fedric and Nell Wall are in the hospital. We have no report on Frank Judd or Chas. Beaman. They were hospitalized last week.

It was so nice to visit for a few minutes with Lola Ward and Frankie Lavake.

Joyce Hart, Emma Naylor, Corda Pleyer, Luzelle Lowe and Timmie Brown members of the Bertha Smith Bible Class, enjoyed luncheon and Bible study with Mildred James in her home west of Kerrick, Wed, Jan. 28. Mildred has been a member of this group for several years. Sorry to say that Mildred has had some bronchial trouble. She is better. Lily Galloway missed the visit to Mildred's because Travis Galloway Sr. has not been very well. We trust he is on the mend.

Lets say "Hello and Happy Birthday" to Lona Graham, Boise City-honoring her 91st one. Glennell and Jack Dettle visited her and report that she is active as ever.

Doris & Bill Dyess leave today to be with son Bill and family. Glenda has been in the hospital, so dad and mom will lend a helping hand. Glenda is improving.

We have such interesting news to report of two of our peers. Word of Lee Ellen Bonar from her daughter Kathryn tell us that Lee Ellen is with daughter, Erma Lee in Wichita, Kansas and

Helpful

Hints

by Naomi

Always return shop and garden tools to their proper place, to save time searching for them when needed again.

If you do not have a lot of time to garden but have the space, find a friend or neighbor who would like to help with the work for a share in the harvest.

A freezer that is full uses less energy to maintain its temperature, if your freezer is not full, freeze water in milk cartons to fill up the space.

Keep the lint screen in your dryer cleaned for energy efficiency and safety.

Slice cold leftover potatoes thin and coat with melted butter then in grated cheese, place on hamburger patties put in hot oven few minutes broiling.

Paint horse shoes jet black for framing snapshots they look beautiful.

Screw a small hook or towel rack to babys high chair for wash rags and bibs.

A foam rubber pillow without a cover, placed in babys high chair will keep him from slipping out the front it is a warm seat in winter.

is quite well. Two of Erma Lee's daughters live in Wichita, also. Lee Ellen's greatest delight centers in great-grand-daughter, Sasha, who is seven years old.

Our other word is about Mildred Reclus (Mrs. A.W. Reclus) who with her husband pastored the Baptist Church here from 1916-1929. Sunday (Feb. 1, 1987) Maurine Plunk invited Timmie Brown, Lorelyn and Joy Powers to go with her to Hooker to attend a reception for Mrs. Reclus on her 90th birthday. Her son, Rex and wife Georgia, and x granddaughter, Lloyd's daughter were present. Lloyd is to undergo surgery today (Feb. 2) in Oklahoma City-so was not there. Carl and Lula Mae Reeder, Maurine parents, were very dear friends of the Reclus's. So Mrs. Reclus could realize that we visitors from Stratford represented 4 generations of friendship ties with Stratford people. The blessings of such ties and the joy of "holding-on" can't be described. One has to live them. Mrs. Reclus body certainly is frail but not so with her spirit and mind. She will remain in Pioneer Manor for the present. Her address in Pioneer Manor Room #210, Hugoton, Kansas 67951. Bro. Reclus married Timmie Baskin and Joe Brown in 1917. In 1946 he performed the wedding ceremony for Marijo Brown-their daughter-and H. H. Haile. Lula Mae Reeder was Joe brown's sister. In generations Maurine and Marijo-who were cousins-were of the same. Marijo died June 22, 1976. Is this all "clear as mud?" To us is clear and dear. We are thankful.

We want to tell you that C.R. Mitchell, Alan Hamerick and Mark Marshall are members of our A 1 City Crew. They did not attend Scot dinner last week, so far as we know. Probably they were on the night crew and were getting some well

earned rest. Please take time to re-read last weeks "Star" about our young people and their activities ranging from birth thru school years and college. Since we are your informants we call your attention to James Rice Wilson and Deidra Lee Tarver who are fifth generation people-to wit; James lineage is based on Samuel Ross, father of Arthur, father of Lorraine Ross Mehner, mother of Dolly Mehner Wilson, mother of James Rice Wilson. Congratulations Lorraine! Little Deidra Lee Tarver's fore-runners are J.T. Brown, father of Willie Brown Hester, Mother of Katie Hester Allen, mother of Carolyn Allen Tarva, mother of Deidra Lee Tarvar. Congratulations to ALL.

A goodly number attended Scot Dance Saturday night. Scot Birthday party is scheduled for Friday, Feb. 13 at 7 p.m. Birthday folks include Harold Bennett, Frankie Lavake, Raymond Dyess, Howard Ethridge, Lois Fedric, Irene Wakefield, Bud Parvin, Corda Pleyer, Ted Reynolds, Madeline Reesing, Dicy Stephenson, Marie Hill, H.L. Little and Bill Lasley. let's rally around and wish them well. Every year is precious.

Quilting goes on three days each week, Monday, Wednesday and Friday. So begins another week to be thankful, sharing "love u's" and being happy.

A goodly number attended Scot Dance Saturday night. Scot Birthday party is scheduled for Friday, Feb. 13 at 7 p.m. Birthday folks include Harold Bennett, Frankie Lavake, Raymond Dyess, Howard Ethridge, Lois Fedric, Irene Wakefield, Bud Parvin, Corda Pleyer, Ted Reynolds, Madeline Reesing, Dicy Stephenson, Marie Hill, H.L. Little and Bill Lasley. let's rally around and wish them well. Every year is precious.

Quilting goes on three days each week, Monday, Wednesday and Friday. So begins another week to be thankful, sharing "love u's" and being happy.

A goodly number attended Scot Dance Saturday night. Scot Birthday party is scheduled for Friday, Feb. 13 at 7 p.m. Birthday folks include Harold Bennett, Frankie Lavake, Raymond Dyess, Howard Ethridge, Lois Fedric, Irene Wakefield, Bud Parvin, Corda Pleyer, Ted Reynolds, Madeline Reesing, Dicy Stephenson, Marie Hill, H.L. Little and Bill Lasley. let's rally around and wish them well. Every year is precious.

Quilting goes on three days each week, Monday, Wednesday and Friday. So begins another week to be thankful, sharing "love u's" and being happy.

A goodly number attended Scot Dance Saturday night. Scot Birthday party is scheduled for Friday, Feb. 13 at 7 p.m. Birthday folks include Harold Bennett, Frankie Lavake, Raymond Dyess, Howard Ethridge, Lois Fedric, Irene Wakefield, Bud Parvin, Corda Pleyer, Ted Reynolds, Madeline Reesing, Dicy Stephenson, Marie Hill, H.L. Little and Bill Lasley. let's rally around and wish them well. Every year is precious.

Quilting goes on three days each week, Monday, Wednesday and Friday. So begins another week to be thankful, sharing "love u's" and being happy.

Menu

Monday-Fish Krispies, Tartar sauce, Mashed potatoes, w/k Corn, Rolls-buttermilk, Rolled oat cake,

Tuesday-Corn Dogs-mustard potato salad, pork beans biscuit, fruit and peanut butter.

Wednesday-Steak finger-gravy, mashed potatoes, green beans, rolls-milk, apple cobbler.

Thursday-Taco pizza, lettuce-tomatoes, mixed vegetables, fruit-milk.

Friday-Stew, tossed Green salad, corn bread, chocolate cake and milk.

M's Meet & Eat
Saturday
from 5:00 - 8:00 p.m.
Mexican Food & Steak Dinners

JACK BARTON
Sherman County Attorney
NOW AVAILABLE FOR THE GENERAL PRACTICE OF LAW
Please call for appointment - 396-2270
P.O.Box 986, Stratford

★ **REWARD** ★
UNCLAIMED SCHOOL SEWING MACHINES
NELCO'S Education Department placed orders in application of previous years sales. Due to budget cuts, these sales are unclaimed. These sewing machines must be sold! All sewing machines offered are new and the most modern machines in the NELCO Line. These sewing machines are MADE OF METAL and sew on all fabrics. Livi's; canvas, upholstery, nylon, stretch vinyl, silk, EVEN SEW ON LEATHER! These sewing machines are new and with a 5-YEAR WARRANTY. With new 1987 NELCO you just set the dial and see the magic happen; straight sewing, zigzag, buttonholes (any size), invisible blindhem, monogram, satin stitch, embroidery, applique, sew on button and snaps, overcast... all of this and more without the need of old fashioned cams or programmers. Your price with this ad \$149.50, without this ad \$429.00. Master Card and Visa accepted, your checks are welcome. Showing in conjunction with UNITED DISTRIBUTORS

ONE DAY ONLY!
Thursday, Feb. 5th 12:00 Noon to 7:00 p.m.
Best Western - Western Skies
623 Denver Ave. Dalhart, Tx

Kerrick News

by Marylou McDaniel

Community Supper time is Friday, Feb. 13, 7 p.m. Lynn & Kenneth Wells and Franny Taylor are hosts for an Italian supper. Bring your favorite Italian dish or something to go with it.

Gayla, Trew & Thea James and Blanche James were in Amarillo Friday to see Newt Crabtree. Newt's broken ribs were giving him more "fits" than his other problems, he said.

Shorly Peters, three year old cousin, spent a few days with Terri and John McDaniel. Shorly lives in Dalhart.

Hank and Mabel Rogers returned home Jan. 28 after a two week trip to South

Texas. They left in a snowstorm! On the way they enjoyed a visit at the home and museum of Cactus Jack Nance Garner in Uvalde. At Mission they met Bob and Roberta Murdock of Laramie, Wy. and Lyall and Louine Murdock of Dallas. The BobMurdocks are departing the winter there.

Louine brought with her new Baylor recipe books that had been dedicated to her. These she gave to Mabel and Roberta.

The Rogereses stayed at an apartment in McAllen. They were surprised to be greeted by the manager, Geneta Miller, former Stratford

resident. Geneta said to tell everyone "Hello".

They especially enjoyed all the good entertainment at the El Valley Del Sol Trailer Park where Bob & Roberta are staying.

Lynn Wells, Jo June McDaniel, Franny Taylor and Marylou McDaniel attended a District Texas Extension Homemakers Association planning meeting in Stratford Jan. 28.

4-H Food Concession

The Sherman County 4-H Parent/Leaders Association will be sponsoring the food concession during the 42nd Annual Sherman County 4-H and FFA Livestock Show this Wednesday, Thursday, Friday and Saturday.

Barbeque Sandwiches and Hot Ham Sandwiches will be served in addition to Frito Pies, Nachos, pie, donuts, brownies, rice crispy treats, sandwiches, candy, and an assortment of hot and cold drinks.

Proceeds from the concession are used to support county-wide 4-H activities throughout the year.

Make plans to attend the Livestock Show and Sale this week. Stop by for a cup of coffee and piece of pie or a sandwich and a cold drink at the concession stand while you are there.

Pleyer Named To Who's Who



Alpha Chi National Honor Society; Kappa Kelta Pi Education Honor Society (treasurer 86-87) future Secretaries Association (secretary 84-85, president 85-86); Dorm Hall Council (secretary 83-84); WTSU Marching Band; Texas Student Education Association; Texas Business Education (nominee for Collegiate Business Education Student of the Year 86-87); and a WTSU Leadership Conference participant in 1984-1986.

The 1987 edition of WHO'S WHO AMONG STUDENTS IN AMERICAN UNIVERSITIES AND COLLEGES will include the names of 57 students from West Texas State University who have been selected as national outstanding leaders.

One student named this year from West Texas State University is Janet L. Pleyer, daughter of Mr. and Mrs. Stanley W. Pleyer of Stratford. Pleyer, a senior business education major, is active in Phi Eta Sigma Freshman Honor Society;

A message from The Billy Graham Film Ministry...
When was the last time you told someone about Jesus Christ? Or invited someone to an evangelistic meeting? Need some help to get going? Here's an effective way...invite someone to go with you and see.

CRY FROM THE MOUNTAIN
From the Producers of *The Hiding Place*, *Joni*, and *The Prodigal*. **PG**

In a split second, their lives will change forever.
A World Wide Pictures release in color. Featuring BILLY GRAHAM with a message of hope.

Guymon - Feb. 6 - 12 Suburban Theatre
Dalhart - Feb. 13 - 19 - Mission Theatre
Dumas - Feb. 20 - 26 - Evelyn Theatre

LET'S JOIN IN PRAYER

The Churches of Stratford Welcome Your Family

ASSEMBLY OF GOD

Rev. Lonny Robbins
Corner of Purnell & Fulton
Sunday School 9:45 a.m.
Morning Worship 10:45 a.m.
Evening Worship 6:00 p.m.
Wednesday Bible Study 7:30 p.m.

FIRST CHRISTIAN

Rev. David A. Harker
Fifth and Main Street
Sunday Coffee Fellowship 9:00 a.m.
Sunday School 9:45 a.m.
Morning Worship 10:45 a.m.
Chi Rho Fellowship 5:00 p.m.
Evening Worship 6:00 p.m.
Wednesday:
Childrens Choir 3:45 p.m.
Adult Choir 8:00 p.m.

CHURCH OF CHRIST

Minister Clark Tatum
Third at Chestnut Street
Sunday School 10:00 a.m.
Morning Worship 11:00 a.m.
Evening Worship 6:00 p.m.
Wednesday Bible Study 7:30 p.m.

CALVARY BAPTIST

302 South Main
Sunday School 10:00 a.m.
Morning Worship 11:00 a.m.
Evening Worship 7:00 p.m.
Wednesday Prayer Service and Bible Study 7:00 p.m.

TECO

396-2300

Williams Repair Service
396-5330
396-2322

Stratford Star
396-5885

Duncan Chevrolet & Oil Company
396-5557
396-2835

Cimarron Feeders, Inc.
1-405-543-6383 Griggs

The Girls Next Door
396-5971

A & I Parts Center
396-5593



ONLY FOREWORD

The Australian coat of arms pictures two creatures, the emu, a flightless bird, and the kangaroo. The animals were chosen because they share a characteristic that appealed to the Australian citizens. Both the emu and the kangaroo can move only forward, not back. The emu's three-toed foot causes it to fall if it tries to go backwards, and the kangaroo is prevented from moving in reverse by its large tail.

Those who truly choose to follow Jesus become like the emu and kangaroo, moving only forward, never back. Jesus said: "No one who puts his hand to the plow and looks back is fit for service in the kingdom of God." (Luke 9:62 NIV)

Ken Metzger, Pastor
First United Methodist Church

FIRST UNITED METHODIST

Rev. Ken Metzger
520 North Main
Sunday School 9:40 a.m.
Morning Worship 10:50 a.m.
Evening Worship 6:00 p.m.
Junior High UMY 5:00 p.m.
Senior High UMY 6:00 p.m.
Wednesday Choirs:
Children's Choir 3:45 p.m.
Bell Choir 6:30 p.m.
Chancel Choir 8:00 p.m.

FIRST BAPTIST

Dr. Derrel Lewis
702 North 3rd
Sunday School 10:00 a.m.
Morning Worship 11:00 a.m.
Church Training 6:00 p.m.
Evening Worship 7:00 p.m.
Wednesday Evening Bible Study and Prayer 7:00 p.m.

ST. JOSEPH CATHOLIC

Monsignor Kevin Hand
515 South Pearl Street
Mass Every Sunday 8:30 a.m.
Evening Masses Saturday 6:30 p.m.
Mass in Sunray 11:00 a.m.

Headquarters Restaurant

396-2120

North Plains Savings & Loan

396-5534

Walter Lasley & Sons, Inc.

753-4411

Stratford Grain Company

Stratford 396-5541
Lautz 769-4485

C & C Texaco Products

396-2131

C & C Texaco Station

396-2547

Consumers Company

396-2261

Olson Automotive Machine & Supply
Hwy 54 W
396-5572



SHURFINE CUT GREEN BEANS OR CS./WK. GOLDEN

CORN
16/17 OZ. CANS

4 \$1

FOR



25 LB. SHURFINE
FLOUR
\$2.99

SHURFINE SELF-RISING OR REGULAR

FLOUR
5 LB. BAG

59¢



SHURFINE MACARONI & CHEESE

DINNER
7½ OZ. BOXES

5 \$1

BOXES



SHURFINE CHUNK LITE OIL/WATER

TUNA
6½ OZ. CAN

49¢

Shur Fine

Winter Sale



SHURFRESH HICKORY SMOKED
SLICED BACON

\$1.59

1 LB. PKG.



HEAVY GRAIN FED BEEF
ROUND STEAK

\$1.68

LB.



RUSSET

10 LB. BAG

SHURFRESH 93% FAT FREE FULLY COOKED

HALF HAMS
3-4 LB. AVERAGE

\$1.89

FINEST QUALITY

LB.

• NATIONAL MEAT WEEK February 1-7, 1987

H.G.F. BEEF BNLS. STEAK OR ROAST		
SIRLOIN TIP	LB.	\$2.19
SHURFRESH SLICED COOKED HAM	6 OZ. PKG.	\$1.59
SHURFRESH SLICED MEAT BOLOGNA	12 OZ. PKG.	99¢
SHURFRESH MEAT FRANKS	12 OZ. PKG.	89¢
SHURFRESH WHOLE HOG REG./HOT PORK SAUSAGE	1 LB. ROLL	\$1.48
SHURFRESH WHOLE HOG REG./HOT PORK SAUSAGE	2 LB. ROLL	\$2.95



SHURFINE **SOFT SPREAD**
99¢

3 LB. TUB



SHURFINE FROZEN **ORANGE JUICE**
59¢

12 OZ. CAN



SHURFINE OIL, SHAMPOO, OR **BABY POWDER**
\$1.59

14/16 OZ. BTL.

SHURFRESH AMERICAN SLICES SINGLES	12 OZ. PKG.	\$1.39
SHURFRESH COLBY/CHEDDAR CHEESE	10 OZ. PKG.	\$1.39
SHURFRESH CHILLED ORANGE JUICE	64 OZ.	\$1.39
SHURFINE APPLE OR GRAPE JUICE	12 OZ. CAN	69¢

SHURFINE BLENDED VEGETABLES	16 OZ. PKG.	99¢
SHURFINE FROZEN CAULIFLOWER & BROCCOLI	16 OZ. PKG.	99¢
SHURFINE FROZEN CUT CORN, OR GREEN PEAS	16 OZ. PKG.	79¢
SHURFINE CUT POTATOES	32 OZ. PKG.	99¢

SHURFINE ASPIRIN	100 CT. BTL.	59¢
SHURFINE ASSORTED SIZES JERSEY GLOVES	PAIR	\$1.19
SHURFINE INSIDE FROST 60/75/100 LIGHT BULB	2 CT. PKG.	89¢
SHURFINE 50-150 WATT 3-WAY LIGHT BULB	PKG.	\$1.19



SHURFRESH BUTTERMILK / OLD FASHION
BISCUITS
8 OZ. CANS
8 \$1
CANS



16 OZ. SHURFINE COFFEE
CREAMER
99¢
SHURFINE VAC PAK ALL GRINDS
COFFEE
1 LB. CAN
\$2.39



SHURFINE GRANULATED
SUGAR
5 LB. BAG
\$1.39



SHURFRESH ASSORTED POTATO
CHIPS
7 OZ. BAG
69¢



SHURFINE FAMILY
TEA BAGS
\$1.49
24 CT. BOX



16 OZ. SHURFINE ASST.
R.T.S. FROSTING
\$1.29
SHURFINE ASSORTED
CAKE MIX
59¢
18 1/2 OZ. BOX



SHURFINE
SWEET PEAS
2.89¢
17 OZ. CANS

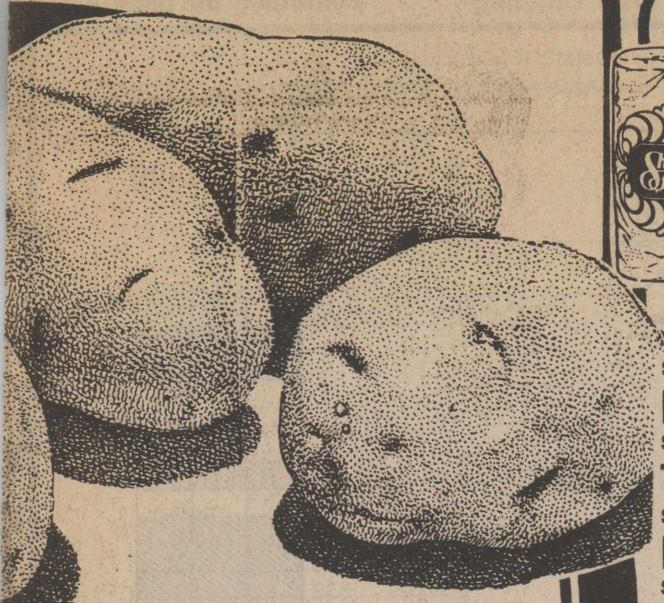


48 MED. OR 32 LG.
SHURFINE DIAPERS
\$5.99
BOX

This Country's Best!

MY DAD ALWAYS THOUGHT THE TROUBLE WITH FOLKS WAS THAT THEY GOT TIRED OF ANYTHING NEW THE MINUTE THE NEW WORE OFF. YOUR AFFILIATED FOODS MEMBER STORE KNOWS ONE THING FOLKS NEVER TIRE OF. AND THAT'S GOOD VALUE!

SHURFINE BOUTIQUE ASSORTED FACIAL TISSUE 100 CT. BOX 69¢ SHURFINE ASSORTED CAT FOOD 4 6 OZ. CANS \$1.00 SHURFINE FRUIT COCKTAIL 16 OZ. CAN 69¢



ALL PURPOSE
POTATOES
9¢



SHURFINE
PAPER TOWELS
2.89¢
ROLLS



SHURFINE SMOOTH/CRUNCHY
PEANUT BUTTER
\$1.29
18 OZ. JAR



SHURFINE
LIQUID BLEACH
59¢
GAL. JUG



SHURFINE WHITE 2-PLY
BATH TISSUE
\$1.69
8 ROLL PKG.



SHURFINE
SALTINE CRACKERS
2 \$1
1 LB. BOX

SHURFINE ASSORTED NAPKINS 140 CT. PKG. 69¢
SHURFINE KITCHEN TALL BAGS 30 CT. BOX \$1.39
SHURFINE ALUMINUM FOIL 12X25 ROLL 59¢
SHURFINE LIQUID DISH REG./LEMON DETERGENT 22 OZ. BTL. 69¢
SHURFINE LIQUID LAUNDRY DETERGENT 64 OZ. BTL. \$1.99
SHURFINE FABRIC SHEET SOFTENER 40 CT. BOX \$1.39
SHURFINE PLAIN / IODIZED SALT 2 26 OZ. CTN. 49¢
SHURFINE WATER SOFTENER PELLETS 40 LB. BAG \$2.99
SHURFINE ASSORTED DOG FOOD 25 LB. BAG \$3.99

SHURFINE EVAPORATED MILK 2 12 OZ. CANS 89¢
SHURFINE BLUEBERRY MUFFIN MIX 13 OZ. BOX 99¢
SHURFINE PANCAKE MIX 32 OZ. BOX 89¢
SHURFINE MIX HOT COCOA 12 CT. PKG. \$1.19
SHURFINE MEDIUM OR LONG GRAIN RICE 2 LB. PKG. 59¢
SHURFINE MICROWAVE ASST. POPCORN 10 OZ. PKG. \$1.39
SHURFINE LONG SPAGHETTI OR ELBO MACARONI 32 OZ. PKG. \$1.09
SHURFINE ASSORTED SPAGHETTI SAUCE 32 OZ. JAR \$1.49
SHURFINE REG. OR NATURAL APPLESAUCE 25 OZ. JAR 79¢

SHURFINE SLICED OR HALVES PEACHES 16 OZ. CAN 69¢
SHURFINE HALVES PEARS 16 OZ. CAN 69¢
SHURFINE ASSORTED PINEAPPLE 15 1/2 OZ. CAN 59¢
SHURFINE APPLE JUICE 64 OZ. BTL. \$1.59
SHURFINE ASSORTED BLENDS CRANBERRY JUICE 48 OZ. BTL. \$1.59
SHURFINE TOMATO JUICE 46 OZ. CAN 79¢
SHURFINE SPINACH 2 15 OZ. CANS 89¢
SHURFINE WHITE OR GOLDEN HOMINY 3 15 OZ. CANS 89¢
SHURFINE WHOLE OR SLICED POTATOES 2 16 OZ. CANS 89¢



ALL VEGETABLE
SHURFINE SHORTENING
\$1.39
48 OZ. CAN



VEGETABLE OIL
SHURFINE OIL
\$1.59
48 OZ. BTL.



SHURFINE ASSORTED
SODA POP
69¢
2 LTR. BTL.



SHURFINE
TOMATO SAUCE
6 \$1
8 OZ. CANS



SHURFINE
TOMATO CATSUP
88¢
32 OZ. BTL.

SHURFINE WHOLE PEELED TOMATOES 2 16 OZ. CANS 89¢
SHURFINE HONEY 16 OZ. JAR \$1.29
SHURFINE GRAPE JELLY 32 OZ. JAR \$1.19

SHURFINE STRAWBERRY PRESERVES 32 OZ. JAR \$1.99
SHURFINE WAFFLE SYRUP 24 OZ. BTL. 99¢
SHURFINE ASSORTED PICKLES 22 OZ. JAR \$1.09

SHURFINE ASSORTED PICANTE SAUCE 16 OZ. JAR \$1.39
SHURFINE MUSTARD 32 OZ. JAR 69¢
SHURFINE SALAD DRESSING 32 OZ. BTL. 89¢

HINGTON RED DELICIOUS PLES 3 LB. BAG \$1.59
NO. 1 IDAHO YELLOW IONS 3 LBS. \$1.00
FORNIA FRESH RROTS 3 1 LB. PKGS. \$1.00
FORNIA HAAS OCADOS 4 FOR \$1.00



Come Home for Good!

WE ACCEPT FOOD STAMPS
WE RESERVE THE RIGHT TO LIMIT QUANTITIES

THRIFTWAY

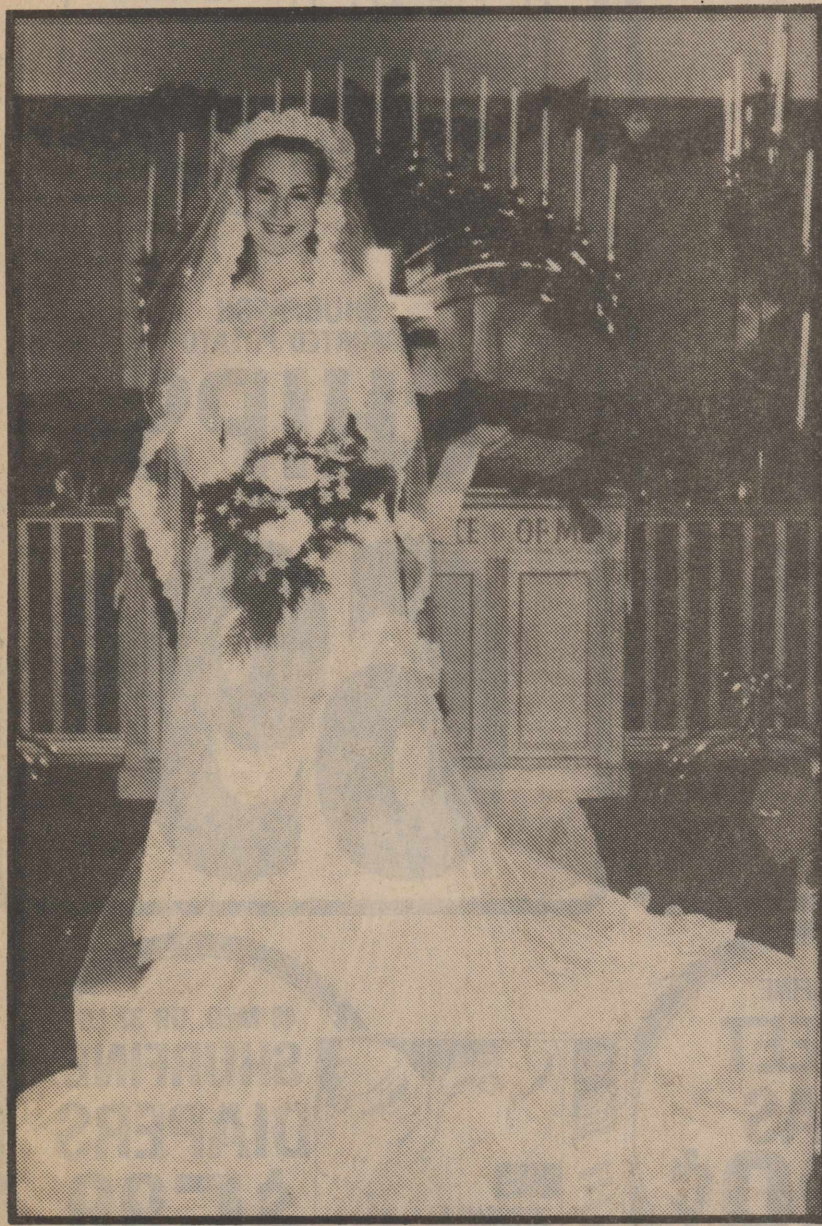


PRICES EFFECTIVE
FEB. 4 - 10, 1987

Thrifty McSaver

Star SOCIETY

Vows Exchanged



Billie Denise Harrison and Russell Duane Osborne were united in marriage on Dec. 20, 1986 with the Rev. Ken Metzger officiating. The double ring ceremony was performed at the First United Methodist Church in Stratford.

Billie is the daughter of Mr. and Mrs. Hoy Harrison of Stratford and Russell is the son of Landrum Osborne of Perryton, Texas and Elouise Osborne of Canyon, Texas.

Escorted by her father the bride wore a white floor length gown out of Sheer brilliant Sataglo with a sabrina neckline. The gown was trimmed in re-embroidered Chantilly lace and bridal pearls on the fitted bodice were cameo appliques, lace motifs and pearls. The waistline dipped to a point front and back. The sleeves were long and straight with lace appliques. The skirt was softly gathered and had bands of lace and lace appliques on the front of the skirt. The skirt was edged in Alencon lace. Billie wore a scalloped attached train consisting of fluted ruffles and lace. The tiara was of Alencon lace and pearls with a finger tip veil and the bottom edged in a band of Alencon lace.

The bridal bouquet was of Christmas greenery, butterfly orchids and stephanotis. Billies something old was a handkerchief of her grandmother, something new, her bridal gown, something borrowed, a penny of her birth year and something blue was her garter.

Maid of honor was the bride's sister Kristi Harrison of Stratford. Bridesmaids were Shawna Dettle of Lubbock, Texas cousin of the bride and Katie Salmon of Nocona, Texas. The attendants were dressed in matching gowns of red satin which were complimented with red satin shoes. The tea length dresses featured a shaped bodice with princess liner, a bateau neckline accented with a double ruffle of self fabric, above the elbow puffed sleeves and a gathered flared skirt with front pleats.

They carried wreaths of greenery with red ribbon, silk poinsettias and small gold bells.

Guests were registered by Lane Johnson, Lubbock, Texas.

Mother of the bride wore a two piece of green on green silk. Mother of the groom wore a black and green two piece silk dress. Both mothers had corsages of butterfly orchids.

Barbara Dettle, aunt of the bride and Boyd Spurlock sang "Friends", "To Me", and "The Bridal Prayer".

The church was decorated with poinsettias on a large ladder cron and poinsettias on the bannister rail. Spirals of candles entwined with greenery and red ribbon and the altar with a Unity candle, greenery and open Bible formed the setting for the ceremony. Red bows marked the bridal aisle.

The reception was held at the Stratford Country Club. Susanne Williams of Las Cruces, N. M. served the punch and Brenda Simpson, Canyon, Tex, sister of the groom served the cake. The table had a cloth of white with white lace overlay. Coffee and punch was served from a silver punch bowl and coffee service. Silver candelabra with greenery, silk poinsettias and red ribbons were on either side of the wedding cake. The three-tiered cake separated by column, was decorated with small white doves and holly. Hor's devoures were served from a similar table.

After a wedding trip to New Mexico, the couple is residing in Friona, Texas. The bride chose a white tuxedo style blouse and gray and black print shirt with black flats for her wedding trip.

The bride graduated from Stratford High school and West Texas State University with a Bachelor of Science degree and is currently employed by the Friona Ind. School District. The groom graduated from Perryton High School and Seward County Community Collage, Liberal, Kansas.

CRP FACTS 1987 News by SCS

Grass drilled into growing wheat must be sprayed with Roundup on March 15 through April 1 to kill the wheat.



A bridal shower was held in the home of Mrs. Hubert Waldrop in honor of Kathy Payne Brooks, Sunday Feb. 1. Pictured are the brides mother, Kay Payne, Kathy and Grandmother Lois Fedric.

Extension Club

The Star Extension Club met January 27, 1987 at noon with a covered dish luncheon in the home of Ava Keener.

Geneva Bell presided over the business meeting at one p.m. Ava read an article that said "Dalhart is closer to the state capitals of Colorado, Kansas, Nebraska, New Mexico, Oklahoma and Wyoming than it is to the Texas capital at Austin and this would apply to Stratford also."

After the short business meeting the following toured the Sherman County Depot Museum, Emma Naylor. Adam Bell, Geneva Bell, Lorelyn Powers, Doris Dyess, Joyce Harper, Irene Wakefield and Ava Keener. Club will meet February 3, 1987 at noon with Lorelyn Powers and members are asked to let their hostess know if they are not coming.

Brownie Troop 87

Stratford brownie Troop 87 has been traveling recently, working on their activity patches. The Brownie troop consists of first, second and third year brownies. After a month of preparation, troop members participated in a troop overnight-out-of-town camp-out. They travelled to the Council office for Yucca Council Girl Scouts in Guymon, and visited Thompson Park and Sunset Lake in Guymon.

The Brownie troop was trained in Basic Outdoor Skills, Planning and Using Kaper Charts, First Aid, Kitchen skills, packing bedrolls and personal care. During the event, troop members planned and prepared all their own meals, and were responsible for clean-up. This camping-

Prospectus Study Club

Invitations are out for GFWC/Prospectus Study Club Couples Mexican Supper, Friday, Feb. 13, 7 p.m. at the home of Betty and Baskin Brown. Members and their husbands and other guests will hear an update on Girlstown from Margaret Reed. Marcia Shieldknight and Debbie Stopper, Amarillo, will have a program on Estate Planning.

Terry Flores, Social Chairman and committee, Rinda Allison, Jane Sizemore, Joyce Hart, ViAnn Reed, Glennell Dettle, Frances Watson and Mary Lou Cotney are hostesses.

Members should check their invitation to see what they should bring.

Tuesday, Feb. 10 2 p.m. club members will host the February Birthday party for Coldwater Manor residents. "In the Spirit of Love" sing-a-long, ice cream and cake are planned by members. All members are urged to attend and visit with the residents.

Frances Watson is Chairman for the party.

learning activity completed the girls Outdoor Ready Patch requirements.

To date, the troop has earned awards for Staying Safe, Safe and Sound At Home alone, Say No to drugs, Oklahoma 75th Anniversary, Walk-A-Mile Handicap Awareness, Nut Sale and I Love Girl Scouts. Currently the troop is working on their Rainbow Honor Troop, Cookie Sale, Friends Around

[continued on page 8]



Valentine Dinner
February 13, at 7:30
Country Club

Reservations Only, by contacting Barbara Chumley, 396-2537 or Martha Willard, 727-4827 before February 10th

Steak Dinner, Catered by M's Meet & Eat



Heart of Art
202 Poplar
806-396-2298

25% off all Art Supplies
thru February 14th

Beginners Classes in
Acrylic's Available

Major Medical Insurance

Paying too much?
Get My Quote

Smith Agency
(806)396-2031

Very Competitive Rates

Underwritten by:
Golden Rule Insurance
"A" Rated (Excellent)

Smith Agency

"Your Independent Insurance Agent"

PUBLICATION COPY - COMMERCIAL BANK		CONSOLIDATED REPORT OF CONDITION (Including Domestic and Foreign Subsidiaries)	
LEGAL TITLE OF BANK		STATE BANK NO.	
The First State Bank Of Stratford		1791-09	
Box 48		FEDERAL RESERVE DISTRICT	
Stratford, Texas 79084		11 13 08633	
CITY	COUNTY	STATE	ZIP CODE
Stratford	Sherman	Texas	79084
		CLOSE OF BUSINESS DATE	
		December 31, 1986	
Dollar Amounts in Thousands			
ASSETS			
1. Cash and balances due from depository institutions			
a. Noninterest-bearing balances and currency in coin		3 389	1 a
b. Interest-bearing balances		7 274	1 b
2. Securities		14 530	2
3. Federal funds sold and securities purchased under agreements to resell in domestic offices of the bank and of its Edge and Agreement subsidiaries, and in IBFs		none	3
4. Loans and lease financing receivables			
a. Loans and leases, net of unearned income	27 785		4 a
b. LESS: Allowance for loan and lease losses	532		4 b
c. LESS: Allocated transfer risk reserve	none		4 c
d. Loans and leases, net of unearned income, allowance, and reserve (item 4 a minus 4 b and 4 c)	27 253		4 d
5. Assets held in trading accounts		none	5
6. Premises and fixed assets (including capitalized leases)		545	6
7. Other real estate owned		209	7
8. Investments in unconsolidated subsidiaries and associated companies		none	8
9. Customers' liability to this bank on acceptances outstanding		none	9
10. Intangible assets		none	10
11. Other assets		1 305	11
12. Total assets (sum of items 1 through 11)		54 305	12
LIABILITIES			
13. Deposits:			
a. In domestic offices		46 033	13 a
(1) Noninterest-bearing	7 360		13 a (1)
(2) Interest-bearing	38 673		13 a (2)
b. In foreign offices, Edge and Agreement subsidiaries, and IBFs		none	13 b
(1) Noninterest-bearing		none	13 b (1)
(2) Interest-bearing		none	13 b (2)
14. Federal funds purchased and securities sold under agreement to repurchase in domestic offices of the bank and of its Edge and Agreement subsidiaries, and in IBFs		1 300	14
15. Demand notes issued to the U.S. Treasury		none	15
16. Other borrowed money		none	16
17. Mortgage indebtedness and obligations under capitalized leases		none	17
18. Bank's liability on acceptances executed and outstanding		none	18
19. Notes and debentures subordinated to deposits		none	19
20. Other liabilities		435	20
21. Total liabilities (sum of items 13 through 20)		47 768	21
22. Limited-life preferred stock		none	22
EQUITY CAPITAL			
23. Perpetual preferred stock (No. of shares outstanding)	none		23
24. Common stock (No. of shares a. Authorized)	60,000		
b. Outstanding	none		
25. Surplus		600	24
26. Undivided profits and capital reserves		1 400	25
27. Cumulative foreign currency translation adjustments		4 537	26
28. Total equity capital (sum of items 23 through 27)		6 537	28
29. Total liabilities, limited-life preferred stock, and equity capital (sum of items 21, 22, and 28)		54 305	29
MEMORANDA Amounts outstanding as of Report Date			
1 a. Standby letters of credit, Total		30	MEMO 1 a
1 b. Amount of Standby letters of credit in memo 1 a conveyed to others through participations		none	MEMO 1 b
NOTE: This report must be signed by an authorized officer(s) and attested by not less than three directors, other than the officer(s) signing the report.			
I, We, the undersigned officer(s), do hereby declare that this Report of Condition has been prepared in conformance with official instructions and is true to the best of my knowledge and belief.			
SIGNATURE OF OFFICER(S) AUTHORIZED TO SIGN REPORT		DATE SIGNED	
		January 30, 1987	
NAME AND TITLE OF OFFICER(S) AUTHORIZED TO SIGN REPORT		AREA CODE PHONE NO.	
John M. Wilson, Sr. Vice President & Cashier		806-396-5521	
We the undersigned directors attest the correctness of this Report of Condition and declare that it has been examined by us and to the best of our knowledge and belief has been prepared in conformance with official instructions and is true and correct.			
SIGNATURE OF DIRECTOR	SIGNATURE OF DIRECTOR	SIGNATURE OF DIRECTOR	
State of Texas Sworn to and subscribed before me this 30th day of January 1987			
(MAKE MARK FOR NOTARY'S SEAL) and I hereby certify that I am not an officer or director of this bank My commission expires February 15, 1988			
Signature Notary Public			

Cards of Thanks

We would like to take this opportunity to thank the citizens of Stratford for their cooperation, patience and many words of thanks during the past snow storm. Although we feel it is our job to try and clean the ice and snow from our streets it is always nice to know someone appreciates our efforts.

Thanks again, City of Stratford Employees

I want to thank everyone for the concern for me during my stay at the hospital and since I had come home. Thank you so much for the visits, flowers, cards, food and calls. It is sure nice to be thought of in this way. I am at present at the Coon Memorial Nursing Home in Dalhart, but hope to come back to Stratford soon.

Olive Boston

The Stratford Country Club members would like to thank everyone who donated to the 1987 fund raising Auction and also everyone who came and purchased the items up for bid. The citizens of Stratford are wonderful people and we appreciate all of you.

Thank You
The Stratford County Club

The family of Belle Davis wishes to express their appreciation to all of our friends who sent flowers, food and cards. Your expressions of sympathy will always be treasured.

Words cannot express our appreciation for all the love, prayers and concern this community shown us during the loss of our brother and uncle, J.B. Thank you for all your cards, food, flowers, memorials, calls and visits.

A special "Thank You" to Bro. Lonny for his comforting service and to our Excellent EMT's and paramedics for their immediate response in trying to do all possible. Also, many thanks to the ladies who served our meal.

May God Richly Bless each of you.

Barbara Hawkins & family
Mr. & Mrs. Newell Williamson
Mr. & Mrs. George Dempsey & family
Mr. and Mrs. Gordon Folkers & family
Mr. & Mrs. Carl Ragar & family



Betty Hamrick and Jan Genn placed first in doubles on Dec. 20th at the 500 Club bowling tournament in Guymon. Betty also won 3rd in all events. The Fat Alberts 500 Team also placed 3rd. The other members of the team are Bonnie Barber and Margie Foster of Guymon.

Buckle & Bow

Going Out of Business Sale

All Womans Shoes 40% to 60% off
Purses 1/2 Price
Justin Boots \$45.00
Tennis Shoes 40% off
Nurse Maids 40% off
Snow Boots 1/2 Price
Rubber Boots \$5.00
Overshoes \$3.00
Womans & Childrens

We Support The Stock Show

The Girls Next Door \$5.00 off all
Ladies & Juniors Lee Jeans & Wranglers \$12.00
C's Male Box Men's Jeans \$14.00
Student Jeans \$10.00
Boy's Jeans

What's Happening !!



By Kristi Blake

Auditions were held for the 1986-87 One Act Play Alsop's Fables, Thursday night. Students winning the fifteen roles include Kristi Blake, Lisa O'Brien, Stefanie Harrison, Leigh Bass, Jenny Fedric, Cristie Chumley, Christie Willey, Kristin Altman, Sami Oakley, Chris Clements, Neal Smith, Brent Lane, Duane Mungia, Chris Riffe and Wes Allison. JoDawn Shields, Lori Wiley

and Bobby Chesher are understudies. Stage manager if Galen Knight, Tech Director is Mike Powers, and Boyd Dyess is Crew. Brenda McClellan and One Act Play director, said she could not believe either the quantity or quality of the auditions. "Those novices who tried out were excellent; OAP competition certainly has a bright future!" Those auditioning included Katrina

Plunk, Yvette Childress, Charissa Bryson, Sam Hensley, Lucy Cano, Casie Cathey, Desine Melton, Jamie Randall, Michelle Decker, Heather Carter, Lisa White, Sheri Bullock, Chase Griffin, Darren Pittman, Carmen Canada and Patti Sizemore.

Alsop's Fables will be presented at Panhandle High School March 24 at the One Act Play Contest.

Basketball

7th, 8th, & 9th

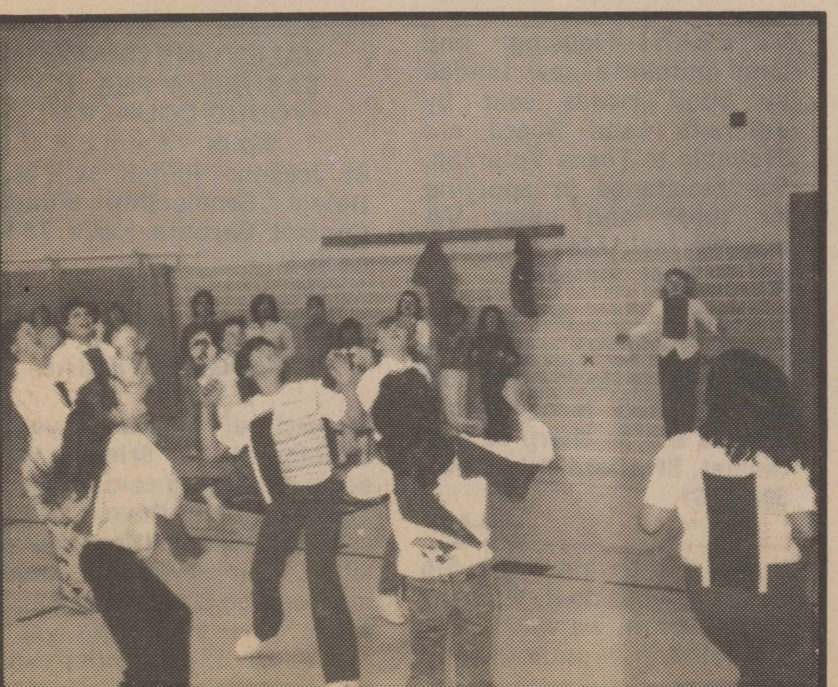
Feb.9, Gruver
Girls Here Boys There 5:00

VB VG JVB JVG
Feb.6, Panhandle There 5:00
Feb.10, Gruver Here 4:00

Elkettes vs Spearman
Stratford - 44
Spearman - 56
Susan Cloyd - 14
Vicki Rolan - 11
Kim Morris - 8
Michelle Durham - 7
Jennifer Britte - 4
Coaches comments-We played well throughout the whole ball game. We just could not make a basket during the third period. All of the girls played hard.

Elkettes vs Stinnett
Stratford - 44
Stinnett - 31
Susan Cloyd - 19
Vicki Rolan - 12
Michelle Durham - 7
Kim Morris - 6
Coaches Comments- We had another poor shooting performance but the hustle and hard work of the girls allowed us to win.

JV Girls vs White Deer
Stratford - 45
White Deer - 23
Charissa Bryson - 16
Isabell Ramos - 9
Tonya Dyess - 7
Michelle Decker - 4
Lisa White - 4
Kay Lynne Spurlock - 3
Patty Sizemore - 2



Stars & Pee Wee Hermans



Celtics & Wolverines

JV Girls vs Spearman JV
Stratford - 29
Spearman - 57
Tonya Dyess - 6
Lisa White - 5
Michelle Decker - 4
Desine Melton - 4
Patty Sizemore - 4
Kay Lynne Spurlock - 3
Isabell Ramos - 2
Charissa Bryson - 1

JV Girls vs Stinnett Jv
Stratford - 37
Stinnett - 19
Michelle Decker - 10
Desine Melton - 6
Charrisa Bryson - 6
Tonya Dyess - 4
Kay Lynne Spurlock - 4
Amie Vincent - 2
Isabell Ramos - 2
Yvette Childress - 2
Heather Carter - 1

Mary Allen News

The fourth grade class completed the annual basketball tournament last week in P.E. The teams and results are as follows:

Goldminers:
Marta Arredondo
Tammie Burton
Katie Norris
Alicia Beltran
Pati Porras
Christy Wells

Zippy Zippers
Mandy Mires
Yesenia Arredondo
Kelly Flowers
Sheila Fedric
Ashley Parsons
Kelly Grimes

Pee Wee Hermans
Jennifer Newcomb
Patsy Cruz
Sarah Ortega
Peggy Ford
Lisa Ramos
Misty Zari

Stars:

Lea Shuping
Wendy Palmer
Sami James
Anna Brown
Sherry Bewcomb
Amy Tillery

Woolverines

Osca Baeza
Hector
Brian
Jeffrey Mercer
Clint Craig
Leeland Lindenfeld

Rockets
Lawrence Aguilera
Tracy Weiland
Rudy Sanchez
Michael Harris
Rhea Chumley
Jeff Ricketson

Iron Eagles
Clint Vincent
Aaron Griffith
T.J. Miller
Michael Gonzalez
Julian Licon
Ryan Wannan

Celtics
Marcus Lavake
Coby Seaton
Josh Slater
Ben Pigman
Jose Barajas

Girls-First Round-Pee Wee Hermans (4) vs Stars (6).
Second Round-Zippy Zippers (2) vs Goldminers (6) for 3rd place third round-Pee Wee Hermans (4) vs Zippy Zippers (22) and for 1st and 2nd place fourth round Stars (6) vs Goldminers (2).

Boys-First Round-Celtics (12) vs Wolverines (0) Second Round-Iron Eagles (10) vs Rockets (8) for 3rd place third round- Woolverines (10) vb Rockets (20) and for 1st and 2nd fourth round Celtics (2) vs Iron Eagles (20)

7th Girls vs Highland Park

Stratford - 32
Highland Park - 18

Kendra Tillery - 12
Brandie Lavake - 10
Angie Porras - 6
Buffy Ellison - 4

[continued on page 8]

North Plains
Savings & Loan
396-5534

Cimarron Feeders, Inc. 1-405-543-6383 Griggs

Elk Pharmacy 396-5505

Thriftway 396-5586

Consumers Company 396-2261

A & I Parts Center 396-5593

TECO 396-2300

Coldwater Manor 396-5568

Brooks Motor Company 396-2470

Stratford Star 396-5885

Walter Lasley & Sons, Inc. 753-4411

Stratford Grain Co. Stratford 396-5541 Lantz 769-4485

Olson Automotive 396-5572

Stratford Printing 396-5371

IT PAYS TO LOOK IN THE

Star

CLASSIFIEDS
'THE BEST SALESPERSON AROUND'

Phone 396-5885 to place your Star classified ad

★ FOR SALE ★

For Sale: Country Club Membership, Call 396-2472 after 4p.m. 12-4tfn

For Sale: 1983 Ford Escort GLX, Good Condition. 4 dr hatch back fully loaded. Automatic Transmission - heat-Air conditioning. Rear window defroster. \$3,000.00 or best offer. 396-2559. 2-26-c

For Sale: Country Club Membership. Reasonable. Call 396-5321. 12-4tfn

1979 Chevrolet Caprice Classic, Real clean and loaded. 1976 Chevrolet Impala, 1976 GMC Jimmy 4-Wheel drive. Call day-396-2131 or nights 396-5396. 12-4tfn

If you call on one of our customers. Tell them you saw their ad in The Stratford Star.

A small fire with a Halon fire extinguisher would probably be an inconvenience. A small fire without a fire extinguisher could be a major disaster. Sometimes luck is directly proportional to preplanning. I have those fire extinguishers to sell. Bill Riffe 396-5541. Come by for a demonstration anytime. 1-29-tfn

For Sale: Used Pickups & car parts, engines, transmissions, rear ends, etc. Cash for pickups and cars for salvage purpose. Located 4 miles West of Hooker on Hwy 54. Musscat Salvage 405-652-2400 2-19-c

Lower Your Heating Bill. Kerosene heaters on sale now. Sherman Implement Co., Hwy 54 East. 2-12-c

Transmission Problems. Rebuilt automatic transmissions you can depend on and afford. 6 month, 6,000 mile warranty. BJ Transmissions, 800 S.Bliss, Dumas 935-3700. 2-5-tfn

C's Male Box final Winter clearance sale. Winter sweaters 40% off. London Fog Coat and Jogging Suits 50% off. Sports Coats 40% off. 2-5-c

NOTICE

"Shimmer-on" Iron sequins; "N" Crochet hooks; Conchos, etc. New hours 9-12 and 1-5 Tues and Wed. 9-12 and 1-6 Thursday and 9-12 and 1-4 Friday. T & O U-Store and Tinker Shop, Texhoma, Oklahoma. 2-5-c

Basketball

continued from Page 7

7th Boys vs Highland Park

Stratford - 17
Highland Park - 37-

Greg Vandiver - 3
Scott Asher - 5
Jay Cloyd - 1
Alan Gore - 2
Justin Long - 6

8th Girls vs Highland Park

Stratford - 17
Highland Park - 30

Marsha Diamond - 5
Kim Thompson - 3
Monique Smith - 3
Larita Jefferies - 2
Melinda Rendon - 2
Laly Fierro - 2

★ SERVICES ★

If you call on one of our customers. Tell them you saw their ad in The Stratford Star.

Durans Disc Rolling Service
35 years experience
No Mileage charged
405-423-7238
2-5-9-tfn

Decorated cakes for all occasions. Wilton certified, call Kathy Sherrod at 396-2589, anytime. 6-26tfn

We wash, starch, and press shirts. Bring them in with your cleaning. Stratford Poly Clean, 396-2151. 10-2tfn

Several new movies arriving this week. Will reserve movies. Drawing once a month for a free movie. Main Video Plus. 2-5-c

VETERANS--Housing and Land purchase now funded by bond issues sold by Veterans Land Board are available to Texas Veterans. For assistance in applying for these and other VA benefits, call Max Stephenson CSO at 396-5348. 2-26p

Ladies Only: If you want your man to look good, try our starched jeans. Our creases are as sharp as you can get. Stratford Poly Clean 396-2151. 9-4tfn

If you don't want to do the laundry, let us do it. Drop off before 9 a.m. we wash, dry, and fold it for you to pick up by 5 p.m. Dirty work is our business. Stratford Poly Clean 396-2151. 1-16tfn

For Termite Control Call Leo Russell at 1-383-7075 Amarillo. Have been working Stratford for 28 years. Have City and State License for the City of Stratford. 4-24tfn

Breaking and training 2 yr. olds, cutting horse training, fitting horses for sale. Also riding lessons on horsemanship. Contact Dana Larsen at the R.J. Cluck ranch. Evenings 753-4491 days 753-4470. 2-5-c

We have the perfect gift for your Valentine. Collector Belt Buckles, All sizes, all prices. Come see them on Display at Sherman Implement. Hwy 54 East 2-12-c

Homemade Cinnamon Rolls at \$3.50/doz. Brownies at \$2.50-\$3.00/doz. Chocolate Chip Cookies at \$2.25/doz. Peanut Butter at \$2.00/doz. Plain cookies at \$2.00/doz. Decorated at \$3.75/doz. Contact Cathy Crawford at 396-2885 to place order. 2-12-c

We Cater To You!

Let us have that special dinner or luncheon for you! Birthday, Anniversary, Wedding rehearsals, Business, Bridge, or just Friends getting together. Jeanie-396-2224; Linda-727-4636 or Pat-396-2243. 2-5-tfn

8th Boys vs Highland Park

Stratford - 36
Highland Park - 37

Gary Laramore - 12
Robert Williams - 18
Shane Sawyer - 2
Wayne Stacy - 4

★ MANUFACTURED ★

HOMES

ABANDONED HOMES
Take up payments. 806-381-1352. call collect. 12-18tfn

You've got credit with us!! Low, Low down repos. Good, Bad & No Credit welcome. 806-381-1352, call collect. 12-18tfn

★ MISC ★

THRIFTY BOUTIQUE

Moved to new location, Across from Depot Museum. Lots of new bargains. 12-25tfn

Final Winter Clearance Sale. All winter sweaters now 40% off. Selected Allison and Haggard pants now 1/2 off. London Fog Coats and Children's clothes 1/2 off. The Girl's Next Door. 2-5-c

VALENTINE DANCE
SATURDAY FEB. 14
"YOUNG COUNTRY"

9 p.m. - 1 a.m.
St. Joseph's Parish Hall, Nu Beta's Scholarship Fund. Contact Barbara Halle 753-4486. 2-12-c

VALENTINE SPECIAL

Instead of sending your sweetheart or friend the same old boring card, or box of candy. Send them a large customized Valentine cookie with your own personal message on it for only \$2.50. Make sure you place your order early to assure delivery on time. Great Ideal for Secret Pals! Contact Cathy Crawford at 396-2885 or Stephanie Helton at 948-4508. 2-12-p

ALCOHOLICS ANONYMOUS and AL-ANON meet each Thursday at 8:00 p.m. in the old County Barn

ATTENTION FARMERS
April 15, 1987 is the last day to insure 1987 Grain Sorghum and Corn under FCIC or MPIC
For more information contact
Roy J. Hill Box 621 Stratford, Texas 79084
806-396-2087

Other Services - Roofing, Tile, Sheetmetal Work
Carpet Laying & Remodeling

Mungia's Heating & Air Conditioning
24 Hour Service

219 N. Main P.O. Box 1253 Stratford, Texas 79084 396-2007
If No Answer Call 396-2403

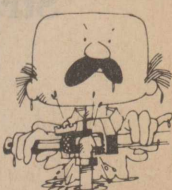
Williams Repair Service

Phone 396-2429

Don Williams Res. 396-2322 Eddie Williams Res. 396-5330

For Plumbing and Heating trouble
Roof Repair and Home Remodeling
Residential and Commercial

We Sell
Smith Water Heaters
Cozy Wall Heaters
Heat Tape
Kohler Fixtures
Plumbing Supplies
Cozy Floor Furnaces
Delta Faucets



★ FOR RENT ★

For Rent-Gillis Apartments, 101 N. Main. 1 and 2 bedroom, furnished and unfurnished. Call George Jeffcoat, 396-5564 or in emergency, Mrs. Garrison, 396-5657 or 396-2264. 1-30tfn

Two bedroom house for rent. 401 N. 5th St. call Bill Riffe to look. 396-5692. 11-20tfn

For Rent, Lease or Sale-Large aircraft hanger and 11 acres of land. Located 1 mile North of Stratford on Beaver Hwy. 396-5317. 11-20tfn

Duplex Apt. for rent, 396-2102. 10-30tfn

House For Rent: Call Elsie Pickens at 396-2304 or come by 519 N. Cedar. 2-5-c

Apartments for Rent: "Fulton Hilton" (We call it that) New carpet, new paint, clean and neat. One bedroom, furnished or unfurnished. 6th and Fulton. Call Bill Riffe to look it over, 396-5541 or 396-5692 nights. 2-5-tfn

★ Garage Sales ★

For Sale: A whole housefull of household items. If interested call 396-5911. 2-5-c

Moving Sale Feb. 6 & 7 9 a.m. until 5 p.m. St. Joseph's Parish Hall. Clothes, furniture and lots of miscellaneous. 2-5-p

Brownies Cont. from page 6

the World, Be a Ready Helper, 75th Fun Fest, Strutting Our Stuff, Try-its (first and second year Brownies), and Bridge to Juniors for 3rd year Brownies.

Leaders for the groups are: Valerie Naugle, Candy Gutierrez and Karen McMillion.

Classified Ad Rate

16¢ per word after 25 words
\$4.00 minimum up to 25 words
16 cents each additional word first week
8¢ per word on subsequent insertions
\$1.00 discount if paid in advance

Deadline Noon Mondays

★ HOUSES FOR SALE ★

For Sale: Two story, three bedroom, office or fourth bedroom, bath and a half. Phone 396-5684 afternoons. 10-2tfn

FOR SALE--3 bedroom brick home, central heat & air, fireplace, large fenced backyard. Call 316-624-9241, evenings. 9-5tfn

HOUSE FOR SALE
Brick, 3 bedrooms, 2 baths, breakfast room, fireplace, 1 car garage, hobby room, storage shed, fenced in patio, fruit trees. Call 396-2508 after 5:30 p.m.

★ HELP WANTED ★

Salesman in Stratford Area. Must have good knowledge of area and people in area. Be your own boss. Selling old established line of Aluminum storm doors and windows on commission. No investment required, but must furnish own transportation. Call 405-338-6966. 8-5 for more information. 2-5-c

Here's a tip... a Tax Tip.

If you have at least one dependent child living with you and your income is less than \$11,000 a year, you may qualify for the Earned Income Credit and receive money back from the IRS. Publication 596 can tell you how. Call 1-800-424-FORM (3676) or the IRS Tax Forms number in your phone book to get a copy.



Stratford Lodge No. 874
Roy Chamberlain W.M.
V.O. Lasley Sec'y
Third Thursday 8 p.m.

CLASSIFIED ADS PAY OFF!

STRATFORD REFRIGERATION
Appliance Repair
Clothes Dryers,
Refrigerators, Freezers,
Electric & Gas Ranges
WAYNE MERRILL
396-2129

TURHAN BAYKAN, M.D.
Specialist In
Obstetrics-Gynecology
Monday-Friday 9 a.m. - 6 p.m.
201 S. Bliss Avenue, Dumas
Appointments 935-6599, Emergencies 935-7171

PASTURE — CATTLE — STORM INSURANCE
INSURE YOUR CATTLE WITH A CATTLEMAN
JOE FLORES
FARM BUREAU INSURANCE
396-5598 NIGHT 396-5389

Catherine D. Taylor
Certified Public Accountant
North Plains Building
401 N. 3rd 396-2435
Monday - Friday 9 a.m. - 5 p.m.

Family Vision Care Specialists
Dr. J.W. McCormick
Dr. David Riddlespurger
OPTOMETRISTS
Dr. McCormick will be in the Stratford Office:
Thursday February, 5th & 19th
Office Hours: 10:30 to 4:30 396-5516

DAN H. LOVING, D.D.S., M.A.G.D.
GENERAL DENTISTRY
Wednesday in Stratford
P.O. BOX 556 212 S. BLISS DUMAS, TEXAS 79029 (806) 935-9212
P.O. BOX 779 212 N. POPLAR STRATFORD, TEXAS 79084 (806) 396-5665