

Skirting Stanton

By PEGGYE SORLEY



Everyone make a note to attend the grand opening of Gregg's Flowers. There will be all sorts of FREE goodies at the affair, and it will give you a chance to meet the new owners, Hubert and Betty Gregg. The date is this Sunday, February 21, from 2:00 to 5:00 p.m. The Greggs purchased the shop from Maxine and "Mac" McArthur recently, and Maxine still helps out occasionally. Betty Gregg informed me that the shop will carry a supply of gift items, along with the usual artificial arrangements. The shop carries a large variety of flowers for every occasion.

Congratulations to Tommy Pinkerton and Polly Creech on being selected as "Sweethearts of the Youth of the First Baptist Church." The youth sponsored a sweetheart banquet this past Saturday night, and approximately 70 persons were in attendance. The Sweethearts were voted by secret ballot, and revealed at the banquet. They were crowned by Mr. and Mrs. Charlie Pinkerton.

The Beta Sigma Phi Sorority Chapters have each selected their Valentine Queens, and have honored them with parties recently. Xi Theta Nu selected Ruth Holcombe, president of the chapter, to represent them; Rho Xi selected Mary Sale, and Mu Lambda selected Bonnie Faye Sorley, director of the chapter. The other two chapters, Xi Epsilon Delta and Preceptor Mu did not pick queens, but usually celebrate Valentines Day by sponsoring a party for their families. Mu Lambda Chapter postponed their Valentine party until February 22, because of several illnesses in the group.

Here's an interesting item: Take your age. Multiply by 2. Add 5. Multiply by 50. Subtract 365. Add the loose change in your pocket under a dollar. Then add 115. The first two figures are your age, and the last two the change in your pocket.

If you will make note of an article elsewhere in this issue, you will find a story on the 4-H Club here. I have been noticing a number of cars at the county barn and the old Wheeler Motor Co. building, and was curious as to what was going on. I had heard that a square-dancing group had been organized, and that Mildred Elland could tell me more. I got in touch with Mildred this past Monday, and found out several interesting things about the 4-H. First of all, the group is participating in square dancing as a recreational project, and second, I found out that you are not limited to things you know how to do to become a 4-H member. As a matter-of-fact, the 4-H Club teaches you how to do things. Anyone is eligible to become a member as long as they are nine years old or older. 4-H Club work includes a number of projects, and any member can choose any project they wish to participate in. Get in touch with Mildred Elland or Billy Reager, if you are interested in fun or educational projects, and they will explain all the different areas of 4-H Club work. Remember, you do not have to have an animal in order to join, you can only have an interest in recreational projects, public speaking, animals, cooking, housekeeping, or many, many other things.

Local Chapter To Observe FFA Week

National Future Farmers of America Week opens on Saturday, February 20, and continues through February 27.

The Stanton High School Chapter of FFA will participate in the observance of the special national week.

Nolan Parker, vocational agriculture teacher at SHS, and the members of his various FFA teams in stock, range, and pasture judging, are well identified in the West Texas community.

The Future Farmers of America is a national organization of, by, and for students studying vocational agriculture in the public schools. The FFA is an educational, non-profit, non-political youth organization of voluntary membership, designed to develop agricultural leadership, character, thrift, scholarship, cooperation, citizenship, and patriotism. One of the requirements for membership is that the students must be enrolled in a high school class of vocational agriculture. The age limit is 12-21. In these vocational agriculture classes, students are provided an opportunity to secure technical and scientific training in all phases of agriculture.

Texas is the largest of the fifty chartered state associations with over 10 per cent of the national membership. Texas has 940 chapters with a membership of over 49,000. The national membership is over 450,000, and is sponsored by the State Department of Education. The Texas Association of FFA is sponsored by the State Department of Education. The high schools in Texas serve as local sponsors, and the local vocational agriculture teacher serves as the local FFA chapter advisor.

The FFA provides training for those interested in production agriculture, as well as those anticipating careers in off-farm agricultural occupations. The FFA, through the vocational agriculture classes, provides training for the entire agriculture industry, both on-farm and off-farm. Four out of every ten employed persons in the United States work in some phase of the agriculture industry.

The FFA strives to furnish well-trained leaders and citizens for responsible positions in agricultural business and industry, professional agricultural work, farming, and ranching. Presently Texas high schools are offering vocational agriculture classes in production agriculture, agricultural mechanics, horticulture, meat processing, and forestry.

Local FFA Teams Win Awards At El Paso Livestock Show Feb. 6

Members of the Stanton FFA Chapter won team and individual honors at the El Paso Livestock Show Feb. 6-14. Animal exhibitors included Steve Fryar, Clint Creech, Theodore Wells, Lynn Romine, Jackie Rudd, Duane Clary, and John Parker. Steve Fryar placed seventh with a medium weight Hampshire barrow. John Parker placed fourth with a heavy weight Duroc barrow, sixth with a lightweight Poland China barrow, and eighth with a medium weight Crossbred barrow.

The Plant Identification teams won the first and second place team awards in the Range and Pasture Contest, while Odessa FFA placed third. Team number one was

composed of Gary Posey, Lynn Romine, George Franks, and Jackie Rudd. Team number two was composed of Steve Wood, Bradford Hull, Gary Henson, and Dennis Ireton. Those winning individual awards were: Gary Posey, first; Lynn Romine, second; Steve Wood, third; Jackie Rudd, fourth, and Bradford Hull, fifth. The Stanton FFA plant teams have won the Heart of Texas Contest at Waco, State Fair at Dallas, and the Fort Worth and El Paso Plant Identification contests this school year.

Adult sponsors attending the El Paso Livestock Show were: Richard Posey, Neil Fryar, and agricultural teacher, Nolan Parker.

Easter Seal Appeal Will Open Monday, Mar. 1

The 1971 Easter Seal Appeal will open in Martin County on Monday, March 1, according to R. O. Anderson, who serves as Easter Seal representative for the county.

Mr. Anderson said that Easter Seal Appeal letters would begin arriving at homes in the county about March 1.

As Easter Seal representative, he is the local person to contact to request rehabilitation services for the Easter Seal Society for Crippled Children and Adults of Texas. These services include physical and occupational therapy, speech and hearing programs, and special information about services to help solve the many problems faced by the families of handicapped children and adults.

Last year over 21,000 handicapped people received help from the Texas Easter Seal Society. With the costs of providing expert professional care raising, more money than ever will be needed.

Funds help support 20 centers in Texas, where crippled children and adults are treated, regardless of their ability to pay. Walkers, wheelchairs, and related services are provided to those who cannot provide for themselves.

"The people of Texas have always responded generously to helping the handicapped, and I feel certain they will make it possible to increase Easter Seal services to crippled Texans throughout the coming year," Anderson said.

Two Localities To Attend Meet In Washington

Martin County will have two representatives at the National Farmers Union Convention in Washington, D. C., February 21 through 28. Ronnie Deatherage and Mike Holcomb will fly from Dallas to Washington aboard a chartered jet that will carry the Texas delegates.

Holcomb was chosen by the Texas Farmers Union state president to serve on the livestock and livestock marketing commodity committee, for the purpose of making policy recommendations to the convention delegates.

Both Deatherage and Holcomb will meet with various USDA officials to the best advantage. (Continued on page 8)

Grady Lions To Sponsor Donkey Ball

The Grady Lions Club will sponsor a donkey basketball game this coming Tuesday night, February 23, in the Grady School gym. Time for the fun-filled evening is 7:30 p.m., with tickets on sale by any of the Grady Lions Club members at \$1.00 for adults, and 25 cents for students. Tickets may also be purchased at the door.

Proceeds from the game and the concession will go to the Grady Lions Club.

Ralph Godfrey's Donkey Ball Company of Crescent, Oklahoma, will provide the donkeys, which along with the games will include, between quarters, a trick donkey act. (Continued on page 8)

J. O. Hardin Funeral Services Held Feb. 11

Funeral services were held February 11, in the First Baptist Church, in this city, for John Odas Hardin, 74, who expired, Tuesday, February 9, in the Methodist Hospital in Lubbock. Hardin had been in ill health for some time.

He was born June 21, 1896, in Independence, Arkansas, and came to Martin County in 1942 from Big Spring. He was a retired farmer, and veteran of World War I.

Hardin was married to Lillie Mae Patterson in Nolan County, Texas, January 13, 1918. She preceded him in death November 19, 1967.

Rev. John Rankin officiated for the services, with Rev. Richard Payne assisting. Interment was in the Evergreen Cemetery under direction of Gilbreath Funeral Home.

He is survived by two sons, Billy Hardin of Dublin, and George Hardin of Cuero; three sisters, Mrs. Lola Elliott, Tulare, California; Mrs. Tina William, Abilene, and Mrs. Olan William, Abilene; two brothers, P. H. Hardin. (Continued on page 8)

4-H Develops New Program

Local 4-H leaders are striving to develop a youth program aimed at the fulfillment of the needs and interests of boys and girls, and provide for creative experiences in action, learning, and fun. Youth today are looking for ways they may learn to balance their time, talents, and energy. The 4-H program committee is trying to plan activities to meet these needs, says Mrs. Mildred Elland, county home demonstration agent.

One way of meeting this need is the "special interest approach," which allows flexibility in content and structure. The recreation project for high school boys and girls of Martin County, now in progress, is one such special interest group. Fifty-two boys and girls are enrolled. They meet once a week for two hours of instruction and fun. Roger Fleckenstein is directing this group, with assistance of parents.

Other special interest project groups are available. They are open to any boy or girl between ages 9-19. Details of 4-H work may be obtained from the County Extension Agents' Office, located in the county courthouse.

Flower Grove To Fill Two Board Places

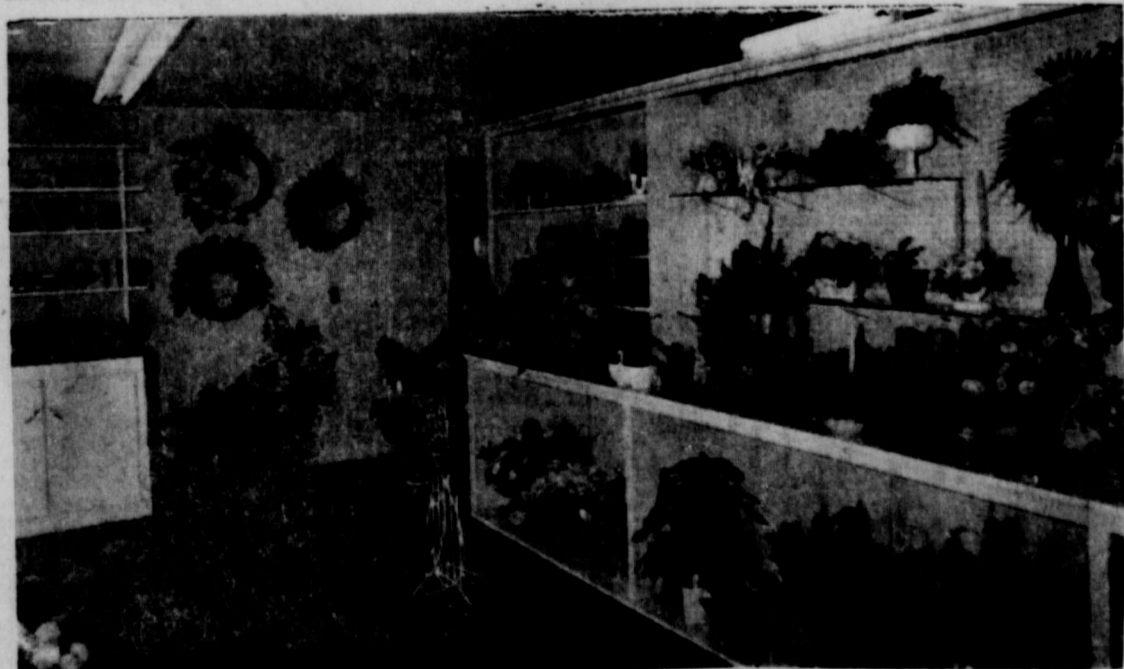
Superintendent of the Flower Grove Independent School District, J. W. Massengale, has advised the newspaper that two places will be filled in April for the Flower Grove School Board.

Members of the board whose terms are expiring are: Earl Hightower, and Bennie Foster. Holdover board members include: Jimmy Heald, Leon Cave, Derrel Froman, and Opal Langston.

The election for the school board places will be held on April 3, at the lunch room in the Flower Grove School.

Candidates wishing their name to appear on the ballot should inform the superintendent's office at the Flower Grove School.

Mr. and Mrs. Verbin Graves, Mr. and Mrs. Travis Clay and Shane, Mr. and Mrs. James Jones and Laquana, and Mrs. Myrtle Jones, were in Fort Worth this past Saturday, to attend the funeral of Mr. Roy Grissom. Grissom was a brother-in-law of Mrs. Graves and Mrs. Jones.



GRAND OPENING PLANNED—Betty and Hubert Gregg, recent purchasers of Maxine's Flowers, will be holding their grand opening this weekend. Free carnations will be given away, and refreshments will be served.

Chamber Of Commerce Plans New Office Site

The Martin County Chamber of Commerce at their regular monthly meeting held Tuesday night, voted to move the present chamber office to the vacant office next door.

It was felt that the move would make the chamber more accessible to the public, and would give the chamber more room to operate in. No increase in rent will be incurred by this move. The new office will be where Elland-Stallings Insurance Agency used to be.

Chamber president Bob Deavenport appointed a committee to three to study the present dues structure, and to work on gaining new members for the chamber.

Vic-president Don Tollison gave a report on a questionnaire that will soon be mailed out to all chamber members and interested persons. The questionnaire will contain several suggestions for projects to be undertaken by the chamber. In getting the questionnaire ready it was felt that all things

cannot be accomplished in one year, and that priorities should be established for the chamber to work from. Persons receiving the form should feel free to add their suggestions to the list.

President Deavenport reminded those present that E. H. Sheffield, Industrial Development Consultant for the Texas Industrial Commission, will be in Stanton on Friday, February 19, to meet briefly with local chamber members.

Sheffield will explain the workings of the new computerized Insta-Site program. Insta-Site is designed to assist Texas communities in the search for new industry, and to better coordinate activities between the various agencies involved in industrial development work.

The meeting is scheduled for 4:15 p.m. Friday, February 19, in the Reddy Room at Texas Electric. All chamber members and interested parties are invited to attend.

Supply Shortage Could Hurt Outlook For Cotton Markets

A supply shortage could endanger the best outlook for expanding cotton markets in a decade was a commonly heard statement at the recently held National Cotton Council meeting in Dallas.

Fred C. Elliott, extension cotton specialist, said the need for more cotton production was pointed out by several conference speakers, including Assistant Secretary of Agriculture Clarence D. Palmby, and Dr. M. K. Horne, Jr., consulting economist for the Council. Horne noted that domestic

mill usage in 1970 was eight million bales, and that exports for the crop year ending next August 1, are projected to rise to 3.5 million bales, up 700,000 from 1969. There is some feeling that actual exports will go to four million bales or more, Horne said. Domestic use of eight million bales, and exports of 3.5 million would reduce the carryover stock of cotton to

Palmby also emphasized the need for more cotton production in 1971, and outlined how the Agricultural Act of 1970

cotton. The new program offers the cotton industry the opportunity to be more competitive in terms of production costs, and to produce what the market will take — the quantities and varieties needed, he said.

could give a new direction for the lowest level since 1952, and bring us to the brink of a supply crisis, the economist said.

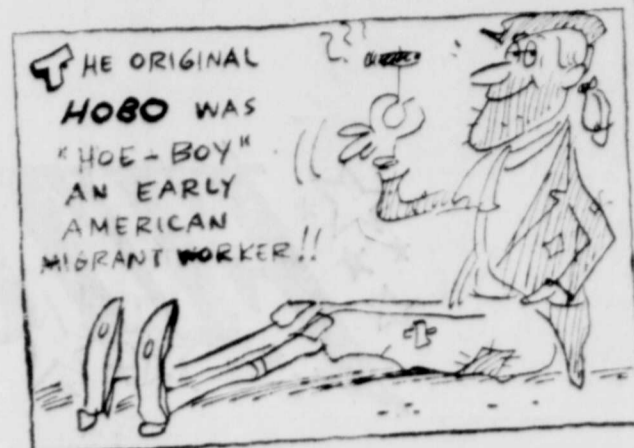
Elliott said Dr. Horne emphasized that cotton could not survive such a situation when we are competing with synthetic fibers which are produced on dependable schedules every day of the year. Therefore, a larger crop in 1971 is a must.

In order to expand our market opportunities, we must have larger supplies along with a greater variety of staple lengths and other quality factors. We must have cotton available if we hope to regain cotton's rightful share of market growth here and around the world, the assistant secretary said.

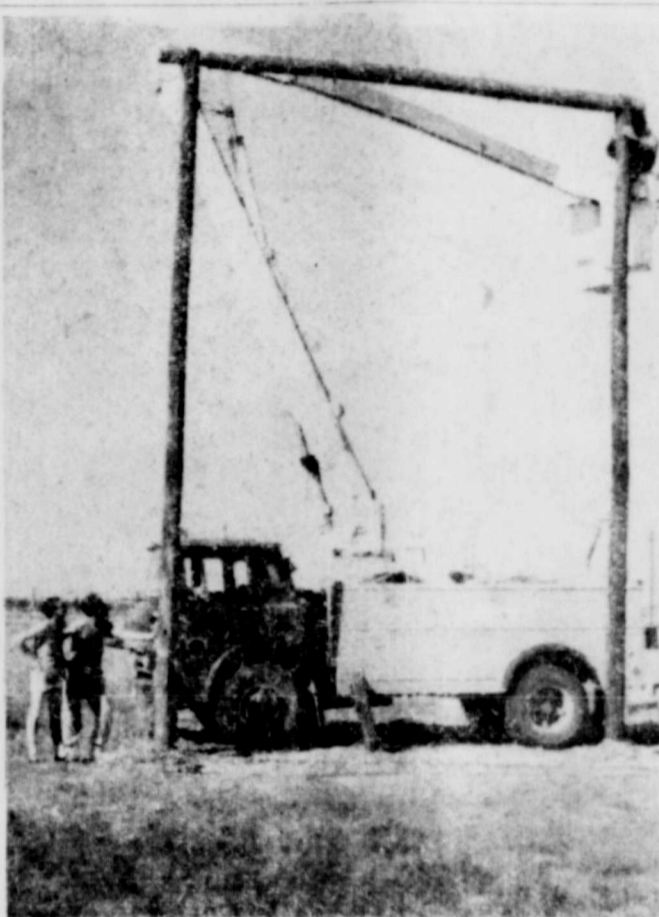
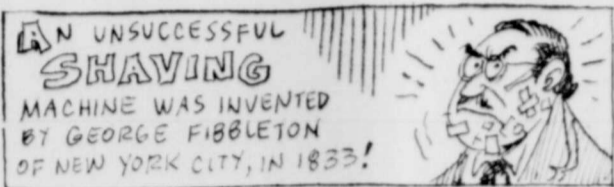
Elliott advises Texas cotton producers to take a realistic view of the current situation, and take advantage of the opportunities offered.

MU LAMBDA VALENTINE SWEETHEART — Bonnie Faye Sorley was recently selected as Valentine Sweetheart of the Mu Lambda Chapter of Beta Sigma Phi. She serves as director years. She has been a member of Beta Sigma Phi for 11 years, and has served the chapter as president, vice-president, secretary, and treasurer. She and her husband, Floyd, reside in Big Spring, where she is a teacher at Washington Elementary School, and he, a teacher at Big Spring High School. Their four children include Veronica, Mike, Herb, and Tom. She will be the honoree at a belated Valentine party, Monday, February 22, and will be presented a gift by last year's sweetheart Peggy Sorley. Photo was unavailable at press time.

THE STANTON REPORTER, THURSDAY, FEB. 18, 1971—3



We had to raise the price of The Stanton Reporter to \$3.00 in the county, and \$3.50 out of the county.



LONG WAY UP — Stanton students watch as a Cap Rock Electric Cooperative worker tightens the bolts on the supports for a 26 foot rope climb that will be the final barrier in an obstacle course to be used for conditioning the school's athletes.

Distinctive PRINTING

Make Us Your "One Stop" Press Center

We have the complete facilities and know how to successfully serve your printing need. Letterpress, engraving are all part of our service. We print color of black and white. Call us, compare our quality and prices.

- Stationary • Catalogs
- Business Forms • Envelopes
- Announcements • Advertising

THE STANTON REPORTER

Sale Paid Quarterly

All For The Price Of One, MSA Will Give You:

1. Daily Compounding Higher Yield
2. Convenience Branch Office
3. Security Oldest & Largest—Plus \$20,000 Insurance

PER ANNUM

EFFECTIVE ANNUAL YIELD

4 3/4%

4.86%

5 1/4%

5.39%

5 3/4%

5.92%

6%

6.18%

Pass Book Certificate 6 Month
Certificate 1 Year
Certificate 2 Year

We dare you to compare. Midland Savings pays more on all rates. How? DAILY COMPOUNDING!

"The Best Rates In Town!"

MIDLAND SAVINGS ASSOCIATION

Stanton Agency

A. J. STALLINGS, JR.

304 N. St Peter — Stanton, Texas

Agent

Big Food Buys FOR SMALL BUDGETS

FOLGER'S 1 lb. can
COFFEE
85c

DIAMOND 3 lb. can
Shortening
59c

PEAS	LIBBY'S, No. 2 Butter Seasoned	4 for 89c
CORN	LIBBY'S, No. 2 Butter Seasoned	4 for 89c
Facial Tissue	SILK 150 Count	5 for 89c
E G G S	FLYING W Grade A Medium	39c
INSTANT POTATOES	IDAHO 1 lb bag	29c
PORK & BEANS	LIBBY 14 Oz.	10c
FLOUR	GLADIOLA 25 lb. bag	\$1.99
JELLO	ALL FLAVORS Reg. Size	4 for 47c
FRENCH FRIES	KIETH 9 oz.	10c
POT PIES	BANQUET 2 for	45c
FRO-ZAN	GANDY 1/2 gal.	39c
TV DINNER	BANQUET	39c
NAPKINS	ZEE 150 Count	29c
PAPER TOWELS	CHIFFON Jumbo 3 for	\$1
TOILET TISSUE	FAMILY SCOTT 4 rolls	39c
BABY FOOD	GERBER Strained	6 for 69c

BACON	ARMOUR lb.	69c
FRANKS	ARMOUR 12 oz.	49c
LIVER	BEEF, SLICED lb.	49c
PICNICS	CANNED, Gooch 3 lbs.	\$2.49
SAUSAGE	German, Gooch 12 oz.	69c
BANANAS	lb.	10c
ORANGES	lb.	10c
CARROTS	lb	10c
GRAPEFRUIT	each	9c
LETTUCE	head	25c

FRIENDLY FOOD

PHONE 756-3375

(STANTON'S DISCOUNT GROCERY)
(BILL COGGIN — Manager)

200 N. ST. MARY

FREE DELIVERY ON \$5.00 OR MORE ORDERS.
PRICES EFFECTIVE FEBRUARY 18 THROUGH FEBRUARY 24.

FUTURE FARMERS OF AMERICA



To Future Farmers, Our Thanks...

Future Farmers of America, we salute you . . . with thanks for all you are doing to aid agriculture in this area . . . and to promote the conservation of our farm resources. For the future, our hopes are high . . . because we know that our local FFA members are building agricultural leadership that will serve us well. Congratulations on your achievements.



OUR CONGRATULATIONS TO THE STANTON and MARTIN COUNTY FFA

— THIS PAGE SPONSORED BY THE FOLLOWING FIRMS —

Farmers Co-Op Gin
Currie's Little Store
Epley Abstract Company
The Stanton Reporter
Turner Texaco
Hicks Auto Supply, Ltd.
Stanton Food Market

Bill's Friendly Food
Dalashanta Beauty and Dress Shop
First National Bank
Stanton Cleaners
Wheeler Motor Company
Alsop Chevrolet
Higginbotham-Bartlett Company

Blocker Oil Company
Dr Pepper Bottling Company
Gilbreath Funeral Home
Cook's Enco
Belvue Motel and Restaurant
Cap Rock Electric Co-op.
Dairy Treat

Cain Tractor and Supply
Eiland-Stallings Insurance
Gregg Flowers
Ector Thornton Implement Co.
Franklin Gulf Service Station
Central TV Service
Stanton Walgreen Drug

Classified Ads

AUTOMOTIVE

Trucks & Trailers D-2
For Sale: Extra nice, 1963, 18 foot travel trailer, self-contained. Call after 5:00 p.m. 756-2253. 2-18-tnc

BUS. OPPORTUNITIES

Business Chances E-1
Business Opportunity Man Or Woman
Reliable person from this area to service and collect from automatic dispensers. No experience needed... we establish accounts for you. Car, references and \$995.00 to \$1,885.00 cash capital necessary. 4 to 12 hours weekly nets excellent monthly income. Full time more. For local interview, write, include telephone number. Eagle Industries, 3938 Meadowbrook Road, St. Louis Park, Minnesota 55426. 2-18-tnc

FARM & RANCH

Farm & Ranch Supplies J-2
For Sale. Two used Tri-Matic systems. Taken on trade. Good condition. Call Midland, 682-0839. 12-24-tnc

MERCHANDISE

Miscellaneous K-8
Have your GITS and PARTY FAVORS personalized with monogramming. We do it in all COLORS, NAPKINS, F.I.L.L.F.O.L.D.S. STATIONERY and MATCHES. STANTON DRUG STORE.
One bedroom house for sale, 505 School Street. Call First Federal Savings and Loan, Big Spring, Texas, 267-8252. 12-24-tnc

Greenware, firing slip, and paints. House of Ceramics, 1503 E. 3rd, Big Spring, Texas. 2-4-4tp

Miscellaneous

Miscellaneous K-8
For Sale: Two lawn mowers, and a two-piece sectional divan. Call 756-2487. 2-11-3tc
Abraham is a Hebrew name meaning "father of a multitude."

Patronize your hometown merchants and save money!

REAL ESTATE

Farms & Ranches M-2
Farm for sale or trade, 160 acres, 4 miles north of Stanton, cotton and maize allotment, some minerals. Possession immediately. Call Rick Orson in Lamesa at 872-7313 or 872-8721. 2-4-4tc

Houses For Sale

Houses For Sale M-4
Two bedroom house, one and one-half bath, living room, kitchen, and den. Close to school. See Paige Eiland or call 756-3481. 11-19-tnc
Two bedroom house, one bath, corner lot. Will sell furnished or unfurnished. See Paige Eiland or call 756-3481. 10-1-tnc

Two bedroom house, hall tile, attached carport. See Paige Eiland, or call 756-3481. 1-28-tnc

Three bedroom house, one bath, newly redecorated, attached garage. See Paige Eiland, or call 756-3481. 2-28-tnc

One bedroom, frame house, large, separate garage, fenced back yard. See Paige Eiland or call 756-3481. 2-28-tnc

E. U. Morris Jr. Dies In Auto Accident Feb. 5

Ernest Udell (Randy) Morris, Jr., 19, of Fort Worth, was killed in an accident on the Fort Worth Freeway, Friday, February 5.

He was a 1970 graduate of Coleman High School, and the son of Mr. and Mrs. Udell Morris, former residents of this city. He was also a member of the Baptist Church.

Funeral services were held Sunday, February 7, in Brownwood, with burial in Cisco. Former football team mates were pall bearers.

Morris is survived by his parents; three sisters, Rhonda, a student at Hardin-Simmons University, Paula and Sandra, of the home; two brothers, Jackie and Rodney, of the home; grandparents and a number of uncles and aunts. Young Randy visited in Stanton during the New Year's

Philosopher Comes Out With Plan To Keep The TV Moon Series From Being Canceled

(Editor's note: The Martin County Philosopher on his grass farm on Mustang Draw has a few moon thoughts this week, more or less).

Dear editor:

According to an article I read in a newspaper I picked up off the road near this Martin County grass farm yesterday because I thought it was my ecological duty to do it, interest in trips to the moon is lagging, in fact, it said, people are getting bored with them.



I'm afraid this is true because I heard several people around here say they didn't have time to watch the recent landing or the splash-down live. "We can catch it later on the evening news," they said. This means there's a real crisis in the space program. It's as though a football fan skipped the televised game with the off-hand statement he could get the score in tomorrow's paper. We can't let it happen.

To keep the space program going I have figured out two possible solutions.

(1) To keep people glued to their TV sets during a moon walk, put on some sort of sports event up there. Alan Shepard's golf antics on the moon attracted more attention than anything else, so why not send up a golf team, or better still two football teams? What quarterback wouldn't love to thrill

NOTICE

Stanton Chemical and Seed will sponsor a barbeque at the Cap Rock Electric Auditorium, Thursday, February 18, at 7:00 p.m. The program will be presented by Elmer Hudspeth of Lubbock, with the Texas Experiment Station, on herbicides and narrow row cotton. Any interested person is invited to attend this informative meeting.

holidays with the Clyde White family.

the fans by throwing a three-mile-long bomb? They could pick up rocks during the half. How about an interplanetary pole vault record of 350 feet? What do you suppose would be the longest home-run hit on the moon? You get the idea. We've got to do something to keep this television series from being canceled.

(2) On a more serious side, as you know, to send the latest team to the moon to get 100 pounds of rocks cost \$800,000,000.

That figures out at 8 million dollars a pound. Clearly, moon rocks are the most precious substance man possesses, and rather than turn them over to a bunch of geologists to argue about, why not really utilize them? Why not base our monetary system on them? Why not go off the gold standard and get on a moon-rock standard?

A few more trips and we'd have enough rocks to more than equal all the gold in Fort Knox, with less than one-tenth of one per cent of the storage problem. You could keep the whole lot in two or three suitcases.

Yours faithfully,
J. A.

Sweethearts Were Named By Baptist Youth

The youth of the First Baptist Church sponsored a sweetheart banquet this past Saturday night, Feb. 13, at the Cap Rock Electric Auditorium. Sweethearts were named and crowned by Mr. and Mrs. Charlie Pinkerton. Pinkerton is the chairman of the youth committee at the church. The sweethearts are Polly Creech, daughter of Mr. and Mrs. Earl Creech, and Tommy Pinkerton, son of Mr. and Mrs. Charlie Pinkerton.

Special guest for the affair was Ken Smith of Hardin-Simmons University in Abilene. He presented a brief program on "Love—The Bond of Mankind," and concluded with several songs.

A short skit was presented by several of the youth entitled "The House of Unclaimed Blessing Sorority." The youth participating included: Polly Creech, Zanna Angel, Rita Pinkerton, Cheryl Bradshaw, and Betty Anderson.

Following the banquet, the youth returned to the church, where they played several games.

Approximately 70 guests were in attendance, including the new pastor of the First Baptist Church and his family, Brother and Mrs. Warren Hall and Tim.

The common North American loach can lay 28,000 eggs in a 10-hour period.

Lydia Darrah, Quaker, a spy in the American Revolution, is credited with once saving Washington's Army.

Martin County Abstract Co.
P. O. Box 766
Stanton, Texas 79782
H. Hilton Kaderli, Sr.
Sole Owner.

Portraits Weddings
Commercial Shots
Copy Work
CURLEY'S STUDIO
"Anywhere - Anytime"
• COLOR
• BLACK & WHITE
Phone AM 3-1071
Big Spring, Texas

SEAL PEST CONTROL SERVICE
Call After 5:00 P. M.
STANTON—756-2401
Or
Jay Dee House in Lamesa — COLLECT
Code 806-872-8554

Hammond Organs
EVERETT PIANOS
Sales Service Instruction
American Music Co.
401 Andrews Hwy. 684-5731
Midland



Read The Stanton Reporter for all the local news!

Samuel Francis Smith, a student at Andover Theological Seminary, wrote the words of our patriotic hymn, "America."

Most widely spoken language is northern Chinese (Mandarin), which is used by an estimated 460 million persons.

Solid carbon dioxide is called dry ice because it does not return to liquid form when it melts, but changes directly into a gas.

Day its stamp of approval in 1894, when it legalized observances in the Territories and the District of Columbia.

The Rio Grand River bubbles from springs high up in the San Juan mountains of southwestern Colorado.

Maryland's Peggy Stewart Day commemorates the sinking at Annapolis in 1774 of the tea-laden brig, Peggy Stewart, in protest against the stamp taxes.



PRICES EFFECTIVE THURSDAY, FEB. 18th, FRIDAY, FEB. 19th And SATURDAY, FEB. 20th, And MONDAY, FEB. 22nd, TUESDAY, FEB. 23rd, And WEDNESDAY, FEB. 24th.

EGGS, Grade A, Break-O-Day	doz.	39c
PEAR HALVES, Del Monte	No. 2 1/2 Can	49c
CRISCO	3 lb. can	89c
CATSUP, Del Monte	14 oz. bottle	23c
TOMATOES, Solid Pack, Hunt's	No. 300 Can, 4 for	89c
TOMATO JUICE, Stokley	46 oz. can, 3 for	\$1.30
PEANUT BUTTER, Peter Pan	12 oz. jar, 2 for	89c
AIR FRESHNER, Sun Country	9 ounce	49c
TOAST EM POP UPS, General Mills	3 for	\$1.00
TOILET TISSUE, Silk	4 roll pkg.	35c
COFFEE, Folger's	1 lb. can	85c
CRANBERRY SAUCE, Ocean Spray	No. 300 Can	25c
FLOUR, Gladiola	25 lb. bag	\$2.10
FLOUR, Gladiola	5 lb. bag	49c
ICE CREAM, Borden	1/2 gal. ctn.	79c
DR PEPPER, King Size	6 bottle ctn.	39c
COCA COLA, King Size	6 bottle carton	47c
RIBBON CANE SYRUP, Pure Open Ketile	45 oz. tin	75c

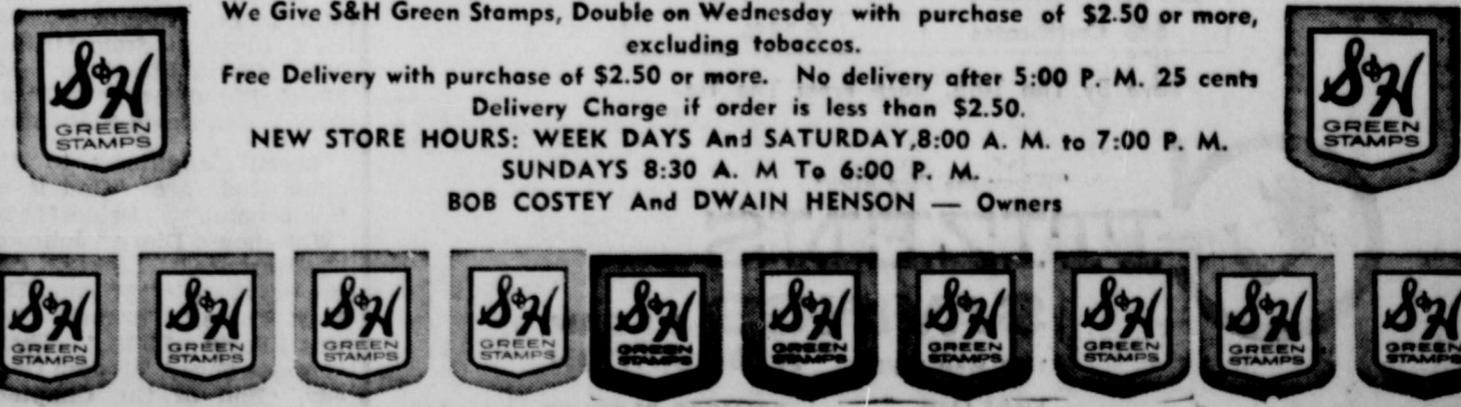
VEGETABLES FOR EASY TO DO SALADS

MEATS

ORANGES TEXAS	5 Lb. Bag	39c	SAUSAGE GERMAN, GOOCH	12 Oz. Ring	69c
GRAPEFRUIT RUBY RED	5 Lb. Bag	39c	FRANKS ARMOUR'S	12 Oz. Pkg.	49c
APPLES RED ROME	3 Lb. Bag	39c	BACON ARMOUR'S, PAN SIZE	12 Oz. Pkg.	59c
POTATOES RUSSETS	10 Lb. Bag	39c	ROAST Chuck, Blade Cut, Choice Beef	Lb.	59c
CELERY CALIF., LARGE STALK	Each	15c	ROAST 7-Cut, Choice Beef	Lb.	69c
PERCH BOOTH	1 Lb. Pkg.	69c	FRYERS U.S.D.A. Inspected, Fresh Whole	Lb.	29c
WAFFLES AUNT JEMIMA	9 Oz. Pkg.	39c	BOLOGNA DECKER'S, ALL MEAT	Lb.	59c

Stanton Food Market

— WE DELIVER —
GET YOUR OHMER KELLY MILK HERE!
We Give S&H Green Stamps, Double on Wednesday with purchase of \$2.50 or more, excluding tobaccos.
Free Delivery with purchase of \$2.50 or more. No delivery after 5:00 P. M. 25 cents Delivery Charge if order is less than \$2.50.
NEW STORE HOURS: WEEK DAYS And SATURDAY, 8:00 A. M. to 7:00 P. M.
SUNDAYS 8:30 A. M. To 6:00 P. M.
BOB COSTEY And DWAIN HENSON — Owners



STEP by STEP...



A toddler grows to kindergarten age. Then its time for grade school... and soon, college!

WILL YOU BE READY?

You can be, if you make sure your savings grow. Step by step along with your child. Open an interest bearing Savings Account with us.



First National Bank
Stanton, Texas

THE STANTON REPORTER

SPORTS

Stanton Country Club Sets Partnership Tournament Dates

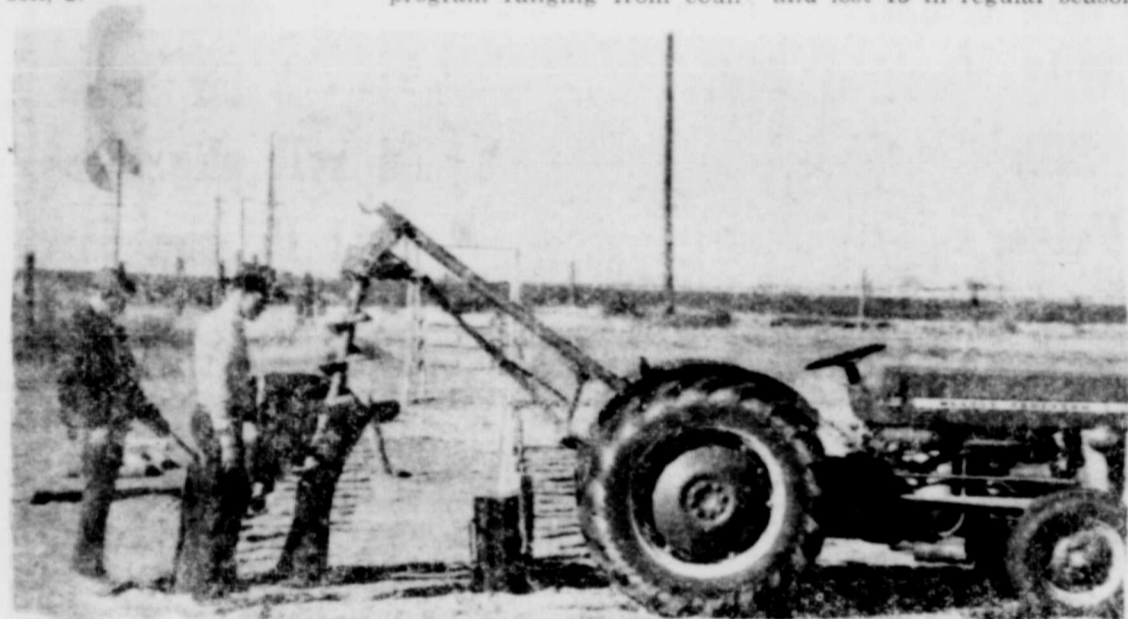
The recent arrival of warm weather has caused a flurry of activity at the Stanton Country Club. The club added two new members in February, and several additional new prospects are expected to join shortly.

There were approximately thirty golfers out on the course on both Saturday and Sunday. Many other golfers have been taking advantage of the weather and playing during the week. Among those out Sunday were former club pro Charlie Burnett, and another guest from Sweetwater playing with Glen Linder and Ron Gilbreath.

Buffaloes Lose Final Game To Ozona By 53-43

The Stanton Buffaloes traveled to Ozona this past Friday night to complete their schedule for this basketball year. The Buffaloes lost their final game to the Lions by 53-43. Ozona, winner of the first round, is 3-2 in the second half, and Stanton is 3-2 in the second half also.

Dennis Jones was top scorer for the Buffaloes with 13. Glenn Ray was second leading scorer for the Stanton team with 8. Ricky Mims, 3; Gary Kitchens, 7; George Dean, 3; Lawrence Menefield, 2; Bubba Standefer, 3; Frankie Barnhill, 2; and Jackie Swanson, 2.



STUDENTS HELPED TOO—Stanton High School students turned out to assist the coaches and janitors in the building of the new facilities at the school, making the project one of cooperation by all.

Are your current dividends really current?

They are if you are saving at Citizens Savings. Citizens pays 4 3/4% on regular pass-book savings . . . 6% on two year savings certificates of ten thousand dollars or more.

At Citizens Savings, dividends are COMPOUNDED DAILY and paid quarterly. And accounts are insured to \$20,000 by the FSLIC.

You should be getting the most up-to-date return on your investment. You can at Citizens Savings.

DO NOT BE MISLED . . . DESPITE THE ADVERTISING YOU MAY HAVE READ OR HEARD IN RECENT WEEKS, NO SAVINGS ASSOCIATION IN MIDLAND PAYS HIGHER EARNINGS THAN CITIZENS SAVINGS ON ANY TYPE SAVINGS ACCOUNT . . . AND BESIDES, IT'S THE NICEST PLACE IN TOWN TO DO BUSINESS.

You Get Richer By The Day When You Save at Citizens . . . Here's How

PER YEAR	EFFECTIVE YIELD
4 3/4% Accounts	4.86%
5 1/4% Certificates	5.39%
5 3/4% Certificates	5.92%
6% Certificates	6.18%

Save By The 10th. Earn From The 1st



"Where the Flag Flies"
CITIZENS

SAVINGS & LOAN ASSOCIATION

1408 West Wall

MIDLAND

SPENCER BLOCKER, Asst. Mgr.

New Stanton 'Track Do It Yourself Job'

"We did it all ourselves," said Stanton football coach and athletic director Bill Young. "It's the first track this school has ever had."

The new hard surface running track was surveyed and laid out by the coaches, and the janitors built the concrete curbs. Then the coaches and janitors got together and hauled in the caliche in city trucks and mixed it with water to make it hard.

The track is due to be rolled soon to make it smooth, and in future years the Buffs hope to put cinders or a synthetic surface on top of the caliche.

The new track is just part of the work now going on at the high school as the athletic plant gets a long needed overhaul. In addition to the new track, an obstacle course is being worked on to give Stanton athletes a better conditioning program.

All equipment for the course is either donated or refitted from old furnishings at the school. When done, the course will rival a military

physical conditioning unit. Stanton athletes will start out by duck-walking a tunnel and then they will give their arms a workout on an overhead ladder. Next in line is a "spider-web" which must be navigated by lifting the feet high on each step so no one trips.

After they have completed the web the athletes must crash through a "Smitty" blocking unit, and then climb an eight-foot wall before turning around and coming to a staddle log, and then a cross-over step pattern. After that there's a chicken wire tunnel barely two feet off the ground, and the player must negotiate it with knees, elbows, and stomach.

When the player comes out of the chicken wire tunnel he must get up, sprint towards the finish line where a 26-foot rope is waiting for him to climb.

Coach Young says, "If we lose anybody next fall it won't be because they're not in shape."

The field house now under construction was a number one priority item at Stanton High. Players had almost no room to dress, and the coaches office, which is used by football and basketball officials is little more than a closet. The new field house will give needed space for locker rooms and coaches offices.

Work on the field house is the only work underway at the athletic facilities that is being handled by outside crews. Stanton High is doing the rest with help from interested citizens. Costs for the renovation underway were born entirely by the school, Buffaloe Boosters, and private donations.

Normally such a project would mean the work being done at the taxpayers expense, but with Coach Young and his staff, interested citizens all pitching in, Stanton's athletic facilities will be better than ever and with no additional cost to the taxpayer.



LENDING A HAND—Football Coach and Athletic Director Bill Young lends a hand during recent construction of the new track and obstacle course at the high school.

SHS News

Look out Houston! Here we come! Eleven people will attend the State FTA convention in Houston this year. Going is Robert Waddell, FTA sponsor, Gloria Bryand, Jackie Cook, Karen and Kathy Linney, Rosalyn Louder, Marlene Long, Irma Mashburn, Bill Pardue, Diane Peden, and Rosa Sanchez.

The Stanton High School Choir will present a "variety" program ranging from coun-

try and western to "soap operas." It will be held February 23 at 7:30 p.m. in the High School auditorium.

The Stanton High School Band will present their spring concert on March 2 at 7:30 p.m. in the High School auditorium. The band will travel to Six Flags for their band trip on May 7.

Well, another basketball season has come and gone. The A-boys came out 5-5 in district play, and they won 12 and lost 13 in regular season

play. The B-boys lost to McCamey 38-34, and to Ozona 50-46. Duane McMeans was high pointer both times. The A-boys beat McCamey 49-48, but lost to Ozona 53-43. Dennis Jones was high point against Ozona scoring 13 points.

Iraan girls and Copper of Lubbock, have selected Stanton as a mutual site to play their bi-district ball game. Games was played at 7:30 p.m. Tuesday night. The winner goes to the Lubbock Regional tournament the week-end of February 26-27.

Work has begun on the district UIL One Act Play to be held in Coahoma April 15. A number of our boys and girls have shown a lot of interest in the cutting from the three act play, "The Diary of Anne Frank." Mary Jane Dillard, junior high school teacher,

Stanton School Lunch Menu

Mon.: Pizza meat and cheese, buttered green beans, seasoned corn, chocolate pudding, and milk.

Tues.: Corn dogs and mustard, blackeyed peas, creamed new potatoes, strawberry gelatin, corn bread, butter, and milk.

Wed.: Beef stew with vegetables, lettuce wedges, prune spice cake, corn bread, butter, and milk.

Thurs.: Hamburger, lettuce, tomatoes, onions, pickles, French fries, peach haves, and milk.

High School:
Fri.: Turkey and dressing, mashed potatoes, buttered peas, banana pudding, hot sliced bread, and milk.

Elementary School:
Creamed turkey on toast, mashed potatoes, buttered peas, banana pudding, hot sliced bread, and milk.

Library Lines

Library Hours: Monday through Friday, 2 to 6 p.m.

Memorials have been received by the library in memory of Mr. Glen (Hoot) Tom, from Mrs. Hattie Estes, Mr. and Mrs. Tom Estes, Mr. and Mrs. Miller Self Estes, Mr. and Mrs. George Herzog, Mr. and Mrs. R. S. Lewis, and Mrs. J. P. Carson. In memory of Mr. Ray Kelly, from Mr. and Mrs. George Herzog, Mrs. Jim Tom, and Mr. and Mrs. R. S. Lewis. Bruce Frazier, from Mr. and Mrs. R. S. Lewis. Mr. Neal Estes, from Mr. and Mrs. James A. Mashburn. Mr. Fred S. Buchanan, from Mr. and Mrs. Marvin Standefer. Mr. H. T. Burchett, from Mr. and Mrs. Marvin Standefer. Mr. Morris Standefer, from Paula, Bubba, and David Standefer.

Recent additions to the adult shelf are: "God is an Englishman," Delderfield, "Whitehouse Diary," Johnson, "Deliverance," Dickey, "All the Best People," Wilson, "Day Must Dawn," Turnbull, "Dawns Early Light," Thane "Forsythe Saga," "Modern Comedy," "End of the Chapter," Galsworthy

Grand Opening

GREGG'S FLOWERS

(FORMERLY MAXINE'S)

Sunday, February 21, 1971

2:00 To 5:00

Free Carnations For The Ladies

Free Refreshments

Drawing For \$15.00 Centerpiece

We Have Flowers For

All Occasions:

Weddings, Funerals, Birthdays, Anniversaries,

Hocjitals(and Memorials.

WE ALSO HAVE A NICE SUPPLY OF GIFT ITEMS, And BEAUTIFUL ARTIFICIAL ARRANGEMENTS.



Member FTD

GREGG'S FLOWERS

500 N. ST. PETER

756-2351

Hubert and Betty Gregg — Owners

Spring Can't Be Far Behind They're Off And Running As Track Season Arrives

Eighth grade coach Jerry Bethell says, "the eighth graders should do all right as most all of the boys out this year also participated when they were seventh graders."

A sure sign that spring is just around the corner can be seen out at the Stanton track as the junior high seventh and eighth grade boys go through the pre-season conditioning for the 1971 track season.

A total of 40 seventh and eighth grade boys have turned out for this year's track season, which get underway on March 3, with a meet at Coahoma.

The 22 boys out for Coach Richard Granado's seventh grade team are an unknown factor at this stage, but optimism is high that they will perform well during the coming season.

Following the March 3rd Coahoma meet, the junior highers travel to Crane on March 19th, and then are at home for the Stanton meet on March 26th. Coach Bethell has sent out fifteen invitations to the March 26 meet, the season will be the District Track Meet on April 2. Both seventh and eighth graders will be entered in all meets

this year, and has hopes of about 8-10 teams competing. Windup of

Events that the boys will be participating in include: the 660 yard run, the 330, the 220, and the 100 yard dash. Some meets will have 50 and 75 yard dashes. In addition to the running events, all field events are also scheduled. These include the 70 yard high hurdles, 110 yard low hurdles, 440 sprint relays, long jump, pole vault, shot put, discus, and high jump.

Practice started on Tuesday, February 9th, and continues every night after school.



IT'S A LONG WAY AROUND—The distance around the track seems to get longer with each turn around judging from the expressions on these track hopefuls working out at the new track.



LOOKING THEM OVER—Eighth grade coach Jerry Bethell surveys the scene trying to determine what kind of a team he will field this year. Most of the eighth graders out for track were also out last year as seventh graders.



ONE MORE TIME AROUND—Seventh grade coach Richard Granado points "one more time around" at a recent workout of the seventh graders. The team is an unknown quantity at this time but Granado hopes to field a good squad for the first meet.



FIRST MEET MARCH 3rd—These junior high track hopefuls have been working out at the high school track since February 9th in anticipation of the first meet of the year to be held on March 3rd.

Letters Awarded To Athletes At Junior High

Letters were awarded to the athletes of the Stanton Junior High, and includes the eighth grade football team consisting of: Jimmy Bryant, Julian Childs, John H. Higgins, Gordon Elland, Johnny Gonzales, Darrell Thompson, Ray Conner, Morgan Cox, Robert DeLaRosa, Paul Evans, Vernon Brown, Darrell Wells, Jimmy Jones, H. A. Schuelke, Alan Clary, Ronnie Dickenson, Bruce Stanley, Joe Benny Bryant, Tony Hinojosa, Joe Louis Hernandez, Jerry Brumley, and managers, Leonard Mitchell, Rodney Menefield, and Al Mendenhall.

Seventh grade footballers include: Clay Harris, Ronnie Mims, Larry Butler, Keyv Allred, Randy Conner, Terry Kelly, Gary Hanson, John

Yater, Sammy Barnhill, Robert Torres, Eddie Padron, Oscar Rodriguez, Adam Saenz, Jr., Salvador Olivars, Joe Equinones, Billy Pinkston, Alex Sandoval, Dennis Simonek, and Mike Douglas.

Basketball members were also awarded letters, and includes from the eighth grade: Vernon Brown, Ray Conner, Jerry Brumley, Gordon Elland, Paul Evans, H. A. Schuelke, John H. Higgins, Tony Hinojosa, Jimmy Jones, Sammy Montez, Johnny Gonzales, Darrell Thompson, and managers, Morgan Cox, and Leonard Mitchell.

Seventh graders include: Elvin Brown, Randy Conner, Terry Kelly, Gary Hanson, Ronnie Mims, Keyv Allred, Eddie Padron, Larry Butler, Billy Pinkston, Clay Harris, Ronnie Henson, Max Lopez, John Yater, and manager, Lloyd Price.

Girls eighth grader basketballers include: Susie Hopkins, Jeanne Ramos, Lynnette Hagard, Karla Gregg, Linda Woody, Brenda McKenzie, Karen Anderson, Peggy Barbes, Gloria Simonek, Lois Howard, Wanda Brown, and Rosie McCalister.

Seventh graders: Carolyn Hopkins, Debra Jones, Twila Kelly, Joyce McCalister, Mary Perez, Carla Welch, and Diana Wells. Managers include: Ann Saunders, Patti Klein, and Melissa Hursh.

To Late To Classify

CARD OF THANKS

We deeply appreciate your kind expressions of sympathy, food, and flowers. May God bless each of you.
The Family of J. O. Hardin.



Jess Miles

ACCOUNTING — INCOME TAX SERVICE

EAST COUNTY LINE ROAD

Phone 459-2303

The switch to a better quality of life.

By simply flipping a switch you place an instant order for electricity, the clean energy that provides so many worthwhile things for you.

Light for convenience, safety, beauty. Entertainment. Temperature control. Help on tiresome chores. However electricity is used, it adds up to a better quality of life.

This requires electric service so dependable you can take it for granted. That's what we at Texas Electric try to provide.

We also work to make sure that every community we serve has plenty of power to grow on, and with full regard for the environment.

We're growing with the area.

Our carefully scheduled program of system development has increased Texas Electric's net generating capability by 20 times since 1948. And corresponding improvements and additions have been made to the company's transmission system.



This has been done so we'll be able to get electric power to where it's needed, when it's needed, and also maintain adequate reserves.

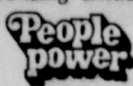
What lies ahead?

As more people continue to use more electricity, more generating capability will be required.

At Texas Electric we're doing our best to be ready. Power generating facilities are now under construction to help make sure your electric service will be as dependable in the future as it is now.

Our program of planning and building ahead to assure good service—and to improve the quality of life in the communities we serve—

is another example of our People Power . . . at work for you.



\$308

OFF

Ford Country White



Up to \$308 off list when you buy a new Ford Explorer Special with luxury options

It comes with all the extras you'd probably order anyway: Cruise-O-Matic, air conditioning, special metallic colors, foam seat cushion, tinted glass, swing-lock Western mirrors,

bumper guards, bright-metal trim, lots more . . . all a part of \$308 off!

*Manufacturer's suggested retail price now reduced up to \$308 when you buy this luxury-equipped Explorer Special Pickup.



Texas is Ford Country

White Motor Company

201 E. ST. ANNA

STANTON, TEXAS

756-3321

Four New Producers Completed In Spraberry Trend Of Martin

Four new producers have been completed in the Spraberry Trend Area of Martin County, with two new sites being staked.

WD Oil Corp., Midland, completed No. 1 Fraser, a 1/2-mile west extension in the Playa area of the field, to pump 280 barrels of 38-gravity oil and 24 barrels of water in 24 hours through perforations between 7,074-8,438 feet. Gas-oil ratio was 800-1.

Well site is 1,320 feet from south and east lines of section 8, block 35, T-1-N, T&P survey, 11 miles northeast of Stanton.

Western States Producing Co. completed No. 2 McAlpine 1,320 feet from north and west lines of section 30, block 36, T-1-N, T&P survey, as a 1/2-mile north extension in the Sale Ranch portion of the field.

On a 24-hour potential test it flowed 235 barrels of 38.7-gravity oil and 50 barrels of water through a 28-64-inch choke, and shot holes at 7,975-8,969 feet, which had been treated with 3,000 gallons of acid and fractured with 80,000 gallons.

It is located 1,320 feet from north and west lines of section 30, block 36, T-1-N, T&P survey, approximately 7 1/2 miles northwest of Stanton.

Adobe Oil Co., Midland, accounted for two of the new projects.

Located eight miles east of Stanton, No. 1 McKinney, completed to pump 221 barrels of 39.8-gravity oil and 25 barrels of water in 24 hours, through perforated interval from 7,918-8,883 feet. Gas-oil ratio measured 779-1.

It spots 1,320 feet from north and east lines of section 3, block 37, T-1-S, T&P survey.

No. 2-F Sale Ranch, 1,320 feet from north and west lines of section 20, block 37, T-1-N, T&P survey, completed to flow 240 barrels of 39.8-gravity oil through a 16-64-inch choke on a 24-hour potential test. Production was through perforations between 8,141-9,138 feet, which had been treated with 1,000 gallons of acid and fractured with 40,000 gallons and 120,000 pounds.

It is a 1/2-mile east outpost to the Sale Ranch portion of the Trend Area.

Adobe Oil Co. staked the new projects in the Trend Area, approximately two miles north of Lenora townsite.

No. 1 Saleh, a 1/2-mile west outpost to the Sale Ranch portion, spots 1,320 feet from north and east lines of section 28, block 36, T-2-N, T&P survey.

No. 2 Saleh, 3/4 mile north-east and one mile west, is located 1,320 feet from north and west lines of the same section.

Both projects are scheduled for 9,200 feet.

John L. Cox of Midland, completed a producer and staked sites for four projects in the Martin County portion of the Spraberry Trend Area.

No. 9 Dickenson finalized on pump for 82 barrels of 36-gravity oil daily, through perforations at 8,407-8,556 feet, which had been fractured with 40,000 gallons.

Location is 1,320 feet from south and west lines of section 18, block 37, T-1-N, T&P survey, 11 miles northwest of Stanton.

Cox plans No. 1 Holloway, 1/2 mile north of production in the Sale Ranch part of the field, 1,320 feet from south and west lines of section 16, block 37, T-2-N, T&P survey, two miles northeast of Tarzan. Scheduled depth is 9,300 feet.

Also going to 9,300, is No. 4 Kewanee, 1,800 feet from south and west lines of section 4, block 35, T-1-S, T&P survey, three miles northeast of Stanton and 1/2 mile southwest of production in the Playa area.

No. 2 J. N. Woody, 1/2 mile south and west of production, spots 1,320 feet from south and west lines of section 38, block 37, T-2-N, T&P survey, and is also scheduled for 9,300 feet.

No. 1 Nettie Hale, 3/4 mile northwest outpost, spots 1,320 feet from south and east lines of section 4, block 38, 8-1-N, T&P survey.

Collier Diamond C. Oils, Inc.

of Fort Worth, completed No. 1-B Slaughter as a link well one mile east and west of production of the north side of the Sulphur Draw (8,790 Dean) field of Martin County.

On a 24-hour potential test, it flowed 171 barrels of 39.2-gravity oil and 40 barrels of water, through perforations at 8,925-9,094 feet, which had been fractured with 80,000 gallons and 160,000 pounds acidized with 2,500 gallons Gas-oil ratio measured 427-1.

The well is 24 miles north of Stanton, and spots 1,320 feet from south and east lines of section 86, block B, Bauer & Cockrell survey.

Same operator staked No. 1-D Slaughter as a 1 1/4-mile north outpost to the same area of Martin.

Site for the 9,200-foot test, 25 miles north of Stanton, is 1,320 feet from south and 7.1 170 feet from east lines of section 44, block 36, T-3-N, T&P survey.

G. E. Kadane & Sons, Wichita Falls, plans No. 1 Morgan Ranch as an 8,000-foot exploratory test in Howard County five miles southeast of Big Spring.

It spots 1,980 feet from north and east lines of section 27, block 32, E-1-S, T&P survey, five miles west of the depleted Moss Lake (lower Permian and Wolfcamp), field and six miles southwest of the Hutto, South multizone field, but separated from both by failures.



O. D. Green Receives Award

O. D. Green of Stanton, has received an award recognizing his accomplishments as one of the leading sorghum growers of this area.

One of the winners of Northrup, King & Company's 1970 Carload Sorghum Club awards, he qualified for the honor by producing over 445,000 pounds of sorghum from a single NK hybrid. The presentation was made by T.N. Meador, Northrup, King & Co., at a meeting of district winners held in Big Spring, on February 10.

The awards, which are made annually by Northrup King, generate a great deal of interest both locally and nationally due to the rising importance of sorghum as a major grain crop. In addition, NK representatives point out, the performance awards in themselves are convincing proof of the field performance that can be expected from the new sorghum hybrid varieties now coming into general availability.

Maple Tree Taps

Two to four taps can be made on a mature maple tree, depending on the size of the tree, but buckets must be about the same height above the ground and never one above the other. Sap flows up and down — not sideways.

Cuba, Hispaniola (consisting of Haiti and the Dominican Republic) Jamaica, and Puerto Rico comprise the islands known as the Greater Antilles.

Two - - -

(Continued from page 1) vantage to the area farmers. Martin County farmers are invited to hear George Glynn of the local Department of Agriculture Stabilization and Conservation Service, discuss the new farm program tonight at the Flower Grove School at 7:00 p.m. Any suggestions that farmers can make at this time to help Holcomb and Deatherage present the Martin County needs in Washington will be welcomed.

Grady - - -

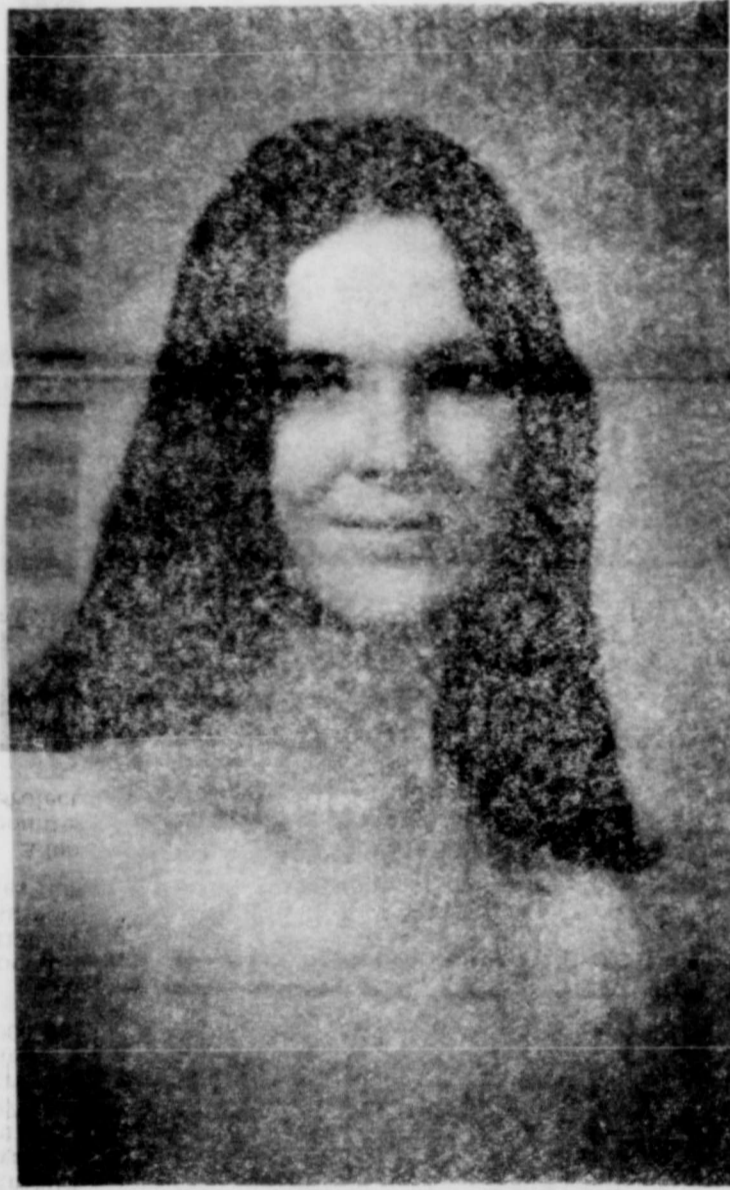
(Continued from page 1) races on mechanical donkeys, and a hobby donkey derby. A spokesman for the club said that they are also planning a women's exhibition if enough women will consent to ride the donkeys. If any area woman is interested in participating, she may contact either Eldon Welch, Myrl Mitchell, or L. R. Dunn, at Grady.

J. Hardin - - -

(Continued from page 1) Tulare, California, and A. B. Hardin, Lubbock. Survivors also include ten grandchildren, and two great-grandchildren. One son preceded him in death, Waymon Hardin, this city, in 1963.

LOANS

Mid-City Credit Co.
Stanton Supply Finance
LO 3-1377 756-3422
Midland-Odessa Stanton



Local FTA Group To Attend State Convention Soon

The Future Teachers of America of Stanton High School, will attend the state convention in Houston next week. There will be 12 people from Stanton to attend the meeting. Robert Waddell is the sponsor, and students attending include Kathy Linney, Karen Linney, Judy Henley, Gloria Bryand, Jackie Cook, Marlene Long, Irma Mashburn, Rosalyn Louder, Rosa Sanchez, Dianne Peden, and Bill Pardue.

The group will leave the 24th of February, on a chartered Greyhound bus, with students from Midland and Lee High Schools. The group will stay at the William Penn Hotel in Houston, and will return here on the 27th of February.

Music Students Hold Recital

The music students of Mrs. Roy Koonce came together in recitals both on Monday, Feb. 8, and Monday, Feb. 15. The informal recitals were held in her home, with parents and friends attending Mrs. Koonce has several recitals in her home during the course of the school, both as aids to her teaching and information for the parents. Refreshments were served after each recital.

Those students performing on Monday, Feb. 8 were: Susan Stallings, and Rena Koonce, playing a duet "Butterscotch and Bigpipes," by Glover. Shelly Church playing "Dream Boat," by Garrow; Tracie Williams playing, "Distant Bells," by Streebog; Polly Lewis playing, "Pomp and Pageantry," by Cobb; Steve Church playing, "Arabesque," by Burgmuller; Lisa Zuck playing "Minuet in G," by Bach. Pam Hazlewood sang three songs, "He's Got the Whole World in His Hands," a spiritual; "All Through the Night," a Welsh lullaby, and "O Lord Most Holy," by Franck.

The students performing on Monday, Feb. 15 were: Leah Flanagan playing, "The Ice Cream Man," by Russell; Tammy Watson playing, "Echoes," by Pace; Cheryl Dickenson playing, "Summer Afternoon," by Horowitz; Glynith Latty playing, "Spring Song," by Thompson; Lance Hanson playing, "In My Space Ship," by Gillock; Randy Koonce playing, "Tribal Dance," by King; Charles Straub playing "Me Shoveling Snow," by Burrows; Dirk Perry playing, "Sonny Catina," by Cobb; Belinda Martin and Peggy Barnes playing and "La Pastorale," by Burgmuller.

NOTICE

A meeting will be held Monday, February 22, at the Phillips Cafe on Front Street for the purpose of appointing the board of directors to the cable television system in process now. The system will be a home-owned cooperation, and will be called Stanton Community Cable Service. If any person is interested in this project, meet at the cafe at 7:30 p.m. Monday.

TO LATE TO CLASSIFY LOST & FOUND

Lost in Grady School gym Monday at volleyball practice, ladies white-gold Tissot wristwatch. Reward offered, no questions asked. Contact Mrs. Jack Kuhlman at 459-2341.

ends nt?

434% on regular pass-

ousand dollars or more.

paid quarterly. And

ent. You can at Citizens

MAY HAVE READ OR MIDLAND PAYS HIGH- VINGS ACCOUNT . . .



Stays Fresh Longer

HIGH TEAM GRASS JUDGING—Pictured above are several students from SHS that took top honors at the recent Fort Worth Fat Stock Show in grass judging. Pictured are Nolan Parker, vocational agriculture teacher at SHS, Roy Kelly, Ricky Mims, Mark Hursh, and A. T. Vandburg.

COMING!
AMERICA'S FUNNIEST GAME

DONKEY BASKETBALL

ALSO
HOBBY DONKEY DERBY RACES ON MECHANICAL DONKEYS
TRICK DONKEY ACT BETWEEN QUARTERS

GRADY SCHOOL GYM
TUESDAY, FEBRUARY 23
7:30 P.M. Admission: Adults \$1.00, Students, 25 Cents.

YOUR SOUNDEST INVESTMENT
Insurance

There's No Need to Leave Home

No matter what happens. Low-cost mortgage insurance is the answer. See us.

EILAND-STALLINGS INSURANCE

Life stride shoes

Snap, Crackle, Crinkle

The way to go when the look is casual. Soft crinkled moc with touches of hardware, set on a handsome chunky heel. All that your pants and sporty skirts really need.

\$17

Deavenport's