

Skirting Stanton

By PEGGYE SORLEY



There is only one sort of LOVE, but there are a thousand copies. Remember Valentine's Day, Sunday, February 14.

— S S —
Congratulations to Jody Yates on his first place honor in the Southwestern Exposition Livestock Show held in Fort Worth recently. Jody showed the first place Polled Hereford junior calf. Several other localities were entered in the show also, and most of them placed in their various divisions.

— S S —
The traffic problems around the grade school is likely to be done away with since the police department put up the new one-way street signs. I hope everyone will pay attention to the signs and heed them. The one-way street includes the entire street that the grade school and junior high school is located on, the 200 block of North College. The one-way was put into effect to eliminate the hazards of traffic accidents and injuries, according to Police Chief C. L. Rogers. Traffic on the street must move from north to south.

— S S —
Elsewhere on this page you will find a story of several localities who are entered in the Houston Livestock Show. The show opens February 24 and will go through March 7. The local youths are in for a second treat as the Astrodome is located just across the street from the exposition building. We wish these youngsters a lot of luck in showing their lambs, barrows, and steers in the show, and hope they all bring back ribbons. Thirty-one members of the Martin County 4-H Club, and eight members of the Stanton FFA Chapter are entered.

— S S —
Work on the new field house at the high school is still underway, and completion of the project is expected to be in about three more weeks, if the weather permits. Private donations, plus a big donation of \$7,500, started the project off to a fairly good start. The Booster Club then added \$1,000 to the plan, and donations totaling over \$3,500 were added to just about finance the project. I am anxiously awaiting the finish of the field house, I have seen the first stage, but all I can make of it is concrete and water pipes.

— S S —
The Rho Xi Chapter of Beta Sigma Phi volunteered their services for the annual Heart Fund Drive again this year, and a spokesman for the group told me that the drive would continue for the next few days. Area residents should give generously when any of these members call on you for donations.

— S S —
NOTICE
The Martin County Farmers Union will host an informational meeting at the Flower Grove School on Thursday, February 18, at 7:00 p.m. George Glynn, Martin County Agriculture Stabilization and Conservation manager, will present a slide program, followed by a question and answer period. Any interested persons are cordially invited to attend.



ONE WAY SIGNS — New signs went up last Friday designating College Street between Broadway and North Front as a one-way street. The change was adopted at the January 5 city council meeting, and was made to help ease congestion in the area.

School Board Sets Election

The Stanton School Board has set the date for election of members to the board. In their regular Monday night meeting the board set the election date for April 3, 1971. Polling place will be at Stanton Elementary School from 8 a.m. to 7 p.m.

Persons interested in running for the board must have their application in at least 30 days prior to the election, application in by March 3, to adhere to regulation that all candidates must have filed for the election at least 30 days prior to the date set for balloting.

There are two vacancies on the seven member board, each for a two-year term. Board members whose terms are expiring are C. E. (Gene) Butler, and David Workman.

Butler has already filed for re-election, however Workman will not be a candidate for re-election. Workman, in stating that he does not intend to seek another two-year term said, "I appreciate the support over the last six years, and hope that support will continue."

In other action the board approved a spring trip for the

One-Way Street In Effect At Grade School

Stanton Police Chief C. L. Rogers has asked The Reporter to inform the residents of this city of the one-way street in front of the Stanton Elementary School. The street was put into the one-way effect Friday, February 5.

The one-way street includes from the corner of Broadway to Front Street, which encompasses the two blocks of College.

high school band to Six Flags Over Texas. The trip will be made May 7 and 8. While there the band will attend a scheduled band festival.

Appointed John Roueche, Herbert Schueike, and Wayne Stroud to the Board of Equalization.

Al Smith, school vocational counselor, discussed the possibility of adding new vocational programs to the current high school curriculum. No decision was made although further study of the program will be made.

Board members present at the meeting were: David Workman, Gene Butler, Jack Ireton, Kenneth Holcombe, Dwan Henson, Owen Kelly, with George Glenn absent.

School officials present were: Russell McMeans, supt.; Corene Manning, business manager; J. R. Dillard, High School principal; Jimmy Conner, Junior High principal; George Walker, band director, and Al Smith, school counselor.

Guests attending included Mrs. Stanley Barnes, James Biggs, and Bob Haislip.

Services Held Sunday, Feb. 7 For Ray Kelly

Funeral services were held Sunday, February 7, for Milton Ray Kelly, 71, who died Thursday night in a Lubbock hospital following a short illness.

Services were held in the First United Methodist Church at 3:00 p.m., with the Rev. Richard Payne, pastor, officiating. Interment was in the Evergreen Cemetery under the direction of Gilbreath Funeral Home.

Kelly was born May 12, 1899, in Kosse, and came to Stanton in 1951 from Abilene. He was a retired cotton buyer. He married Mamie Lee Moore in Walters, Oklahoma, January 4, 1930.

Survivors include the widow; a sister, Mrs. Johnnie Mae Thomas of Seminole; two nieces, and one nephew.

Buddy Shanks Scheduled To Study In Europe

Buddy Shanks, son of Mr. and Mrs. John Shanks, this city, recently enrolled in a new course that Abilene Christian College has added to its curriculum. The course will take students to London, Berlin, and Moscow this summer for six weeks of study.

Eight students in all have already enrolled in the course. Mrs. Woodard Robbins, assistant professor in the Department of Business Administration, will be college sponsor for "Comparative Political and Economic Systems of Britain, Germany, and the USSR," arranged through the American Institute for Foreign Study.

Mrs. Robbins and the students will leave New York on June 28, study six weeks, travel two weeks to several places in Europe, and leave Rome for the United States on August 22.

The six weeks of study will be conducted at the London School of Economics, Schiller College in Berlin, and Moscow University.

ACC students will study under European professors during the six-week period. Also in each city a number of guest lectures will be provided by distinguished speakers from such spheres as politics, diplomacy, and journalism.

Shanks is a senior business major.

Mrs. Robbins pointed out that this is the first time Abilene Christian had offered an overseas course taught by foreign professors.

Byrd, New TESCO Area Serviceman

Eugene Byrd has returned to Stanton as serviceman for Texas Electric Service Company, after working the past two years for the company in Midland.

Byrd started with TESCO 13 years ago as a helper at the company's Midland service center. He moved to Stanton in 1961 as serviceman.

During the seven years he was in Stanton, Byrd was most active in Little League, and other youth activities, and at the First Baptist Church, where the Byrds are members. He also served as chief of the volunteer fire department at that time.

The Byrds have three children: Ernest, 9; Lee, 7, and Diane, 6.

Byrd was born in McComb, Miss., and graduated from high school in Summitt, Miss. He served four years in the Air Force, and held the rank of staff sergeant when he was discharged.

Mrs. M. Brown Dies From Injuries In Accident

Ice on a highway east of Midland, was blamed for a one-car accident Monday morning that sent a 24-year-old Stanton woman to Midland Memorial Hospital in critical condition. Mrs. Brown died Monday night in the intensive care unit of the hospital.

Mrs. Margie Buckner Brown received internal injuries, and head injuries when her car, eastbound on IS 20, hit an icy spot and left the road.

Also injured was her son, four-year-old Tommy Brown. He was reported in satisfactory condition with bruises and head cuts.

Police said Mrs. Brown's car hit ice on the IS 20 overpass over US 80 about six miles east of Midland. The car swerved into the guard rail on (Continued on page 8)

Stanton FFA, 4-H Members Are Entered In Houston Livestock Show

Thirty-one members of the Martin County 4-H Club have entered livestock in the 1971 Houston Livestock Show and Rodeo, February 24 through March 7, to be held in the 16-acre Houston Livestock Show Exposition Building, adjacent to the domed stadium.

These members are as follows: Jackie Jones, Hereford steer; Brenda Holloway, Hereford steer; Jerry Holloway, Hereford steer; Jody Yates, Polled Hereford and Charolais steer; J. C. Tunnell, Hereford and Charolais steer; Morgan Cox, three Hereford steers; Robert Cox, Hereford steer; Cydne Mullins, Charolais steer; Sharalyn Holcomb, Brahman and Charolais steer, 1 lamb; Mike Holcomb, two Charolais steers; Vicki Graves, three lambs, and two Hereford steers; Dena Holcomb, two lambs; Faye Ann Welch, one lamb; Leslie Welch, one lamb; Mike Douglas, one lamb; Marty Airhart, one lamb, and two Charolais steers; Darrell Wells, two barrows; Diana Wells, two barrows; Mike Holcomb, two barrows; Wayne Atchison, one barrow; Frank Atchison, barrow; Lanny Hanson, one barrow; Gary Hanson,

two barrows; Sharalyn Holcomb, two barrows; Elonna Airhart, two barrows; Wendy Tunnell, two barrows; J. C. Tunnell, two barrows; Tana Yates, two barrows; and Jody Yates, two barrows.

Eight members of the Stanton FFA Chapter have entered barrows in the show, and includes: Steve Fryar, Dennis Jones, Theodore Wells, Rickey Mims, John Parker, Charles Atchison, Danny Fryar, and Mark Hersh.

The Houston show is the largest livestock show in the world, and this year entry figures and premium money are expected to exceed all previous years. Last year's 17,756 livestock entries set a record. Classes are provided for nine beef breeds, four dairy breeds, five swine breeds, 11 sheep breeds, five horse breeds, five rabbit breeds, 22 poultry breeds, and Angora goats.

Among other programs benefiting youth on a statewide basis are the scholarship and research programs. The Houston Livestock Show and Rodeo annually presents scholarships to outstanding FFA and 4-H Club members in the amount of \$4,000 each. More than 40 stud-

Martin County Heart Fund Drive Underway

The Martin County Heart Fund started their annual drive this past Sunday afternoon, with it to continue for the next week or so. According to a spokesman for the unit, weather conditions would not permit the drive to be finished, so it will be extended for a ten day or two week period. Area residents are asked to give generously when a Heart Fund volunteer calls on you.

Rho Xi Chapter of Beta Sigma Phi is heading the drive this year with donations being taken for basic and clinical research, medical care, and professional and public education to eliminate heart diseases. By February 1 of this year, \$225,557 was collected in Texas alone, with the month of February being the designated month for Heart Fund Drives over the entire state.

A spokesman for the Rho Xi Chapter stated that envelopes were left at residences of the people who were not home the past Sunday, and they can make their donations payable to the Stanton Heart Association, and mail them or take them to the First National Bank here. Residents may also contact any member of the Rho Xi Chapter and they will see that your donations are collected.

Members to contact include: Judy Reagor, Peggy Bethell, Nona Cain, Mary Sale, Marilyn Newman, Loyace Ann Fincher, Beth Black, Sara Blocker, Mary Detikier, Bonnie Franklin, Clara Stewart, Beverly North, or Janelle Watson. Residents in the Lenora area should contact either Wanda Driver, or Loyce Laxon.

The Martin County portion of the Spraberry Trend was spread to the east in the Sale Ranch part of the county, with the completion of two wells, and the staking of two sites.

Corrected potential for Western States Producing Co. No. 2 McKenney, 1/2 mile south and east of the nearest producers in the same area, is for 225 barrels of oil per day plus 40 barrels of water.

Production was through a 32-64-inch choke and perforations at 7,868-8,880 feet.

Well site is 1,320 feet from south and east lines of section 37, block 37, T-1-N, T&P survey.

Two Midland operators have scheduled offsets in the Martin County portion of the Spraberry Trend Area, about 1 1/2 mile northwest of Lenora.

ents are currently attending college on scholarships provided by this non-profit civic event.

The research program was established in 1970 by the show to be conducted in nine Texas agricultural colleges. Much of the work is done by students, thus providing jobs for those college students who need to work.

The knowledge shared through this \$100,000 research program directly benefits Texas agri-business.

Dates for the 1971 Houston Show are February 24 through

March 7, with the first two days set aside solely for livestock judging and sales. The rodeo will open on February 26, with Johnny Cash headlining matinee and evening performances on February 26, 27, and 28; B. J. Thomas will appear at evening performances on March 1, 2, 3, and 4, and Glen Campbell stars at the evening performance March 5, and the matinee and evening performances March 6 and 7.

Tickets may be obtained by writing the Houston Livestock Show and Rodeo, P. O. Box 20080, Houston, Texas 77025.



STOCK SHOW WINNER—Jody Yates, son of Mr. and Mrs. Sammy Yates, is shown with his first place Polled Hereford junior calf at the Southwestern Exposition Livestock Show in Fort Worth.

Jody Yates Places First

Several Martin County 4-H Club members exhibited steers at the livestock show in Fort Worth recently.

They included: Jody Yates, son of Mr. and Mrs. Sammy Yates, who showed the first place junior calf in the Polled Hereford division. The steer was bred by Lewis Carlie of Stanton; Jerry Holloway placed ninth with his summer yearling Hereford steer; Brenda Holloway placed 20th, with her junior calf in the Hereford division; Morgan Cox placed 24th and 25th with his junior Hereford calves, and Janie Roper placed 22nd with her junior Angus steer.

Other exhibitors from Martin County, included Robert Cox, and Vicki Graves.

Sweetheart Banquet Slated For February 13

The youth of the First Baptist Church will host a Sweetheart Banquet this Saturday night, February 13, at the Cap Rock Electric Auditorium from 6:30 p.m. to 8:30 p.m.

Entertainment for the affair will be furnished by Ken Smith of Hardin-Simmons University.

At this time a Valentine queen and king will be crowned. Voting will be done by secret ballot on this night.

Everyone is cordially invited, and can purchase tickets for 75 cents from any of the youth of the First Baptist Church.

Spraberry Trend Area Spread To East In Sale Ranch Area

No. 2 Hatchell, 1,320 feet from south and west lines, is a 1/2-mile north and east offset.

Kelly Bell staked No. 1 Howell, a 9,200-foot project, 1,320 feet from north and 1,060 feet from west lines of section 34, block 36, T-2-N, T&P survey, 1/2 mile south of production.

Tom Brown Drilling Co., Inc., of Midland, has staked four tests in the Spraberry Trend Area in Martin County, 10 miles northwest of Stanton.

All are scheduled to 9,200 feet, and are in section 3, block 37, T-1-N, T&P survey.

No. 1-3 Woody, 1/2 mile south of the nearest completed producer, is 1,170 feet from north and 1,320 feet from east lines.

No. 2-3 Woody, 3/4 mile northwest and one mile south of the nearest wells, is 1,320 feet from south and east lines of section.

No. 3-3 Woody, 1,320 feet from south and west lines of section, is a link project, 1 1/2 mile east and west of completed production.

And No. 4-3 Woody, 3/4 mile southwest of production, is 1,200 feet from north and 1,320 feet from west lines of section 3.

U. S. Smelting, Refining & Mining Co. of Salt Lake City, plans No. 3 Holt as a 1 3/4-mile south and slightly west out-post to the five-well Lacaff (Dean) field of west Martin County.

Drill site for the test, scheduled to 9,800 feet from north and west lines of section 12, league 320, Garza C-LB survey, eight miles west-northwest of Tarzan.

WD Oil Corp. of Midland, completed a middle Clearfork extender, and staked site for an offset to that pay in the Howard-Glasscock field of Howard County, six miles east of Forsan.

No. 1 Reed was finished as seventh producer and 1/2 mile south extension to pump 128 barrels of 28-gravity oil and 13 barrels of water daily, with (Continued on page 8)



The recently announced sales policy of Commodity Credit Corporation will make it possible for government stocks of cotton during the 1971-72 marketing year to be sold at prices from 1.7 cents to 2.6 cents below the minimum prices in effect for 1970-71, according to Donald Johnson, executive vice president of Plains Cotton Growers, Inc.

On learning of the announcement Johnson promptly requested Congressman Bob Price of Pampa, to initiate through the Cotton Subcommittee of the House Committee on Agriculture an investigation of both the loan level for cotton this year and the newly revealed sales policy.

Johnson's letter to Congressman Price said "in any but rare and highly undesirable circumstances this action, coupled with the two-cent drop in the loan level, will depress market prices and jeopardize the ability of producers to continue supplying their markets, while serving no useful purpose on behalf of government, the cotton industry or the consuming, taxpaying public."

Month	1970-71 Minimum	1971-72 Minimum	Difference
August	24.55	21.95	260 points below 1971
September	24.10	21.95	215 points below 1971
October	23.65	21.95	170 points below 1971
November	23.80	21.95	170 points below 1971
December	23.95	22.10	185 points below 1971
January	24.10	22.25	185 points below 1971
February	24.25	22.40	185 points below 1971
March	24.40	22.55	185 points below 1971
April	24.55	22.70	185 points below 1971
May	24.70	22.85	185 points below 1971
June	24.85	22.85	200 points below 1971
July	25.00	22.85	215 points below 1971

The letter continued, "Cotton economists have determined that competing fibers have had no significant price advantage over cotton with a 20.25 cent loan, basis gross weight, and average micronaire. Put another way, cotton could in 1971 have a 21.50 cent, net weight, premium micronaire loan and still be competitive. By the same token there is no necessity for CCC, as USDA proposes, to sell cotton in 1971 from 170 to 260 points cheaper than the prices at which CCC cotton was sold in 1970."

On the level of the loan, which USDA previously set at 19.50 cents per pound, basis net weight and 3.5 and 4.9 micronaire, Johnson pointed out that the law requires a loan for Middling 1 inch cotton at 90 percent of the previous two year world market average price for such cotton.

He went on to note that 90 percent of the "estimated" world market price for 1968, 1969, and 1970 was determined by USDA to be 20.25 cents per pound, basis average micronaire and gross weight. When converted to a net weight, premium micronaire basis, which requires adding 80 points and 45 points respectively, the figures for all three years would have been 21.50 cents as compared to the 19.50 cent loan established for 1971 on the same basis.

And Johnson's letter stated "It is impossible for producers to understand how USDA could estimate the world market price for Middling 1 inch cotton at 21.50 cents in both 1968 and 1969, then average the actual world market price for the same cotton over the same two years and come up with 19.50 cents."

The USDA announcement, released February 3, placed the "markup" on CCC stocks for August, September, October, in November of 1971, at 245 points per pound (2.45 cents). The "markup" would be increased 15 points per month for the next five months, as follows: December, 260 points, January - 275, February - 290, March - 305, and April, 320 points. For May, June, and July, the markup would remain constant at 335 points. For each month the markup would be added to the 19.50 cent base loan price for Middling 1 inch cotton. Minimum resale prices for other qualities would be figured from market differences, with no quality sold for less than 120 points above its loan value.

The letter included a chart showing minimum resale prices for the various months of 1970-71, the minimum resale prices that will apply for 1971-72, and the differences. The chart, will all prices figured for Middling 1 inch cotton, 3.5 to 4.9 micronaire, net weight, follows.

Johnson summed up the case by saying "Reduction of the cotton loan below the level at which cotton had already achieved competitive prices, together with lower CCC minimum resale prices, will cut producer income, endanger adequate and continuous supplies to meet market demands, and will cause CCC to lose money on the cotton it has on hand August 1 of this year."

id estimate the world market price for Middling 1 inch cotton at 21.50 cents in both 1968 and 1969, then average the actual world market price for the same cotton over the same two years and come up with 19.50 cents."

Foul Up Delays Veterans Checks

Because of a foul up in the computer system, the V. A. announced that more than 20,000 checks to veterans and their dependants are late about arriving.

The trouble was supposed to be remedied by midnight February 7, and the checks would start rolling.

Martin Gibson, Veterans Service officer, advises that if you have not received your check from the VA by the time you read this Thursday morning, to contact his office that some effort may be had to get action on the payment.

County Agent's Column

By BILLY REAGOR

March 1, reminds County Agent Billy Reagor, is the deadline for farmers to file their 1970 income tax return. This date was extended from February 15 to March 1 by the 1969 income tax law.

To qualify for reporting as a farmer, two-thirds of your gross farm income must be from the sale of agricultural products. If farm income is less than two-thirds of the gross income, a taxpayer may be required to declare estimated tax and make quarterly payments. Statutory penalties are assessed for failure to file required declarations of estimated tax.

The county agent adds that many taxpayers will not be required to file a return due to a new low income allowance. As an example, for 1970 returns, married persons filing a joint return would not be required to pay any tax if their incomes were less than \$2,300. However, farmers may be required to file an income tax return in order to report self employment tax if their net income exceeds \$400 for 1970.

Additional information regarding farm income tax reporting regulations can be found in the 1971 edition of the Farmer's Tax Guide, which is available from your county agricultural agent, or the Internal Revenue Service.

Stanton FFA Wins Third Major Livestock Show Plant Contest

The Stanton FFA won their third major Livestock Show Plant Identification Contest at Fort Worth, Saturday, February 6. A team composed of Mark Hursh, Ricky Mims, and Roy Kelly, placed first out of the 25 teams entered. A team composed of Gary Posey, Lynn Romine, and Dennis Jones placed third.

Mark Hursh had a perfect score with 400 points, Ricky Mims had 399 points out of a possible 400, and Roy Kelly scored 390 points — giving a team score of 1189 out of a possible 1200 points. Snyder FFA placed second in team

scoring, and the Stanton number two team scored 1150 points to place third in the overall contest. Callesburg FFA placed fourth, and San Saba FFA placed fifth.

A poultry team composed of Gene Louder, Darrell Bradshaw, Curtis Duncan, and Kenneth Hull, entered the poultry judging contest at Fort Worth, Saturday. This is the teams first contest, and according to Stanton Vocational Agriculture teacher, Nolan Parker, the team will enter at least two other poultry contests this year. Snyder FFA won the poultry judging contest at Fort Worth.

Farm And Ranch Show To Be Held In Waco

Texas farmers and livestock men have been assured of being able to inspect a big collection of the latest agricultural equipment at the two-day Mid-Tex Farm and Ranch Show in Waco, Feb. 16-17.

Exhibit space in the Heart of Texas Coliseum has been filled up.

A full complement of the latest in tractors, combines, forage handling equipment, livestock haulers and hand-trucks, agricultural chemicals and fertilizers, and hundreds of other items will be on exhibit.

FHA News

The Stanton FHA Chapter held a business meeting Tuesday, February 9. Kathy Decker explained the meaning of Heartsister Week to the new members.

Names were drawn, and everyone received a secret heartsister. For the next two weeks, each member will find notes and messages in her locker at the school from her heartsister.

The next meeting will be Tuesday, February 23, with gifts being exchanged, and the revealing of each members heartsister.

The human heart weighs about an ounce at birth and about a pound at maturity.



OUR SOIL ★ OUR STRENGTH MARTIN-HOWARD-MIDLAND SOIL CONSERVATION - SOIL CONSERVATION - DISTRICT NEWS

Outdoor recreation could offer additional income to farmers and ranchers in the Martin County area. The Outdoor Recreation Resources Review Commission has said that about 90 per cent of all Americans participated in some form of outdoor recreation in the summer of 1960. In total, they participated in one activity or another on 4.4 billion separate occasions. It is anticipated that by 1976, the total will be 6.9 billion, and by the year 2,000, it will be 12.4 billion—a three-fold increase by the turn of the century.

Stripcropped fields offer food and cover for many game birds, such as dove and quail. The best hunting available for many game species is on agriculture land where farmers use soil conservation practices, and preserve wildlife cover.

Most farmland produces game of one kind or another. In fact, it is estimated that 80 per cent of the hunting in the United States is on private land. Although wild game "belongs to the state," the landowner controls access to the land, and may charge for

the privilege of hunting. As more and more people want to hunt, good shooting is more and more restricted to land where farmers and ranchers improve the habitat and control hunting — aside from public hunting grounds. Most present-day sportsmen are willing to pay a reasonable fee for the privilege of hunting where game abounds. Anyone who would like more information on wildlife management, can contact the Soil Conservation Service in Stanton.

TAX MAN SEZ:

For many years we have issued the forecast from IRS's groundhog. IRS's groundhog is noted for being poor on what the weather will do, but amazingly accurate on what taxpayers will do. This year is forecast:

April 15 will be bright, sunny, and pleasant for early filers, and happy for those who have already received their refund check... but turning dark and dreary and miserable for those who file their income tax return at 11:59 p.m.

Martin County Farm News

Sponsors of the show are the Waco Chamber of Commerce, Texas Power and Light Co., The Texas Farmer-Stockman magazine, and the Waco Farm and Ranch Club. Admission will be free.

Jerry Singleton, chairman of the event, said it's hard for farmers and ranchers to beat the combination available to them with the show — comparison of the latest equipment from major manufacturers at one time and place during the mid-winter slack season. That, plus the fact that weather can't interfere, makes the Waco show something special.

Doors will be open both days from 10 a.m. to 8 p.m.

TROY WEIGHT

Troy weight is a standard system used in weighing gold, silver, platinum, and coins. It is also used to weigh jewels, except pearls and diamonds, which are weighed in carats. Long wings cannot be moved as quickly as short wings.

BUDGET-WISE GIFTS FOR YOUR SPECIAL

Valentine

Special Purchase

Arrow Sport Shirts

Regular \$9 Flannels

\$5.88

Deavenport's

Valentine
FLOWERS
for Your Lady Love...

Gregg's Flowers

Formerly Maxine's

500 N. ST. PETER

756-2351

Special Purchase

Arrow Woven Shorts

Values to \$2.50

\$1.00

Deavenport's

"NEED AN IDEA FOR

YOUR VALENTINE"

— SLIPS —

— HOSIERY —

— BLOUSES —

Dalashanta's

"FOR YOUR VALENTINE"

CANDY -

Valentine Cards

Many Other Ideal Gifts

Stanton Variety



Please Her With A
Coat From Sheila's
Coats Are Now One-Half Price

SPECIAL PRICE ON HIPHOSE

"DOES WHAT PANTY HOSE DOES — ONLY BETTER."

Sheila's

DRESS and BEAUTY SHOP

SHE'LL LOVE

Lingerie

Wilson's

For Your Sweetheart

Colognes - Perfumes - Candys

SEE OUR LARGE SELECTION

Stanton Walgreen Drug



New improved
liquid Planavin[®]
for cotton.

Handles
even better.

And you get the same great control of
grasses and broadleaves.

Planavin 4 WDL gives top-notch control of many annual
grasses and broadleaves in your cotton. New Planavin
pours better and mixes better, too.

Ask us about new improved Planavin. We have the answers.
And the Planavin.

STANTON CHEMICAL CO



save 3 ways

1- PRICES, THE LOWEST 2- QUALITY, THE HIGHEST 3- SERVICE, THE BEST

HUNT'S 46 Oz.
Tomato Juice
35c

6 bottle ctn.
Dr Pepper
39c

KIMBELL 3 Oz.
Vienna Sausage
4 for 89c


COFFEE	FOLGER'S 1 lb. can		85c
CATSUP	DEL MONTE 14 oz.	4 FOR	89c
SWEET PEAS	DEL MONTE No. 303	4 FOR	89c
Cut Green Beans	DEL MONTE No. 303	4 FOR	89c
CORN	OUR DARLING No. 303	4 FOR	89c

CHIFFON Paper Towels 3 for \$1	JUMBO FLOUR . . . 45c	GLADIOLA DOG FOOD . 5c
--	---------------------------------	----------------------------------

BLEACH KALEX 1 gallon	39c
DTERGENT SUPER SUDS Giant	55c
CRACKERS SALTINE 1 lb. box	25c

PATIO
Mexican Dinners 39c

Quality Produce


	APPLES ROME Lb.	19c
	LETTUCE	head 25c
	TANGERINES	lb. 29c
	LEMONS SUNKIST	4 for 29c
	RUTABAGAS	lb. 10c
	POTATOES	8 lb. bag 45c

Be Our Valentine!

FRO-ZAN 1/2 Gal.
39c

REMEMBER HER WITH A BOX OF VALENTINE CANDY
98c
To **\$350**

KIMBELL LAYER CAKE MIX
29c

BACON TALL KORN	lb	59c
LITTLE SIZZLERS HORMEL	12 oz.	59c
PORK CHOPS CENTER CUT	lb.	89c
PORK CHOPS FIRST CUT	lb.	65c
 WHOLE Pound		Fryers 29c

FRIENDLY FOOD

PHONE 756-3375 (STANTON'S DISCOUNT GROCERY) (BILL COGGIN — Manager) 200 N. ST. MARY
FREE DELIVERY ON \$5.00 OR MORE ORDERS.
PRICES EFFECTIVE FEBRUARY 11 THROUGH FEBRUARY 17.

BACK THE BUFFALOES

Support The Stanton Buffaloes As
They Go Through Another Action
Packed Season

THIS WEEK'S GAMES

Fri. Feb. 12 Boys Play Ozona There A&B

All Games Start At 6 P. M.



— THIS PAGE SPONSORED BY THE FOLLOWING FIRMS —

J. T. Berry and Sons
Currie's Little Store
Epley Abstract Company
Sheila Dress and Beauty Shop
Turner Texaco
Hicks Auto Supply, Ltd.
Stanton Food Market

Bill's Friendly Food
Dalashanta Beauty and Dress Shop
First National Bank
Stanton Cleaners
Wheeler Motor Company
Alsup Chevrolet
Higginbotham-Bartlett Company

Blocker Oil Company
Dr Pepper Bottling Company
Gilbreath Funeral Home
Cook's Enco
Beluve Motel and Restaurant
Cap Rock Electric Co-op.
Dairy Treat

Cain Tractor and Supply
Eiland-Stallings Insurance
Gregg Flowers
Ector Thornton Implement Co.
Franklin Gulf Service Station
Central TV Service
Stanton Walgreen Drug

Classified Ads

AUTOMOTIVE D REAL ESTATE M

Trucks & Trailers D-2
For sale or rent, 1959 Contemporary trailer house, 10x51 foot. Call 459-2252. 2-4-2tc

FARM & RANCH J
Farm & Ranch Supplies J-2
For Sale. Two used Tri-Matic systems. Taken on trade. Good condition. Call Midland, 682-0839. 12-24-tnc

MERCHANDISE K
Miscellaneous K-8
Have your GIFTS and PARTY FAVORS personalized with monogramming. We do it in all COLORS, NAPKINS, B I L L F O L D S, STATIONERY and MATCHES. STANTON DRUG STORE.

One bedroom house for sale, 505 School Street. Call First Federal Savings and Loan, Big Spring, Texas, 267-8252. 12-24-tnc

Farm For Lease. 430 acres, 150 irrigated. Pipe and pump furnished. Call Midland, MU 3-3192, or at night, MU 2-8387. 1-21-tnc

Greenware, firing slip, and paints. House of Ceramics, 1503 E. 3rd, Big Spring, Texas. 2-4-4tp

Miscellaneous K-8
For Sale: Two lawn mowers, and a two-piece sectional divan. Call 756-2487. 2-11-3tc

SENIOR CITIZENS TO HOLD MEETING
The Senior Citizens will hold a meeting Tuesday, February 16, at 3:00 p.m. in the Cap Rock Auditorium.

Hostesses for the social will be Mrs. C. C. Clements, Mrs. Jeff Walker, and Mrs. Eddie Butler.

SUSAN PEDEN MAKES DEAN'S HONOR ROLL AT ACC IN TULSA, OKLA.
Susan Peden, daughter of Mr. and Mrs. Wilbern Peden, has made the Dean's Honor Roll list for the first semester at American Christian College in Tulsa, Oklahoma.

Dean of the school, Dr. Russell Grow, announced the list on January 29.

Farms & Ranches M-2
Farm for sale or trade, 160 acres, 4 miles north of Stanton, cotton and maize allotment, some minerals. Possession immediately. Call Rick Orson in Lamesa at 872-7616 or 872-8721. 2-4-4tc

Houses For Sale M-4
Two bedroom house, one and one-half bath, living room, kitchen, and den. Close to school. See Paige Eiland or call 756-3481. 11-19-tnc

Two bedroom house, one bath, corner lot. Will sell furnished or unfurnished. See Paige Eiland or call 756-3481. 10-1-1tnc

Two bedroom house, hall tile, attached carport. See Paige Eiland, or call 756-3481. 1-28-tnc

Three bedroom house, one bath, newly redecorated, attached garage. See Paige Eiland, or call 756-3481. 2-28-tnc

One bedroom, frame house, large, separate garage, fenced back yard. See Paige Eiland or call 756-3481. 2-28-tnc

Paternal grandparents include Mr. and Mrs. Harold Graves of Lamesa, and maternal grandmother is Mrs. S. C. Middleton of Lamesa.

Martin County Abstract Co.
P. O. Box 766
Stanton, Texas 79782
H. Hilton Kaderli, Sr.
Sole Owner.

New Arrivals
Congratulations to Mr. and Mrs. Jimmy Don Graves, Leno, on the birth January 16, of a baby daughter, Karen Diane. The infant weighed six pounds and six ounces at birth, and was 19½ inches in length. She was born in a Lamesa hospital.

Philosopher Comes Out With A Backward Method Of Improving Nation's Mail Service

(Editor's note: The Martin County Philosopher on his grass farm on Mustang Draw studies the post office department this week, with what success we won't say).

Dear Editor:
According to some articles I've been reading in the newspapers that turn up out here, the post office department is undergoing a lot of changes in order, Washington says, to help balance the budget.

While I don't understand why Washington should balance its budget, very few people in the country balance theirs, still I've been following the reorganization plans and as I understand them the way to make the post office pay is to increase rates and to cut down on service.

The reason the post office is losing money and the service is getting worse is that people are flooding the mails with too many letters and other stuff.

And the reason they're doing that is that there are too many people in this country who can read and write.

The way to solve the mail jam is to stop teaching kids to read and write. They don't need it anyway, with television.

I understand some schools are working on this, some of them rather successfully, but I won't go into that.

Actually of course Washington has the wrong philosophy concerning mail service. The post office is a public service institution, it's not supposed to make a profit. It's like farming.

Yours faithfully,
J. A.

Beta Sigma Phi News

Preceptor Mu Chapter of Beta Sigma Phi met Thursday, February 4, in the home of Mrs. Elmer Long. Mrs. Tull Ray Louder presided, and roll call was answered by 12 members.

The club planned their Valentine party to be held February 13. They also voted to make donations to the March of Dimes and the Heart Fund.

It was reported that Mrs. Glenn Gates had donated a wheel chair and various other articles to the hospital in memory of her father.

Mrs. Sanley Reid, program chairman, introduced Mrs. John Rouche, who presented the program on "Slavery—The War Between The States." To highlight the program, she presented maps and a civil war chronology.

Mrs. Rouche also won the special gift the chapter presents to a member at each meeting.

Following the program, Mrs. Glenn L. Brown presented a quiz taken from the book of Beta Sigma Phi.

Mrs. Love served refreshments to the members, with decorations in a Valentine motif. The table was decorated with a centerpiece of red carnations and hearts on a red tablecloth.

Members present included: Mrs. P. M. Bristow, Mrs. Glenn L. Brown, Mrs. Glenn Gates, Mrs. Bob Latimer, Miss Sammie Lewis, Mrs. Elmer Long, Mrs. Tull Ray Louder, Mrs. Stanley Reid, Mrs. John Rouche, Mrs. Louis Roten, Mrs. Leo Turner, and Mrs. John Wood.

Portraits Weddings
Commercial Shots
Copy Work
CURLEY'S STUDIO
"Anywhere - Anytime"
• COLOR
• BLACK & WHITE
Phone AM 3-1071
Big Spring, Texas

SEAL PEST CONTROL SERVICE
Call After 5:00 P. M.
STANTON—756-2401
Or
Jay Dee House in Lamesa — COLLECT
Code 806-872-8554

Hammond Organs
EVERETT PIANOS
• Sales Service Instruction

American Music Co.
401 Andrews Hwy. 684-5331
Midland

Southside Scale Steppers Met Thursday, Feb. 4

The Southside Scale Steppers met Thursday, February 4, in the Martin-Glasscock Neighborhood Center. Mrs. David Young presided, and Mrs. Nick Sanchez led the club pledge.

Mrs. Joe Ramos was crowned queen by the previous queen, Mrs. Gladys Jackson.

Ten members were present, and made plans for the Valentine party to be held Thursday, February 11, in the high school gym. Jimmy Stallings will present the program on income tax at this time. Following the program, games will be played, and refreshments will be served.

The members took turns using an exercise cycle which had been loaned to them.

tion today announced that expenditures for Texas for fiscal 1970 totaled \$522,997,791 of which \$153,425 was for Martin County.

Jack Coker, director of the VA Regional Office in Waco, said that the bulk of the money was \$311,630,001 in disability compensation and pension payments for Texas veterans—\$115,322 for Martin County veterans.

Other VA expenditures in Martin County for fiscal '70, Coker said, were for GI Bill, and other VA education programs, \$22,076, and insurance and indemnities, \$16,027.

In announcing these figures, Coker invited Martin County veterans to contact the nearest VA office for information on any program, including the GI Bill.

Sea God's Daughters

The Gorgons of Greek mythology were the three daughters of the sea god Phorcys. Stheno and Euryale were the two immortal sisters, Medusa was a mortal being, not a goddess.

grams, \$22,076, and insurance and indemnities, \$16,027.

In announcing these figures, Coker invited Martin County veterans to contact the nearest VA office for information on any program, including the GI Bill.



PRICES EFFECTIVE THURSDAY, FEB. 11th, FRIDAY, FEB. 12th, And SATURDAY, FEB. 13th, And MONDAY, FEB. 15th, TUESDAY, FEB. 16th, And WEDNESDAY, FEB. 17th.

COTTAGE CHEESE, Borden's	12 oz. ctn.	35c
ICE CREAM, Gandy	½ gal.	79c
EGGS, Grade A, Golden Break-Day	2 doz.	85c
SLICED BEETS, Stokely	No. 303 Can, 3 for	55c
SHORTENING, Crisco	3 lb. can	89c
GOLDEN CORN, Stokely	No. 303 Can, 4 for	89c
Pineapple, Sliced or Crushed, Del Monte	No. 2 Can, 2 for	69c
Italian Cut Green Beans, Del Monte	No. 303 Can, 4 for	\$1.00
LUNCHEON MEAT, Celebrity	12 oz. can	49c
TUNA, Chicken of the Sea	6½ oz. can, 2 for	79c
TOILET TISSUE, Delsey	2 Roll Pkg.	29c
BLACK PEPPER, French's	4 oz. can	39c
FRUIT COCKTAIL, Stokely	No. 303 Can 4 for	\$1.00
COFFEE, Folger's	lb.	89c
FLOUR, Gladiola	25 lb. bag	\$2.10
FLOUR, Gladiola	5 lb. bag	49c
TOMATO SAUCE, Hunt's	8 oz. can, 2 for	25c
BATHROOM CLEANER, Dow	20 oz. can	69c
DR PEPPER, King Size	6 bottle ctn.	39c
COCA COLA, King Size	6 bottle carton	45c

VEGETABLES FOR EASY TO DO SALADS

MEATS

POTATOES RUSSETS	20 Lb. Bag	79c	FRANKS ARMOUR'S	12 Oz. Pkg.	49c
ONIONS YELLOW, TEXAS	Lb.	5c	SAUSAGE GOOCH, COUNTRY STYLE	2 Lb. Roll	79c
YAMS JUMBO, N. M.	Lb.	9c	BACON ARMOUR'S, PAN SIZE	12 Oz. Pkg.	59c
CELERY NICE CRISP	Stalk	15c	SAUSAGE MARKET MADE	Lb.	59c
HUSH PUPPIES GOLD KING	1 Lb. Pkg.	39c	PORK STEAK	Lb.	59c
SPAGHETTI and Meatball Pot Pies	4 For	\$1.00	PORK ROAST	Lb.	53c
			CUTLETS BEEF, GOOCH	Lb.	69c
			MEAT SPICED LUNCHEON	Lb.	69c

Stanton Food Market

— WE DELIVER —
GET YOUR OHMER KELLY MILK HERE!
We Give S&H Green Stamps, Double on Wednesday with purchase of \$2.50 or more, excluding tobaccos.
Free Delivery with purchase of \$2.50 or more. No delivery after 5:00 P. M. 25 cents Delivery Charge if order is less than \$2.50.
NEW STORE HOURS: WEEK DAYS And SATURDAY, 8:00 A. M. to 7:00 P. M.
SUNDAYS 8:30 A. M. To 6:00 P. M.
BOB COSTEY And DWAIN HENSON — Owners



STEP by STEP ..



A toddler grows to kindergarten age. Then its time for grade school . . . and soon, college!

WILL YOU BE READY?

You can be, if you make sure your savings grow. Step by step along with your child. Open an interest bearing Savings Account with us.



First National Bank
Stanton, Texas

Bufs Down McCamey Still In Contention

The Stanton Buffaloes kept alive their chance of winning the second half crown in District 5-AA play by downing McCamey 49-48 in a real thriller at McCamey Tuesday night.

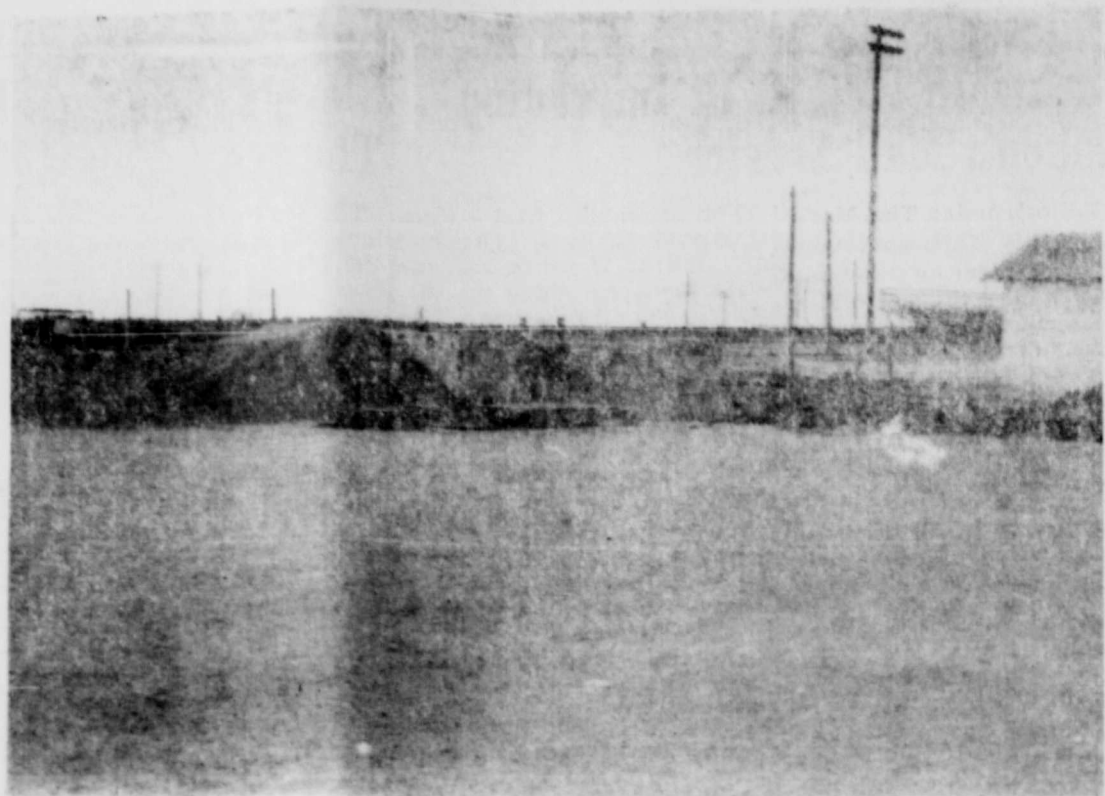
Stanton led at the end of the first quarter by 2 points, 12-10, but McCamey came back in the second period to take a 30-25 lead into the dressing room at half time.

The Buffs came roaring out in the third period, and out-scored McCamey 14-8, giving them a one point lead going into the final quarter. Both teams scored ten points in the final stanza, giving Stanton the one point victory margin.

Free throws won the ballgame for the Buffs as they sink 19 out of 29 from the line, for a 65 per cent free throw

shooting average. Coach Burns labeled the victory a good team effort, and a good job on defense by the Stanton five. Last game of the season is Friday, February 12, against Ozona. The game will be played at Ozona.

Scoring for the Buffaloes were: Ricky Mims, 12; Dennis Jones, 10; Glenn Ray and Gary Kitchens, 9; Ray Kelly, 5, and Jackie Swanson, 2.



NEW FIELD HOUSE—Work is progressing on the new field house being built at the High School. Completion is tentatively set for about the end of March. Funds for the building were raised entirely by private donations. When completed it will be used by junior and senior football teams, and for basketball, and other athletic uses.



THE STANTON REPORTER SPORTS

Three Buffs In Top Ten

In the latest District 5-AA individual scoring statistics released Monday, Stanton had three players in the top ten.

Number three in the league is the Buffs Glenn Ray with 127 points, for a 15.8 average. In the number seven spot is Jackie Swanson with 88 points, and a 11 points per game average. Right behind Swanson is Dennis Jones with 87 points, and an 10.8 average.

Leading the league is Crane's Terry Neal with 139 points, and a per game average of 17.4.

All figures are based on eight games played.

Stanton Buffs Defeat Reagan County 87-48

The Stanton Buffaloes defeated Reagan County this past Friday night 87-48.

The Buffaloes jumped to a 21-7 lead in the first quarter, and continued to pull away, as all 10 members of the Stanton varsity managed at least four points each.

High point man for the Buffaloes was Glen Ray with 17, Jackie Swanson added 16, and Ricky Mims had 13. Ronnie Poole led the Owls with 19.

Stanton is now 2-1 in league play.

try a little KINDNESS



Be kind to our fine feathered friends. Feed them in the winter—not the summer. Ornithologists say summer feeding robs birds of the training to hunt for their own food.

Don't take up two parking spaces.

When your friend tells you that same story, try remembering how funny it was the first time.

A shining example of kindness is the new Kindness Deluxe Instant Hairsetter with Lighted Mirror by Clairol. It features a mirror and an interior light in a compact, self-contained case. With these, it is now possible for a woman to give herself a completely new or refreshed hairdo in just ten minutes.

Spend some time reading to or entertaining children with retarded mental development. According to the Bureau for Children with Retarded Mental Development, 99 University Place, New York, N.Y. 10003, approximately 3% of all the children in the United States are handicapped with such a condition.

For a free button that says, "try a little kindness," send your name and address to Corporate Services Dept., Clairol, 345 Park Avenue, New York, N.Y. 10022.

Veterans Administration

The Veterans Administration today announced that expenditures for Texas for fiscal 1970 totaled \$22,997,791, of which \$153,425 was for Martin County.

Jack Coker, director of the VA Regional Office in Waco, said that the bulk of the money was \$311,680,002 in disability compensation and pension payments for Texas veterans, \$115,322 for Martin County veterans.

Other VA expenditures in Martin County for fiscal '70, Coker said, were for GI Bill and other VA education programs, \$22,076, and insurance and indemnities, \$16,027.

In announcing these figures, Martin Gibson, Veterans County Service Officer, reminded all veterans to contact his office for information on any program, including the GI Bill, and Texas Veterans Land Board.

Oldest man to serve in the U. S. Senate was Theodore F. Green of Rhode Island. He retired from the Senate in 1960 at the age of 93.

BELVUE CHURCH OF CHRIST LADIES PLAN WORK DAY FEB. 16

The ladies of the Belvue Church of Christ have planned their next work day for Tuesday, February 16. The group will work on clothes for Orphans Homes, and for the Big Spring State Hospital.

The workday will be held at that church with a covered dish luncheon in the home of Mrs. Fred Bowlin.

Meeting time for the work day is 9:00 a.m.

King's
Valentine Chocolates are *Memory makers*

MAKE YOUR SELECTION FROM OUR DISPLAY OF GORGEOUS HEARTS.

Priced From 00¢ to \$00.00

Stanton Walgreen
Drug

DID YOU KNOW—?

IN EVENT OF A MAJOR DISASTER THERE ARE 2500 HOSPITALS STRATEGICALLY PREPOSITIONED IN THE U.S.

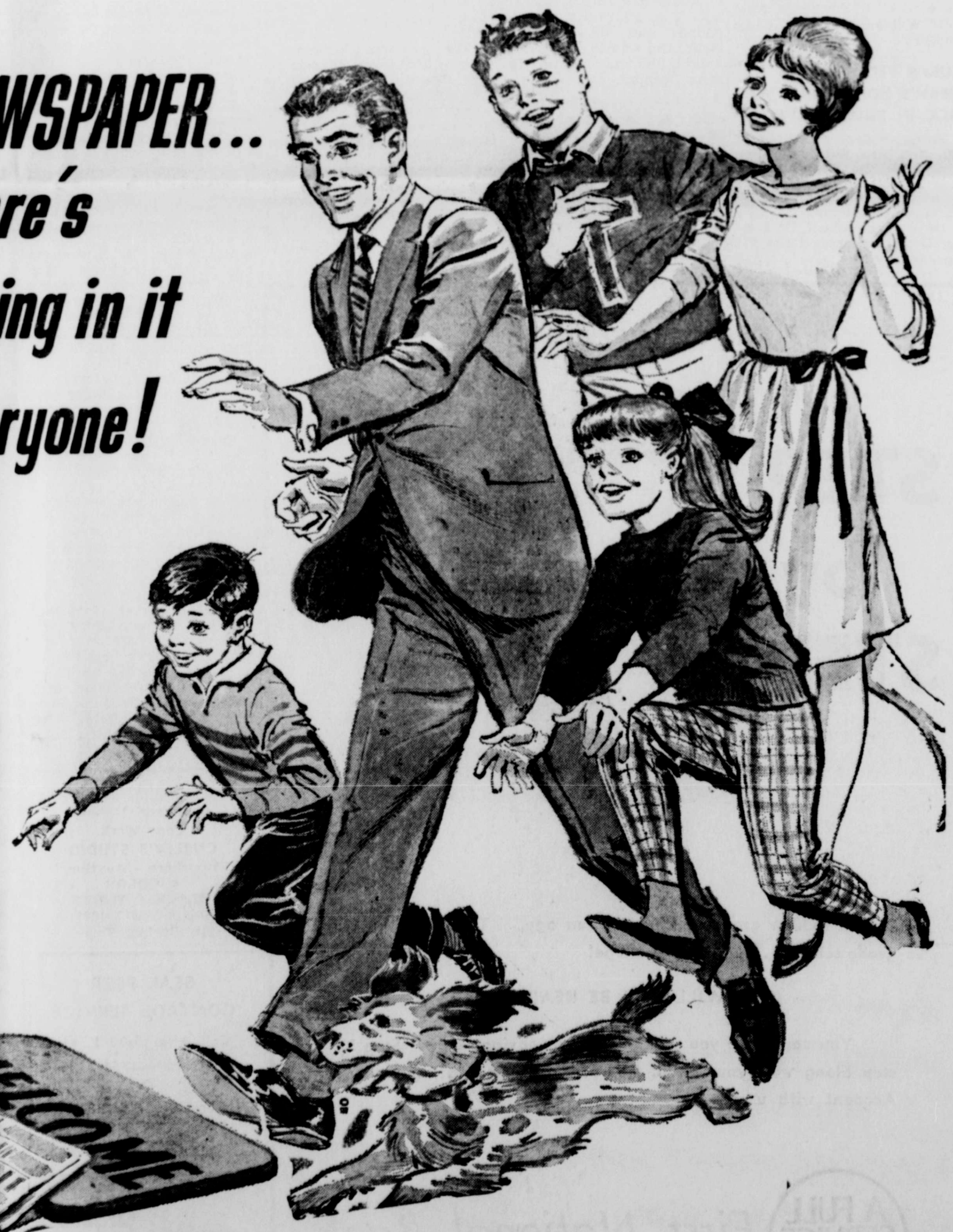
WHAT EACH OF THESE EMERGENCY HOSPITALS IS A COMMUNITY ASSET WHICH CAN BE USED...

- AS A HOSPITAL SET UP IN A PUBLIC SCHOOL
- AS SEVERAL TREATMENT STATIONS
- AS A SOURCE OF SUPPLY FOR EXISTING HOSPITALS

MORE FACTS? CONTACT YOUR LOCAL CIVIL DEFENSE

The head of a comet is a mass of gas and particles of solid matter.

**YOUR NEWSPAPER...
There's
Something in it
for Everyone!**



Are your current dividends really current?

They are if you are saving at Citizens Savings. Citizens pays 4 3/4% on regular pass-book savings... 6% on two year savings certificates of ten thousand dollars or more.

At Citizens Savings, dividends are COMPOUNDED DAILY and paid quarterly. And accounts are insured to \$20,000 by the FSLIC.

You should be getting the most up-to-date return on your investment. You can at Citizens Savings.

DO NOT BE MISLED... DESPITE THE ADVERTISING YOU MAY HAVE READ OR HEARD IN RECENT WEEKS, NO SAVINGS ASSOCIATION IN MIDLAND PAYS HIGHER EARNINGS THAN CITIZENS SAVINGS ON ANY TYPE SAVINGS ACCOUNT... AND BESIDES, IT'S THE NICEST PLACE IN TOWN TO DO BUSINESS.

You Get Richer By The Day When You Save at Citizens... Here's How

PER YEAR	EFFECTIVE YIELD
4 3/4% Accounts	4.86%
5 1/4% Certificates	5.39%
5 3/4% Certificates	5.92%
6% Certificates	6.18%

Save By The 10th. Earn From The 1st

CITIZENS SAVINGS & LOAN ASSOCIATION
1408 West Wall
"Where the Flag Flies"

The Stanton Reporter

Social Calendar

BETA SIGMA PHI CITY COUNCIL — First Monday of each month
 ORDER OF EASTERN STAR — First Tuesday night of each month
 RHO XI CHAPTER — First and third Thursdays.
 XI THETA NU — First and third Monday.
 month.
 REBEKAH LODGE — Each Monday night.
 ODDFELLOW LODGE — Each Thursday night.
 MASONIC LODGE — Second and fourth Tuesday of each month.
 AMERICAN LEGION—First Tuesday night of each month.
 AMERICAN LEGION AUXILIARY—Third Tuesday of every month.
 MEN'S DEPARTMENT First United Methodist Church—Second Monday night of each month.
 BROTHERHOOD, First Baptist Church — Second Thursday
 MU LAMBDA — First and third Monday.
 PRECEPTOR MU — First and third Thursdays.
 XI EPSILON DELTA — First and third Thursdays.
 LIONS CLUB — Each Tuesday at noon.
 STITCH AND CHATTER CLUB — Every other Wednesday.
 STUDY CLUB — Second Tuesday of each month.
 GRADY PARENTS-TEACHERS ASSOCIATION—Third Tuesday of each month at 7:30 p.m.
 WOMAN'S SOCIETY OF CHRISTIAN SERVICE, CIRCLE I—First United Methodist Church, Each Monday
 WOMAN'S SOCIETY OF CHRISTIAN SERVICE, CIRCLE II—First United Methodist Church, each Tuesday.
 STANTON MUSIC CLUB—Second Wednesday of each month.
 WOMEN'S DEPARTMENT — Reorganized Church of Jesus Christ of Latter Day Saints — First and Third Thursdays.
 SA'S. LENORAH BAPTIST CHURCH — Wednesday night at 7:45 p.m.
 BROTHERHOOD, LENORAH BAPTIST CHURCH — Fourth Monday of each month at 8:00 p.m.
 WYA, LENORAH BAPTIST CHURCH — Each Tuesday at 4:15 p.m.
 STANTON GARDEN CLUB — Fourth Tuesday of each month.
 WESLEYAN SERVICE GUILD — First United Methodist Church, second Monday evening of each month
 WOMEN'S MISSIONARY UNION — First Baptist Church
 MARY STAMPS CIRCLE — Each Monday.
 WHS GENERAL MEETING — All Circles, first Tuesday morning of each month
 BETHANY SUNDAY SCHOOL CLASS — Last Thursday of each month.
 ST. JOSEPH'S CATHOLIC CHURCH — Second Wednesday of each month
 HOME DEMONSTRATION CLUBS—
 COURTNEY CLUB — First and third Thursday morning, 9:30 a.m.
 KOFFEE KUP CLUB — Second and fourth Thursday morning 9:30 a.m.
 LAKEVIEW CLUB — First and third Thursday afternoon, 2:00 p.m.
 STANTON CLUB—First and third Wednesday afternoon, 2:00 p.m.
 GRADY CLUB — Second and fourth Thursday afternoon, 2:00 p.m.
 HOME DEMONSTRATION COUNCIL MEETING — First Tuesday of each month, 2:00 p.m.
 FIRE DEPARTMENT — First and third Monday night at City Hall.
 CANCER SOCIETY — First Monday night at Cap Rock at 7:30 p.m.
 GRADY LIONS CLUB — First and third Monday night of each month at Grady School
 MARTIN COUNTY FARM BUREAU MEETING — First Tuesday of each month
 BOY SCOUTS — Troop No. 28, every Monday night at 7:00
 WOMEN'S AUXILIARY OF MARTIN COUNTY HOSPITAL — Every Tuesday night.
 HISTORICAL SOCIETY — Third Tuesday.
 WOMEN'S BIBLE STUDY—First Baptist Church, Second and

Scale Steppers Met February 9

The Stanton Scale Steppers met Tuesday night, February 9, at the Martin County Library with Mrs. Calvin McKenzie presiding.

After a moment of silent prayer, Mrs. Durwood Clardy led the club pledge. Mrs. Prentiss Hightower read the minutes.

Mrs. George Dowden presented the program, and demonstrated various isometric exercises with all members participating.

The January queen, Mrs. Joe Barber, was crowned by the previous queen, Mrs. Richard Payne. Mrs. Barber was also selected as the club's Valentine queen, and was presented with gifts.

Mrs. Durwood Clardy served the club as photographer. Mrs. Barber and Mrs. Dowden were presented with their first Scale Steppers Shoe.

The forbidden can was drawn from, and the members voted to have a St. Patrick's Day queen for the month of March.

Those present included: Mrs. McKenzie, Mrs. W. A. Ringener, Mrs. Payne, Mrs. Dowden, Mrs. Al Morgan, Mrs. Clardy, Mrs. Melvin Graves, Mrs. Barber, Mrs. Hightower, Kathy Stewart, and Rosalyn Louder, also one guest, Brenda Ringener.

Africa's Lake Victoria is second only to Lake Superior in size.

Beta Sigma Phi News

Xi Epsilon Delta Chapter of Beta Sigma Phi met January 21, at the Texas Electric Reddy Room, with Allie Anderson as hostess.

Opening ritual was said, and Allie Anderson presided at a brief business meeting. There was a short discussion of the scrap book, and the Mother-Daughter Tea, which will be held May 2, at the home of Edith Chenault.

The program was a very informative talk on Astrology by Earl Waltrip of Midland. An interesting discussion followed the talk. Closing ritual and Mizpah were said, and refreshments were served to members: Alyne Kelly, Corene Manning, Tince Ory, Mary Payne, Oera Angel, Beulah Mae Hall, Bert Schwalbe, Margie Ireton, Georgia McMeans, Jean Koonce, Vanita Waid, Edith Chenault, Allie Anderson, and two guests, Mr. and Mrs. Waltrip.

Xi Epsilon Delta Chapter of Beta Sigma Phi met February 4, at the home of Mary Payne. President Allie Anderson presided for the business meeting.

The treasurer's report was given by Georgia McMeans, and Allie Anderson reported for city council. The various chapters are to help with the Cancer Drive to be held in April.

Old business was discussion

HD Club News

The Lakeview Home Demonstration Club met Thursday, February 4, in the home of Mrs. Bill McIlvain.

Mrs. Alfred Franks presided, and the club prayer was voiced by the group. Mrs. McIlvain brought the devotional, and roll call was answered with a "New Interest I Have."

It was reported that the club members had sent 64 dozen cookies to the Big Spring State Hospital, February 3.

A garage sale was voted for March 19 and 20.

Mildred Eiland, county home demonstration agent, presented the program on tailoring, and stressed some interesting points on sewing new materials. She also said that the latest in fashion news shopping was trying on six dresses per minute — all done by mirrors.

Valentine gifts were exchanged from a table decorated with Valentine hearts and red roses. Refreshments of red velvet heart shaped cake and red punch were served to Mrs. Eiland, Mrs. Franks, Mrs. D. W. Bryant, Mrs. J. B. Mashburn, Mrs. W. J. Harlowe, and the hostess.

The next meeting will be held February 18, in the home of Mrs. J. B. Mashburn. The program will be Fashion Forecast by the Dalashanta Dress Shop.

The Stanton Home Demonstration Club met Wednesday, February 3, in the home of Mrs. W. T. Wells. Crystal Webb, president, presided.

Roll call was answered with "A New Interest I Have Gained."

It was announced that the club would furnish lunch to the visitors to the District 4-H Food Show to be held here.

Mrs. W. T. Wells was elected as a nominee to attend the District THDA meeting to be held in Andrews, March 25.

Members present were: Alyne Kelly, Corene Manning, Tince Ory, Mary Payne, Lois Powell, Oera Angel, Beulah Mae Hall, Bert Schwalbe, Margie Ireton, Georgia McMeans, Jean Koonce, Robbie Graves, and Allie Anderson.

New Arrivals

Mr. and Mrs. Louis Farrington, Midland, are the proud parents of a baby son born Sunday, February 7, in the Martin County Hospital. The baby is named Kenneth Earl, and weighed six pounds and four ounces at birth. He was 21 inches in length.

Maternal grandparents include Mr. and Mrs. Kenneth Fincher, Midland; and paternal grandparents are Mr. and Mrs. Earl Glenn Farrington, also of Midland.

A squall of profit taking could overtake the market any day now, Spear and Staff notes. The market has been "basking in the warmth of easy money" for a number of months now, and a "speculative bubble" could be forming, the analyst adds.

Raisins are a nourishing food.

Easter Seal Society Steps Up Services

Because of the steady growth in numbers of crippled children and adults in Texas, the Easter Seal Society for Crippled Children and Adults of Texas has stepped up its rehabilitation services.

According to R. O. Anderson, who is the Easter Seal representative for Martin County, over 21,000 handicapped Texans received Easter Seal treatments during 1970.

"Despite medical scientific advances," he explained, "the ranks of the crippled are growing. This is because of population growth, increased number of accidents and medical treatment which saves victims of crippling diseases who might not have lived in past years."

Quoting the annual report of the Easter Seal Society for Crippled Children and Adults of Texas, he said that 20 affiliated treatment centers are in operation in Texas. They include treatment and rehabilitation centers, sheltered workshops, recreation and educational programs, and many others.

"Through these programs, persons with a wide variety of handicaps receive the help they need to live normal lives," Anderson said.

The largest group served includes those with major deformities of bones and joints, severe speech defects, cerebral palsy, arthritis, muscular dystrophy and multiple sclerosis, and stroke. The Easter Seal Campaign, which provides funds for continuation of these services, begins March 1 and continues through April 11, Easter Sunday.

The tarpon is not important as a food fish.

Explorer I, the first satellite put into orbit by the United States, weighed 30.8 pounds, and was launched Jan. 31, 1958.

Stanton Lions Hear Accessor

The Stanton Lions Club met Tuesday noon, February 9. The pledge was led by Bill Young, and Richard Payne led the prayer.

J. R. Dillard presided over the meeting, in which 32 members were present.

The members discussed the ladies night they will hold on Monday night, February 15, at the high school cafeteria at 7:00 p.m. The affair will include a covered dish supper, and entertainment by Tammy Whitmire, a singer from Crane.

Russell McMeans, program chairman, introduced Corene Manning, tax accessor-collector for the Stanton Independent School District, and vice-president of the South Plains Chapter of TAAO Mrs. Manning presented the program on tax evaluation. She showed a film on "Searching for Equity," and explained the different approaches to value costs, market, and income. At the closing of the film, a short phrase was shown, "Judge Well For Ye Shall Be Judged."

The next regular meeting will be held Tuesday noon, February 23.

Stanton School Lunch Menu

February 15 Through 19:
 Mon.: Roman steak, brown gravy, green beans, banana pudding, hot rolls, buttered rice, and milk.

Tues.: Shepherd pie, vegetable salad, fruit gelatin, hot rolls, and milk.

Wed.: Pinto beans, buttered corn, French fries, apricot cobbler, corn bread, butter and milk.

Thurs.: Spaghetti rings and meat balls, buttered peas, carrot and celery sticks, apple sauce cake, and milk.

Fri.: Hamburgers, lettuce, tomatoes, onions, pickles, pork and beans, butter cookies, and milk.

The Stanton Reporter

Stanton, Texas
 THE PERMIAN BASIN PUBLISHING COMPANY
 Telephone No. 756-3544 105 W. Broadway



ED PIEL Editor and General Manager

Entered at the post office at Stanton, Texas as second class mail matter.

Published Every Thursday

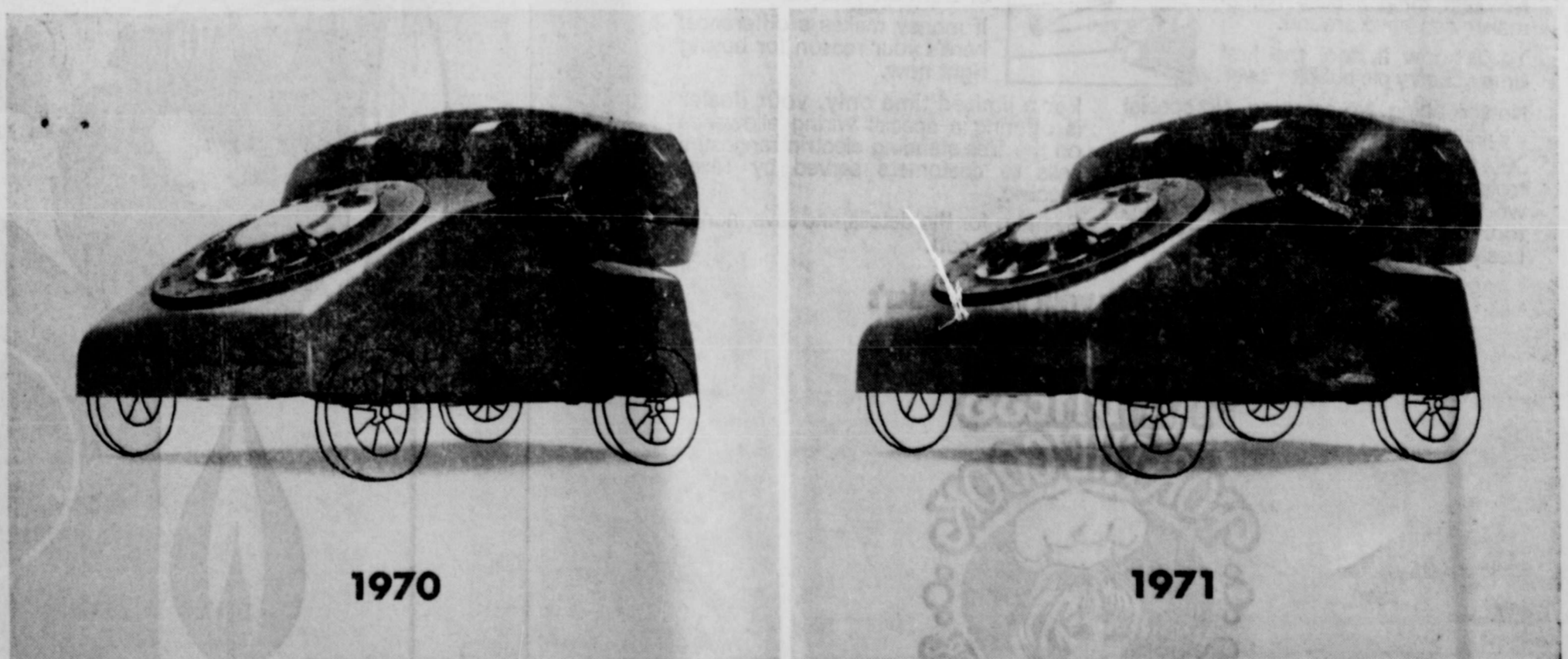
Any erroneous reflection upon the character, standing or reputation of any persons, which may occur in the columns of THE STANTON REPORTER, will be gladly corrected upon being called to the attention of the editor.

MEN NEEDED
 In this area to train as
LIVESTOCK BUYERS
 LEARN TO BUY CATTLE, HOGS AND SHEEP
 at sale barns, feed lots and ranches. We prefer to train men 21 to 35 with livestock experience. For local interview, write age, phone, address and background to:
NATIONAL MEAT PACKERS TRAINING B-167
 238 E. Town, dept. Columbus, Ohio 43219

LOANS
Mid-City Credit Co.
 Stanton Supply Finance
 LO 3-1377 156-3422
 Midland-Odessa Stanton

YOUR SOUTHWESTERN LIFE INSURANCE REPRESENTATIVE
 J. Woodford Sale

Irvin's Welding And Machine Shop
 GARBAGE CAN RACKS FOR SALE.
 WE TURN BRAKE DRUMS.
 For All Types Welding And Machine Work,
 See Us.
 304 W. ST. ANNA 756-3671



Last year we spent \$740 million on your telephone ...and it still looks the same.

The changes don't show. But they are ways of making your phone—the one you've had all along—work better. For instance, the money went for more Long Distance circuits so your

call will go through faster. It also went for more training so that telephone employees serving you will know their job. The money went for new switching systems to speed up connections for

the 56 million calls we handle daily. At Southwestern Bell, we keep working every day, every year, to put a new phone inside your old one. Even if it does look the same. "We may be..."

17 Local Representatives Voted Membership In PBRA And

Seventeen representatives of the food service industry in this area have been voted into the membership of the Permian Basin Restaurant Association and the statewide Texas Restaurant Association for 1971.

These members are: Bill Woodward, B & B Vending Co.; John M. Oakes, Monahans Coca Cola Bottling Co., Inc.; Horace W. McAdams, Odessa College Cafeteria; George W. Carver, Watts Burger No. 1; Mr. and Mrs. Leo Gonzalez, La Posada Restaurant; Joy Alvey, First National Bank; Basin

Janitor Supply Co.; A. B. Price, The Branding Iron; LeRoy's Pitt Barbecue, and Mike Kelly, Mike Kelly Beer Distributing, all of Odessa; Don Tergerson, Don't Poultry & Egg Co.; Charles Bayes, Bayes Cafeteria; R. C. Cauble, Beef Delight; S. W. Hunley, Frito-Lay, Inc.; and Cecil Hall, Sand's Motor Hotel, all of Midland. Also Janice Carter, Gage's Fina Truck Stop and Restaurant, and Bobby Martin, Cain's Coffee Company, both of Stanton.

President of the Permian Basin Restaurant Association is Daniel T. O'Conner, Ector

County Independent School Cafeteria, Odessa.

The Texas Restaurant Association is made up of 4,000 leading Texas food service members. It has 21 chapters covering every section of Texas. Executive Vice President W. Price, Jr., heads the state headquarters in Austin. State President is James R. Hill of Corpus Christi.

Today food service in Texas is the first in the number of retail outlets, and first in the number of employees, thus providing employment for mo-

Spraberry - - -

(Continued from page 1) gas-oil ratio of 200-1, through perforations at 3,569-3,580 feet, after acidizing with 3,000 gallons.

Drilled to 3,612 feet where 5 1/2-inch casing is seated, it has been plugged back to 3,600 feet.

It spots 330 feet from north, and 2,310 feet from east lines of section 142, block 29, W&N-W survey.

WD plans No. 1 Mid-Central ne location east of No. 1 - eed, 467 feet from north and 853 feet from east lines of section 142. It is slated to 3,800 feet.

Middle Clearfork production was extended one location west in the Howard-Glascock field of Howard County with completion of Wood, McShane & Thams of Monahans, No. 4 E. W. Douthit, sixth producer from that zone.

Through perforations at 3,499-3,782 feet, it pumped 86 barrels of 26.2-gravity oil and 225 barrels of water on 24-hour potential test. The producing section had been acidized with 2,000 gallons and

fractured with 60,000 gallons and 24,000 pounds.

Drilled to 3,849 feet, it has 5 1/2-inch casing set one foot off bottom.

It spots 1,980 feet from north and 660 feet from west lines of section 123, block 29, W&NW survey.

Same operator filed application to drill No. 5 E. W. Douthit as a southwest offset to the nearest middle Clearfork production, and one mile east-northeast of the most south-westerly producer from that pay in the Howard-Glascock field of Howard County.

The project, slated to 3,850 feet, spots 660 feet from south and 1,980 feet from west lines of section 123, block 29, W&NW survey, one mile east of Chalk.

Stoltz, Wagner & Brown of Midland, has filed application to re-enter No. 6-A Beth, former Spraberry producer one mile west of a recently completed Dean-Wolfcamp producer in the Spraberry Trend Area of Midland County.

It is to deepen to about 8,700 feet for test, of the Dean-Wolfcamp.

Location is 664 feet from south and 660 feet from east

Bud Burchett, Rites Held Jan. 29 In Midland

Henderson (Bud) Burchett, 75, former Big Spring resident, died in the Veterans Administration Hospital, in Big Spring, Friday, after a long illness.

Services were held January 29 in Midland at the Calvary Baptist Church, where he was a member, at 3 p.m. Sunday, with the Rev. Don Sigler, pastor, officiating. Burial was in baby daughter named Karen Diane. She was born January 16, in a Lamesa hospital, weighing six pounds and six ounces.

He is buried in the Resthaven Memorial Cemetery under direction of New-

Veterans Administration

Other VA expenditures in Martin County for fiscal '70, Coker said, were for GI Bill and other VA education programs, \$22,076, and insurance and indemnities, \$16,027.

In announcing these figures, Martin Gibson, Veterans County Service Officer, reminded all veterans to contact his office for information on any program, including the GI Bill, and Texas Veterans Land cells filled with sap instead of air.

Boon, Stanton; one brother, James Yarbar, Delano, California, five grandchildren, and several nieces and nephews.

Pallbearers included Jacky Romine, Elmer Belcher, Chester Kirkland, Grady Ulmer, Joe Hungerford, and Johnny Gilbreath.

Patronize your hometown merchants and save money!

Mrs. Brown - - -

(Continued from page 1) the right side of the road, crossed the highway and crashed through a guard rail on the left side.

The vehicle tumbled down an embankment, coming to a rest on its top at the bottom of the slope. Both occupants were pinned in the vehicle for a short time.

Mrs. Brown and her son were rushed to Midland Memorial Hospital, where they were being treated.

Highway Patrolman Robert Petty of Midland, investigated the accident.

Jess Miles

ACCOUNTING — INCOME TAX SERVICE

EAST COUNTY LINE ROAD

Phone 459-2303

W
11
8-11

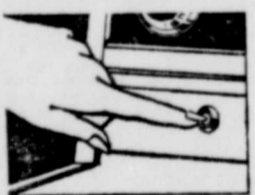
Easiest way ever to clean an oven.

An electric range with a self-cleaning oven is about the handiest thing a busy homemaker can have around.

You'll know it, too, the first time a cherry pie bubbles over.

No scrubbing. No scouring. No special cleansers needed.

Just take a few seconds to set the controls. And electricity does the dirty work, cleaning the entire oven—door, top, back, bottom and sides—effortlessly and automatically.



Let a new electric range with a self-cleaning oven take a lot of work off your hands.

If money makes a difference, here's your reason for buying right now.

For a limited time only, your dealer is offering a special wiring allowance on the free-standing electric ranges he sells to customers served by Texas Electric.

See him for the details, and save money while you can.

Save money now with your dealer's special wiring allowance!



TEXAS ELECTRIC SERVICE COMPANY
People power... at work for you

FIELD HOUSE—Work is progressing on the new field house being built at the High Completion is tentatively set for about the end of March. Funds for the building used entirely by private donations. When completed it will be used by junior and football teams, and for basketball, and other athletic uses.

Other VA expenditures in Martin County for fiscal '70, Coker said, were for GI Bill and other VA education programs, \$22,076, and insurance and indemnities, \$16,027.

In announcing these figures, Martin Gibson, Veterans County Service Officer, reminded all veterans to contact his office for information on any program, including the GI Bill, and Texas Veterans Land cells filled with sap instead of air.

Boon, Stanton; one brother, James Yarbar, Delano, California, five grandchildren, and several nieces and nephews.

Pallbearers included Jacky Romine, Elmer Belcher, Chester Kirkland, Grady Ulmer, Joe Hungerford, and Johnny Gilbreath.

Patronize your hometown merchants and save money!

Rev. Bailey Smith officiating Interment was in the Memory Garden Cemetery in Hobbs, under direction of Griffin Funeral Home.

Pallbearers were Roswell Auld, Jim Blaine, J. B. Tidwell, Bill Morris, Henson Shelton, Dave Foreman, and Barney Dennis.

Survivors include his wife, Stella, and one sister, Cora Willingham. He was preceded in death by three brothers, Clarence, Dow, and Jim.

Frengo, an international language invented by a Spaniard, has five vowels and 12 consonants. It is simpler and more logical than Esperanto.

The sergeant major serves as the representative in the Pentagon for all American enlisted men around the world.

Pumice, sulfur, and lava are volcanic materials used in industries.

Distinctive PRINTING

Make Us Your "One Stop" Press Center

We have the complete facilities and know how to successfully serve your printing need. Letterpress, engraving are all part of our service. We print color of black and white. Call us, compare our quality and prices.

Stationary • Catalogs
Business Forms • Envelopes
Announcements • Advertising

THE STANTON REPORTER

Install gas air conditioning now?

You should be so foxy

Installing GAS air conditioning now means you'll beat the rush that always comes with the first hot or dusty spring day. While everyone else is waiting for the overworked installers you'll be cool, calm, and collected.

GAS air conditioning cools your whole house quietly and efficiently. You'll save on repairs, too, because there is no compressor to break down or wear out. And, GAS air conditioning cools your whole house for what you might have been paying to cool just two or three rooms before.

So, be foxy. Call Pioneer and tell them you'd like to find out more about installing GAS air conditioning in the winter. A representative will tell you what it will take to include it in your present forced air heating system. You may be able to use the same ductwork for heating and cooling. It costs nothing to get a complete survey of your home or business.

PIONEER

NATURAL GAS COMPANY

Ask about special Winter Terms.