

"SIGHT BEATS THE WORLD! There Is No Substitute For The Printed Word, Read It, Clip It, Keep It. Put It In The Family Scrap Book!"

TEXAS PRESS ASSOCIATION  
Member 1969

# The Stanton Reporter



FINEST CLIMATE ON EARTH WHERE HEALTH, HAPPINESS AND PROSPERITY AWAIT THE HOMESEAKER

Vol LVIV—No. 42

STANTON, MARTIN COUNTY, TEXAS (79782,) THURSDAY, OCT. 16, 1969

6 Pages—Price 10c

## VARIETY

By NEAL ESTES

The drop in temperature in a space of a few hours Sunday night found Basin residents leaving their homes early Monday morning in real winter weather. The indicator on guides stood at a even 35-degrees. It was a blast. The suddenness of the tumbling temperature reminded us of an old-fashioned blue norther. A record was shattered too. Not since 1909 has this area experienced such a low reading on an October 13.

Shot through and through with injuries, the Stanton Buffaloes found the pigskin going rough again the past Friday night in Post. The game with the Antelopes marked the conclusion of non-district play. On Friday evening of this week the Bisons travel to McCamey to engage the Badgers in the first district contest. Several local fans are planning on making the trip to back the boys in the conference lid opener.

October days are dropping from the calendar like falling autumn leaves. It is not too early to mention here that Christmas is just a few weeks away. Plan right now to trade at home this year. Make selections early and get your holiday shopping behind.

Taxpayers who follow the periodic publishing of financial reports will find the county treasurer's presentation in this issue of the paper along with a semi-annual report from the City of Stanton. These publications are required by law and in a week or two or three readers will get a glimpse of the financial condition of the school districts. These three districts who will be filing reports include Flower Grove, Stanton, and Grady.

A lot of illness has been reported in the community. It is hoped that any outbreak of the flu this year will not equal the epidemic proportions reached last year when the Asian type A influenza swept the country.

### Rebekahs Plan Rummage Sale, Bake Sale Oct. 18

The Stanton Rebekah Lodge will hold a rummage sale and bake sale at the Oddfellow Hall on Saturday October 18. Daisy Wilkes, chairman of the fund raising campaign, announce the date at a recent meeting of the lodge, presided by Ellen Morgan. All Rebekahs are asked to bring their items for the sale to Pauline Graves before Saturday morning. Ten members were present.

### Sales Tax Of 4 1/4% Effective October 1

Taxes move up the scale again with the new tax effective October 1. Merchants will be collecting 4.25 percent tax, which includes the state tax and the local city sales tax. Printed below is a segment of the tax schedule, and how they apply to Stantonites:

Amount Of Sale:	Tax:
\$1.06 to \$1.29	.05
\$1.30 to \$1.52	.06
\$1.53 to \$1.76	.07
\$1.77 to \$1.99	.08
\$2.00 to \$2.23	.09
\$2.24 to \$2.47	.10

(Continued on page 6)

# Buffaloes To Open District Play

## Miss Ledbetter State Finalist 4-H Dress Revue

Eulene Ledbetter, daughter of Mr. and Mrs. A. L. Ledbetter of Stanton, was one of 12 finalists in the State 4-H Dress Revue in Dallas on October 3.

The Midland High School senior modeled a gray-brown heather skirt and vest under a matching plaid cape which she constructed out of wool fabric. Miss Ledbetter completed the ensemble with a beige tam and a terra cotta orange turtle neck sweater.

The finalist competed with 43 other teenagers in the fashion event sponsored by the Texas Agricultural Extension Service. The dress revue is an annual feature of the State Fair of Texas.

Winners were Jean Ann Block from Tom Green County, and Sheila Tankersely, Lynn County.

Miss Ledbetter, who has been a member of the Greenwood 4-H Club for nine years has won honors in public speaking, food shows, and livestock shows.

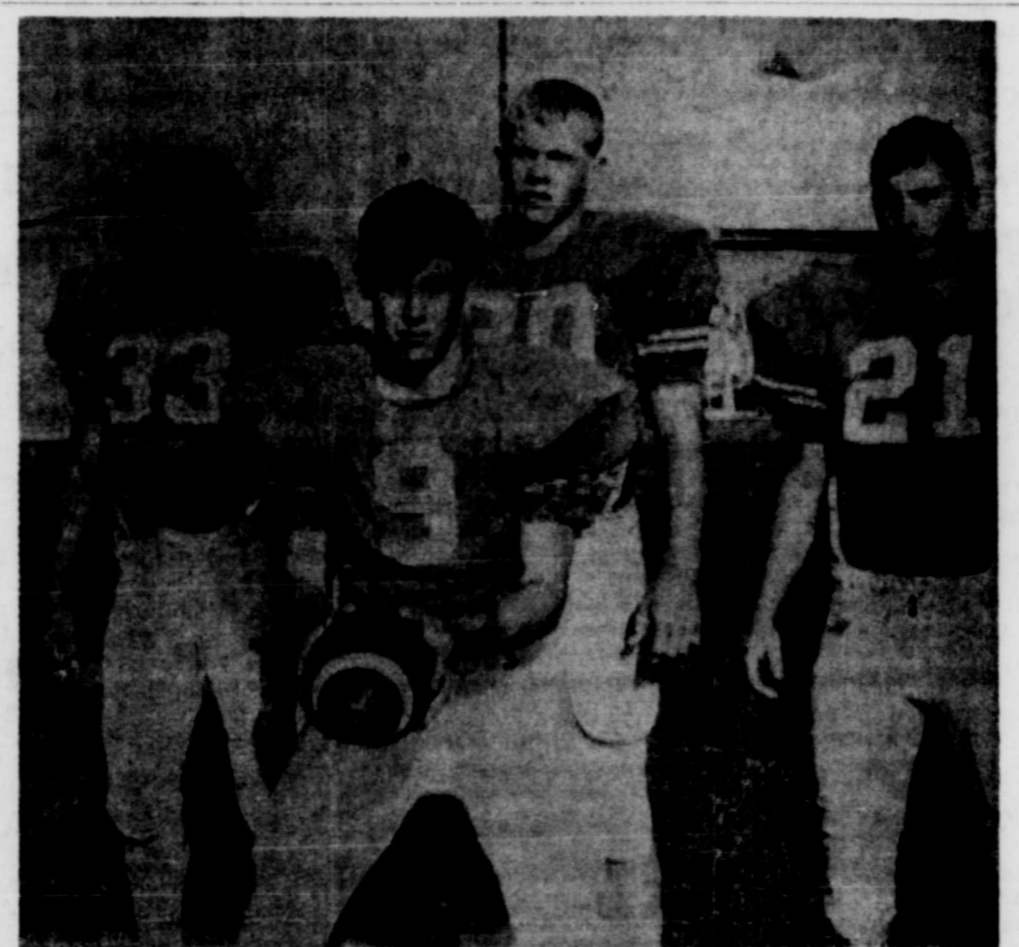
In the dress revue, girls were judged on grooming, poise, attitude, workmanship, and their ensemble. They represented about 17,000 girls enrolled in 4-H clothing education work, explained Dr. Graham Hard, extension clothing specialist, and revue chairman.

## Co. Farm Bureau Directors Named At Annual Meet

Floyd Martin, Leroy Linney, Roy Koonce, Curtis Flanagan, and Douglas Church were elected to the board of directors of the Martin County Farm Bureau at the annual meeting held October 11, in the Grady School gymnasium.

Approximately 160 people attended the meeting and barbecue, which featured a speech by David Workman on "The History and Growth of Communism." Workman was one of the two local students sponsored by the Bureau that attended the Citizenship Seminar at Baylor University this summer.

Owen Kelly presided at the annual meeting that elected Leroy Linney, Floyd Martin, J. M. Payne, and Kelly, as delegates to the state convention in San Antonio, November 16-19.



McCAMEY BACKS — When the Stanton High Buffaloes open their District 5-AA season against McCamey Oct. 17, they will face quarterback Charles Graves, (9), right halfback Pete Casillas (33), fullback Gary Bolen (30), and left halfback Glenn Huffman (21).

## Stanton Loses By 16-6 Tab

STATISTICS		Post
Stanton	First Downs	17
6	Yards Rushing	234
85	Yards Passing	22
3 of 15	Passes Com.	1 of 2
0	P asses Inter. By	2
2	Fumbles Lost	1
2 for 20	Yards Pen.	5 for 44
6 for 35	Punts Ave.	7 for 36

Injury - inflicted Stanton Buffaloes absorbed their fourth football defeat in five outings at Post Friday night, dropping a 16-6 decision to Post's Antelopes.

The Post eleven employed a devastating ground game which netted the Antelopes 234 yards rushing. Stanton, meanwhile, could muster only 28 yards on the ground, although its passing attack earned 85 yards.

Stanton trailed at the half, 16-6, but could not record additional points in a scoreless second half for both teams.

The Buffs' lone tally came in the second quarter with Stanton trailing 7-0. Quarterback Glenn Ray threw 72 yards to swift end Steve Stallings for a touchdown.

With 1:19 remaining in the

## Grady Honor Roll Announced By Supt. L. R. Dunn

Supt. L. R. Dunn, superintendent of the Grady School, announced the honor roll students for the first six weeks of 1969-70.

Third Grade: Leland Key, Jimmy Mitchell, Wallace Overby, Ramona Barrera, Joanna Graham, Patricia Hewitt, Terrie Parum, and Shirilla Sawyer.

Fourth Grade: Donna Sue Hale, Belinda Martin, Lawenda Tunnell, Faye Ann Welch, Donnie Dunn, and Mark Tate.

Fifth Grade: Kathryn Springer, and Joe Lynn Dunn.

Sixth Grade: Tahita Blake, and Benny Joe Butler.

Seventh Grade: Jackie Haggard, and Billy Howard.

Eighth Grade: Nancy Pribylo, Rosalind Welch, and Terry Tate.

## Chamber Letter Campaign Meets Good Success

The Martin County Chamber of Commerce reports that their letter campaign to support the continuation of prayer in space, has been met with good success.

Mrs. James Wheeler, Chamber secretary, reports that approximately 175 letters have been sent to NASA from Stanton, in support of the prayers and Bible readings in space by the nation's astronauts.

Mrs. Wheeler states that there will be additional copies of the letter left at the town merchants for local residents to sign and return to the Chamber office.

## Wet Weather Slows Cotton Ginning In Co.

Cotton ginning in Martin County is progressing, but rather slowly due to the past wet weather the county has been experiencing.

Several farmers have defoliated their cotton and are waiting for the weather to dry up the fields so cotton picking can start.

The Farmers Coop Gin reports approximately 47 bales of cotton have been ginned as of date.

The Guita Gin has ginned 118 bales, and are looking forward to more ginning activity as the weather permits more cotton picking.

## Floyd Wheeler Receives Army Promotion

Floyd G. Wheeler, 20, son of Mr. and Mrs. Floyd C. Wheeler, Stanton, was promoted to Army specialist five August 21, in Vietnam, while serving with the 1st Cavalry Division (Airmobile).

Spec. 5 Wheeler is a mechanic with Headquarters Service Company of the division's (Continued on page 6)

## TESCO Quarter Century Club Held In Odessa

Texas Electric Service Company's president Burt B. Hulsey, Jr., praised employees of the company October 8, by saying they were the real power behind the company giving it its vitality, its direction and purpose, and its distinctive quality and character.

Speaking to the 700 employees and their guests from this area, which included Cecil Bridges, Miss Sammie Laws, and Alfred Franks, at the annual meeting honoring members of the company's Quarter Century Club, Hulsey said it was the people of the company "that made it the difference between just an ordinary company and a really good one, a company that has earned the respect and confidence of its customers."

"In this era of sophisticated machines that seemingly do our work for us, and computers that seemingly do our thinking for us, there is a tendency to lose sight of the importance of people," he said. "But machines and equipment are only as good as the people who control and operate them."

The meeting was held in Exhibit Building "A," on the Ector County Coliseum grounds. Winston Barclay, division manager of this area, was master of ceremonies and introduced the members of the Quarter Century Club present. Members are those employees who have completed 25 years of service with the company.

Following Hulsey's address, the Musical Majority, a group of students from Sul Ross State University, entertained.

## Post Office Work Continuing

Work is progressing satisfactorily on remodeling the U. S. post office here, according to Postmaster Bill Morrow.

A contract calling for approximately \$7,2000 worth of renovations is about 50 per cent completed, he said.

Most of the work consists of installing new lighting, heating and cooling system, plus painting.

# Bisons Slated To Meet Strong McCamey Eleven

Stanton will send the Buffaloes to McCamey Friday night to do battle with a strong Badger eleven.

It will mark the district lid blaster for both teams and a large delegation of loyal fans from Martin County are due to make the trek. The school band will go along and so will a majority of the members of the Booster Club.

## Brown Drilling Finished No. 1 J. Sales Outpost

Tom Brown Drilling Co. Inc. of Midland, finished No. 1 J. C. Sales as a 1 3/8-mile northeast outpost to a recently opened six mile extension region in the Martin County sector of the Spraberry Trend Area, 10 miles northwest of Stanton.

It flowed 241 barrels of 40.1-gravity crude and 7.5 barrels of water in 24 hours through a 24-64-inch choke from shot holes at 8,284-8,445 feet and 8,870-8,991 feet with a gas-oil ratio of 710-1 and tubing pressure 175 pounds.

The intervals had been stimulated with 3,250 gallons of acid, 90,000 gallons of refined oil and 180,000 pounds of sand.

It is 1,320 feet from south and west lines of section 14, block 37, T-1-N, T&P survey. Scheduled as a 9,200-foot Wolfcamp searcher, it was drilled to 9,063 feet and is plugged back to 9,042 feet inside the 4 1/2-inch casing set one foot off the bottom.

Lario Oil & Gas Co. of Midland, set 4 1/2-inch casing at total depth 9,059 feet in No. 1 Reeves, Howard County Pennsylvania prospects, and was waiting on cement and moving off the rotary preparatory to perforating and testing.

Located six miles southwest of Vealmoor, it is 467 feet from north and 853 feet from west lines of section 44, block 33, T-3-N, T&P survey, a mile southeast of the Brooking, Northeast (Fanyon) area and (Continued on page 6)

## Cotton Crop Shows Decline Since August

The latest estimate for the 1969 cotton production shows a decline of 1.3 million bales since August.

Agriculture Department officials predicted Wednesday this year's cotton crop at 10.5 million bales, compared with more than 11 million indicated the previous month, and 11.8 million estimated in August.

Department officials had encouraged farmers to plant their full acreage allotments (Continued on page 6)

# Voter Registration Now In Progress

Registration for voters for 1970 began in Martin County, and across Texas on Wednesday October 1. Voter registration is handled in the county clerks' office, and the registration period will continue through January 31, 1970.

In urging Texans to register early, Secretary of State Martin Dies, Jr., pointed out that one of the major registration problems of the assessor-collectors stems from the tendency of the voting public to put off registration until the closing days of the period. He urges voters to register as early as possible.

Dies said that in 1968 Texas had the highest percentage of registered voters in its history, and yet only about 65 per cent of the persons eligible to register were on the registration rolls, and only 49 per cent voted in the presidential election.

The 1970 voting year begins on March 1, 1970, and ends on February 28, 1971. This is the period for which the present registration is effective.

The general rule is that no one can vote without having registered. A former exempted person over 60 years old who did not live in a city of 10,000 or more inhabitants, is no longer in effect. The only major exception the general requirement for registration is for persons who are absent from their county of residence in active military service.

Qualification For Voting The required qualifications for voting are:

1. Citizen of the United States.
2. Over 21 years old on the day of the election.
3. Resident of the state for at least six months immediately preceding election day.
4. Resident of the county for at least six months immediately preceding election day — required for voting in local elections but not required for voting on state-wide offices and issues. (Residence in the city for six months is required for voting in city elections.)

Persons convicted of a felony who have not had their right of suffrage restored, and persons who are under an adjudgment of mental incompetence cannot vote. (Continued on page 6)



FFA WINNERS — Members of the Stanton Future Farmers Chapter won second place honors in the grass judging contest at the Heart O Texas Fair in Waco. Pictured are Lynn Romine, Chris Blow, Curtis Flanagan, and Gary Posey. Harold Parker is the chapter sponsor.

**The Stanton Reporter**

Stanton, Texas  
THE PERMIAN BASIN PUBLISHING COMPANY  
Telephone No. 756-3344 211 Broadway



NEAL ESTES General Manager

Entered at the post office at Stanton, Texas as second class mail matter.

Published Every Thursday.

Any erroneous reflection upon the character, standing or reputation of any persons, which may occur in the columns of THE STANTON REPORTER, will be gladly corrected upon being called to the attention of the editor.

Advertising Rates on Application

**SUBSCRIPTION RATES**

Martin County \$2.50 a year  
Outside County \$3.00 a year

The publisher is not responsible for copy omission, typographical errors or any unintentional errors that may occur other than to correct it in the next issue after it is brought to his attention. All advertising orders are accepted on this basis only.

**Abilene Cotton Classing Office Is Now Open**

In some areas the cotton harvest is getting started, says B. B. Manly, Jr., in charge of the Abilene Cotton Classing Office.

Sample receipts picked up this week, coming mainly from the counties in the San Angelo area. Receipts are beginning to pick up from gin points around Big Spring.

Grades of sample received are not good; however, they are improving daily. They range from Below Grade, up to Middling. The better grades are coming from the sandy land areas around Big Spring. Some of the low grade may have been caused from heavy rains soon after fields were killed, but Manly says all you have to do is look at the cotton on the stalk and you can understand the poor grades. Staple is shorter than normal and micronaire readings are good.

The Abilene Classing Office has processed 2,478 samples this season, of which 2,018 were classed this week. Last season 3,262 samples had been processed at this time. The following is a breakdown of grade, staple, and mike so far this season: Grades — 31, 3 per cent; 41, 7 per cent; 51, 8 per cent; 61, 1 per cent; 32, 3 per cent; 42, 38 per cent; 52, 22 per cent; 43, 5 per cent; 53, 1 per cent; Below Grades 2, per cent and bark bales were 5 per cent. Staple — 28,

8 per cent; 29, 34 per cent; 30, 42 per cent; 31, 11 per cent; 32, 4 per cent, and 33, 1 per cent. Mike — 3.0-3.2, 2 per cent; 3.3-4.4, 3 per cent; 3.5-4.9, 94 per cent, and 5.0 and higher, 1 per cent. Pressley or strength readings were good.

The Abilene Classing Office is a part of the U. S. Department of Agriculture, Consumer and Marketing Service, Cotton Division. It is one of 30 classing offices in the United States. It serves 24 cotton counties, generally bordered on the south by Schleicher County, on the west by Midland County, on the north by Dickens, and on the east by Throckmorton. A sub office located at Munday, Texas, Knox, Taylor, Haskell, Jack, Throckmorton, and Young counties, operates during the active ginning season. A. D. Peables will be in charge of the Munday office again this season.

The cotton market situation looks optimistic this year. Approximately 3,000 to 4,000 bales have been ginned so far this year, and about 25 per cent of that has been sold. At this time it appears cotton will sell readily about the government loan prices.

**Johnny Appleseed**  
Jonathan Chapman was the real name of Johnny Appleseed, legendary planter of fruit trees in pioneer America.

**Music Club Notes**

The Stanton Music Club of T. F. M. C. met in the Reorganized Church of Jesus Christ of Latter Day Saints on October 8. Mrs. Carl Leonard, Jr., was hostess.

During the business meeting, all members were urged to attend the 12th district Music Conference in Midland, October 11.

A program of the "Holy Land" was given by Mrs. Glenn Brown, who showed post cards of places visited, as she described the events of the trip make by a group to the Holy Land this past summer.

The musical program consisted of organ solos, "O Clemens," by Paumann, "Adagio," by Mozart, played by Diana Payen. Betty Anderson played "How Great Thou Art," by Stewart J. Hines, and "Wonderful Savior," by Jane Carrier. Mrs. Carl Leonard, played two selections, "Triumph" and "Voluntary in D," by Henry Purcell.

Refreshments were served to Mrs. Steve Church, Mrs. Richard Payne, Mrs. Billie Billie Houston Diana Payne, Betty Anderson, Mrs. R. O. Anderson, Mrs. Claude Houston, Mrs. Homer Schwalbe, Mrs. Edmund Tom, Mrs. Arthur Wilson, and the hostess, Mrs. Leonard.

**Beta Sigma Phi Activities**

The Xi Epsilon Delta sorority met recently in the county library to hear Margie Iretton speak on "Public Speaking."

Doris Stephenson served as hostess to the membership attending: Allie Anderson, Obera Angel, Fiji Brandt, Edith Che-naul, Chris Clark, Margie Iretton, Corene Manning, Georgia McMeans, Tince Ory, Lois Powell, and Bert Schwalbe.

"End of Life," was the subject of the program presented by Mrs. John McIntyre, at the recent meeting of the Xi Theta Nu Chapter of Beta Sigma Phi.

The Beta Sigma Phi fall banquet will be held October 27, at the Silent Woman Inn in Big Spring.

Plans were discussed to hold a bake sale on October 22, at the Stanton Food Store.

The next meeting will be October 20, in the home of Mrs. Nolan Simpson.

**JUMPING BEAN**

The larva of a moth enters the seed, on which it feeds, and by its contortions makes the seed of the Mexican jumping bean jump.

Trade at home and save!



**TFMCO OFFICERS**—Officers elected during the District 12, Texas Federation of Music Clubs, conference held Saturday in the First United Methodist Church in Midland, included, left to right, Mrs. R. V. Nabers of Pecos, recording secretary; Mrs. Glenn Brown of Stanton, auditor; Mrs. Bob Sewell of Odessa, president, Mrs. T. J. Pujot of Midland, first vice president, and Mrs. T. E. Street of Odessa, historian.

**Clay-Brantley Engagement Told By Parents**

Mr. and Mrs. George S. Clay of Andrews, announce the engagement and approaching marriage of their daughter, Donnita, to Roger Harold Brantley, son of Mr. and Mrs. Harold Brantley of Stanton.

Miss Clag is a 1968 graduate of Andrews High School, and is a student at West Texas State University, where she is an elementary education major. She is a member of the college modern dance team.

**PERSONALS**

Mrs. Dwight Atchison and children, Sandra, Mike, Marilyn, and Dwayne, have returned from Germany to reside in Stanton until Sgt. Atchison finishes his tour of duty in Germany. They are presently living with Mr. and Mrs. Gene Atchison.

Mrs. Helen Blocker is home after being hospitalized in Midland, following surgery on her ankle. Mrs. Blocker is reported recuperating well.

**HD Club News**

The Koffee Kup Home Demonstration Club met recently in the home of Mrs. James Doyle in Stanton, with Mrs. Fred Bowlin, president, presiding. Roll call was answered by 12 members with a safety measure that we practice. A new member was introduced.

**Boat Registration Requests Handled By Parks, Wildlife**

Although the responsibility for registering boats was transferred to the Texas Parks and Wildlife Department effective Sept. 1, the Texas Highway Department continues to receive applications and registration fees.

All this leads to delays, according to the Parks and Wildlife Department.

All registration applications, applications for transfers, or requests for information on boat registration, numbering and safety requirements,

should be addressed to the Texas Parks and Wildlife Department, John H. Reagan Building, Austin, Texas 78701.

Boat owners may also register their boats and receive their registration number at 29 regional, district, or field offices of the Parks and Wildlife Department.

Registration numbers may also be transferred for a \$1 fee if the buyer can produce a current certificate or the transfer stub.

Registration services are available at Parks and Wildlife offices in the following cities: Dallas, San Antonio, Houston, Fort Worth, Lufkin, Tyler, Corpus Christi, Lubbock, El Paso, Mt. Pleasant, Abilene, Amarillo, Beaumont, Brownsville, Brownwood, Bryan, Edinburg, and Galveston.

Also, Seabrook, Kerrville, Midland, La Porte, Palestine, Rockport, San Angelo, Temple, Victoria, Waco, and Wichita Falls.

Donnita Clay

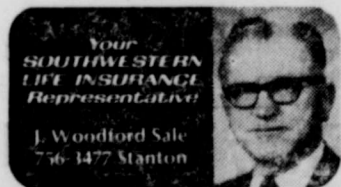
and Delta Zeta. Brantley of a 1964 graduate of Stanton High School, and attended North Texas State University, and has served with the U. S. Army.

The wedding date will be December 27, at the Means Memorial Church of Andrews, at 2:00 p.m. The couple plan to reside in Canyon, where both will continue their studies at West Texas State.

ed. Mrs. Charlie Burnett. Financial report was given, and the results of the bake sale held October 1.

The Christmas salad luncheon was discussed, and the plans are to hold in at the new home of Mrs. Delbert Hopper. Mrs. W. T. Wells gave a candle making program, with several members molding candles of their own.

The next meeting will be in Mrs. Nolan Simpson's home, October 23.



**LOANS**  
Mid-City Credit Co.  
Stanton Supply Finance  
LO 3-1377 756-3422  
Midland-Odessa Stanton

**CUSTOM BALING**  
INCLUDING CRIMPING  
30¢ Per Bale  
STANTON AREA  
CALL  
LO 3-2549 or EM 6-3037  
ODESSA

**Twenty-Four Years Ago**

Deputy District Governor of Lions Frank Stubbeman of Midland, spoke to the Lions at their Monday night meeting. Three Midland Junior High School girls sang several numbers. Lions voted to contribute to a fund to buy sweaters for the Stanton High School football team.

Two pledges were installed into the Stanton Delta Omega Chapter of Beta Sigma Phi, Friday evening, in the dining room of the Scharbauer Hotel, Midland. New pledges are Mrs. Filmore Epley, and Mrs. Louis. Roten in charge of the services were Margie Richards, Mrs. James A. Wilson, Jr., Mrs. P. M. Bristow, and Mrs. W. E. Milam.

The Stanton Buffaloes won an overwhelming victory over Lamesa B Golden Tornados. The final score was 27-0. Stanton is scheduled to meet Midland Friday, and Odessa on Oct. 25. Scores of earlier games, are Stanton 76 — Midland 0.

The SHS girls basketball team has been organized. Players are Betty Renfro, Gwen McClain, Betty Blizzard, Frances Morrow, and Billie Lindsay, forwards; Frankie Leonard, Lurlene Geurin, Lurlene Lomax, and Dorothy Harris, guards. Bobby Atchison was named captain of the forwards, and Betty Ruth Gibson, captain of the guards.

The First Lady of the Year of Stanton, is to be chosen in the next few weeks. She will be selected by secret ballot by a committee of civic leaders. The choice will be based on accomplishments in war service, cultural, or civic work, homemaking, business, or other outstanding community activity.

A nice gift for your friends and relatives to receive at Christmas time, is The Stanton Reporter, filled with all hometown, county, and local merchants advertising their many values from now until the big sales for Christmas gift giving!

**Roadrunner**

WHERE QUALITY IS ALWAYS THE FIRST CONSIDERATION.

756-2145 Call Direct 458-3468

**On the move: New Chevrolet Movers for '70**

**Chevy goes heavy! New Titan 90.**

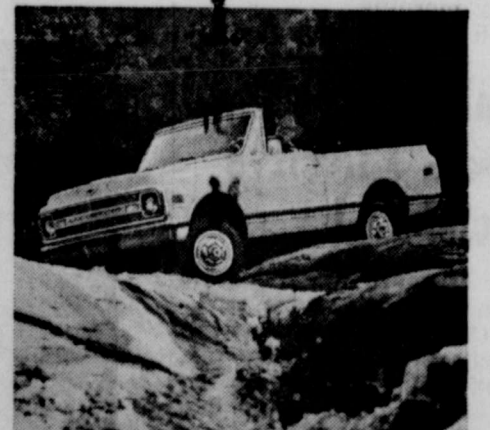
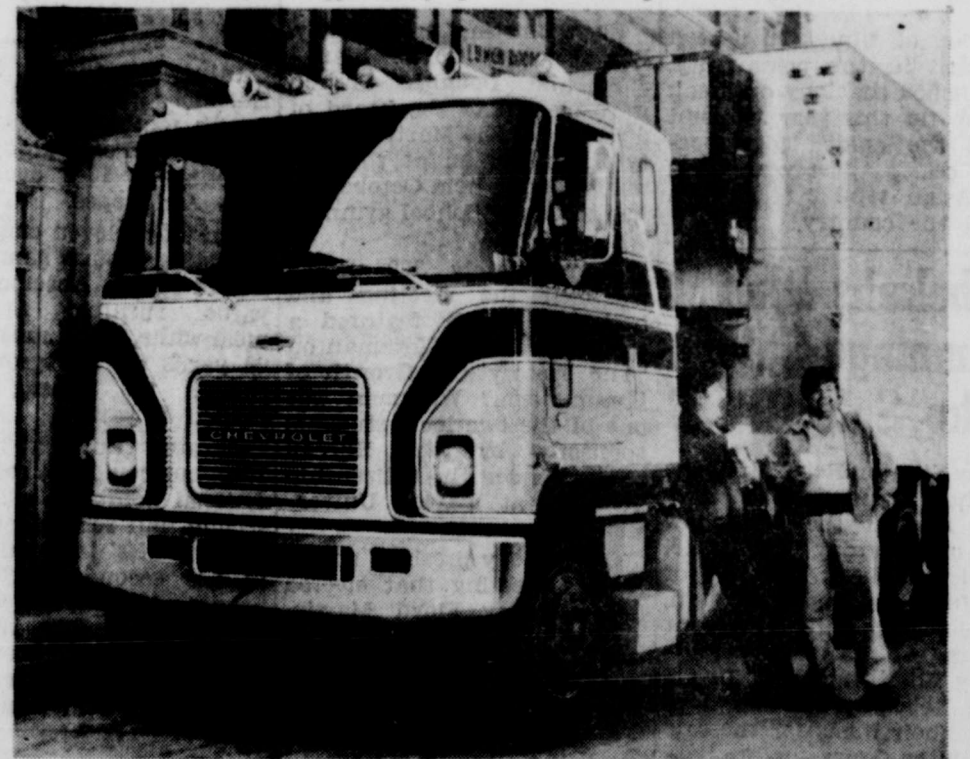
Anybody can add a new truck to a lineup. Leave it to Chevy to add a truck and a half.

Titan 90. No other Chevy tilt is so long on muscle. So right for turnpike stretches. With 9 diesels available. And one of the biggest sleeping

compartments on the road.

With a wraparound instrument panel that puts everything just a glance or fingertip away.

Conventionals. Vans. Recreational vehicles. Whatever you're thinking, your Chevrolet dealer's got it. And it's a Mover.



**Chevy goes lively! New '70 pickup.**

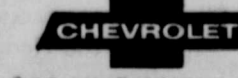
The first thing a Chevy pickup has to move is you. And we never forget it. It shows in the way our '70s look. In their smooth ride.

And all the different ways they come: Fleetside, Stepside and Longhorn camper,

**Chevy goes anywhere! New Blazer.**

Call it Chevrolet's convertible-station-wagon-car-truck. Or Blazer for short. It's the runabout with the largest V8's, and widest track.

Order it with removable hardtop. Two- or four-wheel drive for telling trails to get lost.

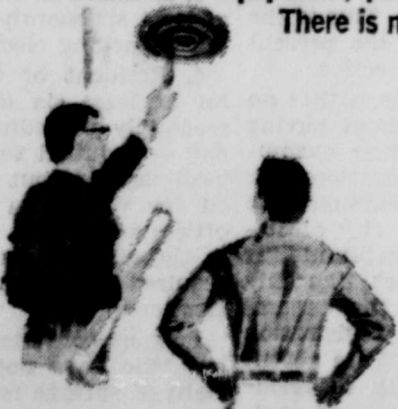


**Expert counseling to help you get maximum benefit from your electric service**

Our trained staff of qualified specialists is always available to work with you to determine how you can get the maximum benefit from your electric service. Lighting, heating and air conditioning specialists, home economists and others will be glad to help with advice and suggestions regarding any use of electric service . . . in homes, business and industry. Whenever you have a question about any application of electric service, such as types of equipment available, proper installation or the use and care of appliances and equipment, please feel free to call us.

There is no charge for this service.

We want to help you make the most of your electric service.



# COUNTY TREASURER'S REPORT

**Book Balance In Various Funds  
On September 30, 1969**

FUND	BALANCE
Jury	\$ 4,932.99
Road and Bridge No. 1	2,565.21 OD
Road and Bridge No. 2	9,297.90 OD
Road and Bridge No. 3	33,855.81
Road and Bridge No. 4	372.33
Lateral Road No. 1	16,441.12
Lateral Road No. 2	3,500.00
Lateral Road No. 3	4,505.41
Lateral Road No. 4	3,314.86
General County	47,221.87
Officer's Salary	94,121.37 OD
CASH BALANCE	\$8,159.91
Permanent Improvement Fund	15,527.71
Road and Bridge Warrant Sinking Fund	17,855.17
Courthouse and Jail Sinking Fund	—0—
Road Bond Sinking, 1951	6,037.40
Martin County Social Security	2,419.41
Road Bond Sinking, 1952	15,294.87
Hospital Bond Sinking Fund	11,668.23
Martin County Library Fund	10.17

**ELMO REED,**  
County Treasurer  
Of Martin County

Approved: 10-13-'69, County Judge, Jim McCoy

Commr. No. 1: W. W. Atchison  
Commr. No. 2: M. A. Coggin  
Commr. No. 3: Eldon A. Welch  
Commr. No. 4: G. E. Cave



**PLANS TO WED**—Mr. and Mrs. Donnie L. Jones of Stanton, announce the engagement of their daughter, Rita Joyce, to Robert L. Feister, son of Mr. and Mrs. Samuel Feister of Paradise, Pa. The bridegroom-to-be received a degree in forestry from Pennsylvania State University, and is stationed at San Angelo with the U. S. Air Force. Miss Jones is attending Commercial College of Midland. The wedding will be held at 8 p.m. December 5.

## Philosopher Doubts Free Time For Political Speeches On Television Will Work Very Well

(Editor's note: The Martin County Philosopher on his grass farm on Mustang Draw examines a new proposal to control campaign expenses in his letter this week.)

Dear editor:  
According to an article I read in a newspaper which somebody left in a cafe in town and which I picked up and brought home with me to offset the high cost of a cup of coffee, running become so expensive for office has become so expensive it's now out of hand, a man without money and no rich friends hasn't got a chance, and a bunch of Congressmen are proposing to do something about it.

According to them, it takes from 10 to 15 million dollars to run for President, win or lose; at least a million to run for Senator, and from a million on down for Governor, depending on which state you're running in. Naturally a governor of say desert-swept Nevada wouldn't cost much as a governor of Texas.

Most of this cost, they said, goes for television, and they have come up with a proposal.

Instead of begging or borrowing from rich people and big corporations, with the best beggars or borrowers, or promoters and obligations, getting the most television, the Federal government should buy up enough time for everybody and let them speak free. This group argues.

Furthermore, so the government won't be wasting its money, the speeches should run on all networks, and stations at the same time. No turning out a political speech on one channel to see Gunsmoke on another. From watching tapes of their own speeches, most Congressmen know they couldn't compete with Festus Hagen, and a good many couldn't hold their own against a summer re-run.

Thus, the group argues, turn on your set and you'd have to listen to nothing but political speeches in a given night, and all candidate would thus have a fair shake.

I don't know whether this would improve democracy or not, but I know blamed well it'd ruin television.

Yours faithfully,  
J. A.

## Farm & Ranch Review

**Rewards For 4-H Achievements**—Four 4-H Club members with a combined membership of 38 years have been rewarded for their work they have been named to receive college scholarships from the C. J. Davidson Scholarship Fund which is administered by the Texas 4-H Youth Development Foundation. The four are Stephen Warminski, Carson County; Laura Jane Pair, Comanche County; Brenda Louise Malmstead, Comal County, and Joseph Pickett, Dimmit County. Each is now enrolled in the university of their choice.

**Peach Promotion**—Texas peach marketing needs a promotion program which will create the impression that "if you are going to eat peaches, eat Texas peaches." B. G. Hancock, extension horticulturist, made the suggestion to growers at a recently held conference at Texas A&M University. A seal-of-quality

for marking Texas peaches should be established, he said.

**4-H Family Affair**—Much of the 4-H program is centered around the home and family. Many parents are former 4-H members and want their children to have the same opportunities they enjoyed and profited from during their youth. A successful 4-H'er needs parents' cooperation and encouragement.

**Worth Remembering**—Don't blame beef prices for inflation; blame inflation for beef prices.

**SHERIFF POSSE HOLDS TRAIL RIDE**

The Martin County Sheriff's Posse sponsored a 24 mile trail ride to the old Houston Ranch headquarters in Glascock County last Satur-

## Pheasant Season Holds Promise For Hunters

The 1969 pheasant season in the Panhandle will open on Dec. 12 for nine consecutive days, closing Dec. 21, says Jack Parson, wildlife supervisor for the Texas Parks and Wildlife Department.

Dick DeArment, project leader, kept careful statistics of last year's hunt for the big birds, and found that they weighed in excess of to pounds each, well worth the work and walking involved.

Statistics compiled for the first two days of the hunt were conservatively expanded for an annual estimate of data on hunter and hunted in the million acre of six Panhandle counties.

On the first two days of the feather flew, and 6,159 hunters bagged 4,248 cock birds. It might appear that some of

the flying feather were on birds untouched by the sprays of shot. The extended estimate of statistics at the end of the season revealed that approximately 26,000 hunters dropped 18,000 of the bomb-shell birds in the bag, a hunter success of 0.69 birds per hunter.

Biologists say the birds are in good condition, and are not presently suffering from any apparent food shortage.

Bag limit on pheasant this year will be two cocks per day, four in possession after the first day's hunt. Head and feet must remain attached to the carcass.

## PERSONALS

Mr. and Mrs. Tad Gardenhire of Kansas, Mr. and Mrs. Gene Gardenhire of Lubbock, and Mrs. G. P. Pollock, were all recent guests of Mr. and Mrs. Grady Gardenhire.

Mr. and Mrs. Cecil Gilmore visited recently with their son and family, Mr. and Mrs. Kenneth Gilmore, Lyn, Kerry, and Greg of Lubbock.

Read The Stanton Reporter for the latest news from your home county!

## Traffic Costs For 1969 Soar

The Texas barometer of traffic costs for 1969 soared past the one-half-billion-dollar mark as August traffic crashes in the Lone Star State added \$61 million to the state's rapidly ascending cost register.

The Texas Safety Association said today that preliminary reports for the month of August indicate that rural fatalities, injuries, and property damage from traffic accidents cost Texans almost \$23 million. Urban accident costs topped the rural tab by \$15 million, with a total cost of \$38 million for accidents happening within city limits.

The cost of traffic accidents on Texas streets and highways for the first eight months of the year reached \$529 million when computed according to a National Safety Council formula.

Noting a significant increase of fatalities on Farm-to-Market roads in the past month, the Safety Association suggested folks driving in rural areas observe the following rules:

When traveling on an un-

## WHAT'S IN A FRAME?

Nondescript pictures take on new importance as decorative accessories when framed and matted properly, the Picture and Frame Institute points out. Take a careful look at the pictures that now decorate your walls. If any picture are not doing their job decoratively, consider brightly colored mats or reframing them. You'll be surprised and pleased with the results.

paved roadway, yield the right-of-way to vehicles traveling on a paved highway. Under a new Texas law, you may enter an intersecting paved roadway only when there is no chance of interference or collision with traffic on the highway.

Be prepared for animals grazing near the roadway. They may suddenly cross in front of your vehicle.

Look for narrow or rough shoulder areas and washed-out or rough spots in the highway that can cause you trouble in steering.

Keep on your side of the roadway, even if it's narrow. Slow down for sharp curves, and when approaching or crossing narrow bridges.

Trade at home and save!

# Save At Stanton Food

PRICES GOOD THURSDAY, OCT. 16th FRIDAY, OCT. 17th, And SATURDAY, OCT. 18th, And MONDAY, OCT. 20th, TUESDAY, OCT. 21st, And WEDNESDAY, OCT. 22nd.

LIQUID IVORY	King Size 69c
B I Z	King Size 85c
FRUIT COCKTAIL, Stokley	No. 303 Can, 2 for 49c
C O R N, Stokley	4 for 89c
ASPARAGUS, All Green, Stokley	No. 300 Can, 2 for 69c
DOG FOOD, Alpo Trio	14 1/2 Oz. Can, 4 for \$1.00
C O F F E E, Folger's	1 lb. can 67c
C R I S C O	3 lb. can 75c
F L O U R, Gold Medal	5 lb. bag 49c
FLOUR, Light Crust	25 lb. bag \$1.98
Sugar, with purchase of \$5.00 or more excluding tobaccos, 5 lb. bag	39c
DR PEPPER, King Size	6 bottle ctn. 43c
C O C A C O L A, King Size	6 bottle ctn. 45c
J E L L O, Gelatin Dessert	3 oz. pkg., 3 for 29c
ALUMINUM FOIL, Diamond	12x25 Roll, 2 for 39c
CAKE MIXES, (Layer) Betty Crocker	3 for \$1.00
SPICED PEACHES, Hunt's	No. 2 1/2 Can, 2 for 49c
DOG FOOD, Hi Vi	Big 26 oz. can, 6 for \$1.00
INSTANT POTATOES Idahoan	1 lb. pkg. 49c
C H I L I, Wolf	No. 2 Can 65c
GREEN BEANS VERTICAL PACK, WHOLE BLUE LAKE, IRVINGTON CLUB	No. 303 Can, 3 For \$1.00

## VEGETABLES FOR EASY TO DO SALADS

ORANGES TEXAS	5 Lb. Bag	39c
APPLES DELICIOUS	3 Lb. Bag	39c
PEPPER BELL, LARGE GREEN	Lb.	10c
SQUASH YELLOW, NICE FRESH	Lb.	10c
FISH STICKS FISHER BOY	8 Oz. Pkg., 5 for	\$1.00
SHRIMP BREADED, GULF PRINCESS	8 Oz. Pkg.	69c

## MEATS

BACON GOOCH, BLUE RIBBON	Lb.	79c
FRANKS ALL MEAT, ARMOUR'S	12 Oz. Pkg.	53c
BOLOGNA DECKER ALL MEAT	12 Oz. Pkg., Reg. 65c, Only	49c
CHOPS Pork, Center Cuts	8 1/2 Lb. First Cuts	69c
PICNICS SMOKED CURED, DECKER	Lb.	49c

# Stanton Food Market

— WE DELIVER —

GET YOUR OHMER KELLY MILK HERE!

We Give S&H Green Stamps. Double on Wednesday with purchase of \$2.50 or more, excluding tobaccos.

Free Delivery with purchase of \$2.50 or more. No delivery after 5:00 P. M. 25 cents Delivery Charge if order is less than \$2.50.

BOB COSTEY And DWAIN HENSON — Owners

OPEN 8:00 To 8:00 — 6 DAYS SUNDAYS 8:30 To 7:00



IF YOU NEED LP-GAS, CALL . . .

**Jerry Graham**

756-3692

FOR ACCURATE MEASUREMENT  
THROUGH A PRINTING METER

# City Of Stanton, Texas

## Semi-Annual Financial Statement

April 1, 1969 - September 30, 1969

### GENERAL FUND

<b>RECEIPTS:</b>		<b>DISBURSEMENTS:</b>	
Balance April 1, 1969	\$13,415.25	Salaries	\$20,991.28
Fines	1,500.00	Firemen Salaries	1,340.00
Tax Collections	1,280.55	Other Salaries and Wages	1,579.00
Penalties and Interest	244.53	Social Security	885.66
Building Permits	35.00	Employees Insurance	480.00
Electrician's License	50.00	Employees Uniforms	190.00
Garbage Billing Transfer	6,180.43	Fire Department Supplies	77.34
Tax Certificates	8.00	Legal Expense	395.43
City Sales Tax	7,663.31	Insurance and Bonds	656.00
Loan	7,500.00	Expense to Newspaper	351.68
Percentage of Carnival Receipts	144.00	Office Supplies	572.78
Insufficient Checks Collected	14.30	Utilities	302.19
Miscellaneous	46.52	Jail, Care of Prisoners	68.02
		Police Dept.: Gas and Oil	884.95
		Equipment and Repairs	385.64
		Supplies	62.29
		Uniform Allowance	125.00
		Garbage Truck: Gas and Oil	367.98
		Repairs	568.04
		City Hall Repairs and Supplies	249.15
		Park Expense	475.60
		Miscellaneous	45.99
			\$31,054.02
<b>TOTAL</b>	<b>\$38,081.89</b>	Balance September 30, 1969	7,027.87
		<b>TOTAL</b>	<b>\$38,081.89</b>

### STREET AND ALLEY FUND

Balance April 1, 1969	\$10,048.80	Salaries	\$ 5,088.20
Tax Collections	564.94	Labor	155.00
Gross Receipts Tax	1,105.87	Social Security	257.00
Street Lights	74.40	Employees Insurance	120.00
Mowing Weeds, Etc.	560.00	Employees Uniforms	135.00
		Gas and Oil	496.11
		Street Lights	1,473.90
		Traffic Lights	31.83
		Supplies	230.30
		Repairs	1,006.40
		Tools	112.02
		Utilities	31.20
		Insurance	224.82
		Miscellaneous	73.45
			\$ 9,435.23
<b>TOTAL</b>	<b>\$12,354.01</b>	Balance September 30, 1969	2,918.78
		<b>TOTAL</b>	<b>\$12,354.01</b>

### WATER WORKS SINKING FUND

Balance April 1, 1969	\$ 8,115.69	Bonds	\$ 5,000.00
Tax Collections	293.37	Interest	1,271.25
Interest	212.50	Bank's Charge	10.00
			\$ 6,281.25
<b>TOTAL</b>	<b>\$ 8,531.56</b>	Balance September 30, 1969	2,250.31
		<b>TOTAL</b>	<b>\$ 8,531.56</b>
		Invested in Midland Airport Bonds	\$10,251.06
		Balance September 30, 1969	2,250.31
		<b>TOTAL AVAILABLE</b>	<b>\$12,501.37</b>

### GENERAL OBLIGATIONS BONDS SINKING

Balance April 1, 1969	\$ 3,801.73	Interest	\$ 1,438.75
Tax Collections	210.90	Bank's Charge	5.00
Interest	107.97	Investment	3,877.80
Investment Returned	3,892.03		\$ 5,321.55
		Balance September 30, 1969	2,691.08
<b>TOTAL</b>	<b>\$ 8,012.63</b>	<b>TOTAL</b>	<b>\$ 8,012.63</b>
		Invested in U. S. Treasury Bonds	\$3,877.80
		Balance September 30, 1969	2,691.08
		<b>TOTAL AVAILABLE</b>	<b>\$6,568.88</b>

### WATER AND SEWER FUND

Balance April 1, 1969	\$11,116.27	Salaries	\$11,261.04
Collections: Water, Sewer, and Garbage	57,212.97	Extra Labor	586.88
Reconnects	54.00	Social Security	765.00
Deposits	1,065.02	Insurance	240.00
Tapping Fees	663.30	Uniforms	254.00
Sewer Connect Permits	1.00	Power — Water	1,464.96
Sewer Water	60.00	Power — Sewer	216.84
Pumps	132.00	Pickup Expense: Gas and Oil	681.40
Bad Debts Collected	20.79	Repairs	161.66
Freight Claim	206.25	Office Supplies	753.27
Insurance Claim	96.00	Supplies: Water System	4,003.72
Miscellaneous	1.70	Sewer System	2,496.18
		Utilities	196.41
		Water: Clardy Well	993.50
		C. R. M. W. D.	7,306.09
		Filter Plant	1,528.39
		Water and Sewer Contingencies	600.00
		Garbage Billing Transfer	6,180.43
		Garbage Contingencies	967.25
		Water Works General Oblg. Bonds	2,490.90
		Revenue Bonds Int. and Sink. Fund	8,012.52
		Revenue Bonds Reserve Fund	1,000.02
		Revenue Bonds Contingencies	1,000.02
		Meter Repairs	889.51
		Meters	428.75
		Tools	309.14
		New Pickup	1,749.00
		New Pump for Well	1,234.80

Insurance on Filter Plant	299.85
Fences	385.94
W and S. Deposit Refund Fund	100.00
Deposits Refunded	937.11
Refund—Overpayment of Water Bills	25.00
Miscellaneous	92.05

	\$59,571.63
Balance September 30, 1969	11,057.67

<b>TOTAL</b>	<b>\$70,629.30</b>	<b>TOTAL</b>	<b>\$70,629.30</b>
--------------	--------------------	--------------	--------------------

### 1967 WATER CONSTRUCTION FUND

Balance April 1, 1969	\$ 7,197.29	Investment	\$19,245.80
Investment Matured	19,454.39	Construction at Filter Plant	163.38
Interest	545.61		\$19,409.18
		Balance September 1, 1969	\$ 7,788.11
<b>TOTAL</b>	<b>\$27,197.29</b>	<b>TOTAL</b>	<b>\$27,197.29</b>
	Invested in U. A. Treasury Bonds	\$19,245.80	
	Balance September 30, 1969	7,788.11	
	<b>TOTAL AVAILABLE</b>	<b>\$27,033.91</b>	

### STREET AND WATER CONSTRUCTION FUND

Balance April 1, 1969	\$12,702.17	Taxes	\$ 77.84
House Payments	155.77	Loan to General Fund	7,500.00
Interest	21.47		\$ 7,577.84
Paving Payment	20.00	Balance September 30, 1969	5,321.57
<b>TOTAL</b>	<b>\$12,899.41</b>	<b>TOTAL</b>	<b>\$12,899.41</b>

### GARBAGE CONTINGENCIES FUND

Balance April 1, 1969	\$ 2,535.58	Balance September 30, 1969	
Transfer from Garbage Billings	967.25		
<b>TOTAL</b>	<b>\$ 3,502.83</b>		

### WATER AND SEWER CONTINGENCIES FUND

Balance April 1, 1969	\$ 2,623.07	Investment	\$ 5,816.70
Transfer from Water and Sewer Fund	600.00		
Investment Returned	5,838.07	Balance September 30, 1969	3,406.37
Interest	161.93		
<b>TOTAL</b>	<b>\$ 9,223.07</b>	<b>TOTAL AVAILABLE</b>	<b>\$ 9,223.07</b>

### WATER WORKS GENERAL OBLIGATIONS SINKING

Balance April 1, 1969	\$ 1,052.95	Interest	\$ 2,462.50
Transfer from Water and Sewer Fund	2,490.90	Bank's Charge	5.00
Interest	95.00		\$ 2,467.50
		Balance September 30, 1969	1,171.35
<b>TOTAL</b>	<b>\$ 3,638.85</b>	<b>TOTAL</b>	<b>\$ 3,638.85</b>
	Invested in U. S. Treasury Notes	\$ 3,957.55	
	Balance September 30, 1969	1,171.46	
	<b>TOTAL AVAILABLE</b>	<b>\$ 5,129.01</b>	

### REVENUE BONDS INTEREST AND SINKING FUND

Balance April 1, 1969	\$ 5,183.36	Interest	\$ 5,550.00
Transferred from W & S Fund	8,012.52	Bonds	5,000.00
			\$10,550.00
		Balance September 30, 1969	2,645.88
<b>TOTAL</b>	<b>\$13,195.88</b>	<b>TOTAL</b>	<b>\$13,195.88</b>

### REVENUE BONDS RESERVE FUND

Balance April 1, 1969	\$ 3,409.89	Balance September 30, 1969	\$ 4,498.72
Transferred from Water and Sewer Fund	1,000.02		
Interest	88.81		
<b>TOTAL</b>	<b>\$ 4,498.72</b>		

### REVENUE BONDS CONTINGENCIES FUND

Balance April 1, 1969	\$ 3,409.89	Balance September 30, 1969	\$ 4,498.72
Transferred from Water and Sewer Fund	1,000.02		
Interest	88.81		
<b>TOTAL</b>	<b>\$ 4,498.72</b>		

### SOCIAL SECURITY FUND

Balance April 1, 1969	\$ 19.38	State Department of Pub. Welfare	\$ 3,588.04
Employees General Fund	1,009.24	Administrative Cost	9.00
Water and Sewer	540.51		\$ 3,597.04
Street and Alley	244.22	Balance September 30, 1969	123.97
City: General Fund	885.66		
Water and Sewer Fund	765.00		
Street and Alley	257.00		
<b>TOTAL</b>	<b>\$ 3,721.01</b>	<b>TOTAL</b>	<b>\$ 3,721.01</b>

### EMPLOYEES INSURANCE FUND

Balance April 1, 1969	\$ 2.49	Insurance — Employees	\$ 1,657.08
Employees: General Fund	945.33	City	372.50
Water and Sewer	406.09	Southwestern Life Insurance	62.58
Street and Alley	368.24		\$ 2,092.16
City: General Fund	480.00	Balance September 30, 1969	465.01
Water and Sewer	240.00		
Street and Alley	120.00		
<b>TOTAL</b>	<b>\$ 2,557.17</b>	<b>TOTAL</b>	<b>\$ 2,557.17</b>

### EMPLOYEES UNIFORMS FUND

Balance April 1, 1969	\$ 44.80	Uniforms	\$571.05
Employees: General	101.30		
Water and Sewer	125.90		
Street and Alley	59.25		
City: General	190.00		
Water and Sewer	254.00		
Street and Alley	135.00		
<b>TOTAL</b>	<b>\$910.25</b>	Balance September 30, 1969	\$339.20
		<b>TOTAL</b>	<b>\$910.25</b>

I, Addie Mae Burgess, do hereby certify that the foregoing Semi-Annual Financial Statement for the period beginning April 1, 1969 and ending September 30, 1969, is true and correct to the best of my knowledge and belief.

ADDIE MAE BURGESS,  
City Treasurer, Stanton, Texas.

# Classified Ads

## ANNOUNCEMENTS A

### Special Notices A-2

Openings for several pre-kindergarten and kindergarten children available. Also child care. All ages. Drop-ins welcomed. Call 756-3417 or 756-2545. Village Nursery and Kindergarten. 9-39tnc

## CARD OF THANKS B

Many, many thanks to everyone of you who have helped me get relief from arthritis suffering. The relief is unbelievable. Thank you all sincerely.  
Fay Smithson.

## Child Care G-2

Will care for children in my home. 756-2534. 10-41-2tc

## Help Wanted H-1

Wanted: Part-time bookkeeper. 756-3365. 10-41-tnc

## FARM & RANCH J

### Farm Machinery J-1

Custom Baling — including crimping, 30c per bale. Stand area. Call LO 3-2549 or EM 6-3037, Odessa.

## MERCHANDISE K

### Appliances K-1

Have your GIFTS and PARTY FAVORS personalized with monogramming. We do it in all COLORS, NAPKINS, R I L L F O I D S, STATIONERY and MATCHES. STANTON DRUG STORE.

Photography equipment and dark room supplies, including enlarging machine for sale. Tom Angel, 756-2217. 9-39-tnc

## Miscellaneous K-8

Porch Sale: All day Saturday, October 18, Sunday afternoon, and all day Monday, October 20. 509 W. 4th. 10-42-1

## Pets, Dogs K-7

For Sale: Miniature poodles \$25. Eight weeks old. Phone 756-2586. 10-42-1tc

## RENTALS L

### Houses L-2

For Rent: one small furnished house. Call 756-3417 or 756-2545. 9-39tnc

## REAL ESTATE M

### Farm & Ranches M-2

For Sale 107 acres of land. All in farm land about 7 miles west of Stanton. Approximately 40 acres cotton allotment at 890 pounds yield per acre. \$125.00 per acre. Call 366-2541 in Odessa. 8-37-tnc

### Houses For Sale M-4

Three bedroom, two bath, den, large living - dining area. New carpet, fresh paint. Detached garage and workshop. tile fence. 602 St. Francis. James D. Eiland. 8-36-tnc

House For Sale or Rent: 3 bedroom, one bath. 508 West Fourth. Call 756-2150. 8-37-tnc

FOR SALE: Three bedroom home with den, 1 and 3/4 baths. Water well. Call 756-2466 for appointment. 9-39-tnc

For Sale: three bedroom, two bath house, with or without furniture. Call 756-3728 or 756-2457. 9-39-6tc

Three bedroom, two bath, brick - veneer home for sale. Low interest rate. Contact Paige Eiland, at Eiland Insurance, or call 756-3481. 10-9-40-tnc

## GRASSHOPPER GLACIER

Grasshopper Glacier in Montana takes its name from the fact that millions of grasshoppers are buried in its ice. Scientists estimate that years ago the insect, migrating over the mountain ranges, were caught in a severe storm and deposited in the forming glacier.

# Stanton Intermediate School News

## By BARBARA TRIMBLE

Both Junior High teams lost last week, October 9, to Coahoma Junior High. The scores were 14-0 in the seventh, and 16-4 for the eighth grade.

Neither team could move the ball against Coahoma, because of fumbles and other mistakes. Richard Padilla looked good for the eighth grade, and found a starting spot at right halfback. Tommy Coates also looked good at the left end position.

The eighth grade will play Forsan this week at 4:00. The same as at home. The seventh grade is idle this week, but since Forsan only plays one junior high time, some of the seventh grade will see action. We would like to see all of you at our game.

The Junior High and High School coaches want to men-

tion what a fine job Coach Stovall is doing on the cover page for the scouting report each week.

## —SHS—

Miss Little selected a girls A and B basketball team. There are 24 girls that made the team. 12 on each team. The teams were posted Monday after school. Managers are Patricia Ramos, and Nancy Glynn.

## —SIS—

We are going to have a pep rally Thursday at 3:00 to 3:30. We would like to see all of you there.

## —SIS—

The fifth and sixth grade girls are forming a pee-wee team. They are going to play in the Greenwood tournament. They are working very hard. I think we're going to have a pretty good team.

Literature on the subject of bridge playing takes up more than 2,000 volumes.

The big basking shark is probably the least dangerous to man, says the Miami Seaquarium.

# NOW OPEN Fina Truck Stop Restaurant

Intersection Lamesa Highway and I. S. 20

SERVING BREAKFAST — LUNCH — DINNER

Delicious Steaks — Mexican Food — Seafood

Home Made Pies — Chili — Bar-B-Q

Stew.

(Breakfast Served Anytime)



**DONE TO PERFECTION!**  
Ah... it's that last touch of seasoning that makes your meal really perfect... and that's what you can expect!

Owner — JUANICE CARTER

# Stanton High School News

## By DORIS HOWARD

October brings on more and more activity for SHS students, and the pace hasn't slowed since the doors of the school opened. As the saying goes — on with the action.

## —SHS—

The Math Club met and elected officers for the present school year. To be in the Math Club, each student has to have a 90 or above average in mathematics.

Officers for 1969-70 are: Kenneth Simonek as president, Cindy Avery as vice-president, and Jackie Cook as secretary-treasurer. Because the Math Club sponsored by Mr. Harrell, is a honored club, we feel each member should be given recognition.

Other members are: Scotty Fisher, Alan Gregston, Chester Kokel, David Workman, Mark Hursh, Roy Kelly, Jerry Smith, Susan Vest, Betty Anderson, Judy Costlow, Doyle Doggett, Lyn Herzog, Marlene Long, Irma Mashborn, Edna McKenzie, Diana Payne, Gary Posey, Don Robinson, and Mary Villa.

## —SHS—

The National Honor Society met Thursday with Mr. Harrell to discuss the grade average and recording system. The possibility of the Honor Society having a banquet, was brought up. David Workman presided.

## —SHS—

Dalashanta's Dress Shop held a fashion show and eke party for the high school girls Monday night. A few of the girls modeled the latest fashions in the dress shop. Those modeling were: Doris Howard, Carolyn Holloway, Connie Henley, Allene McMillon, Vicki Graves, Jana Hall, Sharon Rotan, Lanette Haggard, and Lisa Hopper.

## —SHS—

The high school had a Southern Assembly Monday, featuring Mrs. Gifford, who has

appeared on the Ed Sullivan show, and have traveled around the world. Her program included singing and slides of all places around the world.

## —SHS—

The seniors and sophomores tied for having the best poster of the week. That makes three wins for the seniors — go seniors.

## —SHS—

The Buffaloes lost against Post, but we're all going to go and back them as they travel to tangle with the McCamey Badgers.

## Lunch Menu

Elementary and High School

Oct. 20 Through Oct. 24:

Monday: Menus subject to change. Menus: Franks stuffed cheese or hot dogs, blackeye peas, glazed sweet potatoes, cabbage slaw, hot rolls, butter, chocolate pudding, and milk.

Tuesday: Hamburgers on buttered bun, hamburger salad, potatoes, celery sticks, fruit gelatin, and milk.

Wednesday: Beef stew with vegetables, cheese wedges, corn bread, apple sauce, and milk.

Friday: Fried chicken, mashed potatoes, vegetable salad, green beans, hot rolls, butter coconut pudding, and milk.

## Peggy Barnes Honored At 13th Birthday Party

Peggy Barnes was honored October 10, on her thirteenth birthday with a party in the home of her parents, Mr. and Mrs. Stanley Barnes.

Attending were Susie Hopkins, Linda Woody, Lyette Haggard, Gaye McIntyre, Ann Saunders, Gloria Simonek, Karen Anderson, Patti Klein, Deanna Sission, Ray Couger, Paul Evans, Phil Petree, John Curry, and Morgan Cox.

The girl guests had a slumber party at the Barnes home following the birthday party.

We Are Happy To  
Announce the association of  
Mary Bradshaw

with our Beauty Salon.  
We welcome friends and associates,  
both old and new, for the  
latest in beauty work.

Sheila Beauty Shop  
Phone 756-2331

# TEMPTING VALUES That Make Your Meal

DEL MONTE—No. 303  
**PEAS**  
19c

**Carmels**  
KRAFT — 14 Oz.  
3 FOR \$1.00

**COFFEE**  
KIMBELL  
59c lb.

LIBBY — No. 2 1/2  
**Peaches**  
19c

**Work Saving FROZEN FOODS**  
Patio  
**Mexican Dinners**  
3 FOR \$1.00

- DETERGENT, Kimbell Giant 59c
- BLEACH, Kalex 1 gal. 39c
- PEAS, Libby No. 303, 5 for \$1.00
- TOMATO SAUCE, Mt. Pass 7 oz. 10c
- SPINACH, Del Monte No. 303 21c
- PEAS, Diamond No. 303, 6 for \$1.00
- Fruit Drink, Del Monte 46 oz. 25c
- CHILI, Wolf No. 2 69c
- TUNA, Van Camp flat 29c
- Facial Tissue, Scotties 200 cnt. 29c
- REYNOLD'S WRAP 12x25 31c
- COLD CAPSULE, Contac \$1.19
- Mouth Waste, Listerine 14 oz. 89c
- ASPIRIN, Bayer 100's 79c
- HAIR SPRAY, Sudden Beauty 69c
- TOOTH PASTE, Colgate 5 oz. 71c
- DRISTAN TABLETS 50's \$1.79
- MOUTH WASH, Lavioris 15 oz. 89c

**CORN**  
LIBBY — No. 303  
5 FOR \$1.00

**DOG FOOD**  
KIM — 15 Oz.  
5c

**MOUTH WATERING Produce**  
POTATOES bag 39c  
TOMATOES lb. 29c  
CARROTS lb. 19c  
**APPLES**  
DELICIOUS  
lb. 19c  
**Lettuce** Head 15c

**BACON**  
Hormel Red Label lb. 75c

**Pork Chops**  
END CUTS  
lb. 59c

**FRIENDLY FOOD**  
PHONE 756-3375 (STANTON'S DISCOUNT GROCERY)  
(BILL COGGIN — Manager) 200 N. ST. MARY  
PRICES EFFECTIVE THUR., OCT. 16th, THROUGH WED. OCT. 22.

# The Launching Pad

By NEAL ESTES

It is the season of the whooping cranes again. From their nesting grounds in the unexplored wilderness of northern Canada across the thousands of miles of woods and water, prairie grass and grain fields, these largest and most celebrated of North American waders are winging their way back to the salt marshes of the Texas coast. By mid November or early December the world's population of whooping cranes will be stalking the reedy borders of the inter-coastal canals of the Aransas National Wildlife Refuge. These birds do not all fly together. A single bird, noticeably larger and whiter, trailing a flock of sandhill cranes, can often be seen in these parts in October. Hunting season is open on sandhill cranes but don't shoot the big white bird, if you see one. It may be a whooper.

Stanton Lions were knocking on doors Tuesday evening to sell Trick-or-Treat candy. CHUCK ELMORE, NOLAN SIMPSON, and DELTON COSTLOW all caught the editor at various times. Halloween comes on October 31. Some schools are planning carnivals to entertain the youngsters during the last week of the month. The Booster Club will sponsor an affair bearing on the Halloween theme on Monday evening, Oct. 27. For the past several years vandalism has been held way below the minimum in Stanton and I give credit to the schools, and the good organizations in the community for making clean, fair programs possible at Halloween time.

After dropping the opening game of the World Series the New York Mets bounced back to take the next two games. A report on Wednesday's game will be too late for this column but I have the feeling that the Mets are going to wind the best four of seven games affair up in short order before leaving Shea Stadium in New York. It's like MICKEY MANTLE, an old Yankee said: "I have changed my mind about the outcome of the series—the Mets really want to win and I doubt such ambition and drive can be stopped."

CASSIUS CLAY set the alarms ringing this week by announcing he had permission to fight in Mississippi and said he had the consent of JOE FRAZIER to oppose him if he could get permission to fight anywhere in the country. CLAY's statement turned out to be a false alarm. But the thing that intrigued your editor was FRAZIER'S remarks upon hearing the tale spread around by CASSIUS. He said: "Is he crazy? What I gonna do down dere? How I gonna get dere? Even the Greyhounds don't take colored folks down to Mississippi." There is nothing in this world more honest or humorous as the native dialect of a black man when he speaks of such situations as CLAY claimed he had set up.

Voter registration has opened in Texas and the deadline for signing up is January 31, 1970. A lot of interesting politics might be on the agenda for next year. Surely, the local county races will bring out



STANTON FULLBACK — Johnny McMeans, 180 SHS fullback and a two-year letterman, should see plenty of action Friday night, when the Buffaloes take on the McCamey Badgers for the Buff's first district game.

## Brown - - -

(Continued from page 1) a mile west and slightly south of the one-well Wright Ranch (Cisco) region.

A 1-hour and 40-minute drillstem test of the interval between 9,036 and 9,059 feet has gas to the surface in 10 minutes at the rate of 120,000 cubic feet per day, with the volume decreasing to too small to measure at the end of the investigation.

Recovery was 150 feet of 44-gravity crude, 180 feet of very heavily oil- and gas-cut water and 8,500 feet of water.

Initial shut-in pressure, after 40 minutes, and final

shut-in pressure, after an hour and 20 minutes, were both 3,578 pounds. Flow pressures ranged from 1,493 to 3,578 pounds.

A straddle-packer test between 9,030 and 9,049 feet was taken with the results not being reported.

MWJ Producing Co. of Midland, plans No. 1 McMurry as an 8,350-foot venture in the Martin County sector of the Spraberry Trend Area, six miles northeast of Stanton.

It is 660 feet from north and east lines of section 10, block 35, T-1-N, T&P survey and a 1/2-mile south and west of Spraberry wells in the region.

the voters. The city election comes up in April, and perhaps there will be other special issues to be decided at the ballot boxes in 1970. So—get your registration slip as soon as possible and be ready to participate in all elections as a franchise holder.

The antiwar demonstrations staged across the nation Wednesday were disgusting. No one wants war. Everyone should do as HUBERT HUMPHREY said this week—back the president in his peace efforts. The Vietnam conflict will never close until a show of near solid support is evidenced by the American people. Surely, the demonstrations were viewed with heavy hearts in the ranks of our fighting men who are in Vietnam fighting the very thing the Communist want to happen over herein the U.S.A.

## Voter - - -

(Continued from page 1) **Who Is Eligible To Register** Any person who already fulfills the requirements already listed, or who will fulfill them before the end of the 1970 voting year on February 28, 1977, may register during the regular period. Persons registering before they meet the age of residence requirements cannot vote until the requirements are met. Their registration certificates will show the date on which they will become eligible to vote.

All persons already meeting the requirements for voting already listed must register by January 31, 1970, regardless of whether they will have met the one-year residence requirement by that date and regardless of whether they will have lived in the county of present residence for six months. (Persons moving into Texas after October 1, 1969, may register during the regular period, and may also register at any time afterward, but must have been registered for 30 days before they can vote on the registration.)

**Where To Register** A person must register as a voter of the county and precinct where he has his permanent residence (domicile). He makes his application for registration to the county clerk of that county. The application may be made either by mail, on a voter registration application form, which can be obtained from the county clerk's office, or by personal appearance in the clerk's office, or before a deputy who has been authorized to serve at some other location.

There is no charge for registration.

**Application Through An Agent** The husband, wife, father, mother, son, or daughter of a voter may act as the voter's agent in applying for registration, if the relative is a qualified voter in the same county. Except for these listed relatives, which do not include persons related by marriage (in-laws), no one may act as agent for the voter in applying for registration.

## Sales - - -

(Continued from page 1)

\$2.48 to \$2.70	11
\$2.71 to \$2.49	12
\$2.95 to \$3.17	13
\$3.18 to \$3.41	14
\$3.42 to \$3.64	15
\$3.65 to \$3.88	16
\$3.89 to \$4.11	17
\$4.12 to \$4.35	18
\$4.36 to \$4.58	19

## HD Agents Column

By MRS. MILDRED EILAND, Martin County HD Agent. A large assortment of apples are on the market. There are many good all-purpose apples. Apples that "go to pieces" when cooked are usually best for apple sauce; those that keep their shape are best for baking whole. Tart apples are good for cooking, sweeter apples, for eating raw.

It is a good idea to learn to recognize some of the most popular varieties. Red Delicious, excellent choice for eating out of hand, and combines well with raw foods for salads. Jonathan, one of many popular varieties that can enliven up your general cooking, give cobbler a flavor boost. Rome Beauty, is a classic choice for dishes such as baked apples.

Here are some of the many ways to use apples — in the main course of the meal, in salads, in breads, in desserts, and in other ways. The flavor, texture, and juiciness of the finished product may vary slightly with the kind of apple used.

Raw apples may darken when the cut surface is exposed to air, especially if the fruit has touched the iron in a knife blade or chopper. Protect cut apples from darkening by mixing with fruit juice — lemon, orange, grapefruit, or pineapple, before adding other ingredients.

**Baked Apples—6 Servings**  
6 baking apples  
1/2 cup honey or sugar  
1/2 cup raisins, if desired  
1/2 teaspoon cinnamon  
1/2 teaspoon nutmeg  
1 tablespoon butter or margarine  
1 cup water

Core apples without cutting through the bottom end. Peel about one-third of the way down. Place in baking dish.

Mix remaining ingredients except fat and water: fill centers of apples. Dot filling with fat. Pour water into baking dish.

Bake at 375 degrees (moderate oven) about 45 to 60 minutes or until apples are tender. If apples seem dry,

## Floyd - - -

(Continued from page 1) 15th Medical Battalion. He entered the Army in December 1967, received basic training at Ft. Polk, La., and was stationed at Ft. Rucker, Ala., before arriving overseas in November 1968.

He is a 1967 graduate of Stanton High School.

\$4.59 to \$4.82	20
\$4.83 to \$5.05	21

## Cold Front Hits Martin County

The first cold front of the season swept into Martin County Monday morning dropping temperatures to a record low of 34 degrees for that day.

Previous record low temperature for October 13 was 40 degrees back in 1940.

Frost warnings were forecast by the U. S. Weather Bureau Monday night, but failed to materialize for the county. Tuesday morning low, however, was a nippy 39 degrees.

Cold dry winds accompanied the front and brought memories of the past cold, windy winter.

While Permian Basin shivered with the rest of the Panhandle, the South Texas area enjoyed Indian summer weather of 70 degrees.

Cool weather and partial-baste frequently with liquid in pan.

Note: After baking, top each apple with a marshmallow, if desired and return to oven until marshmallows are lightly browned. Or top with cream cheese softened with cream or milk, and beaten until fluffy.

**VARIATION**  
Pineapple — or cranberry-baked apples. Omit apple filling. Instead, fill apples with canned crushed pineapple, or whole cranberry sauce. Top each apple with one teaspoon sugar, and dot with butter or margarine.

## The Letter Box

(Editor's Note: The following communication was received by The Stanton Reporter from the National Federation of Music Clubs. It is in appreciation of the publicity in The Stanton Reporter of the local organization that this certificate of commendation was issued.)

This is an expression of APPRECIATION AND COMMENDATION for your COOPERATION AND SIGNIFICANT CONTRIBUTION in behalf of AMERICAN MUSIC MONTH and THE PARADE OF AMERICAN MUSIC conducted annually in February under the sponsorship of THE NATIONAL FEDERATION OF MUSIC CLUBS.

Mrs. J. L. Yarborough, State Chairman of American Music, Marion Richter, National Chairman of American Music.

The Buffalo Booster Club of Stanton, announced plans to sponsor a Halloween Carnival Oct. 27, in the American Legion Hall in Stanton.

ly clouded skies were forecast for the remainder of the week.

## LEGAL NOTICE

# Notice To Bidders

Notice is hereby given that the Commissioners' Court of Martin County, Stanton, Texas, will receive bids until 10:00 o'clock A. M., October 27, 1969, for the purchase of one new current series motor grader with the following minimum specifications: engine to be direct electric starting, horsepower 125, weight base 26,700, tires 14.00 x 24 — 10 ply, with tubes, and 10" rims, hydraulic shiftable moldboard, 14' moldboard, heavy duty dry type air cleaner with service indicator and air intake pre-cleaner, fully enclosed cab with tinted safety glass, heater — twin fan 27,000 B. T. U.

One Galion model — 118 motor grade will be offered in trade. The Commissioners' Court reserves the right to reject any or all bids and to waive all technicalities.

By Order of the Commissioners' Court, Martin County, Texas.

JIM MCCOY,  
County Judge of  
Martin County, Texas

Oct. 16-23-2tc

## Fall Grazing Opens On County Diverted Acres

Acres diverted under the 1968 feed grain and wheat programs may now be used for livestock grazing. Bob Hill, chairman of the County Agricultural Stabilization and Conservation (ASC) Committee, has announced.

He reminded farmers that under normal circumstances no grazing is permitted on acreage still under contract in long-term land retirement programs, such as the Conservation Reserve and the Corpland Adjustment Program. In

counties designated for emergency assistance because of natural disaster, county ASC committees may permit haying and grazing on these lands.

Today's announcement affects only livestock grazing on land diverted under annual commodity programs. No diverted acreage may be harvested, again with the exception of those counties designated for the emergency program, where both grazing and haying may be permitted by county committees.

Diverted acreage is land set aside from crop production by farmers participating in voluntary commodity programs. Diverted acreage must be kept in conserving uses. Among

other provisions, this means no livestock may graze during the growing season.

Public benefits are provided by conserving use of diverted acres, Hill said, as well as protection of the farmer's land. By helping prevent soil erosion, conserving uses help keep water run-off more silt-free than if the land were left idle but unprotected. Diverted land also provides many thousands of acre of wildlife habitat.

The temperature range in Northern Afghanistan is from 12 degrees below zero to 120 degrees above zero.

Buy at home and save more money!

## Cotton - - -

(Continued from page 1) this year with the intention of rebuilding the country's reduced stockpile.

Now it seems that because of poor growing conditions that the 1969 crop will provide less than the 11.5 million needed to meet domestic and

export demands during the 1969-70 marketing year.

Read the Ole Reliable for the latest hometown news!

Martin County Abstract Co.  
P. O. Box 766  
Stanton, Texas 79782  
H. Hilton Kaderli, Sr.  
Sole Owner.

Ship'n Shore Limited edition shirt, ultra collared and cuffed. 7.00



Luxury shirt, tailored larger-than-life in Sand crepe, 80% Dacron® polyester and 20% cotton. So-easy-care, in gentle shades for Fall. Sizes 28 to 38.

Deavenport's

# TRUCK DAY

## The 1970 Chevrolet Truck On Display At Alsup-Nowlin Chevrolet

### On October 16. Everyone Welcome!

# Alsup-Nowlin Chevrolet

STANTON, TEXAS 79782

## DALASHANTA HARVEST SALE Starts Today One Week Only

Beautiful, new fall and winter fashions for the style-minded are here and on sale.

DALASHANTA FEATURES Children, Junior, and Misses Sizes. PATSY ODOM and LATRELL WELCH Owners. CALL 756-3626

all new for fall