

# The Muleshoe Journal

DEDICATED TO THE PROGRESS AND DEVELOPMENT OF BAILEY COUNTY AND THE GREAT MULESHOE COUNTRY

Volume 27, Number 12

MULESHOE — County Seat of Bailey County — TEXAS

Thursday, March 17, 1949

## Muleshoe Fat Stock Show To Be Held Tomorrow; Judging To Start At 2:30

### Parliamentary School Will Be Held In Muleshoe

Mrs. H. F. Godeke, of Lubbock, who is chairman of Procedure and By-laws in the National Congress of Parent Teachers and vice-president of Region VIII, under auspices of the Muleshoe P.T.A., Mrs. Blanch Lenderson, president announced.

The course will be held at the Fellowship Hall beginning Tuesday night at 8 o'clock and following all day Wednesday with a covered dish luncheon at noon. Wednesday's session will start at 10 A. M.

The community is invited to attend this outstanding course, Mrs. Lenderson said. Mrs. Godeke especially invites civic leaders, both men and women.

This is the first course of the kind to be held in Muleshoe, and the P.T.A. hopes to have large groups to attend. Mrs. Lenderson pointed out that one is unable to attend all sessions they are urged to attend at least one.

### ON CRACK DRILL TEAM

Jack DeShazo, student at John Tarleton, Stephenville, is a member of a crack drill team, he writes his parents, Mr. and Mrs. J. J. DeShazo.

Muleshoe businessmen backed Bailey County club work almost one hundred percent with cash donations which make possible the high premiums this year as in previous years. Since all businessmen have not been contacted to date, it would be unfair to some to post a list of contributions in this issue of The Journal.

The services of the popular judge of last years show will be available again this year. Homer Brumley, part owner and manager of a meat packing company at Hereford and former member of a highly successful livestock team from Texas Tech will be on hand at 2:30 Friday when the first class of livestock enters the ring to act as official judge.

Mr. Tilger, Mr. White and Mr. Christie, sponsors of FFA exhibits, and J. K. Adams, sponsor of 4-H exhibits promise the judge and general public a group of fat calves and fat barrows of uniformly higher quality than those shown in last years show.

Many of the exhibits will continue on to Lubbock following the Muleshoe show and will enter the competition there Monday and Tuesday.

The management of the Muleshoe 4-H and FFA Fat Stock Show cordially invites the business men, who so generously contributed to the premium list, and the general public to be on hand at 2:30 Friday on the new school grounds Vocational Agriculture plot adjoining the new Ag. building to do a bit of ringside judging while the official placings are in progress.



DIXIE LEE JENNINGS

### District Court To Convene Monday

District court for Bailey County will be convened in Muleshoe the coming Monday morning, March 21, for the regular March term, with Judge C. D. Russell presiding. A petit jury has been summoned to report that morning, but on Judge Russell's orders the grand jury panel, selected recently by the jury commission, has not been summoned, hence their names have not been made public.

Men summoned for duty on petit coming Monday morning, March 21, Robert Byrd, L. S. Barron, Charles Lenau, B. M. Seales, Ray Maberry, I. L. Kitchens, Leon Lewis, B. A. Dearing, Harold Mardis, E. L. Jennings, Arthur Crow, Chester Anderson.

Burford Butts, Omar Bessie, J. I. Kemp, C. E. Briscoe, Willie W. Williams, Albert Ellis, A. M. Self, Delma McCarty, J. V. Stancell, Henry Bass, Dewey Ross, J. P. Wedel.

S. W. Beason, H. W. McAdams, R. C. Day, Jack Julian, G. B. Benton, H. D. King, Byron Griffiths, A. H. Daricek, Jim Alsop, Partin Austin, Morgan Locker, and Conrad Williams.

The jury commission, which performed its duties last week, was composed of O. C. Thomson, T. E. Millen, and F. J. Kelley.

## STYLE SHOW TO BE STAGED HERE



BOB GREEN



DOLORES WAGGON

### Baptist Association To Begin Simultaneous Revivals Sunday

A mighty, concerted drive to bring a revival to the people of the Plains will get underway in scores of Baptist churches March 20.

The West Plains Baptist Association, listing twelve neighboring churches, will cooperate with eight other Baptist associations of District 9 in this Simultaneous campaign. Rev. A. W. Blaine, pastor of the First Baptist church here and publicity director for the association's revival drive said.

Among well known evangelists who will spearhead these drives are Rev. Dewey Squyres, Rev. R. L. Wittner, Rev. Claude Tipps, Rev. J. J. Sloane, Rev. M. R. Hancock, Rev. Lloyd Garrison, Rev. T. A. Patterson, and Rev. V. M. Lollar. In some churches the preaching will be by the regular pastor.

Revivals in all churches will continue from March 20, the coming Sunday through Sunday, April 3.

Churches of this association cooperating in the revival campaign are: Baileyboro, Circleback, First Baptist of Earth, First Baptist of Littlefield, Hart Camp, Longview, Lums Chapel, Maple, First Church of Muleshoe, First Church of Sudan, Three Way, and West Camp.

In all churches there will be two services daily, at 10 a. m. and 8 p. m. However Circleback church will begin their revival on the 19th and run through the 27, with services at 7 a. m. and 7 p. m.

This will be the third year in which the District 9 Baptists have conducted their widely publicized Simultaneous Revival.

Mr. and Mrs. Cecil Waters and two children of Amarillo spent the day Sunday in the home of Mrs. Waters' sister, Mrs. F. T. Wenner and family. Others in the Wenner home Sunday were Mr. and Mrs. Ance Ashford and baby, Rev. and Mrs. E. L. Merriott and two sons, Dee and Virgil.

Men used windmills to grind corn and pump water in Europe as early the 12th Century.

Next to water, wind is the greatest natural force in the process of erosion.

High grade bauxite contains about 60 per cent alumina.

A Spring Tea and Style Show just in advance of Easter has been placed on the Muleshoe social calendar under the auspices of the ladies of the Muleshoe Study Club. Arrangements are being made to seat several hundred ladies of Bailey County and the Muleshoe territory in the high school gym which has been secured for the occasion.

Clothing and other merchants of Muleshoe will participate in the Style Show, set for Saturday, April 2.

The tea is scheduled for 4 o'clock and the program likely will be of about two hours duration. Women everywhere are invited to attend.



MRS. HAZEL DYER

Latest creations in women's, misses', and children's wear will be shown by St. Clair's Department Store, Cobb's Department Store, the Dixie Lee Shop, and the Fashion Shop. Western Drug Store has arranged to have a special cosmetician here to supervise make-up of the models. McWhorter's Floral has volunteered to furnish floral decorations, corsages for the models, background, etc.

Models are listed

There will be additions, but here is a tentative list of models of the merchants above:

St. Clair's—Mrs. E. W. Locker, Lanell Boothe, Jackie Bovell, Mrs. Carlene Steinbock.

Cobb's—Miss Joyce Blackburn, Mrs. Lonnie Arnold.

Dixie Lee Shop—Mrs. Jesse Osborn, Dolores Waggon, Mrs. Hazel Dyer, and Dixie Lee Jennings.

Fashion Shop—Bobbie Green, Mrs. Doris Brown, Sandy Weeks.

Every club president in Bailey County, in Sudan, Farwell, and Friona, will receive special invitations, but all ladies, it is hoped, will attend. Admission will be \$1.00 per person. All will be seated.

All kinds of women's wear will be modeled, formals, street and party clothes, sport clothes, play clothes, etc.

The Study Club ladies, contacting Muleshoe merchants, quickly found them to be very enthusiastic about their idea, which not only will furnish women an opportunity to become acquainted with their neighbor, but will show people that they can buy what they need right here in Muleshoe.

Howard Cox will furnish background music and a loudspeaker system throughout the tea and program.

Patrons of Muleshoe schools, the citizenship generally, and friends of Muleshoe everywhere will thrill with pride when they learn that their high school capella choir, heard here on many occasions, lauded in these columns more than once, will be heard on a sectional case when they broadcast Sunday, April 3, in the "Panhandle Salute" a Sunday afternoon feature of KFDD and KFDD-FM, Amarillo.

## Muleshoe High School Choir To Give Radio Program April 3 Over Station KFDD

Patrons of Muleshoe schools, the citizenship generally, and friends of Muleshoe everywhere will thrill with pride when they learn that their high school capella choir, heard here on many occasions, lauded in these columns more than once, will be heard on a sectional case when they broadcast Sunday, April 3, in the "Panhandle Salute" a Sunday afternoon feature of KFDD and KFDD-FM, Amarillo.

### Consumers Fuel Stockholders Set Annual Meeting

Annual meeting of stockholders of the Consumers Fuel & Supply Co., of Muleshoe, will be held on Wednesday evening, March 30, in the Fellowship Hall. The gathering will be at 8 o'clock.

Besides the election of two directors, several other items of business will be taken up, and some entertainment is expected to be arranged.

Nominated for the two director posts are Dennis Williams, D. B. Head, Gordon Murrah, and R. E. Bahman.

Officers of the cooperative are: George Templar, president; F. L. Glascock, secretary; Harry Engleking and Neal Warren, directors.

### Toews Manager Of Piggly Wiggly

Nick Toews, formerly of Littlefield, long experienced as a grocer, began his duties Monday morning as manager of the Muleshoe Piggly Wiggly store. He succeeds Bill Hale, who resigned to accept other employment after serving as manager since the store's founding a year ago.

The store is owned by the Davis-Humphries company of Lubbock. Mr. Toews (pronounced Taves) was in the employ of this company for 13 years, most of the time as manager of the Littlefield store. He and family have spent the last year in California in the interest of Mrs. Toews' health.

No other change in personnel or in store policy was announced. Mr. and Mrs. Toews have a married daughter. A son, Weldon, 17, who has already finished high school, makes his home with them.

RETURNED TO ARLINGTON  
Tye Young returned to Arlington this week to visit his mother who has been ill.

TO BROWNFIELD  
Mrs. J. T. Gilbreath went to Brownfield Sunday to visit her sister who is ill.

given by the girls octet. The nine girls listed below will be used at various times on the octet: Cora Stinson, Dixie Jennings, Doris Albin, Betty Guthrie, Marion McCarty, Betty Thurman, Irene Shanks, Barbara Klutts, Barbara Fields.

## New Plymouth Automobile To Be On Display By 2 Dealers Friday

### School Census Is Now Underway

Counting of children of school age in the Muleshoe Independent School District is now underway and must be completed by April 1, Frank Cummings, school business manager reminds the people.

Since income from state funds is based upon the number of children enumerated, he pointed out that it is vitally important that every child that is or will be of school age should be listed at this time.

Should the enumerator miss a family, or even one child, this fact should be reported to the business manager at once, so that the oversight may be corrected.

Counting the scholastic population is a big job, and it is easily possible for someone to be missed.

The new 1949 Plymouth automobile will be on display at two automobile agency show rooms in Muleshoe tomorrow, Friday, March 18.

Covin Motor Company and Arnold Morris Auto Co. announced today they have received new models to go on display tomorrow. Both firms will show the four door Plymouth sedan.

The two are joining with Plymouth dealers over the country in a nation wide showing on this day.

Arnold Morris Auto are dealers here for Dodge and Plymouth while Covin Motor are dealers for Chrysler and Plymouth lines.

Both firms invite the people of this territory to view the new models and giving some of the salient features of the new Plymouth line will be found on another page of this newspaper.

### TO SLATON SUNDAY

Mr. and Mrs. Willis Farrell and Carroll Howell visited friends in Slaton Sunday afternoon.

### Marriage Licenses

Randolph P. Glenn, Muleshoe and Leona Crossland, Wheeler, Texas.

Medford Selfres and Alice Marie Hicks, Muleshoe.

Roy Wicker and Sara Eugenia Leathers, Lubbock.

Odus D. Spittler, Friona and Charlene Black, Muleshoe.

The Roman emperors Trajan, Hadrian, Marcus Aurelius and Theodosius were Spaniards.

### Growing With Muleshoe

Above is pictured the home of Piggly Wiggly in Muleshoe, the first White building, where the firm last week celebrated their first anniversary of doing business here. The store is owned by Davis-Humphries of Lubbock, and is one of nearly a score owned by this firm.

Joining the building on the left is shown the spacious parking lot maintained for store customers.

Nick Toews is now the manager of the local store.

This picture and story is carried in another of The Journal's series of home town firms that are "Growing with Muleshoe". The paper will use any picture furnished it of the homes of Muleshoe business houses, additions, developments, etc. at no cost to the business man.



### Personnel Of The Choir

The capella choir has made a hit in Muleshoe wherever it has sung. The Journal, wishing to give more recognition to the sterling work of these youngsters and their director, Mr. Moore, has secured a list of the personnel, which follows:

Doris Albin, Waneen Bellar, Ivera Blackwell, Doris Bickel, Bob Fudge, Jackie Bovell, Melba Bryant, Dolores Daterman, Dorothy Dorsey, Rilda Gabbert, Dorothy Giles, Wanda Gilliland, Barbara Grandy, Joyce Gwyn, Charlene Hoover, Mary Horn, Joe Bob Horksey, Dixie Jennings, Al Jennings, Sue Johnson, Jerry Julian.

Arlyn Kriegl, Ted Lawler, James Mitchell, Joan Montgomery, Dorothy Murrah, Mack Ragsdale, Charles Roark, Irene Shanks, Margaret Sanders, Lucille Smith, Joy Snyder, Cora Stinson, Eudene Spradley, Billie Williams, Jim Williams, Joe Pat Waggon, Frieda Mooneyham, and Linda Thurman.

Octet  
One or more numbers will be

## Legion Lot To Be Awarded Here At 4:30 Saturday Afternoon, March 26

A lot in Legion Addition, Muleshoe, will be in the possession of some lucky contributor to the building fund of Ben Richardson Post, American Legion, on Saturday, March 26.

The lot will be awarded that day at 4:30 o'clock, the post decided at its last meeting, attended by both Legionnaires and Auxiliary members. The event will take place on Main Street in front of the Cox Radio & Electric.

Construction of the building will begin as soon as blue prints and specifications have been received from the architect. Commitment on sufficient loan to augment the building fund on hand has been made.

Peerless Pump Opening Factory Branch Office Here

Opening of a factory branch office in Muleshoe by the Peerless Pump Division is announced this week, with E. M. Gregory as manager. The office is located in the Moeller building on Main Street, in a room formerly occupied by Gas Appliance Co.

They will sell complete irrigation plants, pumps, engines, electric motors, well casing, sprinkler systems, with pumps and repair parts carried in stock. Mr. Gregory said that Peerless now has more than 100 irrigation pumps in operation in the Muleshoe area.

Pumps are available in oil or water lubricated types, both types being carried in stock here. The Division maintains warehouses in both Lubbock and Plainview, with a complete machine shop in Plainview.

Their office and repair stock in Muleshoe makes it possible to give the irrigation farmer a far better service than would be possible with only a sales agent here and it being necessary to go to Plainview or some other point for parts, Mr. Gregory said.

The company will specialize in converting engine driven pumps to electric drive and can furnish bowl assemblies for any make pump.

Mr. Gregory said the public is cordially invited to visit their store here. Besides carrying all types of pumping equipment to handle from 5 to 200,000 gallons per minute, the firm will offer a turn-key irrigation job service.

### Local Boys Enter Stock At Lubbock

Fine animals shown in the Muleshoe Fat Stock Show here tomorrow will find their way to other shows at the Littlefield show.

The following will be entered in the South Plains Junior Fat Stock Show in Lubbock the following day, Sunday, to be judged Monday or Tuesday:

Jim Prather, calf, 3 pigs; John Henry Gammon, calf; E. C. Giles, Jr., 3 pigs; K. Quesenberry, 2 pigs; Jim Prather, 1 pig; Alton Taylor, 2 pigs; Bill Gaede, pig; Jim Gaede, pig; J. R. Henry, 3 pigs; Ernest Ramm, 3 pigs; Bill Stinson, pig; Billy Whalin, pig; Robert Waggoner, 2 pigs; Wayne Holmes, pig; Freddie Harvey, pig; David Taylor, pig; Marion Waggoner, pig; Ted Harrison, 3 pigs; Don Harrison, 2 pigs; Jim White, pig; J. V. Moore, pig.

### AT LUZIER'S MEETING

Mrs. Bernice Splawn and Mrs. Ernest Holland attended a Luzier's sales meeting held in Clovis Tuesday.

### Local Markets

Cream, lb.	.55
Eggs, doz.	.36
Light Hens, lb.	.20
Heavy Hens, lb.	.22
Hides, lb.	.08
Hogs, cwt.	\$20.25
Wheat, bu.	\$2.15
Maize, cwt.	\$2.15
Hegari, cwt.	\$2.15
Kafir, cwt.	\$2.15

SUBSCRIBE To The Journal Today.

# The Muleshoe Journal

Published Every Thursday  
At  
Muleshoe, Texas

J. M. FORBES . . . . . Publisher

Entered as second-class matter at the Muleshoe Post Office under the Act of Congress, March 3, 1897.

### Subscription Rates

IN IMMEDIATE  
TERRITORY, Year . . . \$2.00  
OUT OF IMMEDIATE  
TERRITORY, Year . . . \$2.50

### THE BUSINESS SITUATION IN TEXAS

AUSTIN, March 15.—Business activity in Texas in January continued the downward trend that became apparent in the fall of 1948, the University of Texas Bureau of Business Research reported.

The Bureau's composite index of business activity declined 1 per cent from December to 227 per cent of the prewar (1935-39) base period, a level 3 per cent under the postwar high of 233 per cent which was reached in August last year.

Dr. John R. Stockton, Bureau statistician, said this decline, coming at a time when there is widespread anxiety over weak spots developing in business all over the country, emphasizes the instability of the equilibrium that had been obtained by American business at the end of the year 1948.

All but one of the components electric power consumption with a 5-per-cent rise, registered declines during January in comparison with December. Miscellaneous freight carloadings dropped 8 per cent from December; crude oil runs to stills, 4 per cent; employ-

ment, 3 per cent; and pay rolls and department and apparel store sales, 1 per cent.

In comparison with January a year ago, two of the components showed declines, although the composite index was 8 per cent higher. Although the year 1948 saw business at very high levels, further increases do not appear likely.

The greatest weakness in the Texas business picture appears in the data on retail sales. Total retail sales in the State declined 11 per cent from December after adjustment for seasonal variation. Even more striking than this decline, Dr. Stockton said, was the fact that sales of durable goods stores dropped 16 per cent while sales of non-durable goods fell only 8 per cent. This reversed a trend that has held with little variation since the war. Sales of durable goods stores have consistently run higher than nondurable goods stores and have been an important factor in maintaining the high level of business activity.

Department and apparel store sales made a better showing than either durable or nondurable goods, with a decline of only 1 per cent in the Bureau's index. It has been rather generally reported that the response of consumers to the price reductions available in the after Christmas sales have given a substantial boost to department and apparel store sales. This seems to indicate that consumer buying can be stimulated by reduction of prices, and that the buying public is becoming more conscious than ever of high prices.

### Income Declines

Cash income received by farmers continued to decline in January. The 37-per-cent drop in the seasonally adjusted index carried farm cash income to a level 32 per cent under January 1948. This decrease indicates strikingly the effect of falling prices of farm products on the income of the farmer.

The consumers' price index for Houston continued to decline in January. The level of all prices went down 7 per cent, while food prices dropped 1 per cent. The food price index was 3 per cent below the level of January 1948, but all commodities were still 1 per cent higher than a year ago.

The prices of goods at retail always move more slowly than the prices in the primary markets, so the price of foods in the grocery stores does not yet reflect all the decreases in the prices paid to farmers.

## Mr. Muleshoe . . .

By Forbes

### PETERSBURG IS TO GET DIAL TELEPHONES

PETERSBURG, Mar. 12—Plans for a dial telephone system for Petersburg were announced today by G. D. Shelley, district manager for Southwestern Associated Telephone Company.

Shelley stated that a resolution was presented to the city council for approval of rates necessary for dial service. The resolution was approved by the city council, and if 70 per cent of the present subscribers indicate they want dial service, installation of dial equipment will be started within the next few days.

Shelley stated that if no unforeseen delays are encountered, it is expected that the dial system can be placed in operation early in June of this year.

This is our own company doing this.

But what's this, what's this. We invite your attention to the contents of a letter received by The Journal from the headquarters of the company:

Dear Mr. Forbes: We regret there has been a delay in acknowledging your letter of February 28, 1949. However, as you know, we have been in the process of moving our general office since February 25.

We have discussed the telephone service situation at Muleshoe with Mr. G. D. Shelley, our district manager for your area, and he will call on you in the next few days to discuss our plans for a different type of telephone system.

Yours very truly,  
RAY F. RED,  
General Commercial  
Superintendent.

The weeping willow tree is a native of China and is appreciated for its beauty although it has no practical value.

Cadiz, Spain, was a Phoenician colony in the 11th Century, B. C., and was then known as Gades.

Spain's area is 194,947 square miles.

### DRS. WOODS & ARMISTEAD Optometrists

406 LFD Drive Littlefield  
Phone 328

### LEGAL NOTICE

#### NOTICE TO CONTRACTORS

Sealed proposals of approximately 9.5 miles of grading, drainage structures, flexible base, double asphalt surface treatment in Precinct 2, Bailey County, Texas, will be received at the office of the County Judge, of Bailey County, at Muleshoe, Texas, until 10 A. M., March 26, 1949, then publicly opened and read.

Plans and specifications are available at the office of Cecil H. Tate, County Judge, Muleshoe, Texas, or at the office of the Lubbock Engineering Company, at 1721 Broadway, Lubbock, Texas.

The Commissioner's Court of Bailey County, Texas, reserves the right to reject any and all bids. Dated at Muleshoe, Texas, this 15th day of March 1949.

County Judge,  
Bailey County, Texas  
12-2tc

#### NOTICE TO CONTRACTORS

Sealed proposals addressed to the Mayor, Muleshoe, Texas, for constructing elevated Water Storage, water mains, well, sewage collecting lines, 3 lift stations, force main and Imhoff tank, will be received at the office of the City Clerk, Muleshoe, Texas, until 2:00 P. M., March 30, 1949, and then publicly opened and read.

Bidders must submit a bond, cashiers or certified check for Five Thousand Dollars (\$5,000.00) as a guarantee that the bidder will enter into the contract under the conditions set forth within 10 days after notice of award of contract. The minimum wages which shall apply on this work are the established rates for this area as set forth in the specifications. Each bidder shall submit a statement of his experience, financial resources and equipment with the bid. The City reserves the right to waive all formalities and to reject any or all bids. Plans and specifications may be inspected at the office of the City Clerk, Muleshoe, Texas, Texas Contractors' Publication Office or Hasie and Green Engineering office in Lubbock, Texas. Plans and specifications may be obtained at the office of Hasie and Green Engineering Company, P. O. Box 1139, Lubbock, Texas, a deposit of twenty five dollars (\$25.00) which will be refunded to each actual bidder upon return of the plans and specifications. Fifteen dollars (\$15.00) will be refunded to non-bidders upon return of the documents. Proposals are available without charge.

City of Muleshoe:  
By Connie Gupton,  
Mayor.  
11-3tc

Try Journal Classified Ads.—  
They buy, sell and trade.

### STUDENT COUNCIL

#### BEING ORGANIZED IN MHS

On Friday, March 11, the students of Muleshoe High School met in the study hall to submit their nominations of officers for the student council which is in the process of being organized.

Nominations for President were as follows: Teddy Joe Lawler, Bill Green, Bobby Goss and Jerry Julian.

Those nominated for Vice-President were: Janice Jordan, Sondra Wagnon, Ed Nichols and Kirk Herrington.

Mary Jo White, Ellen Johnson, Joyce Bernice Blackburn, Joe Frank Cummings, Bill Thompson, Billy Margaret Collins and R. E. Bryant were nominated as candidates for secretary-treasurer.

Each candidate has selected a campaign manager who will conduct a campaign throughout the next few days. Selection will be made by secret ballot in a joint meeting of the student body on Thursday.

#### CARD OF THANKS

We wish to express our many thanks and appreciation to those who were so kind during the death of our baby, also to thank the Assembly of God church for the nice dinner and beautiful flowers.

Mr. and Mrs. F. M. Hawkins  
and children

### ELECTRICIAN

DAVE COULTER

### GUARANTY ABSTRACT CO.

BONDED for your protection, against errors and omissions.  
We Do Income Tax Returns



J. C. BUCHANAN, Owner  
Phone 356-W  
Muleshoe State Bank Building

Entertainment at Your Local  
**THEATERS**  
MULESHOE, TEXAS  
Box Office Opens 6:45 p. m.—Show starts 7:00 Weekdays  
Saturday & Sunday Show Starts 2:00 p. m.

<p><b>--- VALLEY ---</b> THURSDAY &amp; FRIDAY Marx Brothers and Kitty Carlisle In <b>A Night At The Opera</b> SATURDAY William Boyd In <b>Sinister Journey</b> SUNDAY &amp; MONDAY Gene Kelly Lana Turner In <b>The Three Musketeers</b> TUES. &amp; WED. Oscar Homolka In <b>Code Of Scotland Yard</b></p>	<p><b>--- PALACE ---</b> THURSDAY &amp; FRIDAY Rod Cameron Bonita Granville In <b>Strike It Rich</b> SATURDAY Kristine Miller Arthur Franz In <b>Jungle Patrol</b> SUNDAY &amp; MONDAY Laraine Day Kirk Douglas In <b>My Dear Secretary</b> TUESDAY &amp; WEDNESDAY James Lydon Lois Collier In <b>Out Of The Storm</b></p>
--	---

## SURVEYING & MAPPING

Surveying of all kinds, Contour Maps.  
Terracing lines run and have party who  
builds them.

**John J. Mock**  
COUNTY SURVEYOR  
Muleshoe Phone 356-J

DRS. WOODS & ARMISTEAD  
Optometrists  
406 LFD Drive Littlefield  
Phone 328

# ANNOUNCING....

NOW A....  
**FACTORY BRANCH OFFICE**  
IN MULESHOE

BECAUSE...  
WE WANT TO OFFER BETTER SERVICE TO OUR IRRIGATION CUSTOMERS IN THE MULESHOE AREA

BY.....  
MAINTAINING A COMPLETE STOCK OF PUMPING EQUIPMENT AND REPAIRS, WITH SERVICE FACILITIES NEAR YOU . . . IN MULESHOE

WE OFFER...  
DEEPWELL TURBINE PUMPS . . . IN CAPACITIES FROM 15 TO 30,000 GALLONS PER MINUTE. ANY TYPE OF DRIVE — GEAR-HEAD, ELECTRIC MOTOR, FLAT OR VEE BELT. CHOICE OF OIL OR WATER LUBRICATED TYPES.

**Vertical Hollow Shaft Motors  
and New Bowl Assemblies  
To Fit Any Pump**

GASOLINE ENGINES - WELL CASING or COMPLETE IRRIGATION PLANTS

## PEERLESS PUMP DIVISION

**Food Machinery & Chemical Corporation**  
R. M. GREGORY, Local Manager  
PHONE 40-W NORTH MAIN STREET  
MULESHOE, TEXAS

A Change is in Order...

## Change to OIL-PLATING!

<p><b>BETTER PROGRAM!</b></p> <p>... For best car care, change to Conoco N<sup>th</sup> Motor Oil—get the lubricant that stands up under hard driving, fights combustion acids.</p>	<p><b>HOARDS POWER!</b></p> <p>... because another exclusive added ingredient in Conoco N<sup>th</sup> combats power-robbing carbon and sludge.</p>
<p><b>READY TO GO!</b></p> <p>... because Conoco N<sup>th</sup> fastens an extra shield of lubricant right to cylinder walls, actually OIL-PLATES your engine. It can't all drain down, even overnight.</p>	<p><b>LOW RUNNING COSTS!</b></p> <p>... because Conoco N<sup>th</sup> Motor Oil stands up under hard driving. You'll get more miles per quart—add less oil between drains.</p>

Oil-Plate today at your  
Conoco Mileage Merchants!

Copyright 1949, Continental Oil Company

## COFFEE

ADMIRATION

1 lb. Can

**43c**

## JELLO

All Flavors

BOX

**5c**

# For SAFETY'S SAKE!

*Eat a HEARTY BREAKFAST every day*



INSURANCE STATISTICS CONCLUSIVELY PROVE THAT THOSE WHO EAT A HEARTY BREAKFAST HAVE FEWER ACCIDENTS DURING THE DAY!

**PIGGLY WIGGLY**

- CRACKERS, Krispy, 1 lb. box ..... 25c
- GRAPEFRUIT JUICE, 46 oz. can ..... 19c
- ORANGE JUICE, Adams, 46 oz. can ..... 29c
- BABY FOOD, Heinz, 3 cans ..... 25c
- TOMATO SOUP, Heinz, No. 1 can ..... 12c
- CATSUP, Snider, 1ge. bottle ..... 19c
- PICKLES, Libby's, Sweet Mixed, 12 oz. jar ..... 25c
- PINTO BEANS, Dorman Dry, No. 2 can ..... 12½c
- GREEN BEANS, Gold Tip, No. 2 can ..... 14c

**Shortening** Mrs. Tucker 3 lb. Carton **64c**

**Scottisue** 1000 Sheet Roll **10c**

**Margarine** Del Mar 1 lb. Carton **22c**



**FRYERS** Full Dressed & Drawn - Pound **49c**

### FRUIT COCKTAIL

LIBBY'S No. 2½ Can

**33c**

### PEACHES

HUNTS HEAVY SYRUP No. 2½ Can

**25c**

### SAUSAGE

Pinkneys Pure Pork In Sack Pound **29c**

WILSONS - TENDERED

**Cured-Hams** ½ or Whole POUND **59c**

**OYSTERS** FRESH PINT— **59c**

**Sliced Bacon** PLYMOUTH POUND— **59c**

### ROAST BEEF

Chuck Pound **49c**

- PEAS, Clifton, No. 2 can ..... 12½c
- PREM, 12 oz. can ..... 43c
- CORN, Kent, No. 2 can ..... 15c
- FLOUR, Gold Crown, 25 lb. bag ..... \$1.59
- CHILI, Wolf Brand, No. 2 can ..... 59c
- DOG FOOD, Alert, can ..... 9c
- HOMINY, Marshal Brand, No. 2 can ..... 10c
- KRAUT, Shioctan Brand, No. 2 can ..... 12c
- BEANS, Libby's, Deep Brown ..... 15c

**SLICED BACON** Wilson's Lakeview - Pound **29c**



**Oranges** FLORIDA FROST FREE POUND— **8c**

**BANANAS** POUND **12½c**

**RADISHES** BUNCH **3 for 10c**

**ONIONS** No. 1 Yellow lb. **5c**

**Potatoes** IDAHO RUSSETTS No. 1 WASHED POUND— **5c**

### SURF

HARD - WATER - SUBS SENSATION LARGE BOX 2 FOR

**33c**

### SALAD DRESSING

KRAFTS MIRACLE WHIP PINT

**25c**

WE RESERVE THE RIGHT TO LIMIT NONE SOLD TO MERCHANTS

SEE HOW YOU SAVE AT **PIGGLY WIGGLY**

### At the Churches



#### Schedule of Services

##### FIRST BAPTIST CHURCH

Rev. A. W. Blaine, Pastor

Sunday School 9:45 a.m.

Morning Worship 11 a.m.

Training Union 6:30 p.m.

Evening Worship 7:30 p.m.

Officers and Teachers, Wednesday 7 p.m.

WMU, Wednesday 2 p.m.

Choir Rehearsal, Thursday 7 p.m.

##### UNITED PENTECOSTAL CHURCH

Maggie Kent, Pastor

Sunday School 10:00 a.m.

Preaching Service 11:00 a.m.

Evening Service 7:30 p.m.

Tuesday Evening 7:30 p.m.

Friday Evening 7:30 p.m.

##### LONGVIEW BAPTIST CHURCH

Rev. J. E. Moore, Pastor

Sunday School 10 a.m.

Preaching Services 11 a.m.

B. T. U. 8 p.m.

Preaching Service 8:30 p.m.

W. M. S., Monday, 2:30 p.m.

All Church Night, Wed., 7:30 p.m.

##### FIRST METHODIST CHURCH

T. G. Craft, Pastor

Sunday Services

Bible Study 10 a.m.

Church School 9:45 a.m.

Preaching 11 a.m.

Young People 6 p.m.

Evening Worship 7:30 p.m.

Midweek Service, Wednesday 7:30 p.m.

W.S.C.S., Monday 2:30 p.m.

Choir Rehearsal, Wednesday 7:30 p.m.

##### ANTIOCH PRIMITIVE BAPTIST CHURCH

Across Street from Hospital

Services every 3rd Sunday

Starting at 10:30

Elder Jimmie Bass, Pastor

Singing every Sunday Night

Except 3rd Sunday

##### CHURCH OF CHRIST

Ebb Randol, Minister

Bible Study, 10 a.m.

Church Services, 10:50 a.m.

Evening Services 7:30 p.m.

Ladies Bible class Wednesday at 3 p.m.

Mid-week Service, Wednesday, at 7:30 o'clock.

##### CHURCH OF CHRIST

Legion Hall West of Courthouse.

Worship, 10:30 Each Lords Day.

Extending to all a cordial invitation.

##### Y. L. - PROGRESS METHODIST CHURCH

(At Progress 1st & 3rd Sun.)

(At Y. L. 2nd & 4th Sun.)

Carrol M. Jones, Pastor

Union Sunday School 10 a.m.

Preaching Service 11 a.m.

Bible Study Classes 7 p.m.

Preaching Service 7:30 p.m.

##### MAIN STREET MISSIONARY

Rev. M. E. Robinson, Pastor

Sunday School 10 a.m.

Church Services 11 a.m.

B. T. U. 7:30 p.m.

Church Services 8:15 p.m.

##### LAZBUDDY METHODIST CHURCH

J. G. Walker, Pastor

Sunday School 10 a.m.

Church Service 11 a.m.

Evening Service 8:30 p.m.

Mid-Week Prayer and Song Service 8:40 p.m.

Everyone invited to our services.

##### FIRST BAPTIST CHURCH

L. B. Edwards, Pastor

Lazbuddy, Texas

Sunday School 10 a.m.

Morning Worship 11 a.m.

Training Union 6:45 p.m.

Evangelistic Service 7:45 p.m.

Mid-Week Prayer Service 7 p.m.

"Not forsaking the assembling of ourselves together. Heb. 10:25."

##### ASSEMBLY OF GOD CHURCH

Rev. L. H. Hubbard, Pastor

Sunday School 10 a.m.

Morning Worship 11 a.m.

Evening Service 8 p.m.

Young People's Service, Tuesday 8 p.m.

Mid-week Service, Thursday evening 8 p.m.

##### MULESHOE PRIMITIVE BAPTIST CHURCH

Elder L. M. Handley, Preacher

Sunday at the school house.

Song Service 10:30 a.m.

Preaching 11 a.m.

##### CHURCH OF THE NAZARENE

Rev. Martin L. Patton, Pastor

Mack Hale, S. S. Supt.

##### MORNING WORSHIP

Sunday School 10:00 A. M.

Morning Worship 11:00 A. M.

##### EVENING WORSHIP

Young People's Service 7 P. M.

Evening Worship 7:45 P. M.

You are invited to our services in the Chorus Hall, on the High School Campus.



### Local Couple Wed In Las Vegas

Las Vegas, Nev. March 8. The Little Church of the West, Hotel Last Frontier, Las Vegas, Nevada was the scene of the wedding of Miss Bobbie Jean Thurman, daughter of Mr. and Mrs. T. Thurman of Muleshoe, Texas, and Mr. Wallace Wilson, son of Mr. and Mrs. W. R. Wilson of Littlefield, Texas which took place on Sunday March 6 at 8:00 p.m.

Reverend F. C. Carpenter of the Las Vegas Community Church officiated at the candlelight ceremony which was witnessed by Mr. and Mrs. James Timian who acted as best man and matron of honor. Mr. and Mrs. Wilson will honeymoon in Reno, Nevada.

### Mrs. Roubinek Is Hostess To Club

The Pleasant Valley Club met Wednesday, March 9th in the home of Mrs. R. L. Roubinek.

With 11 members, 1 visitor and one new member.

The president had charge of the business meeting. Roll call was answered by each member giving her favorite pastry recipe.

It was voted to make a quilt for boys ranch farm. Each member is to have her blocks finished and bring to next meeting. Which will be an all day meeting March 23rd at the Pleasant Valley school house. Each one is to bring a covered dish. We will put the quilt together and quilt it that day.

The social hour was spent embroidering dish towels for the hostess, after which delicious refreshments were served by the hostess.

The next meeting will be Wednesday, March 23rd at the Pleasant Valley school house with Mrs. Seaborn Moore as hostess.

### "Friendship Night" Programs At OES

These are the days of "Friendship Night" programs given by OES chapters throughout this section. Last Friday night a group of Muleshoe people attended the Friendship Night program of the Littlefield chapter.

Attending from here were Mesdames Clyde Bray, Frank Cummings, Eddie Lane, Betty Burkhead, B. H. Morgan, Edward White, and Bill Collins and Mr. R. J. Klump.

Mrs. Pat Boone of the Littlefield chapter, a grand lodge officer, gave a review of the book "Barabbas." Refreshments were served to more than two hundred guests representing many chapters of this area.

More than 300 species of dahlias have been evolved and named.

### Mrs. Robert King Is Shower Honoree

Mrs. Robert King was honored Wednesday afternoon, March 9, with a tea and pink and blue shower, in the home of Mrs. Marion Harris.

Cut flowers of peach gladiolus were the decorations in the entertaining rooms.

Refreshments were served to the following guests: Mesdames Paul Craig, John Whipple, Joe Damron, Julian Lenau, Sam Damron, Fred Johnson, W. B. Waggon, Noel Woodley, Roy Jordan, B. F. King, of Bridgeport, Harold King, Henry Williamson, Ray Keeling, the honoree and the hostesses O. C. Ray, Ett Evans, Forrest Jones, John Smith, Houston Hart, Woodie Lambert, Clifton Griffiths, Howard Elliott and Marion Harris.

Gifts were sent by friends who were unable to attend.

### Mrs. Marion Harris Study Club Hostess

Members of the Muleshoe Study Club met in the home of Mrs. Marion Harris, Thursday, March 10.

The program for the evening was Famous Political Figures in Texas. Mrs. Harold King gave Sam Houston and Mrs. S. C. Beavers, Stephen F. Austin.

Refreshments were served to the following members: Mesdames Charles Lenau, Julian Lenau, Buck Wood, S. C. Beavers, Jack Lenderon, Harold King, A. E. Lewis, Pat Bobo, M. F. Green, Lee Pool, Miss

### Shrubbery Is Topic Of West Camp Club

"I think the Nandina is one of the most beautiful winter shrubs," said Lamoin Williams. Each member answered roll call with the name of her favorite shrub. Sylvia Couch gave a list of shrubs that are well adapted to the Plains.

Louise Busbice was elected as our delegate to District meeting.

Louise Busbice received the hostess gift.

Refreshments were served by Elizabeth Harden and one new member, Mrs. Henry Williamson and the hostess.

hostess Louise Roark to the following members. Naomi Austin, Joy Jones, Beulah Williams, Bonnie Williams, Louise Busbice, Sylvia Couch, Vola Dutton, Pat Akin. Next meeting will be March 23, with Alean Watts.

### GUESTS IN VAY HOME SUNDAY

Mr. and Mrs. Fred Vay had a Sunday dinner guests, Mrs. Blanche Vay of Pueblo, Colo., Elder and Mrs. C. J. L. Bolinger of Lubbock, Elder and Mrs. W. Lee Bolinger and children of Springlake, Mr. and Mrs. Louis Bolinger and children of Springlake, Mr. and Mrs. Ivey Lotis and children of Levelland, and Miss Margaret and Carol Beth Hughes of Levelland. Afternoon callers were Mr. and Mrs. Ralph Randolph and Mr. and Mrs. H. O. Geroge and son.



The only machine that makes a rolled bale. Saves the leaves, color and protein of hay. Priced for home ownership. See us for full information.

**ALLIS-CHALMERS SALES AND SERVICE**  
**MULESHOE IMPLEMENT & SUPPLY CO.**  
 Muleshoe, Texas

**Welcome...**

TO THE  
**Muleshoe Fat Stock Show**

AND OUR CONGRATULATIONS

TO THE  
**4-H Club Boys and FFA Boys**

A GOOD PLACE TO EAT  
**CROSS ROADS CAFE**  
 MULESHOE — TEXAS

**Price of Meters is up 68%\***

**Yet Natural Gas Service Remains At the Same Low Pre-War Prices!**

Meters are but one item. Everything behind your natural gas service has increased in price.

Like everything else, gas is more expensive to produce and more expensive to deliver to your home, but not one cent of this increased cost has been passed on to you.

No expense has been spared to assure you an ample supply of gas when you need it. Natural gas service for your home and business is still furnished you at 1940 prices!

\*Home meters purchased now (made with cast iron tops and cast aluminum cases) are \$3.10 higher than the 68 per cent increase quoted above on iron meters.

**West Texas Gas Company**  
 HELPING BUILD WEST TEXAS SINCE 1927

*Enjoy the music America loves best on*

**RCA VICTOR RECORDS**

"SO IN LOVE"  
 "POWDER YOUR FACE WITH SUNSHINE"  
 "I'VE GOT MY LOVE TO KEEP ME WARM"  
 "CRUISING DOWN THE RIVER"  
 "DON'T ROB ANOTHER MAN'S CASTLE"  
 "BOUQUET OF ROSES"  
 "RED ROSES FOR A BLUE LADY"

**COX RADIO & ELECTRIC**  
 THE HOUSE OF SERVICE  
 Phone 300 — Muleshoe

**"SPEEDY" by COVIN MOTOR CO.**

**Congratulations...**

**FUTURE FARMERS OF AMERICA AND 4-H CLUB MEMBERS**

ON YOUR FINE WORK THIS YEAR AND YOUR GREAT FAT STOCK SHOW

**POOL INSURANCE AGENCY**  
 Phone 113 — Muleshoe

## Slants From The Sidelines ...

By W. E. Hill

The local school board officially accepted Coach J. A. Beam's resignation last Thursday night and hired a very capable man to take his place beginning next August. Coach Beam has done a magnificent job since he has been here, in building up the athletic department of MHS. We hate to see him go, but his successor is a very capable man who has a fine record behind him and we feel that he can take over the head coach's job and make even more progress in the local schools athletic department.

Of course we don't mean that just because we have a new football coach the Yellowjackets should win the district title, as we still have the same opponents that we had last year to contend with and they also will be coming up with some very good teams.

Sundown is expected to repeat next season with a very good squad and no one else knows that any better than the new head coach, Woody Green.

Littlefield and Levelland can always be expected to have a good ball club and Sudan will also have about the same team with a years experience back next season. Morton is on the bottom of the list with Muleshoe being the dark horse in the north half of district 4-A. The prospects for the Yellowjacket squad looks good for next season, but all the other area schools also have a better looking prospective teams coming up. Therefore no one should be looking too strongly toward district title honors yet . . . there are six football games between Muleshoe and the district title and a loss of any of those games could put the Jackets out of the running.

Professional wrestling was enthusiastically welcomed here last Saturday night by over 300 people who attended the matches held in the local high school gym.

The JayCeers are sponsoring the wrestling bouts here which are to be held every Saturday night just as long as the fans demand this type of entertainment.

It looks as if there will be several matches carded for Muleshoe if the local people show as much enthusiasm in the future as they showed last Saturday night stated another JayCee official.

Coaches Beam and Hedges are putting their track team through rugged training and have already entered their boys in two practice meets. The boys are beginning to look good and will soon be in top condition for the district meet where they are expected to make a good showing of themselves.

## Bobby Layne Now Coaching At Tech

By Clark Schooley

LUBBOCK, Mar. 15.—Texas Tech will open its 1949 football season against Abilene Christian college on the night of Sept. 10, in Jones stadium at Tech, officials have announced.

Arrangement for the game completes the schedule which includes six home games and five away from home.

The schedule is:  
Sept. 10—ACC at Lubbock.  
Sept. 17—Texas at Austin.  
Sept. 24—Texas A. & M. at San Antonio.  
Oct. 1—West Texas at Lubbock.  
Oct. 8—Tulsa at Lubbock.  
Oct. 15—Baylor at Lubbock.  
Oct. 22—Arizona at Lubbock.  
Oct. 29—Rice at Houston.  
Nov. 5—Texas Mines at El Paso.  
Nov. 19—New Mexico at Albuquerque.  
Nov. 26—Hardin-Simmons at Lubbock.

Bobby Layne, former All-American at the University of Texas and last fall quarterback for the professional Chicago Bears, has joined the Texas Tech coaching staff for the football spring training period. He is tutoring passers.

## SAVE

Where Your SAVINGS ARE INSURED

Each Account Insured To \$5,000 by the FSLIC, A Government Agency

LIBERAL DIVIDENDS

Member Federal Home Loan Bank

For Information Regarding SAVINGS ACCOUNTS or HOME LOANS—See

Mildred Davis Western NPLA Building

**FIRST FEDERAL SAVINGS AND LOAN ASSOCIATION**  
Clovie, N. M. P. O. Box 916

# MULESHOE JOURNAL SPORTS

THE MULESHOE JOURNAL, Thursday, March 17, 1949

## Board Accepts Beam's Resignation; Woody Green Elected As Head Coach

### Wrestling Draws Huge Crowd Here

Over 300 people enthusiastically welcomed professional wrestling in Muleshoe last Saturday night as the nationally-known wrestlers put on some of the best fights ever staged on the South Plains.

One substitute fighter was entered as Killer Karl Grey was at the last moment called away on an emergency call.

Bauk Estes took Grey's place in the ring against Dory Funk with each fighter roughing the other one up considerably, each being tossed clear out of the ring one time and each man scoring one fall. The fight was a draw as the time limit ran out before either of the two fighters could score another fall.

Disqualified

On the second feature of the evening Alex Kasadoki was ruled disqualified after having bit a big chunk out of his opponent, Buck Weaver's leg. Therefore Buck Weaver was awarded the fight by this disqualification of Kasadoki.

However the fans only got to see only a part of this bout as the two men went together again in the dressing room and after much pushing and pulling two or three other men finally got the two men separated.

Excitement created by the fights were so tremendous that at times they shook the walls of the local gym where the bouts were held.

An Amarillo man stated after the fights: "if we had that much enthusiasm at the Amarillo fights, we would have to build a larger arena in order to take care of the fans."

A member of the JayCeers stated that the fights went over in a big way and that the JayCeers will continue to bring "big-time" wrestlers to Muleshoe every Saturday night as long as the fans demand this type of entertainment.

### JOHNNY ON HONOR ROLL

Stephenville, March 15.—John T. Crow of Muleshoe made the "B" honor roll for the fall semester at John Tarleton College, according to J. E. Tompkins, registrar.

John is a freshman student at Tarleton majoring in business administration. He graduated from Muleshoe high school in 1948.

### MOVE BACK TO MULESHOE

Mr. and Mrs. John McPike and son, Richard, who have been in San Antonio for some months, have moved back to Muleshoe. They own a farm west of town. Richard has enrolled in Muleshoe high school.

The queen wasps, sole members of communities who survives the winter, lay eggs in the spring which found new nests and form new generations.

A 1948 survey showed 51 per cent of American housewives still roll their own pie crust.

of the best coached teams in this district, winning a tie for the north half of district 4-A with Levelland, but due to politics Levelland was ruled to defend the north half against Post for the title.

Many local fans who saw his team in action here last fall against the Yellowjackets have stated that his ball club was the best coached team to appear last season on the local football field.

Coach James A. Beam has not stated what his plans are for the coming year, but he will remain here until the end of the school year.

Coach Green will take over the head coaching job in August at the beginning of the next term of school.

Read The Journal Want Ads.

### Bobo Insurance Agency

Pat R. Bobo, Owner  
Office in Court House  
Phone 97 — Muleshoe

### DR. B. R. PUTMAN OPTOMETRIST

Office: Muleshoe Bank Bldg.  
Hours: 9 to 5

**Western PUMPS for IRRIGATION**

AVAILABLE WITH Direct Connected Electric Motor, Flat or V-Belt Drive or Right-Angle Gear Drive

ANY CAPACITY 300 TO 2500 GALLONS PER MINUTE, AND ANY LIFT FROM 10 TO 300 FEET

MANUFACTURED BY Western Land Roller Co. HASTINGS, NEBRASKA

### H. D. CRAWFORD SALES & SERVICE

See me at farm, 2-mi. out on Clovis Hi-way, 1/4-mi. West FOR TURKEY JOB

Muleshoe — Texas

Nitric acid is produced in stainless steel vats. Chemical engineers say the acid has no corrosive effect on this metal.

The Salvation Army reports a total of 13,766 conversions was brought about in its work in the United States during 1948.

With the exception of certain tropical honey wasps, all wasps feed on animal food — usually other insects.

Try Journal Want Ads Today!

Read The Journal Want Ads.

Next Time Try A Journal Want Ad



## CONGRATULATIONS

4-H CLUB MEMBERS

AND

FUTURE FARMERS OF AMERICA

We Are Proud Of You!

MULESHOE MOTOR CO.

AND

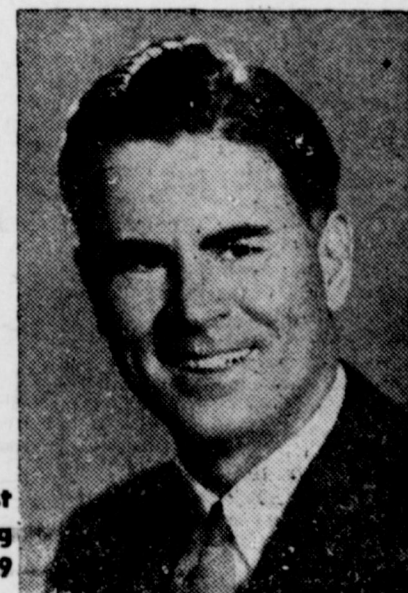
ROCKEY TRACTOR CO.



Dewey Squyres



Manly Finch



T. A. Patterson



J. R. Stroble

## BAPTIST SIMULTANEOUS REVIVAL

Seek Christ at the revival in one of the following Baptist churches of the West Plains Baptist Association cooperating with the churches of the other eight Associations of District 9 in a District-Wide Revival.

MARCH 20 to APRIL 3

### CHURCH

BAILEYBORO  
CIRCLEBACK  
EARTH, FIRST  
LITTLEFIELD, FIRST  
HART CAMP  
LONGVIEW  
LUMS CHAPEL  
MAPLE  
MULESHOE, FIRST  
SUDAN, FIRST  
THREE WAY  
WEST CAMP

### PASTOR

Dick Love  
D. C. Lindley  
Bruce Giles  
Lee Hamphill  
C. Vanlandingham  
J. E. Moore  
W. L. Brian  
L. A. DuBose  
A. W. Blaine  
Wayne Perry  
C. T. Holtzclaw  
Earl Mitchell

### EVANGELIST

Pastor  
V. M. Lollar  
Pastor  
T. A. Patterson  
Lloyd Garrison  
M. R. Hancock  
J. J. Stone  
Claude Tipps  
Dewey Squyres  
Pastor  
R. L. Wittner  
Pastor

### ADDRESS

Spur  
San Angelo  
Earth  
Beaumont  
Plainview  
Greenville  
Yoakum  
Grand Prairie  
Lawton, Okla.  
Sudan  
Alpine  
Central City, Ky.

### SINGER

Grady Newman  
Freddie Packwood  
J. R. Stroble  
Coley Arender  
Manly Finch  
Earl Chester  
C. T. Holtzclaw  
Guy Austin

### ADDRESS

Sudan  
Littlefield  
Dallas  
Claude  
Fort Worth  
Sudan  
Maple  
Muleshoe



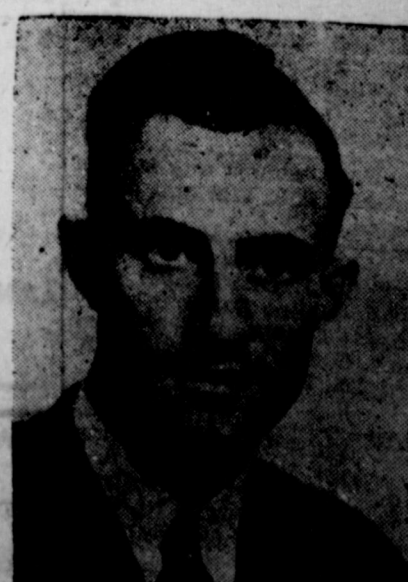
J. J. Stone



Coley Arender



Bruce Giles



Wayne Perry

## CHRIST

IS THE ANSWER

For Life Instead Of Death  
For Heaven Instead Of Hell  
For Happiness Instead Of Heartache.

S-E-E-K H-I-M

March 20 — April 3

TWO SERVICES DAILY

10:00 A. M. and 8:00 P. M.

YOU ARE CORDIALLY INVITED

BUY SELL LEASE RENT TRADE  
**USE THE CLASSIFIED FOR RESULTS**  
 RENT TRADE BUY SELL LEASE

**CLASSIFIED AD RATES**

The minimum for any classified ad is 35c; 2 1/2 cents per word for one insertion; 1 1/2 cents per word for additional insertions. All classified advertising is strictly cash in advance.

**HELP WANTED 2**

WANT FULL TIME EMPLOYMENT. HOWARD GRIFFIN, Progress. 11-2tc

Read The Want Ads Every Week.

**MISCELLANEOUS 3**

FOR SALE—2 piece modern living room suit. See J. C. Barber at the Muleshoe Journal. 11-tfc

Read The Want Ads Every Week.

**FARM LOANS—Will make some choice farm loans. 15 years with 4-1/2 per cent interest. No handling charges except recording of your papers. S. & Goucher, 1 blk. west of hospital. 15-tfc**

**SIGNS — J. E. McWhorter. Phone 211. 23-tfc**

LOANS of all kinds, on farms or city property. Low rate interest. Littlefield, Texas. Ph. 389M. 32-20tp

WANTED—Will take orders for custom made Venetian Blinds. Howard Cox, Cox Radio Shop. 1tc

Read The Journal Want Ads.

**NOTICE**

RALPH CARPENTER—Water Well Drilling, Irrigation and Clean-out Office with E. K. Angeley, Phone 344-J or 241. 9-4tp

**FREE ORCHIDS**

For News Phoned In About SOCIAL EVENTS

**McWHORTER FLORAL**

Phone 211 6-tfc

**STORM PROOF COTON SEED**

MACHA—old variety tested—re-cleaned—Ceresan treated—Bulk & de-hulled. Johnnie Graham, Sudan, Rt. 1; Farm & Warehouse 7 mi. south Bula, Texas. 3-tfc

Read The Journal Want Ads.

**JOHNSON-POOL**

**TIRE & APPLIANCE**

We recommend calcium chloride for your tractor. We will fill them at our store or at 3-tfc farm.

FOR SALE—2-11-38 Slightly used Firestone Deluxe Champion Tread tractor tires, tubes, mounted at a bargain.—Bass Firestone Store. 3-tfc

NEW ADDING MACHINE for sale at THE JOURNAL.

FOR SALE—Good milch cow and bundle feed, 7 mi. south Muleshoe, R. L. Fields. 11-3tp

HAY FOR SALE—About 170 bales. Very leafy. Carrol Jones, Y. L. Parsonage. 11-tfc

FOR SALE—2 butane bottles with regulator, 155 gal butane tank, about half full of butane. O. D. Troutman. 11-2tp

FOR SALE—1947 Dodge Panel, 1-1946 Dodge Pickup, 1-3 h.p. electric motor, Milk Equipment. H. W. McAdams at E. R. Hart Company. 11-3tc

40' BUICK 40-50 series, will trade for light one or two-row tractor. J. R. McPike, 3 mi. on Clovis highway. 11-2tp

THE JOURNAL keeps a supply of Warranty Deeds, Bill of Sale, Standard Sale Contracts, Notes, Farm Lease Forms, etc. 10-tfc

**FREE LANDSCAPE SERVICE**

Now is the time to sow your lawn and landscape your grounds. Write phone or see us.

Home Grown and acclimated evergreens, shrubs, trees and roses.

**NEW MEXICO NURSERIES**

Clovis, New Mexico Phone 142-W 219 E. 2nd St. 9-4tp

SEWING MACHINES Repaired, all makes and models. We also change your machine over to electric. Satisfaction guaranteed. Also repair electric irons, tractors, heaters, waffle irons, percolators, etc. A trial will convince you. Prices reasonable. KELOG'S, Phone 2197, Amberst, Texas. 2-tfc

200 BUSHELS—Half and Half Cotton Seed first year from white sacks. Willie Williams, 2 miles west and 1 mile south of West Camp School House. 9-4tc

I CAN CLEAN—almost any kind of planting seed: R. E. Williams Muleshoe, Texas. 12-8tp

Hay Bales FOR SALE OR TRADE Minneapolis-Moline Balomatic Hay Baler, used 1 season. Sell very reasonable. Contact Allen Grisham, Carr Feed Co., Portales, N. M. 12-7tp

FOR SALE—Used Gear Drive Pump Heads, Engines, Butane Tanks and Carburetors. Available from irrigation wells being converted to electricity. Call 40-W or see Peerless Pump Division, Muleshoe, Texas. 12-tfc

PANSIES, Extra large, nice, in bloom. McWhorter's, phone 211. 12-tfc

1948 Dodge Pickup for sale. Mileage 7,000. See Johnson-Pool. 1-tfc

**MISCELLANEOUS 3**

MULESHOE NURSERY, for landscaping, fruit trees, shade trees, roses, evergreens. PLENTY FIELD GROWN ROSES, three year plants, all colors at \$7.50 dozen at the Nursery. See Dave Aylesworth in Muleshoe. 9-tfc

FOR BEST PRICES on yard fences see J. J. DeShazo. 12-3tp

Read The Want Ads Every Week.

**HOUSES FOR RENT 4**

FOR RENT—Two 3-room apartments, unfurnished, gas & water bills paid. See Claudis Murrah, S. Main St. 10-2tp

FOR RENT OR SALE—6-rm. house 8 mi. south of Friona at the Hub. F. L. Wenner, Muleshoe. 10-3tp

FOR RENT—3 room house. Also 1 and 2 room furnished cabin. J. O. Aday, 2nd door west of Pop's Cafe. 11-2tp

FOR RENT—2 room apt., furnished and bills paid. C. H. Millsap. 11-tfc

FOR RENT—2 bedrooms. W. B. McAdams. 1 1-4 N. W. of Muleshoe. 11-3tp

Read The Want Ads Every Week.

**APARTMENTS FOR RENT 5**

FOR RENT—Unfurnished 3 rooms & bath apartment. Mrs. Clyde Holland. 9-tfc

APARTMENT FOR RENT—Unfurnished, 3 rooms and bath. See S. E. Goucher, 1 blk. west of hospital 10-tfc

FOR RENT—2 room furnished or unfurnished apartment. J. A. Dearing, Main St. 12-1tp

FOR RENT—Two 3-room unfurnished apartments and bath, \$25 per month, also two 4-room unfurnished apartments and bath, \$35.00 per month. Mrs. Irvin St. Clair. 12-2tc

**HOUSES FOR SALE 6**

FOR SALE OR TRADE—4 room modern house in Lakeside Addition. Howard Griffin. 9-4tp

FOR SALE—12x16 1-room finished house and small barn to be moved. Phone 372 or 348-J. Jack Holland. 11-tfc

FOR SALE—4 room, modern, and garage, \$500 down, assume first of \$2,400, bal. \$1,900 second at \$10 per mo., 5 per cent. Howard Griffin, Progress. 12-tfc

Try A Journal Want Ad.

**FARMS FOR SALE 7**

FOR SALE—480 acres, nice modern 5-room house, electricity; 135 A. in cult., lots more tillable; also additional 160 A. with 320 grass lease. Would sell to buyer 53 head of white face cattle, immediate possession. A. J. Thomas, Dora, N. M., 4 S.—4 W.—1 SW Dora. 11-4tp

FOR SALE OR TRADE—For irrigated land, 177 acres in Hockley County, improved, possession '49. Gas, electricity available. Best high school. Box 642, Whiteface, Texas. 12-3tp

Try Journal Want Ads Today!

**TWO BARGAINS**

160 A., one mile north of Bovina, highly improved, modern house, large barn and granary, chicken house, cow barn, extra good water system, big garden, lots of corals. The land is all in cultivation, beautifully smooth and level, 40 A. summer tilled wheat, all goes. Immediate possession. This would be a beauty to irrigate.

Also one half section close in on pavement, all smooth and level, all in wheat, buyer gets one-third of wheat.

**O. W. RHINEHART**

Next Door To Hotel Bovina, Texas 4-tfc

**REAL ESTATE FOR SALE**

Farms - Large & Small City Property

16x26 house to be moved \$550.

24x50 good sheet iron building to be moved.

5 rooms and bath on pavement, \$5000.

4 rooms two lots, \$1650.

Pointy of Good Buys in Good Homes

SEE

**EDDIE LANE**

AT

**LANE & HALE BARBER SHOP**

Phone 40-J or 24-W

**WANT TO BUY 10**

WANTED TO BUY Top prices for Fat Hogs and Feder Pigs

CLOVIS HOG CO., Ph. 224

**CITY LOTS FOR SALE 12**

FOR SALE—3 nice residence lots. Hillcrest Addition. Bill Collins, Muleshoe, Cafe. 6-tfc

Read The Want Ads Every Week.

**FARMS FOR SALE 7**

20 acres with 2 modern homes, good wells, 1 mile from town on the Clovis highway. Well worth the money.

Nine 80 acre tracts well improved with good wells.

Several 160's and 320's with good wells and good improvements. Priced to sell. All above land or any other land we advertise can give possession for 1949. We have several farms located in Lubbock county near Littlefield for sale or trade.

We have several 3-bedroom homes and 2-bedroom homes in Muleshoe at attractive prices well located near school and church for sale or trade.

At Lubbock we have several home owners who would like to trade nice homes in on Muleshoe irrigation farms. We appreciate the listings we have received from Bailey and Lamb county residents, but due to excessive buying we still need listings on Muleshoe homes and Bailey and Lamb county farms. All listings will be given our personal attention.

At Lubbock we have several home owners who would like to trade nice homes in on Muleshoe irrigation farms. We appreciate the listings we have received from Bailey and Lamb county residents, but due to excessive buying we still need listings on Muleshoe homes and Bailey and Lamb county farms. All listings will be given our personal attention.

At Lubbock we have several home owners who would like to trade nice homes in on Muleshoe irrigation farms. We appreciate the listings we have received from Bailey and Lamb county residents, but due to excessive buying we still need listings on Muleshoe homes and Bailey and Lamb county farms. All listings will be given our personal attention.

At Lubbock we have several home owners who would like to trade nice homes in on Muleshoe irrigation farms. We appreciate the listings we have received from Bailey and Lamb county residents, but due to excessive buying we still need listings on Muleshoe homes and Bailey and Lamb county farms. All listings will be given our personal attention.

At Lubbock we have several home owners who would like to trade nice homes in on Muleshoe irrigation farms. We appreciate the listings we have received from Bailey and Lamb county residents, but due to excessive buying we still need listings on Muleshoe homes and Bailey and Lamb county farms. All listings will be given our personal attention.

At Lubbock we have several home owners who would like to trade nice homes in on Muleshoe irrigation farms. We appreciate the listings we have received from Bailey and Lamb county residents, but due to excessive buying we still need listings on Muleshoe homes and Bailey and Lamb county farms. All listings will be given our personal attention.

At Lubbock we have several home owners who would like to trade nice homes in on Muleshoe irrigation farms. We appreciate the listings we have received from Bailey and Lamb county residents, but due to excessive buying we still need listings on Muleshoe homes and Bailey and Lamb county farms. All listings will be given our personal attention.

At Lubbock we have several home owners who would like to trade nice homes in on Muleshoe irrigation farms. We appreciate the listings we have received from Bailey and Lamb county residents, but due to excessive buying we still need listings on Muleshoe homes and Bailey and Lamb county farms. All listings will be given our personal attention.

At Lubbock we have several home owners who would like to trade nice homes in on Muleshoe irrigation farms. We appreciate the listings we have received from Bailey and Lamb county residents, but due to excessive buying we still need listings on Muleshoe homes and Bailey and Lamb county farms. All listings will be given our personal attention.

At Lubbock we have several home owners who would like to trade nice homes in on Muleshoe irrigation farms. We appreciate the listings we have received from Bailey and Lamb county residents, but due to excessive buying we still need listings on Muleshoe homes and Bailey and Lamb county farms. All listings will be given our personal attention.

At Lubbock we have several home owners who would like to trade nice homes in on Muleshoe irrigation farms. We appreciate the listings we have received from Bailey and Lamb county residents, but due to excessive buying we still need listings on Muleshoe homes and Bailey and Lamb county farms. All listings will be given our personal attention.

At Lubbock we have several home owners who would like to trade nice homes in on Muleshoe irrigation farms. We appreciate the listings we have received from Bailey and Lamb county residents, but due to excessive buying we still need listings on Muleshoe homes and Bailey and Lamb county farms. All listings will be given our personal attention.

At Lubbock we have several home owners who would like to trade nice homes in on Muleshoe irrigation farms. We appreciate the listings we have received from Bailey and Lamb county residents, but due to excessive buying we still need listings on Muleshoe homes and Bailey and Lamb county farms. All listings will be given our personal attention.

At Lubbock we have several home owners who would like to trade nice homes in on Muleshoe irrigation farms. We appreciate the listings we have received from Bailey and Lamb county residents, but due to excessive buying we still need listings on Muleshoe homes and Bailey and Lamb county farms. All listings will be given our personal attention.

At Lubbock we have several home owners who would like to trade nice homes in on Muleshoe irrigation farms. We appreciate the listings we have received from Bailey and Lamb county residents, but due to excessive buying we still need listings on Muleshoe homes and Bailey and Lamb county farms. All listings will be given our personal attention.

At Lubbock we have several home owners who would like to trade nice homes in on Muleshoe irrigation farms. We appreciate the listings we have received from Bailey and Lamb county residents, but due to excessive buying we still need listings on Muleshoe homes and Bailey and Lamb county farms. All listings will be given our personal attention.

At Lubbock we have several home owners who would like to trade nice homes in on Muleshoe irrigation farms. We appreciate the listings we have received from Bailey and Lamb county residents, but due to excessive buying we still need listings on Muleshoe homes and Bailey and Lamb county farms. All listings will be given our personal attention.

At Lubbock we have several home owners who would like to trade nice homes in on Muleshoe irrigation farms. We appreciate the listings we have received from Bailey and Lamb county residents, but due to excessive buying we still need listings on Muleshoe homes and Bailey and Lamb county farms. All listings will be given our personal attention.

At Lubbock we have several home owners who would like to trade nice homes in on Muleshoe irrigation farms. We appreciate the listings we have received from Bailey and Lamb county residents, but due to excessive buying we still need listings on Muleshoe homes and Bailey and Lamb county farms. All listings will be given our personal attention.

At Lubbock we have several home owners who would like to trade nice homes in on Muleshoe irrigation farms. We appreciate the listings we have received from Bailey and Lamb county residents, but due to excessive buying we still need listings on Muleshoe homes and Bailey and Lamb county farms. All listings will be given our personal attention.

At Lubbock we have several home owners who would like to trade nice homes in on Muleshoe irrigation farms. We appreciate the listings we have received from Bailey and Lamb county residents, but due to excessive buying we still need listings on Muleshoe homes and Bailey and Lamb county farms. All listings will be given our personal attention.

At Lubbock we have several home owners who would like to trade nice homes in on Muleshoe irrigation farms. We appreciate the listings we have received from Bailey and Lamb county residents, but due to excessive buying we still need listings on Muleshoe homes and Bailey and Lamb county farms. All listings will be given our personal attention.

At Lubbock we have several home owners who would like to trade nice homes in on Muleshoe irrigation farms. We appreciate the listings we have received from Bailey and Lamb county residents, but due to excessive buying we still need listings on Muleshoe homes and Bailey and Lamb county farms. All listings will be given our personal attention.

At Lubbock we have several home owners who would like to trade nice homes in on Muleshoe irrigation farms. We appreciate the listings we have received from Bailey and Lamb county residents, but due to excessive buying we still need listings on Muleshoe homes and Bailey and Lamb county farms. All listings will be given our personal attention.

At Lubbock we have several home owners who would like to trade nice homes in on Muleshoe irrigation farms. We appreciate the listings we have received from Bailey and Lamb county residents, but due to excessive buying we still need listings on Muleshoe homes and Bailey and Lamb county farms. All listings will be given our personal attention.

At Lubbock we have several home owners who would like to trade nice homes in on Muleshoe irrigation farms. We appreciate the listings we have received from Bailey and Lamb county residents, but due to excessive buying we still need listings on Muleshoe homes and Bailey and Lamb county farms. All listings will be given our personal attention.

At Lubbock we have several home owners who would like to trade nice homes in on Muleshoe irrigation farms. We appreciate the listings we have received from Bailey and Lamb county residents, but due to excessive buying we still need listings on Muleshoe homes and Bailey and Lamb county farms. All listings will be given our personal attention.

At Lubbock we have several home owners who would like to trade nice homes in on Muleshoe irrigation farms. We appreciate the listings we have received from Bailey and Lamb county residents, but due to excessive buying we still need listings on Muleshoe homes and Bailey and Lamb county farms. All listings will be given our personal attention.

At Lubbock we have several home owners who would like to trade nice homes in on Muleshoe irrigation farms. We appreciate the listings we have received from Bailey and Lamb county residents, but due to excessive buying we still need listings on Muleshoe homes and Bailey and Lamb county farms. All listings will be given our personal attention.

At Lubbock we have several home owners who would like to trade nice homes in on Muleshoe irrigation farms. We appreciate the listings we have received from Bailey and Lamb county residents, but due to excessive buying we still need listings on Muleshoe homes and Bailey and Lamb county farms. All listings will be given our personal attention.

At Lubbock we have several home owners who would like to trade nice homes in on Muleshoe irrigation farms. We appreciate the listings we have received from Bailey and Lamb county residents, but due to excessive buying we still need listings on Muleshoe homes and Bailey and Lamb county farms. All listings will be given our personal attention.

At Lubbock we have several home owners who would like to trade nice homes in on Muleshoe irrigation farms. We appreciate the listings we have received from Bailey and Lamb county residents, but due to excessive buying we still need listings on Muleshoe homes and Bailey and Lamb county farms. All listings will be given our personal attention.

At Lubbock we have several home owners who would like to trade nice homes in on Muleshoe irrigation farms. We appreciate the listings we have received from Bailey and Lamb county residents, but due to excessive buying we still need listings on Muleshoe homes and Bailey and Lamb county farms. All listings will be given our personal attention.

At Lubbock we have several home owners who would like to trade nice homes in on Muleshoe irrigation farms. We appreciate the listings we have received from Bailey and Lamb county residents, but due to excessive buying we still need listings on Muleshoe homes and Bailey and Lamb county farms. All listings will be given our personal attention.

At Lubbock we have several home owners who would like to trade nice homes in on Muleshoe irrigation farms. We appreciate the listings we have received from Bailey and Lamb county residents, but due to excessive buying we still need listings on Muleshoe homes and Bailey and Lamb county farms. All listings will be given our personal attention.

**FARM IMP. FOR SALE 8**

LOST—Dodge truck spare wheel, new. See Mack Hale at Lane & Hale Barber Shop. 7-tfc

FOR SALE—1948 Case baler and automatic blocker in A-1 shape, 1948 No. 5 John Deere Mower, nearly new, 1937 W. C. Allis Tractor in good condition. Phone 80-W or see Howard Splawn at Irrigation Supply. 11-3tc

FOR SALE—WC Tractor, 2-row lister, new 55 cultivator and planting attachments. E. R. Lawhon, Muleshoe, Rt. 1, or 10 miles E., 6 miles north. 10-3tp

FOR SALE—60x140 lots, West part of town. Inquire Dyer Hardware & Furniture. 10-3tc

FOR SALE with TERMS—Model B John Deere with 2-row equipment. Complete power unit for irrigation, Mercury motor, butane carburetor, cooling system, universal shaft—perfect shape—A bargain. 40 pine poles for hay barn, 8 crosscut yard poles and 1 mile no. 6 insulated copper wire, 10-ft. Moline one-way plow. Largest model Montgomery Ward feed mill. Carol M. Jones, Y. L. Community. 8-tfc

FOR SALE—47 Ford tractor, 6-speed transmission, 4 pieces of equipment, \$1,350. M. H. "Chick" Otwell, 3 east, 7 north Muleshoe. 12-2tp

FOR SALE—Ferguson Ford tandem disc harrow. Also 1 drag type tandem disc harrow. J. A. Dearing, Main St. 12-2tp

FOR SALE

CLEAN WC Allis-Chalmers 2-row tractor, recently overhauled. New clutch, all motor parts. Used 1 year. Latest type cultivator, lister, planter. Extra set offset beams, can be made into chisel. 8 beams. Tractor used to cultivate 130 acres of black land, unused in 1948. Buy it, try it a day. If not as represented bring it back. Can be seen at Muleshoe Implement Co. \$1200. W. H. McCormick, Box 167, Muleshoe, Texas. 11-2tp

FOR SALE—50 ft. setting used Layne-Bowler elec. driven pump, with 8 in. column. D. H. Sneed Supply Co. 11-tfc

FOR SALE—Serval Butane Refrigerator, 8-ft., practically new. Also 7 bottom III turning plow, power lift, 1 roan Durham cow, 4 1/2 gal. 7 yrs. Inquire M. L. White, in trailer house, Lazbuddy. 12-2tp

FOR SALE—Brooder House, 10'x10' floored and has 60-lb. poultry yard. About 100 ft. butane pipe. All for \$150. R. C. Day, Stegall. 10-3tp

FOR SALE—3' Case hay baler with automatic blocker used 1 year, 50' 12" heavy casing Butane carburetor for Chevrolet motor. C. E. Briscoe 2 miles North. 11-2tp

FOR SALE—3' Case hay baler with automatic blocker used 1 year, 50' 12" heavy casing Butane carburetor for Chevrolet motor. C. E. Briscoe 2 miles North. 11-2tp

FOR SALE—3' Case hay baler with automatic blocker used 1 year, 50' 12" heavy casing Butane carburetor for Chevrolet motor. C. E. Briscoe 2 miles North. 11-2tp

FOR SALE—3' Case hay baler with automatic blocker used 1 year, 50' 12" heavy casing Butane carburetor for Chevrolet motor. C. E. Briscoe 2 miles North. 11-2tp

FOR SALE—3' Case hay baler with automatic blocker used 1 year, 50' 12" heavy casing Butane carburetor for Chevrolet motor. C. E. Briscoe 2 miles North. 11-2tp

FOR SALE—3' Case hay baler with automatic blocker used 1 year, 50' 12" heavy casing Butane carburetor for Chevrolet motor. C. E. Briscoe 2 miles North. 11-2tp

FOR SALE—3' Case hay baler with automatic blocker used 1 year, 50' 12" heavy casing Butane carburetor for Chevrolet motor. C. E. Briscoe 2 miles North. 11-2tp

FOR SALE—3' Case hay baler with automatic blocker used 1 year, 50' 12" heavy casing Butane carburetor for Chevrolet motor. C. E. Briscoe 2 miles North. 11-2tp

FOR SALE—3' Case hay baler with automatic blocker used 1 year, 50' 12" heavy casing Butane carburetor for Chevrolet motor. C. E. Briscoe 2 miles North. 11-2tp

FOR SALE—3' Case hay baler with automatic blocker used 1 year, 50' 12" heavy casing Butane carburetor for Chevrolet motor. C. E. Briscoe 2 miles North. 11-2tp

FOR SALE—3' Case hay baler with automatic blocker used 1 year, 50' 12" heavy casing Butane carburetor for Chevrolet motor. C. E. Briscoe 2 miles North. 11-2tp

FOR SALE—3' Case hay baler with automatic blocker used 1 year, 50' 12" heavy casing Butane carburetor for Chevrolet motor. C. E. Briscoe 2 miles North. 11-2tp

FOR SALE—3' Case hay baler with automatic blocker used 1 year, 50' 12" heavy casing Butane carburetor for Chevrolet motor. C. E. Briscoe 2 miles North. 11-2tp

FOR SALE—3' Case hay baler with automatic blocker used 1 year, 50' 12" heavy casing Butane carburetor for Chevrolet motor. C. E. Briscoe 2 miles North. 11-2tp

FOR SALE—3' Case hay baler with automatic blocker used 1 year, 50' 12" heavy casing Butane carburetor for Chevrolet motor. C. E. Briscoe 2 miles North. 11-2tp

FOR SALE—3' Case hay baler with automatic blocker used 1 year, 50' 12"

## Many Area Farmers Attend Meeting Held In Courtroom Here Last Week

At an all day meeting in the county courtroom Tuesday of last week, attended by some forty different farmers from the Muleshoe irrigation area, many secrets and problems related to pumping irrigation water upon the land and maintaining high fertility while producing high yielding crops were solved by experts in scientific fields related to these problems.

Robert Thurmond, Irrigation Specialist for the Extension Service, used the morning to demonstrate to farmers what could be done now to improve their method of applying water on the land. He also gave an insight into the future irrigation practices such as gravel packing of wells, specially designed strainer and casing to fit any type geological formation in the well involved, also the use of concrete pipe to carry water from pump to point of application. Mr. Thurmond used slides in natural color during the afternoon to show actual scenes snapped in Bailey and other counties of good and bad practices of irrigation farmers.

How to maintain soil fertility was the main theme of the remainder of the afternoon program. Dr. A. W. Young, Head of Soils Dept. of Texas Tech, took a handful of facts regarding Bailey county soils and laid out a program that, if followed by our farmers, would in large measure replace

the valuable elements removed yearly and carried to market in the form of cash crops. Bill Millen, farmer of Y. L. community famous for high quality spuds and high yields per acre, gave proof to many of Dr. Young's arguments while telling how he had built up a worn out farm with phosphate and legumes so that yields were raised from 100 sacks of spuds per acre to a present capacity of 300 sacks per acre.

Oliver Thompson followed Mr. Millen to the witness stand and gave testimony of similar results with winter legumes such as Vetch in combination with superphosphate. Mr. Thompson sounded the keynote of the entire meeting when he admitted that commercial fertilizers didn't respond satisfactorily on his farm until he had permitted his green manure to be turned under and allowed to return to soil humus.

In a brief summation of the meeting high points, the county agent brought out that our major problems included high lime content of every soil sample yet tested. Low organic matter and low phosphorus showed up in all soils tested. There is also the problem of porous nature of soils on many farms. The lime rating on all soils being greater than desired by all crops including alfalfa, every farmer should be planning to raise acidity and counteract the lime by the use of both green and

**barnyard manure.**  
The manures will also raise the organic matter in all soils and increase the water holding capacity and bring new life into the soil so that our commercial fertilizers will respond more readily. Phosphate is the one element lacking in our soils that must be added from a sack.

Barnyard manures are very low in this element and it cannot be taken from the air by legumes, so the best answer is still the growing of a heavy tonnage of legumes by the use of irrigation water plus phosphate from the sack. Allow the legume to fix nitrogen in the soil from the air and plow the crop under when it reaches maximum growth. The phosphate applied in this process is simply borrowed and will all remain in the soil for the following cash crop.



### No Crystal Ball Needed To Tell Needs of Soil Tests Will Give Farmer Answer to Question

You don't need a crystal ball to tell you whether your soil needs a soil test will give you the yes or no answer. Where a deficiency exists, a test will indicate how much lime your soil needs. County agricultural agents, vocational agricultural teachers or agronomists at state colleges and experiment stations are glad to cooperate in making such tests.

Testing is always the safest course in applying lime. Some soils have plenty lime. Adding more might be harmful rather than helpful to crop production.



To soils that need it, lime is the keystone of any well-planned soil building program. Lime adds needed calcium. Lime boosts the efficiency of fertilizers. It neutralizes acid soils and makes possible the growth of sweet clover and alfalfa. These deep-rooted legumes add precious organic matter to the soil.

But lime by itself cannot do the whole soil building job. It has to be supported by the generous use of phosphate and potash fertilizers, by plowing under deep-rooted legumes, by the return to the soil of all possible animal manure and crop residues.

#### SPECIAL

DuPont Nylon Hose  
Full Fashioned

54-gauge, 15 denier  
Irregulars - Beauties

Only 2 pair to a customer  
2 Pair For  
**\$1.00**

MRS. CAROTHERS

## Sheriff's Report ...

Hello every one:  
Here we come again after missing about two reports.

For the past two weeks we have been very busy.

Last weeks efforts netted us two boot-leggers, one D. W. I. case and a few more bad checks, and several minor fines in traffic and drunks.

Sunday morning I got a tip on a man long wanted by our department and at Farwell also. By putting the pieces together and with the information we already had, we called the sheriff at Dumas, Texas, and within an hour we had our man. He is wanted here for forgery.

In the last two weeks we have had our jail full and a few over. At present we have seven prisoners. Five of them waiting trial in District Court.

Our court meets next week and maybe for the first time since the

first of January, we can clear the jail.

In the past two weeks we have had several complaints about things being stolen from irrigation motors.

Buck and myself wroked on this the greatest part of last week and found out who did one of the jobs, but the boys have drifted, but if and when we catch them maybe we can solve several cases.

So far we haven't got anything on uncle Josh's case. We have run down what seemed to be clues, but every one of them so far has been a blind alley.

To all of you in the south end of the county, we have a man at Enochs selling car tags. So if you are there and want car tags you can get them this week and next. Bring your titles and last years receipts. We would like to register every car in Bailey County for this money goes for the betterment of our roads.

Thanking each and every one for your splendid cooperation, I remain your sheriff,

Hugh Freeman.

THE MULESHOE JOURNAL, Thursday, March 17, 1949

There is no precaution against HAIL!  
... No safeguard for your CROPS

Buy Your Hail Insurance Today from ...

BOBO INSURANCE AGENCY ... Phone 97



## CONGRATULATIONS

4-H CLUB

AND

FFA CLUB MEMBERS

BEST WISHES FOR YOUR SHOW

KING GRAIN & SEED CO.

WESTERN FERTILIZER CO.

WATH THIS SPACE

FOR

MULESHOE'S

NEWEST BUSINESS VENTURE



Congratulations

FFA

AND

4-H CLUB

MEMBERS

LET'S ALL ATTEND THE FAT STOCK SHOW

C. W. GOSS AUTO CO.

Phone 53

Muleshoe

## THE FIRST DRAWING

Sponsored by the Merchants Listed below and held last Tuesday night was a big success in Muleshoe.

Howard Cox was the spokesman for the drawing with his public address system in the Valley Theatre and another in the Palace.

The name drawn was MRS. J. C. BARBER, one of our Muleshoe citizens. A bicycle was to be the first premium but they were not able to use a bicycle, so Mrs. Barber got her choice of taking the second premium, a toaster and coffee maker by Westinghouse. She was very much overwhelmed!

### Muleshoe Food Mkt.

QUALITY GROCERIES & MEATS  
Name Brands Our Specialty  
We Appreciate Your Patronage  
We Deliver — Phone 2

### Dyer Hardware

COMPLETE HOME FURNISHINGS  
Maytag & Philco Appliances  
Monarch Gas & Electric Ranges  
Your Satisfaction Is Our Success  
Phone 151

### Ray's Service Station

PHILLIPS "66" PRODUCTS  
Tires—Tubes—Accessories  
Phillips "66" Premium Motor Oil  
Gives Lubrication for a Clean Motor  
And Enduring Performance  
Phone 44-J

### Johnson - Pool

TIRE AND APPLIANCE  
Bandy Johnson — Myron Pool  
B. F. Goodrich Tires and Tubes  
Norge Refrigerators ... Stoves  
Thor Washers and Ironers ... Batteries  
Box 133 Phone 731

### Muleshoe Motor Co.

FORD  
SALES—SERVICE  
"Selling a Car With Value  
Far Above Price"

Your Neighborly Service Shop

### Cox Radio & Electric

R. C. A. VICTOR Phonograph Records  
Radio Sales and Service  
Electrical Contracting  
Howard Cox, Owner Phone 300

### GRAHAM'S

"Home Made Bread"  
Fancy Pastry and Cakes for  
All Occasions  
Phone 27

You Will Never Kick at Our Prices  
See Us FIRST

### St. Clair Department & VARIETY STORE

Phone 99

### The Dixie Lee Shoppe

MISS LOS ANGELES SUITS & COATS

Hattie Jennings

Phone 234-J

### Mrs. Sidney Provence

KELTON'S BEAUTY SHOPPE  
Mamie Provence Mrs. Juanita Garrett  
Phone 167-W

WALGREEN AGENCY

### Western Drug Co.

"The Leading Drugstore in Muleshoe"

### The Fashion Shop

Reich Dresses  
Nardis Sportswear—Dresses & Suits  
Joan Miller—Petti, for Juniors  
Mojud Hosiery and Lingerie  
Sho-Form Brassiers  
Dorothy Mathiesen - Elizabeth Barnett  
Phone 174

### Berry Electric

ADMIRAL DEALER  
Dual Temp Refrigerators—Radios  
Washing Machines—Deepfreeze  
Electrical Ranges  
American All-Steel Kitchen Cabinets  
Phone 98

### Gerald's Fine Foods

Phone 316  
Meet Your Friends at GERALD'S  
For Steaks—Lunches—Short Orders &  
Soda Fountain Service  
"Get Your Free Tickets Here"

HUDSON

### C. W. Goss Auto Co.

Phone 53

GULF PRODUCTS

HUDSON CARS

### Lambert Cleaners

"It Looks Like New When We Are Thru"  
Major Alterations  
Custom Tailored Suits  
Phone 232

WE JOIN OUR SPONSORS IN THANKING YOU FOR HELPING TO MAKE THIS DRAWING A SUCCESS

VALLEY & PALACE THEATRES

## REMEMBER....

When Your Doctor  
Gives You A Prescription

That Prescription Is Yours!

You Can Have It FILLED Wherever  
YOU WANT TO

DAMRON REXALL STORE has TWO Registered Pharmacists to  
FILL YOUR PRESCRIPTIONS

SAM DAMRON  
B. S., Phg. No. 11483

JOE DAMRON  
No. 9576

Damron Rexall Drug

PHONE 36

MULESHOE

### Soil Conservation District News

Applications for soil conservation assistance have been received

### GREEN Hospital & Clinic

Muleshoe, Texas

L. T. GREEN, Jr., M. D.

M. F. GREEN, M. D.

DAN A. HARRISON, Jr., M. D.

Mrs. Lula Gorrell, R. N.  
Alice Hicks, R. N.  
Winona Blair, R. N.  
Geraldine Green, R. N.  
(Offices At Hospital)

on 639 acres of land owned by J. R. Seccherist, on 400 acres owned by R. C. Gaede, on 80 acres owned by Mrs. D. W. Walston of Lubbock, and on 80 acres owned by G. W. Mimms.

Topographic surveys have been completed on farms owned by Jimmy Mooneyham, Ray Griffiths, Ben Graham, and Virgil and Claude D. Norwell. These surveys will be used in planning improved methods for the application of irrigation water.

A well location was made last week for R. C. Gaede.

Soil Conservation Service technicians ran terrace lines on farms owned by C. E. Davis and W. E. Scholter.

A plan of conservation operations has been worked out with L. H. Davenport on his farm.

Conservation surveys have been completed on farms owned by Nowell Brothers, L. O. Norwood, C. A. Norcross, and E. T. Bryant.

About April 1st is the time for overseeding wheat with Hubam clover. The wheat can be harvested and the Hubam turned under as a green manure crop. Madrid clover is used in making fall seedings.

### Pleasant Valley

Mr. and Mrs. J. E. Dulin were in Tahoka Tuesday on business.

Mrs. O. W. Corley has been visiting her parents in Lynn county this week.

Mr. and Mrs. A. J. Moffitt attended church in Lubbock Sunday. The daughters of Mr. and Mrs. Lawrence Quesenberry, of Sudan, visited in the home of Jackie Dulin Sunday.

Mr. Herman Haberer left Wednesday for Antioch, California to visit his parents.

Mr. and Mrs. Russell Haberer have recently moved into their new home.

Mr. and Mrs. Short Bickle were visitors at Boys Ranch farm Sunday and delivered a gift of two saddle horses to the boys there.

Mrs. Herman Haberer, Red Cross representative made the annual drive last week and reports the quota of \$98.00 was raised. Mrs. Haberer wishes, in behalf of the organization, to thank the patrons of the district for their fine cooperation.

Mrs. E. K. Angeley, Ronnie and Bonnie Pat spent Tuesday afternoon in Clovis shopping.

Mr. and Mrs. W. A. Stevens and their daughter, Mrs. Opal Robinson were in Lubbock.

Mr. and Floyd Andreas and Mr. Andreas' father enjoyed a trip through the Carlsbad Caverns Sunday.

Mr. and Mrs. Harold Allison and daughters spent the week with Mrs. Allison's parents in Hagerman, New Mexico.

The grade school boys of the Pleasant Valley school district spent last Thursday night with their bus driver, Mr. Frank Cummings. The boys reported a swell time.

We wish to express our heartfelt sympathy for Mr. and Mrs. Frank Hamkins and family in the death of their infant daughter.

#### HAS ARTICLE PUBLISHED

ABILENE, March 15.—Maurine Witterding, a sophomore in McMurry college, Abilene, was one of the contributors to "In These Days", a Lenten devotional booklet published recently by the college Christian Foundation. Her subject was "On Finding Oneself".

#### SPENT WEEKEND AWAY

Mr. and Mrs. H. A. Spradley and children spent the weekend in Lubbock visiting his parents. Mr. and Mrs. F. D. Spradley and Mr. and Mrs. H. D. Jackson.

#### HOME FROM COLLEGE

Several boys home from college at Tech this weekend were Jim Bickle, Bill Jim St. Clair, Jack Cummings, Jack Young, and J. M. Bowman.

#### VISITED IN SILVER CITY

Mr. and Mrs. Walter Witte and Mrs. Pete Jenkins visited Lamar Witte in Silver City, New Mexico, the past weekend.

#### VISITED HERE

Mr. and Mrs. C. E. Briscoe of Artesia, New Mexico visited their daughter, Mrs. Ike Bayless and family over the weekend.

#### WAS HOME FOR WEEKEND

David Wyer was home from school at Canyon visiting his parents, Mr. and Mrs. Jay Wyer over the weekend.

### Uncle Sam Says



In February we observe the birthdays of two very famous Americans, George Washington and Abraham Lincoln. Practical men, they understood the value of thrift, the necessity for a well-ordered method of saving. They had no ready-made plan such as is now offered by the U. S. Savings Bonds program. You specify the sum to be allotted each payday, where you work. That is the Payroll Savings Plan. If self-employed, use the Bond-a-Month Plan at your bank. And in 10 years, you reap the reward—\$4 for every \$3 you invest.

U.S. Treasury Department

### FOR SALE GOOD MANURE FERTILIZER

Delivered To Your Place

ANY AMOUNT

BUD WHITMIRE

Sudan, Texas

or R. L. LEWALLEN

Muleshoe, Texas

11-tfc

Try The Classified Ads . . .

### CHORUS SINGS

Friday, March 11, the Muleshoe High Chorus was invited to sing over the radio, KSEL, at Lubbock. Our chorus is making quite a name as one of the outstanding high school choruses over the plains. Numbers sang were, Drink To Me Only With Thine Eyes, When I Grow To Old To Dream, Dig My Grave, My Own, and The Lord Bless you and Keep You.

Queen wasps first lay the eggs of worker wasps and when they are old enough to provide food, lay eggs of queens and males.

William IV of England, the "Sailor King" was 65 years of age when he ascended the throne and reigned but seven years, to be succeeded by his niece Victoria.

The bazaar is usually on of the chief monuments of a Mahammedan city. If picked up, horned toads may puff themselves out or deflate themselves.

### Bailey County Abstract Co.

Established In 1900

Muleshoe - Texas

#### ABSTRACTS — LOANS

All Matters Pertaining To Land Titles Given Prompt Attention

MRS. LELA BARRON

L. S. BARRON

Agent For Kansas City Life Insurance Co. Loans

## Free Photograph



We have arranged for a reliable well known portrait photographer to be in our store MONDAY and TUESDAY March 21 and 22 between the hours of 10:00 and 5:30.

We offer one free gift portrait to one member of each family or a family group absolutely without cost or obligation in appreciation of your past and future patronage.

There is nothing you must buy from either the photographer or the store to get this free picture. The friendship, good will and patronage of both old and new customers is our reward.

Minors MUST be accompanied by parent or guardian and parent or guardian MUST select proof to be finished.

LOOK AT OUR WINDOW!

TELL YOUR FRIENDS

## BASS FIRESTONE STORE

MULESHOE, TEXAS

### CAR FINANCING

### FARM LOANS

For Complete Insurance Protection

Including Polio See . . .

### Pool Insurance Agency

M. W. POOL, Jr.

LEE R. POOL

Muleshoe Phone 113 Texas

### Bring Us Your

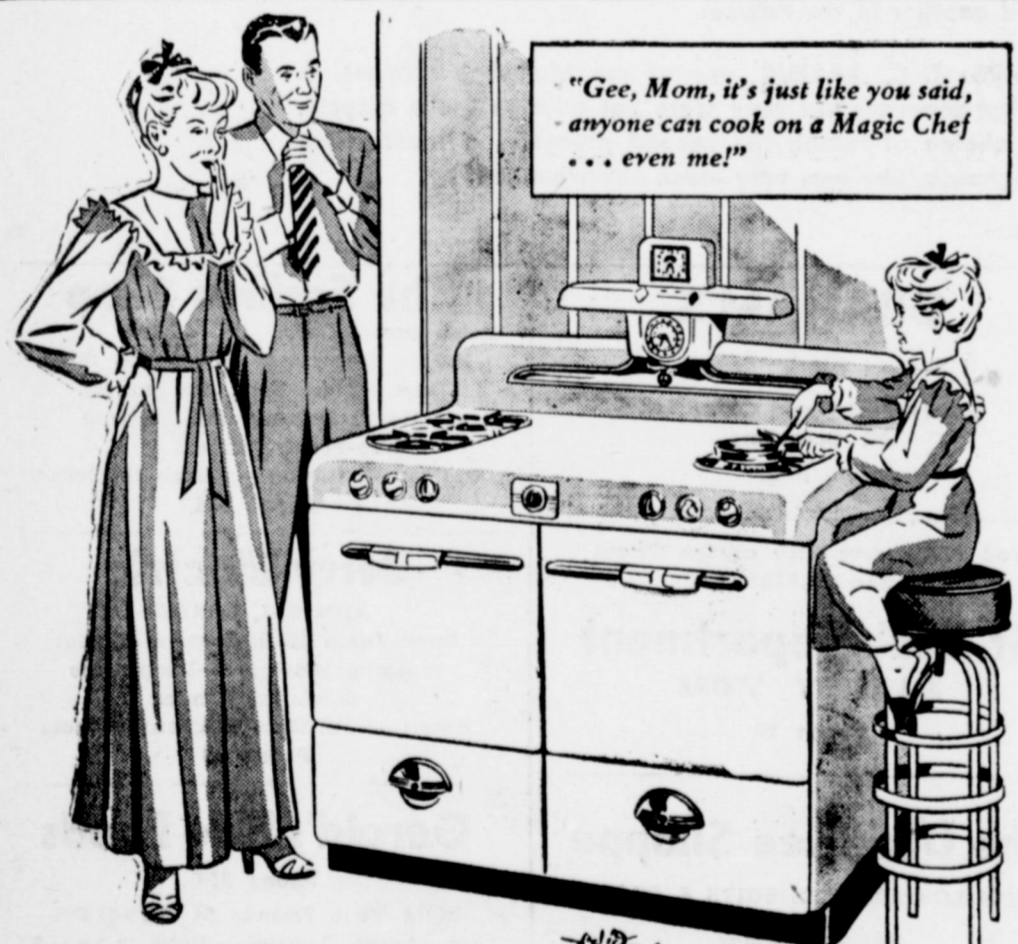
## SUDAN - CANE HEGARI

THAT IS SUITABLE FOR SEED PURPOSES

### GILBREATH FEED & SEED

Phone 115

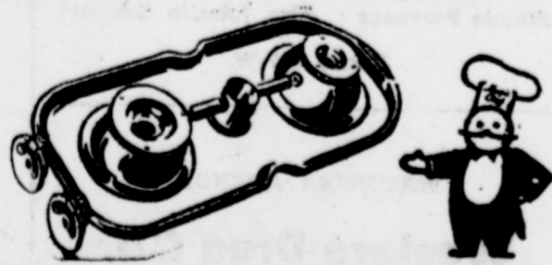
Muleshoe



## GREATEST Magic Chef YET! It's Fully Automatic

Offers a sensational new top burner development that makes cooking easy and fast

This exclusive top burner invention makes burner cleaning drudgery a thing of the past. These magic one-piece burners catch spillovers, lift completely out in one easy motion, wash like dishes. All burners—oven and broiler, too—light automatically on "CP" models. Many other modern features make Magic Chef a joy to own, a thrill to cook on. See it, compare it, you'll say, "That's the range for me!"



SEE IT Today AT

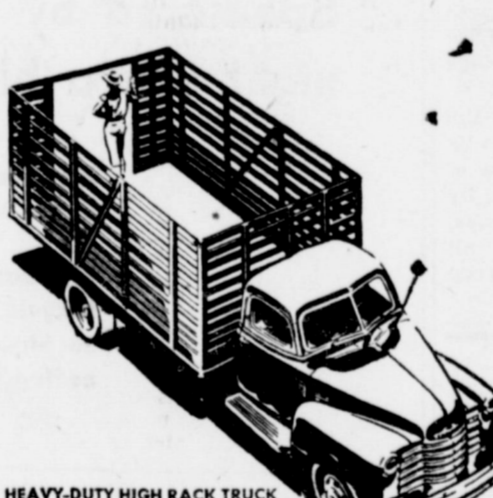
## Wiedebush & Childers

Muleshoe

PHONE 16

Texas

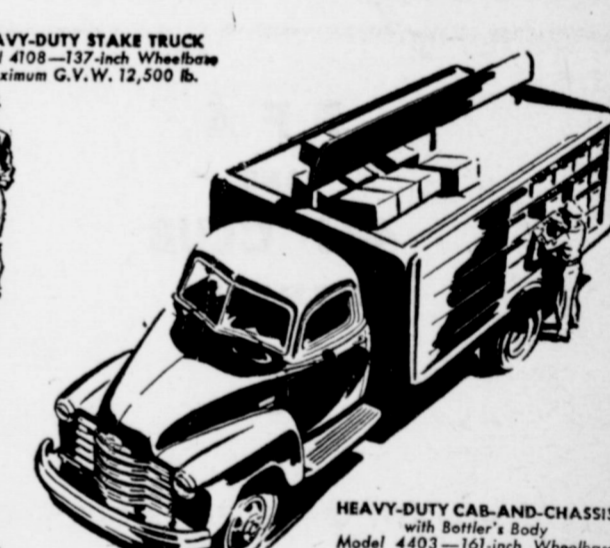
# CHEVROLET HEAVY-DUTY TRUCKS



HEAVY-DUTY HIGH RACK TRUCK  
Model 6417—161-inch Wheelbase  
Maximum G.V.W. 16,000 lb.



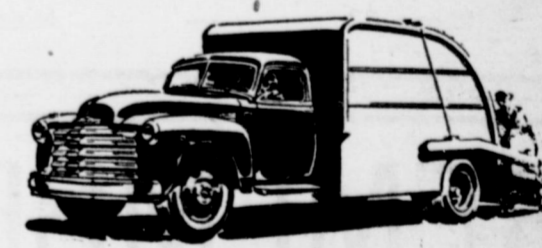
HEAVY-DUTY STAKE TRUCK  
Model 4108—137-inch Wheelbase  
Maximum G.V.W. 12,500 lb.



HEAVY-DUTY CAB-AND-CHASSIS  
with Butler's Body  
Model 4403—161-inch Wheelbase  
Maximum G.V.W. 16,000 lb.



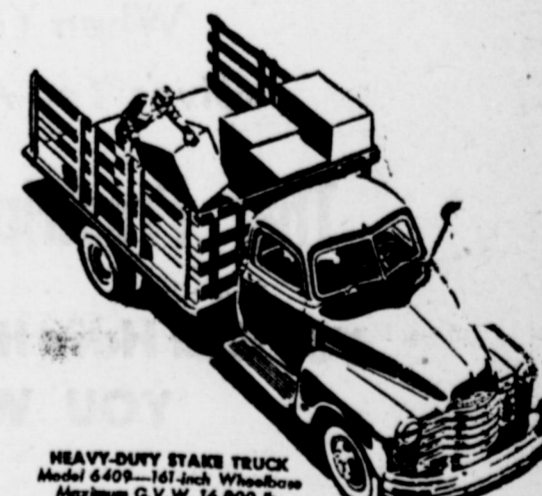
HEAVY-DUTY CAB-AND-CHASSIS  
with Dump Body  
Model 6403—161-inch Wheelbase  
Maximum G.V.W. 16,000 lb.



HEAVY-DUTY CAB-AND-CHASSIS  
with Refuse Body  
Model 6403—161-inch Wheelbase  
Maximum G.V.W. 16,000 lb.



HEAVY-DUTY TRACTOR  
with Trailer  
Model 6103—137-inch Wheelbase  
Maximum G.V.W. 16,000 lb.



HEAVY-DUTY STAKE TRUCK  
Model 6408—161-inch Wheelbase  
Maximum G.V.W. 16,000 lb.



HEAVY-DUTY CAB-AND-CHASSIS  
with Refrigerator Body  
Model 6403—161-inch Wheelbase  
Maximum G.V.W. 16,000 lb.

OFFICIAL REGISTRATIONS PROVE THERE ARE MORE CHEVROLET TRUCKS IN USE THROUGHOUT THE NATION THAN ANY OTHER MAKE!

#### Look at all these Extra-Value Features!

- 4-Speed Synchro-Mesh Transmission • Splined Rear Axle Hub Connections • Load-Master Valve-in-Head Engine • The Cab Bud "Sunroof" • The Flatz-Mounted Cab • Uniford, all-steel Construction • New, Heavier Springs • Full-floating Hypoid Rear Axles • Hydraulic Power Brakes • Wide Base Wheels • Heating and Ventilating System optional at extra cost.

The Chevrolet truck line includes scores of standard models in many forms. In addition, a wide range of special bodies, chassis, and chassis for special equipment and needs, built by reliable manufacturers, are available.



## C & H CHEVROLET COMPANY

PHONE 12

YOUR CHEVROLET DEALER

MULESHOE, TEXAS



## Landscape Topic At Muleshoe Club

The Muleshoe Home Demonstration club met March 10, at the home of Mrs. D. L. Morrison. Roll call was answered by each member bringing a shrub or plant suitable for this country and telling how to plant and care for it.

The club will give \$5.00 to the Red Cross Drive.

The subject for the program was "Care of Landscape." Mrs. D. R. Aylesworth gave a talk on "Pruning Trees and Shrubs." After her talk the ladies went out to the orchard and Mrs. Aylesworth gave a demonstration on the tools to use and the correct way to prune trees or shrubs. Mrs. D. L. Morrison gave a talk on "Transplanting shrubs and trees."

Mrs. D. E. Beller and Mrs. Byron Jeffcoat had charge of the recreation.

Those present were two visitors Mrs. Moody and Mrs. Heald and fourteen members: Mesdames D. E. Beller, S. C. Caldwell, Roy Carney, D. E. Aylesworth, Byron Jeffcoat, H. M. Shofner, C. E. Briscoe, J. T. Boydston, Mack Hale, Marvin Wimberley, A. W. Copley, Tom Zimmer, J. T. Shofner and the hostess, Mrs. Morrison.

The next meeting will be March 24, at 2:30 at the home of Mrs. S. C. Caldwell.

Wasp eggs, laid by the queen, hatch in about eight days.

## Enochs Club Met With Mrs. Pool

Enochs H. D. club met in the home of Mrs. W. A. Pool Thursday, March 10. Twelve members and one visitor was present.

The meeting was opened by reading the creed. Discussion was made on getting someone to put up the letters on the cemetery gate.

Mrs. M. G. Gipson gave a reading on "Home Medicine Chest." Several club members have been doing yard work, and getting their gardens broke up. Also there have been several garments made.

We have ordered another order of everyday cards, and also you can turn in your order for stationary and napkins with your name engraved on them.

Next club meeting will be in the home of Mrs. Milton Parsons, Thursday, March 24.

There will be a white elephant sale. Each member is expected to be present and have a gift wrapped to sell at the sale.

Mrs. Pool served a refreshment plate of banana pudding, muffins, and tea, which was enjoyed by all.

### VISITED IN LUBBOCK

Miss Elizabeth Harden spent the weekend in Lubbock where she visited a friend, Miss Nina Jones. They attended church in Plainview Sunday and visited Miss Harden's aunt, Mrs. O. V. Anderson and a cousin from California who was visiting there.

## Double Ceremony Unites Local Couples



Mr. and Mrs. Weldon McCarty

Mr. and Mrs. Donald Fudge

Miss Melba Bryant, daughter of Mr. and Mrs. Roy Bryant of Muleshoe, became the bride of Donald Fudge, son of Mr. and Mrs. R. B. Fudge of Needmore and Marian Davis, daughter of Mr. and Mrs. F. H. Davis of Muleshoe, became the bride of Weldon McCarty, son of Mr. and Mrs. Delma McCarty of Muleshoe, on March 9, in the Muleshoe Methodist Church.

The double ceremony was read by Rev. T. G. Craft of Muleshoe, before an altar flanked by baskets of white snapdragons and greenery and lighted by white tapers in floor candelabra.

Preceding the ceremony, Mrs. Sam Damron played several selections on the Hammond Electric Organ. Traditional wedding marches completed the nuptial music.

The brides were given in mar-

riage by their fathers. Melba wore a powder blue suit with tan and rust accessories. Marion wore a royal blue suit with pink accessories. Each of the brides carried a White Bible topped with pink roses from which fell a shower of white satin streamers.

The candles were lighted by Fuston McCarty and Mack Ragsdale.

Miss Joyce Blackburn was Miss Bryant's maid of honor. She was attired in a blue suit with blue accessories and a corsage of pink roses. Miss Bette Guthrie was Miss Davis' maid of honor. She was attired in a brown suit with green accessories and a corsage of pink roses.

The best men were Mack Ragsdale and Fuston McCarty. Ushers were R. E. Bryant, Teddie Lawler, and Bobby Goss.

Immediately following the ceremony parents of the brides were hosts at a reception held in the home of Mr. and Mrs. Buford Butts. After the first pieces of wedding cake had been cut, according to tradition, by the brides and grooms, the cake was served by Mrs. Wiley Moore and Miss Margie Moore. Mrs. Foy C. Futrell and Miss Elizabeth Harden, presided at the punch service. Miss Bette Guthrie had charge of the guest books.

Following a short wedding trip the couples are at home in Muleshoe. They will continue their studies in Muleshoe High School.

### MAKES TECH HONOR ROLL

LUBBOCK, March 15.—Jane H. Stovall daughter of Mr. and Mrs. A. S. Stovall of Muleshoe has been named to the fall honor roll at Texas Technological College.

### TO LUBBOCK

Mrs. Alton Cherry spent last Thursday in Lubbock shopping.

THE MULESHOE JOURNAL, Thursday, March 17, 1949

### ON TECH HONOR ROLL

LUBBOCK, March 15.—Howard Taylor, son of Mr. and Mrs. Roy Taylor of Muleshoe, has been named to the fall honor roll at Texas Technological College.

### GUEST IN FIELDS HOME

Paul Haley visited Jack Bundy Saturday night and they attended church at Lazbuddy Sunday.

### VISITORS IN TAPP HOME

Mr. and Mrs. Leroy Wilkson and daughter of Texico visited Miss Polly Tapp Sunday.

### WERE IN PLAINVIEW

Mrs. Olen Jennings, Mrs. Opal Fields, and Miss Barbara Fields

were in Plainview last Thursday on business.

### RETURNED HOME

Mrs. Guy Nickels returned home Sunday from Amarillo where she has been visiting with her daughter, Mrs. T. L. Gilley and her daughter, Floris who is ill.

### TO QUANAH

Mr. and Mrs. Noel Woodley were in Quanah the past weekend where they visited his mother, Mrs. Henry Woodley.

### IN LUBBOCK

Mrs. Roland Matthesen, Mrs. Mertie Priboth, and Gerald Priboth were in Lubbock Tuesday on business.

## Young Man —

Order Your Suit Now

For Graduation

Activities

## Spring Suit Samples

by M. BORN

NOW ON DISPLAY

For Older Men, Too

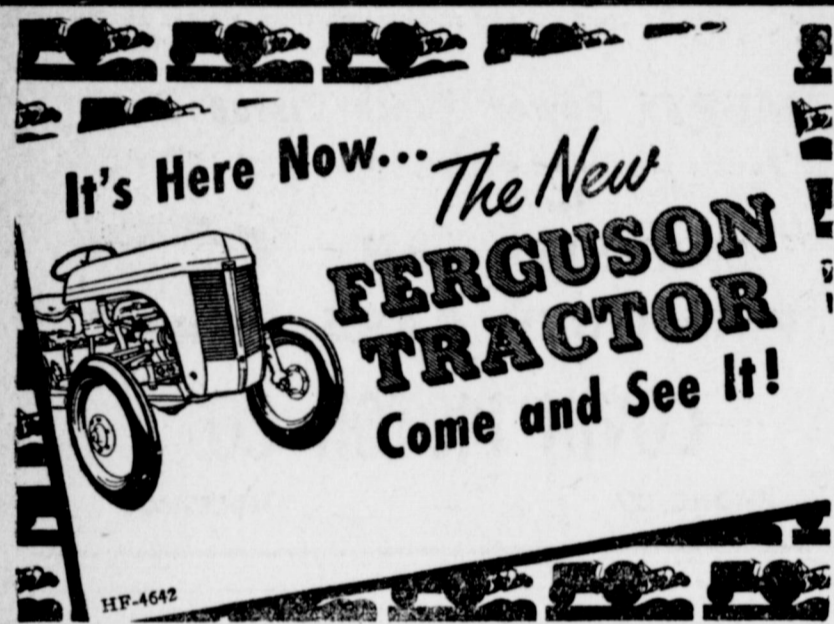


Let's All Visit The  
**FAT STOCK SHOW**

**CITY CLEANERS**

CHARLES ALSUP

Muleshoe — Texas

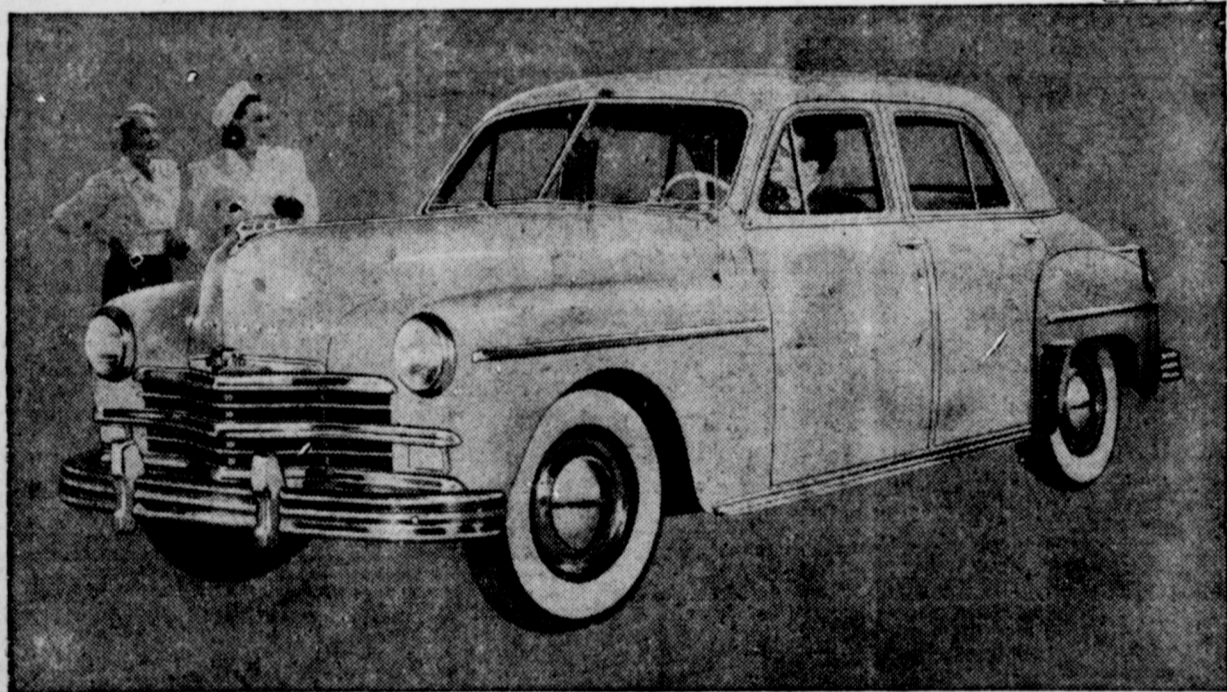


**D. H. SNEED SUPPLY CO.**

ACROSS FROM RAY GRIFFITHS ELEVATOR

Phone 43 — Muleshoe

## New Plymouth on Display



Plymouth's new special deluxe four-door sedan (above). Throughout the new Plymouth line beautifully streamlined bodies are lower and narrower, seats are wider and headroom greater. At the same time overall exterior dimensions are reduced, but wheelbase has been lengthened to 118 inches and glass area is increased. Horsepower is raised to 97. Although fenders flow gracefully into the body they are detachable for ease in repair.

## New Plymouth Features Beauty, Performance, Safety and Comfort

Brilliant new styling is combined with outstanding riding comfort, increased roominess, and sweeping mechanical improvements in the new line of Plymouth automobiles.

Completely redesigned, the new Plymouth has a longer wheelbase for a better ride and more road stability, but less front and rear overhang for easier parking and garaging. While the silhouette has been lowered and the width decreased, there is more head and leg room and seats are wider. Typical of Plymouth's many refinements is the ignition-starter combination, with which a turn of the key starts the engine.

The new Plymouths are sleek in appearance. New rear-end styling provides a graceful balance with the horizontal grille lines which empha-

size the broadness of the front. Fenders which blend perfectly into body lines are nevertheless separate and detachable, thus avoiding sheet metal panels so costly to repair or replace.

The new Plymouth line includes nine distinct automobiles. Special deluxe and deluxe types are on a 118-inch wheelbase, one inch longer than last year's. Special deluxe models are: four-door sedan, club coupe, convertible club coupe and station wagon. In the deluxe group are the four-door sedan and the club coupe. In addition, Plymouth will build three deluxe models on a brand new 111-inch wheelbase, a two-door sedan, a three-passenger coupe, and a new body type, the Suburban.

The 97-horsepower engine has im-

proved performance and efficiency with a new design cylinder head which increases compression ratio to 7 to 1. A new chrome plated compression piston ring reduces cylinder wear and provides greater protection during the break-in period. There are improved oil rings for greater oil economy, while a newly-designed intake manifold induces quicker, smoother engine warm-up and produces faster throttle response.

Body styling which produces greater passenger room without excessive bulk also increases visibility. V-type windshields have 37 percent more area and provide excellent vision without distortion. Windshield wipers clear 61.5 percent greater area and the rear window is 26.4 percent larger.

## Watson Club Met With Mrs. St. Clair

The Watson H. D. club met Wednesday, March 9, in the home of Mrs. David St. Clair.

"First Aid Kits" was the subject at a round table discussion, which was enjoyed by all.

The club voted to hold a "42" party at the Joe Smith building in Maple, Friday night, March 18.

Everyone is invited to attend the party. Delicious refreshments of sandwiches, salad, cookies and pop were served to Mesdames Horace Hutton, Geo. Fine, Malchas Fine, Jack Lowe, Johnnie Wheeler, E. F. Campbell, Edwin Neutzier, Albert Ellis, Neil Smith, and the hostess. The meeting was adjourned and is scheduled to meet again on March 23, with Mrs. E. F. Campbell.

### FIRE AT NICHOLS HOME

No damage was done to the home when a kerosene stove exploded in the Jewell Nichols home here early Wednesday morning. After a quick run the Muleshoe fire department extinguished the blaze.

We Have The  
**LARGEST VARIETY**  
of  
**FLOWER SEEDS**  
Of Any Store In  
The West  
**McWHORTER'S**  
Phone 211

## LUZIER'S BEAUTY SERVICE

Available  
afternoons at the  
**FASHION SHOP**  
or at my home  
Mornings

**Mrs. Ernest  
Holland**

Home Phone  
256-W



**Congratulations**

**FFA MEMBERS  
AND  
4-H CLUB BOYS**

**—FOR SALE—**

1—15-FT. KRAUSE ..... \$525.00

1—H FARMALL, overhauled, guaranteed,  
with 2-row Lister & Cult. .... \$1350.00

1—Slightly Used FARMALL H with  
2-row Equipment ..... \$1650.00

DITCHERS — LEVELERS — LISTER BOTTOMS  
IRRIGATION TUBES, ETC.

**JOHNSON & NIX**  
**IHC AND OLDSMOBILE**  
**SALES AND SERVICE**  
PHONE 166.. MULESHOE & CLOVIS HIGHWAY

We Invite You To View The New Plymouth In Our ...

SHOWROOM FRIDAY

**COVIN MOTOR CO.**

Phone 627

Muleshoe

**CUB SCOUTS OF DEN 2 TO MEET FRIDAY P. M.**

All Cub Scouts of Den 2 are urged to attend a meeting at the home of Den Mother, Mrs. Daily Howell Friday afternoon at 2:30 o'clock. The dues for one year is \$1.00 which is to be paid at this meeting.

**CALIFORNIANS HERE**

Otto Kelton and family, and Miss Gertrude Been, of California, visited here last week with J. C. Kelton and other relatives. They were en route to Oklahoma for a visit.

**VISITING PARENTS**

Mrs. R. L. Jones and little daughter, Lovonne, of Albuquerque, are visiting here in the home of her parents, Mr. and Mrs. R. T. Tibbets.

**SUNDAY VISITORS**

Dave Aylesworth and family had as Sunday guests his brother, Gene Aylesworth and wife, of Floydada, and his sister-in-law, Mrs. L. N. Aylesworth and children, of Plainview.

**VISITOR FROM CHICAGO**

Mrs. Russ Morscheck of Chicago,

arrived Tuesday for a weeks visit with her sister, Mrs. Chester Anderson and family.

**LIBRARY ADDS TWO MORE NEW BOOKS**

Two more new books are in our library now. One is "The Cokesbury Game Book" by A. M. Dewey. It is for the public's use and should be very helpful. "The New Information Please Almanac for 1949" is the other new book. This book is a whole shelf of reference books in one volume.

**FWLW HOME FOR WEDDING**

Fuston McCarty flew home from school at A. & M. College last week to serve as best man at his brother, Weldon's wedding and visit his parents, Mr. and Mrs. Delma McCarty.

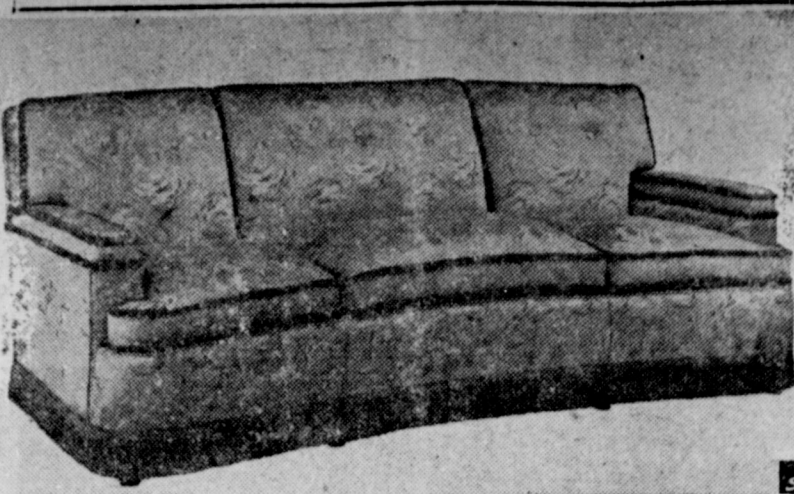
**VISITED SISTER**

Miss Ann Horsley visited her sister, Mrs. K. O. Pitner in Snyder over the weekend.

**WERE IN AMARILLO**

Mrs. Morris Childers and children and Mrs. H. P. Holland spent Friday and Saturday in Amarillo. Mrs. Childers visited her husband's aunt Mrs. F. E. Walker and Mrs. Holland visited her mother.

**FURNITURE FASHIONS** by Frances Ainsworth



GRAND RAPIDS, MICHIGAN — Illustrated — one of the fine upholstered pieces of furniture that proudly lives up to the Grand Rapids century-old reputation of truly quality furniture. The sofa, shown, was introduced at the January Market by Modernize Furniture Company . . . and was designed for adaptable use in both traditional and contemporary room settings. Piece is upholstered in beautiful Matelasse with a double Boucle trim, and has new foam rubber arms for extra comfort. The employment of the finest available materials, combined with the skilled workmanship of master craftsmen, makes furniture such as the sofa illustrated provide service and decorative beauty for a lifetime.

**\$10 Million Proposed For Soil Conservation Work In Texas**

AUSTIN, March 16.—During the next 12 months, 798,746,000 tons of topsoil will wash and blow off Texas.

It would cost a billion, 250 million dollars to ship this amount of soil from Temple to Galveston in 16,000 hundred-car Santa Fe freight trains. Lykes Brothers Steamship Lines would charge 95 million dollars to move the soil from Galveston to Havana in 8,967 ships.

These figures were given today by Representative J. A. Luedemann of Brenham, sponsor of legislation in the House that appropriates 10 million dollars as a capital fund for soil conservation work in Texas.

The money will be allocated by a five-man state soil conservation board to 175 soil conservation districts, there to be administered by district supervisors.

Supporting the appropriation measure is the Association of Texas Soil Conservation District Managers.

R. M. Boswell of Kenedy, representing the association in Austin, says that every penny of the 10 million dollars will go into actual work on the land, inasmuch as the state has already provided for payment of administrative costs.

Boswell emphasized that the money will be used as a revolving fund, to be kept intact as farmers pay for work done on their property.

"In other words," Boswell said, "the fund is of a permanent nature; it will not be necessary to ask the legislature for additional appropriations at every session."

The fund, Boswell asserted, is intended to round out the present soil conservation program by mak-



**TO BE SURE OF A FINE SEED BED**

A spike-tooth harrow is a very important tool, and it's important to select the right model for the job you want to do. We have a choice of models and sizes for all purposes . . . with quality construction in teeth, tooth bars, and tooth bar connections. Give us a chance to point out the superior features of MM peg-tooth harrows.



**FRY & COX BROS.**

A One-Stop Farm Service  
MINNEAPOLIS-MOLINE • WESTINGHOUSE APPLIANCES  
Muleshoe, Texas — Phone 35

**The NEW**

**54**

**COTTON PLANTING SEED NOW AVAILABLE**

The NEW Paymaster "54" is now available for the 1949 planting season — ready for farmers who want more profit from Cotton. This quick-maturing, high-yielding, better-staple-producing planting seed answers the demand for a variety that is tested and proved for West Texas growers. It is the result of scientific selection and painstaking experiments to develop a seed that will produce more money per acre planted.

Here's why the NEW Paymaster "54" is a money-making Cotton . . .

- **EARLY MATURITY**  
Of 25 varieties tested recently . . . "54" was first in percentage of crop harvested in a four-month period.
- **HIGH YIELD**  
In this same test, "54" was third among all varieties in yield per acre.
- **BETTER STAPLE**  
"54" ran 15/16" so 1 inch throughout West Texas, assuring a better price.
- **TESTED FOR DRY LAND**  
"54" has been proved successful for dry land farming as well as for irrigated Plains areas.

Be among those profit-minded farmers who demand a money-making Cotton planting seed—the NEW "54"; order your supply of the improved, state-registered "54" NOW.

IT PAYS TO PLANT PAYMASTER "54"

Sold through your ginster, your seed dealer, all branches of the Western Cotton Oil Co., and at Lockview Farm, Plainview, Texas.

**WESTERN COTTON OIL CO.**  
producers of Paymaster FORMULA FEEDS and SEEDS

**New Plymouth on Display**



Plymouth's new special deluxe is featured above. Brilliant new styling is combined with outstanding riding comfort, increased roominess, and sweeping mechanical improvements in the new line of Plymouth automobiles.

Completely redesigned, the new Plymouth has a longer wheelbase for a better ride and more road stability, but less front and rear overhang for easier parking and garaging. While the silhouette has been lowered and the width decreased, there is more head and leg room and seats are wider. Typical of Plymouth's many refinements is the ignition-starter combination, with which a turn of the key starts the engine.

The new Plymouths are sleek in appearance. New rear-end styling provides a graceful balance with the horizontal grille lines which emphasize the broadness of the front. Fenders which blend perfectly into body lines are nevertheless separate and detachable, thus avoiding sheet metal panels so costly to repair or replace.

The new Plymouth line includes nine distinct automobiles. Special deluxe and deluxe types are on a 118-inch wheelbase, one inch longer

than last year's. Special deluxe models are: four-door sedan, club coupe, convertible club coupe and station wagon. In the deluxe group are the four-door sedan and the club coupe. In addition, Plymouth will build three deluxe models on a brand new 111-inch wheelbase, a two-door sedan, a three-passenger coupe, and a new body type, the Suburban.

The 97-horsepower engine has improved performance and efficiency with a new design cylinder head which increases compression ratio to 7 to 1. A new chrome plated compression piston ring reduces cylinder wear and provides greater protection during the break-in period. There are improved oil rings for greater oil economy, while a newly-designed intake manifold induces quicker, smoother engine warm-up and produces faster throttle response.

Body styling which produces greater passenger room without excessive bulk also increases visibility. V-type windshields have 37 percent more area and provide excellent vision without distortion. Windshield wipers clear 61.5 percent greater area and the rear window is 35.4 percent larger.

We Invite You To See The New

**PLYMOUTH**

In Our Showroom

FRIDAY, MARCH 18

**ARNOLD MORRIS AUTO CO.**

MULESHOE, TEXAS

ing equipment and supplies available at a reasonable cost to operators of small farms.

Farmers who have limited resources frequently cannot themselves buy the equipment and supplies needed to do the soil conservation work on their land; nor is it economical for private contractors to bring in heavy machinery for a small operation, Boswell said.

By grouping small farms, however, and working out mutual problems on a watershed basis in each soil conservation district, it is possible to carry out the program efficiently, the association's representative added.

He urged the necessity for speed in getting the work under way, pointing out that:

"This proposed legislation will expedite the soil conservation program in Texas to the extent that \$10,000,000 made available to the districts now will be more effective than ten times the amount if delayed another ten years."

**Parmer County Livestock Show To Be Saturday**

The Parmer County Livestock Show will be held Saturday, March 19, at Friona. There will be classes for both light and heavy barrows, also light and heavy calves. There also will be classes for open gilts, all breeds, and beef type heifers.

Show officials are expecting that approximately 45 barrows, 18 calves, 15 beef type heifers, and 50 open gilts will be in the show.

We Have The  
**LARGEST VARIETY**  
of  
**FLOWER SEEDS**  
Of Any Store In  
The West  
**McWHORTER'S**  
Phone 211

At the end of the show the barrows and most of the calves will be offered for sale at auction. E. M. Hargrove, of the agricultural education department of Tech College, Lubbock will judge the show.

Members of the Parmer County Fair Association and Fat Stock Board of Directors are as follows: Dan Ethridge, Friona, Pres.; Hulle Honr, Friona, Sec.-Treas.; Clyde Hays, Black; Virgil Teague, Lazbuddy; Wendol Christian, Farwell; Floyd Schlenker, Friona; Levi

Johnson, Farwell; George Trimble, Bovina; C. M. Henderson, Farwell; Ex-officio members are: Robert Morton, Voc. Ag. teacher, Farwell; Elmer Berryhill, Voc. Ag. teacher, Bovina; J. T. Gee, Voc. Ag. teacher, Friona; and Ollie Liner, county agent, Farwell.

**TO CANYON AND AMARILLO**

Mr. and Mrs. Weldon McCarty and Mr. and Mrs. Don Fudge spent several days in Canyon and Amarillo on their wedding trip.



"Ugh! Smoke signal say heap loss power . . . heap loss wampum!"



The chief's right!

Telltale exhaust smoke from your car or truck means lost power . . . wasted oil and money.

Don't let smoke signals put the Indian sign on your pocketbook. Let us inspect your car or truck. If you need piston rings, we can install

**MOPAR Power Punch Piston Rings**

Factory Engineered and Inspected for

**CHRYSLER and PLYMOUTH CARS**



**COVIN MOTOR CO.**

PHONE 327

MULESHOE

Welcome To The Fat Stock Show . . . and Congratulations to our FFA and 4-H Club boys.

**WESTERN CLOTHES**

The **STETSON** Open Road

You'll like the smart lines of the Open Road, and you'll like its comfortable, light weight. Bust most of all you'll like the fact that it's a Stetson. See the Open Road today.

More people wear Stetson Hats than any other brand.



READY FOR ACTION . . . OR RELAXATION

In Our **Ranchwear**

In the saddle or at ease, here's ranchwear with assured comfort and good-looks. Tailored by famous H-Bar-C, known for ranchwear at its best . . . in finest fabrics . . . with the trim, well-fitting lines and beautiful details you've been looking for. And they'll take plenty of wear! Ask to see our shirts, frontier pants, and jackets by H-Bar-C.



**NOCONA BOOTS**

A perfect boot to go with your western clothes, made of fine leather and workmanship. Let us fit you up . . . \$32.50



**COBB'S**

## Social Security Man Here March 24

Elliot W. Adams, Social Security Administration Representative, will be in Muleshoe at the Post Office at 9:00 a.m. on March 24, 1949 for the purpose of answering any questions you may have on social security! discussing possible benefits and taking claims from persons who seem to be entitled to benefits; and taking applications for social security account number cards.

When a veteran of World War II dies within 3 years after his discharge, social security benefits may be paid, if certain requirements are met, even if the deceased had never worked in social security employment.

Try Journal Classified Ads.—They buy, sell and trade.

FOR  
**Refrigeration  
Sales & Service  
and HOUSE WIRING**

Call 272-W

**PERKINS'  
Refrigeration  
Service**

BOX 1025

## MULESHOE FUNERAL HOME

LOYD ROBERTS

FOR AMBULANCE SERVICE CALL  
47

## ELECTRIC SERVICE

IRRIGATION MOTOR HOOK-UPS & REPAIRS  
REA HOUSE WIRING A SPECIALTY  
FOR ANY ELECTRICAL NEEDS

Contact

**MULESHOE ELECTRIC**

SPUD THOMAS

First Door East of Magnolia Wholesale

## Interior Models... by Reno



Swinging, sliding and folding doors have been used for hundreds of years to enhance room interiors. Combining beauty and utility, science and construction engineers have produced another modern miracle—a door that folds like an accordion, yet meets all building requirements through its flame-proof coated fabric. Modernfold doors have many unique uses in the home. Here we see it employed to make an even more cozy nook of the fireplace area of this living room. Leading interior decorators recommend these folding doors or walls in remodeling as well as new home construction. There's a wide variety of 28 colors, chosen to match or harmonize with popular home furnishings in all price ranges and with any interior color scheme.

## Farmhouse Remodeling Requires Much Thought And Prior Planning

COLLEGE STATION, March 14.—Before you get too deep into plans for remodeling an old house make sure first that the house

was well built and is still sound, says Mrs. Bernice Claytor, extension specialist in home management of Texas A. & M. College.

Do some checking before you decide to remodel, advises Mrs. Claytor. Examine the house from foundation to roof and estimate the needed repairs and their cost. Check the location from the standpoint of good drainage, protection from cold winds which make a house hard to heat, protection from flooding during heavy rains, good sewage disposal and convenience to the highway. Don't forget the water supply. Water should be plentiful and tested for safety.

If the house and its site pass inspection, and remodeling seems a wise investment, USDA housing specialists say it's wise to give as much thought to remodeling plans as you would to planning for a new house. Mrs. Claytor points out.

She suggests that careful attention be given to the following points: Plan for enough rooms to take care of your family's needs. Well located doors and windows will help solve the lighting and ventilation problems in the house and don't forget a closet near the back door for the men's work clothes.

Are house entrances convenient to the drive? Are all rooms easily reached from the back door? Are work and living areas free from traffic? Do bedrooms and bath open from a hall and are the halls wide enough to allow for moving furniture?

Kitchen and work areas should be arranged to save labor and unnecessary steps. Allow working space for more than one person. Plan plenty of storage space for supplies and equipment where they are used and a place for the men to wash other than the kitchen sink.

The dining room should be convenient to the kitchen serving area. Be sure there is seating space for everyone regularly served and for company. Provide storage space for dishes, silver and linen.

The living room should be large and comfortable. In it should be equipment and storage for reading, writing, studying, farm business, sewing, games, hobbies and entertainment.

The sleeping space should be sufficient to allow for separate rooms for parents, boys and girls... not more than two persons per room. Is there space for overnight guests or provisions for the aged and ill? Plan plenty of storage space for clothing and bedding.

Is the water supply plentiful and safe? Plan an adequate sewage disposal system. Is there hot and cold running water in the kitchen, bathroom and laundry? Have you planned for enough well-located lighting fixtures, switches and wall plugs?

From the plans you have made, do you think the house will appear pleasing both inside and out? Does it have good proportions and

Read The Want Ads Every Week.

## Water Well Drilling

California Irrigation Pumps  
Estimates on  
TURN KEY JOBS

Any Size Hole up to 20 Inch

50 Yr. Experience

3 Machines In Operation

ALL WORK GUARANTEED

**K. & L. Drilling Co.**

E. H. Kennedy - L. D. Lancaster

Muleshoe, Box 612 Ph. 268-W

## Shriners Clinic Set For April 30

Plans have been completed for Khiva's second annual orthopedic diagnostic clinic, according to announcement by Mr. Bill Collins Potentate's Aide for Muleshoe from Khiva Temple.

The clinic will begin at 9 o'clock in the morning, Saturday, April 30, in Khiva Temple, Fifth and Fillmore, Amarillo, Texas, and continue through the day with orthopedic specialists conducting the examinations. Mr. Paul M. Clauser is clinic chairman, a position in which he served for the 1948 clinic. At that time 77 children were examined.

simple lines?

Now that plans are made, will the cost of remodeling be less than for a new building?

If you can answer "yes" to most of these questions, says Mrs. Claytor, your planning is good. If you "yes" only a few, try to improve your plans before starting the remodeling job, she concludes.

## NOTICE

Before You Buy A Radio See The New

**ZENITH'S**

At

**Spence Radio**

**Shop**

ALSO APPLIANCES FOR YOUR NEEDS

HEADQUARTERS For All Kinds Of RADIO BATTERIES

And

DEPENDABLE SERVICE On ANY MAKE RADIO

Phone 270-W

THE MULESHOE JOURNAL, Thursday, March 17, 1949

"Anyone interested in having their children attend the clinic is asked to contact me at once," Mr. Collins stated. "Children under 15 years of age are eligible for the clinic, regardless of race, creed, or color."

Application forms must be filled out for eligible children. There is no charge for the application or the examinations. Lunch will be served at the Temple at noon for the children, their parents or

guardians, and all those assisting with the clinic," said Mr. Collins.

High winds have been known to reach a world-record force of 233 miles an hour around Mount Washington, N. H., according to the National Geographic Society.

The wood of the willow tree is more durable in water than any other common timber.



**FUTURE FARMERS  
OF AMERICA**  
and  
**4-H CLUB MEMBERS**

## CONGRATULATIONS

WELCOME

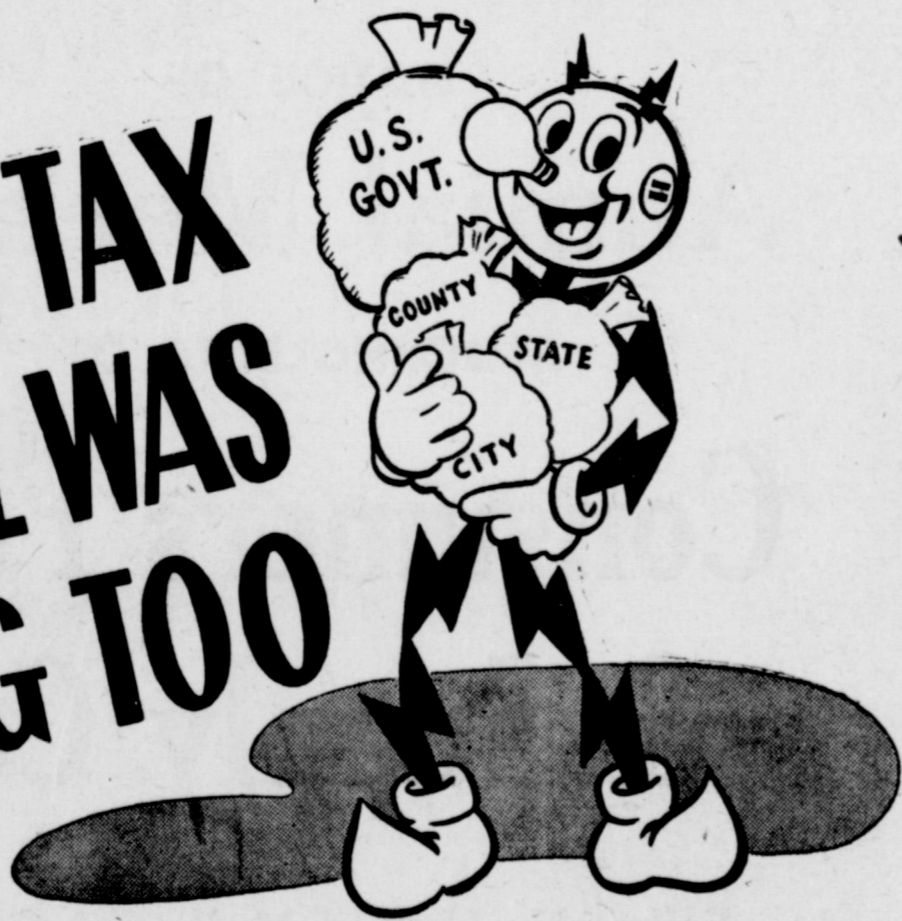
TO THE

**MULESHOE  
FAT STOCK SHOW**

**MULESHOE  
STATE BANK**

Member FDIC

# OUR TAX BILL WAS BIG TOO



IN MANY TOWNS we serve, Southwestern Public Service is the largest tax payer. Just as many other tax paying citizens we pay each year municipal, county, state and federal taxes.

Most of these tax bills have gone up in the past several years as tax rates have risen, and as our investment in equipment has increased.

Despite increased expenditures for taxes, wages and equipment, your Public Service Company is happy that it is still able to provide dependable electric service today at lower cost than ever before.

**SOUTHWESTERN  
PUBLIC SERVICE  
COMPANY**

24 YEARS OF GOOD CITIZENSHIP AND PUBLIC SERVICE

## "We get faster handling of larger payloads

...with our new 145-horsepower Ford Model F-7 BIG JOBS!"



Ford Model F-7 Big Job shown has Gross Vehicle Weight rating of 18,000 lbs., Gross Combination Weight rating of 35,000 lbs. as a tractor.

"THE ACTUAL operation cost for our fleet of Ford F-7 Big Jobs is the same as the two-ton trucks they replaced, but we get faster handling of larger payloads," reports Mr. H. B. McCuiston of Beaumont, Texas. "We find our new 145-horsepower Ford Model F-7 Big Jobs are more versatile, more capable. They are far superior to the two-ton trucks."

Sensational reports on the new F-7 and F-8 Ford Big Jobs are coming in from everywhere. Men who know trucks claim 6,000 miles per month, for months on end, with no time out... gross loads of 50,000 lbs.... power that leaves other trucks eating dust... passenger-car type of driving ease and comfort... gasoline economy that even smaller two-ton trucks cannot excel on comparable runs. Come in and let us give you more facts on the Mr. Big of big-time trucking—the Ford Big Job.

- ★ Brand New 145-Horsepower Ford V-8 Truck Engine
  - ★ New Heavy Duty QuadraX Axles; Single-Speed and Two-Speed
  - ★ Big Tires; up to 10.00-20 on F-8, up to 9.00-20 on F-7
  - ★ New Heavy Duty Five-Speed Transmissions
  - ★ Big Rear Brakes, Power Actuated, 16-in. by 5-in. on F-8
  - ★ Built and Warranted for the following ratings:
- |              | Gross Vehicle Weight | Gross Train Weight |
|--------------|----------------------|--------------------|
| '49 FORD F-7 | 19,000 lbs.          | 35,000 lbs.        |
| '49 FORD F-8 | 21,500 lbs.          | 39,000 lbs.        |
- ★ Nationwide Service From Over 6400 Ford Dealers

**Anything Goes IN...**  
(Over 139 Models)

**FORD** *Bonus Built* **TRUCKS**



# Motor Co.

Phone 33

Muleshoe, Texas

S. M. U. Choir To Appear Here Tuesday Afternoon, March 22

Hilltop News ...

Letters To The Editor ...

MULESHOE LAND

● 160 A., all in cult., good 4-rm. house, REA, mail, school route, clean, the best of tight red cat claw land, soon be on paved road, none better, in irrig. belt, level, only \$165 A.  
 ● 45 A., all in cult., 2-rm tile house other out bldgs., irrig. well, water well & mill, 18 A. alfalfa, sell or trade \$200 A.  
 ● 40 A., all in cult., on Plainview hiway, shallow water, dandy location for suburban home, 4 miles out, \$125 per A.  
 ● 160 A., all in cult., no imp., irrig. belt, good red cat claw land, level, \$75 A.  
 ● 320 A., good new land, 165 in cult., bal in good grass, irrig. belt, has water well, mill, and corrals, \$58 per A.  
 ● 160 A., all in cult., good land pump setting will be 100 ft., plenty water, poss. \$65.  
 ● 320 in edge of New Mexico, due west of Baileyboro, 5-rm. house partially mod., plenty good water at 35 ft., stanchions for 7 cows, other bldgs., 275 in cult., tight land, grow anything, \$40 A. and poss. if bought next two weeks, Big Loan.  
 ● One of the best business locations in Muleshoe, almost a quarter of a block, north of Court House, on pavement, will sell or trade, see me.  
 ● Nice Duplex, 6 rms., two baths, tile floors, close to new H school, best rental prop in Muleshoe, \$5500.00, with \$1500.00 down.  
 ● 3000 Acre Ranch, on pavement, 7 or 800 acres cultivated land, 2 sets imp., lots water, a dandy little ranch. \$20.00 per A.

Our Honor Roll ...

Old subscribers who have renewed their subscriptions for the Journal are:

- C & H Chevrolet, City
- Zeffie Childress, City
- Rev. J. P. Cole, McAdoo
- Jack Cox, City
- E. N. Darsey, Star Rt. 2
- R. C. Day, Goodland.
- J. A. Goss, Rt. 1
- Mayor F. W. Greene, Rt 1
- R. O. Gregory, Rt. 1
- Allen Guinn, City
- Cecil Harvey, City
- Mrs. C. H. Holdeman, St. Rt. 2
- W. S. Menefee, Rt. 1
- W. L. Myers, Farwell
- L. E. Pollard, Enochs
- Mrs. M. V. Robertson, Rt 1
- Mrs. Lois Shook, City
- Mrs. Vernice Snyder, City
- Mrs. Alex Steinbock, Rt. 1
- J. T. Toombs, Morton.
- W. H. Whalin, City
- Coy White, Rt. 1

New Subscribers:  
 Edna Hart, City  
 F. M. Hawkins, Rt. 1  
 H. H. Homsley, Goodland  
 Owen Jones, City  
 T. P. Kittrell, Rt. 2  
 Ed Myers, City.

Many Conditions Affect Poultry Flock Breeding

There are several conditions which can affect the fertility of a breeding poultry flock. Experts say it is a good plan to wait for a week or 10 days after males have been put with the flock before starting to save eggs that are to be used for hatching.

Weather conditions, vigor of males, size of flock, condition of layers, and number of males are some of the important factors.



Southern Methodist University's 38-member mixed choir will sing at Muleshoe High School Gym Tuesday, March 22. The program will begin at 2:00 p. m. There is no admission charge.

Directed by Bernhard Tiede, assistant professor of voice in the SMU School of Music, the choir is composed of 16 men and 22 women students.

On annual spring tour, the group will visit at least 13 other Texas and New Mexico towns before completion of its schedule March 26.

In Texas, performances will be given at Childress, Pampa, Amarillo, Plainview, Lubbock, Littlefield, Muleshoe, Odessa, Dallas, San Angelo, and Brownfield.

New Mexico towns on the itinerary are Clovis, Roswell and Carlsbad.

Each year the choir performs in a different section of the state. Last spring's tour led the organization to Texas' Rio Grande Valley towns.

Choir officers are Carey May of Lubbock, president; Gloria Turquette of Dallas, vice-president; Lee Clark of La Feria, secretary; Martha Harred of Sulphur Springs, treasurer; Weldon Wendland of Temple, publicity manager; Gene Fields of Santa Fe, N. M., librarian; and Walter Wilson of Dallas is accompanist.

Mrs. Ellen Clare Gillespie Kirbs, Field Secretary at SMU, is in charge of arrangements and will accompany the group.

Here's another week gone and not much has happened.

Mr. and Mrs. U. C. Blair spent Sunday afternoon with Mr. and Mrs. Donald Kellough south of town.

Mr. and Mrs. Norris Hatter went to New Mexico, Saturday night with their parents, they returned home Sunday afternoon.

Mr. and Mrs. J. D. Middlebrooks went to Amherst Sunday morning. Alene Spivey, Edward Spivey, Jerry Spivey and Lula Belle Blair went bicycle riding late Sunday afternoon. They enjoyed their ride except a few falls.

Well all the news has been given till next week.

Mr. Muleshoe:  
 I saw in your paper of the sale one hundred years ago. The only thing in that sale the people could use now would be 32 gallons of whiskey and the brandy and the 40 gallon still. Can you deliver the goods?  
 As ever,  
 E. A. Fowler,  
 Goodland, Texas.

Try Journal Classified Ads.— They buy, sell and trade.

BEAVERS - HANOVER & DAY  
 Bank Bldg. - South Door

SEE — Phone 97

**BOBO INSURANCE AGENCY**  
 Pat R. Bobo, Owner  
 For Your Insurance Protection  
 Better To Have And Not Need  
 Than To Need And Not Have.

YOU ARE INVITED  
 TO A  
**P-A-R-T-Y**

WATCH THIS SPACE

Grudge Battle Carded At Local Gym Between Weaver And Kasadoki Saturday

A return bout has been matched for the local wrestling fans at the high school gym here Saturday night between Buck Weaver and Alex Kasadoki (the Russian Lion).

This bout will be a grudge battle as Weaver was awarded the decision here last Saturday night in their first appearance here after Kasadoki had hit the referee, who in turn disqualified him.

The fans only got to witness part of the fight between Weaver and Kasadoki as they went to gether again in the dressing room after leaving the ring.

Since this is a grudge fight it has been carded as the main attraction on the double main event here Saturday night.

In the first bout of the double main event will see Dory Funk pitted against the man who refereed the two bouts here last Saturday night, George Overhuls.

Overhuls is a local fighter (that is he is from Amarillo) and has been making a big hit with wrestling fans over this area for the past several months.  
 Dory Funk fought to a draw

here last Saturday night against Bauk Estes who substituted for Killer Karl Grey who was called away on an emergency a short time before the fights were to begin.

These fights should create a lot of attraction as one of the fights is a grudge battle and the other is between a Texan and a Hoosier. Referee for the bouts next Saturday night will be Olen Barton another Amarillo man.

The JayCees are sponsoring the wrestling bouts being put on each Saturday night in the local high school gym and they believe that the area people were well satisfied with the fights here last Saturday night and are all looking forward to this big event every Saturday night.

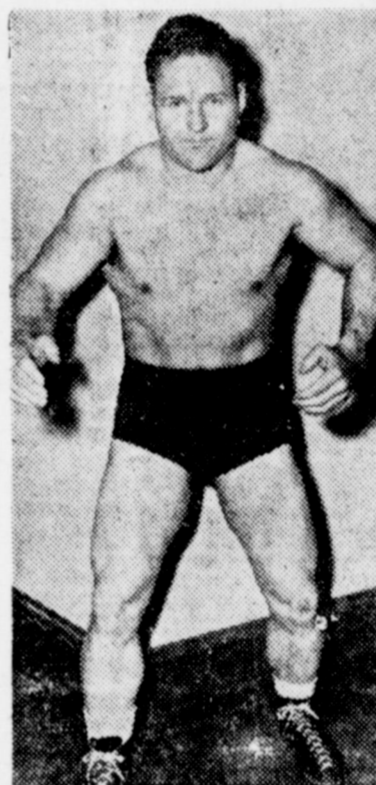
Plowing Under Organic Matter Aids Oxidization

Plowing under some organic matter in the field or garden is a good way of disposing of crop residues because the microbes "burn" or oxidize them.

They do this slowly, yet the process of microbial combustion of such materials may have disastrous effects on a crop planted soon after plowing, in which case it is said the crop was "burned out."

Microbes need more than energy "go" foods. They need the "grow" foods, too, just as humans do. They do not demand that the nitrogen be given them in the complete proteins or the more complex compounds of this element as humans do; nevertheless, they are just as exacting in their needs for nitrogen, at least, in its simpler forms.

Dr. William A. Albrecht, chairman of the department of soils, University of Missouri college of agriculture, in discussing how soil microbes get their food, points out that they get it before growing crops get theirs.



George Overhuls

FOR  
**CAR**  
 AND  
**TRUCK**  
**Service**

(ALL MAKES)

COME  
 TO  
 US

C. & H. Chevrolet

PHONE 12 — MULESHOE

**3 BIG DAYS  
 IN MULESHOE**

Under Auspices Muleshoe Roping Club

FRIDAY, MARCH 25, 8:00 P. M.

- TEAM ROPING ..... \$50.00
- BAND CONTEST ..... \$50.00
- WOMEN'S BARREL RIDE ..... \$25.00

SATURDAY, March 26, 11:00 to 8:15

Merchants of Muleshoe To Award Prizes At  
 11 A. M. and 5 P. M.—\$400.00 in Prizes & Mdse.  
 BAREBACK RIDING—2:30 p. m.—Roping Arena  
 American Legion Lot Award, 5 p. m.—Main St.  
 JayCees Wrestling at 8:15 o'clock

SUNDAY, March 27, Starting 2:30 P. M.

- Straight Brahma Bull Riding ..... \$50.00
- TIE DOWN ROPING ..... \$50.00
- RIBBON ROPING ..... \$50.00

NO ENTRANCE FEES

3 DAYS OF PLEASURE AND PROFIT  
 —Come And Be With Us—

\$732 Turkey



Elwood Swanson of Turlock, Calif., with his grand champion turkeys at the Far West turkey show. The 24-lb. hen on the left was grand champion and sold for \$30.50 a pound. The 41-lb. tom on the right was reserve grand champion and sold for \$10.75 a pound. The birds were finished on a grain and mash ration to which pelletized milk product was added.

Livestock Sanitation Gets Credit for Avian TB Curb

Professor F. E. Muschel of the University of Nebraska poultry husbandry department credits the work of the U. S. livestock sanitation association with doing much to reduce losses from avian tuberculosis. The livestock sanitation group comes into the picture, he explains, because avian tuberculosis was quite often found responsible for condemnation of hogs. Swine retentions for tuberculosis are lower.

NOTICE OF

**Annual Meeting**  
 STOCKHOLDERS OF  
**Consumers Fuel  
 & Supply Co.**

Fellowship Hall of Methodist Church  
 Muleshoe, Texas

WEDNESDAY, MARCH 30, 8:00 P. M.

TWO DIRECTORS TO BE ELECTED

The Following Have Been Nominated

- DENNIS WILLIAMS
- GORDON MURRAH
- D. B. HEAD
- R. E. BUHRMAN

G. A. Sahli, auditor, will give the financial report.  
 4% Interest To Be Declared On Preferred Stock

REFRESHMENTS — DOOR PRIZES  
**COME AND BRING THE FAMILY**