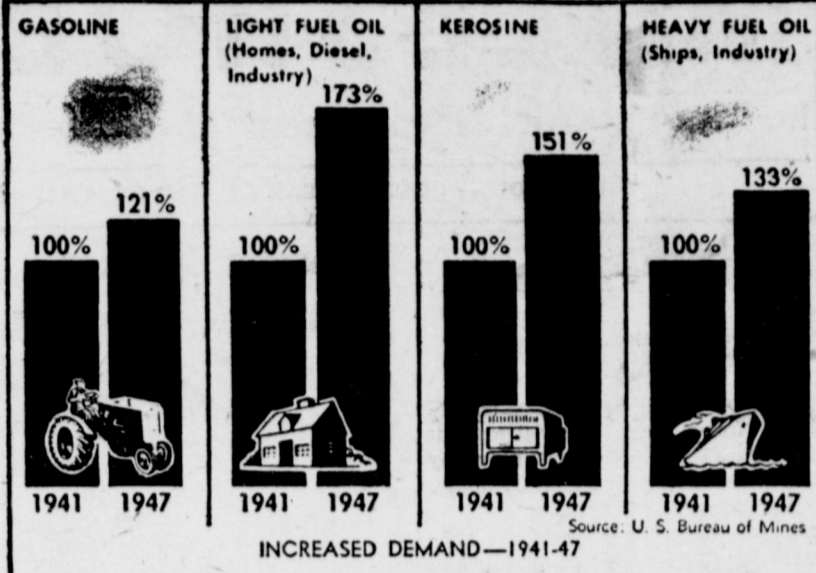


Production Of 2,4-D Is Boosted For Battle Against Weeds In Crops

With some 27 million acres of winter wheat in six Central and Southern Great Plains states endangered by weeds, the Sherwin-Williams Co. today announced that it is immediately increasing production of alkyl ester of 2,4-D chemical weed killer to help avert what

Farm Plays Major Part In Upping Nation's Demand For Oil Products



Since 1941, the wide and varied use of oil has increased the demand for every major oil product. One big factor in creating this demand has been the rapid mechanization of the farm during war years. As the heating season closes, the need for gasoline, Diesel and kerosene in ever-increasing quantities for wide use on the farm is in the spotlight.

EVER-INCREASING food production is creating a new major demand for oil which the companies in the oil industry are working on a twenty-four hour, seven-day a week basis to meet, the Oil Industry Information Committee declared this week.

In a statement analyzing current demands for oil as shown by figures recently released by the United States Bureau of Mines, the Committee explained that the oil industry is spending \$4,000,000,000 before the end of this year on a two-year postwar program to expand facilities that are now being pushed to the limit by a record demand.

America is using oil at a rate per person 28 times as great as that of the rest of the world with the demand for every major oil product up. The farm has become a major factor in this consumption as mechanization has skyrocketed, it added.

During the abnormally cold winter just past, when oil production was shifted to produce a maximum of fuel oil, not only was the output of the oil used for heating upped 13 percent but overall increased output of gasoline 1 percent, the Committee said.

To utilize this increased output of gasoline, there are on the farms this year 3,000,000 tractors operating 15,000,000 implements, almost triple the number of tractors that existed in 1935, it explained. Since that year, it said, the average rate of increase in farm production per year has been seven times what it was formerly. From the time that records start in 1910, farm production increased six tenths of one percent per year on the average up to 1935. Since then it has been increasing 4 percent per year on the average, the committee stated.

There are, it said, 1,880,000 trucks in service on the farms, an increase of 62 percent since 1941 and of 21 percent since the war, while the number of farm automobiles is 4,500,000, also an increase of about 20 percent since the war and oil now does varied jobs from hatching chickens to pumping water.

In 1947, as compared with the prewar peak in 1941, overall increases in demand for oil products to which the farm contributed were gasoline, 21 percent; light fuel and Diesel oil, 73 percent; kerosene, 51 percent; and heavy fuel oil of the type used by industry and ships, 33 percent, the Bureau of Mines figures show.

extremely fast. Dr. Witman asserted that while the evidence of weed infestation is already apparent, the real danger will come in a matter of weeks when the weeds emerge after spring rains.

Weeds which are likely to be in greatest abundance are broad-leaved winter annuals such as wild lettuce, Casada fleabane and various mustards; also broad-leaved spring annuals, including pigweed, lamb's quarter, sunflowers and Russian thistle. All of these weeds can be controlled by alkyl ester of 2,4-D, Dr. Witman said. Generally, annual weeds are killed most readily by 2,4-D when they

are small. Dr. Witman recommends spraying in early spring when the grain stand is about five inches high or after tillering is complete. Spraying grain after it has headed may be warranted if weeds such as bindweed, sunflower, pigweeds and wild lettuce become a serious problem and might interfere with harvesting. In such instance, a dosage as high as one and one-half

pints of alkyl ester of 2,4-D in five gallons of water per acre may be required to achieve satisfactory results.

HERE FROM OKLAHOMA
Mr. and Mrs. W. B. Brown, of Oklahoma City, visited here a part of last week with his sister, Mrs. C. D. Julian and family.

UNKLE HANK SEZ

COME TO THINK OF IT-- I DON'T BELIEVE I EVER HEARD OF A THIEF STEALIN' SOMETHING I WORK WITH.



Come to think of it we got some pretty vital machinery for sale—

- 1—NEW MODEL C FARMALL WITH 2 ROW CULTIVATOR. THIS HAS THE FAMOUS FINGER TIP CONTROL HYDRAULIC LIFT.
- 2—NEW HAY RAKES.
- 2—NEW McCORMICK-DEERING MOWERS.
- 2—LAND LEVELERS.
- 2—DITCHERS.
- 1—1942 USED 8 CYL. PONTIAC, GOOD SHAPE.
- 4—POWER-LIFT TYPE GODEVIL SLEDS & SEVERAL AUTOMATIC MARKERS.

JOHNSON & NIX
IHC AND OLDSMOBILE
SALES AND SERVICE
ONE 166.. MULESHOE & CLOVIS HIGHWAY

CHAMPION DESIGNER

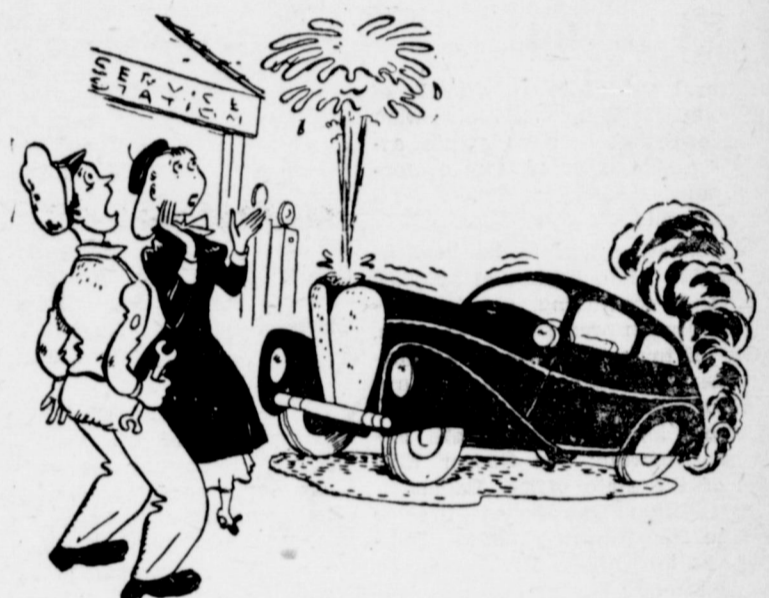


Miss Louise Temple of Dallas captured highest honors at the Southern Methodist University School of Design. A classic one-piece frock of white cotton pique she created was selected as the best fashion design from more than 1,000 sketches made by students at the school, sponsored by the Dallas Fashion and Sportswear Center.

ELECTRIC SERVICE

Anywhere — Anytime
Motor Hook-ups and Repairs
REA House Wiring A Specialty
FOR ANY ELECTRICAL NEEDS
Contact

O. H. Morris Spud Thomas
at C. L. Lenau Lumber Co.



IT NOT ONLY SMOKES—IT SPITS TOO!

No need to worry when your car acts real ornery! Just drive in here and watch us teach your car good behavior. We'll service it from bumper to bumper... quickly, expertly. Drive in!

OIL **GULF** GAS

C. W. GOSS AUTO CO.
Phone 53 Muleshoe, Texas

BYRON JACKSON PUMPS

Atlas Portable Overhead Irrigation Equipment

F. M. DENTON
PUMP COMPANY

Just West of Angeley Yard Phone 163-J

some experts, foresee as a possible catastrophe for thousands of wheat growers.

Nearly half of the 860,500,000-bushel wheat crop which the Department of Agriculture predicts for this year is produced in the area involved—a broad belt extending from South Central Nebraska, across Central and Western Kansas, Central and Western Oklahoma, the Panhandle of Texas and into Eastern New Mexico. The otherwise bright crop outlook, it is pointed out, could be severely upset by heavy wheat losses due to weeds.

Wheat in the area is unusually late this year because of delayed germination resulting from dry weather last fall. At least 40 per cent of the wheat acreage did not emerge until November 21 and much of the remainder did not germinate until January and February. Wheat stands in many sections are thin and spotted and could easily be overcome by the weeds between now and harvest time. Dr. E. D. Witman, director of fundamental research of the Sher-

win-Williams Agricultural Chemicals Division, asserted that the company's accelerated output of 2,4-D will make it possible for more wheat farmers to take full advantage of the use of this chemical weed killer in the present emergency. He further emphasized that a critical shortage is likely to develop due to increasing demands for 2,4-D products.

"Most of the wheat crop can certainly be saved from weeds if farmers will use 2,4-D judiciously," he said. "It is simply a matter of applying the proper dosage at the proper time."

The use of alkyl ester of 2,4-D was proven safe and practical last year on more than 50,000 acres of corn and some 500,000 acres of wheat and other small grains, Dr. Witman said.

Low-Dosage treatment—using as little as a half pint of alkyl ester of 2,4-D in five gallons of water per acre—has eliminated the obstacle of limited water supply where large acreages must be treated. Airplane spraying and ground spraying using the low dosage method are equally effective and are

Farm Loans

DRY LAND — IRRIGATED LAND — RANCH

L. S. BARRON
Representative
Kansas City Life Ins. Co.

FOR Refrigeration Service and Refrigerators

Call 272-W
BOX 1025
PERKINS'
Refrigeration Service

Spring's In the Air ...

PUT "SPRING" IN YOUR CAR!

—by having our expert mechanics perform these important services:

- Change Oil
- Lubricate
- Drain, Flush and Refill Radiator
- Adjust Clutch, Brakes
- Check and Align Front Wheels if necessary

Your Service Headquarters ...

C. & H. Chevrolet Co.

BLOCK ASSEMBLIES and MOTOR ASSEMBLIES

Muleshoe Texas Phone 12



MONDAY MAY 3 ONLY

Play Suits \$1.98

Gloves All Colors \$1.00 pr.

Nylon Hose, Reg. \$2.49 Sp. \$1.79

Legant Girdles, Reg. 14.98, Sp. 8.98

Blouses, Reg. \$7.95 Sp. \$4.75

Reg. \$3.98 Sp. \$2.50

THE DIXIE LEE SHOP

Hattie Jennings

Phone 234-J Muleshoe, Texas

Get Your Refrigerator While They Are Available

REFRIGERATORS

Electric and Butane

BREAKFAST ROOM SUITES

Blond and Chromium

DINING ROOM SUITE

9-Pc. Walnut

Custom UPHOLSTERING Materials

NEW McCORMICKS USED FURNITURE

D in five
may be
actory re-

own, of
e a part
er, Mrs.



Today's Price
REGULAR OR
DRIP GRIND

49c
Lb.

Give your House that Sparkle!
WITH OUR EASY
CLEANING AIDS

SAVE MONEY
By Buying!
COUPON BOOK

\$10 Book for \$9.00
\$5 Book for \$4.90

No. 2 Can
TOMATOES 12 1/2c

No. 2 1-2 Can
TURNIP GREENS 10c

Libby's No. 2 Can
TOMATO JUICE 14c

SUDS Lge. Box
MARVENE 12 1/2c

Cottage Can
SARDINES 12 1/2c

Alma No. 2 Can
NEW POTATOES 14c

Dromedary Blended 46 oz.
ORANGE JUICE 25c

Modart Jar
SHAMPOO 49c

Tobacco Can
PRINCE ALBERT 10c

Scott
TOWELS 15c

Pet or Carnation Lge. Can
MILK 14c

Baby 13 Ozs.
FORMULAC 23c

Houston Club 12 Ozs.
GINGER ALE 5c

Peerless No. 2 1-2 Can
SAUERKRAUT 15c

Lge. Box
Vel 29c

Comstock Sliced No. 2 Can
Apples 17c

Libby's 2 Cans
BABY FOOD 15c

School Day No. 2 Can
PEAS 12 1/2c

Windmer's Fancy Pt.
GRAPE JUICE 23c

Jello 3 Pkgs.
PUDDING 24c

Fresh Dorman No. 2 Can
BLACK EYE PEAS 15c

Dorman No. 2 Can
PINTO BEANS 12 1/2c

White 1-2 Gal.
KARO 61c

2 Lb. Bag
RAISINS 30c

WALDORF Roll
Toilet Tissue 8c



Full Dressed & Drawn Lb.
FRYERS 69c

Pork Shoulders Lb.
ROAST 49c

WILSON PURE PORK LB.
Sausage 43c

Armour's American 2 Lb. Box
CHEESE 95c

Salt No. 1 Lb.
BACON 36c

Green Lge. Bunch
ONIONS 7 1/2c

Lge. Bunch
RADISHES 7 1/2c

Fresh White Lb.
SQUASH 7 1/2c

Sunkist Lb.
LEMONS 12c



California Green Stalk
CELERY 15c

Golden Fruit Lb.
BANANAS 15c

Everlite 25 Lb. Bag
FLOUR \$1.69

Pure Armour's 3 Lb. Carton
LARD 75c

Brooks 12 C
CATSUP

Hallmark 4 O
COCOANUT 19c

Schillings 1-4 Lb
TEA 23c

Pink No. 1 T
SALMON

Krispy 1 Lb.
CRACKERS 25c

Marshall No. 2 Ca
HOMINY 10

Texas 46 Ozs.
Grapefruit Juice 15c

Santa Clara, in syrup No. 2 1-
APRICOTS 25c

Franco American No. 1 Can
SPAGHETTI 15c

Mixed No. 2 Can
VEGETABLES 10

Post Box
RAISIN BRAN 15c

World Over
Peach or Apricot
PRESERVES 4

C.H.B. Sour or Dill
PICKLES 37c

Denton Crushed
PINEAPPLE 15c

C & H Pure Cane 5 Lbs.
Sugar 42c

Friday & Saturday SPECIALS



We Buy Fresh Country EGGS

THURSDAY, APRIL 1

**Production
Battle Ag**With some 27 million
winter wheat in the
Southern Great Plains
dangered by weevil

· 30 ·
MINUTES

**Yes, In Only 30 Minutes, We'll Do
THE FAMILY WASH -
and on the Average For Only 90c !**

WE FURNISH THE SOAP — DRYING TAKES A LITTLE LONGER — COSTS A LITTLE MORE

REST in cool comfort while our automatic Bendix machines do the work—do the family shopping or make a social call. In 30 minutes your week's laundry job is done—your clothes are ready to take home.

All we ask is that you separate the colored or work clothes from the white.

Our automatic Bendix laundry is modeled after those of the city—Muleshoe takes another step in the direction of progress with this institution.

Bring your children—we have playpens for them. Our building is air conditioned and we have clean, sanitary restrooms. You will enjoy your visit with us!

Unless there is a large family, our service will cost only 90 cents. We furnish the soap. And of course the dryer takes slightly longer and costs slightly more. We are now open for service—and we invite you to visit our new plant, located on a paved street in Muleshoe where there's plenty of parking space.

No Fuss . No Bother . No Work !

NOW READY FOR SERVICE

BENDIX LAUNDRY

James and Bill Case, Owners

Muleshoe

Phone 343 For Appointment

Texas

Letters To The Editor

San Angelo, Texas
April 20, 1948

Muleshoe Journal
Muleshoe, Texas.
Dear Mr. Editor:

I want to express my appreciation for the nice write up and the hearty invitation you gave me and my family to return to Muleshoe. It makes a fellow feel good to receive such invitations.

But there are a few things in your write up I would like to have explained. You spoke of my good behavior. I would like to know who is spying on me to know about

my behavior. Would like to know if it is Clay Beavers, Ray Edwards or Clyde Bray. Will say if it is either one of them or all three of them, you can't rely on them! For I or any one else could get away with murder with those guys. They are sure tough.

I also resent the statement that I was exiled in San Angelo, the Sheep country.

I want to tell you the biggest hearted people that live are in Angelo. And I don't think you people have very much appreciation for what other people do for you. For instance, if we had not furnished you with good wool blankets last winter you folks would have all frozen to death.

And we have been almost doing without rain to let you folks have plenty to raise good crops.

Now don't you think you should retract your statement about my being in exile?

Thanks again.

Yours for a bigger and better Muleshoe,
H. H. Carlyle.

IF YOU'RE GOING PLACES, IT AIN'T HOW MUCH GAS YOU GOT BUT HOW YOU STEER



RENDERING PLAINVIEW COMPANY

FOR FREE REMOVAL OF DEAD STOCK CAU

Muleshoe Phone 115

FAST SANITARY SERVICE

The Senior Class of Muleshoe High School

Presents

"The Absent Minded Professor"

High School Gymnasium

April 29 & 30

8 P. M.

Admission:

General Adm., 25c & 50c

Reserve Seats, 75c

LOTS OF LAUGHS — LOTS OF FUN

At the Churches



Schedule of Services

CHURCH OF CHRIST

Ebb Randol, Minister

Bible Study	10 a.m.
Preaching Service	11 a.m.
Communion Service	11:45 a.m.
Preaching	8 p.m.
Ladies Bible Class, Wednesday	3 p.m.
Mid-Week Services	8 p.m.

FIRST BAPTIST CHURCH

Rev. A. W. Blaine, Pastor

Sunday School	9:45 a.m.
Morning Worship	11 a.m.
Training Union	6:30 p.m.
Evening Worship	7:30 p.m.
Officers and Teachers, Wednesday	7 p.m.
Choir Rehearsal, Thursday	7 p.m.
WMU, Wednesday	2 p.m.

FIRST METHODIST CHURCH

T. G. Craft, Pastor

Sunday Services	9:45 a.m.
Church School	11 a.m.
Preaching	11 a.m.
Young People	6 p.m.
Evening Worship	7:30 p.m.
Midweek Service, Wednesday	7:30 p.m.
W.S.C.S., Monday	2:30 p.m.
Choir Rehearsal, Wednesday	7:30 p.m.

LONGVIEW BAPTIST CHURCH

Elwin R. Ingram, Pastor

Sunday School	10 a.m.
Morning Worship	11 a.m.
Training Union	7:30 p.m.
Evening Worship	8:30 p.m.

Everyone welcome.

MAIN STREET MISSIONARY

Rev. M. E. Robinson, Pastor

Sunday School	10 a.m.
Church Services	11 a.m.
B. T. U.	7:30 p.m.
Church Services	8:15 p.m.

LAZBUDDY

FIRST BAPTIST CHURCH

Lazbuddy, Texas

Sunday School	10 a.m.
Training Union	7 p.m.
Evangelistic Service	8 p.m.
Midweek Prayer Service	7 p.m.
Wednesday Night Prayer Meeting	8 p.m.

"Not forsaking the assembling of ourselves together."—Hebrews 10:25

MULESHOE PRIMITIVE

BAPTIST CHURCH

Elder L. M. Handley, Preacher

Services every second and fourth Sunday at the school house.	
Song Service	10:30 a.m.
Preaching	11 a.m.

ASSEMBLY OF GOD CHURCH

Rev. L. H. Hubbard, Pastor

Morning Worship	11 a.m.
Sunday School	10 a.m.
Morning Worship	11 a.m.
Evening Service	8 p.m.
Young People's Service, Tuesday	8 p.m.

CHURCH OF CHRIST

Legion Hall West of Courthouse. Worship, 10:30 Each Lords Day. Extending to all a cordial invitation.

Dr. B. Z. Beaty
Dr. A. E. Lewis
Dentists
Rear Western Drug

Get That Airway Sanitizer

It has power, it is sanitary, has attachments for all parts of house and car. Call 299 for free demonstration or come to my place on main street.

J. B. NICHOLS

Justice Hart Will Seek Re-election

Austin, April 26—James P. Hart, of Travis County, this week announced his candidacy for associate justice of the Supreme Court of Texas. Judge Hart will be seeking his first elective term on the Court. He was appointed to the position seven months ago.

Judge Hart said he was basing

WESTERN SCENERY



There's no need for a Horace Greeley to tell young men to "go west" these days—this typical sample of California scenery speaks for itself. This golden-haired girl of the west wears a sunny smile and a new "double duty" ensemble by Cole of California. A full skirt in the same plaid cotton fabric turns a two-piece swimming suit into an attractive play dress.

GREEN

Hospital & Clinic

Muleshoe, Texas

L. T. Green, Jr., M. D.
M. F. Green, M. D.

Mrs. Lula Gorrell, R. N.
Alice Hicks, R. N.
Betty Jo Campbell, R. N.
Winona Blair, R. N.
Geraldine Green, R. N.

(Offices At Hospital)

his candidacy on nearly 20 years legal experience as a practicing attorney, a prosecutor, Assistant Attorney General of Texas, and a judge.

A native hometo Judge H children, to eight

CONTOUR MAP

IRRIGATION DITCHES AND HIGH POINTS LOCATED FOR IRRIGATION WELLS

Also Terracing Lines Run and Have Party Who Builds

See Me at Pool Insurance Agency

John J. Mock

Steed Funeral Home

SERVING MULESHOE AND SURROUNDING

TERRITORY OVER TWENTY YEARS

Muleshoe Phone 47

Clovis Phone 14

FOR AMBULANCE SERVICE

Call Day Phone Night Phone
Howard Cox 300 219-J

Steed Funeral Home

L. V. SPARKS, Co-Owner and Manager

• Ambulance Service • Funeral Service



From where I sit... by Joe Marsh

Sam's Hens Wear Spectacles!

Yes, it's a fact! Sam's brood of two dozen hens are wearing spectacles—which he bought from a mail-order house in Capitol City.

Sam says it works (and big poultry raisers say so, too). The hens see each other through soft colored glasses, and instead of fighting and picking at each other, they go around placidly, gain weight, and lay more eggs.

Makes me almost wish we could have rose-colored glasses for human beings, too. So that instead of quarrelling and criticizing, like we

do so much of the time, we'd live and let live in contentment.

From where I sit, the human race wastes a powerful lot of energy in wrangling over minor issues, whether a man should drink beer or cider... whether a woman should wear slacks or skirts... instead of seeing each other through "spectacles" of tolerance that enable us to live-and-let-live like Sam's brood of chickens.

Joe Marsh

FARMERS, NOTICE

We Are Now Ready To Write Contracts for

GREEN BEANS

For the 1948 Canning Season

This is a cash crop that is harvested in July and Early August.

If you have land that you plan to put in alfalfa, pasture, or wheat this fall, your beans would be off in plenty of time to prepare your ground and get a good stand before frost.

Come To See Us at the Muleshoe Canning Company Offices at Any Time After

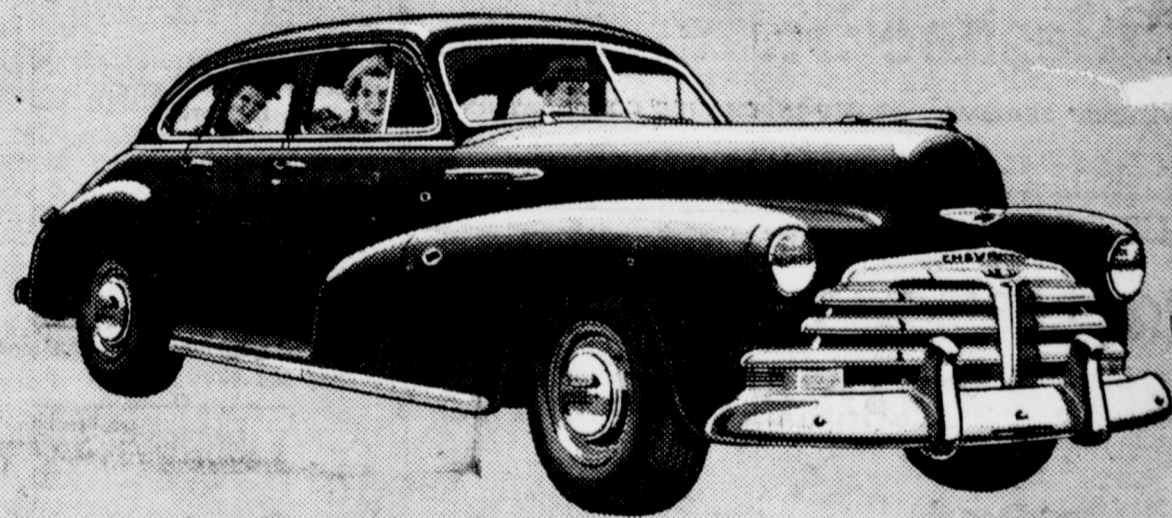
April 15

MULESHOE CANNING CO.

Phone 140

Muleshoe

From its styling to its stamina... from its road-action to its ride...



CHEVROLET—and ONLY Chevrolet— IS FIRST!

First in all-round quality in the entire low-price field!

How you and your family will enjoy ownership of this newer, smarter, finer Chevrolet for 1948! It brings you BIG-CAR QUALITY—not in one item only, but in every phase of styling, engineering and construction—and brings it to you AT LOWEST COST, as well. That is why more people drive Chevrolets, according to official nationwide registrations—and more people want Chevrolets, according to seven independent nationwide surveys—than any other make of car. That is why you, too, will agree that CHEVROLET AND ONLY CHEVROLET IS FIRST in all-round value!

Nowhere else beauty like this New styling! New colors! New upholstery fabric! All this added to the basic Big-Car luxury of Chevrolet's famous Body by Fisher. Remember—this body is exclusive to Chevrolet and higher-priced cars.



You'll enjoy much greater comfort in Chevrolet for 1948. It brings you the Big-Car riding-smoothness and roadsteadiness of the Unitized Knee-Action Gliding Ride. Another feature found only in Chevrolet and more expensive cars.

Just as you'll find no equal for Chevrolet value, so you'll find no equal for Chevrolet service. Safeguard your transportation by bringing your present car to us for skilled service, now and at regular intervals, pending delivery of your new Chevrolet!

C. & H. CHEVROLET CO.

Phone Chevrolet Sales & Service

Muleshoe

Production Battle Aged

With some 27 million winter wheat in the Southern Great Plains endangered by weeds,

Men's News Club Events Social Activities

Club Met Well Home

The Home Demonstration Club met Thursday, April 22, in the home of Mrs. S. C. Caldwell with six members and one present. The day was spent quilting for the Willard Carter family who lost their home by fire. A dish luncheon was served at the home. The next meeting will be held May 13 in the home of Mrs. H. M. Goffner with Mrs. J. T. Shofner as hostess. West Camp club will be invited to visit our club on this date. Each member is urged to be present.

Mrs. Cash Hostess To Enochs HD Club

The Enochs Home Demonstration Club met Thursday, April 22, in the home of Mrs. Dutch Cash. The regular business session was held. The roll call was answered with each doing a good deed. Fifteen members, one new member, and one visitor were present. Mrs. Williamson was present and gave a demonstration on desserts. Most of the afternoon was spent in organizing a play. It is to be given by the club ladies in the near future. A delicious plate lunch was served to the group by the hostess and Mrs. Williamson. The next meeting will be in the home of Mrs. J. E. Autry May 13. Everyone is requested to bring potato holders for the grab box.

Wesleyan Service Guild Met Monday

The Wesleyan Service Guild met Monday night, April 26, in the home of Mrs. I. W. Haney. Mrs.

David Anderson served as hostess. Mrs. Francis Gilbreath, president, was in charge of the business meeting.

Mrs. Marty Ezell gave two chapters of their study, "Great Prayers of the Bible." Refreshments were served to the following members: Mesdames W. B. LeVogue, Harold Wyer, James Case, Jim Burkhead, Francis Gilbreath, T. Craft, N. H. Greer, Buford Butts, Marty Ezell, Herbert Potter, Miss Elizabeth Harden, and the hostess, Mrs. David Anderson. The next meeting will be in the home of Mrs. Jim Alsop Monday, May 10.

Study Club Met In St. Clair Home

Muleshoe Study Club met Thursday, April 22, in the home of Mrs. I. L. St. Clair, Sr. A general discussion was held among the members present.

Refreshments were served to the following members: Mesdames E. R. Hart, A. E. Lewis, Clyde Holt, Horace Holt, Buck Wood, Henry Ivy, Charles Lenau, Julian Lenau, H. D. King, A. J. Gardner, Misses Elizabeth Harden and Elizabeth Bailey, one visitor, Mrs. Irvin St. Clair, Jr., and the hostess.

The next meeting will be held May 13 at the Crossroads cafe. All members are urged to attend. The husbands of the members are invited to attend the meeting. Officers are to be installed for the following year. This will be the last meeting for this year.

Parents, Teachers Met Monday Night

The Muleshoe Parent-Teachers Association met Monday night, April 26, in the high school auditorium. Mrs. Morris Childers presided during the meeting.

Rufus Aylesworth gave several piano selections and Mrs. Noel Woodley gave a reading, "Stay alive as long as you live." Mrs. Childers presented a lovely gift as a token of appreciation from the PTA.

Officers were installed for the new year. Miss Elizabeth Bailey was in charge of installation of the officers and they are as follows: President, Mrs. Jack Lenderson; Vice President, Mrs. W. C. Cunningham; Secretary, Miss Margy Moore; Treasurer, Mrs. L. S. Barron, Jr.; and Historian, Mrs. J. J. DeShazo.

The hospitality committee, composed of Mrs. Rufus Gilbreath, Mrs. Morris Douglass and Mrs. Dudley Malone, served ice cream and cookies. Mrs. Cunningham's room won the attendance award.

Sophomores Held Skating Party

The Sophomores of Muleshoe high school held a skating party, Friday, April 23, in Morton.

The class was accompanied to Morton by their room mothers, Mesdames L. J. Sanders, O. C. Kirk, David Stovall, Roy Bryant, L. V. Julian and M. F. Green, and their sponsors, Miss Margie Moore and James A. Beam.

Refreshments of sandwiches and soda pop were served to all members of the class present.

Peggy Jean Boren And Harold Wilson Are Wed At Belton

Mr. and Mrs. M. L. Boren are announcing the marriage of their daughter, Peggy Jean, to Mr. Harold Eugene Wilson, son of Mr. and Mrs. J. R. Wilson, on April 21 at Belton. An impressive double ring ceremony was read by Boyd Denman, minister of the Church of Christ at his home in Belton.

The bride was given in marriage by her father. She wore a pale pink halo hat and white accessories. Mrs. Herbert L. Cartwright II of Camp Hood, and cousin of the bride, attended her as matron of honor. She wore a pale green dress black sequin halo and black accessories. Mr. Johnny Light of Belton served as best man.

Others attending the wedding were Mrs. John Light, Mrs. I. B. Boren and "Butch" Cartwright.

Immediately after the ceremony, the couple left for a honeymoon trip to San Antonio. They will be at home on a farm near Muleshoe where Mr. Wilson is engaged in farming.

A. M. Seaton's 60th Birthday Honored

Mr. and Mrs. John L. Seaton and Mrs. A. M. Seaton entertained relatives and friends with a surprise birthday dinner at their home in the Lazbuddy community Sunday, April 25, honoring A. M. Seaton's 60th birthday. A bountiful dinner was served buffet.

RICHLY-BROWNE PORK CHOPS



The savory flavor of richly-browned pork chops looks far in this world for an equal. Especially when these chops are plump, juicy, and well-filled with a delicious stuffing, do they arouse the appetite. Accompany them with a head of cauliflower, tart apple sections and buttered sweet potatoes.

lowing guests:

Mr. and Mrs. C. D. Julian of Muleshoe, Mr. and Mrs. J. H. Marsh and daughters of Hereford, Mr. and Mrs. Gene Seaton, Mr. and Mrs. W. E. Payne, Mr. and Mrs. W. A. Knight, Mr. and Mrs. Riley Good-nough, Mr. and Mrs. Roy Lawhon and Janice, Mr. and Mrs. Charlie Gartin and boys, Mr. and Mrs. Frank Hinkson and girls, Mr. and Mrs. Leroy McDonald, Mr. and Mrs. Forrest Green and Mary Ann.

Mr. and Mrs. Jimmie Seaton and Jimmie Dale and Charlotte, Mr. and Mrs. R. B. Seaton and Gayla, Mr. and Mrs. John L. Seaton, Mrs. A. M. Seaton and the honoree. Mr. Seaton received several gifts and the afternoon was spent visiting.

Represents F.H.A. Club At Galveston

Mrs. Harold Newsom, Muleshoe home economics teacher, and Doris Gatlin, representative for the Muleshoe chapter of the F.H.A., were in Galveston Wednesday through Sunday attending a State meeting of the F.H.A. club.

About 3,000 girls attended from various parts of the state. Meetings were held in the Galveston city hall.

Between meetings they went yacht riding and sight-seeing to many points of interest.

Mrs. Newsom and Miss Gatlin stayed in the Buccaneer Hotel while in Galveston. They brought back much valuable information that will

be useful to the F.H.A. club in the future.

Perkins' Returned From Long Visit

Mr. and Mrs. J. E. Perkins of Circle Back have returned from a long trip to visit their children, other relatives and friends. They went to Dallas March 3 and visited two sons, Lester and Dewey and their families. Then they journeyed to Waxahachie, visited a son, Calvin Perkins and family and some grandchildren, and to Hillsboro, where they visited Mrs. Perkins' sister, Mrs. Bruce Wilhoite. Then they went to Jacksonville, Texas, for a visit with Mrs. Perkins' sister, Mrs. Mary Henson and children; another sister of Lindale, came to Jacksonville to be with them.

They were on these visits three weeks, then went from there to Memphis, Tenn., to visit two of their children, Mrs. George W. Fenton and family and J. B. Perkins and family. They had a wonderful visit there. Memphis and the country around is noted as a beautiful country, so many beautiful flowers and beautiful blooming trees. They left Memphis by train the night of April 24 and arrived in Amarillo Sunday, April 25. A daughter and her husband, Mr. and Mrs. T. W. Berry of Muleshoe met them at

the station.

They were glad to get back to their home in Circle Back community and to find everybody well and very busy getting fields ready to begin planting crops.

While on their trip the couple celebrated their 52nd wedding anniversary.

They remember a drive to Sardis Dam on Sardis lake. The lake was so large one could not see the opposite shore. A spillway through this dam makes a rolling gush of water. A large barge came in to the docks at Memphis with 600 new cars on it, and this was a pretty sight to the couple. The Mississippi had been at a high level for several weeks.

CARD OF THANKS

We wish to take this means of expressing our appreciation thanks to our many friends every deed of kindness shown during our stay in the hospital. Especially, our thanks to the Green and their staff of nurses. May God, bless and keep each of you. Mr. and Mrs. Russell Buhrr and Darlene.

Goggles for Ducks Ducks have a transparent membrane to pull over their eyes while in flight—like goggles.

Soil Erosion, Soil Fertility and Human Health

Healthy soils produce healthy plants but poor soils are sick soils and produce only sick plants. Modern man has perfected two devices either of which is capable of destroying civilization. One is total war. The other is accelerated soil erosion.

War is more spectacular—it is easier for it to get the headlines—but of the two, accelerated soil erosion is the more destructive.

The disaster of soil erosion has gone so far that today it is the most fundamental, complex and pressing economic problem man faces.

There is one well established fact of history which we Americans need to stop and ponder. That fact is that soil is not imperishable or permanent—it does not lie thick upon the surface of the earth—it is a film only a few inches thick, to be blown by the winds, bombed by rain drops, wrenched away by floods. The distance between America, as we know it today, and a barren desert is only about seven inches of top soil. Read history. The rise and decline of all past great nations follows the pattern of the impoverishment and destruction of their soil.*

* Acco Press, February, 1948. ** This information is furnished by the Blackwater Valley Soil Conservation District.

Muleshoe State Bank
MEMBER FEDERAL DEPOSIT INSURANCE CORPORATION

MOTHER'S DAY and GRADUATION GIFTS

- Pearls
- Costume Jewelry
- Compacts
- Ronson Cigarette Lighters
- Pen and Pencil Sets
- Sterling Silver
- Silver Plate
- Electric Appliances
- Watch Bands
- Hand Tool Billfolds
- National Brand Watches

Many Other Items for You to Select From

MULESHOE JEWELRY
Phone 114-J Muleshoe, Texas

Remember Mother

"America's First Lady"
Sunday, May 9th

Yes, remember that she never has forgotten you... Show her your gratitude and affection. Select a special Mother's Day Gift from our varied collection of "sure-to-please" accessories and famous brand merchandise. We're ready to advise you and special gift wrap your packages. Cobb's has just the Gift for Her!

Nolly Don DRESSES

Cotton, Bemberg, Sheers, Linens, all sizes.

\$9.95 to \$14.95

Kid Gloves

White, Black, Beige, and Brown

Sizes 6 1-2 to 8 1-2

\$3.98

Nylon Hose

Berkshire. Sheer, new spring summer shades. Short, med, long proportioned. Sizes 8 1-2 to 11.

\$1.50 to \$2.35

BAGS

Plastic and Leathers. A large variety of colors and styles to choose from.

\$3.98 to \$12.95

Trimmed Slips

White and Tearose. An ideal gift for Mother.

\$2.98 to \$5.95

SPECTATORS

Brown and White

\$8.95

COBB'S

Want Ads

RATES: — Minimum charge, 35c; 2 1-2c per word one time; 1 1-2c per word each additional insertion. Cash in advance.

WANT TO TRADE — Fairbanks-Morse 1 to 1 1-4 ratio gear head for 1 to 1 or 1 to 1 1-8 ratio gear head. C. R. Black 17-4tp

FOR IRRIGATION FARMER—See the six or nine foot Schafer One-way Plow with 26" disc, 10" spacing, the ideal plow for heavy turf or sod plowing. Flows any depth, on tinker bearings, pulls lighter than any one-way, larger size for wheat farmers. See it at Consumers Supply Clovis N. M. 17-2tc

FOR SALE—1000 bundles heavy grained hegar and some good alfalfa hay. Gordon Murrah. 17-2tp

COTTON SEED FOR SALE — Mocha Stormproof, 1,000 bu. at \$2.50 Wayne Garth, 1 1-2 mi. south, 1 west of Needmore. 16-4tc

FOR SALE—Ferguson Ford Mowing machine and disc harrow. J. A. Dearing. 17-4tp

FOUND—Front and back of cultivator for M Farmall. J. E. Embury, 8 1-2 miles northeast. 17-2tp

SWEET SUDAN, seed re-cleaned, sacked and tagged. See Johnnie Glascock, 1 mile west, 6 north. 16-3tp

FOR SALE—1000 bushels of Mocha Cottonseed, \$2.25 bu. E. T. Bryant, 8 1-2 miles northeast of Muleshoe. 16-4tp

FOR SALE OR TRADE—1941 Pontiac Tudor Silverstreak, with radio and heater. See Noel Woodley, Muleshoe Bank Bld. 12-1tc

WE DELIVER — Just call 54 and hold the door open. Paper and supplies at the Journal. 10-1f

FARM LOANS—Will make some choice farm loans, 15 years with 4 per cent interest. No handling charges except recording of your papers. S. E. Goucher, 1 blk. west of hospital. 15-1tc

FOR SALE—'41 1 1-2 ton Ford truck. \$700.00. Howard Griffin. 15-4tc

FOR SALE—1 new John Deere 4 bar side delivery hay rake, never been set up. One small Case feed grinder with 18 ft. belt. J. M. Wilson, 5 mi. northeast of Muleshoe. 15-4tp

FOR SALE—50T - IHC Haybaler. Used one season. A-1 condition. L. Embury, Route 2. 14-1tc

WANTED—Will take orders for custom made Venetian Blinds. Howard Cox, Cox Radio Shop. 1tc

FOR SALE—12 by 24 ft. frame house with 10 by 24 ft. shed room on side, to be moved. Near Goodland gin, price \$700.00. See H. E. Baker. 16-3tp

EDAR POSTS delivered to your farm, any amount and any size. Give us your order. Clyde, Jr., and Dan Bray. 35-1tc

WANTED TO BUY Top prices for Fat Hogs and Feder Pigs CLOVIS HOG CO., Phs. 224

SEWING MACHINES Repaired, Guaranteed Work. Old Machines electrified or rebuilt into modern Electric portable or Console. I buy used machines. J. D. OWEN E. R. Hart Company 15-4tp

WANTED TO BUY Top prices for Fat Hogs and Feder Pigs CLOVIS HOG CO., Phs. 224

SEWING MACHINES Repaired, Guaranteed Work. Old Machines electrified or rebuilt into modern Electric portable or Console. I buy used machines. J. D. OWEN E. R. Hart Company 15-4tp

WANTED TO BUY Top prices for Fat Hogs and Feder Pigs CLOVIS HOG CO., Phs. 224

SEWING MACHINES Repaired, Guaranteed Work. Old Machines electrified or rebuilt into modern Electric portable or Console. I buy used machines. J. D. OWEN E. R. Hart Company 15-4tp

WANTED TO BUY Top prices for Fat Hogs and Feder Pigs CLOVIS HOG CO., Phs. 224

SEWING MACHINES Repaired, Guaranteed Work. Old Machines electrified or rebuilt into modern Electric portable or Console. I buy used machines. J. D. OWEN E. R. Hart Company 15-4tp

WANTED TO BUY Top prices for Fat Hogs and Feder Pigs CLOVIS HOG CO., Phs. 224

SEWING MACHINES Repaired, Guaranteed Work. Old Machines electrified or rebuilt into modern Electric portable or Console. I buy used machines. J. D. OWEN E. R. Hart Company 15-4tp

WANTED TO BUY Top prices for Fat Hogs and Feder Pigs CLOVIS HOG CO., Phs. 224

SEWING MACHINES Repaired, Guaranteed Work. Old Machines electrified or rebuilt into modern Electric portable or Console. I buy used machines. J. D. OWEN E. R. Hart Company 15-4tp

WANTED TO BUY Top prices for Fat Hogs and Feder Pigs CLOVIS HOG CO., Phs. 224

SEWING MACHINES Repaired, Guaranteed Work. Old Machines electrified or rebuilt into modern Electric portable or Console. I buy used machines. J. D. OWEN E. R. Hart Company 15-4tp



THE LONE STAR TRADING POST IN MULESHOE needs more listings. If you want your land sold, list it with us. We get results. BUY, SELL, TRADE or EXCHANGE anything through the LONE STAR TRADING POST. TUNE IN KSEL in Lubbock, 950 on your dial, at 6:40 a. m. Where Service is not a motto - It's a business.

DAVE AYLESWORTH Phone 271-J Muleshoe

FOR SALE—COTTON SEED NORTHERN STAR, HALF & HALF, MACA STORM PROOF, HIBRID, D. P. & L. no better seed found; one year out; cleaned and sacked ready to go anywhere; several bales ginned at a time; located 3 blocks north of courthouse or see R. O. Hamill, Phone 187-J, Hamill Apartments, Levelland, Texas. 18-5tc

FOR SALE—Four piece walnut bedroom suite in good condition. Mrs. J. Clyde Taylor. 18-7p

FOR RENT—Bedroom. Phone 265-J. 181-2tp

WANT TO RENT typewriter or contact person to do typing. See Mrs. Davis at Muleshoe Gin 18-1tp

THE LADIES of the Main Street Baptist church will hold a Bake Sale at Hart's Saturday, May 1, beginning at 12 o'clock 18-1tp

FOR SALE—New Duplex, near hospital and new high school. Will rent for \$100. J. J. DeShazo. 18-2tp

LOST—Nylon printed scarf. Placed in wrong car parked at Palace Theatre. Mrs. S. D. Anderson at Coffee Shop. 18-1tp

FOR SALE—'41 1 1-2 ton Ford truck. \$700.00. Howard Griffin. 15-4tc

FOR SALE—1 new John Deere 4 bar side delivery hay rake, never been set up. One small Case feed grinder with 18 ft. belt. J. M. Wilson, 5 mi. northeast of Muleshoe. 15-4tp

FOR SALE—50T - IHC Haybaler. Used one season. A-1 condition. L. Embury, Route 2. 14-1tc

WANTED—Will take orders for custom made Venetian Blinds. Howard Cox, Cox Radio Shop. 1tc

FOR SALE—12 by 24 ft. frame house with 10 by 24 ft. shed room on side, to be moved. Near Goodland gin, price \$700.00. See H. E. Baker. 16-3tp

EDAR POSTS delivered to your farm, any amount and any size. Give us your order. Clyde, Jr., and Dan Bray. 35-1tc

WANTED TO BUY Top prices for Fat Hogs and Feder Pigs CLOVIS HOG CO., Phs. 224

SEWING MACHINES Repaired, Guaranteed Work. Old Machines electrified or rebuilt into modern Electric portable or Console. I buy used machines. J. D. OWEN E. R. Hart Company 15-4tp

WANTED TO BUY Top prices for Fat Hogs and Feder Pigs CLOVIS HOG CO., Phs. 224

SEWING MACHINES Repaired, Guaranteed Work. Old Machines electrified or rebuilt into modern Electric portable or Console. I buy used machines. J. D. OWEN E. R. Hart Company 15-4tp

WANTED TO BUY Top prices for Fat Hogs and Feder Pigs CLOVIS HOG CO., Phs. 224

SEWING MACHINES Repaired, Guaranteed Work. Old Machines electrified or rebuilt into modern Electric portable or Console. I buy used machines. J. D. OWEN E. R. Hart Company 15-4tp

WANTED TO BUY Top prices for Fat Hogs and Feder Pigs CLOVIS HOG CO., Phs. 224

SEWING MACHINES Repaired, Guaranteed Work. Old Machines electrified or rebuilt into modern Electric portable or Console. I buy used machines. J. D. OWEN E. R. Hart Company 15-4tp

WANTED TO BUY Top prices for Fat Hogs and Feder Pigs CLOVIS HOG CO., Phs. 224

SEWING MACHINES Repaired, Guaranteed Work. Old Machines electrified or rebuilt into modern Electric portable or Console. I buy used machines. J. D. OWEN E. R. Hart Company 15-4tp

WANTED TO BUY Top prices for Fat Hogs and Feder Pigs CLOVIS HOG CO., Phs. 224

SEWING MACHINES Repaired, Guaranteed Work. Old Machines electrified or rebuilt into modern Electric portable or Console. I buy used machines. J. D. OWEN E. R. Hart Company 15-4tp

WANTED TO BUY Top prices for Fat Hogs and Feder Pigs CLOVIS HOG CO., Phs. 224

SEWING MACHINES Repaired, Guaranteed Work. Old Machines electrified or rebuilt into modern Electric portable or Console. I buy used machines. J. D. OWEN E. R. Hart Company 15-4tp

WANTED TO BUY Top prices for Fat Hogs and Feder Pigs CLOVIS HOG CO., Phs. 224

SEWING MACHINES Repaired, Guaranteed Work. Old Machines electrified or rebuilt into modern Electric portable or Console. I buy used machines. J. D. OWEN E. R. Hart Company 15-4tp

FOR SALE—Some of the best grained bundles in the country, 35 tons wheatland maize in stack. Bundles have small stalks and are fine for grinding to fatten livestock or will thresh a large percentage of excellent grain. See Valton Morris on old Edgar Foreman farm, Clovis highway, Portales, N. M. 18-2tc

FOR SALE—Plano. See Pearl Jennings or Phone 61-J. 18-1tp

FOR SALE—1 Ford tractor; 1 gear head and Case motor for irrigation pump. B. J. Leedy, 6 1-2 mi. northeast of Muleshoe. Inquire at Truelock filling station on Plainview hiway. 18-1tp

FOR SALE—Macha and Northern Star Storm Proof cotton seed. Edgar Broyles, 9 east, 4 north Muleshoe. 18-4tp

FOR SALE—About 3 tons alfalfa hay and Hubam Clover seed. Inquire at Journal or see Carol M. Jones. 18-3tp

Blackwater Valley Real Estate
FARMS, CITY PROPERTY
List your irrigated farms with me. I will handle your rent house.
J. B. NICHOLS
P. O. Box 166 Phone 299
So. Main St. Muleshoe, Tex.

A. S. STOVALL COTTON
Buyers Of Spot Cotton and Government Loan Equities
Office Over Muleshoe Real Estate
Telephone 282 Muleshoe, Texas

FOR SALE International Farmall
New Paint, in Perfect Shape. Original Tires on Rear, Complete with Lister, Planter and Cultivator.
ONLY \$750.00 FOR THE OUTFIT
New 1948 Case DC-4 Row With Tool Bar Lister, Planter and Cultivator.
OWENS MOTOR CO.
Plainview, Texas

Baked Goods
over fresh for weeks!
Whether you bake at home or buy at the corner bakery, you save time, work, food and money with a Deepfreeze home freezer.
Bread, rolls, pies, cakes, cookies—all kinds of baked goods—stay oven-fresh for weeks in a Deepfreeze home freezer. Just stow away in quantity—take out as needed. No last-minute rushes to the store. No stale leftovers, spoilage, waste!
See the Deepfreeze home freezer in action
Now is the time to investigate the many advantages of a Deepfreeze home freezer—now is the time to put one in your home.
Come in and see one in operation. Let us show you in detail how a Deepfreeze home freezer gives you brand-new baking freedom—how you can save real money on your food bills. Let us prove to you that a Deepfreeze home freezer actually pays for itself with the money it saves.
Stop in today. There's no obligation.

Below, De Luxe Model C-10, 10 cubic ft. holds more than 350 lbs. assorted, perishable foods. \$49.50 delivered. Other models for any size purse—any size family. Small down payment. Easy terms.



There's only One!
Deepfreeze
HOME FREEZER
Come in today for a Demonstration!
BERRY ELECTRIC
Phone 98 Muleshoe

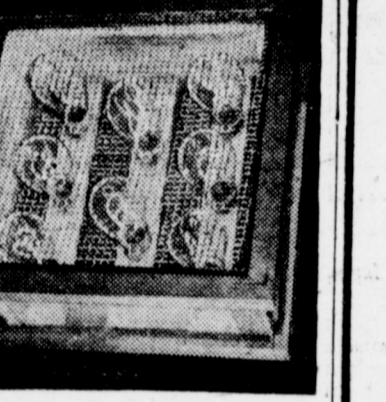
FOR SALE—About 3 tons alfalfa hay and Hubam Clover seed. Inquire at Journal or see Carol M. Jones. 18-3tp

Bobo Insurance Agency
Pat R. Bobo, Owner
Office in Court House
Phone 97 Muleshoe



Simple Dehydrator Saves Garden Crops
Homemade Apparatus Serves Many Purposes

A homemade dehydrator heating unit, which also may be used as a room heater in the home or brooder house, is an economical device and a labor-saver on the farm.
Successful drying depends upon removal of enough moisture from the fruit or vegetables to prevent spoilage. This must be done at a temperature that does not seriously affect the texture, color and flavor of the vegetable or fruit.
Best results are obtained when fruits and vegetables are dried in a dehydrator, like one shown, rather than in the sun. In hot, dry localities, however, sun-dried fruits have excellent color, flavor and good nutritive value. Sun-dried vegetables usually are noticeably inferior to



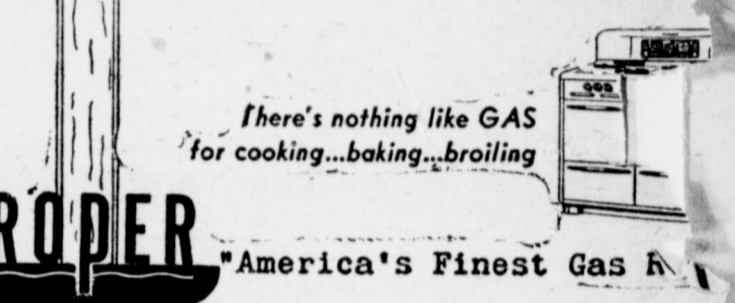
Good type of homemade dehydrator heating unit, which also may be used as a room heater.
dehydrated vegetables in most respects, but when properly dried they are fairly satisfactory.
If gas-filled tungsten-filament lamps are used, care should be taken to prevent liquids dripping onto the bulbs, as that is likely to crack them. If carbon-filament lamps are used, as shown in the picture, water dripping on them will not crack the bulbs.

Minerals Will Improve Quality of Egg Shells
Improvement in shell texture of eggs can be made in many cases by providing the foods that supply the mineral properties contained in the shell itself. The shell of the egg contains about 90 per cent calcium carbonate and foodstuffs containing the minerals and vitamins necessary for shell production should help to increase the supply and bring about some improvement in shell quality.
Shell-grit or oyster shell-grit provides calcium carbonate, but without vitamin D the hen may not be able to convert sufficient quantities to meet the demands for bone and egg-shell formation.

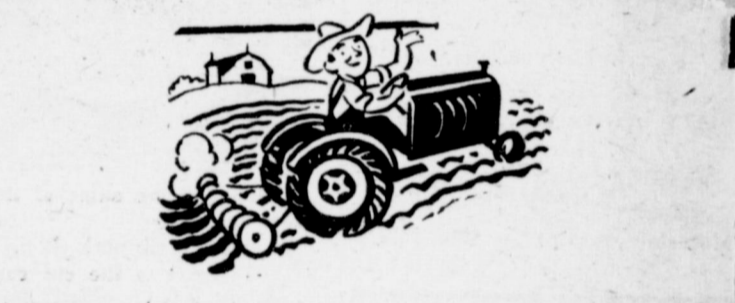
In Building or Remodeling



Since so much of her time is spent in the kitchen, make those hours enjoyable, convenient, self-satisfying. Provide her with a new ROPER Gas Range, having "Jewels of Cooking Performance". That means fast cooking, economical cooking, full-flavor cooking. Her choice of a new ROPER from our display floor will really give her "a break".



E. R. HART COMPANY
Phone 23 Muleshoe, Texas



BE READY TO MAKE HAY WHILE THE SUN SHINES

Get your machinery in tip top shape for the busy season ahead. Check your Tractor and other machinery and get your parts early.

Tractor Mechanic
LLOYD EUBANKS



DAVIS & LENDERSON
Phone 56 Muleshoe, Texas

We Do Custom SPRAYING For

Cattle — Bindweed — Johnson Grass
If you have your sprayer we have plenty of
—DDT for Cattle
—2,4-D for Bindweed
—Atricide for Johnson Grass

We Have The Exclusive Agency For
Van Horn Sprayers
And Can Deliver You One on Short Notice

Jones Farm Store
Temporary Headquarters at Ray Griffiths Elevator
Phone 32 Muleshoe, Te

THURSDAY

Product Battle

With the shoe Journal winter as second-class matter at Southern Postoffice under the danger of March 2, 1897.

Published Every Thursday at MULESHOE, TEXAS

Publisher

Subscription Rates

State territory, yr. \$2.00
Territory \$2.50

National HD
Week Is May 2-8

The demonstration work is that of the Agricultural Extension program which deals with one of the 3,107 counties in the United States, Alaska, Hawaii, Puerto Rico, 2,301 employ one of the home demonstration agents. State and federal government contribute to this work. Advertisements made available by the next five increased the number of home demonstration agents in the past 2 years, and more would have been added if

trained workers had been available. The Home Demonstration agent is a teacher. Some of the teaching is done through the 50,000 home demonstration clubs with a membership of 1,162,346 women. These clubs meet monthly. Leaders are chosen who get special training in various phases of the home demonstration program by the agent or specialists from the State College. Training schools were held for 423,000 such leaders last year. These leaders passed on the information to their fellow club members by means of talks and demonstration.

Bailey County Home Demonstration clubs will observe National Home Demonstration Week May 2 to 8, by each club paying a visit to a neighboring club in the county.

"Trim Your Trees",
HD Agent Advises

"Some kinds of pruning may be done at any time," says Mrs. Laurette Williamson, home demonstration agent. "Remove dead limbs, diseased limbs and limbs that injure each other regardless of season."

Some plants need pruning all during the growing season. Among these shrubs are abelia and Florida jasmine which have a tendency to send out long awkward shoots. If

the buds at the tips of the branches are cut off the plant will grow into a compact form which generally is liked better than a shrub with a few long sprouts. Hardy shrubs which grow fast such as amur privet or Japanses ligustrum, may be pruned safely during the growing season.

Mrs. Williamson says prune shrubs which bloom in the spring or early summer just as soon as the blooming season is over for it is then that they begin forming bloom buds for the next year. Among these are such plants as bridal wreath and flowering peach. If you wait until late summer or winter, pruning lessens the amount of blooms as it destroys bloom buds.

Among flowering shrubs to be pruned as soon as they have bloomed and before they have formed bloom buds for the next year's flowers are: azaleas, butterfly bush (beddela), redbud, flowering quince, flowering dogwood, catanaster, poinsetta, philadelphus (Elish dogwood, mock orange), photinia, flow-

ering plums, spiraea, viburnums, (haws and snowballs), primrose, jasmine, winter blooming jasmine, and wisteria.

VACANCIES IN CRIMINAL INVESTIGATION SERVICE

M-Sgt. Temple of the Clovis recruiting station states that he has a number of vacancies in the Criminal Investigation Service for men who can meet the rigid requirements. He stated applicants must have had prior service in either the Army, Air Force, Marine Corps, Coast Guard or Navy, be a High School graduate or the equivalent thereof, this latter to be determined by actual test; applicants cannot be less than 22 years of age nor over 34 years, qualified for general service as to health and be of excellent moral character.

Sgt. Temple stated all accepted applicants will be enlisted in grade 5 or higher and forwarded to Carlisle Barracks, Penna., for schooling. Applicants successfully com-

pleting the school will be promoted to grade four or three. He stated married applicants can be accepted. Interested men are advised to contact the recruiting sergeant in the P.O. building, Clovis.

LEGAL NOTICE

No. 224
IN THE MATTER OF THE GUARDIANSHIP OF THE ESTATES OF WILLIAM EDD JONES AND JACK EDWARD JONES, MINORS

IN THE COUNTY COURT OF BAILEY COUNTY, TEXAS TO ALL PERSONS INTERESTED IN THE ABOVE WARDS OR THEIR ESTATES:

You are notified that I have on this 26th day of April, 1948, filed with the County Clerk of Bailey County, Texas, an application under oath for authority to make to Sinclair Prairie Oil Company, as lessee, an oil, gas and mineral lease on that certain undivided 1-8 interest belonging to each of said wards

in and to the South One-Half of Section No. 29, in Block Y, Bailey County, Texas, containing 320 acres of land; that Ceol H. Tate, Judge of the County Court of Bailey County, Texas, on the 26th day of April, 1948, duly entered his order designating the 5th day of May, 1948 at 10 o'clock A. M., in the courthouse of said county as the time and place when and where such application would be heard, and that such application will be heard at such time and place.

Iva Ray Jones
Guardian of the Estates of William Edd Jones and Jack Edward Jones, Minors. 18-ltc

MARRIAGE LICENSES

Dewey Dorsey and Mary Roxie Ward, Muleshoe.
Marion Gail Hoover and Betty Irene Atchison, Muleshoe.
Bill Weldon Reecer and Mary Maxine Peace, Muleshoe.
Harold E. Wilson and Peggy Jean Boren, Muleshoe.

Cleo Wesley Hall and Leta Mae Bayless, Enochs.
Charles L. Copelin and Faye Cotten, Plainview.

Johnnie C. Black, Seagraves, and Sarah Wall, Slaton.

VISIT PARENTS AND BROTHERS

M. G. Bass visited his parents, Mr. and Mrs. H. I. Bass of Anton and his brother, J. W. Bass and family of Lubbock Sunday.

VISITING IN SAN SABA

Mrs. Lillian Sellars is spending a two-weeks vacation with her parents of San Saba.

HAVE NEW DAUGHTER

Congratulations to Mr. and Mrs. Jeff Prossie on the birth of a daughter, Janice Kay, Thursday, April 22, at the Amherst hospital.

VISITS PARENTS

Mr. and Mrs. Roy Shirey spent the week end at Lubbock visiting her parents.

Water Well Drilling

AND REPAIR

California Irrigation Pumps
Estimates on
TURN KEY JOBS

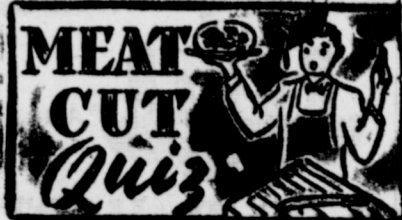
Any Size Hole up to 20 Inch

50 Yr. Experience

ALL WORK GUARANTEED

E. H. Kennedy

Muleshoe, Box 612 Ph. 268-W



Q. What is the name of this cut of meat?

A. This is a rib pork chop.

Q. Where does the cut come from, and how is it identified?

A. This cut is taken from the pork loin. It contains only the eye muscle of the meat (as compared to the loin chop which contains the tenderloin muscle as well). If cut thick, each chop will contain a rib bone; if thin, every other chop will have a rib bone.

Q. How should this cut be prepared?

A. Like all other cuts of pork except roasts, the rib chop is braised, or cooked with moisture. Because pork requires a longer cooking time than other meats to be completely cooked, the presence of moisture prevents a dryness that otherwise might develop. Not only is thorough cooking important, but a richly developed brown is also desirable. To this end, brown the chops well before cooking in a small amount of lard (if desired they may first be dipped in flour as an egg-and-crumbs coating). After the meat is browned, add a small amount of liquid, then cover and cook slowly until tender, usually about 45 to 60 minutes, depending on the thickness.

Job PRINTING of Quality

...of every type done by experienced printers. All work done to your complete satisfaction.
Phone 54

DOLLAR DAY

MONDAY, MAY 3rd

THESE PRICES GOOD FOR MONDAY ONLY

SPECIALS

1 Group Children's Dresses & Pinafores
\$1.59 to \$2.98 Values
DOLLAR DAY ONLY
\$1

Men's Dress STRAW HATS
A Large Selection to Choose from
These Hats Are as Good as Some \$3.98 To \$4.98 Values
Sizes 6 3-4 to 7 3-8 **2⁹⁸**

Men's Split Leather WORK GLOVES
Small, Medium, Large
98c Values 2 for **\$1**

E. & W. Men's Dress SHIRTS
Sanforized Fast Colors
Sizes 14 to 17
\$2.98

"Hope" Bleached DOMESTIC
36 in. Wide
49c
Yard

Valley & Palace THEATERS
MULESHOE, TEXAS

Schedule of Coming Attractions
Box Office opens 7:45 p. m. Show starts 8:00 p. m. Saturday and Sunday, continuous showing beginning at 2 p. m.

VALLEY Fri., April 29, 30 Lizabeth Scott in "Desert Fury" Sat., May 1 The Hoosier Hot Shots in "Rose of Santa Rosa" Sun., Mon., May 2, 3 Joan Crawford in "Daisy Kenyon" Tues., Wed., May 4, 5 James Stewart in "Destry Rides Again"	PALACE Thurs., Fri., April 29, 30 Margaret O'Brien in "Tenth Avenue Angel" Sat., May 1 Gailhy O'Donnell in "Bury Me Dead" Sun., Mon., May 2, 3 Van Johnson in "The Bride Goes Wild" Tues., Wed., May 4, 5 George Sanders in "The Private Affairs of Bel Ami"
---	---

requent Change of Programs Gives Phonu A Variety of Fine Entertainment

One Rack of Ladies' **DRESSES**
Nationally Known Brands
Only A Few To Go So Be Early To Get Your Size
Dollar Day Only
1/2 Price

\$10.98 Reduced \$5.49
\$12.98 Reduced \$6.49
\$14.95 Reduced \$7.47

Garza SHEETS
81x99, Type 128
2 for **\$5.00**

Children's RAYON PANTIES
Sizes 2 to 6
69c Values
3 for **\$1**

Men's Sanforized Oxford Cloth SHORTS
Reg. 98c Values While They Last To Go \$ Day
2 for **\$1**

Topmost & Quacriqa New Shipment 80 x 80 PRINTS
Fast Color Beautiful Colors
59c Yd.

Men's Ribbed UNDERSHIRTS
69c Value — 34 to 46
2 for **\$1.00**

Cannon WASH CLOTHS
10 for **\$1**

COBB'S

Delegation Of Amarillo Men Coming May 4

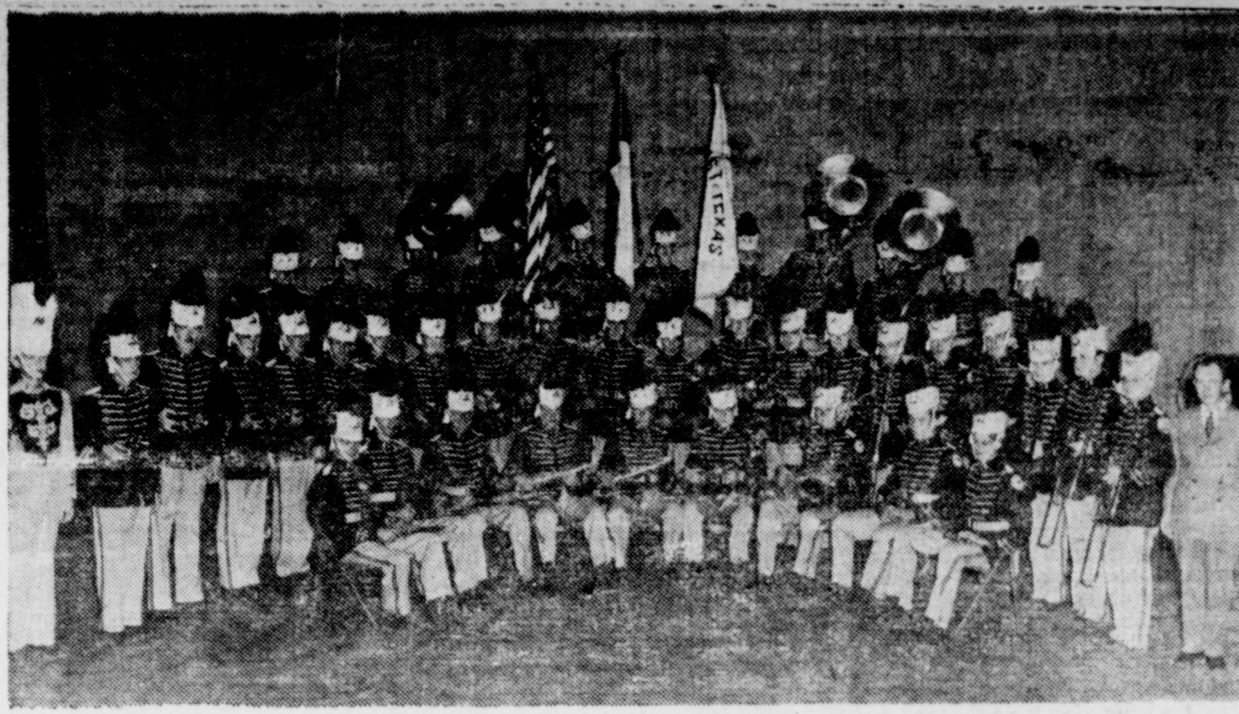
A goodwill delegation from Amarillo, consisting of 85 business and professional men, will arrive in Muleshoe on Tuesday, May 4, on an eight-car train at 4:10 p.m. The group will be accompanied by 40 pieces of the flashy West Texas State College band which is under direction of M. J. Newman.

Leading the goodwill trippers will be Gene Klein, president of the Amarillo Chamber of Com-

THE WINNER!



A classic one-piece frock of white cotton pique designed by Miss Louise Temple was named the best fashion design from a group of 1,000 sketches made by students at Southern Methodist University School of Design. The dress features a yoke effect and old-fashioned gold collar buttons used as accents to accentuate the bodice. A trimmed belt repeats the gold motif. It is modeled by Miss Elizabeth Ann Stollenwerk, alternate maid of Cotton.



Pictured above is 40 pieces of the famed West Texas State College band which will accompany the 85 business and professional men of Amarillo when they make a goodwill visit to Muleshoe on Tuesday, May 4, at 4:10 p.m. The band is under the direction of M. J. Newman.

merce.

Activities will be at the railroad station. After a welcome address and a response by one of the Amarillo group, the band will give a concert and present novelty acts. Following that part of the program a magician will perform a few tricks.

The Amarillo group extends an invitation to all citizens of this area to meet and visit with them during their stay.

The special train will also visit Anton at 1:50 p.m.; Littlefield at 2:20 p.m.; Amherst at 3:10 p.m.; and Sudan at 3:35 p.m.

The train departs for Carlsbad at 5:30.

Soil Conservation District News

A well location was made last week for A. J. Shafer.

Applications for soil conservation assistance were received last week on 160 acres of land owned by Tom Payne and on 160 acres owned by C. C. Cooley of Amarillo, Texas.

Soil Conservation Service technicians assisted M. B. Dutton, T. A. Miller, Dennis Williams, C. M. Baker, F. W. Watts, R. E. Willingham, L. H. Davenport, and Rex Willingham in laying out irrigation ditch-

es for watering row crop and wheat land.

Terraces have been constructed on land owned by the Paul Brothers Ranch and operated by Kirk Slaughter.

Myles A. Kelly, Agricultural Engineer, worked with the field crew last Wednesday, Thursday and Friday in assisting cooperators.

S. C. Caldwell received assistance in laying out a border system for

watering improved pasture.

Conservation surveys have been completed on 320 acres owned by McCasland and Williams of Clovis, N. M.; and 320 acres owned by Roland Bigham; on 160 acres owned by L. M. Abel of Lubbock, Texas; on 320 acres owned by S. L. Busbice; on 320 acres owned by H. W. Herington; on 160 acres owned G. P. Meissner; and on 320 acres

owned by John Johnson. Terraces which have been constructed by Troy Perkins and B. H. Black and on land operated by H. Coleman have been checked according to specifications.

Mr. C. A. Tidwell, Assistant State Conservationist of Amarillo, Mr. C. A. Rechenin, Zone Conservationist of Fort Worth and Mr. John A. Perrin, District Conservationist of Littlefield, were here last week checking application records and reports of the District.

- NEWS BRIEFS -

AT LITTLEFIELD SUNDAY
Mrs. Clyde Bray and son Keith, and Mrs. Horace McAdams were visitors in the home of Mr. and Mrs. Hubert Rutherford, and with a niece of Mrs. Bray, Mrs. Herbert Phillips and family of Littlefield.

FLEW HOME
Billy Jim St. Clair flew home from Denton over the week end.

He was met in Lubbock by his mother, Mrs. Irvin St. Clair.

VISIT AT A & M

Mr. and Mrs. Arnold Morris, Miss Barbara Morris, and Buddie Blackman visited over the week end at A. & M. College with Mr. and Mrs. Marshall Morris.

TO SNYDER

Miss Ann Horsley visited relatives and friends in Snyder over the week end.

VISITED FATHER

Carroll Blackman visited last week end with his father in Cisco, Texas.

HERE FROM McMURRY

Rev. and Mrs. T. G. Craft had as their guests from Thursday until Sunday, their daughters and their husbands, Mr. and Mrs. Foy Landford and Mr. and Mrs. James

Jennings, of McMurry College, Abilene.

FAMILY NIGHT FILM FOR LAZBUDDY PLANNED

An outstanding film is scheduled for showing the coming day night at the regular "Night" in the Lazbuddy Church. Rev. L. B. Edwards announces. It is another mission film, which will portray the of the foreign mission board. Rev. Edwards said a good speaker also has been obtained. The meeting begins at 8 p.m.

RETURNED HOME

Mrs. W. B. LeVeque has returned home from Colorado where she has been visiting several weeks.

TO LODGE SESSION

Neil Rockey left Tuesday morning for Belton, to attend the IOOF grand encampment being held there.

HOLD EVERYTHING This Ad Is Worth Money!

I am the new Watkins Dealer in Bailey County.

In order to introduce myself and my services of bringing the famous Watkins products to your home, I am making a special offer.

CLIP THIS AD from your paper and present it to me when I call. It is worth 25c on each order of \$2.00 and over.

Special offers on each call we make. For better products, special offers and premiums wait for my call and use this advertisement.

L. W. HOUSE
Your Watkins Dealer

SCREAM KIDS



Malone's Ice Cream is packed full of flavor. Try it today—you will find it a delicious treat for the whole family.



HAIL-?

ARE YOU PROTECTED?

Wheat Is Still A Good Price

INSURE NOW!

The Cost Is Small Compared to a Loss. See

POOL INSURANCE AGENCY

Phone 113

Muleshoe

ST. CLAIR DEPARTMENT and VARIETY MONDAY STORE DOLLAR DAY SPECIALS MAY 3

SHEETS

72 x 108

\$2.50 ea.

NYLON HOSE

1 Pair
\$1

First Quality Shades, Morning Mist, Glace Mocha Sizes 9 to 10 1-2

Men's OVERALLS

Blue Stripe Sizes 29 to 38

\$2.79

Men's "T" SHIRTS

Sizes, Small, Medium, Large

69c

PILLOW TUBING

2 Yds. \$1.50

Ladies' Pantie GIRDLE

\$1

Ladies' PANTIES

Black Lace Trim 2 Pair For

\$1

Children's PLAY SUITS

Sizes 8 to 12

\$1

Men's Underwear
SHORTS 50c ea.
SHIRTS 50c ea.

Mirromatic Pressure COOKERS

\$10.95

Ladies' RAYON HOSE

Sizes 8 1-2 to 10 1-2 3 for

1.00

Congoleum RUGS

\$6.00

TOWELS

19x38 4 for

1.00

Waste Baskets

Fibre Board Sides Metal Bottom

3 for

\$1.00

WASH CLOTHS

12 for

1.00

PINKING SHEARS

\$5.95

Plastic

SHOWER CURTAIN SETS

Consists of Shower Curtain and Window Curtain to Match Fish, Bubble, Animal Design

6.00

MEN'S HOSE

Fancy Rayons

6 Prs. \$1.00

Vanity LAMPS

Glass Base Washable Out Take Shade

Pair

4.00

THURSDAY
MULESHOE, TEXAS, APRIL 28, 1948

Production Battle Cotton Insects Early Cause Loss \$162 Million

An annual loss of \$162,000,000 cotton farmers of the nation have an annual loss of \$55,000,000. It has been estimated that the insects take one bale out of every seven.

The major pests that destroy the cotton crop are the boll weevil, boll worm, cotton leafworm, cotton aphid, thrips, cotton fleahopper, two-spotted mite, lygus bugs and stink bugs. Geigy Company, Inc., originators of DDT insecticides, have been cooperating in field tests for

new insecticides to combat these pests. Geigy is now ready with two new products—Gesarol 3-5-40 dust mixture and Gy-Phene "20"-S, especially for use to step up cotton yield. These are in addition to DDT dusts that may be recommended for specific pests.

One of the basic chemicals for Gesarol 3-5-40 dust mixture is the powerful benzen hexachloride, BHC, which according to the Department of Agriculture gives a much quicker kill of the boll weevil and longer protection against the cotton leaf worm than did calcium arsenate (the standard boll weevil poison).

Benzen hexachloride, mixed with DDT and sulphur gave "outstanding control of heavy infestations" of practically every known cotton pest in experiments at Waco, Texas, the Bureau of Entomology reported last December.

Gy-Phene "20"-S is a ready-to-use dust mixture containing chlorinated camphene (67 per cent to 69 per

cent chlorine content) and sulphur. It has been found to be highly effective for control of the major cotton pests.

Heretofore, cotton dusting and mopping preparations, while effective for one or two pests, often contributed to the build-up of another yield-depressing insect. The use of these new insecticides avoids such unsatisfactory results. Another point in favor of the newly developed dusts — grasshoppers can cause the cotton farmer a lot of trouble and both of these dusts will handle these pests.

Dairy Products Judging Team 3rd At Lubbock Meet

Muleshoe vocational agriculture students participated in five judging contests at Tech college Saturday, April 24.

The dairy products team, composed of Bill Aylesworth, Eugene Henry and Jimmy Thomas, placed third as a team. This team, coached by Lee Christie, Voc. Ag. instructor,

COTTON OF THE MONTH



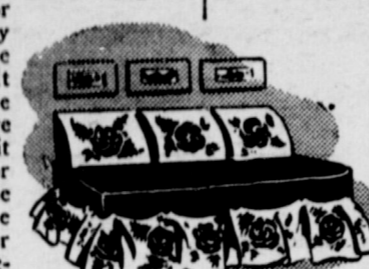
The National Cotton Council's choice for its April "Cotton of the Month" is modeled here against a background of a cotton field. The April cotton winner is a wardrobe ensemble designed by Clifford of del Mar in Lonsdale poplin. It includes a jacket, skirt, and playuit with separate shorts, a combination for town and country wear.

COLOR SYMPHONIES

Probably nine out of ten American homes, ranging from one-room-and-a-half apartments to six-or-more-room houses, harbor that time-honored article of functional furniture known as the "extra studio couch." Such a couch is almost inevitable in today's living arrangements and is frequently the most hard-working member among the family's communal possessions.

Lucky for you if it's a strong and valiant couch, for by day and by night it must serve you faithfully. It is beloved by the children, who love to curl up on it with homework or the funnies. The man of the house finds it handy for that pause that refreshes while dinner is almost but not quite ready for the table. The unexpected overnight guest can be met with open arms because there's always the studio couch. On the sun porch off the kitchen it is sure to be the favorite refuge of the homemaker, between keeping an eye on the roast and the youngsters in the play pen. Handy for snowy armfuls of sun-dried laundry, too, until it can be sorted and dampened for the iron.

All your long suffering couch asks from you is an occasional new dress. Every time you give it one, carefully planned and lovingly executed, both you and the "extra" receive a new lease on life. But don't spend too much on these periodically necessary pick-ups. Save the delicate and fragile fabrics for spots where they'll get less hard wear. Often something new and something that just looks new can be combined happily.



A remnant of crisp material, enough for a founce and three pillow tops, can team up with a plain top section and pillow backs salvaged from an old bed-spread and dyed to pick up one color from the patterned new material. Choose a gay bordered print for a chintzy living or dining room, a bright plaid for sun porch or children's room. Then cut and fit your tailored top, treat it to a good bath in all-purpose dye in your laundry tub or washing machine with the hottest tap water that gushes. The surface of a couch gets the most wear and a separate top cover like the one in the picture can be laundered often and easily.

was in competition with 22 other Muleshoe school at A & M college next Saturday.

Gerald Bass ranked sixth in poultry judging. There were 42 teams in this division.

Johnny Seid placed tenth in judging Jersey cattle and the team placed eighth in this contest of 60 teams.

There were 692 boys in the contest from 81 West Texas schools. was the greatest number of FFA boys that has ever been in this contest at Lubbock.

Muleshoe boys in the contests,

other than in the dairy products contest, were: Poultry team, Gerald Bass, Jimmy Winstead, Clifford Mardis; Dairy cattle team, Johnny Seid, Earl Henry, Preston Williams; Livestock team, Alton Taylor, Donald Monroe, Dean Williams; Crops, Robert Martin, Don Floyd, Teddy Harrison.

Hereford Observes 50th Anniversary

Hereford, April 28—Hereford citizens have turned back the clock a

full 50 years.

A casual visitor to the city these days might wonder if he'd stepped accidentally into Dr. Womug's famous "Time Machine" and been swept back to the Gay Nineties of the Old West.

Hereford men are attired in western regalia, cowboy style—and Hereford women are appearing on the streets and in stores in styles which were in vogue half century ago.

But it's still the 20th century. Hereford is preparing to celebrate its 50th Anniversary on Saturday, May 8, and the citizens are dressing the part for one of the most colorful celebrations ever staged on the Plains.

A pioneer reunion, a gigantic parade, an old-fashioned chuck-wagon

supper, and a street carnival and dancing will feature the big day. Visitors from surrounding towns and counties are invited to come to Hereford and take part in the birthday jubilee.

HAVE GUESTS SUNDAY

Guests in the home of Mr. and Mrs. S. D. Clements were her niece, Mrs. Laverne Warbington of Wichita Falls and Mrs. Clement's brother, I. O. Chaney and family of Plainview.

VISITED IN GIDDINGS

Mr. and Mrs. Cecil Tate returned Sunday from Giddings where they visited his father and other relatives.

Mary's Phone Is Forever Ringing!



Mary knows the first requisite to popularity is a clean, neat appearance. We do dry cleaning... keep wardrobes immaculate at low cost.

Have your wool garments and blankets cleaned now and put in MOTHPROOF bags for the summer.

LAMBERT CLEANERS

Your Garments Fully Insured Against Fire and Theft While in Our Shop

Phone 232 Muleshoe, Texas

The Gift She Always Needs

... is new lingerie! And what a wonderful gift a fresh pink nightie, a crepe slip, petticoat with ruffles made for Mother. Visit our ULTRA-Feminine Shop today and select from our tremendous assortment of the perfect gift treasure for your Mom. We've all the styles, all sizes and all modestly priced.



THE DIXIE LEE SHOP

Hattie Jennings

Mother's Day
May 9th



Phone 234-J

Muleshoe, Texas

SPECIALS

Friday and Saturday

Texsun 46 Oz. Can
Grapefruit Juice 13c

Red & White No. 2 1-2 Can
Fruit Cocktail 35c

Marco Per Can
Cranberry Sauce 19c

Big M Tender Sweet No. 2 Can
PEAS 10c

Red & White 2 Cans
VIENNA SAUSAGE 35c

Brimfull 2 No. 2 Cans
KRAUT 25c

Brimfull Pt. Jar
SWEET PICKLES 35c

Kellogg's Lge. Box
ALL BRAN 21c

BRING US YOUR COUPONS
FOR VEL, SUPER SUDS
PALMOLIVE AND
CASHMERE BOUQUET

Wagon's "Market Boy" Says:



46 Oz. Can

19c

Market Specials

Half or Whole	Lb.
PICNIC HAMS	49c
Beef	Lb.
STEAK	69c
Hot	Lb.
BARBECUE	59c
PLENTY OF FRESH FISH	

WAGNON GROCERY & MARKET

Your Red & White Store

PHONE: 4 ... WE DELIVER ... MULESHOE

Honor Roll

The Journal's subscription list continues to grow. Those who have paid new and renewal subscriptions in the past week are the following:

- E. A. Seaton, Route 1, Clarence Wilhite, City.
- H. E. Wimberley, Route 2, Otis Blaylock, City.
- F. L. Wenner, Route 1, Eddie Lane, City.
- Fred O'Hair, Goodland Taylor Produce, City.
- J. J. Williams, City.
- Cliff Riddle, City.
- C. H. Millsap, City.
- J. B. Burkhead, City.
- B. H. Black, Route 2.
- J. W. Jarman, Route 1.
- M. L. Howard, Dimmitt.
- C. D. Gustin, Route 1.
- R. D. Precure, Route 1.

- Harry Engleking, Route 1, C. A. Stone, City.
- Albert Ellis, Baileyboro.
- Eddie Ramm, Route 2.
- Everett Roark, Route 2.
- E. W. Lacker, Route 2.
- Mrs. C. A. Horsley, City.
- B. H. Bickel, Star Route 1.
- J. K. Adams, City.
- J. A. Dearing, City.
- T. L. Glascock, Route 1.
- F. Heathington, City.
- Kenneth Burton, Route 1.
- L. E. Ware, City.

GUEST FOR WEEK END

Miss Elizabeth Harden had as her guest for the week end, Miss Nina Jones of Lubbock.

VISIT IN FT. WORTH

Mr. and Mrs. Ben Oglesby and daughter, Margy, visited friends and relatives in Fort Worth during the past week end.

Political Announcements

The Journal is authorized to make the following announcements for public office, subject to the action of the Democratic Primaries in July.

For Representative, 19th Texas Congressional District: **GEORGE MAHON** (Re-election)

For Senator, 30th Texas Senatorial District: **KILMER B. CORBIN** Dawson County

STERLING J. PARRISH Lubbock County (Re-election)

DUDLEY K. BRUMMETT Lubbock County

For District Attorney, 64th Judicial District: **JOE SHARP** Hale County

For County Judge: **CECIL H. TATE** (Re-election)

For Sheriff, Tax Assessor and Collector: **J. C. BUCHANAN** (Re-election)

For County and District Clerk: **M. G. BASS** (Re-election)

For County Treasurer: **HELEN JONES** (Re-election)

For Commissioner, Prec. 1: **L. T. McKILLIP** (Re-election)

H. K. FREEMAN

For Commissioner, Prec. 2: **TOM L. SMITH** (Re-election)

For Commissioner, Prec. 3: **BOB KINDLE** **DAVE ST. CLAIR**

For Commissioner, Prec. 4: **G. W. (JOE) SEAGLER** **W. E. "Woody" GOFORTH** **R. P. McCALL**

For County Attorney: **PAT R. BOBO** (Re-election)

MULESHOE LODGE NO. 1237 A. F. & A. M. regular Meeting Second Tuesday Night of Each Month Jack Lenderson, W. M., R. J. Klump Secretary —Visitors Welcome—



Whether you are keen about the "new look" or not, fashions have changed and to a degree most of us have accepted padded hips, soft shoulders and longer hemlines. Unfortunately, though, the "new look" is not just dress deep and it affects our slips too, particularly during weather when our wardrobes consist chiefly of sheers.

There are ways and means to solve the slip problem, and happily. For some very pretty ones can be made out of those that are only slightly worn, but definitely too short.

Start off on the right foot to get the best results by giving slips new, fresh color.

Eye them soft, lingerie colors of pink, light blue, pale green or rose. And since slips may be rayon, silk or cotton, or a combination of these fibers, use an all-purpose dye which is guaranteed to work on all fabrics

whether natural or synthetic. Tinting is the quickest method for slips that merely needs a freshening of color. This dye bath needs only hot tap water and with a few swishes they will quickly be rejuvenated. For permanent color when a tattle-tale gray has shelved white ones, a simmering dye bath is used.

Slips may be lengthened by adding lace at the bottom of a ruffle or eyelet embroidery. Then a ruffle made from an old slip and dyed is another way.

When doing this, use insertion with ribbon to match the slip and you'll be very satisfied with the results.

If you still can't make slips long enough by one of the above methods, then cut them down for a younger feminine member of the household. With dainty lace and ribbon added, few young ladies will care that they aren't "store new."



DR. J. R. DENHOF
DR. ABNER ROBERTS
Optometrists
PHONE 61-W OR WRITE FOR APPOINTMENT
121 W. 4th St. Clovis, N. Mex.
ACROSS FROM POST OFFICE

LOANS TO BUILD OR REMODEL IN MULESHOE

Find out at once how practical and how sound Savings and Loan is as the way to realize home ownership plans. You can and should have a home!
WE WELCOME SAVINGS ACCOUNTS
For Information See **Miss Mildred Davis** Muleshoe State Bank Bldg.

FIRST FEDERAL SAVINGS AND LOAN ASSOCIATION
CLOVIS NEW MEXICO

Shooting Mail Boxes Federal Offense, Warning

Postmaster A. J. Gardner informs The Journal that during the past few months there have been several complaints from rural and star route patrons about someone shooting their mail boxes.

On the night of April 22, he said, two mail boxes on star route 2, south of Muleshoe, were shot with a shotgun and were very badly damaged. In fact, he said, they are no longer serviceable as mail boxes.

"I feel that this was done by someone who does not realize the seriousness of an offense of this kind as it is a FEDERAL offense, and carries a pretty heavy penalty," Mr. Gardner writes. "These mail boxes are purchased by the people who place them on the route to be used for their mail delivery, but they are considered by the Post Office Department the same as if they were Government property, and are protected by the Post Office Department while in use for mail delivery."

"All cases of this kind will be investigated by the Post Office Department, and any persons guilty of such an offense will be prosecuted."

MORRIS TAKES PART IN ENGINEERING DISPLAY

College Station, April 26—Marshall M. Morris, of Muleshoe, will participate in the Texas A&M Agriculture-Engineering Day, May 8. Morris, a senior aeronautical engineering student at the college, will demonstrate the operation of a pulse jet engine. He is the son of Mr. and Mrs. Arnold Morris, Muleshoe.

SAVE USED FATS!

HELP YOUR COUNTRY... HELP YOURSELF!

There is still a very real need for every ounce of used fats... can salvage. The world-wide shortage is greater today than ever before. Please... keep saving and turning in your used kitchen fats. P. S. Yes! you do get paid for them... and you know how ready cash counts today.

Keep Turning in Used Fats!
American Fat Salvage Committee, Inc.

VISIT GLENN HOME
Mrs. J. E. Neeley and daughters, Bern of Texas Tech, and Ellen of Lamesa, were visiting in the home of her mother, Mrs. R. D. Glenn of the Fairview community Monday.

TO RETURN HOME
Mr. and Mrs. Carl Case, of the Muleshoe Canning Company, are expected to return home this week after spending most of the winter at McAllen.

BRING US YOUR SEED
Hegari, Sudan, Millet and Other Grains
Suitable for Seed, Johnson Free—
Gilbreath Feed & Seed Co.
Muleshoe, Texas

AUTO TESTS

NEXT TIME, LISTEN TO ME!

Motor Drowned? Carburetor Bad? Call the
ARNOLD MORRIS AUTO CO.
Phone 111 Muleshoe
Job-Rated Dodge Trucks

Portraits of Distinction

Now In Our Downtown Studio

We are better situated than ever to give you the service you are looking for—More room, more new equipment—more stock—a large posing room.

We Will Stock Photo Finishing Supplies — Cameras

We Aim To Please YOU

Pierce's Studio
Phone 185 — Muleshoe

INSURE HIS FUTURE

• IT'S WORTH PROVIDING FOR. When you make early provision for your child's start in life, you insure his future at the lowest possible cost. A Southwestern Life Endowment policy maturing at the close of a college career provides funds for a continuance of studies, or a start in business. Ask for the full details today, and start your child on the road to success.

Marion F. Harris
Phone 242-J Box 30 Muleshoe, Texas

Southwestern Life Insurance Company

Protect Against VITAMIN DEFICIENCY With

ONE A DAY

MULTIPLE VITAMIN CAPSULES
Each One-A-Day (brand) Multiple Vitamin Capsule furnishes the full basic daily quantity of five vitamins whose requirements in human nutrition have been established.

You can't buy better vitamins no matter what you pay for them. One-A-Day (brand) Multiple Vitamin Capsules are guaranteed to be full potency, as shown on the label.

Make One-A-Day your Buy Word for vitamins. Get them at your drug store.

MILES LABORATORIES, INC.
Elkhart, Indiana

Graduate TO BETTER LIVING Electrically

Step into new freedom, new luxury, new convenience... when you live electrically. It's the smartest, and most economical way to live today. With so many wonderful new appliances to make housework less tedious, and with electric service costing less than ever before... NOW'S THE TIME to graduate to better living electrically.

SOUTHWESTERN PUBLIC SERVICE COMPANY
23 YEARS OF GOOD CITIZENSHIP AND PUBLIC SERVICE

Plans For New School Announced

Plans for a \$450,000 high school building, thoroughly modern in every respect, are being pushed by the board of trustees of Muleshoe Independent School district, and board members hope to call for construction bids shortly, it was announced today.

Funds for the structure were made available through a recent \$350,000 bond issue voted by the district to supplement an earlier issue of \$150,000.

A Lubbock architectural firm, Butler-Brusher company, is completing the plans for early release to bidders.

13 Class Rooms

The building, designed to accommodate approximately 400 high school students of the Muleshoe district, will contain 13 classrooms, an auditorium with seating capacity of 1,000 band and music rooms, home economics department, study halls and library and a gymnasium. Overall dimensions of the U-shaped edifice will be 346 by 30' feet, including the gymnasium.

Of masonry construction, the building will employ fine construction materials throughout. The corridors will feature glazed tile wainscoting. Terrazzo floors will be used on corridor floors.

Steel windows will be used throughout the building, and glass blocks will be employed.

Board Members Named

Latest developments in equipment will be incorporated into the cafeteria and kitchen equipment.

Members of the school board of the Muleshoe district are Morris Douglass, president, W. M. Pool, jr., secretary; N. H. Greer, Burrell Black, C. A. Barnett, W. T. Millen and L. J. Sanders, members.

Walter C. Cunningham is superintendent of schools for the district, which includes three-fourths of Bailey county.

EARTH NEWS

FAMILY REUNION HELD AT H. N. SEYMOUR HOME

The H. N. Seymour home was the scene of a family reunion last Sunday, April 25, when all of Mr. Seymour's children and grandchildren were present.

They were: Mr. and Mrs. Perry

Marten and son of Tipton, Okla.; Mr. and Mrs. Harvey Evans and children and Mr. and Mrs. Albert Taylor of Roswell, N. M.; Mr. and Mrs. Harold Fox of Beck, Texas, and Mr. and Mrs. Carl Seymour and family of Springlake.

HAS TONSILITIS

Miss Marie Howell of Springlake was ill with tonsillitis the past week.

91 AT SUNDAY SCHOOL

There were 91 persons reported present at the Sunday school at the Springlake Church of Christ last Sunday.

GUESTS OF HARPERS

Minister and Mrs. Howard E. Stubblefield were guests in the home of Mr. and Mrs. E. W. Harper last Sunday.

Mostly Static

By Berry

Howdy Folks: Probably the greatest waste of effort is telling a hair raising story to a bald headed man.

If your hair is coming out and you want something to keep it in, get a paper bag.

If your hair should come out to where you should have to wear a wig, for the luvva Mike keep it under your hat.

If a man is bald he has less hair to comb, but more face to wash. Always something to spoil a good thing.

Of course it doesn't mean that a man aspires to be a high brow just because he's bald headed.

There's one thing about a bald headed man, he always looks neat.

Well, all men come to baldness sooner or later, so it's all in fun. Also, sooner or later, you're going to try our Electrical Repair Service so why not do it now and learn about some real customer satisfaction.

Berry Electric

This Black Magic Chocolate Cake Is a Luscious Cake Flour Triumph



Here's a dream of a chocolate cake, a Black Magic Cake, easy to make and delicious, with a fine, tender grain assured by the use of cake flour. It's so easy to get a light, fine texture and a tender crust when you use cake flour that even a beginner cook can plan a gala cake for dessert with complete confidence in success. This Black Magic Chocolate Cake is as light as down when it is first cut; if any is left after the first serving, it becomes a mellow treat that's moist to the last forkful.

Black Magic Chocolate Cake

2 cups sifted cake flour
2 cups sugar
1/2 teaspoon salt
2 egg yolks, unbeaten
3 squares unsweetened chocolate
1 1/2 cups milk
4 tablespoons butter or other shortening
1 teaspoon vanilla
1 teaspoon soda

Sift flour once, measure into sifter, add salt, and set sifter aside. Melt chocolate and shortening over hot water. Turn into mixing bowl or electric mixer bowl. Cool to room temperature. (This is important). Then add sugar and mix well. Mix together egg yolks and 1 cup of the milk; add to chocolate mixture and blend. Sift in flour, mix until all flour is dampened, then beat 1 minute at low speed of electric mixer or about 150 strokes by hand. Add vanilla and 1/2 cup more of the milk; stir until smooth. Dissolve soda in the remaining 1/2 cup milk. Stir into the batter quickly and thoroughly. (Batter will be thin).

Turn into two 9-inch layer pans which have been lined on bottoms with paper, then greased. Bake in moderate oven (350°F.) 30 minutes, or until done. Or bake in 13x9x2-inch pan 45 minutes, or until done. Frost as desired.

Note: This cake may be mixed completely in a 2-quart double boiler. Melt the chocolate and shortening in a double boiler and cool to room temperature. Proceed with mixing as directed above, using double boiler instead of a bowl. Bake as directed above.

VISIT BOZEMANS

Visitors in the F. F. Bozeman home last Sunday were Mr. and Mrs. K. K. Bozeman of Lubbock.

MOVE TO PAMPA

The Jack Cunningham family of Springlake moved to Pampa last week.

CAFE OPENS SATURDAY IN SPRINGLAKE

Free coffee and doughnuts were served all day last Saturday to the customers at the new cafe in Springlake. The cafe, which opened Saturday, is owned by Mr. and Mrs. Ralph Rudd.

ODELLS ENTERTAIN FRIENDS WITH FISH SUNDAY

Friends of Mr. and Mrs. George Odell of Earth were guests Sunday afternoon for a fish fry. The fish were caught by Mr. Odell in California and shipped to Earth.

Those who reported a nice time visiting and eating fish were:

Mr. and Mrs. Bill Kisinger, Mr. and Mrs. Gerald Inglis, Mr. and Mrs. J. B. Inglis and daughter, Molly and granddaughter, Patricia, all of Earth; and Mr. and Mrs. I. H. Robinson, Mr. and Mrs. A. B. Robinson and son, Mr. and Mrs. L. P. Robinson and son, Mr. and Mrs. of Lubbock.



with plastic curlers \$2 plus tax

Today's the day to give yourself a TONI

So lovely. The Toni wave is soft and natural-looking. Never frizzy.

So thrifty. Looks just as lovely and lasts just as long as a \$15 beauty shop wave.

So easy. Illustrated instructions are easy as ABC to follow.



- Rinses away dandruff instantly
- Leaves hair smoother, shinier
- Makes hair easier to manage
- Not drying
- No vinegar or lemon rinse needed

Western Drug Co. The Leading Drug Store in Muleshoe

LICENSE EXAMINER TO BE MULESHOE AND LITTLEFIELD

Effective May 1, 1948, there will be a drivers license examiner in Littlefield every Wednesday from 9 until 5 o'clock and also one in Muleshoe every Wednesday from 9:30 until 1 o'clock, according to information received from the Texas Department of Public Safety, Drivers License Division.

SUNDAY GUESTS

Guests in the O. F. Dent home Sunday were Mr. and Mrs. Mickey McGill of Plainview and Mr. and Mrs. Ruie Williamson and children

RETURN FROM ARKANSAS

Col. and Mrs. W. D. Wanzor and son, Butch, and Mrs. Maude Morris of Cecl, Ark., mother of Mrs. Wanzor returned home Tuesday from a visit in Arkansas and points in Texas. They visited Willpoint, Texas, the old home of Mrs. Morris. It was the first visit she had made there in 57 years. Mrs. Morris visit with her daughter until school is out.

OFFICE SUPPLIES - The Journal



FOR THE BEST CORN GET THE BEST SEED

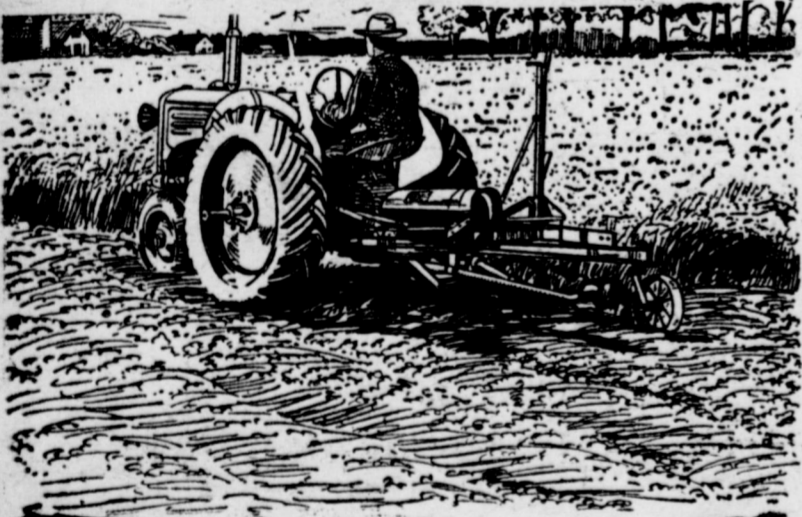
No matter how well you've prepared and fertilized your soil, you won't get good corn without good seed. Our HYBRID seed, especially designed to produce larger, more tender kernels, and to resist bacterial growth, will increase your yield.

INSECTICIDE

Destroys Weeds and Insects

RAY GRIFFITHS ELEVATOR

Phone 32 Muleshoe, Texas



DID YOU KNOW?

That you don't have to have an MM tractor to take advantage of the outstanding performance of the MM Uni-Mower... it may be operated with any tractor equipped with power take-off.

The MM Uni-Mower now has a new simple and improved V-belt drive direct from the power take-off shaft to the pitman.

MM Mowers are equipped with a universal full-length wearing plate which holds the sickle true and straight and greatly improves cutting action and ease of operation.

The Uni-Mower's all-welded tubular steel frame, high grade roller bearings, and drop-forged steel rock-type guards give you every assurance of long life, trouble-free performance. For additional facts, see us now.

Fry & Cox Bros.

Minneapolis-Moline Farm Machinery
A One Stop Farm Service
Phone 35 Muleshoe

For Convenience and Ease Of Application Use

Liquid Fertilizer


Simply place container at source—regulate flow of fertilizer according to rate of water flow or acreage coverage per hour. Use fertilizer as your soil needs it during growth of the crop.

WE HAVE LIQUID FERTILIZER IN 10 GAL., 30 GAL. & 50 GAL. DRUMS

SEE US FOR CERTIFIED SEEDS

King Bros. GRAIN & SEED CO.

H. D. King — Bob King
Phone 134 — Muleshoe

Our All  Star Cast

- ☆ Chrysler-Plymouth Automobiles
- ☆ Texaco Products
- ☆ Goodyear Tires
- ☆ Auto-Lite and Excello Batteries
- ☆ MoPar Parts and Accessories

FREE—Have your battery checked and filled with Pure Distilled Water.

Covin Motor Company

Chrysler - Plymouth Sales & Service
Southeast Corner of Square — Phone 327