

THE GRAHAM LEADER

ESTABLISHED AUGUST 16th, 1876.

WITH MALICE TOWARD NONE; WITH CHARITY FOR ALL

OLDEST NEWSPAPER IN NORTHWEST TEXAS

VOLUME XLV.

GRAHAM, TEXAS, THURSDAY, FEBRUARY 8, 1921.

NUMBER 23.

STEADY INCREASE OIL ACTIVITY IS SEEN IN CITY

Work on the Wichita Falls & Southern Railroad is Expected to Use All Surplus Labor

A summary of general conditions in Graham for the past week shows a steady increase in the number of arrivals here and in the location of business enterprises.

Despite the completion of two new hotels, the Wichita and the Commercial, people coming to the city still find it difficult to obtain rooms.

The building program shows no sign of slackening and many new structures are now nearing completion. This coming week is expected to see the foundations laid for several more.

The number of letters received by the Chamber of Commerce from people in other sections is increasing daily. This indicates that wide publicity is being given Graham as the center of Young county's oil field.

Several refinery men have visited the city during the last week and all expressed themselves as being favorably impressed with conditions here. It may therefore be confidently expected that a refinery will be located here in the near future.

The number of new arrivals from other Texas oil centers is one notable feature of the past few weeks. Literally scores of persons from Wichita, Breckenridge, Ranger and other places have flocked into the city.

All these people, many of them veterans of the oil game, are optimistic in their views for the future Graham, and are banking on the city being a second Wichita Falls.

The determination of two Breckenridge men to build a \$75,000 hotel here, together with the construction of warehouses by the Goodner Wholesale Grocery and the Waples-Platter Wholesale Grocery Company, is taken as an indication of the confidence that is being placed in the growth of the city.

Work on construction of the Wichita Falls & Southern railroad, which is expected to be started at once, will result in every idle man in the city finding a job. Officials of the road are now busy making preparations for grading and the actual start on the road awaits only telegraphic information from the Interstate Commerce Commission. Laborers already are being hired by railroad officials and these men are being sent to the grading camps.

Traffic between South Bend and Graham is increasing day by day. Freight and materials continue to pour in on every train, and the yards are as badly congested as ever. The Rock Island now usually carries three coaches to care for the increased number of people coming here.

ROCK ISLAND DOES BIG BUSINESS HERE

The Rock Island Railroad at this place is doing a rushing business. A total of \$17,580 was remitted one day last week by Agent Bennett, this amount being the receipts for one day's business, it is said.

The local office of the Rock Island it is said, is doing more business than any other place in the South on this line, including Fort Worth.

INSURANCE AGENTS OPEN OFFICE HERE

Ted Wallace & Co. of Fort Worth, general insurance agents, have opened offices over the Graham National Bank. H. F. Rice will be in charge of the office here.

ALLEGED SOUTH BEND GAMBLERS ARRESTED

About 70 alleged gamblers were rounded up Tuesday night at South Bend in a raid made by Deputy Sheriff Chas. Hoffman and two rangers from Breckenridge, according to a statement made Wednesday by Mr. Hoffman. Several fines were collected, it is said.

HIGH SCHOOL NOW BADLY NEEDED TO CARE FOR PUPILS

That Graham now faces a serious situation in regard to its public school is indicated by the large increase in the number of pupils enrolled during the last few months.

J. T. Rickman, president of the school board, and H. B. Cogdell, superintendent, are convinced that some early action must be taken to relieve congested conditions at the school. The building, which was constructed about three years ago, and which can care properly for about 800 pupils, now houses over 1,000 children, and its walls are said to be fairly bulging.

The board has adopted a policy of "watchful waiting." Mr. Rickman said Monday, in discussing the situation. "A committee was appointed by the board at its last meeting, the members of which will keep their eyes open and their ears to the ground. When this committee feels that the opportune time has come to act, it will report back to the board."

Mr. Rickman expressed himself as being opposed to any temporary arrangements by which to meet the situation. "Personally," he said, "I feel that whatever is done along this line should be done in a permanent way. If a high school building is necessary—and I believe it is necessary—then we should start in by constructing so many units and adding to these from time to time."

The present building, Mr. Rickman said, is adequate to care for the pupils of all grades up to the seventh and a high school building therefore is the only logical solution.

However, to build a high school it will be necessary to vote a bond issue, as the school board has not sufficient funds with which to do the work.

Some action, it is thought, will be taken shortly to meet the situation.

GRADING TEAMS FORM LINE ONE MILE LONG

Grahamites have become familiar with unusual sights during the last few months. They have become accustomed to the roar of heavy trucks and automobiles. They have seen buildings erected almost overnight.

But citizens were wholly unprepared for the sight that met their gaze Monday afternoon when a string of wagons, filled with grading equipment and fully a mile long, moved slowly around the square and headed south. The rush of business was suspended for a few minutes while people took in the spectacle. It looked like a circus with the trappings removed and the elephants missing.

The equipment was being moved to the grading camp preparatory to beginning work on the Wichita Falls & Southern railroad.

DORSEY RIG BUILDERS GO OUT ON A STRIKE

All rig builders of the Dorsey Lumber & Rig Company at Breckenridge went on strike February 1, according to information obtained from the local office of the company here. One crew in the South Bend district was affected, it is said.

The strike followed a reduction in wages of from \$22 to \$17 per day. It is said that several crews engaged in rig construction left their work unfinished and walked out. In speaking of the strike the local representative of the company said:

"The firm is merely trying to assist the movement to get construction costs to a lower level and put this class of labor on a more equitable basis, so that development may not be hampered in the future."

SEED PRICES MEET WITH REDUCTION

There has been a reduction in the price of seeds and farmers of Young county are urged by County Agent E. O. Kemp to get in touch with him before buying. "If the farmers will see me before making their purchases," Mr. Kemp said, "I can save them money on their seeds."

BRINGING IN OF NEW WELLS IS DELAYED THROUGH LACK OF PIPE LINE CONNECTIONS

Panhandle-McCluskey No. 2 Gasser Comes in After Two Months as Good Oil Well—Makes 480 Barrels in Twenty Hours.

Lack of pipe line connections in the South Bend district has been responsible during the last few weeks for a general slowing up in the work of oil development.

Many wells in this territory are now on the sand and ready to be drilled in. More are rapidly nearing the pay. Just how soon the Prairie Company will effect these connections is not known. But it is expected that it will be at least two more weeks before the lines are laid and the station completed.

There have been no sensational developments in the field during the past week. Activity of drilling and the making of new locations, however, continues unabated.

The Panhandle-McCluskey No. 2, which for the past two months has been making about 44,000 feet of gas, came in last Sunday as an oil well. During a period of 20 hours this well is reported to have made about 480 barrels of oil. The hole is located about 300 feet southwest of McCluskey discovery pool. The prediction has been made that this well will make eventually one of the best wells in this district. However, that yet remains to be proved.

The Shamrock test, on the Graham lease, came in last week making gas, and is now reported to be spraying oil. Operators in this district believe that all gassers will finally blow themselves in as good wells.

The Panhandle-McCluskey wells Nos. 5 and 6 are now on the sand waiting to be put on the pipe lines. Both these wells are reported as showing up good.

The Chapman-Clark's Graham No. 4 is said to be making between 100 and 200 barrels of oil and considerable gas at a depth of 2,100 feet. The Gulf people passed up a 100-barrel well in the 2,100-foot sand on their Keller No. 1 and are going to 2,500 feet.

CITIZENS URGED NOT TO NEGLECT FARM INTERESTS

A strong appeal to the citizens of Graham not to forget the agricultural interests of Young county during the oil boom, was made Thursday week night by W. H. Hook in a speech delivered at the Chamber of Commerce banquet. Mr. Hook is a new arrival in the city and is assisting in the first year's high school work at the public school.

Mr. Hook's plea came at the close of the banquet and struck a responsive chord in the sentiment of those present. The welfare of the farmer, he said, should not be neglected during the rush and clamor for the dollar.

Mr. Hook's speech was followed by a few remarks from Mayor Cline of Wichita Falls, who stated that this had been one of the failings of Wichita county during the oil boom there.

DUST NUISANCE IS WORRY TO MERCHANTS

Merchants of the city are becoming impatient at the dust nuisance. The wind, sweeping across the square in fierce gusts, picks up the sand and blows it into dry goods and clothing stores and causes many dollars of damage to goods, it is said.

Just at this time when so many visitors are coming into the city the business men and other citizens are desirous that the streets be sprinkled at regular intervals. The business men themselves, it is said, are willing to raise the money for this purpose if necessary.

O. P. & G's McCluskey No. 1 is flowing by heads at 2,094 feet.

Clear Fork Oil & Gas Co's McCluskey No. 1 on the 2,100-foot sand awaiting pipe line connections.

Clear Fork-McCluskey No. 2, rig up.

Shamrock-McCluskey No. 1, building rig.

Conner-McCluskey No. 1, rig on ground.

Danciger-Graham No. 1, rig on the ground.

O. P. & G-McCluskey No. 2, building rig.

Roxana-Braddock No. 2, on the 2,100-foot sand awaiting pipe line connections.

Roxana-Braddock No. 3, rig on the ground.

O. P. & G-Kellar No. 1, drilling at 800 feet.

O. P. & G-Graham No. 2, drilling at 2,300 feet.

O. P. & G-Graham No. 4, drilling at 1,100 feet.

O. P. & G-Graham No. 5, rigging up.

O. P. & G-Graham No. 6, rig on ground.

Shamrock-Graham No. 5, drilling at 700 feet.

Danciger No. 1, drilling at 1,800 feet.

Godley-Graham No. 2, drilling at 1,400 feet.

Godley-Graham No. 4, drilling at 500 feet.

Godley-Graham No. 6, rig completed.

Young County Oil & Gas Co., drilling at 2,410 feet.

Texas National-Dooley No. 1, drilling at 1,950 feet.

Shankles-Dooley No. 1, drilling at 1,400 feet.

O. P. & G-Dooley No. 1, rig on ground.

Nelson-Dooley No. 1, rig on ground.

Grant & Scott-Dooley No. 1, shut down at 1,800 feet.

\$75,000 HOTEL TO BE BUILT SOON ON NORTH OAK STREET

A new three-story brick hotel to cost approximately \$75,000 will be erected shortly on North Oak street, a short distance from the square.

This was made known Monday through an announcement by B. A. Adams and H. P. Cook, of Breckenridge, who have purchased the lot and who will erect the building. The lot was owned by a man in Breckenridge and the deal for its purchase was closed at that place.

The new hotel will have fifty rooms and will be modern in every respect, it is said. Determination to build the hotel was made Monday after these men had looked over conditions here.

Both Mr. Adams and Mr. Cook will return here Monday to make final arrangements for construction of the building, work on which it is expected will be started right away.

FIRE RUINS HOME OF MRS. AMMIE GATLIN

Fire, which is thought to have originated in a defective flue in the rear of the building, broke out in the home of Mrs. Annie Gatlin, South Elm street, Tuesday morning and left the interior of the residence a mass of charred ruins. Her loss is partly covered by \$3,000 insurance.

Quick action by members of the fire department probably saved the house from total destruction. When the alarm was sounded and the fire truck arrived the interior of the structure was in a mass of flames. Little of the household furniture was saved.

Besides Mrs. Gatlin, who was absent at the time the fire occurred, the house was occupied by roomers. Much of their personal belongings was lost.

WORK ON SOUTH BEND HIGHWAY IS DELAYED

Several subscriptions to the Chamber of Commerce South Bend road fund have been received during the last few days, according to E. C. Stovall, chairman of the committee. These subscriptions are coming in from oil men, truck drivers and others who use the road.

Work on the highway is being held up pending the arrival of parts for grading machinery. These parts, which were ordered several weeks ago, are expected in at any time.

CRAIN LUMBER CO. TO OPERATE IN THE CITY

The E. L. Crain Lumber Company of Houston are locating in Graham and have established temporary offices with the Federal Supply Company on the east side of the square. This company now has several cars of material enroute here. All this material is ready-cut for homes and business houses, and dwellings for oil men. Houses can be erected from this material in a very short time it is stated, and when completed are very nice and comfortable. T. D. Tway will be in charge of the company's office here.

NEW STORES ADDED BY LAUCK & GALLAGHER

Work of building additional stores in the Lauck & Gallagher building, on the corner of Fourth and Elm streets, has been started on the Fourth street side. There will be a total of seventeen new stores added to the building. There will be five spaces in the rear, 20x40 feet. On the Fourth street side there will be five 12x20 foot spaces; two 14x35 foot spaces and two 13x50 foot spaces. The work is expected to be completed within the next ten days.

The theatre which is now being constructed in connection with the building will have its entrance on Elm street. The theatre has been leased by a Wichita Falls man and it will be ready for operation within the next three weeks, it is said.

WORK ON WICHITA FALLS & SOUTHERN WILL BE RUSHED

Officials are Busy Making Preparations Preliminary to Starting Work on the New Road

Within fifty days from the date of issuance by the Interstate Commerce Commission of permission for the construction of the Wichita Falls & Southern Railroad, the steel rails will have been laid into Graham. This was the statement made Monday by Chief Engineer McFarland, who stated that he was expecting the permission to be received at any time.

Rapid preparations are now being made preliminary to starting actual work on the railroad. Mr. McFarland stated that 1,500 tons of steel already has been received and that 1,000 more tons is now in transit from Kansas City.

"Contracts for bridge materials will be let Wednesday," Mr. McFarland said, adding that within five days after he had received permission to start the work, at least 300 teams will be busy between Newcastle and the Brazos. Work of placing the piers for the steel span across the Brazos, he said, was expected to start within two weeks after receipt of permission.

"We are now in a position to put every man to work who wants a job," the chief engineer said. He added that laborers need not expect to receive the high wages they have been accustomed to during the last few years.

Those who want work are advised to get in touch at once with the chief engineer's office.

Between 500 and 600 men will be employed on grading work, it is said, about 25 or 30 men on timber trestles; between 25 and 30 men on bridges and some 225 men on laying the track. Some 25 or 30 men with teams will be used in hauling from the material yards.

LABOR SURPLUS IS GROWING STEADILY

There is no shortage of labor in Graham and contractors have little difficulty in finding men to fill jobs. The number of unemployed here is not known, but that there is a surplus of labor is indicated by the number of men who are found looking for jobs. Men are being put to work every day, some are leaving and others continue to arrive on every train.

One man stated that he had gone the rounds of Ellassville, Ivan, South Bend and Graham and had been unable to find a job, although he has sought one diligently in each of these places. This might be an exception to the general rule, however, but it illustrates present conditions. The Chamber of Commerce receives many inquiries concerning work here, but workmen are being advised against coming to Graham at the present time.

It is thought that when spring comes it will bring a better condition in the financial situation and that many more men can then be used in connection with the city's building program.

INJUNCTION SOUGHT AGAINST OPERATORS

An injunction to prevent operators in the South Bend district from running salt water into the Clear Fork of the Brazos River will be sought by E. C. Stovall, according to a statement made Thursday. Mr. Stovall is putting in waterworks to supply South Bend and the oil field and this action is being taken to prevent the fresh water in the river from being ruined by the salt water.

Mr. Stovall has been urged to take this action by citizens of South Bend and by a majority of operators in the field. It is stated that the salt water can be shut off with little difficulty.

Leander, Williamson County, Tex., Feb. 1.—Blackleg has broken out among the cattle in this section and a number of calves and yearlings have died from the disease.

THE LEADER

Published by
THE GRAHAM LEADER COMPANY
BOWRON & McLENDON, Props.

Entered at the Post Office at Graham, Texas, as second-class mail matter.

Subscription Rates:
One Year \$2.00
Six Months 1.25
Three Months75

NOTICE—Any erroneous reflection upon the character, standing or reputation of any person, firm, or corporation which may appear in the columns of The Leader will be gladly corrected upon its being brought to the attention of the publishers.

Graham, Texas, February 3, 1921.

TREE PLANTING BULLETIN

A new bulletin, "Tree Planting in Texas, Towns and Cities" has just been issued by the State Forester. Copies may be secured free of charge by writing him at College Station. This bulletin should be of great assistance to residents of towns and cities who wish to beautify their homes by planting trees. For decorative planting around farmsteads this bulletin will also prove helpful. Forest tree planting for windbreaks and utility woodlots, however, is not discussed but is taken up in a bulletin "Tree Planting by Farmers for Fuel Fence Posts, and Shelter," which is now in press. Announcement will be made when it is ready for distribution.

The city planting bulletin points out the advantages to be gained by planting shade trees. It is said that "in no other way can the comfort and attractiveness of a town be secured so cheaply, easily and satisfactorily as by the extensive planting of shade trees and shrubs."

Points to consider in the selection of trees are the shape, rapidity of growth, length of life, cleanliness, shape of root system and adaptability to soil and climate.

Tables of trees adapted to narrow streets, wide avenues, trees tolerant of severe city conditions, short-lived trees, untidy trees, and undesirable one are given. Following these tables comes a list showing the essential characteristics of eighty commonly planted trees.

A section is devoted to the location of shade trees and planting directions are given. Subsequent care and attention is treated and then comes a discussion of tree troubles and remedies. Various pests are considered and various other remedies for tree troubles are recommended. Tree repair work is briefly mentioned with a descriptive cut showing methods of pruning, bracing and concrete filling.

A set of city ordinances is suggested to be used by towns which desire to put the shade tree work on a firm footing.

At the end is a list of Texas Nursery dealers which should be helpful where nursery stock is desired. Many of these nurseries issue descriptive catalogs which may be obtained by writing them.

Mr. Sieck announces that he expects that the distribution of this bulletin to greatly stimulate tree planting in Texas municipalities.

MAYOR CLINE MUCH PLEASED WITH CITY

Mayor Walter D. Cline, of Wichita Falls, who spoke here Thursday night at the Chamber of Commerce banquet, sees great possibilities for Graham. In an interview the mayor declared that he had never seen a better foundation for a real city.

"We want the citizens of Graham to feel that the people of Wichita Falls are their friends," the mayor said. "We feel that we can be of help to you and that you also can be of assistance to us."

Mr. Cline, who has been a driller and roughneck in the oil fields, expressed gratification at his reception in Graham. While in the city he was a guest of Mr. and Mrs. M. K. Graham.

The mayor and other visitors from Wichita Falls were shown the oil fields at South Bend Friday morning, returning home by automobile in the afternoon.

FIRE WHISTLE MOVED TO NEW LOCATION

Those who have been accustomed to hearing the fire whistle peal forth its sound from the rear of the Morrison building, on the north side of the square, will fail to hear it there in the future. The siren has been moved from that location and installed at the foot of Twin Mountain.

This location, it is thought, will give the whistle a greater range of sound when a fire alarm is turned in.

WRIGHT HARDWARE CO. WILL OPERATE HERE

The building at 500 Oak Street, on the northwest corner of the square, occupied for many years by the Tidwell & Sons Grocery store, has been acquired by an Eastland firm and is being remodeled for a hardware store. The members of the company are, L. B. Wright, B. S. Wolfe, and R. E. Sikes.

Ten carloads of hardware are now in transit here, consigned to the company, it was stated by Mr. Wright, who is in charge of arrangements here.

The building is being remodeled throughout and a new floor is being laid. Everything in the hardware line will be carried.

The rear of the building will be used as a grocery store.

Seven families will be brought to Graham through the establishment of the firm here, Mr. Wright said.

DOGS ARE ENEMIES OF CONCRETE WORKERS

This is a story of a concrete finisher and a dog. Now you may wonder what relation could possibly exist between this workman and the canine. But there is a relation—strained relations—or, in other words, downright hostility existing between these two.

This was shown on day last week when a concrete finisher, bent low over his work of smoothing out the surface of one of Graham's sidewalks, uttered a sudden exclamation of anger. He had just completed a whole section of the walk and its surface glistened in the sunlight. At the very moment that he straightened himself to view his work, a large mongrel, as though from pure joy, leaped upon the wet, glossy concrete and trotted the full length of the sidewalk, leaving behind him a winding trail of tracks.

"Darn you!" shouted the angered workman at the retreating form of the dog. "I'll get me a shotgun after you."

"Yes, a shotgun," the man repeated, "for that's the only way you can keep a dog off a wet concrete sidewalk."

Then he returned to his work of smoothing out the dog tracks, his whole frame shaking with rage.

You will find the largest new complete line of Box Stationery at SNODDY & SON. 7fc

CITATION BY PUBLICATION

To the Sheriff or Any Constable of Young County—Greeting:

You are hereby commanded to summon Mary Jane Blauser by making publication of this Citation once in each week for four consecutive weeks previous to the return day hereof, in some newspaper published in your County, if there be a newspaper published therein, but if not, then in any newspaper published in the 30th Judicial District, but if there be no newspaper published in said Judicial District then in a newspaper published in the nearest District to said 30th Judicial District, to appear at the next regular term of the District Court of Young County, to be held at the Court House thereof, in Graham, on the 1st Monday in March A. D. 1921, then and there to answer a petition filed in said Court on the 13th day of January A. D. 1921 in a suit numbered on the docket of said Court No. 6273, wherein E. L. Blauser is Plaintiff, and Mary Jane Blauser is Defendant and said petition alleging that plaintiff and defendant were lawfully married on or about the 11th day of September 1911; that they continued to live together until on or about the 10th day of January, 1919 when by reason of the cruel, harsh, inhumane and improper conduct of the defendant he was driven from his home and compelled to permanently abandon her since which time they have not lived together as man and wife; that plaintiff treated defendant at all times with the greatest consideration, providing for her and caring for her, but the defendant about one year after their marriage began a course of cruel, unkind, harsh, tyrannical treatment toward plaintiff rendering their further living together insupportable.

That there is no children of said union, and no community property to be divided. That defendant be cited to appear and on final hearing that he have judgment dissolving said marriage relations, costs of suit, etc.

Herein fail not, but have before said Court, at its aforesaid next regular term, this writ with your return thereon, showing how you have executed the same.

Witness, Willie Riggs, Clerk of the District Court of Travis Co., Texas, in a final partition judgment of partition in cause No. 13582 and recorded in Vol. "T" page 91 Deed Records of Stephens Co., Texas, a mesq. 10" bns S 80 1-2 E 38 vrs east 10" bns N 56 E 70 vrs; thence east 3670 vrs to stake and rock mound on E line

of said survey the N E corner of lot No. 3 a L O 13" bns S 70 1-2 W 162.7 vrs. mesq. 6" bns. N 28 W 58.6 vrs; Thence N 2987.5 vrs to the place of beginning, containing nineteen hundred and forty-two (1942) acres of land more or less. That on the day and year last aforesaid, defendants unlawfully entered upon said premises and ejected plaintiffs therefrom and unlawfully withhold from him the possession thereof to his damage \$25,000.00. That the reasonable value per year of said land and premises is \$1000.00. That the defendants be cited to appear and answer this petition, that the plaintiff have judgment for the title and possession of said land and premises and that the cloud be removed, for writ of restitution, rents, damages and costs of suit.

Herein fail not, but have before said Court at its aforesaid next regular term, this writ with your return thereon, showing how you have executed the same.

Witness, Willie Riggs, Clerk of the District Court of Young County, Texas, at office in (L. S.) Graham, Texas, this the 18 day of January, A. D. 1921.

20-23c WILLIE RIGGS, Clerk District Court, Young County

CITATION BY PUBLICATION

THE STATE OF TEXAS

To the Sheriff or Any Constable of Young County—Greeting:

You are hereby commanded to summon Joseph Hyland, Sarah E. Campbell, Walter Campbell, Ruth Campbell, Thomas Morrow, Harland A. Edwards, N. Lockhart, Eliza Lockhart, G. W. Deardorff, Samuel Carroll, William Gary, J. B. Downing, B. E. Burgess, N. J. Downing, M. A. Stovall, William Veal, A. G. Crawford, J. L. Crawford, J. J. Lane, N. C. Lane, A. M. Carothers, J. W. Hollingsworth, James B. Simpson, H. P. Hillard, J. J. Douglas, S. W. Bingham, S. C. McBride, George W. Robinson, Mary Yancey Robinson, Eliza Robinson, R. E. Burns, W. B. Burns Margaret Beebe, R. C. Walker, Adolphus Beebe, Emily Beebe, Prudy Beebe, Nancy J. Waldron, M. F. Waldron, J. C. McBride, J. I. Hyland, L. A. Chapman, William Chapman, Nancy E. Shilling, J. G. Shilling, Mary Hyland, William Hyland, Effie Hyland, Elizabeth Davis, J. R. Davis, Mary J. House, J. D. House, Melissa Parmenter, N. W. Parmenter, Emily Lewis, T. W. Lewis, Marion F. Waldron, John D. Waldron, Lillie Waldron, Henrietta M. Waldron, George Waldron, Harvey Morey, Annie Cox, H. M. Cox, William Woodom, James Woodom, Jane Newman, J. C. Newman, Sr., Barbara A. Robinson, L. N. Robinson, Matilda Jenkins, H. W. Jenkins, Parker C. Ewan,ohn Winingham and the unknown heirs of the above named parties all of whose residences are unknown to the plaintiff, by making publication of this Citation once in each week for four consecutive weeks previous to the return day hereof, in some newspaper published in your County, if there be a newspaper published therein, but if not, then in any newspaper published in the 30th Judicial District, but if there be no newspaper published in said Judicial District, then in a newspaper published in the nearest District to said 30th Judicial District, to appear at the next regular term of the District Court of Young County, to be held at the Court House thereof, in Graham, on the 1st Monday in March A. D. 1921, then and there to answer a petition filed in said Court on the 12th day of January A. D. 1921 in a suit numbered on the docket of said Court No. 6269, wherein W. A. Corbett is Plaintiff, and Joseph Hyland, Sarah E. Campbell, Walter Campbell, Ruth Campbell, Thomas Morrow, Harland A. Edwards, N. Lockhart, Eliza Lockhart, G. W. Deardorff, Samuel Carroll, William Gary, J. B. Downing, B. E. Burgess, M. J. Downing, M. A. Stovall, William Veal, A. G. Crawford, J. L. Crawford, J. J. Lane, N. C. Lane, A. M. Carothers, J. W. Hollingsworth, James B. Simpson, H. P. Hillard, J. J. Douglas, S. W. Bingham, S. C. McBride, Geo. W. Robinson, Mary Yancey Robinson, Eliza Robinson, R. E. Burns, W. B. Burns, Margaret Beebe, R. C. Walker, Adolphus Beebe, Emily Beebe, Prudy Beebe, Nancy J. Waldron, M. S. Waldron, J. C. McBride, J. I. Hyland, L. A. Chapman, William Chapman, Nancy E. Shilling, J. G. Shilling, Mary Hyland, William Hyland, Effie Hyland, Elizabeth Davis, J. R. Davis, Mary J. House, J. D. House, Melissa Parmenter, N. W. Parmenter, Emily Lewis, T. W. Lewis, Marion F. Waldron, John D. Waldron, Lillie Waldron, Henrietta M. Waldron, George Waldron, Harvey Morey, Annie Cox, H. M. Cox, Wm. Woodom, Jas. Woodom, Jane Newman, J. C. Newman Sr, Barbara A. Robinson, L. N. Robinson, Matilda Jenkins, H. W. Jenkins, Parker C. Ewan, John Winingham and the unknown heirs of the above named parties all of whose residences are unknown to plaintiff, and W. L. Hill, J. R. Hill, J. H. Farbar, and C. E. Hopper are Defendants and said petition alleging that on or about the 1st day of October A. D. 1898 he was lawfully seized and possessed of the following described land and premises situated in Young County, Texas, and Stephens County, Texas, holding and claiming the same in fee simple to-wit: Land situated in Young and Stephens Counties, Texas, described as follows:

Out of the Ruth Campbell survey, abt No. 87 in Stephens County, Texas and abst. No. — in Young County, Texas, and more particularly described as follows: Beginning at the N. E. corner of said Ruth Campbell survey a rock mound in drain, a L. O. bns S 20 1-2 E 6 vrs. do bns S. 73 E 10 vrs. old bearings; Thence west 3670 vrs. to N. W. corner a rock mtd mesq. bns. S. 36 E 11 vrs a P O b N 55 W 11 vrs; Thence S. 2987. 5 vrs to stk in lane on west line of said survey the N W cor of lot No. 7, a subd of said survey as set out by the District Court of Travis Co., Texas in a final partition judgment of partition in cause No. 13582 and recorded in Vol. "T" page 91 Deed Records of Stephens Co., Texas, a mesq. 10" bns S 80 1-2 E 38 vrs east 10" bns N 56 E 70 vrs; thence east 3670 vrs to stake and rock mound on E line

of said survey the N E corner of lot No. 3 a L O 13" bns S 70 1-2 W 162.7 vrs. mesq. 6" bns. N 28 W 58.6 vrs; Thence N 2987.5 vrs to the place of beginning, containing nineteen hundred and forty-two (1942) acres of land more or less. That on the day and year last aforesaid, defendants unlawfully entered upon said premises and ejected plaintiffs therefrom and unlawfully withhold from him the possession thereof to his damage \$25,000.00. That the reasonable value per year of said land and premises is \$1000.00. That the defendants be cited to appear and answer this petition, that the plaintiff have judgment for the title and possession of said land and premises and that the cloud be removed, for writ of restitution, rents, damages and costs of suit.

Herein fail not, but have before said Court at its aforesaid next regular term, this writ with your return thereon, showing how you have executed the same.

Witness, Willie Riggs, Clerk of the District Court of Young County, Texas, at office in (L. S.) Graham, this the 12th day of January, A. D. 1921.

20-23c WILLIE RIGGS, Clerk District Court, Young County Texas.

CITATION BY PUBLICATION

The State of Texas.

To the Sheriff or Any Constable of Young County—Greeting:

You are hereby commanded to summon C. R. Wynne by making publication of this Citation once in each week for four consecutive weeks previous to the return day hereof, in some newspaper in your County, to appear at the next regular term of the District Court of Young County, to be held at the Court House thereof, in Graham, on the 1st Monday in March A. D. 1921, the same being the 7th day of March A. D. 1921, then and there to answer a petition filed in said Court on the 18th day of January A. D. 1921, in a suit numbered on the docket of said Court No. 6280, wherein Minerva Wynne is Plaintiff, and C. R. Wynne is Defendant and said petition alleging that plaintiff and defendant were legally married January 6, 1898; lived together 14 months, whereupon on account of unbearable cruelties plaintiff was forced to separate. After 6 years on urgent request plaintiff returned to defendant on his vehement promises of reform. For 10 months plaintiff continued the abuse by defendant—his profane, vulgar language toward plaintiff together with threats of great bodily injuries. On one occasion in a drunken, assault plaintiff with a heavy stick and armed have struck her down but was restrained by defendant's son. The continued bad treatment made plaintiff nervous, impaired her health and the doctor had to be called. That at the end of ten months plaintiff to protect herself, was forced to separate from the defendant.

Herein fail not, but have before said Court, at its aforesaid next regular term, this writ with your return thereon, showing how you have executed the same.

Witness, Willie Riggs, Clerk of the District Court of Young County, Texas, at office in (L. S.) Graham, this the 18th day of January A. D. 1921.

22c WILLIE RIGGS, Clerk District Court, Young County, Texas.

CITATION BY PUBLICATION

The State of Texas.

To the Sheriff or Any Constable of Young County—Greeting:

You are hereby commanded to summon J. M. Birdwell, W. B. Birdwell, R. J. Robinson, Cora Robinson, Bob Robinson, Mrs. J. E. Birdwell, Mrs. Joanna Birdwell, J. E. Birdwell, Edward Johnson, Caddo B. Johnson, Jessie Robinson, Jesse G. Robinson, Wallace E. Robinson, Harris L. Robinson, Ted Robinson, Alice Robinson, Cap Robinson, Jesse Birdwell, Lee Birdwell, Joe Birdwell, Eva Wales, Guinn Wales, Young Birdwell, George Birdwell, Joe Robertson, G. W. Robertson, Jannie Brashears, Maud Brashears, John Birdwell, Lizzie Birdwell, J. J. Birdwell, Fannie Birdwell, V. C. Roberson, Bernice Roberson, G. T. Birdwell, Ross Lee, Annie Lee and the unknown heirs of each and all of the above named persons, by making publication of this citation once in each week for four consecutive weeks previous to the return day hereof, in some newspaper published in your County, if there be a newspaper published therein, but if not, then in any newspaper published in the 30th Judicial District, but if there be no newspaper published in said Judicial District, then in a newspaper published in the nearest District to said 30th Judicial District, to appear at the next regular term of the District Court of Young County, to be held at the Court House thereof, in Graham, on the 1st Monday in March A. D. 1921,

the same being the 7th day of March A. D. 1921, then and there to answer a petition filed in said Court on the 26th day of January A. D. 1921 in a suit numbered on the docket of said Court No. 6287, wherein J. C. Vaughan is Plaintiff, and J. M. Birdwell, W. B. Birdwell, R. J. Robinson, Cora Robinson, Bob Robinson, Mrs. J. E. Birdwell, Mrs. Joanna Birdwell, J. E. Birdwell, Edward Johnson, Caddo B. Johnson, Jessie Robinson, Jesse G. Robinson, Wallace E. Robinson, Harris L. Robinson, Ted Robinson, Alice Robinson, Cap Robinson, Jesse Birdwell, Lee Birdwell, Joe Birdwell, Eva Wales, Guinn Wales, Young Birdwell, George Birdwell, Joe Robertson, G. W. Robertson, Jannie Brashears, Maud Brashears, John Birdwell, Lizzie Birdwell, J. J. Birdwell, Fannie Birdwell, V. C. Roberson, Bernice Roberson, G. T. Birdwell, Ross Lee, Annie Lee and the unknown heirs of each and all of the above named persons are Defendants and said petition alleging that on or about the 26th day of January A. D. 1921 plaintiff was lawfully seized and possessed of the following described tracts of land in fee simple to-wit:

Situated in Young County, Texas, First Tract being 80 acres more or less and being all of the R. Taylor Survey Abstract No. 1542 lying on the west side of Flat Rock Creek as the same meanders through said survey, excepting a certain one and one-half acres tract out of the said part of said survey, described as follows, to-wit:

Beginning at the S E corner of B R I R Sur. No. 96; Thence North 10 E with the E B line of said survey No. 96 229 vrs to a stake; thence South 80 E 50 vrs to a stake on Flat Rock Creek for corner; thence down said creek with its meanders to the place of beginning. Second Tract: Being all of the B R I R one-quarter section No. 96 in Young County, Texas, Abstract No. 2180 excepting that part of said survey described as follows, to-wit:

Beginning at the S E corner of the Calvin Harmon Survey; thence South 10 W. 171 vrs. to the S W corner of B R I R survey No. 96; thence South 80 E with the S B line of said survey No. 96 801 vrs to the S E corner of same; thence North 10 E 229 vrs to a stake for corner; thence in a westerly direction to the place of beginning, said excepted portion of said survey containing 28 1-2 acres of land. That the defendants unlawfully entered upon said premises and ejected plaintiff therefrom and unlawfully withhold the possession thereof to plaintiff's damage in the sum of \$10,000.00; that the defendants be cited to appear and answer herein and that plaintiff have judgment for the title and possession of said land for his damages, costs of suit and other and further relief, etc.

Herein fail not, but have before said Court, at its aforesaid next regular term, this writ with your return hereon, showing how you have executed the same.

Witness, Willie Riggs, Clerk of the District Court of Young County, Texas, at office in (L. S.) Graham, this the 26th day of January, A. D. 1921.

22c WILLIE RIGGS, Clerk District Court, Young County, Texas.

of said survey the N E corner of lot No. 3 a L O 13" bns S 70 1-2 W 162.7 vrs. mesq. 6" bns. N 28 W 58.6 vrs; Thence N 2987.5 vrs to the place of beginning, containing nineteen hundred and forty-two (1942) acres of land more or less. That on the day and year last aforesaid, defendants unlawfully entered upon said premises and ejected plaintiffs therefrom and unlawfully withhold from him the possession thereof to his damage \$25,000.00. That the reasonable value per year of said land and premises is \$1000.00. That the defendants be cited to appear and answer this petition, that the plaintiff have judgment for the title and possession of said land and premises and that the cloud be removed, for writ of restitution, rents, damages and costs of suit.

Herein fail not, but have before said Court at its aforesaid next regular term, this writ with your return thereon, showing how you have executed the same.

Witness, Willie Riggs, Clerk of the District Court of Young County, Texas, at office in (L. S.) Graham, this the 12th day of January, A. D. 1921.

20-23c WILLIE RIGGS, Clerk District Court, Young County Texas.

CITATION BY PUBLICATION

The State of Texas.

To the Sheriff or Any Constable of Young County—Greeting:

You are hereby commanded to summon C. R. Wynne by making publication of this Citation once in each week for four consecutive weeks previous to the return day hereof, in some newspaper in your County, to appear at the next regular term of the District Court of Young County, to be held at the Court House thereof, in Graham, on the 1st Monday in March A. D. 1921, the same being the 7th day of March A. D. 1921, then and there to answer a petition filed in said Court on the 18th day of January A. D. 1921, in a suit numbered on the docket of said Court No. 6280, wherein Minerva Wynne is Plaintiff, and C. R. Wynne is Defendant and said petition alleging that plaintiff and defendant were legally married January 6, 1898; lived together 14 months, whereupon on account of unbearable cruelties plaintiff was forced to separate. After 6 years on urgent request plaintiff returned to defendant on his vehement promises of reform. For 10 months plaintiff continued the abuse by defendant—his profane, vulgar language toward plaintiff together with threats of great bodily injuries. On one occasion in a drunken, assault plaintiff with a heavy stick and armed have struck her down but was restrained by defendant's son. The continued bad treatment made plaintiff nervous, impaired her health and the doctor had to be called. That at the end of ten months plaintiff to protect herself, was forced to separate from the defendant.

Herein fail not, but have before said Court, at its aforesaid next regular term, this writ with your return hereon, showing how you have executed the same.

Witness, Willie Riggs, Clerk of the District Court of Young County, Texas, at office in (L. S.) Graham, this the 18th day of January A. D. 1921.

22c WILLIE RIGGS, Clerk District Court, Young County, Texas.

CITATION BY PUBLICATION

The State of Texas.

To the Sheriff or Any Constable of Young County—Greeting:

You are hereby commanded to summon J. M. Birdwell, W. B. Birdwell, R. J. Robinson, Cora Robinson, Bob Robinson, Mrs. J. E. Birdwell, Mrs. Joanna Birdwell, J. E. Birdwell, Edward Johnson, Caddo B. Johnson, Jessie Robinson, Jesse G. Robinson, Wallace E. Robinson, Harris L. Robinson, Ted Robinson, Alice Robinson, Cap Robinson, Jesse Birdwell, Lee Birdwell, Joe Birdwell, Eva Wales, Guinn Wales, Young Birdwell, George Birdwell, Joe Robertson, G. W. Robertson, Jannie Brashears, Maud Brashears, John Birdwell, Lizzie Birdwell, J. J. Birdwell, Fannie Birdwell, V. C. Roberson, Bernice Roberson, G. T. Birdwell, Ross Lee, Annie Lee and the unknown heirs of each and all of the above named persons, by making publication of this citation once in each week for four consecutive weeks previous to the return day hereof, in some newspaper published in your County, if there be a newspaper published therein, but if not, then in any newspaper published in the 30th Judicial District, but if there be no newspaper published in said Judicial District, then in a newspaper published in the nearest District to said 30th Judicial District, to appear at the next regular term of the District Court of Young County, to be held at the Court House thereof, in Graham, on the 1st Monday in March A. D. 1921,

the same being the 7th day of March A. D. 1921, then and there to answer a petition filed in said Court on the 26th day of January A. D. 1921 in a suit numbered on the docket of said Court No. 6287, wherein J. C. Vaughan is Plaintiff, and J. M. Birdwell, W. B. Birdwell, R. J. Robinson, Cora Robinson, Bob Robinson, Mrs. J. E. Birdwell, Mrs. Joanna Birdwell, J. E. Birdwell, Edward Johnson, Caddo B. Johnson, Jessie Robinson, Jesse G. Robinson, Wallace E. Robinson, Harris L. Robinson, Ted Robinson, Alice Robinson, Cap Robinson, Jesse Birdwell, Lee Birdwell, Joe Birdwell, Eva Wales, Guinn Wales, Young Birdwell, George Birdwell, Joe Robertson, G. W. Robertson, Jannie Brashears, Maud Brashears, John Birdwell, Lizzie Birdwell, J. J. Birdwell, Fannie Birdwell, V. C. Roberson, Bernice Roberson, G. T. Birdwell, Ross Lee, Annie Lee and the unknown heirs of each and all of the above named persons are Defendants and said petition alleging that on or about the 26th day of January A. D. 1921 plaintiff was lawfully seized and possessed of the following described tracts of land in fee simple to-wit:

Situated in Young County, Texas, First Tract being 80 acres more or less and being all of the R. Taylor Survey Abstract No. 1542 lying on the west side of Flat Rock Creek as the same meanders through said survey, excepting a certain one and one-half acres tract out of the said part of said survey, described as follows, to-wit:

Beginning at the S E corner of B R I R Sur. No. 96; Thence North 10 E with the E B line of said survey No. 96 229 vrs to a stake; thence South 80 E 50 vrs to a stake on Flat Rock Creek for corner; thence down said creek with its meanders to the place of beginning. Second Tract: Being all of the B R I R one-quarter section No. 96 in Young County, Texas, Abstract No. 2180 excepting that part of said survey described as follows, to-wit:

Beginning at the S E corner of the Calvin Harmon Survey; thence South 10 W. 171 vrs. to the S W corner of B R I R survey No. 96; thence South 80 E with the S B line of said survey No. 96 801 vrs to the S E corner of same; thence North 10 E 229 vrs to a stake for corner; thence in a westerly direction to the place of beginning, said excepted portion of said survey containing 28 1-2 acres of land. That the defendants unlawfully entered upon said premises and ejected plaintiff therefrom and unlawfully withhold the possession thereof to plaintiff's damage in the sum of \$10,000.00; that the defendants be cited to appear and answer herein and that plaintiff have judgment for the title and possession of said land for his damages, costs of suit and other and further relief, etc.

Herein fail not, but have before said Court, at its aforesaid next regular term, this writ with your return hereon, showing how you have executed the same.

Witness, Willie Riggs, Clerk of the District Court of Young County, Texas, at office in (L. S.) Graham, this the 26th day of January, A. D. 1921.

22c WILLIE RIGGS, Clerk District Court, Young County, Texas.

of said survey the N E corner of lot No. 3 a L O 13" bns S 70 1-2 W 162.7 vrs. mesq. 6" bns. N 28 W 58.6 vrs; Thence N 2987.5 vrs to the place of beginning, containing nineteen hundred and forty-two (1942) acres of land more or less. That on the day and year last aforesaid, defendants unlawfully entered upon said premises and ejected plaintiffs therefrom and unlawfully withhold from him the possession thereof to his damage \$25,000.00. That the reasonable value per year of said land and premises is \$1000.00. That the defendants be cited to appear and answer this petition, that the plaintiff have judgment for the title and possession of said land and premises and that the cloud be removed, for writ of restitution, rents, damages and costs of suit.

Herein fail not, but have before said Court at its aforesaid next regular term, this writ with your return thereon, showing how you have executed the same.

Witness, Willie Riggs, Clerk of the District Court of Young County, Texas, at office in (L. S.) Graham, this the 12th day of January, A. D. 1921.

20-23c WILLIE RIGGS, Clerk District Court, Young County Texas.

CITATION BY PUBLICATION

The State of Texas.

To the Sheriff or Any Constable of Young County—Greeting:

You are hereby commanded to summon C. R. Wynne by making publication of this Citation once in each week for four consecutive weeks previous to the return day hereof, in some newspaper in your County, to appear at the next regular term of the District Court of Young County, to be held at the Court House thereof, in Graham, on the 1st Monday in March A. D. 1921, the same being the 7th day of March A. D. 1921, then and there to answer a petition filed in said Court on the 18th day of January A. D. 1921, in a suit numbered on the docket of said Court No. 6280, wherein Minerva Wynne is Plaintiff, and C. R. Wynne is Defendant and said petition alleging that plaintiff and defendant were legally married January 6, 1898; lived together 14 months, whereupon on account of unbearable cruelties plaintiff was forced to separate. After 6 years on urgent request plaintiff returned to defendant on his vehement promises of reform. For 10 months plaintiff continued the abuse by defendant—his profane, vulgar language toward plaintiff together with threats of great bodily injuries. On one occasion in a drunken, assault plaintiff with a heavy stick and armed have struck her down but was restrained by defendant's son. The continued bad treatment made plaintiff nervous, impaired her health and the doctor had to be called. That at the end of ten months plaintiff to protect herself, was forced to separate from the defendant.

Herein fail not, but have before said Court, at its aforesaid next regular term, this writ with your return hereon, showing how you have executed the same.

Witness, Willie Riggs, Clerk of the District Court of Young County, Texas, at office in (L. S.) Graham, this the 18th day of January A. D. 1921.

22c WILLIE RIGGS, Clerk District Court, Young County, Texas.

CITATION BY PUBLICATION

The State of Texas.

To the Sheriff or Any Constable of Young County—Greeting:

You are hereby commanded to summon J. M. Birdwell, W. B. Birdwell, R. J. Robinson, Cora Robinson, Bob Robinson, Mrs. J. E. Birdwell, Mrs. Joanna Birdwell, J. E. Birdwell, Edward Johnson, Caddo B. Johnson, Jessie Robinson, Jesse G. Robinson, Wallace E. Robinson, Harris L. Robinson, Ted Robinson, Alice Robinson, Cap Robinson, Jesse Birdwell, Lee Birdwell, Joe Birdwell, Eva Wales, Guinn Wales, Young Birdwell, George Birdwell, Joe Robertson, G. W. Robertson, Jannie Brashears, Maud Brashears, John Birdwell, Lizzie Birdwell, J. J. Birdwell, Fannie Birdwell, V. C. Roberson, Bernice Roberson, G. T. Birdwell, Ross Lee, Annie Lee and the unknown heirs of each and all of the above named persons, by making publication of this citation once in each week for four consecutive weeks previous to the return day hereof, in some newspaper published in your County, if there be a newspaper published therein, but if not, then in any newspaper published in the 30th Judicial District, but if there be no newspaper published in said Judicial District, then in a newspaper published in the nearest District to said 30th Judicial District, to appear at the next regular term of the District Court of Young County, to be held at the Court House thereof, in Graham, on the 1st Monday in March A. D. 1921,

the same being the 7th day of March A. D. 1921, then and there to answer a petition filed in said Court on the 26th day of January A. D. 1921 in a suit numbered on the docket of said Court No. 6287, wherein J. C. Vaughan is Plaintiff, and J. M. Birdwell, W. B. Birdwell, R. J. Robinson, Cor

...rested
...hear-
...ne to
...ce, if
...ation
...d ap-
...Water
...table

...an or-
...ineers
...office
...Texts,
...A. D.

...est in-
...alms-
...e only,
...al. 22c

...ION
...able of

...to sum-
...pany,
...l. Swift
...and
...e Texas
...e resi-
...iff, by
...itation
...consec-
...return
...er pub-
...pear at
...District
...s hold-
...in Gra-
...farch A.
...7th day
...nd there
...in said
...December
...ered in
...o. 6262
...iff, ar-
...ny, G.
...Swift, J.
...nd R. F.
...nd said
...ntiff is
...and gas
...id Trust-
...id the 1st
...loyed the
...rate and
...t a spec-
...15.00 per
...uring the
...iff began
...nd contin-
...320, when
...Mrs. Hol-
...tiff's ac-

...0 per
...\$660.00
...and
...\$9.00
...\$669.00
...\$230.00
...\$7
...\$

...ar 6 per
...ary lat.
...\$587.50
...h is just
...remains
...ough of-
...e to pay
...be cited
...rein, that
...his debt,
...etc.

...ve before
...next reg-
...ur return
...have exe-

...rk of the
...ounty.
...the Seal
...office in
...27th day
...1921.
...RIGGS,
...g County.

AN OLD TIME SETTLER PASSES AWAY
Mrs. Epsie Nicklas, 67 years of age, died January 5th, 1921 at 3:00 o'clock p. m. at the home of her daughter, Mrs. Berta Boyles, 1612 Madison street, Amarillo, Texas.
Epsie Melton was born June 15th 1853 in the state of Alabama. While still a small child, she with her parents moved to Union Parish, Louisiana, where she grew to womanhood. In September 1869 she was married to W. D. Nicklas.

Mr. and Mrs. Nicklas came to Texas in 1872 and about the year 1877 they settled on their present homestead which is situated in the north west part of Palo Pinto County near Pickwick.
Mrs. Nicklas experienced the hardships of frontier life. She and her three small children stayed alone while her husband was away freighting. During those days all supplies had to be freighted by wagons across the country from Fort Worth, the nearest railroad station. The Indians were all supposed to be on the reservations, yet it was unsafe for the men to be out without a gun for they never knew when they would meet a band of the Red Men who had escaped from the reservations. Many a night while she was left alone with her small children she was afraid the cry of a baby might attract the red man's attention and bring trouble to her home. The howl of the coyote in the dead of night would make one realize the distance back to civilization.

Mrs. Nicklas was a member of the Christian Church. She was very zealous in her belief, and lived a devoted Christian life. During her last illness she talked very much of the happy meeting that would be on the resurrection morning.
Mrs. Nicklas had been in poor health for a number of years. In November she went to visit her daughter in Amarillo, thinking the climate there would help her. At first she seemed to be better but December 19, she was taken suddenly ill and continued to grow worse. On January 1, she sank into a sleep from which she could not be aroused, and on January 5th she passed away without a struggle. Her remains were brought home and laid to rest in the McAdams Cemetery at Pickwick, in the presence of a large number of friends and relatives.

Mrs. Nicklas was the mother of twelve children. Two passed on before her, one having died in infancy and the other, Mrs. Elvie Reeves, died in December, 1918. Her husband, W. D. Nicklas, of Pickwick, and ten of the children, W. J. Nicklas, San Pedro, California; Mrs. Berta Boyles, Amarillo; Mrs. Dovie Freeman San Miguel, California; C. T. Nicklas, P. D. Nicklas and Mrs. Clemmie Wester of Pickwick, H. L. Nicklas, D. A. Nicklas and Mrs. Winnie Fawkes of Graham, and Jewel Nicklas of Patches, Colorado, are left to mourn the loss of a wife and precious mother.

All were present at the funeral except W. J. Nicklas and Mrs. Dovie Freeman, who were both unable to come.

CITATION BY PUBLICATION
The State of Texas.
To the Sheriff or Any Constable of Young County—Greeting:
You are hereby commanded to summon Edna Stewart, whose residence is unknown to plaintiff, by making

MR. INVESTOR AND BUSINESS MAN
There are more opportunities for real investments in the city of Graham than any city in Texas today. We mean investments that will last and make big returns on your money. We are offering the choicest investment propositions in Graham, consisting of close in business lots, hotels, residence and resident lots. If you want to buy or sell business or resident property, any kind of business, hotel, store or peanut stand see us when you first hit town. No proposition too large nor none too small to receive our most careful attention.
If you have acreage or royalty to buy or sell see us. Let us be your rental agent for your Graham property.
If 40 to 50 per cent. interest on your investment looks good to you invest in Graham property.
LEWIS REALTY CO.
OFFICE OVER SLOAN DRUG STORE GRAHAM, TEXAS

publication of this Citation once in each week for four consecutive weeks previous to the return day hereof, in some newspaper published in your County, to appear at the next regular term of the District Court of Young County, to be holden at the Court House thereof, in Graham, on the 1st Monday in March A. D. 1921, the same being the 7th day of March A. D. 1921, then and there to answer a petition filed in said Court on the 31st day of January A. D. 1921, in a suit numbered on the docket of said Court No. 6298, wherein James Stewart is Plaintiff, and Edna Stewart is Defendant, and said petition alleging that plaintiff and defendant were married in Pineville, Kentucky, about September 1st, 1910, and lived together as husband and wife about five months, during which time plaintiff treated defendant kindly and provided for her support within his means. That defendant permanently abandoned the plaintiff without cause or provocation and that they have been separated about eleven years, that they have never corresponded with each other and plaintiff does not now know where defendant resides. That there are no children of said wedlock and no community property existing between them. That defendant is cited to appear and answer herein and that plaintiff have judgment annulling the marriage between them and for costs of suit.

Herein fail not, but have before said Court, at its aforesaid next regular term, this writ with your return thereon, showing how you have executed the same.
Witness, Willie Riggs, Clerk of the District Court of Young County.
Given under my hand and the Seal of said Court, at office in (L. S.) Graham, Texas, this the 28 day of January A. D. 1921.
23c **WILLIE RIGGS,**
Clerk District Court, Young County.

BIG EGG YIELD
"From a small flock of hens I now get 20 to 25 eggs per day, whereas before giving them Dr. LeGear's Poultry Prescription, I only received three or four. Its cost has been repaid to me over and over." So writes Mrs. J. W. Montgomery, Tunnell Hill, Ga.
You should increase your yield now, while prices are high, through Dr. LeGear's Poultry Prescription. It is a tonic which builds up the hen's strength and vitality, and stimulates the egg-producing organs.
For 28 years Dr. LeGear has been recognized as America's foremost Expert Poultry Breeder and Veterinarian. Any time your poultry or stock are ailing, it will pay you to get the proper Dr. LeGear Remedy from your dealer. It must give satisfaction, or your dealer will refund your money.

CITATION BY PUBLICATION
The State of Texas.
To the Sheriff or Any Constable of Young County—Greeting:
You are hereby commanded to summon The Texas National Oil Company, by making publication of this Citation once in each week for four consecutive weeks previous to the return day hereof, in some newspaper published in your County, if there be a newspaper published therein, but if not, then in any newspaper published in the 30th Judicial District, but if there be no newspaper published in said Judicial District, then in a newspaper published in the nearest District to said 30th Judicial District, to appear at the next regular term of the District Court of Young County, to be holden at the Court House thereof, in Graham, Texas, on the 1st Monday in March A. D. 1921, the same being the 7th day of March A. D. 1921, then and there to answer a petition filed in said Court on the 7th day of January, A. D. 1921, in a suit numbered on the docket of said Court No. 6266, wherein S. V. Bradford, is Plaintiff and The Texas National Oil Company is Defendant and said petition alleging that defendant is indebted to plaintiff in the sum of \$662.82 for labor performed by plaintiff for defendant, during the month of December, 1920, plaintiff also sues for the sum of \$100.00 as attorneys' fees and for the foreclosure of laborer's lien on the following

One standard derrick, and all houses and buildings of every description which was placed and is now located on the south fifty acres of the 95.7-10 acres of the E. D. Rhoton survey of land abstract No. 243, in Young County, Texas, together with the leasehold on said described land.
Herein fail not, but have before said Court, at its aforesaid next regular term, this writ with your return thereon, showing how you have executed the same.
Witness, Willie Riggs, Clerk of the District Court of Young County.
Given under my hand and the Seal of said Court, at office in (L. S.) Graham, Texas this the 28 day of January, A. D. 1921.
23c **WILLIE RIGGS,**
Clerk District Court, Young County.

NOTICE
Notice is hereby given that on the 19th day of February at three o'clock p. m., 1921, I will sell at public auction to the highest bidder for cash one Oakland automobile engine number B 7 626, and apply the proceeds from such sale to the satisfaction of my claim against same for repairs for Geo. E. Boyer, said sale will take place on the public square in the city of Graham, Texas.
22-25. **B. A. REDDELL.**
HEREFORD BULLS FOR SALE
I have on hand about 30 head of one and two year bulls which I offer for sale. Postoffice Graham, Texas, Box 392, Ranch 25 miles south of Graham.—T. M. CORBETT. 22-26p.

described property of the defendant to-wit:
One National oil well rig complete 1700 feet of 12.1-2 inch casing, one boiler, one engine, one wire line, and the leasehold on the south fifty acres of 95.7-10 acres of the E. D. Rhoton survey abstract No. 243, of Young County, Texas.
Herein fail not but have before said Court, at its aforesaid next regular term, this writ with your return thereon showing how you have executed the same.
Witness, Willie Riggs, Clerk of the District Court of Young County.
Given under my hand and the Seal of said Court, at office in (L. S.) Graham, Texas, this the 28 day of January A. D. 1921.
23c **WILLIE RIGGS,**
Clerk District Court, Young County.

BIG EGG YIELD
"From a small flock of hens I now get 20 to 25 eggs per day, whereas before giving them Dr. LeGear's Poultry Prescription, I only received three or four. Its cost has been repaid to me over and over." So writes Mrs. J. W. Montgomery, Tunnell Hill, Ga.
You should increase your yield now, while prices are high, through Dr. LeGear's Poultry Prescription. It is a tonic which builds up the hen's strength and vitality, and stimulates the egg-producing organs.
For 28 years Dr. LeGear has been recognized as America's foremost Expert Poultry Breeder and Veterinarian. Any time your poultry or stock are ailing, it will pay you to get the proper Dr. LeGear Remedy from your dealer. It must give satisfaction, or your dealer will refund your money.

CITATION BY PUBLICATION
The State of Texas.
To the Sheriff or Any Constable of Young County—Greeting:
You are hereby commanded to summon The Texas National Oil Company, by making publication of this Citation once in each week for four consecutive weeks previous to the return day hereof, in some newspaper published in your County, if there be a newspaper published therein, but if not, then in any newspaper published in the 30th Judicial District, but if there be no newspaper published in said Judicial District, then in a newspaper published in the nearest District to said 30th Judicial District, to appear at the next regular term of the District Court of Young County, to be holden at the Court House thereof, in Graham, Texas, on the 1st Monday in March A. D. 1921, the same being the 7th day of March A. D. 1921, then and there to answer a petition filed in said Court on the 7th day of January, A. D. 1921, in a suit numbered on the docket of said Court No. 6266, wherein S. V. Bradford, is Plaintiff and The Texas National Oil Company is Defendant and said petition alleging that defendant is indebted to plaintiff in the sum of \$662.82 for labor performed by plaintiff for defendant, during the month of December, 1920, plaintiff also sues for the sum of \$100.00 as attorneys' fees and for the foreclosure of laborer's lien on the following

One standard derrick, and all houses and buildings of every description which was placed and is now located on the south fifty acres of the 95.7-10 acres of the E. D. Rhoton survey of land abstract No. 243, in Young County, Texas, together with the leasehold on said described land.
Herein fail not, but have before said Court, at its aforesaid next regular term, this writ with your return thereon, showing how you have executed the same.
Witness, Willie Riggs, Clerk of the District Court of Young County.
Given under my hand and the Seal of said Court, at office in (L. S.) Graham, Texas this the 28 day of January, A. D. 1921.
23c **WILLIE RIGGS,**
Clerk District Court, Young County.

NOTICE
Notice is hereby given that on the 19th day of February at three o'clock p. m., 1921, I will sell at public auction to the highest bidder for cash one Oakland automobile engine number B 7 626, and apply the proceeds from such sale to the satisfaction of my claim against same for repairs for Geo. E. Boyer, said sale will take place on the public square in the city of Graham, Texas.
22-25. **B. A. REDDELL.**
HEREFORD BULLS FOR SALE
I have on hand about 30 head of one and two year bulls which I offer for sale. Postoffice Graham, Texas, Box 392, Ranch 25 miles south of Graham.—T. M. CORBETT. 22-26p.

MRS. SARAH ELLEN BURGESS PASSES AWAY
On Sunday morning at 11 o'clock January 23, 1921, the Death Angel came into the home of Mrs. Sarah Ellen Burgess and bore away the spirit of a kind and noble woman. She was a loving and devoted wife and mother. Her children, friends, physicians and nurse did everything possible to relieve and comfort her in her last hours of suffering, but God Who doeth all things well saw fit to call her spirit to dwell with Him in the home of Eternal Rest.
Mrs. Burgess loved her God and looked to Him as her comforter. The life she lived bore evidence of her faith in Jesus.
Her health had been failing for a number of years, but she bore her suffering with great patience. She was 76 years, 3 months and 20 days old, and lived to see all of her children grown, married and with families of their own.
She was the widow of B. E. Burgess, who was so well known to the early settlers of Stephens and Young Counties, better known as "Uncle Ben," who made good here in the early days in the cattle business.
In the death of Mrs. Burgess, was the breaking up of a pioneer home where she has raised her family and enjoyed the pleasure of having her children visit her many times with their families. This home has been the playground for her children, her grandchildren and great-grandchildren all of whom loved her dearly and loved to visit her.
Everybody who knew her loved her. There are few grandmothers of her age who loved little children more dearly than she. Even in her darkest hours of suffering she never failed to notice the voice of a child and would try to speak to them.
Coming here in the early days as she did, of course, she endured many hardships like all other pioneer settlers, but she bore them with a patient endurance and her home was always a hospitable resting place to her many friends.
On Monday evening, January 24th, just as the sun was setting behind the beautiful hills which surround the Veal's Creek Cemetery, and in the presence of a large number of heartbroken relatives and friends the body was lowered into its last earthly resting place. The funeral services were conducted by Rev. Mr. Steel, who spoke many impressive things in behalf of the life Mrs. Burgess lived and also spoke words of condolence to her heartbroken children. She is survived by all nine of her children; Messrs. Jim Burgess of New Mexico, J. W. Burgess, South Bend; S. E. Burgess, South Bend; Josh Burgess, Graham; Mrs. Sarah Saffell, California; Mrs. Birdie Duncan, Ivan; Mrs. Roxie Red, South Bend; and Mrs. Georgia Copeland of Graham.
We will say to those who life left to mourn: The same God that guided and comforted your mother will guide and comfort you. Just lean upon Jesus for He will never forsake you; no not even in the darkest hours of sorrow. **A FRIEND.**

SCREEN COMEDY FOR EUROPEAN RELIEF
William DeMille, who has achieved an enviable reputation not only as the author of such stage plays as "Strongheart" and "The Warrens of Virginia," but also as director and author of stories for the screen, believes that there is a demand for a new kind of screen comedy. Moreover, in the new series of pictures which Mr. DeMille is producing for Paramount Artercraft release, he aims to meet this demand.
"Comedy has been defined as the humorous side of drama," said the producer recently. "Very few screen comedies live up exactly to this definition. We have farce, slapstick, and the smart, sophisticated type that, for want of a better name, is called polite comedy. But the real comedy, in my opinion, carries along with its laughter a few tears, a genuine tug at the heart, and an atmosphere of simple reality. It portrays the sunny side of life, but it gives a thought to the other side also. Its chief ingredients are humor, health, and heart-appeal."
Mr. DeMille has incorporated these ideas into his pictureization of "The Prince Chap," which will be shown at the National Theatre February 9th and 10th, next Wednesday and Thursday.
Thomas Meighan has the leading role, and Lila Lee, Theodore Kosloff, Kathryn Williams, and Charles Ogles are also in the cast. Ogles Printz-lau furnished the scenario from Edward Peple's well known stage play of the same name.
The National Theatre has kindly allowed tickets for this comedy to be sold for the benefit of Graham's European Relief Fund. Theatre box office receipts do not help us, so buy your tickets from the school children who have them for sale, or at B. S. Doty's Drug Store, or L. M. Davis Drug Store.

EVERYBODY WHO KNEW HER LOVED HER.
There are few grandmothers of her age who loved little children more dearly than she. Even in her darkest hours of suffering she never failed to notice the voice of a child and would try to speak to them.
Coming here in the early days as she did, of course, she endured many hardships like all other pioneer settlers, but she bore them with a patient endurance and her home was always a hospitable resting place to her many friends.
On Monday evening, January 24th, just as the sun was setting behind the beautiful hills which surround the Veal's Creek Cemetery, and in the presence of a large number of heartbroken relatives and friends the body was lowered into its last earthly resting place. The funeral services were conducted by Rev. Mr. Steel, who spoke many impressive things in behalf of the life Mrs. Burgess lived and also spoke words of condolence to her heartbroken children. She is survived by all nine of her children; Messrs. Jim Burgess of New Mexico, J. W. Burgess, South Bend; S. E. Burgess, South Bend; Josh Burgess, Graham; Mrs. Sarah Saffell, California; Mrs. Birdie Duncan, Ivan; Mrs. Roxie Red, South Bend; and Mrs. Georgia Copeland of Graham.
We will say to those who life left to mourn: The same God that guided and comforted your mother will guide and comfort you. Just lean upon Jesus for He will never forsake you; no not even in the darkest hours of sorrow. **A FRIEND.**

NOTICE
Notice is hereby given as provided by law that the Commissioners' Court at its regular term, on the 2nd Monday in February, 1921, will receive and consider bids for County Depository for County and School Funds for the ensuing two years.
W. H. REEVES,
County Judge, Young County, Texas.

WE NOW HAVE ON DISPLAY A NICE ASSORTMENT OF VALENTINES AT SNODDY & SON.
You will find the largest new complete line of Box Stationery at SNODDY & SON.

Biggest Tube Sale
Ever Launched in Graham.
This is all new stock and the Highest Grade Pure Gum Rubber Southland Tubes.
30 x 3 \$2.50
30 x 3 1/2 2.60
32 x 3 1/2 2.70
31 x 4 2.80
32 x 4 2.90
33 x 4 3.00
34 x 4 3.10
32 x 4 1/2 3.20
33 x 4 1/2 3.30
34 x 4 1/2 3.40
35 x 4 1/2 3.50
36 x 4 1/2 3.60
33 x 5 3.70
35 x 5 3.80
37 x 5 3.90
Neither can you afford to miss the Bargains we are offering in Tires. **COME AND SEE THEM.**
Graham Tire Co.
With the Willard Battery Service Station—430 Oak St.—Old Post Office Building.

INTERSCHOLASTIC LEAGUE FIELD DAY
The executive committee of the Interscholastic League for Young county met in the office of County Superintendent H. H. Avants on January 29th, for the purpose of selecting the place and naming the date for Young county's annual field day. The committee will meet in the lobby of the Harris House at Newcastle at 1 p. m. on March 19th for the purpose of formulating the program. No entries will be accepted after that date.
Every school in the county is a member of the League, and the public support is earnestly requested in our efforts to make this the biggest and best field day ever held in this part of the State. Watch the papers for further particulars.
H. H. AVANTS,
County Superintendent.

SACRED CONCERT
Presbyterian Church, Graham, Texas, February 6, 1921, 7:30 p. m.
"Make a Joyful Noise Unto the Lord all ye Lands."
"Serve the Lord with Gladness; come before His presence with singing." Psa. 100:1-2.
Organ Voluntary.—Mrs. A. Morrison.
Doxology.
Invocation.—Mr. W. S. McMimsy.
Anthem, "God Be Merciful," Choir.
Scripture Reading.—Rev. Gary Smith.
Hymn.—Congregation.
Solo, "Compassion"—Mrs. H. B. Cogdell.
Anthem, "I Heard the Voice of Jesus."—Choir.
Organ Solo.—Mr. Russell.
Quartet—Men's voices.
Offeratory.—Mrs. A. A. Morrison.
Anthem, "How Excellent thy Name"—Choir.
Solo, "Hold Thou My Hand"—Miss Drew.
Reading, "The Prayer Circle"—Mrs. R. A. Duncan.
Anthem, "Jesus Shall Reign"—Choir.
Hymn.—Congregation.
Benediction.—Rev. Gary Smith.
All are cordially invited to attend this musical program.
No charges for admission.

NOTICE
Notice is hereby given as provided by law that the Commissioners' Court at its regular term, on the 2nd Monday in February, 1921, will receive and consider bids for County Depository for County and School Funds for the ensuing two years.
W. H. REEVES,
County Judge, Young County, Texas.

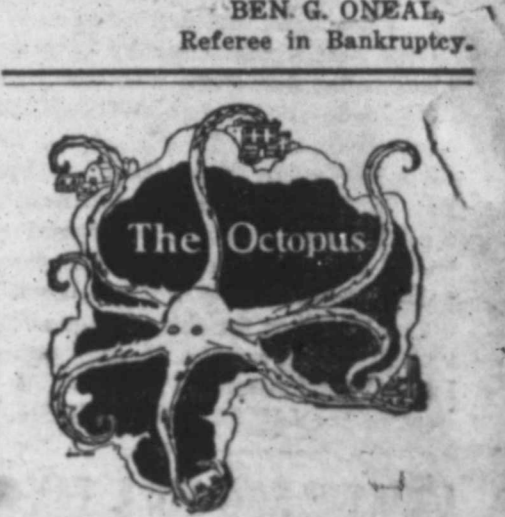
WE NOW HAVE ON DISPLAY A NICE ASSORTMENT OF VALENTINES AT SNODDY & SON.
You will find the largest new complete line of Box Stationery at SNODDY & SON.

Biggest Tube Sale
Ever Launched in Graham.
This is all new stock and the Highest Grade Pure Gum Rubber Southland Tubes.
30 x 3 \$2.50
30 x 3 1/2 2.60
32 x 3 1/2 2.70
31 x 4 2.80
32 x 4 2.90
33 x 4 3.00
34 x 4 3.10
32 x 4 1/2 3.20
33 x 4 1/2 3.30
34 x 4 1/2 3.40
35 x 4 1/2 3.50
36 x 4 1/2 3.60
33 x 5 3.70
35 x 5 3.80
37 x 5 3.90
Neither can you afford to miss the Bargains we are offering in Tires. **COME AND SEE THEM.**
Graham Tire Co.
With the Willard Battery Service Station—430 Oak St.—Old Post Office Building.

Biggest Tube Sale
Ever Launched in Graham.
This is all new stock and the Highest Grade Pure Gum Rubber Southland Tubes.
30 x 3 \$2.50
30 x 3 1/2 2.60
32 x 3 1/2 2.70
31 x 4 2.80
32 x 4 2.90
33 x 4 3.00
34 x 4 3.10
32 x 4 1/2 3.20
33 x 4 1/2 3.30
34 x 4 1/2 3.40
35 x 4 1/2 3.50
36 x 4 1/2 3.60
33 x 5 3.70
35 x 5 3.80
37 x 5 3.90
Neither can you afford to miss the Bargains we are offering in Tires. **COME AND SEE THEM.**
Graham Tire Co.
With the Willard Battery Service Station—430 Oak St.—Old Post Office Building.

BANKRUPT NOTICE
In the District Court of the United States for the Northern District of Texas.
In the matter of J. L. WOODS, Bankrupt, No. 34 in Bankruptcy.
Referee's office, Wichita Falls, Texas, January 29th, 1921.
Order on Petition for Sale:
To the Creditors of Said Bankrupt: You are hereby notified that M. E. Stevens, Esq. Trustee of the said Bankrupt's estate, filed a motion with the Referee of said District on January 25th, 1921, praying for authority to sell at public or private sale on Thursday, February 10th, 1921, the following described property belonging to said estate, viz:
Stock of jewelry and confectionery supplies invoicing about \$1,000.00
Soda fountain, furniture and fixtures invoicing about \$2,000.00
One electric piano \$500.00
On consideration, no adverse interest being represented, it is ordered that a hearing on said petition is set to take place before the Referee at his office in Wichita Falls, Texas on February 7th, 1921, at 9:00 o'clock a. m.

BEN. G. ONEAL,
Referee in Bankruptcy.



The Octopus
FIRE spreads its tentacles in every direction, seeking homes, stores, factories and communities to destroy. The Hartford Fire Insurance Company has sold sound insurance against loss or damage by fire since 1810. It has paid every honest loss, big and little.
The Hartford will pay you for your loss caused by fire if you buy its policies. In addition, at no extra cost, Hartford Fire Prevention Engineers will search out perils which might cause fire.
You need this protection. Get it at this Hartford agency.

GRAHAM INSURANCE AGENCY
GRAHAM, TEXAS
MARTIN CREEK
Team Contractor
Tools for Heavy Hauling a Specialty
Two Blocks South Ball Park

MILLER STUDIO
Now Open
LOCATED UP STAIRS IN TIDWELL BUILDING
Portraiture, Expert Kodak Finishing, Copying and Enlarging.
TRY OUR PORTRAIT SERVICE AND SEE HOW THOROUGHLY SATISFYING IT IS

CLAUDIE GREENE
PALMER SCHOOL
CHIROPRACTOR
706 Oak Street

CLAUDE GREENE
PALMER SCHOOL
CHIROPRACTOR
706 Oak Street
OFFICE HOURS
9 to 11 a. m. 3 to 5 p. m.
6 to 7 Evening

Published by THE GRAHAM LEADER COMPANY BOWRON & McLENDON, Props.

Entered at the Post Office at Graham, Texas, as second-class mail matter.

Subscription Rates: One Year \$2.00 Six Months 1.25 Three Months .75

NOTICE—Any erroneous reflection upon the character, standing or reputation of any person, firm, or corporation which may appear in the columns of The Leader will be gladly corrected upon its being brought to the attention of the publishers.

Graham, Texas, February 3, 1921.

LETTER FROM OUR REPRESENTATIVE AT WASHINGTON

Washington, Jan. 25, 1921.

To the Editor, Graham Leader.

My Dear Sir,

The supply of free garden seed is limited this year and I will not be able to distribute them as heretofore, but there are available a limited number of packages for those who really want and will use them.

You will kindly insert in your paper a notice that those who will write me here at 171 House Office Building, Washington, D. C., giving the name and address can be supplied. I take this method of distributing the supply of seed at my disposal as I would like for them to reach those who really want and will use them.

Thanking you for this kindness both to me and the readers of your paper, I am, very sincerely,

LUCIAN W. PARISH.

ABOUT 2,500 POLL TAX RECEIPTS ARE ISSUED

Although Tax Collector Cusenbary has been unable so far to make an accurate check of the number of poll taxes paid, it is estimated that the number will exceed 2,500.

Checks are being received in each mail and it will be two or three days yet before the exact number of payments will be known.

About 2,300 automobile seals have been taken out so far. Those who operate their cars without a 1921 license will be arrested, officers announce.

STIEPP-NORMAN

Mr. William Stepp of Decatur, Texas, and Miss Mearine Norman of this city were united in marriage at the home of the bride's mother, Mrs. L. E. Norman, on South Oak street, Saturday evening, at ten o'clock, January 22nd, 1921. The ceremony was performed by Rev. Gary L. Smith, pastor of the Presbyterian Church.

The bride is the talented daughter of Mrs. L. E. Norman and was reared in Graham where she has a host of friends.

The groom is a popular young man of Decatur. He is not personally known in Graham but he has already made many friends here.

The happy couple left on the first train for Decatur where they visited the groom's parents for a few days, after which they visited in Fort Worth and Dallas before returning to Graham, where they will make their home.

Their many friends join in congratulations.

NOTICE

Notice is hereby given as provided by law that the Commissioners' Court, at its regular term, on the 2nd Monday in February, 1921, will receive and consider bids for County Depository for County and School Funds for the ensuing two years.

Bids may be made for both together or for each separately. W. H. REEVES, County Judge Young County, Texas.

MADAM ODUS HIGHLY PRAISED IN LETTER

That Madam Odus, world's greatest phenologist, palmist and medium can foretell the past and future and help people with their love and business affairs, is indicated in a letter she has received from a party at South Bend.

Madam Odus, who is now at the Texan Hotel, 408 Elm Street, can help you the same as she helped this party and thousands of other persons. The letter follows:

South Bend, Texas, Jan. 25, '21. Madam Odus, Texan Hotel, Graham.

Dear Madam—I write you to thank you for the good you did me. Everything came out just as you said and I am so pleased. I want you to lend me one of your cards so I can give it to a friend of mine. I am sending him to you, and also South Bend, Texas. (adv.)

CHAMBER BANQUET BIG SUCCESS

MANY SPEAKERS ARE HEARD

Organization as the most important means by which to build a permanent city, was the keynote of an address delivered by Mayor Walter D. Cline, of Wichita Falls, at the banquet given Thursday night by the local Chamber of Commerce. Referring to a question asked by Secretary Milton McConnell—namely, "What do you, as a citizen, think is the thing of first importance to be done for the community as a whole?" Mayor Cline said:

"Organize; use teamwork and your city will be just what you want it to be. I want to say that you have no right to play a lone hand."

The banquet was featured by speeches from prominent Wichita Falls men, and local citizens and was attended by over 200 persons.

In extending a word of welcome on behalf of the Chamber, Mayor E. S. Graham greeted the visitors and the new comers, and said he wanted to welcome "you, citizens of Graham, who are always willing to put your shoulders to the wheel."

Morris U. Lively, chairman of the entertainment committee, at the instance of Toastmaster, A. W. Kay, introduced Mayor Cline of Wichita Falls. The mayor prefaced his remarks with an expression of surprise at the growth of Graham, saying:

"I am impressed with the tremendous growth of the city and the influx of men since my last visit to Graham. I think you have the largest attendance here I have ever seen in a city of your size."

"The necessity of safeguarding the public health from infected dairy products was the subject of a brief address by Edgar Kemp. He stated his belief that the tubercule test should be applied to all dairy cattle. 'I am told that the spread of tuberculosis from this source is enormous,' Mr. Kemp said, in closing his appeal.

The necessity of safeguarding the public health from infected dairy products was the subject of a brief address by Edgar Kemp. He stated his belief that the tubercule test should be applied to all dairy cattle. 'I am told that the spread of tuberculosis from this source is enormous,' Mr. Kemp said, in closing his appeal.

continued, "they are not so serious, not so complex but what you business men can solve them. First, in an oil field center there are the old timers and the new comers. The new comers will furnish some of the new blood and pep, as it were, but let me say that the old timers are a necessary asset to the city. The day will come when you must rely upon their guidance, upon their conservatism; upon their knowledge of local conditions to pull you through.

"And finally let me say," the speaker concluded, "that you should not lose faith in a supreme ruler in your rush for gain."

McDonald Speaks.

A plea to make character the test of Graham citizenship was made by C. C. McDonald, attorney of Wichita, and former secretary of state. "Honorable every honest man who wants to work and despise the man who refuses to work," was his appeal. "When you do this, and when you build a beautiful city," he continued, "you will attract people here from other cities. Pay no attention to those who pose as men of means."

At this point a motion was made by Morris Lively that the courthouse square be kept free from commercialism. This motion was carried by a rising vote, it being agreed to oppose the selling of any ground.

The importance of keeping the South Bend and Eliasville roads in good repair was stressed by M. K. Graham.

In this connection Mr. Graham said that it would take about \$1,000 per month, or at least one-third of the Chamber budget, to keep the roads in good shape for the heavy oil field traffic. He appealed to those who use the road to contribute to the fund for its upkeep.

"As we couldn't have a concrete road," he said, "we have the next best thing—a good dirt road. It will take money to build permanent culverts and I favor giving a third or even a fourth of our budget for this purpose."

The necessity of safeguarding the public health from infected dairy products was the subject of a brief address by Edgar Kemp. He stated his belief that the tubercule test should be applied to all dairy cattle. 'I am told that the spread of tuberculosis from this source is enormous,' Mr. Kemp said, in closing his appeal.

Community House

A. W. Kay broached a proposition sponsored by the local post of the American Legion to the effect that a community house be built which would embody space for a city hall, library, Shriners and the legion post. This building would be erected on the southeast corner of the square.

This plan, Mayor Graham said, is favored by himself and other members of the council. "America is called the melting pot of the world," he said, "but our present city hall is the melting pot of Graham." This plan was favored in short addresses by Dr. R. A. Duncan and L. W. Kayser.

E. S. Goodner of the Goodner Wholesale Company of Wichita Falls, in a brief speech stated that he felt himself already a citizen of Graham by proxy. The Goodner Company is locating a wholesale house here.

Judge W. P. Stinson spoke on "How we Should Rally to Chamber of Commerce Work." He made a very forceful speech, saying "we have got to be loyal to any enterprise to make it a success." Each committee appointed by the Chamber, he said, should put in its entire time if necessary to carry over any move.

Secretary Milton McConnell caused to be placed under the plate of each guest a card bearing two questions, as follows:

"What do you, as a citizen, think is the thing of first importance to be done for the community as a whole?" "What do you expect the Chamber of Commerce to do for the promotion of your line of business?"

Blank spaces were left underneath these questions on which members and guests could write their answers. The replies will be classified and grouped by Mr. McConnell.

An appeal by Mr. Lincoln, of the City Garage, for co-operation, and an explanation by Superintendent Cogdell of the school problems of the city were other interesting addresses. Mr. Cogdell explained that there are now 1,006 children in the schools of the city and that more room must necessarily be provided soon. Any plan for the future growth of Graham, he said, must not leave out the welfare of the child.

The necessity of constructing sidewalks throughout the entire city was pointed out by F. A. Arnold, who declared this was important because it would tend to increase the value of real estate and give Graham a city mail delivery.

from every stand is thought to have been derived from the meeting. There were fifteen guests from Wichita Falls. They were Mayor Walter D. Cline, C. C. McDonald, John Gould, Record-News; Mr. Jennings, City National Bank of Commerce; E. S. Goodner, Goodner Wholesale Grocery Company; C. A. Klineman, Claude Miller, A. O. Easley, president University Club; Will Viner, R. W. Hockaday, H. F. Wurtz, J. C. Straus, B. M. Bullard, James Calvert, Wichita Daily Times; and A. L. Bewley.

Excellent music was furnished by Miss Nora Akard, Miss Velma D. Adams, Miss Mary Bowman, Claude Stewart, Gaston Hallam and Robert Lynch, Jr.

The banquet was served by Worm & Worm in their Mecca Cafe No. 2 on Elm street. Much credit is due them for the excellent way in which they cared for the guests.

The invocation was delivered by Rev. Bowman of the Methodist Church.

SHERIFF'S DEPARTMENT IS AFTER VIOLATORS

Sheriff John W. Saye is determined to run to earth all men who violate the law in Young County.

Up to Monday 102 persons had been jailed by the Sheriff's department since Mr. Saye assumed office on December 1. This number does not include those persons released on bond.

Three bootleggers were arrested Saturday night and landed in jail. County Attorney F. V. Hinson and officers Burnett and Flint raided a poker game at South Bend Saturday night and arrested and fined a number of persons. It is stated that there were about thirty men in the room at the time the raid was made, some of whom were not participating in the game.

Officer Burnett, acting by himself, raided a game at South Bend on Thursday of last week and collected fines amounting to \$116.55.

The County Attorney, Sheriff's department and police force are co-operating to maintain law and order in both the city and county.

LANDMARK SITE WILL BE SCENE OF BUILDING

The site of one of Graham's most famous landmarks, the lot at 514-516 Oak street, on the west side of the square, will be the scene shortly of an imposing two-story brick building. The structure will be erected by John. son & Johnson.

The old wooden buildings, familiar to Graham citizens for the last forty years, are now being torn down. These buildings were constructed in 1884, shortly after the disastrous fire that wiped out the entire block on this side of the square. It was in this blaze that Wadley & Burkett's dry goods store was destroyed. This store was located on the same lot that will be used for the new brick.

It was the first dry goods store ever built in Graham, and is remembered as such by all old timers.

It is predicted that other old landmarks will pass away with the coming of new enterprises.

MAYOR WILL INSPECT PLANS OF ENGINEER

Work of construction on the additional reservoir dam on Salt Creek and extension of water and sewer mains to new additions of the city will be started within the next few days, according to Mayor E. S. Graham.

The mayor went to Fort Worth and Dallas Wednesday, where he was to approve the plans which have been drawn up by an engineer. As soon as the plans are approved, the mayor said, the work will be commenced.

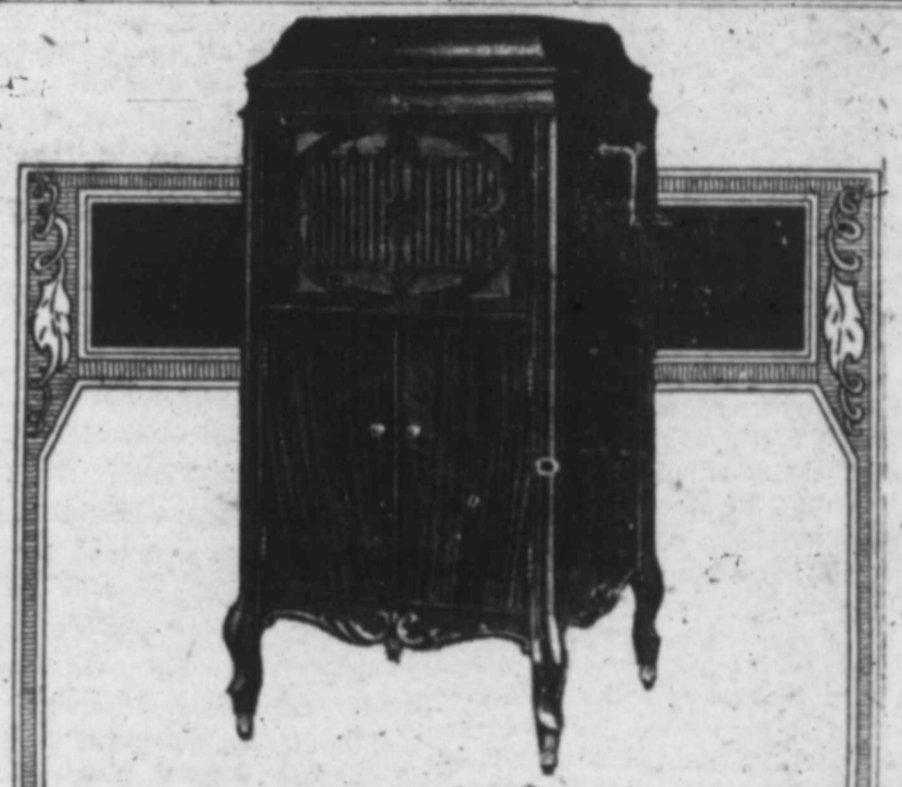
Graham at present is coming in for its full share of publicity in connection with the Young County oil field. The Fort Worth Star-Telegram, Fort Worth Record, Texas Oil Ledger, Wichita Oil Reporter, the Oil World and several other publications recently have featured this city in full page articles and extensive write-ups.

Special correspondents have been covering the field and obtaining data on Graham and Young County for their publications. That Graham right now is one of the most important oil centers in Texas is indicated by the amount of publicity it is receiving and by the number of arrivals here.



Don't fail to consult her. Special Reading \$1.00 for a short while. 22c

LET... TED WALLACE & COMPANY
Be Your Protection
 (General Insurance)
 Fire, Compensation, Oil Derricks, Accident, Health, Life, Automobiles.
Over Graham National Bank
 BOTH PHONES 170 GRAHAM, TEXAS



How to Judge a Phonograph Follow This Way of Brunswick Owners

Before you buy a phonograph, we suggest hearing several. It will be to your advantage to make tone tests for yourself.

Please do not think that this is difficult or that it takes a musically trained ear.

In over 300,000 homes music lovers enjoy The Brunswick because they have followed the above advice. Critical people have chosen Brunswicks because they have come to appreciate the betterments afforded by the Brunswick Method of Reproduction.

You need only hear The Brunswick play several selections—you need only compare it with one or two other phonographs and you will appreciate the tone qualities brought about by the Brunswick Method of Reproduction.



Come in and find out for yourself. You cannot afford to make a mistake and it costs you nothing to be sure.

EARP-GLASS MUSIC CO.
"Everything Musical"
 In Harmon Bros. Jewelry Store

EDGEWATER ADDITION

—To South Bend will be surveyed and offered for Lease or Sale during the coming week. Many of these lots front on the river, which insures cool south breeze, and are just across the river from the business part of South Bend and desirable in every particular. Will have restricted district for good homes and amusement park and we will try to make it a superior place to live. All these lots are of fine soil and subject to irrigation, which makes it possible to have a garden, etc.

We will have water and possibly gas and sewerage and if you want a quiet place to live and way from the noise and dust, see me for desirable locations. Will Lease or sell and will have office on the ground.

Also will rent for CASH RENT acreage for truck, melon patch, feed or anything you want to raise. Have royalty, leases and drilling contracts for sale.

Office at present Over First National Bank, Graham. E. C. Stovall

BROTHERS BUILDING

The Price Brothers' building, located on the west side of the square, was taken over Monday by Wilke Brothers and Mc Connell, who are to have the structure remodeled for a theatre.

This building was recently purchased by these men for a consideration of \$25,000. They plan to spend \$10,000 or \$15,000 in converting the building into a theatre. The work is expected to be completed some time within the next forty days.

WAPLES-PLATTER BUILD WAREHOUSE

The Waples-Platter Wholesale Grocery Company of Fort Worth is having a 50x150 foot warehouse erected on Cherry street, just south of the Goodner Company. Work was started on the building last Tuesday. District Manager Laski, it is understood, will have charge of the branch here. He is now in Graham overseeing work on the new warehouse.

NOTICE OF APPLICATION FOR PROBATE OF WILL

The State of Texas.
To the Sheriff or any Constable of Young County—Greeting:

You are hereby commanded to cause the following notice to be published in a newspaper of general circulation which has been continuously and regularly published for a period of not less than one year preceding the date of the notice in the County of Young, State of Texas, and you shall cause said notice to be printed at least once each week for the period of ten days excluding of the first day of publication before the return day hereof:

Notice of Application for Probate of Will.
The State of Texas.

To all persons interested in the estate of W. J. Hughes, deceased. E. E. Hughes has filed in the County Court of Young County an application for the Probation of the Will of W. J. Hughes, deceased, and for letters testamentary which will be heard at the next Term of said Court, commencing the first Monday in April, A. D. 1921, at the Court House thereof, in the city of Graham, Texas, at which time all persons interested in said estate may appear and contest said application should they desire to do so.

Herein fail not, but have you then and there before said Court this writ, with your return thereon endorsed, showing how you have executed the same.

Given under my hand and the seal of said Court, at office in (L. S.) Graham, Texas, this 13 day of January, A. D. 1921.

W. H. KENNEDY,
Clerk County Court, Young County, Texas.

CITATION BY PUBLICATION

The State of Texas.
To the Sheriff or any Constable of Young County—Greeting:

You are hereby commanded to summon Bill Dillard to appear at the next regular term of the District Court of Young County, to be holden at the Court House thereof, in Graham, on the 1st Monday in March A. D. 1921, the same being the 7th day of March A. D. 1921, then and there to answer a petition filed in said Court on the 11th day of August A. D. 1920 in a suit numbered on the docket of said Court, No. 6226 wherein Laura Dillard is Plaintiff, and Bill Dillard is Defendant and said petition alleging Plaintiff and Defendant married May 18, 1914 in Denton Co., Texas; lived with him till December 31, 1919, when by reason of gross cruelties, consisting of cursing, threatening and assaulting plaintiff lived in a constant state of dread of great bodily injury. The defendant abandoned himself to intoxicating liquors; failed to make a support; led a wandering life. The cruelties caused plaintiff to separate and has made her home in Graham, supporting herself and two children with personal labor; a boy, Willie Dillard is the fruit of said marriage, the cruelties of defendant constitute such treatment as to render plaintiff's living with defendant insupportable. Plaintiff seeks the custody of Willie Dillard, the defendant being unable to have his custody. Plaintiff prays for citation decree for dissolution of bonds of matrimony between plaintiff and defendant.

Herein fail not, but have before said Court, at its aforesaid next regular term, this writ with your return thereon, showing how you have executed the same.

Witness, Willie Riggs, Clerk of the District Court of Young County.

Given under my hand and Seal of said Court, at office in Graham, this the 24th day of January, A. D. 1921.

22c WILLIE RIGGS,
Clerk District Court, Young County, Texas.

INCREASE IN FEES

Texas Sheriffs are seeking increased compensation for their official duties. Sheriff John Saye stated Wednesday of last week on his return from the Sheriffs' Convention at Abilene.

The officers will ask for a rate of ten cents per mile in all civil processes, the sum of \$1 for serving subpoenas, \$1.50 for citations, \$4 per day for waiting on the county and district courts and \$1 per day for each prisoner fed. Those rates are double the amount of existing fees.

The sheriffs also will ask that they be granted authority to go into other counties and arrest persons for crimes committed in their respective counties, Sheriff Saye said.

CITATION BY PUBLICATION

The State of Texas.
To the Sheriff of any Constable of Young County—Greeting:

You are hereby commanded to summon Benjamin Hill, Sr., and Benjamin Jr., A. W. Hill, Riley B. Roberts, B. J. Hill, Mary V. Hill, E. S. Graham, Sr., W. J. Hill, Eugenia J. Hill, W. G. Etter and Charlotte Etter, Mary Hill, Lee A. Hill, J. L. Rhea, Henry Rhea, J. M. Hill, Beersheba Hill, Isham Perry, Matilda Perry, R. B. Roberts, James G. Hill, Albert Sidney Hill, W. C. Hill, and W. C. Hill, administrator of the estate of B. I. Hill, W. W. Fairbank, J. W. Guthrie, Margaret Guthrie, J. T. Davis, Josie Davis, and the unknown heirs of each of the above named parties whose residences are to the plaintiff unknown; and the Graham Cemetery Association and the unknown heirs and successors of the members composing said Association, whose residences are also unknown to plaintiff by making publication of this Citation once in each week for four consecutive weeks previous to the return day hereof, in some newspaper published in your County, if there be a newspaper published therein, but if not, then in any newspaper published in the 30th Judicial District, but if there be no newspaper published in said Judicial District, then in a newspaper published in the nearest District to said 30th Judicial District, to appear at the next regular term of the District Court of Young County, to be holden at the Court House thereof, in Graham, on the 1st Monday in March A. D. 1921, the same being the 7th day of March A. D. 1921, then and there to answer a petition filed in said Court on the 12th day of January A. D. 1921, in a suit numbered on the docket of said Court No. 6270, wherein J. H. Cochran is Plaintiff, and Benjamin Hill, Sr., and Benjamin Jr., A. W. Hill, Riley Roberts, B. J. Hill, Mary V. Hill, E. S. Graham, Sr., W. J. Hill, Eugenia J. Hill, W. G. Etter and Charlotte Etter, Mary Hill, Lee A. Hill, J. L. Rhea, Henry Rhea, J. M. Hill, Beersheba Hill, Isham Perry, Matilda Perry, R. B. Roberts, James G. Hill, Albert Sidney Hill, W. C. Hill, and W. C. Hill administrator of the estate of B. I. Hill, W. W. Fairbank, J. W. Guthrie, Margaret Guthrie, J. T. Davis, Josie Davis, and the unknown heirs of each of the above named parties whose residences are to the plaintiff unknown; and the Graham Cemetery Association and the unknown heirs and successors of the members composing said Association, whose residences are also unknown to plaintiff are Defendants, and said petition alleging that on or about the 18th day of May A. D. 1917, he was lawfully seized and possessed of the following described land and premises situated in Young County, Tex., holding and claiming the same in fee simple to-wit: All that certain tract of land being 23 4-5 acres out of the Ben Hill Survey Abst. No. 137, Beginning at a stone for corner, 1519 varas south of the N. E. corner of said Ben Hill survey; Thence West 947 feet; Thence North 1101 1-2 feet; Thence East 947 feet; Thence South 1101 1-2 feet to the place of beginning; That defendants unlawfully withheld from him the possession thereof to his damage in the sum of Fifteen Thousand (\$15,000.00) Dollars. That the reasonable annual rental value of same is \$500.00; That defendants be cited to appear and answer herein and that he have judgment for title and possession of said premises; That the cloud cast upon said title by the claim of said defendants be removed and that writ of restitution issue, for his rents, damages, and costs of suit.

Herein fail not, but have before said Court at its aforesaid next regular term, this writ with your return thereon, showing how you have executed the same.

Witness, Willie Riggs, Clerk of the District Court of Young County.

Given under my hand and the Seal of said Court, at office in (L. S.) Graham, this the 12th day of January, A. D. 1921.

20-23c WILLIE RIGGS,
Clerk District Court, Young County, Texas.

REWARD IS OFFERED FOR ALL HI-JACKERS

The sum of \$500 will be paid for the arrest and conviction of each and every hi-jacker operating in Graham, according to a petition which has been signed by various business men and private citizens of the city. The petition is now in the hands of authorities, and reads:

"We, the undersigned, hereby subscribe and agree to pay the sum set opposite our names for the arrest and conviction of every person who is guilty of robbing with fire arms, where same occurs in the city of Graham, Texas, the sum of said subscription to be paid to the man, or men, arresting said guilty person."

W. L. DAVIIDS N, PRESIDING JUDGE OF CRIMINAL APPEALS DEAD

Austin, Jan. 25.—Judge W. L. Davidson, 75, Judge of the Court of Criminal Appeals died suddenly Tuesday as a result of stroke of apoplexy.

Judge Davidson was fishing in a small lake in the grounds of the State Insane Asylum when he was stricken and fell into the lake, but only part of his head was submerged. He was seen by bystanders and taken out of the lake, but he died a few minutes later.

Dr. F. E. Cook, one of the attending physicians, said that death was due to apoplexy and not drowning.

CITATION BY PUBLICATION

The State of Texas.
To the Sheriff or any Constable of Young County—Greeting:

You are hereby commanded to summon W. A. Welty and wife, Mrs. W. A. Welty and their unknown heirs, whose residence is unknown to this plaintiff, by making publication of this citation once in each week for four consecutive weeks previous to the return day hereof, in some newspaper published in your County, to appear at the next regular term of the District Court of Young County, to be holden at the court house thereof, in Graham, on the 1st Monday in March A. D. 1921, the same being the 7th day of March A. D. 1921, then and there to answer a petition filed in said Court on the 11th day of January A. D. 1921 in a suit numbered on the docket of said Court No. 6268, wherein A. W. Kay is Plaintiff, and W. A. Welty and his wife, Mrs. W. A. Welty and their unknown heirs and Grover Ellis are Defendants and said petition alleging that on the 24th day of October, 1917 he was the owner in fee simple of the following lands and tenements situated in Young County, Texas, to-wit:

Eighty acres the south one-half of the J. J. Patridge survey and 140 acres of land the S. E. one-fourth of T & N O R R Co. survey No. 9 That on said day and date he sold said land to the defendant, W. A. Welty, a part of the consideration being the execution and delivery of the promissory note of that date for the sum of Twenty Two Hundred Dollars due on or before October 22nd, 1922, with interest from date at rate of 8 per cent interest payable annually and failure to pay one year's interest maturing said note at option of the holder, and that same should bear an additional 10 per cent as attorney's fees if collected by suit. That plaintiff, A. W. Kay, reserved a vendor's lien on said deed which is still an outstanding valid lien upon said land. That plaintiff A. W. Kay, reserved an undivided one-half of the mineral rights in said land for himself and same were not conveyed by said deed, and are not affected hereby; that the defendant, Welty, became indebted to the First National Bank of Rotan, Texas, in some sum unknown to this plaintiff and that said bank procured a judgment against the said W. A. Welty and foreclosed on said land and sold the same under the judgment procured, said bank being the purchaser of same, and later sold the same to the defendant, Grover Ellis, who now purports to own same. That all of said proceedings were subject to the lien and claim of this plaintiff. That the defendants, Welty, his wife and unknown heirs and the defendant, Ellis, have never at any time paid any sum whatever on said note and that there are now due on the same three years' interest and the plaintiff has elected to declare said note due and payable. That defendants be cited to appear and answer this petition and that on a final trial that he have a judgment for his debt, interest, attorney fees.

Herein fail not, but have before said court, at its aforesaid next regular term, this writ with your return thereon, showing how you have executed the same.

Witness, Willie Riggs, Clerk of the District Court of Young County.

Given under my hand and the Seal of said Court, at office in Graham, Texas, this the 12th day of March, A. D. 1921.

WILLIE RIGGS, Clerk. District Court, Young County, Texas.

JOHNSON & JOHNSON START BUILDING

A contract has been let by Johnson & Johnson for the erection of a two-story brick and stone building on the west side of the square, next to Snoddy's Racket Store. Work on the building will be started February 1. The size of the structure will be 28x-100 feet.

It is understood that the lower floor of the building will be used as a department store by Howell & Howell, substantial merchants of Wichita Falls. The upper story probably will be used for office space.

NEW WAREHOUSE IS BUILT WITH SPEED

One 50x75 foot brick and tile unit of the Goodner Wholesale Grocery Company, of Wichita Falls, has been completed and is now ready for occupancy by the company. The building is located on Cherry street, near the depot. Rapid work has marked the construction of this building, as it was started about ten days ago. Mr. Goodner, who was in Graham last week, was so favorably impressed with conditions here that he announced the company will have three more units erected. These units will be the same size as the first. The work is being done by the Greabre Construction Company.

We have a large, complete line of magazines at Snoddy & Son, 191fc

PARSONAGE WILL BE COMPLETED SOON

The handsome new parsonage of the Christian church, located on Elm street, will be completed and ready for occupancy by February 15, according to John Craig, superintendent of the construction work.

The building, which is constructed of white brick and tile, cost about \$16,000. The lower floor contains a living room, dining room, breakfast room, bed room, kitchen and bath. The upper floor has four large rooms and a bath. The inside is finished with plaster and is hand painted. The building is considered a handsome addition to the Christian church, which was completed in 1917.

WANTED

BIG JOB OF CLEARING LAND

P. P. ACOSTA, Contractor

Wood cut and delivered to wells. No contract too large. Also Pipe Line Ditching Done. Ind. Phone 279

DON'T DRILL WITHOUT A SURVEY

IT ISN'T SAFE

JOHN E. MEYER

Graduate Civil Engineer

County Surveyor, Young County Licensed State Land Surveyor. Dependable Surveys

ACCURATE AND UP TO THE MINUTE OIL MAPS

Ask for MEYER'S MAPS, drawn true to scale from re-surveys. Complete sets of Forms for Supplying Information required by State Railroad Commission, from organization of company to plugging a dry hole.

NOTICE

I am remodeling my Studio and installing new up-to-date equipment, including Electric Enlarging and Printing Machines.

I also have employed Homer F. Price, an up-to-date and well known photographer. We will be prepared to do the highest class Studio work. Also Kodak Finishing, View Work, etc.

GHISM'S STUDIO
Southwest Corner of Square

MR. AUTO AND TRUCK OWNER

—We are here with a complete line of Continental and Buda Motor Parts. Also Timken, Hyatt and New Departure Bearings to fit any make car.

GAINES-YARBROUGH MOTOR COMPANY
433 ELM STREET

PRICES OF FORDS

F. O. B. GRAHAM

That there will be no misunderstanding in the prices of Fords we herewith quote below prices of all models F. O. B. Graham.

Touring, [Plain]	\$530.25
Touring, [Starter]	\$603.14
Roadster, [Plain]	\$483.39
Roadster, [Starter]	\$556.28
Chassis, [Plain]	\$441.01
Truck, [Pneumatic]	\$630.59
Coupelet	\$847.83
Sedan	\$899.89
Tractor	\$852.10

We have in stock all models for immediate delivery, easy terms if desired, on monthly installment plan.—Get your Ford NOW.

LeSAGE MOTOR CO.

Authorized FORD Agents

CLASSIFIED COLUMN

LOST-Found notices including a large black and white spotted hound and a pocketbook containing papers.

FOR SALE notices including a counter table, a six-room house, and registered Poland China pigs.

FOR SALE notices including a No. 1 good team wagon and a six-room house with a sleeping porch.

FOR SALE notice for 80 acres adjoining Bunker, including an oil center and improvements.

FOR SALE notice for 160 acres land 14 miles south of Boswell, N. M., including an artesian water belt.

FOR SALE notice for a six-room house with a sleeping porch, located on west Third Street.

FOR SALE notice for a rooming house at South Bend, including terms and contact information.

FOR SALE notice for frost proof cabbage plants, including prices and contact information.

FOR SALE notice for a large, complete line of magazines at Snoddy & Son.

FOR SALE notice for a six-room house with a sleeping porch, located on west Third Street.

FOR SALE notice for a Dodge commercial car with screen body and a Dodge commercial car with express body.

FOR SALE notice for a one standard rig and a full string of 15, 12, 10, and 8 1-2 in casing.

FOR SALE notice for a good restaurant outfit, including a Burroughs adding machine and a galvanized iron garage building.

MISCELLANEOUS notice for DeMille Quartet, including performance details and contact information.

A BUSINESS MAN'S PRAYER: Teach me that 60 minutes make an hour, 16 ounces one pound, and 100 cents one dollar.

NOTICE: The following meat markets will not open on Sunday mornings. A. F. McLAUGHLIN & SONS, SANITARY MARKET, Timbes & Son, MILLER'S MARKET, W. M. Miller.

MISCELLANEOUS: For stenographic work call Mrs. Maxwell at Erwin & Spears Realty office. Phone 11J.

BE SURE to hear the DeMille Male Quartet Monday, February 7, at the School Auditorium, Fourth Lyceum Number.

Call and see us about your oil property. Erwin & Spears, 19tf. See H. LONG about it. Investments, Real Estate, Employment, etc. 16tf.

STENOGRAPHER AND TYPIST: Public Stenographer and Typist, Guaranty State Bank building. 20tf. I WILL THRESH cane and maize at my place east of town Tuesday, February 8th.—A. J. BRYAN. 23p

FIVE-PASSENGER PAIGE CAR BROUGHT HERE TO SELL. See DAY, at Graham Auto Supply Co. 1p

WANTED: YOUNG LADY with business experience desires position as stenographer or assistant business manager. Have had legal experience, can draw up contracts, assignments, etc. Write or wire Miss Lucy Holder, 614 West Second St., Fort Worth, Texas.

SEWING WANTED—MRS. H. A. CRAIG, 805 Grove Street. 23-24p. POSITION WANTED—By experienced stenographer, also graduate in bookkeeping. Apply at Leader Office. 23p

WANTED—Someone to finance experienced lady in securing hotel or rooming house in Graham, South Bend or Elvasville.—H. L., care of Leader. 1tp

FOR LEASE: ROOM FOR RENT for gentleman.—Phone 145 Ind. 1tp. List your Leases, Drilling Contracts, Royalties and Production with us. Give full description of property. Have daily inquiries for oil properties. Have branch office over Graham National Bank, at Graham. Can get quick action on good properties, priced right. Submit listing to both offices.—ROBINSON, FAIN-PECK-HAM AND ROBINSON, 513 City National Bank of Commerce, Wichita Falls, Texas. 20-25c

FOR RENT—Furnished bed room, all modern conveniences. Phone Ind. 47-J. 23c. For Lease—260 acres, 4 miles north of Graham; house, barn and good well; 60 acres in cultivation.—B. G. Moseley, Graham, Texas. 19tf

Leases and royalties. Bought and sold.—Erwin & Spears. 19tf. Lease owners submit your leases and drilling contracts to us; we are purchasing to develop, not brokers. Propositions submitted to us will be held confidential. Will not deal with brokers. P. O. Box 811, Phone 6 or 820, Mineral Wells, Tex. 19-23p

ACTIVITIES OF AMERICAN RED CROSS SOCIETY

Fifty-seven major disasters occurred in the United States during 1920, taking a toll of 425 lives, injuries to 2,700 persons, and damage to property estimated at \$11,250,000, according to an official report compiled and issued by the American Red Cross at Washington.

Of the fifty-seven disasters in which the Red Cross figured, 22 were fires, three explosions, six floods, 11 tornadoes, two storms and cloudbursts, five shipwrecks, two typhoid epidemics, three wrecks, one general relief problem, one grasshopper plague in North Dakota, and the continuation of relief for drought victims in Montana and two in North Dakota.

An outstanding feature of the report of the Bureau of Disaster Relief for 1920 was the unusual number of tornadoes, most of these occurring in March, April, and May. Fifteen states and nearly 100 communities were affected, located largely in the central, south central and south-eastern states.

Aid was extended to 159 communities visited by disaster during the year. About 3,750 families, involving 19,000 persons were affected. Besides emergency relief extended to the number more permanent aid toward rehabilitation proved necessary in 1,460 families.

Nurses were assigned locally by the Red Cross to meet emergencies in 178 instances, and 20 emergency hospitals were established, the report says. A total of 103 chapters expended funds for relief purposes, while 118 chapters had to meet disaster emergencies and carry on active relief work.

Besides administering aid in domestic disasters the American Red Cross succored thousands of sufferers during 1920 in earthquakes in Italy, and Mexico; extended aid to famine sufferers in China; and participated in relief activities incident to an epidemic in Haiti.

Following the war the policy of the Red Cross has been to give disaster preparedness and relief work great prominence in the peace time program of the organization and a greater number of chapters took part in this work during 1920, the annual report shows, than at any other time in the history of the organization.

THOMAS MEIGHAN IN CHIEF ROLE IN WM. DE MILE PICTURE. Thomas Meighan, who was so large a factor recently in the success of George Loane Tucker's "The Miracle Man" and Cecil B. De Mille's "Male and Female," is the feature player in the picturization of Edward Peple's well known play "The Prince Chap." It will be shown at the National Theatre on Wednesday and Thursday, February 9 and 10.

WOODSTOCK TYPEWRITERS. A shipment of new Woodstock Typewriters has been received at The Leader office and if you are interested in buying a new machine call at The Leader office for a demonstration. The good features of all machines are combined in the new Woodstock. A demonstration will convince you.

HEAD OF STAND DERIVED FROM \$2,000 EXEMPTION

Two Hundred Dollar Exemption Allowed for Dependents Under 18, or Incapable of Self-Support. Single persons, though required to file a return if their net income for 1920 was \$1,000 or more, are, if they are the heads of families, granted a special exemption under the revenue laws.

Such persons are allowed the exemption of \$2,000 granted a married person. In addition, they are allowed a credit of \$200 for each dependent under 18 years of age or incapable of self-support because mentally or physically defective.

A married person living with his band and wife can not claim an additional \$2,000 exemption as the head of a family. His or her exemption is based upon the marital status, irrespective of the support of others living in the same household.

The additional \$200 credit for dependents does not apply to the husband or wife of a taxpayer. For example, if a married man supports a father who is incapable of self-support, he is entitled to the \$200 credit for such person. If through force of circumstances he supports his wife away from home he is entitled to the \$2,000 exemption allowed a married person, but not to a \$200 credit for a dependent.

A son who has left home but who sends him mother more than one-half the sum required for her support is treated as his mother more than one-half the mother can not support herself. Otherwise, the amount must be considered as a gift, and therefore, the credit is not allowed.

WANTED—Combination stenographer and bookkeeper for automobile work. Give full particulars regarding your ability and personality in first letter. Address P. O. Box 41, Graham, Texas. 1tc

RESOLUTION

The Fifth Sunday Meeting of Young County Baptist Association at South Bend, unanimously passed the following resolutions on January 20, 1921: Whereas, there is now an effort to get our law makers to rescind some of the laws regarding Sabbath desecration, therefore be it

Resolved by this body, representing more than fifteen hundred members, that we do most respectfully enter our hearty protest against Sabbath desecration in our county and state, and do hereby pledge to our officers our sympathy and support, in their efforts to suppress the violation of Sunday laws and all other laws on our statute books.

Be it further resolved, That we heartily indorse the efforts being made against gambling, and join in asking that the Dallas Fair, and all other fairs, be closed on our Lord's day.

J. B. RIDDLE, C. R. TAYLOR, MRS. J. T. RICKMAN, Committee.

NOTICE The City Bakery is under new management Bread and Pastry any time of the day D. B. McRAE Manager

WE wish to call the attention of the public to the fact that Mr. Hancock, representing R. T. Dennis & Co. of Waco, is showing the latest designs in high class Draperies and Rugs. Mr. Hancock will take pleasure in showing these draperies in your homes or they can be seen at store. Our furniture stock is very complete and now is the time to buy your furniture, as you can get your furniture, rugs and draperies all blended together in colors. See our oil and gas stoves before buying. Don't forget the kitchen cabinets. We have a complete line of Hoosiers. For a good night's rest sleep on a Sealy Mattress. We have them and at the right price. BARROW FURNITURE CO. The Home of Service.

OLUTION
Day Meeting of Young
Association at South
ly passed the fol-
ons on January 20,

e now an effort to
akers to rescind some
arding Sabbath dese-
re be it

his body, representing
en hundred members,
st respectfully enter
test against Sabbath
ur county and state.
pledge to our officers
nd support, in their
ress the violation of
nd all other laws on
s.

r resolved, That we
the efforts being
ambling, and join in
Dallas Fair, and all
closed on our Lord's
day.

B. RIDDLE,
R. TAYLOR,
S. J. T. RICKMAN,
Committee.

THIS BANK IS FOUNDED ON

Service--

DEDICATED TO THE PROGRESS
AND UP-BUILDING OF THIS
COMMUNITY--

OPERATED BY MEN WHO HAVE
AT HEART THE BEST INTER-
EST OF EVERY CUSTOMER--

A BANK OF SAFETY, SERVICE,
SATISFACTION.

The First National Bank

Safe, Strong, Conservative, Courteous
Successor to Beckham National Bank

LOCAL PERSONAL NEWS

W. H. Dyer is in Rock Island, Ill., on business.

C. W. DeFreest spent the first of the week in Fort Worth.

John Ragland is confined to his home with a cold.

John Wirges, of Fort Worth, spent last week here.

Oron De Bell visited his wife and baby in Denton last week.

Miss Edna Adams, of Virginia street, spent last week in Fort Worth.

Judge John W. Woods of Abilene was a visitor here Saturday.

Mary Louise Hallam spent Saturday in Fort Worth.

Mrs. C. C. Mayes has returned from an extended visit to her daughter in Texarkana, Texas.

Solmon & Carter of Wichita Falls will open a new bakery about February 5th on North Elm street.

Rev. J. E. Evans filled his regular fifth Sunday appointment at Jermy's last Sunday.

The Graham Shrine's will have a business meeting Thursday night in the Masonic Hall.

WE now have on display a nice assortment of Valentines at SNODDY & SON. 21tf

Mayor E. S. Graham left Wednesday for Fort Worth and Dallas where he will transact official business.

The Met Cafe No. 2, on the west side of the square, was opened for business last week.

W. A. Stewart, well known local man, is now connected with The John E. Morrison Dry Goods Company.

Mr. and Mrs. O. T. Anderson and Misses Jones and Porer, of Olney, visited friends here Sunday.

WE now have on display a nice assortment of Valentines at SNODDY & SON. 21tf

Elmer Graham, attorney of Olney, was here Monday. Mr. Graham may locate his law practice here.

R. G. Hallam and family are now occupying their new home, a modern building on Second street.

DON'T fail to ask Madam Odus at Texan Hotel, 408 Elm Street, Room No. 9. 23c

Madam Odus is still at Texan Hotel, 408 Elm Street, Room 9, satisfying the public. Pay her a visit. 23c

R. E. Bradford of Mineral Wells is opening a new drug store and soft drink stand in the Lauck & Gallagher building.

Morris Lively is in receipt of a letter from Mayor Cline of Wichita Falls, potentate of Masked Temple, saying that Wichita Shrine's will have a social meeting on the night of February 22nd at the Kemp Hotel.

Misses Helen Widmayer and Madeline Long were guests at a house party in Dallas during the weekend.

PURCHASE your Valentines early—first come, first served.—SNODDY & SON. 21tf

W. J. Logan of Rhome, Texas, spent several days here looking after his ranch interests in the northern part of the county.

Chief Engineer McFarland of the Wichita Falls & Southern Railroad, went to Fort Worth this week on official business.

M. B. Harland, who has been in Cisco and other Texas cities for the past six months, returned to Graham last week.

FOR SALE—New Guinea Butter Bean Seed. Now is the time to plant.—B. B. GARRETT.

I. W. Place and Lem Gross of Jean were in the city Saturday and called at the Leader office. Both subscribed for the Leader.

Davenport & McFall of Wichita Falls are installing a barber shop in the Lauck & Gallagher Bldg., on North Elm street.

R. W. Cole of Dublin, Texas, will be connected with Bradford's drug store. Mr. Cole expects to move his wife and baby here soon.

L. T. Gardner of Wichita Falls is putting in a toffee house in the Lauck & Gallagher Bldg. It will be known as "Larry's Coffee Shop."

T. R. Billingsley and H. E. Downey of Elvasville, Texas, were in Graham, Saturday and were pleasant callers at the Leader office.

PURCHASE your Valentines early—first come, first served.—SNODDY & SON. 21tf

J. D. Cameron of Paducah, Texas, was in the city yesterday. He is a promising young attorney just out of school and is looking for a location.

Who is Madam Odus, Answer: World's Greatest palmist, clairvoyant and phrenologist, at Texan Hotel, 408 Elm Street; Room 9.

Miss Hallie Gray, of Seymour, is visiting her sisters, Mesdames R. H. Holland, and A. D. Harmon and brother, Zack Gray, of this city.

A. A. Hobrecht and Miss Mary Dorothy Gisham were united in marriage, January 25th, 1921, at the Methodist parsonage in Graham by Reverend T. E. Bowman.

John Ware, who bought a fine residence here some months ago and moved from Stephens county to make Graham his home, is a Graham "booster." He recently ordered The Leader sent to Roscoe Waters, Ivan, Texas, and J. O. Smyth, Raymondsville, Texas, in order that they could keep in touch with the liveliest town in Texas.

and D. Clark of Elvasville spent Monday in Gray.

FOR SALE—Rhode Island Red cockerels.—ROLLIE VOULES. 23-4c

When it comes to offering the ladies seats in the street cars, a lot of Southern Democrats are beginning to act like Northern Republicans.

And our guess is that those efficiency experts haven't got much more sense than to try to teach dishwashing to their wives.

One reason why there isn't much fun in being a boy is because he suffers as much from washing his feet as you do from doctoring your corns.

Mr. and Mrs. E. P. Clarke left Monday for their home at Sharpsburg, Ky., after spending two weeks here as the guests of his brother, C. Fox Clarke, and family.

W. R. Timmons of Fort Worth, secretary of the Mid-Texas Petroleum Company, and family spent several days here this week looking over the oil fields.

Of course we are uneasy when we wear our diamonds, but if we didn't wear them we might as well not have them, and if we didn't have them we might as well be poor.

Probably the best thing about being tied to your wife's apron strings is how convenient you are when she wants her waist buttoned down the back.

R. B. Brotherton, assistant chief engineer for the Texas Company, at Wichita Falls, is in the city this week attending to business for his company.

Miss Fred Boyd of Wichita Falls arrived here Monday. She has established an office as public stenographer in the Gra-Tex Oil Co's office, on North Elm street.

O. T. Anderson and wife, Misses Jones, Porter, Farmer, Wood and Key and Messrs. Key and Eagan, all from Olney, visited County Clerk Kennedy and wife last Sunday.

Mrs. W. A. Bradley of Strawn joined her husband here last Sunday. Mr. Bradley is a carpenter and has been here for two months. Mr. and Mrs. Bradley will make their home in Graham.

"Pop" Boone, sporting editor of the Fort Worth Record, spent a night last week at the home of County Clerk Kennedy. Mr. Boone was here to obtain data for an article for the Record.

WANTED—Rooms for light housekeeping; furnished or unfurnished. Apply J. B. H. at Leader Office. 1fc

E. G. Walsh, of the firm of Walsh & Burney, building contractors of San Antonio, spent last Saturday in Graham and said he was just looking about and thinks Graham a good place for any one to stay and he might return shortly to linger indefinitely.

T. J. Dawson formerly of Breckenridge has moved to Graham and has opened offices in the Guaranty Bank Building. He is a property owner here and has been interested in the oil business in this section for two years. Mr. Dawson's family will move here in June.

FOR SALE—Rhode Island Red cockerels.—ROLLIE VOULES. 23-4c

Mr. and Mrs. M. M. Burris and Mr. and Mrs. D. C. Leberman of Orth were in the city last Friday. They reported that a large acreage of wheat was not looking good. There has been a general complaint that the wheat crop was not very promising at the present time but it is hoped that the weather conditions will be favorable to growing wheat.

David S. Castle of Abilene was a visitor in Graham last week. He is one of the best architects in Texas and was especially pleased with the future prospects of Graham. He did not make known the purpose of his visit here but he is probably considering the advisability of opening an office here. He has been the architect for several of the best and largest buildings in Texas.

INCOME COLLECTOR NOW IN YOUNG COUNTY

J. V. Monrief, deputy collector of income taxes, will be in different towns in Young county on the following dates:

Graham, February 1; Elvasville, February 2-3; Graham, February 4-5; Olney, February 23-24; and Newcastle 25.

WANTED

Everybody to Know—We are now occupying our own office.

FOUR-NAUGHT-TWO FOURTH STREET

—Next door to Dollman House See us there for

City Property, Leases, Royalties, Insurance and Loans

Riser & McAneny

REPORT ON WORK OF CITY SCHOOL

To the Honorable Board of Trustees and Patrons of Graham Independent School—Greetings:

I am submitting the following summary of the schools for the term just closed:

Number of students enrolled, males 494, females 522, total 1006.
Number of new students since Christmas—146.

The first term and also the fifth month of school has just closed. Examinations have been given and summaries of results have been made. In a number of classes, both in the high school and in the grades, a high percentage made their work and were promoted. It is true that quite a number were not promoted, and that many of those who were promoted made barely passing grades. We wish the co-operation and assistance of the parents of the children who are in either of the latter groups. It is the hope and purpose of the school authorities that each child get all the benefit possible during the school term. If we are to keep our standing as a first-class school with the State Department of Education and with the University, we must maintain as high a standard in the grades as in the high school. A pupil can not do barely passing work in the grades and then make a strong high school pupil. The State Department in making its estimate of a school, looks more to the work done in the grades, while the University looks more to the high school work.

We do not wish to be understood as working solely for the approval of the State Department or University—this comes as a result of the character of the work done.

We are vitally interested in the character of work done by each pupil; this for the good it will do him, personally, to thoroughly master each day's work. It is for this reason that we are asking the co-operation of every patron. If your child has been giving too much time to interests other than school duties and has not been doing enough home study, please see to it that he be given an opportunity to do his best work during the next four months.

H. B. COGDELL, Supt.

WORK ON SIDEWALKS IS MAKING PROGRESS

Work on sidewalks in the business section is progressing. The last section in the concrete walk on the southwest corner of the square is now being completed. Work of laying the walk in front of the Lauck & Gallagher building on Elm street also has been finished.

MR. MCGOWAN DIES IN JACKSONVILLE, TEXAS

Mrs. W. I. Tidwell received a message yesterday from Mrs. H. W. McGowan of Jacksonville, informing her of the death of Mr. McGowan, Tuesday morning at 8:30 o'clock. He was buried at Jacksonville where his people reside. He is survived by his wife and three sons.

Mr. McGowan lived here a number of years and is remembered by the people who have lived here some time.

Mrs. McGowan's many friends in Graham join in sympathy with her in her hour of sorrow and sadness.

CIRCLE FOUR

Circle Four of the Presbyterian Auxiliary, held an interesting meeting last Thursday at the Manse. The Circle is composed of the Young Women of the church, married and unmarried. They are known among themselves as the "Noble Bereans," Acts 17:11.

At present the Circle is engaged in sewing for the Presbyterian Indian Orphanage at Goodland, Oklahoma, and the freewill offering (\$8.25) will be devoted to the same cause.

The next meeting will be with Miss Eloise Morrison. Visitors and prospective members cordially welcomed.

THE GRAHAM DAILY LEADER

The management of The Leader had expected that the Graham Daily Leader would have been started before this time, but on account of the new model linotype No. 14, which was ordered three weeks ago, not yet having been received, it has been impossible to start the daily. The machine is expected daily and as soon as it is received and installed the Daily will be issued. Everything else is in readiness. The reporter and the linotype operator and other additional help as well as other equipment have been secured and before many days our people will be reading the Graham Daily Leader.

NATIONAL THEATRE

CONTINUOUS SHOW FROM 3:00 UNTIL 11:00 P. M.

PROGRAM

Monday and Tuesday, Feb. 7 and 8

"The Branding Iron"

Adapted from the fascinating story by KATHERINE NEWLIN BURT

Wednesday and Thursday, Feb. 9-10

"The Prince Chap"

WITH THOMAS MEIGHAN

A Paramount Super Special

Friday, Feb. 11

MABLE NORMAND

"What Happened to Rosa"

Saturday, Feb. 12

CHAS. RAY AND FRANK KEENAN

"The Coward"

HENRY FORD'S PAPER SUED FOR \$5,000,000

Chicago, Feb. 1.—The praecipe in a \$5,000,000 damage suit against Henry Ford and his paper, the Dearborn Independent, was filed in the circuit court today by Morris Gest, theatrical producer, who alleged that an article in the Independent on Jan. 22, 1921, contained "libelous, slanderous and false statements" concerning Mr. Gest and certain stage productions he has handled.

The article mentioned in the suit was said to have attacked "Aphrodite" and "Mecca"—in particular, terming them the "most salacious spectacles ever shown in America."

The article, which was alleged to have been libelous, was quoted in the praecipe. In asserting that the American stage was under the influence and control of a group of former bootblacks, newsboys, ticket speculators, prize ring habitués and bowery characters.

After saying that "Mr. Gest stalks before his fellow Jews as the greatest producer of the year," the article declared that Mr. Gest was not a producer, but a "great panderer to a public whose taste he has been no mean factor in debasing."

Gest, it is said, sold newspapers in Boston and in 1906 was a member "of a notorious gang of ticket speculators who were the bane of the public."

"There is nothing in Gest's career to indicate that he will ever contribute anything to the theater's best interests," the article said, and also declared that "the story of Morris

Gest is the last one in the world to use as a 'success story' of the type of immigrant boy who became a great theatrical producer."

CIVIC LEAGUE

Program for February 16th, First National Bank, 2:30 p. m.

Roll Call—What I have done or intend to do to beautify my own premises.

What the Park needs.—Mrs. F. M. Burckett.
Health Talk: Garbage disposal for Graham.—Dr. R. A. Duncan.

STOP THAT ITCHING

Use Star Eczema Remedy for Itch, cracked hands, letter, eczema, ring worm, and sores, on children. Sold on a guarantee by all druggists.—STAR PRODUCTS CO, Cameron, Texas.

MADAM DALE Mental Telepathist

FOR ONE WEEK

Beginning Feb. 8th at 724 S. Cherry St

Consultation and advice on business, social and financial matters.

Hours: 9 a. m. until 8 p. m.

Fifty-Room Brick Hotel FOR LEASE

We also have for Lease a store room 25x100 feet in brick building, well located on square.

For Rent—Residence houses and apartment houses.

For Sale—Residence and business property on terms.

We are in the market for all kinds of property.

Halloway & Anderson

PHONE INDEPENDENT 238.

505 ELM STREET

LEADER A BUSINESS MAN'S PRAYER ACTIVITIES OF AMERICAN HEAD...
CLAS...
10 minutes make an...
been derived from

15% TO 40% DISCOUNT

TO SHAREHOLDERS

AT THE

PEOPLES CO-OPERATIVE STORES

421 Elm Street--Duckworth's Old Stand

GROCERIES AND MEATS

WHOLESALE BUYING POWER MEANS WHOLESALE SAVINGS TO OUR SHAREHOLDERS

We wish to advise those who have not investigated the plan offered by this store to save from 15 per cent to 40 per cent on their Grocery bill to phone in and have a representative call and explain details or come to the store and see for themselves as the old and tried adage is still good doctrine:

"SEEING IS BELIEVING"

There is no need for any one to continue paying war prices for Groceries—just investigate this Store's plan. We buy

Groceries in Car Load Lots Direct

With all freight prepaid—giving each Shareholder advantage of wholesale purchases without paying two or three middlemen's profits and drummers' salaries and freight.

OUR GOODS COME PREPAID

Peoples Co-operative Stores

Duckworth's Old Stand

421 Elm Street

GRAHAM, TEXAS

Phone 165

T
TH
P
San
no
C
h
Dem
cum
on
Meal
IF
CA
ing
U
FI
Sch
ary
I
yet
fore
some
nice
Graham,

WELFARE URGED BY GUESTS

Construction of sidewalk and paving of streets is favored by a majority of citizens in their replies to the question, "What do you, as a citizen, think is the thing of first importance to be done for the community as a whole?" which was submitted to guests at the Chamber of Commerce banquet last week. To be exact, there were twenty-one guests who favored this improvement.

"Build a paved sidewalk from the square to the school building for the hundreds of school children who must wait for them four times a day for nine months of the year," says one man, while another says "keep your streets in better condition in order to impress the stranger and visitor."

Sanitary Conditions.

Eight men favor betterment of sanitary conditions. "As the health of the city is essential to the best interest of every individual," advises one physician, "I think Graham should make arrangements to dispose of the garbage of the city. Another medical man urges 'the installation of a public rest room for women and easily accessible; free or pay toilets for each sex.'"

Evening up the recommendations for sanitary betterment, eight citizens join in urging better fire protection through the medium of more fire equipment. "Our fire equipment is very inefficient for these new fire teasers," avers one man in his reply, while the others agree to "better fire protection."

School Problem.

Seven citizens agree that the present school buildings are inadequate to care for the enrollment of pupils. One prominent official of the city requests the Chamber of Commerce to "interest itself in, and make an effort to co-operate with, the school board which must enlarge its facilities, and the city council which must meet the demands for civic improvements." One reply recommends that "a \$150,000 high school building be built."

Six replies show that there is a sentiment for the erection of a modern hotel. Two out of these favor a building with 150 rooms, while another would "take care of the traveling public in such a manner and at a price that they will not go away feeling they have been 'stung.'"

Six guests believe that there should be closer co-operation among the business men of the city, one saying that they should "get together and stay that way." "Help each other who may be striving in a clean way," says another, while still another advises that "all work together and every man be a booster."

That there should be more effort expended to keep the South Bend road in good condition is the belief of six men. "Build immediately a suitable road to South Bend," says one. "I would like a united effort," says another, "to raise sufficient funds to purchase the proper tools to keep our roads well drugged."

Housing Situation.

"Every one that possibly can, build a rent house," says one citizen in speaking along the lines of building while still another reply would "provide for the building of tenant homes of the best class." One man favors "housing the influx of people," while another would "get the housing proposition under way."

Police protection is urged by four men, one recommendation urging the city to "keep all crime down possible, and make it so unpleasant for criminals that they will desire some other place." "Put on more police force," frankly, states one of the replies, while another would "provide police protection and keep the town clean and moral." "Keep our city to the front as a community of law and order before business expediency," adds another.

"Improve the lighting system of this town," demands one man, while another would "get in after the light plant."

Some of the replies attack the high prices here. "Keep the prices of real estate down to a level that will encourage legitimate business to come in," says one man along this line. "Stop profiteering on rentals," warns another citizen, while still another would "stop profiteering in the matter of renting rooms to the floating population of the town."

Water Supply.

An adequate water supply is urged by a large number of men, one man believing that "an ample water supply for 40,000 people" should be provided. "Don't fail to make ample water reservoir," states one, and another adds to this by advising citizens to keep a clean town; that means an adequate water supply.

Improved railroad conditions, a gas supply for the city, membership drive for the

strong financial basis," advises one man, while another would "encourage legitimate oil promotion and put the ban on get-rich-quick schemes." "Get natural gas in Graham," is the recommendation of some of the replies.

Some agree that "Graham should be put on the map and be made second to none." One man would "stimulate and encourage substantial building and advertise this fact broadcast." "Advertise more the opportunities for oil development here," says one, and another believes "the Chamber of Commerce should carry on an extensive publicity campaign in the leading papers of not only this state, but of nearby states as well."

GRANDMA WASHBURN DEAD
In The Leader recently we carried a short notice of Grandma Washburn's death. In this issue we desire to give a more extended account of the life of this good woman who lived so long on this earth to bless mankind.

Mrs. Elizabeth Washburn was born in Henderson county, Tennessee on the seventh day of March, 1829.

When a small girl she moved to Texas with her parents and settled on a 1280-acre homestead in Grayson county near where the city of Sherman now stands. This was in the fall of 1836.

In 1850 she was married to J. M. Washburn. To this union were born seven children, three girls and four boys, six of whom survive her. She had thirty grandchildren and thirty-six great grandchildren.

Grandma Washburn lived in Texas from 1836 until the time of her death and, often talked of the early days when the Indians were numerous and when the buffalo, the bear and many other wild animals roamed over the plains and valleys. She came to Young county in 1901 and made her home with her son, J. H. Washburn.

She joined the Christian church in 1890 and was true to her church until her death. She often said she was ready to go when the Master called for her. She was a truly good woman and her influence will continue to live.

AT THE LIBRARY

The following books have been added recently to the Graham Public Library:

The library is located at the City Hall, west side of square, open on Saturdays from 3 to 6 p. m.
The House of a Thousand Candles, by Meredith Nicholson.
The Count of Monte Cristo, by Alexandre Dumas.
Departmental Ditties, by Rudyard Kipling.
To Have and to Hold, by Zane Grey.
Returned Empty, by Florence Barclay.
Thuvia Maid of Mars, by Edgar Rice Burroughs.
Love Stories, by Mary Roberts Rinehart.
East Is West, by Eugene Marlowe Rhodes.
The Ramblin' Kid, by Earl W. Bowman.
The Prairie Mother, by Arthur Stringer.

SINGLETON-HOGUE

Henry G. Singleton of Red Top and Miss Willie Hogue of this city were married Saturday, January 22, 1921 at 7 o'clock p. m. by Reverend G. W. Black at his residence on South Elm street.

Miss Hogue is the daughter of Mrs. E. L. Hogue and has been reared in Graham where she has many friends. She was a popular pupil in the Graham High School for several years, and later attended the State normal at Denton.

The groom is a brother of R. J. Singleton. He is a prosperous young farmer and has a bright future before him.

The happy couple are at home in the Red Top community, and are receiving the congratulations from their hosts of friends.

MARRIAGE LICENSES

The following marriage licenses have been issued by County Clerk Kennedy during the past week:

A. A. Hobrecht and Mary Dorothy Grisham.
Elmer Pennell and Andie Canterbury.
Joe Cagle and Rosa J. Hamilton.
Carl H. Gaw and Gressie McNabb.
William E. Stepp and Maurine Norman.
E. P. Reynolds and Irene Brogden.

SPECIAL BARGAINS

New NATIONAL SEXTET, driven about 700 miles as demonstrator, at greatly reduced prices. Will take part trade, Graham property and part cash at this sacrifice price. See Mr. WURTZ, at J. C. Vaughn's office, or address Smith, Albin & Peay, 404 Morgan Bldg., Wichita Falls, Texas. 23-24p

WEEKLY NOTES

WHERE CHRISTMAS COMES IN MIDSUMMER

(Miss Lelia J. Epps)

For so many years we have heard of and studied about our mission work in the Orient, and have been told of the millions there passing into eternity without having heard of Jesus, that to many of us "being a missionary," naturally means going to China, Japan, or Korea. Our hearts are thrilled with joy at the very thought of telling the Christmas story for the first time to people who have never had the chance of hearing of the wonderful plan of salvation.

Consequently, it is difficult to realize that there are hundreds and thousands of people in Brazil and other Roman Catholic countries who teach and preach that our salvation does not depend upon Jesus, but upon the Virgin Mary. Some time ago one of the most prominent and influential Catholic priests made the following appeal in a sermon preached in Rio de Janeiro: "Oh, hard hearts, why do you doubt the maternal love of the Virgin, who, by her co-operation in the incarnation, in the redemption and the spiritual birth, became mother of all? And if she became mother of all through her suffering and the suffering of her Son, it is certain that the milk of the divine grace, the fruits of the passion of Jesus Christ, and the way to obtain eternal life are given to the faithful by other than the Virgin. The unanimous sentiment, which is well supported by all the economy of the redemption, is since the Virgin was the medium by which God came down to humanity, she is also the necessary ladder up which all humanity must climb to God. Our worship to the Virgin, therefore, has a firm foundation."

I have seen hundreds of Brazilians bowing down and worshipping the image of the Virgin. They wear little golden images of Mary on chains around their necks to keep off evil spirits and protect them from calamity.

In Brazil Jesus is not recognized as the Savior of the world, therefore very little attention is paid to the celebration of His birthday. In our Protestant churches we are teaching that only through his name can we be saved; in our Sunday schools we teach the Christmas story and in our day schools we teach the life of Jesus. We have Christmas trees and teach the spirit of giving very much as we do in our home land.

Sometimes it is quite difficult to realize that it is really Christmas, because of the season, December and January being in Brazil's midsummer, the very hottest part of the year. Some one has said that it doesn't seem enough like a real Christmas to make even new missionaries homesick.

Let us pray and work together that the time may soon come when Jesus shall reign in the hearts of his children, not only in Brazil, but in all of Latin American and throughout the whole world. Then, with our hearts full of joy and gladness, the whole race may celebrate together the birthday of our King.

DISOWNED YOUTH IN BRAZIL WINS FATHER TO CHRIST
In our church at Juiz de Fora there have occurred recently several very interesting conversions. We

UNIVERSITY SITE WILL BE DELAYED

Austin, Texas, Feb. 3rd.—Final action on the bill which has been introduced in the Legislature authorizing the removal of the main University of Texas from its present site to what is known as the Brackenridge land bordering the Colorado River at Austin will probably not be taken for several days.

This bill was introduced in the House by Lee Satterwhite, of Panhandle, chairman of the appropriations committee, and in the Senate by R. M. Dudley of El Paso, chairman of the finance committee. In hearings before a joint session of these two committees the only outside opposition that was shown came from citizens of Austin. The pending bill does not provide for any direct appropriation by Legislature for the removal of the University. It authorizes the Board of Regents to use all unexpended balances now in the University available fund and that which will accrue during the two fiscal years ending August 31, 1923 for the laying out of the grounds and other improvements of the proposed new site for the University.

The valuation and sale of the present site and buildings is also authorized by the bill. The emergency clause of the bill points out that the attendance at the University is increasing so rapidly that new buildings are essential and that the present site of the main University is inadequate to the future requirements of the institution.

EPWORTH LEAGUE

Program for Sunday, February 6, 1921.
Subject: "Fellow Leaguers, what are we doing for each other?"
Leader, Jack White.
Song.

Lord's Prayer in concert.
Scripture Lesson, by Leader.
Violin Solo.—Mary Bowman.
"Our Duty as Leaguers, and are we doing it?"—Glynn Stegall.
Announcements.
Benediction.

CLARK-MAYES

John Clark and Miss Genella Mayes both of this city were united in marriage Saturday, January 22nd.

They are popular young people of Graham, both having lived here all their lives. They are now at home in Graham and are receiving the congratulations of their many friends.

They have a young man in our seminary who was disowned by his family for deciding to become a protestant and especially for preparing for the ministry. A short time ago, to be exact, it was during our District Conference, this boy's father came out to hear ex-Padre Hypolyto preach in our church. He afterwards sent for his son and asked him to explain what it was in the protestant faith that made his life different and gave the peace which he himself did not have. The boy in telling about it afterwards, said it was the happiest moment of his life to be able to lead his own father to a personal knowledge of Christ. They are now a reunited family, although so far only the father has applied for admission to the church.—D. L. Betts, Juiz de Fora, Brazil.

---OPENING---

Announcement

SIMMONS & BOWDEN
Real Estate—Oil Investments

We have opened an office in room 7 in the D. & F. building on east side square.

We are experienced real estate and lease brokers and expect to be one of the leading firms of this city in this line. We are in touch with a large number of outside investors, and will be in position to submit meritorious propositions on real estate and oil investments. We will be in the market ourselves for bargains in real estate and oil leases. We solicit the listing of all kinds of property and will push the sale of same in an energetic manner. Good service will be our motto. Call at our office as we want to get acquainted with you.

OCCUPATION TAX

Jitney drivers operating in Graham have been paying their occupation taxes this week as the result of an ordinance passed recently by the City Council. The ordinance is in keeping with a state law which requires a payment of tax for the operation by all persons of automobiles for hire. The ordinance became effective last Monday.

Daniel Roberts, arrested here Friday on a charge of forgery to have been committed at Ho Oklahoma, was returned to place Monday afternoon by De. Sheriff W. A. Carter.

ELMER GRAHAM
LAWYER
Office—
GRAHAM NATIONAL BANK BUILDING

To You Who Are Ready to Build Save Time and Expense

We can sell you ready cut material for homes and business houses and construct them on short notice.

E. L. CRAIN LUMBER and MFG. CO.
Ready Cut and Portable Houses

At Federal Supply Co., East Side Square, Graham, Texas.
T. D. TWAY, Rep.

ANNOUNCING OPENING Ted Wallace & Company General Insurance

Over Graham National Bank. Both Phones 170

H. F. RICE IN CHARGE

Graham, Texas



Brunswick PHONOGRAPHS AND RECORDS

Records

Hear How Different They Are!

Different artists—different interpretation—different tones—that's what you'll notice in these new Brunswick Records. Songs that touch the heart, solos that thrill, instrumental pieces that move you, record music such as you never heard before.

Brunswick Records unite the talent of the artist with the genius of the composer.

Into Brunswick Records go the breath and soul of the artist. Into every one is graven that individuality which is seen in the living likeness. Each is a music picture portraying clearly, distinctly and artistically the most intense accents—the most delicate shadings.

Compare Brunswick Records

Ask to hear them today. Be their sole judge. Compare them with others. Look for something entirely different in record music. Something graver, sweeter, richer, truer. You'll find it here in Brunswick discs.

EARP-GLASS MUSIC CO.

"Everything Musical"

In Harmon Bros. Jewelry Store

JEAN LOCALS

Mr. and Mrs. Chas. Keen, of Graham visited Mrs. Mollie Keen and family Wednesday.

Tom Roden returned Sunday week from a few days trip to Arlington.

Mrs. J. A. Robinson and little daughter, Maxine, spent several days at week with her brother, Fred Wees, in Graham.

Duckworth of Graham was here of last week looking after his al-merchandise store.

Miss Lois McBrayer was the guest of her brother Fred McBrayer and family, at Loving, last Sunday week. Mrs. R. E. Huffman and children visited her daughter at Loving Tuesday.

Mack St. John and family, Aubrey Kirkpatrick and family, and Mrs. Martha Simpson of Olney, visited W. D. Allen and Joe Cole and families Saturday and Sunday.

W. D. Allen and wife, L. W. Loper, Messames J. L. Jordan, M. R. Biggers, H. K. Weems, Pearl Biggers and Misses Lola Jordan and Vera Young attended first quarterly conference at Loving Tuesday.

Misses Fenton and Flora Whitte Olney were in Jean Sunday afternoon.

eschell Gray of Fort Worth at Friday night with his parents, H. Gray and wife.

Clyde Poole and family of Olney visited C. W. Poole and H. M. Orr Saturday and Sunday.

H. H. Gray of Fort Worth and sister, Miss Roma Gray, were guests of their brother, Hulbert Gray and wife in Graham, Saturday.

L. C. Wallace is putting up a black smith shop at this place.

Cleve Cope of Graham visited his parents, Mr. and Mrs. W. W. Cope, Sunday.—HAZEL EYES.

CITATION BY PUBLICATION

The State of Texas. To the Sheriff or any Constable of Young County—Greeting.

You are hereby commanded to summon Joseph Hyland, Sarah E. Campbell, Walter Campbell, Ruth Campbell, Thomas Morrow, Harlan A. Edwards, N. Lockhart, Eliza Lockhart, G. W. Dearborn, Samuel Carroll, William Gary, J. B. Downing, B. E. Burgess, M. J. Downing, M. A. Stovall, William Veale, A. C. Crawford, J. L. Crawford, J. J. Lane, N. C. Lane, A. M. Carruthers, J. W. Hollingsworth, James B. Simpson, H. P. Hilliard, J. J. Douglas, S. W. Bingham, S. C. McBride, George W. Robinson, Mary Yancey Robinson, Eliza Robinson, R. E. Burns, W. B. Burns, Margaret Beebe, R. C. Walker, Adolphus Beebe, Emily Beebe, Prudy Beebe, Nancy J. Waldron, M. F. Waldron, J. C. McBride, J. I. Hyland, L. A. Chapman, William Chapman, Nancy E. Shilling, J. G. Shilling, Mary Hyland, William Hyland, Effie Hyland, Elizabeth Davis, J. R. Davis, Mary J. House, J. D. House, Melissa Permenter, Emily Lewis, T. W. Lewis, Marion F. Waldron, John D. Waldron, Lillie Waldron, Henrietta M. Waldron, George Waldron, Harvey Morey, Annie Cox, H. M. Cox, William Woodom, James Woodom, Jane Newman, J. C. Newman, Sr., Barbara A. Robinson, L. N. Robinson, Mateldia Jenkins, H. W. Jenkins, Parker C. Ewan, John Willingham, and the unknown heirs of each of the above named parties, the residences of whom are unknown to plaintiff, by making publication of this Citation once in each week for four consecutive weeks previous to the return day hereof, in some newspaper published in your County, if there be a newspaper published therein, but if not, then in any newspaper published in the 30th Judicial District, but if there be no newspaper published in said Judicial District, then in a newspaper published in the nearest District to said 30th Judicial District, to appear at the next regular term of the District Court of Young County, to be holden at the Court House thereof, in Graham, on the 1st Monday in March, A. D. 1921, the same being the 7th day of Mar., 1921, then and there to answer a petition filed in said Court on the 28th day of January, A. D. 1921, in a suit numbered on the docket of said Court No. 6269, wherein W. A. Corbett is plaintiff, and Joseph Hyland, Sarah E. Campbell, Walter Campbell, Ruth Campbell, Thomas Morrow, Harlan A. Edwards, N. Lockhart, Eliza Lockhart, G. W. Dearborn, Samuel Carroll, William Gary, J. B. Downing, B. E. Burgess, M. J. Downing, M. A. Stovall, William Veale, A. C. Crawford, J. L. Crawford, J. J. Lane, N. C. Lane, A. M. Carruthers, J. W. Hollingsworth, James B. Simpson, H. P. Hilliard, J. J. Douglas, S. W. Bingham, S. C. McBride, George W. Robinson, Mary Yancey Robinson, Eliza Robinson, R. E. Burns, W. B. Burns, Margaret Beebe, R. C. Walker, Adolphus Bee-

bee, Emily Beebe, Prudy Beebe, Nancy J. Waldron, M. F. Waldron, J. C. McBride, J. I. Hyland, L. A. Chapman, William Chapman, Nancy E. Shilling, J. G. Shilling, Mary Hyland, William Hyland, Effie Hyland, Elizabeth Davis, J. R. Davis, Mary J. House, J. D. House, Melissa Permenter, M. W. Permenter, Emily Lewis, T. W. Lewis, Marion F. Waldron, John D. Waldron, Lillie Waldron, Henrietta M. Waldron, George Waldron, Harvey Morey, Annie Cox, H. M. Cox, William Woodom, James Woodom, Jane Newman, J. C. Newman, Sr., Barbara A. Robinson, L. N. Robinson, Mateldia Jenkins, H. W. Jenkins, Parker C. Ewan, John Willingham, and the unknown heirs of each of the above named parties, the residences of whom are unknown to plaintiff, and W. L. Hill, J. R. Hill, J. H. Farbar, C. E. Hopper are defendants, and said petition alleging suit for trespass to try title upon the following land and premises to-wit, in Young and Stephens counties:

Being 248.4 acres as partitioned in the District Court of Travis County, Texas, in the Case of S. C. McBride et al vs. the Scottish American Mortgage Company, Ltd., et al, in cause No. 13582. Said lot No. 7, described by metes and bounds, Beginning at the N. W. Cor of Lot No. 6, stake on the west line of Campbell survey fr wh a L. O. hrs N 1 E 1943 vrs.

Thence N. with sd line 935 1-2 vrs to stake in the Breckenridge and Graham road mesq. 10" hrs. S 80 1-2 east 38 vrs. do 10" hrs N 56 E 70.

Thence E 1499.2 vrs a stake.

Thence S. 935 1-2 vrs a stake.

Thence W. 1499.2 vrs to place of beginning, and being the same land conveyed to W. A. Corbett by S. C. McBride et al April 24th, 1899.

A parcel of said survey being Lot No. 6, Beginning at a stake on the west line of said Campbell survey the N. W. Cor of lot No. 2, a rock hrs N 10 3-4 E 18.9 vrs a mesq. hrs N 75 W 19.5 vrs. Thence east 1062 vrs to S. W. Cor. of lot No. 5 a stake fr wh a mesq 6" hrs N 73 W 16.8 vrs a mesq 6" hrs S 14 1-2 W 13 vrs.

Thence North 955.1 vrs. to the N W Cor of lot No. 5.

Thence West 1052 vrs a stake on West line sd Survey a L. O. hrs N 1 East 1942 vrs.

Thence S 955.1 vrs to the place of beginning, being the same land conveyed by T. W. Brown to W. A. Corbett by deed dated May 22, 1899.

A tract of 14.2 acres in said survey, set apart to William H. Hyland in said Decree as shown by deed from W. H. Hyland to W. A. Corbett dated August 2, 1900.

A tract of 580.7 acres out of said survey, described as follows.

Beginning at a stake in rock md. the N. E. Corner of lot No. 2, a triple L. O. hrs N 3 1-4 W 137 1-2 vrs. mesq. N 97 1-2 W 34.2. Thence west 1797.1 vrs stake and rock md mesq. 12" N 56 3-4 E. 108.1 vrs. mesq. 8" N 62 E 106.8. Thence north 955.1 vrs stake. Thence East 127 1-2 vrs stake. Thence north 935 1-2 vrs stake. Thence East 1669.6 vrs stake and rock md on east line Campbell survey mesq. 6" hrs N 28 W 58.6 vrs L. O. 13" hrs S 70 1-2 W. 162.7 vrs Thence South 1890.6 vrs to place of beginning, being the same land conveyed by R. C. Walker to A. W. & W. A. Corbett by deed dated Oct. 1, 1898.

A portion of said survey described as follows; being lot No. 5, partitioned by said Court. Beginning at the S. W. Cor. of Lot No. 4, sd Survey, a stake, mesq. 7" hrs S 47-30 E 12.8 vrs. do 5" hrs N 35-30 E. 10.5 vrs. Thence North 955.1 vrs. to the N. W. Cor of lot No. 4. Thence west 364.7 vrs. stake. Thence South 955.1 vrs a stake fr wh a mesq 6" hrs N 73 W 16.8 vrs. do 6" hrs S 8 41-30 W 73 hrs. Thence east 364.7 vrs to the place of beginning, containing 61.7 acres, same land conveyed by B. E. Burgess to Walter A. Corbett by deed dated March 8, 1902.

A tract out of said survey, Beginning at the S. W. Cor. of the J. L. Crawford survey of 250 acres, for the N. W. cor. of this tract. Thence south 95 yds stk for corner. Thence E 765 yds stake for corner. Thence north 95 yds stk. Thence W 7 5 yds place of beginning, same land conveyed by B. E. Burgess to W. A. Corbett deed dated March 8, 1902.

And a tract out of said survey containing 77.5 acres of said survey being lot No. 4 partitioned in said Court conveyed by Parker C. Ewan to Walter A. Corbett deed dated April 16, 1900.

A tract of 83 acres of said survey being lot No. 8 as shown by said partition decree conveyed by R. C. Walker to W. A. Corbett December 19, 1899.

A tract out of the said Ruthy Campbell survey abst No. 37 in Stephens County, Texas, and, Beginning at the N E Cor of sd Ruthy Campbell survey a rock mound in drain a L O hrs S 20 1-2 E 6 vrs do hrs S 73 E 10 vrs old bearings. Thence West 3670 vrs to N W Cor a rock md mesq hrs S 36 E 11 vrs a P O hrs N 55 W 11 vrs. Thence S 2 987.5 vrs to stake in

lane on west line of sd survey the N W Cor of lot No. 7 a subd. of said survey as set out by the District Court of Travis County, Texas in a final judgment of partition in Cause No. 13,582 and recorded in Vol "4" page 91 deed records of Stephens County, Texas, a mesq. 10" hrs. S 80 1-2 E 38 vrs mesq. 10" vrs N 56 E 70 vrs.

Thence East 3670 vrs to stake and rock mound on east line of said survey the N. E. Cor of lot No. 3 a L. O. 13" hrs S 70 1-2 W 162.7 vrs mesq. 6" hrs N 28 W 58.6 vrs. Thence N 2 987.5 vrs to the place of beginning, containing nineteen hundred and forty two (1942) acres of land more or less.

Defendants unlawfully entered upon said premises and ejected plaintiff therefrom and unlawfully withheld from him the possession to his damage in the sum of \$50,000.00. That the reasonable value per year of said land is \$1000.00; that the defendants be cited to appear and answer this petition and that plaintiff have judgment for the title and possession of said land and premises and that the cloud cast upon plaintiff's title by the defendants claim be removed and that writ of restitution issue, for his rents, damages and costs of suit, etc.

Herein fail not, but have before the said Court, at its aforesaid next regular term, this writ with your return thereon, showing how you have executed the same.

Witness, Willie Riggs, Clerk of the District Court of Young County.

Given under my hand and the Seal of said Court, at office in (L. S.) Graham, this 28th day of January, A. D. 1921.

WILLIE RIGGS, Clerk District Court, Young County.

CITATION BY PUBLICATION.

The State of Texas. To the Sheriff or any Constable of Young County—Greeting.

You are hereby commanded to summon R. W. Scott and H. S. Grant, by making publication of this Citation once in each week for four consecutive weeks previous to the return day hereof, in some newspaper published in your County, if there be a newspaper published therein, but if not, then in any newspaper published in the 30th Judicial District, but if there be no newspaper published in said Judicial District, then in a newspaper published in the nearest District to said 30th Judicial District, to appear at the next regular term of the District Court of Young County, to be holden at the Court House thereof, in Graham, on the 1st Monday in March, A. D. 1921, the same being the 7th day of March, A. D. 1921, then and there to answer a petition filed in said Court on the 15th day of January, A. D. 1921 in a suit numbered on the docket of said Court No. 6279, wherein Oklahoma Petroleum & Gasoline Company of Texas, S. R. Travis, president, and E. W. Graves, Agent, is Plaintiff, and R. W. Scott and H. S. Grant are Defendants and said petition alleging that defendants are indebted to plaintiff Oklahoma Petroleum and Gasoline Company of Texas for fuel and fuel oil to the value of Twenty-two hundred and Seventy-four (\$224.00) dollars, and for six hundred feet and seven inches or 31 joints to be used in their work of drilling a well on the W. W. Edwards Survey Abstract No. 1422 situated in Young County, Texas and being that interest assigned by R. L. Reed and W. T. Finch to R. W. Scott and H. S. Grant. That defendants returned to plaintiff four hundred seventy-six feet and nine inches of ten inch casing, leaving a balance due plaintiff of one hundred twenty-nine feet and six inches of ten inch casing, forty pounds per foot at a price of \$2.60 per foot, being a total of \$336.70. That plaintiffs loaned to defendants two hundred sixty-five feet and ten inches of casing to which defendants obtained no title. That defendants promised plaintiffs that same would be paid for upon presentation of draft at their bank at Breckenridge, Texas, but that said drafts were so presented by plaintiffs and were wholly dishonored by the defendants and that none of said accounts have been paid in whole or in part. That the defendants though often requested have hitherto failed and refused to pay the same or any part thereof to plaintiffs' damage in the sum of \$4000.00; That defendants be cited to appear and answer herein, that plaintiff have judgment for its debt, interest, cost of suit and for foreclosure of its materialman's lien on said property, that writ of restitution issue, etc.

Herein fail not, but have before said Court, at its aforesaid next regular term, this writ, with your return thereon, showing how you have executed the same.

Witness, Willie Riggs, Clerk of the District Court of Young County.

Given under my hand and the Seal of said Court, at office in (L. S.) Graham, Texas, this 31 day of January, A. D. 1921.

WILLIE RIGGS, Clerk District Court, Young County.

CITATION BY PUBLICATION

The State of Texas. To the Sheriff or Any Constable of Young County—Greeting:

You are hereby commanded to summon Mrs. Ella V. Austin and the unknown heirs of Ella V. Austin, and W. W. Austin and his unknown heirs, whose residence is unknown to plaintiff by making publication of this Citation once in each week for four consecutive weeks previous to the return day hereof, in some newspaper published in your County, to appear at the next regular term of the District Court of Young County, to be holden at the Court House thereof, in Graham, on the 1st Monday in March, A. D. 1921 the same being the 7th day of March, A. D. 1921, then and there to answer a petition filed in said Court on the 29th day of January, A. D. 1921 in a suit numbered on the docket of said Court No. 6274, wherein Mrs. M. D. Snead, feme sole, is Plaintiff, and Mrs. Ella V. Austin and the unknown heirs of Mrs. Ella V. Austin, and W. W. Austin and his unknown heirs are Defendants and said petition alleging plaintiff's cause of action, is suit in trespass to try title and for damages to recover title and possession and remove cloud on title to the south half of the east half of section No. 10, T. & N. O. Railway Company, located by virtue of certificate No. 863, containing 187 1-2 acres more or less. The said land was entered by W. W. Austin and filed in the General Land Office on or about December 11, 1882.

The plaintiff alleges good title under that grant. That claiming to have a good title by deed, plaintiff has had peaceable adverse title of said tract of land known as the S. E. quarter of said section No. 10 T. & N. O.—Ry. Co. under title and color of title and under deed duly registered, inclosed by barb wire fence, used and enjoyed, with all taxes paid, used as pasture for stock and for fuel and timber supply for her home place. That said possession has been continuous, open, notorious, peaceable and adverse for more than ten years next before the trespass of defendants and next before the commencement of this suit and exclusive within the terms of the statutes of three, five and ten years limitation. The plaintiff pleads the statute of three years limitation and five years limitation, and ten years limitation in support of her title by deed, for the recovery of title and possession and writ of possession of the said tract of land and removal of cloud therefrom.

Plaintiff charges, that on the first day of July, 1920, plaintiff was in possession and entitled to possession of said tract of land, described in plaintiff's petition by metes and bounds.

The defendants are here notified, that plaintiff will use for evidence on trial of said cause, deed, dated January 25, 1889, from Ella V. Austin to William Davis and Robert Snead, whose estate this plaintiff has, whereby, said Ella V. Austin conveyed the east half of said section No. 10, T. & N. O. R. R. Co., which deed is of record in Book 20, page 76, of the deed records of Young County.

Plaintiff prays for citation, and on hearing, that plaintiff have judgment for the title and possession of said tract of land. That any cloud existing on said land be removed.

Herein fail not, but have before said Court, at its aforesaid next regular term, this writ with your return thereon, showing how you have executed the same.

Witness, Willie Riggs, Clerk of the District Court of Young County.

Given under my hand and the Seal of said Court, at office in (L. S.) Graham, Texas, this 31 day of January, A. D. 1921.

WILLIE RIGGS, Clerk District Court, Young County.

STAFFORD'S News Service

NOW OPEN

All late Magazines, Newspapers and Popular Fiction.

Your business will be appreciated

Next Door to Postoffice

United Home Builders of America

3% LOANS

We furnish you money at 3 per cent yearly Balance. Payments made on contracts prior to Loan are credited to your account. Our investment feature can't be beat. We are under State supervision, carrying the Legal Reserve on all contracts.

See an agent and ask for explanation

Sam Goldwater

Graham, Texas, District Agt. OFFICE AT E. J. BUMSTED & CO.

NEW LUMBER YARD!

ONE BLOCK NORTH DOLMAN HOUSE

Hardware, Rig Timbers and all Kinds of Building Material.

House Bills a Specialty

George Ragland, General Mgr. August Cambrarick, Mgr.

C. D. Shamburger Lumber Co.



Perfect Baking and Absolute Fuel Saving

COLE'S HOT LAST FUEL SAVING SYSTEM

Don't waste your food and fuel. Cole's Sanitary Down Draft Range will save one-third to one-half on your fuel bill and will give you perfect baking and cooking suits that you have always wanted. Let us explain to you the wonderful features found on this up to the minute range. See us at once.

For sale by---The John E. Morrisom Co.

CITATION BY PUBLICATION
 The state of Texas.
 To the Sheriff or any Constable of Young County—Greeting:
 You are hereby commanded to appear at the Court House thereof, in Graham, on the 1st Monday in March A. D. 1921, then and there to answer a petition filed in said Court on the 20th day of January A. D. 1921 in a suit numbered on the docket of said Court No. 6282, wherein Mary Baldwin, a widow, E. L. Baldwin, A. H. Baldwin, C. R. Baldwin, Willie Ann Hyden, J. P. Hyden, R. L. Baldwin, Mattie Jane Matthews,

Virgil Matthews, W. L. Baldwin, R. Y. Baldwin, Alice Atcheson, C. L. Atcheson, Leona Hill, John Hill, Marion (F. M.) Baldwin, Hugh (W. H.) Baldwin, Anna Cartwright, a widow, Cora Maitlen, H. C. Maitlen, Hattie Baldwin, Willie Baldwin, Dewitt Baldwin, Alvis Baldwin, Truman Baldwin, and Fred Baldwin by their guardian and next friend, Ella Lee, and Ella Lee for herself being the heirs and only heirs at law of F. M. Baldwin, deceased, are plaintiffs, and Heard Oil & Gas Company, J. T. Heard, president, T. H. Gray, J. F. Heard, A. S. Hunt, Wm. Heard, W. M. Heard; the Chancellor Petroleum Company; Burk-Hoyt Oil Company, and the Heard Oil Company are defendants, and said petition alleging that on or about the 15th day of lawfully seized and possessed of the following described land and premises situated in Young County, Texas, holding and claiming the same in fee simple to-wit:

The south 60 acres of the B. H. Jayne survey abstr. No. 2016 and being all of said B. H. Jayne survey, save and except the north 2000 of said survey on which the Heard Oil and Refining Company of Houston, Texas hold an oil and gas lease that on the 11th day of October, 1918 all the plaintiffs, save and except Cora Maitlen and husband, H. C. Maitlen and the Minors hereinbefore mentioned, Hattie Baldwin, Willie Baldwin, Dewitt Baldwin, Alvis Baldwin, Truman Baldwin and Fred Baldwin, made, executed and delivered an oil and gas lease unto J. F. Fouch; that the plaintiffs Cora Maitlen and husband, H. C. Maitlen made executed and delivered an oil and gas lease to J. F. Fouch and his assigns on the 11th day of October, 1918, which said lease is duly recorded in Vol. 78, page 347 Deed Records of Young County, Texas, and deferred to. That the plaintiffs Hattie Baldwin, Willie Baldwin, Dewitt Baldwin, Alvis Baldwin, Truman Baldwin, and Fred Baldwin, acting by and through their then guardian, E. L. Baldwin, made, executed and delivered unto J. F. Fouch, an oil and gas lease which lease is dated the 11th day of October A. D. 1918, and recorded in Vol. 78, page 47 of the Deed Records of Young County, Texas; that said above described leases provided that if no well be commenced on or before November 11th, 1919, same should terminate

unless the lessee on or before said date pay or tender to lessors the sum of \$626.00 as a rental or defer the drilling of said well for 12 months; that in like manner and upon like payments the commencement of a well may be further deferred for like periods of the same number of months successively. By said terms of said oil and gas leases, the sum of \$60.00 became due and payable as above provided to plaintiffs as an annual rental on said land, on the 11th day of November, 1920. That said rental was not paid as provided in said oil and gas lease. That no well was ever commenced or drilled on said land and that said leases have been forfeited for non-payment of the rentals and failure and refusal to commence a well. That said leases provided for the assignment of the land described therein whole or in part and that by means transfers and assignments the oil and gas lease hold estate and rights and privileges have been transferred, sold and conveyed unto the defendants who are now claiming the leasehold estate which claim casts a cloud upon the title to their great damage Twelve Thousand (\$12,000.00) Dollars. That the above described land, is reputed to be valuable for oil and gas purposes and plaintiffs verily believe that said land is reasonably worth \$200.00 per acre for oil and gas purposes and that there is a ready market for same at said price. That the plaintiffs Hattie Baldwin, Willie Baldwin, Dewitt Baldwin, Alvis Baldwin, Truman Baldwin and Fred Baldwin, minors, are the owners and entitled to an undivided six-two hundred twentieths (6-220) interest in and to the oil gas and other minerals in and under said premises same being equal to 1.64 acres of said tract and that the other plaintiffs are the owners and entitled to the remainder of said oil, gas and other minerals in, on and under said described land and that in case the lease or leases hereinbefore described and referred to are held to be valid and subsisting as to said minors' interest that a partition and division be made of the above described 60 acres so that said minors and their leases shall have and hold their interest and portion of said mineral separate and apart from the other plaintiffs in this suit. However the minor plaintiffs do not admit that defendants have and hold any oil and gas lease on their portion and interest in said land. That plaintiffs are the sole owners of said land and premises so far as known to these plaintiffs, but in event the court finds that the defendants or any of them are the owners of any portion of the leasehold estate then the plaintiffs and defendants are the sole owners of said land and mineral rights therein, thereon or thereunder or that may be produced therefrom, and the estimated value of the oil and gas and other minerals, in on and under and that may be produced from said land is Twelve Thousand (\$12,000.00) Dollars. That on the 15th day of November A. D. 1920, defendants unlawfully entered upon said premises and ejected plaintiff therefrom and unlawfully withholds from them the possession thereof to their damage in the sum of Twelve Thousand Dollars. That the defendants be cited to appear and answer this petition and that plaintiffs have judgment for the title and possession of said above described land and premises and that writ of restitution issue and for their damages; and in the event the court finds that the oil and gas leases or lease are valid in defendants, which fact is especially denied that said land be partitioned as to the oil and gas leasehold estate and mineral rights as made and provided in Title 101, Chapter 1 of the Revised Statutes of State of Texas; that commissioners be appointed and a writ of partition issue and for possession of that portion that by judgment of the court may be ascertained and declared to be the property of the plaintiffs that the cloud be removed and that said oil and gas lease be cancelled, annulled and held for naught in so far as the same affects the title to the land herein described, for costs of suit, etc.

Herein fail not, but have before said Court, at its aforesaid next regular term, this writ with your return thereon, showing how you have executed the same.

Witness, Willie Riggs, Clerk of the District Court of Young County.
 Given under my hand and the seal of said Court, at office in (L. S.) Graham, Texas, this the 20th day of January, A. D. 1921.
WILLIE RIGGS,
 Clerk, District Court, Young County, Texas.

HONOR ROLLS GRAHAM HIGH
 Below are the Honor Rolls of the Graham High School for the quarter ending, January 14th. On the high honor roll appear the names of those students who made an average of 90 or above on every subject studied:
 High Honor Roll—Eleventh Grade: Faye Steen. Ninth Grade—Rufus McAfee, Walter Moreland, Mary Margaret McNamara, Martha Mae Morris, Mary Bowman. Eighth Grade—Willie Allen, Cecil Porter, Elizabeth Wright.
 Honor Roll—On the honor roll appear the names of those students who made an average of 80 or above but below 90 on every subject studied:
 Eleventh Grade—Olin Calvin, Charles McLaren, Wallace Price, Glynn Stegall, Adele Anderson, Lois Bryant, Lillie Mae Calvin, Ona Saye. Tenth Grade—Lois Cook, Gaston Hallam, D. Lacy Mayes, Carl Smith, Robert Stewart, Lou Taylor. Ninth Grade—Floyd Lisle, Bertie Scott, Mary Thomas, Kate Stringer, Jessie B. Stegall, Frances Bell, Erna Husted, Louise Harrison, Sumner Choate, Mary Choate, Annie Cornish, Dorothy Vaughn. Eighth Grade—Robt. Lynch, Avis Calvin, Alice Graham, Katherine Morris, Artie Slater.

PROFESSIONAL ADS

- B. B. GARRETT**
 CONTRACTOR AND BUILDER
 GRAHAM TEXAS
- JOHNSON & JOHNSON**
 LAWYERS
 West Side of Square
 GRAHAM TEXAS
- G. DRUMMOND HUNT**
 ATTORNEY AND COUNSELOR
 AT LAW
 American Exchange Bank Building
 DALLAS TEXAS
- DR. W. A. MORRIS**
 DENTIST
 Office over Graham National Bank
 GRAHAM TEXAS
- DR. M. H. CHISM**
 DENTIST
 Office at Chism's Studio
 GRAHAM TEXAS
- MARSHALL & KING**
 LAWYERS
 Office over the Graham National Bank
 GRAHAM TEXAS
- Herman T. McBrayer H. H. Guice
 Alden S. Young
McBRAYER, GUICE & YOUNG
 Attorneys and Counselors at Law
 General Practice, Specializing in
 Real Estate, Oil and Gas
 Law-Giving
 Special attention to Organization
 Work
 GUARANTY STATE BANK BLDG.
 Graham, Texas
- L. A. KAYSER**
 ATTORNEY-AT-LAW
 Income Tax Law a Specialty
 Office over Harmon Bros.
 Jewelry Store
 GRAHAM TEXAS
- FLOY V. HINSON**
 ATTORNEY AT LAW
 Real Estate, Federal Loans at 5 1/2 %
 Guaranty State Bank Bldg.
- ARNOLD & ARNOLD**
 ATTORNEYS-AT-LAW
 Will practice in all State and Fed-
 eral courts, loan money upon lands,
 and furnish same on short notice.
- J. L. WOODS**
 OPTICAL SPECIALIST
 All refractive defects corrected
 No Drugs
 We Use the Improved Electric
 Test Chart.
- ERWIN & SPEARS**
 Investments
 Leases Royalties
 GRAHAM CITY PROPERTY
 600 Oak Street - Both Phones
- STINE & STINE**
 ATTORNEYS-AT-LAW
 Office Over Sloan's Drug Store
 GRAHAM, TEXAS
- YORK INVESTMENT COMPANY**
 LEASES, ROYALTIES
 REAL ESTATE
 IVAN, TEXAS



Willard Batteries

at a New Price Level

Effective with the publication of this announcement, Willard Batteries will be sold on a new and materially lower price level.

The same Willard quality—backed by the same authorized Willard Service.

Graham Storage Battery Company
 Graham, Texas

Willard Batteries

ITCH!

Money back without question if HUNT'S Salve fails in the treatment of ITCH, ECZEMA, RINGWORM, TETTER or other itching skin disease. Try a 75 cent box at our risk.

"A SHINE IN EVERY DROP"

Black Silk Stove Polish

It not only cleans, but it gives a brilliant, silky lustre that cannot be obtained with any other polish. Black Silk Stove Polish does not rub off—it lasts four times as long as ordinary polish—It saves you time, work and money.

Don't forget—when you want stove polish, buy Black Silk. If it isn't the best stove polish you ever used—your dealer will refund your money.

Black Silk Stove Polish Works, Stoves, Ranges, Gas Ranges, Gas Dryers, Iron Chests, Grates, Radiators, Stoves, and Automobile Tire Rims. Prevent rusting. Try it, it's the best.

Use Black Silk Metal Polish for aluminum, nickel, copper, brass, and chrome. It works quickly, easily and leaves a brilliant surface. It has no equal for use on automobiles.

Get a Can TODAY

ECZEMA!

Money back without question if HUNT'S Salve fails in the treatment of ITCH, ECZEMA, RINGWORM, TETTER or other itching skin disease. Try a 75 cent box at our risk.

SLOAN DRUG CO.
 Graham, Texas

"Oh! What A Difference!"

That is what everyone says who comes to our store and hears the pure musical tone of Edison's Amberola Phonograph, after listening to shrill "talking machines" and the metallic sound of ordinary phonographs. That is what you will say when this revelation of pure melody greets your ears. No wonder Edison's Amberola has proved its marked superiority over ordinary phonographs in great public tests.

EDISON'S NEW DIAMOND AMBEROLA

Is the world's greatest phonograph value—the "master product of Edison's master mind." Just consider a genuine Diamond Point Reproducer, which forever does away with the bother and expense of changing needles. And Amberol Records are just as far superior to ordinary records. They are practically indestructible, and give years of enjoyment after ordinary records have broken and been thrown away.

When you consider that you can own Edison's Amberola on practically your own terms you must realize you owe it to yourself and your family to come to our store without delay and let us play the world's best music for you on this wonderful phonograph. Don't delay your visit—come today, tomorrow, as soon as possible—we will expect you. Bring all the family and your friends, too—they will all be welcome.

L. M. DAVIS DRUG CO.
 East Side Square - Graham, Texas

PIANO TUNING
 Strictly high class work, 31 years experience. All work guaranteed. Let us rebuild your old Piano. We also do refinishing.

The Tipton Music Co.
 Telephone 154 East Side of Square

Attention Oil Men!

I am equipped to cut and deliver
WOOD TO THE WELLS
 I have a complete big force
 Independent Phone 12-W **S. P. AGOSTA**

Shawnee Park Addition

A Restricted Sub-Division

Lots 42 X 150 Feet--Water and Sewer at Every Lot.

Price \$250 and \$300

E. J. Bumsted & Co.

EXCLUSIVE CITY PROPERTY

FOR SALE—One Acre Two Blocks from Court House Square

HOUSES AND LOTS FOR SALE

Five-Room House, lights and water, on Tennessee Street, \$2,500.00; easy terms.

Five-Room House close in, \$7,500.00; all modern conveniences.

Six-Room House, strictly modern, built-in features. Price \$6,500.00; terms to suit.

Three-Room House, lights and water; C. H. A., \$2,750; Terms.

Four-Room House close in, \$4,000.00; \$1,500.00 cash; balance monthly payments.

Four-Room House near school, \$2,000.00; one-half cash, balance one and two years.

Five-Room House near school, \$4,000.00; terms to suit.

Four-Room House, modern, close in; \$3,000.00; terms.

New Five-Room House, all modern conveniences, \$5,000.00; close in; 1-2 cash, balance easy.

Two-Room House with water, \$900.00; one-half cash.

Two-Room House close in \$500.00, one-half cash.

Two-Room House, new S. V. A. with water, \$600.00, \$300 cash balance \$50 per mo.

Three-Rooms with water, close to school, \$2,200.00; one-half cash; balance monthly.

New Five-Room House, all modern, two and one-half blocks from square, \$5,000.00; \$1,750.00 cash, balance easy terms.

Some good Lots in College Heights, \$250 and up to \$500.00.

Some good Lots close in, very reasonable.

E. J. Bumsted & Co.

EXCLUSIVE CITY PROPERTY

PREPARE FOR SIX MORE WEEKS WINTRY WEATHER

This is the official verdict of old man Ground-hog, who came out of his hole Wednesday, saw his shadow and then retired to hibernate for a period of six more weeks. Indications looked favorable for Mr. Ground-hog up to noon Wednesday, when a light flurry of snow began to fall. Clouds scudded overhead for an hour or so during the afternoon, and Mr. Ground-hog, happy in the belief that old Sol would not show his face during the day proceeded to gambol about outside his den.

However, during the afternoon the sun came out and crushed the hopes of Mr. Ground-hog, proverbially if not actually. For it is believed, in keeping with Santa Claus and other traditions that if the ground-hog sees his shadow on February 2 there will be six more weeks of wintry weather.

BABB MOTOR COMPANY TO CHANGE ITS NAME

W. J. Lassater, of Gorman and George Phillips, of Eastland, have purchased an interest in the Babb Motor Company, and will change the name of the firm to The Texas Motor Company. They will handle a complete line of Dodges and Dodge accessories.

MEMPHIS SUFFERS FROM EARLY MORNING FIRE

The most destructive fire in the business section of Memphis, for many years took place in the early morning hours of this Friday. The loss ran well into thousands of dollars. The property burned was the Cross Dry Goods Store and the Hogland Mercantile Company and the buildings they occupied.

The fire started in the second story of the corner building, in the rooms occupied by Dr. E. H. Boaz. As far as we could learn, the first to discover the fire were Frank Fore and Pete Clower. They were returning from a dance at Childress. They passed the buildings at about 3 a. m. and saw the fire showing through a window in the Boaz offices. They rushed to the fire station and turned in the alarm. The department was on the ground very promptly and the water was playing on the flames before they got to the main floor of the Cross establishment. The large building's second story was cut into many rooms with studding walls. These made it impossible to make much headway in checking the flames.

The crowds gradually began carrying out goods from the adjoining business houses. Only comparatively few could be taken from the Cross store, only a few groceries were carried from the Hogland store into the street. Practically all the goods

were carried from the Wherry Jewelry store, Womack's Racket Store, Baldwin's dry goods store and BeBery's grocery. Some were taken from the Nuhn harness shop and from the Draper & Ross produce store.

In the meantime a heroic fight was being made by the fire department. The Cobb Hotel just to the east was threatened being practically under the same roof. The effort was redoubled to confine the flames within the brick walls of the Cross and Highland stores. There was very little wind and this aided the fire fighters. Four streams of water were playing on the flames. Slowly the great heat was reduced and the roofs of adjoining property were protected. By 3:30 it was apparent that the fire was under control. It took the remainder of the night to cool the embers and put the fire in a safe condition to leave. The loss comes heaviest on Cross and Hogland. Both carried insurance but not nearly enough to cover the loss. The loss to the other stores was on account of removal. They will be back doing business very soon.

The amount of the loss cannot be approximated at this time, but it will perhaps run over \$150,000.

The buildings burned belonged to a man named Holmes of Los Angeles, Cal., and to Gilpin & Walsh of England. It is not known what will be done about rebuilding.—Hall County Herald.

FOR SALE—Rhode Island Red cockerels.—ROLLIE VOULES. 23-4c

"THE BRANDING IRON" AT NATIONAL THEATRE

"The Branding Iron," which comes to the National Theatre for Monday and Tuesday, February 7 and 8, is the latest Goldwyn feature production, enacted by an all-star cast, and directed by the well known Reginald Barker.

The story is truly dramatic, and deal with the life of a beautiful young girl, Joan, who is imprisoned in a cabin in the mountains of Wyoming, by a liquor crazed father, who has never permitted her to see the outer world. Her opportunity came one night, when her father, more intoxicated than ever before, unthinkingly leaves the only door to the cabin unlocked.

Joan took refuge in a ranch house in the valley, where Pierre, a handsome rugged type of man, is attracted by her beauty, woos and marries her.

Pierre took the girl to the lonely little cabin on his ranch where they lived and loved devotedly, until Joan's father, much the worse for the liquor, appeared at the ranch one day, and warned Pierre that his wife was inheritedly like her mother, who was unfaithful to him, and whom he confessedly shot.

Hollivell, a young preacher, with a kindly interest in Joan, prompted by his sympathy for her utter lack of education, interested the little

mountain girl in good books, for which she manifested a keen delight. Pierre, returning from the range, was greeted by Joan who told him of her efforts to better her condition under the kindly influence of Hollivell. Pierre, knowing the broader vision Joan would derive from her reading, and fearing the consequences, forbade her to see Hollivell again.

Joan saw Hollivell, and when Pierre again came back from his range, and discovered her disobedience, his anger rose, until like a maddened animal he tied her to the bedpost, and before her eyes heated a branding iron, exclaiming that he would brand her as he does his cattle that everybody may know that she is his property. When the iron was white hot he advanced towards her, blind to her horror.

Many situations followed in the wake of the branding iron.

MINERAL WELLS MAN ESTABLISHES DRUG STORE

R. E. Bradford of Mineral Wells is establishing a drug store in the Lauck & Gallaher Building on Elm street. The store will be opened soon, it is said.

The fixtures, not including the fountain, which will be installed, cost \$4,200. A full line of drugs, toilet articles and other things will be carried.

HERE'S A NOVEL WAY TO GET TO A DOCTOR

There is more than one way to see a doctor but the most original way yet is the one taken by Mabel Normand in "What Happened to Rosa." It is a way that started simply enough but ended in a hand to hand combat in a coal cellar from which she emerged to be hit by a vegetable cart, then, to the doctor.

She got there at last, and what happened afterwards may be seen in the Goldwyn picture, which comes to the National theatre, Friday, February 11th. "What Happened to Rosa," is a story of a hardworking shop-girl, who plimpped romance afar-off until—but see the picture!

You will find the largest new complete line of Box Stationery at SNODDY & SON. 77c

We are Representing—

THE HOME INVESTMENT COMPANY OF DALLAS

See us for Real Estate Loans
402 Fourth Street

Next to Dolman Hotel

Riser & McAneny

WOODSTOCK...

The Woodstock Typewriter Is Gaining Rapidly in Popularity

IMPROVED--SIMPLIFIED--MODERNIZED

The Woodstock Typewriter has all of the desirable features of the latest improved typewriter construction, skillfully combined together in one splendid machine with many modern improvements added.

Standard--(42 Key--84 Characters)--Long Carriage--Single Shift--Ball-Bearing--Light Touch--Quick Action--Simple--Quiet--Visible--Durable and Efficient

In no other typewriter have so many of the best features been combined. Some have won favor no one point, some on another, but the Woodstock offers these various advantages in one masterly model, simplified yet comprehensive.

Buy a Woodstock and Save Waste--Save Time--Save Trouble

Easey Payments

If you are in need of a machine call at the Leader office and see the Woodstock. New machines in stock at the

LEADER OFFICE

WEST SIDE SQUARE

GRAHAM, TEXAS