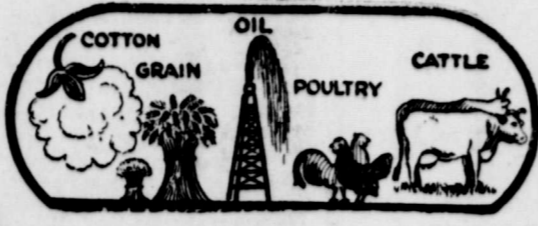


THE HASKELL FREE PRESS



HASKELL, HASKELL COUNTY, TEXAS, THURSDAY FEB. 9, 1950

NUMBER 6

Engineers Begin Surveys As Initial Step In Wide 100-Block Street Paving Project

Work was started this week on the contemplated street paving project in a recent \$150,000 job, when Yeatts & Allen, engineers, began surveys and drainage levels on streets and drainage levels. The project, which will be completed in a base for securing a bid for paving streets in order to provide thoroughfares which will be other streets or units of streets, signed up, it was estimated that the paving of G and H was passed at the City Council last week. The two thoroughfares become as providing an extra average traffic flow. The average traffic flow on paved streets in the principal sections of the city is estimated to be increased by 36 feet in width, the project is estimated to be 36 feet.

The Economic Outlook for Agriculture in 1950 was the topic for discussion at a meeting of county agriculture agents of District 3, held in Seymour Wednesday.

Dr. T. R. Timms, agriculture economist of the Texas A&M College Extension Service was the principal speaker at the meeting. Overall farm income for the current year, Dr. Timms believes, will be approximately five percent below the 1949 figure.

The all-day meeting was attended by county agents and agriculture leaders from ten counties in this area. Attending from Haskell were County Agent F. W. Martin, and Bryan Swaim, assistant county agent in training.

Scout-O-Rama Scheduled Saturday On Courthouse Lawn In Observance of Boy Scout Week In Haskell

In connection with the 40th anniversary of the Boy Scouts of America, Haskell Troop No. 36, of which Joe W. Tyson is Scoutmaster and Leroy Forham is assistant Scoutmaster, will hold a Scout-O-Rama on the courthouse lawn in this city Saturday.

Scouts and their leaders will meet at the First Methodist Church Saturday morning at 8 a. m. for assembly, and march to the north side of the square. The BobWhite and Mohawk Patrols and the Explorer unit will pitch tents and set up camp for the morning and afternoon activities. The Scouts will demonstrate such skills as First Aid, Signaling, Compass Reading, Knot Tying, Firemanship and Cooking. A highlight of the day's activities will be the noon meal, cooked entirely without utensils.

County Agents Of District 3 Meet In Seymour

Boy Scout Week will be terminated by a recognition during the morning services Sunday of the First Methodist Church, which sponsors the troop. All Scouts and Scouters are urged to attend this service.

Value Of Farms To Be Shown In 1950 Farm Census

Change in the number of farms, land in farms, and value of farm property since 1945 are a few of the interesting facts which will be determined from the 1950 census of agriculture, to be taken in April in Haskell County as part of the seventeenth decennial census of the United States.

The 1945 farm census showed that the 5,859,169 farms in the United States had a total value of land and buildings of \$46.4 billion, or an average value of \$7,917 per acre. In 1945 the average value per acre of farm land was slightly more than \$40.00.

Every decennial census since 1920 has recorded a decrease in the number of farms in the nation, while the total acres of land in farms has shown a steady increase. Increased mechanization of farms has accomplished this trend.

The number of farms in the United States increased from 1,449,000 in 1850 to a peak of 6,448,000 in 1920, when the decline began. However, acres of land in farms continued to increase in every census from 294 million acres in 1850 to 1,147 million acres in 1945.

The value of farm land and buildings reported by the census bureau has fluctuated markedly during the last century. In 1850 farm land and buildings in the United States had a total value of \$3.3 billion. Fifty years later the value of farm land and buildings exceeded \$16.6 billion. After World War I, the 1920 census of agriculture reported the value of land and buildings on farms to total \$66.3 billion. However, two decades later the value of farm land and buildings has declined to \$33.6 billion.

Ernest L. Johnston, Former Resident, Dies Tuesday

Ernest L. Johnston, former Haskell resident who with his family had been living in Wichita Falls for the past eight years, died at his home in that city Tuesday night. He was 48.

Demand Is Brisk For 1950 Auto License Plates

County Tax Assessor-Collector R. A. Coburn reports a fairly brisk demand for the new 1950 license plates for automobiles, which went on sale at his office Feb. 1. Haskell county has been allotted 5,125 tags for the current year, the largest number, 3,700 being for passenger cars; followed with 600 for farm trucks, 450 for commercial vehicles, and the remainder for various classifications of vehicles.

Colors used in the 1950 plates are the reverse from last year, the figures appearing in gold on a black background. The tags can be purchased and placed on cars or vehicles immediately, with March 31, 1950, the deadline for operating an automobile or other vehicle with last year's license plate.

Assessor-Collector Coburn reminds owners that the certificate of title and old license receipt must be presented when applying for the new license tag, except on new cars.

License plate numbers allotted Haskell county for the year 1950 are as follows:

Passenger cars, BP-6300 to BP-999
Commercial vehicles, MH-1550 to MH-1999
Farm Trucks, RE-2100 to RE-2699
Truck Tractors, VA-6730 to VA-6804
Farm Truck Tractors, VR-905 to VR-914
Trailers, TB-9745 to TB-9864
House Trailers, TP-5805 to TP-5829
Motorcycles, YF-5795 to YF-5844
Dealers tags, SJ-3805 to SJ-3839

State Farm Income Was \$1,852,496,000 For Past Year

Texas farm cash income for the year 1949 totaled \$1,852,496,000, rising 12 percent above the year 1948 with \$1,658,952,000. The University of Texas Bureau of Business Research reported. Cotton was the greatest source of income throughout 1949, bringing Texas farmers \$798,309,000. Income from cattle totaled \$227,204,000; wheat, \$190,843,000; milk products, \$119,547,000; and other crops, \$116,773,000.

In comparison with the 12-month period of 1948, farm cash income in 1949 showed increases in Southern High Plains, 41 percent; Red Bed Plains, 36 percent; Northern High Plains, 30 percent; Lower Rio Grande Valley, 10 percent; Southern Texas Prairies, 9 percent; Coastal Prairies and Black and Grand Prairies, 5 percent.

The following areas turned in total declines in 1949 as compared with 1948: South Texas Plains, 23 percent; Edwards Plateau, 19 percent; Western Cross Timbers, 14 percent; Trans-Pecos area, 11 percent, and East Texas Timbered Plains, 1 percent.

New Officers Of I. O. O. F. Lodge Installed

New officers of Haskell Lodge, I. O. O. F., were installed in ceremony held in the Rule Lodge hall recently, due to the fact that members of the local order are meeting in temporary quarters until the damaged IOOF building can be rebuilt.

All Plans Completed For Annual FFA And 4-H Livestock Show Feb. 13th

Contributions To March Of Dimes Passes \$6,000 Mark

With the official closing date of the annual campaign past, contributions to the 1950 March of Dimes in Haskell county moved well above the \$6,000 mark Wednesday, and J. M. Crawford, the county campaign chairman, expressed confidence that when all contributions are in and tabulated the total may be near the minimum goal of \$7,000 which had been contemplated as the county's share in the current campaign.

Chairman Crawford praised workers in the county who gave unselfishly of their time and means in furthering the campaign, and said further that if it were humanly possible he would like to thank personally every person who contributed to the fund in any amount.

Receipts up to Wednesday at 6 p. m., Crawford reported, listed \$4,853.09 deposited to the credit of the local treasury in

Associational Baptist Brotherhood Meeting To Be Held Here Feb. 16th

East Side Baptist Church in this city will be host for the Associational Brotherhood Meeting of the Haskell Baptist Association, to be held Thursday evening, Feb. 17th, beginning at 7 p. m.

Magnolia Company Exploration Crew Working Here

A geophysical meter crew of the exploratory division of Magnolia Petroleum Company has been assigned to Haskell county, for the purpose of making oil exploration surveys taking in practically all sections of the county, according to Thos. B. Robertson, local Magnolia consignee, who assisted the party in locating living quarters and office space here.

County Singing Convention Will Meet Here Sunday

With singers and music lovers from a wide area expected in attendance, the Haskell County Singing Convention will meet Sunday, Feb. 12th at the Fundamental Baptist Church in this city for an afternoon program of singing. The program will begin promptly at 2 p. m.

Haskell Leads Area Counties In Cotton Production

Haskell county was the leading cotton producing section in this area of West Texas, with 91,671 bales, according to figures released last week by the Bureau of the Census, Department of Agriculture.

In the Haskell area, cotton production from the 1949 crop was more than double that for the previous year, the report shows. With same cotton remaining to be ginned in many sections, a slight increase in the final total will be shown in the Bureau's report in mid-March.

Figures for this area are as follows:

County	1949	1948
Baylor	15,029	4,473
Childress	52,845	26,365
Collingsworth	53,449	28,342
Cottle	46,350	19,550
Dickens	47,374	16,144
Foard	13,589	7,631
Hall	85,003	42,849
Hardeman	29,248	13,170
Haskell	91,671	49,544
Jones	84,774	28,838
King	9,087	3,891
Knox	63,110	30,325
Throckmorton	3,520	1,238
Wichita	11,557	7,579
Willbarger	45,587	23,777
Young	3,923	1,926

Youth Evangelist Group Will Visit Pinkerton Church

A group of eleven Youth Evangelists from Baylor University are to spend the week end with the Pinkerton Church community, February 10-12. They will appear first in the Friday evening service at 7:30, then on Saturday evening at 7:30. They are to give the program for a county-wide Youth Rally, meeting with Pinkerton, on Sunday morning they are to appear at the First Baptist Church in Rule, and they will be with Haskell First Baptist Church at 7:30 in the evening.

Seven of the boys are ministerial students, and one is a missionary volunteer. They have a quartet in the group and a soloist from the Church Choir of Waco, First Church. One is from Aruba, South America. Two are from Arkansas, one from Kentucky, and seven from Texas. Two of the boys have seen military service in the Pacific Zone. By name they are James Vardaman, John Pike, Donald Wester, Roy Davidson, Carl Shradler, Harmon Popham, Shelby Newman, Walter Mangham, George Pirtle, Andy Hargrove, and Gene Kemler.

Potential Voting Strength In 39th District Drops

Potential voting strength in the four counties comprising the 39th Judicial District this year will be approximately 10 percent below that for the previous election year of 1948, based on poll tax receipts issued prior to February 1.

In the four counties making up the 39th District—Throckmorton, Kent, Stonewall and Haskell—a total of 6,651 poll tax receipts were issued for the current election year. This compares with 7,308 for the last election year, 1948, a decline of 657.

Counties	1950	1948
Throckmorton	1432	1439
Kent	583	733
Stonewall	1194	1336
Haskell	3442	3800
	6651	7308

Farm Bureau Heads Attend Meeting In Wichita Falls

Several Haskell farm leaders were in attendance at an informative all-day meeting of Texas Farm Bureau officers held Tuesday at the Holt Hotel in Wichita Falls.

The meeting was the second of a series of thirteen Officer-Advisor meetings to be held over the state this month. Attending from Haskell were Clinton H. Hearn, H. D. Gammill and Mrs. Gene Tomp.

J. Walter Hammond, president; Marvin Carter, organization director; Austin Crowner, field and sales representative; Loys D. Barbour, district director; M. C. Jaynes, organization and cooperative specialist; and T. B. Scofield, district agent of the Extension Service were also in attendance, together with County and Home Demonstration Agents of this area.

Firemen Called To Extinguish Grass Fire Monday

Firemen were called out Monday afternoon to extinguish a grass fire in the 600 block on North 11th St., when the blaze threatened damage to fences and barns in the vicinity. No property was damaged.

Bryan Swaim New Assistant County Agent Here

New assistant in the office of County Agent F. W. Martin is Bryan Swaim, formerly of Temple, who has been appointed assistant county agent in training. He began work in the office in the latter part of January. He is a graduate of Texas A&M College. Mr. and Mrs. Swaim have moved to Haskell and plan to make

NE SIXTY-FOUR

ineers

-Wide 100-Block Street Paving Project

work was started this week on the contemplated street paving project in a recent \$150,000 job, when Yeatts & Allen, engineers, began surveys and drainage levels on streets and drainage levels. The project, which will be completed in a base for securing a bid for paving streets in order to provide thoroughfares which will be other streets or units of streets, signed up, it was estimated that the paving of G and H was passed at the City Council last week. The two thoroughfares become as providing an extra average traffic flow. The average traffic flow on paved streets in the principal sections of the city is estimated to be increased by 36 feet in width, the project is estimated to be 36 feet.

The Economic Outlook for Agriculture in 1950 was the topic for discussion at a meeting of county agriculture agents of District 3, held in Seymour Wednesday.

Dr. T. R. Timms, agriculture economist of the Texas A&M College Extension Service was the principal speaker at the meeting. Overall farm income for the current year, Dr. Timms believes, will be approximately five percent below the 1949 figure.

The all-day meeting was attended by county agents and agriculture leaders from ten counties in this area. Attending from Haskell were County Agent F. W. Martin, and Bryan Swaim, assistant county agent in training.

Boy Scout Week will be terminated by a recognition during the morning services Sunday of the First Methodist Church, which sponsors the troop. All Scouts and Scouters are urged to attend this service.

The value of farm land and buildings reported by the census bureau has fluctuated markedly during the last century. In 1850 farm land and buildings in the United States had a total value of \$3.3 billion. Fifty years later the value of farm land and buildings exceeded \$16.6 billion. After World War I, the 1920 census of agriculture reported the value of land and buildings on farms to total \$66.3 billion. However, two decades later the value of farm land and buildings has declined to \$33.6 billion.

Ernest L. Johnston, former Haskell resident who with his family had been living in Wichita Falls for the past eight years, died at his home in that city Tuesday night. He was 48.

New officers of Haskell Lodge, I. O. O. F., were installed in ceremony held in the Rule Lodge hall recently, due to the fact that members of the local order are meeting in temporary quarters until the damaged IOOF building can be rebuilt.

All plans for the annual FFA and 4-H livestock show are complete. Haskell county leads area counties in cotton production. Contributions to the March of Dimes have surpassed \$6,000. A geophysical meter crew from Magnolia Petroleum is working in Haskell. The county singing convention meets Sunday. Farm Bureau officers meet in Wichita Falls. Potential voting strength in the 39th district has declined. Farm Bureau heads attend meeting in Wichita Falls. Firemen called to fight grass fire. Bryan Swaim is new assistant county agent.

Good Management And Planning May Be Answer To Lower Farm Prices

Lower farm prices and stable or even higher production costs have put a real squeeze on Texas farm and ranch operators. The low acreage allotments for some of the major cash crops have created other problems and one of them is how to maintain farm profits.

Something can be done, says C. H. Bates, extension farm management specialist of Texas A. & M. College, to cushion or soften the shock of cash crop reductions and declining incomes. He says farmers should set up definite plans for making operations on their individual farms more efficient. This planning will require a close examination of present operations and methods must be found for reducing some of the production costs and thus increase net returns. Farm records, he points out, are a mighty important part of the farm business operation and a close study of these records may reveal "leaks" of "low

staves" in the profit barrel. Bates says there is a definite need for better individual planning of all farm activities for 1950 if farmers and ranchmen are to achieve maximum production at the lowest possible cost. He says operators should try to balance livestock numbers with crop and forage production. Increase crop yields by planting seed of improved varieties, fertilizing generously, controlling insects and diseases and by proper harvesting methods. The production of grass and legume seed may provide good returns for efficient producers in some sections of the state, he says.

Farmers and ranchers should not forget to include in their plans practices and crops that will improve their basic asset—the soil. It takes good soil to produce high crop yields and support good livestock and good soil coupled with good management, he says,



Rev. S. G. Wallis, pastor, recently closed a successful revival at the Fundamental Baptist Church in this city. There were five additions to the church during the revival, and two the following Sunday. Four were by baptism and three by letter. Rev. Wallis came to the local pastorate from the Delmar Baptist Church in San Angelo.

CHURCH ANNOUNCEMENTS

FIRST PRESBYTERIAN CHURCH
N Avenue at Fourth
R. K. McCall, D. D., Minister-elect

Sunday School, 9:45 a. m. Morning Worship 11:00 a. m. Message by the minister.
Vesper Worship Service 5:00 p. m. Message by the minister.
We cordially invite all to these services.

FIRST CHRISTIAN CHURCH
(Corner of Ave. F and North 2nd)
Francis F. Nickerson, Minister

9:45 a. m. Bible School, classes for all ages. Lesson subject: "The Gospel Moves Westward" (Acts 13:2-14:28)
11:00 a. m. Morning Worship and the Lord's Supper. Sermon subject: "Heartfelt Religion (part II)". You are cordially invited.

ASSEMBLY OF GOD CHURCH
400 South Avenue E.
C. U. McMullen, Pastor

9:45 Sunday School, 11:00 Worship and Sermon, 6:30 Young People's Service, 7:30 Evangelistic Service.
Monday, 2:30, Women's Missionary Council.
Wednesday, 7:30, Prayer Meeting.
Saturday, 7:30, Young Peoples Evangelistic Service.

LUTHERAN CHURCH SERVICES

Trinity Lutheran church members will meet at the Presbyterian Church in Haskell on the following schedule:
First Sunday in each month at 2:30.
Third Sunday in each month at 2:30 p. m.
Fifth Sunday services at 6:30 p. m.

MATTSON BAPTIST CHURCH
Rev. Bill Austin

10:00 A. M. Sunday School, 11:00 A. M. Preaching Service, 7:45 P. M. Evening Service.

5TH ST. BAPTIST CHURCH
(Corner 5th St. & Ave. J)
RULE, TEXAS
Jesse Jones, Pastor

9:45 A. M. Sunday School, 11:00 A. M. Preaching Service, 6:30 P. M. Young People's Class, 7:00 P. M. Song Service, 7:30 P. M. Preaching Service, Wednesday, 7:00 P. M., Prayer Service, Friday, 7:00 P. M. Choir Practice and Teachers' Meeting.

LEGAL NOTICE

THE STATE OF TEXAS TO THE SHERIFF OR ANY CONSTABLE OF HASKELL COUNTY—GREETING: J. W. Michaels, administrator of the estate of Mack Wheeler Michaels, deceased, having filed in our County Court his final account of the condition of the estate of said Mack Wheeler Michaels, deceased, together with an application to be discharged from said administration, you are hereby commanded, that by publication of this writ once in a newspaper regularly published in the County of Haskell, and said publication shall be not less than ten days before the return day hereof, you give due notice to all persons interested in the account for final settlement of said estate, to file their objections thereto, if any they have, in said court on or before Monday, the 20th day of February, A. D. 1950, when said account and application will be considered by said court. Witness, Horace Oneal, Clerk of the County Court of Haskell County.

Given under my hand and seal of said court, at my office in the town of Haskell, Texas, this 8th day of February, A. D. 1950.
Horace Oneal
(Seal) Clerk County Court
A true copy, I certify:
R. M. Cousins, Sheriff,
6-c Haskell County, Texas

TOM DAVIS
LAWYER
Office over Oates Drug Store

HASKELL COUNTY ABSTRACT CO.
Abstracts, Maps
Title Insurance
South Side Square Haskell

CHURCH OF CHRIST
Roy Deaver, Minister

Our Regular Schedule:
Sunday: Bible classes for all ages 9:45-10:40
Regular Worship Service 10:45-12:00
Young Peoples' Class 5:30-6:20
Evening Service 6:30-7:30
Wednesday: Ladies' Bible Class 4:00-5:00
Mid-Week Bible Study 7:30-8:30
Thursday: Broadcast 11:15-11:30

FUNDAMENTAL BAPTIST CHURCH
114 Ave. D, South 2nd St.
Rev. S. G. Wallis, Pastor

10 a. m. Sunday School, 11 a. m. Morning Message, 7 p. m. Young People's Service, 7:00 p. m. Evening Message, Wednesday, 7:15 p. m. Prayer Meeting, Friday, 7:15 p. m. Teachers' Meeting and Young People's Training Service.

WEINERT FOURSQUARE CHURCH
Weinert, Texas
Wm. O. Pritchett, Pastor

Sunday School, 10:00 a. m., Roy Herricks, supt., Morning Worship, 11:00 a. m., Message: "Contact", Group Services for all ages 6:00 p. m., Evangelistic Service, 7:00 p. m., Message: "When God Speaks", Special music and singing. We extend a warm-hearted welcome to all to come worship the Lord with us. February 13th will be the date of a fellowship meeting of the Wichita Valley District Churches at the Stamford Foursquare Church. Services will be held at 3:00 and 7:00 p. m.

PINKERTON BAPTIST CHURCH
Jack D. Wester, Pastor

Sunday School, 10:00 a. m., Preaching Hour, 11:00 a. m., Training Union Study, 7:00 p. m., Evening Sermon, 8:00 p. m., Wednesday Evening Service, 7:30 p. m., W. M. U. 1st and 3rd Monday, 2:00 p. m. A friendly church invites a friendly visit. Next Sunday is Entire Family Day. Come and bring all the family. The mother of the entire family that comes farthest will be presented with a corsage, as will the mother of the largest entire family present.

FRIENDSHIP BAPTIST CHURCH
Corner South 7th and Ave F
Rev. Joe Scheets, Pastor
O. E. Nuckles, Sunday School Superintendent

Sunday School—9:45 a. m., Preaching Service—11 a. m., and 8 p. m., Prayer Service—Wednesday, 8 p. m.

BIBLE BAPTIST CHURCH
Corner N. 3 and Ave. C
Rev. R. B. Turner, Pastor

Regular services each Sunday: Sunday School—10 a. m., Morning Message—11 a. m., Evening Song Service—7 p. m., Evening Message—7:30 p. m., Mid-Week Prayer Service—Wednesday night at 7 o'clock.

CURRY CHAPEL BAPTIST CHURCH
Pastor, Rev. John W. Seay
Sunday School 10 a. m., Morning Service 11:00 a. m. (Sermon by Pastor), Evening Service 7:00 p. m. (Sermon by Pastor). Everyone is welcome.

THE CHURCH OF GOD
909 South 1st Street, East
Geo. Ivy, Pastor

Sunday School at 9:45 A. M., Message at 11:00 A. M., Preaching Sunday Evening 7:00 P. M., Prayer Meeting Tuesday 7:00 P. M.

FREE! HEARING CLINIC

The Beltone Representative Will Be At The Tonkawa Hotel, Haskell From 10:00 a. m. to 12 noon On Wednesday, February 22nd

Beltone
HEARING AID
WITH THE MAGIC SILVER CIRCUIT
NEWEST INVENTION IN HEARING AIDS

BELTONE of Wichita Falls
821 Eight Street
(Corner 8th & Lamar)

EAST SIDE BAPTIST CHURCH
Rev. W. T. Priddy, Pastor

8:30 A. M. Radio Sermon by the pastor, Rev. W. T. Priddy, over station KDWT, Stamford, 9:45 A. M. Sunday School, 11 a. m. Morning Preaching Service, 7:00 p. m. — Young People's Meeting, 7:30 p. m.—Evening Preaching Service.

Typewriter and Adding Machine Ribbons. Most all makes in black, blue, or two-color. The Free Press.

Read the Want Ads.

QUICK RELIEF FROM Symptoms of Distress Arising from STOMACH ULCERS DUE TO EXCESS ACID

Free Book Tells of Home Treatment. Must Help or It Will Cost You Nothing. Over three million bottles of the **WILLARD'S** have been sold for relief of symptoms of distress arising from Stomach and Duodenal Ulcers due to Excess Acid, Gas, Heartburn, Sour or Upset Stomach, Poor Digestion, Sour or Upset Stomach, Headaches, Nervousness, Sleeplessness, etc. due to Excess Acid. Sold on 15 days' trial. Ask for "Willard's Message" which explains this treatment—free at PAYNE DRUG COMPANY

REAL ESTATE FOR SALE

80 Acres irrigated land near Hale Center. Has good 5" well, 3 room house. Gas, Electricity. 10'x30' house for hired help also. Will sell or trade for stock farm.

4 rooms and bath. 3 rooms and bath. 5 rooms and bath.

Business Lots on Rule Highway. 193'x138'. Have a few lots in the Pierson Addition left.

Real Estate G. I. Loans FHA Loans
RUFUS or MILDRED BANKS
Telephone 162-J
Office Upstairs Over Helber's Jewelry 4-5c

Great Singing

At
Fundamental Baptist Church
Sunday, February 12, 1950, 2:00 p. m.
County Singing Convention

Announcing the Re-Opening Of
The Wagon Wheel

We are pleased to announce that we have taken over management of The Wagon Wheel, and invite you to visit us and try our food and service.

We will serve:
Short Orders, Steaks Sandwiches
Hamburgers, Drinks Of All Kinds
TRY OUR COFFEE

THE WAGON WHEEL
Clara Gardner Dale Garrett

You Can't Expect Dogs to pull a 2-MULE LOAD

Neither can you expect half-written insurance to properly cover your farm or ranch property. That's why our agents are urged to look at your place before writing your fire, storm and explosion insurance. Our agents are expected to see and to know what you have.

A postcard request from you will bring you the names of our local agents in your nearest town.

W. I. "SCOTCH" COGGINS
"The Right Insurance Gives The Most Protection"
South Side Square Phone 390

Perfectly Fine for a Valentine

Claussner
KLEER-SHEER Nylon HOSIERY

Watch her eyes shine when you give her Claussner Nylons as a Valentine. With their Kleer-Sheer beauty and Personalized Proportions that insure perfect fit, these are the ultimate in fine hosiery. We'll be glad to help you select an enchanting shade.

\$1.50 PERSONALITY SHOPPE

Delco Battery - Any Size

Battery charging, fast or slow. Regulator for all equipment. OILS—we have your brand. Also Generators. Fram elements Plugs, Fan Belts and All Accessories for Car and Trucks. Flat Service. Storage Space.

M. C. Wilfong & Son
OPEN 7 DAYS A WEEK PHON 50

TOM DAVIS
LAWYER
Office over Oates Drug Store

HASKELL COUNTY ABSTRACT CO.
Abstracts, Maps
Title Insurance
South Side Square Haskell

NEW 1950 Chevrolet Cars
Immediate Delivery

- 1 Fleetline De Luxe, 4 door
- 3 Fleetline De Luxe, 2 door
- 2 Styleline De Luxe, 4 door
- 1 Styleline Special, 4 door
- 1 1/2 Ton Pickup
- 1 3-4 Ton Pickup
- 1 2 Ton Truck

"OK" Used Cars
Bargains in good clean used cars. These cars must be moved this week.

CHEVROLETS	FORDS
1948 4 door Sport Sedan	1948 2 door Sedan
1948 5 Passenger Coupe	1947 2 door Sedan
1948 Aero Sedan	1941 Mercury Convertible
1948 2 door Sedan	PLYMOUTHS
1946 4 door Sedan	1948 Coupe
	1947 4 door Sedan

MANY OTHER BARGAINS NOT LISTED HERE

CASH TRADE TERMS

Burton-Dotson Chevrolet Co.
"Where Friend Meets Friend"
R. L. Burton Olen Dotson

Haskell Man, Byron W. Frierson, Has Challenging In Management Of Texas Prison System Farms

Following article, reprint—The Houston Post, contains the work of Byron W. Frierson, who is director of agriculture for the Texas Prison System. The story, written by John M. Moore, staff correspondent of the Houston news, was one of a series dealing with the agriculture division of the prison system. Frierson was appointed to his present position Sept. 1, 1949, and resigned as Sterling County Agent to accept the post. A graduate of HHS and Texas A&M College, he is the son of Mr. and Mrs. Paul Frierson of Haskell. He is a veteran of World War II, having served with the 36th Division in the European theater, and was discharged with the rank of Captain. The Post story: A young man named Byron W.

Frierson has the most challenging agriculture job in Texas. Mr. Frierson was hired Sept. 1, 1949, as executive assistant to the Texas Prison System, manager in charge of agriculture. This means, among other things, that he was employed to ride herd on the 73,010 acres contained in the system.

These extensive farm and ranch holdings range from Houston County in deep East Texas to Freeport on the Gulf of Mexico. The new agriculture manager carries about half of his office files in the back end of his state-owned sedan and spends about half his time either traveling, telephoning or dictating letters.

On Oct. 4, just about 30 days after Mr. Frierson started to work, a Gulf hurricane struck and made a beeline through his 114 sections of ranch and farm operations. This is about the size of Rockwall County.

To paraphrase this situation, we might say that Mr. Frierson "got off in a storm" and has been trying to get his—and the prison system's—feet back on the ground ever since.

Truthfully it can be said that Mr. Frierson hardly has paused to draw a deep breath since the hurricane hit.

Whenever this farm executive, who graduated from Texas A&M College and previously worked as a county agricultural agent, is not confronted with current problem, then he begins to plan for the future.

"I guess we lost at least \$500,000 in crop damage from the hurricane," said Mr. Frierson. "It hit us from every angle—we lost garden crops, cotton, corn, and our cattle lost flesh."

"And it made us late planting alfalfa, beets, carrots, and other crops."

"But I didn't have much time to worry about what we had lost because I had to start planning for next year immediately."

Following the hurricane, cotton

Wage-Hour Clinic Stated Friday In Wichita Falls

A wage-hour clinic to explain changes in the Federal law which became effective January 25, will be held in the Texas Electric Service Auditorium in Wichita Falls at 2:00 p. m. Friday, February 10, according to Jack Hammond, chairman of the Wichita chapter of the Texas Manufacturers Association.

"Many changes which affect business are included in the revisions of the 'Wage-Hour Law,'" Mr. Hammond said. "The Texas Manufacturers Association has arranged this clinic as a public service to give full and complete information on what these changes are. Anybody who is interested is invited to attend."

The program will consist of a brief address by Hugh L. Cole, of the wage-hour division's Dallas office, to be followed by a period of "questions and answers," Mr. Hammond said.

was salvaged in every way possible pickers. It was picked wet and dried indoors in some cases. Part of it was picked off the ground.

To add to the other farming difficulties of the prison system, about 20 inches of rain fell during October, making field work almost impossible.

However, most of the 11 prison farms now have the majority of next year's fields plowed and ready for planting. The remainder of the cotton has been gathered and Mr. Frierson was able to compute some losses and map some 1950 planting schedules.

When the hurricane struck, an estimated half of the 1949 cotton crop, 2668 bales, had been gathered. Later, 1152 bales were gathered, leaving about 1300 bales "gone with the wind" and rain.

But, the grade of the cotton salvaged was lowered by the water damage, and the price received by the prison system was less than the earlier cotton brought.

"We muddled out the corn crop last fall," Mr. Frierson said. "In some cases, convicts tied their pants legs above their shoes and waded through the corn patches."

"We loaded the corn in Ellis (rubber-tired) wagons and the convicts shucked it as they went because the shucks were too wet to load it any other way."

During November, the farm manager said, the system had nine ensilage cutters running at once. A great deal of the system's grain sorghum crop was harvested and placed in trench silos.

When the storm hit, the prison farms had a total of 3725 acres planted in corn. This crop was ready to be gathered, and about one-third of it had been harvested.

Mr. Frierson estimated that 40 per cent of the remaining two-thirds of the corn crop was lost. There are a number of reasons why the new agriculture manager has one of the most challenging farm jobs in Texas, but the Ellis Plan is one big reason.

"I recommend that the agricultural program of the Texas Prison System be primarily one of truck farming, dairying, beef cattle and hogs, with fed crops to take care of all livestock and enough cotton grown to supply our textile mill, with some surplus for market," O. B. Ellis, general manager of the system, said.

"Much of the land owned by the prison system could be developed into very fertile and productive lands by the proper use of soil conservation practices and a diversified program of soil building and crop rotation."

Most of the responsibility for converting worn-out fields into lucrative cropland rests with Mr. Frierson.

HASKELL VISITOR

Mrs. Roy Killingsworth of Dallas spent the week end in Haskell with relatives and friends.

Do not throw away stale doughnuts. They regain their flavor when cut in half, placed under the broiler for a few minutes, and spread while warm with melted margarine, sugar, and cinnamon.

Future Homemakers Exhibit At Fair Given Recognition

A picture of the exhibit set up by the Florence Fields Chapter, Future Homemakers of America, at the Central West Texas Fair

was published in a recent issue of "Future Homemaker," publication of the Texas Association, FHA. Subject of the exhibit was "Help Your Child Help Himself" and was one of the outstanding booths arranged in the main exhibition building at the Fair. The exhibit won first place.

CARD OF THANKS

We wish to express our heart felt appreciation to our many friends in Haskell and elsewhere for the kindness and sympathy shown us during the recent illness and loss of our dear Mother, Mrs. Geo. Best. We especially thank you for the lovely floral tributes to her memory and for

all that was done and said to help lighten our burden of sorrow. Should sorrow enter your home may you find the same true friends is our prayer.

—The Best Children

Use Want Ads for results.

TOMORROW MAY BE TOO LATE!

WITH COSTS UP, A LOOK AT YOUR FIRE INSURANCE POLICIES IS IN ORDER TODAY

John F. Ivy Insurance Agency

Radio and Motor Service

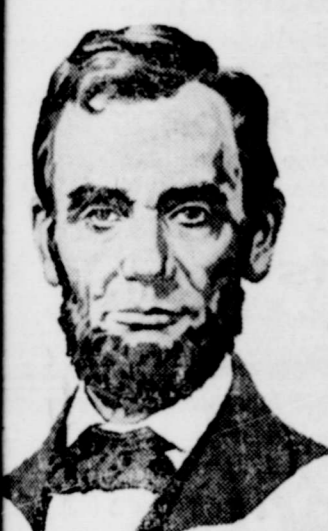
Henderson Electric Service is now located at 4 South 3rd Street, where we are prepared to give you with a large stock of Radio Parts and Supplies, and give you expert Motor Service.

A. N. Strong, experienced radio repairman, now connected with our concern. We specialize servicing Automobile Radios, any make.

Call us for prompt radio repairs and motor service. No job too large nor too small for expert attention.

HENDERSON ELECTRIC SERVICE

John E. Henderson, Owner
4 South 3rd St. Telephone 227-W



Legal Holiday

Monday, February 13th

This bank will be closed on the above date in observance of the birthday of Abraham Lincoln, 16th President of the United States.

Safety Deposit Boxes for rent. Use them for your bonds and other valuable papers

Haskell National Bank

Member F. D. I. C.



WARM HER HEART ON VALENTINE'S DAY FEB. 14th

with an Electrical Gift

This Valentine's Day give your wife or mother or sweetheart an exciting electrical gift—one that will make her kitchen tasks easier all year long. Women know and appreciate the enduring beauty and dependable service of lovely electrical appliances... that is because of the lasting satisfaction they are giving in millions of homes—every day, year in, year out.



ELECTRIC FOOD MIXER
Saves time, arm work. Puts extra deliciousness, extra success into cooking and baking. Mixes, mashes, whips, beats, stirs, blends, etc. Additional attachments also available.



AUTOMATIC WAFFLE BAKER
Automatically makes four delicious good-sized waffles at one time. No confusion, waiting or delay between waffles—serves four people with one baking. Indicator can be set for light, dark, or medium waffles.



AUTOMATIC TOASTER
Automatic beyond belief—all you do is drop in the bread. Bread lowers itself automatically. Toast raises itself, silently without popping or banging. Hot! Hot! or dry, thick slices or thin—always the same uniform toasting.



LIGHTWEIGHT IRONS
Lightweight irons—2½ lbs. and 4 lbs.—with thumb-tip regulator in handle heat quicker, stay hotter, iron faster. Hot in 30 seconds. Takes much of the work out of hand ironing.



AUTOMATIC COFFEE MAKER
Thrill the whole family with an electric coffee maker. It's automatic—you can't miss. Perfect coffee every time. No watching, no worry. It's an ideal gift.

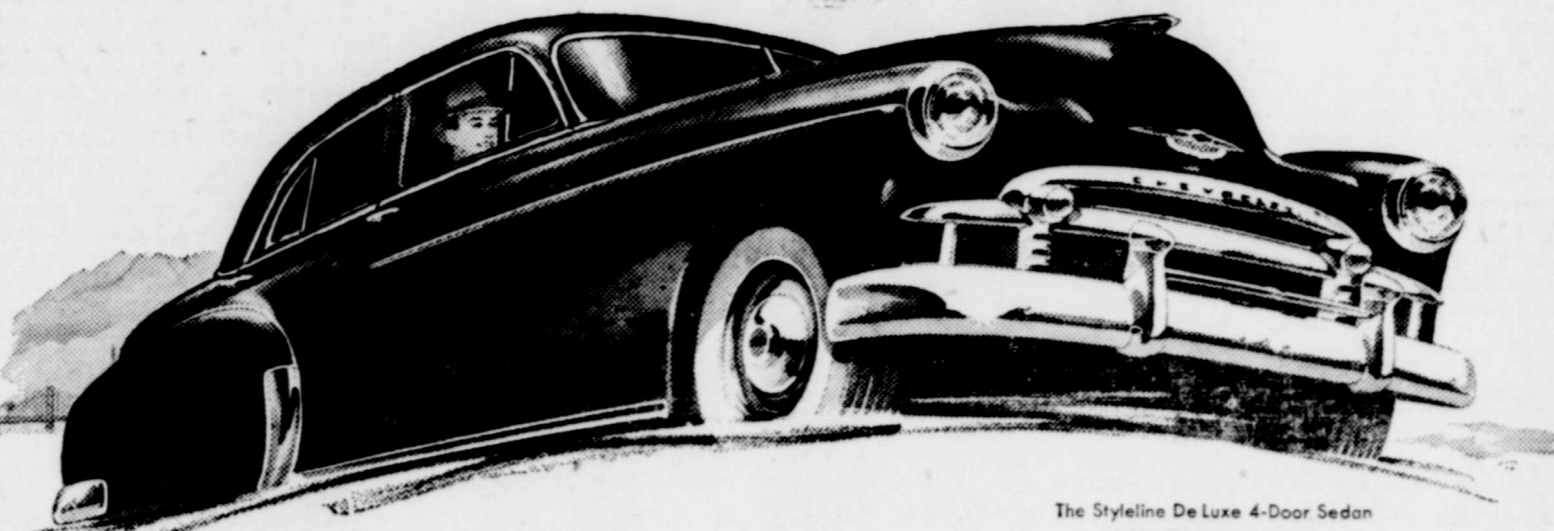
West Texas Utilities Company See Your Electric Appliance Dealer

WATCH REPAIRING

All Work Guaranteed
★ BRONZE BABY SHOES



Ideal Gift of An Everlasting Keepsake
10 Day Service
★ BASSING JEWELRY



The Styleline De Luxe 4-Door Sedan

FIRST...and Finest...at Lowest Cost!



Yes, you can expect the new standard of powerful, dependable low-cost performance from the 1950 Chevrolet... just as you can look to it for the new standard of beauty, driving and riding ease, and all-round safety.

offering you a choice of the finest standard or automatic drive and the finest performance with economy from two great Valve-in-Head engines... plus all the other features listed here.

Chevrolet—and Chevrolet alone—brings you all these advantages at lowest cost! NEW STYLE-STAR BODIES BY FISHER... NEW TWO-TONE FISHER INTERIORS... CENTER-POINT STEERING AND UNITIZED KNEE-ACTION RIDE... CURVED WINDSHIELD WITH PANORAMIC VISIBILITY... BIGGEST OF ALL LOW-PRICED CARS... PROVED CERTI-SAFE HYDRAULIC BRAKES... EXTRA-ECONOMICAL TO OWN, OPERATE AND MAINTAIN.

POWERGLIDE AUTOMATIC TRANSMISSION
Combination of Powerglide Transmission and 105-h.p. Engine optional on De Luxe models at extra cost.

It's the only low-priced car

Come in. See Chevrolet for 1950—first and finest at lowest cost!

AMERICA'S BEST SELLER... AMERICA'S BEST BUY!

BURTON-DOTSON CHEVROLET CO.

510-12 NORTH FIRST

PHONE 2-J

E. R. Clifton Clover Farm

THE PLACE TO SHOP AND SAVE MONEY!

Follow The Crowd—To E. R. Clifton Clover Farm Where Groceries Are Cheap



Armour's Pure LARD 3 Lb. Ctn. 47c

CARROTS Bunch 5c
LETTUCE Each 15c

Cherry Bell FLOUR 25 Lb. Sack \$1.65

GRAPES Lb. 12c

Our Value TOMATOES No. 1 Can 8c

BANNAS Lb. 13c

Porto Rica Sweet Potatoes Bushel \$2.50

CALIFLOUR Large Heads Each 25c

Monarch Cream Style, tiny kernels SWEET CORN No. 2 Can 19c

TOMATOES Old Mexico Lb. 20c

Washing Powder TREND 2 Pkg. 35c

RADISHES 2 Bunches 15c

Commet RICE 12 Oz. Pkg. 15c

TURNIPS & TOPS Bunch 10c

Yellow ONIONS Lb. 8c

ONIONS Fresh Bunch 10c

12 Oz. WHEATIES Pkg. 22c

SQUASH Yellow Lb. 22c

QUALITY MEATS OUR MOTTO

Sliced BACON Lb. 29c
Pimento CHEESE ½ Lb. Box 24c
Loin STEAK Lb. 62c

Weiner Sausage Lb. 33c
Cured ½ or Whole HAM Lb. 53c
OYSTERS Pint Cans 99c

Canned BISCUITS 2 for 25c
We have plenty NICE FRYERS

H. C. King, Of Haskell, Completes 30 Years Of Service In Electric Industry

The following article concerning the lengthy service of H. C. King, local manager of the WTU Haskell district, appeared in the January issue of Electric Times, monthly house organ published by and for employees of the West Texas Utilities Company.

Thirty years ago on January 20, Henry C. King, local manager in Haskell for the West Texas Utilities Company, was employed as a helper by the Haskell Ice & Light Company — and helper he was—for he helped the electrician and lineman. The two did all the house wiring, the repair work, built the new lines and practically everything else there was to do in the distribution of electricity in Haskell. "If they needed help at the little power plant, I was it—if they needed help at the ice plant—that was me, too," recalls the WTU local manager.



H. C. KING

Mr. King has spent the entire 30 years of service working in and around Haskell except for a short time that he was working with a construction crew at Weirter. He has been local manager at Haskell since 1927.

He was born at Throckmorton, Texas, in 1893, and attended elementary school about five miles west of Throckmorton and was graduated with the class of 1916. He played baseball while in high school, and played on the Freshman team while he was attending the University of Texas. "The first job I ever had, for pay, was pitching hay to a hay-

bailler and I drew fifty cents per day, working from sun-up until sun-down. The job was finished in four days, and it almost finished me.

"Another good job I had later on was breaking wild horses at a \$1.00 per head. I would give them three rides and turn 'em over to the cowboys."

Mr. King volunteered for service in Uncle Sam's Air Corps during World War I. He entered the service in July, 1917; was "washed-out" in September, and joined a supply company for over-seas duty. He landed in France in January, 1918, and was assigned to the 509 Engineer. He helped operate supply trains until July, 1919. He returned to the States and was discharged in August with the rank of Tech. Sergeant. He got his start in the electric industry when he was assigned to the power plant in army camp in Montoir, France.

The Haskell local manager has been active in the civic affairs. He is a member of the Presbyterian Church, the Knights of Pythias and the Elks. He is a past-member and officer in the Bonehead Club, Lions Club and the Fair Association. He has served as a member of both the Haskell city council and the school board, and served as chairman of the county Red Cross Chapter.

He was married to the former Una Shook of Haskell in 1921 and two daughters complete the King family. The elder daughter, Mrs. Beverly Van Sicken lives in Abilene; Miss Chan King is a student in McMurry College in Abilene.

"Looking back over the past thirty years with West Texas Utilities Company," Mr. King recalls, "there have been too many interesting events to try to relate all of them, but the main reason that I have enjoyed working for WTU is that we are continually growing and changing as West Texas develops — my job never gets monotonous. When I start-

Many Workers Fail To Apply For SS Benefits At Age 65

Loss of social security benefits, particularly to 65 year old retired workers, continues to be a major problem, according to Ralph T. Fisher, manager of the Abilene Social Security Administration office.

"The smart thing for a worker to do," said Fisher, "is to contact the social security office when he is 65 and discuss his particular problems with us. Financially successful people apparently did not over look their opportunities. We find that very few financially successful workers lose their benefits."

Fisher explained that social security claims may be back-dated for a period of three months only and that workers who do not check into their rights within three months after they first became eligible may lose some of the benefits they have paid for.

"The social security office," Fisher concluded, "is a good place for a worker to spend a part of his 65th birthday. Our job is to help workers collect all the payments they are entitled to. However, we can't do this unless the worker comes in and talks it over."

Fisher will be in Haskell at the Chamber of Commerce at 11:00 a. m. on Thursday, February 16. Persons wishing assistance with retirement claims or death claims under the Social Security Act should call at that time for necessary help and information.

PARENTS OF SON

Mr. and Mrs. Keith Cartwright of Knox City are announcing the arrival of a son, Joel Keith, born Sunday, Feb. 5th in the Knox City Hospital. Mrs. Cartwright was the former Joan Fowler of Haskell.

ed to work in Haskell in 1920 the Haskell Ice & Light Company furnished power for Haskell and Rule; then Munday, Goree and Knox City were added. Next came Weinert — then Rochester and O'Brien. The load on the Haskell plant was too big and the properties were sold to West Texas Utilities Company, and the high line was built from Stamford to Haskell to take care of the added load.

"The management and the employees of our Company are regular fellows, good West Texans, either by birth or by choice, and you can always talk to them about your job, your personal business or troubles, and know that they will help and encourage you in every way possible."

Sagerton People Attend Sunday School Institute In Big Spring Recently

Lois Knippling celebrated her birthday Sunday afternoon, in the home of her parents, Mr. and Mrs. A. C. Knippling. Guests were: Mrs. J. F. Schaake and Erna and Walter of Stamford, Mr. and Mrs. Otto Schaake, Mr. and Mrs. F. A. Stegemoeller, Mrs. F. W. Stegemoeller, Mr. Herman Raphael and Lillie Mae of Stamford, Mr. and Mrs. C. E. Stegemoeller and Marvin, Mr. and Mrs. Herbert Lehmann and children, Adrienne Lehmann, Wandalene Nauer, and Rev. and Mrs. M. C. Hoernner and children.

Jeanell Lambert, daughter of Mr. and Mrs. R. T. Lambert of Idalou, visited with her grandparents, Mr. and Mrs. G. A. Lambert, over the week end while her parents attended the Fat Stock Show in Fort Worth.

Mr. and Mrs. Louis Manske and son, Whit, of Lueders and Mr. and Mrs. Carl Manske and children visited Mr. and Mrs. Oscar Manske and sons Sunday.

Mrs. Charles Clark was a patient at the Stamford Hospital Friday.

Mrs. Don Henley and son, Chris, and Mr. and Mrs. Engleman of Spur visited Mr. and Mrs. Ben Hess Tuesday of last week.

Mrs. C. E. Evans and children of Stamford visited Mr. and Mrs. Barney Ross and family Thursday night. Mrs. Evans is the former Maggie Ross.

Mr. and Mrs. Harlan West and children visited Mr. and Mrs. M. D. Ross in Dublin recently.

The following attended the Lutheran Sunday School Institute at Big Spring, Texas, Sunday afternoon, February 5: Mr. and Mrs. E. H. Diers, Mr. and Mrs. Carl Druessedow and Joan, Rev. and Mrs. H. E. Driessner, Joyce and Velma Lehmann, Leon Stegemoeller, Lillie Mae and Ruby Baitz, and Gloria Jean Diers.

Mr. and Mrs. J. A. Hertel entertained in their home Thursday night, February 2, with a "84" party. Guests were: Mr. and Mrs. Aubrey Fouts, Mr. and Mrs. Clyde Grice, Mr. and Mrs. Earnest Baugh, Mr. and Mrs. Homer Chambers and Mr. and Mrs. F. A. Stegemoeller.

Several of the veterans who attend the Veterans' Agricultural

School at Sagerton went to the Fat Stock Show at Fort Worth last Thursday and Friday.

Mr. and Mrs. Reece Clark and Glenda spent the week-end in Wortham, visiting Mrs. Anna LeFevre, who is ill and other relatives.

Mr. Herman Nienast is a patient at the Haskell Hospital. He was taken there last Friday after suffering a heart attack.

Dental Health Education Need For Every Child

Solution of the nations dental health education and dental care problems lies in making dental available to every child, said Dr. Geo. W. Cox, State Health Officer.

He said it is possible to prevent loss of teeth from decay if a person starts early in life to follow these simple rules:

1. Early and frequent examination of mouth by a dentist.
2. Early treatment of small cavities and other dental defects.
3. Proper diet with refined sugars held at a minimum.
4. Proper brushing of teeth after eating.

A child should be taken to the dentist shortly after the last of his first teeth appear at about the age of two, he declared. Frequent examinations and treatment of dental defects by dentists should follow, he added.

Experiments are under way in research laboratories to find the answer to dental decay and other dental diseases, he said, adding: "It has been learned that the

very active element, fluorine, can be used to curb dental decay to a large degree. Dentists are now applying a solution of sodium fluoride to the teeth of their child patients as a routine dental treatment.

"To improve the dental health of the children of this country, each community, through coordinated group activity, should assume its responsibility in putting an adequate dental health program into operation to meet adequately the needs of our children."

Read the bargains listed in Free Press Want Ads each week.

Your Local USED-COW Dealer Removes Dead Stock FREE

For Immediate Service PHONE 250 COLLECT Stamford, Texas



CENTRAL HIDE & RENDERING CO.

To bleach cotton tea towels, a piece of lemon in the wash gives a wonderfully fresh appearance to the towels.

Cotton insulation keeps warmer and helps maintain even temperatures throughout winter months.

IN ROCHESTER TUESDAY Mayor Courtney Hunt was business visitor in Rochester.

WATCH REPAIRS

- You Name the Day
- We'll Have It Ready
- Our Watchmaster
- Eliminates Guessing
- ALL WORK GUARANTEED
- Genuine Material Used

Helber's Jewelry
Phone 169V
HASKELL, TEXAS

WILLIAMS CLINIC
T. W. Williams, M. D.
Thomas M. Pridcaux, M. D.
Phone 111
William J. Kemp, D. D. S.
Phone 508
HASKELL, TEXAS

T. C. Cahill & Son
Insurance - Bonds
Real Estate - Rentals
Phone 51-J

STARR WELDING SHOP
ALL KINDS OF WELDING
One Block West of Square Haskell, Texas

FEDERAL LAND BANK LOANS

Time 34½ years. Net interest costs 3.75% or less. Loans may be paid in part or in full on any business day in the year. We have no balloon payments.

National Farm Loan Assn. Office
W. H. McCandless, Secty-Treas.
HASKELL, TEXAS

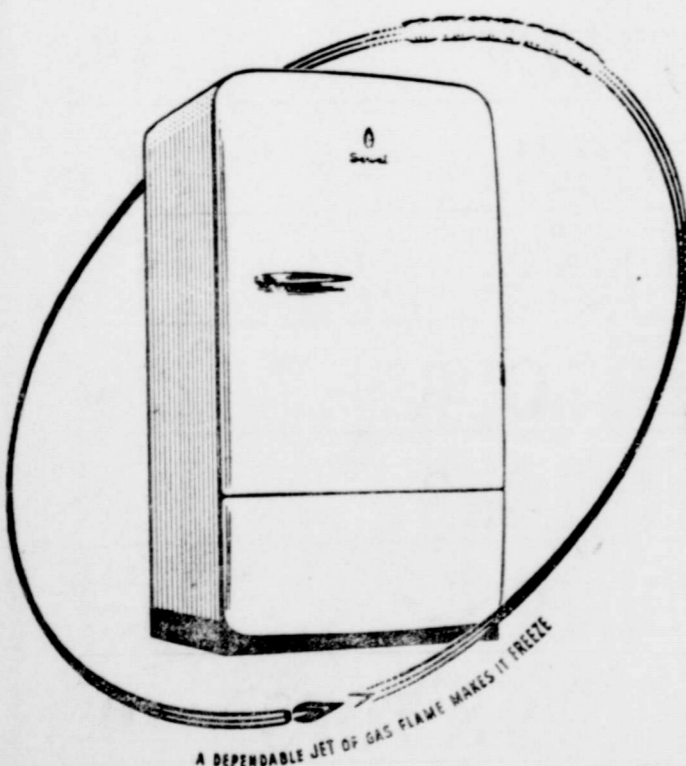
Beware Coughs From Common Colds That HANG ON

Creomulsion relieves promptly because it goes right to the seat of the trouble to help loosen and expel germ laden phlegm and aid nature to soothe and heal raw, tender, inflamed bronchial mucous membranes. Tell your druggist to sell you a bottle of Creomulsion with the understanding you must like the way it quickly allays the cough or you are to have your money back.

CREOMULSION
for Coughs, Chest Colds, Bronchitis

NEW 1950 DESIGN! NEW LOW PRICES!

Servel has no motor to wear —no machinery to make noise Stays Silent, Lasts Longer



genuine Servel gas refrigerator

yours, now, for as little as

\$199.50

\$10 Down and as little as \$6.21 per month

the refrigerator guaranteed 10 years

compare both types

When you've looked at both types, you'll agree with the millions of Servel owners who know from experience. "It's the freezing system that counts."

You can't hear it — see it, today

LEONARD T. FLORENCE COMPANY

LONE STAR GAS COMPANY

A Texas Corporation

Friday and Saturday Specials

Kimbell's Best, Print Bags	25 Lbs.	Swift's Silverleaf	3 Lbs.
FLOUR	\$1.49	Pure Lard	49c
Pet or Carnation	Tall Cans	Imperial, Pure Cane	10 Lbs.
Milk 3 for 35c		Sugar	85c
Scott	Roll	Royal Prince, or Mayfield	No. 2 Can
TISSUE	10c	CORN	10c
TIDE OXYDOL VEL	box	Mission Brand	2 Cans
	23c	SUGAR PEAS	25c
American, flat cans	3 for	Market Specials	
SARDINES	25c	Fresh Hamburger	Lb.
Vermont Maid, Maple	12 Oz. 24 Oz.	MEAT	38c
SYRUP	19c 35c	Armour's	Lb.
Hunt's or Heart's Delight, extra fancy	No 2½ Can	BOLOGNA	25c
PEACHES	19c		Lb.
No. 1 Cans	3 for	Pork Chops	45c
TOMATOES	25c	Choice Beef	Lb.
No. 1 Green	Lb.	PLAIN STEAK	49c
CABBAGE	3c	POGUE'S	
		Phone 17-W	We Deliver

Ad in The Free Press

THE TEXAS

Phone 133
Shows From 2 P. M.

Sat., Feb. 10-11
in Cinelcolor!
Stallion Of The Rockies
—Starring—
—Plus—
—Cartoon— Comedy

ow Sat. Nite
—11 p. m.—
Special Agent
—With—
—William Eythe
—Short Subjects

on, Feb. 12-13
Power
Wanda Hendrix
—In—
Force Of Foxes
—Plus—
—Late News

One Day Only
Force Of Evil
—With—
—Beatrice Pearson
—Plus—
—Derby Girl
—News Events

Thurs.
You Beautiful Doll
—Starring—
—Mark Stevens
—Also—
—Cartoon— Comedy

Mrs. Carrol Bledsoe To Present Students In Recital

Mrs. Carrol Dean Bledsoe will present 12 students in recital Valentine's Day, Feb. 14, 7.30 p. m., at the Homemaking Cottage. The public is cordially invited.

C. B. Sprayberry of Rule was a business visitor in Haskell Thursday.

RITA

Phone 398-J

Open Week Days 6:45, Sat. 12:45
Sun. 1:45 and 7:30 P. M.

Thurs., Fri., Feb. 9-10
George Raft at his best!
—In—
"Johnny Appolo"
—Plus—
Pluto's Purchase

Sat. One Day Only
Feb. 11th
"Renegades Of Sonora"
—With—
Allan Lane
—Also—
Comedy
Chpt. 6 Scarlet Horseman

Sun. Mon. Feb. 12-13
Bill Elliott
—In—
"Deputy Marshall"
—Plus—
Comedy — Color Cartoon

Tues. Wed. Feb. 14-15
"Counter Punch"
—Starring—
Joe Kirkwood
—Also—
Texas Redheads
Trigger Magic

Friendship HD Club Meets In Home Of Mrs. Frank Garrett

The Friendship H. D. Club met Friday, February 3rd, in the home of Mrs. Frank Garrett.

The meeting was opened with a singing of "America" led by Mrs. Frank Garrett.

Roll call was answered with different subjects selected from our year book. Mrs. Edward Newton read collect for club women.

The president, Mrs. Ted Jetton, presided over the business meeting.

Mrs. Edward Newton gave THDA and its relationship to our club and council.

Timely topics were given by Mrs. Dewayne Vaughn. Slick Trick was given by Mrs. Leon Newton.

Mrs. Rob Edwards was elected vice president to take the place of the former vice president, Mrs. Clifton Vaughn who with her family moved to Monday.

We welcomed a new member Mrs. Claud Young, who moved to our community recently from near Seymour.

Love Pal gifts were exchanged and refreshments of fruit Jellib topped with whipped cream, cookies and coffee were served to Mrs. Ted Jetton, Mrs. Edward Newton, Mrs. Otto Vaughn, Mrs. Leon Newton, Mrs. Rob Edwards, Mrs. Dewayne Vaughn, Mrs. Claud Young and the hostess, Mrs. Frank Garrett.

The agent will be with us Feb. 17 when the club meets with Mrs. Edward Newton.

Mrs. H. F. Copeland Hosts Meeting Of Sewing Club

Members of the Rainbow Sewing Club met with Mrs. H. F. Copeland in her home on 1st St. Tuesday afternoon, February 7.

The house was called to order by the president, and the club song was sung by the group.

The secretary read minutes of the last meeting. Fourteen members answered to roll call.

A party was planned at which time our club will be host to the Sunshine Club members. An interesting program has been arranged and we look forward to a jolly good time.

Two new members: Mesdames Ruby Matthews and Ruby Alvis, were initiated into the club by Stella Josselet.

Mrs. W. E. Johnson gave a part of parliamentary drill in a very interesting way—in playlet fashion.

A miscellaneous program was rendered, all taking part.

Several members received gifts from secret pals — and others received hostess gifts from those who did not attend club meeting in their home.

Refreshment plate of sandwiches, potato chips, olives, cookies, coffee and tea was served to the following:

Mesdames Eva Chapman, W. E. Johnson, Annie Pearl Lusk, Zada Smith, Stella Josselet, Jewel Edwards, Sallie Patterson, Helen Johnson, Ruby Alvis, Velma Toolsey, Ruby Matthews, Flossie Rogers, Della Corzine, four children and our charming hostess Mrs. Copeland.

Next meeting will be at Mrs. W. E. Johnsons. Stella Josselet will be hostess.

Mattson 4-H Girls Club Elects Food Demonstrator

At the regular meeting of the Mattson 4-H Girls Club, Lois Howard was elected as food demonstrator, and Patsy Jacobs was chosen as clothing demonstrator. The county Home Demonstration agent, Mrs. Vee J. Howle, taught club members how to lay out patterns on cloth and cut out, and also the method for pre-shrinking cloth.

Simplify your record keeping with Card Index Filing System. All sizes, metal, wood, fiber, complete with cards and index. The Free Press.

Mrs. T. Stockton Is Hostess For Meeting Of V. W. Club

The Veteran's wives Home Demonstration Club met Wednesday, February 1st, in the home of Mrs. Trammel Stockton.

In the absence of our president, Mrs. W. G. May, the meeting was called to order by vice president, Mrs. Trammel Stockton. Members opened the meeting by repeating the club prayer together. Opening song was "The Eyes of Texas," led by Mrs. Howard Sloan.

Roll call was answered with women in the news, "Famous Quotations," "Sewing Hints" and other subjects from our year book.

Mrs. Paul Grindstaff gave the timely topic on "Help Fight Polio," which was very interesting.

Mrs. Trammel Stockton gave the slick trick on "How to Garnish Lettuce Leaves."

Mrs. Howard Sloan gave the T. H. D. A. had its relationship to our club council.

Our next meeting will be in the home of Mrs. Lewis May, February 22.

T. H. D. A. Will Offer Two Scholarships For 4H Club Girls

Two outstanding Texas 4-H club girls will annually have a chance to attend college on scholarships provided by the Texas Home Demonstration Association if plans made at the Association's recent board meeting are approved.

A recommendation was approved to raise the Maggie W. Barry Scholarship to \$500 per year and in addition, the board voted to present to club women plans for the creation of another scholarship of equal value. The second to be known as the Helen H. Swift Scholarship.

The recommendation was introduced by Mrs. B. M. Harris, Plainview, chairman of the State 4-H Committee of the Association. Final action will be taken on the scholarship proposal during the 1950 state meeting which is to be held in Big Spring in August.

The awards would be of equal rank and would be presented annually to the two most outstanding 4-H club girls in Texas who are entering college for the first time or have started their second year.

The Texas Home Demonstration Association also assists each of the 14 extension districts by furnishing a \$100 grant that may be used in promoting 4-H work. This financial aid comes from a small contribution that each member of the Association makes annually and it has done much to stimulate 4-H Club work in the state.

Haskell National Adds More Safety Deposit Boxes

Work was completed Saturday on installation of 172 additional safety deposit boxes at the Haskell National Bank, to take care of the increased demand for this service offered by the bank.

The safety deposit boxes are available to anyone for the safekeeping of bonds, deeds or other valuable papers, affording protection from theft, fire, and other hazards.

Use Want Ads for results

Radiator Repair Shop Opened In Haskell

An automobile radiator repair shop has been opened in this city by Ark Allred, formerly of Fort Worth, where he was engaged in this line of work for a number of years.

The shop is located in the building with the Haskell Nash Company. They will specialize in cleaning, repairing, and re-coring radiators for all model cars and trucks. They are also equipped to clean and repair gasoline tanks.

Just a 15 Min. Drive to The H-H Drive-In Theatre

On Stamford Hiway
A Speaker for Every Car

Fri-Sat-Feb. 10-11

Unbelievable Adventure
in a South Sea Paradise!
COBRA WOMAN
A TALE OF EXOTIC LOVE!
MARTA MONTEZ
JON HALL
SABU
LON CHANEY

Free Gasoline On Cold Nites

Sun-Mon-Feb. 12-13

Find **ASTAIRE** and **HAYWORTH** in *Your Most Loveliest*

Tue-Wed-Thur-Feb. 14-16

JENNIFER JONES
JOSEPH COTTEN
ETHEL BARRYMORE
Portrait of Jennie

LUSK and ALLEN SHOE SHOP
HAND TOOLED BELTS, ARCH SUPPORTS
In The Masonic Building

JUST RECEIVED! NEW 1950
EMERSON RADIOS

The world's leading radio in style, tone, performance and values. Available in portables, table models, and combinations. See them today.

Prices Range
\$14.95 to \$54.95

HENDERSON ELECTRIC SERVICE
704 South 3rd St. Phone 227-W

MODERNIZE YOUR HOME

Title I FHA loans are available in Haskell.
\$100 to \$2500
36 months to pay

Your home does not have to be clear for our remodeling plan.

Investigate this plan!

DREW LUMBER CO
Telephone 182-W

Sgt. and Mrs. L. B. Grappe of San Antonio are the parents of a son born at 5 p. m. Tuesday, February 7, weighing six pounds and 11 ounces. He was named Larry Eugene. Mrs. Grappe is the former Christine Lowe of Haskell and both she and the boy are doing fine.

HERE FROM DALLAS
Frank Tiller of Dallas was a business visitor in Haskell the first of the week.

Friday and Saturday Specials . . .

Ant Washing Powder	3 Lb. 1 Oz.	75c	KRAFT DINNER	7 1/2 Oz. Box	13c
Crystal White or	3 Bars	25c	200 Sheet	Box	15c
8 & G SOAP			KLEENEX		
Flat Can	25 Oz.	24c	SARDINES		11c
Flubber Girl			MEATS		
BAKING POWDER			Kraft	5 Oz. Glass	22c
Trans Down	2 3-4 Lb. Box	42c	CHEESE SPREAD		
BAKE FLOUR			Ballards	2 Cans	25c
bershev	1/2 Lb. Box	22c	BISCUITS		
COCOA			Luncheon	Lb.	39c
orton's Free Running	Box	9c	MEAT LOAF		
ALT			Plenty of Picnic Hams and Nice Fryers At A Good Price		
Cedar	12 Oz. Bottle	42c			
OLISH					
iamond Brand	Can	9c			
ORK & BEANS					

Phone us your orders — We deliver. All orders taken before 10:45 a. m. delivered before noon. After 10:45 a. m. delivered after noon.

GHOLSON GROCERY
Phone Us Your Orders—We Deliver—Phone 79. All Groceries Sold Quality Guaranteed

Ford's won it again!

The New York Fashion Academy Gold Medal Award for the Fashion Car of the Year

WHAT sterling is to silver, the Fashion Academy of New York is to the world of fashion—the last word! And again for 1950, as for 1949, it has selected the Ford Car to receive its distinguished gold medal award as "Fashion Car of the Year." There is, we believe, no greater proof of the beauty of the '50 Ford. And there's no greater proof of its fine performance than a 10-minute "test drive." Your Ford Dealer will be glad to arrange it.

The one fine car in the low-price field
See it...Test Drive it...at your Ford Dealer's Now!

BILL WILSON MOTOR COMPANY
SALES AND SERVICE
HASKELL, TEXAS

Ladies -

Here's A Tip We Believe
You Will Appreciate

Bendix Laundry Service

Come as you are and bring your washing. Get acquainted and learn how little effort your laundry will require when you do it here.

If you prefer we will do your washing.

WET WASH ROUGH DRY FINISH WORK

LUXURY LAUNDRY

Mr. and Mrs. Wilburn Greene Phone 457J
Across street north of Post Office

Haskell County Red Cross Chapter Was Active In Many Fields During Past Year

In his annual report to the chapter board, John H. Banks, chairman of the Haskell County Chapter, American Red Cross, stated that in 1949, the Haskell chapter was active in nine services: Home Service, Production, First Aid, Water Safety, Nutrition, Accident Prevention, Disaster Preparedness, Junior Red Cross, and Home Nursing. In 1949, there were 1030 cases in Home Service alone, Banks reported. Of this number 150 were active servicemen, 545 veterans, and 335 civilians. For the servicemen, welfare reports regarding their families, and confirmation of the needs for emergency furloughs and extensions were given, as well as assistance to their families in preparing affidavits requesting dependency discharges. Veterans were assisted in filing claims for disability compensation, insurance and vocational rehabilitation. Referrals and emergency maintenance were given to civilians. All three divisions received financial assistance and message service. J. A. Boyd is Home Service Chairman.

During the year, in Production, with Mrs. W. B. Guess of Weinert as chairman, 186 garments were made by women volunteers of this county to be sent to various Veterans Hospitals for the use of ex servicemen and their wives and children. Included in this assignment were: 15 pair mens bedsocks, 25 terry wash-cloths, 15 cushion covers, 3 infants layettes, and 50 pairs of mens wool house shoes. In Junior Red Cross, the school children brought bars of soap, combs, pencils, tooth paste and brushes, from home, packed them in Red Cross cartons and sent them to children overseas. This chapter also purchased a Visual Survey Telemicroscopic visual unit of stereographs, and color perception stereographs to be used as a screening for vision for every student in Haskell County public schools. All school teachers in the county witnessed the demonstration by Mrs. Iva Palmer, Junior Red Cross chairman, and in turn, gave the test to their pupils so that in cases where defective vision was found, the child's parents were advised to consult their specialist. Available at all times are courses in First Aid, with Goodson Sellers of Rule as chairman; Water Safety, with Theron Cahill in charge; Accident Prevention, Ray Lusk; Nutrition, Mrs. Edwin Jeter of Sagerton; and Home Nursing, Mrs. Roberta Phillips. Any group who is interested in such training may call the office or consult any of these chairmen, and arrangements will be made for the course. Other Board members, in addition to those already named, include: Horace Oneal, vice-chairman; Curtis Pogue, secretary-treasurer; B. C. Chapman, chairman, disaster preparedness; John B. Martin, public relations; Harold Spain, Fund Campaign; Robert Sollock, Rule District; Bruno Kupatt, Sagerton; J. H. Parsons, Sagerton; Bailey Guess, Weinert; Sam Reid, O'Brien. Members of the Nominating Committee are: Hattox, Doyle, Eastland, Cecil Gregory, Miss Wanda Dulaney is Executive Secretary.

Bank Will Observe Legal Holiday On Monday, Feb. 13

The Haskell National Bank will be closed Monday, Feb. 13th, the date being a legal holiday in observance of the birthday of Abraham Lincoln. Merchants and other bank patrons are reminded to keep the legal holiday in mind, in order that their banking transactions can be arranged without inconvenience.

Hydrogen Bomb After-Effects Less Than Atom Bomb's

The proposed hydrogen bomb may have more initial destructive force than the atom bomb but probably will not have the deadly after-effects of radiation, Dean Robert C. Goodwin of Texas Tech said today. Dr. Goodwin is dean of the arts and sciences division and head of the chemistry department at Tech. He said uranium decomposition produces harmful radioactive particles while the conversion of hydrogen into helium (and the subsequent explosion) would have no lingering effects from radioactive substances. "Helium is inert," Dr. Goodwin explained, "and I therefore assume that the helium produced artificially from hydrogen would be inert."

From Dr. Goodwin's statement it would follow that persons exposed to hydrogen bomb blast might escape the temporary sterility and other injuries which followed the a-bomb explosions at Hiroshima and Nagasaki. Other injuries, such as the keloid tumor which was widespread among the exposed Japanese, would probably occur following a hydrogen bomb detonation. "Theoretically, we have known of hydrogen's possibilities for many years — even before uranium fission was developed," Dr. Goodwin said. "We can speculate that hydrogen is being converted into helium on the sun all of the time, thereby providing the sun's energy."

The Tech scientist said he is more interested in the peacetime planting of long-season varieties in June in Texas holds out hope for both yield and quality. Among other than blackland soils, the report indicated the soyed may be profitably used in moist bean plants and methods developed Texas and other Southwestern areas.

possibilities of hydrogen fission than in the destructive aspects. "I assume that conversion of hydrogen energy could also be used in peacetime since energy is interchangeable. Heat energy can be developed into many other forms, electricity or steam power, for example," he said. He said a "chain reaction" similar to that in the atomic bomb would have to occur in a hydrogen bomb. If the reaction weight is lost, and the loss in mass is converted into energy. The relative loss in mass in hydrogen would be greater than when fission in uranium occurs. What about the helium in West Texas? Could it be used in the development of the h-bomb? "Probably not, since the hydrogen is one of conversion of hydrogen. The helium stored under the ground in West Texas is the end product and should have little value in the research phase which is now beginning," he said.

DAUGHTER BORN TO MR. AND MRS. ROY HODGINS Mr. and Mrs. Roy Hodgins of Abilene, former Haskell residents, are the parents of a baby daughter, born Monday, February 6, in the Haskell County Hospital. The little girl has been named Shirley Ann.

State and District P-TA Presidents Be Speakers For Founders Day Program Sponsored By Local P-TA Groups

STATE AND DISTRICT — 14 Mrs. J. H. Moore of Deport, Texas, State President of the Texas Parent-Teacher Association, and Mrs. Van Browning of Truscott, District P-TA president, Haskell North Ward and South will be guests of honor of the Ward Parent-Teachers' joint sponsorship of the Founders Day Program.

Blue Bird Leaders Will Meet Tuesday In Crawford Home

A meeting of leaders in Blue Birds Camp Fire Girls activities will be held Tuesday, February 14 at 2:30 p. m. in the J. M. Crawford home. Kathleen Crawford, area executive of Camp Fire, in announcing the meeting, said: "We especially want you, and that means parents, too, to come as we will discuss the Birthday Project, to be held in March. As the theme is on Discovery Unlimited, won't you be thinking of the various people who have hobbies, especially hobbies that would interest Blue Birds."

Attention Ladies

We take pleasure in announcing the addition of Mrs. Dorothy Palmer to our staff of operators. Mrs. Palmer has just moved to Haskell from Amarillo and was connected with the Orchid Shop in that city. Prior to that she practiced at Kerr's Beauty Salon in Oklahoma City. She holds recent certificate on hair styling and haircutting from Lu Self of El Paso and James Hisey of Tulsa, Oklahoma, both nationally known hairstylists, and members of the Hair Fashion Council of America. Call 437 for a complete hairstyling. Sibyl's House of Beauty 1303 N. Ave. F Sue Stone Dorothy Palmer Sibyl's Graham

INSURANCE Give Yourself Family Ade Protection! One kind of insurance is better than none, but your financial future may be threatened in another quarter. Now to complete coverage. • LIABILITY • LIFE AND • PROPERTY FLOREN INSURANCE AGENCY

CURLEE CLOTHES

To look your best, wear a Curlee or Berkeley Square suit. We have them in a variety of colors and styles. Just received a new shipment of Curlee Rayon Suits to retail at \$29.50 to \$31.50. These suits are ideal for spring and summer wear and the price is reasonable. Extra pants are available at \$8.00.

Sunflower Seen As Promising New Oilseed Crop For Texas Farmers

A "big three" in new and promising oilseed crops for Texas farmers, now nearing materialization as the outgrowth of a three-year research program at the Texas Research Foundation at Renner, seven miles north of Dallas, are sesame, sunflowers and soybeans in almost equally advanced stages of progress. If one or more of this trio lives up to current promise in results obtained, that fact would be of major potential importance to this region's farmers as well as to its vegetable oil see crushing industry. Both of these groups could well use such a new crop, the farmer in order to utilize acreage which may become idle as result of government acreage cuts; the seed crusher as a supplemental source, should cotton seed be in short supply. This "big three" of new crop materials for farmers were selected as by far the most promising of a group of oilseeds which were tested in hundreds of strains and thousands of plantings prior to and through the 1949 growing season. They included, in addition, fairly complete tests run on flax, okra, castor beans, safflower perilla and rapeseed. The research, on the "big three," and on some of the others, will be continued. This year's significant results of the three-year program have just been summed up in a report by Dr. Robert R. Kalton, in charge of the oilseeds research program for the three years of its duration thus far, to Dr. C. L. Lundell, Director of the Texas Research Foundation. The research has been a major phase of the basic research program of the Karl H. Blitzzelle Agricultural Laboratory of the Foundation. Because of the impressive nature

of these results, particularly as regards the sesame and sunflower experiments, Dr. Lundell in announcing them considered it well to issue a warning against rushing them into premature production. Results to date are preliminary, even in the most advanced of the trio—sunflowers—he pointed out. "Although sunflowers have been shown to have apparently only one remaining obstacle to their general use, that one question-mark should be cleared up before they are grown generally in the blacklands," he said. "This one serious complication is that of insects which, in this area, heavily infest the sunflower heads. We have shown that they can be controlled with insecticides but some work remains to be done in learning whether these necessary insecticides may accumulate to the danger point in the oil of the plant's seeds. Until this analysis is completed, we advise holding up on their farming use." The report showed that early-planted sunflower plants were grown in 1949 with seed yields ranging from 700 to 1,076 pounds per acre, and with height suitable for combining. Sesame, in which crop the Renner research this year also came up with highly encouraging results, made notable progress toward success in being able to combine a nonshattering trait—indispensable if the crop is to be mechanically, and therefore economically, harvested—with the high yield of the old commercial (shattering) type. In this crop, planted in May on well prepared land, and using the best yielding shattering varieties in the breeding nursery, resulted seed yields of 700 pounds per acre, analyzing 50 per cent oil. This was the heaviest yield yet obtained in sesame. "Because of the extreme shattering habit of all the good commercial types, the Foundation does not feel the time is ripe for the average farmer to grow sesame, and the Foundation does not have for distribution any seed of sesame, whatsoever," Dr. Lundell warned concerning this crop, however. The report suggested that two crops of sesame each year, the second generation in the fall months, might be grown in the Rio Grande Valley, with its prolonged warm season. Research into the growing of soybeans, dating back to 1944 at Renner, indicates that Texas can produce as high quality in this crop as can any area in the United States, according to Dr. Lundell. In the blackland of Texas, however, there is a serious complication of root rot attacking this plant, and 1949 results have confirmed in the minds of the staff members the fact that "the early planting of early varieties of soybeans is totally useless under our climatic conditions." It was pointed out that some high yields were obtained from these early plantings, but seed quality was poor. Late plantings gave better quality, with yields ranging from 10 to 20 bushels per acre. Late planting also shows evidence of reducing root rot hazard in the blacklands but has proved to be not enough by itself, he declared. Soybeans must be grown in rotation with soil-improving crops, and in conjunction with enough fertilizer in the crop rotation to maintain better than average levels of soil fertility, he added. If these problems, such as root rot, are ironed out, Texas can produce unsurpassed beans.

FELKER MEN'S WEAR

THE STORE OF FAMOUS BRANDS

Increase Egg Production Of Your Flock With "Ultra-Life" Laying Mash

In Crumbleized Pellets or Mash Form

The quickest and surest route to early egg production is to feed your laying hens vitamin-enriched Ultra-Life Laying Mash, manufactured and sold by Market Poultry & Egg Co., West Texas' largest poultry and produce dealers. In attractive print bags, worth 60c each

MARKET POULTRY & EGG CO.
A. T. BALLARD - MGR.
Phone 85 Haskell, Texas

Modern Way Food Store

WE RESERVE THE RIGHT TO LIMIT QUANTITIES

Tyni Tin or Old Bill	Can	Del Haven—White or Golden	No. 2
VIENNA SAUSAGE	10c	HOMINY	
Hunt's	Tall Can	Argo	No. 2
PORK & BEANS	10c	CUT GREEN BEANS	
Diamond	No. 2 Can	Veri-Fine Green	Tall Can
MUSTARD GREENS	10c	ASPARRAGUS	
Diamond	No. 2 Can	Hunt's Cream Style or White Kernel	No. 2
TURNIP GREENS	10c	CORN	
Dromedary	4 Oz. Can	Comet	2 Lb. B
PIMIENTOS	14c	RICE	
Kraft's Miracle Whip	Pint	Zestie Pure Peach	Quart
SALAD DRESSING	29c	PRESERVES	
Kraft's Miracle Whip	Quart	Penick Golden	Pint
SALAD DRESSING	49c	SYRUP	
Haase's	Quart Jar	Hunt's—In Syrup	No. 2
QUEEN OLIVES	66c	LOGANBERRIES	
Hormel	3 for	Fulvalu	Quart
POTTED MEAT	25c	FURNITURE POLISH	
Golden Shore	Tall Can	Disinfectant—Pine Oil	Pint
SALMON	44c	DEODORANT	
U. S. No. 1 Russets	Pound	MEAT MAKES MEAT	
SPUDS	5c	Ballard or Borden's	
East Texas	Pound	BUISSCUTS	
YAMS	8c	Swift or Armor Star	
Yellow	Pound	PPRESSED HAM	
SQUASH	15c	Deekers First Grade	
Waxed	Pound	PORK SAUSAGE	
RUTABAGAS	8c	Hormel's Minnesota	
		SLICED BACON	

Paul Pruitt Will Review "The Big Fisherman" At Progressive Study Club
 Program For Public Feb. 16th

Mrs. Paul Pruitt of Munday will review "The Big Fisherman" by Lloyd Douglas, at the regular meeting of the Progressive Study Club, Thursday Feb. 16 at 7:30 p. m. in the Homemaking Cottage of Haskell High School.

This will be an open meeting for the public, and everyone is invited. A silver offering will be taken, and all proceeds will be used for civic projects sponsored by the Club.

A similar program is observed each year by the Club as a "Dollars and Cents" program. Mrs. R. A. Lane is committee chairman in charge of plans for this meeting.

Camp Fire Girls Dad-Daughter Party Planned Thursday

The annual "dad and daughter" party of Blue Birds and Camp Fire Girls will be held Thursday night at 7:30 o'clock in the Activity Building of Haskell High School.

Each Camp Fire Girl or Blue Bird is to invite her dad and bring him. Games will be played

Boy Scouts Mark 40th Anniversary

"STRENGTHEN LIBERTY"



Official poster marking the 40th birthday.

The 40th anniversary of the Boy Scouts of America will be observed Feb. 6 to 12 in every part of the nation by more than 2,300,000 boys and adult leaders. "Strengthen Liberty" is the birthday theme. The Boy Scouts' "Crusade to Strengthen the Arm of Liberty" continues through 1950.

During Boy Scout Week, Units will hold "Crusade Night" meetings when 1949 Crusade Awards will be presented. Representing the 12 Scout Regions, 12 outstanding Boy Scouts will make a "Report to the Nation" at Washington, D.C., where the Movement was incorporated Feb. 8, 1910. They will also take part in an impressive ceremony at Independence Hall in Philadelphia.

The highlight of 1950 will be the Second National Jamboree which will see 40,000 Scouts and Leaders camping together at Valley Forge, Pa., from June 30 to July 6, including Scouts of other lands.

Since 1910 more than 16,500,000 boys and men have been identified with the Boy Scouts of America.

Wagon Wheel Cafe Reopened Under New Management

Reopening of The Wagon Wheel, popular cafe on the southeast corner of the square under the management of Mrs. Clara Gardner and Dale Garrett is announced this week. The new managers are experienced in the cafe business, and invite the public to visit their establishment. They will feature short orders, steaks, sandwiches, and all kinds of cold drinks.

Roy E. Frierson Receives Degree At A. & M.

Roy Elwood Frierson of Haskell, received his Bachelor of Science degree, in Agricultural Administration, School of Agriculture, Texas A. and M. College, at the January graduation.

He is the son of Mr. and Mrs. Paul Frierson of Haskell.

Phillip Cadenhead Earns Degree At Texas A&M

Phillip W. Cadenhead of Haskell received his Bachelor of Science degree in Agriculture, School of Agriculture, Texas A. and M. College, at the January graduation.

He is the son of Mrs. J. F. Cadenhead, Sr., of Haskell.

extension agricultural engineer-buildings of Texas A. & M. College. A major cause — all heating equipment is operating at capacity or above and thus the chances for fire are greater.

He says overheated stoves or and space heaters can easily start home fires. He points out that space or portable heaters should always be kept away from walls and from materials that burn easily and should never be placed where they can be knocked over. Kerosene nor gasoline should ever be used for starting a fire and if you use a fireplace, he advises keeping a metal screen in front of it at all times.

Coal or wood burning stoves should be set on a matel pad that has some insulation between it and the floor. He says the grate and ash pit should be kept clean and that only metal containers should be used for holding the ashes. Be sure that no live coals are in the ashes you carry outside. A gust of wind might blow the coals into combustible materials and start a fire.

The easiest and by far the best way to fight fires is by prevention. You should remember, says Allen, the first few minutes are the most vital so far as

fire fighting are concerned. TH should know where the fire fighting equipment is kept and should be drilled in using it. The equipment should be checked periodically to see that it is in working order. Allen says, always remember that farm fires are destructive; that they cost lots of money and even lives; but your big job is to prevent them.

Now Ready To Serve You . . .

Haskell Nash Radiator Shop

Operated by Ark Allred

Radators Cleaned, Repaired
 And Re-Cored

We Also Clean and Repair Gas Tanks

North First and Ave F Telephone 374

New Spring Materials

Chambray

Beautiful new dress goods in all wanted colors. Mercerized and sanforized. Per yard

89c

Printed Crepe

Not Rayon printed crepe. Good patterns. \$1.59

98c

Gingham

New Comal cottons. Lovely new patterns. Sanforized, 36 inches wide. Plaids, checks and stripes.

79c

40th Anniversary 1950

BOY SCOUTS OF AMERICA

Official poster marking the 40th birthday.

The 40th anniversary of the Boy Scouts of America will be observed Feb. 6 to 12 in every part of the nation by more than 2,300,000 boys and adult leaders. "Strengthen Liberty" is the birthday theme. The Boy Scouts' "Crusade to Strengthen the Arm of Liberty" continues through 1950.

During Boy Scout Week, Units will hold "Crusade Night" meetings when 1949 Crusade Awards will be presented. Representing the 12 Scout Regions, 12 outstanding Boy Scouts will make a "Report to the Nation" at Washington, D.C., where the Movement was incorporated Feb. 8, 1910. They will also take part in an impressive ceremony at Independence Hall in Philadelphia.

The highlight of 1950 will be the Second National Jamboree which will see 40,000 Scouts and Leaders camping together at Valley Forge, Pa., from June 30 to July 6, including Scouts of other lands.

Since 1910 more than 16,500,000 boys and men have been identified with the Boy Scouts of America.

Home Fires Cost Americans \$2 Million Daily

Fires cost Americans \$2 million per day to say nothing of the hardships and tragedies they leave behind. This is the time of the year when home fires are most numerous says W. S. Allen,

Northern Star Planting Seed

Northern Star Cotton is the cotton to grow for profit, early maturing, a quality staple that cleans up well at the gin.

These seed are on sale at

Bob Herren Gin, Haskell, Texas

Secure the amount of seed you will need at once.

Beautiful New Spring Cottons

All nationally advertised lines, Trudy Hall Juniors, Georgianas in Regular and half sizes. A style for every Lady and Miss. Real values at

\$7.95 to \$16.95

New Spring Coats and Suits at Real Savings.

and there will be refreshments for all present.

Mrs. R. A. Lane is in charge of the evening's program and she will be assisted by Mesdames James Hobbs, Henry Atkinson, Woodley Davis, John W. Seay, S. P. Herren and several Blue Bird mothers.

Cotton Market Slow During Past Week

Spot cotton market activity was moderate in Oklahoma and Texas this past week, according to the U. S. Department of Agriculture's Production and Marketing Administration.

Sales at Dallas were slightly higher than the previous week at 45,787 bales. However, Houston-Galveston sales were down more than a third at 32,785 bales.

Farmers were scrapping the last few bales of the current cotton crop in the late producing areas and were selling their equities in government loan cotton more freely.

This movement was stimulated by prices high enough to offer some profit after storage and handling fees were deducted. Equities moved into trade channels last week anywhere from \$3 to \$9 per bale for White cotton. Some Spotted and Tinged grades were higher.

Best demand from domestic and export sources continued to center around Middling and better grades in staples ranging from 7/8 inch to 1-1/32 inch, and for lower grades of White cotton. Merchants were encountering difficulties in filling previous commitments of these qualities.

Domestic mill purchases of the medium grades were moderate. However, export demand for the medium grades was very good and priced offered were fairly attractive.

The basis in the Dallas market strengthened during the week and remained firm in the Houston-Galveston markets. Spot prices held steady from Monday through Friday at \$1.05c per pound for Middling 15/16 inch offerings at Houston and Galveston. Dallas prices stood mostly at 30.70c. These prices were \$8 to \$9 per bale lower than a year ago.

tors showed an average increase per acre of 7.5 bushels and most of it was due to the use of corn hybrids. Last year, according to the Office of Crop Estimates, USDA, 1,297,000 acres of hybrids were planted in Texas and this time the average increase made by the demonstrators means that an extra 9,727,500 bushels of corn were produced in the state.

Miller says the acreage planted to corn hybrids in Texas is still small. It amounts to 32 percent of the total corn acreage planted and he adds that farmers could profit from planting hybrids instead of the lower yielding open-pollinated varieties.

The newer hybrids, including Texas yellow hybrids 20, 24, 26 and 28 have demonstrated their ability to outyield the older hybrids and should be substituted for them, he says.

In the Blackland Prairie and the areas south and west of there, Texas 26 and 28 are well adapted. Texas 20 and 24 have also made good records in these areas, he reports.

He says the demand for seed is especially heavy for the newer developed hybrids and suggests that planting seed be purchased at an early date. If seed of the newer varieties are not available, he says, you can substitute some of the older hybrids such as Texas 8, 12 and 18 for them. These hybrids will do well and will outyield the open-pollinated varieties.

New hybrid seed should be planted each year, he says, for after the first year hybrid seed run-out" and this results in lower yields. Planting good, adapted corn hybrids is one way farmers can increase yields and profits, says Miller and right now that is an important consideration for most every farmer in the state.

PIGGLY WIGGLY

THE ORIGINAL SELF SERVICE

Imperial Pure Cane Sugar 10 lbs. 79c

Cal-Top in Light Syrup	No. 2 1/2 Can, 2 Cans	3 Pound Can
PEACHES	39c	CRISCO 75c
Hunt's Tall Can	2 Cans	Crustine Shortening
PEACHES	29c	SHORTNING 63c
Del Monte	46 Oz. Can	Crushed Dei Monte
PINEAPPLE JUICE	43c	PINEAPPLE 27c
Nuzest	46 Oz. Can	Mission
ORANGE JUICE	39	PEAS 15c
2 1/2 Lb. Box		Miracle Whip
CORN MEAL	29c	SALAD DRESSING 29c
DIAL SOAP 2 Bars	39c	
Dexter or Tall Korn	Pound	PORK & BEANS 10c
BACON	35c	No. 1 Washed
	Pound	POTATOES 6c
PRESSED HAM	37c	Texas
Wilsons	Pound	ORANGES 45c
SLICED CHEESE	39c	
Ballard	Can	CABBAGE 5c
BISCUITS	9c	LEMONS 17c

WE RESERVE THE RIGHT TO LIMIT QUANTITIES

PIGGLY WIGGLY

SAVE

If you don't have access to quality meat for your locker needs—see us. We have choice meat available in whole or half beeves at wholesale prices.

PHELPS LOCKER PLANT

Farmers Advised To Plant Corn Hybrids For Greater Yields

Haskell county farmers will be interested in the fact that results of tests conducted by the Texas Agricultural Experiment Station and 4,226 4-H Club demonstrators show that corn yields can be increased from 20 to 30 per cent and in some cases as much as 50 per cent by planting adapted corn hybrids. E. A. Miller, extension agronomist of Texas A. & M. College, says this should be proof enough for greatly expanding the use of corn hybrids in Texas.

He says the 4,226 demonstra-

Ladies Jeans

size for every Lady and Miss. Well made with zipper side opening. Sizes 10 to 18. Real values at

\$2.98

Boys & Girls Jeans

Plain and fancy 8 oz. Sanforized. Button or zipper fasteners. Sizes for every boy or girl.

\$1.98

Army Twill SHIRTS

Lot Men's Army Twill in sizes 14 to 17. Extra Special

\$2.75

Cotton Batts

Extra good grade. 72x90 size. Bleached white. 8lb. batts.

\$1.39

JONES DRY GOODS

The Cash Store

WORK SHIRTS AND PANTS

RUGGED 8.2 OZ. ARMY TWILL

800 Type I, Tan Pants	\$4.45
600 Shirt to match No. 800	\$3.95
810 Type IV, Army Tan Pants	\$3.45
610 Shirt to match No. 810	\$2.95

The Haskell Free Press

Established January 1, 1886
Published every Thursday

Member TEXAS PRESS ASSOCIATION
Jetty V. Clare, Owner and Publisher
Alonzo Pate, Editor
Lola Lemmon, Bookkeeper

Entered as second-class matter at the postoffice at Haskell, Texas, under the act of March 3, 1879.

NOTICE TO THE PUBLIC — Any erroneous reflection upon the character, reputation or standing of any firm, individual or corporation will be gladly corrected upon being called to the attention of the publishers.

HASKELL COUNTY HISTORY

Brief Items Taken from Old Copies of The Free Press

20 Years Ago—Feb. 13, 1930

The farm home of Corrie Lott, one-half mile east of Rule, was destroyed by fire late Sunday night, together with practically all contents.

Miss Hattie Paxton, who is teaching in the Abilene schools, spent the week end here with her parents, Mr. and Mrs. R. J. Paxton.

Mr. and Mrs. G. W. Waldrop and Mrs. M. S. Pierson of Abilene were business visitors in Haskell Thursday.

A Handley, Texas, man was fined \$25 and costs in County Court Friday on a complaint alleging violation of the State Pure Food Laws. The charge was based on the alleged sale to a Haskell merchant of a quantity of adulterated honey.

Henry Townsend of Rule and Sheriff W. T. Sarrels left Tuesday for Cleburne, where they will take custody of a man being held there for local authorities.

Mrs. Jim Bailey spent the week end in Seymour, guest in the home of her niece, Mrs. Roy Whiteside.

Mrs. Gladys Conner of Paducah spent the week end in the home of her brother and family, Mr. and Mrs. Chas. M. Conner of

this city. Emory Menefee and Misses Lois Earnst and Ermine Daugherty were in Wichita Falls Friday, where they attended the District Convention of Lions Clubs.

Mrs. C. W. Bledsoe has returned from Roscoe, where she spent the past three months.

At a Court of Honor for Boy Scouts, held at the Methodist Church Monday night, the following boys passed the tenderfoot test: Alvin Keams, Billy Burt, Eyrion Frierson, Hugh Shelley, Norwood Roberts. Scouts receiving Merit Badges were Ralph Bernard, C. B. Breedlove, Jr., Floyd Taylor, Edwin Parsons, Frank Bryant. Advanced to the rank of Scouts, first class, were Wallace Sanders, Herman Pitman and Frank Bryant.

40 Years Ago—Feb. 5, 1910

Miss Humphreys, teacher in the Howard school, has organized a corn and maize club. The following boys have joined: Floyd Wiley, Thad Powell, James Cox, Jim Long, John Andrews, Fred Howard, Howell Anderson, Marvin Medford, Vernay Anderson, Alex Reichle, Ira Davis, Beno Andrews, Irvin Bowin and Major Howard. These clubs are being organized over the whole state, and we feel sure they will benefit the boys taking part.

Paul Zahn, one of the county's leading farmers, sold a hog here Saturday that weighed 625 pounds, and brought \$40.60. The animal was raised principally on kaffir and maize. J. V. Hudson was the buyer.

There is a move on foot to organize a company and build a railroad from Haskell west to Rule, and from this city east to Throckmorton. The proposition is meeting with enthusiastic approval among local business men.

R. W. Herren was in from his ranch Saturday to receive two yearling Hereford bulls. He paid \$100 apiece for them, and they are the equal of any ever brought to this county.

G. E. Courtney reports that his broom factory is running on full time.

M. R. Hemphill returned the early part of the week from an extended trip to East Texas, Houston and other points.

C. W. Turner of Silverton is visiting his old friend, Burwell Cox of this place.

It is now time to transplant trees and the Mother's Club has taken up a movement to ornament the school grounds by setting out forest trees.

Dr. Williamson, who sold his place some time ago, moved this week to a place east of the railroad.

Miss Arney Huston is much improved and will soon be able to resume teaching her class again.

Martin Arend of the northeast side was in town Monday. He reports farming prospects generally favorable in his section.

C. M. Brown of Rochester was in the city Monday. Mr. Brown served Haskell county for years as tax assessor.

The land firm of Williams, Rives and Hurd has been dissolved, Mr. Williams having purchased the interest of his two partners. He will continue the business.

50 Years Ago—Feb. 10, 1900

W. F. McMillian, freight and passenger agent for the Texas Central, and A. C. Upchurch, representing the Cotton Belt in a like capacity, were here this week on business.

We understand that the next shipment of freight for this place will come over the Central to Stamford.

Our old townsman, Ed Robertson, was here as traveling representative for Kemp Grocery Company, having taken the place of Mr. Mitchner.

Mesdames M. A. Clifton and T. G. Marks of the north part of the county, spent a day or two this week with friends in town.

J. A. Stephens, a lawyer of Benjamin, was here on business Monday. He was accompanied by his wife and little girl.

A Cisco wholesale grocery house had a salesman here this week, the Central having opened this territory to them.

Dr. Lindsey reports a son born to Mr. and Mrs. Will Clark of the Paint Creek community, on last Tuesday night.

The young folks enjoyed themselves much at a party in the home of Judge and Mrs. Sanders Monday night.

S. E. Carothers tells us that his announcement for tax assessor will appear in a month or so.

A 16-year-old boy, who has been in jail here a week or two charged with stealing some tobacco from the store of McKee & Co., decided Wednesday to plead guilty, and he was given a sentence of 30 days in the county jail by Judge Jones.

There are several cases of measles in town.

Deputies T. J. Lemmon and Bert Brockman Monday arrested two young men on the complaint of W. A. Black, charging them with burglarizing a building on his premises and taking a saddle.

The complaint was based on circumstantial evidence and the officers failed to find the saddle in possession of the two men. As they were coming to town the prisoners made a break to escape but were recaptured after a pretty warm chase, all being on horses.

After being jailed a day or two, the younger of the men, about 18, turned State's evidence and told how they got the saddle, and where it was concealed. Officers went out with him and found the saddle buried as he had told. The older man was placed under \$1,000 bond to await action of the Grand Jury, and the youth was placed under \$300 bond as a witness.



Right Now is a Good Time to Let us Checkover your

JOHN DEERE

(NAME OF IMPLEMENT HERE)

Don't take a chance on untimely delays in the field! Let us service your John Deere Equipment.

Our trained servicemen will go over it completely... putting it in fine shape for the work ahead. Stop in the next time you're in town and let's talk over your servicing requirements.

Gilmore Implement Co.

BUY ONLY GENUINE JOHN DEERE PARTS

EXTRA - - EXTRA

ADDED FOR THIS WEEK

We appreciate the liberal response of hundreds of customers who took advantage of the offered in our New Ownership Clearance Sale last week. Prices quoted are still in effect on remaining in stock. In addition, we have added the following items at the low prices listed. Come in and get your share of these bargains.

Mens Cowboy Boots	Close Out	\$5.00	Infants Chinelle Shawls	2 For	\$1.00
Baby Blankets	100% Wool 36x50	\$1.97	MENS SHOES	Odd Lot Close Out	\$2.97
Childrens Shoes	Odd Lot	\$1.00	CANVAS GLOVES	Medium 6 Pr.	\$1.00
More Anklets	8 Pr.	\$1.00	All Leather Work Gloves		6
"Pearce" Blankets	72x84 80% Wool	\$4.97	INDIAN BLANKETS		\$1.97
Ladies Cotton Hose	9 to 10 3/4 3 Pr.	\$1.00	MENS DRESS PANTS	Close Out	\$4.97
Gowns	Ladies Sheer, Formerly As High As \$5.95	\$2.63	Mens Work Shirts	Odd Lot	\$1.63
Mens Red Duck Pants	Close Out	\$1.57	MENS DRESS SOX	3 pr.	\$1.00
Boys Gabardine Jackets		\$1.57	Mens Baseball Gloves		\$5.00
BOYS OVERALLS	Sizes 8 and 10	97c	Ladies Rayon Half-Slips	Full Length	6
ARMY BOOTEES	Only A Few	\$4.97	Mens Flannel Shirts		\$1.87
Superfoam Pillows	Now	\$8.95	GRAB BOXES	Each 25	

THE HUB

ATKEISON FOOD STORE

WHERE LOTS OF GOOD FOLKS TRADE
MIGHTY SWEET SAVINGS FOR HEARTY VALENTINE MEALS
HOME OF FINE FOODS, ECONOMICAL PRICES — PLENTY OF PARKING SPACE

Gold Chain FLOUR 5 Lbs. 44c Guaranteed To Please	Six Flavors JELLO Box 5c	Doles FRUIT COCKTAIL No. 2 1-2 Can 29c	Dole Crushed PINEAPPLE No. 2 Can 25c
--	---------------------------------------	---	---

Guaranteed To Please IVORY SOAP For Your Floors AERO WAX Lipton's The Perfect Ice Cream Mix FROSTEE 3 Small or 2 Large Bars CAMAY SOAP Good Fried or Cold SPAM White Swan CATSUP 14 Oz. Bottle Waldorf TOILET TISSUE Stewart PECANS Paper Shell Redchain DOG FOOD 5 lb. box	Large Bar 14c 1 Lb. Can 21c Pkg. 14c 23c Can 39c It's Good 18c 3 Rolls 22c 1 Lb. Bag 29c 49c
---	---

FRUIT AND VEGETABLES	
Delicious Yellow Squash	lb. 15c
Firm Heads LETTUCE	lb. 15c
Kentucky Wonder Beans	lb. 20c
Florida NEW POTATOES	lb. 8c
CARROTS	bunch 5c
Texas Seedless Grapefruit	lb. 7c

PHONE 99

HERSHEY SALE	
COCOA	1-2 Lb. Box 22c
Baking CHOCOLATE	1/2 Lb. 39c
Bitter Sweet DAINITIES	Pkg. 19c
Large CANDY BARS	2 For 37c
MINIATURE BARS	6 Oz. Bag 28c
Foil Wrapped KISSES	Bag 24c
Small CANDY BARS	6 For 25c
CHOCOLATE SYRUP	1 Lb. Can 18c

FRESH AND CURED MEATS	
Fine For Barbecue	Lb. 37c
BEEF RIBS	lb. 37c
SEVEN STEAK	lb. 49c
Dexter SLICED BACON	Lb. 34c
SALT BACON	lb. 24c
SALT MACKEREL	lb. 45c

Queens Plain OLIVES	Full 7
LARGE LIMA BEANS	2 lb. bag 2 Lb. 4
Supreme SALAD WAFERS	No. 300 4
Brooks CHILE HOT BEANS	3 Cans 2
Whitsons Mexican Style Beans	2 No. 2 cans No. 300 1
Our Favorite PEAS	A Good Buy 1
Rosedale Golden Whole Kernel Corn	2 2
Kills Odors AIR-WICK	5
Redchain 18 Per Cent DAIRY FEED	100 Lb. Print \$3.97

TIME TO BUY GARDEN SEED	
FRESH FROZEN FOODS	
FRYER THIGHS	lb.
FRYER DRUMSTICKS	lb.
FILLET OF SOLE	lb.
BROCOLLI	pkg.
Minute Maid or Snocrop ORANGE JUICE	can.
TURNIP GREENS	pkg.
SPINACH	pkg.

Prices Good February 10-11-13
We Reserve The Right To Limit

504 N. 2nd

NEW!

An Improved Phillips 66 Gasoline for 1950!

Octane rating stepped up to provide smoother power and long mileage!

Now at your Phillips 66 Dealer's there's a great new motor fuel designed to meet the exacting standards of America's high-powered 1950 automobiles! New, improved Phillips 66 Gasoline (both regular and premium grade) has more of the high-quality elements that make for smoothness, and fast, effortless acceleration in any automobile. Fill up with new, improved Phillips 66 Gasoline at your Phillips 66 Dealer's.



PHILLIPS 66

Distributed by

JOHN DARNELL

Service Garage & Station

WANT AD SECTION

FOR RENT — House on Haskell and Rule highway. Also Butane brooder and house, and 100 feet piping for sale. See Bill Lees on Herren farm. 5-6p

WANTED — To rent a furnished apartment with 2 bedrooms. Call Bynums Service Station—H. V. Reeve. 6p

MALE HELP WANTED. Men—Sell Monuments and Markers direct from factory. No investment or experience needed to start. Full or part time. Write WINONA MONUMENT CO., Box 565, Winona, Minnesota. 6p

MISCELLANEOUS — NOW OPEN — J. W. Simpson's welding shop and garage at South Avenue D. 5p

LOST — 20 ft. length 5-8 chain, between Johnny Grand home and pavement. Return to Jim Alvis. 6p

LOST: Pink plastic frame glasses during Christmas week. Reward Telephone 128. 6p

LOST: On Highway 24 east of Haskell, Feb. 2, 12-ply 1.00-20 Tire, tube and wheel, mounted. Anyone knowing about this tire contact John L. Butler, Rt. 2, Happy, Texas, for reward. 6-8p

FURNITURE — If you need anything in furniture, come to see us before you buy. We have a nice stock on hand, priced to sell. — Boggs & Johnson.

FARM BUREAU INSURANCE — Contact C. H. Herren at Farm Bureau office, phone 461W or 208J. 5-8C

TRACTOR TIRE ANTI-FREEZE — service your Tractor with Anti-Freeze — weight will give better traction and life. "TIRE HEADQUARTERS" — Divant Home & Auto Supply Haskell 37tfc

RE-SALE SHOP — Wide selection ladies' new shoes, \$2.99, extra pair 1c. Girls new dresses, sizes 1 to 12 years, \$1.98 to \$3.98, includes spring sheers, organdies, broadcloth, gingham, linens and chambrays. Boys' Girls and Mens blue jeans. Gaberdine, khaki and satin shirts for men and boys. Those good army khaki twill pants, shirts to match. Men's work and dress socks. Ladies' slips and gowns at cost. Be sure and see our new records for 15c each, and 25c each. Also players, electric and spring guitars, 22 rifles, electric and gas hot plates; model aeroplanes. We have a complete line of used clothing and shoes for the entire family. Living room suite, dining room suite, breakfast set. We will buy, sell or trade anything of value. Pay cash for comic, western and true story books.

REAL ESTATE — FOR SALE at a bargain—14x20 two-room stucco house in Weinert To be moved. Call Shever's Gin, Weinert, Texas. 6-7p

FOR SALE — Five room house, south part of town, \$2,200. Three-room house and 4 lots in west part of town \$1,500. 6-room house, extra good location. C. G. Gay. 5-6C

FOR SALE — Homeplace of Mrs. B. E. Hattox. 6 rooms and bath, stucco house, close in. See Payne or Gaston Hattox at Hattox Hardware Store. 46-tfc.

SEWING MACHINE parts and repair. We have a large stock of parts for sewing machines. We clean and repair your old machine or will sell you parts you need. — Boggs & Johnson.

PENCILS — Writing, Copying, Indelible, Drawing, and Marking Pencils. The Free Press.

SEWING MACHINES repaired. If your sewing machine needs fixing bring it to Mrs. Cofield's Ready-to-Wear Shop on west side of square. 6tfc

Colonial — World's Largest Selling Baby CHICKS — your order with us now for Colonial Baby These vigorous, full-bodied chicks will be the best foundation for a healthy, productive, or for marketing. They are available in strains or crossbreeds. your order today for early delivery date.

Feed Ultra Life Starter — In Pillow Case Bags —

RE-SALE SHOP — East Side of Square, Haskell, Tex. Phone 495J 5c

FREE 75 Mile Delivery FREE

2x4 & 2x6 Special	
No 2 Grade Marked	
2x4 8' Each	.56
2x4 14' Each	.98
2x4 16' Each	1.12
2x6 12' Each	1.26
2x6 14' Each	1.47
2x6 16' Each	1.68

75 Mile Free Delivery All Prices Cash Experienced personnel to figure your bill and save you money. We will not be undersold. Call — Wire — Or Come In

LONE STAR LUMBER & BUILDERS SUPPLY — Abilene, Texas 6-7c

HOUSEHOLD GOODS — SPECIAL — Let us brighten up your home with custom made Venetian blinds. Fourteen decorative colors to choose from. H-H Venetian Blind Co. 2tfc

NEW SEWING MACHINES. Domestic, New Home and Mercury in consoles, desk models and portables also factory rebuilt. Singers, good as new. We have a few used machines ready to go. Liberal trade in on your old machine. We can repair your old machine. — Boggs & Johnson.

MATTRESSES. Do you rest well at night? We can make that old mattress new again. Our inner-springs are better in the long run. We pick up and deliver. One day service. Phone 44-J. — Boggs & Johnson.

FEED AND SEED — FOR HOT CAPS, bulk garden seeds of all varieties, hoes, rakes and other garden supplies, see TRICE HATCHERY. 5-6p

STRAYED — STRAYED: One sorrell blazed faced and one bay horse. Notify George Burkett or W. G. White, phone 371, Haskell, Texas. 6-7p.

LOST or STRAYED — White Face calf weighing about 450 pounds — 2½ miles north of Weinert. Brand — JJ on left hip. Sidney Winchester. 5-6p

POULTRY — FEED PURINA startena checker-etts to start your chicks for rapid growth. — Trice Hatchery 6-7p. BULK — Several varieties of Glad-ice, Holland grown — Also Dah-ins and Coladurum. — Trice Hatchery. 6-7p.

PETS — FOR SALE — Male Pekinese puppies. Mrs. T. J. Arbuckle, 705 N. 4th St. 6p

USED CARS — BARGAINS in used cars. Fords and Chevrolets. Thurman Bynum at Texaco Station. 30-tfc.

FOR SALE — 1941 Ford pickup, or 1948 Deluxe 2-door Ford car. Harold Walton. 5-6p.

BABY CHICKS — custom hatching, poultry supplies for chicks and hens. TRICE HATCHERY. 5-6p

BABY CHICKS — All leading breeds, day old and older. All pullets, all cockrels, or just as hatched, also hybrids. New low prices. Stamford Hatchery and Poultry Farm, Stamford, Texas. 4-tfc

CHICK Brooders, feeders, founts and other equipment for chicks and hens — Trice Hatchery. 6-7p.

PRESENTING THE ... CROSLEY Custom Refrigerator



Model C. B. 9 \$299.95

The New 1950 Shelvador - The Most Sensational Refrigerator In Shelvador History!

New Design — New Features — Bigger Than Ever — More Room In Less Space. More Frozen Storage Space — No Stopping — No Shelf Too Low.

Fouts Dry Goods & Variety

NET POULTRY & EGG CO. — A. T. BALLARD - MGR. — Haskell, Texas 85

ROWS OF VALUES IN A LINE

GREETINGS TO OUR VALENTINES!

LE JUICE	No. 2 Can	15c
POTATOES	2 No. 2 Cans For	25c
POTATOES	No. 2 1/2 Can	23c
K & BEANS	Can	12c
ONES	Tall Can	15c
ONS	Bunch	10c
NS	Pound	20c
NS	Pound	20c
NS	Pound	10c
NS	Pound	5c

RECIPE OF THE WEEK

HUSBAND-TESTED RECIPE by Mary Lee Taylor

Jellied Waldorf Salad

1 package lemon gelatin 1/2 cup finely diced celery
 1 cup boiling water 1/4 cup finely cut nuts
 1/2 cup Fat Milk 1/2 teaspoon salt
 1 1/2 cups unpared apples, diced

Rub with vegetable oil a quart mold. Dissolve gelatin in boiling water. When cold, stir in milk. Chill until slightly thicker than unbeaten egg whites. Mix rest of ingredients and fold in. Put into mold. Chill until firm. Turn out; serve on lettuce or other salad greens. Makes 4 servings.

PET MILK

Lemon Gelatin	Pkg. 8c
Apples	Lb. 12c
Pecans	Pkg. 25c

POULTRY — FEED PURINA startena checker-etts to start your chicks for rapid growth. — Trice Hatchery 6-7p. BULK — Several varieties of Glad-ice, Holland grown — Also Dah-ins and Coladurum. — Trice Hatchery. 6-7p.

PETS — FOR SALE — Male Pekinese puppies. Mrs. T. J. Arbuckle, 705 N. 4th St. 6p

USED CARS — BARGAINS in used cars. Fords and Chevrolets. Thurman Bynum at Texaco Station. 30-tfc.

FOR SALE — 1941 Ford pickup, or 1948 Deluxe 2-door Ford car. Harold Walton. 5-6p.

BABY CHICKS — custom hatching, poultry supplies for chicks and hens. TRICE HATCHERY. 5-6p

BABY CHICKS — All leading breeds, day old and older. All pullets, all cockrels, or just as hatched, also hybrids. New low prices. Stamford Hatchery and Poultry Farm, Stamford, Texas. 4-tfc

CHICK Brooders, feeders, founts and other equipment for chicks and hens — Trice Hatchery. 6-7p.

Licensed Chiropractor

Gertrude Robinson — CHIROPRACTIC CLINIC — Highway 277 — Office Phone 108. Res. 14 — House Calls Day or Night

BARNES INSURANCE AGENCY — General Insurance — 316 1/2 N. 1st Street — H. F. Barnes — C. L. Lewis

CALVIN HENSON — LAWYER — Haskell, Texas

OPTOMETRIST — Glasses Fitted — Magnetic Mesaur — Dr. Arthur Edwards — 105 North Ave. D 5tfc

DOLLAR DAYS — FRIDAY - SATURDAY & MONDAY

At The FAIR STORE

Ladies Nylon Hose 15 Denier-51 Gauge Dollar Days only \$1.00 Pair	DOMESTIC Extra Heavy Brown Domestic. Regular 29c yard. Dollar Days Only 4 yards for \$1.00	MENS SOCKS Mens Work Socks 5 Pair for \$1.00
Ladies Panties White and Pink All Sizes 3 pair for \$1.00	DOMESTIC 36 Inch Brown Domestic. 5 yards for \$1.00	HANDKERCHIEFS Mens Handkerchiefs 10 for \$1.00 Dollar Days Only
PRINTS 36 Inch prints in all colors and many patterns to choose from. Regularly 39c yard 3 yards for \$1.00	SHEETS Garza Sheets In Large Size Only \$1.95	Shorts And Shirts Mens shorts and shirts Regular 69c Values Each A Suit for \$1.00 Dollar Days Only

Extra Values: Those Wash Clothes Again 15 for \$1.00. Don't Miss These Bargains. We Have New Merchandise Arriving Daily In All Departments. Come And See Us.

THE FAIR STORE

Neal's Food Store — WE DELIVER

Silage Best Feed For Dairy Cattle During Winter

This is the season of the year when dairymen can use silage to replace pastures that aren't furnishing much grazing. According to R. E. Burleson, associate extension dairy husbandryman of Texas A&M College, silage or "canned pasture" runs next to improved pastures as our best source of low cost nutrients.

He says with silage, 100 pounds of digestible nutrients can be produced for about \$1.70. This same 100 pounds of digestible nutrients would cost \$2.60 in the form of alfalfa hay or \$6 as a good commercial mix. This one point alone, he says, should be sufficient to convince dairymen that silage is a mighty good source of cheap feed to have on the farm.

The dairy cow prefers this type of feed for she is made to handle it efficiently and it stimulates milk flow more readily than any other type of feed. A reserve of silage on hand is good insurance against unproductive years and he adds, the wise dairyman will put up a two or three years supply



with today's outstanding tractor value

He's "sittin' pretty"—the man who owns a John Deere Two-Cylinder Tractor. Its matchless simplicity and strength of parts insures the maximum in dependability, economy, long life. Its many advanced features make farming far easier than ever before.

Come in soon and let us tell you all about John Deere Tractors—today's leaders in modern design and proved performance.

Gilmore Implement Co.

JOHN DEERE 2-Cylinder TRACTORS
First in Modern Design

Farmers Advised To Plant Soil Conserving Crops

Supervisors of the Wichita Brazos Conservation District urge the planting of soil conservation crops on the acreage that cannot be planted to cotton and wheat. These crops will not only check the depletion of soil, but will add to the supply of minerals and organic matter necessary for high production.

The past few years have greatly lowered the level of available minerals and structure of the soil by being planted continuously to cash crops and no crop rotation followed. Crops such as hubam sweet clover improve the soil greatly because of its soil building properties. The strong tap root of this plant will open up the soil to great depths, much below the level of ordinary tillage. Many cooperators of the District report increased yields as a result of planting a legume in their rotation.

On many soils of the District there is danger of wind erosion where no cover crops are growing. Leaving as much of the crop residue on the surface as possible will help prevent this. On soils such as these the fall planting of vetch or peas with rye is the only safe way to prevent wind erosion and to check the depletion of minerals and loss of organic matter. To protect your investment in the land to leave the soil in as good a condition as you received it, you must include soil conservation crops in the rotation.

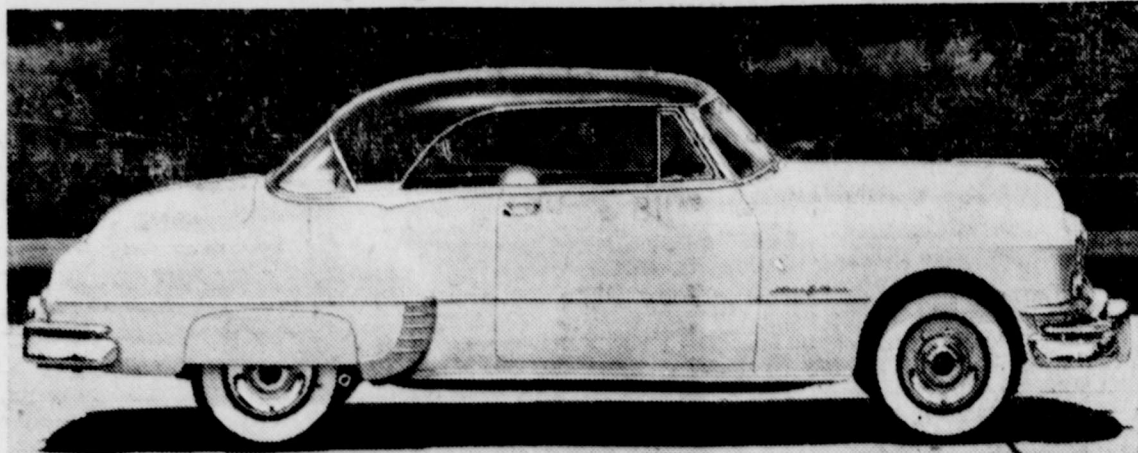
When conditions are favorable, this practice may often mean the difference between success or failure for the dairyman.

Burleson says at least three tons of silage are needed for each cow in the herd and if the insurance factor is considered, six tons is better. That may sound like a lot of feed for a cow, but when less than one acre of a good silage crop will make the recommended tonnage, he says.

Now is the time to make plans for 1950's silage crop for the planting season in some sections of the state isn't far away. Burleson recommends before you plant you check with your county agent on the best varieties of silage crops for your area.

The use of fertilizers will improve the quality and increase the yield per acre in many sections of the state and then the crop must be harvested at the right time. Storage, says Burleson, isn't such a big problem on most farms. In some areas the trench silo is very practical, the box silo can be used in other areas and the up-right silo will work most anywhere in the state. Then there are temporary structures that can be set up easily for a small outlay of cash, but, he points out, more permanent storage should be planned—it's cheaper in the long run.

Pontiac Displays Its Super-Sleek 'Catalina'



Pontiac's rakish, stylish Catalina models offer the lithe grace of the convertible with the comfort and all-weather adaptability of a sedan. Catalinas are available in Super-Deluxe and Deluxe models and differ in color choice and interiors. Illustrated is the Super-Deluxe in Ivory and Sierra Rust with matching leather upholstery and interior decor.

Readers Asked to Check Expiration Date On Paper

Free Press subscribers are requested to check the expiration date printed with their address on each copy. With the beginning of a new year, our subscription list is being brought up to date and care has been exercised to credit all renewal or new subscriptions. Cooperation of readers is asked in order that any mistake might be avoided. Because of the continued newsprint shortage all subscriptions will be discontinued upon expiration unless otherwise arranged.

Readers are also asked to keep in mind the subscription rates: \$2.00 per year in Haskell and adjoining counties; \$3.00 per year outside this zone.

Political Announcements

The Free Press is authorized to announce the following candidates for office in Haskell County, subject to the Democratic primaries.

For Representative, 113th Legislative District: Clyde Whiteside. (Second Term)

For District Judge, 39th Judicial District: Ben Charlie Chapman. (Re-election)

For County Judge: O. E. Patterson. (2nd elective term)

For District Attorney, 39th Judicial District: Curtis Pogue. John H. Banks. (Re-election)

For Sheriff: R. M. (Bob) Cousins. (Second term)

For County Superintendent of Public Instruction: Mrs. Iva Palmer. (Re-election.)

For County Treasurer: Byron Wright.

For County Attorney: Royce Adkins.

For County Clerk: Horace Oneal. (Re-election.)

For District Clerk: Jesse B. Smith. (Re-election.)

For County Tax Assessor-Collector: R. A. Coburn. (Re-election.)

For Commissioner, Precinct 1: Ira Blair. (Re-election)

For Commissioner Precinct 2: W. A. (Drew) Leonard. (Second Term)

For Commissioner, Precinct 3: M. B. Cobb. (Re-election) Hoyt Perry.

For Commissioner Precinct 4: C. L. (Roy) Clark.

For Justice of Peace, Precinct 1: C. K. Jones. (Re-election)

For Constable, Precinct 1: Sterling Edwards. (Re-election)

For Public Weigher, Prec. 1: George Weaver

For Public Weigher Prec. No. 7: A. A. Cox (Re-election).

JASON W. SMITH
Abstracts — Title Insurance
Haskell, Texas

T. R. Odell Phil Bilton
ODELL & BILTON
Attorneys-at-Law
Rooms 4-5-6, Odell Bldg.
Phone No. 303

Hogs Lead Upward Trend In Farm Market Prices

Hogs showed the sharpest advance in the generally steady to strong markets for southwest farm products last week, the U. S. Department of Agriculture's Production and Marketing Administration reports.

Mild weather and prolonged grazing of small grains and stubble were factors making for slow demand in midwest and southwest hay trading last week. U. S. No. 2 prairie hay brought \$18.50 to \$20 a ton at Fort Worth. Meanwhile, most feeds sagged to lower price levels in North Texas trade in the face of liberal offerings.

The general trend on cattle at markets last week was steady in major southwest markets last week was steady to strong. Price fluctuations were frequent but net gains or losses were small. San Antonio reported moderate net losses on steers and yearlings as Fort Worth slaughter classes sagged even though supplies were meager some days. In contrast, Oklahoma City saw bulls, cows, canners and cutters 25 to 50 cents higher.

Slaughter lambs ranged from steady to \$1 higher at all terminals covered by USDA market news reporters. Replacement lambs and slaughter ewes held firm.

Hogs showed consistent daily upturns at most reporting markets for a net 50 cents to \$1 gain over the previous week's close. Monday's top prices hit \$17.25 at San Antonio, \$17.50 at Fort Worth and at Oklahoma City, and \$17.75 at Kansas City. North Texas and Little Rock poultry markets saw fryers remained steady last week. Monday's reports, however, note an advance of two cents per pound with fryers selling at 25 cents at both points. Eggs were mostly unchanged in the southwest. However, Monday's reports reflect a one to two cent advance in North Texas and in Arkansas.

Yellow corn and wheat advanced a fraction of a cent this past week as white corn and barley took slight losses from Monday to Monday. Other grains held unchanged. Chief influences in the grain market were smaller offerings, good domestic demand and some export sales of corn.

Cotton advanced 75 cents to \$1 a bale last week to reach the highest point since mid-August.

M. J. Lain was taken to the St. Ann hospital in Abilene in a Holden Ambulance Wednesday where he will undergo major surgery.

PLAINVIEW BAPTIST CHURCH

Rev. H. G. Hammer, Pastor
Herbert Mueller, Supt.

Sunday School each Sunday at 10 o'clock.
Preaching Service, 2nd and 4th Sundays at 11 a. m., 7:30 p. m. Everyone welcome.

Cotton cloth exports during the first nine months of 1949 were more than four per cent higher than for the preceding year, the National Cotton Council reports.

Use a double thickness of cheesecloth or muslin with a steam iron for pressing on the right side of fabrics that acquire a shine easily.

A cotton gin built during the Civil War, believed to be the oldest in the country, is still in operation. It is located near Hagood, S. C.

Read the Want Ads.

Fort Bend County Health Unit 49th In Texas

Public Health in Texas has received another boost with the February 1 formation of the Fort Bend County Health Unit.

State Health Officer Geo. W. Cox, in announcing the commission of the Fort Bend Unit said Dr. John R. Turner, a public health man of long experience in Texas and elsewhere, had been named as director. The budget is set up to include a director, a sanitarian, a public health nurse, and a clerk. Their operations will cover Fort Bend County in its entirety.

Texas now has forty-nine units, some of them serving more than one county. Altogether, fifty-five have protection of full-time health seven counties within the State units.

"We've come a long way toward our goal of raising the standard of public health in Texas to a high plane," Cox asserted. He cautioned: "But we still have a long road ahead of us."

Ideally, a local health unit is designed, according to Cox, to promote better health among Texans it serves by performing these functions:

1. By investigating cases of communicable diseases, and tracking down, if possible, the source of the germ.
2. By teaching the people, through meetings and personal visits, how smallpox, diphtheria, whooping cough, and other diseases are spread, and how immunization and sanitation will prevent their spread.
3. By making studies of venereal diseases (mainly syphilis and gonorrhea,) tuberculosis, poliomyelitis, etc., and providing for patient education concerning the illness affecting them.
4. By making home visits to

expectant mothers referred by private physicians, and by holding well-child conferences which are designed to keep children in tip-top health.

5. By making periodic inspections of food-handling businesses like dairies, slaughterhouses, grocery stores, and cafes to make sure the operators are sticking close to sanitation laws.

CARD OF THANKS
We want to take this opportunity to express our sincere appreciation to our many friends for their kindness and beautiful offerings in our recent bereavement. We are especially grateful to Edwin Thomas, Mrs. E. Thomas, Mr. and Mrs. Johnson, Leroy Thomas.

TOWN & COUNTRY SHOP
107 N. Avenue C Phone 165-W
GUARANTEED UPHOLSTERING
We will completely upholster any type furniture and will guarantee our work

Perkins-Timberlake
A SMART "McCALL" PATTERN
Plus
Our Famous WHIPPET CLOTH
To Give You . . .

The Sleek Look

is the right look for Spring. A look that's perfectly expressed by the sleek rich texture of a gabardine. You never saw a greater array of wonderful colors than we show you in gabardine for Spring 1950. And what could be more expressive of the new sleek look than McCall 7941 with its long slot seam emphasizing the slim outline.

McCall 7941

Famous "Bur-Mil" Whippet Cloth

A handsome RAYON GABARDINE in 16 beautiful new Spring colors—42 inch—for fashion, for quality, for value it is the **Finest Fabric Buy** obtainable. See this new collection—the largest we've ever had!

PRICED ONLY **\$1 29** YARD

MEN'S ANKLETS

Quality Cottons For Less!

Novelty sport cottons in style featured patterns and designs! Double woven heel and toe for extra wear!

39c

Sizes 10 to 12

● Most Popular Colors!
● Unusual Designs And Combinations!

CHARGE ACCOUNTS INVITED

The Fashion Shoppe

Spring Temptation

Be irresistible in **STYLING'S** cure for Spring Fever . . . 100 per cent virgin wool worsted sheen gabardine. Sizes 9 to 17. Choice of colors in Beige, Black, Cocoa, Grey, Kelly, Navy, Red and Dacia.

Specials

Special Rack Early Spring Dresses. Assorted Styles & Fabrics. Jr. and Regular Sizes.

Nylon Slips & Petticoats Nylon Slips, tea rose and white, Reg \$5.95 — \$3.95
½ Slips, blue, yellow, white, tea rose and black. Reg to 4.95 — \$2.95

20% Discount

The FASHION SHOPPE

Perkins-Timberlake

BIG SHIPMENTS!

MEN'S DRESS SHIRTS

New Solid Colors

\$1.98

• Tan • Blue • White

Smartly styled from good quality broadcloth and striped percales. Well-constructed stand-up collars, sanforized and fast colors. Solids in white and colors, cluster and pin stripes. Sizes 14-17.

CHARGE ACCOUNTS INVITED