



\$3,900 Raised To Date, Urgent Appeal Made For March of Dimes Funds

Appeal was issued today by the committee of the march of Dimes campaign for the cure for funds to fight poliomyelitis.

Appeal was issued today by the committee of the march of Dimes campaign for the cure for funds to fight poliomyelitis.

Baptist Brotherhood Meetings Slated In Haskell, Five Other Area Towns

Baptist brotherhood meetings for District 17 will be held in Haskell and five other communities.

LAWSON E. COOKE

First Land Deal In Vets Program Is Recorded

First land sale in Haskell county under the new Texas Veterans Land Program was closed Friday.

Haskell Group Attends Farm Bureau Meeting

Clinton H. Herren, H. D. Gamble and Mrs. Gene Tonn attended the first meeting of the Presidents and Secretaries Farm Bureau Conference for 1950.

Bids Sought For Haskell Post Office Quarters

Proposals are being solicited through the office of Post Office Inspector D. C. Jernigan at Fort Worth.

R. Templeton Dies Saturday In Lubbock

Ellis R. (Eek) Templeton, 56, Lubbock carpenter and a former resident of this city, died of a heart attack while driving his car Saturday morning in Lubbock.

Two New Members Added To Fire Department

At the regular meeting of the Haskell Fire Department Monday night, two new members, R. M. (Bob) Cousins and John B. Martin were inducted.

FFA, 4-H Club Boys Stock Show Set Feb. 13th

Date for the annual 4-H Club Boys and Future Farmers stock show has been tentatively set for Monday February 13.

Sister Of Frank B. Reynolds Dies In Morton, Texas

Funeral services for Mrs. J. A. Petree of Morton, Texas, a sister of Frank B. Reynolds of Haskell, were held Monday afternoon in Morton.

Moderate Activity Shown In Spot Cotton Market

Southwest spot cotton markets continued moderately active last week as prices moved up and down within a margin of 25 to 50 cents per bale.

Mrs. J. Y. Mobley Dies In Carrizo Springs Friday

Mrs. J. Y. Mobley, mother of R. Y. Mobley, Sr., of Haskell, died Friday morning in Carrizo Springs, Texas.

Guests In Home Of Mrs. Will Harrell

Visitors in the home of Mrs. Will Harrell over the weekend were four of her sisters.

Cemetery Association Audit-Report For Fiscal Year Made

Audit Report of the Haskell Cemetery Association for the fiscal year Oct. 19, 1948 to Oct. 31, 1949, lists receipts of \$4,729.25 and disbursements of \$3,672.39.

Bobby Neil Smith Member Glee Club At Schreiner

Bobby Neil Smith, son of Mr. and Mrs. Clay Smith of Haskell, is a member of the Delaney Hall Glee Club and intramural football team at Schreiner Institute.

Postal Receipts In Steady Climb During Past Year

Postal receipts in the Haskell office showed a substantial gain over the previous year's total, reports Postmaster Harold Spain.

Three Additional Candidates Enter Political Picture

List of candidates for district, county and precinct offices on which Haskell county voters will ballot in coming elections was increased to 20 this week.

Japanese Pastor Will Speak Here Friday Night

Dr. Yoshimune Abe of Tokyo, Japan, will be the guest speaker at the First Methodist Church of Haskell at a Sub-district Rally for people of this area Friday night.

Crouch Well Seen As Opening New Oil Pool Near Haskell

Interest in oil activity in Haskell county was centered this week on the discovery of a new oil pool three miles west of Haskell.

Moderate Activity Shown In Spot Cotton Market

Southwest spot cotton markets continued moderately active last week as prices moved up and down within a margin of 25 to 50 cents per bale.

County Bond Sales Total \$258,000 During Year

The people of Haskell County invested \$258,733.25 in U. S. Savings Bonds during 1949.

Mrs. Wallace Cox Guest Speaker At Club Meeting

One of the most interesting programs of the year in Progressive Study Club was rendered last Thursday evening when Mrs. Wallace Cox discussed "Women of the Bible."

Short Course For Waterworks Men Scheduled Here

Representatives from a number of surrounding towns and communities are expected to be enrolled in a Water Works Short Course to be held in this city.

Haskell Students To Receive Degrees At NTSC

Two Haskell students are among a group of 300 candidates for bachelor's and masters degrees to be awarded at North Texas State College.

Judge Odell Forms Partnership With Bilton Of Dallas

Elsewhere in this issue of The Free Press will be found an announcement of the association of Judge T. R. Odell and J. Philip Bilton under the firm name of Odell and Bilton.

Business Houses Here Checked For Fire Hazards

Tests of fire-fighting apparatus of the Haskell Fire Department, and a spot check of potential fire hazards in establishments in the business section, were made Thursday and Friday by Morris C. Horton.

ATTN DIRECTORS MEETING IN DALLAS

A. C. Pierson, Haskell banker and member of the board of directors of Southwestern Associated Telephone Company, was in Dallas Wednesday to attend the annual meeting of directors of the company.

RETURNS FROM HOSPITAL

Mrs. Will Harrell returned home Friday afternoon from the Henrick Memorial Hospital in Abilene where she has been taking X-ray treatments for the past two and one half weeks.

Crouch Well Seen As Opening New Oil Pool Near Haskell

Interest in oil activity in Haskell county was centered this week on the discovery of a new oil pool three miles west of Haskell.

Three Additional Candidates Enter Political Picture

List of candidates for district, county and precinct offices on which Haskell county voters will ballot in coming elections was increased to 20 this week.

Japanese Pastor Will Speak Here Friday Night

Dr. Yoshimune Abe of Tokyo, Japan, will be the guest speaker at the First Methodist Church of Haskell at a Sub-district Rally for people of this area Friday night.

County Bond Sales Total \$258,000 During Year

The people of Haskell County invested \$258,733.25 in U. S. Savings Bonds during 1949.

Mrs. Wallace Cox Guest Speaker At Club Meeting

One of the most interesting programs of the year in Progressive Study Club was rendered last Thursday evening when Mrs. Wallace Cox discussed "Women of the Bible."

Short Course For Waterworks Men Scheduled Here

Representatives from a number of surrounding towns and communities are expected to be enrolled in a Water Works Short Course to be held in this city.

Haskell Students To Receive Degrees At NTSC

Two Haskell students are among a group of 300 candidates for bachelor's and masters degrees to be awarded at North Texas State College.

Judge Odell Forms Partnership With Bilton Of Dallas

Elsewhere in this issue of The Free Press will be found an announcement of the association of Judge T. R. Odell and J. Philip Bilton under the firm name of Odell and Bilton.

Business Houses Here Checked For Fire Hazards

Tests of fire-fighting apparatus of the Haskell Fire Department, and a spot check of potential fire hazards in establishments in the business section, were made Thursday and Friday by Morris C. Horton.

ATTN DIRECTORS MEETING IN DALLAS

A. C. Pierson, Haskell banker and member of the board of directors of Southwestern Associated Telephone Company, was in Dallas Wednesday to attend the annual meeting of directors of the company.

Postal Receipts In Steady Climb During Past Year

Postal receipts in the Haskell office showed a substantial gain over the previous year's total, reports Postmaster Harold Spain.

Three Additional Candidates Enter Political Picture

List of candidates for district, county and precinct offices on which Haskell county voters will ballot in coming elections was increased to 20 this week.

Japanese Pastor Will Speak Here Friday Night

Dr. Yoshimune Abe of Tokyo, Japan, will be the guest speaker at the First Methodist Church of Haskell at a Sub-district Rally for people of this area Friday night.

County Bond Sales Total \$258,000 During Year

The people of Haskell County invested \$258,733.25 in U. S. Savings Bonds during 1949.

Mrs. Wallace Cox Guest Speaker At Club Meeting

One of the most interesting programs of the year in Progressive Study Club was rendered last Thursday evening when Mrs. Wallace Cox discussed "Women of the Bible."

Short Course For Waterworks Men Scheduled Here

Representatives from a number of surrounding towns and communities are expected to be enrolled in a Water Works Short Course to be held in this city.

Haskell Students To Receive Degrees At NTSC

Two Haskell students are among a group of 300 candidates for bachelor's and masters degrees to be awarded at North Texas State College.

Judge Odell Forms Partnership With Bilton Of Dallas

Elsewhere in this issue of The Free Press will be found an announcement of the association of Judge T. R. Odell and J. Philip Bilton under the firm name of Odell and Bilton.

Business Houses Here Checked For Fire Hazards

Tests of fire-fighting apparatus of the Haskell Fire Department, and a spot check of potential fire hazards in establishments in the business section, were made Thursday and Friday by Morris C. Horton.

ATTN DIRECTORS MEETING IN DALLAS

A. C. Pierson, Haskell banker and member of the board of directors of Southwestern Associated Telephone Company, was in Dallas Wednesday to attend the annual meeting of directors of the company.



### CHURCH ANNOUNCEMENTS

**LUTHERAN CHURCH SERVICES**  
Trinity Lutheran church members will meet at the Presbyterian Church in Haskell on the following schedule:  
First Sunday in each month at 2:30.  
Third Sunday in each month at 2:30 p. m.  
Fifth Sunday services at 6:30 p. m.

**MATTSON BAPTIST CHURCH**  
Rev. Bill Austin  
10:00 A. M. Sunday School.  
11:00 A. M. Preaching Service.  
7:45 P. M. Evening Service.

**JASON W. SMITH**  
Abstracts - Title Insurance  
Haskell, Texas

**CHURCH OF CHRIST**  
Roy Deaver, Minister  
Our Regular Schedule:  
Sunday: Bible classes for all ages 9:45-10:40  
Regular Worship Service 10:45-12:00  
Young Peoples' Class 5:30-6:20  
Evening Service 6:30-7:30  
Wednesday: Ladies' Bible Class 4:00-5:00  
Mid-Week Bible Study 7:30-8:30  
Thursday: Broadcast 11:15-11:30

**FRIENDSHIP BAPTIST CHURCH**  
Corner South 7th and Ave F  
Rev. Joe Scheets, Pastor  
O. E. Nuckles, Sunday School Superintendent

Sunday School—9:45 a. m.  
Preaching Service—11 a. m. and 8 p. m.  
Prayer Service—Wednesday, 8 p. m.

### FEDERAL LAND BANK LOANS

Time 34 1/2 years. Net interest costs 3.75% or less. Loans may be paid in part or in full on any business day in the year. We have no balloon payments.

**National Farm Loan Asso. Office**  
W. H. McCandless, Secty-Treas.  
HASKELL, TEXAS

### T. R. ODELL

ANNOUNCES THE ASSOCIATION OF

### J. PHILIP BILTON

(Formerly with the Magnolia

Petroleum Co. in Dallas)

IN THE GENERAL PRACTICE OF LAW

UNDER THE FIRM NAME OF

### ODELL & BILTON

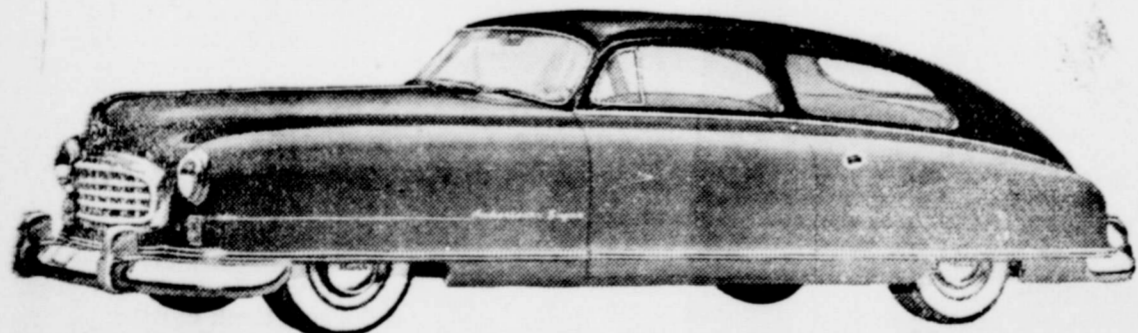
AT HASKELL, TEXAS

Odell Building

Phone 303



*Now—an Airliner Reclining Seat  
in the 1950 Nash Ambassador*



For the last word in comfort try the Nash Ambassador's new Airliner Reclining Seat. At lever touch the seat goes back as far as you wish. Relax completely... float off to sleep if you like.

Except for the landscape flashing by, you'd hardly know you were in a moving car. For super-soft coil springs on all four wheels have turned the road to velvet.

The air you breathe is fresh and filtered by the Nash Weather Eye Conditioned Air System. And in this Sky Lounge interior there is so much room you can even have Twin Beds.

#### HYDRA-MATIC DRIVE!

Drive this Nash Ambassador. Discover America's top high-compression engine that requires only regular gasoline—up to 30% more economical than other fine cars by owner reports.

And now you can have Hydra-Matic Drive plus new Nash Selecto-Lift Starting—available only in the Nash Ambassador.

See your Nash dealer and learn the good news about price. The Ambassador—even in Custom models regally tailored to your order—costs as much as a thousand dollars less than other cars of comparable size and quality.



**Only Nash Ambassador Owners Enjoy All These Fine-Car Features**

Turbo-head Valve-in-head Engine... America's highest compression ratio (7.3 to 1) utilizing regular gasoline... 7-bearing, 100% counter-balanced crankshaft... Airlyte Construction. Squeak-free and rattle-proof. Twice as rigid, stays new years longer.

\* THERE'S MUCH OF TOMORROW IN ALL NASH DOES TODAY \*

### HASKELL NASH CO.

North First and Ave F

#### CURRY CHAPEL BAPTIST CHURCH

Pastor, Rev. John W. Seay  
Sunday School 10 a. m.  
Morning Service 11:00 a. m.  
(Sermon by Pastor)  
Evening Service 7:00 p. m.  
(Sermon by Pastor)  
Everyone is welcome.

#### THE CHURCH OF GOD

909 South 1st Street, East  
Geo. Ivy, Pastor  
Sunday School at 9:45 A. M.  
Message at 11:00 A. M.  
Preaching Sunday Evening 7:00 P. M.  
Prayer Meeting Tuesday 7:00 P. M.

#### FUNDAMENTAL BAPTIST CHURCH

114 Ave. D, South 2nd St.  
Rev. S. G. Wallis, Pastor  
10 a. m. Sunday School.  
11 a. m. Morning Message  
7 p. m. Young People's Service.  
8:00 p. m. Evening Message.  
Wednesday, 7:15 p. m. Prayer Meeting.  
Friday, 7:15 p. m. Teachers' Meeting and Young People's Training Service.

#### EAST SIDE BAPTIST CHURCH

Rev. W. T. Priddy, Pastor  
8:30 A. M. Radio Sermon by the pastor, Rev. W. T. Priddy, over station KDWL, Stamford.  
9:45 A. M. Sunday School.  
11 a. m. Morning Preaching Service.  
7:00 p. m. — Young People's Meeting.  
7:30 p. m.—Evening Preaching Service.

#### BIBLE BAPTIST CHURCH

Corner N. 3 and Ave. C  
Rev. R. B. Turner, Pastor  
Regular services each Sunday: Sunday School—10 a. m.  
Morning Message—11 a. m.  
Evening Song Service—7 p. m.  
Evening Message—7:30 p. m.  
Mid-Week Prayer Service—Wednesday night at 7 o'clock.

#### ASSEMBLY OF GOD CHURCH

400 South Avenue E.  
C. L. McMullen, Pastor  
9:45 Sunday School.  
11:00 Worship and Sermon.  
6:30 Young People's Service.  
7:30 Evangelistic Service.  
Monday, 2:30, Women's Missionary Council.  
Wednesday, 7:30, Prayer Meeting.  
Saturday, 7:30, Young Peoples Evangelistic Service.

#### BARNES INSURANCE AGENCY

General Insurance  
316 1/2 N. 1st Street  
H. F. Barnes C. L. Lewis

#### PLUMBING

DAY AND NIGHT SERVICE  
Day Phone 396  
Nite Phone 167  
RAYMOND STUART

### Abilene Golden Glove Tournery Set This Week

The 13th annual Golden Glove tournament, which belongs to amateur boxers and boxing fans of this community as much as it does to Abilene, gets under way Friday night at 7:30 o'clock, in Abilene.

Rose Field House, on the Hardin-Simmons campus, will be the site of three nights of boxing in eight weight divisions of three classes—high school, novice, and open. The big winter sports show continues Saturday night and Monday night, Jan. 30, when championships in all divisions and classes will be determined.

All amateur boxers who have reached the age of 16 are invited to compete in one of the three classes. Winners and runners up in each division and class will receive awards—a total of 48. Extreme care will be taken to see that entries are properly and evenly matched. Winners in the "open" class will receive, in addition to valuable and practical awards, an expense-paid trip to the State Golden Glove tournament in Fort Worth starting February 15.

Tickets for the three-night extravaganza are on sale at The Mackey Company, 1075 North Second Street, and at the Hardin-Simmons business office.

All boxers planning to enter the tournament are requested to report at Rose Field House as soon after 12 o'clock noon Friday, Jan. 27, as possible. Entries close at 3:30 p. m. All entries will receive free admission tickets to all fights of the tournament after being weighed and examined Friday afternoon.

Fryers and broilers are now in plentiful supply and recent price drops make them one of the best food buys. The lower prices will help the homemaker balance the family food budget and the increased consumption will help the producer.

A small paintbrush is an excellent gadget to use for cleaning crumbs from an electric toaster or waffle-iron.

#### WEINERT FOURSQUARE CHURCH

Weinert, Texas  
W. O. Pritchett, Pastor

Sunday School—9:0 a. m. Roy Herricks, Supt.  
Morning worship—11:00 a. m. Message by the pastor "The Judgment Seat of Christ."  
Group Services for all ages—6:00 p. m.  
Evangelistic Service—7:00 p. m. Message "He Is Able."

You will find a warm friendly welcome in a spiritual atmosphere in our church. Come and worship the Lord with us.

#### 5TH ST. BAPTIST CHURCH

(Corner 5th St. & Ave. J)  
RULE, TEXAS  
Jesse Jones, Pastor

9:45 A. M. Sunday School.  
11:00 A. M. Preaching Service.  
6:30 P. M. Young People's Class.  
7:00 P. M. Song Service.  
7:30 P. M. Preaching Service.  
Wednesday, 7:00 P. M., Prayer Service.  
Friday, 7:00 P. M. Choir Practice and Teachers' Meeting.

#### PINKERTON BAPTIST CHURCH

Jack D. Wester, Pastor  
Sunday School 10:00.  
Preaching Hour 11:00.  
Training Union 6:30  
Evening Sermon 7:30  
Wednesday Evening Service 7:00  
W. M. U. 1st and 3rd  
Mondays 2:00 P. M.  
A friendly church invites a friendly visit.

#### A. Y. BARNES

Real Estate & Insurance  
A Chance To Serve You Will Be Appreciated.  
Telephone 183-J

#### Licensed Chiropractor

Gertrude Robinson  
CHIROPRACTIC CLINIC  
Highway 277  
Office Phone 108. Res. 14  
House Calls Day or Night

#### WATCH REPAIRS

- You Name the Day—
- We'll Have It Ready
- Our Watchmaster
- Eliminates Guessing
- ALL WORK
- GUARANTEED
- Genuine Material
- Used

Helber's Jewelry  
Phone 169W  
HASKELL, TEXAS

### Mrs Jimmy Cox Named Honoree At Shower

The home of Mrs. Clyde Walker of Weinert was the scene of a bridal shower honoring Mrs. Jimmy Cox, the former Miss Eunice Hutchinson, Thursday Jan. 19 from 2 until 4 p. m.

Guests were greeted by the hostess group, the honoree, and her mother, Mrs. R. E. Hutchinson. Guests were registered in the bride's book by Miss Lucille Toller, a classmate of the bride. More than seventy-five names were registered.

In the dining room the attractive refreshment table was laid with a lace cloth with a centerpiece of mixed flowers. Napkins which accompanied the refreshment plates were inscribed in gold lettering with "Eunice and Jimmy."

On display during the party hours, were the lovely gifts of silver, crystal, china, and linens in the bride's guest pattern.

Out of town guests were from Knox City, O'Brien, Haskell, Munday and Rochester.

### Mrs. D. Vaughn Hosts Meeting Of H. D. Club

The Friendship Home Demonstration Club met Friday afternoon Jan. 20 at 2 p. m. in the home of Mrs. Dewayne Vaughn for a regular meeting.

The club president, Mrs. Ted Jetton, presided, and Mrs. Frank Garrett led the group in singing Auld Lang Syne.

Mrs. Garrett also gave the January County Council report. Recommendations for 1950 that were formulated by the Council were read and adopted, and the club's candidate for the District THDA meeting was chosen.

Mrs. Vee J. Howle, county Home Demonstration Agent, gave an interesting demonstration on the selection of commercial patterns and measurements for fitting dress patterns.

Refreshments were served to Mesdames Ted Jetton, Edward Newton, Leon Newton, Otto Vaughn, Frank Garrett, a visitor Mrs. C. V. Ashley and the hostess, Mrs. Dewayne Vaughn.

Try a Want Ad in The Free Press

#### CALVIN HENSON LAWYER

Haskell, Texas

### Mid-Term HHS Graduate Enlists In Air Force

Oren Rex Williams, mid-term graduate of Haskell High School, has enlisted in the U. S. Air Force, and will take his basic training at Lackland Air Force Base, San Antonio.

The 18-year-old youth, son of Mr. and Mrs. O. T. Williams of Haskell, graduated from HHS last Friday, enlisted and was sent to the San Antonio base the following day.

Young Williams clerked at Piggy-Wiggly store from September until January during his after-school hours.

Use Want Ads for results

For quick results in buying, selling, use the Want

### Delco Battery - Any Size

Battery charging, fast or slow, regulator for all equipment. OILS—we have your brand. Also Generators. Fram elements Plugs, Fan Belts and All Accessories for Car and Trucks. Flat Service. Storage Space.

**M. C. Wilfong & Son**  
OPEN 7 DAYS A WEEK



**OUR "KNOW HOW" IS YOUR GOOD FORTUNE!**

A VISIT to our modern service department will convince you that our "know-how" is your good fortune. Not only do you get the benefits of our outstanding service facilities, but our mechanics will overhaul and recondition your John Deere Farm Equipment the way it should be done. This means quick, efficient

service at less cost to you. You'll be amazed at the completeness... the fine work... the results you get.

You can depend on it... there'll be no unnecessary work. Our estimates will cover everything needed to put your equipment in "tip-top" condition. See us the next time you're in town.

### GILMORE IMPLEMENT CO.

Remember ONLY GENUINE JOHN DEERE PARTS FIT AND WEAR LIKE THE ORIGINALS

## Friday and Saturday Specials . . .

Washing Powder <b>BREEZE</b>	2 Large Boxes 38c	Table <b>SALT</b>	10 Lb. Bag 27c
<b>DREFT</b>	Large Box 26c	Ranch Style <b>BEANS</b>	Tall Can 12c
Cherrybell <b>FLOUR</b>	25 Lbs \$1.59	Su-Mar Brand <b>HOMINY</b>	Gallon Can 44c
Home Packed <b>PURE HONEY</b>	2 Lb. 13 Oz. Jar 80c	Red Heart <b>DOG FOOD</b>	Can 14c
Crystal Wedding <b>OATS</b>	16 Oz. Box 16c	<b>MEATS</b>	
Powdered or Brown <b>SUGAR</b>	1 Lb. Box 12c	Fresh <b>PORK CHOPS</b>	Lb. 43c
Kimball or Wolf Brand <b>TAMALES</b>	No. 2 Can 22c	Southern Maid Colored <b>OLEO</b>	Lb. 33c
Chicken of the sea <b>TUNA</b>	Can 39c	Kraft Velveta <b>CHEESE</b>	2 Lbs. 82c
Gold Seal <b>GLOSS WAX</b>	Pt. Can 53c		

PLENTY OF NICE FRYERS

AT A GOOD PRICE

## GHOLSON GROCERY

Phone Us Your Orders—We Deliver—Phone 79.

All Groceries Sold Quality Guaranteed



**The Haskell Free Press**

Established January 1, 1888  
Published every Thursday

Member **TEXAS PRESS ASSOCIATION**  
Lola Lemmon, Bookkeeper

Entered as second-class matter at the postoffice at Haskell, Texas, under the act of March 3, 1879.

**NOTICE TO THE PUBLIC** — Any erroneous reflection on the character, reputation or standing of any firm, individual or corporation will be gladly corrected upon being called to the attention of the publishers.

**CARD OF THANKS**  
All of our friends and neighbors who helped us in any way during the illness and death of our dear mother we want to express our appreciation.  
The Flenniken Family  
And Grandchildren

Every home should be protected by home fire fighting equipment. Keep it in good operating shape and ready for instant use. The first few minutes are the most vital so far as fire fighting is concerned.



Matched to the perfection of Spring!  
A Topper that's smart with everything

So vital and beautiful . . . for casual elegance wherever you go! A blessed style to wear belted, boxy or half-belted . . . all wonderful. Supremely created in kitten-soft Monterey fleece of 100% wool with stunning tab pockets. Provocative new Spring colors: Petal Pink, Gold, Kelly, Lipstick Red, Miami Blue, Dacia. Sizes 8-18.  
\$24.95

**LANE - FELKER**

**Ruth Bible Class Meets In Home Of Miss Betty Jo Clanton For Social Hour**

The Ruth Bible Class of First Baptist Church met Monday night, January 23, in the home of Betty Jo Clanton for its social hour.

The program opened with the group singing "Let the Beauty of Jesus Be Seen in Me," led by Josephine Davis. Then Mrs. Brooks said an inspiring prayer. The business meeting was called to order by the chairman, Avis Pennington. Reports on projects were given by Allene Wheatley. Our shut-in, Theo Burson was taken to church at Pinkerton Sunday and later treated to a chicken and dressing dinner at the home of Mrs. Bill Lees. He reported a very enjoyable day. He is scheduled to go to an Abilene hospital shortly for a few days of treatment there.

Our special project for February is the church kitchen. The motion was made and carried that we give it a thorough cleaning, and then buy what needed articles we can.

The motion was also made and carried that the date of our February 27th social be moved up to February 11, so that we may carry out a valentine theme in the dinner which we are serving our

husbands. Plans were outlined for the dinner and entertainment by Jerrene Couch and Gladys Oneal, and committees were appointed to secure help for serving and nursery.

Reports on attendance, new members, old members moved away, visitors, and finance, were given by Ruth Currie. We have lost two members recently, but have gained several to offset it. We are proud to say that we now have 107 active members.

The business meeting was adjourned and Mrs. Claude Ashley gave the devotional "God Calls for Everyone Who Thirsteth After Righteousness," from Isaiah 55:1-9. This was a great spiritual lesson for us all.

Josephine Davis said a lovely prayer.

Jerrene Couch, social secretary, gave our theme for the month, "Resolutions Speak." On this she suggested that we each resolve to read our Bible more and learn more about the different books and names in the Bible. Then she conducted a memory and spelling contest in which we all learned to say and spell the books in both the Old and New Testaments.

After this lesson, the hostesses served a very nice refreshment plate of sandwiches, potato chip, hot cocoa and cookies to the 44 members and hostesses.

Those present were: Lorene Hood, Lois Henry, Mildred Robertson, Elyse Eastland, Anna Mae Davis, Maxine Miller, Gladys Darrell, Trudie Gresham, Lara Mae Mullins, Faye Stewert, Buell Moore, Opal Gilliam, Ann iePearl Lusk, Brucile Nellums, Wynona Lusk, Josephine Davis, Mary Lou Jesselet, Pauline Ray, Mozelle Lowe, Mary Watson, Jerrene Couch, Katherine Doris Reeves, Mrs. Claude Ashley, Ailene Adkins, Bessie Rich, Doris Burson, Emma Lee Gordon, Elnora Trimmer, Marjerie Waldrip, Mrs. Certia Brooks, Arvis Pennington, Reva Brown, Eula Mae Herren, Allene Wheatley, Jimmie Lou Adkins, and the hostesses: Betty Jo Clanton, Ethel Lou Shelton, Jerry Spain, Ruth Currie, Berta Mae Bass, and Ordria Darden.

We had a wonderful Fellowship, and we would like to encourage all our members to make every effort to come to our socials. You don't know what a blessing you are missing!

**HASKELL VISITORS**  
Mr. and Mrs. Woody Wilson and little son of Merkel were visitors in Haskell Sunday. Mrs. Wilson is the former Frances English of Haskell.

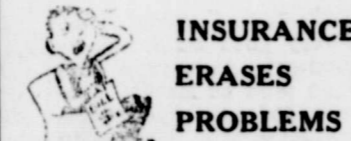
**T. R. ODELL**  
Attorney-at-Law  
ODELL BLDG.  
Rooms 4, 5, and 6  
Phone No. 303

**WHAT'S YOUR PROBLEM?**



If This Was Your Problem

Insurance Erases Problems  
You wouldn't have a thing to worry about! Our accident insurance coverage takes the brunt of property and monetary loss away from you. Call us for the important details, today!



**INSURANCE ERASES PROBLEMS**

**FLORENCE INSURANCE AGENCY**

Tonkawa Hotel Bldg.  
HASKELL, TEXAS

**Breakfast Important To Efficiency, Food Specialists Find**

Breakfast is a mighty important meal and if you want to be an efficient worker, you'll be wise to take the advice of the experts and add some protein-rich foods to your breakfast menu. Mrs. Vee J. Howie, county Home Demonstration agent, says that scientists in the USDA now have the evidence to prove that a protein-rich breakfast can do more to stave off fatigue hours longer than a morning meal with less protein.

Over a period of two years, says Mrs. Howie, the breakfasts tested ranged from a cup of black coffee to a hearty meal that included eggs and bacon. Those in the experiment consistently reported a sense of well-being when the breakfast contained the larger amounts of protein. Their feelings agreed with the record of their blood-sugar level, the physiological indicator of the body's response to different meals, used in the study.

The favorable feeling of well-being seemed to depend more on the amount and quality of the protein in a breakfast than on the calories from starch, sugar or fat, says Mrs. Howie. The influence of a breakfast with plenty of protein lasted even into the afternoon, when the workers in the test ate a light lunch of a sandwich and coffee.

It is an advantage to provide

**New Texas Highway Map Now Being Distributed**

Want to know the best route from Boca Chica to Texline? Motorists may have the latest official Texas Highway map just for the asking.

D. C. Greer, state highway engineer, states that the 1950 map is the best ever published. Anyone desiring a free copy should contact the Texas Highway Department.

The new map has been brought up to date to show all of the recent changes in the principal highways of the state. Complete mileage tables are shown.

Twenty-five full color pictures show points of interest in Texas and along the Pan-American highway in Mexico.

The highway department distributed three hundred thousand copies of the 1949 edition. An even larger demand for the new map is anticipated.

about one third of the day's protein allowance in the breakfast, says Mrs. Howie and some of it should come from such top-quality protein foods as milk, eggs, and lean meats.

Mrs. Howie suggests that a copy of the Texas Food Standard will help you figure out the daily food requirements for your family and you can get a copy from the local county home demonstration agent.

For quick results in buying, selling, use the Want Ads.

**Final January Clearance Sale**

**6 only Suits**  
Values to 49.50  
**\$15.00**

**1 Rack Dresses & Robes**  
Value to 29.95  
**\$7.00**

**3 only Coats**  
Values to 49.50  
**\$15.00**

**Special Group**  
Dresses, Robes, Pajamas Gowns  
**\$3.00**

**Coats**  
Value to 59.95  
**\$25.00**

**2 only Slacks**  
Value 8.95  
**\$3.00**

**Special Counter**

Gowns — Hats — Hose — Blouses — Dresses — Scarfs — Skirts and other odds and ends items

**\$1.00**

**The FASHION SHOPPE**

**Atkeison Food Store**

FOR BETTER MEALS FOR BIGGER SAVINGS  
**SHOP EVERY DAY AT ATKEISON'S**

**GOLD CHAIN**  
**FLOUR** Coffee Mug Free 25 Lb. Print Bag **\$1.79**  
**CRISCO** 3 Lb. Can **79c**  
**CIGARETTES** Your Favorite Brand Carton **\$1.69**  
**HERSHEY'S KISSES** Foil Wrapped Bag **23c**

**★ FRUITS AND VEGETABLES**

Golden Yellow **BANANAS** lb. **12c**  
Texas Green **CABBAGE** lb. **2 1/2c**  
Paschal **CELERY** lb. **10c**  
No. 1 Diamond **WALNUTS** 1 lb. pkg. **35c**  
Stewart Thin Shell **PECANS** 1 lb. bag **33c**  
Texas **ORANGES** 5 lb. bag **35c**

**★ MEAT DEPARTMENT**

Fresh Dressed **FRYERS** lb. **46c**  
Lean **PORK CHOPS** lb. **46c**  
Star **SLICED BACON** lb. **49c**  
**RIB ROAST** lb. **37c**  
Pressed **HAM** lb. **39c**

**★ FROZEN FOODS**

Welch **GRAPE JUICE** can **29c**  
**PERCH FILLETS** lb. **39c**  
1 Lb. Box **STRAWBERRIES** **44c**  
Patio In Corn Shucks **TAMALES** Doz. **47c**  
**TORTILLAS** 15 pkg. **22c**  
Mrs. Chesser's **FRYER THIGHS** lb. **79c**



**Bisquick** 20 Oz. **29c**  
**Peanut Butter** 12 Oz. **35c**  
**Sugar** Brown **12c**

Gold Chain Universal **LAYING MASH** 100 Lbs. **\$4.75**

**3 Cans HEINZ BEANS** With Covered Baking Dish **\$1.20 Value 89c**

Monarch or Hunt's Whole Peeled **APRICOTS** No. 2 1/2 Can **25c**

Dromedary **PITTED DATES** pkg. **25c**  
Gold Coast, Whole No. 2 1/2 Can **SPICED PEACHES** **29c**  
**Eagle Brand Milk** can **27c**

Sweet Sixteen **OLEO Plain** 22c **Colored** 32c

Gold Chain 25 Lb. Sack **DOG FOOD** **\$2.25**

ONION SETS AND PLANTS ARE HERE

PRICES GOOD JAN. 27-28-30  
• We Reserve The Right To Limit •

Phone 99

504 N. 2nd

**MOST POWERFUL Chevrolet Trucks Ever Built!**



Introducing a **Great Load-Master "105" Engine**

It's the most powerful truck engine in Chevrolet history! And it's here now to give you a new high in on-the-job performance for your 1950 hauling.

This great Load-Master Valve-in-Head engine with 105 horsepower enables you to speed up heavy-duty schedules — complete more deliveries in less time. And for light- and medium-duty hauling, Chevrolet's famed

Thrift-Master Engine also delivers more power with improved performance.

Come in and look over these new Chevrolet Trucks in the light of your own hauling needs. See all the important improvements for 1950. See how Chevrolet offers just the model you want — with more power and greater value than ever!



ADVANCE-DESIGN TRUCKS

PERFORMANCE LEADERS • PAYLOAD LEADERS • POPULARITY LEADERS • PRICE LEADERS

**BURTON-DOTSON CHEVROLET CO.**

510-12 NORTH FIRST

PHONE 2-J



# WANT AD SECTION

for BUYING SELLING TRADING RENTING LOANS SERVICE

**FOR RENT—**  
FOR RENT—2 room yard apartment. Mrs. J. S. Boone. 306 N. Ave. B. 4-p

**MISCELLANEOUS—**  
RED FLOOR SWEEP, \$1.50; Waxed Sweep \$1.75. Guaranteed to be good as any you can get. We deliver promptly. Chas. Frierson. Phone 13-W. ttc

**CUSTOM DISC GRINDING**, one-ways and tandems, without tear-

ing down the plow, one dollar per disc. Rule Tractor Company, Phone 71. Rule, Texas. 25-ttc.

**PERSONAL—**  
LET ME keep your children while you work, shop or attend club. 25 cents per hour or \$1.00 per day. Mrs. Joe B. Scrivner, 206 South Ave G. 3-4p

**NOTICE—**We buy used furniture of all kinds and miscellaneous items of any value. H-H Venetian Blind Co., 1308 N. Ave. E. 2tc

**REAL ESTATE—**  
FOR SALE—Seven-tenths acres of land; well, pump, storage tank, all set up for irrigation; good 3-room house on tract. Priced to sell right. O. L. Moore, Haskell. 41-4-p

**FOR SALE—**Homeplace of Mrs. B. E. Hattox. 6 rooms and bath, stucco house, close in. See Payne or Gaston Hattox at Hattox Hardware Store. 46-ttc.

**WILL BUY—**Production, Producing Royalty, or will drill attractive wildcat. James T. Cumley 415 Staley Building, Wichita Falls Texas. 1 4tp

**ONE VACANT LOT—** Southeast corner lot 140x104 feet on water, gas, electric and sewer line. See A. D. English or Phone 496-W. 1p

**FOR SALE—**10 young milk cows at my barn. Buddy Thompson. 4-5p

**FREE 75 MILE DELIVERY** Free Send Us Your Bill For Big Savings 210 lb. Composition Thick Butt Roofing, Per Sq. \$ 6.45 2x4 & 2x6 No. 2 Grade Eased Edge & Double End Trimmed. 8.95 15 lb. Felt Per Roll 3.00 1x8 S4S No. 2 8.95 2'x8x5/2 12 Light Weather Stripped Window Unit (Complete with Screen - Ready to Install) 19.75 Asbestos Siding (John Mansville) 9.90 We can furnish Complete Line Building Material. Let our experienced personnel save you money by figuring your material bill. All prices cash & include 75 Mile Delivery Free. Call—Wire —or Come In. Lone Star Lumber & Builders Supply, Phone 4381, 1818 Pine Street, Abilene, Texas.

**HOUSEHOLD GOODS—**  
**SPECIAL—**Let us brighten up your home with custom made Venetian blinds. Fourteen decorative colors to choose from. H-H Venetian Blind Co. 2tc

**FOR SALE—**150 gallon Butane tank and pipes. Complete bathroom fixtures. Hot water heater and kitchen sink. Electric water pump. Linoleum rug. 8 foot chicken wire. Light fixtures. Telephone 110. 2-4p

**NEW SEWING Machines.** Domestic, New Home and Mercury in consoles, desk models and portables also factory rebuilt. Singers, good as new. We have a few used machines ready to go. Liberal trade in on your old machine. We can repair your old machine.—Boggs & Johnson.

**MATRESSES.** Do you rest well at night? We can make that old mattress new again. Our inner-springs are better in the long run. We pick up and deliver. One day service. Phone 44-J.—Boggs & Johnson.

**STRAYED—**  
STRAYED—Six Hereford heifers, weight 350 lbs. Branded PR left hip. If seen notify W. P. Russell, Rochester, Texas. 3-4p

**BUSINESS SERVICE—**  
FLOOR SANDING—Sand your own floor. See me for sanding machine. O. W. Tooley. 4-8-p

**WANTED—**One-waying, sowing, rebuilding old terraces, or building new terraces. AAA has plenty of money for new terraces. Lets spend all of this money. See Jim or Rice Alvis. 41-ttc.

**THERE IS NO SUBSTITUTE FOR EXPERIENCE—**Bring us your Income Tax summary or call at our office and get one of our printed, easy to fill in forms. We believe with our experience, our office is in position to render you a worthwhile service, for the nominal price we would charge you. Courtney Hunt. ttc

**SEWING MACHINE parts and repair.** We have a large stock of parts for sewing machines. We clean and repair your old machine or will sell you parts you need. — Boggs & Johnson.

**PENCILS—** Writing, Copying, Indelible, Drawing, and Marking Pencils. The Free Press.

**SEWING MACHINES repaired.** If your sewing machine needs fixing bring it to Mrs. Cofield's Ready-to-Wear Shop on west side of square. 6-ttc

**CUSTOM MADE—** Venetian blinds. For free estimate, call 394. White Auto Store. 16-ttc

**FURNITURE—** If you need anything in furniture, come to see us before you buy. We have a nice stock on hand, priced to sell. — Boggs & Johnson.

**USED CARS—**  
BARGAINS in used cars. Fords and Chevrolets. Thurman Bynum at Texaco Station. 30-ttc.

**FRYERS—**  
FRYER SPECIAL for Friday and Saturday. White Leghorn fryers 50c each, supply limited. Trice Hatchery. 4-p

**FOR SALE—** Fryers. See W. R. Turpin, 915 South 1st St. 3-5p

**BABY CHICKS—**  
BABY CHICKS — All leading breeds, day old and older. All pullets, all cockrels, or just as hatched, also hybrids. New low prices. Stamford Hatchery and Poultry Farm, Stamford, Texas. 4-ttc

**COLONIAL CHICKS—** Write today for FREE CATALOG and prices, or see our representative in Haskell, A. T. Ballard, Market Poultry & Egg Co. COLONIAL HATCHERIES, Sweetwater, Texas. 50 7tc

**FEED FOR CHICKS,** hens, calves, goats, rabbits, dogs and hogs. Trice Hatchery. 3p-4

**FOR SALE—** Easy Spin-Dryer Washing Machine, good as new. Reasonably priced. See me at Holden's Funeral Home. Covell Adkins. 50 ttc

**FEED AND SEED—**  
FOR SALE—Limited amount of new Nortex clipped, tagged, tested and treated seed oats.—Clifton Grocery and Grain. 3p-4

**VIGORO** the complete plant food for lawns and flowers. Trice Hatchery. 3p-4

**I AM still booking** those fine seed at \$3.10 per bushel for 6 to 29 bushels; \$3.00 for 30 bushels or more, qualla 60. R. A. Bradley, Haskell, Texas. 40-ttc.

**FOR SALE—**Span of mules, age 4 and 5, well broke for work. Will sell or trade for combine. 2 miles south Sagerton. F. W. Ender. 3-4p

**WANTED—**Have pasture for about 100 head of cattle 1/4 mile north of Mattson school house. Mrs. R. B. Guess. 4-p.

**FOR SALE—** Nine registered Hereford bulls from 12 to 14 months old, eleven registered Hereford heifers 12 to 14 months old. Also one B Farmall tractor, in good condition, new tires. Geo. E. Free, 12 miles southeast of Haskell, Route 3. 3-4p

**STRAYED—**  
STRAYED—Six Hereford heifers, weight 350 lbs. Branded PR left hip. If seen notify W. P. Russell, Rochester, Texas. 3-4p

**FOR SALE—** Single 16 inch breaking plow for Ford tractor; has plowed only 20 acres. George Pool, Rule, Tex. 4-p

**FOR SALE—** Farmall H and Allis Chambers combine — also 8 disc John Deere one way. See C. G. Hammer. 4-5-p

**FOR SALE—** One 8-ft. Air Motor windmill with 40 foot steel tower. See H. C. King or Jim Darden, Haskell, Texas. 3-4p

**FOR SALE—** Latest model F-30 Farmall. Very good condition, 4-row equipment, new type tool bar. Can be seen at Haskell Implement Co. Priced very reasonable. Lane Bros. 3-4tp

**FOR SALE—** 40 model Oliver 60 tractor; 46 model Oliver 60 tractor for sale; 2 fine disc one-ways for sale. W. B. Hill, Route 1 Weinert. 1-4tp

## Fryers And Broilers In Plentiful Supply

Farm prices in most of the major fryer and broiler producing areas of the Southwest have dropped four to five cents per pound since early January and they now are averaging about 10 cents per pound lower than one year ago.

The southwest area office of PMA's Food Distribution Programs Branch in Dallas reports that supplies are plentiful and they are urging consumers to take advantage of the situation. The lower prices, they say, can help the homemaker balance her family's food budget and at the same time help the producers who report that present selling prices are below their cost of production.

The extension foods and nutrition specialists of Texas A. & M. College, say that fryers and broilers can be used to take care of many of the meat requirements for the family. They point out that there are many different ways to prepare fryers and broilers for the family table and recommend that consumers try several of the different methods of preparation. They are always good fried, baked or broiled but try barbecuing a few. The specialists suggest that you visit your local county home demonstration agent's office and pick up a few of the recipes for preparing chicken meat dishes.

They say now is a mighty good time to store some extras in the freezer-locker box or the home freezer. They will come in mighty handy when unannounced guests drop in for lunch and, too, the family will appreciate changes in the menu. They conclude that the wise shopper will look for these poultry bargains on the next trip to the grocery store.

**FARM MACHINERY—**  
FOR SALE—Single 16 inch breaking plow for Ford tractor; has plowed only 20 acres. George Pool, Rule, Tex. 4-p

**FOR SALE—** Farmall H and Allis Chambers combine — also 8 disc John Deere one way. See C. G. Hammer. 4-5-p

**FOR SALE—** One 8-ft. Air Motor windmill with 40 foot steel tower. See H. C. King or Jim Darden, Haskell, Texas. 3-4p

**FOR SALE—** Latest model F-30 Farmall. Very good condition, 4-row equipment, new type tool bar. Can be seen at Haskell Implement Co. Priced very reasonable. Lane Bros. 3-4tp

**FOR SALE—** 40 model Oliver 60 tractor; 46 model Oliver 60 tractor for sale; 2 fine disc one-ways for sale. W. B. Hill, Route 1 Weinert. 1-4tp

Home fires are more numerous during the winter months. A major cause—home heating equipment is operating at capacity or above and careless handling of this equipment increases the chances for fire.

Simplify your record keeping with Card Index Filing System. All sizes, metal, wood, fiber. Complete with cards and index. Free Press.

## BABY CHICKS

Beginning February 7, we will make weekly deliveries of baby chicks to Campbell's Produce, Haskell. This will enable our customers to get their chicks faster and in first class condition.

We will also make stops at McConnell and Weisner. Send for price list and get your order in immediately.

## HILLCREST POULTRY FARM

Hamlin, Texas J. B. Daniel, Mgr. Ph. 102-34  
This ad good for \$1 with order of 100 chicks!

## Durwood Otis JACOBS and HAWKINS

Announce the Purchase Of

## Kennedy's Texaco Station

ON SOUTH AVENUE E ONE BLOCK SOUTH OF THE COURTHOUSE

We have purchased and are now operating the above station and want to solicit the continued patronage of the present customers and invite the general public to visit the station when in need of anything in our line.

We will carry a complete line of Texaco products, many popular brands of oil, accessories, do washing, tire repair, and greasing and will be open from early until late for the convenience of those we serve.

Visit us for courteous, prompt and efficient service.

Your business will be sincerely appreciated.

## Camp Kennedy Station

Successor to Kennedy's Texaco Station

We pick up and deliver flats

DURWOOD JACOBS Phone 4 OTIS HAWKINS

## "OK" USED CARS

Below are a few of the bargains we have to offer in Used Cars this week.

Many others on our lot. Come and see them.

### CHEVROLETS

- 1949 2-door, Radio and Heater
- 1948 4-door Sedan — R & H
- 1947 Club Coupe, Radio and Heater
- 1946 Club Coupe, Radio and Heater
- 1941 2-door, Good
- 1940 2-door, Good
- 1938 2-door, Good

### FORDS

- 1948 2-door, Radio and Heater
- 1941 2-door, Clean
- 1933 2-door, Good

### PICK-UPS

- 1947 International
- 1940 Chevrolet
- 1939 Chevrolet
- 1938 Chevrolet

## NEW 1950 CHEVROLET PASSENGER CARS AND PICK-UPS IMMEDIATE DELIVERY.

Let our Service Department figure your next repair job. We are equipped with trained mechanics and the latest tools to do you a good job at reasonable cost. All new Chevrolet Parts and Accessories used in repair work.

## Burton-Dotson Chevrolet Co.

"Where Friend Meets Friend"

R. L. BURTON Haskell, Texas OLEN DOTSON

## THERE'S NO QUESTION about SAVINGS



Wapco No. 2 Can	Cut Green Beans	19c	Wapco No. 2 1/2 Can	PEACHES	25c
Tiny Tot No. 303 Can	Tendersweet Peas	28c	Heinz	BABY FOOD 3 cans	25c
Monarch Can	PORK & BEANS	10c	Dromedary	DATES box	25c
Kuner's No. 2 1/2 Can	TOMATOES	19c	Quality	FLOUR 25 lb. sack	1.49

**RECIPE OF THE WEEK**  
HUSBAND-TESTED RECIPE  
by Mary Lee Taylor

**Thousand Island Dressing**  
1/2 cup But Milk 2 teaspoons lemon juice  
1/2 cup chili sauce 1/4 teaspoon salt  
1/2 cup salad oil 1/2 teaspoon pepper  
Put all ingredients into jar. Shake well. Cover and keep in refrigerator. Use on green or vegetable salads. Makes 1 cup.

**PET MILK**  
2 large cans 25c  
Lemons lb. 20c  
Salad Oil Pt. 35c

**FOR BETTER NUTRITION**  
EAT MORE VEGETABLES

**SPUDS** 5c lb.  
**GRAPES** 15c lb.  
**YAMS** 8c lb.  
**ORANGES** 12c lb.  
**CAROTS** 2 bunches 15c

## O'Neal's Food Store

PHONE 28 WE DELIVER



# NEWS OF INTEREST to WOMEN

**St. Paul's Chapel H. D. Meets In All Session**

Dennis Chapel Home Demonstration Club met in the home of Cecil Hutchinson for an all session meeting. Each member brought a covered dish for the group. The group worked on leather and belts, with the regu-

lar program being held during the session. C. Childress was elected delegate.

The bargains listed in Free Want Ads each week.

**C. Cahill & Son**  
Insurance - Bonds  
Real Estate - Rentals  
Phone 51-J

**Liberty H. D. Club Meets With Mrs. J. B. Marr**

Regular meeting of the Liberty Home Demonstration Club was held in the home of Mrs. J. B. Marr recently with seven members and one visitor present.

The meeting opened with members joining in a song, after which the Club Prayer was repeated in unison.

Committee chairmen were appointed by the president, and 1950 recommendations by the Council were read and accepted. Mrs. Vee J. Howle, county Home Demonstration Agent, gave a demonstration on correct measurement for foundation pattern.

**Hutchinson-Cox Wedding Vows Read In Bride's Home**

Miss Eunice Hutchinson became the bride of Jimmy Cox in a double ring ceremony Tuesday January 10 at 4 p. m. at the home of the bride's parents, Mr. and Mrs. Robert E. Hutchinson. The ceremony was read by Rev. H. G. Hammer, Baptist minister of Haskell.

Only attendants of the couple were Mr. and Mrs. R. L. Cox, Jr. The bride was dressed in a navy blue taffeta frock. Her corsage was of white carnations. For something old she wore a necklace belonging to her mother.

Refreshments of sandwiches, cookies and coffee were served to Mesdames Wisdom, Pogue, Lytle, LeClaire, Ragsdale, Davis, Arnold, and the hostess.



MR. AND MRS. J. A. FELKER —Photo by Blom

**Sons And Daughter Honor Parents On Golden Wedding Anniversary**

On the occasion of their 50th wedding anniversary, Mr. and Mrs. J. A. Felker of Gainesville, Texas, were honored by their sons and daughter with a come-and-go tea, Sunday January 8 in the home of Mr. and Mrs. Viars Felker in this city.

All of the children and grandchildren of the Gainesville couple were present with the exception of Mr. and Mrs. Marion Felker and daughter.

More than seventy relatives and friends registered during the afternoon.

Former residents of Haskell, Mr. and Mrs. Felker moved to

## Rochester News

A pink and blue shower was given Tuesday, Jan. 17 at the home of Mrs. Ben Williams, honoring Mrs. Dayle Graham.

Mrs. Andrew Reeves, who recently suffered an attack of pneumonia, is recovering nicely.

Mrs. John Wolfe is in an Abilene hospital, where she is receiving treatment for a fractured hip. She will be brought home this week.

Mrs. Chester Speck spent last week in Abilene with Mrs. Pearl Ballew and children.

Mrs. Robert Speck and Mrs. Palo Speck visited Mrs. John Wolfe, patient in an Abilene hospital, last week.

Mrs. Luda B. Hills of Rule was a recent visitor in the home of Mrs. Sallie Fields and Mr. and Mrs. J. H. Walton.

Mr. and Mrs. Joe Hudson have moved back to Rochester from Gorman, where they have been living for several years.

Dalton Hindsley and family, who have been living in Oklahoma for the past two years, have moved to their home four miles southwest of Rochester.

Mr. and Mrs. Ben Williams have returned from a visit with relatives in Los Angeles, Calif.

Jack Gauntt and family have moved to the farm of his grandmother, Mrs. Mattie Gauntt east of Rochester, and he will operate the farm this year.

Mr. and Mrs. Jimmie Adams are moving to a farm in the Jud community.

## FINAL January Clearance

This is our Final Clearance on All Fall and Winter Merchandise. We are reducing our prices again—so take advantage of these great SAVINGS!

- WINTER COATS AND SUITS
- 59.75 values now . . . \$35
- 49.75 values now . . . \$25
- One Group . . . \$20
- Short Coats, values to \$49.75 \$25
- Dresses, values to \$29.75 . . \$10
- Dresses, values to \$29.75 . . \$8
- Dresses . \$5 Dresses . \$3

Drastic Reductions in Skirts, Blouses, Weskits, Gloves and Many Other Items.

NO ALTERATIONS — ALL SALES FINAL  
**THE PERSONALITY SHOPPE**

Following the wedding, a reception was held at the home of Mr. and Mrs. R. L. Cox, Jr., after which the couple left for a wedding trip to Dallas. For her going away costume the bride wore a navy blue dress with pink and navy accessories.

Those present for the wedding and reception were Mr. and Mrs. R. E. Hutchinson, Lester, Christine, Jean and Jerry; Mr. and Mrs. R. L. Cox, Sr., Caroline and Charlie; Mr. and Mrs. R. L. Cox, Jr., and Wilma Caroline; Mr. and Mrs. Cecil Hutchinson and Doris Ann; Mr. and Mrs. J. M. Humphries, Mr. and Mrs. Paul Fitzgerald and Cora Jan.

Washable flannel shorts introduced by St. Louis sportswear designers will make for easy ironing of the sports wardrobe this Spring and Summer. Tailored in pastel colors for wear into the mild weather, the sports shirts are styled minus shoulder pads and designed with large pockets particularly handy for active sports. Pearl button trim down the front of the blouses makes them right for casual wear with separate skirts also.



By **Frank C. Scott, M. D.**  
**SPECIALIST**

Diseases and Surgery of the Eye, Ear, Nose, Throat — Fitting of Glasses

Complete Test for Allergic Conditions  
OFFICE HOURS:  
9:30 to 11:30 a. m. and 2 to 4 p. m.  
Office: Scott's Clinic

**Plans On Paper Helpful In Rearranging Furniture, Home Specialists Point Out**

Now that the holiday season is history, homemakers may be interested in doing a rearranging job on the furniture in the home. Time and effort can be saved on this job by doing the rearranging on paper before actually moving the furniture, say the extension home management specialists of Texas A. & M. College.

They suggest grouping furniture as a good starting place. The larger pieces of furniture such as the piano, the davenport or beds can usually be arranged to follow the lines of the room. They say if the larger pieces can be centered in suitable—wall space, that it not only makes for a better arrangement, but it gives you a chance to show each piece to better advantage.

They point out that putting the upright piano across a corner diagonally requires more floor space and gives the room a less orderly appearance. The smaller pieces and the larger chairs may however be placed at an angle. Upholstered chairs especially are an inviting if they aren't lined up in stiff, straight rows.

Furniture can be placed parallel to the wall without pushing it back tight against the wall. In fact, the appearance may be better if it is kept away from the wall. This arrangement helps make a large room with a limited amount of furniture look cozier.

Most homemakers like to move the furniture around a bit and it can be fun (but the specialists say, if you try it on paper first it will help you get the best possible results with the least possible effort. Your local county home demonstration agent will be glad to furnish you material on the subject.

**IS YOUR HOME UNDER-INSURED FOR FIRE INSURANCE?**

LET US CHECK YOUR NEEDS!

**John F. Ivy**  
Insurance Agency

Jimmie Michael spent several days recently in the Rio Grande Valley with his brother and family. Mr. and Mrs. Bill Michaels, Mr. and Mrs. Junior Duncan moved last week to a farm west of Rochester, near Jud.

## MOVED

I have discontinued my music shop at the old location but will continue in the new and used piano business at my residence. This will allow me more time for tuning and repairing. I sold Frazier Radio and Record Shop my small musical goods such as reeds and strings for all instruments and would be glad for my old customers to call there for their musical needs.

**FAGAN MUSIC SHOP**  
ELBERT FAGAN  
706 No. Ave H. Phone 370-W

## SEWING MACHINES FOR SALE

Any Kind: Treadle, Electric, Portable; New or Used. Just drop me a card for free demonstration.

**Bennett's Sewing Machine Mart**  
SECOND FLOOR, FABRIC MART  
Box 577  
ABILENE, TEXAS  
49-4c

BEFORE YOU MAKE ANY DECISION—LET US SHOW YOU THESE BEAUTIFULLY STYLED NEW CARS

# COME SEE CHRYSLER'S New, New, 1950 Styling!



There's beauty, beauty, beauty everywhere you look! And it's all brand-new beauty inside and out! Chrysler for 1950 is boldly and dramatically re-styled! Deliberately re-designed to be the Beauty Queen of the road, a classic of the long, low, and lovely. There are wonderful new nylon fabrics . . . smart new trim. Most of all you'll be impressed by the fact that Chrysler's kind of beauty—unlike all others—truly reflects the sound

engineering and the solid comfort and safety inside! The extra headroom, legroom, shoulder-room! The safer visibility! The chair-height seats! All the extra convenience of the easiest of all cars to enter and leave! See and drive this great car at your Chrysler dealer's today. It's the smartest, most comfortable car we ever built and the sweetest performing with its wonderful Spitfire Engine with the completely Waterproof Ignition System.

BEAUTIFUL 1950 **CHRYSLER** TODAY'S NEW STYLE CLASSIC  
**COX MOTOR COMPANY**  
Ave D & South 2nd Haskell, Texas

## ALL SET for Sleep Comfort

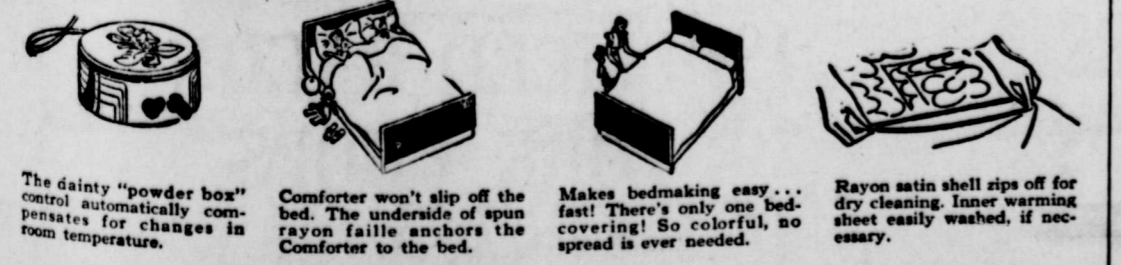


**Westinghouse Electric Comforter**  
with the Automatic Watchman Control  
*The last word in Sleep Lummy*

Just set the Automatic Watchman Control and you're all set to sleep in mellow warmth the whole night through. One lightweight, Westinghouse Electric Comforter is all you'll ever need on the coldest nights. The bedside control, dainty as a powder box, will automatically maintain the selected degree of warmth regardless of changes in room temperature.

The lush rayon satin cover is available in three rich, gorgeous colors: Rose, Blue or Green. It is easily dry-cleaned and the inner warming sheet can be removed for laundering.

The mothproof Comforter, 72" x 86", allows for ample tuck-in. Ask for a demonstration of this wonderful Electric Comforter at the West Texas Utilities Company or at your local electric appliance dealer.



The dainty "powder box" control automatically controls temperature for changes in room temperature.  
Comforter won't slip off the bed. The underside of spun rayon faulle anchors the Comforter to the bed.  
Makes bedmaking easy . . . fast! There's only one bed-covering! So colorful, no spread is ever needed.  
Rayon satin shell zips off for dry cleaning. Inner warming sheet easily washed, if necessary.

**West Texas Utilities Company**

## ANNUAL HALF-PRICE SALE

**Dorothy Gray**  
Cleansing Creams



Regularly . . . \$2

**\$1 each**

Regular \$4 size now \$2

**DRY-SKIN CLEANSER**  
(Cream 683)

**SALON COLD CREAM**  
(for normal or young skin)

**CLEANSING CREAM**  
(for oily skin)

\$3.50 size for \$2

All prices plus tax

LIMITED TIME ONLY  
**Oates Drug Store**



### Miss Winnie Faye Bledsoe Is Bride Of Max Bowen In Ceremony January 15th

Miss Winnie Faye Bledsoe of Dallas, daughter of Mr. and Mrs. Slower Bledsoe of this city, became the bride of Max Bowen of Dallas, in a ceremony read at the home of the bride's parents Sunday afternoon January 15 at 3 o'clock.

Rev. H. H. Sego, uncle of the bride read the double ring ceremony before an improvised altar decorated with pink gladiolas, pink carnations and pink candles. Preceding the ceremony Delight Ash sang Always.

The bride wore an ice blue satin street length dress with sweetheart neckline, fitted bodice and flared skirt with peplum effect. For something old she wore a

necklace and engagement ring belonging to her mother. For something borrowed she carried a white Bible belonging to Delight Ash. For something new she wore ruby ear studs.

Miss Martha Wallace of Wichita Falls was matron of honor. She wore a brown taffeta street length dress and a corsage of yellow carnations.

Darward Elmore of Dallas, brother-in-law of the groom, was best man.

After the ceremony a reception was held at the home of the bride's parents. Mrs. Taylor Alvis of Wichita Falls, aunt of the bride, presided over the guest book. Mrs. E. M. Derr of Haskell, aunt of the bride, and Miss Arlis Bowen of Dallas, sister of the groom, served punch.

For her going away costume, the bride wore a suit of grey and navy, with navy accessories.

After a short wedding trip, Mr. and Mrs. Bowen will live in Dallas, where both are employed.

The groom is the son of Mr. and Mrs. O. H. Bowen of Haskell, and both he and his bride are graduates of Mattson High School.



MR. AND MRS. MAX BOWEN Photo By Blohm

### Mrs. Noveda Hunt Hostess for H. D. Club Meeting

The regular meeting of the Center Point Home Demonstration Club was held at the club house with Mrs. Noveda Hunt as hostess. Sixteen ladies were present.

A very interesting business session was held, with several matters being discussed. Mrs. Lee Cornelius gave an instructive talk on Textile Paintings.

A plate of devil food cake topped with whipped cream, and coffee was served to the following:

Mesdames Doris Hannsz, Claudia Mae Bland, Emma Bland, Virginia Dornier, Oleta Pennington, Sallie Patterson, Zedie Smith, Loren Fouts, Ida Farrel, the hostess, Mrs. Hunt, and a visitor, Mrs. Cornelius.

### Fort Worth Fat Stock Show Opens This Week End

FORT WORTH, Jan. 27 — Its Stock Show time in Fort Worth

Beginning with the colorful, traditional Western parade on Friday afternoon and the opening performance of the rodeo that night with Gov. Allan Shivers present, the Southwestern Exposition and Fat Stock Show will be in progress through Sunday, Feb. 1.

There will be rodeo performances at 2 p. m. and 8 p. m. daily, and a big, free attraction—the Southwestern Square Dance Championship Contest, open to teams from anywhere, no entry fee, \$1,000 in prizes, each afternoon at 4:30. Another free attraction will be the West Texas Art Show, presenting the paintings of leading artists.

Fifty-three cities — the greatest number in the Show's history — will have special "days," bringing their bands and Cowgirl Sweethearts. Future Farmer and Future Homemaker Day is Saturday, Jan. 28; Oklahoma Day, Sunday, Jan. 29; 4-H Club Day, Monday, Jan. 30; Veterans and American Legion Day, Wednesday, Feb. 1.

The rodeo, besides presenting the greatest cowboy contestants and the wildest of stock, will offer the greatest horse show the Southwest has ever seen and six spectacular specialty acts.

Entries of cattle, sheep, swine, poultry, turkeys and rabbits are the heaviest the Show has ever known and cash awards offered are the largest in the exposition's 54 years.

So every sign points to the most successful season ever.

Mr. and Mrs. Abdon Holt and David Smith of Lubbock were visitors the first of the week in the home of their father and brother, Mr. and Mrs. N. T. Smith and Mr. and Mrs. Jason W. Smith.

### Homemaking Chores Made Easier By Work Simplification

Home demonstration club members in eight central Texas counties know that homemaking chores can be made easier, because they are using simplified methods in their own homes. They have studied each job, step by step, and have then used this information to work out the simplified, time and labor saving methods they now employ.

Last winter, says Bess Edwards, extension district agent, several leadership training schools were held in her district by the home management specialists of Texas A. & M. College for the purpose of training county home demonstration agents and work simplification leaders from the local clubs. These local leaders in turn held meetings and gave demonstrations in their clubs for the other members and before the year was over a lot of things had been done.

In Hood county, the 17 trained

leaders held demonstration meetings in seven different communities with 210 women attending. Their work was featured by the county home demonstration council when a float on work simplification was entered in a county-wide reunion parade. It was a winner. They have simplified such household chores as ironing, dish washing, bed making and the arrangement of utensils in the kitchen.

As a result of the training program in Hill county, more than 250 women have worked out new methods for doing at least one house keeping job. The trained leaders gave demonstration to 578 women in the county. They included in their work the home laundry, portable shelves for the kitchen cabinets, rearrangement of sewing centers, ironing aids and many have rearranged their kitchen equipment to save steps and labor.

In McLennan county, emphasis has been placed on better arrangements for the home sewing center, bringing the pressing equipment into the center and organizing the garment construction job in an orderly manner to save time and unnecessary handling. Simplified methods have been used by 496 home demonstration club members. Twenty-five families have improved or added a business center to their home. To save time in setting the family table, women have learned how to make and use metal trays. The local county home demonstration agent conducted a training school for 38 leaders and the result—334 trays have been made.

The 40 women and 4-H girls who were trained in work simplification in Palo Pinto county

through demonstrations trained 302 others. The program has featured better ways to do the family work, converting a baby carriage into a cart that is used for transporting and hanging the wash, a less back-breaking and adding and rearranging kitchen cabinets.

Work simplification has been applied by 143 county homemakers to their hold tasks. Five families added business centers, 13 assembled and are using hold kits and six have added ironing boards to their equipment.

In Falls county, home slides have been made of kitchen improvement work set out by Mrs. A. G. Gudering, Satin community.

Just a 15 Min. Drive to The

**H-H Drive-In Theatre**  
On Stamford Hiway  
Fri., Sat., Jan. 27-28

**THE Michigan KID** STARRING **Jon Hall**  
Sun-Mon-Jan. 29-30

Robert Stack Edmond O'Brien "FIGHTER SQUADRON"  
Tue-Wed-Thur

**ABBOTT & COSTELLO** with **Frankenstein**  
LOU CHANEY BELA LOGOSI

FREE: 1 gallon of gasoline to keep your heater running on cold nites.

• A Speaker for Every Car

**You are Invited to Meet Mr. J. A. Etheridge**

**The KAHN Tailoring Specialist**

He will be at our Store on Friday January 27

with a large display of New Suitings and Coatings for Ladies and Gentlemen. Stop in and consult him . . . let him take your measure . . . for delivery when you want it.

**FELKER Men's Wear**

**New Spring Cottons**

Just received a new shipment of New Braunfels Comal Cottons, Chambray, Gingham, Checks and Plaids.

Ideal for all Spring and Summer wear. Large, small and medium. Plaids and checks.

See these new materials. 36 inch wide. Fast color and Sanforized.

Special **79c yd.**

**BLANKETS**

1 lot Double bed Blankets. 50% Wool. Heavy satin bound edge. 72x84 size. Pepperell brand.

**\$7.95**

<b>SHEETING</b> Garza—9-4 Bleached, none better made in Texas. Real value, yd.	<b>TOWELS</b> Heavy Turkish bath towels 20x40 size. Special 2 for
<b>79c</b>	<b>\$1.00</b>

<b>Piece Goods</b> 1 lot dress goods. Cordie Chambray, Sun Rayon, Gilbrae Dress Rayon, all good patterns, value to \$1.49 yr.	<b>Work Clothes</b> Dickie Army twill Pants and Shirts. Grey, Sun Tan and Forest Green colors. All sizes. Suit	<b>Corduroy Coats</b> 1 lot boys dress corduroy coats Sizes 4 to 12. To close out. \$7.95 value.
<b>79c yd.</b>	<b>\$6.40</b>	<b>\$4.95</b>

**Men's Sport Coats And Jackets**

1 lot Men's dress sport coats. Solid and two tone including 2 Corduroy. All good sizes. Values to 22.50. NOW

**\$10.00**

Men's and Boys Winter Jackets. All good styles in short and coat lengths. All new styles and materials. Priced at

**\$4.95 up to \$14.50**

**JONES DRY GOODS**  
— The Cash Store —

**A Moving Sale**  
EVERYTHING TO GO!

**Children's Dresses Reduced 20%**

BOY'S SUITS, \$8.95, reduced to \$5.95  
ALL T-SHIRTS 75c and \$1.49  
ALL MATERIALS — Chambray, Gingham, Dotted Swiss and Batiste—AT WHOLESALE COST

1 GROUP DRESSES \$4.98 to \$6.98  
1 RACK DRESSES \$8.98  
\$2.95 GLOVES \$1.95  
CHILDREN'S COATS \$3.98 and \$9.95  
CHILDREN'S PAJAMAS \$1.00 Pair

All Hats \$1.00 each

**COFIELD LADIES AND CHILDRENS SHOP**

**Modern Way Food Store**  
WE RESERVE THE RIGHT TO LIMIT QUANTITIES

Saxet <b>CREAM PEAS</b> Tall Can <b>10c</b>	Kraft's Miracle Whip <b>SALAD DRESSING</b> Pint <b>29c</b>
Mayfield—Cream Style <b>CORN</b> No. 2 Can <b>10c</b>	Kraft's Miracle Whip <b>SALAD DRESSING</b> Quart <b>49c</b>
Del Haven <b>HOMINY</b> No. 2 Can <b>10c</b>	Diamond <b>SOUR PICKLES</b> Quart <b>19c</b>
Rio Grand—Cut <b>GREEN BEANS</b> No. 2 Can <b>15c</b>	Dromedary <b>PIMENTOS</b> 4 Oz. Can <b>14c</b>
Kett's Kettle <b>PURE CANE SYRUP</b> 1/2 Gallon <b>39c</b>	Kimbell's—In Syrup—Sweet <b>POTATOES</b> No. 2 1/2 Can <b>19c</b>
Crystal White Penick <b>SYRUP</b> Pint Bottle <b>10c</b>	Hunt's <b>TOMATO JUICE</b> Tall Can <b>10c</b>
Softasilk <b>CAKE FLOUR</b> Large Box <b>35c</b>	Franco-American <b>SPAGHETTI</b> Tall Can <b>14c</b>
<b>BISQUICK</b> Large Box <b>44c</b>	Yellow Hybrid <b>POPCORN</b> 1 Lb. Package <b>19c</b>
<b>BISQUICK</b> Small Box <b>25c</b>	Sterling <b>PAPER TOWELS</b> Roll <b>10c</b>
Betty Crocker—Apple <b>PYEQUICK</b> Box <b>39c</b>	Charmin <b>FACIAL TISSUES</b> 300 Count <b>19c</b>

**FRESH PRODUCE**

Firm Pink Mexico <b>TOMATOES</b> Pound <b>19c</b>	Hormel's Minnesota <b>SLICED BACON</b> Lb. <b>34c</b>
Large Size <b>AVOCADOS</b> Each <b>20c</b>	<b>PORK CHOPS</b> Lb. <b>39c</b>
California <b>CARROTS</b> 2 Bunches <b>15c</b>	Hormel's 1 Lb. Sack <b>SAUSAGE</b> Lb. <b>39c</b>
White or Yellow <b>ONIONS</b> Pound <b>10c</b>	Meadowlake Uncolored <b>OLEO</b> Lb. <b>25c</b>

**MEAT MAKES THE MEAL**

Re  
ever  
stock  
ST  
FRA  
I  
PAPI  
SHI  
Wear  
high



Check results in buying, selling, use the Want Ads.

# Record Sale

The largest Record Sale we have ever had.

The greater portion of our entire stock of single record on sale, 30c each or

## 4 for \$1.00

Also All Classical Albums  
**50% OFF**

STARTS FRIDAY AND CONTINUES THROUGH FEB. 15th

### FRAZIER'S RADIO & RECORD SHOP

Phone 431-W

## Political Announcements

The Free Press is authorized to announce the following candidates for office in Haskell County, subject to the Democratic primaries.

- For Representative, 113th Legislative District:**  
Clyde Whiteside. (Second Term)
- For District Judge, 39th Judicial District:**  
Ben Charlie Chapman. (Re-election)
- For County Judge:**  
O. E. Patterson. (2nd elective term)
- For District Attorney, 39th Judicial District:**  
Curtis Pogue.
- For Sheriff:**  
R. M. (Bob) Cousins. (Second term)
- For County Superintendent of Public Instruction:**  
Mrs. Iva Palmer. (Re-election.)
- For County Treasurer:**  
Byron Wright.
- For County Attorney:**  
Royce Adkins.
- For County Clerk:**  
Horace Oneal. (Re-election.)
- For District Clerk:**  
Jesse B. Smith. (Re-election.)
- For County Tax Assessor-Collector:**  
R. A. Coburn. (Re-election.)
- For Commissioner, Precinct 1:**  
Ira Blair. (Re-election)
- For Commissioner Precinct 2:**  
W. A. (Drew) Leonard. (Second Term)
- For Commissioner, Precinct 3:**  
M. B. Cobb. (Re-election)
- For Commissioner Precinct 4:**  
C. L. (Roy) Clark.
- For Justice of Peace, Precinct 1:**  
C. E. Jones. (Re-election)
- For Constable, Precinct 1:**  
Sterling Edwards. (Re-election)
- For Public Weigher, Prec. 1:**  
George Weaver.

## Oversupply, Low Prices, Seen As Agriculture Prospect In 1950

What's ahead for agriculture in 1950? That's pretty easy, according to the economists who make a study of outlook matters—an oversupply of some commodities, the threat of oversupply in others, prices down a little, and a little more of a gap between cost of production and gross income.

It's when you get into what's ahead for the next decade, the next quarter of a century and the next 50 years that you run out of the near certainties and get into the field of by-guess and by-gosh. I've talked with some of the top agriculturists at Texas A&M—men who look at agriculture as a whole rather than at just one or another phase of it—and here's about what they come up with when you put it all together:

At first glance, it seems they believe that the era of marketing lies ahead, just as the past 50 years or so made up the era of production. They point out that there is now so much know-how on production—with the research workers constantly coming up with more and better ideas—and so many tools and short cuts for them all together in a real farm and ranch management system, we are likely to burst out all over with what we can raise.

Within 10 years we could easily produce enough to make Texas' 1949 record over-all yield look like a poor crop year.

But there are a couple of other angles to it. Sure, in the past 50 years output per farm worker has increased by 250 per cent. The difference, though, is that there are fewer farmers doing all the producing.

Back in 1800 farm people made up 94 per cent of the United States population; by 1900 they by 1920, to 30. Right now its percentage had dropped to 60 and by 1920, to 30. Right now it's estimated that rural people account for only 18 per cent of our population.

Nobody knows, of course, where that trend is going to end; but the consensus is that it won't get much lower than 15 per cent. Say that's the figure. There's a lot of difference between 94 people feeding themselves and depending on the other six for a cash market, as was the case in 1800; and 15 people with a market made up of 85 people.

There's a difference not only in total potential production, but in income per farm family. Only 20 years ago we had a half million farm and ranch families in Texas; today about 375,000. Say those extra 125,000 families had been farming in 1949, and that total cash income from sales of farm product had been about the same, which might well have been the case—then everyone would have had to take about a 25 per cent cut in gross income. The chances are that the

increase in production will lead to an increase in the acreage of what is known as grassland agriculture. When a people produce more than is needed, the tendency is to market more and more food through animals. When agricultural production gets in balance—or out of balance—with consumption, people eat more cereals, rather than meat products which were raised on cereals; and grassland goes under the plow.

Texas' local market for animal products is brighter than in most parts of the country, because the rapid industrialization of the state has upped the demand for eggs, milk, meats, fruits and vegetables. If the truck farmers, for instance, say the demand for vegetables isn't what it might be, the fact remains that its better than it would be but for all those new factories.

That grassland agriculture, by the way, fits in well with long time conservation plans.

Make every day in 1950 a safe day on your farm.

## Tech Announces Summer Program

Two major additions to the 1950 Texas Tech summer school visiting faculty in the department of education have been announced by Pres. D. M. Wiggins.

Dr. W. B. Irvin, Dallas, and Mrs. Anna B. Odell, Abilene, will offer courses during the session. The first term begins June 1 and ends July 12. The second term will run from July 13 through Aug. 23.

Mrs. Odell, associate professor of elementary education at McMurry college, will serve as visiting lecturer during the second term. Dr. Irvin also will serve during the July 13—Aug. 23 term, and will offer courses in educational research and the history of education. He is superintendent of schools at Highland Park, Dallas, and is past president of the Texas State Teachers association.

Tech's department of education will offer 48 courses during the

summer session, an increase of 14 over the 1949 curriculum. A visiting professorship in physical education will be filled shortly, Dr. Wiggins said.

Read the bargains listed in Free Press Want Ads each week.

Your Local USED-COW Dealer  
Removes Dead Stock  
FREE  
For Immediate Service  
PHONE 250 COLLECT  
Stamford, Texas



**APRI SHIRT**

Wear it open wide

Your Capri Shirt got its swish beginning on the ultra Riviera... now it does an American triple-take\* in washable combed cotton. Done in lush tones of pastels and high shades. Sizes



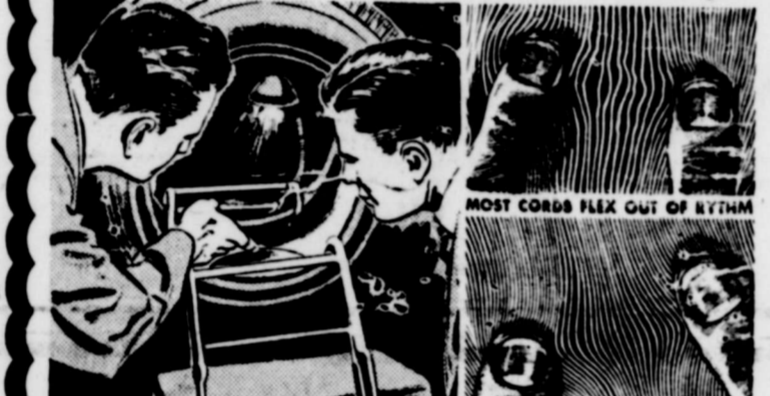
Pick your new Spring skirt from our new stock. In all colors and styles. See our skirts for your square dance.

Priced from 5.98 up.



Lane-Felker

Stop in before you trade tires... See this money-saving difference with your own eyes!



**B.F. Goodrich**  
*"Rythm Ride"*

MORE MILEAGE, SAFETY, COMFORT

"Rhythmic-Flexing Cords" make the difference! Unlike cords in most tires, BFG cords work in rhythm to share the wear for more miles—cushion the impact for more comfort—absorb the road punch for more safety.

LIBERAL TRADE-IN ALLOWANCE FOR YOUR PRESENT TIRES!

CAMPBELL SERVICE STATION  
Telephone 485 100 N. First Street

**B.F. Goodrich**  
FIRST IN RUBBER

## Our January Clearance Sale

Is Almost At An End

Saturday January 28th is the last day of this wonderful Sale!

3 Pairs of Shoes for the Price of One  
We are also offering in connection with this Sale—

20% Reduction On All Other Shoes  
Except Walkover and Sbicca.

Our Ladies Belts Are Going at Half Price  
This Week Only

E. R. Clifton Shoe Department  
North of Post Office at The Fashion Shoppe



WE RESERVE THE RIGHT TO LIMIT PURE CANE

<b>KLEENEX</b> 300 Count Box 23c	<b>Sugar</b> 10 lb. bag 85c
Popular Brands CIGARETTES Carton \$1.68	Salad Wafers, NBC, or Sunshine <b>CRACKERS</b> 2 lb. Box 47c
	<b>MISSION PEAS</b> 303 Can 15c
	<b>MIRACLE WHIP SALAD DRESSING</b> pint 29c
	<b>PURASNOW FLOUR</b> 25 lb. Bag \$1.79
	<b>CRUSTENE SHORTENING</b> 3 lb. Carton 65c
<b>JELLO</b> 2 Boxes 15c	<b>MEATS</b>
Del Monte Yellow <b>CORN</b> 2 Cans 29c	
Diamond <b>PORK &amp; BEANS</b> 10c	
Gold Medal <b>FLOUR</b> 10 lbs. 93c	
Gold Medal <b>FLOUR</b> 5 lbs. 52c	Fresh <b>DRESSED FRYERS</b> 45c
Morton's, Round Box <b>SALT</b> 2 for 19c	Armour's <b>BACON</b> 35c
<b>SARDINES</b> 15c	Armour or Delight <b>ROLL SAUSAGE</b> 32c

Fresh <b>COUNTRY EGGS</b> 29c	Dozen	Folger's <b>COFFEE</b> pound 73c
Mexico <b>TOMATOES</b> 22c	Pound	<b>TIDE</b> 4 boxes 99c
<b>BELL PEPPER</b> 16c	Pound	<b>VEL</b> 4 boxes 99c
<b>RUTABAGAS</b> 8c	Pound	<b>OXYDOL</b> 4 boxes 99c
<b>CARROTS</b> bunch 10c	Pound	<b>DREFT</b> 4 boxes 99c
		<b>DIAL SOAP</b> bar 19c
		<b>LUX SOAP</b> 3 for 25c
		<b>LUX SOAP</b> 2 for 25c





# HASKELL COUNTY HISTORY

Brief Items Taken from Old Copies of The Free Press

## 20 Years Ago—January 23, 1930

Courtney Hunt spent Monday in Dallas on business. The coldest weather in 31 years was recorded here when the temperature dropped to 3 below zero Saturday. Dimmitt Hughes of the Hughes Ranch is driving a new 1930 Chevrolet truck. Mary Cole Morgan who is attending high school at Haskell spent the week end with home folks. Miss Ethel Bland spent the week end with home folks. Mr. and Mrs. C. G. Starks and son Wallace of Rose community spent Saturday night with Mr. and Mrs. J. E. Adams and family. Mrs. Ray Greenway was a visitor here last week.

### TOM DAVIS LAWYER

Office over Oates Drug Store

### HASKELL COUNTY ABSTRACT CO.

Abstracts, Maps  
Title Insurance  
South Side Square Haskell

Mr. and Mrs. Ernest G. Bosse spent Thursday afternoon in the home of Mr. and Mrs. W. Lee Hank near Anson.

Mrs. J. A. Lyles is driving a new 1930 Chevrolet Sedan. Mr. and Mrs. C. Wheatley and son Robert motored to Midlothian last week end and visited Mrs. Wheatley's mother.

C. E. Bray, manager of the Haskell Motor Company returned the first of the week from Fort Worth and Dallas where he had been on business.

Rev. G. R. Forrester was elected Noble Grand at the regular meeting last Thursday night of the Haskell Lodge No. 525, I. O. O. F. A shower was given in the home of Mr. and Mrs. L. P. Lackey last Monday evening honoring Mr. and Mrs. Tom Osborn who were recently married.

Mrs. Mabel Steele and Mrs. Letha Brondburg of Oklahoma are visiting at the home of J. C. Bland. Mrs. G. W. Carter visited Mrs. Hollis McReynolds Friday afternoon.

Misses Ruth Faye Miles, Minnie Hill and Mr. Marion Day spent Sunday afternoon in the home of Mr. and Mrs. W. J. Miles.

Two inches of snow fell in this community Thursday and Friday. The wind kept most of it blown away, however, large deep drifts were to be seen in many places. A few of the farmers started

working their land but they have been kept inside because of cold weather.

Mr. and Mrs. Peter Ray are the proud parents of a 10 day old baby girl.

## 40 Years Ago—January 22, 1910

Hon. Pat M. Neff of Waco addressed a good sized audience at the courthouse Wednesday night in behalf of the Modern Woodmen of America.

Jas. A. Bankerson, the official stenographer for the 39th Judicial District, came in from Anson Wednesday, where he has been engaged with the present term of court. He reports several felony convictions.

T. N. Young and J. T. Reed of the Lone Star community were in the city Thursday. They reported that they had a new \$1,000 school building on the site of the original Grass Bur school. Misses D. Thomason and Minnie Greer are the teachers.

Ewing Powell of Mountain View, Ark., was in Haskell this week. He owns a large tract of land in this county.

H. Weinert of the thriving little city bearing his name, was a visitor in town the first of the week.

J. D. Stodghill and family has moved to Fort Stockton.

Miss Ella Day has returned from her ranch in the southwest part of the state, and has resumed her work in the abstract office of Clive F. Elkins.

D. M. Cogdell has joined C. E. Bowers in the dry goods business and they have put in a \$20,000 stock of merchandise in their store.

The family of J. O. Stark, county commissioner in Prec. 2, has mov-

### KILL ATHLETES FOOT "TE-OL BEST SELLER" SAYS REID'S DRUG

HERE'S THE REASON. The germ grows deeply. You may REACH it to KILL it. TE-OL containing 90 per cent alcohol, PENETRATES. Reaches more germs. Your 35c back from any drugist if not pleased IN ONE HOUR. 37-4tc.

### REID'S DRUG STORE

Dennis P. Ratliff W. P. Ratliff  
**RATLIFF & RATLIFF**  
Attorneys-at-Law  
Haskell, Texas

### ROYCE ADKINS Lawyer

Office Over Oates Drug Store



These three beauties pose a pretty picture to mark the celebration of Fresh Orange and Tangerine Week, January 19-26, sponsored by the National Citrus Merchandising Committee for the three citrus producing areas, California, Arizona, Texas and Florida. Growers report current crops of high quality and flavor.

ed to Haskell for the school advantages. The cornerstone of the new Methodist Church building will be laid Jan. 31st under auspices of the Masonic fraternity. Prominent Masons and churchmen will take part in the services. There will be a box supper at the Kirkdale schoolhouse on the Baldwin ranch Saturday night, Jan. 29.

A. J. Hill has announced that he would be a candidate for Justice of the Peace in the coming election.

Rev. J. T. Nicholson of Hamlin spent most of the week here visiting his children and with old friends.

## 50 Years Ago—January 27, 1900

The Haskell Brass Band will give a concert on Saturday night, February 10, 1900.

Stem Daugherty has purchased the Reese & Cowden ranch, twelve miles west of Midland, and Reese and Cowden will move their cattle to New Mexico where they have established a new ranch.

J. F. Pinkerton left Thursday on a business trip to Hico.

Sam Lanier and family moved to town this week.

Miss Laura Hale returned on Tuesday from Seymour.

W. T. Hudson came home this week.

M. S. Pierson and family arrived last Saturday.

Who is doing anything to push

that prairie dog scheme along? Dr. Lindsey reports the arrival of a nice little girl at Red Gordon's home Thursday.

The band boys are practicing hard and seem to be making pretty good progress.

Dr. Gilbert reports the arrival of a fine boy at Mr. W. D. Dickersons on Monday, 22nd.

Major J. M. Bogart left Tuesday for Denver, Col. He thought he probably would visit Haskell again in three or four months.

The Central railroad is bringing lumber in much more convenient reach of our people, yards being now opened up at Avoca and Stamford.

Evangelist George Thomas of the Christian denomination has been preaching to large congregations at the Christian church here since Friday night of last week.

A. E. Rose had a good saddle and bridle stolen from his ranch last week. He has his suspicions and you'd best bring it back young man, or you may be picked up yourself.

Our San Antonio crowd returned last night.

The young folks had a very enjoyable party at Mr. T. G. Carneys Friday night.

Dr. J. E. Lindsey returned from St. Louis the latter part of last week, where he took a special course of instruction. He is highly pleased with what he has learned and thinks wonderful results are to be had from the new system in certain classes of diseases when applied in connection with medical treatment.

West Neathery of Farmersville, arrived Tuesday on a visit to his brother Dr. A. G. Neathery.

C. D. Long has resigned from his position in the postoffice and L. C. Hill from Seymour will be in charge after today.

Virgil Hudson expected to leave today for Fort Worth, where he will enter a business college or the Polytechnic Institute.

G. O. Thomas, son of Treasurer J. F. Thomas of Knox County is here having his eyes treated by Dr. Lindsey.

A. W. Springer has taken a position with the hardware firm of Penick & Company soon to open up business at Stamford.

The cold wave that came down Thursday and put an end to the springlike weather we had been having for a week or more was quite welcome.

At the meeting of the stockholders of the Haskell National Bank Thursday the old officers were all reelected.

Notwithstanding the rise in price of sugar and coffee on account of

the fight raging between the coffee and sugar trusts, T. G. Carney is still selling coffee and sugar at the old price.

Farmers living eighteen to twenty-five miles north of this place have been engaged for the

past ten days or two weeks in hauling their last year's wheat crop through here to market at Albany, a distance of sixty or seventy miles. Haskell should hurry up her railroad and furnish a home market for all such stuff, it

means additional business. Ed Lanier of the north of Stonewall was transacting business here Thursday and

Make every day in the year on your farm.

# Hurry! Hurry! Hurry!

## 28th Annual Bargain Rate Closes January 31st

If you have not sent in your subscription yet—let us urge that you do so today.

You have your choice of:

THE WICHITA DAILY TIMES

OR

WICHITA FALLS RECORD NEWS

# \$8.75

One Full Year by Mail in Texas and Oklahoma

The Latest News—First

Subscription Coupon

TIMES PUBLISHING CO.,  
Wichita Falls, Texas  
Gentlemen:

Enclosed is my remittance of \$8.75. Please send a year's subscription to:

Wichita Daily Times

Wichita Falls Record News

Name \_\_\_\_\_  
Route \_\_\_\_\_ Box \_\_\_\_\_  
Town \_\_\_\_\_

# JONES & SON

"THE PLACE FOR EVERYTHING"

## SHEET METAL WORKS

If it is made of metal, we can make it.

## BLACKSMITHING AND WELDING

Where you get the job done, like you want it, for the same money, or less.

## PLUMBING SUPPLIES

Crane and Standard Products at a price that will please. Pipe and Fittings.

## SERVICE STATION

Continental Products, also Pennsylvania, Opaline, Quaker State and Amalie Oils. U. S. Tires and Tubes.

## PAINTS

House — Implement — L & S Roofing Paints.

# E. R. Clifton, Clover Farm

THE PLACE TO SHOP AND SAVE MONEY

WHERE FRIEND MEETS FRIEND

Robin Hood <b>FLOUR</b>	25 Lb. Sack <b>\$1.98</b>	Old Mexico <b>TOMATOES</b>	Lb. <b>20c</b>
White <b>SPUDS</b>	10 Lbs. <b>55c</b>	<b>CELERY</b>	Per Stalk <b>10c</b>
White <b>ONIONS</b>	Lb. <b>10c</b>	Good <b>CABBAGE</b>	Lb. <b>5c</b>
2 Boxes <b>TREND</b>	<b>39c</b>	Good <b>LETTUCE</b>	Per Head <b>10c</b>
Del Monte <b>PEACHES</b>	2 1/2 Size Can <b>29c</b>	<b>CARROTS</b>	Bunch <b>10c</b>
King Size Sweet <b>PEAS</b>	No. 2 Can <b>12c</b>	<b>TURNIPS &amp; TOPS</b>	Bunch <b>10c</b>
Earth Fig <b>PRESERVES</b>	1 Lb. Jar <b>22c</b>	<b>BELL PEPPERS</b>	Lb. <b>18c</b>
<b>ORANGADE</b>	46 Oz. Can <b>31c</b>	<b>RADISHES</b>	Bunch <b>10c</b>
Delight <b>PURE LARD</b>	3 lb. pk. <b>39c</b>	<b>BANNAS</b>	Lb. <b>13c</b>

# ...Quality Meats...

— OUR MOTTO —

Brick <b>CHILI</b>	Lb. <b>43c</b>	1/2 Lb. Box <b>CHEESE</b>	<b>26c</b>
Wilsons Sliced <b>BACON</b>	Lb. <b>39c</b>	Country Style <b>SAUSAGE</b>	Lb. <b>39c</b>
Loin <b>STEAK</b>	Lb. <b>62c</b>	<b>PORK CHOPS</b>	Lb. <b>49c</b>

# New Models... New Values!



## "Job-Rated"... yet priced with the lowest

... look at what you get for what you pay ...

THE RESULT OF DODGE ENGINEERING LEADERSHIP

### 1. AN ECONOMICAL TRUCK ENGINE:

An engine designed to develop power for 1 1/2-ton truck loads... NOT the same engine used in lighter trucks. A Dodge truck engine is "Job-Rated." You get maximum performance... and economical, long-life operation.

### 2. NEW SYNCHRO-SHIFT TRANSMISSIONS:

New Dodge "G" models (1 1/2-ton) are equipped with "Job-Rated" 4-speed silent helical gear Synchro-shift transmissions. Smooth, easy and quiet. Get behind the wheel. Feel the difference! New 5-speed Synchro-shift transmissions also available.

### 3. BIGGER LOAD SPACE:

Dodge trucks, engineered for balanced weight distribution, provide for maximum body length in relation to wheelbase. For example: A 152" wheelbase model is "Job-Rated" for 10-foot to 13-foot bodies.

### 4. SHORT TURNING DIAMETERS:

DODGE "JOB-RATED" TRUCK

RIGHT OR LEFT TURN

AVERAGE RIGHT TURN

AVERAGE LEFT TURN

Wide tread front axles, cross-type steering and short wheelbases provide shorter turning diameters, easy handling and parking.

### 5. "PILOT-HOUSE" CABS:

Rear quarter windows and the big 890 sq. in. windshield give safe all-round vision. Vent wings provide controlled ventilation. You ride in deep-cushioned comfort on a big, adjustable 57 1/4" Air-O-Ride seat.



The truck illustrated... a Model "G" 1 1/2-ton... fits its job. It's "Job-Rated."

It has "Job-Rated" power... a "Job-Rated" frame, transmission, clutch, axle, springs, brakes and tires. It's built better to do its job better.

The cost of operating this truck will be low. It will stand up on the job. Upkeep cost will be low. Its performance will be of the best. This truck will last longer.

Does such a truck cost more? Emphatically "NO." All Dodge "Job-Rated" trucks... 1/2-ton to 4-ton... are priced with the lowest in each weight class.

Why not call us or come in today. We'll recommend the right Dodge "Job-Rated" truck for your job.

You'll be pleased at its low cost... and the liberal purchase terms, including a "good deal" on your used truck.

Dodge Model G-192 (illustrated) is one of 92 "Job-Rated" 1 1/2-ton basic chassis models... with gross weights from 7,000 to 16,250 lbs. Available in 7 wheelbases... conventional and cab-over-engine... with 8-, 12-, and 14-ft. stake bodies and special bodies. Single-speed or two-speed axles. There's one to fit YOUR job.

For low cost transportation... switch to

# DODGE "Job-Rated" TRUCKS

PITMAN MOTOR COMPANY

200 NORTH AVE E

HASKELL



### Ton People Observe Birthdays Joint Celebrations Last Week

Mrs. F. A. Stegemöller, on a business trip to Austin, returned last week after nearly two weeks absence in Tennessee. Her father is seriously ill.

The League of the Zion Church were entertained at home of Mr. and Mrs. Knippling and Mrs. Frank Boedeker and Mrs. M. C. Hoerman and children, and Mr. and Mrs. A. C. Knippling and daughters, Lois and Dorothy.

Dr. and Mrs. J. C. Davis or Rule visited in the Cliff LeFevre home Sunday afternoon.

Cliff LeFevre spent several days of last week in Wortham and Mexia where his mother, Mrs. Anna LeFevre, is ill.

Mrs. Wilson Gibson and boys of Rule visited in the home of her parents, Mr. and Mrs. G. A. Leach Sunday. Other guests were Mr. and Mrs. Cecil Morgan and son of Haskell.

Miss Fannie Kay of Haskell spent the past week-end with Mr. and Mrs. R. N. Shied.

Mr. and Mrs. J. A. Hertel and

children returned recently from a trip to Florida.

Guests in the home of Mr. and Mrs. R. O. Gibson Sunday were: Mr. and Mrs. G. H. Harris and Ruth Ann of Aspermont, Mr. and Mrs. Travis Beil of Old Glory, and Mr. and Mrs. Wilson Gibson and sons of Rule.

Johnny Lee Guinn, student at Hardin-Simmons in Abilene, spent the past week-end with his parents, Mr. and Mrs. C. L. Guinn.

Mr. and Mrs. F. S. Stegemöller and Rev. and Mrs. H. E. Driesner and sons were dinner guests in the home of Mr. and Mrs. J. the parents, of a son born Saturday, Hertel Sunday.

Mr. and Mrs. Oscar Manske are day, January 21, in the Stamford Hospital. They also have another son, Jerry.

Mrs. J. C. Kainer is a patient at the Stamford Hospital.

The following students of Texas Lutheran College at Seguin spent the past week-end with their respective parents: Dorothy Pearl Knippling, Nat Hoerman, Leroy and Leland Nauert, Fred Kupatt, end Marvin Rinn.

Margaret Lou Wendeborn, a student at McMurry in Abilene, spent the past week-end with her parents, Mr. and Mrs. Walter Wendeborn.

Little Sara Jane Lehrmann, infant daughter of Mr. and Mrs. Herbert Lehrmann, was baptised in the St. Paul's Lutheran Church here Sunday.

Guests in the home of Mr. and Mrs. Otto Lehrmann Sunday were: Mr. and Mrs. J. C. Schwartz of Borger, Mr. and Mrs. Carl Opitz and son, Danny, of Wienert, and Mr. and Mrs. Clancey Lehrman of Sagerton.

C. E. Stegemöller and his son, Marvin, celebrated their birthdays Tuesday evening, January 17, in their home. Games of 84 were played and refreshments were served to Mrs. H. E. Driesner and sons, Mr. and Mrs. Otto Schaake, Mr. and Mrs. Emil Wolsch, Mr. and Mrs. August Hahn, Mr. and Mrs. A. C. Knippling and Lois, Mrs. J. F. Schaake and Walter and Mr. H. C. Raphael and Lillie Mae of Stamford, Mr. and Mrs. F. A. Stegemöller, Mr. and Mrs. Will Stegemöller and the host and hostess and their sons, Marvin and Leon.

Rev. and Mrs. M. C. Hoerman went to Seguin Tuesday to take their son, Nat, and Dorothy Knippling and Marvin Rinn back to Texas Lutheran College for the second semester.

Mrs. John Clark is in Neocoma where her mother, Mrs. Ruth Smith, is seriously ill.

**STARR WELDING SHOP**  
ALL KINDS OF WELDING  
Block West of Square Haskell, Texas

**FARM LOANS**  
T. C. CAHILL, Agent, Haskell  
John Hancock Mutual Life Insurance Co. 4% loans, time 10 to 20 year.

**ATTEND FUERAL IN LUBBOCK**  
Mr. and Mrs. H. Y. Driesner and Bobbie, and Mr. and Mrs. Herbert Fischer and Carolyn, attended the funeral Monday in Lubbock of Alfred Hill, brother of Mrs. Henry Duesedow Jr. of this city. Mr. Hill died Saturday.

A protein-rich breakfast can do more to stave off fatigue hours longer than a morning meal with less protein. It is an advantage to provide about one third of the day's protein allowance in the breakfast. Some of it should come from such top-quality protein foods as milk, eggs and lean meats.

Read the Want Ads.

### Farm Women Find Home Tailoring Pays Dividends

Home tailoring not only pays off in dollars and cents saved but the home tailoring schools sponsored by the Texas Extension Service have also given to those trained new techniques on how to do the job. Fern Hodge, district extension agent of the Texas A. & M. College System, in commenting on the work done in district 3 last year, says the home tailoring programs in Cottle and Hardeman counties are examples of what can be done.

In the training school conducted in Hardeman county by Mrs. Hazel C. Harrison, county home demonstration agent, seven leaders and 23 others back in the local clubs. This combined group reported that they have saved approximately \$950 on their clothing budgets during the year. Included in the garments made, were 21 suits, 4 coats for adults and 5 for children. In addition to the savings made, each woman was able to add more and better equipment to her sewing center.

Former Cottle county home demonstration agent Mrs. Aubrey W. Russel, reports that the tailoring school was only the beginning. In the regular home demonstration club meetings, more detailed information was given on clothing construction by demonstrations, individual help and best of all by the members actually using the knowledge they had gained.

Mrs. Hugh Frazier, of the Chalk Club, Cottle county, reported that she had never been able to buy a store bought suit that would fit, but she isn't worrying about that now. She has learned to alter a commercial pattern and can now make the kind of suit she always wanted.

Mrs. Wallace Norrell, of the Delwin Club, says that the training in home tailoring that she has received will be very valuable to her because she can now do a better job on the sewing she does for herself and two small daughters.

Miss Hodge says that other demonstrations on clothing work in the district have included pattern selection and alteration, placing patterns, choosing materials, construction details, making professional belts and buckles, shoulder pads that fit and choosing accessories. In conclusion, he says, the home tailoring program has been both popular and profitable for those who have participated in it and plans have already been made to continue and improve the program during 1950.

### Jacobs & Hawkins Buy Kennedy Texaco Station Here

Change in ownership and management of Kennedy's Texaco Station on South Ave E was announced this week with the purchase of the business by Durwood Jacobs and Otis Hawkins from W. C. Johnston, former operator.

The business will be operated in the future as Camp Kennedy Station, and the new owners announce they will continue to carry a full line of Texaco products, accessories, etc., in offering the motoring public a complete one-stop service.

Mr. Hawkins has been associated with the business in the past, and Mr. Jacobs and his wife and their two children Raymond and Linda Carol plan to move from Anson to Haskell as soon as living quarters can be secured here.

### HERE FROM LUBBOCK

Mr. and Mrs. Abdon Holt and David Smith of Lubbock were visitors the first of the week in the home of their father and brother, Mr. and Mrs. N. T. Smith and Mr. and Mrs. Jason W. Smith.

Join the PLANT A PECAN Tree Program when it gets underway in your community.

**WATCH REPAIRING**  
All Work Guaranteed  
★  
BRONZE BABY SHOES



Ideal Gift of An Everlasting Keepsake  
10 Day Service

★  
**BASSING JEWELRY**

### FASHION FORECASTS MIDDIES FOR SPRING

The middies will be found on shore this Spring, report designers of junior fashions in St. Louis, giving you a young style that is new and flattering to the figure.

Middy bodices have the long torsos and wing-back collars with small scarves tied in a square knot at the neckline that go with pleated all the way around or straight skirts.

Other dresses introduce a variation of the long torso creating a tall, slim look popular for Spring.

**WILLIAMS CLINIC**  
T. W. Williams, M. D.  
Thomas M. Prideaux, M. D.  
Phone 111  
William J. Kemp, D. D. S.  
Phone 508  
HASKELL, TEXAS

To Reduce Misery of  
**COLDS**  
take 666  
LIQUID OR TABLETS - SAME FAST RELIEF

**TRACTOR TIRE ANTI-FREEZE**  
Let us service your Tractor with Anti-Freeze—the added weight will give better traction and longer tire life.  
"TIRE HEADQUARTERS"  
**Sturdivant Home & Auto Supply**  
Telephone 87 Haskell  
87tfc

**REAL ESTATE FOR SALE**

TO MOVE OFF LOT—New large 3½ room house. Ample closet space, beautiful kitchen with all built-ins. Large bath with space for dressing table. Combination tub and shower. Hardwood floors. Will sell completely plumbed or without plumbing.

Filling Station with living quarters.

NEW FHA. Large 4½ rooms. Living room, two bedrooms, four closets, huge kitchen, bath with combination tub and shower. Wall furnace, attic fan. Overhead insulation. \$1,000 down and \$59.48 per month including taxes and insurance.

100 ft. by 288 ft. Business location on highway.

Remodeled 3 rooms and bath Very livable. Reasonable. Immediate possession.

Real Estate — G. I. Loans — Conventional Loans  
FHA Loans

**RUFUS or MILDRED BANKS**  
Telephone 162-J  
Office Upstairs Over Helber's Jewelry 4-5c

# Dodge Job-Rated Truck Prices Reduced

## \$40<sup>00</sup> to \$125<sup>00</sup>

Now you can save up to \$125 on a new Dodge "Job Rated" Truck.

Every Dodge "Job Rated" Truck at these new low prices is the same truck—with the same equipment—as before the price reduction. These new low prices have been made possible through the great public acceptance Dodge "Job-Rated" Trucks have enjoyed.

You continue to benefit from the advantages of such exclusive Dodge features as proper weight distribution to carry your load better... short turning diameters for easier handling... shorter wheelbases and shorter over-all lengths to accommodate standard bodies.

All of this means greater truck value than ever before! It means lower delivered prices—plus unmatched Dodge economy, performance, and dependability.

Come in today! Get the new low delivered price on the Dodge "Job-Rated" Truck that fits your job—the truck that will save you money today—and every day you use it.

See us today for a dollar-saving deal  
**PITMAN MOTOR CO.**  
North Ave E and North 2nd HASKELL

## Friday and Saturday Specials

K. B.—In Print Bags	25 Lbs.	Swift's Silverleaf	3 Lb. Carton
<b>FLOUR</b>	\$1.49	<b>Pure Lard</b>	49c
Imperial, Pure Cane	10 Lbs.	Mission	2 Cans
<b>SUGAR</b>	85c	<b>SUGAR PEAS</b>	25c
Pet or Carnation		Extra Fancy, Washington State	Lb.
<b>MILK</b>	3 Tall Cans 35c	<b>Apples</b>	10c
Sea Ace—Tall Cans		<b>TIDE OR OXYDOL</b>	23c
<b>MACKEREL</b>	19c	<b>Market Specials</b>	
Sour or Dill	Quart	Fresh Dressed	Lb.
<b>PICKLES</b>	20c	<b>FRYERS</b>	45c
Collins, 8 oz., Pure	Jar	Fresh Ground	Lb.
<b>APPLE JELLY</b>	10c	<b>HAMBURGER</b>	35c
U. S. No. 1, White	10 Lbs.	Armour's Dexter, Sliced	Lb.
<b>Potatoes</b>	49c	<b>BACON</b>	39c
Kimbell's Best	5 Lbs.	Wisconsin Round	Lb.
<b>MEAL</b>	29c	<b>CHEESE</b>	45
Jack Sprat	3 Cans	<b>POGUE'S</b>	
<b>PORK AND BEANS</b>	25c	Phone 17-W	We Deliver



### Hoyt Perry Is Candidate For Commissioner

Hoyt Perry, well-known farmer of this section, has authorized The Free Press to announce his candidacy for the office of Commissioner of Precinct 3, subject to the action of the Democratic primary.

Mr. Perry, who has lived in Haskell county and Precinct No. 3 his entire lifetime, needs no in-

roduction to the voters. A successful farmer, he has the business experience necessary to qualify him for the office he seeks, and due to his long residence he is fully acquainted with the needs of the precinct insofar as they are administered by the Commissioner.

In announcing his decision to seek the office, Mr. Perry does so after due consideration and at the solicitation of many friends and supporters. If elected, he will devote his efforts to discharging all of the duties of Commissioner to the best of his ability, consistent with the needs of all

sections of the precinct, and the best interest of the county as a whole.

Before the primary is held, Mr. Perry will endeavor to see as many of the voters in Precinct 3 as possible to discuss his candidacy with them in person. In the meantime he solicits and will appreciate your consideration and support of his candidacy.

#### VISIT IN GILMORE

Mr. and Mrs. Tot Johnson and Cheryl, and Mrs. J. S. Chapman spent the week end in Glen Rose.

Read the Want Ads.

### George Weaver Is Candidate For Second Term

George Weaver, now serving his first term as Public Weigher in Precinct No. 1, announces his candidacy this week for re-election for a second term in that office.

Mr. Weaver has no formal statement to make at this time other than to let the people in his precinct know that he appreciates the confidence and trust expressed by the voters in electing him to the office, and that he desires to continue in that capacity. He also expressed his gratitude for the cooperation of the farmers, ginners, cotton buyers and others having business connected with his office.

The experience gained during his first term will be an asset in discharging his duties in the future.

Mr. Weaver plans to see as many of the voters in the precinct as possible before the election is held in order to discuss his candidacy personally. Until he has this opportunity, he solicits your consideration and continued support.

### Brother Of Haskell Woman Dies In Lubbock Jan. 21

Funeral services for Alfred Hill, brother of Mrs. Henry Druese-dow, Jr., of this city, were held in Lubbock Monday at 2:30 p. m. from Shepherd Lutheran Church. Interment was in Lubbock Memorial Park.

Mr. Hill, 33, died Saturday at 5 p. m., after being stricken with a heart attack. His health had been failing for several months.

He is survived by his wife and their small children, Larry and Sharon of Lubbock; his parents, Mr. and Mrs. H. B. Hill of Littlefield; four sisters and one brother.

### Alteration Of Patterns Studied By HD Club

A demonstration on altering patterns was given by Mrs. G. E. Davis at the regular meeting of the Bluebonnet Home Demonstration Club. Mrs. Corbet Lytle and Mrs. Rex Murry assisted Mrs. Davis in the demonstration, using ribbon for the measurements around neck, bust, chest, waist, hips, and keeping ribbon parallel with the floor and recording measurements as they were taken. The demonstrator explained this was the most practical method for assuring perfect alterations.

A round table discussion was held, with members telling how foundation patterns were made in past years.

Mrs. Raymond Astin, club president, presided for a business session. Mrs. Lee Cornelius submitted her resignation as secretary and treasurer. Mrs. Rex Murry was named as her successor, and Mrs. R. V. Hagle was appointed assistant secretary and treasurer.

Mrs. Alf Denson gave the Council report. Mrs. Raymond Astin was elected delegate to the THDA district meeting which will be held at Matador in April.

Roll call was answered with current events, jokes, brief talks on scenic spots in Texas, health hints, safe driving practices, and what other clubs are doing.

At the conclusion of the meeting, which was held in the hospitable home of Mrs. Corbet Lytle, refreshments were served to Mesdames Rex Murry, G. E. Davis, Less Lewis, Arthur Williams, Edd Conner, John Wendeborn, Raymond Astin, Fred Knipping, R. V. Hagle, Mrs. A. C. Denson and the hostess.

The next meeting will be February 2 in the home of Mrs. Arthur Williams.

### Physical Maturity Rate Varies With Every Individual

We do not all grow, develop, mature—nor do our organs degenerate—at the same rate, says Dr. Geo. W. Cox, State Health Officer.

Today, a man of 60 may be as young, vigorous and vital as the average man of 40. On the other hand, he may look and act like a man of 80, old, weak and miserable. A man of 60 may have a 40 year old heart, 50 year old kidneys and an 80 year old liver.

"The physical changes which come with age alone are not entirely decline, either. Speed of reaction does diminish, but endurance increases in certain capacities. As speed declines, skill is increased with practice, and as strength declines, judgement increases. Automobile driving ability, for example, improves from 24 to 43 in the average individual and at 65 is superior to that of the 20's.

"Normal human beings can grow mentally at any age. The worst of all old-age diseases is neglect. Many factors that help make a healthy, happy old age are (1) eating right; (2) regular physical examinations and (3) keeping physically and mentally active without overtaxing ourselves.

### Birthday Club Meets In Home Of Mrs. Adkins

The Jolly Birthday Club met Jan. 19 in the home of Mrs. Dallas Adkins. The meeting was called to order by the president, Mrs. Gene Rose. Members of the club voted to sell cards.

Present for the meeting were: Mesdames Howard Sloan, Pete Sego, George Wade, Buford Gholston, Manford Reid, Bill Lees, Jesse Adams, Delma Williams, Jerry Harrell, Dennis Williams, Grady Newsom, Gene Rose, Hoie Harrell, Tidwell, J. C. Halliburton; two visitors, Mrs. Kenneth Burt and Mrs. Jerry Hamilton, and the hostess, Mrs. Dallas Adkin.

Next meeting of the club will be February 3rd in the home of Mrs. Tidwell at 2 p. m., honoring Mrs. Grady Newsom.

#### RETURNS FROM DALLAS

Mrs. A. Q. Gentry returned Tuesday from a three weeks visit with her children in Dallas.

There is a rapidly growing branch of medicine, known as geriatrics, that specializes in disease and conditions of the aging.

"Don't wait until you deteriorate—consult your physician now!"

## VALUES ARE UP Your Fire Losses Will Be Just As High!

Don't be lulled into security just because covered your home with fire insurance years ago. It would cost more to replace your home today, your insurance should be great enough to cover this advance.

### She tries them on for size...

and so do most folks who want their shoes to fit. Farm and Ranch Insurance can be fitted to your size, too, when we look at your place before writing your fire and wind insurance. We see and know what you have, and we recommend a policy which is neither too little nor too big. Call us—we'll be out to see you.

## W. I. "SCOTCH" COGGINS

"The Right Insurance Gives The Most Protection"

South Side Square Phone 31



## GET THIS COMBINATION OF FEATURES

...in the DISK TILLER You Buy!

Be sure the disk tiller you buy will do efficient work for you... in less time... at the lowest possible cost. You'll find a John Deere delivers that kind of performance because it has this combination of features:

- (1) John Deere overhead frame design which places the frame above the disk gang for maximum penetration and clearance...
- (2) complete adaptability to a variety of tillage jobs...
- (3) variability in the angle of

the gang... and (4) quick, easy field adjustments by convenient lever and screw crank.

Add to these advantages the heavy-duty, heat-treated steel disks... over-sized chilled bearings... strong, sturdy frame... plus many others which assure better work in all field conditions. You'll choose the John Deere!

Remember... there's a size and type of John Deere Disk Tiller to meet your particular power. See us about it soon.

## GILMORE IMPLEMENT CO.

JOHN DEERE Quality Farm Equipment and Service



## BANISH SUDDEN TEMPERATURE CHANGES with Flue-Vented gas heating appliances

If you are heating only one or two rooms, you are exposing yourself and your family again and again to sudden temperature changes, which make you susceptible to taking cold.

Anything that can help stop colds, the forerunner of many serious sicknesses, is of vital importance.

Protect your family against sudden changes in temperature indoors. Give them healthful, pure warm air in every room with flue-vented gas heating appliances.

You have only to ask an owner of flue-vented gas heating appliances to be convinced of the value of this health protection.

Your good health and that of your family is your most desirable possession. Don't go another week without health protection of flue-vented gas heating. Investigate closet-type central furnaces, wall furnaces, floor furnaces, gas-steam radiators and other modern flue-vented gas heating appliances for the health protection of your family, today.

### AUTOMATIC FLUE-VENTED HEATING APPLIANCES WORK THREE WAYS TO PREVENT COLDS:

Only flue-vented gas heating equipment can be equipped with automatic thermostatic controls. Automatically these controls maintain the ideal temperature, protecting you against common colds and more serious sickness which may follow.



Flue-vented gas heating equipment is designed to give you positive air circulation. Doesn't just "throw out" heat. Result: No frigid floors. No chilly corners. No cold feet when flue-vented gas heating equipment is installed throughout.



Air is noticeably fresher because products of combustion are carried off through the vent to the out-of-doors. Wall and window sweating is eliminated.



### TIME TO TAKE STOCK OF INSURANCE, TOO

What can be more important than knowing just what your insurance does or does not cover? You can see how your personal insurance program stands with PLANDEX. May we show you, without obligation?

John F. Ivy Insurance Agency

Representing The Aetna Casualty and Surety Company of Hartford, Conn.



# O. M. Sale

Final Close Out Winter Goods

Values in every department—Read every item!

Shop Early For Best Selection

<p>Values to \$10.95</p> <h2>3.98</h2>	<p>2 Special Group 2</p> <h2>WOMEN'S DRESSES</h2> <p>Silks—Cottons—Spuns Sizes 9-15 10-20 14 1/2-22 1/2</p> <p>Values To \$17.95</p> <h2>6.95</h2>
<p>Special Group</p> <h2>MEN'S HATS</h2> <p>Values to \$7.50</p> <h2>3.98</h2> <p>Mens Flannel</p> <h2>SPORT SHIRTS</h2> <p>Bold Plaids—Fancy Patterns</p> <p>\$2.98 Value \$2.29</p>	<p>Special Group</p> <h2>GOSSARD</h2> <p>Garments</p> <p>Girdles—Brassieres</p> <h2>1-2 Price</h2> <p>Womens Winter COATS</p> <p>Just eleven left Priced \$24.95 to \$39.75</p> <p>EOM Sale</p> <h2>1-2 Price</h2> <p>Childrens COATS</p> <p>Only six left—Values to \$17.95</p> <h2>\$10.00</h2> <p>Mens OVERCOATS</p> <p>—Gabardines and Coverts—</p> <p>Top tailoring and select materials were used to make these coats outstanding values at the original price—Just a few left to close out.</p> <p>\$29.50 Values \$21.00</p> <p>\$34.75-\$38.75 Values \$27.00</p>
<p>Mens Wool Gabardine SHIRTS</p> <p>Wine-Blue Tan 14 1/2 to 16</p> <p>\$7.50 Value \$5.00</p>	<p>Childrens DRESSES</p> <p>\$2.98 Values \$1.88</p> <p>\$3.98 Values \$2.88</p> <p>Womens Rayon PANTIES</p> <p>39c Value</p> <p>4 Pairs \$1.00</p> <p>Group Womens SHOES</p> <p>Pumps—Straps—Ties Values to \$8.95</p> <p>\$2.49</p> <p>Special Group</p> <ul style="list-style-type: none"> <li>Flowers</li> <li>Jewelry</li> <li>Belts</li> <li>Gloves</li> </ul> <p>Values to \$2.98</p> <p>Baby DRESSES</p> <p>Values to \$1.95</p> <p>\$1.00</p> <p>Fast Color PRINT</p> <p>Formerly 39c</p> <p>4 yds. \$1.00</p> <p>Wool and Rayon GABARDINE</p> <p>\$2.98 Value \$1.88 yd</p> <p>"Chathams" Lamsdown BLANKET</p> <p>72x90</p> <p>\$18.95 Value \$13.88</p>
<p>Mens LEATHER COATS</p> <p>Entire Stock of Suedes — Goatskin — Horsehide — Calf Skin Coats and Jackets</p> <p>\$25 Value \$18.00</p> <p>\$29.50 Value \$21.00</p> <p>WORK Gloves \$1.</p> <p>95c Value—2 for</p>	<p>Mens SHORTS-SHIRTS Suit</p> <p>\$1.00</p>

See Your Gas Appliance Dealer, Plumber, Heating Contractor OR LONE STAR GAS COMPANY