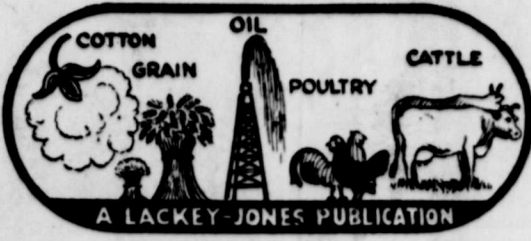


THE HASKELL FREE PRESS



HASKELL, HASKELL COUNTY, TEXAS, THURSDAY MAR. 3, 1949

Number 9

C of C Banquet-Meeting Held Tuesday, March 29

Completed this week the annual banquet-meeting of the Haskell Chamber of Commerce was held Tuesday evening, according to organization president...

A widely known appearance in public demand was second appearance recently delivered at Wichita Falls and is one of the standing speakers section, C. of C.

who will have various phases of be named in a scheduled for 8th, and will be week. The meeting will be a combined retiring board and plans for the will be made by

banquet and made to accommodate 325 people invited guests at towns. The will be open to the of the high

General Motors Corporation announced a reduction in all GM passenger Chevrolet trucks a 2-cent an hour 273,000 production on the cost of

General Motors' first call for April. Capt. William B. announced week-end. He said had been received headquarters.

There was a prevailing drought

There was a prevailing drought

There was a prevailing drought

There was a prevailing drought

Eight Club Boys Show Calves At Wichita Falls

Eight Haskell county club boys showed club calves in the district show at Wichita Falls Feb. 23-25.

Places won and price received for their calves were: In the light weight class, calves weighing under 900 pounds, Gilbert Brandenberger placed 5th, and his calf sold for 41c per lb.; Dub Sims placed 8th, and his calf sold for 41c per pound.

In the heavy weight class, calves weighing over 900 pounds, Buddy Lane placed 4th and sold his calf for 41c per pound; Billy Middlebrook placed 9th and sold his calf for 41c per pound; Sid Woodson placed 12th and sold his calf for 41c per pound; the second calf shown by Sid Woodson placed 19th and sold for 35c per pound; Andy Wilfong placed 23rd and sold his calf for 36c per pound; Kenneth Lane placed 25th and sold his calf for 35c per lb.; Bob Stone placed 28th and sold his calf for 35c per pound.

Dean W. L. Blizard, of Oklahoma A&M, judged the show.

Community Singing At Rule Church Sunday Afternoon

A Community Singing will be held at the 5th Street Baptist Church in Rule, Sunday afternoon March 6th, beginning at 2 p.m. Time for the regular monthly event has been moved up thirty minutes in order to give singers more time on the program.

All music lovers are invited to attend the program at the Rule church and enjoy an afternoon of good singing and music.

NEWS PAPER FILES REVEAL FIRST FARMING WAS DONE IN HASKELL COUNTY 64 YEARS AGO

With Haskell county now rated as one of the most productive agricultural areas in Central West Texas, several "old timers" still living here recall when cultivated tracts were rare in comparison to the vast ranches and open ranges of the early days.

J. N. McFatter, 90, Former Resident, Dies In Dallas

J. N. McFatter, former resident and early-day building contractor here, died Saturday, Feb. 26, in Dallas. He was 90 years old and had been in feeble health for some time.

Mr. McFatter, born in Mississippi, Oct. 10, 1858, came to Texas as a young man. He married Miss Bell Alford, Dec. 30, 1885, at Hico, Texas. In 1906 he moved his family to Haskell and for a number of years was a building contractor here. He built the present building of the First Baptist erected in about 1916, and also supervised construction of numerous business buildings in this section. In 1919 he moved to Ranger, where he served as a public official for a number of years, retiring to private life when his health began to decline.

He had been a member of the Baptist Church since early manhood, and also was a member of the W.O.W. and IOOF fraternal orders.

He is survived by two sons, Charles McFatter of Gorman; and Artie McFatter, Dallas; a daughter, Mrs. Helen Julius of Dallas; and several grandchildren and great-grandchildren.

Final rites for Mr. McFatter were held at Holden's Funeral Home in this city Monday at 2 p.m., conducted by Rev. Allen O. Webb, pastor of the First Baptist Church, and Rev. Blair.

Burial was in Willow Cemetery under direction of Holden Funeral Home. Pallbearers were A. C. Pierson, John A. Couch, R. V. Robertson, Ed F. Fouts, Sam A. Roberts, and R. J. Paxton.

RADA THORNTON IS MEMBER OF TOP VOLLEYBALL TEAM AT McMURRY COLLEGE

Rada, Thornton, daughter of Mr. and Mrs. Curtis Thornton, of Weinert, was a member of the champion girls' volleyball team at McMurry College, Abilene. The team was composed of residents in Boyce and Hunt dormitories, which has for three consecutive years been undefeated in intramural competition.

Dwight Van Pelt, Son of Mrs. N. McNeill, Dies

Dwight Van Pelt, 63, of Houston, son of Mrs. N. McNeill of this city, died Feb. 4, in Houston following an illness of several months. Funeral rites for Mr. Van Pelt were held in that city Saturday.

FHA Farm Ownership Borrowers Hold Annual Meeting Here Wednesday

The Haskell County Farm Ownership borrowers of the Farmers Home Administration held their annual borrowers' meeting Wednesday, March 2, in the American Legion building at Haskell.

There were some 60 people present, including farmers and their wives. The meeting was conducted by Wm. E. Lawson, local supervisor in the Haskell office. Those attending the meeting, other than the regular members, were: Wallace White, State Field Representative at Haskell; Dallas State office; Mrs. Elizabeth Hoffman, from Dallas Home Management Specialist; Joe McHarg, Land Appraiser from Dallas; and the three Advisory Committees from Haskell County: Gene Overton, Buck Calloway, and Gaston Hattox.

Motion pictures were shown the group, illustrating how crop yield could be increased through water conservation. Mr. Lawson summarized the 1948 records of the familiar showing how yields had been increased over 1947 and prior years, and that the borrowers were more than two years ahead on their payments.

The group brought basket lunches and spread them together picnic style. Entertainment at the noon hour was furnished by several of the ladies, accompanied by Mrs. Gene Overton at the piano.

MARRIAGES OUTNUMBER DIVORCES 7-TO-1 IN COUNTY IN FIRST TWO MONTHS OF 1949

Marriages outnumbered divorces 7-to-1 in Haskell County during the first two months of 1949, records in the County Clerk and District Clerk offices revealed this week. Marriage licenses were issued to 21 couples in January and February from the office of County Clerk Horace Oneal, while three divorce decrees were listed on the docket in District Clerk Jesse B. Smith's office for this period.

Couples securing marriage licenses since the first of the year: Doc Jamerson and Georgia Wade. Freeman H. Smith and Edna Gauntt.

Controls Eased On Instalment Buying

The Federal Reserve Board Wednesday relaxed instalment credit controls, effective next Monday, making it easier to buy products on time.

The chief changes allow 21 months to pay off the credit balance due after cash payment. The time limit in force now is 18 months where the credit amount is more than \$1,000, or 15 months when it is less.

Red Cross Quota Exceeded In First Day of Fund Drive

With the town of Weinert retaining the distinction of being the first community in the county to meet its annual Red Cross quota, Haskell County's quota of \$3,556 in the 1949 Fund Drive was raised Tuesday in less than 10 hours after the national campaign was launched. Wanda Dulaney, secretary of the Haskell County Chapter, reported.

No preliminary campaign drives were held before the drive opened Tuesday at 8 a.m., but before 6 p.m. National Headquarters of the Red Cross had been notified that Haskell County had over-subscribed its quota, Miss Dulaney reported.

Harold R. Spain, Haskell postmaster, is county chairman of the year's fund drive.

Following Weinert in reporting the '49 goal drive reached early on the first day was Rochester with Bob Speck as chairman; O'Brien, where the drive was headed by S. N. Reed; and Rule, where Robert Sollock is chairman of this year's campaign. Prompt and generous support reported in all other sections of the county indicated that the '49 goal would be liberally over-subscribed, County Drive Chairman Spain believed.

In some communities and areas of the county, condition of roads due to rain prevented the workers from carrying out the campaign on the first day, but as weather conditions permitted workers in these sections will endeavor to contact everyone who desire, to contribute to the campaign. A substantial portion of all money raised remains in the county for use by the local chapter, Spain pointed out.

The campaign chairman and other officials of the County Chapter were generous in their praise of workers who gave time and effort to the drive, and who are continuing the campaign to completion.

Haskell County's quota in the 1948 drive was \$2,995, and a total of \$3,556 was raised. Chapter officials revealed, with 991 individuals contributing in addition to business concerns and civic organizations.

With the 1949 goal several hundred dollars higher than last year, liberal response of the first day indicates that more than 1,000 individuals will be listed as contributors in boosting the over-subscription well above the 1948 total.

HHS Sponsoring Invitation Cage Tournament

Play is scheduled to begin today in a three-day Invitation Basketball Tournament sponsored by Haskell High School, in which five independent teams are entered.

Four Area Schools to Hold Pre-Spring Track Meet Here Friday, March 4th

Quadrangular pre-Spring Track Meet for high school athletes of Haskell, Weinert, Hamlin and Paint Creek schools will be held on Indian Football Field in this city Friday afternoon, under sponsorship of Coach Jack Roten and athletic directors of the remaining schools, entered.

At least 50 or more high school athletes are expected to take part in the afternoon events, Coach Roten estimated Thursday.

Track and field events in which entrants from the four schools entered will take part include: 120-yard high hurdles; 100-yd. dash; 440-yard relay; 220-yard dash; 440-yard dash; 880-yard run; one mile run; 200-yard low hurdles; high jump; broad jump; pole vault, discus throw; shot put; and mile relay.

Schedule of events will begin promptly at 3 p. m. An admission charge of 15c will be made for grade school students, and 25c for high school students and adults.

Final Rites For Clyde Mansker Held Saturday

Funeral service for Clyde Mansker, 46, resident of Weinert for more than 25 years and former peace officer in that city, was held at Holden's Funeral Chapel in this city Saturday at 2:30 p.m. Rev. Charles Sargent and Rev. H. G. Hammer conducted the service and interment was in the Weinert Cemetery. Pallbearers were Jiggs Edwards, Argie Reeves, John Woolsey, Glenn Merchant, Stanley Furrh, J. D. Davis, and L. V. Reeves.

Mr. Mansker, who had been in ill health for the past three years, died at 3 a.m. Friday, at the home of a brother, A. J. Mansker, in this city.

He was a native of Waco, Texas, born Dec. 12, 1902, the son of Mr. and Mrs. Joe P. Mansker. He moved with his parents to Weinert in 1920 from Weatherford, Texas. He served as Constable of the Weinert precinct for several years.

Only immediate survivors are his brother, and a sister, Miss Mildred Mansker, both of this city.

Fire Siren Will Sound Reminder for Day of Prayer

In connection with observance of the World Day of Prayer the fire alarm siren at the City Hall will be sounded at 3:05 p.m. Friday as a reminder of the worldwide observance and call to prayer. Request is being made of merchants and their employees that when the siren is sounded, all business be suspended for two minutes of silent prayer for lasting peace, goodwill and brotherhood to all the world.

School Census To Be Taken During Month of March

The annual school census will be taken in Haskell county during the month of March, with the census takers appointed in the various school districts expected to begin enumerating scholastics this week or as soon as the weather permits, Mrs. Iva Palmer, county superintendent, said. Census-taking is due to be completed by March 31.

In Haskell, Mrs. J. E. Bernard has been appointed enumerator for the Haskell Independent School District. Jess Bell will take the census in the Rule School District, and Supt. Norman of Mattson Rural High School will supervise census-taking in that district. Complete list of enumerators for all districts in the county was not available the first of the week.

All children who will become 6 years of age before Sept. 1, 1949, and those who will not become 18 years of age until after Sept. 1, this year should be included in the census, school officials explained.

It is expected that the state apportionment money for the coming school year will amount to \$50 per pupil, a drop of \$5 from the apportionment of \$55 for the current year. In urging enumerators to see that every child in their districts are listed, Mrs. Palmer pointed out: "Missing only a few children can mean the loss of several hundred dollars to your district. At the same time we urge the parents to co-operate. If you think you may not be at home when the enumerator comes, get in touch with him and see that your children are counted in the school census."

Pvt. Kingsbury Now In Japan With Infantry Division

Private Richard Kingsbury, son of Mr. and Mrs. Ervin Kingsbury of Haskell, has recently been assigned to Company E 24th Infantry at Camp Gifu, Japan, a part of the 25th Infantry (Tropic Lightning) Division, commanded by Major General William B. Kean.

Pvt. Kingsbury entered the Army in April, 1946, received his basic training at Sack Field, Texas, and departed for overseas duty in December, 1948.

Before entering the service Pvt. Kingsbury attended Blacksherr High School.

Outline of Preliminary Work on Proposed Dam Project Is Given Rochester Rotarians By Haskell Speaker

John A. Couch, Haskell businessman and chairman of the Bob Baskin Dam Association, was guest speaker for the regular meeting of the Rochester Rotary Club on Tuesday evening.

Club meetings are held in the high school cafeteria, with the meals being served by the cafeteria staff. More than twenty members were present to hear Couch tell of the progress of the Bob Baskin group over the 7-year period that active efforts have been made to begin work on the much needed project for northwestern Haskell county.

Red Cross Quota Exceeded In First Day of Fund Drive

With the town of Weinert retaining the distinction of being the first community in the county to meet its annual Red Cross quota, Haskell County's quota of \$3,556 in the 1949 Fund Drive was raised Tuesday in less than 10 hours after the national campaign was launched. Wanda Dulaney, secretary of the Haskell County Chapter, reported.

No preliminary campaign drives were held before the drive opened Tuesday at 8 a.m., but before 6 p.m. National Headquarters of the Red Cross had been notified that Haskell County had over-subscribed its quota, Miss Dulaney reported.

Harold R. Spain, Haskell postmaster, is county chairman of the year's fund drive.

Following Weinert in reporting the '49 goal drive reached early on the first day was Rochester with Bob Speck as chairman; O'Brien, where the drive was headed by S. N. Reed; and Rule, where Robert Sollock is chairman of this year's campaign. Prompt and generous support reported in all other sections of the county indicated that the '49 goal would be liberally over-subscribed, County Drive Chairman Spain believed.

In some communities and areas of the county, condition of roads due to rain prevented the workers from carrying out the campaign on the first day, but as weather conditions permitted workers in these sections will endeavor to contact everyone who desire, to contribute to the campaign. A substantial portion of all money raised remains in the county for use by the local chapter, Spain pointed out.

The campaign chairman and other officials of the County Chapter were generous in their praise of workers who gave time and effort to the drive, and who are continuing the campaign to completion.

Haskell County's quota in the 1948 drive was \$2,995, and a total of \$3,556 was raised. Chapter officials revealed, with 991 individuals contributing in addition to business concerns and civic organizations.

With the 1949 goal several hundred dollars higher than last year, liberal response of the first day indicates that more than 1,000 individuals will be listed as contributors in boosting the over-subscription well above the 1948 total.

HHS Sponsoring Invitation Cage Tournament

Play is scheduled to begin today in a three-day Invitation Basketball Tournament sponsored by Haskell High School, in which five independent teams are entered.

Will Appear In Recital Here



Miss Betty Jo Adkins, daughter of Mr. and Mrs. James Adkins of Haskell, was a member of a class of five nursing students of Lubbock Memorial Hospital who recently completed their pre-clinical training period. The five students, Miss Adkins, Iris Clepper, Dean Clifton, Billy Hodges and Anna Bess Slater, took part in a capping service held at the First Baptist Church in Lubbock last week.

Miss Betty Jo Adkins Finishes Nursing Course at Lubbock

Miss Betty Jo Adkins, daughter of Mr. and Mrs. James Adkins of Haskell, was a member of a class of five nursing students of Lubbock Memorial Hospital who recently completed their pre-clinical training period. The five students, Miss Adkins, Iris Clepper, Dean Clifton, Billy Hodges and Anna Bess Slater, took part in a capping service held at the First Baptist Church in Lubbock last week.

VISIT IN CARLSBAD, N. M.

Outline of Preliminary Work on Proposed Dam Project Is Given Rochester Rotarians By Haskell Speaker

John A. Couch, Haskell businessman and chairman of the Bob Baskin Dam Association, was guest speaker for the regular meeting of the Rochester Rotary Club on Tuesday evening.

Club meetings are held in the high school cafeteria, with the meals being served by the cafeteria staff. More than twenty members were present to hear Couch tell of the progress of the Bob Baskin group over the 7-year period that active efforts have been made to begin work on the much needed project for northwestern Haskell county.

Red Cross Quota Exceeded In First Day of Fund Drive

With the town of Weinert retaining the distinction of being the first community in the county to meet its annual Red Cross quota, Haskell County's quota of \$3,556 in the 1949 Fund Drive was raised Tuesday in less than 10 hours after the national campaign was launched. Wanda Dulaney, secretary of the Haskell County Chapter, reported.

No preliminary campaign drives were held before the drive opened Tuesday at 8 a.m., but before 6 p.m. National Headquarters of the Red Cross had been notified that Haskell County had over-subscribed its quota, Miss Dulaney reported.

Harold R. Spain, Haskell postmaster, is county chairman of the year's fund drive.

Following Weinert in reporting the '49 goal drive reached early on the first day was Rochester with Bob Speck as chairman; O'Brien, where the drive was headed by S. N. Reed; and Rule, where Robert Sollock is chairman of this year's campaign. Prompt and generous support reported in all other sections of the county indicated that the '49 goal would be liberally over-subscribed, County Drive Chairman Spain believed.

In some communities and areas of the county, condition of roads due to rain prevented the workers from carrying out the campaign on the first day, but as weather conditions permitted workers in these sections will endeavor to contact everyone who desire, to contribute to the campaign. A substantial portion of all money raised remains in the county for use by the local chapter, Spain pointed out.

The campaign chairman and other officials of the County Chapter were generous in their praise of workers who gave time and effort to the drive, and who are continuing the campaign to completion.

Haskell County's quota in the 1948 drive was \$2,995, and a total of \$3,556 was raised. Chapter officials revealed, with 991 individuals contributing in addition to business concerns and civic organizations.

With the 1949 goal several hundred dollars higher than last year, liberal response of the first day indicates that more than 1,000 individuals will be listed as contributors in boosting the over-subscription well above the 1948 total.

HHS Sponsoring Invitation Cage Tournament

Play is scheduled to begin today in a three-day Invitation Basketball Tournament sponsored by Haskell High School, in which five independent teams are entered.

Red Cross Quota Exceeded In First Day of Fund Drive

With the town of Weinert retaining the distinction of being the first community in the county to meet its annual Red Cross quota, Haskell County's quota of \$3,556 in the 1949 Fund Drive was raised Tuesday in less than 10 hours after the national campaign was launched. Wanda Dulaney, secretary of the Haskell County Chapter, reported.

No preliminary campaign drives were held before the drive opened Tuesday at 8 a.m., but before 6 p.m. National Headquarters of the Red Cross had been notified that Haskell County had over-subscribed its quota, Miss Dulaney reported.

Harold R. Spain, Haskell postmaster, is county chairman of the year's fund drive.

Following Weinert in reporting the '49 goal drive reached early on the first day was Rochester with Bob Speck as chairman; O'Brien, where the drive was headed by S. N. Reed; and Rule, where Robert Sollock is chairman of this year's campaign. Prompt and generous support reported in all other sections of the county indicated that the '49 goal would be liberally over-subscribed, County Drive Chairman Spain believed.

In some communities and areas of the county, condition of roads due to rain prevented the workers from carrying out the campaign on the first day, but as weather conditions permitted workers in these sections will endeavor to contact everyone who desire, to contribute to the campaign. A substantial portion of all money raised remains in the county for use by the local chapter, Spain pointed out.

The campaign chairman and other officials of the County Chapter were generous in their praise of workers who gave time and effort to the drive, and who are continuing the campaign to completion.

Haskell County's quota in the 1948 drive was \$2,995, and a total of \$3,556 was raised. Chapter officials revealed, with 991 individuals contributing in addition to business concerns and civic organizations.

With the 1949 goal several hundred dollars higher than last year, liberal response of the first day indicates that more than 1,000 individuals will be listed as contributors in boosting the over-subscription well above the 1948 total.

HHS Sponsoring Invitation Cage Tournament

Play is scheduled to begin today in a three-day Invitation Basketball Tournament sponsored by Haskell High School, in which five independent teams are entered.

Red Cross Quota Exceeded In First Day of Fund Drive

With the town of Weinert retaining the distinction of being the first community in the county to meet its annual Red Cross quota, Haskell County's quota of \$3,556 in the 1949 Fund Drive was raised Tuesday in less than 10 hours after the national campaign was launched. Wanda Dulaney, secretary of the Haskell County Chapter, reported.

No preliminary campaign drives were held before the drive opened Tuesday at 8 a.m., but before 6 p.m. National Headquarters of the Red Cross had been notified that Haskell County had over-subscribed its quota, Miss Dulaney reported.

Harold R. Spain, Haskell postmaster, is county chairman of the year's fund drive.

Following Weinert in reporting the '49 goal drive reached early on the first day was Rochester with Bob Speck as chairman; O'Brien, where the drive was headed by S. N. Reed; and Rule, where Robert Sollock is chairman of this year's campaign. Prompt and generous support reported in all other sections of the county indicated that the '49 goal would be liberally over-subscribed, County Drive Chairman Spain believed.

In some communities and areas of the county, condition of roads due to rain prevented the workers from carrying out the campaign on the first day, but as weather conditions permitted workers in these sections will endeavor to contact everyone who desire, to contribute to the campaign. A substantial portion of all money raised remains in the county for use by the local chapter, Spain pointed out.

The campaign chairman and other officials of the County Chapter were generous in their praise of workers who gave time and effort to the drive, and who are continuing the campaign to completion.

Haskell County's quota in the 1948 drive was \$2,995, and a total of \$3,556 was raised. Chapter officials revealed, with 991 individuals contributing in addition to business concerns and civic organizations.

With the 1949 goal several hundred dollars higher than last year, liberal response of the first day indicates that more than 1,000 individuals will be listed as contributors in boosting the over-subscription well above the 1948 total.

HHS Sponsoring Invitation Cage Tournament

Play is scheduled to begin today in a three-day Invitation Basketball Tournament sponsored by Haskell High School, in which five independent teams are entered.

The Haskell Free Press

Established January 1, 1886
Published every Thursday

Member TEXAS PRESS ASSOCIATION
Sam A. Roberts, Publisher
Alonzo Pate, Editor
Lola Lemmon, Bookkeeper

Entered as second-class matter at the postoffice at Haskell, Texas, under the act of March 3, 1879.

NOTICE TO THE PUBLIC—Any erroneous reflection upon the character, reputation or standing of any firm, individual or corporation will be gladly corrected upon being called to the attention of the publishers.

Growing plants without soil is a method known by several names, some of which are soil-less culture, water culture, chemical gardening, hydroponics and tank farming.

The average sized egg contains 7 calories, as well as iron, phosphorus and calcium minerals. They have vitamins too—A, B1,

B2, and D.

Chlordane and toxaphene will kill grasshoppers faster and over a longer period of time than other insecticides tested by the Texas Agricultural Experiment Station.

Read the Classified Section.

SPECIAL WHILE THEY LAST

- G. I. WORK SHOES **4.95**
- WOOL SHIRTS, O. D. **1.25**
- Cushion Foot Wool Sox, per pair **50c**
- 1/2 In. Drive Socket Sets, 24 Pieces **12.50**

Special Price On All Wrenches
Come Over To See Us
THE ARMY STORE
Knox City, Texas

HASKELL COUNTY HISTORY

Brief Items Taken from Old Copies of The Free Press

50 Years Ago—March 4, 1899

The Wichita Valley and Fort Worth & Denver Railway is offering a rate of one fare, \$4.95 for the round trip from Seymour to Fort Worth for the annual meeting of the Cattleman's Association March 13-15.

Mrs. Lanier moved back to Rayner this week.

Judge P. D. Sanders is in Austin this week looking after some official business for the county.

Dr. E. E. Gilbert and family left Tuesday for the eastern part of the state. The Doctor goes to Dallas on business, and his family will visit relatives at their old home for several weeks.

The young people had an enjoyable entertainment at T. J. Wilbourn's Monday night.

Miss Rob Lindsey spent several days this week with the family of her uncle on California Creek.

Mr. and Mrs. W. L. Hills have a son whose advent dates from the 25th of last month. The young gentleman will be known as William Lamont Hills.

J. F. Jones advertises that he will thresh sorghum seed at his gin on Friday, March 10.

"Who is she?" is the question since John Couch began building that residence four miles out. It is not believed that he intends to establish a hemitage.

Hugh Meadors made a business trip to Abilene this week.

Misses Lula and Stella Dodson returned home from Dallas last Friday.

Rev. C. C. Anderson, pastor of the Presbyterian Churches here and in Anson, has moved his headquarters to Haskell.

It is reliably reported from Seymour that work will be started in the not too distant future on extension of the Wichita Valley railroad southward either to Benjamin or Haskell—and Haskell seems to have the inside track.

Rev. C. C. Anderson, pastor of the Presbyterian Churches here and in Anson, has moved his headquarters to Haskell.

It is reliably reported from Seymour that work will be started in the not too distant future on extension of the Wichita Valley railroad southward either to Benjamin or Haskell—and Haskell seems to have the inside track.

Rev. C. C. Anderson, pastor of the Presbyterian Churches here and in Anson, has moved his headquarters to Haskell.

It is reliably reported from Seymour that work will be started in the not too distant future on extension of the Wichita Valley railroad southward either to Benjamin or Haskell—and Haskell seems to have the inside track.

Rev. C. C. Anderson, pastor of the Presbyterian Churches here and in Anson, has moved his headquarters to Haskell.

It is reliably reported from Seymour that work will be started in the not too distant future on extension of the Wichita Valley railroad southward either to Benjamin or Haskell—and Haskell seems to have the inside track.

Rev. C. C. Anderson, pastor of the Presbyterian Churches here and in Anson, has moved his headquarters to Haskell.

It is reliably reported from Seymour that work will be started in the not too distant future on extension of the Wichita Valley railroad southward either to Benjamin or Haskell—and Haskell seems to have the inside track.

Rev. C. C. Anderson, pastor of the Presbyterian Churches here and in Anson, has moved his headquarters to Haskell.

It is reliably reported from Seymour that work will be started in the not too distant future on extension of the Wichita Valley railroad southward either to Benjamin or Haskell—and Haskell seems to have the inside track.

Rev. C. C. Anderson, pastor of the Presbyterian Churches here and in Anson, has moved his headquarters to Haskell.

It is reliably reported from Seymour that work will be started in the not too distant future on extension of the Wichita Valley railroad southward either to Benjamin or Haskell—and Haskell seems to have the inside track.

Rev. C. C. Anderson, pastor of the Presbyterian Churches here and in Anson, has moved his headquarters to Haskell.

It is reliably reported from Seymour that work will be started in the not too distant future on extension of the Wichita Valley railroad southward either to Benjamin or Haskell—and Haskell seems to have the inside track.

Rev. C. C. Anderson, pastor of the Presbyterian Churches here and in Anson, has moved his headquarters to Haskell.

It is reliably reported from Seymour that work will be started in the not too distant future on extension of the Wichita Valley railroad southward either to Benjamin or Haskell—and Haskell seems to have the inside track.

Rev. C. C. Anderson, pastor of the Presbyterian Churches here and in Anson, has moved his headquarters to Haskell.

It is reliably reported from Seymour that work will be started in the not too distant future on extension of the Wichita Valley railroad southward either to Benjamin or Haskell—and Haskell seems to have the inside track.

Rev. C. C. Anderson, pastor of the Presbyterian Churches here and in Anson, has moved his headquarters to Haskell.

It is reliably reported from Seymour that work will be started in the not too distant future on extension of the Wichita Valley railroad southward either to Benjamin or Haskell—and Haskell seems to have the inside track.

Rev. C. C. Anderson, pastor of the Presbyterian Churches here and in Anson, has moved his headquarters to Haskell.

It is reliably reported from Seymour that work will be started in the not too distant future on extension of the Wichita Valley railroad southward either to Benjamin or Haskell—and Haskell seems to have the inside track.

Rev. C. C. Anderson, pastor of the Presbyterian Churches here and in Anson, has moved his headquarters to Haskell.

It is reliably reported from Seymour that work will be started in the not too distant future on extension of the Wichita Valley railroad southward either to Benjamin or Haskell—and Haskell seems to have the inside track.

Rev. C. C. Anderson, pastor of the Presbyterian Churches here and in Anson, has moved his headquarters to Haskell.

It is reliably reported from Seymour that work will be started in the not too distant future on extension of the Wichita Valley railroad southward either to Benjamin or Haskell—and Haskell seems to have the inside track.

Rev. C. C. Anderson, pastor of the Presbyterian Churches here and in Anson, has moved his headquarters to Haskell.

It is reliably reported from Seymour that work will be started in the not too distant future on extension of the Wichita Valley railroad southward either to Benjamin or Haskell—and Haskell seems to have the inside track.

Rev. C. C. Anderson, pastor of the Presbyterian Churches here and in Anson, has moved his headquarters to Haskell.

It is reliably reported from Seymour that work will be started in the not too distant future on extension of the Wichita Valley railroad southward either to Benjamin or Haskell—and Haskell seems to have the inside track.

Rev. C. C. Anderson, pastor of the Presbyterian Churches here and in Anson, has moved his headquarters to Haskell.

It is reliably reported from Seymour that work will be started in the not too distant future on extension of the Wichita Valley railroad southward either to Benjamin or Haskell—and Haskell seems to have the inside track.

Rev. C. C. Anderson, pastor of the Presbyterian Churches here and in Anson, has moved his headquarters to Haskell.

It is reliably reported from Seymour that work will be started in the not too distant future on extension of the Wichita Valley railroad southward either to Benjamin or Haskell—and Haskell seems to have the inside track.

Rev. C. C. Anderson, pastor of the Presbyterian Churches here and in Anson, has moved his headquarters to Haskell.

It is reliably reported from Seymour that work will be started in the not too distant future on extension of the Wichita Valley railroad southward either to Benjamin or Haskell—and Haskell seems to have the inside track.

Rev. C. C. Anderson, pastor of the Presbyterian Churches here and in Anson, has moved his headquarters to Haskell.

It is reliably reported from Seymour that work will be started in the not too distant future on extension of the Wichita Valley railroad southward either to Benjamin or Haskell—and Haskell seems to have the inside track.

Rev. C. C. Anderson, pastor of the Presbyterian Churches here and in Anson, has moved his headquarters to Haskell.

It is reliably reported from Seymour that work will be started in the not too distant future on extension of the Wichita Valley railroad southward either to Benjamin or Haskell—and Haskell seems to have the inside track.

Rev. C. C. Anderson, pastor of the Presbyterian Churches here and in Anson, has moved his headquarters to Haskell.

It is reliably reported from Seymour that work will be started in the not too distant future on extension of the Wichita Valley railroad southward either to Benjamin or Haskell—and Haskell seems to have the inside track.

Rev. C. C. Anderson, pastor of the Presbyterian Churches here and in Anson, has moved his headquarters to Haskell.

It is reliably reported from Seymour that work will be started in the not too distant future on extension of the Wichita Valley railroad southward either to Benjamin or Haskell—and Haskell seems to have the inside track.

Rev. C. C. Anderson, pastor of the Presbyterian Churches here and in Anson, has moved his headquarters to Haskell.

It is reliably reported from Seymour that work will be started in the not too distant future on extension of the Wichita Valley railroad southward either to Benjamin or Haskell—and Haskell seems to have the inside track.

Rev. C. C. Anderson, pastor of the Presbyterian Churches here and in Anson, has moved his headquarters to Haskell.

It is reliably reported from Seymour that work will be started in the not too distant future on extension of the Wichita Valley railroad southward either to Benjamin or Haskell—and Haskell seems to have the inside track.

Rev. C. C. Anderson, pastor of the Presbyterian Churches here and in Anson, has moved his headquarters to Haskell.

It is reliably reported from Seymour that work will be started in the not too distant future on extension of the Wichita Valley railroad southward either to Benjamin or Haskell—and Haskell seems to have the inside track.

Rev. C. C. Anderson, pastor of the Presbyterian Churches here and in Anson, has moved his headquarters to Haskell.

It is reliably reported from Seymour that work will be started in the not too distant future on extension of the Wichita Valley railroad southward either to Benjamin or Haskell—and Haskell seems to have the inside track.

Rev. C. C. Anderson, pastor of the Presbyterian Churches here and in Anson, has moved his headquarters to Haskell.

It is reliably reported from Seymour that work will be started in the not too distant future on extension of the Wichita Valley railroad southward either to Benjamin or Haskell—and Haskell seems to have the inside track.

Rev. C. C. Anderson, pastor of the Presbyterian Churches here and in Anson, has moved his headquarters to Haskell.

It is reliably reported from Seymour that work will be started in the not too distant future on extension of the Wichita Valley railroad southward either to Benjamin or Haskell—and Haskell seems to have the inside track.

Rev. C. C. Anderson, pastor of the Presbyterian Churches here and in Anson, has moved his headquarters to Haskell.

It is reliably reported from Seymour that work will be started in the not too distant future on extension of the Wichita Valley railroad southward either to Benjamin or Haskell—and Haskell seems to have the inside track.

Rev. C. C. Anderson, pastor of the Presbyterian Churches here and in Anson, has moved his headquarters to Haskell.

It is reliably reported from Seymour that work will be started in the not too distant future on extension of the Wichita Valley railroad southward either to Benjamin or Haskell—and Haskell seems to have the inside track.

Rev. C. C. Anderson, pastor of the Presbyterian Churches here and in Anson, has moved his headquarters to Haskell.

It is reliably reported from Seymour that work will be started in the not too distant future on extension of the Wichita Valley railroad southward either to Benjamin or Haskell—and Haskell seems to have the inside track.

ness here to Mr. Gilliam, and plan to move with his family to Clovis, N. M., this spring.

Pat Jones, who now lives in the Sierra Blanco country, is here visiting his parents, Mr. and Mrs. L. S. Jones of the north side. Pat says the Sierra Blanco is in good shape.

Scott W. Key, a graduate of the law department of the University of Texas, has moved to Haskell to be associated with his uncle, Judge Scott of this city in the practice of law.

Mr. and Mrs. Courtney Hunt of Merkel are visiting his parents, Mr. and Mrs. J. T. Hunt.

Judge W. C. Jackson of Fort Stockton was up this week visiting his family. Judge Jackson will leave his family here until the end of the school term.

Rev. L. O. Cunningham and Lewis Sherrill have returned from Birmingham, Ala., where they attended the Laymen's Missionary Presbytery.

Henry Tandy of Oklahoma is visiting his sister, Mrs. S. W. Scott and family.

Miss Erma Sowell who is attending school at Stamford spent Sunday with relatives here.

20 Years Ago—Feb. 28, 1929

The first of a series of terracing demonstrations to be given in West Texas will be held Friday and Saturday near the McConnell school house southeast of Haskell. The demonstrations are being sponsored by the West Texas Chamber of Commerce.

The Norton Hotel in this city, which was almost destroyed by fire last August, has been rebuilt into a modern apartment house. Work of rebuilding and remodeling was completed this week.

Mrs. Dennis Ratliff and children and Miss Geneva Golden spent the week-end in Bomarton with their parents, Mr. and Mrs. A. H. Golden.

Miss Agnes Cox, teacher in the Stamford primary schools, spent the week-end here with her parents, Mr. and Mrs. Cox.

W. E. Penick, postmaster at Rule and W. R. Carothers and their families spent Friday of last week with friends in Haskell.

Work was started this week on an addition to the building occupied by the Haskell Motor Co., one block west of the square. The addition will be 25x100 feet and joins the old building on the east side. The completed building will be 75x100 feet in size.

Mrs. Wm. C. Schwartz of Sargent was in Haskell Saturday. She brings her farm produce to Haskell regularly, and says she



Family Gathering Held In Home of Mr. and Mrs. Mills

A family get together was held in the home of Mr. and Mrs. Roy Lee Mills of Rochester on Sunday, Feb. 20. At the noon hour a bountiful dinner was served buffet style. Those enjoying the

day were: Mrs. J. F. Thomas, Sr., of Electra; Mrs. C. M. Milloholon and daughters, of Electra; Mr. and Mrs. C. C. Thomas, of Electra; Mr. and Mrs. C. A. Thomas and Lewis of Weiner; Mr. and Mrs. John Thomas and family, Mr. and Mrs. Odell Thomas and family, Mr. and Mrs. Clifford Thomas, Jr., Mrs. Berta Mae Bass and children, all of Haskell;

Mr. and Mrs. R. Bobby of Rochester; Mrs. Hubert Muleshoe. VISITS IN MIDLAND—City Marshal returned the first from Midland in that section, several days.

YOUR 1949 LICENSE TAG FREE

If you buy one of our good reconditioned cars. This offer closes

SATURDAY MARCH 12TH

We have a nice selection of good reconditioned cars. All of them have been placed in good mechanical condition and are ready to go. You'll get a bargain in a good car and at the same time save registration fee.



Roy Ratliff

Manager, Used Car

ATTENDS SALES MEETING IN ABILENE

Mrs. Ruby Brown spent the week-end in Abilene where she attended a sales meeting of the Lutzer's fine cosmetics and perfumes. Mrs. Brown is the local distributor for this cosmetics.

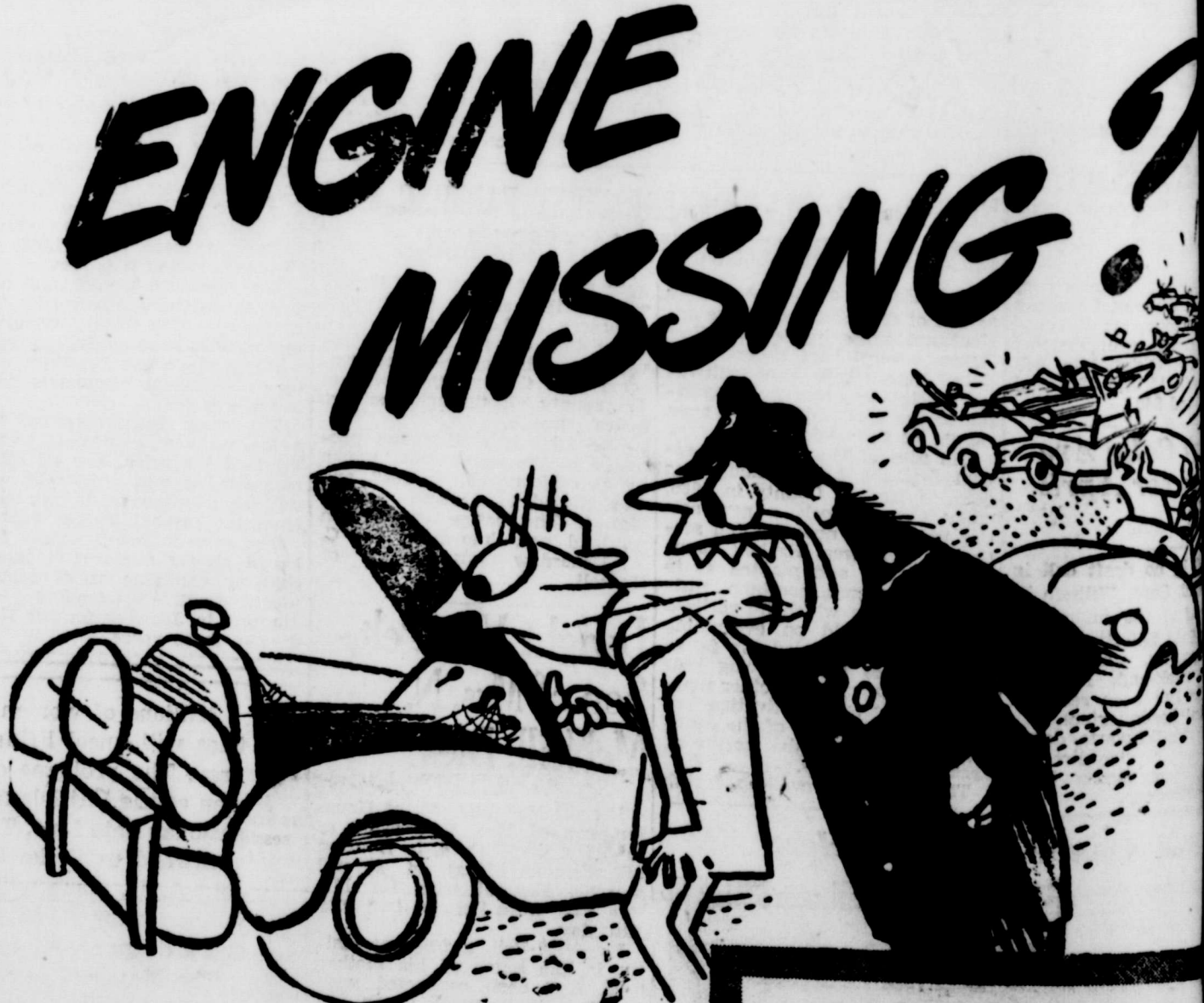
finds many bargains offered by merchants here.

W. W. Newton of the Bunker Hill community has recently purchased a tractor and double row equipment. He plans to sell some of his mules and plow tools.

BASSING JEWELRY WATCH REPAIR

All Work Guaranteed

106 North Ave' D



ENGINE MISSING ?

GET THIS SPECIAL FORD TUNEUP!

HERE'S WHAT WE DO!

1. Make compression test
2. Clean and adjust carburetor
3. Clean and check fuel pump
4. Clean and space spark plugs
5. Completely check ignition system
6. Adjust fan belt
7. Tighten all hose connections
8. Check water pumps
9. Check radiator and cooling system

AT THIS LOW PRICE \$4.00 labor included

We Ford dealers know Fords best!
Bill Wilson Motor Company
300 South Avenue E
Haskell

Only **CROSLY** Has The **Shelvador**

Model EA9
Capacity
9.1 Cubic Feet
\$269.95

The Shelvador is one of the finest conveniences and useful features of all modern refrigerators. Doubles the front row food space. Provides a "Filing Cabinet" for small, hard to locate bottles and packages. Makes food rearranging easier. Triples bottle storage capacity.

THIS EXCLUSIVE FEATURE IS AVAILABLE ONLY IN THE

CROSLY SHELVADOR REFRIGERATOR

Now in stock for immediate delivery.

FOUTS

Dry Goods and Variety

FORWARD, MARCH!

- March is here again, the month that heralds spring—and spring housecleaning!
- In Grandma's day, housecleaning—and housekeeping, too—meant endless rounds of back-breaking drudgery. But today, thousands of wise West Texas homemakers call on their low-cost electric servant, Reddy Kilowatt, to help take the work out of housework—to cook and clean, wash and iron, sweep and sew.
- For less than you'd pay for a daily pack of cigarettes, electric service makes life easier, healthier, more comfortable. What other item in your family budget gives you such great living value—at such little cost?

West Texas Utilities Company

Give

1948 Goes In Books As Good Year For Hog Raisers

Last year was a good year as far as the hog raisers were concerned. They set an all-time state record for the number of pigs saved per litter. The average was 8.4 pigs per litter, far above any previous year.

Great progress is being made in improving the quality of hogs raised in Texas, says E. M. Regench, extension swine husbandman of Texas A&M College. Hogs of excellent breeding are found in all sections of the state.

More than 15,400 adults and 4-H club members conducted hog demonstrations last year, using improved breeding stock and following recommended practices in carrying out their swine improvement programs.

Good green pastures are pretty valuable to have in the hog raising program, and most producers know how the cost of gains can

be lowered if these pastures are available. Last summer's drought taught others the real meaning of deficiency diseases. Good grazing crops generally supply all the vitamin requirements necessary in a ration. They also supply most of the mineral and about one-half of the protein requirements of the ration as well.

When the dry summer parched Texas pastures, the result was an increase of the deficiency diseases of swine. The effect of this on the hog producers was strong. Minerals and vitamins have taken a new meaning, and hog raisers now know their value in a properly balanced ration, says Regench.

In the line of medicines, the new vaccines BTV and crystal violet proved their efficiency in protecting hogs against cholera. Over a thousand demonstrations were conducted, and not a single case of cholera was reported on farms where these vaccines were used.

Sodium flouride was widely used in worming hogs of the large round stomach worm. Results were very good when used as recommended, says Regench.

Chlordane and BHC were widely demonstrated in Texas last year as a control for hog mange and hog lice. Mange is found over most of the state, and was hard to control before these new drugs were introduced on the market, he concludes.

Willing Workers Hear Review of "Hound Dog Man"

The Willing Workers H.D. Club members and their husbands met Thursday night, Feb. 24, in the home of Mr. and Mrs. Elmer Burleson, for a book review by Mrs. Bess Porter of Rochester. Mrs. Porter chose, "Hound Dog Man," by the popular Book of the Month author, Fred Gipson of Mason, Texas. Mrs. Porter, a popular entertainer, is a friend of Mr. Gipson and having lived in Mason herself, she knows the locale in which the story takes place and could make it even more interesting for her audience.



A 2-piece back interest dress by Dale Thomas of lustrous new iridescent faille. The fabric is of Avisco rayon yarns.

Landscape Jobs Can Be Done Before Spring

Note to rosebush fanciers: roses will do better if set in ground which has been sodded with grass for the past five years.

This suggestion comes from Sadie Hatfield, extension landscape gardening specialist of Texas A&M College, who adds this reminder: Be sure your rosebushes come from a reliable nursery. Roses can be set out now, or anytime as long as the ground is not frozen.

There is still some time left for removing unattractive and unhealthy shrubs, and replacing them with better ones. This should be done before the spring growing season begins, adds Miss Hatfield.

City dwellers may want to grow a few vegetables as part of a landscape plan. If so, pruning the roots and tops of overgrown shrubs will make room for their new plantings. Among those vegetables, Miss Hatfield lists as suitable for planting now in most parts of Texas are roots or seed of asparagus, seed endive, carrots, lettuce, mustard and turnips.

The recent state-wide freeze injured a large number of shrubs. Don't prune such frost injured shrubs right away, she warns. Leave the injured part on for a while as further protection against other cold snaps, should they occur.

About the care of shrubs, Miss Hatfield has this to say. It is a good idea to examine the flowering quince, gardenias, roses and wax leaf legustrum for signs of scale. That goes for peach and plum trees as well. County agricultural agents have further information on the treatment and protection of shrubs from insects and diseases.

When shrubs, trees or roses have abnormally yellow leaves, this specialist suggests using a corrective treatment of one cup of iron sulphate (or copper) and two cups of sulphur. Mix this in well with the soil within 15 square feet of the plant, says Miss Hatfield.

Harmony Club Studies American History

The Harmony Club met in regular session Thursday night, February 24, in the Homemaking Cottage.

Mrs. John H. Banks, president, presided for a short business session. Plans were discussed for the Reciprocity tea March 10.

Roll call was answered with a good musical program heard recently.

Mrs. C. F. Cadenhead directed the program on Opera. Mrs. C. F. Cadenhead, Jr. spoke on Opera in America and Opera Composers. She told the story of Pargy's and Bess and played recordings of this opera.

Miss Bobby Ann Herren, played a piano number, Claire de Lune (Debussy). Billy Cadenhead sang Brahms' Cradle Song. Fifteen members and one guest were present. Mrs. L. H. Cooper was hostess.

HERE ON BUSINESS

George Logan of Abilene was a business visitor in Haskell Tuesday.

VISITS MOTHER IN LUBBOCK

M. E. Helber visited his mother in Lubbock the past week. He was accompanied home Saturday evening by his son, Scottie, who is a student in Texas Tech and Ray Carter, of Wink, and Miss Shirley Allen, of Lubbock, who spent the week-end in the Helber home.

Mrs. H. D. Bland Hosts Meeting of Rainbow Club

Mrs. H. D. Bland was hostess to the Rainbow Sewing Club on Tuesday, Feb. 22.

House was called to order by the president, Mrs. J. B. Edwards. In the absence of Mrs. Walter Rogers, Mrs. Floyd Lusk acted as secretary.

Several songs were sung, led by Mrs. Tony Patterson.

A business session followed. Mrs. W. E. Johnson read Needlecraft report. Mrs. H. D. Bland winning first place, Mrs. Edwards second.

Thought for the day—"May Our Hinges of Fellowship Never Rust, Nor Our Wings of Love Lose a Feather," was given by a guest, Mrs. Chic Foster.

Mrs. Tooley gave an interesting talk, "The Life of Ma Perkins," in radio program, who in real life is Virginia Payne.

The social hour was under di-

rection of Mrs. Tooley. Stella Josslet won prize in game contest.

Refreshments of delicious cherry pie trimmed with small hatchets over top, ice cream, and cakes were served to five guests:

Mesdames Jewel Perdue, Ollie Johnson, Chic Foster of California, Oleta Pennington and daughter, Janice and the following members:

Mesdames A. B. Corzine, Tony Patterson, J. B. Edwards, Helen Johnson, W. E. Johnson, O. W.

Veterans Wives HD Club Hears Review Of Recent Book

The members of the V.W.H.D. Club of Rochester were entertained Tuesday night when Mrs. Bess C. Porter reviewed the book, "The Hound Dog Man," by Fred Gibson for them. After the book review, a delicious refreshment plate was served by the hostesses, Mrs. Paul Grinstead and Mrs. Tramel Stockton, to the following:

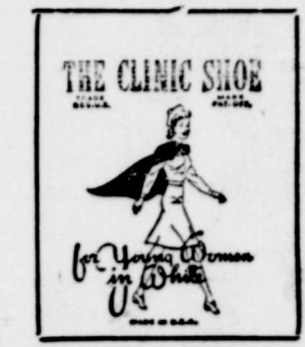
Mesdames Porter, Granger Jenkins, Lewis May, W. G. May, Melvin Stevens, Gene Rose, Lee Bevens, J. C. Haliburton, Shelby Bell, C. G. Burson, Jr., Vernay Burson, and Mrs. H. B. Berry—Reporter Mrs. Berry.

tion of Mrs. Tooley. Stella Josslet won prize in game contest. Refreshments of delicious cherry pie trimmed with small hatchets over top, ice cream, and cakes were served to five guests: Mesdames Jewel Perdue, Ollie Johnson, Chic Foster of California, Oleta Pennington and daughter, Janice and the following members: Mesdames A. B. Corzine, Tony Patterson, J. B. Edwards, Helen Johnson, W. E. Johnson, O. W.

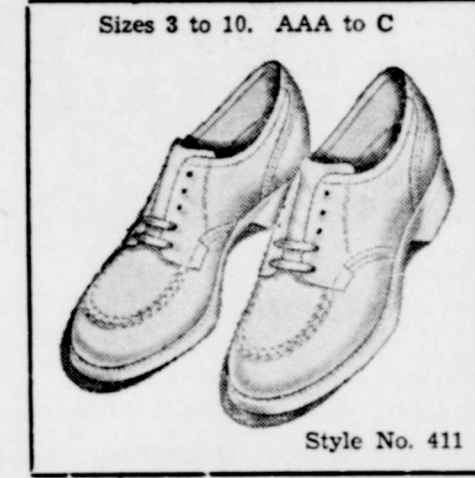
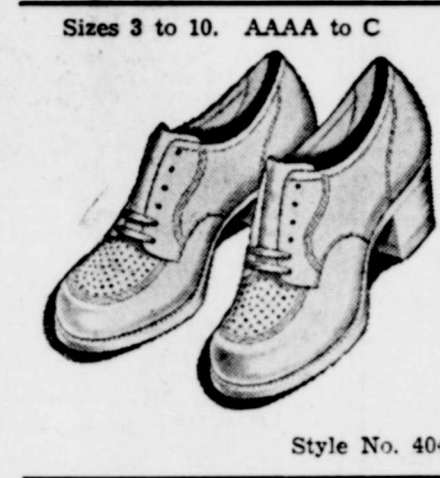
The Booterie

Attention, Nurses and Waitresses . . .

Neat looking utility Oxfords, carefully constructed for miles of walking comfort, hours of standing ease . . .



\$7.95



We will gladly fill your mail orders. No extra charge for postage. State size and style number. Enclose check or money order. Mail to The Booterie, Haskell, Tex., Box 242.

MEMORIAL SERVICE
Mrs. R. Mitchell returned to the homes of her family in Haskell, Okla., where she died last week.

Colonial CHICKS
PEDIGREE SIRE
BLOOD TESTED
See Us Today!

Met Poultry & Egg Co.
Ballard, Mgr. Haskell
Authorized Representative For
COLONIAL HATCHERIES
World's Largest Chick Producers"
Sweetwater, Texas

Swansdown
Cygnets
New Season!
Fully Created For
the Smaller Woman

As advertised in VOGUE

Now . . . a new you, suited as you should be if you are 5'5" or under!
This Cygnets creation by Swansdown is a favorite of Miss Dorothy Stickney, star of the Broadway hit, "Life With Mother." You will see her photographed wearing it in the February issue of Vogue. So flattering with its easy-fitting jacket, zigzag collar, slim skirt! In pure worsted crepe. Cygnets sizes 10 to 20.

It's ours Exclusively

Lane-Felker

E. R. CLIFTON

— We Reserve the Right To Limit —

Brooks—	Milford's White—	No. 2 Can—
Chilli Hot BEANS can 12c	Cream Style CORN 18c	Sweetheart SOAP 4 Bars 35c
PUREX BLEACH qt. 15c	2 1/2 Lb. Can—	SWEET POTATOES 15c
Sumar—	No. 2 Can—	2 Cans—
HOMINY No. 2 can 10c	PINEAPPLE JUICE 25c	TOMATOES 2 cans 25c
OXYDOL box 29c	No. 2 Cans—	
5 Lb. Box—		
Aunt Jemima FLOUR 41c		
QUALITY MEATS		
CHUCK STEAK lb. 51c		
Wilson's Corn King—		
BACON lb. 52c		
Wilson's—		
Sugar Cured JOWLS lb. 29c	Florida—	
	ORANGES pound 8c	

CLOVER FARM STORES
WE DELIVER TELEPHONE 332

Church Calendar

FUNDAMENTAL BAPTIST CHURCH
114 Ave. D. South 2nd St.
Rev. C. Jones, Pastor
10 a. m. Sunday School.
11 a. m. Morning Message.
7 p. m. Young People's Service.

Meeting.
Friday, 7 p. m. Teachers' Meeting and Young People's Training Service.
EAST SIDE BAPTIST CHURCH
Rev. W. T. Priddy, Pastor
8:30 A. M. Radio Sermon by the pastor, Rev. W. T. Priddy, over Station KWDT, Stamford.
11 a. m. Morning Preaching Service.
7:00 p. m. — Young People's Meeting.
7:30 p. m. — Evening Preaching Service.

THE CHURCH OF GOD
909 South 1st Street, East
Geo. Ivy, Pastor
Sunday School at 9:45 A. M.
Message at 11:00 A. M.
Preaching Sunday Evening 7:00 P. M.
Prayer Meeting Tuesday 7:00 P. M.

5TH ST. BAPTIST CHURCH
(Corner 5th St. & Ave. J)
RULE, TEXAS
Jesse Jones, Pastor
9:45 A. M. Sunday School.
11:00 A. M. Preaching Service.
6:30 P. M. Young People's Class.
7:00 P. M. Song Service.
7:30 P. M. Preaching Service.
Wednesday, 7:00 P. M., Prayer Service.

Friday, 7:00 P. M. Choir Practice and Teachers' Meeting.
CHURCH OF CHRIST
Roy Deaver, Minister
Sunday:
Bible Classes, all ages, 9:45 a. m.
Sermon and Worship, 10:45 a. m.
Young People's Class, 5:30 p. m.

TRINITY LUTHERAN CHURCH
Irby, Texas
Sunday, February 20
Sunday School and Bible Class, 2:30 p. m.
Service and installation of the newly elected church council, 3:30 p. m.
A cordial welcome to all.
M. C. Hoermann, Pastor.

FIRST CHRISTIAN CHURCH
(Corner of Ave. F and N. 2nd)
Francis C. Nickerson, Minister
9:45 A. M. Bible School
The lesson is: Parables of Jesus. (Temptance). Scripture: Mark 4; Luke 15:11-14. Classes for all ages. You are cordially invited to make yourself at home.

Evening, Sermon. 6:30 p. m.
Tuesday:
Men and Boys Training Class, 7:30 p. m.
Wednesday:
Ladies Bible Class, 3:00 p. m.
Mid-Week Bible Study, 7:30 p. m.
Thursday:
Radio Sermon, KDWT, 11:15 a. m.
Many deny that Baptism is essential.

PINKERTON BAPTIST CHURCH
Jack D. Wester, Pastor
Sunday School—10:30.
Preaching Hour—11:15.
Training Union—7:00.
Evening Message—7:45.
Wednesday Evening—7:00.
Study of Revelations.
Monday afternoon—2:00. W. M. U. Meeting.

A Friendly Church invites a friendly visit from you.
Patsy Ann Ingram, Church Reporter.
DOUBLE TROUBLE
Springfield, Ill.—Waiting near a drugstore door for a homeward bus, Miss Jean Harris started to move toward the bus only to find that the tail of her coat was caught in the locked drugstore door. Jean, the bus driver, the passengers and a squad of policemen were unsuccessful in freeing the coat from the door, so a policeman drove three miles to the manager's home, got a key and released the coat—and Jean. But in the meantime, Jean had missed the last bus home. The policeman started to drive Jean home in a squad car. The car broke down and she had to walk the last few blocks.

The first Naval Reserve Aviation base was established at Squantum, Mass.
Navy planes average 6.64 flight hours per day during their first month of operation in the Berlin Airlift.

Rochester News
Mr. and Mrs. Gene Rose of Haskell visited here Sunday.
Charlene Smith, who is attending school at Mineral Wells, spent the week-end here with her parents, Mr. and Mrs. Hap Smith, and other relatives.
T. J. Turner and family of El Paso and Mrs. Ed Howard of Wickett were guests here last week in the home of their parents, Mr. and Mrs. Jim Turner, and other relatives.
Mrs. Walter Herring visited in Eastland last week.
Last Wednesday, Feb. 16, the FFA Annual Initiation was presented. The program, at 5:30 p. m., a parade, composed of heralds, strip poker losers, sportsmen, tramp married couple and daughter, and jack players marched through town where an unusual large crowd gathered to see the event. Many men found out that the Freshmen needed money for coffee and produced it for them. After the parade, a formal meeting was held at the school house. Billy Berryhill, T. J. Sego and Bob Glover were presented medals by Mr. Roberts, for their achievements in the grass judging contest at Knox City. Everyone will agree that the boys who were initiated are surely good sports.
Miss Walls spent the week-end in Denton with old friends.
Mr. and Mrs. King and Mr. and Mrs. Duffie visited in Denton.
One of the prettiest events of the school year was the banquet the Baptist Missionary women gave the high school faculty Tuesday evening at 7:30 o'clock in the Fellowship Hall of the Baptist Church.
Mr. and Mrs. George Shuff of Sweetwater were guests here Sunday of Mr. and Mrs. Ed Watkins.
Mrs. Easter Burton of Edgewood spent a few days here last week with her sister, Mrs. Olga Gray.
Mrs. Ada Mitchell left Saturday for San Angelo where she will make her home. Her friends here honored her, in the home of Mrs. James A. Greer, with a farewell party. We regret to see this old-timer leave, but wish for her prosperity in her new home.
Mrs. J. H. Cooper and daughter, Mackie, visited their daughter and sister at Slaton Sunday.
Pete Huntsman, Jr., of Floydada, spent last week-end here with homefolks.
Robert Wermer and family of Mineral Wells spent last week-end here in the home of her parents, Mr. and Mrs. Lawrence Kay and other relatives.
Carl Davidson and son, Joe, were in Portales, N.M., over the week-end visiting their son and brother, Lynn Davidson and family.
Mr. and Mrs. Bobby Michaels of Amarillo spent Tuesday night here last week with her parents, Mr. and Mrs. Asa Alvis, and other relatives.
R. Snodgrass and family of Lubbock spent a few days here last week with relatives.

During the last six months, the Navy MARS has maintained a 100 per cent load factor, supplying airlift to cargo and passengers in the Pacific.

Birthday Club Meets In Home of Mrs. Burleson

The Happy Birthday Club met Feb. 23, in the country home of Mrs. Leroy Burleson, honoring Mrs. Grady Newsom. Games were played and enjoyed by all throughout the evening. The next meeting will be March 17 with Mrs. Grady Newsom, Mrs. Bud Glover as honoree. A delicious refreshment of cake and coffee was served. Those present were: Mesdames Eugene Rose, Eddie Harris, Dallas Adkins, J. C. Haliburton Jr., Jerry Harrell, Minnie Glover, C. E. Tidwell, Grady Newsom, Manford Reid, Hoie Harrell, and the hostess, Mrs. Leroy Burleson.
A beautiful table lamp was presented to Mrs. Newsom.

Checochelo Camp Fire Girls Meet At City Hall

The Checochelo Camp Fire Girls met Thursday, Feb. 24, in the City Hall. The meeting was from 5:30 until 7:00 p. m. A group of the Boy Scouts were present also. The two groups danced. Put Your Little Foot Right Out and the Schotische. The Camp Fire Girls present were:
Paula Ratliff, Kay Starr, Mary Sue Byrd, Doris Strain, Melva Feemster, Beverly Gilstrap, Terry Bynum, Annette Merchant, and leaders, Mrs. Glenn Mann and Genelle Bailey.
Boy Scouts present were:
Charles Burnett, Charles Cobb, David Middleton, William Medford, James Mann, Max Johnson, Jimmy White, and Dyrrell Davis.
Refreshments were served by the hostesses, Doris Strain and Annette Merchant.

LAW-ABIDING CONVICT

Salt Lake City.—After sentencing a man to prison, Judge Will L. Hoyt, of Nephi, Utah, with the view of saving the state some transportation expense, put the defendant on his honor to report to the prison 20 miles away. The prisoner hitchhiked the distance and showed up at the prison gate lugging a suitcase and a guitar.

ANNOUNCE ARRIVAL OF BABY DAUGHTER

Mr. and Mrs. Edwin Lott announce the arrival of a baby daughter, born Feb. 17, at the Haskell County Hospital. The little Miss will answer to the name, Kay Lynn. Both mother and baby are doing fine.

ATTEND REBURIAL SERVICES IN TUCUMCARI, N. M.

Mr. and Mrs. Olen Dotson took his aunt, Mrs. Jim Tankersley, of Glen Rose, and Mr. and Mrs. Jack Dotson, of Stamford, to Tucumcari, New Mexico, Sunday to attend a reburial service for H. Ford Ward, their nephew and cousin.

IN SWEETWATER
TUESDAY
Mr. and Mrs. ... were in Sweetwater ... night visiting ... who is a patient there.
Typewriter Paper, Second Free Press.



we have the new ALBA nylon "ice cream" tones
9 fitted lengths...
The 2-piece Dress that goes everywhere. Lin-spun top with a printed shantung skirt. 9 to 15 at \$10.95.
FASHION SHOPPE
Mrs. Leone Pearsey

Our Friday and Saturday Specials
Gholson Grocery
Every Sack Guaranteed—
Our Baker's FLOUR 25 lbs. \$1.60
Armour's— 3 Lbs.— Can—
PURE LARD 50c
Washing Powder—
TREND 2 boxes 33c
Snider's, 14 oz. Bottle—
CATSUP bottle 18c
Baking Powder— 1 lb. 9 oz. Can
CALUMET 29c
West Texas Cane Flavor—
SYRUP 5 lb. can 59c
Armour's—
PURE PORK SAUSAGE 1 lb. Rolls 33c
Wilson's CHEESE The Best per lb. 42c
No. 1 DRY SALT BACON lb. 29c
The Store of Quality — All Merchandise Guaranteed
PHONE US YOUR ORDER!
Phone Orders Have Special Attention
PHONE 79 WE DELIVER

A BONUS for your BUDGET
Our Prices Allow — EXTRA BUYS WITH YOUR SAVINGS!
We Reserve the Right to Limit—and Sell to Dealers
No. 2 Cans, New —
POTATOES 4 cans
Diamond Blackeyed—
Peas & Bacon tall cans 5 for
SPRY 3 lb. can
Hershey's SYRUP 2 cans
Hershey's—
COCOA 1-2 lb. can
Kraft—
MIRACLE WHIP
Libby's— No. 2 1/2
Fruit Cocktail
Campbell's— 46 Oz.
TOMATO JUICE
PINK SALMON
TUNA can
Mother's OATS box
Prime Meats
GROUND BEEF lb.
Wilson's BACON
Wilson's SAUSAGE
Armour's TREET can

ENTER COLGATE • PALMOLIVE • FEET'S
\$100,000.00 49 GOLD RUSH CONTEST
First Prize \$49,000.00 — Second Prize \$4,900.00
4949 OTHER CASH PRIZES
Get Entry Blanks from Us

1 Box Vel
1 Bar Palmolive Soap
1 Can Ajax Cleanser
All For . . . 49c
2 Reg. Bars Palmolive Soap
1 Large Box Super Suds 49c
2 Large Boxes Fab
1 Bar Lady Alice Soap 49c
Wilson's—
OLEO 2 pounds 49c
Armour's—
PURE LARD 3 lb. carton 49c
All Brands—
FLOUR 5 lb. Bag 49c
No. 2 Cans—
TOMATOES 4 cans for 49c
Snider's 14-Oz. Bottles—
CATSUP 3 for 49c

"THE STORE YOU'RE MOST AT HOME IN!"
Piggy Wiggly
Free Delivery Phone 70-W

**School For
Lovers New
Project**

campaign to e-
health level by
spread of com-
which might
foods, the State
health is conduct-
for food
sections of Tex-
Dr. Geo. W. Cox,
acter.

are being in-
ary methods of
ing, and serving
consumption, Dr.
experience has

**RELIEF FROM
Stress Arising from
ULCERS
EXCESS ACID**
Some Treatment that
Cost You Nothing
of the WILLIAMSON
acid for relief of
arising from stomach
due to Excess Acid-
or Ulcer Stomach,
or sleeplessness, etc.
hold on 15 days' trial
message" which fully
and free—no
G COMPANY

shown that an insanitary eating
establishment is one of the sur-
est sources of spreading infec-
tion. The lack of proper sanita-
tion in food handling is a de-
finite menace to public health
and our goal is the education of
cooks, waiters, butchers, bakers,
fountain men, and all other food
handlers to such a level as will
insure an elimination of this
health hazard.

The training schools consist of
elementary courses in bacterio-
logy, communicable diseases,
medical zoology, foods, disinfection,
sterilization, personal hy-
giene, and sanitation.

Since the program was institu-
ted about 8 years ago, more
than 400 schools have been con-
ducted, with a total of over 25-
000 food handlers receiving their
certificates of completion in the
courses.

Arrangements for such a food
can be made through any county
health unit by requesting the
service from the Division of
Health Education, State Depart-
ment of Health, Austin, Texas.

**VISITORS FROM
ARCHER CITY**

Mr. and Mrs. John Blackman
and children of Archer City
were recent visitors in the home
of Mr. and Mrs. Giles Kemp.

**Gluten Meal Feeds
For Livestock Soon
To Be Available**

Gluten meal and gluten feed
obtained from grain sorghums as
by-products from the extraction
of starch may soon be available
in significant quantities for the
feeding of livestock.

According to information from
Dr. J. C. Miller and Fred Hale,
of the department of animal hus-
bandry, and Dr. Carl M. Lyman,
of the department of biochemis-
try and nutrition, all of Texas
A&M College, some work has
been done in the past on the use
of corn gluten feed and corn glu-
ten meal as feeds for swine.
However, there are no reports on
the use of sorghum gluten feed
and meal.

In the fall of 1947 and the
summer of 1948, feeding trials
were conducted by the Texas
Agricultural Experiment Station
to study the value of sorghum
made by-products as pig fatten-
ing rations. The first experiment
was made up of 40 Duroc pigs,
averaging 79 pounds each and
divided into four lots of 10 pigs
each.

The ration in each lot was
composed of whole grain milo
and a protein supplement which
was fed free choice in self feed-
ers. Each group of 10 pigs also
had free access to a mineral mix-
ture containing 80 pounds of
ground limestone and 20 pounds
of salt. The sorghum by-products
were used as part of the protein
mixture. The protein mixture in
the check lot consisted of 50 lbs.
meat scraps, 30 pounds of soy-
bean meal and 20 pounds of de-
hydrated alfalfa leaf meal.

In place of the 30 pounds of
soybean meal in the check lot,
one lot contained 30 pounds of
sorghum gluten meal, and an-
other had 30 pounds of sorghum
gluten feed. The third had 40
pounds of gluten meal replacing
the 30 pounds of soybean meal
and 40 pounds of meat scraps
in the protein supplement.

The same ratio was used in
the summer of 1948, only in this
test the pigs were fed separately
rather than in groups.

The results of these tests indi-
cate that the protein supplement
for fattening hogs may con-
tain up to 30 per cent of sorghum
gluten meal. Also, they found
that gluten feed is not as good
as the gluten meal in hog fatten-
ing rations.

The group of pigs getting the
soybean meal as 30 per cent of
the protein mixture made 10 per
cent greater daily gains than did
the pigs fed by sorghum by-pro-
ducts.

Since grain sorghum by-pro-
ducts are low in lysine, it may
be a better practice to replace a
part of the grain with these by-
products rather than use them in
the protein supplement when
feeding the grain and protein
supplement free choice in self
feeders, these men report.

Typewriter Ribbons, Carbon
Paper, Second Sheets, etc., at the
Free Press.



This dashing bolero suit is fash-
ioned of Milridge Wool for those
who custom-make their own
Spring costumes.

**BARNES INS. & REALTY
AGENCY**
316 1/2 Odell Bldg., Haskell
Phone 122-W, Haskell
• Loans
• Insurance
• Real Estate
See us for Irrigated Ranches and
Farms, South Plains and N. Mex.

**Starr Blacksmith &
Machine Shop**
We Do All Kinds of Repair
Work, Welding and
Blacksmithing

**TOM DAVIS
Lawyer**
Office over Oates Drug
Store

**T. R. ODELL
Attorney at Law**
ODELL BLDG.
Rooms 4, 5 and 6
Phone No. 303

**E. H. TIDROW
—PLUMBING—**
Phone 104 — Haskell

T. C. Cahill & Son
Insurance - Bonds
Real Estate - Rentals
Phone 51-J

**VIRGIL A. BROWN
Real Estate**
Office over Piggy-Wiggy
Farms and City
Property

A. Y. BARNES
Real Estate & Insurance
A Chance To Serve You Will
Be Appreciated.
PHONE 148-J

DR. GERTRUDE ROBINSON
Chiropractic Clinic
Highway 277
Telephone 108

JASON W. SMITH
Abstracts — Title Insurance
Haskell, Texas

CALVIN HENSON
Lawyer
Haskell, Texas

Dennis P. Ratliff W. P. Ratliff
RATLIFF & RATLIFF
Attorneys-at-Law
Haskell, Texas



By
Frank C. Scott, M. D.
SPECIALIST

Diseases and Surgery of the Eye,
Ear, Nose, Throat — Fitting of
Glasses
Complete Test for Allergic
Conditions
OFFICE HOURS:
9:30 to 11:30 a. m. and 2 to 4 p. m.
Office: Scott's Clinic

**Workers Advised To
Always Give Correct
Security Number**

Husbands who give their so-
cial security number to the boss
from memory, or who fail to give
it at all, are gambling with the
future security of their families,
it was announced today by Ralph
T. Fisher, manager of the Abilene
social security office.

Wage credits are posted to the
worker's account when correct
name and number are sent in by
the employer. Wages reported by
name only, or by name and with
a wrong number, can be credited
only if contact with the employ-
er or employee produces a cor-
rect number.

Since future social security
benefits are directly geared to
wages posted to the worker's ac-
count, Fisher said, the worker in
his own interest and in the in-
terest of his family, has a definite
reason to see that his employer

gets his name and number di-
rectly from his social security
card.

Mr. Fisher said that many
wives do not know that social se-
curity pays death benefits. He
urged all workers to show their
cards to their families and tell
them to take the card to the so-
cial security office in the event
of death of the worker.

VISITOR FROM RULE

Ollie Kittley of Rule was a
business visitor in Haskell the
first of the week.

WEEK-END VISITORS HERE

Mr. and Mrs. George Cramer
of Snyder spent the week-end
here with Mr. and Mrs. Giles
Kemp.

PLUMBING

DAY AND NIGHT SERVICE
Day Phone 396
Nite Phone 167
RAYMOND STUART

Greater use of soybean oil in
mayonnaise and other salad
dresings now seems likely, since
USDA chemists have demon-
strated that refining oil with citric
acid improves both its flavor and
keeping quality.

The first Naval Air Reserve
was formed in 1923.

A new anti-submarine destroy-
er will be named in honor of
Vice Admiral Theodore S. Wil-
kinson, World War II hero.

Serwel
BALL-TYPE
Automatic Gas Water Heater

the difference

**IS FOR YOU
TO ENJOY!**

Serwel's different ball-shaped
tank with an exclusive new
operating principle reduces
heat waste. You pocket the
difference in money saved.

The ball-shaped copper tank
is also forever rustproof. An-
other difference to enjoy—
crystal clear hot water. All you
want, whenever you want it.

Come in and see Serwel ul-
tra-modern, different auto-
matic gas water heaters today.

- Copper Tank
- Fast Heating
- Precision Control
- Silent Burner
- Double Insulation
- "Cold-Water Brake"

10% Down—24 Monthly Payments

LONE STAR GAS COMPANY
A Texas Corporation

QUALITY SEEDS

handle nothing but the best seeds obtain-
we would not sell you seeds we would
to buy.

Seeds For Immediate Planting

A limited quantity of Green Tag State
"Nortex Oats" especially adapted for
planting, Clipped and 96% germination.
sack \$8.40
A limited quantity of Speltz suitable for
sow, 3 bushel sack \$6.30
A quantity good Seed Barley, 2 bu. sack \$3.00
A quantity good Spring Wheat, can be planted
bushel \$3.00

We have just received a car of Arizona Cer-
tain Sorghums, we will be able to sell at
prices than last year.

Be sure to see us for your seeds.

COURTNEY HUNT

Look inside—outside—all around the car—
CHEVROLET
is the most Beautiful BUY of all



for full value...for a full view...and from every viewpoint

The most Beautiful BUY for Performance with Economy
Every test you make at the traffic light, on the hills,
on the straightaway—and of gasoline and oil mileage
at journey's end—will confirm your own deep-seated
conviction that Chevrolet is the most beautiful buy of
all for performance with economy!

Moreover, your new Chevrolet will keep on giving
this finer brand of thrills and thrift with unflinching
dependability, year after year, for it's the only low-
priced car with a world's champion Valve-in-Head
Engine, holding all records for miles served, owners
satisfied, and years tested and proved.

New "Dubl-Life" Rivetless Brake Linings—Last up to TWICE as Long!
Linings are secured to brake shoes by a
special "Perma-Bond" process developed
by Chevrolet and General Motors Research
and thoroughly tested and proved by
millions of units under all kinds of driving
conditions. Because there are no rivets
to limit lining wear or score brake drums,
lining life is practically doubled. Chevrolet
is the first full-sized car to bring you this
important braking advancement!

OR QUALITY AT LOWEST COST **CHEVROLET** AMERICA'S CHOICE FOR 18 YEARS

Burton-Dotson Chevrolet Company
Telephone 2 J **OLEN DOTSON**

2 for 1 Sale on PERMANENTS

For a limited time we are offering
regular \$5.00 Machine or Machineless
Permanents Two for the price of One.
Bring a friend!
Regular \$10.00 Cold Waves Two
for the price of One.

All work guaranteed. Two opera-
tors: Lila Woodson, Margie Blackwell.
11 years experience in present shop.

Call 186 for appointment. Open
all day—six days a week.



CHARMODE BEAUTY SHOP
Located on Wichita Falls Highway
One Block North of School Grounds

do you have enough hot water
for automatic
dishwashing?

In addition to normal hot water needs, homes with
automatic dishwashers need an extra 10 to 20 gallons
of extra hot water for each load of dishes washed.

The Sizing Chart for Automatic Gas Water Heaters
was prepared to help you select the correct size water
heater for normal needs—plus the extra hot water
needed for automatic dishwashing.

Give that automatic dishwasher you have, or are
planning to buy, the hot water it needs for wonder
working, work-saving performance. Get the size auto-
matic gas water heater recommended for you in the
Sizing Chart.

Number Bathrooms	Number Bedrooms	Storage Capacity Gallons
1	1 or 2	30
1	3 or 4	40
2	2 or 3	40
2	4 or 5	50
3	3	50
3 or 4	4 or 5	75

While sizing chart does not include every size
water heater, it does offer a basic guide for
selecting proper capacity. Select the heater with
the capacity nearest that listed for your size
home.

FREE! STAIN REMOVAL CHART
... with Guide for Sizing Automatic Gas Water
Heaters. Tells how to remove 21 common
clothes stains easily. Ask for it at your Plumber's,
Gas Appliance Dealer's, or Lone Star Gas Co.

See your Plumber or Gas Appliance Dealer
Lone Star Gas Company

California
July



HELBER'S JEWELRY
Telephone 169W
Haskell, Texas

DOLLAR VALUES!
Jones Dry Goods

- Quadrige Prints. 80 square material. Solid and fancy patterns. 59c value. 2 yards **\$1**
- Bleached and Brown 36 inch Domestic. Good heavy double L sheeting. 29c and 35c value. 4 yards **\$1**
- Cannon Wash Cloths. Good soft quality. Blue, Green, Rose, Yellow. Extra Special. 10 for **\$1**
- Cannon Turkish Face Towels. 16 x 27 size. Blue, Green, Rose, Yellow. 29c value. 4 for **\$1**
- Johnson Prints. Fast color and sanforized. Solid and fancy. 39c value. 3 yards **\$1**
- Children's Loraine Rayon Knit Panties. Size 2 to 14. A real value. 2 for **\$1**
- Cannon Towel. Good heavy bath. Fancy patterns. 22x40 size. 65c value. 2 for **\$1**

Mrs. J. U. Fields Stresses Civic Needs Of Community In Talk Before Lions Club

Mrs. J. U. Fields, long time civic worker of Haskell, and past president of the Federated Women's Clubs of Texas, was guest speaker for the local Lions Club in their regular weekly luncheon meeting Tuesday.

More than 40 club members were present to hear the speaker tell of the civic needs of the community, and the place the Lions Club could have in the development of the social, recreational and economic life of this community.

Using as her subject, "What Does the Solourner Think of Haskell," Mrs. Fields encouraged the local club to adopt a program of work that would include a more hospitable welcome to the new citizens of Haskell, provide a place of worship and recreation for the thousands of Mexican agricultural workers that come to this area during seasonal periods of each year and to develop the social life of the community.

The population of the United States is changing at a rapid pace, and new families are constantly moving to new locations, and the opportunity to welcome new citizens to Haskell should be one of the major objectives of the club. She added that in the past 8 years, 70,000,000 people in this nation have changed home addresses, and that more than 35,000,000 people have changed either state or community addresses.

Praising the club for their past accomplishments, the speaker listed the purchase of an iron lung for the Haskell County Hospital, the sponsorship of the movement to purchase spray equipment for the county, and the year-round athletic program as major activities of the club for 1948.

Collective effort will always be the most efficient method of civic accomplishments, and the speaker closed by urging the club not to rest on past achievements, but to be alert to the ever growing needs of the community.

The club met in the dining rooms of the newly completed Texas Cafe, and H. R. Spain presided over the meeting. The speaker was introduced by John A. Couch, former Haskell mayor.

Magnolia Seeds
are Good Seeds!

GROWN BY SEED SPECIALISTS

GOOD SEEDS are vital to production success, and for twenty-six years MAGNOLIA seeds have been producing high yields for your successful farming and gardening neighbors.

ASK FOR FREE CATALOG

Trice Hatchery
1303 North Ave I

LADIES READY TO WEAR

Beautiful New
Dresses, Coats, Suits

Values that will please every lady and miss. Regular, half, and Junior sizes. Priced—
\$6.95 up to \$19.85

One Lot
Short Spring Coats
All Wool materials. Solid and fancy. Regular \$29.75 value. Special—
\$23.85

Boy's Polo Shirts. All new patterns. All color stripes. Sizes 2 to 16. 65c value. 2 for **\$1**

Men's White Handkerchiefs. Good smooth quality, quarter inch hem. Full size. 10 for **\$1**

Work Sox. Good cotton sox. Gray and mixture. 25c value. 5 Pairs **\$1**

Jones Dry Goods
The Cash Store

Harmony Club Will Present H-SU Talent In Recital Here Thursday, March 10th

Ted Smith, senior School of Music student and Frances Merle Cooper, instructor of voice and chorus at Hardin-Simmons University, will give a recital at a meeting of the Haskell Harmony Club Thursday afternoon, March 10. The program will be given in the First Baptist Church. Smith is the son of Mr. and Mrs. R. H. Smith, of Rule, and has appeared previously as an organist in Haskell.

The program Thursday will include sacred and secular music. Miss Cooper will sing Musetta's Waltz song from LaBoheme by Puccini, only a Rose by Rudolph Friml and The Lord's Prayer by Malotte.

Smith will play Hail to the Merciful Jesus by Bach, Behold A Rose Is Blooming by Brahms, Elizabeth's Prayer from Tannhauser by Wagner, and White Clouds from an Organ Suite by Carre.

Miss Cooper and Smith gave a similar series of programs last summer, appearing in Lamesa, Munday, Big Spring, Haskell, Aspermont and Rule.

Mrs. John H. Banks, president of the Harmony Club, will preside at the program. The Harmony Club, seeking to promote a broader appreciation and love of music is one of the original music clubs in Texas.

Smith is a student of Jack Dean, professor of organ at Hardin-Simmons. He is majoring in organ. Miss Cooper has studied under Ethel Rader at H-SU and Oscar Seagle in New York. She was a member of the "Golden Girls" quartet while in school and advanced to the semi-finals in the "Hour of Charm" contest in 1946. Her home is in Colorado City. This week, March 3 and 4, she sings the part of Adina in the opera, "The Elixir of Love," presented by the School of Music at H-SU.

GLASS TOO CLEAR
Salem, Mass. — A window washer polished up the glass door to a Salem tobacco shop so carefully that a customer, Henry L. Wiley of Middleton, walked right through the plate glass and landed in the hospital with severe cuts in his legs. He told police he thought the door was open.

\$124 FOR NAPOLEON'S HAIR
Paris—A lock of Napoleon Bonapart's hair, reported cut from his head while he was an exile on St. Helena in 1816 and wrapped in a paper on which Napoleon had scribbled notes while studying English brought 17,000 francs (\$124) when sold at auction recently.

point amid-week and closed Friday around \$1 to \$1.25 higher than the previous Friday. Last year at this time cotton was about 50 cents to \$1.50 per bale higher than it is now.

Farmers report that planting of cotton is well under way in the Rio Grande Valley and around Corpus Christi where the land is dry enough to work.

Although domestic demand was still very slow, export inquiry continued good. Most of the business was with France, Germany, Korea and Japan.

The basis continued firm in all southwest markets last week. Quotations reached their high

Mrs. Elizabeth Gilstrap Returns From Helena Rubenstein's Beauty Training School Held In Dallas

If you could go to the world's leading authority for advice on your skin and make-up problems, there isn't a woman who would miss the chance for such a consultation. Mme. Helena Rubenstein has always felt that true beauty is a very personalized thing and her advice has been sought by the world's wealthiest women. But because she is unable to give personal advice to all women, who need help, Mme. Rubenstein has established training centers for her personnel throughout the country.

So to know the last word in beauty advice, we sent Mrs. Elizabeth Gilstrap, from our toilet goods department, to the Helena Rubenstein Beauty Training School, recently held in Dallas. Now she is back, to teach you how to make-up how to care properly for YOUR skin.

No matter what your beauty problem, you can have the benefit of Helena Rubenstein's lifetime study. Perhaps all you need is a thorough knowledge of your skin, to care for it properly or perhaps a new make-up will reveal a new facet of loveliness! Stop in at our store and consult Mrs. Gilstrap. She will be happy to advise with any who have cosmetic problems, and will give them the benefit of the intensive training which she has received.

PAYNE DRUG CO
(Adv.)

It's a Lot Easier to Farm with a JOHN DEERE Tractor!

more profitable tractor farming awaits you at the wheel of a new John Deere "A" or "B" Hydraulic Power-Trol, Roll-O-Matic "knee action" Front Wheels, and Quick-Tatch equipment are just a few of the many modern operating conveniences of these great new tractors. Let us tell you about them soon.

Gilmore Implement Co.

JOHN DEERE 2-Cylinder TRACTORS
Fast in Modern Design

ON DEAN'S LIST AT OKLAHOMA A&M COLLEGE

Roy Clay Brock, Oklahoma A&M College student, who graduated from Haskell, Texas, was included on the first semester Dean's list of Distinguished Students in the School of Engineering. He is the son of Mr. and Mrs. Roy Brock of Haskell. To be eligible for inclusion on the Dean's list, students must have passed in all subjects, aggregating not less than 15 semester hours with an average of B or higher and not having received any grade below C.

VISITORS FROM FT. WORTH
Mr. and Mrs. Lesley Miller and Mr. and Mrs. John Paul McClung

Read the Classified Section.

Fundamental Baptist Church
114 Ave. D, South 2nd St.
REV. C. JONES, Pastor

- 10:00 A. M. Sunday School Study (Isiah 36 Chapter).
- 11:00 A. M. Morning Message.
- 6:45 P. M. Young People's Service.
- 7:45 P. M. Evening Message.
- Wednesday, 7:00 P. M., Prayer Meeting.
- Friday, 7:00 P. M. Teachers' Meeting and Young People's Service.
- Fellowship Meeting March 2, 3, and 4, 1949.

Hear Dr. B. F. Dearmore Thursday 7:45, Friday 11 a.m. & 7:45

ANNOUNCEMENT

MOVING BEAUTY SHOP TO MY HOME
Will be open for business Tuesday, March 8th
Located 1303 Ave F on Brick Street

FULL LINE MERLE NORMAN COSMETICS

Phone 19-W For Appointments

Sibyl Graham
Operator and Merle Norman Demonstrator

VIRLENE WHITMIRE, Operator

Save Money at POGUE'S Phone We Del
THESE PRICES GOOD FRIDAY & SATURDAY

PURASNOW— 25 Lbs.—
Flour \$1.65

MISSION BRAND, TALL CANS—
PEACHES can **18c**

NO. 2 CANS— CAN—
Tomatoes 12 1-2c

MISSION—
SUGAR PEAS 2 cans 25c

GLADIOLA— 10 LBS.—
MEAL 65c

FAULTLESS—
HOMINY 3 cans 25c

LARGE SIZE—
OXYDOL Box 29c

BRIGHT & EARLY—
COFFEE 30c

KIMBELL'S, PURE APRICOT OR PEACH—
PRESERVES 1 lb. Jar

CRYSTAL WHITE, or P & G LAUNDRY—
SOAP 3 bars 20c

Market Special

STORE MADE—
CHILI Pound

FIRST GRADE—
PRESSED HAM lb.

AMERICAN—
Cheese 45c

SMOKED—
SAUSAGE pound

We Reserve the Right to Limit Quantities!

and baby, all of Fort Worth, were week-end visitors in the home of Mr. and Mrs. F. J. McCurley in this city, and with relatives and friends in Knox City.

Clothing store reported that percent of their total are for children's

Smart Suit

SPR
Sharke
Worste
Tropie
Weave

Here the brand new of tailored Spring and wear. In its group and solids and see the earliest com

Other me arriving cluding

Shir
Sor
Tw
Sport J
Pan
Shoe

If It's New We Have It

GENE HUNTER
Men's Wear

Classified Ads

1946 Model Farmall new equipment. Willard 9-4p

Paris Says: TELEGRAM 104 OUTLINE THE BEST OF THINGS TO DO FOR SPRING...

DoDson JUNIORS



Spain Town... Doris DoDson... \$14.95

LOOK AT THIS VALUE! Cockers from Pedigreed Matings... 9-4p

FOR SALE—1939 Dodge for... 9-2tp

LET ME BREAK YOUR GARDEN—Can do a good job... 9-2tp

WANTED—Hauling sand, gravel or any kind of junk you have to haul... 9-2tp

FOR SALE—Good, clean seed oats \$1.00 per bushel... 9-2tp

FOR SALE—47 Model Massey-Harris combine... 9-4tp

FOR SALE—Good electric washing machine... 1tp

FOR SALE—Cheap 1947 Ford tractor... 1tp

FOR SALE—1-year-old heifer with first calf... 1tp

FOR SALE OR TRADE—1947 Fleetline Chevrolet... 9-2tp

FOR SALE—A clean 1947 Chev... 1tp

FOR SALE—One of the best 1939 Fords... 1tp

FOR A LIMITED TIME—We will give \$5.00 for your old battery... 9tp

FOR SALE—Baby bed and mattress, circulating heater... 1tp

TIME TO PLANT SHANKS—Freshly dug trees... 9-4tp

FOR SALE—39 M-M tractor with 1 row equipment... 8-3tp

WANT TO RENT—Young couple, permanently employed... 1tp

YES, NORRIS CLEANERS have new hat equipment... 43tp

FOR SALE—Floor Sweep, Call 13-W... 41tp

WANTED—Septic tank cleaning... 1-1tp

SEWING MACHINES repaired... 6tp

LET US DO YOUR PLOWING and Sowing... 1tp

WANTED—Several small sets of books to keep... 8tp

Complete line of garden tools for your yard and garden... 8tp

BATTERIES — FLATS — Call 53-W for Road Service... 8tp

HOUSE WIRING — We have a complete stock of wiring materials... 8-3tp

ELECTROLUX Vacuum Cleaners \$68.75... 8-3tp

FOR SALE—1945 model H Farmall with 2-row tools... 9-2tp

FOR SALE—WC Allis Chalmers with 2-row tools... 9-2tp

FOR SALE—F-12 Farmall with 2-row tools... 9-2tp

FOR SALE — Tractor wheel weights, per set, \$15.00... 1tp

FOR SALE—Model B John Deere with cultivator and tool bar... 200.00... 9-2tp

USED CARS — 49 Chev. Fleetline, 4-Dr. New... \$2,295... 49 Ford Custom Tudor, New... \$1,995... 49 Chev. 1-2 Ton Pickup, New... \$1,695... 48 Chev. Fleetline 4-Dr., R&H, New Airride tires... \$1,785... 47 Chev. Tudor, R&H, perfect car... \$1,575... 47 Plymouth Special Tudor, heater, white sidewall tires... \$1,395... 41 Chev. 4-Dr. Sedan, R&H... \$895... 41 Ford Tudor, R&H... \$750... 38 Ford Tudor, hydraulic brakes... \$395... 37 Chev. Tudor, a good car... \$395... 36 Chev. Coupe, R&H, motor overhauled... \$250... 36 Chev. Tudor, a nice car, H... \$250... BROWN & PEARCY MTR. CO. Phone 1... Ross Pearcy... Westinghouse electric refrigerators and stoves... Jones, Cox & Co.

FOR RENT—Bedroom with private entrance adjoining bath... 205 N. 1st Street... 9tp

FOR RENT—Modern 5-room house and bath... 316-W... 1tp

FOR RENT—3-room unfurnished apartment with bath... 5-7p

WANTED—Saleswoman for Lutz's cosmetics... 5-1tp

SEED CORN—Try some hybrid seed this year... 8-2tp

Big Mama electric brooders... \$4.95... Jones, Cox & Co.

BROODERS—Our place is headquarters for chick brooders... 8-2tp

ORPHA STYLE Featherweight... \$11.95... VITALITY White suede kid with turftan calf trim... 8-2tp

Wanted chrome dinnette suites... None better... Jones, Cox & Co.

Youngstown steel kitchens and kitchen aids... Jones, Cox & Co.

COTTON SEED—Book your order with us for Sinkers' Cottonseed... 9-2tp

Howell chrome dinnette suites... None better... Jones, Cox & Co.

WANT TO RENT—Young couple, permanently employed... 1tp

YES, NORRIS CLEANERS have new hat equipment... 43tp

FOR SALE—Floor Sweep, Call 13-W... 41tp

WANTED—Septic tank cleaning... 1-1tp

SEWING MACHINES repaired... 6tp

LET US DO YOUR PLOWING and Sowing... 1tp

WANTED—Several small sets of books to keep... 8tp

Complete line of garden tools for your yard and garden... 8tp

BATTERIES — FLATS — Call 53-W for Road Service... 8tp

HOUSE WIRING — We have a complete stock of wiring materials... 8-3tp

ELECTROLUX Vacuum Cleaners \$68.75... 8-3tp

PULLETS—We have a limited number of 6-weeks old White Leghorn pullets... 9-2tp

FOR SALE—1947 Buick sedan, fordror, radio and heater... 8tp

Beauty Rest, Morning Glory & Sealy inner spring mattresses and other bedding... Jones, Cox & Co.

FOR SALE — One new Massey Harris Model 30 with 3-row lister and 2-row planter and cultivator... 22 with 2-row tools... New 4 foot, 6 foot and 8 1/2 foot one-way plows... One used Model H Farmall with 3-row lister and 2-row tools... One used John Deere 6 foot combine with motor in good condition... R. W. Merchant Equipment Phone 487... Jones, Cox & Co.

FOR HASKELL — Lister Points, Tractor Lube, Oil Filters, Bug Screens, Tractor Heaters... Everything for your FORD TRACTOR... Factory Trained Mechanics... Marlow Tractor & Implement Co. 1tp

CABBAGE PLANTS—See us for those cabbage plants... 9-1tp

FOR SALE—New bicycle, boys model... 1tp

FOR RENT—Bedroom with private entrance adjoining bath... 205 N. 1st Street... 9tp

FOR RENT—Modern 5-room house and bath... 316-W... 1tp

FOR RENT—3-room unfurnished apartment with bath... 5-7p

WANTED—Saleswoman for Lutz's cosmetics... 5-1tp

SEED CORN—Try some hybrid seed this year... 8-2tp

Big Mama electric brooders... \$4.95... Jones, Cox & Co.

BROODERS—Our place is headquarters for chick brooders... 8-2tp

ORPHA STYLE Featherweight... \$11.95... VITALITY White suede kid with turftan calf trim... 8-2tp

Wanted chrome dinnette suites... None better... Jones, Cox & Co.

Youngstown steel kitchens and kitchen aids... Jones, Cox & Co.

COTTON SEED—Book your order with us for Sinkers' Cottonseed... 9-2tp

Howell chrome dinnette suites... None better... Jones, Cox & Co.

WANT TO RENT—Young couple, permanently employed... 1tp

YES, NORRIS CLEANERS have new hat equipment... 43tp

FOR SALE—Floor Sweep, Call 13-W... 41tp

WANTED—Septic tank cleaning... 1-1tp

SEWING MACHINES repaired... 6tp

LET US DO YOUR PLOWING and Sowing... 1tp

WANTED—Several small sets of books to keep... 8tp

Complete line of garden tools for your yard and garden... 8tp

BATTERIES — FLATS — Call 53-W for Road Service... 8tp

HOUSE WIRING — We have a complete stock of wiring materials... 8-3tp

ELECTROLUX Vacuum Cleaners \$68.75... 8-3tp

HOUSEHOLD GOODS—

MATTRESSES—We can give you quick service on your mattress needs... 44tp

YES, NORRIS CLEANERS have fiber-head machines... 43tp

SEWING MACHINES — New & rebuilt... 44tp

FURNITURE SALE — Everything marked down... 44tp

BOGGS & JOHNSON 7-4c

WANTED! Clean cotton rags... 8tp

National 4-H Club Week will be held March 5-13... 8-2tp

PERSONAL—SPIRELLA—For health and comfort... 5-7p

WANTED—Saleswoman for Lutz's cosmetics... 5-1tp

SEED CORN—Try some hybrid seed this year... 8-2tp

Big Mama electric brooders... \$4.95... Jones, Cox & Co.

BROODERS—Our place is headquarters for chick brooders... 8-2tp

ORPHA STYLE Featherweight... \$11.95... VITALITY White suede kid with turftan calf trim... 8-2tp

Wanted chrome dinnette suites... None better... Jones, Cox & Co.

Youngstown steel kitchens and kitchen aids... Jones, Cox & Co.

COTTON SEED—Book your order with us for Sinkers' Cottonseed... 9-2tp

Howell chrome dinnette suites... None better... Jones, Cox & Co.

WANT TO RENT—Young couple, permanently employed... 1tp

YES, NORRIS CLEANERS have new hat equipment... 43tp

FOR SALE—Floor Sweep, Call 13-W... 41tp

WANTED—Septic tank cleaning... 1-1tp

SEWING MACHINES repaired... 6tp

LET US DO YOUR PLOWING and Sowing... 1tp

WANTED—Several small sets of books to keep... 8tp

Complete line of garden tools for your yard and garden... 8tp

BATTERIES — FLATS — Call 53-W for Road Service... 8tp

HOUSE WIRING — We have a complete stock of wiring materials... 8-3tp

ELECTROLUX Vacuum Cleaners \$68.75... 8-3tp

MISCELLANEOUS—

FOR SALE OR TRADE—250-gal. propane tank... 8-2p

Dempster electric water pumps... Jones, Cox & Co.

FARM MACHINERY—FOR SALE—At a bargain one 12-foot M-M combine... 6-4tp

FOR SALE—1947 M&M model U.T.U. 4 row tractor... 5-4tp

FOR SALE—1948 Ferguson tractor in excellent condition... 8-2tp

LIVESTOCK — PIGS—We have only a few of those good Hampshire pigs... 8-2tp

POULTRY—FOR SALE—Various kinds of lumber... 4tp

CHICKS—Of all breeds... 8-2tp

STRAYED—One Hereford cow branded C on left side... 2-1tp

REAL ESTATE—FOR SALE—Zahn home... 5-1tp

FOR SALE—Four room house with bath... 8-2tp

FOR SALE—Nice 2 room house, 3 1/2 lots... 8-2tp

Typewriter Ribbons, Carbon Paper, Second Sheets, etc., at the Free Press.

FOR SALE

654 acre river bottom Baylor county stock farm... 8-2p

500 acre stock farm, 100 acres in cultivation... 8-2tp

Buyers and Sellers get results with Want Ads.

BUSINESS SERVICE—

SAFE STORAGE—We have facilities for the safe storage of your car, etc... 7tp

NEWS *** County *** Agricultural Agent Texas A. & M. College Extension Service

READ THE CLASSIFIED ADS

SPECIALS

For Friday and Saturday



- MEN'S DRESS SHIRTS, Regular \$3.95 to \$4.50, Special \$2.49
- FREEMAN SHOES, Regular \$9.95 and \$11.95, Now \$7.95 and \$9.95
- One Lot MEN'S SOCKS, Regular 65c to 75c retail, Now 4 for \$1.00
- One Lot MEN'S ZELAN JACKETS, Regular \$6.95 to \$9.95, Now \$4.95

FELKER MEN'S WEAR

"Quality Merchandise At No Higher Price"

SAVE MONEY ON THESE FOODS

- Kett's Kettle—PURE CANE SYRUP 1-2 gallon 49c
- Clabber Girl—BAKING POWDER 10 oz. can 9c
- Concho—CREAM STYLE CORN No. 2 can 15c
- Anagold—46 Oz. Cans—CITRUS FRUIT COCKTAIL 2 cans 35c
- MY-T-FINE Box 8c
- PURITY OATS 3 Lb. Box 37c
- White Swan—ROLLED OATS Box 16c
- VEGETABLES
- TOMATOES 1 lb. Package 19c
- TEXAS ORANGES pound 5c
- CARROTS 2 for 15c
- YELLOW ONIONS pound 5c
- SEED POTATOES White or Red lb. 5c

O'Neal's Food Store

PHONE 28 WE DELIVER

AS HERE... and even better than you'd dreamed!



the Great New INTERNATIONAL HARVESTER Refrigerator

with Frozen Food "Stowaway" ... Meat "Frigidrawer" ... Super-Storage Pantry-Bin ... "Foldaway" Shelf ... "Tight-Wad" Unit

ROOM TO SPARE... with spare room in the kitchen!



The new IH eight-cubic-foot refrigerator will win your heart with their beautiful streamlined designs... and amaze you with their ample storage space... 35 pound capacity freezer locker for storing delicious frozen food... Super-Storage Pantry-Bin that keeps 1 1/2 bushels of unrefrigerated food handy... "Frigidrawer" for the small fry... come and see them today!

Haskell Implement Co.

SOUTH 1ST HASKELL, TEXAS Use Free Press Want Ads.

Veterans' News

Questions and Answers

Q—I served more than 3 years in the U. S. Army during World War II. I now wish to take institutional on-farm training and would like to know how much training I will be permitted to take?

A—An institutional on-farm training course may be as long as 18 months, but no longer than, is necessary to meet your individual training needs until you have exhausted your four year period of eligibility.

Q—Do I have to meet any set standard if I am taking an on-farm training course?

A—Yes. Once you start training it is your responsibility to meet the standards of progress set by the institution in which you are enrolled. If you fail, your benefits will be discontinued.

Q—What farming tools and

Treat Pecan 'Scale' Now To Insure Nut Crop In Fall

There's a small, ashy gray insect with a black spot that may keep you from harvesting pecans next fall.

But you'll have plenty of pecans for pies, candies and for roasting and salting if something is done about the obscure scale. This is a small insect covered with a circular waxy scale. They are found on the bark, says A. C. Gunter, associate entomologist of Texas A&M College, but you won't see them moving around over the tree.

These small scale insects feed on the juices by injecting a small, needle like beak through bark. Many times large limbs, and once in a while the whole tree, will be killed. But the scale does not bother the leaves or the pecans.

Control of the scale is pretty difficult, says Gunter, because it is so few protected. The best control can be had by thoroughly spraying the trees during a winter or dormant season with a 3 per cent dormant oil. However, Gunter cautions pecan growers not to use the 3 per cent dormant oil spray if there are leaves on the trees.

The care and management of a pecan grove isn't complete without insect control. When the right variety of pecans is growing on good soil, it is possible to harvest more pecans practically every year when a crop is set if the insects are controlled.

And it is possible to control insects if pecan growers have good equipment for spraying, and follow the recommendations given for each insect, says Gunter.

Either the insects or the pecan grower get the pecans. Which one, depends on the extent of the insect control by the pecan grower.

is done about the obscure scale. This is a small insect covered with a circular waxy scale. They are found on the bark, says A. C. Gunter, associate entomologist of Texas A&M College, but you won't see them moving around over the tree.

These small scale insects feed on the juices by injecting a small, needle like beak through bark. Many times large limbs, and once in a while the whole tree, will be killed. But the scale does not bother the leaves or the pecans.

Control of the scale is pretty difficult, says Gunter, because it is so few protected. The best control can be had by thoroughly spraying the trees during a winter or dormant season with a 3 per cent dormant oil. However, Gunter cautions pecan growers not to use the 3 per cent dormant oil spray if there are leaves on the trees.

The care and management of a pecan grove isn't complete without insect control. When the right variety of pecans is growing on good soil, it is possible to harvest more pecans practically every year when a crop is set if the insects are controlled.

And it is possible to control insects if pecan growers have good equipment for spraying, and follow the recommendations given for each insect, says Gunter.

Either the insects or the pecan grower get the pecans. Which one, depends on the extent of the insect control by the pecan grower.



This short, flare-back topper presents a completely different silhouette when it is worn snugly belted at the waistline. The smart topper in the picture, is ideal for wear through the Spring months, over suits and daytime dresses. It is in Navy and white checked woolen fabric. Simplicity pattern 2676 can be used to make this short coat.

Paratroopers Now Stationed at Fort Bliss Army Post

For the first time in the century-long history of the Post, paratroopers are stationed at Ft. Bliss, El Paso. The Army jumpers are members of the 88th Airborne Anti-aircraft Battalion which was recently activated in El Paso.

First mass jump made by personnel of the new unit was at Elwood, N. M., 35 miles north of Fort Bliss, on Feb. 23. Fourteen officers and one non-commissioned officer made the jump from an Army C-47 plane at an altitude of 1000 feet.

When jumping, men of the 88th Battalion wear the usual large parachute, 28 feet in diameter, and smaller emergency parachute.

By giving the small box on his chest a half-turn and then striking it with his hand, the jumper easily and quickly frees himself from the big parachute when he lands.

Paratroopers take the usual Army training plus a five-week course at Fort Benning, Ga., where they are taught the technique of jumping. To graduate, they must make five jumps a week from an airplane.

A fully-equipped Airborne

Antiaircraft soldier will jump with about 125 pounds of equipment including a pistol, carbine, machine gun, hand grenades, and a knife, in addition to other supplies. He is expected to be able, in wartime, to sustain himself for from 3 to 10 days after his jump.

Because excellent physical condition is necessary for para-

troopers, personnel of the 88th Airborne Anti-aircraft Battalion start a program with a physical training program later have other physical training.

READ THE NEWS

FARM LOAN
John Hancock Mutual Life Insurance
farm loans, time 10 to 20 years.
T. C. CAHILL, Agent, Haskell

OILS-BATTERY FLAT SERVICE
Yes, we have any oil you use. We give service on your car.
Battery and Flat Service Is An Art
M. C. WILFONG & SON
OPEN 7 DAYS A WEEK
23-24c.

NOW IS THE TIME
to let us help you with your **INSURANCE PROBLEMS**

John F. Ivy Insurance Agency
Representing THE TRAVELERS, Hartford
GOOD, LOCAL INSURANCE SERVICE

COURTNEY HUNT INCOME TAX CONSULTANT

This is to remind you that if you have not already filed your Income Tax Return for 1948, you MUST do so before March 15th, or be subject to a penalty, if your income was \$600 or more.

Who Must File A Declaration:

A declaration must be filed by every citizen of the United States who expects to receive in 1949, as much as \$100 on which there is no withholding, provided his total income will amount to \$600 or more. (Farmers are not required to file a declaration).

Your Government expects you to take every allowable deduction; we will take pride in saving you every dollar we can. We would like to make your return for you, and we believe you will find our charges very reasonable for the service we render.

COURTNEY HUNT

133 Cases Measles Reported In County

The State Health Department report for the week ending February 19, shows a continued spread of measles and mumps in Texas, with Haskell listing the largest number of cases for any county reporting during the period.

For that week, in the entire state, there were 2,684 cases of measles, compared to the 7-year average of 731 for the week. There were 538 cases of mumps, compared to the average of 269.

Haskell County reported 133 cases of measles, Caldwell 124, and Nueces 112. Jefferson County reported 98 cases of mumps.

To Relieve Misery of **COLDS take 666**
LIQUID OR TABLETS - SAME FAST RELIEF

CAUTION

You may lose your driver's license! Yes, an accident, unless you're insured, might deprive you of your driving rights, under state insurance responsibility laws in most states. Insurance is proof that you are financially responsible—protects you against financial loss. Let me show you how State Farm Mutual auto insurance is different from any other. It's the way that benefits you! Call or write today!

Calvin Henson
STATE FARM MUTUAL AUTOMOBILE INSURANCE COMPANY
HASKELL, TEXAS

Retail Sales Down In January From Previous Year

Texas retail sales, estimated at \$321 million for January, 1949, dropped 6 per cent under figures for January, 1948, the University of Texas Bureau of Business Research reported.

Apparel stores, with sales decreasing less than 1 per cent, food stores, with sales declining less than 2 per cent, and department stores, with sales dipping 3 per cent, recorded the smallest declines over this 12-month period. Lumber and building materials sales, showing the greatest fall in business for January 1949, tumbled 28 per cent from the January 1948 figure.

Greatest gains for 1949 in retail sales placed family clothing stores and men's and boys' clothing establishments at top with 5 per cent jumps over January 1948, and drug stores, filling stations, and florists with 2 per cent rises. General merchandise, eating and drinking places and restaurants maintained nominal increases of less than 1 per cent over January 1948.

Christmas influenced retail sales for December 1948, when sales stood 80 per cent above those for January 1949 in jewelry, 49 per cent in family clothing stores, 53 per cent in men's and boys' clothing stores, 48 per cent in hardware stores, 58 per cent in department stores, 49 per cent in apparel, 47 per cent in women's specialty shops, 50 per cent in general merchandise, and 43 per cent in shoe stores.

January sales of durable goods stores fell 26 per cent from December and 11 per cent from a year earlier, while non-durable store sales slid 44 per cent from December and 2 per cent from January 1948.

CAUSE FOR COMPLAINT

Missoula, Mont.—A motorist returned to the filling station, which he had shortly before left, and complained about the gasoline sold him. The attendant, who investigated, found that hoses had been switched and a 400-gallon underground gasoline storage tank had been filled with water.

RELIEF AT LAST For Your COUGH

Creomulsion relieves promptly because it goes right to the seat of the trouble to help loosen and expel germ laden phlegm and aid nature to soothe and heal raw, tender, inflamed bronchial mucous membranes. Tell your druggist to sell you a bottle of Creomulsion with the understanding you must like the way it quickly allays the cough or you are to have your money back.

CREOMULSION for Coughs, Chest Colds, Bronchitis

NOTICE OF CITY ELECTION

Pursuant to an order issued by the City Council of the City of Haskell, Texas, notice is hereby given that an election will be held on Tuesday, the 5th day of April, 1949, at the City Hall in the City of Haskell, for the purpose of electing two Aldermen to serve on the City Council for a period of two years.

W. Q. CASEY, Mayor, City of Haskell.

LEGAL NOTICE

No. 1141
In the County Court of Haskell County, Texas, Guardianship of John Ernest Westmoreland, a Minor.
To all persons interested in the above minor or his estate: You are notified that I have on the 22 day of February, 1949, filed with the County Clerk of Haskell County, Texas, an application under oath for authority to make to O. N. Westmoreland, and Gene W. Wood as lessee, an oil gas and mineral lease on that certain real estate belonging to said minor, described as follows: Situated in Haskell County, Texas, and being an undivided one-fourth interest in the North Half of the South-West Quarter of Subdivision No. Forty-One of the Wise County School Land, Survey No. 76, Abstract No. 405, as shown on a plat or map of the Subdivisions of said Wise County School Land, Survey 76 of record in Volume 23, Page 396 and 397 of the Haskell County Deed Records, containing 80 acres of land, and that O. E. Patterson, Judge of the County Court of Haskell County, Texas, on the 22 day of February, 1949, duly entered his order designating Monday the 14th day of March, 1949, at 10 A.M. in the County Court Room as the time and place when and where such application would be heard and that such application will be heard at such time and place. E. C. Westmoreland, Guardian of the estate of John Ernest Westmoreland, a minor.

HERE it is! THE NEW DODGE THAT DARES TO BE DIFFERENT



Come and see the car built for today's bigger, taller, more active Americans

It's a daring new car... new in its own distinctive style... new in the fresh, natural beauty that comes from truly basic design! It's the new car that dares to be different. It's narrower outside... yet wider inside, for the extra elbow room and shoulder comfort you want.

It's shorter outside for easier parking and garaging... yet this new Dodge is longer inside for stretch-out roominess. It's lower outside... yet higher inside, to give you the head room that spells added comfort every mile you ride.

See how Dodge gives all those things car owners really want today... sleek styling with plenty of room... flashing performance with economy... the proved smoothness Dodge All-Fluid Drive makes possible. Come in... get the whole Dodge story... now!

DODGE CORONET
New GYRO-MATIC... Frees You From Shifting... Available at Extra Cost

PITMAN MOTOR CO.
200 NORTH AVENUE E HASKELL, TEXA

Feed Your Baby Chicks For Growth and Livability

Give Them the Right Start With Mar-Ket Superior Starting Mash

To make a success of your poultry raising you cannot risk early death losses, slow growth or undernourished chicks by feeding poor quality chick feed. The best chicks, the best equipment and the best care will not overcome the handicap of feed that is not balanced and blended for utmost nutrition.

Market Superior Starting Mash contains the necessary amounts of quality proteins, minerals, and vitamins needed for fast growth, early maturity, extra stamina and vigor. Get a supply today and give your chicks the right start.

Bring Us Your Produce, Poultry and Eggs for Best Prices.

MARKET POULTRY & EGG CO.
A. T. BALLARD - MGR.
Phone 85 Haskell, Texas

SH PRICES DEAD STOCK



HIDE & WING CO.
Service Phone Collect
Texas

Trees Easily Grown Without Irrigation In Any Area

Trees can be grown without irrigation in any county in Texas. That goes for shade trees, windbreaks and ornamentals, says Sadie Hatfield, extension landscape gardening specialist of Texas A&M College.

But she admits there is a trick to it. The secret of success is in properly collecting and storing rain water in the soil for the trees to use. Terraces and contours should be constructed so as to collect and hold the moisture which falls throughout the year. And the terraces may be built any time you can get around to it.

Soil is the most natural, the easiest and the best place to keep water for growing trees in the Panhandle, the plains, and in all the drier regions of Texas, says

Miss Hatfield.

She goes on to say it is true that three or four acres of soil may be needed to produce one acre of trees, because it is necessary to take rainwater from nearby soil in order to give a tree—or a group of trees—the annual rainfall of a semi-arid region.

That is where terracing and contouring come into the picture. These practices, long recommended by county agricultural agents, can bring about a diversion of water in almost any area selected for trees.

Among the trees which are being grown successfully—and have been grown for more than 10 years—by landscape gardeners, demonstrators in the Panhandle and on the plains are black walnut, red cedar, osage, orange or bois d'arc, green ash, desert willow, hackberry and honey locust, says Miss Hatfield.

Also grown in these and the drier regions of the state are the jujube, mulberry, Russian olive, salt cedar, wild plum and Chinese elm.

There is a trick to it, but trees can be grown in any Texas county.

HERE FROM RULE

A. C. Foster, Rule lawyer and former County Attorney, was a business visitor in Haskell Monday.

BUSINESS VISITOR

W. H. Anders of Rule was a business visitor in Haskell Friday.

Free Press Want Ads always get results.

The Correct Time



... if you're slowing down or racing ahead — your watch needs adjustment. Bring it here today.

HELBER'S JEWELRY

Telephone 169W
Haskell, Texas



There's an iridescent glow in this simply cut dress by Claire McCardell. It's an Ameritex cord, a Stonecutter fabric.

Regular Meeting of Josselet HD Club Held Feb. 22

Josselet H. D. Club met in their regular meeting at club house on Feb. 22, at 2:30 o'clock, with Mrs. S. G. Perren as hostess. Seven members were present and each member paid THDA dues.

Mrs. Jim Perrin gave a demonstration on patch weaving. Mrs. S. G. Perrin had on display a small cabinet, for club dishes, made out of an apple box. The men worked on the club house and covered the top of the building. Members voted to paper and paint the inside of the club house.

Our next meeting will be on March 8th.

Refreshments were served to the following members:

- Mesdmes Jim Perrin, J. L. Toliver, Jimmy Anderson, J. H. Reding, J. L. Toliver, Jr., C. A. Thomas, S. G. Perrin, and also the following men: J. L. Toliver, J. P. Perrin, Jimmy Anderson, J. L. Toliver, Jr., and Jim Perrin.

Jeeps and Pick-Ups Invading Realm Of Cow Pony

These days it is different from what is used to be on the Texas ranges. Today's cattlemen are doing the same job their granddads did, but they are doing it a little differently.

For instance, says A. L. Smith, extension animal husbandman of Texas A&M College, the jeep and the pickup truck are fast replacing the cow ponies in many ranch operations. And, too, the old dipping vat is giving way to the portable power sprayers in insect control.

Other mechanical equipment that is coming into the picture are the mineral dispensing machines, pushing the mineral boxes for supplying phosphorus supplements into the background. Calf tables for dehorning, castrating and branding have replaced many a "heeler."

The maximum use of grazing crops such as small grains, sudan grass and re-seeded pastures have taken the place of dry-lot finishing of cattle for slaughter purposes.

There is a noticeable trend toward more crossbred cattle in Texas, particularly in the southern and eastern part of the state. This crossbreeding is to increase the market weight of cattle. As a result of this work, the King Ranch has developed the Santa Gertrudis breed, the only breed developed in the western hemisphere.

On Texas ranches cattlemen are practicing a more rigid culling of herds and stocking their ranges with less cattle. They realize the pounds of beef rather than the number of cattle is the secret of profitable production. In the continuous fight against animal parasites, many new insecticides are being used today that were unknown just a few years ago. Rotenone, DDT and BHC have replaced the old standbys of arsenical dips in controlling lice, ticks, cattle grubs and horn flies. Chloroform has been replaced by Smear 62 in the control of screw worms. Phenothiazine has proven more effective in controlling stomach worms than the bluestone used by cattlemen of a generation ago.

Texas 4-H Club work has been responsible for a generous share of these new-fangled ideas in beef cattle production. Club boys seeking information on raising beef calves have learned better and faster methods of feeding and management through the county agents and animal husbandmen.

In doing so, they have pushed boys' club work in beef calf production ahead in the lines of calf selection, rations, care and management, control of animal parasites and fitting calves for show and marketing, says Smith.

IN HASKELL MONDAY
Hubert Watson and John A. Willoughby, Stamford attorneys, were in Haskell the first of the week on business.

Farm Machinery Prices Are Due to Remain High

Farm machinery prices are still climbing. They have gone up continuously for the past 8 years, and right now are at a record high.

That's the report from W. L. Ulich, extension agricultural engineer of Texas A&M College. He says that in last September, prices were 62 per cent higher than in 1940, and 15 per cent higher than in Sept. of 1947.

As for this year, farm machinery and motor fuel prices are expected to remain high. And, as things look now, he says, farmers will have to continue to buy tractors and equipment on a seller's market through this year, even though there was a record production last year. This production will probably continue in 1949.

Cement, nails and paint supplies look favorable. Reports are that the cold weather and seasonal building slump have made cement more available. This is an item short in supply. If any farmers have been looking for this material and are fixed so they can use it now, this should be a good time to check up on local stocks, suggests W. S. Allen, extension agricultural buildings engineer of Texas A&M College.

The nail supply is building up somewhat at this time, and

paint of pre-war quality is now available. Allen warns prospective buyers to beware of low quality, as such types do not have the carrying agents and pigments that make for long-lasting coats of paint, he says.

HILL MOVING HOUSE

Rapid City, S.D.—When John Fitchell bought his house and lot, he had a 30-foot backyard. The hill behind them gradually moved in, pushing in a 5-foot deep pile of dirt that covers half of the kitchen windows. Fitchell and his family decided to move their 2-story house before the hill moved it for them.

Use Free Press Want Ads.

BUSINESS VISITOR Lamar Casey of Rule was a business visitor in Haskell the first of the week.

FEDERAL LAND BANK LOANS

Time 34½ years. Net interest costs 3.75% or less. Loans may be paid in part or in full on any business day in the year. We have no balloon payments.

National Farm Loan Asso. Office
W. H. McCandless, Secty-Treas.
HASKELL, TEXAS

VALET SERVICE

Try Our Specially Equipped

BACHELOR STEAM LAUNDRY

We Give The Men of This Section High Class Service On...

SHIRTS, KHAKI UNIFORMS

UNDERWEAR, PAJAMAS, SOCKS, ETC.

OUR DRY CLEANING WILL PLEASE YOU

Service Cleaners

514 North 1st St.

Joe E. Thomson

EN YOU FER A LOSS—

Insurance Agent is your friend in need—exactly what protection your Policy knows how to get adjusters on the job—with them to see that you get a fair deal, you time and trouble.

I. "SCOTCH" COGGINS

ALL KINDS OF INSURANCE

Insurance Gives The Most Protection"

Solve Your Plowing Problems With MM Wheatland DISC PLOWS

For plowing stubble or sod MM Wheatland Disc plows do a superior job and often cut plowing costs much as 50 per cent. They thoroughly mix trash with soil to increase moisture absorption and to prevent soil blowing. They do not leave air pockets. MM Wheatland Disc Plows have a wide range of adjustments of disc angles from 40 to 60 degrees. Adaptable to any size farm. Offered in 4, 6, 8, and 10 foot sizes, MM Wheatland Disc Plows can be set to plow from 3 to 9 inches and one of their big advantages is that they hold to their work at a depth for which they are set.

If you are going to need a One-Way Plow, see us as we have a few plows coming in soon. First come, first served. All sold at list prices.

Now a word about Wheat Drills. Now is the time to come in and place your order for a drill, as we only have a small allotment of drills for 1949. This way you can get your size in drills. All drills also sold at list prices.

For any kind of Farming Tools, see us. None better.

Hallie E. Chapman Implement Co.

Having Trouble?

When you have trouble with your car, you want prompt, efficient service.

Our Chevrolet-trained mechanics, with modern tools and equipment will do the best job possible for you, in the shortest possible time, and at reasonable charges.

Only New Genuine Chevrolet Parts are used for repairs.

USED CARS

- 1948 Chevrolet Town Sedan
- 1948 Chevrolet Sport Sedan
- 1947 Chevrolet Aero Sedan
- 1947 Chevrolet Sport Coupe
- 1947 Ford De Luxe Coach
- 1941 Chevrolet Coach
- 1939 Chevrolet Coach
- 1948 Chevrolet 3-4 Ton Pick-Up
- 1942 Dodge 1-2 Ton Pick-Up
- 1940 Chevrolet 1 1-2 Ton Truck

Several older model Car, Pick-Ups and Trucks.

Burton-Dotson Chevrolet Co.

R. L. Burton "Where Friend Meets Friend" Olen Dotson

Shell Pipe Line Group Presented Safety Awards

Two National Safety Council Awards won by Shell Pipe Line Corporation were presented and displayed at the quarterly meeting of the Hamlin-Haskell Safety Chapter of the Shell Pipe Line

Corporation Feb. 23, at the Hamlin High School. This group of employees were participants in establishing the safety records. The first award was the Council's plaque for first place in the Oil and Gas Pipe Line Section for having the least number of disabling injuries sustained by employees. The second was the National Safety Council's Award of Honor for Distinguished Service for having worked 1,272,630 man hours without a disabling injury from January 16, 1948 to June 11,

1948. This latter award had been previously won by Shell in 1946. An interesting and educational program had been planned and representatives of the various departments gave speeches on the hazards encountered and preventative used in maintaining safe working conditions on the job. To conclude the program, Lee Fisher showed a film, Wanton Murder, which served to impress upon all present the necessity for safe conduct upon our highways, and the high cost of neglecting to use every precautionary measure in the prevention of accidents.

Seventeen members and nine visitors were present. Visitors from the Area Office included J. K. Alfred, Acting Asst. Area Supt. Les Fisher Area Safety Engineer, and O. W. Gaul and Bill Hilgenfeld of the Personnel Department.

CARD OF THANKS

We desire to express our sincere appreciation and heartfelt gratitude to our friends and neighbors who were so kind and thoughtful in the loss of our loved one. We especially thank you for the beautiful flowers and the food you prepared.

The Manker Family.

Wichita-Brazos Soil District Purchases New Grass Drill

The Supervisors of the Wichita Brazos Soil Conservation District have recently purchased a new grass drill, which will be used by district cooperators to plant grass seed on worn out acres. This drill was badly needed by the district, as there are approximately 20,000 acres of land in the district that are not economical to farm and should be retired permanently. The farmers and ranchers of this district should be proud of this drill, as there are many districts that are still without a good drill. This drill was specially constructed to plant fluffy grass seed, and very small grass and clover seed. It was obtained from the Kerr Construction Co. at Geary, Oklahoma. The supervisors have set a price of 75c an acre for the use of the drill.

Seeding of grass has already begun on the League-Davis ranch and the drill will be routed to other cooperators, as rapidly as possible. It is not too late to order your grass seed now if you have some land that should be retired from cultivation. The grass seed to be planted this spring will mostly be a mixture of bluestem grasses, which are available in Oklahoma at a very reasonable price. If you are not certain whether your land should be retired or not, consult your local soil conservation district.

It is now time to start planting sweet clover. Carl Chaffin, northwest of Knox City, started planting this week on some land he wanted improved. He is planting Madrid in rows, and will graze it with livestock. Madrid is a biennial if planted in the spring, and will furnish grazing the first year and make seed the second. Increased yields of maize and cotton have been the usual thing following sweet clover. Take care of your soil and it will take care of you.

Brother of Mrs. R. L. LeClaire Dies In Stamford Recently

Final rites were held at the First Baptist Church in Stamford Feb. 21 for W. E. Clark, retired farmer and rancher of that city and brother of Mrs. R. L. LeClaire of Haskell. Mr. Clark, 83, died Feb. 19, in the Stamford sanitarium, after being ill with pneumonia for about one week. Mr. Clark had lived in Jones and Haskell counties since 1886. Immediate survivors include two sons, a daughter, several grandchildren and great-grandchildren, and three sisters.

Mattson Seniors To Present All-Variety Program March 11

Mattson High School Seniors are sponsoring a community all-variety program to begin Friday, March 11, at 7:30 at Mattson.

If you like good old-fashioned home talent fun, you are invited to see a blackface skit, "Coom Creek Courtship," old-fashioned square dancing done to modern calls, monologues in dialect, string orchestra music, tap dancing, a two-act comedy drama, songs and novelty numbers galore.

This all-variety program is presented by interested patrons and high school students. Among the many performers are old favorites such as Slover Bledsoe, Troy Ash, Ray Lancaster, Henry Smith, Beaulah McFadin, Nellie Ash, Roy Fought, Gladys Merchant, Perry Force Band, Rule Square Dance Team, Hub Merchant, Herman Forehand, Jake Stewart, Joyce Davis, Willie Mae Bowers, and Lela Mae Atchison, Anna Jean Roberts, Jane Turner, and many, many more.

Throckmorton Oil Field Worker Killed By Falling Timber

B. T. Arnold, of Breckenridge, about 32, was killed near Throckmorton last Thursday when a sill fell off a truck he was unloading on the Irwin Lease, several miles south of Throckmorton.

Arnold, who was employed by the R & O Drilling Company, was pronounced dead by Dr. W. L. Berry, of Throckmorton, from a broken neck and a head injury. The body was taken to his home in Breckenridge.

Survivors include the widow, two sons and his parents. Mrs. Arnold was in German at the time of the accident with one of the sons, who was ill.

HERE FROM ABILENE

Karl McGregor of Abilene was in Haskell and Rochester the first of the week looking after his business interests in this section.

HERE FROM ASPERMONT

Mr. and Mrs. E. E. Spicer and daughter, Sandra Sue, of Aspermont, were visitors in the home of Mr. and Mrs. O. T. Williams the first of the week.

TEXAS

Fri. & Sat., Mar. 4-5—

One of the Most Exciting and Shocking Pictures Ever Made!

Dick Powell
SIGNE HASSO
In

"To the Ends of
The Earth"

Extra: "Texas Red-Heads"
"Symphony In Spinach"

"Owl Show" 11 P. M.
Saturday Night—

FANTASTIC ADVENTURE!
WARNER BAXTER

In
"Gentleman From
Nowhere"

Plus: "PIANO MAGIC"

Sun., Mon., Mar. 6-7—

Never Give A Bachelor
An Even Break!
CARY GRANT
DIANA LYNN
In

"Every Girl Should
Be Married"

Added: "DAFFY DUCK"
— Latest News —

Tues. Only, March 8—

"Guest - Nite"

WILDEST
Boom Town Saga of Them All!
ROD CAMERON
In

"Strike It Rich"

Plus: "Headliners of '48"
— Latest News —

Wed., Thurs., Mar. 9-10—

The Thrilling True Story of
"Boy's Ranch!"

AUDIE MURPHY
In His First Starring Role
LLOYD NOLAN
JANE WYATT
JAMES GLEASON
In

"Bad Boy"

Added: "COUNTY FAIR"

Delta Kappa Gamma Banquet Will Be Held March 12

Beta Chi Chapter of Delta Kappa Gamma will hold its annual public relationship banquet, in Haskell, March 12, 1949, in the activity building at 7:30. Members of the chapter and all friends are cordially invited to attend.

The chapter will present Miss Lillie V. Lillard, head of the Speech Department, John Tarleton College, Stephenville, Texas, as guest speaker.

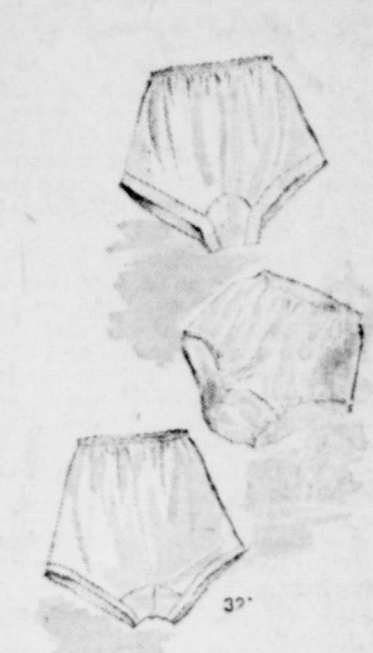
Miss Lillard is recognized as being one of the most charming speakers in the Southwest. She will discuss the nations in the "Lime Light Today."

Miss Lillard has an outstanding collection of dolls in authentic costumes. She uses the dolls in a most interesting and unique manner in her lecture.

Friends interested in reservations may call Mrs. Scott Green.


WATER SPOUTING STOVES.

Derby, Conn.—Several local housewives were recently startled when their gas stoves suddenly became water fountains. Investigation disclosed that heavy road machinery had cracked water and gas mains.



Women's BRIEF
By "C..."
Fine select quality
on Brief, Elastic
and elastic
Blossom. Sizes
79c

Perkins-Timberlake



Perkins-Timberlake
NEW...
ARRIVALS...
MEN'S SHORTS
Ea. 89c
Nationally advertised "HANES" Brand.
Good news for you men who have been awaiting the arrival of our new shipment of famous HANES Shorts and Shirts!
Made for comfort and wear of fine high-count broadcloth, 100% rubber lined, comfortable, Good looking stripes in color, full assortment. Sizes 28 to 41.
COMPANION
UNDERSHIRTS
Ea. 65c

Rita
Fri. & Sat., Mar. 4-5—
"Wild Bill" ELLIOTT
In
"Lone Star
Pioneers"
Plus: "Sea Hound" No. 14
Cartoon — Comedy

Sun., Mon., Mar. 6-7—
Like An Enchanted Dream!
ALAN CURTIS
In
"Enchanted Valley"
Plus: "Law of the Wild" No. 3
"Goldlocks and 3 Bears"

Tues., Wed., Thurs.,
March 8-9-10—
DOUBLE FEATURE!
Joe E. Brown
In
"The Daring
Young Man"
AND
John Wayne
In
"Trail Beyond"

Perkins-Timberlake
MEN'S
DRESS SHIRTS
NEW LOW PRICE
\$2.49
Smartly styled from good quality broadcloth and striped percales. Well-constructed stand-up collars, sanforized and fast colors. Solids in white and colors, cluster and pin strips. Sizes 14-17.
Available at Your Nearest
Perkins-Timberlake Store



Modern Way Food Store

FRIDAY AND SATURDAY SPECIALS — WE RESERVE THE RIGHT TO LIMIT QUANTITIES

Kimbell's Fancy— 46 Oz. Can—	House of George— 46 Oz. Can—
GRAPEFRUIT JUICE 19c	TOMATO JUICE 26c
Del Monte— 300 Size Can—	K & M— 12 Oz. Pkg.—
TOMATO JUICE 10c	VANILLA WAFERS 25c
Miracle Whip— Pint—	Sugaripe— 15 Oz. Box—
SALAD DRESSING 35c	Seedless RAISINS 19c
Pecan Valley— 9 Oz. Box—	Bar-Be— Can—
MINCE MEAT 15c	VIENNA SAUSAGE 14c
SURE-JEL box 13c	Bird Brand— pint 20c
Harvest Pride—	Senior, Jumbo—
CORN No. 2 can 2 for 25c	RIPE OLIVES Tall Can 33c
Pan-Am— No. 2 Can—	Floattill, Pure— Qt.—
CUT GREEN BEANS 15c	Apricot PRESERVES 39c
Hunt's— Tall Can—	Hunt's— No. 2 1/2 Can—
FRUIT COCKTAIL 21c	Whole APRICOTS 20c
Ro-Tel— No. 2 Can—	Haase's Pure— 6 Oz. Bottle—
SAUERKRAUT 10c	HORSERADISH 19c
Hunt's CATSUP bottle 15c	PUREX quart 14c

FRESH FRUITS and VEGETABLES

YELLOW ONIONS lb. 5c	MEATS
Sunkist—	SALT JOWLS lb. 19c
LEMONS Large Size lb. 15c	Swift's—
APPLES lb. 15c	PICNIC HAMS lb. 39c
POTATOES lb. 5c	Swift's PREM can 39c
	Velveeta—
	CHEESE 2 lb. box 74c

New Arrivals!
Womens Spring
COATS
These beautiful tailored all
Covert coats are both fashion
and value-wise. Gored back
the new V yoke that adds a
glamour to the boxy one button
gle breasted Spring favorite. No
tomorrow, club collar, and
sleeves. This fine all wool Co
lined with select quality satin.
Spring shades of Grey, Neon.
Sizes 8 - 16
\$27.95



Perkins-Timberlake