

Football games

RULE
Bobcats vs Richland Springs
 Sat., Dec. 15, 7:30 p.m.
 San Angelo
Woodson vs Motley Co.
 Sat., Dec. 15, 3 p.m.
 San Angelo
 1 ticket sees both games

Basketball games

HASKELL
JVB, VB vs Paducah
 Fri., Dec. 14, 5 p.m.
 at Paducah
JVG, VG vs Stanton
 Fri., Dec. 14, 6 p.m.
 at Haskell
7th-8th Girls vs Stamford
 Mon., Dec. 17, 5 p.m.
 at Stamford
7th-8th Boys vs Stamford
 Mon., Dec. 17, 5 p.m.
 at Rochester
JVG-B, VG-B vs Anson
 Tues., Dec. 18, 4 p.m.
 at Haskell
PAINT CREEK
VG-VB vs Loraine
 Fri., Dec. 14, 6:30 p.m.
 at Loraine
VG-VB vs Knox City
 Tues., Dec. 18, 6:30 p.m.
 at Knox City
RULE
VG, VB Rule Tournament
 Dec. 13-15 at Rule
VG, JVB-VB vs Hamlin
 Tues., Dec. 18, 5 p.m.
 at Rule

Calendar

Early deadline

Deadline for news and advertising for the New Year's edition Thurs., Dec. 27 of the Haskell Free Press will be

Thurs., Dec. 20 at 5 p.m.

Lighting contest

The Rule Chamber of Commerce will sponsor the Home and Yard Lighting Contest in Rule. Prizes will be awarded for first, second and third place. To enter the contest, call 996-2214 by 1 p.m. on Dec. 19. No entry fee will be charged. Judging will be on Thurs., Dec. 20.

Food distribution

The Haskell County Ministerial Alliance Food Distribution Center will distribute food Sat., Dec. 15 from 10 a.m. til 11:30 a.m. at 206 S. 2nd (building east of Civic Center) in Haskell. Volunteers and boxes are needed.

Immunizations

The Texas Dept. of Health in Stamford will hold an immunization clinic Thurs., Dec. 20 at the Haskell National Bank Community Room in Haskell. Clinic times are from 1 to 4 p.m. For more information call 325-773-5681.

Candlelight service

Trinity Lutheran Church will hold a candlelight service Mon., Dec. 24, Christmas eve, at 11 p.m. at the church located on the Throckmorton Highway in Haskell.

Pep rally

A blacklight pep rally will be held Fri., Dec. 14 in support of the Rule Bobcats who are on a quest to win the state football championship. Doors shut at 3:15 p.m. at the Rule High School Auditorium. Cheerleaders will have glow-in-the-dark items available for fans to purchase.

Candlelight service

The First Presbyterian Church of Haskell will hold a candlelight service Mon., Dec. 24, Christmas eve, at 6 p.m. downstairs.

Index

Out of the Past Page 4
 Menus Page 8
 Classifieds Page 9

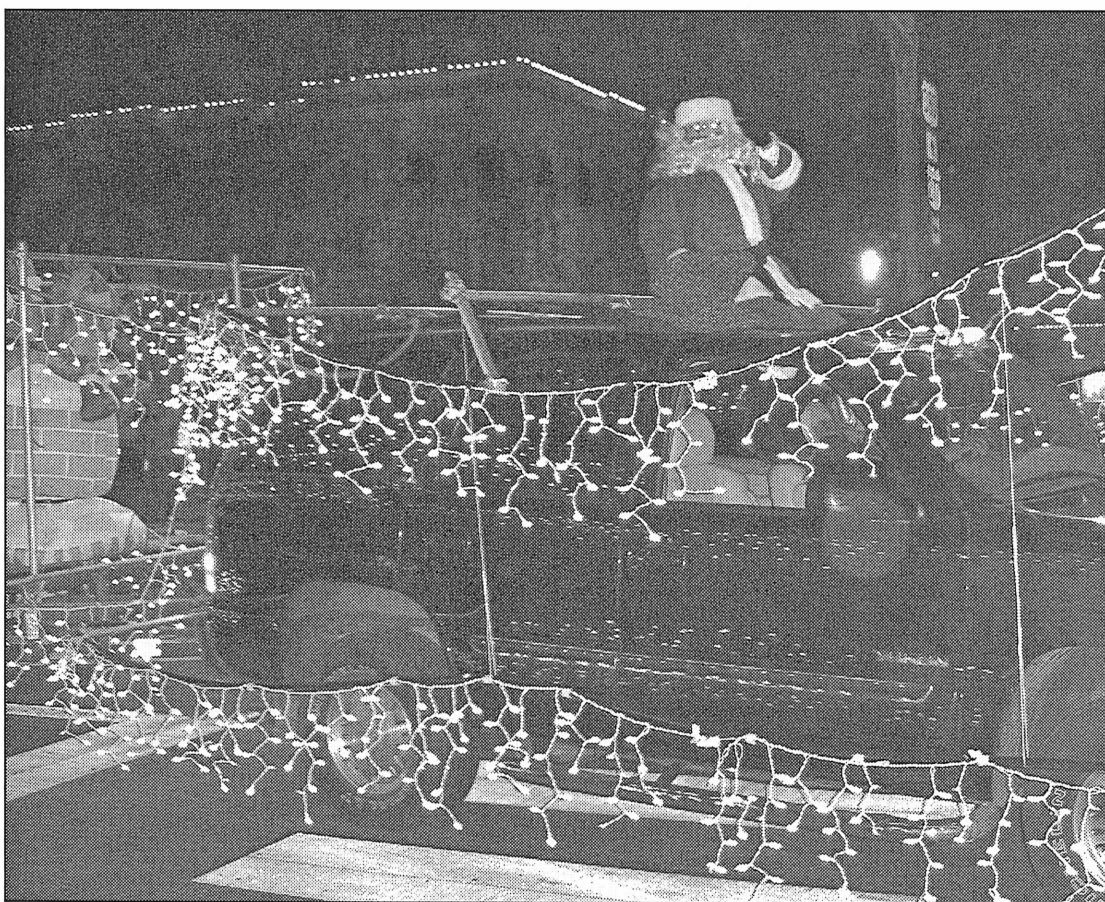
Christmas Cantata Sun., Dec. 16

The Haskell Free Press

VOL. 121-NO. 50, ©DECEMBER 13, 2007

"The People's Choice"

10 PAGES-ONE SECTION-75 CENTS



SANTA'S ARRIVAL—Santa arrived in Haskell during the Christmas parade held Sat., Dec. 8. The Rotary Club provided his sleigh ride. The float was judged first place during the Haskell Chamber of Commerce annual event.

Parade results

The annual Haskell Chamber of Commerce lighted Christmas parade was held Sat., Dec. 8 with the following results:

First place: Santa's Sleigh, entered by the Rotary Club; second place: Mr. and Mrs. Claus Deliver Christmas, entered by Cliff's Garage; and, third place, Gingerbread House, entered by Rolling Plains Correctional Facility.

Other awards include:

Most distance traveled: Melissa Morgan; most original, Christmas on the Prairie, entered by Committee to Help Haskell County; best lights, Santa's Sleigh, entered by the Rotary Club; best holiday spirit: Cornerstone Fellowship Baptist Church; best individual entry: Mrs. Claus on her scooter, entered by Jennifer Burgess, State Farm;

Best effort: St. George Catholic Church; best children's float: First United Methodist Church; most creative float: Christmas in Downtown Haskell, entered by Haskell Chamber of Commerce; and, best religious theme: Nativity, entered by Richardson's.

Bobcats to play for state title

The Rule Bobcats are on their way to the state contest. The Bobcats defeated the Rankin Red Devils 86 to 60 in the six-man Division I state semifinal game

played in San Angelo.

With a 13-0 record, the Bobcats will meet Richland Springs in the battle for the state title. Richland Springs has won

three of the last four state titles.

Rule converted three Red Devil turnovers into scores. Rule turned around the game by changing its defense from a man-coverage style to a zone defense.

In the second quarter, Rule took advantage of the Red

Devil's turnovers driving to score three unanswered touchdowns late in the second quarter. Rule led by eight points at halftime.

In the second half, Rule picked up another three straight touchdowns building their lead. Senior Bobcat C.J. Saucedo

had 213 rushing yards and five rushing touchdowns on 14 carries. Jay T. Spitzer threw three passes for touchdowns.

The Bobcats will meet Richland Springs in the game for the state title Sat., Dec. 15 in San Angelo at 7:30 p.m.

Haskell Elementary to host open house

The faculty and students of Haskell Elementary School will host an open house Thurs., Dec. 20 from 5:30 to 6:30 p.m. Special musical performances will be presented in the cafeteria at 5 p.m. by Kindergarten, sixth grade, first grade, Prekindergarten, Head

Start and PPCD and at 6:30 p.m. by second grade, third grade, fourth grade and fifth grade.

School will dismiss at 12:15 p.m. Thurs., December 20 and Fri., Dec. 21.

Classes will resume Mon., Jan. 7.

Cantata to be presented Sunday

The Christmas cantata, "A Christmas to Remember," will be presented by a 50-voice choir and dramatic speakers representing nine churches in Haskell County Sun., Dec. 16 at 7 p.m..

If you ask the average person about Christmas, they'll tell you it is a holiday we celebrate once a year with tinsel, lights and a

Christmas tree. It is also a time when memories of Christmas past, present and future envelop our very being. The cantata, created by Claire Cloninger and Gary Rhodes, is filled with a great combination of carols and well known seasonal songs, and invites the listener to focus on not only the birth of God's only Son but also on the complete

work of our Savior and Lord, Jesus Christ.

The cantata choir invites you to come worship with us on Sun., Dec. 16, at 7 p.m. at First Baptist Church, 301 N. Ave. E, in Haskell.

A nursery will be provided. For more information, contact the First Baptist Church office at 864-2581.

Two schools honored with bronze award

Two Haskell County Schools were recognized with bronze awards on a rating list of the nation's best high schools in U.S. News and World Report. Both Haskell High School and Rule High School were included on the magazine's list.

Schools were rated on: how students performed on state tests (adjusted for student circumstances), how disadvantaged students performed, and success in providing college-level course work.

Goodfellows Donations

The Haskell Goodfellows are accepting donations for Christmas boxes to be distributed to needy families this holiday season. Boxes will be delivered on Dec. 24 to those who have been selected to receive them. Those with donations of food, contact a Lions Club member, toys and clothing may be taken to the Haskell Fire Dept.; and cash donations may be sent to The Haskell Free Press, P. O. Box 555, Haskell, TX 79521. In memory of Red and Alma Collins

by Don and Bobbye Collins	\$100
Anonymous	\$50
Total this week	\$150
Previous total	\$75
Total to date	\$225



SANTA'S HELPERS—Members of the Haskell Lions Club served hot chocolate at the Haskell Christmas parade Dec. 8 and helped Santa by taking pictures of the children. Lions members helping were, l-r, Lela Bevel, Donnie Rieger, Ellen Rieger, John Hicks, Jennifer Burgess, Brian Burgess and Linda Haynes.

FOR NEWS ITEMS OR TO SUBSCRIBE, CALL 864-2686

E-mail your news and photos
to The Haskell Free Press at
hfp@valornet.com

BERNARD E. GODLEY, INC.
TAX SERVICE AND BOOKKEEPING
Specializing in Farm, Ranch & Agri-business
Over 35 Years Experience
940-889-8809
98 Hill Drive • Seymour, Texas
Fax 940-889-4908



FARMERS

Gets you back where you belong.

Auto + Home

- Renters •Mobile Homes
- Commerical •Boats
- Motorcycles •RV's

- Easy Payment Plans
- Package Discounts up to 55%



*Charlotte
Culpepper*
LOCAL AGENT
810 N. Ave. B
Haskell, Texas
940-864-2358
1612 N. Swenson
Stamford, Texas
325-660-2958



**2008
Spring
Registration**

www.vernoncollege.edu

**Don't let classes
fill up without you!**

**Campus Connect Registration
December 14 - January 3**

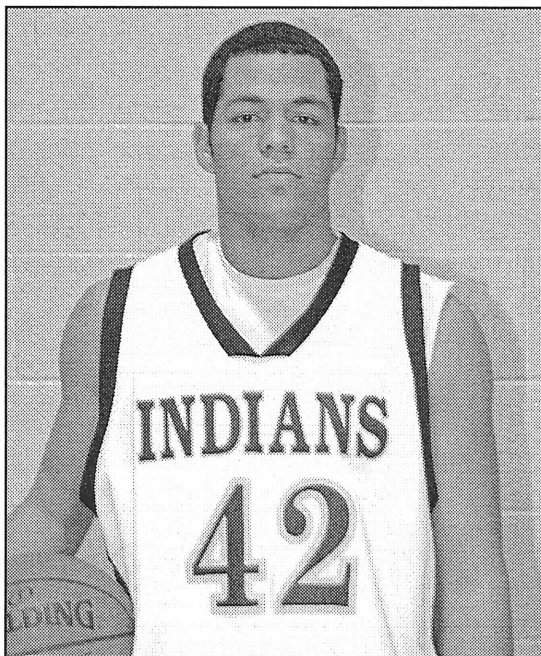
Wichita Falls Registration
January 9

Vernon Registration
January 10

See schedule for registration times.

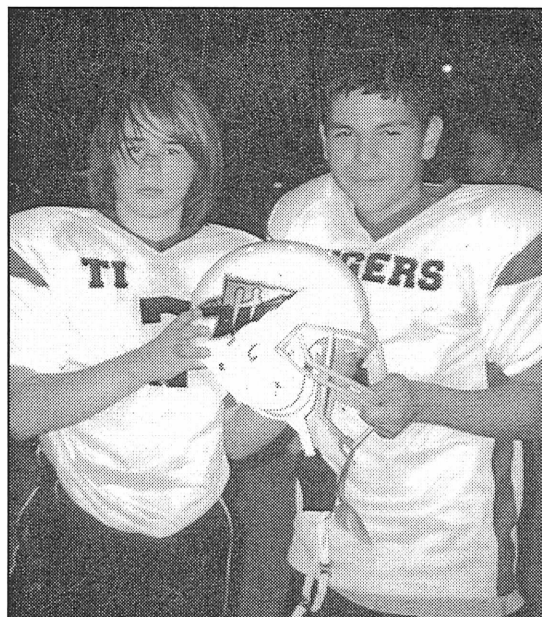
Classes begin **January 14**

Register for Continuing Education classes at anytime.



PLAYER OF THE WEEK—Haskell Indian, D.J. McCulloch, who plays post, was named the Big Country Player of the Week for his help in winning the title game of the Childress and Albany Tournament. McCulloch earned MVP honors during the Childress tournament and was named MVP of the Albany Tournament. The senior averages 26 points per game.

Photo by Bill Blankenship



ALL-STARS—Matthew Martinez, left, and Jarred Escobedo, both of Haskell are members of the Anson Tigers Mighty Might football team. The team won the Super Bowl competition held Sat., Dec. 8 in Hawley. Martinez was selected MVP. Both were selected as All-Stars and will play in the All-Star competition game against Mineral Wells Sat., Dec. 15 in Hawley. Martinez is the son of Joe and Velma Martinez of Haskell. Escobedo is the son of Jackie Escobedo and Irene Castillo, both of Haskell.

No crop payments to be made by USDA

The U.S. Department of Agriculture has announced that because market prices are high, producers with wheat, barley or oats base acres who are enrolled in USDA's Direct and Counter-cyclical Payment Program will not receive partial 2007-crop year counter-cyclical payments.

Producers enrolled in the program may receive counter-cyclical payments when effective prices for eligible commodities are less than their respective target prices specified in the 2002 Farm Bill. USDA calculates these program payments based on historical base acreage and payment yields, not current production. USDA used the November World Agricultural Supply and Demand Estimates Report, which was released on Nov. 9, to project these rates and determined that the effective

prices exceed their respective target prices.

Any partial payments for producers with upland cotton, rice or peanut base acres will be announced on or after Feb. 1, 2008. Any partial payments for producers with corn, grain sorghum or soybean base acres will be announced on or after March 1, 2008.

By statute, the 2007 crop counter-cyclical payments can be made in only two installments, a change from prior crop years when counter-cyclical payments were made in three installments. For 2007, if partial payments are made, the first installment will equal 40 percent of the projected total payment and will be made after the first six months of the beginning of the marketing year. The final payment is made after

the end of the marketing year.

The 2002 Farm Bill requires that any overpayments to producers must be repaid. If not repaid, USDA may deduct overpayments from any future

USDA payments.

More information on this program is available at local Farm Service Agency offices and at this website: <http://www.fsa.usda.gov/>.

Store pesticides, chemicals properly during winter

by Wes Utley

CEA-Ag/NR, Haskell Co.

Environmental contamination from fertilizers and pesticides occurs most frequently in storage areas, where these materials are concentrated, not from their routine use in the landscape. Therefore, properly storing lawn and garden chemicals is an extremely important practice that can definitely preserve and protect our environment.

Now that winter is here most unused fertilizers and pesticides will be placed in storage until they are needed next spring. Now is the perfect time to prepare a safe holding area for these materials. Proper storage is important for many reasons, including environmental protection, human (and pet) health concerns, as well as maintaining the effectiveness of the chemicals and fertilizers.

Although there are numerous considerations, generally speaking a winter storage area or facility should be:

- Secure from children and pets
- Well-ventilated to eliminate fumes and vapors
- Well-lit when in use to make it easy to read product labels
- "High and Dry," especially from potential flooding
- Large enough to allow for separation of various pesticides and fertilizers
- Enclosed in such a manner that leaks/spills may be contained and cleaned quickly
- And—protected from extreme heat and cold to preserve chemical effectiveness

The storage area must be secure from unwanted visitors, both people and animals.

Good lighting and ventilation are important to the personal health of the user(s) of the facility. In addition, proper ventilation can prevent volatile chemicals from contaminating other materials in storage. Separation of chemicals in storage by type is additional insurance against contamination. Flammable liquids must be

stored outside living areas and away from ignition sources.

Dampness is a serious problem, as it reduces the shelf life of many chemicals and causes metal and paper containers to degrade. It is imperative that storage areas be secure from flooding.

Temperature extremes can also affect product shelf life. In addition, heat increases the volatility of stored chemicals while freezing can cause some types of containers to rupture. If specific temperature ranges are required for proper storage, they will be found on the product label.

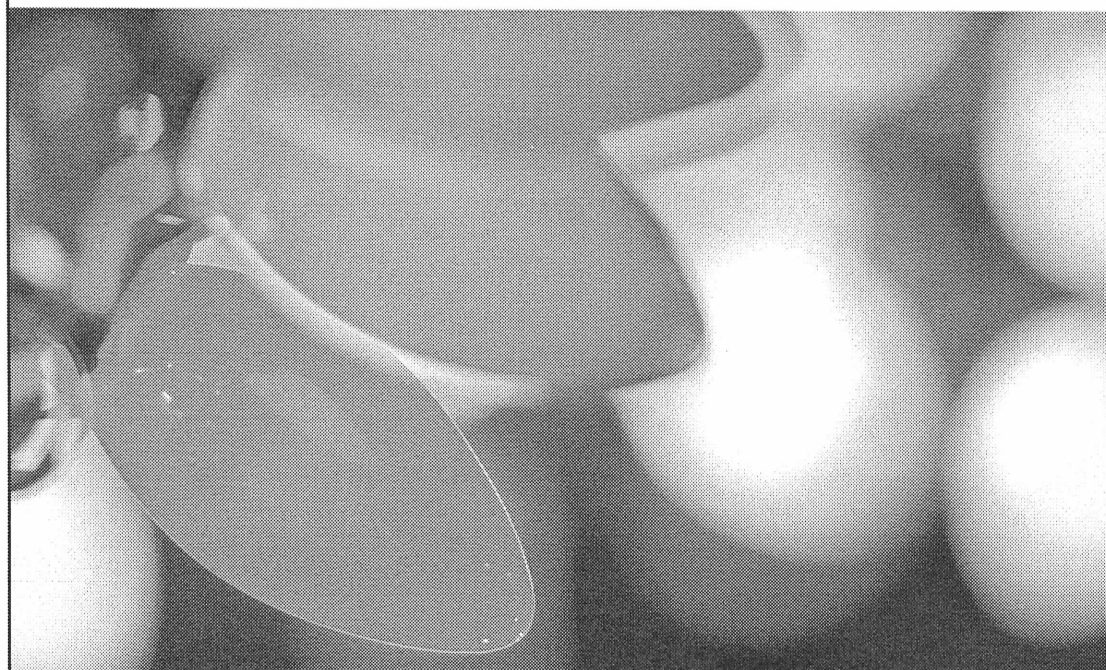
Finally, the site must allow for containment of spills and/or leaks. Ideally, clean-up materials (absorbents, water) will be near at hand. Chemicals and the containers in which they are to be held must be in good condition. Whenever possible, pesticides and fertilizers should be kept in their original containers. In all cases, a legible product label must be attached to the chemical container. Never transfer excess pesticide or fertilizers to an empty food container.

Do not store pesticides with or near food, medicine, or cleaning supplies. An updated storage inventory allows for keeping track of what has been placed in storage and also helps in planning purchases next season. Useful records may include product name, active ingredient, date of purchase, and date and volume stored.

Perhaps the best way to minimize storage problems is to plan ahead, and buy pesticides and fertilizers one season at a time. The small-volume containers that seemed expensive in the spring may, in fact, be the "best buy" in the long run.

Now that winter is here it's time to properly store any unused fertilizers and pesticides. This critically important practice will play a key role in creating a healthy and sustainable landscape environment.

5:35 p.m. Thursday



Lighting up the holidays.

As you begin using decorative lighting in and around your home this holiday season, AEP Texas reminds you to keep safety in mind. Check light strings for frayed cords, and use only UL-approved lights and extension cords. Remember not to overload circuits, and remind children not to touch lights or outlets. And on behalf of all of us here at AEP Texas, please enjoy a safe, bright holiday season with your family and friends. **AEP Texas is there, always working for you.**



A unit of American Electric Power

For more information about electrical safety, visit AEPTexas.com

Haskell Jr. Livestock Show schedules listed

by Wes Utley

CEA-Ag/NR, Haskell Co.

Tentative arrival times, show schedules and the sale date for the Haskell County Livestock Show include:

Arrival: Thurs., Jan. 10, by 4 p.m.: Steers, Heifers, Lambs and Swine. Show: Fri., Jan. 11, 8 a.m.

Swine followed by Lambs; 2 p.m. Steers, followed by Heifers.

Thurs., Jan. 10, by 5:30 p.m.: Poultry and rabbits. Show at 7 p.m.

Sale: Sat., Jan. 12, 11 a.m.

Entries are due in the Haskell County Extension Office by Mon., Dec. 17 at 5 p.m.

College financial aid program to be held in Rule

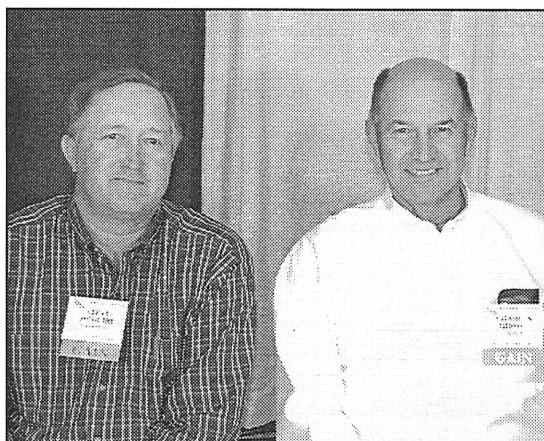
A financial aid night will be held Tues., Dec. 18 at 6:30 p.m. in the Rule School Library for parents of junior and senior students needing information about applications for financial aid to attend college.

Don Hilton, a representative of Panhandle Plains Student Loan Center in Abilene, will present information and answer questions about the process and standards for applying for financial aid for colleges, technical and trade

schools, and other post-secondary schools.

A discussion will be held concerning the new FAFSA (Free Application for Federal Student Aid) worksheet.

Students may not apply for financial aid until January of their senior year, but it is helpful for parents of junior students to learn about the financial aid process in advance. Juniors will also be given information on Pell Grants. Refreshments will be served.



ATTEND CONVENTION—Steve McGuire, left, and Charles Gibson attended the Texas Farm Bureau convention held Dec. 1-3 in Waco.

McGuire, Gibson attend meeting

Haskell voting delegates, Charles Gibson and Steve McGuire, of Haskell County Farm Bureau participated in the 74th annual Texas Farm Bureau convention Dec. 1-3 held in Waco.

Policies directing the state's largest farm organization were adopted by more than 1200 delegates of 207 organized Farm Bureaus.

Approved recommendations on national policies will advance to the

American Farm Bureau Federation's annual meeting to be held in January in Louisiana.

Addressing the delegates were Kenneth Dierschke of San Angelo, TFB President; Don Smith of Sulphur Springs, secretary-treasurer; and Vernie Glasson, TFB Executive Director.

The business session covered the final day of the meeting where Dierschke was reelected president.

Master Marketer program scheduled

by Wes Utley
CEA-Ag/NR, Haskell Co.
The Master Marketer program is coming back to Vernon. The program is a national award-winning risk management training that teaches participants how to develop marketing plans, evaluate opportunities, manage production and risk, and execute their risk management and marketing plans.

Participants learn from top industry and university professionals who apply case studies and simulation exercises

in the classroom. The 64-hour curriculum is the most intensive marketing and risk management training offered by Extension nationwide.

The first two-day Master Marketer session at Vernon is set for Jan. 16-17. Subsequent sessions will be held Jan. 30-31, Feb. 13-14 and Feb. 27-28.

Interested persons can contact Stan Bevers, Extension Economist at 940-552-9941, ext. 231, or contact the Haskell County Extension office at 940-864-2658.

VC/MSU agreement

Vernon College and Midwestern State University have formed a new partnership. The Midwestern State University-Vernon College Degree Partnership Program is designed for students who have applied for and been denied admission to MSU. These students will be invited to apply for admission at Vernon College and enroll in the degree partnership program. Participation in the program will require enrollment in three semester credit hours on the MSU campus and a commitment to live in MSU housing (beginning with the spring 2009 semester) unless special circumstances warrant waiving this requirement. Students will have the same rights and privileges accorded all MSU students. Simultaneously, students will be concurrently enrolled in a minimum of nine semester credit hours at Vernon College's Century City Center. With all of the rights and privileges accorded Vernon College students, the MSU-VC program is considered a two semester program. Upon completion of a minimum of 18 semester credit hours of nondevelopmental course work with a minimum cumulative grade point average of 2.0, students will be unconditionally admitted to MSU. Failure to achieve a 2.0 grade point average in the partnership program will require continuing in this program.

Dr. Steve Thomas, President of Vernon College stated, "We are pleased to announce that VC and MSU have formalized a degree partnership program that will benefit students at both institutions. This is just one of many ways in which VC and MSU continue to work together to create opportunities for students to enroll in college and reach their educational goals."

Recognizing the joint benefit of making selected Midwestern State University services available to Vernon College students, the Experience MSU program is designed with the flexibility required by today's college student. All Vernon College students not enrolled in the MSU-VC Degree Partnership Program will be eligible to purchase optional

services from MSU.

At the time of initial enrollment at VC, and each semester thereafter, students will be provided an Experience MSU enrollment form with optional services and associated fees. Payment will be rendered to the MSU Business Office.

The MSU-VC Degree Partnership Program will begin in the fall of 2008. For more information contact the Vernon College Admissions office at 940-552-6291.

Calendar

Burn ban issued

A burn ban is in effect for Haskell County. The use of combustible materials in an outdoor environment by any person is prohibited. Combustible materials specifically include, but are not limited to, fireworks, camp fires, welding and any other pyrotechnic material, which in the manner or means of its use could result in a wildfire. The ban will continue until conditions warrant otherwise, stated Haskell County Judge David C. Davis. A person who knowingly or intentionally violates this order commits a Class C misdemeanor, punishable by a fine of up to \$500.

Storm sirens

The City of Haskell will test the storm sirens at noon on Fridays.

Storytime

Storytime at Haskell County Library is held on Wednesdays at 10 a.m. Stories, crafts and snacks are offered. Paula Rennegarbe is the storyteller.

All Splatterware Red, Green, Blue 25% off	All Holy Bears \$3 each
Dolls, All, Dolls 25% off	All Dreamsicles 50% off
Yankee Candles 50% off	Selected Items 50% off
All Dreamsicles Angel Hugs \$3 each	All Wooden Items 50% off
Bassing Jewelry	
404 N. 1st • Haskell • 940-864-2548	

DOUBLE Patty Melt
American cheese, grilled onions & mayo
\$3.89
TRY IT WITH A FRESHLY BREWED CRANBERRY ICED TEA

SONIC
America's Drive-In.
No Waiting
Call In Orders
864-8533
Limited Time Only!
Only at participating SONIC Drive-Ins. ©December 2007 America's Drive-In Brand Properties LLC

Stamford Floral
Deliveries morning and afternoon to Haskell!
Come by 102 S. Swenson in Stamford or call
Kay Perry, owner
325-773-2005
and place your order
We accept all major credit cards.

R3 Western Wear
7 Avenue E • Haskell, Texas
940-863-4388

- Selected Belts **30% off**
- All short sleeved Shirts and T-Shirts for men and women **30% off**
- Selected Styles Long Sleeved Shirts **10% off**
- All Jeans excluding some Wrangler **\$5 off**
- Selected Jewelry **20-30% off**

Spend \$50 and receive a free gift!
New shipment of Twisted X boots!

Check out our Great selections of
•Montana Silversmith Jewelry and Candles
•Cowboy Kickers for kids and adults

~ OPEN LATE ~
December 21-24
9 a.m. til 8 p.m.

Season's Best
We sincerely appreciate all of our fine customers and invite you to join us as we celebrate the birth of Jesus Christ.

**Open House Thursday and Friday
December 20-21, 9 a.m. to 3 p.m.**
We will close Mon., Dec. 24 at 12 noon.

Rule Banking Center
A Branch of Hamlin National Bank

P. O. Box 10
Rule, Texas 79547
940-997-2216
Member FDIC

OPINION

TEXAS PRESS ASSOCIATION

State Capital



HIGHLIGHTS

By Ed Sterling

State plans to issue new Medicaid card

AUSTIN—The Texas Health and Human Services Commission announced plans to go statewide with a new smart card system that it said would create a more convenient and secure way for people to verify their Medicaid coverage.

The card, which looks like a credit card, automates the patient check-in process, which presently requires provider staff to copy data manually from paper forms.

The card contains encoded patient information and has built-in fraud protection, as it requires the client's finger image to use.

Statewide expansion is set to begin next year when HHSC issues a request for proposals in May to select a contractor for the project.

The system may be in place by the second half of 2009, said Commissioner Albert Hawkins.

AG sues two Internet sites

Attorney General Greg Abbott on Dec. 5 filed lawsuits against two Web sites, TheDollHouse.com and Gamesradar.com under the federal Children's Online Privacy Protection Act, COPPA.

COPPA generally prohibits Web sites from unnecessarily collecting personal information from children under 13.

Abbott accused the Web sites of unlawfully collecting personal information such as names, ages, and home addresses from children.

Investigators also discovered that the sites' parental consent features were easily manipulated and circumvented.

Regents scale down tuition hike

The University of Texas System board of regents ordered UT-Austin to cut back a proposed tuition hike after students and state legislators complained the average \$300 per semester hike was too big an increase.

Instead, in school years 2008-2009 and 2009-2010, UT System students will pay \$150 more tuition per semester or 4.95 percent more, whichever amount is greater.

In 2002, before the Legislature deregulated tuition, a typical freshman entering UT in the fall paid about \$4,500 a year in tuition and fees. In 2010, under the new rates, an incoming freshman should prepare to pay more than \$8,000.

Speaker names energy panel

Texas House Speaker Tom Craddick announced the creation

of the Select Committee on Electric Generation Capacity and Environmental Effects.

Craddick, R-Midland, assigned the committee to prepare a long-term energy and environmental impact plan and submit it to the 81st Legislature, which convenes Jan. 13, 2009.

The plan will include an assessment of various types of energy generation available to the state.

Craddick appointed eight House members to the committee: Charles "Doc" Anderson, R-Waco; Kevin Bailey, D-Houston; Norma Chavez, D-El Paso; Rick Hardcastle, R-Vernon; Phil King, R-Weatherford; Burt Solomons, R-Carrollton; Joe Straus, R-San Antonio; Sylvester Turner, D-Houston; and Dennis Bonnen, R-Angleton, to serve as chair.

Green schools effort is launched

U.S. Rep. Michael McCaul, R-Texas, announced on Dec. 5 a new, bipartisan congressional effort to ensure schools are safer environmentally and thus should provide a healthier learning place for children.

McCaul, co-chair of the Green Schools Caucus, said, "Today, there are American schools which are harmful to our children. That is unacceptable."

The caucus will take input and begin working on legislation to promote safer schools.

McCaul and architect Stan Haas made the announcement at J.J. Pickle Elementary School in Austin, a "green-built" campus that features proper solar orientation, insulated concrete, rainwater collection, salvaged pine and recycled-content materials, unfinished materials, and paint and finishes with low levels of chemical emissions.

New chief at Parks & Wildlife

Carter Smith, state director of the Nature Conservancy of Texas since 2004, was named executive director of the Texas Parks and Wildlife Department on Dec. 5.

A graduate of Texas Tech University and Yale University, Smith succeeds Robert L. Cook, who retired on Aug. 31.

Dewhurst is named Texan of Year

Lt. Gov. David Dewhurst has been named "2008 Texan of the Year" by Texas Legislative Conference, a non-partisan organization of Texas business and political leaders. Dewhurst will accept the award at the group's 42nd annual meeting at New Braunfels in March.



From Out of the Past

From the files of The Haskell Free Press

10 Years Ago December 11, 1997

Visiting in the home of G.W. and Ophelia LeFevre were Charles and Dolores Gibson of Jackson, Mississippi, Larry and Jean Gibson of Springtown, Shane Gibson of Fort Worth, Betty LeFevre, Jack and Tina LeFevre of Spring and Lisa Mosier of Wautoga.

Visiting in the home of Dora Holley were Mr. and Mrs. Dude Hutchen of Phemonia, California, Mr. and Mrs. Alvin White of Breckenridge and Mr. and Mrs. Noel Abbott of Fort Worth.

Kaki Stapleton and Jennifer Andress visited the Rotary Club.

20 Years Ago December 10, 1987

Helen Allison of Rule was the champion adult exhibitor in the Haskell County Pecan Bake Show. Heather Stewart was the champion youth exhibitor.

Jerry Morgan of Paint Creek has been elected to the Executive Board of the Chisholm Trail Boy Scout Council.

Mr. and Mrs. Johnny Guinn visited in the home of Mr. and Mrs. James Gellner.

Mr. and Mrs. Alvin Bredthauer visited in the home of Mr. and Mrs. Bill Casey in Waco.

30 Years Ago December 8, 1977

Leona Carter was chosen as Employee of the Month for December at the Haskell Memorial Hospital.

Mr. and Mrs. Jesse Galindo

and family of Lewisville, visited with Mr. and Mrs. Leopoldo Galindo.

Delorese Blakley and Jessie LeFluer of Oklahoma City, Oklahoma, have been visiting with Lorene Dewey.

Mr. and Mrs. R.B. Jones of Seymour visited Lillie Bradley.

40 Years Ago December 7, 1967

The Cancer Center noted the following volunteer workers, P.C. Spenny, T.W. Jetton, R.C. Overton, Florence Darden, M.B. Wilson, J.H. Montgomery, J.B. Edwards, Jim Dean, C.T. Jones, Ira Davis, H. Russell, Ethel Thomas, J.R. Davis, W.E. Brady and Alice Mayes.

The Haskell Tortilla Factory and Bakery held an open house to show their new machinery and new modernized look to their building. The Haskell Tortilla Factory makes tamales, tortillas, sweet rolls, bread, candies, etc.

Mike Guess and Diane Davis were honored at the Gold Star District Three Banquet in Vernon.

Rev. James Ray Story of Amarillo accepted the pastorship of the Church of God.

50 Years Ago December 12, 1957

Mr. and Mrs. H.C. King had guests in their home, their daughter and family, Mr. and Mrs. Clinton D. Van Siclen and children of Bellaire.

Mr. and Mrs. Tom Bevel and son, Joel, spent several days in

Mercedes visiting in the home of Mr. and Mrs. J.H. Bevel.

Mrs. Bradley Buford and children, Forrest and Ann of Sweetwater, visited in the home of their parents and grandparents, Mr. and Mrs. Chas. M. Conner.

Mr. and Mrs. Bill Middlebrook of Casper, Wyoming, spent the holidays with their parents, Mr. and Mrs. Virgil Sonnamaker and Mr. and Mrs. G.V. Middlebrook of Paint Creek.

Mr. and Mrs. Thurman Lusk of Plainview, were weekend visitors in Haskell in the home of his mother, Mrs. L.N. Lusk.

100 Years Ago December 14, 1907

Capt. W.M. Wood of Weinert was in town and said the farmers are about up with their work of harvesting and are now making plans for next year.

The Haskell Light Plant is making a special offer this month. Customers are invited to get an electric smoothing iron and a meat broiler from the plant, attach them to their electric connections and give the appliances a trial in their homes. If not satisfied after the trial, the articles may be returned and no charge will be made.

Florence Baldwin visited friends in Munday the first part of the week.

Mr. and Mrs. Hart of Dallas are visiting the family of John B. Baker.

AG Consumer Alert

By Greg Abbott

Don't Pay Up-Front To Borrow Holiday Cash

With the holiday season in full swing, many Texans might encounter advertisements promising instant cash loans. Consumers should avoid loan offers that require up-front payments for "taxes" or "processing fees." Legitimate lenders never ask borrowers to pay money up-front in order to obtain a loan.

Posing as legitimate loan offers, these slick loan promotions often appear online, in newspaper classified ads or on flyers. Some scammers provide a toll-free number for borrowers to call and supposedly speak with someone who claims to be a reputable bank representative. Other con artists send official-looking correspondence guaranteeing a loan for hundreds or even thousands of dollars at a reasonable interest rate.

In both schemes, borrowers are instructed to wire several hundred dollars in advance to cover the loans' taxes or processing charges. Once consumers send the money, they never hear from the scam artist again.

Many of these schemes give the impression that they are based in the United States. Often, they provide "confirmation"

correspondence with a return address in this country. The unfortunate reality is that most scammers are based abroad and use stolen or disposable cell phones that cannot be traced. The correspondence addresses are either nonexistent or anonymous drop boxes. Once money is wired to the scammers, they are able to pick it up from any of thousands of locations around the world, with little chance of being caught.

Consumers who need extra cash over the holidays should consider approaching local lenders to discuss their options in person. Borrowers should also carefully protect their personal information, especially Social Security and bank account

numbers. While reputable lenders typically require Social Security numbers and other information to conduct credit checks on a borrower, scam artists often obtain victims' personal information to perpetrate identity theft.

Texans can verify they are dealing with a legitimate, properly licensed organization by contacting the Texas Department of Banking toll-free at 877-276-5554 or online at www.banking.state.tx.us.

To report an advance fee scam or to obtain additional information, call the Office of the Attorney General at 800-252-8011 or visit us online at www.oag.state.tx.us.

Letter to the Editor

Dear editor,

Many of you have seen the signs that say 'Shop Local,' but how many of us really ever do? In my new position, I have the great pleasure of being out and visiting with many of the wonderful citizens of Haskell, and yesterday, I spoke with two different, unrelated people that both proudly told me that they had completed all of their Christmas shopping, and had

done all of it in Haskell.

To them and every one like them, I would like to say thank you from all of the merchants in Haskell. I know that this next week or so as I work on completing my holiday shopping, I am going to try and follow their lead.

Sally Rueffer
Haskell Chamber
of Commerce

Cotton Market Weekly

By Plains Cotton Cooperative Association

December 6, 2007

As the week progressed, cotton trading on the New York Board of Trade appeared to have been partly marking time amid some tweaking of positions ahead of USDA's key monthly domestic and world supply/demand estimates scheduled for release on Tues., Dec. 11.

The market also took note of USDA's weekly export sales report. Net export sales of U.S. cotton in the week ended Nov. 29 totaled 219,400 bales, down 12 percent from the previous week and one percent more than the four-week average. Major buyers were China, Mexico, Indonesia and Turkey. Net sales of 13,200 bales for delivery in 2008-09 resulted as a sales increase for Mexico was partially offset by cancellations for El Salvador.

Export shipments of 212,300 bales were 28 percent more than the week earlier and 21 percent more than the four-week average. Primary destinations were China, Turkey, Mexico and Indonesia. Traders now say average shipments from now through the end of the 2007-08 marketing year need to average approximately 325,000 bales to reach USDA's target of 16.2 million bales.

"The figure still is within reach, but sales need to increase sharply to make it happen," an analyst said. "For the time being, Chinese mills continue to give preference to Indian cotton thanks to the lower prices combined with a shorter transit time."

Meanwhile, in the week ended Dec. 6, online trading by producers in Texas, Oklahoma and Kansas totaled 17,588 bales compared to 27,012 bales the previous holiday shortened trading week. Average prices received by producers ranged from 54.96 to 59.86 cents per pound versus 55.49 to 61.58 cents per pound one week earlier.

In other news, in its Dec. 3 report the International Cotton Advisory Committee (ICAC) revised supply and demand numbers from earlier seasons for several countries. The adjustment had the net effect of a 1.8 million bale increase in 2007-08 ending stocks. The new 54.0 million-bale world ending stocks estimate now is very much in line with USDA's 54.8 million-bale figure. Both USDA and ICAC show 2007-08 production at about 119.4 million bales, but USDA's consumption estimate of 129.2 million exceeds ICAC's projection by 3.4 million bales, with most of the difference in cancellations centering on China's cotton use.

For now, the trade is monitoring the harvest of the U.S. cotton crop as it winds down in most states in the southern portion of the country. Texas seems to be the main interest as the harvest has progressed to the 90 percent level in the Lubbock area and field work is moving forward, weather permitting, across the rest of the Texas High and Rolling Plains. Roughly 25 percent of the state-wide cotton crop remains on the stalk, according to county extension agent reports. Thanks to the picture-perfect cotton weather all over West Texas since September, both qualities and yields probably will break records.

"Our poor market can't catch a ride from any direction, but they're looking at USDA's next supply/demand report," a market watcher said. "A private crop estimate suggests the U.S. crop will come in another 100,000 bales bigger than in the department's November estimate, but that shouldn't surprise anyone considering the difficulty the crop reporting board has had in getting its arms around the almost miraculous yields in Texas," he concluded.

The Haskell Free Press

Established January 1, 1886

PUBLISHED EVERY THURSDAY

420 North First Street • P. O. Box 555

HASKELL, TEXAS 79521

Phone 940-864-2686 • Fax 940-864-2687

hfp@valornet.com

John McDougal Publisher
Lisa Shaw Business Manager
Mary Kaigler Editor
Doris McDougal Production
Bill Blankenship Staff Photographer

Periodical Paid Haskell, Texas 79521
(USPS 237-040)

SUBSCRIPTION RATES:

Haskell County, one year, \$25.00.

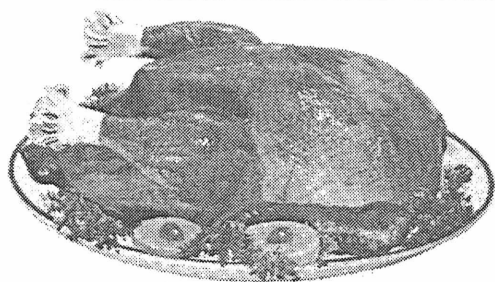
Outside of Haskell County, one year, \$34.00.

NOTICE TO PUBLIC-Any erroneous reflection upon the character, reputation or standing of any firm, individual or corporation will be gladly corrected upon being called to the attention of the publisher.

POSTMASTER: Send address changes to The Haskell Free Press, P.O. Box 555, Haskell, TX, 79521-0555.

This issue mailed Wed., Dec. 12, 2007





WIN YOUR CHRISTMAS TURKEY

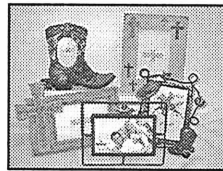
Shop Haskell First



~ Rules ~

1. Clip out the ads, fill in your name, address and telephone number.
2. Deposit each ad in the box *each week* at the business listed on the ad. (All entries deposited in the wrong box will be disqualified.)
3. Each store will award one FREE TURKEY - you need not be present to win, no purchase is necessary.
4. Drawing will be held Friday, December 21, 2007, at noon.
5. Anyone over 16 years of age is eligible to enter (except employees at participating stores and this newspaper.)

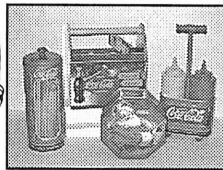
Come in to receive your FREE 2008 Cardui Calendar and Ladies' Birthday Almanac



Holiday Gift Sets

- Choose from
- *Cheesy Gift Set
- *Napkin Caddy Set
- *Stacked Mug Set
- *Hostess Set

Frames



Coca Cola Gift items

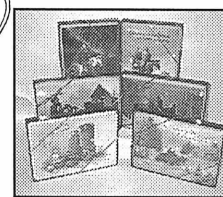


Afghans & Throws



Pewter Gifts

25% off REG. PRICE



Leanin' Tree Boxed Christmas Cards

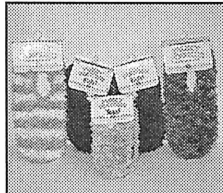
Buy Two Boxes Get One Box FREE

(Assortments not included)

Fuzzy Footies

Fun & Fuzzy Footwear
One Size Fits Most • Assorted Colors

Adult **\$8⁹⁹**
Kids **\$6⁹⁹**
Tots **\$5⁹⁹**



Give a delicious gift... Russell Stover Candy

including Millionaires & Sugar-free Millionaires
New! Assorted Chocolates in a Collectible Elvis tin

When in Doubt, Give a Gift Certificate!

Prices good December 13, 14 & 15
Discounts taken off regular price.
Limited to stock on hand. Some restrictions apply.

Bridal Registry

Sarah Davidson and A.J. Shaw

Deck the Halls with Special Memories!

Create - Print - Share with
The Drug Store's

New Photo Center!

Now available in store:
4"x6" Prints 5"x7" Prints 8"x10" Prints
Enlargements Photo Christmas Cards
DVD Creation

Bring in your Digital Media
or

Bring in a photo to scan
to make reprints, enlargements
or Christmas cards.

Name _____
Address _____
Phone No. _____

www.haskelldrugstore.com
Monday-Friday 8 a.m. to 6 p.m.
Saturday - 8 a.m. to 2 p.m.

THE DRUG STORE
100 S. Ave. E • Haskell • 864-2673

Thurs., Fri. & Sat., Dec. 13-15
Sharon Young, City Girl
and A' La Cart

25% off

Marc Chantal Handbags

25% off

Merle Norman Studio

Call for an appointment for your

FREE Makeover

Free Gift Wrapping

Gift Certificates Available

Personality-Slipper Shoppe

940/864-2501 • 864-3051

South Side of Square • Haskell, Texas

Name _____

Address _____

Phone _____

Merry Christmas!

We have
Stocking Stuffers
for everyone!

Christmas Dishes

20% off

Name _____

Address _____

Phone No. _____

The Carousel Gift Shop

Erlinda Mayfield

Open M-F 10 to 5:30. Sat. 10 to 4

Southside of the square

in Haskell

864-2069

SHOP HERE for EVERY ONE!

Christmas Sale

All Apparel and
Nike, Reebok,
Asics and other
brands of Shoes
on sale

Super Discounts
throughout the Store!
Everything **20-30% off**

Just in time for Christmas!

Where Winners Shop

Sport-About
of Haskell



940-864-3891
402 N. 1st

We accept Discover, VISA, AMEX, MasterCard

Name _____

Address _____

Phone No. _____

Come see our

HUGE

Year End Specials!

Bailey Toliver



940-864-2626 • 800-588-2626

209 S. Ave. E • Haskell, Texas

Name _____

Address _____

Phone No. _____

Area Basketball scores

Girls

Eula 41, Haskell 38
 Scoring for Haskell: Agraz 12, Peiser 10, Reid 6, Newton 3, Rutkowski 2, Wallace 2, Rodgers 2, Bassett 1.

JV: Haskell 33, Eula 15.

Albany 51, Rule 22
 Scoring for Rule: Scheets 8, Messenger 6, Benarilers 4, Dudensing 2, Muniz 2.

Woodson Tournament
 Cisco JV 50, Paint Creek 27
 Scoring for Paint Creek: Wigley 13, Armstrong 6, Pendergraft 4, Gilbreath 2, Waggoner 2.

Paint Creek 39,
 Lueders-Avoca 37 (OT)
 Scoring for Paint Creek: Gilbreath 11, Waggoner 9, Wigley 7, Armstrong 6, Martinez 3, Hall 3.

Woodson 51, Paint Creek 28
 Scoring for Paint Creek: Wigley 8, Gilbreath 7, Waggoner 5, Armstrong 4, Hall 4.

Albany Tournament
 Haskell 52, ACHS 30
 Scoring for Haskell: Agraz 16, Wallace 8, Peiser 8, Rodgers 6, Adams 6, Rutkowski 4, Isbell 2, Johnson 2.

Haskell 36, Seymour 13
 Scoring for Haskell: Agraz 15, Bassett 6, Wallace 4, Rutkowski 3, Thane 2, Rodgers 2, Peiser 2.

Roby 35, Haskell 21
 Scoring for Haskell: Agraz 14, Peiser 2, Reed 2, Wallace 2, Adams 1.

Haskell 47, Albany 44
 Third place game
 Scoring for Haskell: Agraz 13, Peiser 14, Rodgers 8, Bassett 4, Newton 4, Adams 2, Wallace 2.

All tournament team
 Molly Agraz, Hanna Wallace and Ashton Rutkowski.

Boys
 Haskell 68, Eula 45
 Scoring for Haskell: McCulloch 22, Adams 13, English 10, Rutkowski 7, Agraz 6, Rodriguez 4, Bitner 4, Alvarez

2.

Woodson Tournament
 Paint Creek 40, Cisco JV 32
 Scoring for Paint Creek: Myers 14, Bishop 10, Whitfield 7, Groves 5, Reed 2, McDonald 2.

Lueders-Avoca 65,
 Paint Creek 34
 Scoring for Paint Creek: Myers 13, Groves 6, Whitfield 5, Ruiz 4, Rogers 2, Bishop 2, McDonald 2.

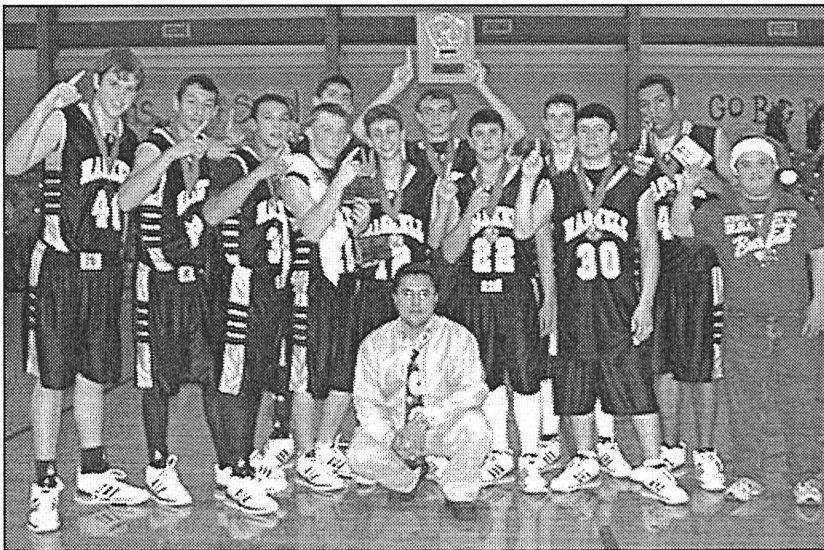
Albany Tournament
 Haskell 83, Rotan 28
 Scoring for Haskell: McCulloch 34, English 10, Alvarez 9, Agraz 8, Adams 7, Rutkowski 6, Guzman 4, Guevara 3, Rodriguez 2.

Haskell 79, Stamford 44
 Scoring for Haskell: McCulloch 21, Agraz 14, English 12, Adams 11, Guzman 5, Rutkowski 5, Alvarez 4, Bitner 4, Marshall 2, Rodriguez 1.

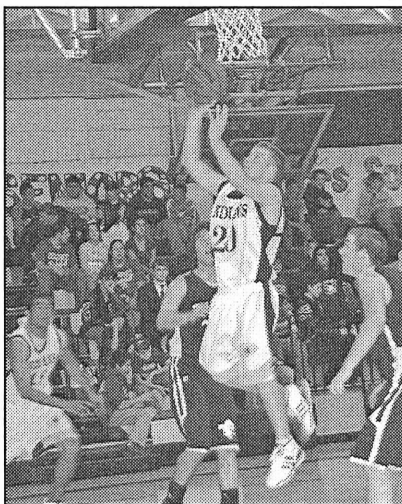
Haskell 50, Albany 44
 Championship game
 Scoring for Haskell: McCulloch 15, Adams 10, Guzman 8, English 7, Rutkowski 6, Agraz 4.

All tournament team
 John English, Weston Rutkowski, Travis Adams
 MVP: D.J. McCulloch

E-mail your news and photos to The Haskell Free Press at hfp@valornet.com

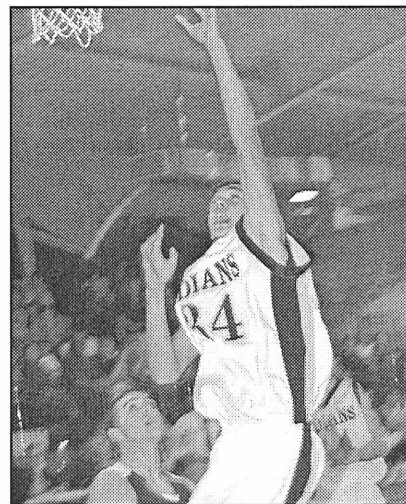


TOURNAMENT CHAMPS—The Haskell Indians won the championship game at the Albany Tournament last weekend. Team members are, l-r, Samuel Bitner, A.J. Alvarez, Stephen Guavara, Travis Adams, All Tournament Team; Derek Agraz, John English, All Tournament Team; Aaron Rodriguez, Austin Marshall, Weston Rutkowski, All Tournament Team; Greg Guzman, D.J. McCulloch, MVP; and Joseph Rodriguez. Indian coach is Toby Villa.



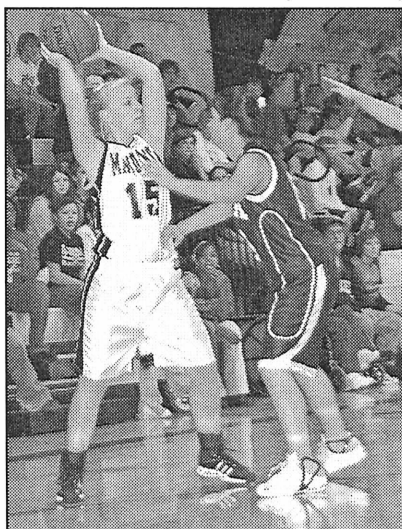
ADDING TWO POINTS—Haskell Indian #20 Travis Adams adds two points for the Indians during their winning game against Eula, 68-45. Adams scored 13 points for the Indians during the game.

Photo by Bill Blankenship



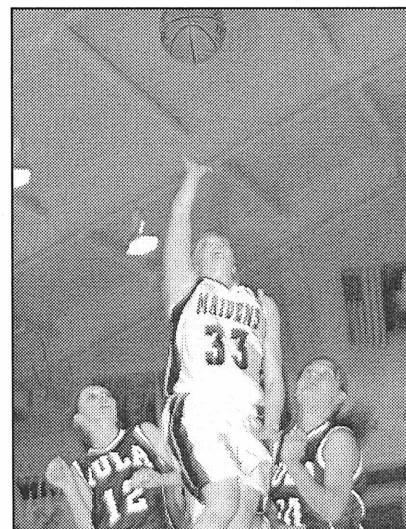
INDIAN SCORE—Haskell Indian #34 gets by Eula opponents to add two points to the Indians' winning score. Haskell had a victorious score of 68-45. Rodriguez added 4 points to the Indians total for the game.

Photo by Bill Blankenship



LOOKING FOR AN OPENING—Haskell Maiden #15 Aerial Thane looks for an open teammate during the Eula game. The Maidens fell to Eula 41-38.

Photo by Bill Blankenship



SCORING FOR THE MAIDENS—Haskell Maiden #33 Hope Reid makes a basket for the Maidens during the Eula game. Reid posted six points during the game.

Photo by Bill Blankenship

It's that time of year again and Santa's on his way. Ho - Ho - Hope you'll drop in for some fun and food. It will really brighten our day!

Thurs., Dec. 20, 2007
 2 to 5 p.m.

501 S. 2nd • Haskell

Please join the Haskell Chamber of Commerce for a **Holiday Open House**



Come Let Us Adore Him

Putting the People of Our Community First

Welcome to Our **Open House**

All Day Wednesday, Dec. 19

~ Holiday Banking Hours ~

Christmas Eve: Mon., Dec. 24, Close at 12 noon
 Christmas: Bank Closed Tues., Dec. 25
 Regular Banking Hours resume Wed., Dec. 26
 New Year's: Bank Closed Tues., Jan. 1
 Regular Banking Hours resume Wed., Jan. 2

First National Bank Haskell
 200 South Avenue E Haskell, Texas 79521

940-864-8555



Other Convenient Locations to Serve You:
First National Bank Munday - Stamford - Rochester



A Christmas to Remember

This year's countywide Christmas Cantata
"A Christmas to Remember"

will be presented on

December 16 at 7 p.m.

at First Baptist Church
 301 North Avenue E, Haskell

A nursery will be provided.
 For more information, call
 First Baptist Church at 864-2581

Haskell INDIANS



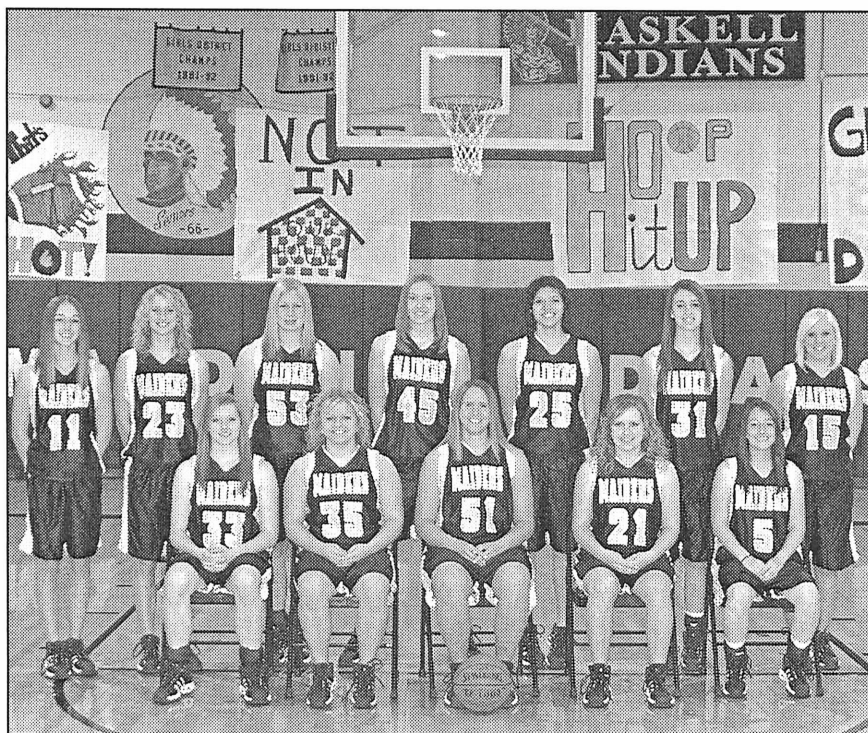
Fri., Dec. 14 • 5 p.m.
JV & Varsity Boys
vs Paducah
at Paducah

Tues., Dec. 18 • 5 p.m.
JV & Varsity Boys
vs Anson
at Haskell



HASKELL INDIANS—Front row, l-r, Andrew Sammons, A.J. Alvarez, John English, Travis Adams, Greg Guzman, Austin Marshall and Luke Terry; back row, Coach Lolo Martinez, Stephen Guevara, Aaron Rodriguez, Samuel Bitner, D.J. McCulloch, Derek Agraz, Weston Rutkowski and Coach Toby Villa.

Photo by Bill Blankenship



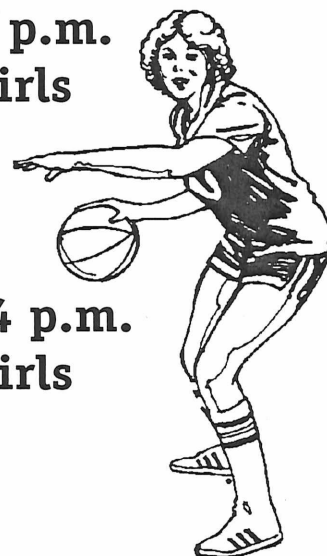
HASKELL MAIDENS—Front row, l-r, Hope Reid, Lauren Newton, Lacey Peiser, Paige Adams and Claire Isbell; back row, Aubrey Bassett, Ashton Rutkowski, Miranda Johnson, Lisa Rodgers, Molly Agraz, Hanna Wallace and Aerial Thane.

Photo by Bill Blankenship

Haskell MAIDENS

Fri., Dec. 14 • 6 p.m.
JV & Varsity Girls
vs Stanton
at Haskell

Tues., Dec. 18 • 4 p.m.
JV & Varsity Girls
vs Anson
at Haskell



Go

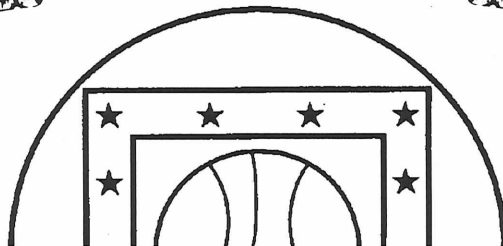


H H S



Go

Indians!



Maidens!

This Page Sponsored By The Following Indian and Maiden Boosters

Big Country Electric Cooperative
Cecil's Country Meat Mkt. & Grocery
Richardson TrueValue & NAPA Auto Parts
Brian Burgess State Farm Insurance
Personality-Slipper Shoppe
Haskell Tire & Appliance
Haskell County Insurance Agency
Modern Way Food & Fuel

Haskell Free Press
Haskell National Bank
Hanson Paint and Body
Haskell Save-A-\$
Larned Sales Center
Matlock & Associates
Smitty's Auto Supply
D & S Aerial

Do your homework before shopping for toys

Buyer be educated. That's the idea that product safety experts at the Texas Department of State Health Services (DSHS) want shoppers to keep in mind. "Know the child: know the toy," said Alice Rogers with the DSHS environmental and consumer safety section. "Put these two pieces of information together, and buyers have a better chance of giving a gift that is both enjoyed and safe."

"Reading labels for age recommendations and learning about recalled items helps consumers make better, safer choices among the thousands of

items available for children whether in retail stores or resale shops," Rogers said. A label will tell a consumer two important things: if a toy is not safe for younger children and why it is not safe. Toys meant for older children may have parts or strings that can choke or strangle a younger child, especially those under 3.

"Be careful at home when you have children of different ages," Rogers said. "It is important to keep toys meant for older children out of the reach of younger ones."

DSHS product safety inspectors regularly visit mega-sized retail outlets, small stores and resale shops looking for dangerous children's items and for those products that have been recalled by the U.S. Consumer Product Safety Commission (CPSC). Inspectors also educate sellers about recall information. Many stores, including large resale shops, now post the recall notices for the public.

"Consumers have access to the same information when planning their shopping," Rogers said. People can look at a list of recalled items and sign up to receive information directly from

the CPSC at their Web site at www.cpsc.gov. One of the major concerns this year has been toys recalled because of lead hazards. Lead may be used in two ways during toy manufacturing—in the paint on the toys and in plastics. Toys that have been made in other countries and imported into the United States or antique toys and collectibles passed down through generations may expose children to lead.

Only a certified laboratory can accurately test a toy for lead. Though do-it-yourself kits are available, they do not indicate how much lead is present, and their reliability at detecting low levels of lead has not been determined.

"If you suspect your child has been exposed to a toy containing lead, take the toy away and call your health care provider to see if your child needs to be tested," Rogers said.

DSHS offers these additional safety tips:

- Select toys to suit the age, abilities, skills and interests of the child. Look for sturdy construction such as tightly secured eyes, noses, buttons and other small parts.
- Do not buy toys with small parts or items such as marbles, small balls or balloons for children under 3.
- For children under 6, avoid building sets with small magnets. If magnets or magnetic pieces are swallowed, serious injury or death could occur.
- For children under 8, avoid electric toys with heating elements and toys with sharp edges and points.
- If you buy arrows or darts, be sure they have rubber suction cups or flexible, protective tips that stay secured when used. If your children receive arrows or darts, teach them how to play with them safely. Arrows and darts are not recommended for children under 5.
- Charging batteries should be supervised by adults. Read the warnings and instructions. Chargers and adapters can pose thermal burn hazards to children. Some chargers do not have any way to prevent overcharging.
- Discard plastic wrappings on toys immediately, before they become deadly playthings.

More information about toy safety is available on the DSHS Web site at www.dshs.state.tx.us/hazpro/toys/shmtm.

Haskell School Menu

Dec. 17-21
Breakfast
Juice and milk are served daily on the breakfast menu.
Monday: Funnel cake
Tuesday: Omelet, toast
Wednesday: Cereal, animal crackers
Thursday: Manager's choice
Friday: Blueberry muffin, cheez-its

Lunch
Milk and iced tea are served daily at the Secondary campus. Milk is served daily at the Elementary School. Secondary campus: choice of entree or baked potato

with cheese and ham.
Monday: Steak fingers, gravy, broccoli with cheese, mashed potatoes, hot roll, pineapple tidbits
Tuesday: Chicken spaghetti, green beans, garden salad, breadstick, pudding cups
Wednesday: Chili dogs with cheese, pickle spears, tater tots, orange slices
Thursday: Pizza Hotpockets, baby carrots, ranch dressing, corn, applesauce
Friday: Ham and cheese sandwich, lettuce, tomato, pickles, assorted chips, yogurt

Rule School Menu

Dec. 17-21
Breakfast
Juice and milk are served daily.
Monday: Cereal
Tuesday: Pancakes, sausage patty
Wednesday: Sausage patty, biscuit, gravy
Thursday: Cinnamon roll, graham crackers
Friday: Muffin choice, graham crackers

Lunch

Milk is served daily.
Monday: Taco salad, whole kernel corn, fruit cocktail, chocolate pudding cup
Tuesday: Chicken strips, tossed salad, green beans, gravy, toast
Wednesday: Pizza choice, corn cobbette, tossed salad, fresh apple
Thursday: Two corn dogs, ranch style beans, corn
Friday: Cheeseburger, burger salad, chips, cookie

Haskell Co. Gin Report

Dec. 10, 2007

Haskell	
Haskell County Gin	4,000
Haskell Co-op Gin	5,813
O'Brien	
O'Brien Co-op Gin	14,160
Rule	
Rule Co-op Gin	6,354
Weinert	
Griff's Gin	2,453
Weinert Gin	4,206
Total bales	36,986

This Week's Devotional Message:



THE BIBLE CONTAINS A TIMELESS RECIPE FOR THE GOOD LIFE

Despite the march of progress and all the latest inventions that mark our ever-changing lifestyles, there are some things that remain constant; because they cannot be improved upon. One of these is a good recipe that has been preserved intact through the years, because it is made from the finest ingredients. However, the most famous of all classic recipes is found not in a cookbook, but in the Bible; where we learn that ideal human behavior

has not changed through all the centuries of recorded history. Even in our space age, there is no replacement for honesty, kindness, industry, a spirit of cooperation, compassion for the less fortunate and the love and worship of God; among other things. This recipe for a good life appears in any version of the Scriptures, with easy-to-follow directions; and any further explanation you might need is available at your house of worship.

ATTEND CHURCH THIS SUNDAY

- HASKELL**
- East Side Baptist Church**
Dr. Jim Heflin, interim pastor
Sun. 9:45 a.m., 11 a.m., 6 p.; Wed. 7 p.m.
600 N. 1st East, Haskell
 - Christian Church**
Richard Barr, minister
Sun. 9:45 a.m., 10:45 a.m.; Thurs. 7 p.m.
107 N. Ave. F, Haskell
 - Church of God**
Bruce Ray, pastor
Sun. 10 a.m., 11 a.m., 6 p.m.; Wed. 7:00 p.m.
714 North First East, Haskell
 - Trinity Lutheran Church**
Ron Renniegarbe, pastor
Sunday School 9:30 a.m., Worship 10:30
Hwy 380 East, Haskell
 - Iglesia Bautista El Calvario**
Art Flores, Interim pastor
Sun. 9:45 a.m., 10:45 a.m., 5 p.m.; Wed. 7 p.m.
607 S. 7th, Haskell
 - First United Methodist Church**
Rev. Tom Long, pastor
Sun. 9:45 a.m., 10:50 a.m. 6 p.m.; Wed. 6 p.m.
201 N. Ave. F, Haskell
 - First Assembly of God**
Rev. J.C. Amburn
Sun. 9:45 a.m., 10:45 a.m., 6 p.m.; Wed. 7 p.m.
1500 N. Ave. E, Haskell
 - St. George Catholic Church**
Father George Roney
Sat. Mass 7 p.m.; Sun. Morn. 9:00 a.m.
901 N. 16th, Haskell
 - Church of Christ**
Philip Sims, minister
Sun. 9:30 a.m., 10:30 a.m., 6 p.m.; Wed. 7 p.m.
510 N. Ave. E, Haskell
 - First Presbyterian Church**
Kelly Pigott, interim pastor
Sun. Morn. 9:30 a.m.
306 N. Ave. E, Haskell
 - Trinity Baptist Church**
Larry White, pastor
Sun. 10 a., 11 a., 6:30 p.m.; Wed. 6:30 p.
114 S. Ave. D, Haskell
 - Hopewell Baptist Church**
Rev. Tom Collins, pastor
Sun. 9:30 a.m., 11:00 a.m.; Wed. 7 p.m.
908 N. Ave. A, Haskell

- Greater Independent Baptist Church**
Sun. 9:30 a., 11:00 a., 6:30 p.; Wed. 7 p.
301 N. 3rd St., Haskell
- New Covenant Foursquare**
Bill and Renee Glass, pastors
Sun. 10 a.m., 11 a.m., 6:30 p.m.; Wed. 7 p.
200 S. Ave. F, Haskell
- Mission Revival Center**
Rev. William Hodge
Sun. 10 a.m., 11 a.m., 6 p.m.; Tues. 6 p.m.
1600 N. Ave. B, Haskell
- First Baptist Church**
Greg Gasaway, pastor
Sun. 9:45 a., 10:55 a., 6 p.m.; Wed. 6:30 p.m.
301 N. Ave. E, Haskell
- Church in the Wind**
C.C. Curran, pastor
Sun. fellowship 5 p.m. Church 5:30 p.m.
Tues. Bible Class 7:30 p.m.
203 S. 1st East, Haskell
- Cornerstone Fellowship Baptist Church**
Morris R. Johnson, pastor
Sun. 9:30 a.m. 10:45 a.m., 6 p.m., Wed. 7 p.m.
1600 N. First St., Haskell

- WEINERT**
- First Baptist Church**
Dan Bullock, pastor
Sun. 10 a.m., 11 a.m., Wed. 7 p.m.
Weinert
 - Weinert Foursquare Church**
Rev. Robert Harrison
Sun. 10 a.m., 11 a.m. Wed. 7 p.m.
Weinert
- ROCHESTER**
- Church of Christ**
Steve Willis, minister
Sun. 9:45 a., 10:45 a., 6 p.m.; Wed. 6 p.m.
West on Main Street, Rochester
 - First Baptist Church**
Fred Garvin, pastor
Sun. 11:00 a.m., 6 p.m.; Wed. 6:00 p.m.
500 Main, Rochester
 - Union Chapel Baptist Church**
Clovis Dever
Sun. 9:45 a., 10:45 a., 6 p.m.; Wed. 7 p.m.
Rochester
 - Faith Chapel of Rochester**
Randy Hollingsworth, minister
Sun. 10 a.m., 11 a.m., Wed. 6 p.m.
Hwy 6, Rochester

- SAGERTON**
- Sagerton Methodist Church**
Stephanie Gilkey, pastor
Sun. Morn. 9:45 a.m.
Sagerton
 - Faith Lutheran Church**
Curtis Baker, pastor
Sun. 9:30 a.m., 10:30 a.m.
Sagerton
- RULE**
- First Baptist Church**
Russell Stanley, pastor
Sun. 9:45 a., 11:00 a., 5 p.m.; Wed. 7 p.m.
1001 Union Ave., Rule
 - Primitive Baptist Church**
Dale Turner Jr., pastor
First & Third Sundays 10 a.m.
Corner of 8th & Robins, Rule
 - Church of Christ**
John Greeson, minister
Sun. 9:45 a., 10:40 a., 6 p.m.; Wed. 7 p.m.
811 Union, Rule
 - First United Methodist Church**
Tom Long, pastor
Sun. Morn. Worship 8:30 a.m.
1000 Union Ave., Rule
 - Primera Iglesia Bautista**
Alfa y Omegas
Manuel Marin, pastor
Sun. 10 a., 11:00 a., 5 p.m.; Wed. 6 p.m.
500 Elm Street, Rule
 - Sweet Home Baptist Church**
Larry Neal, pastor
Sun. 10 a.m., 11 a.m., 5 p.m.;
Gladstone Ave., Rule
 - West Bethal Baptist Church**
Rev. Clovis Dever
Sun. 10 a., 11 a., 8 p.m.; Wed. 7:30 p.m.
300 Sunny Ave., Rule

- PAINT CREEK**
- Paint Creek Baptist Church**
Sun. 10:00 a.m., 11:00 a.m., 6 p.m.
Paint Creek
- O'BRIEN**
- O'Brien Baptist Church**
Jim Reid, pastor
Sun. 9:45 a., 11 a., 5 p., 6 p, Wed. 6 p.m.
O'Brien

Paint Creek School Menu

Dec. 17-21
Breakfast
Juice and milk are served daily.
Monday: Toast or cereal
Tuesday: Biscuits, gravy
Wednesday: Eggs, toast
Thursday: Waffles
Friday: Donuts

Lunch
Milk is served daily.
Monday: Enchilada casserole, refried beans, corn, salad, cake

Tuesday: Turkey, rice, sweet potatoes, green beans, rolls, apple crisp
Wednesday: Burritos, corn, salad, fruit
Thursday: Hot dogs, chili, cheese, pork-n-beans, chips, rice krispies
Friday: Ham or turkey sandwiches, cheese, lettuce, tomatoes, pickles, fruit

ECC Calendar and Menu

Mon., Dec. 17
Lunch—Chicken spaghetti, English peas, sliced onions, corn, yeast rolls, apple crisp, milk, tea, or coffee

Wed., Dec. 19
Bingo—10:30
Lunch—Turkey, dressing, giblet gravy, candied yams, green

beans, corn casserole, yeast rolls, peach cobbler, milk, tea, or coffee

Fri., Dec. 21
Lunch—Goulash over rice, sliced onions, black-eyed peas, harvard beets, lemon cake, milk, tea, or coffee

Announcements begin at 11:45 a.m. followed by lunch.

Internet business class set Dec. 18

by Wes Utley
CEA-Ag/NR, Haskell Co.
The Haskell County Cooperative Extension Service will be hosting a class to educate local business owners on the use of the internet for their business. The event will take place Dec. 18 at 6:30 p.m. in the Haskell

National Bank Community Room.
Topics to be covered are web-page design, domain name hosting and web advertising.
For more information and to pre-register, contact the Haskell County Extension office at 940-864-2658.

Sonic Drive-In

1402 N. Ave. E
864-8533
Managers: Leon & Carolyn Herring

Steele Machine

Hwy. 280 • 864-2208

Modern Way Food Store

1202 N. Ave. E • 864-3763

HANSON PAINT & BODY SHOP

207 S. 1st • 864-3631
Professional Auto Body Repair
Glass Installation • 24 Hour Wrecker Service

Rule Co-op Gin & Elevator

301 Adams • Rule • 996-2421

Smitty's Auto Parts

107 N. 1st East • 864-2607

The Haskell Free Press

"The People's Choice"

420 N. First
Haskell, Texas
940-864-2686



Serving Haskell County Since 1886

** Full Sun **
Tanning Salon
Boutique

329 South Central Ave. • Haskell, Texas 79520
325-576-2300

Bring this coupon with you to receive
15% off
of all Purchases including items already on sale!

**Offer excludes Arthur Court, Jon Hart, or One Sole Shoes.*



Shop The Haskell Free Press CLASSIFIEDS



864-2686

ALL DEADLINES MONDAY 5 P.M.

864-2686

For Sale

FOR SALE: White round dining table with leaf and four chairs. 325-660-8011. 47fc

FOR SALE: Cragar SS mag wheels. 14"x7" for Ford car. 5 bolt. \$150 OBO. 325-660-8011. 47fc

FOR SALE: 16 ft. and 8 ft. garage doors, sectional with all hardware. \$200 for both. 325-660-8011. 47fc

Lost and Found

REWARD: Missing since Mon., Nov. 26. White male miniature poodle with tan ears. Collar with bell. Answers to Casper. Call 864-2554. 50p

Miscellaneous

HOUSE LEVELLING and foundation repair. No payments until work is satisfactorily completed. David Lee & Co. 325-675-6369. 1-888-486-8588. 6fc

Jobs Wanted

OLD MAN'S farm and ranch custom plowing. Clayton Pannell 940-849-3030 leave message. 44-52p

Real Estate

HOUSE FOR SALE: 3 bedroom, 2 bath. New paint and new carpet. Nice location. Must see. 305 Ave. K East. 940-256-2610. 49-50p

FOR SALE OR LEASE: 200 N. 2nd. 2 bedroom, 1 bath. CH/A. 864-3762. 50c

For Rent

FOR RENT: Furnished rooms for rent. Nightly, weekly. Call Lone Star Lodging 864-2424. 21fc

FOR RENT: 1 bedroom house. Very clean. Furnished or unfurnished. No pets. 864-2986. 49-50c

FOR LEASE: 1107 N. 10th. 2 bedroom apartment. CH/A. 864-3762. 50c

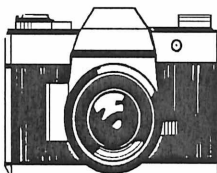
A good reputation is more valuable than money. Right now get two great La-Z-Boy recliners for one low price. Kinney Furniture in Stamford. 50c

Nanny Plumbing, Inc.

301 S. Ave. E • Haskell
940-864-3043
Sales and Service for Residential Plumbing and Heating/Cooling, Pump Installer and Sprinkler Systems.
License numbers available upon request.

FOR SALE BY OWNER WILL FINANCE

505 N. Ave. B
3 bedroom, 1 bath.
Real nice home.
940-391-8306
Dwayne, Agent for Trustrar Real Estate



Photos and Photo Pin Buttons
Available upon request.
Sports Athletes
Other Activities also.
Contact
Bill Blankenship
940-864-3535

Help Wanted

THE NEW SONIC Drive In in Haskell is now taking applications for all positions. Apply in person. 44fc

GIBSON CARE Center, Aspermont needs CNAs for all shifts. Call Melissa Prew, ADON at 940-989-3526. E.O.E. 9fc

PERSONAL CARE ATTENDANT needed for part-time hours in Haskell. Must be mature, dependable and have a clean criminal history. For further information, call Community Care, Mon.-Fri., 9 a.m. to 4 p.m. for further information, 1-800-695-5462. 43fc

WES-T-GO now accepting applications for cashier. Apply in person at store. 400 N. Ave. E. 45-52c

WANTED: Experienced cook and waitresses. Apply in person. Red Rooster, 1006 S. Ave. E, Haskell. 48-51c

Help Wanted

POSITIONS AVAILABLE: RN, Case Manager, San Angelo, Texas, (Sign-On Bonus). RN, Clinical Supervisor, Rotan, Texas, (Relocation Assistance and Sign-On Bonus). 401K plan. Excellent benefits. Competitive salary. Please fax resume to: H.R. Director, 806-687-3664 or call 800-791-7007. Interim Healthcare. 49-50c

TRUCK DRIVERS NEEDED for cotton harvest. 940-864-4080. 49-51p

CERTIFIED NURSE AIDE position available. Please apply in person at Brazos Valley Care Home, 605 S. Ave F, Knox City. 50-51c

LICENSED VOCATIONAL NURSE position available. Please apply in person at Brazos Valley Care Home, 605 S. Ave. F, Knox City. 50-51c

NOTICE
The deadline for Classified Advertising is 5 p.m. on Mondays.
Haskell Free Press

The Haskell Free Press

read by more people in Haskell County than any other print media.



OWNER FINANCE

See at
1305 N. Ave. F
2 bedroom, 1 bath.
CH/CA.
Call
325-893-1973

I BUY HOUSES

Quick cash and closing on homes \$25,000 or less.
Call Ron at
325-893-1973

Dodson Concrete Construction

Commercial - Residential
David Dodson
704 N. Ave. F • Haskell
940-864-2038
Over 20 Years in the Business
FREE ESTIMATES

HELEN FARABEE REGIONAL MHMR CENTERS

(#766) Providing crisis follow-up and relapse prevention services in adult mental health services. Bachelors degree in social, behavioral, or human services field, plus 2 years paid experience working with individuals with severe and persistent mental illness required.

NOW OPEN!

In Haskell ~ A great place to call:

homePROREALTORS®

4 Ave. D, Haskell, Texas 79521
940-863-4360 (Haskell)
940-256-2724 (Cell)
Fax: 325-573-5624

homeprorealtorstexas.com

Brandy Miller, Real Estate Agent
Seller & Buyer Representation Available
Qualify for Financing - Down Payment Assistance Programs Available
One Stop Shopping for all your Real Estate Needs

Debby Miller, Broker/Owner
ABR®, C-CREC®, RECS
2002 REBAC Hall of Fame Recipient
Licensed Texas Loan Officer
Real Estate Instructor



RECENTLY LISTED

64.2 (+/-) Acres with 5(+/-) Lake bottom, cultivated, bird hunting. NW of Haskell. Call for more information \$42,500

THROCKMORTON: 3/1.5/1 house, recently updated, wood floors in living, new carpet and vinyl flooring through rest of house, fenced front and back yards. Call for more information. Reduced. \$52,900

HASKELL COUNTY, TEXAS

Approximately 454 acres in Haskell County, located five miles east of Stamford, Texas. Has 235 acres in farm land and 218 acres in pasture with four tanks. Has deer, birds, turkey and hogs. Excellent hunting. Has electricity on property. Priced at \$995 per acre.

1102 N. 7th St., Haskell. Spacious masonry home, custom built, 3 bedrooms, 2 baths, living room, den. 2 auto carports. CH/A.

Bill Jackson Realtors

Bill Jackson: 432-557-3366
G.W. Clark 325-669-8691
1501 West Illinois - Midland, Texas 79701
www.billjacksonrealtors.com

Basic Law Enforcement Training

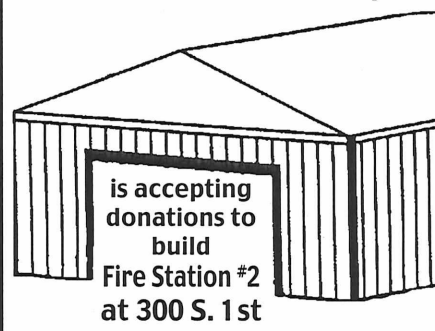
The West Central Texas Council of Governments is accepting applications for the following course:

Basic Peace Officer Course-Abilene. This 750-hour course begins February 25, 2008 and continues for approximately 30 weeks. Classes are held from 6 p.m.-10 p.m. M-F and 8 a.m.-5 p.m. on most Saturdays. Tuition for this course is \$1200. Location: Abilene, WCTLEA. Application deadline is January 11, 2008.

Entry requirements include, but are not limited to, the following: 1. Sponsored by a law enforcement agency; 2. Attained 20th birthday before the first day of class; 3. High School Diploma or G.E.D.*; 4. No felony convictions; 5. No convictions of any class involving family violence; 6. Must not be prohibited from possessing ammunition or firearm by state or federal law; 7. No convictions above the grade of Class C misdemeanor within the past 10 years; 8. No military discharge under other than honorable conditions; 9. Pass physical examination; 10. Pass reading comprehension examination.

*G.E.D. has additional requirements.
Call (325) 672-1197 for application information.

Haskell Volunteer Fire Dept.



is accepting donations to build Fire Station #2 at 300 S. 1st

to house donated Texas Forest Service firefighting equipment and provide a larger training facility. If you would like information on making a donation or how you can help contact Fire Chief Bill Steele 940-864-2208; Randy Shaw 940-864-2023; or ask any Haskell fireman for details.

Donations may be mailed to:
Haskell Volunteer Fire Dept.
301 N. First St., Haskell, TX 79521

RIKE REAL ESTATE

Mary Rike, Broker John Rike, Agent
411 1/2 S. First Street
Haskell, Texas 79521
940 864 2411 940 864 2332
mjr@dtmspeed.net
www.rikerealestate.com

1101 N. AVE. F. 3-2-carport. Older home on two lots. House has high ceilings, wood floors. large living-din-
d i **SOLD** e n
com- lation. Lot has fenced yard and pecan trees.

1410 N. AVE. L. Large brick three bedroom, two bath home in excellent condition, carpet and tile, large kitchen with lots of cabinets, large den, game room or office, carport, fenced back yard with water well.

1408 N. AVE. K. Large three or four bedroom home, two living areas, kitchen-dining, large utility or fourth bedroom, C/HA, outside storage, fenced yard and carport.

201 S. AVE. P. Immaculate three-bedroom, two bath on approximately six acres in southwest Haskell. Property has large living with built-in bookcase, dining, kitchen, utility and two baths with showers and tub. Other amenities include a large metal carport, shop building, cellar and large covered patio.

Come by Rike Real Estate for a complete list.

FOR SALE BY OWNER WILL FINANCE

506 N. Ave. G
3 bedroom, 1 bath.
Real nice home.
940-391-8306
Dwayne, Agent for Trustrar Real Estate

EXPERT AUTO WORK REASONABLE RATES

See us for all your auto mechanic needs. 20 years experience. We do it right the first time.
US 277 South • Haskell

Langford Roustabout Services, LLC

8348 U.S Hwy 277 N.
Haskell, TX 79521

Scott Langford
Owner
940-256-0535

Doug Sorrells
Supervisor
940-256-0536

Office
940-864-3490

Fax
940-864-3491

Haskell County Realty

103 N. Ave. E • 940-864-2665



Bridget Guess
Broker



Chan Guess
Agent



Hess Hartsfield
Agent

FEATURED LISTINGS

1300 N. AVE. F. FEEL AT HOME. 2 bedroom, 2 bathroom, brick home, with living room and den, kitchen with dining room, central heat and air, underground water sprinkler system, 2 car carport with storage and 2 car garage.

1557 U.S. HWY. 380 WEST: COUNTRY LIVING with ACREAGE. 4 bedrooms, 2 bath, brick home, living room, large kitchen open to nice size dining room, great for entertaining, wonderful storage throughout house, utility room, patio area, 2 car carport, beautiful yard, shop with attached carport. Property sets on approximately 9 acres of cultivated land.

A HUNTER'S DREAM. 138 ACRES. PURE PASTURE LAND. Approximately 8 miles southwest of Haskell. Lots of brush, fenced with water. Great for hunting, deer, hog, quail, dove.

"Where we make You our #1 Priority"
Residential, Commercial, Land
www.haskellcountyrealty.com

The Hard Way.



Sure, you can stand in the street in the middle of a major intersection every day for a week with an item you want to sell, put a couple of huge signs on it, and hope someone takes you up on the offer. It might just get the job done. Or you might just end up looking foolish.

The Easy Way.

For Sale: [Handwritten text]

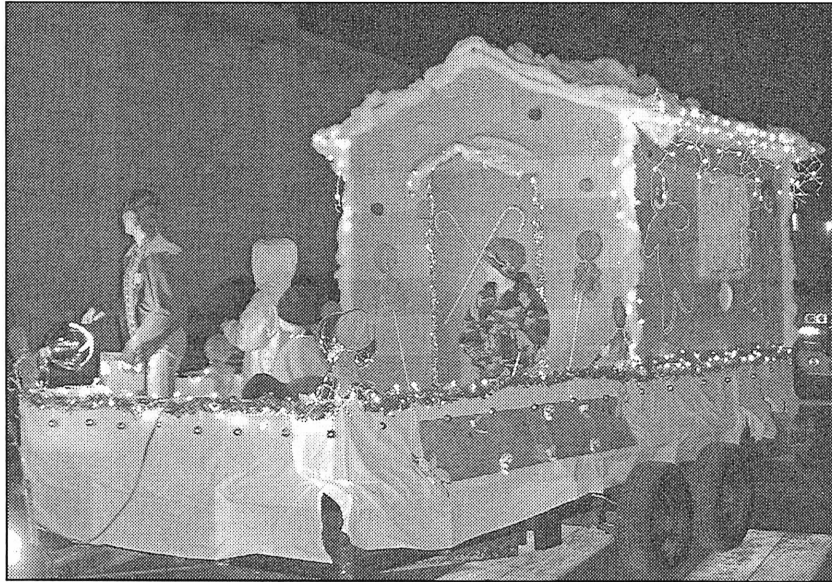
Or, you can place a Classified Ad with us and have people from all over the area clamoring to take your unwanted items off your hands for a handsome profit. Quickly and easily. And for a very small investment. So what are you waiting for? Call now!

The Haskell Free Press

P. O. Box 555 • 420 N. First Street
Haskell, Texas 79521



CHRISTMAS FLIGHT—This Christmas flight delivery float, sponsored by Cliff's Garage, won second place in the Haskell Chamber of Commerce's annual lighted Christmas parade.



GINGERBREAD HOUSE—The Rolling Plains Correctional Facility entered this gingerbread house float entry in the Christmas parade held last Saturday in Haskell. The float was selected as the third place entry.

City Council report

The Haskell City Council met Mon., Dec. 10 in a regular meeting called to order by Mayor Ken Lane. Councilman Randy Bowers offered the invocation.

Brandon Anderson's, City Administrator, recommendation for Resolution #121007 casting the City's votes to appoint Max Stapleton to the Haskell County Appraisal District's Board of Directors was approved.

A financing option with Baystone Company, recommended by Anderson, was approved.

The matter of the leasing contract with Keeter Flying Service was tabled.

Councilman Bob Smith reported on the R.F.P. for the prison.

The Council approved to have an appraisal for Block 42, Lots 2 & 3 and west 1/2 of Lots 10 & 11 in the Frisco Addition with the intent of the City selling the property.

Possible for apartments being constructed were discussed.

In Anderson's administrator's report:

Information was compiled for the audit to be conducted by Castagna and Gregg. The audit should be completed by February.

Seven dogs were picked up and six tickets were written

during a recent dogs at large roundup. The Haskell Police Department is working with Stamford's Animal Control officer to help with Haskell's dog problem.

Municipal Judge Linda St. John has changed her office hours to 8 a.m. to 12 noon and 1 to 5 p.m. weekdays.

The scales at the landfill are working. Those needing to dump at the landfill can get their weights there. Landfill rates may be increased January first.

The bid for the City's depository has been issued. Bids are due Jan. 7 and will be brought before the Council on Jan. 14.

Law enforcement report

The Haskell County Sheriff's Office reports the following number of offenses and arrests made in the county during the month of November.

Driving while intoxicated second offense: 1 case.

Assault causing bodily injury (out of county warrant): 1 case.

Theft, more than \$1,500 and less than \$20,000: 1 case.

Driving while intoxicated, third offense: 2 cases.

Surety withdrawal: 1 case.

Money laundering, more than \$20 and less than \$100,000: 2 cases.

Possession of a controlled substance, pgl., more than 1 gram and less than 4 grams, out of county warrant: 1 case.

Theft by check, out of county warrant: 1 case.

Driving while intoxicated: 1 case.

Assault causing bodily injury: 1 case.

Manufacture/delivery of controlled substance pgl., more than 1 gram and less than 4 grams: 1 case.

Manufacture/delivery controlled substance, 3/4, more than 28 grams: 1 case.

Theft by check: 2 cases.

Unlawful possession of a firearm: 1 case.

Hinder apprehension of known felon: 1 case.

Failure to identify fugitive, giving false information: 1 case.

Possession of drug paraphernalia: 1 case.

Possession of marijuana: 2 cases.

Violation of probation: 1 case.

Driving while license invalid, out of county warrant: 1 case.

Clear Fork Crime Stoppers
1-800-222-TIPS

A.C.I. Professional Services
Carpet Steam Cleaning

Cory Ivy
P.O. Box 41
Haskell, Texas 79521

940-256-0223



Person to person



When you shop and invest in your hometown you can count on person to person, "Hello, how are you?" friendly service. The merchants in our area stand behind what they sell. If you need to exchange an item you will usually find that they will bend over backwards to keep you satisfied. Celebrate the spirit of your hometown. Shop and invest locally whenever you can. Get involved in community service.

First National Bank

MUNDAY - HASKELL - STAMFORD - ROCHESTER

PHONE - (940) 864-8555

fnbmunday.com



**Go Maidens!
Go Indians!**

Holiday Bakery Headquarters

Modern Way Bakery

Meringue Pies	\$5.99
Pecan Pies	\$7.99
Christmas Cookies, Pinks Doz.	\$2.99
Chocolate Clusters Doz.	\$3.99
Christmas Cakes Single Layer	\$5.99
Butterflake Rolls Doz.	\$2.99

Picture Perfect Party Cake®
Birthday and Wedding Cakes
Homemade Sweets
by Martha and Tammy

Please Call 864-3976

Modern Way
1202 N. AVE. E • Haskell

WE WILL BE OPEN CHRISTMAS EVE, UNTIL 6 P.M.

Get outstanding low prices on quality products.

STANLEY
You Pay 4.99
FREE
After \$4.99 Mail-in Rebate
Consumer responsible for taxes. Limit 1.
1" x 25' LeverLock® Tape Rule
Easy-to-read, locking blade. Compact size, nonslip rubber grip. R 155 184 B4
While supplies last.

BLACK & DECKER
You Pay 2.99
FREE
After \$2.99 Mail-in Rebate
Consumer responsible for taxes. Limit 1.
77-Pc. Drilling & Screwdriving Accessory Set
Set includes black oxide bits, masonry bits, spade bits and roll-up storage case. R 598 492 B4
While supplies last.

IRWIN
You Pay 6.99
FREE
After \$6.99 Mail-in Rebate
Consumer responsible for taxes. Limit 1.
Pro-Touch Retractable Utility Knife
Features a smooth, 3-position slide. Easy entry for blade storage. R 531 675 B5
While supplies last.

DECEMBER BARGAINS of the month

Find the right tools and supplies for your projects, plus expert, local advice.

Richardson's
FARM • RANCH • HOME • AUTO
CASE # True Value

True Value
START RIGHT. START HERE.
Hwy. 277 North • Haskell, Texas
Phone 940-864-8551
Offer good thru Dec. 31, 2007. While supplies last! Hours: Mon.-Fri. 7:30 to 5:30; Sat. 7:30 to 5