

## Football games

**HASKELL**  
Indians vs Roscoe  
Scrimmage at Shotwell  
Sat., Aug. 18, 10 a.m.  
at Abilene  
**PAINT CREEK**  
Pirates vs Chillicothe/  
Guthrie Scrimmage  
Sat., Aug. 18, 6 p.m.  
at Guthrie  
**RULE**  
Bobcats vs Newcastle  
Scrimmage  
Sat., Aug. 18, 10 a.m.  
at Rule

## Calendar

### Girls' athletics

All Haskell High School girls who plan to participate in the 2007-08 athletics programs need to have their physicals and other forms ready to turn in to the Girls Athletic office on the first day of school, Mon., Aug. 27. If you need forms, contact the girls athletic office.

### Immunizations

The Texas Dept. of Health in Stamford will hold an immunization clinic Thurs., Aug. 16 at the Haskell National Bank Community Room in Haskell. Clinic times are from 10 to 11:30 a.m. and 1 to 4 p.m. For more information call 325-773-5681.

### Food distribution

The Haskell County Ministerial Alliance Food Distribution Center will distribute food Sat., Aug. 18 from 10 a.m. til 11:30 a.m. at 206 S. 2nd (building east of Civic Center) in Haskell. Volunteers are needed.

### RJHS registration

Haskell CISD Rochester Junior High will hold registration Tues., Aug. 21 from 5:30 to 6:30 p.m. All new and returning junior high students and parents are encouraged to attend and pick up registration packets and tour the campus. Classes begin Mon., Aug. 27. If you cannot attend, pick up a registration packet at the administration office in Haskell or call Reida Penman at 743-3260.

### LULAC meeting

A LULAC meeting will be held Sat., Aug. 25 from 6 to 9 p.m. in Haskell at the Haskell National Bank Community Room. Michael Mellen, Counsel of Legal Aide in Abilene, will be the guest speaker. All are welcome.

### Band parents

Parents of Haskell Indian Band members grades 6-12 will meet Tues., Aug. 21 at 5:30 p.m. in the Band Hall.

### Bible study

First Christian in Haskell will begin a new Bible study Wednesday evenings at 6 p.m. based on Paul's letter to the church in Galatia covering such topics as modern day legalism and false gospels used by Satan to divide and destroy the church as well as practical advice for living a victorious Christian life. The study will be held at the parsonage at 205 N. Ave. For more information, call 864-2445 or 864-3550.

### HHS Ex-students

The Haskell Homecoming Association is seeking email addresses of ex-students. To register your email address, email Dorothy Hartsfield, secretary, at hshshharts@cs.com.

## Index

ECC Menu ..... Page 2  
Obituaries ..... Page 2  
Around Town ..... Page 3  
Out of the Past ..... Page 4  
Classifieds ..... Page 9

Lock your car, secure your valuables

# The Haskell Free Press

VOL. 121-NO. 33, ©AUGUST 16, 2007

"The People's Choice"

10 PAGES-ONE SECTION-75 CENTS

## Businesses, schools targeted by vandals

The Haskell CISD Administration business office, and two business, Alltel and Pit & Grill were victims of break-ins and vandalism sometime before 7 a.m. on Fri., Aug. 10.

Most of the damage came from the break-in, where windows were broken, and from the scattering and destruction of property including desks, filing cabinets, refrigerators, computers

and equipment, phones and general office furniture. Business and school personnel were busy with the clean-up of the mess throughout the weekend.

Haskell Police Officer Steven Grand reports that evidence was taken from the scenes and that arrests are expected to be made by the end of this week.

Other business who have recent victims of similar crimes are Red Rooster, a building at the cemetery, Larned Sales Center, Haskell Housing Authority and Lifespan.

The Haskell Elementary School suffered an attack of graffiti last week. School personnel were busy repainting items damaged in that crime.

Information about these incidents that lead to an arrest may be left with Crimestoppers, the Haskell Police Department or the Haskell Sheriff's Department, where a reward is offered.

Other crimes around the community include the taking of items from vehicles. Officer Grand said that citizens should lock their vehicles, take the keys, and remove any valuables. Thieves are looking for money, purses, guns, cell phones, medications and anything else of value. Citizens need to use common sense and be diligent about protecting their property.

Haskell Police Chief Tom Bassett reported that recent arrests this summer have cleared other cases including:

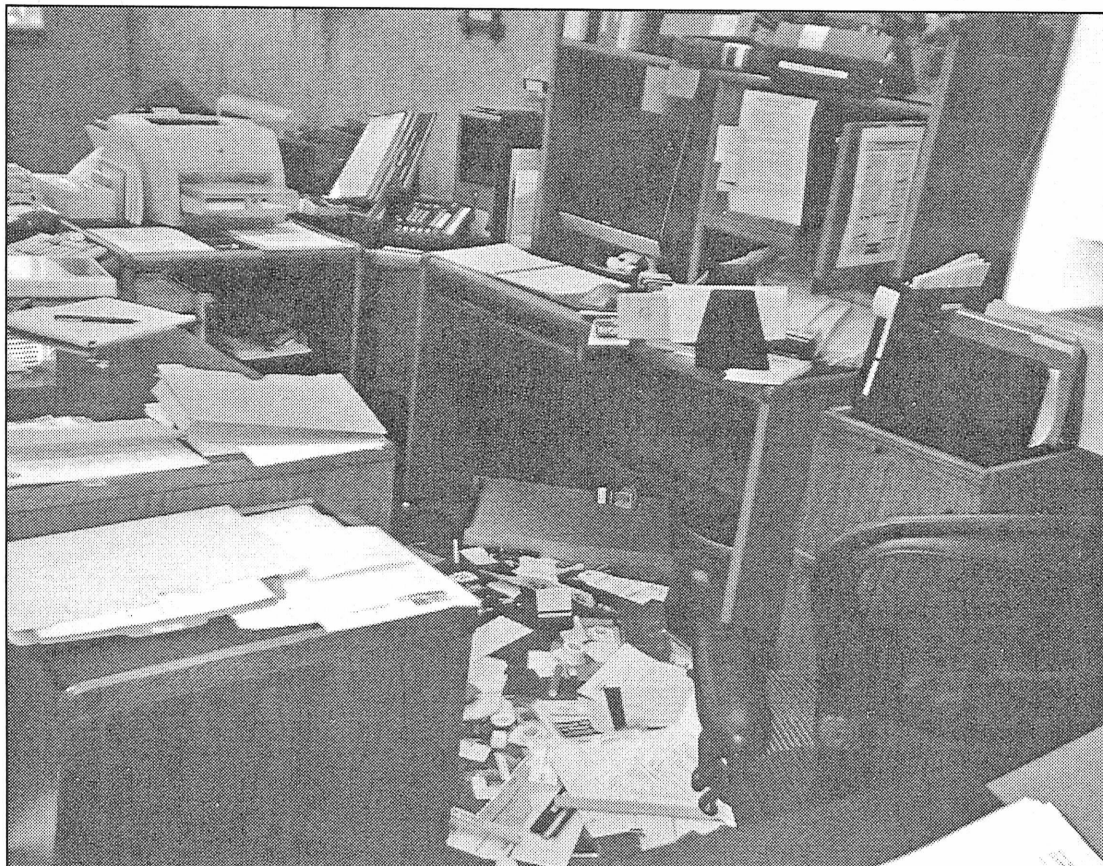
In May, three juveniles were taken into custody for nine cases of burglary of motor vehicles;

In June, four juveniles were taken into custody along with one adult for eight cases of burglary of motor vehicles, and one juvenile and one adult were taken into custody for the burglary of Johnny's Game Room;

In July, one adult was arrested for five cases of forgery, and two juveniles were taken into custody for two cases of burglary of a motor vehicle along with one adult; and,

So far in August, two juveniles were filed on for burglary of the Haskell High School cafeteria. That burglary occurred in April.

Those interested in alarm systems may contact Officer Grand or Chief Bassett for information.



**VANDALISM**—This is a scene from the Haskell CISD Administration office found Friday morning at approximately 7 a.m. Vandals generally made a mess in the school's offices by tearing items from the walls, tossing office equipment around, emptying the contents of a refrigerator, dumping contents of desk and filing cabinet drawers and breaking items in the office. Alltel and Pit & Grill also had break-ins found on Friday morning.

## Rule school checking TAKS scores

After being rated as "Academically Acceptable" on the last TAKS test, taken by all 18 of the Rule 11th graders, the students are taking the test again, as a result of some suspicious scores noted on the last tests.

With no way to determine which students may have cheated to raise scores, Superintendent David Parr said all were required by the school in May to retake the

science and math portions. The Texas Education Agency was notified.

According to the school's superintendent, a veteran teacher who monitored the students during the first tests did not follow instructions. He said a calculator was passed around without first being cleared during the science test. The teacher of 34 years has since resigned, which

Parr said is an "unfortunate" situation. He added that, as often happens, it turns out to be an issue in which school staff needs more training on test administration.

Changes have now been made in the way the school administers the TAKS tests, including being moved to a larger place, a church basement. Two monitors will

now be in attendance, and one calculator required for each student.

All Juniors must pass the exit-level TAKS test to graduate from high school. Parr said the retesting has not affected student's grade-level classification or athletic eligibility.

## Indians to scrimmage

The Haskell Indians will travel to Roscoe Sat., Aug. 18 to take on the Plowboys in the opening scrimmage for the upcoming 2007 football season.

The scrimmage is set to start at 10 a.m. Both schools had a great 2006 season and expectations for the 2007 season are high.

## County schools learn TAKS results

The 2007 accountability ratings for Texas school districts have been released by the Texas Education Agency (TEA).

Schools districts are rated as exemplary, recognized, acceptable or unacceptable based on the Texas Assessment of Knowledge and Skills (TAKS) tests scores, among other criteria.

Paint Creek ISD received a 'Recognized' accountability rating on the testing administered in grades three through eleven in reading, writing, math, science and social studies.

Haskell High School and Rochester Junior High School both received 'Academically Acceptable' ratings. Haskell Elementary received a 'Recognized' rating. The combined rating for Haskell CISD was 'Academically Acceptable.'

Rule ISD received a

'Academically Acceptable' rating.

To receive a "Recognized" rating, a school must have at least 75% in each student group pass each subject; at least 70% pass tests given to students with disabilities; at least 85% high school completion rate; and a 7 percent or less drop-out rate in grades 7-8.

Those schools receiving the "Academically Acceptable" rating must have at least 65% pass English language arts/reading, writing and social studies; at least 45% pass math; at least 40% pass science; at least 50% pass tests given to students with disabilities; at least 75% high school completion rate; and, no more than 1 percent drop-out rate in grades 7-8.

According to TEA, tougher standards this year resulted in hundreds of schools and districts dropping from 'recognized' to 'acceptable' ratings.



**WINNERS AT STATE PULL**—John Anderson, left, placed third in the 7-year-old division; Levi Grand, center, placed second in the 12-year-old division; and, Jacie Klose, right, placed second in the 10-year-old division of the Texas Pedal Pullers Association State Championship Pull. The contest was held Sat., Aug. 11 in Henrietta. They had all qualified at the event held in March during the Haskell Fire Department's annual Car Show.

FOR NEWS ITEMS OR TO SUBSCRIBE, CALL 864-2686

# Better Business Bureau warns of Medicare scam

The Better Business Bureau is ALERTING senior citizens about an abusive telemarketing scheme aimed at Medicare and Medicaid beneficiaries. There are many different "scripts" but basically the caller informs the seniors they are about to lose their Medicare benefits unless they pay a fee immediately. Telemarketers instruct the victims to disclose their bank account number to pay a check by phone. There are a number of tactics the telemarketers use to trick unsuspecting folks into giving out

their checking account information. Victims are asked to "verify" their account numbers, or misled to believe the caller already has all of their checking account information. The scam is called the "\$399 Ring." The typical amount of money the Medicare beneficiaries are talked into with drawing from their checking accounts in order to "keep" their benefits or to pay for a non-existent prescription drug plan. Many people are under the false impression that only their written permission can be

used to withdraw from their checking accounts when in fact unscrupulous companies, such as these, use deception to obtain the necessary numbers. Electronic funds transfers can occur the very day the account numbers are disclosed. In many cases, your bank is unaware of the transfer unless to you notify them immediately. If the funds are transferred it may be difficult or impossible to reverse the transaction.

The Bureau offers the following tips:

- Never release your personal banking information to anyone that calls YOU
- Legitimate Medicare drug plans never ask for payment by phone
- No one can come into your home uninvited
- No one can ask you for personal information during their marketing activities
- Always keep all personal information safe including Medicare numbers
- If you have concern about any activity regarding Medicare call 1-800-MEDICARE.

## ECC Menu and Calendar

### Mon., Aug. 20

Lunch—Sausage and kraut, au gratin potatoes, black-eyed peas, sliced onions, garlic toast, apple crisp, milk, tea, or coffee

### Wed., Aug. 22

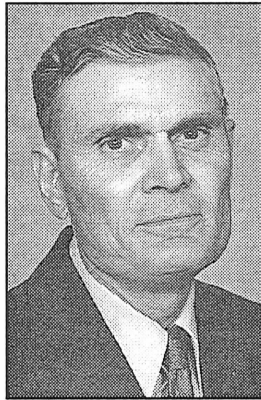
Lunch—Enchiladas, Spanish rice, pinto beans, garden salad, chips, salsa, strawberry cake, milk, tea, or coffee

### Fri., Aug. 24

Lunch—Ham and beans, garden salad, buttered corn, onion slice, cornbread, jello, cookie, milk, tea, or coffee

# Obituaries

## Roy Alton Amonett



**ROY ALTON AMONETT**

Funeral services for Roy Alton Amonett, 76, of Haskell were held Sat., Aug. 11 at Cornerstone Fellowship Baptist Church in Haskell with Dr. Troy Culpepper and Rev. Morris Johnson officiating. Burial was in Willow

Cemetery under the direction of Holden-McCauley Funeral Home of Haskell.

Mr. Amonett died Fri., Aug. 9 at Hendrick Medical Center in Abilene.

Born Nov. 17, 1930 in Haskell County, he was the son of Willis and Alta Mullins Amonett. He married Omitene Strickland June 6, 1952. He worked for WTU as a shift supervisor where he retired in 1990 after 35 years. He was a former United States Marine. He was a member of Cornerstone Fellowship Baptist Church where he was a great contributor of the formation of the new church. He was proud to be one of the many building blocks of the wonderful church and loved Cornerstone with all his heart. He was a faithful and loving husband, father, grandfather, great grandfather, and friend. His

warmth, wisdom, generosity, and love will be greatly missed.

He was preceded in death by his parents; step-mother, Eunice Amonett; and step-brother, Bill Pannell.

Survivors include his wife, Omitene Amonett of Haskell; son, Rodney Amonett and wife, Pamela, of Abilene; daughter, Derinda Hannsz and husband, Keith, of Haskell; brother, Eldon Ray Amonett of Denver City; sister, Dorthy Lane Strickland of Rochester; step-sister, Nannie Burns of Wolfe City; three grandchildren, Dennise Hoover, Aaron Amonett and Jeremy Gentry; four great grandchildren, Payton Amonett, Felicity Gentry Madison Hoover and A.J. Amonett.

Memorials may be made to Cornerstone Fellowship Baptist in Haskell. PD. NOTICE

## Virginia 'Jenny' Daniels



**VIRGINIA DANIELS**

Funeral services for Virginia 'Jenny' Daniels, 80, of Wolfthor,

formally of Haskell, were held

Tues., Aug. 14 at East Side Baptist Church in Haskell with Dr. James Heflin officiating. Burial was in Willow Cemetery under the direction of Holden-McCauley Funeral Home.

Mrs. Daniels died Sun., Aug. 12.

Born April 5, 1927 in Maywood, California, she was the daughter of Raymond and Lillian Reeves Banks. She married Jack Daniels Sr. in October 1942 and was a lifetime resident of Haskell. She became a Christian at the age of twelve and was a long time member of East Side Baptist Church.

She was preceded in death by her parents; husband; two

brothers; and one sister.

Survivors include son, Jack Daniels Jr. and wife, Mae of Wolfthor; two sisters, Doris Roberts of Haskell and Melba Mower of Jacksboro; grandchildren, Vickie Mae, Cecil Mandrell and Kimberly Sue Daniels, all of Lubbock, Johnny Carlton and Jodie Daniels of Tulsa; great grandchildren, Chad and Lara Mandrell, Christopher Mandrell, Justin Schoepf, Ronnie Lynch, Kellie and Chris Hamm, and Maegan Daniels.

Great grandchildren served as pallbearers.

Memorials may be made to East Side Baptist Church, 600 N. First East, Haskell, Texas 79521. PD. NOTICE

## James 'Jim' Adams

Funeral services for James 'Jim' Adams, 67, of Brady were held Sat., Aug. 11 at Leatherwood Memorial Chapels in Brady. Interment with military honors were held at Rest Haven Cemetery in Brady.

Mr. Adams died Tues., Aug. 7 in Round Rock. Born Aug. 29, 1939 in Ashland, Kentucky, he was the son of Arnold and Ruth Kilgore Adams. He married Wanda Sue Smith April 2, 1964 in Sandy Hook, Kentucky. He served in the U.S. Air Force. He was a plant supervisor for GTE/Verizon for 32 years before retiring in 1994. After retirement, he worked for Oglebay Norton Industrial Sanda in Brady from 1998 to 2006. He loved to play tennis, fish and garden.

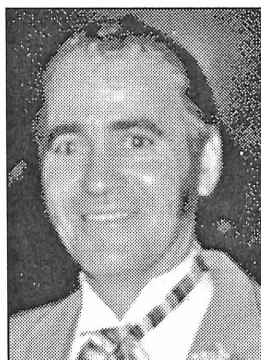
He was preceded in death by his parents; his wife; and his brother, Robert D. Adams.

Survivors include sons, Randy Adams and wife, Judy of Brady, and Brady Adams of Austin; daughter, Paula Patton and husband, Brad of Austin; sisters, Lucille Kennedy and Lee Cunningham, both of Marion, Ohio, and Linda Atkinson of Flatwoods, Kentucky; grandchildren, Kirstin Guinn and husband, Brandon of Granbury, and Tucker Vineyard of Brady; step grandchildren, Julia, Stephanie and Victor Ramirez, Rose Cruz and Lauren Patton; a great grandchild, Cooper Guinn; a step great grandchild, Nathaniel Bernal.

Pallbearers were Jimmy Potter, Sammy Routt, Charlie Avery, Benny Herrera, Ray Garza and Richard Probst.

Memorials may be made to the American Cancer Society. PD. NOTICE

## Travis Tidwell Burson



**TRAVIS BURSON**

Funeral services for Travis Tidwell Burson, 75, of Lubbock were held Wed., Aug. 15 in Sanders Memorial Chapel in Lubbock. Military graveside services were held Wed., Aug. 15 in Willow Cemetery in Haskell. Arrangements were under the direction of Sanders Funeral Home of Lubbock.

Mr. Burson died Sat., Aug. 11. Born July 8, 1932 in Haskell, he served his country over twenty years in the U.S. Air Force. He retired in 1973 and moved to Lubbock where he worked for the

U.S. Post Office. He retired again in 1994. He was an active member of the Disabled American Veterans in Lubbock.

Survivors include his wife of 54 years, Peggy Joyce; his children, Joni and Bruce, their spouses, Steve Speegle and Shelley Burson; a grandson, Travis Speegle; and his baby brother, Dan Burson.

Memorials may be made to R.L. Ferguson Chapter 44, Disabled American Veterans, P.O. Box 64713, Lubbock, Texas 79464. PD. NOTICE

## Looking for a Great Rate?

We can customize a loan to meet your needs. Ask about our:

- Competitive rates
- Terms up to 30 years
- Choice of payment plans

*See us for all your rural mortgage financing.*

**Central Texas Farm Credit, ACA**  
www.centralexsasaca.com

**550 South 2nd  
Haskell, Texas 79521  
940-864-8565**

## CORRECTED Notice of Public Hearing on Tax Increase

The Haskell County Farm to Market will hold a public hearing on a proposal to increase total tax revenues from properties on the tax roll in the preceding tax year by 7.75 percent (percentage by which proposed tax rate exceeds lower of rollback tax rate or effective tax calculated under Chapter 26, Tax Code). Your individual taxes may increase at a greater or lesser rate, or even decrease, depending on the change in the taxable value of your property in relation to the change in taxable value of all other property and the tax rate that is adopted.

The public hearing will be held on August 24, 2007 and August 27, 2007 at 11 a.m. in the Commissioners Court Room, Haskell, Texas.

The members of the governing body voted on the proposal to consider the tax increase as follows:  
**FOR:** Kenny Thompson, Johnny Scoggins, Bobby Don Smith, Tiffen Mayfield, David Davis  
**AGAINST:**  
**PRESENT and not voting:**  
**ABSENT:**

### Comparison of Proposed Budget with Last Year's Budget

The applicable percentage increase or decrease (or difference) in the amount budgeted in the preceding fiscal year and the amount budgeted for the fiscal year that begins during the current tax year is indicated for each of the following expenditure categories:

Category	% (increase)	% (decrease)
Maintenance and operations		15.2%
Debt service		
Total expenditures		15.2%

### Total Appraised Value and Total Taxable Value as calculated under section 26.04, Tax Code

	Preceding Tax Year	Current Tax Year
Total appraised value* of all property	\$352,320,842.00	\$454,438,799.00
Total appraised value* of new property**	\$ 1,968,547.00	\$ 2,237,650.00
Total taxable value*** of all property	\$212,937,420.00	\$220,789,533.00
Total taxable value*** of new property**	\$ 1,939,307.00	\$ 1,255,270.00

### Bonded Indebtedness

Total amount of outstanding and unpaid bonded indebtedness \$0.00

### Tax Rates

Adopted tax rate for the preceding tax year	\$0.1479 per \$100 per value
Proposed tax rate for the current tax year	\$0.1542 per \$100 in value
Difference in the proposed tax rate and the adopted tax rate for the preceding tax year	\$ .0063 per \$100 in value
Percentage increase or decrease in the proposed tax rate for the preceding tax year	7.75% Increase

These tax rate figures are not adjusted for changed in the taxable value of property.

### Comparison of Residence Homestead Values

Average appraised and taxable values on residence homesteads are compared from the preceding tax year and the current tax year.

	Preceding Tax Year	Current Tax Year
Average residence homestead appraised value	\$32,089.00	\$32,932.00
Homestead exemption amount for the taxing unit (excluding special exemptions for persons 65 years of age or older or disabled)	\$ 3,000.00	\$ 3,000.00
Average taxable value of a residence homestead (excluding special exemptions for persons 65 years of age or older or disabled)	\$29,089.00	\$29,932.00

### Comparison of Residence Homestead Taxes

The taxes that would have been imposed in the preceding tax year on a residence homestead at the average appraised value (excluding special exemptions for persons 65 years of age or older or disabled) are estimated to be \$43.02. The taxes that would be imposed in the current tax year on a residence homestead appraised at the average appraised value in the current tax year (excluding special exemptions for persons 65 years of age or older or disabled) if the proposed tax rate is adopted, are estimated to be \$47.71. The difference between the amount of taxes on the average residence homestead in the current tax year, if the proposed tax rate is adopted, and the preceding tax year would be at increase of \$4.69 in taxes.

\* "Appraised value" is the amount shown on the appraisal roll and defined by Section 1.04(8), Tax Code.  
 \*\* "New property" is defined by Section 26.012(17), Tax Code.  
 \*\*\* "Taxable value" is defined by Section 1.04.(10), Tax Code.

**Fiber Optic Cable waiting to be placed to your home or business. "Hand-Coils" supply Fiber to the Home telephone service, and/or DSL & IPTV. Please call our Haskell office at 863-1125 if you have a "hand-coil" around your home or office and would like to have it connected.**

**SANTA ROSA Telephone Cooperative INC.**

113 N. Ave. D. • Haskell

# Wood floors need care

Wood floors in a home will look great and last for a long time with proper care.

Remember, wood floors aren't scratch resistant, so don't drag heavy objects across them. Also, wood floors may contract or swell when humidity and temperature levels change. This can result in minor squeaks and gaps. Be sure to follow the manufacturer's instructions for care and cleaning to prolong the life of wood floors. Finally, remove food and spills immediately and use floor protectors under furniture as an added defense against damage.

# Thomas family meets for reunion

The descendants of the late Clifford Adell Thomas Sr. met at the Civic Center Sat., Aug. 4, for the annual Thomas Reunion.

Although John Thomas, 95, the oldest of the surviving children and a resident of the local nursing home was unable to attend, the other surviving children were all present. Berta Mae Thomas Carroll of Forney, Helen Thomas Mills of Levelland, Marie Thomas Cole of Plano and Lewis Thomas of Haskell were all present.

Twenty-six family members attended along with four guests. They all enjoyed a catered BBQ lunch with all the trimmings, plus ham and fried chicken and a variety of desserts prepared by family members.

Clois and Donna Thomas of Haskell and Don and Christene Dubois of Magnolia represented the John Thomas family along with Reda and Micah Thomas of Haskell and Delin and Taylor Konicki of Spring. Berta Mae Carroll came with daughters, Jean Taylor and Sandra Blair, all of Forney as well as son, Jerry Bass of Dallas. Sandra Blair brought two guests, Manuel Gonzales of Cedar Hill and Joyce Eaves of Forney. The late

Adell Thomas was represented by Bill and Grace Thomas of Haskell, whose guest was Mary Kammenga also of Haskell.

Helen Mills of Levelland was accompanied by daughter Marijohn Motherol of Sundown. C.A. Thomas and wife, Kay of Wichita Falls represented the late Clifford Thomas. Their guest was their former exchange student, Petra Schichorova of Slovakia, who was spending part of her summer vacation with them. Marie Cole of Plano came with daughter, Gaylen Chanslor of Farmers Branch, and Lewis and Joyce Thomas of Haskell were accompanied by Ricky, Debbie, Todd and Kaylee Scheffel of Lubbock.

A successful auction of Thomas memorabilia and various arts and crafts was held after lunch, with Lewis Thomas as auctioneer ably assisted by daughter, Debbie Scheffel.

After an afternoon of visiting and reminiscing and looking at old and new pictures, the family had supper together and then dispersed looking forward to Reunion 2008.



**RECEIVES AWARD—Terri Klose, left, is presented a Distinguished Service Award for Outstanding Service to the Farm Service Agency and agriculture by TASCOE President, Billy Wayne Denison of the Dickens County Office.**

# Klose honored with FSA service award

Terri J. Klose was recently presented the Distinguished Service Award for Outstanding Service to the Farm Service Agency and agriculture by the Texas Association of County Office Employees (TASCOE) during the state convention held in Austin in July. She was accompanied by her husband, Eddie, and daughters, Jasmine and Jacie.

Klose was nominated by Haskell County Executive Director, Glenn R. Brzozowski, who noted that Klose has almost 25 years of experience working with FSA farm programs and

Haskell County producers.

Klose is involved in other areas of the community including serving as a Sunday school teacher, working with the youth group, and helping initiate the Player in Progress (PIP) program in Haskell. She is a former TACSOE director and serves as a member of the Haskell CISD board.

Her current position at FSA is Chief Program Technician where she is a very instrumental in delivering the current farm program administered by the Haskell County Committee.

# Phone equipment available for hearing impaired

The Texas Department of Assistive and Rehabilitative Services Deaf and Hard of Hearing Services department makes equipment available to Texas residents who need specialized telephone equipment.

Those eligible could or may be hard of hearing, deaf, blind, vision impaired, speech impaired, mobility impaired or cognitive impaired.

Equipment available includes:  
•Amplified telephones for those who can comprehend speech on the phone but need to control the volume for clarity;

•VCO or captioned telephone for those who have difficulty hearing on the phone but wish to talk to their party and read what the caller is saying to them on a display screen;

•TTY/TTD equipment for those who cannot hear or talk on the telephone;

•Speech impaired equipment

for those who have speech difficulty or no speech and require specialized equipment to convey their message;

•Mobility impaired equipment for those who have difficulty dialing or holding a phone;

•Vision impaired equipment including Telebraille and phones with large buttons.

•Cognitive impaired adaptive equipment and picture memory telephones.

This equipment is available free through the Specialized Telecommunication Assistance Program (STAP) for those who qualify.

Contact Cynthia Maldonado, STAP Specialist at the Deaf Action Center, 500 Chestnut, Suite 1812, Abilene, Texas 79602, 325-677-4988 or email c.maldonado@deafactioncenter.texas.org for application information.

# Make sure kids vaccinations are up-to-date

A new school year means an increased risk of children catching serious illnesses and spreading those illnesses to others. Getting your children needed vaccinations can help keep them and others healthy, says Dr. Doug Hardy, infectious disease specialist at UT Southwestern Medical Center.

Check with your doctor for the recommended vaccination schedule, as several changes have been made to the schedule and make sure your children are up to date before they go back to school, Dr. Hardy says.

For younger children, proper vaccinations can help prevent polio, measles, mumps, chicken pox, pneumonia, meningitis, diarrhea and pertussis. For teens and young adults headed to college, vaccinations that also

can help prevent disease include tetanus-diphtheria-pertussis; meningococcal; HPV; and hepatitis A and B.

Children and young adults entering another school year also are at risk of spreading the flu virus—forgetting to wash their hands and often being in close contact with others—so a flu shot is recommended.

“If getting your children to the doctor for their vaccinations and shots seems like a hassle, think of the time you’ll save if they don’t get sick—they’ll miss less time at school, and you’ll miss less time at work,” Dr. Hardy says. “Most importantly, they’ll avoid the potentially life-threatening complications and permanent after-effects of some of these diseases.”

# Around Town

Helping Marlene Sanders celebrate her 70th birthday Sat., Aug. 11 at First Baptist Church Life Center in Cross Plains were her husband, Andy Sanders, children Ricky and Netha Carouth and children ReNetha, Brent, Crystal and Logan McDaniel of Texarkana, A.J. Carouth, Andra Poole Kandra, and Andrew of Cross Plains, Tommy, Lisa and Tiffany of

Austin and Ricky, Tina Megan and Austin of Cross Plains, Bill and Martha Maupin of Odessa, B.D. and Marie Kirkland of Fort Worth and Barbie Kirkland of Weatherford, Jacky and Sandra Sanders of Weatherford, Kenneth and Elaine Campbell and Lona Mae Phelps of Haskell, along with Marlene’s family and church family, friends and acquaintances of Cross Plains.

**Home theater LOAN**

two fast up - on your favorite recliner!

**First National Bank**

MUNDAY - HASKELL - STAMFORD - ROCHESTER  
PHONE - (940) 864-8555

Celebrating Our 75th Anniversary

**SPICY SOUTHWEST SUPERSONIC**

CRISPY JALAPENO STRIPS, PEPPER JACK CHEESE & CREAMY CHIPOTLE SAUCE

**\$3.99** BURGER ONLY PLUS TAX

CRISPY JALAPENO STRIPS TRY THEM AS A SIDE!

**SONIC**  
America's Drive-In

No Waiting  
Call In Orders  
**864-8533**

Limited Time Only!

**Stamford Floral**

Deliveries morning and afternoon to Haskell!

Come by 102 S. Swenson in Stamford or call  
**325-773-2005**  
and place your order  
We accept all major credit cards.

**New! Colonial Candles**

Check for your favorite fragrance!

We have new fragrances in McCall's Candles

Bridal Selections for  
Beth Haele and Ethan Brown  
Alexis Reed and Austin Smith  
Victoria Ross and Heath McCulloch

Baby Shower Selections for  
Tamara Ortiz  
Jaxon White, son of Kyle and Loutina White

**The Carousel Gift Shop**

Erlinda Mayfield  
Open M-F 10 to 5:30 • Sat. 10 to 4  
Southside of the square in Haskell • 864-2069

**Back to School Supplies!**

Shop The Drug Store for a complete selection of Name Brand School Supplies!

Bring in your Haskell School Supply Vouchers!

Register to win a **FREE Coby CD Player**  
Portable Stereo CD with AM/FM Radio

**Baby Shower Registry**  
Loutina White  
Tamara (Strickland) Ortiz

**Bridal Registry**  
Brandie Smith and Justin Anderson  
Lana Patterson and Adam Boger  
Krystal Urbanczyk and Jason Gregory  
Victoria Ross and Heath McCulloch  
Mr. and Mrs. Ethan Brown

www.haskelldrugstore.com

**THE DRUG STORE**  
Haskell • 864-2673  
Mon.-Fri. 8 a.m. to 6 p.m. Sat. 8 a.m. to 2 p.m.  
Closed Sundays and Holidays

# OPINION

TEXAS PRESS ASSOCIATION

State Capital



## HIGHLIGHTS

By Ed Sterling

### Annual sales tax holiday set Aug. 17-19

AUSTIN—The annual state sales tax holiday is Aug. 17-19 and Texas shoppers will get a break from state and local sales taxes for most clothing and footwear priced under \$100.

Lay-away plans can be used again this year to take advantage of the sales tax holiday.

For the first time backpacks under \$100 specifically used by elementary and secondary students also are exempt. The new exemption includes backpacks with wheels, provided they can also be worn on the back like a traditional backpack.

Comptroller Susan Combs estimates that shoppers can save about \$8 on every \$100 they spend during the state sales tax holiday.

Examples of items that qualify for the sales tax exemption include baby clothes, boots, diapers, neckwear and ties, pajamas and swimsuits.

Items not covered in the holiday include belt buckles, most sport specific shoes such as baseball cleats, purses and jewelry.

This year the annual sales tax holiday was moved to the third weekend in August to better coincide with the first day of school.

"The Legislature voted to change the date of the sales tax holiday because schools are opening later in many districts," Combs said. "Most families take advantage of the sales tax holiday to buy back-to-school clothes for the kids."

### TPWD to hire 200 new workers

The Texas Parks and Wildlife Department is adding 200 new employees to state parks after receiving increased funding from the Texas Legislature during this year's session.

The staffing increase is the first for the state park system in many years and follows several lean years where the department was forced to make major cuts to park services, staffing and hours of operation.

The available positions will be advertised through the TPWD Web site [www.tpwd.state.tx.us](http://www.tpwd.state.tx.us) and will be filled in September and October.

"We're looking for people who are really excited about

helping take care of some of the most special places in our state, folks who are interested in a long-term career with Texas State Parks," said Walt Dabney, TPWD state parks director.

### Gov's speechwriter resigns

Gov. Rick Perry's director of communications, Eric Bearse, resigned Aug. 6 to form his own consulting business, specializing in speechwriting, public affairs and political consulting.

For the last nine years, Bearse has been Perry's principle speechwriter, authoring two inaugural addresses, the governor's initial oath of office speech, four State-of-the-State speeches, and three Republican state convention speeches among nearly 2,000 speeches given by Gov. Perry since 1999.

### Carrollton rep gets pacemaker

State Rep. Jim Jackson, R-Carrollton, was admitted to Massachusetts General Hospital Aug. 6 with a low heart rate. On Aug. 8 he received a permanent pacemaker and flew home a day later.

Jackson was in Boston attending the National Conference of State Legislatures' annual meeting.

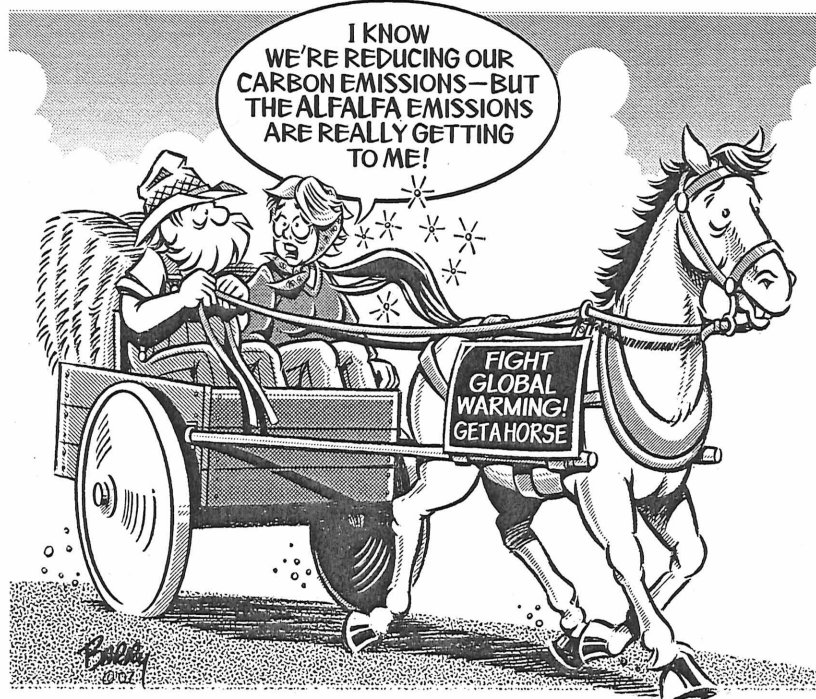
### AG alerts parents to toy recall

The Office of the Attorney General is urging Texas consumers to stop using certain toys after Fisher-Price and the U.S. Consumer Product Safety Commission issued a recall due to potential lead poisoning hazards.

According to the safety commission, toys and figures bearing the likeness of characters from Sesame Street, Dora the Explorer and other popular children's programs contain surface paints with excessive levels of lead, which could be toxic if ingested.

More than 950,000 of the recalled toys were sold nationwide from May 2007 to August 2007. The products were sold both alone and as parts of sets. The toys are all marked with "Fisher-Price" and may have a date code between 109-7LF and 187-7LF marked on the product or packaging.

A detailed list of the recalled toys can be found on the Attorney General's Web site at [www.oag.state.tx.us](http://www.oag.state.tx.us).



## From Out of the Past

From the files of The Haskell Free Press

Texas Pharmacy Association has announced that Doyle High was named 1997 Pharmacist of the Year.

Located between Anson and Haskell on the east side of Hwy. 277, is a new sign designed by Ruby Turner, Mary Rike and Jill Druesedow which reads, "Crossroad of the Texas Midwest."

Kevin Patton earned the rank of Eagle Scout.

Visiting Mr. and Mrs. Frank White was his brother, Alvin White of Breckenridge.

### 20 Years Ago August 13, 1987

Marine Lance Cpt. Sterling W. Bradford, son of Mr. and Mrs. Wayne Bradford of Haskell, completed the Radio Fundamentals Course.

Fields Museum Committee members met for their annual reporting and planning session. Committee members are Mary Kaigler, Nettie McCollum, Mary Helen Fouts, Erma Liles and Peggy Vaughter.

### August 11, 1977

Mr. and Mrs. Bae of Louisiana, visited Dora Long.

Della Cox visited her daughters and families, Alice Byrd and Helen Coleman of Dallas, over the weekend.

Mr. and Mrs. Theodore Lewis of Cleburne, visited James and Ola Smith.

Mrs. W.M. Archibald, Kelli and Joseph, visited Mrs. Tubbs of Marietta, Georgia.

L.E. Graves, wife, and grandson, of Irving, visited Clarence Butler.

Ted Jennings family returned from a week vacation in the mountains of Cowles, New Mexico.

Mr. and Mrs. J.C. Yeary visited their son and family, Mr. and Mrs. Jim Yeary and Stacey in Pauls Valley.

### 40 Years Ago August 10, 1967

Mr. and Mrs. Roy DeViney, owners-operators of the Texas Theatre for the past five months, announce the sale of the building and equipment to Ray Townsend of Burkburnett.

Dawn Patterson of Stamford, visited in the home of her grandparents, Mr. and Mrs. John Petterson.

Mr. and Mrs. Jerry Bradley of Dallas, visited in the home of Alvis Bird.

Mrs. Arthur Sanders, of Franklin, visited in the home of her nieces, Maggie and Florence Larned.

Dave Hutchison of Pomona, California, visited in the home of his grandmother, Mrs. W.J. Carruth.

Capt. Doyle K. Jetton, wife Pauline, and son J.R., visited his parents, Mr. and Mrs. T.W. Jetton and Jerry Jetton.

### 50 Years Ago August 15, 1957

Mr. and Mrs. Charles Oman and children, Brady and Teena Beth, visited in the home of Mr.

and Mrs. Hill Oates, parents of Mrs. Oman.

Mr. and Mrs. C.H. Hunter and daughters, Shelley, Kathy and Margaret Sue, returned to their home in New Orleans, Louisiana, after an extended visit with Mrs. Hunter's parents, Mr. and Mrs. D. H. Persons.

Visiting with Mrs. A.C. Scott over the weekend were her daughter-in-law, Carriell Scott and three daughters.

Mr. and Mrs. John Larned and family visited his sisters; Mrs. Jack Davis and Mrs. Wendil Jarman and his brother, Don Larned of Pasadena.

### 100 Year Ago August 17, 1907

G.J. Graham took his Sunday School class on a fishing trip to Paint Creek. The boys were Arnold Perey, Hubbard Buchanan, Wyatt Williams, Clarice Smith, Charley Locke, Trayner Wyche, Willie Bee Martin, B.D. Hester, Henry Parsons, Raymond Touchstone, Brevard Long, Alex Bullock, Ed Hart, Collins Jones, Robert Terrell, Clifford Foster, Clarence Hester and Elmer Cain.

Mr. McGregor sold his farm in the northeast part of the county.

G.J. Miller sold his place and moved to Lindale.

Sunday night burglars broke into the Wichita Valley depot and blew open the door of the iron safe with dynamite or nitro and secured about \$140 in money.

## Weather Whys

### Dog days of summer

Q: What are the "dog days of summer"?

A: It's a slang term for the hottest time of the year, explains Brent McRoberts of Texas A&M University. "In general terms, it's the time between early July and early September when the highest temperatures occur in the Northern Hemisphere," he says.

"The ancient Egyptians named the brightest star in the sky Sirius, which they labeled the 'dog star' after one of their mythic gods. Sirius could be seen in the sky at the same time as the sun and they believed it was responsible for the intense summer heat."

Q: Are the 'dog days' really the hottest time of the year?

A: Almost always, adds McRoberts. "Today, we usually mark the dog days as occurring from July 3 to the middle of August, but other countries mark them differently," he adds.

"It is usually the hottest and most uncomfortable time of the year. That's why 'dog days' also refer to period of any inactivity or a slow time of the year. For decades, the term has been used on Wall Street to refer to very slow times of economic activity in the stock market, and brokers call non-moving stocks 'dogs' in reference to the dog days of summer."

## New wake-up schedule

Summer is a time for staying up late and sleeping in, but those lazy summer habits can make it hard for children to adjust to a school schedule. Experts at UT Southwestern Medical Center have some tips to make school mornings a bit more tolerable.

"Making children go to bed early is not the answer. If children are not ready to go to sleep, they'll just lie awake," says Dr. John Herman, a UT Southwestern sleep specialist.

Instead, Dr. Herman suggests waking children up earlier as summer comes to an end and getting them into bright light as soon as feasible, such as playing outside. Once kids start getting up, they'll have an easier time getting to sleep earlier at night. They may be tired for a couple of days, but they will adjust, and within a week or so, they'll be on the new schedule.

Children should have a consistent sleep schedule seven days a week. Those who are consistently well rested tend to do better academically and emotionally.

## AG Consumer Alert

By Greg Abbott

The Office of the Attorney General is urging Texas drivers to check their vehicles for potentially dangerous tires. The tires were sold from 2002 to 2006 for light trucks, sports utility vehicles, and vans, and could be in danger of tread separation. The tires were made by Hangzhou Zhongce Rubber Co. Ltd. ("HZ") in China and distributed in the United States under several names, including Westlake, YKS and Compass.

According to Foreign Tire Sales, Inc. (FTS), - 1 - the U.S. distributor, at least 270,000 tires may have insufficient or missing "gum strips," an important safety feature on certain tires that helps prevent tread separation. More than 50,000 of the potentially unsafe tires are believed to have been sold in Texas.

If you have any of these tires, immediately contact the dealer where you bought them. If the dealer is more than 50 miles

away, ask the closest tire shop or mechanic to inspect your tires. In the interest of public safety, the Office of the Attorney General is asking tire dealers not to charge for such an inspection. Consumers who purchased these tires should not drive for long distances on hot roads and should avoid overloading their vehicles.

If an inspection indicates that the tires may be unsafe, consumers should immediately file an online complaint with the Office of the Attorney General at [www.oag.state.tx.us](http://www.oag.state.tx.us) or call 800-252-8011 to receive a form by mail. Consumers can also contact the National Highway Traffic Safety Administration (NHTSA) at 800-327-4236 and FTS at [www.foreign.tire.com](http://www.foreign.tire.com).

Consumers should check the sidewalls of their tires for the brand name, size, model, and U.S. Department of Transportation (DOT) number. If the DOT number contains "FTS" as part of

the number, the tire may be subject to a recall in the future.

Specific tire sizes and models affected:

- LT235/75R-15 CR861 CR857
- LT245/75R-16 CR860 CR861 CR857
- LT225/75R-16 CR 861
- LT265/75R-16 CR860 CR861 CR857
- LT235/85R-16 CR 860 CR861 CR857
- LT31X10.5R-15 CR861 CR857

At this time, NHTSA has not ordered a recall of any of these tires and no replacement program has been instituted. However, consumers should regularly check the NHTSA, FTS and Attorney General's Web sites for updates.

As part of general tire safety, consumers should keep the following tips in mind:

- Inspect tires at least once a month and before every long trip for patterns of uneven wear. Check tire inflation pressure in accordance with manufacturer recommendations.
- Do not overload your vehicle. Excess weight can place extra

stress on your tires. Check your tire placard or vehicle owner's manual for the maximum amount of weight your vehicle can safely carry.

Develop safe driving habits. Observe speed limits and avoid fast stops, starts, and turns. Avoid contact with potholes, debris, and curbs when driving or parking your vehicle.

Keep your vehicle properly maintained. Rotate tires regularly, get wheels balanced, and get a front-end alignment if necessary. Use the proper tires for your vehicle. Check the vehicle manufacturer's recommendations before replacing a tire with a different size and/or construction.

Be aware of how the outside temperature affects your tires. Hot weather can be especially hard on tires.

Have any tire problems checked out by professionals. If you find that one of your tires is losing pressure, take it to a tire expert for a complete internal inspection.

Avoid buying used tires. You might be getting previously recalled or otherwise dangerous tires.

## The Haskell Free Press

Established January 1, 1886  
PUBLISHED EVERY THURSDAY  
420 North First Street • P. O. Box 555  
HASKELL, TEXAS 79521  
Phone 940-864-2686 • Fax 940-864-2687  
[hfp@valornet.com](mailto:hfp@valornet.com)

John McDougal ..... Publisher  
Lisa Shaw ..... Business Manager  
Mary Kaigler ..... Editor  
Doris McDougal ..... Production  
Bill Blankenship ..... Staff Photographer

Periodical Paid Haskell, Texas 79521  
(USPS 237-040)

### SUBSCRIPTION RATES:

Haskell County, one year, \$25.00.  
Outside of Haskell County, one year, \$34.00.

NOTICE TO PUBLIC—Any erroneous reflection upon the character, reputation or standing of any firm, individual or corporation will be gladly corrected upon being called to the attention of the publisher.

POSTMASTER: Send address changes to The Haskell Free Press, P.O. Box 555, Haskell, TX. 79521-0555.



This issue mailed Wed., Aug. 15, 2007

Sales tax holiday  
Aug. 17-19

# August sales tax reported

Texas Comptroller Susan Combs said the state collected \$1.6 billion in sales tax revenue in July, up 5.3 percent compared to July 2006.

"Growth in sales tax collections eased in July, but moved ahead at a steady pace," Combs said. "In particular, receipts from the mining, construction, manufacturing, and service sectors reflect a Texas economy resisting the cooling seen in the national economy."

Combs sent \$534.2 million in August sales tax allocations to local governments, up 5.1 percent compared to August 2006. So far this calendar year, sales tax allocations to local governments are up 6.6 percent compared to last year.

Combs sent sales tax payments of \$364 million to Texas cities, up 4.1 percent compared to last August. Calendar year to date, city sales tax revenues are surpassing 2006 by 6.9 percent. Sales tax payments of \$31 million went to Texas counties, 5.6 percent higher than last August. So far in calendar year 2007, county sales

tax allocations are up 7.8 percent compared to last year.

In addition, \$17.6 million in sales tax revenue went to 121 special purpose taxing districts, 20.3 percent more than in August 2006. Ten local transit systems received \$121.5 million, up 5.9 percent compared to a year ago.

July state sales tax revenue and August allocations to local governments represent sales taxes collected in June by businesses that report sales taxes monthly, and sales taxes collected in April, May and June by quarterly filers.

The Comptroller's next sales tax allocation will be made on Fri., Sept. 14.

Haskell County had a 1.96 percent decrease for August 2007 of \$40,459.54 in comparison to \$41,269.39 for August 2006. 2007 payments to date of \$277,155.27 reflect a 7.06 percent increase over 2006 payments to date of \$258,872.14.

The City of Haskell had a .03 percent increase for August 2007 of \$37,256.03 in comparison to \$37,244.37 for August 2006. 2007 payments to date of \$243,843.65 reflect a 2.72

percent increase over 2006 payments to date of \$237,385.06.

The City of O'Brien had a 31.85 percent increase for August 2007 of \$134.98 in comparison to \$102.37 for August 2006. 2007 payments to date of \$909.72 reflect a 52.93 percent increase over 2006 payments to date of \$594.85.

The City of Rochester had a 25.91 percent decrease for August 2007 of \$708.68 in comparison to \$956.60 for August 2006. 2007 payments to date of \$4,222.31 reflect a 13.20 percent decrease over 2006 payments to date of \$4,864.68.

The City of Rule had a 21.01 percent decrease for August 2007 of \$1,949.26 in comparison to \$2,467.83 for August 2006. 2007 payments to date of \$13,711.05 reflect a 2.10 percent increase over 2006 payments to date of \$13,428.79.

The City of Weinert had a 17.58 percent decrease for August 2007 of \$410.59 in comparison to \$498.22 for August 2006. 2007 payments to date of \$14,468.54 reflect a 456.74 percent increase over 2006 payments to date of \$2,598.76.

The market at the Haskell Livestock Auction was on a run of 1,298 head of cattle at its sale on Sat., Aug. 11, according to B.D. Rainey, reporter.

478 steers, 480 heifers, 340 cows and bulls were sold. There were 84 sellers and 36 buyers.

Cows: fat, 48-53; cutters, 53-59; canners, 35-42.

Bulls: bologna, 63-70; feeders, 85-93.

Steers: medium and large frame No. 1 200-300 lbs., 160-185; 300-400 lbs., 125-138; 400-500 lbs., 130-138; 500-600 lbs., 116-128; 600-700 lbs., 109-116; 700-800 lbs., 105-109; 800-up lb 86-105 lbs.

Heifers: medium and large frame No. 1 200-300 lbs., 131-140; 300-400 lbs., 124-131; 400-500 lbs., 109-124; 500-600 lbs., 105-109; 600-up lbs., 94-105.

Bred heifers: medium frame 650-850.

Bred cows: young to middle

aged 850-1050; aged or small, 450-650.

Cows with calves: medium

frame No. 1 young and middle aged, 1050-1510; aged or small, 750-950.

# Cattle Market Report

## Quality Pest Control

Specializing in residential and commercial pest control, lawn and tree treatments, termite control, fire ants, and honey bees. Licensed and insured. 17 years experience in Haskell County.

940-863-4210

105 N. Ave. D • P.O. Box 863 • Haskell Texas 79521



Paul J. Gibson, owner/instructor  
1007 North 8th Street  
Haskell, Texas 79521  
call : 940.256.0764

"Private piano & voice lessons"

**SIGN UP NOW!!**  
limited lesson times available

member of Texas Music Teachers Association and Music Teachers National Association  
"competition participation available"

## Calendar

### 50th reunion

The 1958 class of Haskell High School will celebrate their fifty year reunion at Haskell's homecoming Sept. 21-22. The planning committee is seeking names and addresses of persons who attended at anytime during this class's school career. If you would like to be included, contact Janice Browning at 940-864-2755. Additional information will be mailed to those on the mailing list.

### Class '96 reunion

The Haskell High School Class of 1996 will hold a class reunion Sept. 21-22. Contact Tonya Weatherman, 824 N. U.S. Hwy. 87, Brady, Texas 76825 or tonyaweatherman@hotmail.com with current contact information.

# Drury attends meeting

Darin Drury of Haskell boosted his expertise of winter wheat production by attending a wheat technology meeting in Oklahoma city, Oklahoma July 31.

Ron Hays, director of farm broadcasting for Radio Oklahoma Network, presented an

overview of the economy and its expected impact on winter wheat to the more than 150 producers and retailers who attended the day-long meeting. University researchers provided the latest practices to help control pests, such as armyworms, mites, wireworms and grubs, as well as

disease control and plant nutrition.

At the meeting, Dr. Jim Swart, IPM Extension Agent, Texas Cooperative Extension, provided an overview of wheat-based research conducted in Texas. Oklahoma State University Weed Scientist Dr. Tom Peeper addressed ryegrass control in wheat, Dr. Bob Hunger, OSU extension state specialist for small grains, discussed important diseases and Dr. Tom Royer, OSU associate professor and IPM coordinator, provided the latest news in pest control. Roger Gribble, OSU area extension agronomist, addressed what he says are the most limiting factors in winter wheat production.

# Tinted glass

Heat that radiates through glass can get trapped in your home, causing temperatures to rise. If you have a lot of glass in your home, you could also have a lot of radiated heat. While shades, curtains, or blinds can help, another option is to install tinted glass.


reduces glare and cuts down on heat production. Tinted glass can lower the temperatures in your house during the summer and help you save money. There are different types of tint in a variety of colors and darkness intensities.

Consult a professional to find out what's right for you and your home.

## City Storm Warning Siren Testing Fridays at noon

### TAX PLANNING

Written By  
**Gerald Rodgers, CPA**



#### REPAIR OR IMPROVEMENT? KNOW THE DIFFERENCE

Ordinary repairs and maintenance on business equipment and buildings are deductible business expenses. Improvements to business equipment or property which materially add to the value of the property or significantly prolong its useful life are capital improvements and must be depreciated over a period of years. It will pay you to understand the difference.

A court case on this issue points out the problem. A partnership owned a hotel and had neglected to do repair and maintenance work for several years. They decided to remodel the hotel and do the necessary repairs at the same time. They deducted the repair and maintenance costs as ordinary and necessary business expenses and capitalized the remodeling costs to be depreciated over a period of years.

The IRS disallowed the current-year deduction for the repairs, saying that since they were done as part of a plan of capital improvements, they also had to be depreciated.

To avoid losing tax deductions for repairs and maintenance, do them regularly. If you decide to make major improvements that will increase the value or add years to the property's useful life, do them apart from general repairs and maintenance.

Typical repairs include repainting the inside or outside of a building, mending leaks, replacing machine parts, or patching damaged floors or walls. Typical capital improvements include laying a new floor, overhauling machinery, adding a new roof, or putting a new facade on the building.

The dollar amount of the expenditure is not the determining factor, so do not assume that if you spend a large amount, you must necessarily capitalize it. Remember, the test is that you must capitalize if the expenditure materially adds to the value of the property or significantly prolongs its useful life. Otherwise, you probably have a repair that is deductible in the current year.

**RODGERS & COMPANY**  
Certified Public Accountant  
20 Southwest Third Street  
Hamlin, Texas • 325-576-2356

## Be the envy of your school with the cool new Hue™



**Get The Alltel Hue™ \$39.99**  
After \$25 mail-in rebate with 2-yr. service agreement. Optional faceplates shown.

Includes Two Color Faceplates!

**Get The Alltel Snap FREE**  
With the purchase of the Hue after the mail-in rebate with 2-yr. service agreement.



come and get your love™

**Take the head-to-head challenge** | Switch today to America's Largest Network—risk free

<p><b>Alltel Retail Stores</b> • This Retail Store Now Open Sunday.</p> <p><b>Abilene</b> • 4149 Southwest Dr.   (325) 437-0800</p> <p><b>Breckenridge</b> 3732 W. Walker St.   (254) 559-3664</p> <p><b>Graham</b> 1221 Hwy. 16 S.   (940) 549-1885</p>	<p><b>Haskell</b> 10 Ave. D N.   (940) 864-8585</p> <p><b>Snyder</b> 4109 College Ave.   (325) 573-7907</p> <p><b>Sweetwater</b> 309 N.E. Georgia Ave.   (325) 235-0300</p> <p><b>Vernon</b> 807 Hillcrest Dr.   (940) 553-1885</p>	<p><b>Shop at a participating retailer:</b> Equipment &amp; promotional offers at these locations may vary.</p> <p><b>Abilene</b> Cellular Connection   (325) 672-3841 Trio Wireless   (325) 692-5195 Trio Wireless   (325) 692-5776</p> <p><b>Aspermont</b> Trinity Cellular   (940) 989-2543</p> <p><b>Breckenridge</b> Trio Wireless   (254) 559-2261</p>	<p><b>Colorado City</b> Lone Wolf Cellular   (325) 728-8000</p> <p><b>Snyder</b> Trio Wireless   (325) 574-1788</p> <p><b>Sweetwater</b> Sierra   (325) 235-3157</p> <p><b>Proud Sponsor of:</b> </p>
--	---	--	--

For Business & Government Accounts call 1-866-WLS-BIZZ or visit [alltelbusiness.com](http://alltelbusiness.com)

Federal, state & local taxes apply. In addition, Alltel charges a monthly connectivity, regulatory & administrative surcharge up to \$1.70; federal & state Universal Service Fund fees (both vary by customer usage); & a \$11 fee of up to \$134 (where 911 service is available). These additional fees may not be taxes or government-required charges & are subject to change. Phone Promotions: Phones at sale prices & applicable rebates available to new customers & eligible existing customers for a limited time, while supplies last, with activation of a qualifying rate plan. Contact Alltel to determine if you are eligible. Limit 1 rebate per qualifying purchase. Customer pays applicable taxes. See rebate form for details. Blue and red faceplates included with purchase of the Hue. Pink and green available for purchase. Largest Network Claim: Based upon analysis by an independent research company in April 2007, which compared marketed coverage patterns at the time of their creation of each wireless carrier without allowance for variations due to electrical interference, customer equipment, topography & each carrier's translation & defined preferences of their own internal engineering data. Risk Free: If you're not completely satisfied with your postpaid service within the first 15 consecutive days of purchase, you can end your agreement with no disconnect penalty & pay only for the service used. Undamaged equipment can also be returned or exchanged. Activation & phonebook transfer fees are non-refundable. See [shopalltel.com](http://shopalltel.com) for complete details. Additional Information: This offer may be limited due to time, supplies, coverage or participating locations. \$25 non-refundable activation fee & possible \$200 early termination fee applies per line. Service is according to the Terms & Conditions for Communications Services & other information available at any Alltel store or [alltel.com](http://alltel.com). All product & service marks referenced are the names, trade names, trademarks & logos of their respective owners. Screen images are simulated. ©2007 Alltel. All rights reserved.

All deadlines are 5 p.m. Monday.

# Paint Creek School sets picnic

Paint Creek ISD will hold its annual "Back to School Picnic" Thurs., Aug. 23. This night of food, fun and fellowship will begin at 6 p.m.

The evening will "kick-off" with a hamburger/hot dog supper. Superintendent Donald L. Ballard will then discuss legislative and Title I updates for the upcoming school year. Principal Kristi Exum will

introduce new faculty/staff members, and PTO President Deborah Oliver will talk about events planned for 07-08.

The night will close with "Meet the Pirates/Lady Pirates" conducted by Athletic Director Michael Waggoner and his

coaching staff. All families of Paint Creek students are encouraged to attend this back to school event.

**GONZALES CARPET CLEANING**  
 Carpet Cleaning • Upholstery Cleaning  
 Emergency Water Extraction • Expert Floor Care  
 Waxing Polishing & Cleaning

Residential & Commercial  
 (325) 773-2667 • (325) 773-2258

Robert Gonzales  
 P. O. Box 929  
 Stamford, Tx  
 79553

## CORRECTED Notice of Public Hearing on Tax Increase

The Haskell County Precinct Roads will hold a public hearing on a proposal to increase total tax revenues from properties on the tax roll in the preceding tax year by 7.75% percent (percentage by which proposed tax rate exceeds lower of rollback tax rate or effective tax calculated under Chapter 26, Tax Code). Your individual taxes may increase at a greater or lesser rate, or even decrease, depending on the change in the taxable value of your property in relation to the change in taxable value of all other property and the tax rate that is adopted.

The public hearing will be held on August 24, 2007 and August 27, 2007 at 11 a.m. in the Commissioners Court Room, Haskell, Texas.

The members of the governing body voted on the proposal to consider the tax increase as follows:  
 FOR: Kenny Thompson, Johnny Scoggins, Bobby Don Smith, Tiffen Mayfield, David Davis  
 AGAINST:  
 PRESENT and not voting:  
 ABSENT:

### Comparison of Proposed Budget with Last Year's Budget

The applicable percentage increase or decrease (or difference) in the amount budgeted in the preceding fiscal year and the amount budgeted for the fiscal year that begins during the current tax year is indicated for each of the following expenditure categories:

Maintenance and operations	% (increase)	10.5% (decrease)
Debt service	% (increase)	% (decrease)
Total expenditures	% (increase)	10.5% (decrease)

### Total Appraised Value and Total Taxable Value as calculated under section 26.04, Tax Code

	Preceding Tax Year	Current Tax Year
Total appraised value* of all property	\$352,320,842.00	\$454,438,799.00
Total appraised value* of new property**	\$ 1,968,547.00	\$ 2,237,650.00
Total taxable value*** of all property	\$223,959,631.00	\$231,757,969.00
Total taxable value*** of new property**	\$ 1,965,777.00	\$ 1,275,580.00

### Bonded Indebtedness

Total amount of outstanding and unpaid bonded indebtedness \$0.00

### Tax Rates

Adopted tax rate for the preceding tax year	\$0.1153 per \$100 per value
Proposed tax rate for the current tax year	\$0.1207 per \$100 in value
Difference in the proposed tax rate and the adopted tax rate for the preceding tax year	\$.0054 per \$100 in value
Percentage increase or decrease in the proposed tax rate for the preceding tax year	7.75% Increase

These tax rate figures are not adjusted for changed in the taxable value of property.

### Comparison of Residence Homestead Values

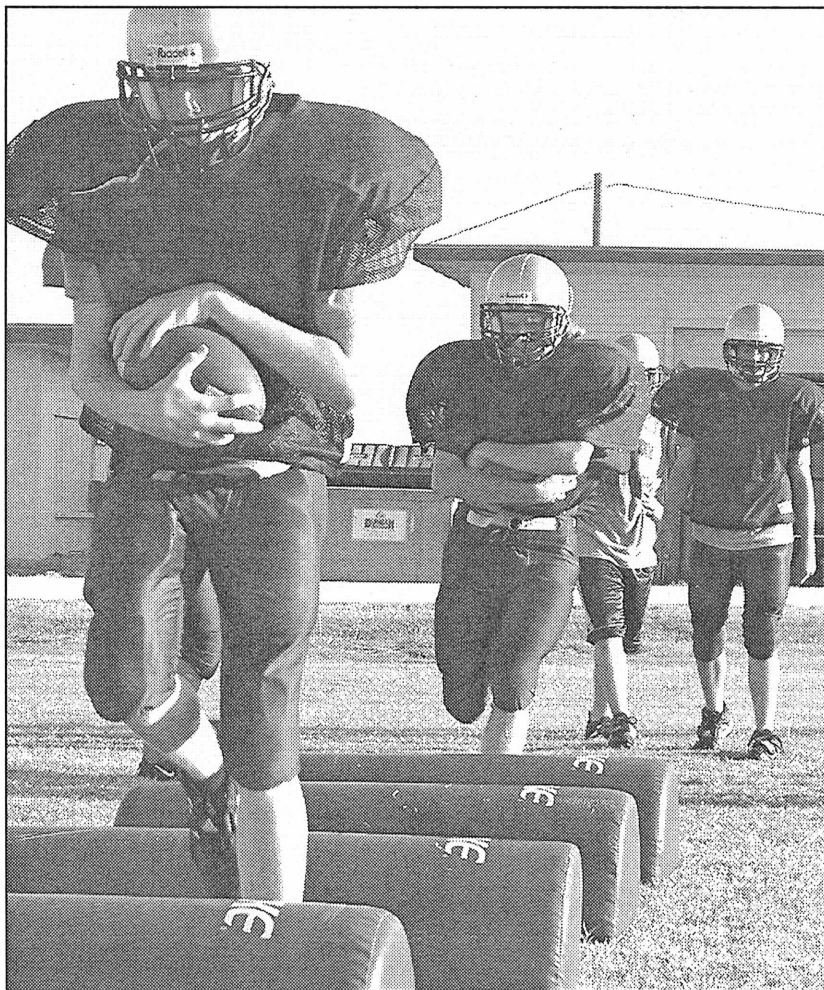
Average appraised and taxable values on residence homesteads are compared from the preceding tax year and the current tax year.

	Preceding Tax Year	Current Tax Year
Average residence homestead appraised value	\$32,089.00	\$32,932.00
Homestead exemption amount for the taxing unit (excluding special exemptions for persons 65 years of age or older or disabled)	\$ 0.00	\$ 0.00
Average taxable value of a residence homestead (excluding special exemptions for persons 65 years of age or older or disabled)	\$32,089.00	\$32,932.00

### Comparison of Residence Homestead Taxes

The taxes that would have been imposed in the preceding tax year on a residence homestead at the average appraised value (excluding special exemptions for persons 65 years of age or older or disabled) are estimated to be \$37.00. The taxes that would be imposed in the current tax year on a residence homestead appraised at the average appraised value in the current tax year (excluding special exemptions for persons 65 years of age or older or disabled) if the proposed tax rate is adopted, are estimated to be \$40.90. The difference between the amount of taxes on the average residence homestead in the current tax year, if the proposed tax rate is adopted, and the preceding tax year would be at increase of \$3.90 in taxes.

\* "Appraised value" is the amount shown on the appraisal roll and defined by Section 1.04(8), Tax Code.  
 \*\* "New property" is defined by Section 26.012(17), Tax Code.  
 \*\*\* "Taxable value" is defined by Section 1.04.(10), Tax Code.



PIRATES WORKOUT: Paint Creek Pirates, front to back, Taylor Exum, Charlie Myers and Jacob Long train for the upcoming six man football season.



PAINT CREEK PIRATES—Members of the Paint Creek Pirates football team include, back row, l-r, Dakota Carson, Coach Darren Carson, Brett Siegfried, Rusty Rogers, Jacob Long, Taylor Exum and Coach Michael Waggoner, front row, Si Exum, manager, Caleb Whitfield, Jordan Adkins, Denton Reed, Charlie Myers and Micah Waggoner, manager.

**WYLIE**  
**CASE III**  
 APPLICATION EQUIPMENT

## Ride & Drive Summer Field Day

**What:** New "Case SPX3320" 1,000 Gal.  
 New "Wylie PivoTrakr" 1,250 Gal.

**When:** Friday, Aug. 17, 10 AM - 2 PM

**Where:** Myers & Yates Farms  
 West of TXDOT office, Hwy. 222  
 Munday, Texas

Refreshments will be served!!!

Questions? Call Ron Cox

888-249-5162 or 806-786-2698

Sponsored by: Wylie Mfg., 702 E. 40th, Lubbock, TX 79404

## New IRS rule will not affect teachers

Moving to clear up confusion about a recent tax law change, the Internal Revenue Service has reassured teachers and other school employees that new deferred-compensation rules will not affect the way their pay is taxed during the upcoming school year.

"Many teachers are busy preparing for the start of school, so we don't want them to be worried about this issue as the summer winds down," said Clay Sanford, an IRS spokesman in Dallas.

Recently, the IRS has received inquiries from teachers who had been told that they had to make certain decisions about their pay, this month, or risk severe penalties. At issue is a 2004 law change that applies to people who decide to defer compensation from one year to a future year. In April, the Treasury Department and the IRS issued final rules implementing this law change.

Under the 2004 law, when teachers and other employees are given an annualization election—that is, they are allowed to choose between being paid only

during the school year and being paid over a 12-month period—and they choose the 12-month period, they are deferring part of their income from one year to the next. For instance, a teacher who chooses to get paid over a 12-month period, running from August of one year through July of the next year, rather than over the August to May school year, falls under this law.

The IRS clarified that the new rules do not require school districts to offer teachers an annualization election. Thus, school districts that have not been offering teachers this election are not required to start.

School districts that offer annualization elections may have to make some changes in their procedures. The IRS announced that the new deferred-compensation rules will not be applied to annualization elections for school years beginning before Jan. 1, 2008, so school districts and teachers will have time to make any changes that are needed.

More information, including answers to frequently-asked questions is posted on IRS.gov.



**ATTEND CAMP**—The Paint Creek varsity and junior high cheerleaders attended a private cheer camp on their home campus Aug. 6-8. The camp instructor was Amy Edwards, front, left. The varsity cheerleaders are back row, l-r, Amber Gilbreath, Lacey Stephens, Sidney Jordan (mascot), Shana Armstrong and Jessica Pendergraft. Their sponsor is Allison Key. The junior high cheerleaders include, front row, Katrina Buerger, Haley Myers, Addie Exum and Caitlin Medford. Their sponsor is Barbara Utley.



**CROSS COUNTRY**—Participating on the Paint Creek Lady Pirates varsity cross country team are, l-r, Coach Esther Waggoner, Brittany Waggoner and LaCresha Escamilla.

## Paint Creek School to register students Aug. 20

Paint Creek ISD will conduct student registration Mon., August 20. Students who are new to the district and returning elementary students in grades Pre-K-8 who have not pre-registered should

come to the school cafeteria between the hours of 9 a.m. and 12 noon.

Parents of new students should bring a drivers license, child's birth certificate, social security

card, current immunization record, and last report card.

Registration for returning students in grades 9-12 will be in the cafeteria from 1 to 3 p.m. Aug. 20.

## Backpacks should not be a burden

A backpack bulging with books and school supplies may be a sign of a good student, but doctors at UT Southwestern Medical Center say it can also cause back strain and even nerve damage.

A condition called Rucksack

Paralysis is caused by the strain on shoulders and arms. Symptoms include pain and tingling in the hands and arms. The problem could become permanent if kids continue to sport packs that are too heavy.

"If the child is straining or

slouching, that is a sign the pack's too heavy," says UT Southwestern orthopaedic surgeon Dr. Kevin Gill, co-director of the Spine Center at the medical center. "You can often lighten the load by ensuring that kids don't carry anything in their packs that isn't necessary."

In addition, Dr. Gill recommends avoiding slinging a backpack over just one shoulder.

"Use a pack with a waistband and carry it with both straps to distribute the load," says Dr. Gill. "Or you may want to consider a rolling backpack or luggage cart."

## Lunch box goodies

With childhood obesity a continuing concern, nutrition experts at UT Southwestern Medical Center say what you put in your child's lunch box is more important than ever.

Lona Sandon, a registered dietitian at UT Southwestern, says a healthy lunch is good for the body and the brain. Kids who eat a good lunch do better in school. Look for protein from lean lunch meats, low-fat cheese or peanut butter on whole-grain bread. Other good lunch box

items include fresh fruits and vegetables, fruit cups, yogurt in a tube, single serving containers of cottage cheese and pudding cups made from skim milk.

"A healthy lunch not only keeps the body going but also the brain," says Sandon. "Kids who eat regular healthy meals often do better in school."

If your kids insist on chips and candy, use baked chips and offer fun-sized candy bars instead of full-sized bars.

## Athletes need quality H<sub>2</sub>O

For many children, back to school means back to sports. During the time off, many young athletes tend to forget the importance of drinking plenty of fluids during hot, long practices,

says Dr. Luis Palacios, an expert in sports medicine at UT Southwestern Medical Center.

He recommends sports participants drink 4 to 8 ounces of water every 15 to 20 minutes

if they have been working out for an hour or less, including warm-up sessions. For workouts longer than an hour, athletes should reach for the sports drinks to replenish carbohydrates and electrolytes such as sodium and potassium that are lost through sweating.

## Healthy fast food

Are after-school activities making menu choices for you? Rather than super-size that next fast-food selection, think about ways to include healthier options in those typically high-calorie, high-fat meals, says Dr. Jo Ann Carson, a clinical nutritionist at UT Southwestern Medical Center.

"Be proactive, focused and selective when dining out, even at fast-food restaurants," she says.

Several fast-food chains now offer fruits, vegetables and side salads (easy on the dressing) as an alternative to french fries. In addition, more fast-food companies are providing orange

juice and low-fat milk as optional beverage choices. While low in fat, bean-laden chili can provide plenty of fiber. Also, a small fruit yogurt parfait can be a snack or dessert that counts toward your daily servings of dairy and fruit.

"Hydration is very important because heat stress and heat stroke are such a concern among physicians caring for athletes," Dr. Palacios says. "Besides, dehydration impairs performance."

**BERNARD E. GODLEY, INC.**  
**TAX SERVICE AND BOOKKEEPING**  
 Specializing in Farm, Ranch & Agri-business  
 Over 35 Years Experience  
**940-889-8809**  
 98 Hill Drive • Seymour, Texas  
 Fax 940-889-4908

**HERE'S TO YOUR HEALTH... AT HOME!**  
 Brought to You By:  
**Haskell Home Health Agency**

Misty Gibson  
 RN, BSN

**Heat-related illness continued...**  
**Safety in the hot summer months**  
 Because our bodies adapt to the current environment over time, heat illnesses do not usually occur in people who are accustomed to strenuous activity on hot days, or those who live in areas that routinely suffer high heat and humidity. Danger often occurs when, for example, severe heat affects a geographic area suddenly or at the beginning of sports seasons, when unconditioned athletes begin training in warm weather.  
 Heat illnesses are preventable with proper precautions. Here are a few ways to protect yourself from heat illnesses:

1. Remain in an air-conditioned environment during hot weather or go to an air-conditioned area if feeling overheated. If air conditioning is not available, using fans can help cool the body.
2. Wear lightweight, loose-fitting and light-colored clothing. This allows heat to escape the body and the light color does not absorb heat.
3. Drink plenty of water and other hydrating liquids throughout the day to help maintain the body's fluid balance.
4. Avoid activity during the middle of the day when the sun is at its highest point.
5. A cool bath or shower will help keep body temperature at a normal level in hot weather.

What questions regarding home care do you have for the nurse? Send your questions to Haskell Home Health Agency, 417 S. First, Haskell, TX 79521 or call 940-864-5074 or 1-877-864-5074.

HERE'S TO YOUR HEALTH—AT HOME is brought to you by Haskell Home Health Agency providing home care services in Haskell, Knox, Stonewall, Throckmorton and Jones Counties

Home Care: Keeping Texans Proud & Independent

**MAKE THE SMART CHOICE.**

**HIGH-SPEED INTERNET**

**\$14.99 PER MONTH**  
 FOR 12 MONTHS WITH QUALIFYING SERVICES

- NO CONTRACT REQUIRED
- 30-DAY SATISFACTION GUARANTEE
- LIMITED-TIME OFFER

PHONE  
 BROADBAND  
 DIGITAL TV

THE FASTEST, MOST RELIABLE SPEED FOR THE MONEY

1.877.312.WIND | WINDSTREAM.COM

windstream  
 grow places

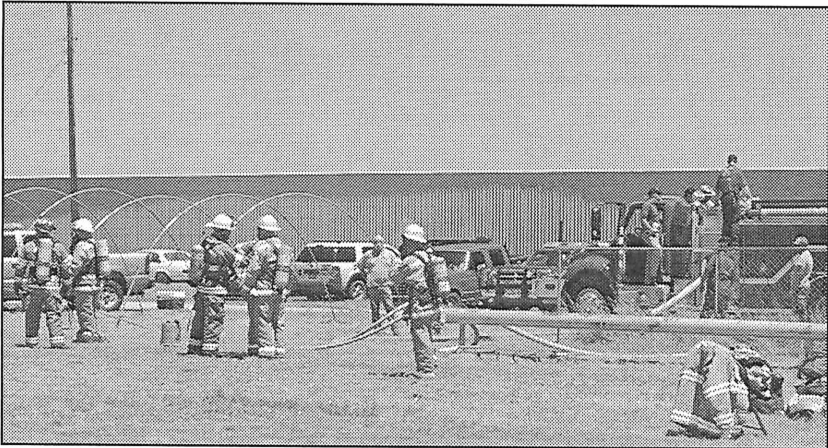
VISIT US IN TEXAS:

<b>ANDREWS</b> 112 S.W. 1st Street 432.523.3323	<b>DALHART</b> 310 Rock Island Avenue 806.249.1100	<b>PERRYTON</b> 301 S. Amherst Street 806.435.2050	<b>SEYMOUR</b> 400 N. Main Street 940.888.1220	<b>SUGAR LAND</b> 403 Highway 6 S, Suite H 281.490.9412	<b>TEXARKANA</b> 2315 Richmond Road, Suite 101 903.223.4688
---	--	--	--	---	--

Limited-time offer for new Windstream Broadband customers. Subject to availability. Offer Details: Price for Broadband Lite when bundled with Connect Package and Digital TV. Includes Broadband transport and Internet access. \$25 activation fee applies. Speeds are distance-sensitive and availability varies by address. Windstream cannot guarantee speeds or uninterrupted, error-free service. Satisfaction Guarantee: If customer cancels within the first 30 days, first month fee will be refunded. Modem equipment purchased through Windstream must be returned upon termination. Taxes and fees are non-refundable. Additional Information: Credit approval required. Taxes, fees and other charges, including Universal Service Fund, apply. Services convert to the regular tariffed monthly rate (long distance converts to Windstream 20) if any bundled service is disconnected. Windstream reserves the right to alter or discontinue this plan at any time. Other conditions may apply. Subject to Windstream Terms and Conditions available at Windstream stores or windstream.com. Windstream is a registered service mark of Windstream Corporation. ©2007 Windstream Corporation

YOUR LANDLINE IS YOUR LIFELINE

RELIABLE  
 SAFE • SECURE  
 mostreliablephone.com



**FIRE ACADEMY**—Haskell Fire Dept. played host to the Midwest Firefighter Academy Sat., Aug. 11 at their fire field. Those attending finished classroom work, participated in live burns in the cottage fire and rappelled from the tower. Approximately 36 students and instructors attended. Haskell firemen provided a meal and personnel to pump trucks and provided any services needed. Haskell EMS services were on hand to help keep the participants safe during the extremely hot temperatures.

## Haskell hosts fire academy

The final phase of the Midwest Firefighter Academy was held in Haskell Sat., Aug. 11, sponsored by the Haskell and Hamlin Fire Departments.

Twenty-four students and twelve instructors were involved in the classroom and final hands on activities. Haskell firemen provided the fire field, meeting rooms and manpower for the

academy and instructors to conduct the school. Students and instructors represented departments from Buffalo Gap, Merkel, Potosi, Roby, ECCA, Mulberry Canyon, Stamford, Asnon and Anson.

The TEEX (Texas Engineering Extension Service) approved class allowed students, who had previously completed 72

objective hours of classroom activities, to participate in a live burn.

All the instruction is held to allow firefighters and fire departments to be in compliance with new fire service mandates, while achieving the goal of making the fire service safer for firefighters.

## AG Consumer Alert

By Greg Abbott

### Toys Recalled Due To Lead Poisoning Hazard

The Office of the Attorney General is urging Texas consumers to stop using certain toys after Fisher-Price and the U.S. Consumer Product Safety Commission (CPSC) issued a recall due to potential lead poisoning hazards. Texans are urged to remove these toys from their homes and contact Fisher-Price to learn more about replacing the recalled products.

According to CPSC, toys and figures bearing the likeness of characters from Sesame Street, Dora the Explorer and other popular children's programs contain surface paints with excessive levels of lead, which could be toxic if ingested. More than 950,000 of the recalled toys were sold nationwide from May 2007 to August 2007. The products were sold both alone and as parts of sets. The toys are all marked with "Fisher-Price" and may have a date code between 109-7LF and 187-7LF marked on the product or packaging.

A detailed list of the recalled toys can be found on the Attorney General's Web site at [www.oag.state.tx.us](http://www.oag.state.tx.us).

Consumers who own these recalled toys or figures should immediately remove the products from children and contact Fisher-Price at 800-916-4498. Consumers who wish to return the recalled product will receive a voucher for a replacement toy of the consumer's choice (up to the value of the returned product).

CPSC tests consumer products on an ongoing basis to ensure they are safe. As it did with the Fisher-Price toys, the CPSC issues warnings whenever products do not meet certain safety standards.

While the majority of consumer products are safe when used properly, consumers are encouraged to regularly check the CPSC Web site ([www.cpsc.gov](http://www.cpsc.gov)) to make sure they do not have items that could pose a danger. Many of the alerts posted by CPSC involve toys, car seats, cribs and other items for children. Parents and friends might be particularly interested in the "Toys" and "Child Products" section of the CPSC Web site, which provides information on recent recalls. The Web site also allows consumers to submit information on a product they believe is hazardous.

Texans are understandably concerned about their safety, particularly that of their children. Consumers can contact the Office of the Attorney General at 800-252-8011 or online at [www.oag.state.tx.us](http://www.oag.state.tx.us). Our staff will gladly help consumers find federal, state and local resources that will assist them in gathering critical information about a product's

safety record or reporting their concerns.

Below is a list of resources from several federal agencies that test and regulate the safety of consumer goods:

Consumer Product and Safety Commission (CPSC): Information about dangerous and recalled consumer goods and household items, including toys, children's cribs, car seats, smoke detectors, electronics, sporting goods, lawnmowers, gas grills, and many others. [www.cpsc.gov](http://www.cpsc.gov) Consumer hotline: 800-638-2772 (TTY 800-638-8270).

Food and Drug Administration (FDA): Information about dangerous and recalled foods, cosmetics, pharmaceuticals and other health-related items. [www.fda.gov](http://www.fda.gov). General information: 888-463-6332.

National Highway Traffic Safety Administration (NHTSA): Information about auto safety technology and alerts/recalls on dangerous vehicles and components such as defective tires, etc. [www.nhtsa.gov](http://www.nhtsa.gov). General information: 888-327-4236.

U.S. Department of Agriculture: Information on food contents and nutritional value, including an online search tool for the profiles of 13,000 common foods. [www.usda.gov](http://www.usda.gov).

Environmental Protection Agency (EPA): Information about toxic products, such as asbestos, pesticides, and pollution. [www.epa.gov](http://www.epa.gov). General information for Texans: 214-665-6444.

## This Week's Devotional Message:

### BE SURE YOUR CHILDREN'S VOCABULARY INCLUDES THE WORD 'NO'



It's time to send your children off to school again, to prepare them for the world they must one day confront. The school will do a good job of this, but your cooperation is also needed in order to make sure that they don't learn the wrong things. As everyone knows, we are living in an era where drug abuse is rampant, and the children are being lured into this trap at a shockingly early age. Don't fail to warn them

about this, as a part of their preparation for the new school year, for it can be vastly more important than their clothes or books. Moreover, you can reinforce your efforts by enrolling them in the Sunday school at your house of worship. With all this, you can rest assured that the vocabulary your children develop in school will include the proper use of the word "No," as the password to a happier, healthier and longer life.

### ATTEND CHURCH THIS SUNDAY

#### HASKELL

- East Side Baptist Church**  
Danny Manross, pastor  
Sun. 9:45 a.m., 11 a.m., 6 p.; Wed. 7 p.m.  
600 N. 1st East, Haskell
- Christian Church**  
Richard Barr, minister  
Sun. 9:45 a.m., 10:45 a.m.; Thurs. 7 p.m.  
107 N. Ave. F, Haskell
- Church of God**  
Bruce Ray, pastor  
Sun. 10 a.m., 11 a.m., 6 p.m., Wed. 7:00 p.m.  
714 North First East, Haskell
- Trinity Lutheran Church**  
Ron Rennegarbe, pastor  
Sunday School 9:30 a.m., Worship 10:30  
Hwy 380 East, Haskell
- Iglesia Bautista El Calvario**  
Art Flores, Interim pastor  
Sun. 9:45 a.m., 10:45 a.m., 5 p.m.; Wed. 7 p.m.  
607 S. 7th, Haskell
- First United Methodist Church**  
Rev. Tom Long, pastor  
Sun. 9:45 a.m., 10:50 a.m. 6 p.m.; Wed. 6 p.m.  
201 N. Ave. F, Haskell
- First Assembly of God**  
Rev. J.C. Amburn  
Sun. 9:45 a., 10:45 a.m., 6 p.m.; Wed. 7 p.m.  
1500 N. Ave. E, Haskell
- St. George Catholic Church**  
Father George Roney  
Sat. Mass 7 p.m.; Sun. Morn. 9:00 a.m.  
901 N. 16th, Haskell
- Church of Christ**  
Jim Yates, minister  
Sun. 9:30 a.m., 10:30 a.m., 6 p.m.; Wed. 7 p.m.  
510 N. Ave. E, Haskell
- First Presbyterian Church**  
Kelly Pigott, interim pastor  
Sun. Morn. 9:30 a.m.  
306 N. Ave. E, Haskell
- Trinity Baptist Church**  
Larry White, pastor  
Sun. 10 a., 11 a., 6:30 p.m.; Wed. 6:30 p.  
114 S. Ave. D, Haskell
- Hopewell Baptist Church**  
Rev. Tom Collins, pastor  
Sun. 9:30 a.m., 11:00 a.m.; Wed. 7 p.m.  
908 N. Ave. A, Haskell

- Greater Independent Baptist Church**  
Sun. 9:30 a., 11:00 a., 6:30 p.; Wed. 7 p.  
301 N. 3rd St., Haskell
- New Covenant Foursquare**  
Bill and Renee Glass, pastors  
Sun. 10 a.m., 11 a.m., 6:30 p.m.; Wed. 7 p.  
200 S. Ave. F, Haskell
- Mission Revival Center**  
Rev. William Hodge  
Sun. 10 a.m., 11 a.m., 6 p.m.; Tues. 6 p.m.  
1600 N. Ave. B, Haskell
- First Baptist Church**  
Greg Gasaway, pastor  
Sun. 9:45 a., 10:55 a., 6 p.m.; Wed. 6:30 p.m.  
301 N. Ave. E, Haskell
- Church in the Wind**  
C.C. Curran, pastor  
Sun. fellowship 5 p.m. Church 5:30 p.m.  
Tues. Bible Class 7:30 p.m.  
203 S. 1st East, Haskell
- Cornerstone Fellowship Baptist Church**  
Morris R. Johnson, pastor  
Sun. 9:30 a.m. 10:45 a.m., 6 p.m., Wed. 7 p.m.  
1600 N. First St., Haskell

#### WEINERT

- First Baptist Church**  
Dan Bullock, pastor  
Sun. 10 a.m., 11 a.m., Wed. 7 p.m.  
Weinert
- Weinert Foursquare Church**  
Rev. Robert Harrison  
Sun. 10 a.m., 11 a.m. Wed. 7 p.m.  
Weinert

#### ROCHESTER

- Church of Christ**  
Steve Willis, minister  
Sun. 9:45 a., 10:45 a., 6 p.m.; Wed. 6 p.m.  
West on Main Street, Rochester
- First Baptist Church**  
Fred Garvin, pastor  
Sun. 11:00 a.m., 6 p.m.; Wed. 6:00 p.m.  
500 Main, Rochester
- Union Chapel Baptist Church**  
Clovis Dever  
Sun. 9:45 a., 10:45 a., 6 p.m.; Wed. 7 p.m.  
Rochester
- Faith Chapel of Rochester**  
Katherine Byrd, minister  
Sun. 10 a.m., 11 a.m., 7 p.m.  
Hwy 6, Rochester

- First United Methodist Church**  
Rev. Daniel Echols, pastor  
Sun. Morn. 9:00 a.m., 11:00 a.m.  
Rochester

#### SAGERTON

- Sagerton Methodist Church**  
Stephania Gilkey, pastor  
Sun. Morn. 9:45 a.m.  
Sagerton

- Faith Lutheran Church**  
Curtis Baker, pastor  
Sun. 9:30 a.m., 10:30 a.m.  
Sagerton

#### RULE

- First Baptist Church**  
Russell Stanley, pastor  
Sun. 9:45 a., 11:00 a., 5 p.m.; Wed. 7 p.m.  
1001 Union Ave., Rule
- Primitive Baptist Church**  
Dale Turner Jr., pastor  
First & Third Sundays 10 a.m.  
Corner of 8th & Robins, Rule
- Church of Christ**  
John Greeson, minister  
Sun. 9:45 a., 10:40 a., 6 p.m.; Wed. 7 p.m.  
811 Union, Rule

- First United Methodist Church**  
Tom Long, pastor  
Sun. Morn. Worship 8:30 a.m.  
1000 Union Ave., Rule

- Primera Iglesia Bautista**  
Alfa y Omegs  
Manuel Marin, pastor  
Sun. 10 a., 11:00 a., 5 p.m.; Wed. 6 p.m.  
500 Elm Street, Rule

- Sweet Home Baptist Church**  
Larry Neal, pastor  
Sun. 10 a.m., 11 a.m., 5 p.m.;  
Gladstone Ave., Rule
- West Bethal Baptist Church**  
Rev. Clovis Dever  
Sun. 10 a., 11 a., 8 p.m.; Wed. 7:30 p.m.  
300 Sunny Ave., Rule

#### PAINT CREEK

- Paint Creek Baptist Church**  
Sun. 10:00 a.m., 11:00 a.m., 6 p.m.  
Paint Creek

#### O'BRIEN

- O'Brien Baptist Church**  
Jim Reid, pastor  
Sun. 9:45 a., 11 a., 5 p., 6 p, Wed. 6 p.m.  
O'Brien



### Santa Rosa Telephone Cooperative Inc. LIFELINE SERVICE AND LINK-UP PROGRAM AND UNIVERSAL SERVICES Texas

The Federal Communications Commission and the Public Utility Commission of Texas have established two programs to make basic telephone service more affordable to eligible customers. **Lifeline Service** is a program designed to make basic telephone service available at reduced rates to eligible residential customers. Customer's eligibility to receive the discount must be renewed periodically. **Link-Up** is a program designed to offer eligible residential customers a reduction in installation charges for telephone service.

**Who Qualifies?** You are eligible for Lifeline Service and Link-Up Program if your annual household income is at or below 150% of the federal poverty guidelines, or in your household resides a person who receives or has a child who receives benefits from at least one of the following programs:

Medicaid, Food Stamps, Supplemental Security Income (SSI), Federal Public Housing Assistance (FPHA), Low Income Home Energy Assistance Program (LIHEAP), Health benefits coverage under the state Children's Health Insurance Program (CHIP), An eligible customer residing in tribal lands, Other eligible programs may apply.

Information about customers who qualify for Lifeline Service or Link-Up Program may be shared between state agencies and Santa Rosa Telephone Cooperative Inc. Lifeline customers can also subscribe to optional services at the same rate offered to other customers.

**What Universal Services are available to all customers?** Universal services are offered to all customers of Santa Rosa Telephone Cooperative. Universal Services available include the following services: Voice grade access to the public switched network; Local usage; Dual tone multi-frequency signaling or its functional equivalent; Single-party service or its functional equivalent; Access to interexchange services; Access to directory assistance; Toll limitation for qualifying low-income consumers.

In addition to the above services, Santa Rosa Telephone Cooperative offers optional calling features, along with Santa Rosa Communications Long Distance, SRCaccess.net-internet/DSL, and SRTV (where available).

**How do Telephone Customers and Applicants for Telephone Service Apply for Lifeline and Link-Up Program?** Please call the LIDA at 1 866-454-8387 (1-866-4-LITE-UP) if you wish to apply for or have any questions regarding the Lifeline Service and Link-Up Program. LIDA provides self-enrollment forms by direct mail upon customer request.

**How to Apply for Telephone Service?** If you do not have telephone service and wish to obtain telephone service or if you have telephone service and you move and you qualify for the Link-Up Program and you are in the Santa Rosa Telephone Cooperative serving areas please call our business office number 1 888-886-2217 and we will be glad to assist you.

### Sonic Drive-In

1402 N. Ave. E  
864-8533  
Managers: Leon & Carolyn Herring

### Steele Machine

Hwy. 280 • 864-2208

### Modern Way Food Store

1202 N. Ave. E • 864-3763

### HANSON PAINT & BODY SHOP

207 S. 1st • 864-3631  
Professional Auto Body Repair  
Glass Installation • 24 Hour Wrecker Service

### Rule Co-op Gin & Elevator

301 Adams • Rule • 996-2421

### Smitty's Auto Parts

107 N. 1st East • 864-2607

### The Haskell Free Press

"The People's Choice"

420 N. First  
Haskell, Texas  
940-864-2686



Serving  
Haskell County  
Since 1886





# Shop The Haskell Free Press CLASSIFIEDS



864-2686

ALL DEADLINES MONDAY 5 P.M.

864-2686

### For Sale

FOR SALE: Two motorcycle windshields. One National Cycle, one Memphis Shades. \$75 each or both for \$100. 940-864-2023 or 325-721-0674. 14tfc

FREE PUPPIES: Half Rat Terrier, half Blue Heeler. Six weeks old. 940-864-2826. 31-34p

BULLS FOR SALE: Two, 4 year old registered Hereford bulls. 940-864-2826. 31-34p

WANTED: Responsible party to take on small monthly payments on high definition big screen TV. 1-800-398-3970. 32-33p

FOR SALE: Used sheet iron. Call 864-2208 or 940-256-3129. 32-33c

FOR SALE: Fertilized Haygrazer round bales. 940-864-8803 or 940-864-3780. 32-33c

FOR SALE: 1975 Terry travel trailer. 940-864-2182 or 940-256-0668. 32-33p

DO YOU NEED more energy to lose weight to feel great? Shipping paid on in stock items for a limited time. Call 940-864-2127. 33-34p

FREE: Four week old Blue Heeler puppies with snipped tails. Looking for good homes! 206 S. Ave. C or 863-4278. 33p

### Cars For Sale

FOR SALE: 1997 Chevrolet pickup, ext. Silverado 1500; 1982 Cadillac Coupe DeVille. Call 940-256 1490. 33p

FOR SALE: 1980 Thunderbird. \$400. Will run. Fixer-upper. Come by 1202 N. Ave. J, Haskell. 33c

### Garage Sale

GARAGE SALE: 916 N. 6th. Sat., Aug. 18. Kids' clothing and more. 33p

GARAGE SALE: 1201 N. Ave. K. Fri., Aug. 17. 7 a.m. to 1 p.m. Furniture, glass items and lots of other stuff. 33p

3 FAMILY YARD SALE: 605 Elm St., Rule. Sat., Aug. 18. Selling gorditas. 33p

HUGE GARAGE SALE: Little bit of everything. Girls' and boys' teenage clothes, furniture, 1980 Thunderbird. 1202 N. Ave. J, Haskell. Sat., Aug. 18. 33c

### Lost and Found

LOST near N. 18th and Ave. G. Black and white cat. Blue tag. 863-4380. 33p

Shop Haskell first

### I BUY HOUSES

Quick cash and closing on homes \$25,000 or less. Call Jim at 325-518-8128

### EXPERT AUTO WORK

REASONABLE RATES



See us for all your auto mechanic needs. 20 years experience. We do it right the first time. US 277 South • Haskell

### Miscellaneous

HOUSE LEVELLING and foundation repair. No payments until work is satisfactorily completed. David Lee & Co. 325-675-6369. 1-888-486-8588. 6tfc

GIBSON MUSIC STUDIO. Private piano and voice lessons call Paul Gibson at 940-256-0764. Member of TMTA and MTNA. 32tfc

### Jobs Wanted

WILL DO mowing, farm or ranch work. Sylverio Escamilla. 864-5582. 33p

WANT to do any small automotive engine repairs, alternators, starters, oil changes, etc. Come by 206 S. Ave. C or call Eddie at 863-4278. 33p

### Real Estate

LAND FOR SALE: 325 acres, five miles northeast of Stamford (Haskell County). Good hunting: deer, quail, hogs; tank for fishing. 940-864-2826. 31-34p

FOR SALE: Nice corner lot, 9th and Ave. L. Inquire at 1202 N. Ave. J. 33c

FOR SALE: 4 deeded adjoining lots. Two with septic tanks and mobile home. Needs remodeling. \$15,000. 940-864-2579. 33-34c

FOR SALE: Lake cabin. Two deeded lots with 1,500 sq. ft. home. Private channel and boat dock, carport, storage building and workshop. \$49,900. 940-864-2579. 33-36c

### For Rent

FOR RENT: Furnished rooms for rent. Nightly, weekly. Call Lone Star Lodging 864-2424. 21tfc

### Nanny Plumbing, Inc.

301 S. Ave. E • Haskell 940-864-3043 Sales and Service for Residential Plumbing and Heating/Cooling, Pump Installer and Sprinkler Systems. License numbers available upon request.

### Help Wanted

NOW TAKING applications for all positions at Sonic Drive In, Haskell. Apply in person. 25tfc

GIBSON CARE Center, Aspermont needs CNAs for all shifts. Call Melissa Prew, ADON at 940-989-3526. E.O.E. 9tfc

HELP WANTED: Waitresses. Apply in person. 1006 S. Avenue E. 31-34c

A-TEAM CONSTRUCTION needs oilfield hands, roustabouts and roustabout pusher. Experience required. 940-657-4333. 31-34c

EARN EXTRA Money fast and fun: AVON Reps needed. No door to door, only \$10 to start. Call Deborah 325-773-2013. 32-33c

NURSES UNLIMITED Inc. is seeking enthusiastic and outgoing attendant to assist clients in the home with personal care, meal prep., light housekeeping. P.T. E.O.E. Call 1-888-859-0640. 32-33c

CERTIFIED NURSE AIDE positions available. Please apply in person at Brazos Valley Care Home. 605 S. Ave. F, Knox City. 32-33c

BAKER HUGHES Baker Petrolite: Applications are being accepted for a driver in Knox City, Texas area. Candidate will operate a treater truck for downhole and pipeline treatments. Must be physically capable, and able to maintain paperwork. Requirements: High school diploma or equivalent; good driving record, Class A or B CDL; HAZMAT and tanker endorsements. Competitive pay/excellent benefits. EOE. Please call 888-446-1722, ext. 1. 32-33c

WES-T-GO now accepting applications for cashier. Apply in person at store. 400 N. Ave. E. 33-40c

### Help Wanted

PART-TIME person needed for desktop publishing position. Must be able to accurately type 50 wpm. Hours needed are Mon. 8:30 to 5 and Tues. and Wed. 8:30 to noon. Applicant must be dependable, mature and energetic. Good proofreading and grammatical skills with strict attention to detail is important. Applicant must be able and willing to perform any and all duties that arise in a very busy, deadline-driven office setting. Computer knowledge a must. No smoking environment. Apply in person, Wednesday and Thursday afternoons only, at the Haskell Free Press, 420 N. First, to make appointment for interview. 33tfc

The Haskell Free Press reserves the right to edit and/or delete all news stories and locals for length and liability and to refuse to print anything deemed not newsworthy.

You can't stay mad at someone who makes you laugh. We meet or beat all other stores on Ashley Furniture and delivery is free. Kinney Furniture in Stamford. 325-773-2232. 33c

### Help Wanted

HASKELL HEALTHCARE is accepting applications for CNAs. Call or come by. Ask for Paulette or Cindy. 864-8537. 33-34p

ROLLING PLAINS Correctional Facility is currently accepting applications for correctional officers, licensed vocational nurses, and a diesel mechanic. Benefits include medical and life insurance no cost, paid time off (PTO), 401(k) and optional supplemental insurance. Call Lorie Martinez (HR Mgr.) at 940-864-5694 or stop by facility to pick up an application. 33-34c

HASKELL OWNER FINANCE See at 506 N. Ave. G Wood fence. Extra clean home. Easy terms. Call Jim at 325-518-8128

WILD HORSE TRADING POST Haskell's General Store and RadioShack. Don't forget - We have guns and ammo, gifts, musical instruments and ladies clothing! 419 S. 1st, Haskell • 864-2200 Hours: M-F 9-6; Sat. 9-3

Dodson Concrete Construction Commercial - Residential David Dodson 704 N. Ave. F • Haskell 940-864-2038 Over 20 Years in the Business FREE ESTIMATES

Need to make your Cash Register sing? Let us help you ring up the big sales with our display or classified ads. Call us today, for results that are music to your ears!

**The Haskell Free Press**  
940-864-2686

**RIKE REAL ESTATE**

Mary Rike, Broker John Rike, Agent  
411 1/2 S. First Street  
Haskell, Texas 79521  
940 864 2411 940 864 2332  
mjr@dtmspeed.net  
www.rikerealestate.com

**WEINERT-304 S. LEAVITT.** Nice two-bedroom, one bath in great location. Home has living, dining, kitchen combination, large utility room and two large bedrooms, C/HA, carport and fenced yard.

**1405 N. AVE. H.** Three-bedroom or two-bedroom and den with two baths, large utility room, C/HA, some wood floor, large living area, lifetime metal roof, carport and large metal storage.

**804 N. AVE. H.** 2-1-carport. Property has living, dining, kitchen, two bedrooms, C/H. Property hookups, garage in rear, water well and extra lot.

**SOLD**

Come by Rike Real Estate for a complete list.

**LANGFORD ROUSTABOUT SERVICE**  
SCOTT LANGFORD

Roustabouts Backhoes Winch Trucks Dump Trucks Welders

Mobile: 940-256-0535  
Office: 940-864-3490  
Home: 940-864-2565

8348 N. Hwy. 277  
Haskell, Texas 79521

Specializing In:  
Oilfield Repair,  
Maintenance & Construction

**Haskell Volunteer Fire Dept.**

is accepting donations to build Fire Station #2 at 300 S. 1st

to house donated Texas Forest Service firefighting equipment and provide a larger training facility. If you would like information on making a donation or how you can help contact Fire Chief Bill Steele 940-864-2208; Randy Shaw 940-864-2023; or ask any Haskell fireman for details.

Donations may be mailed to:  
**Haskell Volunteer Fire Dept.**  
301 N. First St., Haskell, TX 79521

**OPENING SOON!**  
In Haskell ~ A great place to call:

**homePROREALTORS®**

4 Ave. D, Haskell, Texas 79521  
325-573-5626 (Temporary Phone)  
325-573-5624 Fax

homeprorealtors2000@yahoo.com  
Debby Miller, Broker/Owner

ABR®, C-CREC®, RECS  
2002 REBAC Hall of Fame Recipient  
Licensed Texas Loan Officer  
Real Estate Instructor

**Brandy Miller, Real Estate Assistant**  
Seller & Buyer Representation Available  
Qualify for Financing - Down Payment Assistance Programs Available  
One Stop Shopping for all your Real Estate Needs

**RECENTLY LISTED**  
64.2 (+/-) Acres cultivated, bird hunting. NW of Haskell. Call for more information ..... \$42,200

The New **Haskell County Realty**

103 N. Ave. E • 940-864-2665

Bridget Guess Broker  
Chan Guess Agent  
Hess Hartfield Agent

**FEATURED LISTINGS**

**1300 N. AVE. F. FEEL AT HOME.** 2 bedroom, 2 bathroom, brick home, with living room and den, kitchen with dining area, utility room, central heat and air, underground water sprinkler system, 2 car carport with storage and 2 car garage.

**1005 N. AVE. K. PLENTY OF SPACE.** 2 or 3 bedroom, 1 bath, living room, step down den with wood burning stove, large dining area, large utility room, central heat, 1 car carport, fenced yard. Possible owner finance.

**1557 U.S. HWY. 380 WEST: COUNTRY LIVING with ACREAGE.** 4 bedrooms, 2 bath, brick home, living room, large kitchen open to nice size dining room, great for entertaining, wonderful storage throughout house, utility room, patio area, 2 car carport, beautiful yard, shop with attached carport. Property sets on approximately 11 acres of cultivated land.

"Where we make You our #1 Priority"  
Residential, Commercial, Land  
www.haskellcountyrealty.com

**AFTER SCHOOL PROGRAM**  
Now Hiring  
Enthusiastic Staff to work with kids in exciting Ballinger program

Prefer experience with kids, but willing to train the right person.

Following Part-time positions available:  
Project Manager (30 hrs/week)  
Site Coordinators (25 hrs/week)  
Instructors/Coaches (up to 15 hrs/week)

Art; Sports; Tutoring;  
Music; Dance; Photography;  
Film making; Robotics/Engineering and more . . .

Starting pay \$8-\$15/hour depending on experience, education, and position  
Call Michelle for information at 325-672-8544

West Central Texas Council of Governments is an equal opportunity employer and program

# Rule school sets registration

Rule ISD will hold registration on Aug. 22, 23, and 24 in the Rule ISD library. Parents and legal guardians of students in Pre-K through 8th grade, and parents of all students who are new to the district for the upcoming school year are required to attend. Parents of all high school age students are also encouraged to attend.

The registration schedule is as follows:

Wed., Aug. 22; 1:00 p.m. until 2:30 p.m., Seniors. 2:30 p.m. until 4:00 p.m., Juniors.

Thurs., Aug. 23, 1:00 p.m. until 2:30 p.m., Sophomores. 2:30 p.m. until 4:00 p.m., Freshman.

Fri., Aug. 24, 9:00 a.m. until 11:00 a.m., Pre-K through 5th grade. 1:00 p.m. until 2:00 p.m., 8th grade. 2:30 p.m. until 3:00 p.m., 7th grade. 3:00 p.m. until 4:00 p.m., 6th grade.

Parents of students who are new to the district should bring the following items with them to register:

\*Proof of residency in the

Rule ISD district in the form of a water or electric bill

\*A copy of the child's Social Security Card.

\*Current immunization records.

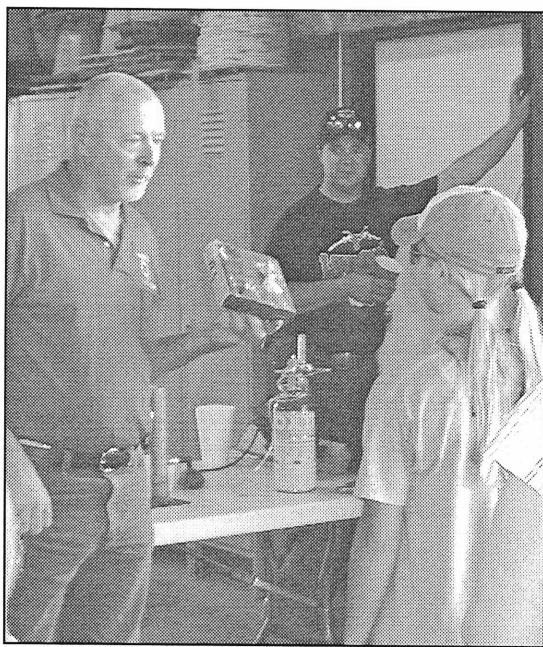
\*Any records from the child's previous school district.

If anyone has questions about registration, call Rule ISD at 997-2246 or 997-2521.

Friday night, Aug. 24 Rule ISD will be hosting "Meet the Teachers Night" for all students and their parents from 5:30 to 6:30 p.m. This event is for the families who will have students in Early Childhood through 12th grade, during the 2007-08 school year.

Teachers and staff will be on hand to meet and greet parents, register students new to the district, and answer questions regarding the upcoming school year. Elementary students are encouraged to bring their school supplies with them.

Rule Elementary School lists are available at the Rule ISD Superintendent's office.



**NATIONAL NIGHT OUT—Haskell Fire Chief Bill Steele, left, explains to Stormy Darnell that the blacken box he is holding is a smoke detector, found inside a house that burned, still inside the box. Smoke detectors work, but, it has to be installed and maintained to be effective. Approximately 40 firemen, their families, and citizens attended the Tuesday night out. The night out is an invitation for citizens to come to the station, meet the firemen, look over the equipment and ask questions about all the services that the men provide. Fireman Steven Wright is pictured in the back.**

# WT Fair, show season entries due Aug. 17

by Wes Utley  
CEA-Ag/NR, Haskell Co.

The fall show season is fast approaching. If you are a 4-H member and have an animal project, entries for the West Texas Fair and Rodeo in Abilene and the State Fair of Texas are due in the Haskell County Extension Office Fri., Aug. 17 by 4:30 p.m.

The entry forms are available at the Haskell County Extension Office, located at 101 S. Ave. D in Haskell.

If you have any questions on animal projects, or the upcoming fairs and shows, call Wes Utley, Haskell County Extension Agent-Ag at 940-864-2658 or 864-2546.

## Tower Drive-In Theatre

Hwy 6 North, Rule - (940) 997-0137

**NOW PLAYING** The Simpsons Movie - PG-13  
I Now Pronounce You Chuck and Larry - PG-13  
Show starts at 9:15! Open Friday, Saturday & Sunday  
Adults \$5; Ages 6-12, \$2; 5 and Under Free

**BACK TO SCHOOL NO SALES TAX!**  
**SALE** Fri., Sat. & Sun.  
ALL SHOES ON SALE

Adult-Kids <b>20-50% OFF</b>	Men-Women <b>20-50% OFF</b>	One Group Shoes <b>\$6<sup>50</sup></b> pair
Football Girls Basketball Shoes	Hi-Tops Lo-Tops Sandals	Tee Shirts Bags • Shorts Backpacks Cheerleader Suits

**2007 Hunting License Now Available!**  
Where Winners Shop  
Sport>About of Haskell  
940-864-3891  
402 N. 1st

# Bobcats set soap scrimmage, social

Admittance to the Bobcat versus Abilene Christian High School football scrimmage Thurs., August 23, will be a jug or box of laundry soap. The Rule Athletic Department for all girls and boys sports in junior high and high school will benefit from this cost of admission. Game time is 6 p.m. at Bobcat Stadium in Rule.

The annual Rule Booster Club "Meet the Bobcats" ice cream social is set for Aug. 23, following the football scrimmage against ACHS. All

junior high and high school cheerleaders and football players will be introduced. Parents, friends and fans will be able to join the Booster Club also.

Booster Club members and parents of players and cheerleaders should bring either a freezer of homemade ice cream or cookies to share.

For more information, call the Rule Superintendent's office at 997-2521, High School office at 997-2246 or the Athletic Department at 997-2772.

# Haskell Elementary sets registration and back-to-school night

Registration and Back to School Night for all Haskell Elementary students will be held Tues., Aug. 21 and Thurs., Aug. 23. On Tues., Aug. 21 students in third grade and fourth grades will register at 5:30 and students in fifth and sixth grades will register at 6:30. On Thurs., Aug. 23 students in Head Start, Early Childhood and Kindergarten will register at 5:30, Prekindergarten students will register from 5:30 to 7:30 and students in first and second grades will register at 6:30. Parents are encouraged to

attend registration with their child/children so they can meet the teachers and fill out necessary paperwork.

Homeroom lists will be posted at the time of registration.

School begins Mon., Aug. 27. Classes will begin at 8:00 a.m. Kindergarten through sixth grades will dismiss at 3:15 p.m. Kindergarten will dismiss at 1:00 p.m. the first three weeks of school (Aug. 27 to Sept. 14).

## TAX FREE WEEKEND SIDEWALK SALE

Friday and Saturday only, August 17-18

**\$10<sup>00</sup> - \$20<sup>00</sup> - \$50<sup>00</sup>**

Racks of Clothes

Select Group Shoes **\$20<sup>00</sup>**

Select Group Brighton Shoes **\$40<sup>00</sup>**

All Spring & Summer Sale Clothes

**1/2 price**

All Sandals & Dress Shoes

Including Clarks **1/2 price**

Now Selling Merle Norman Cosmetics and Not Your Daughters Jeans

**Personality-Slipper Shoppe**

940/864-2501 • 864-3051

South Side of Square

Haskell, Texas

## CORRECTED Notice of Public Hearing on Tax Increase

The Haskell County General will hold a public hearing on a proposal to increase total tax revenues from properties on the tax roll in the preceding tax year by 7.75% percent (percentage by which proposed tax rate exceeds lower of rollback tax rate or effective tax calculated under Chapter 26, Tax Code). Your individual taxes may increase at a greater or lesser rate, or even decrease, depending on the change in the taxable value of your property in relation to the change in taxable value of all other property and the tax rate that is adopted.

The public hearing will be held on August 24, 2007 and August 27, 2007 at 11 a.m. in the Commissioners Court Room, Haskell, Texas.

The members of the governing body voted on the proposal to consider the tax increase as follows:

FOR: Kenny Thompson, Johnny Scoggins, Bobby Don Smith, Tiffen Mayfield, David Davis

AGAINST:

PRESENT and not voting:

ABSENT:

### Comparison of Proposed Budget with Last Year's Budget

The applicable percentage increase or decrease (or difference) in the amount budgeted in the preceding fiscal year and the amount budgeted for the fiscal year that begins during the current tax year is indicated for each of the following expenditure categories:

Maintenance and operations	% (increase)	.06% (decrease)
Debt service	% (increase)	% (decrease)
Total expenditures	% (increase)	.06% (decrease)

### Total Appraised Value and Total Taxable Value as calculated under section 26.04, Tax Code

	Preceding Tax Year	Current Tax Year
Total appraised value* of all property	\$352,320,842.00	\$454,438,799.00
Total appraised value* of new property**	\$ 1,968,547.00	\$ 2,237,650.00
Total taxable value*** of all property	\$215,321,830.00	\$223,188,713.00
Total taxable value*** of new property**	\$ 1,941,797.00	\$ 1,255,780.00

### Bonded Indebtedness

Total amount of outstanding and unpaid bonded indebtedness \$0.00

### Tax Rates

Adopted tax rate for the preceding tax year	\$0.5171 per \$100 per value
Proposed tax rate for the current tax year	\$0.5394 per \$100 in value
Difference in the proposed tax rate and the adopted tax rate for the preceding tax year	\$.0223 per \$100 in value
Percentage increase or decrease in the proposed tax rate for the preceding tax year	7.75% Increase

These tax rate figures are not adjusted for changed in the taxable value of property.

### Comparison of Residence Homestead Values

Average appraised and taxable values on residence homesteads are compared from the preceding tax year and the current tax year.

	Preceding Tax Year	Current Tax Year
Average residence homestead appraised value	\$32,089.00	\$32,932.00
Homestead exemption amount for the taxing unit (excluding special exemptions for persons 65 years of age or older or disabled)	\$ 0.00	\$ 0.00
Average taxable value of a residence homestead (excluding special exemptions for persons 65 years of age or older or disabled)	\$32,089.00	\$32,932.00

### Comparison of Residence Homestead Taxes

The taxes that would have been imposed in the preceding tax year on a residence homestead at the average appraised value (excluding special exemptions for persons 65 years of age or older or disabled) are estimated to be \$165.93. The taxes that would be imposed in the current tax year on a residence homestead appraised at the average appraised value in the current tax year (excluding special exemptions for persons 65 years of age or older or disabled) if the proposed tax rate is adopted, are estimated to be \$181.39. The difference between the amount of taxes on the average residence homestead in the current tax year, if the proposed tax rate is adopted, and the preceding tax year would be at increase of \$15.46 in taxes.

\* "Appraised value" is the amount shown on the appraisal roll and defined by Section 1.04(8), Tax Code.  
\*\* "New property" is defined by Section 26.012(17), Tax Code.  
\*\*\* "Taxable value" is defined by Section 1.04.(10), Tax Code.