

Football games

RULE

Bobcats vs Richland Springs
Sat., Dec. 16, 7:30 p.m.
at Shotwell Stadium, Abilene

Basketball games

HASKELL

JV-V B vs Paducah
Fri., Dec. 15, 6 p.m.
in Paducah
JV-V G vs Stanton
Fri., Dec. 15, 6 p.m.
at Stanton
7th-8th G vs Colorado City
Mon., Dec. 18, 4 p.m.
at Rochester
7th-8th B vs Colorado City
Mon., Dec. 18, 5 p.m.
at Colorado City
JV-V G-B vs Anson
Tues., Dec. 19, 4 p.m.
at Anson

PAINT CREEK

VG-VB vs Guthrie
Fri., Dec. 15, 6:30
at Guthrie
VG-VB vs Knox City
Tues., Dec. 19, 6:30
at Knox City

RULE

VG-B in Rule Tourney
Dec. 14 & 16
JV-V G-B vs Hamlin
Tues., Dec. 18, 4 p.m.
at Hamlin

Calendar

Early deadline

Deadline for news and advertising for the New Year's edition, Thurs., Dec. 28 of the Haskell Free Press will be Thurs., Dec. 21 at 5 p.m.

Toy run

The 'Big Empty Riders' of the West Texas H.O.G. Chapter will sponsor a toy run Sat., Dec. 16 to benefit the children of this area. All riders and all types of motorcycles are welcome to take part in this ride to help make a child's Christmas just a little brighter. Registration will be held at Kathy's Barber Shop in Rule at 11:30 a.m. and parade to Haskell to drop off toys to the Child Welfare Board. For more information, call Lonnie Rolls at 864-8910.

Food distribution

The Haskell County Ministerial Alliance Food Distribution Center will distribute food Sat., Dec. 16 from 10 a.m. to 11:30 a.m. at 206 S. 2nd (building east of Civic Center) in Haskell. Volunteers and boxes are needed.

Christmas Cantata

'A Thrill of Hope,' this year's countywide Christmas Cantata, will be presented Dec. 17 at 7 p.m. at First Baptist Church, 301 N. Ave. E in Haskell. A nursery will be provided. For information, call First Baptist Church at 864-2581.

Christmas concert

The Haskell 7th, 8th and high school bands will present a Christmas concert Thurs., Dec. 14 at 7 p.m. at the Rochester School auditorium.

Blood drive

The Meek Blood Center will hold a blood drive Tues., Dec. 19 from 12 noon to 6 p.m. at the Haskell National Bank. Call 325-670-2798 for more information.

Noah Project

The Noah Project-North Advisory Committee will meet at the Haskell County Courthouse Fri., Dec. 15 at noon. All members are asked to attend. The meal will be pot luck.

Storm sirens

The City of Haskell will test the storm sirens at noon on Fridays.

Index

ObituariesPage 2
Out of the PastPage 4
MenusPage 10
ClassifiedsPage 11

Christmas Cantata at FBC Sun., Dec. 17 at 7 p.m.

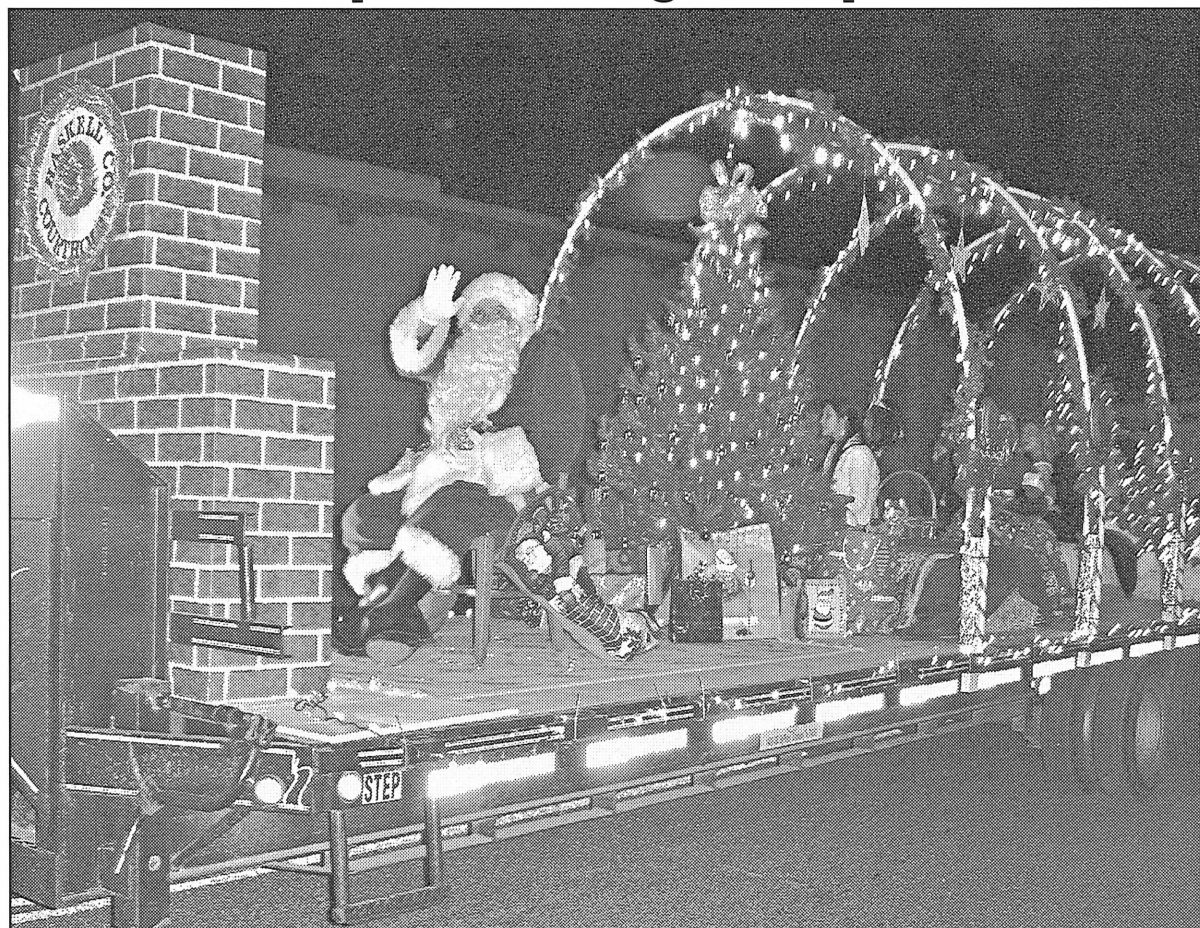
The Haskell Free Press

VOL. 120-NO. 50, ©DECEMBER 14, 2006

"The People's Choice"

12 PAGES-ONE SECTION-75 CENTS

Christmas parade lights up streets of Haskell



A VISIT FROM THE JOLLY OLD ELF—Santa Claus came to town Saturday to greet every one while waving and riding on the Merry

Christmas Pageant float by Haskell County Precinct 3 that took first place in the Old Time Christmas Parade of Lights judging.

The Haskell Chamber of Commerce 'Old Time Christmas Lighted Parade' lit up the parade route Saturday evening with 24 entries, making it one of the largest parades ever held in the city.

Grand Marshals for the parade were Bob and Darlene Smith, chosen in appreciation of their donations of decorative lights and scenes displayed on the County courthouse square.

The first place entry was the Merry Christmas Pageant float of Haskell County Precinct 3 and County Judge, David Davis.

Second place went to the Richardson's TrueValue float. Third place went to the Santa Rosa Telephone Cooperative float.

Other floats winning were: Most Distance Travel, The West Beulah Choir of Goree; Most Original, Haskell Chamber of Commerce, Christmas on the Courthouse; Best Lights, Sheriff David Halliburton's pickup; Best Music, West Beulah Choir of Goree; Best Holiday Spirit, Perez float of nativity children; Best Individual Entry, Go Cart of Carson Hadaway and Macy Bingham; Best Effort, Haskell High School Band; Best Children's Float, Rolling Plains Correctional Facility angel float; Most Creative, Rolling Plains Correctional Facility, Christmas house with choir; Best Religious Theme, Richardson's TrueValue.

All of the winners received trophies, donated by the Rolling Plains Detention Center.

Rule Bobcats win chance at state six-man title

"One Team, One Dream," came through and came true for the Rule Bobcats Saturday night at Lowrey Field in Lubbock, when they shut out Meadow, 45 to 0 in the Division I six-man semifinals.

In the "best game of the season," Bobcat quarterback Jay T. Spitzer threw for two touchdowns and ran for two others, helping the team to reach the status of 12-0.

The team which limited Meadow to five first downs and a total of 123 yards, will face Richland Springs at Shotwell Stadium in Abilene Sat. Dec. 16 at 7:30 p.m. It will be their first state championship football game.

The last time a Rule six-man team has gone as far as the semifinals was in 1999, when they lost to Groom. The only other time a Rule football team has been to the State finals was in 1973, when Art

Briles, Rob Kittley, Larry Barbee and company lost to Big Sandy in the Class B finals at Weatherford.

The Rule teams have been in the playoffs nearly every year of the five years that Mike Reed has been the head coach. Assistant coaches are Ryan Bleiker and Bobby Robinson.

Robinson's comment was, "He (Reed) is a good one. He's going to win State sometime in his career, and it may as well be this year!"

Members of the team are as follows: Jonathan Rincon, runningback/linebacker; Austin Flores, end/end; Stephen Pace, running back/linebacker; Jay T. Spitzer, quarterback/safety; James Wolfe, end/linebacker; Josh Large, end/end; Adam Vasquez, runningback/linebacker; C.J. Saucedo, runningback/linebacker; D.J. Hall, quarterback/safety; Paul Griffin, runningback/end; Julian

Menchaca, runningback/end.

Kade Kittley, end/safety; Joseph Turner, end/cornerback; Kyle Simpson, end/linebacker; Nick Johnson, end/end; Mathew Turner, center/end; Chris Salinas, end/end; Wesley Short, runningback/safety; Vinnie Perales, quarterback/end;

Steven Anderson, center/linebacker; Marty Hall, end/linebacker.

Josh Perez, runningback/linebacker; Tye Clark, center/linebacker; Andrew Hertel, end/end; Will Kittley, center/linebacker; A.J. Rogers, end/end; Brady Baitz, center/end; Tate Clark, end/

linebacker; Mason Bishop, end/end; Heath Trussell, end/end.

Trainer for the team is John Gaines.

Asked his feelings about the win, Coach Reed said, "It feels great. We're going to enjoy it. Very much so."

Christmas cantata choir voices to be heard Sunday, Dec. 17 at FBC

The Christmas cantata, "A Thrill of Hope," will be presented Sun., Dec. 17 at 7 p.m. by a fifty voice choir and dramatic speakers representing eleven churches in Haskell County.

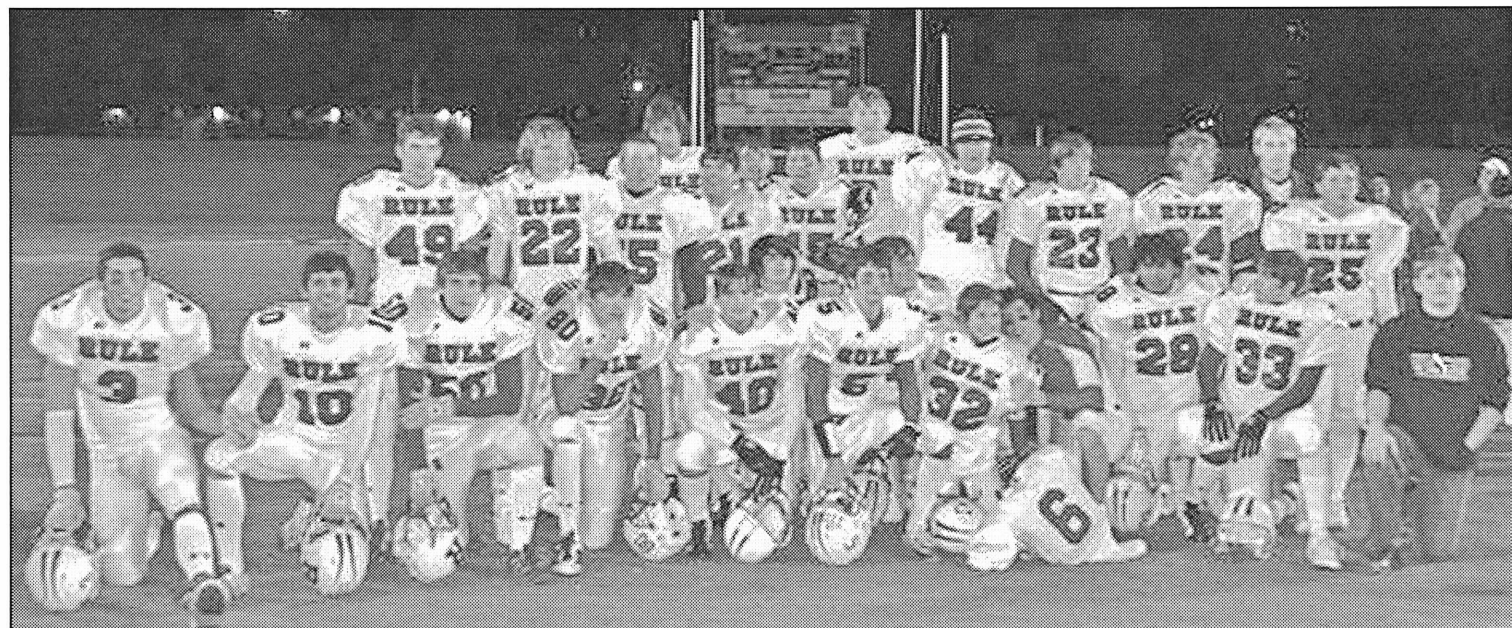
With so many news breaking events and personal tragedies robbing people of their joy, it seems

that we live in a world more desperately in need of hope than at any time in recent history. The cantata, created by Camp Kirkland and Claire Cloninger, uses carols and worship choruses, as well as new and traditional Christmas songs, to tell the incredible story of the hope that came to earth as a baby,

who came to heal the hopeless human heart.

The cantata choir invites you to come worship with us at First Baptist Church, 301 N. Ave. E. A nursery will be provided.

For more information, contact the First Baptist Church office at 864-2581.



BOBCATS-SEMI—Members of the Rule Bobcats semifinals champion football team celebrate following the victory over Meadow last Saturday, played in

Lubbock. The Bobcats will play Richland Springs in the State championship game at Abilene's Shotwell Stadium Sat., Dec. 16, at 7:30 p.m.

FOR NEWS ITEMS OR TO SUBSCRIBE, CALL 864-2686

Keep your pets safe during the holidays

While you're making your holiday plans, don't forget about those other family members who bring us so much joy: the four-legged ones. Here's a checklist with a few simple precautions to protect your cats or dogs from harm during holiday festivities.

your cats or dogs from harm during holiday festivities.

- Try to route electric cords away from where your pets can reach them. Puppies and kittens love to chew on things, including wires; they can easily gnaw through insulation and receive a painful shock or be electrocuted. But never run cords under carpets; walking on them could damage the insulation and cause a fire. Check your local pet store for chew-proof plastic sleeves that you can wrap around wires, or bitter-tasting liquids that you can apply to discourage your pet from nibbling on something dangerous.

- Keep tinsel, decorations, and the hooks for hanging them out of reach of inquisitive pets. If you're wondering what may tempt a pet, you might find it helpful to get on your hands and knees and view the world from their perspective.

- Cover the water in your tree stand which can make your pet sick if they drink it. Likewise, certain holiday plants like poinsettias, mistletoe berries, holly, and amaryllis, if ingested, may also poison your pet.

- Prevent your dog or cat from knocking over your tree by attaching the tree to the ceiling or wall with fishing line.

- Mount indoor lights high enough to prevent pets from becoming entangled in them.

**Back the
Indians and
Maidens!**

ABC Greenhouse
*Noble Fir Wreaths
was \$22 now **\$16.50** was \$26 now **\$19.50**
*28" Christmas Cross
was \$30 now **\$22.50**
Located just past 2nd house North of Trinity Lutheran Church in Haskell. Debbie Earles, owner



BERNARD E. GODLEY, INC.
TAX SERVICE AND BOOKKEEPING
Specializing in Farm, Ranch & Agri-business
Over 35 Years Experience
940-889-8809
98 Hill Drive • Seymour, Texas
Fax 940-889-4908

SANTA ROSA Telephone Cooperative
INC. COMMUNICATIONS HAS
DSL
CALL OUR OFFICE 863-1125 FOR MORE DETAILS!
Broadband, High Speed Internet. Always On - Won't tie up your phone line. Surf with amazing speed. Download with "super speed."
A must for distance learning.
Haskell office 863-1125, or come by 113 N. Ave. D.



STOREWIDE SALE
Going on now at
Boggs & Johnson Furniture
Check out these specials:

<p>Large Blue Rocker-Recliner Reg. \$499.00 30% OFF Sale \$349</p>	<p>Select Group of Lamps CLOSEOUT PRICED AT each \$19</p>	<p>Lane Double-Reclining Loveseat Medium Brown. Reg. \$1095. 30% OFF Sale \$759</p>
<p>4 Drawer Chest Choice of Colors only \$99</p>	<p>Lane Leather Match Rocker-Recliner Burgundy 20% OFF at \$599</p>	<p>Heavy Pine Dresser & Mirror Well Made! Reg. \$999.00 40% OFF Sale \$599</p>

Living Rooms, Dining Rooms, Bedrooms, and more—all on sale.

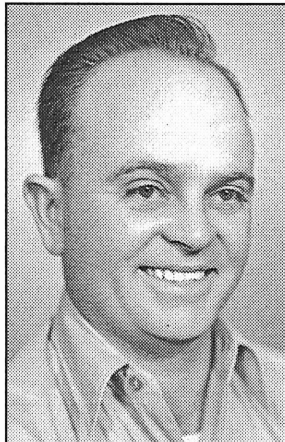
Did you know that we finance with approved credit?
For example, you can get a Bedroom Group consisting of Dresser, Mirror, Headboard, Chest and Nifstand for only . . .
\$99 Down and \$47/month for 18 months
Add a full size set of bedding and frame in with it and pay only . . .
\$125 Down and \$64/month for 18 months

Don't miss out on these savings!
Boggs & Johnson Furniture Store
"We Want To Be Your Furniture Store!"
East Side of Square • Haskell, Texas • 864-2346



Obituaries

Carl Thomas Hitt



CARL THOMAS HITT
Funeral services for Carl Thomas Hitt, 83, were held Sat., Dec. 9 at

First Baptist Church of Aspermont with Rev. Dolan Brinson officiating. Burial was in Rule Cemetery under the direction of Hamil Family Funeral Home of Abilene.

Mr. Hitt died Wed., Dec. 6 in Abilene.
Born Dec. 11, 1922 in Haskell County, he was the son of James Thomas Hitt and Verla Grace Grinstead Hitt. He graduated from Rule High School and married Sue Wright March 31, 1951 in New Mexico. A farmer and rancher, he was a longtime resident of Rochester and Aspermont. He served his country in the United States Army during World War II and the Korean Conflict. He was a Mason, a member of the VFW, the American Legion, and was a member of the Aspermont Lion's

Club. He served on the Board of Directors at the Stonewall County Memorial Hospital. He also worked as an administrator for various nursing homes.

He was preceded in death by both of his parents; his wife, Sue Wright Hill on July 30, 1996; his brother, Clarence Hitt, also in 1996; and one nephew, Tommy Collum.
Survivors include three sisters, Tommie Collum of Abilene, Eva Irvin and husband, Alton 'Cotton' of Abilene, and Mary Ellen Smith of Wichita Falls; nieces and nephews, Riva Hitt Johnson, Dr. Larry Irvin, Kenneth Irvin, Carla Castell and Karen Allred.
Memorials may be made to Rochester Veterans Memorial, 608 Avenue, Rochester, Texas 79544.
PD. NOTICE

Nellie Belle LuElla Ralston Wilson



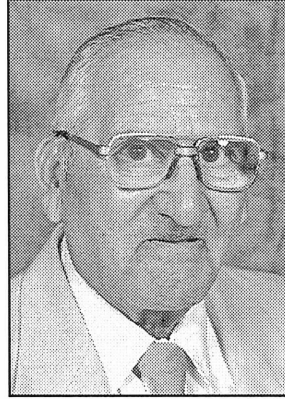
NELLIE WILSON
Funeral services for Nellie Belle LuElla Ralston Wilson of Haskell were held Fri., Dec. 8 at Trinity Baptist Church in Haskell with Tony Grand officiating. Burial was in Rule Cemetery under the direction of Holden-McCauley Funeral Home of Haskell.

Her children are celebrating the homegoing of their beloved mother. She was the wife of Louis Frank Wilson for over 61 years until his death in 2002. She was dearly loved by family, friends and all who ever had the privilege of meeting her. She was known by many as Mrs. Nellie, Mrs. Wilson and Nellie Belle. Her grandchildren knew her as G-G, Lady, Gran Gran, Grandma and Granny. All of her names were spoken with love and endearment. Her special saying was 'Jiggerdy-Jog-Home Again' when speaking to her grandchildren, after returning home from a shopping spree of fists full of change she had filled in each one of their hands. When asked what she was doing she would reply 'Justa-messen and a-groomin!' She loved her children and all her grandchildren, but the love of her life was her Jesus.

As a mother-in-law, Nellie was always as loving and encouraging to her daughters-in-law and son-in-

law, as she was to her children. She will be dearly missed by those who married into her family Everyone should be blessed with a mother-in-law like our dear Nellie.
She was preceded in death by her husband, Louis on March 20, 2002; two brothers, William Ralston and Everett Ralston; and four sisters, Violet Ralston, Cecil Corley, Gladys Summers and Jenny Manuel.
Survivors include three sons, Billy Wilson of Clyde, David Wilson of Pagosa Springs, Colorado and Roger Wilson of Haskell; a daughter, Sandra Stewart of Midlothian; 9 grandchildren, 20 great grandchildren and one great great grandchild; and three sisters, Nanny Wilson of Haskell, Odessa Pruitt of Bullhead, Arizona and Ruby Cutbirth of Magnolia.
Memorials may be sent to Trinity Baptist Church, 114 South Avenue D, Haskell, Texas 79521.
PD. NOTICE

Victor Salinas



VICTOR SALINAS
Funeral services for Victor Salinas, 74, of Rochester were held

Sat., Dec. 9 at St. George Catholic Church in Haskell with Father George Roney officiating. Burial was in Rochester Cemetery under the direction of Smith Funeral Home of Rochester.

Mr. Salinas died Wed., Dec. 6 at Hendrick Medical Center in Abilene.
Born June 3, 1932 in Woodsboro, he was the son of Victor and Victoria Cruz Salinas. He married Martina Macias Nov. 9, 1956 in Breckenridge. She preceded him in death in February 1996. He was a retired farmer and an active member of St. George Catholic Church.
He was preceded in death by his parents; his wife, Martina; and sisters, Trina Salinas and Olivia

Perez.
Survivors include his daughter, Mary Salinas White and husband Dewayne of Abilene; sons, Victor Salinas, III and wife, Irma of Abilene, and Joe Freddy Salinas of Rochester; three grandchildren, Letitia Guajardo and husband Robelin of Levelland, Enedina Rivera of Abilene and Victoria White of Abilene; and four step great grandchildren; sister, Rafayla Moreno of O'Brien; three brothers, Merardo Salinas of Rochester, Romula Salinas of Knox City and John Salinas of Falfurrias; and two special sisters-in-law, Andrea Kitley of Sagerton and Mary Enriquez of Haskell.
PD. NOTICE

a thrill of
HOPE
A CHRISTMAS MUSICAL

**This year's Countywide
Christmas Cantata
'A Thrill of Hope'**
will be presented
December 17 at 7 p.m.
at **First Baptist Church**
301 North Avenue E in Haskell.
A nursery will be provided.
For more information, call
First Baptist Church at 864-2581

Honoring 60 years of nursing education at TCU



NURSING STUDENTS in class in 1948. The first TCU nursing students were young, single, white and female. The student on the far right is Bobbie Herd Williams of Haskell. This picture is courtesy of The Harris College of Nursing & Health Sciences.

•A lot has changed since TCU started its program

by Leila Fadel
Star-Telegram Staff Writer
Reprint Courtesy of the Fort Worth Star-Telegram
FORT WORTH—It's been 60 years since the first nursing students walked the halls of Texas Christian University.

In 1946, nurses wore white uniforms, caps and capes. Most nursing students still went through hospital diploma programs rather than to a traditional university. In 1952 TCU because the first Texas university to be accredited by the National League for Nursing.

At that time, no one had heard of many of today's infectious diseases, such as AIDS.

Nowadays students are immersed in technology with cellphones, PalmPilots and simulation dolls that breathe, blink and get sick.

Today, TCU celebrates six decades of education at the Harris College of Nursing & Health Sciences.

"Nursing has its own research

base that was not there in 1946," said Paulette Burns, associate professor and dean of the Harris College of Nursing & Health Science. "We have nurse scientists and are developing a body of knowledge so we can give more effective care."

Defeat the holiday blues

One gift you don't need in this season of frenzy—the holiday blues The hustle and bustle of the holidays doesn't always translate into feelings of warmth and "good cheer" for everyone. A sense of loneliness or isolation—particularly when compared with the glowing environment depicted all around us in seasonal movies, television dramas and store settings—often brings the "holiday blues."

Quite different from true clinical depression, the holiday blues are transient and can be resolved or prevented fairly easily, says Dr. Madhukar Trivedi, who leads the Mood Disorders Research Program and Clinic at UT Southwestern Medical Center.

She added: "We have a legacy to live up to, and that legacy is to strive for excellence."

Then
•Nurses wore starched, white uniforms with capes and ironed their nurses' caps.

•They worked in wards with tens

"Some people don't have the opportunity or the wherewithal to get involved with family and friends and that offers a stark contrast to the pictures painted by the media and the attention focused on the season," says Dr. Trivedi. "On the other hand, it's surprising how soon people can shake those blues, if they just make a concentrated effort."

Dr. Trivedi offers the following suggestions for combating holiday blues:

- Get involved in your community or with charitable activities.
- Exercise regularly.
- Eat properly.
- Don't drink too much alcohol.
- Get enough sleep.
- Stick with a routine.

of beds instead of double or single rooms.

•Nursing was typically a female profession. The first TCU nursing students were young, single, white and female.

•The nurses often stood when doctors walked into the room.

•The first men were admitted in 1948.

Now

•More than 500 students are studying to be nurses.

•Technology is key; nurses fill out patients' charts and check lab results and doctor's orders on bedside computers.

•Nursing students practice on simulation dolls that breathe, blink and get sick. At TCU, one is named Addie, after the school's mascot, the horned frog.

•Master's classes are conducted online to encourage higher education for future nursing

educators; students can elect to study for a time in Mexico, Chile, London and Spain.

•About 7 percent of

undergraduate nursing students are male.

SOURCES: Paulette Burns, dean of the Harris School of Nursing, and The Harris College of Nursing by Lucy Harris.

Full Service
Soup, Salad and
Baked Potato Bar Daily
Serving 11 a.m. to 2 p.m.
Monday ~ Friday

It's messy outside,
but we're still
cooking!
Parking available in back.
Call-in orders welcome!

Good Times
☛ CAFE ☛
512 N. 1st
940-864-6133

new **Denver Omelet Burrito**
Eggs, ham, green peppers
and shredded cheese.

Try it With
Minute Maid
CRANBERRY JUICE

\$2.19
plus tax
and delivery

SONIC
America's
Drive-In.

Limited Time Only!
Only at participating SONIC Drive-Ins. ©2006 American's Drive-In Corp.

No Waiting **864-8533**
Call In Orders

Holiday Bakery Headquarters

Modern Way Bakery

Meringue Pies **\$5.99**

Pecan Pies **\$6.99**

Christmas Cookies, Pinks,
Chocolate and Fruit Filled Doz. **\$2.99**

Gingerbread Men **6 for \$2.99**

Picture Perfect Party Cake®
Birthday and Wedding Cakes

Homemade Sweets
by Martha and Tammy
(formerly of The Sweet Shop)

Please Call 864-3976

Modern Way
1202 N. AVE. E • Haskell

WE WILL BE
CLOSED
CHRISTMAS
DAY, MON.,
DEC. 25.



Come Let Us Adore Him

Putting the People of Our Community First
Welcome to Our

Open House

All Day Wednesday, Dec. 20

~ Holiday Banking Hours ~

Christmas: Bank Closed Mon., Dec. 25

Regular Banking Hours resume Tues., Dec. 26

New Year's: Drive thru Open Dec. 30. Bank Closed Mon., Jan. 1

Regular Banking Hours resume Tues., Jan. 2

First National Bank Haskell

200 South Avenue E

Haskell, Texas 79521

940-864-8555



Other Convenient Locations to Serve You:
First National Bank Munday - Stamford - Rochester



OPINION

TEXAS PRESS ASSOCIATION

State Capital



HIGHLIGHTS

By Ed Sterling

Education tops governor's goals for 80th Legislature

AUSTIN—Aides for Gov. Rick Perry, Lt. Gov. David Dewhurst and House Speaker Tom Craddick—addressed a small group of newspaper editorial writers and publishers in a small forum Dec. 7 in Austin.

The three took turns talking about their bosses' goals for the upcoming legislative session, which begins Jan. 9.

Kathy Walt, Perry's special assistant for communications, said the governor is pleased that the outgoing 79th Texas Legislature's handling of school finance and property tax reform takes those issues off the back of the incoming 80th Legislature.

Education continues to be Perry's highest priority, so he'll be working with the Legislature to increase higher education accessibility and affordability, Walt said.

Other Perry priorities:

- Increase border security and reduce crime.

- Simplify the state's spending limit formula, which presently is tied to growth in citizens' personal income. Perry believes the formula should be based on population growth, instead, Walt said.

- Require state agencies to post detailed budgets online.

- Amend the state constitution so that surplus tax dollars would be returned to taxpayers.

- Require the state comptroller to publish the methodology for making revenue estimates.

- Require universities and other state-supported institutions of higher learning to publish detailed cost breakdowns for instruction and maintenance and operations.

- Deliver on promise of property tax cuts.

- Solicit more citizen input on ways to accomplish property tax appraisal reform.

Dewhurst to hit child predators

Rich Parsons of Lt. Gov. Dewhurst's office said his boss is calling the next session "the children's session" because of plans to lower the boom on adults who commit sexual offenses against children by passing tougher laws.

Dewhurst wants to pass a Texas version of "Jessica's Law"—a Florida law that increased penalties against sex offenders whose victims are children.

Dewhurst is proposing that a first-time offender convicted of a

sexual assault against a child under age 14 would get a 25-year sentence and lifetime monitoring after release. A second-time offender would be subject to the death penalty.

Parsons said the 200,000 teachers and 300,000 support personnel in Texas' public school system would be subject to background checks under Dewhurst's child-protection agenda. **Speaker's rep focuses on budget**

Appropriations bills must originate in the House, so Don Green, speaker Craddick's director of budget and policy, focused on money issues.

Green said Craddick believes the estimated \$15 billion surplus projected by outgoing Comptroller Carole Keeton Strayhorn is more like \$7 billion.

Green briefed the audience on the list of the state constitution's spending controls. He pointed out the overlapping mandates that budget writers must consider, such as those based on the state's economic growth, the pay-as-you-go imperative, the welfare budget minimum and the debt service spending limit.

Adding to the complicated task of coordinating the many mandates, Green said, is the fact that the writers of the state constitution could not have anticipated the Legislature's recent shifting of \$13 billion to \$14 billion in funding responsibility from local government to back to the state.

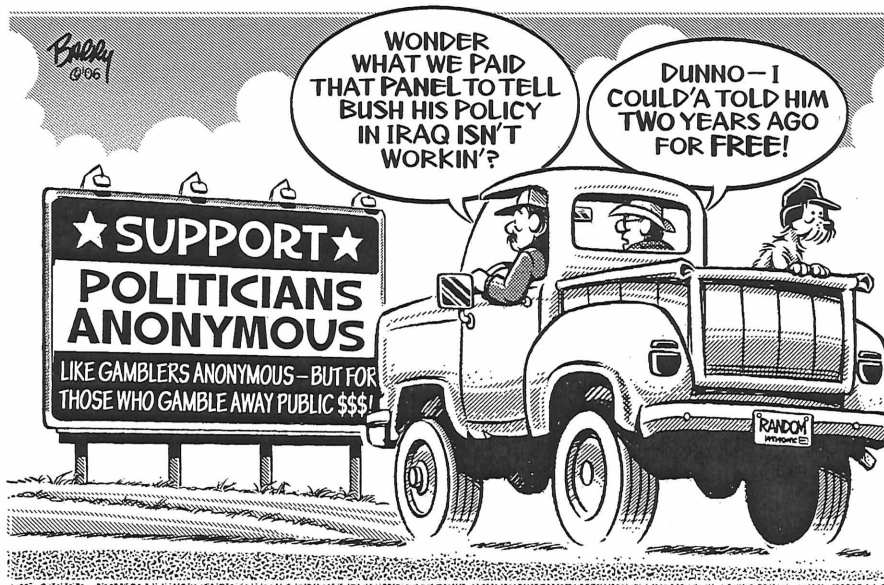
Green said the increased need for Medicaid spending as the state population grows and as medical costs increase presents another conundrum to be solved.

Teacher union releases report

The American Federation of Teachers released a report titled "Building Minds, Minding Buildings—Turning Crumbling Schools into Environments for Learning."

The Texas Federation of Teachers endorsed the report. Findings assert that such conditions as mold, high temperatures, overcrowding, poor air quality and vermin infestation in too many public schools must be addressed immediately as a top educational priority.

TFT president Linda Bridges said the AFT's comprehensive report on schools across the nation "confirms that the problem is widespread and needs to be addressed sooner rather than later."



From Out of the Past

From the files of The Haskell Free Press

10 Years Ago December 12, 1996

For the first time, a team from Haskell High School advanced to round two of the KTXS Academic Challenge. Team members are Sarah Cothron, Lyle Fouts, Casey Burgess and Wendy Dulaney.

Mr. and Mrs. J.L. Tolivers celebrated their 50th wedding anniversary.

Delma and Elizabeth Williams of Haskell County celebrated their 67th wedding anniversary.

The children and grandchildren of Callie Mae Kuenstler celebrated her 90th birthday with a reception.

20 Years Ago December 11, 1986

Shelly Hester's Cherokee pecans, was named champion of the in-shell division and Frances Fischer's Italian cream cake was named champion of the Bake Show of the Haskell County Pecan Show. Haskell High cheerleader, Sheree Dumas, will participate with the All-American Cheerleaders in Aloha Bowl activities in Honolulu.

Eleven students in the Haskell Secondary School made straight "A's" during the second six weeks grading period including Craig Neal, Chris Tanner, Erick Harvey, Rusty Stocks, Sheila Unger, Davis Chapman, Julie Nanny, Gia Henshaw, Michael Rodriguez, Julie Roewe and Debra Teague.

30 Years Ago December 9, 1976

The Texas Federation of Teachers endorsed the report. Findings assert that such conditions as mold, high temperatures, overcrowding, poor air quality and vermin infestation in too many public schools must be addressed immediately as a top educational priority.

TFT president Linda Bridges said the AFT's comprehensive report on schools across the nation "confirms that the problem is widespread and needs to be addressed sooner rather than later."

Portugal and elsewhere.

When honey bees collected in Europe and Africa were studied, they separated genetically into four distinct groups, he said.

However, the genome of U.S. bees "was a complete mix of the three different introduced European subspecies," he said.

That mixture is changing with the introduction of the fourth subspecies from Africa in 1990. The form that was Italian mixed with other strains has been crossbreeding with an Africanized-Spanish strain. In effect, the Italian mix is disappearing. This has not happened to the same extent with the European varieties.

"It is clear that introduced African bees mated with existing

Three members of the Haskell Volunteer Fire Department were given special recognition. R.A. Lane, Alvis Bird and Alton Middleton retired this year and were presented with plaques during the banquet in appreciation of their service in the department and to the City of Haskell.

District 7-A coaches made the All District team selections. Chosen on the first team offense were Johnny Larned, guard, Mike New, tackle and Gary McAdams, quarterback. On the defensive first team were Mike New and Jesse Billigton, down lineman and Kelvin Marshall, running back.

40 Years Ago December 8, 1966

Ray Herren, son of Mr. and Mrs. Clinton Herren of Haskell, a junior who plays end for the Indians, was named to the All-Area football team.

Gary Mayfield was named football hero and Brenda Nanny sweetheart of Haskell Junior High.

Mr. and Mrs. R.E. Morrison, Sheila and Bobby, visited Mr. and Mrs. Kenneth Young and Melissa in Dallas over the weekend.

50 Years Ago December 13, 1956

Mr. and Mrs. George Henshaw of Abilene were weekend visitors with relatives and friends in Haskell.

Visiting in the home of Mr. and Mrs. D.C. Wester their daughter, Jo Wester, Mr. and Mrs. H.F. Weatherbee, Marvin Weatherbee

and Mr. and Mrs. Bill Dunsworth of Olney.

Mrs. R.V. Robertson and Mrs. Herbert H. Decker of Denton spent Friday in Haskell, visiting friends.

Mrs. Horace Payne and sons, Bill and Ricky of Ventura, California arrived to spend the Christmas with Mrs. Payne's mother, Mrs. Frank C. Scott and Dr. Scott.

Mr. and Mrs. Hastings B. Pratt, of Honolulu, Hawaii visited in the home of Courtney Hunt.

100 Years Ago December 8, 1906

W.F. Tompkins has bought an interest in T.B. Morgan's business and they will operate a grocery business under the firm name of Morgan & Tompkins.

A.B. Deadman and family from near Lindale, in Smith County, came in last week with their household goods and livestock and have settled in the Pinkerton neighborhood.

Mr. Hurd, who bought a farm a few miles north of town a few months ago, has moved up from Bell County with his family.

W.M. Sager of Sagerton, the founder of that town on the Orient Railroad, was here this week on jury service for several days.

The Planter Nursery of Denton made delivery of about 4,000 fruit, shade and ornamental trees.

Roy Shook returned from Fort Worth, where he has been attending school.

U.S. bees and that colonies with large portions of the African bee genome were able to out-compete the original U.S. mixture," he said.

"Why the Africanized honey bee successfully invaded the New World but has not moved across Europe, we don't know," Johnston added. "Maybe (the U.S. varieties) were selected (by beekeepers) for everything but competition."

An important goal of the research was to identify candidate genes that could be responsible for the overly defensive behavior in Africanized honey bees.

"It will be a race among researchers to find out which specific genes are involved in behavior," he said.

Night lights provide light and energy savings

As winter approaches and the days grow shorter (and darker), it's natural to look for ways to make every corner of your home a little more bright and cozy. Yet with the price of electricity as high as it is, you probably don't want to keep your lights on any longer than you have to. So how do you add a warming glow of light to hallways, bedrooms and bathrooms? Simple: night lights.

Night lights are a great way to add convenience lighting to your home for just pennies a day. Available in a multitude of different styles, they're inexpensive to purchase and operate and can be used anywhere in your home. They radiate a comforting glow in bedrooms, bathrooms, and hallways or any other area of your home where convenience lighting is needed after dark.

Night lights are ideal for homes with toddlers, small children or seniors. Surveys show that one out of every three people over the age of sixty-five falls each year. According to the Centers for Disease Control (CDC), 2/3 of them will unfortunately fall again within six months. Children, too, can wake up disoriented or afraid in a dark room. A night light can be a reassuring beacon in the dark for young and old alike. That's why The Leviton Institute recommends adding night lights to your home lighting mix. There are a number of appealing options to consider when choosing night lights for your home.

Night lights make a great stocking stuffer and a thoughtful holiday gift. Some of the most popular night lights are: LED (night lights that use long-lasting, energy efficient Light Emitting Diodes); incandescent (night lights that cast a soft, soothing glow with a small 4-5 watt bulb); light sensing (night lights that feature an automatic sensor that turns the light ON at dusk and OFF at dawn); sonar-activated (night lights that respond to sound); motion-sensor (night lights that detect when you are walking by them and switch on to brighten the way); rotating (night lights that can be shined up, down, or anywhere you need to direct light within 360 degrees).

Night lights are a great stocking stuffer and a thoughtful gift for the holidays.

Good luck Rule Bobcats at state

The Haskell Free Press

Established January 1, 1886
PUBLISHED EVERY THURSDAY
420 North First Street • P. O. Box 555
HASKELL, TEXAS 79521
Phone 940-864-2686 • Fax 940-864-2687
hfp@valornet.com

John McDougal Publisher
Lisa Shaw Business Manager
Mary Kaigler Editor
Doris McDougal Production
Bill Blankenship Staff Photographer

Periodical Paid Haskell, Texas 79521
(USPS 237-040)

SUBSCRIPTION RATES:

Haskell County, one year, \$25.00.
Outside of Haskell County, one year, \$34.00.

NOTICE TO PUBLIC—Any erroneous reflection upon the character, reputation or standing of any firm, individual or corporation will be gladly corrected upon being called to the attention of the publisher.

POSTMASTER: Send address changes to The Haskell Free Press, P.O. Box 555, Haskell, TX, 79521-0555.

This issue mailed Wed., Dec. 13, 2006



AG Consumer Alert

By Greg Abbott

Be A Smart Shopper When Buying Gift Cards

With the holidays fast approaching, millions of consumers will buy prepaid gift cards from merchants all across the State of Texas. These cards have become extremely popular; they can easily be mailed to far-away loved ones and undoubtedly simplify gift shopping at a very busy time of year.

Unfortunately, recent reports indicate that the crooks might also have their eye on the convenience of gift cards. According to law enforcement and consumer protection sources from around the country, scam artists are strolling around busy shopping centers,

eyeing racks full of not-yet-activated gift cards (generally, these cards are only valid after a consumer pays for them). The con artists write down or memorize the serial numbers on the face of the card, then sit back and wait for an unsuspecting consumer to purchase and activate the card.

Once a card has been purchased, all the scammer has to do is call the card's customer service number, confirm that it has been activated, and check its available balance. By then, the scammer can use the card to make online purchases. Sadly, it could be days or even weeks before consumers find out that the balance on their cards has been drained by a thief.

Protect yourself by making sure that your purchase of a gift card is a safe one: Ask a store clerk to provide you with a gift card from behind a counter or that has not otherwise been accessible to the general public. Also note that some gift cards already have security measures, such as an additional scratch off code. If so, make sure that the no one has tampered with either the card or its packaging.

Remember to be a vigilant consumer throughout the season. If you buy or receive a gift card where any part of the balance mysteriously disappears, you should immediately notify the merchant who issued the card.

Haskell Indians



HASKELL INDIANS: L-r: Coach Lolo Martinez, Travis Adams, Gregg Guzman, Raul Villarreal, Weston Rutkowski, Vicente Castillo, D.J. McCulloch, Samuel Bitner, Derek Agraz, A.J. Alvarez, James Haggard, John English and Coach Toby Villa. Front, Luke Terry, Jared Webb. Photo by Bill Blankenship

Fri., Dec. 15 • 6 p.m.

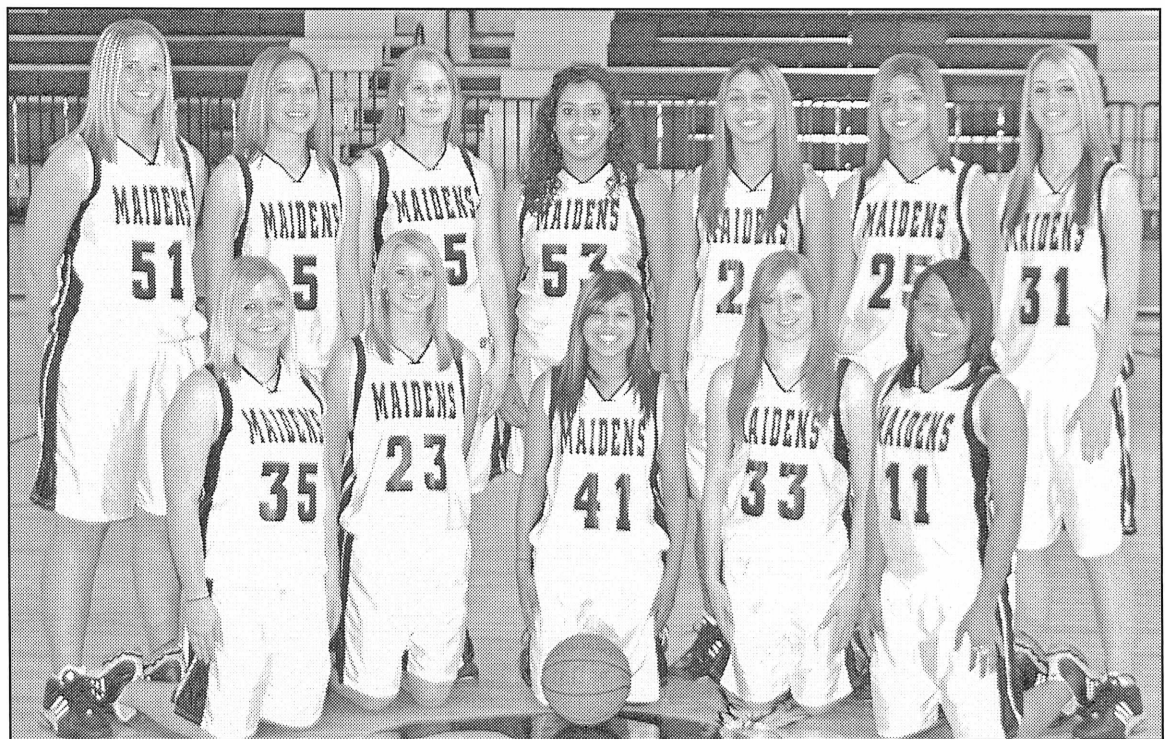
JV & Varsity Boys vs Paducah at Paducah

Tues., Dec. 19 • 5 p.m.

JV & Varsity Boys vs Anson at Anson



Haskell Maidens



HASKELL MAIDENS: Front, l-r, Lauren Newton, Ashton Rutkowski, Haley Chavez, Hope Reid, Jasmine Thomas; back, Lacey Peiser, Chambray Bartley, Kimberly Medford, Sarah Garcia, Samantha Rodriguez, Molly Agraz, Hanna Wallace. Photo by Bill Blankenship

Fri., Dec. 15 • 6 p.m.

JV & Varsity Girls vs Stanton at Stanton

Tues., Dec. 19 • 4 p.m.

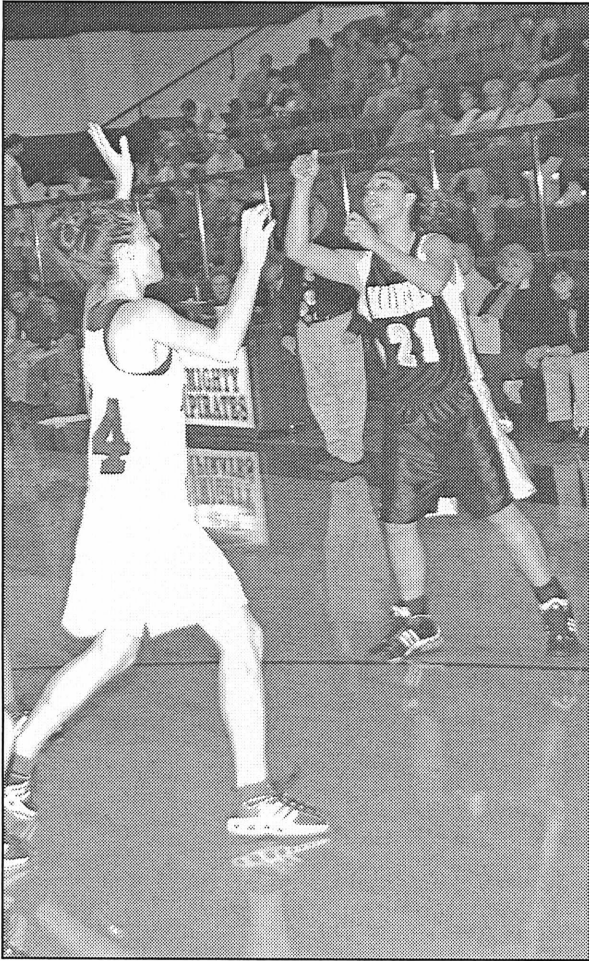
JV & Varsity Girls vs Anson at Anson

III
III
S

This Page Sponsored By The Following Indian and Maiden Boosters

- Santa Rosa Telephone Cooperative**
- Big Country Electric Cooperative**
- Cecil's Country Meat Mkt. & Grocery**
- Richardson TrueValue & NAPA Auto Parts**
- Brian Burgess State Farm Insurance**
- Personality-Slipper Shoppe**
- Haskell Tire & Appliance**
- Haskell County Insurance Agency**

- Haskell Free Press**
- Haskell National Bank**
- Double A Drive Inn**
- Hanson Paint and Body**
- Haskell Save-A-\$**
- Larned Sales Center**
- Matlock & Associates**



POISED TO SCORE—Haskell player, Samantha Rodriguez, #21, attempts to add count in the Dec. 12 game with Eula, which ended in a 44 to 34 win for the Maidens. Photo by Bill Blankenship



GINGERBREAD HOUSE—Edie Strickland, employee of Rochester Junior High School, surprised the students with a gingerbread house last Thursday. The house is on display in the lunchroom for all to admire, and is edible and features amazing details. Strickland had entered the creation in a gingerbread house contest earlier in the month.

GFI outlets provide safety

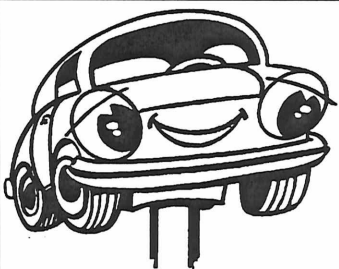
Ever notice that electrical outlets don't all look the same? Take GFI outlets for example. GFI stands for Ground Fault Interrupters and these outlets are usually used when an outlet is near water.

You'll find GFI plugs in places like bathrooms, kitchens and outdoor areas. GFI outlets have buttons on the plug face. These

buttons reset and test the plug to make sure it's in good and safe working condition. GFIs are designed to trip easily in the event of an electrical short. If you ever have an outlet that isn't working, push the reset button on your GFI plugs.

If you still are having problems, consult a professional.

Time for an Oil Change?



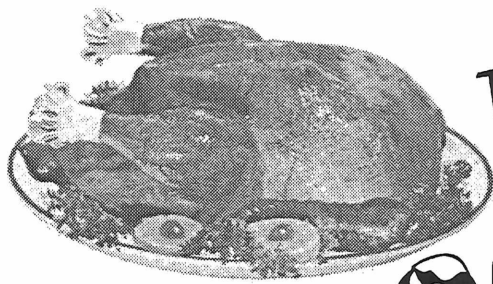
**Call
864-5228**
for an
appointment!

M & M Auto Plus
Hwy. 277 North • Haskell

COUPON

**Oil Change \$10 off
Special** With This Coupon.

You must present this coupon at time of purchase.
Expires 2/1/07



WIN YOUR CHRISTMAS TURKEY

Merry Christmas

From All Your Local Merchants

Shop Haskell for Your Last Minute Christmas Gifts!

\$20 Tops
3/4 Sleeve. Reg. \$40.

\$10 off
After a Purchase Receive a
\$10 Gift Certificate
towards your Next Purchase of
\$25 or more on regularly priced
merchandise.
(Excluding Brighton)

Gift certificates available and FREE gift wrapping

**Personality-Slipper
Shoppe**

New Holiday Hours: 10:00 - 5:30
940/864-2501 • 864-3051
South Side of Square • Haskell, Texas

Name _____
Address _____
Phone _____

old world
Christmas Ornaments
1/2 price

Kitchen Notions
15% off

Must see!
**Santa Claus
Purses**
by Timmy Woods

Shop with us for
Teacher's Gifts!

*Bridal Selections for
Coy and Crystal Hise*

Name _____
Address _____
Phone No. _____

The Carousel Gift Shop

Erlinda Mayfield
Open M-F 10 to 5:30. Sat. 10 to 4
Southside of the square
in Haskell
864-2069

SHOP HERE for EVERY ONE!

Christmas Delights!
We at Sport-About strive to be your Best Sports Store in the Area. No matter if you are a spectator or participant we have the perfect Christmas Gift.

Footwear

- Walking Shoes
- Jogging Shoes
- Tennis Shoes
- Athletic Socks
- Redwing Boots

Sport Apparel

- Sweats-Multicolors
- Warm-ups - Jogging Suits
- Jackets
- Sweaters
- NFL Caps
- Head & Wrist Bands
- Gift Certificates

Sporting Goods

- Footballs
- Basketballs
- Leg Weights
- Billiard Supplies
- Gym bags
- Back Paks
- Golf Supplies

Hunting Supplies

- Guns
- Archery Sets
- Binoculars
- Camouflage
- Other**
- Telephones
- Pocket Knives
- BB Guns

Where Winners Shop

Sport-About of Haskell **940-864-3891**
402 N. 1st

We accept Discover, VISA, AMEX, MasterCard

Name _____
Address _____
Phone No. _____

Bailey Toliver

Ford

LOW

Interest Rates
Still Available!

940-864-2611
800-749-5576
209 S. Ave. E
P.O. Box 1057
Haskell,
Texas

*It's a great time
to select a new vehicle!
Let us help you today!*

Name _____
Address _____
Phone No. _____

1. Cli
tele
2. De
bus
in t
3. Ea
not
4. Dr
at r
5. An
(ex
this



1. Clip out the ads, fill in your name, address and telephone number.
2. Deposit each ad in the box *each week* at the business listed on the ad. (All entries deposited in the wrong box will be disqualified.)
3. Each store will award one **FREE TURKEY** – you need not be present to win, no purchase is necessary.
4. Drawing will be held Friday, December 22, 2006, at noon.
5. Anyone over 16 years of age is eligible to enter (except employees at participating stores and this newspaper.)

STAR STOP

706 N. 1st • Haskell • 864-2062

Pigs-in-a-Blanket Bean & Chili Burritos Beef-n-Bean Burritos Deli Fried Pies

2 for \$1

*For your Holiday Gift Giving,
ask about our
Gift Certificates
for Fuel, Deli and other Store Purchases.*

Name _____
Address _____
Phone No. _____

- *Afghans
 - *Cookbooks
 - *Frames
 - *Crosses
 - *Puzzles
 - *Purses
 - *Candle Warmers
 - *John Deere Gifts
- 20% off reg. price**

Christmas Gift Wrap
Christmas Gift Bags
Christmas Tissue
Christmas Ornaments

25% off reg. price

Caramel Corn Can 20 oz. **\$4⁹⁹**

Caramel Corn Can 20 oz. **\$5⁹⁹**
With Peanuts

Caramel Corn Can 20 oz. **\$6⁹⁹**
With Almonds & Pecans

Dirt Devil
Swift Stick or
Hand Scorpion Vacuum

Your Choice

\$21⁹⁹

13 inch Gibson Poinsettia Serving Platter **\$3⁹⁹**

Delagar Champagne Bubble Bath 8.5 oz. **\$1⁹⁹**

Give a *delicious* gift:
Russell Stover Candy

*Need
Stocking Stuffers? Teacher Gifts?
We have them!*

*For all your holiday cooking . . .
We carry Quality*

WATKINS PRODUCTS

*Vanilla *Black Pepper *Spices and Seasonings

*We also have a complete line of
Kitchen Gadgets & Thermometers,
Small Appliances and Bake ware
including splatter ware
in red, blue and green.*

When in Doubt, Give a Gift Certificate!

Prices good December 14, 15 & 16.
All items limited to stock on hand. Some restrictions apply.
www.haskelldrugstore.com

Medicare Part D Questions?
We can help!

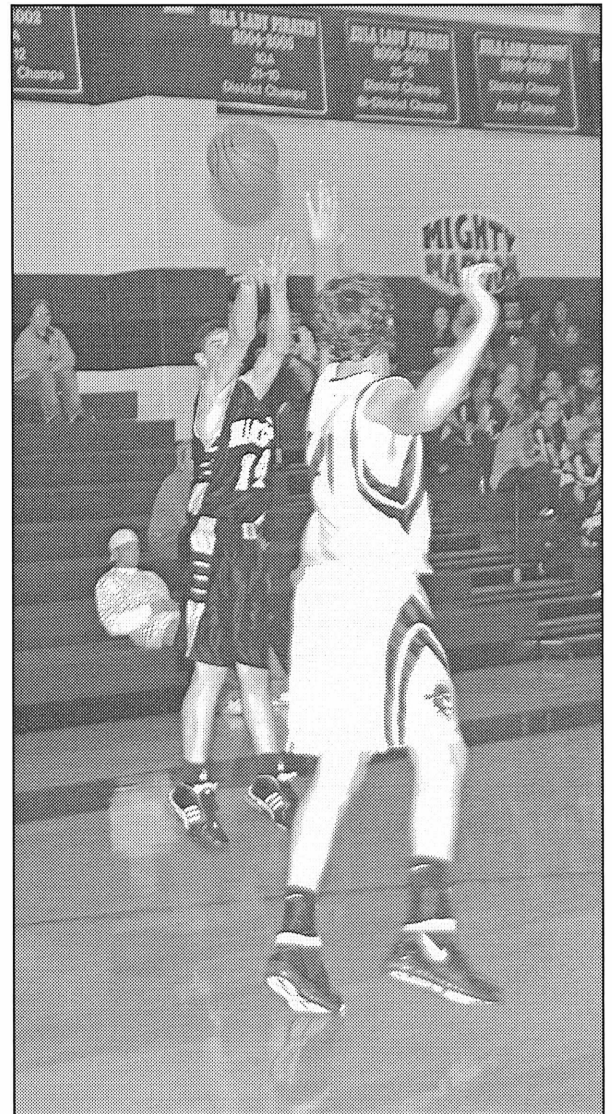
Before you select a Medicare drug care program, please call us at
The Drug Store
at 940-864-2673
for specific information about the various plans.
Enroll NOW – Coverage begins Jan. 1, 2007.

Name _____
Address _____
Phone No. _____

www.haskelldrugstore.com

THE DRUG STORE

100 S. Ave. E • Haskell • 864-2673



GOING ALOFT FOR COUNT—Haskell Indian, Weston Rutkowski, #14, goes up to make count in the Tues., Dec. 12 non-district game lost to Eula, 54 to 49.
Photo by Bill Blankenship

Area basketball scores

<p>Girls</p> <p>Haskell 44, Eula 34</p> <p>Scoring for Haskell: Kim Medford 12, Lacey Peiser 8, Samantha Rodriguez 7, Chambray Bartley 7, Sarah Garcia 6.</p> <p>JV score: Eula 33, Haskell 31.</p> <p>***</p> <p>Albany Holiday Classic</p> <p>Haskell 52, Woodson 39</p> <p>Scoring for Haskell: Chambray Bartley 14, Kim Medford 12, Haley Chavez 7, Samantha Rodriguez 6, Molly Agraz 6, Lacey Peiser 3, Hope Reid 2, Ashton Rutkowski 2, Seymour 39, Haskell 24</p> <p>Scoring for Haskell: Lacey Peiser 4, Sarah Garcia 4, Samantha Rodriguez 4, Jasmine Thomas 3, Chambray Bartley 2, Molly Agraz 2, Hope Reid 2, Haley Chavez 2, Hanna Wallace 1.</p> <p>Haskell 47, Stamford 44</p> <p>Scoring for Haskell: Samatha Rodriguez 13, Kim Medford 9, Lacey Peiser 9, Molly Agraz 6, Hanna Wallace 5, Sarah Garcia 3, Hope Reid 1, Lauren Newton 1.</p> <p>Albany All-Tournament Team</p> <p>Kim Medford and Sarah Garcia</p> <p>***</p> <p>Albany 57, Rule 51</p> <p>Scoring for Rule: K. Scheets 15, Bannon 13.</p>	<p>***</p> <p>Benjamin 68, Paint Creek 14</p> <p>Scoring for Paint Creek: Stevens 5, Gilberath 5.</p> <p>Boys</p> <p>Eula 54, Haskell 49</p> <p>Scoring for Haskell: D.J. McCulloch 19, Weston Rutkowski 12, Gregg Guzman 5, Derek Agraz 4, John English 3</p> <p>JV score: Eula 63, Haskell 29</p> <p>***</p> <p>Albany Holiday Classic</p> <p>Haskell 73, Woodson 30</p> <p>Scoring for Haskell: D.J. McCulloch 24, Derek Agraz 12, John English 9, Weston Rutkowski 9, Travis Adams 9, James Haggard 2, Gregg Guzman 2, A.J. Alvarez 2, Samuel Bitner 2, Vicente Castillo 2, Seymour 43, Haskell 34</p> <p>Scoring for Haskell: Travis Adams 9, Gregg Guzman 9, John English 6, Samuel Bitner 4, D.J. McCulloch 3, Rodriquez 2, Weston Rutkowski 1.</p> <p>Haskell 54, Hamlin 35</p> <p>Scoring for Haskell: Weston Rutkowski 11, Travis Adams 11, D.J. McCulloch 9, Gregg Guzman 8, Vicente Castillo 4, John English 3, Derek Agraz 1.</p> <p>Albany All-Tournament Team</p> <p>Travis Adams and Gregg Guzman</p>
--	--

Partial list!

Consignment Sale Dec. 28

This is a partial list of stock consigned for this Special Sale!

- | | |
|---|---|
| <p>100 Mixed 5-7 year old cows; heavy bred.</p> <p>100 Mixed 4-8 year old cows; bred to black bulls. 40% Blacks, 20% Charlais, 40% Cross Bred</p> | <p>100 Crossbred cows; heavy bred to Black and Hereford Bulls</p> <p>55 Brangus and Angus, 3-5 year olds; heavy bred to black bulls</p> <p>15 Young Angus bulls</p> <p>8 Young Hereford bulls</p> <p>30 Young Pairs</p> |
|---|---|

Haskell Livestock Auction

For any Consignments, Please Call

**940-864-2624
325-721-2997
940-864-5757**

B.D. and Francine Rainey, owners
Hwy. 277 South, Haskell

Check out our selection of Appliances!

Shop early for best selection!

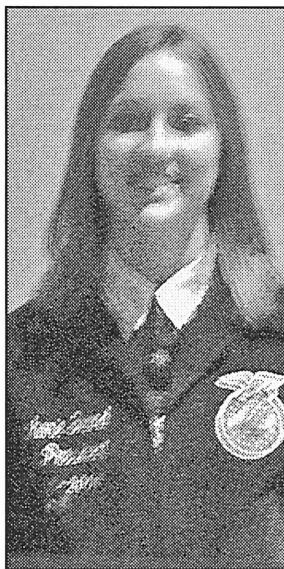
Haskell Tire & Appliance

206 S. Ave. E • 864-2900

Name _____
Address _____
Phone No. _____



AG ISSUES TEAM—The Haskell FFA Ag Issues team placed second in both district and area contests and advanced to the state competition where they placed sixth. Team members are, l-r, Amber Bingham, Aubrey Bassett, Maggie Teague, Ashley Foster, Teddye Harris and Diana Mauricio.



JOB INTERVIEW—The Haskell FFA Job Interview contestant, **Stephanie Grand**, placed second at district and sixth at the area contest.

Haskell FFA Leadership teams travel to state

The Haskell FFA Leadership Teams have had another successful year at all of their contests.

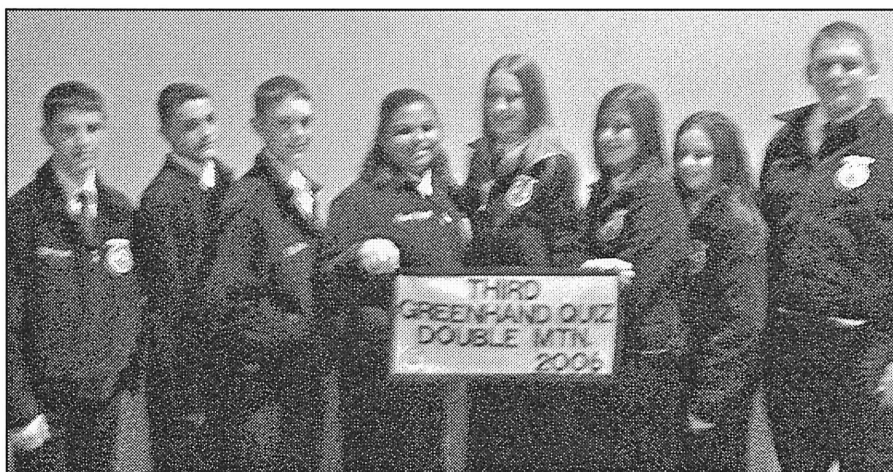
The District Contest was held in Anson Nov. 14. The results were: Ag Issues 2nd; Radio 1st; Jr. Skills 2nd; Sr. Skills 3rd; Jr. Chapter Conducting 2nd; Jr. Creed Speaking 3rd and 4th; Sr. Creed 5th and 6th; Public Relations 1st; Jr. Quiz 4th; Sr. Quiz 6th; and Job Interview 2nd.

Haskell FFA advanced five teams to the Area II Competition in Big Spring Nov. 18. The results were: Ag Issues 2nd; Radio 2nd; Jr. Skills 3rd; Job interview 6th; and Jr. Chapter Conducting 7th.

The Ag Issues and Radio Teams both advanced to the State LDE contest in Huntsville Dec. 2. The Radio team finished in the top 20 while the Ag Issues team took home the 6th place banner.



JUNIOR CHAPTER CONDUCTING TEAM—The Haskell FFA Jr. Chapter Conducting team placed second at district and seventh at the area contest. Team members are, l-r, Kayce Wilcox, Jordan Burson, Kristina Bitner, Clint Hamilton, Katy Grand, Miranda Johnson, Brie Torres and Shelby Still.



QUIZ TEAM—The Haskell FFA Quiz team placed fourth in district. Team members are, l-r, Ethan Frierson, Tyler Rodriquez, Tyler Reese, Shambrie Rodriquez, Lisa Rodgers, Ashley Meier, Lauren Lampe and Cody McLemore.

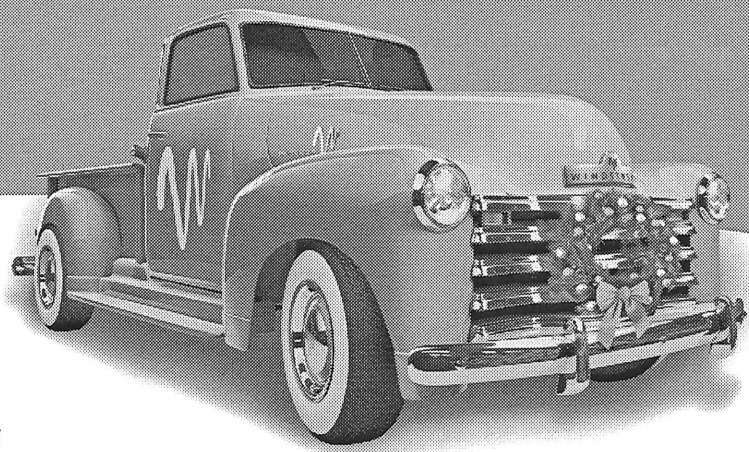
SANTA-LIKE SPEED AT A JOLLY GOOD PRICE.

FREE MODEM*
(AFTER REBATE / WITH AGREEMENT)
FREE ACTIVATION
FREE SELF-INSTALL KIT
FREE PARENTAL CONTROL SOFTWARE

BROADBAND
\$24.95
per month
WITH BUNDLE

RELIABLE CONNECTIONS
DOWNLOAD MOVIES AND MUSIC
SHARE PHOTOS AND MORE

\$39.95 WITH BUNDLE
UNLIMITED LOCAL AND UNLIMITED LONG DISTANCE



PHONE
BROADBAND
DIGITAL TV

windstream
1.877.312.WIND | windstream.com

VISIT THESE WINDSTREAM LOCATIONS:

- | | | | | | |
|---|---|--|---|--|--|
| MISSOURI
BOLIVAR
1705 S. Lillian
437-326.1013 | ESPANOLA
2000 Hwy. 68 N. Riverside Drive
505.747.6200
HOBBS
320 N. Shipp Street
505.397.0912
RUIDOSO
721 Mechem Drive (Sierra Mall)
505.257.9000 | OKLAHOMA
BROKEN ARROW
929 N. Elm Place
918.259.8255
BROKEN ARROW
Coming Soon: 2449 W. Kenosha
918.259.8255 | TEXAS
ANDREWS
112 S.W. 1st Street
432.523.3323
BOERNE
215 W. Bandera Road, Suite 104
830.248.1111
DALHART
310 Rock Island Avenue
806.249.1100 | DUMAS
401 W. 1st Street
806.935.1681
FREDERICKSBURG
1425 E. Main, Suite 100A
830.990.9299
KERRVILLE
955 Water Street
830.257.9100
PERRYTON
301 S. Amherst Street
806.435.2050 | POST
Coming Soon: 410 N. Broadway
806.495.3864
SEYMOUR
400 N. Main Street
940.888.1220
SUGAR LAND
8306 Highway 90A
281.490.9412
TEXARKANA
2315 Richmond Road,
Suite 101
903.223.4688 |
|---|---|--|---|--|--|

Limited-time offer. Subject to availability in certain locations. Must be a Windstream wireline customer. Broadband 1.5: Price is good for first 12 months when bundled with Connect Package or DISH Network & includes Broadband transport & Internet access. Broadband Speeds: Windstream cannot guarantee Broadband speeds or that Broadband service will be uninterrupted or error-free. *Free Modem: Free Modem available with 1-year Broadband agreement and after instant credit of \$49.95 and \$50.00 mail-in rebate. A \$9.95 shipping and handling fee applies. Connect Unlimited: \$39.95, when bundled with Broadband and DISH Network, includes residential access line, unlimited hours of long distance & certain calling features. Unlimited Long Distance is for residential 1-plus direct-dialed calls for voice use only. Unlimited Long Distance may not be used for Internet services, fax machines, softphones or data devices, transcription services, business (whether for-profit or not-for-profit), telemarketing, auto-dialing, multi-party conference calls (including 3-way calls), party lines, chat lines, adult entertainment lines, calls to 900 and 976 numbers and calls to access voice mail or information services. Additional charges may apply for directory assistance, calling cards, collect calls, operator services, international calling or toll-free calling services. If Windstream determines that usage is not consistent with residential voice service, includes excessive usage or usage predominantly during business hours, Windstream may immediately restrict use or change your long distance plan to the Windstream 10 plan. If any required component of the service bundle is discontinued, the account will convert to the Windstream 10 plan. Additional Information: Credit approval required & pre-payment may be required. Taxes, fees & other charges, including Universal Service Fund, apply. Windstream reserves the right to cancel or discontinue this plan at any time. If any required bundle component is disconnected, all remaining components convert to the regular tariffed monthly rate. Other restrictions may apply. Offers are subject to the Windstream Terms & Conditions for Communications Services available at any Windstream store or at windstream.com. Contact a Windstream representative for details.

Weather Whys

Texas' coldest temperature

Q: What's the coldest it's ever been in Texas?

A: Texas is no stranger to below zero temperatures, says Brent McRoberts of Texas A&M University.

"There have been numerous times in the last 100 years when parts of the state have been below zero," he explains. "But one day stands out among all others. On Feb. 8, 1933, the temperature was minus-23 degrees in Seminole to set the state's all-time low temperature. It should be noted that the elevation of Seminole is over 3,200 feet which is no doubt one reason the temperature that day was a record."

Q: What about surrounding states?

A: In Arkansas, the all-time low temperature is minus-29 degrees (set in 1905), while in Oklahoma the record low is minus-27 set in 1930.

"In Louisiana, the all-time low is minus-16 degrees set in 1899, and in New Mexico, it gets a lot colder than most people think," McRoberts adds.

"In 1950 in the town of Gavilan, the temperature reached minus-50 degrees. The elevation of Gavilan is 7,350 feet which means the mountain air got mighty cold that day."

Haskell Co. Gin Report

Dec. 11, 2006

Haskell

Haskell County Gin 500

Haskell Co-op Gin 74

O'Brien

O'Brien Co-op Gin 11,300

Rule

Rule Co-op Gin 1,611

Weinert

Griff's Gin 651

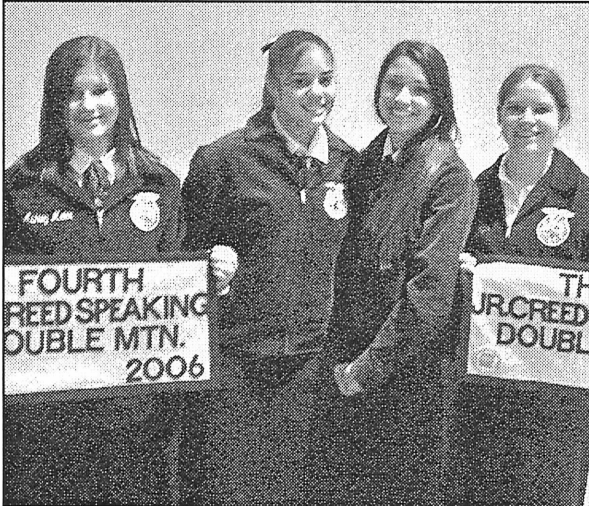
Weinert Gin 1,003

Total bales 15,139

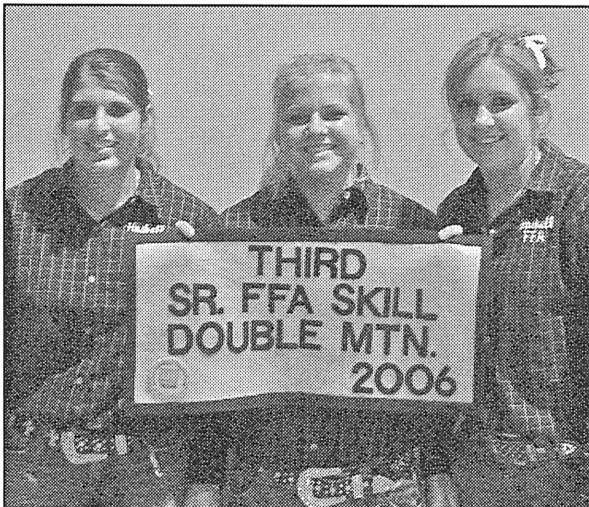
*Good luck
at state
Bobcats!*



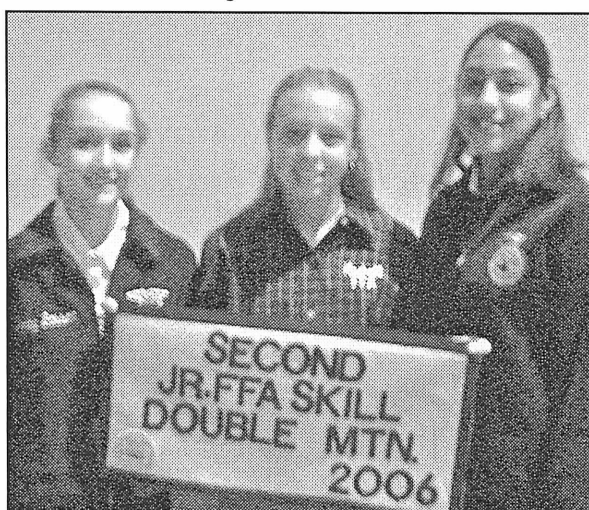
RADIO TEAM—The Haskell FFA Jr. Chapter Radio team placed first at district and second at area competitions. The team advanced to state where they finished in the top 20. Team members are, l-r, Lonnie Alvarez, Teddy Harris and Aubrey Bassett.



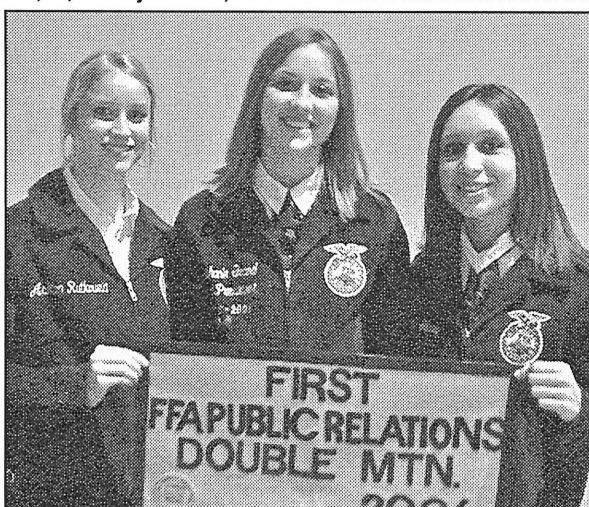
CREED SPEAKERS—The Haskell FFA Creed speakers placed third and fourth at district. Team members are, l-r, Ashley Meier, Lynette Ortiz, Diana Mauricio and Brooke Bullinger.



SENIOR SKILLS TEAM—The Haskell FFA Sr. Skills team placed third at district. Team members are, l-r, Kimie Hutchinson, Lauren Newton and Paige Adams.



JUNIOR SKILLS TEAM—The Haskell FFA Jr. Skills team placed second at district and third at area competitions. Team members are, l-r, Aubrey Bassett, Veronica Benton and Lonnie Alvarez.



PUBLIC RELATIONS TEAM—The Haskell FFA Public Relations team placed first at district. Team members are, l-r, Ashton Rutkowski, Stephanie Grand and Faith Silvas.

Commissioners' Court report

The Haskell County Commissioners met for a special called meeting, Nov. 28, with Precinct Commissioners Johnny Scoggins, Tiffen Mayfield, Kenny Thompson and Bobby Smith, and County Clerk Rhonda Moeller present.

On a motion by Mayfield, all bills presented to the Court were approved for paying.

A motion by Mayfield was approved to extend the Interlocal Agreement with Throckmorton County and the Haskell County Attorney, Kris Fouts, for two more years.

Discussion was held concerning office space for the County Attorney's office. No action was taken.

Upon the recommendation of Sheriff Halliburton, Commissioner Smith entered a motion to hire Jessica Thompson of Anson as part-time dispatcher at the Sheriff's office. The vote was 3 for, 0 against.

Cattle Market Report

The market at the Haskell Livestock Auction was on a run of 1442 head of cattle at its sale on Sat., Dec. 9, according to B.D. Rainey, reporter.

Packers \$2 lower. Stockers \$2-5 higher. Feeders \$1 higher.

Cows: fat, .42-.45; cutters, .40-.47; canners, .36-.41.

Bulls: bologna, .56-.63, feeders, .65-.70, utility, .48-.53.

Steers: medium and large frame No. 1 200-300 lbs., 1.35-1.52; 300-400 lbs., 1.25-1.40; 400-500 lbs., 1.18-1.36; 500-600 lbs., 1.08-1.20; 600-700 lbs., .94-1.05; 700-800 lbs., .88-.95; 800-up lbs., .84-.91.

Heifers: medium and large frame No. 1 200-300 lbs., 1.25-1.40; 300-400 lbs., 1.10-1.28; 400-500 lbs., .95-1.12; 500-600 lbs., .90-1.07; 600-up lbs., .83-.92.

Bred cows young to middle aged 675-885; aged or small, 350-500.

Cows with calves: medium frame No. 1 young and middle aged, 800-1085; older, 575-750.

Season's Best

We sincerely appreciate all of our fine customers and invite you to join us as we celebrate the birth of Jesus Christ.

**Open House Thursday and Friday
December 21-22, 9 a.m. to 3 p.m.**

Rule Banking Center
A Branch of Hamlin National Bank

P. O. Box 10
Rule, Texas 79547
940-997-2216
Member FDIC

FREE RAZR

buy one, get one free
Starting at \$79.99
with 2-yr. service agreement on both lines after \$50 mail-in rebates. See below for details.

Most advanced **MOTORAZR™**

- Bluetooth® wireless technology
- 1.3 megapixel camera

Silver or Fire Red **MOTORAZR V3m**

come and get your love™

alltel wireless

Gift Cards — always the perfect gift

shopalltel.com

Alltel Retail Stores		Authorized Agents	
Abilene 4149 Southwest Dr. (325) 437-0800	Graham 1221 Hwy. 16 S. (940) 549-1865	Snyder 4109 College Ave. (325) 573-7907	Vernon 807 Hillcrest Dr. (940) 553-1885
Breckenridge 3732 W. Walker St. (254) 559-3664	Haskell 10 Ave. D.N. (940) 864-8695	Sweetwater 1418 Hayley St., Ste. C (325) 235-0300	Abilene Cellular Connection 1150 S. Teadway Blvd. (325) 672-3841
		Trijo Wireless 4310 Buffalo Gap, #K1110 (325) 692-5195	Trijo Wireless 4565 S. 1st St. (325) 692-5776
		Aspermont Trinity Cellular 612 E. Broadway (940) 989-2543	Colorado City Lone Wolf Cellular 1040 Hickory (325) 728-8000
			Sweetwater Sierra 1209 Lamar St. (325) 235-3157
			Vernon Island Phones 3800 Hwy. 287 W. (940) 553-3860

For Business & Government Accounts call 1-877-BIZ-CNTR or visit alltelbusiness.com

And now we're ranked "Highest Call Quality Performance Among Wireless Cell Phone Users in the Southwest Region"

J.D. Power and Associates 2006 Wireless Customer Satisfaction Study™

Federal, state & local taxes apply. In addition, Alltel charges a monthly connectivity, regulatory & administrative surcharge up to \$1.70; federal & state Universal Service Fund fees (both vary by customer usage); & a 911 fee of up to \$1.94 (where 911 service is available). These additional fees may not be taxes or government-required charges & are subject to change. Phone Promotions: Phones available at set prices to new customers & eligible existing customers. Qualifying Alltel rate plan required. Contact Alltel to determine if you are eligible. Phone Details: Phones & applicable rebates available for a limited time, while supplies last, with activation of a qualifying rate plan. Limit 1 rebate per qualifying purchase. Phone cannot be returned once mail-in rebate certificate has been submitted. Customer pays applicable taxes. See rebate certificate for details. Bluetooth Wireless Technology: The Bluetooth features of this handset may not be compatible with all devices that are Bluetooth enabled. Alltel cannot be responsible for compatibility with devices not sold by Alltel. Gift Cards: While supplies last. Additional Information: Limited-time offer at participating locations. While supplies last. Credit approval & approved handset required. \$25 non-refundable activation fee applies per line. \$200 early termination fee may apply per line. Offers are subject to the Alltel Terms & Conditions for Communications Services available at any Alltel store or alltel.com. All product & service marks referenced are the names, trade names, trademarks & logos of their respective owners. Screen images are simulated. ©2006 Alltel Communications, Inc. All rights reserved. J.D. Power and Associates Award: Alltel Wireless received the highest numerical score among wireless cell phone providers in the Southwest region of the proprietary J.D. Power and Associates 2006 Wireless Call Quality Performance Study™ - Vol. 2. Study based on 23,626 wireless users measuring 5 providers in the Southwest region (AR, KS, MO, OK, TX) and measures opinions of consumers with the call quality of their wireless service. Proprietary study results are based on experiences and perceptions of consumers surveyed in March and June 2006. Your experiences may vary. Visit jdpower.com.



JEREMY'S DEER—Jeremy Cadenhead of Haskell killed this 8 point deer in Haskell County Sat., Dec. 2 at approximately 1:30 p.m.

Paint Creek School Menu

Dec. 18-20
Breakfast

Juice and milk are served daily.
Monday: Toast or cereal
Tuesday: Biscuits, gravy
Wednesday: Toast, cereal
Thursday: No school
Friday: No school

Lunch

Milk is served daily.
Monday: Enchilada casserole, refried beans, corn, salad, rice krispy bars
Tuesday: Turkey, mashed potatoes, green beans, rolls, apple crisp
Wednesday: Ham or turkey sandwiches, cheese, lettuce, tomatoes, pickles, fruit
Thursday: No school
Friday: No school



C.J. DEFENSE—Rule Bobcat defensive back C.J. Saucedo (#10 on the ground) brings down a Meadow runner during Rule's state semifinals win on Saturday.

ECC Calendar and Menu

Mon., Dec. 18

Lunch—Chicken and dressing, giblet gravy, cranberries, yeast rolls, green beans, German chocolate cake, milk, tea, or coffee

Wed., Dec. 20

Bingo: 10:30
Lunch—Enchiladas, Spanish rice, garden salad, onions, pickles, chips,

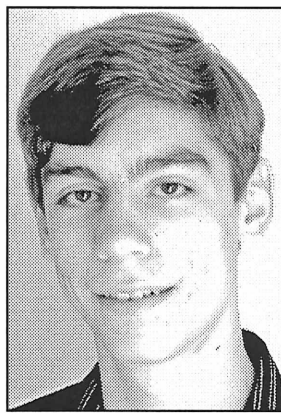
hot sauce, peach cobbler, milk, tea, or coffee

Fri., Dec. 22

Lunch—Beef stew, cornbread, sliced onions, pickle slice, carrot salad, Coke cake, milk, tea, or coffee

Announcements begin at 11:45 a.m. followed by lunch.

Students visit Rotary Club



MATTHEW BOWERS

Matthew Bowers is a home-schooled student in Haskell and is the son of Randy and Janet Bowers. He is a member of East Side

Baptist Church where he plays bass guitar with the worship team and leads music for the Wednesday night youth worship service.

He volunteers for the Haskell County Ministerial Alliance Food Distribution Center. He is employed by Wild Horse Trading Post, where he also operates his own Airsoft business.

His favorite areas of study in school are Bible, economics and history.

In his spare time, he enjoys playing guitar, reading, 'airsofting,' and playing computer games and poker.

He plans to pursue a business degree at either Howard Payne University in Brownwood or LeTourneau University in Longview.

Haskell School Menu

Dec. 18-22
Breakfast

Juice and milk are served daily on the breakfast menu.

Monday: Smucker's PB&J

Tuesday: Manager's choice

Wednesday: Cereal, manager's choice

Thursday: Pigs in a blanket

Friday: No school

Lunch

Milk and iced tea are served daily at the Secondary campus. Milk is served daily at the Elementary School. Secondary campus: choice

of entree or baked potato with cheese and ham.

Monday: Pepperoni pizza, corn, garden salad, sliced peaches

Tuesday: Turkey, dressing, giblet gravy, mashed potatoes, garden salad, green beans, homemade bread, cherry cheesecake

Wednesday: Ham and cheese sandwich, lettuce, tomatoes, pickles, chips, shape-up, Gogurt or ice cream

Thursday: Corndogs, pickle spears, chips, baby carrots with ranch dressing, pudding cups

Friday: No school

This Week's Devotional Message:



APPLY THE LESSONS OF THE SABBATH ALL THE REST OF THE WEEK

At the place where you worship the sermons compel
That you contemplate mending your ways;
After which you are told to remember this well,
For the week has another six days.
You consider that service an hour well-spent;
Where the guidance of God will abound;

And with all good intentions you try to repent,
For temptations are always around.
But those wonderful lessons you're apt to ignore
For the rest of the week, as we know;
So just carry them with your right out of the door.
And apply them wherever you go.

ATTEND CHURCH THIS SUNDAY

—HASKELL—

- East Side Baptist Church**
Danny Manross, pastor
Sun. 9:45 a.m., 11 a.m., 6 p.; Wed. 7 p.m.
600 N. 1st East, Haskell
- Christian Church**
Richard Barr, minister
Sun. Morn. 9:45 a.m., 10:45 a.m.; Thurs. 7 p.m.
107 N. Ave. F, Haskell
- Church of God**
Bruce Ray, pastor
Sun. 10 a.m., 11 a.m., 6 p.m.; Wed. 7:00 p.m.
714 North First East, Haskell
- Trinity Lutheran Church**
Ron Renegarbe, pastor
Sunday School 9:30 a.m., Worship 10:30
Hwy 380 East, Haskell
- Iglesia Bautista El Calvario**
Art Flores, Interim pastor
Sun. Morn. 9:45 a., 10:45 a.m., 5 p.m.; Wed. 7 p.m.
607 S. 7th, Haskell
- First United Methodist Church**
Rev. Daniel Echols, pastor
Sun. Morn. 9:45 a.m., 10:50 a.m. 6 p.m.; Wed. 6 p.m.
201 N. Ave. F, Haskell
- First Assembly of God**
Rev. J.C. Amburn
Sun. Morn. 9:45 a., 10:45 a.m., 6 p.m.; Wed. 7 p.m.
1500 N. Ave. E, Haskell
- St. George Catholic Church**
Father George Roney
Sat. Mass 7 p.m.; Sun. Morn. 9:00 a.m.
901 N. 16th, Haskell
- Church of Christ**
Jim Yates, minister
Sun. Morn. 9:30 a.m., 10:30 a.m., 6 p.m.; Wed. 7 p.m.
510 N. Ave. E, Haskell
- First Presbyterian Church**
Kelly Pigott, interim pastor
Sun. Morn. 9:30 a.m.
306 N. Ave. E, Haskell
- Trinity Baptist Church**
Tony Grand, pastor
Sun. Morn. 10 a., 11 a., 6:30 p.m.; Wed. 6:30 p.
114 S. Ave. D, Haskell
- Hopewell Baptist Church**
Rev. Tom Collins, pastor
Sun. Morn. 9:30 a.m., 11:00 a.m.; Wed. 7 p.m.
908 N. Ave. A, Haskell

Greater Independent Baptist Church

Sun. Morn. 9:30 a., 11:00 a., 6:30 p.; Wed. 7 p.
301 N. 3rd St., Haskell

New Covenant Foursquare

Bill and Renee Glass, pastors
Sun. Morn. 10 a.m., 11 a.m., 6:30 p.m.; Wed. 7 p.
200 S. Ave. F, Haskell

Mission Revival Center

Rev. William Hodge
Sun. Morn. 10 a.m., 11 a.m., 6 p.m.; Tues. 6 p.m.
1600 N. Ave. B, Haskell

First Baptist Church

Greg Gasaway, pastor
Sun. Morn. 9:45 a., 10:55 a., 6 p.m.; Wed. 6:30 p.m.
301 N. Ave. E, Haskell

Church in the Wind

C.C. Curran, pastor
Sun. fellowship 5 p.m. Church 5:30 p.m.
Tues. Bible Class 7:30 p.m.
203 S. 1st East, Haskell

Cornerstone Fellowship Baptist Church

Dr. Larry Nail, pastor
Sun. 9:30 a.m. 10:45 a.m., 6 p.m., Wed. 7 p.m.
1600 N. First St., Haskell

—WEINERT—

First Baptist Church

Dan Bullock, pastor
Sun. Morn. 10 a.m., 11 a.m., Wed. 7 p.m.
Weinert

Weinert Foursquare Church

Rev. Robert Harrison
Sun. Morn. 10 a.m., 11 a.m. Wed. 7 p.m.
Weinert

—ROCHESTER—

Church of Christ

Steve Willis, minister
Sun. Morn. 9:45 a., 10:45 a., 6 p.m.; Wed. 6 p.m.
West on Main Street, Rochester

First Baptist Church

Fred Garvin, pastor
Sun. 11:00 a.m., 6 p.m.; Wed. 6:00 p.m.
500 Main, Rochester

Union Chapel Baptist Church

Clovis Dever
Sun. Morn. 9:45 a., 10:45 a., 6 p.m.; Wed. 7 p.m.
Rochester

Faith Chapel of Rochester

Katherine Byrd, minister
Sun. Morn. 10 a.m., 11 a.m., 7 p.m.
Hwy 6, Rochester

First United Methodist Church

Rev. Daniel Echols, pastor
Sun. Morn. 9:00 a.m., 11:00 a.m.
Rochester

—SAGERTON—

Sagerton Methodist Church

Terry O'Rear, pastor
Sun. Morn. 9:45 a.m.
Sagerton

Faith Lutheran Church

Deborah Nissen, pastor
Sun. Morn. 9:15 a.m., 10:30 a.m.; Wed. 7 p.m.
Sagerton

—RULE—

First Baptist Church

Josh Stowe, pastor
Sun. Morn. 9:45 a., 11:00 a., 5 p.m.; Wed. 7 p.m.
1001 Union Ave., Rule

Primitive Baptist Church

Dale Turner Jr., pastor
First & Third Sundays 10 a.m.
Corner of 8th & Robins, Rule

Church of Christ

John Greeson, minister
Sun. Morn. 9:45 a., 10:40 a., 6 p.m.; Wed. 7 p.m.
811 Union, Rule

First United Methodist Church

Terry O'Rear, pastor
Sun. Morn. Worship 8:30 a.m.
1000 Union Ave., Rule

Primera Iglesia Bautista

Alfa y Omegs
Manuel Marin, pastor
Sun. Morn. 10 a., 11:00 a., 5 p.m.; Wed. 6 p.m.
500 Elm Street, Rule

Sweet Home Baptist Church

Larry Neal, pastor
Sun. Morn. 11 a.m., 5 p.m.; Wed. 5 p.m.
Gladstone Ave., Rule

West Bethal Baptist Church

Rev. Clovis Dever
Sun. Morn. 10 a., 11 a., 8 p.m.; Wed. 7:30 p.m.
300 Sunny Ave., Rule

—PAINT CREEK—

Paint Creek Baptist Church

Sun. Morn. 10:00 a.m., 11:00 a.m., 6 p.m.
Paint Creek

—O'BRIEN—

O'Brien Baptist Church

Jim Reid, pastor
Sun. 9:45 a., 11 a., 5 p., 6 p, Wed. 6 p.m.
O'Brien

Sonic Drive-In

1402 N. Ave. E
864-8533
Managers: Leon & Carolyn Herring

Steele Machine

Hwy. 280 • 864-2208

Modern Way Food Store

1202 N. Ave. E • 864-3763

HANSON PAINT & BODY SHOP

207 S. 1st • 864-3631
Professional Auto Body Repair
Glass Installation • 24 Hour Wrecker Service

Rule Co-op Gin & Elevator

301 Adams • Rule • 996-2421

Smitty's Auto Parts

107 N. 1st East • 864-2607

The Haskell Free Press

"The People's Choice"

420 N. First
Haskell, Texas
940-864-2686



Serving
Haskell County Since
1886

Christmas Cards! For The Best Selection Of Cards To Send To Family And Friends . . .



Visit the American Greetings display at

THE DRUG STORE

AMERICAN GREETINGS
American Greetings Corp. 100 S. Ave. E • Haskell • 864-2673



Shop The Haskell Free Press CLASSIFIEDS

864-2686

ALL DEADLINES MONDAY 5 P.M.



864-2686

For Sale

FOR SALE: Pool table, with all accessories. Call days 864-8555, ask for Bob. 49-50c

FOR SALE: Medical lift chair (less than 1 year old). Original cost \$699. Will take \$250. Call 806-781-8912. 49-50p

FOR SALE: Recliner. Call 996-2167. 50p

TO GIVE AWAY to good home: Black lab, blue healer mix. Call 864-5461. 50-51c

FOR SALE: 18" MS290 Stihl chainsaw with bar guard and carrying case. Brand new, used four times. \$275. 325-201-8202 or 325-201-8212. Ask for Trey. 50p

WILD HORSE Trading Post is your RADA Cutlery dealer. We're a cut above the rest! Come see our selection! 50c

Garage Sale

ESTATE SALE: Ethel Alvis Tidwell Estate Sale, Dec., 14, 15, 16, Thurs., Fri., Sat. Until all sold. Furniture, appliances, clothes, kitchen items, misc., Ford Cultivator parts, equipment tires jacks, etc., storage building 10x12 you move. 1201 N. Ave. F. 49-50p

YARD SALE: 104 S. Ave. F. Sat. 8 to 1. 50p

Miscellaneous

HOUSE LEVELLING and foundation repair. No payments until work is satisfactorily completed. David Lee & Co. 325-675-6369. 1-888-486-8588. 6fc

WELDING CLASSES: Basic welding classes will be held at the Knox City Ag. Shop, beginning Jan. 4, 2007. Classes will be held on Thursday nights from 6:00 to 10:00 p.m. Cost will be \$140.00. For more information, contact Dwayne Bearden at Munday City Hall, 940-422-4331. Students must be at least 16 years of age and classes will have a minimum of 10 students. If interested, sign up as soon as possible. 50c

Real Estate

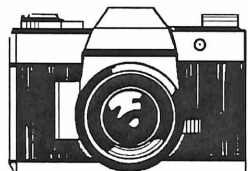
FOR SALE: Recently remodeled. 904 N. 3rd E. 4 bedroom, 2 1/4 bath, 2 car garage, central AC/heat, fireplace, storage building, custom shutters. 325-370-3946. 46fc

FOR SALE: Fully furnished, two bedroom lake cabin at Veda's Camp. Living room, den, storage shed. \$6,000. 940-864-3595. 50p

You cannot do a kindness too soon because you never know how soon it will be too late. One group of Christmas items on sale at half price or less. Kinney Furniture in Stamford. 325-773-2232. 50c

I BUY HOUSES

Quick cash and closing on homes \$25,000 or less.
Call Jim at
325-518-8128



Photos and Photo Pin Buttons
Available upon request.
Sports Athletes
Other Activities also.
Contact
Bill Blankenship
940-864-3535

Help Wanted

NOW TAKING applications for all positions at Sonic Drive In, Haskell. Apply in person. 25fc

GIBSON CARE Center, Aspermont needs CNAs for all shifts. Call Melissa Prew, ADON at 940-989-3526. E.O.E. 9fc

WEST-T-GO now accepting applications for cashier. Apply in person at store. 400 N. Ave. E. 48-3c

MUNDAY NURSING Center is now taking applications for CNAs, LVNs, and dietary help. Apply in person. 421 W. F St. 48fc

GIBSON CARE CENTER, Aspermont, Texas needs Certified Nurse's Aids as well as Non-Certified Nurse's Aids. Great place to work with competitive salary. Contact Darla Trammel or Melissa Smart at 940-989-3526 E.O.E. 49-50c

APPLICATIONS ARE now being taken for Activity Director. Must be cheerful, enthusiastic, dependable and enjoy working with the elderly. For more information, apply in person at Brazos Valley Care Home, 605 S. Ave. F, Knox City. 49-50c

GIBSON CARE CENTER, Aspermont, Texas needs full time and/or weekend R.N. Please call Darla Trammel or Melissa Prew 90-989-3526 E.O.E. 49-50c

For Rent

FOR RENT: Furnished rooms for rent. Nightly, weekly. Call Lone Star Lodging 864-2238. 21fc

TRAILERS FOR RENT: United Trailer Rentals. 864-8938. 50fc

Public Notices

NOTICE
Haskell County Commissioner, Precinct 2 will accept bids for one 2000 model D5MXL, 2300 hours, rear rippers, grubber and rake, excellent machine; and for two 1000 gallon fuel tanks with pump, hoses and nozzles included. Bids will be opened Jan. 3, 2007.

Haskell County reserves the right to accept or reject any or all bids. For bidding and other information, call 940-864-8602 days or 940-673-8364 nights. 49-51c

NOTICE
The deadline for Classified Advertising is 5 p.m. on Mondays.
Haskell Free Press

EXPERT AUTO WORK
REASONABLE RATES

See us for all your auto mechanic needs. 20 years experience. We do it right the first time.
117 North Ave. E • Haskell

What About the Health Care Costs Medicare Doesn't Cover?

If Medicare doesn't cover all your medical bills, you may want to supplement that coverage with a Medicare Supplement insurance plan. It helps you keep out-of-pocket costs down by paying some of the expenses Medicare doesn't.

With Medicare Supplement insurance plans from Mutual of Omaha Insurance Company, you'll be covered by one of the nation's largest and most reliable providers of Medicare Supplement insurance plans. We take our commitments seriously.

Learn more about a Medicare Supplement insurance plan. Call today.

CHAN GUESS
940-864-2665



Neither Mutual of Omaha Insurance Company nor its Medicare supplement insurance policies/certificates are connected with or endorsed by the U.S. government or the federal Medicare program. Policy forms: M221-Series 20828, M222-Series 20829, M223-Series 20830, M285-Series 20831, M376-Series 20838. Medicare Supplement insurance plans are underwritten by Mutual of Omaha Insurance Company, Mutual of Omaha Plaza, Omaha, NE 68175. This advertisement is used for the solicitation of insurance. This insurance has exclusions, limitations, and reductions. An outline of coverage is available upon request.
AFN32555_0206

MUTUAL OF OMAHA INSURANCE COMPANY

Public Notices

ADVERTISEMENT FOR BIDS
CITY OF HASKELL, TEXAS ASSISTED LIVING WATER LINE
TCDP PROJECT NO. 725032
Separate sealed bids for furnishing and installing 4,850 linear feet of 8" DR 18 C-900 PVC waterline, valves, fittings, bore, encasement, and incidentals will be received by the City of Haskell, Texas until 10:00 a.m. January 10, 2007 at City Hall, 301 South 1st Street, Haskell, Texas 79521, and then at said location publicly opened and read aloud.

Contract Documents and plans made be reviewed at the following locations:

Haskell City Hall, 301 South 1st Street, Haskell, Texas 79521, and Jaco & Martin, Ltd., Consulting Engineers, 3465 Curry Lane, Abilene, Texas 79606.

Bids will not be received from contractors who have not obtained original plans and specifications from Jacob & Martin. Bids shall be submitted on original documents and the entire specification book must be returned with bid. No faxes or copies of bid sheets will be accepted.

The owner reserves the right to waive any informalities and to reject any or all bids. Bids may be held by the owner for a period not to exceed 60 days from the date of bid opening for the purpose of reviewing the bids and investigating the qualifications of bidders prior to awarding of the contract.

Copies of the Contract Documents may be obtained from Jacob & Martin, Ltd., 3465 Curry Lane, Abilene, Texas 79606 (325-695-1070), upon payment of \$50.00 (non-refundable) for each set.

A certified check or bank draft, payable to the order of the City of Haskell, negotiable U.S. Government bonds (at par value) or a satisfactory Bid Bond executed by the Bidder and an acceptable surety in an amount equal to five percent (5%) of the total bid shall be submitted with

OWNER FINANCE IN HASKELL
1305 N. Ave. F: 2 bedroom.
605 N. 5th: 1 bedroom.
1007 N. Ave. D: 2 bedroom.
LOW DOWN LOW MONTHLY
Call Tyler at **325-829-3276** or Jim at **325-518-8128**

each bid.
Because Federal Funds are being used, attention is called to the fact that not less than the federally determined prevailing (David-Bacon) wage rate as issued by the Office of Rural Community Affairs and contained in the contract documents must be paid on this project. In addition, the successful bidder must ensure that employees and applicants for employment are not discriminated against because of their race, color, religion, sex or national origin.
City of Haskell, Texas
By: s/ Ken Lane, Mayor
Date: December 13, 2006 50-51c

Nanny Plumbing, Inc.

301 S. Ave. E • Haskell
940-864-3043
Sales and Service for Residential Plumbing and Heating/Cooling, Pump Installer and Sprinkler Systems.
License numbers available upon request.

WILD HORSE TRADING POST

Haskell's General Store and RadioShack. See us for your Christmas Shopping needs!
Don't forget-We also have guns and ammo, gifts, musical instruments and ladies clothing!
419 S. 1st, Haskell • 864-2200
Hours: M-F 9-6; Sat. 9-3

Dodson Concrete Construction
Commercial - Residential
David Dodson
704 N. Ave. F • Haskell
940-864-2038
Over 20 Years in the Business
FREE ESTIMATES

A.C.I. Professional Services
Carpet Steam Cleaning
Cory Ivy
P.O. Box 41
Haskell, Texas 79521
940-256-0223

Haskell Volunteer Fire Dept.
is accepting donations to build Fire Station #2 at 300 S. 1st
to house donated Texas Forest Service firefighting equipment and provide a larger training facility. If you would like information on making a donation or how you can help contact Fire Chief Bill Steele 940-864-2208; Randy Shaw 940-864-2023; or ask any Haskell fireman for details.
Donations may be mailed to:
Haskell Volunteer Fire Dept.
301 N. First St., Haskell, TX 79521

RIKE REAL ESTATE
Mary Rike, Broker John Rike, Agent
411 1/2 S. First Street
Haskell, Texas 79521
940 864 2411 940 864 2332
mrike@dtinspeed.net
www.rikerealestate.com

1507 N. AVE. F. Large home in immaculate condition. Property has three bedrooms, living room and upstairs den, some knotty pine paneling with beautiful hardwood floors, utility room, C/HA, attic storage, cellar and much more.

1801 N. AVE. G. Very large 4 bedroom, 3 bath home, immaculate condition. C/HA, large kitchen, den plus living, cellar, well and sprinkler, lifetime metal roof and brick storage building.

606 N. 17TH. 2-2-car-port. Brick home on nice corner lot. Property has been updated and includes living, dining, built-in kitchen, utility, C/HA, fenced yard, sprinkler system and well.

Come by Rike Real Estate for a complete list.

Shop Haskell first

Lots of good used furniture-hard rock maple china cabinet, pedestal table and chairs, serving cart, full size bed plus sofas and chairs. 325-773-2232. 50c

We would like to thank all those who donated to and attended our fall festival this year. The funds raised helps purchase Christmas gifts for our residents. The family at Haskell Healthcare Center appreciates your help and wishes you a happy holiday season.
Thank you,
Haskell Healthcare Center

The family of Elvira Schmidt would like to thank our many friends for the food, cards and prayers in our time of sorrow.
Alvin Schmidt and family
Milton Schmidt and family
Edith and John Paul Leek
Derrel Schmidt

LANGFORD ROUSTABOUT SERVICE
SCOTT LANGFORD
Roustabouts
Backhoes
Winch Trucks
Dump Trucks
Welders
Specializing In:
Oilfield Repair,
Maintenance & Construction

Mobile: 940-256-0535
Office: 940-864-3490
Home: 940-864-2565
8348 N. Hwy. 277
Haskell, Texas 79521

Haskell County REALTY
EQUAL HOUSING OPPORTUNITY

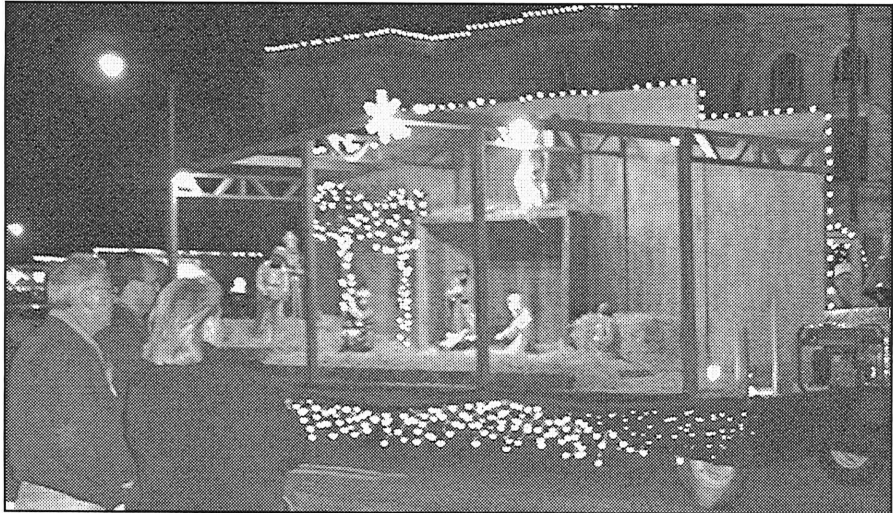
605 N. AVE. G. Cottage-like 3 bedroom, 2 bath. Two living areas, large kitchen, fenced backyard, carport. Lots of storage. 1010 N. 6TH ST. 3 bedroom, 1 bath. Cottage like home. Great interior. Ceramic tile. Hardwood flooring. Rock patio. Fenced yard.
200 N. 2ND. 2 bedroom, 1 bath. Immaculate condition. Completely new flooring, cabinets, fixtures, CH/A, plumbing and wiring. Much more.
401 BEVERS IN WEINERT. Great deal. 2 bedroom, 2 bath, living room and large den. 2 car garage. Nice storage. More amenities. UNDER CONTRACT.
3 BEDROOM, 2 bath. One acre. CH/A. Water well. Price reduced.

1409 N. AVE. J. 2 bedroom, 1 bath. Water well. 1 car garage. Fenced backyard. Cute home. Possible owner finance.
PROPERTY at 203 N. Ave. G. 3 bedroom, 2 bath. Large living room. 3 car garage. 2 apartments. More amenities.
507 N. 5TH. 3 bedroom, 2 bath. Hardwood floors. CH/A. Large corner lot with storage building. Water well. Priced to sell.

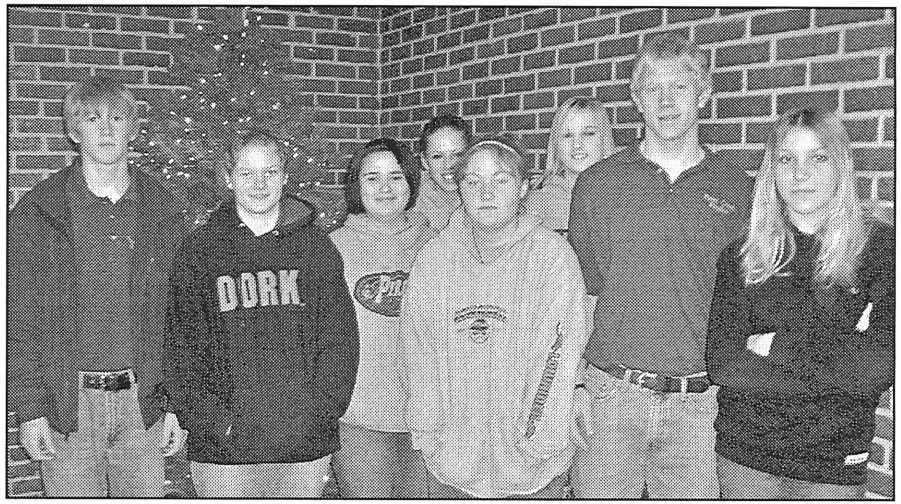
103 N. Ave. E
940-864-2665
1-800-658-6342
or call
Bridget or Chan Guess 864-6142
Hess Hartsfield, Broker 864-2004

Take Aim with your Advertising Dollars
Let us help you score big with on-target display or classified ads. We reach more of your potential customers than any other advertising medium, so there's no better way to get your point across.
Call us today, let us help you hit your target!

The Haskell Free Press
940-864-2686



SEASON'S REMINDER—The second place winner in the Chamber of Commerce Old Time Lighted Christmas Parade held Saturday, was the Richardson's TrueValue float, featuring a nativity scene depicting the coming of the real true light to the world.



COMPLETES UNIT—Paint Creek FCCLA students completing their 'Power of One' units were I-r, Taylor Exum, Kristen Barr, Cidney Jordan, Alice Blair, Cassidy Cooper, LaShell Walker, Jesse Exum and Amy Bogle.

Paint Creek students finish FCCLA projects

Several Paint Creek FCCLA chapter member recently all units of their "Power of One" project. These members include LaShell Walker, Cassidy Cooper, Cidney Jordan, Alice Blair, Amy Bogle, Taylor Exum, Kristen Barr, and Jesse Exum.

CCLA members have qualified to compete in the Region II Family, Career and Community Leaders of America Contest and Conference to be held in San Angelo March 2-3.

They will be recognized for their "Power of One" unit completions and they will also compete in Leaders Enhancement Opportunity (LEO) tests.



SANTA ROSA'S COMING TO TOWN—Winning third place in the lighted Christmas Parade, Sat., Dec. 9, was the Santa Rosa Telephone Cooperative's entry featuring children dressed for winter, riding with lighted candy canes, reminding all that Santa Claus is coming to town.

Goodfellows Donations

The Haskell Goodfellows, sponsored by the Haskell Lions Club, are accepting donations for Christmas boxes to be distributed to needy families this holiday season. Boxes will be delivered on Dec. 24 to those who have been selected to receive them. Donations of food, toys and clothing are being accepted. Cash donations may be sent to The Haskell Free Press, P.O. Box 555, Haskell, Texas 79521.

Don and Bobbye Collins	\$50
Dr. and Mrs. William J. Kemp	\$25
In lieu of Christmas cards, Eloise and Dudley Perrin	\$30
In memory of Edna Burnett by E.H. Burnett	\$25
Total this week	\$130
Previous total	\$975
Total to date	\$1,105

Chapter Advisor, Darlene Hopkins, explains that the students must complete a "Power of One" project sheet for each unit that involves using the FCCLA Planning Process Steps: 1. Identifying a concern. 2. Set a goal. 3. Form a plan. 4. Act. 5. Follow up. The five "Power of One" self important units are entitled: A Better You, Family Ties, Working on Working, Take the Lead, and Speak out for FCCLA. In addition, these Paint Creek

Calendar

Candlelight service

A candlelight Christmas Eve service will be held Sun., Dec. 24 at 5:30 p.m. at First Baptist Church in Haskell.

Immunizations

The Texas Dept. of Health in Stamford will hold an immunization clinic Thurs., Dec. 21 at the Haskell National Bank Community Room in Haskell. Clinic times are from 12:30 to 3 p.m. For more information call 325-773-5681.

Chapman retires

A reception will honor the retirement of The Honorable Charles Chapman, Judge, 39th Judicial District in celebration of his twenty-two years of service, Thurs., Dec. 21 from 2 to 3:30 p.m. at First National Bank, South 2nd and U.S. 277 South in Haskell.

Candlelight service

Trinity Lutheran Church, located east of Haskell on the Throckmorton Highway, will hold a candlelight service Christmas Eve at 11 p.m. Come join in the worship service and beautiful music of Christmas.

Candlelight service

A Christmas Eve candlelight service will be held at 6 p.m. at First Presbyterian Church, N. Ave. E in Haskell, on Dec. 24. Everyone is invited to join in communion.

Open daily
Mon. thru Fri.

**Just in time
for Santa
50% OFF ALL
MERCHANDISE**

Happy Holidays
to all our friends
and customers!

Good Times
UNLIMITED

512 N. 1st
940-864-6133

*Wishing you a Beautiful Holiday Season
and a New Year of Peace and Happiness*

Christmas Open House

Tuesday, December 19th, 9:00 a.m. to 3:00 p.m.

We will be closed (including drive-in) December 25.
Drive-in open December 30.
Bank and drive-in will be closed Monday, January 1.

Officers, Directors & Employees of
Haskell National Bank

601 N. 1st • 864-2631 • Haskell, Texas
Member FDIC

Meranda
Kathryn
Connie
Tam
Mary
Randy
Mylene
Robbie
Carla
Betty Sue
Lina
Pam
Debra
Rubie
Gina
Andy