

## Basketball games

**HASKELL SUMMER LEAGUE**  
Thurs., June 22 at Haskell  
Crowell vs Haskell 7 p.m.  
Stamford vs Crowell 8 p.m.  
Stamford vs Haskell 9 p.m.  
Tues., June 27 at Haskell  
Haskell vs Munday 6 p.m.  
Munday vs Rule 7 p.m.  
Rule vs Haskell 8 p.m.

## Calendar

### Early deadline

Deadline for news and advertising for the, Thurs., July 6 edition of the Haskell Free Press will be Thurs., June 29 at 5 p.m. The Free Press office will be closed Tues., July 4.

### Summer lunches

Haskell CISD will serve summer food service meals at the Haskell Elementary School cafeteria, 306 S. Ave. G, Monday through Friday through July 28 from 11:30 a.m. to 1 p.m. Those ages 1-18 years of age will eat free. Adults may eat for \$2.50 per plate. No meals will be served on July 4.

### Story time

Haskell Co. Library will hold four school age story times, in cooperation with the Haskell CISD summer program, on June 22, July 13 and July 20 at 9:30 a.m. The theme is 'Reading-Sport of Champions.' For more information, call 864-2747.

### Immunizations

The Texas Dept. of Health in Stamford will hold an immunization clinic Thurs., June 22 at the Haskell National Bank Community Room in Haskell. Clinic times are from 2 to 4 p.m. For more information call 325-773-5681.

### Old Glory days

Old Glory Days will be held from noon until 11 p.m. July 1 in Old Glory. The 7th annual celebration will feature a parade, flag raising, auction, bingo, egg toss, bike games, horseshoe tournament, food, fireworks and a dance. For information call 940-989-3609 or 817-281-3273.

### Blood drive

The Meek Blood Center will hold a blood drive Tues., June 27 from noon to 7 p.m. at Haskell National Bank. Call 325-670-2798 for more information or visit [www.meekbloodcenter.org](http://www.meekbloodcenter.org).

### Garisons honored

The Dusty Garison family will be honored with a come and go reception Sun., June 25 at the fellowship hall of First Christian Church from 1 to 3 p.m. The family has moved to Abilene and Sunday will be Dusty's last Sunday morning service at the church. The community is invited.

### Old Glory musical

The Old Glory Musical will be held Sat., June 24 at the Community Center in Old Glory at 5:30 p.m. For more information or a spot on the program call 940-989-2816 or 989-2739.

### Burn ban issued

A burn ban is in effect for Haskell County. The use of combustible materials in an outdoor environment by any person is prohibited. Combustible materials specifically include, but are not limited to, fireworks, camp fires, welding and any other pyrotechnic material, which in the manner or means of its use could result in a wildfire. The ban will continue until conditions warrant otherwise, stated Haskell County Judge David C. Davis. A person who knowingly or intentionally violates this order commits a Class C misdemeanor, punishable by a fine of up to \$500.

## Index

Out of the Past ..... Page 4  
Menus ..... Page 6  
Classifieds ..... Page 7  
Around Town ..... Page 8

## Burn ban in effect

# The Haskell Free Press

VOL. 120—NO. 25, ©JUNE 22, 2006

"The People's Choice"

8 PAGES—ONE SECTION—75 CENTS



**READY FOR TAKE-OFF**—Richard Levecht of Abilene is shown with his World War II biplane. Model airplanes such as this will be on display during the Texas Chiefs annual Open House FlyIn

held this Sat., June 24 at the Haskell Model Airport, located three miles east of town on Hwy. 380. A variety of models will be on display for the public to enjoy.

## Local men represent Haskell at TMCN

Abe Turner serves as Haskell's official delegate on the Texas Midwest Council. Alternate delegate for the city is Brandon Anderson.

The Texas Midwest Council meets three times a year for delegates from cities throughout the region to network and learn about implementing successful community programs and projects.

During the second meeting of the year last Wednesday, delegates were informed about how cities are

included in the *Texas Midwest Guide*, an annual publication that promotes history, attractions, places to visit, annual events and quality of life in the region. Council members also shared success stories on economic development and city improvement projects.

Texas Midwest Community Network is a regional organization that provides marketing programs for tourism and economic development; networking opportunities for

community leaders to find ways to enhance community development; and legislative awareness in monitoring issues that directly affect the communities in this region of the state. The organization was founded on the basis of "communities working together to accomplish what one community cannot do alone."

Many of the member cities find themselves facing each other across a football field or over a basketball

court during the course of a year. The regional organization gives communities an opportunity to turn their rivalries into alliances to strengthen the economy and quality of life in the region.

TMCN was founded in 1994 and has a membership of 43 communities.

For more information visit [www.texasmidwest.com](http://www.texasmidwest.com).

## Nominations sought for FSA election

Agriculture Secretary Mike Johanns has announced that agricultural producers throughout the nation can nominate eligible candidates to serve on USDA Farm Service Agency (FSA) county committees now through Aug. 1 for the county committee elections to be held in the fall.

"Farmers and ranchers have an important opportunity to ensure that their FSA county committees represent them by participating in the county committee election process," said Johanns. "I encourage agricultural producers across the country to nominate eligible candidates, especially minorities and women, to serve on their local county committees and to vote this fall."

Farmers and ranchers who serve on county committees help make decisions necessary to administer federal farm programs offered in their communities. County committees make decisions on agricultural issues such as commodity price support loans and payments, conservation programs, disaster payments and employing county executive directors.

Agricultural producers who participate or cooperate in programs administered by FSA and live in the local administrative area conducting an election may be nominated for candidacy for a committee. Farmers and ranchers can obtain a complete

list of eligibility requirements by visiting a local USDA Service Center or online at <http://www.fsa.usda.gov/pas/publications/facts/html/cocelig06.htm>.

Individuals may nominate themselves or others as candidates. Additionally, community based organizations representing minorities and women may nominate candidates.

To become a nominee, eligible individuals must sign nomination form FSA-669A. The form includes a statement that the nominee agrees to serve if elected.

Farmers and ranchers should keep the following important dates in mind during the 2006 county committee election process:

- The nomination period begins June 15 and Aug. 1 is the deadline to file nomination forms at the local USDA Service Center.

- USDA will mail ballots to eligible voters by Nov. 3. The last day to return voted ballots to the local USDA Service Center is Dec. 4.

- Newly elected county committee members take office Jan. 1, 2007.

For more information about FSA county committees or to obtain a nomination form (FSA-669A), visit a local USDA Service Center or online at <http://www.fsa.usda.gov/pas/publications/elections/Default.asp>.

## Fireworks banned in unincorporated areas

With the Texas Forest Service making the determination that drought conditions exist in Haskell County, on Mon., June 19, the Commissioner's Court determined that the normal danger of fire in the unincorporated areas of Haskell County is greatly enhanced by the extremely dry conditions now existing. As a result, an order was issued prohibiting the sale or use of

certain fireworks in those areas.

Under the order, no person may sell, detonate, ignite, or in any way use fireworks classified as "skyrockets with sticks" and "missiles with fins" in any portion of the unincorporated area of Haskell County.

The order does not prohibit common fireworks, small in size classified as Class C explosives; large

fireworks devices designed primarily to produce visible or audible effects by combustion, deflagration, or detonation, and classified as Class B explosives by the U.S. Dept. of Transportation.

A person commits an offense if the person knowingly or intentionally violates a prohibition established by this order. An offense under this order is a Class C misdemeanor.



**ZIP-P-T-DO-DAH**—Robert Talkington of Amarillo takes a minute to ready his plane Zip-P-T-Do-Dah for flying at a model airplane event. Club members will be on hand to explain their models and control systems during the Texas Chiefs annual Open House FlyIn Sat., June 24 at Haskell Model Airport, located three miles east of town on Hwy. 380. The informal event offers the public an opportunity to see the many different types of aircraft in flight.

## Texas Chiefs to hold FlyIn

The Texas Chiefs Model Airplane Club will hold their annual Open House FlyIn Sat., June 24 at the Haskell Model Airport. The field is located three miles east of town on Hwy. 380.

Fliers are expected from several different clubs, and a variety of models should be on hand. Club members will be glad to explain the models and the control system.

No formal competitive events are planned, however, plaques will be awarded for Best Military Model and Best Civilian Model.

Everyone is invited to come out, see the field and enjoy the flying.

## Short wins runoff

In a runoff election for Haskell school board single member district #4 held Tues., June 13, Larry Short defeated incumbent Susan Turner by a 126-95 posting of votes.

The candidates each gathered 89 votes during the May election prompting the runoff.

FOR NEWS ITEMS OR TO SUBSCRIBE, CALL 864-2686

# Quick Draw event set

The "Quick Draw" event at the Preview Party for the Stamford Art Foundation Show will feature fifteen artists. In this event, the artists participating are given one hour to complete a painting from scratch and then the painting is auctioned with all proceeds benefiting the West Texas Rehabilitation Center.

Those attending the Preview Party can watch the artists as they are painting. No one will duck, flinch or reach for a gun when "Draw" is shouted. Instead the artists will start painting and in one hour will have an original painting ready to be auctioned. Patrons can mingle and observe these awesome works in the making and then try to outbid each other in the auction.

Movie start, artist and Texas Cowboy Reunion Parade Marshall,

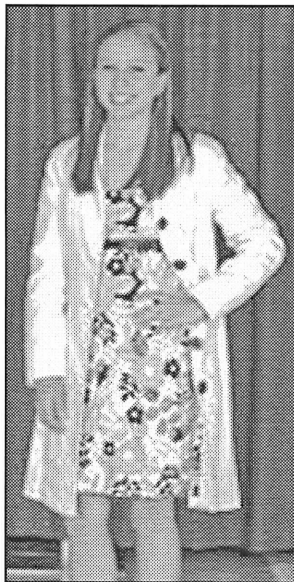
Buck Taylor will be a special feature in the "Quick Draw" event.

Also featured is the Official State of Texas Artist for 2006, George Goutwell of Clifton.

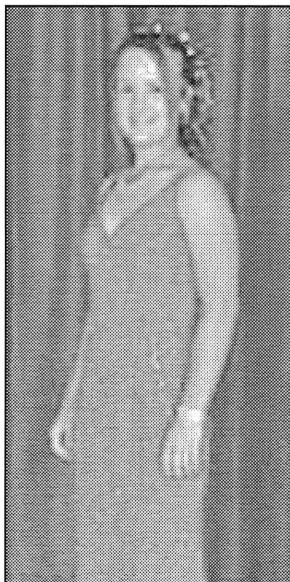
In the auction there will be a print on canvas donated by Cowboy Hall of Fame artist, Wayne Baize of Fort Davis. Baize was an original artist in the Stamford Art Show in 1974 and continues to be supportive.

The Preview Party will be Tues., June 27 at the John Selmon Memorial Gallery. Besides the "Quick Draw" event there will be a steak dinner and music. The art for the 2006 show will be viewed for the first time and those attending will have the opportunity to visit with the artists. Thirty-eight artists are participating.

For more information call Dawn Ham at 325-773-9094.



**MOLLY DUDENSING**  
2nd Place  
State 4-H Fashion Show  
Dressy Construction Division



**CANDICE BRISTER**  
2nd Place  
State 4-H Fashion Show  
Formal Buying Division

# 4-H'ers compete at State Round-Up

Seven Haskell County 4-H members competed in a variety of 4-H contests during the State 4-H Round-Up held June 6-9 on the Texas A&M University campus.

These senior age 4-H youth qualified in their respective contest areas at the district level earlier in the year earning the right to represent the Rolling Plains District at the state level.

The week of contests began with the State 4-H Fashion Show competition. Representing Haskell County and the Rolling Plains district in this event were: Candace Brister, Formal Buying Division; Molly Dudensing, Dressy Construction Division; and Kimberly Williams, Casual Construction Division. The top three in each division were announced during the Wednesday evening style show with approximately 2,000 people in attendance. Receiving second place in their divisions were Candace Brister and Molly Dudensing. They each received cash awards for their accomplishments.

Wednesday events also included

the Nutrition Quiz Bowl in which the Haskell County team of Emery Dudensing, Gay Lynn Gary and Kiel Rowan took fifth place honors after a day of competitive play in which they matched their knowledge of "nutrition" against twenty-four other teams competing for the state honors.

Another wave of competition began early Thursday when C.J. Saucedo represented Haskell County and the Rolling Plains District in the "Share The Fun, Vocal" competition. Saucedo sang the Keith Urban hit, "Making Memories of Us."

Competing in the State "Clothing & Textiles" Educational Presentations portion of Round-Up was Molly Dudensing with a power point presentation on cotton fiber and fabric. Dudensing placed fourth with her talk titled, "And The Winner Is....."

Winding up the week of competition for Haskell County was Candace Brister as she competed in the State 4-H Food Show. This contest included preparing her competition dish, "Spinach Dip" and going through an intense interview regarding her foods project activities and knowledge of foods and nutrition.

In addition to the competitive events, the participants enjoyed evening activities including concerts featuring Trent Willmon and Aaron Watson. Accompanying these youth for the week were Renee Dudensing, Sharazan Riggins, Debbie Brister, Sylvia and Conrad Saucedo and Jane Rowan—County Extension Agent for Family and Consumer Sciences.

Appreciation is expressed to the Texas Extension Education Association (TEEA) of Haskell County and the Haskell County 4-H and Youth Committee for helping with some of their expenses for the competitions.

## Student in the News

Bonnie Emert of Paint Creek has been named to the Dean's List at Vernon College for the spring 2006 semester. The list recognizes full-time students who complete the semester with a GPA of 3.5 or above.

She is the daughter of Randy and Susan Emert of Paint Creek.

## BURN BAN IN EFFECT

## Tower Drive-In Theatre

Hwy 6 North, Rule - (940) 997-0137

NOW PLAYING:

### The Omen-R

Show starts at 9:15! Open Friday, Saturday & Sunday  
Adults \$4; Ages 6-12, \$2; 5 and Under Free

## Rolling Plains Health Care System Assisted Living

We are now accepting reservation deposits in the amount of \$500 for our new 20 unit Assisted Living Community in Haskell. We will be under construction very soon. We anticipate completion in the fall of 2007. Please call Margaret Evans at 1-888-883-6663 for detailed information. You can make your reservations with her or with Wallace Emerson at 864-8555 or Brandon Anderson at 864-2355 locally. Remember it will be a first come, first serve basis. So hurry and don't miss out!

## C&S Flooring and Lumber Yard

105 N. 1st • Haskell • 940-864-3753  
742-4021 Home • 325-338-3048 Cell  
Conrad and Sylvia Saucedo, Owners

See us for all your flooring needs!

**WOLF PEAK** Safety Glasses

We have all your roofing supplies!

Kelly Moore Paints, Roofing, Lumber, Insulation  
Hardware, Plumbing, Screen Repairs, Glass

We can help with all your installation needs!



## HERE'S TO YOUR HEALTH... AT HOME!

Brought to You By:

## Haskell Home Health Agency

Misty Gibson  
RN, BSN

Dear Misty,

What are the symptoms of hyperglycemia (High Blood Sugar) and hypoglycemia (Low Blood Glucose)?

Clip and place on refrigerator as a handy reference.

### Hyperglycemia (High Blood Glucose)

- Symptoms
- Extreme Thirst
  - Frequent Urination
  - Dry Skin
  - Hunger
  - Blurred Vision
  - Drowsiness
  - Nausea

### What Can You Do?

- Test Blood Glucose
- If over 250 mg/dL for several tests, CALL YOUR DOCTOR.

For more diabetic information, contact Haskell Home Health Agency, 417 S. First, Haskell, TX 79521 or call 940-864-5074 or 1-877-864-5074.

### Hypoglycemia (Low Blood Glucose)

- Symptoms
- Shaking
  - Fast Heartbeat
  - Sweating
  - Anxious
  - Dizziness
  - Hunger
  - Impaired Vision
  - Weakness Fatigue
  - Headache
  - Irritable

### What Can You Do?

- Drink 1/2 glass OJ, skim milk
- Test Blood Glucose. If symptoms don't stop, CALL YOUR DOCTOR.
- Within 30 minutes after symptoms go away, eat a light snack.

HERE'S TO YOUR HEALTH—AT HOME is brought to you by Haskell Home Health Agency providing home care services in Haskell, Knox, Stonewall, Throckmorton and Jones Counties



Home Care: Keeping Texans Proud & Independent

# Enroll Now!

# for CNA Classes

## at Munday Nursing Center

Course is administered by



Classes are scheduled:  
Tuesday and Thursday Nights  
6 p.m. to 10 p.m.

at Munday Nursing Center  
(times and days subject to change)

Enrollment information available on request at  
Munday Nursing Center  
940-422-4541

# Sign-up continues for USDA hurricane relief

County Farm Service Agency (FSA) reminds agricultural producers that sign-up continues for four crop and livestock assistance programs providing financial resources to producers affected by the destructive 2005 hurricanes, said Glenn R Brzozowski, FSA County Executive Director.

The four programs: Livestock Indemnity Program, Feed Indemnity Program, Hurricane Indemnity Program and Tree Indemnity Program are funded through \$250 million from the U.S. Department of Agriculture.

To be eligible for this assistance, a producer's loss must have occurred in one of 261 counties that received a primary presidential or secretarial disaster designation due to 2005 Hurricanes Dennis, Katrina, Ophelia, Rita or Wilma. Under these criteria, several counties qualify for USDA disaster assistance. An extended list of eligible counties in Alabama, Florida, Louisiana, Mississippi, North Carolina and Texas is available at: <http://www.usda.gov/HurricaneInfo.xml>.

Livestock Indemnity Program. The Livestock Indemnity Program (LIP) will provide payments to eligible livestock owners and contract growers who incurred the death of livestock due to the hurricanes. To determine payments, USDA's Farm Service Agency (FSA) will multiply the number of eligible livestock by the payment rate. Livestock owners will receive 75 percent of the livestock's average fair market value, whereas contract growers will receive 75 percent of the average sustained income loss. More information on LIP is available in the online LIP fact sheet at: [www.fsa.usda.gov](http://www.fsa.usda.gov).

Feed Indemnity Program. The Feed Indemnity Program (FIP) will provide payments to eligible livestock owners and cash lessees who suffered feed losses or increased feed costs due to the hurricanes. To calculate program payments, FSA will multiply the national payment rate established for each livestock category by the number of eligible livestock. More information on FIP is available in the online FIP fact sheet at: [www.fsa.usda.gov](http://www.fsa.usda.gov).

Hurricane Indemnity Program. The Hurricane Indemnity Program (HIP) will provide payments to eligible producers who suffered crop losses and received either a Federal Crop Insurance Corporation crop insurance indemnity or a FSA Noninsured Crop Disaster Assistance Program (NAP) payment. Producers' HIP benefits will equal 30 percent of the crop insurance indemnity or 30 percent of the NAP payment. More information on HIP is available in the online HIP fact sheet at: [www.fsa.usda.gov](http://www.fsa.usda.gov).

Tree Indemnity Program. The Tree Indemnity Program (TIP) will provide payments to eligible owners of commercially grown fruit trees, nut trees, bushes and vines that produce an annual crop and were lost

or damaged due to the hurricanes. FSA will base TIP payments on the crop's proximity to the hurricanes based on established tiers, which reflect the severity of damage from least to most severe. More information on TIP is available in the online TIP fact sheet at: [www.fsa.usda.gov](http://www.fsa.usda.gov).

Aquaculture Grants. USDA is also providing \$25 million in block grants to the state governments of Alabama, Florida, Louisiana, Mississippi, North Carolina and Texas from Section 32 funds. The funds are to provide assistance to producers raising aquaculture species in a controlled environment as part of a farming operation. Governors or their designees will determine sign-up procedures for the assistance and will distribute the funds to eligible aquaculture producers to help them recover from the devastating effects of the hurricanes of 2005. More information on the aquaculture grants is available in the online fact sheet at: [www.fsa.usda.gov](http://www.fsa.usda.gov).

Additional Disaster Assistance. Additional funds have been designated in response to the 2005 hurricane disasters. Approximately \$200 million is designated for the Emergency Conservation Program, \$400 million for the Emergency Forestry Conservation Reserve Program and \$300 million for the Emergency Watershed Protection.

Additional funds for oyster, nursery and poultry producers and forest landowners will be made available when new rules authorizing assistance are published in the Federal Register. USDA's Farm Service Agency (FSA) is developing these rules with plans to publish proposed rules for public comment in the near future.

Emergency Loan Assistance. USDA's Farm Service Agency (FSA) currently has \$156 million in low-interest emergency (EM) loan funds available to help farmers and ranchers rebuild their operations.

In certain cases, FSA can provide producers with both EM and operating loans to assist them with spring operations. Eligible producers who expect to receive future hurricane disaster payments from USDA may receive loans now and assign the disaster funds to EM loan payments. Emergency loan funds may be used to: restore or replace essential property; pay all or part of production costs associated with the disaster year; pay essential family living expenses; reorganize the farming operation and refinance certain debts. To apply for an EM loan, producers are encouraged to contact their local USDA Service Center. An FSA fact sheet explaining the loan application process step-by-step and is available at: [www.fsa.usda.gov](http://www.fsa.usda.gov).

For information on eligibility and the application process, contact the Haskell County FSA office at 940-864-2435.

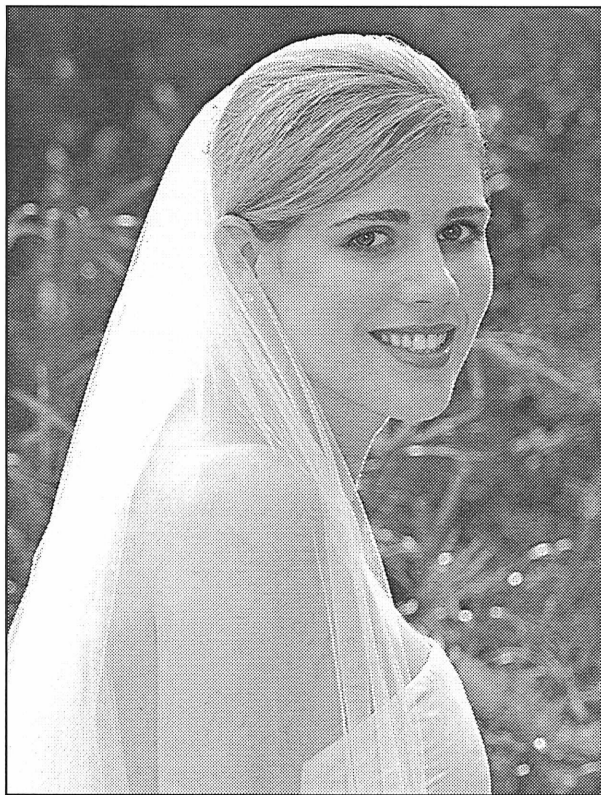
**FLY FREE TO Las Vegas**

For a limited time, buy one air/hotel package and the second person flies free\* from Abilene!  
Packages available with 35 of Las Vegas' most exciting hotels.

**allegiant air**

Book now at [www.allegiantair.com](http://www.allegiantair.com)  
call 1-800-432-3810 or ask your favorite travel agent.

\* Offer based on a buy one (1) air/hotel package, get one (1) round-trip companion airfare for free. Minimum two (2) night air/hotel package required. Companion travel must be on same itinerary as regular fare passenger. Must be purchased by June 24, 2006 for travel to be completed by Nov. 30, 2006. Prices do not include PPH, segment tax or Sept. 11 security fee of up to \$10.20 per segment. A convenience fee of \$7.00 per traveling customer will apply when booked at [www.allegiantair.com](http://www.allegiantair.com) or through an Allegiant Air call center. Travel purchased through an Allegiant Air call center will cost an additional \$3.00 per segment. A segment is defined as one take-off and one landing. Fares are non-refundable. Seats are limited and subject to availability. Restrictions apply. Offer not valid on previously purchased tickets.



MRS. JEFFREY SWOPE

## Ball, Swope wed in New Orleans

Allison Elaine Ball and Jeffrey Orland Swope were married June 10 in New Orleans with a double ring ceremony held at Trinity Church.

A reception was hosted in their Garden District home, Hogan-Swope House, built in 1855.

A rehearsal dinner party was held at the New Orleans Museum of Art.

The bride is the daughter of Mr. and Mrs. William Wesley Ball of Austin. She is the granddaughter of Mr. and Mrs. Charles Wilton Oman and Mr. and Mrs. Wesley Luzerne Ball, Jr., all of Austin.

The groom is the son of Mrs. Jane Swope of Little Rock, Arkansas and the late Earnest Orland Swope, Jr. He is the grandson of the late Mr. and Mrs. George E. Jernigan and the late Mr. and Mrs. E.O. Swope, Sr.

Given in marriage by her parents and escorted by her father, the bride wore a strapless silk taffeta gown.

Serving as maid of honor was the bride's sister, Elizabeth Evelyn Ball of Austin. Bridesmaids included Lacy E. Davis, Sonya M. Mirbagheri, Ashley D. Collins, Elizabeth H. Morse and Lindsey W. Smith, all of

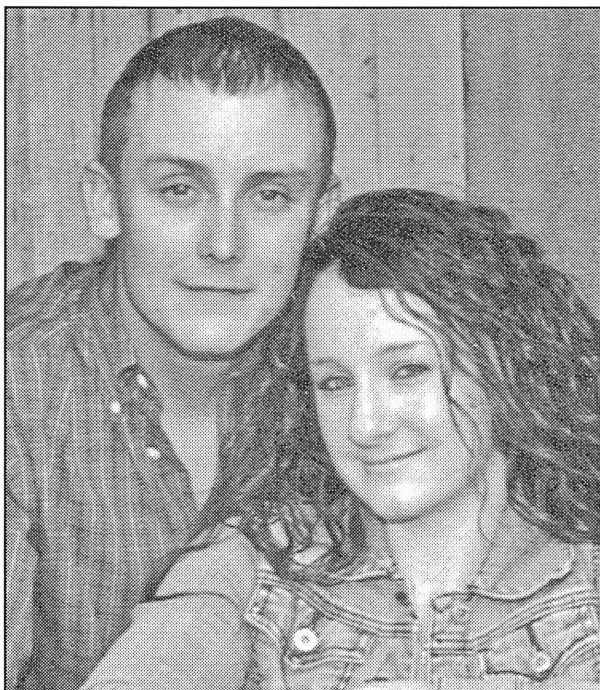
New York City. Bell ringer was Abigail Piper Graham of Princeton, New Jersey.

Best man was William Wesley Ball, brother of the bride of Austin. Groomsmen included Brendan F. Wallace, Cullen B. Hilkene and Brian Zakutansky, all of New York City; Kevin Dodge of La Jolla, California, and Ford F. Graham of Princeton, New Jersey.

The bride is a graduate of Westlake High School and Princeton University where she received her Bachelor of Arts in English Language and Literature and is a member of the Ivy Eating Club. She is a Senior Associate at Vulcan Capital Management, New York City.

The groom is a graduate of the Frost Business School at Centenary College of Louisiana with a Bachelor of Arts in Economics and a member of Theta Chi. He is a Partner Managing Director with Fiduciary Asset Management, based in St. Louis.

The couple will honeymoon in Maui and will reside in New York City and New Orleans.



B.J. OPSAHL - BRITTNAY CRISWELL

## Criswell, Opsahl to marry Aug. 19

Mr. and Mrs. Bill Mullen of Aspermont are announcing the engagement of their daughter, Brittney Criswell, to B.J. Opsahl, son of Greg and Debbie Brister of Haskell.

The bride-elect attends

Midwestern State University.

The prospective bridegroom is employed by Suez Energy.

The couple plans an Aug. 19 wedding and plan to make their home in Jacksboro.

## Dudensing receives Division I at State

Molly Dudensing recently competed at the Texas State Solo-Ensemble Contest on the campus of Texas State University in San Marcos playing a Haydn sonata.

She received a Division I in her first year to compete at the state UIL competition.

To qualify for state, high school students must play a memorized

Class I solo from the Prescribed Music List and make a Division I at the regional competition, which was held in Abilene in February.

Dudensing is a sophomore at Rule High School and has been a piano student of Bille Mayes of Stamford for eight years. She is the daughter of Lynn Dale and Renae Dudensing of Sagerton.

I, Ronnie Buell of Kansas, wish my Great Aunt Loudell Barbee a Super Birthday!  
 I love ya, Loudell, and all the family.  
 Hey guys, help keep a tight rope on her. J.W. you're in charge! Louetta, make sure the girls twirl that baton.  
 Loudell, did you order a pizza for your birthday?  
 Love, Ronnie Buell  
 son of Francis Laverne Webb Buell of Rule  
 God bless you all.

## Births

Paul and Melinda McGuire of Clyde announce the birth of their son, Matthew Samuel McGuire, born Tues., June 6 at 5:01 a.m. at Abilene Regional Medical Center in Abilene, weighing 6 lb. 8 oz. He was 19 inches long.

Grandparents are Linda Latham and the late Ruddy Samuel Latham of Munday and Steve and Phoi McGuire of Haskell.

Great grandparents are Edith

Hobert of Munday, the late Donald Hobert, the late Alfred Samuel and Lodean Latham, Floyd and Alta McGuire of Haskell, H.B. and Jo Graves of Knox City and the late Ruth Graves.

Other relatives include cousins, Brady, Carley, Mason, Madison and Megan Latham; aunts and uncles Bryan and Crissy Latham, Kent and Denise Latham, Cliff McGuire and Tillie McGuire.

Come join us!

This Friday,  
June 23  
The Patio

will be serving

## Peel-your-own Boiled Shrimp

**\$11** per pound

Keystone Light Long Necks  
will also be available for \$1.50.

**THE Belfry** Restaurant  
and Private Club

369 County Road 251 # Weinert, Texas # 940-673-1114  
(Take Business 277 and turn east on Weinert's main street)  
www.thebelfrysteakhouse.com

**NEW! BACON EGG & CHEESE BURRITO**

YOUR MORNING DRINK STOP!

No Waiting  
Call in Orders

SEE MENU FOR BREAKFAST BURRITO PRICING

**SONIC**  
America's Drive-In.  
Limited Time Only!

Only at participating SONIC Drive-Ins. ©2005 American's Drive-In Corp.

## BURN BAN IN EFFECT

Where do you want to go?

**The Travel Store**  
can get you there

Call Sally at 940-864-3617

**Cancun**

**Hawaii**

**Alaska**

**LAS VEGAS**

**Bridal Selections for**  
Missy Teague and John Mark Hodgkin  
Christi Sorrells and David Thompson  
Whitney Hise and Chris Halsell  
Heather Steele and Casey Riley  
Brittney Criswell and B.J. Opsahl

Newly Released  
Willow Tree Angels!

Going to Market — Look for new merchandise soon!

**The Carousel Gift Shop**  
Erlinda Mayfield  
Open M-F 10 to 5:30. Sat. 10 to 4  
Southside of the square in Haskell • 864-2069

## \$IZZLING Summer Sale!

Jewelry Fashion Watches  
Luggage Coca Cola Gifts

**25% off**  
REGULAR PRICE

Sequin Purses  
American West Belts  
Jeweled Belts

**1/2 price**

3 speed Lakewood <b>Box Fan</b> <b>\$12<sup>99</sup></b>	<b>Visine-A</b> For Eye Allergy Relief 1/2 fl. oz. <b>\$4<sup>99</sup></b>
<b>Mucinex</b> For Congestion & Mucus 20 tablets <b>\$7<sup>99</sup></b>	<b>Oscal 500</b> or 500+D 75 ct. Calcium Supplement Your Choice <b>\$5<sup>99</sup></b>

Dr. Abraham's  
**Allernon** \$29<sup>95</sup>  
Live Your Life Allergy Free

**Bridal Registry**  
Heather Steele Brittney Criswell  
Bride-elect of Casey Riley Bride-elect of B.J. Opsahl

**Did you know?**  
If you have a Medicare Part D card or other prescription insurance card, you can have your prescription filled at any participating pharmacy for the same price!

*Let us fill your prescriptions!*

We accept most Medicare Part D cards and many other prescription insurance cards.

All sales cash and final.  
Prices good June 22, 23 & 24  
www.haskelldrugstore.com

## THE DRUG STORE

Haskell • 864-2673

# OPINION

TEXAS PRESS ASSOCIATION

State Capital



## HIGHLIGHTS

By Ed Sterling

### Strayhorn's tax calculator gives idea on future tax liabilities

AUSTIN—Business owners don't have to wait to see how the Texas Legislature's rewrite of the tax code might affect their bottom line.

They can go to the state comptroller's Web site, type in a few financial figures and get an idea of how much "business activity tax" they'll be paying to the state of Texas in 2008.

Comptroller Carole Keeton Strayhorn, who is running as an independent against Republican incumbent Gov. Rick Perry, said, "More than 200,000 Texas businesses that currently do not pay taxes will have to pay or file taxes under the new law. Texans need to know how much they will be paying and begin preparing today by setting aside dollars for the new tax."

But the governor's office said the comptroller's tax calculator doesn't take into account the lower property tax bill businesses will be paying and other factors.

State Sen. Tommy Williams, R-The Woodlands, also criticized the comptroller's take on the new tax law, saying, "As a member of the Senate Finance and Education committees, I have learned not to trust information that comes out of this politically driven comptroller's office. I would urge the Texas business community to do the same."

Despite Strayhorn's assertion that more businesses will be taxed—and pay much more in taxes than under the former franchise tax—Bill Hammond, executive director of the Texas Association of Business, has spoken out in favor of the Perry tax plan.

Agriculture Commissioner Susan Combs, a Republican who is running to succeed Strayhorn as the state's chief financial officer, said that if elected, she will review and rewrite the new tax law. She said there is "growing sentiment among legislators" that the tax law will need to be "tweaked" during the regular legislative session, which convenes in January.

**No flood insurance hurts parks**  
Because flood insurance is a condition of reimbursement, the Texas Parks and Wildlife Department will not receive full reimbursement from the Federal Emergency

Management Agency.

The Parks and Wildlife Department expected FEMA funding to repair flood-related damages brought about by Hurricane Rita, which struck East Texas on Sept. 24, 2005. A number of state parks sustained serious damage.

### AG putting away sex criminals

Attorney General Greg Abbott's office has obtained convictions against 42 men on child pornography charges since he began hunting them down in December 2004. Online solicitation of a minor, attempted sexual assault of a child and possession of child pornography are third-degree felonies punishable by two to 10 years in prison and a fine of up to \$10,000.

### State repays workplace costs

Businesses who employed at least two but not more than 50 employees each business day of calendar year 2005 may be reimbursed by the Texas Department of Insurance's Division of Workers' Compensation for up to \$2,500.

Pay-outs may be authorized for costs of workplace modifications, equipment, tools, furniture or devices, or other related costs paid to bring an injured employee back to work in a modified duty or alternate duty capacity.

### Troops prepare for border duty

Gov. Perry signed a memorandum authorizing the deployment of Texas National Guard soldiers to the U.S.-Mexico border as part of Operation Jump Start.

National Guard troops in Texas will be under Perry's command, but the deployment will be federally funded.

### We're not tops in volunteerism

In a national state-by-state comparison of volunteerism, Texas ranked 34th among its peers with 28.3 percent of residents putting in some time as volunteers between 2003 and 2005.

Top ranked among states was Utah, with 48 percent of its adults committing personal time as community volunteers.

Nationally, women volunteer at a rate of 32.4 percent while men volunteered at a rate of 25 percent. Among women, those with children at home volunteered most (40 percent).



NEWS ITEM: GAS STATION DRIVE-OFFS FUELED BY HIGH PRICES ...

## From Out of the Past

From the files of The Haskell Free Press

### 10 Years Ago June 20, 1996

The Center for Cardiac Conditioning and Rehabilitation held its grand opening at the Haskell Memorial Hospital.

Leese Ann Middleton, elementary education major, was inducted into Abilene Christian University's chapter of the Alpha Chi National Honor Society.

Malcolm Kingston caught a 62 pound and a 22 pound catfish at Lake Stamford.

Hilee Mulligan won the title of Intermediate Miss Majorette of North Texas in the 13-15 year old solo twirl.

### 20 Years Ago June 19, 1986

Jill Jennings was first place

winner in the State 4-H Food Show at Texas A&M University.

Wendy Smith received a "I" on her twirling solo at the University Interscholastic League competition.

Bettie Riley was named to "Who's Who Among Students in American Junior Colleges."

Five students from the Haskell area are listed on the spring semester honor roll at Angelo State University including Albert Sherman, Shane Hadaway, Don Kretschmer and Robert Mickler of Haskell, and Jeffrey Wayne Robertson of Weinert.

### 30 Years Ago June 17, 1976

V.W. Felker was awarded the Lions Club twenty-five year pen. The Haskell County Farm Bureau

sent three students to the 14th annual High School Students Citizenship Seminar held in Waco. Attending will be Cindy Thomas, Cynthia Jones and Cynthia Sorrells.

A number of local ladies have volunteered their time and energy for the making of pads for cancer patients. The workers were Ethel Thomas, Laura Overton, Wilma Wallace, Grace Montgomery, Era Davis, Mae Brock, Maye Bledsoe, Florence Darden, Lucille McCurley, Dora Klose, Alice Mayes, Lela Mae Atchison and Laura Parker.

### 40 Years Ago June 16, 1966

Haskell Theatre is now showing Mary Poppins, starring Julie Andrews, Dick Van Dyke, and Fireball 500 starring Frankie Avalon and Annette Funicello.

Mr. and Mrs. James Martin of Corpus Christi, niece and nephew of J.U. Fields, visited Sunday.

Joyce Cook and Pamela Druessedow, Haskell's representatives to the American Legion Auxiliary Bluebonnet Girls State in Austin at the Texas School for the Blind, have been elected to offices.

### 50 Years Ago June 21, 1956

The bowling alley procured by the Haskell Youth Center Organization has been moved to Haskell from Kilgore and temporarily stored in the old Rita Theatre building.

Doug Tyler, son of Mr. and Mrs. J.D. Tyler, won a third place in the Junior Hand Launch Glider event at the Alamo Regional Contest in San Antonio.

Mr. and Mrs. Bernard Phelps of Muleshoe were weekend visitors in the home of Mr. and Mrs. C.E. Phelps and with other relatives and friends here.

Mr. and Mrs. Archie Jones, Pasadena are visiting in Haskell this week with his parents Mr. and Mrs. D.A. Jones.

Courtney Hunt and J.M. Crawford left for Miami, Florida, where they will attend the Lions International convention as delegates from the Haskell Lions Club.

### 100 Years Ago June 16, 1906

A new post office has been established in the neighborhood about 12 miles northeast of Haskell and was opened for business. The new office was named Vontress.

The railroad is coming and will probably reach Haskell about the 4th of July.

D. Scott, who has just located in Haskell, is having a residence build in the east part of town.

In the potato race at the roller rink, little Elmer Miller won the prize, a pair of skates.

Almedia Camp left for Sweetwater to spend a few weeks with friends and relatives.

J.E. Garren, one of the oldest settlers of the southwest part of the county, was doing business in town. S.P. Odell of Denton was in Haskell prospecting.

Several Haskell people went on the Orient excursion from Rule to Sweetwater Sunday.

## Summertime tax tips

Summertime may be get-away time, but you can't get away from the tax implications that accompany most financial matters. Being aware of the tax issues—and preparing yourself for some tax breaks—sure beats putting your head in the sand, even if you are at the beach. So check out these tips for newlyweds, working students, parents with children at day camp, and moving.

Advice for newlyweds. It may not be high on the list of wedding planning activities, but there are a few, simple steps that can help keep tax issues from interrupting newly-wedded bliss. There are some practical things to attend to when the honeymoon's over and you get your feet back on the ground.

- Report any name change to the Social Security Administration, so your name and social security number will match when you file your next tax return.

- Report any address change to the U.S. Postal Service—they'll forward your mail and let IRS know. You may also notify the IRS directly by filing Form 8822, Change of Address.

- Report any name and address changes to your employer to ensure receipt of your paychecks and Form W-2 during tax season.

- Check your withholding status using the automated "IRS Withholding Calculator" available on the "Individuals" page at IRS.gov Web site.

- Consider whether you'll file joint or separate tax returns.
- If you're buying a home, find out which expenses may be deductible and which are not.

Tips for working students. All employees have income tax withheld from their pay, right? Not necessarily. You may be exempt from withholding if:

- you can be claimed as a dependent (usually on a parent's return),

- your total 2006 income will not be over \$5,150,

- your unearned income (interest, dividends, etc.) will not exceed \$300, and

- you had no income tax owed for 2005.

You'll still have to pay Social

Security and Medicare taxes, but skipping unnecessary income tax withholding will put more money in your pocket now. Read Form W-4 carefully before filling it out for your employer.

If customers tip you, those tips are taxable. You must keep track of the amounts, include them on your tax return, and—if they total \$20 or more in a month—report them to your employer by the middle of the next month.

Check-out IRS Publication 531, Reporting Tip Income, IRS Publication 1872, Tips on Tips (for food or beverage industry workers), and Form W-4, Employee's Withholding Allowance Certificate (with worksheets to figure how many allowances to claim).

Summer day camp. Many working parents must arrange for care of their younger children under 13 years of age during the school vacation period. A popular solution—with favorable tax consequences—is a day camp program. Unlike overnight camps, the cost of day camp counts as an expense towards the child and dependent care credit. Of course, even if your childcare provider is a sitter at your home, you'll get some tax benefit if you qualify for the credit. Check-out IRS Publication 503, Child and Dependent Care Expenses.

Job-related move. Moving expenses may be deductible if your move is job-related and you meet certain tests. If your employer reimburses you for moving expenses, that amount may be taxable income. Generally, up to \$250,000 of gain (\$500,000 filing jointly) from the sale of your home is not taxable. New homeowners, be aware that mortgage interest, points and real estate taxes may be deductible.

For more details and information see IRS Publication 523, Selling Your Home, and IRS Publication 521, Moving Expenses.

Tax Forms and Publications. For more information and to access IRS forms and publications, go to the IRS Web site at www.irs.gov. Also, forms and publications can be ordered by calling toll-free 1-800-829-3676.

## Hair braiders have new certification

The Texas Commission of Licensing and Regulation Wednesday eased the training requirements for professional hair braiders and created a new certificate for individuals who will offer hair braiding services without offering other services.

To qualify for a hair braider certificate, applicants will be required to complete only a 35-hour training course. Applicants will not be required to pass a licensing examination. Previously, hair braiders operated under a hair weaver/braider license, which requires a 300-hour training course and requires passage of both practical and written examinations.

"Changes were made to the hair braiding requirements based on comments TDLR received from the public," said William Kuntz, executive director of the Texas Department of Licensing and Regulation (TDLR). "We believe, and the public agrees, that a 300-hour curriculum for hair braiders is unnecessarily burdensome."

The services a hair braider can offer will be limited. Hair extensions can be attached by braiders, but they must be braided in rather than attached with glue or any other chemical. Licensees will not be permitted to shampoo, condition or dry hair.

The requirements for a hair weaving license will not change. Hair weavers must still complete a 300-hour pre-licensure curriculum and must pass written and practical tests. Hair braiders, moreover, may offer hair braiding, and they also may shampoo, condition and dry hair and may use chemicals to attach hair extensions to a client's hair or scalp.

## Weather Whys

### Rainmaking Success

Q: How successful have efforts been toward rainmaking?

A: Not very, says Brent McRoberts of Texas A&M University.

"There have been hundreds of attempts over the past century or so by scientists all over the world to create rain when and where it's needed, but these efforts have been disappointing."

McRoberts explains. "The best results have occurred with the use of silver iodide and mixing it into clouds, called cloud seeding, but the results have not been promising. Only a portion of a seeded cloud is cold enough for moisture to form. Some studies have shown that cloud seeding is only effective about 5 to 20 percent of the time, which is not very good considering the costs involved. Sometimes, cloud seeding is used to reduce the possibility of hail, especially in Western states."

Q: How long has cloud seeding been around?

A: It's believed modern rainmaking techniques first occurred on Nov. 13, 1946 in New York, McRoberts adds.

"A scientist working for General Electric named Vincent Schaefer tested his theory that dry ice—solid carbon dioxide—dropped into clouds near the Albany area would produce rain. Five minutes later, snowflakes were falling from the clouds. The following year, other scientists discovered that silver iodide worked better at producing precipitation since its atoms have a similar structure to ice crystals. But overall, we've learned that cloud systems tend to be complex and efforts to produce rain have not been very encouraging."

## City Storm Warning Siren Testing Fridays at noon

## The Haskell Free Press

Established January 1, 1886  
PUBLISHED EVERY THURSDAY  
420 North First Street • P. O. Box 555  
HASKELL, TEXAS 79521  
Phone 940-864-2686 • Fax 940-864-2687  
hfp@valornet.com

John McDougal ..... Publisher  
Lisa Shaw ..... Business Manager  
Mary Kaigler ..... Editor  
Doris McDougal ..... Production  
Bill Blankenship ..... Staff Photographer

Periodical Paid Haskell, Texas 79521  
(USPS 237-040)

### SUBSCRIPTION RATES:

Haskell County, one year, \$25.00.  
Outside of Haskell County, one year, \$34.00.

NOTICE TO PUBLIC—Any erroneous reflection upon the character, reputation or standing of any firm, individual or corporation will be gladly corrected upon being called to the attention of the publisher.

POSTMASTER: Send address changes to The Haskell Free Press, P.O. Box 555, Haskell, TX, 79521-0555.

This issue mailed Wed., June 21, 2006



# Texas blueberries offer lots of flavor and nutritional value

The blueberry is native to North America and was used extensively by Native Americans. The blueberry season was short, so they would dry the harvested berries and use them throughout the year until summer came around and gave them a new crop.

The fresh, or dried, blueberries were added to meats, stews, soups and other foods for an added touch of flavor. In fact, Native Americans taught the pilgrims to use blueberries in numerous ways including drying then grinding them into a powder, which was subsequently combined with cornmeal, honey and water to make a pudding called Sautaugith. This powder was also used as a spice rub to season meat—an excellent means of preservation for the lean winter months.

And we're still enjoying that great blueberry taste. Blueberries are excellent with spices such as

cinnamon, coriander, cardamom, nutmeg and ginger. They also mix well with other fruits such as apples, pears and berries, as well as savory items such as cheese, poultry and meats.

Prime time for Texas blueberries is from the beginning of June to about the beginning of August. And how does the Texas crop look this year?

"This year looks like the best I've ever had and the berries are very large," said Frederick Ware of Blueberry Basket in LaRue.

Blueberries lead the pack when it comes to nutritional value. The incredible little blueberry has emerged as nature's number one source of antioxidants among fresh fruits and vegetables. In tests at the United States Department of Agriculture Human Nutrition Research Center on Aging at Tufts University in Boston, blueberries beat out 39 other common fruits and

vegetables when the topic came around to health. Blueberries are Mother Nature's leading source of antioxidants among fresh fruits and vegetables and much of that power comes from anthocyanins, the pigments that give blueberries their deep blue color.

Charlie Delker of Garden Valley Orchards in Lindale also said this year's crop looks great. And he has tips on how to enjoy great-tasting Texas blueberries beyond the season: "After you pick them, put them in the freezer in plastic bags," said Delker. "They're great on oatmeal." Ware agrees, saying he's had great blueberries that have been frozen for up to two years.

Look for blueberries that are firm and have a lively, uniform hue colored with a whitish "bloom" that serves as a protective coating. The dusty appearance suggests they were harvested at the best time.

An easy way to make sure your blueberries are Texas-grown is to look for the GO TEXAN logo—a brand in the shape of Texas. GO TEXAN is the Texas Department of Agriculture's marketing initiative promoting the wide array of agricultural products grown and processed in Texas.

"Enjoying Texas blueberries is a great way to show your Lone Star State pride and support local growers," said Texas Agriculture Commissioner Susan Combs. "It's not a true Texas summer without Texas blueberries."

Those who want to be sure they're getting the freshest blueberries on the market may also want to visit a pick-your-own farm. To find one, visit <http://www.picktexas.com> and select the "Pick Your Own" tab at the top of the page to find the nearest pick-your-own operation. In addition to picking blueberries, Texas farmers

offer opportunities to harvest your own vegetables, peaches, apples, cut flowers and more.

Here are a couple of blueberry recipes that will make your summer a little tastier:

## QUICK BLUEBERRY COBBLER

1 cup flour  
1 cup sugar  
1 T. baking powder  
4 cups blueberries  
1/2 cup sugar  
3/4 stick margarine or butter  
Enough milk to make gravy consistency

Heat oven to 350 degrees F. Mix flour, sugar and baking powder and add enough milk to make batter a

gravy consistency. Heat blueberries with sugar in saucepan until boiling. Melt margarine in a 9 x 13 baking dish. Pour batter over melted margarine. Pour blueberries over batter. Bake 30 to 35 minutes.

## BLUEBERRY LEMONADE

Juice of 12 lemons (or substitute 2 (7.5 oz.) bottles of frozen lemon juice, thawed)  
12 cups water  
8 cups fresh or frozen blueberries, pureed and strained  
Sugar or sugar substitute  
Combine lemon juice, water and blueberry puree. Sweeten to taste with sugar or sugar substitute. Make by the gallon and sweeten to taste by the cup.

## Strategies for relief from summer allergens

The good news for allergy sufferers is that springtime mountain cedars and tree pollens have generally subsided.

The bad news: It's summertime. "For summer, it will be grass pollen along with high ozone levels combining for a one-two punch," said Dr. David Khan, associate professor of internal medicine at UT Southwestern Medical Center. "In July, cedar elm will appear."

While heat doesn't influence the amount of pollen in the air, it does aid in the formation of ground-level ozone, which, in turn, can exacerbate allergy symptoms.

To cope, Dr. Khan, who also directs the asthma clinic at Parkland Memorial Hospital, offers these tips:

- Limit outdoor exposure during peak times—from mid-morning to midday.

- Air-conditioning filters out some allergens. Keeping windows closed lessens the amount of allergens that

travel into the home.

- If you're out for long periods during the day, take a shower before bedtime to wash off some of the allergens and prevent them from being transferred to pillows. "Your hair can be like a pollen magnet," warns Dr. Khan.

- Wear a mask while mowing the lawn or doing yard work.

- Take allergy medications before you go outside, so they have time to work into your system.

Choosing the right medications to help control symptoms is important, Dr. Khan said. Antihistamines are the most common medications used for allergies. They can help relieve itching, sneezing and runny noses, but don't generally help with stuffiness. Oral decongestants like pseudoephedrine generally work for stuffy noses.

Topical decongestants—nose sprays—aren't a good long-term solution because you can become

addicted to them, causing nasal passages to swell even more and possibly resulting in other nasal problems as well.

If symptoms aren't subdued or allergies are interfering with your lifestyle or work, it's probably a good time to find an allergy specialist and see if other treatments may help.

"It's reasonable to try some of the over-the-counter drugs first, and if you're not satisfied with those results, then you need to see a doctor," Dr. Khan said.

Prescription antihistamines can offer more potency and be less sedating than over-the-counter measures, Dr. Khan said.

Corticosteroid anti-inflammatory nasal sprays can be used regularly, often once a day, and are generally

safe and effective. These are not the same as anabolic steroids that athletes sometimes abuse and for which some school systems now test.

Antihistamines, decongestants and corticosteroids, however, do no more than depress symptoms. "Although you'll be reducing the effect of the allergic reaction, you'll still be just as allergic at the end of the day," Dr. Khan said.

Shots are the most effective medical treatment, he said, actually making allergy sufferers less allergic.

There's also a novel clinical approach, called rush immunotherapy, which simply means taking more shots over a shorter period of time. Doctors think this may help expedite results.

## John Cox named CEO of HUD

John W. Cox, formerly of Haskell, as chief financial officer of the U.S. Department of Housing and Urban Development, is responsible for overseeing the financial management practices that ensure the department meets the needs of the housing community. His duties include preparing and accounting for HUD's budget, strategic and budget planning, and maintaining financial systems which process millions of transactions annually to support HUD projects. Cox has primary responsibility for filing timely and accurate financial statements for HUD and is responsible for establishing internal controls over financial matters for the department.

Cox comes to the U.S. Department of Housing and Urban Development from the private sector, where he was a consultant to private and public oil and gas and technology companies. He served as vice president, chief financial officer, and chief accounting officer at BMC Software, Inc. in Houston. In this capacity, he managed the tax, investor relations, accounting, and treasury and planning functions for

this global provider of enterprise management software solutions. He also served as BMC's vice president of investor relations and taxation, and manager of taxation. Over 15 years at BMC, he reorganized the company's accounting functions, improved customer satisfaction and reduced its cost structure. Prior to that, he spent five years with Ernst & Young, LLP in Houston.

He served on the board of directors of Benchmark Electronics, Inc. from 2003 until his confirmation in May, 2006. He was chairman of the board's audit committee and served on the compensation and governance committees. He also served on the Board of Governors of the Houston Grand Opera.

Cox and his wife, Sally, serve on the College of Liberal Arts Development Council at Texas A&M University.

He is a graduate of Texas A&M University with a B.A. in Accounting and a CPA from the State of Texas. He and his wife live in Washington, D.C. with their daughter, Kate.

He is the son of Wallace and Jo Cox of Haskell.

## Many Americans in need of an eye exam

A new study from the National Institutes of Health has found that more than 10 million Americans have visual impairments, many of which could be corrected with glasses or contact lenses, but aren't.

That rate has remained fairly level over the years, but ophthalmologists at UT Southwestern Medical Center say it's a good reminder for people to schedule regular vision tests.

"Many of them could be helped," says Dr. Dwight Cavanagh, professor and vice chairman of ophthalmology.

People under 50 should have an eye exam every two to three years. Those 50 and older, as well as

diabetics, should have exams annually. And children should be examined before they enter kindergarten.

The study, which appeared in the Journal of the American Medical Association, found that 6 percent of Americans aged 12 and older (14 million) are visually impaired and about 11 million have uncorrected visual impairment. Teenagers, diabetics, Hispanics, and the economically disadvantaged have higher rates of visual impairment and can most benefit from corrective lenses, according to the study.

Catching some eye diseases early is critical because the vision loss can be irreversible.

"You can't undo glaucoma," which damages the optic nerves, Dr. Cavanagh says. Glaucoma can also be painless and show no symptoms, so an eye test is the best way to catch it early. Diabetics are particularly vulnerable to glaucoma, so eye exams are even more important.

## Calendar

### Storm sirens

The City of Haskell will test the storm sirens at noon on Fridays.

### Rochester anniversary

Rochester exes are asked to email both physical and email addresses to Sandra Fry at [sfryrochester@yahoo.com](mailto:sfryrochester@yahoo.com). Pictures for a presentation for the Rochester 100th anniversary and homecoming weekend to be held Oct. 13-14 are also needed.

**BERNARD E. GODLEY, INC.**  
TAX SERVICE AND BOOKKEEPING  
Specializing in Farm, Ranch & Agri-business  
Over 35 Years Experience  
**940-889-8809**  
98 Hill Drive • Seymour, Texas  
Fax 940-889-4908

**SANTA ROSA Telephone Cooperative INC.**

~ Our new office is now open! ~  
Come by 113 N. Ave. D, Haskell and greet Pam Waldron  
Our Customer Service Representative for Haskell

*Watch for our Grand Opening!*

**Hermann Sons Youth Camp**  
A Fraternal Service for Members

Riverside Camp for Girls  
Hilltop Camp for Boys  
Ages 9-13

Call a representative today!  
Elna Weise  
940-864-3564  
Beunice Vahlenkamp  
940-989-3609

Serving Texas Families Since 1890  
Order of the Sons of Hermann in Texas • San Antonio  
More information is available at [www.texashermannsons.org](http://www.texashermannsons.org)

HERMANN SONS  
**HSFI**  
FRATERNAL INSURANCE

**OVERWEIGHT?**

**Candy Lost 75lbs!**

BEFORE AFTER

Ask us how to lose up to 25 lbs. in 25 weeks!

**2 FOR 1 MEMBERSHIP SPECIAL**

**CALL NOW! Start losing tonight!**

**325-692-6992**

**FREE CONSULTATION!**

Coming every Thursday 1:30 to 5:30 p.m. at the ECC!

**METABOLIC RESEARCH CENTER**  
WEIGHT LOSS SPECIALISTS  
Individual Results May Vary

**Federal Land Bank Association**

**6.95%**

- VARIABLE RATE
- LONG TERM FARM & RANCH LOANS
- IMPROVEMENT LOANS
- FIXED RATES AVAILABLE
- RATES PRICED WEEKLY
- NO PRE-PAYMENT PENALTY

**Federal Land Bank Association of Texas, FLCA**  
550 S. 2nd • Haskell, Texas • (940) 864-8565  
[www.flbatexas.com](http://www.flbatexas.com)

Annual percentage rates from 7.0560% APR to 7.0471% APR depending on length of contract. APR based on rates for specified prime indexed variable rate during week of June 20, 2006 – June 27, 2006. Rates subject to change without notice.

**EQUAL HOUSING LENDER**

# Quick, easy, healthy summertime snacks

Just because school's out doesn't mean that healthy eating should take off for summer vacation. Your kids play hard and work up an appetite that demands attention. With vacation just around the corner, demanding schedules can wreak havoc with plans for eating nutritionally, especially when outdoor activities increase. Unfortunately, busy parents don't always have time to stop and fix a healthy snack for their kids on the spot.

No matter what your summer plans are, you and your kids will need plenty of pep. Keep your snacks and meals loaded with vitamins and minerals for energy. Be sure to eat plenty of different fruits and vegetables.

Try these ideas from the Texas Department of Agriculture for great-tasting healthy snacks and quick meal tips to help fuel your family's fun:

Prepare in advance. Use plastic sandwich bags to pack snacks in small portions ahead of time. Take the bags with you when you head out the door and pull them out later for a quick energy fix.

Baby carrots, celery sticks, broccoli bites, cherry tomatoes and whole grain cereals are great snacks to

go.

- Mix and match your favorite cereal with dried fruit and sunflower seeds, peanuts, walnuts or sesame seeds for a fun trail mix.

- Try freezing little bags of grapes or blueberries ahead of time. The fruit still tastes great even if it thaws!

Think portable. Don't have time to plan ahead?

- Consider fruits that come in Mother Nature's wrappers. Apples, pears, oranges and bananas as well as many other fruits are good when on the go.

- Keep a basket of fruit on the table so grabbing fruit for a snack is quick and easy.

- Look for snack-size packs of fresh vegetables at the store.

Plan for the long haul. Think about keeping a small stockpile of energy boosters packed in the car.

- A jar of peanut butter, a package of whole wheat crackers, assorted nuts, canned fruit packed in light syrup or its own juice, some 100 percent juice boxes and bottled water won't wilt in the high heat and can stave off hunger pangs.

- Nuts, pretzels, animal and graham

crackers and low-fat granola won't spoil in the heat of our Texas weather either.

- Plan ahead and create a week's worth of snacks in advance. Buy extra fruits and vegetables, yogurt, crackers, cheese and cereal at the grocery store, then spend a little extra time on the weekend preparing snacks that will save you time, energy and money!

Spice it up with produce. Fire up the barbecue and grill some delicious vegetables as the perfect side dish.

- Marinate fresh vegetables like squash, bell peppers, tomatoes, onions and mushrooms in fat-free Italian dressing and then place on skewers and barbecue or place the vegetables in aluminum foil and cook over medium hot coals.

- Try your favorite lean fajita meat with vegetables and salsa in a lettuce wrap instead of a tortilla.

Keep it fresh. Use in-season fruits and vegetables for a just-picked taste.

- Carrots and cucumbers tossed with dark leafy greens make a super salad.

- Oranges and grapefruit add extra flavor to any leafy green salad.

- Create colorful kabobs by placing fresh fruit, such as strawberry,

honeydew, cantaloupe and watermelon slices, on a skewer.

Imagine the possibilities. Once you start to think about it, the choices are almost endless for adding fruits and vegetables to your busy day.

- Chopped apples or oranges taste great in tuna or chicken salad. Green or red pepper strips and broccoli bits add crunch to your pasta.

- Add fresh spinach, tomato and onion to your sandwich.

- To start the day right, slice berries and peaches and place on top of cereal. You can also use fruit as a topping in place of butter and syrup on pancakes and waffles.

A word about water. Water is essential for good health, especially during the hot summer months. Physical activities during the summer exhaust our body's water supply and often leave us dehydrated. Keep plenty of water on hand to stay cool and refreshed.

For more snack ideas, healthy recipes, TDA nutrition information and more call 888-TEX-KIDS or e-mail squaremeals@agr.state.tx.us. And be sure and visit the Web site <http://www.squaremeals.org/>.

## Cattle Market Report

The market at the Haskell Livestock Auction was on a run of 859 head of cattle at its sale on Sat., June 10, according to Bill Cox, reporter. 69 sellers and 39 buyers were present.

Packers \$1-3 lower. Feeders \$1-2 lower. Stockers \$2-4 lower. Stocker cows \$10-20 lower.

Cows: fat, .36-.44; cutters, .42-.47; canners, .22-.34.

Bulls: bologna, .56-.63; feeders, .78-.88; utility .52-.59.

Steers: medium and large frame No. 1 200-300 lbs., 1.40-1.90; 300-400 lbs., 1.25-1.48; 400-500 lbs., 1.20-1.40; 500-600 lbs., 1.15-1.35; 600-700 lbs., 1.05-1.24; 700-800 lbs., .95-1.14; 800-up lbs., .75-1.05.

Heifers: medium and large frame No. 1 200-300 lbs., 1.30-1.80; 300-400 lbs., 1.20-1.40; 400-500 lbs., 1.10-1.28; 500-600 lbs., .95-1.20 600-up lbs., .68-1.07.

\*\*\*

The market at the Haskell Livestock Auction was on a run of 982 head of cattle at its sale on Sat.,

June 17, according to Bill Cox, reporter. 74 sellers and 45 buyers were present.

Packers \$2-4 lower. Stockers \$1-3 lower. Stocker cows \$10-25 lower. Feeders steady.

Cows: fat, .38-.45; cutters, .40-.47; canners, .30-.37.

Bulls: bologna, .52-.62; feeders, .67-.88; utility .49-.57.

Steers: medium and large frame No. 1 200-300 lbs., 1.35-1.90; 300-400 lbs., 1.25-1.58; 400-500 lbs., 1.20-1.42; 500-600 lbs., 1.15-1.28; 600-700 lbs., 1.00-1.19; 700-800 lbs., .90-1.14; 800-up lbs., .76-1.04.

Heifers: medium and large frame No. 1 200-300 lbs., 1.25-1.75; 300-400 lbs., 1.15-1.30; 400-500 lbs., 1.00-1.28; 500-600 lbs., .90-1.23; 600-up lbs., .68-1.07.

Bred heifers medium frame, 675-825.

Bred cows young to middle aged 775-925; aged or small, 500-700.

Cows with calves: medium frame No. 1 young and middle aged, 850-1295; aged or small, 650-785.

## Haskell Summer Lunch Menu

**June 26-June 30**  
Milk is served daily.  
**Monday:** Popcorn chicken, mashed potatoes with gravy, pickle spears, brownies  
**Tuesday:** Stew, grilled cheese sandwiches, applesauce, cookies

**Wednesday:** Beef enchiladas, pinto beans, garden salad, tortilla chips and salsa, strawberries  
**Thursday:** Pizza, salad, cheese sticks, cantaloupe  
**Friday:** Chili dogs, french fries, pickles, ice cream with toppings

## ECC Calendar and Menu

**Mon., June 26**  
Lunch—Ham and beans, garden salad, buttered corn, cornbread, onions, lemon cake, milk, tea, or coffee

**Fri., June 30**  
Lunch—Chili with wieners, pinto beans, onions, pickles, cornbread, misc. dessert, milk, tea, or coffee

**Wed., June 28**  
Lunch—Beef and mac, English peas, club spinach, cornbread, jello,

Announcements begin at 11:45 a.m. followed by lunch.

## This Week's Devotional Message:



### WHETHER YOU TRAVEL OR STAY HOME, GOD IS THERE

Like many of us, you may have a vacation looming on the horizon, and of course your budget will dictate where you will spend it. You may visit another part of the world, or just lounge around the house. In any case your vacation can be a very enjoyable and rewarding escape from the realities of everyday living. Moreover, wherever you are the Lord will be there to

watch over you. Thank Him for His protection at any house of worship, and even if your travels take you beyond the orbit of civilization, there is always the Bible. Put it on your list of things to pack in your suitcase. In fact, that's a good idea no matter where you're going. To borrow the advice of a well-know TV commercial, "Don't leave home without it."

### ATTEND CHURCH THIS SUNDAY

#### HASKELL

- East Side Baptist Church**  
Danny Manross, pastor  
Sun. 9:45 a.m., 11 a.m., 6 p.; Wed. 7 p.m.  
600 N. 1st East, Haskell
- Christian Church**  
Dusty Garison, minister  
Sun. Morn. 9:45 a., 10:45 a., 6 p.m.; Wed. 7 p.m.  
107 N. Ave. F, Haskell
- Church of God**  
Bruce Ray, pastor  
Sun. 10 a.m., 11 a.m., 6 p.m., Wed. 7:00 p.m.  
714 North First East, Haskell
- Trinity Lutheran Church**  
Ron Rennegarbe, pastor  
Sunday School 9:30 a.m., Worship 10:30  
Hwy 380 East, Haskell
- Iglesia Bautista El Calvario**  
Art Flores, Interim pastor  
Sun. Morn. 9:45 a., 10:45 a.m., 5 p.m.; Wed. 7 p.m.  
607 S. 7th, Haskell
- First United Methodist Church**  
Rev. Daniel Echols, pastor  
Sun. Morn. 9:45 a.m., 10:50 a.m. 6 p.m.; Wed. 6 p.m.  
201 N. Ave. F, Haskell
- First Assembly of God**  
Rev. J.C. Amburn  
Sun. Morn. 9:45 a., 10:45 a.m., 6 p.m.; Wed. 7 p.m.  
1500 N. Ave. E, Haskell
- St. George Catholic Church**  
Father George Roney  
Sat. Mass 7 p.m.; Sun. Morn. 9:00 a.m.  
901 N. 16th, Haskell
- Church of Christ**  
Jim Yates, minister  
Sun. Morn. 9:30 a.m., 10:30 a.m., 6 p.m.; Wed. 7 p.m.  
510 N. Ave. E, Haskell
- First Presbyterian Church**  
Kelly Pigott, interim pastor  
Sun. Morn. 9:30 a.m.  
306 N. Ave. E, Haskell
- Trinity Baptist Church**  
Tony Grand, pastor  
Sun. Morn. 10 a., 11 a., 6:30 p.m.; Wed. 6:30 p.  
114 S. Ave. D, Haskell
- Hopewell Baptist Church**  
Sun. Morn. 9:30 a.m., 11:00 a.m.; Wed. 7 p.m.  
908 N. Ave. A, Haskell
- Greater Independent Baptist Church**  
Sun. Morn. 9:30 a., 11:00 a., 6:30 p.; Wed. 7 p.  
301 N. 3rd St., Haskell

#### New Covenant Foursquare

Bill and Renee Glass, pastors  
Sun. Morn. 10 a.m., 11 a.m., 6:30 p.m.; Wed. 7 p.

#### Mission Revival Center

Rev. William Hodge  
Sun. Morn. 10 a.m., 11 a.m., 6 p.m.; Tues. 6 p.m.

#### First Baptist Church

Greg Gasaway, pastor  
Sun. Morn. 9:45 a., 10:55 a., 6 p.m.; Wed. 7 p.m.

#### Church in the Park

Rev. Tim and Suzann Townsend  
Sun. Morn. 10:30 a.m. Wed. 7 p.m.

#### Cornerstone Fellowship Baptist Church

Dr. Larry Nail, pastor  
Sun. 9:30 a.m. 10:45 a.m., 6 p.m., Wed. 7 p.m.  
1600 N. First St., Haskell

#### WEINERT

#### First Baptist Church

J. C. Baker, pastor  
Sun. Morn. 10 a.m., 11 a.m., Wed. 7 p.m.

#### Weinert Foursquare Church

Rev. Robert Harrison  
Sun. Morn. 10 a.m., 11 a.m. Wed. 7 p.m.

#### ROCHESTER

#### Church of Christ

Steve Willis, minister  
Sun. Morn. 9:45 a., 10:45 a., 6 p.m.; Wed. 6 p.m.

#### First Baptist Church

Jim Davis, pastor  
Sun. 11:00 a.m., 6 p.m.; Wed. 6:00 p.m.  
500 Main, Rochester

#### Union Chapel Baptist Church

Clovis Dever  
Sun. Morn. 9:45 a., 10:45 a., 6 p.m.; Wed. 7 p.m.

#### Faith Chapel of Rochester

Katherine Byrd, minister  
Sun. Morn. 10 a.m., 11 a.m., 7 p.m.  
Hwy 6, Rochester

#### First United Methodist Church

Rev. Daniel Echols, pastor  
Sun. Morn. 9:00 a.m., 11:00 a.m.  
Rochester

#### SAGERTON

#### Sagerton Methodist Church

Terry O'Rear, pastor  
Sun. Morn. 9:45 a.m.

#### Faith Lutheran Church

Deborah Nissen, pastor  
Sun. Morn. 9:15 a.m., 10:30 a.m.; Wed. 7 p.m.

#### RULE

#### First Baptist Church

Josh Stowe, pastor  
Sun. Morn. 9:45 a., 11:00 a., 5 p.m.; Wed. 7 p.m.

#### Primitive Baptist Church

Dale Turner Jr., pastor  
First & Third Sundays 10 a.m.  
Corner of 8th & Robins, Rule

#### Church of Christ

John Greeson, minister  
Sun. Morn. 9:45 a., 10:40 a., 6 p.m.; Wed. 7 p.m.

#### First United Methodist Church

Terry O'Rear, pastor  
Sun. Morn. Worship 8:30 a.m.  
1000 Union Ave., Rule

#### Primera Iglesia Bautista

Alfa y Omegas  
Manuel Marin, pastor  
Sun. Morn. 10 a., 11:00 a., 5 p.m.; Wed. 6 p.m.

#### Sweet Home Baptist Church

Bill Trice, pastor  
Sun. Morn. 11 a.m., 5 p.m.; Wed. 5 p.m.

#### West Bethal Baptist Church

Rev. Robert Sweet  
Sun. Morn. 10 a., 11 a., 8 p.m.; Wed. 7:30 p.m.  
300 Sunny Ave., Rule

#### PAINT CREEK

#### Paint Creek Baptist Church

Sun. Morn. 10:00 a.m., 11:00 a.m., 6 p.m.  
Paint Creek

#### O'BRIEN

#### O'Brien Baptist Church

Jim Reid, pastor  
Sun. 9:45 a.m., 11 a., 5 p., 6 p, Wed. 6 p.m.  
O'Brien

### Sonic Drive-In

1402 N. Ave. E  
864-8533  
Managers: Leon & Carolyn Herring

### Steele Machine

Hwy. 280 • 864-2208

### Modern Way Food Store

1202 N. Ave. E • 864-3763

### Smitty's Auto Parts

107 N. 1st East • 864-2607

### HANSON PAINT & BODY SHOP

207 S. 1st • 864-3631  
Professional Auto Body Repair  
Glass Installation • 24 Hour Wrecker Service

### Rule Co-op Gin & Elevator

301 Adams • Rule • 996-2421

### Rice Springs Care Home, Inc.

1302 N. 1st • 864-2652  
Medicare • Medicaid • Therapy

Committed To Excellence  
In Service

Attend Church  
This Sunday

## The Haskell Free Press

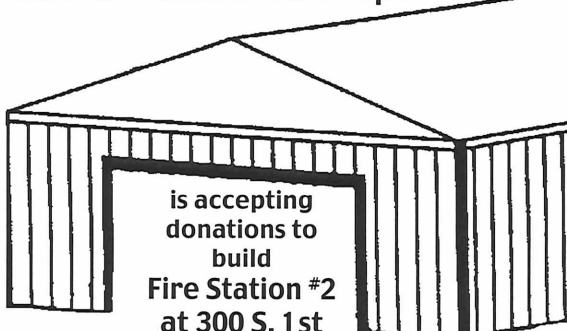
"The People's Choice"

420 N. First  
Haskell, Texas  
940-864-2686

Serving  
Haskell County Since  
1886



### Haskell Volunteer Fire Dept.



is accepting  
donations to  
build  
Fire Station #2  
at 300 S. 1st

to house donated Texas Forest Service firefighting equipment and provide a larger training facility. If you would like information on making a donation or how you can help contact Fire Chief Bill Steele 940-864-2208; Randy Shaw 940-864-2023; or ask any Haskell fireman for details.

Donations may be mailed to:

**Haskell Volunteer Fire Dept.**  
301 N. First St., Haskell, TX 79521



864-2686

# Shop The Haskell Free Press CLASSIFIEDS

ALL DEADLINES MONDAY 5 P.M.



864-2686

## For Sale

FOR SALE: Tamales. Sat., June 24. 108 N. 2nd St., Haskell. 25p

FOR SALE: Lift chair, vintage 6 drawer dresser and matching dressing table with mirror and bench, Oreck carpet shampooer. Call before noon, 940-864-8012. 25p

FOR SALE: Above ground pool shell, sand filter, pump and hoses, ladders, vacuum (used 1 season) and wooden pool deck with stairs and railing (to be disassembled). 864-3619 or 864-8589. 25c

FOR SALE: Computer and monitor \$50. Super nice solid wood computer armoire, slide out keyboard tray, fold-back doors, file drawer \$500. 940-864-3904. 25c

TO GIVE AWAY: 5 month old miniature mixed breed puppy and 1 year old mixed breed dog. 864-3619 or 864-8589. 25c

## Garage Sale

GARAGE SALE: 907 N. Ave H. Fri., Sat., Sun. 25p

GARAGE SALE: Fri. and Sat. 8 til ? 1002 S. Ave. J, Haskell. Moving and everything must sell. Mary Kay products, some boys and girls clothes, recliner, toddler bed, kids tepee, area rugs and lots more. 25c

GARAGE SALE: Sat. 8 a.m. til noon. 700 N. 16th, Haskell. Will make bargains! 25p

3 FAMILY GARAGE SALE: Sat., June 24. 8 a.m. til 2 p.m. 206 S. Ave. I. Lots of name brand clothes, kitchen items, toys, shoes, furniture and lots more. 25p

GARAGE SALE: Fri. and Sat. 911 N. Ave. C. Clothes, Christmas items, knick knacks, tamales, burritos. 25p

LIVING ESTATE SALE: Blue Willow Dishes, CD/DVD player with surround sound, old 33 record player with large collection records, Karaoke, trundle bed, box springs mattresses sets, Phaff commercial sewing machine, craft supplies, decorator items. Trash and treasures galore! June 22-24, Thurs., Fri., Sat., 8 a.m. to 2 p.m. 404 Central Ave., S. Hwy. 6, Knox City. No early viewers, thanks. 25p

## Lost & Found

LOST: Male, blonde, miniature Chihuahua. Blue dog collar. Answers to Ty. Reward offered for return. 940-864-5034. 25c

## Real Estate

OWNER FINANCE: 505 N. 2nd, Haskell, Texas. 3 bedroom, 2 bath. \$23,539. Easy terms. Call 325-893-1973. 24-25c

OWNER FINANCE: 1007 N. Ave. D, Haskell, Texas. \$16,500. Easy terms. Call 325-893-1973. 24-25c

RENT TO OWN: No credit check! 2 (possible 3) bedroom. \$285 monthly, tax included. 303 N. 11th. 325-480-0678 or 940-642-6599.

## AMERITEX CONCRETE FOUNDATION REPAIR.

Concrete slab/pier and beam foundation repair. Floor and attic bracing. Brick and mortar repair. Foundation coating. Pressure washing. Brick sealing. Driveway repair. Free estimates. 325-677-4470. Stamford and Haskell. References available. Low prices. Excellent work.

## EXPERT AUTO WORK REASONABLE RATES

See us for all your auto mechanic needs. 20 years experience. We do it right the first time. 117 North Ave. E • Haskell

## Estate Sale

ESTATE SALE: Fri., June 23. 1706 N. Ave. G, Haskell. Early sales. Piano, maple dining room suite, small chest deep freezer. VP Girls. Call 996-2428 for information. 24-25c

## Miscellaneous

HOUSE LEVELLING and foundation repair. No payments until work is satisfactorily completed. David Lee & Co. 325-675-6369. 1-888-486-8588. 6tfc

ENROLL NOW FOR CNA classes at Munday Nursing Center. Course is administered by Venron College. Classes are scheduled: Tuesday and Thursday nights 6 p.m. to 10 p.m. at Munday Nursing Center. Times and days subject to change. Enrollment information available on request at Munday Nursing Center. 940-422-4541. 25-26c

## Help Wanted

NOW TAKING applications for all positions at Sonic Drive In, Haskell. Apply in person. 25tfc

GIBSON CARE Center, Aspermont needs CNAs for all shifts. Call Melissa Prew, ADON at 940-989-3526. E.O.E. 9tfc

HIRING experienced waitresses. Apply in person at Red Rooster Restaurant, 1006 S. Ave. E, Haskell. 24-27c

RICE SPRINGS Care Home is making a difference. We are taking applications for LVNs and CNAs. Contact Melissa at 864-2652. 25c

OUTREACH HEALTH Services has openings for attendants in the Haskell and surrounding areas. Must be 18 years plus with Texas drivers license. Please contact 800-342-3153 or 940-888-5586. E.O.E. 24-25c

PERSONAL CARE attendant needed for part-time hours in Haskell, Texas. Must be mature, dependable and submit to criminal history check and speak Spanish. For further information call M-F, 9 a.m. to 4 p.m. 322-4357. 24tfc

ROLLING PLAINS Correctional Facility is currently accepting applications for food service specialist. Benefits include medical and life insurance no cost. Call Lorie Rodriguez at 940-864-5694 or stop by facility to pick up an application. 24-27c

MUNDAY NURSING Center is accepting applications for full-time and part-time positions in the dietary department. Contact Dorothy Rodriguez at 940-422-4541. 25tfc

INDEPENDENT CONTRACT CARRIER: Paper carrier needed for the Abilene Reporter-News for Rule area. Must have reliable transportation, current driver's license and car insurance. Early morning hours. 7 days a week. Profit analysis \$650 a month. Must live in Rule area. Please call Connie 325-670-5266. 25tfc

## Dodson Concrete Construction

Commercial - Residential  
David Dodson  
704 N. Ave. F • Haskell  
940-864-2038  
Over 20 Years  
in the Business  
FREE ESTIMATES

Need  
A New ROOF?  
Call Ben McGee  
864-3431 Home  
864-4555 Cell  
WARRANTY

## Help Wanted

NOW HIRING COOK SUPERVISOR. Must possess high school diploma or GED. One year experience in quantity food preparation preferred. Must be able to pass background investigation and drug screen. Benefit package available after 90 days. The Geo Group, Inc. Dickens County Correctional Center, 2637 FM 621, Spur, Texas 79379. For information, call 806-271-3421. EOE. 25c

NOW HIRING MAINTENANCE TECHNICIAN. Starting pay \$8.75 per hour. Full benefit package available after 90 days. Experience in correctional maintenance desirable. High school diploma/GED required. No criminal record. Apply in person at The Geo Group, Inc. Dickens County Correctional Center, 2637 FM 621, Spur, Texas 79379. For more information, call 806-271-3421. EOE 25c

DELTA AND PINE LAND Company Research Station in Haskell, Texas, seeks to fill position of Research Technician. Person filling this position will be working with a cotton breeding program, including planting, treating, harvesting, ginning, delinting and other field work along with other duties as assigned. High school diploma or equivalent required. Please apply at D&P Research Station, 247 U.S. Hwy. 380 W., Haskell, Texas. Applications will be accepted until a suitable applicant is found. Equal Opportunity Employer. Drug testing required. 25-27c

HELP WANTED: Busy, independent drug store has an opening for a part-time adult clerk-A motivated, energetic, dependable person to work 25 to 35 hours per week. Retail experience helpful. Apply in person at 100 S. Ave. E, Haskell. Contact Linda or Lonnie at 940-864-2673. The Drug Store in Haskell. 25c

## NOTICE

The deadline for Classified Advertising is 5 p.m. on Mondays.  
Haskell Free Press

You know you're getting old-if your children are beginning to look middle aged. You might not feel so old if you had a leather La-Z-Boy recliner to relax in. Kinney Furniture in Stamford. 325-773-2232. 25c

**Nanny Plumbing, Inc.**  
301 S. Ave. E • Haskell  
940-864-3043  
Sales and Service for Residential Plumbing and Heating/Cooling, Pump Installer and Sprinkler Systems.  
License numbers available upon request.

**OWNER FINANCE IN HASKELL**  
1305 N. Ave. F: 2 bedroom.  
1400 N. Ave. F: 2 bedroom. **SOLD**  
605 N. 5th: 1 bedroom.  
1007 N. Ave. D: 2 bedroom.  
**LOW DOWN LOW MONTHLY**  
Call Tyler at 325-829-3276  
or Jim at 325-518-8128

## Public Notices

NOTICE CITY OF WEINERT COMMUNITY DEVELOPMENT PROGRAMS  
The City of Weinert will hold a public hearing at 7:15 p.m. on June 27, 2006, at City Hall (South end of School Building, Weinert, Texas 76388) regarding submission of future applications for Texas Community Development Block Grant Program assistance to provide improved facilities and services in the community. The City encourages citizens to attend this public hearing to discuss the citizen participation plan, local housing and community development needs, available funding amounts, eligible activities and past use of funds. Citizens may also submit written comments to the City Secretary at City Hall. Citizens who have disabilities or require auxiliary aids or services for this meeting should contact the City Secretary at 940-673-8223 at least two days before the meeting so arrangements can be made. 25c

## BURN BAN IN EFFECT

**I BUY HOUSES**  
Quick cash and closing on homes \$25,000 or less.  
Call Jim at 325-518-8128

**QUALITY ROOFING AT AN AFFORDABLE PRICE**  
ERICH REID OWNER  
**Reid Roofing**  
All Phases of Roofing  
10 Years Experience  
Contract or Subcontract  
FREE ESTIMATES  
Painting - Exterior & Interior  
Tree Trimming & Removal  
325-721-3004 Cell  
940-864-3190 Local  
706 N. 12th St.  
Haskell, Texas 79521

**Dean REALTORS**  
HASKELL: 1005 N. Ave. I. 3 bedroom, 2 bath. House has been updated. CH/A, like new. Very nice home. 1700 sq. ft. REDUCED.  
HASKELL: 1002 S. Ave. J. 3 bedroom, 2 bath. 2.29 acres. Has guest house.  
RULE: 11624 FM 617. 2 bedroom, 2 bath. Living room, dining room. 80 acres. Very nice place. Built in 1999.  
Danny Josselet, Realtor  
4404 South Clack ~ Abilene, Texas 79606  
Office 325-698-3326  
Home 940-864-2744 ~ Cell 940-864-8660  
Visit us at Web site www.DeanRE.com

**"I HAVE A HOUSE AND TWO CARS. IS THERE SUCH A THING AS ONE-STOP INSURANCE SHOPPING?"**  
YES. CALL ME ABOUT OUR HOME AND AUTO DISCOUNTS.  
CHAN GUESS  
P O BOX 617  
HASKELL  
(940) 864 2665  
P.S. Call or stop by for a free quote  
**Allstate.**  
You're in good hands.  
Discount and insurance offered only with select companies and subject to availability and qualifications. Discount amount may be lower. Allstate County Mutual Insurance Company and Allstate Texas Lloyd's, Irving, TX. © 2003 Allstate Insurance Company.

## For Rent

FOR RENT: Furnished rooms for rent. Nightly, weekly. Call Lone Star Lodging 864-2238. 21tfc

RENT TO OWN: No credit check! 2 (possible 3) bedroom. \$285 monthly, tax included. 303 N. 11th. 325-480-0678 or 940-642-6599.

**CASE 480 F** back hoe. 1990 model. 3500 hours. Cab, windows. Very good condition. Beishe tongue pull trailer to haul back hoe.  
**1979 White Road Boss.** Cummings engine. 5th wheel tandem. Excellent county truck. Lots of miles left.  
**5088 Case International.** Low hours. 2355 mount o matic front end loader. Bucket mounted spray rig with 10' boom. Hydraulic pump sprayer.  
**15' 3 point Bush Hog shredder.** Very few hours. Excellent shape.  
**4000' of Highway guard rail.** Excellent shape. Will load.  
Will open bids on June 29, 2006.  
Send bids to: Haskell County Judge's Office 1 Ave. D Haskell, Texas 79521 Please call: 940-864-8602 or 940-673-8364 (night) for more information.

## LANGFORD ROUSTABOUT SERVICE

**SCOTT LANGFORD**  
Roustabouts  
Backhoes  
Winch Trucks  
Dump Trucks  
Welders  
Mobile: 940-256-0535  
Office: 940-864-3490  
Home: 940-864-2565  
8348 N. Hwy. 277  
Haskell, Texas 79521  
Specializing In:  
Oilfield Repair,  
Maintenance & Construction

**Haskell County REALTY**  
3 BEDROOM, 2 bath. One acre. CH/A. Water well. \$24,900.  
1409 N. AVE. J. 2 bedroom, 1 bath. Water well. 1 car garage. Fenced backyard. Cute home.  
1706 N. AVE. G. 3 bedroom, 2 bath on corner lot. Over 1500 sq. ft. living area. Fireplace insert. 2 car carport. Storm cellar. Water well. Great shade and pecan trees.  
610 MAIN STREET, ROCHESTER. Great deal. 2 bedroom, 1 bath. Brick home. Nice storage. Carport. Fenced yard. Corner lot. Priced to sell. REDUCED.  
1206 N. AVE. J. 3 bedroom, 2 bath. Large two car garage. Fenced. Corner lot with water well. REDUCED TO \$56,900.  
206 N. AVE. M. 3 bedroom, 2 bath. Fenced yard with dog run. \$39,900.  
BRAND NEW HOME: 3 bedroom, 2 bath. Call for details.  
75 ACRES approximately 7 miles from Haskell off of Hwy 277. South southeast Haskell County. 2.29 acres irrigated. 50 acres pasture land. One tank. City water availability.  
103 N. Ave. E  
940-864-2665  
1-800-658-6342  
or call  
Bridget or Chan Guess 864-6142  
Hess Hartsfield, Broker 864-2004

**NOTICE TO CONTRACTORS OF PROPOSED TEXAS DEPARTMENT OF TRANSPORTATION (TxDOT) CONTRACTS**  
Sealed proposals for contracts listed below will be received by TxDOT until the date(s) shown below, and then publicly read.  
CONSTRUCTION/MAINTENANCE/BUILDING FACILITIES CONTRACT(S)  
Dist/Div: Abilene  
Contract 0908-00-062 for RAISED AND THERMOPLASTIC PAVEMENT MARKINGS in TAYLOR County, etc. will be opened on July 6, 2006 at 1:00 p.m. at the State Office.  
Plans and specifications are available for inspection, along with bidding proposals, and applications for the TxDOT Prequalified Contractor's list, at the applicable State and/or Dist/Div Offices listed below. If applicable, bidders must submit prequalification information to TxDOT at least 10 days prior to the bid date to be eligible to bid on a project. Prequalification materials may be requested from the State Office listed below. Plans for the above contract(s) are available from TxDOT's website at www.dot.state.tx.us and from reproduction companies at the expense of the contractor.  
NPO: 20434  
State Office: Constr./Maint. Division, 200 E. Riverside Dr., Austin, Texas 78704. Phone 512-416-2540.  
Dist/Div Office(s): Abilene District, District Engineer, 4250 N. Clack, Abilene, Texas 79604-0150. Phone 325-676-6800.  
Minimum wage rates are set out in bidding documents and the rates will be part of the contract. TxDOT ensures that bidders will not be discriminated against on the grounds of race, color, sex, or national origin.

**RIKE REAL ESTATE**  
Mary Rike, Broker John Rike, Agent  
411 1/2 S. First Street  
Haskell, Texas 79521  
940 864 2411 940 864 2332  
mrike@dtmspeed.net  
www.rikerealestate.com  
605 N. AVE. F. One of a kind custom built home. Amenities include brick entry, kitchen, replace cook's dream, many unique built-ins, C/HA, vaulted ceiling with exposed beams.  
1206 N. 12TH. 3-2-2, immaculate brick home on large corner lot with great manicured lawn. Amenities include living, kitchen-dining, good closets, utility, C/HA, fenced yard with water well and much more. Located in northwest Haskell with open view.  
508 AND 510 S. 12TH. Two bedroom, two bath home with living, dining (opens to patio), large utility room, C/HA, built-in appliances, two storage buildings and all in great condition. Adjoining property has two bedroom, one bath mobile home, C/HA, living, built-in kitchen, dining and water well. Property is being sold together or separately.  
Come by Rike Real Estate for a complete list.

## City Council report

The Haskell City Council met in a regular meeting Mon., June 12. Mayor Ken Lane called the meeting to order, and the invocation was given by Jimmy Roberts.

Mayor pro tem, Sue Medford administered the oath of office to Mayor Ken Lane.

The council approved the signing of the guarantee for the \$150,000 bridge loan for the Rolling Plains Health Care Systems Assisted Living Project, under Local Government Code 380.

Approval was given to the only bid submitted for the vacant lot at 802 South 1st St., to Jennabeth Kimbrough for \$450.00 and to secure an easement along the creek.

Approval was given to deny the request of Atmos Energy Corp. Mid-Tex Division for an annual grip rate increase in the municipality.

Approval was given to model resolution A, authorizing the city's

aggregation power project (CAPP) Inc. to negotiate an electric supply agreement for deliveries of electricity effective Jan. 1, 2007 if they are in line.

The council voted three to one to keep Jeff Caparoon employed by the Police Department until budget, if Bill Glass returns from Iraq before budget.

Approval was given for Tom Bassett to seek bids for a pickup to replace the 1999 Ford Victoria.

Approval was given to bid out the digging of a trash pit at the landfill, and to get details in writing.

Bob Smith was appointed to the prison board to replace Ken Lane.

City Administrator, Brandon Anderson reported that the city has changed its cellular phone provider to Alltel, and has upgraded its plans, being extremely pleased so far with its new service. The city is looking at an alternative on its health and dental insurance, and if things pan out, he thinks it can improve the coverage and save about \$10,000. The city should know something on the S.I.B. loan application with TxDOT around the end of July, having already visited with TxDOT locally, and is hoping everything is approved and it can move forward with the water line adjustment and replacement, Anderson said.

## Sanders reunion held

A total of seventy-five persons attended the annual reunion of the children, grandchildren and great grandchildren of the late Jack and Sallie Sanders, held June 8-12 at the Circle S Ranch southwest of Haskell.

Lasting longer than usual, the reunion extended into Monday to allow for visiting with Ethelyne Slade, son Steve and Donna Slade, and grandson Justin, Kristen and daughter Kadence of Eagar, Arizona.

Hosts of the reunion were Martha, Bill, Loretta, William Mark, Denise and Mark Maupin and Susan, Hank, and Shawn Ray of Odessa. Sue Cox and Marie Kirkland prepared the breakfasts and other members of the family brought food and desserts.

Sue Cox also emceed for the talent show Saturday evening. Performing were Austin Sartain, Phoenix Sanders, Texas Sanders, Abby Sanders, Shambay Sanders, Alexis Cohen, Sallie Sartain and Nicola Slade.

Attending this year were Lona Mae Phelps, Kenneth and Elaine Campbell, Karen, Kendall and Allison Mitchell, visitors Zachary and Dillon Campbell and Vincenti Solano all of Haskell; Travis and Wilma Sanders, Leigh and Alexis Cohen, all of Coleman; Darrell, Texas and Phoenix Sanders of Wesley Chapel, Florida, who traveled

the farthest; Ethel Slade, Steve and Donna, Justin and Kristen Slade and daughter, Kadence of Eagar, Arizona; Ben and Melinda Slade and daughters, Nicola and Mercedes of Burleson; Ricky, Tina, Megan and Austin Thomas of Cross Plains.

Andy and Marlene Sanders, Netha and A.J. Balleu, ReNetha and Johnny Carrow of Cross Plains; B. D. and Marie Kirkland, Tom and Tammy Tannise of Fort Worth; Jacky D., Barbie, Jack and Rebecca and Kristen Kirkland of Weatherford; Walter and Sue Cox of Naples; Brenda, Austin and Sallie Sanders of Omaha; Jacky, Sandra and Jaclyn Sanders of Aledo; Ricky, Shana and Shambrie Sanders of Weatherford; Rex, Mandy, Abby and Robert Sanders of Aledo; Rocky and Marsha Sanders of Abilene and visitors, Erin Byrd of Arlington, Brent Forester of Aledo, Sam Traylor of Spring and Charles Davis of Avoca. Not present was Jack and Sallie Sanders daughter, Scarlett Sanders and her family.

Hosts for next year's reunion will be Marie and B. D. Kirkland and their family.

Entertainment included fishing and hunting, playing basketball, riding scooters, going on a buggy ride and visiting the home of their mother, Sallie Sanders.

## BURN BAN IN EFFECT



706 N. 1st • Haskell • 864-2062

### Hamburger Baskets

with fries and 24 oz fountain drink

### Steak Finger and Chicken Strip Baskets

with fries, gravy, Texas toast, and 24 oz fountain drink

# \$1.00 off

## Commissioners' Court report

The Haskell County Commissioners' Court met in regular session, June 12 with County Judge, David Davis presiding, Rhonda Moeller, County Clerk and all County Commissioners attending.

Approval was given to the proposal from Keith McGrew and Debbie Graves, managers of The Anchor, to move a building in to be used as the store at The Anchor.

The contract for court fees and fines collection services with Perdue, Brandon, Fielder, Collins and Mott L.L.P. to do collections for the Justice of the Peace, Lynn Dodson, was approved.

The County Treasurer's monthly report was approved.

Several line items transferred in the budget for FML were: 1. \$5,935.23 out of Grant Funding, with \$387.50 going into Grant Expense, \$1,500.00 going into Materials and Supplies, \$1,000.00 into Grader Blades, \$200.00 into Miscellaneous

and \$2,837.73 into Fuel. FML 2. \$9,747.96 out of Grant Funding with \$637.50 going into Grant Expense, \$1,000.00 into Tires and Tubes, \$1,500.00 into Materials and Supplies, \$100.00 into Miscellaneous and \$6,510.46 into Equipment Purchase. FML 3. \$9,747.96 out of Grant Funding with \$637.50 going into Grant Expense, \$2,500.00 into Parts and Repairs, \$1,500.00 into Grader Blades and \$5,110.46 into Equipment Purchase. FML 4. \$12,806.25 out of Grant Funding with \$837.50 going into Grant Expense, \$5,000.00 into Parts and Repairs and \$6,968.65 going into Materials and Supplies.

The burn ban was reinstated for the county immediately.

Approval was given to the renewal of the Westlaw contract for online legal research service.

The Courthouse will be closed July 3 and 4.

## Students in the News

Samantha Steele of Haskell was awarded an Associate of Science degree during commencement ceremonies of Clarendon College held Fri., May 5.

She is the daughter of Bill and Pam Steele of Haskell.

Hillary K. Bleiker of Rule was awarded a Master of Arts in Communications degree during spring commencement exercises held May 13 by West Texas A&M University in Canyon.

Kolt Kittley of Rule was named to the President's list of West Texas A&M University in Canyon for the spring semester.

Students named to the list must carry a grade point average of 4.00 with a class load of a minimum of 12 undergraduate hours.

A sophomore student, Kittley majors in Sports/Exercise sciences.

Angelo State University has released the names of student's listed on the spring semester dean's list.

To be eligible for the listing, students must be enrolled full-time and maintain a 3.25 grade point average on a 4.0 scale.

Honorees and their majors from Haskell listed were Jacklyn Escobedo accounting; Chris Hobbs, chemistry; and Breanna Marquis, kinesiology/teacher certification.

## Around Town

By Joyce Hawkins

Floradean Cockerell of Abilene spent the day last Wednesday with her mother, Joyce Hawkins.

Tammy Flannery and daughter, Ashley, of Arkansas visited her

parents, Mr. and Mrs. Charles Blair, over the weekend. Also visiting were his sister, Shirley Freeman of Peacock, Earlene Dugan of Odessa, Joyce Russ of Fort Worth and Cody Blair and daughter of Munday.

## Business Isn't Built



Dreams can be achieved with sound strategies and solid financial backing. We're here to give support to your business needs and help you obtain the business loan that will structure you into a successful enterprise. Stop in and see our loan officer for the answers you need.

# First National Bank Haskell

200 South Avenue E Haskell, Texas 79521

FDIC 940-864-8555

Other Convenient Locations to Serve You:  
First National Bank Munday - Stamford - Rochester

Choose the people you call for free —  
no matter what network they're on.  
Exclusively from Alltel Wireless



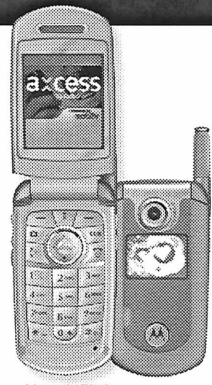
Motorola RAZR V3c



ATTENTION: Our lawyers would like to inform you some of the characters you see are not associated with Alltel. They are look-alikes. The characters, not our lawyers.

**Most Advanced RAZR**  
**\$9999**  
after \$100 mail-in rebate with 2-year service agreement  
1.3 Megapixel Camera/Video  
Bluetooth® Wireless Technology  
Access TV & Radio Ready

**Video & MP3 phone**  
**\$7999**  
after \$50 mail-in rebate with 2-year service agreement  
1.3 Megapixel Camera  
Bluetooth® Wireless Technology  
Access TV & Radio Ready



Motorola E815



For exclusive online deals shopalltel.com 1-800-alltel-1

Retail Stores				Authorized Agents			
<b>Abilene</b> 4149 Southwest Dr. (325) 437-0800	<b>Graham</b> 1221 Hwy. 16 S. (940) 549-1885	<b>Snyder</b> 4109 College Ave. (325) 573-7907	<b>Vernon</b> 807 Hillcrest Dr. (940) 553-1885	<b>Abilene</b> Cellular Connection 1150 S. Treadway Blvd. (325) 672-3841	<b>Trio Wireless</b> 4565 S. 1st St. (325) 692-5776	<b>Colorado City</b> Lone Wolf Cellular 1040 Hickory (325) 728-8000	<b>Trio Wireless</b> 407 N.E. Georgia Ave. (325) 235-1210
<b>Breckenridge</b> 3732 W. Walker St. (254) 559-3664	<b>Haskell</b> 10 Ave. D N. (940) 864-8585	<b>Sweetwater</b> 1418 Halley St., Ste. C (325) 235-0300		<b>Trio Wireless</b> 4310 Buffalo Gap, #K1110 (325) 692-5195	<b>Aspermont</b> Trinity Cellular 612 E. Broadway (940) 989-2543	<b>Sweetwater</b> Sierra Satellite Systems Inc. 1102 A Lamar (325) 235-5445	<b>Proud Sponsor of:</b> 

Federal, state & local taxes apply. In addition, Alltel charges a monthly connectivity, regulatory & administrative surcharge up to \$1.70; federal & state Universal Service Fund fees (both vary by customer usage); & a 911 fee of up to \$1.94 (where 911 service is available). These additional fees may not be taxes or government-required charges & are subject to change. My Circle: Available to new and existing customers on current select rate plans \$39.99/mo & higher. My Circle applies to ten numbers per account, which must be shared among all lines on account. Not available on prepaid plans. Customer may not designate own wireless or voice mail number. Directory Assistance or 900 numbers as any of the ten available numbers. Calls must begin & end in your plan's calling area. Designated numbers must be within the U.S. Program may be discontinued at the discretion of Alltel. Phone Promotions: Phones available at sale prices to new customers & eligible existing customers. Requires activation of a qualifying Alltel rate plan. Contact Alltel to determine if you are eligible. Mail-In Rebates: Phones & applicable rebates available for a limited time, while supplies last, with activation of a qualifying rate plan. Limit 1 rebate per qualifying purchase. Phone cannot be returned once mail-in rebate certificate has been submitted. Customer pays applicable taxes. See rebate certificate for details. Additional Information: Limited-time offer at participating locations. While supplies last. Qualifying Alltel rate plan, credit approval & approved handset required. \$20 non-refundable activation fee applies per line. \$200 early termination fee may apply per line. Offers are subject to the Alltel Terms & Conditions for Communications Services available at any Alltel store or alltel.com. All product & service marks referenced are the names, trade names, trademarks & logos of their respective owners. Screen images are simulated. ©2006 Alltel Communications, Inc. All rights reserved.