

Basketball games

HASKELL

Indians vs Crowell
Sat., Feb. 11, 7 p.m.
at Haskell
Maidens Playoff Game
vs Smyer or Sundown
Tues., Feb. 14, TBA

Calendar

Valentine dinner

A Valentine dinner and silent auction will be held Sat., Feb. 11 beginning at 6 p.m. at the Haskell Civic Center to benefit the Noah Project-North. The 'Imitation Stats' of Seymour will perform at 7 p.m.. Tickets are \$10 and may be purchased at the door. Brisket and all of the trimmings will be served at 6:30. Proceeds benefit victims of family violence in a five county area.

Bass club reorganizing

The Haskell Bass Club is reorganizing. Those interested in joining should attend a meeting Thurs., Feb. 9 at 7 p.m. at the Red Rooster Restaurant. For more information contact, Jay Miller 864-2182, Brad Dubent 989-3515 or Allen Morrow 864-5228.

ADHD program

Tori Caparoon, RN, BSN of Midwestern State University will present a free program on evaluation criteria, treatment options and comorbidities of Attention Deficit Hyperactive Disorder Thurs., Feb. 9 at 7 p.m. at the Haskell High School Auditorium.

Cookbook sale

The Friends of Old Glory School committee has reordered the cookbook, 'Amazin' Grazin,' and will have them for sale at the Old Glory 50 Star Stop beginning Fri., Feb. 10 at 5 p.m. For more information, call Suzie 989-2983, Phyllis 989-2965, Carm 989-2794, Sharon 989-2697, Dorothy 996-2179 or Florence at 989-3153. Proceeds benefit the repair fund for the Old Glory school building.

Food distribution

The Haskell County Ministerial Alliance Food Distribution Center will distribute food Sat., Feb. 18 from 10 a.m. til 11:30 a.m. at 206 S. 2nd (building east of Civic Center) in Haskell. Volunteers and boxes are needed.

Art Association

The Brazos West Art Association will meet Mon., Feb. 13 at 7 p.m. at the Haskell National Bank Community Room. Becky Tubbs, Anson artist, will demonstrate a collage.

Medical fund

A medical fund to benefit Rowena Jacobs has been established at Haskell National Bank.

Round Robin

The Ministerial Alliance of Haskell will present their annual Round Robin services beginning Sun., Feb. 19 at First Baptist Church with Rev. Daniel Echols speaking. Services will follow: Mon., Feb. 20, First United Methodist Church, Rev. Ron Rennegarbe speaks; Tues., Feb. 21, Cornerstone Fellowship Baptist Church, Rev. Danny Manross speaks; Wed., Feb. 22, Assembly of God Church, Dusty Garison speaks; and Thurs., Feb. 23 at East Side Baptist Church, Rev. Greg Gasaway speaks. All services will begin at 7 p.m. An offering will be collected to benefit the Benevolence Fund of the Ministerial Alliance.

Index

Obituaries.....Page 2
Menus.....Page 3
Out of the Past.....Page 4
Classifieds.....Page 11

Happy Valentine's Day

The Haskell Free Press

VOL. 120-NO. 6, ©FEBRUARY 9, 2006

"The People's Choice"

12 PAGES-ONE SECTION-75 CENTS



CLEAN UP AFTER THE FIRE—Work crews began the clean up of the Conner Floral building this week, located on the east side of the square in downtown Haskell. The building was determined

to be a total loss following a fire on New Year's Eve, and the owners, Don and Shirley Welch, have decided not to rebuild at this location.

Flood recovery committee ends relief efforts

The local committee overseeing recovery efforts for residents of Lake Stamford following last summer's flood held its final meeting Feb. 2 at the Haskell County Courthouse. The Haskell County Steering Committee was formed in response to the August 2005 flood event at Lake Stamford, and is affiliated with Big Country Voluntary Organizations Active in Disaster (VOAD).

Haskell County Judge David Davis said the committee was formed to solicit donations, coordinate

recovery efforts and prevent duplication of services. He noted that the committee was made up of concerned citizens from Haskell and Stamford, as well as lake residents and others.

Dusty Garison, committee chairman, said Committee members expressed appreciation to all of those who had contributed to the recovery efforts. "We have so many people to thank," he said. "The people of this area really came through for their neighbors at Lake Stamford."

Garison said that the committee raised a total of \$128,977.77 in cash contributions to the relief effort. "That's an amazing outpouring of love and concern," he said. "We received major gifts from so many businesses and organizations, and we could never have done this without their support." He noted that this amount reflects gifts of \$30,000 from the United Way of Abilene, and \$25,000 from the Shelton Family Foundation.

The committee's relief efforts

were aided by gifts of materials, merchandise and in-kind donations from area businesses, churches and non-profit organizations. "We received major donations of materials from the Salvation Army, the Churches of Christ Disaster Relief, Inc., Lowe's Home Improvement Centers, and so many others," he said. He added that committee members are compiling a full accounting of all gifts, in-kind donations, and expenditures that will be available for public inspection at the Haskell County Judge's office, and copies of it will be at the Haskell County Public Library, and at the Stamford City Manager's office.

To date, the committee has spent \$23,635.85 for lumber, insulation and building materials; \$1,226.42 for feeding construction volunteers; \$30,496.25 for carpet and vinyl flooring; \$10,659.75 for contractor expenses; \$40,800 for merchandise cards for clients to purchase specific items for their homes; and \$7,000 in reimbursement of client construction expenses. Garison noted that some expenses are still remaining, and payment for some invoices is still pending. He said that after the committee pays these bills and meets its current obligation, all donated funds will be exhausted.

Committee members also expressed appreciation to the many church groups and others who came to help. Churches involved in the cleanup and construction phases include First Baptist of Merkel; First Baptist, Pioneer Drive Baptist and Broadview Baptist, all of Abilene; First United Methodist of Wylie; Aldersgate Methodist of Abilene; First United Methodist of Garland; First Baptist of Wylie; Ceta Canyon Methodist Church; First Baptist of Seymour, the Haskell Church of Christ; and Abilene Christian University.

Work is continuing on some homes at the lake, and committee members expect to be finished in mid-March.

Round Robin Revival to be held Feb. 19-23

Taken from Hebrews 10:19-25, "Persevere With Hope" is the theme of the annual Haskell Ministerial Alliance Round Robin Revival set for

Feb. 19-23. The services will begin each evening at 7:00 p.m.

Sun., Feb. 19, at Haskell First Baptist Church, Rev. Daniel Echols

will bring the message.

Mon., Feb. 20, at the First United Methodist Church, Rev. Ron Rennegarbe will bring the message.

Tues., Feb. 21, at Cornerstone Baptist Church, Rev. Danny Manross will bring the message.

Wed., Feb. 22, at the Assembly of God, Rev. Dusty Garison will bring the message.

Thurs., Feb. 23, at East Side Baptist Church, Rev. Greg Gasaway will bring the message.

Committees united; to meet Feb. 13

In a joint meeting, Thurs., Feb. 2, the Haskell Festivals Committee and the Haskell Health Net Committee agreed to combine the two organizations and to rename the organization, the Committee to Help Haskell County.

During the meeting, the decision to hold a trail ride the weekend of Wild Horse Prairie Days was finalized, with plans beginning for the event. Other ideas and proposals were discussed.

With participation from individuals in each Haskell County community being vital, anyone who is interested in becoming a member of the Committee to Help Haskell County is invited to attend the

meetings. The next meeting will be held Feb. 13 at 6:00 p.m. at the Rule Lions Club building.

For more information, call Susan Cockerell at 940-864-2851 or Megan Cox at 940-864-8505.

Basketball teams head to playoffs

Standing at 7-0 for the season, the Haskell Indians basketball team has won the District. They will play a warm-up game with Crowell here, Feb. 11 at 7:00 p.m. Times and places for the play-off games have not been

determined.

The Haskell Maidens are in the play off, and will play Smyer or Sundown Tues., Feb. 14, at a place and time to be announced.

UIL moves Haskell to 2A

Under the 2006-08 Official Football and 2006-07 Official Basketball District Alignments, Haskell, Rule and Paint Creek schools will be reclassified.

Haskell will now be in Conference 2A, Region 1, District 5. Rule will be in Conference 1A 6-Man Division 1, Region 2, District 7. Paint Creek will be aligned in Conference 1A 6-Man Division 2, District 10.

On moving from Class 1A to Class 2A, Haskell football coach Brad Brunson said, "We weren't expecting it, but it's not bad news. We just didn't expect it. The competition is a lot different in every classification, so we just respond to it the same way as if we had stayed down. We just have to work hard and get better."

On the scramble to complete a schedule once the new district were announced, Brunson said, "It's kind of like the trading on the stock market, because once the realignment comes out, a lot of teams' schedules go straight out the window, because a team they had scheduled out of the district is now in their district, or they could be in an eight-team district and have to drop two games. We had to cancel a couple of games and change our schedule a little bit. My schedule is finalized now, we've just got to talk to our non-district opponents and decide if we are going to play them home or away."

More voting machine training scheduled

With the enactment of the Help Americans Vote Act of 2002 (HAVA), Haskell County is required to have an accessible voting machine in each voting precinct for voters with disabilities.

Although these machines do not have to be used by every voter, everyone is welcome to see a demonstration on how the machine voting process will work for them.

With the goal of educating the voters about using the machines, Haskell County officials are going to be demonstrating the machines in the county communities. The times are flexible and additional hours can be requested if needed.

The schedule planned thus far is as follows:

Feb. 9, Paint Creek, Lake Stamford, PCISD Library, 11:00 a.m. to 2:00 p.m.

Feb. 10, Weinert School, 11:00 a.m. to 2:00 p.m.

Feb. 14, O'Brien First Baptist Church, 11:00 a.m. to 2:00 p.m.

Feb. 17, Rule City Hall from 11:00 a.m. to 2:00 p.m.

Feb. 20, Rochester Fire Hall, 11:00 a.m. to 8:00 p.m.

For any information or changes, contact the County Judge's Office at 940-864-2851.

FOR NEWS ITEMS OR TO SUBSCRIBE, CALL 864-2686

Pipeline group to present contractor's awareness program

The Pipeline Group's annual "Public Education-Contractor Awareness Program" will be held at 6:30 p.m. Tues., Feb. 21, at the

Abilene Civic Center, 1100 N. 6th St. in Abilene. The program will be sponsored by a group of companies with a common goal of preventing accidents and damages to underground pipelines and utilities. A free dinner will be catered for all persons involved in excavation related activities in Callahan, Eastland, Fisher, Haskell, Jones, Nolan, Shackelford, Stonewall, and Taylor counties. Following the dinner, a brief safety program will be presented which stresses the importance of accident prevention by identifying pipeline and utility rights of way, use of one-call systems, and the importance of working with pipeline and utility companies to safely excavate in the vicinity of underground facilities. The Texas law requiring notification to a one-call system before excavating will be discussed. Sponsors will provide promotional materials; including notification information for their companies, safety related brochures and other safety reminders.

Each year many lives are injured or lost, plus millions of dollars in repairs and lost products are incurred due to "third party" incidents—some digging into a pipeline. Thousands of communications, some life-threatening, may be disrupted when expensive fiber-optic cables are damaged or severed. These types of excavation can be financially devastating to the responsible party. This safety program is an attempt to help those who do excavation work to avoid such situations.

For more information call 800-982-8752 or visit our web site at www.pipelinegroup.com.

Obituaries

Fidel Martinez Lopez



FIDEL LOPEZ

Funeral services for Fidel Martinez Lopez, 91, of Rule, were held Tues., Feb. 7 at St. George Catholic Church in Haskell with Father George Roney officiating.

Burial was in Rule Cemetery under the direction of Holden-McCauley Funeral Home of Haskell.

Mr. Lopez died Sun., Feb. 5 in Stamford.

Born July 18, 1914 in Georgewest, he was the son of Divurcio and Demencia Martinez Lopez. In 1939, he married Silberia Barrera in Georgewest. She preceded him in death May 5, 2005. He was a farmer and member of St. George Catholic Church.

He was preceded in death by his parents; wife; one son, Fidel Lopez Jr.; grandson, Rogelio Lopez; brothers and sisters, Marcos Lopez, Pedro Lopez, Robert Martinez, Lucia Arvica, Adela Banda, Alejós Lara and Carlota Moreno.

Survivors include three daughters, Lucia and husband, Abaristo Ogeda

of Lamesa, Elva and husband, Richard Guerra of Lamesa and Crucita and husband, Luis Mendoza of Stamford; six sons, Henry and wife, Ida Lopez of Sagerton, Encarnacion and wife, Margaret Lopez of Lewisville, Margarito and wife, Lydia Lopez of Haskell, Oscar and wife, Oralia Lopez of Stamford, Joe and wife, Francis Lopez and Noe and wife, Teresa, all of Knox City; 40 grandchildren; 32 great grandchildren; brothers and sisters, Divurcio Lopez Jr. of Georgetown, Ceracin Lopez of Belton and Sofia Arvica of Waco.

Memorials may be made to Hospice of the Big Country, 4601 Hartford St., Abilene, Texas 79605 or Girling Home Health, 4400 Buffalo Gap Road, Suite 5850, Abilene, Texas 79606. PD. NOTICE

New Merchandise has Arrived!

Get your Valentine a **Gift Certificate** from Rainey's Scrapbook Store, she'll love it!

Class for Design Techniques Feb. 13 at 5:30 p.m. Class fee \$10. Reservations must be made by calling 864-5119

Rainey's Scrapbook Store
408 N. First • Haskell, Texas • 940-864-5119
New Hours: Mon.-Fri. 1 to 6 p.m. Sat. 10 a.m. to 4 p.m.

Re-Elect David C. Davis County Judge on March 7th

We, the citizens of Haskell County, have come together so many times to help in times of need. As County Judge, I take pride in knowing and working with people of the county. We have been there to feed the hungry, clean up after tornadoes and floods, support those who have lost so much and helped to make their life a little easier. A true test of a community is how it steps up to make life better for those who have suffered a loss.

Let us work together to make Haskell County an even better place to live. The Commissioners' Court and I are here to hear the voices of the citizens. Let us know what the needs and concerns are. Help us explore options and ideas for improvements here in our County. Let's not be afraid to dream of what we want for the County and Citizens in the future.

I want to be a part of that future. I am asking you to vote for David C. Davis on March 7th.

PAID POLITICAL AD BY DAVIS C. DAVIS, CAMPAIGN TREASURER

Early activation program could help to save lives

If you live in Haskell County, chances of surviving a medical emergency just got better. Haskell County 911 officials have partnered with Air Evac Lifeteam in a program that could save lives by helping people get emergency medical help as quickly as possible.

Air Evac's Early Activation program is designed to decrease the amount of time it takes for a patient to get to a life-saving healthcare facility, according to Early Activation

Coordinator Brock Wiggins.

In many counties, a medical helicopter is not dispatched until an emergency official at the scene calls for one. "A lot of time is wasted waiting for emergency personnel to arrive at the scene, assess the patient, call a helicopter, and wait for it to arrive," Wiggins explained, "Our Early Activation program saves valuable time by launching the aircraft and crew as early as possible, immediately after local

ground EMS units are dispatched, and not waiting for an official at the scene to make the call. As soon as we know we might be needed, we're in the air. And if we're not needed, we just turn around and go home."

Counties who participate in the Early Activation program notify the ground EMS service, as well as Air Evac Lifeteam, as soon as they receive a call for help if the medical emergency falls within Early Activation criteria, such as traumatic accidents, near drowning, heart attacks or strokes.

When an Early Activation call is made, the Air Evac crew will immediately respond to the scene of the injury or illness. If the ground EMS unit as the scene determines the patient's chances of survival would be increased by helicopter transport, Air Evac will fly the patient to the closest facility that meets the patient's needs.

If the ground EMS decides the patient does not require immediate air transport, air Evac will return to their base, and the ground EMS unit will transport the patient.

Wiggins said studies have shown that if a person can receive medical treatment within an hour of the onset of a critical injury or illness, the chances of having a good recovery are greatly increased.

"Medical professionals refer to this time as 'The Golden Hour,'" he said. "Our goal with the Early Activation program is to get the patient to a place where they can get definitive healthcare within that 'Golden Hour.'"

Air Evac provides training for dispatch personnel who are interested in the Early Activation program. Haskell County 911 recently completed the training program.

Wiggins said the training helps communicators understand when and how to utilize helicopter services, and enables them to recognize medical conditions that might require advanced medical treatments.

As part of the program, Air Evac establishes landing zones throughout the county. When the helicopter is not able to respond directly to the scene of the medical emergency due to the terrain, the ground ambulance can bring the patient to one of the established landing zones.

Weather Whys

Cirrus Clouds

Q: Do cirrus clouds mean good or bad weather will occur?

A: Cirrus is perhaps the most common type of cloud, says Brent McRoberts of Texas A&M University. "They usually look light and feathery with a curl or two at the end of them," McRoberts adds.

"In fact, cirrus is a Latin word meaning 'curl of hair.' Cirrus clouds are usually found at heights of at least 15,000 feet and they generally indicate that fair weather is ahead."

Q: Why do they seem so light and other clouds appear to be darker?

A: Cirrus clouds are high-level clouds and are almost always composed of ice crystals, McRoberts adds. "That gives them a transparent appearance," he explains.

"Because they are so light, they indicate a stable weather pattern, usually meaning sunshine and little chance of rain. By contrast, nimbus is the Latin root word for rain and cumulonimbus clouds are often associated with thunderstorms."

Occluded Fronts

Q: Sometimes the weatherman talks about an "occluded front." What

is it?

A: In simple terms, an occluded front occurs when a cold front gradually overtakes a warm front, says Brent McRoberts of Texas A&M University.

"Cool air comes in contact with warm air, and this forms a sort of boundary both on the ground and above the surface," McRoberts explains.

"When this warm air is lifted aloft, it's called an occlusion, or an occluded front. So you can have a cold occlusion front or a warm occlusion front."

Q: Is rain associated with an occluded front?

A: Very often, that is true—heavy rains can result from an occluded front, McRoberts adds.

"Because of the mixing air masses, rainfall is common during an occluded front," he says. "Changes in temperature, dew point and wind direction can happen during an occluded front, and these changes often mean rain. Occluded fronts can occur any time of the year, but they are most common during winter and spring when cold fronts are more frequent."

**Go Indians!
Go Maidens!**

Tuesday February 14th IS Valentine's Day

ROSES

Arranged in a Vase

DOZEN	1/2 DOZEN	3 BUD VASE	1 BUD VASE
\$38 ⁹⁵	\$19 ⁹⁹	\$9 ⁹⁹	\$4 ⁹⁹

Valentine Cupcakes 6 ct. \$2.99

Assorted Valentine Balloons \$1.99 - \$5.99

Place Orders Early - 864-3763 or 864-6120

Modern Way

1202 N. AVE. E Haskell, Texas

WE ACCEPT VISA, MASTERCARD AND DISCOVER

STORE HOURS: MON.-SUN. 7:30 A.M. TO 9 P.M. WE GLADLY ACCEPT FOOD STAMPS

The Public is Invited to A Free Program on Evaluation Criteria, Treatment Options, and Comorbidities of Attention Deficit Hyperactive Disorder Thursday, February 9 at 7 p.m. at the Haskell High School Auditorium Presented by: Tori Caparoon, RN, BSN Midwestern State University

Elect JOHN FOUTS FOR District Judge

I have the experience and background to be your District Judge

- Assistant Criminal District Attorney, Lubbock County
- Practice of Law for 28 Years
- District Attorney, 39th Judicial District, 16 Years
- Tried Contested Cases - both Civil and Criminal
- Tried over 60 Jury Trials - both Civil and Criminal
- Impaneled 193 Grand Juries
- Won numerous Appellate Cases including the writing of briefs
- Presented Oral Arguments to Appellate Court Justices

Pd. Pol. Adv. Pd. for by John Fouts, Campgn. Treasurer

Emerson is new Rochester Postmaster

Susan Emerson of Knox City has been named as the Postmaster of Rochester.

Born in Yuma, Arizona, she moved to O'Brien in 1962, and graduated from O'Brien High School in 1966.

She married J.M. Emerson in 1967. The couple now lives in Knox City. They have two sons, one granddaughter and one grandson. Son Justin lives in Lubbock, and son J. and wife, Connie, live in Merkel with their daughter, Ashlyn. Grandson Calvin lives in Calisburg.

Emerson joined the postal service in 1977 as PTF clerk in O'Brien, where she served as OIC in 1985 and again in 1992. From Sept. 1989 to April 1990, she drove to the Mail Processing Center in Abilene, working as a clerk from 3:30 p.m. to midnight, when not working at O'Brien. From June 1990 to Aug.



SUSAN EMERSON

1992, she was loaned to the Haskell Post Office, when she was not working in O'Brien. She was appointed Postmaster of O'Brien in Apr. 1994.

Concert to benefit museum

They may be called the "Imitation Stats" but the musicianship and showmanship will be completely professional when the Seymour group performs at the Knox City High School Auditorium Sun., Feb. 12 at 3:00 to 4:30 p.m. Proceeds will go to the Knox County Museum Building Fund, "The Wichita-Brazos Museum and Cultural Center."

The concert pattern and the songs will keep faith with the Statler Brothers style their fans love, but just because you've seen them before doesn't mean you'll hear the same thing each time. Five new Statler Brothers songs, including a new gospel song, have been added. They have been practicing since November to get the right sound and the right look to the new concert years' program.

It isn't easy to book the Imitation Stats says Curtis Priddy, the Seymour Police Departments School Resource Officer, who sets up the dates and arranges the advertising. It's easy to understand when you realize the variety of jobs held by the Imitation Stats members. You may wonder how they have time for the shows alone, besides all the practices and

planning that precede a show. Priddy sings bass in the quartet.

B.J. Brooks, is at the keyboard for the group, besides spending his days with music as director of the Seymour High School Band.

Cory Butler, youngest of the Stats, plays bass guitar and spends his days as a junior at Seymour High School.

Baldo Campos drums on stage, but offstage he manages a grain elevator for Myers Grain Company.

Rosie Priddy, a case worker for the Texas Department of Human Services, renews her energy, with enthusiasm, on the acoustic guitar.

Royce Miller, sings baritone when he's not farming at Gilliland or being an auctioneer.

Tim Nix has a musical background as a former band director, and is now a physical therapist at Seymour Hospital, and continues in music, singing for the Stats.

Lead singer is Sid Winn, who spends his days as Seymour Postmaster.

Billie Jean Young, retired from directing the Seymour High School Choir, is now teaching piano, and is the Stats indispensable piano player.

ECC Menu and Calendar

Mon., Feb. 13
Lunch—King ranch, buttered squash, green beans, onions, yeast rolls, peach cobbler, milk, tea, or coffee

Wed., Feb. 15
Bingo 10:30 a.m.
Lunch—Salmon patty, parslid potatoes, black eye peas, sliced onions, garlic toast, sweetheart cake with white icing, milk, tea, or coffee

Fri., Feb. 17
Lunch—Sausage and kraut, pinto beans, scalloped potatoes, sliced onions, yeast rolls, apricot cobbler, milk, tea, or coffee

Announcements begin at 11:45 a.m. followed by lunch.

Valentine's Day is Tues., Feb. 14th

Come by and place your order early or call 325-773-2005!

Stamford Floral
102 S. Swenson, Stamford
We accept all major credit cards.

Student in the News

Leslie Grand of Haskell has been named to the President's List at Texas Tech University for the Spring and Fall semesters of 2004 and 2005. To make the list, a student must attain a grade-point ratio of 4.0 during the semester.

Grand was inducted into membership in the Golden Key International Honour Society, and was honored at an induction ceremony at Texas Tech University. The global nonprofit organization provides academic recognition to college juniors and seniors in the top 15 percent of their class. Grand was elected recording secretary of the Golden Key Honour Society.

Heart to Heart

February is the month to promote habits for a healthy heart, so we invite members to bring friends and family to **WORKOUT EXPRESS** at no additional charge. Also, Tuesday through Thursday of each week, enjoy our **BLESS YOUR HEART** salad bar at **GOOD TIMES CAFE.** Soup, salads, baked potato, dessert, and drink included. **SRS. & W.E. MEMBERS 10% OFF.** *Register for lunch for two "on us!"

GOOD TIMES
Workout Express
Good Times CAFE
512 N. 1st
940-864-6133

We have Valentine's Gifts for all ages!

Look for Sweetheart Discounts throughout the store!

Shop with us for all your Valentine needs!

Bridal Selections for Shannon Jordan and Drew Deen
Dinnerware by Denby Glassware by Noritake

The Carousel Gift Shop

Shop with us through lunch!

Erlinda Mayfield
Open M-F 10 to 5:30, Sat. 10 to 4
Southside of the square in Haskell • 864-2069

Valentine Special
Select Jewelry
1/2 PRICE

Fall and Winter Clothes and Coats
1/2 PRICE

Buy 1 Pair of Shoes at Regular Price Get 2nd Pair at **1/2 PRICE**
Paying the Price of the More Expensive Pair

Remember your Valentine with Brighton Perfume, Brighton Jewelry and more!

Personality-Slipper Shoppe
940/864-2501 • 864-3051
South Side of Square Haskell, Texas

Valentine's Day

Tuesday, February 14

We invite you to come by and enjoy refreshments with us on Valentine's Day and receive a FREE gold heart lapel pin (while supplies last!).

Russell Stover Candy

Fragrances
Large selection of Ladies' and Men's Fragrances

Balloons
Send a Beautiful Balloon Bouquet

Jewelry
Just arrived! New shipment of Jewelry

Stuffed Animals
Add one to a balloon for a great gift

Cards
Send along some love with a little help from
American Greetings Cards

Necco Sweethearts

1.25 oz. **5 for 99¢**

Valentine Exchange Cards

Assorted Themes. 32 count Your Choice **99¢**

Disney Heart Box with Candy

2 oz. **99¢**

Cella's Chocolate Covered Cherries

8 oz. **\$1.99**

Webkinz

Discover a Virtual World with Webkinz—Adopt a Pets.

only \$7.99

Each plush pet includes a secret code to bring your pet to life on the web!

*Candles
*Purses
*CROSSES **25% off**
REGULAR PRICE

Bridal Selections for
Shannon Jordan Kristin Cypert
Bride-elect of Andrew Deen Bride-elect of Russell Bishop

Prices good February 9, 10 & 11
www.haskelldrugstore.com

THE DRUG STORE
Haskell • 864-2673

Haskell School Menu

Feb. 13-17 Breakfast
Juice and milk are served daily on the breakfast menu.
Monday: Breakfast bagel
Tuesday: Cereal, toast
Wednesday: Funnell cake
Thursday: Cereal, animal crackers
Friday: Sausage, biscuit
Lunch
Milk and iced tea are served daily at the Secondary campus. Milk is served daily at the Elementary School. Secondary campus: choice of entree or baked potato with cheese and ham.
Monday: Salisbury steak, gravy, mashed potatoes, green beans, hot rolls, peaches
Tuesday: Pepperoni pizza, corn, garden salad, pineapple tidbits
Wednesday: Buffalo wings, ranch dressing, potato wedges, baby carrots, hot biscuit, rosy applesauce
Thursday: Beef and vegetable stew, grilled cheese sandwich, fried okra, cherry jello
Friday: Cheeseburger, lettuce, tomato, pickles, french fries, fresh fruit

Paint Creek School Menu

Feb. 13-17 Breakfast
Juice and milk are served daily.
Monday: Toast or cereal
Tuesday: Biscuits and gravy
Wednesday: Pancakes
Thursday: Cinnamon rolls or donuts
Friday: Toast or cereal
Lunch
Milk is served daily.
Monday: Ham, scalloped potatoes, peas, salad, rolls, fruit cups
Tuesday: Chicken spaghetti, green beans, salad, garlic bread, Valentine cake
Wednesday: Tacos, refried beans, salad, salsa, jello with fruit
Thursday: Chicken strips, mashed potatoes, peas, rolls, chocolate cake
Friday: Hamburger, cheese, lettuce, tomatoes, onions, pickles, chips, fruit cups

Buy a Chicken Strip Dinner And Get a FREE Medium Soft Drink

Diet Pepsi

SONIC

America's Drive-In™

No Waiting Call In Orders

864-8533

Limited Time Only!
Offer good February 1-28, 2006.
Only at participating SONIC Drive-Ins. ©2005 American's Drive-in Corp.

Come in and register for a

Great Big Kiss

to be given away Feb. 14, 2006 at 4 p.m.

New Jewelry • Balloons
Valentine Heart-Shaped Candy
New Spring Tommy Hillfiger
Infants, Toddlers, Girls & Boys
Wyman Meinzer Books

Art Stall & Frame Shop

Valenteenies "Since 1974" Great Big Kiss
114 Central • Knox City
940-658-3092

OPINION

TEXAS PRESS ASSOCIATION

State Capital



HIGHLIGHTS

By Ed Sterling



Border security initiative gets 2nd cash infusion

AUSTIN—Gov. Rick Perry on Feb. 2 announced an additional \$3.8 million in state funds will be directed to Operation Linebacker, a law enforcement initiative to stem criminal activity along the Texas-Mexico border.

In December, Operation Linebacker—a coalition of 16 border county sheriffs—received \$6 million from the federal Edward Byrne Memorial Justice Assistance Grant. The grant money was divided so the sheriffs received \$376,500 each.

The counties are Brewster, Cameron, Culberson, Dimmit, El Paso, Hidalgo, Hudspeth, Jeff Davis, Kinney, Maverick, Presidio, Starr, Terrell, Val Verde, Webb and Zapata.

The governor said his criminal justice division will disburse the state's \$3.8 million so the sheriffs will receive \$223,000 each.

"By funding additional patrol hours, new technology tools and rapid deployment teams of state troopers, we will make Texas—and the nation—more secure," Perry said.

Increased surveillance along the 1,200 mile Texas-Mexico border enabled deputies in Hudspeth County to stop a Jan. 23 attempt by smugglers to cross the Rio Grande into the U.S.

At the scene, sheriff's deputies and Border Patrol agents spotted three vehicles manned by civilians and men armed with automatic weapons and wearing military-style uniforms.

The El Paso Times reported that Juan Carlos Foncecerra Berumen, the Mexican consul general in El Paso, said the men were not Mexican soldiers, but because of the incident, the Mexican government would not allow its soldiers within 3.2 miles of the border.

Rister named chief of agency

Milton Rister has been confirmed as chief executive of the Texas Legislative Council, a 14-member nonpartisan office that drafts legislation and performs a variety of other services primarily for the Texas Legislature, but also serves state agencies and the citizens of Texas.

Rister most recently worked as a senior advisor and director of research for Republican Lt. Gov. David Dewhurst and before that as the executive director of the Republican Party of Texas. His other

legislative experience includes serving as chief of staff for state Sen. Jane Nelson, R-Lewisville.

Before he was confirmed, Rister's GOP background prompted a letter by state Rep. Senfronia Thompson, D-Houston, urging Dewhurst and House Speaker Tom Craddick, R-Midland, to reconsider the appointment.

Stayhorn critiques state agency

Last August, state Rep. Todd Smith, R-Eules, asked the office of the state comptroller to investigate the business practices of the Texas Residential Construction Commission.

After completing her review of the agency last month, state Comptroller Carole Keeton Strayhorn said she was "deeply troubled" when she found the TRCC functions as a "homebuilder protection agency."

Her office conducted a survey of homeowners, and reported that 86 percent of the respondents said their builder failed to fix construction defects in their homes.

Strayhorn offered suggestions to improve the TRCC. She said the agency should not shift builder fees to the homeowner and not allow public members of the commission to have ties to the construction industry.

The TRCC was created by the Legislature in 2003 to resolve disputes between homeowners and builders without the expense of litigation.

Governor remembers Mrs. King

Coretta Scott King, a longtime agent for nonviolent social change and the widow of slain civil rights leader, the Rev. Martin Luther King Jr., died Jan. 30, at age 78.

Gov. Perry ordered flags to be flown half-staff on Feb. 7 in her honor.

"Today (first lady) Anita and I join all Texans in celebrating the life of Coretta Scott King, and we extend our prayers as the nation mourns her loss," Perry said.

"Mrs. King ... worked right alongside her husband, Martin Luther King Jr., to advance the cause of freedom, and after his untimely passing she did not pause in her efforts to fight for economic and social justice. ..."

King died from an assassin's bullet after speaking at an April 4, 1968, rally in Memphis, Tenn.

From Out of the Past

From the files of The Haskell Free Press

10 Years Ago February 8, 1996

Amy Turner showed the grand champion heifer, Mary Belle Turner showed the reserve grand champion heifer, Jeffrey Murray showed the grand champion swine and Jonathan Hisey showed the reserve champion swine in the Haskell County Junior Livestock Show.

The Haskell girls varsity basketball team won the first half of district with a 5-0 record. Team members were Kelly McCulloch, Rebecca Unger, Heather Guess, Stephanie Alsbrook, Veronica Gonzalez, Shayne McKenzie, Betsy Coleman, Charissa Huff, Anita Rapp, Wendy Gray, Lisa Rodriguez and Jennifer Andress.

Haskell CISD band students, Philip Huff, Kaki Stapleton, Wendy Dulaney, Mary Kay Watson and Chris McSmith participated in the Region II UIL Solo and Ensemble contest and advanced to state.

20 Years Ago February 13, 1986

First place winners in the Haskell Soil and Water Conservation Poster Contest were Craig Neal, Haskell; Angie Parsons, Leigh Ann Reel and George Mayen, all of Paint Creek; Patricia Slaughter, Brandon Williams, Karmen Adkins, Billy Reyna, Michelle Hunt and Mindy Ballard, all of Rochester; Christy Mathis and Neal Kreger, both of Rule; Jessie Castorena, Jace Yates, Randy Alexander, Christy Horan and Kenny Forehand, all of Weinert.

Lisa Wheatley, daughter of Mr. and Mrs. Boyd Baird of Rule, was elected president of the Southwestern Oklahoma State University Student

Pharmaceutical Association.

Jerry Larned, son of Mrs. Joe Larned of Haskell and superintendent of the Monahans schools, became the 26th recipient of the Monahans Outstanding Citizen award.

30 Years Ago February 12, 1976

Amos D. May Sr. of Rule, was one of two Texans appointed to be part of the six new members appointed by Agriculture Secretary Earl Butz to the 20-man Cotton Board.

Marsie Mickler, daughter of Mr. and Mrs. James R. Mickler of Haskell, was chosen FFA Sweetheart. Karla Brothers and Mark Whittemore were crowned Sweet Home Youth Choir Queen and King.

Rule students participated in a UIL practice meet at Childress. Martha Kittley placed 1st novice slide rule, Johnny Baitz 1st persuasive speaking, Jill LeFevre 1st number sense and James Cloud 1st junior high science.

40 Years Ago February 10, 1966

Mr. and Mrs. William Adolph Hirsch, daughter and son-in-law of Mr. and Mrs. Manis Pogue and granddaughter of Mrs. W.S. Pogue Sr. of Haskell, attended the 14th annual National Physics Show in New York.

JaNay Morrison calmly dropped in three free throws in the final seconds to give Paint Creek a 51-48 win over Cross Plains and the championship in the Hardin-Simmons Girls' Invitational Basketball tournament.

Judy Therwhanger of Weinert sold her over-all regional champion barrow, a Hampshire, to the Abilene

Reporter-News in the sale of champions.

Johnny Westbrook, Rule FFA member, sold the champion steer of the Haskell County FFA Stock show to the Rule Chamber of Commerce.

50 Years Ago February 9, 1956

Haskell residents began thawing out Monday from the deep freeze which had enveloped the area. Snow came to an estimated depth of two to three inches.

Jimmy Lee Medley of Haskell received a Bachelors degree from the school of Pharmacy at the University of Texas.

Anita Jo Humphrey, daughter of Mrs. Bertha Humphrey was named Betty Crocker Homemaker of Tomorrow.

New officers were elected for the Ladies Auxiliary of the Haskell Fire Department. Officers were Wilma Adkins, president; Eva Speers, vice president; Evelyn Mercer, secretary; Annie Pearl Lusk, treasurer; and Chris Correll, reporter

100 Years Ago February 10, 1906

Attorney's S.W. Scott and H.G. McConnell attended Justice court at Marcy Friday.

H.C. Melton of Hubbard City purchased the residence of J.B. Collier and has moved his family to this place.

First Monday was a success here. Although it was cold, the streets were crowded with traders and their horses and mules.

F.E. Shaw of the Carney neighborhood was in town Wed. He said the snow fell to a depth of about four inches in his area.

Rural Rental Housing funding available

Bryan Daniel, USDA Rural Development State Director, has announced that USDA Development is accepting applications for the guaranteed Rural Rental Housing Program. Funding in the amount of \$99 million nationwide is available to guarantee loans for the construction, acquisition, or rehabilitation of rural multifamily housing.

"The Guaranteed Rural Rental Housing Program not only provides decent and affordable housing, but is an important component of USDA's economic development efforts," said Daniel. "The availability of affordable rental housing is often a key element in whether a business decides to locate or remain in a rural community."

The Guaranteed Rural Rental Housing Program is intended to fund construction, acquisition, or rehabilitation of rural multifamily housing for low-income occupants. The program guarantees up to 90% of the amount of the loan from a private lender to a housing developer. Residents of the completed housing facility must be very low to moderate income households; or elderly, handicapped, or disabled persons with income not in excess of 115% of the median income of the surrounding area.

Eligible lending partners for the Guaranteed Rural Rental Housing Program are those approved and considered eligible by the Federal National Mortgage Association, Federal Home Loan Mortgage Corporation, State Housing Finance Agencies, and a member of the Federal Housing Finance Board or the Department of Housing and Urban Development. Other lenders have the opportunity to enter into a correspondent bank relationship with approved lenders in order to participate in the program. The terms of the loans guaranteed may be up to 40 years, and the loans must be fully amortized.

Under Federal guidelines posted in the Notice of Fund Availability, interested and eligible lenders must submit loan applications to the USDA Rural Development State Office, Housing Programs, 101 S. Main, Suite 102, Temple, Texas 76701 by June 16. For more information regarding the 538 Guaranteed Rural Rental Housing Program call Gayle Ledyard at 254-742-9770.

BURN BAN IN EFFECT

The Haskell Free Press

Established January 1, 1886
PUBLISHED EVERY THURSDAY
420 North First Street • P. O. Box 555
HASKELL, TEXAS 79521
Phone 940-864-2686 • Fax 940-864-2687
hfp@valornet.com

John McDougal Publisher
Lisa Shaw Business Manager
Mary Kaigler Editor
Doris McDougal Production
Bill Blankenship Staff Photographer

Periodical Paid Haskell, Texas 79521
(USPS 237-040)

SUBSCRIPTION RATES:

Haskell County, one year, \$25.00.
Outside of Haskell County, one year, \$34.00.

NOTICE TO PUBLIC—Any erroneous reflection upon the character, reputation or standing of any firm, individual or corporation will be gladly corrected upon being called to the attention of the publisher.

POSTMASTER: Send address changes to The Haskell Free Press, P.O. Box 555, Haskell, TX. 79521-0555.



This issue mailed Wed., Feb. 8, 2006

From the AG

By Greg Abbott

Don't Fall for Tax Scams

Tax season always seems to remind us of Benjamin Franklin's famous adage about the certainty of "death and taxes." Tax-related scams also spring up during this time of year, but the good news is that, unlike taxes, these schemes are avoidable.

Many businesses offer legitimate services preparing tax returns for those who don't have the time, the experience, the desire or the confidence to prepare the forms themselves. However, some unscrupulous operators prey on this need with deceptions that could cost you money and, worse, cause you serious problems with the Internal Revenue Service (IRS).

For instance, some businesses promise an "immediate refund" of your taxes, but generally the so-called "instant refund" is simply a loan.

Carefully read the fine print in any ad for this kind of service. The fees and interest for instant-refund loans can be quite high, so you should consider whether it would be better to fill out the tax refund paperwork yourself. If you can wait a little longer to receive a refund directly from the IRS, free of charge, you will

be a lot better off.

Be extremely careful if someone who provides tax preparation services assures you they can obtain a larger refund for you. Some bogus tax return businesses promise larger "refunds" and deliver them only by adding phony deductions and making false claims on your return.

Before signing a return that has been prepared for you, you should review it carefully to make sure all the information it contains is truthful, especially concerning your income and deductions. Any errors or fabrications are your responsibility and you may have paid a hefty fee for a worthless service. You will have to return any refund money that you obtained by filing false information and you will owe interest and penalties.

Of course, you should also beware of any tax preparer who tries to get you to sign your return without carefully reading it, or who does not want to provide you with copies of your return.

Another type of tax scam misleads consumers into thinking they do not have to pay taxes. The scammers claim income taxes are voluntary and

that you can buy an "untax package" that will make you exempt from all taxes. Naturally, a fee is required before you can learn the "secrets to tax freedom."

The outrageous argument that taxes are voluntary or optional has been repeatedly rejected by U.S. courts. In fact, a couple of years ago my office successfully sued a business that was perpetuating this scam. Taxes are NOT voluntary.

Yet another scam targets African-Americans, in particular. In this fraud, commonly referred to as the "reparations scam," you are contacted by individuals who claim that tax law allows credits or refunds as reparations for slavery.

Usually the scammers ask for a fee in return for filing the false claim for reparations, and the scam artist is long gone before the victim realizes what has happened. The truth is, there is no such law, and the victim may be subject to civil penalties for filing a false claim.

Income tax scams at this time of year are not the only kind of chicanery to watch out for. A recurring scheme involves an official-looking mailer in which a

business urges local homeowners to send in a fee to receive some kind of break on property taxes.

Most often, the "reduction" being offered is nothing other than the homestead exemption that is already available to Texas homeowners. There is no need to pay anyone to secure a homestead tax exemption. You can easily claim it yourself by contacting your local county tax assessor-collector.

Finally, beware of people going door-to-door posing as IRS agents. These people may claim you owe back taxes and pressure you to write a check on the spot. Don't pay them anything and don't let anyone into your home who claims to be an IRS agent without first verifying their identification and documentation.

If you believe an imposter has shown up at your door, call your local police department immediately. Afterwards, you should call the U.S. Treasury Inspector General's Hotline at 800-366-4484.

Pay your taxes and enjoy your refunds. Don't let a scam artist cash in on your windfall, and don't let a bogus tax return business get you into trouble with the IRS.

Haskell Indians



HASKELL INDIANS: L-r: Coach LoLo Martinez, Weston Rutkowski, A.J. Alvarez, D.J. McCulloch, Jeremy Sorrells, Augustene Lara, Miquel Chavez, Greg Guzman, Travis Adams, John English and Coach Toby Villa. Kneeling, Jared Webb and Luke Terry. Photo by Bill Blankenship



District Champs

Warm-Up Game: Sat., Feb. 11 • 7 p.m.
Indians vs Crowell at Haskell

Haskell Maidens



HASKELL MAIDENS: Front, l-r: Mollie McKnight, Jasmine Thomas, Roxanne Chavez and Lindsay Pannell; middle, Kimberly Medford, Lacey Peiser, Samantha Rodriquez and Robbyn Tribbey; back, Victoria Armenta and Kerri Newton. Photo by Bill Blankenship

H
H
S

Playoff Bound!

Tues., Feb. 14 • TBA
Maidens vs Smyer or Sundown

This Page Sponsored By The Following Indian and Maiden Boosters

Carla's Sweet Shop
Haskell Co-op Gin
Haskell Free Press
Haskell National Bank
Double A Drive Inn
Valor Telecom

Haskell County Insurance Agency
Big Country Electric Cooperative
Santa Rosa Telephone Cooperative
Cecil's Country Meat Mkt. & Grocery
Richardson TrueValue & NAPA Auto Parts
Brian Burgess State Farm Insurance

Hanson Paint and Body
First National Bank
Haskell Save-A-\$
Larned Sales Center
Matlock & Associates
Personality-Slipper Shoppe



**Vote for
Kathy Decker
for
Haskell County Judge
March 7**

Paid Political Advertising Paid for by Lori G. Combs,
815 CR 493, Sagerton, Texas 79548, Campaign Treasurer.

**C&S Flooring
and Lumber Yard**

105 N. 1st • Haskell • 940-864-3753
742-4021 Home • 325-338-3048 Cell
Conrad and Sylvia Saucedo, Owners

Swine Show Feed 273 and 11148 in stock.
Now Taking Orders for:
Show Calf Feeds • Show Goat Feeds • Rabbit Feeds
Moorglo Horse Pro-Vita-Min Tub
Proud Paws Dog Food
MoorMan s Shavings • Pig Feeders
Countertops, Tile, Laminate

Kelly Moore Paints, Roofing, Lumber, Insulation, Hardware, Plumbing, Screen Repairs

We can help with all your installation needs!

**Cattle Market
Report**

The market at the Haskell Livestock Auction was on a run of 675 head of cattle at its sale on Sat., Feb. 4, according to Bill Cox, reporter. 63 sellers and 30 buyers were present.

Stockers calves \$2-3 higher. Feeders \$1-3 lower. Packers steady. Cows: fat, .44-.50; cutters, .42-.52; canners, .32-.42.

Bulls: bologna, NT; feeders, .82-.98; utility NT.

Steers: medium and large frame No. 1 200-300 lbs., 1.45-1.80; 300-400 lbs., 1.30-1.50; 400-500 lbs., 1.20-1.43; 500-600 lbs., 1.10-1.35; 600-700 lbs., 1.05-1.25; 700-800 lbs., .95-1.10; 800-up lbs., .84-1.02.

Heifers: medium and large frame N. 1 200-300 lbs., 1.25-1.65; 300-400 lbs., 1.20-1.35; 400-500 lbs., 1.15-1.30; 500-600 lbs., 1.00-1.19; 600-up lbs., .82-1.09.

Bred heifers medium frame, 675-850.

Bred cows young to middle aged 775-950; aged or small, 525-720.

Cows with calves: medium frame No. 1 young and middle aged, 875-1200; aged or small, 725-950.



LUCKY LADY OPENING—Earl Craig and Ronny Linebaugh, Sr., owner, cut the ribbon opening the Lucky Lady Game Room located at 1302 N. Ave. E in Haskell. They are joined, l-r, by Chamber of Commerce member Ruby Turner, holding the ribbon, employees Julie Cochran, Darlene Conn and Richard DeLaCruz, Chamber members Lorie Rodriguez, Ronnie Nail, Sammy Larned, Myra Rainey, Abe Turner, Sammy Bitner and Robert Tribbey. Not pictured are employees Mary Westerman and Sandra Baker.

CRP re-enrollments to open

Agriculture Secretary Mike Johanns announced that USDA will begin notifying certain agricultural producers with Conservation Reserve Program (CRP) contracts expiring in 2007 that they may extend or re-enroll their contracts.

"Approximately 16 million acres subject to CRP contracts expire in 2007," said Johanns.

"Fulfilling President Bush's directive to allow eligible farmers and ranchers to re-enroll or extend their CRP contracts helps ensure that the quality of soil, water, air and wildlife benefits of CRP continue across the nation for years to come."

Farm Service Agency (FSA) county offices will begin notifying certain CRP participants by mail with expiring contracts in 2007 if they are eligible for re-enrollments or two- to five year extensions. Participants eligible for re-enrollment will be offered a 10- or 15-year contract provided there are restored wetlands on the original land enrolled in the contract. Fifteen-year contracts expiring Sept. 30, 2007, are not eligible for extension.

FSA used the Environmental

Benefits Index (EBI) to determine eligibility for CRP re-enrollments or extensions. Additional credit was considered for contracts within national CRP conservation priority areas. The EBI addresses expected benefits to water quality, erosion, enduring benefits, air quality and wildlife habitat.

FSA ranked individual contracts into one of five tiers based on the environmental benefits of the original EBI score. Eligible participants ranking in the first tier (i.e. between 81-100 percent) of the EBI will be afforded the opportunity to re-enroll their land in new contracts.

Farmers and ranchers with wetlands in this top tier ranking are eligible for a 15-year contract.

Eligible participants ranking in the second tier (i.e. between 61-80 percent) may extend their CRP contracts for five years. Eligible participants ranking within the third tier (i.e. between 41-60 percent) may extend their CRP contracts by four years. Eligible participants ranking in the fourth tier (i.e. between 21-40 percent) may receive three-year extensions.

Eligible participants ranking in the bottom tier may extend their contracts by two years.

Before approving a re-enrollment contract or an extended contract, FSA will review the contract to ensure that the required cover is maintained and there is compliance with other contract provisions. In addition, to be


eligible, participants must be able to show that they meet eligibility requirements for the new enrollment period. In the case of re-enrollments, updated rental rates will apply.

USDA also announces that a general CRP sign-up will be held this spring. Farmers and ranchers will be able to make offers for CRP's competitive general sign-up from March 27 through April 14 at their local FSA offices. Offers for general sign-up will be evaluated based on five environmental factors (wildlife, water, soil, air and enduring benefits) and cost.

"President Bush stated that he is committed to fully utilizing the 39.2 million-acre enrollment authority under CRP," said Johanns. "This general sign-up demonstrates the administration's dedication to maintaining CRP's wide-ranging environmental benefits."

CRP is a voluntary program that helps farmers, ranchers and other agricultural producers protect their environmentally sensitive land. Producers enrolling in CRP plant long-term, resource-conserving covers, with Commodity Credit Corporation (CCC) providing rental payments, cost-share and technical assistance.

For more information on CRP, contact your local FSA office or visit the FSA Web site at <http://www.fsa.usda.gov/dafp/cepd/crp.htm>.



**LOSE UP TO 50 lbs.
by Easter**

Joe lost 125 lbs 67 1/4 inches

LOSE 50 LBS.

If you are 170 lbs, you can be 120 lbs
If you are 180 lbs, you can be 130 lbs
If you are 190 lbs, you can be 140 lbs
If you are 200 lbs, you can be 150 lbs
If you are 210 lbs, you can be 160 lbs

Coming to Haskell Feb. 16th

Call Now - Start Losing Tonight!

325-692-6992

Individual results vary

Metabolic Research Center
WEIGHT LOSS SPECIALISTS

Switch to America's Largest Wireless Network

now is a good time to be you

you-friendly coverage

america's largest wireless network

covering more of the country than any other company

you-friendly deals

Greater Freedom*
1000 anytime minutes
unlimited nights & weekends
unlimited mobile-to-mobile

\$39.99 mo
additional charges apply, see below.*

Switch to America's Largest Wireless Network
Get \$50 credit
limited time offer

*My Alltel service is awesome. Switch today and get a \$50 credit. How cool is that? And did you know with Alltel's Anytime Plan Changes you can change your rate plan whenever you need without extending your contract?"

Ty Pennington

camera phone \$2999
after \$50 mail-in rebate with 2-year agreement

Motorola V266

only \$999
after \$40 mail-in rebate with 2-year agreement

Motorola V262

alltel wireless

alltel.com/youfriendly 1-866-alltel8

available at these **CELLULARONE** locations

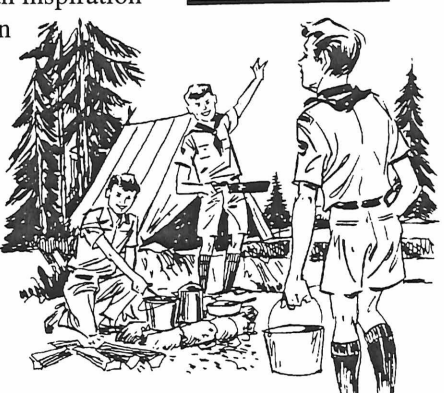
**Go Indians!
Go Maidens!**

BOY SCOUTS OF AMERICA

Since 1910, boy Scouts have helped boys to learn about good citizenship, training them to be the leaders of tomorrow. Scouts are taught how to do everything better and to appreciate their environment.

We salute the Boy Scouts and their leaders. We know that their record of accomplishments will serve as an inspiration to others in helping to build a stronger and better nation.

FEBRUARY IS BOY SCOUT MONTH



First National Bank Haskell

200 South Avenue E Haskell, Texas 79521

FDIC 940-864-8555

Other Convenient Locations to Serve You:
First National Bank Munday - Stamford - Rochester

Retail Stores		Authorized Agents	
Abilene 4149 Southwest Dr. (325) 437-0800	Graham 1221 Hwy. 16 S. (940) 549-1885	Snyder 4109 College Ave. (325) 573-7907	Vernon 807 Hillcrest Dr. (940) 553-1885
Breckenridge 1822 W. Walker St. (254) 559-1885	Haskell 10 Ave. D N. (940) 864-8585	Sweetwater 1418 Halley St. Ste. C (325) 235-0300	Abilene Cellular Connection 1150 S. Treadway Blvd. (325) 672-3841
			Trio Wireless 4585 S. 1st St. (325) 692-5776
			Aspermont Trinity Cellular 812 E. Broadway (940) 985-2543
			Colorado City Lone Wolf Cellular 1044 Hickory (325) 728-8000
			Sweetwater Sierra Satellite Systems Inc. 1102 A Lamar (325) 235-5445
			Breckenridge Trio Wireless 3732 W. Walker (254) 559-9045
			Snyder Trio Wireless 4515 College Ave. (325) 573-8240
			Trio Wireless 4310 Buffalo Gap Rd. (325) 691-9900
			Wireless 4 U 4310 Buffalo Gap Rd. (325) 691-9900
			Trio Wireless 407 N.E. Georgia Ave. (325) 235-1210

*Federal, state & local taxes apply. In addition, Cellular One charges a monthly \$1.70 regulatory & administrative surcharge. This additional fee is not a tax or a government-required charge & is subject to change. Largest Network Claim: Based upon analysis by an independent research company in July 2005, which compared marketed coverage patterns at the time of their creation of each wireless carrier without allowance for variations due to electrical interference, customer equipment, topography & each carrier's translation & defined preferences of their own internal engineering data. Anytime Plan Changes: Does not apply to certain business accounts. Plan changes may not become effective until beginning of your next billing cycle. Plan Details: Usage outside of your calling plan/coverage area is subject to additional roaming, minute & long-distance charges. Nights are Mon-Thurs 8:00pm-5:59am. Weekends are Fri 8:00pm-Mon 5:59am. Mobile-to-Mobile Minutes apply to calls between Cellular One wireless customers that begin & end in your plan's calling area. Call forwarding, 411 & voice mail calls excluded. \$50 Credit: Credit available for a limited time to new & existing customers with activation of a qualifying rate plan \$39.99 & higher or an additional line of service & 2-yr service agreement. One credit per account, per billing period. Must be a customer for 30 days to receive credit. Credit will appear on customer's next bill. Phone Promotions: Phones available at sale prices to new customers & eligible existing customers. Contact Cellular One to determine if you are eligible. Phones & applicable rebates available for a limited time, while supplies last, with activation of a qualifying rate plan. Limit 1 rebate per qualifying purchase. Phone cannot be returned once mail-in rebate certificate has been submitted. Customer pays applicable taxes. See rebate certificate for details. Additional Information: Limited-time offer at participating locations. Credit approval & approved CDMA handset & PRL required. \$20 non-refundable activation fee will apply per line. \$200 early termination fee may apply per line. TalkWATCH customers may be required to pay a non-refundable program fee & recurring administration fee. Offers are subject to the Cellular One Service Agreement available at any Cellular One store. All product & service marks referenced are the names, trade names, trademarks & logos of their respective owners. Screen images are simulated.

NATIONAL BOY SCOUT

WEEK FEBRUARY 5-11



Haskell Cub Scouts Pack 136

Pack Committee Chairman

Wallar Overton

Pack Committee Members

Darrell Smith
Leland Terry
Bonita Tatum

Chartering Organization

Lions Club

Cubmaster

Allen Morrow

Tigers:

Kay Smith, Leader
Dylan Brunson
Lane Burson
Sam Fouts
Chase Gibson
Hayden Hudson
Jonathan Primen
Alec Roewe
Braydon Smith

Wolves:

Craig McCormick, Leader
Seth McCormick
Pryce Stewart
Garrett Tatum

Bears:

Sherri Morrow, Leader
Jonah Caddell
Harrison Jarred
Reed Lee
Cedar McIlwain
Riley Meinzer
Ryan Pace

Webelos I:

Kay Smith, Leader
Braeden Alves
Cotton English
Jarred Escobedo
Gus Estrada
Ben Groves
Seth Rock
Zachary Tatum
Micah Thomas
Aaron Waggoner
Max Weise

Webelos II:

Allen Morrow, Leader
Sherri Morrow, Leader
Levi Grand
Hunter Jordan
River McTasney
Preston Morrow
Trevor Reese



SCOUTING/USA

Boy Scouts Troop 136

Chartering Organization
First United Methodist
Church

Chartering Organization Rep.
Rev. Daniel Echols
Scoutmaster
Bill Markunas

Asst. Scoutmasters

Randall Frierson
Craig McCormick
Leland Terry

Troop Committee

Kenneth Patton, Chairman
Connie Benton
Tom Hairgrove
Angela Markunas
Kay Smith

Youth Members

A.J. Benton
Nathan Edwards
Ethan Frierson
Tucker McCormick
Brennan Medford
Tyler Reese
Luke Terry



Being self-reliant is important in life and one of the things a Scout learns. We proudly support Scouts in all their endeavors.



**Federal Land Bank
Association of Texas**
HASKELL OFFICE
550 S. Second • 864-8565



Making good things grow-in nature and in life-is what Scouting is all about. Keep up the good work, Scouts!

Larned Sales Center
864-2749 • Haskell



Scouting builds confidence and self-reliance. That's why Scouts go on to become leaders in all walks of life.



Scouts learn skills they'll enjoy for a lifetime. We're proud of the contribution Scouting makes to America's youth.

Rule Banking Center

A branch of Hamlin National Bank
P. O. Box 10 • Rule, Texas • 940-997-2216
Member FDIC



"To help others at all times" is an important part of the Scout Oath. Thanks, Scouts, for setting a fine example.

Haskell National Bank
Haskell • Abilene



Scouts from around the world share the satisfaction of meeting new challenges. We support these leaders of tomorrow!

Haskell Tire & Appliance
864-2900 • Haskell



Learning is always at hand in Scouting, as boys get the chance to take an active part in new and different fields of interest.



**Big Country Electric
Cooperative**
Stamford • Roby • Snyder



Scouts of all ages are the pride of our community. We congratulate them on all they do to make our lives better.

Hanson's Paint & Body
864-3631 • Haskell



Scouting opens new worlds of learning and exploration. You're our hope for the future, Scouts, and we salute you!

M & M Auto Plus
864-5228 • Haskell



Outdoor adventure teaches Scouts the value of teamwork and instills admiration and respect for the environment.

WAL-MART
915-773-2775 • Stamford



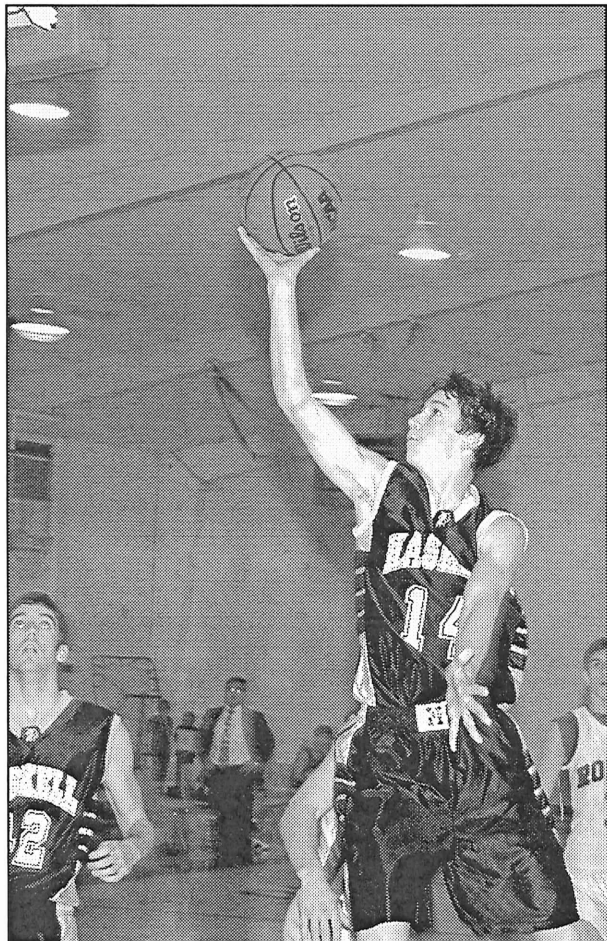
Scouting at any age is an opportunity to experience many things and have a great time, too. We heartily support them.

The Haskell Free Press
864-2686 • Haskell
The People's Choice

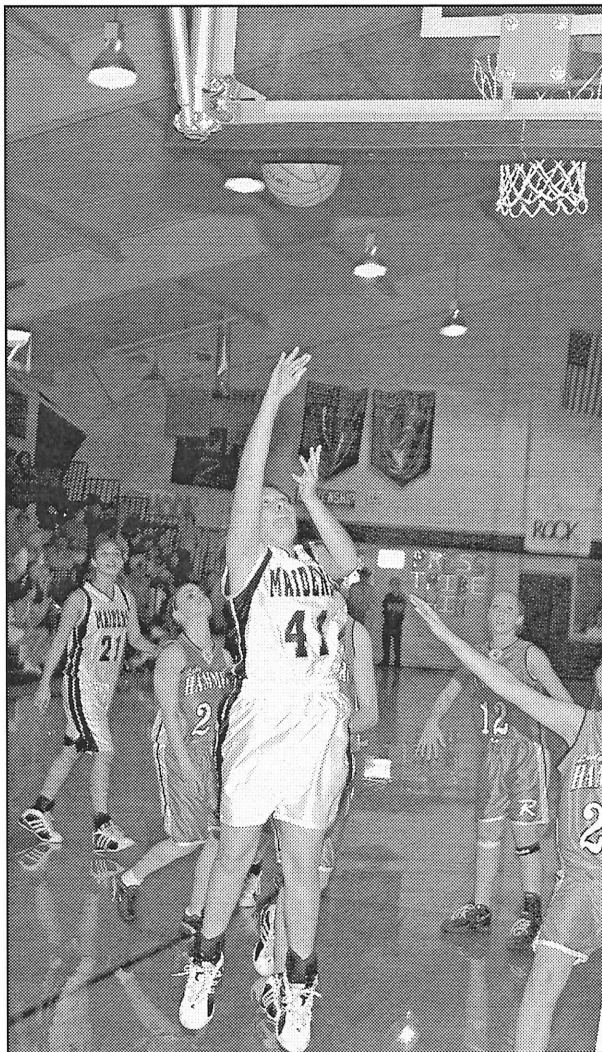


Thanks, Boy Scouting, for putting our young men on the road to becoming compassionate and self-assured adults.

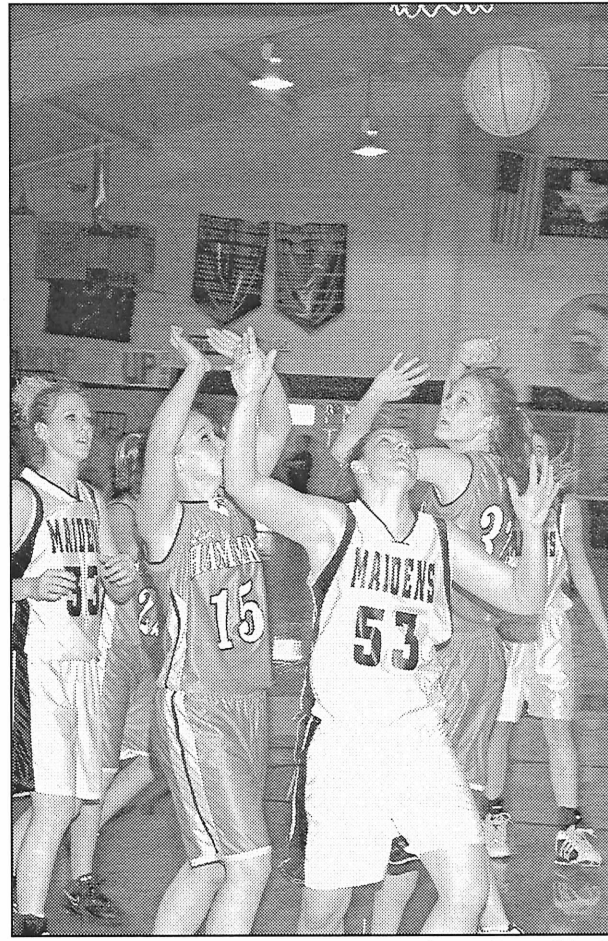




SCORING ON ROTAN—Weston Rutkowski (#14) reaches to add score in the Haskell Indians' winning game with Rotan, Jan. 31.
Photo by Bill Blankenship



IN FOR POINTS—Haskell Maiden, Victoria Armenta (#41) scores count in one of her two baskets made in the 65 to 18 win over Rotan.
Photo by Bill Blankenship



MAIDENS AND LADY HAMMERS—Haskell's Lindsay Pannell (#53) is ready for the ball in the Maiden's game with Rotan, Jan. 31.
Photo by Bill Blankenship

Gifts from the Heart
\$10 and under

Great Selection
New Merchandise
Fruit of the Spirit Candles
Angelic Candles
New selection of Crosses
Variety of fun Valentine Gifts for all

Wedding Selections
for
Shannon Jordan and Drew Deen
Kristin Cypert and Russell Bishop

Good Times UNLIMITED
512 N. 1st
940-864-6133

Go
Indians!
Go
Maidens!

Valentine's Day Special
Good through February 28!
Lowest Prices of the Year on
Stainless Appliances
Shop early for Pre-Vacation Voucher
with any purchase of any
appliance, mattress or set of four tires.

Haskell Tire & Appliance
206 S. Ave. E • 864-2900

Area basketball scores

Girls
Haskell 65, Rotan 18
Scoring for Haskell: McKnight

19, Newton 14, Peiser 10, Rodriquez 6, Medford 5, Armenta 4, Pannell 4, Tribbey 3.

JV score: Haskell 35, Rotan 11

Haskell 37, Roscoe 31
Scoring for Haskell: Chavez 10, Medford 6, McKnight 6, Tribbey 4, Pannell 4, Newton 3, Rodriquez 2, Peiser 2.

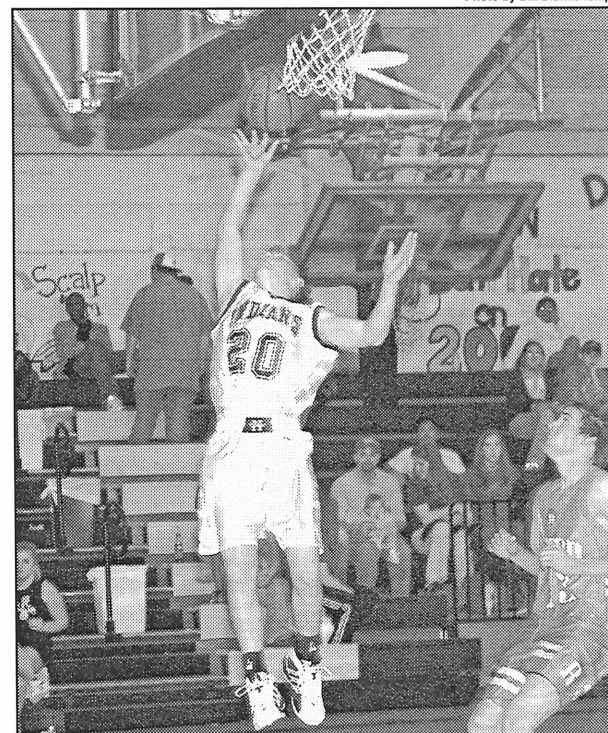
JV score: Haskell 30, Roscoe 22

Boys
Haskell 60, Rotan 22
Scoring for Haskell: Chavez 19, McCulloch 13, Lara 15, Rutkowski 7, Sorrells 4, Guzman 2.

JV score: Haskell 45, Rotan 28

Haskell 63, Roscoe 48
Scoring for Haskell: Lara 17, McCulloch 14, Adams 13, Sorrells 9, English 4, Chavez 4, Rutkowski 2.

JV score: Haskell 48, Roscoe 31



LEAPING TO THE BALL—Haskell Indian, Travis Adams (#20) goes up to take control in the team's winning 60 to 22 game with Rotan Jan. 31.
Photo by Bill Blankenship

BARGAINS OF THE MONTH

Great Low Prices!

By combining the buying strength of thousands of True Value stores, you get great low prices on quality top-name brands.

Hefty 488
Your choice
CinchSak Drawstring Trash Bags
Choose 20-ct./33-gal. trash bags or 45-ct./13-gal. kitchen bags. W 696 211, 594 074 B6 While supplies last.

STANLEY 399
1" x 25' Locking Tape Rule
Long-lasting polymer-coated blade with easy-to-read measurements. R 862 786 B6 While supplies last.

Quickie 699
Broom/Roller Mop Combo Pack
Angle-cut kitchen broom provides easy access into corners. Automatic roller mop has built-in scrubber. W 615 874 F12 While supplies last.

Find many more items on sale and fast, helpful service.

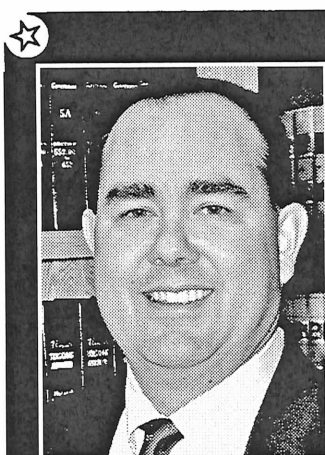
Richardson's
FARM • RANCH • HOME • AUTO
CASE # True Value. AUTO PARTS
Sale ends February 28, 2006

True Value
Help Is Just Around The Corner.
Hwy. 277 North • Haskell, Texas
Phone 940-864-8551
Store Hours:
Mon.-Fri. 7:30 to 5:30; Sat. 7:30 to 5

BERNARD E. GODLEY, INC.
TAX SERVICE AND BOOKKEEPING
Specializing in Farm, Ranch & Agri-business
Over 35 Years Experience
940-889-8809
98 Hill Drive • Seymour, Texas
Fax 940-889-4908

Always Patsy Cline

The Hamlin FFA Booster Club along with the Albany Mainstreet Playhouse will present Always Patsy Cline Sat., March 4 at 7 p.m. in the Hamlin High School auditorium. Proceeds will benefit the FFA Booster Club. Tickets are \$10 and are available at the door, first come, first served. For pre-ticket information, call Melinda Guadalcazar 325-576-3603 or Melissa Lee 325-669-6127.



★ **VOTE** ★
SHANE HADAWAY
for 39th Judicial District Court
JUDGE

SHANE HADAWAY
YOUR CANDIDATE FOR DISTRICT JUDGE
WITH INTEGRITY AND ETHICS

If elected as your District Judge, I will ensure that each case before the 39th Judicial District Court is handled fairly. I pledge to seek the fair and impartial application of justice to all citizens of the District and everyone else who appears before the District Court. I will serve the people of the 39th Judicial District with unquestionable fairness and indisputable ethics.

I am committed to ensuring cases before the District Court are disposed of in a timely manner and I will respect the time of citizens called for jury duty and appearing before the District Court. I pledge to work hard in all four counties of the 39th Judicial District. I can assure you that I will give you an honest day's work and I will be prepared and available to hear all matters before the Court.

I have worked hard and have dedicated myself to getting the job done as Haskell County Attorney, Throckmorton County Pro Tem, and in my private practice. I pledge to practice the same work ethic and dedication in all four counties of the 39th Judicial District as your District Judge.

Political advertising paid for by Shane Hadaway in compliance with the voluntary limits of the Judicial Campaign Fairness Act. Shane Hadaway subscribes to the Code of Fair Campaign Practices. Amanda M. Hadaway, Campaign Treasurer.

Texas Forest Service gathers data to aid in FEMA declarations

Gathering and assessing information for individual and public assistance for a federally declared disaster is both challenging and time-consuming for the U.S. Department of Homeland Security's Federal Emergency Management Agency (FEMA). In the aftermath of two hurricanes and an on-going wildfire siege, FEMA has four active disaster declarations in Texas. Recognizing this challenge, the Texas Forest Service is helping FEMA acquire information from fire departments in 254 eligible counties seeking wildfire

disaster reimbursement. In close cooperation with FEMA, the Texas Forest Service is using its agency's innovative online Fire Department Fire Reporting System to collect and compile wildfire records, including the costs for responding to the fires. The reports provide a statewide picture of the unusual number of large fires and the severity, losses and threats from wildfires that began in December. The fires are continuing to strain the budgets and affect the resources of the individual fire departments.

A cadre of personnel stationed at the Texas Forest Service Emergency Operations Center in College Station is staffing a phone bank where fire departments may call for assistance with the online reporting process. After a fire department establishes an account in the reporting system, they are able to record data on multiple numbers of individual wildfire responses. Reports from individual fire departments are compiled on a county by county basis then passed to FEMA through a designated county representative and entered into the reimbursement process.

Dennis Penney, Training Coordinator for the Boonsville/Balsora VFD, Bridgeport, says "The Texas Forest Service is responsive to the needs of VFD's and has developed a user friendly web based Online Fire Department Fire Reporting System. It is simple enough that a computer mouse is all that is needed to go through the various menus."

"The TFS reporting system is proving to be helpful in the timely collection of required data from individual fire department contacts," said Sandy Coachman, senior federal coordinating officer for the Texas wildfire response and recovery effort. "This information will speed processing of reimbursement requests."

As of February 2, 2038 individual wildfire reports had been entered into the online Fire Department Fire Reporting System by 325 fire departments. For more information, go to Texas Forest Service web site at <http://texasforestservice.tamu.edu> or www.tamu.edu/ticc.

FEMA manages federal response and recovery efforts following any national incident. FEMA also initiates mitigation activities, works with state and local emergency managers, and manages the National Flood Insurance program. FEMA became part of the U.S. Department of Homeland security on March 1, 2003.

Mathis graduates from Tarleton

Tracy Mathis was among the graduates receiving degrees from Tarleton State University in Stephenville, during commencement exercises held Dec. 17.

A member of Alpha Gamma Delta at Tarleton, she graduated with a Bachelor of Business Administration in Marketing.

While at Tarleton she was

involved as a Texan Representative, Duck Camp leader, and a member of the Texas Independence Celebration Committee. In 2003 she was recognized as The Sweetheart of Sigma Chi.

She participated in Tarleton's study abroad program, during which she visited five European countries while studying International

Business.

In the summer of 2005 she completed an internship with Rike Real Estate of Haskell. She recently enrolled in the graduate program at the University of North Texas.

A 2002 graduate of Haskell High School, Mathis is the daughter of Ron and Pam Opitz of Mount Pleasant. Her grandparents are Wilbert and Dwanna Klose of Haskell.



TRACY MATHIS

PIT AND GRILL

1308 N. Ave. E, Haskell • 864-5348
HOURS: Sun.-Fri. 11-2; Mon.-Sat. 5-9

Valentine Special
2 Ribeye Dinners
with dessert **\$25⁹⁵**

Come join us
for lunch!
D. L. & Shelly
Cooper
~ Owners ~

Catfish Served on Fridays
~ Noon Buffet Daily ~

'Flushing' heifers

by Wesley Utley
CEA-Ag/NR, Haskell Co.

Developing heifers to breed at 13-15 months can be costly. Oklahoma researchers wondered if heifers could be developed slowly after weaning and then fed at a high rate just before breeding. They also wanted to look at different energy sources for this purpose. Heifers used were Hereford or Angus X Hereford.

In Trial I, treatments were: 42% CP soybean meal (control, C); high starch (high in corn) for 60 day days before breeding (HS-60); high starch for 30 days before breeding (HS-30); and low starch (less corn, more corn distillers dried grains) for 30 days before breeding (LS-30). HS-60 and

LS-30 were heavier at breeding. More HS-60 reached puberty before breeding. HS-60 were 24 and 22 days younger at puberty than LS-30 and C.

In Trial II, treatments were: C as above; HS-60 as above; LS-60 (high in distillers grains and soybean hulls). At puberty, weight did not differ among the three groups, but HS-60 and LS-60 were younger than C. Incidence of puberty during breeding was higher for HS-60 than LS-60.

The authors concluded that high concentrate feeding before breeding may stimulate puberty, especially by using high-starch feeds, but that a minimum of 60 days feeding may be needed.

Humidifiers need care to prevent infections

Humidifiers are harmless if you use common sense, says Dr. Jane Siegel, an infection specialist at UT Southwestern Medical Center.

"It is important to keep them clean and dry," Dr. Siegel says.

For people who get one or two upper respiratory infections a year, cleaning a humidifier with water and drying it should suffice. For those with cystic fibrosis or other conditions that make them more

susceptible to respiratory infections, it's a good idea to clean humidifiers with a disinfectant, she says.

To minimize the risk of infections, Dr. Siegel says using humidifiers that emit cool mist are better than hot water humidifiers.

"Just use common sense," Dr. Siegel advises. "When you're done using one, empty the water out and dry it."

6.70%

- VARIABLE RATE
- LONG TERM FARM & RANCH LOANS
- IMPROVEMENT LOANS
- FIXED RATES AVAILABLE
- RATES PRICED WEEKLY
- NO PRE-PAYMENT PENALTY

Federal Land Bank Association of Texas, FLCA
550 S. 2nd • Haskell, Texas • (940) 864-8565
www.flbatexas.com

Annual percentage rates from 6.8068% APR to 6.7959% APR depending on length of contract. APR based on rates for specified prime indexed variable rate during week of January 24, 2006 – January 30, 2006. Rates subject to change without notice.

4.25%

Current Rate 4.25% APR
Guaranteed minimum 4.00% APR
Effective until 3/31/06

TEXAS HERMANN SONS

Annuity
IRA • ROTH

Call today for information on these products plus
Term Life • Whole Life

LOCAL REPRESENTATIVES:
Elna Weise • 940-864-3564
Beunice Vahlenkamp • 940-989-3609

Serving Texas Families Since 1890
Order of the Sons of Hermann in Texas,
San Antonio
www.texashermannsons.org

HERMANN SONS
HSFI
FRATERNAL INSURANCE

HEY!

Little Dribblers
Be A Winner –
Come To Sport-About
for all
Your Basketball Needs

FREE!

Little Dribbler
T-shirt with each pair of
basketball shoes purchased

Basketball Checklist

- Shorts
- Sweats
- Goals
- Shoes
- Team Color Socks
- Sweat Bands
- Knee Pads
- Balls –all sizes

Ms _____
Mr _____
Work or Contact Number 8:00am to 5:00pm

Ms _____
Mr _____
Cellular Numbers _____

Signature _____

Date _____

Date Received by office _____

Date Drop Installed _____

Initials _____

PLANT USE ONLY

LINE	PED/HH	F#	FIBER COUNT	PON#	MAP#
NID			TAIL		LOSS
DATE	INITIALS	DATE	INITIALS	DATE	INITIALS

Please leave completed form at:
Haskell Chamber of Commerce or Haskell City Hall

310 West California Street
Seymour, TX 76380

Phone: (877) 889-1125
Fax: (940) 889-1190

SANTA ROSA
Telephone Cooperative
INC.

Property Access Form

This form is for construction purposes only.

7110 HWY 287 East
Vernon, TX 76384

Phone: (888) 886-2217
Fax: (940) 886-2025

This form allows the construction crew to put a drop to the locations - actual Service Request will be completed at a later date at your request for service.

Name _____

Physical Address _____

Mailing Address _____

City _____

State _____

Zip _____

Home Phone Number _____

Directions to Location (include street names and county road numbers):

Carla's Sweet Shop
 Lunch Menus for Feb. 8-9. Serving 11-2.
 All meals include dessert and drink.

~Wednesday~
Tacos, Chalupas, Beans

~Thursday~
Smothered Steak, Mashed Potatoes, Blackeye Peas

507 N. Ave. E • Haskell • 864-2711

SANTA ROSA Telephone Cooperative INC.

Facts about Santa Rosa Telephone Cooperative
 ~ Established in 1951 ~
 Celebrating our 55th year of service in North Central Texas and South Central Oklahoma.
 Questions? Call 889-1125

Commissioners' Court report

The Haskell County Commissioners' Court met in special session, Tues., Jan. 24 to consider several agenda items.

Approval was given to paying of all bills presented to the Court with the exception of those from Yellowhouse and Warren Cat.

County Treasurer, Willie Faye Tidrow gave an investment report.

The Court approved the motion to put Benny Dossey on full time in Precinct 3.

The bid was accepted from Ray and Betty White for the sale of a lot in Rochester, by the Appraisal District.

Approval was given to the Resolution selecting Grant Works,

Inc. as administrative service providers for the TCPD Disaster Relief Grant award.

The Court approved the 2006 Local Project for Four Winds RC&D.

No action was taken on the Festivals Committee application.

The motion was passed to approve line item transfers in the budget.

In a special called meeting, Jan. 30, the court approved a motion to do time warrants at the Rule Banking Center on the 140 H Motor Grader for Precinct 1.

Approval was given to the Resolution of Haskell County Authorizing Designated Signators for Texas Community Development Program Contract 725287.

Approval was given to resolution establishing the Rules and Regulations regarding the use of excessive force during nonviolent civil rights demonstrations, including physically barring entrance to a facility or location, which is the subject of such demonstration, and providing penalties for violations thereof in Haskell County.

BURN BAN IN EFFECT

This Week's Devotional Message:



We're observing a special occasion today,
 With our love the emotion we try to portray,
 On a beautiful card, where the verses combine
 With some cupids and hearts in a lacy design.
 Yet true love isn't simply delivered by mail;
 It's the service to others we do without fail,

When we lend our assistance to someone in need,
 And we worship our Father, whose lessons we heed,
 To encourage the sick and give aid to the poor.
 So obey the instructions of faith, and be sure
 That your love is a thing you can never convey
 Just by sending a greeting on Valentine's Day.

ATTEND CHURCH THIS SUNDAY

- HASKELL**
- East Side Baptist Church**
 Danny Manross, pastor
 Sun. 9:45 a.m., 11 a.m., 6 p.; Wed. 7 p.m.
 600 N. 1st East, Haskell
 - Christian Church**
 Dusty Garrison, minister
 Sun. Morn. 9:45 a., 10:45 a., 6 p.m.; Wed. 7 p.m.
 107 N. Ave. F, Haskell
 - Church of God**
 Bruce Ray, pastor
 Sun. 10 a.m., 11 a.m., 6 p.m.; Wed. 7:00 p.m.
 714 North First East, Haskell
 - Trinity Lutheran Church**
 Ron Rennegarbe, pastor
 Sunday School 9:30 a.m., Worship 10:30
 Hwy 380 East, Haskell
 - Iglesia Bautista El Calvario**
 Art Flores, Interim pastor
 Sun. Morn. 9:45 a., 10:45 a.m., 5 p.m.; Wed. 7 p.m.
 607 S. 7th, Haskell
 - First United Methodist Church**
 Rev. Daniel Echols, pastor
 Sun. Morn. 9:45 a.m., 10:50 a.m. 6 p.m.; Wed. 6 p.m.
 201 N. Ave. F, Haskell
 - First Assembly of God**
 Rev. J.C. Amburn
 Sun. Morn. 9:45 a., 10:45 a.m., 6 p.m.; Wed. 7 p.m.
 1500 N. Ave. E, Haskell
 - St. George Catholic Church**
 Father George Roney
 Sat. Mass 7 p.m.; Sun. Morn. 9:00 a.m.
 901 N. 16th, Haskell
 - Church of Christ**
 Jim Yates, minister
 Sun. Morn. 9:30 a.m., 10:30 a.m., 6 p.m.; Wed. 7 p.m.
 510 N. Ave. E, Haskell
 - First Presbyterian Church**
 Kelly Pigott, interim pastor
 Sun. Morn. 9:30 a.m.
 306 N. Ave. E, Haskell
 - Trinity Baptist Church**
 Tony Grand, pastor
 Sun. Morn. 10 a., 11 a., 6:30 p.m.; Wed. 6:30 p.
 114 S. Ave. D, Haskell
 - Hopewell Baptist Church**
 Sun. Morn. 9:30 a.m., 11:00 a.m.; Wed. 7 p.m.
 908 N. Ave. A, Haskell
 - Greater Independent Baptist Church**
 Sun. Morn. 9:30 a., 11:00 a., 6:30 p.; Wed. 7 p.
 301 N. 3rd St., Haskell

- New Covenant Foursquare**
 Bill and Renee Glass, pastors
 Sun. Morn. 10 a.m., 11 a.m., 6:30 p.m.; Wed. 7 p.
 200 S. Ave. F, Haskell
 - Mission Revival Center**
 Rev. William Hodge
 Sun. Morn. 10 a.m., 11 a.m., 6 p.m.; Tues. 6 p.m.
 1600 N. Ave. B, Haskell
 - First Baptist Church**
 Greg Gasaway, pastor
 Sun. Morn. 9:45 a., 10:55 a., 6 p.m.; Wed. 7 p.m.
 301 N. Ave. E, Haskell
 - Church in the Park**
 Rev. Tim and Suzann Townsend
 Sun. Morn. 10:30 a.m. Wed. 7 p.m.
 Gazebo or Pavillion
 - Cornerstone Fellowship Baptist Church**
 Dr. Larry Nail, pastor
 Sun. 9:30 a.m. 10:45 a.m., 6 p.m., Wed. 7 p.m.
 1600 N. First St., Haskell
 - Cross of Christ Fellowship**
 Joe and Loretta Stulir, pastors
 864-5404
 Sun. 10:30 a.m.
 455 CR 410, Haskell
- WEINERT**
- First Baptist Church**
 J. C. Baker, pastor
 Sun. Morn. 10 a.m., 11 a.m., Wed. 7 p.m.
 Weinert
 - Weinert Foursquare Church**
 Rev. Robert Harrison
 Sun. Morn. 10 a.m., 11 a.m. Wed. 7 p.m.
 Weinert
- ROCHESTER**
- Church of Christ**
 Steve Willis, minister
 Sun. Morn. 9:45 a., 10:45 a., 6 p.m.; Wed. 6 p.m.
 West on Main Street, Rochester
 - First Baptist Church**
 Jim Davis, pastor
 Sun. 11:00 a.m., 6 p.m.; Wed. 6:00 p.m.
 500 Main, Rochester
 - Union Chapel Baptist Church**
 Clovis Dever
 Sun. Morn. 9:45 a., 10:45 a., 6 p.m.; Wed. 7 p.m.
 Rochester
 - Faith Chapel of Rochester**
 Katherine Byrd, minister
 Sun. Morn. 10 a.m., 11 a.m., 7 p.m.
 Hwy 6, Rochester

- First United Methodist Church**
 Rev. Daniel Echols, pastor
 Sun. Morn. 9:00 a.m., 11:00 a.m.
 Rochester
- SAGERTON**
- Sagerton Methodist Church**
 Terry O'Rear, pastor
 Sun. Morn. 9:45 a.m.
 Sagerton
 - Faith Lutheran Church**
 Deborah Nissen, pastor
 Sun. Morn. 9:15 a.m., 10:30 a.m.; Wed. 7 p.m.
 Sagerton
- RULE**
- First Baptist Church**
 Josh Stowe, pastor
 Sun. Morn. 9:45 a., 11:00 a., 5 p.m.; Wed. 7 p.m.
 1001 Union Ave., Rule
 - Primitive Baptist Church**
 Dale Turner Jr., pastor
 First & Third Sundays 10 a.m.
 Corner of 8th & Robins, Rule
 - Church of Christ**
 John Greeson, minister
 Sun. Morn. 9:45 a., 10:40 a., 6 p.m.; Wed. 7 p.m.
 811 Union, Rule
 - First United Methodist Church**
 Terry O'Rear, pastor
 Sun. Morn. Worship 8:30 a.m.
 1000 Union Ave., Rule
 - Primera Iglesia Bautista**
 Alfa y Omegas
 Manuel Marin, pastor
 Sun. Morn. 10 a., 11:00 a., 5 p.m.; Wed. 6 p.m.
 500 Elm Street, Rule
 - Sweet Home Baptist Church**
 Bill Trice, pastor
 Sun. Morn. 11 a.m., 5 p.m.; Wed. 5 p.m.
 Gladstone Ave., Rule
 - West Bethal Baptist Church**
 Rev. Robert Sweet
 Sun. Morn. 10 a., 11 a., 8 p.m.; Wed. 7:30 p.m.
 300 Sunny Ave., Rule
- PAINT CREEK**
- Paint Creek Baptist Church**
 Sun. Morn. 10:00 a.m., 11:00 a.m., 6 p.m.
 Paint Creek
- O'BRIEN**
- O'Brien Baptist Church**
 Jim Reid, pastor
 Sun. 9:45 a., 11 a., 5 p., 6 p, Wed. 6 p.m.
 O'Brien

Sonic Drive-In
 1402 N. Ave. E
 864-8533
 Managers: Leon & Carolyn Herring

Steele Machine
 Hwy. 280 • 864-2208

Modern Way Food Store
 1202 N. Ave. E • 864-3763

Smitty's Auto Parts
 107 N. 1st East • 864-2607

HANSON PAINT & BODY SHOP
 207 S. 1st • 864-3631
 Professional Auto Body Repair
 Glass Installation • 24 Hour Wrecker Service

Rule Co-op Gin & Elevator
 301 Adams • Rule • 997-2421

Rice Springs Care Home, Inc.
 1302 N. 1st • 864-2652
 Medicare • Medicaid • Therapy
 Committed To Excellence
 In Service

Attend Church This Sunday

The Haskell Free Press
 "The People's Choice"

420 N. First
 Haskell, Texas
 940-864-2686

Serving Haskell County Since 1886

Shop the Haskell Free Press
CLASSIFIEDS
 864-2686 864-2686

Public Notices

TEXAS COMMISSION ON ENVIRONMENTAL QUALITY NOTICE OF RECEIPT OF APPLICATION AND INTENT TO OBTAIN AIR PERMIT PROPOSED AIR QUALITY PERMIT NO. 20986

APPLICATION Strickland Bridge, Inc. has applied to the Texas Commission on Environmental Quality (TCEQ) for the renewal of Air Quality Permit No. 20986 which would authorize continued operation of the Ready Mix Concrete Plant located at 175 Highway 277 South, Haskell, Haskell County, Texas. The facility will emit the following air contaminants: particulate matter including (but not limited to) aggregate, cement and road dust.

This application was submitted to the TCEQ on January 04, 2006. The application is available for viewing and copying at the TCEQ central office, the TCEQ Abilene regional office and the Haskell County Courthouse, 1 Avenue D, Haskell, Haskell County, Texas. The facility's compliance file, if any exists, is available for public review in the Abilene regional office of the TCEQ.

The TCEQ executive director has determined the application is administratively complete and will conduct a technical review of the application. Information in the application indicates that this permit renewal would not result in an increase in allowable emissions and would not result in the emission of an air contaminant not previously emitted. **The TCEQ may act on this application without seeking further public comment or providing an opportunity for a contested case hearing if certain criteria are met.**

PUBLIC COMMENT You may submit public comments, or a request for a contested case hearing to the TCEQ Office of the Chief Clerk at the address below. The TCEQ will consider all public comments in developing a final decision on the application. **The deadline to submit public comments is 15 days after newspaper notice is published.** After the deadline for public comments, the executive director will prepare a response to all relevant and material, or significant public comments. Issues such as property values, noise, traffic safety, and zoning are outside of the TCEQ's jurisdiction to address in the permit process.

After the technical review is complete the executive director will consider the comments and prepare a response to all relevant and material, or significant public comments. If only comments are received, the response to comments, along with the executive director's decision on the application, will then be mailed to everyone who submitted public comments or who is on the mailing list for this application, unless the application is directly referred to a contested case hearing.

OPPORTUNITY FOR A CONTESTED CASE HEARING You may request a contested case hearing. The applicant or the executive director may also request that the application be directly referred to a contested case hearing after technical review of the application. A contested case hearing is a legal proceeding similar to a civil trial in state district court. Unless a written request for a contested case hearing is filed within 15 days from this notice, the executive director may act on the application. **If no hearing request is received within this 15-day period, no further opportunity for hearing will be provided.** According to the Texas Clean Air Act § 382.056(o)

After the deadline for public comments, the executive director will prepare a response to all relevant and material, or significant public comments. Issues such as property values, noise, traffic safety, and zoning are outside of the Commission's jurisdiction to address in this proceeding.

MAILING LIST In addition to submitting public comments, you may ask to be placed on a mailing list for this application by sending a request to the TCEQ Office of the Chief Clerk at the address below. Those on the mailing list will receive copies of future public notices (if any) mailed by the Office of the Chief Clerk for this application.

INFORMATION Written public comments or requests for a public meeting or contested case hearing should be submitted to the Office of the Chief Clerk, MC-105, TCEQ, P.O. Box 13087, Austin, Texas 78711-3087. For more information about this permit application or the permitting process, please call the Office of Public Assistance, Toll Free, at 1-800-687-4040. Si desea informacion en Español, puede llamar al 1-800-687-4040. General information regarding the TCEQ can be found at www.tceq.state.tx.us.

Further information may also be obtained from Strickland Bridge, Inc., P.O. Box 123, Haskell, Texas 79521 or by calling Mr. Adam Garcia, General Manager at (940) 864-2677.

Issuance Date: January 24, 2006. 6c

Your ad in the Classifieds puts the bite on the right buyer for most anything you have to sell. Call today and we'll help you put some real teeth into your message.

The Haskell Free Press
 940-864-2686

Jones-Haskell Eye Clinic
 Dr. Trussell Thane, O.D.
 Therapeutic Optometrist
 Appointments Available • Monday through Friday

Dr. Thane provides comprehensive eye care including the diagnosis and treatment of eye disease. Dr. Thane offers complete evaluation for eyeglasses and contact lenses.

Various contact lens packages available.

MEDICARE, BLUE CROSS AND BLUE SHIELD AND FIRSTCARE ACCEPTED.

1501 Columbia • Stamford
 325-773-2083
 Hours: M.-Th. 8:30 to 5; Fri. 8:30 to



AMERISTAY OPENING—Robert and Lynette Tribbey cut the ribbon opening their new AmeriStay Inn and Suites at 108 Hwy. 380 in Haskell. They are joined by Chamber of Commerce members, I-r, Ronnie Nail, Myra Rainey, Lorie Rodriguez holding the ribbon, Sammy Larned, Ruby Turner, Abe Turner and Sammy Bitner, and employees, Mary Schonerstedt, Iris Riley and Linda Tibbets.

Student in the News

Mary Belle Turner of Rochester was among the 2005 fall graduates of Texas Christian University, who were presented diplomas Dec. 17 at commencement exercises in TCU's Daniel Meyer Coliseum.

Haskell Co. Gin Report

Feb. 6, 2006	
Haskell	
Haskell County Gin	6,550
Haskell Co-op Gin	16,147
O'Brien	
O'Brien Co-op Gin	26,900
Rule	
Rule Co-op Gin	11,191
Sagerton Gin	2,100
Weinert	
Griff's Gin	9,110
Weinert Gin	14,102
Total bales	86,100

Calendar

Political forum

The Experienced Citizens Center, 1401 S. First in Haskell, will host a fund-raising "Political Forum," Sun., Feb. 19 from noon to 2 p.m. Candidates will make a short speech. An enchilada dinner will be served including all the trimmings, tea, coffee and peach cobbler. Adult tickets are \$8, students \$4, and children under 10 are free.

Rule banquet

The Rule Chamber of Commerce will host their 52nd annual banquet Thurs., March 2 at 7 p.m. in the Rule School cafeteria. Junior class members and their parents will cater the meal. The man and woman of the year will be announced during the banquet. Rule 4-H Club members will present a program. Tickets are \$8 each and may be purchased from any Chamber member.

CTHHC to meet

The newly named Committee to Help Haskell County will meet Mon., Feb. 13 at 6 p.m. at the Rule Lions Club building. Those interested in becoming a member of the committee is invited to attend. For more information contact Susan Cockerell at 864-2851 or Megan Cox at 864-8505.

Catfish dinner

A real catfish fillet dinner will be held Sun., Feb. 26 from 11:30 a.m. to 1:30 p.m. Sun., Feb. 26. Fried fish, coleslaw, french fries, hush puppies, beans, tea and dessert will be available for \$7 per plate. Take outs will be available. Proceeds will benefit the church camp fund for the Trinity Lutheran Youth Group.

Storm sirens

The City of Haskell will test the storm sirens at noon on Fridays.

Open house

Rule City Hall will host open house Fri., Feb. 17 from 7:30 a.m. to 4 p.m. to showcase their new facility. The new voting machines will be demonstrated from 11 a.m. to 2 p.m. Refreshments will be served.

McGuire to play

Cliff McGuire, former Haskell student, will play in Abilene with the Howard Payne University Yellowjackets at McMurry University Thurs., Feb. 9 at 7:30 p.m. and at Hardin-Simmons University Sat., Feb. 11 at 3 p.m. The senior student is leading the conference in stats.

Story time

Story time will be held at the Haskell Co. Library each Thursday morning at 10:30 a.m. Stories, songs, activities, crafts and story telling by Paula Rennegarbe will be featured for children.

Burn ban issued

A burn ban has been issued for Haskell County. The use of combustible materials in an outdoor environment by any person is prohibited. Combustible materials specifically include, but are not limited to, fireworks, camp fires, welding and any other pyrotechnic material, which in the manner or means of its use could result in a wildfire. The ban will continue until conditions warrant otherwise, stated an order from Haskell County Judge David C. Davis. A person who knowingly or intentionally violates this order commits a Class C misdemeanor, punishable by a fine of up to \$500.

**Shop
Haskell
First**

STAR STOP
706 N. 1st • Haskell • 864-2062

Hamburger Baskets
with fries or tots and 24 oz fountain drink

Steakfinger or Chicken Strip Baskets
with fries, gravy, Texas toast, and 24 oz fountain drink

\$1.00 off

Go Indians!

VALOR TELECOM
Local & Long Distance Phone Service

High-Speed DSL Internet Service and

DISH Network® Satellite TV available

Come by and visit with our VALOR Authorized Agent in Haskell at the **WILD HORSE TRADING POST** or call local 864-2200

Grand Opening

Sunday, Feb. 12
2 to 5 p.m.

Come join us for refreshments and visit our newly constructed 22-room motel.

- ☆ Free Wireless High Speed Internet
- ☆ Extended Stay Rates
- ☆ Free Continental Breakfast
- ☆ Cable/HBO
- ☆ Business Center
- ☆ Large Parking Area
- ☆ Handicapped Accessible Rooms



Have A Great Ameri-Stay

AmeriStay
Inn & Suites

108 Hwy. 380 • Haskell, Texas 79521
940-864-2424
Fax 940-864-8938
Locally owned and operated