

**Football games**

**HASKELL**

Indians vs Windthorst  
Fri., Nov. 25, 7:30 p.m.  
at Graham

**Basketball games**

**HASKELL**

JV-V G-B vs Stamford  
Tues., Nov. 29, 4 p.m.  
at Stamford

\*\*\*

**PAINT CREEK**

JH vs Jayton  
Mon., Nov. 28, 5:30 p.m.  
at Paint Creek

V G-B vs Moran  
Tues., Nov. 29, 6:30 p.m.  
at Moran

\*\*\*

**RULE**

JH G-B vs Paducah  
Mon., Nov. 28, 5:30 p.m.  
at Rule

JV-V G-B vs Roby  
Tues., Nov. 29, 4 p.m.  
at Rule

**Calendar**

**Bar-B-Que dinner**

A bar-b-que dinner will be held Sat., Nov. 26 beginning at 11 a.m. by the Greater Independent Baptist Church, 301 N. 3rd St., Haskell. Plates are \$5. Takeouts will be available.

**Society to meet**

The Haskell County Historical & Genealogical Society will meet Mon., Dec. 5 in Haskell City Hall at 7 p.m. Members are to bring a snack for the annual Christmas party.

**Tour of Homes**

The Noah Project-North will host their annual Christmas Tour of Homes Sun., Dec. 4 from 2 to 5 p.m. Homes included are those of Chad and Kristi Gibson, Chan and Bridget Guess, Kevin and Stacia Leach and Phillip and Fonda Newton. Tickets are \$6 and may be purchased from any Advisory Committee member, at the Noah Project office on the 3rd floor of the courthouse or at the door on the day of the tour. Proceeds benefit victims of family violence.

**Storm sirens**

The City of Haskell will test the storm sirens at noon on Fridays.

**Flood donations**

The Haskell Ministerial Alliance is collecting monetary donations for local flood relief. Donations may be made to P.O. Box 411, Haskell, Texas 79521. 100% of these donations will go directly to help the local flood victims.

**Story time**

Story time will be held at the Haskell Co. Library each Thursday morning at 10:30 a.m. Stories, songs, activities, crafts and story telling by Paula Renegarbe will be featured for children.

**Santa letter deadline is Dec. 8**

Hey kids! Santa is getting ready to make his trip to Haskell on Christmas Eve. It's time to get your Christmas letters written and sent to him.

Letters to Santa may be dropped off at the Free Press office at 420 N. First St. or mailed to Santa Claus at P.O. Box 555, Haskell, Texas 79521.

Deadline for having your letter printed in the newspaper is 5 p.m. Thurs., Dec. 8. All letters received by that time will be printed in the Dec. 22 issue.

**Index**

Obituaries ..... Page 2  
Out of the Past ..... Page 4  
Menus ..... Page 8  
Classifieds ..... Page 9

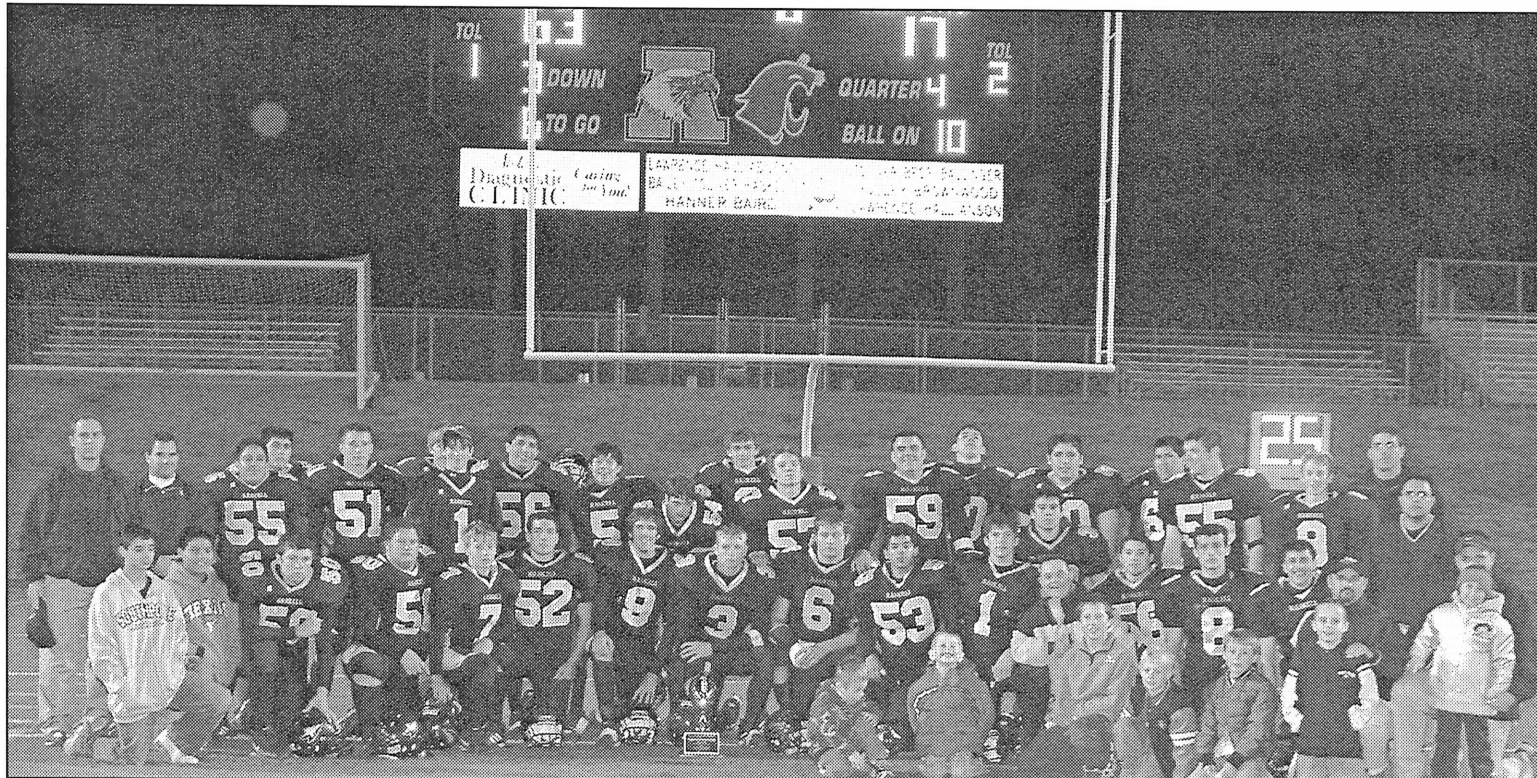
*Happy Thanksgiving*

**The Haskell Free Press**

VOL. 119-NO. 47, ©NOVEMBER 24, 2005

"The People's Choice"

10 PAGES-ONE SECTION-50 CENTS



**REGIONAL WINNERS**—The Haskell Indians, coaches and some little friends, stop for a photo session with the trophy after the team defeated the Christoval Cougars, 63 to 17, in a game played at Shotwell Stadium in Abilene, Fri., Nov. 18. The Indians will play Windthorst at Graham on Fri., Nov. 25. Photo by Bill Blankenship

**Indians are Regional Champs**

The Haskell Indians used a blitzkrieg attack to win the regional football game over the Christoval Cougars, 63 to 17, Fri., Nov. 18.

Cameron Short got the attack going on Haskell's first possession of the pigskin with a 14-yard run up the middle. Eleven plays later, QB Matt Brown got a one-yard run for the score. The PAT failed, but Haskell was off and running.

On the Indians' second possession, they needed two plays to cross the goal line. RB Josh Barbee got the score on a 62-yard run. The 2-point conversion try failed, but at the quarter's end, the Indians led 12 to 0. Haskell would score on its fourth possession, with Barbee getting a 72-yard run for the TD.

**Drug bust conducted in Rule**

On Friday night, officers of Haskell County law enforcement executed a search warrant on a trailer house in the southwest part of Rule. As a result of information that was received from local citizens and from surveillance of local officers, it was believed that illegal drugs were being sold at this residence to local youth and other individuals in the county.

The search by officers resulted in finding over 11 grams of crystal methamphetamine, under an ounce of marijuana, drug paraphernalia and some guns. A total of five defendants were taken into custody, including three males and two females.

According to the report, the fact that the residence was also located within the 1,000 foot range of the Rule School, will help in setting the punishment.

**Home tour set Dec. 4**

The Noah Project-North will host their annual Christmas Tour of Homes Sun., Dec. 4 from 2 to 5 p.m. The beautifully decorated homes of Chad and Kristi Gibson, FM 2163; Chan and Bridget Guess, 310 Bonnie Lane; Kevin and Stacia Leach, 7483 Hwy. 380; and Phillip and Fonda Newton, 270 CR 104. Refreshments will be served at Conner Floral on the east side of the square.

Short got the 2-point conversion.

On the Indian's next possession, Barbee got a 26-yard TD run, but failed on the 2-point conversion try. Christoval would add a 23-yard field goal at the end of the second quarter to make the score at intermission, 26 for Haskell, 3 for Christoval.

The Indian defensive unit played much of the second half, due to the blitzkrieg running game of Haskell, which resulted in rapid scoring.

The Cougars would score at the 9:50 mark of the third quarter, while Haskell scored in their 1st, 2nd, 3rd, 4th, 5th and 6th possessions of the football during the second half of play. The Indians used two plays going 57 yards on the 1st possession.

Officers involved with the search were Rule Police Chief, Alan Beard, Haskell Police Chief, Tom Bassett, Officer Mathew Cunningham, Sgt. Jodie Tullis, Troopers Brodie Moore, James Groves of the DPS, Game Warden Steve Barbour, Chief Deputy Winston Stephens and Sheriff David Halliburton.

The sheriff thanks all of the citizens of Haskell County who have given information to law enforcement officers. "Remember that it doesn't have to be drug related information. It helps us by getting information on any illegal activity in the county," he said. "The holidays are coming up and we in law enforcement want all of the citizens of Haskell County to have safe and happy holidays."

Tickets are \$6 and available from any Advisory Committee member, at the Noah Project office on the third floor of the courthouse or at the door the day of the tour. All proceeds benefit victims of family violence.

The Noah Project-North, an outreach of Noah, Inc., Abilene, provides free services in the counties of Haskell, Jones, Knox, Stonewall and Throckmorton.

Barbee got another long run of 52 yards to pay dirt. Gary Frierson added the PAT kick.

QB Brown hit Travis Adams for a 74-yard TD pass play on the 2nd possession. Again, Frierson made good the PAT kick. On the 3rd possession, Brown scampered 68 yards for the score. Frierson added the extra point via the kick. Haskell used another method to score on its 4th possession. Barbee would have to punt. He got off a 44-yard boot with the ball resting on the Cougars

**Entries sought for Christmas pageant**

A Haskell County Miss Merry Christmas Pageant will be held, Sun., Dec. 4 at the Rochester School Auditorium. It is sponsored by the Haskell County Festivals Committee, which plans to promote the pageant as an annual event and fun activity for the county.

Divisions for the Miss Merry Christmas Pageant will include Miss Merry Christmas (grades 9-12), Junior Miss Merry Christmas (grades 6-8), Young Miss Merry Christmas

(grades 3-5), Little Miss Merry Christmas (grades PK-2), Little Miss Snowflake (ages 0-3 years).

The Boys Division will include Santa's Littlest Elf (0-3) and Santa's Reindeer Wrangler (ages 4 + up).

The Overall Division will be Mr./Miss Christmas Spirit.

Judging will be based on resume, onstage confidence, poise, presence, composure, personality, Christmas spirit and onstage interview, if applicable.

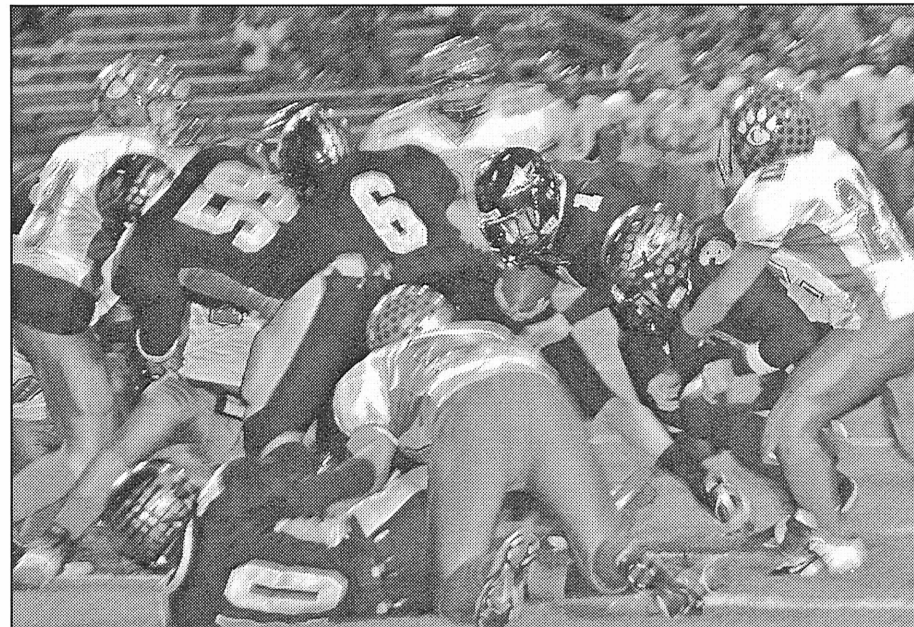
Haskell point of the evening via the extra point kick.

Christoval would add one TD and a two-point conversion at the 4:16 mark of the fourth quarter. Haskell's 7th and final possession of the second half saw the Indians move the pigskin to the Cougars 8 yard line, there to down the ball by a knee.

As Regional Champions, the Haskell Indians will play Windthorst in Graham, Fri., Nov. 25. Kick off is set for 7:30 p.m.

Awards will include crowns, trophies, flowers, prizes for winners, runners-up and all contestants.

For entry forms or more information call the pageant coordinators, Susan Cockerell at 940-864-2851 or Lynn Dodson at 940-864-2903 or 940-864-2038. Completed forms must be returned to Susan Cockerell, Haskell Co. Judge's office, 1 Ave. D, Haskell on or before Mon., Nov. 28 by 5:00 p.m.



**SCORING IN A CROWD**—Haskell Indian Matt Brown, #1, takes the ball in to score for the Tribe in the regional game with Christoval, Fri., Nov. 18 at Shotwell Stadium. Photo by Bill Blankenship

**FOR NEWS ITEMS OR TO SUBSCRIBE, CALL 864-2686**

Go Indians!

**5-C BBQ & CATERING**  
 1503 Adams St., Rule • 940-997-2459  
 RAY DON CAMPBELL

Custom BBQ and Catering for Banquets, Parties, Weddings or any event.  
**BRISKET, RIBS, HAM OR SAUSAGE WITH ALL OF THE TRIMMINGS.**  
 ~ Very Reasonable Prices ~  
 Let us do the cooking for your next event!

# Don Henry hired as new city administrator

The Haskell City Council met in a regular session, Mon., Nov. 14 at 7:00 a.m., with Mayor Ken Lane calling the meeting to order, and Councilman Dan Hoover giving the invocation.

On a motion, the council honored the Zoning Board's recommendation to deny the request by Fred Draper for zoning change from general residential to single wide mobile home at 202 S. Ave. C.

Approval was given to the request from Keeter Aerial Spraying for space to build a hangar at the airport, pending a detailed contract.

Denial was given to the request from Linda St. John for the city to furnish her health insurance. The matter will be discussed at the next budget meeting.

On a request by city police officer, Steven Grand, the council agreed for city attorney, Shane Hadaway to compose an ordinance including a yield sign at the Post Office drop box at S. 1st and Ave. D, and signs at South Brick Village at S. 8th and 9th and South Ave. H, I, & J.

The council voted 4 to 1 to hire Don Henry as city administrator.

A police report was given by Officer Steven Grand.

City Attorney Shane Hadaway handed out a rough draft of the agreement between the City of Haskell and the Country Club.

In an administrative report by Ken

Lane, the following were reported:

No action has been taken on the WHPD shade.

Specifications for the airport pilot's lounge job were published in the paper and were sent to three construction people for bidding on the project.

Trouble with the scraper at the landfill turned out to be solenoids on transmissions. A new transmission was advised by an Abilene firm.

City computers have been installed and are working. The PC Anywhere setup will require a rework of the internet. To get moving, the city will exchange internet hookup with the police and

fire departments.

The Housing Committee has decided to challenge the USDA in its decision to get the city's proposed assisted living facility cut back to 16 bed units from 20 bed unit.

In a jail report, progress is being made with All Wire. The prison is full and full of employees. Emerald will soon propose putting in temporary buildings as a guard post.

The city is looking at contracting electricity that is generated with coal, not natural gas, to get a more uniform price for the next ten years.

The ORCA sewer grant was reported as being closed out, with all going well.

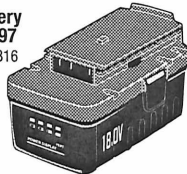
## New! Innovative 18V cordless Master Mechanic tools.

**SMART SYSTEM™**  
 Flexibility & power are yours with the 18V Master Mechanic Smart System.

One battery pack can power all the tools in the Master Mechanic 18V cordless collection, and a smart charger will fully charge a battery pack in just one hour.

Need more battery packs and chargers? Buy them here.

**18V Battery Pack 24.97**  
 J 565 067 B16



**18V Smart Charger 19.97**  
 J 565 004 B8

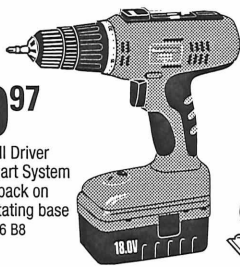


**MASTER MECHANIC™**

Get your hands on these great tools today!  
 The 18V collection includes drills and drivers, most with 360° rotating bases; circular saws and jigsaws; a cutout tool and more. Expand your collection at your own pace, and power them all with the same battery.

**49.97**

3/8" Drill Driver with Smart System battery pack on 360° rotating base  
 J 565 026 B8



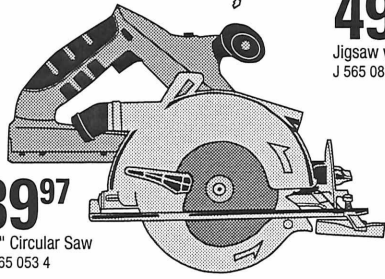
**49.97**

Jigsaw with Laser  
 J 565 083 B8



**89.97**

6 1/2" Circular Saw  
 J 565 053 4



**Richardson's**  
 FARM • RANCH • HOME • AUTO  
 CASE # True Value AUTO PARTS

Sale ends December 31, 2005

**True Value**  
 Help Is Just Around The Corner.

Hwy. 277 North • Haskell, Texas  
 Phone 940-864-8551  
 Store Hours:  
 Mon.-Fri. 7:30 to 5:30; Sat. 7:30 to 5



**FRANCES CLARK**

Funeral services for Frances Lola LeFevre Clark, 89, of Sagerton were held Mon., Nov. 21 at First United Methodist Church in Sagerton.

### Frances Lola LeFevre Clark

Burial was in Stamford Cemetery. Mrs. Clark died Thurs., Nov. 17 at her Sagerton residence.

Born Aug. 27, 1916 in Limestone County, she was the daughter of Cliff and Alva Lefevre and moved to Haskell County with her parents in 1918. She graduated from Sagerton High School and married Reece Clark Dec. 8, 1935. They farmed and ranched in the Sagerton Community. She was a lifetime member of the Methodist Church where she was a Sunday School teacher and active in the Women's Society of Christian Service. She was a member of the L.O.C. Home Demonstration Club and the Sagerton Hobby Club. She worked as a bookkeeper at car

dealerships and a freight company in Stamford. After retirement, she enjoyed cooking, gardening and visiting with relatives and her many, many friends.

She was preceded in death by her husband, Reece; and her parents, Alva and Cliff LeFevre.

Survivors include her daughter Glenda and husband, Pete Bryan of San Antonio; grandchildren, Clark Don and wife, Mary Terrell and their children, Iris and Emma Terrell of Boerne, and Kay Terrell Tonnon and Chelsea and Brian of Wylie; brother, Delbert LeFevre and sister, Mozelle Manske, both of Sagerton.

Memorials may be made to the Sagerton Community Center, 1730 FM 1661, Sagerton, Texas 79548.

PD. NOTICE

### Martha Frances Bird

Funeral services for Martha Frances Bird, 94, of Stamford were held Sat., Nov. 19 at First Baptist Church in Haskell with Rev. John Irwin officiating. Burial was in Willow Cemetery in Haskell under the direction of Holden-McCauley Funeral Home of Haskell.

Mrs. Bird died Thurs., Nov. 17 at Teakwood Manor in Stamford.

Born Nov. 20, 1910 in Haskell County, she was the daughter of Joe and Mary Harris Chapman. She married Alvis Bird Oct. 12, 1928 in Breckenridge. She was a

homemaker.

She was preceded in death by her parents; husband; and two daughters.

Survivors include two sons, Gerald Bird of El Paso and Robert Bird of Stamford; one sister, Anna Rose Perkins of Stamford; four grandchildren, Rickey Faust, Vicky Moreno, Rob Bird Jr., and Marvin Haile; eight great grandchildren and four great great grandchildren.

PD. NOTICE

## Weathers Whys

### Fog

Q: What causes fog?  
 A: Fog—and mist—are simply clouds that form immediately above the ground, says Andrew Odins of Texas A&M University.

"Fog can occur at different times for different reasons," Odins explains. "The most common form

is radiation fog, usually called ground fog. If the air near the ground is cooled sufficiently, it becomes saturated and fog can develop. This often occurs at night and this time of year. During fall is often when fog develops most frequently. The nights are longer in fall and that allows the ground more time grow cold enough to condense water vapor into the air, and fog can form."

Q: How big are the water drops fog?

A: Very tiny, says Odins. "Fog and mist drops are very small," Odins adds. "They vary from about 1-500th of an inch to even 1-25,000th of an

inch, so just a little moisture can cause a lot of fog and mist. In strict meteorological terms, fog occurs when surface visibility is reduced to less than 3,000 feet. Many times, airports are forced to close when the visibility is reduced by far less. Fog normally disappears not long after sunrise. The warmth of the sun tends to evaporate fog and it gradually disappears. One type of fog, called valley fog, forms in mountain valleys during winter and it can be as much as 1,500 feet thick, so thick that it often does not evaporate even during sunlight. This type of fog can last for several days."

### PAINT CREEK INDEPENDENT SCHOOL DISTRICT STATEMENT OF REVENUES, EXPENDITURES, AND CHANGES IN FUND BALANCE - GOVERNMENTAL FUNDS FOR THE YEAR ENDED AUGUST 31, 2005

	General Fund	Reading First Special Revenue Fund	Other Funds	Total Governmental Funds
<b>REVENUES</b>				
Total Local and Intermediate Sources	\$567,985	\$0	\$2,324	\$570,309
State Program Revenues	649,700	0	19,583	669,283
Federal Program Revenues	1,661	174,227	90,936	92,597
<b>TOTAL REVENUES</b>	<b>\$1,219,346</b>	<b>\$174,227</b>	<b>\$112,843</b>	<b>\$1,332,189</b>
<b>EXPENDITURES</b>				
Instruction	\$627,792	\$162,117	\$57,047	\$684,839
Instructional Resources and Media Services	24,787	0	506	25,293
Curriculum Development and Instructional Staff Development	633	0	0	633
Instructional Leadership	50,494	0	0	50,494
School Leadership	19,630	0	380	20,010
Guidance, Counseling and Evaluation Services	20,110	0	0	20,110
Health Services	16,018	0	506	16,524
Student (Pupil) Transportation	66,788	1,428	414	67,202
Food Services	0	5,282	66,179	66,179
Cocurricular/Extracurricular Activities	42,669	0	147	42,816
General Administration	94,614	0	0	94,614
Plant Maintenance and Operations	121,563	5,400	507	122,070
Data Processing Services	44,921	0	451	45,372
Debt Service Principal on Long-term Debt	7,541	0	0	7,541
Debt Service Interest on Long-term Debt	944	0	0	944
Intergovernmental - Payments to Fiscal Agent/Member Districts of SSA	23,751	0	0	23,751
<b>TOTAL EXPENDITURES</b>	<b>\$1,162,255</b>	<b>\$174,227</b>	<b>\$126,137</b>	<b>\$1,288,392</b>
<b>EXCESS OF REVENUES OVER EXPENDITURES</b>	<b>\$57,091</b>	<b>\$0</b>	<b>(\$13,294)</b>	<b>\$43,797</b>
<b>OTHER FINANCING SOURCES (USES)</b>				
Transfers - In	\$ -	\$ -	\$ 13,294	\$ 13,294
Transfers - Out	(13,294)	0	0	(13,294)
<b>TOTAL OTHER FINANCING SOURCES (USES)</b>	<b>(\$13,294)</b>	<b>\$0</b>	<b>\$13,294</b>	<b>\$0</b>
Fund Balance - September 1 (Beginning)	495,420	0	0	495,420
<b>FUND BALANCE - SEPTEMBER 1 (BEGINNING)</b>	<b>\$539,217</b>	<b>\$0</b>	<b>\$0</b>	<b>\$539,217</b>

### Country Friends & Frames/ Yours, Mine & Ours

Welcome you to the Northwest Corner of the Square in Stamford

**Unique Gifts ~ Alterations  
 Custom Framing**

Open Tues.~ Sat. 10-6; Sat. 10-2

### BERNARD E. GODLEY, INC.

**TAX SERVICE AND BOOKKEEPING**  
 Specializing in Farm, Ranch & Agri-business

Over 35 Years Experience

**940-889-8809**

98 Hill Drive • Seymour, Texas

Fax 940-889-4908

### Jones-Haskell Eye Clinic

**Dr. Trussell Thane, O.D.**  
 Therapeutic Optometrist

Appointments Available • Monday through Friday

Dr. Thane provides comprehensive eye care including the diagnosis and treatment of eye disease. Dr. Thane offers complete evaluation for eyeglasses and contact lenses.

Various contact lens packages available.

MEDICARE, BLUE CROSS AND BLUE SHIELD AND FIRSTCARE ACCEPTED.

1501 Columbia • Stamford  
 325-773-2083

Hours: M.-Th. 8:30 to 5; Fri. 8:30 to 1



**YOUNG HELPERS**—Haskell Elementary students, Tillie McGuire, back left, Caitlan Johnson, front left, and Sidney Cassidy, right, deliver toiletry items to Paint Creek Baptist Church that were collected for the flood victims of Lake Stamford. Feeling the need to help, the students were proud to do so. They were assisted with means for the project by a K-12 School Community Partnership Grant.



**AT WORKSHOP**—Haskell County students, Molly Dudensing, Andrea Anderson and Candace Brister participate at a 4-H Food and Nutrition Workshop held in Stamford, Oct. 10. The event was hosted by the Haskell and Jones County Extension offices.

## Club honors Co. officials

The Haskell County Commissioners, County Judge, judge's secretary and their spouses were honored Nov. 14 by the Haskell County Extension Education Association for their support of extension work during the past year.

Members cooked and served a lunch of stew and cornbread with peach cobbler for dessert.

Attending were Judge David Davis, Kenny and Susan Cockerell, Gaston and Willie Faye Tidrow; Commissioners Bobby Smith, Kenny Thompson, Tiffen and Erlinda Mayfield, and Johnny and Teresa Scoggins; County Agents, Jane Rowan and West Utley; and special guest Galen Chandler, District Extension Administrator.

Members hosting the event were Flossie Bates, Lena Tidwell, Alice Ballard, Mildred Robertson, Alice Yates, Shirley Mickler, Joetta Burnett and Cynthia Manross. Members spouses attending were Bobby Tidwell, Don Ballard and Danny Manross.

## Glenn presents acrylic study

Esme Glenn, noted Abilene artist, demonstrated the use of acrylic paint at the meeting of the Brazos West Art Club Nov. 14 in the Haskell National Bank Community Room.

Painting a vegetable stilllife in vivid, electrifying colors, Glenn stressed the study of the color wheel in relationship to achieving the desired values of color.

Club members also discussed an upcoming trip to the Grace Museum and Contemporary Arts Center in Abilene.

Hostesses were Martha Spitzer and Marsha Whittemore.

Others attending were Donna Clayton, Gary Conn, Nelwyn Beakley, Peggy Middlebrook, Betty Berry, Doris Reeves, Adaline Laird, Jennie Lyckman, Fern Livengood, Denia Cunningham, Jerry Bowers and Bobbie Harrison.

## Go Indians!

### Carla's Sweet Shop

Lunch Menus for Nov. 30-Dec. 1. Serving 11-2.  
All meals include dessert and drink.

~Wednesday~  
Beef Stew,  
Cornbread

~Thursday~  
Chicken Fried Steak,  
Mashed Potatoes, Peas

507 N. Ave. E • Haskell • 864-2711



America's Drive-In.

No Waiting  
Call In Orders **864-8533**

Limited Time Only!

Offer good November 1-30, 2005.

Only at participating SONIC Drive-Ins. ©2005 American's Drive-in Corp.

## Expensive toys are not necessary

by Jane Rowan  
CEA/FCS, Haskell County  
With cool weather outside, many children are spending more time indoors, and keeping them entertained can be a challenge.

Instead of buying expensive toys, Extension recommends using free or cheap materials to relieve boredom. Entertaining your child with fun projects will serve to stimulate his or her imagination and creative

thinking. Making use of cardboard boxes, rocks, magazine scraps, and baker's clay, many projects can be both affordable and educational. For craft ideas, visit fcs.tamu.edu.

## THROCKMORTON PRESENTS

THE ALL NEW ~ RED, WHITE AND BLUE  
**COW COUNTRY CHRISTMAS CELEBRATION**  
IN THROCKMORTON THIS YEAR ~ NOV. 30 THROUGH DEC. 3

**1-3 p.m.**  
Free crafts to do for the young at heart

**Wed., Nov. 30**  
Throckmorton 5 p.m.  
Senior Dinner and Sophomore Sandwich, Snacks.  
6 p.m. Youth lead Community Church Service

**Fri., Dec. 2**  
9 a.m. til noon Merchants Open House. Refreshments • Door Prizes  
Grand Openings for 3 new businesses. Throckmorton is thriving!

**Sat., Dec. 3**  
1 to 5 p.m. Festivities all day. Food, crafts, antiques.  
Music by local musicians. Artists. Vendors.  
Special dinner for local cancer boy Brock.  
5:30 p.m. Parade  
6 p.m. Santa Land  
7 p.m. Special performance by the "Prairie Players"  
7:30 p.m. Lighting of the Community Christmas Tree

Throckmorton ~ The Biggest Little Town in Texas And Growing!!

**Bring your Homemade 'Goodies' to sell**

**NEW ANTIQUE STORE**  
Open! 5,000 sq. ft. of Treasures

**Wanted: Local and Afar Artists to sell and display**

**Texas Sweet Water Corn will be roasted on site by Terry Squires**

**Crafters and Vendors Needed**  
Homemade Crafters from as far as Albuquerque, N.M. will be here!

**TENT SPACE available FREE for artists to display and sell. Reserve now!**

**Good Cooks Wanted for the Food Tent**

**DON'T MISS THE EXCITEMENT OF COW COUNTRY CHRISTMAS! YA'LL COME!**

Crafters & Vendors, Call Sharie at 505-250-0102 for information.  
First Come ~ First Reserved!



# HASKELL INDIANS



IT'S GOOD TO BE FROM HASKELL!

## REGIONAL CHAMPS!

WE BELIEVE!! IN H-TOWN



Flip-Flop and Stomp



### THE TROJANS

All over the Field



BE A PROUD INDIAN FAN

## BEAT

BEAT 'EM SCALP 'EM

## WINDTHORST!

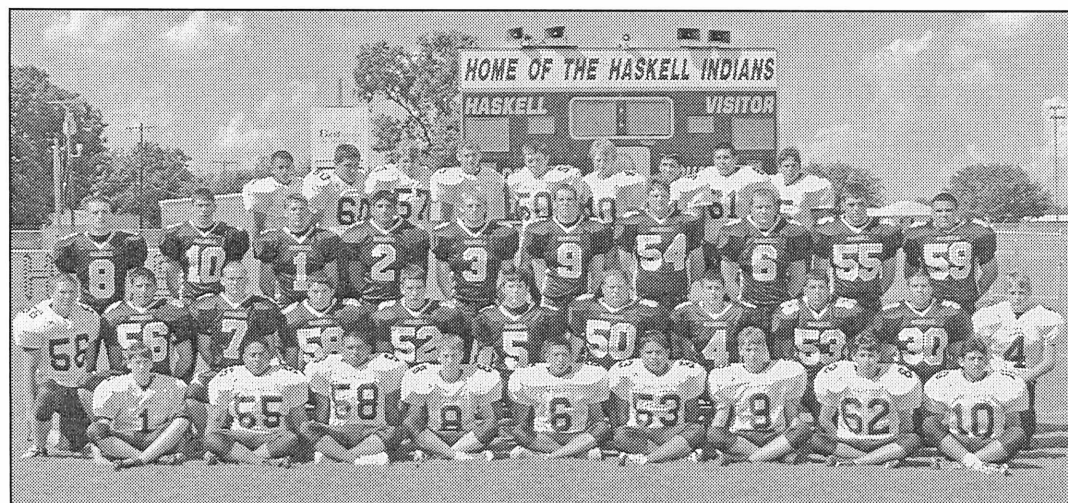
From: YOUR BIGGEST FANS—YOUR MOMS





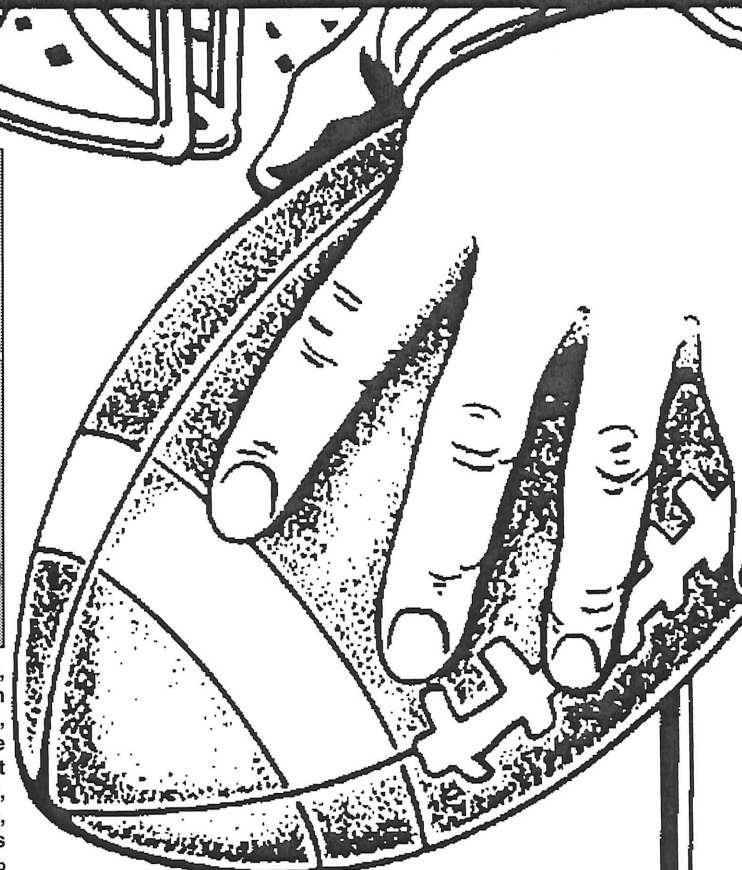
# REGIONAL CHAMPIONS

# HASKELL INDIANS vs WINDTHORST TROJANS



2005 HASKELL INDIANS: front row left to right, Weston Rutkowski, D.J. Rodriguez, Adam Pena, Steven Fillmon, Chris Graciano, Gerardo Torres, Brandon Wilson, Justin Meier, Magdiel Gonzales. Second row, Randall Pace, Scott Agraz, Joseph Landreth, Moses Munoz, Josh Kimmel, Greg Guzman, Rylie Tatum, Anthony Hernandez, Vicente Solano, Josh Rodriguez, Travis Adams. Third row, Justin Rodriguez, Derek Agraz, Matt Brown, Vicente Castillo, Josh Barbee, Jeremy Sorrells, Doug Carroll, Cameron Short, Gary Frierson, Billy Lusk. Back row, Larry Arebalos, Justin Amaro, Douglas Moore, Aaron Rodriguez, Clyde Frierson, Blake Foley, Brett Seigfried, Ruben Robledo and Chris Jones.

Photo by Bill Blankenship



## FRI., NOV. 25, 7:30 P.M. at GRAHAM

THIS PAGE SPONSORED BY THE FOLLOWING INDIAN BOOSTERS

**Cecil's Country Meat Mkt. & Grocery**  
**Personality-Slipper Shoppe**  
**Brian Burgess State Farm Insurance**  
**Haskell Free Press**  
**Haskell County Insurance Agency**  
**Double A Drive Inn**  
**First National Bank**  
**Hanson Paint and Body**  
**Big Country Electric Cooperative**  
**Modern Way Food & Fuel**  
**Richardson TrueValue & NAPA Auto Parts**  
**Boggs & Johnson Furniture**  
**Haskell Tire & Appliance**

**Haskell National Bank**  
**Haskell County Gin**  
**Martha's Beauty Center**  
**Haskell Livestock Auction**  
**Matlock & Associates**  
**Haskell Save A \$**  
**Larned Sales Center**  
**Carla's Sweet Shop**  
**Haskell Co-Op Gin**  
**Nanny Plumbing**  
**Smitty's Auto Supply**  
**Valor Telecom**



**RUNNING UP SCORE**—Josh Barbee, #3, runs with the ball to make points for the Haskell Indians in their winning regional game with Christoval, Fri., Nov. 18 played in Abilene. Photo by Bill Blankenship

## Commissioners' Court report

The Haskell County Commissioners' Court met in regular session, Nov. 14.

The County Treasurer's report was approved. Matters of personnel changes were tabled.

Duane Gilly, spokesperson for a committee from the Anchor, spoke about The Anchor building known as "The Store," and the concerns about how it is going to be managed and who is going to be the manager. The Court agreed to delay any decision until figures on expenses can be obtained. A meeting at a later date will determine the final decision.

No action was taken on closing Dennis Chapel Road.

A motion setting Mon., Jan. 2 as a holiday was approved.

No action was taken on TxDOT materials request.

A resolution was approved to set the Eleventh Court of Appeals fees.

Approval was given to passing the order extending the 900 hour rule to Jan. 1, for part time employees, to

comply with the Texas County and District Retirement System and to allow the County Judge to sign the order.

The court approved a motion that the County pay for tetanus shots for critical employees.

A motion was passed to approve the sale of lots in Rochester to Ray and Betty White by the Appraisal District.

Doctor Wayne Cadenhead was approved as the local Health Authority.

A bid was accepted from H & J Mechanical for \$501.50 for a 1989 GMC pickup. A bid from Jerry Don Hudgens in the amount of \$3,001.00 was accepted on the belly dump.

The bid of \$150.00 for the 1989 Chevrolet Crew Cab from M&M Auto was rejected.

Following court recession until 1:00 p.m., votes from the Constitutional Amendment Election were canvassed with a few minor corrections made.



**HERE'S TO YOUR HEALTH... AT HOME!**

Brought to You By:

**Haskell Home Health Agency**

Misty McMeans  
RN, BSN

Dear Misty,

**What is A Diabetic Diet?**

Good diabetes control means keeping your blood sugar level as close to normal as possible. You need to maintain a proper balance between the insulin you produce or receive in a shot and the sugar your body makes out of the food you eat. You should maintain a nutritious, healthy diet that would be good for anyone. The main differences are that your diet contains limited or no added sugar that could raise blood sugar levels too high, specifies the amount of food to be eaten, and sets specific times to eat for regulatory purposes. You should also maintain a proper weight.

**What should I eat?**

Eat foods from the six main food groups: milk, meat, vegetables, breads, fats and fruits. Most diabetic meal plans list foods in terms of exchanges. Exchanges are units of measure that help you keep calories and types of foods controlled but allow variety by letting you trade one exchange for another food in the same group. Within each food group, serving sizes are adjusted to provide about the same amount of calories, carbohydrates, protein and fat.

**Isn't fat bad for you? Why can I eat fruits but not sugars?**

Fat is a nutrient, and you need some fat in your diet. But too much fat can be harmful for people with diabetes because it increases the risk of heart disease and hardening of the arteries. Follow these tips:

- Avoid 'hidden' fat (e.g. creamy pasta sauces, gravies); fried foods, and high-fat salad dressings.
- Choose lean meats; eat more fish and skinned poultry. Eat liver or organ meats only occasionally.
- Use diet margarine instead of butter.
- Drink lowfat or nonfat milk.
- \*Limit intake of eggs to 2 or 3 a week.

People with diabetes should eat less sugar. Depending on your individualized plan, some fruits may be encouraged because they provide fiber and carbohydrates for energy.

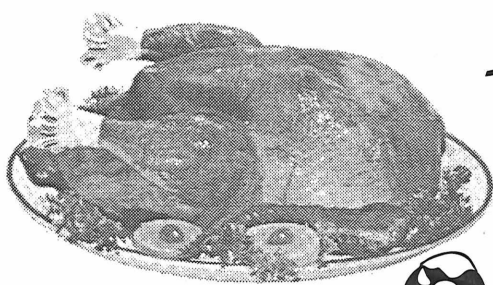
**What questions regarding home care do you have for the nurse?**

Send your questions to Haskell Home Health Agency, 417 S. First, Haskell, TX 79521 or call 940-864-5074 or 1-877-864-5074.

HERE'S TO YOUR HEALTH—AT HOME is brought to you by Haskell Home Health Agency providing home care services in Haskell, Knox, Stonewall, Throckmorton and Jones Counties



Home Care: Keeping Texans Proud & Independent



# WIN YOUR CHRISTMAS TURKEY

## Christmas Pageant

Sun., Dec. 4 at Rochester School

Deadline to enter is Mon., Nov. 28 at 5 p.m.

Call 940-864-2451, 864-2903 or 864-2038 for information!

*Pre-*  
**Christmas Sale**

**20% off**  
Winter Coats & Jackets

**30% to 50% off**  
Select Fall Clothes

**1/2 Price Shoes**  
Select Group

**Personality-Slipper Shoppe**  
940/864-2501 • 864-3051  
South Side of Square • Haskell, Texas

Name \_\_\_\_\_

Address \_\_\_\_\_

Phone \_\_\_\_\_

*Good Luck in the Playoffs!*  
**Indians**

See our new  
**Holiday Candles**  
and new line of  
**Plush Toys!**

*Bridal Selections for*  
Mary Jane Short and  
Nathan Buerkle

*Happy Thanksgiving!*

**The Carousel Gift Shop**  
Erlinda Mayfield  
Open M-F 10 to 5:30. Sat. 10 to 4  
*Shop with us through lunch!*  
Southside of the square in Haskell • 864-2069

Name \_\_\_\_\_

Address \_\_\_\_\_

Phone No. \_\_\_\_\_

**SHOP HERE** for EVERY ONE!

**PERFECT FOR LANDING ON ROOFS AND CLIMBING DOWN CHIMNEYS.**

**WORK HARD**

Lay Away Now!  
Where Winners Shop

**Sport-About of Haskell** 940-864-3891  
402 N. 1st

We accept Discover, VISA, AMEX, MasterCard

Name \_\_\_\_\_

Address \_\_\_\_\_

Phone No. \_\_\_\_\_

Come see our  
**HUGE**  
Year End Specials!

*Bailey Toliver*

**CHEVROLET**

940-864-2626 • 800-749-5576  
209 S. Ave. E • Haskell, Texas

Name \_\_\_\_\_

Address \_\_\_\_\_

Phone No. \_\_\_\_\_



1. Clip out the ads, fill in your name, address and telephone number.
2. Deposit each ad in the box at the business listed on the ad. (All entries deposited in the wrong box will be disqualified.)
3. Each store will award one FREE TURKEY – you need not be present to win, no purchase is necessary.
4. Drawing will be held December 23, 2005, at noon.
5. Anyone over 16 years of age is eligible to enter (except employees at participating stores and this newspaper.)

## STAR STOP

706 N. 1st • Haskell  
864-2062

**All Hamburger Baskets**  
with fries or tots and  
24 oz fountain drink

**Steakfinger and Chicken Strip Baskets**  
with fries, gravy, Texas toast,  
and 24 oz fountain drink

**\$1.00 off**

Name \_\_\_\_\_  
Address \_\_\_\_\_  
Phone No. \_\_\_\_\_

Shop early  
for best  
selection!

Lowest Prices Ever on  
**Front Load Washers & Dryers!**

**Haskell Tire & Appliance**  
206 S. Ave. E • 864-2900

Name \_\_\_\_\_  
Address \_\_\_\_\_  
Phone No. \_\_\_\_\_

Come in to receive your **FREE**  
**2006 CARDUI CALENDAR**  
and Ladies' Birthday Almanac

<b>Christmas Light Sets</b>  <b>50% off</b> REGULAR PRICE	<b>'Yuletide Ranch' Christmas Décor Items</b>  <b>50% off</b> REGULAR PRICE
Selected Boxed 18 to 20 count <b>Christmas Cards</b>  <b>60% off</b> REGULAR PRICE	<b>Quilted Jackets</b>  <b>50% off</b> REGULAR PRICE
<b>Throw Rugs</b>  <b>50% off</b> REGULAR PRICE	<b>When in Doubt, Give a Gift Certificate!</b>

**Bridal Registry**  
Mary Jane Short  
Bride-elect of Nathan Buerkle

*Do you have Medicare Prescription Benefit Questions?*

We can help you pick the plan that best fits your needs. The website is live and we are processing requests.  
Website: [www.medicare.gov](http://www.medicare.gov)  
Enrollment began: November 15, 2005  
Benefits begin January 1, 2006  
Call us.

Name \_\_\_\_\_  
Address \_\_\_\_\_  
Phone No. \_\_\_\_\_

All items limited to stock on hand.  
All Sales Cash and Final.  
Prices good November 25 & 26

## THE DRUG STORE

Haskell • 864-2673 • 1-800-962-0743  
[www.haskelldrugstore.com](http://www.haskelldrugstore.com)

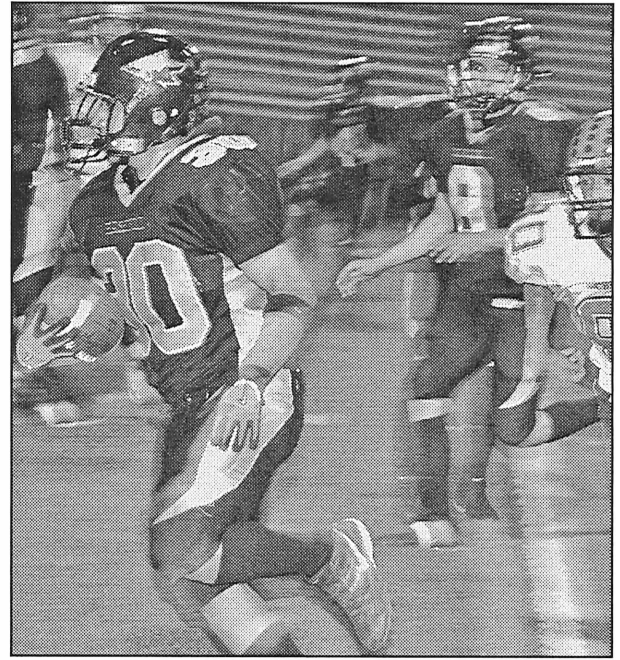
**PHOTO DEPARTMENT**  
**Photo Greeting Cards**  
Prices start at only \$9.99  
for 20 cards and envelopes  
*Guaranteed 7-Day Delivery*

*Other Picture Gifts include:*  
Calendars Mugs Mouse Pads T-Shirts  
Playing Cards Puzzles Ornaments  
*Order by Dec. 6th for Christmas delivery*

**Photo Processing**  
Drop your Thanksgiving film off today and receive  
**2 for 1 prints every day!**  
Please see clerk for details.

*Do you own a Digital Camera? Try our*  
**Automated Photo Machine!**  
Just bring in your digital media or CD  
It's Quick! It's Easy! and You do it yourself!  
**4" x 6" Prints 29 cents each**  
or Transfer your cards to CD for only \$4.95  
(plus the cost of the CD)

**Don't make SANTA do all the work!!**  
*Bring your Christmas packages to Pack & Mail inside The Drug Store. Let our packing pros pack and ship your packages by UPS. Pack & Mail also has postage stamps for your Christmas cards.*



**CARRYING TO VICTORY-** Josh Rodriguez, #30, helps to secure the win for the Haskell Indians in the regional game with the Christoval Cougars in Abilene, Fri., Nov. 18. Photo by Bill Blankenship

## Cattle Market Report

The market at the Haskell Livestock Auction was on a run of 828 head of cattle at its sale on Sat., Nov. 19, according to Bill Cox, reporter. 56 sellers and 36 buyers were present.

Packers \$1-3 higher. Stockers \$1-2 lower. Feeders steady. Stockers cows and pairs \$15-35 lower.

Cows: fat, .36-.45; cutters, .42-.50; canners, .28-.43.

Bulls: bologna, .56-.65; feeders, .82-.98; utility .53-.59.

Steers: medium and large frame No. 1 200-300 lbs., 1.35-1.80; 300-400 lbs., 1.25-1.48; 400-500 lbs., 1.20-1.37; 500-600 lbs., 1.10-1.25; 600-700 lbs., 1.05-1.20; 700-800 lbs., .95-1.12; 800 lbs. and up, .78-1.09.

Heifers: medium and large frame No. 1 200-300 lbs., 1.25-1.65; 300-400 lbs., 1.20-1.43; 400-500 lbs., 1.00-1.25; 500-600 lbs., .92-1.17; 600 lbs. and up, .72-1.09.

Bred heifers medium frame, 750-975.

Bred cows young to middle aged 875-1125; aged or small, 550-825.

Cows with calves: medium frame No. 1 young and middle aged, 950-1250; aged or small, 675-850.

## VALOR TELECOM

Local & Long Distance Phone Service  
High-Speed DSL Internet Service and  
DISH Network® Satellite TV available

Come by our new store in  
Seymour at 400 N. Main or for more  
information, call 1-866-478-9026

*A Time to Give*

# Thanks

Way up on our list of the things for which we are most thankful are good customers like you!

On this day of thanksgiving, may you also have much to thankful for—loving family, dear friends, good health and prosperity.

We also appreciate our hard-working, dependable employees. They play a vital role in the success of our bank and the satisfaction of our customers.

**First National Bank Haskell**  
200 South Avenue E Haskell, Texas 79521  
940-864-8555

FDIC

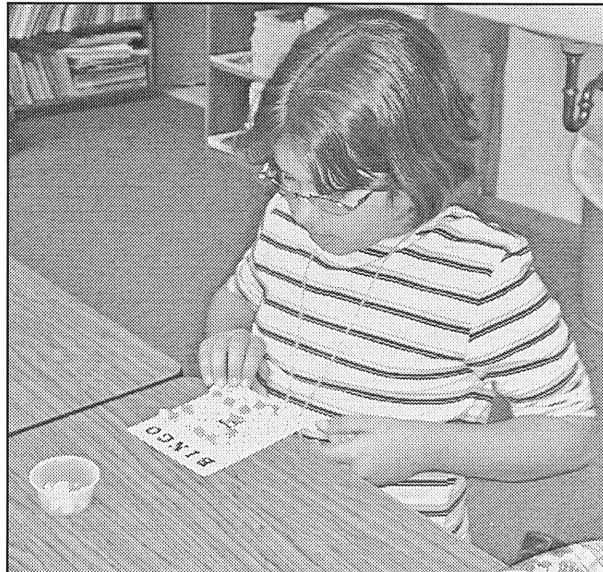
Other Convenient Locations to Serve You:  
**First National Bank Munday – Stamford – Rochester**



HONORING VETERANS—Elementary students, l-r, Myra Rodriguez, Sierra Stewart and Drake Everett, welcome Haskell County veterans Billy Jack Ray, l, and Earl Smith, r, to the annual Veteran's Breakfast and Ceremony. The students, along with their classmates, looked up famous quotes from authors, and typed a book of "Thoughts for the Day" for the veterans to take home with them.

Haskell School Menu

Nov. 28-Dec. 2
Breakfast
Juice and milk are served daily on the breakfast menu.
Monday: Muffin
Tuesday: Mini breakfast hot pocket
Wednesday: Cereal and animal crackers
Thursday: Cinnamon roll
Friday: Sausage/cheddar in a blanket
Lunch
Milk and iced tea are served daily at the Secondary campus. Milk is served daily at the Elementary School. Secondary campus: choice of entree or baked potato with cheese and ham.
Monday: Pepperoni pizza, garden salad, corn, baby carrots, ranch dressing, applesauce
Tuesday: Frito pie, cheese, pinto beans, garden salad, pineapple tidbits
Wednesday: Beef and vegetable stew, grilled cheese sandwich, fried okra, peaches
Thursday: BBQ chicken strips, green beans, mashed potatoes, hot rolls, banana pudding
Friday: Chicken on a bun, lettuce, tomato, pickle, french fries, fresh fruit



TURKEY TROT BINGO—With learning games such as Turkey Trot Bingo, Haskell Elementary, along with a K-12 SCP School Community Partnership Grant, recently provided an evening of safe fun for young students. Elementary student, Breezy Gibbs tries to bingo before the other students to win the prize.

NRC Cost share assistance applications now accepted

Applications for cost share assistance are being accepted at the Natural Resources Conservation Service office in Haskell located at 607 N. First St. East.
The Haskell County Environmental Quality Incentives Program (EQIP) Local Work Group (LWG) has designated water quality as the major resource concern for the application of conservation funding in 2006.
Conservation funding will be allocated for the following practices: High priority practices receiving 10 points are pasture planting, range seeding, diversion/terrace and grassed waterways; Livestock ponds and cross fencing applications will receive 5 points.
A producer can sign up for any combination of these practices on each application.
In addition to the County Base funding, the Seymour Aquifer Irrigation area will be eligible for cost share applications for center pivots, drip irrigation and irrigation pipelines.
Haskell County is also included in a special wildlife emphasis area for the improvement of Bobwhite Quail Habitat. Application for brush management and range seeding will be taken for these funds.
The cost share rates set by the LWG are Limited Resource Producers will receive 90% cost share; all others will receive 50% cost share.
For information concerning EQIP cost share, contact the NRCS office at 940-864-8516 ext. 4.

This Week's Devotional Message:



WE CAN ALL FIND GOOD REASONS TO GIVE OUR THANKS

Through fortune seems to pass you by,
There's something that you can't deny:
At times we all have things go wrong,
But manage still to get along.
If you can somehow pay each bill,
And no one at your house is ill,
And if your children get good grades
And don't indulge in escapades,
And if you have just one good friend,

In case misfortune should descend,
Then you have blessings by the score,
Of things you should be thankful for.
Your house of worship will convey
This message for Thanksgiving Day,
So let us all, with one accord,
Extend our thanks unto the Lord.

Gloria Nowak

ATTEND CHURCH THIS SUNDAY

HASKELL
East Side Baptist Church
Danny Manross, pastor
Sun. 9:45 a.m., 11 a.m., 6 p.; Wed. 7 p.m.
600 N. 1st East, Haskell
Christian Church
Dusty Garrison, minister
Sun. Morn. 9:45 a., 10:45 a.m., 6 p.m.; Wed. 7 p.m.
107 N. Ave. F, Haskell
New Vision Family Worship Center
Dan Kinjorski, pastor
864-3465
Sun. 11 a.m., 6 p.m., Wed. 7:00 p.m.
East Hwy 380, Haskell
Trinity Lutheran Church
Ron Rennegarbe, pastor
Sunday School 9:30 a.m., Worship 10:30
Hwy 380 East, Haskell
Iglesia Bautista El Calvario
Art Flores, Interim pastor
Sun. Morn. 9:45 a., 10:45 a.m., 5 p.m.; Wed. 7 p.m.
607 S. 7th, Haskell
First United Methodist Church
Rev. Daniel Echols, pastor
Sun. Morn. 9:45 a.m., 10:50 a.m. 6 p.m.; Wed. 6 p.m.
201 N. Ave. F, Haskell
First Assembly of God
Rev. J.C. Amburn
Sun. Morn. 9:45 a., 10:45 a.m., 6 p.m.; Wed. 7 p.m.
1500 N. Ave. E, Haskell
St. George Catholic Church
Father George Roney
Sat. Mass 7 p.m.; Sun. Morn. 9:00 a.m.
901 N. 16th, Haskell
Church of Christ
Jim Yates, minister
Sun. Morn. 9:30 a.m., 10:30 a.m., 6 p.m.; Wed. 7 p.m.
510 N. Ave. E, Haskell
First Presbyterian Church
Kelly Pigott, interim pastor
Sun. Morn. 9:30 a.m.
306 N. Ave. E, Haskell
Trinity Baptist Church
Tony Grand, pastor
Sun. Morn. 10 a., 11 a., 6:30 p.m.; Wed. 6:30 p.
114 S. Ave. D, Haskell
Hopewell Baptist Church
Sun. Morn. 9:30 a.m., 11:00 a.m.; Wed. 7 p.m.
908 N. Ave. A, Haskell
Greater Independent Baptist Church
Sun. Morn. 9:30 a., 11:00 a., 6:30 p.; Wed. 7 p.
301 N. 3rd St., Haskell

New Covenant Foursquare
Bill and Renee Glass, pastors
Sun. Morn. 10 a.m., 11 a.m., 6:30 p.m.; Wed. 7 p.
200 S. Ave. F, Haskell
Mission Revival Center
Rev. William Hodge
Sun. Morn. 10 a.m., 11 a.m., 6 p.m.; Tues. 6 p.m.
1600 N. Ave. B, Haskell
First Baptist Church
Greg Gasaway, pastor
Sun. Morn. 9:45 a., 10:55 a., 6 p.m.; Wed. 7 p.m.
301 N. Ave. E, Haskell
Church in the Park
Rev. Tim and Suzann Townsend
Sun. Morn. 10:30 a.m. Wed. 7 p.m.
Gazebo or Pavilion
Cornerstone Fellowship Baptist Church
Dr. Larry Nail, pastor
Sun. 9:30 a.m. 10:45 a.m., 6 p.m., Wed. 7 p.m.
1600 N. First St., Haskell
Cross of Christ Fellowship
Joe and Loretta Stulir, pastors
864-5404
Sun. 10:30 a.m.
455 CR 410, Haskell
WEINERT
First Baptist Church
J. C. Baker, pastor
Sun. Morn. 10 a.m., 11 a.m., Wed. 7 p.m.
Weinert
Weinert Foursquare Church
Rev. Robert Harrison
Sun. Morn. 10 a.m., 11 a.m. Wed. 7 p.m.
Weinert
ROCHESTER
Church of Christ
Steve Willis, minister
Sun. Morn. 9:45 a., 10:45 a., 6 p.m.; Wed. 6 p.m.
West on Main Street, Rochester
First Baptist Church
Jim Davis, pastor
Sun. 11:00 a.m., 6 p.m.; Wed. 6:00 p.m.
500 Main, Rochester
Union Chapel Baptist Church
Clovie Dever
Sun. Morn. 9:45 a., 10:45 a., 6 p.m.; Wed. 7 p.m.
Rochester
Faith Chapel of Rochester
Katherine Byrd, minister
Sun. Morn. 10 a.m., 11 a.m., 7 p.m.
Hwy 6, Rochester

First United Methodist Church
Rev. Daniel Echols, pastor
Sun. Morn. 9:00 a.m., 11:00 a.m.
Rochester
SAGERTON
Sagerton Methodist Church
Terry O'Rear, pastor
Sun. Morn. 9:45 a.m.
Sagerton
Faith Lutheran Church
Deborah Nissen, pastor
Sun. Morn. 9:15 a.m., 10:30 a.m.; Wed. 7 p.m.
Sagerton
RULE
First Baptist Church
Josh Stowe, pastor
Sun. Morn. 9:45 a., 11:00 a., 5 p.m.; Wed. 7 p.m.
1001 Union Ave., Rule
Primitive Baptist Church
Dale Turner Jr., pastor
First & Third Sundays 10 a.m.
Corner of 8th & Robins, Rule
Church of Christ
John Greeson, minister
Sun. Morn. 9:45 a., 10:40 a., 6 p.m.; Wed. 7 p.m.
811 Union, Rule
First United Methodist Church
Terry O'Rear, pastor
Sun. Morn. Worship 8:30 a.m.
1000 Union Ave., Rule
Primera Iglesia Bautista
Alfa y Omegas
Manuel Marin, pastor
Sun. Morn. 10 a., 11:00 a., 5 p.m.; Wed. 6 p.m.
500 Elm Street, Rule
Sweet Home Baptist Church
Bill Trice, pastor
Sun. Morn. 11 a.m., 5 p.m.; Wed. 5 p.m.
Gladstone Ave., Rule
West Bethal Baptist Church
Rev. Robert Sweet
Sun. Morn. 10 a., 11 a., 8 p.m.; Wed. 7:30 p.m.
300 Sunny Ave., Rule
PAINT CREEK
Paint Creek Baptist Church
Sun. Morn. 10:00 a.m., 11:00 a.m., 6 p.m.
Paint Creek
O'BRIEN
O'Brien Baptist Church
Jim Reid, pastor
Sun. 9:45 a., 11 a., 5 p., 6 p., Wed. 6 p.m.
O'Brien

Rule loses chance for playoff bid

The Rule Bobcats saw their chance for a playoff berth in six-man football dashed Saturday when Richland Springs handed them a 66-38 defeat.
The Bobcats trailed the 2004 state champion Coyotes at the half 16-14. The Coyotes added 32 points in third quarter and 18 in the fourth to continue their march to the state playoffs.
Bobcat Emery Dudensing rushed for more than 200 yards, scoring two touchdowns and was felt on the defensive line against Richland Springs.
Kade Kittley had a 15 yard run for a Bobcat touchdown and returned a kickoff for 80 yards to stride the entire field.

Paint Creek School Menu

Nov. 28-Dec. 2
Breakfast
Juice and milk are served daily.
Monday: Cereal or toast
Tuesday: Biscuits and gravy
Wednesday: French toast
Thursday: Breakfast burritos
Friday: Cereal or toast
Lunch
Milk is served daily.
Monday: Chicken strips, mashed potatoes, peas, rolls, peach cobbler
Tuesday: Enchilada casserole, corn, chips, salad, fruit
Wednesday: Beef stew, cornbread, salad, applesauce cake
Thursday: Mac and beef, green beans, salad, rolls, rice crispy bars
Friday: Chili dogs, relish, onions, cheese, chips, jello with fruit

ECC Calendar and Menu

Mon., Nov. 28
Lunch-BBQ German sausage, pinto beans, potato salad, onions, pickles, garlic toast, peach cobbler, milk, tea, or coffee
Wed., Nov. 30
Lunch-Meatloaf, creamy potatoes, fresh cabbage, pinto beans, cornbread, dessert
Announcements begin at 11:45 a.m. followed by lunch.

Sonic Drive-In
1402 N. Ave. E
864-8533
Managers: Leon & Carolyn Herring
Steele Machine
Hwy. 280 • 864-2208
Modern Way Food Store
1202 N. Ave. E • 864-3763
Smitty's Auto Parts
107 N. 1st East • 864-2607

HANSON PAINT & BODY SHOP
207 S. 1st • 864-3631
Professional Auto Body Repair
Glass Installation • 24 Hour Wrecker Service
Rule Co-op Gin & Elevator
301 Adams • Rule • 997-2421
Rice Springs Care Home, Inc.
1302 N. 1st • 864-2652
Medicare • Medicaid • Therapy
Committed To Excellence In Service

Attend Church This Sunday
The Haskell Free Press
"The People's Choice"
420 N. First Haskell, Texas
940-864-2686
Serving Haskell County Since 1886

C&S Flooring and Lumber Yard
105 N. 1st • Haskell
940-864-3753 or 940-256-1902
Conrad and Sylvia Saucedo, Owners
Swine Show Feed 272 and 11148 in stock.
Now Taking Orders for:
Show Calf Feeds & Show Goat Feeds
37% Protein Cubes
Moorglo Horse Pro-Vita-Min Tub
Proud Paws Dog Food
MoorMan s Shavings
See us for all your flooring needs!
Paint, Roofing, Lumber, Insulation, Hardware, Plumbing
We can help with all your installation needs!





# Shop The Haskell Free Press CLASSIFIEDS



864-2686

ALL DEADLINES MONDAY 5 P.M.

864-2686

### Help Wanted

NOW TAKING applications for all positions at Sonic Drive In, Haskell. Apply in person. 25tc

LICENSED NURSE. Charge nurse position available. Please apply in person at Brazos Valley Care Home, 605 S. Ave. F, Knox City. 43tc

COMMUNITY CARE CENTER of Baylor County is dedicated to provide quality of care for the elderly and disabled. Currently we are accepting applications for D.O.N. Current Texas R.N. license required. Long term care experience a plus. We provide a competitive salary and benefit package. We are an equal employment opportunity employer. Qualified personnel may apply in person at the business office, 8 a.m.-5 p.m., M-F, or fax your application to 940-889-8806. Community Care Center of Baylor County, 1110 Westview Drive, Seymour, Texas 76380. Phone 940-889-3176. 46-47c

LVNs. Community Care Center of Baylor County, 90-bed long term care facility located in Seymour is looking for LVNs. Current Texas LVN license required. Prior long term care experience is a plus. We offer a competitive salary and benefits. \$15 hourly. We are an Equal Opportunity Employer. Qualified personnel may forward resume to 940-889-8806. 46-47c

RICE SPRINGS Care Home is making a difference. We are taking applications for CNAs. Contact Shandra at 864-2652. 47c

LVN or nurses aide. Full time. Hospital Clinic, 1400 S. 1st, Haskell, Texas 79521. 940-864-8513. 46tc

THE CITY OF STAMFORD will receive applications for Water/Wastewater Utility Maintenance Worker. Job Description: Repair and maintain the city's water and wastewater systems in compliance with the Texas Commission on Environmental Quality rules and regulations. Duties include installing, maintaining, and repairing water mains, services, pumps, valves, manholes, lift stations, meter reading, and related infrastructure. Operate heavy equipment for routine and emergency operations and repairs. Must be available to work overtime and be on call duty as assigned by supervisor. Work outdoors. Requirements: Ability to operate heavy machinery; understand written and verbal instructions. High school graduate, or equivalent. TX DL, must be able to obtain a D Water or D Wastewater Certification from TCEQ. The City of Stamford offers a full benefits package including paid health insurance from Blue Cross Blue Shield of Texas, retirement benefits, paid holidays along with paid vacation and sick leave. Applications can be received by contacting the City Secretary, Jaime McCright at 325-773-2591 or 201 E. McHarg, Stamford, Texas. The City of Stamford is an equal opportunity employer. 46-47c

**ZERO DOWN**  
Land-Home with low interest rate.  
**NO CREDIT NECESSARY**  
325-673-8488

**WILD HORSE TRADING POST**  
Haskell's General Store and **RadioShack**.  
We have **RadioShack**.  
*Tis the Season!*  
Hot Friday starts 7 a.m. Nov. 25! Come early for special prices!  
*Don't forget-We also have guns and ammo, gifts, musical instruments and ladies clothing!*  
419 S. 1st, Haskell • 864-2200  
Hours: M-F 9-6; Sat. 9-3

### For Sale

FOR SALE: 1982 Honda CB900F Super Sport. Runs great. \$1500 obo. 325-437-1665. 45tc

FOR SALE: Like new. Motorized wheelchair. 940-673-8323 or 864-3344, leave message. 46-47c

FOR SALE: AKC Pembroke Welsh Corgi puppies. Both parents on site. Ready just in time for Christmas. Available after Dec. 16. Call 864-3764 or 325-668-7457 for more info. 46-47c

### For Rent

FOR RENT: Furnished rooms for rent. Nightly, weekly. Call Lone Star Lodging 864-2238. 21tc

HOUSE FOR RENT: 3/2, C/HA, workshop, carport. \$450 per month. 1405 N. Ave. H. 254-559-7117. 43tc

### Real Estate

FOR SALE: Brick, 3 bedroom, 1 bath. CH/A. Cellar, water well. Large lot. 940-864-2264. 37tc

FOR SALE: Recently remodeled, brick 3 bedroom, 2 bath, large living room with cathedral ceiling and fireplace. New CH/A. Attached garage with opener. Great location on large lot with water well, sprinkler system, beautiful yard and large pecan trees. 1203 N. Ave. L. Can see by appointment only. Contact Jolanda at 864-8531, day or 996-2016, night. 42tc

FOR SALE OR LEASE: 3 bedroom, 1 bath. 1208 N. 11th. Owner/broker. 864-2238. 45tc

### Public Notices

**NOTICE**  
Application has been made for a Private Club Registration Permit for The Belfry Private Club, Inc. located at 369 County Road 251, Outside the City Limits of Weinert, Haskell County, Texas.

Said application made to the Texas Alcoholic Beverage Commission in accordance with the provision of the Texas Alcoholic Beverage Code.

A Texas Non-Profit Corporation: David Charles Earle, Director/President; Sandra Mathison Earle, Director/Secretary; Daniel Martin Earle, Director. 46-47c

You may be getting old if people keep telling you how well you look. Save on Ashley furniture during our factory cooperation sale. Kinney Furniture in Stamford. 325-773-2232. 47c

**CUTE LITTLE HOUSE**  
Very affordable. Call 325-673-7353

### Miscellaneous

HOUSE LEVELLING and foundation repair. No payments until work is satisfactorily completed. David Lee & Co. 325-675-6369. 1-888-486-8588. 6tc

WILD HORSE Trading Post is your RADA Cutlery dealer. We're a cut above the rest! Come see our selection! 41-51c

**EXPERT AUTO WORK**  
REASONABLE RATES

See us for all your auto mechanic needs. 20 years experience. We do it right the first time. 305 South Ave. E • Haskell

**RULE 2 BR RENT TO OWN**  
Corner lot with trees. Needs TLC.  
Call Jim at 325-518-8128

**DANCE at Rhineland K-MAC**  
9 to 1 Sat., Nov. 26 \$5.00

**For Your Sheet Metal Work**  
Water Storage Tanks  
All Kinds of Metal Duct Work  
See or call:  
**Guinn Sheet Metal & Plumbing**  
940-658-3341 L.C. Guinn Knox City, TX

**LANGFORD ROUSTABOUT SERVICE**  
SCOTT LANGFORD

Roustabouts  
Backhoes  
Winch Trucks  
Dump Trucks  
Welders

Mobile: 940-256-0535  
Office: 940-864-3490  
Home: 940-864-2565

8348 N. Hwy. 277  
Haskell, Texas 79521

Specializing In:  
Oilfield Repair,  
Maintenance & Construction

**I BUY HOUSES**  
Quick cash and closing on homes \$25,000 or less.  
Call Jim at 325-518-8128

**Nanny Plumbing, Inc.**  
301 S. Ave. E • Haskell  
940-864-3043  
Sales and Service for Residential Plumbing and Heating/Cooling, Pump Installer and Sprinkler Systems.  
License numbers available upon request.

**Dodson Concrete Construction**  
Commercial - Residential  
David Dodson  
704 N. Ave. F • Haskell  
940-864-2038  
Over 20 Years in the Business  
FREE ESTIMATES

**RIKE REAL ESTATE**

Mary Rike, Broker John Rike, Agent  
411 1/2 S. First Street  
Haskell, Texas 79521  
940 864 2411 940 864 2332  
mrrike@dtmspeed.net  
www.rikerealestate.com

**ROCHESTER-CR 151.** 3-3-2 brick home with C/HA, living, dining, den, large kitchen, utility with mud room. Property located on 9.5 fenced acres with barn, shed and pens. Located on CR 151 just off Hwy. 6 north.

**605 N. AVE. E.** One of a kind custom built home. Amenities include brick entry, kitchen workplace cook's dream, many unique built-ins, C/HA, vaulted ceiling with exposed beams.

**1801 N. AVE. G.** Very large home, immaculate condition, C/HA, large master suite, well and sprinkler, lifetime roof.

Come by Rike Real Estate for a complete list.

**Haskell County REALTY**

1401 N. AVE. I: 3 or 4 bedroom, 2 bath brick home. Large open living area. Fenced yard with pecan trees. Priced to sell.  
ROCHESTER: 4 bedroom, 2 bath lovely brick home. Sets on four lots. Large living area. Beautiful hardwood floors throughout house.  
103 N. AVE. M: Clean, newly remodeled 4 bedroom, 2 bath. One car garage, fenced yard, cellar.  
1602 DERRICK DR. Beautiful brick home. 3 bedroom, 2 bath. Newly updated interior. 2 car garage. Privacy fence. Great price.

13 AVE. K EAST: Immaculate home. 3 bedrooms, 3 baths. Large living area. 75 ACRES approximately 7 miles from Haskell off of FM 618 South in southeast Haskell County. 25 acres cultivated. 50 acres pastureland. One tank. City water availability.

103 N. Ave. E  
940-864-2665  
1-800-658-6342  
or call  
Bridget or Chan Guess 864-6142  
Hess Hartsfield, Broker 864-2004

**"IN CASE I DON'T WIN THE LOTTERY, HOW CAN I SUPPLEMENT MY SOCIAL SECURITY?"**

A LOT OF PEOPLE ARE CONCERNED ABOUT HOW THEY'RE GOING TO PAY FOR WHAT SOCIAL SECURITY DOESN'T. CALL ME. I CAN HELP YOU FIND THE RIGHT PRODUCTS TO MEET YOUR NEEDS.

Chan Guess  
Haskell  
940-864-2665

P.S. Appointments to fit your schedule

You're in good hands.

Allstate Life Insurance Company, Home Office, Northbrook, IL. Securities offered by Personal Financial Representatives through Allstate Financial Services, LLC. Registered Broker-Dealer. Member NASD, SIPC. Main Office: 2920 South 84th Street, Lincoln, NE 68506. 877-525-5727. © 2004 Allstate Insurance Company.

Like what you're reading?

We'll send it to you each week for just \$20 a year. (in Haskell County)

Name \_\_\_\_\_  
Address \_\_\_\_\_  
City \_\_\_\_\_ State \_\_\_\_\_ Zip \_\_\_\_\_

Yearly Subscription Rates  
\$20 a year in county  
\$28 out-of-county

Clip and Mail Coupon, Along with Check or Money Order to:  
**The Haskell Free Press**  
P. O. Box 555, 420 N. First, Haskell, TX 79521

**Haskell Volunteer Fire Dept.**  
is accepting donations to build  
**Fire Station #2 at 300 S. 1st**

to house donated Texas Forest Service firefighting equipment and provide a larger training facility. If you would like information on making a donation or how you can help contact Fire Chief Bill Steele 940-864-2208; Sam Watson 940-864-2355; Randy Shaw 940-864-2023; Jerry Stocks 940-864-3455 or ask any Haskell fireman for details.

Donations may be mailed to:  
**Haskell Volunteer Fire Dept.**  
301 N. First St., Haskell, TX 79521

# Cub Scouts cook cakes for funds

Twenty-five Haskell Cub Scouts baked a cake and met on Nov. 15 for their annual cake bake competition and fund-raiser with their families and friends in attendance.

Winners and their divisions were:

**Tiger Cubs:** Dylan Brunson, Most School Spirit; Lane Burson, College Spirited; Sam Fouts, Most Dimensional; Chase Gibson, Most Animated; Hayden Hudson, Most Artistic; Jonathan Primm, Wildest; Alec Roewe, Most Thankful; and Braeden Smith, Most Athletic and Best Tasting.

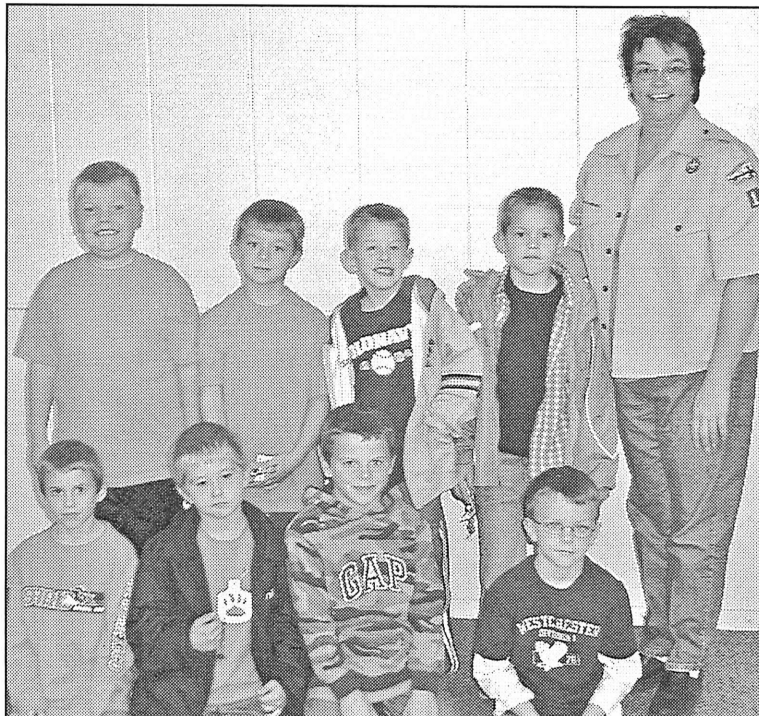
**Wolf:** Seth McCormick, Best Seasonal and Best Tasting.

**Bear:** Harrison Jarred, Most Spacy; Cedar McIlwain, Most Spongy; Riley Meinzer, Creamiest; and Ryan Pace, Most Texas Freedom and Best Tasting.

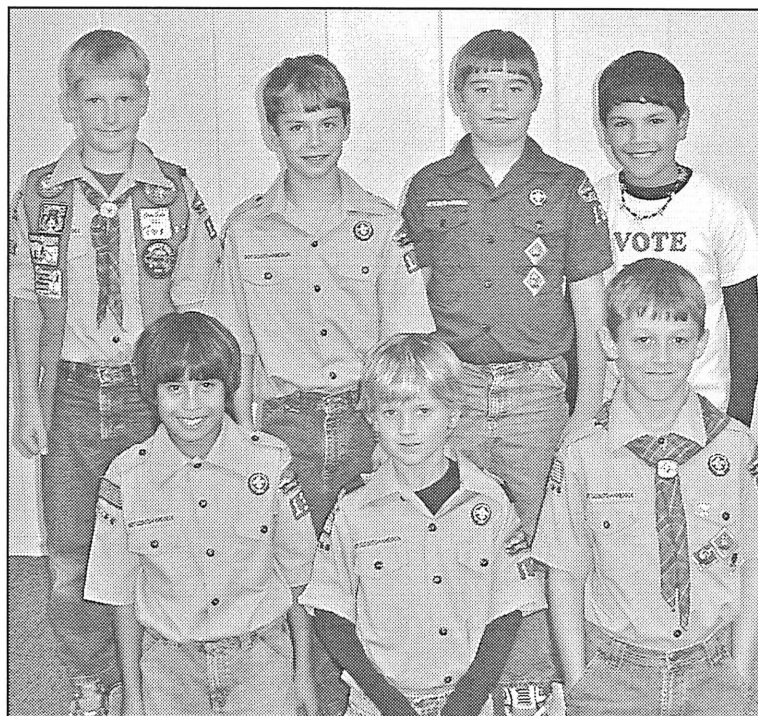
**Webelos I:** Braeden Alves, Most Rockish; Colton English, Webelo Spirit; Jarred Escobedo, Most Coca Colaist; Gus Estrada, Most Scout Spirit and Best Tasting; Seth Rock, Roundest; Micah Thomas, Most Creative; Aaron Waggoner, Scariest; and Max Weise, Sportiest.

**Webelos II:** Levi Grand, Giggiest and Best Tasting; Hunter Jordan, Scariest; Preston Morrow, Most Patriotic; and Trevor Reese, Fruitiest.

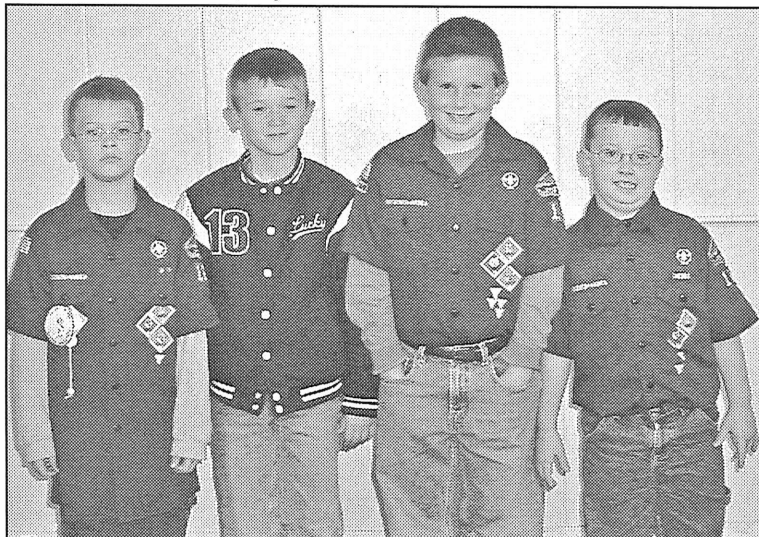
Judges were Haskell Boy Scouts, Tucker McCormick, Taylor Reese and Luke Terry assisted by Scout leaders, Craig McCormick and Leland Terry.



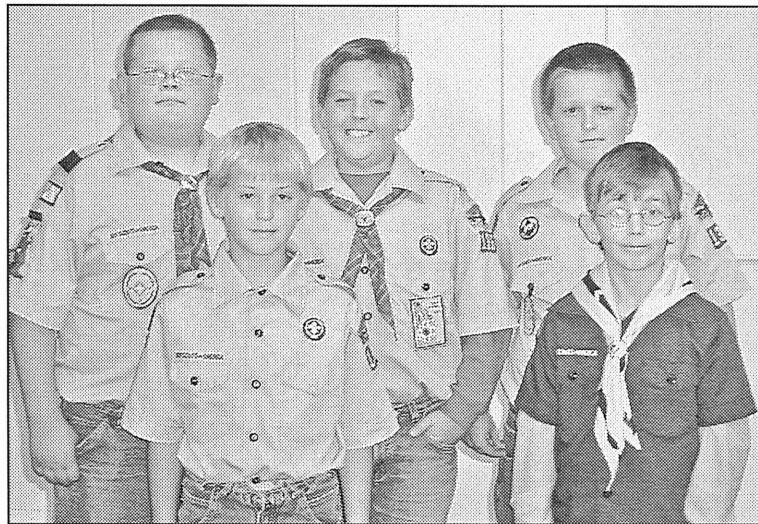
**TIGER CUBS**—Members of Haskell Cub Scout Pack 136 Tiger Den participating in the annual Cake Bake were front, l-r, Sam Fouts, Jonathan Primm, Alec Roewe and Lane Burson; back, Chase Gibson, Dylan Brunson, Braeden Smith, Hayden Hudson and their leader, Kay Smith.



**WEBELOS I SCOUTS**—Webelos I Scouts helping to raise money for the pack during last week's Cake Bake were front, l-r, Gus Estrada, Micah Thomas, Seth Rock; back, Max Weise, Colton English, Braeden Alves and Jarred Escobedo. Not pictured are Ben Groves and Zachary Tatum. Kay Smith is their den leader.



**BEAR SCOUTS**—Practicing their fine cooking and decorating skills to help Cub Scout Pack 136 raise some funds last week were Bear Scouts, l-r, Ryan Pace, Cedar McIlwain, Riley Meinzer and Harrison Jarred. Not pictured are Reed Lee and Jonah Caddell. Sherri Morro is their den leader.

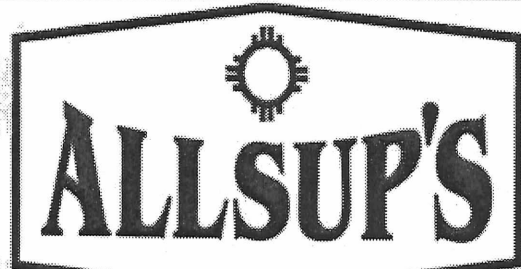


**WEBELOS II AND WOLF**—Webelos II scouts trying their hand at cake baking and decorating to help raise funds for Cub Scout Pack 136 were l-r, Preston Morrow, Trevor Reese, Hunter Jordan and Levi Grand. Allen Morrow is their den leader. They are joined by Wolf Scout Tucker McCormick who also tried his culinary skills. Craig McCormick is the den leader for the Wolf group.

## Area Basketball scores

### Girls

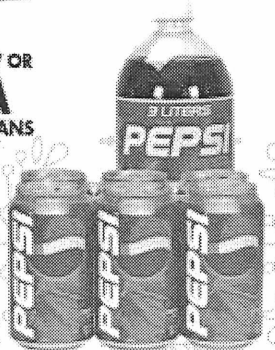
Haskell 32, Throckmorton 22  
Scoring for Haskell: McKnight 15, Pannell 7, Peiser 4, Tribbey 3, Newton 2, Chavez 1.  
JV score: Haskell 54, Throckmorton 22.



November 20, 2005 thru December 3, 2005

DIET PEPSI, MOUNTAIN DEW OR PEPSI COLA  
3 LITER BTL. OR 6 PACK CANS

**\$1.79**



**CHICKEN TENDER ORDER & 32 OZ. TALLSUP**

**\$1.99**



HOMOGENIZED, 2% OR 1% GALLON

**ALLSUP'S MILK**

**\$1.99**



10 LB. AVERAGE

**SHURFINE TURKEY**

**\$6.99 EACH**



**HASKELL #153**  
1000 N. AVE. E  
RULE #91  
501 UNION AVE.

LANA'S EGG ROLLS  
**4 FOR \$3.99**

\$1.29 EACH OR

ASSORTED FLAVORS  
**BROWNIE BAKER MUFFIN**

\$1.19 EACH OR

**2 FOR \$2**

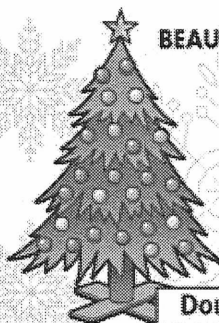
BLUEBERRY, BANANA, ALMOND, DBL. CHOC. CHIP, STRAWBERRY CREAM CHEESE, CREAM CHEESE

### ALLSUP'S COMBO MEALS

COMBO NO. 1	BACON/EGG BISCUIT & 16 OZ. COFFEE	\$1.99
COMBO NO. 2	SAUSAGE/EGG BISCUIT & 16 OZ. COFFEE	\$1.99
COMBO NO. 3	BBQ SANDWICH & 32 OZ. TALLSUP	\$1.99
COMBO NO. 4	HOMESTYLE POPCORN CHICKEN & 32 OZ. TALLSUP	\$2.69
COMBO NO. 5	SPICY POPCORN CHICKEN & 32 OZ. TALLSUP	\$2.69
COMBO NO. 6	3 TAMALES, HOWLERS & 32 OZ. TALLSUP	\$2.59
COMBO NO. 7	2 HOT LINKS WITH BREAD & 32 OZ. TALLSUP	\$2.49
COMBO NO. 8	2 CORN DOGS & 32 OZ. TALLSUP	\$2.59
COMBO NO. 9	CHIMICHANGA & 32 OZ. TALLSUP	\$2.39
COMBO NO. 10	2 BEEF & BEAN BURRITOS & 32 OZ. TALLSUP	\$2.59

BEAUTIFUL, FRESH CUT 6 TO 7 FOOT  
**CHRISTMAS TREES**

**\$20.99**



Douglas Fir

BUY A 20 OZ. COFFEE OR CAPPUCCINO GET A GAMESA COOKIE

**FREE**

Gamesa Cookies

ALLSUP'S ICE CREAM 1/2 GAL. / \$3.89 EACH OR	<b>2 FOR \$6.00</b>
ALLSUP'S SANDWICH BREAD 24 OZ. / 79¢ EACH OR	<b>2 FOR \$1.09</b>
ALLSUP'S WHEAT BREAD 24 OZ. / 89¢ EACH OR	<b>2 FOR \$1.29</b>
SANTA FE FLOUR TORTILLAS 12 CT.	\$1.19
BROWN 'N SERVE ROLLS 12 CT.	\$1.09
GATORADE OR PROPEL WATER ALL FLAVORS 24 OZ. / \$1.49 EACH OR	<b>2 FOR \$2.00</b>
GATORADE ALL FLAVORS 32 OZ. / \$1.95 EACH	<b>BUY TWO GET ONE FREE</b>
SWEET THANG MEXICAN PASTRIES 59¢ EACH OR	<b>2 FOR \$1.00</b>
PLAIN FLAVORED MILK STRAWBERRY, CHOC. OR HOMOGENIZED 12 OZ.	99¢
BAR-S BACON 12 OZ. / REG. \$2.49	\$1.99
MARDI GRAS NAPKINS 120 CT.	\$1.19
SO-DRI PAPER TOWEL 1 ROLL PKG. / REG. 75¢	59¢
SOFT'N GENTLE 4 ROLL PKG. / REG. \$1.19	99¢
FUJI CAMERA 27 EXP. / REG. \$7.79	\$4.99