



Optimities

Football games

HASKELL
7th Indians vs Roscoe
Thurs., Nov. 4, 4 p.m.
at Roscoe
8th, JV Indians vs Knox City
Thurs., Nov. 4, 5 p.m.
at Knox City
Indians vs Knox City
Fri., Nov. 5, 7:30 p.m.
at Haskell

PAINT CREEK
JH Pirates vs Spur
Thurs., Nov. 4, 5:30 p.m.
at Paint Creek
Pirates vs Spur
Fri., Nov. 5, 7:30 p.m.
at Spur

RULE
JH-JV Bobcats vs Jayton
Thurs., Nov. 4, 5:30 p.m.
at Jayton
Bobcats vs Jayton
Fri., Nov. 5, 7:30 p.m.
at Rule (Homecoming)

Basketball games

HASKELL
JV-V G vs Clyde
Sat., Nov. 6, 10 a.m.
at Clyde (Scrimmage)

JV-V G vs Throckmorton
Tues., Nov. 9, 6 p.m.
at Throckmorton

Calendar

Office to be closed

The offices of the Haskell Free Press will be closed Thurs., Nov. 4.

Hamburger supper

The Haskell-Mattson-Weinert Homecoming Association will serve hamburgers Fri., Nov. 5 before the Knox City-Haskell game from 5 to 7 p.m. at the Haskell High School cafeteria. Tickets are \$5 and are available at the Haskell CISD Administration Office, Haskell County Insurance Agency and the Carousel. Take-outs will be available.

Homecoming 2005

The next Haskell-Mattson-Weinert Homecoming will be held Oct. 7-8, 2005.

Arts and craft show

Haskell Young Homemakers will hold an arts and crafts show Sat., Nov. 13 at the Haskell Civic Center from 10 a.m. til 5 p.m. Admission is \$2 for adults and \$1 for children ages 5-12.

Concert

Southern Grace will be in concert at the First Baptist Church in Haskell Sat., Nov. 6 beginning at 6 p.m. A love offering will be taken. For more information call the church at 864-2581.

Lodge meeting

The Sons of Hermann Lodge meeting will be held Sun., Nov. 7 at 3 p.m. at the Pit & Grill in Haskell.

Art Association

The Brazos West Art Association will meet Mon., Nov. 8 at 7 p.m. at the Haskell National Bank Community Room. Catherine Sandell, Abilene artist, will demonstrate art techniques using colored pencils.

Revival

Trinity Baptist Church of Haskell will hold an old-fashioned revival Nov. 7-10 led by Jerry Lewis, evangelist. Morning services will begin at 11 a.m. Evening services will begin at 6:30 p.m. For more information call 864-8165.

Veterans breakfast

A Veterans Day breakfast will be served Thurs., Nov. 11 from 8:30 to 11 a.m. at the Haskell Elementary School for Haskell County veterans. A flag raising ceremony will be held in front of the school followed by the breakfast hosted by the sixth grade class.

Index

Menus Page 2
Obituaries Page 2
Around Town Page 3
Out of the Past Page 4
Classifieds Pages 8-9

Go Indians

The Haskell Free Press

VOL. 118--NO. 45, ©NOVEMBER 4, 2004

"The People's Choice"

10 PAGES--ONE SECTION--50 CENTS

Indians take control of district race

The Haskell Indians took control of the District 9-A race Friday by defeating the Albany Lions 21 to 14 before a large Parent Night crowd in Albany.

The Indians got a big break when linebackers, Brandon McClatchey

and Cameron Short burst through the Albany protection and blocked the Lions' first punt, to give Haskell the ball on the 24 yard line.

Four plays later, McClatchey passed for 17 yards to Nate Webb, to give the Indians first blood. It was

Haskell 7, Albany 0 at the 4:31 mark of the first quarter.

Haskell would put together a 14-play, 71-yard drive to again reach the end zone as the second quarter began. Josh Barbee would carry the pigskin over on a 2-yard run. Webb added

another PAT kick: 14 to 0 in Haskell's favor.

An explosive team, the Lions would put together a 60-yard drive using 9 plays. Alex Rodriguez, Albany's tailback, would carry the ball 8 times during this drive, and

would get the last 18 yards for the score. A good PAT would make the score 14 to 7 Haskell.

Both teams were undefeated in District competition coming into this game, and the score at the half reflected how evenly the teams were matched.

During the third quarter, both teams traded possessions via the pass interception route. Julio Solano of the Indians picked off a Spencer Balliew pass, and Donovan Clevenger picked off a McClatchey pass. At the end of the third quarter, Haskell lost a fumble on their own 39 yard line; however, the Indian defense rose to the occasion and stopped the Lions at the Indian 31 yard line, as the quarter ended. Time remaining in this huge district game was 11:54.

For the next ten minutes and 39 seconds, the Indians did what they do best; ball control offense. On the 19th play, Josh Barbee would get the 8-yard TD run. Webb would add the Indians' final point of the game. It was Haskell 21, Albany 7, with 1:15 to go in the game.

Feeling the desperation, Albany came right back, and on 3 straight passes, crossed the goal line and kicked the extra point.

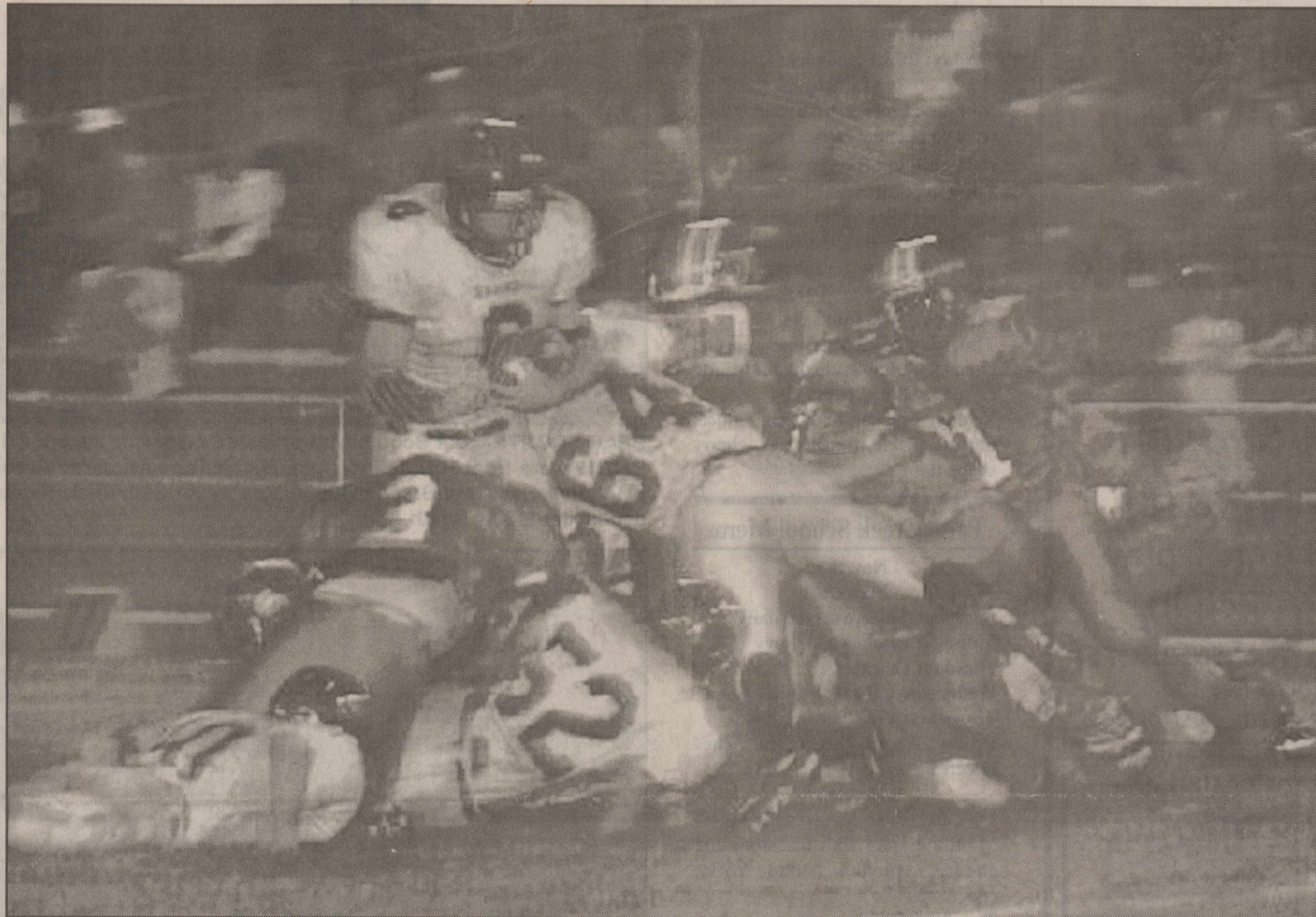
On the ensuing on-side kick, McClatchey came up with the football for the Indians. There is nothing sweeter than to kneel the ball down three straight times for the win: Haskell 21, Albany 14.

Undefeated in District 9-A play, the Indians close out their regular season play at home against the Knox City Greyhounds.

Haskell had 186 yards rushing on 51 rushes. McClatchey had 24 rushes for 85 yards, Barbee got 79 yards on 20 carries and 2 TDs. Cameron Short had 7 carries for 22 yards. Nate Webb would have 2 pass catches for 33 yards and one TD. QB McClatchey had 2 completions on 3 attempts and one interception.

The JV Indians defeated the JV Lions 21 to 0. The Jr. High Warriors lost 6 to 36 to the Albany 8th grade team. The JV will play Rotan in Hamlin Thursday evening. Game time TBA. The Warriors will play Knox City in O'Brien. Game time is 5:00 p.m., Thursday.

The Varsity Indians, 8 and 1 on the season and 4-0 in district play, will host Knox City at Indian Field Friday night. Kickoff is at 7:30 p.m.



WINNING TEAMWORK—With help from his blockers, Haskell Indian #6 Cameron Short, carries the ball through a crowd of

Albany Lions in the game which the Indians won 21 to 14 to take control of the District 9-A race. Photo by Bill Blankenship

Rule homecoming set this weekend

The Rule Homecoming committee and community are announcing plans for the 2004 Rule Homecoming to begin Thurs., Nov. 4 with a bonfire after the Junior High football game. Those attending should meet at north of the post office for a snake dance to the school.

Fri., Nov. 5, a pep rally will be held in the gymnasium at 2:45 p.m. The Rule-Jayton homecoming football game festivities will begin at 7 p.m. with the introduction of the Bobcats and their parents. The football game will kickoff at 7:30 p.m. with the Homecoming Queen crowned at half-time.

Saturday's activities will begin with a road race at 8 a.m. Registration for homecoming will begin at 9:30 at the school. Visiting, coffee and doughnuts will be available. Registration fee is \$1. A bar-b-que plate lunch will be served beginning at 11:30 in the school cafeteria. Tickets are \$7.50.

The general assembly will begin at 1:30 in the auditorium. The program will include the recognition of ex-students, faculty, cheerleaders, the Homecoming Queen and her court. Entertainment will be provided by the theatre arts classes.

Class meetings will be announced at the assembly.

A homecoming dance will be held at the Haskell Civic Center beginning at 8 p.m.

For additional information, contact the school.

The Homecoming 5K Road Race will be held Sat., Nov. 6 at 8 a.m. Registration will be held from 7 to 7:45 a.m. at the Rule High School gym.

Runners and walkers are

welcome. Entry fee is \$15 with t-shirt to the first 35 entries. Awards will be given to the top three finishers in each age division.

Age divisions will include four divisions for men, four divisions for women and other divisions determined by the number of entries.

The race will begin and end at the Rule High School Gym.

For more information, call Jill LeFevre Brown at 940-997-2304 home, 997-2246 school or by email her at jebrown@rule.esc14.net.

Christmas for Kids fund-raiser planned by Welfare Board

The Haskell County Child Welfare Board is holding a fund-raiser through Haskell County churches for the "Christmas for Kids" project held each year to provide clothing and toys at Christmas for needy children in Haskell County.

On the designated Sundays of Nov. 7 and Nov. 14, members of Haskell County churches will have an opportunity to donate the amount they wish to the fund-raiser. The goal of the board is that each person will donate at least one dollar on these dates. Last year 50 families and 130 children were provided

Christmas through this project.

Any church that has not been contacted and is interested in taking part, is asked to contact Betsy McManamon at 940-864-2194.

Anyone not affiliated with a local church is welcome to send donations to Department of Family Protective Services (CPS office) at 500 South 10th Street, Haskell, 79521.

"Your donation could make a big difference in a child's Christmas," said McManamon. "The Board greatly appreciates the continued support of the people of Haskell County."



TAKING CHARGE—Haskell's #1 Brandon McClatchey, totaled 24 rushes for 85 yards in the Indians' winning 21 to 14 District 9-A game with the Albany Lions, Fri., Oct. 29. Photo by Bill Blankenship

FOR NEWS ITEMS OR TO SUBSCRIBE, CALL 864-2686

Obituaries

Raymond Luther Underwood

Funeral services for Raymond Luther Underwood, 59, of Haskell, and formerly of Lueders, were held Sat., Oct. 30 at Tankersley Funeral Home Chapel with Rev. Harold Barnes and Rev. Jessie Morton officiating. Burial was in the Clear Fork Cemetery in Lueders under the direction of Tankersley Funeral home of Stamford.

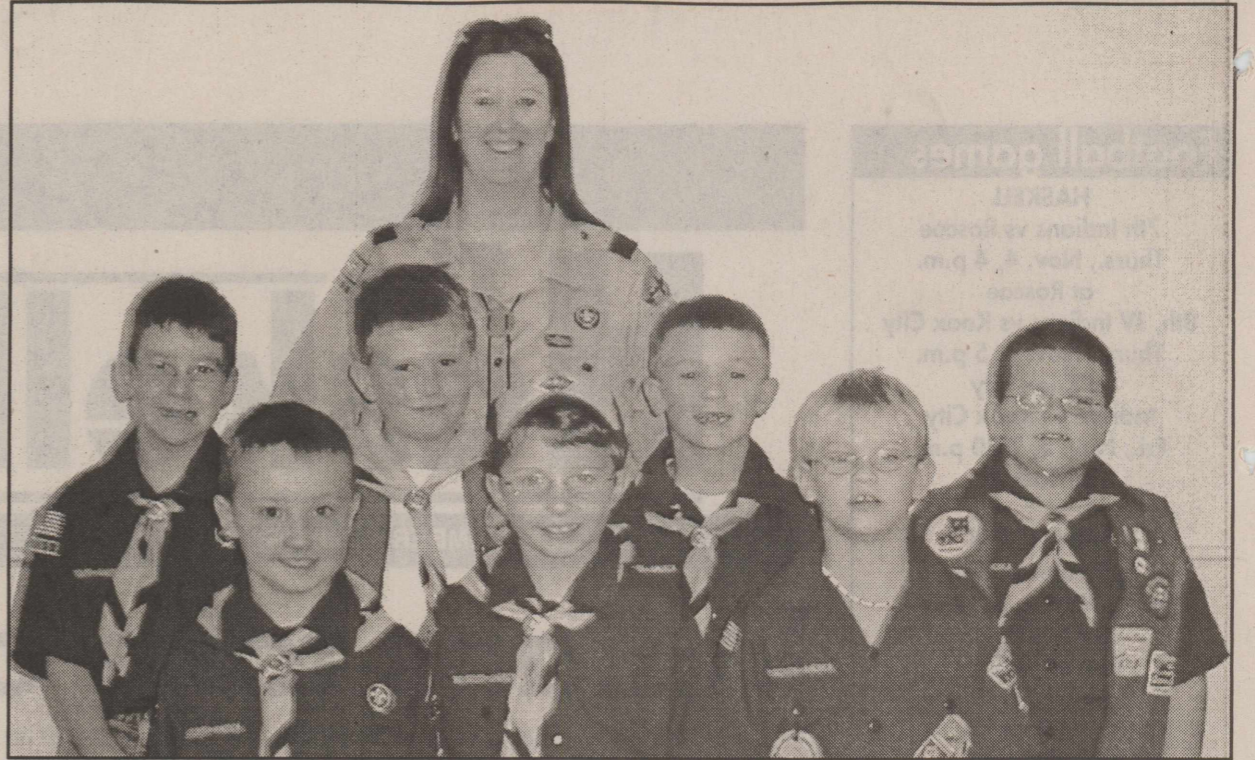
Mr. Underwood died Wed., Oct. 27.
Born Sept. 9, 1945 in Lueders, he was the son of Dallas Gilford and Mattie Ruth Underwood. He was a lifetime resident of the area and a member of Lueders Baptist Church. He was a carpenter and an avid hunter and fisherman.

He was preceded in death by his father, Dallas Gilford

Underwood; his grandparents, Sam and Ellen Underwood and Walter and Bessie Lemons.

Survivors include his mother, Mattie Ruth Lemons Underwood of Haskell; two daughters, Starla Ann and husband, Charlie Mashburn of Abilene and Karen Rance of Dallas; one son, Raymond Luther Underwood Jr. and wife, Tanya of Abilene; three sisters, Bobbie and Melvin Shott of Houston, Laverne and Kenneth Chisum of Lovington, N.M. and his twin sister, Reba Faye Cheyne of Haskell; one brother and sister-in-law, Dallas Clifford and Linda Underwood of Stamford; five grandchildren; two great grandchildren; and numerous nieces and nephews.

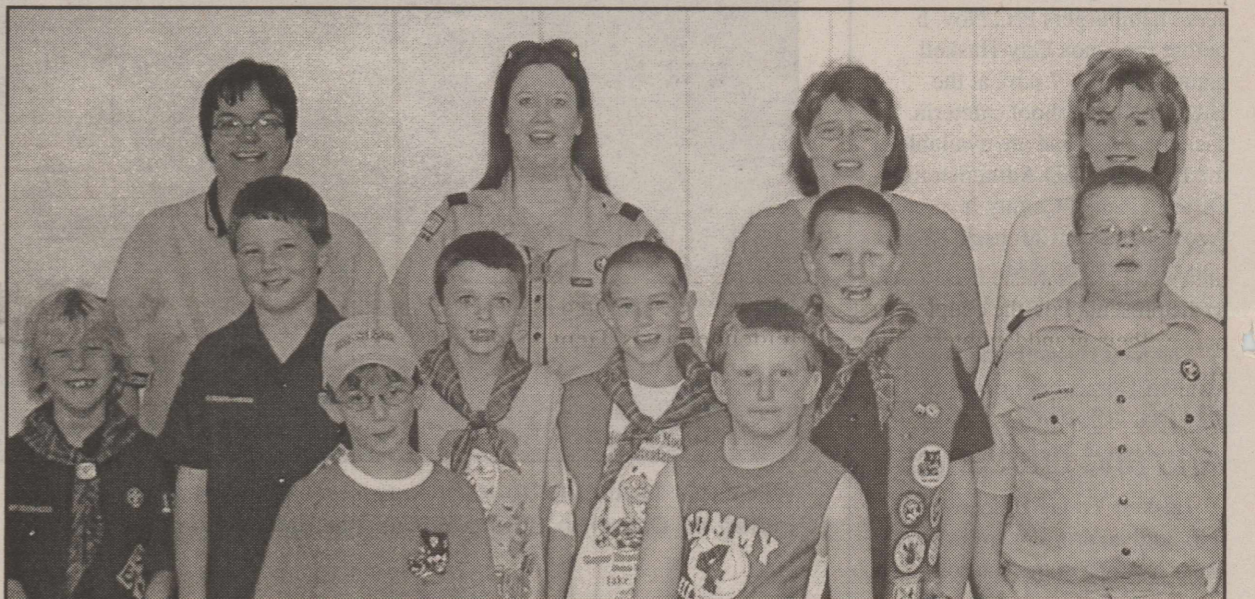
PD. NOTICE



WOLF SCOUTS—Baking cakes for entry into the annual Cub Scout Cake Bake held recently were Wolf Scouts front row, left to right, Harrison Jarred, Taylor Buchannon and Ryan Pace. Back row, Reed Lee, Riley Meinzer, Cedar McIlwain and Rhett Lampe. Their den leader is Sherri Morrow.



BEAR SCOUTS—Bear Scouts who prepared cakes for the annual Cub Scout Cake Bake held Tues., Oct. 19 were front row, left to right, Micah Thomas, Jared Escobedo, Kyle Kimbrough and Aaron Waggoner. Back row, Braeden Alves, Max Weise, Seth Rock, Blade Siegfried and Andrew Hearn. Their den leader is Kay Smith.



SCOUT CHEFS—Scouts baking cakes for the Cub Scout Cake Bake held Tues., Oct. 19 included Tiger Cub Scouts, front row, left to right, Seth McCormick and Pryce Stewart. Webelos I Scouts who baked cakes were second row, David Newton, Brett Shelton, Phillip Coleman, River McTasney, Levi Grand and Preston Morrow. Tiger leaders are back row, Kay Smith and Sherri Morrow; Webelos I leaders are Rae Webb and Janet McCormick.

Haskell School Menu

Nov. 8-12

Breakfast

Juice and milk are served daily on the breakfast menu.

Monday: Breakfast bagels

Tuesday: Pigs in a blanket

Wednesday: Cereal, graham crackers

Thursday: Breakfast taco

Friday: PB&J sandwich

Lunch

Monday: Chicken fried steak/gravy, mashed potatoes, mixed vegetables, roll or biscuit, sliced peaches

Tuesday: Soft tacos, cheese, lettuce, tomatoes, salsa, pinto beans, pears

Wednesday: Roasted turkey/giblet gravy, dressing, cranberry sauce, green beans, breadstick, candied sweet potatoes, fruit salad

Thursday: Corn dogs, macaroni and cheese, ranch style beans, baby carrots, pudding cups

Friday: Chicken on a bun, lettuce, tomato, pickle, french fries, cherry shape-ups

Paint Creek School Menu

Nov. 8-12

Breakfast

Juice and milk are served daily.

Monday: Biscuits and gravy

Tuesday: Pancakes

Wednesday: Toast or cereal

Thursday: Breakfast burritos

Friday: Toasted cheese sandwiches or cereal

Lunch

Milk and tea are served daily.

Monday: Ham with macaroni and cheese, spinach, salad, rolls, chocolate cake

Tuesday: Chicken strips, mashed potatoes, gravy, green beans, bread, jello

Wednesday: Burritos, corn, pinto beans, salad, fruit cups

Thursday: Beef stew, cornbread, peach cobbler

Friday: Hamburgers, lettuce, tomatoes, onions, pickles, cheese, chips, cookies

Rock bottom Prices
on all remaining
2004 TVs
While supply lasts!
Haskell Tire & Appliance

206 S. Ave. E • 864-2900

Basketball Season

is **NEAR!**

You **CAN'T** play Basketball in

UGLY Sneakers!

Sport About has the

#1 team shoes at the best prices!

Men's and Women's Nike Shoxs

Men's and Women's Nike Air Uptempo



Quail and Deer Hunting Headquarters!
We sell hunting licenses.

Where Winners Shop

Sport-About of Haskell



940-864-3891
402 N. 1st

We accept Discover, VISA, AMEX, MasterCard

HASKELL CONSOLIDATED INDEPENDENT SCHOOL DISTRICT

STATEMENT OF REVENUES, EXPENDITURES, AND CHANGES IN FUND BALANCE - GOVERNMENTAL FUNDS FOR THE YEAR ENDED AUGUST 31, 2004

	General Fund	Other Funds	Total Governmental Funds
REVENUES			
Total Local and Intermediate Sources	\$1,547,723	\$87,252	\$1,634,975
State Program Revenues	3,622,683	107,314	3,729,997
Federal Program Revenues	2,836	787,774	790,610
TOTAL REVENUES	\$5,173,242	\$982,340	\$6,155,582
EXPENDITURES			
Instruction	\$2,392,772	\$590,581	\$2,983,353
Instructional Resources and Media Services	77,148	1,014	78,162
Curriculum Development and Instructional Staff Development	29,829	20,012	49,841
School Leadership	270,917	3,327	274,244
Guidance, Counseling and Evaluation Services	102,836	24,225	127,061
Health Services	48,559	506	49,065
Student (Pupil) Transportation	64,460	619	65,079
Food Services	0	352,478	352,478
Cocurricular/Extracurricular Activities	247,645	653	248,298
General Administration	344,523	14,686	359,209
Plant Maintenance and Operations	599,768	4,697	604,465
Security and Monitoring Services	6,271	0	6,271
Data Processing Services	107,778	802	108,580
Community Services	65,053	1,225	66,278
Intergovernmental - Payments to Fiscal Agent/Member Districts of SSA	141,619	0	141,619
TOTAL EXPENDITURES	\$4,499,178	\$1,014,825	\$5,514,003
EXCESS OF REVENUES OVER EXPENDITURES	\$674,064	(\$32,485)	\$641,579
OTHER FINANCING SOURCES (USES)			
Transfers - In	\$ -	\$ 32,485	\$ 32,485
Transfers - Out	(32,485)	0	(32,485)
TOTAL OTHER FINANCING SOURCES (USES)	(\$32,485)	\$32,485	\$0
Fund Balance - September 1 (Beginning)	3,330,997	0	3,330,997
FUND BALANCE - SEPTEMBER 1 (BEGINNING)	\$3,972,576	\$0	\$3,972,576

ECC Calendar and Menu

Mon., Nov. 8

11:00 a.m. Blood pressure check

Lunch—beef spaghetti, peas and carrots, garden salad, sliced onions, garlic bread, banana pudding, milk, tea, or coffee

Wed., Nov. 10

Lunch—Enchiladas, Spanish rice, pinto beans, garden salad, chips and

salsa, Coke cake, milk, tea, or coffee

Fri., Nov. 12

Lunch—German sausage, sauerkraut, potato salad, green beans, garlic bread, brownies and peaches, milk, tea, or coffee

Announcements begin at 11:45 a.m. followed by lunch.

Auto Home Life
INSURANCE

Wouldn't life be easier with **one agent** to handle your insurance needs?

Whether you have a claim, need to change coverage or just have a question, Farm Bureau Insurance is really convenient. You always call the same office and receive prompt, professional service from your own personal agent. Plus, with our competitive rates, you may even save money.

FARM BUREAU
INSURANCE

Auto • Home • Life

Helping You is what we do best.

508 N. 1st

(940) 864-2647

sfbl.com • txfblins.com

Texas Farm Bureau Mutual Insurance Co
Texas Farm Bureau Underwriters
Southern Farm Bureau Casualty Insurance Co
Southern Farm Bureau Life Insurance Co
Farm Bureau County Mutual Insurance Company of Texas

TX2ML0426



MR. AND MRS. JOE CORTEZ

Couple celebrates 50th anniversary

Joe and Sarah Cortez of Haskell celebrated their 50th wedding anniversary Sat., Sept. 25, with 400 family and friends from Colorado, New York, Florida, New Mexico, Arkansas, California, Oklahoma, and Texas from Amarillo to Houston.

Mass was celebrated at St. George's Catholic Church, with the original members of their wedding party participating in the processional. The processional song, "Ave Maria," was dedicated in memory of their parents. The couple exchanged new diamond rings, and their daughter presented the scripture readings. Granddaughters presented the offertory gifts during the ceremony.

A reception dinner and dance was held at the Haskell Civic Center, where family and friends danced until midnight to music from the 40's to the present. For the couple's first dance, their granddaughters chose Alan Jackson's "Remember When."

The head table was decorated with candles, miniature white lights, gold ribbon and swags of ivory tulle over hand-stitched lace table cloth with a gold skirt.

Covered with ivory cloths, seventy tables were decorated with candles,

gold ribbons, fall leaves and gold beads. Ten photos of the couple, made into confetti, were sprinkled on each of the tables for guests to keep as souvenirs. Disposable cameras were given to guests to take photos of the event from their vantage point.

A ten-foot gold banner bearing the couple's names and miniature lights, decorated the walls. Joe's original tie and boutonniere from their wedding, and Sarah's wedding dress, along with the wedding portrait were also on display.

Multiple white cream cakes with delicate pineapple topping and three chocolate heart-shaped cakes decorated with gold beads and ribbon were served. The cake table was set up beneath a white gazebo decorated in ivory tulle and fall flowers.

The couple was married in 1954 at Sacred Heart Catholic Church in Coleman. Joe is retired as owner of Heidenheimer's Dept. Store in Haskell, and Sarah is retired from Haskell Elementary School. They have lived in Haskell for the past thirty years.

The event was hosted by their daughter, Sarah, and granddaughters, Bridgitte and Ginger Cortez, all of Austin.

Rule 4-H to hold Operation Christmas Child project

The Rule 4-H meeting will be held at 5:30 p.m., Mon., Nov. 8 at the school library. Following a business session, Texas Dept. of Public Safety Education Officer, Gary Rozzell, will present a program on traffic safety.

Members of the Rule 4-H will again this year conduct the Operation Christmas Child project, sometimes called Shoeboxes for Christmas. Members may want to stuff their gift boxes and bring them to the meeting.

The boxes will be filled for a boy or girl, in age category 2-4, 5-9 or 10-14. An appropriate Boy/Girl label denoting age group will be attached.

The boxes can be filled with a variety of gifts such as toys, small cars, dolls, stuffed animals, plastic kazoo's, harmonicas, yo-yos, toys that light up or make noise (with extra batteries), Slinkys, etc.

School supplies: pens, pencils and sharpener, crayons or markers, stamps and ink pad sets, coloring books, writing pads or paper, solar calculators, etc.

Hygiene items: toothbrush, toothpaste, soap, comb washcloth, etc. Other items: hard candy, lollipops, mints, gum, sunglasses, flashlights with extra batteries, ball caps, socks, T-shirts, toy jewelry sets, hair clips, watches, small picture book, etc.

Not to be included are: used items, war-related items (toy guns, toy soldiers, knives, etc.), perishable items (chocolate, canned foods, crackers, etc.), liquids (shampoos, lotion, bubbles, etc.), medicines (vitamins, cough drops, ointment,

etc.), breakable items (mirrors, china dolls, etc.).

A note to the child and a photo of the sender or their family may be placed in the box. If the address is enclosed, the recipient may write back.

A form to be completed and placed in the gift box along with \$5.00 or more to help cover shipping may be obtained from Renee Dudensing, Julie Petty or on-line. (Checks, made out to Samaritan's Purse, are recommended rather than cash.) A rubber band should be placed around the shoe box and lid.

You are not required to send the \$5.00 for shipping.

Donations will be accepted through Fri., Nov. 19. The total collection of boxes will be delivered to the drop off point in Abilene, Sun., Nov. 21. From there, the boxes will be shipped to overseas locations and given to underprivileged children for Christmas.

Anyone in the community is welcome to contribute to Operation Christmas Child. For more information, contact Renee Dudensing at 996-2738 or Julie Petty at 997-2802.

Diabetes workshop set Sat., Nov. 13

by Jane Rowan
Haskell Co. Extension Agent
The tenth annual Diabetes Texas Style workshop is set for Sat., Nov. 13 in the Shelton Building, 2000 Pine Street, Hendrick Medical Center in Abilene.

Registration and exhibits open at 8 a.m. and the workshop concludes at 11:45 a.m.

Sessions conducted by health professionals include: "Portion Sizes," "Common Skin Problems," and "Diabetes & Public Health."

Exhibits will include diabetic

supplies, patient educational materials, and pharmaceuticals with company representatives to answer questions.

Breaks will feature diabetic foods and recipes.

The workshop is free to the public, but participants are asked to register by calling Martha Alice Spraberry, Jones County Extension Agent-FCS, at 325-823-2432 by Fri., Nov. 12.

To Subscribe,
Call 940-864-2686

BUSY HANDS & FEET
Melba Lowrance
Licensed Nail Technician
November Special
Gift Certificates
on sale 10% off!
Buy now for Christmas!
701 N. Ave. E • Haskell • 940-864-3536
Artificial Nails • Reflexology • Manicures • Pedicures

Shop Haskell First

Haskell Young Homemakers
Craft Show
Sat., Nov. 13
Haskell Civic Center
10:00 a.m. - 5:00 p.m.
Admission: \$2 Adults
\$1 Children 6-12
Under 5 get in Free

Around Town By Joyce Hawkins

Mr. and Mrs. David Conn and girls along with Joyce Hawkins and Britney Hawkins of Aspermont visited Darlene Conn and family in Graham over the weekend. They helped Dawton Conn celebrate his second birthday with a party in his home on Saturday.

week of Oct. 28

Visiting with Hyrum and Jean

Richards were son, Dan and wife, Mary of Casper, Wyoming and son, John and friend Shannon Johnson and her son Lane of Dallas. They also visited with Lois Redwine and played golf.

Alice Ballard visited with her daughter, Mindy of Abilene, on Monday evening.

The Carousel Inventory Reduction Sale
Dorothy's had a birthday and she's ready to retire!
Entire Store
10%-35% off
Get your Christmas Shopping Started Early!
Bridal Selections for
Christie Cadenhead
Nelli Moeller
The Carousel Gift Shop
415 S. 1st, Haskell
864-2069

NEW
DOUBLE PATTY MELTS
SMOKY CHEDDAR OR PEPPER JACK
SONIC
America's Drive-In.
No Waiting Call In Orders
864-8533
Limited Time Only!
Offer good October 1-31, 2004. Only at participating SONIC Drive-Ins. ©2004 America's Drive-In Corp.

Mark Your Calendar
and plan now to come to our
Customer Appreciation Day
Wed., Nov. 17
8 a.m. to 3 p.m.

HEALTH SCREENINGS
THE DRUG STORE
100 S. Ave. E • Haskell, Texas

PRESENTS
Health Screenings for disease prevention and good health.

- Cholesterol & Glucose Testing
- Bone Mineral Density
- Arterial Elasticity Screening
- Liver Functions
- PSA for Men's Prostate Health
- Body Fat Composition
- NEW-Thyroid Test

November 17, 2004
8:00 a.m. to 3:00 p.m.

All test results are available immediately with the exception of the PSA and Thyroid. All tests will be discounted during the screening hours.
Price ranges are from \$10.00 to \$35.00 with discount.
Call 940-864-2673 for Further Details!

Sponsored by Calvert Home Health Care, Inc.

FREE Bowl of Homemade Chili and a Drink.
FREE Gifts
Register to win Door Prizes.

Meet our new pharmacist
Amy Cunningham Martin

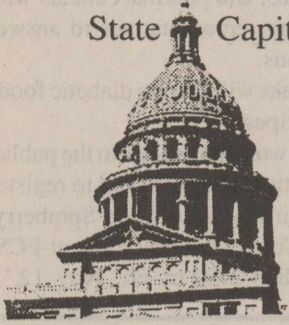
Sale Savings throughout the Store!
Look and listen for more information in next week's ad!

WE CARE ABOUT YOU AND YOUR HEALTH!
www.haskelldrugstore.com
THE DRUG STORE
Haskell 864-2673

OPINION

TEXAS PRESS ASSOCIATION

State Capital



HIGHLIGHTS

By Mike Cox

Legislature eyes accountability in school funding

AUSTIN—Unless it had to do with the election, Austin was pretty quiet last week.

The business of state government went on, of course, but to say that most elected officials had a singular focus would be an understatement.

House Speaker Tom Craddick, addressing the Permian Basin Petroleum Association in Midland, did make it plain that the next session of the Legislature (assuming the governor does not call a special session, which seems unlikely this close to January) would be interested in more than the funding side of public education in Texas.

"I don't believe the only way to fix education is to throw money at it," he told the oil folks. "I believe we need some reforms in the system."

Indeed, one buzz word when it comes to education seems to be "accountability."

Craddick said work on a plan that would include more accountability measures is nearly complete.

The speaker also said that whatever the Legislature does to make public school funding more efficient likely will include reducing property taxes.

Craddick said work on a plan that would include more accountability measures is nearly complete.

That's clearly a touchy issue with teachers. Not long after the letter went out, the Texas Classroom Teachers Association and other groups complained that how class

size waivers are handled should be settled through TEA's regular rulemaking process.

In response to that, Neeley rescinded her letter late last week.

Armed men fan out in Texas...
Saturday is opening day of deer season across most of Texas.

The numbers reported by the Texas Parks and Wildlife Department are impressive: Some 500,000 hunters (and many of those on opening day) will be aiming for a shot at some of Texas' 4 million white-tailed deer.

This annual effort generates an estimated \$2.5 billion for the Texas economy. For some areas, hunting season has become the economy. In Llano County, for example, hunting annually amounts to a \$3.5 million industry.

Businesses and landowners make money whether the hunting is good, average or bad. This year, however, looks like a banner season for hunters.

As TPWD's white-tailed deer program leader Mitch Lockwood said in mid-October, "This is the best year I've seen."

Many ranchers, he said, "are saying range conditions are the best in 20 years."

Main Street cities announced...

La Porte, Livingston, San Angelo and Sinton have been selected by the Texas Historical Commission as 2005 Main Street Cities.

Those four cities join more than 80 other communities designated as Main Street Cities included in THC's historic downtown revitalization program. When a city gains Main Street status, it qualifies for state help in developing strategies to use historic preservation as an economic stimulus.

For more information on the program, check the agency's Web site at www.thc.state.tx.us.

Meat prices could be higher this holiday season

by Jane Rowan

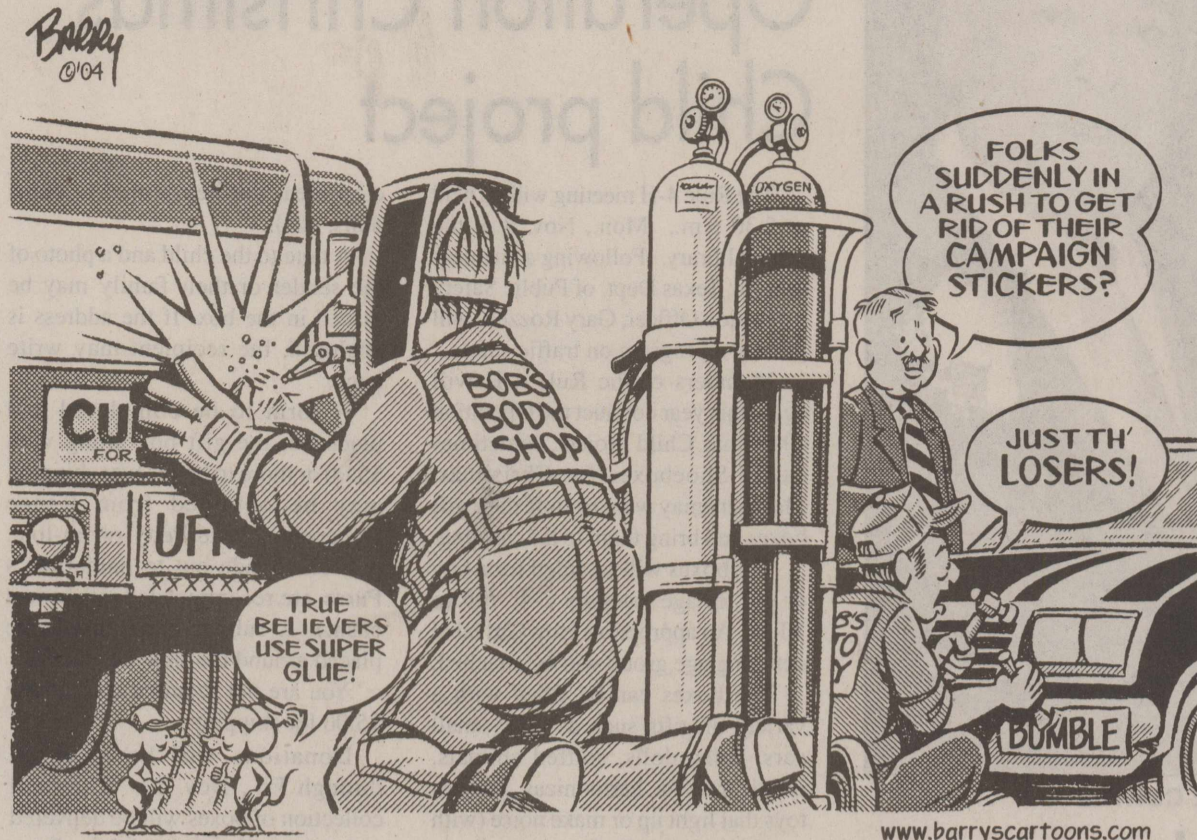
Haskell Co. Extension Agent

Prices of beef, pork and poultry could be moving up. Japan and Korea are considering allowing imports of American beef.

Beef prices are expected to go up because it puts upward pressure on prices, causing competing meats to

get more expensive. Japan and Korea's ban of American beef began with the discovery of mad cow disease in 2003. Japan accounted for about 1.2 billion dollars in beef purchases before the ban.

Prices are expected to increase sometime during the holiday season if talks are successful.



www.barrycartoons.com



From The Inside Out

By Mary Kaigler

Paul Clayton of Haskell has never been a defeatist.

That attribute, along with his strong faith in what God can effect in the lives of men and women, has allowed him to beat the odds of being alive eight months since being given the prognosis on Mar. 5, of having only eight days to live under hospice care.

He went home instead.

"I turned it over to the Lord, asking for the strength to continue living in his hands. The Lord turned this illness around and has allowed me to exceed the eight days," he said, adding that he also received strength and courage from the letters, and signatures of many people in all of the local churches who prayed for him.

Diagnosed as having interstitial pulmonary fibrosis of the lungs, coupled with congestive heart failure, coronary artery disease, hypertension and "a few other things," keeps him inside and has caused him to refocus from an active life to one of confinement.

However, believing that many others, who may be labeled as having asthma, emphysema, COPD or one of the many forms of pneumonia, may be inaccurately diagnosed and may actually have pulmonary fibrosis, Clayton wants to help make them aware that the only sure means to diagnose any of these is through a biopsy.

Through the Pulmonary Fibrosis Foundation, Clayton is working to raise public awareness of the

foundation's ongoing research into finding cures. At this time, there is no effective treatment for pulmonary fibrosis. It is a terminal illness in which the victim succumbs within two to four years after diagnosis. The pharmacological agents designed to treat lung scarring are still in the experimental phase, while the treatments intended to suppress inflammation have only limited success in reducing the fibrotic process.

Each year more than 40,000 Americans die from the condition, in which the air sacs of the lungs are gradually replaced by scar tissue. As it progresses, the increase in scar tissue interferes with the ability of the lungs to transfer oxygen to the blood stream. Breathing becomes increasingly difficult and the patient dies of respiratory failure. The symptoms are shortness of breath upon physical exertion, and later on, difficulty in talking on the phone.

While the exact cause is unknown, associations have been made with inhaled environmental and occupational pollutants; diseases such as Scleroderma, Rheumatoid Arthritis, Lupus and Sarcoidosis; certain medications and therapeutic radiation.

Clayton is impressed that the Foundation is devoted to improving the quality of life for those afflicted with pulmonary fibrosis and providing hope for patients through funding and supporting research, education and advocacy.

Aware that his own life has been

prolonged in spite of the odds, Clayton says it is a proud moment for him that he can positively use the time he's been given to help bring about awareness of the need for further research to find a cure for the disease. His hope is that others will help by providing volunteer services, educating themselves and others about pulmonary fibrosis, advocacy through publicity and lobbying efforts, and providing a tax-deductible gift.

Now living in Haskell, Clayton graduated from Rochester High School in 1955, lived in Knox City 23 years, served in the U. S. Army, and retired in 1998 from Service International Corporation in Houston. He and his wife, Donna, have a daughter living in Munday.

With his strength fading, Clayton says he tells his own story, not as a "Bible thumper's means of gaining sympathy," but as a positive means to enlighten others of the need for funding research in meeting the goal of discovering the genetic components of the disease process, as well as effective treatments and, someday, a cure.

Locally, a Pulmonary Fibrosis Foundation fund-raiser is being planned, spearheaded by Warden Jill Watson, of Rolling Plains Regional Jail and Detention Center.

Further information about the disease and research may be obtained from the Pulmonary Fibrosis Foundation, 1440 West Washington Blvd., Chicago, Illinois 60607.

From Out of the Past

From the files of The Haskell Free Press

10 Years Ago November 3, 1994

John McDougal of Mountain Home, Arkansas assumed duties as owner and publisher of The Haskell Free Press. McDougal is a veteran newspaperman, who has published six newspapers, worked as an advertising manager and circulation manager and held corporate positions with two well-known newspaper groups.

Brittany Moore, great granddaughter of Mr. and Mrs. E. W. Pruett and Bobby Rogers, and the great-great granddaughter of Elizabeth Corum, all of Haskell, placed second in the beauty pageant in Dallas.

Costume winners at the Harvest Carnival sponsored by Haskell Business Association were Angel Pena, scariest; Candice Brister, cutest; Christina Bitner, most original; Chelsie Thane, best overall girl; and Eric Lewis, best overall boy.

20 Years Ago November 1, 1984

Local weatherman, Sam Herren, was awarded the Thomas Jefferson Award at the Country Dinner Theatre by Bob Manning of the National Weather Service. Herren has served the Haskell area for 43 years.

First place winners in the Halloween window painting contest were Jennifer Comedy: The Haskell

Free Press; Chris Brown, Noel Hadaway and Eric Harvey; Sears; Gia Henshaw, Penny Peden, Cassie McGee, April Brandon and Shelly Briscoe; WTU; and Elizabeth Scharff; Kay's Cleaners.

At half time of the Paint Creek-Jayton football game, football hero Ronald Wayne Campbell and Sweetheart Rhonda Lynn Coleman were recognized.

30 Years Ago November 7, 1974

Jim McMillen of Haskell was appointed publisher of the Journal-Review, Crawfordsville, Ind., by Freedom Newspaper, Inc.

Dale Kent LeFevre of Rule and Alexia Mayfield of Weinert were named to Who's Who Among American Colleges and Universities.

During a Haskell junior high pep rally, Patricia Arredondo was named Football Sweetheart of the Warrior team. Richard Amaro was named Football Hero.

40 Years Ago November 5, 1964

Mary Yates, of the Weinert 4-H Club, and Ricky Perry, of the Paint Creek 4-H Club, are the recipients of the most cherished 1964 Gold Star Girl and Boy Awards.

Carolyn Fisher was honored by the Rotary Club of Haskell with designation as High School Rotarian of the Month.

Two of Haskell's most beloved citizens, both octogenarians, Mr. and Mrs. G. W. Sego, quietly observed their 66th wedding anniversary at their home.

50 Years Ago November 4, 1954

Mattson Mustangs fought from a 14-13 deficit in the first half to edge Vera, 19-14 in a District 4 six-man game played at Vera. Mattson touchdowns were garnered by Gene Mapes, Aryn Alexander and John Kuykendall with Mapes adding an extra point across.

Travis E. Smith of Haskell, a member of Baylor University's Golden Wave Band, marched for a coast-to-coast television audience between halves of the Baylor-University of Texas football game.

A. C. Orr, 88-year-old Haskell man, attended the first State Fair in Dallas in 1886. He returned to the fair in 1954 and took his granddaughter, Patricia Gayle Dejana.

100 Years Ago November 5, 1904

J. W. Johnson contracted the sale of his farm a few miles north of town to T. A. Williams of Tarrant County. Williams is a nephew of Capt. T. S. Williams who resides near this place.

In the old fiddler's contest at the Street Fair, R. S. Long won first prize of \$10, and Monroe Howard won second prize of \$5.

Pneumonia shots now important

With the flu vaccine in limited supply it is imperative for elderly Americans to get a second, often overlooked vaccine that protects against a type of pneumonia germ that's a common complication of influenza.

The Texas Medical Foundation, AARP/Texas and the American Lung Association of Texas are recommending that seniors check with their healthcare providers about getting the pneumococcal polysaccharide (PPV) shot, more commonly referred to as the pneumonia vaccine.

Pneumonia is the primary complication of influenza and kills more people each year than all other vaccine preventable diseases combined, according to the Centers for Disease Control and Prevention (CDC). The CDC estimates that as many as 40,000 Americans die from pneumonia each year. In Texas there were 3,162 deaths from pneumonia in 2002 according to the State Department of Health Services (formerly Texas Department of Health).

"We are urging seniors to check with their doctor about getting the pneumonia vaccination. There is no shortage of that vaccine, Medicare covers it and given the limited flu vaccine supply, it's more important than ever for older adults to protect themselves," said Mark Narvaez, Manager of State Operations at AARP/Texas.

The pneumonia vaccine protects against 23 strains of the most common and serious pneumococcal bacteria, yet, according to the Texas Medical Foundation, Medicare claims data suggest that nearly 66 percent of Medicare beneficiaries in Texas have not had the pneumococcal vaccine.

"The current heightened awareness about the flu vaccine provides an ideal opportunity to assess patients and ensure their pneumococcal vaccination status is updated. Unlike the flu shot, most seniors 65 and older need only one pneumococcal vaccination in their lifetime although a booster shot may be required for those who received their shot before the age of 65," said Mark Bing M.D., clinical advocate for the Texas Medical Foundation.

"This year's flu vaccine shortage makes it imperative that the elderly and other vulnerable populations get a pneumonia shot. If you do develop the flu, a pneumonia vaccination will give you protection against one of its most frequent complications," said Robin Anderson, RN, director of Medical Affairs for the American Lung Association of Texas.

Cattle Market Report

The market at the Haskell Livestock Auction was on a run of 292 head of cattle at its sale on Sat., Oct. 30, according to Gary Tate, reporter. 50 sellers and 30 buyers were present.

Packers \$1 to \$2 higher, stockers \$2 to \$4 lower, feeders \$2 to \$5 lower.

Cows: fat, .45-.53; cutters, .43-.55; canners, .28-.38.

Bulls: bologna, .59-.68; feeders, .84-.97; utility, .55-.65.

Steers: medium and large frame No. 1 200-300 lbs., 1.35-1.70; 300-400 lbs., 1.25-1.40; 400-500 lbs., 1.05-1.30; 500-600 lbs., 1.00-1.25; 600-700 lbs., .98-1.10; 700-800 lbs., .95-1.07; 800-up lbs., .85-1.00.

Heifers: medium and large frame No. 1 200-300 lbs., 1.18-1.40; 300-400 lbs., 1.05-1.20; 400-500 lbs., .95-1.15; 500-600 lbs., .87-1.10; 600-up lbs., .80-.98.

Bred heifers medium frame, 675-750.

Bred Cows: young to middle aged, 850-975; aged or small, 575-700.

Cows with calves: medium frame No. 1 young and middle aged, 950-1300; aged or small, 725-850.

The Haskell Free Press

Established January 1, 1886
PUBLISHED EVERY THURSDAY
420 North First Street

P. O. BOX 555 HASKELL, TEXAS 79521

John McDougal Publisher
Lisa Shaw Business Manager
Mary Kaigler Editor
Doris McDougal Production
Bill Blankenship Staff Photographer

Periodical Paid Haskell, Texas 79521
(USPS 237-040)

SUBSCRIPTION RATES:
Haskell County, one year, \$20.00.
Outside of Haskell County, one year, \$28.00.

NOTICE TO PUBLIC—Any erroneous reflection upon the character, reputation or standing of any firm, individual or corporation will be gladly corrected upon being called to the attention of the publisher.
POSTMASTER: Send address changes to The Haskell Free Press, P.O. Box 555, Haskell, TX, 79521-0555.

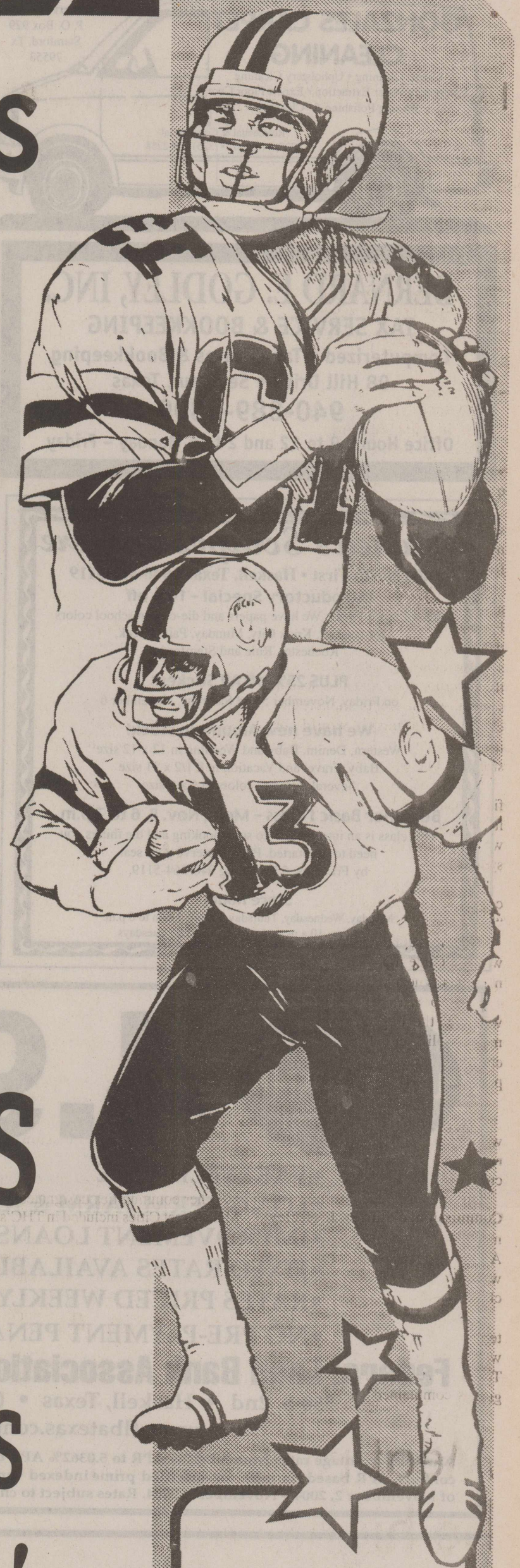


This issue mailed Wed., Nov. 3, 2004

2004 Haskell Indians



2004 HASKELL INDIANS: front row left to right, Ronald Chapman, Josh Kimmell, Josh Tidrow, Ray Cuellar and Ray Graciano. Middle row: Brad Blanks, Greg Andrada, Brandon McClatchey, Billy Lusk, Julio Solano and Aaron New. Back row: Jon Dulaney, Nate Webb, Cameron Short, Jeremy Sorrells, Gary Frierson, Josh Barbee, Andrew Long and L. J. McCulloch. Photo by Bobbie J.



FRIDAY, NOV. 5TH
7:30 P.M. AT HASKELL
HASKELL INDIANS

VS
KNOX CITY GREYHOUNDS

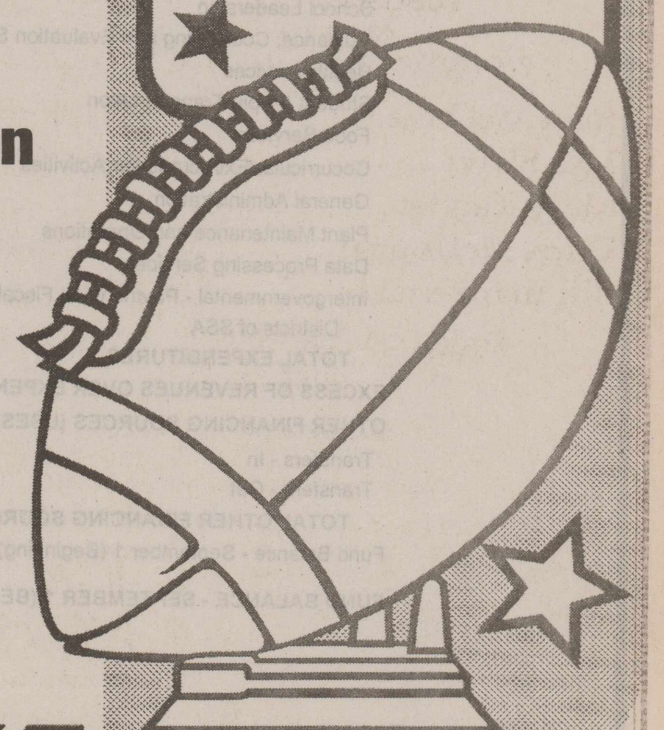
Scalp 'em, Indians!

THIS PAGE SPONSORED BY THE FOLLOWING INDIAN BOOSTERS

Cecil's Country Meat Mkt. & Grocery
Personality-Slipper Shoppe
Brian Burgess State Farm Insurance
Haskell Free Press
Haskell County Insurance Agency
Double A Drive Inn
First National Bank
Hanson Paint and Body
The Lumberyard
Nanny Plumbing
Modern Way Food & Fuel
Richardson TrueValue & NAPA Auto Parts
Holden-McCauley Funeral Home
Boggs & Johnson Furniture

Bobbie Johnson
Rice Springs Care Home
Martha's Beauty Center
Haskell Tire & Appliance
Haskell National Bank
Haskell County Gin
Haskell Livestock Auction
Matlock & Associates
Haskell Save A \$
Video Mania
Larned Sales Center
Flatlands
Carla's Sweet Shop
Haskell Co-Op Gin

Go
Tribe!



GONZALES CARPET CLEANING
 Carpet Cleaning • Upholstery Cleaning
 Emergency Water Extraction • Expert Floor Care
 Waxing Polishing & Cleaning

Residential & Commercial
 (325) 773-2667 • (325) 773-2258

Robert Gonzales
 P. O. Box 929
 Stamford, Tx
 79553

BERNARD E. GODLEY, INC.
TAX SERVICE & BOOKKEEPING
 Computerized • Tax Returns & Bookkeeping
 98 Hill Drive • Seymour, Texas
940-889-8809
 Office Hours: 9 to 12 and 2 to 5 Monday - Friday

Rainey's Scrapbook Store
 408 North First • Haskell, Texas • 940-864-5119

Introductory Special - 10% off
 School Spirit Packs: We have papers and die-cuts in school colors for Haskell, Knox City, Munday, Paint Creek, Rochester, Rule and Stamford

PLUS 25% off All Stickers
 on Friday, November 5 and Saturday, November 6

We have new Albums in stock!
 Western, Denim, Baby and Wedding in 12 x 12 size
 Baby, Travel and Vacation in 8 1/2 x 11 size
 Several different colors in 6 x 6 size

Beginner Basic I Class - Mon., Nov. 8, 6 to 7 p.m.
 This class is an introduction to scrapbooking and the things you need to get started. Please reserve your seat by Fri., Nov. 5 by calling 940-864-5119.

Store Hours
 Monday, Wednesday, Thursday, Friday: Noon to 6 p.m.
 Saturday: 10 a.m. to 4 p.m. • Closed on Tuesdays

Federal LAND BANK Association

4.95%

- VARIABLE RATE
- LONG TERM FARM & RANCH LOANS
- IMPROVEMENT LOANS
- FIXED RATES AVAILABLE
- RATES PRICED WEEKLY
- NO PRE-PAYMENT PENALTY

Federal Land Bank Association of Texas, FLCA
 550 S. 2nd • Haskell, Texas • (940) 864-8565
 www.flbatexas.com

Annual percentage rates from 5.2317% APR to 5.0362% APR depending on length of contract. APR based on rates for specified prime indexed variable rate during week of November 2, 2004 - November 8, 2004. Rates subject to change without notice.

EQUAL HOUSING LENDER

Paint Creek FCCLA attends workshop

Fifteen members of the Paint Creek Family, Career and Community Leaders of America (FCCLA) chapter recently attended a Region 2 Leadership Workshop at Eastland High School in Eastland. The workshop entitled "It's Your Move... Experience Extreme Leadership" was held Tues., Oct. 5.

Members participated in various Leadership Enhancement Opportunity (LEO) project tests. Workshops attended by the group included "Stop the Violence" and "FACTS-Families Acting for Community Traffic Safety" as well as team building activities.

Attending were Michael Bailiff, Alice Blair, Audrey Daniel, Jeremy DeLaCruz, Todd Emert, Michael Gordy, Rebecca Hope, Jessica Messenger, Josh Messenger, Kailey McCord, Charlie Myers, Tara Myers, Matt Ruiz, Matt Smith, Taylor Williams and Darlene Hopkins, Paint Creek FCCLA Advisor.



PAINT CREEK FCCLA—Members of the Paint Creek Family, Career and Community Leaders of America attending a workshop in Eastland recently were front row, left to right, Michael Gordy, Alice Blair, Jeremy DeLaCruz and Darlene Hopkins, advisor; middle row, Matt Smith, Kailey McCord, Tara Myers, Charlie Myers, Michael Baliff and Taylor Williams; and back row, Todd Emert, Josh Messenger, Matt Ruiz, Audrey Daniel, Rebecca Hope and Jessica Messenger.

Births

Mickey and Michelle Dunnam of Haskell announce the birth of their daughter, Shalee Bralynn Dunnam, born Fri., Oct. 8 at 7:18 p.m. at Abilene Regional Medical Center weighing 7 lbs. and 4 oz. She was 19 1/4 inches long.

Grandparents are Johnny and Teresa Scoggins of Rochester and Jerry and Jean Dunnam of Haskell.

Great grandparents are Lucille and the late A. H. (Johnny) Becker and J. B. and the late Nina Dunnam, all of Haskell.



AMBULANCE VISIT—Randy Shaw, right, an ECA with the Haskell Ambulance Service visited with the children attending Guys and Dolls Day Care recently. The children were able to look inside the ambulance and "hit the siren." They also heard their heartbeat with a stethoscope. Enjoying the tour were front, left to right, Baylee Hearn; middle row, Rhett Lampe, Andrew Hearn, Evan Green, Hayden Guzman and Brison Tullos; back row, Taryn Strickland, KLee Lampe, Dakota Hearn and Garrett Arendall.

Travelers to have wireless access

Free, wireless access to the Internet for travelers stopping at 102 safety-rest areas in Texas has moved a step closer to reality with the signing of an agreement between the company that will provide the service and the Texas Department of

Transportation.

"Road Connect, a brand of Austin-based Coach Connect, will be providing no-cost Internet connectivity at all of our safety-rest areas and travel-information centers within the year," said Andy Keith, TxDOT program manager for safety-rest areas. "The seven safety-rest areas that currently provide wireless Internet access will be upgraded to provide additional services."

TxDOT selected the firm after evaluating proposals submitted last summer by five potential vendors.

The first two rest areas to receive Coach Connect services will be in Medina County on U. S. 90 near Hondo and in Colorado County on Interstate 10 near Columbus. Installations there are expected to be complete by December. Installations at all 102 safety-rest areas should be complete by October 2005.

"As of yet, we have not been notified of the date the Haskell County safety-rest area will receive the Coach Connect services," Mary Beth Kilgore, Abilene District public information officer, said.

There are seven safety-rest areas in the 13-county Abilene District: two each in Callahan and Nolan Counties, and one each in Haskell, Howard and Mitchell Counties.

Travelers with wireless laptops or handheld Internet-capable devices will be able to access free safety, weather, and travel information at the safety-rest areas and travel centers across the state. In addition, up to 120 minutes of free Internet time will be available. Anyone wanting more time can subscribe in 20-minute increments, by the day, by the week, or by the month.

"Our vendor will be providing the wireless service at no cost to the state," Keith continued. "TxDOT, in return, will receive 25 percent of the profit from subscriptions made by anyone wanting more than two hours of wireless service."

Besides the equipment needed to provide wireless connections with the Internet, the company also will install Internet kiosks in TxDOT safety-rest areas. The kiosks, placed at those safety-rest areas with indoor lobbies, will be for use by people lacking wireless devices.

"Increasingly, travelers are becoming accustomed to—and even demanding—Internet access whenever and wherever they stop. Road Connect will give drivers on Texas highways one more reason to take a break from driving," says Coach Connect Co-Founder Jamison Stewart. "That means more alert drivers, and safer Texas highways."

RULE INDEPENDENT SCHOOL DISTRICT STATEMENT OF REVENUES, EXPENDITURES, AND CHANGES IN FUND BALANCE - GOVERNMENTAL FUNDS FOR THE YEAR ENDED AUGUST 31, 2004

	General Fund	Other Funds	Total Governmental Funds
REVENUES			
Total Local and Intermediate Sources	\$458,308	\$16,285	\$474,593
State Program Revenues	1,018,028	27,051	1,045,079
Federal Program Revenues	0	181,995	181,995
TOTAL REVENUES	\$1,476,336	\$225,331	\$1,701,667
EXPENDITURES			
Instruction	\$853,805	\$143,313	\$997,118
Instructional Resources and Media Services	2,816	74	2,890
Curriculum Development and Instructional Staff Development	596	0	596
School Leadership	98,180	1,041	99,221
Guidance, Counseling and Evaluation Services	44,163	3,019	47,182
Health Services	7,961	0	7,961
Student (Pupil) Transportation	29,159	643	29,802
Food Services	0	83,175	83,175
Cocurricular/Extracurricular Activities	64,273	248	64,521
General Administration	129,652	253	129,905
Plant Maintenance and Operations	188,589	869	189,458
Data Processing Services	37,463	253	37,716
Intergovernmental - Payments to Fiscal Agent/Member Districts of SSA	53,296	0	53,296
TOTAL EXPENDITURES	\$1,509,953	\$232,888	\$1,742,841
EXCESS OF REVENUES OVER EXPENDITURES	(\$33,617)	(\$7,557)	(\$41,174)
OTHER FINANCING SOURCES (USES)			
Transfers - In	\$ -	\$ 7,557	\$ 7,557
Transfers - Out	(7,557)	0	(7,557)
TOTAL OTHER FINANCING SOURCES (USES)	(\$7,557)	\$7,557	\$0
Fund Balance - September 1 (Beginning)	1,553,267	0	1,553,267
FUND BALANCE - SEPTEMBER 1 (BEGINNING)	\$1,512,093	\$0	\$1,512,093

Jones-Haskell Eye Clinic

Dr. Trussell Thane, O.D.
 Therapeutic Optometrist

Appointments Available • Monday through Friday

Dr. Thane provides comprehensive eye care including the diagnosis and treatment of eye disease. Dr. Thane offers complete evaluation for eyeglasses and contact lenses.

Various contact lens packages available.

MEDICARE, MEDICAID, BLUE CROSS AND BLUE SHIELD AND FIRSTCARE ACCEPTED.

1501 Columbia • Stamford
 325-773-2083

Hours: M.-Th. 8:30 to 5; Fri. 8:30 to 1

Wittenborn elected garden club director

The 74th fall convention of Texas Garden Clubs, Inc. was held Oct. 25-26, at the Four Points Sheraton Hotel in Lubbock. Host was the Lubbock Council of Garden Clubs. President of Texas Garden Clubs, Inc. is Linda Whetsell of Tyler.

Theme for the convention was "High Plains Hoe Down." Decor depicted a western theme. One program featured floral designs staged by Flower Show Judges from the Lubbock Council and was entitled "History of High Plains thru Designs." Other programs featured container growing of flowers and vegetables and growing vegetation in space for the purpose of absorbing carbon dioxide from the atmosphere.

The convention closed with a tour of the Ranching Heritage Center

followed by a chuck wagon dinner. June Wood of N. M., President of National Garden Clubs, Inc., was a special guest.

Representing Haskell Garden Club Melyn Wittenborn. Also attending were Loyce Rogers of Stamford Garden Club and Elaine Bryant of Abilene Garden Club. Wittenborn was elected Director of District VIII. Rogers was elected to serve as Trustee of Texas Garden Clubs, Inc. from District VIII, the district which encompasses the Haskell, Stamford and Abilene areas. Bryant is currently Vice President-Membership of Texas Garden Clubs, Inc.

The spring convention of Texas Garden Clubs, Inc. will be held in Addison in April, 2005.



ECOLOGY SUMMIT—Science students of Paula Everett have presented their projects at The Ecology Summit 2004. Fifth grade students, left to right, Felysha Walker, Bertha Carranza, Brady Leach and Zachary Wyrick taught Haskell Elementary fourth graders and Headstart students about the different environments found on planet Earth. The project was provided for by a Learn and Serve grant.

Check 21 puts end to check floating

by Jane Rowan
Haskell Co. Extension Agent

The "float" is gone and consumers will have to keep a closer eye on their bank account balance.

A new federal law went into effect Oct. 28. Check 21 will cause checks to clear much faster. It is designed to make check handling faster, and has essentially eliminated the time between check writing and bank clearing.

Another change caused by Check 21 is the end of receiving original canceled checks with your bank statement. Now banks can substitute legal copies of the originals. The original checks will be destroyed after processing.

All the changes are caused by a need to reduce the physical transfer of checks between institutions to lower costs and check-transportation time.

Check out health care discount cards carefully

by Jane Rowan
Haskell Co. Extension Agent

With the cost of health care rising, many people are tempted to buy commercial discount cards.

But, what you get may not be what is advertised. Some advertisements are misleading, and consumers should do their homework before signing the dotted line.

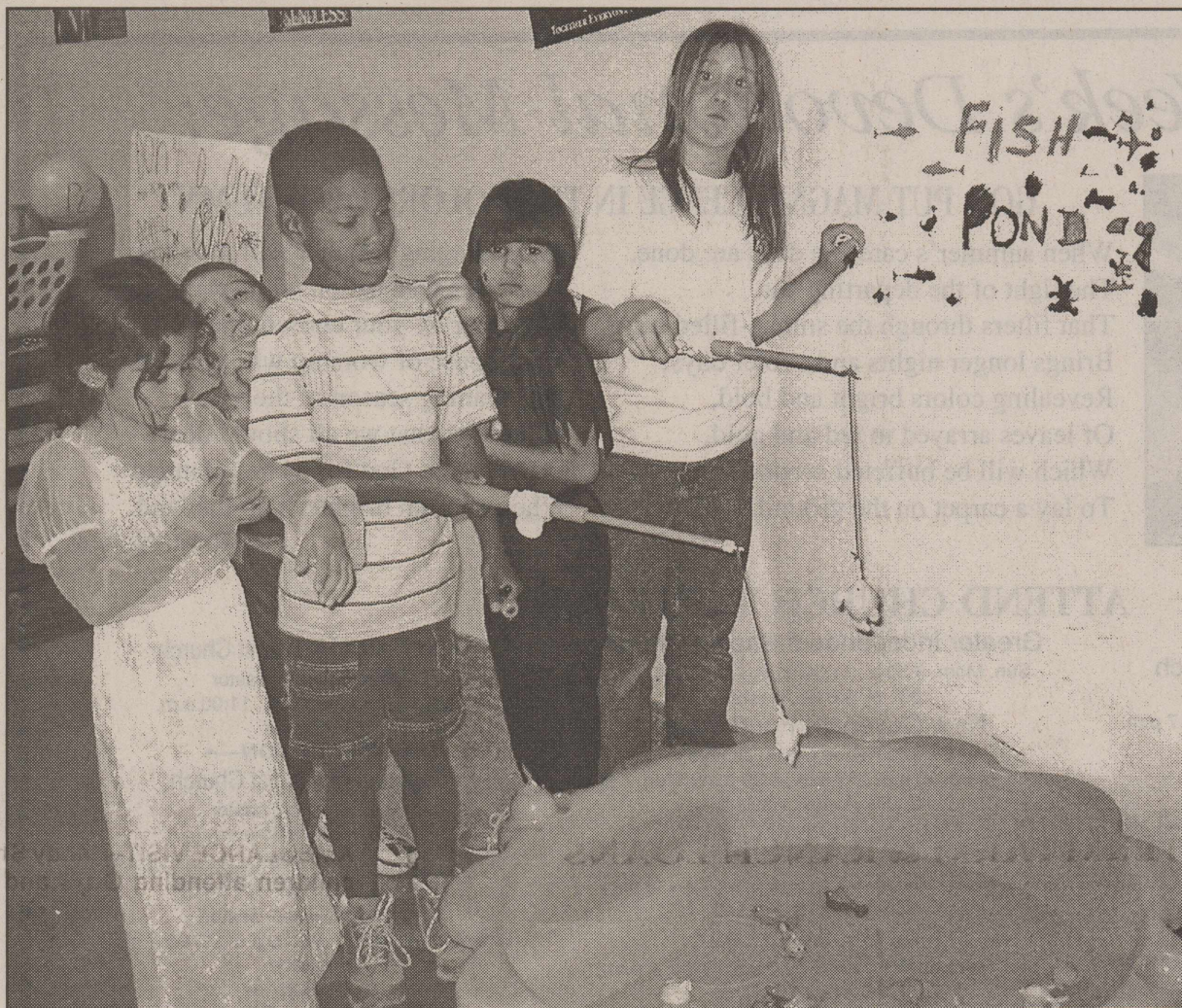
Cost of the cards range from \$10 to \$100 per month, and discounts on services may vary. Even the best cards only provide a discount if the health care provider accepts them.

People considering buying a discount card should get a list of providers and make sure their doctor is on it.

Extension specialists advise comparing prices of health insurance to discount cards. Sometimes insurance is more affordable.



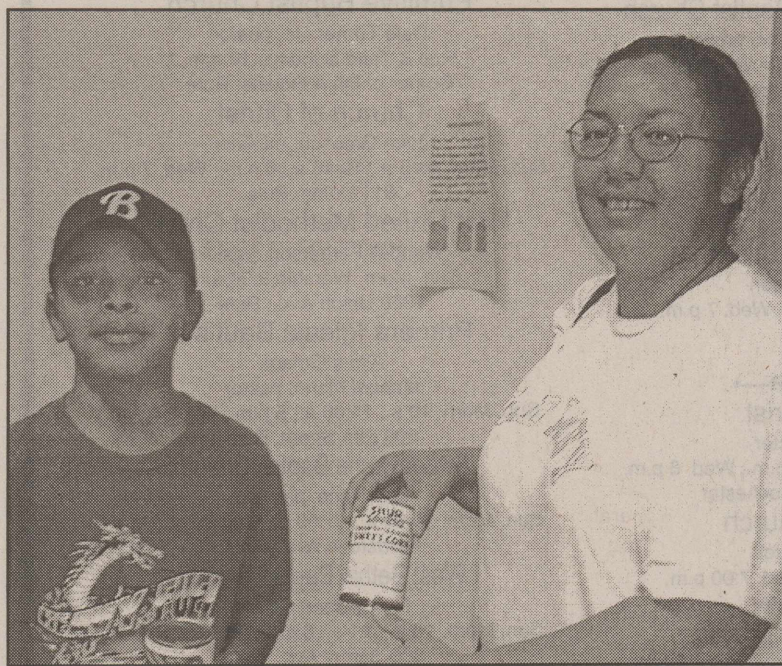
FIXING UP AT THE FALL FESTIVAL—Haskell secondary student, Brittany Garrison, paints BaileyAnn Toliver's face during the Fall Festival, using techniques taught by teacher Paula Everett. The festival was part of a Learn & Serve Grant that partnered with Partners in Education (PIE). While students enjoyed the festival, parents attended a BRAINSMART meeting, presented by Rod Fruit of Region XIV.



FISHING AT THE FESTIVAL—Students in the 21st Century Books and Beyond program fishing for prizes during the recent Haskell festival activities, are: l-r, Harley Foreman, Austin Alsabrook, Justice Dever, Destiny Pierce and Cheyenne Hill.



WEEKEND VISITOR—Stuart Little, pet rat from Paula Everett's elementary science lab, is adopted out for a weekend visit with Candy Masias. Little, along with hamsters and guinea pigs belonging to the class, are adopted out each weekend by science students and their parents. The project is the result of a Learn and Serve grant.



HELPING FILL THE FOOD BANK—Haskell Elementary student, Isiah Llewellyn and his mother, Daniela, donate cans of food to the Haskell Food Bank, which distributes the food monthly to those in need. The project was part of a Learn & Serve Grant that Kindergarten and 5th grade students participated in during the Fall Festival. The students learned about "go and whoa foods" from teachers Rhonda Lisle and Bonnie Fouts.

Livestock Risk Protection

Livestock Risk Protection offers coverage against declining livestock prices.

Protect your income... contact your local Rain and Hail agent today for more information.

For details contact your local Rain and Hail certified livestock agent:

Haskell Co. Farm Bureau
508 N. First • Haskell
940-864-2647

Committed to Your Success - www.RainHail.com

TEXAS HERMANN SONS FRATERNAL LIFE INSURANCE

WHOLE LIFE INSURANCE GUARANTEES

- Your premiums will not increase
- Your death benefit will not decrease
- You cannot be canceled because of age

CALL AN AGENT TODAY!

Haskell #241
Eunice Koehler 940-864-2134
Elna Weise 940-864-3564
Old Glory #228
Beunice Vahlenkamp 940-989-3609

Serving Texas Families Since 1890

HERMANN SONS
HSFI
FRATERNAL INSURANCE

Order of the Sons of Hermann in Texas, San Antonio
www.texashermannsons.org

HERE'S TO YOUR HEALTH... AT HOME!

Brought to You By:

Haskell Home Health Agency

Misty McMeans
RN, BSN

Dear Misty,

What is Pneumonia?

- It is an inflammation of the lung.
- It causes hardening of the lung tissue as fluid collects.
- Pneumonia can be caused by bacteria, viruses, fungi, inhaling foreign substances (such as food), or radiation.

Risk Factors:

- Smoking and air pollution
- Upper respiratory infection
- Lack of mobility
- Poor nutrition
- Chronic diseases (diabetes, heart disease, cancer, renal disease, etc.)
- Exposure to intensity cold, damp weather
- Inhalation of noxious substances
- Age (very young or very old)
- Frequent intoxication from alcohol

Signs and symptoms:

- Chest pain
- Fever and chills
- Cough (may be productive)
- Green, yellow, or rust-colored sputum
- Fatigue
- Loss of appetite
- Rapid pulse and breathing

What questions regarding home care do you have for the nurse? Send your questions to Haskell Home Health Agency, 417 S. First, Haskell, TX 79521 or call 940-864-5074 or 1-877-864-5074.

HERE'S TO YOUR HEALTH—AT HOME is brought to you by Haskell Home Health Agency providing home care services in Haskell, Knox, Stonewall, Throckmorton and Jones Counties

Home Care: Keeping Texans Proud & Independent



NEW FCCLA OFFICERS—The Haskell chapter of Family, Career and Community Leaders of America recently elected officers for the 2004-2005 school year, including l-r, front, Devon Flye, treasurer; second row, Ashley Meier, secretary; McKenzie Barrington, reporter; Callen Pittman, president. Back row, Kayce Wilcox, vice-president and Ethan Frierson, social chairman. This month, chapter members collected items to donate to the Red Cross to ship to the Florida area to aid hurricane victims.

EQIP meeting set Nov. 9 in Stamford

The Environmental Quality Incentives Program (EQIP) will hold a Program Development Group and Local Work Group Meeting Tues., Nov. 9, at 1:30 p.m. at the Cliff House Restaurant in Stamford.

The purpose of the meeting will be to make recommendations for the EQIP cost share conservation program in Haskell County for 2005. The main topic of business will be to select high priority conservation practices for cost share in Haskell County during 2005.

Haskell County is eligible for cost share funds under EQIP from two sources this year, the regular county based funding and a special emphasis irrigation area on the Seymour Aquifer.

If you have comments or ideas on the cost share program for 2005, please make plans to attend. For additional information, call the NRCS office at 940-864-8516 ext. 4.



SYDNEY ROBERSON



MISTY WOODALL

Students visit Rotary Club

Sydney Roberson is the daughter of Ken and Patti Roberson of Stamford.

She is a member of the United Methodist Church.

In school she is active in Ag Issues, band and other agriculture activities.

Special recognitions she has received include going to Nationals in Ag Issues, listed in Who's Who Among America's High School Students, and on the National Honor Roll four years.

Among her favorite things to do are attending church, ranching, riding horses and playing golf.

After finishing high school she plans to attend either Texas Tech or

the University of Texas, Austin, majoring in biochemistry, hopefully.

Misty Woodall is the daughter of Jean Woodall of Haskell.

At Paint Creek School she is active in Family, Career and Community Leaders of America (FCCLA), Student Council, and National Honor Society.

Special awards she has received include Basketball Award, President's Award, English 3 Award and Algebra 2 Award.

Among her favorite activities are basketball and running.

After finishing high school, she plans to attend Cisco Jr. College and to become a registered nurse.

This Week's Devotional Message:



GOD PUT MAGNIFICENCE IN THE COLORS OF AUTUMN

When summer's carefree days are done,
The light of the departing sun
That filters through the smoke-filled haze
Brings longer nights and cooler days;
Revealing colors bright and bold,
Of leaves arrayed in red and gold,
Which will be buffeted around
To lay a carpet on the ground;

And changing weather will give rise
To clouds that sail on windswept skies.
Whatever by your chosen creed,
Your house of worship will give heed
This waning season of the year
To lessons that we all should hear,
On love that God for us has planned
When autumn brightens up the land.

Gloria Nowak

ATTEND CHURCH THIS SUNDAY

- HASKELL—
- East Side Baptist Church**
Danny Manross, pastor
Sun. 9:45 a.m., 11 a.m., 6 p.; Wed. 7 p.m.
600 N. 1st East, Haskell
 - Christian Church**
Dusty Garison, minister
Sun. Morn. 9:45 a., 10:45 a., 6 p.m.; Wed. 7 p.m.
107 N. Ave. F, Haskell
 - New Vision Family Worship Center**
Joe and Loretta Stulir, pastors
864-3465
Sun. 9:45 a.m., 11 a.m., 6 p.m.; Wed. 7:00 p.m.
East Hwy 380, Haskell
 - Trinity Lutheran Church**
Ron Renegar, pastor
Sunday School 9:30 a.m., Worship 10:30
Hwy 380 East, Haskell
 - Iglesia Bautista El Calvario**
Art Flores, Interim pastor
Sun. Morn. 9:45 a., 10:45 a.m., 5 p.m.; Wed. 7 p.m.
607 S. 7th, Haskell
 - First United Methodist Church**
Allen Brooks, pastor
Sun. Morn. 9:45 a.m., 10:50 a.m. 6 p.m.; Wed. 6 p.m.
201 N. Ave. F, Haskell
 - First Assembly of God**
Rev. J.C. Amburn
Sun. Morn. 9:45 a., 10:45 a.m., 6 p.m.; Wed. 7 p.m.
1500 N. Ave. E, Haskell
 - St. George Catholic Church**
Father George Roney
Sat. Mass 7 p.m.; Sun. Morn. 9:00 a.m.
901 N. 16th, Haskell
 - Church of Christ**
Brett Anderson, minister
Sun. Morn. 9:30 a., 10:30 a., 6 p.m.; Wed. 7:30 p.m.
510 N. Ave. E, Haskell
 - First Presbyterian Church**
Steve Beatty, pastor
Sun. Morn. 9:30 a.m.
306 N. Ave. E, Haskell
 - Trinity Baptist Church**
Tony Grand, pastor
Sun. Morn. 10 a., 11 a., 6:30 p.m.; Wed. 6:30 p.
401 S. Ave. D, Haskell
 - Hopewell Baptist Church**
Sun. Morn. 9:30 a.m., 11:00 a.m.; Wed. 7 p.m.
908 N. Ave. A, Haskell

- Greater Independent Baptist Church**
Sun. Morn. 9:30 a., 11:00 a., 6:30 p.; Wed. 7 p.
301 N. 3rd St., Haskell
- New Covenant Foursquare**
Bill and Renee Glass, pastors
Sun. Morn. 10 a.m., 11 a.m., 6:30 p.m.; Wed. 7 p.
200 S. Ave. F, Haskell
- Mission Revival Center**
Rev. William Hodge
Sun. Morn. 10 a.m., 11 a.m., 6 p.m.; Tues. 6 p.m.
1600 N. Ave. B, Haskell
- First Baptist Church**
Sun. Morn. 9:45 a., 10:55 a., 6 p.m.; Wed. 7 p.m.
301 N. Ave. E, Haskell
- Church in the Park**
Rev. Tim and Suzann Townsend
Sun. Morn. 10:30 a.m. Wed. 7 p.m.
Gazebo or Pavillion
- Cornerstone Fellowship Baptist Church**
Dr. Gibbie McMillan, Interim pastor
Sun. Morn. 9:30 a.m. 10:45 a.m. Wed. 6 p.m.
1303 N. Ave. I, Haskell
- WEINERT—
- First Baptist Church**
J.C. Baker, pastor
Sun. Morn. 10 a.m., 11 a.m., Wed. 7 p.m.
Weinert
- Weinert Foursquare Church**
Rev. Robert Harrison
Sun. Morn. 10 a.m., 11 a.m. Wed. 7 p.m.
Weinert
- ROCHESTER—
- Church of Christ**
Steve Willis, minister
Sun. Morn. 9:45 a., 10:45 a., 6 p.m.; Wed. 6 p.m.
West on Main Street, Rochester
- First Baptist Church**
Jackie Brem, pastor
Sun. 11:00 a.m., 6 p.m.; Wed. 7:00 p.m.
500 Main, Rochester
- Union Chapel Baptist Church**
Rev. Clarence Walker
Sun. Morn. 9:45 a., 10:45 a., 6 p.m.; Wed. 7 p.m.
Rochester
- Faith Chapel of Rochester**
Katherine Byrd, minister
Sun. Morn. 10 a.m., 11 a.m., 7 p.m.
Hwy 6, Rochester

- First United Methodist Church**
Dolan Brinson, pastor
Sun. Morn. 10:00 a.m., 11:00 a.m.
Rochester
- SAGERTON—
- Sagerton Methodist Church**
Philip Houston, pastor
Sun. Morn. 9:30 a.m.
Sagerton
- Faith Lutheran Church**
Deborah Nissen, pastor
Sun. Morn. 9:15 a.m., 10:30 a.m.; Wed. 7 p.m.
Sagerton
- RULE—
- First Baptist Church**
Josh Stowe, pastor
Sun. Morn. 9:45 a., 11:00 a., 5 p.m.; Wed. 7 p.m.
1001 Union Ave., Rule
- Primitive Baptist Church**
Dale Turner Jr., pastor
First & Third Sundays 10 a.m.
Corner of 8th & Robins, Rule
- Church of Christ**
John Greeson, minister
Sun. Morn. 9:45 a., 10:40 a., 6 p.m.; Wed. 7 p.m.
811 Union, Rule
- First United Methodist Church**
Wendall Ferguson, pastor
Sun. Morn. Worship 8:30 a.m.
1000 Union Ave., Rule
- Primera Iglesia Bautista**
Alfa y Omegas
Manuel Marin, pastor
Sun. Morn. 10 a., 11:00 a., 5 p.m.; Wed. 6 p.m.
500 Elm Street, Rule
- Sweet Home Baptist Church**
Bill Trice, pastor
Sun. Morn. 10:00 a., 11:00 a., 6 p.; Wed. 7 p.m.
Gladstone Ave., Rule
- West Bethal Baptist Church**
Rev. Robert Sweet
Sun. Morn. 10 a., 11 a., 8 p.m.; Wed. 7:30 p.m.
300 Sunny Ave., Rule
- PAINT CREEK—
- Paint Creek Baptist Church**
Sun. Morn. 10:00 a.m., 11:00 a.m., 6 p.m.
Paint Creek
- O'BRIEN—
- O'Brien Baptist Church**
Kelly Pigott, interim pastor
Sun. 9:45 a., 11 a., 5 p., 6 p., Wed. 6 p.m.
O'Brien

Shop the Haskell Free Press CLASSIFIEDS

864-2686

864-2686

Miscellaneous

HOUSE LEVELLING and foundation repair. No payments until work is satisfactorily completed. David Lee & Co. 325-675-6369. 6fc

CUSTOM FRAMING. Country Friends and Frames, 101 N. Swenson, Stamford. 325-773-2661. Complete framing needs. Closed Mondays. 45c

CHARTERED BUS Nov. 13-14 Abilene to Thackerville, Okla. 3 casinos/bingo. Only \$60. High payouts. 325-235-2068. 45c

Real Estate

FOR SALE: 3 bedroom, 1 bath. Brick. Water well, cellar. C/HA. Price reduced. 940-864-2264.

FOR SALE: 3 bedroom, 2 bath. Fixer-upper in country. Make cash offer. 864-2238. 41fc

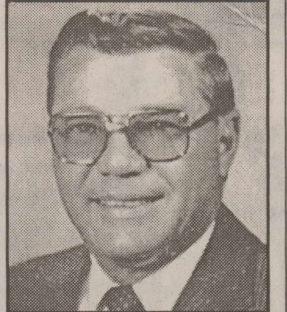
FOR SALE: 3 bedroom, 2 bath brick home. 1206 N. Ave. J. Small down for qualified buyer. Call 864-2238. 42fc

FOR SALE: 2 bedroom, 1 bath rock home. New roof. Ceiling fans. Garage. Storage building. Good location. 940-864-2194.

To Subscribe, Call 940-864-2686

TAX PLANNING

Written By James E. Rodgers, CPA



YEAR-END TAX PLANNING IS A SMART BUSINESS MOVE

As year-end rapidly approaches, every business should review its options for cutting income taxes for 2004. Undoubtedly you've been doing tax planning throughout the year, but here are some last-minute strategies you shouldn't overlook.

If you were planning to purchase business equipment before long, you should analyze whether squeezing your purchases into 2004 is a good tax move. You can expense up to \$102,000 of business equipment placed into service this year. But be careful if a new purchase before year-end will push total equipment purchases for the year over \$410,000 or if it means that more than 40% of all equipment you've purchased this year was purchased in the fourth quarter. The rules will limit your expensing or depreciation deductions if you are over these limits.

Tax rates on stock dividends are now at a 15% maximum. If your business corporation holds substantial accumulated earnings, consider distributing some to yourself as a dividend.

Consider end-of-year inventory write-downs. If your inventory has declined in value, you may be able to claim a deduction at year-end. To do so, you must make a bona fide offer to sell the inventory at the lower price.

Make sure you are using retirement plans to minimize your tax bill. Get details to help you decide which plan is best for your business, and what the requirements are to give you the best tax break for 2004.

If you are a shareholder in an S corporation that will have a tax loss this year, check your basis before year-end to be sure you will be able to utilize the loss on your tax return.

Investing time right now for a year-end review of your business's tax situation will assure you of paying no more tax than necessary. For assistance with your year-end tax review, contact our office.

RODGERS & COMPANY
Certified Public Accountant
20 Southwest Third Street
Hamlin, Texas • 325-576-2356

Sonic Drive-In

1402 N. Ave. E
864-8533
Managers: Leon & Carolyn Herring

Steele Machine

Hwy. 280 • 864-2208

Modern Way Food Store

1202 N. Ave. E • 864-3763

Smitty's Auto Parts

107 N. 1st East • 864-2607

HANSON PAINT & BODY SHOP

207 S. 1st • 864-3631
Professional Auto Body Repair
Glass Installation • 24 Hour Wrecker Service

Rule Co-op Gin & Elevator

301 Adams • Rule • 997-2421

Rice Springs Care Home, Inc.

1302 N. 1st • 864-2652
Medicare • Medicaid • Therapy

Committed To Excellence
In Service

Personality Slipper Shoppe

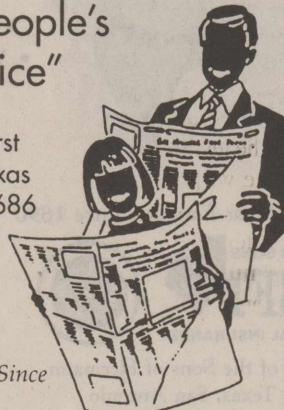
413 S. 1st (South Side of Square)
864-2501 and 864-3051
"One Stop Shopping"

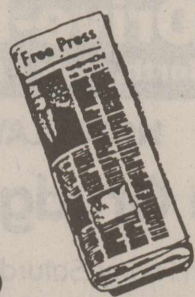
The Haskell Free Press

"The People's Choice"

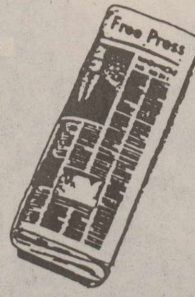
420 N. First
Haskell, Texas
940-864-2686

Serving Haskell County Since 1886





Shop The Haskell Free Press CLASSIFIEDS



864-2686

ALL DEADLINES MONDAY 5 P.M.

864-2686

For Sale

FOR SALE: Haygrazer hay. Fertilized round bales near Rochester. Call 940-864-2042. Kay Henry. 43-46p

DACHSHUND DOG looking for a home. Five years old. Good health. Friendly and loving. Call 864-2547. 45p

FOR SALE: Exercise bike. Good condition, \$5. Call 864-3782. 45c

FOR SALE: Red top cane round bales. \$30 a bale. Call Sam at Modern Way, 864-3763. 45-46c

HOMEMADE TAMALES for sale: Sat., Nov. 6. 10 a.m. til sold out. 108 N. 2nd St., Haskell. 940-864-3037. 45p

Garage Sales

GARAGE SALE: 1206 N. Ave. L. Sue Bingham's home. Sat. only. Sale starts at 9 a.m. 45c

GARAGE SALE: Nov. 6, 8 til ? 1107 N. Ave. F. Lots of nice children, teens and ladies clothes; exercise equipment, toddler bed, water bed drawers, bunk beds, Singer sewing machine, toys and misc. Weather permitting. 45p

4 FAMILY GARAGESALE: Sat., Nov. 6, 8 til 4. 1400 N. Ave. J. Little bit of everything. 45p

GARAGE SALE: Sat., Nov. 6. 8 til 4. 8687 FM 2163 (1 mile west on 16th). Washer, dryer, strollers, car seat, bay items, children's shoes and clothing, toys, men's and women's shoes and clothing, misc. items and decor, furniture (bed, chairs, microwave/TV stand and more), slide projector and misc. Fresh lemonade and goodies made by Gibson kids. 45c

GARAGE SALE: Nov. 6, 8 to 3. 925 N. 6th. Boys, men's and women's clothing; Honda motorcycle, household items and much more. 45c

CUTE LITTLE HOUSE

Very affordable. Call 325-673-7353. 35c

How much money do you really need to retire?

Call me today for a free Financial Needs Analysis

CHAN GUESS
940-864-2665



Allstate Life Insurance Company, Home Office, Northbrook, IL. Securities offered through Allstate Financial Services, LLC (LGA Securities in LA and PA). Registered Broker-Dealer. Member NASD, SIPC. Office of Supervisory Jurisdiction: 2920 South 84th Street, Lincoln, NE 68506 (877)525-5772. ©Allstate Insurance Company 3/3/04

LANGFORD ROUSTABOUT SERVICE

SCOTT LANGFORD

Roustabouts
Backhoes
Winch Trucks
Dump Trucks
Welders



Specializing In:
Oilfield Repair,
Maintenance & Construction

Mobile: 940-256-0535
Office: 940-864-3490
Home: 940-864-2565

8348 N. Hwy. 277
Haskell, Texas 79521



106 AVE. J EAST: 3 bedroom, 2 bath with basement. 2 car garage, shop. Fenced yard, water well, sprinkler system.
LAKESHORE SITES: Lake Stamford on 4 lots. Extra Clean 3 bedroom, 2 bath double wide, 3 bedroom, 1 bath stucco with metal roof.
208 N. AVE. E. 4 bedroom, 2 bath. Corner lot. Water well.
907 N. AVE. L. Large, clean home. Ready to move into. 4 bedroom, 2 bath, C/A. Large storage. Water well. Fenced yard. Price reduced.
1307 N. AVE. L. Nice home. Great condition. 3 bedroom, 2 bath, C/A. 2 living areas. Cellar, water well, storage building. Corner lot. Priced reduced to sell.
1021 N. 6TH. 2 bedroom, 1 bath. Large living. Large garage.
1605 DERRICK DR. Beautiful home, built in 1995. 3 bedroom, 2 bath. Lots of amenities.

101 N. AVE. E. Large two story historic building.
1401 N. AVE. I. Priced reduced to sell today. 3 bedroom, 2 bath rock home. Beautiful rock fireplace, C/A. Privacy fence. 12 pecan trees. Dog kennel. Carport.
307 N. AVE. H. Priced to sell today. Large brick home. 4 bedroom, 2 bath. C/A. Basement, garage apartment. Newly remodeled. Lots of amenities.
LAKESHORE SITES: Mobile home with large addition on 4 lots. Central H/C. Also 3 window units. Fireplace, six ceiling fans. Two car carport. Fenced yard. Garden plot. Nice landscaping.

103 N. Ave. E
940-864-2665
1-800-658-6342
or call
Robert Tribbey 256-1400
Bridget or Chan Guess 864-6142
Hess Hartsfield, Broker 864-2004

Garage Sales

GARAGE SALE: 202 N. Ave. I. Haskell. Sat., 8 a.m. Adult men and women's clothing, children and teenage clothing, dolls and misc.

GARAGE SALE: Nov. 5-6. 109 N. Amity, Rule. Lots of clothes, computer desk, riding lawn mower, odds and ends. 45p

MOVING SALE: Fri. and Sat., 8 to 5. Hwy. 6, Rochester, by Faith Chapel Church. Queen size sleeper, rocker, stove, dryer, large entertainment center, lots of Wrangler jeans, end tables and lots more. 45c

GARAGE SALE: Sat., 8 a.m. 404 S. Ave. F. 45p

YARD SALE: Monitor, printer, games, TV, coats, VCR and lots more. Sat., 8 to noon. 1007 N. Ave. G. 45c

BIG GARAGE SALE: Nov. 4, 5, 6, 8 to 5. Lots of everything. At Jimmie and Frances Brown home on FM 2407, between Haskell and Rochester. 45p

YARD SALE: Nov. 6. Two TVs, tiller, wheelbarrow, nuts and bolts, hammers. 402 Gladstone, Rule.

2 FAMILY GARAGESALE: Sat., 8 a.m. Super nice clothes: Polo, Cinch, Tommy, Rockies, dresses; boys, 8-14; girls, 4-5; juniors, 3-5; misses, 11-13; men's, L/XL. Microwave, Playstation, Nintendo, loveseat, videos, picture frames, toys, CD's (teens), trash compactor, bikes, decor, antique dining table with 4 chairs. 1.5 miles south of Haskell Livestock Auction. 45p

ZERO DOWN

Land-Home with low interest rate. NO CREDIT NECESSARY 325-673-8488. 35c

A man is old when he begins to hide his age. A woman is old when she begins to tell hers. A good night's sleep on a new Spring Air mattress set might make you look younger and feel better. Special prices on all sizes. Kinney Furniture in Stamford. 45c

Help Wanted

NOW TAKING applications for all positions at Somic Drive In. Haskell. Apply in person. 25c

RICE SPRINGS Care Home is making a difference. We are looking for LVNs and CNAs, various shifts; and a full time cosmetologist, hourly pay. Call Shandra at 864-2652 for information. 45c

THE CITY of Haskell is accepting applications for street superintendent. Applications may be picked up at Haskell City Hall during regular business hours. 44-45c

BIG COUNTRY ELECTRIC has immediate opening with full benefits for Stamford office Lineman Trainee. Requires high school diploma or equivalent, reside within 15 minutes of the Stamford office, communication skills, and must meet all job requirements if hired. Call 325-776-2244. 45-46c

The deadline for Classified Advertising is 5 p.m. on Mondays.

Dodson Concrete Construction

Commercial - Residential
David Dodson
704 N. Ave. F • Haskell
940-864-2038
Over 20 Years in the Business
FREE ESTIMATES. 18c

For Rent

FOR RENT: Furnished rooms for rent. Nightly, weekly. Call Lone Star Lodging 864-2238. 21c

OFFICE SPACE FOR RENT: 105 and 107 N. Ave. D. 864-2238.

Public Notices

NOTICE
Haskell County Commissioners' Court will accept sealed bids until 10:00 a.m. on November 8, 2004 at the office of the County Judge in Haskell County Courthouse for the purchase of a new vehicle for Haskell County Sheriff's Office. Specifications can be picked up at the office of the County Judge.
Haskell County reserves the right to accept or reject any or all bids.
David C. Davis
County Judge 44-45c

\$500 MOVE IN

Owner finance. Call Alex 325-725-1449. Se habla español. 35c

EXPERT AUTO WORK

REASONABLE RATES
See us for all your auto mechanic needs. 20 years experience. We do it right the first time. 305 South Ave. E • Haskell



QUALITY PEST CONTROL

We specialize in Residential and Commercial Treatments for all types of pests. We also treat lawns, trees, termites and bees. Very reasonable prices. 1503 Adams St. ~ Rule, Texas 940-997-2787

Need It Sold Yesterday? WE CAN HELP!

NEW LISTINGS
•305 Hamilton, Stamford (2-1).....\$15,000
•1210 Hudson Road, Stamford. Price Reduced.....\$35,000
Exotic Hawaii style landscaped entertainment area w/above ground decked swimming pool
•1212 Hudson Road, Stamford.....\$17,500
•644 Acres, west of Odessa.....\$150 Acre
•160 Acre Improved Pasture, west of Haskell.....\$450 Acre
•1309 Wesleyan, Stamford.....\$70,000
3 bedroom, 1 3/4 bath, 2.5 Ac., new paint, carpet, large scenic pond
We are almost out of listings! Have buyers for Farm Land, Pasture Land and Houses. Serving the Big Country.

Bill Jackson Owner/Broker
Gerald W. Clark Associate
325-773-3358
1501 W. Illinois Avenue • Midland, TX 79701
Office: 432-683-9548 Mobile: 432-557-3366 Fax: 432-683-9572
billyjackson8828@yahoo.com

PART-TIME FIELD INTERVIEWER NEEDED BY THE U. S. CENSUS BUREAU

\$10.19 PER HOUR WITH A \$0.37 1/2 PER MILE CAR ALLOWANCE
Contact selected households to conduct a computer-assisted AMERICAN COMMUNITY SURVEY in the Haskell area. Selected person will work approximately 20 to 40 hours each Month during the survey period.

TO QUALIFY YOU MUST:
•Be available to work days, evenings and weekends during the survey period.
•Be a U. S. citizen
•Be at least 18 years old, or 16 years old with a high school diploma or GED.
•Pass a 30-minute written test.
•Have a valid driver's license and the full-time use of an automobile.
•Have a non-cordless private line home telephone.
•Be able to attend a paid 4 to 5 day training session.
•Be a resident of Haskell County.

Bring two forms of identification to the test session to verify employment eligibility. Please allow 3 hours for the testing session. Veterans must bring documentation for preference. Seating is limited - no one will be admitted once testing begins. If you have special needs due to a handicap, please call the Bureau of the Census at least 24 hours in advance of the testing at 1-800-835-9752, extension 34406. If you qualify and are interested in being tested and interviewed you must register in advance, as soon as possible, but no later than November 9, 2004 to be given a test date, time and location with the Bureau of the Census at (214) 253-4406.

THE U. S. DEPARTMENT OF COMMERCE
BUREAU OF THE CENSUS
IS AN EQUAL OPPORTUNITY EMPLOYER
TDD (214) 253-4434

A bank is a place that will lend you money, if you can prove you don't need any. Right now get two great LA-Z-Boy recliners for one low price starting at \$499 per pair. Kinney Furniture in Stamford. 325-773-2232. 45c

I BUY HOUSES

Quick cash and closing on homes \$25,000 or less. Call Jim at 325-518-8128. 16c

Guadalcazar Roofing

30 years experience. All types roofing. Steel roofing. Free Estimates. Daniel Cell 325-660-7533 Lupe Cell 325-665-7060 Haskell 940-864-5009

WILD HORSE TRADING POST

Haskell's General Store and RadioShack. All Ladies Apparel 50% off. Watch for Hot Friday ad! We have guns and ammo. 419 S. 1st, Haskell • 864-2200 Hours: M-F 9-6; Sat. 9-3

Texas Boll Weevil Eradication Foundation

Temporary Clerk Haskell
1201 North First
www.txbollweevil.org
Responsible for various data-entry duties for a small, fast-paced office. Experience with purchase requisitions, personnel and payroll/time sheets. Proficiency in word processing, windows and other computer applications a must. Must have valid driver's license and be insurable under the Foundation's fleet insurance policy. Pre-employment drug testing required. Reply to: HR Department, P. O. Box 5089, Abilene, TX 79608.
Fax: (325) 672-5034
Email: jobs@txbollweevil.org
Equal Opportunity Employer Drug-free Workplace 45c

To those who called, visited, sent flowers and food and prayed faithfully during our time of sorrow, may God bless each of you. Your love and support will always be remembered.
The Thomas Harrell family
Wanda and children

Dear friends,
We would like to express our heartfelt appreciation to the community for your acts of love and kindness in this time of our loss. Thank you for the prayers, food, visits and many acts of kindness. Our family appreciates your love.
The Bud Pogue family

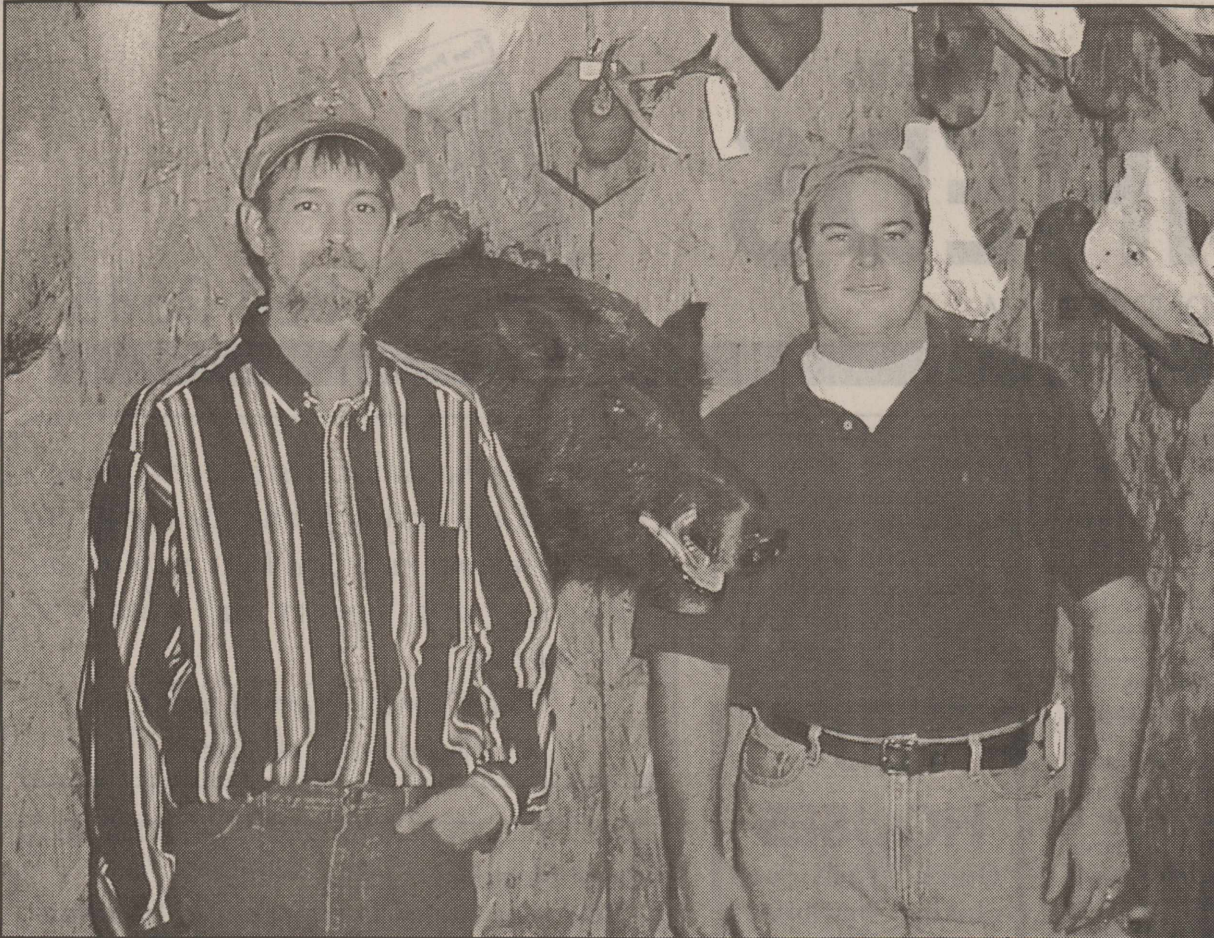
The family of Robert C. Trussell would like to thank the many friends who were so supportive during his illness and our time of sorrow. Thank you for the prayers, visits, cards, flowers and every act of kindness shown. The food brought to our home was delicious as was the wonderful meal provided by First Presbyterian Church, East Side Baptist Church and Cornerstone Baptist Church. A special thanks to Brian Burgess for his special service and to Dr. McSmith, Haskell Memorial Hospital, Haskell Healthcare, Outreach, Dr. Carolyn Aks and Hendricks Medical Center for their loving care of dad during his battle with cancer. May God bless you.
Pam, Bill, Heather, West and Samantha Steele

Our family has always been a close and loving one that grew closer and more loving as each new member was added. God chose to call home that member who was the cornerstone of our lives. One who was so loved by each of us. She touched our lives and made them special. We did not realize that she had touched so many others also. The love and words of her many friends have been of the greatest comfort during this time of sorrow. Thank you is inadequate for the feelings in our hearts for you, her friends, who have helped in so many ways to enable us to bear our pain of parting with her. We will always cherish the memories of love that you have shared with us. May God bless each of you as He has blessed us.
The family of Glenda Davis Drinnon:
Cleatus (Biggon) Drinnon
Stephen and Charmaine Drinnon and children
Brian and Leesa Toliver and children
David and Judy Drinnon and children
David and Sharla Carver and children

RIKE REAL ESTATE

Mary Rike, Broker John Rike, Agent
411 1/2 S. First Street
Haskell, Texas 79521
940 864 2411 940 864 2332
mrrike@dtnspeed.net
www.rikerealestate.com

605 N. AVE. F. One of a kind custom built home. Amenities include brick entry, kitchen workplace cook's dream, many unique built-ins, C/HA, vaulted ceiling with exposed beams.
607 S. 6TH. 3-2-2, office or game room, C/HA, living, dining, breakfast nook, pine cabinets, C/HA, well, fenced.
1500 N. AVE. H. Large home, three or four bedrooms, living, dining, den and pine cabinets, wood floors, CH/A, cellar.
1506 N. AVE. E. Large 3-2, large open living, kitchen, large bath with tub and shower, CH/A, 1.5 ac., out buildings.
1801 N. AVE. G. Very large home, immaculate condition, C/HA, large master suite, well and sprinkler, lifetime roof.
Come by Rike Real Estate for a complete list.



GRAND OPENING—Randy Messenger, left, and Roger Roewe welcomed visitors to the grand opening of Randy's Wildgame Processing and Taxidermy located at 900 N. First in Haskell Sat., Oct. 30.

Calendar

Brisket meal

The Texas Cowboy Reunion Oldtimers Assn. will host a bar-b-que brisket meal with all the trimmings Fri., Nov. 5 from 11:30 a.m. until 1:30 p.m. at the Bunkhouse in Stamford. Tickets are \$6 each. Proceeds will assist the association with annual insurance premiums for the Bunkhouse and Round-up Hall. Advance tickets may be purchased by calling 864-2411 or contacting any member of the Oldtimers Assn.

Benefit lunch, auction

A benefit brisket lunch and auction will be held Sun., Nov. 21 at the Haskell Civic Center to help defray costly medical expenses for Rob Mickler who was injured in a horse riding accident Sept. 2. The lunch will be held from 11 a.m. to 1:30 p.m. with donations being accepted. The auction will begin at 1 p.m. To donate an item call Mark Wallace 864-4848 or Sammy Larned 864-2749.

Veterans Day

A Veterans Day program will be held Thurs., Nov. 11 at 11 a.m. at the Knox County Veterans Memorial. A hamburger meal will follow at the Benjamin Ex-Students building. Tickets are \$6 each. Proceeds will benefit the Knox County Veterans Memorial Fund. Those attending are asked to bring their lawn chairs.

Family fun night

The 'Friends of Old Glory School' committee will host a family fun night Sat., Nov. 13 from 5:30 to 9 p.m. at the Old Glory School gym. Country style Santa Claus will appear for pictures with the kids. Rerun the clown will entertain with free balloons. Games will be available for the children and adults, along with karaoke, a silent auction and a concession stand. To donate items for the auction call 940-989-3153. All proceeds will benefit the fund to repair the school building.

Vet program to be held in Benjamin Thurs., Nov. 11

A Veterans Day program will be held Thurs., Nov. 11 at 11 a.m. at the Veterans Memorial in Benjamin. A Veterans Day exhibit will be on display at the Knox County Courthouse from 9 a.m. to 2 p.m.

The Munday band will entertain the audience followed by the 11 a.m. program conducted by Charles Baker.

The family of R. Otis Burnett, the Gold Star family, will be recognized and will place a memorial wreath at the arch that is engraved with names of Knox County veterans killed in the war. Burnett was the son of Mr. and Mrs. M. O. Burnett of Munday. He entered the U.S. Navy Oct. 31, 1942 and served in the Pacific Theatre during World War II. Ranked as a Chief Pharmacist, he served aboard the destroyer Monogham under Commander Admiral William F.

Hasley. The ship went down in a typhoon. Burnett was reported missing in December 1944 and his death was confirmed Feb. 11, 1945. He is honored with a marker at Arlington National Cemetery.

A hamburger and beans meal will follow, served at the Benjamin Ex-Students Memorial Center. Tickets are \$6 a plate. Binders with information on the Knox County Veterans honored on the memorial will be displayed.

For more information, call the Knox County Historical Commission at 940-459-2229 or 940-459-2205.

Shop
Haskell
First

Just in Time for Thanksgiving...

FREE GROCERIES

\$50⁰⁰

Gift Certificate with purchase of \$500 or more

\$25⁰⁰

Gift Certificate with purchase of \$300 or more



CERTIFICATE NOT VALID AFTER NOV. 24, 2004

"We Want To Be Your Furniture Store!"

BOGGS & JOHNSON

East Side of Square Haskell 940-864-2346

Weather Whys

Rain Gauges

Q: When was the first rain gauge used?

A: People have been trying to measure how much rain has fallen over a certain period for thousands of years, says Brent McRoberts of Texas A&M University. "Ancient Chinese government records show that the Chou dynasty was interested in keeping rainfall measurements over 3,000 years ago," McRoberts says. "We also know that there are records in India of recording rainfall about 400 B.C. Some of the best records were kept in Korea. King Sejong wanted to improve agricultural technology and his son, who was to become King Munjong, invented a rain gauge in the 1400s. A rain gauge was sent to every village to measure a farmer's potential harvest and to determine taxes to be levied on certain areas of the country according to the rainfall it received."

Q: What about modern rain gauges?

A: Records appear to be somewhat sketchy, McRoberts says. "In Europe, the earliest rain gauge appears to be one devised by inventor Christopher Wren in 1662," he notes. "In Great Britain in 1722, a Rev. Horsley invented a rain gauge that seemed to set the standard for years to come. Today, rain gauges are a bit more sophisticated than those used 200 years ago, but the idea is still the same—to see how much rain has fallen over a 24-hour period."

Tower Drive-In Theatre

Hwy 6 North, Rule - (940) 997-0137

NOW PLAYING

The Grudge - PG-13

Show starts at 7:00!

Open Friday, Saturday & Sunday
Adults \$4; Ages 6-12, \$2; 5 and Under Free

STAR STOP

706 N. 1st • Haskell • 864-2062

Dr. Pepper, Pepsi and Mountain Dew

Six Pack All Flavors

2/\$3

Dr. Pepper and Pepsi

3 liter All Flavors

2/\$3

Go Indians!

Crystal Point Water

20 oz.

2/\$1



ATTENTION WILD HOG TRAPPERS

Beltex Corporation of Fort Worth will be buying live wild hogs at a new location in Knox City. Payton Tankersley will be our new buying agent. Directions to buy station are 2 miles north from Knox City on Highway 6, then turn west on FM 1292 for 1 mile to pen on south side of highway.

Our prices will be the top of the wild hog market!

We will not buy any pigs under 60 pounds! You are welcome to leave them in the little pig pen if you wish.

Please help us to keep our new facility as clean as possible.

Thank you for your business in the past and we look forward to buying your hogs in the future.

I will pay you when the hog steps off the scale if you let me know when you are coming.

CONTACT PAYTON WITH ANY QUESTIONS.

940-256-8288 cell or 940-658-3749 home

To Subscribe,
Call
940-864-2686

Monthly Calendar of Events

NOVEMBER 2004

Haskell Independent School District

SUN	MON	TUE	WED	THU	FRI	SAT
	1	2	3	4 7th Indians vs Roscoe 4 p.m. at Roscoe 8th, JV Indians vs Knox City 5 p.m. at Haskell	5 Homecoming Committee Supper HS Cafeteria Indians vs Knox City 7:30 p.m. at Haskell	6 V Girls BB Scrimmage Clyde 10 a.m. Cross Country Lubbock
7	8	9 V Girls BB Haskell at Throckmorton 6 p.m.	10	11	12 JV-V Girls BB at Anson TBA	13 Cross Country Roundrock JV-V Girls BB at Anson TBA
14	15 7th, 8th B&G Hamlin at Haskell 5 p.m. JV B&G Haskel at Eula 6:30	16 JVG-B, VG-B vs Throckmorton at Haskell 4 p.m.	17	18	19 JVG-B, VG-B vs Rule at Rule 4 p.m. Eula JV Tournament at Eula TBA	20 Noah Project at HS Auditorium 7th-8th G-B Seymour Tournament TBA
21	22	23 JVG-B, VG-B vs Seymour at Seymour 4 p.m.	24 Holiday	25	26	27
28 JV B vs Stamford at Haskell 5:30 p.m.	29 7th, 8th B&G vs Rotan Girls There 5 p.m. Boys Here 5 p.m.	30 JVG-B, VG-B vs Stamford at Haskell 4 p.m.				



First National Bank Haskell

200 South Avenue E 940-864-8555 Haskell, Texas 79521

Other Convenient Locations to Serve You: **First** National Bank Munday - Stamford - Rochester

