

1/1/02
Baze Book Binding
514 W 7th St
Amarillo TX 79101-2212

Football games

Haskell vs. Bangs
Sat., Aug. 18, 11 a.m.
at Bangs (Scrimmage)

Calendar

Football tickets

Reserved seat tickets for the Haskell Indians will be on sale Aug. 27 through Sept. 4. Cost is \$25 for five home games. Tickets may be picked up at the high school office. Tickets not picked up by Sept. 4 will go on sale to the general public Sept. 5.

Haskell school pictures

Haskell school pictures for grades 7-11 will be taken Tues., Aug. 28 in the auditorium. Senior pictures will be taken Sat., Sept. 1 at the Haskell National Bank Community Room. For information call Pam Thigpen 864-2231.

Meet the athletes

The Booster Club and Coach Brad Brunson invites everyone to come "Meet the Athletes" Mon., Aug. 27 at 7 p.m. at the southeast side of the courthouse. The Booster Club will host an ice cream supper for all athletes in Haskell High School and Junior High.

Lamb validation

The deadline to order lamb validation ear tags is Fri., Aug. 17 at 4 p.m. To show a 4-H or FFA lamb project at any of the major shows or at the county show for the year 2001-2002, all lambs must be validated. To order the tags come by the Haskell County Extension office at 101 S. Ave. D or call Brandon Anderson at 864-2658.

Rule Jubilee

The Rule Chamber of Commerce has announced that the Rule Jubilee will be held Sat., Sept. 22 at the Rule City Park. Contact Maxine Hertenberger for information on the flea market and the parade; Jill Brown for the road race for all ages; and Kenny Tanner for booth information.

Mexican food

St. George's Catholic Church at 901 N. 16th St. will serve Mexican food, burritos and tamales Fri., Aug. 17 from 11 a.m. to 3 p.m. Call 864-3171 to order.

Homecoming

Haskell, Mattson, Weinert Homecoming will be Oct. 19 and 20. Addresses are now being updated. Please send changes to Haskell, Mattson, Weinert Homecoming, Box 32, Haskell, Texas 79521. Addresses are needed from the following class representatives: 1936, 1942, 1945, 1954-58, 1964-65, 1967, 1970, 1972, 1976, 1979, 1982, 1987-88, 1990-92, 1994, and 1996-97.

Elementary students to register

Haskell Elementary students will register Thurs., Aug. 16 from 1 to 3 p.m. Parents are encouraged to attend registration with their child/children to meet the teachers and fill out paperwork. School begins Aug. 20 at 8:15 a.m. K-3rd grades will dismiss at 2:15. 4th-6th grades will dismiss at 3:15. Kindergarten will dismiss at 1 p.m. for the first three weeks of school.

Early Childhood classes offered

Screening and registration for Early Childhood classes will be held Thurs., Aug. 23 and Fri., Aug. 24 at Haskell Elementary. To be eligible, children must be 3 years old on or before Sept. 1, 2001. If you feel your child may be delayed in learning, speech and/or emotional skills, please call the elementary office at 864-2654 to make an appointment for your child to be screened.

Index

Obituaries Page 2
Around Town Page 3
Out of the Past Page 4
Menus Page 8
Classifieds Page 9

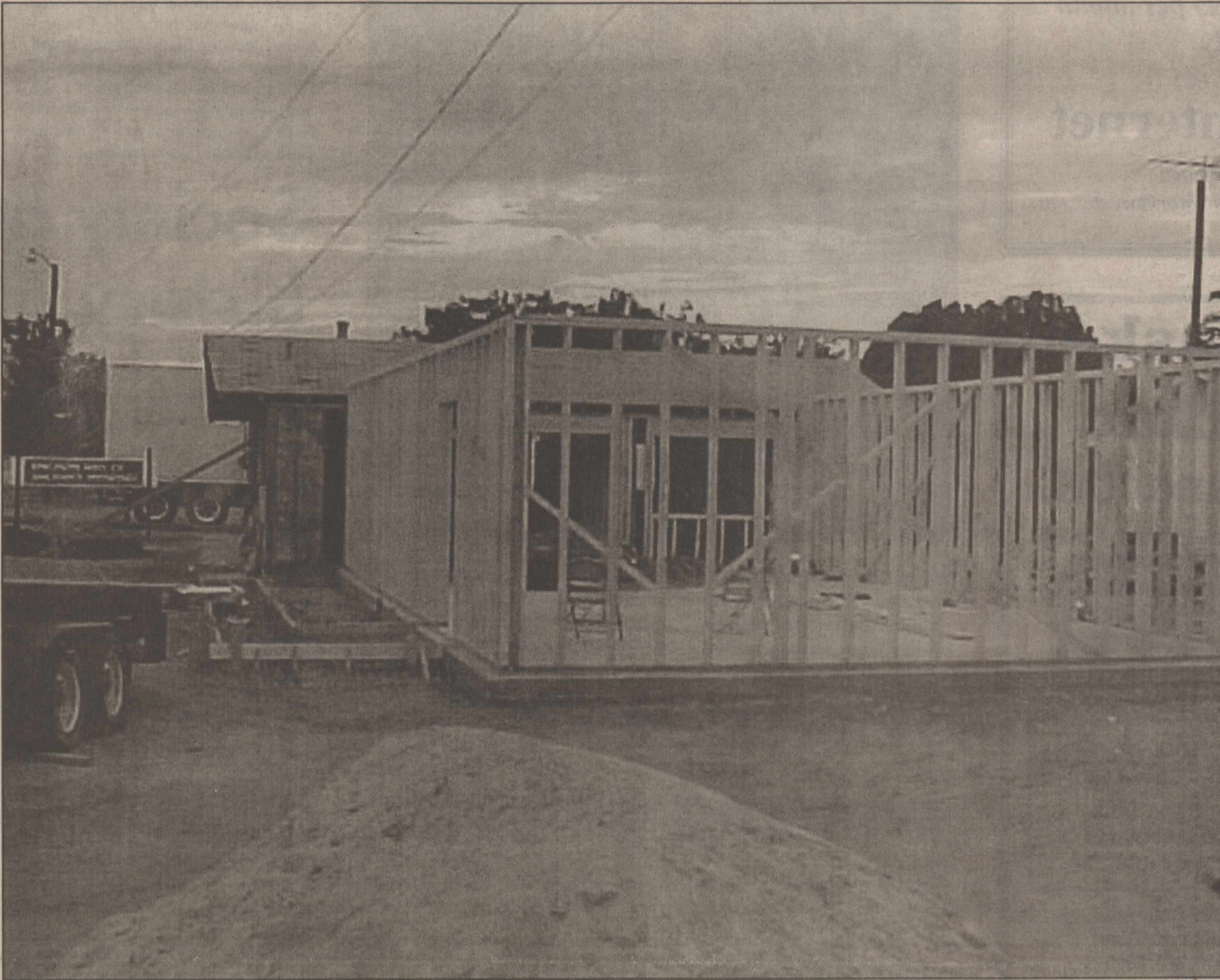
Slow down and watch for children in school zones

The Haskell Free Press

VOL. 115--NO. 33, ©AUGUST 16, 2001

"The People's Choice"

10 PAGES--ONE SECTION--50 CENTS



NEW KINGDOM HALL—Wall studs were put in place last week for the new Kingdom Hall of Jehovah's Witness at the corner of 16th and Ave. J, in readiness for a crew of approximately 600 volun-

teer professional construction workers from a wide area, who will gather in Haskell Aug. 16-19, to complete the construction of the building for the local congregation.

Local group builds new meeting place

Six hundred volunteer construction workers from across the country are expected to converge in Haskell, Thurs., Aug. 16 through Sun., Aug. 19, to construct a new Kingdom Hall of Jehovah's Witness, at the corner of 16th Street and Avenue J.

Building on the concrete foundation which has already been poured and cured, crews will work in teams, beginning with the framers, and continuing on to completion by the end of the three days.

Willie Jones of Haskell, overseer of the local congregation, said almost all of the materials for the building have been provided by donation, (much of it from contractors and commercial building material suppliers state-wide who are members of the Jehovah's Witness movement). Also, all of the work done by the professional construction people who are coming will be voluntary. He estimated that otherwise the building would have cost about \$180,000 to build instead of the \$40,000 it will actually cost when done.

The new, local building will have a seating capacity of about 100, with an overflow room seating 20. Jones said the present congregation numbers about 24.

The group coming to raise the building will be representing the Watchtower Bible and Tract Society which does world-wide construction, building meeting places and convention halls. There are 35 branch offices of the organization across the world.

Dale Dillinger of Fort Worth, who heads the Society's construction operation in Texas, will be supervising the local construction. Jones said that during the last 15 years, 92,000 units have been built around the world. Two of the larger facilities in Texas are the 4,000 capacity Kingdom Hall in Denton and the one in Rosenberg which seats 22,000.

In expressing appreciation for people in Haskell who have been helpful to the local group's efforts to build their meeting place, Willie Jones said, "So many have been just great about it. Even when we approached those living in the area about closing off the ally behind their homes during the construction, not a one of them complained or told us no."

School's in - Watch for buses and children

More than 23 million students across the country make their journey to school via buses every year, according to the National Highway Traffic Safety Administration.

The Texas Department of Transportation (TxDOT) is reminding motorists to do their part in helping to increase safety around school zones by using extreme

caution when approaching a loading or unloading school bus.

"According to Texas law," Brenda Mitchell, Abilene district traffic safety coordinator, said, "a motorist can be cited for failure to yield to a school bus with flashing red lights, which indicates children are boarding or exiting the bus. This fine could cost the motorist between \$200-\$1000."

To increase safety, Mitchell offers motorists the following tips:

- Slow down. Always obey the speed limit when traveling through neighborhoods and school zones.
- Be attentive. Watch for children gathering near bus stops and walking in the street, especially where there are no sidewalks.
- Remain alert. Hurried children may dart into the street without looking for traffic.
- Flashing yellow lights indicate a school bus is preparing to stop to load

or unload children. Motorists should be prepared to slow down and stop.

•Flashing red lights or an extended "STOP" arm indicate children are loading or unloading a school bus. Motorists must stop.

•Vehicles can begin moving again when the flashing red lights are turned off or the extended "STOP" arm is withdrawn.

•Motorists traveling on roads separated by a median are not required to stop for school buses traveling on the opposite side of the road.

"By keeping these tips in mind," Mitchell said, "motorists will help make children's ride to school safer by reducing the number of school bus-related injuries and fatalities this and every year."

"Keeping our school children safe is important and requires caution around school buses and school

Brands can be re-recorded after Sept. 1

According to law passed in 1971, Texas livestock producers are required to re-record their brands and earmarks with their county clerk every ten years if they intend to continue using them.

The re-recording process will begin Sept. 1, at which time, all county clerks will accept the applications for re-recording. Haskell County Clerk, Rhonda Moeller reminds producers that applications for re-recording will not be accepted before that date.

Producers will be given six months, until Feb. 28, 2002, in which to register brands and marks and the location on the animal which they are currently using. After that time, any unrecorded

brand will be available for use on a "first come" basis.

Early re-recording, beginning Sept. 1, not only protects producers brands, but also benefits them by having immediate updated information listed in the Texas and Southwestern Cattle Raisers Association data base.

The cost of re-recording a brand is \$11.00. There is no limit to the number of brands which can be recorded in a county by a person, as long as requirements of the law governing the recording and re-recording of brands is met. Producers may need to re-record their brands in additional counties, if their operations are extensive.

HHS to issue parking tags

Haskell High School parking tags will be issued during class meetings on Mon., Aug. 20. Students will need to bring:

•\$10.00 (or more, if necessary) to cover class dues. Students will NOT receive a parking assignment until all class dues, current and past, have been paid. Actual current year class dues may be less than \$10.00, but the amount will not be determined until that day.

- A valid Texas driver's license
- The license plate number for the vehicle which will be parked in the

student's space.

If students must temporarily drive another vehicle to school, the office must be notified with the student's name, assigned parking space number and the license plate number.

Each designated parking space belongs to the assigned student. Students should not park in someone else's space and should not allow someone else to park in their space. Disciplinary action will be taken and violators may lose assigned parking privileges.



MORNING WORKOUT—The second week of football workouts began early Monday for the Haskell Indians who will meet the Bangs team in a scrimmage Saturday at 11:00 a.m. in Bangs.

FOR NEWS ITEMS OR TO SUBSCRIBE, CALL 864-2686

Get Connected . . .

Local Internet Access
Local Tech Support
Free Software
Multiple Free E-mail Accounts
Free Home page
No set-up fee
Unlimited Access

\$19.95 per month or \$16.95 per month
if paid annually

West Texas Internet

Locally Owned and Operated
864.8124 • www.westex.net • administrator@westex.net
Haskell

Jones-Haskell



Eye Clinic

Dr. Trussell Thane, O.D.

Appointments Available • Monday through Friday

Dr. Thane provides comprehensive eye care including the diagnosis and treatment of eye disease.

Dr. Thane offers complete evaluation for eyeglasses and contact lenses.

2 pair of clear daily wear contact lenses **\$159⁰⁰**

Disposable lens packages and contacts to change your eye color available.

MEDICARE, MEDICAID
AND FIRSTCARE
ACCEPTED.

1501 Columbia
Stamford, Texas
915-773-2083



WINNING YOUNG GOLFER—Tyler Stone, of Early, son of Randy and Janie Stone, and grandson of Marion and Geneva Stone and Evelyn Henderson, all of Haskell, poses with the trophies he won on the West Texas Junior Champions Golf Tour this summer.

Tyler Stone is winning golfer

As a contender in the West Texas Junior Champions Golf Tour this summer, Tyler Stone of Early played fifteen tournaments, winning one 1st place, four 2nd places and three 3rd places.

The son of Randy and Janie Stone of Early, and grandson of Marion and Geneva Stone and Evelyn Henderson, all of Haskell, Tyler finished 2nd in the point standings on the tour with 197 points.

This qualified him to play in the Tour Championship Tournament in Llano, July 31-Aug. 1. On the first day he shot a 36 and on the second day a 45, for a two-day total of 81, placing him 5th in the Tour Championship.

City accepts bid for 35 blocks of seal coating

At the Aug. 13, morning meeting, members of the Haskell City Council accepted the bid of \$1.35 per square yard from Lipham Construction Company of Aspermont for seal coating approximately 35 blocks of city streets. Work on the project is due to begin within the next six weeks.

In other business, the Council tabled decision on the Zoning Board recommendation concerning the Denton and Dee Bates primary plat and designation of the Westwood Estates, requesting a zoning change from agricultural to residential use.

The planned development, to be located on 46 acres south of the Addison Addition, involves the tract of land situated in the mid-west part of Lot 128, Peter Allen Subdivision, recorded in the Deeds Records of Haskell County as The Westwood Estates Addition. Development is planned to begin with sales of approximately two acre tracts in two of the four blocks, and approximately one acre tracts in two of the blocks. The area would be bound on the south by South 7th Street and on the east by Ave. P.

Society hears history of Jud

The Haskell County Historical & Genealogical Society held a meeting Mon., Aug. 6 at the First National Bank Community Room.

Darlene Bellinghausen told about the people of Jud from the past to the present. The presentation included a slide show. She was assisted by Pam Thigpen.

A business meeting was held. Wanda Ham summarized last

month's meeting about antique toys and showed a proof of the new, upcoming 2002 calendar.

Present were: Johnny Scoggins, Dolin Hughes, Wanda Ham, Maxine Miller, Hortense Lees, Marilyn Griffith, Erma Liles, Patsy Cobb, Eula and Lowell Peters, June White, Ernestine C. Herren, Frances Lane, Randy Wilson, Darlene Bellinghausen and Pam Thigpen.

Cattle Market Report

The market at the Haskell Livestock Auction was on a run of 562 head of cattle at its sale on Sat., Aug. 11, according to Gary Tate, reporter.

Stockers and feeders steady. Packer cattle 1-3 lower.

Jersey, longhorns, Holsteins, knots, cripples and bad eyes \$5-\$30/100# less than figures quoted!

Cows: fat, .38-.44; cutters, .40-.46; canners, .25-.35.

Bulls: bologna, .54-.60; feeder, .72-.82; utility .45-.55.

Steers: medium and large frame No. 1 200-300 lbs., 1.10-1.40; 300-400 lbs., 1.00-1.20; 400-500 lbs.,

.95-1.10; 500-600 lbs., .88-.97; 600-700 lbs., .80-.94; 700-800 lbs., .77-.87; 800-up lbs., .65-.82.

Heifers: medium and large frame No. 1 200-300 lbs., .95-1.20; 300-400 lbs., .90-1.10; 400-500 lbs., .88-.98; 500-600 lbs., .80-.94; 600-up lbs., .62-.87.

Bred Heifers: medium frame, 475-600.

Bred Cows: young to middle aged, 575-675; aged or small 500-625.

Cows with calves: medium frame No. 1 young and middle aged, 650-850; aged or small, 575-650.

NOTICE OF PUBLIC MEETING TO DISCUSS BUDGET AND PROPOSED TAX RATE

The Rule Independent School District will hold a public meeting at 1:00 p.m. on August 31, 2001, in the library.

The purpose of this meeting is to discuss the school district's budget that will determine the tax rate that will be adopted. Public participation in the discussion is invited.

The tax rate that is ultimately adopted at this meeting or at a separate meeting at a later date may not exceed the proposed rate shown below unless the district publishes a revised notice containing the same information and comparisons set out below and holds another public meeting to discuss the revised notice.

Comparison of Proposed Rates with Last Year's Rates

	Maintenance & Operations	Interest & Sinking Fund *	Total	Local Revenue Per Student	State Revenue Per Student
Last Year's Rate	\$1.50	\$0.00	\$1.50	\$1,972	\$4,992
Rate to Maintain Same Level of Maintenance & Operations Revenue & Pay Debt Service	\$1.49	\$0.00	\$1.49	\$2,031	\$4,864
Proposed Rate	\$1.50	\$0.00	\$1.50	\$2,128	\$5,125

*The Interest & Sinking Fund tax revenue is used to pay for bonded indebtedness on construction, equipment, or both. The bonds, and the tax rate necessary to pay those bonds, were approved by the voters of this district.

Comparison of Proposed Levy with Last Year's Levy on Average Residence

	Last Year	This Year
Average Market Value of Residences	\$23,455	\$24,560
Average Taxable Value of Residences	\$3,455	\$4,560
Last Year's Rate Versus Proposed Rate per \$100 Value	\$1.50	\$1.50
Taxes Due on Average Residence	\$51.83	\$68.40
Increase (Decrease) in Taxes		\$16.57

Under state law, the dollar amount of school taxes imposed on the residence homestead of a person 65 years of age or older or of the surviving spouse of such a person, if the surviving spouse was 55 years of age or older when the person died, may not be increased above the amount paid in the first year after the person turned 65, regardless of changes in tax rate or proposed value.

Notice of Rollback Rate: The highest tax rate the district can adopt before requiring voter approval at an election is \$1.5469. This election will be automatically held if the district adopts a rate in excess of the rollback rate of \$1.5469.

Fund Balances

The following estimated balances will remain at the end of the current fiscal year and are not encumbered with or by a corresponding debt obligation, less estimated funds necessary for operating the district before receipt of the first state aid payment.

Maintenance and Operations Fund Balance(s)	\$1,504,156
Interest & Sinking Fund Balance(s)	\$0.00

Obituaries

Edna Allen Boykin

Graveside services for Edna Allen Boykin, 84, of Nashville, Arkansas were held Mon., Aug. 13 at Academy Cemetery in Nathan, Arkansas under the direction of Nashville Funeral Home.

Mrs. Boykin died Sat., Aug. 11 in a Nashville hospital.

Born Sept. 19, 1916 in Dekalb County, Alabama, she was the daughter of Henry Franklin and Nora Edna Turpin Allen. She was a former cafeteria worker at Weichert High School in Weichert and a member of Newhope Church of Christ in Newhope, Arkansas. She was an excellent cook and loved being with her family.

She was preceded in death by her husband, Ted Boykin, in 1988; a son, David C. Boykin, in 1973; two sisters,

Edith Meadows and Ellen Dickenson; and one brother, Thomas F. Allen.

Survivors include one daughter and son-in-law, Betty Boykin Carroll and husband, Bob of Nashville, Arkansas; one son and daughter-in-law, Billy W. Boykin and wife, Marsha Reynolds Boykin of Houston; one daughter-in-law, Deana Loyd Boykin of Andrews; one sister, Mimmie Allen Nivens of Wichita Falls; one sister-in-law, Sue Allen of Midland; 10 grandchildren, 12 great grandchildren and three step-great grandchildren; several nieces and nephews and a host of other family and friends.

Memorials may be made to the American Heart Association or the American Kidney Association. PD. NOTICE



Fall, 2001

Registration: Thursday, August 16, 6p.m.

WESTERN TEXAS COLLEGE

STAMFORD CENTER

Affordable College Classes Close to Home

HAWLEY HIGH SCHOOL - Registration: Thursday, August 16 - 6:00 p.m.-Hawley High School.						
CDEC 1358	0780	CREATIVEARTS	W	6:30-9:20	3	ON SITE MOUSER, S
COSC 1300	0781	INTR/COMPUTERS	M	6:30-9:20	3	ON SITE ST. JEAN, D \$20
DMT 011	0782	MATH SKILLS LAB	TBA	TBA	1	TBA DUCHENEAX, S \$12
ENGL 1301	0783	COMPOSITION I	CONCURRENT		3	ON SITE GEE, G \$8
ENGL 1302	0784	COMPOSITION II	CONCURRENT		3	ON SITE GEE, G \$8
ENGL 1302	0785	COMPOSITION II	T	6:30-9:20	3	ON SITE RATLIFF, W \$8
HIST 1301	0786	US HIST TO 1865	TH	6:30-9:20	3	ON SITE STAFF
STAMFORD HIGH SCHOOL - Registration: Thursday, August 16 - 6p.m.-Library Media Center						
ECON 2301	0793	PRINC/ECONOMICS	W	6:30-9:20	3	ITV fr WTC SMITH, N
ENGL 1301	0794	COMPOSITION I	MWF	8:00-8:50	3	ITV fr STAM RISTER, M \$8
ENGL 2311	0795	TECH WRITING	M	6:30-9:20	3	ON SITE RISTER, M
GOVT 2305	0796	US/ST/LOC GOV	MWF	12:00-12:50	3	ITV fr WTC PRICE, J
HIST 1301	0797	US HIST TO 1865	MWF	10:00-10:50	3	ITV fr WTC PRICE, J
HIST 1301	0798	US HIST TO 1865	W	6:30-9:20	3	ITV fr WTC PRICE, J

*SHADING INDICATES EVENING CLASSES

For more information, call toll-free:
1-888-GO-TO-WTC (1-888-468-6982)
Email: info@gotowtc.org
http://wtc.cc.tx.us

Cost

1 class	\$141
2 classes	\$267
3 classes	\$393

(does not include lab, DL fees, EC fees or books)

Western Texas College is an equal opportunity institution in compliance with ADA. Applications are accepted and considered without regard to race, color, creed, sex, age, national origin, veteran's status, or disability.

Preventing falls is topic for TEEA program

After a vacation month, the members of Haskell County TEEA were enthusiastic about getting back into the business ahead for the group. Many are excited about the State Meeting, which is to be held at College Station in September. The ladies worked hard serving for the Cultural Arts Day held in Weinert and their earned proceeds will help see them through the expenses of their State Meeting trip.

New officers are president, Dolores Medford; vice-president, Coleta Whitfield; secretary/treasurer, Flossie Bates; and reporter, Sharon Lefevre. Lena Tidwell advances to Council Chairman and Flossie Bates was elected Council TEEA vice-chairman/reporter.

Lena Tidwell and Joetta Burnett brought the program entitled "Preventing Falls." Each leader presented information which should alert anyone, but especially the older person, to some hazards around the home. Most falls happen in the home and many obstacles are easily removed, making the home a safer environment. Throw rugs should be removed, or use double-sided tape on the backs of the rugs to secure them to the floor. Extra furniture, which presents barriers in the home, should be removed. Stacks of papers, magazines, books, clothing and general clutter should be removed. Do a walk-through of the home and see just what might be considered a hazard and remove it.

As a person ages, the body changes. The vision and hearing adjust and the flexibility of the body

and the gait change. Stronger lighting is required; our storage habits need changing. In areas where storage is prevalent, such as a bathroom, kitchen and utility, place things on shelves, which make easy access to objects. Things should be readily available without having to climb, with the risk of falling from a stool, or stooping and risking the chance of blackout and tumbling. Also, place a phone on a lower table or area of easy reach, in case of a fall, enabling the use of the telephone to call for assistance.

Some medication can alter our reaction period, our stability, alertness and drowsiness. If sedate affects are noticed, notify your physician and/or pharmacist and be sure to report all medications that are being ingested, in order for the professional to make a proper exchange of medication. Use of a walking aid can be helpful and the use of an alarm device to be worn, especially if living alone. Remember when rising from chair or bed, speed is always reckless. Move slowly in order to help prevent the blood rushing from one area to another, creating a problem. Falls account for two of every three days of hospitalization for injuries and at a cost to the economy of more than \$7 billion annually.

Votes were taken for the Club Woman of the Year and Rookie of the Year.

Refreshments were served by Coleta Whitfield and Jeri Burke. New members are invited to come and benefit from the educational programs.



RICK PHEMISTER - EMMALEE BIVINS

Bivins, Phemister to marry Oct. 6

Emmalee Bivins and Rick Phemister, both of Haskell, plan to marry Sat., Oct. 6.

Don and Patsy Bivins of Valley View are the parents of the bride-elect. She is employed by

CellularONE of Haskell.

Max and Doris Jean McMeans of Haskell and Wayne and Linda Phemister of Austin are the parents of the prospective groom. He is an owner of Heads or Tails Western Wear of Haskell.

TEEA hold Cultural Arts Day in Weinert

District 3 Texas Extension Education Association held Cultural Arts Day at the Weinert School July 17. Haskell, Kent and Knox Counties hosted the event.

Clara Howell, District 3 director, welcomed members and guests. Jane Smith gave the greeting. Alice Yates introduced her daughter, Mary Murphy, who is a professional photographer and school teacher. Murphy presented a program on successful picture taking and framing by showing pictures that she has taken. She also told the history of the Weinert School and the converting of the school to a community center.

Debbie Moore from the MHMR Training Center in Haskell spoke on the use of cultural arts as therapy for handicapped persons. She showed an exhibit of the crafts that are made at the Training Center.

Molly Yarger, owner of Country Pleasures in Abilene, gave a program on judging quilts and other textiles in contests. She gave tips on the care of old linens.

Erma Liles, Haskell TEEA member, resident of Weinert and a former Weinert school teacher, invited everyone to tour her home and see her collections. One of her collections is replicas of castles that she visited on her travels to different

countries.

During the Cultural Arts Awards presentation and announcements, Alice Yates was awarded first place for her quilt. She will enter the quilt in the State Conference at A&M University in September.

Haskell Homespun Club served a salad luncheon to 105 members and one guest.

Hospital

Admissions
Emma Bridges, Haskell
James Kierepka, Haskell
Eureda Campbell, Haskell

Dismissals
Hazel Wofford, Doris Martin, Jess Leonard, Janie Walker

90 attend Mullins cousins reunion

The Mullins Cousins family reunion was held Sun., July 15, at the Haskell National Bank Community Building. Approximately 90 descendants of Will and Bettie Mullins, early settlers in Haskell County, gathered to exchange family news and to share fellowship.

Kay Smith, Kristen Grand, Kim Crawford, Kathy Rea and Betsy Langford were hostesses. Faye Campbell was Mistress of Ceremonies with Frank Clarkson leading the auction of gift items.

Oldest member attending was Maple Thomas of Haskell. Relatives traveling the farthest were Michael Smith of New York City and Marie and Marlin Brown of Farmington, N. M. Youngest member was Jessica Andrews of Haskell.

Nettie Mullins Smith's descendants had the highest number of family members attending with thirty-two present.

Members voted to return to Haskell next summer with the same hostesses for the annual family reunion with July 28 as the selected date.

Attending were: Roy and Omitene Amonett, Gwen Campbell, Kim and James Robert Crawford, Jim and Amanda, Milbert and Ladelle Opitz, Darrell and Kay Smith and Charlie, John and Maple Thomas, Scott and

Leanna Andrews, Jessica and Valerie, Betsy and Jodi Langford, Keith and Derinda Hannsz, Kristen and Chris Grand, Katie and Levi, all of Haskell.

Eldon Amonett of Denver City, Judy and R. W. Anderson, J. R. and Kay Rodriguez, Dara and Erika, Kathy Rea, Tracie and John, Jeremy Gentry and Felicity, all of Abilene.

Marlin and Marie Brown of Farmington, N. M., Faye and Arvil Lee Campbell, Shanna Hutton and children, all of Floydada; Frank and Barbara Clarkson, Royce and Wanda Mullins, Deborah Cole, Marjorie Reynolds, J. W. Mullins, Jr., Jennifer Massey and Bobbie Gray, all of Lubbock.

Rodney and Pam Amonett of Clyde, Manuel Mullins, Sue and John Holcombe, all of Olney; Sherri and Nicole Nelson of Dallas, Mildred Offutt of Weinert, Michael Smith of

New York City, Wilmer Smith of Milano, Jimmy and Gayle White of Knox City, Freddie and Karon Sharp, Nikalous and Christopher, Steve and Cindy Collins, Zack, Katie and Josh, all of Fort Worth; Juanita Davis of Munday, Dalton and Dale Linton, John and Jennifer Linton, all of Midland; Clifton and Donna Sue Morrison, Samantha and Jeremiah of Anson; Larry Gilliam of Stamford, George and Bess Mullins of San Antonio, Monty and Leslie Holcombe of College Station, Shirley and Jim Reed of Azle.

Around Town

By Joyce Hawkins

Saturday evening Billy and Margaret Tatum took their grandkids Aubrie and Caden to Childress to meet their parents Jonathan and Candice after a two weeks visit with grandparents, aunts, uncles, cousins and great grandma Joyce.

Zachary Tatum celebrated his fifth birthday with a party at the park Friday evening. Attending the party were his parents Christopher and Melissa, his brothers Garret and Taylor, grandparents Billy and Margaret Tatum and Linda Chapman, great grandmothers Joy Chapman and Joyce Hawkins, aunts and uncles Creora Tatum, Glenda Gayle Rutkowski, Clarence and Bo Tatum and Gary Hawkins; cousins Aubrie and Caden Tatum from Dalhart, Rylie

Tatum, Brittany, Weston and Ashton Rutkowski and friends Josh Barbee, Dustin Threot, Bobby Scheets and Audree Renfro.

Sammy, Peggy and Brittney Hawkins of Aspermont spent Saturday afternoon with his mom Joyce and Gary Hawkins. Darlene Conn came over for a few games of 42 and visiting. Peggy and Brittney also visited her dad Joe Ruiz.

Monica Childs and sons Alan, Richard, Joshua and Matthew of Midland were recently in Haskell to attend the Frierson-Rogers wedding. They also visited Monica's brother and family, the Flint Nannys, her father, Joel Nanny and Mrs. Nanny and her grandmothers Jennelle Nanny and Lois Redwine.

Haskell Free Press

IS READ BY MORE PEOPLE IN HASKELL COUNTY THAN ANY OTHER NEWSPAPER.

This Is It!

Our Final Reductions on Spring and Summer Sale Shoes

(Values to \$98.00)

\$9⁹⁰ \$14⁹⁰ \$19⁹⁰ \$24⁹⁰

UP TO 75% OFF Spring & Summer Sale Clothes

Buy 2 packages Round-the-Clock Hose Get 1 package FREE

Personality-Slipper Shoppe

940/864-2501 • 864-3051

South Side of Square

Haskell, Texas

End-of-Summer Sale

Leggs' Hose, Tights and Socks Selected Jewelry Selected Gift Items

75% off regular price

Save 20% off the reg. price on East Texas Pottery Americana Gift Items Desk and Box Fans

Crayons 48 Count Rose Art with FREE 8 oz. School Glue \$2⁰⁰	Theme Books 70 Sheet • Limit 6 3 for \$1⁰⁰
Filler Paper 150 sheets • Limit 6 3 for \$2⁰⁰	Metro Analog Bath Scales \$10⁰⁰
Tavist Allergy, Sinus, Headache \$4²⁹ 24 ct.	Zantac 75 Acid Reducer • 30 tablets \$7⁹⁹

Prepaid Phone Cards Great for the College Student! Choose from \$5, \$10 or \$20 cards. Only 4.5 Cents a Minute after applicable fees.

Prices Good August 16, 17 & 18

THE DRUG STORE

Haskell 940-864-2673

OPINION

State Capital



HIGHLIGHTS

By Mike Cox
TEXAS PRESS ASSOCIATION

AUSTIN — As debate continues on whether Mexican trucks should be allowed on interior highways, the Texas Transportation Institute is quietly studying another way to move freight: A 400-mile tunnel from Laredo to Dallas.

With truck traffic related to the North American Free Trade Agreement growing by 11 percent each year, the work under way in College Station is not as far-fetched as it might seem.

The idea is outlined in an article the transportation study group published last fall in its journal, Texas Transportation Researcher.

Here's the concept: Move freight on electric-powered, pallet-carrying vehicles through an underground concrete tube 2 meters in diameter.

No humans would be involved in the transportation process, except for operating the system from above and at either end.

"We are aiming specifically to alleviate the impact—pollution, road damage, accidents, congestion—of increased NAFTA truck traffic on Texas highways," said Steve Roop, director of the institute's Rail Research Center.

Roop said the system could move the equivalent of a tractor-trailer load on one railroad-like vehicle at about the same speed trucks can legally travel on highways.

The effective life of such a system, Roop said, would be 50 to 100 years.

Assuming such a route followed a straight line, a ruler laid between Dallas and Laredo on the Texas Department of Transportation's highway map shows it would cut through the Hill Country.

Even though the institute believes such a system would be efficient once built, it would be expensive. And given the resistance that killed the high-speed rail proposal, a tunnel

across Texas doubtless would be controversial as well.

"It took 25 years to get the interstate highway system in place, so a large, integrated freight system would certainly take decades," Roop said in the article.

Oyster harvest up

Texas' oyster catch last year was the largest in a decade, according to statistics compiled by the National Marine Fisheries

Service and the Texas Parks and Wildlife Department.

The state's long coastline netted harvesters 6.1 million pounds of oysters during the season, which runs from Nov. 1 to April 30.

Value of that catch is estimated at \$14 million.

The Texas oyster harvest was only 2.9 million pounds in 1991.

Some Texas trivia

Everyone knows the state flower is the bluebonnet and that the state tree is the pecan, but do you know what the state shrub is?

It's not mesquite, which technically is a tree. It's not purple sage or mountain laurel. It's crape myrtle.

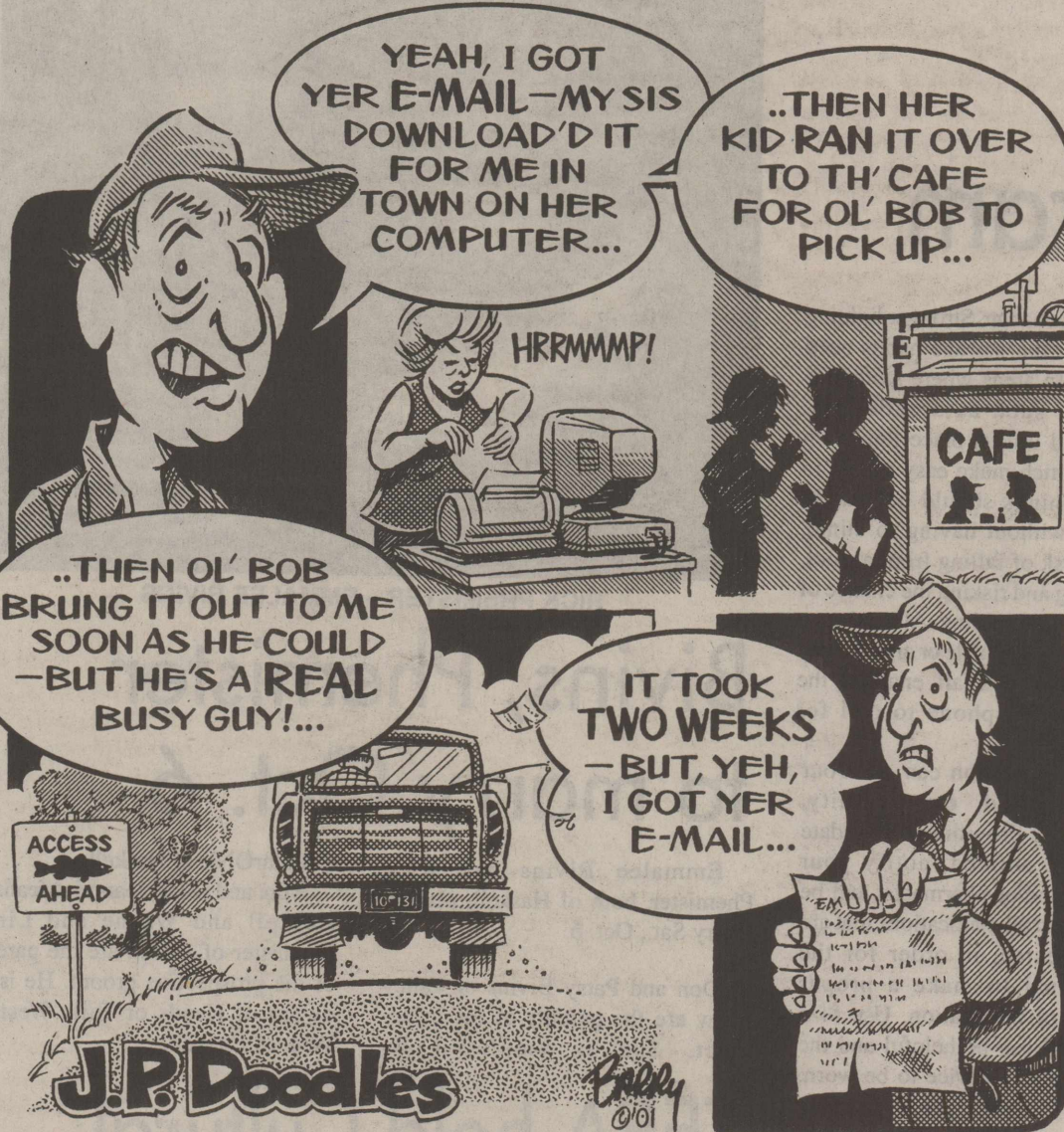
The Texas A&M University Research and Extension Center in Dallas has been studying the plant and the city of McKinney has undertaken a project to plant 50,000 crape myrtles in public areas and medians over the next decade.

Don't Mess With Texas

These four famous words, the unofficial slogan of Texas, previously only had been available on bumper stickers and plastic vehicle trash bags.

Now, however, for \$25 in addition to your vehicle registration fee, you can buy "Don't Mess with Texas" custom license plates.

The slogan has been around since 1985, specialty license plates since 1965.



From The Inside Out

By Mary Kaigler

The importance of using the right word to convey the proper meaning of a thing is evident in everything we speak, read or hear.

"A word fitly spoken is like apples of gold in pictures of silver," said the poetic writer of Proverbs, speaking of the beauty of words when they are aptly used. I first heard that metaphorical allusion from Mr. Snider, my geometry instructor, a retired, older teacher who was of the old school of oratory. Drafted back into teaching in 1941-42 during World War II, when so many younger men teachers went into the armed services, he came to our high school as superintendent, and I suppose taught geometry in lieu of a real geometry teacher.

Actually, not being a real student of geometry myself, I remember sitting enthralled on the edge of my seat, hanging on his every eloquently spoken word, class after class, as he opened up my first glimpse into the works of many great philosophers and writers. Somehow, his apt quotations made the subject of geometry one of the most interesting ones I had that year. (Of course, I'm not sure that what I learned was related to the assigned subject matter. Today I couldn't work through a geometric equation if I had to, but I well remember Mr. Snider's side excursions into works and words of the old masters and early mathematicians.)

One of my dad's lessons to us as a child, about how meanings can be misinterpreted by the emphasis put on certain words, was the joke about the sign a barber put outside his shop to stimulate business. "What do you think—I'll give you a haircut and buy you a drink," was the message printed. When a gullible customer came in and quoted the words on the sign after getting his hair cut, the wily barber would say, "Oh no, that sign says

What? Do you think I will give you a haircut and buy you a drink?"

Even a headline in a newspaper or magazine can be misleading in the way it's worded. Sometimes they too are meant to be misleading, like the shill standing out in front of a side show at the carnival, promising more titillating information on the subject inside the tent or inside the covers of an expose publication than is really there.

Yet, many times even the well-meant meaning of a headline is lost in the choice of words used, leaving readers either shaking their heads in puzzlement or in amusement. Reading the six or eight area-wide community newspapers that come across the desk each week, one sees that our own paper is not the only one that can be caught with our words down. We all occasionally suffer from headline "foot-in-mouth" affliction. Sometimes it is hilarious to the readers (if not to the one who wrote it).

One case in point was the recent front page headline stating that a certain "county's aging coordinator to retire." It was accompanied by a nice article and picture of an attractive, young-looking lady who was Coordinator of the Agency on Aging Program in her county. No doubt, the lady was definitely not aging to the point of having to retire, (and we can hope that she also has a good, healthy sense of humor.)

Sometimes, a headline can make us wonder if it is intentionally written as it is, or just in a misinterpretation of the facts of the story it heads. A recent headline in a neighboring daily newspaper, stating, "Waco endures Bush's visit," not only caught our eye for not relating to the real content of the story it headed, but also brought a letter to the paper's editor from one of their readers who also noticed its misleading connotation.

In his questioning, scolding letter he pointed out the two faces of journalism, one which blatantly distorts truth and the other which truthfully describes the facts.

One of my two favorite *Free Press* readers in the Los Angeles area, (yes, we have them in states and cities coast to coast), recently sent the following letter, having some fun with a witty observation about one of our July 5 edition headlines, which caught his eye and piqued his imagination as to what it really may have been alluding to.

Hi Mary,
After reading the attached headline (**Seniors should retire on a new mattress**) I began to wonder about the real meaning of the article.

- Is the Haskell Free Press
- 1) Suggesting seniors buy a new mattress as an optimistic statement about longevity;
 - 2) Indicating there might really be something to the title "sexy seniors";
 - 3) Recommending a new mattress so all of that cash hidden in their mattress will be less noticeable, or
 - 4) Suggesting that they may just lie around all the time and need new support?

(signed) Bud,
Altadena, CA.

Well, dear Bud,
Those are fitly spoken words and observations. We appreciate your continued, attentive reading of the *Free Press*. After further review by the editorial staff (of one) it is our considered opinion that taking any or all of the implications you suggest might be gleaned from reading the headline, may well be appropriate. Take it from a senior who has retired several times; any way you look at it, "Seniors should retire on a new mattress."

New challenges face students

Studies show the potential for drug and alcohol abuse rises when children enter middle school. Extension health specialist Linda Jouridine says this is the most important time for parents to talk to their children about alcohol and drugs.

Between the ages of 8 and 12, children become most susceptible to outside influences, such as peer pressure. However, they still get their basic ideas about right and wrong, their morals and their belief system from their parents.

Jouridine recommends talking to your kids about drugs, setting firm limits on behaviors and getting to know their friends and their friends' parents.

From Out of the Past

From the files of
The Haskell Free Press

10 Years Ago
August 15, 1991

The Weinert 4-H elected officers recently. They are: Heather Guess, president; T. Nichols, vice president; Jace Yates, second vice president; Dusty Yates, third vice president; Heath Guess, secretary and treasurer; and Lane Murphy, reporter.

Mayor Greg Melton cut the ribbon in ceremonies dedicating the new gazebo at Rice Springs Park.

Brad Lane, Truett Standefer, Susan Jarred and Cynthia Halliburton participated as volunteers in the door-to-door canvass to raise funds for the Muscular Dystrophy Association.

20 Years Ago
August 13, 1981

Mr. and Mrs. Phil Coleman and Mr. and Mrs. Kenny Thompson attended the Texas Farm Bureau Cotton Tour in New Orleans, Louisiana.

The Altar Guild of Faith Lutheran Church in Sagerton met with eight members present. Those present were Norma Tredemeyer, Alvin Bredthauer, Mrs. Arthur Knippling, Mrs. Henrietta Stegemoeller, Mrs. Lena Schaake, Mrs. Louise Stegemoeller, Mrs. David Letz and Mrs. Carl Druessedow.

30 Years Ago
August 19, 1971

A well-known local farm leader, Charles Swinson and his wife of Haskell, have joined cotton growers, processors and agri-business leaders from 12 states in a cotton study visit to Russia and four other European countries.

Rick Perry is in College Station for a week of Ground School Training in connection with his AFROTC program. He will begin his Flight Training. Perry is the son of Mr. and Mrs. J. R. Perry of Paint Creek.

40 Years Ago
August 17, 1961

Jane Bynum, 1961 graduate of Haskell High School, has been nominated by the HHS chapter of Future Farmers of America as one of 18 candidates in the Official Sweetheart Contest of the 1961 West Texas Fair in Abilene.

Ira Sue Bell and Jerry Larned of Haskell and Nelta Walton of Paint Creek received bachelor's degrees from North Texas State College. They are among the last graduates to receive degrees from North Texas State College. By an act of the Texas Legislature the school will become North Texas State University Aug. 29.

Lt. Col. R. C. Couch Jr. of Haskell has returned from a two-week tour of duty with the Continental Army Command in Fort Monroe, Virginia. Col. Couch is one of a few selected reservists who have been chosen throughout the U. S. to undergo regular Army officers that are in sensitive positions.

50 Years Ago
August 16, 1951

Mrs. C. L. Garrett and son Weldon of Weinert have returned home from visiting in Lubbock.

Roy G. Johnston, hospital corpsman, second class, USN, is serving aboard the newly recommissioned destroyer USS Black. Johnston is the son of Mr. and Mrs. W. C. Johnston of Haskell.

Mr. and Mrs. Jack Spear, Doc Henshaw, Mrs. McKelvain and daughter, Janis, returned Friday from a vacation trip to Corpus Christi.

90 Years Ago
August 19, 1911

W. O. Sanders of the Pleasant Valley community brought in the first bale of cotton from the 1911 crop on Aug. 12. It was ginned at the Newsom Gin and weighed 410 pounds. It was purchased by W. W. Fields & Son for 11 3/4 cents per pound. Haskell merchants made up a premium of \$35 cash for the first bale.

J. D. Roberts was in town Saturday. Roberts has several ears of fine corn grown on his farm this year on display in the lobby of the Farmers National Bank.

Mrs. Gammill, formerly Miss Belle Simmons, arrived this week from Pine Bluff, Ark. and is visiting her parents, Dr. and Mrs. J. G. Simmons.

Burn ban in effect

The Haskell Free Press

Established January 1, 1886
PUBLISHED EVERY THURSDAY

401 S. First St
P. O. BOX 555 HASKELL, TEXAS 79521

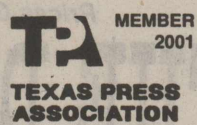
John McDougal Publisher
Lisa Shaw Business Manager
Mary Kaigler Editor
Doris McDougal Production
Bill Blankenship Staff Photographer

Periodical Paid Haskell, Texas 79521
(USPS 237-040)

SUBSCRIPTION RATES:

Haskell County, one year, \$20.00.
Outside of Haskell County, one year, \$28.00.

NOTICE TO PUBLIC—Any erroneous reflection upon the character, reputation or standing of any firm, individual or corporation will be gladly corrected upon being called to the attention of the publisher.
POSTMASTER: Send address changes to The Haskell Free Press, P.O. Box 555, Haskell, TX. 79521-0555.



This issue mailed Wed., August 15, 2001

Keeping an Eye on Texas

Preventive Practices

The Auto Theft Prevention Authority's (ATPA) proactive measures have led to a 50 percent decrease in the overall auto theft rate in Texas, saving the state more than \$470 million in losses from auto theft.

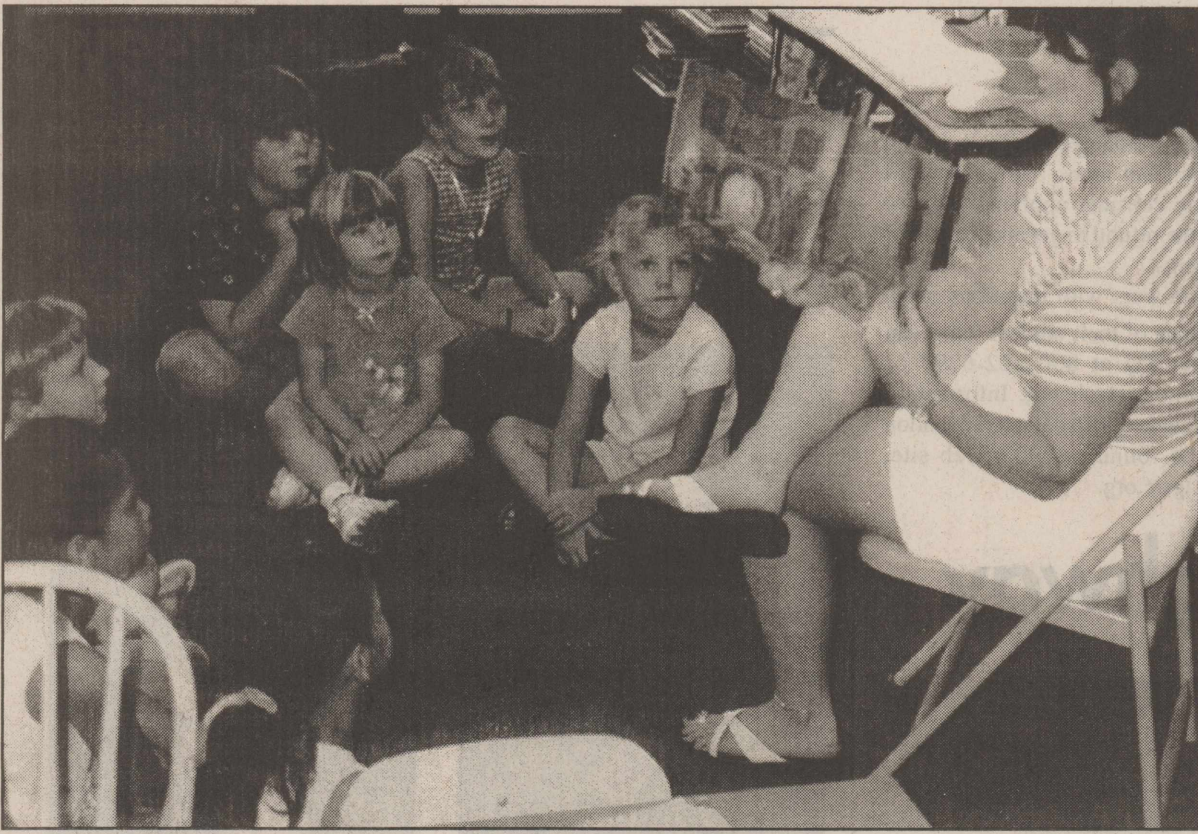
A car is stolen every five-and-a-half minutes in Texas. Guard against becoming a victim of auto theft by:

- parking in attended lots.
- closing car windows completely when parking.
- removing valuables inside your car from plain view.
- turning off your car, even if you'll only be away for a minute.



Watch Your Car

SOURCES: Carole Keeton Rylander, Texas Comptroller (www.window.state.tx.us), and the Texas Automobile Theft Prevention Authority.



SUMMER READING FUN—Haskell County youngsters enjoy hearing a story during a weekly session of the Library Summer Reading Program held at the Haskell County Library.



SNACK TIME AT THE LIBRARY—Some of the children attending the Summer Reading Program, take time out for refreshments during their visit to the Haskell County Library.

Advice for parents with college-bound students

It happens every fall. Many spring graduates of Haskell County high schools leave home for college. Like other parents from Maine to Montana, Haskell parents may be thinking, "Free at last!" or more likely, "How can I let her/him go?"

Relax. Several experts at Southwestern University have pooled their pearls of wisdom about how parents can survive their

teenager's first year away from home, what they can do to help and when they need to take a back seat.

They offer some down-to-earth advice to parents of first-year college students.

1. Realize that things have changed enormously since you were seventeen. You may not like it, you may hate it, but it's true.

2. If you did your job as a parent, your teenager was ready to

leave.
3. Allow your student to experience making decisions on his or her own. Freedom is one thing—being able to set limits has to be learned.

4. Your student should establish his or her own checking account. It provides a sense of money management.

5. Regarding finances, provide your student with what is needed and a little more without allowing irresponsibility. Make surprises treats rather than bail outs.

6. Send a bag of groceries back to school with a friend or surprise your student with something he or she wants or needs that isn't part of the support you promised. Most importantly, send mail.

7. The hardest thing for parents to do is to let go. Don't meddle. Be willing to leave your student alone.

8. Don't insist on a career choice that fits your values and interests.

9. For a student trying to settle upon the choice of a course of study, the best advice is and always has been, "Do what you enjoy the most." Students pursuing areas of real interest always do the best, and doing well always opens the most doors in the long run.

10. Don't be shocked when your son or daughter questions values that you cherish. It's a natural part of developing his or her own values.

11. Parents need to find ways to take care of themselves—it is vital to the health of a son or daughter that parents don't continue to make the student the center of their lives.

12. Don't foster guilt for how much you are spending on education.

13. Ask your daughter or son about something other than grades.

14. Encourage a balanced lifestyle, paying attention to

studying, relationships with new friends, work, spiritual health and physical activity.

15. Realize that their first experience with independence will make it extremely hard to follow schedules and curfews on visits home.

16. Encourage your child to stay on campus until Thanksgiving. This will give them time to develop relationships, plan weekend activities and create a new community. Well, maybe Thanksgiving is a little too far off. At least don't let your child come home the first weekend. Or the second.

17. Expect to see some changes in your child. College is, and should be, a time of growth, exploration, and questioning for a young person. It is part of growing up into an educated and self-confident adult.

18. There is no way to prepare yourself for the mood swings you'll

feel as a person, except to recognize that you'll have them.

19. Don't be offended if no one can answer your questions about your child's academic progress. The law prohibits colleges from doing so.

20. Don't change your student's room into a sewing room until at least the sophomore or junior year. Make sure there is a place to come

home that is familiar.

21. You've raised a child who can go out into the world and make new friends, new mistakes and new discoveries. The most positive thing parents can do is convey to their student that they trust them, love them, they are there for them, they believe in their education and they are proud of them.

22. Listen.

TNRCC sets Waste Pesticide Collection in Sweetwater, Aug. 23

The Texas Natural Resource Conservation Commission (TNRCC) will co-sponsor an Agricultural Waste Pesticide Collection, Texas Country Cleanup, and Household Hazardous Waste event, 8:00 a.m. to 1:00 p.m., Thurs., Aug. 23. The location will be at the Sweetwater-Rolling Plains CO-OP Compress, located on West Alabama Street, building number 29, southwest of Sweetwater off of I-20.

Materials that will be accepted are household hazardous wastes, banned or unwanted pesticides, properly rinsed plastic pesticide containers, used motor oil, oil filters, and lead acid batteries free of charge.

Household hazardous wastes include: automotive waste products, such as antifreeze, brake and transmission fluids; old painting supplies, such as old paint, solvents, varnishes, paint strippers or wood preservatives; gardening

supplies, such as pesticides, insecticides, fertilizers, weed killers and rat poison; and old cleaning supplies, such as polishes, drain cleaners, oven cleaners and degreasers, concentrated cleaners, moth balls and cleaning concentrates.

All agricultural chemicals will be accepted, excluding pesticides or herbicides containing 2,4,5-T-Silvex (quantities less than 5 gallons can be accepted); explosives; compressed gas cylinders; fertilizers or nutrient materials that are neither hazardous nor contain pesticide admixtures; or pesticides or wood preservatives containing pentachlorophenol.

Lab wastes from local school districts can be accepted.

The TNRCC contact person for the event is Ronnie May at (512) 239-4749. The contact person at the site is Zack Wilcox at (915) 236-6912.

We haul anything - Even ol' goats!
B & B Wrecker Service
 201 N. 1st • Haskell, Texas • 940-864-2688

Like what you're reading?
 Call 940-864-2686 to Subscribe.

We honor all major competitor's coupons!

Southwest Grilled Chicken **Pecan Grilled Chicken**

Crispy Chicken

Only **\$3.99** ea.

Hungry for something different?

Try one of the delicious DQ® salads. Made with only the freshest ingredients and topped with our own special dressings, these salads are anything but ordinary. Or try one of DQ's new Blizzard® flavors, like a medium Grape Cool-Aid® Explosion for just a \$1.99!

16 oz. BLIZZARD
 Only **\$1.99**
 August 6 thru August 19, 2001.

www.dqtexas.com

Offer good at participating DQ® stores. *Kool-Aid® is a Registered Trademark of Kraft Foods Holding Inc. ®Reg. U.S. Pat. & TM Off. Am. D.Q. Corp. *Reg. U.S. Pat. & TM Tx. D.Q. Corp. © Tx. D.Q. Corp.

CALL IN ORDERS WELCOME!

864-3732

Open 6 a.m. until 10 p.m. daily. Fri. nights til 11 p.m.

PIZZA PRO
 of Modern Way

LARGE PIZZAS
 UNLIMITED TOPPINGS • EXCLUDING CHEESE

2 FOR \$14.99

LARGE PIZZA SINGLE TOPPING

Lunch Special \$5.99
 11 - 2 P.M.

You Always Get More Pizza for Less Money at Pizza Pro!

OPEN BY POPULAR DEMAND!
SPORT-ABOUTLET STORE
Fri. & Sat., Aug. 17th-18th
 ON THE EAST SIDE OF THE SQUARE

More shoes & Merchandise added!

Athletic Shoes
 Major Brands
 Childrens, Mens
 Ladies, Lo Tops,
 Hi Tops
40-50-60% OFF

Basketball Football Shoes	Printed Tee Shirts \$2.00 ea.	Shorts \$2.00 pair
----------------------------------	--------------------------------------	---------------------------

Come early for best selections. Sport-About has moved hundreds and hundreds of shoes and other merchandise to the East Side of Square for this event. **ALL ON SALE!**

2001-2002 Hunting & Fishing Licenses Now Available!
 Where Winners Shop

Sport-About of Haskell 940-864-3891 402 N. 1st

Student loan defaulters get no check

Student loan defaulters won't have a difficult time deciding how to spend their tax rebate money. The federal government has decided for them.

Although the first batches of tax rebate checks from the 2001 federal tax cut legislation have hit the mail, those who have defaulted on their student loans will be receiving a letter from the U. S. Treasury Department rather than a check.

According to the federal government's Tax Offset Program, the Treasury Department has the authority to apply any federal tax refunds or rebates to the outstanding balance for anyone who is in default on a student loan. Refunds from the current tax cut legislation are anticipated to be \$300 for single filers

and \$600 for married couples who file jointly.

Texas Guaranteed (TG), which guarantees student loans for 83 percent of the borrowers in Texas receiving Stafford or PLUS loans, indicates that there are more than 130,000 Texans who are currently in default on their student loans.

Terry Caldwell, TG's assistant manager for default recovery, indicated that the consequences of student loan default can be severe. According to Caldwell, student loan default can affect borrowers' credit ratings, impacting their ability to qualify for a car or home loan and can even result in wage garnishment.

"We've had hundreds of calls from defaulted borrowers since the tax rebate letters started going out,"

said Caldwell. "In most cases, defaulted borrowers perceive the government's action as unfair, although we try to point out that they do benefit from having their loan balance reduced. If they continue to make consistent payments, they can rehabilitate their loans and get out of default - a big step in the right direction."

For more than 665,000 Texans

who have remained current in paying back student loans, TG encourages them to consider applying some or all of the refund to get ahead on their payments.

Borrowers with questions about the status of their student loans can contact TG at 800-222-6297 or collections@tgscl.org. Information about student loan default prevention may be found on TG's web site, www.tgscl.org.

Adopt-a-Highway groups wanted

Time on your hands? The Texas Department of Transportation (TxDOT) Abilene district is looking for a few good volunteers. Any civic group, family, business, church or school is encouraged to adopt a section of state-maintained highway in their community or county.

Adopting groups enter into a two-year contract with TxDOT, agreeing to clean two miles of highway four times a year. TxDOT supplies trash bags, safety training and safety vests and then picks up the bags of trash collected by the group. Blue and white signs at both ends of the adopted section recognizes the group for its efforts.

"The Adopt-a-Highway (AAH) program saves taxpayers millions of dollars a year and allows TxDOT to use those funds for other roadway maintenance, like mowing, road repair and upkeep on picnic and rest areas," Mary Beth Kilgore, district

Adopt-a-Highway coordinator, said. "Cleaning the roadway isn't as hard as it sounds; it's very rewarding work and there is nothing like the pride you'll feel when you drive through your adopted section and see those two miles clean," Kilgore continued.

The AAH program began in Texas in 1985 and continues to this day saving taxpayers money and keeping the rights-of-way clean. Today, more than 3,793 volunteer groups have adopted 7,929 miles of Texas highways. The Abilene district boasts 119 active AAH groups who clean 248 miles of highways in the district's 13-county area.

For more information on this program as well as what sections of highway are available in your area, contact the Haskell county AAH coordinator, Erlinda Mayfield, at 940/864-8521. Kilgore can be reached at 915/676-6896.

Education Council sets Information Day Oct. 6

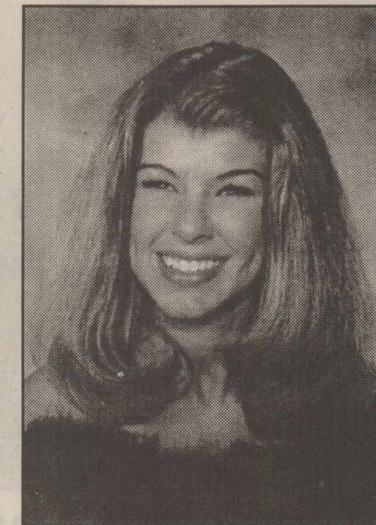
Haskell County Extension Education Council met Aug. 9 in the extension office. Chairman Lennie Blankenship called the meeting to order. She read a poem "Summer Golden Days" by Nora M. Bozemas. Seven members and two guests attended.

Yearbook committee members Dolores Medford, Joetta Burnett and

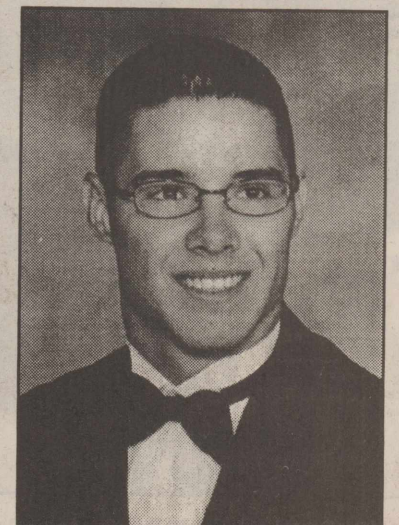
Alice Yates reported that they were working on the 2001-2002 yearbook. Information Day has been set for Oct. 6 at Levis and Lacey.

TEEA chairman Jane Smith reported on the sale of t-shirts. District 3 will sell t-shirts at the "County Store" at the state conference.

Three Rule athletes compete in six-man contests in Lubbock



TIFFANY McDUFF



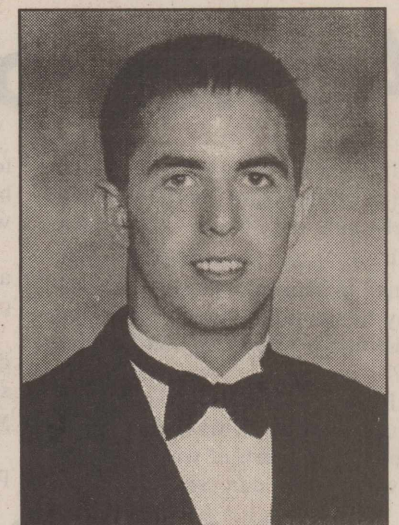
JUSTIN COKER

Three Rule High School students were chosen to participate in the Texas Six-Man Coaches Association All-Star games at Lubbock Christian University's Rip Griffin Center, July 21.

Tiffany McDuff of Rule High School was a member of the East Team in the girls basketball All-Star game. McDuff opened the third quarter with a jump-shot that narrowed the West lead to only three points. Her stats were 2-7 1-2 5.

Rule student, Justin Coker, also participated in the Texas Six-Man Coaches Association games, playing on the boys basketball All-Star East Team. His scoring was 1-10 7-8 10. For 3-point goals he was 1-5.

Josh Smith of Rule, who wore the #50 on the Six-Man Coaches All-Star football East Team, kicked



JOSH SMITH

five of six attempted extra points, and made a spectacular interception for the team.

Local students in Threshold program

Haskell residents Aubrey Bassett, Brooke Bullinger, Austin Page and Hannah Page were recently participants in Hardin-Simmons University's 2001 Threshold program for gifted and talented students.

The program is in its twenty-fifth year, with the theme this year of "Explorations!" Threshold runs two week long camps during the summer,

enlisting 250 children, who will be entering kindergarten through tenth grade this fall, to broaden their minds and imaginations. The children are divided into classes based on their age group, each class being taught by an experienced gifted and talented program teacher. Some of the individual class themes included "Exploring the World," Roller Coaster Physics," Ancient Rome," and "Exploring Improv!"

Haskell City Pool is now CLOSED.
Private Parties are available until Aug. 27.
Call 864-3820 & leave message.

STAR STOP
706 N. 1st • Haskell • 864-2062

1/2 Pound Hamburger
With French Fries or Tator Tots
\$3.99

Country Cones ... Reg. 99¢ **69¢**
Reg. 69¢
Homemade Vanilla Cup ... **2/\$1**
Reg. 59¢
Cherry Frostbite **3/\$1**

Reg. 69¢ **2/\$1** parrot-ice
Megabite
DRINK PRODUCTS OF AMERICA, LTD.


NOTICE OF 2001 PROPERTY TAX RATES

This notice concerns 2001 property tax rates for the following taxing units: City of O'Brien; City of Rochester; City of Rule; Haskell Memorial Hospital District. It presents information about three tax rates. Last year's tax rate is the actual rate the taxing unit used to determine property taxes last year. This year's effective tax rate would impose the same total taxes as last year if you compare properties taxed in both years. This year's rollback tax rate is the highest tax rate the taxing unit can set before taxpayers can start tax rollback procedures. In each case these rates are found by dividing the total amount of taxes by the tax base (the total value of taxable property) with adjustments as required by state law. The rates are given per \$100 of property value.

	City of O'Brien	City of Rochester	City of Rule	Haskell Memorial Hospital Dist.
LAST YEAR'S TAX RATE:				
Last year's operating taxes	\$ 10,362.00	\$ 25,646.00	\$ 48,003.00	\$ 686,911.00
Last year's debt taxes	\$ 0.00	\$ 0.00	\$ 0.00	\$ 0.00
Last year's total taxes	\$ 10,362.00	\$ 25,646.00	\$ 48,003.00	\$ 686,911.00
Last year's tax base	\$ 2,049,480	\$ 3,740,646	\$ 9,768,670	\$ 201,204,362
Last year's total tax rate	\$ 0.5056/\$100	\$ 0.6856/\$100	\$ 0.4914/\$100	\$ 0.3414/\$100
THIS YEAR'S EFFECTIVE TAX RATE:				
Last year's adjusted taxes (after subtracting taxes on lost property)	\$ 10,355.85	\$ 25,608.58	\$ 48,001.52	\$ 686,534.24
+ This year's adjusted tax base (after subtracting value of new property)	\$ 2,114,515	\$ 3,780,643	\$ 9,858,938	\$ 213,586,282
= This year's effective tax rate	\$ 0.4897/\$100	\$ 0.6773/\$100	\$ 0.4868/\$100	\$ 0.3214/\$100
x 1.03 = maximum rate unless unit publishes notices and holds hearing	\$ 0.5043/\$100	\$ 0.6976/\$100	\$ 0.5014/\$100	\$ 0.3310/\$100
THIS YEAR'S ROLLBACK TAX RATE:				
Last year's adjusted operating taxes (after subtracting taxes on lost property and adjusting for transferred function, tax increment financing, and/or enhanced indigent health care expenditures)	\$ 10,355.85	\$ 25,608.58	\$ 46,740.91	\$ 686,534.24
+ This year's adjusted tax base	\$ 2,114,515	\$ 3,780,643	\$ 9,768,070	\$ 213,586,282
= This year's effective operating rate	\$ 0.4897/\$100	\$ 0.6773/\$100	\$ 0.4785/\$100	\$ 0.3214/\$100
x 1.08 = This year's maximum operating rate	\$ 0.5288/\$100	\$ 0.7314/\$100	\$ 0.5167/\$100	\$ 0.3471/\$100
+ This year's debt rate	\$ 0.0000/\$100	\$ 0.0000/\$100	\$ 0.0000/\$100	\$ 0.0000/\$100
= This year's rollback rate	\$ 0.5288/\$100	\$ 0.7314/\$100	\$ 0.5167/\$100	\$ 0.3471/\$100
STATEMENT OF INCREASE/DECREASE				
If the City of O'Brien adopts a 2001 tax rate equal to the effective tax rate of \$0.4897 per \$100 of value, taxes would decrease compared to 2000 taxes by \$7.22. If the City of Rochester adopts a 2001 tax rate equal to the effective tax rate of \$0.6773 per \$100 of value, taxes would decrease compared to 2000 taxes by \$39.70. If the City of Rule adopts a 2001 tax rate equal to the effective rate of \$0.4868 per \$100 of value, taxes would decrease compared to 2000 taxes by \$9.69. If the Haskell County Memorial Hospital District adopts a 2001 tax rate equal to the effective tax rate of \$0.3214 per \$100 of value, taxes would decrease compared to 2000 taxes by \$444.69.				
SCHEDULE A - UNENCUMBERED FUND BALANCES				
The following estimated balances will be left in the unit's property tax accounts at the end of the fiscal year. These balances are not encumbered by a corresponding debt obligation.				
Type of Property Tax Fund	Balances as Listed			
City of O'Brien	\$ 0.00			
City of Rochester - General	\$ 0.00	\$ 0.00		
City of Rule - General			\$ 0.00	
Hask. Mem. Hosp. Dist.				\$ 0.00

TAX PLANNING

Written By
Richard E. Rodgers, CPA



DOES THE NEW LAW AFFECT YOUR ESTATE PLAN?

You may have read that the estate tax met its demise under the new tax law. However, the 2001 Tax Relief Act does not completely eliminate the estate tax until 2010. Until then, the exclusion amount and the top tax rate change almost every year. In 2010, the estate tax will disappear, and the rules covering the tax basis of inherited property will change. And after 2010, the estate tax is due to return unless Congress changes the law.

How will the new law affect your estate planning? Because the exemption amount gradually increases from \$675,000 in 2001 to \$3.5 million in 2009 and the tax is completely repealed in 2010, you might be tempted to ignore estate planning. However, at the very least, you should review your estate documents (will, living trust, etc.) with your attorney to make sure your planning documents are still properly worded. If they aren't, your estate may not be able to take advantage of the changing tax rates and exemption amounts.

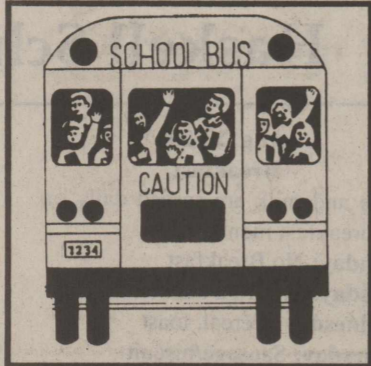
The new law modifies the carryover basis rules. Under the current estate tax law, your property generally receives a "step-up" in income tax basis to its fair market value at the date of your death. This often allows your heirs to sell inherited assets at little or no gain for income tax purposes. In 2010, the new law limits the amount of basis step-up to \$1.3 million, or to \$4.3 million in the case of property passing to a surviving spouse. Income taxes may be due where they weren't before. That means you'll need to keep better records than in the past. Your heirs will need this information to correctly calculate gains and losses when assets are sold.

The new law doesn't eliminate the need for basic estate planning, such as having a valid will, naming a guardian for minor children, and owning adequate life insurance to provide for your family.

The 2001 tax law does not eliminate estate tax planning; it increases its importance. Give us a call for assistance with your estate planning needs.

RODGERS & COMPANY
Certified Public Accountant
20 Southwest Third Street
Hamlin, Texas • 915-576-2356

Video Mania
864-3594
701 N. 1st
Haskell, Texas



Matlock & Associates
864-3050
510 S. Second
Haskell, Texas

Jay's Tire Center
864-2908
510 N. 1st East • Haskell

Nanny Plumbing
864-3043
Haskell, Texas

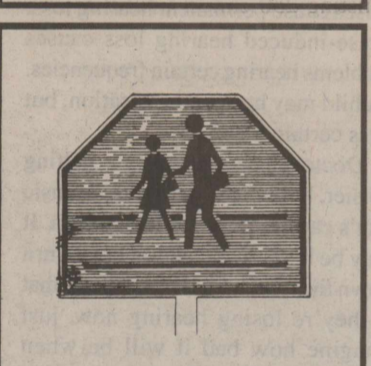
First American Bank
518 South Second • 864-8577
Member FDIC

Haskell Tire & Appliance
864-2900
206 S. Ave. E
Haskell, Texas

Hanson Paint & Body Shop
864-3631
Haskell, Texas

Rice Springs Care Home
864-2652
1302 N. First • Haskell

Haskell Co. Insurance Agency
864-2665
417 S. First • Haskell



Haskell Livestock Auction
864-2624
Haskell, Texas

Haskell Co-Op Gin
864-2046
Leon Jones, Manager
Haskell, Texas

Holden-McCauley Funeral Home
864-2151
304 N. 2nd
Haskell, Texas

Eddie Briles James E. Lindsey & Co.
997-2414
P. O. Box 127
Rule, Texas 79547

HEY BIG DRIVER!
WATCH OUT FOR THE LITTLE GALS AND GUYS!
Children move fast, so go slow!
Drive carefully on streets near schools and in all residential areas. Remember too, that some schools have double sessions and shorter school days so be on the look-out for children on bikes and on foot throughout the day. Give the little kids a chance to grow up big, like you!

Busy Hands
Melba Lowrance
701 N. Ave. E
Haskell, Texas
864-3536

Richardson's Case IH & True Value
864-8551 • Haskell

WAL-MART
Always The Low Price
Always!
Stamford, Texas

The Haskell Free Press
read by more people in Haskell County than any other print media.

Charter COMMUNICATIONS
A WIRED WORLD COMPANY
915-773-3391
(800) 527-4331

ACE TRANSPORTATION, INC.
103 N. Ave. L DIRK
Haskell, TX 79521 BARRINGTON
Watts 888-314-5014 Terminal Mgr.
Phone 940-864-5458 JAY MILLER
Fax 940-864-5449 Dispatcher

Double A Drive Inn
864-2466
1103 N. 1st
Haskell, Texas

Haskell County Gin
864-2358
Mike Gage, Owner
Haskell, Texas

Bill Wilson Motor Co.
864-2611
209 S. Ave. E
Haskell, Texas

Federal LAND BANK Association
Federal Land Bank Association of Haskell
550 S. Second • 864-8565

Dulaney Abstract
864-2301
318 N. 1st
Haskell, Texas

Cecil's Country Meat Market & Grocery
864-2511
Haskell, Texas

First National Bank-Rochester
Member FDIC
1-800-343-3511
110 W. Main
Monday
940-422-4522
410 Carruthers 610 Columbia
Rochester Stamford
940-743-3511 915-773-2122

BERNARD E. GODLEY, INC.
TAX SERVICE & BOOKKEEPING
 Computerized • Tax Returns & Bookkeeping
 98 Hill Drive • Seymour, Texas
940-889-8809
 Office Hours: 9 to 12 and 2 to 5 Monday - Friday

LIFE
 HOSPITALIZATION
 ANNUITY
 IRA
 CANCER



HOME
 AUTO
 FARM
 CROP INSURANCE
 COMMERCIAL

LANCO INSURANCE
 DON • SHIRLEY • CHERIE - Agents

P. O. BOX 585
 HASKELL, TX 79521

12 AVE. D
 WORK 940-864-2629
 1-800-687-3761

Fast food can pack on fast pounds

Summer travel often results in frequent stops at restaurants where serving sizes are doubled and menu choices are filled with super-sized selections.

Lona Sandon, assistant professor of clinical nutrition at UT

WHORTON FAMILY - OWNERS
TOWER DRIVE-IN
 Phone 997-1300
 Rule, Texas
FRI.-SAT.-SUN. AUG. 17-18-19
Dr. Doolittle II
 Rated PG
 \$4.50 Adults 12 & up;
 \$2 Children; Under 6 FREE

Southwestern Medical Center at Dallas, offers a few simple tips to avoid vacation weight gain.

•Avoid stuffed foods - such as foods filled with cheese or sour cream - because they are high in calories and fat.

•Skip sauces like mayonnaise and choose a low-fat salad dressing or vinegar with oil.

•Instead of fried, choose grilled, steamed, broiled or baked foods.

"Ordering an appetizer as your main entree is also a good idea because it's usually a smaller portion and just as satisfying without leaving you too full," Sandon says.

If you're craving a burger, consider ordering a side salad along with your burger instead of fries.

Haskell School Menu

Aug. 20-24 Breakfast
 Juice and milk are served daily on the breakfast menu.
Monday: No Breakfast
Tuesday: Pigs in a blanket
Wednesday: Cereal, toast
Thursday: Sausage/biscuit
Friday: Cinnamon toast
Lunch
 Salad bar is offered Tues. and Wed. at the Secondary campus. Milk and iced tea are served daily at the Secondary campus. Milk is served

daily at the Elementary School.
Monday: Chili dogs, pickle spears, assorted chips, orange wedges
Tuesday: Bean and beef burritos, cheese, corn, salsa, apple crisp
Wednesday: Baked potatoes, ham, cheese, fried okra, garden salad, bread sticks, watermelon
Thursday: Chicken nuggets with gravy, mashed potatoes, green beans, hot rolls, peach slices
Friday: Submarine sandwiches, lettuce, tomatoes, French fries, ice cream

Paint Creek School Menu

August 20-24 Breakfast
 Milk and juice served daily.
Monday: Cereal, toast, jelly
Tuesday: Pop-tarts
Wednesday: Biscuits and gravy
Thursday: Waffles
Friday: Cereal
Lunch
 Milk served daily.
Monday: Chili dog, cheese, tator tots, pork-n-beans, salad, pears

Tuesday: Ham with gravy, corn, green beans, salad, rolls, peaches
Wednesday: Country fried steak, gravy, cream potatoes, peas, salad, bread, cookies
Thursday: Ham or pepperoni hot pockets, mac-n-cheese, blackeyed peas, salad, Rice Crispie treats
Friday: Bologna or tuna sandwiches, lettuce, tomatoes, pickles, Fritos, corn or pork-n-beans, applesauce

ECC Calendar and Menu

Mon., Aug. 20
 9:00 a.m. Miracle Ear
 Lunch-Meat loaf, corn, blackeyed peas, carrot salad, pudding, bread, milk, tea or coffee
Wed., Aug. 22
 11:00 a.m. Outreach Health Services blood pressure check
 Lunch-Pizza, tossed salad, English peas, dessert, bread, milk, tea or coffee

Fri., Aug. 24
 Lunch-Chicken enchiladas, Spanish rice, beans, tossed salad, cookie, bread, milk, tea or coffee
 Announcements begin at 11:45 a.m. followed by lunch.
 All over 60 are invited to come and eat. Call 864-3875 for transportation to the center or for home delivered lunches for the sick or disabled.

This Week's Devotional Message:



BE SURE YOUR CHILDREN'S VOCABULARY INCLUDES THE WORD "NO"

It's time to send your children off to school again, to prepare them for the world they must one day confront. The school will do a good job of this, but your cooperation is also needed in order to make sure that they don't learn the wrong things. As everyone knows, we are living in an era where drug abuse is rampant, and the children are being lured into this trap at a shockingly early age. Don't fail to warn them about this, as a part of their

preparation for the new school year, for it can be vastly more important than their clothes or books. Moreover, you can reinforce your efforts by enrolling them in the Sunday school at your House of Worship. With all this, you can rest assured that the vocabulary your children develop in school will include the proper use of the word "NO," as the password to a happier, healthier and longer life.

ATTEND CHURCH THIS SUNDAY

HASKELL

- East Side Baptist Church**
David Page, pastor
Sun. 8:30 a.m., 9:45 a.m., 11 a.m., 6 p.; Wed. 7 p.m.
600 N. 1st East, Haskell
- Christian Church**
Dusty Garrison, minister
Sun. Morn. 9:45 a., 10:45 a., 6 p.m.; Wed. 7 p.m.
107 N. Ave. F, Haskell
- Church of God**
Eric Clark, pastor • 864-2021
Sun. 9:45 a.m., 11 a.m., 6 p.m., Wed. 7:00 p.m.
East Hwy 380, Haskell
- Trinity Lutheran Church**
Gary Bruns, pastor
Sunday School 9:30 a.m., Worship 10:30
Hwy 380 East, Haskell
- Iglesia Bautista El Calvario**
Sun. Morn. 9:45 a., 10:45 a.m., 5 p.m.; Wed. 7 p.m.
607 S. 7th, Haskell
- First United Methodist Church**
Shane Brue, pastor
Sun. Morn. 9:45 a.m., 10:50 a.m. 6 p.m.; Wed. 6 p.m.
201 N. Ave. F, Haskell
- First Assembly of God**
Rev. J.C. Amburn
Sun. Morn. 9:45 a., 10:45 a.m., 6 p.m.; Wed. 7 p.m.
1500 N. Ave. E, Haskell
- St. George Catholic Church**
Father Michael Melcher
Sat. Mass 7:15 p.m.; Sun. Morn. 9:00 a.m.
901 N. 16th, Haskell
- Church of Christ**
Brett Anderson, minister
Sun. Morn. 9:30 a., 10:30 a., 6 p.m.; Wed. 7:30 p.m.
510 N. Ave. E, Haskell
- First Presbyterian Church**
Henry Chisholm, temporary supply
Sun. Morn. 9:30 a.m., 11:00 a.m.
306 N. Ave. E, Haskell
- Trinity Baptist Church**
Rev. Kenneth Blair
Sun. Morn. 10 a., 11 a., 6:30 p.m.; Wed. 7:30 p.
401 S. Ave. D, Haskell
- Hopewell Baptist Church**
John Lewis, pastor
Sun. Morn. 9:30 a.m., 11:00 a.m.; Wed. 7 p.m.
908 N. Ave. A, Haskell

- Greater Independent Baptist Church**
Samuel Blackwell, pastor
Sun. Morn. 9:30 a., 11:00 a., 6:30 p.; Wed. 7 p.
301 N. 3rd St., Haskell
- New Covenant Foursquare**
Bill and Renee Glass, pastors
Sun. Morn. 10:00 a.m., 11:00 a.m.
200 S. Ave. F, Haskell
- Mission Revival Center**
Rev. William Hodge
Sun. Morn. 10 a.m., 11 a.m., 6 p.m.; Tues. 6 p.m.
1600 N. Ave. B, Haskell
- First Baptist Church**
Kevin Hall, pastor
Sun. Morn. 9:45 a., 10:55 a., 6 p.m.; Wed. 7 p.m.
301 N. Ave. E, Haskell
- Church in the Park**
Rev. Tim and Suzann Townsend
Sun. Morn. 10:30 a.m. Wed. 7 p.m.
Gazebo or Pavillion

PAINT CREEK

- Paint Creek Baptist Church**
Sun. Morn. 10:00 a.m., 11:00 a.m., 6 p.m.
Paint Creek

WEINERT

- First Baptist Church**
Chris Powell, pastor
Sun. Morn. 10 a.m., 11 a.m., Wed. 7 p.m.
Weinert
- Weinert Foursquare Church**
Rev. Robert Harrison
Sun. Morn. 10 a.m., 11 a.m. Wed. 7 p.m.
Weinert

ROCHESTER

- Church of Christ**
Steve Wills, minister
Sun. Morn. 9:45 a., 10:45 a., 6 p.m.; Wed. 6 p.m.
West on Main Street, Rochester
- First Baptist Church**
Troy Culpepper, pastor
Sun. 11:00 a.m., 6 p.m.; Wed. 7:00 p.m.
500 Main, Rochester
- Union Chapel Baptist Church**
Rev. Clarence Walker
Sun. Morn. 9:45 a., 10:45 a., 6 p.m.; Wed. 7 p.m.
Rochester

- Faith Chapel of Rochester**
Katherine Byrd, minister
Sun. Morn. 10 a.m., 11 a.m., 7 p.m.
Hwy 6, Rochester
- First United Methodist Church**
Dolan Brinson, pastor
Sun. Morn. 10:00 a.m., 11:00 a.m.
Rochester

SAGERTON

- Sagerton Methodist Church**
Tommy Wilson, pastor
Sun. Morn. 9:30 a.m.
Sagerton
- Faith Lutheran Church**
Deborah Nissen, pastor
Sun. Morn. 9:15 a.m., 10:30 a.m.; Wed. 7 p.m.
Sagerton

RULE

- First Baptist Church**
Scott Hensley, pastor
Sun. Morn. 9:45 a., 11:00 a., 6 p.m.; Wed. 7 p.m.
1001 Union Ave., Rule
- Primitive Baptist Church**
Dale Turner Jr., pastor
First & Third Sundays 10 a.m.
Corner of 8th & Robins, Rule
- Church of Christ**
John Greeson, minister
Sun. Morn. 9:45 a., 10:40 a., 6 p.m.; Wed. 7 p.m.
811 Union, Rule
- First United Methodist Church**
Shane Brue, pastor
Sun. Morn. Worship 9 a.m.
Sunday School 10 a.m.
1000 Union Ave., Rule
- Primera Iglesia Bautista**
Arturo Jr. Flores
Sun. Morn. 9:30 a.m., 11:00 a.m.; Wed. 7 p.m.
Elm Street/Hwy 380 E, Rule
- Sweet Home Baptist Church**
Bill Trice, pastor
Sun. Morn. 10:00 a., 11:00 a., 6 p.; Wed. 7 p.m.
Gladstone Ave., Rule
- West Bethal Baptist Church**
Rev. Robert Sweet
Sun. Morn. 10 a., 11 a., 8 p.m.; Wed. 7:30 p.m.
300 Sunny Ave., Rule

Hearing loss can appear in children

We think of hearing loss as something that happens to old people. But new research shows that hearing loss starts younger than you think.

We know that exposure to loud noises can result in hearing loss. It usually shows up in middle age or later in life. Now, though, scientists with the Centers for Disease Control and Prevention say hearing loss actually has an effect earlier than that. They've found that more than 5 million American kids show symptoms of hearing loss caused by exposure to loud noise. That's 12 percent of children between the ages of 6 and 19. It's worse for older children, with nearly 15 percent of older teens showing signs of hearing loss.

Hearing experts at UT Southwestern Medical Center at Dallas say loud noise affects hearing

by damaging the tiny hair cells in the ear. Brief exposure to loud noise causes temporary hearing loss, but longer exposure or especially loud noises cause permanent hearing loss. Noise-induced hearing loss causes problems hearing certain frequencies. A child may hear a conversation, but miss certain words.

Doctors say our society is getting noisier, but it's primarily loud music that's causing hearing loss in kids. It may be hard to get teen-agers to turn down the music, but remind them that if they're losing hearing now, just imagine how bad it will be when they're older. Turn down the speakers at home or in the car. If you're listening on headphones, nobody else should hear your music. When you go to a place where there will be really loud music, like a rock concert, wear earplugs to protect your hearing.

Sugar can be addictive, too

Is it possible to become addicted to sugar?

You may have jokingly referred to yourself as a chocoholic or a sugarholic because of your sweet tooth, but researchers in New Jersey have found that sugar can have an effect on the body similar to addictive drugs. Sugar and sweets appeared to cause the brain to produce the same kind of pleasure-causing chemicals that drugs produce.

Researchers tested this theory by studying laboratory rats, feeding rats a diet with a sweet solution for weeks. Then they cut off the sweets,

returning to a more normal diet. The rats displayed some of the same symptoms seen in mild withdrawal, such as anxiety. When researchers once again offered the sweet diet, the rats binged on it. A formula sweetened with saccharine had the same effect as sugar, demonstrating that it was the taste and not the chemical composition that counted. This behavior is a lot like that of drug-addicted humans, though the researchers said the rats seemed to have a dependence on sugar rather than a full-fledged addiction.

Researchers believe that this understanding of the body's response to certain foods can help them better understand human eating disorders, which could be an addictive response to food.

Nutrition experts at UT Southwestern Medical Center at Dallas say this doesn't mean sweets are bad for you, unless they replace food with nutritional content or they provide so many extra calories that you gain weight. The occasional sweet treat is fine and depriving yourself of sweets all the time may make you more likely to binge later. It's better to allow yourself a cookie every so often than to eat a whole box at one sitting because you feel deprived.

Like what you're reading?
 Call
 940-864-2686
 to Subscribe.

Sonic Drive-In
 1402 N. Ave. E
 864-8533
 Managers: Leon & Carolyn Herring

Steele Machine
 Hwy. 280 • 864-2208

Modern Way Food Store
 1202 N. Ave. E • 864-3763

Jay's Tire Center
 506 N. 1st East • 864-2908
 "See You In Church"

Smitty's Auto Parts
 107 N. 1st East • 864-2607

HANSON PAINT & BODY SHOP
 207 S. 1st • 864-3631
 Professional Auto Body Repair
 Glass Installation • 24 Hour Wrecker Service

Rule Co-op Gin & Elevator
 301 Adams • Rule • 997-2421

Attend Church
 This Sunday

Rice Springs Care Home, Inc.

1302 N. 1st • 864-2652
 Medicare • Medicaid • Therapy
 Committed To Excellence
 In Service

Personality Slipper Shoppe
 413 S. 1st (South Side of Square)
 864-2501 and 864-3051
 "One Stop Shopping"

McGee's Lumber Yard
 105 N. 1st

The Haskell Free Press

"The People's Choice"
 401 S. First • Haskell
 940-864-2686

Serving Haskell County
 Since 1886

Sport About of Haskell
 864-3891 • "Where Winners Shop"



864-2686

Shop The Haskell Free Press CLASSIFIEDS

ALL DEADLINES MONDAY 5 P.M.



864-2686

For Sale

FOR SALE: Rockwood 200 watt, 4 channel stereo amp. \$100 OBO. 864-2023. 23tfc

REDUCED: 1995 80 cu. inch Springer soft tail Harley Davidson. New tires. Lots of chrome. Real beauty. 10,715 miles. 940-422-5161. 29-35p

HUNTING SEASON is almost here! See us for shot guns and ammo. Wild Horse Trading Post, 419 S. 1st, Haskell. 864-2200. 33-35c

NEW & REFURBISHED computers at very low prices. 940-864-3834. 33-35p

FOR SALE: Portable dishwasher \$25; recliner \$35. Call 940-864-3122. 33p

Garage Sales

GARAGE SALE: Baby boy items, infant seat, stereo, exercise bike, console TV (free, needs repair), girls and junior clothes, boots, shoes, vacuum, pictures and many misc. 1107 N. Ave. 1. Sat. 8-1. Tammy Parham, Tabitha and Andrea. 33p

GARAGE SALE: 1200 N. Ave. J. Sat., Aug. 18. 8 til ? Furniture, clothes, misc. items. 33p

GARAGE SALE: Dresser with mirror, Honda 70 and 90 h.p. bikes, 3.5 and 8 h.p. go karts, father and son hunting bows and accessories, TV stand, treadmill, Gemtop camper shell, too much to list. Sat., 8 to 3. 1009 N. 7th, Haskell. 33p

ESTATE SALE: Fri. & Sat., Aug. 17-18. 8 a.m. to 5 p.m. 160 S. 14th St., Munday. Appliances, TV, bedroom suite, tools, fishing gear, trailer, generator, electric lift chairs, much more. Everything must go. No early sales. 33c

GARAGE SALE: Sat. 7 a.m. to 10 a.m. 2 miles south on Hwy. 277. Two story rock house on east side of hwy. Betsy Nanny. 33c

Wanted

CASH PAID for old lever action Winchester rifles, Colt pistols and most other guns and western memorabilia. A. C. Richardson at store Hwy. 277 N. 12tfc

NOTICE
The deadline for Classified Advertising is 5 p.m. on Mondays.
Haskell Free Press

CUTE LITTLE HOUSE
Very affordable. Call 915-673-7353. 41tfc

NOTICE
The Haskell Free Press reserves the right to edit and/or delete all news stories and locals for length and liability and to refuse to print anything deemed not newsworthy.

To Subscribe
Call
864-2686

SELLING HASKELL
FOR OVER 25 YEARS

Hartsfield Realty

South Side of Square
864-2665
See us first for your real estate needs.

3 BEDROOM, 2 bath in Middleton Addition. Spacious kitchen, nice carpet. Ceiling fans. Large garage. Cellar with inside and outside exits. Covered patio. Storage Building. Large lot with water well and full sprinkler system. REDUCED.

Hess Hartsfield, Broker 864-2004
Chan Guess, Agent 864-6142
Esther Conn, Agent 658-3904

Cars For Sale

FOR SALE: 1984 Chevrolet Silverado. Needs minor repairs. \$1300 OBO. 743-3434, ask for Lee. 31tfc

FOR SALE: 1989 Buick LaSabre. 4 door, one owner and very clean. \$4995. Call Roy Amonett 940-864-2458 or 940-864-5808. 33p

FOR SALE: 1983 Delta 88 Olds. 4 door, rear quarter panel damaged, \$1150. Call 940-864-3122. 33p

Jobs Wanted

HOUSE LEVELING. Floor bracing, slab, pier and beam. Insurance claims, free estimates. References. No payment until work satisfactorily completed. David Lee & Company, www.davidleeco.com. 915-675-6369. 50tfc

CHILD CARE: 864-6127. Meals, snacks. 200 N. 3rd St. 32-35p

WILL TAKE CARE of the elderly. Experienced. Call 864-8093, 864-5245 or 997-3310. 32-33c

J & D HOME REPAIRS: Small jobs welcome. Painting, carpentry, plumbing, electrical and more! Need your fence repaired, ceiling fan installed, switch replaced, new faucet installed? Get those 'little things' finally done that no one has time to do. Give Jimmy or Donna Bynum a call at 940-864-2293. Free estimates. (If no answer, leave message). 33-36p

Lost & Found

\$500 REWARD: For information leading to the arrest and indictment of the person or persons who on 8/06/01 broke out the passenger door glass on a white 1998 Dodge Dually pickup and stole a purple duffel bag filled with custom made bull riding equipment. The incident happened at approximately 6:00 to 6:45 p.m. 4 miles north of Rule, Texas on Hwy. 6. Call Haskell County Sheriff's Office 940-864-2345. 33-35c

STOLEN: On 8/06/01: Custom made bull riding equipment and purple duffel bag. Please return. No questions asked. Call 940-997-2137. 33-35c

If you are not criticized, you may not be doing much. You won't be criticized at Kinney Furniture for taking lots of time to browse. It takes a long time to see our great selection of good looking sofas and love seats in attractive fabrics. No high pressure salesmen and you get quick free delivery since 1932. 33c

Help Wanted

APPLICATIONS now being taken for LVN or RNs for charge nurse position. Sign on bonus for LVNs. Day and evenings shifts available. Also, CNAs needed. Call Audre Elizonds, DON at 864-2652. 16tfc

HELP WANTED: Satellite installer. Experience preferred, but will train. Experience with cable or telephone a plus. Benefits. Top pay. Call 915-795-0414. 31-33p

NEEDING part time weekend help in the Haskell area to care for the elderly and disabled. Please call Outreach Health Services at 800-342-3153. EOE. 32-33c

ACCEPTING APPLICATIONS: The Texas Agricultural Experiment Station at Munday is accepting applications for an Agricultural Research Worker I position. This position requires a high school graduate with production agriculture and tractor driving experience. Primary work location will be the Munday Research Station. Contact David Bordovsky at 940-852-5125 with any questions. A complete position description and/or application may be obtained from the Munday Station. The Texas Agricultural Experiment Station is an equal opportunity employer. 33-34c

For Rent

FOR RENT: 201 N. Ave. D. 2 bedroom house. 864-3762. 33c

FOR RENT: 604 N. 3rd. 1 and 2 bedroom apartments. 864-3762. 33c

FOR RENT: 2 bedroom, 1 bath house in Weinert. \$150 plus \$50 deposit. 673-8273. 33-34p

FOR RENT: 3 bedroom, 1 bath house in Weinert. \$200 plus \$50 deposit. Ready Sept. 1. 673-8273. 33-34p

FOR RENT: Small 2 bedroom, 1 bath house. 306 S. 2nd St. Call 915-694-8041. 33-36c

Dodson Concrete Construction
Commercial - Residential
David Dodson
704 N. Ave. F • Haskell
940-864-2038
Over 20 Years in the Business
FREE ESTIMATES 18tfc

**For Your Sheet Metal Work
Water Storage Tanks
All Kinds of Metal Duct Work**
See or call:
Guinn Sheet Metal & Plumbing
940-658-3341 L.C. Guinn Knox City, TX

NOTICE TO CONTRACTORS OF PROPOSED TEXAS HIGHWAY IMPROVEMENT CONTRACTS
Sealed proposals for highway improvement contracts will be received by the Texas Department of Transportation (TxDOT) until the date(s) shown below, and then publicly read.
CONSTRUCTION/MAINTENANCE CONTRACT(S)
District: Abilene
Contract 6075-75-001 for ROUTINE STREET SWEEPING in HASKELL County, etc. will be opened on September 11, 2001 at 2:00 p.m. at the District Office for an estimate of \$168,796.00.

Plans and specifications are available for inspection, along with bidding proposals, and applications for the TxDOT Prequalified Contractor's list, at the applicable State and/or District Offices listed below. Bidders must submit prequalification information to TxDOT at least 10 days prior to the bid date to be eligible to bid on a project. Prequalification materials may be requested from the State Office listed below. Plans for the above contract(s) are available from TxDOT's website at www.dot.state.tx.us and from reproduction companies at the expense of the contractor.
NPO: 4297
State Office: Construction Division, 200 E. Riverside Dr., Austin, Texas 78704. Phone 512-416-2540.
District Office(s): Abilene District, District Engineer, 4250 N. Clack, Abilene, Texas 79601. Phone 915-676-6800.

Minimum wage rates are set out in bidding documents and the rates will be part of the contract. TxDOT ensures that bidders will not be discriminated against on the grounds of race, color, sex, or national origin. 33-34c

Miscellaneous

SECURITY FINANCE now looking for 1000 new customers. No credit, no problem. Loans from \$100 to \$467. Phone applications welcome. Call 915-773-3081. 19tfc

CUSTOM FRAMING. Country Friends and Frames, 101 N. Swenson, Stamford. 915-773-2661. Complete framing needs. Closed Mondays. 33c

Real Estate

HOUSE FOR SALE: 4 bedroom, 2 living rooms, 2000 sq. ft. Water well, CH/A. 302 S. Ave. C. 940-997-0061. 19tfc

FOR SALE: 3 bedroom, 2 bath brick home with double garage on corner lot. 864-2238 or 864-3301. 28tfc

HASKELL COUNTY Lain farmland for sale: Call 512-793-2795. 31-34p

Beautiful Double-Wide in country.
Call Laura at 915-665-3544 48tfc

You know you're getting old if you realize your children and most of your clothes are about the same age. Feel younger by getting a good night's sleep on a Spring Air mattress set from Kinney Furniture in Stamford. We have all sizes in stock for quick free delivery, and we'll dispose of your old bedding at no charge. 33c

EXPERT AUTO WORK REASONABLE RATES



See us for all your auto mechanic needs. 20 years experience. We do it right the first time. 117 North Ave. E • Haskell

AMIGO WIRELESS CELLULARONE Authorized Dealer

Receive 1125 minutes for only \$29.99 a month and a FREE Motorola XL Lite Phone. Call 915-773-3621 or 915-773-3209. 1tfc

FOR RENT S & S Storage

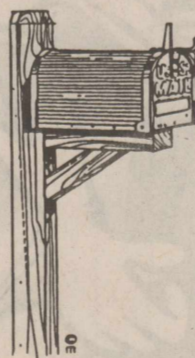
has new buildings available for rent.
Coming soon: Spaces for RVs and Boats!
Also has newly installed security fence and gate.
Call 864-2208. 26tfc

FOR SALE
RIKE
Real Estate
864-2411
864-2332
Mary Rike, Broker 411 1/2 South First St.

RIKE
REAL ESTATE
NEW LISTINGS
HWY. 277 SOUTH. Two-story on one acre. 3-2, C/H/A, large den-dining-kitchen, fireplace down and upstairs. 1607 DERRICK DR. 3-2-2, living-den, fireplace, vaulted ceilings, fenced, well. 305 BONNIE LANE. 3-2-2 on two lots in perfect condition with large open living and dining, fireplace, utility room, fireplace, fenced and sprinkler system. ROCHESTER, 810 Madison. 3-2, C/H/A. Carport, built-in kitchen. All on 6 lots. 1506 N. AVE. E. Immaculate large 1 1/2 story home, 3-2 with open living, fence, ceramic tile floor, C/H/A on 1 1/2 acre. Has out-buildings and rent house. RULE. 3-2, carport, fresh paint, wood floors in living, fireplace, well, sprinkler.

411 1/2 South First Street
Box No. 853
Haskell, TX 79521
(940) 864-2411 (940) 864-2332
FAX (940) 864-3686
Mary Rike, Broker
mrike@westex.net

Like what you're reading?



We'll send it to you each week for just \$20 a year.
(in Haskell County)

Yearly Subscription Rates
\$20 a year in county
\$28 out-of-county

Name _____
Address _____
City _____ State _____ Zip _____

Clip and Mail Coupon, Along with Check or Money Order to:
The Haskell Free Press
P. O. Box 555, 401 S. First, Haskell, TX 79521

DOVE HUNTING
Dan R. Griffith
Haskell County
915-773-3863 32-39p

\$500 MOVE IN
Owner finance.
Call Juan
915-725-4133 5tfc

Light Up YOUR Career

Nurses are needed NOW for Rice Springs Care Home.

Great working environment
Competitive wages
\$1000 sign on Bonus!!
NEW: Improved Salary Package!

Pick up application at or send resume to:
1302 North First
Haskell, TX 79521

Phone: 940-864-2652 Contact: Andre Elizando
Fax: 940-864-8173 or Karen Becknel

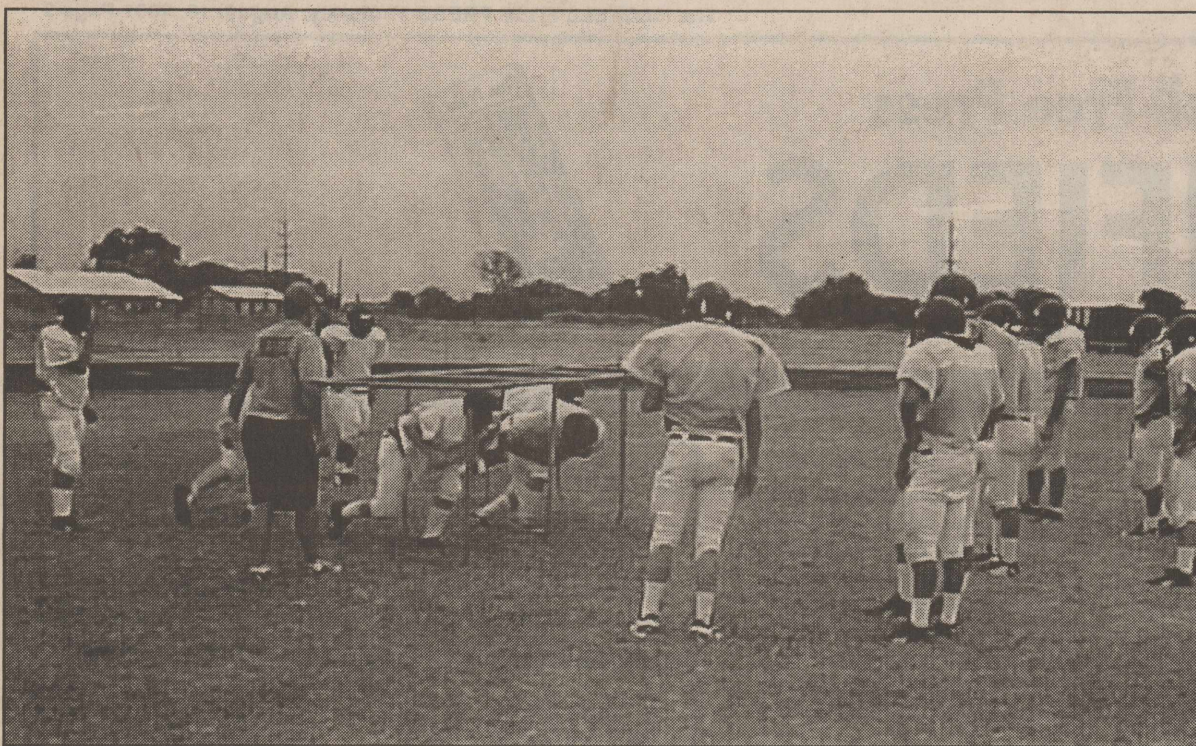
When it comes to retirement planning, have you lost your sense of direction? We'll help you reach your destination.

Sound financial strategies. It's what we do.

Contact:
Chan Guess
REGISTERED REPRESENTATIVE
940-864-2665

Securities offered through Washington Square Securities, Inc., 20 Washington Ave. S., Minneapolis, MN 55401. (612) 372-5507. Member NASD and SIPC.
1099 612-372-5507 MEMBER NASD AND SIPC N800 147

NOTICE TO CONTRACTORS OF PROPOSED TEXAS HIGHWAY IMPROVEMENT CONTRACTS
Sealed proposals for highway improvement contracts will be received by the Texas Department of Transportation (TxDOT) until the date(s) shown below, and then publicly read.
CONSTRUCTION/MAINTENANCE CONTRACT(S)
District: Abilene
Contract 0098-06-016 for SAFETY END TREAT CULVERTS, FLEX BASE & GUARD FENCE in HASKELL County will be opened on September 6, 2001 at 1:00 p.m. at the State Office.
Plans and specifications are available for inspection, along with bidding proposals, and applications for the TxDOT Prequalified Contractor's list, at the applicable State and/or District Offices listed below. Bidders must submit prequalification information to TxDOT at least 10 days prior to the bid date to be eligible to bid on a project. Prequalification materials may be requested from the State Office listed below. Plans for the above contract(s) are available from TxDOT's website at www.dot.state.tx.us and from reproduction companies in Austin, Texas at the expense of the contractor.
NPO: 4219
State Office: Construction Division, 200 E. Riverside Dr., Austin, Texas 78704. Phone 512-416-2540.
District Office(s): Abilene District, District Engineer, 4250 N. Clack, Abilene, Texas 79601. Phone 915-676-6800.
Minimum wage rates are set out in bidding documents and the rates will be part of the contract. TxDOT ensures that bidders will not be discriminated against on the grounds of race, color, sex, or national origin. 32-33c



GOING THROUGH THE DRILL—The Haskell varsity football team worked out in the cooler air Monday morning, as they went into the second week of two-a-day pre-season practice sessions.

Texas Cooperative Extension is new name for Extension Service

July 27 the Board of Regents of The Texas A&M University System approved changing the name of the Texas Agricultural Extension Service to Texas Cooperative Extension.

"The new name ties the agency's roots to the broader services it currently offers and will offer in the future," said Chancellor Howard Graves. "Our hope is that more Texans will take advantage of the variety of programs and services available through Extension."

Citing the state's tremendous urban growth, among other changing demographics, Dr. Ed Hiler, vice chancellor and director of Texas Cooperative Extension, explained that the change was necessary to maintain and improve service to all Texans.

"Our mission always has been to provide education to help farmers and ranchers increase their productivity, to help families succeed, to empower young people to grow into productive citizens and to help communities develop economically," Hiler said. "But

some people, especially in our urban centers, never realized we offered all those opportunities because our name seemed to emphasize only one area."

"We are very pleased to make this change and to renew our commitment to serving all Texans."

Despite the change in the name, Extension leaders affirmed that the agency's commitment to Texas' \$15 billion agriculture industry will remain as strong as ever.

"Throughout our history, agriculture has been an integral part of what we do, one of the primary reasons for our work - and that won't change," Deputy Director Chester Fehlis said. "However, our mission has always been broader than just agriculture and we want all Texans to feel comfortable requesting assistance for the wide array of Extension educational programs designed to serve their needs."

Why the word "cooperative?" Texas Cooperative Extension is an

agency founded on the cooperation of federal, state and county governments, Fehlis said.

"The U. S. Department of Agriculture, The Texas A&M University System and the County Commissioners Courts of Texas are the funding partners that make Extension possible. We are also part of the national Cooperative Extension System found in every state and U. S. territory."

"We're pleased that our new name emphasizes our close relationship with our sister program, the Cooperative Extension Program at Prairie View A&M University," he added. "We work together in so many ways; it's good to share the 'family name.'"

To find out about Extension education opportunities locally, contact the nearest county Extension office or visit the Texas Cooperative Extension web site: <http://texasextension.tamu.edu>.

To Subscribe, Call 940-864-2686

Coming Events

Plainview-McConnell-Bunker Hill homecoming

F. A. Ulmer is upgrading addresses of alumni for the upcoming Plainview-McConnell-Bunker Hill homecoming. Addresses may be submitted to Ulmer at Route 2 Box 1C1, Sagerton, TX 79548 or by calling 940-997-2577. The homecoming will be held Sat., Oct. 6 at the Sagerton Community Center.

Immunizations

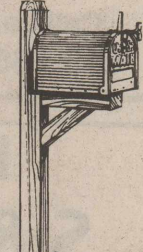
The Texas Dept. of Health in Stamford will hold an immunization clinic Thurs., Aug. 16 at the American Legion Hall in Haskell. Clinic times are 1 to 4 p.m. For more information, call 915-773-5681.

Rule Booster Club

The Rule Booster Club will meet Aug. 24 at 7 p.m. at the Rule School Library. New officers will be elected. After the scrimmage Aug. 31 against Woodson, Bobcats and new teachers will be introduced. Refreshments will be served.

Calf roping

A calf roping will be held Sun., Aug. 26 at 1 p.m. at the Longs Indoor Arena in Abilene. For information call J. W. Wallace 864-3509 or Tim Layman 864-8500.



Like what you're reading?

Call 940-864-2686 to Subscribe.

All deadlines are 5 p.m. Monday.

GONZALES CARPET CLEANING

Robert Gonzales
P. O. Box 929
Stamford, Tx
79553

Carpet Cleaning • Upholstery Cleaning
Emergency Water Extraction • Expert Floor Care
Waxing Polishing & Cleaning

Residential & Commercial
(915) 773-2667 • (915) 773-2258



**Vernon College
Haskell High School**

Registration - August 20, 2:30 - 6:30 p.m.

ENGL 1301.27	Composition & Grammar (High school students only)	Mon.-Fri.	10-11 a.m.
GOVT 2301.18	American Political System I	Tues., Thurs.	2:30-4 p.m.
SPAN 1411.27	Beginning Spanish I Lab to be announced	Wed.	6-9 p.m.

See www.vrjc.cc.tx.us/dslrn for Internet and Video Tape courses

For more information: (940) 552-6291 ext. 2230

TEXAS HERMANN SONS
Serving Texas Families Since 1890

1-877-HERMANN
Fraternal Life Insurance
Newborn Children Adults Senior Adults Whole Life Term Life Annuities



1-800-234-4124
Fraternal Benefit Services
Activities in 154 lodges across Texas
Summer Camps Dance Classes Scholarships Retirement Home Junior Chapters

Area Lodges and Agents:

Abilene #50 Old Glory #228
Robert I. Boyd: 915-793-9594 Beunice Vahlenkamp: 940-989-3609
Haskell #241
Eunice Koehler: 940-864-2134 • Elna Weise: 940-864-3564

Order of the Sons of Hermann in Texas
San Antonio, Texas • www.texashermannsons.org

NOTICE OF PUBLIC MEETING TO DISCUSS BUDGET AND PROPOSED TAX RATE

The Paint Creek ISD will hold a public meeting at 8:00 p.m. August 27, 2001 in the Paint Creek School Library, Paint Creek ISD.

The purpose of this meeting is to discuss the school district's budget that will determine the tax rate that will be adopted. Public participation in the discussion is invited.

The tax rate that is ultimately adopted at this meeting or at a separate meeting at a later date may not exceed the proposed rate shown below unless the district publishes a revised notice containing the same information and comparisons set out below and holds another public meeting to discuss the revised notice.

	Comparison of Proposed Rates with Last Year's Rates				
	Maintenance & Operations	Interest & Sinking Fund *	Total	Local Revenue Per Student	State Revenue Per Student
Last Year's Rate	\$1.40	\$0.000	\$1.40	\$3,384	\$4,188
Rate to Maintain Same Level of Maintenance & Operations Revenue & Pay Debt Service					
Proposed Rate	\$1.43	\$0.000	\$1.43	\$3,548	\$4,513

*The Interest & Sinking Fund tax revenue is used to pay for bonded indebtedness on construction, equipment, or both. The bonds, and the tax rate necessary to pay those bonds, were approved by the voters of this district.

	Comparison of Proposed Levy with Last Year's Levy on Average Residence	
	Last Year	This Year
Average Market Value of Residences	\$19,077	\$20,795
Average Taxable Value of Residences	\$4,077	\$5,795
Last Year's Rate Versus Proposed Rate per \$100 Value	\$1.40	\$1.43
Taxes Due on Average Residence	\$57.08	\$82.86
Increase (Decrease) in Taxes		\$25.78

Under state law, the dollar amount of school taxes imposed on the residence homesteading of a person 65 years of age or older or of the surviving spouse of such a person, if the surviving spouse was 55 years of age or older when the person died, may not be increased above the amount paid in the first year after the person turned 65, regardless of changes in tax rate or property value.

Notice of Rollback Rate: The highest tax rate the district can adopt before requiring voter approval at an election is \$1.4461. This election will be automatically held if the district adopts a rate in excess of the rollback rate of \$1.4461.

Fund Balances	
The following estimated balances will remain at the end of the current fiscal year and are not encumbered with or by a corresponding debt obligation, less estimated funds necessary for operating the district before receipt of the first state aid payment.	
Maintenance and Operations Fund Balance(s)	\$436,000
Interest & Sinking Fund Balance(s)	\$0

ANYTIME MINUTES!



"THAT'S 24-SEVEN, DAY OR NIGHT... RAIN OR SHINE!"

YES...THE SUPER TEXAS CELLULAR TEAM IS WORKING CONTINUOUSLY TO PROVIDE CUSTOMERS THE VERY BEST CELLULAR SERVICE WITH BOTH ANALOG AND SUPERIZED DIGITAL CELLULAR QUALITY! PLUS, AT TEXAS CELLULAR, WE MAKE EVERY MINUTE ON EVERY TEXAS CELLULAR PLAN... AS LOW COST AS POSSIBLE! YOU FOLKS WILL ALWAYS SAVE MONEY ON EVERY CELLULAR CALL YOU MAKE!

PLUS...A BIGGER HOME AREA!!!

TEXAS - NEW MEXICO - OKLAHOMA

We Take Care Of Our Neighbors.



TEXAS CELLULAR
A service of Taylor Telecommunications, Inc.
9796 N. I-20 • Merkle, TX • 79536
915-928-3200 • 800-424-7182

IN HASKELL: Haskell Tire & Appliance
206 S. Avenue E
940-864-3269

IN ALBANY: Albany Communications
500 S. Main Street
915-762-2333

IN SWEETWATER: 1113 Lamar
915-235-4377

Some restrictions apply. See agent for details.

Safety-
Your most important call

The Wireless Industry Reminds You To Use Your Phone Safely When Driving

Foot
Sal
at
Cal
Foot
Reso
Haskell
Aug. 27
\$25 for
may be
school
up by S
general
Hask
Hask
grades
Aug. 28
pictures
at the H
Commu
tion cal
Me
The
Brad B
come "I
Aug. 27
side of
Booster
cream s
Haskell
High.
Lam
The
validati
at 4 p.m.
lamb p
shows t
the year
must be
tags co
Extensi
or call
2658.
Rule
The
merce
Rule Ju
Sept. 2
Contac
informa
and the
road ra
Tanner
Mex
St. C
at 901
Mexica
tamale
to 3 p.m.
Hom
Has
Homed
20. Ad
update
Haskel
Homed
Texas
needed
repres
1954-5
1972,
1990-9
Eler
to re
Has
will re
1 to 3
aged to
their cl
teacher
School
a.m. K
2:15. 4
at 3:15
at 1 p.m.
of sch
Earl
clas
Scr
Early
held T
Aug. 2
To be
years o
2001.
be del
and/or
call th
2654 t
your c
Ind
Obitu
Aroun
Out of
Menu
Classif