

1/1/01
Baze Book Binding
514 W 7th St
Amarillo TX 79101-2212

Amarillo--33333 zzxxxxxxxxxxxxx
AMARILLO TX 791

Football games

Haskell JV vs. Hamlin
Thurs., Nov. 9, 6 p.m.
at Haskell

Haskell Indians vs. Hamlin
Fri., Nov. 10, 7:30 p.m.
at Hamlin

Paint Creek vs. Rule
Fri., Nov. 10, 7:30 p.m.
at Rule

Rule Bobcats vs. Paint Creek
Fri., Nov. 10, 7:30 p.m.
at Rule

Rochester Steers vs. Jayton
Fri., Nov. 10, 7:30 p.m.
at Rochester

Basketball games

Haskell
JV-GB, V-GB vs Hawley
Tues., Nov. 14, 4 p.m. at Haskell

Paint Creek: Aspermont-
Jayton (Scrimmage)
Sat., Nov. 11 at Aspermont

Paint Creek vs. Lueders-Avooca
Tues., Nov. 14, 5 p.m.
at Paint Creek

Rule Ladycats: Albany/Coleman
(Scrimmage)
Sat., Nov. 11 at Albany

Rule JH-GB vs Jayton
Mon., Nov. 13, 5:30 p.m.
at Jayton

Calendar

Early deadlines

Deadlines for the November 23 Thanksgiving issue of the Haskell Free Press is Thurs., Nov. 16 at 5 p.m.

Blood drive

A blood drive, sponsored by the Hospital Auxiliary, is set Tues., Nov. 14 from 1 to 6 p.m. at Haskell Memorial Hospital. Those donating blood will receive a free holiday t-shirt.

Veterans breakfast

Area veterans are invited to a breakfast in their honor at the Stamford Wal-Mart Fri., Nov. 10 from 8 to 9 a.m.

Arts and crafts show

The Haskell Young Homemakers will hold the annual Arts and Crafts Show Sat., Nov. 11 at the Civic Center. Hours will be from 10 a.m. to 5 p.m. Admission is \$2 for adults and \$1 for children ages 6-12. Children under 5 will be admitted free. Booths will feature wooden crafts, clothing, jewelry and holiday crafts and gift ideas. A concession stand will be available. Proceeds benefit the scholarship fund of the Young Homemakers.

Bake sale

The Paint Creek FFA Booster Club will hold a bake sale Sat., Nov. 11 beginning at 10 a.m. at Wal-Mart.

Fish fry

East Side Baptist Church in Haskell will sponsor a fresh fish fry Sun., Nov. 12 from noon till 1:30 p.m. The meal will consist of fried fish, beans, hush puppies, fried potatoes, tea and dessert. Contributions will be accepted and will be used to help fund a team who will be going to Romania to work with orphans.

Auction

Paint Creek Senior Class will hold an auction Sat., Nov. 11 at 7 p.m. in the Paint Creek School cafeteria. A barbecue sandwich supper will be served from 6 to 7 p.m. Tickets for the supper are \$4 for adults and \$2.50 for children under 12.

Index

Obituaries Page 2
Out of the Past Page 4
Menus Page 10
Classifieds Page 11



Shop your local merchants

The Haskell Free Press

VOL. 114-NO. 45. ©NOVEMBER 9, 2000

"The People's Choice"

12 PAGES-ONE SECTION-50 CENTS



CUBS AND INDIANS-Haskell's running back #45 Justin Tidrow protects the ball in an attempt to gain some yards during the

Indian's foggy Friday night encounter with the 5th-ranked Olney Cubs at Indian Field. Olney won 46-0. Photo by Bill Blankenship

Undefeated Olney downs Haskell 46-0

Playing on a wet field, something rarely seen at Indian Field in the past two seasons, the District 8-2A 5th-ranked Olney Cubs defeated the Haskell Indians 46-0 in a cool, wet environment. Coming into the district encounter averaging 44.5 points per game, the Cubs left averaging 44.6 points per game. Standing at 9-0 for the season, Olney is by far the best team the Indians have faced this season.

The Cubs hit the scoreboard at the 8:23 mark in the 1st quarter, when running back, Mace McClatchey scored on a 6-yard run. The PAT kick by Matt Langford was good. Olney's quarterback Steven Hinson scored on a 5-yard run with 7:37 left in the 1st quarter. Langford again kicked the PAT.

With only 3:47 left in the 2nd quarter, Olney's running back Adam Heard scored on a 12-yard run. The PAT failed. With time running out in the 1st half, Olney's quarterback Hinson scored his second TD on a 3-yard run. The 2-point conversion was good on a pass from Hinson to Mace McClatchey. The score was 28-0 in favor of Olney at the half.

Showing why they are the 5th-ranked team in the state, Olney scored quickly in the 3rd quarter. At the 10:59 mark, Hinson hit fleet-footed Chase Pratt on a 73-yard TD pass. Langford again kicked the PAT.

Joey Brown, another talented running back for the Cubs, scored on a 20-yard run with 3:56 left in the 3rd quarter. Brian Hampton caught the 2 point conversion pass from Langford.

Striving to get to their average scoring, Olney got on the scoreboard one more time. Langford kicked a 47-yard field goal with 3:31 to go in the game.

Haskell's tailback Adam Diaz had 15 yards on 7 carries, while fullback Dustin Threet had 52 yards on 17 carries in the game. Threet now has 883 yards in 9 games.

Olney is undefeated at 9-0 for the season and 4-0 in District play. Haskell is 3-6 for the season and is 1-3 in 8-2A play.

continued on page 2

Kids Club reaches out to local children

By Mary Kaigler

The large group of exuberant youngsters came into the Haskell First United Methodist Church Fellowship Hall for refreshments Tues., Oct. 24, just as they had each Tuesday afternoon after school since Kids Club began, Aug. 15. It marked the end of an eleven week session, which saw a weekly average of 40 to 45 kids attending the fast paced program of fun activities and learning about God through stories, hands-on crafts, games and music.

This day, after weeks of studies centered around each aspect of the story of Creation, (light, water, land, plants, animals and birds and the first man and woman), they would learn about how Adam and Eve were sent from their beautiful Garden of Eden because of disobeying God. Young eyes were wide when they visited the colorful "Garden Room," built as a group project over the weeks, to find an "angel", (AKA Kathryn Medford), guarding the entry.

Medical fund established for Harvey

A fund to help defray medical expenses has been established at the Rule Banking Center in Rule for Jody Harvey and his family.

Harvey, a former Rule High School and Lueders-Avooca High School athlete, was critically injured in a car wreck in Lubbock Sat., Oct. 28. He has undergone extensive surgery to repair broken bones in his pelvis and broken lower back.

At the time of the accident he was a student at Wayland Baptist University in Plainview. He is in the Intensive Care Unit of Texas Tech's University Medical Center in Lubbock.

Picked up at the Elementary School in the church van, the group arrives at the church building about 3:15 each Tuesday, ready for the after school snacks provided and served by a number of church ladies each week. This is followed by an active outdoor game time.

Divided into two groups, pre-school, kindergarten, first and second graders in one, and third, fourth, fifth and sixth graders in the other, they go to story time taught by alternating volunteer teachers, Judy Patton, Darlene Hopkins, Marijane Cunningham, Christi Stapleton, Cathy Bartley, Renee McClellan, Doris May Watson and Valiene Bullinger.

After a time for projects and crafts, all the groups assemble in the sanctuary for a session of lively singing, with music provided by Nelda Lane. On this last day parents were invited by the children to join them in the closing singing session and to visit their Garden Room.

Kids Club was designed and started by the local church to establish a special outreach ministry to children. It evolved from a seminar held in Abilene early last summer, attended by Rev. Shane Brue, church pastor, and Cathy Bartley, children's coordinator.

"Jesus had a special ministry with children, and we believe we should too," Rev. Brue said. "Sometimes Sunday morning may not be the best time to minister to children. Certainly it is not the only time. We looked for a non-traditional time in a format similar to vacation Bible school, yet in a sustained, extended time frame. We want to offer kids the opportunity to learn that they can have fun at church, while learning more about God, meeting Jesus through the stories and learning that there are people here who love them."

To make the opportunity open to as many community children as possible, a brochure with an invitation was mailed to every

Elementary School student. About 35 to 40 attended the first week, with a high of 60 coming the second week. "Some were our own church kids, some were from other churches and some were kids who don't attend any church," Rev. Brue said of those who came to enjoy the after-school activities.

On Wednesday afternoons for the last eleven weeks, the Rule United Methodist Church, which Rev. Shane Brue also pastors, has offered Kids Club to elementary children there. Mirroring the same curriculum established by the Haskell planners, they too have had a good turnout of kids at club.

The project necessarily requires

the help of many individuals from both Methodist congregations volunteering their time, energy and resources.

"I'm proud of both churches," the pastor said. "They took up the challenge and stepped up to the plate to put together a successful program and ministry of love to the children of their communities."

When the next school term session of Kids Club begins again in the early spring, with a ten to twelve week program of after-school activities, it will be planned around a different biblical theme. Judging from the enthusiasm shown by the kids attending the last weekly session, it won't lack for eager club members.



KIDS CLUB-After having snacks and playing games outside, some of the pre-school through second grade group of youngsters enjoying activities of the Kids Club at Haskell First United Methodist Church, Tues., afternoon, Oct. 24, listen as teacher Judy Patton tells the story of Adam and Eve having to leave the beautiful Garden of Eden God created for them.

FOR NEWS ITEMS OR TO SUBSCRIBE, CALL 864-2686

Indians

continued from page 1

The Indians will travel to Hamlin Friday for their final game of regular season play. The play-off picture still looms over each of these two teams. A win is of most importance to remain playing in post season.

The 7th grade Warriors played to a 22-22 tie with the young Cubs, while the 8th grade was tailing 6-0

at half-time when their game was called due to weather. The JV game was cancelled because of weather conditions.

The Indian JV team will play their last game Thursday against Hamlin here at Indian Field. Kick-off is at 6:00 p.m.

The Varsity kick-off is at 7:30 in Hamlin.

The Haskell Free Press

IS READ BY MORE PEOPLE
IN HASKELL COUNTY
THAN ANY OTHER NEWSPAPER.

Jones-Haskell



Eye Clinic

Dr. Trussell Thane, O.D.

Appointments Available • Monday through Friday

Dr. Thane provides comprehensive eye care including the diagnosis and treatment of eye disease.

Dr. Thane offers complete evaluation for eyeglasses and contact lenses.

2 pair of clear daily wear contact lenses \$159⁰⁰

Disposable lens packages and contacts to change your eye color available.

MEDICARE, MEDICAID
AND FIRSTCARE
ACCEPTED.

1501 Columbia
Stamford, Texas
915-773-2083

Coming Events

Calf roping

A calf roping will be held Sun., Nov. 12 at 2 p.m. at the Haskell County Arena. B ropers will rope 3 for \$45 and open ropers will rope 3 for \$60. For more information call Carl Hopkins 940-864-5299 or Fred Hernandez 940-864-2493.

Immunizations

The Texas Dept. of Health in Stamford will hold an immunization clinic Thurs., Nov. 16 at the American Legion Hall in Haskell. Clinic times are 10 a.m. to 11:30 and 1 to 3 p.m. For more information, call 915-773-5681. No flu shots.

Pizza sale

The Paint Creek Seniors are selling Little Caesar's pizza kits. To order contact Cara Thomasson at 864-6158 and you will be given the name of a senior to contact. Proceeds benefit the senior trip.

Rule Booster Club

The Rule Booster Club will meet Thurs., Nov. 9 after the Jr. High basketball game (approximately 8 p.m.). The Jr. High basketball teams will be introduced.

Art Association

The Brazos West Art Association will meet Mon., Nov. 13 at 7 p.m. in the Haskell National Bank Community Room. Featured artist will be Ruth Jackson of Abilene who is well-known for her lovely watercolor art.

Retired Teachers

The Haskell Co. Retired Teachers will meet Wed., Nov. 15 at noon at Burkett's Family Restaurant. This is the last meeting this fall.

Obituaries

Fadwa Saab Hassen



FADWA SAAB HASSEN

Funeral services for Fadwa Saab Hassen, 90, of Haskell were held Wed., Nov. 8 at First United Methodist Church in Haskell with Rev. Shane Brue officiating. Burial was in Willow Cemetery under the direction of Holden-McCauley Funeral Directors.

Mrs. Hassen died Sun., Nov. 5 in Haskell.

Born in 1910 in Shweifat, Lebanon (a suburb of Beirut), she was the widow of Shahir Hassen. She was the owner of Hassen's Department Store in Haskell for many years. She was a

member of the Business and Professional Women's Club, the Progressive Study Club, the Magazine Club and the First United Methodist Church.

She was preceded in death by her beloved son, Raja Shahir Hassen, two brothers and one sister.

Survivors include one daughter and son-in-law, Nabeela Hassen David and Edward K. David of Roswell, N.M.; two grandchildren, Camille David of Dallas and Edward Nabeel David of Roswell.

PD. NOTICE

Sue Merchant

Graveside services for Sue Merchant, 68, of Odessa were held Mon., Nov. 6 at Willow Cemetery in Haskell with Rev. Don Palmer of Odessa officiating. Services were under the direction of Holden-McCauley Funeral Directors.

Mrs. Merchant died Fri., Nov. 3 at Odessa Medical Center Hospital.

Born April 15, 1932 in Erath County, she was the daughter of the late Alvin and Ufama Tanner. She married H. C. 'Cleo' Merchant May 7, 1949 in Ranger. She has lived the last 20 years in the Odessa area. She was a homemaker.

She was preceded in death by a son, Alan Keith Merchant.

Survivors include her husband, H. C. 'Cleo' Merchant of Odessa; one son, Dennis Wayne Merchant of Amarillo; one daughter, Selena Paulette Wood of Lovington, N.M.; two brothers, A. J. Tanner of Ranger and W. A. Tanner of Dumas; two sisters, Joy Honea of Ranger and Mickey Baggett of Grafrod; six grandchildren, Stacy Williams, Alan Wayne Merchant, Aaron Merchant Nauert, Nathan Nauert, Jody Glenn Wood and Stewart Wood; and two great-grandchildren, Rusty Rogers and Kelsey Smith.

PD. NOTICE

Selma L. Terrell

Funeral services for Selma L. Terrell, 94, of Stamford, formerly of Haskell County, were held Tues., Nov. 7 at First Baptist Church in Stamford with Rev. Truett Kuenstler and Rev. T. C. Melton officiating. Burial was in Highland Memorial Cemetery under the direction of Kinney Funeral Home of Stamford.

Mrs. Terrell died Sun., Nov. 5 in a Stamford nursing home.

Born March 13, 1906 in Jones County, she was the daughter of William T. and Lannie Frances Yates West. She married Harvey Lee Terrell Nov. 29, 1924 in Haskell County. He preceded her in death Jan. 16, 1973. She was a homemaker and a lifetime resident of Jones and Haskell counties. She was a thirty-year member of the First Baptist Church and attended the Willing Workers Sunday School Class.

She was preceded in death by her parents; her husband; one son, Edwin Lee Terrell; one daughter, Helen Joyce Howard; four brothers and five sisters.

Survivors include one daughter, Rowena Seth of Midland; two sons and daughters-in-law, Jerry and Barbara Terrell of Stamford and Lloyd and Rudean Terrell of Seagraves; 15 grandchildren; 34 great grandchildren; 11 great great grandchildren; numerous nieces and nephews and a host of friends.

Pallbearers were grandsons: Terry Seth, Scott Seth, Gary Seth, Douglas Terrell, Michael Terrell, Ricky Terrell, Eric Howard and Brent Howard.

Memorials may be sent to the American Heart Association, West Texas Rehabilitation Center or First Baptist Church Memorial Fund.

PD. NOTICE

Drought report reveals extensive farm losses

A Drought Report developed from a statewide survey of Farm Service Agency County Offices reveals extensive row crop, pasture/hayland, and livestock losses in each of Texas' 254 counties. Extended periods of extreme heat compounded losses in 223 counties. Crop year 2000 marks the fourth consecutive drought year for much of Texas. The report reflects areas of the state hit harder than others, but no single region was unaffected by or immune to the effects of the droughts.

"Although recent rain has been received throughout the state, the damage done by the drought is irreversible. Predicted above average rainfall for fall 2000 will not alleviate the current precipitation deficit," according to

State Executive Director, Wayland Shurley of the U. S. Department of Agriculture's Farm Service Agency.

Crop condition data received by FSA indicated 53% of the state's wheat acres, 42% of cotton, 35% of sorghum, 4.9% of corn and 81% of peanuts failed. Statewide, corn was the only exception to the widespread losses. Texas' corn acres were either harvested or matured to the extent that the dry conditions did not adversely impact the crop. Additionally, livestock and pasture losses were recorded in 207 counties, with many counties indicating higher than normal culling and in some cases, liquidation of entire operations.

"The resulting economic hardship felt by Texas farmers and ranchers has been devastating," said Shurley. "FSA's report showed approximately 136,000 producers with 30 percent or greater losses and 15,000 producers who will have difficulty meeting their financial needs through commercial lenders. USDA and FSA are doing all we can to provide programs and lending opportunities to producers in an attempt to life some of the financial strain inflicted by the drought," he said.

To date, 24 counties have received primary disaster declarations for the 2000 drought and an additional 39 counties have received contiguous declarations. "Although these numbers are

substantial, I do not feel the list is complete or adequately mirrors the needs of counties that have not yet received disaster declarations," said Shurley. Damage Assessment Reports have been requested from 44 additional counties and are pending review for eligibility for Secretarial Disaster Designations. Disaster declarations provide farmers and ranchers with low interest emergency loan assistance. This year, the declarations will be a key factor for providing assistance to livestock producers who suffered grazing losses.

FSA's survey also indicated 39 counties where agricultural businesses are feeling the effects of the lack of production and depressed commodity prices, a statistic that is vital considering agriculture is the second largest industry in Texas. Losses suffered by the state's farmers and ranchers have a severe impact on Texas' entire economy.

Fortunately, President Clinton recently signed the farm spending bill for 2001 which provides for approximately \$3.5 billion in disaster aid for agriculture losses nationwide. Texas farmers and ranchers will benefit from provisions that specifically allocate monies for crop loss payments, dairy market loss payments and livestock assistance. For more information on the farm spending bill, visit the USDA World Wide Web site at <http://www.fsa.usda.gov>.

Like what
you're
reading?
Call
940-864-2686
to Subscribe.

Mullen & Sons

Aspermont/Peacock
Water Well Service

806-254-2012 or 940-989-2236

Gould Pumps - American West Windmills
5 year warranty 5 year warranty
Complete line of Well Supplies

Have had a brief absence from the business but we're back with a 1997 truck and 5 T Smeal rig. We are not just limiting ourselves to Pumps and Windmills so if it's broke or just giving you trouble give us a call and maybe we can save you a few dollars on your next repair job.



John 3:16

Wednesday, November 15 • 7 p.m. • School Auditorium

On Nov. 15, Horsemen for Christ will present an all school assembly for Haskell Junior High and High School on the effects of sex, drugs and alcohol. This program will be testimonial and motivational to help them in the struggle to make right choices. However, the assembly during the day will be secular in presentation. That Wednesday night, all students are invited back to the school auditorium where Joe Howard Williamson and his wife, Founders of Horsemen for Christ, will share their testimony and give students an opportunity to respond to Jesus Christ.

ALL YOU CAN EAT PIZZA WILL BE SERVED FOLLOWING THE EVENING ASSEMBLY.

Sponsored by First Baptist Church Student Ministries.
For more information contact Greg Rake at 864-2581.

Meet us at the Haskell

Dairy Queen

We're here to stay!

Christian Operated! • Under New Management!

<p>DQ Dude & Fries MONDAY ONLY! \$1.99</p>	<p>Senior Citizens get half price for all regular priced item all day every Tuesday. Dine-in orders only.</p> <p>New Pumpkin Pie flavor! Blizzards \$1.59 12 oz.</p>	<p>WEDNESDAY CHURCH NIGHT ~ SPECIAL ~ 4 Pc. Steak Finger Basket 5-9 P.M. \$1.99 ONLY!</p>
<p>Thursday Only! Buy Any Taco Salad or Order of 3 Tacos Get FREE Medium Soft Drink</p>	<p>CALL IN ORDERS WELCOME! 864-3732 Breakfast served 9 a.m. to 11:00 a.m. Open 9 a.m. until 9 p.m.</p>	<p>SPECIALS GOOD THRU NOV. 13 Chicken \$3.99 Basket 4 pc. Pecan Mudslide \$1.59</p>

Tips to fry the perfect turkey

Tired of the same old baked turkey at Thanksgiving every year? With this holiday right around the corner, Dr. Sarah Birkhold, poultry specialist with the Texas Agricultural Extension Service, said deep-frying your turkey may be one alternative.

First, she said, choose your bird. A high quality 8- to 11-pound turkey is ideal for deep-frying, or chickens or quail can also be cooked.

"You can deep fry just about anything," she said.

The most important point to remember is to remove the giblets - located under the flap of skin at the front of the turkey -

from the body cavity before cooking, she said. Trim the skin flap to allow good oil flow through the bird.

Equipment needed is a propane burner and a cooking pot large enough to hold the turkey and oil. The amount of cooking oil depends on the size of the pot. A wire basket for the fryer, or a wire wrapped around the legs and a dowel, will help with the removal of the bird after cooking.

"As far as seasonings, you can use whatever you like. Anything from making your own to buying the seasons is fine," Birkhold said.

A heavy rub can be applied to the bird, both inside and outside.

Marinades also can be injected into the muscle before cooking.

When cooking, oil should be heated to 375-390 degrees F before lowering the bird into it. Once the bird is immersed, the oil temperature should drop to 350 degrees.

"You can use a thermometer to get the temperature right," she said.

Also, using a timer will help ensure the turkey is done. A turkey should fry 3.5 minutes per pound. For example, a 10-pound bird will need to be cooked for 35 minutes at 358 degrees F. If the oil gets to 375 degrees F, cooking time may be reduced to 2.5 to 3 minutes per pound, she added.

"If you cook this right, it won't be greasy," Birkhold said.

Birkhold had a few words of caution going out to anyone using the frying method of cooking.

"When preparing food in hot oil, particular attention should be paid," she said. Adults should be careful to avoid spilling or splashing the oil onto themselves or others. Children and pets should not be allowed near the hot oil.

When cooking is complete, carefully remove the bird from the oil and drain on a clean platter. When carving meat, make certain it is completely cooked. All juices should run clear, with no blood.

Debit cards are becoming popular

by Lou Gilly
Haskell Co. Extension Agent
More and more individuals are using debit cards. In fact, it is now estimated that more than 60 percent of U. S. households have a debit card and use it frequently, which means they are now as popular as

credit cards, checks and cash. Debit cards are quite different from credit cards, according to Lou Gilly, family and consumer science agent with the Texas Agricultural Extension Service in Haskell County.

"Unlike credit cards which allow you to buy now and pay later, debit cards are buy now and pay now," she said. "They are actually another form of a check or cash because you are using your own money, not someone else's. With a debit

card, the payment is instantly withdrawn from your checking or savings account."

Debit cards look like credit cards or ATM (automated teller machine) cards and they are accepted at many locations, including grocery stores, retail stores, gasoline stations and restaurants.

Debit cards require the use of a personal identification number (PIN).

"You must have a PIN before you can use your debit card. Once you get it, memorize it. You don't want to write it down on your card or keep it with your card because it's your personal password. And, if someone else has access to your PIN, they also have complete access to your checking or savings accounts," she warned.

Gilly also advised against using a PIN that someone could figure out easily. For example, using your street address, your phone number, your birthday or other personal information is unwise.

"It just makes it easier for someone who knows something about you to gain access to your account."

In addition to protecting your PIN, Gilly encourages you to write down every transaction you make with your debit card.

"It's so easy to use them to make a purchase, but if you don't keep track of those purchases, you can drain your checking or savings account," she said. "Keep your receipts in one place to better manage your spending habits and your account balances."

Lost or stolen debit cards should be reported immediately to the issuing financial institution.

"Even though you have the card in your possession, it's still possible for someone to use it fraudulently."

If you suspect that your card is being used without your permission, report it immediately to your bank or credit union.

"Following these suggestions helps you protect your money so you can either increase your savings or decrease your debt...rather than letting someone else spend it for you," she added.

Many families are far-flung during Thanksgiving holidays

Thanksgiving is traditionally a family-oriented holiday, but with many families spread out around the country - even around the world - sometimes the distance is too great to allow the whole family to get together.

The holidays can be particularly hard on older family members, especially when they can't be with their relatives, says Dr. Myron Weiner, vice chairman for clinical services of psychiatry at UT Southwestern Medical Center at Dallas. Weiner, a geriatric psychiatrist, treats many older people who find that being alone during the holidays brings on conditions ranging from "the blues" to major depression.

"It's a sad fact, but not everyone who would like to can be with

family during holidays like Thanksgiving," he says. "But there are things we can do to make holidays happier for older family members who are not able to join other family members during that time."

Weiner suggests that families write or telephone more often during a holiday season. If the older family member uses a computer, frequent e-mails - especially from the children - can bring smiles. Smaller children can color or paint and send holiday pictures they've created. A surprise package of small holiday decorations in the mail is a nice touch, or a holiday flower arrangement can be wired.

Photographs of the family make a cheery holiday gift, especially if it's followed by an album of

snapshots of the holiday gathering itself - or a videotape that could be played again and again.

And whatever you do, don't forget to telephone that person at least once on the actual holiday.

Abuse intervention available

A new intervention model aims to raise awareness about abuse against women with disabilities and help those women leave abusive situations.

"Our research has shown 62 percent of women, both with and without physical disabilities, have been physically, sexually or emotionally abused at one time in their lives," said Dr. Margaret Nosek, director of the Center for Research on Women with Disabilities (CROWD) at Baylor College of Medicine in Houston. "We want to help these women take action and leave their abusive situations."

The intervention kit, compiled by CROWD, contains information on how to develop a safety plan and provides battered women's programs, social service programs and independent living centers with the tools to help meet the special needs of these women.

For more information on the intervention kit, call CROWD at (800) 44-CROWD.

Diabetes affects many Hispanics

by Lou Gilly
Haskell Co. Extension Agent
New findings underscore the need to better educate U. S. Hispanics on how to prevent diabetes or minimize its impact.

A study of elderly Hispanics shows that those who have diabetes are more likely to lose muscle and the ability to move with ease or take care of basic needs, such as eating, dressing, bathing and toileting. These disorders increase the list of known complications

that may result from uncontrolled blood sugar. They include heart disease, blindness, kidney failure and nerve damage in the extremities.

Diabetes is more prevalent among U. S. Hispanics in the study who use insulin rather than dietary changes. The number of Hispanics in the study who use insulin rather than dietary changes or less potent drugs to control their blood sugar is high, indicating that the disease is more severe.

Extra Long Cheese Coney & Tots*



ONLY \$2.79
PLUS TAX

Limited Time Only!

SONIC
America's Drive-In.

**No Waiting
Call In Orders 864-8533**

*Large Tater Tots
Offer good November 1-30, 2000. Not valid with any other offer. Only at participating drive-ins.
©2000 America's Drive-In Trust.

PIZZA PRO

of Modern Way

LARGE PIZZA
SINGLE TOPPING

\$7.99
EACH



MEDIUM PIZZA
UNLIMITED TOPPINGS
EXCLUDING CHEESE

2 FOR \$9.99

You Always Get More Pizza for Less Money at Pizza Pro!

Teeth grinding can cause headaches

If you wake up with a headache, it may be because of something you're doing in your sleep.

You've heard of sleepwalking. But have you heard about sleep grinding? If you have a sore or tense jaw in the morning, or if you have a lot of headaches that center on your temples, you may be grinding or clenching your teeth in your sleep. This habit, also called bruxism, affects men and women alike—and most people aren't even aware they do it.

Oral surgeons at UT Southwestern Medical Center at Dallas say the major cause of nighttime tooth grinding is stress. It's a lot like clenching your jaw when you're tense during waking hours, only you're not aware

you're doing it and therefore can't make yourself stop while you're asleep. Another cause is misaligned teeth. In addition to soreness and headaches, tooth grinding can damage teeth, wearing down the surface.

If you notice your teeth wearing down and have soreness in your jaw or temples, talk to your dentist or doctor about tooth grinding. Managing stress is one way to stop it. Your dentist also may develop a mouth guard that you wear in your sleep to keep your teeth from grinding together.

To reduce the soreness in your jaws, use warm compresses and eat soft foods. You should also avoid chewing gum, because that gives your jaws a workout.



Arts & Crafts Sale

Haskell Young Homemakers Arts & Crafts Sale

Sat., Nov. 11

Haskell Civic Center

10:00 a.m. – 5:00 p.m.

Admission: \$2 Adults
\$1 Children 6-12

Proceeds benefit Scholarship Fund

Stock Up and SAVE!

<p>Kleenex 175 ct.</p> <p style="font-size: 2em; font-weight: bold;">99¢</p>	<p>Bounty Paper Towels</p> <p style="font-size: 2em; font-weight: bold;">89¢</p>
<p>Northern Bathroom Tissue 4 pack</p> <p style="font-size: 2em; font-weight: bold;">99¢</p>	<p>Extra-Strength Tylenol Caplets, Tablets or Gelscaps</p> <p style="font-size: 2em; font-weight: bold;">\$7.49</p> <p style="font-size: small;">100 ct.</p>
<p>Select Brand Saline Solution 12 oz.</p> <p style="font-size: 2em; font-weight: bold;">\$1.49</p>	<p>Robitussin All Formulas</p> <p style="font-size: 2em; font-weight: bold;">\$5.99</p> <p style="font-size: small;">8 oz.</p>

CLEARANCE!

Earrings

Values to \$20.00. Now Clearance Priced

50¢ to \$5.00

Great Christmas Gifts!

Stadium Blankets

Black & Gold, Purple & Gold, Royal Blue and Camouflage for 3 days only

Reg. \$24.99
\$19.99

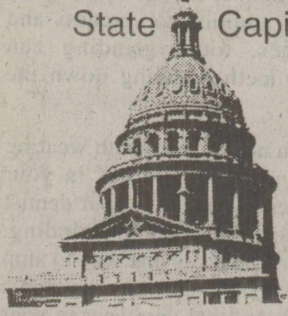
Prices Good Nov. 9, 10, & 11
We reserve the right to limit quantities.

THE DRUG STORE

Hours: 8-6 M-F; 8-5 Sat. • 940-864-2673

OPINION

State Capital



HIGHLIGHTS

By Ed Sterling
TEXAS PRESS ASSOCIATION

AUSTIN — The state of Texas won cases against two "payday" lenders in Hidalgo County that made loans without a license and charged interest rates as high as 780 percent.

A jury found the businesses EZ Cash and Quick Cash and owners George Moreno and Anna Gaytan guilty and ordered them to pay \$250,000 and \$17,500, respectively, to restore interest overpayments by unsuspecting customers. Combined civil penalties were \$12,000 and state's attorneys fees total \$36,000.

The jury also found the defendants used threats or coercion to collect money from customers, including the threat of filing criminal charges when customers had not violated any laws.

"These are clearly illegal acts perpetrated by unscrupulous individuals," said Attorney General John Cornyn. "The people of this state have no tolerance for lenders who prey on those least able to protect themselves against these kinds of practices."

Businesses that engage in payday loan arrangements typically lend small amounts to customers who face short-term financial difficulties and often live paycheck to paycheck, with little access to mainstream forms of credit.

Flu shot supply remains slim
The Texas Department of Health has received only 35,000 of the 366,000 doses of flu vaccine it ordered and the balance should be shipped periodically through December.

Most of the shipment will go to public health facilities. The agency is asking doctors to disperse their vaccines to the elderly and other high-risk groups first until an adequate supply is available.

"What we're trying to avoid is a well-protected low-risk population at the expense of an unprotected high-risk population," said Sharilyn Stanley, M.D., the agency's associate commissioner for disease control and prevention.

High-risk groups include people age 65 and older, nursing home residents, asthmatics and people with diabetes, kidney or heart problems. Children on long-term aspirin therapy and pregnant women in the second or third trimester as well as health care workers also are high-risk.

The health department estimates private practitioners and health care providers in Texas

have ordered 3 million doses of the flu vaccine.

TNRCC report finds 42 changes

The Texas Natural Resource Conservation Commission would continue to operate for the next 12 years and would gain greater flexibility over its own budget under changes proposed in the first in-depth performance review of the 7-year-old agency.

The Sunset Advisory Commission completed a yearlong review of the environmental agency and found that TNRCC's current funding structure does not adequately support its activities and that the agency lacks strategic direction and innovation in its regulatory structure.

The report also found that the public's interest is not represented in environmental issues as well as it is in electric utility and insurance regulation, and that the agency limits the collection and use of public input into its compliance efforts.

The commission turned its report and 42 recommended changes over to the Legislature for consideration.

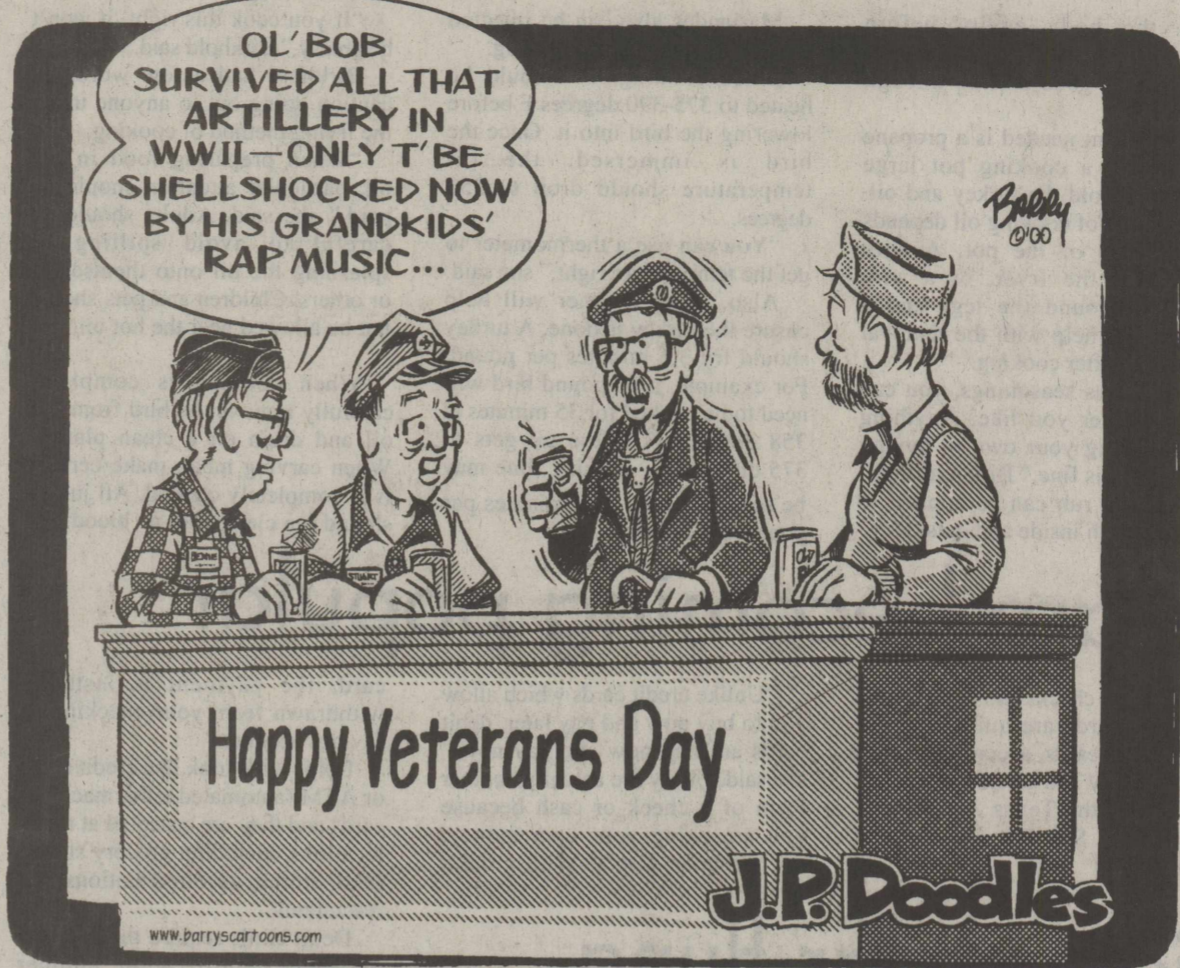
Other Highlights

- Secretary of State Elton Bomer announced the results of his "Why My Parents Should Vote" essay contest that drew 3,000 entries from schoolchildren statewide. First-place winners are Andrew Cole, Stroman Memorial High School in Victoria, Matthew Cole, Howell Middle School in Victoria and Morgan Redus, Bremond Elementary in Bremond.

- The first 29 people graduated from the Comptroller's Texas IT Academy, a public-private partnership to help fill high-tech state jobs. Students are college graduates who earn an entry-level salary while in the program and agree to work for the state for at least two years after they graduate.

- Oyster season opened last week but harvesters only will be able to gather oysters in parts of Galveston Bay. All other Texas coastal waters will remain closed to commercial and recreational harvesting due to the effects of red tide, a toxin-producing algae bloom that hit the coast in August.

- Texas Parks and Wildlife Department launched the first migratory bird hunting report that will run from the opening of waterfowl season through mid-February. Updates will be posted online at www.tpwd.state.tx.us on Thursdays.



From The Inside Out

By Mary Kaigler

When Carolyn Reynolds of Haskell was going through some old trunks and boxes, she found a poem that was written eighty-two years ago, in 1918, by a very young girl named Annie Roberds during the months before her wedding to Frank Reynolds, Carolyn's father-in-law.

Hand written in pencil on both sides of three small pieces of lined tablet paper, yellow now with age, sweetly beautiful in its descriptive poetry, it seems to capture the breathless essence of young love in its purest meaning.

And yet, perhaps surprising for one so young to envision and put into words, her poem could also be read to reflect a certain looking forward in faith to the constancy and beauty of true love for those beginning to glimpse the winter of their lives after the passing of summer.

In her words, composed and written down in 1918, is her poem.

The Message of a Rose

She gave him a rose, a dark red rose. Beautiful flower of love.

He gave her his heart, and vowed to be true, as the shining stars above.

Will he keep his vow as the years go by? Will he be ever faithful and true?

Or will he forget; when the rose is dead, that her love was awakened too?

"He will not forget," says the sweet red rose, as it rises its dewy

head. "He will not forget his sweet heart, when all the flowers are dead."

Though love was born with the flowers of June, like God, it's a deathless thing. It can never die like the blossoms that only bloom in the spring.

The sad sweet summer is leaving, with a smile, a tear and sigh. Old Winter is hastening her onward and soon she must pass and die.

But the winter will bury her gently, in a shroud of gleaming snow, and she will lie in peace 'mid the flowers, with the summers of long ago.

So our hearts feel the coming of "Winter," with a thousand wonderous thrills. For the flying birds are flying southward o'er the breast of the purple hills.

The mist hangs low on the river. The fields are pearled with dew. The mountains gleam in the distance, through a veil of silvery hue.

In folds of pansy-purple and crimson capped with white, the clouds hang o'er the sunset and bathe in the golden light.

And we watch the glowing signal, with wondering, reverent eyes. For we know 'tis the herald of winter that flames in the Western skies.

And we know that God will guard us 'til our wedding day is come, when we shall learn the meaning of those sacred words, "Our Home --- Our Home."

So, we feel the power and the glory, that only belongs to Him Who gave us Love everlasting, that time itself will not dim.

Annie Roberds and Frank Reynolds were married later in the year following her writing this poem. She and Frank became the parents of Sonny Reynolds of Haskell and Beuna Faye Perrin of Center, Colorado. Annie worked many years for Haskell County Clerk Jason Smith in the School Tax Office.

Reading her words expressing the delicate, inner feelings of wonder and philosophical insight, rekindled for me the memory of the need of a young girl to pour out youthful dreams and longings into the receptacle of her poems, written only to be put away in secret in some long forgotten place.

And although our youthful words and lines, written so long ago, probably served their best purpose just by finding expression in poems to be put away and never seen by others, one has to wonder how they would be read today by those we know and love.

Would our words perhaps evoke in some reader the sweet remembrance of their own youthful spirit of innocent belief in the steadfast abiding of true love, just as the reading of Annie Reynold's poem of eighty-two ago has done?

Thanks Annie, for a sweet reminder.

Fighting and winning the war against the common cold

We can't cure the common cold, but can we prevent it?

The so-called "common" cold is actually a complex problem. It's caused by a number of viruses and those viruses keep changing, so it's almost impossible to vaccinate against it or fight it once you've caught it. All you can do is fight the symptoms—the sneezing,

coughing, runny nose and sore throat.

You may have heard a lot lately about herbal remedies that help prevent colds. One popular one is echinacea, an herbal remedy made from the purple coneflower. This herb is believed to help boost the immune system to help people stave off colds. There may be

scientific proof of this power. Florida researchers tested echinacea and found that it appears to boost the disease-fighting ability of white blood cells.

But the researchers caution that you probably should not take echinacea every day - only when you feel a cold coming on. It could be bad for your body to have your immune system boosted like that all the time. More research is needed on the best way to use echinacea to fight disease.

Doctors at U-T Southwestern Medical Center at Dallas say another way to prevent colds is to wash your hands often. Cold viruses are often transmitted by hands when your hands come in contact with the germs, then you touch your face. Wash with soap and warm water several times a day.

Keeping an eye on Texas

Texas then and now
Since the turn of the last century, population trends and demographics have changed drastically in Texas.

Texans' median age	1900		1998*	
	Males	Females	Males	Females
	19.3 years	18.2 years	31.8 years	34.0 years



Texas population by sex	1900		1999*	
	Males	Females	Males	Females
	1.6 million (51.8%)	1.5 million (48.2%)	10.0 million (50%)	10.0 million (50%)

*Year of most recent figures
SOURCE: Carole Keeton Rylander, Texas Comptroller of Public Accounts (www.window.state.tx.us), and U.S. Census Bureau.

From Out of the Past

From the files of
The Haskell Free Press

10 Years Ago
November 8, 1990
Rick Perry was elected Texas State Agriculture commissioner.

Nick Jimenez Jr. won a first-place trophy and an All-Star medal in an All-Star Talent Contest in Abilene. He is the son of Nick and Eva Jimenez.

Christopher Kitley of Rule celebrated his third birthday with a party at the recreation center. The birthday theme was the Ninja Turtles.

Seven Haskell 4-H Club members competed in the District Food Show in Vernon. They are Kim Gilly, Shana McKenzie, Jennifer Comedy, Tonya Burson, Kaki Stapleton, Shannon Sanford and Shannon Jordan.

20 Years Ago
November 6, 1980

Mrs. Grace McKelvain was honored by families of the Haskell Clinic at a salad supper in honor of her retirement. McKelvain has worked as a nurse in the Haskell Clinic since Jan. 12, 1948.

Mikeana Wilcox, daughter of Mr. and Mrs. Mike Wilcox of Rule, was awarded the F. W. Martin Memorial Award at the Haskell county 4-H Awards Banquet.

Dr. V. N. (Ben) Brock, vice president of Western Texas College, has been selected for the prestigious Marquis Who's Who in America. Brock is a graduate of Haskell High School.

30 Years Ago
November 5, 1970

Mr. and Mrs. Pat Hale of Hale Farm Supply were awarded an all-expense paid trip to Acapulco, Mexico by the John Deere Company for meeting their sales quota.

The Highway Department is in the process of moving into its new building according to Ray Lusk, local maintenance foreman. The new building is located one-fourth mile west of the city limits of Haskell.

Hayden McDonald has retired from the Haskell Post Office after being employed as clerk for the past 28 years.

40 Years Ago
November 10, 1960

A. C. Pierson of Haskell was elected to the Executive Board of the Baptist General Convention of Texas during the meeting in Lubbock.

Returning recently from their annual pheasant hunt in Nebraska were Scotch Coggins of Haskell, Charles Gary, Bill King and Ramon Liles of Weinert. They reported plenty of game and ideal weather.

Mr. and Mrs. S. M. Royall entertained members of the Haskell County Sheriff's Posse and invited guests at an outdoor steak cookout at their farm home southwest of Haskell.

50 Years Ago
November 9, 1950

Haskell's five gins reported a combined total of 9,424 bales of cotton processed so far.

Patsy Turnbow, daughter of Mr. and Mrs. R. W. Turnbow of Haskell, was elected FFA Sweetheart.

Naomi Sparkman, daughter of Mr. and Mrs. John Sparkman, was crowned queen of the Mattson High School in ceremonies held at the carnival.

Marie Bird, an eighth grader and daughter of Mr. and Mrs. T. M. Bird, was crowned queen of the Mattson grade school.

90 Years Ago
November 5, 1910

G. E. Courtney has recovered from a three months illness with typhoid fever.

H. H. Franklin, owner of the Franklin Tent Theatre road shows, will close the season here and store his equipment here until spring.

The school at Plainview has started and the teacher, Prof. T. R. Odell, is contemplating organizing a Literary Society.

Hospital

Admissions
James Freeman, Rule
Alonzo Golan, Crowell
Viola Tidwell, Haskell
Gladys Whitaker, Haskell

Dismissals
Levi Greer, Willia Rogers, Josh Tidrow

Like what
you're reading?
Call
940-864-2686
to Subscribe.

To Subscribe, Call 940-864-2686

The Haskell Free Press

Established January 1, 1886
PUBLISHED EVERY THURSDAY
401 S. First St
P. O. BOX 555 HASKELL, TEXAS 79521

John McDougal Publisher
Lisa Shaw Business Manager
Mary Kaigler Editor
Doris McDougal Production
Bill Blankenship Staff Photographer

Periodical Paid Haskell, Texas 79521
(USPS 237-040)

SUBSCRIPTION RATES:

Haskell County, one year, \$20.00.
Outside of Haskell County, one year, \$28.00.

NOTICE TO PUBLIC: Any erroneous reflection upon the character, reputation or standing of any firm, individual or corporation will be gladly corrected upon being called to the attention of the publisher.
POSTMASTER: Send address changes to The Haskell Free Press, P.O. Box 555, Haskell, TX, 79521-0555.



This issue mailed Wed., Nov. 8, 2000

Credit cards can become expensive to use

by Lou Gilly

Haskell Co. Extension Agent
Most of us consider using a credit card as a routine method of payment when purchasing goods and services. Whether we're shopping at a local merchant or in one of the major chain stores, we tend to pay with plastic instead of paying cash or writing a check.

While there is nothing wrong with using credit cards, they can become an expensive method of payment if we fail to comply with the terms established by each card company. Avoiding some of the common pitfalls of credit card use can help save you both money and time, according to Lou Gilly, family and consumer science agent

with the Texas Agricultural Extension Service in Haskell County.

One of the most important things to remember when using credit cards is to pay your bills on time. Credit card companies process millions of checks each month and it may take 5-7 days for

your payment to be posted to your account.

Using the envelope they send you for payment or a regular size envelope will help speed the process because most companies use high speed sorting machines that are set to handle them, while other mail must be hand-sorted. Also, credit card companies would prefer that you not use staples or paper clips, or add letters or notes to your payments because it delays processing your payment.

Delays in getting your payment posted to your account will usually result in expensive late fees and additional interest charges. So, when possible, mail your payment as soon as possible after you receive the statement. You may also want to explore the possibility of a bank draft, payment by phone or payments online.

While some cards offer special rates to their preferred customers, you may face higher interest rates due to even one late payment. Paying additional interest plus the late fees increases the overall cost of your purchases and may also have a negative impact on your credit rating.

If you need to contact customer service in writing, read the back of your billing statement for assistance. Most companies use a separate mailing address for correspondence.

Back the Indians!

Just in Time for Thanksgiving...

FREE GROCERIES

\$50⁰⁰

Gift Certificate with purchase of \$500 or more

\$25⁰⁰

Gift Certificate with purchase of \$300 or more



CERTIFICATE NOT VALID AFTER NOV. 23, 2000

"We Want To Be Your Furniture Store!"

BOGGS & JOHNSON

East Side of Square Haskell 940-864-2346

City Council approves purchase of land for regional jail

At the recent meeting of the Haskell City Council, approval was given for the purchase of land for the Regional County Jail and Detention Center.

The land is a part of the Albert Barnett property east of Haskell near the cotton warehouses. It will be purchased through the Development Corporation of

Haskell which bought 113 acres of the Barnett land.

Approval is forthcoming for the sale of revenue bonds and certificates of obligation for the funding of the jail project.

Randy Hise, president of the Development Corporation, said banks generally buy the certificates of obligation because they are sold in larger lots, and backed by the tax

base, while revenue bonds are sold in smaller lots.

The Council also discussed the distribution of profits from the regional jail. A trust company will be handling all monies. They will hold 50% of the profits until a second annual payment is in reserve. The remainder will then be split 50-50 between Haskell County and the City of Haskell.

Don't pack on the pounds when you throw out the pack

Giving up cigarettes is one of the kindest things you'll ever do for your body. But if you're worried about the inevitable weight gain - it's not.

It's a myth that nicotine helps with weight reduction, says Dr. Patricia Cook, an associate professor in internal medicine at UT Southwestern Medical Center at Dallas.

"Smokers have a highly refined oral reflex and putting something

in the mouth is almost as important as the smoke," Cook says. "Knowing this makes it easier to remember that the desire can be satisfied with things other than cigarettes."

To satisfy the craving, Dr. Cook suggests low or no-calorie foods, drinking water from a sports cap bottle or through a straw, sucking on cinnamon sticks, or chewing gum.

She says exercise is the most important tool to maintain weight loss or avoid weight gain.

"Walk 10 minutes a day and gradually increase the time to 30 minutes a day," she says. "This helps clear the mind when you obsess about not smoking."

Even if you gain some weight after quitting, it's usually small and temporary. "It's also much less harmful to your health than smoking."

Medications may not mix

An over-the-counter drug is still a medication and your physician needs to know which ones you are taking.

"Your physician needs to know about all medications-including

over-the-counter drugs and home remedies-to assess possible drug interactions and overdosing," says Dr. Craig Rubin, associate professor of internal medicine at UT Southwestern Medical Center at Dallas.

Seniors with multiple medical problems are especially vulnerable because they may see more than one doctor. Each physician must be made aware of other doctors' treatments, including prescriptions, to avoid exposing the patient to potential complications, says Rubin, a specialist in geriatric medicine.

A common scenario, says Rubin, involves a patient who has been prescribed a nonsteroidal anti-inflammatory drug and is mistakenly taking another drug

from the same class, such as ibuprofen or Alleve. Such patients, regardless of age, would increase their risk of gastric ulcers or kidney failure.

Like what you're reading? Call 940-864-2686 to Subscribe.

BERNARD E. GODLEY, INC.

TAX SERVICE & BOOKKEEPING

Computerized • Tax Returns & Bookkeeping

98 Hill Drive • Seymour, Texas

940-889-8809

Office Hours: 9 to 12 and 2 to 5 Monday - Friday

FLATLANDS

"essential elements for the way we live"

Gourmet Coffee and Tea Bistro
Rustic and Antique Home Furnishings
Gift Market

Grand Opening

Saturday November 11th

8:00 AM — 5:00 PM

Come in and browse. Have a pleasurable shopping experience and register to win a 1 lb. bag of gourmet coffee.

13 Avenue E Haskell, TX

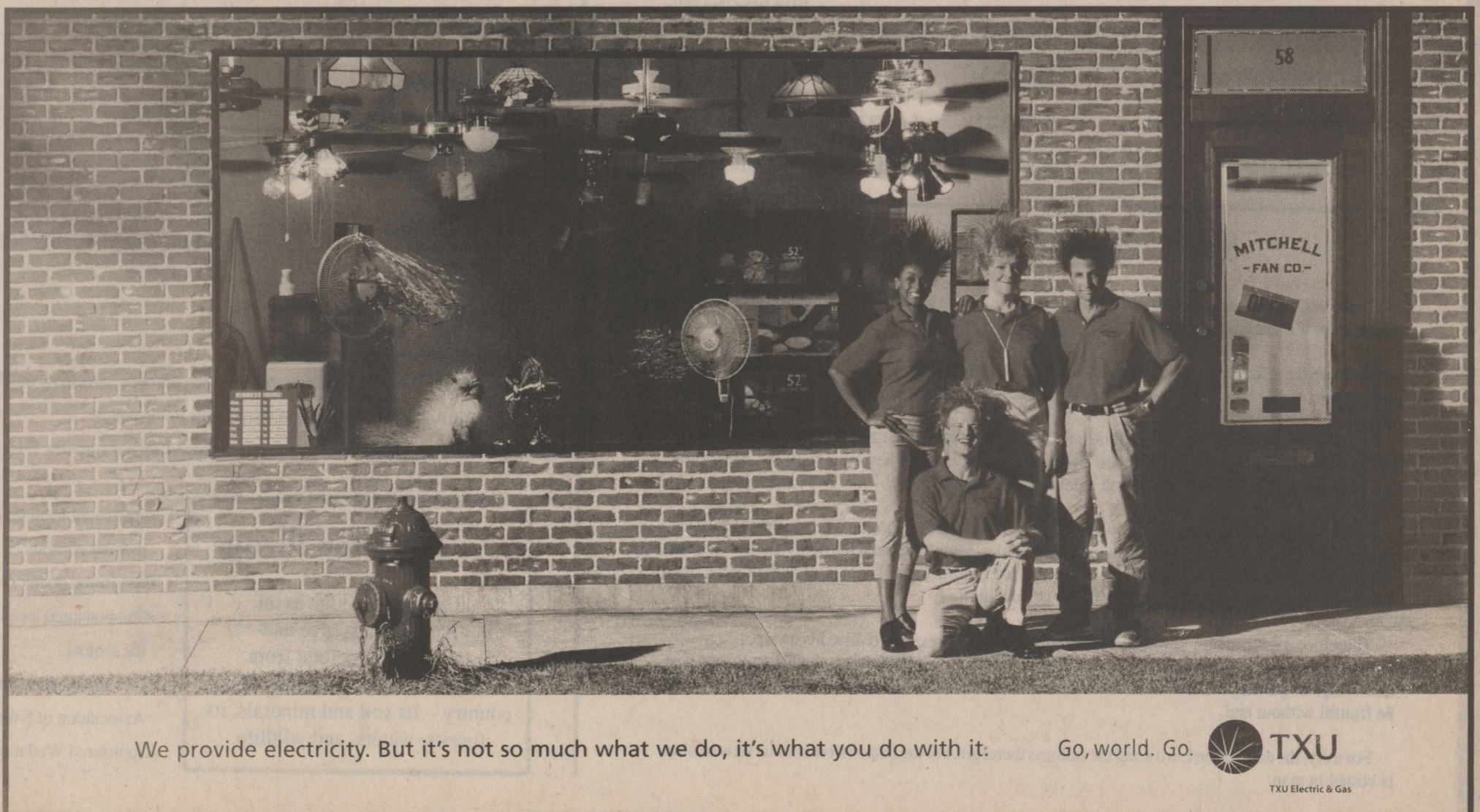
(West side of the square)

940.864.5777

Major Credit Cards Accepted

The Haskell Free Press

read by more people in Haskell County than any other print media.



We provide electricity. But it's not so much what we do, it's what you do with it.

Go, world. Go. **TXU**
TXU Electric & Gas

Track spending to reach your financial goal

by Lou Gilly
Haskell Co. Extension Agent
Tracking your spending can help you learn a lot about your spending patterns. If you track your spending, you will be able to see where your money goes and if you are able to live within your means. You will be able to see where you can make future changes in your spending habits. You will also be able to use the information to set future financial goals.

In order to track your spending, consider how many different ways you spend money. Some of the possibilities include cash, check, credit card, debit card, ATM, money order, electronic transfers, or value cards (like prepaid telephone calling cards).

Awareness of how you spend your money can help you determine how to most easily track your spending. Knowing how you spend money is your key to knowing where your money goes.

Four Simple Tools for Writing it Down

There are many tools available for recording how you spend your money. Such tools can be as simple as an envelope system on which expenses are recorded and in which receipts are stored, to computerized systems.

No one system will probably suit everyone. The important thing is to be aware of your spending: when, where, how much and how you spend. Some people disregard their spending unless the spending is done by cash or check. But this short-sightedness could lead to serious financial trouble if there is little conscious awareness of spending by credit card. It is important to record all spending, no matter what form of money was used to make the purchase or pay the bill.

Four easy tools for recording money spent include:

•Personal Notebook or Index Card Method - Buy a small spiral notebook or set of 3 x 5 inch index cards. Write down all expenditures unless they have already been recorded in your check register. Women often prefer to carry the notebook in their purses, while men often favor carrying the index

cards in a shirt pocket. This system takes little discipline if you are not accustomed to writing down how you spend every nickel and dime. This means writing down all transactions made by credit card, ATM, debit card, or cash. In a family, each family member should carry their own notebook or cards.

•Receipt Method - If you cannot see yourself writing down everything into a notebook or onto an index card, then the receipt method may work for you. With this system, you must obtain a receipt for every item you purchase. When you get the receipt, write directly onto the receipt what it was for and how you made the purchase (check, cash, debit or credit card). Each family member needs to cooperate by obtaining receipts for all expenditures.

•Calendar System - If you do not make many purchases, a calendar system may work well for you. Dedicate a calendar as a "money calendar." Each day you can track your spending for that day. This method works well for people who live alone. Although by posting the money calendar on the refrigerator, all family members can track their spending. An expanded version of the calendar system is frequently used by people who incur business expenses. They use their daily calendars for recording business-related expenses, a practice that is encouraged by the Internal Revenue Service, because it establishes what the IRS calls "contemporaneous record-keeping," that is, tracking your spending as it occurs. Most business expenses must be substantiated by receipts.

•Register System: Check Register and Register of Non-check Transactions - One of the most traditional ways to track spending by check has been the check register. Writing down every check

or debit card amount and posting it in a check register creates an excellent tracking system. This same methodology can be applied to non-check transactions. You can record all spending (including credit card and cash expenditures) in your regular check register by writing down the amounts and purpose of the spending. Instead of writing

down the amounts of non-check transactions made by cash or credit card in the column of the register that you use for writing check amounts, you can use another column, such as the check number column. That way you won't accidentally subtract the amount of the non-check (debit card transaction from your checking account balance). Alternative approaches include using a separate check register for recording non-check transactions. You can either record everything onto one page, or devote different pages to cash and credit purchases.

Analyzing Your Spending Records

Your written records will reveal important information about your spending patterns if you take the time to analyze your results. The tracking method you use will not only help you unless you use it to analyze your spending patterns. If you carefully track your spending over several months and then analyze where your money has gone, you can decide whether your

choices were good ones or poor ones. By analyzing your spending, you may be able to see where you have spent more money than necessary and where you can cut back your spending. Once you have compiled your analysis, share the results with other family members so everyone can see the results of their tracking efforts.

Adjusting Future Spending Habits

Depending upon what you see about your spending patterns, you will be able to adjust your future spending patterns by making different spending choices and establishing financial goals. As a family, you can choose financial goals that are important to everyone. If you continue to track your spending, you will know if you have successfully met your target goals.

To Subscribe,
Call 940-864-2686

Get Connected . . .

- Local Internet Access
- Local Tech Support
- Free Software
- Multiple Free E-mail Accounts
- Free Home page
- No set-up fee
- Unlimited Access

\$19.95 per month or \$16.95 per month
if paid annually

West Texas Internet

Locally Owned and Operated
864.8124 • www.westex.net • administrator@westex.net
Haskell

Cattle Market Report

The market at the Haskell Livestock Auction was on a run of 750 head of cattle at its sale on Sat., Nov. 4, according to Gary Tate, reporter.

Stockers 5-8 higher. Stocker cows and pairs 5-25 higher; feeders steady to 2 higher. Command good all classes.

Jersey, Longhorns, Holsteins, cripples, and goons \$5-\$30/100# less than figures quoted!

Cows: fat, .35-.39; cutters, .36-.44; canners, .22-.32.

Bulls: bologna, .45-.50; feeder, .68-.78; utility, .38-.43.

Steers: medium and large frame No. 1 200-300 lbs., 1.25-1.55; 300-400 lbs., 1.10-1.35; 400-500 lbs., .95-1.20; 500-600 lbs., .85-1.01; 600-700 lbs., .82-.95; 700-800 lbs., .78-.84; 800-up lbs., .73-.81.

Heifers: medium and large frame No. 1 200-300 lbs., 1.10-1.35; 300-400 lbs., .95-1.15; 400-500 lbs., .85-.98; 500-600 lbs., .82-.94; 600-up lbs., .55-.88.

Bred Heifers: medium frame, 525-600.

Bred Cows: young to middle aged, 625-700; aged or small, 550-640.

Cows with calves: medium frame No. 1 young and middle aged, 675-850; aged or small, 625-700.

Don't Miss Out
Subscribe Today!
864-2686
The Haskell Free Press

Allergy & Sinus

Allergy and sinus are two of the most common health complaints in the U.S., affecting as many as 30-50 million people a year.

A vicious cycle of nasal obstruction, excessive mucous production, blockage of secretions and recurrent infection characterizes this condition.

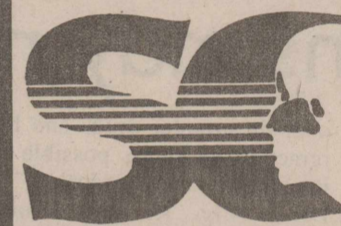
Treatment options are available and should be directed at the underlying cause. Decongestants and antibiotics can often control acute problems. Other methods are available to open the nasal and sinus passages, with and without surgery, for longer-term control.

For Consultation

W. O. AKIN, M.D., F.A.C.S.

BOARD CERTIFIED

EAR, NOSE, THROAT, SINUS & NECK SURGERY



Sinus Care Center

702 Hickory • Abilene, Texas • 915/677-2026

Haskell Soil and Water Conservation District 2000 Annual Report

The Haskell Soil and Water Conservation District was formed to help and serve producers and landowners with technical assistance. The current directors are: F. A. Ulmer, Sagerton; Kenneth Sanders, Weinert; Kenneth Newberry, Rochester; Willie Buerger, Haskell; and Dan R. Griffith of Paint Creek. The Board of Directors meet monthly on the third Friday of each month at 9:00 a.m. in the Natural Resources Conservation Service Office at 607 North 1st East Suite B in Haskell. All regular meetings are open to the public in accordance with the Texas State open meeting law. All programs administered by the District are on a voluntary basis and are provided without regard to race, color, sex, national origin, or disability.

Haskell Soil and Water Conservation District No. 546 Combined Statement of Revenue and Expenditures for fiscal year ended August 31, 2000

	STATE FUND	TRUST FUND	OTHER TEXAS WATER DEVELOPMENT BOARD GRANT
Balance as of September 1, 1999	\$ 9,321.64	\$ 6,410.59	
TOTAL REVENUES	\$16,374.90	\$65,287.35	
TOTAL EXPENDITURES	\$16,742.22	\$60,560.29	
GAIN (LOSS) 8/31/00	\$ (367.32)	\$ 4,727.06	
ENDING BALANCE	\$ 8,954.32	\$11,137.65	\$10,762.36

Soil Conservationist's Creed

I believe God created the earth by His divine process for the benefit of man, not one man, nor one generation, but mankind for all time.

I believe the Almighty gave man an inheritance of the earth, not to be hoarded as a miser guards his treasure, but to be used with wisdom for the perpetual benefit of all men.

I believe all mankind, regardless of race or creed, are entitled to a fair and equitable share of the earth's bounty commensurate with their own efforts. But in so believing, I hold the irrevocable conviction that man himself owes earth a debt of respect and fealty.

I believe that whatsoever a man soweth, that shall he also reap; that he who manages his fields, pastures and woodlands, and streams with respect and wisdom shall reap the bountiful harvest, and so shall his descendants, while he who uses them selfishly, thinking only of his immediate gain, shall bring grief to his land, himself, and his children's children.

Therefore, I dedicate myself to the task of helping my fellow man realize his own personality in conserving the earth for the generations which follow. To this end I shall devote my best knowledge in guiding the efforts of others who use the soil so that the land which nurtures us shall be fruitful without end.

For truly, the earth is the Lord's and the fullness therefore, but the responsibility of its stewardship is vested in man.

CONSERVATION PLANNING AND SERVICE ASSISTANCE

Active Food Security Act Plans	759 on 78,070 acres
Conservation Reserve Contracts	185 on 24,107 acres
Emergency Conservation Program	62 on Pond Cleanouts
Long Term Contracts	50 on 3,701 acres
Range Seeding	199 acres
Brush Management	910 acres
Irrigation Conveyance Systems	3 on 385 acres

Other Activities of the Haskell SWCD

News Articles	15
Annual Report	1
Soil Stewardship special edition	1
•Supplied soil stewardship materials to churches, ministers, and kindergarten students	
•Distributed book covers to the schools in the county	
•Co-sponsored Annual Clear Fork Range Camp for grades 7-12	

Conservation Pledge

I give my pledge as an American to save and faithfully to defend from waste the natural resources of my country - Its soil and minerals, its forests, waters, and wildlife.

- Sponsored local land, range, and pasture judging contests
- Sponsored poster contest for elementary students
- Co-sponsored local scholarship/essay contest for seniors
- Two directors attended the Rolling Plains Association of SWCD meeting
- Sponsored Wetlands Meeting for Producers

VETERANS DAY

A Special Thanks To All Our Veterans

We salute all of the Veterans of Haskell County and pay tribute to all of the American heroes, whose names we may not know, but whose efforts have made it possible for all of us to enjoy the many freedoms that we have today. To all those brave servicemen, who paid with their bodies and souls,

we pay our respects and offer our gratitude. Their contributions have not been forgotten. Featured on this page are pictures of Haskell County servicemen from the files of The Haskell Free Press. The pictures will be returned to the serviceman or his relatives on request.



First National Bank
200 S. Ave. E
864-8555 • Haskell
Member FDIC



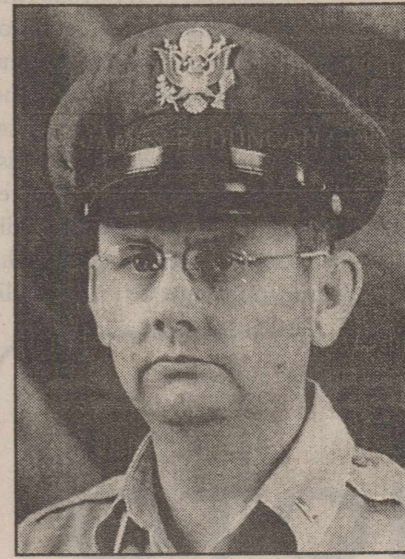
MICHAEL DUNCAN



QUINTON E. BAILEY



L. F. BRUEGEMAN



HOUSTON C. CROSS

Haskell Livestock Auction
864-2624
Haskell, Texas

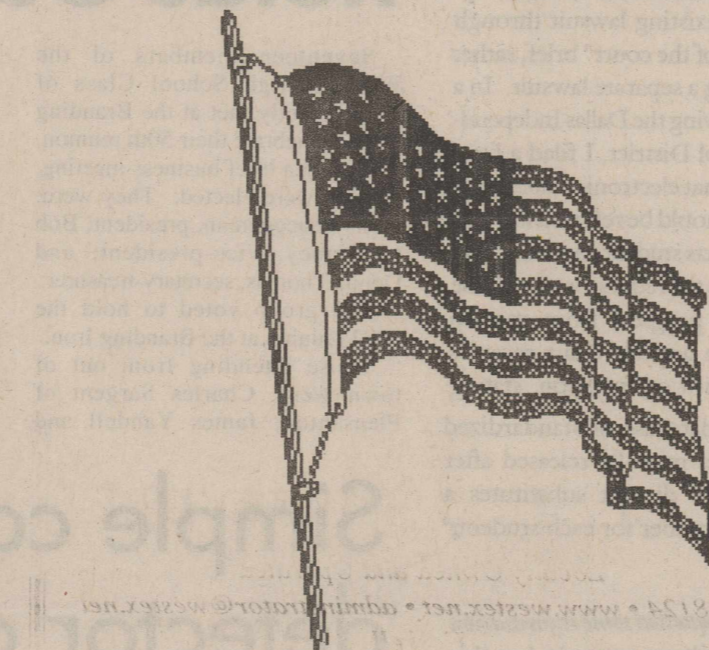
Kay's Cleaners
516 N. 1st
Haskell, Texas

Nanny Plumbing
864-3043
Haskell, Texas

Rice Springs Care Home
864-2652
1302 N. First • Haskell



THOMPSON



HIRAM E. BLAND

B & B Automotive Parts
864-2688
201 N. 1st
Haskell, Texas

Bill Wilson Motor Co.
864-2611
209 S. Ave. E
Haskell, Texas

Haskell Co-Op Gin
864-2046
Leon Jones, Manager
Haskell, Texas

Holden-McCauley Funeral Home
864-2151
304 N. 2nd
Haskell, Texas



R. C. MEDFORD



JOHNSON WILLIAM SHELBY



NO NAME



JAMES B. DUNCAN?

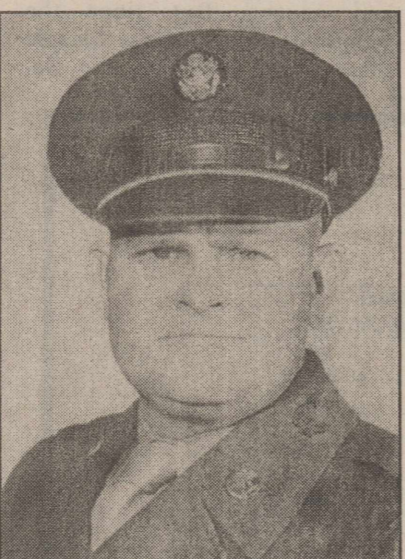


Federal Land Bank Association of Texas
HASKELL OFFICE
550 S. Second • 864-8565

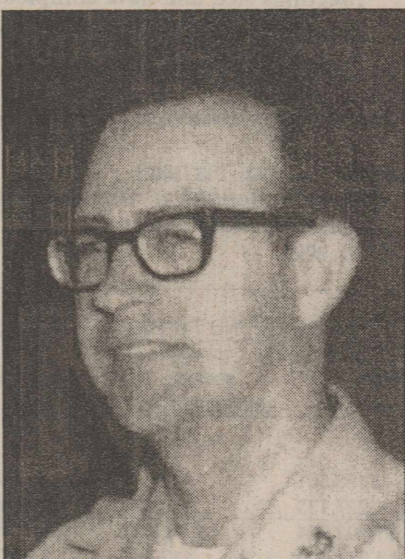
Double A Drive Inn
864-2466
1103 N. 1st
Haskell, Texas



RAYMOND DUNCAN



JIMMY TURNER



ALLEN D. ADAMS



JIMMIE E. HUNT

Haskell County Gin
864-2358
Mike Gage, Owner
Haskell, Texas

Matlock & Associates
864-3050
607A N. 1st East
Haskell, Texas



WAL-MART
Always The Low Price
Always!
915-773-2775
Stamford, Texas

Cecil's Country Meat Market & Grocery
864-2511
Haskell, Texas

Haskell Save-A-\$
864-2146
Haskell, Texas

Hanson Paint & Body Shop
864-3631
Haskell, Texas

Haskell Tire & Appliance
864-2900
206 S. Ave. E
Haskell, Texas

Larned Sales Center
864-2749
Haskell, Texas

Home State Bank
Member FDIC
1-800-343-3511
410 Carruthers Rochester 610 Columbia Stamford
940-743-3511 915-773-2122

Richardson's Case IH True Value NAPA
864-8551 • Haskell



First American Bank
518 South Second • 864-8577
Member FDIC

Jay's Tire Center
864-2908
506 N. 1st East • Haskell

Big Country Blinds
864-2692
5 N. 1st
Haskell, Texas

Nemir's Medical Supply
864-2258
510 N. Second • Haskell

Haskell Co. Insurance Agency
864-2665
417 S. First • Haskell

Lanco Insurance
864-2629
Don Welch, owner
12 Ave. D
Haskell, Texas

The Haskell Free Press
read by more people in Haskell County than any other print media.



Ask the AG

By John Cornyn, Attorney General

Q: You said recently that open government is one of your top priorities. What are you doing to put this into action?

A: When citizens ask for information, they expect to get it within a reasonable amount of time. After a citizen requests information, a governmental body has 10 business days to ask my office for an opinion on whether the information is public. In 1998, before I took office, only 4 percent of these open records rulings were issued within 20 business days or less. By June of this year, my office was issuing over 40 percent of these rulings within that time frame.

We also have expanded our education and outreach efforts so that both the public and government officials know their rights and obligations under the law. We have sponsored many conferences

and seminars for public officials around the state, and have expanded the portion of my agency's Web site dealing with open government.

Q: What happens if somebody refuses to release public information? Do they get sued?

A: My office has authority to sue state and local authorities to enforce the Public Information Act. While going to court should always be a last resort, I will not hesitate to take this step if needed.

For example, I recently sued the Stephenville Independent School District to force the release of some legal bills. The district claimed the material was covered by several exceptions to required public disclosure under the Act. After reviewing the law and the legal bills themselves, my office ruled that the information must be made public

in its entirety. The school district had 30 days to appeal the ruling, but chose not to do so. Instead, they released the bills but first blacked out various names and other key pieces of information. The lawsuit would force the district to release the legal bills without any editing.

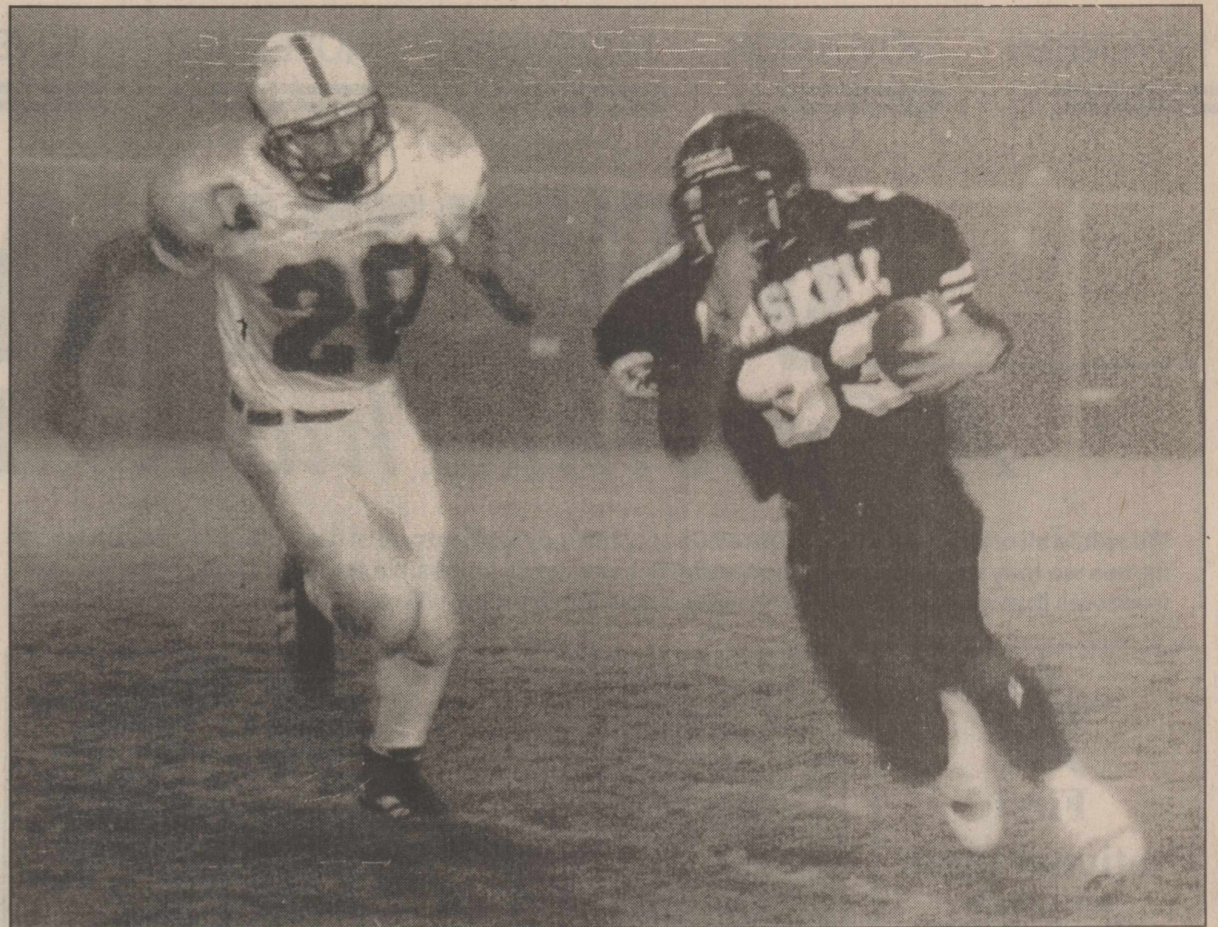
In another matter, the Plano Police Department was asked for material related to an arrest which included audio and video tapes. While the department released some very basic information without seeking a ruling from my office, it claimed most of the information was covered by the Act's law enforcement exception. According to the law, however, an agency claiming an exception has 10 days to ask my office for a ruling on the matter. Since the department did not seek a ruling, it waived the right to claim the exception and the information automatically became an open record. My office filed suit to force the release of the material.

Sometimes an individual will file suit against a government agency to force the release of public records. In such cases, I may support the existing lawsuit through a "friend of the court" brief, rather than filing a separate lawsuit. In a case involving the Dallas Independent School District, I filed a brief arguing that electronic student test records should be released in a way that protects student confidentiality but allows the requestor to examine students' progress from year to year. An appeals court recently agreed with my position, stating that the database of standardized test scores must be released after the school district substitutes a unique number for each students' name.

Q: I requested some information from my city government, but they refuse to give it to me. What should I do?

A: Call the Attorney General's Open Government Hotline. The Hotline's toll free number is 877-OPEN-TEX (877-673-6839). Both the Plano Police Department and Stephenville I.S.D. lawsuits were triggered by complaints made to the Hotline. In addition to receiving complaints, the Hotline answers questions about the Public Information Act and the Open Meetings Act.

Please remember my office only has authority to enforce the Public Information Act. County and district attorneys enforce the Open Meetings Act, and have complete discretion in deciding which allegations will be prosecuted.



FOGGY NIGHT AT INDIAN FIELD—Haskell Indian running back #33, Marcus Johnson carries the ball in a wet-weather game with the Olney Cubs Fri., Nov. 3. Photo by Bill Blankenship

Weinert Class of 1950 holds 50th reunion

Seventeen members of the Weinert High School Class of 1950 recently met at the Branding Iron to celebrate their 50th reunion.

During a brief business meeting, officers were elected. They were: Doris Brueggeman, president; Bob McKinney, vice-president; and Donna Thomas, secretary-treasurer.

The group voted to hold the 2002 reunion at the Branding Iron.

Those attending from out of town were: Charles Sargent of Pleasanton; James Yandell and

Jonnie of San Antonio; Jenella Couch Pemberton, of Ringling, Oklahoma; Robert Gaines and Pat of Abilene; Edith Alexander Ross of Midland; Bobby Carroll and Betty of Nashville, Arkansas; Dorothea Forehand Howell and Jim of Odessa, Winona Pace Sanders and Joe of DeSoto, Gay Reeves Oates and Wayburn of Odessa; Joe David Walker and son Chris of Farmington, New Mexico; Joyce Rodgers of Clyde; Jessie Mae Pickering Shipley and Ted of

Selah, Washington.

Attending from Haskell were: Wanda Dunnam Ham and Wayne; Doris Anderson Brueggeman and T. J.; Floyd McGuire and Alta; Bobby McKinney; Patsy Brite Smith and Earl; and Donna Grimsley Thomas and Clois.

The Class of 1950 was honored at the Weinert Homecoming Sat., Oct. 14. Wanda Ham and Joe David Walker were chosen Homecoming Queen and King.

Simple carbon monoxide detector can save your life

Installing a carbon monoxide detector in your home could be a lifesaver, says Dr. Christopher Keyes, associate professor of emergency medicine and internal medicine at UT Southwestern Medical Center at Dallas.

"The best way to prevent accidental carbon monoxide poisoning in your home is to install a carbon monoxide monitor," he says.

Carbon monoxide is an odorless and colorless gas produced during combustion. The most common causes of home carbon monoxide poisoning are malfunctioning indoor natural gas heaters and water heaters.

Symptoms of carbon monoxide poisoning include fatigue, headache and nausea. But since the symptoms are so vague, people often think they have the flu,

Keyes says.

"Pregnant women need to be especially cautious about carbon monoxide poisoning because the fetus has a lower threshold for carbon monoxide," Keyes says.

Carbon monoxide poisoning can cause permanent brain damage or even be fatal. Carbon monoxide takes the place of oxygen in the blood, causing cells to suffocate.

Now is the time to make a Christmas budget

by Lou Gilly
Haskell Co. Extension Agent
Christmas is less than two months away. Financial experts say it is wise to make a Christmas budget now to prevent unwanted debt.

Deciding how much one can spend is the first step. Examine last year's expenses, review credit card bills and check register receipts to get an estimate of how well Christmas spending went last year.

Then, list every expense you

expect to have around the holidays. These expenses include decorations, parties, cards and gift wrapping.

Next, make a list of everyone that you plan to buy gifts for. Decide how much you want to spend on each person and total the dollar amount. If your amount of estimated expenses is too high, then try to figure where you can cut costs. Finally, when you're done with your shopping, quit. Buying just one more extra thing can ruin efforts to limit spending.

PHOTO greetings

ORDER BY DECEMBER 14TH FOR GUARANTEED 7-DAY RETURN!



20 Cards/Envelopes \$11.99
40 Cards/Envelopes \$22.99
60 Cards/Envelopes \$32.99
100 Cards/Envelopes \$49.99

Greeting Cards are made from 35mm or APS color negatives [negatives will be produced for a small charge from prints (3x5 to 8x12) or color slides]. No panoramic or single-frame negatives.

Signed release from photographer must accompany copyrighted materials.

See Photo Center for Details!

THE DRUG STORE

Hours: 8-6 M-F; 8-5 Sat. • 940-864-2673

HASKELL CONSOLIDATED INDEPENDENT SCHOOL DISTRICT COMBINED STATEMENT OF REVENUES, EXPENDITURES, AND CHANGES IN FUND BALANCES ALL GOVERNMENTAL FUND TYPES AND SIMILAR TRUST FUNDS YEAR ENDED AUGUST 31, 2000

Data Control Codes	GOVERNMENTAL FUND TYPES		TOTALS (MEMORANDUM ONLY)	
	100-199	200-499	98	97
	GENERAL FUND	SPECIAL REVENUE FUND	AUGUST 31, 2000	AUGUST 31, 1999
REVENUES:				
Local and Intermediate Sources:				
5742	\$176,561	-	\$176,561	\$165,709
	1,227,133	172,090	1,399,223	1,337,573
	\$1,403,694	\$172,090	\$1,575,784	\$1,503,282
5700	4,214,709	112,717	4,327,426	3,661,804
5800	13,192	495,361	508,553	530,294
5900				
5020	\$5,631,595	\$780,168	\$6,411,763	\$5,695,380
EXPENDITURES:				
0010	\$3,154,658	\$453,888	\$3,608,546	\$3,438,403
0020	266,299	-	266,299	342,884
0030	575,324	323,167	898,491	837,891
0040	339,307	2,858	342,165	269,720
0050	667,218	13,920	681,138	763,670
0060	50,219	49,994	100,213	137,302
0070	1,032	-	1,032	73,430
0080	96,442	-	96,442	2,221
0090	169,306	-	169,306	164,938
6030	\$5,319,805	\$843,827	\$6,163,632	\$6,030,459
1100	\$311,790	(\$63,659)	\$248,131	(\$335,079)
7020	44,079	63,659	107,738	52,078
8030	(63,659)	-	(63,659)	(52,078)
1200	\$292,210	-	\$292,210	(\$335,079)
0100	2,509,048	-	2,509,048	2,844,127
1300	-	-	-	-
3000	\$2,801,258	-	\$2,801,258	\$2,509,048

The Haskell Free Press

IS READ BY MORE PEOPLE IN HASKELL COUNTY THAN ANY OTHER NEWSPAPER.

Haskell-Knox Shared Service Arrangement

servicing

Haskell CISD
Rochester ISD
Rule ISD
Paint Creek ISD

Knox City-O'Brien CISD
Goree ISD
Munday ISD
Benjamin ISD

OPEN HOUSE

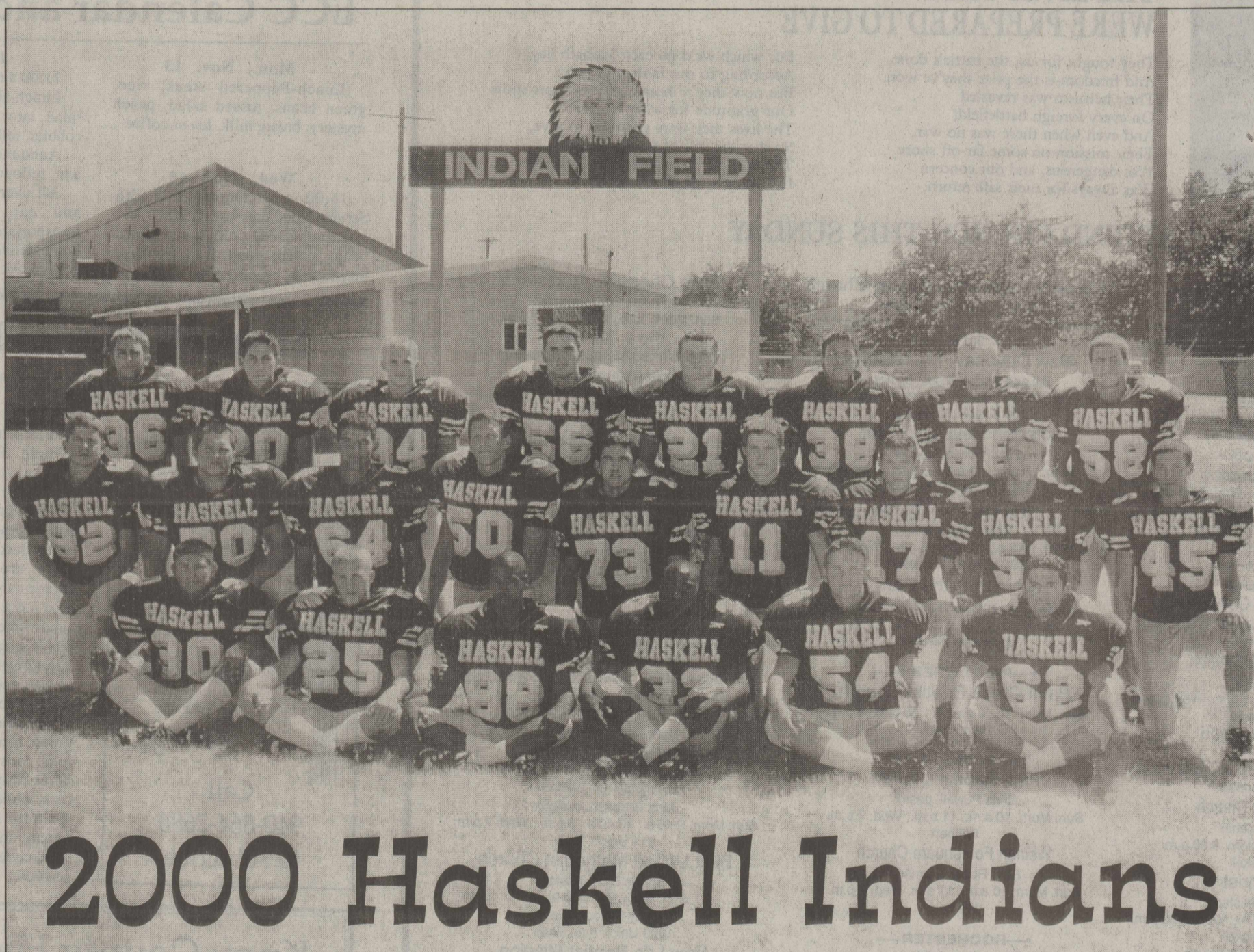
The staff of the Haskell-Knox SSA cordially invites you to join us in celebrating our new location on November 15, 2000, from 3:00 to 5:00 p.m.

Our office is located at
201 North East Second Street, Knox City.

Scalp 'em, Indians!

HASKELL vs HAMLIN

AT HAMLIN - FRI., NOV. 10TH - 7:30 P.M.



2000 Haskell Indians

Photo by KIS

This Page Sponsored By The Following Indian Boosters

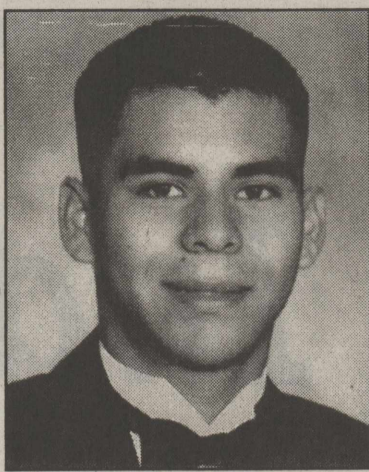
AMSCO Steel
Steele Machine
Larned Sales Center
Haskell Co-op Gin
Cecil's Country Meat Mkt. & Groc.
Personality-Slipper Shoppe
Fieldan Inn
Haskell Free Press
Jay's Tire Center
Brian Burgess State Farm Insurance
Haskell County Insurance Agency
Double A Drive Inn

First National Bank
Hanson Paint and Body
McGee's Lumber Yard
Medford Buick-Pontiac-GMC
Sport-About
Bill Wilson Motor Co.
Nanny Plumbing
Modern Way Food & Fuel
B & B Automotive
Video Mania
Richardson Case-IH-NAPA
Johnson KIS Photo

Burkett's Family Restaurant
Rice Springs Care Home
Conner Nursery & Floral
Martha's Beauty Center
Haskell Tire & Appliance
G & G Carpets
McFadden's Bar-B-Que & Grill
Haskell National Bank
Haskell County Gin
Haskell Livestock Auction
Matlock & Associates
Holden-McCauley Funeral Directors

Paint Creek defeated by Patton Springs

Paint Creek was defeated by Patton Springs 66-16 in their District 4 Six Man game at Paint Creek. The Pirates scored on runs by Bronc Davis, Skeet Hope and a 20-yard pass from Davis to Eugene Escamilla. Patton Springs now stands at 8-1, 4-0. Paint Creek drops to 0-8, 0-4.



ALVINO ALVAREZ, JR.



JIMMY ROJO

Students visit Rotary Club

Alvino Alvarez, Jr. is the son of Alvino and Victoria Alvarez. He is a member of the Catholic Church. Favorite pastimes for him are drawing and riding around. After finishing high school he plans to leave Haskell and would like to go to an automotive paint and body school.

Jimmy Rojo is the son of Ted and Linda Rojo. He is a member of the Catholic Church. Drawing is his favorite leisure time activity. After finishing high school he plans to attend Universal Technical Institute and Cisco Jr. College.

Pricey isn't perfect when it comes to toys

Selecting the right toys for your children at the holidays could have an impact that reaches far past the New Year.

Dr. Donna Persaud, assistant professor of pediatrics at UT Southwestern Medical Center at Dallas, says the most expensive toys aren't always the best. "Parents need to be wise, as more expensive and complicated toys are

not necessarily more valuable to the child," Persaud says. "Always read age information and requirements for adult supervision to assure that a toy is appropriate to the child's development."

Toys that offer children an opportunity to both play and learn are ideal. Persaud says that books are always a good choice for children of any age.

Bobcats suffer loss to Jayton

In their District 4 Six-Man game, the Jayton Jaybirds defeated the Rule Bobcats, 28-20.

Rule scored first on a 1-yard run by Berto Sotelo, with Jayton answering with an eleven-yard pass to tie the score at 6-6.

In the second quarter Josh Smith completed a 16-yard pass to Jeffrey Murray to put Rule ahead 12-6. Jayton answered with a 20-yard

pass to tie the half-time score at 12-12.

Smith again scored on a 2-yard run for Rule to take the lead again only to see it matched by Jayton again.

Leading the offence for Rule, standing at 4-4 and 1-2, was Bert Sotelo with 111 yards on 17 carries and one TD.

LIFE HOSPITALIZATION ANNUITY IRA CANCER

HOME AUTO FARM CROP INSURANCE COMMERCIAL

LANCO INSURANCE

DON • SHIRLEY • CHERIE - Agents

12 AVE. D
P. O. BOX 585 HASKELL, TX 79521
WORK 940-864-2629
1-800-687-3761

This Week's Devotional Message:



LET US HELP THE LIVES THEY WERE PREPARED TO GIVE

They fought for us; the battle's done, And freedom is the prize they've won. Their heroism was revealed On every foreign battlefield, And even when there was no war, Their mission on some far-off shore Was dangerous, and our concern Was always for their safe return,

For which we'd go each Sabbath day, According to our faith, and pray; But now they're home, and we must show Our gratitude for what we owe The lives they were prepared to give, So that the rest of us could live The way our founding fathers planned: In liberty throughout our land.

ATTEND CHURCH THIS SUNDAY

- HASKELL**
- East Side Baptist Church**
David Page, pastor
Sun. 8:30 a.m., 9:45 a.m., 11 a.m., 6 p.; Wed. 7 p.m.
600 N. 1st East, Haskell
 - Christian Church**
Dusty Garrison, minister
Sun. Morn. 9:45 a., 10:45 a., 6 p.m.; Wed. 7 p.m.
107 N. Ave. F, Haskell
 - Church of God**
Eric Clark, pastor • 864-2021
Sun. 9:45 a.m., 11 a.m., 6 p.m., Wed. 7:00 p.m.
East Hwy 380, Haskell
 - Trinity Lutheran Church**
Gary Bruns, pastor
Sunday School 9:30 a.m., Worship 10:30
Hwy 380 East, Haskell
 - Iglesia Bautista El Calvario**
Sun. Morn. 9:45 a., 10:45 a.m., 5 p.m.; Wed. 7 p.m.
607 S. 7th, Haskell
 - First United Methodist Church**
Shane Brue, pastor
Sun. Morn. 9:45 a.m., 10:50 a.m. 6 p.m.; Wed. 6 p.m.
201 N. Ave. F, Haskell
 - First Assembly of God**
Rev. J.C. Amburn
Sun. Morn. 9:45 a., 10:45 a.m., 6 p.m.; Wed. 7 p.m.
1500 N. Ave. E, Haskell
 - St. George Catholic Church**
Father Michael Melcher
Sat. Mass 7:15 p.m.; Sun. Morn. 9:00 a.m.
901 N. 16th, Haskell
 - Church of Christ**
Brett Anderson, minister
Sun. Morn. 9:30 a., 10:30 a., 6 p.m.; Wed. 7:30 p.m.
510 N. Ave. E, Haskell
 - First Presbyterian Church**
Luther S. Hollowell, II, pastor
Sun. Morn. 9:45 a.m., 11:00 a.m.
306 N. Ave. E, Haskell
 - Trinity Baptist Church**
Rev. Kenneth Blair
Sun. Morn. 10 a., 11 a., 6:30 p.m.; Wed. 7:30 p.m.
401 S. Ave. D, Haskell
 - Hopewell Baptist Church**
John Lewis, pastor
Sun. Morn. 9:30 a.m., 11:00 a.m.; Wed. 7 p.m.
908 N. Ave. A, Haskell

- Greater Independent Baptist Church**
Bobby Ray Wade, pastor
Sun. Morn. 9:30 a., 11:00 a., 6:30 p.; Wed. 7 p.m.
301 N. 3rd St., Haskell
- New Covenant Foursquare**
Bill and Renee Glass, pastors
Sun. Morn. 10:00 a.m., 11:00 a.m.
200 S. Ave. F, Haskell
- Mission Revival Center**
Rev. William Hodge
Sun. Morn. 10 a.m., 11 a.m., 6 p.m.; Tues. 6 p.m.
1600 N. Ave. B, Haskell
- First Baptist Church**
Kevin Hall, pastor
Sun. Morn. 9:45 a., 10:55 a., 6 p.m.; Wed. 7 p.m.
301 N. Ave. E, Haskell
- Church in the Park**
Rev. Tim and Suzann Townsend
Sun. Morn. 10:30 a.m. Wed. 7 p.m.
Gazebo or Pavillion

- PAINT CREEK**
- Paint Creek Baptist Church**
Sun. Morn. 10:00 a.m., 11:00 a.m., 6 p.m.
Paint Creek

- WEINERT**
- First Baptist Church**
Chris Powell, pastor
Sun. Morn. 10 a.m., 11 a.m., Wed. 7 p.m.
Weinert
 - Weinert Foursquare Church**
Rev. Robert Harrison
Sun. Morn. 10 a.m., 11 a.m. Wed. 7 p.m.
Weinert

- ROCHESTER**
- Church of Christ**
Steve Wills, minister
Sun. Morn. 9:45 a., 10:45 a., 6 p.m.; Wed. 6 p.m.
West on Main Street, Rochester
 - First Baptist Church**
Troy Culpepper, pastor
Sun. 11:00 a.m., 6 p.m.; Wed. 7:00 p.m.
500 Main, Rochester
 - Union Chapel Baptist Church**
Rev. Clarence Walker
Sun. Morn. 9:45 a., 10:45 a., 6 p.m.; Wed. 7 p.m.
Rochester

- Faith Chapel of Rochester**
Katherine Byrd, minister
Sun. Morn. 10 a.m., 11 a.m., 7 p.m.
Hwy 6, Rochester
- First United Methodist Church**
Dolan Brinson, pastor
Sun. Morn. 10:00 a.m., 11:00 a.m.
Rochester

- SAGERTON**
- Sagerton Methodist Church**
Tommy Wilson, pastor
Sun. Morn. 9:30 a.m.
Sagerton
 - Faith Lutheran Church**
Stan Leaf, pastor
Sun. Morn. 9:15 a.m., 10:30 a.m.; Wed. 7 p.m.
Sagerton

- RULE**
- First Baptist Church**
Scott Hensley, pastor
Sun. Morn. 9:45 a., 11:00 a., 6 p.m.; Wed. 7 p.m.
1001 Union Ave., Rule
 - Primitive Baptist Church**
Dale Turner Jr., pastor
First & Third Sundays 10 a.m.
Corner of 8th & Robins, Rule
 - Church of Christ**
John Greeson, minister
Sun. Morn. 9:45 a., 10:40 a., 6 p.m.; Wed. 7 p.m.
811 Union, Rule
 - First United Methodist Church**
Shane Brue, pastor
Sun. Morn. Worship 9 a.m.
Sunday School 10 a.m.
1000 Union Ave., Rule
 - New Life Baptist Mission**
Artuo Jr. Floves
Sun. Morn. 10:00 a.m., 11:00 a.m.
Elm Street Hwy 380 E, Rule
 - Sweet Home Baptist Church**
Sun. Morn. 10:00 a., 11:00 a., 6 p.; Wed. 7 p.m.
Gladstone Ave., Rule
 - West Bethal Baptist Church**
Rev. Robert Sweet
Sun. Morn. 10 a., 11 a., 8 p.m.; Wed. 7:30 p.m.
300 Sunny Ave., Rule

ECC Calendar and Menu

Mon., Nov. 13
Lunch-Peppered steak, rice, green beans, tossed salad, peach mystery, bread, milk, tea or coffee

Wed., Nov. 15
11:00 a.m. Outreach Health Service blood pressure check
Lunch-BBQ chicken, pinto beans, potato salad, fruit, cookies, bread, milk, tea or coffee

Fri., Nov. 17
11:00 a.m. Texas State Hearing Lunch-Hamburgers, hamburger salad, tator tots, baked beans, fruit cobbler, milk, tea or coffee

Announcements begin at 11:45 a.m. followed by lunch. All over 60 are invited to come and eat. Call 864-3875 for transportation to the center or for home delivered lunches for the sick or disabled.

Haskell School Menu

Nov. 13-17 Breakfast
Juice and milk are served daily on the breakfast menu.
Monday: Breakfast on a stick
Tuesday: Pigs in a blanket
Wednesday: Breakfast pizza
Thursday: Sausage biscuit
Friday: Cinnamon toast

Lunch
A choice of baked potato with choice of topping or a salad bar is offered daily at the Secondary campus. Ala-carte line offered daily Secondary only. Snack bar Wednesday only-Secondary. Milk and assorted drinks are served daily at the Secondary campus. Milk and juice are served daily at the Elementary School.
Monday: Ham & cheese sandwiches, lettuce, tomato slices, pickle spears, chips, ice cream
Tuesday: Taco salad w/cheese, lettuce and tomatoes, pinto beans, sliced peaches
Wednesday: Turkey and dressing, green beans, sweet potatoes, hot rolls, fruit salad
Thursday: Peppereoni pizza, corn, garden salad, banana pudding
Friday: Cheeseburgers, lettuce, tomato slices, pickle spears, curly fries, chocolate chip cookies, sliced peaches

Like what you're reading?
Call 940-864-2686 to Subscribe.

Knox County Historical Commissions' Veterans Memorial Committee

will host the

Veterans Memorial Dedication

November 11, 2000

10:00 a.m.

East of the Knox County Courthouse

Hamburger Lunch \$5.00
(proceeds go to the Veterans Memorial Fund)

11:30 a.m. - 1:00 p.m.
Memorial Building
Benjamin, Texas

Sonic Drive-In
1402 N. Ave. E
864-8533
Managers: Leon & Carolyn Herring

Steele Machine
Hwy. 280 • 864-2208

Modern Way Food Store
1202 N. Ave. E • 864-3763

Jay's Tire Center
506 N. 1st East • 864-2908
"See You In Church"

Smitty's Auto Parts
204 N. 1st St. • 864-2607

HANSON PAINT & BODY SHOP
207 S. 1st • 864-3631
Professional Auto Body Repair
Glass Installation • 24 Hour Wrecker Service

Rule Co-op Gin & Elevator
301 Adams • Rule • 997-2421

Attend Church This Sunday

Rice Springs Care Home, Inc.
1302 N. 1st • 864-2652
Medicare • Medicaid • Therapy

Committed To Excellence In Service

Personality Slipper Shoppe
413 S. 1st (South Side of Square)
864-2501 and 864-3051
"One Stop Shopping"

McGee's Lumber Yard
105 N. 1st

The Haskell Free Press

"The People's Choice"
401 S. First • Haskell
940-864-2686

Serving Haskell County Since 1886

Sport About of Haskell
864-3891 • "Where Winners Shop"

Shop The Haskell Free Press CLASSIFIEDS

864-2686

ALL DEADLINES MONDAY 5 P.M.

864-2686

For Sale

FOR SALE: Samsung FX 1505 thermal fax machine. Includes 7 rolls fax paper. \$75. 864-2686.

BLUE STUFF: Relief in 3-7 minutes. Rub on as needed and relief lasts longer each time. All natural. Highly effective on arthritis, sciatic nerve, sports injury, lower back, sinus and migraine headaches and stiff joints. Guaranteed or full refund. Blue Stuff Pain Management, 806 N. 10th, Haskell, TX 79521. 1-940-864-2909 or at Classic Cuts. Zella Moeller, Co./Assoc. of Altus, OK Blue Stuff Center. 43-45p

SEED WHEAT: Cleaned in bulk in Haskell Co. \$6.50 p/bu. 915-695-4892. 45p

FOR SALE: Zenith TV wooden cabinet; Sears 19 ft. deep freezer. Call 864-8925. 45p

THEY HAVE ARRIVED! Dreamers Candles Christmas fragrances are in stock. Christmas ornaments, earrings, beta vase aquatic gardens, Indian Maiden Spirit pins. Custom orders welcome. Come by and see Melba at 701 N. Ave. E or call 864-3536. Open late for your convenience.

FOR SALE: 1995 Toyota Corolla, 30 mpg, great mechanical shape. A super car \$400; G-Six Kirby with all attachments. 6 months old. \$900; King trumpet, silver, new \$300. 940-743-3637 after 6 p.m.

Real Estate

LAKE CABINS for sale at Jeffcoat's. 864-3416. 42-45c

CHOICE 100 AC. irrigated farm located on FM 2163 3 1/2 mi. NW of Haskell. Three good irrigation wells give abundance of water. Minerals available. Rike Real Estate, 940-864-2411 or 940-864-2332. mrjike@westex.net. 44tc

FOR SALE: Rock house and 2 acres, 1 mi. south on Hwy. 277. Phone 940-864-3727 or 254-968-3493. 44-47p

FOR SALE: 2 bedroom, 1 bath, 1006 N. Ave. F, Corner lot. \$11,000. 864-2258. 44tc

FARM FOR SALE: 83 1/3 acre farm, 3 miles southeast of Rochester. 940-864-3549. 44tc

HOUSE FOR SALE: 3 bedroom, 2 bath, 1301 N. Ave. L. Call 864-2855. 45p

HOUSE FOR SALE by owner: 2 bedroom, 1 bath, large fenced back yard, water well, 2 car garage. 710 S. 12th St. Call 940-864-3700. 45p

Business Opportunities

CARRY OUT and delivery pizza franchise. Financing available for qualified individual. Call Lance or Neil 1-800-310-8848. 42-45p

CUTE LITTLE HOUSE

Very affordable. Call 915-673-7353. 41tc

Instant Housing

Move in within 48 hrs. Call Brendan 915-721-2101. 49tc

SELLING HASKELL

FOR OVER 25 YEARS

Hartsfield Realty

South Side of Square 864-2665

See us first for your real estate needs.

3 BDR., 2 bath on 2.1 acres. 2

fireplaces and outbuildings.

OVER 3,000 SQ. FT. 4 bdr., 2

bath with 2 large living areas.

Separate dining and office.

Basement, well w/sprinkler system.

2 BDR. and garage detached with double carport. Extra large fenced corner lot.

Hess Hartsfield, Broker 864-2004

Chan Guess, Agent 864-6142

Esther Conn, Agent 658-3904

Help Wanted

EMPLOYMENT in your own home. Pay no income tax. Helen Farabee Regional MHRM Centers is seeking people to contract with who would like to be Foster Care Parents for adult individuals with developmental disabilities. Salary is determined by level of care needed for each individual. Pay is tax-free. Training will be provided through Helen Farabee Regional MHRM Centers. If you are interested in applying, please call 940-550-0157 or 940-550-0153. 37tc

SUPER 7 CONVENIENCE Store in Stamford, Texas is accepting applications for store manager. Call 940-888-5153 for application or mail resume to West Texas SuperQuick, Inc., 107 E. Nevada, Seymour, TX 76380. 38tc

APPLICATIONS now being taken for LVNs or RNs for charge nurse position. Also, CNAs needed. Call Tori Hicks or Karen Becknell 864-2652. 43tc

PRIMARY HOME CARE attendants needed in Haskell and surrounding areas. 915-673-5596 or 1-888-801-6228. 43-46c

HASKELL HEALTHCARE is seeking an experienced, qualified business office manager. We are seeking an active and vibrant addition to our management team. Contact Bobby Thompson at 864-8537. 45p

CERTIFIED NURSE AIDE needed for PRN shifts. Only nurse aides committed to quality and compassionate patient care need to apply. Haskell Healthcare Center is dedicated to providing the highest quality of care for our patients. Call Cindy Guess at 864-8537 or come by 1504 N. 1st, Haskell. 45-46p

Wanted

CASH PAID for old lever action Winchester rifles, Colt pistols and most other guns and western memorabilia. A. C. Richardson at store Hwy. 277 N. 12tc

The trouble with giving advice is people want to repay you. One of the largest selections of La-Z-Boy recliners at the best prices in the Big Country is at Kinney Furniture in Stamford. Life is short, why not be comfortable? Our salespeople will help you find the recliner that is just right for you. 45c

Jobs Wanted

HOUSE LEVELING. Floor bracing, slab, pier and beam. Insurance claims, free estimates. References. No payment until work satisfactorily completed. David Lee & Company, 915-675-6369. 50tc

For Rent

FOR RENT: 507 N. Ave. G, 3 bedroom, 2 bath. 864-3762. 45c

FOR RENT: 604 N. 3rd, 2 bedroom apartment. 864-3762. 45c

FOR RENT IN WEINERT: 2 bedroom, 1 bath, CH/A, built-in stove, carport, wash room. 864-2629 days or 673-8296 nights (Weinert). 45tc

Public Notices

NOTICE Haskell County Commissioner's Court is advertising for bids to sell a 1984 1/2 ton Chevy van and a 40x8 ft. travel trailer. Contact Judge's office at 940-864-2851 to see the equipment.

Haskell County reserves the right to accept or reject any or all bids.

Bids will be opened on November 13, 2000 at 10:00 a.m.

Haskell County Commissioners Court David C. Davis County Judge. 44-45c

Guadalcazar Roofing Daniel or Lupe 940-864-5009

Free Estimates. All Types. 43-46c

Dodson Concrete Construction Commercial - Residential David Dodson 704 N. Ave. F • Haskell 940-864-2038

Over 20 Years in the Business FREE ESTIMATES. 18tc

For Your Sheet Metal Work Water Storage Tanks All Kinds of Metal Duct Work

See or call: Guinn Sheet Metal & Plumbing 940-658-3341 L.C. Guinn Knox City, TX

AFFORDABLE QUALITY HOME REPAIR

Michael Moore (940) 422-4436

All Types of Home Repair All Work Guaranteed

211 West Main • Munday, Texas 76371. 38tc

Need A ROOF?

Atlas 30 year Shingles Now in Stock!

Call Ben McGee After 6 p.m.: 864-3431 Lumber Yard: 864-3552 Mobile: 864-4555

No turkey ever voted for an early Thanksgiving. You will have plenty to be thankful for when you come to Kinney Furniture in Stamford and see the low prices on sofas, chairs and sleepers. Kinney's has been known for small town personal service, low overhead, and quick free delivery for 68 years. 45c

EXPERT AUTO WORK REASONABLE RATES

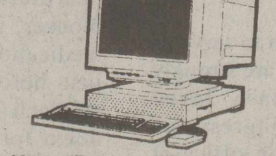


See us for all your auto mechanic needs. 20 years experience. We do it right the first time. 117 North Ave. E • Haskell

You may be getting old if there's nothing left to learn the hard way. You won't feel so old if you get a good night's sleep on a new Spring Air mattress set from Kinney Furniture in Stamford. \$100 instant factory rebate on the new no flip mattress. This unique Back Supporter bed never needs turning and there is less motion disturbance between sleeping partners. Quick free delivery and free disposal of your old bedding. 45c

Computer Solutions!

Sales, Service & Troubleshooting



Home/Business/Government 940-864-2964. 27tc

Beautyrest

The Best Night's Sleep

Partner movement can affect your ability to sleep through the night.

The new Beautyrest has 71% better motion separation than the already superior Beautyrest.

Redesigned from the ground up for a better night's sleep.

BOGGS & JOHNSON FURNITURE

864-2346

East Side Square • Haskell

The Haskell Free Press

read by more people in Haskell County than any other print media.



NOTICE TO CONTRACTORS OF PROPOSED TEXAS HIGHWAY IMPROVEMENT CONTRACTS

Sealed proposals for highway improvement contracts will be received by the Texas Department of Transportation (TxDOT) until the date(s) shown below, and then publicly read.

CONSTRUCTION/MAINTENANCE CONTRACT(S)

District: Abilene

Contract 6058-91-001 for GUARD RAIL AND BRIDGERAIL REPAIR in JONES County, etc. will be opened on December 6, 2000 at 1:00 p.m. at the State Office for an estimate of \$739,001.50.

Plans and specifications are available for inspection, along with bidding proposals, and applications for the TxDOT Prequalified Contractor's list, at the applicable State and/or District Offices listed below. Bidders must submit prequalification information to TxDOT at least 10 days prior to the bid date to be eligible to bid on a project. Prequalification materials may be requested from the State Office listed below. Plans for the above contract(s) are available at reproduction companies in Austin, Texas at the expense of the contractor.

NPO: 1912

State Office: Construction Division, 200 E. Riverside Dr., Austin, Texas 78704. Phone 512-416-2540.

District Office(s): Abilene District, District Engineer, 4250 N. Clack, Abilene, Texas 79601. Phone 915-676-6800.

Minimum wage rates are set out in bidding documents and the rates will be part of the contract. TxDOT ensures that bidders will not be discriminated against on the grounds of race, color, sex, or national origin. 45-46c

Shelton Roofing

Free Estimates Locally Owned

Call 864-5085. 42-52p



BlueCross BlueShield of Texas

Individual Health Products

Keeping Texans in a Healthy State

Hess Hartsfield

864-2665. 41tc

Frances Arend Real Estate & Insurance

Northside 2 bedroom, 1 bath, carport, storage, chain link fence.

ROCHESTER: 4 bedroom brick, 2 bath, carport on 3 lots.

Health Insurance Life Insurance Medicare Supplements Long Term Care 408 N. 1st 940-864-3880. 45c

RILEY CONSTRUCTION

ROOFING Fencing, sheet rocking, blowing texture, painting exterior and interior, wallpaper, ceramic tile flooring. References available. DANIEL RILEY 940-864-5079. leave message. 44-45p

WE'VE GOT IT!



RICHARDSON'S Hwy 277 N • Haskell • Open All Day Saturdays 940-864-8551

\$500 Move In.

Owner financed. Call Juan 915-725-4133. 39tc

NOW HIRING Baum Construction Company, Inc.

915-625-1331

No experience necessary. Must be willing to travel. Lodging furnished. \$8.50 per hour and up. 41tc

The Rochester Class of 2001 would like to thank those who gave donations in support of our Halloween Auction that was held Saturday, October 28. Your help is greatly appreciated.

Haskell Healthcare Center, our families, staff and residents wish to thank all who participated in our fall festival.

DANCE at Rhineland K-MAC

9 to 1 Sat., Nov. 11 \$5.00

FOR SALE

RIKE Real Estate

864-2411 864-2332

Mary Rike, Broker 411 1/2 South First St.

RIKE REAL ESTATE

1102 N. AVE. K, 3-1-1/2, garage, new paint, PAINT CREEK HIGHWAY - Three or four bedrooms, two bath, great condition, good water well, on 92 ac. in CRP. Close to town.

1001 N. AVE. H, 3-2, fireplace, sprinkler.

1303 N. AVE. G, 3-1, carport, well, C/A, wood stove, great condition.

317 ADDISON, 3-2, brick, sprinkler, well.

115 AVE. J, EAST, 3-2-2, brick, large utility.

1102 N. AVE. G, 3-1, corner lot.

285 N. AVE. K, EAST, 3-2-2, Great location for growing family.

1402 N. AVE. H, 3-2, new C/H, rewired.

300 N. AVE. I, 3-1, Carport, brick, den, cellar.

501 N. AVE. E, Large 3-1, garage, new roof.

LARGE 3 YR. OLD, Wood floors, 9 ft. ceilings, Sun room, sprinkler, fenced, oversized garage.

900 S. FIRST, 2-1, Brick, large shop, C/H, OUTSIDE CITY LIMITS, 4-3, C/H, carport.

PART CREEK HWY, 3-1, lg. kitchen and living.

VEDAS CAMP, 3-yr. old mobile home. Like new. Can be moved.



411 1/2 South First Street Box No. 853 Haskell, TX 79521 (940) 864-2411 (940) 864-2332 FAX (940) 864-3686 Mary Rike, Broker mrjike@westex.net



Equal Housing Opportunity



Are your investments missing the mark? We can help you hit the target.

Sound financial strategies. It's what we do.

Contact:

Chan Guess REGISTERED REPRESENTATIVE 940-864-2665

Securities offered through Washington Square Securities, Inc., 20 Washington Ave. S., Minneapolis, MN 55401. (612) 372-5507. Member NASD and SIPC. 10999 N800.143



FESTIVE FUNSTERS—Among the youngsters enjoying the fun games, prizes and refreshments at the colorful community-wide fall festival for families hosted by Haskell First United Methodist Church, Sat., Oct. 28 were, l-r, Brian and Shelby Copeland, children of Michael and Michelle Copeland, and Benjamin Brue, son of Shane and Jill Brue.

Stenholm seeks applicants for service academies

Congressman Charles W. Stenholm has announced the deadline for applications to the United States Service Academies.

The deadline to apply to any service academy through Congressman Stenholm's office is Dec. 1, 2000. Interested individuals are encouraged to contact the Washington office as soon as possible.

Eligible applicants must be at least 17 but not past their 23rd birthday and need to have graduated from high school by June 30, 2001. They must also be single with no dependents and be a legal resident of the 17th District.

Competitive applicants should

be in the top 15 percent of their class. They need to have SAT scores above 550 Verbal and 600 Math or ACT scores of 26 English and 27 Math. Involvement in extracurricular activities, including school and community organizations and sports as well as full or part-time employment, is also in the applicant's favor.

The Congressman will be making nominations for appointments to the Air Force Academy at Colorado Springs, Colo.; the Military Academy at West Point, N. Y.; the Naval Academy at Annapolis, MD; and the Merchant Marine Academy at Kings Point, N. Y.

The academies offer young people an excellent education, while also developing skills in leadership and self-discipline. It is a one-of-a-kind opportunity to earn a bachelor's degree and earn a salary for doing so. An education at an academy also guarantees a career upon graduation as an officer in the U. S. Armed Forces.

Applicants who wish to serve as commissioned officers are strongly encouraged to contact Jayne Schoonmaker in Congressman Stenholm's Washington office at 202/225-8119, 1211 Longworth HOB, Washington, D. C. 20515.

Nominees will be announced in late December.

Local media honored

Dusty Garrison, Ron McCandless and Carl Shearer of KVRP-AM/FM were named to the Media Honor Roll, a program sponsored by the Texas Association of School Boards (TASB) and Haskell CISD. The Media Honor Roll recognizes media representatives statewide who deserve recognition for fair and balanced reporting of news about public schools. Media representatives from almost 400 Texas newspapers and radio and television stations were honored by their local school districts.

Criteria for the district selection included media representative's efforts to get to know the superintendent, board president and the district's mission and goals; report school news in a fair, accurate and balanced manner; give a high profile to positive news about schools; visit the schools; and maintain a policy of no surprises by sharing information with school officials.

"Districts across Texas appreciate these reporters for their

balanced and accurate approach to sharing both the challenges facing our schools and the successes achieved by local teachers, students and school boards. Their work aids

local communities in focusing on the goal of providing the best public schools we can for every child," said John McInnis, TASB president.

Volunteers needed by AARP for upcoming tax season

The AARP Foundation in cooperation with the Internal Revenue Service (IRS) will be providing free income tax preparation services for all middle and low income taxpayers for the 2000 tax year, beginning in Feb. 2001.

In order for this service to continue, volunteers are needed to

be trained as preparers. Training is given in Abilene in Jan. and travel expenses are reimbursed. No prior experience is required, however, volunteers should have a basic knowledge of the Form 1040 instructions. Having prepared one's own return is sufficient.

Call Ken Roussel at (915) 672-7596 for more details.

The Haskell Free Press
IS READ BY MORE PEOPLE IN HASKELL COUNTY THAN ANY OTHER NEWSPAPER.

Holiday Open House

Sat., November 11
10 a.m. to 5 p.m.

Fall and Christmas Decorations
Unique Crafts and Gifts
Antiques and Collectibles

Refreshments and door prizes

Peddler's Village

304 South 1st, Haskell



Get it all. Get it now. Get a great deal!

Get Charter Complete Basic with HBO
\$19.95 per month for 3 months

And get

it in

time

for the

holidays!

Now for a limited time get

99¢ installation*

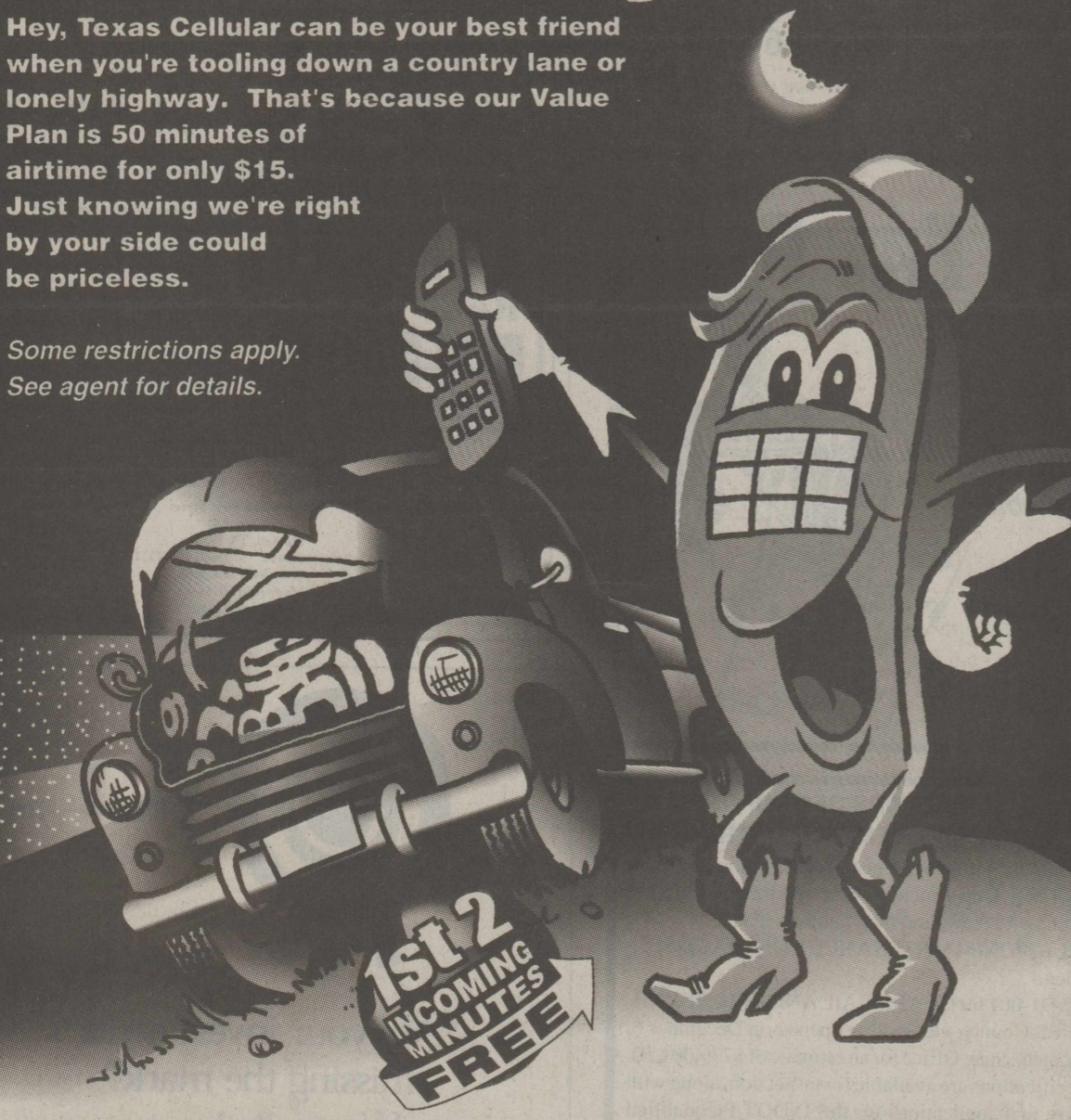
Charter **Cable TV**
1-888-409-7618

*Call for details. Some restrictions may apply.

\$15 Safety Tool!

Hey, Texas Cellular can be your best friend when you're tooling down a country lane or lonely highway. That's because our Value Plan is 50 minutes of airtime for only \$15. Just knowing we're right by your side could be priceless.

Some restrictions apply. See agent for details.



We Take Care Of Our Neighbors.

TEXAS CELLULAR
A service of Taylor Telecommunications, Inc.

9796 N. I-20 • MERKEL, TX • 79536
915-928-3200

For More Information, Call Us at 800-424-7182 or Contact Your Local Texas Cellular Agent.

IN HASKELL:
Haskell Tire & Appliance
206 S. Avenue E
940-864-3269

IN ALBANY:
Albany Communications
500 S. Main Street
915-762-2333