

1/1/01  
Baze Book Binding  
514 W 7th St  
Amarillo TX 79101-2212

### Football games

Haskell JV vs. Cisco  
Thurs., Aug. 31, 6 p.m.  
at Cisco  
\*\*\*\*\*

Haskell Indians vs. Cisco  
Fri., Sept. 1, 7:30 p.m.  
at Haskell  
\*\*\*\*\*

Paint Creek vs. Novice  
Thurs., Aug. 31, 6 p.m.  
at Novice (Scrimmage)  
\*\*\*\*\*

Rule Varsity, JV vs. Woodson  
Fri., Sept. 1, 6 p.m.  
at Woodson (Scrimmage)

### Calendar

#### Early deadlines

Deadline for the Sept. 7 issue of The Haskell Free Press will be Thurs., Aug. 31 at 5 p.m. The Free Press office will be closed Mon., Sept. 4 in honor of Labor Day.

#### Paint Creek VFD

Paint Creek Volunteer Fire Dept. members will hold a yard sale set on Labor Day weekend at the Anchor Marina. Call Chuck or Joyce Lewis at 864-3638 or Larry or Deb Jeffcoat at 864-2462 for more information.

#### No school

Labor Day, Sept. 4 is a school holiday for Haskell Schools.

#### Paint Creek Seniors

Paint Creek Senior Class of 2001 will offer cooked meals delivered with a card to someone who is sick or to someone who just needs a meal. Meals can be cooked or purchased frozen for later use. Meals to serve 2-3 are \$10; to serve 4-6 are \$22. Meal choices are chicken spaghetti, King Ranch casserole, beef enchilada casserole or lasagna. Rolls and dessert are included with every meal. Call Cara at 864-6158 for information. Proceeds benefit the senior class trip. Orders should be placed in advance.

#### Society to meet

The Haskell County Historical & Genealogical Society will meet Sept. 4 in the First National Bank Community Room at 7 p.m. Members are to bring something old to discuss.

#### Mexican plate dinner

St. George Catholic Church will hold a Mexican plate dinner Fri., Sept. 8 beginning at 11 a.m. at the church hall. Call 864-3171 to order.

#### Social Security

A representative from the Social Security Administration will be in Haskell at the old City Hall annex, 305 N. 1st, Thurs., Sept. 7 at 9:30 a.m.

#### Steinfath reunion

The Steinfath reunion will be held Sat., Sept. 2 at the American Legion Building beginning at 2 p.m. Supper will be pot luck. Family and friends are invited.

#### Hamburger supper

A hamburger supper will be held before the ballgame Fri., Sept. 1 from 5:30 to 7:30 p.m. in the Haskell High School cafeteria to benefit the Noah Project-North. Tickets are \$5 each and can be purchased at the door or before the game from any Advisory Committee member or by calling 864-2551. The meal will include a hamburger, drink and dessert. Carry-outs will be available.

#### Jamaica

St. George Catholic Church will hold Jamaica Sept. 17 at the church grounds. Co-ed volleyball and horseshoe tournaments are planned. For information call Felix Rodriguez 940-864-5502.

### Index

Obituaries ..... Page 2  
Menus ..... Page 3  
Out of the Past ..... Page 4  
Sagerton News ..... Page 8  
Classifieds ..... Pages 9-11

## Have a safe Labor Day weekend

# The Haskell Free Press

VOL. 114-NO. 35, ©AUGUST 31, 2000

"The People's Choice"

12 PAGES-ONE SECTION-50 CENTS.



ANNUAL COLLECTION-Eddie Klose was among ten Haskell Volunteer Firemen collecting almost \$800.00 from motorists in

Haskell Saturday morning, Aug. 26, during their annual Fill-A-Boot fundraiser for the Muscular Dystrophy Association.

## Indians to meet Cisco Fri., 7:30

Friday night, Aug. 25, the Haskell Indians scrimmaged the Knox City Greyhounds.

The Indian's number one offensive unit scored during the session, with Adam Diaz carrying the pigskin some 57 yards around right end. Diaz provided the Indian fans with some fine running and maneuvering.

On the last play from scrimmage, Indian fullback, Dustin Threet, went 25 yards behind some outstanding blocking by the quick side of the Indian line, to score a touchdown. Haskell got another TD on a defensive fumble recovery in midair, and caused Knox City to have one fumble and two pass interceptions.

Last week in defensive play against Bangs, Haskell caused two interceptions and three fumbles for a total of eight turnovers in two scrimmages. Bangs scored only once. Haskell failed to score.

The Indian's coaching staff reports that Haskell has shown some hustle and hard hitting during the two scrimmages, but that the real test will start for the Indians this Friday night at Indian Field. With Cisco bringing to town a big team up front and a fleet-footed back field, it should be an interesting test for Haskell. This opener game will kick off at 7:30 p.m. at Indian Field.

The Indians JV will travel to Cisco Thurs., Aug. 31. Game time there is 6:00 p.m.

## Early voting underway on regional jail proposal

Early voting got underway in the City of Haskell and Haskell County Mon., Aug. 28, to continue until Sept. 8, on the proposition of issuance of general obligation bonds for constructing and equipping a jail and levying of a tax and payment thereof.

The Sept. 12 election has been called by both the City Council of Haskell and the Commissioner's Court of Haskell County. The City and County of Haskell will be joint owners of the proposed Rolling Plains Regional County Jail and Detention Center, which they expect to be a positive step toward boosting and diversifying the future economic prospects of Haskell County.

When overwhelming support was given to the initial documents

to begin the project, during a county-wide Town Hall meeting held July 10, the Haskell City Council and Haskell County Commissioners made the decision to pursue the final stages of a four year process they have made to bring such a facility here.

When opposition was voiced by a group of citizens who are against the project and felt they had not had a vote in the matter, the City Council and County Commissioners Court each set an election for Sept. 12.

A petition signed by 393 citizens against the project was presented to the County Commissioners, but was declared invalid because of legal irregularities in its preparation.

On Sept. 12, all qualified voters in both the city and county will

have the opportunity to voice their preference on a ballot.

Those who live in the city of Haskell, paying both city and county taxes, are eligible to vote in both the city and county elections.

Those who live in the county, paying only county taxes, are eligible to vote in the county election.

In determining the outcome, if the vote in either the city or county election fails to pass the proposition, the other election fails as well.

Early voting in the City election may be made at the Haskell City Hall, and early voting in the County election may be made at the Haskell County Courthouse. The early voting deadline for both is Sept. 8.

## Prisoner escapes county jail

Monday morning about eleven o'clock, a prisoner held at the Haskell County Jail escaped by going over the fence in the exercise yard.

Brandon Reid was being held in the jail on a motion to revoke probation. A suspect is being sought as an accomplice in his escape.

Tuesday morning, County Sheriff Johnny Mills said, "We

have got him entered on the state-wide Teletype computer system, and he will be apprehended. And of course, by doing this, he has just given added reason for being held."

Speaking of the fact that over the years, several prisoners have escaped the local jail in the same manner, by going over the fence, Sheriff Mills said, "The present location of the county jail, near the center of town, has its advantages

and disadvantages."

Among the advantages he mentioned is the likelihood of a witness seeing someone escaping.

Disadvantages include the easy accessibility to the fence area by way of the drive-by street area behind the bank. "It is not easy to watch that area from inside the building, and we would like to be able to make some changes in that situation," Mills said.

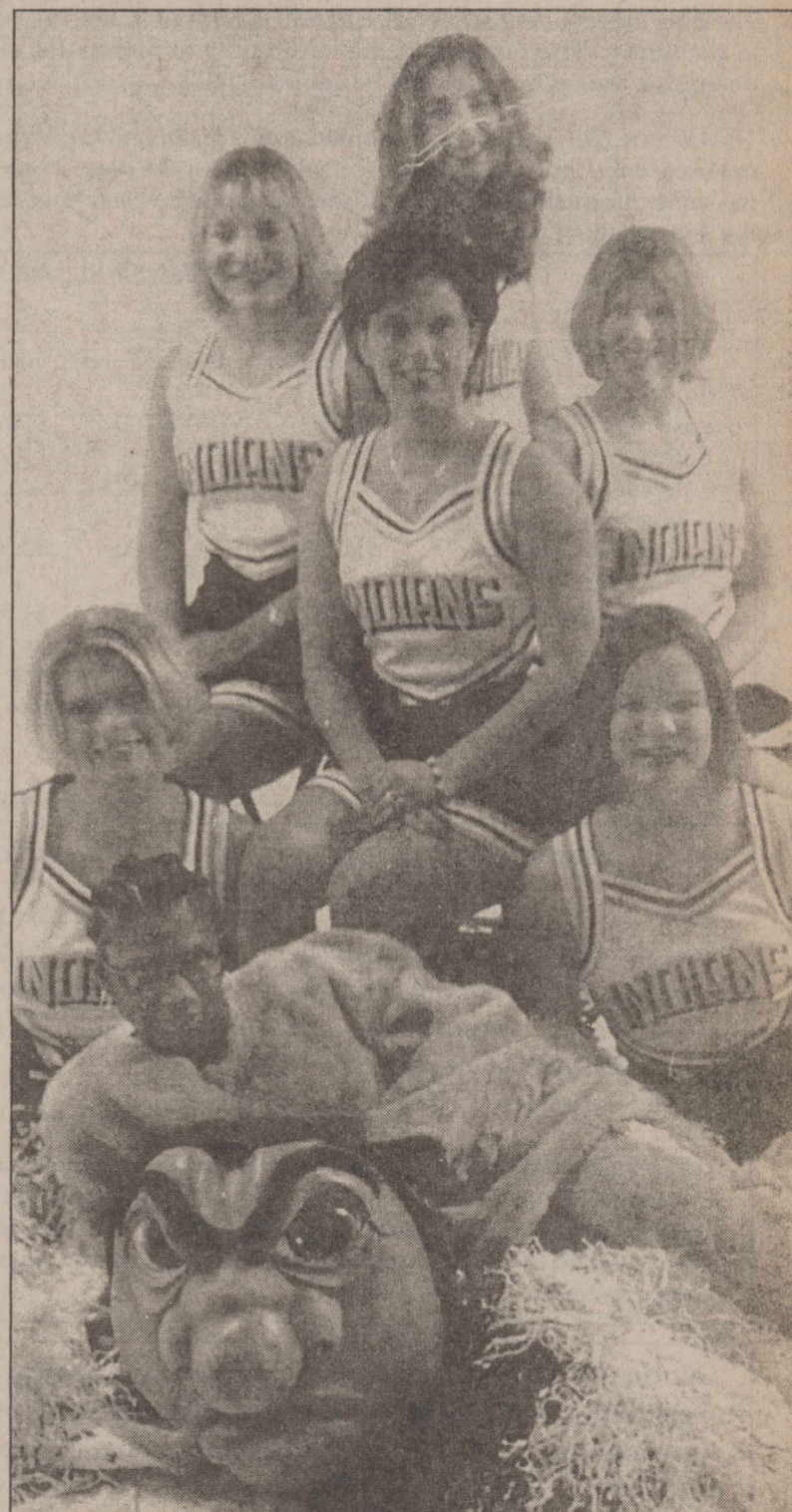
Mills added that, "If we do not build the new jail, we are definitely going have to make some changes in the present county jail. Modifications will have to be made on the present single-wire fence."

Mills said that most prisons, and even some jails, have double or triple fences. "Our fence is definitely one of the disadvantages."

## DPS to operate mobile station

Due to the Haskell County Courthouse elevator being in repair, anyone who needs to renew a driver's license or ID card within the next three months, and is not able to climb the stairs, will need to take care of this on Thurs., Aug.

31. On that day the Department of Public Safety Drivers License Division will operate a mobile station on the first floor of the Courthouse from 9:30 to 11:00 a.m., and from 1:00 to 3:00 p.m.



INDIAN CHEERLEADERS- The Haskell cheerleaders, beginning at the top are: Jennifer Bryan; second row from top, l-r, Trac Mathis, Megan Bird, Amanda Perry; seated bottom row, l-r, Tiffany Lindsey, Mascot Stephanie Hodge and Jessica Miller.

Photo by Kis

FOR NEWS ITEMS OR TO SUBSCRIBE, CALL 864-2686

# Ag Field Day set Sept. 28

by Brandon Anderson  
Haskell Co. Extension Agent  
Farmers and stockmen can update their knowledge of cropping and tillage systems, learn more about grazing and livestock production and hear an update on water districts at a Sept. 28 field day at the Smith Farm near Munday.

"This field day will offer farmers and stockmen a wealth of crops and livestock information. Registration runs from 8 to 9 a.m.," said Galen Chandler, Texas Agricultural Extension Service district

agriculture director. "The Smith Farm is 2.6 miles east of Munday on U. S. Hwy. 277 and about 1/2 mile south on County Road 4780. There is no charge to attend."

"Our noon speaker is Wyman Meinzer, wildlife writer and photographer. He will share slides and a review of his new book *Rivers and Ranches of Texas* following a complimentary lunch."

The 9 to 10 a.m. morning session will feature these topics and speakers:

- Livestock production and grazing alternatives utilizing wheat and cool-season grasses, Dr. Bill Pinchak, Texas A&M associate professor of range animal nutrition, Vernon.

- Underground water districts update, State Representative Rick Hardcastle, Vernon.

- Conservation tillage, Dr. Wayne Keeling, Texas A&M professor of systems agronomy and weed science, Lubbock.

The field day will also include a crops field tour hosted by several Extension specialists and research scientists. Stops on the field tour will focus on cotton tillage, cropping systems, cotton varieties, BT cotton seeding rates and an insect update featuring relay crops and boll weevils.

Producers can earn three Continuing Education Units (CEUs), including one in laws and regulations, by attending this event, Chandler noted.

For more information on the Sept. 28 Agriculture Field Day, call the Texas A&M Research and Extension Center in Vernon (940) 552-9941, Chillicothe (940) 852-5125, or Munday (940) 442-4531.

To Subscribe,  
Call  
940-864-2686

## STOREWIDE ANNIVERSARY SALE!

### CONTINUES at

"We Want To Be Your Furniture Store!"

# BOGGS & JOHNSON




East Side of Square • Haskell, Texas • 864-2346

### Take Advantage of the VARIABLES


Invest with the names you know and trust.

**SOUTHERN FARM BUREAU LIFE NOW OFFERS T. ROWE PRICE AND FIDELITY® INVESTMENT OPTIONS!**

A Variable Annuity contract from Southern Farm Bureau Life offers quality investment choices. Choose from T. Rowe Price or Fidelity funding options. Call today for a free insurance and investment review and develop a strategy that fits your individual needs.



Kenny Tanner 864-2647



Southern Farm Bureau Life Insurance Company  
Jackson, Mississippi

Securities products and services offered through:  
Southern Farm Bureau Fund Distributor, Inc.,  
1401 Livingston Lane, Jackson, MS 39213, 601-981-7422  
Southern Farm Bureau Life Insurance Company,  
Jackson, MS

For more information, obtain a prospectus from your registered representative. You should carefully read the prospectus before investing in the Variable Annuity contract. The value of the Variable Annuity subaccounts will fluctuate, and when redeemed, your contract may be worth more or less than your original investment.  
® Fidelity Investments is a registered trademark of FMR Corporation.  
© FBL 2000 289

## Obituaries

### Estelle Holcomb Michels



ESTELLE MICHEL

Funeral services for Estelle Holcomb Michels, 80, of Knox City were held Tues., Aug. 29 at First

Baptist Church in O'Brien with Rev. Bill Trice officiating. Burial was in Rule Cemetery under the direction of Mansell-Smith Funeral Home.

Mrs. Michels died Sun., Aug. 27 at Steakwood Manor Nursing Home in Stamford following a lengthy illness.

Born March 9, 1920 in Jud, she married W. C. (Bill) Holcomb in June 1936. He preceded her in death in June 1982. She married John Michels Jan. 7, 1988. She was a nurse and worked for the Knox City hospital for 27 years. She was a member of First Baptist Church in O'Brien.

John Michels of Rule; two sons, Bill Holcomb of Rule and David Holcomb and his wife, Helen, of Stamford; four step daughters, Mildred Dandey of Hiltop Lakes, Gloria Descoteaux of Mansfield, Lois Smith of Placencia, Calif., and Gohnnye Graft of Athens, Texas; one step son, J. W. Michels of Wichita Falls; two sisters, Helen Connell of Meridian and Edna Davis of Snyder; three grandchildren, Davine Clark of Monahans, Justin Holcomb of San Antonio and Nicole Holcomb of Lubbock; and three great grandchildren.

Memorials may be made to Hospice of the Big Country, 3113 Oldham Lane, Abilene, Texas 79602.

PD. NOTICE

She was preceded in death by one brother and two sisters.

Survivors include her husband,

### Joe B. Cloud

Funeral services for Joe B. Cloud, 80, of Rule were held Fri., Aug. 25 at First Baptist Church in Rule with Rev. Scott Hensley and Rev. J. R. Williams and Travis Boyd officiating. Burial was in Rule Cemetery under the direction of McCauley-Robison Funeral Directors.

Mr. Cloud died Tues., Aug. 22 at a Haskell nursing home.

Born Feb. 9, 1920 in Rule, he was the son of Henry and Irene Cloud and a third generation farmer. Following high school graduation, he attended Texas A&M University where he was a member of the Corp. He graduated in 1942 as a Second Lieutenant. Two hours after graduation, he boarded a troop train for Camp Robinson, Ark. where he trained recruits for thirteen months. Here he was promoted to 1st Lieutenant. Later he was sent overseas for active duty. He fought for weeks on the Siegfried Line in Belgium with Co. I, 309th Infantry and 78th Division. At this time he was promoted to Captain. He received the Purple Heart Medal after being wounded in Action in 1944 and Bronze Stars for valor, heroic and meritorious service.

In February of 1945, he was transferred to Co. E. They crossed the Rhine River at the Remagen Bridge into Germany. The Germans blew the bridge up killing two thirds of his company. His last long battle was in the Rhur Pocket. His unit has experienced 128 days of combat with 300 percent casualties.

He lost his youngest brother in July 1943 and his oldest brother Lt. Merle M. Cloud of the Air Corp in December 1943. Merle was shot down at sea and his body was never recovered. His father died in July 1945. At this time the American Red Cross arranged for Joe to return

home to manage the family farm.

He married Emma Jean Lisle of Rule Nov. 24, 1945. They observed 50 years of marriage in 1995.

He was a member and a deacon of Rule First Baptist Church where he taught Sunday School for 50 years. He served on the Rule School Board for 11 years, the Rule City Council once and served as mayor of Rule twice. He was a member of the Rule Masonic Lodge #954 for 55 years where he was District Deputy Grand Master in 1977 and in 1999 he received the Masonic Golden Trowel Award. He was a member of the Rule Lions Club and named Rule Man of the Year in 1985. For a number of years, he served as Secretary on the Board of the Haskell USDA and was a member of the Haskell County Appraisal Board.

He was preceded in death by his parents, two brothers, Harold J. and Lt. Merle M. Cloud of Rule, and a sister, Helen Ruth Westbrook of Tulsa, Okla.

Survivors include his wife, Jean of the home; one son, Joe Harold Cloud of Rule; one daughter, Caron Thornbury and husband, Dan, of Lubbock; two grandchildren, Scott of West Point, N.Y. and Angela of Lubbock.

Pallbearers were Jimmy Lisle, Mike Lisle, David Lisle, Johnny Westbrook, Scotty White, Tim Daniel, James Cloud and Dennis Cloud. Honorary pallbearers were Billy Dave Kitley, Robert Saffel, Jerry Saffel, Pete Kitley and Bradley 'Pete' Place.

Memorials may be made to the American Heart Association, P. O. Box 547, Haskell, Texas 79521 or the Rule First Baptist Church, P. O. Box 146, Rule, Texas 79547.

PD. NOTICE

### Ted William Hines

Funeral services for Ted William Hines, 85, of Haskell were held Sat., Aug. 26 at East Side Baptist Church in Haskell with Dr. David Page officiating. Burial was in Willow Cemetery under the direction of Holden-McCauley Funeral Directors.

Mr. Hines died Thurs., Aug. 24 at a local hospital.

Born Aug. 18, 1915 in Sallisaw, Okla., he served in the U. S. Army during World War II. He married Lovell Cox Oct. 14, 1939. He worked in the farmland industry and was a member of East Side Baptist Church.

Survivors include his wife, Lovell, of the home; one daughter, C. Renia Smith of Abilene; one brother, Jake Hines of Abilene; one sister, Lucille Boyd of Hamlin; two grandchildren, Todd Smith of Lubbock and Angie Smith of Abilene; one great granddaughter, Aleesha Smith of Lubbock.

Pallbearers were Danny Boland, Kenneth Blair, Gentry Middleton, Mike Guess, Bob Hines and Jerry Hines. Memorials may be made to the donor's favorite charity.

PD. NOTICE

## Don Kretschmer appointed as U. S. Probation Officer

Don Kretschmer of Haskell has recently been appointed the position of United States Probation Officer for the Northern District of Texas, San Angelo Division. The Northern District includes the counties of Hunt and Kaufman in the east, extending south to Sutton County, west to the Texas-New

Mexico boundary and north to the Texas-Oklahoma state line. The San Angelo office is responsible for supervision of federal probationers and parolees in 17 of the 100 counties encompassed by the Northern District.

Prior to his appointment with U. S. Probation, Kretschmer served as an adult and juvenile probation officer for the state judicial district. He began in probation with the 155th Judicial District, consisting of Waller, Austin and Fayette counties located in southeast Texas. During this tenure with this department, he served as a presentence officer, adult and juvenile

probation officer and county supervisor.

In Feb. 1992, he was appointed by District Judge Charles Chapman to serve as Chief Probation Officer for the 39th Judicial District, encompassing Haskell, Knox, Stonewall and Throckmorton counties. He served in that capacity until June of this year.

Don's wife, Julie, a native of San Angelo, is employed by the San Angelo Independent School District as a librarian clerk at Central High School. They have two sons, Chad, age 8 and Cody, age 12. Don is the son of Walter and Marie Kretschmer of Haskell.

**CLASSIFIED SELLS CALL 864-2686**

*This message is brought to you by the progressive merchants and concerned citizens of Haskell County.*

In the September 12th election for the Rolling Plains Detention Center, registered voters of the City of Haskell should vote in both the City of Haskell election and the Haskell County election; whereas those voters living outside the city will vote in the Haskell County election only. Voters will vote in their regular polling places for the City and the County elections. The City of Haskell election will have early voting and the election day will be September 12th at the City Hall. For the Haskell County election, voters vote early at the Haskell County Clerk's Office and at regular polling places on September 12th. Vote FOR on September 12th for the progress of Haskell County.

Paid for by progressive merchants and interested individuals for the growth of Haskell County, treasurer Loraine Johnson

### NOTICE OF PUBLIC MEETING TO DISCUSS BUDGET AND PROPOSED TAX RATE

The Rule Independent School District will hold a public meeting at 7:30 p.m. on September 12, 2000, in the library. The purpose of this meeting is to discuss the school district's budget that will determine the tax rate that will be adopted. Public participation in the discussion is invited.

The tax rate that is ultimately adopted at this meeting or at a separate meeting at a later date may not exceed the proposed rate shown below unless the district publishes a revised notice containing the same information and comparisons set out below and holds another public meeting to discuss the revised notice.

#### Comparison of Proposed Rates with Last Year's Rates

	Maintenance & Operations	Interest & Sinking Fund *	Total	Local Revenue Per Student	State Revenue Per Student
Last Year's Rate	\$1.46	\$0.00	\$1.46	\$1,731	\$5,076
Rate to Maintain Same Level of Maintenance & Operations Revenue & Pay Debt Service	\$0.00	\$0.00	\$0.00	\$0	\$0
Proposed Rate	\$1.50	\$0.00	\$1.50	\$1,835	\$5,752

\*The Interest & Sinking Fund tax revenue is used to pay for bonded indebtedness on construction, equipment, or both. The bonds, and the tax rate necessary to pay those bonds, were approved by the voters of this district.

#### Comparison of Proposed Levy with Last Year's Levy on Average Residence

	Last Year	This Year
Average Market Value of Residence	\$23,250	\$23,455
Average Taxable Value of Residences	\$3,600	\$3,764
Last Year's Rate Versus Proposed Rate per \$100 Value	\$1.46	\$1.50
Taxes Due on Average Residence	\$52.56	\$56.46
Increase (Decrease) in Taxes		\$3.90

Under state law, the dollar amount of school taxes imposed on the residence homestead of a person 65 years of age or older or of the surviving spouse of such a person, if the surviving spouse was 55 years of age or older when the person died, may not be increased above the amount paid in the first year after the person turned 65, regardless of changes in tax rate or property value.

**Notice of Rollback Rate:** The highest tax rate the district can adopt before requiring voter approval at an election is \$1.59. This election will be automatically held if the district adopts a rate in excess of the rollback rate of \$1.59.

#### Fund Balances

The following estimated balances will remain at the end of the current fiscal year and are not encumbered with or by a corresponding debt obligation, less estimated funds necessary for operating the district before receipt of the first state aid payment.

Maintenance and Operations Fund Balance(s)	\$1,278,835
Interest & Sinking Fund Balance(s)	\$0



MRS. JEFFREY LANCE WRIGHT

## SoRelle, Wright wed in Lubbock

Sarah Jane SoRelle and Jeffrey Lance Wright were married Aug. 5 at Trinity Church in Lubbock with Rev. Chris Osborne of College Station officiating.

The bride is the daughter of Frank and Beverly SoRelle of Lubbock. She is the granddaughter of Helen Owens Yearwood of Snyder and the late Jimmy Owens. The bridegroom is the son of Jay and Janet Wright of Houston and the grandson of Gene and Thelma Cox of Coleman.

Sarah Hill of College Station was the maid of honor. Bridesmaids were Emily SoRelle, sister of the bride, of Lubbock, Ruth Anne Jodeit of College Station, Melody Bingham, Alyssa Bromley, Lindsay Hill and Dana Brewer, all of Lubbock. Flower girl was Brittany Breshears of Beeville, cousin of the bridegroom. Emily Fisher, of College Station, registered guests.

Jansen Wright of College Station served as his brother's best man. Groomsmen were Jody Wright, brother of the groom, of Houston, Daniel Banes and Jeff Kopp, both of College Station, Paul Buchanan of Dallas, Troy Green of San Antonio and Michael Bingham of Lubbock. Ring bearer was Jared Breshears of Beeville, cousin of the groom. The groomsmen served as ushers.

The bride's gown was an elegant long sleeve gown of candlelight Italian satin. Her romantic gown was accented with Alencon lace sprinkled with sparkling crystal sequins and pearls. The off the shoulder gown featured a sweetheart neckline and a basque waistline. The full ballroom skirt fell gracefully to the floor and swept

into a cathedral length train. The border of the skirt was accented by appliques of lace and pearls. The back of the gown was enhanced by three satin roses nestled at her waistline and three satin roses also lay softly on the train. The bridesmaids wore long a-line dresses of woodrose. The empire waist gowns featured a combination of satin and crepe.

A reception and dance was held at the Texas Tech Merket Alumni Center on the Texas Tech campus. Serving in the house party were Lindsay Duyck, Julianne Hill, Julie McInis, Angela Bush, Elizabeth Hill and Cassandra Slayton.

Prior to the wedding, friends of the bride hosted a lingerie shower May 26 in College Station. July 8 the bride was honored with a shower in the home of Dr. and Mrs. Stephen Cox.

July 16 the couple was honored with a shower in the home of Dr. and Mrs. Mike Calmes of Lubbock and July 23 the couple was honored with a shower at the First Baptist Activity Center, Haskell. August 5 a bridesmaids' brunch was held in the home of Mr. and Mrs. Mike Bingham of Lubbock.

The bride, a graduate of Trinity Christian High School, is a senior at Texas A&M majoring in English. She is employed by Texas A&M and College Station Independent School District.

The groom, a graduate of Cold Springs High School, is a senior at Texas A&M University and is a computer engineer major. He is employed by Compaq.

Following a honeymoon cruise, the couple will reside in College Station.

## Fad diets are recipe for failure

by Lou Gilly  
Haskell Co. Extension Agent  
Fad diets are sweeping the nation and nutrition experts are concerned. Nutrition specialist Jenna Anding says fad diets set people up for failure. These diets are not healthy and run contrary to what long-term research has shown about weight loss.

For successful long-lasting weight loss, people need to adopt a lifestyle that includes a healthy diet and regular physical activity. High protein/low carbohydrate diets can actually be very harmful. Some fad diets are based on the idea that by reducing carbohydrates, the body is forced to burn fat reserves for energy. However, when you run out of carbohydrate stores, the body breaks down muscle.

Without carbohydrates the body cannot use the fats that are broken down. These fats then turn into ketone bodies. Ketone bodies build up and can cause ketosis. Anding says ketosis leads to unpleasant and potentially serious side effects.

Counselor Laurie Baker-Brown thinks most people know fad diets will not work. Baker-Brown thinks most people feel guilty when they don't stick to their diets. She works with many patients trying to lose weight and says this can create a vicious cycle that only adds to a person's emotional hunger.

Anding says for weight loss to be long term people need to adopt

permanent behaviors that promote healthy lifestyles. Anding recommends people set realistic goals and commit to eating a healthy diet and regular physical activity. Fruits, vegetables and whole grains should take place of high fat foods and snacks.

## Haskell School Menu

Due to the early-out schedule change on Fri., Sept. 1, the menu will be changed to:

Turkey sandwich, chips, pickle spears, carrot sticks, cookies

Sept. 4-Sept. 8

### Breakfast

Juice and milk are served daily on the breakfast menu.

Monday: Labor Day holiday

Tuesday: Breakfast on a stick

Wednesday: Pigs in a blanket

Thursday: Sausage/biscuit

Friday: 1/2 peanut butter and jelly sandwich, fresh apple

### Lunch

A choice of baked potato with choice of topping or a salad bar is offered daily at the Secondary

campus. Ala-carte line offered daily Secondary only. Snack bar Wednesday only—Secondary. Milk and assorted drinks are served daily at the Secondary campus. Milk and juice are served daily at the Elementary School.

Monday: Labor Day holiday

Tuesday: Taco salad, nacho chips, pinto beans, sliced peaches

Wednesday: Corn dogs, macaroni and cheese, French fries, fruit salad

Thursday: Lasagna, green bean Amandine, fried okra, bread sticks, royal brownie

Friday: Chicken fried steak w/cream gravy, mashed potatoes, corn, hot rolls, gelatin w/fruit cocktail and topping

## Paint Creek School Menu

September 4-8

### Breakfast

Milk and juice are served daily.

Cereal is offered daily.

Monday: Labor Day holiday

Tuesday: Waffles

Wednesday: Pancakes

Thursday: Cereal

Friday: Honeybuns

### Lunch

Milk and tea are served daily.

Monday: Labor Day holiday

Tuesday: Pepperoni or ham and cheese hot pockets, macaroni & cheese, fruit

Wednesday: Hamburgers, chips, lettuce, tomatoes, cheese

Thursday: Chili dogs, French fries, cheese, pudding

Friday: Pirate meal

## ECC Calendar and Menu

Mon., Sept. 4

ECC closed for Labor Day.

Wed., Sept. 6

11:00 a.m. Outreach blood pressure check

Lunch-Steak/gravy, whipped potatoes, green beans, carrot cabbage slaw, pineapple pudding, bread, milk, tea or coffee

Fri., Sept. 8

Lunch-Chicken, glazed carrots,

potatoes au gratin, tossed salad, Jello, cookies, bread, milk, tea or coffee

Announcements begin at 11:45 a.m. followed by lunch.

All over 60 are invited to come and eat. Call 864-3875 for transportation to the center or for home delivered lunches for the sick or disabled.

Back the Indians!

## This Is It!

Our Final Reductions on Spring and Summer Sale Shoes

(Values to \$80.00)

\$9<sup>90</sup> \$14<sup>90</sup> \$19<sup>90</sup> \$24<sup>90</sup>

UP TO 75% OFF Spring & Summer Sale Clothes

Brighton Handbag Trade-In Event

Ends September 2

Trade in your old handbag towards the purchase of a new Brighton Handbag and receive

\$50<sup>00</sup> off

Personality-Slipper Shoppe

940/864-2501 • 864-3051

South Side of Square

Haskell, Texas

This message is brought to you by the progressive merchants and concerned citizens of Haskell County.

Q: What types of jobs would be available at the proposed Rolling Plains Detention Center.

A: There will be numerous job opportunities. They include prison guards, administrative staff, office (that is, secretarial, etc.), maintenance, educational (that is, teaching), and medical (nurses). Also opportunities will become available in the new businesses that will hire new employees and existing businesses that will hire new employees. Vote FOR in the September 12th election.

Paid for by progressive merchants and interested individuals for the growth of Haskell County, treasurer Loraine Johnson



of Modern Way

LARGE PIZZA

TWO TOPPINGS PLUS 1 ORDER BREADSTICKS



2 FOR \$12<sup>99</sup>

MEDIUM PIZZA

SINGLE TOPPING

\$4<sup>99</sup> EACH

You Always Get More Pizza for Less Money at Pizza Pro!

## End of Summer Savings

Sunglasses

25% OFF

Huggies Baby Wipes

80 ct.

\$2<sup>99</sup>

Tagamet HB 200

30 Tablets or NEW 12 oz Liquid

Your Choice \$8<sup>49</sup>

Angel Soft Bathroom Tissue

89¢

Sylvania Light Bulbs

8 pk Bulbs with Free 3 way Bulb

\$3<sup>99</sup>

Sun Worship Tanning Products

1/2 price

1 Subject 70 Sheet Notebook

Limit 4 25¢ EACH

Elmer's Glue

4 oz

49¢

## New Items!!

\*Old Glory \*Liberty \*Bandana Pig Placemats, Dish towels, Potholders and Much, Much More \*Colonial Star

Candle Pans in Assorted Sizes

\*Pepsi Collectible Century Bears \*Glow Lamps

in Angel and Fish Designs

\*Metal Advertising Signs including John Deere, Pepsi and Antique Farmer

\*Scarecrows and Assorted Autumn Items

Bridal Selections

now on display for

Penny Young

Bride-Elect of Brandon Anderson

Prices Good thru Sept. 2

THE DRUG STORE

Hours: 8-6 M-F; 8-5 Sat. • 940-864-2673



**Nemir's Medical Supply**  
864-2258  
510 N. Second  
Haskell, Texas

**Holden-McCauley Funeral Home**  
864-2151  
304 N. 2nd  
Haskell, Texas

**Matlock & Associates**  
864-3050  
510 S. Second  
Haskell

**Jay's Tire Center**  
864-2908  
506 N. 1st East • Haskell

**Charter COMMUNICATIONS**  
A WIRED WORLD COMPANY  
915-773-3391  
(800) 527-4331

**Home State Bank**  
Member FDIC  
410 Carruthers  
Rochester 610 Columbia  
940-743-3511 Stamford  
1-800-343-3511 915-773-2122

**Haskell Tire & Appliance**  
864-2900  
206 S. Ave. E  
Haskell, Texas

# LABOR DAY

SEPTEMBER 4, 2000

## OUR SALUTE TO AMERICAN LABOR

**WAL-MART**  
Always The Low Price  
*Always*  
Stamford, Texas

**Hanson Paint & Body Shop**  
864-3631  
Haskell, Texas

**Case IH True Value**  
Richardson's Case IH & True Value  
864-8551 • Haskell

*Have a safe Labor Day holiday!*

*Please drive safely!*


**Haskell Co. Insurance Agency**  
864-2665  
417 S. First • Haskell

**Larned Sales Center**  
864-2749  
Haskell, Texas

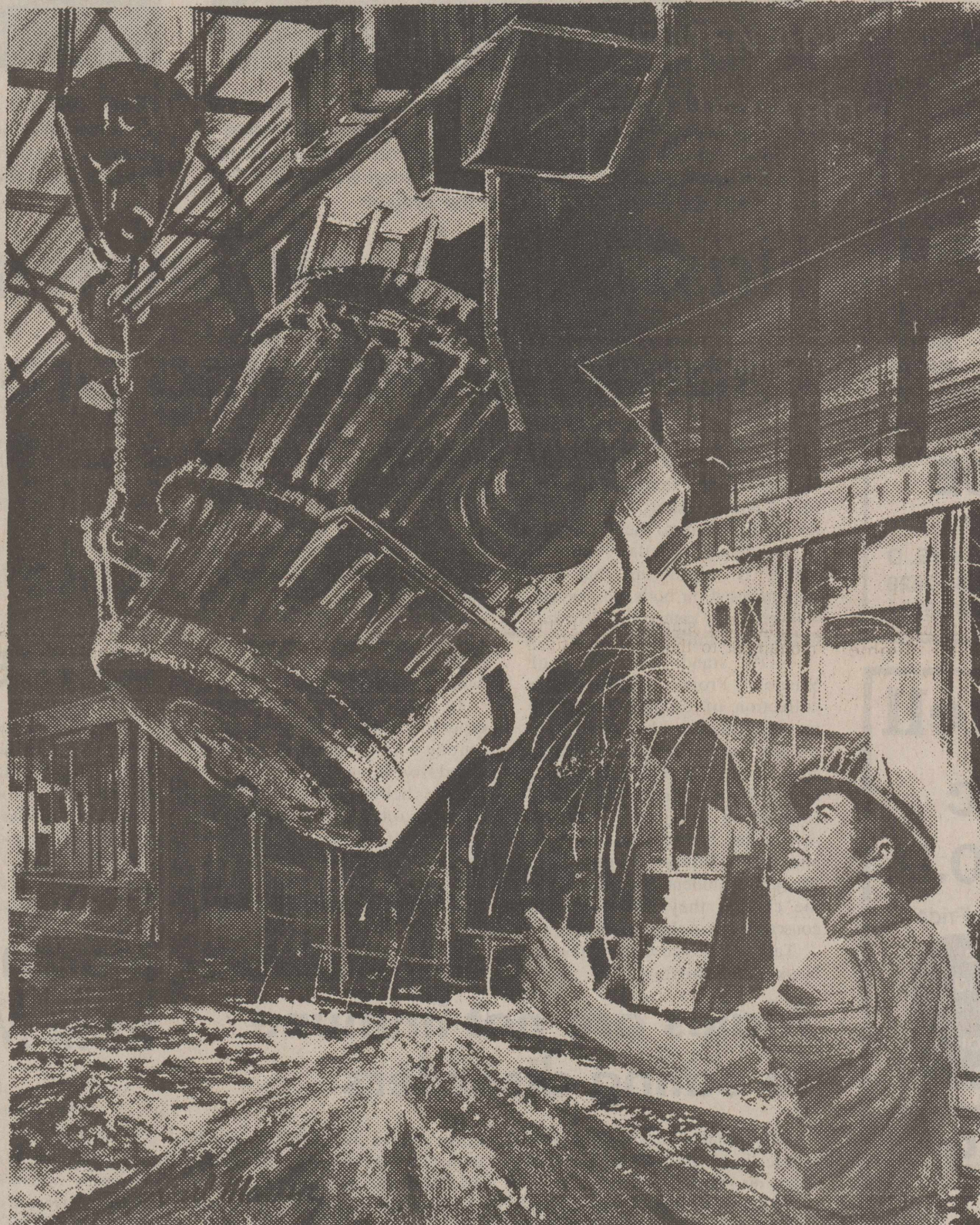
**Farmers Co-op Gin**  
864-2358  
810 N. Ave. B • Haskell

*Have a safe Labor Day holiday!*

**Dulaney Abstract**  
864-2301  
318 N. 1st  
Haskell, Texas

**The Haskell Free Press**  
read by more people in Haskell County than any other print media.  


**The Haskell Free Press**  
read by more people in Haskell County than any other print media.  

WE WISH TO HONOR THE MEN AND WOMEN WHO COMPOSE THE LABOR FORCE OF AMERICA...

The United States is a land of unlimited opportunities for people from every ethnic background. It is these hard-working individuals who have built this country into a great nation. We salute the working force of America, past and present; the people who have made equal employment opportunities for everyone a reality.

**Double A Drive Inn**  
864-2466  
1103 N. 1st  
Haskell, Texas

**Haskell Livestock Auction**  
864-2624  
Haskell, Texas

**Federal Land Bank Association of Haskell**  
550 S. Second • 864-8565

**Rule Banking Center**  
A Branch of Hamlin National Bank  
P. O. Box 10  
Rule, Texas 79547  
940-997-2216  
Member FDIC

**Bill Wilson Motor Co.**  
864-2611  
209 S. Ave. E  
Haskell, Texas

*Have a safe Labor Day holiday!*

**Rice Springs Care Home**  
864-2652  
1302 N. First  
Haskell, Texas

*Use your seat belt!*

**First American Bank**  
518 South Second • 864-8577  
Member FDIC

## Depression is not a normal part of aging

Depression is not a normal part of aging, but rather a medical condition that should be treated aggressively.

"About three percent of the elderly living independently in the community will experience depression," said Dr. Victor Molinari, a psychologist at Baylor College of Medicine and director of geropsychology at the Veterans Affairs Medical Center in Houston. "That number increases to between 20 and 30 percent of people in

nursing homes or with chronic illnesses such as emphysema, heart disease or diabetes."

Two personality types are also at high risk: obsessive/compulsive people bothered by their lack of control over changes related to aging and dependent persons who lose loved ones.

Typical signs of depression include:

- Sleep problems
- Failure to gain pleasure from previously enjoyed activities
- Decreased energy or concentration
- Changes in appetite
- Feelings of hopelessness and helplessness
- Thoughts of death and suicide.

If you know an elderly person with any of these symptoms, encourage them to seek medical attention as soon as possible, Molinari said.

**Don't Miss Out  
Subscribe Today!  
864-2686  
The Haskell Free Press**

**BERNARD E. GODLEY, INC.**  
TAX SERVICE & BOOKKEEPING  
Computerized • Tax Returns & Bookkeeping  
98 Hill Drive • Seymour, Texas  
940-889-8809  
Office Hours: 9 to 12 and 2 to 5 Monday - Friday

LIFE HOSPITALIZATION ANNUITY IRA CANCER



HOME AUTO FARM CROP INSURANCE COMMERCIAL

**LANCO INSURANCE**  
DON • SHIRLEY • CHERIE - Agents

P. O. BOX 585  
HASKELL, TX 79521

12 AVE. D  
WORK 940-864-2629  
1-800-687-3761

## Jones-Haskell Eye Clinic

Dr. Trussell Thane, O.D.

Appointments Available • Monday through Friday

Dr. Thane provides comprehensive eye care including the diagnosis and treatment of eye disease.

Dr. Thane offers complete evaluation for eyeglasses and contact lenses.

2 pair of clear daily wear contact lenses **\$159<sup>00</sup>**

Disposable lens packages and contacts to change your eye color available.

MEDICARE, MEDICAID AND FIRSTCARE ACCEPTED.

1501 Columbia  
Stamford, Texas  
915-773-2083

*This message is brought to you by the progressive merchants and concerned citizens of Haskell County.*

**Q:** What kinds of prisoners will be housed in the Rolling Plains Detention Center? And is there a possibility that some can do city and county work?

**A:** Prisoners that will be housed in the Rolling Plains Detention Center will be medium to minimum security. There will be no maximum-security prisoners. If allowed, work crews from the detention center may be used to work in the County, including cleaning and maintenance of cemeteries, work at the Courthouse, at the Library, on the county roads, at ball fields and at the parks. Vote FOR in the September 12th City and County election.

Paid for by progressive merchants and interested individuals for the growth of Haskell County, treasurer Loraine Johnson



**POSITIVE THINKING**—Through the "No Putdowns" studies, Haskell Elementary students learn about the impact of keeping a positive attitude in their relationships with other people. Fourth graders Kimie Hannsz, standing left, Brandon Wilson and Brittany Martinez, display the motto of the project.



**USING WORDS OF WISDOM**—Haskell Elementary third grade students talk about the thought-provoking messages they are learning through the WOW program. From the left are, Jordan Burson, Ryan Pierce, Austin Marshall, Tony Garcia and Miranda Johnson.

# Haskell schools implement new character building programs

As parents and students get settled into the routine of daily school life, the familiar voice of Mr. Lisle, Haskell Elementary principal, returns to the PA system to announce the daily WOW. WOW is a program that was implemented on both the primary and secondary campuses at Haskell CISD in the fall of 1999.

WOW stands for Words of Wisdom. Project Wisdom is a collection of thought-provoking messages that are broadcast over the PA system every morning on both campuses. These messages help to build "character muscles," reminding students to be responsible, trustworthy, courteous and caring human beings. They encourage students to think about the choices they make and the consequences of those choices.

Tara Myers and Colton Young, Haskell Elementary 5th grade

students said. "It gives us a choice in what to do or not to do, and it's cool to think about it." Meredith Harvey, another 5th grade student said, "It helps us to do the right thing and I like the way it always ends - Have a great day or not...the choice is yours." High school students Kyle Hunt and Heath McCulloch indicated that it helps them to "start our mornings off with a positive attitude."

In addition to the WOW program, Haskell Elementary is starting a new and exciting project called No Putdowns.

"We believe it will have an impact on our school and community. It is not enough to gain knowledge if we don't learn to use it properly," said Cindy McCulloch, Haskell Elementary counselor.

The goal of this ten-week campus wide project is to teach

children to recognize and understand the effects of putdowns. Children will develop strategies for reducing their own use of putdowns and

responding to others' putdowns without violence. Haskell Elementary School intends to be a "No Putdowns Zone."

## Rule Booster Club to meet Sept. 11

The Rule Booster Club met Mon., Aug. 21, with twenty-one members present. A committee was formed to look into several options for purchasing banners for the school. Brenda McRae was elected secretary. The club voted to sell t-shirts supporting the Rule Bobs and Ladycats.

The first scrimmage of the year was Thurs., Aug. 24 against Trent. After the scrimmage the Booster Club provided homemade ice cream for everyone in attendance.

The next meeting will be Mon., Sept. 11 at 7:00 p.m. in the school library. The High School football players will be introduced.

## Martin children graduate from Midwestern

Andy Martin, youth minister at West Side Baptist Church in Wichita Falls, teaches classes in psychology at Midwestern State University, where he is working on a Master's Degree in Psychology.

He is the son of Philip and Laela Martin of Haskell.

The couple's daughter, Katherine Martin, is a Dec. 1999 graduate of

Midwestern State University with a Bachelor's Degree in communication and public relations. She is program director for several radio stations in Wichita Falls and co-hosts a morning show on station KNIN. She also continues to do occasional spots for radio station KVRP in Haskell.

## Males are not immune to eating disorders

Many males in search of the perfect body are falling victim to eating disorders.

"Approximately 10 percent of patients diagnosed with an eating disorder are males," said Jana Rosenbaum, LMSW-ACP with the Baylor College of Medicine Eating Disorders Program in Houston.

Because most males are unlikely to seek help for this problem, the number of anorexics, bulimics and

binge eaters is probably much higher. Unlike female with eating disorders who turn to self-induced vomiting or laxative abuse, males will purge through excessive exercise.

Here are some other signs of male eating disorders.

- Extreme weight loss
- Social isolation
- Avoiding situations where food is the focus
- Visits to the bathroom after meals

Rosenbaum said a person with an eating disorder might also develop unusual rituals about where and how they eat.

## Births

Ariel Jordan Martinez was born at 4:09 p.m., Aug. 17 at Abilene Regional Hospital. She weighed 7 lbs., 3 oz., and was 19 1/4" long. Her parents are former Haskell

residents. Lolo and Teresa Martinez of Clyde.

Grandparents are Johnny and Lucy Diaz of Haskell, and Tony and Jobita Martinez of Paint Creek.

## Meet us at the Haskell Dairy Queen



Christian Owned and Christian Operated!

**WEDNESDAY CHURCH NIGHT SPECIAL**

4 Pc. Steak Finger Basket **\$1.99**



5-9 P.M. ONLY!

**Thursday Only!**  
Buy Any Taco Salad or Order of 3 Tacos Get **FREE** Medium Soft Drink

Senior Citizens get half price for all regular priced items all day every Tuesday.

Phone in Orders Welcome! Call 864-3732 and we will have it ready for you!

Breakfast served 9 a.m. to 11:00 a.m. Open 9 a.m. until 9 p.m. daily. FRI. HOME FOOTBALL GAMES OPEN TIL 10 P.M.

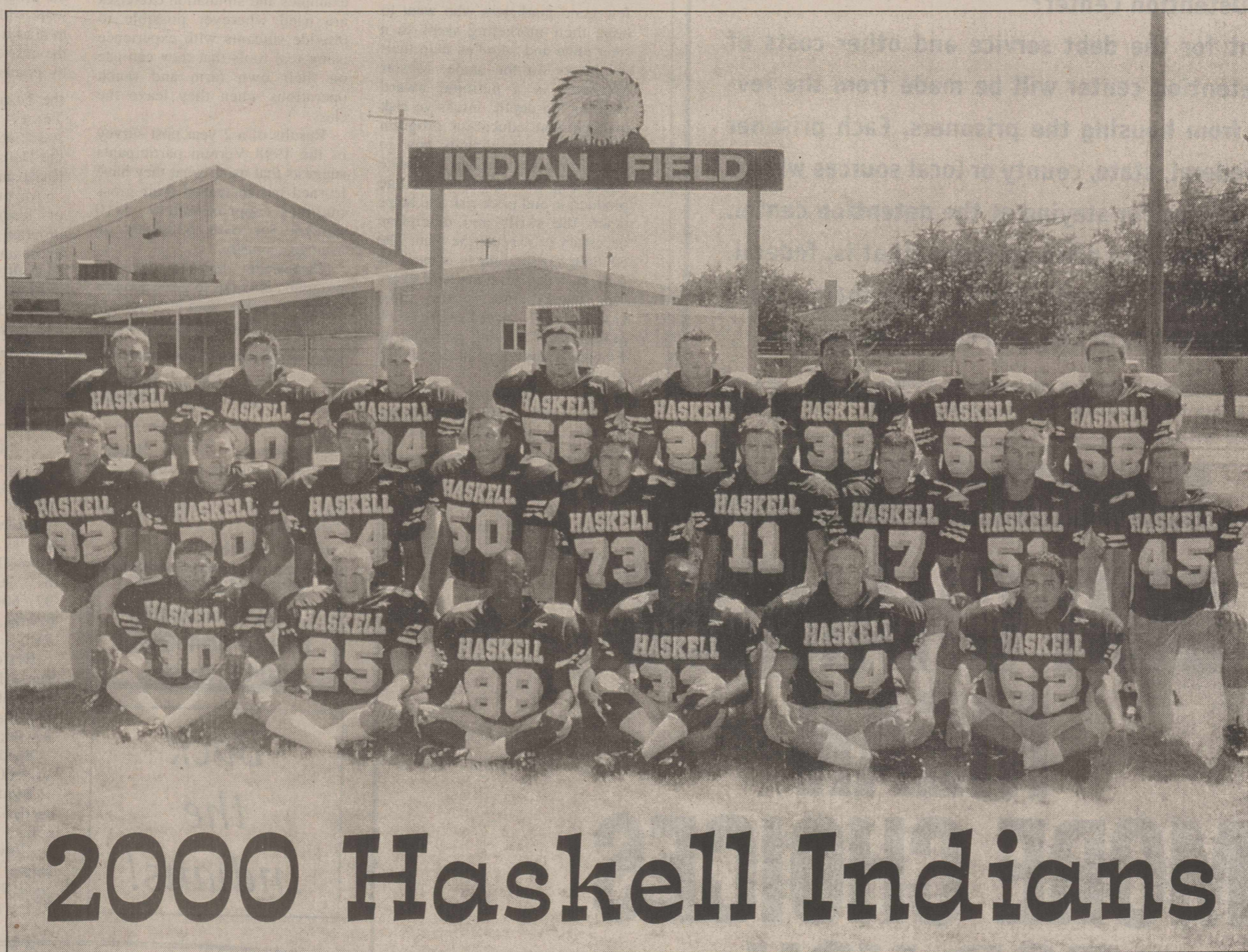
Try our **Catfish Basket** Every Day!  
**\$4.99** only



# Scalp 'em, Indians!

## HASKELL vs CISCO

### AT HASKELL - FRI., SEPT. 1<sup>ST</sup> - 7:30 P.M.



## 2000 Haskell Indians

Photo by KIS

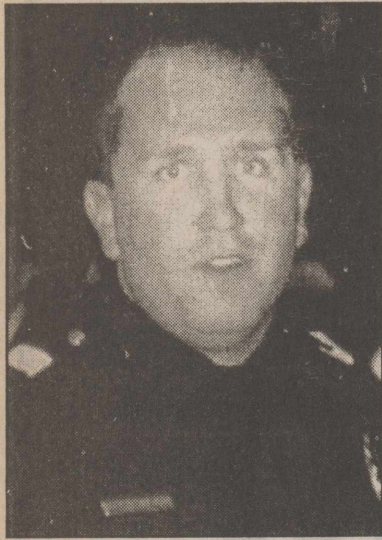
*This Page Sponsored By The Following Indian Boosters*

AMSCO Steel  
 Steele Machine  
 Larned Sales Center  
 Haskell Co-op Gin  
 Cecil's Country Meat Mkt. & Groc.  
 Personality-Slipper Shoppe  
 Fieldan Inn  
 Haskell Free Press  
 Jay's Tire Center  
 Brian Burgess State Farm Insurance  
 Haskell County Insurance Agency  
 Double A Drive Inn

First National Bank  
 Hanson Paint and Body  
 McGee's Lumber Yard  
 Medford Buick-Pontiac-GMC  
 Sport-About  
 Bill Wilson Motor Co.  
 Nanny Plumbing  
 Modern Way Food & Fuel  
 B & B Automotive  
 Video Mania  
 Richardson Case-IH-NAPA  
 Johnson KIS Photo

Burkett's Family Restaurant  
 Rice Springs Care Home  
 Conner Nursery & Floral  
 Martha's Beauty Center  
 Haskell Tire & Appliance  
 G & G Carpets  
 McFadden's Bar-B-Que & Grill  
 Haskell National Bank  
 Haskell County Gin  
 Haskell Livestock Auction  
 Matlock & Associates  
 Holden-McCauley Funeral Directors

## McFadden receives special commendation



BRANDON McFADDEN

Brandon McFadden, son of Arvil and Mary Ann McFadden of Haskell, recently participated in a 3-day manhunt in Lubbock that resulted in the arrest of a suspect sought on several charges, including a shooting incident.

An employee of the Lubbock Police Department, McFadden has received a special letter of commendation for this from his chief.

McFadden is a 1995 graduate of Haskell High School. He graduated from Texas Tech University in 1998 and from the Lubbock Police Academy in 1999. He and his wife, Stephanie, reside in Lubbock.

*This message is brought to you by the progressive merchants and concerned citizens of Haskell County.*

**Q: Where will the revenue come from for paying for the Rolling Plains Detention Center?**

**A: The payment for the debt service and other costs of running the detention center will be made from the revenue received from housing the prisoners. Each prisoner whether from federal, state, county or local sources will be charged a per-day fee for staying at the detention center. The entity that placed the prisoner there (that is, federal, state, county or local) will pay the per-day charge. Vote FOR in the September 12th City and County elections.**

Paid for by progressive merchants and interested individuals for the growth of Haskell County, treasurer Loraine Johnson

Effective September 30

# OUR CHANGES MEAN MORE CHOICES FOR YOU.

### How Will Our Changes Affect You?

We will no longer take bill payments or offer merchandise at our local offices, effective September 30. However, we will be using most of our offices for operational purposes so that we can continue to provide exceptional customer service and outage response. We have made many changes during the past year that will provide more choices for our customers in how they pay their bills and conduct business with WTU.

### Will This Change Affect Your Service?

**Absolutely not.** During this past year, we have added to the services available - like 24-hour-a-day, seven-day-a-week, toll-free access to our customer service center, 1-888-216-3523. We've added payment options, including the Internet. And, even though we're shifting around some of our resources, critical areas, such as responding to outages and other emergencies will continue to receive the same high priority they get today.

### Payment Options:

- **BY MAIL**, using the convenient return envelope enclosed with your bill.
- **THROUGH AUTOMATIC BANK DRAFTING.** Under DirectAdvantage, your payment is

automatically drafted on the bill's due date through your bank or other financial institution. To sign up for the program, call WTU Customer Service at 1-888-216-3523 and ask for an application form. Automatic drafting will begin 30 to 60 days after you've filed your application. You still get your billing statement - before the funds are withdrawn from your account. So you have plenty of time to check your bill before it's paid. But you don't pay the bill, your bank does. And that saves you time, checks and stamps.

- **WITH A CREDIT CARD OR CREDIT/DEBIT CARD.** ChoicePay, a third-party vendor, offers an automated bill payment system that provides a convenient, easy way for customers to pay their bills using most major credit/debit cards 24 hours a day, seven days a week. Call 1-877-414-2060 to use this service.

- **AT A WTU-AUTHORIZED PAY STATION.** Call WTU at 1-888-216-3523 for the location of the pay station nearest your home.

- **OVER THE INTERNET THROUGH TRANSPORT™.** Customers with Internet access can sign up at the TransPoint™ Web site of [www.transpoint.com](http://www.transpoint.com) to receive and pay their WTU bill electronically. Electronic bill payment is convenient, secure and there is no charge to the customer for this service.

**WTU**

West Texas Utilities Company

## Sagerton News

By Dorothy M. Clark

Here we are, looking at another new month. Where does the time go...and we think we live in such a slow-paced society. Soon we will have to include the local football games into our schedule, too. We hope the Rule Bobcats have a successful year and wish them well as they begin their new season. Sagerton's own Brady Standifer will be playing for the Bobcats this year. His parents are Lana and Bob Culpepper.

The Hobby Club entertained their husbands with "dinner out" last week with a visit to Saddle and Sirlain Restaurant in Anson. Those enjoying the outing included Alvin and Ev Ulmer, Frances Clark, Delbert and Joyce LeFevre, Mary Neinast, Wilma Teichelman, Dave and Jo Brown, Herbert and Christine Stremmel, J. C. and Margaret Wendeborn and David and

Leona Letz. The club ladies have begun work on their new quilt for the fall bazaar. The pattern is Millennium and is done in predominantly burgundy solids and prints.

Members of the Sagerton Methodist Church met Wed. night for their regular monthly supper and social. Pastor Tommy Wilson furnished the brisket for the meal and ladies of the congregation added the side dishes and desserts. Members present included Frances Clark, Delbert and Joyce LeFevre, Jack and Peggy Tabor, G. W. and Ophelia LeFevre and Alvin and Ev Ulmer.

We are also reminded that the community supper will not be held on the first Mon. night as usual due to the Labor Day holiday. The supper will be Sept. 11. Mark your calendars.

We live in a modern age of computers and www.com bit it was proven just last week that some of the old fashioned methods just can't be beat. Work has been on going since May to get some of the local cemeteries on the internet in order to help people locate deceased members of their respective families. Just when we thought the job had been completed, it was discovered that many dates on the Sagerton cemetery were incorrect. Sure enough...many were wrong and upon investigating it was discovered that when only a year date was sent down, it came up on the monitor as a month, day and year of 1905. It was found that there were many people listed as being born and also dying in the year 1905. After checking records that had been sent to the source for recording this information we found

that all the documents we had sent were correct and the only thing that we were able to determine was that there was a "glitch" (whatever that is) in the computer and the 1905 dates appeared from somewhere unknown. It has all been corrected and resubmitted and should be updated soon. We regret this and hope that not too many people had found this and were wondering about where this information had come from. For anyone that is interested, you may look up the following cemeteries in our area: Capron, Fairview and a single grave south of Sagerton, all in Haskell County and Old Glory, Hale family, Hooker and Rayner in Stonewall County. The information may be found by logging on to [usgenweb.org](http://usgenweb.org) or by calling your correspondent for further instructions. Happy surfing.

wide range of topics are covered, to enhance marketing/risk management skills. Case study examples and simulation exercises are used wherever possible to provide students with experience using real tools that they can use on their own farm and ranch operations when they leave the class.

## Instructors to teach Master Marketing program in Jan.

Results of a 2 year post survey of the 1998 Vernon participants suggests that using what they have learned has increased their gross incomes approximately 5-10 percent (or over \$32,900) on average, annually.

Statewide demand for the program continues to grow and this winter, it will be held in Vernon at the Texas Agricultural Research

and Extension Center. The first two-day session will begin Jan. 16-17. There is a registration fee for the program and a commitment to work with your county agent to try to start a marketing club. Most of the cost of the program is covered by grants from sponsors including the Texas Corn Producers Board, Texas Wheat Producers Association, Texas Farm Bureau, the Houston Livestock Show and Rodeo and Cotton Incorporated.

Anyone interested in attending or learning more about this program can get more information by contacting Brandon Anderson, Haskell County Extension Agent at (940) 864-2658 or Stan Bevers at (940) 552-9941. The deadline for registration is Jan. 5.

## Cattle Market Report

The market at the Haskell Livestock Auction was on a run of 988 head of cattle at its sale on Sat., Aug. 26, according to Gary Tate, reporter.

Packer cows \$2 lower.

**Tree Removals  
Lawn Mowing  
Drake 864-2183  
204 S. Ave. L**

*Back  
the  
Indians!*

Cows: fat, .36-.42; cutters, .38-.44; canners, .25-.32.

Bulls: bologna, .48-.53; feeder, .72-.79; utility .42-.46.

Steers: medium and large frame No. 1 200-300 lbs., 1.20-1.45; 300-400 lbs., 1.07-1.20; 400-500 lbs., .90-1.14; 500-600 lbs., .88-.97; 600-700 lbs., .84-.92; 700-800 lbs., .80-.87; 800-up lbs., .72-.78.

Heifers: medium and large frame No. 1 200-300 lbs., .90-1.15; 300-400 lbs., .87-.97; 400-500 lbs., .84-.94; 500-600 lbs., .82-.88; 600-up lbs., .65-.85.

Bred Heifers: medium frame, 475-600.

Bred Cows: young to middle aged, 625-700; aged or small, 550-650.

Cows with calves: medium frame No. 1 young and middle aged, 725-850; aged or small, 650-725.



## Get Connected...

- Local Internet Access
- Local Tech Support
- Free Software
- Multiple Free E-mail Accounts
- Free Home page
- No set-up fee
- Unlimited Access

\$19.95 per month or \$16.95 per month if paid annually

**West Texas Internet**

Locally Owned and Operated  
864.8124 • [www.westex.net](http://www.westex.net) • [adminstrator@westex.net](mailto:adminstrator@westex.net)  
Haskell









# Haskell Horse Club presents awards

Young riders competed Sat., Aug. 26 in barrels, flags and poles as the Haskell Horse Club closed the gate on another excellent year.

Club president Jim McTasney said, "I'm proud of the hard work and dedication displayed by each rider."

Results of the playday are as follows:

**Barrels**  
8 and under Novice: 1. Laramie Stewart 2. Sam Allen 3. Shana Moorehead

8 and under: 1. Courtney Conklin 2. Ashton Rutkowski 3. River McTasney

9-12: 1. Larissa Hise 2. Misty Hise 3. Samuel Bitner 4. Weston Rutkowski 5. Tara Ford 6. Alexa Roberts 7. Luke Terry

13-15: 1. Morgan Cox 2. Chris Hise 3. Brittany Rutkowski 4. Melissa Neal

16-19: 1. Jessica Fowler 2. Julie Fowler

**Flags**  
8 and under Novice: 1. Laramie Stewart 2. Sam Allen 3. Shana Moorehead  
8 and under: 1. Courtney Conklin 2. Ashton Rutkowski 3. River McTasney

9-12: 1. Weston Rutkowski 2. Tara Ford 3. Samuel Bitner 4. Alexa Roberts 5. Larissa Hise 6. Misty Hise 7. Luke Terry

13-15: 1. Chris Hise 2. Morgan Cox 3. Brittany Rutkowski 4. Melissa Neal

16-19: 1. Jessica Fowler 2. Julie Fowler

**Poles**  
8 and under Novice: 1. Sam Allen 2. Shana Moorehead

8 and under: 1. Courtney Conklin 2. Ashton Rutkowski 3. River McTasney

9-12: 1. Tara Ford 2. Weston Rutkowski 3. Samuel Bitner 4. Misty Hise 5. Larissa Hise 6. Alexa Roberts 7. Luke Terry

13-15: 1. Morgan Cox 2. Chris Hise 3. Brittany Rutkowski 4. Melissa Neal

16-19: 1. Julie Fowler 2. Jessica Fowler

**Barrels**  
8 and under Novice: 1. tie between Sam Allen and Shana Moorehead  
8 and under: 1. Ashton Rutkowski 2. tie between Kristina Bitner and Courtney Conklin 3.

River McTasney  
9-12: 1. tie between Weston Rutkowski and Larissa Hise 2. Samuel Bitner 3. Misty Hise 4. Alexa Roberts 5. Luke Terry

13-15: 1. Morgan Cox 2. Brittany Rutkowski 3. Chris Hise

16-19: 1. Jessica Fowler

**Flags**  
8 and under Novice: 1. Shana Moorehead 2. Sam Allen

8 and under: 1. Ashton Rutkowski 2. tie between Kristina Bitner and Courtney Conklin 4. River McTasney

9-12: 1. Weston Rutkowski 2. Samuel Bitner 3. Alexa Roberts 4. Misty Hise 5. Larissa Hise 6. Luke Terry

13-15: 1. Brittany Rutkowski 2. Morgan Cox 3. Chris Hise

16-19: 1. Jessica Fowler

**Poles**  
8 and under Novice: tie between Sam Allen and Shana Moorehead  
8 and under: 1. Ashton Rutkowski 2. Kristina Bitner 3. Courtney Conklin 4. River McTasney

9-12: 1. Weston Rutkowski 2. Samuel Bitner 3. Misty Hise 4. Larissa Hise 5. Alexa Roberts 6. Luke Terry

13-15: 1. Morgan Cox 2. Brittany Rutkowski 3. Chris Hise

16-19: 1. Julie Fowler

**Overall Standings**  
8 and under Novice: 1. Shana Moorehead 2. Sam Allen

8 and under: 1. Ashton Rutkowski 2. Kristina Bitner 3. River McTasney 4. Courtney Conklin

9-12: 1. Weston Rutkowski 2. Samuel Bitner 3. Misty Hise 4. Larissa Hise 5. Alexa Roberts 6. Luke Terry

13-15: 1. Morgan Cox 2. Brittany Rutkowski 3. Chris Hise

16-19: 1. Jessica Fowler 2. Julie Fowler

Prizes of silver breast collars were given to the top three riders in barrels from each age group. Riders were presented with reins for the top three riders in flags. The top three riders in poles received winter horse blankets. Other prizes, such as feed buckets, gear bags, halter

and lead ropes were presented to the riders placing in each discipline. Gift certificates were given to every rider who had an "overall standing," meaning they were a member of the horse club and had been present for at least three play days.

McTasney wrapped up the night with acknowledging the hard work displayed by this year's club officers and volunteers. The election of new officers followed. Glenda Gayle Rutkowski was elected club reporter. Tina Bitner will continue as club secretary with the assistance of Rutkowski. Howard Hopkins will extend his role of treasurer for another year. Jim McTasney was nominated for the position of club president, a position he will retain for another year.

The members of the Haskell Horse Club invite any interested riders to join next year. Contact Jim McTasney or Tina Bitner for more information.



## DOVE SEASON

**Opens Fri., Sept. 1<sup>st</sup>**  
**OPEN SUNDAY**  
**1 to 5**  
**OPEN MONDAY**  
**LABOR DAY til 2 P.M.**

**We have your hunting needs:**

- ✓Guns
- ✓Shotguns Shells
- ✓Game Vest
- ✓Reloading Supplies
- ✓Gun Cases
- ✓Cleaning Kits, etc.
- ✓Camouflage Apparel
- ✓Hunting Stools

*We Sell Hunting & Fishing Licenses*  
**Where Winners Shop**

Sport-About of Haskell



940-864-3891  
402 N. 1st

*We accept Discover, VISA, AMEX, MasterCard*

## Commissioner's Court report

During a special meeting Aug. 22, the Haskell County Commissioners' Court voted to allow Election Boxes 2, 3, and 5 to have a maximum of four workers: a presiding judge, alternate judge, and two clerks. Other boxes will have a maximum of three workers: a presiding judge, alternate judge and one clerk. This will be in effect for the Sept. 12, Special Bond Election.

The Court also voted to allow Judge David Davis to hire a replacement for Nick Ortiz, who resigned as janitor.

Early voting for the County Special Bond Election will continue at the County Courthouse until Sept. 8, from 8:00 a.m. to 5:00 p.m., with the exceptions of Labor Day Sept. 4, and Friday's early closing time of 4:00 p.m.

## City Council report

At the regular meeting of the Haskell City Council Mon., Aug. 28, it was announced that a new building will be constructed on the site of the old Henderson Book Store, which has been torn down. The new building will be leased to the Texas Department of Human Services.

After discussion during an executive budget workshop session, Tues. evening, the council anticipates the 1999-2000 tax rate to be around .3953 per \$100 valuation.

The annual convention of the Texas Municipal League will be held in Austin, Nov 15-18.

To Subscribe,  
Call 940-864-2686

*This message is brought to you by  
the progressive merchants and  
concerned citizens of Haskell County.*

**Q: What opportunities will be available for churches, towns and schools with regard to the Rolling Plains Detention Center.**

**A: There will be opportunities for churches to minister to the prisoners. The management company will allow faith-based organizations to have programs at the detention center and encourage these programs. Also, the management company encourages extension of education and skills training for the inmates. Vote FOR on September 12th for the progress of Haskell County.**

Paid for by progressive merchants and interested individuals for the growth of Haskell County, treasurer Loraine Johnson

An important message from your new telephone company

# We're Coming To Your Neighborhood. September 1.

Beginning in September, you'll see a new name around the neighborhood—VALOR Telecom. And as your new telephone company, you can count on us to put Texas first because it's our home too. Starting September 1, we're your telephone company. Here for you.

Beginning September 1, VALOR Telecom will become the new local telephone company for the following communities:

ABERNATHY ADRIAN AMHERST ANDREWS ANNONA ANTON ASPERMONT AVALON AVERY AVINGER BAGWELL BAIRD BALMORHEA BECKVILLE BEDIAS BENJAMIN BLACKWELL BLOOMING GROVE BOGATA BONWIER BOOKER BOVINA BOYS RANCH BROADDUS BRONSON BROWNFIELD BUFFALO BURKEVILLE BURLINGTON	BYNUM CACTUS CENTERVILLE CHANNING CHILTON CLARENDON CLARKSVILLE CLAUDE CLYDE COLMESNEIL COYANOSA CRAWFORD CROCKETT CROSBYTON CROSS PLAINS CUSHING DAINGERFIELD DALHART DARROUZETT DAWSON DEKALB DENVER CITY DEPORT DETROIT DIMITT DODSON DOUGLASSVILLE DUMAS ELKHART	ESTELLINE FABENS FAIRFIELD FAIRMOUNT FOLLETT FORSAN FORT HANCOCK FRANKEL CITY FRANKLIN FRIONA FRITCH FROST GARY GLEN ROSE GOREE GRAPELAND GROOM GROVETON HAPPY HART HARTLEY HASKELL HEDLEY HEMPHILL HIGGINS HILLTOP LAKES HOLLIDAY HOOKS HUBBARD	HUGHES SPRINGS HUNTINGTON HURLWOOD IDALOU IMPERIAL IOLA IRENE JOAQUIN KAMAY KARNACK KENNARD KNOX CITY LAKEVIEW LAMESA LEONA LEVELLAND LINDEN LIPSCOMB LITTLEFIELD LONE STAR LORAIN LORENZO LOTT LOVELADY MALONE MARIETTA MARQUEZ MAUD MAY	MEADOW MEGARGEL MEMPHIS MENTONE MERKEL McNARY MIAMI MILAM MILFORD MOBEETIE MORAN MORGAN MORTON MOUNT CALM MUNDAY NAPLES NAZARETH NEGLEY NEW BOSTON NEWTON NORMANGEE NORTH ZULCH OAKWOOD ORLA PANHANDLE PECOS PENNINGTON PERRYTON PETERSBURG	PINELAND POST PURDON PUTNAM RALLS REDWATER REKLAW RICHLAND RIESEL RISING STAR ROCHESTER ROGERS ROPESVILLE ROSEBUD RULE SANFORD SEAGRAVES SEYMOUR SHALLOWATER SIERRA BLANCA SIMMS SLOCUM SMYER SPADE SPEARMAN STRATFORD STREETMAN SUNDOWN SUNRAY	TAHOKA TENAHA TEXARKANA* THROCKMORTON TORNILLO TOYAH TRENT TRINITY TULIA UNCERTAIN VALENTINE VAN HORN VEGA WALNUT SPRINGS WEINERT WELLINGTON WHEELER WHITE DEER WHITEFACE WHITHARRAL WHITNEY WILDORADO WILSON WOLFFORTH ZAVALLA
---	--	--	---	---	---	---


\*Texarkana includes Texas and Arkansas customers

For Customer Service dial 811

For Repairs dial 611

Outside VALOR Telecom service area dial (toll free) 1-877-520-5220

www.valortelecom.com



Serving Texas With Pride™