

1/1/01
Baze Book Binding
514 W 7th St
Amarillo TX 79101-2212

AMARILLO--33333
AMARILLO TX 791
ZZXXXXXXXXXXXX

Shop for Back-to-School clothes tax free Aug. 4-6

The Haskell Free Press

VOL. 114-NO. 31, ©AUGUST 3, 2000

"The People's Choice"

10 PAGES-ONE SECTION-50 CENTS

Local backyard garden is butterfly haven

by Mary Kaigler

An ancient Indian legend says, "To make a wish come true, whisper it to a butterfly. Upon these wings it will be taken to Heaven and granted. For they are messengers of the Great Spirit."

In Melba Lowrance's backyard butterfly garden in Haskell, wishes can be sent on little wings any day of the week. And for Melba, the butterfly garden itself is a wish that's been granted for her, after spending several seasons in research and labor to make it a reality.

The idea of having a butterfly garden began several years ago. Sowing wild flower seeds in a bed alongside the street outside of the house, she hoped to entice the colorful creatures to come. But every time the plants emerged for the next three or four years, they were "weed-eaten" down. So, she moved her location to the alley, sowing new seeds of plants said to be loved by butterflies. Not to be

denied when somebody cut these down also, she told herself, "Okay, I'll move it into my own backyard where nobody will get to them except me." When her yard plants were nearly destroyed by the hail storm this year, she salvaged what she could and just started over. Today, it is a backyard haven where butterflies are indeed free to feed on sweet watermelon and fruit rinds, plus herbs, lamb's quarters,

tropical milkweed, lantana, passion vine and numerous wildflowers and plants.

But, it didn't happen overnight. After her dill seeds failed to come up the first two years, she began to consult books and has become expertly knowledgeable on the subject. When she and her husband, Jerry Lowrance, went to Fredericksburg early this spring,

Deborah Payne, owner of the Butterfly Ranch and Habitat, advised Melba, that in addition to all the sweet-nectar plants she had planted for the adult butterflies, she also needed to plant some larval food plants. Caterpillars are choosy eaters and the female butterfly may spend hours before laying eggs, selecting the specific type of food source for the newborn caterpillars to feed on. The tiny larvae begin to

eat their host environment immediately.

This summer the Lowrance's passion vine has been almost eaten up by caterpillars hatching from hundreds of pin-point size eggs laid on the vine by the beautiful burnt orange Gulf Fritillary butterflies which flit and dart around the back fence. On the vine, in every stage of development are eggs,

caterpillars of all sizes, chrysalises and emerging adult butterflies.

Also attracted by proper "host" plants this summer, hundreds of Spicebush Swallowtails and Painted Ladies have stopped to mate, lay eggs and feed. This fall Melba expects the Monarchs to come feed on her garden, as they head south for the winter.

Wanting very much for her little grandchildren to know and appreciate the beauties of nature, and strongly believing that our lifestyles today don't often afford the opportunity for children to learn about the earth and its wonders, Melba loves sharing her butterfly garden with them, and often reads to them about how we, along with all of God's creatures, are all a part of this world.

The growth cycle of the butterfly, from egg to the emergence of a full-fledged butterfly, takes only a few weeks. As the butterflies suck out the nectar for food, traveling from flower to flower, carrying pollen with them, they become a part of a close relationship that is one of nature's finest natural cycles. They play a part in the food chain: the larvae eating leaves and in turn being eaten by many birds, amphibians and reptiles.

Quoting Deborah Payne, Melba said, "The butterfly can teach us so much more than metamorphosis. They teach us each how important we are in God's perfect plan. If God spends this much time and effort and intricacy in making these beautiful butterflies, which only live a few weeks after emerging as an adult butterfly, think how much time God puts in on each and every one of us."

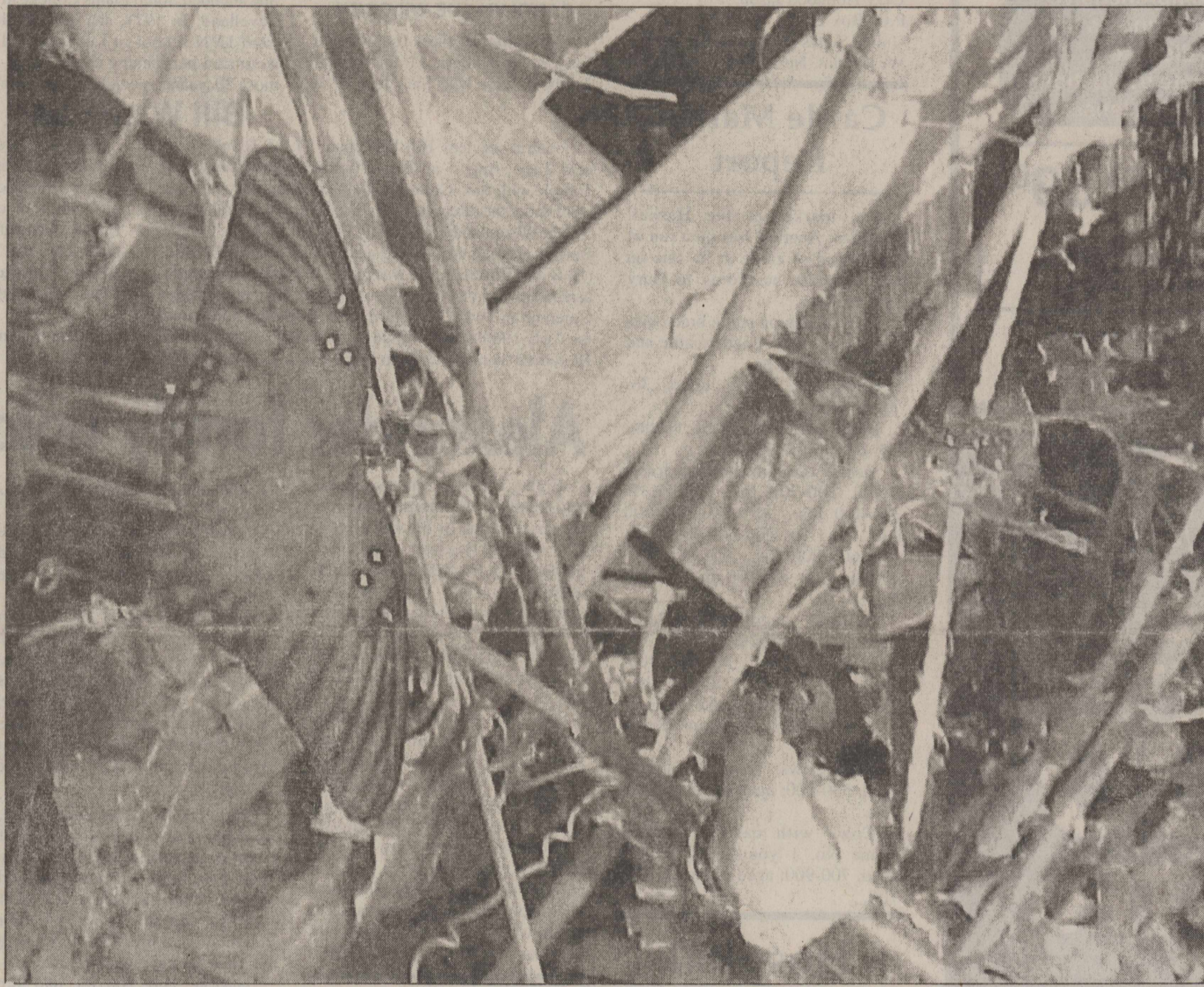
Although there are about 700 species of butterflies found in North America, with growing environmental awareness, people now realize that butterflies need to be conserved. Many species are endangered and others are less plentiful than they once were, even a few decades ago. It would be a great sorrow to lose creatures that are so beautiful and backyard gardens such as Melba's are helping to conserve them.

Melba puts out cracked corn for the birds, hangs hummingbird feeders and in addition to planting the herbs and flowers for the butterflies, she hangs butterfly feeders, and provides watermelon and fruit for them. When the melons and the fresh fruit play out, she soaks sponges in a mixture of five cups of water to one cup of sugar, and places them around the yard. Like the melon rinds, the sponges will be quickly covered with adult butterflies, sipping the sweet treat.

What began for Melba, several years ago, as an extension of her love for nature, she says the butterfly garden became her salvation two years ago, when she retired from her career at the bank to stay home and take care of her mother-in-law, the late Alice Lowrance. "I'm a people person," she said, "and after I retired from the daily public contact with people, I needed something more to fill that part of my life."

In creating a haven for the butterflies, the Lowrances have created a backyard "haven" for themselves as well; a peaceful, pleasant place in the outdoors, where they can relax and listen to the restful sounds of a large fountain, watch the ever-changing life cycles evolving in the grasses and plants, and let the cares of the day drain away.

A round stone plate set into the ground just inside the gate to Melba's backyard is etched with this welcome: "Come into my garden, so my flowers can meet you." She might also add, "and my butterflies, too."



NATURE UNFOLDING—An orange and black Gulf Fritillary butterfly hovers to lay eggs on a stem of the passion vine in Melba

Lowrance's back yard, while nearby, lower center, a chrysalis hangs, awaiting the right moment to open up with a new butterfly.

Time changed for Haskell football practice

All high school football players need to note a time change for Haskell High School football practice sessions that has been announced by the coaching staff.

Football practice will begin on Monday, Aug. 7 at 7:00 a.m.

This is a new time change made in order to coincide with faculty in-service.

Calendar

Social Security

A representative from the Social Security Administration will be in Haskell at the old City Hall annex, 305 N. 1st, Thurs., Aug. 3 at 9:30 a.m.

Rule High School registration set

Rule High School will hold registration in the Library at Rule ISD. Seniors will register Mon., Aug. 7 from 9 a.m. until 12 noon. Juniors will register Mon., Aug. 7 from 1 to 4 p.m. Sophomore registration will be held Tues., Aug. 8 from 9 a.m. until 12 noon. Freshmen will register Tues., Aug. 8 from 1 to 4 p.m.

Rule Booster Club

The Rule Booster Club will meet Sun., Aug. 6 at 10 p.m. in the teachers' lounge.

Society to meet

The Haskell County Historical & Genealogical Society will meet Aug. 7 in the First National Bank Community Room at 7 p.m. Joan Strickland will talk about the local library and the Friends of the Library organization.

Swimming party

The Sr. 4-H Club will have their first organizational meeting Wed., Aug. 9 at Grand Central Place from 6 to 7:30 p.m. A short meeting and election of officers will be followed by pizza, swimming and door prizes. The Jr. 4-H Club of Haskell is also invited to this meeting. Youth grades 3-12 are also invited to attend. Call the Extension Office 864-2658 by Aug. 8 if you plan to attend.

Index

Obituaries Page 2
Out of the Past Page 4
Menus Page 8
Classifieds Pages 8-9
Around Town Page 10

Commissioners discuss courthouse repairs

At the July 25 meeting of the Haskell County Commissioner's Court, Mike Jordan appeared before the court to present information on the state of the courthouse and library roofs. Judge David Davis and Jordan will write the specification for the opening of bids on the two projects.

Ginger Cook presented information on grant writing for

the Courthouse Presentation Project. The project will be quite involved and take a great deal of time. Commissioners will take up further discussion on this matter at a later date, due to being presently involved in several other matters that involve rather extensive attention and discussion.

The Court voted to continue collecting annually, the county

road and bridge fee of \$10.00.

Commissioners Tiffen Mayfield and Kenny Thompson were appointed to the Detention Facilities Committee.

In accord with an Interlocal Agreement, the Haskell County Commissioners assisted the city of Throckmorton in laying their emergency water line.

Judge Davis announced that a

public hearing will be held at 10:00 a.m., Mon., Aug. 28 at the Texas Farm Bureau Fleet Sales building in Waco for the purpose of hearing public comments on the proposed Brazos G Regional Water Plan. The group will accept written and oral comments at the hearing. The public may submit comments in writing separate from the hearing by addressing those comments to Brazos G Regional Water Planning Group, Box 7555, Waco, TX 76714-7555.

The deadline for receipt of written comments separate from the public hearing is Sept. 5.

A meeting on Cloud Seeding will be held in Abilene Aug. 4. For further information about the meeting, contact Judge Davis at the County Court.

The commissioners returned to the court meeting in the afternoon to work on the annual budget.

Fund to help Loyd family

Eddie Loyd of Haskell, who suffered a brain aneurism is now hospitalized at Lubbock Methodist Hospital.

Donations to assist his three boys may be made at Haskell National Bank.

Donations sought for Baty family

The Haskell County 4-H Council and 4-H Club Management Task Force is

accepting donations to help with expenses for the 4-H family of Justin Baty who live in Rochester.

Donations may be brought to the Extension Office between 8 a.m. - noon and 1 p.m. - 5 p.m. on weekdays. If possible, donations need to be made by 5:00 p.m. Fri. Aug. 18, so donations can be presented to Beverly and Willie Strickland at the annual Haskell County 4-H Awards Program Aug. 20.

Justin was an active member of the Rochester 4-H Club and showed swine at county and state shows as a 4-H member.

For more information, contact Brandon Anderson or Lou Gilly, County Extension Agents at (940) 864-2658. The mailing address for the Haskell County Extension Office is P. O. Box 300 Haskell, TX 79521-0300. The physical location is 101 South Ave. D in Haskell.

Bloodmobile to benefit Flora Pace

Meek Blood Center has scheduled a replacement blood drive to benefit Flora Pace Wed., Aug. 9 from 1:00 to 6:00 p.m. at Haskell Memorial Hospital. Flora Pace is a long-time resident of Haskell. Pace suffers from the blood disorder TTP, which will require her to receive periodic transfusions of blood platelets. According to Mary Schonertedt, sister of Pace, "blood

donors literally have saved her life. We want everyone to know how thankful and grateful we are for their continued support."

The drive is sponsored by the Haskell Rotary Club. Those who donated during the June drive will be eligible to donate.

For more information contact Meek Blood Center at 915-670-2799.

FOR NEWS ITEMS OR TO SUBSCRIBE, CALL 864-2686

Student in the News

Haskell native Marci Elmore earned academic honors for the spring 2000 semester at Howard Payne University, Brownwood. Elmore, a communication major, was named to the

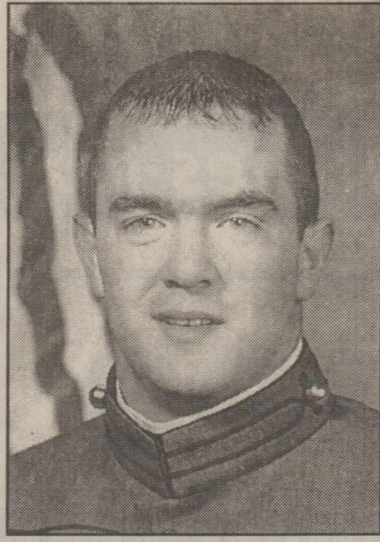
President's List. She is the daughter of W. O. and Melinda Elmore of Haskell. Students must accumulate a grade point average of 4.0 for the President's List.



GONZALES CARPET CLEANING
 Carpet Cleaning • Upholstery Cleaning
 Emergency Water Extraction • Expert Floor Care
 Waxing Polishing & Cleaning

Residential & Commercial
 (915) 773-2667 • (915) 773-2258

Robert Gonzales
 P.O. Box 929
 Stamford, TX 79553



JASON HOBGOOD

Hobgood recuperating

Jason Hobgood, second year cadet at West Point, is recuperating from an emergency appendectomy surgery last week at Keller Army Medical Hospital. In addition, an umbilical hernia was repaired. He is the son of Debbie and Bobby Hobgood of Haskell.

He will be convalescing for the next two or three weeks. Anyone wishing to write get-well greetings may do so at the following address: CDT Hobgood Jason P.O. Box 2674 United States Military Academy West Point, New York 10997

Cattle Market Report

The market at the Haskell Livestock Auction was on a run of 1,265 head of cattle at its sale on Sat., July 29, according to Gary Tate, reporter.

Fully steady on pairs, bred cows and packer cows. Feeder cattle and calves \$2-\$4 lower.

Cows: fat, .34-.42; cutters, .36-.46; canners, .25-.40.

Bulls: bologna, .46-.56; feeder, .55-.65; utility, .35-.46.

Steers: medium and large frame No. 1 200-300 lbs., 1.00-1.35; 300-400 lbs., .85-1.10; 400-500 lbs., .80-1.10; 500-600 lbs., .75-.95; 600-700 lbs., .75-.88; 700-800 lbs., .68-.84; 800-up lbs., .68-.82.

Heifers: medium and large frame No. 1 200-300 lbs., .95-1.10; 300-400 lbs., .80-1.07; 400-500 lbs., .75-.98; 500-600 lbs., .72-.92; 600-up lbs., .65-.84.

Bred Heifers: medium frame, 600-680.

Bred Cows: young to middle aged, 550-700; aged or small, 400-550.

Cows with calves: medium frame No. 1 young and middle aged, 700-900; aged or small, 550-700.

Hospital

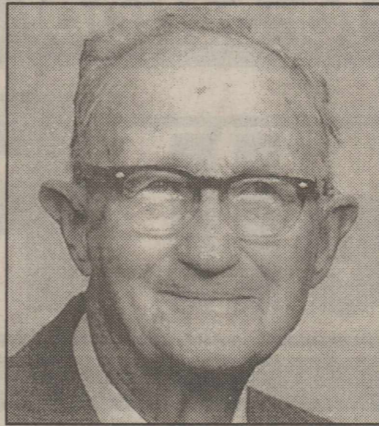
Admissions
 Angelica Sanchez, Munday

Dismissals
 Ilene Smart, Alonzo Galan,
 Michael Birkenfeld

All deadlines
 5 p.m.
 Monday

Obituaries

Miles Leonard Powell



MILES LEONARD POWELL

Funeral services for Miles Leonard Powell, 95, of Rule were held Fri., July 28 at First Baptist Church in Rule with Rev. Scott Hensley officiating. Burial was in Rule Cemetery under the direction of McCauley-Robison Funeral Directors.

Mr. Powell died Wed., July 26 at a Haskell hospital.

Born Feb. 1, 1905 in Stephenville, he married Lillian Mauldin Powell Feb. 5, 1938 in Anson. She preceded him in death July 30, 1996. He worked as a lintroom operator for 43 years for the Rule-Jayton Cotton Oil

Mill. He was an avid gardener and loved fishing. He was a member of First Baptist Church in Rule.

Survivors include three sons, Miles Owen Powell of Odessa, Irvin Powell of Phoenix, Ariz., and Eugene Rhoads of Rule; one daughter, Joyce Fern Callahan of Corinth, Miss.; and numerous grandchildren and great grandchildren.

Pallbearers were Malcolm Hertenberger, Melvin Fannin, J. N. Cornelius, Derrell Sorrells, and grandsons, Leonard Rhoads, Mike Rhoads and grandsons-in-law, Eddie Briles and Wes Kittley. PD. NOTICE

Carolyn Sue Dunlap Wilborn



CAROLYN SUE WILBORN

Willow Cemetery in Haskell with Rev. Kenneth Blair officiating. Services were under the direction of Holden-McCauley Funeral Directors.

Ms. Wilborn died Wed., July 26 at Baylor University Medical Center in Dallas while awaiting a liver transplant.

Born May 29, 1949 in Haskell, she was the fourth child of Gene and Thelma Dean Dunlap. She attended elementary schools in Haskell and Bandera, and high school at Estelline. She graduated from Spur in 1967. She attended South Plains College in Levelland. In 1971, she graduated from LVN school in Lubbock and continued her nursing career for almost 30 years, specializing in care

for the elderly. She was preceded in death by her father, Gene Dunlap in 1984 and one sister, Leta Faye Dunlap in 1947.

Survivors include her mother, Thelma Dunlap of Haskell; one daughter, Katie Zino of Israel; one son, Issac Zino of Israel; one brother, James 'Cookie' Dunlap and wife, Judy, of Haskell; two sisters, Shirley Dunlap Parker and husband, Jeff, of Haskell and Anita Dunlap of Germany; nieces, Shady Blue Dunlap of Germany, Shalin Parker White and Dewaine of Midland; nephew, Craig Dunlap of Memphis, Texas; aunts, uncles, cousins and many friends; and her best friends her dogs, Yaman and Momma Dawg and her cat Keisha. PD. NOTICE

Bill Wiseman

Funeral services for Bill Wiseman, 77, of Temple were held Tues., Aug. 1 at Harper-Talasek Funeral Home in Temple with Rev. Connolly Dugger officiating. Services were under the direction of Harper-Talasek Funeral Home.

Mr. Wiseman died Fri., July 28 at his home in Temple. Born in Haskell, he was the son of W. H. and Willie Alice (Dawson) Wiseman. He was reared in Haskell and graduated from Haskell High School in 1940. He married Helen Coleman in 1941. They farmed in Haskell County until the early 1960's, later moving to Temple in August 1967. He retired from Delta Centrifugal Casting Corp. in 1963.

He was preceded in death by his wife, Helen; his son, Billy; and son-in-law, Terry Trippet.

Survivors include three daughters, Kay Cheatham and husband, Ken, of Houston, Debby Trippet of Dallas and Lynne Harris and husband, Bill, of Salado; one daughter-in-law, Jan Wiseman of Temple; one sister, Emma Bland of Haskell; one brother, Woodrow Wiseman of Mass.; 10 grandchildren and 2 great grandchildren.

Memorials may be made to Friends of the Library in Haskell. PD. NOTICE

Alexander family holds reunion

Eighty relatives and two guests registered for the annual reunion of the descendants of the late George and Harriet (Lovell) Alexander, pioneers of Haskell County. The reunion started years ago to commemorate George Alexander's birthday and was held in the Donnie Portwood building and pavilion in Seymour July 22-23 this year.

The two day event was filled with a variety of activities, including washer pitching, swimming, fishing, watermelon eating, visiting and story telling about the "good ole days."

Organizers were Troy Wayne Blakely and his wife, Jo, of Micanopy, Florida; Thomas Alexander of San Antonio and his nephew, Terry Alexander of Munday; and Martha and Bill

Maupin and their family of Odessa.

Andy Sanders and J. W. Alexander were auctioneers for the auction of donated crafts and antique items to help defray the costs of the reunion.

Kenneth Sanders of Weinert brought his dad, Eddie Sanders, to Seymour to visit with all the relatives on Saturday. Eddie was the oldest one at the reunion and shared memories of his grandparents, Richard Scott Alexander and Minerva Jane Alexander.

Melba Kim of Phoenix, Ariz., youngest and only living child of George and Harriet Alexander, also shared memories of her childhood and life. Then children of the other siblings shared stories of their childhood and life. This was a very fun time for everyone present.

George and Harriet had ten children, nine of them survived to adulthood. Descendants of their oldest child, Minerva Touchstone, attending the reunion were two grandsons, Troy Blakely and Jo of Micanopy, Fla. and Russell Touchstone and his granddaughter, Halli, of Helotes. Descendants of

Richard Alexander were Frances and Bill Babbitt of Gorman and Larry and Edith Ross of Midland.

Descendants of Washington Alexander were Herchell and Merle Alexander of Weinert, their children Danny and Pat Owens of Wichita Falls and Terry and Dianne Alexander and their daughters Briana and Brittany Alexander of Goree, Thomas Alexander of San Antonio and his son, Randy and Linda, Josiah, Sarah, Jordan, Justin and Jimmy of San Antonio and his daughter, Lisa and Briana Beck of Dacula, Georgia, Roy and Muri

Alexander of Lubbock and Carl and Evelyn Ellington of Muleshoe.

Descendants of Nellie (Alexander) Rinehart were Joy Kimbell and her friend, Jerry Bradford, of Burkburnett and June Parr of Phoenix, Ariz.

Sallie (Alexander) Sanders' descendants present were Lona Mae Phelps, her daughter and husband, Elaine and Kenneth Campbell and their daughter Karen Mitchell, all of Haskell, Travis and Wilma Sanders and their son, Travis Glenn and Pam Sanders of Coleman, Andy Sanders of Cross Plains, Martha and Bill Maupin and their children, William Mark, Denise and Mark Alexander Maupin, Susan and Hank Kim, Kris and Shawn Ray and Loretta Maupin, all of Odessa and Jacky, Sandra, Rex and Jaelyn Sanders of Aledo.

Lola Mae Cowley's descendants present were Bill and Pauline Burnswick of Eagle River, Wis., Wanda and Lloyd Cohee of Casper, Wyoming, Gloria Shepherd and Angel Grothe of Columbus, Georgia, Jimmy and Sharon, Christina, Robert and Michael Grothe of Paradise, Rocky and Misti Cowley and Hunter of Luaders, Dale, Shannon, Jerry and Mary Ann Pittman, all of Wichita Falls.

Descendants of J. T. Alexander were J. W. and Wanda Alexander of Anna and Bill and Charlene Harman of Eagle Lake.

Descendants of Albert Alexander were his daughter Joan Slayman of Phoenix, Ariz. and her daughter and family, Rodie, husband and Natalie Reichard of Flagstaff, Ariz.

Melba Kim, the baby of the family, was the only one present from her family.



HEADS OR TAILS WESTERN WEAR
 707 S. Ave. E Haskell 834-3320

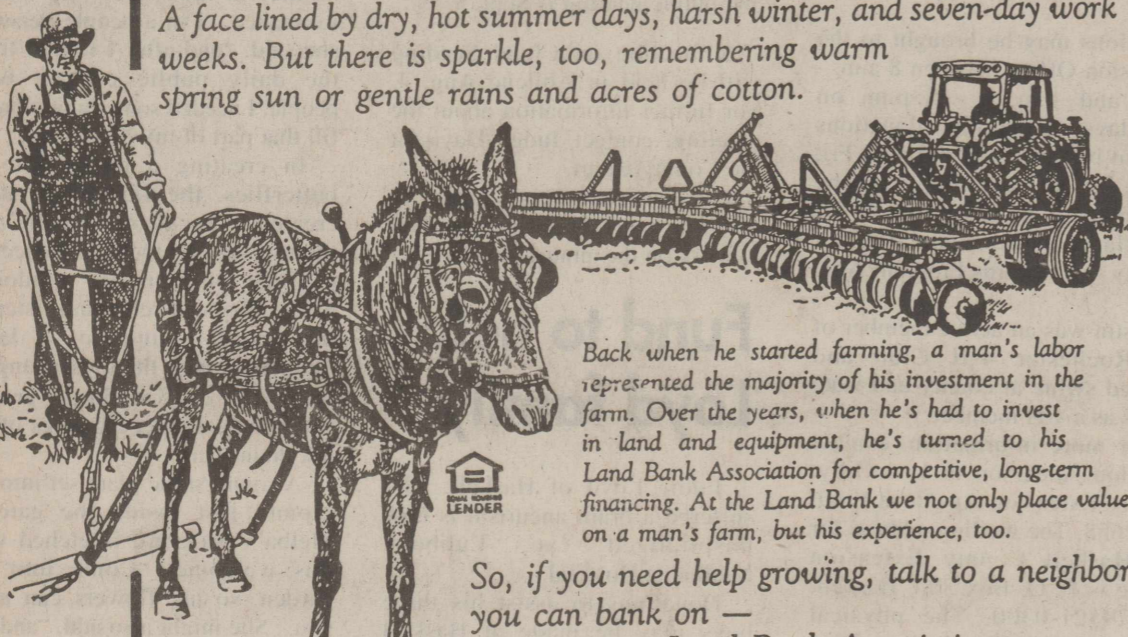
NO SALES TAX
 FRI., AUG. 4TH OR SAT. AUG. 5TH

2000 20TH
 Anniversary Sale continues!!

20% OFF
 Everything in the Store
 Including Sale Items!

Experience — We consider it money in the bank.

A face lined by dry, hot summer days, harsh winter, and seven-day work weeks. But there is sparkle, too, remembering warm spring sun or gentle rains and acres of cotton.



Back when he started farming, a man's labor represented the majority of his investment in the farm. Over the years, when he's had to invest in land and equipment, he's turned to his Land Bank Association for competitive, long-term financing. At the Land Bank we not only place value on a man's farm, but his experience, too.

So, if you need help growing, talk to a neighbor you can bank on — your Land Bank Association.

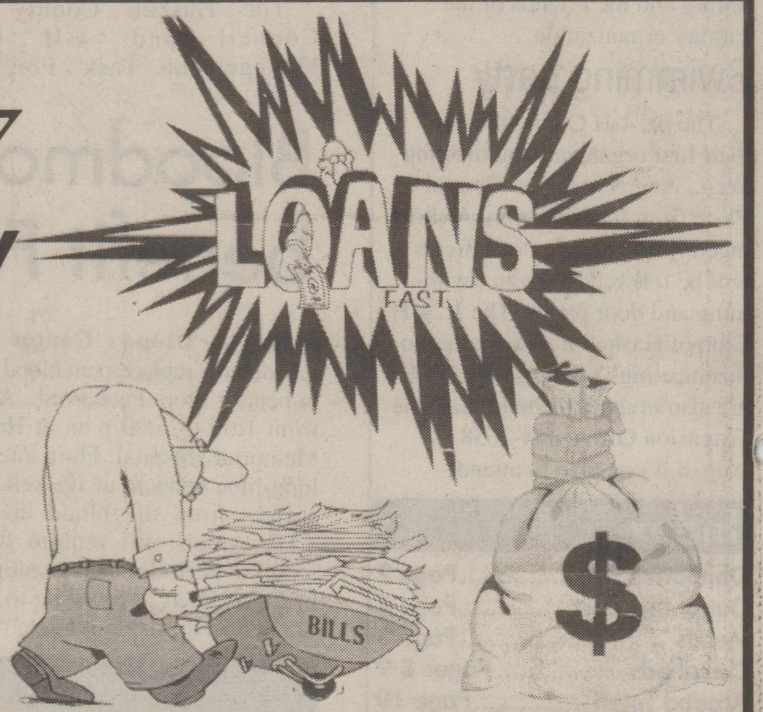
Federal Land Bank Association of Texas
 Haskell Office • Dale Bullinger — Pres. • Phone 864-8565

To Subscribe,
 Call 940-864-2686

UP TO \$467⁹⁷
SECURITY FINANCE

112 N. Swenson
 Stamford, TX 79553-4116
 Phone Applications Welcome
915-773-3081

*Subject to Our Usual Credit Policy.





LISA CRUTCHER - MICHAEL HESTER

Crutcher, Hester to wed in Plains

Lisa Crutcher and Michael Hester, both of Plains, would like to announce their engagement and approaching marriage.

The bride-elect is employed by the Texas Boll Weevil Eradication Foundation as the Zone Secretary. She is the daughter of Dennis and Melba Crutcher of Plains.

The prospective bridegroom is employed by the Texas Boll Weevil Foundation as the Assistant Zone Supervisor. He is the son of Billy Wayne and Sheila Hester of Rochester.

An August 19 wedding is planned at the First Baptist Church of Plains.



BRIDGETT SILVAS - JOHN MARK LOPEZ

Silvas, Lopez plan August 19th wedding

Bridgett Renae Silvas, daughter of Mr. and Mrs. Johnny Silvas of Haskell and John Mark Lopez, son of Mr. and Mrs. Manuel Gonzales of Rochester, have announced their engagement to be married.

A wedding is planned for Aug. 19, at the New Covenant Foursquare Church in Haskell.

The bride-elect is a graduate of Paint Creek High School.

The prospective bridegroom graduated from Rochester High School and has attended South Plains College. He will leave for the United States Marine Corp. Oct. 4. He is currently employed by A & B Machinery in Austin.

Lackey family holds reunion

The Lackey family reunion was held at the Haskell Civic Center, Saturday and Sunday, July 22-23.

Approximately 100 to 120 family members from as far away as Atlanta, Georgia, New Mexico, Mississippi and Arkansas, and some who had never attended before, enjoyed visiting, food, games, an auction and entertainment by each family.

Wanda Cheek of Stamford was this year's president. Plans are already being made for next year's reunion which will be held July 28-29. Jan Perkins of Grand Prairie will be president of next year's reunion.

FCE Council meets

Haskell County FCE Council met at the Extension Office July 17. Nine members were present.

Betty Sanders, council chairman, opened the meeting. Lena Tidwell read "Hugging" for the recreation. Flossie Bates and Kelly Lemons, Stephens County Extension agent, were guests.

Officers for the new year are: Council Chairman, Lennie Blankenship; Vice Chairman, Dolores Medford; Secretary, Joetta Burnett; Treasurer, Jeri Burke; TAFCE Chairman, Jane Smith; and Vice TAFCE Chairman, Lena Tidwell. The new year begins in October.

Lou Gilly gave a report on 4-H activities and winners at State.

Haskell County is invited to

participate in the Jones County Fair Oct. 13-14.

The Council gave a donation to the Haskell County Library.

Hostess was the Homespun Club.

**Don't Miss Out
Subscribe Today!
864-2686
The Haskell Free Press**

**Remember
TAX FREE HOLIDAY
Aug. 4, 5 & 6**

**New Sportswear Groups
25% OFF
Including Pedal Pushers**

**1/2 Price Sale
All**

**Spring & Summer Sale Shoes
Reduced 50%**

**Spring & Summer Sale Clothes
1/2 OFF**

Personality-Slipper Shoppe

940/864-2501 • 864-3051

South Side of Square

Haskell, Texas

**Burger &
Cream Pie
Shake**

**No. 1 or No. 2 Sonic[®] Burger
with any Cream Pie Shake***

*Any regular size shake

SONIC
America's
Drive-In.

Limited Time Only
\$2.49
PLUS TAX

No Waiting
Call In Orders

864-8533

Offer good August 1-31, 2000. Not valid with any other offer. Only at participating Drive-Ins.
©2000 America's Drive-In Trust. Sonic, America's Drive-In and the Double Delta design are trademarks of America's Drive-In Trust.

Like what you're reading?
Call 940-864-2686
to Subscribe.

BACK TO SCHOOL SALE

We have Back-to School lists for
*Haskell *Rochester *Rule
*Paint Creek *Aspermont



**5 cents a Minute
Pre-paid Phone Cards**
Great for College Students!

Westclox Digital
Alarm Clocks **\$8.99**

Blue, Green or Purple



Wide or College ruled
Filler Paper **59¢**

200 count



Asst. 96 ct. or 20 ct. Red or Green
Construction Paper **99¢**

Your Choice



Bic 10 pack
Stick Pens **75¢**

Assorted Types

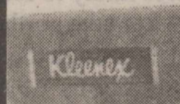
Thermos
Lunch Kit **\$5.00**

Assorted Designs



Kleenex
Facial Tissue **99¢**

175 count



70 Pages
Theme Books **3/\$1**

Limit 6

Elmer's
Glue **49¢**

4 oz.



Crayola
Crayons **79¢**

16 count



Mead D'Nealian
Practice Tablet **\$1.29**

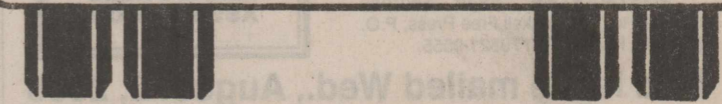
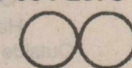
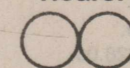
40 sheets

Quantities are limited, so shop early
for best selection!
We reserve the right to limit quantity.

Prices Good Aug. 3, 4 & 5

THE DRUG STORE

Hours: 8-6 M-F; 8-5 Sat. • 940-864-2673



OPINION



HIGHLIGHTS

By Ed Sterling
TEXAS PRESS ASSOCIATION

AUSTIN — Texas Comptroller Carole Keeton Rylander last week reminded Texans that the second annual sales tax holiday is Aug. 4-6.

Rylander urged families to take advantage of this well-deserved tax break.

"I am happy to announce that I was able to expand the holiday to include layaway items this year," she said.

Eligible clothes and shoes placed in layaway during the sales tax holiday weekend may be taken out at a later date tax-free.

"This will allow hard-working Texas families with limited budgets to pay for their purchases a little bit at a time and still receive the tax break," she said.

During the sales tax holiday, most clothing and footwear priced at less than \$100 is exempt from state and local sales taxes. Though the holiday is timed to help families outfit their children to go back to school, the tax break isn't limited to children's wear.

The tax exemption applies to school uniforms, work uniforms, pajamas, robes and slippers, socks, underwear, and jackets and sweaters, but it does not apply to accessories, jewelry and watches, or items that are carried, such as wallets, hand-bags, briefcases and backpacks.

Rylander said she will recommend to the Texas Legislature, which convenes in January, that the sales tax holiday be extended for a longer period of time and cover more items, such as backpacks and fabric, buttons and zippers.

During the first sales tax holiday last year, Texas families spent more than \$400 million on tax-exempt clothing and shoes, saving more than \$32 million in sales taxes. This year, the savings are expected to add up to \$37 million.

This year, local communities had a chance to opt out of the sales tax holiday, if they notified the comptroller's office by March 31. Only one taxing jurisdiction, the city of Sunset Valley, south of Austin, opted out.

Retailers and shoppers who have questions about the sales tax holiday may contact the comptroller's tax assistance line at 1-800-252-5555.

It Still Pays to Shop Around
If Texans would just take a few minutes to compare auto insurance rates, company by company, they

could save a lot of money. In a recent survey that included 6,171 Texas residents, Progressive Auto Insurance found that respondents could have paid up to \$558 less every six months for coverage from a provider other than their present provider.

The Texas data was among that collected from some 90,000 consumers across the nation who called Progressive or visited the company's web site between Jan. 1 and June 30 and received a "premium variance" rate comparison for Progressive and three other leading insurers.

"It's simply amazing what people will do to save a few cents here or there, but they won't even consider the savings on automobile insurance," said Willy Graves, president of Progressive County Mutual of Texas.

Water Quality Standards Set
The Texas Natural Resource Conservation Commission last week adopted updated standards for surface water in Texas.

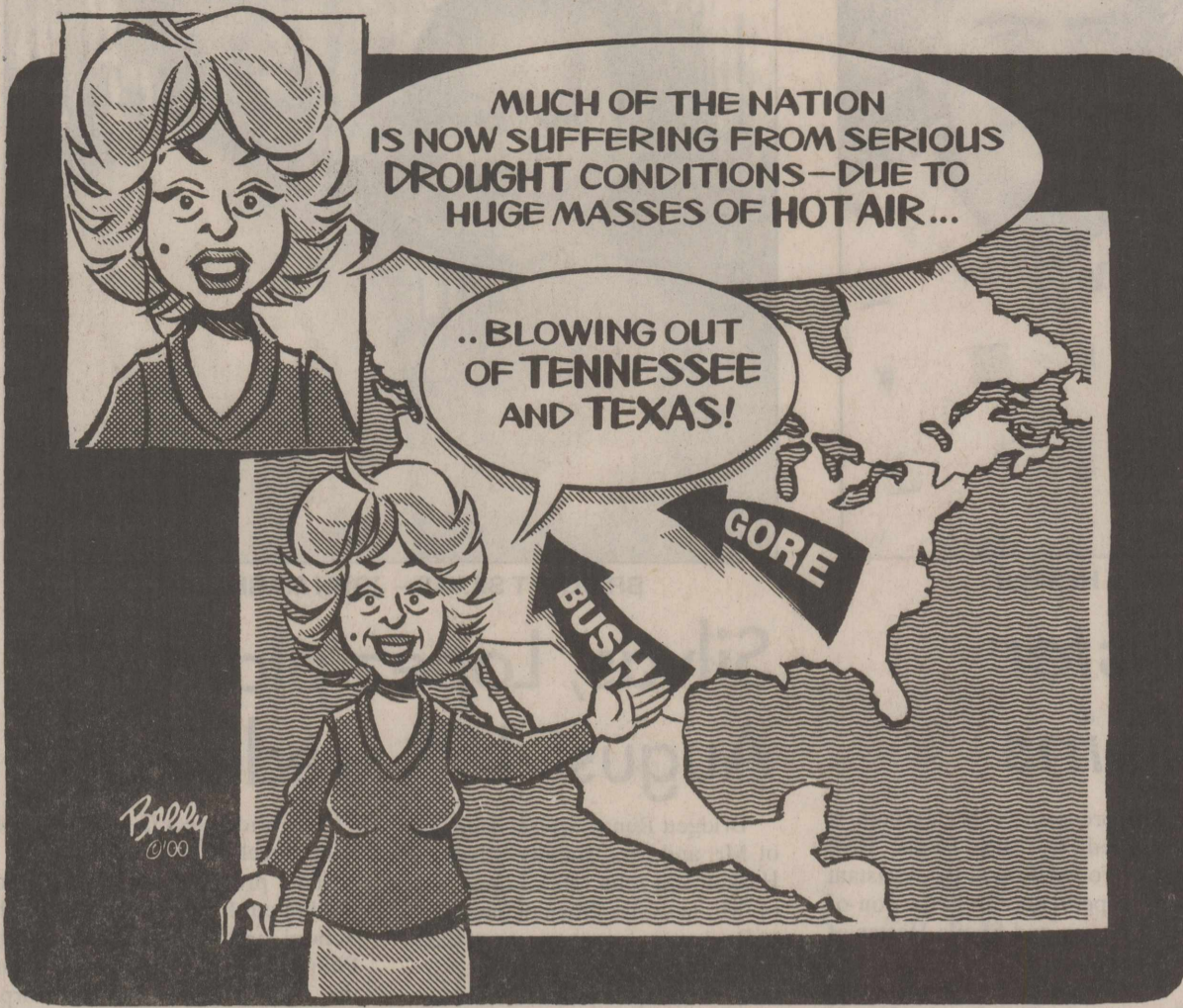
The standards are intended to protect drinking water supplies, aquatic life, recreation and other uses.

"Taken on the whole, these updated standards are stronger and more protective of Texas waters," said TNRC Chairman Robert J. Huston.

However, Huston added, "Where unrealistic standards for specific waters were previously presumed, we've adopted changes which are based on what good science tells us."

Other Highlights
• The Texas Department of Health has launched efforts to detect and monitor the West Nile virus, which can be transmitted by mosquito species likely to feed on birds migrating from the northeastern United States through the Gulf Coast. Mild infections of mosquito-borne encephalitis may occur with only a headache. More severe infections may include headache, high fever, neck stiffness, disorientation, coma and tremors.

• Texas Parks and Wildlife will conduct a series of public meetings in August to gather input on proposed changes to its white-tailed deer Trap, Transport and Transplant permit program. The agency is expected to make a final decision Aug. 31 in Austin.



From Out of the Past

From the files of The Haskell Free Press

10 Years Ago August 2, 1990

Thomas Wayne Davis of Haskell and Rebecca Doris Ruiz of Weinert were among 16 new correctional officers receiving certification Mon. evening in the Western Texas College Fine Arts Theatre.

Four Haskell Webelos Scouts returned recently from Camp Tonkawa after attending Webelos I camp. Attending camp were Caleb Brown, Jake Roysdon, Ethan Brown and Randy Cass.

Bill Steele Jr. of the Haskell Volunteer Fire Department attended the 61st annual Texas Firemen's Training School held on the Texas A&M University campus.

20 Years Ago July 31, 1980

Rex Felker has retired as the Haskell Chamber of Commerce manager after serving as manager of the local chapter on two occasions for a total of eighteen years.

James Edward Cloud, 1980 graduate of Rule High School, has been awarded a \$1000 Clark Foundation Scholarship by the Texas Interscholastic League Foundation.

Eight Haskell ministers were blood donors last week when the Red River Regional Bloodmobile was in Haskell. Ministers donating were: Kenneth Blair, Trinity Baptist; Harvey Faltisek, Trinity Lutheran; Ernest Flanders, Independent Baptist; Dusty Garrison, First Christian; William Hodge, Church of God in Christ; Martin Jacobsen, First Presbyterian; Charles Kardokus, Four Square; and Mike McKinney, First Baptist.

30 Years Ago July 30, 1970

Six Haskell High School twirlers and drum major completed a two-weeks youth band camp at Texas Tech University. Attending from Haskell were Lynda Lane, Susie McAdoo, Bonnie Adkins, Linda Hartsfield, Lugene Lane, Karen Felker and Denise Roberson.

The Haskell Garden Club has selected four yards of the month. The judges selected the yards of Mr. and Mrs. Jessie Dean, Dr. and Mrs. William Kemp, Mr and Mrs. Raymond Davis and Mr. and Mrs. W. I. Scoggins.

Joan Caddell, a Weinert 4-H member, took top honors in the Senior Division in the Haskell County 4-H Dress Revue. Carol Dudensing was the first place winner in the Junior Division of the revue.

40 Years Ago August 4, 1960

Mr. and Mrs. Shelly Royall and daughter Christy returned from a vacation trip to Boulder, Colorado, New Mexico and Cheyenne, Wyoming. Royall, special agent for Farm Bureau Life Insurance, won the trip as a result of his insurance sales over a period of several months.

The Palomar Motel has been purchased by Mr. and Mrs. J. E. Haynes of Plainview. Management of the Palomar will be in the hands of Mr. and Mrs. C. H. Hastings, who have moved here from Plainview. Mrs. Hastings is the mother of Mr. Haynes.

Bradberry's Super Save Market is scheduled to open the last of the week. The business is located just south of the Haskell National Bank at the corner of South First Street and Avenue F.

50 Years Ago August 3, 1950

A group of fifteen men of the

Presbyterian Church met last week in the home of Mr. and Mrs. Ira Hester and organized a Presbyterian Men's Club. Ira Hester was elected president.

The Commissioners Court awarded a contract for roofing the courthouse to Lydick-Hooks Roofing Company of Abilene, at a cost of \$2,542.

The Lions Club heard an interesting report from Boy Scouts who attended the World Jamboree of Scouting in Valley Forge, Penn. Haskell County Scouts attending the Jamboree were Sammie Vaughter, Ernest Strain, Abe Turner and Temple Williams, all of Haskell; David Counts of Rule; Wallace Cox, Paul Gothard, John Grindstaff, all of O'Brien.

90 Years Ago July 30, 1910

The old Methodist Church building has been torn down and much of the material will go into a new parsonage that is under construction on the lot west of the new church building.

Gus Grusendorf took the train here Tuesday for a trip to Central Texas.

J. T. Cooke of Clarksville, Tenn. visited in Haskell recently. Cooke was here in 1892 and helped to build the Baptist Church.

Mr. and Mrs. W. B. Alexander are spending a week with Mr. and Mrs. Roy Shook on the Shook Ranch in northwest Haskell County.

Ask the AG

By John Cornyn
Attorney General

Q: I have custody of my two children and live in Texas. My ex-wife now lives out of state. How will you handle my child support case now that it involves two states?

A: The Office of the Attorney General is responsible for collecting court-ordered child support in Texas. When one of the parents in a child support case lives in another state, we work with that state to collect child support.

In the past, collecting child support orders across state lines was difficult. Laws varied from state to state. A federal law called the Uniform Interstate Family Support Act (UIFSA) now ensures that state lines do not interfere with collecting child support.

Court Orders

If you do not have a court order for child support, the Office of the Attorney General can help you establish one. Because you live in Texas, we can establish this order without the help of your ex-wife's state of residence. However, if we do need assistance from that state, UIFSA enables us to work with that state to establish the order.

UIFSA allows there to be only one active child support order per case. If court orders have been established in more than one state, UIFSA has rules to determine which order will be the controlling order that governs the case.

Enforcement

States now have more power to collect payments from non-custodial parents who live in other states. Parents can now enforce court orders without the assistance of the non-custodial parent's state of residence.

Often, child support can be collected through a withholding order. The withholding order can require that child support payments be deducted directly from the non-custodial parent's paycheck by his or her employer.

In some cases, it is better to work with the authorities in the state where the non-custodial parent lives. That state can register the court order for enforcement, but cannot make any changes to the terms of the order. The authorities from that state do, however, have the right to pursue collection of child support through enforcement hearings, license suspension, and incarceration of the non-custodial parent, if necessary.

Modifications

Often, changes in a non-custodial parent's circumstances, such as job promotions, unemployment, or disability, can affect that parent's ability to meet his or her child support obligations. These changes may require a modification of the child support order.

UIFSA sets the ground rules for modification based on the state that issued the order, the states where the parties reside, and the controlling court order.

If either of the parents or the children still live in the state that issued the controlling order, that state may order the modifications. However, if none of the parties live in the state where the controlling order was issued, the court order must be registered in the state where the parent who is not seeking modification lives.

In addition, both parents can agree in writing to allow one of the states involved to modify the order and take control of the case.

Once a modification has been approved, the new amount of support must be collected by all states involved in the case.

For more information

To find out more about services offered by the Attorney General's Child Support Division, visit the agency Web site at www.oag.state.tx.us.

All deadlines are 5 p.m. Monday.

The Haskell Free Press

Established January 1, 1886
PUBLISHED EVERY THURSDAY
401 S. First St
P. O. BOX 555 HASKELL, TEXAS 79521

John McDougal Publisher
Lisa Shaw Business Manager
Mary Kaigler Editor
Doris McDougal Production
Bill Blankenship Staff Photographer

Periodical Paid Haskell, Texas 79521
(USPS 237-040)

SUBSCRIPTION RATES:

Haskell County, one year, \$20.00.
Outside of Haskell County, one year, \$28.00.

NOTICE TO PUBLIC—Any erroneous reflection upon the character, reputation or standing of any firm, individual or corporation will be gladly corrected upon being called to the attention of the publisher.
POSTMASTER: Send address changes to The Haskell Free Press, P.O. Box 555, Haskell, TX. 79521-0555.



This issue mailed Wed., August 2, 2000

Keeping an Eye on Texas

Immunize Your Children for Back to School

Don't forget to add immunizations to your child's back-to-school list. Students must be up-to-date on state-required vaccinations before the first day of school. Required vaccinations for school-age children include:

- Chicken Pox
- Hepatitis B
- Meningitis
- Hepatitis A (only children in 32 border counties)
- Polio
- DPT (Diphtheria, Whooping Cough and Tetanus)
- Tuberculosis skin test
- MMR (Measles, Mumps and Rubella)

For specific immunization information, check with your doctor or go to: www.tdh.state.tx.us/immunize/schmain.htm or call 1-800-252-9152

SOURCES: Carole Keeton Rylander, Texas Comptroller of Public Accounts (www.window.state.tx.us), and Texas Department of Health.

MAKE A BUNDLE

CALL 864-2686

SELL THOSE UNWANTED ITEMS

The Haskell Free Press

To All CITIZENS OF HASKELL COUNTY

In an effort to dispel the rumors and misinformation concerning the Rolling Plains Regional County Jail and Detention Center, we want to inform you of the *True* and *Correct* facts about this project.

- > Haskell County has lost an estimated 20% of its assessed tax value in the last 10 years: \$250,000,000.00 in 1990 to approximately \$199,000,000.00 today.
- > All population studies and population forecasts strongly indicate that Haskell County is dramatically losing population.
- > If population loss continues there is a very distinct possibility that Haskell High School could become Class A in the next four years. All other Haskell County Schools will have similar declining numbers.
- > Currently a substantial number of our *Haskell County Merchants* have indicated they are having a very difficult time surviving the current economic conditions. In order to help them survive and before we can consider recruiting any new retailers, we have to have a dominant, long term and committed industry/employer in the county.
- > The Haskell County Jail has been notified that it must have a plan to become *Americans with Disabilities Act (ADA)* compliant in the very near future. This will necessitate extensive repairs to the current Haskell County Jail or construction of a new jail. The *ADA* compliance will effect all Texas county jails, state jails and prisons.
- > The Texas Department of Criminal Justice has stated that it will be short nearly 1,500 beds by August 2000 and that they will need more beds in the future.
- > The Rolling Plains Regional County Jail and Detention Center will cost approximately \$15 million to build.
- > The Rolling Plains Regional County Jail and Detention Center will house approximately 500 county and state/federal inmates.
- > Certificates of Obligation issued by Haskell County and the City of Haskell will fund this facility. Haskell County and the City of Haskell will each own an undivided 50% interest in the facility.
- > All costs to Haskell County and the City of Haskell associated with this facility will be paid for in the following sequence:
 1. Revenues generated by the incarceration of state/federal inmates, Haskell County inmates and other county inmates.
 2. If the revenues are not sufficient then the general funds of Haskell County and the City of Haskell will be used to cover any short fall.
 3. Lastly, a tax to pay for the Certificates of Obligation will be implemented ONLY if the first two options cannot cover any short fall.


The only reason your Ad Valorem taxes would increase because of this facility, would be if the first two payment methods mentioned above did not cover any short fall. Your ad valorem taxes will not automatically increase due to the construction of this facility.

- > When this facility meets its anticipated inmate population goals, Haskell County and the City of Haskell will receive the surplus revenues into their general funds.
- > This facility will employ approximately 125 people with a payroll of approximately \$3,000,000.00 per year, including health insurance, education and retirement benefits. In addition approximately \$700,000.00 could be spent in Haskell County annually for prison supplies.
- > Prison projects in other Rural West Texas Counties have proven to be economically successful.

THIS JAIL PROJECT WILL NOT SOLVE ALL OF OUR CURRENT ECONOMIC PROBLEMS. IT WILL HELP STABILIZE OUR ECONOMY AND BE A CORNERSTONE FOR FUTURE GROWTH IN HASKELL COUNTY.

If you have signed the petition against this facility and wish to have your name removed from it, please contact Shane Hadaway at 864-2434 for instructions on how to do this.

THIS AD SPONSORED BY:

Rule 
Banking Center
 A Branch of Hamlin National Bank

P. O. Box 10
 Rule, Texas 79547
 940-997-2216
 Member FDIC



Home State Bank
 410 Carruthers • Rochester
 940-743-3511 • 1-800-773-2122
 Member FDIC



HASKELL NATIONAL BANK

P. O. Box 998 • Haskell, TX • 940-864-2631 • Member F.D.I.C.



First National Bank

200 South Avenue E • P. O. Box 527
 Haskell, Texas 79521 • 940-864-8555
 Member F.D.I.C.

Now available
**Sheet Metal for
Roofing and Siding**

#1 grade ~ 25 year warranty

metal sales
manufacturing corporation



Styles:
R & U Panels
Classic Rib
Stile

Standing
Seam panels

Trim, Gutters, etc. also available

Lots of Colors!

Call us today for details!

Steele Machine

940- 864-2208 or 800-687-7639

East Hwy. 380 ~ Haskell



CASH WINNER—Andy Gannaway of the Haskell National Bank awards the cash giveaway prize of \$293.21 to Diane Huff of Haskell for having the closest guess on the total dollar amount of a large glass jar of assorted coins. The prize was a part of the bank's Customer Appreciation Day. Other prizes of collector coins, coin holders and smaller cash amounts were also awarded as door prizes throughout the day.



MRS. RONALD BARTON RILEY

**Henshaw, Riley
wed in West Indies**

Gia Victoria Henshaw and Ronald Barton Riley, both of Splendor, were married June 16, at the Sandals Resort on the West Indies Island of St. Lucia. The ceremony was held next to a cascading waterfall in a large, white Caribbean-style gazebo decorated with native flowers and overlooking the white sand beach and turquoise Caribbean Sea.

The bride is the daughter of Victoria Henshaw-Parr and the late Phil Henshaw of Haskell. The bridegroom is the son of Bill and Jo Hadley of Gruver.

Grandparents of the couple are Bob and Jean Free of Paint Creek, Ona McClangan of Gruver and great-grandmother, Victoria Keeter of Haskell.

The bride wore an Alfred Angelo gown of white satin and rose embroidered lace, with halter-style bodice embellished with sequins and seed pearls. The dramatic open, crisscross back flowed into a cathedral train edged with scalloped lace. Her antique head piece and two-tiered cathedral length veil were also embroidered with roses, seed pearls and sequins. The antique handmade veil belonged to her mother, and was finished by hand by four generations of the bride's family, to match the bride's wedding gown. She carried native island purple orchids, white antheriums, and pink Franchise pansies.

Roland Brammer of New York City, who served as man of honor, wore a navy, four-button Armani suit with a lavender shirt and tie.

The groom and his best man, Bill Hadley, wore ivory shirts and black suits with Caribbean blue ties, and purple orchid boutonnières.

Upon returning to the states, the couple was honored with a reception held June 24, at the Branding Iron in Rochester.

Guests arrived in bright tropical attire and received colorful leis while registering.

A unity candle ceremony was performed by the bride's godmother, Dr. Janelle Coffey of Wimberly.

The bride's table was covered with an antique ecru ivory satin table cloth made by the bride's grandmother and used for the bride's mother's wedding and the bride's christening party. The three-tiered bride's cake, decorated with fresh flowers and a Wilton Bianca "bride and groom" that played "The Wedding March", was served by Leiza Morales and Nikki Capuano. Centering the table was an angel waterfall decorated with fresh flowers.

The bridegroom's sister and niece, Ronda and Amanda Schneider, served at the groom's table. Covered with a tropical cloth surrounded by a grass skirt, the table held a basket-weave chocolate cake, and was decorated with Caribbean-style flowers.

The bride is a graduate of Haskell High School and Southwest Texas State University, where she earned a Bachelor of Fine Arts degree. She is currently teaching 3rd, 4th and 5th grade art at Splendor Independent School.

The groom is a graduate of Gruver High School. He received a Bachelor of Science and a Bachelor of Arts degree from Southwest Texas State University. He currently teaches biology and anatomy at Splendor High School.

Playday results

Results of the Haskell Horse Club Playday held Sat., July 22 are as follows:

Barrels
8 and under Novice: 1. Shana Moorehead

8 and under: 1. Kristina Bitner 2. Ashton Rutkowski 3. River McTasney

9-12: 1. Misty Hise 2. Weston Rutkowski 3. Laryssa Hise 4. Samuel Bitner 5. Alexa Roberts

13-15: 1. Morgan Cox 2. Chris Hise 3. Brittany Rutkowski

16-19: 1. Julie Fowler 2. Jessica Fowler

Flags
8 and under Novice: 1. Shana Moorehead

8 and under: 1. Ashton Rutkowski 2. Kristina Bitner 3. River McTasney

9-12: 1. Weston Rutkowski 2. Misty Hise 3. Alexa Roberts 4. Laryssa Hise 5. Samuel Bitner 6. Luke Terry

13-15: 1. Morgan Cox 2. Chris Hise 3. Brittany Rutkowski

16-19: 1. Jessica Fowler 2. Julie Fowler

Poles
8 and under Novice: 1. Shana Moorehead

8 and under: 1. Ashton Rutkowski 2. Kristina Bitner 3. River McTasney

9-12: 1. Laryssa Hise 2. Misty Hise 3. Weston Rutkowski 4. Samuel Bitner 5. Alexa Roberts 6. Luke Terry

13-15: 1. Morgan Cox 2. Chris Hise 3. Brittany Rutkowski

16-19: 1. Julie Fowler 2. Jessica Fowler

Bargains on Steel Products

- 3/8 Rebar in 20 ft.ft. 7¢
- 1/2 Rebar in 20 ft.ft. 12¢
- 5/8 Rebar in 20 ft.ft. 20¢
- New Pipe 1.66 by 24 ft.ft. 45¢
- New Pipe 1.9 by 24 ft.ft. 49¢
- Steel Storage Buildings 6 ft. x 6 ft.ea. \$450.00
- Steel Storage Buildings 8 ft. x 12 ft.ea. \$850.00
- Steel Tin U Panel White 8 ft. thru 24 ft.sq. \$52.00

LOTS OF STEEL IN STOCK!

SIMPSON STEEL YARD

915-773-2287 • STAMFORD, TEXAS



A message from the
**ABILENE EYE INSTITUTE
&
CATARACT SURGERY CENTER**
DEDICATED TO EXCELLENCE

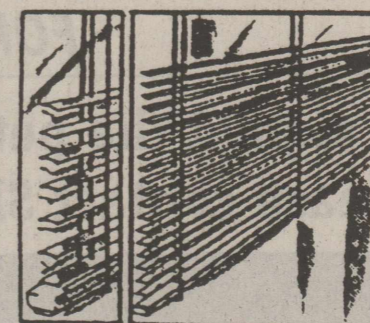
We specialize in cataract surgery with intraocular lens implant and routinely use the small incision phacoemulsification technique. We have 2 modern, fully equipped operating rooms each with its own Zeiss operating microscope and Phacoemulsifier. We also have an observation room so that family and friends may view the surgery while it is happening. Our ambulatory surgery center is State licensed and Medicare approved. We have performed over 3,000 cataract implant operations since 1987. Our doctors accept Medicare Assignment and we think you will find our fees very competitive with most hospitals. Our friendly, dedicated staff is available to answer any of your questions. If you need transportation, we can help.

- Robert W. Cameron, M. D., F.A.C.S.
- Paul B. Thames, M.D., F.A.C.S.
- Mark J. Phelan, M.D.
- Vincent J. Priestner, M.D.
- Kerry C. Preston, O.D.

2120 Antilley Road, Abilene, TX 79605
3/10 mile west of Humana Hospital
915-695-2020 or 1-800-692-2020

Like what
you're
reading?
Call
940-864-2686
to Subscribe.

**Custom Mini
Blinds**



Custom
measuring and
installation
all included
in one price!

Free estimates

1" Aluminum Blinds available in these colors:

- Vanilla, Fawn, Adobe, White,
- Alabaster, Grey, Black and Bronze

Custom vertical blinds available!

No need to drive out of town ~
Custom blinds are available right here in Haskell!

Big Country Blinds

East Highway 380 ~ 5 North 1st ~ Haskell
864-2692 or 800-269-2692

SHANNON AIRMED 1

SUBSCRIPTION PROGRAM

Making the critical difference...

When you or a family member are ill or injured, it helps to have friends in high places. Shannon AirMed 1 provides 24-hour air emergency care for area hospitals in 30 counties across West Texas.

In other words, we bring the emergency room to you.

Most insurances can leave thousands of dollars unpaid for an emergency transport by air. For just \$49 a year, you and your family can join the Shannon AirMed 1 Subscription Program. If you're covered under the program and require medically necessary air ambulance service, Shannon AirMed 1 will accept your insurance payment as payment in full, in addition to any applicable co-payments or deductibles.

Your only out-of-pocket expense is your co-payment or deductible!

Special programs are available for business owners, too.

To learn more call
915-658-1256

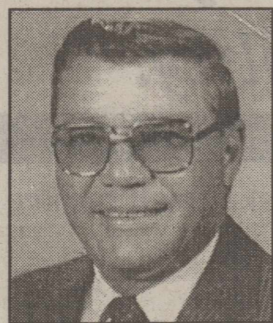


120 East Harris Avenue, San Angelo, Texas 76903
657-6222 • 800-640-6222 (outside of San Angelo)

You may now visit us at www.shannonhealth.com

**TAX
PLANNING**

Written By
James E. Rodgers, CPA



**SOCIAL SECURITY CHANGE COULD
INCREASE YOUR TAX BILL**

Thanks to *The Senior Citizen's Freedom to Work Act of 2000*, the social security earnings limit for some workers has been eliminated. If you are age 65 or older, you can now receive full benefits regardless of the amount you earn. While that is good news, you should be aware that a portion of these benefits might be taxable. Under present law, up to 85 percent of your social security benefits could be subject to income tax in certain circumstances.

Including this additional amount in your gross income may increase your taxable income and change your tax bracket. As a result, you may need to adjust your estimated tax payments or the amount of income tax withheld from your wages. You might also want to have federal income tax withheld from your social security benefits. To avoid surprises at year-end, you should determine now whether any of your benefits could be taxable.

Here's a quick way to check: add one-half of your annual benefits plus all your other income (including tax-exempt interest) and compare the total to a base amount. The base amount that applies depends on your filing status. If you are married filing jointly, the base amount begins at \$32,000. For singles, the base amount begins at \$25,000.

If you exceed the base amount and part of your benefits become taxable, planning strategies can reduce the impact. For example, timing income and deductions and making deductible IRA contributions are two moves that can save tax dollars.

The amount of taxable benefits can also be affected by special situations such as the receipt of unemployment compensation, the repayment of benefits, and certain exclusion items.

If you'd like assistance in determining the effect the new law will have on the taxability of your benefits, please give us a call.

RODGERS & COMPANY

Certified Public Accountant
20 Southwest Third Street
Hamlin, Texas • 915-576-2356

Shop The Haskell Free Press CLASSIFIEDS

864-2686

ALL DEADLINES MONDAY 5 P.M.

864-2686

Garage Sales

3 FAMILY YARD SALE: Aug. 4 and 5. 500 Central, Rule, Texas. Starts at 8 a.m. Furniture, Plus Size clothing, toddler boys shoes and clothes and much more. 31p

2 FAMILY YARD SALE: 400 Sunny, Rule. Fri. 4th, Sat. 5th, Sun. 6th. 31c

MOVING SALE: Sat., Aug. 5, 8 a.m. No early sales. 104 N. 3rd. 31c

GARAGE SALE: Fri. & Sat. 109 N. Amity, Rule. Furniture, clothes, riding lawn mower. 31p

GARAGE SALE: Fri. & Sat., Aug. 4-5. 8 til 2 Men and ladies clothes, Hoover and Kirby vacuum cleaners, electric motors, lawn mower decks, luggage and much more. 918 N. 6th St., Haskell. 31p

GARAGE SALE: Fri. 4th, 4-8 and Sat. 5th 10-4. 309 Cardiff, Rule. 31c

GARAGE SALE: 209 8th Ave., Rochester. Ladies, girls, boys clothing, misc. Sat., Aug. 5, 8 to noon. 31c

Jobs Wanted

HOUSE LEVELING. Floor bracing, slab, pier and beam. Insurance claims, free estimates. References. No payment until work satisfactorily completed. David Lee & Company, 915-675-6369 50tfc

LOOKING TO BEGIN lawn care service in local area. Need new customers. If you are in need of dependable mowing and lawn care service at reasonable rates, call W. L. Wolf 940-864-2777. 31p

Public Notices

NOTICE TO ALL PERSONS HAVING CLAIMS AGAINST THE ESTATE OF MILLETT VUICICH, DECEASED

Notice is hereby given that original letters testamentary were issued on the Estate of MILLETT VUICICH, Deceased, No. 4067 now pending in the County Court of Haskell County, Texas on July 25, 2000, to GLADYS I. VUICICH, whose residence is in Haskell County, Texas and whose mailing address is HCR 65, Box 29, Haskell, Texas 79521.

All persons having claims against the Estate described above are hereby directed to address their claims in care of the representative's attorney, WILLIAM G. THOMPSON, at 210 West Elm, Breckenridge, Texas 76424. Dated July 25, 2000.

Glady I. Vuicich
Independent Executrix of the Estate of Millett Vuicich, Deceased
No. 4067, County Court, Haskell County, Texas 31p

Real Estate

FOR SALE: 2 bath, 2 bedroom, brick, corner lot. 706 N. Ave. G. Pecan, pear trees. Garage with storage, privacy fence, nice yard. CH/A, dishwasher. Nice home. 864-3785. 27tfc

PERFECT FOR 4-H family. Approximately 2+ acres, 3 bedroom, 3 bath, office, new cellar, good well, lots of trees, fenced, creek, pens, great for entertaining. Lots of extras. See to appreciate. Call for appointment, 940-864-3573. 28-31p

Help Wanted

RN/LVN NEEDED. Contact D.O.N. Tori Hicks, Rice Springs Care Home. 940-864-2652. 17tfc

CNAs NEEDED. Contact D.O.N. Tori Hicks, Rice Springs Care Home. 940-864-2652. 20tfc

APPLICATIONS now being taken for Certified Nurses Aide training class. Call Tori Hicks at Rice Springs Care Home for details. 864-2652. 24tfc

HOUSEKEEPER NEEDED: Please call after 6 p.m. weekdays. 864-2861. Serious inquiries only. 31p

Public Notices

NOTICE OF APPLICATION FOR FLUID INJECTION WELL PERMIT

Centaur Petroleum Corporation, P. O. Box 270, Fort Worth, Texas 76101 is applying to the Railroad Commission of Texas for a permit to inject fluid into a formation which is productive of oil or gas.

The applicant proposes to inject fluid into the Palo Pinto, Pace Lease, Well Number 4. The proposed injection well is located 6 miles south of Haskell, in the Haskell South Field, in Haskell County. Fluid will be injected into the subsurface depth interval of 3626 to 3730 feet.

LEGAL AUTHORITY: Chapter 27 of the Texas Water Code, as amended, Title 3 of the Texas Natural Resources Code, as amended, and the Statewide Rules of the Oil and Gas Division of the Railroad Commission of Texas.

Requests for a public hearing from persons who can show they are adversely affected, or requests for further information concerning any aspect of the application should be submitted in writing, within fifteen days of publication, to the Environmental Services Section, Oil and Gas Division, Railroad Commission of Texas, P. O. Box 12967, Austin, Texas 78711 (Telephone 512/463-6792). 31p

Children may buy lunch for \$1.50 and breakfast for \$.50. Children who qualify under U. S. Dept. of Agriculture guidelines may get meals free or at a reduced-price of \$.40 for lunch and \$.30 for breakfast. All meals served must meet nutrition standards established by the U. S. Dept. of Agriculture. If a child has a disability, as determined by a doctor, and the disability prevents the child from eating the regular school meal, the school will make substitutions prescribed by the doctor. If a substitution is needed, there will be no extra charge for the meal. Please note, however, that the school is not required to make a substitution for a food allergy, unless it meets the definition of disability. Please call Paint Creek School for further information: 940-864-2471.

Your children can get free school meals if you get food stamps or Temporary Assistance for Needy Families (TANF). Depending on your income, your children may be eligible for free or reduced-price meals. To find out if you qualify, you must complete the Application for Free and Reduced-Price Meals from and return it to Paint Creek School. To find out more about this or get an application, please call 940-864-2471 or write to Paint Creek ISD, Rt. 2 Box 190, Haskell, Texas 79521. 31c

programas vocacionales en Computadores, Home Economics, y Agricultura. La admision a estos programas se basa en interes, aptitud, edad apropiada, y espacio disponible.

Es norma de Paint Creek ISD no discriminar por motivos de raza, color, origen nacional, sexo o impedimento, en sus programas, servicios o actividades vocacionales, tal como lo requieren el Titulo VI de la Ley de Deprechos Civiles de 1964, segun emmienda; el Titulo IX de las Emmiendas en la Educacion, de 1972, y las Seccion 504 de la Ley de Rehabilitacion de 1973, segun emmienda.

Paint Creek ISD tomara las medidas necesarias para asegurar que la falta de habilidad en el uso de la lengua ingles no sea un obstaculo para la admision y participacion en todos los programas educativos y vocacionales.

Para informacion sobre sus derechos o procedimientos para quejas, comuniquese con el Coordinador del Titulo IX, Max Calk, en Paint Creek ISD, phone 864-2471 y/o Board President, Gina Buerger 915-773-5226. 31c

procedimientos de empleo, tal como lo requieren el Titulo VI de la Ley de Derechos Civiles de 1964, segun emmienda; el Titulo IX de las Emmiendas en la Educacion, de 1972, la ley de Discriminacion por Edad, de 1975, segun emmienda, y las Seccion 504 de la Ley de Rehabilitacion de 1973, segun emmienda.

Para informacion sobre sus derechos o procedimientos para quejas, comuniquese con el Coordinador del Titulo IX, Max Calk en Paint Creek ISD, phone 864-2471 y/o Board President Gina Buerger 915-773-5226. 31c

\$500 Move In.
Owner financed.
Call Brendan
915-721-2101

Guadalcazar Roofing
Daniel or Lupe
940-864-5009
Free Estimates.
All Types.

Can't Bear The Heat?
Home Air Conditioning
Check Up \$55
Clean Condenser, Change Filter, Motor Oiled.
Up to 2 lbs. Freon Added
Expert Installation
Decker AC & Refrigeration
864-3755

Do You Sleep With A Partner?
DOES YOUR PARTNER:
•Toss & Turn
•Elbow and Kick
•Check On The Kids
•Go To The Bathroom
•Take Medicine
In The Middle Of The Night?
DID YOU KNOW?
•Your Partner Tosses & Turns 40-60 Times Per Night
•70% Of The Time Your Partner Moves, You Move.
•You Both Get 20% Less Deep Sleep.
•Deep Sleep Loss Affects Mood, Memory, Concentration, Productivity, And Creativity.

BOGGS & JOHNSON FURNITURE
864-2346
East Side Square • Haskell

BlueCross BlueShield of Texas
Individual Health Products
Keeping Texans in a Healthy State
Hess Hartsfield
864-2665

An archaeologist is the best husband a woman can have—the older she gets, the more interested he is in her. A La-Z-Boy is the best recliner any one can have—they are made stronger, last longer, and are the most comfortable recliner you can buy. Kinney Furniture in Stamford received 25 La-Z-Boy recliners last week, and 25 more this week. Best prices in the Big Country. 31c

Frances Arend Real Estate & Insurance

ROCHESTER: 4 bedroom brick 2 bath, carport on 3 lots. Central H/A. Priced to sell.

Have buyer for 3 bedroom 2 bath houses.

**Health Insurance
Life Insurance
Medicare Supplements
Long Term Care
408 N. 1st
940-864-3880**

PUBLIC NOTICE

It is the policy of Paint Creek ISD not to discriminate on the basis of race, color, national origin, sex, handicap, or age in its employment practices as required by Title VI of the Civil Rights Act of 1964, as amended; Title IX of the Education Amendments of 1972; the Age Discrimination Act of 1975, as amended; and Section 504 of the Rehabilitation Act of 1973, as amended.

For information about your rights or grievance procedures, contact the Title IX Coordinator, Max Calk at Paint Creek ISD, phone 864-2471, or Board President Gina Buerger 915-773-5226.

FORMA DE MUESTRA

Es norma de Paint Creek ISD no discriminar por motivos de raza, color, origen nacional, sexo, impedimento o edad, en sus

It is the policy of Paint Creek ISD not to discriminate on the basis of race, color, national origin, sex, or handicap in its vocational programs, services, or activities as required by Title VI of the Civil Rights Act of 1964, as amended; Title IX of the Education Amendments of 1972 and Section 504 of the Rehabilitation Act of 1973, as amended.

Paint Creek ISD will take steps to assure that lack of English language skills will not be a barrier to admission and participation in all educational and vocational programs.

For information about your rights or grievance procedures, contact the Title IX Coordinator, Max Calk at Paint Creek ISD, phone 864-2471 or School Board President Gina Buerger 915-773-5226.

Computer Solutions!
Sales, Service & Troubleshooting

Home/Business/Government
940-864-2964

Middle age is when you have stopped growing at both ends, and have begun to grow in the middle. No matter what your age is, sleep is a necessity, not a luxury. Your mattress is critical to getting a good night's sleep. Come take a look at the new Spring Air Back Supporter mattress sets at Kinney Furniture in Stamford. Quick free delivery and free disposal of your old bedding. 31c

CUTE LITTLE HOUSE
Very affordable. Call
915-673-7353

WE'VE GOT IT!
ACCO FEEDS
RICHARDSON'S
Hwy. 277 N. • Haskell • Open All Day Saturdays
940-864-8551

For Your Sheet Metal Work
Water Storage Tanks
All Kinds of Metal Duct Work
See or call:
Guinn Sheet Metal & Plumbing
940-658-3341 L.C. Guinn Knox City, TX

Need A ROOF?
Atlas 30 year Shingles Now in Stock!
Call Ben McGee
After 6 p.m.: 864-3431
Lumber Yard: 864-3552
Mobile: 864-4555

FOR SALE
RIKE REAL ESTATE
TWO IRRIGATED TRACTS, 80 AC. Each, North of cemetery, Rochester. 231.5 IRRIGATED AC. One pivot, four side rows, 4 wells, 3 bedroom, 3 bath house with pens, barn. South of Rochester. 158 ACRES, 2 mi. South of Rule. 320 ACRES. Cultivation and pasture. 240 ACRES. Two tracts, 5 mi. west of Haskell. 130 ACRES & 44 ACRES. Two tracts just out of CRP. Near Rule. 330 AC. CULTIVATION, approx. 6 mi. west of Haskell. 547 lb. cotton yield.

Serving Haskell, Knox, Jones, Stonewall, and Rolling Plains Counties

411 1/2 South First Street
Box No. 853
Haskell, TX 79531
(940) 864-2411 (940) 864-2332
FAX (940) 864-3686
Mary Rike, Broker
mriks@westnet.net

Chan Guess
REGISTERED REPRESENTATIVE
940-864-2665

Securities offered through Washington Square Securities, Inc.
20 Washington Avenue South, Minneapolis, MN 55401

For Rent

FOR RENT: 604 N. 3rd. Nice 1 and 2 bedroom apartments. CH/A. 864-3762. 31c

FOR RENT: 800 1/2 N. 1st East. 1 bedroom house. 864-3762. 31c

FOR RENT: Large custom home. 4 bedroom, 4 bath brick in Weinert. 972-840-6595. 31c

EXPERT AUTO WORK
REASONABLE RATES

See us for all your auto mechanic needs. 20 years experience. We do it right the first time.
117 North Ave. E • Haskell

A true friend is someone who thinks you are a good egg even though he knows you are half-cracked. Lots of new sofas, love seats and sleepers arrived this week at Kinney Furniture in Stamford. The quality is excellent, the fabrics are attractive, and the prices are great! Quick free delivery, easy terms, and courteous sales people since 1932. 31c

Abandoned Home.
Take over payments
915-725-4133

Dodson Concrete Construction
Commercial - Residential
David Dodson
704 N. Ave. F • Haskell
940-864-2038
Over 20 Years in the Business
FREE ESTIMATES

SELLING HASKELL FOR OVER 25 YEARS
Hartsfield Realty
South Side of Square
864-2665

3 BEDROOM, 1 BATH IN RULE. New carpet, water well, storage bldg., new roof, storm windows, masonite siding, porch swing, fenced yard with great garden plot.

200 ACRES CHOICE FARM LAND. (Abilene Loan). North of 380 West. All minerals go with sale.

See us first for your real estate needs.
Hess Hartsfield, Broker 864-2004
Chan Guess, Agent 864-6142
Esther Conn, Agent 658-3904

Dr. Mike Moses to speak



MIKE MOSES

Mike Moses, deputy chancellor for Texas Tech University System, will be the keynote speaker at Haskell CISD Aug. 7, back-to-school in-service.

In his position with the university, Moses oversees governmental relations, institutional advancement, and linkages between public education

and the Texas Tech University System.

Prior to assuming these duties in Sept. 1999, he served as Texas Commissioner of Education in 1995-99. A native of Nacogdoches, he received his doctorate in 1980 from Texas A&M University at Commerce.

Dr. Moses has received numerous awards during his educational career. During a public education career of 25 years, he served as teacher and administrator in the Duncanville and Garland School districts. He has held superintendencies in the Tatum, LaMarque and Lubbock school districts. He has appeared before legislative committees in over 30 occasions, and was asked to address the freshman class of the last United States Congress regarding issues in public education.

Moses and his wife, Debi, a former school teacher, are both actively involved in community activities in Lubbock. They are the parents of two teenage sons.

USDA announces upcoming dates for pork referendum

Glenn R. Brzozowski, Executive Director of the Haskell County FSA Office, announced final procedures and dates for the upcoming referendum on continuation of the pork checkoff program. Secretary Dan Glickman authorized a vote on continuation of the checkoff program in February.

The congressionally mandated pork checkoff program is funded by assessments collected from producers when hogs are sold. The funds are used for pork promotion, research and consumer information. Program funds cannot be used to affect the outcome of the referendum vote.

The final referendum rules provide for in-person voting Sept. 19-21 at the Haskell County FSA Office, 506 South Second, Haskell.

Absentee ballots may be requested beginning Aug. 1.

However, absentee ballots for producers will become available from the Haskell County FSA Office from Aug. 18 through Sept. 18.

The public is invited to observe the counting of the ballots at the Haskell County FSA Office Nov. 29 at 9:00 a.m.

Producers who have owned and sold one or more pigs or hogs at any time from Aug. 18, 1999, through Aug. 17, 2000, are eligible to vote. Producers are to vote in the County Office where the producer's farm records are administratively located or, for other producers, in the county where the producer owns hogs or pigs.

The final rule will be published in the Federal Register July 13 and will be on the web at: <http://www.ams.usda.gov/lsg/mpb/pork/pkretrule.htm>.

Around Town

By Joyce Hawkins

Mr. and Mrs. Clinton Baccus of Mansfield spent the weekend with her mother Hope Josselet.

Mr. and Mrs. Glendon Hawkins of Irving visited his mother Joyce on Saturday.

Gladys O'Neal visited her sister Frances Lee in Wichita. On Monday her cousin and wife, Mr. and Mrs. Bob Glenn of near Lubbock, visited her.

Mary Ann McFadden visited with her mother Faye Wheeler in Anson on Saturday.

Hortense Lees has gone home with her daughter Sarah Jackson for a visit.

Helping Wallace Cox, Jr. celebrate his 72nd birthday were children Mr. and Mrs. Elliott Cox and family from Snyder, Sarah from Ft. Worth and Emily of St. Louis. Also Mr. and Mrs. James Rike of Abilene and several people from Haskell.

Visiting with Mr. and Mrs.

Tommy Matthews last week was her daughter and children from Arkansas.

Faye Gray went home with her son and wife, Lee and Polly, to Midland and spent several days. She is back home and reported having a good visit.

Births

Wayne and Tricia Hester of Anson announce the arrival of their son Micah Joseph. Micah was born Thurs., June 29, at 7:34 p.m. in Abilene. He weighed 6 lbs., 9 ozs. and was 19 1/2 inches long.

Grandparents are Billy Wayne and Sheila Hester of Rochester, Jane Patterson of Plano and Harold Patterson of Sherman.

Great grandparents are Bobby and Rowena Hester of Haskell, W. A. and Zetta Dutton of Haskell and Alvin Deckard of Mt. Vernon, Missouri.

**Fall 2000 Semester
Registration
Tuesday, August 15
2:30 - 6:30 p.m. Haskell High School**

ECON 2301	Principles of Economics I	8:00 - 9:15 a.m. TTh
ENGL 1301	Composition & Grammar	10:00 - 11:00 a.m. M-F
MATH 1314	College Algebra	6:30 - 9:30 p.m. Th
SPAN 1411	Beginning Spanish I	6:00 - 9:00 p.m. W Lab TBA
POFI 2401	Principles of Word Processing	6:00 - 10:00 p.m. W Lab TBA

INTERNET COURSES
 COSC 1301 Intro. to Computers
 CRJ 1301 & CJSA 1322 Intro. to Criminal Justice
 CRJ 1307 & CJSA 1312 Crime in America
 CRJ 2313 & CJCR 1307 Correctional Systems & Practices
 ECON 2301 Principles of Economics I
 ENGL 1301 Composition & Grammar
 ENGL 1302 Composition & Literature
 ENGL 2322 Survey of British Literature
 GOVT 2302 American Political System II
 PHED 1105 Weight Training & Conditioning
 DFTG 1409 Basic Computer-Aided Drafting
 ITSW 1304 Intro. to Spreadsheets
 POFI 2431 Desktop Publishing for the Office

**VRJC
Classes begin August 23
at
Haskell High School**

VIDEO TAPE COURSES
 ACCT 2401 Principles of Accounting I
 ACCT 2402 Principles of Accounting II
 BUSI 1301 Intro. to Business
 HIST 1301 United States History to 1865
 HIST 1302 United States History since 1865
 PHYS 1411 Intro. to Astronomy

www.vrjc.cc.tx.us
940.552.6291 ext. 2230

LIFE HOSPITALIZATION ANNUITY IRA CANCER

HOME AUTO FARM CROP INSURANCE COMMERCIAL

LANCO INSURANCE
DON • SHIRLEY • CHERIE - Agents

12 AVE. D
WORK 940-864-2629
1-800-687-3761

P. O. BOX 585
HASKELL, TX 79521

OPEN

SPORT-ABOUTLET STORE

**This Fri., Sat. and Sun.,
Aug. 4th-5th-6th**

ON THE EAST SIDE OF THE SQUARE

NO SALES TAX!

Athletic Shoes
Major Brands
Childrens, Mens
Ladies, Lo Tops,
Hi Tops
40-50-60% OFF

**Basketball
Football
Shoes**

**Printed
Tee Shirts**
\$2⁰⁰ ea.

Shorts
\$2⁰⁰ pair

Come early for best selections. Sport-About has moved hundreds and hundreds of shoes and other merchandise to the East Side of Square for this event. **ALL ON SALE AND NO SALES TAX!**

Where Winners Shop

Sport-About of Haskell

940-864-3891
402 N. 1st

**HASKELL #153
1000 N. AVE. E
RULE #91
501 UNION AVE.**

ALLSUP'S

ALLWAYS

LOW PRICES!

**BAR-S
COTTO
SALAMI**
12 OZ. PKG.
79¢

**ALL VARIETIES
FRITOS OR
CHEETOS**
REG. \$2.29
\$1.99
EACH

**ALL VARIETIES
COKE**
6 PACK CANS **3/\$4.99**
3 LITER BTL. **\$1.79**

**ALL VARIETIES BLUE BUNNY
CHAMP CONES** **2/\$1**

**ALL VARIETIES TROPICANA
SEASON'S BEST JUICES** 16 OZ. BTL. **99¢**

**LANA'S
EGG ROLLS** **2/\$1.09**

**ALLSUP'S
WHEAT
BREAD**
1-1/2 LB. LOAVES
79¢
EACH

**ALL VARIETIES PLAINS
SNACK
ATTACK**
ONE QUART
\$1.19

PRICES EFFECTIVE JULY 30 - AUGUST 12, 2000 WHILE SUPPLIES LAST