



WAR NEEDS MONEY
Buy United States Defense Bonds
and Stamps

IT WILL COST MONEY TO DEFEAT JAPAN

Your Government

Calls On You to Help Now!

Buy Defense Bonds and Stamps Today

Buy them every day, if you can, but buy them on a regular basis.

"Bonds cost as little as \$18.75. Stamps come as low as 10 cents. Defense Bonds and Stamps can be bought at all banks and post offices."



Advance 1942 Patterns in New

A-B-C Prints

Prints Needed for Spring!

25c yd.

Worth 29c

The very NEWEST for Spring! Full 80-square count. Washfast! Soilfast!

Fresh! Zesty! Colorful! Here are the fabrics you're going to need for the coming season! Take advantage of complete selections and low prices.

Fast Color
Prints

36 inches wide in a large variety of colors—small, medium or large pattern designs . . . also solid colors! Special!

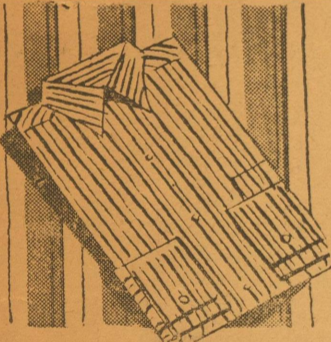
19c yd.

1000 Yards

Genuine 9-4 Bleached Sheeting
Special 42c yard

10-4 Bleached Garza Sheeting
Special 49c yard

This sheeting has just been received, on orders placed quite some time ago, no more sheeting will be sold at mill at present.



You Can Still Buy Famous
Dress Shirts

for only
\$1.29

Other Shirts\$1.50 and \$1.65
Full cut, perfect fitting, 7-button front, sanforized shrunk, vat dyed, won't fade or wrinkle, all new patterns and white broadcloth.

1000 Pairs of Men's

KHAKI PANTS

TAN—TAUPE—GREEN—SANFORIZED SHRUNK

\$1.69

MEN'S

Khaki Shirts

\$1.39

To match Khaki Pants, Size 14 to 17½.

New Bathroom Brighteners

21"x44" large! Wonderful soft terry that will bring new life to your bathroom! Bold reversible checks in the prettiest colors imaginable! Buy a year's supply—here's a grand investment in beauty and service!

29c

10 Dozen

Garza Sheets

Size 81x99

\$1.39

No More When These Are Gone

Outing Flannel

—White —Colors—

7 yards \$1

A Good Safe Place To Trade

B. SCHWARZ & SON

SPUR, TEXAS

"The Store Of Little Profit"

WE ARE "ALL" OUT FOR HOME DEFENSE
Buy Defense Bonds and Stamps
B. SCHWARZ & SON
DELIVER THE GOODS.

In Spite of War—Hail—and High Water,
B. Schwarz & Son Delivers the Goods

GOOD NEWS

You expect much higher prices, but you are wrong. You expect limited quantities, you're wrong again, prices are not much higher at Schwarz's, there has been no lowering of standards, despite rising costs . . . Manufacturing problems . . . Transportation difficulties . . . Again this year we bring you the same high quality at almost the same low price.

B. Schwarz & Son operates on a well established plan, standard Merchandise at volume prices, until we are forced by increase in price to advance our prices to you.

some like them "Soft"
and some like them "Tailored"

S U I T S

Season's "BIGGEST" Demand—

Trim as a drum major's jacket, or subtly detailed for fluid softness . . . they're all suits you'll love for their fashion-rightness, their handsome fabrics, fine tailoring. Misses and women's sizes.

Suits to keep you looking trim and efficient through the busy days ahead . . . but without sacrificing one whit of your feminine charm.

Man Tailored Suits, black, navy, one button, five pencil stripe in wool crepe.

\$16.95 up

Dress-Maker Suits, such flattering new fluid sleeves. Navy, black.

\$24 up

Sport Suits, pastel colors, new plaids and stripes.

\$9.95 - 12.95 up



EXCITING INTEREST
OVER OUR NEW
COLLECTION OF SPRING

COATS

Popular semi-fitted styles may be had in SHETLAND, FLEECE, TWEED, GABTRINE or HER-RINGBONE weaves . . . the patterns are exceptionally smart, taken from the most popular "demand patterns" from the early Florida and California showings . . . Original and exclusive designs priced—

\$9.95 to \$24.75

COLOR IS IMPORTANT

and here are the most favored BALI CORAL — WHEAT—AMBER TAN — SEA FOAM GREEN OFF WHITE—NAVY—BLACK

Just In! ORIGINALS! Splendid collection of stunning spring coats all bearing the famous labels . . . exclusive models—exclusive fabrics—exclusively here . .



Hurry Now! to see advance Spring

DRESSES

CAROL KING—PAULA BROOKS—MIZE BROS.—ANN SUTTON

\$5.98 and \$7.98
\$9.95 up to \$24.95

CASUALS—TAILORED and DRESS STYLES
Florals! Checks! Novelty Prints! Spring's Newest!

Dresses to put Spring in your heart—right now—save you money at the same time! Double-duty jackets, vivid floral prints, paisleys, fresh polka dots—with new pleated skirts, high or low necklines, expensive details! Ravon crepes, Jerseys, Novelty Woolens. In fact everything that's new for now and all through Spring—in these two low price groups. Misses and Women's sizes.



WAR NEEDS MONEY
Buy United States Defense Bonds
and Stamps

IT WILL COST MONEY TO DEFEAT JAPAN

Your Government

Calls On You to Help Now!

Buy Defense Bonds and Stamps Today

"Bonds cost as little as \$18.75. Stamps come as low as 10 cents. Defense Bonds and Stamps can be bought at all banks and post offices."
Buy them every day, if you can, but buy them on a regular basis.

You Can Still Buy Men's 8-Ounce Army Cloth

Khaki Pants
and Shirts

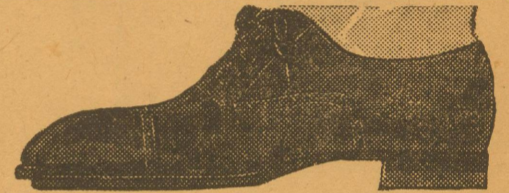
To Match

\$2.49 each

Vat Dyed, Won't Fade—Sanforized, Won't Shrink.—Full Cut
Carefully Made, perfect fitting in every way, the official uniform of mechanics, service men, numerous large companies and for the particular workman.

You Can Still Buy—
Men's All Leather

OXFORDS



\$3.98

—GOODYEAR WELT SOLES —BLACKS— BROWNS —TANS —WHITES—TUTONES.

New Shoes For Spring

Black Patent, Beige, Jersey Crepe, Brown, High, Low and Sandal Types.

\$2.95 to \$4.45

The Ever-Popular

Corduroy Hats

\$1.00

Nuff Said



27x27

Birdseye Diapers

\$1.25

Full Dozen

20x40 Spring Gauze

Diapers

One Full Dozen

\$1.45

You Can Still Buy Men's

100% Leather Work Shoes

For only

\$2.98 pair

—Solid Leather Soles.

—Leather Insoles

Rubber Heels.

Famous "Craftman"

Shirts—Shorts

Fine broadcloth gripper front shorts. Full cut shaped seat. Accordion rib cotton shirts that keep their shape.

39c

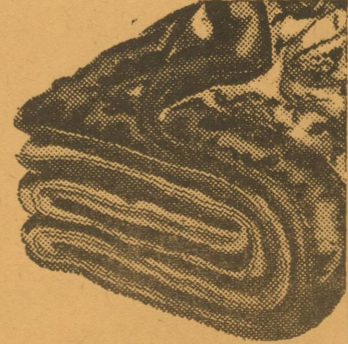
Other Shirts and Shorts .25c

Now! Best Quality Fleece-lined

Sweat Shirts

79c

Absolutely no price advance on this item. Still the same good grade too!



100% White Down, imported from Holland. No more when these are gone, if you will need a white down comfort, buy for future.

NEW SHIPMENT
 of
ADDING MACHINES
 and
REGAL ROYAL TYPEWRITERS

The following is a statement made by a satisfied customer

on
 Union Central Life Ins. Co.,
 Lubbock, Texas
 July 1, 1937

I have had the Regal Royal Typewriter in use long enough to determine its quality and there is nothing about it to indicate that it is a rebuilt typewriter. The alignment is perfect and the touch control adjustment makes it very easy to adjust it to any one's particular desire. It would be foolish of anyone to pay \$115.00 for a typewriter when they can get one as perfect as this for \$69.50.

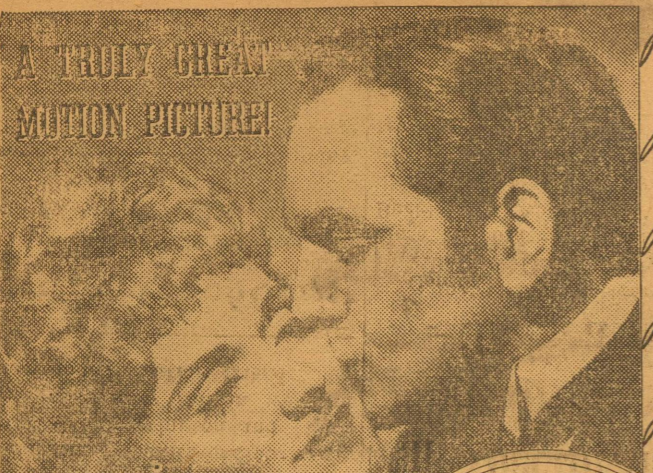
You may feel at liberty to use this letter in any manner that you desire, as I am glad to recommend this typewriter to anyone who wants a first class typewriter.

Yours very truly
 (signed) L. Wesley Read

DICKENS COUNTY TIMES

PALACE THEATRE — Spur

A TRULY GREAT
MOTION PICTURE!



Fredric
MARCH
Martha
SCOTT
in
**ONE FOOT
IN HEAVEN**

**MORE HUMAN...
MORE TOUCHING...
MORE REAL THAN
ANYTHING YOU'VE
SEEN IN YEARS!**

Mid-Nite Prevue
Saturday Night
Sunday and Monday

with
FRANKIE THOMAS
BEULAH BONDI

**Also on the Same Program
MARCH of TIME PRESENTS
"OUR AMERICA AT WAR"**

Today for the destruction of that infamous tyranny . . . 130 Million Americans, filled with a just and terrible wrath, have pledged their wealth, their future and their lives.

**See how our Democracy meets the
Challenge of War!—Fighting with
grim determination to win Victory!**

U.S. Marines— by Krieb

**BRIGADIER GENERAL
DION WILLIAMS**
RETIRED
WAS IN COMMAND OF MARINES OF U.S.S. STIMPES AT CAVITE, PHILIPPINE ISLANDS, ON MAY 2, 1928 AFTER THE BATTLE OF MANILA BAY. IT MARKED THE FIRST TIME OUR FLAG WAS RAISED OVER SPANISH SOIL DURING THE SPANISH-AMERICAN WAR.



THE PRESENT MARINE CORPS SWORD IS AN EXACT COPY OF THE ONE BROUGHT BACK FROM AFRICA IN 1805 BY LT. PRESLEY N. O'BANNON.

SGT STUBBY, U.S. MARINE CANINE MASCOT, WAS THE MOST DECORATED DOG IN WORLD HISTORY. UPON HIS DEATH HIS BODY WAS STUPPED AND PLACED ON EXHIBITION IN THE SMITHSONIAN INSTITUTE.

Mr. and Mrs. A. G. Dyer, of Girard, were in Spur doing some trading and talking with friends Saturday.

W. I. Quattlebaum, of Dickens, was in Spur attending to business affairs and enjoying friends Saturday.

Mr. and Mrs. Will Edgar, of Dickens were in Spur Saturday trading and visiting friends.

Rev. Dock Love, of Red Mud community was attending to business affairs in Spur Monday morning. He made a trip to Jacksboro this week on business.

Mr. and Mrs. Griffith of Spur Cafe, Misses Idalee Harrington and Nelta Boothe, and Lelew Dalton were in Abilene Sunday visiting friends.

Girard Church of Christ
Preaching Services every Fourth Sunday.
Bible School every Sunday at 10:00.

Communion Services each Sunday.
R. E. Beaver, Sunday School Superintendent.

Girard Baptist Church
Preaching services every First and Third Sundays at 11:00 o'clock in the morning and 7:30 in the evening.
Sunday School every Sunday at 10:00 a. m.
Rev. Jones, Pastor.
G. E. Spradling, Sunday School Superintendent.

John Norris, of Glenn, was trading and greeting friends in Spur Saturday.

James Henry Cowan was here the first of the week visiting his mother and his many friends. He has been called into service and will be an instructor in engineering at Fort Belvoir, Va.

Mr. and Mrs. Archer L. Powell, of Dry Lake, were trading and greeting friends in Spur Saturday.

**An Expectorant
for COUGHS
—that's a "Honey"**

Compounded from rare Canadian Pine Balsam, Menthol, Glycerine, Irish Moss and other splendid ingredients, Buckley's CANADIOL Mixture is different—more effective—faster in action. Get a bottle today—take a teaspoonful, let it lie on your tongue a moment then swallow slowly—feel its powerful effective action spread thru the throat, head and bronchial tubes, coughing spasm ceases for right away it starts to loosen up thick choking phlegm and open up clogged bronchial tubes. Now you'll know why over 10 million bottles of Buckley's have been sold in cold wintery Canada.

City Ddug and your own druggist has this great Canadian discovery.

Federal Income Tax

The Revenue Act of 1941 provides a simplified method of computing income tax in the case of individuals whose gross income is derived wholly from salary, wages or other compensation for personal services, dividends, interest, rent, annuities, or royalties, and does not exceed \$3,000. A new Form 1040A has been provided for taxpayers who are entitled to and elect to use such method. A table on the reverse side of this Form shows the amount of tax on increasing amounts of gross income after the proper allowance of \$400 for each dependent, if any.

The tax under the simplified method is the same for each \$25.00 block gross income and the taxpayer need only ascertain in which block his gross income (less allowance for dependents) falls to determine his tax. A flat reduction of 10 per cent has been made in arriving at the amount of tax shown in the table for deductions such as charitable contributions and taxes paid, so that the taxpayer who uses this method does not list these but gets an automatic deduction of 10 per cent.

Under the simplified method the status of a person on the last day of the taxable year is the governing factor in determining the exemption level (\$750 for single persons and married persons not living with husband or wife, and \$1,500 for married persons living together) as well as the credits for dependents.

A husband and wife living together on the last day of the taxable year may file separate returns on Form 1040A if the gross income of each is from the prescribed sources and does not exceed \$3,000, or they may file a single joint return on that Form if their combined income is from the prescribed sources and does not exceed \$3,000.

The use of the simplified method is optional with the taxpayer but once an election has made for any year, it is irrevocable for that year. If a tax-

payer files a return under the simplified method for the taxable year he may not thereafter file a return under the general provisions of the law for that year. Conversely, if he files a return under the general provisions for any taxable year, he may not thereafter file a return under the simplified method for that year. However, a new election is allowed for each succeeding taxable year.

BUY U. S. DEFENSE BONDS.
Mr. and Mrs. Joe Thannisch and two daughters, Misses Juanita and Tommie Lou, of Deer Lake community, were in Spur trading and visiting friends Saturday.

WANT ADS

FOR SALE—Bargain, 40 acre track land, improved, 1 mile west of Spur High School. Call at H. S. Holly, Agency. 15

LAND FOR SALE—Quarter section in Highway, 71 acres in cultivation. Possession now. Price \$2,000. See O. L. Kelley. 1tc

FOR SALE—Good house in Spur, \$1,500. See O. L. Kelley. 1tc

LAND FOR SALE—249 acres, no improvements, 233 acres in cultivation. Get rent off 140 acres wheat. Year McAdoo. Price \$6,250. See O. L. Kelley. 1tc

OR SALE—A. C. Tractor with full equipment, in good condition. Priced to Sell. See S. C. Poteet or Watson Machinery Co. 1tp

FOR SALE—Pure Cash Cotton Seed. If you want them, give me your order now to insure delivery and pay when you get them. H. J. Parks. 1tp

WANT TO BUY—A number of old junk tires, even if blown out. Also all kinds of scrap iron. See Cal Martin or phone 203-J. 1-8-4tp

BUTTON HOLES—Machine made, on new machine—Mrs. Clay Lusk at Kelsey Apartments, Hill street.

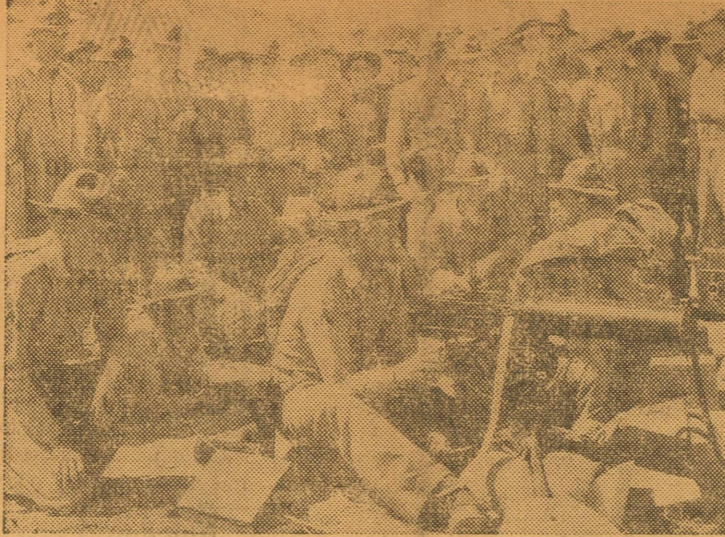
FOR SALE—Farms in Spur trade territory, see Leonard Jopling, Spur. 8-28-tn.

FOR SALE—A new portable adding machine. Dickens County Times.

GET IN Defense Work before registering. Good pay, 7 days per week. See or write Carl Wainwright, box 944, Olney, Texas 1-15-3tp

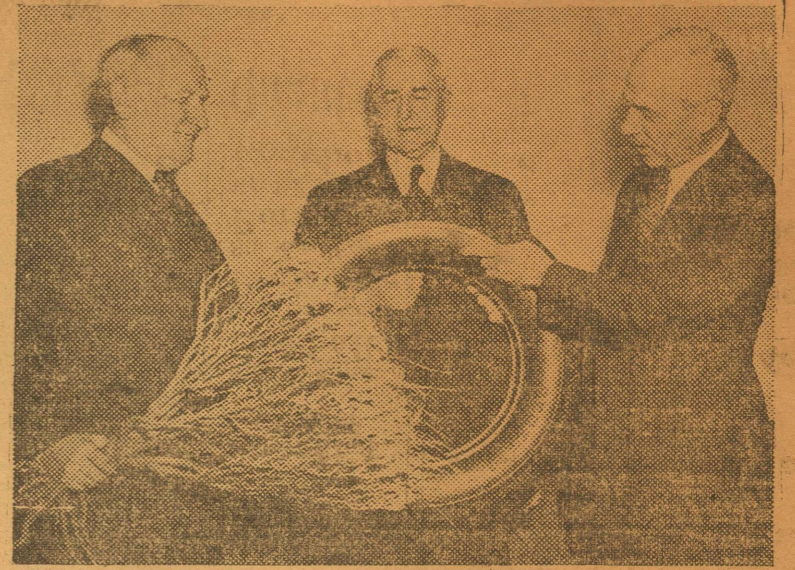
FOR SALE OR TRADE—House and lot in Spur, on Hill Street, will trade for good automobile, or livestock, or for land. See O. B. Ratliff. 1-4tp.

Marine Corps Machine Gunners



CAMP ELLIOTT, Marine Corps Base, San Diego, Calif.—Corp. Weldon Q. Adams prepares to give the "Ready, fire" signal to Pfc. William H. Tolleson and Pfc. Herbert C. Nickerson, assistant gunner, shown here manning a machine gun. In the background are other members of the "D" Company, 2nd Marines, stationed here.

**This American Tire Made
From This American Bush**



O'Neill Jones Kloesner
Proving that manufacture of tires from the American grown guayule shrub is practical, William O'Neill, president of The General Tire & Rubber Co., has turned over to Jesse Jones, secretary of commerce, a specimen of the mature plant and a tire made entirely of guayule rubber. The tire was made in the same General Tire plant and in the same machines used in making tires from far eastern rubber. O'Neill has urged the development of guayule as an emergency rubber supply for years. A bill now before Congress calls for the immediate planting of all available guayule seed in the states of Texas, California, New Mexico and Arizona. Because it thus far is impossible to make a tire from synthetic rubber alone, O'Neill is urging the growth of guayule to supplement the 400,000 ton production of synthetic already announced by Jones. American Legion Posts in all parts of the country are supporting the O'Neill guayule program, which O'Neill discussed this week with Secretary Jones and H. J. Kloesner, president of the Rubber Reserve Corporation.

John Youngblood, of Croton, was enjoying friends and trading in Spur Saturday.

Mr. and Mrs. F. F. Henry, of Duncan Flat, were in Spur doing some trading and enjoying friends Saturday.

W. S. Smiley, one of the key farmers in the county living in Duncan Flat, was in Spur Saturday attending to business.

Mr. and Mrs. Ira Slayden, of Dickens, were in Spur Saturday doing some trading and meeting friends.

ENRICHED FLOUR

A MAJOR CONTRIBUTION TO THE AMERICAN DIET

One of the biggest jobs America has undertaken is to build an impregnable defense of national health. The enrichment of white flour with VITAMINS AND IRON means that now you can get more of these health values in the foods you bake at home by using ENRICHED FLOUR.

ENRICHED WITH VITAMINS AND IRON

BUY THESE ENRICHED FLOURS AT SAFEWAY

Include Defense Stamps In Your Shopping List	Every time you buy food, buy Defense Saving Stamps. Every Safeway Store has them. That's the way to make a steady, consistent contribution to the Victory Drive and regular additions to your savings.
Safeway Employees are buying Defense Bonds regularly. Through a voluntary plan, each employee decides how much he wants to set aside. The Company operates by regularly deducting this "salary allotment" from wages and with the accumulated savings buys Bonds which are delivered directly to each employee by Uncle Sam.	
Castle Crest Peaches No. 2 1/2 can	21c
Libby's Peaches, No. 2 1/2 can	23c
Sugar Belle Peas, No. 2 can	15c
Libby 2 Sieve Peas, No. 2 can	19c
Sunny Dawn Tomato Juice, 23 oz. can	10c
Libby's Tomato Juice, 2, 14-oz cans	15c
Town House Grapefruit Juice, 3, No. 2 cans	20c
Libby's Grapefruit Juice, 46 oz. can	15c
Nu-Made Mayonnaise, 8 oz. jar	15c
Salad Dressing Dutchess, qt. jar	36c
Salad Dressing Miracle Whip, qt. jar	39c
Comfort Tissue, 4 roll fam. pack	23c
Zee Green or Orchid Tissue, roll	5c
White Kink Toilet Soap, bar	5c
Can Edwards Coffee 1 lb	27c
Can Folgers Coffee, 1 lb	31c
1 pound packages Airway Coffee, 2 for	39c
Canterbury Tea, 1/4 lb package	17c
Canterbury Tea, 1/2 lb package	31c
Tea Liptons 1/4 pkg.	25c
Tea, Liptons 1/2 pkg.	47c
Crackers, Hi Ho 1 lb	19c
Emerald Bay Spinach, 2, No. 1 cans	25c
Cigarettes, Kools pkg	16c
3 tall	25c
6 small	25c
3 tall	27c
6 small	27c

GUARANTEED PRODUCE

GRAPEFRUIT Texas seedless lb 2 1/2c

LETTUCE Crisp Fresh 5 doz. size lb 7 1/2c

Size 150-176-200

Oranges, Texas, lb 4c

288 Size Oranges, Sunkist lb 4c

Fancy Winesap Apples size 198-216 lb 5c

Idaho Rurals Potatoes, pound 3c

Yams, Fancy Texas lb 4c

Cabbage, lb 2 1/2c

Cauliflower, lb 7c

Cranberries, lb 15c

Carrots - Beets

Turnips - Collard

Mustard

Turnip Greens

Radishes

Green Onions

3 bunches 10c

Sugar Cured Tender'd	HAMS	5 to 7 lb	29c
Butt Cuts			
Bulk Sugar Cured Sliced Bacon, lb	25c		
Morrell's Palace Sliced Bacon, lb	29c		
Quality Beef Sirloin Steak, lb	35c		
Quality Beef for Roast or Stew Short Rib, lb	19c		
Sugar Cured Tender'd	HAMS	5 to 7 lb	25c
Shank Cuts			
Choice Center Cuts		lb	45c
Fine For Seasoning Dry Salt Jowls lb	14c		
Loin End Cuts Pork Roast	25c		
Sliced or Piece Pork Liver, lb	19c		
Krafts Mello Cure Longhorn Cheese, lb	29c		
PRIME RIB ROAST Quality Beef, lb.	29c		

SAFEWAY