

TEXAS THE SPUR

SERVING A RICH FARM CROP, STOCK AND POULTRY RAISING TERRITORY OF WEST TEXAS.

The Dickens Item and Dickens County Times Absorbed by Purchase

VOLUME 50 SPUR, DICKENS COUNTY, TEXAS THURSDAY, DECEMBER 18, 1958 NUMBER 9



FFA CHAPTER GETS NEW PICKUP - The Spur FFA has received use of a 1959 Ford pickup, courtesy Godfrey Motor Co. Pictured here left to right are Joe Copeland, sentinel; Ralph Carlisle, president; seated in truck, Shirley Greer Sweetheart; W. F. Godfrey local Ford dealer; Bill Gregory, chapter advisor; Jimmy Paronto, secretary and Woodie McArthur, vice president, seated in back of truck.

Spur To Close For Christmas; Some Businesses Take Two Days

A preliminary survey of downtown Spur businesses revealed that the town will be closed for Christmas day, and some businesses will observe Christmas by closing two days. The Spur Barber Shops have indicated that they will close two days, Thursday and Friday, Dec. 25 and 26, but as a consequence, will be open Monday, Dec. 22. The barbers are usually closed on Monday. Spur grocerymen have also indicated they will be closed, as is witnessed in their ads this week. The drug stores, department stores and variety stores will be open the day after Christmas. West Texas Utilities will

be closed Christmas day only, and will have someone on duty that day according to Bob Weaver, office manager.

The Texas Spur will publish on Tuesday, Dec. 23 next week. The paper will also publish early on New Year's week, going into the mail on Wednesday, Dec. 31. Advertisers and news sources are urged to observe these dates, and get their copy in early accordingly.

Lyndal Womack, Brent McCain, and Driver Francis attended the semi-finals play-off between Stamford and Terrell last Friday night in Abilene.

Donors To Spur Christmas Fund Are Revealed

Recently the Texas Spur ran an article asking that people donate old toys that might be repaired for Christmas.

The response has been generous. Those who donated toys included Grady Lackey, Dalton Lehev, Bob Nunley, Johnny Scudder, Bob Blackshear, Oscar Kelley, D. L. Knight, Olney Walker, Dr. E. H. Martin, Mrs. Jack Gordan, Thomas Bingham, Guy Karr, Norman Arnett, John Dunaway, Mrs. W. F. Gilbert, Mrs. W. B. Francis, Ned Blackwell and Norman Morgan.

Helping in repairing and repainting the toys are Roy Callicote, Burford Johnston, S. E. Braley, James Wright, Don Weaver, Tom Spains, Olney Walker, Luther Spain, D. L. Knight, W. E. Wallace, Bill Yoakum and Pinkie Rainbolt.

Mrs. Tom Fields, Mrs. Charles Forbes, Mrs. S. E. Braley and Mrs. Don Weaver made doll clothes for the dolls contributed.

Money donations to aid in repair came from Rickels Chevrolet and Mr. and Mrs. W. F. Gilbert.

Candy to be given out during Christmas was donated by Mrs. W. B. Francis and Cub Scout Troop 9.

District Governor To Visit Spur Lions Club December 23

The Spur Lions Club will welcome to Spur, W. F. (Bill) Hunter, District Governor of District 2T-1 Lions International, which includes 93 clubs in this section of the state.

Lion Hunter is in the insurance business with offices in Amarillo. He is a member of the Amarillo Downtown Lions Club, having served in all offices with the exception of Secretary-Treasurer. He has also served as President of the Broadway-Florence Lions Club in Los Angeles, California and Zone Chairman of District 4A in California. His past district offices in Texas include Deputy District Governor, District 2-T1, for two years and Public Relations Director, District 2-T1.



W. F. HUNTER

'Lucky Bucks' Drawing To Be Saturday

Last Saturday's "Lucky Bucks" drawing was well attended. Mrs. E. Copeland, Dickens, won the big prize of \$50. Other winners included E. Hollingshead, Girard, \$25; Mrs. Gracia Driggers, Gilpin, \$20; Lon Bass, Spur, \$15; Mary McAlpine, Spur, \$10; D. D. Tullis, Spur, \$10; Mrs. Slim Myers, Spur, \$5 and C. F. Watters, Spur, \$5.

Another Lucky Bucks drawing will be held Saturday at 3 p. m. Tickets are given with each dollar purchased by merchants participating in the Chamber of Commerce-sponsored Christmas program.

The final drawing will be held Wednesday afternoon at 3 p. m. Along with the regular drawing, there will be a bonus drawing for \$200.

Anyone who desires to enter the Home Decoration contest should file their entry by Saturday, Dec. 20. There are three classes in the home decorating contest: window or door, outside, and general. The Home Decorations and Business Window entries will be judged on Monday, Dec. 22.

Services Set Thursday For Former Spur Man

Funeral services are scheduled in the Bethel Baptist Church at 2:30 this afternoon (Thursday) for Tommie L. Elkins, 45, a former long time resident of Spur.

He died at 1 p. m. Tuesday in the Veterans Hospital in Big Spring following a long illness. Rev. C. O. Hitt, Chaplain at the Veterans Hospital, Big Spring, will officiate. He will be assisted by Rev. J. E. Lee, pastor. Interment will be in the Red Mud Cemetery, Campbell's Funeral Home in charge of arrangements.

Survivors include his wife, Mrs. Inez Elkins, Big Spring; one daughter, Miss Vickie Elkins, Big Spring and seven sisters, Mrs. Sadie Terrell, Snyder; Mrs. Annie Allgood, Kermit; Mrs. Stella Wilson, Artesia, N. M.; Mrs. Mattie Reed, Lubbock; Mrs. Laura A. Wilson, Perico, Arizona; Mrs. Gladys Arlene Smith, Lubbock, and Mrs. Mildred Hilley, Oxnard, Calif.

One brother, William Newton Elkins, Sweetwater, also survives. Pallbearers will be J. D. Taylor, C. A. Shipman, Allen Gatlin, Mart Turbeville, Cleo Murray and R. J. Bell.

New Arrivals . . .

Mr. and Mrs. Hilton Moore are the parents of a boy, born December 15. He weighed 5 lbs. and 13 oz. and has been named Hilton Clifford Jr.

Seven Spur Gridders Named All-District

Seven Spur Bulldogs have been named to the District 3-AA All-District team released by coaches of the district Wednesday night following a meet-

ing in Slaton. Unanimous choices on both offensive and defensive units were Center-Tackle Don Kidd and Guard-Linebacker Jim Gab-

riel. Fullback Joe Copeland and Tackle Kenneth Gilcrease were unanimous choice on the offensive team.

The complete units are listed below:

OFFENSE

Ends—Jerry Adams, Tahoka; Woodie McArthur, Spur; Bill Patterson, Floydada.

Tackles — Danny Shipley, Floydada; Kenneth Gilcrease, Spur; Dale Gordon, Slaton.

Guards—Jim Gabriel, Spur; Wayne Banks, Slaton; Larry Irby, Floydada.

Center—Don Kidd, Spur. Quarterback—George Adams, Tahoka.

Fullback — Joe Copeland, Spur. Halfback — Kenneth Suitt, Spur; Pat Adamek, Slaton; Don Vickers, Floydada.

DEFENSE

Ends—Richard Graves, Floydada; Howard Limmer, Slaton. Tackles — Don Kidd, Spur; Melton Webb, Spur.

Middle Guards — Bill Gilliland, Floydada. Linebackers — Jim Gabriel, Spur; Danny Shipley, Floydada; Durwood Mayberry, Post; Sam Wilson, Slaton; Wayne Banks, Slaton.

Halfbacks—Pat Adamek, Slaton; Leon Williams, Floydada. Honorable Mention Offense:

Ends—Rex King, Floydada, Ernest Wilson, Spur. Guards—Kenny Poole, Post; Robert Hurst, Slaton; Marshal Murray, Spur.

Center—David Bray, Tahoka. Quarterback—Freddie Walker, Spur; Curtis Didway, Post. Fullback—Durwood Mayberry, Post; Bill Gilliland, Floydada.

Halfbacks—Jimmy Paronto, Spur; Jerry Windham, Post; Leon Williams, Floydada. Honorable Mention Defense:

Ends—Larry Owens, Tahoka; John Hegi, Tahoka; Herbie Hays, Post; Marshal Murray, Spur.

Tackles—Dale Gordon, Slaton; David Bishop, Slaton. Middle guards—Lary Spruill, Tahoka.

Linebackers — Sidney Hart, Post; Billie Pain, Tahoka; Bill Williams, Post; Don Vickers, Floydada; Jerry Allen, Slaton; Ernest Wilson, Spur; Ed Hartman, Floydada.

Halfbacks—Jerry Windham, Post; Bill Patterson, Floydada; Jerry Adams, Tahoka; Freddie Walker, Spur; George Adams, Tahoka; Kent Morgan, Spur; Charles Morris, Post; Kenneth Stice, Tahoka; Bubba Bigham, Spur.

Right Of Way Appraisals Are Rejected By Highway Department

The City of Spur received official notice on Dec. 16 that the appraisals of highway right of way along Hill Street had been rejected by the State Highway Department in Austin because the damage factors as allowed were not arrived at by a method which would stand up in the courts.

Highway Department are now working with the City Council to remedy the objections and a new estimate will be submitted promptly.

Grid Slate For '59 Announced

The Spur Bulldog football schedule for 1959 has been compiled and released by Spur school officials. Next year, the team will play a ten game schedule, six of which will be at home.

September 4—Haskell, here. September 11—Hamlin, here. September 18—Anson, here. September 25 — Crosbyton, here.

October 2—Abernathy, here. October 9—Quanah, here. October 16—Tahoka, here. October 23—Slaton, here. October 30—Post, here. November 6 — Floydada, here.

*—Indicates conference game.

Mrs. Murchison Reports On Cancer Meeting

Greater emphasis on its Statewide Cytology program, was pledged by the American Cancer Society Texas Division, in Austin at the annual meeting, according to Mrs. Lotella Murchison, Dickens County delegate.

Dr. Stewart A. Fish of Dallas and Dr. Jahn J. Andujar of Fort Worth, discussed aspects of the cytology program at the meeting in the Driscoll Hotel. Dr. David A. Todd urged renewed impetus to educating the public to the program.

The program included an afternoon Tumor Clinic demonstration, and four cured cancer patients were presented during the session moderated by Dr. R. Nixon of San Antonio. More than 300 persons registered for group discussions led by Charles Alexander of Lubbock, Mrs. L. M. Johnston of New Braunfels and Dr. Jerry Miller of Dallas.

An award to the Texas Division for its outstanding development of excellence in medical relationships was made at dinner in the Crystal Ballroom of the Driskill Hotel.

The award was presented to Curt W. Reimann of Austin, executive secretary of the Texas Division.

The meeting closed with delegates receiving a report that Leukemia may be the first form of cancer to succumb to science.

Traffic Toll Shows Increase For County

Traffic deaths in Texas have decreased ten per cent in the first ten months of 1958, and Sergeant F. P. Jirek of the Texas Highway Patrol, anticipating heavy travel during the Holiday period ahead, has urged Dickens County motorists to assist in pushing the decrease even lower.

Dickens County has had two traffic fatalities in the 10-month period according to Sgt. Jirek. This year's county death toll compares to only one fatality in this same period of 1957.

The Sergeant pointed out that of the 60 counties in region No. 5 of the Department of Public Safety, 25 counties show a total increase of 74 traffic deaths compared to the same period last year, while 35 counties have had a total decrease of 103 fatalities.

Sgt. Jirek said 241 traffic deaths have been counted during the first 10 months of 1958 in Region 5, which is a reduction of 29 deaths from the total of 270 in the Region for the same period in 1957.

Pleading with motorists to continue the reduction of fatalities in the Region during the remainder of the year, the sergeant cautioned drivers to be especially alert.

"Careful planning of trips during the Holiday period and cooperation with other users of the highways will pay off in lives saved," the sergeant said. "Drive safely, sanely, defensively, and comply voluntarily with all traffic rules," he urged.

ed. "It will help insure a happy Holiday for everyone." The Sergeant continued motorists to drive at a speed that fits in smoothly with the speed of other vehicles. He pointed out that this is especially important in rural areas where speed gives the driver less

time to think in an emergency situation and increases the severity of an accident.

"Remember, you're not alone on the streets and highways," Sgt. Jirek said. "Share the road if you expect to have a Merry Christmas and a Happy New Year!"

86% CORRECT LAST YEAR . . .

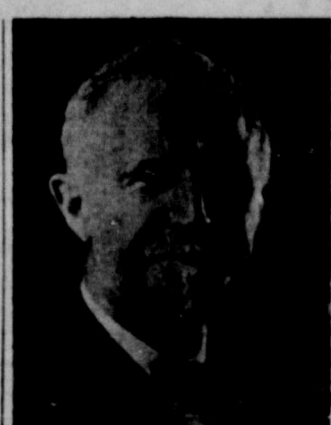
Texas Spur Will Publish 1959 Business Forecast By Babson

American business has no more inspiring personality than Roger W. Babson, internationally-known business commentator and investment advisor. An outstanding feature of his philosophy has been his lifelong insistence on the importance of both religion and advertising in business.

Born and reared in an old-fashioned atmosphere of hard work and hustle on a farm in Gloucester, Mr. Babson went to the Massachusetts Institute of Technology. Upon graduating, he returned instinctively to financial and business activities in which his father was engaged.

His exertions, however undetermined his health; he contracted tuberculosis and he was sent West "as good as dead." It was while he was convalescing from this dread malady that he worked out some of the possibilities and problems of business forecasting. His weekly releases are used by over 400 newspapers and his financial reports by 20,000 corporations and estates. His research work is carried on by a large staff of experts.

Mr. Babson founded Babson Institute of Men; and, in cooperation with the late Mrs. Babson, developed Webber College for Women—both nationally-known educational institutions. Here young men and wo-



Roger W. Babson

men may concentrate on the fundamentals of honest and efficient business administration, located in Eureka, Kansas, the center of the United States. He has been active also in the establishment of other mediums of service to the public, such as the Gravity Research Foundation, located at New Boston, New Hampshire.

Mr. Babson has probably done more than any other man to create among his millions of newspaper readers an interest in simple business problems, and to install a broader vision in businessmen, enabling them to meet the ups-and-downs of

See BABSON, P. 4

Christmas Mail Load Due To Hit

With the expectation that the Christmas mail load will hit its peak within the next few days, Postmaster Guy Karr expressed his appreciation today for your cooperation thus far in our annual "Mail Early For Christmas" Campaign.

The Postmaster said, "It's too late to talk about early mailing of Christmas gifts and cards, because time means everything now - even a few hours delay in getting your cards and gifts mailed may mean disappointment to your friends and loved ones on Christmas Day."

He suggests that last minute mailers use Air Mail for their Christmas cards or gifts that are going out of town. There's still time for local deliveries, but all Christmas cards should be sent First Class Mail. Be sure to include your return address on all Christmas card envelopes and package labels.

Cotton Bowl Trip Cancelled

A trip to the Cotton Bowl by the Spur football team has been spoiled by a legality.

B. G. Nunley Superintendent of Spur Schools reports that it is in a violation of the Amateur and Award Rule of the Interscholastic League for an outside group to collect funds and send a group of high school athletes to such an event.

A reported \$600 was collected recently by Spur Boosters for the purpose of sending the team to the Cotton Bowl. The Spur School Board has ruled that the school will not sponsor such a trip since it would be a violation of Interscholastic League rules.



MYSTERY FARM NO. 22—Here is Mystery Farm for this week. If you can identify this farm, come by the Texas Spur and register your guess. First person to correctly identify the Mystery Farm will be awarded a one year subscription to the Texas Spur. Second place winner will receive two free tree passes, courtesy J. D. McCain, manager of the Palace Theatre. Owner of the farm will receive a glossy, framed picture.

CHURCH REPORT

	1957	1958
Presbyterian	24	20
Methodist	150	173
Foreman Chapel	29	25
Bethel Baptist	55	72
Church of Christ	182	179
First Baptist	207	217
Mission Baptist	27	12
Total	674	705

THE TEXAS SPUR
Sports Page

PAGE TWO

THURSDAY, DECEMBER 18, 1958

Crowell Downs Patton Springs To Win Matador Tournament

Both the Patton Springs Rangers and Rangerettes entered the Matador invitation basketball tournament last week end. Traveling Squads: Rangers — Coach Ralph Marshall. Forwards: H. Goodwin, D. Blasingame, B. Goodwin, T. Lawson, J. Tarrant, O. Hughes. Centers: R. Mullins, C. Thomas, L. Clay. Guards: R. Ragland, M. Legg, J. Gage, T. Green, J. Hayman, A. Melton. Rangerettes — Coach Jack Jackson. Forwards: L. Roberts, N. Futch, M. Goodwin, S. Ragland, G. Blasingame, W. Hayman, C. Gage. Guards: D. Epling, M. Flood, V. Tarrant, B. Willmon, M. Willmon, B. Hobson, S. Bateman, V. Wilcher, L. Martin. In the first round of games in the tournament, the Rangerettes matched their skill with the Roaring Springs Girls. In a hard-fought game, the Patton Springs girls were able to carry off the victory by a decisive score of 51 to 39. On the winning score, Rangerettes Roberts and Futch tied for high points, each having rung up a total of 13 points during the game. On

the losing side, Jerry Warren carried off the high points honor with a total of 16 points. The Patton Springs Rangerettes lost out quickly in the second round the girls division when matched against the strong girls team from Crowell, Texas. Before the game had advanced very far, it was clear that the Rangerettes were no match for the well-organized Crowell Girls. Prosser of Crowell lead her team-mates in the scoring by sacking up a total of 22 points. Rangerettes Goodwin and Futch lead the scoring for Patton Springs with each totaling 11 points during the game. At the close of the game, Crowell had amassed 56 points to Patton Springs' 26. The farmer moved up to win the tournament championship for the girls division, while the latter dropped out of the tournament. **Rangers Win Second Place** Playing their first game of the basketball season, the Patton Springs Rangers were pitted against the Flomont Boys. In the first round of the Matador Lions Club Invitation Basketball Tournament, the Rangers were too much for the Flomont Boys and the final score favored Patton Springs 57 to 28. Billy Goodwin sacked up a

total of 17 points to lead the Rangers scoring. The second-high scorer was Ronnie Mullins with 12 points. Willard of Flomont was high point man with a total of 14 points while his team-mate Clay racked up 8 points for second place.

In their second game of the tournament, the Rangers moved in strongly to defeat the Matador Boys by a score of 52 to 44. Matador was in the lead at the close of the first quarter 11 to 8. Patton Springs was in the lead at the end of the second quarter 24 to 23. Matador was in the lead 32 to 30 at the end of the third quarter. The run-away for the Rangers occurred in the fourth quarter. They were able to garner 22 points to Matador's 12 points in the last go-round. Harold Goodwin was high point man for the Rangers with a total of 15 points for the game. Ronnie Mullins followed with a total of 13 points and Tommy Lawson with 11 counters. Gerald Pipkin took the lead in scoring for the Matadors with a total of 14 points for the game. The next man to him was Scaff with 9 points. This victory for the Rangers elevated them to the finals against the strong Crowell quintet. In the final championship game for the boys, the Crowell team was matched against the Patton Springs Rangers. For two quarters the two teams waged a fairly even battle, but the tide turned strongly against the Rangers in the last two quarters. Crowell scored 27 points in the first half of the game to Patton Springs' 22. In the last half Crowell amassed 41 points to the Rangers' 18. The final score read 68 to 40 in favor of Crowell. The tournament crown went to Crowell

Bulldogs Lose To Jayton In Matador Meet

The Spur High School cage team opened their season belatedly last Thursday night as they lost to Matador, 41-30 in the Matador tournament. Woodie McArthur led the team in scoring with 9 points. Tommy Scaff had 11 for Matador. In their second game of the tournament, the Bulldogs downed Flomont, 46-36, for their first victory of the year. Don Morrison was high point man for Spur with 10 points. McArthur garnered 7. In the consolation bracket with Jayton Saturday night, Spur lost to Jayton, 51-26. McArthur led Bulldog scorers with 8 points. Kenneth Gilcrease had 5. The Bulldogs will entertain the Jayton girls and boys teams in games here Thursday night. Bulldogs starters are: guards, Freddie Walker and Bubba Bigham, forwards, Woodie McArthur and Don Morrison, and center Kenneth Ilcrease. with the Patton Springs Rangers a strong second. David Carpenter was the high-point man for Crowell with a total of 18 points for the game. However, he was followed closely by G. Carpenter and Radar who sacked up 17 points each during the 4th quarters. Billy Goodwin was the leading scorer for the Rangers in the championship game. He racked up a total of 15 points during the game, to be followed by Harold Goodwin with a total of 11 points.



Mystery Farm No. 21 Is M. M. Edwards Ranch

Last week's Mystery Farm on the place and serves as the two free passes to the Palace Theatre was Clifford M. Edwards Ranch, located 7 miles northwest of Spur. Mr. Edwards lives in Abilene, however, Ellis Abercrombie lives to identify the farm, and will receive a year's subscription to The Texas Spur. Winner of C. H. McCully was the first to identify the farm, and will receive a year's subscription to The Texas Spur. Winner of Clarence Watters and Bill Glen. Each week The Texas Spur

TURKEYS CHEAPER IN '59
The 1959 crop of turkeys will exceed the number produced in 1958 and prices will be lower if intentions expressed by U. S. turkey producers in October McHaney, extension economist, are carried out, reports John But, he adds, these intentions are only indications and are usually the basis for readjustments in later production plans.

will offer a new Mystery Farm picture. If you recognize the aerial photo, call your guess to The Texas Spur, CR2-3282.

COMING!
Dec. 28 - 29 - 30



The Big Country

A. V. HOOVER invites you to visit the finest automobile center in Spur and see the car that makes history by making sense—

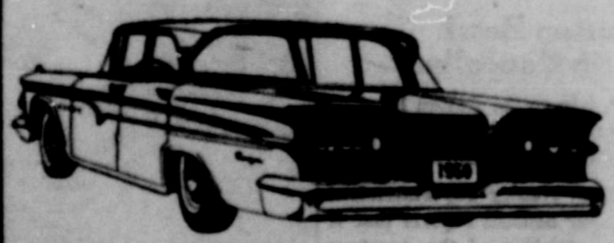
1959 EDSEL

NOW AT

Hoover Motor & Implement Co.
200 Burlington Ave. Spur, Texas



COME AND SEE THIS EXCITING NEW KIND OF CAR DURING **EDSEL SPECIAL OPEN HOUSE** Thursday, Friday, Saturday December 18 - 19 - 20



Now—Complete sales and service center for Edsel and Mercury!

CHRISTMAS SHOPPING GUIDE for last minute gifts

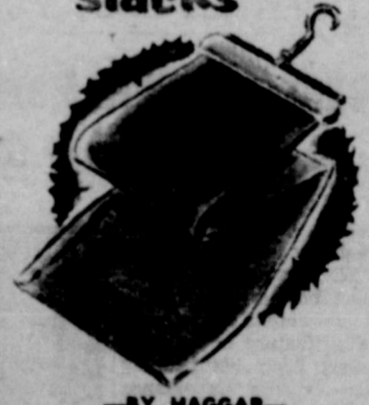
Samsonite Luggage
MANHATTAN WASH N'WEAR
PAJAMAS
Purses & Costume Jewelry
HOUSE SHOES
FOR THE WHOLE FAMILY

ARE YOU SHOPPING FOR SOMEONE WHO HAS EVERYTHING? DID YOU FORGET THE CORRECT SIZE? WHICH COLOR WOULD SHE LIKE GIVE A—
Gift Certificate

Ladies Lingerie
By Munsingwear
• SLIPS
• PANTIES
• HOSE
A Wonderful Christmas Gift for the one who appreciates the finest...
GIVE HIM A FORMFIT E & W
Western Shirt
BEAUTIFUL COLORS
SEE OUR
Men's Shoes
• FLORSHEIM
• CITY CLUB
• WESBORO



Ladies Shoes
• VELVET STEP
• JACQUELINE
• CONNIE
• PARIS FASHION
SHOP OUR COMPLETE SHOE DEPARTMENT FOR THE LATEST FASHIONS
if he had his say... he'd say
give slacks
—BY HAGGAR—
Advertised Nationally... Wash n' Wear and all wools. Priced to Please.



Towel and Wash Cloth Sets
Not only a delightful gift but a useful one. Wide selection of decorator colors.
Cowboy Boots
• TONY LAMA
• NOCONA
• ACME
HATS
By Stetson and Resistol. Latest Styles... Nationally Advertised.
Nothing would S—U—I—T him better than a
CURLEE SUIT



SPORT SHIRTS
—By—
• MANHATTAN
• VAN HEUSEN
• E & W



PAJAMAS GOWNS DUSTERS
—By TEXSHEEN—
A BEAUTIFUL GIFT THAT SHE WILL LONG REMEMBER—



WE REDEEM SCOTTIE STAMPS
GABRIEL'S Ph. CR 2-3351 SPUR, TEXAS

Former Dickens County Couple Celebrate Golden Anniversary

Mr. and Mrs. H. L. (Hugh) Squires, Littlefield, will celebrate their golden wedding anniversary, Sunday, Dec. 21.

Their children will assist with the hospitalities.

Mrs. Squires, the former Maye Young, and Mr. Squires, are both pioneer residents of Dickens County and have many friends in both Dickens and Motley counties. They were married at Afton, Dec. 2, 1908.

Mr. and Mrs. G. C. Sanders and Mrs. Melton Thacker visited in Lubbock Sunday, with Mr. and Mrs. E. E. Moss.

Mr. and Mrs. Bob Clem and Cathy visited in Floydada Sunday with Mr. and Mrs. Galen

Holland.

Mr. and Mrs. Melvin Thacker and children, Lockney, were week end guests of their parents, the S. D. Hunters and the Guy Thackers.

Mr. and Mrs. Johnny Freudenrich and son, Bruce of Idalou, were week end guests of his parents, Mr. and Mrs. Marvin Freudenrich.

Mr. and Mrs. Van Earl Bradford arrived home Saturday from Honolulu, where he has been stationed for the past 18 months. His wife was with him most of the time. He received his discharge at Oakland, Calif., Dec. 11.

Mr. and Mrs. O. F. Watson

and W. A. Valentine attended to business in Dimmitt, Thursday.

SP-5 Robert L. Odum of West Berlin, Germany, is home on furlough, visiting his parents, Mr. and Mrs. Dave Odum. He has been in Germany for three years. He, with his mother and Mr. and Mrs. Leon Lany, Hereford, spent the week end here with his grandmother, Mrs. Duncan and Mr. and Mrs. Jack Prather. Odum is a former resident of Spur.

Mrs. Hansel Pierce and sons, Aspermont, visited here Friday and Saturday with her parents, Mr. and Mrs. N. M. Gray.

Mr. and Mrs. S. J. Braselton returned Sunday from a trip to Dallas which he won for selling the most Ford tractors in a given area.

Sunday guests of Oliver Ford were a niece, Mrs. J. N. Gossett and children of New Home.

Mr. and Mrs. Johnny Osborn of Plain view, visited here

Sunday with relatives.

Miss Mary Alice James, Lubbock, was a week end guest of her parents, Mr. and Mrs. Walden James.

Mr. and Mrs. Lester Morgan of Pecos, were week end guests of her mother, Mrs. Annie Webb.

Charles and Harold Hawkins, Bovina, attended to business here Wednesday.

Mrs. Lizzie Osborn returned Sunday from a visit in Plainview with relatives.

Mrs. R. C. Irwin is in Dallas visiting her daughter, Mr. and Mrs. Posey Welcher and children.

Mrs. Morris Phillips and children, Morton, and Mrs. George Phillips, Plainview, were Sunday guests of Mrs. M. D. Freeman.

Mr. and Mrs. John Kirksey and girls, Lubbock, visited Sunday with her parents, Mr. and Mrs. Duff Green.

lited in Petersburg Sunday with his brother, Mr. and Mrs. Arnold Long.

Mr. and Mrs. Avery Payne and daughters, visited in Oklahoma last week end with relatives.

Mr. and Mrs. J. D. Mitchell visited in Lubbock Tuesday and Wednesday with their son and family, Mr. and Mrs. Doyle Mitchell.

Mrs. Amel Long and Mrs. Newton Fletcher, visited in El Dorado Saturday with Mr. and Mrs. Wilford Richeson.

Mr. and Mrs. Martin Kingery and their daughter, Plainview, visited here last week end with Mr. and Mrs. L. E. Kingery and Mr. and Mrs. Guy Thacker.

Recent guests of Mr. and Mrs. Charlie Brooks were their children, Mr. and Mrs. Ed Whitaker, Mr. and Mrs. John Avera, Brownfield, and Mr. and Mrs. Clarence Brooks, Meadow.

Mr. and Mrs. J. P. Moore vis-

DRY LAKE NEWS

Bridges On Farm To-Market Road 1868 Open To Traffic

The extension of farm to market road No. 1868, north from Foreman Chapel is progressing nicely. Both of the big bridges are open to traffic.

Mrs. John Montgomery of Jayton visited her mother, Mrs. J. L. Karr and her daughter in law, Mrs. Toby Collett, Wednesday.

Rev. and Mrs. George Ellis, visited Mr. and Mrs. Willie Al-

ited their son, Rudolph and family, in Munday last week.

len, Sunday afternoon.

Mrs. T. A. Johnson, spent Thursday in Dickens with her parents, Mr. and Mrs. Matt Dawson.

Mr. and Mrs. Guy Karr and his mother, Mrs. J. L. Karr, visited with Mr. and Mrs. Hubert Karr Sunday night and made candy.

Mr. and Mrs. John Aston with Rev. and Mrs. George Ellis as their guests, had dinner at Bell's Cafe, Sunday at noon.

Mrs. E. J. Lasseter was taken back to the doctor, Monday af-

Local Patrolman Announces DPS Exam Deadline

Examinations will be given for positions with the Texas Department of Public Safety, January 20th, 21th, and 22nd announced Stuart Erickson, local patrolman with the Texas Highway Patrol.

Young Texans interested in a career in law enforcement may compete in Statewide examinations for the positions of Drivers License Examiner, Patrolman, License & Weight Patrolman, Motor Vehicle Inspection Patrolman and Highway Patrolman. January 10th is the deadline for submitting applications to the DPS Headquarters in Austin.

"Job security, paid vacations, sick leave and retirement are only a few of the benefits you will enjoy as a State Law Enforcement Officer. Any young man between twenty-one and thirty-five, a high school graduate in good physical condition can contact any member of the Department of Public Safety for an application," Patrolman Erickson said.

ternoon.

Mrs. Coy Dopson was guest of Mrs. W. F. Foreman at the Golden Age Circle in the First Methodist church, Monday for a turkey dinner which was served to thirty, who were present.

Foreman Chapel will have their Christmas Tree at the church Sunday night, December 21.

Rev. George Ellis filled his regular appointment Sunday, at Foreman Chapel church. He gave the Christmas message.

Mr. and Mrs. Jim Barron made a business trip to Tucumcari, N. M. last Monday and back Tuesday.

Patricia Foreman spent Friday night with Patsy Powell.

Mrs. J. L. Karr's sister, Mrs. Sally Shockley, Mrs. W. F. Foreman and Mrs. Guyer, spent Monday and Tuesday with Mrs. Karr.

Foreman Chapel church wants to congratulate Mrs. Buck Ballard, Mrs. Coy Dopson and Mrs. Robert Kendrick for the nice work done on the Spur Circuit float that won first place in the Christmas parade.

Coy Dopson and son Donald, are the owners of a new pickup.

Sammie Prather of Lubbock, was a recent guest in the home of his cousin, Mr. and Mrs. Kenneth Coursey.

Foreman Chapel church welcome the Latin American people who have been coming to Sunday school and prayer meeting.

Mrs. G. L. Delisle visited Mrs. J. L. Karr last Thursday afternoon.

Mr. and Mrs. Boyd Ball and children of Brownfield, visited Saturday in the home of his parents, Mr. and Mrs. W. E. Ball.

Rev. Hubert Holton of Abilene, preached at Dry Lake last Sunday and will fill the pulpit again this Sunday.

Mrs. Bob Dixon and Mandy with Rev. and Mrs. R. D. Hill Barron had dinner Tuesday, and her mother, Mrs. Della Merriam.

Mr. and Mrs. John K. Johnson and Mr. and Mrs. Toby Collett, visited Mr. and Mrs. T. A. Johnson, Sunday afternoon.

Bill Hahn and Ott Denson, visited Sunday afternoon with Mr. and Mrs. Ellis Draper.

Jane Powell spent Friday night with Sue Stanford in Spur.

Rev. and Mrs. H. T. Harris of White Flat, spent Friday with her sister, Mr. and Mrs. W. E. Ball.

Rev. Hubert Holton was supper guest of Mr. and Mrs. Ellis Draper, Sunday night.

Mr. and Mrs. Bob Dixon visited Sunday afternoon with Mr. and Mrs. O. T. Swenson. Mr. Swenson is just back from the hospital, where he had a silver plate in his hip.



 <p>Mens Billfolds</p> <p>One of the essentials that is sure to please is our genuine leather billfold by Kenton. Choose from black, tan, or brown, in solid to toned leathers beautifully crafted of the luxury skins from over the world.</p> <p>2.99</p>	 <p>Broadcloth Pajama</p> <p>Sanforized cotton in stripes and special patterns in all colors. Elastic waistband with snap front for comfort. Sizes A-B-C-D.</p> <p>2.99</p>	 <p>Nylon Stretch Sox.</p> <p>Finest quality stretch sox for men made for us by a foremost manufacturer of mens hosiery. New patterns designed to our own specifications. Fit's sizes 10-14.</p> <p>69c pair 3 pair \$2.</p>	 <p>Mens Gloves</p> <p>The glove shown is of fine imported capeskin in soft and supple tan or black. Fully whipstitched for added strength and appearance. Sizes 8 1/4-11. Another style in a stadium glove. Knit back with soft leather palm. Choose a pair.</p> <p>3.50</p>	 <p>House Slipper</p> <p>Mens brown leather moccasin construction slipper. Cushion crepe sole and Ivy stripe lining for warmth and comfort. Special area in the inner sole glows in the dark. Sizes 6-12.</p> <p>4.99</p>
 <p>Boys Pajamas</p> <p>For your young man we have wash and wear broadcloth pajamas that require little or no ironing. In stripes and fancy patterns with coat style jacket and adjustable waist. Sizes 6-16.</p> <p>2.99</p>	 <p>Mens Sport Shirts</p> <p>These better sport shirts come in fine fabrics . . . checks, plaids, prints, stripes, and textures. Choose from two pocket, wash and wear styles. Sizes S-M-L. By Americas foremost shirtmakers.</p> <p>3.99</p>	 <p>Cuff Links</p> <p>An outstanding group of cuff link sets by one of Americas foremost mens jewelers. These tarnish proof cuff links, finished in colors of gold and silver are reduced for our Christmas Sale.</p> <p>1.00 plus tax</p>	 <p>Hickok Belts</p> <p>Seven hand finishing operations make Sierra the world's most beautiful and popular belt. Comes in 1/2", 3/4" and 1" widths, a variety of colors and sizes from 28-44.</p> <p>1.50 to 3.50</p>	 <p>Mens Ties</p> <p>We have an outstanding selection of ties for the men on your list. Foulard prints, all silk stripes, woven designs, and other smart patterns. Choose one that will please him.</p> <p>1.50 and 2.00</p>
 <p>Womens Pixies</p> <p>The last word in comfort for those lounging times. In soft, luxurious assorted fabrics. Appropriately decorated in feminine designs.</p> <p>2.99</p>	 <p>Girls Nylon Panties</p> <p>This an admirable nylon tricot brief style pantie for little girls. Pink, blue, or white. Sizes 2-14.</p> <p>39s pair</p>	 <p>Womens Panties</p> <p>Short stories by Lorraine in opaque nylon tricot. Contour fit. life-long elastic. White and colors. The fit is superb. Catering to comfort all ways.</p> <p>1.00</p>	 <p>Ladies Scarfs</p> <p>Our largest collection of scarfs. 36 inches square with hand rolled hems, oblong neck pieces, long sheer stoles, 24 inch scarfs. All the newest fashion colors.</p> <p>1.00</p>	 <p>Costume Jewelry</p> <p>We have a wonderful collection of costume jewelry. Anything her feminine heart would desire. Sport and dress wear. All at—</p> <p>1.00 plus tax</p>
 <p>Steak Knife Set</p> <p>You'll treasure this beautiful set of six steak knives, 4 1/2 inch blades of hollow ground Sheffield steel that never needs sharpening. Eikhorn handles.</p> <p>1.99</p>	 <p>Hostess Sets</p> <p>We have an assortment of hostess sets to please the most discriminating woman. Towel sets and place settings. His-Hers Towel Set. 2 Cannon bath towels, 2 Cannon wash cloths, in a choice of colors.</p> <p>1.98 to 3.98</p>	 <p>Celebrity Kits</p> <p>This beautiful kits contain everything that a woman needs for travel. Set shown . . . semi-oval plastic case that zips. Three plastic containers for cosmetics and toothbrush. Choose from many sets.</p> <p>1.00 to 2.98</p>	 <p>FANCY Pillow Case Sets</p> <p>Here's a gift designed to make the heart of any homemaker beat faster. Two gift boxed pillow cases. Take your choice of His-Hers; Mr-Mrs; floral and fancy patterns embroidered, some with gold or silver thread.</p> <p>2.39 and 3.98</p>	 <p>Ceramic Gifts</p> <p>We have a huge selection of ceramic gift items. Figurines, ash trays, cigarette boxes, planters, animals. All in glowing fired colors.</p> <p>1.00 and 2.00</p>

COMING!
Dec. 28 - 29 - 30



The Big Country

Carole Blair Initiated Into Zeta Sorority

Carole Blair, Spur was among girls who were recently initiated into the Zeta Zeta chapter of Delta Zeta sorority at West Texas State College.

The seven girls were initiated in a twilight ceremony December 8 in the home of Mrs. Edwin Keuhn of Canyon, a Delta Zeta alumna.

Miss Blair, daughter of Mr. and Mrs. Andrew Blair of Route 2, is a sophomore speech education major. She is a 1957 graduate of Spur High School.

Mrs. Berry To Honor Students

Friday afternoon, Dec. 19, at 2 p.m. all music students of Mrs. J. E. Berry will be honored with a Christmas party. All students are asked to come directly from school.

Former Spur Girl Marries In Waco

Miss Margaret May Hensley, daughter of Mr. and Mrs. Laster Hensley of Guthrie, became the bride of Howard H. Warren, son of Mrs. Florence Warren of Waco, November 22, at the Her-ring Methodist church in Waco.

The Rev. Wayne S. Reynolds, officiated with the double ring ceremony.

The bride was attired in a beige, light weight wool dress with white accessories. She carried a white prayer book, topped with a white orchid. Mrs. E. Gene Fox, sister of the bride, of Houston, was matron of honor and Tommy Swafford of Waco, served as best man.

The reception was held at the Waco Club in the Hawleigh Hotel hosted by Mr. and Mrs. Lynwood Armstrong and assisted by Mrs. E. Gene Fox and Mrs. J. E. Ratliff.

The bride is a 1948 graduate of Spur High School. After a short trip to Austin, the couple will be at home in the Brook-ville Hills Garden apartments, in Waco.

Mrs. Berry To Present Music Pupils In Recital

On December 21, Mrs. J. E. Berry will present piano and accordion students in the second recital of the season at 4 p.m. in the Bethel Baptist Church.

An organ and piano duo will be presented by Myrna Bostic and Johnny Ann Blakely, "The Christmas Fantasy." Other organ and piano duos will be played by Johnny Floyd and Don Wright. "The Scotch Poem" by McDowell will be given by Melvita Floyd.

Other students who will play at this time are: Janie Kay Ensey, Barbara Rogers, Janet Parsons, Barbara Martin, Jo Ann Bilberry, Kathy Williams, Craig Knight, Dennis Lelew, Sue Knight, Ruth Hernandez, Elizabeth Williams, Judy Arnold, Bill Williams, Cynthia Walker, Sandra Wade, Patricia Garner, Dorothy Kendricks, Pamela Wade, Donna Dyer, Bobbie Dunaway, Larry Martin, David Tullis and Martha Stephens.

THAT'S A FACT

EARLY BIRDMAN
THE OLD ENGRAVING SHOWS MAN'S SUCCESSFUL ATTEMPT TO FLY IN THE EARLY PART OF THE 19TH CENTURY. THE INVENTOR OF THIS DEVICE WAS AN ITALIAN, GIOVANNI ALBERTI. AFTER SEVERAL FLIGHTS, HE DID FALL ON A CHURCH STEEPLE AND BREAK HIS THROAT!

DOUBLE HARNESS
WHEN YOU BUY U.S. SAVINGS BONDS YOU ARE WORKING ALONG TO SPUR GOVERNMENT DEVELOPMENT. PLACE YOUR MONEY TO WORK THROUGH THE FEDERAL RESERVE PLAN TO HELP YOUR COUNTRY AND YOUR COUNTRY'S FUTURE.

LAND BECOMES SEA!
DEFENDING THEIR COUNTRY AGAINST THE SPANISH INVADERS, THE DUTCH NAVY FENCED THE CITY OF LEYDEN, SAILED IN AND FOUGHT THE ENEMY AMONGST THE ROOFTOPS AND TREES OF THE BESIEGED CITY!

GET IN STEP...
WITH OTHER PATRIOTIC AMERICANS WHO ARE INVESTING IN U.S. SAVINGS BONDS! PEACE COSTS MONEY, AND YOUR BOND PURCHASES HELP SECURE AMERICA'S PEACEFUL FUTURE AS WELL AS YOUR OWN!

Post VFW Honored With Dinner

VFW Post 6797 of District 7, Texas was guest of District 7, Sunday, Dec. 14 at a membership dinner in the Legion Hut at Post. Post was the first in District 7 to sign up 100 per cent of their 1958 members for 1959.

Those from Spur attending the dinner were Mr. and Mrs. E. B. Blumberg, Mr. and Mrs. Brink Carlisle, Mr. and Mrs. Billy D. Bingham, Clomer Randall, Commander and Mrs. Randall, president of the Ladies Auxiliary.

BABSON, Con'd from P 1

the business cycle. The Texas Spur will publish BABSON'S BUSINESS AND FINANCIAL FORECAST FOR 1959 in the first issue in January.

A careful checking of the Babson Prediction made in the BUSINESS AND FINANCIAL FORECAST FOR 1958 upholds the remarkable average of the past years by being 86% correct! Below is the score for the last twenty years. It holds the best and highest record for Annual Forecast on U. S. Future Business.

Forecast For	% Accurate
1938	86
1937	88
1936	85
1935	84
1934	86
1933	84
1932	88
1931	86
1930	81
1929	80
1928	91
1927	93
1926	95
1925	87
1924	91
1923	94
1922	86
1921	78
1920	76
1919	89

Watch for Babson's Business and Financial Forecast for 1959 in our first issue in January.

JOHNSA LOU SCUDDER TO SING IN 'MESSIAH' PROGRAM

Johnna Lou Scudder, member of the Baylor Oratoria Chorus, will participate in the annual performance of Handel's, "The Messiah," in Waco, Texas, December 18, 1958.

Miss Scudder is the daughter of Mr. and Mrs. C. P. Scudder of Spur.

The tradition of Christmas-time performances of "The Messiah" on the Baylor campus was established 27 years ago by the late Professor Robert Hopkins. The 1957 performance, conducted by Dean Daniel Sternberg of the School of Music, was a memorial performance for Professor Hopkins, who had died during that year.

Gamma Etta Has Regular Meeting

On December 6, at 2 p.m. in the party room of the Security State Bank of Ralls, members of the Gamma Etta chapter of Delta Kappa Gamma, held their regular chapter meeting.

The new year book was discussed and reports made concerning work done by several members. Mrs. M. H. Galbreath of Girard had spent Thanksgiving week end at the Texas State Teachers Association, where she acted as secretary of the Small School's Association. Mrs. Evelyn Lowrie of Crosbyton, was introduced as a new secretary of section IX of the State Teachers Association. Mrs. Jessie Thomas of Paducah, recently attended the National Association for County Superintendents.

The program included discussions concerning chapter policies and state requirements and featured a presentation by Mrs. Clark Forbis of Afton. During the social hour, the members were presented gifts by the Security State Bank and Trust Company of Ralls. Mesdames Galbreath, Forbis, King, Miss Gladys Peck of Roaring Springs and Miss Margaret Elliott of Spur, were local members who attended.

V.F.W. - Auxiliary Enjoy Annual Christmas Party

A Christmas party was enjoyed by members of the VFW, the Ladies Auxiliary, their families and guests, Friday, Dec. 12 at the Legion Hut.

The menu consisted of baked ham, green beans, potato salad, slaw, cranberry sauce, cake, coffee and punch.

Preceding the meal, the group was entertained by David Tullis and Larry Martin, accordion students of Mrs. J. E. Berry. Post Chaplain, Raymond Gilcrease, gave the invocation.

Approximately 75 attended the party. Out of town guests were District Commander and wife, Mr. and Mrs. Bob Pool and Nora Baylis, Post; District President, Mrs. N. T. Conner, Sue Crowder and Christine Moore, Lubbock; District Jr. Vice Commander, Bill Rice, Brownfield, Jr. Vice Commander, Department of Texas, Victor L. Afflerbach and family, who recently moved to Lubbock from Victoria.

Mr. Afflerbach, who was guest speaker, gave an inspiring talk on "Why We Belong to the Veterans of Foreign Wars."

The following new members were introduced: Billie D. Bingham, Blue Stephens and Mrs. Catherine Saving, member of the Ladies Auxiliary.

20th Century Study Club Has Christmas Dinner Party

The Twentieth Century Study Club met in the Dyess Tea Room, Dec. 16, at 7 p.m. with 20 members and guests present.

A turkey dinner was served and a delightful program given. Slides of "The Holy Land" were shown and narrated by M. F. McKnight, Plainview, son-in-law of Mr. and Mrs. E. S. Lee. Mrs. George Gabriel sang "Holy City" accompanied by Mrs. Madge Carlisle.

HOSPITAL NOTES...

ADMITTED

Mrs. Rome Rogers, Jayton; Rosa Overton, Jayton; Barbara Jean Denson, Spur; Mrs. Jewel Stephenson, McAdoo; Nicholas Carr, Edinburg; Mrs. H. T. Stanaland Jr., Jayton; Mrs. C. H. McCully, Spur; Terry and Jerry Hoover, Spur; Jesse Morrison, Spur; Kimmy Simmons, Spur; Mrs. Betty Dunn, Spur; Mrs. Doyle Young, Post; J. W. Jackson, Spur; Mrs. Frank Ragland, Roaring Springs; Mrs. J. T. Archer, Jr., Spur; R. L. Walker, Spur; Wanda Chambliss, Spur; Beth Inez Neaves, Spur; Paul Bennett, Spur; Mrs. Wilbur Ball, Spur; Mrs. C. R. Hawley, Dickens.

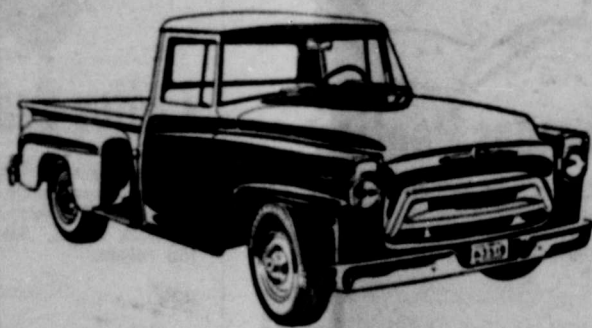
DISMISSED

Mrs. Rome Rogers, Barbara Jean Denson (transferred to John Sealy, Galveston, Texas); Mrs. Jewel Stephenson, Nicholas Carr, Mrs. H. T. Stanaland, Mrs. C. H. McCully, Terry and Jerry Hoover (transferred to West Texas Hospital, Lubbock); Kimmy Simmons, Mrs. Doyle Young, Mrs. J. T. Archer, Jr., Mrs. F. G. Shaw, Dickens; Mrs. Solomon Yanez, Mrs. R. J. Bell, Mrs. J. W. Stephenson, McAdoo; Randolph McNeill, Mrs. Bill Vencil, Jayton; Mrs. W. R. Williams, McAdoo; Sam Cantu, Jr.

ADS TO BUY SELL OR RENT - USE THE CLASSIFIED-

WANT TO TALK TERMS?

Now is the time!



you'll never get more value!

1. Bonus loadspace body
2. Bigger, safer windshield
3. Floating ride cab
4. Wood seat of any
5. Easier to service
6. Lively, economical



EDWARDS-KELLEY IMPL. CO.
600 W. HILL Phone CR 2-3353

INTERNATIONAL TRUCKS

County Agent Conducts McAdoo 4-H Meeting

Monday, December 8, the McAdoo 4H Club held its monthly meeting, in the high school study hall room from 8:45 to 9:45. The meeting was called to order by Don Teague, President.

Those present were: Jesse Blackwell, Joe Bowie, Sammy Brown, Gary Crausbay, Johnnie Dossey, Joe Dillard, Cherry Edredge, Johnny Faubus, Ronald Hardin, Joe Hefley, Jerry Johnson, Johnny McCormick, Don McDonald, Bill McWilliams, Larry Morris, Tommy Murray, Roy Neff, Johnny Powers, Joe Sanchez, Creamer Scott, Bobby Teague, Don Teague, Earl Van Meter, and Richard Williams, and 4H Club county agent, R. S. Conner.

Mr. Conner handed out some pamphlets on "Hogs", which we talked about the rest of the meeting.

The club adjourned at 9:45 until January 12, 1959.

-USE THE CLASSIFIED- ADS TO BUY SELL OR RENT

STRICTLY BUSINESS

by McFeatters



"I am assuming, Mervin, that your reference to me as a 'sol cat' is a compliment!"

I'm in favor of these...

FOOD SPECIALS

We Will Be Closed Thurs. and Fri., December 25 & 26

FRESH FRYERS	lb.	35c
READY TO EAT PICNIC HAMS	lb.	39c
BACON SQUARES	lb.	29c
BUDGET BACON	3 lbs.	1.00
FOLGERS COFFEE	2 lb. can	1.47

Pickles qt.	23c	3 LBS. KIMBELL'S Shortening	69c
OLEO 5 for	\$1.	25 LBS. KIMBELL'S FLOUR	1.79
COCKTAIL 4 for	\$1.	303 CAN KIMBELL'S Cranberry Sauce	19c
PEACHES 4 for	\$1.	303 CAN DIAMOND Pineapple	5 for \$1.
Marshmallows 2 FOR	39c	303 CAN MISSION PEAS	7 for \$1.
LETTUCE	lb.	10c	
CELERY HEARTS		19c	
AVOCADOS	2 for	25c	
GOLDEN BANANAS	2 lbs.	25c	
RUSSET POTATOES	10 lbs.	35c	

Stop & Shop Mkt.

DOUBLE FRONTIER STAMPS TUESDAY!
PLENTY FREE PARKING - USE REAR ENTRANCE

Wyler incalflex
SELF-WINDING
Dynawind

Guaranteed shock resistant!
Guaranteed water resistant!
Guaranteed mainspring!

incalflex balance wheel gives with Shock. Fully guaranteed.

17 jeweled movement 29.95 Up

B. B. PIERCE JEWELRY

Continuing Our Big Hardware

Close-Out

China & Dinner Ware

ORIGINALLY REDUCED 50% - NOW MARKED DOWN ANOTHER

25%

Offer Good Thru January 1

ORIGINALLY OFFERED AT 33 1/3 OFF

ALL PAINT ADD 20% Off

AMMUNITION

.22 RIFLE
.410 SHELLS
SHOTGUN SHELLS

OUR COST

THE ITEMS LISTED BELOW WERE ORIGINALLY MARKED DOWN 25%. NOW WE OFFER THEM WITH ANOTHER-

10% OFF

PYREX HANDTOOLS REVERWARE TIN WARE

ENTIRE STOCK REDUCED ANOTHER 10%

CHASTAIN IMPLEMENT CO.

Phone CR 2-4522 Spur, Texas



A NEW SERIES in the 1959 Ford line—the Galaxie—captures more of the taste and styling flavor of the Thunderbird than any other Ford model. Compared here, the Galaxie Town Victoria in the foreground bears a strong resemblance to the 1955 four-passenger Thunderbird — especially in the roof area, yet it is priced to sell only \$48 above comparable models in the Ford Fairlane 500 series. The new luxury series includes six different body styles and will be available at Ford dealerships in early December.

HIGHWAY COMMUNITY NEWS...

Betty McKay, Walter Stanley Honored With Wedding Shower

Mrs. B. K. Putman Miss Betty McKay and Walter Stanley were honored with a wedding shower, at the home of Mrs. Raymond Bailey in Spur, Friday night.

The table was covered with an ecru cloth, with a white Christmas tree as a centerpiece. Plate favors were white Christmas bells, with the names, Walter and Betty on each.

Hostesses for the occasion were Mesdames Frank Sonnemaker, John Boothe, Wallace Young, Jimmie Hahn, Keley Putman, Raymond Bailey, Floyd Faubus, Bill Rucker, O. L. Kelley and Forrest Martin.

Mr. and Mrs. Wilbur Stanley and Miss Betty McKay, went to Amarillo Wednesday to meet Walter Stanley, who has been serving with the armed forces in Turkey.

Mrs. Wilbur Stanley went to Knox City, Saturday morning to be at the bedside of her mother, Mrs. D. C. Wells, who is seriously ill.

Little Barbara Denson, three year old daughter of Mr. and Mrs. Edwin Denson, formerly



IT'S THE LAW
in Texas
A public service feature of the State Bar of Texas

IS THAT CHRISTMAS GIFT TAXABLE

Although it may come as a surprise to some people, the federal government levies a tax which applies to gifts made by one person to another. However, the government has no desire to tax ordinary birthday and Christmas gifts. The law therefore excludes from taxable gifts the first \$3,000 given to each individual in each calendar year.

The law also excludes from taxable gifts, gifts to the church community chest, and similar charitable organizations, and allows each giver an exemption of \$30,000 - before the tax applies.

The tax applies whether the gift is of money or of property, computed on the fair market value of the property at the date of the gift.

The purpose of many gifts is to remove the property from the taxable estate of the giver at the time of his death. This may or may not be accomplished. The federal law provides that transfers made within three years before date of death shall be deemed to have been made in contemplation of death and shall be taxable in the estate of the one who dies.

It may be advisable to "look a gift horse in the mouth" for the gift may cost the one who receives the gift in income taxes as well as the giver in gift taxes.

For income tax purposes the cost basis of property received by gift is the cost to the giver regardless of the fact that the giver may have paid a gift tax on the gift. The other rule is that in case of property received by inheritance, the cost basis is the fair market value at the date of the decedent's death.

An example will show the application of the rules. Suppose a farmer acquires his land in the early days at a cost of \$10,000. This property is now worth \$50,000. The farmer wishes to retire and to escape estate taxes, so he gives the farm to his daughter.

Although he may pay federal gift taxes totaling several thousand dollars, when the daughter decides to sell the farm for its \$50,000 value, she still has to pay income tax on \$40,000 profit (difference between the sales price and her father's cost of \$10,000).

On the other hand, if the farmer had not given the farm to the daughter, but had left it to her under his will, he would have saved the gift tax. The daughter would have taken the property at a cost basis of \$50,000, so upon the sale she would not have had to pay any income tax.

Of course, there would have been some estate taxes and administration expenses in the father's estate, but that would have been much less than the taxes which resulted from the gift. However, depending upon individual and particular circumstances, there may be occasions when a gift is advisable. Your lawyer can advise you on this matter.

(This column, prepared by the State Bar of Texas, is written to inform - not to advise. No person should ever apply or interpret any law without the aid of an attorney who is fully advised concerning the facts involved, because a slight variance in facts may change the application of the law.)

About Your HEALTH

A weekly public service feature from the Texas State Department of Health. HENRY A. HOLLE, M.D., Commissioner of Health.

Tetanus, often called lockjaw, is still prevalent in the United States. Figures for 1958 show that there were 447 cases of the disease in the country from January 1 to Nov. 1. Twenty-five of these cases occurred in Texas.

The history of tetanus goes way back. This disease was clinically described by Hippocrates and Arataeus very accurately. In 1885 Nicolaier produced the disease experimentally in animals. He did this by inoculating them with garden soil.

Four years later, Kitasato isolated the bacilli in pure culture. He went on to produce a tetanus toxin in 1890 and the antitoxin a year later.

For the past five years the incidence of the disease has been holding its own in Texas, fluctuating only little. The disease is caused by the introduction of the tetanus bacilli into the body through a wound.

The bacilli in turn produce a toxin which reacts in much the same manner as a poison on certain bodily functions.

It is characterized by stiffness of the jaw and neck muscles. Before the development of antitoxin, about 80 per cent of all inflicted persons died.

The disease was more prevalent than because of few paved roads and sidewalks, besides the abundance of horses and other animals before the coming of automobiles. Today, soils, street dust and animal excreta are still the principal reservoirs.

Since 1941 the U.S. Armed Forces have protected their men with tetanus toxoid. During World War II there were only 12 cases of tetanus in the Army and Air Force. Six had not received the toxoid shots and two had received the toxoid, but not an emergency booster. Out of 600,000 battle wounds, only one case developed tetanus.

Meanwhile in the Navy there were two deaths from four cases. Only one had not been

Jimmie Holder Is Member Of H-SU Chorus

Jimmie Rex Holder, H-SU freshman from Spur, is appearing during the Christmas season in a series of concerts with the A Capella Choir from Hardin Simmons University.

Jimmie Rex is the son of Mr. and Mrs. Rex Holder and was a 1958 graduate of Spur High School. He was active in choir work while in Spur High and won a first rating in solo work in regional interscholastic meet in his junior and senior year.

The chorus is under the able direction of Edward H. Hamilton who masterfully combines in many numbers the choir with organ, piano, brass ensemble and percussion instruments.

Their first presentation of the Christmas Concert was given Tuesday, December 9th and the last one will be the finale of all Christmas Activities of the campus when the choir will appear at the Rose Field House on December 19th.

The choir will make a tour of several states in the spring term of school.

The Old Timer

"Of course, life doesn't begin at 40 for the fellow who went like 60 when he was 20."

Texas Farm Population Decline Halted

The sharp decline in Texas farm population which occurred in 1956-57 does not appear to have continued during 1957-58, reports R. L. Skrabanek, professor, Department of Agricultural Economics and Sociology, Texas A&M College.

Skrabanek attributes this temporary reversal partly to the economic recession which tended to retard movement from farms because of a drop in the number of off-farm job opportunities. He said there also is some evidence that the recession caused the return of some workers to farm areas.

The 1958 farm population figure of 1,052,000 represents a decline of 335,000, or 24 per cent, from the estimated farm population in 1950. It represents an increase of 34,000 from the 1957 estimate of 1,018,000.

As Texas' total population continues to grow, the proportion of farm population to the total population continues to decline. In April, 1958, farm residents comprised 11.3 per cent of the total population, as compared to 17.9 per cent in 1950.

This decline represents a continuation of a long-time trend. In 1910, about three of every five persons in Texas resided on a farm. The proportion living on farms continued to fall during the intervening years, interrupted only during depression years and brief periods since World War II.

U.S. farm population in April, 1958, was 20,827,000. The proportion of the nation's farm population living in Texas remains relatively the same. In 1957 about 4.99 of every 100 farm people in the nation resided in Texas. In 1958 the state's share was 5.05 out of every 100.

Mr. and Mrs. M. E. Tree visited their daughter, Mrs. Jimmie Hahn, Sunday evening.

Mrs. Keley Putman visited Mrs. Jerry Thomason and Debbie Thursday morning.

Mr. Edna Hemphill and J. E. visited Mrs. Keley Putman Thursday afternoon.

Jewelry

And You Will Be Sure To Have A MERRY CHRISTMAS

SPECIAL ONE GROUP **WATCHES** 25% OFF
The Gift that will be Remembered!

GIVE A GIFT OF DISTINCTION!

- | | |
|--|--|
| BULOVA, ELGIN AND MIDO WATCHES | FOSTORIA, BRYCE AND DUNCAN CRYSTAL |
| DIAMOND RINGS AND EAR SCREWS | SYRACUSE, ENGLISH BONE AND FRANCONIA CHINA |
| STONE SET INITIAL, SIGNET AND BABY RINGS | COSTUME JEWELRY AND LEATHERGOODS |
| GORHAM AND INTERNATIONAL STERLING | COMMUNITY AND ROGERS PLATED SILVER |
| RUSSEL WRIGHT AND UNIVERSAL POTTERY | MANY OTHER GIFTS. ALL GIFTS WRAPPED FREE! |

20 PIECE SET **BELLERINA POTTERY** 6.95

"BE SURE TO REMEMBER THAT THIS IS THE BIRTHDAY OF JESUS"

GRUBEN JEWELRY
SPUR, TEXAS WE GIVE S & H GREEN STAMPS

PALACE BOX OFFICE OPENS:
Saturday & Sunday 1:15 p.m.
Week Days 6:15 p.m.

FRIDAY - SATURDAY
WILDEST AFRICA TAMING OF THE WEST
The Naked Earth SCOTT BRADY
—Starring—
RICHARD TODD Blood Arrow

PREVIEW SATURDAY NITE - 11:30
SUNDAY - MONDAY - TUESDAY
—YOU WILL COME TO SCOFF... AND STAY TO SHUDDER—

THE WORLD'S GREATEST HORRORAMA!

THE REVENGE OF FRANKENSTEIN
TECHNICOLOR - A COLUMBIA PICTURE

SCIENCE VS. SORCERY!
DANA ANDREWS
CURSE OF THE DEMON
Starring PEGGY CUMMINGS and MALL MACGOWAN
A M. G. M. PICTURE

WEDNESDAY - CHRISTMAS EVE
—SHOW OPEN ALL DAY—

all TECHNICOLOR

CARTOON

2 Jamboree and FUN SHOW

KIDS 25c

With Big Box Free Pop Corn

INTRODUCING **WORLD'S FINEST HIGH FIDELITY!**

sensational new **ZENITH** stereophonic equipped high-fidelity record-playing system

"TWIN ENSEMBLE"

THRILL TO ZENITH QUALITY DEPTH AND DIMENSION

BUY THIS Zenith stereo-equipped instrument NOW for world's finest high-fidelity performance.

BUY THIS Zenith stereophonic remote speaker system NOW or LATER for complete 3-dimension Stereophonic Sound

THE CARTATA Model SP125
Zenith Stereophonic Equipped High-Fidelity Record-Playing Instrument. May be purchased separately as a High-Fidelity instrument. Fully equipped for Stereophonic Sound reproduction by addition of the companion speaker system illustrated at right. Your choice of colors: grained mahogany, grained walnut, or blond oak. 30" high, 28 1/4" wide, 16 7/16" deep **249.95**

Zenith Stereophonic Remote Speaker System (Model SK318)
Attaches to Model SP125 for Stereophonic High-Fidelity Sound reproduction. Has separate 40 watt peak output power amplifier. One 12" woofer, one 5" tweeter. Presence, bass and treble controls. Complete with extension cord. In matching colors. 30" high, 21" wide, 16 1/4" deep **125.00**

- PLAYS YOUR PRESENT RECORDS AND NEW STEREOPHONIC RECORDS**
- | | | | |
|--|--|--|--|
| IT TAKES ZENITH QUALITY FEATURES TO GET THE WORLD'S FINEST PERFORMANCE! | Zenith Stereo Studio Sound Controls
Has 4 position Record Compensator, Loudness, Presence Stereo Balance, separate bass and treble controls. | 4 High-Fidelity Speakers
Two giant-size 12" woofers with heavy magnets, one 5 1/2", one 3 1/2" tweeters. Broad range response of 40 to 15,000 C.P.S. | Lightweight Cobra Tone Arm
Only 6 grams of pressure on stylus. Positive angle pick-up permits needle to "float" in grooves—thus records sound better, last longer. |
| | 40 Watts of Peak Power
Separate power amplifier with pre-amp has 40 watts of peak power output. Faithfully reproduces all harmonics and overtones. | New Deluxe Cobra-Matic 4-Speed Record Changer
Automatically plays 33 1/3, 45, 78, and 16 2/3 RPM records, fourteen 7" records, twelve 10" records. | All Records Sound Better!
Plays 78 RPM, LP's and 16 2/3 records as well as the new stereophonic sound records. |

ANNOUNCING ZENITH QUALITY TABLE MODEL TV!

...with **HIGH FIDELITY PICTURE... even in fringe areas! No out-of-focus edges**

...with **2 Zenith Quality SPEAKERS**

NEW STYLE NEW DESIGN

THE BEAUMONT
Model B 2330 Table TV 21" overall diag. 262 sq. in. rectangular picture area. Handsome slim-line metal cabinet in grained mahogany or blond oak colors.
Complete with Base & Tax **299.95**

40th Buy Now During Zenith's 40 Years of Quality Celebration

YOU'LL GET THE BIGGEST TRADE EVER... NOW AT...

Randy Clifton TV & Appliance

—USE THE CLASSIFIED ADS TO BUY SELL OR RENT

GIRARD NEWS . . .

Mrs. H. A. Hollingshead Enos Jones and son, Johnny of Amarillo were down hunting last week and visited the J. W. Lankfords.

Mr. and Mrs. B. J. McDaniels of Montana visited here last week with their daughter, Mr. and Mrs. Jack Smith and his sister, Mrs. Ola Boone.

The Methodist Quarterly Conference was well attended at Duck Creek recently.

B. P. Woody was reported in critical condition in a Dallas hospital following a heart attack last week. B. P. is a former resident of the community and Mrs. Woody's mother, Mrs. Jewel Cooper resides in Spur.

Bud Cooper's son in law is in a Dallas hospital for surgery following an accident in the oil field.

Mr. and Mrs. C. D. Dickerson were in Aspermont Tuesday on business.

Mr. and Mrs. Luther Bowen and Mr. and Mrs. Bob Hamilton were visiting in the Gordon Hamilton home last Monday. Mrs. Hamilton had just returned from the hospital.

Mr. and Mrs. E. E. Beadle of Cactus and Mrs. G. F. Smith and Mrs. Vera Holmes of Am-

arillo were recent visitors in the Beadle home.

Mr. and Mrs. Lester Bolf and small daughter are guests in the home of her mother, Mrs. H. D. Smith for a few days. Their home is at Mineral Wells.

Mr. and Mrs. Carlos Dickerson have had as their recent visitors their daughters, Mr. and Mrs. Jimmy Teague and girls of Lubbock and Mrs. Don Hill and children of Spur.

Saturday night "84" players at the C. C. Kimmells were Mr. and Mrs. Chas. Witt of Spur and Mr. and Mrs. Satch Witt. Other visitors at the Kimmell's were Connie and Donna Bagwell of Abilene, granddaughters of the Kimmell's. They returned home with Mrs. Kimmell and Mrs. McGaha Friday after the two local ladies had spent Thursday night with their children, Mr. and Mrs. Leslie Bagwell and Mr. and Mrs. J. D. McGaha, respectively. The Bagwells they came for the girls Monday and spent the night with the Kimmell's. Mrs. Oma Jenkins of Abilene also was a passenger with Mrs. Kimmell Friday.

Mr. and Mrs. Raymond Hooper had several of her relatives from Lubbock in their

home Sunday for dinner, Mr. and Mrs. Coy Wilson and family, Mr. Curtis Wilson and Curtis Lee, and Mr. Harley Gene Thomas. Afternoon guests were Mr. and Mrs. G. W. Willis.

P.T.A. met Thursday night and were entertained by the children of Mrs. Bucklew's room in a Christmas presentation plus a musical program under the direction of Mrs. Hatchett.

The High school basketball teams attended a tournament at Guthrie last week, engaging Aspermont teams Monday night and Guthrie Girls Thursday night. Bernice Fincher scored 30 points of the 42 which were made in Monday night's game.

Mr. and Mrs. Tommy Gallagher and Janet of Lubbock visited here with the Gallaghers and Edgar Hollingsheads Thursday and Friday of last week.

Mrs. Lenora Page visited with her brother and family, Mr. and Mrs. Lee J. Peak of Abilene Friday and Saturday nights. Her intentions had been to proceed to San Marcos to see her son, Cubby, and wife but bad weather and hazardous roads discouraged the reminder of her trip and she returned home Sunday.

Mr. and Mrs. Geo Gibson of

Dumont Community Records Low Of 12 Degrees Last Friday

The coldest weather in many years has gripped this locality for the past three days. Friday morning the mercury stood at 12 degrees.

E. L. Park remains in a Quana hospital after major surgery ten days ago.

There were no church services here last Sunday, as it was too cold for the pastor to get here.

Mesdames Cliff Rogers and Perilla Brewster, spent Sunday in Guthrie with Mr. and Mrs. Speck Green and family.

Mr. and Mrs. Floyd Forrest spent the week end in Lawton, Oklahoma, visiting their daughter, Captain and Mrs. D. M. Blanton and children.

Mrs. Wade Smith from near

Odessa were visiting relatives in Spur and the O. M. Beadles here last week end.

Kenneth Jackson recently passed examinations in Lubbock to become a city patrolman. Ken is the nephew of Mrs. Beadle and Mrs. Geo Smith.

Paducah, spent Thursday in the home of Mr. and Mrs. Lowell Smith.

The Claude Boltons spent Sunday in Childress. Mr. and Mrs. Floyd Forrest visiting her brother and family last week.

M. Sgt and Mrs. Carl Woodward and children of Abilene, spent the week end with his mother and sister, Mr. and Mrs. Bob Allen and R. C. Smiths.

Mrs. Paul Dwayne Smith of El Paso, spent the week end with her parents, Mr. and Mrs. Clyde Bolton.

FARM POPULATION GROWS

The sharp decline in Texas farm population which occurred in 1956-57 does not appear to have continued during 1957-58, reports R. L. Skrabanek, professor, Department of Agricultural Economics and Sociology, Texas A&M. He attributes this temporary reversal partly to the economic recession.

Mr. and Mrs. John Aston spent Friday and Saturday in Abilene with their daughter, Mr. and Mrs. Bud Rennels.

USE THE CLASSIFIED ADS BUY, SELL, OR RENT!

Dr. M. H. Brannen
Dentist
111 E. Harris Ph. CR2-3122
SPUR, TEXAS

Tuesday Only
DR. W. F. PATRICK
Optometrist
110 E. HARRIS, SPUR

Dr. W. C. Gruben
OPTOMETRIST
Ph. CR2-3783 Spur, Texas

Knights of Pythias
Meets Every Monday Night
Visitors Welcome

Dr. O. R. Cloude
CHIROPRACTOR
103 West Hill Street
Spur, Texas

BUSINESS & PROFESSIONAL DIRECTORY

SPUR, TEXAS

DAVIS AND RECTOR

REAL ESTATE & GENERAL INSURANCE

AUTO LOANS
"Cash in 10 Minutes"

Office Phone
CR2-3391

Residence Phone
CR2-3257

CONNER and WALKER

ATTORNEYS AT LAW

SPUR,

TEXAS

FLASH-O-GAS INC.

BUTANE CARBURETION A SPECIALTY

Phone CR2-4291

P. O. Box 1216
SPUR, TEXAS

ALWAYS PROMPT AND COURTEOUS SERVICE

GIBSON

INSURANCE AGENCY

GENERAL INSURANCE

PHONE CR2-4441

"66" SERVICE STATION

WHOLESALE and RETAIL

OPEN 24 HOURS

PHONE CR2-4141

SPUR

FLOY WATSON - AGENCY

FARM BUREAU INSURANCE FOR MEMBERS ONLY

Fire, Casualty, Automobile, Life etc. IT PAYS TO BELONG TO FARM BUREAU SEE US FOR CROP HAIL INSURANCE

108 E. Harris St. Spur, Texas
Office Phone CR2-3231-Res. Dry Lake 2161
P. O. Box 84

O. L. KELLEY

REAL ESTATE

Farms, Ranches, City Property LISTING WANTED

BOX 1093 Spur, TEXAS
PHONE CR2-3383

MARKET POULTRY & EGG CO.

BUY OR STORE GOVERNMENT STORAGE FOR BIRD AND OTHER GRAINS

F B B

(Grain, Pellets, Corn, Oats, Milo, Barley) SPUR, Phone CR2-3112 (1 Block West of Co-Op Bldg.) DICKENS Phone 3467

GARNER BROS.

DRILLING COMPANY

TEST HOLES DOMESTIC WELLS IRRIGATION WELLS A & C and LANE TURBINES REDA SUBMERSIBLES JETS PLASTIC PIPE CLEANOUTS PUMP REPAIR

Free Estimates. We'll appreciate your call

RIP GARNER - Phone CR2-3242
BUNK GARNER - Phone CR2-3188

H. A. C. BRUMMETT

ATTORNEY AT LAW

DICKENS, TEXAS

PHONE 2621

ALWAYS BOOSTING SPUR

TEXAS THE SPUR

SERVING A RICH FARM CROP STOCK and COUNTRY RAISING TERRITORY OF WEST TEXAS

OFFICIAL PUBLICATION FOR COUNTY OF DICKENS AND CITY OF SPUR DICKENS (TEX) and DICKENS COUNTY TIMES Absorbed by Purchase Published weekly on Thursday at Spur, Dickens County, Texas. Office and Printing Plant located at 434 North Burlington Avenue. Office Telephone CR2-3282.

JOE HARRISON, Editor and Publisher

NOTICE - Any erroneous reflection upon the character, standing or reputation of any individual, firm or corporation, which may appear in the columns of The Texas Spur will be gladly corrected upon its being brought to the attention of the publisher.

SUBSCRIPTION RATES
Per Year in Advance

In Dickens County, Motley, King, Stonebush, Cottle, Kent, Garza, Floyd counties \$2.00
In Mail Zone Two \$2.50
In All Other Zones \$3.00

Entered as second class matter on the 12th day of November, 1956, at the Post Office at Spur, Texas, under the Act of Congress of March 3, 1879, and published continuously without recess.

All subscriptions are removed from our mailing lists upon expiration. Renewals should reach us two weeks in advance of expiration date to avoid missing an issue. In giving address changes, both old and new address should be given.

New radiance! New glamour! New life for your lawn with electric...

Lawn Lighting

THE NEW FASHION FOR HOMES

\$2.50

...down payment and \$2.50 a month on your electric statement

For new sparkle, new brilliance, add these fashionable new post lights to your lawn! Four handsome styles, described below, are available through any local electrical contractor, completely installed at \$39.50 or \$49.50. These prices include up to 50' of cable and normal installation of an inside switch, so you may turn your post light on or off at will. Costs continue to operate - you can use it all night, every night, for less than 28¢ a month.

See these smart styles on display of your electrical contractors

THE ARCADIA - Traditional head on adjustable post. Uses clear or colored bulb, 25 to 100 watts. Completely installed, up to 50' of cable and normal installation of inside switch, \$39.50, on easy terms.

THE BOSTON - Traditional style on adjustable post, with lighted house number bracket. Uses clear or colored bulb, 25 to 100 watts. Completely installed, up to 50' of cable, and normal installation of inside switch, \$49.50, on easy terms.

THE CHARLESTON - Traditional head on wrought iron base. Uses clear or colored bulb, 25 to 100 watts. Completely installed, up to 50' of cable and normal installation of inside switch, \$49.50, on easy terms.

THE DOVER - Styling modern head on wrought iron base. Uses clear or colored bulb, 25 to 100 watts. Completely installed, \$49.50, on easy terms.

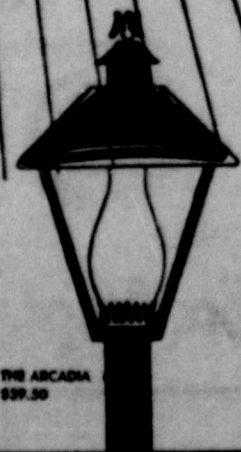
WEATHERPROOF LAWN OUTLET - You can add a weatherproof electric outlet at the base of the post to plug in your electric lawn mower, edge clipper or other outdoor equipment. \$16.00 additional, but may be included in your monthly payment.

Lawn lighting sold only by your electrical contractor - call him today!

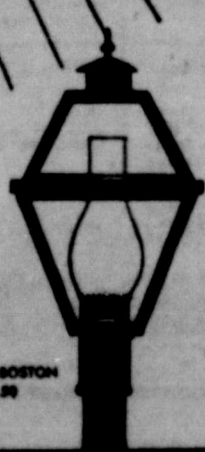
LIVE BETTER ELECTRICALLY WITH LAWN LIGHTING



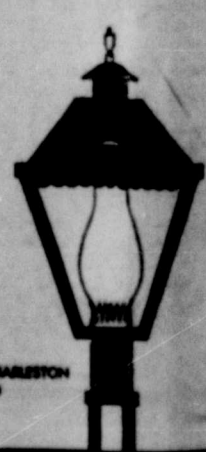
West Texas Utilities Company



THE ARCADIA \$39.50



THE BOSTON \$49.50



THE CHARLESTON \$49.50

REGISTER FOR
**FREE
GIFTS!!**

Christmas Gifts for you in appreciation of your patronage.
No. 1 - Swing King Recliner
No. 2 - RCA Radio
No. 3 - GE Steam Travel Iron
No. 4 - Pair Planter Lamps

For The Kiddies - FREE - 8 ft. Stocking Full of Toys.



IT'S CHRISTMAS SHOPPING WE GO...

AT WEST TEXAS FURNITURE'S BIG

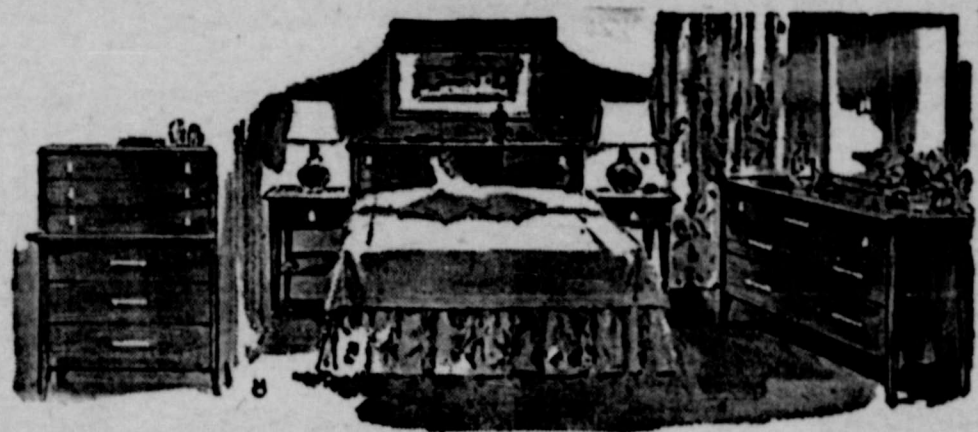
Christmas Furniture Sale

NOW IN FULL SWING!!



3 Pc. Bedroom Suites

By McCoy Couch and Bassett



• OAK

Book Case Bed, Large Chest, Double Dresser

Regular 199.50

CHRISTMAS BARGAIN

149.50

Other 2, 3 & 4 Pc. Suites 139.50 to 499.50

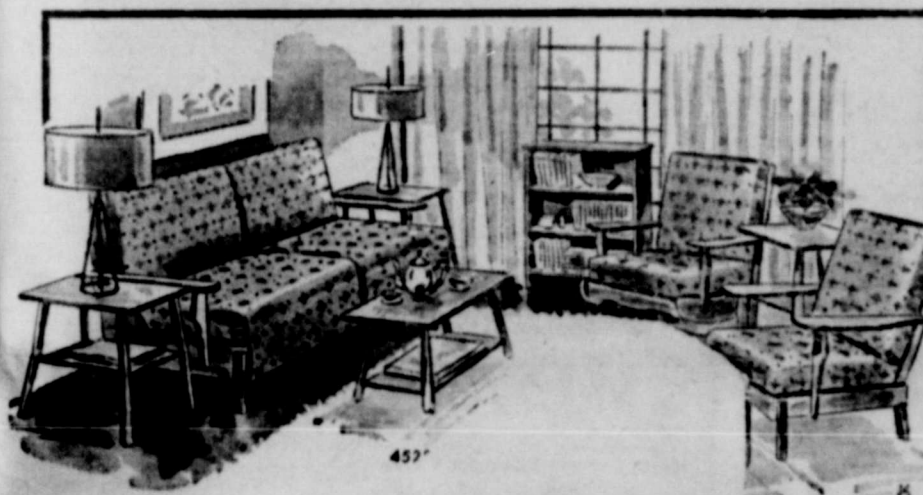
WITH TRADE-IN

FURNITURE IS A PERMANENT GIFT

5 Pc. Living Room Groups

Beautiful Groups to Choose From, Patterns by
A. Brandt and West Wood. Reg. to 229.50

- TWO SOLID OAK TABLES
- SIDE CHAIR
- SOFA BED
- ROCKER



189.50

Other Living Room Suites from 99.50 up

Casco Utility Table & Kitchen Stool



Nice Selection

10% OFF

FULL SIZE Reg. 219.50

HARDWICK RANGE

With DeLuxe Back Panel, Electric Clock, Automatic Timer, Grill and 5th Burner Attachment. NOW!!

169.50

With Acceptable Trade-In

REGULAR LINE

DINETS

By Virtue. Large 7-Piece Suites. Large Leave. Reg. 149.50 . . . Going At-

With Trade-In **99.50**



Recliners

By Kroehler & Swing King.

Reg. 79.50. Christmas Sale Price . . .



59.50

Others with and without vibrators, up to 179.50)

ENTIRE STOCK

LAMPS & TABLES

One Third OFF

ENTIRE STOCK

MATTRESSES & BOX SPRINGS

20% Off

DURING THIS BIG CHRISTMAS SALE . . .

We Offer Extra Long Trade-Ins for Good Used Furniture, Appliances and TV Sets.

LONGEST TRADES . . . EASIEST TERMS

West Texas Furniture Company

SPUR, TEXAS

CLASSIFIED ADS

FOR SALE

FOR SALE: 1955 Ford Pick-up. Custom Cab, Radio and Heater, New Heavy Duty Tires. E. L. Caraway. Ph. CR 2-1459. 9-ctfn-15

FOR SALE: Baby Beef, Bronze Turkeys. Will Deliver Dec. 20 to Spur. Call CR 2-4552, night CR 2-4507. 9-1tc-15

I AM CLOSING OUT ALL MY Gifts and Plain Christmas Cards at Cost. Mrs. P. C. Nichols, 313 E. Hill St. 9-1tp-20

FOR SALE: Hampshire Gilts, the Good Kind, Breeding Age. Ph. CR 2-4421 or CR 2-3771. 6-ctfn-13

PONTIACS GALORE! All types of body styles, variety of colors. Air, power, and plenty of class in our '59 Pontiacs. Reagan Motor Co. 220 North Burlington. 7-ctfn-27

FOR SALE: 3 Cows and Calves. Call Bob Blackshear, Leon Lee & Locker Co. CR 2-4371. 6-ctfn-15

IF YOU NEED Casing or Structural Pipe call CR2-4330 Mrs. Cal Martin. 1-ctfn-12
FOR SALE: Used Norge refrigerator. Good condition. Randy Clifton TV and Appliance. 6-ctfn-12

FOR SALE: International Whirlwind Terraocer; 2 Augers! \$200. Roy Gilmore, 6 miles north of Dickens, Midway. 6-4tp-15

1952 Chevrolet: Tudor, motor just overhauled. For sale or will trade for small house. C. V. Allen. 4-ctfn-18

FOR SALE: 17" Emerson TV first class condition. Fully guaranteed 90 days. \$75.00. Randy Clifton TV & Appliance. 3-ctfn-18

FOR SALE: CBS 21" Table Model with stand. New Picture Tube, guaranteed 1 year. 90 day guarantee on set \$125.00. Randy Clifton TV & Appliance. 3-ctfn-26

FOR SALE: Reo electric reel type lawn mower with 65 ft. cord. Less than 1 year old. Originally \$98.50 — \$50.00. Call CR2-4428. 29-ctfn-21w

FOR SALE: Mustang Seed Oats, 80c bushel. Alton Delisle, Dickens Highway. AX6-2122. 52-ctfn-11

JUST ARRIVED! A new Shipment of RCA Whirlpool home Freezers and Refrigerators. We have on display the famous RCA Refrigerator Ice-Maker. Also a new shipment of Whirlpool Automatic Washers. Edwards-Kelley Implement Co. 2-ctfn-33

COMPLETE floor covering sales, service, installation. Carpeting, inlaid linoleum, plastics, tiles, etc. West Texas Furniture Co. 23-ctfn-16

FOR SALE: Beef and hogs for your locker or home freezer. We have all sizes available. Half or whole. Wholesale price. Leon Locker Plant. Ph. CR2-4371, Spur. 46-ctfn-27w

FOR SALE: 120 acre farm 4 1/2 miles south of Spur. Contact Olney Walker, Spur. 34-ctfn-13

FARM FOR SALE: 6 miles Southwest of Girard. 101 and one-fourth acres, all in cultivation. 33 acres already sown to small grain. See Millard Smith, Girard, Texas. 8-ctfn-25

FOR SALE: Brick Veneer business building 30 x 80. 2 rooms upstairs. Living quarters available in back of store. Grocery fixtures and counters for sale. Millard Smith, Girard, Texas. 8-ctfn-29

HOW BOUT THAT

By RALPH TEE



"We buy and sell good used farm equipment" A&B Tractor & Equipment Co., at Ken Boteman's on Ideal Highway. Elmer H. Adams, Mgr. Ph. PO2-2510. Night, PO2-1896. Rt. 7, box 81, Lubbock, Texas. 44-ctfn-33w

FOR SALE: 1952 Model Ford Tractor 2-row. \$850.00 with planter, lister, cultivator, Go-Devil. Mrs. Cecil Alexander, 808 Burlington. 47-241p-20w

FOR SALE: 22 cu. ft. IH Home Freezer. Excellent condition. Guaranteed. Terms available. West Texas Furniture Co. Spur, Texas. 49-ctfn-20w

FOR MONUMENTS, Curbs, and Covers, See J. E. Lee. 3-ctfn-9

FOR SALE: Good used cook-stoves. \$5.00 to \$69.50. West Texas Furniture Co., Spur, Texas. 49-ctfn-14w

FOR SALE: 2" and 1 1/2" used pipe. See at Henry Simmons' welding shop. 16-ctfn-13

FOR SALE: In field, between 5000 and 6000 bundles of well headed, late Hegari. Special price if sold in large quantities. Mrs. H. D. Smith, one and one-half miles West of Girard. 8-2tp-30

Home Freezer For Sale: By Girard Ind. School Dist. 1952 model, 6 cu. ft. Maytag home freezer, to be sold by sealed bids Jan. 5, 1959. Send bids to: Orwin Stephens, Sec. of School Board, Girard, Texas. 8-2tc-37

FOR SALE: Two bed-room house and lot for sale. Low down payment. Call CR 2-3175 after 5 p. m. 8-ctfn-19

FOR SALE: My houses in Spur, located at 416 — 2nd St., and 416 3rd St. Jerry Willard 115 S. Adonis, Dallas 8, Texas. 8-4tc-23

FOR SALE: 3 piece bed-room suite, 2 wheel trailer, with bed, W. C. Ingley. 8-2tp-15

FOR SALE: Pedigreed Boxers and Pups. Dam Susie Boe W73-1137, Fu Wh Wmkys - 4 years, 75.00. Sire, Tired Timber W 77-7571, Fu Blk Mak 2 1/2 years old 50.00. Pups, 35.00 each with papers. Will deliver Christmas week. Mrs. C. B. Fort, Box 3008 Ft. Worth 5, Texas, phone J. E. 67004. For information phone CR 2-3180. 8-2tp-53

FOR SALE

166 acre farm, three bed-room house. \$100 per acre. Close in.

4 acres land three Room house. Near Experiment Station \$3,500.

2 bedroom home. Good location. \$3,500.

2 bedroom home near East Ward School. \$2,850.

Other Farms, Ranches and City Property for Sale. SEE...

M. L. Crafton

REAL ESTATE
CR 2-4312 CR 2-4582
Office Residence

FOR SALE: New Electric Admiral Sewing Machine. \$65.00. Mrs. Evelyn Smelser, 423 N. Keeler. Ph. CR 2-4180. 8-2tc-15

LET US Slaughter your beef or hog. Modern, clean, sanitary facilities. Experienced staff. Leon Lee Co., Spur. 34-ctfn-15

FOR RENT

FOR RENT: Small Apartment. Call CR 2-3329 or see it at 608 1/2 Trumbull. 8-ctfn-12

FOR RENT: Three room house and bath, furnished. All bills paid. \$35.00 per month. See at 522 Trumbull or call CR 2-3725. Mrs. John K. Johnson. 8-ctfn-25

BUYING A CAR? Come and look over the Pontiacs. Compare before you buy. Compare Looks, Size, Comfort and Durability. Reagan Motor Co. 220 North Burlington. 7-ctfn-26

FOR RENT: Furnished Apartments: Three rooms, bath, clean, close in. Call CR2-4137 or CR2-4212. Allen Apartments. 4-ctfn-16

FOR RENT OR SALE: 24 x 100 brick building with living quarters; parking space, in rear. Call or come by Morgan's Studio. CR2-3182.

FOR RENT: Furnished Apartment. E. S. Lee. 2-ctfn-7w

FOR RENT: 40' x 60' Sheet Metal Building. Located east of Willson-Young Lumber Co. Call CR2-4271. 52-ctfn-15

Miscellaneous

FOR EXPERT Piano Tuning and Repair see or call John E. Berry Jr., 4307 - 46th St. Lubbock, Texas, Phone SW9-6852 or call CR2-3116. 50-ctfn-23w

The Presbyterian Church is open at all times for prayer and meditation. 702 N. Burlington. 46-16tp

FOUND: House Key, may claim at Texas Spur by paying for this ad. 2-ctfn-13

LOST: Two pigs-sow and boar about six weeks old. Bob Cannon, AX6-2226. 4-ctfn-14

LOST: Roan Milch Cow and yearling heifer. 4 F connected brand. E. L. Maben, Star Rt. 2, Spur, Texas. 7-ctfn-19

WANTED

WANTED: Grass Land, Large or Small Acreage. Call CR 2-3788. 6-ctfn-9

WANTED: Typing to do in my home. Pick up and delivery service. 24 hour service. Mrs. Arlene Wyatt. AX 6-2223. 5-ctfn-19

NEED A PLUMBER? Call CR2-3212 for quick service and reasonable prices. Willson & Young Lumber Co. 27-ctfn-16

WANTED: FARM LOANS, 5% percent interest payable on or before maturity. Spur National Farm Loan Ass'n. Spur, Texas

WANTED: Ironing to do in my home. See sign on Cemetery road. Mrs. J. C. Neal

WILLARD (BILL) DAY PLUMBING CONTRACTOR We give you prompt service and reasonable prices on repairs. Headquarters Willson-Young Lumber Co. Day Ph. CR2-3212, Nite, CR2-3115. 23-ctfn-31

MAN WANTED: for 1500 family Rawleigh business in Dickens County. Permanent if you are a hustler. Write Rawleigh's, Dept. TX1-410-123, Memphis, Tenn. 2-1tp-22

The Old Timer



"The key to many a family row is the one that fits the car."

CARD OF THANKS
We would like to express our thanks and appreciation to the doctors, fans, and boosters who played an important part in making the past football season a success.
It took everyone working together to accomplish the success.
Coach Bill Henry, Coach Jim Eddins and Coach Douglas McArthur.

CARD OF THANKS
Thank you for the cards, letters and flowers, sent to me while I was in Baylor Hospital. Your many kindnesses made my stay much more pleasant.
O. T. Swenson

CARD OF THANKS
The Spur Ministerial Alliance Association wish to express their thanks to the following merchants for sponsoring the full page ad for the joint Thanksgiving service: Mac's Super Market, Campbell's Funeral Home, City Drug Company, The Texas Spur, Gabriel's, Spur Security Bank and Rickels Chevrolet.

LEGAL NOTICE

THE STATE OF TEXAS TO ALL PERSONS AND PARTIES INTERESTED IN THE ESTATE OF EDNA I. BARTON, A PERSON OF UNSOUND MIND:

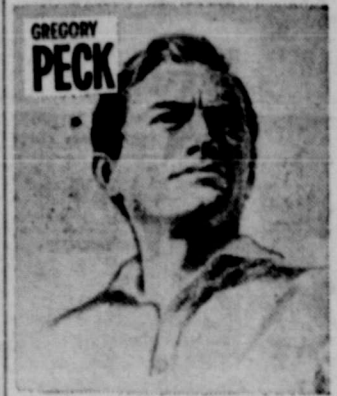
You and each of you are hereby cited, required and commanded to appear before the County Court of Dickens County, Texas, to be held in the County Court room in the Courthouse of said county in the City of Dickens in said county, such appearance to be at or before ten o'clock A. M. of the first Monday next after the expiration of ten days from the date of service, exclusive of the day of such service, which day and date of service shall be the date of publication that this newspaper bears, and which day of appearance will be the 29th day of December, 1958, and contest, by filing written answer of contest, if they or any of them see proper so to do, a verified account, the nature of which is an account for final settlement of such estate, which has been filed by J. B. Barton, Guardian of the Estate of Edna I. Barton, a person of unsound mind, and is now pending there, in a probate proceeding on the probate docket of said court styled in The Matter Of The Estate Of Edna I. Barton, A Person Of Unsound Mind, the file number of which account and the docket number of which proceeding is No. 755, which account will at such 10 o'clock hour, on such day, and at such place be considered by such court.

If this citation is not served within 90 days after date of its issuance, it shall be returned unserved.
WITNESS Fred Arrington, Clerk of the County Court of Dickens County, Texas.

GIVEN UNDER MY HAND AND THE SEAL OF THE COURT, at office in the City of Dickens, Texas, on this 17th day of December, 1958. (SEAL)
(S) FRED ARRINGTON
Clerk of the County Court of Dickens County, Texas
9-1tc-320

—USE THE CLASSIFIED—
ADS TO BUY SELL OR RENT

COMING!
Dec. 28 - 29 - 30



The Big Country

SO RIGHT FOR YOUR CHRISTMAS TABLE

NOTICE: We Will Be Closed Thursday and Friday For Christmas Holidays

HOLIDAY MEAT SPECIALS		FRESH PRODUCE	
TURKEY HENS	lb. 45c	BANANAS	lb. 12 1/2c
TURKEY TOMS	lb. 39c	FRESH CRANBERRIES	lb. 25c
WRIGHT'S HAMS	lb. 55c	BAG ORANGES	5 lb. bag 35c
READY TO EAT PICNICS	lb. 35c	FIRM GREEN HEADS LETTUCE	lb. 9c
RANCH STYLE BACON	2 lbs. 89c	CRISP STALK CELERY	stalk - 10c
PINKNEY'S SAUSAGE	2 lbs. 69c	WASHINGTON DELICIOUS APPLES	lb. 12 1/2c
LIGHT CRUST FLOUR	5 lbs. 45c	10 lbs. 89c	25 lbs 1.89

SHURFINE Shortening	3 lb. can 69c	NO. 303 CAN SHURFINE FRUIT COCKTAIL	4 for \$1.
FOOD KING OLEO	lb. 15c	NO. 2 CAN COMSTOCK SLICED PIE APPLES	19c
POWDERED OR BROWN (LB. BOX) SUGAR	2 for 25c	300 CAN SHURFINE CRANBERRY SAUCE	19c
NO. 2 CAN DOLES CRUSHED or SLICED PINEAPPLE	4 for \$1.	NO. 1 CAN CAMPBELL'S TOMATO SOUP	10c
NO. 303 CAN SHURFINE PEARS	4 for \$1.	2 LB. BOX SUPREME SALAD WAFERS	47c
NO. 2 1/2 CAN FOOD KING SLICED PEACHES	4 for \$1.	12 BOTTLE CARTON (Plus Deposit) DR. PEPPER	45c

Spur Super Mkt. AFFILIATED
DOUBLE SCOTTIE STAMPS ON TUESDAY

G. F. WACKER'S
WEEK-END SPECIALS!

REGULAR 4.98
BABY DOLLS 3.98

REGULAR 6.98
TOY TIGERS 4.98

REGULAR 78c CHRISTMAS
TREE LIGHTS 59c

REG. 9.98 14 PC. SET IMPORTED
CHINA 5.98

REGULAR 50c SIZE
Notebook Paper 3 for \$1.

BRACH'S CHOCOLATE COVERED
CHERRIES box 59c

MEN'S
HOUSE SHOES pair 69c

FINE MUSLIN
SHEETS each 1.98

CHILDREN'S
MINK STOLE 1.00

REGULAR 3.98 TOY
POODLE 2.49

32 PC. SET STAINLESS STEEL
TABLEWARE 10.95

REGULAR 16.95

Our Selection of Dolls and Other Toys are still Complete; but Shop Now - They Are Going Fast.

PATTON SPRINGS...

SCHOOL COMMUNITY NEWS

Supt. W. M. Hayman has announced a change in the Christmas School Holidays. Patton Springs School will turn out for Christmas in the afternoon of December 18, 1958 and return to classes on Monday, December 29, 1958. There will also be a holiday on January 1, 1959.

Last week, Supt. W. M. Hayman of Patton Springs received a letter from Mr. Curtis Graham, President of the Matador Lions Club, inviting the 1958 Ranger Football Squad, Coaches, and Superintendent to be the guests of the Matador Lions Club at the noon luncheon on Tuesday, December 16, 1958. The Lions entertained this fine group in the basement of the Matador Methodist Church. In this way, the Matador Business Men had an opportunity to express their appreciation to the

Bi-District Champions - - The Mighty Patton Springs Rangers of 1958 - - for a job well-done in 8 Man Football this past season. Everyone in the Patton Springs School District is grateful and thankful for this honored event in our School History.

FIRST AND SECOND GRADE
Every child in these grades is thrilled to have a chance to make decorations and presents for Christmas. Art work this week has been a real pleasure.

This group and their teacher, Mrs. Ralph Bennett, have moved into the schoolroom formerly occupied by the 3rd Grade.

Sue Martin and Charles Bennett will celebrate birthdays this month.

Sandy Rainbolt is sporting a pretty new jacket that her brother sent her from Hawaii.

This grade is losing Craig Mackwell this week to the Spur School System. He is a good pupil and everyone regrets his departure.

SECOND AND THIRD GRADE
These grades report that their Room Mothers for the Christmas Party are: Mrs. Dumont Bridge, Mrs. Newman Young, Mrs. W. M. Hayman, and Mrs. Tom Bateman.

Mr. and Mrs. Newman Young and family have just returned from a visit with their sons, Bill and Manuel, in Ft. Worth.

Mr. and Mrs. Elmer Thompson of Vigo Parks are visiting in the home of their daughter Mrs. L. C. Winkler.

Mr. Henry Bland's mother from Plainview has been visiting in the Bland home this past week.

FOURTH GRADE

Bobby Smallwood's father, Mr. G. F. Smallwood, broke his hand last Tuesday while working cattle, but the accident did not prevent the Smallwoods bringing a beautiful cedar tree for our Christmas Wednesday afternoon. We decorated it and made gifts for parents who were invited to bring the pre-school children to enjoy the Christmas Party.

Bob and Sam Porter, father and uncle of Kenny, made a business trip to Kansas City this past week.

Boo and Dick Perryman from Tyler are visiting this week with the J. S. Perryman family.

FIFTH GRADE

Mr. Jim Robinson and his friend, Mr. Chadwick, from Wichita Falls were bird-hunting on the Ralph Bennett Ranch this past week-end.

Mr. and Mrs. Doyle Floyd of Loop, Texas were week-end guests of the Doyle Cagle family.

Laure Moreno of the 5th grade is moving to McAdoo this week.

SIXTH AND SEVENTH GRADE

These grades made elaborate plans for the Christmas Party in their room. It was a big success and everyone had a good time.

Mr. Charles Edwards of East Afton was seriously cut about the hands recently when he got them caught in the gin machinery at the East Afton Gin.

Mr. Peyton Legg, Scout Sponsor, reports that the Boy Scouts are moving along well with their advancement projects.

Mr. Conner, Dickens County Agent, met this last week with the Patton Springs 4-H Club

Girl Scouts...

BROWNIE TROOP 143
Brownie Troop 143 held a Christmas Party Monday at the home of D. L. Knight. Mrs. Knight and Sue served refreshments, and Santa Claus arrived to present the presents which the girls exchanged. The girls brought gifts for each other and for Mrs. Kissinger, troop leader.

There will be no meeting during Christmas week, but there will be a meeting Dec. 29. Plans are being made for the Troop Birthday Party, when all the girls will have been Brownies for one year. Ella Jo Powell is the new program aide for the troop.

TAX GUIDE AVAILABLE

The popular Farmer's Tax Guide, informational booklet on farm and ranch income tax matters, will be available in the near future, reports C. H. Bates, extension farm management specialist. He says several changes have been made in the tax code. County agents will announce its release.

members. He visited some of the home projects of the boys and expressed satisfaction regarding the progress being made in each field.

VOCATIONAL AG. DEPT.

Mr. Odie Holly reports excellent progress in his V. A. III Stock Judging Class. The boys use pictures to practice on in class, then put the knowledge and experience to work on the field trips. He plans to take this group to Tulsa, Texas on January 15th to participate in the District Stock Judging Contest.

All V. A. Classes are progressing satisfactorily with their individual projects.

HOME-MAKING DEPT.

This department has been very busy this past week with the Christmas preparations. They have been making Christmas candy, wrapping packages, and decorating trees. It is too bad that Christmas cannot last all of the year around.

A number of the girls have worked hard to finish their projects before Christmas.

SENIOR NOTES

Senior David Whitehurst of the Dickens Community has recently been appointed representative of this District for the Reader's Digest. He will be glad to take your subscription.

AUTUMN PAINT SALE

We are discontinuing handling Kem Glo Enamel and Super Kem Tone. We have a full range of colors. We are putting prices on this to clean our shelves.

	Regular	Sale Price
Super Kem Tone	6.25 Gal.	4.50
Super Kem Tone	2.00 Qt.	1.35
Kem Glo Enamel	9.29 Gal.	6.55
Kem Glo Enamel	2.75 Qt.	1.95
Kem Glo Enamel	1.50 Pint	1.10
Outside White Paint	5.95 Gal.	4.00
White Enamel, Best Grade	8.25 Gal.	5.99
Outside White	7.50 Gal.	6.00
Rubber Base Wall Paint	5.00 Gal.	3.59

20 Gallon Glass Lined Water Heater 10 yr. 69.95
30 Gallon Glass Lined Water Heater 10 yr. 75.50

WILLSON & YOUNG
LUMBER COMPANY
Phone CR2-3212 Spur, Texas

THE MOST BEAUTIFUL WEDDING OF THE YEAR



Announcing THE NEW FORD Galaxie

Just Married in Style to the Thunderbird!

It's the newest and most exciting of all the 59 Fords—the elegant new Galaxie. A bright new personality in cars—and more. The Galaxie is a full "fine car" 6-passenger expression of Thunderbird grace, spirit, style and luxury in an altogether new line of Fords. The Galaxie, as you'll quickly see, is as wonderfully all-the-way Thunderbird as a low-price Ford can be.

Reception now—you are invited. You are cordially invited to come and see the Galaxie and the very full measure of elegance it brings to the low-price field.

True, Ford owners are accustomed to luxury—and at the low Ford price. But never in any Ford—nor in cars costing far more—have you seen anything as sweet, smart and glamorous as this! Come see Ford's new Galaxie today... and bring the entire family.

You'll want to honeymoon again in a **59 FORD**
GODFREY MOTOR CO.

BUY "SANTA APPROVED" CHRISTMAS GIFTS IN

SPUR

AND ATTEND THE WEEKLY DRAWINGS TO RECEIVE HUNDREDS OF DOLLARS IN...

"SPUR LUCKY BUCKS"

This Script Is Redeemable In Trade From Any Of The Spur Merchants Listed Below In Santa's Book Of Approved Businesses:

Drawings Will Be Held On

- December 6
- December 13
- December 20
- December 23

Extra Bonus Drawing For \$200 Grand Prize On December 23.



Shop These Spur Merchants and be Downtown on Drawing Days

- | | | |
|-------------------------------|-----------------------------|----------------------------|
| Dunlap's | Dyess Barber Shop | J. D. Hopkins Station |
| Spur Super Market | Margies Beauty Shop | O. K. Rubber Welders |
| Spur Security Bank | Garner Implement Co. | Hairgrove Feed Store |
| Holder's Ben Franklin | Bell's Cafe | Star Feed Store |
| City Drug Company | Edwards-Kelley Impl. Co. | Mac's Super Market |
| Western Auto Supply | Spur Barber Shop | Simpson Western Store |
| Campbell's Furniture | Stop & Shop Market | A & B Barber Shop |
| Spur Milk and Ice Cream | Reagan Motor Company | Palace Theatre |
| Jones Motor Company | Smith Service Station | Gruben's Jewelry |
| Riter Hardware | Hilltop Station | West Texas Furniture Co. |
| Buzbee Butane Service | Brashear Supply Co. | Texas Spur |
| Randy Clifton TV & Appliance | Gabriel's Department Store | Fay's Fashions |
| Dickens County REA | Spur Laundry & Cleaners | Dealers Finance |
| Stamford Production | Red Front Drug Co. | Farm Bureau |
| Devis & Rector Insurance Co. | Spur Boot Shop | Proctor's Department Store |
| Phillips "66" Service Station | Cooper's Cafe | Market Poultry & Egg |
| Dixie Dog Drive-In | G. F. Wackers Store | Gulf Oil Products |
| Patton Grocery | Allen Auto Supply | Snack Shack |
| Quality Cleaners | West Texas Utilities | Spur Electronics |
| Spur Mattress Company | Clary Poultry & Egg Co. | Hoover Motor Co. |
| Gibson Insurance Agency | Rickels Chevrolet-Buick Co. | Massey Gin Co. |
| Leon Ice and Locker Co. | Tri-County Lumber Co. | Spur Gin Co. |
| Brasletton Lumber Co. | Godfrey Motor Company | Farmers Co-Op Gin |
| Ross's Cafe | City Cleaners | Emma Lee, Florist |
| Barclay & Hale Gulf Service | C. P. "Johnny" Scudder | Dr. W. K. Callan |
| Flash-O-Gas | DeLuxe Beauty Shop | B. B. Pierce Jewelry |
| Cannon Boot & Saddle Shop | Chastain Implement Co. | Morgan Studio |
| | | City Of Spur |



Recipe for a Merry Christmas

NOTICE: We Will Be Closed Thursday and Friday For The Christmas Holidays

Libby's Crushed PINEAPPLE no. 2 can 25c	Powdered or Brown SUGAR 2 boxes 27c	Eagle Brand MILK can 27c	HI-C ORANGE DRINK 46 oz. 25c
--	--	---	---

Hams Wright's 10 to 14 lb. avg. **59¢**

Bacon Wright's Country Style 2 LB. PKG. **1.09**

Loin Steak LB. **89¢**

Cheese Wisconsin Longhorn LB. **55¢**

WIN - ALL
APPLE SAUCE 303 can **15c**

Will Appreciate Your Turkey Order by Sat. Nite Dec. 20

SUN SPUN
OLEO 3 lbs. **55c**

JELLO 2 boxes **15c**

SMOKED
JOWLS lb. **39c**

READY TO EAT
PICNICS lb. **39c**

DEL MONTE WHOLE
GREEN BEANS 303 can **25c**

Bakerite or Fluffo 3 LB. CAN **69¢**

WHITE SWAN
Coffee 2 LB. CAN **1.39**

ELBERTA FLINT RIVER
Peaches 4 No. 2 1/2 CAN **1.00**

LIBBY'S FRUIT
Cocktail 4 303 CANS **1.00**

BORDEN'S
Mellorine 1/2 Gallon Carton **45¢**

GLADIOLA
Cake Mixes 4 Boxes **98¢**

BALLARD
Biscuits CAN **10c**

OUR DARLING
CORN 2 303 CANS **33¢**

GLADIOLA
FLOUR 5 Lbs. **45** 10 Lbs. **85** 25 Lbs. **1.89**

LIBBY'S
Pumpkin 2 303 cans **25¢**

LIBBY'S
Tomato Juice 300 can **10¢**

Sunkist Naval
ORANGES lb. **15c**

Crisp
CELERY stalk **10c**

Cello Bag
CRANBERRIES **20c**

Crisp
LETTUCE lb. **10c**

Red Delicious
APPLES lb. **15c**

SALLY ANN
STRAWBERRIES

5 - 10 oz. pkgs. **\$1.00**

Frozen
Pumpkin Pie 24 oz. **49c**

NOTICE: These Prices Good Through Dec. 24th. Wishing You A Merry Christmas We Will Close At 6 p. m. December 24th.

Mac's Super Mkt.



(WE RESERVE THE RIGHT TO LIMIT REFUSE TO SELL TO DEALERS)

Christmas Candy - Nuts - Egg Nog Mix - Christmas Wrapping Paper - Toys - Fruit Cake Mixes - Plus Those Valuable S & H Green Stamps.