

# STOCK GROWERS

COLORADO TEXAS

ARIZONA MEXICO NEW MEXICO

Live Stock, Feed Farming and Commerce.

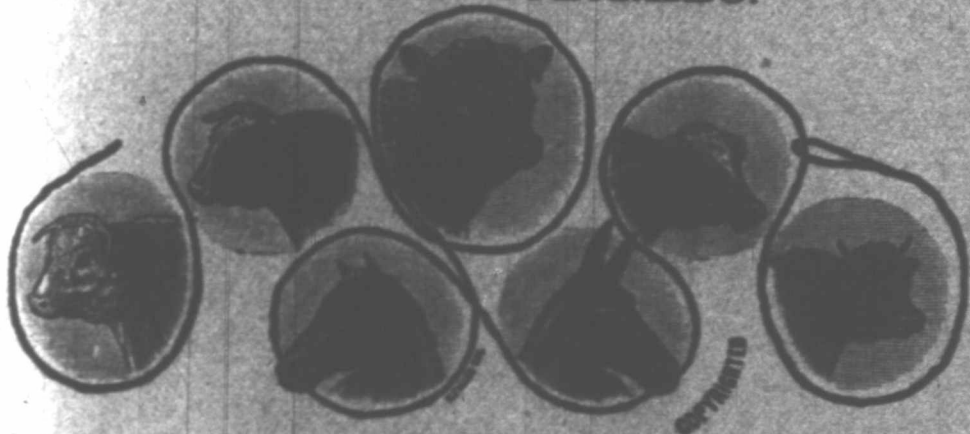
Vol. IV. No. 2.

LAS VEGAS, NEW MEXICO, MARCH 26, 1887.

Weekly, \$3 a Year

## GEO. L. GOULDING & CO.

DENVER COLORADO.



LIVE STOCK COMMISSION MERCHANTS,

AND

PROPRIETORS NEW CITY STOCK YARDS.

We have recently removed to the above new and commodious quarters, and are now prepared to offer to the public unrivalled facilities for the sale and purchase of all classes of live stock. A full line of thoroughbred and grade stock of the various breeds always on hand. Bulls in car lots for the western range a specialty. Freight paid and liberal advances to consignors. Our motto is "Quick sales, reasonable margins and prompt settlements."

Correspondence Solicited

We are in the Market this Spring

With the best lot of Thoroughbred and High Grade

### Black Polled Bulls and Heifers

THAT WE EVER HANDLED.

Will sell singly in car load lots or by the hundred.

WE ALSO HAVE A FEW

### Thoroughbred Shorthorn Bulls AND Cows

FOR SALE.

Those wishing to purchase, please call and examine our stock,

Near Mt. Leonard, - - Saline county, Missouri,

13 miles east of Kansas City, on the Chicago & Alton R. R.  
Trains to and from Mt. Leonard, east and west, morning and evening.

LEONARD BROS.

## MEXICAN LANDS

In large or small tracts.  
For information and circular write to

MEXICO AND TEXAS LAND AND CATTLE CO.  
EL PASO, TEXAS.

## PRINTING

The Stock Grower is headquarters for all kinds of Printing. A specialty is made of stationery for ranchmen. On receipt of \$5, we will send to any address, post-paid \$50 each of nicely printed letter heads and envelopes.

## TO EXCHANGE FOR LIVE STOCK.

A Large or Small Amount of Desirable Real Estate in the city of SOCORRO, NEW MEXICO.

Population of Socorro 5,000. Railroad north and south, with branches east and west which are to be extended. County seat. Trading center for large area. Four flouring mills. Two smelters which are being enlarged. Two more smelters and sampling works projected. Schools. Churches. Hot springs, etc.

H. R. HARRIS, SOCORRO, N. M.

## A. D. HUDNALL,

West Las Animas, Colorado,

IMPORTER AND BREEDER OF

## POLLED ANGUS

AND

## Hereford Cattle.

Has sold in New Mexico during the past season over 1,000 head of grade and thoroughbred bulls, and would refer intending purchasers to any of my customers for the quality and condition of the cattle furnished.

I am prepared to furnish, at any time, thoroughbred or grade bulls, guaranteed of the best strains, and being Colorado raised, ready for immediate service. The cattle from my herds, at the Albuquerque fair, won all first prizes. Correspondence solicited and inspection of herds invited. Full particulars and pedigrees furnished.

I will Contract now for Spring Delivery. Car-load Lots a Specialty.

J. C. LEARY & CO., Agents, Las Vegas.

## W. W. CRAPO,

FLINT, MICHIGAN.

## HEREFORD CATTLE,

Of individual merit and excellent lineage; the oldest, largest and best herd in the state. The blood of Lord Wilton, Horace, The Grove 3d, Hartington, Marquis, and others of equal note.

FOR SALE just now, about sixty grand young bulls, from fifteen to twenty-four months old, also a few very choice imported heifers, and about thirty ones and twos of my own breeding, all at rock bottom prices—in fact no fancy prices asked. Special inducements on car lots to ranchmen. Also a number of farms on easy terms. Address, JOHN W. FOSTER, Manager, Flint, Michigan.

"OUR OWN RAISING."



## THE SHORTHORN CATTLE CO.

OFFERS FOR SALE, SPRING DELIVERY,

### 300 HEREFORD and SHORTHORN GRADE BULLS

Address R. J. BISHOP, LUNA, SOCORRO COUNTY, N. M., or  
R. B. GODLEY, DALLAS, TEXAS.

**BANKERS,**

And those doing business with financial institutions, will find it to their advantage to consult this department in which all the leading banks of the southwest are represented.

FOR CARDS OF  
First National Bank, Las Vegas.  
First National Bank, Albuquerque.  
First National Bank, El Paso.  
See last page of cover.

**Maverick Nat'l Bank,**  
BOSTON, MASE.

CAPITAL, \$400,000  
SURPLUS, 400,000

Accounts of banks, bankers and corporations solicited.

Our facilities for collections are excellent, and we re-discount for banks when balances warrant it.

Boston is a reserve city, and balances with us from banks (not located in other reserve cities) count as a reserve.

We draw our own exchange on London and the Continent, and make cable transfers and place money by telegraph throughout the United States and Canada.

Government bonds bought and sold, and exchanges in Washington made for banks without extra charge.

We have a market for prime first-class investment securities, and invite proposals from states, counties, and cities, when issuing bonds.

We do a general banking business, and invite correspondence.

ASA P. POTTER, President.  
JOS. W. WORK, Cashier.

**The City Bank**

OF LAS VEGAS.

JOSHUA S. RAYNOLDS, President.  
ALPHEUS A. KEEN, Cashier.

CAPITAL, \$30,000.

Transacts a General Banking Business.

**ALBUQUERQUE NATIONAL BANK!**

Albuquerque, New Mexico.

CAPITAL STOCK PAID IN, \$100,000.

OFFICERS:

JOHN A. LEE, President.  
S. M. FOLSOM, Vice President.  
W. S. STRICKLER, Cashier.

DIRECTORS:

JOHN A. LEE, S. M. FOLSOM, E. D. BULLOCK,  
W. P. METCALF, HENRY N. JAFFA, C. H. DANF,  
M. S. OYENO.

Does a General Banking Business.

Interest Paid on Time Deposits.

Gold dust purchased and advances made on shipments of cattle, gold and silver bullion, ores, etc. Superior facilities for making collections on accessible points at par for customers. Exchange on the principal cities of Europe for sale. Stockmen's business a specialty.

**San Miguel Nat'l Bank**

OF LAS VEGAS,

LAS VEGAS, - - N. M.

Authorized Capital, \$200,000  
Paid-up Capital, 100,000  
Surplus Fund, 50,000

OFFICERS:

W. M. EADS, Pres. J. GROSS, Vice Pres.  
D. T. HOSKINS, Cashier.

DIRECTORS:

COLUMBUS MOISE, JACOB GROSS, HENRY GORKE,  
A. M. BEACEWELL, O. L. HOUGHTON,  
E. C. HENRIQUIS, N. S. ROSENTHAL,  
T. H. LAWRENCE, W. M. EADS.

Does a General Banking Business. Drafts for sale on the principal cities of Great Britain and the continent of Europe.

United States Depository.

**First National Bank**

OF SANTA FE.

WM. W. GRIFFIN, Pres. R. J. PALEN, Cashier.  
PEDRO PEREA, Vice President.

**LA MONTAGNE, CLARKE & CO.**

Bankers and Brokers,

42 New St., New York.

E. LA MONTAGNE, Jr., N. Y. Stock Exchange.  
HERMAN CLARKE,  
WALLACE B. SMITH.

Refer by courtesy to

Messrs. E. LA MONTAGNE & SONS, New York.  
UNION BRIDGE Co., Buffalo and New York.  
THE STOCK GROWER, Las Vegas, N. M.

Deposits received subject to sight draft. Interest allowed on balances. All securities dealt in at the New York Stock Exchange bought and sold for investment, or on margin.

**P. R. PAGE,**

DEALER IN

**General Merchandise,**

Wool, Hides, Pelts and Cattle.

CABRA SPRINGS, NEW MEXICO.

Goods Sold at Reasonable Prices.

Travelers will find good accommodations both for man and beast.

Hay, Corn and Oats always on hand.

**DICK DUTCH,**

WITH

**CLARK & CO.**

**Hatters,**

524 Main Street,

KANSAS CITY, MISSOURI.

A complete line of Stetson's Hats for stockmen.

Send statement of size worn, and hat will be sent by express, subject to approval.

**COOLEY & HUNTER,**

Proprietors Livery, Feed and Sale

**Stables,**

CLOSED CARRIAGES, MOUNTAIN WAGONS,  
OPEN CARRIAGES, AND SADDLE HORSES.

CHARGES REASONABLE.

Horses and wagons bought, sold or exchanged. All orders by telegraph promptly answered. We take great care to please owners who board their horses at our stables.

Constantly on hand a number of well-broke cow ponies in good condition, and ready for use. They are offered for sale at reasonable prices.

**O. L. HOUGHTON,**

—Dealer in—

**Hardware**

Two Stores, East and West Side,

LAS VEGAS, NEW MEXICO.

Fence Wire in Car Lots.

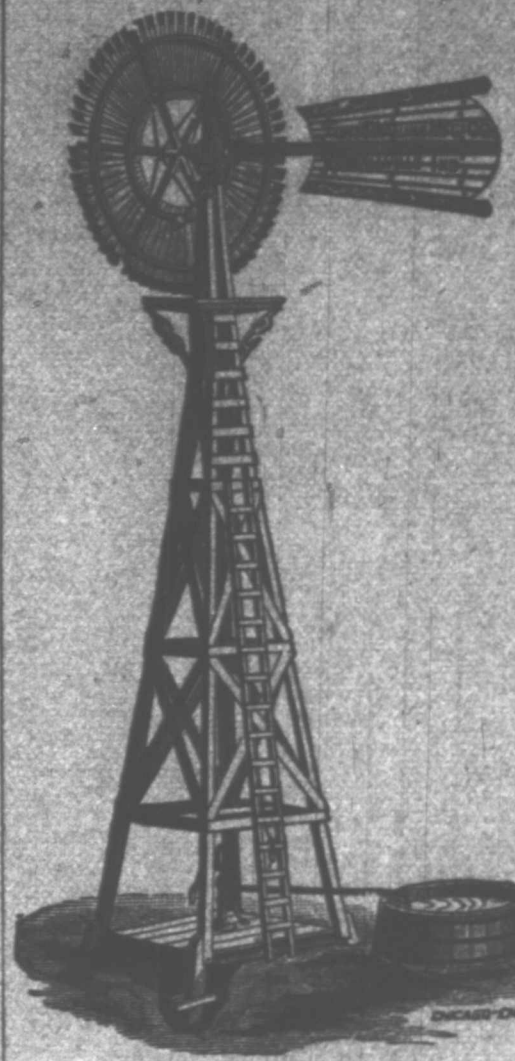
THOMAS JONES,

BREEDER OF

**Grade Hereford Cattle.**

For sale, two car loads Grade Bulls, Yearlings and 2-year olds.

Farm 25 miles from Denver, on D. & R. G. railroad. P. O., Sedalia, Douglas county.  
Reference: J. A. Cooper, German National Bank, Denver.



**Star**

**WIND MILLS**

Water Works Supplies.

Wind Mills, Derricks, Tanks, Pumps, Hoop, Pipe Fittings, Fountains, Feed Grinders, Etc.

**Tubular Well Tools,**

And Supplies, a Specialty.

To the cattlemen we wish to say that we are now making a

**A Special-Outfit for Ranches**

to supply water to large herds, and having furnished many of the largest ranches in Texas with the water works, we know we have just what you need.

Address for prices, particulars, etc.,

**FLINT & WALLING MANFG. CO**

1404 WEST 11th ST., KANSAS CITY, MISSOURI, AND 1607 MAIN ST., FORT WORTH, TEXAS.

EDGAR B. BRONSON, President.

WM. S. HILLS, Vice-President.

WM. H. AUSTIN, Cashier.

**EL PASO NATIONAL BANK**

OF TEXAS.

No. 3608.

PAID IN CAPITAL,

\$150,000.00

STOCKHOLDERS:

CLARENCE KING,  
WM. H. AUSTIN,  
GEO. TEW,

JAMES D. HAGUE,  
GEORGE B. ZIMPELMAN,  
EDGAR B. BRONSON,

WM. S. HILLS,  
MARKS MARK,  
W. COFFIN.

General business transacted: collections promptly made and remitted; foreign and domestic exchange bought and sold; special facilities offered on Mexican business. Customers are offered the convenience, free of cost, of our Herring's safety deposit boxes in fire-proof vault.

CORRESPONDENTS:

National Bank of the Republic, New York; Bank of California, San Francisco; Bank of Commerce, St. Louis; National Bank of Kansas City, Kansas City, Missouri.

**HUNTER, EVANS & CO.**

**Live Stock Commission Merchants**

NATIONAL STOCK YARDS, St. Clair Co., Ill.

KANSAS CITY STOCK YARDS, Kansas City, Mo.

UNION STOCK YARDS, Chicago, Ill.

Fifteen years active experience in live stock commission business. Markets reports regular and special, and all other information incident to the business, will be furnished free by each house. Parties having stock to market, in large or small numbers, will do well to confer with us before making arrangements. Each office in charge of a member of the firm. Correspondence always has prompt attention.



**WM. ROBERT**

Will have for sale for

**SPRING DELIVERY**

A number of fine

**GRADE SHORTHORN BULLS.**

Raised on the Pecos river from the well improved and celebrated former "Chisum Herd." This stock is known to be first-class. Address

WM. ROBERT, ROSWELL, N. M.

# STOCK GROWER

COLORADO TEXAS  
ARIZONA MEXICO NEW MEXICO

Live Stock, Feed Farming and Commerce.

Vol. IV. No. 2.

LAS VEGAS, NEW MEXICO, MARCH 26, 1887.

Weekly, \$3 a Year

## Contents.

Editorial Notes.....	1
The Croakers.....	1
A Funny Discussion.....	1
Support Your Association.....	1
Prize Essay on Splenic Fever.....	2
A Protective Law against Railroads.....	2
A & P. Cattle Association of New Mexico.....	3
Sparks Exploiting on Wind.....	3
The Killing Qualities of Herefords.....	3
The Winter in Alberta.....	3
Arizona Cattlemen.....	3
Colorado Round Up Commissioners.....	3
From All Points.....	4
Fanning the Hammer.....	5
Light Demand for Texas Cattle.....	5
They Will Embrace the Chinook.....	5
Pleuro Pneumonia in Scotland.....	5
Full Blood and Thoroughbred.....	5
Texas Land Measure.....	5
Southwest Stock Notes.....	6
The Free Zone.....	6
Stock in the Panhandle.....	6
Report of Executive Committee.....	7
Will Make a Magnificent Ranch.....	7
The Arizona Law of Quarantine.....	8
Personal.....	9
Business Pointers.....	9

THE president has appointed as interstate commerce commissioners: Thomas M. Cooley, of Michigan; W. R. Morrison, of Illinois; Augustus Schoonmaker, of New York; Aldace F. Wallace, of Vermont, and W. L. Bragg, of Alabama.

THE Lord may be thanked that the providence which has hedged about the cattle raising industry of the plains country the past twelve months, has very nearly divorced from it the tenderfoot cattle raiser. The man of parts and who has a knowledge of the business can now stand on his own bottom, metaphorically speaking.

It is understood that an inspector under the law of quarantine that was repealed by the late legislature, has been illegally collecting fees on cattle coming into the southwest over the Santa Fe railway since the repeal of the law. The said inspector is holding himself responsible for damages in continuing to hold up live stock shippers.

SWIFT & COMPANY, the largest dressed beef firm in Chicago, will move their entire plant to Kansas City this summer, and by August 1st will require of range cattle alone 1,000 head per day for their establishment. The broad cattle trails are slowly diverging from Chicago to other points, and the glory of that market is being dimmed by the rising importance of Kansas City.

THE live stock sanitary board has been completed by the appointment of J. B. Dawson, of Colfax county. The governor's appointments are all most excellent ones, and New Mexico can now felicitate itself in having a quarantine law that protects

the stock interests, and one that through the board of commissioners, who will have the practical application of the law to look after, will be efficiently administered.

TIMIDITY seems to be the most conspicuous feature in the operations of the northern steer buyer this spring. The buyer is waiting for the seller to shade last year's prices. The seller expects the buyer to spring prices a trifle. In the meantime, while the buyers and sellers are shivering on the brink of expectancy, the southwestern steer is reveling in nature's bounties and encouraging the hope in his owner's breast by his gamey condition that he will be worth a "lettle" more two months hence than he is today.

THEY say that William Andrew Jackson Sparks wants to be the next president of the United States. Ambition has made the commissioner mad. He is now known in Washington as the man of extraordinary decisions, or more pleasantly spoken of as an egregious ass. Will this Hun, this destroyer of the settlers' happiness sit down with his little slate and put thereon the number of votes he can poll west of the Mississippi river? The slate would be as barren as is some of the alleged agricultural land he is alleged to be saving for posterity in the wild west.

## SUPPORT YOUR ASSOCIATION.

From a circular issued by the secretary of the Wyoming Stock association to the membership it is seen that the executive committees are deliberating the question of abolishing all the assessments and making the annual dues and entrance fees and the receipts from the sale of mavericks pay all legitimate expenses of the association. This is a move in the right direction. Associations everywhere the past year have felt the burdens of the assessment roll, and it has operated in many instances in a very depressing way. Membership has fallen off and many of the larger associations which have been a great power in regulating much that was of the highest value to the cattle industry, have become crippled and lost their influence as an aggressive working force. Some of the associations have disbanded and entirely forsaken the broad field of usefulness they first occupied, and the old members have reorganized smaller associations for local work in the management of affairs on the range. The principal cause in bringing about this change has been the heavy assessments levied to keep up the association and to do the work necessary to be done. The ordinary cowman, who is generally unmindful of the benefits flowing from associated work unless he can receive

about ten for one on all the money he pays into the association, thinks he is just as well off to stand alone and let the more progressive fellows do the work and put up the money for running the association, and he will somehow or other ring in on the general good which comes to all stockmen through a well-managed association. If the plan is adopted which has been proposed by the executive committee of the Wyoming association, and is made successful, it will have a beneficial effect on all associations of the kind. It will be the adoption of a practical idea that has been rampant in the minds of many cattlemen interested in association work. The association must not be allowed to die either a natural or an unnatural death, for there is much in the morale of a good organization of stockmen, which has a large monetary value to its membership as well as to the section of country through which it operates. If the waning interest in cattlemen's associations can be checked and a healthier sentiment inspired on all sides, the cattle industry will gain thereby. Support your association and it will in turn benefit you.

## THE CROAKERS.

The assertion cannot be truthfully disputed that cattle raising on the open ranges of the west is a most profitable business, barring extraordinary dispensations of Providence, with which it has to contend now and then, and inefficient human management. In this connection THE STOCK GROWER wishes to speak of the tendency noticeable in some quarters to decry the business and inveigh against it as a profitable investment for capital. It may be stated as a general proposition embodying every element of truth that the instances of failure to make a cattle property a paying one have come about through remediable causes in nine cases out of ten, and the principal remediable cause is the incapacity of the manager of the property. There are men engaged in handling large ranch and cattle properties who could not bring the balance on the right side of the ledger, even though every cow had twin calves annually and steers were worth four cents per pound on foot. This class of men are the ones who proclaim that the cattle business is not paying. They seek to give as a reason for such a deplorable state of affairs that it is *this* cause or *that* force beyond their control. Anything, in fact, to shift the fault from their own shoulders where it properly belongs. Incapacity in the man or men who are at the practical head of affairs, is the reason why some of the large cattle ranches *don't* pay. This is the plain English of it. Substitute for

this set of men men with ability and who are devoted to the success of the whole business and are not given to detraction of the cattle business, and at the expense of men who have invested in it, and whose interests are made subservient to the salary account of the manager, then we shall hear less about the cattle business not paying. It is not fair for the few men who have been lamentable failures in the business to give the black eye to the industry and thereby reflect on those who are successfully managing their affairs. It is an admitted fact that there is a fine profit on well-managed ranches in raising yearling steers at eight dollars per head. No cattleman in New Mexico or Arizona has been obliged to sell yearlings at that price. The business then must be a paying one, other things being equal. Let the man who says the cattle business is not a paying one, state that it is not paying with him, then his declaration will bear the impress of truth if he is an honorable man, and the reason why it is not paying will be readily understood, probably. From one instance do not judge all, is a safe rule to stand by just now.

## A FUNNY DISCUSSION.

The discussion now going on between the granger papers and the stock journals of Montana is amusing to people outside of that territory. The granger newspaper man maintains that the herds and flocks have been reduced at least seventy-five per cent. by the low temperature of the winter. He particularizes also the number of days since last September in which the Manitoba wave has fondly embraced in its chilling folds the entire area of country there, wherein the mercury has ranged from zero to seventy-five below. In the ecstasy of his joy at the despoilation of the live stock industry he asks the settler to come to that land and secure for himself and family happiness and prosperity by tilling the soil and—digging up frozen potatoes in the early fall months, which the climate always makes possible. Yes, Montana offers fine inducements for the granger. So does Wrangell Island, in the vicinity of the North Pole, if the settler can live through nine months of winter and has leisure enough on his hands to use the other three months in thawing out. The stock journals, on the other hand, are trying to smile through the gloom and persuade themselves that the losses are only five per cent. or thereabouts. The per cent. of the loss there which all journals will probably agree on, is that one-fourth of the herds have perished. This is bad enough, and it is to be hoped that it may be many a year before Montana shall be again so afflicted in her leading industry.

**Prize Essay on Splenic Fever.**

"Texas Fever" is a term unfairly applied to a disease, said to be indigenous to the tide water and adjacent sections of the southern states. Why Texas should have the whole discredit, is a question beyond the knowledge of the writer. Splenic, or southern fever, would be more appropriate, as the disease is equally native to the whole coast region, from Virginia to Mexico.

Though not so fatal and far reaching as pleuro-pneumonia, it is a disease that vitally affects our cattle industry, and calls for prompt consideration.

Although known to exist in South Carolina for the last eighty years, it is only within the last twenty that it has come under public notice, and called forth restrictions on the cattle trade. During the last decade these restrictions have been gradually increasing and accumulating until the state of Kansas now actually prohibits the passage of Texas cattle through her territory on foot.

For many years it was a question with Texas stockmen whether such a disease had an existence outside the brains of government veterinarians and cattlemen of other states interested in checking the shipment of Texas cattle to northern ranges.

There was some reason for this skepticism, as the disease was unknown in Texas; and even now it does not manifest itself in districts well proved to be permanently infected. It is this apparent absence of disease from our native cattle, that makes it difficult to believe they can infect others—yet such seems to be the fact. That a dangerous fever is transmitted from southern, or coast-bred cattle, to healthy ones beyond certain lines, has been demonstrated, and no longer admits of doubt.

The explanation of the paradox is, that all southern, or coast-bred, cattle have this disease in a mild form, at some early stage of their existence, but so mild as not to be noticeable. This is said to render them proof against the fever for the rest of their lives, just as inoculation protects the human subject against smallpox. Many theories have been advanced as to the cause of the disease, but the most reasonable and now generally accepted one is that it is caused by the animal's eating grass, or other vegetation, on which a parasitic fungus grows. This is both reasonable and probable, although investigators have never been able to find any of the diseased germs on grass supposed to be infected. They may, however, exist in such a minute form as to be undistinguishable.

These germs enter the digestive organs with the grass, and after a prolonged stay, pass out with the excrement, and lodge on convenient vegetation, to again infect other cattle grazing on the same land.

It is said that the germs may remain in the system for sixty days; but no case is known of an animal imparting the disease after being ninety days removed from a permanently infected district.

Why the coast region of the southern states should be the favorite, and, at present, only breeding ground for the disease is a mystery, for it embraces every conceivable variety of geological formation—from the high, rolling and sandy lands of Virginia, the Carolinas and Georgia, to the swampy pastures of Florida, and the low-lying coast prairies of Texas. The native vegetation on which the parasite lives, varies as widely as the climate of the soil on which it grows.

Probably the saline atmosphere of the coast is conducive to the development of the germ, and also enables the animal to pass through the disease without fatal result. This is given color to by the fact that native cattle in the high lands beyond the infected district when attacked by the imported disease, on their own pastures, have it in a violent and fatal form; but if the same cattle are brought into the infected district, they do not die from the disease.

Some cattle are more susceptible to the disease than others, and this observation also applies to breeds. It is said that Brahmas are altogether incapable of the disease, and that next to them Jerseys

JAMES H. CAMPBELL,  
GEORGE W. CAMPBELL,  
D. L. CAMPBELL.

# JAMES H. CAMPBELL & CO.

## LIVE STOCK COMMISSION MERCHANTS,

For the Purchase and Sale of Cattle, Hogs and Sheep.

ROOMS 23 and 24, EXCHANGE BUILDING, KANSAS CITY STOCK YARDS.

CONSIGNMENTS SOLICITED.

Correspondence Promptly Attended to, and Market Reports Furnished by Mail or Wire on Application.

seem to be the least affected. Yet we have had very recent evidence that Jerseys are subject to climatic fever.

Cattle imported to Texas almost invariably suffer from acclimation fever, which is quite a distinct malady, although some of its symptoms closely resemble those of splenic fever. The two fevers are often confounded, probably owing to their both being named "Texas."

Southern, or splenic fever, is not climatic, and is highly infectious, beyond its natural boundary; while acclimation fever is mainly climatic, and is not infectious. It is a mystery as yet, how healthy imported cattle can be fed on permanently infected pastures without fatal results, while cattle taken from the same pastures to non-infected ranges will leave death on their track, while they not only remain healthy themselves, but improve in condition.

Mere contact with an infected animal will not produce the fever. An infected Texas steer may be yoked to a healthy Kansas native, and the two may be worked together; but so long as the latter does not eat where, or near where, the former has dunged, it will not contract the disease.

Again, the disease germ may be deposited on the grass early in the spring, but will not develop into the infectious stage till some time in June, and the development must take place before the germ enters the system of the animal. Hot and dry weather seems best adapted to the development of the germs, and the disease is always most destructive in July and August. Frost kills the germs in non-infected districts, but merely puts a check on their development in permanently infected regions.

It cannot, however, be the action of frost alone that kills the germs, else would they be killed out in some infected parts of Texas, where we often have the thermometer at 10° Fah., with no snow to protect vegetation. The line of infection seems to be gradually extending northward and westward, and it is probable that the germs will become acclimatized to higher latitudes and altitudes, so that regions now free from infection may become the breeding ground for the disease; and what is now peculiar to the coast will eventually be found in every part of the country. Nor would this be an unmixed evil, for if the disease were spread all over the whole continent, there would no longer be danger of infection. But it is too much to expect the cattlemen in healthy districts to take this philosophical view of the matter. They very naturally prefer to have their herds free from infection than so loaded with germs as to be disease proof.

Although all Texas is quarantined, a recent investigation by an eminent and competent government official has clearly demonstrated that a very large portion of our state is as free from the disease as Kansas or any northern state, and that native cattle in that region die after grazing on pastures infested by coast cattle.

The department at Washington, recognizing this fact, have been seeking information to enable them to fix a safe line across Texas, with a view to modifying the restrictions that presently hamper her cattle trade.

This is a difficult and delicate matter to decide, as every cattleman is ready to make affidavit that his ranch is free from natural infection, and would have the line drawn anywhere east and south of him. So that if a line is fixed to suit all cattlemen it will have to be the water line of the Gulf of Mexico and the Rio Grande.

Any new line would be better than the one drawn by Kansas, and the cattlemen of Texas should loyally unite with the

federal authorities in their efforts to put matters on a better footing.

No line can be drawn, except the water line, that will suit all parties and not do injury to some; but if a line could be fixed that would enable now infected cattle to be moved north at any season, it would be an immense advantage to the state. Even those on the wrong side of the line would largely share in the benefit, for trade would soon adapt itself to the circumstances, and coast-bred cattle would be brought over the line during the winter months, when no danger of infection existed, and be ready for the spring drive.

Unbiased and competent authorities agree that so far as Texas is concerned, splenic fever is indigenous only in the flat prairie lands near the coast and that the high limestone ridges and mountainous sections are perfectly free from infectious germs.

Steps should be taken to make this fact clear to our northern neighbors, and if possible have the quarantine line brought down, say to the upper Cross Timbers, by way of experiment, and afterwards extended as far east and south as experience proved safe. JOHN EDGAR, Duval, Texas.

—From Texas Farm and Ranch.

### A Protective Law Against Railroads.

Be it enacted by the legislative assembly of the territory of New Mexico.

SECTION 1. That every railroad or railway corporation or company operating any line of railroad or railway, or any branch thereof within the limits of this territory, which shall damage or kill any horse, mare, gelding, filly, jack, jenny or mule, or any cow, heifer, bull, ox, steer or calf, or any other domestic animal, by running any engine or engines, car or cars, over or against any such animal, shall be liable to the owner of such animal for the damages sustained by such owner by reason thereof.

SEC. 2. If the owner of the animal or animals so killed, or his or her authorized agent shall make affidavit before some officer authorized to administer oaths, that he or she was the owner, or authorized agent of the owner, of the recorded brand found upon the animal or animals so damaged or killed, at the time of such killing or damaging, and such persons shall, within six months, after such killing or damaging, deliver such affidavit to the agent or an officer of such company or corporation, together with a certificate of his or her mark or brand, under official seal of the county clerk of the county in which such person resides, or shall make affidavit that the animal damaged or killed as aforesaid had no recorded mark or brand, and that he or she was the owner of such animal, describing it; and the corporation or company shall pay such person delivering such affidavit or certificate, and such affidavit last aforesaid, as follows:

SCHEDULE.	
Texas yearlings	\$ 7 00
Texas two-year-olds	12 00
Texas three-year-olds and over	15 00
American yearling	10 00
American two-year-olds	14 00
American three-year-olds and over	18 00
American work cattle	25 00
American sheep, each	2 50
Mexican sheep	1 50

All half blood Texan, Mexican and American cattle shall be counted as Texas cattle, and all three quarter blood American cattle shall be considered American cattle.

Thoroughbred cattle, sheep and goats shall be paid for at their cash value. Horses, mules, jacks, jennies and hogs shall be paid for at their cash value: *Provided*, that no railroad company shall at any time be required to pay more than the market value of any animal killed or damaged.

In all cases where such railroad company or corporation shall kill any of the stock mentioned in this act, and for which no price or sum is fixed, the owner or agent of such stock shall, after the filing of such affidavit and certificate of brand or affidavit of ownership as aforesaid, select some disinterested freeholder of the county where such killing took place, and shall notify such company or corporation of such selection; and such company or corporation shall within three days thereafter select some suitable person to act with the person so selected, and the two so selected shall select a third, and the three so selected shall without delay proceed to appraise the value of the stock so killed, a majority of which three appraisers should be sufficient to determine the same, and shall certify under oath such appraisalment to an agent or superintendent of such company or corporation. In case such railroad or corporation shall refuse or neglect to

Union Stock Yards, Chicago, Ill.  
Kansas City Stock Yards, Kansas City, Mo.  
National Stock Yards, East St. Louis, Ill.

appoint such appraiser, it shall be the duty of the justice of the peace nearest the place where such stock is so killed, to select three disinterested persons as appraisers, and administer to them an oath to honestly appraise the value of such stock, which appraisers shall without delay appraise and forward to such justice the result of such appraisalment; which justice shall within ten days thereafter forward to an agent or superintendent of such railroad or corporation, which railroad or corporation shall, within thirty days after the receipt of such certificate, pay to the owner of the stock so killed, or his or her agent, the amount of such appraisalment, together with all the costs as aforesaid; and in all cases where the value of such stock is established by this act, such company or corporation shall pay for such stock within thirty days after the delivery of the affidavit and certificate of ownership or brand or affidavit of ownership of stock, as hereinbefore provided.

SEC. 3. Every railroad company shall keep a book at some station in each county through which their road runs, to be designated by the company, and a notice of the station so designated shall be filed with the county clerk of the counties in which the stations are located, and it is hereby made the duty of said company to cause to be entered in said book, within fifteen days after the killing of any animal, a description as nearly as may be of said animal, its color, age, marks and brands, and shall keep said books subject to the inspection of persons claiming to have had animals killed. Should any company fail to keep said book or to file such notice as herein provided; or to enter therein such description of any animal killed for a period of fifteen days thereafter, such company shall be liable to the owner of such animal to an amount twice the full value thereof.

SEC. 4. If the owner of any stock shall drive any stock on the line of the track of any such company or corporation, with intent to injure such company or corporation, and such stock shall be killed or injured, said owner shall not receive any damage from said railroad or corporation therefor, and shall be liable to such company or corporation for all damages such company or corporation may suffer in consequence of such act, and shall also be criminally guilty of a felony and liable to indictment therefor, and on conviction shall be imprisoned in the penitentiary not less than one or more than five years; but nothing herein shall be construed to prevent any person from allowing his or her stock to pasture on lands adjacent to the line of such railroads, or to drive his stock over or across any track at suitable times and places.

SEC. 5. In every case of the wounding or killing of any such cattle, sheep or hogs, the price of the damages for which is fixed by this act, the body of such animal shall belong to such company unless the owner thereof shall elect to take the same in lieu of said damages or part thereof within twenty-four hours after said wounding or killing; but in every other case the company or corporation may proceed to take care of and preserve the body of said animal, and it shall be the duty of such company or corporation to preserve the hide of such animal for at least thirty (30) days after such killing, such hide or hides to be kept for thirty (30) days for inspection by said company or corporation at the station house nearest the place where such killing occurred. If any agent or employe of such company or corporation shall bury any animal killed or wounded by such company or corporation without skinning the same, or shall neglect to keep for thirty (30) days for inspection any hide so taken off as herein provided, such agent or employe of such company or corporation shall be fined in any sum not less than one hundred or more than three hundred dollars for each and every animal, to be collected in the name of the people of the territory of New Mexico before any court of competent jurisdiction. One half of the amount so received to go to the county treasurer for the public school fund of said county, the other half to go to the person at whose instance the suit was brought.

SEC. 6. Any person falsely making an affidavit of ownership of any animal killed or damaged shall, upon conviction thereof, be punished by a fine of not less than three hundred dollars or by imprisonment in the penitentiary not more than two years.

SEC. 7. Sections 2315 and 2316 of the compiled laws of New Mexico, 1884, are hereby repealed. This act shall take effect and be in full force from and after its passage.

Approved February 24, 1887.

### Annual Meeting.

The annual meeting of the Wagon Mound Local Stock Growers' association will be held at Wagon Mound, N. M., on Monday, March 28, 1887.

W. H. WILLCOX, Secretary.

### Annual Meeting Postponed.

The annual meeting for election of officers and other important business, of the Canadian River Live Stock association, will be held at Liberty, N. M., on April 1, 1887.

E. W. BULLARD, Secretary.

### Notice.

rail running from back bone to point of shoulder,

Steers in the above brand are the property of the Chadbourne Bros., who drove this bunch of steers from Texas last year.

Postoffice address, Endee, N. M.

**The A. & P. Cattle Association of New Mexico.**

For some time the cattlemen ranging along the Atlantic & Pacific railroad from the Rio Grande river to the Arizona line, have felt the necessity of forming an active association for the promotion and protection of their interests. Accordingly on the 15th instant quite a number of the leading cattlemen of the section met at the Armijo House in Albuquerque for that purpose. The meeting was called to order by W. H. Hulvey, of Bluewater, who proceeded to read the call made by a preliminary meeting held in Bluewater in January.

Matters of a common interest were discussed having reference to the adoption of a constitution and by-laws, which having been adopted the following gentlemen were elected to represent the association on the official roster: President, Col. Geo. H. Pradt, of Laguna; vice president, Aleck Conrad, of Coolidge; secretary and treasurer, J. E. Saint, of Grants. The executive committee are: Col. Geo. H. Pradt, J. E. Saint, J. A. Johnson, R. P. Brown and M. W. Scott.

The question of round-ups was then brought up for discussion. It was decided that each district should determine when and how they should work, due notice of which shall be given the secretary of the association.

A general informal talk was then had as to how the association should be run, as well as the discussion of other matters of interest to those present, after which the association adjourned.

**NOTES.**

John De Long, of Gallup, was among the cattlemen who took in the convention.

W. H. Hulvey took an active part in the organization, and proposes to use his influence and money to make it a success.

Dick Brown could not be at the meeting, but was elected a member of the executive committee all the same. Dick is practical and knows what an association should do to accomplish good work.

J. A. Johnson, of San Jose, got in too late to aid in organizing the association, but was recognized as the proper man to put on the executive board. His well-known business ability fits him exactly for the place.

M. W. Scott, manager of the Box ranch, owned by General Bradley and other army officers, of Fort Wingate, helped the organization along, and which recognized his ability as a cowman by electing him one of the executive committee.

Justus Clark, who stands in the front ranks as a successful stockman, with something like forty-five years of experience in handling steers, will take membership in the association. He has extensive interests in Socorro county and southwestern Valencia county.

Colonel Marmon was present and none the worse for his unsuccessful efforts as a lobbyist at Santa Fe in trying to secure a new county and the passage of the militia appropriation bill. The three-cornered fight downed the colonel, but he is still in the ring, although a little disfigured.

Colonel Pradt, the new president of the association and assessor of Valencia county, left off assessing burros, etc., among the natives of western Valencia county long enough to take a hand in the organization. He always comes to the front whenever he can help out the stock interests.

Alex Conrad, manager and a partner in the Tusas Valley Cattle company, at Chaves station took a lively interest in everything that goes to make an association what it should be to a cowman. Mr. Conrad will hold the boys down as vice-president and presiding officer during the president's absence.

J. E. Saint, manager of the Acoma Cattle company, is always ready to respond with his money and best efforts whenever the cattle interests need boosting. He is invaluable as a right-minded, hard-working cattleman to his section of the territory. The association very properly made him secretary and treasurer. The right man in the right place.

W. P. Metcalf, manager of the Estancia Grant outfit, was circulating among the cattlemen, but was "barred" because he belonged to the Philistines east of the Rio

Grande river. He would be gladly taken into the association if the by-laws would admit of such action. He is recognized as one of the best managers in the country and is deservedly popular with all the stockmen.

"Uncle Bill" Crane, of Coolidge, was an interested looker-on. The old "Pathfinder," as he is familiarly known, touched the territory back in the fifties, and explored the country west of the Rio Grande river with Kit Carson to find water for the army previous to the Navajo war. Uncle William soon got to feeling well, thank you, and said he "didn't care a flubdub for the association; had ordered a set of teeth by mail the week previous and when he received them they were too big; did not wear 'nines,' and they were too big for the biggest cow on the ranch, so had to come in and have his mouth measured for a set." He played the "queen open," and borrowed money to pay his fare to the depot. Says Saint is the ugliest man off the Navajo reservation. Uncle Bill has plenty of cows and will always stand with the cowmen.

The cowmen were nearly all in attendance, and it was a noteworthy fact that every man present is a practical cow puncher and works with the boys on the range. You can put it down that these men are not groaning that the cow business don't pay. They make it pay by attending to business. LEX.

**Boom in the Cattle Market.**

CHICAGO, March 18.—The cattle market has had quite a boom this week owing to the very limited receipts. Daily runs have surprised everyone by their meager proportions, and it is safe to say that double the number of cattle actually received would have come nearer the supplies generally expected. The advance gained the previous week however, did not bring out the rush looked for and buyers showed considerable anxiety. Dealers each morning were in the saddle early and out scurrying around to fill their orders. The situation was unmistakably in sellers' favor. They advanced their rates each morning, and although shippers made some "kicks" on the ground that eastern markets did not warrant them in making purchases at current figures dressed beef men took hold actively. They would follow a load of cattle from the chutes to the pens and before the astonished salesman could close the gate or order feed and water the aroused buyer would shout out: "What do you ask for them?" "So much," says the salesman. "Take anything off?" "No." "Weigh 'em." Many hundred trades are made in fully as brief and graphic a manner as this. Everybody who has had cattle here has made something. Prices are about twenty-five cents higher for the week and 40@60 cents higher for the past two weeks. The most salable lots now, as for a long time past, are smooth, well-fatted steers weighing 1,150 to 1,300 pounds. Fat, pony-built stock of the above weight sells for almost as much per hundred pounds as do droves averaging 1,450 to 1,600 pounds. Choice steers have been in good supply, but fancy beefs scarce. That the present dearth of cattle will speedily be followed by a large influx goes without saying, and that there will be a reaction in prices may also be set down as a foregone conclusion. There is not much danger, however, although the consumptive demand is light, that quotations will recede to as low a plane as they occupied a fortnight ago. In the opinion of the best informed traders the low-water mark has been passed for good. The highest figure of the week was \$5.50, and was paid for some extra fancy beefs. A lot of 900 lb. malt-fed Texans brought \$4.50 which is about fifty cents higher than was paid a week ago.

Butchers' and canners' stuff, like shipping cattle, have been in small supply and competition was, therefore, sharp. Fat cows and useful stock generally has been salable at the best prices of the season, and the lower grades, such as have recently been selling to so poor advantage, brought as high figures as before the break. Choice cows are chiefly taken to convert into dressed beef, and some of the best material comes from Nebraska. It is a pretty poor bunch of cows for which better than \$2.50 cannot be obtained. Stockers and feeders are higher than at

any previous time this season. They have advanced in sympathy with beef cattle and not because of any activity in the demand. Receipts are small and there are buyers for everything offered.

Closing quotations range as follows:

Extra steers.....	\$5 25@5 50
Choice steers.....	4 90@5 20
Good steers.....	4 55@4 85
Fair steers.....	4 05@4 50
Common steers.....	3 50@4 00
Choice cows.....	3 25@3 90
Medium cows.....	2 55@3 30
Common cows.....	2 15@2 50
Poor to choice bulls.....	2 40@4 00
Stockers and feeders.....	2 65@4 20

**Sparks Exploiting on Wind.**

Land Commissioner Sparks has been vigorously going through the motions of prosecuting alleged land thieves in the territories. He has clapped hundreds of men into the courts, in New Mexico alone. These things have not been done without considerable fuss and feathers. In fact, it is a matter of common knowledge that Sparks has exploited himself as no other officer of the government ever did before. His reports are full of self-glorification. He boasts of his prodigious reform work. Politicians and the democratic press have pointed to the wonderful record Sparks is making and have stuck gaudy plumes in the cap of the administration for its great zeal in "turning the rascals out" of the public domain. Now what has actually resulted from all this flourish of "reform?" A glance at the cold truth will be refreshing—but not to Sparks nor the democratic politicians. The Santa Fe *New Mexican* of Saturday, March 5, contained the docket of the U. S. district court at Santa Fe for the term which closed on that day. There were on the docket 134 cases for perjury in making entries of public land. These represented the reform industry of Commissioner Sparks. Note how the "perjurers" fared:

Acquittals.....	10
Not prosecuted.....	76
Discharged.....	28
Continued.....	20
Total.....	134

Not one of the 134 persons charged with "stealing" public land, or coming into possession of it fraudulently, was convicted. This record, it would seem, exposes the true inwardness of the bunch administration of the land office. It is operated largely on wind and for political effect.—*Cincinnati Times-Star*.

**The Killing Qualities of Herefords.**

The splendid killing qualities of the Herefords was never set forth to a better advantage than in the following statement which we find in the Plattsburg, Mo., *Democrat*, which says:

Mr. Jas. A. Fuukhouser, of our town, sold in Chicago, December 10, 1886, seven yearling cross-bred Shorthorn and Hereford steers at \$6.50 per cwt.

From the fact that the steers only weighed fourteen pounds per head less in Albany, N. Y., where they were killed, than they weighed in Chicago, proves that they were not fixed to make such a grand showing. We should think this statement would convince any fair-minded man that the improved breeds of cattle are profitable to both butchers and feeders.

Weight of seven steers in Chicago, December 10, 1886, 6,490 pounds, killed by Wiley Bros., Albany, N. Y., December 18, 1886:

	Gross Wt. in Albany.	Weight of beef.	Per Ct. to gross wt.
1 steer.....	1,280	885	68.33
1 steer.....	1,310	826	62.67
1 steer.....	1,350	887	65.70
1 steer.....	1,350	866	64.14
1 steer.....	1,390	894	64.32
1 steer.....	1,410	918	65.16
1 steer.....	1,300	826	63.54
Total weight.....	9,390	6,044	64.36

Weight of hides 660 pounds; weight of tallow, 747 pounds; per cent. of profitable weight (carcass, hide and tallow), to gross or live weight, average, 79.36.

**The Winter in Alberta.**

Although the weather during the past month has been the severest ever known to the oldest inhabitant, still the reports from the ranges have not been so very unfavorable. The loss on pilgrim cattle is reported heavy and, should the cold

weather continue, will be still heavier. It stands to reason that if people will bring in poor cattle late in the season, and do not have hay to feed, they must expect to lose. The loss on acclimated range cattle up to the present time, is not greatly in excess of that of any previous year, and unless the present month turns out to be a very severe one, stock will pull through all right.

In the neighborhood of the Porcupine hills cattle are reported in pretty good condition. At High river range cattle are said to be doing favorably, but there has been a very heavy loss among the pilgrims, one herd especially is reported to have lost nearly one-half. On Pine and Fish creeks the cattle are nearly all pilgrims and have suffered severely. In the McLeod district the report seems to be about the same. At Maple creek the cattle are in a sad plight and the loss will be very heavy. They do not attempt to feed, and the ranchers, we understand, have no hay to feed them. The cattle seem to take refuge in the cuts on the railway and are being killed in large numbers by the trains, one train alone killing eighteen head. In the neighborhood of Medicine Hat and Lethbridge the loss is reported very heavy. Let us hope for a good spring.—*Calgary Herald*.

**Arizona Cattlemen.**

A special meeting of the San Pedro Live Stock association was held in Benson on the 15th instant; T. F. White, president, in the chair.

The minutes of the last meeting were read and approved.

On motion, it was ordered that the assessment for spring round-up purposes be paid in advance, and parties joining the round-up who have not so paid, shall be barred until they do so.

It was ordered that the spring round-up commence work on April 10th at the ranch of Antonio Soso, on the San Pedro river, and work up the same to the railroad at Benson; from there go to the ranch of J. D. Kinnear, in the Whetstone mountains; thence to the ranch of Miguel Torres, and from there to the ranch of Manuel Coronado, where the work will end.

T. D. Roberson was elected captain of the round-up.

On motion the chair appointed W. B. Gibson, Henry Etz and W. H. Weeks a committee to levy and collect the assessment for the round-up, and make such other arrangements as may be necessary for the same.

The secretary, W. H. Weeks, was ordered to notify all parties of the amount of their assessment by postal card.

Captain Roberson was instructed to send two men to the Lowell round-up, the expenses of such men to be paid by the association.

A motion by D. H. Logan, seconded by T. J. Turner, to the effect that no Mexicans in employ of Americans shall be allowed to work with the round-up, was unanimously carried.

It was ordered that all persons who attend the round-up who are not on the assessment list be charged at the rate of fifty cents per day.

Adjourned to Monday, April 4th.

**Colorado Round-Up Commissioners.**

Governor Adams, of Colorado, has appointed the following gentlemen to serve as round-up commissioners:

- J. C. Jones, A. Rhoades, H. R. Tillets, and John Vrooman, Bent county.
  - A. M. Pryor and Thomas L. Bryan, Pueblo county.
  - Theodore H. Lowe and Charles Lansing, El Paso.
  - A. J. Rich, Undercliffe.
  - Myron W. Jones, H. S. Holly, W. S. Pingsley, R. G. Wilson, F. P. Ernest, and G. S. Benklemen, Arapahoe county.
  - J. L. Brush, D. D. Wyatt, and Robert Burr, Greeley.
  - Hairy Kahler, Delta.
  - L. C. Gelmick, Hotchkiss.
  - Charles Freeman, Mahr.
  - C. E. Michard and Charles Hartman, Sagauche.
  - A. Shellabarger, Rio Alto.
- The commissioners are divided among the various districts.

FROM ALL POINTS.

Live Stock Notes Carefully Collected From Every Source.

The Plateau Live Stock company have increased their capital stock to \$250,000.—*Meeker (Colo.) Herald.*

Pleuro-pneumonia is decimating the cattle herds of Bright & Co., on Twin creek. So reports the Billings, Montana, *Gazette.*

The Fort Shaw, Montana, Live Stock company's losses will be fifteen per cent. It has 600 tons of hay, and fed 1,600 head during February.

The governor of Iowa will not permit a horned animal that has been in Cook county, Ill., inside of twelve months, to be taken into the state.

The cattlemen resident in Billings, Montana, report that many bands of yearling cattle that were supposed to have perished during the winter, are alive and in good condition.

A new rule to be adopted by the live stock exchange gives the country shipper the right to have any grievances he may have against a member of the exchange, investigated.—*Chicago Commercial.*

Ike Stephens, of Georgetown, bought 500 head of ones, twos and threes last Saturday from Knox, Barfield et als., for \$7, \$11 and \$14. He left for Mexico last Sunday, from whence he will start a herd of 5,000 steers to Montana.—*Colorado (Tex.) Clipper.*

The managers of the transcontinental roads have just adjourned after long consultation at Chicago over the inter-state act. It is proposed to construe the law strictly, and on this decision the tariff rates will be about fifty per cent. higher than those now prevailing.

The western portion of Tom Green county, Texas, has been divided into six counties, named as follows: Ector, Winkler, Loving, Upton, Crane and Ward. The counties of Winkler, Loving and Ward are attached to Reeves for judicial purposes and Ector, Crane and Upton to Midland for the same purpose.

James N. Upton last Thursday sold his half-circle J brand of cattle, some 800 in number, now located in his pasture on Crows Nest, to J. Willis Johnson at the following figures: \$16 for cows and \$12.50 for two year-olds, and \$9 for yearlings; also 3,840 acres of land on Crows Nest for the sum of \$9,600.—*Colorado (Tex.) Clipper.*

While the weather here is soft and balmy, spring has set in abruptly in the bleak northwest and is working grievous damage on the upper Missouri. Dispatches show that the situation is one of grave danger to life and property, and that the disasters that are now unavoidable will be the greatest known in the history of the region.

Bud. Turner and Sam Lazerus, prominent stockmen of Knox county, Texas, were waylaid near Seymour, Texas, and Turner was murdered, Lazerus escaping by flight. The murderers are supposed to be brothers of one Brooks, who is in jail at Seymour on the charge of stealing cattle, Turner being the principal witness for the state against him.

A determined fight is being made against the Chicago dressed beef syndicate by the stock yards men and butchers of Ohio. Cleveland and Toledo have combined in support of a law requiring an inspection on foot of all beef sold within a radius of forty miles from either city. The bill has passed the senate, and is said to be strong in the house.

The prize offered by the Texas Live Stock association for the best essay on Texas or splenic fever, has been awarded by the committee, Messrs. H. M. Taylor, S. P. Cunningham and A. W. Hilliard, to whom they were submitted, to John Edgar, of Travers county. In the estimation of the committee none of the essays presented a complete statement of the cause and remedy.

H. M. Taylor, agent of the bureau of animal industry, was in the city yesterday to make arrangements with the management of the Texas and Pacific railroad to establish a quarantine under the laws of the bureau against the entrance into the state of stock from infected districts of other states. Mr. Taylor recently visited Washington at the request of the southwestern railways to lay before the bureau

the importance of some sort of protection for Texas and the Indian Territory, which have no sanitary safeguards whatever, and he succeeded in interesting Commissioner Colman to the extent of proceeding to at once place restrictions on the importation of cattle from infected districts into Texas and the Territory.—*Dallas News.*

B. Washam, a heavy stock dealer of Texas, has written to a cowman in this country, desiring to contract for the delivery of 20,000 head of Texas cattle upon the ranges of eastern Montana, the drive to commence as soon as the grass begins to grow.—*Miles City Journal.*

The Bay State Cattle company had a bunch of 100 head of cattle that averaged 1,42½ lbs., and sold for \$4.60. The Anglo-American Cattle company shipped in from their ranch at Oelrichs, Dakota, ninety head of fine cattle that brought the handsome figure of \$4.60.—*Omaha Stockman.*

The Carson, Nev., *Appeal* tells of a young man named Anderson, working at baling hay on a ranch in Carson valley last fall, who suddenly disappeared without trace; and that his remains were lately found in a bale of hay. Put there to weigh, probably, instead of the old style of putting in a stone.

W. M. Letts, Sons and Waiters will ship about 1,200 feeders to their farm in Louisa county, Iowa, about the 20th of this month. The greater part are from their own pasture in Zavalla county and some from B. L. Crouch, Geo. G. Williamson and John T. Lytle. The highest price paid for steers not to fall below 800 lbs., was \$2.10.—*Texas Live Stock Journal.*

The Nolan and Fisher County Stock association met in Sweetwater on March the 5th, and was well attended. The committee on round-ups reported that the wagons should meet in the HXW pasture on the last day of April and commence work May 1st. The work to move from there as it did last year. Also that fifty cents per day be charged for board of hands.—*Colorado (Tex.) Clipper.*

The spring sales of pure-bred stock have opened in Scotland with unsatisfactory results. The average for Shorthorns was £20 7s. against £20 18s. 10d. last year. For Aberdeen-Angus the results were worse, the average being £17 5s. 7d., against £21 2s. 3d. last year. This is £4 less per head than last year, and a drop of £14 when compared with the average price obtained five years ago.

Native beef cattle during the last five days advanced 25@35 cents per 100 lbs., being the greatest advance established in many weeks. Small receipts, firmer outside markets and lively competition between buyers caused the sudden advance. Sales ranged as high as \$5.50, with 1,331-lb. cattle at \$5.05, some 1,107-lb. cattle at \$4.50, and 896-lb. Nebraska yearlings as high as \$4.40.—*Butchers' National Journal.*

Last Saturday the stockmen of Greeley rounded-up and drove outside the fences and across Crow creek and into the sand hills from three to four thousand head of range cattle. The cattle are reported to be looking well, and as having passed the winter in good shape. A fall of snow would prove of great benefit to the stock in this section, which are now compelled to travel long distances for water.—*Greeley (Colo.) Sentinel.*

On the 8th inst. the Oasis Ranch company, of Toano, Nevada, was incorporated in New York city with a capital of \$60,000, for the purpose of growing sheep, cattle and horses, and dealing in draft stallions, Polled-Angus and Galloway cattle and Merino rams. E. C. Hardy is president; H. K. Lyon, secretary; A. E. Kingsbury, treasurer, and E. C. Hardy, manager.—*Cheyenne Journal.*

The regular annual meeting of the Wyoming Stock Growers' association will be held at Cheyenne, beginning Monday, April 4. Secretary Thomas Sturgis has mailed the following circular to members of the association: "The executive committee has instructed me to advise you that at the annual meeting of the association, to be held on the 4th proximo, the question of abolishing assessments upon members will be seriously considered. The committee believe that a general and faithful compliance with the provisions of the maverick law will result in largely increased receipts from the sale of mavericks, and that the fund so obtained will,

in addition to the annual dues and entrance fees, be sufficient to pay all legitimate expenses of the association, economically administered."

Conrad Kohrs, of Deer Lodge, Mont., says: "I think the estimate of twenty-five per cent. loss is too high. I would not put it more than five per cent. now, though if bad weather continues it may get as high as twenty-five per cent. The loss on my range is not very great yet. I had a letter from my cowboys dated the 7th, and it said they had found some dead stock but no many. The ground was about half bare then. The cattle were thin but it was thought they would come out all right. The amount of snow on top of the drouth has made a hard winter for stock. What are known as 'immigrant cattle,' those that have not become acclimated, are the ones that cannot stand the winter. Probably twenty-five per cent. of them will die. The other stock will come out very thin, but if there is not any more bad weather the loss will be only about five per cent."—*Bozeman Chronicle.*

A special from Little Rock, Ark., says: "Advices from the stock growing centers of the southwest are to the effect that a decided revival in the cattle business has commenced. In various parts of Texas preparations for the spring drive have been completed and in some instances herds have started up the trail. The ranges of the northwest are reported as needing young cattle, hence the bulk of the stock placed on the trail will be driven or shipped north. Stockmen estimate that from 50,000 to 100,000 head of stock are ready for the drive in different parts of the southwest. In Arkansas buyers are gathering cattle preparatory for shipment west and north.

In a private letter from E. H. Cowles, he nominates Miles City as the last and best cattle city in the west. He says now is the time to buy, cattle bought now will have good constitutions and will be good cattle to breed from. Cattle, he thinks, will take a rise next season and the business will begin a new life. In his section of the country, Gibbon, Nebraska, a great many are being fed. Mr. Cowles has been enjoying a year's rest, the first in twenty years, but expects to return to Montana and Miles City in the spring to embark again in the cattle business, which he so thoroughly understands.—*Miles City Journal.*

Bills are being introduced into the different legislatures of the states of Missouri, Ohio, Pennsylvania and Tennessee. The bills provide that animals intended for food should be inspected alive before slaughtering, at the different cities where the meat is to be sold. This is an important measure and should have the support of every consumer, as animals are subject to many diseases that cannot be detected when shipped in the form of dressed beef, and it is claimed, and not denied, that meat of this description, when partaken of, is liable to sow the seeds of disease in the human family. The butchers should give these bills their earnest support.

The agricultural department's estimate of the number of horses in the United States at this time is 12,496,744 against 12,077,657 a year ago, an increase of 419,087. The average value is set down at \$72.15, a gain of eighty-eight cents per head. The average value of the past ten years has been \$64.45, the highest year being 1884, when it was \$74.64, and the lowest 1879, when it was \$52.41. The aggregate increase in value over last year is placed at \$40,862,547, while in the aggregate of all other kinds of stock there was a shrinkage in value of \$5,435,471.

A late exchange from Gunnison, Colorado, says: The ranchmen have nearly all turned their cattle on the range and the hillsides in the vicinity of this city are dotted with stock, where last year at this time there were fully two feet of snow. The season is at least five weeks earlier than last year and is one of the earliest in the history of western Colorado. The ranchmen have a large surplus of hay to dispose of which, it is thought, will bring a good price later on, although at present there is scarcely any demand for it.

Cattlemen of upper Ruby valley consider themselves "out of the woods" now, and we have it from one of them that two per cent. will cover the losses in their herds from stress of weather. Horses which have been running on the range

are looking better than those that have been taken to the ranches and partially fed. We are glad to learn that among so many sections from which gloomy rumors come, there is one to give a cheerful report.—*Montana Ex.*

A train load of 1,265-lb. Colorado distillery-fed cattle, belonging to L. Walzel, sold to a dressed beef establishment in Chicago the other day at \$4.50. They were fed at Des Moines, Iowa, and were in fair condition. The season for "stillers" generally opens the latter part of February, but this year the season is behind: About 50,000 will go into Chicago during the next few months.

Nelson Morris, one of the dressed beef syndicate, was interviewed by a reporter of a Pittsburg paper on the occasion of a recent visit to that city, and is credited with the statement that manufacturers of lard are in the habit of adulterating their product with cotton seed oil, using seventy-five per cent. of the latter. Probably the reporter got things a little mixed, though it is not denied that lard is extensively adulterated.—*Breeders' Gazette.*

Doctor Holloway, Montana's new territorial veterinary surgeon, was in Miles City Sunday and Monday. He had examined some cattle of Paul McCormack's, which had died near Custer station, he found that they had died from natural causes and not from any contagious disease. He proceeded from here to Billings for the purpose of inspecting some Hoskins & McGill cattle.—*Miles City Journal.*

Ranchmen in some parts of the northwest are a little uneasy just now over a kind of itch among their cattle and horses which gives some indications of becoming an epidemic trouble. Where it appears the animals lose their hair and very soon get out of condition, leading in aggravated instances to a fatal termination. Stockmen should deal with this promptly and eradicate it while it can be brought under control. A temporizing policy is not to be tolerated in matters of this kind.—*Ex.*

In a private letter from D. W. Marsh, of Calgary, to William Courtney, of Miles City, Montana, Mr. Marsh says that their winter has already been one of seventy days duration, and that in his residence of ten years he has never seen as much severity. The cattle of Mr. Marsh range on Cypress Hills and Maple creek, but no estimate of the losses can be made as the snow has been so deep, travel so hard and the weather so severe that the range could not be ridden, though they look for very heavy losses. Mr. Marsh is of the opinion that these ranges are too far north and that raising cattle in the Northwest Territory is like "lucking against four aces."

Bullard & Co. have now at both their houses at Liberty and Endee a full supply of what the stockman wants for his camp and the cowboy for his outfit.

SEDGWICK STEEL WIRE FENCE.



The best Farm, Garden, Poultry Yard, Lawn, School Lot, Park and Cemetery Fences and Gates. Perfect Automatic Gate. Cheapest and Neatest Iron Fences. Iron and wire Summer Houses, Lawn Furniture, and other wire work. Best Wire Stretcher and Plier. Ask dealers in hardware, or address, SEDGWICK BROS., RICHMOND, IND.

FOR SALE.  
75 Good Cow Horses

Have been used one season on the trail and one season on the ranch. Are well broken, in good condition, sound and young. For terms and particulars, address

Nathan Hall Cattle Co.,  
MAGDALENA, N. M.

ALWAYS mention the Stock Grower in writing to advertisers.

**FANNING THE HAMMER.**

**How Harvey Pumped it into the Tenderfoot.**

Harvey H. Whitehill, ex-sheriff of Grant county and formerly of New York City, was in Santa Fe during much of the legislative session just closed trying to pass a bill creating Logan county out of the county of Grant. It took the measure three weeks to die of exhaustion, and as Mr. Whitehill had little to do except to watch it he was never too busy to chat about the west or ask questions about his old friends in the east. During a long conversation today he remarked:

"It's funny, but every tenderfoot thinks that all cowboys carry double-acting, or, as some call them, self-cocking, revolvers. There was a time when those weapons were in high favor, but the cowboys soon found that they were positively unhandy, instead of being a help to a man in a hurry. Now self-cocking pistols are boycotted. I'll bet that four-fifths of the cowboys in this territory have gone back to the old style single-acting pistol. Two years ago everybody had a double-acting 'gun,' and wouldn't have any other."

"Why? Don't you like the new style?"  
 "No. They discovered that, try as they would, they could not avoid deflecting the muzzle of the pistol to the right while pulling the trigger to raise the hammer. You see, all the power is applied to the right-hand side of the trigger, where you put your finger in. Now, when you pull the trigger for the comparatively long period necessary to get the double-acting hammer up to the point where the spring is released, and it falls, you insensibly put a heavy pressure on the right-hand side, and can't help swaying the muzzle in that direction. When the double-acting guns were in style here we used to notice that five out of every six men who got shot were wounded in the left side. Of these, about one-half were shot so far to the left that the ball simply grazed their ribs. Another large percentage were shot on the inner side of the left arm. Now the cowboy prides himself on hitting the dead centre of his opponent. It is always his wish to put the ball right at the juncture of the ribs above the stomach. This is not merely because they want to put on style; the placing of a 45-calibre ball right there prevents your man from coming back at you. Now as soon as the cowboys began to note this queer feature of the shooting it became a matter of serious moment to them. They quickly found the fault to be in the self-cocker, which, by deflecting their muzzles, of course inclined the ball toward the left side of the man facing them in front. That settled the self-cocker. The fact that the cowboys were right is proven by the simultaneous disappearance of the new-style pistol and the reappearance of the old-style wound."

"But can't one shoot faster with the new-style weapon?" asked the *Sun's* tenderfoot.

"Did you ever see a cowboy shoot?" asked the ex-sheriff with a quizzical smile. "Why, see here, this is a single-acting, old-style pistol. Watch that tree."

Before the words were well uttered the handsome sheriff had got the drop on the growing timber, and six shots rang out in such rapid succession that they sounded like the explosion of a small pack of very large firecrackers. During the shooting Mr. Whitehill's left forefinger vibrated along the top of the pistol barrel from the muzzle to the breach. The six balls entered the tree about three inches apart.

"Now, I carry my pistol fixed this way, and it's all ready for use," he continued, exhibiting the weapon. It was of 45-calibre, about eighteen inches long, and handsomely mounted. The trigger was tied firmly back against the inner side of the guard with a rawhide thong.

"All I have to do with it," explained the ex-peace-guardian, "is to brush the hammer back as far as it will go with my left forefinger, while I hold the pistol firmly with my right hand. My right forefinger never goes near the trigger, but helps to hold the stock, and this makes my grip more firm and certain. When I push back the hammer I have only to take my finger off to let it fall and discharge the pistol. You see, the trigger being tied back, the hammer is always

free. One motion is all that is necessary to push back the hammer and fire the shot. The trick is called 'fanning the hammer.' You see, I pushed it back with my left forefinger; it instantly fell when I released it, and the next instant my finger was again pushing it back to a full cock. Doing this little act quickly makes your finger sway back and forth in a way not unlike the fanning motion. That's where it got its name."

"Do all the cowboys adopt this plan?"  
 "O, no. Most of them cock the pistol with the left forefinger, but some prefer to leave the trigger free and with each shot apply the slight pressure of the right forefinger necessary to discharge the weapon. There is no pressure to speak of on the trigger, however, and the aim is never spoiled. With a hair trigger you have only to hold the gun straight and you'll get there. When I was sheriff down in Grant I always went around with my trigger tied back, and I never carried a self-cocker. Yet I could shoot as quick as any man. If I hadn't I would not be here now. There's Pat Garret, who used to be sheriff of Lincoln, which he is now trying to cut in half so as to make Pecos county. He never carried anything but a single-acting gun, yet when he shot Billy the Kid he put two balls side by side in Billy's heart before the body struck the floor. The first shot killed Billy, but Pat wasn't taking any chances, and he was working his pistol for all it was worth. Now, the second ball had to follow pretty close after the first in order to get to the same spot before Billy dropped, didn't it? That shows what a good man with a good single-acting pistol could do."

"So you would just as lieve put your single-acting pistol against the new style?"

"Why, yea. When I tried to arrest a fellow in Grant one day he came on me suddenly and got the drop with a double-acting pistol. But his ball went under my left arm without doing more than scratching. Of course I went back at him as quick as the Lord would let me, and got there. Now you see why I have a poor opinion of double-acting pistols. That fellow never missed a man before, and if he had had his old gun I would have been dead now."

"People out here are good judges of weapons, then?"

"Are they? Well you can depend upon it that we know good weapons when we get hold of them. I'll bet you can't go on a ranch and give away a 44-calibre pistol."

"Why? Because they are too small?"

"O, no. The boys have simply found out that 44-calibre pistols always 'catch.' That is, the cartridge-chamber always gets hot after one or two shots, swells up, and won't revolve. No one knows why this is so, and I can't explain it. But it's a fact, although the manufacturers sit in their offices in the east and call the boys liars by mail—that's safe, you know. The 44-calibre has been the death of many a man, but almost always the man who held it. You see the other fellow always got in his work while the 44-calibre was on a strike. For this reason we boycott them along with the self-cockers. Give us a single-acting Smith & Wesson, Colt, Remington, or any other good 45-calibre, and we don't ask anything better."—*Santa Fe Letter in New York Sun.*

**Light Demand for Texas Cattle.**

So far the indications are that the demand for Texas cattle in the north will not be anything near like as large as it was last year. At this time last year over 160,000 head of Texas cattle were under contract for delivery at points up the trail, whereas, according to the most careful estimates, not above 50,000 have so far been contracted for this year. Those taken north last year included a good many helpers and stock cattle. This year the small orders are for steer cattle exclusively. The falling off in the demand is accounted for by the fact that the cattlemen up that way are sick. They bought young Texas steers three years ago with a view of selling them at \$50 per head in Chicago when they reached maturity. These cattle are now ready for the market and they fetch about two-fifths of \$50—a trifle more than cost three years ago. When they think of this in connection with the loss of the interest on the money invested in the cattle, and the heavy losses of cattle

**PREPARED ROOFING.**

FOR NEW MEXICO TRADE.  
 Adapted to New Mexico Climate. Absolutely Water, Fire and Rust Proof.



This Roof is made for the million and has been in use in Old and New Mexico, as well as all the states and territories, nearly five years. Quality of goods warranted. Call on us, as we have stock and can make low prices. M. EHRET Jr. & CO., Manufacturers, PHILADELPHIA, CHICAGO and ST. LOUIS.  
 For sale by **BROWNE & MANZANARES CO., Las Vegas, N. M.**

in the meantime, it is no wonder the northern cattlemen are modest in their demand for cattle to replenish their herds. The chief demand for Texas steer cattle so far is from the Indian Territory. The new quarantine law of New Mexico is a Chinese wall against all of Texas except a small patch in the northwestern part of the state. This has had the effect of raising the price of cattle in the said small patch and lowering it in other sections of the state, making a difference of several dollars between the prices at which cattle are held in the two sections. The results of the meeting of cattlemen on the occasion of the Fort Worth convention, were somewhat disappointing. The meeting did not develop as many buyers as it was expected it would. In fact, the only buyers on the ground were Indian Territory men, and it required only 13,200 head of aged steers to fill their orders at the time, though some of them are still in the state and probably since increased their orders. The present condition of the cattle industry in Texas is calculated to impress stockmen more than ever with the importance of feed pens and refrigerating establishments, at least with the necessity of some new way of disposing of their beeves, if they want to remain in the cattle business.—*Dallas News.*

**They Will Embrace the Chinook.**

The southwestern papers are offering sincere condolence to the northwest in its deep affliction in the losses of cattle. While they wax quite eloquent we think we see an underlying spirit of selfishness. It of course helps the southwestern pocket out to see us killed off, as it were, and they may like to contemplate this, but we'll say confidentially that we won't die off this winter, keep up the condolence and "we'll be wid ye eventually," in fact, we will be in Chicago to compete with you next season. We feel rather blue, but we are not looking for "sun-kisses," as one exchange offers us. They are poor substance, you know, and would not console us much. We are going to have a great big osculation from a chinook pretty soon (Indian descent though she be, we love her,) and from that time forth our disposition will change, and Montana will again rise to the top as a stock country with the coming of our early spring.—*Stock Growers' Journal.*

**Pleuro-Pneumonia in Scotland.**

Pleuro-pneumonia is rapidly spreading in Scotland, and already large sums of money have been paid by the local authorities as compensation for animals slaughtered, with the view of checking the disease. The *Dundee Advertiser* publishes reports of outbreaks in the counties of Fife, Perth, Kincardine and Banff. At a meeting of the Fifeshire local authority recently, it was agreed that the whole of the animals on the farms of Logic and Urquhart, numbering eighty head, should be slaughtered. The compensation to be paid was fixed at £7 10s for each animal.

This will amount to £600, and the clerk stated that some £400 had already been paid this year for compensation. A deputation from the Highland and Agricultural society had an interview with Lord Cranbrook and Lord John Manneas at the privy council office in London to urge that something should be done to prevent the spread of the cattle disease in Scotland. They stated that the disease was mostly imported from Ireland, where there was not sufficient inspection. Lord Cranbrook, in reply, said they had no power to deal with this matter, which must be left in the hands of the government of Ireland. Their proposals as to inspection would require money, which he did not believe would be granted by the house of commons.

**Full Blood and Thoroughbred.**

In popular language the terms are synonymous. When used in reference to horses there is a well defined difference between them, which it would argue ignorance to neglect. Some writers seek to establish a difference also, when they are used in relation to sheep, and in this way: A full blood is one in whose veins there is no admixture or stain of any other blood but the Spanish, while a thoroughbred is all that and something more. A sheep may be a full blood (pure blood would be a better term), and yet be so deficient in form or fleece as to be unfit for a breeder. But a thoroughbred is the outcome of a long line of ancestors, which, beginning with pure blood, have been so consummately moulded by man to a special purpose, that this last and finished product is, so to speak, incapable of begetting or bearing a progeny different from itself. While these ought to be, and with accurate men are, the definitions of the two terms, in popular usage they are not and are constantly misapplied.

All lions, all tigers, all animals in a state of nature are full bloods, pure bloods, average type of their respective races; but not all of them are thoroughbreds; that is, not all of them are so even in all their qualities, and so sound in their constitutions, as to be able to produce progeny up to the level of the race standard. They are weeded out by natural selection; they are ill formed or weak or lacking in cunning, and they perish in the struggle of life, leaving the best individual behind to perpetuate the race. Under a state of domestication in which man seeks to preserve all the individuals, good and poor, he must himself conduct the selection of his breeders.—*American Agriculturist.*

**Texas Land Measure.**

All lands in Texas are measured by varas, and not by yards and rods. A vara is 2 3/4 inches less than a yard, being 33 1/2 inches. An acre of land contains 4,646 square varas. One labor of land contains 178 acres; 8 1/2 labors, 1,476 acres, and 25 labors a league. A league and labor contain 4,605 acres. To find the number of acres in a tract of land divide the number of square varas by 5,646, the number of square varas in 1 acre.

# THE STOCK GROWER.

ISSUED WEEKLY AT

LAS VEGAS, NEW MEXICO.

Office, Bridge Street, in Stock Grower Building.

THE STOCK GROWER COMPANY.

The Subscription Price of THE STOCK GROWER is \$3.00 a year, payment in advance. Single copies, ten cents. New subscriptions can commence at any time during the year.

The Stock Grower is sent to subscribers until an explicit order is received by the publishers for its discontinuance, and all payment of arrears is made, as required by law.

Discontinuance.—Remember that the publishers must be notified by letter when a subscriber wishes his paper stopped. All arrears must be paid. Returning your paper will not enable us to discontinue it, as we cannot find your name on our books unless your postoffice address is given.

Always give the name of the postoffice to which your paper is sent. Your name cannot be found on our books unless this is done.

The Courts have decided that all subscribers to newspapers are held responsible until arrears are paid, and their papers are ordered to be discontinued.

ADVERTISING RATES ON APPLICATION.

Address all communications to THE STOCK GROWER, Las Vegas, New Mexico.

Only journal devoted exclusively to the stock growing, feed farming and commercial interests of the Southwest. We give the cattle news of the range country.

Endorsed by every cattle association and representative ranchman in the southwest.

Official Paper of the Pima County, Arizona, Ranchmen's Association.

Official Paper of the Lincoln County Stock Association.

Official Paper of the San Miguel County Stock Association.

Official Paper of the Dona Ana County Stock Association.

Official Paper of the Central New Mexico Stock Growers' Association.

Official Paper of the Canadian River Live Stock Association.

Copies of this paper for sale by

S. B. WINSOR, Denver, Colorado.  
Wm. Lons, St. James Hotel, Kansas City.  
ASTOR HOUSE NEWS STAND, New York City.  
S. H. PARVIN & SON, Cincinnati, Ohio.  
O. H. TURNER, El Paso, Texas.

Copies of the Stock Grower are on file at the American Exchange 448 Strand, London, and American Exchange, 26 Boulevard des Capucines, Paris.

SATURDAY, MARCH 26, 1897.

## SOUTHWEST STOCK NOTES.

### Short Items Relative to Stock and Stockmen of the Southwest.

The Texas legislature has imposed a tax of \$150 per year on live stock brokers in that state.

Clay Allison is moving north over the trail to Springer with 1,800 head of steers for the early market.

Messrs. Head & Hearst, of Deming, have sold 700 beef steers to Los Angeles butchers at 3% cents on foot.

Northeastern New Mexico reports no dead cattle on the range this season. Fat steers are everywhere plentiful.

Con. Ryan, an old ranchman and settler, of Crittenden, Arizona, was butchered Saturday the 15th inst., by two Mexicans.

The Ojo del Puro Ranch company is arranging to ship a lot of feeders to Kansas City from the southern part of the territory.

A. D. Hudnall shipped south this week to Messrs Gardner, Gillies & Wilderming, of Arizona, two car loads of grade Hereford bulls.

The Duncan brothers, who owned a ranch west of the Huachuca mountains in Arizona, were murdered by unknown parties about the 19th inst.

Some of the stockmen of Lincoln county have established the rule that they will employ no man who is a ranch jumper or who kills cattle not his own.

A company of which S. W. Dorsey is president, is trying to obtain the Maxwell grant, which they propose to utilize for colonizing and other purposes.

A lot of 340 head of common native stock cattle was bought this week by a small cattle raiser of Puerto de Luna, San Miguel county, for the sum of \$2,100.

One hundred and twenty-five Arizona steers which had been corralled in Kansas the past few months, were sold on the Kansas City market this week at \$4.45 per cwt. They averaged 1230 lbs.

W. P. Moore, who has a large ranch in Knox county, Texas, which is not within the limits against which the New Mexico law of quarantine is operative, will shortly drive to this territory a large herd of cattle.

Upcher, Stevens & Burr, of the Tularosa, Socorro country, shipped this week 400 head of fat steers to the Fish & Keck Co., of Kansas City, which is efficiently represented in the southwest by G. L. Brooks, of Socorro.

Mr. Wilson Waddingham—he who caught the Dutch at Amsterdam with the Maxwell land grant scheme, has quite lately organized a mammoth cattle company and arranged the loop for California boots.—*Field and Farm.*

Mr. D. S. Green, of Denver—the gentleman who purchased the cattle and grazing lease in the Cherokee Indian country, of Messrs. Howins & Sons last season—is now in St. Louis negotiating additional purchases of land and cattle.

Ed. Dick Hudson, of the 8 bar brand, has purchased Lord Gladstone, a thoroughbred Hereford bull. Gladstone is a long yearling, and weighs 1400 pounds. He is perhaps the finest Hereford ever brought to Grant county.—*Enterprise.*

Some dissatisfaction is manifested with the project of John P. Baker to bring in 3,000 head of cattle on the Pecos. His neighbors claim that he has by the inviolable law of range rights, etc., the use of but one mile of water in good and legal possession.

The Pecos River Cattle company has just organized with a capital stock of \$2,000,000. A meeting of the directors will no doubt be called shortly to increase the capitalization to \$4,000,000, when the company will be in the market for 100 cows with which to begin operations.

The interest in cattle properties and live stock investments is a growing one. The owners of the Mora grant are now in negotiation with prominent live stock dealers of New Mexico for the purchase of 50,000 head of southwest cattle with which to stock the grant this season.

George L. Goulding & Co., Denver, are offering a small bunch of graded northern New Mexico steers, viz: 200 yearlings at \$11.50 per head, 100 twos at \$14.50 per head. Also a bunch of 1,300 steers, one, two and three-year-olds, \$10.00 for yearlings, \$14.50 for twos, \$18.50 for threes and fours.

An Arizona exchange says the rains have helped the San Pedro range and the cattle are beginning to improve. A part of that country is overstocked and some of the ranchers will have to dispose of a portion of their increase as a matter of self-protection. It is a splendid cattle country, but it should not be overcrowded.

It would seem that the entire country will have to turn out and hunt horse thieves. Reports come to THE STOCK GROWER from all sections of New Mexico and Arizona that the rustlers are preying on the horse stock. The local associations should take these fellows in hand and rid the country of them.

Hurst, Black, Kiehne & Wiley will commence rounding up their steers on April 1st, and expect to ship 1,500 north about May 1st. The high grade and thoroughbred bulls which this firm has been placing on their range the last two years have greatly improved an already graded herd, so that now they have one of the best bred up herds in the territory. Their steers are sought after by the largest feeders in Kansas.

Mr. George Frink, of Wilcox, who was struck over the head with a big revolver by Charles Wilson on February 19th, died last week from the effects of the wound. The surgeons were making an operation on his skull as the only hope, and that a slender one, of saving his life, but they soon desisted as it was evident he was dying. The deceased leaves many warm friends in southern Arizona to mourn his untimely end.

The Brasitos tract, in Dona Ana county, comprising 15,641 acres of valuable farming land has been partitioned by the commission appointed for that purpose. The heirs of Andres Dold receive 1,088 acres on the upper end of the tract; Mrs. Anna E. Kerr, of St. Louis, a like number of acres at the south end; Gertrude E. Huntington, the same number and the Casado heirs 8,477 acres. D. Frieze gets 975 acres and 1,300 acres go to the unknown heirs of Anastacio Orcasetas.

The following Santa Fe special is found in the Kansas City Times: Under instructions from the land department a thorough investigation of the survey of what is known as the Mary Lopez grant as made by the surveyor general in 1876 under the direction of T. B. Catron and S. B. Ekins, to cover 42,000 acres, has been made and clearly shows that the land actually granted was a well-defined tract of table land which no deputy surveyor could fail to identify by the help of the natural objects specified, and that it contains only about 11,000 acres.

In the distribution of favors on the opening of court in Las Vegas on Tuesday morning, Judge Long announced the formation of the fourth judicial district of New Mexico. The new district is to be composed of the counties of Lincoln, San Miguel and Mora and probably Colfax. Las Vegas is to be the headquarters of the new district. The changes brought about by the formation of the new district are as follows: The third loses Lincoln county; The second remains the same as heretofore and the first loses San Miguel, Mora and possibly Colfax.

On Thursday the Chiricahua Cattle company shipped a train load—twenty cars—of steers to San Diego. The shipment comprised 448 head, of which 130 were good flesh and will be slaughtered at once, while 318 head will be placed on the range recently leased by the company in San Diego county, and fattened before being slaughtered. Of the beef steers shipped, 111 head were purchased from the Erie Cattle company. Six cow horses were also sent in. The cattle will be unloaded from the cars at San Geronimo, and thence driven across the country to San Diego.—*Wilcox Stockman.*

Porfirio Trujillo and Recordo Valdez, two worthless Mexicans who are known to have stopped at the ranch of Messrs. Lackey and Tessier, of Antelope Springs, the night previous to their atrocious murder, were arrested in Las Vegas the early part of this week and are now confined in the county jail. These men were tracked to this point by men from a neighboring ranch, and there is but little doubt that they are the villains who perpetrated the dastardly murder of Lackey and his partner. When arrested Valdez had \$500 on his person and Trujillo about \$200, and a brand new revolver. The murder was undoubtedly committed for the purpose of robbery.

Messrs. John Melsted, W. Melsted and Mike Millet were brought to the county jail last night from Crittenden, charged with grand larceny. It seems that the testimony given before Justice Edward Vanderlip, the committing magistrate, shows that these parties have killed a number of cattle belonging to the Pennsylvania ranch, and altered the brand on the hides to escape detection, in some instances having cut out the brand entirely. A bundle of the hides bearing the altered brand, has been brought up for evidence. If the facts prove these charges to be true, there will be but little mercy shown to the offenders in awarding them the full penalty prescribed by the law.—*Tucson Citizen.*

It is believed that a band of horse thieves have a secret rendezvous somewhere in the heart of the Superstition mountains. Parties of three and six Mexicans have been seen in the foothills of those mountains during the twelve months just past. They are all armed with first-class repeating rifles and sixshooters and mounted on fine horses. A party of six of them passed by the Whitelaw ranch not long since, and when asked their business said they were hunting horse-thieves. It would be a good idea when the sun-

mer rains come to organize a strong party and make a careful scout of the wild and unfrequented portions of those mountains and ascertain whether or not a gang of thieves have a hiding place there. During the last year a great many horses and cattle have mysteriously disappeared from the grazing country surrounding those mountains and no trace of the missing animals have been discovered.—*Florence (Ariz.) Enterprise.*

The Republicans says the owners of the cattle on the Felix, in Lincoln county, met this week and incorporated a company to be known as the Felix Cattle company. The incorporators are Numa Raymond, W. L. Rynerson, Fritz Bros., J. A. LaRue, Jas. J. Dolan and others, comprising all the cattle owners in that section. The capital stock is \$200,000, three-fourths of which is paid up. The directors of the company consist of J. A. LaRue, W. L. Rynerson, Jas. J. Dolan, Numa Raymond and Emil Fritz. The officers elected by the directors to serve for the ensuing year are W. L. Rynerson, president; J. A. LaRue, vice-president; Jas. J. Dolan, secretary, and Numa Raymond, treasurer. The executive board is Jas. J. Dolan, J. A. LaRue and Emil Fritz, and Jas. J. Dolan is general manager. The company have on the range 5,000 head of cattle and own one of the best stock ranges in the territory.

### The Free Zone.

The following counties in Texas are not affected by the operation of the New Mexico quarantine law, and cattle raised and held in said counties until they seek admission into New Mexico, can be admitted without inspection, or the violation of the law, to wit:

Parmer, Jones, Castro, Fisher, Swisher, Scurry, Briscale, Borden, Hall, Dawson, Childress, Gaines, Bailey, Andrews, Lamb, Hale, Martin, Floyd, Howard, Mobley, Cottle, Hardeman, Wilbarger, Baylor, Knox, King, Dickens, Crosby, Lubbock, Hockley, Cockran, Yoakum, Terry, Lynn, Garza, Kent, Stonewall and Haskell.

### Stock in the Panhandle.

Advices from Quanah, Texas, a new town situated at the terminus of the Fort Worth & Denver railway say things never looked better in northwestern Texas and northern New Mexico. The grass is thick and high enough to hide a cow. Cattle are rolling fat, and the range is ample to carry all cattle now on it until the last days of August. The cattlemen of far western and northwestern Texas are in good financial condition, and are able to hold their beeves for a better market, even if it is a year before there is an improvement in prices; and at the present low prices shipments will be few and far between. The cattlemen have hope, how-

ever, that the depression will soon be removed and that beeves will bring reasonably fair prices. The signs of the times point in that direction. Cattle have wintered well and are in splendid condition. There have been no losses. Nearly all of the cattle growers have been feeding cotton-seed meal to their stock, and it makes them look sleek and it does not require much grass to fatten them for market. Several large firms during the winter made very satisfactory experiments in feeding cactus mixed with cotton-seed meal. It proved to be a healthy food and the cattle relished it. There are almost inexhaustible quantities of this peculiar plant all over western Texas, and now that it has been learned how to prepare it for stock it will be of value to the cattle interests. The plants are cut and the thorns scratched off. After this has been done the cactus is thrown into a machine, where it is chopped up into small pieces that mix very readily with cotton-seed meal. When ready to be fed to the stock the food looks very much like chopped turnips mixed with bran. As the cactus plant grows regardless of drought, there need be no starving of cattle where water can be obtained.

TONY CAJAL,

The Palace Barber Shop,

Bridge street, near the Postoffice,

LAS VEGAS, NEW MEXICO.

# TO PUBLISHERS!

FOR SALE CHEAP.

1 pair 4-col. Chases.  
1 pair 8-col. Chases.  
2 pair 7-col. Chases.

Good as new. Also several good fonts of job and display type at half price.

300 pounds Bourgeois Roman  
at 15 cts. per lb.

3,000 Cuts, Electros and Stereos, Live Stock and Business Cuts.

All of the above and much more valuable material will be sold cheap to make room for our new machinery.

THE STOCK GROWER.

## ELDER BROS.,

Deep and Shallow

# Well Contractors

AGENTS FOR

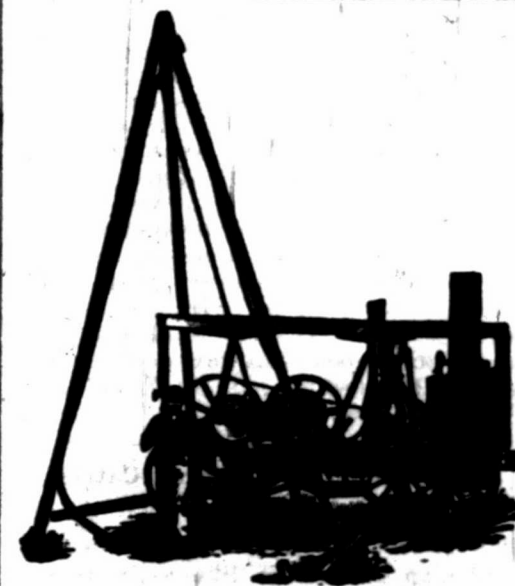
Flint & Walling Mfg. Co.'s Celebrated Star  
Wind Mill and General Water  
Supplies.

St. Louis Vise and Artesian Well Tool  
Co.'s Well Machinery, Tools and  
Horse Powers.

NATIONAL TUBE WORKS WELL  
CASING AND PIPE.

Contracts made for Wells with Mills or  
Horse Powers, Pumps, Tanks,  
Troughs, etc., complete.

EAST LAS VEGAS, N. M.



We Take Contracts in New Mexico and Texas.

G. A. FOWLER, St. Mary's, Kan.

E. S. SHOCKEY, Managr., Lawrence, Kan.

# EARLY DAWN HEREFORD HERD

CONSISTING OF

200 Head Thoroughbred Hereford Cattle, including the Imported Fowler herd and the well known Shockey & Gibb herd.  
1,300 Head High Grade Hereford and Shorthorn Cattle.

FOR SALE.

35 Head yearling and two-year-old thoroughbred, imported and homebred Hereford bulls.  
25 Head thoroughbred, imported and homebred Hereford cows and heifers.  
100 Yearling grade Hereford bulls, out of grade Hereford and solid red Shorthorn cows.  
50 Yearling grade Shorthorn bulls.  
100 Yearling grade Hereford heifers.  
50 Yearling grade Shorthorn heifers.  
100 Two-year-old grade Shorthorn heifers, in calf to imported Hereford bulls.  
75 Two-year-old grade Hereford heifers, in calf to imported Hereford bulls.  
300 Young grade Hereford and grade Shorthorn cows, with calves at foot or in calf to imported Hereford bulls.

Excepting the imported Herefords all the cattle above offered are our own breeding.

Write for catalogue to E. S. SHOCKEY, Manager, Lawrence, Kansas.



# NEW MEXICO LIVE STOCK COMPANY

G. L. BROOKS, MANAGER.

SOCORRO NEW MEXICO.

## Dealer in Ranches

All classes of Land Scrip at Lowest Quotable Prices. Mortgage Loans Negotiated. Shorthorn, Hereford, Polled Angus and Gal-loway Stock Bought and Sold.

## STEERS FOR SPRING & SUMMER DELIVERY

To be Made at Any Point.



## All Classes of Cattle

Native and Improved Sheep, Angora Goats and Registered Bucks. Patented Ranch Property and Confirmed Grants. Stock Horses, Stallions and Saddle Horses.

## CONTRACTS MADE FOR RANGE CATTLE

From Texas, Mexico and New Mexico.

### Report of Executive Committee.

Mr. President, and gentlemen of the San Miguel Stock Growers' Association:

Your executive committee, in addition to rendering to you an account of their stewardship for the past year, feel especial gratification in being able to offer congratulations on the prosperous outlook for the approaching season. The winter is practically past, losses up to the present time are practically nothing and the fine condition of cattle for the opening spring gives promise of an increase as marked for its abundance as last year's calf crop was famed for its shortness and scarcity. After the immense losses caused by the severe winters of 1885-86, together with the almost unparalleled depression and consequent low prices, it is difficult to realize what or how much a good season and a large increase means. For the past two years or more a combination of circumstances adverse to the cattle interests, has, seemingly, cast a weird pall over the entire industry that would have wrought an earthquake of ruin to almost any other class of producers known to the history of commerce. But "it is always darkest just before day," and even now the faint tinge of an opening dawn is shedding its brightness over the gloom of the past, and it needs no stretch of the imagination, no prophetic vision to foresee the sunshine of coming day. Old father Panic, clothed in the mourning garb of hard times and empty pockets, must soon fold himself in his mantle and retire with the passing cloud or be swallowed up in the blaze of restored confidence and the abundance of a new prosperity.

The disasters, reverses, etc., of the last few years, while they have brought ruin to many, have not failed to bring good in their train as well. Cattlemen have awakened from their former lethargy to a keener and more appreciative realization of the necessities of the situation and many of the best minds in the country are now devoting their time and attention to a solution of the problem of producing beef in the cheapest and most profitable manner and putting it on the market at the least cost. That their efforts will result in good none can doubt. The speedy prospect of a reduction in freights, the bringing of the producer and consumer closer to each other, the determination to avoid, as far as possible, the devouring maws of monopolies, and "strange but true," the hope of awakening the conscience of the commission men to a better sense of right and justice, have already inaugurated the opening of a prosperous change that will be felt and appreciated in the enhanced values that will undoubtedly be shown before the close of the present year.

To the cattlemen of our section, especially, and to cattlemen generally we would recommend a better unity of feeling and purpose. A more complete organization of strength and effort and a more determined exercise of thought and power in order to hasten if possible the more speedy coming of approaching prosperity. The want of such organization, the lack of such unity is more to be deplored since it occurs among a class of men who have

won a wide reputation for sound, practical business qualifications.

For the past year the attention of your committee has been directed more especially to rebates and inspections, as being more important and more immediately beneficial to the members of this association, than to other matters more remote in their influences.

An arrangement was made early in the season to co-operate with the Northern New Mexico association for the purpose of more thorough and effective inspection and at the same time to economize in the outlay. The system adopted has not been as complete as we could have desired but that it has been more effective than ever before there is scarcely a doubt, and for the means at command has accomplished all that could have been anticipated, almost the entire funds of the association, collected or collectable, has been expended in this one direction and we would call the attention of this association to the necessity and importance of giving this subject especial consideration and full support for the coming season. Accompanying this report will be found the report of the secretary and treasurer which we recommend to you for consideration and approval; as also the report of the inspector.

For the purpose of aiding and directing your attention to matters for the ensuing year, we would suggest an amendment to our by-laws in the matter of assessments. With the present number of members and representatives of stock the authorized assessment is insufficient to meet the expense of inspection, to say nothing of other expenses. A small increase would be a move in the right direction and would be of great benefit. During the past year your committee have been compelled to extend the assessment allowed in order to meet obligations for inspection and we respectfully ask your endorsement and approval of the same. There are one or two other accounts to be regulated, provided for and paid, and we ask that more ample power be given to our successors, in order that they may be liquidated.

Spring is at hand and of course you will look to and take some measures to provide for spring and summer work. We would respectfully suggest that a committee of three or five be appointed to correspond with and fix a time for a meeting of cattlemen—without regard to association members—at some convenient point in the range country of the San Miguel district, and this association be governed by the action of such meeting in all matters pertaining to round-ups.

Another matter demanding your early and serious attention is the new quarantine law. Under this law the governor is required to appoint three commissioners. We understand that he has not, up to the present time, made these appointments. Without these commissioners there is no machinery to operate this law. As it repeals the old law we are practically without any quarantine and our entire frontier is absolutely open to all kinds, classes and conditions of cattle. This should be attended to at once and every legitimate means used to have these appointments made without delay, in order to make our new law effective before the spring flood of incoming herds

is upon us. We hope you will give this your early and serious consideration. In this connection we will say that one commissioner is required to be from this judicial district and we would recommend the appointment of a special committee whose duty it shall be to confer with the commissioner from this district and aid him as far as practicable in making this law thoroughly effective.

We would also recommend some change in our by-laws in regard to the powers of an executive committee. The members of our association are scattered over a large district so that the members of an executive committee, or a majority of them, are not residents of Las Vegas, and it frequently occurs that it is impossible to get a quorum together to transact business that cannot well be delayed. Some measure should be adopted to remedy this defect. These views and recommendations with their accompanying reports are respectfully submitted for your consideration and approval.

W. B. STAPP,  
Chairman Ex. Committee

### Will Make a Magnificent Ranch.

Cattlemen interested in procuring a fine range will read with interest the following article from the *Arizona Star*:

As there are many inquiries concerning the sale of abandoned military reservations, the *Star* publishes this morning for general information the law touching the same, so that all may know what must be done before purchases can be made.

One of the most valuable of the reservations is old Camp Crittenden, upon which are many fine buildings, the site is most beautiful, the water is as pure as the clearest mountain streams, the location is healthy beyond a fault, and commands a large area of the finest pasture lands in this country. It is believed the lands included in the Crittenden reservation will sell at from twenty to twenty-five dollars per acre. There is certainly no better investment in the country, as the New Mexico & Arizona railroad runs close by the reservation.

Camp Crittenden reservation is three miles square, containing 5,760 acres. It is situated between four mountain ranges—the Santa Rita, Whetstone, Huachuca, and Patagonia—and controls an area approximating half a million acres of the finest grazing lands in the territory. The country is an elevated plateau, studded with the most beautiful live oaks. J. R. Bartlett, of the boundary commission, in his report, states that it resembles a cultivated park more than a natural forest.

Trail herds strike for Liberty or Endee, Bullard & Co. will replenish your "chuck wagons" at low prices. They keep a full assortment of all camp supplies.

### HIGH GRADE HEREFORD BULLS

Range Raised and Acclimated.

We have for sale fifty well grown two year old and yearling high grade Hereford bulls raised on our Colorado ranches. Also 100 Colorado cows in calf to registered Hereford bulls. The registered bulls in use are the get of such sires as "Assurance," "Tregohan," "Anxiety," "Archibald," "Bredwardine," "Earl Horace," "Lord Wilton," "The Grove," "Randolph," "Surprise," "King of Hearts," "Winter de Cote," and other royal prize winners. Address,

The Del Monte Live Stock Co.,  
Henry Van Kleeck, Manager.  
PONCHA SPRINGS, COLORADO.

### Frank T. Robinson,

REPRESENTING

PETERS & TROUT,  
Lancaster, Ohio.

### Merchant Tailors

Has arrived in Las Vegas with the finest line of samples of men's wear ever seen in the west.

Headquarters at the Depot Hotel.

Refers to hundreds of stockmen customers as to prices, work and satisfaction.

### ALFALFA SEED,

White and Mexican Beans

### FOR SALE CHEAP!

All Colorado grown. Write for prices.

J. N. REATTY & CO.,

Castlin, Colorado.

### "Music Hath Charms,"

And there is not a ranch in New Mexico which does not have some musical instrument to help to "liven the leisure hour."

### A GUITAR, A BANJO,

Or even an accordion will afford much pleasure. Write for list and prices to

### Marcellino & Mernin,

Las Vegas, N. M.

### MUSIC WAREHOUSE.

P. S.—A full line of strings, music and supplies.

### J. S. ELSTON,

Wholesale and Retail Dealer in

### Wall Paper, Paints, Oils,

BRUSHES AND GLASS.

### WINDOW SHADES AND FIXTURES

Also, House and Sign Painting, Paper Hanging. Country Orders Solicited.

Sixth St., opp. San Miguel National Bank, Las Vegas.

### C. A. RATHBUN,

—Dealer in—

### Boots, Shoes,

LEATHER AND FINDINGS.

### Boots and Shoes to Order.

SOLE AGENT FOR M. D. WELLS & CO.

Stock Grower's Trade Solicited.

Bridge Street, West Las Vegas.



**THE STOCK GROWER.**

LAS VEGAS, NEW MEXICO.

SATURDAY, MARCH 26, 1887.

**PERSONAL.**

**Items of Interest Relating to Stock Growing People.**

Ex Governor Alger, of Michigan, who recently spent a few days at his ranch near Eagle, stopped a few days in Denver this week while on his return from California to Michigan.

H. H. Metcalf, the well-known Colorado cattleman, still remains at the Hot Springs of Las Vegas. "Met," as he is familiarly called, is trying the efficacy of mud baths, and if the mud holds out he will return to Colorado in as gamey condition as a two-year old steer of the southwestern range.

F. G. Niedringhaus, a wealthy granite-ware manufacturer, of St. Louis, and president of the Home Land and Cattle company, of Montana and New Mexico, paid THE STOCK GROWER a visit during the week. Mr. Niedringhaus is spending a few weeks at the Hot Springs accompanied by a part of his family.

Winfield Smith, of Milwaukee, a large stockholder in the Santa Fe Cattle company, whose cattle range west of the "Ancient," has been visiting the ranch the past two weeks. Mr. Smith reports finding the property in a most satisfactory condition and is greatly pleased with the outlook for the New Mexico investment.

It is a noticeable fact that eastern gentlemen interested in ranch and cattle properties in the southwest, who have visited the territory this winter to inspect their properties, have left the country with the most pleasant impressions of the cattle industry here and were highly satisfied with the present condition of affairs.

Floyd Jarrett, a popular and progressive cattleman of Socorro county, was an agreeable caller at THE STOCK GROWER rooms on Friday. Mr. Jarrett reiterates the common saying of the day that cattle never looked better in New Mexico than now and that the evidence is clear that the industry is moving along on an up grade.

Mr. Glover, of Addoms & Glover, wealthy cattleman of Cheyenne, was a welcome caller at THE STOCK GROWER office this week. Mr. Glover reports the Wyoming herds as having come through the winter in good shape and that the outlook for the stock interests in his section of the country is particularly good. Mr. Glover has been enjoying life at the Hot Springs and recuperating his health under the genial skies of New Mexico the past two weeks.

Judge Louis Sulzbacher, of Las Vegas, left on Thursday with his family for a six months' visit on the continent. Judge Sulzbacher has become a large owner of range cattle and ranch and grant holdings, and having accumulated a competence as a result of a fine legal practice extending over the twenty or more years he has been an honored citizen of this territory, he has now gone abroad for the first time to visit the home of his birth in Haver, Germany. His many friends wish him a prosperous voyage and a safe return with his family to the home of his adoption, and his none are heartier well wishes extended than by THE STOCK GROWER.

**Business Pointers.**

The Santa Fe road has issued for free distribution, a very handsome and useful map of New Mexico, showing the Atlantic & Pacific railroad land grant, public lands open for settlement, government lands taken up, military and Indian reservations and Spanish grants within the territorial limits.

The April 1st issue of the *Texas Farm and Stock* will be found of special interest to farmers and stock men. Besides the discussion of Texas or splenic fever, by Captain John Edgar, and the first of a series of able papers on Horticultural Surgery and Propagation, by T. V. Munson, the paper is full of the finest matter on general farm and home topics.

The International Publishing company will begin the publication in El Paso, Texas, on or about April 15, 1887, *The Cattle Grower and Flockmaster*, of which journal Mr. D. E. Bentley will be managing editor. Mr. H. L. Bentley, of Abilene, Texas, who was the first editor of the *Texas Wool Grower*, will be associate editor and correspondent. He is a practical flockmaster of several years' experience, and is thoroughly conversant with the stock industry. Dr. D. DuPre, late of Austin, Texas, a learned physician and student of disease diseases, will edit a department specially devoted to this important feature of the cattle industry and sheep husbandry. For two years Mr. D. E. Bentley was associate editor of the *Texas Wool Grower*, and correspondent of the *Texas Live Stock Journal*. During the past six months he was the live stock and mining editor of the *Inter-Republic*, of that city. He also served two terms as secretary of the Texas Wool Growers' association, and has had six to seven years' experience as a practical flockmaster and stockman.

**Spring Round-Up.**

At a meeting of the stockmen of the Lower Gila at Duncan, Arizona, on Tuesday, March 15th, it was decided to commence the spring round-up on April 15th, at the Coronado ranch of the Champion Cattle company, and work up the river through the Middle Gila, ending at the ranch of Hart Brothers, in the Burros. Charles W. Jones, of Nichol, Wren & Jones, was unanimously elected captain.

**Spring Round-Up.**

A general round-up will be held beginning April 20th, commencing at Soledad canyon on the east side of the Organ mountains and extending up the range to a point opposite Three Rivers, then across and south following the White mountains and Sacramentos. All of the cattlemen in the district have signified their readiness to participate.

**Notice.**

ATCHISON, TOPEKA & SANTA FE R. R. Co., AND ATLANTIC & PACIFIC R. R. Co., OFFICE OF GENERAL MANAGER, TOPEKA, KAN., MARCH 15, 1887.

Under the provisions of the act of congress to regulate commerce, railroad companies are prohibited from issuing passes, except in special cases mentioned in the law.

All general complimentary passes have been recalled, and such passes, whether annual, time or trip, as do not show on their face that they are issued to officials or employees of railroad companies, will expire April 4th prox., without regard to limitation on their face, and will not be honored after that date.

C. W. SMITH, General Manager.

**Annual Meeting.**

The Apache County Stock Association will hold its annual meeting at St. Johns, Arizona, on Monday, April 5th.

There is much important business to come before the meeting, and a cordial invitation is extended to all stockmen of the county whether members or not, to take part in the meeting.

WILL C. BARNES, Secretary. HENRY SMITH, President.

**The Lincoln County Association.**

The annual meeting of the Lincoln County Stock association will be held at Lincoln, N. M., on April 5th, 1887. Officers will be elected and other important business transacted. A full attendance is earnestly requested as business of great importance will come before the meeting.

JAR. J. DOLAN, Sec'y and Treas. H. MILNE, President.

**Master's Sale.**

By virtue of a decree rendered in the district court of the territory of New Mexico, in and for the county of Mora, by Hon. Elisha V. Long, chief justice of the supreme court of the territory of New Mexico, and judge of the first judicial district thereof in and for said county of Mora, on the tenth day of January, A. D., 1887, in a certain cause therein pending, wherein Charles H. Feld was complainant and Andres Sena, et al., were defendants, whereby it was ordered, adjudged and decreed, among other things, that the following described real estate and premises, lying and being in the counties of Mora and San Miguel, and more particularly described as follows, to-wit:

1. The west one-half of the northwest quarter, and the west half of the southwest quarter, of section five, township nineteen north of range thirty-one east.
2. The east half of the southeast quarter of section twenty-one, and the east half of the northeast quarter of section twenty-eight in township nineteen north of range twenty-nine east.
3. The southwest quarter of the southeast quarter, the south half of the southwest quarter of section eleven, the northwest quarter of the northwest quarter of section fourteen in township twenty north of range thirty-one east.
4. The west half of the northwest quarter, the southeast quarter of the northwest quarter, the southwest quarter of the northeast quarter of section twenty five in township twenty-two north of range thirty-one east.
5. The south half of the southwest quarter of section twenty-six, the north half of the northwest quarter of section thirty-five in township twenty-one north of range thirty-one east.
6. The south half of the northeast quarter, the north half of the southeast quarter of section eleven in township twenty north of range thirty-one east.
7. The east half of the northeast quarter of section two, the south half of the northwest quarter of section one in township twenty-one north of range thirty-three east.
8. The northwest quarter of the northeast quarter, the northeast quarter of the northwest quarter, the south half of the northwest quarter of section twelve in township twenty north of range thirty-one east.
9. The west half of the southwest quarter, the west half of the northwest quarter of section thirty-six in township twenty-two north of range thirty-three east.
10. The northeast quarter of section twenty in township twenty-one north of range thirty-four east.
11. The south half of the southwest quarter, the south half of the southeast quarter, of section thirty-five in township twenty-two north of range thirty-three east.
12. The south half of the southwest quarter, the south half of the southeast quarter of section thirty six in township twenty-two north of range thirty-one east.
13. The southeast quarter of the northwest quarter, the southwest quarter of the northeast quarter, the west half of the southeast quarter of section thirty-three in township twenty-two north of range thirty-one east.
14. The east half of the northwest quarter, the south half of the northeast quarter of section thirty two in township twenty-two north of range thirty-two east.
15. The southwest quarter of the southeast quarter, the south half of the southwest quarter, the northwest quarter of the southwest quarter of section twenty-two in township nineteen north of range twenty-nine east, or so much thereof as may be sufficient to realize the amount of sixteen thousand nine hundred and ninety-two dollars and eight cents (\$16,992.08), together with interest thereon at the rate of six per cent per annum from January 10, 1887, and also the costs of the suit, including the fees, disbursements and commissions on this sale, be sold at public vendue for cash in hand, to the highest and best bidder, at the court house door in the county of Mora, and that said real estate may be sold altogether or in separate parcels as may seem best, by John H. Koogler, a special master appointed for that purpose.

Now, therefore, notice is hereby given that the above described land, real estate and premises, will be sold at public auction to the highest and best bidder for cash in hand, on Tuesday the fifth day of April, A. D., 1887, at ten o'clock in the morning of said day, at the court house door, in the town of Mora, in the county of Mora, and territory of New Mexico, in accordance with the aforesaid decree of court.

JOHN H. KOOGLER, Special Master. February 17th, 1887. 47-51

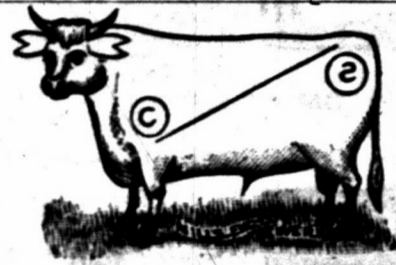
**ARIZONA.**

**\$1,000 REWARD!** I desire to call attention to my marks and brands for cattle, as shown in cut. I sell no stock cattle, and will pay \$1,000 reward for the arrest and conviction of any person or persons unlawfully handling cattle in the following brand and marks.



J. H. Hampson.

P. O.: El Paso, Texas. Ranch P. O.: Clifton, Arizona. Range, on Eagle creek, Graham county, Arizona. Ear marks, crop and split left, crop right. Horse brand, [H] on the left shoulder.



Milo A. Smith.

P. O.: Springerville, Apache county, Arizona. Range, Escadella mountains, Apache county, Arizona; and Johnson's Basin, Socorro county, New Mexico.

**Other Brands:** ELC side, on left side and S on left hip. HES side, on left side and B on left hip. Horse Brands: ELC and also S in circle on the left hip.



Smith, Carson & Co.

P. O.: Springerville, Apache county, Arizona. Telegraph and express office, Navajo Springs, Atlantic and Pacific railroad.

Ear marks: Crop off the left. Horses branded: [H]



David Rope.

P. O.: Holbrook, Apache county, Arizona. Range, Rope's ranch, four miles west of Holbrook, south of the Little Colorado river. All cattle have two bars on left jaw, and are marked with a half under-crop in each ear. Horse brand, XV on the left hip.



Maish & Driscoll.

Postoffice, Tucson, Arizona. Range, on Santa Cruz river, south of Tucson, Pima county. Horse brand [S] on the left hip.



Hunings & Cooley.

Breeders and Importers of Thoroughbred and Graded Cattle. P. O.: Show Low, Apache county, Arizona. Horse brand, same as on cattle, on left shoulder.

**ARIZONA.**



Cameron Bros.

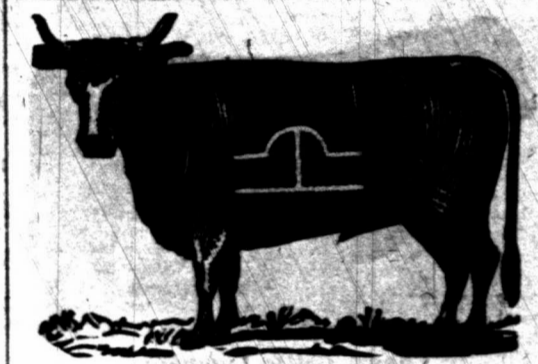
Postoffice, Lochiel, Pima county, Arizona. Range, on the San Rafael de la Zanja Grant. Ear marks, right cropped, left split. All cattle in the quarter-circle U brand are marked underlope the right, swallowfork in left. Horse brand, like cut.

Also own the following brands, kept up:



Collin Cameron.

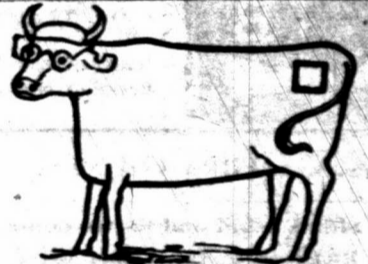
P. O.: Lochiel, Ari. Range, valleys and slope of west Huachuca. Mark, swallowfork both ears. Horse brand, same as cut.



Artec Land and Cattle Company. [Limited.]

HENRY WARREN, General Manager.

Post office address: Holbrook, Arizona. Range, Apache and Yavapai counties. All cattle branded same as cut on both sides. Horses: [H] on right and some on [HS] right branded: [H] left shoulder, also [HS] flank.



William Curtis.

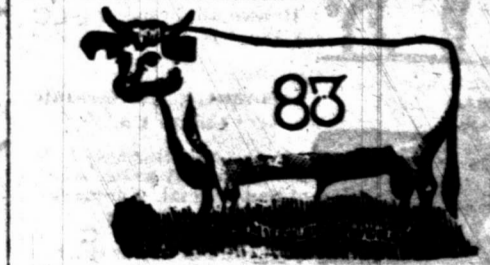
WOODS & POTTER, Managers.

Post Office, Woodruff, Apache County, A. T. Ear mark: crop right over bit left. Horse brands, [H] on left thigh, [C] on left and [H] hip.



Gardiner, Gillies & Wilmersding.

P. O.: Navajo Springs, Apache county, Arizona. Range, Deer and Cedro Springs, Apache county. Ear marks, right ear is grubbed. All cattle in addition to above brand, have an X on the left jaw. Horses are all branded [C] on right shoulder.



Santa Rita Cattle Co.

ISAAC N. TOWN, Superintendent.

Postoffice, Calabasas, Pima county, Arizona. Range, Santa Cruz river, Pima county, Arizona. Calves of 1886 and imported bulls are branded same as cut on left hip.



A. L. Morrison & Sons.

P. O.: Springerville, Arizona. Home ranch, Mamie creek, near Escadilla Mts. Ear marks, underlope right, crop left. Horse brand, same as cattle, on right hip.

READERS will confer a favor if, when writing to advertisers, they will state they read advertisement in the Stock Grower.

NEW MEXICO.

The Counties under this heading are all in the Territory of New Mexico.

SANTA FE COUNTY.

Santa Fe Cattle Co.

W. C. Bishop, Manager, Santa Fe, N. M.



This brand kept up.



Additional brands: FW A 44

Ranch twenty miles west of Santa Fe, N. M.

RIO ARRIBA COUNTY.



Chama Cattle Company.

DEWEY H. SMITH, Manager.

Postoffice, box 132, Santa Fe, N. M. Range, Canon de Chama grant. Horse brand, same as cattle only smaller. Ear marks: Hole with point of triangle out of ear shaped thus:



T. D. Burns. P. O.: Tierra Amarilla, N. M. Range, Canon Largo. Brand on either side.

SIERRA COUNTY.

Sierra Land and Cattle Company.

P. D. RIDENOUR, President, Kansas City, Mo. E. D. BRACKETT, Sec. and Treas., Kansas City, Mo. R. H. HOPPER, Vice-Prest. & Mgr., Kingston, N. M. S. S. JACKSON, Ranch Manager, Hillsborough, N. M.



Range, southeastern Sierra county. All cattle branded as in the cut, and have two bars under the tail on both sides. Horses all branded SLC on the left hip, as in this cut.

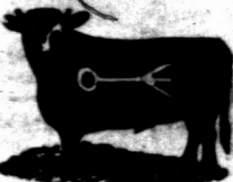


Vermont & Rio Grande Cattle Co. P. O.: San Marcial, N. M. Range, twenty miles south of San Marcial. Ear marks, underbit in each ear. Horse brands: C or TEL on left hip or thigh.

BERNALILLO COUNTY.



Mariano Perea. P. O. Bernalillo, N. M. Range, La Jara. Ear marks, swallow-fork left.



Jacobo Yrisarri. P. O. Albuquerque. Range, Trinchera mountains. Ear marks, swallow-fork, over and under hack in right ear. Other brands same as cut.

SIERRA COUNTY.

Grayson & Company.



P. O.: Los Palomas, Sierra county, N. M. Range, Animas ranch, Sierra county. Ear marks, under half crop each ear. Horse brand, same as cattle but on left shoulder.

Additional Brands:

W on left hip. 22 right hip, 22 right thigh, on the same animal. left hip. Some have same on side. 22 right hip.

Detroit and Rio Grande Live Stock Co.

P. MOTHERSILL, Manager.



P. O.: Engle, N. M. Range, Jornada and Caballo mountains. Ear marks, under-half crop right, underbit left. Horse brand, left hip. Other brands: left side, left hip.



John McLeod. P. O.: Rincon, Dona Ana county. Range, twelve miles north of Rincon on each side of Rio Grande, and in the Caballo mountains in southeastern portion of Sierra county. Horse brand, OM on the left shoulder.



Henry G. Toussaint. P. O.: Engle. Range, near Engle, Sierra county, N. M. Horse brand, left hip. Vent brand on horses under original brand. Other brands on cattle and horses: inverted and run on neck.



John B. Alley Cattle Company. T. J. WRIGHT, Manager. P. O.: Lake Valley, N. M. Range, Lake Valley, Sierra Co., and Ojo Caliente, Socorro Co.

Horse Brands: A V shoulder hip Other Brands: A V shoulder side hip

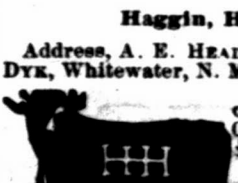


C. Hearn. P. O., Fairview, N. M. Range, Pauvrecita creek and vicinity of Fairview. Ear marks, figure 7 underbit in each ear. Additional brand, GL on left hip. Horse brand, same as cattle on left thigh.

GRANT COUNTY.



Lindauer Cattle Co. S. LINDAUER, Manager. P. O.: Deming, N. M. Range, on McKnight's Cienega, on Upper Mimbres. Horse brand, SL on the left shoulder.



Haggin, Hurst & Head. Address, A. E. HEAD, Deming; or JAMES VAN DYK, Whitewater, N. M. This brand for all cattle on range at Apache Teju, Cow Springs and Warm Springs, Grant county. Other brands: old brand, right side. Horse brand, on the left hip.



This brand kept up on all cattle on range in Animas valley, Grant county. Other brands: known as the Porter brand, with dewlap. Horse brand, on the left hip. All cattle on both ranches marked with dewlap.



Wm. Brahm. P. O.: Silver City, N. M. Range, White Water, Grant county, N. M. Additional brand, on right hind leg. Horse brand, B on the left shoulder.

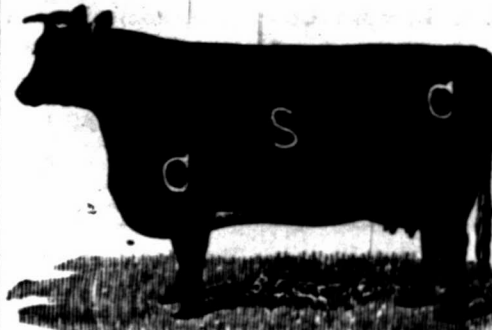
GRANT COUNTY.



Old and New Mexico Ranch and Cattle Co.

Lou H. Brown, Superintendent.

Postoffice address: Hatchita, Grant county, N. M. Range, Alamo Hueco in southern end of Piyas valley, southwestern Grant county, New Mexico. On the right shoulder. Also some horses branded same as the cattle, as in cut.

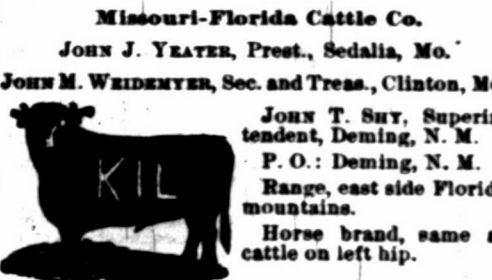


Carpenter-Stanley Cattle Co.

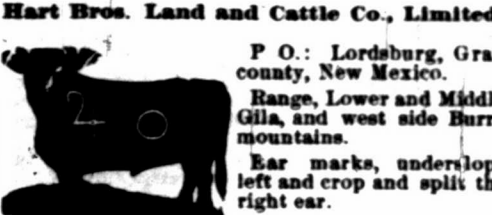
P. O.: Fort Cummings. Range, east side of Cook's Peak, Grant county. Other brands: left side. Horse brand: on left hip. Also, two underbits in each ear; crop left underbit right; underbit left crop right.



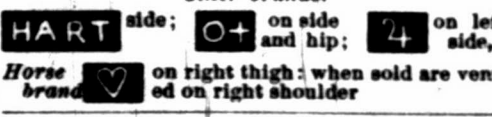
Huckeye Land & Live Stock Company. S. A. BAXTER, Manager. M. Chapman, Supt. P. O. box 101, Deming, N. M. Range, Cedar Grove ranch, 30 miles south of Deming. Horse brand, same, on left hip. Brand on left side. Marked, sharpen both ears.



Missouri-Florida Cattle Co. JOHN J. YEATER, Prest., Sedalia, Mo. JOHN M. WEIDENYER, Sec. and Treas., Clinton, Mo. JOHN T. SUTY, Superintendent, Deming, N. M. P. O.: Deming, N. M. Range, east side Florida mountains. Horse brand, same as cattle on left hip.



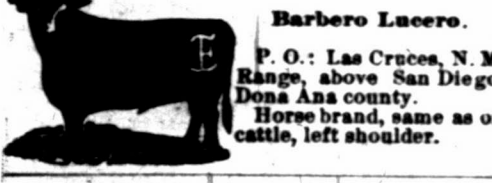
Hart Bros. Land and Cattle Co., Limited. P. O.: Lordsburg, Grant county, New Mexico. Range, Lower and Middle Gila, and west side Burro mountains. Ear marks, underlope left and crop and split the right ear.



Other brands: on left side, on right thigh; when sold are vented on right shoulder.



Mimbres River Cattle Company. E. E. BURDICK, President and Treasurer. E. WALTERS, Secretary and General Manager. C. A. BURDICK, Vice President. P. O.: Deming, N. M. Range, Rio Grande to the Mimbres river. Old brand, on shoulder on hip. Horse brand on the left thigh same as cattle. Ear marks, crop left, crop and split the right.



Barbero Lucero. P. O.: Las Cruces, N. M. Range, above San Diego, Dona Ana county. Horse brand, same as on cattle, left shoulder.



Jornado Cattle Co. MAX GOLDENBERG, Mgr. P. O.: Organ, Dona Ana county, N. M. Range, on southeastern portion of the Jornada del Muerto, San Andrcito and Oso Springs. Ear marks, hole in right, split in the left. Horse brand, on the left hip.

GRANT COUNTY.



John Brockman.

Postoffice, Hudson, New Mexico. Range, Rio Mimbres, Grant county. Horse brand, same as cattle, on the left hip. Also owns all cattle branded on the left side, A on the left hip. Ear mark, under half crop each ear. All parties are cautioned against purchasing cattle in the above additional brands except from myself, as I have purchased the brands and all cattle running in them. JOHN BROCKMAN.

DONA ANA COUNTY.



S. B. Newcomb.

P. O.: Las Cruces, N. M. Range, western part of Lincoln county, in the Rinconada. Horse brand, same as cattle on right shoulder.



Pedro Garcia y Perea. P. O.: Las Cruces. Range, east side of Rio Grande, south of Rincon. Cattle branded on either side.



Hornace Ropes.

P. O. El Paso, Texas. Range, Carizozo Springs and west side San Andres mountains. Horse brand, same as cut on left shoulder.



Mariano Barcia.

P. O.: Mesilla, N. M. Range, west of the Rio Grande, from Picacho mountain west of Mesilla south to the buttes west of La Mesa.



Lynch Bros.

P. O.: Colorado, N. M. Range, La Loma Parda, Sierra Co.; Las Uvas and Sance Springs, Dona Ana Co. Additional brands: Young stock in Dona Ana Co., thus: All horses are branded LB on the left side.



Williams Bros.

P. O.: Las Cruces, N. M. Range, Sacramento river, Dona Ana county. Ear mark, jinglebob in each ear. Other brands, on left hip.



Sacramento Cattle Co.

P. O.: El Paso, Texas. Range, Sacramento Ranch, Sacramento mountains, Dona Ana county, New Mexico. Also cattle branded on left side of neck. Also horses branded on left shoulder. Ear marks, crop right, swallowfork left. Old stock has on left shoulder. Horses branded on left thigh.



Lyons & Campbell. P. O.: Silver City, N. M. Range, Duck Creek, Mule Springs and Middle Gila, Grant county. Mark, crop and split left. Horse brand, anywhere on the left side.

Subscriptions received for any American or Foreign NEWSPAPER OR MAGAZINE. Send price with order, or write for terms. R. F. HARDY, Las Vegas, N. M.

MORA COUNTY.

**W. H. Willeox**  
 P. O.: Wagon Mound, Mora Co., N. M. Range, Mora county west of Red River and east of Turkey mountains.  
 Horse brand the same, on left hip. Some cattle on right side.



**The Wendling Cattle and Land Co.**  
 OF COLORADO AND NEW MEXICO.  
*New Mexico Division.—Breeding Ranch.*  
 TAYLOR MAULDING, Manager.  
 Brand: "O. K." on all stock. Range in Mora county, New Mexico. No cattle vented.  
 Office: 35 17TH ST., DENVER, COLO.  
 S. S. SMYTHE, Secretary.

**W. T. Marshall.**  
 P. O.: Wagon Mound Range, Escobedo, south of Wagon Mound.  
 Horse brand, same on left hip.  
 Ear marks, under half crop left, over half crop right.  
 Also have some cattle branded on right side.  
 All increase branded as in cut.

**Price Lane.**  
 P. O.: Wagon Mound Range, south of Wagon Mound.  
 Horses branded on right shoulder.

**L. W. Leach.**  
 P. O.: Wagon Mound.  
 Range, south of Wagon Mound.

**S. H. Fairchild.**  
 P. O.: Wagon Mound, N. M. Range, in Wagon Mound district.  
 Ear marks, split and underbit left.  
 Additional brand, on the left side.  
 Horse brand, same as cattle, on left shoulder.

**La Cueva Ranch Co.**  
 D. C. DRUEL, Manager.  
 P. O.: La Cueva, N. M. Range, Coyote and La Jara, Mora county.  
 Horse brand, on the right shoulder.

**H. T. Sinclair.**  
 P. O.: Wagon Mound, Range, Vermejo and Teta Vega.  
 All increase branded the same as old stock.  
 Other brand, on right shoulder, side and hip.  
 Horse brand, on the left shoulder.

**J. F. LaTourrette.**  
 P. O.: Wagon Mound, Range, near Fort Union.  
 Extra brand, on left shoulder.  
 Ear marks, swallowfork right, crop and two splits in left.  
 Horse brand, same as cattle, on left shoulder.

**S. B. Watrous & Son.**  
 P. O.: Watrous, N. M. Range, east of Watrous, north and south of Mora river.  
 Horse brand, W on the left shoulder.  
 Ear marks

**Portsmouth Cattle Co.**  
 E. E. HOLMES, Manager, P. O.: Kansas City, Mo.  
 H. G. HOWARD, Supt., P. O.: Springer.  
 Range, Colfax and Mora counties, New Mexico.  
 Horse brand: Same as on cattle, as in cut. Some horses branded

MORA COUNTY.

**T. H. LAWRENCE, Manager, East Las Vegas**  
**W. E. LAWRENCE, Range Supt., Tequisquite, Mora county, N. M.**

**Dubuque Cattle Co.**  
 P. O., East Las Vegas.  
 Range, Tequesquite, Ute creek and Tremperos, Colfax, Mora and San Miguel counties.  
 Horse brands, or  
 MX or left hip or shoulder.

**Other Brands:**   
 All calves branded and marked as in cut, except thoroughbred calves in the OO brand, which is kept up.

**F. J. Maldaner.**  
 P. O.: Wagon Mound, N. M. Range, Vermejo and Teta Vega. Ear mark, crop left and split right.  
 Other brand:   
 Horse brand, same as cut, on the shoulder.

**William McCartney.**  
 P. O.: Los Angeles, Cal. Ranch P. O.: La Cinta, New Mexico.  
 Range, Rincon and Arroyo de Los Alamocitas.  
 Ear marks, crop right, underslope left.  
 Other brands:   
 Horse brand, same as cattle, on left shoulder.

All cattle in New Mexico in above brand are my property, and as I sell none all parties are cautioned against handling same illegally.

Also own all and marked underbit the left, crop right. Range, on left side. head of Canon Largo.  
 This brand kept up.  
 Horse brand, same on left shoulder.

**Hobison & Clark Cattle Company.**  
**W. D. CLARK, Manager.**  
 P. O.: Wagon Mound, N. M. Horse brand, T on the right shoulder.  
 Other brands, H on right side and hip; also, T on right hip and J right side.  
 16 on the left side and hip.  
 All increase branded as in cut.

**H. S. Gratz.**  
 P. O.: Capulin, N. M. Range, Dry Cimarron, Colfax county.  
 Marks, slit in right ear.  
 Horse brand, same as cut on the left shoulder.  
 Other brands, on the left side. Marked, with a slit in the right ear and tin tag in the left ear.

**Farr Bros.**  
 P. O.: Watrous, N. M. Range, Red River and Alamocitas.  
 Horse brand, on left shoulder.  
 Other cattle brand, on left side.

Also, left side.  
 Some cattle are branded with a flying V on side without slash.

**Shepard & Hall.**  
 P. O.: Tequisquite, N. M. Range, Alamocitas.  
 Ear marks, crop and underhalf crop right; crop and underbit left.  
 Other brands, right shoulder, side and hip.  
 this brand kept up.  
 Horse brands, left hip; also, on right hip.

**The Riverside Cattle Company.**  
**W. B. BRUNTON, Manager.**

P. O.: Shoemaker, Mora county, N. M.  
 Range, Cherry valley, Pinos Altos and vicinity, Mora county, N. M.  
 Other brands: N I X on right side, kept up.  
 Horse brand, 2 on right shoulder.

MORA COUNTY.

**A. L. Penhallow.**  
 P. O.: Tramperos, Mora county, N. M. Range, head of Tramperos, Mora Co.  
 Other brands, both on the left side.  
 All increase branded as in cut with - (bar) in addition on back of right leg.  
 Horse brand, > or 3> on right shoulder.

**Carl W. Wildenstein.**  
 P. O.: Watrous, N. M. Range, Pinos Altos and Piedoso Canon, Mora and San Miguel counties.  
 Additional brands:   
 Horse brand, same as on the cut, on the left hip or on the left shoulder.

**J. B. Brown.**  
 P. O.: Wagon Mound, N. M. Range, Vermejo and Teta Vega.  
 Ear marks, underslope each ear.  
 Horse brand, same as on cattle on left shoulder.

**Wagon Mound Cattle Company.**  
**GARTH & LEARY, Managers**  
 P. O.: Wagon Mound, Mora county, N. M. Range, Vermejo.  
 Horse brand, right shoulder.

**Charles Sumner.**  
 P. O. Watrous, Mora Co. Range, south of Wagon Mound.  
 Ear mark, two slits in left ear.  
 Horse brand K left thigh

**M. Johnston.**  
 P. O., Wagon Mound, N. M.  
 Range, Vermejo.  
 Horse brand, same on left hip.  
 Ear marks, crop right and swallowfork left.

COLFAX COUNTY.

**Henry K. T. Lyons.**  
 P. O., Raton, N. M. Range, Sugarite and Red river.  
 Ear mark, sharpen the right ear.  
 Horse brand, same on right hip.

**Aaron Bales.**  
 P. O.: Watrous, N. M. Range, Petrosco canon and Cherry valley, Mora Co.  
 All calves marked with overbit in left and two underbits in right.

**The Akron Live Stock Company,**  
 Akron, Ohio.  
**AUGUSTUS CURTISS, Manager.**  
**I. H. KINGMAN, Range Foreman.**  
 Postoffice, Springer, N. M.

Known as the "Stirrup" brand, formerly owned by Porter & Clouthier.  
 Horse brand, same, on the left hip.  
 Other brands, and various other brands. Brand all calves with dart.  
 Range, Ocate mesa and canon, Sweetwater and Cimarron river.

**Illinois Live Stock Co.**  
**J. S. HOLLAND, Manager.**  
 P. O. Tramperos, N. M. Range, Tramperos.  
 Some cattle are branded but all increase are branded as in cut.

Ear marks—Crop and underbit left, and underbit right.  
 Horse brand, same as cut, on left shoulder.

COLFAX COUNTY.

**Urraca Hereford Ranch.**  
**FRANCIS CLUTTON.**  
 Postoffice, Cimarron, Colfax County, N. M.

Thoroughbred herd, 9 left side. Ear mark, underbit right and left.  
 Horse brand, 5 on the left shoulder.

**Palo Blanco Cattle Co.**  
**O. A. HADLEY, Manager.**  
 P. O.: Springer, N. M. Range, Chico, Retaplen, Holkie, Palo Blanco, Don Carlos and Ute creek.  
 Ear mark, swallow fork the left.  
 Horse brand, same as cattle, on left thigh.  
 Also, left side, slash on left shoulder, own slash left hip.

**Miller & Harshman.**  
 P. O.: Springer, N. M. Range, Ocate, Colfax Co. Ear mark, crop and underbit left.  
 Other brand, all on left side, shoulder and hip.  
 Horse brand, on the right shoulder.

**S. W. Dorsey.**  
 P. O.: Chico Springs, New Mexico.  
 Range—Currum, San Rafael, Cianeguilla, Perico, Carrizo, Pinipottus, and Sierra Grande, Colfax county.  
 Horse brand, same as above, on right shoulder.  
 Additional Cattle Brands: left side and hip.  
 left or right side.  
 CS left hip or side. LRB on left side.

**Eagle Tail Cattle Co.**  
**O. A. HADLEY, Manager.**  
 P. O.: Raton, N. M. Range, Eagle Tail and Tenaja.  
 Horse brand, same as the cut, on the left shoulder.

**Lake Ranch Cattle Co.**  
**D. C. HOLCOMB, Manager.**  
**P. J. TOWNER, Foreman.**  
 P. O.: Chico Springs, N. M. Range, Ute creek, Tremperos, Alamocitas, and Carrizo, Mora county, New Mexico.  
 Horse brand, same as cut, on the left hip or shoulder.

**J. Linn Smythe.**  
 P. O.: Raton, N. M. Range, Gates Canon, Colfax county.  
 Ear marks, split in the left and under back right.

**S. M. Folsom.**  
**E. A. CAHOON, Foreman.**  
 P. O.: Cimarron, Range, Cerrosos Canon, Colfax county.  
 Other brand, right shoulder and on left side, also on left side.  
 Horse brand, on the left hip.

**S. A. Kall.**  
 P. O. Wagon Mound, Range, Vermejo and Teta Vega.  
 Cattle have various ear marks. All increase marked as in cut.  
 Horse brands: Same as cattle on right hip.

**THE STOCK GROWER** presents the best medium for advertising, because it is read by every stockman in the southwest.



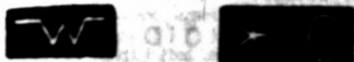
SAN MIGUEL COUNTY.



Trujillo Ranch Company. OF LAS VEGAS. Office of Brown & Mansmore. C. W. BROWN, Manager.

P. O.: Red River Springs, New Mexico. Range on Trujillo creek, in Oldham county, Texas; and San Miguel county, New Mexico.

Additional Brands:



All increase branded as in above cut. Horse brand, same as cut on the left shoulder. Some horses have Star C on the left hip.



Y. Kohn & Co.

P. O.: La Cista, Range, Arroyo de los Alamos. New ear mark, half under crop each ear.

Also own cattle in following brands:



All increase to be branded and marked as in cut. Horses branded some on left shoulder and some on left leg.



Fulmer, Devine & Co.

P. O.: Puerto de Luna, Range, Seisdo. Ear marks, crop and underbit in each ear. Horse brand, small T on left shoulder.



Weddingham Cattle Association.

RAYMOND JENKINS, General Manager. P. O.: Fort Bascom, N. M. Range, Canadian river and Rio creek.

Additional brands 4 on right and left hip, making 44 when seen from behind. Horse brand on shoulder.



W. H. McDoom.

P. O.: Fort Sumner, N. M. Range, Canaditas. Ranch Foreman, Snow HARRIS.

Additional brands X on left hip. Various ear marks for these various brands. Horse brand, same as cut.



L. S. Rogers.

P. O.: Liberty, N. M. Range, Monte Bucho. Other brands, XLY on left shoulder, side and hip, respectively.

Horse brand, same as cut, on the left hip.



Heckie & McDowell.

P. O.: Las Vegas, N. M. Range, Sabino and Lagartijos arroyo.

Some branded only with a W on either side and ear mark grub right or left. Horse brand, L on the right shoulder. Also own all female cattle in following brands, which are not kept up:



W. A. Burnett, Trinidad, Colorado.

J. D. WILLIAMS, Foreman. P. O.: Liberty, N. M. Range, Monte Escuelto, San Miguel county, New Mexico.

Additional brands: T on left jaw and H on left side. Horse brand, H on left hip.



New England Live Stock Company.

P. O.: Greeley, Colorado. Ranch P. O.: Fort Sumner, N. M. Range, the Pecos, at Fort Sumner.

Additional brands, 102 DOS. Horses branded same as cattle on left side. Earmark, crop and two splits in right ear. Cattle in brand of above cut branded both sides.

Percheron Horses!



Pony mare and colt, by imported Success. Weight of mare, 750 lbs.; colt, 1,200 lbs.; sire, 1,700 lbs.

OVER ONE HUNDRED HEAD OF IMPORTED PERCHERON, FRENCH COACH AND GRADE STALLIONS AND MARES.

The largest collection of draft and coach stallions in the west. My imported Percherons were selected from M. W. Ingham's latest importation, which arrived in August, and are all recorded in the stud books of both France and America.

THE FRENCH COACH HORSES

Are fine styled, smooth formed and solid colored, combining size, action, beauty and endurance. Weight, 1,200 to 1,400 pounds. These horses are the get of some of the best coach stallions owned by the French government (some of the pedigrees tracing back more than one hundred years). The government certificate of breeding will be furnished with each horse.

In making this selection it has been my aim to combine individual merit with the finest breeding, using my best efforts to procure the choicest specimens of draft and coach horses that could be obtained.

I am prepared to make as low prices and as favorable terms as can be made on the same quality of stock from any other stud in America. Every horse guaranteed as represented, and a sure breeder. Special rates made on the shipment of horses for breeding purposes, to any point in Colorado or the south or west.

Persons who desire to compare and examine these two great breeds of horses, will here find an opportunity seldom offered, and are invited to come and see them. Correspondence solicited.

JNO. A. WITTER,

Office, Room 5, Evans Block; Stable, 16th and Wasco Sts. DENVER, COLORADO.



MARRS, MIDDLETON & HUNTER,

THE

LEADING LIVE STOCK MERCHANTS

OF DENVER, COLORADO.

LARGEST BUSINESS OF ANY FIRM IN THE CITY!

A big stock of all classes of cattle and horses always on hand.

We defy competition in prices. Liberal advances made. Stable and yards: 1704 to 1728 Wazee street. Branch office, Union stock yards.



Shorthorn Bulls

FOR SALE BY THE

LA CUEVA RANCH CO.

LA CUEVA, MORA CO., N. M.

These bulls have all been raised on the La Cueva ranch, and are out of high grade cows and by thoroughbred bulls. They are ready for immediate service.

A. H. MARTIN. P. J. MARTIN. MARTIN BROTHERS, AGENTS FOR THE BRUNSWICK AND BALK COLLENDER CO.

Billiard Supplies, Etc. Dealers in Kentucky Bourbon and Rye Whiskies and Distillers' Agents. CALIFORNIA WINES AND BRANDIES. Martin Building, near the bridge, LAS VEGAS, NEW MEXICO.

ATTORNEY'S CARDS. A. C. VOORHEES, ATTORNEY AT LAW, RATON, NEW MEXICO. Special attention given to the business of cattlemen and collecting.

JAMES H. PURDY, ATTORNEY AT LAW, SANTA FE, NEW MEXICO. Specialty: Land Titles.

SAN MIGUEL COUNTY.



D. G. Fritzen.

P. O.: Liberty, San Miguel Co., N. M. Range, Tierra Blanca. Ear marks, crop and slit twice the left ear. Horse brand, 77 on right hip.



Frank Carpenter.

P. O.: Liberty, N. M. Range, Red River, twelve miles above Fort Bascom. Ear marks, crop the left and sharpen the right ear.



H. R. Trank.

P. O.: Liberty, San Miguel county, N. M. Range with W. A. Burnett.

Also own O L on left side with slash on hip and on left side. All increase branded as in cut. Horses branded with tepees and as in cut on left hip, and O L on left shoulder. No stock cattle sold in these brands.



A. Strauss, Manager.

P. O.: Liberty, Range, Rincon del Charco. Horse brand, same as on cattle, on right shoulder or left hip.

All young stock is branded thus: on left shoulder, side and hip. Ear marks, double jin- glebob left ear. Other brands:



R. & L. Davidson.

P. O.: Liberty, N. M. Range, Tierra Blanca, San Miguel county.

Ear marks, overlope left. Horse brand, on the left shoulder thus: on either hip, left side, right side. None of these brands kept up. XV on left shoulder and V on left hip. All increase branded XV on both sides.



S. Fred. Reuther.

P. O.: La Cista, N. M. An over half crop in each ear.

Increase branded as in cut.



Reuther & Nahm.

P. O.: La Cista, N. M. Crop two splits left; half undercrop right.

Increase branded as in cut. Horse brand on the left shoulder.

H. S. BRAZIL. MRS. LUE B. MAXWELL.



Brazil & Maxwell.

P. O.: Las Vegas, Ranch P. O.: Fort Sumner, Range, Talvan ranch, east of Fort Sumner.

Horse brand, on left shoulder.



Fort Bascom Cattle Raising Co.

STEPHEN E. BOOTH, Mgr. P. O.: Fort Bascom, San Miguel Co., New Mexico. Range, Boca Location, Noh.

Horses branded same as cattle on the left hip.



I. H. Pfanell.

P. O.: Santa Rosa, N. M. Range, Los Tacos, Pecos river.

Cattle branded on both sides. Ear marks, crop the left swallow fork the right.

SAN MIGUEL COUNTY.



G. S. Long & Bro. P. O.: Cabra Springs, N. I. Range, La Garita and de Conchos. Other brands: W H L on either side. Also, [cross] or [square]

Increase branded as in cut. Horse brands, same as cut. Ear mark, slit right, overbit left.



Geo. W. Mayhan. P. O.: Watrous, N. M. Range, Tualosa Canon, Los Conchos. Ear marks, crop and two slits in left ear. Horse brand, C on left shoulder.

Some cattle branded as above, on the ribs. Beef brand A-K on left side, and bar across the loin, under the tail. Brand all increase as in cut.



P. C. Pixlee. P. O.: Liberty, N. M. Range, Tierra Blanca and Pajarito creek, San Miguel county. Horse brand [cross] on the left shoulder. All horses brand [cross] are vented when sold.



James Conant. P. O.: Gallinas Springs. Range, Gallinas Springs and Ojo de Los Conchos. Other brand, [cross] on left side. Horse brand, same as cut, on the left hip.



Frank W. Dale. P. O.: Liberty, N. M. Range, on Red River, 12 miles above Fort. Bascom. Ear mark, crop the right and sharpen the left ear.



Simon Frankenthal. P. O.: La Cinta. Range: La Cinta Creek. Horse brands: S F on left shoulder.



Lewis Walker and Mary Walker. P. O.: La Canon Largo. Range, Canon Bonito and Canon Largo. Horse brand, cross on the left hip. A few cattle branded in three crosses only.



P. O.: Canon Largo, N. M. Range, Canon Bonito and Canon Largo. Horse brand on left hip. Both brands kept up.



Myers Bros. & Livezey. Postoffice, Liberty, New Mexico. Horse brands, TTT on the left hip. Range, head of Arroyo Plaza Largo, and foot of Staked Plains, San Miguel county, New Mexico.



Nourse & Day Bros. P. O.: Liberty, N. M. Range, Trujillo. Old stock branded on the right hip; young stock as in cut, and also cut off end of tail. No ear marks.



H. M. Coy. P. O. Las Vegas, N. M. Range, Sandijulla creek, San Miguel county. All increase branded as in cut.

Other Brands: [cross] [square] [circle] [triangle] [diamond] [star] [heart] [circle with cross] [circle with square] [circle with triangle] [circle with diamond] [circle with star] [circle with heart]

COLORADO AND NEW MEXICO.

THE HOLT LIVE STOCK COMPANY.

WILLIAM T. HOLT, President. MYRON W. JONES, Manager. Office, Opera House block, Denver, Colorado. P. O. box 2183.

A. TEMPLE THORN, Cashier and Accountant. L. WALLACE HOLT, 7 Rivers, N. M., Asst. Manager.

Breeding range, on the west side of Pecos river, Lincoln county, New Mexico. GEORGE WILCOX, foreman; P. O., Seven Rivers, N. M.

Steer range, in Elbert and Bent counties, Colorado. W. A. WAGGONER, foreman; P. O., Hugo, Colorado.



Swallow fork in left, underslope in right.



On both sides. Underbit in left.



Swallowfork in left, underslope in right.

Horse brands: [circle] on the left hip. [square] on the left hip, or thigh.

Thoroughbred Hereford and Polled Angus breeding farm, Horse Creek, O. Z. postoffice, Colorado.



Crop in left and underslope in right.

THE BLOOM CATTLE CO.

FRANK G. BLOOM, General Manager, Trinidad, Colorado.

Also own the following brands:



[circle] Half undercrop left, crop right. [square] Swallowfork left, split right. [triangle] Crop and two splits each. This mark and brand for all steers. [diamond] Swallowfork left, crop and underbit right.



All increase branded same as cut and marked swallowfork right, and tin tag in the left.

Horse and Steer range, Apishapa Temp creek, Bent and Lockwood canons, Colorado. W. F. BLOOM, Foreman, Postoff: r, Thatcher, Colorado. Breeding ranch, Rio Hondo, Lincoln county, New Mexico. JOHN BURNS, Foreman, Postoffice, Lincoln, New Mexico, care Circle Diamond ranch.



Thoroughbred and High-Grade

NEW MEXICO RAISED

HEREFORD BULLS

FOR SALE BY

FRANCIS CLUTTON,

CIMARRON, - - - - NEW MEXICO.

I am prepared now to make contracts for spring delivery, and invite correspondence, or personal inspection, by intending purchasers.

E. G. MURPHEY & CO.,

THE PLAZA PHARMACY

BRIDGE STREET, LAS VEGAS, NEW MEXICO.

Wholesale and Retail dealers in Drugs and Chemicals. Physicians' prescriptions a specialty. Country orders solicited and prompt attention given same.

TO THE STOCKMEN AND OTHERS, living at a distance: We will gladly fill any orders you may send for goods, whether in our line or not, and ship them as promptly as possible.

ST. NICHOLAS HOTEL,

Sixth St. and Douglas ave., Las Vegas.

CATTLEMEN AND ALL WILL FIND HERE A PLEASANT STOPPING PLACE

Centrally Located. Reading Room Connected. American and European Plans.

MRS. M. A. HORNBERGER, Proprietor.

SAN MIGUEL COUNTY.



Bullard & Co. P. O.: Liberty, N. M. Range: Tierra Blanca and Pajarito Creeks, San Miguel County. Other Brands: GBC also on right side: BB also on right side. Ear mark: Underslope both ears. All increase branded DID right side. Horse Brand: V on left hip or neck.

ROBERT MINGUS, Puerto de Luna. C. A. RATHBUN, Las Vegas.



H. Mingus & Co. P. O.: Puerto de Luna. Range, head of Alamo Gordo. All increase is branded as in cut and ear marked crop and over hach left under hach in right. Other brands: [circle] [square] [triangle] [diamond] [star] [heart] [circle with cross] [circle with square] [circle with triangle] [circle with diamond] [circle with star] [circle with heart]



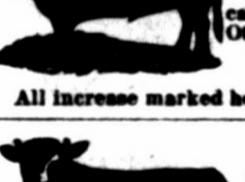
Circle Cattle Co. A. MERRON, Manager. Post-ice, Tequesquite. Horse brand, O left hip. Other Brands: [circle] [square] [triangle] [diamond] [star] [heart] [circle with cross] [circle with square] [circle with triangle] [circle with diamond] [circle with star] [circle with heart]



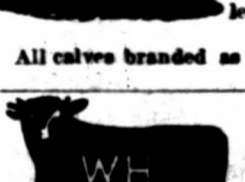
Governor C. H. Moore. P. O.: Puerto de Luna. Range, Upper Yaso. Various ear marks. Horses branded same on shoulder.



Las Carretas Cattle Co. A. S. VAN ANGLEH, Sec., Marshall, Mo. P. O.: Fort Sumner, N. M. Range, Las Carretas and Pecos river. Also claim cattle branded thus left hip or flank, not kept up. Ear marks, crop and underbit in left ear. Cattle branded on both sides. Horses branded with star on left hip.



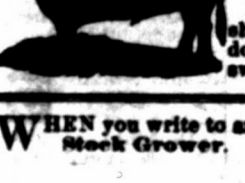
T. Romero, Bro. & Son P. O.: La Cinta. Range, Atarque Canon and Montoya Grant. Horse brand, same as cattle, on the left thigh. Other cattle brands: [circle] [square] [triangle] [diamond] [star] [heart] [circle with cross] [circle with square] [circle with triangle] [circle with diamond] [circle with star] [circle with heart]



Silva & Dodge. P. O.: Puerto de Luna. Range, Alamo Gordo. Horse brand, on either side, on the shoulder. Ear marks, janglebob in left upper half crop right. All calves branded as above. Also own [square]



Mariano Hinojos. P. O.: Puerto de Luna. Range, Carriso. Horses and steers are branded thus: [square]

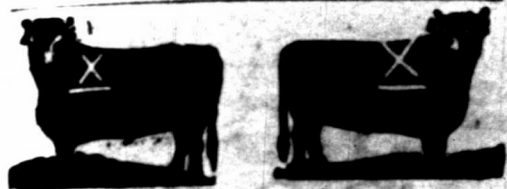


Valley Ranching Co. P. O.: Glorieta, N. M. Range, headwaters Pecos river. Shorthorns only. Young bulls for sale.

Quincy & Las Vegas Cattle Co. W. S. LYON, Manager. P. O.: Cabra Springs. Horse brand same on left shoulder. Ear marks, double janglebob right; swallowfork left. WHEN you write to an advertiser mention the Stock Grower.



SAN MIGUEL COUNTY.



All increase branded on both sides, marks, crop left and crop and hole in right Stonewall Cattle Company.

NICK L. WINSTON, Manager.

P. O.: Cabra Springs, San Miguel Co., N. M. Range, head of the Juan de Dios, head of the Pajarito Arroyo and Cuervito.

Additional brands:

X on right side and || on right hip. X on the right side. X on right side and X on right hip.



W. B. Stapp.

P. O.: Las Vegas. Range, Los Conchas.

Additional brands:

SJ on left ribs.

76 on left rump or hip.

S jaw, S ribs, S thigh.



Montezuma Cattle Co.

J. I. Mostern Manager.

P. O.: Eden, N. M.

Range, Los Tanos and on Pecos river.

Horses branded same as cattle on the left shoulder or hip.

Brand any place on animal.



Pajarito Cattle Co.

A. H. Whinnona, Presid't.

Las Vegas.

E. D. Bullard, Sec. and Manager, Liberty.

P. O.: Las Vegas, N. M.

Range, Pajarito, near Liberty, N. M.

Calves branded on both sides. Ear marks, crop and two splits in each ear.



Hyde Park Cattle Co.

P. O.: Hyde park, Ill.

Range, El Salitre, San Miguel county.

Horse brand, same as cut, on right hip.

All young stock branded same as cut.



Lorenza Lopez.

P. O.: Las Vegas. Range, El Cuervo, San Miguel Co., New Mexico.



Pete Maxwell.

P. O.: Fort Sumner, N. M.

Range, Pecos river, near Fort Sumner.

Ear marks: Right ear cropped and split, and left ear cropped.

Also claims



Geoff. McCrohan.

P. O. Liberty, San Miguel county.

Range, Escondido, near Wagon Mound.

Ear marks, crop right; staple bit left.

Horse brand, same as cut on left shoulder.



Stapp & Ennis.

P. O. Las Vegas, N. M.

Range, Los Conchas.

Ear marks, crop and hole in right; swallow fork left.

Horse brand, same as cut on left hip.



Chas. E. Cowan.

P. O. Pecos Town, N. M.

Range, Rincon de las Trozas, Red River, and Cow Creek, Upper Pecos.

Horse brand 7 on left shoulder.

Ear mark, crop the left, and upper half crop right.

Some cattle branded TA on left side. All increase branded as in cut.



J. N. Degraftonaid & Sons.

P. O.: Fort Sumner, N. M.

Range, Alamo Gordo, Saddle Horses branded SJX

Stock horses are branded



Sam Goldsmith.

P. O.: Liberty, N. M.

Range, Plains Largo.

Ear mark, crop and underbit left.

Horse brand, circle cross on the left shoulder.

SAN MIGUEL COUNTY.



Fort Sumner Land and Cattle Co.

DAN. L. TAYLOR, President and Manager, Fort Sumner, New Mexico.

Range, Fort Sumner, N. M. P. O.: Fort Sumner.

Ear marks, crop the left.

Additional brands—All kept up.

NO right side, VO right hip, X right hip or hip.

VO on right side or hip.

Some horses are branded VO

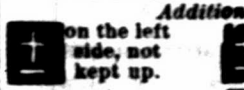


Robert L. M. Ross.

P. O.: La Cinta.

Range, Las Alamositas Arroyo.

All young stock branded as in cut.



Additional brands.

I on the left side, not kept up.

I on the left side, not kept up.

I on the left side, not kept up.

Horse brand, I on the left hip.



E. G. Austen.

Postoffice, Watrous, N. M.

Range, near Liberty, San Miguel county, N. M.

Barash & Bloch.



P. O.: Las Vegas, N. M.

Range, Los Conchas.

Cattle branded either side.

Horse brand, same as cut, on left shoulder.

Ear marks, swallow fork each ear.

Additional brand on left side.

All increase branded as in cut.



INSIDE FELLHEIMER, Of New York.

R. Hirsch, Of Las Vegas, N. M.

Fellheimer & Hirsch.

Ranch P. O.: Liberty, New Mexico.

Range, Pajarito and Tierra Blanca, San Miguel Co.

Cattle branded on either side.

Horse brand, T left hip.

Ear marks, on increase crop left; old stock have various earmarks.

Cattle are also branded | | 4 | on both or either side.

The bars on all cattle run from the top of the back to the belly.

Cattle branded on both or either side.



Waddingham Bell Ranch.

MICHAEL SLATTERY, Mgr

P. O.: La Cinta, county of San Miguel, New Mexico.

The range, Montoya Grant. All the horses on the ranch have the same bell brand on left shoulder.



Jas. E. Johnson.

P. O. Liberty, N. M.

Range, Liberty, N. M.

Ear mark, crop and split each ear.

Horse brand, same as cut on left hip or thigh.



Kemary Ritter.

P. O.: Liberty, N. M.

Range, Canadian and Trujillo rivers.

Ear marks crop left-swallow fork, right t.

Also own all cattle in the C brand, formerly belonging to M. J. Coots.

All horses branded



Rudolph Erminger

P. O.: Liberty, N. M.

Range, Pajarito and Tierra Blanca, San Miguel Co.

Ear marks, underbit in each ear.

Horses branded 2 on the left shoulder.

Also cattle branded 1 on the left side.



Mrs. D. F. Allen.

P. O.: La Cinta, San Miguel county, New Mexico.

Range, Atarque Canon.

Other brands: Some cat's branded same on left hip.

Horse brand: Same on left shoulder.

Atlantic and Pacific Railroad

TIME SCHEDULE.

WEST BOUND.	STATIONS.	EAST BOUND.
(Mountain Time)		
3 30 a. m.	Lv Albuquerque	Ar 12 15 p. m.
6 15 a. m.	Laguna	9 55 p. m.
7 00 a. m.	McCartys	9 18 p. m.
7 28 a. m.	Grants	8 51 p. m.
9 15 a. m.	{ Ar *Coolidge Lv }	7 25 p. m.
9 40 a. m.	{ Lv *Ar }	7 00 p. m.
10 31 a. m.	Wingate	6 37 p. m.
10 25 a. m.	Gallup	6 12 p. m.
11 00 a. m.	Manuelito	5 34 p. m.
12 25 p. m.	Navajo Springs	4 06 p. m.
1 50 p. m.	Holbrook	2 35 p. m.
3 00 p. m.	{ Ar *Winslow Lv }	1 25 p. m.
3 25 p. m.	{ Lv *Ar }	1 00 p. m.
6 05 p. m.	Flagstaff	11 00 a. m.
7 45 p. m.	{ Ar *Williams Lv }	9 25 a. m.
8 10 p. m.	{ Lv *Ar }	9 00 a. m.
9 45 p. m.	Ash Fork	7 10 a. m.
11 07 p. m.	Prescott Junction	5 53 a. m.
1 15 a. m.	Peach Springs	4 00 a. m.
2 29 a. m.	Hackberry	2 29 a. m.
4 15 a. m.	Kingman	1 25 a. m.
7 30 a. m.	{ Ar *The Needles Lv }	10 10 p. m.
8 00 a. m.	{ Lv *Ar }	9 40 p. m.
10 05 a. m.	Fenner	8 02 p. m.
1 15 p. m.	Ludlow	4 43 p. m.
3 10 p. m.	Daggett	3 10 p. m.
3 30 p. m.	{ Ar *Barstow Lv }	2 50 p. m.
4 00 p. m.	{ Lv *Ar }	2 00 p. m.
(Pacific time.)		
2 55 p. m.	Lv Barstow	Ar 1 30 p. m.
6 20 p. m.	San Bernardino	9 45 a. m.
8 00 p. m.	Citrus	7 15 a. m.
2 15 a. m.	Oceanside	2 15 a. m.
6 30 a. m.	San Diego	10 45 a. m.
7 00 a. m.	National City	10 00 p. m.
7 00 p. m.	Colton	9 15 p. m.
9 00 p. m.	Los Angeles	7 00 a. m.
6 35 p. m.	Ar *Mojava	Lv 10 20 a. m.
0 40 a. m.	Ar San Francisco	Lv 3 30 a. m.

\*Meal stations. Through tickets to all the important cities east and west on sale at the principal stations. Connections:—Albuquerque, A. T. and S. F. R. R. for all points east, north and south. Prescott Junction and P. & A. C. R. R. for Prescott. Barstow, Cala. Southern R. R. for all points in southern California. Mojave, all points in northern California. W. A. BISSELL, GEO. L. SANDS, General Passenger Agt. Superintendent, Albuquerque, N. M.

LAND SCRIP FOR SALE

SURVEYED LAND SCRIP

Military Bounty Land Warrants.—In 40, 80, 120 and 160 acre pieces. Will commute homestead or pay for pre-emption.

Additional Homestead Claims.—In 40, 80 and 120 acre pieces. Locatable on any lands subject to homestead and pre-emption entry. Large supply on hand; no delays in filing orders.

I have a large supply of Fractional Additional Homestead Claims of from 3 to 19 acres, which, by rulings of the general land office, are locatable on fractional subdivisions of double their area, or less, the difference being paid for in cash, at \$1.25 or \$2.50 per acre, as the case may be. Send the area of the fractional tract you desire to locate, and I will send a piece of proper size.

Porterfield Warrants.—In 40 acre pieces. Act of April 11, 1860. Locatable on any unappropriated public lands. The Supreme court has decided in Wilcox vs. Jackson, that the word unappropriated as applied to public lands, means "not legally disposed of." It will take lands in the corporate limits of a town. See Secretaries' decision in Reed vs. Digby, and Lewis et al. vs. Seattle. It will take occupied lands where there is no legal claim. See Bovard vs. Bunn. It will take withdrawn land when the withdrawal does not operate as a disposal of the land. See last case and the case of Wm. P. Brown.

SCRIP LOCATABLE ON UNSURVEYED LANDS.

Sioux Half-Breed Scrip.—In 40, 80 and 160 acre pieces. Act of July 17, 1854. Locatable on any unsurveyed lands not mineral.

Valentine Scrip.—In 40 acre pieces. Act of April 3, 1872. Locatable on any unappropriated and unoccupied public lands not mineral, surveyed or unsurveyed.

In locating any of the above scrip no settlement or residence is required, and there is no limit to the quantity one person may use. The right attaches at once on filing the scrip, and transfers of title for town sites or other purposes may be made without any delay.

Void entries, locations or selections will not prevent any of these rights from attaching.

Address T. B. MILLS, Real Estate Dealer, LAS VEGAS, N. M.

Stock Exchange Stables,

FEED AND SALE.

Finest Livery in the City.

DON R. OAKLEY, Prop.

Good teams and careful drivers. Nice rigs for commercial men. Horses and mules bought and sold. Branch stable at the Hot Springs. Telephone No. 53.

Stables in rear of the St. Nicholas Hotel,

LAS VEGAS, NEW MEXICO.

SAN MIGUEL COUNTY.



Fond du Lac & Las Vegas Cattle Co.

JAS. GAYNOR, President and Manager.

P. O.: Fond du Lac, Wis. Range, Liberty Ranch.



Chas. L. Koha

P. O. La Cinta, N. M.

Range, Arroya Las Conchas.

Horse brand, 17 on left shoulder.



Calkins Cattle Company.

O. L. HOUGHTON, Manager, Las Vegas.

E. J. WILCOX, Range Supt., Fort Sumner

Range, Pecos river, near Fort Sumner.

Ear marks on increase, crop left.

Other brands:

OLH on the left shoulder, side and hip.

T on the left side. C on side, || on hip

Horse brand, |X| on the left hip.



Day Bros. & Co.

P. O.: Liberty, N. M.

Range, Trujillo.

All increase is not ear marked, but end of tail cut off.

Horse brand, connects

ND on left shoulder.



D. A. IRWIN. D. RUBIDGE.

Irwin & Rubidge.

P. O.: Denver, Colorado.

Range, Trujillo, N. M.

DAY BROTHERS, Managers.

P. O.: Liberty, New Mexico.



Lon Horn.

P. O.: Trinidad, Colo., or

508 East Ninth St., Kansas

City, Mo. Range, on Pecos

river, old Fort Sumner reservation.

Cattle also bear F left

side, not kept up.



LINCOLN COUNTY.



El Capitan Land and Cattle Company. P. O.: Fort Stanton, Lincoln county, New Mexico. Range, north of El Capitan mountains, Lincoln county.

Other brands: MEL left shoulder, side and hip. Ear marks slit and underbit in right.

COM left shoulder, side and hip. Underslope. GWL on left side. Mark, ed crop right, underbit left.

left side and hip. Ear marks, split both ears. Horse brand on hip.

All increase marked as in cut and tails bobbed. When sold all horses are counterbranded with a small block on the left jaw.



S. S. Terrell.

P. O. Fort Stanton, N. M. Range, Rio Bonito. Ear marks, crop left, split and underbit right. All cattle branded with "riding bar" across top of and extending down on both shoulders.

Also some cattle branded SS on right hip or thigh. Horse brand, SS on left thigh.



S. A. Hubbell.

Post Office: Bernalillo, New Mexico.

Range: Guadalupe Mountains.



Sutherland & Farrell

P. O.: Roswell, N. M. Range, Rio Hondo, above Roswell.

Other brands: All cattle have two bars across the butt.



Carrizozo Cattle Ranch Co. (Limited). JAMES A. ALCOCK, Manager. P. O.: White Oaks, N. M. Range, Carrizozo. Horse brand, C with dot in center placed on left shoulder.



W. H. Fuqua.

P. O. Fort Sumner, N. M. Range, Moro canon, Pecos river, 35 miles south of Fort Sumner. Ear marks, hole in left, finger left.

Old stock branded left side, increase both sides. Additional brands on left side, kept up. Ear marks same as above.

Ear marks, hole in left, quarter over and under crop right. Horse brand: A on left shoulder.



Eddy-Bissel Cattle Co.

EDDY BROS., Managers. P. O.: Seven Rivers, N. M. Range, on the Pecos near Seven Rivers.

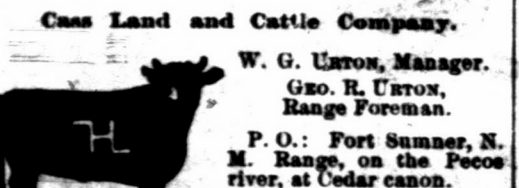
Horse brand on the left shoulder.



J. C. White.

P. O.: Fort Sumner. Range, ten miles below Fort Sumner.

Mark, crop and swallow fork right, crop left. Horse brand on the left hip.



Caas Land and Cattle Company.

W. G. URON, Manager. GEO. R. URON, Range Foreman.

P. O.: Fort Sumner, N. M. Range, on the Pecos river, at Cedar canon. Horse brand, same as in cut, only on right hip.

All young stock branded as in cut on the right side, and also with a 7 on the left hip.



W. L. RYMERSON & Co.

P. O.: Las Cruces, and Lincoln, N. M. Range, Rio Felix, Lincoln county.

Horse brand, same as on cattle, but smaller, and on left shoulder.

Notice for Publication.

[Homestead Entry No. 2,641.]

LAND OFFICE AT SANTA FE, March 15, 1887.

Notice is hereby given that the following named settler has filed notice of his intention to make final proof in support of his claim, and that said proof will be made before the probate judge of San Miguel county, at Las Vegas, N. M., on May 7, 1887, viz: John Dixon, of Liberty, New Mexico, for the N. E. 1/4 Sec. 25, T. 12 N., R. 20 east.

He names the following witnesses to prove his continuous residence upon, and cultivation of, said land, viz: Frank Forsythe, of Las Vegas, N. M., and G. O. C. McCrohan, John Burke and Chas. Thompson, of Liberty, N. M.

CHARLES F. EASLEY, Register.

Notice for Publication.

[Pre-emption No. 1,691.]

LAND OFFICE AT SANTA FE, February 16, 1887.

Notice is hereby given that the following named settler has filed notice of his intention to make final proof in support of his claim, and that said proof will be made before the register and receiver at Santa Fe, N. M., on March 28, 1887, viz: John E. Roark, of San Miguel county, N. M., for the S. W. 1/4 S. E. 1/4, sec. 20, T. 1, N., R. 25 E.

He names the following witnesses to prove his continuous residence upon, and cultivation of, said land, viz: Wm. Phillips, Jack M. Potter, W. H. Fuqua, W. G. Urton, all of Fort Sumner, N. M.

CHARLES F. EASLEY, Register.

Notice for Publication.

[Pre-emption No. 1,334.]

LAND OFFICE AT SANTA FE, February 16, 1887.

Notice is hereby given that the following named settler has filed notice of his intention to make final proof in support of his claim, and that said proof will be made before the register and receiver at Santa Fe, N. M., on March 28, 1887, viz: William Phillips, of San Miguel county, N. M., for the S. W. 1/4 S. E. 1/4, S. E. 1/4 S. W. 1/4, sec. 27, W. 1/4, N. E. 1/4, sec. 34, T. 1, N. R. 26 E.

He names the following witnesses to prove his continuous residence upon, and cultivation of, said land, viz: John E. Roark, W. S. Chadderdon, Jack M. Potter, Geo. S. Taylor, all of Fort Sumner, N. M.

CHARLES F. EASLEY, Register.

[Pre-emption No. 1817.]

Notice for Publication.

LAND OFFICE AT SANTA FE, N. M., February 10, 1887.

Notice is hereby given that the following named settler has filed notice of his intention to make final proof in support of his claim, and that said proof will be made before the probate clerk of San Miguel county at Las Vegas, N. M., on April 4, 1887, viz: Juan Lopez, of San Miguel county, N. M., for the S. 1/4 S. E. 1/4, N. E. 1/4, S. E. 1/4 and S. E. 1/4 N. E. 1/4, sec. 32, T. 7 N., R. 24 E.

He names the following witnesses to prove his continuous residence upon, and cultivation of, said land, viz: Juan C. Gurule, Genaro Garcia, Jesus Bereyesa and Francisco Servner, all of Puerto de Luna, New Mexico.

CHARLES F. EASLEY, Register.

[Pre-emption No. 1602.]

Notice for Publication.

LAND OFFICE AT SANTA FE, N. M., February 10, 1887.

Notice is hereby given that the following named settler has filed notice of his intention to make final proof in support of his claim, and that said proof will be made before the probate clerk of San Miguel county, Las Vegas, N. M., on April 5, 1887, viz: Juan C. Gurule, of San Miguel county, N. M., for the N. W. 1/4 sec. 26, T. 6 N., R. 24 E.

He names the following witnesses to prove his continuous residence upon, and cultivation of, said land, viz: Juan Lopez, Genaro Garcia, Jesus Bereyesa and Francisco Sernan, all of Puerto de Luna, New Mexico.

CHARLES F. EASLEY, Register.

Proposals for Beef and Mutton.

HEADQUARTERS DEPARTMENT OF ARIZONA, OFFICE CHIEF COMMISSARY OF SUBSISTENCE, LOS ANGELES, CAL., March 17, 1887.

Sealed proposals, in triplicate, subject to the usual conditions, will be received at this office and at the office of Captain John J. Clague, chief C. S. district of New Mexico, and at the offices of the acting commissaries of subsistence at the following named posts, until 12 o'clock, noon, on Monday, April 18, 1887, at which time and places they will be opened in the presence of bidders, for furnishing and delivery of such quantities of fresh beef and mutton on the block, as may from time to time be required at San Diego Barracks, California; Forts Apache, Bowie, Grant, Huachuca, Lowell, McDowell, Mohave, Thomas and Verde, San Carlos and Whipple Barracks, A. T., and at the following posts in the district of New Mexico, viz: Santa Fe, Forts Bayard, Selden, Stanton, Union and Wingate, N. M., from July 1, 1887, to June 30, 1888.

The government reserves the right to reject any or all proposals.

Blank proposals, guarantees and full information as to the manner of bidding, conditions to be observed by the bidders and terms of contract and payment, will be furnished on application to this office, to Captain John J. Clague, C. S., Santa Fe, N. M., or to the commissaries of the post.

Envelopes containing proposals should be marked "Proposals for beef," for "beef and mutton at \_\_\_\_\_," and addressed to the undersigned, to Captain John J. Clague, C. S., or to the commissary of the post bid for. J. F. WEAVER, Captain and C. S. U. S. Army. Chief C. S.

MENTION this paper when writing to advertisers.

LINCOLN COUNTY.



GEO. B. BARBER, JOHN RUCKER, S. E. BARBER, EMIL DURR, Lincoln, N. M. Milwaukee, Wis.

Three Rivers Land and Cattle Ranch Co. GEORGE B. BARBER, Manager.

P. O.: Lincoln, N. M. Range, Three Rivers, Lincoln county, N. M. Horse brand, one cross, same as cattle, on the left hip.



A. M. Rogers & Son. P. O. Independence, Mo. Range, Canaditas (with McBroom.)

A few fine young bulls for sale. Parties in need of either high grade or thoroughbred bulls will please correspond with us.



L. L. Cattle Company.

M. R. Lewis, Range Mgr. and Secretary. Postoffice, Fort Sumner, N. M. Lewis Lutz, Treasurer. Las Vegas.

Range, Pecos river, 40 miles south of Ft. Sumner. Ear marks, underslope right, overslope left. Horse brand, L on shoulder, O on jaw, both on the right side.



Frank Leenet.

P. O.: Ruidosa, Lincoln county, N. M. Range, Ruidosa river. Horse brand, on the left shoulder.



R. F. Segrest.

P. O.: Seven Rivers, N. M. Range, head of Seven Rivers, South Prong. Ear mark, underbit and overslope left ear, overbit right ear.

Horse brand on left side. Some cattle are branded with the S straight up.

Additional brands: RRS-Ear mark, overslope and underbit left; overbit right.

OL Ear mark, overslope and underbit left; overslope right.

HUB Ear mark, crop and under half-crop left; crop right.

On shoulder and hip. Ear mark, swallow fork and underbit left; swallow fork right.



J. A. LaRue.

P. O.: Las Vegas, N. M. Range, Rio Felix, Lincoln county, New Mexico.



George G. Gans.

P. O.: South Fork, Lincoln county, N. M. Range, Pleasant valley, 9 miles north of Upper Pecos. Marked, crop both ears.

Horses branded same as cattle, on left shoulder. Also own all cattle branded G on both sides.



Pat Garrett.

P. O.: Roswell, Lincoln county, N. M. Range, White mountains. Also all cattle with a butt brand. Horses branded same as cattle.



L. M. Long.

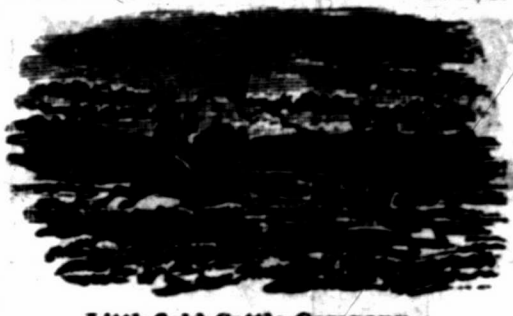
P. O.: Roswell, N. M. Range, Rio Hondo. Other brands: 5 7

Both on left side. Horse brands, same as cattle or right shoulder.



Also run cattle in this brand, which is kept up. Ear marks, upper jinglebob in the right and lower jinglebob in the left.

LINCOLN COUNTY.



Littlefield Cattle Company.

J. P. WHITE, Manager.

Postoffice, Roswell, N. M. Range, at Bosque Grande, Rio Pecos; and at Four Lakes, on the Staked Plains.

Also cattle in the following brands:

on the side. on the right side. on the right side and on right hip.

F on the side. L F W on hip, side and shoulder; 24 on the left hip.

J O on shoulder, side and hip. S+ on the shoulder, side and hip.

For these brands various earmarks. Horse brands: on top of the right thigh.

Also own all cattle in the following brands: LOD left side; ear mark, swallow fork right overslope and underbit left; 888 left side, and S on hip; JEW left side; O V U left hip, side and shoulder.



Lea Cattle Company.

J. C. LEA, Manager. W. M. Atkinson, Range Foreman.

P. O.: Roswell, Lincoln county, N. M. Range, on the Hondo, North Spring and Pecos rivers, and on the Aqua Arni, Blackwater and Boca Ranches, all in Lincoln Co.

Ear marks, crop and split left, split right. Brand as in cut on left side, but sometimes on right side. Ear marks sometimes reversed.

Additional brands: E side, and also some on side and hip. W side, J B on hip or loin. LEA on side, or shoulder, side and hip. Cross on side and hip. And various other old brands and marks.

Horse brand: on left shoulder and on left hip or thigh. Part branded only on left shoulder thus:



Emil Frits.

P. O.: Lincoln, N. M.

Range, Rio Felix, Lincoln county, N. M.



A. E. Powers.

Postoffice, Fort Stanton, Lincoln county, N. M. Ranch P. O., Powers ranch, Red casa, Socorro county, N. M.

Horse brand same as cattle, same place. Other Brands: BUK Crop and under half crop left, crop right. EUK Crop and under half crop left, crop and underbit right. Both brands on both sides of animal.



Deak Good.

P. O.: Paris, Texas. Range, Los Portales, Staked Plains. Ear marks, crop and underslope each ear. Cattle branded on left side.



John Shaw & Co.

Wm. MAILAND, Supt. P. O.: Fort Sumner, N. M. Range, Yeco and Pecos river. Horse brand, X—on the left shoulder. Increase brand both sides.



Edwin Terrell.

P. O. Ruidoso, N. M. Range, Ruidoso river. Horse brand ED on left thigh.

VALENCIA COUNTY.

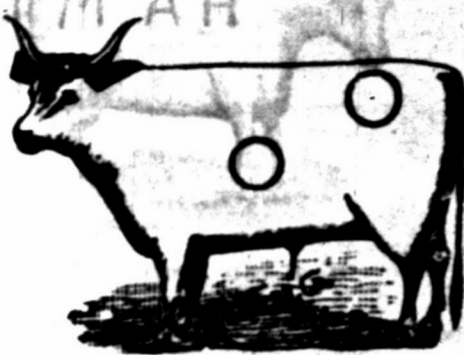


L. P. BRADLEY, Pres.

T. S. MUMFORD, Secy. Cobella Cattle Co. P. O.: Santa Fe, N. M.; box 216. Range, Valencia county, near Fort Wingate. Horse brand, the same.

VALENCIA COUNTY.

W. P. METCALF, Superintendent. Jas. A. STINSON, Ranch Manager. New Mexico Land and Cattle Company.



P. O.: Chilili. Range, Estancia grant, Valencia county. Horse brand, circle on the left hip.



Kennedy & Co.

P. O.: Coolidge, N. M. Ranches in Valles de Las Tuces. Range, between Bluewater and Coolidge, along line of A. & P. R. R.

Old stock are branded on left side; since 1901 all branded as in the cut. Ear marks, crop right, under half crop left. Horses branded on left shoulder.



Davenport Live Stock Company.

M. B. BOWMAN, Manager. P. O.: Chilili, N. M. Range, Buffalo Springs. Horse brand, same as cut on left hip.

This company will pay a reward of \$50 for each and every conviction and sending to the penitentiary of any one illegally handling any stock in its brands.



J. A. Johnson & Co.

P. O.: Albuquerque, N. M. Range, San Jose ranch, on A. & P. railroad, forty-seven miles from Albuquerque. Horse brand, J left hip. Various ear marks.

ROMAN A. BACA, President, San Mateo, N. M. MAX FROST, Secretary, Santa Fe, N. M.



San Mateo Cattle Co.

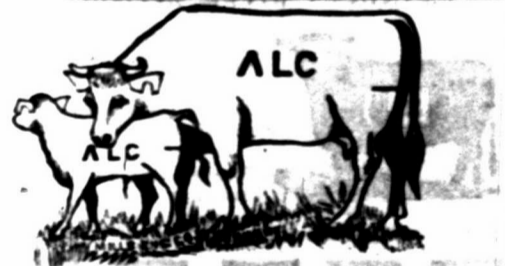
Range, The Miguel and Chavez Grants, Valencia county, New Mexico.



Dr. E. C. Henriques.

P. O.: Bolen and Las Vegas. Range, Estancia Springs, Valencia county.

Other brands on left side. All the increase of cattle and horses branded as in main cut.



Acoma Land and Cattle Co.

P. D. RIDENOUR, President, Kansas City. E. D. BRACKETT, Sec. and Treas., Kansas City. J. E. SAINT, Vice-Prest. and Mgr., Grants, N. M. Range, the Acoma Grant, and territory adjoining west and north. Horse brand, ALC on the left hip.

The BUYER'S GUIDE is issued Sept. and March, each year. 49-519 pages, 8 1/2 x 11 1/2 inches, with over 3,500 illustrations - a whole Picture Gallery. GIVES Wholesale Prices direct to consumers on all goods for personal or family use. Tells how to order, and gives exact cost of everything you use, eat, drink, wear, or have fun with. These INVALUABLE BOOKS contain information gleaned from the markets of the world. We will mail a copy FREE to any address upon receipt of 10 cts. to defray expense of mailing. Let us hear from you. Respectfully,

MONTGOMERY WARD & CO. 227 & 229 Wabash Avenue, Chicago, Ill.

SOCORRO COUNTY.

JOHN R. HOWELL. HENRY B. READ. Howell & Read.



P. O.: San Marcial, N. M. Range, Rio Grande river, San Juan springs, Cedar springs and Nogal creek, Socorro county and Rio Grande river and Penasco springs, Sierra county, N. M.



Glorieta Cattle Co.

Howell & Read, Mangers. Pasture, with Howell & Read. Ear marks, under half crop both ears. Above brands, anywhere on left side of grown cattle. On increase, same as cut.

Illinois Cattle Company. S. P. JOHNS, Manager. JULIUS M. ESTES, Foreman.

P. O.: San Marcial. Range, between Magdalena and San Mateo mountains, and on west side of Rio Grande river, between San Marcial and Cantaritas.



Other brand on the left side and left hip. Ear marks, crop the right and underslope the left.



H. E. HOLBROW. D. H. SMITH. Postoffice, Magdalena, Socorro county, N. M. Range, west of San Mateo mountains and San Augustine Plains.

Also own on left side.



JAMES D. REED, Pres. G. L. BROOKS, Sec'y. SAM N. DEDRICK, Manager.

J. D. Reed Cattle Company.

P. O.: Socorro, N. M. Range, western slope of the Magdalena mountains, Gallinas and Hierolosa mountains, and the Bear Springs, all in Socorro county, New Mexico. Bars across hips as in cut on both sides. Ear marks, half under crop left and crop right. sharpen the left and crop the right.

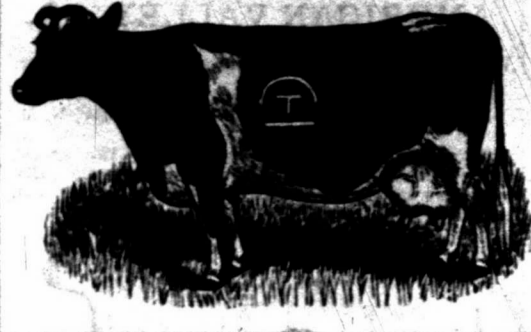
Other brands: on left side, on right side. Horse brand on left hip saddle horses. rt. sh'lder stock horses.

SOCORRO COUNTY.

IRA E. LEONARD, President, Socorro, N. M. C. O. TIFFANY, Sec. & Treas., San Marcial. J. C. TIFFANY, Manager, San Marcial, N. M.

BOSQUE BONITA Land & Cattle Company

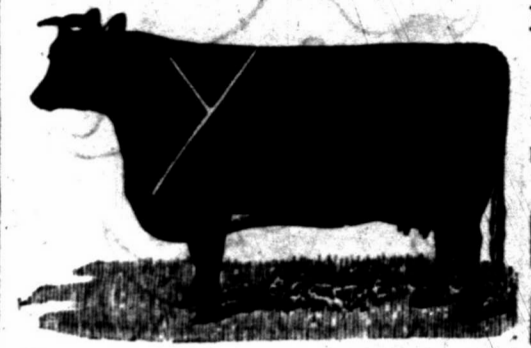
SAN MARCIAL, SOCORRO COUNTY, NEW MEXICO.



HURST, BLACK, KIEHNE & WILEY.

Postoffice, Patterson, Socorro county, New Mexico. Range, southwestern part of the San Augustine plains, and Nigrita river, Socorro county, N. M.

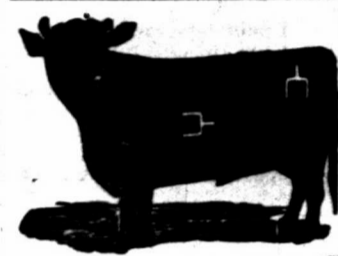
Additional Brands, not kept up. OCK ZIL COD F. H YEE LAN 3778 TIE.



Ear marks, on left side, crop the right. Above brand and ear mark kept up. Horse brand Y on left hip.

Shorthorn Cattle Co.

J. M. HALL, President, Los Angeles, Cal. R. B. GODLEY, Sec'y and Treas., Cleburne, Texas. R. J. BISHOP, Ranch Manager, Socorro. Range, Luna Valley, Rita Blanca and San Francisco Rivers, western end of Socorro county.



Ear marks, some underslope left, and crop and under half crop left, crop right.

UPCHER, STEVENS & BURR.

R. A. JONES, Range Superintendent.

Postoffice, Frisco, Socorro county, New Mexico.

Range, Tulerosa and San Francisco Rivers, and Johnson Basin, Socorro county, New Mexico.



We run two brands, SU and M-F. Ear mark, crop the right and split the left, for both brands. Horse brand, SU on left thigh or left shoulder.

All increase of the following brands, also owned by us, is put in the above brands and marks. MAY on side, S on hip. BEL on side, S on hip. on side. on side. ALA on side, on hip. U on side. on side, on side. MON on side, S on hip. on side, S on hip. A on both sides. All brands on left side. Other horse brands, U S and JON S on left hip.

FLOYD JARRETT,

Postoffice, Datil, New Mexico.

Range, Alamo Park and the Datil Mountains, Socorro County.

Ear marks for all cattle, underslope both ears.

Slash brand is the road brand to the original herd, not having ranch brand.



BUSH & MORSE,

Windsor Farm, Denver, Colorado.

Breeders of Thoroughbred

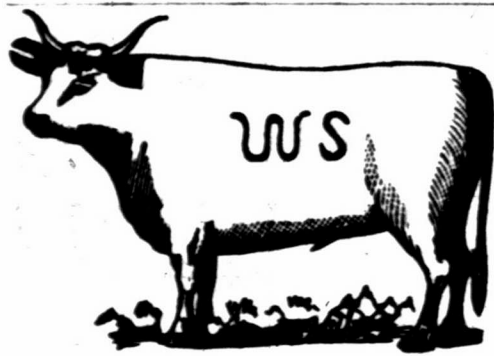
Galloway Cattle

Cattlemen and others invited to visit our farm, and appointments can be made at the Windsor hotel. Specimens of our herd can be seen at any time at Geo. L. Goulding & Co.'s City Stock Yards, Foot of Fifteenth street, who are agents for the sale of our cattle. Illustrated catalogue mailed on application.



BORDERER of Drumlanrig. (2325) Property of BUSH & MORSE.

SOCORRO COUNTY.



W S Ranch.

P. O.: Alma, Socorro county, New Mexico. Range, San Francisco river, Socorro Co. Horse brand, same as cattle, on left shoulder or thigh.

Iowa and New Mexico Ranch Company.

JUSTIN CLARK, President, Red Oak, Iowa. GEN. H. M. ATKINSON, Vice Pres., Santa Fe, N. M. BENJ. B. CLARK, Secretary, Red Oak, Iowa. PAUL P. CLARK, Treasurer, Red Oak, Iowa.



P. O. Magdalena, New Mexico.

Range, Socorro and Valencia counties.

Horse brand on left calf, in cut, and marked crop hip. All increase branded as on right and underslope left.



J. W. Crawford,

"CAPTAIN JACK."

P. O.: Fort Craig, New Mexico. Range, Fort Craig Military Reservation.

All increase branded and marked same as cut. Horse brand, on left shoulder.



Nathan Hall Cattle Company.

NATHAN HALL, Manager.

P. O. Magdalena, New Mexico. Range, Apachita creek, Tulerosa creek and Gallo Springs, Socorro county.

Horse brand, NH connected, same as on cut, on the left hip. Also have cattle branded O on left side and hip with ear mark crop and under hack left and jingle-bob right. All increase branded as in cut.



Hippolyte Goujon.

P. O.: Carthage, New Mexico.

Range, in Oscuro mountains, Socorro county.

Counterbrand, on the left shoulder.



Curwen & Norris.

P. O.: Magdalena, Socorro Co., N. M. Range, north slope of San Mateo mountains and adjoining San Augustine plains.

In addition part of cattle branded N on right jaw, balance C on right jaw. Ear mark, crop and two slits in each ear. Horse brand, C-N on right thigh.

SOCORRO COUNTY

AMERICAN VALLEY CO.

W. B. SLAUGHTER, President and Gen. Manager.

Postoffice address, Socorro, New Mexico. Ranch, American Valley, Socorro county, N. M.

\$250 REWARD will be paid for the arrest and conviction of any person or persons illegally handling any stock in the following marks and brands:

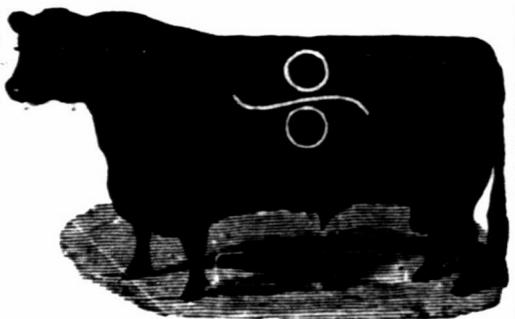


Cattle brand kept up, S as in above cut, on both shoulders.

on the left hip of horses.

Other Brands:

ANA side, S hip. Underslope each ear. FCC side, S hip. Crop and underbit left ear. on side and loin, or side and hip. Cross on bought steers; used as a road brand. V side, underslope each ear. side, various marks and other brands. M side, various marks and other brands. A on side, underslope left, swallowfork right.

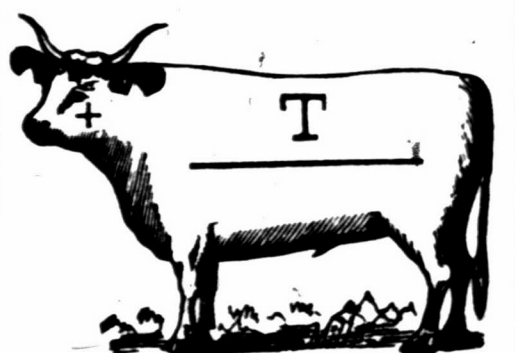


Deer Park Cattle Company.

FRANK H. WINSTON, Manager.

P. O.: Fairview, N. M. Ranches, at Elk mountain, Socorro county.

Also own the following brands: Horse brand, on the left shoulder.



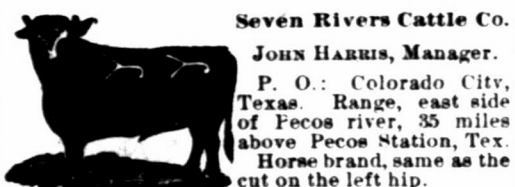
Trocke, Maunsell & Co.

P. O.: Patterson, Socorro Co. Range, eastern slope of the Mogollon mountains, between headwaters of the Nigrita and Gila rivers.

Ear marks, underbit right and left ear.

Other brands:

Horse brand on the left shoulder. 7 on left hip of cows and left side of calves.

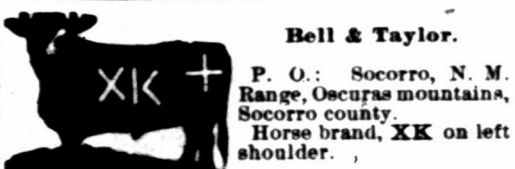


Seven Rivers Cattle Co.

JOHN HARRIS, Manager.

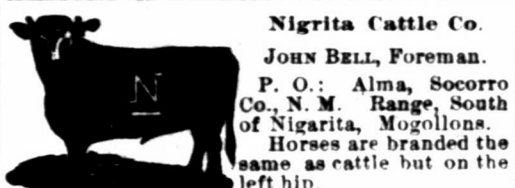
P. O.: Colorado City, Texas. Range, east side of Pecos river, 35 miles above Pecos Station, Tex. Horse brand, same as the cut on the left hip.

A REWARD of \$250 is offered for the arrest and conviction of all persons illegally handling any cattle in this brand.



Bell & Taylor.

P. O.: Socorro, N. M. Range, Ocuras mountains, Socorro county. Horse brand, XK on left shoulder.



Nigrita Cattle Co.

JOHN BELL, Foreman.

P. O.: Alma, Socorro Co., N. M. Range, South of Nigrita, Mogollons. Horses are branded the same as cattle but on the left hip.

Solon E. Rose & Bro.

MANUFACTURERS OF



RANGE

Horse Powers

All sizes from one-half, or burro power, to six horse power.

Exclusive agents for Eclipse Windmills, Gould's Pumps, Deering Mowers and Reapers, St. Louis Artesian Well Tools, Knowles Steam Pumps and Boilers. Write for catalogue and prices.

S. E. ROSE & BRO., Albuquerque, N. M.

J. C. BERTRAM,

Breeder and Importer of

HEREFORD CATTLE

BRISTOL, ILLS.



Makes a specialty of importing representatives from best families and breeding only stock of superior excellence.

Am prepared also to furnish ranchmen first-class grades, which I will guarantee to be of superior breeding, well marked, and sired by bulls of acknowledged merit.

For quality of animals handled by me I refer all ranchmen to the Hereford bulls now on the ranch of Mr. William Robert, at Roswell.

CORRESPONDENCE SOLICITED.

Herefords! Herefords!



John W. Prowers Jr. Owner and Breeder

Of the well-known herd of pure-bred Hereford cattle, of the late Hon. John W. Prowers. Young bulls and heifers for sale; also, twenty-five pure-bred and imported cows, ages ranging from three to six years old. Address all inquiries to

A. D. HUDNALL, Manager For John W. Prowers, Jr., WEST LAS ANIMAS, COLO.

S. L. LEON & CO.,

THE LEADING

Grocers, Bakers

OF LAS VEGAS.

We have also the Finest Line of Fancy and Imported Groceries in New Mexico.

Dealers in Queensware and Glassware.

Ranch Trade Solicited and Prompt Attention given all Mail Orders.

NORTHWEST CORNER OF PLAZA.

SOCORRO COUNTY.



A. HARDCASTLE. C. MITFORD

Hardcastle & Mitford, ADOBE RANCH,

Range, on headwaters of the Upper Gila, Sierra county. P. O.: Grafton, N. M. Horse brand, HM (connected) on left hip or shoulder. Also 2 on the left hip.



C. S. Roberts.

P. O.: San Marcial, N. M. Range, Los Burros, 20 miles west of San Marcial, Socorro county.

Ear marks, crop right and small crop and half circle above and below in left; also, skin cut on nose.

Horse brand, same as cut on left hip. Cattle branded either side and hip.

THE PRAIRIE CATTLE CO.

[LIMITED.]

W. J. TOD, General Manager. MURDO MACKENZIE, Sec. and Cashier. Trinidad, Colorado.

ARKANSAS RIVER DIVISION,

W. WITHERS, Ranch Superintendent.



Ranch postoffice, West Las Animas, Colo.

Range, Bent and Las Animas Counties, Colorado.

Other Prominent Brands:



CIMARRON RIVER DIVISION.

W. J. CARTWRIGHT, Ranch Superintendent.



Ranch postoffice, Catalpa, Colfax county, N. M.

Range, Colfax, Mora and San Miguel counties, New Mexico.

Other Prominent Brands:



CANADIAN RIVER DIVISION.

A. F. MITCHELL, Ranch Superintendent.



Ranch postoffice, Tascosa, Oldham Co., Texas.

Range, Oldham county, Texas.

Other Prominent Brands:



A. McDONALD,

WHOLESALE

Liquor Dealer

GIVENS' BLOCK, BRIDGE ST.,

LAS VEGAS, NEW MEXICO.

Special attention given to ranch trade. Mail orders for all classes of liquors and cigars carefully attended to.

# Browne & Manzanares Co.

LAS VEGAS AND SOCORRO, NEW MEXICO.



## WHOLESALE GROCERS,

DEALERS IN  
AGRICULTURAL IMPLEMENTS, RANCH AND MINING SUPPLIES.



### LANDRETH'S GARDEN SEEDS

BEST IN THE WORLD.

Cremation System. New Seeds Only For Sale.

THE BEST MARKET FOR

### WOOL, HIDES, PELTS, &C.

WILL AT ALL TIMES COMPETE WITH EASTERN PRICES.

### ECLIPSE WINDMILLS

The Best and the Cheapest.

PUMPS, PIPES, AND FIXTURES.

Agents For



### Cooper's Sheep Dipping Powder

A Cold Water Dip.

Sure cure for Scab. Best and cheapest dip in the world. Send for pamphlet, with plans for dipping.

Browne & Manzanares Co.



## Mundy Bros

EL PASO, TEXAS.

Lands in Mexico

—And the—

Southwest.

—And—

### Live Stock

Commission Merchants.

Have unequal facilities for the purchase and sale of Lands in Mexico, and for supplying any class of stock in quantities to suit purchasers.

Correspondence Solicited.

GRAZING LANDS A SPECIALTY

## The Armijo House,

ALBUQUERQUE, N. M.

NEWLY FURNISHED THROUGHOUT.

Every modern convenience has been added, making it one of the best hotels in the southwest. Commercial travelers will find commodious sample rooms. The bar and billiard room are the finest in the territory. Its nearness to business, street car lines, opera house, depots, etc., make it desirable in every way. Requesting your patronage, respectfully,

CHAS. E. BONSALL, Manager.

W. E. TALBOTT, Proprietor



Two Days Public Sale

AT THE

New City Stock Yards,

Foot of Fifteenth Street, DENVER, COLO.

—OF—

## Thoroughbred Shorthorns

Tuesday and Wednesday, March 29 and 30.

Colonel James Richardson, of Boonoke, Missouri, will offer eighty head from his famous herd of fancy, pedigreed Shorthorns, many of them noted prize winners.

This is a grand opportunity to make valuable additions to your herds, or to lay the foundation for new ones.

Among the lot offered will be representatives of the Rose of Sharons, Young Marys, Young Phylises, Rose Marys, Adelalides, Princesses, Western Prizes; and several representatives of the famous Duchess of Goodness, as bred by the late G. M. Bedford, of Kentucky; and many others from noted families.

Catalogues will be furnished after March 15th, upon application to

COL. L. P. MUIR,

GEO. L. GOULDING & CO.,

Of Kansas City, Auctioneer.

DENVER, COLO.

## Gross, Blackwell & Co

LAS VEGAS, NEW MEXICO.

## GROCERIES, DRY GOODS,

Boots, Shoes, Etc., Etc.

At all times on hand a full line of the Racine and Schuttler manufacture of Farm, Freight and Spring

### WAGONS.

A Full Line of Stetson Hats, suitable for Ranchmen, always on hand, ranging in price from \$4 to \$15.

SPECIAL ATTENTION GIVEN TO RANCH TRADE.

Prices quoted when desired and special attention given to mail orders.

### LIGHTNING HAY PRESS



Adapted to baling hay, wool, cotton, and other material. Full circle, most rapid, and easiest operated of any press in the market.

MANUFACTURED BY

Kansas City Hay Press Co.  
6th and Mill Sts. Kansas City, Mo.



### W. H. McBROOM,

Offers an Unusually Fine Lot of

HIGH GRADE

### Shorthorn Bulls

To be Delivered in Spring.

Fine New Mexico Stock.

W. H. McBROOM,

Fort Sumner, N. M.

### HEREFORDS!

REGISTERED BULLS AND HEIFERS.

Pure Bred and Shorthorn Crosses.

Range Cow Horses.

From English Thoroughbreds, Kentucky Saddlers and Tennessee Pacers.

Road Horses.

AMERICAN STANDARD BRED TROTTERS.

All stock branded 4 T or

CAMERON BROS. Managers,

San Rafael Cattle Company,

LOCHIEL, PIMA CO., ARIZ.

**The First National Bank of Las Vegas, N. M.**

**Capital Stock, \$100,000.**

**Surplus Fund, \$30,000.**

J. RAYNOLDS, President.

J. S. PISHON, Asst. Cashier.

JOSHUA S. RAYNOLDS, Cashier.

GEO. J. DINKEL, Vice-President.

**The First National Bank of Albuquerque, N. M.**

Capital Stock, \$100,000.00.

Surplus Fund, \$15,000.00.

J. RAYNOLDS, President.

M. W. FLOURNOY, Asst. Cashier.

JOSHUA S. RAYNOLDS, Vice-President.

**The First National Bank of El Paso, Texas.**

Capital Stock, \$100,000.00.

Surplus Fund, \$15,000.00.

J. RAYNOLDS, President.

JOHN W. ZOLLARS, Vice-President.

H. S. KAUFMAN, Cashier.

The above associated banks have the Largest Capital and most conservative management of any banking house west of the Missouri river, and largely control the banking business of New Mexico. A long residence in this territory familiarizes the management with the wants of customers. Business solicited.

**SIMON LEWIS' SONS,  
Golden Rule Clothing Store**

WHOLESALE AND RETAIL DEALERS IN

Clothing, Hats, Boots and Shoes, and Gent's Furnishing Goods.

**WE'VE GOT THE STOCKMEN'S TRADE**

But want to hear from the few who have not yet bought from us. We can refer to any ranchman in Northern New Mexico as to our Low Prices and Fair Dealing.

**OUR TAILORING DEPT**

IS THE MOST COMPLETE IN THE WEST.

Boots and Shoes Made to order at Lowest Prices and in the Best Style.

Mail Orders Promptly Attended to. LAS VEGAS, NEW MEXICO.

H. B. GODLEY,  
Sec'y and Treas. Shorthorn Cattle Co.

JOHN FLOOD,  
Vice-Pres. Shorthorn Cattle Co.

**GODLEY & FLOOD,  
Land and Cattle Commission Brokers,**

ST. GEORGE HOTEL, DALLAS, TEXAS.

Will examine and make detailed reports on ranches, and will render for taxation, pay taxes, and generally protect the interests of non-residents.

Will negotiate the purchase, sale or lease of agricultural and ranch lands in Texas, New Mexico and Arizona.

We make a specialty of contracting and delivering stock cattle and all kinds of steer cattle to purchasers in New Mexico, Arizona and the northwest. References given on demand.

Mr. Flood will give the ranch and cattle interests his exclusive attention, being a practical cattle and ranch man of twenty-five years' experience.



**Percheron Horses!**

The oldest and most extensive breeding establishment west of the Mississippi river.

**OVER EIGHTY HEAD**

Of pure bred and high grade stallions and mares on hand. Also a few

Recorded Imported French Coachers.

Twenty-five stallions on hand imported by M. W. DUNHAM. Our imported stock all registered in Percheron Stud Book of France and America.

We handle nothing but first-class stock, and guarantee all stock sold to be breeders.

Send for catalogue No. 2 with pedigree.

AVERY & COLEMAN, Proprietors of Republican Valley Stock Farm, Wakefield, Clay County, Kansas.

HENRY AVERY.

C. R. COLEMAN, Formerly with M. W. Dunham.

**J. C. LEARY & CO.,  
Commission Merchants for the Sale of Live Stock and Ranches**

OFFICE IN STOCK GROWER BUILDING, LAS VEGAS, N. M.

Will contract to deliver at any point thoroughbred or grade animals of any breed, at lowest prices. Contracts for surveying taken; maps, plans and estimates for railroad work, and surveys for irrigating schemes and water works carefully made.

We make a specialty of closing trades satisfactorily and promptly. We can find buyers for stock of all kinds, and give personal attention to all business which is entrusted to us. We have the largest acquaintance in this section.

Correspondence solicited, and all inquiries will receive prompt attention.

HENRY G. COORS

WILLIAM F. COORS

**COORS BROS.,**

Successors to Lockhart & Co., Wholesale and Retail Dealers in

**Furniture and Hardware**

Tinware, Sporting Goods, Shotguns, Rifles, Pistols,  
All Styles of Ranges, Cooking and Heating Stoves,  
House Furnishing Goods of Every Description.

Lumber, Sash, Doors, Lath, Shingles and Blinds,

PAINTS, OILS AND GLASS

All Orders by Mail Promptly Filled. Ranch Trade Especially Solicited.

LAS VEGAS, NEW MEXICO.

**NOW**

Is the time to buy

**DRY GOODS CHEAP AT**

*Charndelfeld*

LAS VEGAS, ALSO

Carpets, Furniture and Ranch Supplies.

Call when in town, or order by mail.

**SADDLES!**

**SADDLES!**

**For \$35.00**

I will ship to any address in New Mexico or Arizona one of my best, plain, double stock, No. 44, Colorado saddles.

In addition to saddles, I keep a full line of all styles of

Harness, Bits, Spurs, Quirts, Chapareros, Etc., Etc.

**JOHN H. HUGHES.**

ALBUQUERQUE, N. M.

**PLAZA HOTEL REOPENED**

**August 1st, 1886.**

Thoroughly Renovated and under the Management of the Las Vegas Hotel and Improvement Company.

First-class in all its appointments. Clean, airy rooms. Elegantly furnished. A No. 1 table, and everything possible done for the comfort of guests. Headquarters for Stockmen and Commercial men. Rates \$2.50 per day. Special rates to parties remaining a week or more.