

STOCK GROWERS

COLORADO TEXAS
ARIZONA MEXICO NEW MEXICO

Vol. III. No. 41.

LAS VEGAS, NEW MEXICO, DECEMBER 25, 1886.

Weekly, \$3 a Year

FROM ALL POINTS.

Live Stock Notes Carefully Collected From Every Source.

It is rumored that 70,000 head of cattle on the way to Chili are blockaded by snow in the passes of the Andes mountains.

Some large cattle companies will sue the Texas & Pacific railway management for losses sustained by delay in furnishing transportation.

This promises to be one of the most favorable winters on cattle that we have had for several years. The range stock is now putting on fat, and there is a general feeling of satisfaction among ranchmen.—*Mobeetie (Tex.) Panhandle.*

Col. M. J. Leaming has sold his half interest in the herds of cattle and ranch on the Shonkin, which he owned in connection with E. C. Leaming, to Al. Leeds, who recently came to this territory from Michigan.—*Montana Live Stock Journal.*

The horsemen and cattlemen will have a larger delegation than usual at the International Range association meeting at Denver next month. Utah's interests will be carefully looked after. Idaho, Utah and Nevada cattlemen agree on cattle if they can't on religion.—*Salt Lake Tribune.*

From all over the range country come expressions of joy over the proposed stock yards at St. Louis. Now that the International Range association has entered the lists against the beef monopolists of Chicago, better rates and better treatment will be had in the spring.—*Sagebrush Stockman.*

A book lately published, "Triumphant Democracy," states that as long ago as in 1880 American stock ranged five abreast, each animal to occupy a space five feet long, and marched round the world, the head and tail of the procession would overlap. If it would do it then it would much more than overlap now.

The ever rustling J. H. Conrad has formed a new company styled the J. B. Barnaby Land and Cattle company, with a paid up capital stock of \$300,000. The company will consist of two men, J. B. Barnaby and J. H. Conrad. The cattle will range in Montana and the Northwest Territory.—*Fort Benton (Mont.) Press.*

FORT KEOGH, Mont., Dec. 17.—Territorial Veterinarian Keefe has just finished his final tour of all the Montana ranges before winter closes in. He finds range prospects very bright. He inspected numerous herds of cattle and horses, and finds no cause for alarm. The grass is short in some localities, but as a whole the outlook is good.

S. W. Allerton states that "the oleomargarine that is manufactured in this country is made by seven firms; these seven firms buy eighty per cent. of all the fat cattle that come to Chicago, Kansas City and Omaha markets." This furnishes some ground for the claim that the cattle business of the country is throttled by monopoly.

The committee of the Consolidated Cattle Growers' Association of the United States, to further measures before congress for the eradication of pleuro-pneumonia has perfected a bill which will be introduced in the senate by the Hon. Warner Miller, and in the house by Judge Carey,

of Wyoming. The provisions of said bill will be found elsewhere in this issue.

Range circles throughout the west and southwest are pronouncing unqualifiedly and almost with unanimity for the establishment of stock yards at St. Louis. There is little doubt but that there will be in the establishment of these yards a healthy competition created against the Chicago monopoly which will be greatly to the advantage of the entire range interests.—*Tascona (Tex.) Pioneer.*

The "Ohio idea" is to exterminate pleuro-pneumonia by a slaughter of all cattle afflicted with the disease. There is a vein of economy running through the proposed plan. The Ohio State Grange asks that all pleuro-pneumonia cattle be slaughtered and paid for by the government. Uncle Sam will object to being forced to go on the market and buying diseased meats.

The account of the other side in the Leverton killing affair on the 1st is very different from the story of the surviving Levertons. It is made to appear that John Leverton was a cow thief and a desperado and that he invited the first shot by jumping for his weapon while two guns were leveled on him. We suspend judgment for the present, but there are some things not yet explained by any means.—*Tascona (Tex.) Pioneer.*

Dr. E. Salmon, chief of the bureau of animal industry at Washington, says that the cattle plague in Clinton county, Ind., is not pleuro-pneumonia, but bemicular bronchitis, very contagious, and frequently fatal. The post-mortem in each case disclosed thousands of small, hair-like, white worms, from one to two inches in length, in the bronchial tubes. The infected cattle are quarantined, and it is thought the disease will be checked.

The Comanche Land and Cattle company is plaintiff in a \$2,500 damage suit in the circuit court at Kansas City, in which James D. Hopkins, veterinarian of Wyoming territory, is defendant. It is alleged that thirty-six car loads of cattle belonging to the plaintiff, in transit to eastern markets, were stopped at Cheyenne twelve hours by the defendant for the alleged purpose of ascertaining if they were affected with pleuro pneumonia.

Protection to cattle interests is the all-absorbing topic in New Mexico. Whilst pleuro pneumonia has not made its appearance within our borders, cases are reported on two sides of the territory, and unless stringent quarantine is enforced, we are in danger of having the disease on the ranges of New Mexico. Steps can not be taken too soon to prevent its introduction and the devastation of our principal element of wealth.—*New Mexican.*

Market quotations from the great meat centers shows conclusively that the consumers of beef have not been benefited one cent by the present low prices paid for cattle by the slaughterers and packers. These latter are the real monopolists. They have managed to force beeves down \$10.00 and \$15.00 per head to themselves as purchasers. They make this profit, the stock growers lose it and still those who eat the meat pay the same figures as when cattle on foot were fifty per cent. higher than at present.—*Inter-Republics.*

KANSAS CITY, Dec. 16.—A local paper has an interview with a gentleman from Colorado as the representative of Colorado capitalists interested with New York, Chicago and St. Louis capitalists in a

scheme to purchase or lease for a long term of years the Cherokee Strip, in the Indian Territory, containing six million acres, with the intention of opening it to settlement. The price mentioned is \$3.00 per acre. The scheme also includes the acquisition of five million acres, at No Man's Land, extending to New Mexico, claimed by the Chepokes. It is asserted that \$20,000 has been spent already in looking up the records of the interior department and negotiating with the Indians.

Fence building and cattle driving, both of which business all, or nearly all of our neighboring ranches have been engaged in to a greater or less extent during the summer and fall, have been brought to a close till winter is over. Many are the hands who have been turned off during the past month or six weeks, and who are lying about in idleness or arranging to visit the old folks down in the country until work opens up again in April or May. The majority of the ranches will get along through the winter with fewer employes, perhaps, than for some winters previous. As a ranch manager recently remarked, "there will be a good many cowboys put to studying about how their summer's wages have been spent."—*Tascona (Tex.) Pioneer.*

It has been observed that there have been few beef buyers in this section so far this season. This, we believe, can be accounted for by the fact that reports have gone abroad from here—as we are reliably informed—to the effect that no fat beef cattle could be had in this part of the country. This is an error, and its circulation is calculated to work injury to our beef producers. Several hundred head of fine beef steers could now be purchased within a radius of fifty miles of Wilcox, in small lots. And while we would advise those cattlemen who can afford to do so, and whose ranges are not crowded, to hold on to their beef cattle in the prospect of better prices, there are, however, some who have got to turn their beeves into cash now, to meet current demands; and from such, as stated above, several hundred choice beef animals can be secured. Let buyers make a note of this.—*Wilcox (Ariz.) Stockman.*

First class western Texas cows and calves, two to seven years old, delivered at Albuquerque at \$22.50 per cow and calf in train load lots. G. L. Brooks, Manager, Socorro, N. M.

The Denver Convention.

OFFICE OF THE INTERNATIONAL RANGE ASSOCIATION, Denver, Colo., Dec. 22, 1886.

To members of the International Range association, state, territorial and local range cattle associations and owners of range cattle generally throughout the United States, Mexico and British Columbia:

You are hereby notified that the annual meeting of the International Range association will be held in the city of Denver, Colorado, on the second Tuesday of February, 1887, commencing at 10 o'clock, a. m. The basis of representation shall be by delegates duly appointed and accredited upon the following basis: Each association or society or combination of associations being a member thereof, controlling collectively not less than 10,000 head of cattle or horses, or both, shall be entitled to one delegate, and one delegate

for each additional 25,000 head thus controlled, provided, that no state or territory shall be entitled to more than one-fourth of the entire vote of the association.

The speediest appointment possible of delegates under the above section to attend the meeting, consistent with a wise and judicious selection of the same, is earnestly enjoined upon all associations which desire representation in the meeting as is also recommended discussion by local organizations of all questions of import to the plains and cattle industry in general to the end that the delegates may come into convention with carefully prepared measures and thoughtfully conceived plans approved by their local associations at home, and intended to promote the welfare of this great commercial enterprise. While a section of the constitution provides for the presence of but duly accredited delegates representing regularly formed and existing state, territorial and local associations having membership therein, we earnestly hope that the attendance upon the meeting will not be restricted to such delegates, as questions and measures, which will be under discussion, will be issues directly affecting investments of every owner of range cattle.

Intrusion by delegates for purposes of debate and discussion of topics covering matters of sectional or local interest only, we trust, will be carefully avoided, as far as this may be possible, in order that the limited time of the assemblage drawn from remote distances may be entirely devoted to the consideration of vital questions and measures affecting the interests of all, and upon the proper disposition of which depends, in a large measure, the future prosperity or adversity of this vast food supplying industry, in which millions of people of all stations and conditions are directly interested. The condition of the plains cattle industry at this moment, hampered and weighed down as we know it to be, by natural yokes and oppression in the nature of unjust discriminations and successful operations against it of the schemes and intrigues of powerful combinations as well as the possibility of the still greater and more appalling calamity from the threatened invasion of our ranges by bovine diseases of a malignancy and fatality terrible to contemplate made possible through the absence of government protection, demands of its dependents their immediate and thoughtful consideration and the employment of their combined intelligence in the preparation of measures for its present relief and future protection. The state of affairs herein hinted at cannot be viewed with indifference by any cattleman in the land, and it is to be hoped that every individual who has a dollar at stake in this vast enterprise has awakened to an appreciation of the insecurity of his investment so long as the present condition or things remains unchanged. In view therefore of these facts and the near approach of the date of the annual meeting, all associations entitled to membership in the association are earnestly requested to name delegates at an early date to represent their respective interests in the coming deliberation. Essays upon topics of general interest to the range stockmen to be read before the convention are cordially solicited.

J. C. LEARY, Secretary. R. G. HEAD, President.

THE PRAIRIE CATTLE COMPANY
Confidence in its Present Management Unabated in Scotland.

The *Financial News* has the following article relating more especially to the present admirable management of the Prairie company by Messrs. Tod and McKenzie and the confidence which the shareholders now have in their property, even though most exceptional forces have been in operation for the past twelve months which have greatly depressed all range cattle values. We are sure our readers will find the matter herewith presented of interest:

The prediction we published a few weeks ago, that cattle ranching was not likely to show good results for the current year, has, as might have been expected, excited some interest in Scotland. It has been received, too, in a very different spirit to what it would have encountered a few years ago. When the cattle companies were in the glory of twenty and twenty-five per cent. dividends, to breathe a whisper of doubt as to the continuance of that golden age was to be charged with rank blasphemy. Now, however, warnings and cautions are taken more kindly. A significant sequel of our article on the cattle ranching outlook will be found in a special report just issued by the Prairie company at Edinburgh—the pioneer of Scottish ventures in the far west, and still the largest company of its kind.

The cattle companies' report for the current year are not due until January or February, as the bulk of the sales are not made until November. Meanwhile, disquieting rumors have been afloat as to the demoralized condition of the markets, short calf crops and poor grass. These have, during the past few weeks, had a very injurious effect upon the cattle shares, those of the Prairie company having been especially weak. At one time they dropped to about one-half their par value, and shares which four or five years ago were difficult to buy at £20, might have easily been got of late at 50s. Edinburgh has had so many scares of the kind that directors have learned how to deal with them. They have abandoned their original policy of trying to keep everything and everybody sweet as long as possible, and then letting them have a *douche* of vinegar when it could no longer be held back. This time the Prairie directors have met trouble half way, and in anticipation of the annual report have issued a special report by the manager and secretary on the condition of the company's herds. It is the more welcome as both Mr. Tod and Mr. McKenzie are well known to the shareholders, and their statements will command confidence. Had such an unfortunate season occurred when the herds were under American management, very little faith would have been placed in anything that came from the other side; but we have here the declarations of two intelligent and trustworthy Scotchmen, who have no interest in concealing or disguising the facts.

The candid and careful tone of the report further invites confidence. The bad points of the situation appear to be honestly stated, and the good ones are not made too much of. The general conclusion to be drawn is, that though 1886 has been in many respects a bad ranching year, it closes much more hopefully than it opened. The grass has wonderfully improved since the heavy rains in July. It cured well in September, and on the date of the report it was past injury from frost. That was a vital point, as early frosts seem to be no less injurious to range grass than to Indian corn. Within the past fortnight what promises to be a severe winter has set in, but both the grass and the cattle will have entered on it in good condition, and the sooner begun the sooner it may be expected to end. One bad feature of the past season was the lateness of the winter. Comparatively mild and open at first, it broke out with great violence after the new year. In January they had an unprecedented snow-storm in northern Texas and Colorado, which did not break up until well on in February. A second came at the end of March and lasted until the end of April.

These unseasonable storms implied a bad calf crop. Many cows died on the more exposed parts of the ranges, and many calves perished after they had been

dropped, through the cows being too weak to nurse them. A severe storm had another bad effect in causing the herds to "drift" in search of shelter. Drought in summer has a similar effect for other reasons, the herd in that case "drifting" in search of water. The spring "round ups" were consequently delayed, and in New Mexico, after being started, they had to be abandoned, and were not finished until August, about three months after the usual time. Many of the cattle had drifted hundreds of miles to the south, and the dry cold weather immediately following the March storms prevented the grass growing. All over New Mexico there was not feed enough to drive them north until late on in the summer.

If a bad spring means a bad "round-up," with no less certainty does a bad "round-up" mean a shortage of calves and beef steers. The cattle have neither grass nor quiet to fatten properly. Hunting round fifteen or twenty miles a day for grass and water enough to keep them alive tends to create muscle rather than fat. As to the calves, they not only die through weather and neglect, but even where they survive they stray away and get lost. A late spring or a dry summer means the dispersion of a herd, so that it cannot be rounded up with any certainty. The Prairie company's calf crop exhibits the disastrous effect of such misfortune. Last year there had been nearly 25,000 calves branded up to the end of October, and this year there were only 15,000. But a significant sentence in the report suggests that in the opinion of Messrs. Tod and McKenzie this falling off cannot be wholly ascribed to the bad "round-up." On one of the prairie ranges, where the mortality of the cows was light, the shortage of calves was proportionally as great as on another where the mortality was heavy. It is possibly meant to be read between the lines, that the range, which suffered little from the storm, and should have shown a good average crop, can not have had all the cows carried on the books.

It is a curious, but not at all surprising fact that not a British-bought range has maintained the calf crop it was said to have had when it left the hands of the American vendors. In the ordinary course of nature the calf crop should have grown larger year by year, but all the expected increase has been lost and much of the alleged original crop as well. Toward this result several causes have, no doubt, been working. In the first place, the book count of the herd must have been moonshine. Secondly, the calf crops reported by the American managers when they were in uncontrolled charge had been loosely estimated, if not grossly exaggerated. Thirdly, there may have been a depletion of herds going on in the past few years through excessive sales. These painful experiences have not been peculiar to one or two companies; they are common to nearly all of them, and there is none can reproach the other with a disappointment they share so equally.

But, on the other hand, most of the companies which have been victimized by "book counts" and loose returns of their calf crops have also a consolation in common: They have all faced the difficulty courageously, and are trying to remedy it by putting in more trustworthy managers. One of the last of the American "bosses" has, we observe, just retired from a Dundee company, and most of the Scottish-owned ranches are now under Scottish management. The "round-ups" of the present season, if disappointing, are at least reliable. These are more likely to be under than over the mark, and they afford a test of the numerical strength of the herds which may be accepted with comparative confidence, the most adverse circumstances having been fully discounted.

These were troubles enough to follow each other in a single train, but they are not all. If the autumn had been favorable the losses of the spring might have been easily retrieved, but the autumn has been almost as bad as the spring. Prices, both for beef cattle and stockers, have been abnormally low. Messrs. Tod and Mackenzie estimate the decline on last year's rates at sixty cents to \$1.00 per 100 pounds, and that is, we should think, a very moderate calculation. They say that, compared with their neighbors, they have realized very fair prices, and that is also quite credible, because, to say nothing of their Scotch shrewdness, which has, no doubt, been at work, the fact of their be-

ing able to wait for a market has, no doubt, been of great help to them. In Texas and Colorado many of the ranchmen got so hard pressed during the summer and autumn that they had to throw away their cattle. Sellers who could hold on are, we believe, now getting better returns than they would have done a few weeks ago.

According to the latest live stock papers to hand, the market was strengthening, and there was a general expectation of a great improvement in spring, similar to the revival of 1882 from the very low prices of 1881. If the refrigerating movement should go ahead in Texas, so as to break up the monopoly of the Chicago live stock ring, there might be a very quick recovery in cattle. The ranges are now being worked much more prudently and economically than they used to be. Facilities for transportation are improving, and the cost of producing beef on the prairies should now be materially less than it was in the rough-and-tumble days of cowboy finance. All that is needed to make the business fairly remunerative is free markets in the east. They are not free at present, and beef is kept abnormally low by artificial as well as by natural means. But it is possible to get the better of all these, and to prove that cattle ranching, when prudently conducted, has still money in it.

60 head of $\frac{1}{2}$ to 13-16 grade Hereford bulls, eighteen to thirty months old, delivered at any railroad point north of Socorro at \$50.00 per head. G. L. Brooks, Manager, Socorro, N. M.

Arizona Cattlemen Uniting for Relief.

The Tucson *Star*, of Dec. 16, contains the following mention of the action of the Santa Cruz Stock Growers' association, at a meeting of said association held on the 14th inst.:

Resolved, That in view of the long distance from the market, east or west, and particularly of the limited demands of the latter when reached, that the stock growers of southern Arizona are brought face to face with the absolute necessity of devising some means of reaching the markets of the world with their beef, less expensive and more practical than is at present afforded by ordinary railroad transportation, which eats up their substance and leaves them the empty honors only, of paying heavy taxes and owning property which in the end becomes of no substantial value, that we therefore instruct our president to confer with the Pima County association and others interested with us regarding means to this end.

That this association has discussed at some length the possibility of establishing at some central point a cheap and inexpensive, yet somewhat extensive slaughtering yards, where for perhaps three winter months of each year, our beef might be prepared for shipment and storage, shipping in refrigerator cars the hind quarters to the eastern markets and canning and otherwise preserving the balance.

That we fully realize the objections and possibly serious difficulties which we may encounter in this effort to free our industry from the fetters which chain it fast to that singular kind of poverty surrounded with abundance, we therefore ask the advice and co-operation of those similarly situated, for a practical solution of this problem.

In obedience to the above resolution I hereby respectfully invite the officers of the Pima County Stock Growers' association and others interested to meet me at the parlors of the Palace hotel, in Tucson, on Saturday, Dec. 18th, at 7 p. m.

ISAAC N. TOWN,
President Santa Cruz Stock Growers' association.

The Tide Has Turned.

This is the time to go into the cattle raising business—not the time to draw out. We have stood the pressure during two years of the most unprecedented hardships and while the nerves of many have been twitching we are still on our feet. To the faithful the year of 1887 will usher in the beginning of a new and prosperous era. And this era will be of long continuance—a reaction that will be more productive of good than the past depression has been of harm. Let not bulldozers drive you out.—*Northwestern Journal*.

How it Was at Gilmore.

Some days ago the *Drovers' Journal*, of Chicago, had at the head of its editorial column the following:

The fact that animals died in the Chicago distilleries was taken as positive proof by the *Northwestern Live Stock Journal* that the disease was contagious pleuro-pneumonia. What will the *N. L. S. Journal* say about the 1,200 to 1,500 or more cattle that died in the Union Cattle company's Gilmore "fattery" last spring? The *Drovers' Journal* does not believe there was any pleuro-pneumonia at Gilmore, any more than at Chicago, but there was something the matter and that something was the same in both cases.

We might have made a very short and satisfactory answer to the above by saying just what we knew about the matter, namely, that competent veterinary surgeons were called in to examine the cattle at Gilmore and they pronounced no disease there. But we called upon Mr. Thomas Sturgis, president of the Union Cattle company, the owner of the Gilmore fattery, and asked him what he had to say. His reply was brief and to the point. In substance he stated that so much talk had been engaged in about his company's losses at Gilmore, and evidently prompted by malice, that he declined to talk about the matter. But since the *Drovers' Journal* had made the charge of contagious disease, he was willing to give all the facts to the public.

The company lost, last year, 750 cattle at Gilmore, but they were all old cows, twelve to fifteen years old, and old bulls whose usefulness on the range was gone. They did not die in the sheds but in the open lots near by. They perished from cold, not disease. The sheds were full of steers fattening for the market and no provision had been made to shelter the old stock. Orders were given to gather all of the old cows and useless bulls on the range and drive to the shipping point after the fall gather of beef. Under this order 1,500 head were driven and shipped, reaching Gilmore late in November. They were old and poor but the company hoped by liberal feeding to save them and during the following summer get them ready for the shambles. A few days after their arrival the cold wave that did so much damage to stock from Dakota to Texas struck them and in spite of an abundance of both hay and grain they failed to do well. Many died during the first storm and others lingered almost through the winter. A number of the most skilled veterinarians in the country were called in and a careful examination made before and after death. No trace of any disease could be found. Poverty and the severity of the storms did the work. None of the animals in the stables died, hence no alarm was created.—*Cheyenne Journal*.

New Stock Growers' Association.

The ranchmen in the upper Santa Cruz valley, in Pima county, Arizona, recently organized a local stock growers' association, with headquarters at Nogales. That is a rich grazing country, full of progressive ranchmen, whose organization will be a power for good in that locality. The *Nogales Frontier* publishes the following report of the last meeting's proceedings, to-wit: The Santa Cruz Stock Growers' association held their last meeting last Saturday afternoon. There were present Isaac N. Town, president; G. H. Beckwith, secretary; Chas. Altachul, treasurer; James Breen, Mark Ezekiel, G. W. Atkinson, T. Lillie Mercer, James Owens, Juan Elias, A. L. Peck and M. L. Martinez. Sabino Otero was duly elected as vice-president of the association. The subject of establishing a meat canning establishment at or near Nogales was discussed. Also the advisability of selling mavericks, at the time they are taken up by the rodeos, to the highest bidder, for cash; all monies so received to be placed in the association fund. The association then adjourned to meet again, we believe, on the first Monday in February.

500 to 1,000 head of central Texas, partially graded one and two-year-old heifers, fifty per cent. of each age, delivered at Albuquerque at \$13.50 per head. G. L. Brooks, Manager, Socorro, N. M.

NEW MEXICO LIVE STOCK COMPANY

G. L. BROOKS, MANAGER.

SOCORRO, NEW MEXICO.

Dealer in Ranches

All classes of Land Scrip at Lowest Quotable Prices. Mortgage Loans Negotiated. Shorthorn, Hereford, Polled Angus and Galloway Stock Bought and Sold.

STEERS FOR SPRING & SUMMER DELIVERY

To be Made at Any Point



All Classes of Cattle

Native and Improved Sheep, Angora Goats and Registered Bucks. Patented Ranch Property and Confirmed Grants. Stock Horses, Stallions and Saddle Horses.

CONTRACTS MADE FOR RANGE CATTLE

From Texas, Mexico and New Mexico.

SOUTH WEST CATTLEMEN.

The Pima County Ranchmen's Association Takes Important Action.

An adjourned meeting of the Pima County Ranchmen's association was held at the Palace hotel parlors last evening, chairman Royal A. Johnson, presiding, and Hon. Brewster Cameron as secretary. The matter of establishing a beef canner was discussed at length and action was postponed until Saturday night, when the delegates of the Santa Cruz Stock association will be present.

A vote of thanks was tendered the *Citizen* and the *Star* for the active interest taken and efforts to secure necessary protective legislation to the stock interests against pleuro-pneumonia infection and other cattle diseases.

Gen. R. A. Johnson introduced the following resolutions which were unanimously adopted:

Whereas, pleuro-pneumonia has destroyed \$1,000,000 worth of cattle in England and \$4,000,000 in Australia; and

Whereas, notwithstanding the stringent quarantine regulations against Europe, that insidious disease has been introduced into the United States, where it has already destroyed cattle amounting to many millions in value; and

Whereas, the recent outbreak at Chicago seriously establishes the fact that this terrible disease is gradually approaching the range country, where no effective quarantine can be maintained and where its introduction will destroy investments amounting to more than \$600,000,000; therefore

Resolved, that our delegate in congress is earnestly requested to devote his best efforts to the support of the bill now being prepared under the auspices of the International Range association, for the extermination of pleuro-pneumonia in the United States.

Resolved, that a copy of these resolutions be furnished by the secretary to the delegate and delegate elect.

Then followed a warm discussion as to the advisability of establishing a quarantine against the state of Texas, all Texas cattle to be held on the Arizona line three months, on the ground that the governor of Texas had no authority to establish a quarantine against states infested with pleuro-pneumonia. The fear was expressed that diseased cattle would be shipped to Texas from infected states and thence re-shipped to Arizona. Mr. Cameron expressed the opinion that the Texas legislature, which convenes early in January, would give the governor ample quarantine power to exclude all contagious diseases. He recently returned from Texas, where many prominent cattlemen assured him that Texas would co-operate with the range cattle country in any movement to crush out contagious bovine diseases. Mr. Cameron was convinced that the entire Texas delegation in congress would favor an appropriation of one million dollars or more to exterminate pleuro-pneumonia.

The secretary read two communications from breeders of Red Polled cattle, de-

R. B. GODLEY,
Sec'y and Treas. Shorthorn Cattle Co.

JOHN FLOOD,
Vice-Pres. Shorthorn Cattle Co.

GODLEY & FLOOD, Land and Cattle Commission Brokers,

ST. GEORGE HOTEL, DALLAS, TEXAS.

Will examine and make detailed reports on ranches, and will render for taxation, pay taxes, and generally protect the interests of non-residents.
Will negotiate the purchase, sale or lease of agricultural and ranch lands in Texas, New Mexico and Arizona.
We make a specialty of contracting and delivering stock cattle and all kinds of steer cattle to purchasers in New Mexico, Arizona and the northwest. References given on demand.
Mr. Flood will give the ranch and cattle interests his exclusive attention, being a practical cattle and ranch man of twenty five years' experience.

scribing their advantages for range purposes.

A general discussion ensued upon the attitude of the administration to General Miles. The course of President Cleveland was applauded, while the conduct of Secretary Endicott and General Sheridan was denounced in unmeasured terms. Brewster Cameron offered the following resolutions, which were adopted by a standing vote, as evidence of the cattlemen's respect and affection for General Miles:

Whereas, the material interests of Arizona have been utterly prostrated for the past five years in consequence of the blighting effects of the Indian raids; and

Whereas, peace has now been restored and security established through the military skill and indomitable energy of General Nelson A. Miles; and

Whereas, we reside in Arizona, and have suffered for years from the deadly effect of Indian brutalities, and are alone able to fully appreciate the terrors from which we have been relieved by the triumphant success of General Miles and his command; therefore

Resolved, That the attempt of the secretary of war and the general of the army to belittle the services of General Miles to the people of Arizona is a reflection upon the wise Indian policy of President Cleveland, and an outrage upon the people of our territory, for the following reasons, to-wit:

First, because the citizens of Arizona never demanded the lives of the Apache Indians, but they did seek to have these savages removed from the territory, as the only guarantee against future atrocities.

Secondly, we never demanded the unconditional surrender of Geronimo, nor the farce of a trial by our civil tribunals, because we know that it would be impossible, under the laws of the territory, to procure an impartial jury.

Thirdly, because it would have been impossible to have secured sufficient evidence, positive and circumstantial, to have warranted the conviction of the Indians; there conviction therefore if secured would have been a judicial murder, a deep reproach upon the territory, while their acquittal would have resulted in a still more disgraceful tragedy, as our people—the surviving kinsmen of countless victims of Apache fury—then upon the verge of revolution against the government of our country, would never have permitted Geronimo and his followers to have returned to a reservation in our

midst, a standing menace against which we have been battling for years; and

Finally, we did not insist upon an unconditional surrender, because it would have required years to have destroyed Geronimo and his tribe, involving an appalling sacrifice of life, appalling to all persons except the secretary of war, the general of the army and the horde of thieving contractors who grew fat upon the harvest of death which Geronimo was reaping in our homes.

Resolved, that neither malice nor envy in high places can lessen the glorious achievements of General Miles, his gallant officers and soldiers, nor imperil his claim to the lasting gratitude of our people, for the prompt removal of these fiends from our territory, extra-official though the act may have been; and we, the citizens of the frontier, whose wives and children lived in mortal terror of their lives, till General Miles came to the rescue of our defenceless families, note with pleasure the fact that the president of the United States, in his message to congress, appropriately recognizes the distinguished services which General Nelson A. Miles has rendered to the people of Arizona.

Resolved, that a copy of these resolutions be sent to President Cleveland, to General Miles and the press of the territory.

Mr. Thomas F. Smythe offered the following resolution which was unanimously adopted.

Resolved, that we raise by popular subscription a sufficient sum to purchase a gold sword for General Nelson A. Miles, to be suitably engraved as a souvenir of his illustrious services, in the capture and removal of the Chiricahua Indians.

Upon motion of Mr. Marsh, D. Henderson, banker, was appointed to receive subscriptions for said purpose, and all citizens of Arizona, desiring the privilege of subscribing to said fund, are cordially invited to address their remittance to D. Henderson, banker, Tucson, Arizona.

The press of Arizona are requested to publish the above resolutions.

The meeting then adjourned to meet with the Santa Cruz association delegates on Saturday night.—*Tucson Star*.

500 or 1,000 head of western Texas yearling heifers, $\frac{3}{4}$ and 3-4 bred none to be less than $\frac{1}{2}$ bred, and the bunch to average $\frac{1}{2}$ bred, delivered at Albuquerque, N. M., at \$14.00 per head. G. L. Brooks, Socorro, N. M.

To the Local Associations.

SECRETARY'S OFFICE,
THE INTERNATIONAL RANGE ASSOCIATION,
Las Vegas, December 1st, 1886.

Owing to the failure of a number of the live stock associations throughout the range country to come out and endorse the International Range association after the adjournment of the convention last February, and the consequent uncertainty of the permanency of the organization then created, it was thought best by the directory to withhold the issue of certificates of membership to those associations which had made application for membership until such time as the number of applicants for admission would insure the permanency of the central association, and encourage the officers and directory to enter upon the labors assigned by the convention and the prosecution of the reforms then projected.

Such a time has, we believe, now come, as the endorsement of the range association is being made general from one end of the country to the other. Its need is felt, and those who at first doubted the existence of a field for its labors, are, in the light of recent events, convinced of their error, and are anxious and willing to lend their aid to the building up of this institution, which, of all others, will have the power and influence to protect their interests.

In view of this the executive committee of this association has approved your application for membership and accepted your tender of the initiation fee as prescribed in the by-laws, and a certificate of membership will be sent you from this office at once.

Will you kindly mail to me, at your earliest convenience, a statement of the number of cattle and horses owned and controlled by your association for the purpose of record, and also for that of assessment. I am instructed to say that the whole amount of money to be raised by assessment upon the various local associations represented in the Range association will be slightly in excess of \$3,000.00.

Very respectfully yours,
J. C. LEARY, Secretary.

G. L. BROOKS, Manager, Socorro, N. M., will contract and deliver to any point in Arizona, she cattle in large or small bunches, bulls in carload lots, old Mexico brood mares, sheep and Angoria goats. References, First National Banks of Las Vegas, Albuquerque, Socorro, and El Paso, Socorro County Bank, and Banking House of Browne, Manzanara & Co., Socorro, N. M.

Next Week

The appearance of THE STOCK GROWER will be greatly improved.

It will contain a carefully prepared, tabulated statement of the number of New Mexico's cattle, horses and sheep, and the value and acreage of lands used for stock raising.

It will be full of interesting matter on many subjects of interest to stock owners. Now is the time to send in subscriptions.

R. D. HUNTER, St. Louis.

A. G. EVANS, Kansas City.

M. P. BUEL, Chicago.

HUNTER, EVANS & CO.

COMMISSION MERCHANTS IN ALL KINDS OF LIVE STOCK

KANSAS CITY.

CHICAGO.

ST. LOUIS.

Oldest and most popularly known Commission House in the United States.

LIBERAL CASH ADVANCES ON CONSIGNMENTS TO EITHER HOUSE.

KANSAS CITY STOCK YARDS, Kansas City, Mo.

UNION STOCK YARDS, Chicago.

NATIONAL STOCK YARDS, (St. Louis) Illinois.

J. C. LEARY, General Agent and Solicitor for New Mexico and Arizona, LAS VEGAS, NEW MEXICO.

BACKED BY THE RAILROADS.

The Baltimore & Ohio, Chesapeake & Ohio and the Stock Yards.

The first steps toward improving the site recently purchased for the St. Louis stock yards were taken Saturday by surveyors, who have been employed to make a map of the grounds for the use of the contractors, who will be invited to bid for the necessary grading and construction of the required buildings, all of which, from present indications, will be completed by the 1st of July. In the meantime the testimony as to their support by the range interests is accumulating. T. T. Andrews, of Fort Worth, Tex., one of the largest live stock contractors of that state, now on his way home from Arizona, was at the Southern yesterday, and being asked by a *Globe-Democrat* reporter to express his views and the sentiment of cattlemen generally regarding the enterprise, said:

"The new stock yards are universally spoken of by rangemen as an absolute necessity. St. Louis being more centrally located than any other large city, and nearer to the southwestern ranges by 300 miles than Chicago, I would like to see yards established here, and of such magnitude and with facilities such that stockmen will be able to find a market as a live stock competitor to Chicago."

Mr. Andrews explained that the cattle trade of St. Louis had been diverted to other places when the old ferry system was in vogue, it being a barrier to transportation that live stock shippers objected to, because, by sending their cattle east by way of St. Louis they were compelled to unload stock and drive to the National yards, causing shrinkage in weight. To avoid this they shipped by way of Cairo, where stock was transferred in the cars and unloaded and fed in the yards before resuming the journey to Chicago. Others shipped via the Missouri, Kansas and Texas, crossing the Mississippi over the bridge at Hannibal.

"The trade having been deflected by reason of these disadvantages," he continued, "it has never come back to St. Louis, notwithstanding the preference Texas merchants and range people of the whole southwest have for dealing with business men of this city. If they could find a reliable market here at all times, they would follow their desire to consign stock direct to St. Louis. They believe if yards were located on this side of the river they would come into closer inter-

course with and receive the encouragement of the business element of St. Louis. Buyers for butchers east of this point would be more inclined to come to St. Louis, where the best of accommodations are afforded, and at the same time within easy access of the yards. Stockmen coming to St. Louis from a distance on business, do not, as a rule, visit the National yards, while those visiting Chicago invariably make a trip to the Union yards before returning home. We are satisfied that when the new yards are completed the southwestern stockmen will give the enterprise all the encouragement in their power by shipping cattle direct to the St. Louis yards; and, consequently, there will be an inducement to erect refrigerators and canning establishments. These influences combined, we believe, will make St. Louis of more importance to the range industry than Chicago is at the present time. Since this enterprise was undertaken I have been through Colorado, New Mexico, and Arizona, and everywhere I found the stockmen enthusiastic over the project. St. Louis business men and capitalists never had a more opportune time than now, in connection with the rangemen themselves, to secure the live stock trade. There is a widespread feeling all over the southwest that there is a great and growing monopoly in Chicago establishing the price of beef products to suit themselves, and in this is found the strength of the new movement. The evil has been growing from year to year, and the only way they see out of the difficulty is to establish yards from which roads leading east will afford every inducement for butchers to come to that market. The National yards will not answer the purpose for the reason, as I understand, that the property is owned and its management controlled by Boston and New York capitalists, and thus by the Chicago dressed beef men, who control all the feeding points between Chicago and New York and who also own the stock yards at those places. This new St. Louis enterprise, and this is a point not generally known, will have the advantage of co-operating with the yards now being established by the Baltimore & Ohio railroad company on Staten Island, and those at Newport News under construction by the Chesapeake & Ohio railway company, neither of which roads has heretofore received any benefit from the cattle trade, but which now propose to enter the field and compete with the dressed beef monopoly."—*Globe-Democrat*.

One or two train loads of partially graded western Texas yearling heifers, delivered at Albuquerque at \$11.75 per head. G. L. Brooks, Manager, Socorro, N. M.

The Battle Begun at Washington.

On the 20th inst., at Washington, Senator Spooner, by request of Senator Miller, who was absent, introduced a bill for the extirpation of contagious pleuro-pneumonia, foot and mouth disease and rinderpest among cattle and to facilitate the exportation of cattle and live stock. The provisions of the bill read as follows:

Section 1, authorizes the president to appoint a commission of three persons to be known as the United States cattle commission; he may in his judgement suspend the functions and pay of these commissioners and restore them again at any time. The salaries of the commissioners are fixed at \$5,000 per annum.

Section 2, makes it the duty of the commissioners to cause investigation to be made as to the existence of contagious pleuro-pneumonia, foot and mouth disease and rinderpest, and for this purpose they are authorized to enter either in person or by agents any premises in which they have reason to believe such diseases exist. Upon discovering existence of disease the commissioners are authorized to give public notice of the fact, specifying the location, and also to notify the agents of any transportation company doing business in or through the infected locality. The commissioners are required to establish and maintain such quarantine of animals on the premises as they may deem necessary to prevent the spread of the disease and also to cause the appraisal and destruction of infected or exposed animals. Owners of animals destroyed are to be paid three fourths value of the animals as determined upon a basis of their health before infected in the case of animals diseased, and full appraised value in the case of animals exposed to but not infected with the disease. It is provided, however, that not more than \$160 shall be paid for any animal destroyed which has a recorded pedigree, nor more than \$60 for an animal without a pedigree, provided, further, that in no case shall compensation be allowed for any animal destroyed which may have contracted or been exposed to the disease in a foreign country or on high seas nor will compensation be allowed any one who knowingly or willfully conceals the existence of and such disease or fact exposed thereto.

Section 3, authorizes the commissioners to make rules and regulations for carrying the provisions of the bill into effect, rules to have effect of law when approved by the president.

Section 4, 5 and 7, prescribe the penalties for obstructing commissioners in the performances of their duties, for con-

cealing disease and for transporting or delivering for transportation from one state to another diseased animals, knowing them to be such.

Section 6, makes it a duty of the commissioners whenever any owner of animals refuses to accept the sum authorized to be paid under appraisal to declare and maintain rigid quarantine of animals and premises where the cattle may be found.

Another section makes it the duty of the district attorney to prosecute violations of the provisions of the bill, authorizes the employment of a secretary to the commission and of skilled veterinarians and directs that when the functions of the commissioners are suspended their offices and records shall be turned over to the commissioners of agriculture. The bill appropriated \$1,000,000 to carry its provisions into effect.

500 or 1,000 partially improved central Texas yearling heifers, delivered at Albuquerque, N. M., at \$11.00 per head. G. L. Brooks, Manager, Socorro, N. M.

Not Pleuro-Pneumonia.

The prompt action taken by Texas in the matter of supposed contagious pleuro-pneumonia which appeared among a lot Jersey cattle shipped into that state, has relieved the minds of a great many people, and in the result of the investigations made by the veterinarians which shows that the disease was tuberculosis only, the entire country is to be congratulated. Dr. Hopkins, the Wyoming veterinarian and others delegated to examine into the case, have submitted the following report relative thereto to Commissioner Colman:

We have thoroughly examined all the cases reported to us of cattle having been diseased and belonging to various parties in this locality. In Betterton's herd we found remaining three of the original six head suffering from tuberculosis, and killed one that was diseased and found the left lung, especially the middle lobe extensively and unmistakably affected with tuberculosis in all stages of development. Besides the mesenteric glands tuberculosis. The liver was healthy, the spleen slightly enlarged (abnormally of a dark bluish tinge), and the right kidney was slightly congested. Of thirty-one unregistered Jerseys that were brought here six have died and one was killed today. Seven of the twelve that were examined were affected with tuberculosis. I have seen no evidence of contagious pleuro-pneumonia.

RANCHMENS' ROOFING.

For Stock Sheds, Barns, Corrals,
Houses, Smelting Works, etc.



Water and Fire Proof, for Flat and
Steep Roofs. 1-2 cost of any other.

Weight, 60 pounds to square of 10x10 feet.

Anybody can put on from 6 to 8 squares per day.

Thousands of Squares in use in Mexico and New Mexico. Samples can be seen at office Stock Grower.

PRICE, \$2.00 PER SQUARE 10x10 FEET.

M. EHRET, Jr., & CO. Sole Mfrs. W. E. CAMPE, Manager, ST. LOUIS, MO.

SOUTHWEST STOCK NOTES.

Short Items Relative to Stock and Stockmen of the Southwest.

One hundred and one New Mexico steers, averaging 850 pounds, brought \$2.45 per hundred in the Denver market on the 18th inst.

Lyons & Campbell received for a bunch of steers shipped to Kansas City \$2.90 per hundred. They were bought for reshipment to Chicago.

The shipment of steers made by the Carrizosa Cattle Company, of Lincoln county, to Kansas City brought \$3.05 per cwt. and weighed 1050 each.

E. M. McCrohan, from the vicinity of Liberty, San Miguel county, sold a small bunch of cattle in the Kansas City market this week, which averaged less than 900 pounds, at prices from \$2.00 to \$2.70.

The Southwestern Stock association will send to Santa Fe to attend the territorial meeting on January 3rd, John Brockman, W. A. Leonard, S. P. Carpenter, A. E. Head, J. A. Lockhart, Warren Bristol, August Campbell and R. Hudson.

The ranches and cattle of the two cross outfits, Lincoln county, the property of Geo. B. Barber, have been merged into the Three Rivers Land and Cattle Ranch company. The herd will be increased the coming spring by the addition of a number of thousand head of stock cattle.

Judge Porter and Ike Harold, Denver capitalists, made extensive purchases of arable land in San Miguel county last week. Nearly 30,000 acres of valley land at Los Alamos, all of which can be put under a high state of cultivation, were bought by them. The price paid was \$90,000.

The range is everywhere in that condition of good grass, with the cattle thereon in excellent condition, and no disturbing weather influences, that gladness comes to the heart of the ranchman and encourages the feeling also, now so prominent on the range, that the direful days for the cattlemen are happily passing away.

The forfeited A & P lands in New Mexico, as will be seen elsewhere in our columns, will be open for entry on January 25th next. The company aver they will contest in the courts the action of congress declaring the land granted forfeited. Settlers should not be deterred by the intended action of the company, from making entries.

The Deming *Headlight* says that within ten or twelve miles of that place 800 tons of good hay has been cut this year, as follows: Neise Warrenton, 400 tons; Smith & Holgate, 200 tons; Dickey & Co., 100 tons; Hopkins, 50 tons; Sanders, 50 tons; Lee, 50 tons. On the Mimbres Israel King put up 100 to 150. The lowest price paid for that market was \$15 a ton.

If there is any encouragement to shippers in the price prevailing in the Kansas City market, southern New Mexico will be prepared to ship 25,000 head of beef during the next two months in Sierra, Grant, and Dona Ana counties cattle can be rounded up as well in the winter as at any other season of the year, and the running up of prices in the markets of slaughter will be all that is necessary to bring out a large output of steers from that section of the territory.

It may not be apparent to the casual observer that there is a large and increasing demand from eastern and foreign investors for desirable cattle properties throughout the southwest at the present time. Nevertheless, it is a fact that there is a large number of men looking up such properties, eager to invest at the bottom prices. The men who go into the cattle business during the coming winter will hit the nail on the head, for the signs all point to an appreciation of values in cattle and ranch properties all along the line.

The First National bank, of this city, one of the soundest and most substantial financial institutions in the west, has just been designated by the United States treasury department as a government depository. This is a compliment to an Albuquerque institution which all Albuquerque people will be proud of, and is an indorsement of the soundness of the institution which bankers will so readily appreciate. Uncle Sam is a mighty particular customer, and he doesn't trust a bank with his money unless he knows it is absolutely safe. — *Albuquerque Democrat*

Stock feeding is surely coming to the front among the wide-awake cattlemen as one of the main adjuncts of range cattle raising. The possibilities of profit are so great in the raising of alfalfa and feeding it to steers, that it is no longer a debatable question with the rangemen in cultivating the crop and turning it into beef. Thousands of acres will be devoted to alfalfa growing the coming year in the southwest and hundreds of cattlemen will be the gainer thereby. No feature in the future of the business which comes under the head of wise management and which will contribute to a reduction of expenses will be omitted by the ranchman in the regulation of his affairs on most of the ranches.

400,000 acres of a well watered and well grassed grant to lease for a term of years at a very low rental. G. L. Brooks, Manager, Socorro, N. M.

Open For Settlement.

LAND OFFICE AT SANTA FE, N. M.,
December 22, 1886.

In compliance with the instructions of the honorable commissioners of the land office, under date "F," December 15, 1886, notice is hereby given that the forfeited and unearned lands in the limits of the grant to the Atlantic & Pacific Railroad company, will be subject to entry under the general land laws applicable to unoffered lands, at \$2.50 per acre in the granted limits, and \$1.25 per acre in the indemnity limits, on and after the 25th day of January, 1887.

Said lands include all that portion of the grant to the Atlantic & Pacific Railroad company lying east of a line running north and south, one and one-fourth miles west of the range line between ranges 2 and 3, east of the New Mexico meridian.

CHAS. F. EASLEY, Register.

LEIGH O. KNAPP, Receiver.

20,000 head of partially graded ewes and lambs for sale at 75 cts. per head. G. L. Brooks, Manager, Socorro, N. M.

A Dim Light.

Assistant Secretary Hawkins, of the department of the interior, has within the last few weeks reversed all of the most important decisions rendered by Commissioner Sparks since the resignation of Assistant Secretary Jenks, and Mr. Sparks feels so much aggrieved that he has asked Secretary Lamar to have his future rulings reviewed by Assistant Secretary Muldrow. Mr. Sparks were at all sensitive he would have resigned long ago. He has stood more public snubbing than any other public official in this country within the memory of man, but he still clings to his office and keeps on making rulings that are certain to be reversed as soon as they can be reviewed by his superiors. Secretary Lamar would be very glad to get rid of him, but Mr. Sparks has little taste for private life, and he will probably stick to it as long as he can. — *Denver News*.

\$30,000,000.

It is conceded by the best posted stock men of the range country that the good fight waged by the range live stock papers has had the effect of increasing values at least \$2.00 per head. This means in round numbers thirty millions of dollars, and furnishes an unanswerable reason why cattlemen should stand by the papers that are making the war in their interest. The stockmen ought to know, if they do not know it, that they are utterly powerless to break down the combinations that have throttled their business, without the aid of their live stock papers. Nobody cares how much they swear and roar about the lobbies of the hotels. Such outbreaks may relieve their accumulated indignation, but they will not increase the price of beef. A telegram elsewhere in the *Range Journal* shows what newspapers can do. — *The Range Journal*.

One or more train loads of western Texas stock cattle, partially graded; cows and calves \$22.50; dry cows, two-year-old heifers and two-year-old steers \$16.00; yearling heifers and steers \$11.75; delivered at Albuquerque or at any other railroad point in New Mexico or Arizona at proportionate prices. G. L. Brooks, Manager, Socorro, N. M.



Thoroughbred and High-Grade

NEW MEXICO RAISED

HEREFORD BULLS

FOR SALE BY

FRANCIS CLUTTON,

CIMARRON, - - - NEW MEXICO.

I am prepared now to make contracts for spring delivery, and invite correspondence, or personal inspection, by intending purchasers.

Work for Protection.

Legislation is going bravely forward at Washington for protection against pleuropneumonia, but remember that the men standing there representing the cattle interests and who are battling against error, bigotry and malice which would deprive the stock interests of a just protection, demand as this time more than ever the unqualified support of every western cattle raiser, who should see to it that the extreme urgency of the situation is brought to the attention of every congressman. Don't lag in the work until congress grants the petition of the stockmen for the best safe guard to be thrown about the herds. Quick, intelligent work is a power in the control of an extensive industry. The day of extreme depression for the cattle grower will have passed away for years just as soon as the protective and propelling forces are set into motion, to relieve the pressure that has borne cattle raising to the earth.

Pooling of Freights.

Below is the clause in the Cullom interstate bill which is of vital interest to western stockmen:

That it shall be unlawful for any common carrier, subject to the provisions of this act, to enter into any contract, agreement or combination with any other common carrier or carriers for the pooling of freights of different and competing railroads, so as to divide between them, the aggregate or net proceeds of the earnings of such railroads or any portion thereof; and in any case of an agreement for the pooling of freights aforesaid, each day of its continuance shall be deemed a separate offense.

The Chicago Market.

From the Chicago *Live Stock Review* of the 18th inst, we take the information that the market there for cattle, for the week ending the 17th, was more favorable to the selling interest than were any of the half-dozen that immediately preceded it. The *Review* accounts for the favorable change on more assuring cable advices and less of depression in the eastern market, but thinks the prime cause was the fact of greatly diminished receipts, the receipts being nearly 6,000 less than the previous week, and more than 10,000 head less than for the week ending December 4th. Improving prices are looked for after Christmas. Common to extra shipping steers are quoted at 3.25@5.00, stockers at 2.15@2.75 and cows at 1.50@3.00. Butchers' and cannery's stock has moved up about 25c, and stockers and feeders 10@15c.

A Fine Painting.

THE STOCK GROWER office is this week graced with the presence of a beautiful work of art, a handsome painting from the brush of Mrs. Joseph Waddingham, who is rapidly acquiring an enviable reputation as an animal painter. The subject of the painting is a battle between bulls and masterly work is shown in every detail. The animals, one a fine Shorthorn and the other a scrubby longhorn, are meeting in a charge—savage passion glances from their distended eyeballs and the angry froth streams from the mouths. The attitudes, shading and expression make these principal figures strikingly lifelike and attractive, and the background and grasses are true to New Mexico landscapes. The picture is large and will be a valuable parlor ornament for the purchaser.

The Best Paper in the west. THE STOCK GROWER. Subscribe now and get a premium.

THE STOCK GROWER.

ISSUED WEEKLY AT

LAS VEGAS, NEW MEXICO.

Office, Bridge Street, in Stock Grower Building.

THE STOCK GROWER COMPANY.

Subscribe on Price.....\$3 a Year.
Single Copies, Ten Cents.

ADVERTISING RATES ON APPLICATION.

Address all communications to THE STOCK GROWER, Las Vegas, New Mexico.

Only journal devoted exclusively to the stock growing interests of the Southwest. We give the cattle news of the range country.
Endorsed by every cattle association and representative ranchman in the southwest.

- Official Paper of the Pima County, Arizona, Ranchmen's Association.
- Official Paper of the Lincoln County Stock Association.
- Official Paper of the San Miguel County Stock Association.
- Official Paper of the Dona Ana County Stock Association.
- Official Paper of the Central New Mexico Stock Growers' Association.
- Official Paper of the Canadian River Live Stock Association.

Copies of this paper for sale by

WM. LONG, St. James Hotel, Kansas City.
ASTOR HOUSE NEWS STAND, New York City.
S. H. PARVIN & SON, Cincinnati, Ohio.
OTIS TURNER, El Paso, Texas.
Copies of the STOCK GROWER are on file at the American Exchange 449 Strand, London, and American Exchange, 35 Boulevard des Capucines, Paris.

SATURDAY, DECEMBER 25, 1886.

Mr. H. H. PIERCE has sold his interests in THE STOCK GROWER property to J. D. Warner and R. F. Hardy, of this paper.

WHAT protection will the range country receive if the commissioner clause of the Miller bill becomes a law in the pleuro-pneumonia bill, now before congress?

THE Miller bill introduced in congress giving over the live stock industry of the country to three commissioners, in whom the power shall absolutely rest to regulate all matters for the extirpation of bovine diseases, is meeting with fierce opposition from the western cattlemen.

THE Cattle Growers' yards at west St. Louis have already been offered the advantage of co-operating with the Baltimore & Ohio Railroad company, the entire Pennsylvania system, the Chesapeake & Ohio and other trunk lines, in beef shipments from St. Louis to the east.

THE railroads which have been shut out from the carrying trade of range cattle by the dressed beef monopoly and Chicago influences, are arranging a schedule of tolls in connection with shipments to the west St. Louis yards, so that the range producer can ship his steers, if he chooses, to far eastern yards without having to pay for freightage and charges half the value of the animal, as is now the case.

If there is one thing more than another which pleases the southwestern cattle raiser in the closing days of the year 1886, it is the fact that a way has been opened for him to free his business from the damnable influence of the Chicago fellows. The range stock yards at west St. Louis will be operated by rangemen, not by the Chicago crowd. Two buyers only will not make prices in those yards for range cattle.

THE rangeman now knows why he has yielded up \$15.00 per head on all steers marketed the past year. The great market of Chicago has but three buyers, the Kansas City market two buyers and the National yards at east St. Louis but one buyer for all western cattle. Six buyers, under the direc-

tion of four men, have played the "combine" game with the entire west, and won in every hand.

NOTHING that has occurred the past two years among western cattle raisers has, perhaps, been of greater importance or will have greater and more lasting effect on the plains cattle industry, than the quick action which has been taken in the organization of the cattle growers' stock yards at west St. Louis. The range country shows by its enthusiastic adoption of the project that it is ready as one man to defend its industry from any foe that assails it.

JULY 1, 1887, will find the rangemen's stock yards at west St. Louis ready to receive cattle and stock of all kinds and buyers in attendance there to take whatever number of cattle may be offered. The Chicago syndicate will not be able to set prices for that market. It will be governed solely in the interests of the raisers of beef and other meat products. Every cattle raiser in the range country, who has not already done so, should disabuse his mind of the notion that the Armour crowd will have any control whatever of the west St. Louis yards.

THE men of eminent gall, whose abiding place is Chicago, and whose hands have been in the pockets of the beef producers, tightly grasping their earnings for the past two years, ask the rangemen, like Boss Tweed, "What are you going to do about it?" To the men who have made five quarters in dividing up the beef product, giving to the producer the fifth quarter, or the internal economy of the animal, it may be said in language that is plain, that from the beginning of the year 1887 the cattle raiser will make preparations to so divide the animal as to make two halves equal to one whole.

A KENTUCKY man writes to this paper asking it to publish a "send-off" for one of his horses (he distills whisky and breeds trotters) and says if the notice attracts attention he will advertise and take the paper. Now does not this look like a cheap way to secure valuable advertising free of cost? This case is only mentioned to show an instance of the trouble a large and growing class of people take to get advertising for nothing. Newspapers themselves are to blame for this noble army of duffers. Not a week passes but what we recognize the old, familiar puffs in the columns of our contemporaries—literally advertisements for bull peddlers, horse dealers or machine sellers who never advertise a dollar's worth in the world. The howl of stinginess is often raised by these free advertisement seekers, but there is no level-headed, business man who does not understand that a newspaper's advertising columns are its stock in trade, and no square man that has anything to sell will try to advertise it without cost. We get lots of letters from eastern gentlemen who have axes to grind and want THE STOCK GROWER to turn the handle free of cost to them. We don't want any of this kind of business. THE STOCK GROWER has a large list of liberal advertisers to whom it would rather give free notices than to do the charity act for the cheap John brigade, who don't know exactly which they think most of, a dollar or their right eye.

The activity now seen among Arizona cattlemen in all matters touching upon their industry is most cheering. They have realized as completely as any men could, what virtue there is in agitation and personal effort to secure a neces-

sary progression for their business and protection as well. Earnest, well attended meetings have been held recently by the Southwestern associations, and the quality of work there done indicates that the cattlemen of Arizona are not behind their brethren in other parts of the range country in a keen interest in all agencies which will benefit them that are of a common importance. The spirit of independence and the desire to take a hand in the general work now going on for the good of the industry were never so apparent among our western neighbors as now. They propose to remove some of the mountains that have impeded their progress hitherto, and what is better have set about it in good shape, as our columns detailing their work elsewhere show. The Arizona cattlemen have had theorizing enough. They will now work out their own salvation.

IT IS WARMLY APPROVED

President Head, of the International Range Association, in a letter to THE RANGE JOURNAL, on the 15th inst., corrects the impression which has obtained footing in a few localities in the west that the International Range association is the projector of the agency now established at west St. Louis to wipe out some of the evils against which the western cattleman has to contend. He feels that the meritorious and in every way praiseworthy work which has been inaugurated in the plan of the cattle growers' stock yards is in no way imperiled by the fact that the constitution and by-laws of the International association precludes it from becoming the promoter of private enterprises, and as expressing the almost unanimous sentiment of the west in the important step now taken for the benefit of the range cattle owners, he says:

In justice to the proposed movement, however, and to those gentlemen who are so zealously engaged in its prosecution, we desire to add that the project and its projectors have the approval of a large number of western cattlemen, and that their future movements toward the consummation of the proposed plans will, no doubt, be viewed with satisfaction by numerous plains stockmen as a partial deliverance from evil.

THE GIANT EVIL.

It is reported in the inner circle of the beef eyed quartette that one of the members of the gang has just paid out \$350,000 to secure a certain line of trade. In other words, he has laid out a fortune in order the more tightly to tie the producer to the rear end of the dressed beef chariot which is recklessly driven over the \$600,000,000 invested in the plains cattle industry, thus trampling down and destroying its rightful annual revenue. No one should delude himself with the notion that there are a multiplicity of evils affecting the cattle industry of America, any one of which is as injurious as the work of the syndicate fellows. Such notion is not in harmony with the facts of the situation. These men who have laughingly pillaged the fairest industry on earth and whose hearts are set on further despoilation, who have grown powerful in wealth, who stand at the entrance of every cattle ranch and seize with iron hands one half of the herd, represent the giant evil of western cattle raising. All other agencies of harm are minor forces as compared with them. Conquer this demon and all other evils will fade into insignificance.

THEY ARE BLUFFING.

The syndicate say they will spend \$10,000,000 to defeat the building up of the rangemen's stock yards at west St. Louis. The centralizing of the power of the cattle producers in a market where robbery cannot prevail, where competition in the purchase of the range product will be had

on the freest scale, where the fundamental laws of supply and demand will be respected and where the gentlemen of the Chicago ring cannot practice their iniquities and will find no footing, has made the gilded four swear by all the gods that the plan of self-protection inaugurated by the cattlemen must be wrecked. Though the men who would break down the huge wall of defense now being erected by the western cattle raisers are hundred plated millionaires, the brave work will go on and the six hundred millions invested in western cattle raising will be protected from their rapacity. The ten millions they are reported as willing to spend in tripping up the cattle growers can be more profitably employed in some other direction. THE STOCK GROWER suggests to the syndicate that as they are occasionally found in a charitable mood, they should lay out their money in trying to secure for themselves a quiet nook in that land where the palm gives a quiet shade, the streets are supposed to be golden, and roast beef is never overdone by a too excessive heat.

THREE COMMISSIONERS.

The Miller bill, which was introduced in congress on Monday last, for the suppression of contagious bovine diseases and which in some of its features will merit the approval of the live stock interests of the country, especially in the amount of the appropriation called for with which to carry forward the work of extirpating disease, is found to be objectionable in that portion of it asking for the appointment of three commissioners. These commissioners who are to be invested with authority sufficient to control the entire industry in times of infection and disease of the herds, are to be paid \$5,000 each annual salary, and to have the service of a secretary at government expense also. The drafting of a bill of this character in which the power of the bureau of animal industry is cut off is meeting with unfavorable comment from many prominent cattlemen. It is believed that the power of the bureau should be enlarged and all matters having reference to the regulation and control of contagious bovine diseases left entirely in its hands. The wiping out of one board which has proved its effectiveness and usefulness in its own field of effort and the creation of another at this time is hardly such a wise move as to commend itself to the best sense of the cattle raisers; and THE STOCK GROWER can see where a powerful influence will be thrown against the bill, which may be the cause of defeating it unless it is so amended as to preserve to the country the functions of the animal industry bureau and thus give to that bureau a broader scope in which to exercise its powers, which the appropriation called for makes possible. The three-man power is the feature of the bill that frightens the cattlemen.

THE MILLER BILL UNPOPULAR.

Press dispatches from Denver under date of the 22nd inst. say that R. G. Head, president of the International Range Association, in an interview today expressed himself as being in favor of enlarging the powers of the bureau of animal industry, in preference to securing the passage of the bill for the suppression of contagious cattle diseases, introduced by Senator Miller, of New York. Colorado cattlemen sustain Mr. Head in this view. Telegrams from numerous sections of the range country to the Colorado association are to the same effect. Mr. Head has mailed letters to the secretary of the treasury asking him to prohibit importation of cattle from countries where bovine diseases existed.

JAMES H. CAMPBELL, Manager,
Union Stock Yards, Chicago.

D. L. CAMPBELL, Manager,
National Stock Yards, East St. Louis, Ill.

G. W. CAMPBELL, Manager,
Kansas City Stock Yards, Kansas City, Mo.

JAMES H. CAMPBELL & CO., Live Stock Commission Merchants,

SUCCESSORS TO ANDY J. SNIDER & CO. AND CAMPBELL, LANCASTER & CO.

Offices, Rooms 23 and 24, Exchange Building, - - - - - Kansas City Stock Yards, Kansas City, Missouri.

Consignments Solicited. Correspondence Promptly Attended to, and Markets Furnished by Mail or Wire, on Application.

The Pain of the Cowboy.

Oh! 'tis the cowboy of legend and story,
Who on the back eastern youngster so greatly
admired;
The slaughter of pilgrims is ever my glory,
And few have escaped when they drew out my
fire.

A crowd of my bronchos I speed o'er the prairie,
A terror to all whom my daring behold,
I defy any civilized constabulary
And all vigilantes the country can hold.

As free as the proud soaring bird of the ocean,
I skim on my way over mountain and plain;
And no man dare make the least treacherous mo-
tion
That he lives for a minute to do it again.

The joys of existence I don't claim forever—
Some day I must mizzle like other galoots;
But the "Old Boy" will be most devilish clever
If he gets me laid out while I stand in my boots.

When I'm roped at the round up of judgment
eternal,
And scalded in a furnace forever to dwell,
I'll be able to show them some capers infernal—
I won't be a tenderfoot rooster in hell—
Weekly.

The Time to Act

Every disbeliever, almost to a man, now admits that the dreaded scourge, contagious pleure pneumonia, has obtained a foothold in certain localities in the United States to an alarming extent. Those of our live stock breeders who have awakened to the urgency of the case are making efforts to obtain legislation adequate to arrest the progress of the disease. Meetings and conventions have been held in the past few weeks to feel the pulse of the cattle grower, obtain his views and secure his aid hence and support in a grand effort to be made at Washington for justice and protection, relating to the vital subject of the health of the animals upon which we subsist. While a few associations are working vigorously and earnestly in the cause, yet they are but a mere handful compared to interests at stake. Numerically they are but a drop in the bucket in this great cattle growing land. At the recent convention of the Consolidated Cattle Growers of America, held in Chicago, a committee of representative men was appointed to proceed to Washington to seek the desired legislation. In a few days that deputation will present their claims on behalf of the most important of American industries. There is not a live stock breeder, be he ever so small, that is not directly interested in the work assigned to Messrs. Smith, Ames, Washburn, Tower, Sturgis, Coffin, Alvord and Lloyd. These gentlemen go to Washington armed with authority to act for and represent the cattle and other live stock interests in the United States. It must not, however, be supposed that they will meet with opposition and obstacles in their efforts to secure needed legislation. While President Smith and his associates are prosecuting their labors at the capital, it is the duty of every live stock grower, yes, every consumer of meat, to assist in every possible way, and give a helping hand to those at the helm in obliterating the cloud that at present overshadows our land. The time is at hand when it is the duty of every American citizen, whatever his occupation, to agitate this important national question. Talk it up, write it up, hold meetings, and, above all, instruct your representative in congress. The men chosen for the task of securing for the live stock breeder his legitimate rights are not only deeply interested in the movement, but are men of known ability and integrity, and are possessed of a thorough knowledge of the requirements of the people. This committee, collectively and individually, have labored strenuously in the past for the enactment of laws that would place the health of the American live stock beyond suspicion.

In this struggle for justice let every voter make it his business to personally and promptly address his representative in congress, advising him that he is expected to actively further the efforts of the committee above referred to.—*St. Paul Farmer.*

1,500 head of the best grade of Chihuahua cattle rounded-up and ready for shipment, consisting of 1-3 cows from three to six years old, 1-3 two-year-old heifers and 1-3 yearling heifers delivered at Albuquerque at \$12.50 per head. G. L. Brooks, Manager, Socorro, N. M.

Roots for Stock

It is during the winter when there is no supply of green food and not a great variety of dry, that roots can be made to be of the most value to the farmer; and especially when there is but a small variety of even dry feed. While no doubt we can secure a good, steady growth if we have a good supply of good corn, well cured and nice fodder, and a good quality of hay, if comfortable quarters are provided and they are fed a sufficient quantity at regular times, and a good supply of clean water is given, there is but little danger of stock falling off, but they can be kept gaining. But it is sometimes an important item to feed economically as well as to secure a steady gain, and while corn and hay are very valuable feeds and will always be regarded as the principal reliance for stock feeding, I always like, for two reasons, to furnish a variety, one because it is healthier, and the other because it is generally more economical.

Stock when fed upon the same kind of food each day are sure to somewhat tire and need a change in order to keep them in a good state of health. And I know of nothing that is as cheap, or that will answer the purpose so fully as roots—mangel wurtzels, parsnips, carrots, artichokes and turnips. All can be raised cheap, they yield a good crop if given a reasonable rich soil and thorough cultivation; nearly all this work of cultivation can be given with a cultivator. They can easily be stored in dry, frost-proof cellars, or be pitted away if sufficient covering is given and good drainage secured. They can be fed in connection with grain or hay, or one meal a day can be exclusively of them. If this is done it should be either in the morning or at noon. I prefer to feed corn at night in preference to any other single meal a day; that is, if only one meal a day of corn is to be fed, I prefer that it be given at night. If you are wintering over so that all you care to do is to keep them in a growing condition, this plan of feeding will answer every purpose and at the same time be healthy and economical. And the later in the winter the more important they become.

I do not wish to be understood as opposing corn as a feed. Its value is so important to be underestimated. But when we are wintering over quite a number of stock it is sometimes quite an object to feed as economically as possible, especially if the same growth can be secured. Stock relish roots and they in a measure make up for the lack of green food during the winter. They avoid the objection of feeding so long upon one or two kinds of feed, and by combining with grain and hay can be made to furnish a variety that will prove very desirable.

Sheep, cattle, horses, and hogs can all be benefitted and a greater saving in the cost be made, than if you are obliged to feed exclusively on corn or hay, or at least this has always been my experience.—*Broeders' Journal.*

What True Merit Will Do.

The unprecedented sale of *Boschee's German Syrup* within a few years, has astonished the world. It is without doubt the safest and best remedy ever discovered for the speedy and effectual cure of coughs, colds, and the severest lung troubles. It acts on an entirely different principle from the usual prescriptions given by physicians, as it does not dry up a cough and leave the disease still in the system, but on the contrary removes the cause of the trouble, heals the parts affected, and leaves them in a purely healthy condition. A bottle kept in the house for use when the diseases make their appearance, will save doctor's bills and a long spell of serious illness. A trial will convince you of these facts. It is positively sold by all druggists and general dealers in the land. Price 75 cents, large bottles.*

A ranch for 1000 head of cattle, good grass, located near Socorro, N. M. Price, \$800.00. G. L. Brooks, Manager, Socorro, N. M.

Drunkenness Cured by the Acme Remedy.

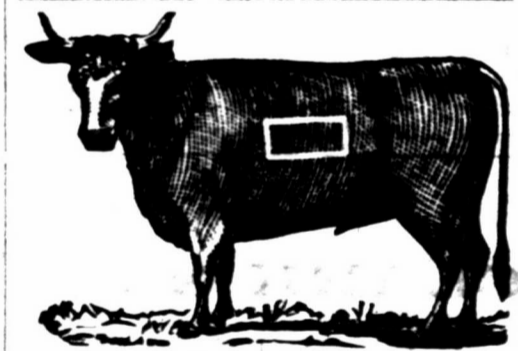
A simple and inexpensive treatment that takes away the appetite for alcoholic stimulants, and an antidote for morphine, tobacco and other narcotics.

It never fails. It can be taken at home, or given in food or cooling drinks. Send for circulars and testimonials.

Ask your druggists for it, or send us one dollar and receive a package by mail, secure from observation.

ACME CO., Drawer C, Kansas City, Mo.

SOUTHERN COLORADO.



George W. Thompson.

P. O. Address: Trinidad, Colorado.
Ranches in western portion of Las Animas county, Colorado, and eastern portion of Colfax county, N. M.

Some branded same as above on right side.
Some cattle in the following brands on either side or hip: **WI HH TI** Various ear marks.

Additional Brands:
N—**N** on right or left side. **X** on left side and hip. **X** on left jaw. **N+N** on right or left side with **N** on right or left hip.
Various ear marks.
Horse brands, **N** on left hip and **N**— on left hip.
Horses also branded same as on above cut, but smaller, on the left shoulder or left thigh.

New Haven Cattle Company.

W. W. THOMPSON, Foreman.
P. T. BRADLEY and C. K. DEWELL, Assistants.
Postoffice, Trinidad, Colorado.
Range, Lower Apishapa.
Brand as here given.
Ear marks, under half crop to left.
Horse brand same as cattle brand.

Lane & Murray.
P. O.: West Las Animas, Colorado.
Range, Fort Lyon to Mud creek, Colorado.
Ear marks, underslope and underbit each ear.

Additional Brands:
Triangle on jaw. **10** left loin. **V** right side.
Pd left side. **FS** left side. **22** left side.
Horse brand, **HL** (connected) on left shoulder.

SOUTHERN COLORADO.



A. D. HUDNALL.

Postoffice, West Las Animas, Colorado.
Breeder of Hereford cattle. North side Arkansas river, Bent county, Colorado.
Ear marked, swallow fork left ear.

Additional Brands:
□ left side, **—** left thigh; under back in each ear.
V left shoulder, **V** left side, **V** left thigh.
VV left side. **V** left hip.

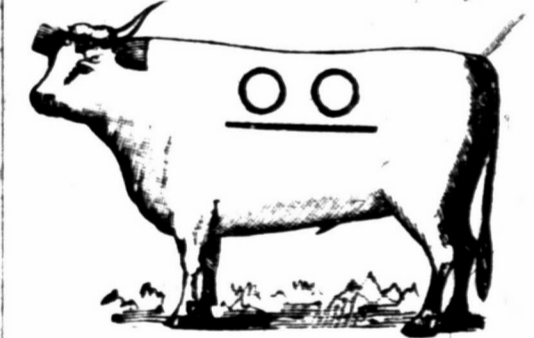
KANSAS.

Watson & Fullington.
P. O.: Greensburg, Edwards county, Kansas.
Ranch headquarter camp Willow Bar, on Cimarron river, Neutral Strip.
All increase branded as in cut.

Ear marks, upper and lower bit left ear.
Additional Brands:
55 10 WK P TH TH W W K
Horses branded **TWT** on the left hip.

T. B. Porter.
P. O.: Lakin, Kansas.
Range, on the Cimarron river, Seward county, Kansas.
Ear marks, split left rop right.

NORTHWEST TEXAS.



O. J. Wiren.

Cattle Raiser and Dealer.
Postoffice, Colorado, Texas. Ranches in Fisher and Kent counties.
Horse brand, circle bar on left hip.

Lee-Scott Cattle Co.
P. O.: Tascosa, Texas.
Range, Oldham and Hartley counties, Texas; and San Miguel county, N. M., on the Canadian river.
Horse brand **LS**, **S** or **J** on the left hip.

Additional Brands:
LS both sides; marked, crop and split both ears.
↔ left side; over both sides; crop and half crop, under bit left.
⊕ split right and split the left.
⊕ both sides; split each Also, **V A H** all on the left side.
GM left side; marked, underslope each ear, all steers.

In addition to the reward offered by the association, we will pay a reward of one thousand dollars for the conviction of any one stealing, butchering or illegally branding any of our stock, or marking any of our calves.
LEE-SCOTT CATTLE CO.

Fresnall & Mussey.
P. O.: Fort Stockton, Texas.
Range, Comanche creek and Pecos river, Texas.
Ear marks, sharpen left ear.
Horse brands **⊕** on left hip.

Arizona Speaks:

A thinking stockman of Arizona writes a sensible letter on the subject of pleuro-pneumonia, to the *Arizona Citizen* as follows: "The ravages of pleuro-pneumonia among the cattle in the infected districts show some very alarming characteristics, and there are good reasons existing for apprehensions felt by the cattlemen in the west for the safety of their herds. The step now being taken by the stockmen of this country are not only timely but they are imperative if the great impending danger that menaces their interests is to be successfully warded off. Indeed, in face of the peculiar and slow development of the disease no complete measure of safety can be secured unless an absolute prohibition of the importation of cattle from infected states be enforced. The emergency demands heroic measures, and it is not now a question involving a nice distinction of interstate commercial relations, but it is one of life or death to one of the leading industries of the great west. When a raging fire threatens the complete destruction of a city the law recognizes the right and propriety of razing intervening buildings by explosives to check its mad course, and valuable property is sacrificed to save other property from destruction. The principle applies with equal force to the ravages of pleuro-pneumonia among cattle. It sweeps with like fury and unerring certainty across the broad country, blighting every animal in its path and reaching out in every direction. To protect those not yet affected, but yet threatened with destruction, demands such extraordinary measures as the exigencies warrant, which are, complete isolation. Our quarantine against those states infected with the disease must be absolute and effective until all danger is passed. The disease is steady and insidious in its development, but it is as certain as death itself. One animal infected will pollute a thousand herds if given the opportunity. Whenever it drinks or grazes or mingles with others of its kind it leaves the fatal infection, and these germs develop and multiply in the previously healthy animal for three months before its full effect of the disease is shown. In the meantime, the animal is regarded as free from taint and is permitted to mingle with others, where it perpetuates the disease like little leaven that leaveneth the whole loaf. Its worst feature is its hidden and insidious development that defies detection until the dreadful climax is reached. A man may import an apparently health animal to his herd that has been exposed to the disease, and for three long months it will industriously spread the contagion, until it suddenly dies in a mysterious manner possibly unnoticed. In due time one after another of the animals will drop off until the whole herd, becomes victims to the imported poison, and the very atmosphere is rank with its germs and redolent with the effluvia of decay. These peculiarities make the contagion very difficult to combat and nothing but untiring vigilance and the most rigid enforcement of quarantine laws will successfully cope with the terrible malady. We hope our cattlemen will succeed in securing such protection as the case demands, and that they will prevent the introduction of the dreadful epidemic among the vast herds of Arizona.

At the meeting of the stock yards men in St. Louis last week, Mr. L. A. Allen, of Kansas City, made a vehement address. He declared that the cattlemen were being jumped upon from all points. First they are proscribed from proper privileges on the reserved lands of the United States. Then the government shows itself willing to saddle a lot of cormorants on the interests of ranchmen, who could, if they desired, with one swoop wipe out of existence millions of dollars of property. Next, the railroads jump up and slash on exorbitant rates for transportation to seaboard points, and, as if this were not enough, again the government comes to the front and issues the mandate that a most important industry, the manufacture and sale of oleomargarine, should be taxed. Where is all this to end? he asked.

Subscribe for THE STOCK GROWER, the best paper in the west. Three months for 25 cents.

A Good Investment.

Cattlemen as a rule are not disposed to put their money into anything but cattle. They say that they understand the cattle business, have made their money in it, and do not care to try new projects with which they are not familiar. This well-known characteristic of stockmen leads to the belief on the part of a great many people that it will be difficult to induce rangemen to take stock in the proposed stock yards at St. Louis. We trust that the cattlemen will not be so blind to their own interest as to permit the control of these yards to be in any hands but their own. Success to their business is not the only reason of securing the property to themselves, they should be willing to recognize the fact that all the stock yards of the country are the very best dividend-paying investments to be found. The stock subscribed is not in any sense a donation, it is an investment which will doubtless pay better than a like amount in cattle or ranch property.

Col. R. D. Hunter, who is universally esteemed by western stockmen, writes to the *Range Journal* that the underlying purpose of the scheme is to keep the yards in the hand of the beef producers of the country, and if the controlling interest is not held by them, it will be, because they are too pig-headed to take advantage of an opportunity to protect themselves from robbery and extortion.

The Chicago yards, which cost a million and a half of dollars, pay dividend on thirteen millions, which shows the profitable nature of the investment. There can be no doubt but that the new yards will pay a very large profit on the amount honestly used in their erection.

In short, the cattlemen are asked to divert a fraction of their capital to an enterprise which is a necessary branch of their business, and no man who makes cattle raising a business can truthfully say that he cannot take some stock in the cattlemen's yards.—*The Range Journal*.

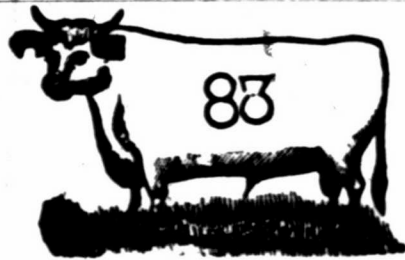
History does not record a failure of a movement of the kind which the cattlemen have begun for relief from the tyranny and oppression they have suffered at the hands of the dressed beef ring. Such iniquitous combinations have been organized before and for a time have flourished, but when the pent-up indignation of the oppressed once breaks forth it never fails of success. The cattlemen have enlisted for the war and they will not surrender a single point at issue. They intend to have just compensation for their labor and will submit no longer to organized robbery. The Chicago syndicate must go.—*The Range Journal*.

DICK DUTCH,
WITH
CLARK & CO.
Hatters,

524 Main Street,
KANSAS CITY, MISSOURI.

A complete line of *Stetson's Hats* for stockmen.
Send statement of size worn, and hat will be sent by express, subject to approval.

ARIZONA.



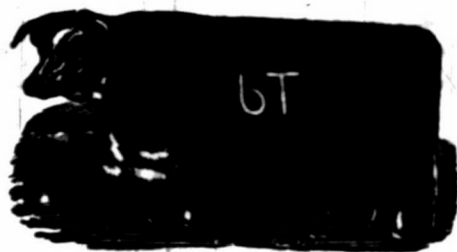
Santa Rita Cattle Co.

ISAAC N. TOWN, Superintendent.
Postoffice, Nogales, Pima county, Arizona.
Range, Santa Cruz river, Pima county, Arizona.
Calves of 1886 and imported bulls are branded same as cut on left hip.



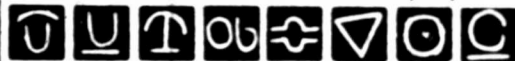
A. L. Morrison & Sons,
P. O.: Springerville, Arizona. Home ranch, Mamie creek, near Escadilla Mts.
Ear marks, underslope right, crop left.
Horse brand, same as cattle, on right hip.

ARIZONA.

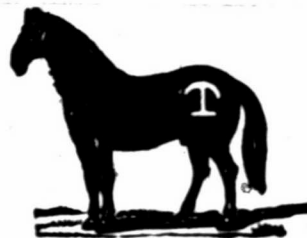


Cameron Brothers.

P. O.: Lochiel, Pima county, Arizona. Telegraph and Express office, Crittenden, on the New Mexico and Arizona railroad.
Range, on the San Rafael de la Zanja Grant.
Ear marks, right cropped, left slit.
All cattle in the quarter-circle U brand are marked underslope the right, swallowfork in left. Cattle also marked with two dewlaps.
Horse brand, like cut on either thigh.
All mares are branded like cut on either hip.



Also own the following brands, kept up:
We will pay \$100 reward for the arrest and conviction of any one unlawfully handling any stock in this brand.
No power of attorney given to anybody.



Harry K. Hildebrandt.

P. O., Lochiel, Arizona.
Range, Cienciga, Joaquin, Antelope and Bear Creek valleys, of the West Huachuca.
Mares branded on either hip.
Horses on left hind leg and thigh.
Cattle on both sides or hips.



Aztec Land and Cattle Company.

HENRY WARREN, General Manager.
Post office address: Holbrook, Arizona.
Range, Apache and Yavapai counties.
All cattle branded same as cut on both sides.
Horses: on right and some on left shoulder, also flank.
Whoever handles these cattle without authority will catch hell.



Jones & Wren.

P. O.: Duncan, A. T. Range, Gila river, A. T.



William Curtis.

WOODS & POTTER, Managers.
Post Office, Woodruff, Apache County, A. T.
Ear mark: crop right over bit left.
Horse brands: on left thigh, on left hip.



Gardiner, Gillies & Wilmerding.

P. O.: Navajo Springs, Apache county, Arizona.
Range, Deer and Cedro Springs, Apache county.
Ear marks, right ear is grubbed.
All cattle in addition to above brand, have an X on the left jaw.
Horses are all branded on right shoulder.

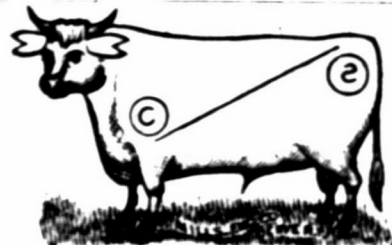
ARIZONA.

\$1,000 REWARD! I desire to call attention to my marks and brands for cattle, as shown in cut. I sell no stock cattle, and will pay \$1,000 reward for the arrest and conviction of any person or persons unlawfully handling cattle in the following brand and marks.



J. H. Hampson.

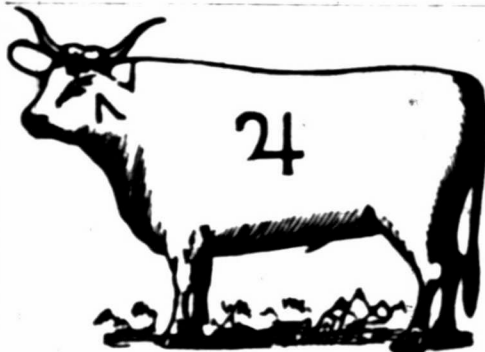
P. O.: El Paso, Texas. Ranch P. O.: Clifton, Arizona.
Range, on Eagle creek, Graham county, Arizona.
Ear marks, crop and split left, crop right.
Horse brand, on the left shoulder.



Milo A Smith.

P. O.: Springerville, Apache county, Arizona. Range, Escadilla mountains, Apache county, Arizona; and Johnson's Basin, Socorro county, New Mexico.

Other Brands: side, on left side and on left hip, on left side and on left hip.
Horse Brands: and also S in circle on the left hip.



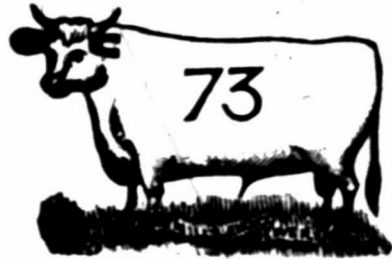
Smith, Carson & Co.

P. O.: Springerville, Apache county, Arizona. Telegraph and express office, Navajo Springs, Atlantic and Pacific railroad.
Ear marks: Crop off the left. Horses branded:



David Rope.

P. O.: Holbrook, Apache county, Arizona.
Range, Rope's ranch, four miles west of Holbrook, south of the Little Colorado river.
All cattle have two bars on left jaw, and are marked with a half under-crop in each ear.
Horse brand, XV on the left hip.



Maish & Driscoll.

Postoffice, Tucson, Arizona.
Range, on Santa Cruz river, south of Tucson, Pima county.
Horse brand on the left hip.



Hunings & Cooley.

Breeders and Importers of Thoroughbred and Graded Cattle.
P. O.: Show Low, Apache county, Arizona.
Horse brand, same as on cattle, on left shoulder.
ALWAYS mention the Stock Grower in writing to advertisers.

R. C. WHITE

ESTABLISHED 1871.

GEO. HOLMES

R. P. NEWBY,
Las Vegas,
Representative in New
Mexico and Arizona.

WHITE & HOLMES,

G. L. BROOKS,
Socorro,
J. W. VIRGIN,
San Marcial,
Representatives in N.
M. and Arizona.

Commission Merchants

Rooms 28 and 29, Exchange Building,

All Kinds of Live Stock

Stock Yards, Kansas City, Missouri.

No firm doing a commission business in Kansas City handles more New Mexico or Arizona cattle, or obtains better prices than ourselves, and we refer with pleasure to the many prominent shippers of New Mexico and Arizona who have done business with us.

LIBERAL CASH ADVANCES ON CONSIGNMENTS OF LIVE STOCK.

ARIZONA STOCKMEN

Aroused and Take Action Regarding Pleuro-Pneumonia.

A large number of progressive cattlemen met in the parlors of the Palace hotel, Tucson, at 7:30 o'clock, on Dec. 14, in response to a call for a special meeting of the members of the Pima County Ranchmen's association, to consider the matter of procuring quarantine legislation necessary to prevent the importation of cattle from states infected with pleuro-pneumonia.

Hon. Royal A. Johnson was chairman of the meeting and Brewster Cameron acted as secretary.

Several gentlemen present gave a detailed statement of the nature of the disease, a history of its ravages in other countries, etc. All persons present expressed the conviction that a three month's quarantine must be established and maintained against every state infected with pleuro-pneumonia. The secretary was directed to ascertain what quarantine laws the Territorial association of New Mexico would seek from their legislature. A resolution was also passed instructing the secretary to communicate with local stock associations in Arizona with a view of presenting to our legislature the importance of early legislation in the matter of contagious diseases. In this connection the secretary read a letter which he recently addressed to Mr. R. G. Head, president of the International Range association.

Resolutions were passed requesting Delegate Bean and Delegate-elect Smith to do all in their power to secure sufficient appropriations from congress to exterminate pleuro-pneumonia in Illinois and other infected states.

Upon request, the secretary read some interesting letters received yesterday from breeders of Red/Polled cattle. Ira S. Haseltine, of Rochester, Mo., made some remarkable claims for the Red Polls as range cattle par excellence, supporting his statements with the reports of fine stock shows.

Upon motion of Thomas Driscoll, Brewster Cameron was elected to represent the Pima County Ranchmen's association at the forthcoming convention of the International Range association, at Denver, on the 8th of February next, 1887.

A number of other important matters of more interest to the association than the public generally, were discussed. This was the largest and most enthusiastic meeting of the association held during the past two years.

Upon adjournment the members were invited to partake of a magnificent banquet.—*Arizona Star.*

Glad to See It.

The New Mexico and Arizona stockmen who visit our office, all ask to see our exchange copy of the **NEW MEXICO STOCK GROWER**. They say it represents the advanced sentiment of the stockmen of that region. Mr. Brewster Cameron, the genial and wide-awake young Arizona stockman, who is in San Antonio, says they are proud of **THE STOCK GROWER**.—*Texas Stockman and Farmer.*

Herefords for the Range.

A Midland county, Texas, correspondent of the *Breeders' Journal* says: "I have been a reader of your paper for some time. I am much interested in your fight for the recognition of the best range animal on earth, the Hereford. I have handled Hereford cattle for two years, and have during that time found that when its comes to rustling they have not only shown the ability to down the Shorthorns and other improved breeds of cattle, but they can successfully hold their own with our native Texas cattle, which have always been admitted to be the rustlers par excellence.

The winter of 1885, we had five Shorthorn bulls at the pens, and five Herefords. The Shorthorns were good average specimens of the Shorthorn; the Herefords were four registered ones, and a bull from old Success, but I cannot say if he is recorded. The Durhams were fed oats twice per day with all the cotton seed they could eat; the Herefords were fed once a day and sometimes not that, for whenever a bulling cow would come near the pens the Herefords invariably took out after her and would not return for two or three days, but Mr. Durhams could not be tempted to leave the sunny side of a corn crib by a herd of bulling cows whilst a norther was blowing, and would always be on deck at meal time with unflinching regularity.

In the following spring the Herefords came out fat, strong and hearty, and by March 1st were out on the range as busy as bees. The Durhams were also turned out, but they were far from being fat, in fact they were not even in good fix, and later in the season when hot weather set in, one had no trouble in finding out which breed of cattle, the Durham or Hereford, could stand the heat best, as the former sought the shady places in the pasture, and stayed there; but the Herefords kept on chasing cows all over the range, and seemed to mind the heat but little, and they just got about seventy per cent of the calves gotten. Last week I brought these same bulls home for the winter, and the Herefords after an unusually hard summer's work looked first-rate, the Success bull "Joe" being as fat as the steers are on the same range, (and cattle are in fine shape here at this time) whilst the Durhams looked like a good many bushels of "four-bit" oats will have to be pumped into them before they will be in half the shape the Herefords are now. I would like some admirer of Durham cattle as range cattle to notice the difference there is in the grade Hereford and the grade Shorthorn calf raised on the range, and if that don't convince him of the superiority of the Hereford I don't know what will.

The range raised Hereford calf of seven months is a big lusty fellow, with a beautiful red body and white face, whose sole object seems to be how big he can grow, and how fat he can keep, and he "gets there" too; whilst the grass raised Durham is a long haired, miserable fellow, who grows too, but mostly in length of legs and poorness, and who doesn't confine himself to the red color of his aristocratic Kentucky sire, but mostly catches on to the plebian brindle, black or yellow

of his Spanish mother; and it is from her that he inherits what few good qualities he has.

The day is coming when Texas will send out many a train load of white-faced steers, as Texas is a grass country from way back, and all that a Hereford wants is a trial and plenty of grass; given these he will be sure to please. This section is fast getting Herefordized, but it will take time, as there are lots of Durham cattle here whose owners are going to "wait and see."

Yours,
A. M. WHITE.

500 one and two-year-old New Mexico steers at \$12.50 and \$16.50 delivered at Magdalena, N. M. G. L. Brooks, Manager, Socorro, N. M.

Texas in Earnest for Relief.

The *Dallas News* in the course of an exhaustive editorial upon the coming cattle convention at Dallas in which it points out to the cattlemen the way by which necessary legislation can be secured from the legislature of Texas for the promotion of the stock interest, concludes as follows:

As to the important question of a quarantine law there can be but little difference of opinion on it. With the exception of Texas the western states and territories have quarantine laws, and their stringency is felt by this state. Pleuro-pneumonia can be brought to this state without restriction. The mere report that it has been introduced into Texas is sufficient to prevent Texas cattle being driven to states having quarantine laws. These states say to Texas: "We are protecting ourselves. You fail to do so, and you must keep your cows at home." But the greatest question which the convention will be called on to consider is that of transportation and sales. No local legislation will meet this. The railroads appear to charge as they see fit, and the buyers at the markets can now pool and put such prices on cattle as they see fit without reference to supply and demand. The question of how fair rates for shipment and fair rates for meat can be obtained is a knotty one, and the International association is rigorously agitating it. United action may accomplish something. Misdirected, desultory action can accomplish nothing. The stockmen must depend upon themselves in this. They must show determination. If the old markets are combined against them, new markets must be made and refrigerator establishments built. These facilities being secured nearer the stock country they will solve the other questions of how to avoid pooling in live stock in the matter of transportation. These few subjects are mentioned only to show the importance of the coming Dallas meeting. The stockmen are in earnest and in accord on many questions about which they have hitherto widely differed. From the January and other conferences it will yet come about that in a few years Texas beef will be slaughtered in Texas, Wyoming cattle in Wyoming and Chicago cattle slaughtered in Chicago.

1,000 head of well graded Angora goats in the d near Socorro, can be sold and delivered at once at very reasonable figures, G. L. Brooks, Manager, Socorro, N. M.

Consolidating Dressed Beef Companies.

New York advices say that it is proposed to consolidate the National Consumers' Meat company, of New York, the National Consumers' Beef company, of New Jersey, and the Western Dressed Beef company. Word came from New York last Thursday that "at a meeting of the Western Dressed Beef company held at No. 146 Broadway yesterday, about thirty stockholders, representing \$180,000 on the part of capital, were present. Oliver H. Teall, the president, resigned, and Morton S. Paton was elected president, the Marquis de Mores, general manager, and T. H. Powers Farr, treasurer. Mr. Teall has also resigned as president of the National Consumers' Meat company, of this city, and the vacancy was filled by the election of Mr. Paton. Mr. Teall was one of the promoters of both enterprises and the chief executive since the organization. Considerable dissatisfaction was found with his policy by the stockholders, and they bought out his interests. This afternoon, at a joint meeting of the stockholders, Ormond Hammond, Jr., of Baltimore, was elected eastern manager for both of the New York companies, and at a subsequent meeting of the New Jersey company, the Marquis de Mores was elected president. It is understood that the next step will be the organization of the new company. The three companies to be merged into one have an aggregate of \$600,000 capital, of which over \$400,000 is paid up.

500 or 1,000 head of western Texas yearling heifers, 2/3 and 3-4 bred none to be less than 1/2 bred, and the bunch to average 1/2 bred, delivered at Albuquerque, N. M., at \$14.00 per head. G. L. Brooks, Socorro, N. M.

Sized Up.

One trouble with cattle conventions is that the influence of men mixed up with them is gauged too often by the extent of their wealth in land and cattle, rather than by their wisdom or business sense; and a certain class of stock papers, owing to their penchant for playing boot lick to such men, are highly responsible for this. They force them into a prominence to which they are entitled by nothing save their wealth. Now, while many of the wealthy cattlemen of Texas and the west have big brains and big souls, and while proud to number them among our friends, some of the commonest scrubs we know, are men who had wealth thrust upon them by the land and cattle boom, and have barely intellect enough to realize that they are rich, to say nothing of how it happened. This is the class of men who are liable to make such breaks as was made at Weatherford last spring. They, moreover, despise the newspaper toady that licks their boots, and hate, with a holy hatred the independent newspapers that sizes them up for what they are. In other words, because of the papers that slobber all over them, and the papers that do not, they came to the conclusion that there is "too much cow business on paper."—*Texas Stockman and Farmer.*

THE STOCK GROWER.

LAS VEGAS, NEW MEXICO.

SATURDAY, DECEMBER 25, 1886.

PERSONAL.

Items of Interest Relating to Stock Growing People.

The *Enterprise* notes the arrival at Silver City of Harold C. Wilson, the owner of the celebrated W. S. ranch, near Alma, Socorro county. Mr. Wilson's home is Chesham, England.

R. R. Elder, forman of the Escaraba ranch, of the Capital Syndicate company, was in Las Vegas Tuesday looking over the field for the establishment of well drilling works at this point.

J. C. Leary, who has been at Denver during the week, had at work arranging for the coming meeting of the International Range association, on February 8th, the call for which will be seen in another column of this issue, returned to Las Vegas on Friday.

Lient. T. S. Munford, of the regular army, who is a large holder of the stock of the Cebolla Cattle company, of Valencia county, is now stationed at St. Louis. He sighs for the climate of New Mexico, but is reconciled to his present position so long as his herds increase and the prospect improves for better figures for beef on the range.

Hon. Brewster Cameron, whose heroic work during the past month in behalf of protection to Arizona cattle interests from the ravages of pleuro-pneumonia, is everywhere realized as being most valuable to the range cattle interests, will represent the Pima County association, of Arizona, in the International Range convention of February 8th.

M. Chapman manager of the Buckeye Land and Live Stock company, stopped off for a day at Las Vegas this week while on his way to his ranch near Deming from a visit to his old home in Pennsylvania. Mr. Chapman was accompanied by a handsome bride and seemed to be about as happy as most mortals ever get. The *Stock Grower* wishes the young cattleman and his wife a long and prosperous life in their New Mexico home.

Mr. A. Morton, manager of the Circle Cattle company, was a visitor to Las Vegas this week. He called on *The Stock Grower* and ordered the paper sent to W. H. Devine, of Nagasaki, Japan. This will be the first *Stock Grower* to go to the realm of the great Mikado and we feel sure that if the eye of that most illustrious monarch sees this paragraph he will at once remit to this office the sum of four yen to pay for a year's subscription to the best cattle journal in the country.

J. W. Bradford, of Hyde Park, Chicago, who has made extensive purchases of cattle and ranch properties during the past summer in San Miguel county, has completed the receiving and branding of his herd for the season and left for his home on Friday, where he will remain until spring. Mr. Bradford has bought nearly 3,500 head of choice cattle and feels that his investment is one of the best for safe and sure returns to be had in the territory.

James A. Alcock, manager of the Carrizozo Cattle company, stopped off a day at Las Vegas to see his many friends here. Mr. Alcock was on his way home from Kansas City, where he sold 640 good steers at \$3.05 for the tops. This is a good price for New Mexico steers the way the market has been this year. Mr. Alcock has a number of warm friends in Las Vegas, who are always glad to see him, and his record as a ranch manager is first-class.

A. A. Grant, who is heavily interested in cattle in New Mexico, and is now a large railroad contractor in California and Kansas, doing work on the numerous Santa Fe extensions, is spending a few days in Albuquerque. Mr. Grant reports that the Billings Land and Cattle company, of Arizona, of which he is a director, has tallied off an eighty-five per cent calf crop for the year 1886. Mr. Grant, like his friend Hampson, has faith in cattle and is an enthusiastic supporter of the new St. Louis stock yards, as one of the best plans yet inaugurated to bring about better prices for the product.

J. H. Hampson, the successful railway contractor, and well known cattleman, of Arizona, is now busily engaged in running roadbeds through Kansas and Illinois, building bridges and other similar work which requires the employment of 1,000 men and 300 teams. He has not lost faith in his Arizona investments, and proposes to hold steer stock until the influence of the Chicago syndicate is a *nil* quantity. Mr. Hampson views the movement of building range stock yards at St. Louis as one of the most important steps yet taken by the western cattle raiser to check the evils of monopoly, and will support the enterprise, by buying some of the stock when it is offered for sale.

THE STOCK GROWER is pleased to chronicle the fact of the appointment of Mr. John Tod, of Chase county, Kansas, to be manager of the Texas Land and Cattle company, limited, of Dundee, Scotland. Mr. Tod has the benefit of a thorough knowledge of the business of cattle breeding to aid him in his new position. His experience is gained by long and extensive stock breeding in the old country, supplemented by a thorough course of stock raising and handling in the United States. From his former connection with the Lee ranch in Kansas Mr. Tod made a number of friends in New Mexico, as he brought here and sold a considerable number of fine bulls this year. Mr. James Anderson, from the company's office at Dundee, Scotland, comes out to take the position of accountant and cashier to the company. The headquarters and office is now at San Antonio, Texas.

One or more train loads of western Texas stock cattle, partially graded; cows and calves \$22.50; dry cows, two-year-old heifers and two-year-old steers \$16.00; yearling heifers and steers \$11.75; delivered at Albuquerque or at any other railroad point in New Mexico or Arizona at proportionate prices. G. L. Brooks, Manager, Socorro, N. M.

Oklahoma.

Oklahoma is a rich and beautiful section of country in the very heart of the Indian Territory. It is watered by the Canadian and Cimarron rivers. An authority on Oklahoma gives the boundaries of that country substantially as follows: Beginning as a starting point at the northwest corner of the Creek nation, thence due west 100 miles to the Red fork of the Cimarron river, and sixty miles south from the Kansas state line and west of the 98th degree of longitude west from Greenwich, and on the 180th meridian; thence in a southeasterly course along the meanderings of said river to 98 degrees of longitude; thence due south to a point on the north side of the Canadian river; thence in a southeasterly course along the meanderings of said river to the Indian meridian; thence due north on the Indian meridian to the north fork of the Canadian river; thence southeasterly along the meanderings of said river to the west line of the Sac and Fox reservation; thence due north to the Red fork of the Cimarron river; thence northeasterly along the meanderings of said river to the west line of the Creek nation; thence north to the place of beginning. This country contains about 14,000,000 acres of land.

Soldier's additional scrip for surveyed and Sioux half-breed scrip for unsurveyed land, for sale by G. L. Brooks, Manager Socorro, N. M.

Pleuro-Pneumonia Must Go.

There seems to be but one sentiment among the progressive cattlemen of the west and that is that pleuro-pneumonia must go. Every stock meeting this fall of any note has passed resolutions urging congress to do something looking to the stamping out of this dreadful cattle contagion. And how our representatives in congress can remain deaf to the appeals of our stockmen, with the present lights before them we cannot understand. Nor do we think they will. The sentiment that pleuro-pneumonia must go is too unanimous. But politicians are slippery fellows and must be watched and made do their duty. We are inclined to think that with close watching and prodding from time to time our representatives in congress may be persuaded to do something for the cattle interest this winter. But this is the short session and urging should commence at once. Cattlemen in every township should at once gather together and express themselves in resolutions and forward them to their representatives in congress. — *Kansas City Record.*

Free Trade.

The reduction of internal revenue and the taking off of revenue stamps from proprietary medicines, no doubt has largely benefited the consumers, as well as relieving the burden of home manufacturers. Especially is this the case with *Green's August Flower* and *Boschee's German Syrup*, as the reduction of thirty-six cents per dozen has been added to increase the size of the bottles containing these remedies, thereby giving one-fifth more medicine in the seventy-five size. The *August Flower* for dyspepsia and liver complaint, and the *German Syrup* for cough and lung troubles, have perhaps, the largest sale of any medicines in the world. The advantage of increased size of the bottles will be greatly appreciated by the sick and afflicted in every town and village in civilized countries. Sample bottles for ten cents remain the same size.*

DICK DUTCH,
WITH
CLARK & CO.
Hatters,
524 Main Street,
KANSAS CITY, MISSOURI.
A complete line of *Stetson's Hats* for stockmen.
Send statement of size worn, and hat will be sent by express, subject to approval.

Prices of pure-bred, 15-16, 7-8, 3-4, and ordinary Angora goats, given upon application; also circular of information, estimates of expenses, profits, etc. G. L. Brooks, Manager, Socorro, N. M.

Notice.

LIBERTY, N. M., December 15, 1886.—No one is authorized to contract debts or make collections in my name without written order from me.
JOHN DEWAN.

International Range Association.
The annual meeting of the International Range Association will be held in Denver on February 8, 1887.

For shipping rates for live stock by the "Santa Fe Route,"

Apply to W. H. H. LIEWELLYN, Live Stock Agent.
Postoffice, Las Cruces, N. M.

Get a Tally Book
Before the supply is exhausted. More than 200 copies of this useful memoranda and tally book have already been sold and orders are coming in every day. Securely bound in leather covers with flap and pencil. Price one dollar, post paid to any address.
THE STOCK GROWER.

\$100.00 Reward.
Will be paid by the undersigned for the arrest and conviction of my brother, Cruz Gonsalez, who shot my father on the ninth of December, 1886, and escaped. He is about twenty years old, dark complexion, about five and one-half feet high, and has marks of small-pox on his face. Any person who will cause his arrest and apprehension, and let me know at once, will have the above reward.
PATRICIO GONSALEZ,
La Cima, N. M.

Water and Grass for Sale.
Water from a sixteen foot windmill with tank and trough, capacity of 9,000 gallons; will carry 800 head of cattle, with feed for 15,000 head. Believe that water can be got in unlimited quantities at a reasonable depth. Hundreds of square miles of government land with as good feed as there is in New Mexico, and not a hoof upon it; not more than 400 feet above the level of the Rio Grande in Socorro county; no snow; splendid place for a big company to locate. For particulars inquire of D. D. FIELD,
11-131 Carthage, Socorro County, N. M.

Meeting of Stockmen.
OFFICE OF THE CATTLE AND HORSE GROWERS' ASSOCIATION,
Las Vegas, N. M., Nov. 10, 1886.

It is respectfully requested that all stockmen of New Mexico, as well as members of the local associations, meet with the Cattle and Horse Growers' Association of New Mexico, at Santa Fe, N. M., on Friday, January 3, 1887, for the purpose of taking into consideration certain changes in the live stock laws of New Mexico, the law of January 1st and for the discussion of other matters of material interest to the industry. A large attendance is desired.
J. W. DWYER, President.
J. D. WARREN, Secretary.

Lost.
One bay gelding about fifteen and one-half hands high, eight years old, branded A over SA on thigh; one white gray gelding same age and height as the bay, branded US on the left shoulder and IC on left thigh and W H S on left hip; one brown or black mare, nine or ten years old, about fifteen hands, branded US on the shoulder and IC on the left thigh; and one light bay horse mule about same age and height, and branded same as the mare mule. These animals left my Red canon ranch, Socorro county, about the 8th inst. I will pay a suitable reward for their delivery at Powers' Red canon ranch, Socorro county, or at my ranch on the Rio Bonito, six miles west of Fort Stanton, or for information leading to their recovery.
Address A. E. POWERS,
Fort Stanton, N. M.

Notice—Aviso!
Section 2313. If any person shall willfully set on fire any woods, marshes or prairies so as thereby to occasion damages to any other person, such person shall make satisfaction in double damages to the party injured, to be recovered by civil action.

Section 2313. Si alguna persona maliciosamente incendiare cualesquier montes, campos o llanuras, de modo que ocasione perjuicio a cualquiera otra persona, tal persona pagara una suma no excediendo quinientos pesos, ni menos que cincuenta pesos; una mitad de la cual, sera para el uso del condado en el cual la ofensa fue cometida.

Section 2314. If and person shall set on fire any woods, marshes, prairies, whether his own or not, so as thereby to occasion any damage to any other person, such person shall make satisfaction in double damages to the party injured, to be recovered by civil action.

Section 2314. Si alguna persona incendiare cualesquier montes, campos o llanuras, ya sea suyo propio o no, de modo que por esto se ocasione cualquier dano, a alguna otra persona, tal persona hara satisfaccion en dobles perjuicios a la parte injuriada re-cobrados en una accion civil.

The Lincoln County Stock association offers a reward of \$100 for the arrest and conviction of any one violating the above sections to the detriment of any member of said association. La asociacion de criadores de vacas de condado de Lincoln, ofrecen un recompensa de \$100 para la aresta y conviccion de cada una persona que hagan mal contra las miembros de esta asociacion y contra estas secciones de las leyes del territorio.
H. MILNE, President.
JAS. J. DOLAN, Sec. and Treas.

NEW BRANDS.

Hilfeld & Leteber.
Postoffice, Las Vegas, N. M.
Range, Alamosas.
Also Chas. Hilfeld, I F E
H and I 50
Horse brand, same as cattle.


A. E. Powers.
Postoffice, Fort Stanton, Lincoln county, N. M.
Ranch P. O., Powers' ranch, Red canon, Socorro county, N. M.
Horse brand same as cattle, same place.

Other Brands:
B U K Crop and under half crop left, crop right
E U K Crop and under half crop left, crop and underbit right.
Both brands on both sides of animal.


NEW MEXICO.
The Counties under this heading are all in the Territory of New Mexico.

SANTA FE COUNTY.

Santa Fe Cattle Co.
W. C. BISHOP, Manager, Santa Fe, N. M.




This brand kept up.



Additional brands: FW A 44
Ranch twenty miles west of Santa Fe, N. M.

RIO ARRIBA COUNTY.

Chama Cattle Company
DERWENT H. SMITH, Mgr.
P. O.: Box 132, Santa Fe, N. M. Range, Canon le Chama grant.
Horse brand, same as cattle, only smaller.




Ear marks: Hone out of ear shaped with point of triangle toward the end of ear.

T. D. Burns.
P. O.: Tierra Amarilla, N. M.
Range, Canon Largo.
Brand on either side.

BERNALILLO COUNTY.

Jacobo Yrisarri.
P. O. Albuquerque.
Range, Truchera mountains.
Ear marks, over and under back in right ear.
Other brands same as cut.



Mariano Perea.
P. O. Bernalillo, N. M.
Range, La Jara.
Ear marks, swallow-fork left.

SIERRA COUNTY.

Grayson & Company.
P. O.: Los Palomas, Sierra county, N. M.
Range, Animas ranch, Sierra county.
Ear marks, under half crop each ear.
Horse brand, same as cattle but on left shoulder.



Additional Brands:
W O left side, 22 right hip, 22 right thigh, on the same animal.
left hip. Some have same on side.
22 right hip.

SIERRA COUNTY.

Sierra Land and Cattle Company.
 P. D. RIDENOUR, President, Kansas City, Mo.
 E. D. BRACKETT, Sec. and Treas., Kansas City, Mo.
 R. H. HOPPER, Vice-Prest. & Mgr., Kingston, N. M.
 S. S. JACKSON, Ranch Manager, Hillsborough, N. M.



Range, southeastern Sierra county.
 All cattle branded as in the cut, and have two bars under the tail on both sides.
 Horses all branded SLC on the left hip, as in this cut.



Henry G. Toussaint.

P. O.: Engle Range, near Engle, Sierra county, N. M.
 Horse brand, left hip.



Vent brand on horses under original brand .
 Other brands on cattle and horses: .
 Vent brand on cattle, same as on cut, but inverted and run on neck.

John McLeod.

P. O.: Rincon, Dona Ana county.
 Range, twelve miles north of Rincon on each side of Rio Grande, and in the Caballo mountains in southeastern portion of Sierra county.
 Horse brand, OM on the left shoulder.



Vermont & Rio Grande Cattle Co.

P. O.: San Marcial, N. M. Range, twenty miles south of San Marcial. Ear marks, underbit in each ear.
 Horse brands: or on left hip or thigh.



John B. Alley Cattle Company.

T. J. WINSOR, Manager.
 P. O.: Lake Valley, N. M. Range, Lake Valley, Sierra Co., and Ojo Caliente, Socorro Co.



Horse Brands: shoulder hip. Other Brands: shoulder hip.

C. Hearn.

P. O.: Fairview, N. M. Range, Pauvrecita creek and vicinity of Fairview. Ear marks, figure 7 underbit in each ear.
 Additional brand, GL on left hip.
 Horse brand, same as cattle on left thigh.

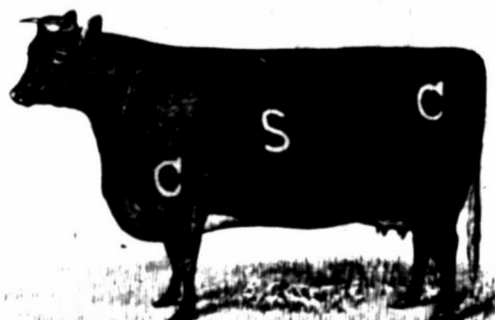


Wm. J. Worden.

P. O.: Las Palomas, Sierra Co., N. M. Stock leased to D. H. Hallock.
 Increase branded on left side WH.
 All company horses branded W on left shoulder. Lease expires January 1st, 1887.



GRANT COUNTY.



Carpenter-Stanley Cattle Co.
 P. O.: Fort Cummings. Range, east side of Cook's Peak, Grant county.
 Other brands: left side. .
 Horse brand: on left hip.
 Ear marks: . Also, two underbits in each ear: crop left underbit right; underbit left crop right.

Browne & Manzanares Co.

LAS VEGAS AND SOCORRO, NEW MEXICO.



WHOLESALE GROCERS,

DEALERS IN

AGRICULTURAL IMPLEMENTS, RANCH AND MINING SUPPLIES.

THE BEST MARKET FOR

WOOL, HIDES, PELTS, &C.

WILL AT ALL TIMES COMPETE WITH EASTERN PRICES.

ECLIPSE WINDMILLS

The Best and the Cheapest.

PUMPS, PIPES, AND FIXTURES.

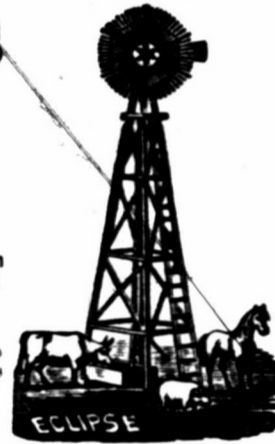
Agents For

Cooper's Sheep Dipping Powder

A Cold Water Dip.

Sure cure for Scab. Best and cheapest dip in the world. Send for pamphlet, with plans for dipping.

Browne & Manzanares Co.



A. D. HUDNALL,

West Las Animas, Colorado,

IMPORTER AND BREEDER OF

POLLED ANGUS

AND

Hereford Cattle.

Has sold in New Mexico during the past season over 1,000 head of grade and thoroughbred bulls, and would refer intending purchasers to any of my customers for the quality and condition of the cattle furnished.

I am prepared to furnish, at any time, thoroughbred or grade bulls, guaranteed of the best strains, and being Colorado raised, ready for immediate service. The cattle from my herds, at the Albuquerque fair, won all first prizes. Correspondence solicited and inspection of herds invited. Full particulars and pedigrees furnished.

I will Contract now for Spring Delivery. Car-load Lots a Specialty.

J. C. LEARY & CO., Agents, Las Vegas.

J. C. LEARY & CO.,
 Commission Merchants for the Sale of Live Stock and Ranches

OFFICE IN STOCK GROWER BUILDING, LAS VEGAS, N. M.

Will contract to deliver at any point thoroughbred or grade animals of any breed, at lowest prices. Contracts for surveying taken: maps, plans and estimates for railroad work, and surveys for irrigating schemes and water works carefully made. We make a specialty of closing trades satisfactorily and promptly. We can find buyers for stock of all kinds, and give personal attention to all business which is entrusted to us. We have the largest acquaintance in this section. Correspondence solicited, and all inquiries will receive prompt attention.

GRANT COUNTY.



John Brockman.

Postoffice, Hudson, New Mexico. Range, Rio Mimbres, Grant county.
 Horse brand, same as cattle, on the left hip.
 Also owns all cattle branded .
 on the left side, on the left hip.
 on the left side.
 Ear mark, under half crop each ear.
 All parties are cautioned against purchasing cattle in the above additional brands except from myself, as I have purchased the brands and all cattle running in them.
 JOHN BROCKMAN.

Haggin, Hurst & Head.

Address, A. E. HEAD, Deming; or JAMES VAN DYK, Whitewater, N. M.

This brand for all cattle on range at Apache Teju, Cow Springs and Warm Springs, Grant county.

Other brands:

.
 Horse brand, on the left hip.

This brand kept up on all cattle on range in Animas valley, Grant county.

Other brands:

known as the Porter brand, with dewlap.
 Horse brand or on the left hip.

All cattle on both ranches marked with dewlap.

Hart Bros. Land and Cattle Co., Limited

P. O.: Lordsburg, Grant county, New Mexico.

Range, Lower and Middle Gila, and west side Burro mountains.

Ear marks, underslope left and crop and split the right ear.

Horse brands: on side; and on left side; on right thigh; when sold are vented on right shoulder.



Charles V. Hugo.

P. O.: Fort Bayard, Grant county, N. M. Range, Lambright canon. Ear marks, underbit both sides.

Other brand left hip.



Lyons & Campbell.

P. O.: Silver City, N. M. Range, Duck Creek, Mule Springs and Middle Gila, Grant county.

Mark, crop and split left. Horse brand anywhere on the left side.



Buckeye Land & Live Stock Company.

S. A. BAXTER, Manager. M. Chapman, Supt. P. O. box 101, Deming, N. M. Range, Cedar Grove ranch, 30 miles south of Deming.

Horse brand, same, on left hip. Brand on left side. Marked, sharpen both ears.



Lindauer Cattle Co.

S. LINDAUER, Manager. P. O.: Deming, N. M. Range, on McKnight's Cienega, on Upper Mimbres.

Horse brand, SL on the left shoulder.



Wm. Brahm.

P. O.: Silver City, N. M. Range, White Water, Grant county, N. M.

Additional on right hind leg. Horse brand, B on the left shoulder.



Missouri-Florida Cattle Co.

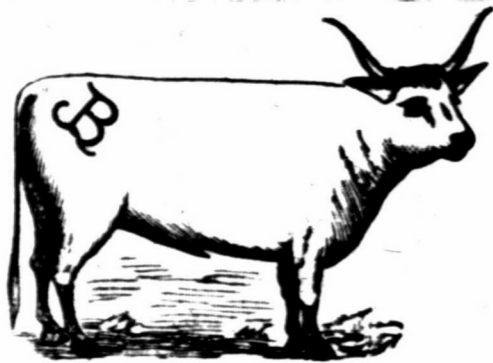
JOHN J. YEATER, Prest., Sedalia, Mo. JOHN M. WEIDENYER, Sec. and Treas., Clinton, Mo.

JOHN T. SHY, Superintendent, Deming, N. M. P. O.: Deming, N. M.

Range, east side Florida mountains. Horse brand, same as cattle on left hip.



GRANT COUNTY.



Old and New Mexico Ranch and Cattle Co. Lou H. Brown, Superintendent. Postoffice address; Hatchita, Grant county, N.M. Range, Alamo Hueco in southern end of Playa valley, southwestern Grant county, New Mexico. On the right shoulder. Also some horses branded same as the cattle, as in cut.

Mimbres River Cattle Company.

E. E. BURDICK, President and Treasurer. E. WALTERS, Secretary and General Manager. C. A. BURDICK, Vice President. P. O.: Deming, N. M. Range, Rio Grande to the Mimbres river. Old brand, 6 on shoulder 9 on hip. Horse brand on the left thigh same as cattle. Ear marks, crop left, crop and split right.

J. A. Lockhart. Postoffice, Deming, N.M. Range, the Cedar Grove Mountains and Dog Springs, Grant county. Horse brand, L on the left hip.

DONA ANA COUNTY.

S. B. Newcomb. P. O.: Las Cruces, N. M. Range, western part of Lincoln county, in the Rinconada. Horse brand, same as cattle on right shoulder.

Pedro Garcia y Perea. P. O.: Las Cruces. Range, east side of Rio Grande, south of Rinconada. Cattle branded on either side.

Williams Bros. P. O.: Las Cruces, N. M. Range, Sacramento river, Dona Ana county. Ear mark, jinglebob in each ear. Other brands, on left hip.

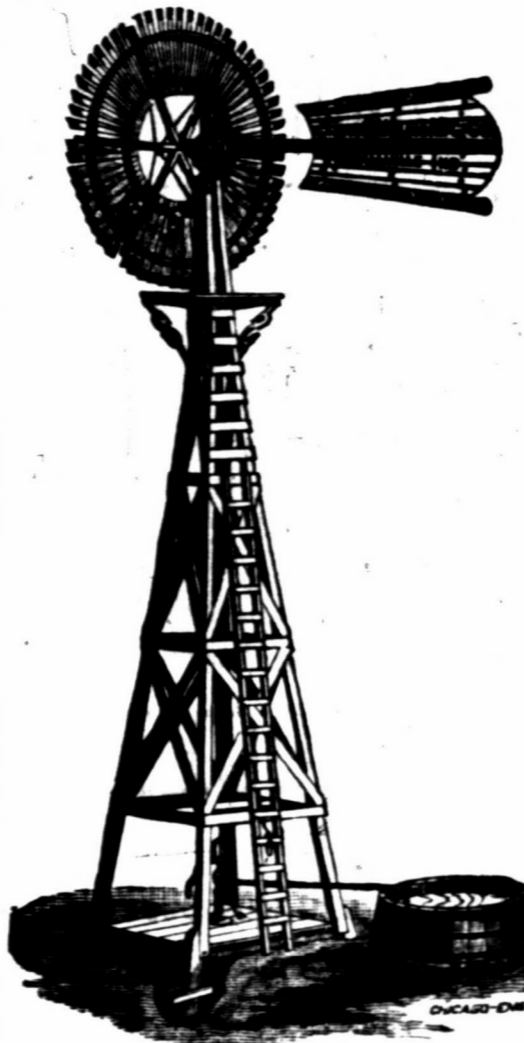
Jornado Cattle Co. MAX GOLDENBERG, Mgr. P. O.: Organ, Dona Ana county, N. M. Range, on the eastern portion of the Jornada del Muerto, San Andrecio and Oso Springs. Ear marks, hole in right, split in the left. Horse brand on the left hip.

Barbero Lucero. P. O.: Las Cruces, N. M. Range, above San Diego, Dona Ana county. Horse brand, same as on cattle, left shoulder.

Lynch Bros. P. O.: Colorado, N. M. Range, La Loma Parda, Sierra Co.; Las Uvas and Sauce Springs, Dona Ana Co. Additional brands: Young stock in Dona Ana Co., thus: All horses are branded LB on the left side.

Hérrera Ropes. P. O.: El Paso, Texas. Range, Carizozo Springs and west side San Andree mountains. Horse brand, same as cut on left shoulder.

Mariano Barola. P. O.: Mesilla, N. M. Range, west of the Rio Grande, from Picaeho mountain west of Mesilla south to the buttes west of La Mesa.



Star WIND MILLS

Water Works Supplies.

Wind Mills, Derricks, Tanks, Pumps, Hose, Pipe Fittings, Fountains, Feed Grinders, Etc.

Tubular Well Tools,

And Supplies, a Speciality.

To the cattlemen we wish to say that we are now making a

A Special Outfit for Ranches

to supply water to large herds, and having furnished many of the largest ranches in Texas with the water works, we know we have just what you need.

Address for prices, particulars, etc.,

FLINT & WALLING MANFG. CO.

1404 WEST 11th ST. KANSAS CITY, MISSOURI, AND 1607 MAIN ST., FORT WORTH, TEXAS.

STUDEBAKER'S SOUTHWESTERN HEADQUARTERS

A full line of Vehicles of all kinds constantly in stock at the

Pioneer Saddle & Harness House

We are now manufacturing a line of

WARRANTED STOCK SADDLES,

That are unsurpassed in quality and very low in price. We have the most extensive manufactory of Saddles and Harness in the southwest, and dealers and ranchmen will find it to their interest to get our prices before buying elsewhere.

Fire Arms and Ammunition at Wholesale and Retail.

Our gunsmith is one of the finest workmen in the United States. Re-boring of shot guns to make any desired pattern, a speciality.

NEWTON & ANDREWS, El Paso, Texas.

J. R. STOLLER, Cattle Salesman. JOHN R. ROUSE, Hog and Sheep Salesman. SAM T. RIAL, JOHN E. HALE, Office.

J. R. STOLLER & CO.,

Live Stock Commission Merchants,

Rooms 6 and 7, Exchange Bldg., Stock Yards,

KANSAS CITY, MISSOURI.

Market reports and all information will be promptly furnished, free of charge, on application to the above address, or by Mr. G. E. Lyon, Raton, N. M., who is our representative.

E. G. MURPHEY & CO.,

THE PLAZA PHARMACY

BRIDGE STREET, LAS VEGAS, NEW MEXICO.

Wholesale and Retail dealers in Drugs and Chemicals. Physicians' prescriptions a speciality. Country orders solicited and prompt attention given same.

TO THE STOCKMEN AND OTHERS, living at a distance: We will gladly fill any orders you may send for goods, whether in our line or not, and ship them as promptly as possible.

A. McDONALD, Feed and Sale Stables

WHOLESALE

LAS VEGAS, N. M.

Liquor Dealer

GIVENS' BLOCK, BRIDGE ST.,

LAS VEGAS, NEW MEXICO.

Special attention given to ranch trade. Mail orders for all classes of liquors and cigars carefully attended to.

Feed and Sale Stables

Good Rigs to let at reasonable rates. Horses boarded by the day or week.

Special Rates to Stockmen

GOOD SADDLE HORSES.

HORSES AND MULES FOR SALE

J. S. DUNCAN, Proprietor

DONA ANA COUNTY.



Sacramento Cattle Co. P. O.: El Paso, Texas. Range, Sacramento Ranch, Sacramento mountains, Dona Ana county, New Mexico. Ear marks, crop right, swallowfork left. Old stock has H on left shoulder. Horses branded H on left thigh.

Davies & Lesinsky. Breeders of and Dealers in Thoroughbred and Graded Cattle. SAN AUGUSTINE, N. M. Range, in Organ Mountains, near San Augustine. Old brand, New brand on cattle on right side, as in cut. Horses, same brand, on left rump.

MORA COUNTY.

F. J. Maldaner. P. O.: Wagon Mound, N. M. Range, Vermejo and Tata Vega. Ear mark, crop left and split right. Other brand: Horse brand, same as cut, on the shoulder.

J. B. Brown. P. O.: Wagon Mound, N. M. Range, Vermejo and Tata Vega. Ear marks, underslope each ear. Horse brand, same as on cattle on left shoulder.

Campbell & Austin. P. O.: Watrous, Mora Co. Range, near Watrous. Horse brand V on left shoulder. Ear mark, crop right ear, underslope left ear. Horse brand: Same as on cattle, as in cut. Some horses branded B B.

Portsmouth Cattle Co. E. E. HOLMES, Manager, P. O.: Kansas City, Mo. H. G. HOWARD, Supt., P. O.: Springer. Range, Colfax and Mora counties, New Mexico. Horse brand: Same as on cattle, as in cut. Some horses branded B B.

S. B. Watrous & Son. P. O.: Watrous, N. M. Range, east of Watrous, south and south of Mora river. Horse brand, W on the left shoulder. Ear marks: Same as on cattle, as in cut. Some horses branded B B.

Wagon Mound Cattle Company. GARTH & LEARY, Managers. P. O.: Wagon Mound, Mora county, N. M. Range, Vermejo. Horse brand: right shoulder.

Charles Sumner. P. O.: Watrous, Mora Co. Range, Escondido canon and Mora river. Ear mark, two slits in left ear, right ear natural. Horse brand K left thigh.

Shepard & Hall. P. O.: Tequisquite, N. M. Range, Alamocitas. Ear marks, crop and underhalf crop right; crop and underbit left. Other brands: this brand kept up. right shoulder, side and hip. Horse brands: Y left hip; also on right hip.

Farr Bros. P. O.: Watrous, N. M. Range, Red River and Alamocitas. Horse brand, on left shoulder. Other cattle brand, on left side. Also left side. Some cattle are branded with a flying V on side without slash.

Some cattle are branded with a flying V on side without slash.

MORA COUNTY.



W. H. Willcox
P. O.: Wagon Mound, Mora Co., N. M. Range, Mora county west of Red River and east of Turkey mountains. Horse brand the same, on left hip. Some cattle on right side.



The Wendling Cattle and Land Co. OF COLORADO AND NEW MEXICO. New Mexico Division.—Breeding Ranch. TAYLOR MAULDING, Manager. Brand "O. K." on all stock. Range in Mora county, New Mexico. No cattle vented. Office: 35 17th St., DENVER, COLO. S. S. SMYTHE, Secretary.



W. T. Marshall.
P. O.: Wagon Mound Range, Escondido, south of Wagon Mound. Horse brand, same on left hip. Ear marks, under half crop left, over half crop right. All increase branded as in cut. on right side.



Billings & Soule.
P. O.: Tramperos, Mora county, N. M. Range, head of Tramperos, Mora Co. Other brands: both on the left side. All increase branded as in cut with — (bar) in addition on back of right leg. Horse brand, > or 3 on right shoulder.



Carl W. Wildenstein.
P. O.: Watrous, N. M. Range, Pinos Altos and Piedoso Canon, Mora and San Miguel counties. Additional brands: Horse brand, same as on the cut, on the left hip or on the left shoulder.



Price Lane.
P. O.: Wagon Mound Range, south of Wagon Mound. Horses branded on right shoulder.



L. W. Leach.
P. O.: Wagon Mound. Range, south of Wagon Mound.



J. F. LaTourette.
P. O.: Wagon Mound Range, near Fort Union. Extra brand, L left shoulder left side. Ear marks, swallowfork right, crop and two splits in left. Horse brand, same as cattle, on left shoulder.



S. H. Fairchild.
P. O.: Wagon Mound, N. M. Range, in Wagon Mound district. Ear marks, split and underbit the left. Additional brand, on the left side. Horse brand, same as cattle, on left shoulder.



La Cueva Ranch Co.
D. C. DEUEL, Manager. P. O.: La Cueva, N. M. Range, Coyote and La Jara, Mora county. Horse brand, on the right shoulder:



H. T. Sinclair.
P. O.: Wagon Mound, Range, Vermejo and Teta Vega. All increase branded the same as old stock. Other brands: on right shoulder, side and hip. Horse brand, on the left shoulder.

BANKERS,

And those doing business with financial institutions, will find it to their advantage to consult this department in which all the leading banks of the southwest are represented.

First Nat'l Bank

LAS VEGAS, N. M.

Authorized Capital, \$500,000
Paid-in Capital, 100,000
Surplus Fund, 25,000

OFFICERS:
JEFFERSON RAYNOLDS, President.
GEO. J. DINKEL, Vice President,
JOSHUA S. RAYNOLDS, Cashier,
J. S. PISHON, Assistant Cashier

First Nat'l Bank

EL PASO, TEXAS.

OFFICERS:
J. RAYNOLDS, President.
J. W. ZOLLARS, Vice Pres.
H. S. KAUFMAN, Cashier.

Capital Paid In, - \$100,000

We do a general banking business: buy and sell drafts on all the principal cities of the United States and Europe; make telegraphic transfers to all accessible points. Accounts received upon favorable terms. We buy and sell Mexican gold, silver and other foreign coin at current rates.

First Nat. Bank

Albuquerque, New Mexico.

Capital Paid In, - \$100,000

OFFICERS:
J. RAYNOLDS, President.
J. S. RAYNOLDS, Vice Pres.
M. W. FLOURNAY, Cashier.

Directors—D. B. Robinson, Gen'l Supt. Atlantic & Pacific Railroad; A. A. Grant, J. H. Hampson, Conrad Shenfield, Jefferson Raynolds, William Garland, Joshua S. Raynolds. A general banking business transacted. Depository of the Atchison, Topeka & Santa Fe and Atlantic & Pacific Railroads. Special Attention given to the Business of Stockmen.

The City Bank

OF LAS VEGAS.

GEO. J. DINKEL, President.

ALPHEUS A. KEEN, Cashier.

CAPITAL, \$50,000.

Transacts a General Banking Business.

ALBUQUERQUE NATIONAL BANK!

Albuquerque, New Mexico.

CAPITAL STOCK PAID IN, \$100,000.

OFFICERS:
JOHN A. LEE, President.
S. M. FOLSOM, Vice President.
W. S. STRICKLER, Cashier.

DIRECTORS:
JOHN A. LEE, S. M. FOLSOM, E. D. BULLOCK, W. P. METCALF, HENRY N. JAFFA, A. M. CODINGTON, H. H. STREETER.

Does a General Banking Business. Interest Paid on Time Deposits. Gold dust purchased and advances made on shipments of cattle, gold and silver bullion, ore, etc. Superior facilities for making collections on accessible points at par for customers. Exchange on the principal cities of Europe for sale. Stockmen's business a specialty.

BROWNE, MANZANARES & COMPANY Bankers, SOCORRO, N. M.

L. P. BROWNE, President.
C. N. BLACKWELL, Vice Pres.
M. W. BROWNE, Cashier.

A General Banking Business Transacted

United States Depository.

First National Bank

OF SANTA FE.

W. W. GRIFFIN, Pres. R. J. PALEN, Cashier.
PEDRO PEREA, Vice President.

San Miguel Nat'l Bank

OF LAS VEGAS,

LAS VEGAS, - - N. M.

Authorized Capital, \$200,000
Paid-up Capital, 100,000
Surplus Fund, 50,000

OFFICERS:
W. M. EADS, Pres. J. GROSS, Vice Pres.
D. T. HOSKINS, Cashier.

DIRECTORS:
COLUMBUS MOISE, JACOB GROSS, HENRY GOEKE,
A. M. BLACKWELL, O. L. HOUGHTON,
E. C. HENRIQUES, M. S. OTERO,
I. H. LAWRENCE, W. M. EADS.

Does a General Banking Business. Drafts for sale on the principal cities of Great Britain and the continent of Europe.

Stock Exchange Stables,

FEED AND SALE.

Finest Livery in the City.

DON R. OAKLEY, Prop.

Good teams and careful drivers. Nice rigs for commercial men. Horses and mules bought and sold. Branch stable at the Hot Springs. Telephone No. 53.

Stables in rear of the St. Nicholas Hotel, LAS VEGAS, NEW MEXICO.

"Music Hath Charms,"

And there is not a ranch in New Mexico which does not have some musical instrument to help to "liven the leisure hour."

A GUITAR, A BANJO,

Or even an accordeon will afford much pleasure. Write for list and prices to

Marcellino & Mernin,

Las Vegas, N. M.

MUSIC WAREHOUSE.

P. S.—A full line of strings, music and supplies.

C. A. RATHBUN,

—Dealer in—

Boots, Shoes,

LEATHER AND FINDINGS.

Boots and Shoes to Order.

SOLE AGENT FOR M. D. WELLS & CO.

Stock Grower's Trade Solicited. Bridge Street, West Las Vegas.

Frank T. Robinson,

REPRESENTING

PETERS & TROUT, Lancaster, Ohio.

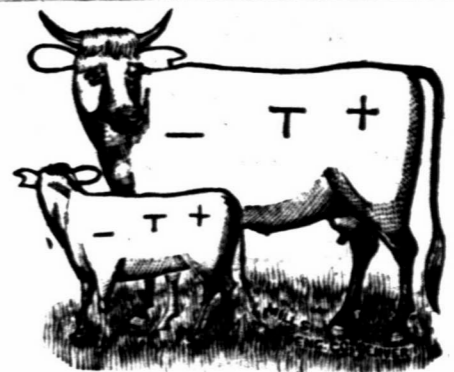
Merchant Tailors

Has arrived in Las Vegas with the finest line of samples of men's wear ever seen in the west.

Headquarters at the Depot Hotel.

Refers to hundreds of stockmen customers as to prices, work and satisfaction.

MORA COUNTY.



The Dubuque Cattle Company.

J. T. HANCOCK, President. W. P. LARGE, Vice President. A. J. VAN DUZZE, Sec. & Treas. T. H. LAWRENCE, General Manager, Las Vegas. W. E. LAWRENCE, Range Supt., Tequisquite Range, Tequisquite, Ute Creek and Tramperos, New Mexico. All calves branded and marked as in cut, except thoroughbred calves in the OO brand, which is kept up.

Other Prominent Brands:



All on the left side.

Horse brand, or on left shoulder.



William McCartney.

P. O.: Los Angeles, Cal. Ranch P. O.: La Cinta, New Mexico. Range, Rincon and Arroyo de Los Alamositas. Ear marks, crop right, underlope left. Other brands: Horse brand, same as cattle, on left shoulder. All cattle in New Mexico in above brand are my property, and as I sell some all parties are cautioned against handling same illegally.

Also own all cattle branded and marked underbit the left, crop right. Range, on left side. Head of Canon Largo. This brand kept up. Horse brand, same on left shoulder.

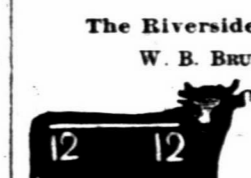
Robison & Clark Cattle Company. W. D. CLARK, Manager. P. O.: Wagon Mound, N. M. Horse brand, on the right shoulder. Other brands, on right side and hip; also, on right hip and right side. on the left side and hip. All increase branded as in cut.



Aaron Bales. P. O.: Watrous, N. M. Range, Petros Canon and Cherry valley, Mora Co. All calves marked with overbit in left and two underbits in right.



The Riverside Cattle Company. W. B. BRUNTON, Manager. P. O.: Shoemaker, Mora county, N. M. Range, Cherry valley, Pinos Altos and vicinity, Mora county, N. M. Other brands: on right side, kept up. Horse brand, on right shoulder.



COLFAX COUNTY. Miller & Harshman. P. O.: Springer, N. M. Range, Ocate, Colfax Co. Ear mark, crop and underbit the left. Other brands: all on left side, shoulder and hip. Horse brand on the right shoulder.

J. A. Judd & Co.

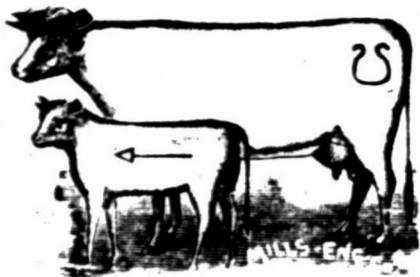
P. O.: Raton, Colfax Co. Range, Sugarite. Horse brand, left hip. Also own all cattle branded thus: Increase branded and marked as in cut.



THE STOCK GROWER presents the best medium for advertising because it is read by every stockman in the southwest.

COLFAX COUNTY.

The Akron Live Stock Company, Akron, Ohio. AUGUSTUS CURTIS, Manager. I. H. KINGMAN, Range Foreman. Postoffice, Springer, N. M.

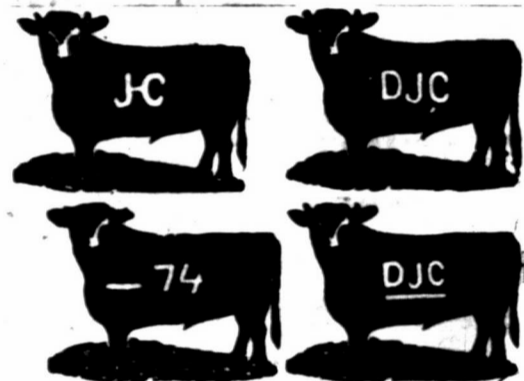


Known as the "Stirrup" brand, formerly owned by Porter & Clouthier. Horse brand, same, on the left hip. Other brands - M - 25 Brand all calves with dart. Range, Ocate mesa and canon, Sweetwater and Cimarron river.



Western Land and Cattle Company (Limited). JAS. A. FORBES, Gen. Mgr. 13 Delaware block, cor. of Seventh and Delaware Sts. Kansas City, Mo. Range, Cimarron river. P. O.: Madison, Colfax county, New Mexico. Ear marks, grub the right ear.

Other prominent brands: VI DC 9 XI MK A+ X WCC III T T all on the right side, and VI right hip. Horse brands: 101 right or left thigh. VI on the left shoulder or thigh. W on the right hip. T on the right thigh.



D. A. & J. H. Clouthier. P. O.: Springer, N. M. Range, Rayado and Sweetwater. Horse brand, J-C on the left hip. All increase of above brands are in the following brand: - 74



H. S. Gratz. P. O.: Capulin, N. M. Range, Dry Cimarron, Colfax county. Marks, slit in right ear. Horse brand, same as cut on the left shoulder.

Other brands: triangle on the left side. Marked, with a slit in the right ear and tin tag in the left ear.



Illinois Live Stock Co. J. S. HOLLAND, Manager. P. O. Tramperos, N. M. Range, Tramperos. Some cattle are branded but all increase thus 12 are branded as in cut. Ear marks—Crop and underbit left, and underbit right. Horse brand, same as cut, on left shoulder.



Richard Steele. P. O.: Tequesquite, N. M. Range, Tequesquite and Ute creek, Colfax county. Ear marks, under half crop right, underbit left. All young stock branded as in cut.

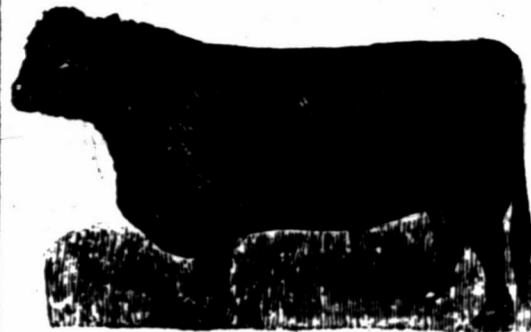
Other brands, not kept up: DS on left side. D left shoulder. S left hip. T left side. Horse brand, DS on left shoulder.



Ernst Winter. P. O.: Raton, Colfax Co. Range, Sugarite and Red river, Colfax county. Ear marks, split right, underbit left.

Other brands: T right side; swallowfork and D left side. V left side and F hip. OI left side and hip. Horse brands: V left, or T right side.

WHEN you write to an advertiser mention the Stock Grower.



THE LEONARD BROTHERS, IMPORTERS AND BREEDERS OF

Galloways, Aberdeen-Angus and Shorthorns. SPANISH JACKS AND JENNETS.

MOUNT LEONARD, MISSOURI. Very Choice Lot of Black Polled and Shorthorn Grades For Sale.

Car load lots for ranchmen a specialty. We have some of the largest and choicest herds of pure-bred stock to select from. Prices reasonable.

Call on or Address, THE LEONARD BROS., Mount Leonard, Mo



Mundy Bros

EL PASO, TEXAS, Lands in Mexico Southwest.

Live Stock Commission Merchants.

Have unequalled facilities for the purchase and sale of Lands in Mexico, and for supplying any class of stock in quantities to suit purchasers.

Correspondence Solicited. GRAZING LANDS A SPECIALTY

LAND SCRIP FOR SALE

SURVEYED LAND SCRIP

Military Bounty Land Warrants.—In 40, 80, 120 and 160 acre pieces. Will commute homestead or pay for pre-emption.

Additional Homestead Claims.—In 40, 80 and 120 acre pieces. Locatable on any lands subject to homestead and pre-emption entry. Large supply on hand; no delays in filling orders.

I have a large supply of Fractional Additional Homestead Claims of from 3 to 19 acres, which, by rulings of the general land office, are locatable on fractional subdivisions of double their area, or less, the difference being paid for in cash, at \$1.25 or \$2.50 per acre, as the case may be. Send the area of the fractional tract you desire to locate, and I will send a piece of proper size.

Porterfield Warrants.—In 40 acre pieces. Act of April 11, 1890. Locatable on any unappropriated public lands. The Supreme court has decided in Wilcox vs. Jackson, that the word unappropriated as applied to public lands, means "not legally disposed of." It will take lands in the corporate limits of a town. See Secretaries' decision in Reed vs. Digby, and Lewis et al. vs. Seattle. It will take occupied lands where there is no legal claim. See Bovard vs. Bunn. It will take withdrawn land when the withdrawal does not operate as a disposal of the land. See last case and the case of Wm. P. Brown.

SCRIP LOCATABLE ON UNSURVEYED LANDS.

Sioux Half-Breed Scrip.—In 40, 80 and 160 acre pieces. Act of July 17, 1854. Locatable on any unsurveyed lands not mineral.

Valentine Scrip.—In 40 acre pieces. Act of April 3, 1872. Locatable on any unappropriated and unoccupied public lands not mineral, surveyed or unsurveyed.

In locating any of the above scrip no settlement or residence is required, and there is no limit to the quantity one person may use. The right attaches at once on filing the scrip, and transfers of title for town sites or other purposes may be made without any delay.

Void entries, locations or selections will not prevent any of these rights from attaching.

Address T. B. MILLS, Real Estate Dealer, LAS VEGAS, N. M.

Fine Books.

Read our new book offer, good until January 1, 1887, and send in a new name and secure a good book, well bound in cloth. Some friend would be pleased to get THE STOCK GROWER for a year, and the book you receive will repay your investment.

S. L. LEON & CO.,

THE LEADING Grocers, Bakers OF LAS VEGAS.

We have also the Finest Line of Fancy and Imported Groceries in New Mexico.

Dealers in Queensware and Glassware.

Ranch Trade Solicited and Prompt Attention given all Mail Orders.

NORTHWEST CORNER OF PLAZA.

JOB PRINTING

There has just been added to the mechanical department of the Stock Grower, a

COMPLETE JOB OFFICE

Which enables to turn out all classes of work in first-class style at low rates.

[Homestead Entry No. 2,491.]

Notice for Publication.

LAND OFFICE AT SANTA FE, N. M., December 17, 1886. Notice is hereby given that the following named settler has filed notice of his intention to make final proof in support of his claim, and that the said proof will be made before the probate judge, of San Miguel Co., at Las Vegas, N. M., on Jan. 25, 1887, viz: Alois Hommel, of San Miguel county N. M., for the the S. E. Sec. 2, T. 13 N., R. 24 E.

He names the following witnesses to prove his continuous residence upon, and cultivation of, said land, viz: Francisco Encenias, Manuel Trujillo, Asencion Martinez, Antonio Angel, all of Cabra Springs, New Mexico. CHARLES F. EASLEY, Register

COLFAX COUNTY.

Urraca Hereford Ranch. FRANCIS CLUTTON. Postoffice, Cimarron, Colfax County, N. M.



Thoroughbred herd, 9 left side. Ear mark, underbit right and left. Horse brand, 5 on the left shoulder.



Palo Blanco Cattle Co.

O. A. HADLEY, Manager. P. O.: Springer, N. M. Range, Chico, Retaplen, Holkio, Palo Blanco, Don Carlos and Ute creek. Ear mark, swallow fork the left. Horse brand, same as cattle, on left thigh. Also T left side, slash on left shoulder, own T left hip.



S. W. Dorsey. P. O.: Chico Springs, New Mexico.

Range—Carrumpa, San Rafael, Cinneguilla, Perico, Carrizo, Pinipotitus, and Sierra Grande, Colfax county.

Horse brand, same as above, on right shoulder.

Additional Cattle Brands: III left side and hip.

XX on right side.

A left or right side.

CS left hip or side.



S. A. Kall.

P. O. Wagon Mound Range, Vermejo and Teta Vega, Colfax county.

Cattle have various ear marks. All increase marked as in cut.

Horse brands: Same as cattle on right hip.



Eagle Tail Cattle Co.

O. A. HADLEY, Manager. P. O.: Raton, N. M. Range, Eagle Tail and Tenaja. Horse brand, same as the cut, on the left shoulder.



Lake Ranch Cattle Co.

D. C. HOLCOMB, Manager. P. J. TOWNER, Foreman. P. O.: Chico Springs, N. M. Range, Ute creek, Tramperos, Alamositas, and Carrizo, Mora county, New Mexico.

Horse brand, same as cut, on the left hip or shoulder.



J. Linn Smythe.

P. O.: Raton, N. M. Range, Gates Canon, Colfax county. Ear marks, split in the left and under hack right.



S. M. Fulsom.

A. R. HARTSEL, Foreman. P. O.: Cimarron Range, Cerososo Canon, Colfax county. Other T on right shoulder and on left side, also T on left hip.

Horse brand, X on the left hip.

VALENCIA COUNTY.



Davenport Live Stock Company.

M. B. BOWMAN, Manager. P. O.: Albuquerque, N. M. Range, Buffalo Springs. Horse brands: D



J. A. Johnson & Co.

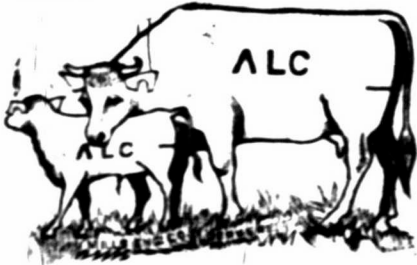
P. O.: Albuquerque, N. M. Range, San Jose ranch, on A. & P. railroad, forty-seven miles from Albuquerque. Horse brand, J left hip. Various earmarks

VALENCIA COUNTY.

W. P. METCALF, Superintendent. JAS. A. STINSON, Ranch Manager. New Mexico Land and Cattle Company



P. O.: Chilili. Range, Estancia grant, Valencia county. Horse brand, circle on the left hip.



Acoma Land and Cattle Co. P. D. REDGROVE, President, Kansas City. B. D. BARNETT, Sec. and Treas., Kansas City. J. E. SAINT, Vice-Prest. and Mgr., Grants, N. M. Range, the Acoma Grant, and territory adjoining west and north. Horse brand, U on the left hip.



Kennedy & Co. P. O.: Coolidge, N. M. Ranches in Valles de las Torres Range between Bluewater and Coolidge, along line of A. & P. R. R. All stock are branded on left side; since 1883 all branded as in the cut. Ear marks, crop right, under half crop left. Horses branded K or S on left shoulder.



L. P. BRADLEY, Pres. T. S. MUMFORD, Secy Cebolilla Cattle Co. P. O.: Santa Fe, N. M. box 218. Range, Valencia county, near Fort Wingate. Horse brand, the same.



Dr. E. C. Henriques. J. L. MILLER, Foreman. P. O.: Belen and Las Vegas Range, Estancia Springs, Valencia county. All the increase of cattle and horses branded as in main cut.

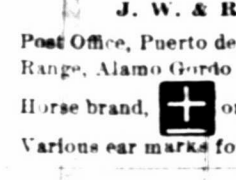


ROMAN A. BACA, President, San Mateo, N. M. MAX FROST, Secretary, Santa Fe, N. M. San Mateo Cattle Co. Range, The Miguel and Chavez Grants, Valencia county, New Mexico.

SAN MIGUEL COUNTY.



J. W. & R. G. Carlisle. Post Office, Puerto de Luna, N. M. Range, Alamo Gordo and Juan de Dios. Horse brand, + on left thigh, high up. Various ear marks for these brands.



Howell & Lynch. J. B. HOWELL, Manager. P. O.: Lubbock, Texas. Range, Spring Lake, on the Staked Plains. Cattle branded on either side. Horse brand the same.



Clifton Davis. P. O.: Puerto de Luna. Range, Juan de Dios. Ear marks, crop left, and crop and split right. Horse brand, IX on the left shoulder.

READERS will confer a favor if, when writing to advertisers, they will state they read advertisement in the Stock Grower.



DEALERS IN Holsteins, Jerseys, Short Horns and Herefords.

AGENTS FOR "THE GLYCERINE DIP," Dana's Stock Label.

SOLE OWNERS OF Weedon's Sale Numbers and Barne's Patent Bull Ringer.

BLUNT & FARR, ALBUQUERQUE, NEW MEXICO, WESTERN AGENTS.

WALTER C. WEEDON. ERSKINE R. MERRILL

Walter C. Weedon & Co.

Importers, Dealers in and Breeders of Galloway and Angus Cattle.

41 Live Stock Exchange, Kansas City, Missouri.

PURE-BRED STOCK, BOARDED, BOUGHT AND SOLD ON COMMISSION.

Catalogues compiled. Sales advertised and clerked. Ranches and Farm Property Inspected. GRADED BULLS FOR RANCHES IN CAR LOTS A SPECIALTY.



Percheron Horses! The oldest and most extensive breeding establishment west of the Mississippi river.

OVER EIGHTY HEAD

Of pure bred and high grade stallions and mares on hand. Also a few Recorded Imported French Coachers.

Twenty five stallions on hand imported by M. W. DUNHAM. Our imported stock all registered in Percheron Stud Book of France and America.

We handle nothing but first-class stock, and guarantee all stock sold to be breeders. AVERY & COLEMAN, Proprietors of Republican Valley Stock Farm, Wakefield, Clay County, Kansas.

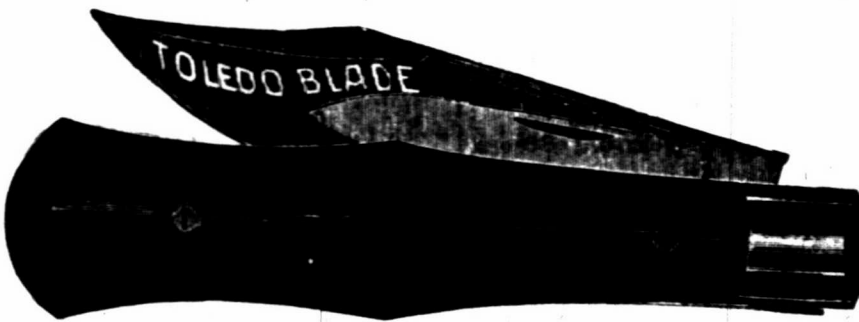
OUR PREMIUM KNIVES.

Any person sending in the name of a new subscriber to THE STOCK GROWER, accompanied by three dollars, will receive by return mail one of these splendid pocket knives free. Remember that any new subscriber for one year gets a choice of the knives. Send in names at once as this offer will continue only until February 1, 1887.

TAKE YOUR CHOICE.



"Texas Hunter" This is a valuable companion in the field; oil tempered, hand forged, saber blades, ready for any use; cut shows exact size. Buckhorn handle. This knife is made for the wear and tear of all purposes. The cutting quality is unsurpassed. Try one and prove its rare quality.

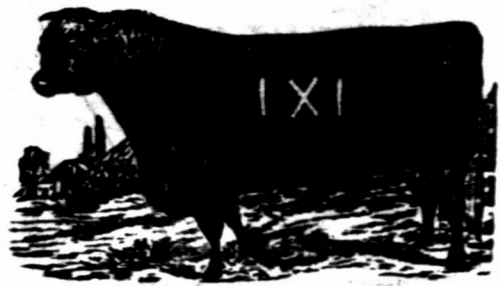


The "Toledo Blade." This knife is a great favorite, owing to the shape of the blades. They are very sharp at the point, and the fact that they are made from the finest razor steel, hand tempered, makes it a desirable knife for everybody. Ebony handle.



"Buckeye Whittler." This knife is our latest. It is made for use, and will not disappoint you. It is the best whittler you ever had in your hand. The handle is of cocoa wood, very strong. Blades are hand hammered from the best razor steel. Are oil tempered and file tested. We positively declare you cannot find a better knife for general use than our Buckeye whittler. We fully warrant it.

SAN MIGUEL COUNTY.



Calkins Cattle Company. O. L. HOUGHTON, Manager, Las Vegas. E. J. WILCOX, Range Supt., Fort Sumner Range, Pecos river, near Fort Sumner. Ear marks on increase, crop off left. Other brands: OLH on the left shoulder, side and hip. T on the left side. C on side, IL on hip. Horse brand, IXI on the left hip.



Howry Cattle Co. S. K. SYDES, Manager. P. O.: At Red River Springs, N. M. Range, on Red River. Have purchased the interest of Mr. J. T. McNamara in the "anchor" herd and range. All "anchor" cattle belonging to this company are tally branded with an anchor and all increase of 1884 is in the [anchor] or [S] brand. All increase from [anchor] or [S] brand as in cut, and marked crop and under half crop the left ear. Horse brand, RY on the left hip. All increase marked crop and under half crop left.



Dav Bros. & Co. P. O.: Liberty, N. M. Range, Trujillo. All increase is not ear marked, but end of tail cut off. Horse brand, connects ND on left shoulder.



Nourse & Day Bros. P. O.: Liberty, N. M. Range, Trujillo. Old stock branded on the right hip; young stock as in cut, and also cut off end of tail. No ear marks.



D. A. IRWIN, D. RUBIDGE. Irwin & Rubidge. P. O.: Denver, Colorado. Range, Trujillo, N. M. DAY BROTHERS, Managers. P. O.: Liberty, New Mexico.



Lon Horn. P. O.: Trinidad, Colo., or 508 East Ninth St., Kansas City, Mo. Range, on Pecos river, old Fort Sumner reservation. Cattle also bear F left side, not kept up.



Stoneroad Brothers. P. O.: Cabra Springs, N. M. Range, the Beck Grant. Horse brand 2 on the left thigh.



J. & E. Rosenwald. P. O.: Las Vegas, N. M. Range, Charco, San Miguel county. Marked, crop the right. Also own cattle branded: RC.



R. C. Temple. P. O.: Fort Sumner. Range, at Fort Sumner. All increase branded on the right side. XL. Horses branded same as on the right hip. Mark, over half crop.



A. Goldsmith. P. O.: Las Vegas, N. M. Range, Charco, San Miguel county, New Mexico. Horse brand, circle cross on the left shoulder. Underslope and under-bit left, overslope and over-bit right.



L. S. Rogers. P. O.: Liberty, N. M. Range, Monte Ruelto. Other brands, XLY on left shoulder, side and hip. Respectively. Horse brand, same as cut, on the left hip.

MENTION this paper when writing to advertisers.

SAN MIGUEL COUNTY.



Fond du Lac & Las Vegas Cattle Co. JAS. GAYNOR, President and Manager. P. O.: Fond du Lac, Wis. Range, Liberty Ranch.



Geo. W. Mayhan. P. O.: Watrous, N. M. Range, Tualosa Canon, Los Conchos. Ear marks, crop and two lites in left ear. Horse brand, C on left shoulder. Some cattle branded as above, on the ribs. Beef brand A-K on left side, and bar across the loin, under the tail. Brand all increase as in cut.



P. C. Pixlee. P. O.: Liberty, N. M. Range, Tierra Blanca and Pajarito creek, San Miguel county. Horse brand on the left shoulder. All horses brand are vented when sold.



James Conant. P. O.: Gallinas Springs, range, Gallinas Springs and Ojo de Los Conchas. Other brand, AX on left side. Horse brand, same as cut, on the left hip.



Frank W Dale. P. O.: Liberty, N. M. Range, on Red River, 12 miles above Fort Bascom. Ear mark, crop the right and sharpen the left ear.



Simon Frankenthal. P. O.: La Cinta. Range: La Cinta Creek. Horse brands: S F on left shoulder.



Lewis Walker and Mary Walker. P. O.: La Canon Largo. Range, Canon Bonito and Canon Largo. Horse brand, cross on the left hip. A few cattle branded in three crosses only.



P. O.: Canon Largo, N. M. Range, Canon Bonito and Canon Largo. Horse brand on left hip. Both brands kept up.



Tiffin Cattle Co. H. F. HALL, Manager. P. O.: Liberty, N. M. Horse brands - Stock horses, IX on left shoulder; saddle horses, TIX on left hip.



Myers Bros. & Livezey. Postoffice, Liberty, New Mexico. Horse brands, TTT on the left hip.



C. A. Martin, Manager. P. O. Las Vegas. Range, Tualosa Canon, Los Conchos. Earmarks, crop and two lites in left. Also cattle all branded a under tail. Horse brand, C on left shoulder.

ATTORNEY'S CARDS.

J. D. O'Bryan. W. L. Pierce.

O'BRYAN & PIERCE, ATTORNEYS AT LAW LAS VEGAS, NEW MEXICO. Special attention given to all matters pertaining to real estate.

A. C. VOORHEES, ATTORNEY AT LAW, RATON, NEW MEXICO. Special attention given to the business of cattlemen and collecting.

JAMES H. PURDY, ATTORNEY AT LAW, SANTA FE, NEW MEXICO. Specialty: Land Titles.

Over 6,000,000 PEOPLE USE FERRY'S SEEDS



D. M. FERRY & CO. are admitted to be the LARGEST SEEDSMEN in the world. D. M. FERRY & CO'S Illustrated, Descriptive & Priced SEED ANNUAL For 1887 will be mailed FREE to all applicants and to last season's customers without ordering it. Invaluable to all. Every person using Garden, Field or Flower SEEDS should send for it. Address D. M. FERRY & CO. Detroit, Mich. The BUYER'S GUIDE is issued Sept. and March, each year. 32-313 pages, 8 1/2 x 11 1/2 inches, with over 3,500 illustrations - a whole Picture Gallery. GIVES Wholesale Prices direct to consumers on all goods for personal or family use. Tells how to order, and gives exact cost of everything you use, eat, drink, wear, or have fun with. These INVALUABLE BOOKS contain information gleaned from the markets of the world. We will mail a copy FREE to any address upon receipt of 10 cts. to defray expense of mailing. Let us hear from you. Respectfully, MONTGOMERY WARD & CO. 227 & 229 Wabash Avenue, Chicago, Ill.

For Sale!

ON OUR RANGE AT SAN AUGUSTINE, Dona Ana County, N.M. AS FOLLOWS, VIZ.:

- 350 Two and Three-year-old Steers, mostly twos.
250 One-year-old Steers.
300 Bull Calves, and
250 Cows. (Many of the cows improved and broken to milk.)
Steers and bull calves from one-half to three-quarters bred. A good supply of

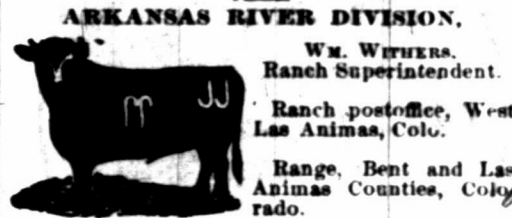
THOROUGHbred BULLS, Durham and Herefords, were placed with our herds four years ago. DAVIES & LESINSKY.

"The Great Wabash Route." People who have been east over the "Great Wabash Route" express themselves as pleased with its elegant equipment and fast time, but more particularly with the low rates procured through Mr. C. M. Hampson, Commercial Agent, No. 10 Windsor Block, Denver. Write to him.

Three months for 25 cents. In order to introduce THE STOCK GROWER to many who do not now take it, we will send this paper for three months for the small sum of 25 cents.

THE PRAIRIE CATTLE CO.

[LIMITED.] W. J. TOD, General Manager. MURDO MACKENZIE, Sec. and Cashier. Trinidad, Colorado.



ARKANSAS RIVER DIVISION. Wm. Withers, Ranch Superintendent. Ranch postoffice, West Las Animas, Colo. Range, Bent and Las Animas Counties, Colorado.

Other Prominent Brands: JJ, PJ, H, N, A, C, P, J, K, A, JJ, U. Horse Brands.



CIMARRON RIVER DIVISION. W. J. CARTWRIGHT, Ranch Superintendent. Ranch postoffice, Catalpa, Colfax county, N. M. Range, Colfax, Mora and San Miguel counties, New Mexico.

Other Prominent Brands: T, 7, 7, J, J, L, T, T, X, T, I, F, H, H. Horse Brand, on the left shoulder or hip.



CANADIAN RIVER DIVISION. A. F. MITCHELL, Ranch Superintendent. Ranch postoffice, Tascosa, Oldham Co., Texas. Range, Oldham county, Texas.

Other Prominent Brands: 7A, U, L, X, A-L, X, III. Horse brand, same as cattle.

The Stock Grower Job Office

Is Now The Most Complete in the Southwest And can turn out every class of printing Cheaply and Promptly

We have on hand a splendid line of live stock cuts of every description, and make a specialty of doing every class of work required by companies or individuals.

- Stock Certificates, Letterheads, Prospectuses, Notehads, Brand Books, Envelopes, Hillheads, Statements, By-Laws, Cards, Vouchers, Checks, Receipts, Tally Books, Etc., Etc., Etc., Etc.

WRITE FOR SAMPLES AND ESTIMATES

Address: THE STOCK GROWER, Las Vegas, New Mex.

And at the same time

SUBSCRIBE FOR THE STOCK GROWER Three Dollars Per Year.

Acknowledged by all representative stock raisers to be the leading journal of the range country.

Stop Writing On scraps of paper and shingles. Send \$5 to THE STOCK GROWER and receive by return of mail 250 envelopes and 250 letter heads, all neatly printed with your brand, range, name and post-office address.

SAN MIGUEL COUNTY.



Ballard & Co. P. O.: Liberty, N. M. Range: Tierra Blanca and Pajarito Creeks, San Miguel County. Other Brands: GBC also on right side; BB also on right side. Ear mark: Underslope both ears. All increase branded QID right side. Horse Brand: V on left hip or neck.

ROBERT MINGUS, Puerto de Luna. C. A. RATHBUN, Las Vegas. R. Mingus & Co.

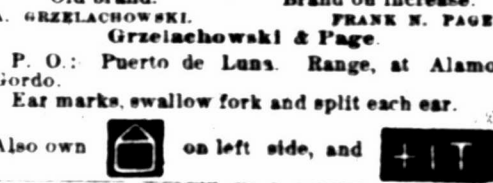


P. O.: Puerto de Luna, Range, head of Alamo Gordo. All increase is branded as in cut and ear marked crop and over back left under back in right. Other brands: For cattle put on both sides, For cattle either side and horse. All horses tails bobbed.

Old brand. Brand on increase. A. GRZELACHOWSKI, FRANK N. PAGE. Grzelachowski & Page.



P. O.: Puerto de Luna, Range, at Alamo Gordo. Ear marks, swallow fork and split each ear. Also own on left side, and +IT.



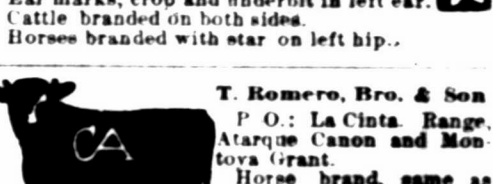
Governor C. H. Moore. P. O.: Puerto de Luna, Range, Upper Yesso. Various ear marks. Horses branded same on shoulder.



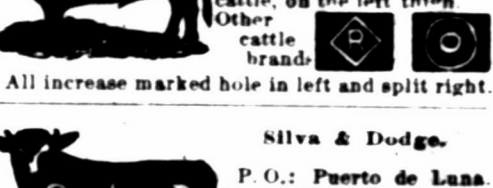
Las Carretas Cattle Co. Wm S. WASSERMAN, Mgr. P. O.: Fort Sumner, N. M. Range, Las Carretas and Pecos river. Also claim cattle branded thus left hip or flank, not kept up. Ear marks, crop and underbit in left ear. Cattle branded on both sides. Horses branded with star on left hip.



T. Romero, Bro. & Son P. O.: La Cinta, Range, Atarque Canon and Montoya Grant. Horse brand, same as cattle, on the left thigh. Other cattle brands: All increase marked hole in left and split right.



Silva & Dodge. P. O.: Puerto de Luna, Range, Alamo Gordo. Horse brand, on either side, on the shoulder. Ear marks, jinglebob in left upper half crop right. All calves branded as above. Also own.



Mariano Hinojos. P. O.: Puerto de Luna, Range, Carriso. Horses and steers are branded thus: H.



Valley Ranching Co. P. O.: Glorieta, N. M. Range, headwaters Pecos river. Shorthorns only. Young bulls for sale.



Quincy & Las Vegas Cattle Co. W. S. LYON, Manager. P. O.: Cabra Springs. Horse brand same on left shoulder. Ear marks, double jinglebob right; swallowfork left.

SAN MIGUEL COUNTY.



All increase branded on both sides. Ear marks, crop left and crop and hole in right Stonewall Cattle Company. Nick S Winston, Manager.

P. O.: Cabra Springs, San Miguel Co., N. M. Range, head of the Juan de Dios, head of the Pajarito Arroyo and Cuervito.

Additional brands: X on right side and II on right hip. X on the right side. X on right side and X on right hip.



W. B. Stapp.

P. O.: Las Vegas. Range, Los Conchas. Additional brands: 3H on left ribs. 76 on left rump or hip. S jaw, S ribs, S thigh.



Montezuma Cattle Co.

J. I. Mosier, Manager. P. O.: Eden, N. M. Range, Los Tanos and on Pecos river. Horses branded same as cattle on the left shoulder or hip. Brand any piece on animal.



Pajarito Cattle Co.

A. H. Whitmore, Presid't. Las Vegas. E. D. Bullard, Sec. and Manager, Liberty. P. O.: Las Vegas, N. M. Range, Pajarito, near Liberty, N. M. Calves branded on both sides. Ear marks, crop and two splits in each ear.



Hyde Park Cattle Co.

P. O.: Hyde park, Ills. Range, El Salitre, San Miguel county. Horse brand, same as cut, on right hip. All young stock branded same as cut.



Lorenzo Lopez.

P. O.: Las Vegas. Range, El Cuerva, San Miguel Co., New Mexico.



Pete Maxwell.

P. O.: Fort Sumner, N. M. Range, Pecos river, near Fort Sumner. Ear marks: Right ear cropped and split, and left ear cropped. Also claims



Geoff. McCrohan.

P. O. Liberty, San Miguel county. Range, Escondido, near Wagon Mound. Ear marks, crop right; staple bit left. Horse brand, same as cut on left shoulder.



Stapp & Ennis.

P. O. Las Vegas, N. M. Range, Los Conchas. Ear marks, crop and hole in right; swallow fork left. Horse brand, same as cut on left hip.



Chas. S. Cowan.

P. O.: Pecos Town, N. M. Ranges, Rincon de las Trozas, Red River, and Cow Creek, Upper Pecos. Horse brand 7 on left shoulder. Ear mark, crop the left, and upper half crop right. Some cattle branded TA on left side. All increase branded as in cut.



J. N. Degraftenreid & Sons.

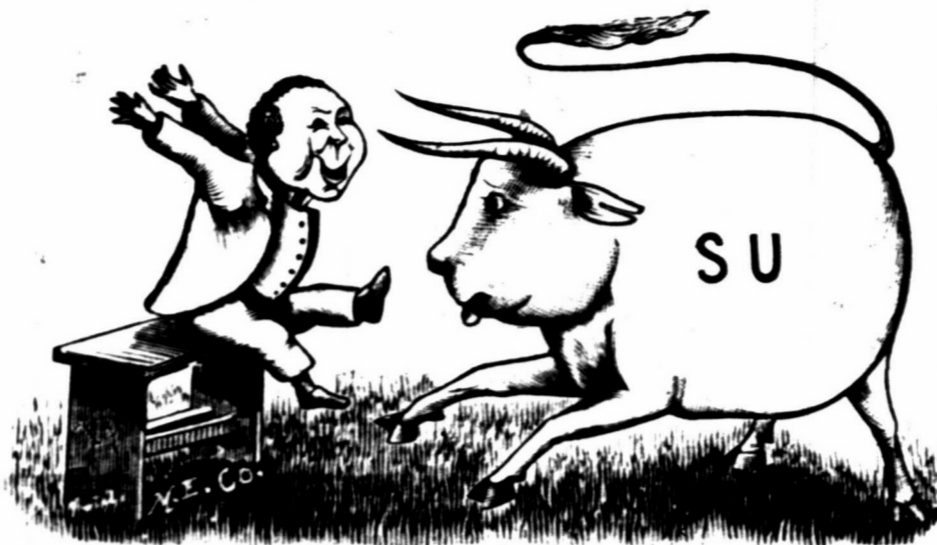
P. O.: Fort Sumner, N. M. Range, Alamo Gordo. Saddle Stock horses branded SIX. Stock horses are branded O-O.



Sam Goldsmith.

P. O.: Liberty, N. M. Range, Plaza Largo. Ear mark, crop and underbit left. Horse brand, circle cross on the left shoulder.

SOCORRO COUNTY.



UPCHER & STEVENS.

R. A. JONES, Range Superintendent.

Postoffice, Frisco, Socorro county, New Mexico.

Range, Tulerosa and San Francisco Rivers, and Johnson Basin, Socorro county, New Mexico.

There was a young man who said, "How? Shall I soften the heart of this cow?" "I'll brand her S U And M-F too, Crop her right, split her left ear:—That's How."

We run two brands, SU and M-F. Ear mark, crop the right and split the left, for both brands. Horse brand, SU on left thigh or left shoulder.

All increase of the following brands is put in the above brand and mark.



Other brands.

MAY on side, S on hip. BEL on side, S on hip. U on side. All brands on left side. ALA on side, U on hip. U on side. Old cattle in various marks and brands. Horse brands, U S and JON S on left hip.



FLOYD JARRETT,

Postoffice, Datil, New Mexico.

Range, Alamocito Park and the Datil Mountains, Socorro County.

Ear marks for all cattle, underslope both ears.

Ranch brand, cattle, horses.



Road brand, cattle.

O. L. HOUGHTON, Hardware

Two Stores, East and West Side, LAS VEGAS, NEW MEXICO.

Fence Wire in Car Lots.

W. H. SHUPP, Wagons And Carriages,

Buckboards and Spring Wagons a Specialty.

Keeps on hand the Cooper steel skein wagon, and an assortment of Buggies and Carriages. Makes Mess Boxes and Branding Irons. Horse Shoes fitted ready to nail on, and portable forges, with tools, for ranch use, always on hand.

Agent for Osborne Mowers. LAS VEGAS, NEW MEXICO.

TONY CAJAL, The Palace Barber Shop,

Bridge street, near the Postoffice, LAS VEGAS, NEW MEXICO.

READERS will confer a favor if, when writing to advertisers, they will state they read advertisement in the Stock Grower.

THE LAS VEGAS Brewery, Bottling Association.

LAS VEGAS, NEW MEXICO.

Our beer is brewed from the choicest malt and hops, and warranted to give entire satisfaction. Our bottled beer is equal to any in the country.

Orders are Respectfully Solicited. G. A. ROTHGER, Proprietor.

J. S. ELSTON,

Wholesale and Retail Dealer in Wall Paper, Paints, Oils, BRUSHES AND GLASS. WINDOW SHADES AND FIXTURES

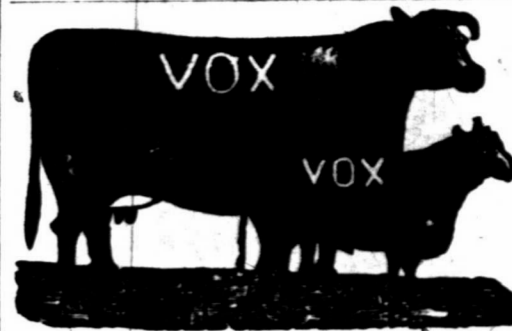
Also, House and Sign Painting, Paper Hanging. Country Orders Solicited. Sixth St., opp. San Miguel National Bank, Las Vegas.

Saddles

—AT— WILLIAM MALBEUF'S. LAS VEGAS, NEW MEXICO.

Having found out the wants of the people I deemed it wise to prepare for it. Consequently I procured the services of the best California saddlers, who can make saddles to suit anybody, and give satisfaction, as I use the best CALIFORNIA MATERIAL and first-class workmanship. I also keep all kinds of horse equipments, at reasonable prices.

SAN MIGUEL COUNTY.



Fort Sumner Land and Cattle Co.

DAN. L. TAYLOR, President and Manager, Fort Sumner, New Mexico.

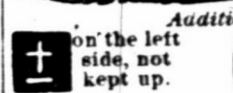
Range, Fort Sumner, N. M. P. O.: Fort Sumner.

Ear marks, crop the left. Additional brands—All kept up. NO on right side, W on right hip, X on right hip or hip. VO on right side or hip. Some horses are branded VO.



Robert L. M. Ross.

P. O.: La Cinta. Range, Las Alamocitas Arroyo. All young stock branded as in cut.



Additional brands. on the left side, not kept up. on the left side and left hip, not kept up.

Horse brand, on the left hip.



E. G. Austen.

Postoffice, Watrous, N. M.

Range, near Liberty, San Miguel county, N. M.



Barash & Bloch.

P. O.: Las Vegas, N. M. Range, Los Conchas. Cattle branded either side. Horse brand, same as cut, on left shoulder. Ear marks, swallow fork each ear.

Additional brand on left side. All increase branded as in cut.



ISIDOR FELLHEIMER, Of New York.

Fellheimer & Hirsch.

R. Hirsch, Of Las Vegas, N. M.

Ranch P. O.: Liberty, New Mexico. Range, Pajarito and Tierra Blanca, San Miguel Co. Cattle branded on either side.

Horse brand, left hip. Ear marks, on increase crop left; old stock have various earmarks.

Cattle are also branded 141 on the right side. The bars on all cattle ran from the top of the back to the belly. Cattle branded on both or either side.



Waddingham Bell Ranch.

MICHAEL SLATTERY, Mgr.

P. O.: La Cinta, county of San Miguel, New Mexico. The range, Montoya Grant. All the horses on the ranch have the same bell brand on left shoulder.



Jas. E. Johnson.

P. O. Liberty, N. M. Range, Liberty, N. M. Ear mark, crop and split each ear. Horse brand, same as cut on left hip or thigh.



Kemary Ritter.

P. O.: Liberty, N. M. Range, Canadian and Trujillo rivers. Ear marks crop left-swallow fork, right. Also own all cattle in the C brand, formerly belonging to M. J. Coots.

All horses branded on the left shoulder.



Rudolph Erminger

P. O.: Liberty, N. M. Range, Pajarito and Tierra Blanca, San Miguel Co. Ear marks, underbit in each ear.

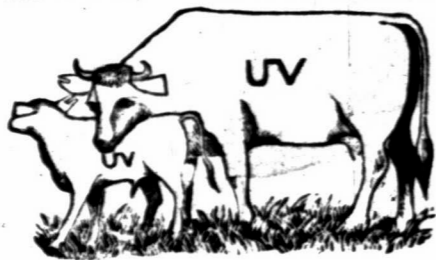
Horses 2 on the left branded on the left side. Also cattle branded on the left side.



Mrs. D. F. Allen.

P. O.: La Cinta, San Miguel county, New Mexico. Range, Atarque Canon. Other brands: Some cattle branded same on left hip. Horse brand; same on left shoulder.

SAN MIGUEL COUNTY.



Trujillo Ranch Company. Of Las Vegas.

Office of Browne & Manzanares. C. W. BROWN, Manager. P. O.: Red River Springs, New Mexico. Range on Trujillo creek, in Oldham county, Texas; and San Miguel county, New Mexico.



All increase branded as in above cut. Horse brand, same as cut on the left shoulder. Some horses have Star C on the left hip.



Y. Kohn & Co. P. O.: La Cista, Range, Arroyo de los Alamosas. New ear mark, half under crop each ear. Also own cattle in following brands: YK on either side, and marked double finglebob in left ear.



Also own cattle in following brands: YK on either side, and marked double finglebob in left ear. All increase to be branded and marked as in cut. Horses branded some on left shoulder and some on left leg.



Fuller, Devine & Co. P. O.: Puerto de Luna, Range, Salado. Ear marks, crop and underbit in each ear. Horse brand, small T on left shoulder.



Waddingham Cattle Association. RAYMOND JENKINS, General Manager. P. O.: Fort Bascom, N. M. Range, Canadian river and Ute creek. Additional brands on right and left hip, making 44 when seen from behind. Horse brand on shoulder.



W. H. McBroom. P. O.: Fort Sumner, N. M. Range, Canaditas. Ranch Foreman, BROWN HARRIS. Additional brands on left hip. X on left side. Various ear marks for these various brands. Horse brand, same as cut.



Goodley Bros. P. O.: Cabra Springs, Range, Largoito, Cuzco and Conchas. Crop left, split right. Horse brand, X on the left hip. Also own X-4 brand.



Heckle & McDowell. P. O.: Las Vegas, N. M. Range, Sabinoso and Lagitijos arroyo. Some branded only with a W on either side and ear mark grub right or left. Horse brand, L on the right shoulder. Also own all female cattle in following brands, which are not kept up: LL left side and thigh, JM left side, JJ road brand, left shoulder. All increase branded as in cut.



New England Live Stock Company. P. O.: Greeley, Colorado. Ranch P. O.: Fort Sumner, N. M. Range, the Pecos, at Fort Sumner. Additional brands, 102 DOS. Horses branded same as cattle on left side. Earmark, crop and two splits in right ear. Cattle in brand of above cut branded both sides.



W. A. Burnett, Trinidad, Colorado. J. D. WILLIAMS, Foreman. P. O.: Liberty, N. M. Range, Monte Ruevelto, San Miguel county, New Mexico. Additional brands: T on left jaw and H on left side. Horse brand, H on left hip.

COLORADO AND NEW MEXICO.

THE HOLT LIVE STOCK COMPANY.

WILLIAM T. HOLT, President. MYRON W. JONES, Manager. Office, Opera House Block, Denver, Colorado. P. O. box 2163.

A. TEMPLE THORN, Cashier and Accountant. L. WALLACE HOLT, 7 Rivers, N. M., Asst. Manager.

Breeding range, on the west side of Pecos river, Lincoln county, New Mexico. GEORGE WILCOX, foreman; P. O., Seven Rivers, N. M.



Horse brands: C on the left hip, H on the left hip or thigh.



Swallow fork in left, underslope in right.

On both sides. Underbit in left.

Swallowfork in left, underslope in right.

Crop in left and under-slope in right.

Thoroughbred Hereford and Poiled Angus breeding farm, Horse Creek, O. Z. postoffice, Colorado.

THE BLOOM CATTLE CO.

FRANK G. BLOOM, General Manager, Trinidad, Colorado.

Also own the following brands:



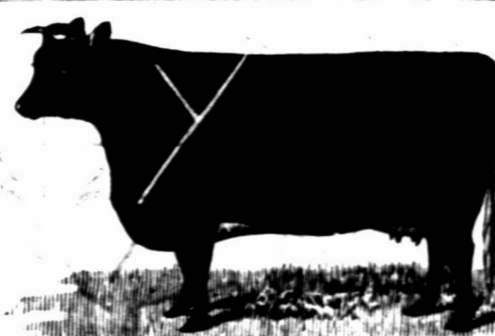
Half undercrop left, crop right. Swallowfork left, split right. Crop and two splits each. This mark and brand for all steers. Swallowfork left, crop and underbit right.



All increase branded same as cut and marked swallowfork right, and tin tag in the left.

Horse and Steer range, Apishapa Temp creek, Bent and Lockwood canons, Colorado. W. F. BLOOM, Foreman, Postoffice, Thatcher, Colorado. Breeding ranch, Rio Honda, Lincoln county, New Mexico. JOHN BURNS, Foreman, Postoffice, Lincoln, New Mexico, care Circle Diamond ranch.

SOCORRO COUNTY.



Ear marks, swallow fork the left, crop the right. Above brand and ear mark kept up.

HURST, BLACK, KIEHNE & WILEY.

Postoffice, Patterson, Socorro county, New Mexico. Range, southeastern part of the San Augustine plains, and Nigrita river, Socorro county, N. M. Additional Brands, not kept up.



SIMON LEWIS' SONS, Golden Rule Clothing Store

WHOLESALE AND RETAIL DEALERS IN Clothing, Hats, Boots and Shoes, and Gent's Furnishing Goods.

WE'VE GOT THE STOCKMEN'S TRADE,

But want to hear from the few who have not yet bought from us. We can refer to any ranchman in Northern New Mexico as to our Low Prices and Fair Dealing.

OUR TAILORING DEPT' IS THE MOST COMPLETE IN THE WEST.

Boots and Shoes Made to order at Lowest Prices and in the Best Style.

Mail Orders Promptly Attended to. LAS VEGAS, NEW MEXICO.

MARTIN BROTHERS, AGENTS FOR THE BRUNSWICK AND BALKE COLLENDER CO.

Billiard Supplies, Etc. Dealers in Kentucky Bourbon and Rye Whiskies and Distillers' Agents. CALIFORNIA WINES AND BRANDIES. Marwede Building, next to Postoffice, LAS VEGAS, NEW MEXICO.

THE COLORADO TELEPHONE AND TELEGRAPH CO. Exclusive lesors of the Electric Telephone in New Mexico.

Special attention given to leasing and putting up Telephones for Private Lines at Stores, Ranches, Mines, etc. Correspondence invited. Address H. T. VAILLE, Supt., Las Vegas, N. M.

SAN MIGUEL COUNTY.



D. G. Fritalen.

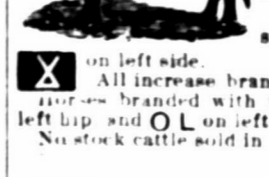
P. O.: Liberty, San Miguel Co., N. M. Range, Tierra Blanca. Ear marks, crop and slit twice the left ear. Horse brand, 77 on right hip.



Frank Carpenter. P. O.: Liberty, N. M. Range, Red River, twelve miles above Fort Bascom. Ear marks, crop the left and sharpen the right ear.



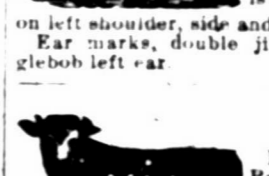
H. R. Trask. P. O.: Liberty, San Miguel county, N. M. Range with W. A. Burnett. Also own O L on left side with slash on hip and X on left side.



A. Straus, Manager. P. O.: Liberty, Range, Rincon del Charco. Horse brand, same as on cattle, on right shoulder or left hip. All young stock is branded thus: KKK on left shoulder, side and hip. Ear marks, double jinglebob left ear. Other brands: TG.



R. & L. Davidson. P. O.: Liberty, N. M. Range, Tierra Blanca, San Miguel county. Ear marks, overslope left. Horse brand, on the left shoulder thus: JM on either hip, left side, right side. None of these brands kept up. XV on left shoulder and V on left hip. All increase branded XV on both sides.



S. Fred. Reuther. P. O.: La Cista, N. M. An over half crop in each ear. NX Increase branded as in cut.



Reuther & Nahm. P. O.: La Cista, N. M. Crop two splits left; half undercrop right. RN Increase branded as in cut. Horse brand 7 on the left shoulder.



Brazil & Maxwell. P. O.: Las Vegas, Range, Taivan ranch, east of Fort Sumner. Horse brand, on left shoulder.



Fort Bascom Cattle Raising Co. STEPHEN E. BOOTH, Mgr. P. O.: Fort Bascom, San Miguel Co., New Mexico. Range, Baca Location, No. 2. Horses branded same as cattle on the left hip.

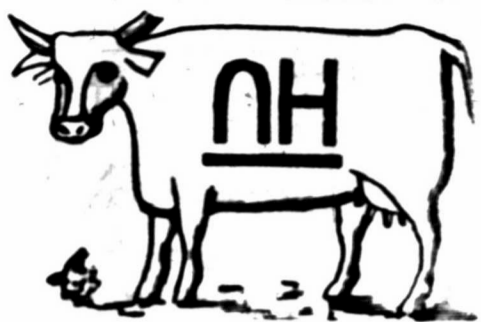


I. H. Finnell. P. O.: Santa Rosa, N. M. Range, Los Tanos, Pecos river. Cattle branded on both sides. Ear marks, crop the left swallow fork the right.



Allen & Womer. P. O.: Liberty, N. M. Range, The Canadian river. Horse brand, same as cut, on the left hip.

SAN MIGUEL COUNTY.



The Dutchess Cattle Co. of New Mexico. TAYLOR MAULINSO, Manager, Postoffice, Wagon Mound. Ranch P. O.: Liberty, N. M. Range, Pajarito, San Miguel county. Other brands, HUT and 202 both on the left side. Horses branded same as above cut, on left hip.

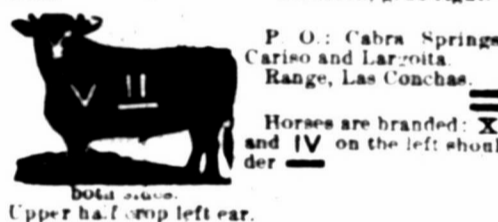


Sam Doss, JOHN PAWLEY, Foreman. Ranch P. O.: Fort Sumner. Address, 508 East 24th st., Kansas City, and Trinidad, Colo. Range, Pecos river, at Fort Sumner. Additional Brands. Cattle in DO brand have also following brands: some D on left hip and left jaw; a few branded D on left hip, side and jaw. Cattle in VQ brand have also following brands: some U right loin; some T right side; some F right side. None of these brands are kept up. All increase is marked and marked as in cut. Horses branded DO on right thigh.

Las Conchas Cattle Company. A. S. HALL, Manager.



Under slope right. Also have U on right side of neck. both sides. Young stock, crop right, old stock, grab right. P. O.: Cabra Springs, Cariso and Larzotta. Range, Las Conchas.



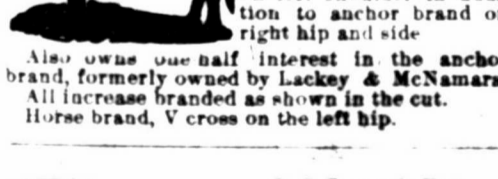
Horses are branded: X and IV on the left shoulder. Upper half crop left ear.



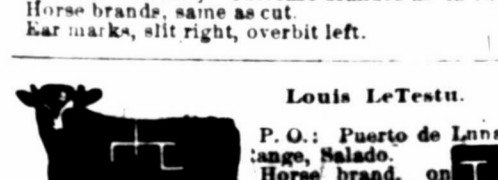
Miguel Romero. P. O.: Las Vegas. The range, San Rafael springs, San Miguel county. Horses, same as cattle. Additional brands: AR GR



Juan De Dios Cattle Company. P. O.: Las Vegas, N. M. Range, Juan de Dios, San Miguel county. Horse brand, same as on cattle, on the left shoulder.



W. S. Lackey. P. O.: Red River Springs, N. M. Range, Red river. Some cattle branded < on left shoulder in addition to anchor brand on right hip and side. Also owns one half interest in the anchor brand, formerly owned by Lackey & McNamara. All increase branded as shown in the cut. Horse brand, V cross on the left hip.



G. S. Long & Bro. P. O.: Cabra Springs, N. M. Range, La Garita and Los Conchos. Other brands: W H L on either side. Also, < or >. On either side. Increase branded as in cut. Horse brands, same as cut. Ear marks, slit right, overbit left.



Louis LeTestu. P. O.: Puerto de Luna, Range, Salado. Horse brand, on left shoulder. Ear marks, crop ear right and jinglebob in the left.

SADDLES!

For \$35.00

I will ship to any address in New Mexico or Arizona one of my best, plain, double cinch, No. 44, Colorado saddles. In addition to saddles, I keep a full line of all styles of

Harness, Bitts, Spurs, Quirts, Chapareros, Etc., Etc.

JOHN H. HUGHES.

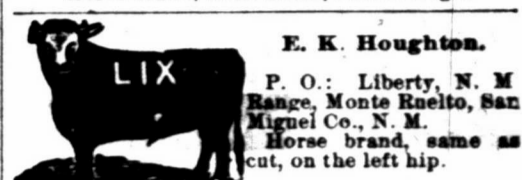
ALBUQUERQUE, N. M.

SADDLES!

SAN MIGUEL COUNTY.



Frank Huntington. Postoffice, La Cinta, N. M. Range, Rincon La Cinta. Also own cattle in ZH on on left side. Horse brand, same as cut, on left thigh.

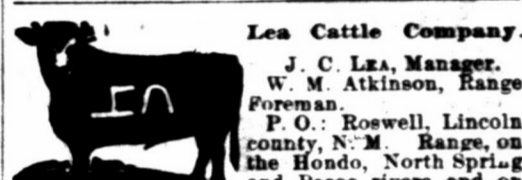


E. K. Houghton. P. O.: Liberty, N. M. Range, Monte Ruelto, San Miguel Co., N. M. Horse brand, same as cut, on the left hip.

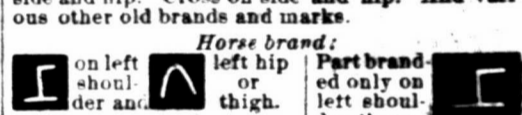
LINCOLN COUNTY.



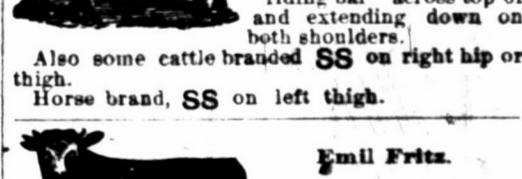
L. M. Long. P. O.: Roswell, N. M. Range, Rio Hondo. Other brands: Both on left side. Horse brands, same as cattle on right shoulder. Also run cattle in this brand, which is kept up. Ear marks, upper jinglebob in the right and lower jinglebob in the left.



Lea Cattle Company. J. C. LEA, Manager. W. M. Atkinson, Range Foreman. P. O.: Roswell, Lincoln county, N. M. Range, on the Hondo, North Spring and Pecos rivers, and on the Aqua Azul, Blackwater and Baca Ranches, all in Lincoln Co. Ear marks, crop and split left, split right. Brand as in cut on left side, but sometimes on right side. Ear marks sometimes reversed. Additional brands: E side, and also some on side and hip. W side, JB on hip or loin. LEA on side, or shoulder, side and hip. Cross on side and hip. And various other old brands and marks.



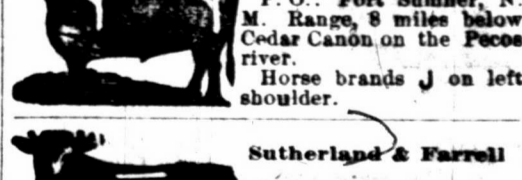
Horse brand: Part branded only on left shoulder thus: S. S. Terrell. P. O. Fort Stanton, N. M. Range, Rio Bonito. Ear marks, crop left, split and underbit right. All cattle branded with "riding bar" across top of and extending down on both shoulders. Also some cattle branded SS on right hip or thigh. Horse brand, SS on left thigh.



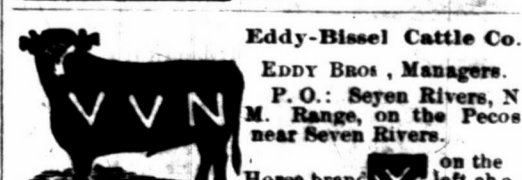
Emil Fritz. P. O.: Lincoln, N. M. Range, Rio Felix, Lincoln county, N. M.



S. A. Hubbell. Post Office: Bernalillo, New Mexico. Range: Guadalupe Mountains.



J. & J. S. Reynolds. A. B. ALLEN, Foreman. P. O.: Fort Sumner, N. M. Range, 8 miles below Cedar Canon, on the Pecos river. Horse brands J on left shoulder.



Sutherland & Farrell. P. O.: Roswell, N. M. Range, Rio Hondo, above Roswell. Other brands: All cattle have two bars across the butt. Eddy-Bissel Cattle Co. EDDY BROS., Managers. P. O.: Seven Rivers, N. M. Range, on the Pecos near Seven Rivers. Horse brand: on the left shoulder.

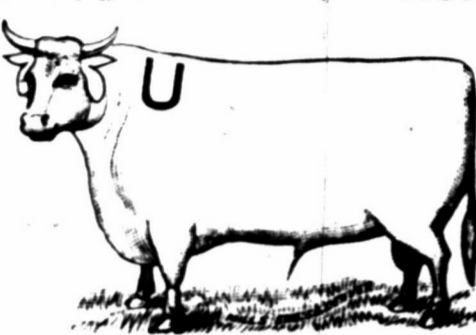
LINCOLN COUNTY.

WM. ROBERT.

Postoffice, Roswell, Lincoln county, New Mexico.

Ranges.

Breeding range, on the Pecos river, New Mexico. Steer range, on the San Pedro river, in Cochise county, Arizona.



Horse Brand, U on the left shoulder.

Ear Marks, Jinglebob in both ears.

Same brand and marks kept up on both the steer and breeding ranges. All increase of following brands, which I own, marked and branded as in main cut.



Underslope each ear.



Overslope each ear.



Crop left, under half crop right.



Crop and underbit left, some same mark right.



Crop and under half crop each ear.



Crop right and under-slope left.



Swallow fork in either ear.



Crop the left and under-half crop right.



Crop left, underslope right.



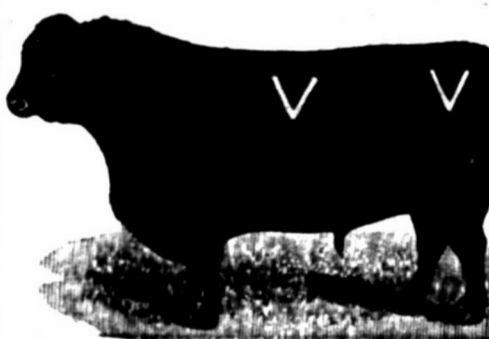
Crop the right.



Crop the right.

THE ANGUS V V RANCH.

KIRBY & CREE.



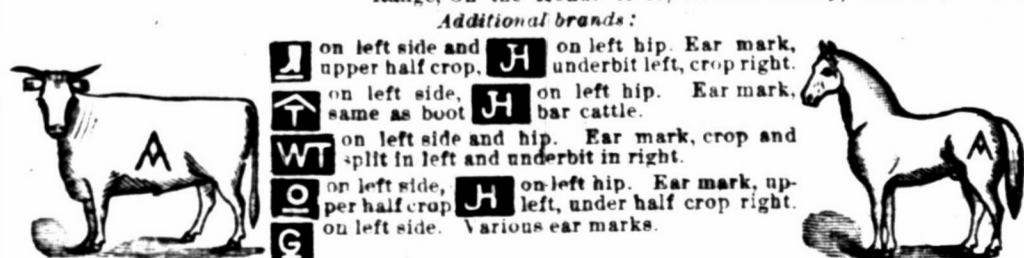
Postoffice, Fort Stanton, Lincoln county, New Mexico. Range, Rio Salado, Rio Bonito, Little creek, Eagle creek, and Rio Ruidosa. Ear marks, underbit in each ear. Horse brand, V on the left shoulder.

Additional Brands: on right side, underbit both ears. on left side, or either side. on either hip. on the left side. on left shoulder, side and hip. Marked, crop right and underslope left.

ANDERSON CATTLE COMPANY.

W. E. ANDERSON, Manager.

Postoffice, Roswell, Lincoln county, New Mexico. Range, On the Hondo river, Lincoln county, west of Roswell.



Additional brands: on left side and upper half crop. on left hip. Ear mark, underbit left, crop right. on left side, same as boot. on left hip. Ear mark, bar cattle. on left side and hip. Ear mark, crop and split in left and underbit in right. on left side, on left hip. Ear mark, upper half crop left, under half crop right. on left side. Various ear marks.

MILNE & BUSH.

Postoffice, Roswell, Lincoln county, N. M. Range, on the Berrendo and Pecos rivers.



Main brand. Grub Left. Grub left and underslope right. Grub left and crop right. Additional Brands: on left side. Ear marks, crop left under half right. Horse brand, V left thigh.

O X O on left shoulder, side and hip. Different ear marks.

LINCOLN COUNTY.



El Capitan Land and Cattle Company. P. O.: Fort Stanton, Lincoln county, New Mexico. Range, north of El Capitan mountains, Lincoln county.

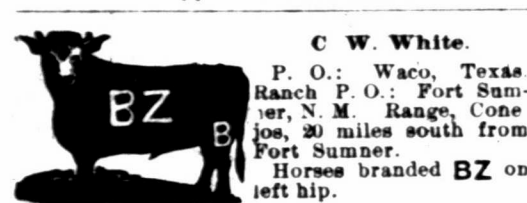
Other brands. MEL left shoulder, side and hip. Ear marks slit and underbit in right. COM left shoulder, side and hip. Underslope. OWL on left side. Marked crop right, underbit left. Horse brand on hip both ears. All increase marked as in cut and tails bobbed. When sold all horses are counterbranded with a small block on the left jaw.



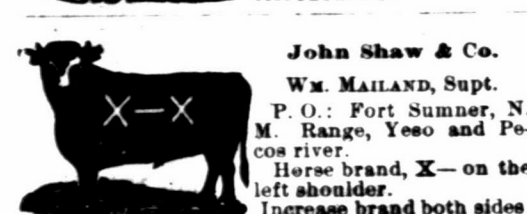
Carrizozo Cattle Ranch Co. (Limited). JAMES A. ALCOCK, Manager. P. O.: White Oaks, N. M. Range, Carrizozo. Horse brand, C with dot in center placed on left shoulder.



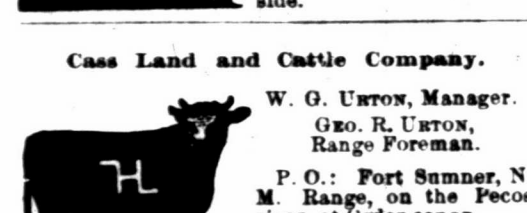
W. H. Fuqua. P. O. Fort Sumner, N. M. Range, Moro canon, Pecos river, 35 miles south of Fort Sumner. Ear marks, hole in left, finger left. Old stock branded left side, increase both sides. Additional brands on left side, kept up. Ear marks same as above. Ear marks, hole in left, quarter over and under crop right. Horse brand: A on left shoulder.



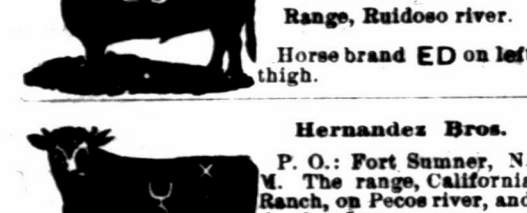
C W. White. P. O.: Waco, Texas Ranch P. O.: Fort Sumner, N. M. Range, Conejos, 20 miles south from Fort Sumner. Horses branded BZ on left hip. W. L. Rynerson & Co. P. O.: Las Cruces, and Lincoln, N. M. Range, Rio Felix, Lincoln county. Horse brand, same as on cattle, but smaller, and on left shoulder.



John Shaw & Co. Wm. MAILAND, Supt. P. O.: Fort Sumner, N. M. Range, Yeso and Pecos river. Horse brand, X on the left shoulder. Increase brand both sides. Doak Good. P. O.: Paris, Texas. Range, Los Portales, Staked Plains. Ear marks, crop and underslope each ear. Cattle branded on left side.

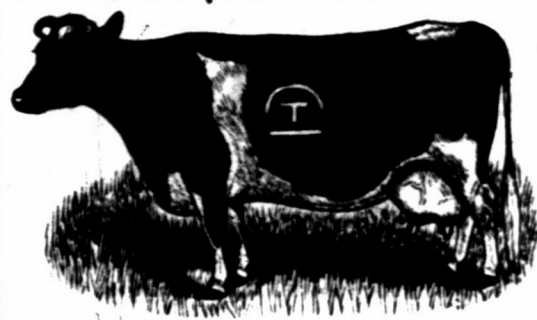


Cass Land and Cattle Company. W. G. URTON, Manager. Geo. R. URTON, Range Foreman. P. O.: Fort Sumner, N. M. Range, on the Pecos river, at Cedar canon. Horse brand, same as in cut, only on right hip. All young stock branded as in cut on the right side, and also with a 7 on the left hip.



Edwin Terrell. P. O. Ruidoso, N. M. Range, Ruidoso river. Horse brand ED on left thigh. Hernandez Bros. P. O.: Fort Sumner, N. M. The range, California Ranch, on Pecos river, and the San Juan mesa. Horse brand on left hip. Ear marks: Swallow fork in the left ear.

SOCORRO COUNTY.



IRA E. LEONARD, President, Socorro, N. M. C. O. TIFFANY, Sec. & Treas., San Marcial. J. C. TIFFANY, Manager, San Marcial, N. M.

BOSQUE BONITA Land & Cattle Company SAN MARCIAL, SOCORRO COUNTY, NEW MEXICO.



Shorthorn Cattle Co. J. M. HALL, President, Los Angeles, Cal. R. B. GODLEY, Sec'y and Treas., Cleburne, Texas. R. J. BISHOP, Ranch Manager, Socorro. Range, Luna Valley, Rita Blanca and San Francisco Rivers, western end of Socorro county. Ear marks, some underslope left, and crop and under half crop left, crop right.

MEXICO, TEXAS AND WYOMING.



CLAY M. MANN, Postoffice Address, Colorado City, Texas. Ranges, Los Varas, State of Chihuahua, Mexico; Kent county, Texas, and Western Wyoming. Ear marks on all cattle, crop off left. All horse stock branded as in cut.

PLAZA HOTEL REOPENED August 1st, 1886.

Thoroughly Renovated and under the Management of the Las Vegas Hotel and Improvement Company.

First-class in all its appointments. Clean, airy rooms. Elegantly furnished. A No. 1 table, and ever, thing possible done for the comfort of guests. Headquarters for Stockmen and Commercial firms. Rate, \$2.50 per day. Special rates to parties remaining a week or more.

The Armijo House, ALBUQUERQUE, N. M.

NEWLY FURNISHED THROUGHOUT. Every modern convenience has been added, making it one of the best hotels in the southwest. Commercial travelers will find commodious sample rooms. The bar and billiard room are the finest in the territory. Its nearness to business, street car lines, opera house, depots, etc., make it desirable in every way. Requesting your patronage, respectfully, W. E. TALBOTT, Proprietor

CHAS. E. BONSALE, Manager.

ST. NICHOLAS HOTEL, Sixth St. and Douglas ave., Las Vegas.

CATTLEMEN AND ALL WILL FIND HERE A PLEASANT STOPPING PLACE Centrally Located. Reading Room Connected. American and European Plans MRS. M. A. HORNBERGER, Proprietor.

UNITED TRADING CO., COLORADO CITY, TEXAS.

Makes Contracts for delivery of Stock Cattle in any quantities and classes, to suit purchasers. Correspondence solicited. Refer to the First National Bank, Colorado, Texas. JOHN HARRIS, Manager.

J. C. LEARY & CO., Commission Merchants for the Sale of Live Stock and Ranches OFFICE IN STOCK GROWER BUILDING, LAS VEGAS, N. M.

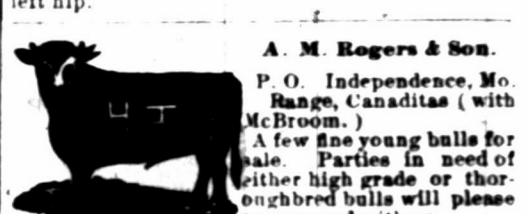
Will contract to deliver at any point thoroughbred or grade animals of any breed, at lowest prices. Contracts for surveying taken: maps, plans and estimates for railroad work, and surveys for irrigating schemes and water works carefully made. We make a specialty of closing trades satisfactorily and promptly. We can find buyers for stock of all kinds, and give personal attention to all business which is entrusted to us. We have the largest acquaintance in this section. Correspondence solicited, and all inquiries will receive prompt attention.

LINCOLN COUNTY.



Three Rivers Land and Cattle Ranch Co. GEORGE B. BARBER, Manager.

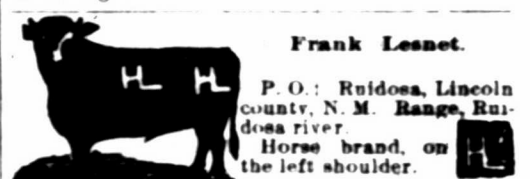
P. O.: Lincoln, N. M. Range, Three Rivers, Lincoln county, N. M. Horse brand, one cross, same as cattle, on the left hip.



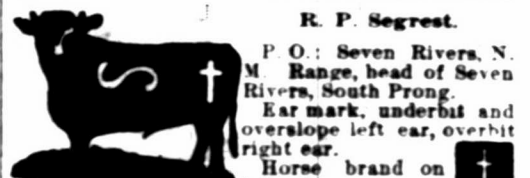
A. M. Rogers & Son. P. O. Independence, Mo. Range, Canaditas (with McBroom.) A few fine young bulls for sale. Parties in need of either high grade or thoroughbred bulls will please correspond with us.



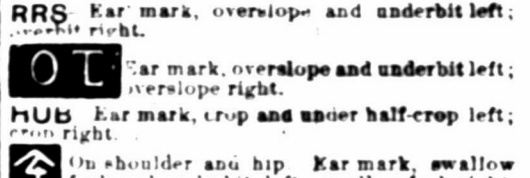
L. L. Cattle Company. M. R. Lewis, Range Mgr. and Secretary. Postoffice, Fort Sumner, N. M. Lewis Lutz, Treasurer. Las Vegas. Range, Pecos river, 40 miles south of Ft. Sumner. Ear marks, underslope right, overslope left. Horse brands, L on shoulder, O on jaw, both on the right side.



Frank Lesnet. P. O.: Ruidoso, Lincoln county, N. M. Range, Ruidoso river. Horse brand, on left shoulder.



R. P. Segrest. P. O.: Seven Rivers, N. M. Range, head of Seven Rivers, South Prong. Ear mark, underbit and overslope left ear, overbit right ear. Horse brand on left side. Some cattle are branded with the S straight up. Additional brands.



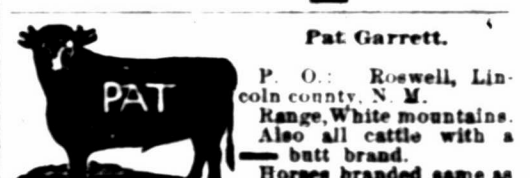
RRS Ear mark, overslope and underbit left; overbit right. OT Ear mark, overslope and underbit left; overslope right. HUB Ear mark, crop and under half-crop left; crop right. On shoulder and hip Ear mark, swallow fork and underbit left; swallow fork right.



J. A. LaRue. P. O.: Las Vegas, N. M. Range, Rio Felix, Lincoln county, New Mexico.



George G. Gans. P. O.: South Fork, Lincoln county, N. M. Range, Pleasant valley, 9 miles north of Upper Pecos. Marked, crop both ears. Horses branded same as cattle, on left shoulder. Also own all cattle branded G on both sides.



Pat Garrett. P. O.: Roswell, Lincoln county, N. M. Range, White mountains. Also all cattle with a butt brand. Horses branded same as cattle.



William Shane. P. O.: Ruidoso, Range, from Ruidoso river to Eagle creek. Horse brand same as cut on left thigh.



N. B. WINFREY. C. H. WINFREY. Winfrey Bros. P. O.: Fort Sumner, N. M. Range, Pecos river, 30 miles south of Fort Sumner. Ear marks, crop left, underbit right. Cattle also branded HAD right side, not kept up. Horses branded on right hip thus: H



J. C. White. P. O.: Fort Sumner. Range, ten miles below Fort Sumner. Mark, crop and swallow-fork right, crop left. Horse brand on the left hip.

LINCOLN COUNTY.



Littlefield Cattle Company.

J. P. WHITE, Manager.

Postoffice, Roswell, N. M. Range, at Bosque Grande, Rio Pecos; and at Four Lakes, on the Staked Plains.

Also cattle in the following brands:

W on the left side. L+ on the right side. RS on the right side and on right hip.

LFW on hip, side and shoulder;

24 on the left hip.

J-O on shoulder, side and hip.

S+R on the shoulder, side and hip.

For these brands various earmarks.

Horse brands: W -F L+ on top of the thigh.

Also own all cattle in the following brands: LOD left side; ear mark, swallow fork right overslope and underbit left; SSS left side, and S on hip; JEW left side; OVJ left hip, side and shoulder.

SOCORRO COUNTY.



Reed & Bruton.

W. C. BRUTON, Representing.

P. O.: Socorro, N. M. Range, western slope of the Magdalena mountains, Gallinas and Hierros mountains, and the Bear Springs, all in Socorro county, New Mexico.

Bars across hips as in cut on both sides.

Ear marks, sharpen the left and crop the right.

Other brands:

CCC on left side. BDE on left side, right loin. F left side. Horse brand on left hip saddle horses. rt. sh'lder stock horses.



J. W. Crawford,

"CAPTAIN JACK."

P. O.: Fort Craig, New Mexico. Range, Fort Craig Military Reservation.

All increase branded and marked same as cut.

Horse brand, on left shoulder.



Bell & Taylor.

P. O.: Socorro, N. M. Range, Ocosingo mountains, Socorro county.

Horse brand, XK on left shoulder.



Nigrita Cattle Co.

JOHN BELL, Foreman.

P. O.: Alma, Socorro Co., N. M. Range, South of Nigrita, Mogollons.

Horses are branded the same as cattle but on the left hip.



Seven Rivers Cattle Co.

JOHN HARRIS, Manager.

P. O.: Colorado City, Texas. Range, east side of Pecos river, 25 miles above Pecos Station, Tex.

Horse brand, same as the cut on the left hip.

A REWARD of \$250 is offered for the arrest and conviction of all persons illegally handling any cattle in this brand.

SPECIAL OFFERS! Herefords! Herefords!

We intend to add a couple of thousand names to THE STOCK GROWER'S subscription list before the first of the year, and in order to do so propose to offer an inducement to new subscribers, and to others, to act as agents in securing new names for our lists.

This offer holds good until January 1, 1887.

FIRST

We have a nice offer for the ladies. To any lady sending us ONE new subscriber, with the usual \$3.00 for subscription, to THE STOCK GROWER, we will send:

American Practical Cookery Book; or House-keeping made Easy, Pleasant and Economical. By a practical housekeeper. Illustrated; 12-mo; or

New Southern Cookery Book. 1,000 carefully tested recipes. By Mrs. M. E. Porter; 12-mo; or

The Ladies' Hand-Book of Fancy and Ornamental Work. By Miss Florence Hartley. 300 illustrations; quarto; extra.

NEXT!

To those desiring to make a holiday gift to some friend, we make the following:

For each new subscriber, with \$3.00.

Life of George Washington. Bancroft.

Public and Private Life of Daniel Webster. Including most of his great speeches and letters. By General S. P. Lyman. Illustrated.

Napoleon and His Campaigns. His army and generals. With sketch of the French revolution. Full page engravings.

Memoirs of Mary, Queen of Scots. By Miss Binger. With portrait.

Life and Public Services of Abraham Lincoln. By Frank Crosby. With portrait.

Also, any one of the following biographies, each in single volume: Gen. Sam Houston, William H. Harrison, Patrick Henry, Henry VIII, and his Six Wives, Alexander Hamilton, Thomas Jefferson, Gen. Andrew Jackson, Joan of Arc, Empress Josephine, Dr. David Livingstone, Captain John Smith, John Quincy Adams, Marie Antoinette, Daniel Boone, Henry Clay, Oliver Cromwell, Kit Carson, Davy Crockett, Stephen A. Douglas, Jefferson Davis and Stonewall Jackson, Benjamin Franklin, Horace Greeley.

FOR CHILDREN.

True Stories from Ancient History. By Agnes Strickland.

True Stories from Modern History. By Agnes Strickland.

Child's History of England. By Charles Dickens.

FOR STOCKMEN.

Cattle and Their Diseases. Embracing their history and breeds, crossing and breeding, feeding and management, etc. By Robert Jennings, V. S. Illustrated.

\$5,000 a Year on the Farm; and How I Made It, starting without capital. By Edward Mitchell.

FOR EVERYBODY.

Rocky Mountain Adventures. Details of fearful fights with savage Indians, Mexican rancheros and beasts of prey. By Edward Bryant.

The Land of the Kangaroo and the Poornang. A true history of the discovery and wonderful growth of Australia, including dashing acts of bravery in pursuit of strange wild animals and wilder forest ruffians.

Female Life among the Mormons; or, Maria Ward's Disclosures. A narrative of personal experience. Illustrated.

Thrilling Adventures among the Indians. Early Indian wars, etc. John Frost. 300 illustrations.

Scouting Expeditions of the Texan Rangers. Samuel C. Reid, Jr. Illustrated.

Gerard, the Lion Slayer, and Other Stories; or the Romance of Adventure. With engravings, 16-mo, extra.

Livingstone's Travels and Researches in South Africa. Illustrated.

Thirty Years in the Arctic Regions. A graphic narrative of Sir John Franklin's four expeditions.

Perils and Pleasures of a Hunter's Life. Herne. Illustrated.

Wonderful Adventures by Land and Sea; Of the Seven Queer Travelers Who Met at an Inn. Josiah Barnes.

Remember all of these books are neatly bound in cloth, and would cost from \$1.25 to \$3.00 at any book store. We guarantee them to please you. We send one of them for each new subscriber sent us by January 1, 1887. Now is the time to replenish your libraries. Read THE STOCK GROWER, and notice the new and attractive special departments which we are constantly adding.

ROBERT MILLER,

WEST LIBERTY, IOWA.

Breeder of Purest and Best Strains of Shorthorns in America.

He also handles Hereford and Polled cattle of the choicest strains. Long years of experience enable him to select and breed the best. Special attention paid to the filling of orders for western ranchmen. Correspondence promptly answered.



John W. Prowers Jr. Owner and Breeder

Of the well-known herd of pure-bred Hereford cattle, of the late Hon. John W. Prowers. Young bulls and heifers for sale; also, twenty-five pure-bred and imported cows, ages ranging from three to six years old. Address all inquiries to

J. J. LANE,

Guardian for John W. Prowers, Jr., WEST LAS ANIMAS, COLO.

COOLEY & HUNTER,

Proprietors Livery, Feed and Sale

Stables,

CLOSED CARRIAGES, MOUNTAIN WAGONS, OPEN CARRIAGES, AND SADDLE HORSES.

CHARGES REASONABLE.

Horses and wagons bought, sold or exchanged. All orders by telegraph promptly answered. We take great care to please owners who board their horses at our stables.

Constantly on hand a number of well-broke cow ponies in good condition, and ready for use. They are offered for sale at reasonable prices.

J.B. KLATTENHOFF & CO.

Undertaker

AND EMBALMER.

A COMPLETE ASSORTMENT OF

Furniture, Queensware and Glassware,

BRIDGE ST., LAS VEGAS.

Atlantic and Pacific Railroad

TIME SCHEDULE.

Table with columns for WEST BOUND, STATIONS, and EAST BOUND. Lists train times for Mountain Time and Pacific Time routes.

*Meal stations. Through tickets to all the important cities east and west on sale at the principal stations. Connections:—Albuquerque, A. T. and S. P. R. R. for all points east, north and south. Barstow, Cal. Southern R. R. for all points in southern California. Majaive, all points in northern California.

W. A. BISSELL, Gen. Manager, Albuquerque, N. M.

SOCORRO COUNTY.

Iowa and New Mexico Ranch Company

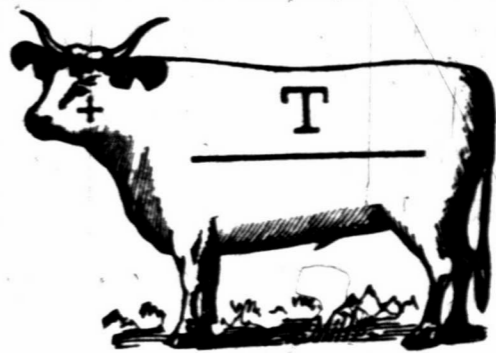
JUSTUS CLARK, President, Red Oak, Iowa. GEN. H. M. ATKINSON, Vice Pres., Santa Fe, N.M. BENJ. B. CLARK, Secretary, Red Oak, Iowa. PAUL P. CLARK, Treasurer, Red Oak, Iowa.



P. O. Magdalena, New Mexico.

Range, Socorro and Valencia counties.

Horse brand on left calf, in cut, and marked crop right and underslope left.



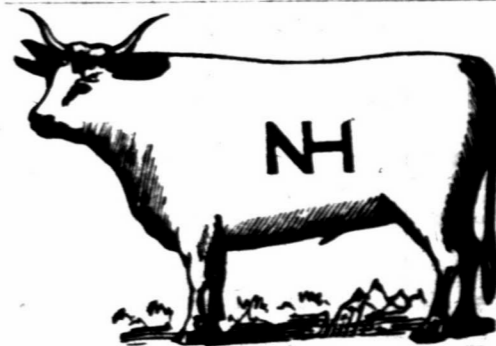
Trocke, Maunsell & Co.

P. O.: Patterson, Socorro Co. Range, eastern slope of the Mogollon mountains, between headwaters of the Nigrita and Gila rivers.

Ear marks, underbit right and left ear.

Other brands:

Horse brand on the left shoulder. T+A+TM 7 on left hip of cows and left side of calves.



Nathan Hall Cattle Company.

NATHAN HALL, Manager.

P. O. Socorro, New Mexico. Range, Apachita creek and Gallo Springs, Socorro county.

Horse brand, NH connected, same as on cut, on the left hip.

Ear Mark as in cut, except it being on left ear.



Grant Bros. & Browne.

P. O.: Albuquerque, N. M. Range, Alamosa Park, Socorro county.

Ear marks, swallow fork in each ear.

Horse brand, same as cut, on left shoulder.

Other brands. @ and @ on right jaw.



Hippolyte Goujon.

P. O.: Carthage, New Mexico.

Range, in Ocosingo mountains, Socorro county.

Counterbrand, @ on the left shoulder.



Carwen & Norris.

P. O.: Magdalena, Socorro Co., N. M. Range, north slope of San Mateo mountains and adjoining San Augustine plains.

In addition part of cattle branded N on right jaw, balance C on right jaw.

Ear mark, crop and two slits in each ear. Horse brand, C-N on right thigh.

HENRY C. COORS

WILLIAM F. OLS

COORS BROS.

Successors to Lockhart & Co., Wholesale and Retail Dealers in

Furniture and Hardware

Tinware, Sporting Goods, Shotguns, Rifles, Pistols,
All Styles of Ranges, Cooking and Heating Stoves,
House Furnishing Goods of Every Description.

Lumber, Sash, Doors, Lath, Shingles and Blinds,
PAINTS, OILS AND GLASS.

All Orders by Mail Promptly Filled. Ranch Trade Especially Solicited.
LAS VEGAS, NEW MEXICO.



Turbine Windmill!

For Western Ranches.

Runs with lightest breeze and through severest gales steadily and evenly, being a SELF REGULATOR.
Irons sold and plans furnished. Any man with a little knowledge of tools can build the woodwork any place at small cost, and save freights.
This is the only windmill adapted to the RANCHO COUNTRY. Its small cost, its great durability and power, and its strength to withstand any windstorm, makes the TURBINE WINDMILL the ranchman's favorite.
Satisfaction guaranteed. Send for circular and price list.

A. H. SOUTHWICK, Patentee.

604 East Locust Street, - - Des Moines, Iowa.

SOCORRO COUNTY.

AMERICAN VALLEY CO.

W. B. SLAUGHTER, President and Gen. Manager.
Postoffice address, Socorro, New Mexico.
Ranch, American Valley, Socorro county, N. M.

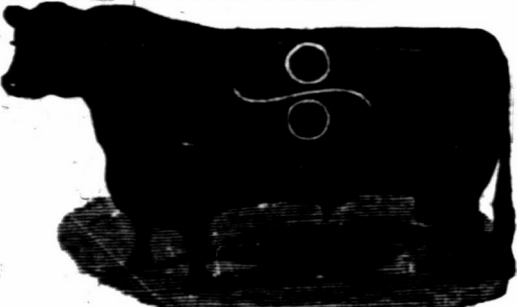
\$250 REWARD will be paid for the arrest and conviction of any person or persons illegally carrying any stock in the following marks and brands:



Cattle brand kept up, S as in above cut, on both shoulders.
T on the left hip of horses.

Other Brands:

ANA side, @ hip. Underslope each ear.
CC side, @ hip. Crop and underbit left ear.
F on side and loin, or side and hip.
G on bought steers; used as a road brand.
V side, underslope each ear.
side, various marks and other brands.
M side, various marks and other brands.
A side, underslope left, swallowfork right.

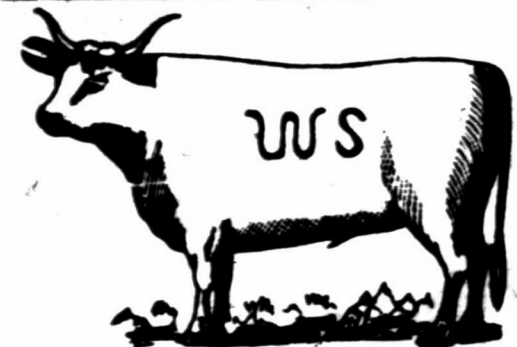


Deer Park Cattle Company.

FRANK H. WINSTON, Manager.

P. O.: Fairview, N. M. Ranches, at Elk mountain, Socorro county.

Also own the following brands:
Horse brand, @ on the left shoulder.



W S Ranch.

J. H. COOK, General Manager.

P. O.: Alma, Socorro county, New Mexico.
Range, San Francisco river, Socorro Co.
Horse brand, same as cattle, on left shoulder or thigh.

Detroit and Rio Grandé Cattle Co.

P. MOTHERSILL, Manager.

P. O.: Engle, N. M. Range, Jornada and Caballo mountains.
Ear marks, under-half crop right, underbit left.
Horse brand, R left side, HP left hip.

Other brands: R left side, HP left hip.

Gross, Blackwell & Co

LAS VEGAS, NEW MEXICO.

GROCERIES, DRY GOODS,

Boots, Shoes, Etc., Etc.

At all times on hand a full line of the Racine and Schuttler manufacture of Farm, Freight and Spring

WAGONS.

A Full Line of Stetson Hats, suitable for Ranchmen, always on hand, ranging in price from \$4 to \$15.

SPECIAL ATTENTION GIVEN TO RANCH TRADE.

Prices quoted when desired and special attention given to mail orders.

NOW

Is the time to buy

DRY GOODS CHEAP AT

Charlesfeld

LAS VEGAS, ALSO

Carpets, Furniture and Ranch Supplies.

Call when in town, or order by mail.

Solon E. Rose & Bro.

JOBBER OF



MACHINERY

Horse Powers, Wind Mills, Well Drilling Outfits, and Augers.

RANCHMEN'S SUPPLIES.

Very Low Prices Guaranteed on all Sizes of Tanks.

Write for circulars and prices.

ALBUQUERQUE, NEW MEXICO.

J. C. BERTRAM,

Breeder and Importer of

HEREFORD CATTLE

BRISTOL, ILLS.



Makes a specialty of importing representatives from best families and breeding only stock of superior excellence.

Am prepared also to furnish ranchmen first-class grades, which I will guarantee to be of superior breeding, well marked, and sired by bulls of acknowledged merit.

For quality of animals handled by me I refer all ranchmen to the Hereford bulls now on the ranch of Mr. William Robert, at Roswell.

CORRESPONDENCE SOLICITED.

WHEN you write to an advertiser mention the Stock Grower.

SOCORRO COUNTY.



H. E. HOLBROW.

D. W. SMITH.

Postoffice, Magdalena, Socorro county, N. M.
Range, west of San Mateo mountains and San Augustine Plains.

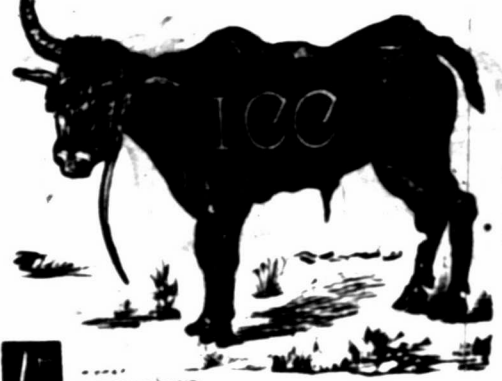
Also own HD and AD

Illinois Cattle Company.

S. P. JOHN, Manager.

JULIUS M. ERNA, Foreman.

P. O.: San Marcial, Range, between Magdalena and San Mateo mountains, and on west side of Rio Grande river, between San Marcial and Cantaritas.



HORSE BRAND.

Other brand AC on the left side and left hip. Ear marks, crop right and underslope the left.



A. HARDCASTLE.

G. MITFORD.

Hardcastle & Mitford, Adobe Ranch, Range, on headwaters of the Upper Gila, Sierra county, P. O.: Gratton, N. M.
Horse brand, HM (connected) on left hip or shoulder. Also 2 on the left hip.



C. S. Roberts.

P. O.: San Marcial, N. M. Ranges, Los Burros, 20 miles west of San Marcial, Socorro county.
Ear marks, crop right and small crop and half circle above and below in left; also, skin cut on nose.
Horse brand, same as cut on left hip. Cattle branded either side and hip.