

# STOCK GROWERS

COLORADO TEXAS ARIZONA MEXICO NEW MEXICO

Vol. III. No. 38.

LAS VEGAS, NEW MEXICO, DECEMBER 4, 1886.

Weekly, \$3 a Year

## FROM ALL POINTS.

### Live Stock Notes Carefully Collected From Every Source.

Best American steers are weak in Liverpool at 11½ cents, estimated dressed weight.

It is estimated that branding inflicts \$4,000,000 worth of damage annually upon the cattle of this country.

If there is not a boom in the cattle market inside of the next twelve months the signs of the times will all fail. Winter feeding will pay.

It is said that Canadian cattle will soon be scheduled in English ports, just as United States cattle are, because of recent pleuro-pneumonia developments in the Dominion.

Col. John N. Simpson, of Dallas, believes in the St. Louis stock yards enterprise. Also that the spaying of surplus heifers is the right thing to do in well regulated ranches.—*Inter-Republics*.

P. F. Shipp, of Live Oak county, last week sold 100 head of three-year-old grade beeves to Collins & Bowers, of Victoria, at \$18 per head. They were a good lot, and two years ago would have brought \$30.—*Texas Stockman*.

The firm of Spencer & Cohen, stockmen of Hackberry, Arizona, was abruptly dissolved last week by Cohen severing the jugular vein of his partner with a pen-knife while they were in dispute over a settlement of their accounts.

The Oxley ranch people have been making it interesting for the wolves and coyotes this fall. They have killed something like twenty altogether, about a third of them being big gray wolves. Let the good work go on on every ranch in the country.—*Macleod Gazette*.

Everything goes to prove that the drive of Texas ones and twos must stop. The true policy is to let them remain on the range until they mature. Beeves three and five years old will be profitable for shipping or feeding purposes. Texas farmers will learn to feed their grain to cattle and mutton.—*Inter-Republics*.

While on our recent western trip we found a good deal of interest manifested among cattlemen in the International Range association, and a large delegation from all the states and territories west of the Rocky mountains will attend the next meeting, to be held in Denver, Colorado, on the second Tuesday in February, 1887.—*Cheyenne Journal*.

If the cattlemen of the west and southwest, will give the International Range association the encouragement to which its efforts in behalf of their interests entitle it, we believe that they will not have cause to regret it, and we believe that Texas cattlemen are inclined to pin their faith to the Denver, rather than the Chicago association.—*Texas Stockman*.

"The night of the 14th inst.," runs a brief announcement in a Montana paper, "a dark bay mare, fifteen hands high, small white star in forehead, both hind feet white, was stolen from the stable of Ira Sampson, the undersigned. I will give the mare and \$50 in cash for full and reliable particulars regarding the funeral of the thief. That's the kind of a man I am."

What the result will be it is not easy to say. This affords one of the prime reasons, however, for the movement now on

foot to build up a rival enterprise at St. Louis, more formidable than anything else which has been attempted at that point. St. Louis stock yards schemes have not been a wonderful success; yet whatever the new effort may amount to, the evil which is urged as one reason for its inception is certain to ultimately injure the Chicago market most seriously.—*National Stockman*.

The president of the National Cattle Growers' association has appointed the following committee on legislation to go to Washington in December, to urge upon congress the necessity for proper legislation for the protection of the cattle industry of the United States: H. E. Alford, of New York; Edward Lloyd, of Maryland; Wm. Warfield, of Kentucky; L. S. Coffin, of Iowa; Thomas Sturgis, of Wyoming; W. A. Towers, of Missouri; Azriel Ames, jr., of Montana; and Elmer Washburne and D. W. Smith, of Illinois.

To give a faint idea as to what the cattle business is worth in the northwestern country it is only necessary to call the attention of our readers to the following figures. Up to the first of the present month there have been shipped east 1,800 cars of cattle, for which the railroad company has received in round numbers \$197,000 in freight charges. From this shipment shippers have realized \$1,440,000. And the story is not half told as yet, as the shipments have only fairly begun.—*Chadron (Neb.) Journal*.

Judge Brewer, of the United States circuit court, at Topeka, has affirmed the decision of Colonel J. S. Botsford, referee in the case of Charles Sloan vs. the Kansas City Stock Yards company, holding that the stock yards are not liable for the damages claimed to have been caused by Texas fever appearing in the herd after having been fed in the yards. During the examination it appeared that there had been cattle in the yards prior to the time of Sloan's cattle, and after the cattle reported infected, and no deaths occurred among them. The stock yards are relieved from responsibility and costs.

The *Inter-Republics* says the Mexico and Texas Land and Cattle company today closed a sale of the Los Varas ranch, located in western Chihuahua, and owned by Clay M. Mann, of Colorado City, Texas. The purchasers of the ranch are Messrs. W. R. Hearst and J. G. Fallonsbee. The ranch contains 225,000 acres of land, and added to the other purchase made by these gentlemen gives Messrs. Hearst and Fallonsbee 650,000 acres of the finest grazing land in the state of Chihuahua, which contains some of the finest grazing land in the world, carrying cattle on an average of one animal to each six acres.

Geo. Lane, foreman of the Northwest Ranch Co., recently did considerable execution among the wolves. He came upon a band of twelve while riding the range and shot five with his revolver before he was through with them. They were all timber wolves, one of them a regular monster, six feet from tip to tip and the paws as large as a man's hand. The timber wolves appear to be increasing in numbers as the cattle begin to stock the ranges in more considerable quantities than heretofore. Something of a practical nature will soon have to be devised to put a stop to their ravages and those of their coyote cousins.—*Calgary Herald*.

In a measure the cattlemen of this section have an advantage over the rest of

their brethren, in having two markets, Kansas City and California. As the matter now looks California seems to have secured the "bakery" as against the eastern beef buyers. For several months that market has attracted the attention of our cattlemen and quite a number of shipments have been made there. The fact that the distance is shorter and that there is consequently less expense for transportation, feeding, attendance, etc., and also that the prices paid are somewhat better, is the reason that the eastern markets have been abandoned for the present.—*Flagstaff (Ariz.) Champion*.

The big steer on exhibition at the Dallas state fair is six years old and weighs 3,080 pounds. He is six feet one and a half inches in height and measures thirteen and a half feet around the body. He is three feet ten inches through the shoulders and measures twenty-six inches between the forelegs. His foreleg above the knee measures thirty-one inches round. He is three feet four inches over the hip and is otherwise gotten up regardless. He is a regular beef monopoly. He is so heavy that he cannot stand on his feet long at a time, and the man who stood by him with a stick to keep him from lying down said he was three-quarters Short-horn.—*Las Animas Leader*.

The *Dallas News* in the course of a learned dissertation on the present state of the cattle business and the application of remedies for some of the evils which are hampering the stock grower, says: The truth of the business is that the cattlemen know all about raising cattle, but when it comes to regulating the markets they are tackling something new, and they very naturally handle it awkwardly at first, because a stout monopoly and several complicated questions of political economy combined are liable to stagger a more powerful industry than the cattle business. But then the country is bound to have beef, and the men who produce it are entitled to the profits, and the cattlemen will come out on top in the end.

During the past season the Northern Pacific has shipped from Montana and western Dakota, to St. Paul, Superior and Chicago, on hoof and dressed, 83,000 head of cattle, against 73,000 last year. Of this amount 78,000 head were shipped on foot and 5,000 were dressed. Last year's figures were 67,000 on hoof and 6,000 dressed. The few shipments which are yet to come will probably swell the total figures to 85,000 head. Sheep shipments show not only a larger number than last year, but larger than was expected for this season. During the season there were shipped from Washington territory and Oregon into Montana 45,000 head against 28,000 last year. The shipments to St. Paul and Duluth and other eastern markets from Montana, Washington and Oregon, foot up 95,000 head. The shipments yet to arrive will swell these figures to about 100,000 head. These figures as against 65,000 head shipped east last season.

The Wabash road has notified its agents and connections that until further advised shipments of cattle to points in Kansas will be subject to the following rules and regulations issued by the live stock sanitary commission of that state: "The rules and regulations governing quarantine and the admission of cattle into Kansas," as issued by this board, dated Topeka, Kan., May 2, 1885, are hereby revoked. From and after this date, and until fur-

ther notice, all cattle coming to Kansas from that portion of New York lying south of the north line of the state of Connecticut, all of Pennsylvania, New Jersey, Delaware, Maryland, District of Columbia, Virginia, West Virginia, Illinois and the Dominion of Canada will be required to enter the state at Kansas City, where they will be held in quarantine at the risk and expense of the owner, for a period of ninety days, and until they shall receive a bill of health signed by the state veterinarian of Kansas. All railroads, express and other transportation companies are forbidden to bring any cattle into this state from the above named quarantined districts, except in compliance with the foregoing rules and regulations."

### Protection for Range Interests.

OFFICE OF THE INTERNATIONAL RANGE ASSOCIATION  
Denver, Colorado, Nov. 30, 1886.

To His Excellency Grover Cleveland, President of the United States:

The time has come when the branch of the commercial interests of our country, represented by the live stock industry, feels that it should no longer plead for, but demand, justice. I am empowered by the live stock men of these plains, who have more than \$600,000,000 invested in cattle alone, to respectfully invite the attention of your excellency to the imminent danger threatening our herds by the existence of contagious bovine diseases, which, if once introduced to the open ranges of the west, will sweep our entire interests from the earth. I feel justified in asking that in your forthcoming message to congress some suggestion may be made in the interest of legislation looking to the extermination of the contagious cattle disease known as pleuro-pneumonia, and such sanitary regulations as will protect the cattle interest in the United States against the importation of cattle from known diseased districts in other countries. I would further respectfully submit that, under the present system entered into by the transportation companies of the United States, under the favoritism of the rebate system, grievous wrongs are imposed on the producer of beef as well as on the consumer; that the same combination which compels millions to pay an exorbitant price for one of the prime necessities of life, compels the producer to accept for his product a price which has pressed the cattle grower to the verge of ruin. The bill now pending before congress for the regulation of the United States commerce, known as the "Reagan bill," is in the interest of justice and equity, and the cattle industry bespeak for it such attention in your message as may meet your commendation.

Respectfully,

R. G. HEAD,

President of the International Range Association.

G. L. BROOKS, Manager, Socorro, N. M., will contract and deliver to any point in Arizona, the cattle in large or small bunches, bulls in carload lots, old Mexico brood mares, sheep and Angora goats. References, First National Banks of Las Vegas, Albuquerque, Socorro, and El Paso, Socorro County Bank, and Banking House of Browne, Manzanara & Co., Socorro, N. M.



# NEW MEXICO LIVE STOCK COMPANY

G. L. BROOKS, MANAGER.

SOCORRO, NEW MEXICO.

## Dealer in Ranches

All classes of Land Scrip at Lowest Quotable Prices. Mortgage Loans Negotiated. Shorthorn, Hereford, Polled Angus and Galway Stock Bought and Sold.

STEERS FOR SPRING & SUMMER DELIVERY

To be Made at Any Point.



## All Classes of Cattle

Native and Improved Sheep, Angora Goats and Registered Bucks. Patented Ranch Property and Confirmed Grants. Stock Horses, Stallions and Saddle Horses.

CONTRACTS MADE FOR RANGE CATTLE

From Texas, Mexico and New Mexico.

### CATTLE AND DRESSED BEEF.

#### A Bill of Complaint Against an Odious Monopoly.

Mr. E. L. Gage, president of the Presidio Live Stock company, of Texas, and interested in other ranches, gives the following statement to a reporter for the *New York Times*:

The situation in the cattle trade is just this: The producers are not getting nearly as much for their cattle as they did three years ago, and the consumers are paying just about the same. One view of the matter, which is taken by all ranchmen, is that the ruling condition of affairs is due to the monopoly at Chicago—the dressed beef syndicate—which keeps down prices at the producers' end of the line, and, with the retail butchers and railroads to help them, raises prices at the consumers' end. They control the markets in the east, having crushed all the local butchers who have declined to handle their dressed beef. Now I will tell you how they treat us.

When a ranchman wants to put his cattle on the market he is obliged to sell them to the syndicate. If he attempts to do otherwise and better, he will soon find that the combination of Armour, Swift, Hammond and Morris, of Chicago and Kansas City is too strong for him. A man from the range arrives with a train load of beef on the hoof at Kansas City, where he receives an offer from a representative of one of the packing firms. The offer is not a good one, and he instructs his commission man to ship the lot to Chicago in order to get a better one. When it reaches Chicago he finds out that he cannot do as well there as he could have done in Kansas City. The fact of the matter is that all the buyers in Kansas City are in collusion, and when one of them has made an offer for a train load of cattle he informs the others and by a tacit understanding they never overbid him. When he ships the cattle to Chicago the Kansas City buyers telegraph their representatives there the name of the ranchman, the description of his cattle, and the price offered at Kansas City, and the Chicago firms, thus apprised of what has happened in Kansas City, make an example of the ranchman when he arrives in their market by forcing him to part with his property on less favorable terms than he had already rejected. Besides this the syndicate takes advantage of every excuse offered for forcing down the market so long as the bulk of the ranch cattle are coming in.

I should judge that their profits on the average full grown steer of 900 to 1,000 pounds weight are not less than \$15. A steer of this size will provide about 500 pounds of meat, and judging from researches which I made in the different cities as I came east, I think that the following are about the figures which the consumer pays for it: Two hundred pounds of that meat will sell at eight cents a pound realizing \$16; 150 pounds will sell at twelve cents, making \$18, and the balance will sell at fifteen cents, making \$22.50—the total which the retail butcher receives for the steer being \$36.50. We receive for the steer \$22.50, which

R. B. GODLEY, Sec'y and Treas. Shorthorn Cattle Co.

JOHN FLOOD, Vice-Pres. Shorthorn Cattle Co.

## GODLEY & FLOOD,

### Land and Cattle Commission Brokers,

ST. GEORGE HOTEL, DALLAS, TEXAS.

Will examine and make detailed reports on ranches, and will render for taxation, pay taxes, and generally protect the interests of non-residents. Will negotiate the purchase, sale or lease of agricultural and ranch lands in Texas, New Mexico and Arizona. Do an exclusive brokerage business, thereby occupying the best position to render services to investors in Dallas City property. Mr. Flood will give the ranch and cattle interests his exclusive attention, being a practical cattle and ranch man of twenty-five years' experience.

leaves \$34 for freight and the profits of the slaughtering shipper and the retail butcher. These I would place at the following figures: Freight, (a quite generous estimate), \$8; profit to retail dealer, \$11; profit to slaughtering shipper, \$15. Our complaint is that if these middlemen were selling their beef at prices in proportion to what they are paying for the beef, the consumption of beef in the thickly settled portions of the country would be increased; possibly it would be nearly or quite doubled. We think that if the slaughterers made a profit of from \$2 to \$5 on every steer they ought to be well satisfied, and so would we be, and the consumers, too, I believe, because the difference between the actual profit and the reasonable one I have mentioned could be divided between us with mutually profitable and agreeable results.

Every year of late prices paid to the ranchmen have been dropping. When beef used to sell at from four to six cents per pound there was some profit in the business, but with prices down to from two and a quarter to three cents the story is quite a different one. With stock cattle at the present low figures we could afford to furnish beef at even the low prices mentioned if only the prices were made correspondingly low to the consumers, who would at once greatly increase in number and amount purchased, and enlarge our sales accordingly. On my way east I took pains to make inquiries in Kansas City, St. Louis, Chicago and Cincinnati, and I found that at all these places the consumers are paying as much for their beef now that we get from two and a quarter to three cents for it as they used to pay in 1882, when prices paid us were just about double those paid now. No other reason than increased profits grasped by the middlemen can be assigned for this injustice to us and the consumers. Freight are less now than they were in 1882; labor is not more costly, and the business of the packer is conducted more economically now than then, partly because his establishments are much larger, and partly because he has thoroughly systematized all his operations.

The general feeling among the ranchmen is that the middlemen are carrying their system of practical extortion too far, and that combined resistance must be resorted to. They are determined to devise some plan by which they will break the hold which the packers have upon them. One remedy suggested is the holding back of cattle and forcing the packers to

come to the ranch to buy. This would only be a makeshift, and could hardly be carried out to the full extent which would be necessary to secure the desired end. Another idea is the establishing of packing houses in the range district, which is now being done to some extent, three small establishments conducting the work at Fort Worth, Victoria and Columbus, Texas, points. To pack on a large scale, however, requires the possession of large capital. The Fort Worth packing house cost only \$50,000, but it takes \$1,000,000 to run it. It is about sixty days before a packing house gets any return for its outlay, so that one which kills 150 head of cattle daily, worth \$25 a head, spends \$225,000 on cattle alone before it begins to make collections. The ranchmen are not in very good financial shape just now, and large operations of the kind described are not within their power. There is no doubt, however, that if capitalists put up packing houses in the ranch districts the ranchmen would sell to them in preference to the distant packers who have treated them so shabbily. I know that we in Texas would not give them the same treatment which some of the ranchmen of the north are said to have given the Marquis de Mores when he started his packing establishment. It is said that his earlier operations were deprived of profit because the ranchmen charged him the same price for steers which they were getting at Chicago. The ranchmen are so thoroughly aroused now to the necessity of obtaining relief from the middlemen that self-interest would insure fair treatment for any packer who settled down among them.

One or more train loads of western Texas stock cattle, partially graded; cows and calves \$22.50; dry cows, two-year-old heifers and two-year-old steers \$16.00; yearling heifers and steers \$11.75; delivered at Albuquerque or at any other railroad point in New Mexico or Arizona at proportionate prices. G. L. Brooks, Manager, Socorro N. M.

The projectors of the new St. Louis stock yards are receiving encouragement from all quarters of the country, especially from cattle shippers in the southwest, and co-operation in the way of many live stock shipments is promised in Texas, New Mexico, Arizona, the Indian Territory and Kansas the moment the yards are ready for service.—*St. Louis Republican*.

### What 10 Cents Per Hundred Means.

The *Texas Live Stock Journal* gives one food for reflection in speaking of the project of establishing range cattle yards at St. Louis. It says:

A steady rise of ten cents per hundred on a million range cattle is a million dollars per year, and a rise of twenty-five cents amounts to \$2,500,000. It is fairly estimated that activity at St. Louis would be worth this to the range cattle industry.

We have before us examples of prices paid for live stock. In Texas market hogs are selling at four cents to five and a half cents. In Chicago on the same day \$4.10 was the highest figure. In Texas local markets Texas steers are sold to limit of consumption, at \$2.25; in Chicago, after one cent per pound charges and shrinkage is added, the same class of cattle bring \$2.65. For five long months, during the marketing of range cattle, St. Louis has sold the stock, to limit of capacity, at prices in advance of the overstocked market at Chicago.

What ever may be done towards strengthening St. Louis or any other market in the live stock trade ought to be earnestly assisted by the live stock owners. The simple concentrating of all stock at Chicago is almost as bad as shipping whole train loads to New Orleans. In one case it is slow death, in the other sudden death.

Chicago forged ahead and became so great that it was considered the only market for live stock; the prices obtained generally paid freight and charges between St. Louis and Kansas City, and sometimes a little more. Lately St. Louis has been the stronger of the two. The "Big Four" at Chicago put on the screws and put the values at a notch too low, and the consequence is that the whole cattle interest is aroused to find some other point, to the end that there may be a division of shipments and a division of the spoils.

The producer and the consumer are the victims of the sacrifice; the packer, commission man, carrier and retailer suffer by no depression, except where the commission man is involved with a stockman through advances. If, as it appears, the stockmen of Texas believe the St. Louis movement is a good one, they had better see that the little required of them is cheerfully accorded, so that the end will be attained.

### Free Trade.

The reduction of internal revenue and the taking off of revenue stamps from proprietary medicines, no doubt has largely benefitted the consumers, as well as relieving the burden of home manufacturers. Especially is this the case with *Green's August Flower* and *Boschee's German Syrup*, as the reduction of thirty-six cents per dozen has been added to increase the size of the bottles containing these remedies, thereby giving one-fifth more medicine in the seventy-five size. The *August Flower* for dyspepsia and liver complaint, and the *German Syrup* for cough and lung troubles, have perhaps, the largest sale of any medicines in the world. The advantage of increased size of the bottles will be greatly appreciated by the sick and afflicted in every town and village in civilized countries. Sample bottles for ten cents remain the same size.\*

R. D. HUNTER, St. Louis.

A. G. EVANS, Kansas City.

M. P. BURN, Chicago

# HUNTER, EVANS & CO.

## COMMISSION MERCHANTS IN ALL KINDS OF LIVE STOCK

KANSAS CITY. CHICAGO. ST. LOUIS.

Oldest and most popularly known Commission House in the United States.

### LIBERAL CASH ADVANCES ON CONSIGNMENTS TO EITHER HOUSE.

KANSAS CITY STOCK YARDS, Kansas City, Mo.

UNION STOCK YARDS, Chicago.

NATIONAL STOCK YARDS, (St. Louis) Illinois.

J. C. LEARY, General Agent and Solicitor for New Mexico and Arizona, LAS VEGAS, NEW MEXICO.

#### RANGE CATTLE SEASON.

The Business Not Fully Up to the Average, but Larger Than Generally Believed.

The past week has practically closed the range cattle season. To be sure there will be liberal shipments to this point in the future, but in toto they will amount to but little, being mainly herds which have been held off here and there for late markets. On being interrogated, Mr. Frank Fish, of the Fish-Keck company, live stock commission merchant, which is considered the leading authority on this class of cattle, declared the number of range cattle marketed in Chicago and Kansas City has been much lighter this year than last, a larger proportion than usual of the cattle marketed during the range season being natives that were half fed corn and grassed out and should have been marketed and out of the way in July and August. Prices then not being satisfactory, they were held for better markets and sold in September and October in competition with grass cattle at very unsatisfactory prices. Had the large number of native cattle been marketed as early as usual we would have had better prices on range cattle. As it was, northern and western cattle and Texas and natives were marketed from September 1 to November 10, overstocking the markets.

Grass cattle have weighed thirty to fifty pounds heavier this year than last, and anything strictly good has sold for as much this year as last, while canners and feeders have ruled about 75 cents lower. Ranchmen from New Mexico, Colorado and Arizona still notify us that they will make more consignments, but as a whole these will be limited. We hear fewer complaints as the season advances, with reference to prices, and it may be safely assumed that ranchmen find themselves in much better shape than they had expected at the opening of the year.

"How large a section of the west does this market command in the range cattle business," was asked.

There is scarcely a section south of Wyoming territory which does not recognize the importance of Kansas City and make liberal shipping. As proof of this I will refer to the following who sent in shipments to us the past week:

"Texas Land and Cattle company, New Kiowa, Kansas, twenty-one cars from the Panhandle of Texas.

"D. R. Streeter, New Kiowa, Kansas, eight cars from the Cherokee strip.

"Ewell & Justice, New Kiowa, Kansas, four cars also from the Panhandle.

"Fred Taintor, Dodge City, Kansas, four cars from the Neutral strip.

"Prairie Cattle company, Las Animas, Colorado, fourteen cars.

"Palo Blanco Cattle company, Springer, New Mexico, twenty cars.

"Garland & Cornzine, Caldwell, Kansas, nineteen cars from the Cherokee strip.

"Fran Latham, Dodge City, Kansas, six cars from the Panhandle.

"Rocking Chair Cattle company, New Kiowa, Kansas, four cars from Mobeetie, Texas.

"York & Draper, Dodge City, Kansas, three cars from the Cherokee strip.

"F. Y. Ewing, New Kiowa, Kansas, seven cars from the Cherokee strip.

"John Blair, Caldwell, Kansas, nine cars from the Cherokee strip.

"Arkansas Valley Land and Cattle company, Holly, Colorado, five cars.

"The Matador Land and Cattle company, Fort Worth, Texas, nineteen cars.

"We have received consignments from points in Arizona, and the first train ever shipped from California."—*Kansas City Times*.

#### Range Items.

A Socorro county cattleman was pumped by the indefatigable live stock editor of the *Dallas News* and this is what he obtained of interest to THE STOCK GROWER'S readers:

John Flood, of the cattle firm of Godley & Flood, is just in from a protracted visit to west Texas, New Mexico and Kansas City. He says that while the range in New Mexico may be put down as good, he does not want to say too much in its praise, because it is just about sufficient to sustain the cattle until spring, and if grass does not come early there will necessarily be heavy losses. The range is better in New Mexico than it is in west Texas, owing to earlier and heavier rains in the territory. For this reason thousands of Texas stock cattle have been driven into New Mexico this fall. Many of these herds have been located where no man with a knowledge of the country would stop with his cattle and others have been located where the ranges are already overstocked, and the transfer of these cattle from Texas to New Mexico is not only an ill advised step for the owners of the cattle, but it will work a hardship on the cattlemen of New Mexico, whose ranges they will curtail.

Mr. Flood says that there was a time when people believed that water could be reached by means of wells all over the plains of New Mexico, and that in the course of a few years the whole country would be converted into ranches. But numerous experiments have proved the falsity of this theory, because during the dry season the water sinks so far below the surface that no pump has the power to resurrect it. On the San Augustine plains, in Socorro county, particularly, is this the case. Suggestions as to how to bring water to the surface of these plains are in order. In west Texas, however, the water is sufficiently near the surface to be easily brought up by pumps. This is true of the Staked Plain, where further experimentation may prove that the water can be had in sufficient quantity for purposes of irrigation.

Mr. Flood took 500 beesves from his Shortborn ranch to the Kansas City market. They were of extra quality and brought a fraction over \$30 per head. He says there are innumerable fat cattle in Socorro county, but they are being held for a better market. Mr. Flood has lately removed 1,200 head of stock cattle from the vicinity of Baird, Texas, to San Marcial, New Mexico.

The cattlemen of New Mexico are taking steps to organize against the Chicago meat syndicate.

From inquiry this far in advance, Mr. Flood believes that there will be a large demand from the northwest for Texas cattle, particularly steers, next year.

500 or 1,000 partially improved central Texas yearling heifers, delivered at Albuquerque, N. M., at \$11.00 per head. G. L. Brooks, Manager, Socorro, N. M.

#### Arizona Cattle Rates.

Mr. J. S. Leeds, general freight agent of the A., T. & S. F. R. R., having been appealed to by stockmen of Arizona for a reduction of cattle rates from Arizona points to the eastern markets, thus states the situation in the matter at issue as published in the last number of the *Hoof and Horn*:

I have your letter at hand, covering enclosure of a letter from John G. Campbell, from Prescott, Arizona, which is herewith returned. I will say that I fully appreciate the points that Mr. Campbell makes in the matter, and would be glad if it were in my power to overcome the difference between prices which can be realized on shipments to California and Kansas City, but judging from the present this would be an impossibility, as you are fully aware that no freight rate which we could make on the present market would realize \$20 a head on the beef cattle which have been shipped into Kansas City from that locality. In other words, it is impossible for the railroad company to make the market for cattle in its freight rate. What we may be able to do in that direction in the future I am unable at the present time to say. Of course our views have always been on the liberal side of the cattle question, and if we could largely increase the movement of cattle to Kansas City by making a low freight rate, so that in the aggregate more money would be realized for the railroad company, there is no reasonable doubt as to what our position would be in the matter. There is one thing, however, that the cattlemen will be obliged to recognize sooner or later, and that is that the relief which they seek cannot all come from the railroad side of the balance sheet. That lower prices are prevailing for all other commodities is true, and the cattle interest must necessarily take its share of such depression as well as the railroad. Of course I believe that economy is the order of the day with the cattlemen now, and I hope that notwithstanding the fact that prices are very largely decreased there is yet, with careful management, an opportunity for some margin in the business. As regards competition with California, the market in that section is to

some extent, a limited one, but to the extent of the market they will draw their supply from the territory immediately tributary to them on the east, and we naturally expect that some of the cattle from Arizona are going to that market.

#### Support the International Association.

Mr. C. W. White, a prominent cattle raiser of Texas and New Mexico, in a recent letter to Secretary Dolan, of the Lincoln County Stock association, expresses very forcibly some of the ideas that are now prevalent among rangemen as to the influences operating against the steer producer in the marketing of his product. Mr. White also offers some suggestions as to the methods that should be employed to counteract the baneful tendencies of the times. He says:

The cattle business is very much depressed here and hundreds of cattlemen are trying to sell out and quit the business but I think there is a brighter day coming for us, and that it is not far off. I think the low prices are caused almost entirely by the manipulations of the dressed beef men of Chicago, together with the combination of the railroads into pools all over the country. Texas stockmen are now paying \$30 to \$40 per car more for transportation to Chicago than they did last year. I hope our association will pass strong resolutions of condemnation, touching the above mentioned difficulties, and call upon our representatives in the national congress for relief, and let the call go up from the whole length and breadth of the range country in such unmistakable language that we will get speedy relief. Much good can be done through our International Range association and we should be well represented, as should every association, at the next meeting.

#### Everybody Interest 1.

It is not the cattlemen alone who are interested in the war on the dressed beef monopoly, which is drawing its coils around the cattle industry. What would any of the thriving towns and cities of the range country be but for the live stock interest. It is the mainstay of the banker, merchant and every other business. Let any branch of business reflect upon the effect produced to it, by the destruction of the stock industry of the plains, and we think it will not be slow to admit that it has a deep interest in the issue of the battle between the stockmen and the combination organized for their ruin. It is the duty of the whole people of the range country to aid in the fight by supporting the live stock papers which are standing on the picket line.—*Denver Record*.

Good Books. Read our book offer to new subscribers. Such books would cost you from \$1.50 to \$3.00 each.

For St  
Hou  
M. E  
TERRIT  
Brief Ment  
Carefull

The foreman  
killed W  
A pool of  
steers at  
S. A. Pawle  
purchased 15  
cortridges ra  
Mail route  
Fort Bascom  
Falls, Texas.  
Texas to Las  
The Seven  
county, mar  
head of mite  
169 head of  
All good fe  
any kind ar  
cents per 10  
did two or  
market.

Messrs. Sn  
have just tu  
of stock catt  
they purcha  
at the report  
range.  
The Trinit  
that Daniel  
San Antonio  
ago, 1,500 he  
branded to b  
a pasture ne  
will be past  
The Lee-1  
fifty three-c  
River compr  
cattle were  
the cows sol  
averaging 74  
being 302 a  
the same br  
of Illinois.

The mana  
Mr. M. M. C  
that arise  
habit of ma  
has struck  
ing to empl  
ranch. The  
country th  
habit. The  
has taken t  
ranches he  
The San  
arrangement  
L. W. Wa  
carload of  
lane, Kansas  
San Vincent  
of cattle on  
the pipe li  
the supply  
for all the  
house and  
have had ir  
be built ne  
ably been  
them from  
ation this  
readiness  
 furnish a  
section an  
herds in G

The St. J  
of gentlem  
from Holl  
Tuesday n  
nines & V  
of the  
Head, Col  
Tapp, Cl  
Ewing, K  
Porter, Ch  
took the  
which awa  
they repr  
with a vie  
hills in  
negotiatio  
company  
their gove  
selves own  
Apache co

1,500 t  
hua catt  
ment, co  
six years  
1-3 year  
que at \$1  
nger, Sen

# RANCHMENS' ROOFING.

For Stock Sheds, Barns, Corrals,  
Houses, Smelting Works, etc.



Water and Fire Proof, for Flat and  
Steep Roofs. 1-2 cost of any other.

Weight, 60 pounds to square of 10x10 feet.

Anybody can put on from 6 to 8 squares per day.

Thousands of Squares in use in Mexico and New Mexico. Samples can be seen at office Stock Grower.

PRICE, \$2.00 PER SQUARE 10x10 FEET.

M. EHRET, Jr., & CO. Sole Mfrs. W. E. CAMPE, Manager, ST. LOUIS, MO.

## TERRITORIAL STOCK NOTES.

Brief Mention of New Mexico Matters  
Carefully Colliated for the Stock  
Grower's Readers.

The foreman of the Red River Cattle company, one Wardenue, on December 1st, in a row, shot and killed William Allen, a cowboy.

A pool of Red river cattlemen shipped this week from Trinidad to Kansas City 900 head of beef steers under the care of D. L. Sby.

S. A. Pawley, the Fort Sumner ranchman, has purchased 1,500 yearling heifers from the Santa Gertrudes ranch, Texas, at \$6.00 per head.

Mail route No. 39,148, from Las Vegas to old Fort Bascom, is soon to be extended to Wichita Falls, Texas, which will make through mail from Texas to Las Vegas.

The Seven Rivers Cattle company, of Lincoln county, marketed this week in Chicago, a train load of mixed cattle. The bulls sold at \$1.60, and 109 head of 732-lb. cows at \$2.15.

All good feeding steers and fat range cattle of any kind are selling now at twenty-five to forty cents per 100 pounds more than the same grade did two or three weeks ago in the Kansas City market.

Messrs Smith & Holbrow, of Socorro county, have just turned loose on their ranch 1,400 head of stock cattle of the O. L. triangle brand, which they purchased in Texas through Godley & Flood, at the reported price of \$10 per head on the Texas range.

The Trinidad *Advertiser* gives the information that Daniel L. Taylor and his son Wesley, are at San Antonio, Texas, where he bought, a few days ago, 1,500 head of yearling heifers, delivered and branded to him at \$6.00 per head. He has rented a pasture near San Antonio, where the yearlings will be pastured until spring.

The Lee-Reynolds Cattle company marketed fifty three cars of cattle this week and the Red River company eighteen carloads. The Reynolds cattle were cows and feeders. Fifty tailings of the cows sold at \$1.25 to the Armour Packing Co., averaging 742 lbs. The most of the cows, numbering 302 and averaging 825 lbs., brought \$2.00 to the same buyer. The feeders sold to Dr. Brown, of Illinois, at \$3.00, weight 925 lbs.

The manager of the Red River Cattle company, Mr. M. M. Chase, in view of the many disturbances that arise on the range through the persistent habit of many cowboys in carrying their pistols, has struck right at the center of the evil by refusing to employ any man carrying a gun about the ranch. The killing reported from the Red river country this week was due to the pistol carrying habit. The evil must be wiped out, and Mr. Chase has taken the proper steps to abate it on the many ranches he controls.

The San Simon Cattle company are making arrangements to ship 2,200 heaves to Kansas City.

L. W. Wallace, of Lone Mountain, brought in a carload of mixed cattle Friday evening from Wallace, Kansas, and took them to his ranch. The San Vicente company expect to have 3,500 head of cattle on their range by the close of the year. The pipe line is working admirably and a plentiful supply of water is kept at convenient intervals for all the stock on the range. The slaughter house and refrigerator which Lyons & Campbell have had in contemplation for some months will be built next summer. The pipe line which has lately been put in successful operation prevented them from putting this plan into successful operation this year, but expect to have everything in readiness for operation next season. This will furnish a home market for the stock raised in this section and will greatly enhance the value of the herds in Grant county.

The St. Johns *Herald* says: Quite a little party of gentlemen arrived in St. Johns on last Sunday from Holbrook, and remained in town until Tuesday morning, when they left for Gardiner, Gales & Wilmerding's ranch. The party consisted of the following named gentlemen: Messrs. Head, Colorado; Andrews, Fort Worth, Texas; Tapp, Chicago, Illinois; Warren, Colorado; Ewing, Kansas City; Pickering, Texas, and Dr. Porter, Chicago. These gentlemen came to Holbrook the latter part of last week in a special car which awaits their return from the inland journey. They represent large capital and are prospecting with a view to investment in ranches and grazing lands in Arizona. Their visit is made pending negotiations with the Atlantic & Pacific railroad company for the purchase of 1,000,000 acres of their government subsidy land lying east of the land owned by the Arctec Cattle company in Apache county.

1,500 head of the best grade of Chihuahua cattle rounded-up and ready for shipment, consisting of 1-3 cows from three to six years old, 1-3 two-year-old heifers and 1-3 yearling heifers delivered at Albuquerque at \$12.50 per head. G. L. Brooks, Manager, Socorro, N. M.

## To Break the Chicago Clique.

Col. C. C. Slaughter talks thus intelligently to the Dallas *News* upon matters of lively interest to cattlemen: Col. Slaughter thinks the State Live Stock association, which will meet in Dallas Jan. 15, will be the most important meeting of stockmen ever held in the state, as the Northwest Texas Cattle association will co-operate with it on this occasion. Herefore the Northwest Texas association has held aloof from the state association, Texas fever and a few other causes operating to make their interests distinct. But they will now come together to consult about matters in which there is a common interest. They are all interested in breaking the power of the Chicago meat syndicate, and in reducing exorbitant railroad rates, and in keeping out of the state the pleuro-pneumonia, if their be any such disease. These common enemies of the whole state have made the cattlemen more of kin than they ever were before. Moreover, the Texas cattlemen wish to map out a line of policy to be pursued by them in the International Range association, which meets in Denver in February, and as the meeting of the State Live Stock association will be the only meeting of a Texas association before the Denver meeting, it will be the only chance they will have to arrange the preliminaries for the Denver meeting.

Col. Slaughter says that the scheme for building stock yards at St. Louis as a first step toward the circumvention of the meat syndicate, is meeting with favor in all parts of the country, and has all the live stock journals on its side. The matter will be discussed in the Dallas meeting, and some definite action taken by the meeting at Denver.

500 one and two-year-old New Mexico steers at \$12.50 and \$16.50 delivered at Magdalena, N. M. G. L. Brooks, Manager, Socorro, N. M.

## The Battle Opened.

The first gun in the war of the range-men against the unholy Chicago combination has been fired. The arrangements for the construction of the cattlemen's yards and markets at St. Louis have been perfected and everything will be completed in time for the business of next year. If the producers of beef stand together there can be but one result of the contest—they will win. There may be a little friction at first, but only a short time will be necessary to make things run smooth. It may be expected that the dressed beef ring will do everything in its power to break down the St. Louis enterprise and stockmen must resolutely close their ears and eyes to all Chicago overtures and stand by the institution which will, if sustained, mete out justice and equity.—*Denver Record*.

## Changed.

The Colorado Live Stock *Record* has been incorporated with a capital stock of \$25,000 paid up, and will now be issued as *The Range Journal*. The incorporators are H. H. Metcalf, secretary of the Colorado Cattle Growers' association; E. L. Marston, St. Louis; J. L. Baker, Greeley, Col.; A. M. Pryor, Pueblo, Col.; G. W. Thompson, Trinidad, Col.; T. T. D. Andrews, Fort Worth, Texas; C. W. Wright, Cheyenne, Wyoming; H. S. Holly, W. H. Crammer and S. A. Standart, Denver.

# Herrick Clothing Company!

KANSAS CITY'S BEST CLOTHING HOUSE

For Range and Stock Men.

CORNER OF MAIN AND SIXTH STREETS, KANSAS CITY, MO.

We have no "ropers in" in our employ. Our clothing and gents furnishing goods are all marked in plain figures. We have one price only. Now then come direct to our store when you are in the city, for, from what we know of the cowboy, we know he is able to care for himself whether on the range or in a crowded city, and he don't require any "cappers" to steer him. We are clothing outfitters, and we can make suits and overcoats to your order. We keep in stock cowboy buck goods, overshirts, etc.

Samples and Rules for Self Measurement Sent on Application.

We are white men and Americans in name and nature. All are invited to make our store headquarters when here. All orders sent us will be carefully filled.

WE ARE THE RESTLESS CLOTHING MEN.

Cut this out and bring with you.

HERRICK CLOTHING CO.

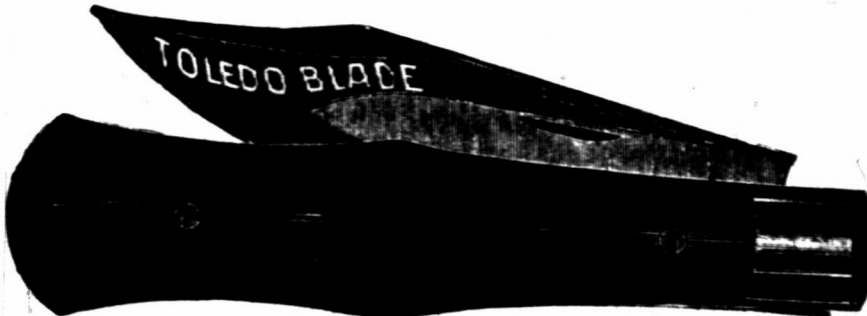
## OUR PREMIUM KNIVES.

Any person sending in the name of a new subscriber to THE STOCK GROWER, accompanied by three dollars, will receive by return mail one of these splendid pocket knives free. Remember that any new subscriber for one year gets a choice of the knives. Send in names at once as this offer will continue only until February 1, 1887.

### TAKE YOUR CHOICE.



"Texas Hunter." This is a valuable companion in the field; oil tempered, hand forged, saber blades; ready for any use; cut shows exact size. Buckhorn handle. This knife is made for the wear and tear of all purposes. The cutting quality is unsurpassed. Try one and prove its rare quality.



The "Toledo Blade." This knife is a great favorite, owing to the shape of the blades. They are very sharp at the point, and the fact that they are made from the finest razor steel, hand hammered, makes it a desirable knife for everybody. Ebony handle.



"Buckeye Whittler." This knife is our latest. 'Tis made for use, and will not disappoint you. It is the best whittler you ever had in your hand. The handle is of cocoa wood, very strong. Blades are hand hammered from the best razor steel. Are oil tempered and file tested. We positively declare you cannot find a better knife for general use than our Buckeye whittler. We fully warrant it.

**THE STOCK GROWER.**

ISSUED WEEKLY AT

LAS VEGAS, NEW MEXICO.

Office, Bri Street, in Stock Grower Building.

THE STOCK GROWER COMPANY.

Subscription Price, \$3 a Year. Single Copies, Ten Cents.

ADVERTISING RATES ON APPLICATION.

Address all communications to THE STOCK GROWER, Las Vegas, New Mexico.

Only journal devoted exclusively to the stock growing interests of the Southwest. We give the cattle news of the range country. Endorsed by every cattle association and representative ranchman in the southwest.

Official Paper of the Pima County, Arizona, Ranchmen's Association.

Official Paper of the Lincoln County Stock Association.

Official Paper of the San Miguel County Stock Association.

Official Paper of the Dona Ana County Stock Association.

Official Paper of the Central New Mexico Stock Growers' Association.

Official Paper of the Canadian River Live Stock Association.

Copies of this paper for sale by

Wm. Long, St. James Hotel, Kansas City. ASTOR HOUSE NEWS STAND, New York City. S. H. PARVIN & SON, Cincinnati, Ohio. OTIS TURNER, El Paso, Texas. Copies of the Stock Grower are on file at the American Exchange 449 Strand, London, and American Exchange, 35 Boulevard des Capucines, Paris.

SATURDAY, DECEMBER 4, 1886.

The consensus of opinion relative to the establishment of refrigerator plants in Texas, as gathered from leading Texas cattlemen by the Texas Stockman, shows that there is meat stock enough in that state to keep a refrigerator going at San Antonio.

The dressed beef gentlemen who sometime find relief from the cares of business in putting up schemes on the western cattlemen, have seen the handwriting on the wall. They will no longer feast on the fat beeves of the range country and make money with the dollars of the rangemen. The rangeman is preparing a feast of his own at last, and will try and enjoy all the fun there is in the business.

The country is at length aroused to the necessity of absolutely stamping out pleuro-pneumonia. Every right-minded man engaged in cattle raising, whether on the plains of the west or the farms of the east, is in line to do what lies in his power to meet the one huge enemy of the live stock industry and if possible destroy the curse forever in America.

The St. Louis stock yards project has received the endorsement of the range country in a way so spontaneously and enthusiastically that work has already begun thereon and the success of the enterprise is no longer a question. The western cattleman is a pretty active fellow in manipulating affairs for the benefit of the industry in which he is engaged when he is called on to take a hand in check-mating the men of guile who have spread a large sized net to drop over him. The net is being torn in shreds and the holders of it will look in vain for the game.

No one is faltering in the work that must be done. The men of the west are taking hold of the evil which has depressed the business of cattle raising, and are determined that a solid front shall be presented to the ranks of the enemy. On these three points the cattlemen of the range country are united. First, an efficient support of the International Range association; second, the absolute protection of the range country from contagious pleuro-pneumonia; and third, the building

up and standing by of an agency which will offset the operations of the men who are strangling the range industry in the Chicago market.

AN IMPORTANT case has just been decided by the Hon. Jacob B. Blair, sitting as United States judge, at Laramie, Wyoming. The case was that of the United States vs. one Simpson, indicted for perjury on two counts relative to homestead entries. It appears that Simpson had made a homestead entry in Wisconsin, and afterward commuted it to a cash entry. He then moved to Wyoming and entered a homestead there swearing in proving up that he had never made a prior homestead entry. Judge Blair instructed the jury to find for the defendant, claiming that Simpson's entry in Wisconsin did not exhaust his rights under the homestead law, and in re-entering in that territory he did not commit perjury.

PRESIDENT HEAD'S address to Grover Cleveland, as published elsewhere in this issue, is a straightforward, practical demand on the part of the plains cattle interests for that recognition by congress which the importance of a great industry at this hour requires. It is in the power of congress to surround the business of stock raising on the plains with every element of protection, and THE STOCK GROWER believes that now when the men of the range country are thoroughly united on all just matters for the good of the industry, the law makers at Washington will very cheerfully extend that legislation for the benefit of the western cattlemen which will aid and not depress the business of meat production.

SOME OF THE STOCK GROWER'S readers have asked us why we do not expose the man Frank Wilkeson, who has been delighting himself in the columns of the New York Sun by telling some most stupendous lies about the western cattle industry. We have hitherto remarked in these columns that Wilkeson was a trivial thing, a weak and mendacious disciple of Eli Perkins. His falsehoods have been exposed all along the line. He is a dead duck on the green sward of truth. THE STOCK GROWER has no space to waste in noticing the utterances of every scalawag who pops up with a lot of trash about the condition of the range cattle industry. If further evidence was needed to show the utter unreliability of Wilkeson's assertions, the fact of their having first appeared in the Sun is sufficient with men of fair judgment to stamp them as untruthful. The Sun has run down from a daily circulation of 125,000 copies in 1884 to between 40,000 and 50,000 in 1886. This would indicate that its character as a strictly trustworthy newspaper was a bit off color. Wilkeson is simply a petty prevaricator. His and Eli Perkins' obituaries were written by the people of America some years ago. They are the two liars of the nineteenth century.

THE Etherington cattle, which were affected with contagious pleuro-pneumonia, were unloaded from the cars and driven a short distance north where the owner had hay to feed them, were a lot of tailings bought in the Union stock yards at Chicago. These were western cattle and as no disease was known to exist in the west, it is fair to presume they were healthy when taken to the Union stock yards. This being the case the natural inference is that they contracted the lung plague from the infected pens at Chicago; and it is also reasonable to presume that such a deplorable state of affairs exists there to

day, for it is a well known fact, as stated by Commissioner Colman a short time ago, that many calves have been brought to the Chicago stock yards from infected districts in the east—from New York where pleuro-pneumonia has been rampant for many years—without restriction, or investigation for disease, which fact was alluded to in a previous number of THE STOCK GROWER. The range cattlemen want yards where every security will be given that no infected stock will be brought in, and as the new yards at west St. Louis will be under the control of the rangemen the necessary safeguards will be thrown about the western cattle raiser to protect him from the greed and mercenary qualities of trade which are a part of the management of the Chicago stock yards.

AT THIS time when the sentiment is so unanimous on the one point of how best to encompass the evils that are threatening the continuance of the range industry, it must be remembered that the concentration of efforts on the working out of salvation must be directed toward the accomplishing of one object at a time. The cattlemen are now fully alive to the necessity of exertion in the direction of sustaining the influences in operation for the establishment of the St. Louis stock yards. After much drifting, waiting for some good genius to point out the way in the thick darkness with which the industry has been surrounded by the Chicago crowd of gamblers, the plains cattle raiser clearly sees the road which will, in keeping on it, bring him into the open field of smooth walking and success in his business. While there may be other roads which will lead to as desirable results and which it may seem to some are as easy to travel, yet the rangemen will be acting in a manner prejudicial to the common good to attempt to travel by many ways to the same point. It is felt that only by directing the entire energies to the main issue, and fighting the battles on that line, can the greatest good be effected. Let one thing at a time be taken up and with the intelligence and force which can be brought to bear on it by the men of the west, all can be wrought out for the good of the industry which its most earnest well wishers have predicted for it.

**IMPROVED STOCK CARS.**

Mr. Edgar L. Marston, of St. Louis, is a large stockholder in a patent stock car which provides for feeding and watering stock while in transit. We saw a model of the car in question while in St. Louis at the last cattlemen's convention, and we cannot see why it should not prove a great success. It is claimed that cattle from remote western points can be run through to extreme eastern markets in less time on these cars than is consumed in shipping to Chicago in the barbarous box car now in use, which necessitates feeding and watering en route. It is also claimed that the saving in shrinkage will offset the cost of freight. The success of this car in its general adoption by cattle shippers will be one of the means at the disposal of rangemen to break down the Chicago syndicate of dressed beef men, as it will enable the rangemen to place their cattle at points of consumption in first-class condition.

Upon the question of improved stock cars and the railroad, Charles Francis Adams, one of the most competent authorities in the country, says:

"Why do railroad officials oppose the introduction of improved stock cars?"

"Their answer is: Because it necessitates the side tracking of the ordinary or old style cars, and, as there are 44,000 of these cars now in use, it would cause a large loss to all roads owning such cars to be obliged to lay them aside and con-

struct new ones of improved patterns to supply their places.

"The question is often asked, how can this be remedied?"

"Ask congress to pass a compulsory law compelling all railway companies, individuals or corporations, when building new cars, to construct a car in which cattle can be fed and watered while in transit and have sufficient room in which to lie down, and the existing evils would soon be remedied."

"The old cars are constantly wearing out and new ones supply their places. Statistics show that upwards of 20,000 stock cars are constructed annually, so, by this method there would be no loss to the railroads, and in a few years the entire system would be improved and complete without loss or damage to anyone."

"There are now in use a number of improved stock cars operated by private parties. These cars are in great demand by the cattle shippers, leaving no excuse whatever why their introduction should not become general. In the past, before the improved methods were perfected, the excuse was that there was nothing yet produced that met the requirements of the law and at the same time serve the shippers to advantage. The shippers are now pleased with the improvements made in live stock cars, and they are desirous of using them. There is no reasonable excuse why railroad corporations should not respect the rights of the public, whose demand is for improved cars. By adopting more humane methods of transportation the cattle grower would receive more for his herd, his purchaser would sell them for a better price, the meat, when it reached the market, would be much more wholesome, and could be dealt out by the retailer at a less price than it is sold for today. Everybody would be satisfied. The animals would be transported to the slaughtering places in a reasonable time and in comfortable cars. By their adoption the great railway lines would not be marked, as they are now, with blood from the feeding lands to the seaboard. The poor creatures which the Almighty has given us for our reasonable use would receive proper care, and the live stock transportation business become one grand system of comfort and economy."

**THE LAW OF QUARANTINE.**

The cattlemen of New Mexico are convinced that if no further progress is made in giving their interests a better protection by the enactment of new laws at the next session of the legislature, the welfare of every stockman in the territory will be advanced by amending our law of quarantine so that we shall have complete protection from contagious and infectious animal diseases. In the enactment of such a law as the necessities of the times require, the governor should be authorized to nominate a competent territorial veterinarian, which nomination should be made upon the recommendation of a board of stock commissioners to be appointed one from each county. The duties of said veterinarian should cover, under a sufficient bond, all cases of contagious or infectious diseases among domestic animals in the territory, and he should have the authority to order the quarantine of all infected premises and places. Whenever it is found necessary to destroy infected animals, appraisers should be selected from among reputable stock owners who shall be sworn to make a true and faithful appraisal of the animals condemned to be slaughtered and the same should be paid for at two-thirds of such appraisal from a territorial fund created for that purpose. The right of indemnity should be limited to animals destroyed by reason of the existence or suspected existence of some epizootic disease, such as rinderpest, hoof and mouth disease, pleuro-pneumonia, anthrax or Texas fever among bovines, glanders among horses and anthrax among sheep. For the ordinary contagious diseases not in their nature fatal, such as scab and hoofrot in sheep and epizootic influenza in horses, no indemnity should be paid. Provision should be made for a reasonable compensation of the veterinarian, together with his necessary traveling expenses when in performance of his duty, which payments are to be made from a fund provided to meet the requirements of the law. The veterinarian should make sworn reports of his work to the governor as often as it may be deemed expedient for the best interests of the territory. The foregoing suggestions which are not made to cover the details of a law that is needed, are offered by THE STOCK GROWER for the consideration of those interested in the protection of a great industry, and in the hope that the matter of the enactment of a suitable law will be undertaken by the stockmen at the meeting of the territorial legislature.

R. C. WHIT  
R. P. N  
Las V  
Represent  
Mexico and  
Com  
Roof  
No firm  
New Mexic  
and we ref  
Mexico and  
To The Su  
AUMA,  
There sh  
exclusion  
America,  
Other cot  
of extirp  
nature  
necessar  
in sheep  
penalties  
occasion  
sheep cr  
ping pr  
with pl  
mouth d  
horses;  
is the sl  
imals inf  
to infec  
requisit  
etc., wh  
whole c  
tirpatio  
haps th  
the sal  
method  
rather t  
some di  
for the  
should  
stock  
tioned  
I do  
aliens,  
tal or e  
our res  
wisdom  
reason  
en mat  
ing the  
cheape  
tralian  
cate b  
leadin  
eral of  
plied c  
able w  
The co  
afford  
across  
aloof,  
brace  
tralian  
inferi  
better  
owner  
centiv  
The  
prairie  
best g  
deteri  
anima  
throu  
will  
age w  
the pl  
have  
ductiv  
pastur  
I care  
such  
pend  
num  
As  
shoul

R. C. WHITE

ESTABLISHED 1871.

GEO. HOLMES

R. P. NEWBY,  
Las Vegas,

Representative in New  
Mexico and Arizona.

# WHITE & HOLMES,

G. L. BROOKS,  
Socorro,  
J. W. VIRGIN,  
San Marcial,  
Representatives in N.  
M. and Arizona.

## Commission Merchants

Rooms 28 and 29, Exchange Building,



## All Kinds of Live Stock

Stock Yards, Kansas City, Missouri.

No firm doing a commission business in Kansas City handles more New Mexico or Arizona cattle, or obtains better prices than ourselves, and we refer with pleasure to the many prominent shippers of New Mexico and Arizona who have done business with us.

LIBERAL CASH ADVANCES ON CONSIGNMENTS OF LIVE STOCK.

### Advance America.

To The Stock Grower:

ALMA, N. M., November 7, 1886.—There should be no hesitation as to the exclusion of all imported live stock from America, while disease is so prevalent in other countries. The cost of the process of extirpation, where disease of infectious nature exists, might be defrayed, if necessary, by the sale of state lands. Scab in sheep can be got rid of by inflicting penalties on the owners, and there is no occasion to destroy the animals as any sheep can be cured by means of the dipping process. It is altogether different with pleuro-pneumonia, and foot and mouth disease, and also with glanders in horses; in such cases the only safe course is the slaughter and destruction of all animals infected, or that have been exposed to infection. The utmost vigilance is requisite also in dealing with buildings, etc., which may retain infection. The whole community is interested in the extirpation of infectious disease, and perhaps the cost could be met as readily by the sale of state lands as by any other method. It would seem more desirable, rather to extirpate infectious and loathsome diseases, than to increase our stock for the present. If lands were to be sold for the said purpose, perhaps such land should be offered as would suit only for stock raising, the price being proportioned to its stock bearing capacity.

I do not advocate the sale of lands to aliens, nor would I object to foreign capital or enterprise being brought to bear on our resources. We have no monopoly of wisdom or enterprise. It would be only reasonable, perhaps, if we gave our woolen manufacturers the opportunity of buying their raw material in the best and cheapest market, especially as our Australian cousins are prepared to reciprocate by the admission of some of our leading products on similar terms, mineral oils and wooden wares can be supplied cheaply by the one country and suitable wools for our patrons by the other. The conveyance of these products would afford freight for the vessels running across the Pacific. If we prefer standing aloof, our Canadian neighbors may embrace the opportunity. I find that Australians are coming to the conclusion that inferior lands, as well as those of the better quality, are best utilized by private owners as they have a much stronger incentive to improvement.

The system of commonage on our own prairies tends to the extirpation of the best grasses and herbage, as well as the deterioration of the stock. Domesticated animals are capable of great improvement through care and classification. Pastures will deteriorate if the worthless herbage which is of no service for stock, takes the place of that which is valuable. I have no faith in the cultivation or introduction of better vegetation upon mere pasture land. A longer experience than I care to mention leads to the conclusion that the improvement of pasture lands such as would not repay cultivation, depends on the judicious adaptation of the number of the animals to the subsistence.

As regards the extent of inclosures, it should be borne in mind that by doubling

the length of the fence, four times the land is inclosed, which will show that inferior pasture can be used to the most advantage on a large scale, whether it is held by individuals or by a company. If thirty or forty acres are required for each head of cattle it would not pay, though the land were obtained as a gift, to fence it in sections, and still less, if destitute of water. It is evident that a large capital is requisite to the development of the resources of inferior pasture and the improvement of the stock. Let us use American capital if obtainable, if not, let us beg, borrow or annex it. We should make the most of our public domain somehow, as a family could not live and thrive upon a section of inferior land, nor four sections for that matter, the man of small means should turn his attention to soil that will make a suitable return, or to other pursuits.

I may give a reliable example of the result of irrigation by steam power on an Australian farm of 113 acres, of which a friend writes. The land was indifferent and the rainfall scanty, but there was an abundant supply of water raised from a well. A flume was carried along a fence, the droppings of the cattle being used in the water, it was applied through a canvas and three acres watered daily. Sixty-seven milk cows were kept, about one beast, in all, for each acre of land. The alfalfa is cut six times in the nine months. From six to eight tons of green stuff per acre is obtained from each cutting and it is grazed the other three months. One man applies the water, giving about three inches over three acres each day. It would require about 4,000 acres to keep the above-mentioned stock giving each animal thirty acres. Hay could be obtained in this way to carry live stock through the winter and thus make the natural pastures of more avail. Such arrangements would demand labor, skill and capital. Stock that was well kept from the earliest age would attain a better and an earlier maturity. If properly classified and cared for, they would not be allowed to breed too young nor to suckle their calves too long, nor yet to save them dropping at a wrong season of the year. Countries could be mentioned where all these things are very carefully considered and with excellent results. Our system, or rather want of all system, tends to penury and the dissemination of disease. What is worth doing at all, is worth doing in the best way, and that system will make the best pecuniary return.

W.

Prices of pure-bred, 15-16, 7-8, 3-4, and ordinary Angora goats, given upon application; also circular of information, estimates of expenses, profits, etc. G. L. Brooks, Manager, Socorro, N. M.

Dr. Salmon, chief of the bureau of animal industry, asked to give a statement as to the extent of the disease, said: "The New England states are free. New York city, Brooklyn and New Jersey are still affected. New Jersey, Delaware and Maryland are making progress in the stamping out of the disease. Pennsylvania has several centers of the disease, but comparatively few cattle are infected. In Virginia there is only one infected spot, but there is no legislation there to extirpate it. I do not know of any cases of pleuro-pneumonia in the west outside of Cook county."—Chicago Tribune.

### The Chicago Market.

Stock cattle are in no better demand than before, nor is there any material improvement in prices, as the season for western range cattle is over. It has been the most unprofitable and generally unsatisfactory one that ranchmen have ever experienced. Texas cattle are still arriving in fair numbers and the better class is selling at higher prices than were current on the date of our last report. Poor stuff is to be had at the lowest figures of the season.

#### QUOTATIONS.

First quality—Fully-matured heaves, averaging 1,540 lbs. and upward, per 100 lbs.	\$5.00@5.20
Second quality—Choice smooth fat steers, weighing 1,350 to 1,550 lbs.	4.70@4.90
Good to choice—Well-formed steers, weighing 1,300 to 1,550 lbs.	4.25@4.60
Medium to fair—Steers in fair condition, weighing 1,050 to 1,250 lbs.	3.75@4.00
Common—Butchers' steers, weighing 900 to 1,100 lbs., and rough stuff.	3.30@3.65
Feeders—Thin to fair fleshy steers, weighing 900 to 1,150 lbs.	2.75@3.40
Stockers—Young steers of all grades, weighing 600 to 850 lbs.	2.25@3.75
Butchers' stock—Poor to choice cows, heifers, and mixed stuffs, all weights, according to quality.	1.50@3.25
Bulls—Common to good fat.	1.50@2.75
Texas cattle.	2.00@3.50
Milk cows—Common to choice, per head.	20.00@45.00

—Breeders Gazette.

Subscribe for THE STOCK GROWER, the best paper in the west. Three months for 25 cents.

### Important Land Office Decision.

The theory held by Mr. Sparks that absence from a claim in pursuit of a livelihood was an absence that seriously impugned, if not entirely invalidated the good faith of the residence required on the land, has been badly crippled by a decision of the secretary of the interior in the case of Josephine A. Camp. Mrs. Camp, who is 57 years of age, filed in April, 1884, a pre-emption entry upon the northeast quarter section 19, township 166, range 64, Devil's Lake (Dak.) land office. She built a substantial house, spent nearly \$200 in improvements, and broke and put in crop about fifteen acres. That same year she went to Devil's Lake and worked two months in the land office, after which she returned to her claim and made further improvements on it. The commissioner of the general land office held her claim for cancellation on the ground of this same absence in Devil's Lake. In reversing Sparks' decision, the secretary says: Good faith in maintaining a residence being shown in other things, absence from the land for the purpose of gaining a livelihood cannot invalidate or affect such residence. This woman was trying to secure for herself a home in her old age, and every step she had taken in her entry showed good faith in carrying out the provisions of the law. Hence her absence for the simple purpose of earning her living could not be urged against the entry.—Washington Special.

One or two train loads of partially graded western Texas yearling heifers, delivered at Albuquerque at \$11.75 per head. G. L. Brooks, Manager, Socorro, N. M.

### The Denver Convention.

W. A. S. Mercer, editor of the Cheyenne Live Stock Journal, has lately returned from an extended trip among the cattle owners of the Pacific states and territories, and reports that they will be largely represented at the International Range convention, to be held in this city in February. Mr. H. M. Taylor has also, just returned from trips among the cattlemen of Idaho, Montana, Dakota, Texas and New Mexico, and reports that the cattlemen of these regions will be here in large numbers.

The reason why they are coming is because they realize the importance of united action for their common good, and that such action can come only through such an organization as the Range association.

There are three matters of deep interest in which good can be accomplished by working together, and in no other way.

First. To adopt systematic quarantine rules and regulations for the protection of the range herds, which will be effective and just to each state and territory, and to unite in a demand on congress to adopt necessary measures to eradicate contagious diseases among live stock.

Second. To adopt some plan to cause the railway companies to give fair rates and decent accommodations to shippers of cattle, without that system of theft known as rebates.

Third. To adopt some plan of breaking up the work of the pools or rings of beef packers or buyers, who by unfair means are said to have robbed the range of vast sums of money.

These are big enough objects, involving thought and study enough to be worthy of the best minds engaged in the cattle business anywhere in the west; and there are no better minds engaged in any business in the United States.—Denver Tribune-Republican.

### Stock and Winter Feed.

An experienced stockman said yesterday in conversation: "Of course no one knows whether this is the beginning of a tough winter, or whether the winter is coming in butt-end first, but it is only prudent to anticipate a hard winter. For men whose stock is on the range where, under the drouth, the grass was burnt up last summer, as in spots in Idaho, Montana, Wyoming, Nevada and Utah, the prospect is discouraging. There are some men who are provided with hay enough to tide their stock over an ordinary winter. The danger with them is that they will feed hay worth \$5,000 or \$8,000, and then after all lose their stock in the latter portion of the winter. I am adopting this plan. I am rushing off every animal that will do for beef, and for the rest I am going to buy grain with which to help out my hay in case the winter comes down strong. A little grain—a pound or two daily—given in conjunction with a little hay, will keep an animal better than a heavy feed of hay, and with the help of grain I mean to make the hay which would by itself keep my stock only a month, last four months." It is a good idea, and we commend it to stockmen.—Salt Lake Tribune.

Breeding Peculiarities.

While it is true that some brood-mares, like the dams of Ethan Allen (2:25 1/2) and Will Cody (2:19 1/2), have produced fast trotters when well advanced in years, it is a significant fact that all the record-breakers, from the time of Flora Temple to the present, were from comparatively young dams. Madam Temple brought Flora Temple (2:19 3/4), her first foal, when in her five-year-old form. Dexter (2:17 1/4) was also the first foal of his dam, and dropped the season that the latter was ten years old. Lady Abdallah was twelve years old when she produced Goldsmith Maid (2:14), and had previously brought two other foals by Cassius M. Clay. Rarus (2:13 1/4), was the first foal of Nancy Awful, and dropped by her the season she was ten years old. Flora, the dam of St. Julien (2:11 1/4), was foaled in 1861, and dropped this speedy son of Volunteer in 1860, having produced her first foal, Abelard, by Volunteer, the previous season. Midnight was foaled in 1865, and produced seven other foals before she brought Jay-Eye-See (2:10) in 1878, the season she was thirteen years old. Miss Russell was foaled in 1865, the same year as Midnight. In 1870, when but five years old, she produced Nutwood (2:18 1/4), in 1871 Lady Norwood, and in 1872, Cora Belmont (2:24 1/4), and in 1874, when in her nine-year-old form, gave birth to the reigning queen, Maud S. (2:08 3/4). It is a fact worthy of note that both Midnight and Miss Russell were barren the season before they brought their fastest produce. Hopeful, champion to the turf to wagon (2:16 1/2), was the first of his dam's produce, and dropped by her when but six years old. It is doubtless true that many very old mares will produce animals far superior in merit to some younger ones, yet the fact that all the above were from comparatively young dams is a strong argument for giving young mares the preference when extreme speed is desired. It has been thought by some that the first foal is not so likely to become distinguished as those produced afterwards. This does not seem to accord with the above facts, Flora Temple, Dexter, Rarus and Hopeful were all the first foals of their dams.—American Cultivator.

Prices of pure-bred, 15-16, 7-8, 3-4, and ordinary Angora goats, given upon application; also circular of information, estimates of expenses, profits, etc. G. L. Brooks, Manager, Socorro, N. M.

A New Stock Scheme.

It is stated, on what seems to be reliable authority, that the cattlemen of the range country will establish large cattle yards at St. Louis. The movement grew out of the suggestion of Governor Routt, of Colorado, some months ago, and the object is to overcome the alleged monopoly resulting from the combination between the stock yards and dressed beef men in Chicago, by which rangemen say they are cheated out of \$10 to \$15 on each beast that goes to that city. They also claim that the same syndicate of eastern capitalists own and control the stock yards in east St. Louis, Chicago, Kansas City and Denver, and that the capital invested in east St. Louis is invested there to keep out outsiders and to concentrate the cattle trade at Chicago, where they can control the market. The proposed yards at St. Louis will be fitted up entirely by rangemen, and will be controlled by them, with close relations, however, between them and commission men there. The scheme also involves contracts with railroad companies for through rates from the ranges to points of consumption in the east, with the privilege of unloading at St. Louis, where eastern buyers can purchase and reship to the east on through instead of local rates, the object being to make St. Louis the great distributing point for the eastern markets.—Kansas Farmer.

1,500 head of the best grade of Chihuahua cattle rounded-up and ready for shipment, consisting of 1-3 cows from three to six years old, 1-3 two-year-old heifers and 1-3 yearling heifers delivered at Albuquerque at \$12.50 per head. G. L. Brooks, Manager, Socorro, N. M.

Improving Cattle on the Range.

When the project of bringing up the characteristics of the cattle on the ranges was first entered upon, the expectation far exceeded the results that have been realized. The peculiarly fixed characteristics of the native western cattle beast was not estimated at its full force, nor anywhere near this. It would have been about as reasonable to expect rapid improvement in the case referred to, through the use of the low grade of bulls first resorted to—and to a large extent continued in use to the present day—as to expect to change the characteristics of a flock of wild geese by substituting mongrel ganders from the flocks found in a country village. In the one case the blood, which, properly rendered, means all the peculiarities of structure and vital forces that go to make up the characteristics of any collection of animals, is in full force in the Texan, bred in and in, of his own sort, without interruption for generations. Type is firmly fixed in this way, and is able to withstand the influence of grade bulls, for generations, without the Texan type being wiped out. Nothing short of bulls of the most excellent breeding, in fact, among the very best, should have been relied upon to make the experiment with. And the mere breeding of a bull alone does not give us a guarantee that he will stamp the progeny coming from skinny cows with the fattening tendencies sought for. This fattening tendency must be a prominent characteristic of the sire, and must be cultivated in him to a reasonable degree, while he is being used as a breeder. In place of this having been done, the young bulls taken from close quarters, fairly well fed on grain, in many cases being made fat, with a view to effecting a quick sale, are turned out upon the range to live the life of the natives, shrinking until they barely make a shadow; no marked fattening tendency is maintained within them, hence they impart what little they have in a weakened degree.—National Live Stock Journal.

Knives. Send in a new subscription and get a good knife. Read our knife offer.

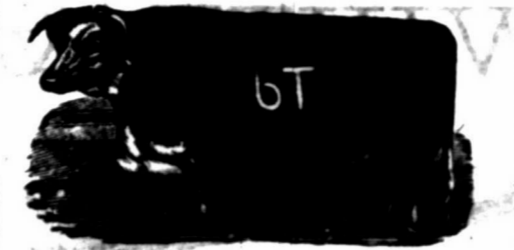
On Tuesday afternoon there was shipped from this town 330 as fine head of beef cattle as ever left northern Arizona. The shipment was made by several of the cattlemen of the San Francisco and Mogollon mountain ranges, and were bought by Charles Collins for Chas. Gassen, wholesale butcher at Los Angeles.—Flagstaff (Ariz.) Champion.

DICK DUTCH, with CLARK & CO. Hatters, 524 Main Street, KANSAS CITY, MISSOURI. A complete line of Stetson's Hats for stockmen. Send statement of size worn, and hat will be sent by express, subject to approval.

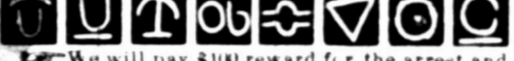
ARIZONA. Santa Rita Cattle Co. ISAAC N. TOWN, Superintendent. Postoffice, Calabasas, Pima county, Arizona. Range, Santa Cruz river, Pima county, Arizona. Calves of 1886 and imported bulls are branded same as cut on left hip.

A. L. Morrison & Sons. P. O.: Springerville, Arizona. Home ranch, Mamie creek, near Escadilla Mts. Ear marks, underslope right, crop left. Horse brand, same as cattle, on right hip.

ARIZONA.



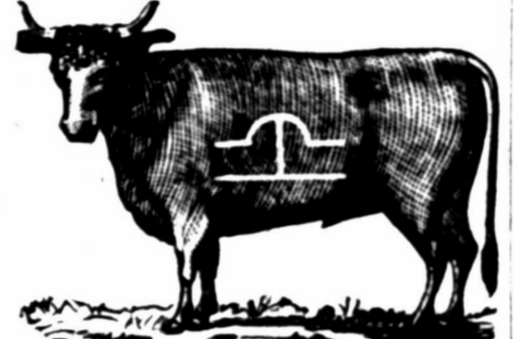
Cameron Brothers. P. O.: Lochiel, Pima county, Arizona. Telegraph and Express office, Crittenden, on the New Mexico and Arizona railroad. Range, on the San Rafael de la Zanja Grant. Ear marks, right cropped, left slit. All cattle in the quarter circle U brand are marked underslope the right, swallowfork in left. Cattle also marked with two downlaps. Horse brand, like cut on either thigh. All mares are branded like cut on either hip. Also own the following brands, kept up:



We will pay \$100 reward for the arrest and conviction of any one unlawfully handling any stock in this brand. No power of attorney given to anybody.



Harry K. Hildebrandt. P. O., Lochiel, Arizona. Range, Gienega, Joaquin, Antelope and Bear Creek valleys, of the West Huachuca. Mares branded on either hip. Horses on left hind leg and thigh. Cattle on both sides or hips.



Aztec Land and Cattle Company. (Limited.) HENRY WARREN, General Manager. Post office address: Holbrook, Arizona. Range, Apache and Yavapai counties. All cattle branded same as cut on both sides. Horses on right and some on left. Right branded: [mark] on right shoulder, also [mark] on left shoulder, also [mark] on flank. Whoever handles these cattle without authority will catch hell.



Jones & Wren. P. O.: Duncan, A. T. Range, Gila river, A. T.



William Curtis. Woods & Potter, Managers. Post Office, Woodruff, Apache County, A. T. Ear mark: crop right over bit left. Horse brands: [mark] on left thigh, [mark] on left hip, and [mark] on left hip.

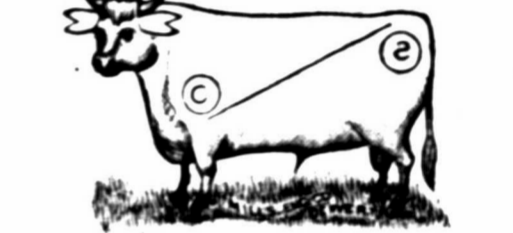
Gardiner, Gillies & Willmerding. P. O.: Navajo Springs, Apache county, Arizona. Range, Deer and Cedro Springs, Apache county. Ear marks, right ear is grabbed. All cattle in addition to above brand, have an X on the left jaw. Horses are all branded [mark] on right shoulder.

ARIZONA.

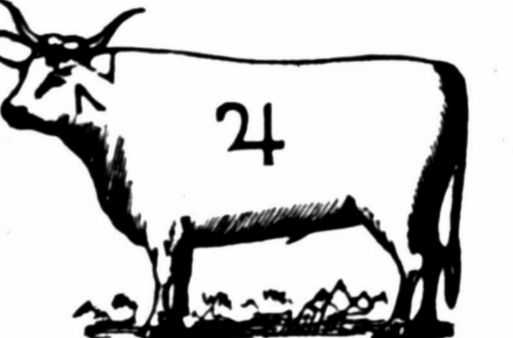
\$1,000 REWARD! I desire to call attention to my marks and brands for cattle, as shown in cut. I sell no stock cattle, and will pay \$1,000 reward for the arrest and conviction of any person or persons unlawfully handling cattle in the following brand and marks.



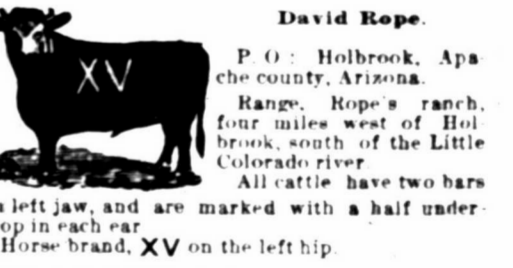
J. H. Hampson. P. O.: El Paso, Texas. Ranch P. O.: Clifton, Arizona. Range, on Eagle creek, Graham county, Arizona. Ear marks, crop and split left, crop right. Horse brand, [mark] on the left shoulder.



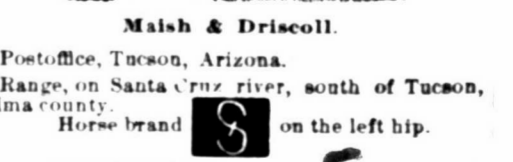
Milo A. Smith. P. O.: Springerville, Apache county, Arizona. Range, Escadilla mountains, Apache county, Arizona, and Johnson's Basin, Socorro county, New Mexico. Other Brands: ELC side on left side and [mark] on left hip. HES side on left side and [mark] on left hip. Horse Brands: ELC and also S in circle on the left hip.



Smith, Carson & Co. P. O.: Springerville, Apache county, Arizona. Telegraph and express office, Navajo Springs, Atlantic and Pacific railroad. Ear marks: Crop off the left. Horses branded: [mark]



David Rope. P. O.: Holbrook, Apache county, Arizona. Range, Rope's ranch, four miles west of Holbrook, south of the Little Colorado river. All cattle have two bars on left jaw, and are marked with a half under-crop in each ear. Horse brand, XV on the left hip.



Maish & Driscoll. Postoffice, Tucson, Arizona. Range, on Santa Cruz river, south of Tucson, Pima county. Horse brand [mark] on the left hip.

Hunings & Cooley. Breeders and Importers of Thoroughbred and Graded Cattle. P. O.: Show Low, Apache county, Arizona. Horse brand, same as on cattle, on left shoulder.

WHEN you write to an advertiser mention the Stock Grower.

JAMES Union Li Office THI SAT Items Hon man, w ing the ticket. The y ceasing tie and conditi G. F. ranch, City Fe ranch I C. H attends the wes a pleas M. M dozen trip to his ran W. E the D bright enjoy the bo Arth Kings Hot Sp que, w arrang Natl with t ted ple mome San M return midd east. Col. Burea Colon lively esta o more most raisin every has le live a the c nesa. Gee in Ne fine s live L. Ge for D the b at ck kind settl char prop in. De stock satis An e prov hey 20 lam Bro T era atic qu4 um in j con anc ma cer 55 43 46 41 24 45 58 18 11



JAMES H. CAMPBELL, Manager, Union Stock Yards, Chicago.

D. L. CAMPBELL, Manager, National Stock Yards, East St. Louis, Ill.

G. W. CAMPBELL, Manager, Kansas City Stock Yards, Kansas City, Mo.

JAMES H. CAMPBELL & CO., Live Stock Commission Merchants,

SUCCESSORS TO ANDY J. SNIDER & CO. AND CAMPBELL, LANCASTER & CO

Offices, Rooms 23 and 24, Exchange Building, Kansas City Stock Yards, Kansas City, Missouri.

Consignments Solicited. Correspondence Promptly Attended to, and Markets Furnished by Mail or Wire, on Application.

THE STOCK GROWER. LAS VEGAS, NEW MEXICO.

SATURDAY, DECEMBER 4, 1896.

PERSONAL.

Items of Interest Relating to Stock Growing People.

Hon. T. D. Burns, the Teira Amarillo stock man, was elected to the territorial council...

The Messrs. Milhiser have about completed receiving their recent purchase of Col. Stapp's cattle...

G. F. Black and Captain Hurst, of the Nigrita ranch, Socorro county, are detained in Kansas...

C. H. Hampson, of Denver, who efficiently attends to the interests of the "Wabash Route"...

M. M. Chase, the general manager of a half dozen ranch properties, made a quick business trip to Las Vegas on Friday night...

W. E. Lawrence, the efficient superintendent of the Dubuque Cattle company, and one of the brightest young men in the cattle business...

Arthur Gorham, the well known cattleman of Kingsley, Kansas, spent Friday at the Las Vegas Hot Springs...

Nathan Hall, who is prominently connected with the cattle interests of Socorro county, chatted pleasantly with THE STOCK GROWER...

Col. H. M. Taylor, the western agent of the Bureau of Animal Industry, is now in Las Vegas...

George L. Goulding, well and popularly known in New Mexico as having sold large numbers of fine stock with the Leonard Bros...

20,000 head of partially graded ewes and lambs for sale at 75 cts. per head. G. L. Brooks, Manager, Socorro, N. M.

Kansas City Market.

The receipts, the past week, were moderate, and values generally steady, fluctuations having been immaterial.

REPRESENTATIVE SALES.

Table with 3 columns: Quantity, Price per head, Total value. Includes items like 55 half breed steers, 43 New Mexico steers, etc.

Table with 3 columns: Quantity, Price per head, Total value. Includes items like 25 New Mexico steers, 18 New Mexico steers, etc.

60 head of 4 to 15-16 grade Hereford bulls, eighteen to thirty months old, delivered at any railroad point north of Socorro at \$50.00 per head.

Will Draw the Line at Pleuro-Pneumonia.

From the numerous letters THE STOCK GROWER has received on the subject of protection of the range cattle from the dread disease pleuro-pneumonia...

I am satisfied that it (pleuro-pneumonia) will utterly destroy all the cattle on the plains, if ever it affects our cattle...

You know that many range cattlemen are utterly ignorant of the disease or its consequences. They are too apt to believe that the glorious west has special privileges in the matter of contagious bovine diseases...

400,000 acres of a well watered and well grassed grant to lease for a term of years at a very low rental. G. L. Brooks, Manager, Socorro, N. M.

Colorado to the Front.

DENVER, Colo., Dec. 1.—At a meeting of the executive committee of the Colorado Cattle Growers' association held yesterday at the chamber of commerce the following resolution was adopted:

Resolved, That the executive committee of the Colorado Cattle Growers' association believes it voices the sentiment of every cattle raiser in Colorado and the west in giving its unqualified approval to the movement for establishing cattlemen's stock yards at west St. Louis...

H. H. METCALF, Secretary Ex. Com.

A syndicate of St. Louis capitalists has been formed for the purpose of establishing an immense cattle ranch in Mexico. The land to be purchased has already been selected...

Three months for 25 cents. In order to introduce THE STOCK GROWER to many who do not now take it, we will send this paper for three months for the small sum of 25 cents.

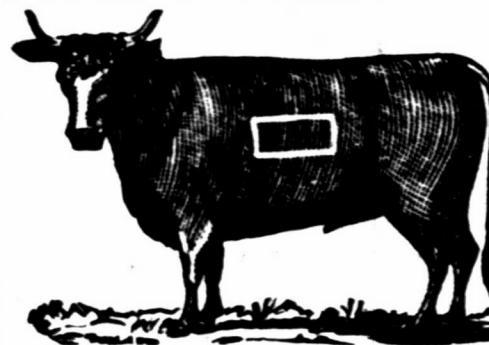
G. L. BROOKS, Manager, Socorro, N. M., will contract and deliver to any point in Arizona, she cattle in large or small bunches, bulls in carload lots, old Mexico brood mares, sheep and Angoria goats.

F. M. FOWLER & SONS,

ALFALFA SEED Phoenix, Arizona.

Correspondence solicited. Price and circulars on application. Refer to Bank of Arizona and the Valley Bank, Phoenix, Arizona.

SOUTHERN COLORADO.



George W. Thompson.

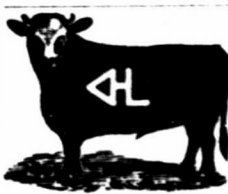
P. O. Address: Trinidad, Colorado. Ranges in western portion of Las Animas county, Colorado, and eastern portion of Colfax county, N. M.

Some branded same as above on right side. Some cattle in the following brands on either side or hip: W I H H T I Various ear marks.

Additional Brands: N—N on right or left side. X on left side and hip. X on left jaw. N+ N on right or left side with N on right or left hip. Various ear marks. Horse brands, N on left hip and N— on left hip.

New Haven Cattle Company.

W. W. THOMPSON, Foreman. F. T. Bradley and C. K. Dewell, Assistants. Postoffice, Trinidad, Colorado. Range, Lower Apishapa. Brand as here given. Ear marks, under half crop to left. Horse brand same as cattle brand.



Lane & Murray.

P. O.: West Las Animas, Colorado. Range, Fort Lyon to Mud creek, Colorado. Ear marks, underslope and underbit each ear.

Additional Brands: Triangle on jaw. V left loin. V right side. P left side. FS left side. 22 left side. Horse brand, HL (connected) on left shoulder.

SOUTHERN COLORADO.



A. D. HUDNALL.

Postoffice, West Las Animas, Colorado. Breeder of Hereford cattle. North side Arkansas river, Bent county, Colorado. Ear marked, swallow fork left ear.

Additional Brands:

left side, left thigh; under hack in each ear. V left shoulder, V left side, V left thigh. VV left side. V left hip.

KANSAS.

Watson & Fullington.

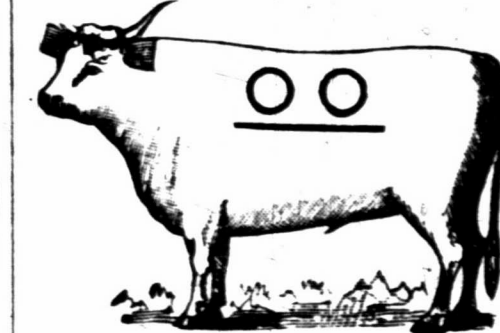
P. O.: Greensburg, Edwards county, Kansas. Ranch headquarters camp Willow Bar, on Cimarron river, Neutral Strip. All increase branded as in cut.

Ear marks, upper and lower bit left ear. Additional brands: 55 10 WK R TH TH W WK. Horses branded TWT on the left hip.

T. B. Porter.

P. O.: Lakin, Kansas. Range, on the Cimarron river, Seward county, Kansas. Ear marks, split left rop right.

NORTHWEST TEXAS.



O. J. Wiren.

Cattle Raiser and Dealer. Postoffice, Colorado, Texas. Ranches in Fisher and Kent counties. Horse brand, circle bar on left hip.

Lee-Scott Cattle Co.

P. O.: Tascosa, Texas. Range, Oldham and Hartley counties, Texas; and San Miguel county, N. M., on the Canadian river. Horse brand, LS, S or J on the left hip.

Additional Brands: LS both sides; marked, crop and split both ears. left side; over both sides; crop and half crop, under bit left. split right and split the left. both sides; split each ear. Also, all on the left side. GM left side; marked, underslope each ear, all steers.

In addition to the reward offered by the association, we will pay a reward of one thousand dollars for the conviction of any one stealing, butchering or illegally branding any of our stock, or marking any of our calves. LEE-SCOTT CATTLE CO.

Presnell & Mussey.

P. O.: Fort Stockton, Tex. Range, Comanche creek and Pecos river, Texas. Ear marks, sharpen left ear. Horse brand, ♀ on left hip.

**Alberta as a Stock Country.**

An exchange, speaking of Alberta as a stock country, says:

Mr. William Lykins, who has just returned from the cattle ranges of Alberta province, gives the scribe information in regard to that country.

Mr. Lykins, with a herd of 7,100 head of cattle belonging to the Powder River Cattle company, crossed the Yellowstone river at Junction City and kept a due northwest course. He passed the Missouri at Great Falls, forty-five miles above Fort Benton, and, pushing on, turned loose on Mosquito creek, in Alberta.

From the Montana line to Eye river, a distance of some 225 miles, runs the new country. It is about seventy-five miles in width, and lies along the base of the main Rocky range. The grass is of the same varieties and characteristics as those of Wyoming and Montana, but grow much thicker, forming a perfect mat. The water supply is magnificent, being both pure and abundant. The cattle of the region are rolling in fat.

The winters are not severe. Indeed, the rangers say that the last three or four winters have been very mild.

Mr. Lykins thinks that the region is not a good place for cowboys to seek employment in, owing to the small number of cattle at present on the ranges. The cattlemen of the region hold their ranges on leases from the government at one cent per acre. A late government regulation provides that all herds entering the province after the 1st of September must pay a duty of 20 per cent on their gross valuation, and that the same duty will be collected from all herds already established there not holding leases. Mr. Lykins thinks that this will have an immediate restricting effect on the cattle influx. He speaks very highly of the country, what there is of it, but is afraid it cannot long escape overstocking.

500 to 1,000 head of central Texas, partially graded one and two-year-old heifers, fifty per cent, of each age, delivered at Albuquerque at \$13.50 per head. G. L. Brooks, Manager, Socorro, N. M.

**Large Winners.**

The usual batch of fall statistics are being brewed, the first writer to get to work in this line being that admirable authority "Black and Blue" of the New York *Mail and Express*. Space does not permit of a reproduction of his first summaries, from which, however the following facts are gleaned:

Between the commencement of the racing season and October 2, the Dwyer Bros., with thirty-three horses, won \$196,280, an average of \$6,915 to each animal. J. B. Haggin won \$87,423 with nineteen horses, an average of \$4,601. E. J. Baldwin's string of fourteen landed \$78,350, an average of \$7,026, and Ed. Corrigan's lot of twenty raked him in \$44,365, an average of \$2,218.

The order of the best winners of the stables, together with the owners' names, are as below:

Dwyer Bros. Tremont, 2	\$39,135
Dwyer Bros. Inspector B., 3	27,875
Dwyer Bros. Dewdrop, 3	27,596
Dwyer Bros. Miss Woodford, 6	20,595
E. J. Baldwin's Silver Cloud, 3	19,525
B. J. Haggin's Ben All, 2	18,910
E. J. Baldwin's King Fox, 2	17,448
E. J. Baldwin's Volante, 4	17,400
Dwyer Bros. Hanover, 2	14,585
B. J. Haggin's Firenze, 2	12,965
E. J. Baldwin's Lucky B., 6	15,085
Ed Corrigan's Jennie Treacey, 2	9,835
Dwyer Bros. Millie, 3	9,835
Dwyer Bros. Beattie June, 3	8,425
Dwyer Bros. Winfred, 3	7,770
Ed Corrigan's Modesty, 5	7,540
E. J. Baldwin's Laredo, 2	7,174
E. J. Baldwin's Grisette, 2	6,710
B. J. Haggin's Ban Fox, 3	6,610
E. J. Baldwin's Estrella, 2	6,560
E. J. Baldwin's McCarthy's Last, 3	6,550
B. J. Haggin's Hidalgo, 4	6,430
Ed Corrigan's Irish Pat, 4	6,320

The greatest failure of the year is Freedom, who is credited this season with only \$200.—*St. Louis Journal of Agriculture*.

1,000 head of well graded Angora goats in the d near Socorro, can be sold and delivered at once at very reasonable figures. G. L. Brooks, Manager, Socorro, N. M.

**Range Feeding.**

A northern paper says the fact that it pays to feed cattle is abundantly demonstrated in the case of the Powder River Cattle company. For several years they have been running large feeding pens near Duluth and they state that it nets them from \$10 to \$12 on every animal they have fed. This makes a splendid margin and applies to all classes of cattle not in the very best condition. The feed consists principally of wheat screenings, ground and boiled. Oat straw and prairie hay are also fed. The animals are tied in rows in large barns and are seldom liberated before being sent to market. When a shipment arrives, the animals are tied up as rapidly as possible, for they get exceedingly wild if allowed to stand in the yard more than a day or two. After the second day in the stable, they eat ravenously and often get as gentle as barn yard cows. When liberated, however, they become as wild as ever. This company has now fed so long and with such uniform success that it has entirely passed the experimental stage. There are occasionally animals that do not fatten well, but they are only the exceptions that prove the rule; they have averaged over \$10 a head on all the animals they have ever fattened, the feeding extending over a period of several years. We expect to see the example of the Powder River Cattle company largely followed by range stockmen. There is no reason why it should not be a success for all, as well as one.

The Best Paper in the West. THE STOCK GROWER. Subscribe now and get a premium.

**Territorial Grazing Lands.**

The question of a change of policy in respect to the great area of public land in the western territories which is wholly unfit for cultivation, has been brought to the attention of Secretary Lamar, and it is believed will be discussed at length in his annual report. A prominent official of the interior department, discussing the matter today, stated that the existing laws in regard to land entries were wholly inadequate to meet the needs of settlers who wish to take up these lands. As a rule the most valuable grazing lands, as already stated, are absolutely unfit for cultivation, while they are at the same time neither mineral or desert lands. It is, however, only arable, desert or mineral lands that entries can be made under the law. By reason of the fact that grazing lands are extremely valuable, notwithstanding entries are made fraudulently, great tracts have passed into private hands under conditions that upon their very face betray the fact that the government has been deceived, if not defrauded. This is one circumstance that manifestly calls for additional legislation if it is desired that these lands shall go out of the hands of the government into the possession of private owners. There is a growing feeling in the territories against the continuance of free grazing. The monster cattle companies have been enabled by the system of free grazing to completely crowd out the small herder, who has no chance whatever in the contest, with these great corporations. The man who owns only a few hundred head of cattle finds his little herd swallowed up and lost among the thousands that belong to the big companies, while such a constant state of terrorism is kept up by the cowboys and other employes of the big companies that the small herder never fails to give up the fight after a brief experience. Mr. Lamar, it is thought, will ask congress to investigate this matter and pass some sort of remedial legislation.—*St. Louis Republican*.

The dressed beef men, it is claimed, "bullied," or, rather, "beared" the cattle market too much. They are nearly all powerful, and do not lose an opportunity to put down prices at a ruinous rate simply because they can. Many commission men say they think the dressed beef men are ruining the prospects of the cattle raiser. Commission men have even gone so far as to advise their customers in the country to quit the business of feeding and shipping.—*Drovers' Journal, March 1886*.

The *Colorado Farmer*, a trustworthy authority in matters appertaining to agriculture, says that "ten pounds of good alfalfa or clover seed is sufficient for an acre. Last year we secured a good stand of clover and alfalfa by sowing only four pounds of seed to the acre. Where thirty pounds of seed is sown to the acre one-half or more of it is covered so deep that it never comes up, or comes up so thick that but a portion of the plants survive. Alfalfa seed is a costly article and times are not flush with farmers that they can afford to be wasteful."

A ranch for 1000 head of cattle, good grass, located near Socorro, N. M. Price, \$800.00. G. L. Brooks, Manager, Socorro, N. M.

For shipping rates for live stock by the "Santa Fe Route." Apply to W. H. H. LEWELLYN, Live Stock Agent, Postoffice, Las Cruces, N. M.

**Tally Books.**

We have only forty copies of the tally book left and will print no more until the summer of 1887. Send at once for a copy or you will be left. Order the calf tally book, by mail, postpaid, one dollar.

**Get a Tally Book**

Before the supply is exhausted. More than 200 copies of this useful memoranda and tally book have already been sold and orders are coming in every day. Securely bound in leather covers with flap and pencil. Price one dollar, post paid to any address. THE STOCK GROWER.

**Water and Grass for Sale.**

Water from a sixteen-foot windmill with tank and trough, capacity of 9,000 gallons; will carry 800 head of cattle, with feed for 15,000 head. I believe that water can be got in unlimited quantities at a reasonable depth. Hundreds of square miles of government land with as good feed as there is in New Mexico, and not a hoof upon it, not more than 400 feet above the level of the Rio Grande in Socorro county; no snow; splendid place for a big company to locate. For particulars inquire of D. D. FIELD, 11131 Carthage, Socorro County, N. M.

**Meeting of Stockmen.**

OFFICE OF THE CATTLE AND HORSE GROWERS' ASSOCIATION, Las Vegas, N. M., Nov. 10, 1886. It is respectfully requested that all stockmen of New Mexico, as well as members of the local associations, meet with the Cattle and Horse Growers' Association of New Mexico, at Santa Fe, N. M., on Friday, January 3, 1887, for the purpose of taking into consideration certain changes in the live stock laws of N. M. Mexico, the law of quarantine and for the discussion of other matters of material interest to the industry. A large attendance is desired. J. W. DWYER, President. J. D. WARNER, Secretary.

**Lost.**

One bay gelding about fifteen and one half hands high, eight years old, branded SA on left shoulder, and SA under Mexican A on left thigh; one white gray gelding same age and height as the bay, branded US on the left shoulder and JC on left thigh and WHS on left hip; one brown or black mare eight years old, about fifteen hands, branded same as the gray horse; and one light bay horse, mule about same age and height, and branded same as the mare mule. These animals left my Red canon ranch, Socorro county, about the 8th inst. I will pay a suitable reward for their delivery at Powers' Red canon ranch, Socorro county, or at my ranch on the Rio Bonito, six miles west of Fort Stanton, or for information leading to their recovery. Address A. E. POWERS, Fort Stanton, N. M. 36-2t

**Notice - Aviso!**

Section 2313. If any person shall willfully set on fire any woods, marshes or prairies so as thereby to occasion damages to any other person, such person shall pay a sum not exceeding five hundred dollars, nor less than fifty dollars, one half thereof for the use of the person prosecuting the same, and the other half for the use of the county in which the offence is committed.

Section 2314. Si alguna persona maliciosamente incendiare cualesquier montes, campos o llanuras, de modo que ocasiona perjuicio a cualquier otra persona, tal persona pagara una suma no excediendo quinientos pesos, ni menos que cincuenta pesos; una mitad de la cual, sera para el uso del condado en el cual la ofensa fue cometida.

Section 2314. If any person shall set on fire any woods, marshes, prairies, whether his own or not, so as thereby to occasion any damage to any other person, such person shall make satisfaction in double damages to the party injured, to be recovered by civil action.

Section 2314. Si alguna persona incendiare cualesquier montes, campos o llanuras, ya sea suyo propio o no, de modo que por esto ocasiona cualquier dano, a alguna otra persona, tal persona hara satisfaccion en dobles perjuicios a la parte injuriada recobrados en una accion civil.

The Lincoln County Stock association offers a reward of \$100 for the arrest and conviction of any one violating the above sections to the detriment of any member of said association.

La asociacion de criadores de vacas de condado de Lincoln, ofrecen un recompensa de \$100 para la aresta y conviccion de cada una persona que hagan mal contra las miembros de esta asociacion y contra estas secciones de las leyes del territorio. H. MILNE, President.

JAS. J. DOLAN, Sec and Treas.

**For Sale!**

ON OUR RANGE AT

SAN AUGUSTINE, Dona Ana County, N. M.

AS FOLLOWS, VIZ:

350 Two and Three-year-old Steers, mostly twos

250 One-year-old Steers.

300 Bull Calves, and

250 Cows. (Many of the cows improved and broken to milk.)

Steers and bull calves from one-half to three-quarters bred. A good supply of

**THOROUGHbred BULLS,**

Durham and Herefords, were placed with our herds four years ago.

DAVIES & LESINSKY.

**NEW MEXICO.**

The Counties under this heading are all in the Territory of New Mexico.

**SANTA FE COUNTY.**

**Santa Fe Cattle Co.**

W. C. Bishop, Manager, Santa Fe, N. M.



This brand kept up.



Additional brands: FW A 44

Ranch twenty miles west of Santa Fe, N. M.

**RIO ARRIBA COUNTY.**

**Chama Cattle Company**

DERWENY H. SMITH, Mgr. P. O.: Box 132, Santa Fe, N. M. Range, Canon le Chama grant. Horse brand, same as cattle brand, only smaller. Ear marks: Hump cut out of ear shaped thus: [Diagram of a hump-shaped ear mark] with point of triangle toward the end of ear.

**T. D. Burns.**

P. O.: Tierra Amarilla, N. M. Range, Canon Largo. Brand on either side. [Diagram of a cow with TB on its side]

**BERNALILLO COUNTY.**

**Jacobo Yrisarri.**

P. O. Albuquerque. Range, Trinchera mountains. Ear marks, over and under back in right ear. Other brands same as cut. [Diagram of a cow with a cross and arrow brand]

**Mariano Perea.**

P. O. Bernalillo, N. M. Range, La Jara. Ear marks, swallow fork left. [Diagram of a cow with a P brand]

**SIERRA COUNTY.**

**Grayson & Company.**

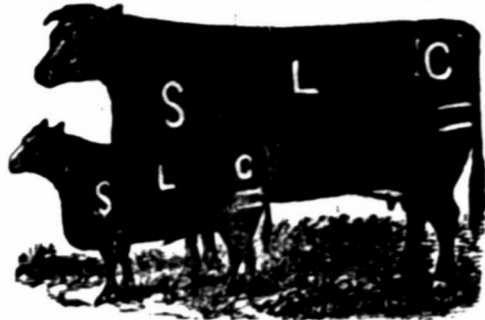
P. O.: Los Palomas, Sierra county, N. M. Range, Animas ranch, Sierra county. Ear marks, under half crop each ear. Horse brand, same as cattle but on left shoulder. Additional Brands: [Diagram of a cow with a P brand]

W O on left hip. [Diagram of a cow with W O on its hip] 22 right hip. [Diagram of a cow with 22 on its hip] 22 right thigh. [Diagram of a cow with 22 on its thigh] on the same animal. [Diagram of a cow with a cross on its hip] left hip. Some have same on side. [Diagram of a cow with a cross on its hip]



SIERRA COUNTY.

Sierra Land and Cattle Company.  
 D. RIDENOUR, President, Kansas City, Mo.  
 H. BRACKETT, Sec. and Treas., Kansas City, Mo.  
 H. HOPPER, Vice Pres. & Mgr., Kirgston, N. M.  
 W. W. RAY, Ranch Manager, Hillsborough, N. M.



Range, southeastern Sierra county.  
 All cattle branded as in the cut, and have two bars under the tail on both sides.  
 Horses all branded SLC on the left hip, as in this cut.



Henry G. Toussaint.  
 P. O.: Engle, Range, near Engle, Sierra county, N. M.  
 Horse brand, **HGT** left hip.  
 Vent brand on horses under original brand **H**  
 Other brands on cattle and horses: **NI AF**  
 Vent brand on cattle, same as on cut, but inverted and run on neck.



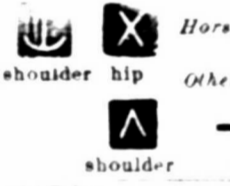
John McLeod  
 P. O.: Rincon, Dona Ana county.  
 Range, twelve miles north of Rincon on each side of Rio Grande, and in the Caballo mountains in southeastern portion of Sierra county.  
 Horse brand, **OM** on the left shoulder.



Vermont & Rio Grande Cattle Co.  
 P. O.: San Marcial, N. M. Range, twenty miles south of San Marcial. Ear marks, underbit in each ear.  
 Horse brands: **C** or **TEL** on left hip or thigh.



John B. Alley Cattle Company.  
 T. J. WRIGHT, Manager.  
 P. O.: Lake Valley, N. M. Range, Lake Valley, Sierra Co., and Ojo Caliente, Socorro Co.



Horse Brands: **X** on shoulder hip  
 Other Brands: **A V** on shoulder hip  
**A** on shoulder, **V** on side, **V** on hip

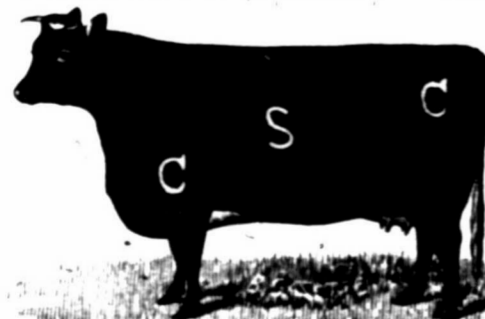


C. Hearn.  
 P. O.: Fairview, N. M. Range, Pauvrecita creek and vicinity of Fairview. Ear marks, figure 7 underbit in each ear.  
 Additional brand, **GL** on left hip.  
 Horse brand, same as cattle on left thigh.



Wm. J. Worden.  
 P. O.: Las Palomas, Sierra Co., N. M. Stock leased to D. H. Hallock.  
 Increase branded on left side **WH**  
 All company horses branded **W** on left shoulder. Lease expires January 1st, 1927.

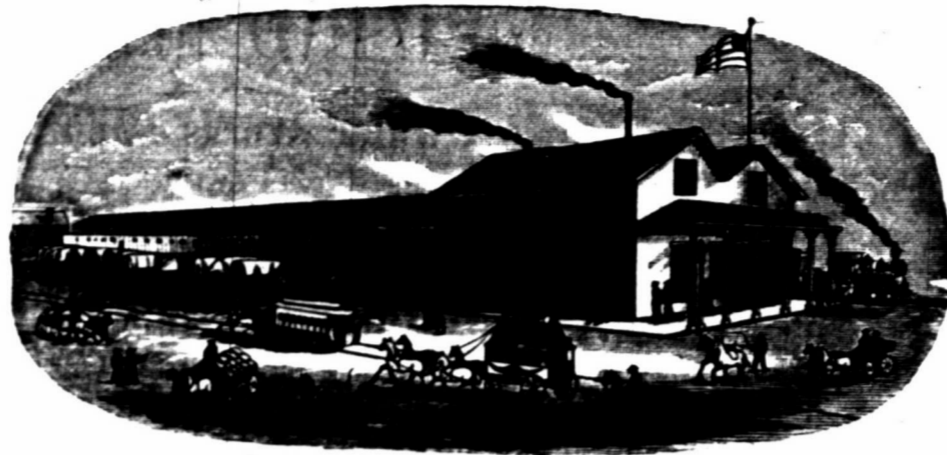
GRANT COUNTY.



Carpenter-Stanley Cattle Co.  
 P. O.: Fort Cummings. Range, east side of Cook's Peak, Grant county.  
 Other brands: **CC** left side, **JL** **FC** **Ts**  
 Horse brand: **CC** on left hip.  
 Ear marks: **CC** on right; underbit left crop right.  
 Also, two underbits in each ear; crop left underbit

Browne & Manzanares Co.

LAS VEGAS AND SOCORRO, NEW MEXICO.



WHOLESALE GROCERS,

DEALERS IN

AGRICULTURAL IMPLEMENTS, RANCH AND MINING SUPPLIES.

THE BEST MARKET FOR

WOOL, HIDES, PELTS, &C.

WILL AT ALL TIMES COMPETE WITH EASTERN PRICES.

ECLIPSE WINDMILLS

The Best and the Cheapest.

PUMPS, PIPES, AND FIXTURES.

Agents For

Cooper's Sheep Dipping Powder

A Cold Water Dip.

Sure cure for Scab. Best and cheapest dip in the world. Send for pamphlet, with plans for dipping.

Browne & Manzanares Co.

A. D. HUDNALL,

West Las Animas, Colorado,

IMPORTER AND BREEDER OF

POLLED ANGUS

AND

Hereford Cattle.

Has sold in New Mexico during the past season over 1,000 head of grade and thoroughbred bulls, and would refer intending purchasers to any of my customers for the quality and condition of the cattle furnished.

I am prepared to furnish, at any time, thoroughbred or grade bulls, guaranteed of the best strains, and, being Colorado raised, ready for immediate service. The cattle from my herds, at the Albuquerque fair, won all first prizes. Correspondence solicited and inspection of herds invited. Full particulars and pedigrees furnished.

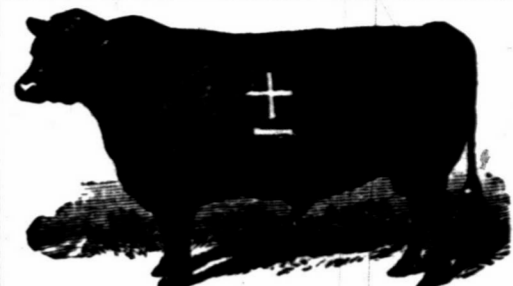
I will Contract now for Spring Delivery. Car-load Lots a Specialty.

J. C. LEARY & CO., Agents, Las Vegas.

J. C. LEARY & CO.,  
 Commission Merchants for the Sale of Live Stock and Ranches  
 OFFICE IN STOCK GROWER BUILDING, LAS VEGAS, N. M.

Will contract to deliver at any point thoroughbred or grade animals of any breed, at lowest prices. Contracts for surveying taken; maps, plans and estimates for railroad work, and surveys for irrigating schemes and water works carefully made. We make a specialty of closing trades satisfactorily and promptly. We can find buyers for stock of all kinds, and give personal attention to all business which is entrusted to us. We have the largest acquaintance in this section. Correspondence solicited, and all inquiries will receive prompt attention.

GRANT COUNTY.



John Brockman.

Postoffice, Hudson, New Mexico. Range, Rio Mimbres, Grant county.  
 Horse brand, same as cattle, on the left hip.  
 Also owns all cattle branded **B**  
**M** on the left side, **A** on the left hip.  
**E** on the left side.  
 Ear mark, under half crop each ear.  
 All parties are cautioned against purchasing cattle in the above additional brands except from myself, as I have purchased the brands and all cattle running in them.  
 JOHN BROCKMAN.

Haggin, Hurst & Head.

Address, A. E. HEAD, Deming; or JAMES VAN DYK, Whitewater, N. M.  
 This brand for all cattle on range at Apache Teju, Cow Springs and Warm Springs, Grant county.



Other brands: **H** **GD** **C**  
 old brand, right side.  
 Horse brand, **10** on the left hip.



This brand kept up on all cattle on range in Animas valley, Grant county.  
 Other brands: **H** known as the Porter brand, with dewlap.  
 Horse brand **A** or **10** on left hip.

Hart Bros. Land and Cattle Co., Limited.  
 P. O.: Lordsburg, Grant county, New Mexico.



Range, Lower and Middle Gila, and west side Burro mountains.  
 Ear marks, underslope left and crop and split the right ear.



Other brands: **HART** side; **O+** on side and hip; **4** on left side.  
 Horse brand **H** on right thigh; when sold are vented on right shoulder.

Charles V. Hugo.



P. O.: Fort Bayard, Grant county, N. M.  
 Range, Lambright canon. Ear marks, underbit both sides.  
 Other brand: **UH** left hip.



Lyons & Campbell.  
 P. O.: Silver City, N. M. Range, Duck Creek, Mule Springs and Middle Gila, Grant county.  
 Mark, crop and split left. Horse brand **LC** anywhere on the left side.



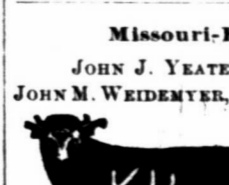
Buckeye Land & Live Stock Company.  
 S. A. BAXTER, Manager. M. Chapman, Supt.  
 P. O. box 101, Deming, N. M. Range, Cedar Grove ranch, 20 miles south of Deming.  
 Horse brand, same, on left hip. Brand on left side. Marked, sharpen both ears.



Lindauer Cattle Co.  
 S. LINDAUER, Manager.  
 P. O.: Deming, N. M. Range, on McKnight's Cienega, on Upper Mimbres.  
 Horse brand, **SL** on the left shoulder.

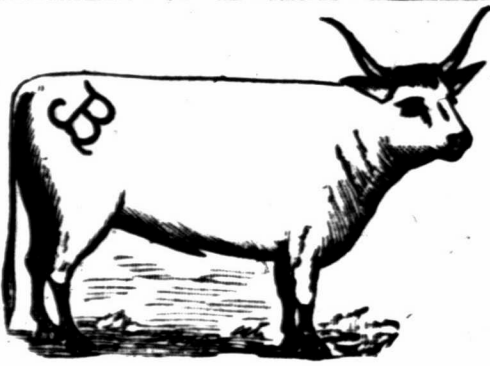


Wm. Brahm.  
 P. O.: Silver City, N. M. Range, White Water, Grant county, N. M.  
 Additional **NB** on right brand, hind leg. Horse brand, **B** on the left shoulder.



Missouri-Florida Cattle Co.  
 JOHN J. YEATER, Pres., Sedalia, Mo. JOHN M. WEIDENYER, Sec. and Treas., Clinton, Mo.  
 JOHN T. SHY, Superintendent, Deming, N. M.  
 P. O.: Deming, N. M. Range, east side Florida mountains.  
 Horse brand, same as cattle on left hip.

GRANT COUNTY.



Old and New Mexico Ranch and Cattle Co. Lou H. Brown, Superintendent. Postoffice address; Hatchita, Grant county, N.M. Range, Alamo Hueco in southern end of Piyas valley, southwestern Grant county, New Mexico. On the right shoulder. Also some horses branded same as the cattle, as in cut.

Mimbres River Cattle Company.

E. E. BURDICK, President and Treasurer. E. WALTERS, Secretary and General Manager. C. A. BURDICK, Vice President. P. O.: Deming, N. M. Range, Rio Grande to the Mimbres river. Old brand, 6 on shoulder 9 on hip. Horse brand on the left thigh same as cattle. Ear marks, crop left, crop and split the right.

J. A. Lockhart.

Postoffice, Deming, N.M. Range, the Cedar Grove Mountains and Dog Springs, Grant county. Horse brand, L on the left hip.

DONA ANA COUNTY.

S. B. Newcomb.

P. O.: Las Cruces, N. M. Range, western part of Lincoln county, in the Rinconada. Horse brand, same as cattle on right shoulder.

Pedro Garcia y Perea.

P. O.: Las Cruces. Range, east side of Rio Grande, south of Rincon. Cattle branded on either side.

Williams Bros.

P. O.: Las Cruces, N. M. Range, Sacramento river, Dona Ana county. Ear mark, jinglebob in each ear. Other brands, on left hip.

Jornado Cattle Co.

MAX GOLDENBERG, Mgr. P. O.: Organ, Dona Ana county, N. M. Range, on southeastern portion of the Jornada del Muerto, San Andrcito and Uso Springs. Ear marks, hole in right, split in the left. Horse brand on the left hip.

Barbero Lucero.

P. O.: Las Cruces, N. M. Range, above San Diego, Dona Ana county. Horse brand, same as on cattle, left shoulder.

Lynch Bros.

P. O.: Colorado, N. M. Range, La Loma Parda, Sierra Co.; Las Uvas and Sauce Springs, Dona Ana Co. Additional brands: Young stock in Dona Ana Co., thus: All horses are branded LB on the left side.

Horace Ropes.

P. O.: El Paso, Texas. Range, Carizozo Springs and west side San Andres mountains. Horse brand, same as cut on left shoulder.

Mariano Barela.

P. O.: Mesilla, N. M. Range, west of the Rio Grande, from Picacho mountain west of Mesilla south to the buttes west of La Mesa.



Star WIND MILLS

Water Works Supplies.

Wind Mills, Derricks, Tanks, Pumps, Hose, Pipe Fittings, Fountains, Feed Grinders, Etc.

Tubular Well Tools.

And Supplies, a Specialty.

To the cattlemen we wish to say that we are now making a

A Special Outfit for Ranches

to supply water to large herds, and having furnished many of the largest ranches in Texas with the water works, we know we have just what you need.

Address for prices, particulars, etc.

FLINT & WALLING MANFG. CO.

1404 WEST 11th ST. KANSAS CITY, MISSOURI, AND 1607 MAIN ST., FORT WORTH, TEXAS.

Gross, Blackwell & Co

LAS VEGAS, NEW MEXICO.

GROCERIES, DRY GOODS,

Boots, Shoes, Etc., Etc.

At all times on hand a full line of the Racine and Schuttler manufacture of Farm, Freight and Spring

WAGONS.

A Full Line of Stetson Hats, suitable for Ranchmen, always on hand, ranging in price from \$4 to \$15.

SPECIAL ATTENTION GIVEN TO RANCH TRADE.

Prices quoted when desired and special attention given to mail orders.

STUDEBAKER'S SOUTHWESTERN HEADQUARTERS

A full line of Vehicles of all kinds constantly in stock at the

Pioneer Saddle & Harness House

We are now manufacturing a line of

WARRANTED STOCK SADDLES,

That are unsurpassed in quality and very low in price. We have the most extensive manufactory of Saddles and Harness in the southwest, and dealers and ranchmen will find it to their interest to get our prices before buying elsewhere.

Fire Arms and Ammunition at Wholesale and Retail.

Our gunsmith is one of the finest workmen in the United States. Re-boring of shot guns to make any desired pattern, a specialty. NEWTON & ANDREWS, El Paso, Texas.

A. McDONALD,

WHOLESALE

Liquor Dealer

GIVENS' BLOCK, BRIDGE ST.,

LAS VEGAS, NEW MEXICO.

Special attention given to ranch trade. Mail orders for all classes of liquors and cigars carefully attended to.

Feed and Sale Stables

LAS VEGAS, N. M.

Good Rigs to let at reasonable rates. Horses boarded by the day or week.

Special Rates to Stockmen

GOOD SADDLE HORSES.

HORSES AND MULES FOR SALE

J. S. DUNCAN, Proprietor

DONA ANA COUNTY.



Sacramento Cattle Co.

P. O.: El Paso, Texas. Range, Sacramento Ranch, Sacramento mountains, Dona Ana county, New Mexico. Ear marks, crop right, swallowfork left. Old stock has H on left shoulder. Horses branded H on left thigh.

Davies & Lesinsky.

Breeders of and Dealers in Thoroughbred and Graded Cattle. SAN AUGUSTINE, N. M. Range, in Organ Mountains, near San Augustine. New brand on cattle on right side, as in cut. Horses, same brand, on left rump.

MORA COUNTY.

F. J. Maldaner.

P. O.: Wagon Mound, N. M. Range, Vermejo and Tata Vega. Ear mark, crop left and split right. Other brand: Horse brand, same as cut, on the shoulder.

J. B. Brown.

P. O.: Wagon Mound, N. M. Range, Vermejo and Tata Vega. Ear marks, underslope each ear. Horse brand, same as on cattle on left shoulder.

Campbell & Austin.

P. O.: Watrous, Mora Co. Range, near Watrous. Horse brand V on left shoulder. Ear marks—crop right ear, underslope left ear. Horse brand: Same as on cattle, as in cut. Some horses branded B B.

Portsmouth Cattle Co.

E. E. HOLMES, Manager. P. O.: Kansas City, Mo. H. G. HOWARD, Supt., P. O.: Springer. Range, Colfax and Mora counties, New Mexico. Horse brand: Same as on cattle, as in cut. Some horses branded B B.

S. B. Watrous & Son.

P. O.: Watrous, N. M. Range, east of Watrous, north and south of Mora river. Horse brand, W on the left shoulder. Ear marks: Same as on cattle, as in cut.

Wagon Mound Cattle Company.

GARTH & LEARY, Managers. P. O.: Wagon Mound, Mora county, N. M. Range, Vermejo. Horse brand: right shoulder.

Charles Sumner.

P. O.: Watrous, Mora Co. Range, Escondido canon and Mora river. Ear mark, two slits in left ear, right ear natural. Horse brand K left thigh.

Shepard & Hall.

P. O.: Tequisquite, N. M. Range, Alamocitas. Ear marks, crop and underhalf crop right; crop and underbit left. Other brands: this brand kept up. right shoulder, side and hip. Horse brands: Y left hip; also on right hip.

Farr Bros.

P. O.: Watrous, N. M. Range, Red River and Alamocitas. Horse brand, on left shoulder. Other cattle on left side. Some cattle are branded with a flying V on side without slash.

MORA COUNTY.



W. H. Willcox  
P. O.: Wagon Mound, Mora Co., N. M. Range, Mora county west of Red River and east of Turkey mountains.  
Horse brand the same, on left hip. Some cattle on right side.



The Wendling Cattle and Land Co.  
OF COLORADO AND NEW MEXICO.  
New Mexico Division.—Breeding Ranch.  
TAYLOR MAULDING, Manager  
Brand: "O K" on all stock. Range in Mora county, New Mexico. No cattle vented.  
Office: 325 17th St., Denver, Colo.  
S. S. SMYTHE, Secretary.



W. T. Marshall.  
P. O.: Wagon Mound Range, Escondido, south of Wagon Mound.  
Horse brand, same on left hip.  
Ear marks, under half crop left, over half crop right.  
Also have some cattle branded on right side.  
All increase branded as in cut.



Billings & Soule.  
P. O.: Tramperos, Mora county, N. M. Range, head of Tramperos, Mora Co.  
Other brands both on the left side.  
All increase branded as in cut with a bar in addition on back of right leg.  
Horse brand > or 3 on right shoulder.



Carl W. Wildenstein.  
P. O.: Watrous, N. M. Range, Pinos Altos and Petrosos Canon, Mora and San Miguel counties.  
Additional brands:  
Horse brand, same as on the cut, on the left hip or on the left shoulder.



Price Lane.  
P. O.: Wagon Mound Range, south of Wagon Mound.  
Horses branded on right shoulder.



L. W. Leach.  
P. O.: Wagon Mound. Range, south of Wagon Mound.



J. F. LaTourette.  
P. O.: Wagon Mound Range, near Fort Union. Extra brand, L left shoulder, A left side.  
Ear marks, swallow fork right, crop and two splits in left.  
Horse brand, same as cattle, on left shoulder.



S. H. Fairchild.  
P. O.: Wagon Mound, N. M. Range, in Wagon Mound district.  
Ear marks, split and underbit the left.  
Additional brand, Z on the left side.  
Horse brand, same as cattle, on left shoulder.



La Cueva Ranch Co.  
D. C. DEUEL, Manager.  
P. O.: La Cueva, N. M. Range, Coyote and La Jara, Mora county.  
Horse brand, on the right shoulder.



H. T. Sinclair.  
P. O.: Wagon Mound, Range, Vermejo and Teta Vegue.  
All increase branded the same as old stock.  
Other brand, T on right shoulder, side and hip.  
Horse brand, HT on the left shoulder.

BANKERS,

And those doing business with financial institutions, will find it to their advantage to consult this department in which all the leading banks of the southwest are represented.

First Nat'l Bank

LAS VEGAS, N. M.

Authorized Capital, \$500,000  
Paid-in Capital, 100,000  
Surplus Fund, 25,000

OFFICERS:  
JEFFERSON RAYNOLDS, President,  
GEO. J. DINKEL, Vice President,  
JOSHUA S. RAYNOLDS, Cashier,  
J. S. PISHON, Assistant Cashier

First Nat'l Bank

EL PASO, TEXAS.

OFFICERS:  
J. RAYNOLDS, President,  
J. W. ZOLLARS, Vice Pres.,  
H. S. KAUFMAN, Cashier.

Capital Paid In, - \$100,000

We do a general banking business; buy and sell drafts on all the principal cities of the United States and Europe; make telegraphic transfers to all accessible points. Accounts received upon favorable terms.  
We buy and sell Mexican gold, silver and other foreign coin at current rates.

First Nat. Bank

Albuquerque, New Mexico.

Capital Paid In, - \$100,000

OFFICERS:  
J. RAYNOLDS, President,  
J. S. RAYNOLDS, Vice Pres.,  
M. W. FLOURNOY, Cashier.

Directors—D. B. Robinson, Gen'l Supt Atlantic & Pacific Railroad, A. A. Grant, J. H. Hampton, Conrad Shennold, Jefferson Raynolds, William Garland, Joshua S. Raynolds.  
A general banking business transacted.  
Depository of the Atchison, Topeka & Santa Fe and Atlantic & Pacific Railroads.  
Special Attention given to the Business of Stockmen.

The City Bank

OF LAS VEGAS.

GEO. J. DINKEL, President.  
ALPHEUS A. KEEN, Cashier.

CAPITAL, \$50,000.

Transacts a General Banking Business.

ALBUQUERQUE NATIONAL BANK!

Albuquerque, New Mexico.

CAPITAL STOCK PAID IN, \$100,000.

OFFICERS:  
JOHN A. LFE, President,  
S. M. FOLSOM, Vice President,  
W. S. STRICKLER, Cashier.

DIRECTORS:  
JOHN A. LEE, S. M. FOLSOM, E. D. BULLOCK, W. P. METCALF, HENRY N. JAFFA, A. M. CODINGTON, H. H. STREETER.

Does a General Banking Business.  
Interest Paid on Time Deposits.  
Gold dust purchased and advances made on shipments of cattle, gold and silver bullion, ores, etc. Superior facilities for making collections on accessible points at par for customers. Exchange on the principal cities of Europe for sale.  
Stockmen's business a specialty.

BROWNE, MANZANARES & COMPANY

Bankers,  
SOCORRO, N. M.

L. P. BROWNE, President,  
C. N. BLACKWELL, Vice Pres.,  
M. W. BROWNE, Cashier.

A General Banking Business Transacted

United States Depository.

First National Bank

OF SANTA FE.

WM. W. GRIFFIN, Pres., R. J. PALEN, Cashier.  
PEDRO PEREA, Vice President.

San Miguel Nat'l Bank

OF LAS VEGAS,

LAS VEGAS, - - N. M.

Authorized Capital, \$200,000  
Paid-up Capital, 100,000  
Surplus Fund, 50,000

OFFICERS:  
W. M. EADS, Pres., J. GROSS, Vice Pres.,  
D. T. HOSKINS, Cashier.

DIRECTORS:  
COLUMBUS MOISE, JACOB GROSS, HENRY GOEKE,  
A. M. BLACKWELL, O. L. HOUGHTON,  
E. C. HENRIQUES, M. S. OTERO,  
T. H. LAWRENCE, W. M. EADS.

Does a General Banking Business. Drafts for sale on the principal cities of Great Britain and the continent of Europe.

Stock Exchange Stables,

FEED AND SALE.

Finest Livery in the City.

DON R. OAKLEY, Prop.

Good teams and careful drivers. Nice rigs for commercial men. Horses and mules bought and sold. Branch stable at the Hot Springs. Telephone No. 53.

Stables in rear of the St. Nicholas Hotel.

LAS VEGAS, NEW MEXICO.

"Music Hath Charms,"

And there is not a ranch in New Mexico which does not have some musical instrument to help to "liven the leisure hour."

A GUITAR, A BANJO,

Or even an accordeon will afford much pleasure. Write for list and prices to

Marcellino & Mernin,

Las Vegas, N. M.

MUSIC WAREHOUSE.

P. S.—A full line of strings, music and supplies.

C. A. RATHBUN,

—Dealer in—

Boots, Shoes,

LEATHER AND FINDINGS.

Boots and Shoes to Order.

SOLE AGENT FOR M. D. WELLS & CO.

Stock Grower's Trade Solicited.  
Bridge Street, West Las Vegas.

Frank T. Robinson,

REPRESENTING

PETERS & TROUT,

Lancaster, Ohio,

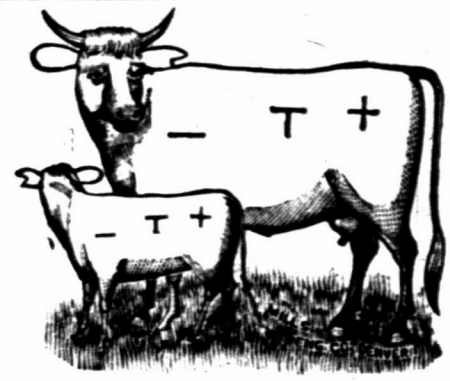
Merchant Tailors

Has arrived in Las Vegas with the finest line of samples of men's wear ever seen in the west.

Headquarters at the Depot Hotel.

Refers to hundreds of stockmen customers as to prices, work and satisfaction.

MORA COUNTY.



The Dubuque Cattle Company.

J. T. HANCOCK, President.  
W. P. LARBE, Vice President. } of Dubuque, Iowa.  
A. J. VAN DUZEE, Sec. & Treas. }  
T. H. LAWRENCE, General Manager, Las Vegas.  
W. E. LAWRENCE, Range Supt., Tequisquite Range, Tequisquite, Ute Creek and Tramperos, New Mexico.  
All calves branded and marked as in cut, except thoroughbred calves in the OO brand, which is kept up.

Other Prominent Brands:



All on the left side.

Horse brand, SX or T on left shoulder.



William McCartney.

P. O.: Los Angeles, Cal. Ranch P. O.: La Cinta, New Mexico.  
Range, Rincon and Arroyo de Los Alamocitas.  
Ear marks, crop right, underloope left.  
Other brands: U, D, Co, Z  
Horse brand, same as cattle, on left shoulder.  
All cattle in New Mexico in above brand are my property, and as I sell none all parties are cautioned against handling same illegally.

Also own all JS and marked underbit the cattle branded on left, crop right. Range, on left side head of Canon Largo.  
This brand kept up.  
Horse brand, same on left shoulder.



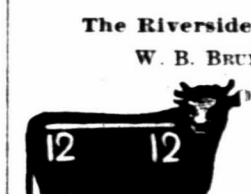
Robison & Clark Cattle Company.

W. D. CLARK, Manager.  
P. O.: Wagon Mound, N. M. Horse brand, T on the right shoulder.  
Other brands, H on right side and hip; also, T on right hip and I right side.  
16 on the left side and hip.  
All increase branded as in cut.



Aaron Bales.

P. O.: Watrous, N. M. Range, Petrosos canon and Cherry valley, Mora Co.  
All calves marked with overbit in left and two underbits in right.



The Riverside Cattle Company.

W. B. BRUNTON, Manager.  
P. O.: Shoemaker, Mora county, N. M.  
Range, Cherry valley, Pinos Altos and vicinity, Mora county, N. M.  
Other brands: N I X on right side, kept up.  
Horse brand, Z on right shoulder.

COLFAX COUNTY.



Miller & Harshman.

P. O.: Springer, N. M. Range, Ocate, Colfax Co. Ear mark, crop and underbit the left.  
Other brands: #, X, JC, V all on left side, # on right shoulder and hip.  
Horse brand W on the right shoulder.



J. A. Judd & Co.

P. O.: Raton, Colfax Co. Range, Sugarite.  
Horse brand, J left hip.  
Also own all cattle branded thus: Increase branded and marked as in cut.

THE STOCK GROWER presents the best medium for advertising, because it is read by every stockman in the southwest.

COLFAX COUNTY.

**The Akron Live Stock Company,**  
Akron, Ohio.  
Augustus Curtis, Manager.  
L. H. KINGMAN, Range Foreman.  
Postoffice, Springer, N. M.



Known as the "Stirrup" brand, formerly owned by Porter & Clouthier.  
Horse brand, same, on the left hip.  
Other brands: Brand all calves with dart.  
Range, Ocate mesa and canon, Sweetwater and Cimarron river.

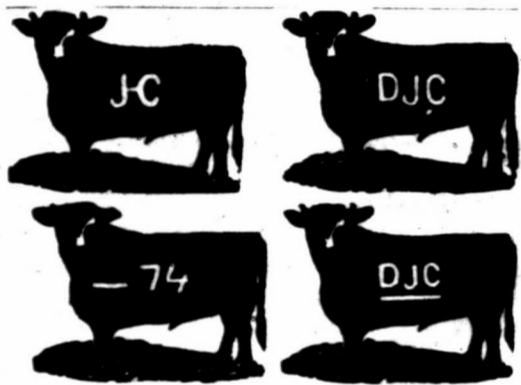


**Western Land and Cattle Company,**  
(Limited.)  
Jas. A. FORBES, Gen. Mgr.  
13 Delaware block, cor. of  
Seventh and Delaware Sts.  
Kansas City, Mo.  
Range, Cimarron river.  
P. O.: Madison, Colfax  
county, New Mexico.

Ear marks, grab the right ear.

Other prominent brands:

all on the right side, and right hip  
Horse brands: right or left thigh, on the left shoulder or thigh, on the right hip, on the right thigh.



**D. A. & J. H. Clouthier.**

P. O.: Springer, N. M. Range, Rayado and Sweetwater.  
Horse brand, J-C on the left hip.  
All increase of above brands are in the following brand: 74



**H. S. Gratz.**  
P. O.: Capulin, N. M.  
Range, Dry Cimarron, Colfax county.  
Marks, slit in right ear.  
Horse brand, same as cut on the left shoulder.

Other brands on the left side. Marked, with a slit in the right ear and tin tag in the left ear.



**Illinois Live Stock Co.**  
J. S. HOLLAND, Manager.  
P. O. Tramperos, N. M.  
Range, Tramperos.  
Some cattle are branded thus but all increase thus are branded as in cut.  
Ear marks—Crop and underbit left, and underbit right.  
Horse brand, same as cut, on left shoulder.



**Richard Steele.**  
E. O.: Tequisquite, N. M.  
Range, Tequisquite and Ute creek, Colfax county.  
Ear marks, under half crop right, underbit left.  
All young stock branded as in cut.

Other brands, not kept up: on left side, left shoulder, left hip, left side. Horse brand, on left shoulder.



**Ernst Winter.**  
P. O.: Raton, Colfax Co.  
Range, Sugarite and Red river, Colfax county.  
Ear marks, split right, underbit left.

Other brands: right side; swallowfork and left side, under hack each ear. left side and hip, left side and hip. Horse brands left, or right side.

READERS will confer a favor if, when writing to advertisers, they will state they read advertisement in the Stock Grower.



**THE LEONARD BROTHERS,**  
IMPORTERS AND BREEDERS OF

Galloways, Aberdeen-Angus and Shorthorns.

SPANISH JACKS AND JENNETS.

MOUNT LEONARD, MISSOURI.

Very Choice Lot of Black Polled and Shorthorn Grades For Sale.

Car load lots for ranchmen a specialty. We have some of the largest and choicest herds of pure-bred stock to select from. Prices reasonable.

Call on or Address, **THE LEONARD BROS.,** Mount Leonard, Mo



**Mundy Bros**

EL PASO, TEXAS,

Lands in Mexico

—And the—

Southwest.

—And—

**Live Stock**

Commission Merchants.

Have unequalled facilities for the purchase and sale of Lands in Mexico, and for supplying any class of stock in quantities to suit purchasers.

Correspondence Solicited.

GRAZING LANDS A SPECIALTY

**LAND SCRIP FOR SALE**

SURVEYED LAND SCRIP

**Military Bounty Land Warrants.**—In 40, 80, 120 and 160 acre pieces. Will commute homestead or pay for pre-emption.

**Additional Homestead Claims.**—In 40, 80 and 120 acre pieces. Locatable on any lands subject to homestead and pre-emption entry. Large supply on hand; no delays in filling orders. **Fractional Homestead Claims** of from 3 to 19 acres, which, by rulings of the general land office, are locatable on fractional subdivisions of double their area, or less, the difference being paid for in cash, at \$1.25 or \$2.50 per acre, as the case may be. Send the area of the fractional tract you desire to locate, and I will send a piece of proper size.

**Porterfield Warrants.**—In 40 acre pieces. Act of April 11, 1860. Locatable on any unappropriated public lands. The Supreme Court has decided in Wilcox vs. Jackson, that the word unappropriated as applied to public lands, means "not legally disposed of." It will take lands in the corporate limits of a town. See Secretaries' decision in Reed vs. Digby, and Lewis et al. vs. Seattle. It will take occupied lands where there is no legal claim. See Bovard vs. Bunn. It will take withdrawn land when the withdrawal does not operate as a disposal of the land. See last case and the case of Wm. P. Brown.

**SCRIP LOCATABLE ON UNSURVEYED LANDS.**

**Sioux Half-Breed Scrip.**—In 40, 80 and 160 acre pieces. Act of July 17, 1854. Locatable on any unsurveyed lands not mineral.

**Valentine Scrip.**—In 40 acre pieces. Act of April 3, 1872. Locatable on any unappropriated and unoccupied public lands not mineral, surveyed or unsurveyed.

In locating any of the above scrip no settlement or residence is required, and there is no limit to the quantity one person may use. The right attaches at once on filing the scrip, and transfers of title for town sites or other purposes may be made without any delay. Void entries, locations or selections will not prevent any of these rights from attaching. Address: **T. B. MILLS,** N. M. Real Estate Dealer. LAS VEGAS, N. M.

**Fine Books.**

Read our new book offer, good until January 1, 1887, and send in a new name and secure a good book, well bound in cloth. Some friend would be pleased to get THE STOCK GROWER for a year, and the book you receive will repay your investment.

**S. L. LEON & CO.,**

THE LEADING

**Grocers, Bakers**

OF LAS VEGAS.

We have also the Finest Line of Fancy and Imported Groceries in New Mexico.

Dealers in Queensware and Glassware.

Ranch Trade Solicited and Prompt Attention given all Mail Orders.

NORTHWEST CORNER OF PLAZA.

**JOB PRINTING**

There has just been added to the mechanical department of the Stock Grower, a

**COMPLETE JOB OFFICE**

Which enables to turn out all classes of work in first-class style at low rates.

**ROBERT MILLER,**

WEST LIBERTY, IOWA,

Breeder of Purest and Best Strains of Shorthorns in America.

He also handles Hereford and Polled cattle of the choicest strains. Long years of experience enable him to select and breed the best. Special attention paid to the filling of orders for western ranchmen. Correspondence promptly answered.

COLFAX COUNTY.

**Urraca Hereford Ranch.**  
FRANCIS CLUTTON.  
Postoffice, Cimarron, Colfax County, N. M.



Thoroughbred herd, 9 left side. Ear mark, underbit right and left.  
Horse brand, 5 on the left shoulder.



**Palo Blanco Cattle Co.**

O. A. HADLEY, Manager.  
P. O.: Springer, N. M. Range, Chico, Retaplan, Holkio, Palo Blanco, Don Carlos and Ute creek.  
Ear mark, swallow fork left.

Horse brand, same as cattle, on left shoulder, own left hip, slash left hip.



**S. W. Dorsey.**

P. O.: Chico Springs, New Mexico.

Range—Currumpa, San Rafael, Chiniquilla, Perro Carrizo, Pinipottina, and Sierra Grande, Colfax county.

Horse brand, same as above, on right shoulder.

Additional Cattle Brands: left side and hip.

on right side.

left or right side, left hip or side, LRB on left side.



**S. A. Kail.**

P. O.: Wagon Mound, Range, Vermejo and Teta Vegue.

Cattle have various ear marks. All increase marked as in cut.

Horse brands: Same as cattle on right hip.



**Eagle Tail Cattle Co.**

O. A. HADLEY, Manager.  
P. O.: Raton, N. M.  
Range, Eagle Tail and Tenaja.

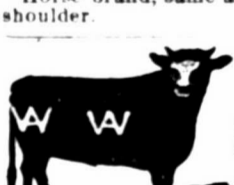
Horse brand, same as the cut, on the left shoulder.



**Lake Ranch Cattle Co.**

D. C. HOLCOMB, Manager.  
P. J. TOWNER, Foreman.  
P. O.: Chico Springs, N. M.  
Range, Ute creek, Tramperos, Alamositas, and Carrizo, Mora county, New Mexico.

Horse brand, same as cut, on the left hip or shoulder.



**J. Linn Smythe.**

P. O.: Raton, N. M.  
Range, Gates Canon, Colfax county.

Ear marks, split in the left and under hack right.



**S. M. Fulson.**

A. R. HARTSEL, Foreman.  
P. O.: Cimarron Range, Cerososo Canon, Colfax county.

Other on right shoulder and on left side, also on left hip.

Horse brand, on the left hip.

VALENCIA COUNTY.



**Davenport Live Stock Company.**

M. B. BOWMAN, Manager.  
P. O.: Albuquerque, N. M.  
Range, Buffalo Springs

Horse brand



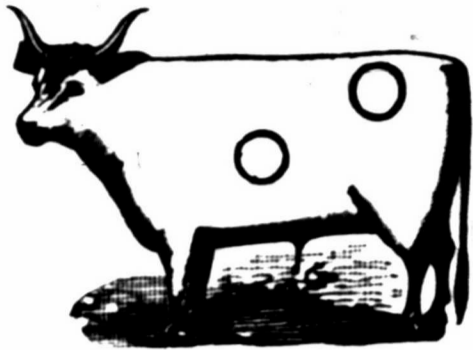
**J. A. Johnson & Co.**

P. O.: Albuquerque, N. M.  
Range, San Jose ranch, on A. & P. railroad, forty-seven miles from Albuquerque.

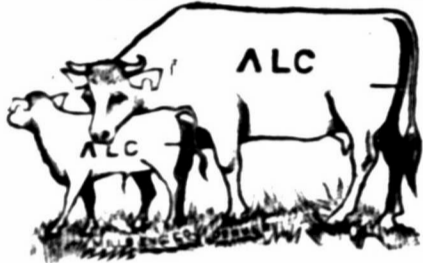
Horse brand, J left hip. Various ear marks.

VALENCIA COUNTY.

W. P. METCALF, Superintendent. J. A. STINSON, Ranch Manager. New Mexico Land and Cattle Company



P. O.: Chihli. Range, Estancia grant, Valencia county. Horse brand, circle on the left hip.



Acoma Land and Cattle Co.

P. D. RIDENOUR, President, Kansas City. E. D. BRACKETT, Sec and Treas., Kansas City. J. E. SAINT, Vice-Prest. and Mgr., Grants, N. M. Range, the Acoma Grant, and territory adjoining west and north. Horse brand, U on the left hip.



Kennedy & Co.

P. O.: Coolidge, N. M. Ranches in Valley de Las Tuces. Range between Bluewater and Coolidge, along line of A. & P. R. R. Old stock are branded K on left side; since 1903 all branded as in the cut. Ear marks, crop right, under half crop left. Horses branded K or M left shoulder.



L. F. BRADLEY, Prest. T. S. MUMFORD, Secy. Cebolla Cattle Co.

P. O.: Santa Fe, N. M., box 218. Range, Valencia county, near Fort Wingate. Horse brand, the same.



Dr. E. C. Henriques. J. L. MILLER, Foreman

P. O.: Belen and Las Vegas Range, Estancia Springs, Valencia county.

Other brands W



ROMAN A. BACA, President, San Mateo, N. M. MAX FROST, Secretary, Santa Fe, N. M. San Mateo Cattle Co.

Range, The Miguel and Chaves Grants, Valencia county, New Mexico.

SAN MIGUEL COUNTY.



J. W. & R. G. Carlisle. Post Office, Puerto de Luna, N. M. Range, Alamo Gordo and Juan de Dios. Horse brand, + on left thigh, high up. Various ear marks for these brands.



Howell & Lynch. J. B. HOWELL, Manager.

P. O.: Lubbock, Texas. Range, Spring Lake, on the Staked Plains. Cattle branded on either side. Horse brand the same.



Clifton Davis.

P. O.: Puerto de Luna. Range, Juan de Dios. Ear marks, crop left and crop and split right. Horse brand, IX on the left shoulder.

WHEN you write to an advertiser mention the Stock Grower.



DEALERS IN Holsteins, Jerseys, Short Horns and Herefords.

AGENTS FOR "THE GLYCERINE DIP," Dana's Stock Label.

SOLE OWNERS OF Weedon's Sale Numbers and Barne's Patent Bull Ringer.

BLUNT & FARR, ALBUQUERQUE, NEW MEXICO, WESTERN AGENTS.



We handle nothing but first-class stock, and guarantee all stock sold to be breeders.

AVERY & COLEMAN, Proprietors of Republican Valley Stock Farm, Wakefield, Clay County, Kansas.

HENRY AVERY.

WALTER C. WEEDON. ERSKINE R. MERRILL

Walter C. Weedon & Co.

Breeding Stock Commission Agents

IMPORTERS, DEALERS IN AND BREEDERS OF

GALLOWAY AND ANGUS CATTLE,

41 Live Stock Exchange,

Kansas City, Missouri.

PURE-BRED STOCK, BOARDED, BOUGHT AND SOLD ON COMMISSION.

Catalogues compiled. Sales advertised and clerked.

[Ranche and Farm Property Inspected.

GRADED BULLS FOR RANCHES IN CAR LOTS A SPECIALTY.

Percheron Horses!

The oldest and most extensive breeding establishment west of the Mississippi river.

OVER EIGHTY HEAD

Of pure bred and high grade stallions and mares on hand. Also a few

Recorded Imported French Coachers.

Twenty-five stallions on hand imported by M. W. DUNHAM. Our imported stock all registered in Percheron Stud Book of France and America.

We handle nothing but first-class stock, and guarantee all stock sold to be breeders.

AVERY & COLEMAN, Proprietors of Republican Valley Stock Farm, Wakefield, Clay County, Kansas.

ESTABLISHED 1874.

S. D. IRWIN. L. A. ALLEN. J. N. IRWIN

LIVE STOCK

Commission Merchants

REFERENCES:

Bankers and Business Men of Kansas City and Stock Men Generally.

J. R. STOLLER, Cattle Salesman.

JOHN R. ROUSE, Hog and Sheep Salesman. JOHN E. HALE, Office.

J. R. STOLLER & CO.,

Live Stock Commission Merchants,

Rooms 6 and 7, Exchange Bldg., Stock Yards,

KANSAS CITY, MISSOURI.

Market reports and all information will be promptly furnished, free of charge, on application to the above address, or by Mr. G. E. Lyon, Raton, N. M., who is our representative.

FELIX MARTINEZ,

GENERAL

Ranch and Live Stock Broker

LAS VEGAS, NEW MEXICO.

Real Estate, Land Grants, Improved Ranches, Cattle Ranges, Native Cattle, Improved Cattle, Horses and Sheep, Land Script of all kinds, Territorial and County Warrants.

General Land Office Business. Titles Secured under the United States Land Laws.

E. G. MURPHEY & CO.,

THE PLAZA PHARMACY

BRIDGE STREET, LAS VEGAS, NEW MEXICO.

Wholesale and Retail dealers in Drugs and Chemicals. Physicians' prescriptions a specialty. Country orders solicited and prompt attention given same.

TO THE STOCKMEN AND OTHERS, living at a distance: We will gladly fill any orders you may send for goods, whether in our line or not, and ship them as promptly as possible.

SAN MIGUEL COUNTY.



Calkins Cattle Company.

O. L. HOUGHTON, Manager, Las Vegas. E. J. WILCOX, Range Supt., Fort Sumner Range, Pecos river, near Fort Sumner. Ear marks on increase, crop off left.

Other brands:

OLH on the left shoulder, side and hip. T on the left side. C on side, IL on hip. Horse brand, IXI on the left hip.



Howry Cattle Co. S. K. SYDES, Manager.

P. O.: At Red River Springs, N. M. Range, on Red River.

Have purchased the interest of Mr. J. T. McNamara in the "anchor" herd and range. All "anchor" cattle belonging to this company are tally branded with X or O and all increase of 1884 is in the X or O and all increase from 1885 is in the X or O and all increase from 1886 is in the X or O and all increase from 1887 is in the X or O and all increase from 1888 is in the X or O and all increase from 1889 is in the X or O and all increase from 1890 is in the X or O and all increase from 1891 is in the X or O and all increase from 1892 is in the X or O and all increase from 1893 is in the X or O and all increase from 1894 is in the X or O and all increase from 1895 is in the X or O and all increase from 1896 is in the X or O and all increase from 1897 is in the X or O and all increase from 1898 is in the X or O and all increase from 1899 is in the X or O and all increase from 1900 is in the X or O and all increase from 1901 is in the X or O and all increase from 1902 is in the X or O and all increase from 1903 is in the X or O and all increase from 1904 is in the X or O and all increase from 1905 is in the X or O and all increase from 1906 is in the X or O and all increase from 1907 is in the X or O and all increase from 1908 is in the X or O and all increase from 1909 is in the X or O and all increase from 1910 is in the X or O and all increase from 1911 is in the X or O and all increase from 1912 is in the X or O and all increase from 1913 is in the X or O and all increase from 1914 is in the X or O and all increase from 1915 is in the X or O and all increase from 1916 is in the X or O and all increase from 1917 is in the X or O and all increase from 1918 is in the X or O and all increase from 1919 is in the X or O and all increase from 1920 is in the X or O and all increase from 1921 is in the X or O and all increase from 1922 is in the X or O and all increase from 1923 is in the X or O and all increase from 1924 is in the X or O and all increase from 1925 is in the X or O and all increase from 1926 is in the X or O and all increase from 1927 is in the X or O and all increase from 1928 is in the X or O and all increase from 1929 is in the X or O and all increase from 1930 is in the X or O and all increase from 1931 is in the X or O and all increase from 1932 is in the X or O and all increase from 1933 is in the X or O and all increase from 1934 is in the X or O and all increase from 1935 is in the X or O and all increase from 1936 is in the X or O and all increase from 1937 is in the X or O and all increase from 1938 is in the X or O and all increase from 1939 is in the X or O and all increase from 1940 is in the X or O and all increase from 1941 is in the X or O and all increase from 1942 is in the X or O and all increase from 1943 is in the X or O and all increase from 1944 is in the X or O and all increase from 1945 is in the X or O and all increase from 1946 is in the X or O and all increase from 1947 is in the X or O and all increase from 1948 is in the X or O and all increase from 1949 is in the X or O and all increase from 1950 is in the X or O and all increase from 1951 is in the X or O and all increase from 1952 is in the X or O and all increase from 1953 is in the X or O and all increase from 1954 is in the X or O and all increase from 1955 is in the X or O and all increase from 1956 is in the X or O and all increase from 1957 is in the X or O and all increase from 1958 is in the X or O and all increase from 1959 is in the X or O and all increase from 1960 is in the X or O and all increase from 1961 is in the X or O and all increase from 1962 is in the X or O and all increase from 1963 is in the X or O and all increase from 1964 is in the X or O and all increase from 1965 is in the X or O and all increase from 1966 is in the X or O and all increase from 1967 is in the X or O and all increase from 1968 is in the X or O and all increase from 1969 is in the X or O and all increase from 1970 is in the X or O and all increase from 1971 is in the X or O and all increase from 1972 is in the X or O and all increase from 1973 is in the X or O and all increase from 1974 is in the X or O and all increase from 1975 is in the X or O and all increase from 1976 is in the X or O and all increase from 1977 is in the X or O and all increase from 1978 is in the X or O and all increase from 1979 is in the X or O and all increase from 1980 is in the X or O and all increase from 1981 is in the X or O and all increase from 1982 is in the X or O and all increase from 1983 is in the X or O and all increase from 1984 is in the X or O and all increase from 1985 is in the X or O and all increase from 1986 is in the X or O and all increase from 1987 is in the X or O and all increase from 1988 is in the X or O and all increase from 1989 is in the X or O and all increase from 1990 is in the X or O and all increase from 1991 is in the X or O and all increase from 1992 is in the X or O and all increase from 1993 is in the X or O and all increase from 1994 is in the X or O and all increase from 1995 is in the X or O and all increase from 1996 is in the X or O and all increase from 1997 is in the X or O and all increase from 1998 is in the X or O and all increase from 1999 is in the X or O and all increase from 2000 is in the X or O and all increase from 2001 is in the X or O and all increase from 2002 is in the X or O and all increase from 2003 is in the X or O and all increase from 2004 is in the X or O and all increase from 2005 is in the X or O and all increase from 2006 is in the X or O and all increase from 2007 is in the X or O and all increase from 2008 is in the X or O and all increase from 2009 is in the X or O and all increase from 2010 is in the X or O and all increase from 2011 is in the X or O and all increase from 2012 is in the X or O and all increase from 2013 is in the X or O and all increase from 2014 is in the X or O and all increase from 2015 is in the X or O and all increase from 2016 is in the X or O and all increase from 2017 is in the X or O and all increase from 2018 is in the X or O and all increase from 2019 is in the X or O and all increase from 2020 is in the X or O and all increase from 2021 is in the X or O and all increase from 2022 is in the X or O and all increase from 2023 is in the X or O and all increase from 2024 is in the X or O and all increase from 2025 is in the X or O and all increase from 2026 is in the X or O and all increase from 2027 is in the X or O and all increase from 2028 is in the X or O and all increase from 2029 is in the X or O and all increase from 2030 is in the X or O and all increase from 2031 is in the X or O and all increase from 2032 is in the X or O and all increase from 2033 is in the X or O and all increase from 2034 is in the X or O and all increase from 2035 is in the X or O and all increase from 2036 is in the X or O and all increase from 2037 is in the X or O and all increase from 2038 is in the X or O and all increase from 2039 is in the X or O and all increase from 2040 is in the X or O and all increase from 2041 is in the X or O and all increase from 2042 is in the X or O and all increase from 2043 is in the X or O and all increase from 2044 is in the X or O and all increase from 2045 is in the X or O and all increase from 2046 is in the X or O and all increase from 2047 is in the X or O and all increase from 2048 is in the X or O and all increase from 2049 is in the X or O and all increase from 2050 is in the X or O and all increase from 2051 is in the X or O and all increase from 2052 is in the X or O and all increase from 2053 is in the X or O and all increase from 2054 is in the X or O and all increase from 2055 is in the X or O and all increase from 2056 is in the X or O and all increase from 2057 is in the X or O and all increase from 2058 is in the X or O and all increase from 2059 is in the X or O and all increase from 2060 is in the X or O and all increase from 2061 is in the X or O and all increase from 2062 is in the X or O and all increase from 2063 is in the X or O and all increase from 2064 is in the X or O and all increase from 2065 is in the X or O and all increase from 2066 is in the X or O and all increase from 2067 is in the X or O and all increase from 2068 is in the X or O and all increase from 2069 is in the X or O and all increase from 2070 is in the X or O and all increase from 2071 is in the X or O and all increase from 2072 is in the X or O and all increase from 2073 is in the X or O and all increase from 2074 is in the X or O and all increase from 2075 is in the X or O and all increase from 2076 is in the X or O and all increase from 2077 is in the X or O and all increase from 2078 is in the X or O and all increase from 2079 is in the X or O and all increase from 2080 is in the X or O and all increase from 2081 is in the X or O and all increase from 2082 is in the X or O and all increase from 2083 is in the X or O and all increase from 2084 is in the X or O and all increase from 2085 is in the X or O and all increase from 2086 is in the X or O and all increase from 2087 is in the X or O and all increase from 2088 is in the X or O and all increase from 2089 is in the X or O and all increase from 2090 is in the X or O and all increase from 2091 is in the X or O and all increase from 2092 is in the X or O and all increase from 2093 is in the X or O and all increase from 2094 is in the X or O and all increase from 2095 is in the X or O and all increase from 2096 is in the X or O and all increase from 2097 is in the X or O and all increase from 2098 is in the X or O and all increase from 2099 is in the X or O and all increase from 2100 is in the X or O and all increase from 2101 is in the X or O and all increase from 2102 is in the X or O and all increase from 2103 is in the X or O and all increase from 2104 is in the X or O and all increase from 2105 is in the X or O and all increase from 2106 is in the X or O and all increase from 2107 is in the X or O and all increase from 2108 is in the X or O and all increase from 2109 is in the X or O and all increase from 2110 is in the X or O and all increase from 2111 is in the X or O and all increase from 2112 is in the X or O and all increase from 2113 is in the X or O and all increase from 2114 is in the X or O and all increase from 2115 is in the X or O and all increase from 2116 is in the X or O and all increase from 2117 is in the X or O and all increase from 2118 is in the X or O and all increase from 2119 is in the X or O and all increase from 2120 is in the X or O and all increase from 2121 is in the X or O and all increase from 2122 is in the X or O and all increase from 2123 is in the X or O and all increase from 2124 is in the X or O and all increase from 2125 is in the X or O and all increase from 2126 is in the X or O and all increase from 2127 is in the X or O and all increase from 2128 is in the X or O and all increase from 2129 is in the X or O and all increase from 2130 is in the X or O and all increase from 2131 is in the X or O and all increase from 2132 is in the X or O and all increase from 2133 is in the X or O and all increase from 2134 is in the X or O and all increase from 2135 is in the X or O and all increase from 2136 is in the X or O and all increase from 2137 is in the X or O and all increase from 2138 is in the X or O and all increase from 2139 is in the X or O and all increase from 2140 is in the X or O and all increase from 2141 is in the X or O and all increase from 2142 is in the X or O and all increase from 2143 is in the X or O and all increase from 2144 is in the X or O and all increase from 2145 is in the X or O and all increase from 2146 is in the X or O and all increase from 2147 is in the X or O and all increase from 2148 is in the X or O and all increase from 2149 is in the X or O and all increase from 2150 is in the X or O and all increase from 2151 is in the X or O and all increase from 2152 is in the X or O and all increase from 2153 is in the X or O and all increase from 2154 is in the X or O and all increase from 2155 is in the X or O and all increase from 2156 is in the X or O and all increase from 2157 is in the X or O and all increase from 2158 is in the X or O and all increase from 2159 is in the X or O and all increase from 2160 is in the X or O and all increase from 2161 is in the X or O and all increase from 2162 is in the X or O and all increase from 2163 is in the X or O and all increase from 2164 is in the X or O and all increase from 2165 is in the X or O and all increase from 2166 is in the X or O and all increase from 2167 is in the X or O and all increase from 2168 is in the X or O and all increase from 2169 is in the X or O and all increase from 2170 is in the X or O and all increase from 2171 is in the X or O and all increase from 2172 is in the X or O and all increase from 2173 is in the X or O and all increase from 2174 is in the X or O and all increase from 2175 is in the X or O and all increase from 2176 is in the X or O and all increase from 2177 is in the X or O and all increase from 2178 is in the X or O and all increase from 2179 is in the X or O and all increase from 2180 is in the X or O and all increase from 2181 is in the X or O and all increase from 2182 is in the X or O and all increase from 2183 is in the X or O and all increase from 2184 is in the X or O and all increase from 2185 is in the X or O and all increase from 2186 is in the X or O and all increase from 2187 is in the X or O and all increase from 2188 is in the X or O and all increase from 2189 is in the X or O and all increase from 2190 is in the X or O and all increase from 2191 is in the X or O and all increase from 2192 is in the X or O and all increase from 2193 is in the X or O and all increase from 2194 is in the X or O and all increase from 2195 is in the X or O and all increase from 2196 is in the X or O and all increase from 2197 is in the X or O and all increase from 2198 is in the X or O and all increase from 2199 is in the X or O and all increase from 2200 is in the X or O and all increase from 2201 is in the X or O and all increase from 2202 is in the X or O and all increase from 2203 is in the X or O and all increase from 2204 is in the X or O and all increase from 2205 is in the X or O and all increase from 2206 is in the X or O and all increase from 2207 is in the X or O and all increase from 2208 is in the X or O and all increase from 2209 is in the X or O and all increase from 2210 is in the X or O and all increase from 2211 is in the X or O and all increase from 2212 is in the X or O and all increase from 2213 is in the X or O and all increase from 2214 is in the X or O and all increase from 2215 is in the X or O and all increase from 2216 is in the X or O and all increase from 2217 is in the X or O and all increase from 2218 is in the X or O and all increase from 2219 is in the X or O and all increase from 2220 is in the X or O and all increase from 2221 is in the X or O and all increase from 2222 is in the X or O and all increase from 2223 is in the X or O and all increase from 2224 is in the X or O and all increase from 2225 is in the X or O and all increase from 2226 is in the X or O and all increase from 2227 is in the X or O and all increase from 2228 is in the X or O and all increase from 2229 is in the X or O and all increase from 2230 is in the X or O and all increase from 2231 is in the X or O and all increase from 2232 is in the X or O and all increase from 2233 is in the X or O and all increase from 2234 is in the X or O and all increase from 2235 is in the X or O and all increase from 2236 is in the X or O and all increase from 2237 is in the X or O and all increase from 2238 is in the X or O and all increase from 2239 is in the X or O and all increase from 2240 is in the X or O and all increase from 2241 is in the X or O and all increase from 2242 is in the X or O and all increase from 2243 is in the X or O and all increase from 2244 is in the X or O and all increase from 2245 is in the X or O and all increase from 2246 is in the X or O and all increase from 2247 is in the X or O and all increase from 2248 is in the X or O and all increase from 2249 is in the X or O and all increase from 2250 is in the X or O and all increase from 2251 is in the X or O and all increase from 2252 is in the X or O and all increase from 2253 is in the X or O and all increase from 2254 is in the X or O and all increase from 2255 is in the X or O and all increase from 2256 is in the X or O and all increase from 2257 is in the X or O and all increase from 2258 is in the X or O and all increase from 2259 is in the X or O and all increase from 2260 is in the X or O and all increase from 2261 is in the X or O and all increase from 2262 is in the X or O and all increase from 2263 is in the X or O and all increase from 2264 is in the X or O and all increase from 2265 is in the X or O and all increase from 2266 is in the X or O and all increase from 2267 is in the X or O and all increase from 2268 is in the X or O and all increase from 2269 is in the X or O and all increase from 2270 is in the X or O and all increase from 2271 is in the X or O and all increase from 2272 is in the X or O and all increase from 2273 is in the X or O and all increase from 2274 is in the X or O and all increase from 2275 is in the X or O and all increase from 2276 is in the X or O and all increase from 2277 is in the X or O and all increase from 2278 is in the X or O and all increase from 2279 is in the X or O and all increase from 2280 is in the X or O and all increase from 2281 is in the X or O and all increase from 2282 is in the X or O and all increase from 2283 is in the X or O and all increase from 2284 is in the X or O and all increase from 2285 is in the X or O and all increase from 2286 is in the X or O and all increase from 2287 is in the X or O and all increase from 2288 is in the X or O and all increase from 2289 is in the X or O and all increase from 2290 is in the X or O and all increase from 2291 is in the X or O and all increase from 2292 is in the X or O and all increase from 2293 is in the X or O and all increase from 2294 is in the X or O and all increase from 2295 is in the X or O and all increase from 2296 is in the X or O and all increase from 2297 is in the X or O and all increase from 2298 is in the X or O and all increase from 2299 is in the X or O and all increase from 2300 is in the X or O and all increase from 2301 is in the X or O and all increase from 2302 is in the X or O and all increase from 2303 is in the X or O and all increase from 2304 is in the X or O and all increase from 2305 is in the X or O and all increase from 2306 is in the X or O and all increase from 2307 is in the X or O and all increase from 2308 is in the X or O and all increase from 2309 is in the X or O and all increase from 2310 is in the X or O and all increase from 2311 is in the X or O and all increase from 2312 is in the X or O and all increase from 2313 is in the X or O and all increase from 2314 is in the X or O and all increase from 2315 is in the X or O and all increase from 2316 is in the X or O and all increase from 2317 is in the X or O and all increase from 2318 is in the X or O and all increase from 2319 is in the X or O and all increase from 2320 is in the X or O and all increase from 2321 is in the X or O and all increase from 2322 is in the X or O and all increase from 2323 is in the X or O and all increase from 2324 is in the X or O and all increase from 2325 is in the X or O and all increase from 2326 is in the X or O and all increase from 2327 is in the X or O and all increase from 2328 is in the X or O and all increase from 2329 is in the X or O and all increase from 2330 is in the X or O and all increase from 2331 is in the X or O and all increase from 2332 is in the X or O and all increase from 2333 is in the X or O and all increase from 2334 is in the X or O and all increase from 2335 is in the X or O and all increase from 2336 is in the X or O and all increase from 2337 is in the X or O and all increase from 2338 is in the X or O and all increase from 2339 is in the X or O and all increase from 2340 is in the X or O and all increase from 2341 is in the X or O and all increase from 2342 is in the X or O and all increase from 2343 is in the X or O and all increase from 2344 is in the X or O and all increase from 2345 is in the X or O and all increase from 2346 is in the X or O and all increase from 2347 is in the X or O and all increase from 2348 is in the X or O and all increase from 2349 is in the X or O and all increase from 2350 is in the X or O and all increase from 2351 is in the X or O and all increase from 2352 is in the X or O and all increase from 2353 is in the X or O and all increase from 2354 is in the X or O and all increase from 2355 is in the X or O and all increase from 2356 is in the X or O and all increase from 2357 is in the X or O and all increase from 2358 is in the X or O and all increase from 2359 is in the X or O and all increase from 2360 is in the X or O and all increase from 2361 is in the X or O and all increase from 2362 is in the X or O and all increase from 2363 is in the X or O and all increase from 2364 is in the X or O and all increase from 2365 is in the X or O and all increase from 2366 is in the X or O and all increase from 2367 is in the X or O and all increase from 2368 is in the X or O and all increase from 2369 is in the X or O and all increase from 2370 is in the X or O and all increase from 2371 is in the X or O and all increase from 2372 is in the X or O and all increase from 2373 is in the X or O and all increase from 2374 is in the X or O and all increase from 2375 is in the X or O and all increase from 2376 is in the X or O and all increase from 2377 is in the X or O and all increase from 2378 is in the X or O and all increase from 2379 is in the X or O and all increase from 2380 is in the X or O and all increase from 2381 is in the X or O and all increase from 2382 is in the X or O and all increase from 2383 is in the X or O and all increase from 2384 is in the X or O and all increase from 2385 is in the X or O and all increase from 2386 is in the X or O and all increase from 2387 is in the X or O and all increase from 2388 is in the X or O and all increase from 2389 is in the X or O and all increase from 2390 is in the X or O and all increase from 2391 is in the X or O and all increase from 2392 is in the X or O and all increase from 2393 is in the X or O and all increase from 2394 is in the X or O and all increase from 2395 is in the X or O





SAN MIGUEL COUNTY.



All increase branded on both sides. Ear marks, crop left and crop and hole in right Stonewall Cattle Company.

Nick S. Winston, Manager. P. O.: Cabra Springs, San Miguel Co., N. M. Range, head of the Juan de Dios, head of the Pajarito Arroyo and Cuervito.



W. B. Stapp

P. O.: Las Vegas, Range, Los Conchas. Additional brands. SH on left ribs. 78 on left rump or hip. S jaw, S ribs, S thigh.



Montezuma Cattle Co

J. I. Mosier Manager. P. O.: Eden, N. M. Range, Los Tanos and on Pecos river. Horses branded same as cattle on the left shoulder or hip.



Pajarito Cattle Co.

A. H. Whitmore, President, Las Vegas. E. D. Bullard, Sec. and Manager, Liberty. P. O.: Las Vegas, N. M. Range, Pajarito, near Liberty, N. M. Calves branded on both sides. Ear marks, crop and two splits in each ear.



Brass Ball Ranch.

P. O.: Hyde park, Ills. Range, El Salitre, San Miguel county. Horse brand, same as cut, on right hip. All young stock branded same as cut.



Lorenzo Lopez.

P. O.: Las Vegas, Range, El Cuervo, San Miguel Co., New Mexico.



Pete Maxwell.

P. O.: Fort Sumner, N. M. Range, Pecos river, near Fort Sumner. Ear marks: Right ear cropped and split, and left ear cropped. Also claims.



Geof. McCrohan.

P. O.: Liberty, San Miguel county. Range, Escondido, near Wagon Mound. Ear marks, crop right; staple bit left. Horse brand, same as cut on left shoulder.



Stapp & Ennis.

P. O.: Las Vegas, N. M. Range, Los Conchas. Ear marks, crop and hole in right; swallow fork left. Horse brand, same as cut on left hip.



Chas. S. Cowan.

P. O.: Pecos Town, N. M. Ranges, Rincon de las Trozas, Red River, and Cow Creek, Upper Pecos. Horse brand 7—on left shoulder. Ear mark, crop the left, and upper half crop right. Some cattle branded TA on left side. All increase branded as in cut.



J. N. Degraftenreid & Sons.

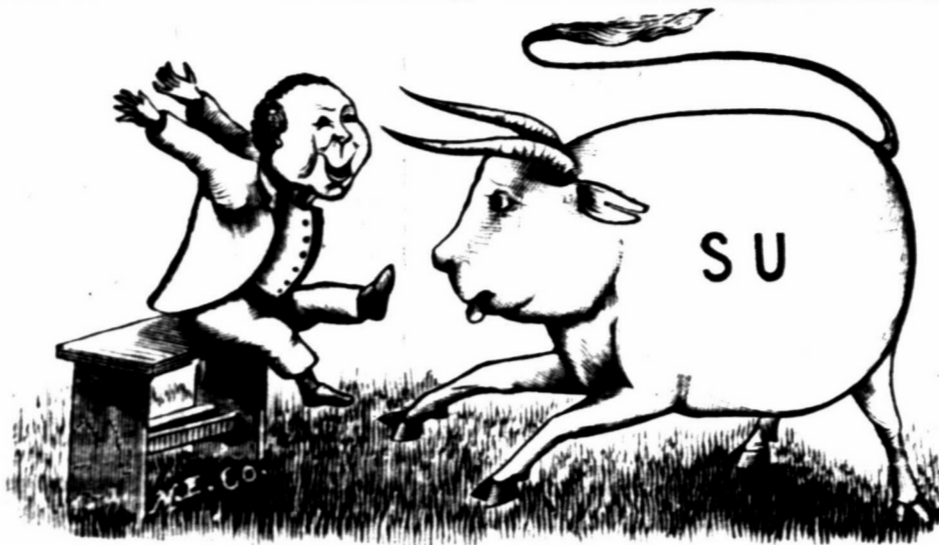
P. O.: Fort Sumner, N. M. Range, Alamo Gordo. Saddle Horses branded SIX Stock horses are branded O—O



Sam Goldsmith.

P. O.: Liberty, N. M. Range, Plaza Largo. Ear mark, crop and underbit the left. Horse brand, circle cross on the left shoulder.

SOCORRO COUNTY.



UPCHER & STEVENS.

R. A. Jones, Range Superintendent. Postoffice, Frisco, Socorro county, New Mexico. Range, Tulerosa and San Francisco Rivers, and Johnson Basin, Socorro county, New Mexico.

There was a young man who said, "How shall I soften the heart of this cow?" "I'll brand her SU And M—F too, Crop her right, split her left ear.—That's How."

We run two brands, SU and M—F Ear mark, crop the right and split the left, for both brands. Horse brand, SU on left thigh or left shoulder.

All increase of the following brands is put in the above brand and mark.



Other brands.

MAY on side, S on hip. BEL on side, S on hip. U on side. All brands on left side. ALA on side, U on hip. U on side. Old cattle in various marks and brands. Horse brands, U S and JONS on left hip.



FLOYD JARRETT,

Postoffice, Datil, New Mexico.

Range, Alamocito Park and the Datil Mountains, Socorro County.

Ear marks for all cattle, underslope both ears.

Ranch brand, cattle, horses.

Slash brand is the road brand to the original herd, not having ranch brand.



Road brand, cattle.

O. L. HOUGHTON, Hardware

Two Stores, East and West Side, LAS VEGAS, NEW MEXICO.

Fence Wire in Car Lots.

W. H. SHUPP, Wagons And Carriages.

Buckboards and Spring Wagons a Specialty. Keeps on hand the Cooper steel skein wagon, and an assortment of Buggies and Carriages. Makes Mess Boxes and Branding Irons. Horse Shoes fitted ready to nail on, and portable forges, with tools, for ranch use, always on hand.

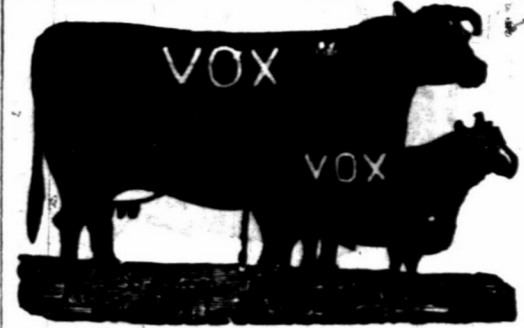
Agent for Osborne Mowers. LAS VEGAS, — — NEW MEXICO.

TONY CAJAL, The Palace Barber Shop.

Bridge street, near the Postoffice, LAS VEGAS, — — NEW MEXICO.

MENTION this paper when writing to advertisers.

SAN MIGUEL COUNTY.



Fort Sumner Land and Cattle Co. DAN. L. TAYLOR, President and Manager, Fort Sumner, New Mexico. Range, Fort Sumner, N. M. P. O.: Fort Sumner. Ear marks, crop the left.

Additional brands—All kept up. NO right side, V right hip, X right hip or hip. VO on right side or hip. Some horses are branded VO



Robert L. M. Ross.

P. O.: La Cinta, Range, Las Alamositas Arroyo. All young stock branded as in cut.

Additional brands. on the left side, not kept up. on the left side and left hip, not kept up.

Horse brand, on the left hip.



E. G. Austen.

Postoffice, Watrous, N. M. Range, near Liberty, San Miguel county, N. M.



Barash & Bloch.

P. O.: Las Vegas, N. M. Range, Los Conchas. Cattle branded either side. Horse brand, same as cut, on left shoulder. Ear marks, swallow fork each ear. Additional brand on left side. All increase branded as in cut.



HIDOR FELLHEIMER, Of New York.

R. Hirsch, Of Las Vegas, N. M.

Fellheimer & Hirsch.

Ranch P. O.: Liberty, New Mexico. Range, Pajarito and Tierra Blanca, San Miguel Co. Cattle branded on either side.

Horse brand, left hip. Ear marks, on increase crop left; old stock have various earmarks. Cattle are also branded | 4 | on the right side. The bars on all cattle run from the top of the bell to the belly. Cattle branded on both or either side.



Waddingham Bell Ranch.

MICHAEL SLATTERY, Mgr.

P. O.: La Cinta, county of San Miguel, New Mexico. The range, Montoya Grant. All the horses on the ranch have the same bell brand on left shoulder.



Jas. E. Johnson.

P. O.: Liberty, N. M. Range, Liberty, N. M. Ear mark, crop and split each ear. Horse brand, same as cut on left hip or thigh.



Kemary Ritter.

P. O.: Liberty, N. M. Range, Canadian and Trujillo rivers. Ear marks crop left swallow fork, right. Also own all cattle in the C brand, formerly belonging to M. J. Coots. All horses branded on the left shoulder.



Rudolph Erminger

P. O.: Liberty, N. M. Range, Pajarito and Tierra Blanca, San Miguel Co. Ear marks, underbit in each ear. Horses branded on the left shoulder. Also cattle branded on the left side.



Mrs. D. F. Allen.

P. O.: La Cinta, San Miguel county, New Mexico. Range, Atarque Canon. Other brands: Some cattle branded same on left hip. Horse brands: Same on left shoulder.

THE LAS VEGAS Brewery, Bottling Association.

LAS VEGAS, NEW MEXICO. Our beer is brewed from the choicest malt and hops, and warranted to give entire satisfaction. Our bottled beer is equal to any in the country.

Orders are Respectfully Solicited. G. A. ROTHGEB, Proprietor.

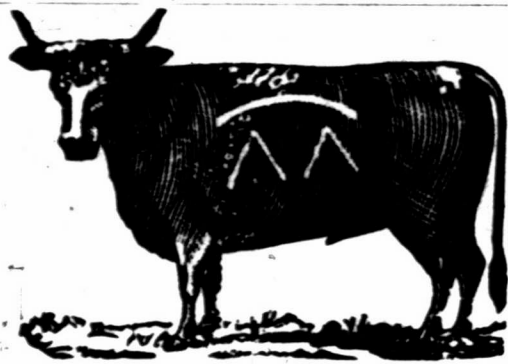
J. S. ELSTON, Wholesale and Retail Dealer in Wall Paper, Paints, Oils, BRUSHES AND GLASS.

WINDOW SHADES AND FIXTURES. Also, House and Sign Painting, Paper Hanging. Country Orders Solicited. Sixth St., opp. San Miguel National Bank, Las Vegas.

Saddles WILLIAM MALBŒUF'S.

LAS VEGAS, NEW MEXICO. Having found out the wants of the people I deemed it wise to prepare for it. Consequently I procured the services of the best California saddlers, who can make saddles to suit anybody, and give satisfaction, as I use the best CALIFORNIA MATERIAL and first-class workmanship. I also keep all kinds of horse equipments, at reasonable prices.

SAN MIGUEL COUNTY.

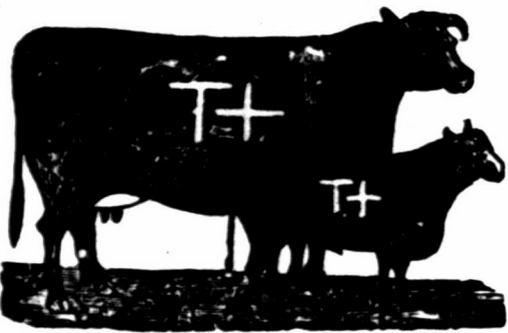


FOND DU LAC & Las Vegas Cattle Co.  
JAS. GAYNOR, President and Manager.  
P. O.: Fond du Lac, Wis. Range, Liberty Ranch.



Geo. W. Mayhan.  
P. O.: Watrous, N. M. Range, Tualosa Canon, Los Conchos.  
Ear marks, crop and two its in left ear.  
Horse brand, C on left shoulder.

Some cattle branded as above, on the ribs.  
Beef brand A-K on left side, and bar across the loin, under the tail.  
Brand all increase as in cut.



P. C. Pixlee.  
P. O.: Liberty, N. M. Range, Tierra Blanca and Pajarito creek, San Miguel county.  
Horse brand on the left shoulder. All horses brand T+ are vented when sold.



James Conant.  
P. O.: Gallinas Springs, Range, Gallinas Springs and Ojo de Los Conchas.  
Other brand, AX in left side.  
Horse brand, same as cut, on the left hip.



Frank W Dale.  
P. O.: Liberty, N. M. Range, on Red River, 12 miles above Fort Bascom.  
Ear mark, crop the right and sharpen the left ear.



Simon Frankenthal.  
P. O.: La Cinta, Range, La Cinta Creek.  
Horse brands: SF on left shoulder.



Lewis Walker and Mary Walker.  
P. O.: La Canon Largo, Range, Canon Bonito and Canon Largo.  
Horse brand, cross on the left hip.  
A few cattle branded in three crosses only.



P. O.: Canon Largo, N. M. Range, Canon Bonito and Canon Largo.  
Horse brand on left hip.



Tiffin Cattle Co.  
H. F. HALL, Manager.  
P. O.: Liberty, N. M. Horse brands - Stock horses, T on left shoulder; saddle horses, TIX on left hip.

Myers Bros. & Livezey.  
Postoffice, Liberty, New Mexico.  
Horse brands, TTT on the left hip.



C. A. Martin, Manager.  
P. O. Las Vegas, Range, Tualosa Canon, Los Conchos.  
Ear marks, crop and two slits in left. Also cattle all branded A under tail.

Horse brand, C on left shoulder.

ATTORNEY'S CARDS.

J. D. O'Bryan. W. L. Pierce.

O'BRYAN & PIERCE,  
ATTORNEYS AT LAW

LAS VEGAS, NEW MEXICO.

Special attention given to all matters pertaining to real estate.

JOHN S. EDDY,

ATTORNEY AT LAW,

Pre-emption and all other land matters attended to with promptness.

Office, in Abeytia Block, over Socorro County Bank, Socorro, N. M.

A. C. VOORHEES,

ATTORNEY AT LAW,

RATON, NEW MEXICO.

Special attention given to the business of cattlemen and collecting.

JAMES H. PURDY,

ATTORNEY AT LAW,

SANTA FE, NEW MEXICO.

Specialty: Land Titles.

Harper's Illustrated Bazar for 1887.

Harper's Bazar combines the choicest literature and the finest art illustrations with the latest fashions and the most useful family reading. Its stories, poems, and essays are by the best writers, and its humorous sketches are unsurpassed. Its papers on social etiquette, decorative art, house-keeping in all its branches, cookery, etc., make it indispensable in every household. Its beautiful fashion-plates and pattern sheet supplements enable ladies to save many times the cost of subscription by being their own dressmakers. Not a line is admitted to its columns that could shock the most fastidious taste.

Harper's Periodicals.

Harper's Bazar	\$1 00
Harper's Magazine	4 00
Harper's Weekly	4 00
Harper's Young People	2 00
Harper's Franklin Square Library, one year (32 numbers)	10 00
Harper's Handy Series, one year (32 numbers)	15 00

Postage free to all subscribers in the United States or Canada.  
The volumes of the Bazar begin with the first number for January of each year. When no time is mentioned, subscriptions will begin with the number current at time of receipt of order.  
Bound volumes of Harper's Bazar, for three years back, in neat cloth binding, will be sent by mail, postage paid, or by express, free of expense (provided the freight does not exceed one dollar per volume), for \$7.00 per volume.  
Cloth cases for each volume, suitable for binding, will be sent by mail, postpaid, on receipt of \$1.00 each.  
Remittances should be made by postoffice money order or draft, to avoid chance of loss.  
Newspapers are not to copy this advertisement without the express order of Harper & Brothers.  
Address HARPER & BROTHERS, New York.



The BUYER'S GUIDE is issued Sept. and March, each year. 47-313 pages, 8 1/2 x 11 1/2 inches, with over 3,500 illustrations - a whole Picture Gallery. GIVES Wholesale Prices

direct to consumers on all goods for personal or family use. Tells how to order, and gives exact cost of everything you use, eat, drink, wear, or have fun with. These INVALUABLE BOOKS contain information gleaned from the markets of the world. We will mail a copy FREE to any address upon receipt of 10 cts. to defray expense of mailing. Let us hear from you. Respectfully,

MONTGOMERY WARD & CO.,  
227 & 229 Wabash Avenue, Chicago, Ill.

"The Great Wabash Route."

People who have been east over the "Great Wabash Route" express themselves as pleased with its elegant equipment and fast time, but more particularly with the low rates procured through Mr. C. M. Hampson, Commercial Agent, No. 10 Windsor Block, Denver. Write to him.

For Merchants in the Territories.

General Merchandise purchased on commission.  
Chicago Market. Personal attention given to selections. Prompt shipments.

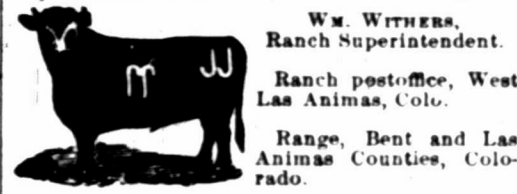
JOHN LAUDER, Purchasing Broker,  
60 Wabash Ave., CHICAGO.  
Reference: Dunn & Co. Commercial report.

THE PRAIRIE CATTLE CO.

[LIMITED.]

W. J. TOD, General Manager.  
MURDO MACKENZIE, Sec. and Cashier.  
Trinidad, Colorado.

ARKANSAS RIVER DIVISION.



Wm. Withers, Ranch Superintendent.  
Ranch postoffice, West Las Animas, Colo.  
Range, Bent and Las Animas Counties, Colorado.

Other Prominent Brands:



CIMARRON RIVER DIVISION.



W. J. Cartwright, Ranch Superintendent.  
Ranch postoffice, Catalpa, Colfax county, N. M.  
Range, Colfax, Mora and San Miguel counties, New Mexico.

Other Prominent Brands:



CANADIAN RIVER DIVISION.



A. F. Mitchell, Ranch Superintendent.  
Ranch postoffice, Tascosa, Oldham Co., Texas.  
Range, Oldham county, Texas.

Other Prominent Brands:



The Stock Grower  
Job Office

Is Now The

Most Complete in the Southwest

And can turn out every class of printing

Cheaply and Promptly

We have on hand a splendid line of live stock cuts of every description, and make a specialty of doing every class of work required by companies or individuals.

- Stock Certificates, Letterheads,
- Prospectuses, Noteheads,
- Brand Books, Envelopes,
- Hillheads, Statements,
- By-Laws, Cards,
- Vouchers, Checks,
- Receipts, Tally Books,
- Etc., Etc., Etc., Etc.

WRITE FOR SAMPLES AND ESTIMATES.

Address, THE STOCK GROWER,  
Las Vegas, New Mex

And at the same time

SUBSCRIBE FOR THE STOCK GROWER

Three Dollars Per Year.

Acknowledged by all representative stock raisers to be the leading journal of the range country.

Stop Writing

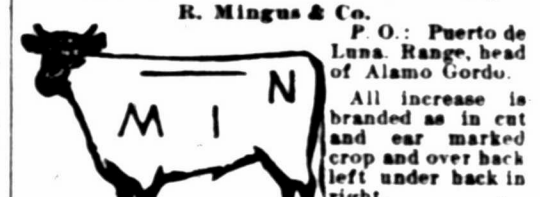
On scraps of paper and shingles. Send \$5 to THE STOCK GROWER and receive by return of mail 250 envelopes and 250 letter heads, all neatly printed with your brand, range, name and post-office address.

SAN MIGUEL COUNTY.



Bullard & Co.  
P. O.: Liberty, N. M. Range: Tierra Blanca and Pajarito Creeks, San Miguel County.  
Other Brands: GBC also on right side; BB also on right side.  
Ear mark: Underslope both ears.  
All increase branded QID right side.  
Horse Brand: V on left hip or neck.

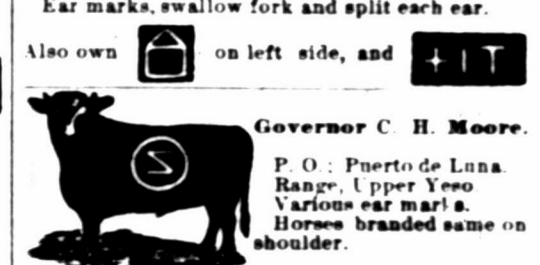
ROBERT MINGUS, Puerto de Luna. C. A. RATHBUN, Las Vegas.



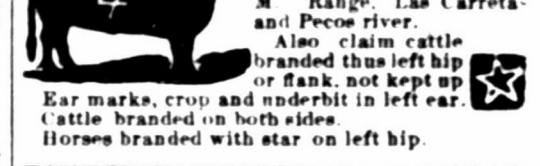
R. Mingus & Co.  
P. O.: Puerto de Luna, Range, head of Alamo Gordo.  
All increase is branded as in cut and ear marked crop and over back left under back in right.  
Other brands:



Old brand. Brand on luc. case  
A. GRELACHOWSKI, FRANK N. PAGE.  
Grzelechowski & Page.  
P. O.: Puerto de Luna, Range, at Alamo Gordo.  
Ear marks, swallow fork and split each ear.



Also own on left side, and TIT  
Governor C. H. Moore.  
P. O.: Puerto de Luna, Range, Upper Yaso.  
Various ear marks.  
Horses branded same on shoulder.



Las Carretas Cattle Co.  
Wm. S. Washburn, Mgr.  
P. O.: Fort Sumner, N. M. Range, Las Carretas and Pecos river.  
Also claim cattle branded thus left hip or flank, not kept up.  
Ear marks, crop and underbit in left ear.  
Cattle branded on both sides.  
Horses branded with star on left hip.



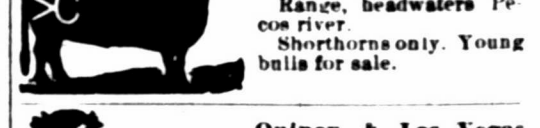
T. Romero, Bro. & Son.  
P. O.: La Cinta, Range, Atarque Canon and Montoya Grant.  
Horse brand, same as cattle, on the left side.  
Other cattle brand.



Silva & Dodge.  
P. O.: Puerto de Luna, Range, Alamo Gordo.  
Horse brand, on either side, on the shoulder.  
Ear marks, jinglebob in 1 ft upper half crop right.



All calves branded as above. Also owl  
Mariano Hinejos.  
P. O.: Puerto de Luna, Range, Carriso.  
Horses and steers are branded thus:



Valley Rancheing Co.  
P. O.: Glorieta N. M. Range, headwaters Pecos river.  
Shorthorns only. Young bulls for sale.  
Quincy & Las Vegas Cattle Co.  
W. S. Lyon, Manager.  
P. O.: Cabra Springs.  
Horse brand same on left shoulder. Ear marks, double jinglebob right; swallowfork left.

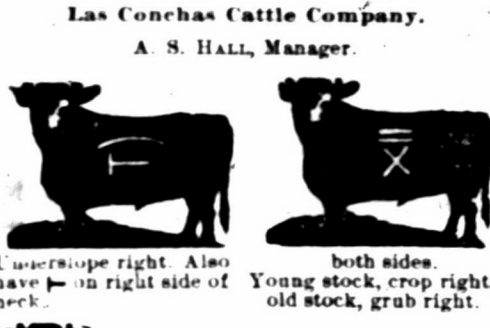
SAN MIGUEL COUNTY.



The Dutchess Cattle Co. of New Mexico. TAYLOR MACLEIN, Manager. Postoffice, Waron Mound. Ranch P. O.: Liberty, N. M. Range, Pajarito, San Miguel county. Other brands, HUT and 202 both on the left side. Horses branded same as above cut, on left hip.



Sam Does. JOHN PAWLEY, Foreman. Ranch P. O.: Fort Sumner. Address, 508 East 9th st., Kansas City, and Trinidad, Colo. Range, Pecos river, at Fort Sumner. Additional Brands: Cattle in DO brand have also following brands: Some D on left hip and left jaw; a few branded D on left hip, side and jaw. Cattle in VG brand have also following brands: Some U right loin; some T right on loin; some F right side. None of these brands are kept up. All increase is side branded and marked as in cut. All horses branded DO on right thigh.



Las Conchas Cattle Company. A. S. HALL, Manager. P. O.: Cabra Springs, Cariso and Largoita. Range, Las Conchas. Horses are branded: X and IV on the left shoulder. Upper half crop left ear.



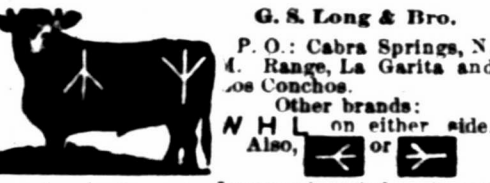
Miguel Romero. P. O.: Las Vegas. The range, San Rafael springs, San Miguel county. Horses, same as cattle. Additional brands: AR and RR.



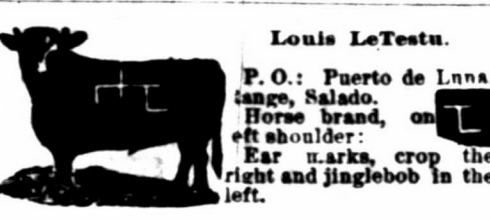
G. W. STONEROD, Pres. C. A. RATHBUN, Secy. JOHN DOLD, Manager. Juan De Dios Cattle Company. P. O.: Las Vegas, N. M. Range, Juan de Dios, San Miguel county. Horse brand, same as on cattle, on the left shoulder.



W. S. Lackey. P. O.: Red River Springs, N. M. Range, Red River. Some cattle branded < on left shoulder in addition to anchor brand on right hip and side. Also owns one half interest in the anchor brand, formerly owned by Lackey & McNamara. All increase branded as shown in the cut. Horse brand, V cross on the left hip.



G. S. Long & Bro. P. O.: Cabra Springs, N. M. Range, La Garita and Los Conchos. Other brands: W H L on either side. Also, < or > Increase branded as in cut. Horse brands, same as cut. Ear marks, slit right, overbit left.

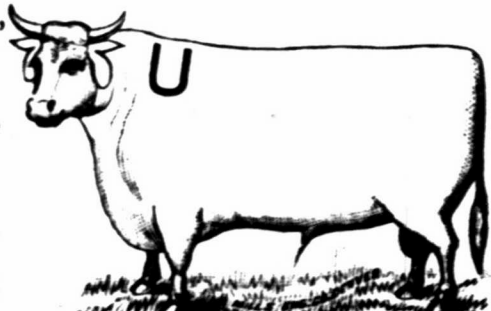


Louis LeTestu. P. O.: Puerto de Luna, Salgado. Horse brand, on left shoulder. Ear marks, crop the right and jinglebob in the left.

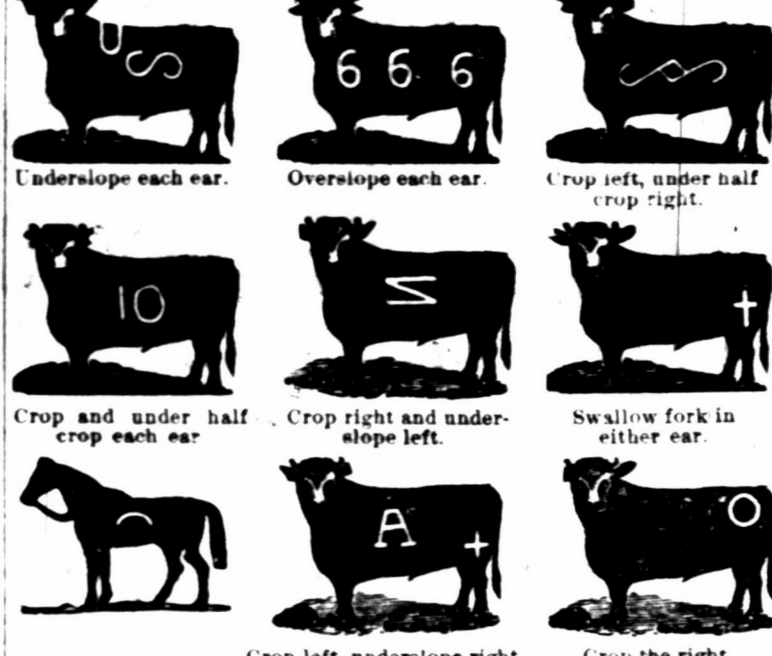
This space belongs to J. H. HUGHES, New Mexico's Leading Saddler and Harness Maker. ALBUQUERQUE, N. M.

LINCOLN COUNTY.

WM. ROBERT, Postoffice, Roswell, Lincoln county, New Mexico.



Ranges, Breeding range, on the Pecos river, New Mexico. Steer range, on the San Pedro river, in Cochise county, Arizona. U on the left shoulder. Ear Marks, Jinglebob in both ears. Same brand and marks kept up on both the steer and breeding ranges. All increase of following brands, which I own, marked and branded as in main cut.



THE ANGUS V V RANCH. KIRBY & CREE. Postoffice, Fort Stanton, Lincoln county, New Mexico. Range, Rio Salado, Rio Bonito, Little creek, Eagle creek, and Rio Ruidosa. Ear marks, underbit in each ear. Horse brand, V on the left shoulder. Additional Brands: < on right side, underbit both ears. > on either hip. W on left side, underbit both ears. W on left side. W on left shoulder, side and hip. Marked, crop right and underslope left.

ANDERSON CATTLE COMPANY. W. E. ANDERSON, Manager. Postoffice, Roswell, Lincoln county, New Mexico. Range, On the Hondo river, Lincoln county, west of Roswell. Additional brands: J on left side and H on left hip. Ear mark, upper half crop, underbit left, crop right. on left side, H on left hip. Ear mark, same as boot, H on left hip. Ear mark, bar cattle. on left side and hip. Ear mark, crop and split in left and underbit in right. on left side, H on left hip. Ear mark, upper half crop left, under half crop right, on left side. Various ear marks.

MILNE & BUSH. Postoffice, Roswell, Lincoln county, N. M. Range, on the Berrendo and Pecos rivers. Main brand. Grab Left. Grab left and underslope right. Grab left and crop right. Additional Brands: O X O on left shoulder, side and hip. Different ear marks. I X on left side. Ear marks, crop left under half right. Horse brand, V left thigh.

SAN MIGUEL COUNTY.

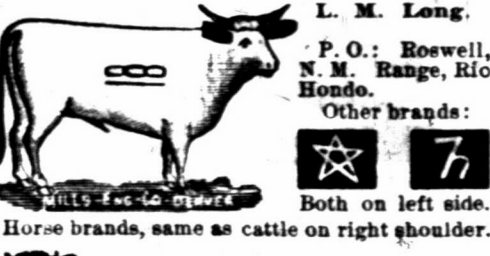


Frank Huntington. Postoffice, La Cinta, N. M. Range, Rincon La Cinta. Also own cattle in ZH on on left side. Horse brand, same as cut, on left thigh.



E. K. Houghton. P. O.: Liberty, N. M. Range, Monte Ruelto, San Miguel Co., N. M. Horse brand, same as cut, on the left hip.

LINCOLN COUNTY.



L. M. Long. P. O.: Roswell, N. M. Range, Rio Hondo. Other brands: < > Both on left side. Horse brands, same as cattle on right shoulder. Also run cattle in this brand, which is kept up. Ear marks, upper jinglebob in the right and lower jinglebob in the left.

Lea Cattle Company. J. C. LEA, Manager. W. M. Atkinson, Range Foreman. P. O.: Roswell, Lincoln county, N. M. Range, on the Hondo, North Spring and Pecos rivers, and on the Agua Azul, Blackwater and Baca Ranches, all in Lincoln Co. Ear marks, crop and split left, split right. Brand as in cut on left side, but sometimes on right side. Ear marks sometimes reversed. Additional brands: E side, and also some on side and hip. W side, JB on hip or loin. LEA on side, or shoulder, side and hip. Cross on side and hip. And various other old brands and marks. Horse brand: < on left shoulder and > on left thigh. Part branded only on left shoulder thus: < >

S. S. Terrell. P. O. Fort Stanton, N. M. Range, Rio Bonito. Ear marks, crop left, split and underbit right. All cattle branded with "riding bar" across top of and extending down on both shoulders. Also some cattle branded SS on right hip or thigh. Horse brand, SS on left thigh.

Emil Fritz. P. O.: Lincoln, N. M. Range, Rio Felix, Lincoln county, N. M.

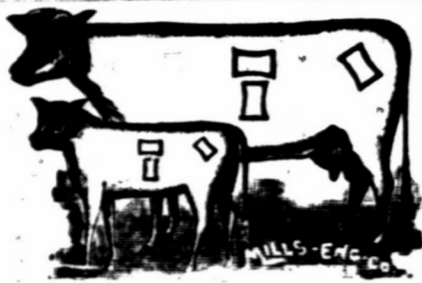
S. A. Hubbell. Post Office: Bernalillo, New Mexico. Range: Guadalupe Mountains.

J. & J. S. Reynolds. A. B. ALLEX, Foreman. P. O.: Fort Sumner, N. M. Range, 8 miles below Cedar Canon on the Pecos river. Horse brands J on left shoulder.

Sutherland & Farrell. P. O.: Roswell, N. M. Range, Rio Hondo, above Roswell. Other brands: All cattle have two bars across the butt.

Eddy-Bissel Cattle Co. EDDY BROS., Managers. P. O.: Seven Rivers, N. M. Range, on the Pecos near Seven Rivers. Horse brand < on the left shoulder.

LINCOLN COUNTY.



El Capitán Land and Cattle Company.

P. O.: Fort Stanton, Lincoln county, New Mexico. Range, north of El Capitán mountains, Lincoln county.

Other brands. MEL left shoulder, side and hip. Ear marks slit and underbit in right.

COM left shoulder, side and hip. OWL on left side. Marked crop right, underbit left.

left side and hip. Ear marks, split. Horse brand. on hip both ears.

All increase marked as in cut and tails bobbed. When sold all horses are counterbranded with a small block on the left jaw.



Carrizozo Cattle Ranch Co. (Limited).

JAMES A. ALCOCK, Manager.

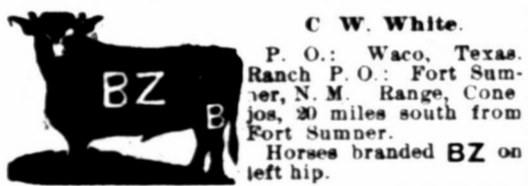
P. O.: White Oaks, N. M. Range, Carizozo. Horse brand, C with dot in center placed on left shoulder.



W. H. Fuqua.

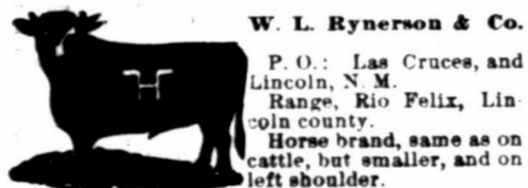
P. O. Fort Sumner, N. M. Range, Moro canon. Pecos river, 35 miles south of Fort Sumner. Ear marks, hole in left, finger left.

Old stock branded left side, increase both sides. on left side, kept up. Ear marks same as above. Ear marks, hole in left, quarter over and under crop right. Horse brand: A— on left shoulder.



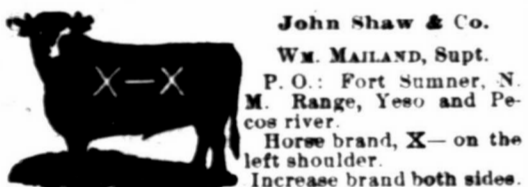
C. W. White.

P. O.: Waco, Texas. Ranch P. O.: Fort Sumner, N. M. Range, Conejos, 30 miles south from Fort Sumner. Horses branded BZ on left hip.



W. L. Rynerson & Co.

P. O.: Las Cruces, and Lincoln, N. M. Range, Rio Felix, Lincoln county. Horse brand, same as on cattle, but smaller, and on left shoulder.



John Shaw & Co.

WM. MAILAND, Supt. P. O.: Fort Sumner, N. M. Range, Yeso and Pecos river. Horse brand, X— on the left shoulder. Increase brand both sides.



Doak Good.

P. O.: Paris, Texas. Range, Los Portales, Staked Plains. Ear marks, crop and underslope each ear. Cattle branded on left side.

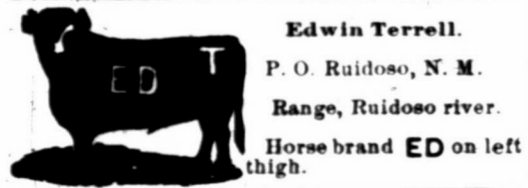


Cass Land and Cattle Company.

W. G. URTON, Manager. GEO. R. URTON, Range Foreman.

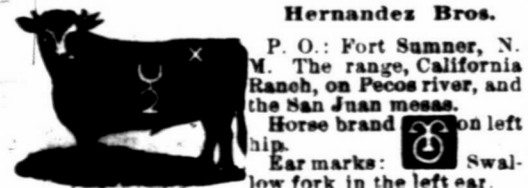
P. O.: Fort Sumner, N. M. Range, on the Pecos river, at Cedar canon. Horse brand, same as in cut, only on right hip.

All young stock branded as in cut on the right side, and also with a 7 on the left hip.



Edwin Terrell.

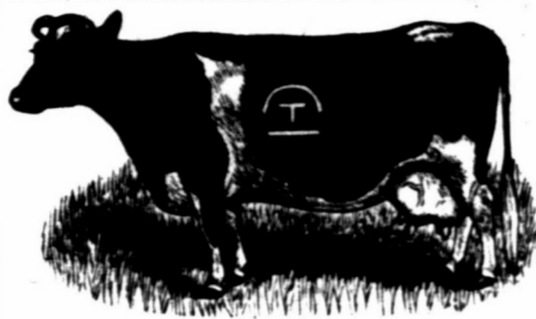
P. O. Ruidoso, N. M. Range, Ruidoso river. Horse brand ED on left thigh.



Hernandez Bros.

P. O.: Fort Sumner, N. M. The range, California Ranch, on Pecos river, and the San Juan mesas. Horse brand U— on left hip. Ear marks: Swallow fork in the left ear.

SOCORRO COUNTY.



IRA E. LEONARD, President, Socorro, N. M. C. O. TIFFANY, Sec. & Treas., San Marcial. J. C. TIFFANY, Manager, San Marcial, N. M.

BOSQUE BONITA Land & Cattle Company SAN MARCIAL, SOCORRO COUNTY, NEW MEXICO.



Shorthorn Cattle Co.

J. M. HALL, President, Los Angeles, Cal. R. B. GODLEY, Sec'y and Treas., Cleburne, Texas. R. J. BISHOP, Ranch Manager, Socorro.

Range, Luna Valley, Rita Blanca and San Francisco Rivers, western end of Socorro county.

Ear marks, some underslope left, and crop and under half crop left, crop right.



MEXICO, TEXAS AND WYOMING.



CLAY M. MANN,

Postoffice Address, Colorado City, Texas.

Ranges, Los Varas, State of Chihuahua, Mexico; Kent county, Texas, and Western Wyoming. Ear marks on all cattle, crop off left. Northern steers road branded. All horse stock branded as in cut.



PLAZA HOTEL REOPENED August 1st, 1886.

Thoroughly Renovated and under the Management of the Las Vegas Hotel and Improvement Company.

First-class in all its appointments. Clean, airy rooms. Elegantly furnished. A No 1 table and ever thing possible done for the comfort of guests. Head quarters for Stockmen and Commercial men. Rate \$2.50 per day. Special rates to parties remaining a week or more.

The Hotel Capital, SANTA FE, NEW MEXICO.

Headquarters for Stockmen and all Travelers. Courteous Treatment to all. Rates Reasonable. WILLIAMS & SHADE, Proprietors.

The Armijo House, ALBUQUERQUE, N. M.

NEWLY FURNISHED THROUGHOUT.

Every modern convenience has been added, making it one of the best hotels in the southwest. Commercial travelers will find commodious sample rooms. The bar and billiard room are the finest in the territory. Its nearness to business, street car lines, opera house, depots, etc., make it desirable in every way. Requesting your patronage, respectfully,

CHAS. E. BONSALL, Manager.

W. E. TALBOTT, Proprietor.

ST. NICHOLAS HOTEL, Sixth St. and Douglas ave., Las Vegas.

CATTLEMEN AND ALL WILL FIND HERE A PLEASANT STOPPING PLACE

Centrally Located. Reading Room Connected. American and European Plans.

MRS. M. A. HORNBERGER, Proprietor.

UNITED TRADING CO., COLORADO CITY, TEXAS.

Makes Contracts for delivery of Stock Cattle in any quantities and classes, to suit purchasers. Correspondence solicited.

Refer to the First National Bank, Colorado, Texas.

JOHN HARRIS, Manager.

LINCOLN COUNTY.



George B. Barber, Manager.

P. O.: Lincoln, N. M. Range, Three Rivers, Lincoln county, N. M. Horse brand, one cross, same as cattle, on the left hip.



A. M. Rogers & Son.

P. O. Independence, Mo. Range, Canaditas (with McBroom.)

A few fine young bulls for sale. Parties in need of either high grade or thoroughbred bulls will please correspond with us.



L. L. Cattle Company.

M. R. Lewis, Range Mgr. and Secretary. Postoffice, Fort Sumner, N. M. Lewis Lutz, Treasurer. Las Vegas.

Range, Pecos river, 40 miles south of Ft. Sumner. Ear marks, underslope right, overslope left. Horse brands, L on shoulder, O on jaw, both on the right side.



Frank Lesnet.

P. O.: Ruidosa, Lincoln county, N. M. Range, Ruidosa river. Horse brand, on left shoulder.



R. P. Segrest.

P. O.: Seven Rivers, N. M. Range, head of Seven Rivers, south Prong.

Ear mark, underbit and overslope left ear, overbit right ear. Horse brand on left side.

Some cattle are branded with the S straight up.

Additional brands. RRS—Ear mark, overslope and underbit left, underbit right.

OT—Ear mark, overslope and underbit left; overslope right.

HUB—Ear mark, crop and under half-crop left; crop right.

On shoulder and hip. Ear mark, swallow fork and underbit left, swallow fork right.



J. A. LaRue.

P. O.: Las Vegas, N. M. Range, Rio Felix, Lincoln county, New Mexico.



George G. Gans.

P. O.: South Fork, Lincoln county, N. M. Range, Pleasant valley, 9 miles north of Upper Penasco. Marked, crop both ears.

Horses branded same as cattle, on left shoulder. Also own all cattle branded G on both sides.



Pat Garrett.

P. O.: Roswell, Lincoln county, N. M. Range, White mountains. Also all cattle with a butt brand.

Horses branded same as cattle.



William Slane.

P. O.: Ruidoso, Range, from Ruidoso river to Eagle creek.

Horse brand same as cut on left thigh.



N. B. WINFREY, C. H. WINFREY, Winfrey Bros.

P. O.: Fort Sumner, N. M. Range, Pecos river, 30 miles south of Fort Sumner.

Ear marks, crop left, underbit right. Cattle and horses branded HAD right side, not kept up. Horses branded on right hip thus H.



J. C. White.

P. O.: Fort Sumner, Range, ten miles below Fort Sumner.

Mark, crop and swallow-fork right, crop left. Horse brand G on the left hip.

Postoffice GRA... AL on st... LFW on th... J-O... S+S... Horse br... Also ov... LOD overslope... S on hip and shoul... P. O. of the M... olosa mo... Socorro... Bars ac... Ear mark... COD... F... left side... Craig M... All inc... Ho... A REV... and conv... any cattl...

LINCOLN COUNTY.



Littlefield Cattle Company.

J. P. WHITE, Manager.  
Postoffice, Roswell, N. M. Range, at Bosque Grande, Rio Pecos; and at Four Lakes, on the Staked Plains.

Also cattle in the following brands:

**W** on the side. **L** on the right side. **RS** on the right side and on right hip.  
**LFW** on hip, side and shoulder.  
**24** on the left hip.  
**J-O** on shoulder, side and hip.  
**S+S** on the shoulder, side and hip.  
For these brands various earmarks on top of the right thigh:  
**W-F**  
Also own all cattle in the following brands:  
**LOD** left side; ear mark, swallow fork right overslope and underbit left. **SSS** left side, and **S** on hip; **JEW** left side; **OVJ** left hip, side and shoulder.

SOCORRO COUNTY.



Reed & Bruton.

W. C. BRUTON, Representing.  
P. O.: Socorro, N. M. Range, western slope of the Magdalena mountains, Gallinas and Hierolosa mountains, and the Bear Springs, all in Socorro county, New Mexico.  
Bars across hips as in cut on both sides. Ear marks, half under crop left and crop right. Sharpen the left and crop the right.  
Other brands:  
**COG** left hip saddle horses.  
**F** left side. **H** left hip and right shoulder stock horses.



J. W. Crawford.

"CAPTAIN JACK."  
P. O.: Fort Craig, New Mexico. Range, Fort Craig Military Reservation.  
All increase branded and marked same as cut.  
Horse brand, **W** on left shoulder.



Bell & Taylor.

P. O.: Socorro, N. M. Range, Oscuras mountains, Socorro county.  
Horse brand, **XK** on left shoulder.



Nigrita Cattle Co.

JOHN BELL, Foreman.  
P. O.: Alma, Socorro Co., N. M. Range, South of Nigrita, Mogollons.  
Horses are branded the same as cattle but on the left hip.



Seven Rivers Cattle Co.

JOHN HARRIS, Manager.  
P. O.: Colorado City, Texas. Range, east side of Pecos river, 35 miles above Pecos Station, Tex.  
Horse brand, same as the cut on the left hip.  
A REWARD of \$250 is offered for the arrest and conviction of all persons illegally handling any cattle in this brand.

SPECIAL OFFERS! Herefords! Herefords!



John W. Prowers Jr. Owner and Breeder

Of the well-known herd of pure-bred Hereford cattle, of the late Hon. John W. Prowers. Young bulls and heifers for sale; also, twenty-five pure-bred and imported cows, ages ranging from three to six years old. Address all inquiries to **J. J. LANE**, Guardian for John W. Prowers, Jr., WEST LAS ANIMAS, COLO.

**COOLEY & HUNTER,**  
Proprietors Livery, Feed and Sale  
**Stables,**  
CLOSED CARRIAGES, MOUNTAIN WAGONS,  
OPEN CARRIAGES, AND SADDLE HORSES.  
CHARGES REASONABLE.  
Horses and wagons bought, sold or exchanged. All orders by telegraph promptly answered. We take great care to please owners who board their horses at our stables.  
Constantly on hand a number of well-broke cow ponies in good condition, and ready for use. They are offered for sale at reasonable prices.

**J.B. KLATTENHOFF & CO.**  
**Undertaker**  
AND EMBALMER.  
A COMPLETE ASSORTMENT OF  
Furniture, Queensware and Glassware,  
BRIDGE ST., LAS VEGAS.

**Atlantic and Pacific Railroad**  
TIME SCHEDULE.

WEST BOUND	STATIONS.	EAST BOUND
	(Mountain Time)	
3:50 a. m.	Lv. Albuquerque	Ar. 12:15 p. m.
4:15 a. m.	..... Laguna	..... 9:55 p. m.
7:00 a. m.	..... Grants	..... 9:18 p. m.
7:25 a. m.	..... *Coolidge	..... 8:51 p. m.
9:15 a. m.	Lv. Albuquerque	Ar. 7:25 p. m.
9:40 a. m.	..... Wingate	..... 7:00 p. m.
10:21 a. m.	..... Gallup	..... 6:37 p. m.
10:25 a. m.	..... Manuelito	..... 6:12 p. m.
11:00 a. m.	..... Navajo Springs	..... 5:34 p. m.
12:25 p. m.	..... Holbrook	..... 4:06 p. m.
1:50 p. m.	..... *Winslow	..... 2:35 p. m.
3:00 p. m.	Lv. Albuquerque	Ar. 1:25 p. m.
3:25 p. m.	..... Flagstaff	..... 1:00 p. m.
6:05 p. m.	..... *Williams	..... 11:00 a. m.
7:45 p. m.	Lv. Albuquerque	Ar. 9:25 a. m.
8:10 p. m.	..... Ash Fork	..... 9:00 a. m.
9:45 p. m.	..... Prescott Junction	..... 7:10 a. m.
11:07 p. m.	..... Peach Springs	..... 5:53 a. m.
1:15 a. m.	..... Hackberry	..... 4:00 a. m.
2:29 a. m.	..... Kingman	..... 2:29 a. m.
4:15 a. m.	Lv. Albuquerque	Ar. 1:25 a. m.
7:30 a. m.	..... Fenner	..... 10:10 p. m.
8:00 a. m.	..... Ludlow	..... 9:40 p. m.
10:05 a. m.	..... Daggert	..... 8:02 p. m.
1:15 p. m.	..... *Barstow	..... 4:43 p. m.
3:10 p. m.	Lv. Albuquerque	Ar. 3:10 p. m.
3:30 p. m.	..... Barstow	..... 2:50 p. m.
4:00 p. m.	Lv. Albuquerque	Ar. 2:00 p. m.
	(Pacific time.)	
2:55 p. m.	Lv. Barstow	Ar. 1:30 p. m.
6:05 p. m.	..... San Bernardino	..... 9:40 a. m.
8:00 p. m.	..... Citrus	..... 7:38 a. m.
2:10 a. m.	..... Ocean side	..... 2:15 a. m.
6:30 a. m.	..... San Diego	..... 10:45 a. m.
7:00 a. m.	..... National City	..... 10:00 p. m.
6:55 p. m.	..... Colton	..... 9:15 p. m.
9:10 p. m.	..... Los Angeles	..... 7:00 a. m.
6:55 p. m.	Ar. Mojave	Lv. 10:20 a. m.
10:40 a. m.	Ar. San Francisco	Lv. 3:30 a. m.

\*Meal stations.  
Through tickets to all the important cities east and west on sale at the principal stations.  
Connections:—Albuquerque, A. T. and S. F. R. R. for all points east, north and south. Barstow, Cal. Southern R. R. for all points in southern California. Mojave, all points in northern California.  
**W. A. BISSELL,**  
D. B. ROBINSON, General Passenger Agt.  
Gen. Manager, Albuquerque, N. M.

We intend to add a couple of thousand names to THE STOCK GROWER's subscription list before the first of the year, and in order to do so propose to offer an inducement to new subscribers, and to others, to act as agents in securing new names for our lists.  
This offer holds good until January 1, 1887.

FIRST

We have a nice offer for the ladies. To any lady sending us ONE new subscriber, with the usual \$3.00 for subscription, to THE STOCK GROWER, we will send:  
**American Practical Cookery Book;** or **House-keeping made Easy, Pleasant and Economical.** By a practical housekeeper. Illustrated; 12-mo; or  
**New Southern Cookery Book;** 1,000 carefully tested recipes. By Mrs. M. E. Porter; 12-mo; or  
**The Ladies' Hand-Book of Fancy and Ornamental Work.** By Miss Florence Hartley. 300 illustrations; quarto; extra.

NEXT!

To those desiring to make a holiday gift to some friend, we make the following:  
For each new subscriber, with \$3.00.  
**Life of George Washington.** Bancroft.  
**Public and Private Life of Daniel Webster.** Including most of his great speeches and letters. By General S. P. Lyman. Illustrated.  
**Napoleon and His Campaigns.** His army and generals. With sketch of the French revolution. Full page engravings.  
**Memoirs of Mary, Queen of Scots.** By Miss F. G. With portrait.  
**Life and Public Services of Abraham Lincoln.** By Frank Crosby. With portrait.  
Also, any one of the following biographies, each in single volume: **Gen. Sam. Houston, William H. Harrison, Patrick Henry, Henry VIII, and his Six Wives, Alexander Hamilton, Thomas Jefferson, Gen. Andrew Jackson, Joan of Arc, Empress Josephine, Dr. David Livingston, Captain John Smith, John Quincy Adams, Marie Antoinette, Daniel Boone, Henry Clay, Oliver Cromwell, Kit Carson, Davy Crockett, Stephen A. Douglas, Jefferson Davis and Stonewall Jackson, Benjamin Franklin, Horace Greeley.**

FOR CHILDREN.

**True Stories from Ancient History.** By Agnes Strickland.  
**True Stories from Modern History.** By Agnes Strickland.  
**Child's History of England.** By Charles Dickens.

FOR STOCKMEN.

**Cattle and Their Diseases.** Embracing their history and breeds, crossing and breeding, feeding and management, etc. By Robert Jennings, V. S. Illustrated.  
**\$5,000 a Year on the Farm; and How I Made It, starting without capital.** By Edward Mitchell.

FOR EVERYBODY.

**Rocky Mountain Adventures.** Details of fearful fights with savage Indians, Mexican rancheros and beasts of prey. By Edward Bryant.  
**The Land of the Kangaroo and the Boomerang.** A true history of the discovery and wonderful growth of Australia, including dashing acts of bravery in pursuit of strange wild animals and wilder forest ruffians.  
**Female Life among the Mormons; or, Maria Ward's Disclosures.** A narrative of personal experience. Illustrated.  
**Thrilling Adventures among the Indians.** Early Indian wars, etc. John Frost. 300 illustrations.  
**Scouting Expeditions of the Texan Rangers.** Samuel C. Reid, Jr. Illustrated.  
**Gerard, the Lion Slayer, and Other Stories;** or **the Romance of Adventure.** With engravings, 16-mo, extra.  
**Livingstone's Travels and Researches in South Africa.** Illustrated.  
**Thirty Years in the Arctic Regions.** A graphic narrative of Sir John Franklin's four expeditions.  
**Perils and Pleasures of a Hunter's Life.** Herne. Illustrated.  
**Wonderful Adventures by Land and Sea;** Of the Seven Queer Travelers Who Met at an Inn. Josiah Barnes.  
Remember all of these books are neatly bound in cloth, and would cost from \$1.25 to \$3.00 at any book store. We guarantee them to please you. We send one of them for each new subscriber sent us by January 1, 1887. Now is the time to replenish your libraries. Read THE STOCK GROWER, and notice the new and attractive special departments which we are constantly adding.

ROBERT MILLER,

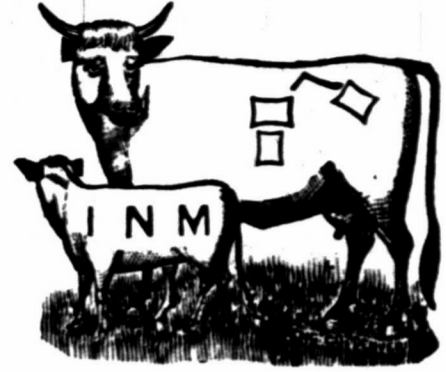
WEST LIBERTY, IOWA,  
Breeder of Purest and Best Strains of Shorthorns in America.

He also handles Hereford and Polled cattle of the choicest strains. Long years of experience enable him to select and breed the best. Special attention paid to the filling of orders for western ranchmen. Correspondence promptly answered.

SOCORRO COUNTY.

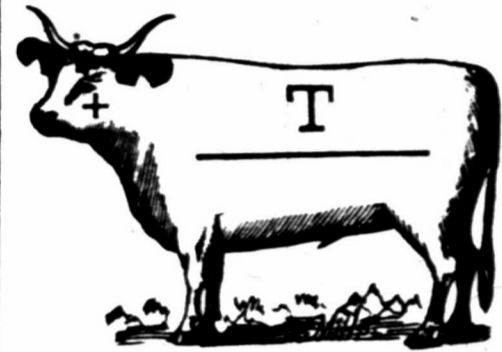
Iowa and New Mexico Ranch Company.

JUSTUS CLARK, President, Red Oak, Iowa.  
GEN. H. M. ATKINSON, Vice Pres., Santa Fe, N. M.  
BENJ. B. CLARK, Secretary, Red Oak, Iowa.  
PAUL P. CLARK, Treasurer, Red Oak, Iowa.



P. O. Magdalena, New Mexico.  
Range, Socorro and Valencia counties.

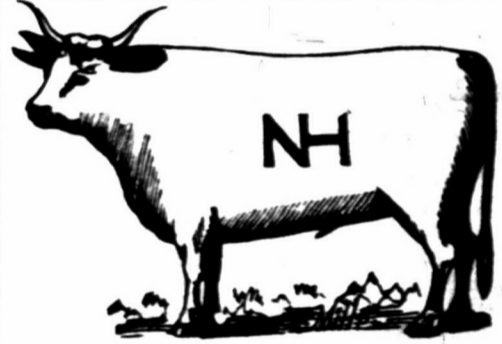
Horse brand **L** on left calf, in cut, and marked crop hip. **L** right and underslope left.



Trocke, Maunsell & Co.

P. O.: Patterson, Socorro Co. Range, eastern slope of the Mogollon mountains, between headwaters of the Nigrita and Gila rivers.  
Ear marks, underbit right and left ear.

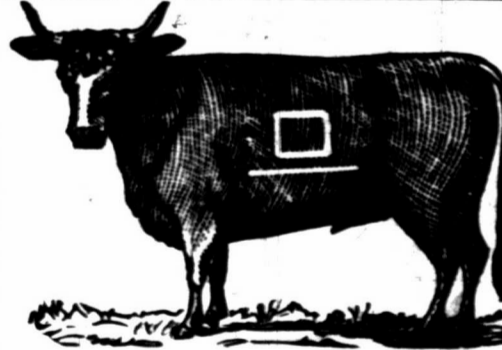
Other brands:  
**T** Horse brand on the left shoulder.  
**T+A+TM**  
7 on left hip of cows and left side of calves.



Nathan Hall Cattle Company.

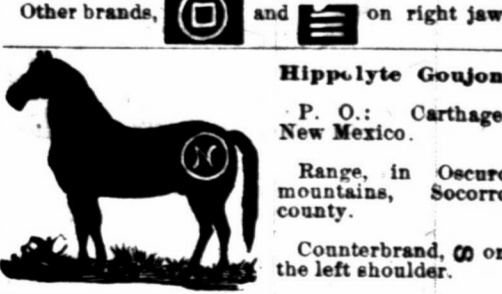
NATHAN HALL, Manager.

P. O. Socorro, New Mexico.  
Range, Apachita creek and Gallo Springs, Socorro county.  
Horse brand, **NH** connected, same as on cut, on the left hip.  
Ear Mark as in cut, except it being on left ear.



Grant Bros. & Browne.

P. O.: Albuquerque, N. M. Range, Alamosa Park, Socorro county.  
Ear marks, swallow fork in each ear.  
Horse brand, same as cut, on left shoulder.



Hippolyte Goujon.

P. O.: Carthage, New Mexico.  
Range, in Oscura mountains, Socorro county.  
Counterbrand, **C** on the left shoulder.



Curwen & Norris.

P. O.: Magdalena, Socorro Co., N. M.  
Range, north slope of San Mateo mountains and adjoining San Augustine plains.  
In addition part of cattle branded **N** on right jaw, balance **C** on right jaw.  
Ear mark, crop and two slits in each ear.  
Horse brand, **C-N** on right thigh.

HENRY G. COORS

WILLIAM F. COORS

# COORS BROS.

Successors to Lockhart & Co., Wholesale and Retail Dealers in

## Furniture and Hardware

Tinware, Sporting Goods, Shotguns, Rifles, Pistols,  
All Styles of Ranges, Cooking and Heating Stoves,  
House Furnishing Goods of Every Description.

Lumber, Sash, Doors, Lath, Shingles and Blinds,  
PAINTS, OILS AND GLASS.

All Orders by Mail Promptly Filled. Ranch Trade Especially Solicited.  
LAS VEGAS, NEW MEXICO.



# Turbine Windmill!

For Western Ranches.

Runs with lightest breeze and through severest gales steadily and evenly, being a SELF REGULATOR.

Irons sold and plans furnished. Any man with a little knowledge of tools can build the woodwork any place at small cost, and save freight.

This is the only windmill adapted to the RANGE COUNTRY. Its small cost, its great durability and power, and its strength to withstand any windstorm, makes the TURBINE WINDMILL the ranchman's favorite.

Satisfaction guaranteed. Send for circular and price list.

A. H. SOUTHWICK, Patentee.

604 East Locust Street, Des Moines, Iowa.

SOCORRO COUNTY

### AMERICAN VALLEY CO.

W. B. SLAUGHTER, President and Gen. Manager.  
Postoffice address, Socorro, New Mexico.  
Ranch, American Valley, Socorro county, N. M.

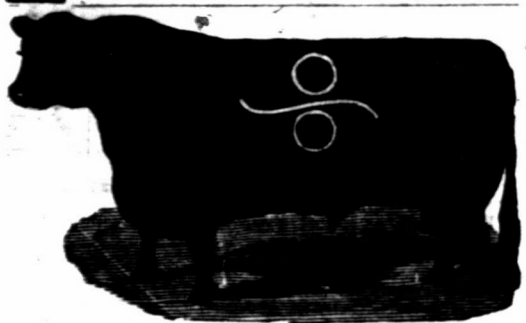
\$250 REWARD will be paid for the arrest and conviction of any person or persons illegally handling any stock in the following marks and brands:



Cattle brand kept up, S as in above cut, on both shoulders.

on the left hip of horses.

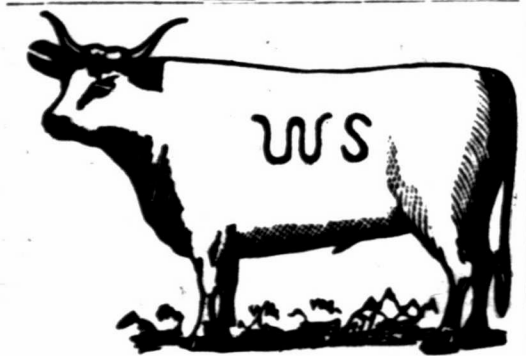
Other Brands:  
ANA side, @ hip. Underslope each ear.  
CC@ side, @ hip. Crop and underbit left ear.  
F on side and loin, or side and hip.  
Cross @ on bought steers; used as a road brand.  
V side, underslope each ear.  
side, various marks and other brands.  
side, various marks and other brands.  
on side, underslope left, swallowfork right.



Deer Park Cattle Company.  
FRANK H. WINSTON, Manager.

P. O.: Fairview, N. M. Ranches, at Elk mountain, Socorro county.

Also own the following brands:  
Horse brand, @ on the left shoulder.



W S Ranch.

J. H. COOK, General Manager.

P. O.: Alina, Socorro county, New Mexico.  
Range, San Francisco river, Socorro Co.  
Horse brand, same as cattle, on left shoulder or thigh.

Detroit and Rio Grande Cattle Co.

P. MOTHERSILL, Manager.



P. O.: Engle, N. M.  
Range, Jornada and Caballo mountains.

Ear marks, under-half crop right, underbit left.

Horse brand, @ left side, @ left hip.  
Other brands: @ left side, @ left hip.

# BROWNING, KING & CO.

Manufacturers and Retailers of Fine

## CLOTHING

1101, 1103 and 1105 Main Street, Kansas City, Missouri.

HENRY L. PITCHER, Manager.

Clothing Specially Adapted to the Requirements of Cattlemen

OF THE RANGE COUNTRY, AND STOCKMEN GENERALLY.

Samples of Goods, Tape Lines, and Rules for Self Measurement, Sent to Any Address, Free of Cost, on Application.

FIRST-CLASS GOODS—REASONABLE PRICES

Money Cheerfully Refunded if Goods Do Not Suit.

## THE FALL SEASON

With its charming new styles is here, and as usual

*Charles L. Feld*

Displays latest fashions of

Dry Goods, Millinery, Dressmaking.

Butterick's Fashion Book mailed free to any lady sending address. Call when in town.

### Solon E. Rose & Bro.

JOBBERS OF



## MACHINERY

Horse Powers, Wind Mills, Well Drilling Outfits, and Augers.

RANCHMEN'S SUPPLIES.

Very Low Prices Guaranteed on all Sizes of Tanks.

Write for circulars and prices.

ABLUQUERQUE, NEW MEXICO

### J. C. BERTRAM,

Breeder and Importer of

## HEREFORD CATTLE

BRISTOL, ILLS.



Makes a specialty of importing representatives from best families and breeding only stock of superior excellence.

Am prepared also to furnish ranchmen first-class grades, which I will guarantee to be of superior breeding, well marked, and sired by bulls of acknowledged merit.

For quality of animals handled by me I refer all ranchmen to the Hereford bulls now on the ranch of Mr. William Robert, at Roswell.

CORRESPONDENCE SOLICITED.

MENTION this paper when writing to advertisers.

SOCORRO COUNTY.



H. E. HOLBROW, D. M. SMITH.  
Postoffice, Magdalena, Socorro county, N. M.  
Range, west of San Mateo mountains and San Augustine Plains.

Illinois Cattle Company.

S. P. JOHNS, Manager.  
JULIUS M. ESTES, Foreman.

P. O.: San Marcial, Range, between Magdalena and San Mateo mountains, and on west side of Rio Grande river, between San Marcial and Cantaritas.



HORSE BRAND.

Other brand: @ on the left side and left hip. Ear marks, crop the right and underslope the left.



A. HARDCASTLE, C. MITFORD.  
Hardcastle & Mitford, ADOBE RANCH,

Range, on headwaters of the Upper Gila, Sierra county, P. O.: Grafton, N. M.

Horse brand, HM (connected) on left hip or shoulder. Also 2 on the left hip.



C. S. Roberts.

P. O.: San Marcial, N. M. Ranges, Los Burros, 20 miles west of San Marcial, Socorro county.

Ear marks, crop right and small crop and half circle above and below in left; also, skin cut on nose.

Horse brand, same as cut on left hip. Cattle branded either side and hip.

Vol.

Live

A tr from 2 Bend cars w ished, beyond zen.

The the pr ranges as in but it men o Worth

Ott Frew official He pr United cattle tory a territo govern

With excha syndic low pr has of the v wester of the useles vic.

So f tle is gaided most gener plies, 1885, mand, that l ducer, rates e the m dresse men b it--B

All belong Min. pneun them. cattle of the The se side by and th year-o togeth bull an The gr sisted merit.

St. summi the snl miles Miles, dian a ho, v the con divulg compa are five El Pas nine y from a Norte, Grand