

STOCK GROWER

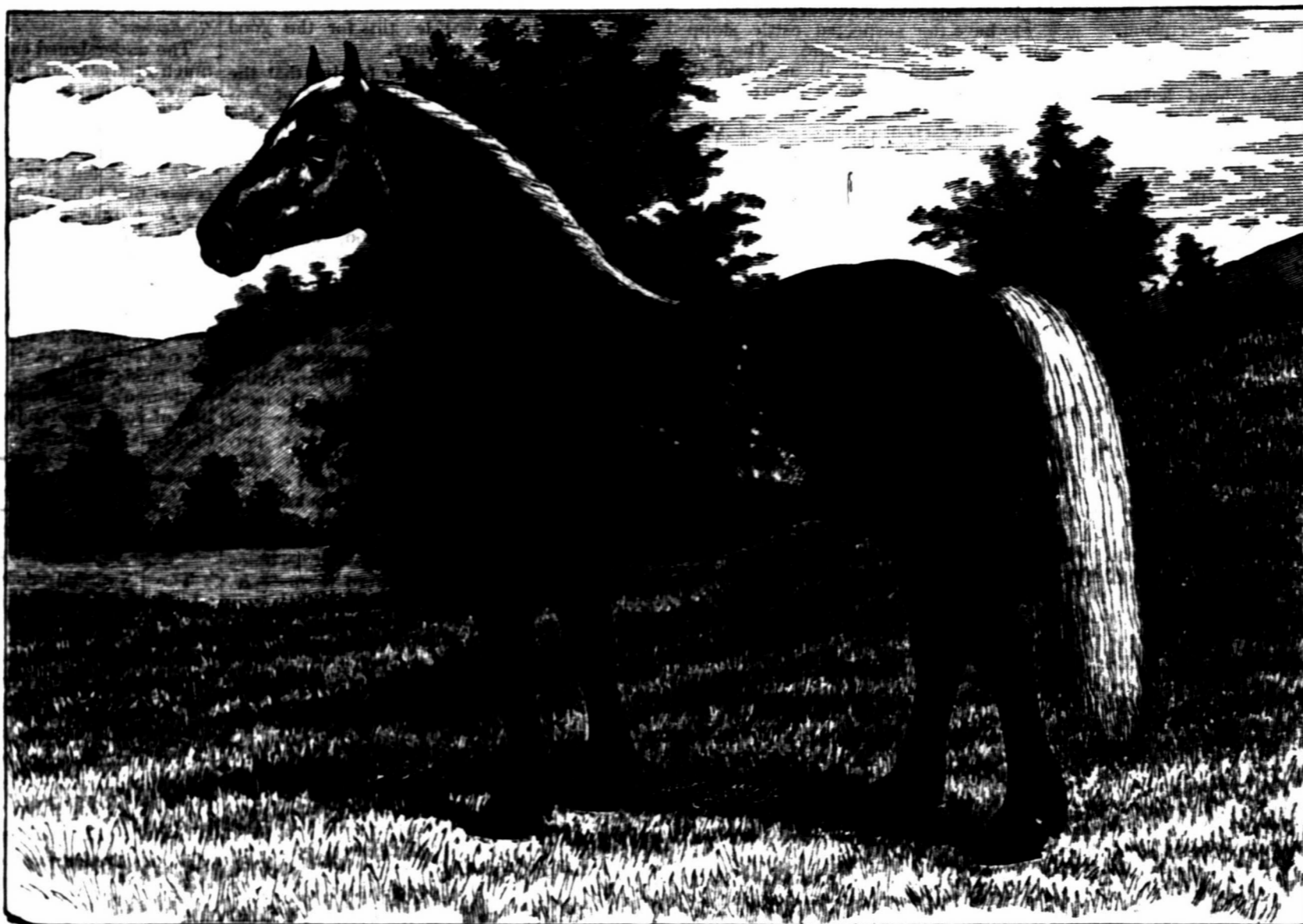
COLORADO TEXAS

ARIZONA MEXICO NEW MEXICO

Vol. III. No. 37.

LAS VEGAS, NEW MEXICO, NOVEMBER 27, 1886.

Weekly, \$3 a Year



PERCHERON STALLION PALADDIN 2175, PROPERTY OF AVERY & COLEMAN, WAKEFIELD, KAS.

Paladdin.

The Percheron stallion Paladdin, 2175, shown in the engraving on this page, is a gray, foaled in 1882, and imported by M. W. Dunham, of Wayne, Ill., having for sire his noted horse Brilliant, 1271, out of a mare by Decide, 126, by Superior, 454, he by Favori 1st (711). This horse, says the *Breeders' Gazette*, was sold by Mr. Dunham in 1883 to Mr. Henry Avery, of Wakefield, Kan., who has been engaged in breeding Percherons for the past ten years, having had in service before the purchase of Paladdin the well known horse Quimper, 400, and Nyanza, 869, a son of old Success, 452, out of the famous mare Mignomette, 584. Mr. Avery has recently sold a half interest in his business to Mr. C. R. Coleman, who has been in the employ of Mr. Dunham for seven years past, most of the time in the capacity of foreman; and the farm upon which their stock is located consists of about 1,200 acres in the Republican valley, all of which is devoted exclusively to the breeding of Percheron horses. The stud contains a number of carefully selected mares, most of which trace back to such famous stallions as old Louis Napoleon, 281, St. Laurent, 435, Napoleon 2d, 355, and Success, 452, besides a fine lot sired by Vidocq, 488, and Brilliant, 1271. The horse stock now on the farm now numbers about eighty head of stallions and

mares, among the more promising of the younger horses being the two-year-old stallion Voltaire 3d, 4320, imported by Mr. Dunham in 1885, and promising to rival in all essential points his celebrated sire, Voltaire, 3540. This establishment is, we believe, the oldest west of the Mississippi river devoted to the breeding of Percheron horses, and it is in charge of experienced and reliable managers, and well stocked with first-class horses of the best breeding, it merits a wide patronage from the farmers and breeders of the west.

The Pleuro Pneumonia Cattle.

The slaughter of cattle exposed to pleuro-pneumonia at the Chicago distilleries was probably begun this week. The owners of the exposed cattle have agreed with the live stock commissioners to allow the stock to be appraised and killed and trust to the legislature to appropriate an amount to pay for those found not to be actually infected with the disease. The commissioners have been looking for several weeks for three appraisers of sufficient knowledge of the cattle business to assess a fair valuation and were at the same time unprejudiced. They were found, sworn in, and have begun their work. The appraisers are Thomas J. Buntain, of Kankakee, H. B. Miller, of Richland, and J. B. Wilson, of Iroquois. They are all practical cattlemen. They began work on the

cattle owned by Simon Ryan at the Phoenix distillery and appraised 191 of the more than 200 head owned by him. The manner of procedure is for the state veterinarian to go with the appraisers and point out the cattle they are to appraise. Each man has a book. He examines the animal and enters in his book what he thinks is a fair value for dairy or beef purposes, as the case may be. When they finish up a herd of cattle they will come together, compare notes, and make up an average. The report on the valuation will not be made until all the cattle owned by a particular man have been appraised. After the appraisement of a particular lot of cattle has been finished they will be slaughtered, and this work will probably begin next week. After the animals are slaughtered the meat will be examined. Nothing will be paid for an animal found after slaughtered to have the disease, but on all those found to be free the owners will receive pay. The complete appraisement, therefore, cannot be made until after the animals are slaughtered, when it will be subject to the approval of the live stock commissioners. All told there are 993 head of cattle at the Phoenix distillery, but these by no means comprise all the exposed cattle in Chicago.

500 or 1,000 head of western Texas earling helpers, $\frac{1}{2}$, $\frac{3}{4}$ and 3-4 bred none to be less than $\frac{1}{2}$ bred, and the bunch to average $\frac{1}{2}$ bred, delivered at Albuquerque, N. M., at \$14.00 per head. G. L. Brooks, Socorro, N. M.

Prospectus—1887.

With the coming of 1887 THE STOCK GROWER will enter upon the fourth year of its existence, and with its accustomed enterprise and energy intends to supply its readers with a greatly improved paper.

The present attractive appearance of THE STOCK GROWER will be added to by the handsome, tinted cover, which will bind each number and which, in addition to embellishing, will preserve the reading pages, unsoiled during the transmission through the mails.

A new departure entitled "Feed Farming," will be added, as THE STOCK GROWER wishes to keep abreast of the growing interest so closely allied to the great cattle growing industry.

All of the popular old departments will be continued and nothing which has made THE STOCK GROWER so successful will be omitted.

The Northwest Ranch company, and the Mount Head Ranch company, have amalgamated. Mr. F. Stimson will manage the whole outfit with Mr. G. Levinge as his assistant. The same parties are interested to a considerable extent in both companies, and the amalgamation was effected since it was thought that the two outfits could be run more economically together than separately.—*Calgary (Alberta) Herald*.

FROM ALL POINTS.

Live Stock Notes Carefully Collected
From Every Source.

Cattle shipments from the northern range country may now be said to have closed for the season.

The Musselshell pool, which has this season marketed at Chicago several thousand head of cattle, has sold about the last shipment for the year at \$3.45@3.65.

The property of the Gosper Horse and Cattle Co. has been transferred to E. H. Witherell, for a consideration of \$100,000. The ranch at Coyote, in this county, is undergoing substantial improvements, a large house having recently been erected thereon.—*Hoof and Horn*.

The London *Live Stock Journal* says of the pleuro-pneumonia scourge at Chicago: Nothing is done to stamp it out, the delay being caused by a dispute as to the disposal of the carcasses. It is really pitiful that the risk of the contagion spreading should be incurred on account of a difficulty of this description.

The cattle plague among the herds on Blue river, near Lincoln, Neb., still continues, twenty-one head having fallen. The mysterious disease is supposed to be rabies. About two months ago a mad dog was seen to enter the pastures and bite a number of cattle in each herd. Since that time the death rate has been large among the cattle on these ranges.

The man Frank Wilkeson, who recently wrote a most infamous article for the *New York Sun*, is receiving the censure he so richly deserves in all quarters. It ought not to be necessary to refute the sayings of so irresponsible a fellow, but Wilkeson is surely catching hades on all sides. Turn him over. Show him up in his true light. He has run loose too long.—*Cheyenne Journal*.

The two-year-old thoroughbred Hereford bull, Anthony Rudolph, which the Wyoming Hereford association sent to the Fat Stock show at Chicago, has taken first prize in his class and first in the grand sweepstakes for all breeds. The grade steers sent by the same company have taken first prize in the class for fat grades. "Wyoming may be a little slow, but she gets there."—*Cheyenne Journal*.

J. C. Pryor, of New Kiowa, Kan., was at the yards several days the present week. His firm have shipped this season the best range half-breed steers ever brought to this market. Mr. Pryor says the Fish & Keck Co., have handled the most of their shipments and deserve a great deal of credit for the excellent way in which they have managed them. He says the fall range was never better, and their cattle are going into the winter in excellent fix.—*Kansas City Indicator*.

If St. Louis capital concludes to go into the dressed meat business, why cannot it buy a plant, employ competent managers and establish connections in the east? Why cannot St. Louis capital erect commodious stock yards and manage it in the interests of both the investors and those who grow the beeves and muttens? Has Chicago a close patent on all the brain and business acumen in the country? Rangemen down here are beginning to believe that St. Louis can do these things.—*Inter-Republics*.

The *Dallas News* says: Precisely to what extent the Chicago meat syndicate is responsible for the depressed condition of the cattle business, will before a great while be shown, for the cattlemen all over the country are combining and making preparations to knock the syndicate in the head and flatten it out. The cattlemen believe that the only thing now obstructing their road to fortune is the syndicate, and they mean to remove the obstruction. The members of the syndicate are becoming alarmed.

The Hereford men have made rapid strides toward popularity lately, the climax being the winning of the sweepstakes prize by Rudolph, jr., a Hereford, at the Chicago Fat Stock show. He is 883 days old and weighs 1,530 pounds, an average daily gain of 1.73 pounds. The Hereford men are jubilant as the prize was won over remarkably fine animals of the Short horn, Polled-Angus, Holstein, Devon and Sussex breeds. The Hereford association has petitioned congress to forbid all importations of cattle for one year in order to better extirpate pleuro-pneumonia from the United States.

At no time in the history of Nevada has there been so many fine bred cattle purchased by our stockmen than has been in the past six months, and it argues well for the future of the stock interest that such is the case. For many years the main object of our stockmen was simply to raise beeves without a thought of producing a superior beef by the introduction of blooded bulls on the ranges. Any thing, so long as it was beef and marketable was satisfactory. It has taken a long while to awaken the beef producers to the fact that blooded cattle, even at high prices, will pay better in the end than scrubs.—*Sagebrush (Nev.) Stockman*.

No one is taking any steps toward excluding from the state stock from pleuro-pneumonia districts, or alleged pleuro-pneumonia districts. The report which was spread three days ago to the effect that there was a train load of infected cattle from southern Indiana en route to Dallas, caused a temporary scare and an investigation of the law. It was found, according to the attorney consulted, that there was no law authorizing the governor to have the suspected cattle stopped on the border of the state. The cattlemen then became resigned, and said the disease would have to be allowed to take its course. Nothing has since been heard of the five cars of cattle.—*Dallas News*.

Mr. J. B. Hunter will ship from here shortly five hundred head of steers for Chicago, and in the course of a week or ten days these will be followed by another five hundred. These cattle are very fat, and will top the Chicago market, and by the way, they are just off of the ranges of that "desert of desolation and death," the North Platte valley, of which Mr. Frank Wilkeson tells of in such words of ghastly pathos, in his letter to the *New York Sun*. Wilkeson should be secluded. He could write his letters just as well in a darkened chamber, and wearing a straight jacket as he could running at large, masquerading in a cowboy's overshirt and leather breeches.—*Laramie Boomerang*.

The *Hoof and Horn* truthfully says that every cowboy has it within his reach to become a cattleman. Not simply the owner of a few head of cattle, but he can number them by the hundreds or even by thousands if he chooses. But he cannot do this and spend his earnings for guns, fire whiskey, and hold the name of being a good card player. There is no class of employers who feel so kindly to their men as do cattlemen. Nearly any of them will consent to pay a good, sober, pains-taking man in young cattle at the end of a given period. The boys can, in fact do, learn their business thoroughly; learn the capacity of the range and the accessible water. If he does not wish to go it alone he has an excellent opportunity of selecting from among his companions a partner.

During the week past the Fish & Keck Co. handled range cattle for various parties as indicated herewith: Texas Land and Cattle Co., New Kiowa, Kan., twenty-one cars. D. R. Streeter, New Kiowa, Kan., eight cars. Ewell & Justice, New Kiowa, Kan., three cars. Fred Taintor, Dodge City, Kan., four cars. Prairie Cattle Co., Las Animas, Colo., fourteen cars. Palo Blanco Cattle Co., Springer, N. M., twenty cars. Garland & Corzine, Caldwell, Kan., nineteen cars. Frank Latham, Dodge City, Kan., six cars. Rocking Chair Cattle Co., New Kiowa, Kan., four cars. York & Draper, Dodge City, Kan., three cars. F. Y. Ewing, New Kiowa, Kan., seven cars. John Blair, Caldwell, Kan., six cars. Arkansas Valley Land and Cattle Co., Holly, Colo., five cars. Matador Cattle Co., New Kiowa, Kan., nineteen cars.

A press dispatch from Denver to the eastern papers says prominent cattlemen here and elsewhere in Colorado, and also in New Mexico, are signing a petition to the railroad companies centering at St. Louis, asking them to give their influence toward the establishment of a cattlemen's stock yards at the west side in St. Louis. There appears to be a unanimous feeling among western cattle growers that the establishment of yards at this point will tend to distribute shipments and force the Chicago, Kansas City and other dressed beef syndicates to pay more reasonable prices for range cattle, the present prices being so low as to make the business unprofitable. The International Range association meeting will have the support of all portions of the range coun-

try. Several new associations have joined within the past few days, and indications point to a large meeting here in February.

The Helena *Independent* of October 27 contains the following in regard to this matter of consolidation with the International Range association: At the meeting of the Dawson County Live Stock association, held a week or two ago, a resolution was passed favoring the International Range association. It is not improbable that the whole Montana Live Stock association will favor the same project and join the International association in a body. The particular objects of the International association are to preserve the ranges from infection and disease and to generally exercise the powers of united action to secure favors to the range industry. For instance should a dangerous disease break out in any particular section of the range country, from the frozen north to the torrid south, the province of the International association is to exercise its strength to confine that disease to the smallest possible limit and to stamp it out as quickly as possible—this for the good of all the range country.

"There is no reason for fearing that the late storm has caused suffering or loss among the cattle of the southwest" said Mr. A. J. Snyder the veteran cattleman this morning. "They have all been driven into winter quarters, and every precaution necessary has been taken. The storm, while it came from the southwest was not severe in that section, and while southwestern trains were delayed, the dispatches do not tell us that snow was the cause. The fact is that the storm was a dry drifting snow blizzard that caught the railroads contrary to calculations for their snow fences were upon the wrong side. This sort of a storm does not injure cattle. It is not cold that kills them off. We have stopped shipping cattle for the winter and no more will arrive, save a few lots, perhaps, of fed cattle from Colorado. My advice is that the southern limit of the storm was the Atchison & Topeka line, and that is the northern limit of the cattle country, save in Colorado. Cattle are not shipped east later because it becomes too cold for the boys to herd them."—*K. C. Star*.

The meeting of the Texas Live Stock association, which will convene in this city January 15, promises to be lively, important and largely attended. It will discuss pleuro-pneumonia and in all probability memorialize the legislature for quarantine laws and a state live stock sanitary board. The lease law involving what amount cattlemen can afford to pay for grass will also be discussed at length and some united action taken in the matter. The question of dressed beef and refrigerating establishments will receive due consideration and also that of disposing of the surplus stock cattle on the range. Nor will railway pooling pass by unnoticed. These are a few of the matters and things that will be discussed and acted upon. The meeting will be an important one and one in which every stockman will be interested. The local stockmen, as they have always done on such occasions, will make due preparations for the entertainment of the guests. The meeting will not only bring together the Texas stockmen, but a large number from other states and the territories.—*Dallas News*.

Soldier's additional scrip for surveyed and Sioux half-breed scrip for unsurveyed land, for sale by G. L. Brooks, Manager, Socorro, N. M.

For The St. Louis Stock Yards.

No movement in the interests of the range cattle owners has met with a heartier response than the one now well under way to establish stock yards at west St. Louis. The men of the western country from nearly every section have manifested surprising zeal for the success of the project which assures to them a means of ridding the business of beef production from the skinning process so long a part of the Chicago market, and which has brought the western industry into such hard lines the past eighteen months. The rangemen are now convinced that there is a remedy for the low prices which have prevailed so long for beef on the hoof, and that that remedy lies in uniting their

forces in aiding to establish a new market wherein the beef producers shall be directly interested in all the ins and outs of the business, and make for themselves a market that will not be under the absolute control of a lot of unscrupulous traders. Texas has shown its faith in the new movement by the unanimous endorsement of the plan of making St. Louis the headquarters for the sale of its beef by all of its leading stock journals and cattlemen. What is true of Texas is also true of New Mexico, Arizona and Colorado, and the northern country. They have all come together as one man and say we are ready to stand by and support any project which will offset the operations of the men of the Chicago market and especially the Armour clique. The following petition has been circulated very generally throughout the southwest and has received the signatures of over 350 cattle companies and cattle owners.

To the general and traffic managers of the Missouri Pacific, St. Louis & San Francisco, Wabash, St. Louis & P. Cific, Chicago & Alton, St. Louis, Kansas & Texas and Chicago, Burlington & Quincy railroads.

Gentlemen:

The undersigned cattle owners are very much gratified to learn that there is a movement on foot to establish a cattlemen's stock yards on the west side of St. Louis. St. Louis by its central position should naturally command the cattle trade of the west and southwest, and the only reason that it has not done so heretofore, has been owing to the fact that the National stock yards are located at an inconvenient point on the east side of the river. We believe that the railroads interested in carrying freight to St. Louis would quadruple their live stock traffic if the yards in question were established, and we respectfully ask that the influence of your roads will be given in aiding the cattlemen's yards to be established on the line of your roads, just west of the St. St. Louis city limits.

Subscribe for THE STOCK GROWER, the best paper in the west. Three months for 25 cents.

The Mean System of Espionage Established by Sparks.

The National convention of cattle growers at Chicago last week paid their respects to William Andrew Jackson Sparks, present commissioner of the land office, in the following resolution which we trust will penetrate the pachydermal covering of the most arrant humbug in the nation. The gentlemen of the west will continue to be heard in the matter which Mr. Sparks has arrogated solely to himself until congressional legislation regulates the autocrat of the land department.

Resolved, That this convention, composed of men from more than thirty of the states and territories of the Union, representing the farming and stock growing interests of the entire country and especially of the western states and territories, hereby declare that they cordially endorse the statements of Governor Houser, of Montana, Governor Warren, of Wyoming and Governor Stevenson, of Idaho, in their recent official reports to the secretary of the Interior upon the question of the use and disposition of the public lands and the injustice to the men who are endeavoring to create homes and support their families under the privations and trials of frontier life. That the broad charges of fraud, made to the commissioner against these men, are not founded on fact; that isolated instances of fraud present no ground for the universal proscription which he has declared against these men, and lastly, that under cover of an intention to preserve these lands for actual settlers, he is in reality and in fact investigating and conducting through his special agents, a system of espionage that is foreign to our institutions, unworthy of American citizenship, and by the suspicion of illegality thus cast upon the entries and titles of the farming class as a whole, a vast injustice is done them, by which no public good is secured or obtained.

First class western Texas cows and calves, two to seven years old, delivered at Albuquerque at \$22.50 per cow and calf in train load lots. G. L. Brooks, Manager, Socorro, N. M.

NI

Dea

All cl
est
Loa
Her
low

STEER

NEW I
Special

LINCO

followin
Stock a
on Mond
with the
Henry B
sen, J. F
Kirby,
Geo. B.
Dolan,The p
held at
were re
the sect
had bee
Letter
N. M.,
abouts c
be runn
county,
of Waco
ulations
cago, Il
ing the
ner, sec
Horse
assessm
enclosu
On
White,
with re
meetin
have su
deemedA pe
yards
read atThe
been in
Stock
passin
summe
report
factor
The
presen
tion:
Frank
of Ca
White
above
ly elec
frey f
and ac
was urOn
ing ad
At
Col. I
gates
meetin
associ
Wedn
secret
bills,
havin
ing th
of \$11
arrest
grass,
inter
tion:
in the
Linco
ninet

NEW MEXICO LIVE STOCK COMPANY

G. L. BROOKS, MANAGER.

SOCOBRRO, NEW MEXICO.

Dealer in Ranches

All classes of Land Scrip at Lowest Quotable Prices. Mortgage Loans Negotiated. Shorthorn, Hereford, Polled Angus and Galloway Stock Bought and Sold.

STEERS FOR SPRING & SUMMER DELIVERY

To be Made at Any Point.



All Classes of Cattle

Native and Improved Sheep, Angora Goats and Registered Bucks. Patented Ranch Property and Confirmed Grants. Stock Horses, Stallions and Saddle Horses.

CONTRACTS MADE FOR RANGE CATTLE

From Texas, Mexico and New Mexico.

NEW MEXICO CATTLE RAISERS.

Special Meeting of the Lincoln County Stock Association.

LINCOLN, N. M., Nov. 16, 1886.—The following members of the Lincoln county Stock association met at Lincoln, N. M., on Monday, the 15th inst., pursuant to call, with the president of the association, Col. Henry Milne in the chair: W. E. Anderson, J. P. White, Capt. J. C. Lea, Brandon Kirby, Wm. Stone, M. E. Richardson, Geo. B. Barber, James E. Cree and J. J. Dolan, secretary.

The proceedings of the annual meeting held at Lincoln, N. M., on April 5, 1886, were read and adopted, when, on motion, the secretary read such correspondence as had been addressed to him, as follows:

Letter from Mr. A. H. Pratt, of Lurra, N. M., making inquiry as to the whereabouts of Silas and Green Ussery, said to be running the M D X brand in Lincoln county, N. M.; letter from C. W. White, of Waco, Texas, in reference to the manipulations of the dressed beef men of Chicago, Ill., and the different railroads leading thereto, and a letter from J. D. Warner, secretary of the Territorial Cattle and Horse Growers' association, relative to an assessment made by said association and enclosing tabular statement, etc.

On motion, the letter of Mr. C. W. White, was referred to Secretary Warner with request to bring same before the next meeting of the Territorial association and have such action taken thereon as may be deemed proper.

A petition for the establishing of stock yards at St. Louis, Mo., was presented, read and signed by all members present.

The report of Mr. A. S. Mayes, who had been in the employ of the Lincoln county Stock association, in cutting trail herds passing up the Pecos river during the summer, was read by the secretary. Said report was received with general satisfaction.

The following names of parties were presented for membership to the association: James E. Cree, of Fort Stanton and Frank Garst, of Rio Penasco. On motion of Capt. J. C. Lea, seconded by J. P. White, the rules were suspended and the above named gentlemen were unanimously elected. The application of N. B. Winfrey for membership was reconsidered and accepted, and the said N. B. Winfrey was unanimously elected.

On motion of Capt. J. C. Lea, the meeting adjourned until 2 o'clock p. m.

At the convening of the members for the afternoon session Capt. J. C. Lea and Col. H. M. Taylor were appointed delegates to represent the association at the meeting of the National Cattle Growers' association, to be held at Chicago, Ill., Wednesday, November 17, 1886. The secretary was then directed to have handbills, in English and Spanish, printed, having thereon the section of law touching the burning of grass, and the reward of \$100 offered by the association for the arrest and conviction of anyone burning grass, which may in any way damage the interests of any member of this association; and also to have the same published in the New Mexico STOCK GROWER and Lincoln Independent for the period of ninety days.

R. B. GODLEY,
Sec'y and Treas. Shorthorn Cattle Co.

JOHN FLOOD,
Vice-Pres. Shorthorn Cattle Co.

GODLEY & FLOOD, Land and Cattle Commission Brokers,

ST GEORGE HOTEL, DALLAS, TEXAS.

Will examine and make detailed reports on ranches, and will render for taxation, pay taxes, and generally protect the interests of non-residents.
Will negotiate the purchase, sale or lease of agricultural and ranch lands in Texas, New Mexico and Arizona.
Do an exclusive brokerage business, thereby occupying the best position to render services to investors in Dallas City property.
Mr. Flood will give the ranch and cattle interests his exclusive attention, being a practical cattle and ranch man of twenty-five years' experience.

On motion the chair appointed Geo. B. Barber, J. P. White and M. E. Richardson a committee to examine the treasurer's accounts and report thereon; upon examination said accounts were found to be correct, and report approved by the association.

On motion of W. C. Anderson the executive committee was increased from five to seven members, M. E. Richardson and M. L. Pierce being appointed by the chair to fill said committee.

In the matter of delinquent dues the motion of Mr. Barber being carried, that all members now delinquent, who shall not pay their dues within thirty days, shall be dropped from the rolls of the association, and in compliance with the instructions to the secretary, embodied in the proceedings of the last meeting, held at Lincoln, N. M., April 5, 1886, the following named members of the association were dropped from the rolls of the association for the non-payment of dues and assessments: W. W. Brazil, Amos B. Eakers, Hernandez Bros., Allen Henley, Jose Montana, James Rainbolt and Jacob Snorer.

On motion of Capt. J. C. Lea the meeting adjourned subject to the call of the president. HENRY MILNE, President.
JAS. J. DOLAN, Sec. and Treas.

One or two train loads of partially graded western Texas yearling heifers, delivered at Albuquerque at \$11.75 per head. G. L. Brooks, Manager, Socorro, N. M.

Hard to Hatch.

It has been evident since last winter that considerable feeling existed among cattlemen against Mr. Hatch, of Missouri, chairman of the committee on agriculture. It has been alleged that he neglected to bring the contagious disease bill up—either intentionally or unintentionally. At any rate the matter failed to receive the attention it deserved at his hands and he is being censured for his actions. In the meeting of the Consolidated Cattle Growers' association of the United States, at Chicago on Wednesday, the following resolution was passed by a vote of forty-eight to thirty-eight:

Resolved, That it is the sense of this convention that Mr. Hatch, present chairman of the agricultural committee, is responsible for the lack of proper legislation and incompetent to grapple with the pressing need of the great cattle industry of the nation.—*Cheyenne Journal.*

Pursuant to a call of the president, Thomas Steele, the Southeastern Live Stock association held a meeting at the office of Judge Nichols on Saturday, November 6th.

The following members answered to their names: Thomas Steele, George Frisk, A. H. Knight, C. M. Hooker, M. W. Stewart.

On motion, M. W. Stewart was chosen secretary pro tem.

The name of Wm. Attenborough was dropped from the roll of membership, he having withdrawn from the association during recess.

It was ordered that the assessment against C. W. Merchant be withdrawn.

C. M. Hooker offered the following resolution, which was adopted:

Whereas, B. Briggs has refused to pay his assessment and still refuses to pay the same, be it Resolved, That the name of B. Briggs be stricken from the roll of members of the association.

The bill of the *Southwestern Stockman* for \$22.50 was allowed.

George Frisk having reported that at the round-up in 1885, a yearling belonging to C. W. Jones, was killed for the use of the round-up party, it was ordered that George Frisk be requested to investigate the matter and report the same at the next meeting of the association.

Treasurer C. M. Hooker having reported \$148.02 delinquent on last assessments, on motion, it was ordered that an assessment of two cents per head on all cattle belonging to the members of the association be levied to pay such delinquent amount and such other bills as may be owed by the association, and that the president be directed to notify the following members that there is due from them the sums herewith given: C. M. Hooker, \$3; C. P. Leitch, \$36; E. A. Jones, \$4; D. H. Ming, \$3; Burt Dunlap, \$14; M. W. Stewart, \$5; Geo. Frisk, \$4.60; Thomas Steele, \$14; H. E. Dunlay, \$3.50; R. H. Knight, \$3; H. C. Hooker, \$60; R. B. Maley, \$2.50; P. H. McGuigan, \$16.10; Louis Prue, \$2; B. E. Norton, \$10; Wm. Whelan, \$1.20; Max Mayer, \$6.

The meeting adjourned until Saturday, January 1, 1887.—*Wilcox (Ariz.) Stockman.*

500 or 1,000 partially improved central Texas yearling heifers, delivered at Albuquerque, N. M., at \$11.00 per head. G. L. Brooks, Manager, Socorro, N. M.

Financial Condition of the Northern Association.

The secretary of the Northern New Mexico Stock Growers' association on the 8th inst., presented the following statement of the disbursements and receipts of the association to date, together with his estimate of the probable shortage in the accounts of the association on January 1st next.

DISBURSEMENTS.	
Inspection	\$2,719 25
Travelling	71 75
Return of rebates	10 00
Attorney's fees	302 60
Printing	167 00
Rewards	250 00
Expense	68 30
Sundries	2 50
	<hr/>
	\$3,491 40
RECEIPTS.	
Initiation fees	\$ 47 50
Dues	275 75
Assessments	2,013 58
Ass'n. Assessments	436 70
Rebates collected	10 00
Advertising Br Books	30 00
J. C. Leary, old account	201 74
J. C. Leary	165 53
Discounted notes San Miguel National Bank	400 00
	<hr/>
	\$3,567 06
Leaving a bal. on hand	\$55 56

The probable shortage was placed at \$987.20, which has been provided for by assessment of three-quarters of one cent per head of stock.

The Best Paper in the west. THE STOCK GROWER. Subscribe now and get a premium.

Pool Rates.

The most important action taken by the National Cattle Growers' association, which has closed its session in Chicago, was the adoption of the following resolutions:

Whereas, The pool of railroads running east from Chicago put in effect March 1, a new tariff of freight rates on live stock and dressed meats; and

Whereas, By the new tariff the rates of freight were advanced \$20.00 per car on live cattle, \$43.00 per car on dressed beef, \$40.00 per car on live sheep, and \$90.00 per car on dressed sheep; be it, therefore,

Resolved, That the action of the roads in advancing the rates to unreasonable figures is in direct opposition to the interests to all the cattle growers, farmers, and feeders of the west, and is an extortion which should not be longer endured.

An emphatic protest follows, with a request that the companies will reconsider the tariff, and the various live stock exchanges are invited to join in the protest, and use their endeavors to secure a reduction. Finally the attention of the state legislators and members of congress is invited to the oppression.

G. L. BROOKS, Manager, Socorro, N. M., will contract and deliver to any point in Arizona, the cattle in large or small bunches, bulls in carload lots, old Mexico brood mares, sheep and Angora goats. References, First National Bank of Las Vegas, Albuquerque, Socorro, and El Paso, Socorro County Bank, and Banking House of Browne, Manzaneros & Co., Socorro, N. M.

R. D. HUNTER, St. Louis.

A. G. EVANS, Kansas City.

M. P. BUEL, Chicago.

HUNTER, EVANS & CO.

COMMISSION MERCHANTS IN ALL KINDS OF LIVE STOCK

KANSAS CITY.

CHICAGO.

ST. LOUIS.

Oldest and most popularly known Commission House in the United States.

LIBERAL CASH ADVANCES ON CONSIGNMENTS TO EITHER HOUSE.

KANSAS CITY STOCK YARDS, Kansas City, Mo.

UNION STOCK YARDS, Chicago.

NATIONAL STOCK YARDS, (St. Louis) Illinois.

J. C. LEARY, General Agent and Solicitor for New Mexico and Arizona, LAS VEGAS, NEW MEXICO.

GRANT COUNTY STOCKMEN.

Important Meeting of the Southwestern Association.

A meeting of the Southwestern Stock association was held at Silver City, N. M., on the 20th inst.

The roll being called and a quorum found to be present the regular order of business was proceeded with.

The admission of members being in order, the names of the following persons were presented for membership, properly vouched for, viz: A. R. Davidson, of Pinos Altos; Schuridle & Fuller, range Cienega de Las Burras; Andrew Steward, range south Walnut creek; James Nimick, range Oak Grove.

On motion the rules were suspended and all of the above named gentlemen were duly admitted to membership in this association.

The reports of committees being now in order, the committee appointed to arrange for the printing of the new constitution and by laws, and a stock book for marks and brands, report that they have not yet completed arrangements for the printing of same, and requested further time, which was granted.

Mr. James Hicks was appointed an additional hide inspector on the Upper Mimbres, and requested to co-operate with Mr. John Mitchell in that district.

The account of the Silver City Enterprise Co., of \$15 for printing rewards for the year ending April 1, 1887, was presented and allowed. Also the account of C. M. Shannon for \$10, for the hire of a team used in following up a herd of cattle infected with Texas fever and preventing their introduction upon the ranges of members of this association, which accounts were allowed, and on motion the secretary was directed to issue warrants therefor.

On motion of Mr. Hart, the following persons were appointed as a committee to confer with the agents of the A. T. & S. F. and other railroads in regard to making the best possible terms for the shipment of cattle, viz: Walter Hart, C. M. Shannon and W. A. Leonard. It was moved and seconded that the president of this association shall appoint in vacation such a number of delegates to represent us in the Territorial Stock association, as shall be required upon notice from that association and he is hereby authorized to notify such delegates that their expenses will be paid by this association.

The following resolution was introduced by Mr. E. Stine, and duly adopted:

Resolved, That it is the sense of this association that our delegates to the Territorial Stock association be instructed to insist upon a remodeling of the present inspection laws in regard to stock imported into the territory, with a view to reduce the assessment on the same or do away with it altogether; and further that there be no discrimination against thoroughbred stock.

There being no further business, the meeting was duly adjourned to meet at Silver City on the third Saturday in February next.

J. A. LUCAS, Secretary.
R. HUDSON, President.

1,000 head of well graded Angora goats in the d near Socorro, can be sold and delivered at once at very reasonable figures, G. L. Brooks, Manager, Socorro, N.

Cattlemen Incorporating.

Reference was made in THE STOCK GROWER a short time ago to the fact that some important changes were being made in the management of range cattle properties in Socorro county. We are able to announce this week that the changes have been effected, and that the gentlemen who have been operating their affairs hitherto under partnership relations have now incorporated their business, which will be known hereafter as the Horse Springs Cattle company and the J. D. Reed Cattle company respectively.

The first mentioned corporation is composed of D. C. Kyle, George Smith, W. B. Slaughter and G. L. Brooks. It is a close corporation and only the aforementioned persons are stockholders. The herds and ranches forming the basis of the company's property comprise the old Horse Springs cattle which were purchased by George Smith in 1881, and the D. C. Kyle cattle that were brought into the territory from Texas at a later date, the consolidation of their individual interests having been made in 1888. The herd now consists of 7,500 head of cattle, including this year's branding, 100 horses and fifteen patented ranch locations, controlling a large area of excellent grazing. The officers are George Smith, president, W. B. Slaughter, vice-president and treasurer, G. L. Brooks, secretary and D. C. Kyle, manager. The directors of the company are George Smith, D. C. Kyle and W. B. Slaughter; the principal place of business is Socorro.

Mr. Smith has been absent all summer, going on horseback through Utah, western Colorado, Wyoming and Montana, searching for a location for the purpose of dividing their herd and running their steers on a northern range. This change

is contemplated at an early day and is the principal reason for the organization of the company in its present form, that the business widely separated may be carried on under one management.

The J. D. Reed Cattle company is composed of J. D. Reed, of Fort Worth, Texas, and W. C. Bruton and G. L. Brooks, of Socorro, who are also the directors. The officers are James D. Reed, president and treasurer, W. C. Bruton, vice-president and manager and G. L. Brooks, secretary, the principal place of business is Socorro. This company is also a close corporation. The range is one of the largest and finest in Socorro county and very favorably located, the headquarters ranch being but eight miles from Magdalena. This company has 5,000 head of cattle and 200 head of horses. The calf brand this year is something over 1,300 head but will be considerably more next season as a large number of heifers purchased and put on the range this fall will come into bearing next season. This herd was originally founded and the ranch established by Joe Fowler, but since its purchase in the fall of 1883 by Reed & Bruton, a number of purchases of cattle from Texas have been added.

The articles of incorporation, by laws, etc., of both companies were drawn up by Mr. G. L. Brooks, who can pride himself on the exactness and model appearance of the papers and the thorough manner in which these organizations have been effected.

500 one and two-year-old New Mexico steers at \$12.50 and \$16.50 delivered at Magdalena, N. M. G. L. Brooks, Manager, Socorro, N. M.

The Chicago Market.

There is not much that is interesting to be said of the cattle market. It has been quiet throughout the week under review, and prices have undergone no important fluctuations. The market was firm during Thursday and Friday, and has leaned to weakness since. It is now lower than a week ago for all grades of shipping cattle, common and medium sorts selling during yesterday and today at about the lowest prices of the year. The comparatively light receipts here might have been expected to result in some appreciation in values, and such would inevitably have been the result but for the fact that the eastern and foreign markets have been in a state of utter prostration. Last week's receipts in New York were the largest ever recorded, exceeding 13,000 head, and prices reached the lowest point known for a number of years. The heavy receipts

there are explained in part by the fact that the three great dressed beef firms of Swift, Morris, and Armour have, since the beginning of the strike, been forwarding cattle on the hoof. Although there has been a very decided falling off in the receipts of range cattle, the supply of common natives have increased to such an extent that prices have had no opportunity to recover, and it may be some time yet before we shall see any very radical change for the better in the ordinary grades. The highest price paid during week was \$5.25. There were few of the offerings that were good enough to bring over \$4.90, while the bulk of the sales were at prices ranging from \$3.75 to \$4.50. Many common droves were weighed at \$3.40@3.50 and some as low as \$3.25@3.20. The immediate future does not hold out much encouragement.

Good to best grades of cows and bulls have been salable at rather better prices than prevailed during the previous week. Poor stuff is as low as at any time, the supply having steadily exceeded the requirements of the trade. Sales were reported all the way from \$1.25@1.50 for scrubs, to \$3.00@3.25 for choice cows and heifers and thinish butchers' steers. Bulls sold at \$1.50@2.75, and veal calves at \$3.50@6.25. In the stocker trade there has been a moderate degree of activity, and but slight variation in prices. Prices range from \$2.25 for rough thin lots to \$2.75 for prime droves averaging from 750 to 850 lbs. Feeders are in some demand at \$2.75@3.25. The season for western range cattle is rapidly drawing to a close. There will be scattering arrivals for a week or two yet, but the number to come forward is too small to have any influences upon prices. Good qualities are selling a little higher than on the date of our last report. Texans will continue to arrive for some weeks yet.

QUOTATIONS.

First quality—Fully matured heaves, averaging 1,540 lbs. and upward, per 100 lbs.	\$5.10@5.80
Second quality—Choice smooth fat steers, weighing 1,350 to 1,550 lbs.	4.80@5.00
Good to choice—Well formed steers, weighing 1,200 to 1,350 lbs.	4.25@4.75
Medium to fair—Steers in fair condition, weighing 1,050 to 1,250 lbs.	3.85@4.10
Common—Butchers' steers, weighing 900 to 1,100 lbs., and rough stuff.	3.50@3.75
Feeders—Thin to fair fleshy steers, weighing 900 to 1,150 lbs.	2.75@3.40
Stockers—Young steers of all grades, weighing 800 to 850 lbs.	2.25@2.75
Butchers' stock—Poor to choice cows, heifers, and mixed stuffs, all weights, according to quality.	1.50@2.25
Bulls—Common to good fat.	1.50@2.75
Texas cattle.	2.25@3.25
Milch cows—Common to choice, per head.	20.00@45.00

Knives. Send in a new subscription and get a good knife. Read our knife offer.

For H
M.
TER
Brief
Care
The tra
of the Gi
the Cim
having re
The Pa
Fish & K
of steers
which th
the mark
The T
victims
while dr
Colorado
peded th
over a pr
Great
along th
the insu
by the
wanted f
age of si
The 30
chased r
loaded a
bauch of
Antonio
Mangas
are now
It is r
arisen f
names o
David I
Spaldin
ton, who
under a
Beaubie
Maxwel
The l
badly d
ion that
which i
ness."
abate th
will die
will aff
are lool
John
played
Charlie
policer
wound
21st in
arrest
long to
about t
The f
tion of
to the
subject
some r
gaged
associ
convict
neglect
Kem
county
Mexico
Kansa
\$40.00
eight
netted
over t
grass
in ma
Tue
Dry c
Dry c
proac
prised
floor d
alive
in its
tents.
the or
closet
starve
Mr.
in Li
Inter
the c
busin
has e
that
pay o
purch
on re
with
mark
Mr.
Floor
the b
west
north
zona
Gray
local

RANCHMENS' ROOFING.

For Stock Sheds, Barns, Corrals,
Houses, Smelting Works, etc.



Water and Fire Proof, for Flat and
Steep Roofs. 1-2 cost of any other.

Weight, 60 pounds to square of 10x10 feet.

Anybody can put on from 6 to 8 squares per day.

Thousands of Squares in use in Mexico and New Mexico. Samples can be seen at office Stock Grower.

PRICE, \$2.00 PER SQUARE 10x10 FEET.

M. EHRET, Jr., & CO. Sole Mfrs. W. E. CAMPE, Manager, ST. LOUIS, MO.

TERRITORIAL STOCK NOTES.

Brief Mention of New Mexico Matters Carefully Collated for the Stock Grower's Readers.

The transfer of the steer stock from the ranches of the Gila Cattle company in Socorro county to the Cimarron pasture, is continued, 1,000 head having recently been received on the Red river.

The Palo Blanco Cattle company shipped to the Fish & Keck company this week, one train load of steers, which averaged 937 pounds, and for which that enterprising firm secured the top of the market, \$1.05, netting \$24.78 per head.

The Temple Bros., of Colfax county, were the victims of a loss of about sixty head of cattle while driving a large bunch from their range into Colorado. The heavy storm of last week stampeded the lot and the above number were lost over a precipice.

Great complaint is made by cattle shippers along the line of the Texas & Pacific railway of the insufficiency of cars placed at their disposal by the company. Four hundred cars are now wanted for various destinations and only an average of six cars a day can be furnished.

The 30 head of cattle which E. M. Snyder purchased near Tucson for his Sierra ranch were unloaded and inspected in Deming on Monday. A bunch of 30 head of stock cattle from near San Antonio for the Shannon & Polk ranch at the Mangus was unloaded at Deming last Friday and are now en route to the ranch. —Sentinel.

It is reported that a new set of claimants have arisen for an interest in the Maxwell grant. The names of the parties are Henry Clark and wife, David D. Mitchell, Benjamin Walker, Dunham Spalding, Thomas B. Hudson, and Jacob Houghton, who want an undivided five-sixths of the grant, under an alleged conveyance made to them by Beaubien and Miranda prior to the advent of Maxwell.

The live stock interests of the southwest are badly depressed and the cattlemen are of the opinion that "the Chicago meat syndicate is the vampire which has sucked the life-blood out of the business." The cattlemen talk of taking steps to abate the monopoly. While they are about it they will discover that St. Louis with a new stock yard will afford them just the base of operations they are looking for. —St. Louis Republican.

John Johnson, a young man who has been employed on ranch 61, in Bernalillo county, and Charles Rosa, his companion, shot and killed policeman Henry, of Albuquerque, and mortally wounded Marshal McGuire on the night of the 21st inst., when they were being placed under arrest by the officers. They are supposed to belong to the Evans gang of bad men, who hover about that county. Rosa has been captured.

The Lincoln county association calls the attention of the range fiend who delights in setting fire to the grass, to the laws of the territory on the subject, elsewhere in this issue, and offers a handsome reward for the detection of all parties engaged in such nefarious work. The northern association also offers a reward for the arrest and conviction of any parties who wilfully or by neglect shall cause the burning of the range.

Kemary Ritter, of Red River Springs, San Miguel county, is one of the happy cattlemen of New Mexico. Kim drove a lot of steers to Kiowa, Kansas, and shipped from there. He got a rate of \$40.00 per car, ran his steers to Kansas City in eighteen hours and sold them so that they netted him over \$25.00 each. Kim is in great glee over the success of his drive, as he found good grass and water on the way and saved \$3.00 a head in marketing his bees.

The Black Range says that Mr. S. S. Staley, of Dry creek, while passing by a deserted cabin on Dry creek, near the Buffum mine, accidentally approached the cabin and, on looking in, was surprised to find three head of his cows lying on the floor dead, and a calf, which was with them, just alive. The calf, in order to exist, had eaten a hole in its mother's stomach and feasted on its contents. It is supposed that the cattle had entered the open door of the cabin, and in some manner closed it and were unable to escape and were starved to death.

Mr. Geo. M. Casey, who has large cattle interests in Lincoln county, in a conversation with the Inter-Republics shows that he has great faith in the continued or renewed success of the cattle business, and thinks that now is the best time he has ever seen for making investments. He says that young steers bought at present prices will pay one hundred per cent. profit in two years if purchasers can only secure good ranges for them on reasonable terms. This estimate is made, too, without any allowance for an advance in the beef market which is sure to come with next winter.

Mr. Godley, of the cattle firm of Godley & Flood, who has traveled over the west, says that the best indications of returning prosperity in the west is that capitalists from Chicago and the northwest are investing in New Mexico and Arizona ranch property. He says Hall, Ashton & Gray have sold their San Pedro ranch, which is located partly in Old Mexico and partly in Ariz-

zona, to Chicago parties. Several other trades of equal magnitude are in course of negotiation. Some of those wishing to purchase are retired lumbermen from the northwest. A large corporation, the name of which he did not want published, has invested large sums in Old Mexico and Arizona ranch property. In fact, Mr. Godley says, the sentiment all the way to the Pacific slope is, that there is about to be a revival of prosperity in the cattle business, and that now is the accepted time to invest in that property. The slightest reaction in the beef market between this and spring will make ranch property go up with a bound. —Dallas News.

A half-dozen shipments of eastern raised stock have arrived at Trinidad the past week, for admission into New Mexico. Most of the shipments were found by deputy inspector Chaffin to be not from prescribed localities, and being in good health and the shippers having proper bills of health, the cattle were admitted. Mr. A. E. Henning, of the Billings Land & Cattle company, of Billings, Arizona, however, was made to unload and rest his stock, and as they were loaded at Plano, Ill., though Mr. Henning had bills of health from the proper authorities, Mr. Chaffin detained the car at Trinidad three days, more as an act of humanity to the animals contained therein than from fear that the bulls were infected with disease. The Henning bulls had been on the car four days and nights without unloading and when taken out on Sunday at Trinidad were in a feverish and despondent condition, many of them being unable to walk from bruised and stiffened joints. Mr. Henning intended to make the entire trip without unloading, from Plano to Billings, and had not the inspector in the interest of humanity forced the shipper to put the lot into the pens at Trinidad for rest, not a bull would have been taken alive from the car at the journey's end. Such inhuman acts as this are just the causes that superinduce disease among cattle, and if the brutality of the shipper cannot be overcome in any other way, then the law should step in and save the dumb beasts.

Good Books. Read our book offer to new subscribers. Such books would cost you from \$1.50 to \$3.00 each.

Business Pointers.

The Scientific American, published by Munn & Co., New York, presents weekly to its readers the best and most reliable record of various improvements in machinery, while the scientific progress of the country can in no way be gleaned so well as by the regular perusal of its pages.

Prices of pure-bred, 15-16, 7-8, 3-4, and ordinary Angora goats, given upon application; also circular of information, estimates of expenses, profits, etc. G. L. Brooks, Manager, Socorro, N. M.

Range Stock Yards.

St. Louis, Nov. 21.—The project of building new and extensive stock yards in the western part of the city, which was first broached by the International Range association, and has been vigorously pushed by members of that organization in conjunction with capitalists of this city and the east, has so far progressed that the first installment on the land designed for the yards has been paid and the enterprise will be carried to as early completion as money can accomplish.

The yards will embrace about 200 acres of land, west of the city, lying between the tracks of the Missouri Pacific and the St. Louis and San Francisco railroads, and facilities for handling stock of all kinds and for the transaction of all business, will be ample to meet all requirements, present and future.

A charter will be procured within ten days and a company formed and officers elected, but who the officers will be or the amount of capital stock has not yet transpired.

1,500 head of the best grade of Chihuahua cattle rounded-up and ready for shipment, consisting of 1-3 cows from three to six years old, 1-3 two-year-old heifers and 1-3 yearling heifers delivered at Albuquerque at \$12.50 per head. G. L. Brooks, Manager, Socorro, N. M.

Herrick Clothing Company!

KANSAS CITY'S BEST CLOTHING HOUSE

For Range and Stock Men.

CORNER OF MAIN AND SIXTH STREETS, KANSAS CITY, MO.

We have no "ropers in" in our employ. Our clothing and gents furnishing goods are all marked in plain figures. We have one price only.

Now then come direct to our store when you are in the city, for, from what we know of the cowboy, we know he is able to care for himself whether on the range or in a crowded city, and he don't require any "cappers" to steer him.

We are clothing outfitters, and we can make suits and overcoats to your order. We keep in stock cowboy buck goods, overshirts, etc.

Samples and Rules for Self Measurement Sent on Application.

We are white men and Americans in name and nature. All are invited to make our store headquarters when here. All orders sent us will be carefully filled.

WE ARE THE RESTLESS CLOTHING MEN.

Cut this out and bring with you.

HERRICK CLOTHING CO.

OUR PREMIUM KNIVES.

Any person sending in the name of a new subscriber to THE STOCK GROWER, accompanied by three dollars, will receive by return mail one of these splendid pocket knives free. Remember that any new subscriber for one year gets a choice of the knives. Send in names at once as this offer will continue only until February 1, 1887.

TAKE YOUR CHOICE.



"Texas Hunter." This is a valuable companion in the field; oil tempered, hand forged, saber blades; ready for any use; cut shows exact size. Buckhorn handle. This knife is made for the wear and tear of all purposes. The cutting quality is unsurpassed. Try one and prove its rare quality.



The "Toledo Blade." This knife is a great favorite, owing to the shape of the blades. They are very sharp at the point, and the fact that they are made from the finest razor steel, hand hammered, makes it a desirable knife for everybody. Ebony handle.



"Buckeye Whittler." This knife is our latest. 'Tis made for use, and will not disappoint you. It is the best whittler you ever had in your hand. The handle is of cocoa wood, very strong. Blades are hand hammered from the best razor steel. Are oil tempered and file tested. We positively declare you cannot find a better knife for general use than our Buckeye whittler. We fully warrant it.

THE STOCK GROWER.

ISSUED WEEKLY AT

LAS VEGAS, NEW MEXICO.

Office, Bri Street, in Stock Grower Building.

THE STOCK GROWER COMPANY.

Subscription Price, \$3 a Year.

Single Copies, Ten Cents.

ADVERTISING RATES ON APPLICATION.

Address all communications to THE STOCK GROWER, Las Vegas, New Mexico.

Only journal devoted exclusively to the stock growing interests of the Southwest. We give the cattle news of the range country. Endorsed by every cattle association and representative ranchman in the southwest.

Official Paper of the Pima County, Arizona, Ranchmen's Association.

Official Paper of the Lincoln County Stock Association.

Official Paper of the San Miguel County Stock Association.

Official Paper of the Dona Ana County Stock Association.

Official Paper of the Central New Mexico Stock Growers' Association.

Official Paper of the Canadian River Live Stock Association.

Copies of this paper for sale by

Wm. Long, St. James Hotel, Kansas City.
ASTOR HOUSE NEWS STAND, New York City.
S. H. PERRY & SON, Cincinnati, Ohio.
OTIS TURKIN, El Paso, Texas.
Copies of the Stock Grower are on file at the American Exchange 449 Strand, London, and American Exchange, 35 Boulevard des Capucines, Paris.

SATURDAY, NOVEMBER 27, 1886.

The article on page eight of this issue under the heading, "F.P. Cranes' Opinion," should have been credited to the *Rural World*.

The Chicago syndicate is responsible for the present depression of cattle values by reason of their extreme hostility to all measures of protection against contagious bovine diseases.

NELSE MORRIS and associates of the Chicago syndicate, it is known, paid the late Emory Storrs, \$20,000 to go to Washington and defeat legislation that was being had for the protection of the live stock industry of the country against pleuro-pneumonia.

The St. Louis market will greatly aid the northern steer raiser, who by reason of the nearness of the Chicago yards must continue to patronize that market, in relieving the glut of stocks there, and thus get prices for his steer product based on the law of supply and demand.

WHILE contagious bovine diseases are rampant in the country, would it not be exercising a just precaution in the interest of all cattle raisers for the western stockman to forbear purchasing bulls east of the Mississippi river. No one can afford to take chances on the introduction of pleuro-pneumonia into the herds.

WHAT is necessary to be done at the present hour is pretty generally understood by the steer producer. Now let us all go to work according to our knowledge and make steers sell for four cents. Raising beef for the benefit of four men is not an enterprising occupation when there are sixty millions of people who are able to consume the entire product without first having to pay a tribute to the robbers of the Chicago market.

THE western cattlemen are beginning to understand just how it has been possible for the Chicago stock yards management to water their capital stock from \$1,500,000 to \$14,000,000. Hay is bought for thirty cents per hundred and sold for \$1.00, corn at thirty cents per hundred and paid for by the shipper at \$1.00. It has been rob-

bery there of the cattlemen by all departments, from the dressed beef men down to the chap that is supposed to feed the cattle in the pens.

It is an undisputed fact that the railroads stand in with the syndicate at Chicago and between them they exact a toll of about \$2.00 on every steer going to market from the range country. The cattlemen of the southwest have been robbed this year of nearly \$100,000, an amount of hard cash which they could ill afford to contribute to the already swollen wealth of the Chicago bandits. The remedy for this monstrous speculation lies in a thorough organization of the rangemen to control their own shipments and thus save the profits to themselves.

THE last number of the *Denver Record* showed considerable virility and enterprise in the way it took in hand the Chicago blood suckers, and it presented a startling array of facts on the questions of the hour which every rangeman should read. The *Record* has the support and sympathy of the entire range country in the good work in which it is engaged. Eight pages of unanswerable arguments, such as the *Record* contained, all directed to a single point, will stir up the dry bones of the enemies of the range cattle industry, and convince them that the western steer producer will no longer be robbed, or allow his affections to be tampered with.

It has been claimed by some of the leading men of the northern country that the Chicago association would accomplish all the possible good that the friends of the International Range association have asserted for it. The Chicago association has adjourned and beyond passing resolutions favoring the stamping out of pleuro-pneumonia and asking for congressional legislation to regulate freight rates, has done nothing for the benefit of the cattle raising industry of the country. THE STOCK GROWER has been an earnest advocate of all measures to protect cattle from disease, and while it has only words of commendation for the work the Chicago association has undertaken, to secure legislation to stamp out pleuro-pneumonia, at the same time it begs to call the attention of the range cattle raiser to the fact that even if all contagion was stamped out in the United States and importations from foreign countries were shut off, he would become a granger and his business bankrupted if steps were not taken to protect his interests from the diabolical machinations of the dressed beef syndicate which is lowering the prices of beeves without cheapening beef-steak.

It is authoritatively stated that the Chicago stock yards, which originally cost but \$1,500,000, are now paying dividends on a capitalization of \$14,000,000; that the National stock yards of East St. Louis, costing \$1,200,000, are paying dividends on \$1,500,000, and that large dividends are being paid by the Omaha and Kansas City stock yard companies. These yards are all owned, or practically so, by the same men. Will the rangeman require any further application of facts to prove to him that it is nearly time to take a hand in regulating some of the forces for his own good, that he has been compelled to pay such exorbitant tribute to the past few years? The St. Louis yards will be operated for the benefit of the range steer producer. In the light of such facts as THE STOCK GROWER has presented regarding the methods that have been employed by the Chicago ring to throttle him, to hold him up, to rob

him, it is not at all surprising that the range cattle interests from one end of the country to the other are united as one man to support the project of building up the range cattle yards at St. Louis, and thus save themselves from utter destruction.

A DAMNABLE LAW.

A SUBSTANTIAL evidence that the laws of this territory need sensible revision was shown this week in a case tried before Judge Long at Las Vegas. The defendant was the Montezuma Cattle company, and the plaintiff Lorenzo Labadie, of San Miguel county, a farmer and fruit raiser. The claim was for \$5,000 damages alleged to have been committed by the inroads of the Montezuma company's cattle upon an unfenced field of the plaintiff's. The claim bore upon its face fraud, extortion and robbery, as if the stock had eaten Mr. Labadie's house, real estate, fences and full crops, the total at \$5,000 would probably represent double what Labadie turns in to the assessor, under oath, for taxation.

The jury in the case returned a verdict for over \$1,000 in favor of plaintiff. This is cold blooded robbery, and the jurors should be at once arrested as accessories. The damage done, as shown by the testimony of witnesses, consisted in the browsing of some willow brush.

The coming legislature must give us a fence law, or capital will be driven out of the country; and the whole territory impoverished by robbers, who, licensed by the present unjust and obnoxious herd law, plant scanty crops, unfenced, for the sole purpose of collecting damages from the unfortunate owners of stock which may stray into the unprotected two-dollar corn patch. This is not all. Some of these ambiguous agriculturists eke out a starvation existence by driving stock into their petty patches and then hastily hunt up the owner to view the ruin and plaster the complaint of the pilferer with a bank note. Hundreds of men annually pay various amounts in this way, knowing it to be extortion, but so doing to save annoyance and further expense.

New Mexico wants farmers—plenty of them. Let them come. But we want honest farmers, and no man can be counted as such who trusts to an unjust law to fence and protect his crops from cattle. When the wire fence or stake-and-rider farmer comes, the cattlemen and THE STOCK GROWER will meet him with open arms.

The Montezuma company will appeal to the supreme court.

THE WEAK POINT OF THE CHICAGO MEETING.

We have carefully read accounts of the proceedings of the Chicago association as given in the newspapers, and we regret to see that no action was taken by that association favoring the prohibition of cattle entering the United States from countries where contagious diseases exist. The *Breeders' Gazette* has opposed the shutting out of importations of cattle, and it would appear to the public at large that the influence of that paper has been potent in preventing the meeting from taking such action as would have represented the almost unanimous feeling of the stockmen of the United States.

THE STOCK GROWER called attention some time ago to the action of the Farmers' congress at Minneapolis which unanimously adopted a resolution favoring the shutting out of all importations. The *Breeders' Gazette* has a large patronage in the way of advertisements from traders and importers who would be injured by

the adoption of radical measures of protection that the people of this country want.

It is well known by all who are conversant with the facts that the government regulations as regards cattle importations as heretofore enforced at our ports of entry are a farce; that cattle seeking admission to quarantine stations which may be infected with disease, are driven over the same walks and alley ways that animals which had been held the required ninety days, and which have been given bills of health, enabling them to be taken to any port in the country, have passed over. Assuming that cattle held ninety days among which no disease has appeared are healthy, it is possible for them to contract disease while passing out of the yards which will develop afterwards when out in the west and possibly on our ranges. There is too much at stake for any chances to be taken, and it is high time that the interests of the cattlemen of America were protected and that any association of stockmen claiming to be national should be freed from the influence of traders and importers and subsidized journals.

The Canadian authorities have prohibited the importation of live stock from certain parts of Great Britain. Australia which has been scourged into bankruptcy, has taken similar action, and why the cattlemen of the United States should submit to risks that Australia and Canada decline taking is beyond the comprehension of this journal, except that the moneyed interest engaged in importing cattle and papers like the *Breeders' Gazette* which are subsidized by them, should pervert the wishes of the nation.

It is further well known that there has been an outbreak of pleuro-pneumonia at Quebec among cattle shipped in from Scotland, and while it is considered that, a ninety days quarantine does not establish the fact of freedom from disease, but that on the contrary, in numerous instances on record, pleuro-pneumonia has broken out among animals that have been held in quarantine for three months and were presumed to be healthy, it will be seen that we are standing on an unsecure foundation and that the Chicago association has been remiss in its duty to the country. A case in point which has just come to the notice of THE STOCK GROWER is that of a trader who has purchased a lot of Galloway cattle from infected Scotland, and now has them in quarantine at an eastern port of entry intending to ship them to the range country where it is proposed that they be sold. These cattle should be quarantined for six months at whatever point they attempt to pass into the range country and no attention should be paid to the bills of health obtained at the port of entry. This will be a valuable lesson to the unscrupulous traders who for the sake of pelf are willing to jeopardize the entire cattle interest of the western country.

In honorable contrast to the course of this unscrupulous trader is the action of the Leonard Bros., of Missouri, leading Galloway breeders of America, who have refrained from importing any cattle this season on account of the danger that would be incurred to the health of our western herds.

The matter simply reduces itself to one of protection for the cattle interests. No consideration as affecting the best measures to be adopted to this end should be overlooked. Every interest and every man that is a part of the live stock industry of America must do the right thing at this time, and let the item of individual expediency be a secondary consideration. The better sense of the industry in a matter of safety for its interests is superior to all selfishness, and must in the end win.

R. C. WHITE.

ESTABLISHED 1871.

GEO. HOLMES

R. P. NEWBY,

Las Vegas,

Representative in New Mexico and Arizona.

WHITE & HOLMES,

G. L. BROOKS,

Socorro,

J. W. VIRGIN,

San Marcial,

Representatives in N. M. and Arizona.

Commission Merchants

Rooms 28 and 29, Exchange Building,

No firm doing a commission business in Kansas City handles more New Mexico or Arizona cattle, or obtains better prices than ourselves, and we refer with pleasure to the many prominent shippers of New Mexico and Arizona who have done business with us.



All Kinds of Live Stock

Stock Yards, Kansas City, Missouri.

LIBERAL CASH ADVANCES ON CONSIGNMENTS OF LIVE STOCK.

TALKING ABOUT PLEURO.

The Chicago Convention Discuss the Disease.

From the Chicago *Tribune* we take the following matter relative to the doings of the National convention of cattlemen in the matter of pleuro-pneumonia. It says:

The Cattle Growers' convention met in the call room of the board of trade yesterday.

The question of pleuro-pneumonia came up for consideration. Dr. Salmon, chief of the United States bureau of animal industry, read a paper covering the history of the disease and the main points of the outbreak in Chicago. A vote of thanks was moved and carried, and Mr. Sturgis, from the committee on resolutions, reported a series acknowledging the spread of the plague and calling upon congress for appropriate legislation to stamp it out.

Mr. Henry E. Alvord, of New York, from the committee on legislation, appointed a year ago, told of the failure of their efforts to secure the necessary measures at the hands of congress during the last session, and charged Mr. Hatch, of Missouri, with having promised to give the animal disease bill precedence when his committee was called, and instead of doing so took up the time with the act making the commissioner of agriculture a cabinet officer.

The resolutions upon pleuro-pneumonia of the National convention of veterinarians and sanitary officers was read. Mr. Wilson, of Iowa, stated his utter lack of confidence in congress. He was glad to see the conversion of Mr. Washburne, the chief man of the stock yards interest, because it was the influence of the stock yards people and the railroads that had heretofore prevented the adoption of needed measures at the hands of that body. His idea was that perhaps \$5,000,000 used during the next five years might rid the country of the plague.

Mr. S. V. Frankland, of Toronto, was given time to talk of the beef trade from an English point of view. It was only an imaginary line that separated Canada and the United States, and their interests were really the same, he thought. Every one can trade in Great Britain; any country with a clean bill of health can ship cattle there. But when the cattle were placed on the dock they were to be examined, and stand there for twelve hours and then undergo a second examination. The farmers should know their cattle and be familiar with them all, or there will never be a cultured farming population in this country. The work was smooth for several years, when the medical officer at Liverpool saw the lungs of a dead animal, and at once said the cattle had pleuro-pneumonia. These being American cattle he thought the authorities of the government should give some assistance. He went to London, and was ordered out of the office of the Duke of Richmond. He had to slaughter them, and there were no houses for the work. Great Britain will not buy refrigerated or canned meat, and what we wanted was an ocean bill of health and a good feeling with all the world.

Dr. Ames, of Montana, offered the following resolution:

Resolved, That the speaker of the house of representatives of the next congress be and is hereby

requested and urged to name as chairman of the committee on agriculture, an able, strong and conscientious man; a man who knows enough to know that he is not omnipotent and infallible in judgment, and who will be governed by a conscientious desire to faithfully and honestly serve the great interests entrusted to his committee, rather than by a weak and vain desire to magnify his own importance and gratify his own inordinate vanity and self-esteem. In short, a man who will be able to raise his committee to the first rank, which the importance of the great agricultural interests of the United States entitles it to hold, instead of sinking it to the low level to which it has unfortunately fallen.

The resolution was referred to the committee.

Mr. Towers presented a series of resolutions calling for an agitation committee of three from each state and territory, and Dr. Salmon stated that there was no necessity of wasting time upon the commissioner of agriculture, as he was in full accord with the convention.

The resolutions reported in the morning were read and adopted with some verbal changes. After reciting that contagious pleuro-pneumonia exists in Cook county; that its presence threatens an entire interruption of inter-state commerce in this important article of trade; that state legislation is inadequate to control the plague, congress being called upon to make sufficient appropriation and provide ample machinery to stamp out the disease; that a committee of five be appointed to go to Washington and see to the passage of laws leading to the desired result; that Dr. Gadsden's ideas as to the prompt slaughter of diseased cattle and the indemnity of owners be endorsed. Also the following additional resolution:

Resolved, That it is the duty of federal, state and municipal authorities to unite in an effort to extirpate pleuro-pneumonia, wherever it may be found, by destroying diseased cattle and those having been exposed to disease, so far as possible, purifying all premises in which the disease has existed, and adopting stringent sanitary regulations with regard to the management of cattle in the feeding stations.

The committee also recommended the passage of a resolution against the practice of inoculation, and urging the fixing of legal penalty for such practice. As Dr. Huidekoper and others thought the prohibition should be limited to pleuro-pneumonia it was again referred. The committee also reported for endorsement the resolutions of the veterinary convention, and the endorsement was followed. Dr. Ames' resolution of the committee on agriculture provoked considerable debate, principally upon the expediency of passing it at the present time. Dr. Ames supported it with a most searching review of Mr. Hatch's past conduct as the chairman of the committee. Mr. Alvord also supported it, while Judge Carey, of Wyoming, thought it inexpedient. The convention was absolutely in the hands of Mr. Hatch, and legislation could only be secured through his committee. Mr. Smith, the president, went over the whole ground of the efforts made by the cattle trade to secure legislation. Hatch from the first had declared that it was his bill or nothing.

After considerable parliamentary fencing a motion to recommit was lost by a vote of 49 to 32. A motion to postpone its consideration to the next convention was lost 46 to 34. Dr. Ames then offered the following as a substitute, which was greeted with applause:

Resolved, That in the judgment of this convention Mr. Hatch, the present chairman of the agricultural committee, is responsible for the lack of proper legislation competent to grapple with the present pressing need of the great cattle industry of this nation.

This was carried by a vote of 48 to 38. Resolutions requesting the president of the convention to urge President Cleveland to emphasize the pleuro-pneumonia question in his annual message and to memorialize the same by the committee was read and referred. The inoculation resolution was reported limiting the prohibition to pleuro-pneumonia and carried unanimously. A motion was carried placing all the work of congressional legislation in the hands of the committee to be appointed, sub-committee and all.

In the afternoon the consolidation with the National Cattle and Horse Growers' association, under the head of the Consolidated Cattle Growers' association of the United States, was effected and the following officers were elected without a dissenting voice: D. W. Smith, of Illinois, president; W. A. Powers, of Missouri, first vice-president; Elmer Washburne, of Illinois, second vice-president; Henry E. Alvord, of Massachusetts, third vice-president; A. H. Sanders, of Illinois, secretary; John Clay, jr., of Wyoming, treasurer.

An executive committee was chosen consisting of fifteen members, from as many different states. The convention then adjourned subject to the call of the executive committee.

500 to 1,000 head of central Texas, partially graded one and two-year-old heifers, fifty per cent. of each age, delivered at Albuquerque at \$13.50 per head. G. L. Brooks, Manager, Socorro, N. M.

Giving Away Cattle.

We do not blame any one who has taken the pains to bring good steers into prime condition for being somewhat disheartened when he is compelled to accept four and one half cents for them in the wholesale market. As a net price this is anything but satisfactory, but when it comes to paying freight and commissions out of it the return is discouraging indeed. It is all very well to reason that cattle will not always sell this way—that a better day must come again; that is philosophy. In contradistinction from this the grower knows that his cattle have gone at a loss; that is experience. And when philosophy and experience are pitted against each other in shaping up a man's feelings, the latter very generally gives the cast to their character. Cattle are doing outrageously—and what is to be done about it? Are they for that reason to be driven from the farm and banished from current agricultural production? That will not do, for observations tell every man who has eyes that, about the time the stock of cattle in the country should be reduced to the lowest point, they will be wanted again, and wanted badly. When the whirligig of trade shall have brought prime beeves to the front again, every producer will want to be well up in the procession. Don't forget this.—*National Stockman*.

One or more train loads of western Texas stock cattle, partially graded; cows and calves \$22.50; dry cows, two-year-old heifers and two-year-old steers \$16.00; yearling heifers and steers \$11.75; delivered at Albuquerque or at any other railroad point in New Mexico or Arizona at proportionate prices. G. L. Brooks, Manager, Socorro, N. M.

Fourth Annual Meeting of the Red Polled Cattle Club of America.

The Red Polled Cattle Club of America met in club room A, at the Grand Pacific hotel, in the City of Chicago, at 7 o'clock p. m., the 17th of November, 1887, President Ross in the chair.

The officers were all present, also the following members: S. A. Akins, Grandville Jones, Joseph McCoy, B. W. Plummer, Lester Teeple, of Illinois, S. A. Converse, Wm. Hanke, J. C. Murray, R. Elwood, L. F. Ross, P. G. Henderson, of Iowa, J. F. English, J. M. Knapp, of Michigan, W. H. Stone, of Minnesota; J. B. Mead, of Vermont; Wm. Steele, of Wisconsin; T. W. W. Sunman, of Indiana; Wm. Warren, of Kansas and Ira Haseltine, of Missouri.

Minutes of the last meeting were read and approved. The president's address being read was ordered placed on the files of the society in the secretary's office.

The secretary's report was read, and on motion it was resolved to adopt the suggestions therein contained and that the report be placed on file.

The society decided by vote to charge double registry fees for cattle owned by parties not members of the club.

Colonel Mead reported in favor of giving consideration to the subject of registering "Colonial Red Polls." The society decided by vote not to change the rules of registry.

The secretary was instructed to issue for each animal recorded a certificate of registry, and to begin to receive pedigrees as soon as the proper blanks could be prepared.

The president and the secretary were authorized to proceed with the publication of the foundation volume of the American Red Polled Herd Book.

The society voted to have 1,000 copies of the foundation volume printed, and to sell copies to members of the club at cost and to charge non-members a profit of 100 per cent.

The secretary was instructed to sell the remaining copies of the registry—at ten cents per copy.

It was found that the importations for the present year would exceed 100 head.

A committee, consisting of J. C. Murray, S. A. Converse and P. G. Henderson, were appointed to have charge of the subject of an exhibit of red polls at the Fat Stock show at Chicago in 1887.

The secretary was instructed to keep a list of persons desiring to exchange animals. It was found that those present owned over 200 head of thoroughbred cattle and over 600 grades.

The following officers were elected for the ensuing year:

L. F. Ross, Iowa City, Ia., president; J. B. Mead, Randolph, Vt., vice-president; J. C. Murray, Maquoketa, Ia., secretary and treasurer.

Executive committee. Wm. Steele, Merton, Wis.; J. M. Knapp, Bellevue, Mich.; I. S. Haseltine, Dorchester, Mo.

The officers were instructed to consider if any change could be made in the rules of registry with advantage to the society and to report at the next annual meeting.

Adjourned to meet at the call of the president. J. C. MURRAY, Secretary.

F. P. Crane's Opinion.

Mr. F. P. Crane, of Independence, Mo., passed through Pueblo this week on his return from Oregon, where he has been with a couple of carloads of "white faces."

Although most of the Missouri cattle breeders met with success last season in their sales of thoroughbred and graded cattle, both to ranch and farms, the success of Leonard Bros., the leading Galloway people, was phenomenal.

I have just returned from a trip through the southern part of New Mexico and grass is thick and matured beyond all danger from frost.

400,000 acres of a well watered and well grassed grant to lease for a term of years at a very low rental.

Jumbo Gaining.

For the month of October the following is the report of steer-feeding at the Agricultural college:

Table with 4 columns: Weight, Sept. 30, Oct. 31, Net Gain. Rows include Jumbo, Hereford grade, Angus grade, Devon grade, and Galloway grade.

These steers, during that time, consumed the following number of pounds of feed: Chop, Roots, Squash, Hay, Total.

Three months for 25 cents. In order to introduce THE STOCK GROWER to many who do not now take it, we will send this paper for three months for the small sum of 25 cents.

Chicago's Crisis.

If Chicago will maintain the lead in the live stock markets of the country which now fairly belongs to it, by reason of the great advantages it affords for consumption, for manufacture, and by shipments of animal products, and by reason of its geographical relation to the greatest stock raising region on the continent—if this is not to be at least impaired, if not absolutely lost—the pleuro-pneumonia affair must be boldly tackled and thoroughly eradicated.

A ranch for 1000 head of cattle, good grass, located near Socorro, N. M. Price, \$800.00. G. L. Brooks, Manager, Socorro, N. M.

DICK DUTCH, WITH CLARK & CO., Hatters, 524 Main Street, KANSAS CITY, MISSOURI.

A complete line of Stetson's Hats for stockmen. Send statement of size worn, and hat will be sent by express, subject to approval.

ARIZONA. Santa Rita Cattle Co. [ISAAC N. TOWN, Superintendent. Postoffice, Calabasas, Pima county, Arizona. Range, Santa Cruz river, Pima county, Arizona. Calves of 1886 and imported bulls are branded same as cut on left hip.

Maish & Driscoll. Postoffice, Tucson, Arizona. Range, on Santa Cruz river, south of Tucson, Pima county. Horse brand [S] on the left hip.

A. L. Morrison & Sons. P.O.: Springerville, Arizona. Home ranch, Mamie creek, near Escadilla Mts. Ear marks, underslope right, crop left. Horse brand, same as cattle, on right hip.

ARIZONA. Cameron Brothers. P. O.: Lochiel, Pima county, Arizona. Telegraph and Express office, Crittenden, on the New Mexico and Arizona railroad. Range, on the San Rafael de la Zanja Grant. Ear marks, right cropped, left slit. All cattle in the quarter circle U brand are marked underslope the right, swallowfork in left. Cattle also marked with two dewlaps. Horse brand, like cut on either thigh. All mares are branded like cut on either hip.

Harry K. Hildebrandt. P. O., Lochiel, Arizona. Range, Cienega, Joaquin, Antelope and Bear Creek valleys, of the West Huachuca. Mares branded on either hip. Horses on left hind leg and thigh. Cattle on both sides or hips.

Artec Land and Cattle Company. [Limited.] HENRY WARREN, General Manager. Post office address: Holbrook, Arizona. Range, Apache and Yavapai counties. All cattle branded same as cut on both sides. Horses [L] on right and some on left shoulder, also [HS] right flank.

Whoever handles these cattle without authority will catch hell. Jones & Wires. P. O.: Duncan, A. T. Range, Gila river, A. T.

William Curtis. Woods & Potter, Managers. Post Office, Woodruff, Apache County, A. T. Ear mark: crop right over bit left. Horse brands [O] on left thigh, and [E] on left hip.

Gardiner, Gillies & Wilmerding. P. O.: Navajo Springs, Apache county, Arizona. Range, Deer and Cedro Springs, Apache county. Ear marks, right ear is grubbled. All cattle in addition to above brand, have an X on the left jaw. Horses are all branded [C] on right shoulder.

Hunings & Cooley. Breeders and Importers of Thoroughbred and Graded Cattle. P. O.: Show Low, Apache county, Arizona. Horse brand, same as on cattle, on left shoulder.

ARIZONA.

\$1,000 REWARD: I desire to call attention to my marks and brands for cattle, as shown in cut. I sell no stock cattle, and will pay \$1,000 reward for the arrest and conviction of any person or persons unlawfully handling cattle in the following brand and marks.

J. H. Hampson. P. O.: El Paso, Texas. Ranch P. O.: Clifton, Arizona. Range, on Eagle creek, Graham county, Arizona. Ear marks, crop and split left, crop right. Horse brand, [4] on the left shoulder.

William Garland. Postoffice, Albuquerque, New Mexico. Range, Little Colorado river, Apache county, Arizona. Other brands, [LO] on the left shoulder and the left hip. [OO] on the left side. Horse brand, same as cut, on the right hip.

Milo A. Smith. P. O.: Springerville, Apache county, Arizona. Range, Escadilla mountains, Apache county, Arizona, and Johnson's Basin, Socorro county, New Mexico. Other Brands: ELC side, on left side and [S] on left hip. ELC on left side and [S] on left hip. Horse Brands: ELC and also [S] in circle on the left hip.

Smith, Carson & Co. P. O.: Springerville, Apache county, Arizona. Telegraph and express office, Navajo Springs, Atlantic and Pacific railroad. Ear marks: Crop off the left. Horses branded: [V]

David Rope. P. O.: Holbrook, Apache county, Arizona. Range, Rope's ranch, four miles west of Holbrook, south of the Little Colorado river. All cattle have two bars on left jaw, and are marked with a half under-crop in each ear. Horse brand, XV on the left hip.

Hunings & Cooley. Breeders and Importers of Thoroughbred and Graded Cattle. P. O.: Show Low, Apache county, Arizona. Horse brand, same as on cattle, on left shoulder.

JAMES H. CA Union Stock

Liv

Offices, R

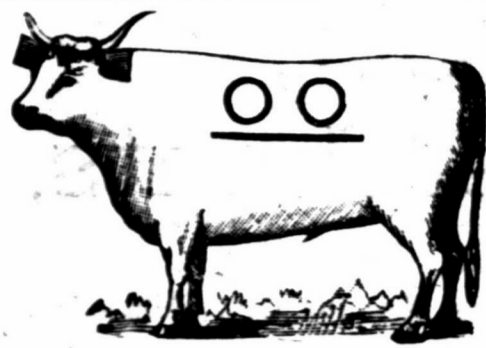
THE S LAS V

SATURDA

Items of LI G

S. K. Sydes, c... Kim Ritter, o... Mr. Raymon... E. W. Keen, ... R. Mings, ... R. C. Temple... Brown Harri... Wm. Robert, ... Professor L... C. C. Sheph... J. C. McWill... E. W. Wal... J. C. Leary... Mr. Evan H... Mr. Edw... The J... A fast l... society... sunk w... hand... at half... had... by halv... had four... at t... Mr. Edw... the K... A fast l... society... sunk w... hand... at half... had... by halv... had four... at t... Mr. Edw... the K... A fast l... society... sunk w... hand... at half... had... by halv... had four... at t...

NORTHWEST TEXAS.



O. J. Wiren. Cattle Raiser and Dealer.

Postoffice, Colorado, Texas. Ranches in Fisher and Kent counties. Horse brand, circle bar on left hip.

NEW MEXICO.

The Counties under this heading are all in the Territory of New Mexico.

SANTA FE COUNTY.

Santa Fe Cattle Co.

W. C. BISHOP, Manager, Santa Fe, N. M.



This brand kept up.



Additional brands: FW A 44 Ranch twenty miles west of Santa Fe, N. M.

RIO ARRIBA COUNTY.

Chama Cattle Company

DERWENT H. SMITH, Mgr.



P. O.: Box 132, Santa Fe, N. M. Range, Canon de Chama grant. Horse brand, same as cattle, only smaller.

Ear marks: Hole cut out of ear shaped thus: with point of triangle toward the end of ear.

T. D. Burns.

P. O.: Tierra Amarilla, N. M. Range, Canon Largo. Brand on either side.



BERNALILLO COUNTY.

Jacobo Yrisarri.

P. O. Albuquerque. Range, Trinchera mountains. Ear marks, over and under back in right ear. Other brands same as cut.



Mariano Perea.

P. O. Bernalillo, N. M. Range, La Jara. Ear marks, swallow-fork left.



SIERRA COUNTY.

Henry G. Toussaint.

P. O.: Engle. Range, near Engle, Sierra county, N. M. Horse brand, left hip.



Vent brand on horses under original brand. Other brands on cattle and horses: NI AF

Vent brand on cattle, same as on cut, but inverted and run on neck.

C. Hearn.

P. O., Fairview, N. M. Range, Panvrecta creek and vicinity of Fairview. Ear marks, figure 7 underbit in each ear. Additional brand, G L on left hip. Horse brand, same as cattle on left thigh.



IRWIN, ALLEN & CO. 1 & 2 Stock Exchange. LIVE STOCK Commission Merchants. KANSAS CITY, MO.

ESTABLISHED 1874.

S. D. IRWIN. E. A. ALLEN. J. N. IRWIN

LIVE STOCK Commission Merchants

REFERENCES:

Bankers and Business Men of Kansas City and Stock Men Generally.

J. R. STOLLER, Cattle Salesman. SAM T. RIAL,

JOHN R. ROUSE, Hog and Sheep Salesman. JOHN E. HALE, Office

J. R. STOLLER & CO., Live Stock Commission Merchants,

Rooms 6 and 7, Exchange Bldg., Stock Yards, KANSAS CITY, MISSOURI.

Market reports and all information will be promptly furnished, free of charge, on application to the above address, or by Mr. G. E. Lyon, Eaton, N. M., who is our representative.

GREGORY & STEPHENS, Live Stock Commission Merchants,

ROOM 23, KANSAS CITY STOCK YARDS, KANSAS CITY, MO.

Solicit consignments from the shippers of the Southwest, and guarantee satisfactory treatment and perfect satisfaction to all customers. Our references, all old patrons, and bankers and business men of Kansas City.

Market reports furnished free on application. Cash advances on consignments. Represented in New Mexico by Jos. OVERHOLS, Las Vegas.

E. G. MURPHEY & CO., THE PLAZA PHARMACY

BRIDGE STREET, LAS VEGAS, NEW MEXICO.

Wholesale and Retail dealers in Drugs and Chemicals. Physicians' prescriptions a specialty. Country orders solicited and prompt attention given same.

TO THE STOCKMEN AND OTHERS, living at a distance: We will gladly fill any orders you may send for goods, whether in our line or not, and ship them as promptly as possible.

For shipping rates for live stock by the "Santa Fe Route," Apply to W. H. H. LLEWELLYN, Live Stock Agent. Postoffice, Las Cruces, N. M.

Tally Books.

We have only forty copies of the tally book left and will print no more until the summer of 1887. Send at once for a copy or you will be left. Order the calf tally book, by mail, postpaid, one dollar.

Notice to Shippers.

LIBERTY, N. M., November 1, 1886. All members of the Canadian River Live Stock association who are shipping cattle to Kansas City, are requested to have duplicate freight bills issued to them when paying their freight and forward same to me for collection of their rebates. E. D. BULLARD, Secretary.

Strayed From Las Vegas.

Two black horse mules, branded D Z on left thigh, and one bay or mouse colored mare mule, same brand. Strayed from Las Vegas about September 30th. Any information leading to the recovery of this stock will be rewarded by addressing J. F. NEWMAN, Sweetwater, Texas.

Strayed or Stolen!

On or about the 25th of June one dark dun horse, about twelve and one-half hands high, bob-tail, branded H on left shoulder, O left hind leg and I near the tail, and G on right thigh. Was last seen on the Star ranch on the Pecos. Will pay five dollars for information leading to recovery. Address, REUTHER & NASH, La Ointa, N. M.

Notice to Shippers.

SPRINGER, Oct. 15.—All shippers of cattle to Kansas City (who are members of the Northern New Mexico Stock Growers' association) are hereby requested to have duplicate freight bills issued to them at Kansas City, at the time of their paying their freight, and forward the same to the undersigned for collection of their rebates. Respectfully, P. J. TOWNSEN, Secretary, Springer, N. M.

Water and Grass for Sale.

Water from a sixteen foot windmill with tank and trough, capacity of 9,000 gallons; will carry 800 head of cattle, with feed for 15,000 head. I believe that water can be got in unlimited quantities at a reasonable depth. Hundreds of square miles of government land with as good feed as there is in New Mexico, and not a hoof upon it; not more than 400 feet above the level of the Rio Grande in Socorro county; no snow; splendid place for a big company to locate. For particulars inquire of D. D. FIELD, Carthage, Socorro County, N. M.

Meeting of Stockmen.

OFFICE OF THE CATTLE AND HORSE GROWERS' ASSOCIATION, Las Vegas, N. M., Nov. 10, 1886. It is respectfully requested that all stockmen of New Mexico, as well as members of the local associations, meet with the Cattle and Horse Growers' Association of New Mexico, at Santa Fe, N. M., on Friday, January 3, 1887, for the purpose of taking into consideration certain changes in the live stock laws of New Mexico, the law of quarantine and for the discussion of other matters of material interest to the industry. A large attendance is desired. J. W. DWYER, President. J. D. WARNER, Secretary.

Lost.

One bay gelding about fifteen and one-half hands high, eight years old, branded S A on left shoulder, and S A under Mexican A on left thigh; one white gray gelding same age and height as the bay, branded U S on the left shoulder and J C on left thigh and W H S on left hip; one brown or black mare eight years old, about fifteen hands, branded same as the gray horse; and one light bay horse mule about same age and height, and branded same as the mare mule. These animals left my Red canon ranch, Socorro county, about the 8th inst. I will pay a suitable reward for their delivery at Powers' Red canon ranch, Socorro county, or at my ranch on the Rio Bonito, six miles west of Fort Stanton, or for information leading to their recovery. Address A. E. POWERS, Fort Stanton, N. M.

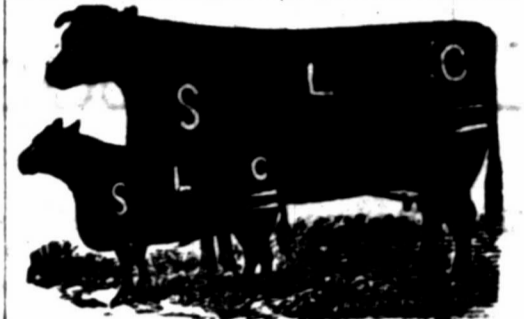
Get a Tally Book

Before the supply is exhausted. More than 200 copies of this useful memoranda and tally book have already been sold and orders are coming in every day. Securely bound in leather covers with flap and pencil. Price one dollar, post-paid to any address. THE STOCK GROWER.

SIERRA COUNTY.

Sierra Land and Cattle Company.

P. D. RIDENOUR, President, Kansas City, Mo. E. D. BRACKETT, Sec. and Treas., Kansas City, Mo. R. H. HOPPER, Vice-Prest. & Mgr., Kingston, N. M. S. S. JACKSON, Ranch Manager, Hillsborough, N. M.



Range, southeastern Sierra county. All cattle branded as in the cut, and have two bars under the tail on both sides. Horses all branded S L C on the left hip, as in this cut.



John McLeod.

P. O.: Rincon, Dona Ana county. Range, twelve miles north of Rincon on each side of Rio Grande, and in the Caballo mountains in southeastern portion of Sierra county. Horse brand, O M on the left shoulder.



Welly & Miner.

W. C. KENDALL, Mgr. P. O.: Fairview, N. M. Range, on north fork of Palomas creek, east side of the Black Range. Ear marks of original stock are various; increase will bear swallow fork in the right. Horses are branded X on the left hip.



Vermont & Rio Grande Cattle Co.

P. O.: San Marcial, N. M. Range, twenty miles south of San Marcial. Ear marks, underbit in each ear. Horse brands: C or TEL on left hip or thigh.



John B. Alley Cattle Company.

T. J. WINSOR, Manager. P. O.: Lake Valley, N. M. Range, Lake Valley, Sierra Co., and Ojo Caliente, Socorro Co.



Horse Brands: A V shoulder hip Other Brands: shoulder hip A side V hip

Grayson & Company.

P. O.: Los Palomas, Sierra county, N. M. Range, Animas ranch, Sierra county. Ear marks, under half crop each ear. Horse brand, same as cattle but on left shoulder.



Additional Brands: on left hip. left hip. Some have same on side. WO left side. 22 right hip. 22 right thigh. on the same animal.

Wm. J. Worden.

P. O.: Las Palomas, Sierra Co., N. M. Stock leased to D. H. Hallock. Increase branded on left side W H. All company horses branded W on left shoulder. Lease expires January 1st, 1887.



GRANT COUNTY.

Hart Bros. Land and Cattle Co., Limited. P. O.: Lordsburg, Grant county, New Mexico. Range, Lower and Middle Gila, and west side Burro mountains.



Ear marks, underslope left and crop and split the right ear. Other brands: HART side: O+ on side and hip; 4 on left side, Horse brand on right thigh; when sold are vented on right shoulder.

Charles V. Hugo.

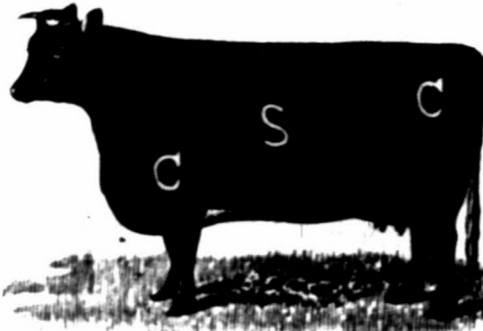
P. O. Fort Bayard, Grant county, N. M. Range, Lambright canon. Ear marks, underbit both. Other brand: J H left hip.



GRANT COUNTY.



Old and New Mexico Ranch and Cattle Co.
Lou H. Brown, Superintendent.
Postoffice address: Hatchita, Grant county, N. M.
Range, Alamo Hueco in southern end of Pinyon valley, western Grant county, New Mexico.
On the right shoulder. Also some horses branded same as the cattle, as in cut.



Carpenter-Stanley Cattle Co.
P. O.: Fort Cummings.
Range, east side of Cook's Peak, Grant county.
Other brands: left side. right side.
Horse brand: on left hip.
Ear marks: Also, two underbits in each ear; crop left underbit right; underbit left crop right.

Mimbres River Cattle Company.
E. E. BURDICK, President and Treasurer.
E. WALTERS, Secretary and General Manager.
C. A. BURDICK, Vice President.
P. O.: Deming, N. M.
Range, Rio Grande to the Mimbres river.
Old brand, on shoulder on hip.
Horse brand on the left thigh same as cattle.
Ear marks, crop left, crop and split the right.

J. A. Lockhart.
Postoffice, Deming, N. M.
Range, the Cedar Grove Mountains and Dog Springs, Grant county.
Horse brand, on the left hip.

Wm. Brahm.
P. O.: Silver City, N. M.
Range, White Water, Grant county, N. M.
Additional on right hind leg.
Horse brand, on the left shoulder.

Missouri-Florida Cattle Co.
JOHN J. YEATER, Pres., Sedalia, Mo.
JOHN M. WEIDENYER, Sec. and Treas., Clinton, Mo.
JOHN T. SHY, Superintendent, Deming, N. M.
P. O.: Deming, N. M.
Range, east side Florida mountains.
Horse brand, same as cattle on left hip.

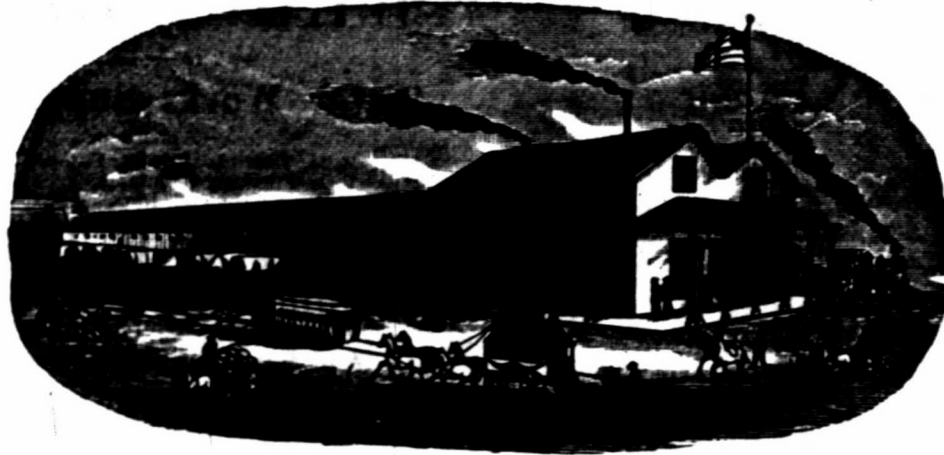
Lyons & Campbell.
P. O.: Silver City, N. M.
Range, Duck Creek, Mule Springs and Middle Gila, Grant county.
Mark, crop and split left.
Horse anywhere on brand the left side.

Buckeye Land & Live Stock Company.
S. A. BAYLER, Manager.
M. Chapman, Supt.
P. O. box 101, Deming, N. M.
Range, Cedar Grove ranch, 30 miles south of Deming.
Horse brand, same, on left hip.
Brand on left side. Marked, sharpen both ears.

Lindauer Cattle Co.
S. LINDAUER, Manager.
P. O.: Deming, N. M.
Range, on McKnight's Cienega, on Upper Mimbres.
Horse brand, on the left shoulder.

Browne & Manzanares Co.

LAS VEGAS AND SOCORRO, NEW MEXICO.



WHOLESALE GROCERS,

DEALERS IN

AGRICULTURAL IMPLEMENTS, RANCH AND MINING SUPPLIES.

THE BEST MARKET FOR

WOOL, HIDES, PELTS, &C.

WILL AT ALL TIMES COMPETE WITH EASTERN PRICES.

ECLIPSE WINDMILLS

The Best and the Cheapest.

PUMPS, PIPES, AND FIXTURES.

Agents For

Cooper's Sheep Dipping Powder

A Cold Water Dip.

Sure cure for Scab. Best and cheapest dip in the world. Send for pamphlet, with plans for dipping.

Browne & Manzanares Co.



A. D. HUDNALL,

West Las Animas, Colorado,

IMPORTER AND BREEDER OF

POLLED ANGUS

AND

Hereford Cattle.

Has sold in New Mexico during the past season over 1,000 head of grade and thoroughbred bulls, and would refer intending purchasers to any of my customers for the quality and condition of the cattle furnished.

I am prepared to furnish, at any time, thoroughbred or grade bulls, guaranteed of the best strains, and, being Colorado raised, ready for immediate service. The cattle from my herds, at the Albuquerque fair, won all first prizes. Correspondence solicited and inspection of herds invited. Full particulars and pedigrees furnished.

I will Contract now for Spring Delivery. Car-load Lots a Specialty.

J. C. LEARY & CO., Agents, Las Vegas.

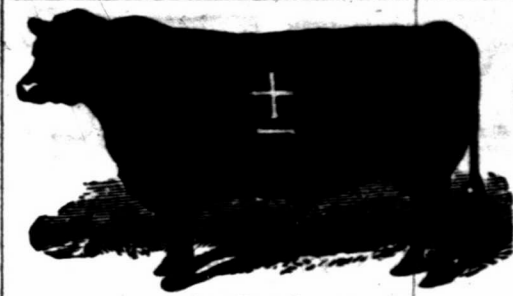
J. C. LEARY & CO.,

Commission Merchants for the Sale of Live Stock and Ranches

OFFICE IN STOCK GROWER BUILDING, LAS VEGAS, N. M.

Will contract to deliver at any point thoroughbred or grade animals of any breed, at lowest prices. Contracts for surveying taken; maps, plans and estimates for railroad work, and surveys for irrigating schemes and water works carefully made. We make a specialty of closing trades satisfactorily and promptly. We can find buyers for stock of all kinds, and give personal attention to all business which is entrusted to us. We have the largest acquaintance in this section. Correspondence solicited, and all inquiries will receive prompt attention.

GRANT COUNTY.



John Brockman.

Postoffice, Hudson, New Mexico. Range, Rio Mimbres, Grant county.

Horse brand, same as cattle, on the left hip.

Also owns all cattle branded on the left side, A on the left hip.

Ear mark, under half crop each ear.

All parties are cautioned against purchasing cattle in the above additional brands except from myself, as I have purchased the brands and all cattle running in them. JOHN BROCKMAN.

Haggin, Hurst & Head.

Address, A. E. HEAD, Deming; or JAMES VAN DYK, Whitewater, N. M.

This brand for all cattle on range at Apache Teju, Cow Springs and Warm Springs, Grant county.

Other brands: old brand, right side. Horse brand, on the left hip.

This brand kept up on all cattle on range in Animas valley, Grant county.

Other brands: known as the Porter brand, with dewlap. Horse brand on the left hip.

All cattle on both ranches marked with dewlap.

DONA ANA COUNTY.

S. B. Newcomb.
P. O.: Las Cruces, N. M.
Range, western part of Lincoln county, in the Rinconada.
Horse brand, same as cattle on right shoulder.

Pedro Garcia y Perea.
P. O.: Las Cruces.
Range, east side of Rio Grande, south of Rincon.
Cattle branded on either side.

Williams Bros.
P. O.: Las Cruces, N. M.
Range, Sacramento river, Dona Ana county.
Ear mark, jinglebob in each ear.
Other brands, on left hip.

Jornado Cattle Co.
MAX GOLDENBERG, Mgr.
P. O.: Organ, Dona Ana county, N. M.
Range, on southeastern portion of the Jornada del Muerto, San Andreito and Oco Springs.
Ear marks, hole in right, split in the left. Horse brand on the left hip.

Barbero Lucero.
P. O.: Las Cruces, N. M.
Range, above San Diego, Dona Ana county.
Horse brand, same as on cattle, left shoulder.

Lynch Bros.
P. O.: Colorado, N. M.
Range, La Loma Parda, Sierra Co.; Las Uvas and Saucedo Springs, Dona Ana Co. Additional brands: Young stock in Dona Ana Co., thus: All horses are branded on the left side.

Horace Rojas.
P. O.: El Paso, Texas.
Range, Carizozo Springs and west side San Andres mountains.
Horse brand, same as cut on left shoulder.

THE STOCK GROWER presents the best medium for advertising, because it is read by every stockman in the southwest.

DONA ANA COUNTY.



Sacramento Cattle Co.

P. O.: El Paso, Texas. Range, Sacramento Ranch, Sacramento mountains, Dona Ana county, New Mexico. Ear marks, crop right, swallowfork left. Old stock has H on left shoulder. Horses branded H on left thigh.



Davies & Lesinsky. Breeders of and Dealers in Thoroughbred and Graded Cattle.

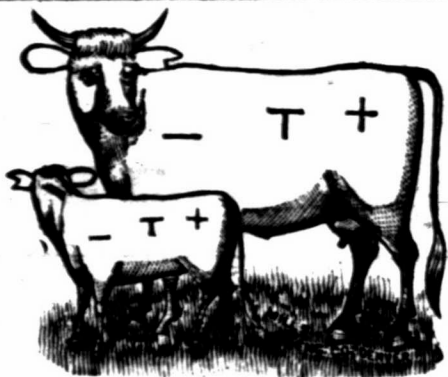
SAN AUGUSTINE, N. M. Range, in Organ Mountains, near San Augustine. Old brand, Q. New brand on cattle on right side, as in cut. Horses, same brand, on left rump.



Mariano Barcala.

P. O.: Mesilla, N. M. Range, west of the Rio Grande, from Picacho mountain west of Mesilla south to the buttes west of La Mesa.

MORA COUNTY.



The Dubuque Cattle Company.

J. T. HANCOCK, President. W. P. LAROE, Vice President. A. J. VAN DUSEN, Sec. & Treas. T. H. LAWRENCE, General Manager, Las Vegas. W. E. LAWRENCE, Range Supt., Tequisquite. Range, Tequisquite, Ute Creek and Tramperos, New Mexico. All calves branded and marked as in cut, except thoroughbred calves in the OO brand, which is kept up.

Other Prominent Brands:



All on the left side.

Horse brand, SX or T, on left shoulder.



William McCartney.

P. O.: Los Angeles, Cal. Ranch P. O.: La Cintas, New Mexico. Range, Rincon and Arroyo de Los Alamocitas. Ear marks, crop right, underslope left.

Other brands: U, O, O, O.

Horse brand, same as cattle, on left shoulder. All cattle in New Mexico in above brand are my property, and as I sell none all parties are cautioned against handling same illegally.

Also own all JS and marked underbit the cattle branded JS, crop right. Range, on left side, head of Canon Largo. This brand kept up. Horse brand, same on left shoulder.



Robison & Clark Cattle Company.

W. D. CLARK, Manager. P. O.: Wagon Mound, N. M. Horse brand, T on the right shoulder. Other brands, H on right side, and hip; also, T on right hip and J right side.

16 on the left side and hip. All increase branded as in cut.



Aaron Bales.

P. O.: Watrous, N. M. Range, Petrosco canon and Cherry valley, Mora Co. All calves marked with overbit in left and two underbits in right.

The Riverside Cattle Company.

W. B. BRUNTON, Manager.

P. O.: Shoemaker, Mora county, N. M. Range, Cherry valley, Pinos Altos and vicinity, Mora county, N. M. Other brands: NIX on right side, kept up. Horse brand, 2 on right shoulder.



Star WIND MILLS

Water Works Supplies.

Wind Mills, Derricks, Tanks, Pumps, Hose, Pipe Fittings, Fountains, Feed Grinders, Etc.

Tubular Well Tools,

And Supplies, a Specialty.

To the cattlemen we wish to say that we are now making a

A Special Outfit for Ranches

to supply water to large herds, and having furnished many of the largest ranches in Texas with the water works, we know we have just what you need.

Address for prices, particulars, etc.,

FLINT & WALLING MANFG. CO.

1404 WEST 11th ST. KANSAS CITY, MISSOURI, AND 1607 MAIN ST., FORT WORTH, TEXAS.

STUDEBAKER'S SOUTHWESTERN HEADQUARTERS

A full line of Vehicles of all kinds constantly in stock at the

Pioneer Saddle & Harness House

We are now manufacturing a line of

WARRANTED STOCK SADDLES.

That are unsurpassed in quality and very low in price. We have the most extensive manufactory of Saddles and Harness in the southwest, and dealers and ranchmen will find it to their interest to get our prices before buying elsewhere.

Fire Arms and Ammunition at Wholesale and Retail.

Our gunsmith is one of the finest workmen in the United States. Re-boring of shot guns to make any desired pattern, a specialty.

NEWTON & ANDREWS, El Paso, Texas.



After Forty years' experience in the preparation of more than One Hundred Thousand applications for patents in the United States and Foreign countries, the publishers of the Scientific American continue to act as solicitors for patents, caveats, trade-marks, copyrights, etc., for the United States, and to obtain patents in Canada, England, France, Germany, and all other countries. Their experience is unequalled and their facilities are unsurpassed. Drawings and specifications prepared and filed in the Patent Office on short notice. Terms very reasonable. No charge for examination of models or drawings. Advice by mail free. Patents obtained through Munn & Co. are noticed in the SCIENTIFIC AMERICAN, which has the largest circulation and is the most influential newspaper of its kind published in the world. The advantages of such a notice every patentee understands. This large and splendidly illustrated newspaper is published WEEKLY at \$3.00 a year, and is admitted to be the best paper devoted to science, mechanics, inventions, engineering works, and other departments of industrial progress, published in any country. It contains the names of all patentees and titles of every invention patented each week. Try it four months for one dollar. Sold by all newsdealers. If you have an invention to patent write to Munn & Co., publishers of Scientific American, 71 Broadway, New York. Handbook about patents mailed free.

JOB PRINTING

There has just been added to the mechanical department of the Stock Grower, a

COMPLETE JOB OFFICE

Which enables to turn out all classes of work in first-class style at low rates.

"The Great Wabash Route."

People who have been east over the "Great Wabash Route" express themselves as pleased with its elegant equipment and fast time, but more particularly with the low rates procured through Mr. C. M. Hampson, Commercial Agent, No. 10 Windsor Block, Denver. Write to him.

A. McDONALD, WHOLESALE

Liquor Dealer

GIVENS' BLOCK, BRIDGE ST.,

LAS VEGAS, NEW MEXICO.

Special attention given to ranch trade. Mail orders for all classes of liquors and cigars carefully attended to.

Feed and Sale Stables

LAS VEGAS, N. M.

Good Rigs to let at reasonable rates. Horses boarded by the day or week.

Special Rates to Stockmen

GOOD SADDLE HORSES.

HORSES AND MULES FOR SALE

J. S. DUNCAN, Proprietor.

Notice to Shippers.

SPRINGER, Oct. 15.—All shippers of cattle to Kansas City (who are members of the Northern New Mexico Stock Growers' association) are hereby requested to have duplicate freight bills issued to them at Kansas City, at the time of their paying their freight, and forward the same to the undersigned for collection of their rebates. Respectfully, P. J. TOWNER, Secretary, Springer, N. M.

MORA COUNTY.



W. H. Willcox

P. O.: Wagon Mound, Mora Co., N. M. Range, Mora county west of Red River and east of Turkey mountains. Horse brand the same, on left hip. Some cattle on right side.



The Wendling Cattle and Land Co. OF COLORADO AND NEW MEXICO.

New Mexico Division.—Breeding Branch. TAYLOR MAULDING, Manager.

Brand: "O K" on all stock. Range in Mora County, New Mexico. No cattle vented. Office: 325 17th St., DENVER, COLO. S. S. SMYTHE, Secretary.



F. J. Maldaner.

P. O.: Wagon Mound, N. M. Range, Vermejo and Tata Vega. Ear mark, crop left and split right.

Other brand: [square]

Horse brand, same as cut, on the shoulder.



J. B. Brown.

P. O.: Wagon Mound, N. M. Range, Vermejo and Tata Vegas. Ear marks, underslope each ear. Horse brand, same as on cattle on left shoulder.



Campbell & Austin.

P. O.: Watrous, Mora Co. Range, near Watrous. Horse brand V on left shoulder. Ear mark—crop right ear, underslope left ear. Horse brand: [square]



Portsmouth Cattle Co.

E. E. HOLMES, Manager, P. O.: Kansas City, Mo. H. G. HOWARD, Supt., P. O.: Springer. Range, Coffey and Mora counties, New Mexico.

Horse brand: [square] Same as on cattle, as in cut. Some horses branded B B



S. B. Watrous & Son.

P. O.: Watrous, N. M. Range, east of Watrous, north and south of Mora river. Horse brand, W on left shoulder. Ear marks: [square]



Wagon Mound Cattle Company.

GANTH & LEARY, Managers. P. O.: Wagon Mound, Mora county, N. M. Range, Vermejo.

Horse brand: [square] right shoulder.



Charles Sumner.

P. O.: Watrous, Mora Co. Range, Esccondido canon and Mora river. Ear mark, two slits in left ear, right ear natural. Horse brand K left thigh



Shepard & Hall.

P. O.: Tequisquite, N. M. Range, Alamocitas. Ear marks, crop and underhalf crop right; crop and underbit left.

Other brands: [square] right shoulder, side and hip.



this brand kept up. [square] left hip; also [square] on right hip.



Farr Bros.

P. O.: Watrous, N. M. Range, Red River and Alamocitas. Horse brand, [square] on left shoulder. Other cattle [square] on left side.

Some cattle are branded with a flying V on side without slash.

MORA COUNTY.



A. Seymour Isaacs.

Postoffice, Wagon Mound, N. M. Range, Escondido Canon, Mora county. Ear marks, under half crop in both ears. Horse brands, A on left shoulder, L on left hip.



W. T. Marshall.

P. O.: Wagon Mound Range, Escondido, south of Wagon Mound. Horse brand, same on left hip. Ear marks, under half crop left, over half crop right. Also have some cattle branded on right All increase branded as in cut.



Billings & Soule.

P. O.: Tramperos, Mora county, N. M. Range, head of Tramperos, Mora Co. Other brands, both on the left side. All increase branded as in cut with - (bar) in addition on back of right leg. Horse brand, > or >> on right shoulder.



Carl W. Wildenstein.

P. O.: Watrous, N. M. Range, Pinos Altos and Medeco Canon, Mora and San Miguel counties. Additional brands: Horse brand, same as on the cut, on the left hip or on the left shoulder.



Price Lane.

P. O.: Wagon Mound Range, south of Wagon Mound. Horses branded on right shoulder.



L. W. Leach.

P. O.: Wagon Mound Range, south of Wagon Mound.



J. F. LaTourette.

P. O.: Wagon Mound Range, near Port Union. Extra brand, L left shoulder A left side. Ear marks, swallow fork right, crop and two splits in left. Horse brand, same as cattle, on left shoulder.



Kearney Cattle Co.

WATKINS & ECKST, Managers. P. O.: Wagon Mound, N. M. Range on Red river and Mora river, in Mora county. Ear marks underbit each ear. All cattle branded on the right side. Other brands SV on the right hip. Horse brand on the right hip.



S. H. Fairchild.

P. O.: Wagon Mound, N. M. Range, in Wagon Mound district. Ear marks, split and underbit the left. Additional brand, Z on the left side. Horse brand, same as cattle, on left shoulder.



La Cueva Ranch Co.

D. C. DEUEL, Manager. P. O.: La Cueva, N. M. Range, Coyote and La Jara, Mora county. Horse brand, on the right shoulder.



H. T. Sinclair.

P. O.: Wagon Mound, Range, Vermejo and Teta Vegas. All increase branded the same as old stock. Other brands on right shoulder, side and hip. Horse brand, HT on the left shoulder.

BANKERS,
And those doing business with financial institutions, will find it to their advantage to consult this department in which all the leading banks of the southwest are represented.

First Nat'l Bank
LAS VEGAS, N. M.

Authorized Capital, \$500,000
Paid-in Capital, 100,000
Surplus Fund, 25,000
OFFICERS:
JEFFERSON RAYNOLDS, President,
GEO. J. DINKEL, Vice President,
JOSHUA S. RAYNOLDS, Cashier,
J. S. PISHON, Assistant Cashier

First Nat'l Bank
EL PASO, TEXAS.

OFFICERS:
J. RAYNOLDS, President.
J. W. ZOLLARS, Vice Pres.
H. S. KAUFMAN, Cashier.

Capital Paid In, - \$100,000
We do a general banking business; buy and sell drafts on all the principal cities of the United States and Europe; make telegraphic transfers to all accessible points. Accounts received upon favorable terms.
We buy and sell Mexican gold, silver and other foreign coin at current rates.

First Nat. Bank
Albuquerque, New Mexico.

Capital Paid In, - \$100,000
OFFICERS:
J. RAYNOLDS, President.
J. S. RAYNOLDS, Vice-Prest.
M. W. FLOURENOY, Cashier.

Directors—D. B. Robinson, Gen'l Supt Atlantic & Pacific Railroad; A. A. Grant, J. H. Hampson, Conrad Shenfield, Jefferson Raynolds, William Garland, Joshua S. Raynolds.
A general banking business transacted.
Depository of the Atchison, Topeka & Santa Fe and Atlantic & Pacific Railroads.
Special Attention given to the Business of Stockmen.

The City Bank
OF LAS VEGAS.

GEO. J. DINKEL, President.
ALPHEUS A. KEEN, Cashier.
CAPITAL, \$50,000.

ALBUQUERQUE NATIONAL BANK!
Albuquerque, New Mexico.

CAPITAL STOCK PAID IN, \$100,000.
OFFICERS:
JOHN A. LEE, President.
S. M. FOLSOM, Vice President.
W. S. STRICKLER, Cashier.
DIRECTORS:
JOHN A. LEE, S. M. FOLSOM, E. D. BULLOCK, W. P. METCALF, HENRY N. JAFFA, A. M. CODINGTON, H. H. STREETER.
Does a General Banking Business.
Interest Paid on Time Deposits.
Gold dust purchased and advances made on shipments of cattle, gold and silver bullion, ores, etc. Superior facilities for making collections on accessible points at par for customers. Exchange on the principal cities of Europe for sale. Stockmen's business a specialty.

BROWNE, MANZANARES & COMPANY
Bankers,
SOCORRO, N. M.

L. P. BROWNE, President,
C. N. BLACKWELL, Vice Pres.,
M. W. BROWNE, Cashier.
A General Banking Business Transacted

United States Depository.

First National Bank
OF SANTA FE.
W. W. GRIFFIN, Pres't. R. J. PALEN, Cashier.
PEDRO PEREA, Vice President.

San Miguel Nat'l Bank
OF LAS VEGAS,
LAS VEGAS, - - N. M.

Authorized Capital, \$200,000
Paid-up Capital, 100,000
Surplus Fund, 50,000
OFFICERS:
W. M. EADS, Pres't. J. GROSS, Vice Pres't.
D. T. HOSKINS, Cashier.
DIRECTORS:
COLUMBUS MOISE, JACOB GROSS, HENRY GORKE,
A. M. BLACKWELL, O. L. HOUGHTON,
E. C. HENRIQUES, M. S. OTERO,
T. H. LAWRENCE, W. M. EADS.
Does a General Banking Business. Drafts for sale on the principal cities of Great Britain and the continent of Europe.

Stock Exchange Stables,
FEED AND SALE.

Finest Livery in the City.
DON R. OAKLEY, Prop.

Good teams and careful drivers. Nice rigs for commercial men. Horses and mules bought and sold. Branch stable at the Hot Springs. Telephone No. 58.
Stables in rear of the St. Nicholas Hotel,
LAS VEGAS, NEW MEXICO.

"Music Hath Charms,"

And there is not a ranch in New Mexico which does not have some musical instrument to help to "liven the leisure hour."

A GUITAR, A BANJO,
OR EVEN AN ACCORDEON WILL AFFORD MUCH PLEASURE. Write for list and prices to

Marcellino & Mernin,
Las Vegas, N. M.

MUSIC WAREHOUSE.
P. S.—A full line of strings, music and supplies.

C. A. RATHBUN,
—Dealer in—

Boots, Shoes,
LEATHER AND FINDINGS.

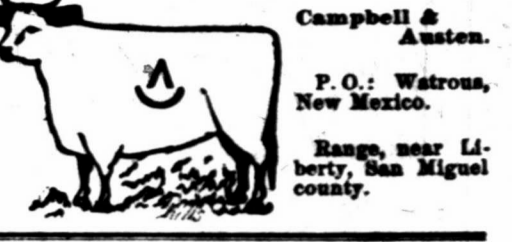
Boots and Shoes to Order.
SOLE AGENT FOR M. D. WELLS & CO.
Stock Grower's Trade Solicited.
Bridge Street, West Las Vegas.

Frank T. Robinson,
REPRESENTING

PETERS & TROUT,
Lancaster, Ohio,

Merchant Tailors
Has arrived in Las Vegas with the finest line of samples of men's wear ever seen in the west.
Headquarters at the Depot Hotel.
Refers to hundreds of stockmen customers as to price, work and satisfaction.

MORA COUNTY.



Campbell & Austen.
P. O.: Watrous, New Mexico.
Range, near Liberty, San Miguel county.

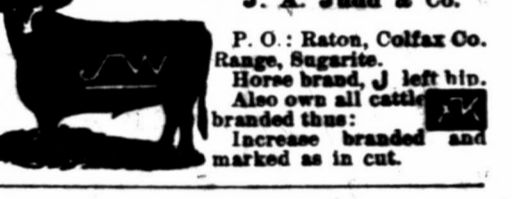
COLFAX COUNTY.



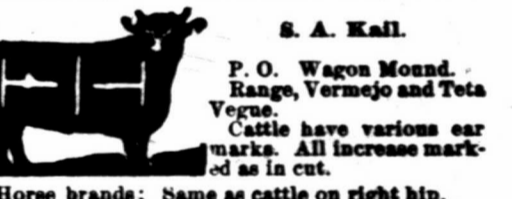
Miller & Harshman.
P. O.: Springer, N. M. Range, Ocate, Colfax Co.
Ear mark, crop and underbit the left. Other brands all on left side, shoulder and hip. Horse brand on the right shoulder.



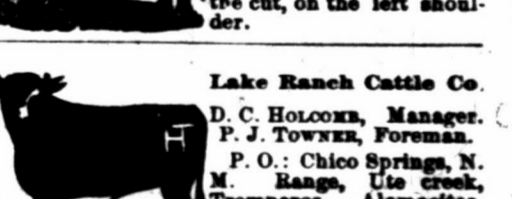
S. W. Dorsey.
P. O.: Chico Springs, New Mexico.
Range—Carrumpa, San Rafael, Cinnegulla, Pecos, Carrizo, Piniopitna, and Sierra Grande, Colfax county.
Horse brand, same as above, on right shoulder. Additional Cattle Brands: left side and hip. left or right side. CS left hip or side. LRB on left side.



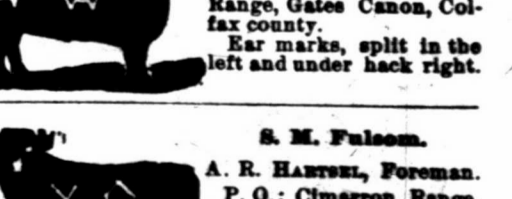
J. A. Judd & Co.
P. O.: Raton, Colfax Co. Range, Sugarite. Horse brand, J left hip. Also own all cattle branded thus: increase branded and marked as in cut.



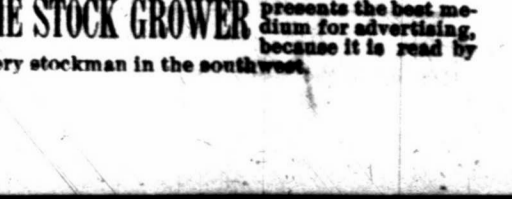
Cyril R. Smythe.
P. O.: Raton, N. M. Range, Sugarite, Colfax county. Ear marks, crop the left and underbit the right.



S. A. Kall.
P. O.: Wagon Mound Range, Vermejo and Teta Vegas. Cattle have various ear marks. All increase marked as in cut. Horse brands: Same as cattle on right hip.



Eagle Tail Cattle Co.
O. A. HADLEY, Manager.
P. O.: Raton, N. M. Range, Eagle Tail and Tenaja. Horse brand, same as the cut, on the left shoulder.

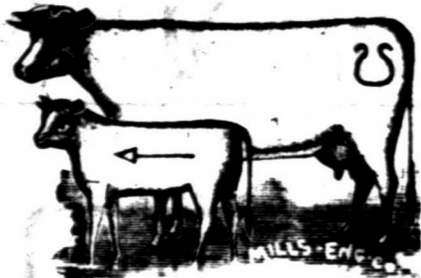


Lake Ranch Cattle Co.
D. C. HOLCOMB, Manager.
P. J. TOWNER, Foreman.
P. O.: Chico Springs, N. M. Range, Ute creek, Trempeau, Alamocitas, and Carrizo, Mora county, New Mexico.
Horse brand, same as cut, on the left hip or shoulder.
J. Linn Smythe.
P. O.: Raton, N. M. Range, Gates Canon, Colfax county. Ear marks, split in the left and under back right.
S. M. Fulson.
A. R. HANSEN, Foreman.
P. O.: Cimarron Range, Cerasoso Canon, Colfax county. Other brands on right shoulder and on left side, also on left hip. Horse brand, on the left hip.

THE STOCK GROWER presents the best medium for advertising, because it is read by every stockman in the southwest.

COLFAX COUNTY.

The Akron Live Stock Company, Akron, Ohio. AUGUSTUS CURTISS, Manager. I. H. KINGMAN, Range Foreman. Postoffice, Springer, N. M.



Known as the "Stirrup" brand, formerly owned by Porter & Clouthier. Horse brand, same, on the left hip. Other brands and various other brands. Brand all calves with dart. Range, Ocala mesa and canon, Sweetwater and Cimarron river.

Western Land and Cattle Company. (Limited). JAS. A. FORBES, Gen. Mgr. 13 Delaware block, cor. of Seventh and Delaware Sts. Kansas City, Mo. Range, Cimarron river. P. O.: Madison, Colfax county, New Mexico. Ear marks, grab the right ear.

Other prominent brands:

VI DC XI MK A+ X all on the right side, and WCC III on the right hip. Horse brands: VI on the left shoulder or thigh, 101 right or left on the right hip, W on the right thigh.



D. A. & J. H. Clouthier.

P. O.: Springer, N. M. Range, Rayado and Sweetwater. Horse brand, J-C on the left hip. All increase of above brands are in the following brand: 74

H. S. Gratz.

P. O.: Capulin, N. M. Range, Dry Cimarron, Colfax county. Marks, slit-in right ear. Horse brand, same as cut on the left shoulder. Other brands on the left side. Marked, with a slit in the right ear and tin tag in the left ear.

Illinois Live Stock Co.

J. S. HOLLAND, Manager. P. O. Tramperos, N. M. Range, Tramperos. Some cattle are branded thus IL but all increase are branded as in cut. Ear marks—Crop and underbit left, and underbit right. Horse brand, same as cut, on left shoulder.

Richard Steele.

P. O.: Tequesquite, N. M. Range, Tequesquite and Ute creek, Colfax county. Ear marks, under half crop right, underbit left. All young stock branded as in cut. Other brands, not kept up: DS on left side, D left shoulder, S left hip, + left side. Horse brand, DS on left shoulder.

Ernst Winter.

P. O.: Raton, Colfax Co. Range, Sugarite and Red river, Colfax county. Ear marks, split right, underbit left. Other brands: L right side, swallowfork and H left side, under back each ear. V left side and F hip, OI left side and hip. Horse brands V left, or L right side.

READERS will confer a favor if, when writing to advertisers, they will state they read advertisement in the Stock Grower.



THE LEONARD BROTHERS,

IMPORTERS AND BREEDERS OF

Galloways, Aberdeen-Angus and Shorthorns.

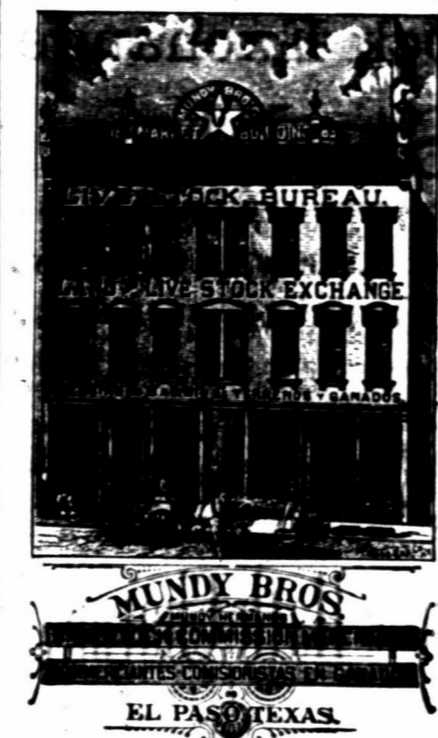
SPANISH JACKS AND JENNETS.

MOUNT LEONARD, MISSOURI.

Very Choice Lot of Black Polled and Shorthorn Grades For Sale.

Car load lots for ranchmen a specialty. We have some of the largest and choicest herds of pure-bred stock to select from. Prices reasonable.

Call on or Address, THE LEONARD BROS., Mount Leonard, Mo.



Mundy Bros

EL PASO, TEXAS,

Lands in Mexico

And the

Southwest.

And

Live Stock

Commission Merchants.

Have unequal facilities for the purchase and sale of Lands in Mexico, and for supplying any class of stock in quantities to suit purchasers.

Correspondence Solicited.

GRAZING LANDS A SPECIALTY

LAND SCRIP FOR SALE

SURVEYED LAND SCRIP

Military Bounty Land Warrants.—In 40, 80, 120 and 160 acre pieces. Will commute home-stand or pay for pre-emption.

Additional Homestead Claims.—In 40, 80 and 120 acre pieces. Locatable on any lands subject to homestead and pre-emption entry. Large supply on hand; no delays in filling orders.

I have a large supply of Fractional Additional Homestead Claims of from 3 to 19 acres, which, by rulings of the general land office, are locatable on fractional subdivisions of double their area, or less, the difference being paid for in cash, at \$1.25 or \$2.50 per acre, as the case may be. Send the area of the fractional tract you desire to locate, and I will send a piece of proper size.

Porterfield Warrants.—In 40 acre pieces. Act of April 11, 1880. Locatable on any unappropriated public lands. The Supreme court has decided in Wilcox vs. Jackson, that the word unappropriated as applied to public lands, means "not legally disposed of." It will take lands in the corporate limits of a town. See Secretaries' decision in Reed vs. Digby, and Lewis et al. vs. Seattle. It will take occupied lands where there is no legal claim. See Boyard vs. Bunn. It will take withdrawn land when the withdrawal does not operate as a disposal of the land. See last case and the case of Wm. P. Brown.

SCRIP LOCATABLE ON UNSURVEYED LANDS.

Stoutz Half-Breed Scrip.—In 40, 80 and 160 acre pieces. Act of July 17, 1854. Locatable on any unsurveyed lands not mineral.

Valentine Scrip.—In 40 acre pieces. Act of April 3, 1872. Locatable on any unappropriated and unoccupied public lands not mineral, surveyed or unsurveyed.

In locating any of the above scrip no settlement or residence is required, and there is no limit to the quantity one person may use. The right attaches at once on filing the scrip, and transfers of title for town sites or other purposes may be made without any delay.

Void entries, locations or selections will not prevent any of these rights from attaching. Address: T. B. MILLS, Real Estate Dealer, LAS VEGAS, N. M.

Fine Books.

Read our new book offer, good until January 1, 1887, and send in a new name and secure a good book, well bound in cloth. Some friend would be pleased to get THE STOCK GROWER for a year, and the book you receive will repay your investment.

S. L. LEON & CO.,

THE LEADING

Grocers, Bakers

OR LAS VEGAS.

We have also the Finest Line of Fancy and Imported Groceries in New Mexico.

Dealers in Queensware and Glassware.

Ranch Trade Solicited and Prompt Attention given all Mail Orders.

NORTHWEST CORNER OF PLAZA.

For Sale!

ON OUR RANGE AT

SAN AUGUSTINE, Dona Ana County, N. M.

AS FOLLOWS, VIZ.:

350 Two and Three-year-old Steers, mostly twos.

250 One-year-old Steers.

300 Bull Calves, and

250 Cows. (Many of the cows improved and broken to milk.)

Steers and bull calves from one-half to three-quarters bred. A good supply of

THOROUGHBRED BULLS,

Durham and Herefords, were placed with our herds four years ago.

DAVIES & LESINSKY.

COLFAX COUNTY.

Urraca Hereford Ranch.

FRANCIS CLUTTON.

Postoffice, Cimarron, Colfax County, N. M.



Thoroughbred herd, 9 left side. Ear mark, underbit right and left. Horse brand, 5 on the left shoulder.



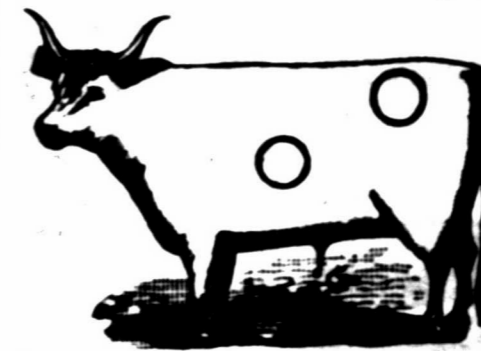
Palo Blanco Cattle Co.

O. A. HADLEY, Manager.

P. O.: Springer, N. M. Range, Chico, Retables, Holkio, Palo Blanco, Don Carlos and Ute creek. Ear mark, as above fork the left. Horse brand, same as cattle, on left thigh. Also on left side, slash on left shoulder, left hip.

VALENCIA COUNTY.

W. P. METCALF, Superintendent. JAS. A. STINSON, Ranch Manager. New Mexico Land and Cattle Company.



P. O.: Chilili. Range, Estancia grant, Valencia county. Horse brand, circle on the left hip.

Kennedy & Co.

P. O.: Coolidge, N. M. Ranches in Valle de Las Yucas. Range, between Bluewater and Coolidge, along line of A & P. R. R. Old stock are branded K on left side; since 1883 all branded as in the cut. Ear marks, crop right, under half crop left. Horses branded K or left shoulder.

L. P. BRADLEY, Pres. T. S. MURFORD, Secy. Cebolla Cattle Co. P. O.: Santa Fe, N. M.; box 278. Range, Valencia county, near Fort Wingate. Horse brand, the same.

Dr. E. C. Henriques. J. L. MILLER, Foreman. P. O.: Helen and Las Vegas. Range, Estancia Springs, Valencia county.

Other brands W. All the increase of cattle and horses branded as in main cut.

ROMAN A. BACA, President, San Mateo, N. M. MAX FROST, Secretary, Santa Fe, N. M.

San Mateo Cattle Co. Range. The Miguel and Chaves Grants, Valencia county, New Mexico.

Davenport Live Stock Company.

M. B. BOWMAN, Manager. P. O.: Albuquerque, N. M. Range, Buffalo Springs. Horse brands D.

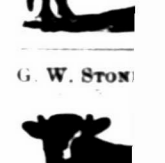
J. A. JOHNSON & Co. P. O.: Albuquerque, N. M. Range, San Jose ranch, on A. & P. railroad, forty-seven miles from Albuquerque. Horse brand, J left hip. Various ear marks.



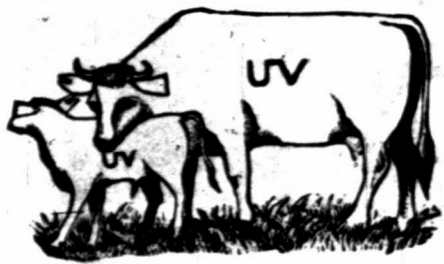
Acom. D. RIDENOUR. D. BRACKETT. E. SAINT, V. Range, the A. west and n. Horse brand.



J. Post Office, I Range, Alan Horse brand Various ear



SAN MIGUEL COUNTY.



Trujillo Ranch Company. OF LAS VEGAS.

Office of Browne & Manzanaras.

C. W. BROWN, Manager.

P. O.: Red River Springs, New Mexico. Range, on Trujillo creek, in Oldham county, Texas; and San Miguel county, New Mexico.

Additional Brands:



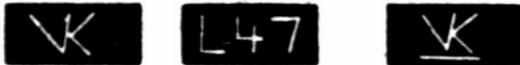
All increase branded as in above cut. Horse brand, same as cut on the left shoulder. Some horses have Star C on the left hip.

Y. Kohn & Co.



P. O.: La Cinta, Range, Arroyo de los Alamosas. New ear mark, half under crop each ear. Also cattle on either side, and marked double jinglebob in left ear.

Also own cattle in following brands:



shoulder, side, hip. All increase to be branded and marked as in cut.

Horses branded some on left shoulder and some on left leg.

Fuller, Devine & Co.



P. O.: Puerto de Luna Range, Salado. Ear marks, crop and underbit in each ear. Horse brand, small T on left shoulder.

Waddingham Cattle Association.



RAYMOND JENKINS, General Manager. P. O.: Fort Bascom, N. M. Range, Canadian river and Ute creek. Additional brands on right and left hip, making 44 when seen from behind. Horse brand on shoulder.

W. H. McBroom.



P. O.: Fort Sumner, N. M. Range, Canaditas. Ranch Foreman, Brown HARRIS. Additional brands on left side.

[on both hips.] Various ear marks for these various brands. Horse brand, same as cut.

Increase branded both sides.

Goodley Bros.



P. O.: Cabra Springs Range, Largoito, Cuervo and Cochas. Crop left, split right. Horse brand, X on the left hip. Also own X-4 brand.

Heckle & McDowell.



P. O.: Las Vegas, N. M. Range, Sabinoso and Lagitijos arroyo. Some branded only with a W on either side and ear mark grub right or left. Horse brand, L on the right shoulder.

Also own all female cattle in following brands, which are not kept up: left side, left side, road brand, left shoulder.

All increase branded as in cut.

New England Live Stock Company.



P. O.: Greeley, Colorado. Ranch P. O.: Fort Sumner, N. M. Range, the Pecos, at Fort Sumner. Additional brands, 102 DOS.

Horses branded same as cattle on left side. Ear mark, crop and two splits in right ear. Cattle in brand above cut branded both sides.

W. A. Burnett, Trinidad, Colorado.



J. D. WILLIAMS, Foreman. P. O.: Liberty, N. M. Range, Monte Rucelto, San Miguel county, New Mexico. Additional brands: left side, right side.

T on left jaw and H on left side. Horse brand, H on left hip.

COLORADO AND NEW MEXICO.

THE HOLT LIVE STOCK COMPANY.

WILLIAM T. HOLT, President. MYRON W. JONES, Manager.

Office, Opera House block, Denver, Colorado. P. O. box 2162.

A. TEMPLE THORN, Cashier and Accountant. L. WALLACE HOLT, 7 Rivers, N. M., Asst. Manager.

Breeding range, on the west side of Pecos river, Lincoln county, New Mexico. GEORGE WILCOX, foreman; P. O., Seven Rivers, N. M.



Steer range, in Elbert and Bent counties, Colorado. W. A. WAGGONER, foreman; P. O., Hugo, Colorado.



Swallow fork in left, underslope in right. On both sides Underbit in left. Swallowfork in left, underslope in right. Crop in left and under-slope in right.

Horse brands: C on the left hip. H on the left hip, or thigh.

Thoroughbred Hereford and Polled Angus breeding farm, Horse Creek, O. Z. postoffice, Colorado.

THE BLOOM CATTLE CO.

FRANK G. BLOOM, General Manager, Trinidad, Colorado.

Also own the following brands:



Horse and Steer range, Apishapa Temp creek, Bent and Lockwood canons, Colorado. W. F. BLOOM, Foreman, Postoffice, Thatcher, Colorado. Breeding ranch, Rio Honda, Lincoln county, New Mexico. JOHN BURSA, Foreman, Postoffice, Lincoln, New Mexico, care Circle Diamond ranch.

SOCORRO COUNTY.



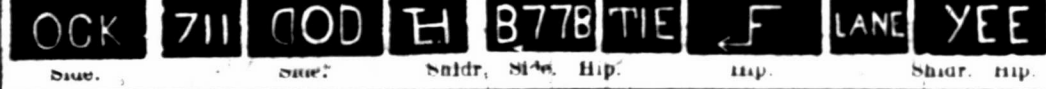
Ear marks, swallow fork the left, crop the right. Above brand and ear mark kept up.

HURST, BLACK, KIEHNE & WILEY.

Postoffice, Patterson, Socorro county, New Mexico.

Range, southeastern part of the San Augustine plains, and Nigrita river, Socorro county, N. M.

Additional Brands, not kept up.



SIMON LEWIS' SONS, Golden Rule Clothing Store

WHOLESALE AND RETAIL DEALERS IN

Clothing, Hats, Boots and Shoes, and Gent's Furnishing Goods.

WE'VE GOT THE STOCKMEN'S TRADE.

But want to hear from the few who have not yet bought from us. We can refer to any ranchman in Northern New Mexico as to our Low Prices and Fair Dealing.

OUR TAILORING DEPT IS THE MOST COMPLETE IN THE WEST.

Boots and Shoes Made to order at Lowest Prices and in the Best Style.

Mail Orders Promptly Attended to. LAS VEGAS, NEW MEXICO.

MARTIN BROTHERS, AGENTS FOR THE BRUNSWICK AND BALKE COLLENDER CO. Billiard Supplies, Etc.

CALIFORNIA WINES AND BRANDIES. Marwede Building, next to Postoffice, LAS VEGAS, NEW MEXICO.

THE COLORADO TELEPHONE AND TELEGRAPH CO.

Exclusive lessors of the Electric Telephone in New Mexico. Special attention given to leasing and putting up Telephones for Private Lines at Stores, Ranches, Mines, etc. Correspondence invited. Address H. T. VAILLE, Supt., Las Vegas, N. M.

SAN MIGUEL COUNTY.



D. G. Fritzen.

P. O.: Liberty, (San Miguel Co., N. M. Range, Tierra Blanca. Ear marks, crop and slit twice the left ear. Horse brand, 77 on right hip.

Wells Bros.



P. O.: La Cinta Range, La Cinta and Alanocita creeks. Additional Brands: Ton left hip, CO on the left side. Other ear marks: Grub left, split right side and hip. Horse brand same as main brand.

Frank Carpenter.



P. O.: Liberty, N. M. Range, Red River, twelve miles above Fort Bascom. Ear marks, crop the left and sharpen the right ear.

H. R. Trask.



P. O.: Liberty, San Miguel county, N. M. Range with W. A. Burnett. Also own O L on left side with slash on hip and X on left side.

All increase branded as in cut. Horses branded with tepees and as in cut on left hip, and O L on left shoulder. No stock cattle sold in these brands.

A. Straus, Manager.



P. O.: Liberty Range, Rincon del Charco. Horse brand, same as on cattle, on right shoulder or left hip. All young stock is branded thus.

on left shoulder, side and hip. Ear marks, double jin- glebob left ear. Other brands TC

E. & L. Davidson.



P. O.: Liberty, N. M. Range, Tierra Blanca, San Miguel county. Ear marks, overslope left. Horse brand, or the left shoulder thus:

Other brands: M, TV on either hip, left side, right side.

None of these brands kept up. XV on left shoulder and V on left hip. All increase branded XV on both sides.

S. Fred. Reuther.



P. O.: La Cinta, N. M. An over half crop in each ear. NX Increase branded as in cut.

Reuther & Nahm.



P. O.: La Cinta, N. M. Crop two splits left; half undercrop right. RK Increase branded as in cut.

Horse brand on the left shoulder.

MRS. LUE B. MAXWELL.



P. O.: Las Vegas, Ranch P. O.: Fort Sumner, Range, Taivan ranch, east of Fort Sumner. Horse brand, on left shoulder.

C. T. Degraftenreid.



P. O.: Fort Sumner, N. M. Range, Alamo Gordo, San Miguel county, N. M.

Fort Bascom Cattle Raising Co.



STEPHEN E. BOOTH, Mgr. P. O.: Fort Bascom, San Miguel Co., New Mexico. Range, Baca Location, No. 2. Horses branded same as cattle on the left hip.

SAN MIGUEL COUNTY.



All increase branded on both sides. Ear marks, crop left and crop and hole in right Stonewall Cattle Company.

NECK S. WINSTON, Manager.

P. O.: Cabra Springs, San Miguel Co., N. M. Range, head of the Juan de Dios, head of the Pajarito Arroyo and Cuervito.

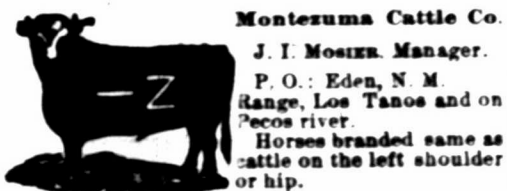
Additional brands:

X on right side and || on right hip. X on the right side. X on right side and X on right hip.



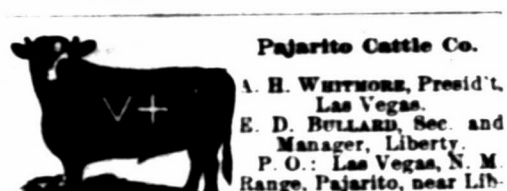
W. B. Stapp.

P. O.: Las Vegas. Range, Los Conchas. Additional brands. SH on left ribs. 76 on left rump or hip. S jaw, S ribs, S thigh.



Montezuma Cattle Co.

J. I. Mosier, Manager. P. O.: Eden, N. M. Range, Los Tanos and on Pecos river. Horses branded same as cattle on the left shoulder or hip. Brand any place on animal.



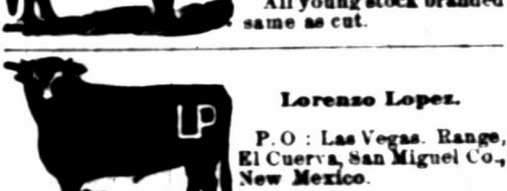
Pajarito Cattle Co.

A. H. WERTSON, Presid't. Las Vegas. E. D. BULLARD, Sec. and Manager, Liberty. P. O.: Las Vegas, N. M. Range, Pajarito, near Liberty, N. M. Calves branded on both sides. Ear marks, crop and two splits in each ear.



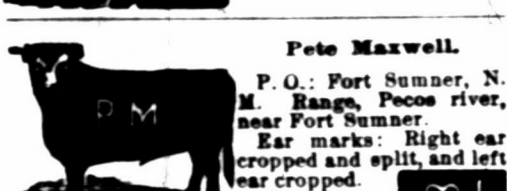
Brass Ball Ranch.

P. O.: Hyde park, Ills. Range, El Salitre, San Miguel county. Horse brand, same as cut, on right hip. All young stock branded same as cut.



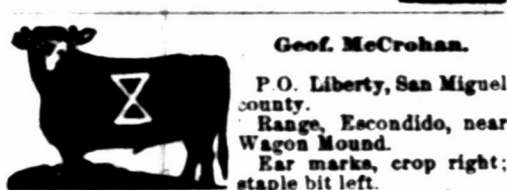
Lorenzo Lopez.

P. O.: Las Vegas. Range, El Cuerna, San Miguel Co., New Mexico.



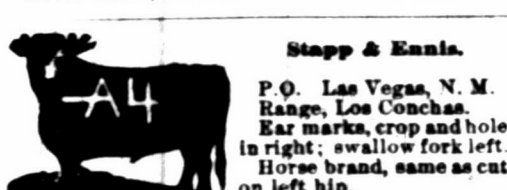
Pete Maxwell.

P. O.: Fort Sumner, N. M. Range, Pecos river, near Fort Sumner. Ear marks: Right ear cropped and split, and left ear cropped. Also claims.



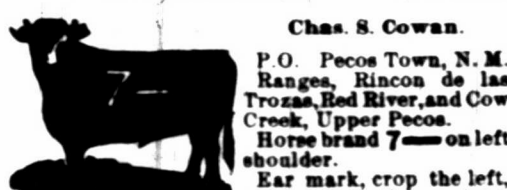
Geof. McCrohan.

P. O. Liberty, San Miguel county. Range, Escondido, near Wagon Mound. Ear marks, crop right; staple bit left. Horse brand, same as cut on left shoulder.



Stapp & Ennis.

P. O. Las Vegas, N. M. Range, Los Conchas. Ear marks, crop and hole in right; swallow fork left. Horse brand, same as cut on left hip.



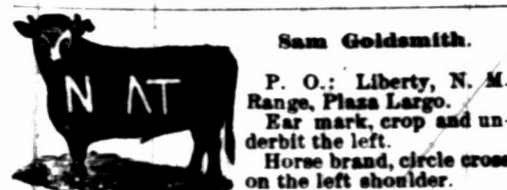
Chas. S. Cowan.

P. O. Pecos Town, N. M. Ranges, Rincon de las Trozas, Red River, and Cow Creek, Upper Pecos. Horse brand 7 on left shoulder. Ear mark, crop left, and upper half crop right. Some cattle branded TA on left side. All increase branded as in cut.



J. N. Degraftenreid & Sons.

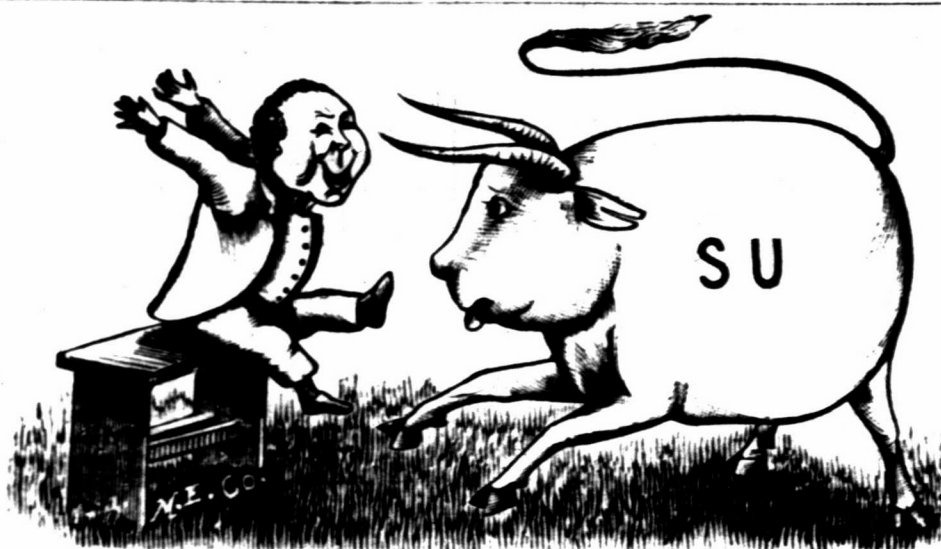
P. O.: Fort Sumner, N. M. Range, Alamo Gordo. Saddle Horses branded SIX. Stock horses are branded O-O.



Sam Goldsmith.

P. O.: Liberty, N. M. Range, Plaza Largo. Ear mark, crop and underbit left. Horse brand, circle cross on the left shoulder.

SOCORRO COUNTY.



UPCHER & STEVENS.

R. A. JONES, Range Superintendent.

Postoffice, Frisco, Socorro county, New Mexico.

Range, Tulerosa and San Francisco Rivers, and Johnson Basin, Socorro county, New Mexico.

There was a young man who said, "How? Shall I soften the heart of this cow?" "I'll brand her S U And M-F too, Crop her right, split her left ear:—That's How."

We run two brands, SU and M-F. Ear mark, crop the right and split the left, for both brands. Horse brand, SU on left thigh or left shoulder.

All increase of the following brands is put in the above brand and mark.



Other brands.

MAY on side, S on hip. BEL on side, S on hip. U on side. All brands on left side. ALA on side, O on hip. U O on side. Old cattle in various marks and brands. Horse brands, U S and JON S on left hip.



FLOYD JARRETT,

Postoffice, Datil, New Mexico.

Range, Alamocito Park and the Datil Mountains, Socorro County.

Ear marks for all cattle, underslope both ears.

Slash brand is the road brand to the Ranch brand, cattle, horses.



Road brand, cattle.

O. L. HOUGHTON, Hardware

—Dealer in—

Two Stores, East and West Side,

LAS VEGAS, NEW MEXICO.

Fence Wire in Car Lots.

W. H. SHUPP,

Manufacturer of

Wagons And Carriages, Buckboards and Spring Wagons a Specialty.

Keeps on hand the Cooper steel skein wagon, and an assortment of Buggies and Carriages. Makes Mess Boxes and Branding Irons. Horse Shoes fitted ready to nail on, and portable forges, with tools, for ranch use, always on hand.

Agent for Osborne Mowers.

LAS VEGAS, — — NEW MEXICO.

TONY CAJAL,

The Palace Barber Shop,

Bridge street, near the Postoffice,

LAS VEGAS, — — NEW MEXICO.

MENTION this paper when writing to advertisers.

SAN MIGUEL COUNTY.



Fort Sumner Land and Cattle Co.

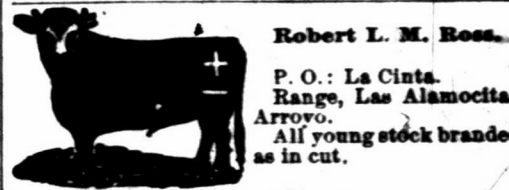
DAN. L. TAYLOR, President and Manager, Fort Sumner, New Mexico.

Range, Fort Sumner, N. M. P. O.: Fort Sumner.

Ear marks, crop the left.

Additional brands—All kept up.

NO right side, V right hip, right hip or hip. VO on right side or hip. Some horses are branded VO



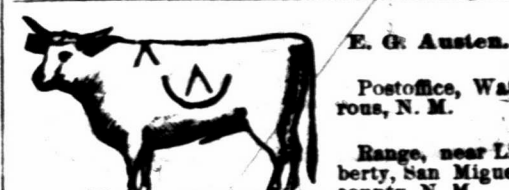
Robert L. M. Ross.

P. O.: La Cinta. Range, Las Alamocitas Arroyo. All young stock branded as in cut.

Additional brands.

± on the left side, not kept up. ± on the left side and left hip, not kept up.

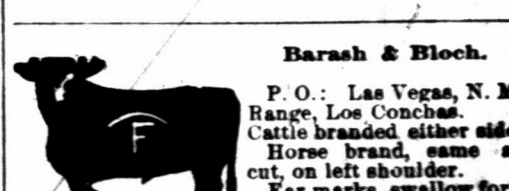
Horse brand, ± on the left hip.



E. G. Austen.

Postoffice, Watrous, N. M.

Range, near Liberty, San Miguel county, N. M.



Barash & Bloch.

P. O.: Las Vegas, N. M. Range, Los Conchas. Cattle branded either side. Horse brand, same as cut, on left shoulder. Ear marks, swallow fork each ear.

Additional brand on left side.

All increase branded as in cut.

ISIDOR FELLHEIMER, Of New York.

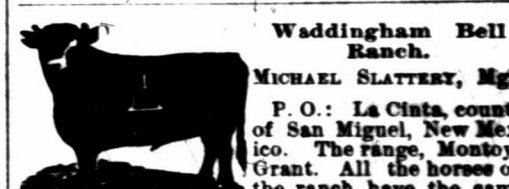
Fellheimer & Hirsch.

Ranch P. O.: Liberty, New Mexico. Range, Pajarito and Tierra Blanca, San Miguel Co. Cattle branded on either side.

Horse brand, ± left hip. Ear marks, on increase crop left; old stock have various earmarks.

Cattle are also branded | 4 | on the right side. The bars on all cattle run from the top of the back to the belly.

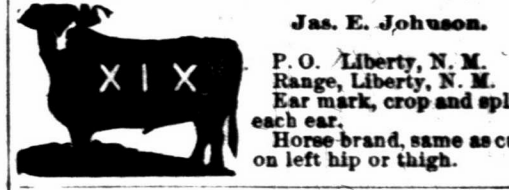
Cattle branded on both or either side.



Waddingham Bell Ranch.

MICHAEL SLATTERY, Mgr.

P. O.: La Cinta, county of San Miguel, New Mexico. The range, Montoya Grant. All the horses on the ranch have the same bell brand on left shoulder.



Jas. E. Johnson.

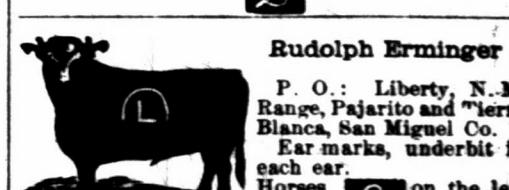
P. O. Liberty, N. M. Range, Liberty, N. M. Ear mark, crop and split each ear. Horse brand, same as cut on left hip or thigh.



Kemary Ritter.

P. O.: Liberty, N. M. Range, Canadian and Trujillo rivers. Ear marks crop left, swallow fork, right.

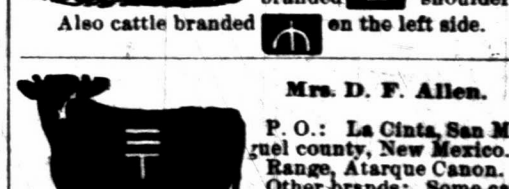
Also own all cattle in the C brand, formerly belonging to M. J. Costa. All horses branded ± on the left shoulder.



Rudolph Erminger

P. O.: Liberty, N. M. Range, Pajarito and Tierra Blanca, San Miguel Co. Ear marks, underbit in each ear. Horses branded ± on the left shoulder.

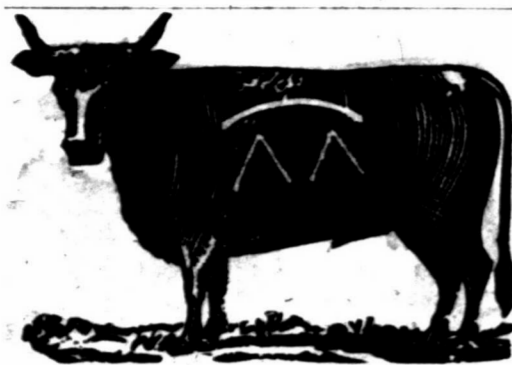
Also cattle branded ± on the left side.



Mrs. D. F. Allen.

P. O.: La Cinta, San Miguel county, New Mexico. Range, Atarque Canon. Other brands: Some cattle branded same on left hip. Horse brands; Same on left shoulder.

SAN MIGUEL COUNTY.



Fond du Lac & Las Vegas Cattle Co. JAS. GAYNOR, President and Manager. P. O.: Fond du Lac, Wis. Range, Liberty Ranch.



Geo. W. Mayhan. P. O.: Watrous, N. M. Range, Taalosa Canon, Los Conchos. Ear marka, crop and two lites in left ear. Horse brand, C on left shoulder.



P. C. Pixlee. P. O.: Liberty, N. M. Range, Tierra Blanca and Pajarito creek, San Miguel county. Horse brand T on the left shoulder. All horses brand T are vented when sold.



James Conant. P. O.: Gallinas Springs Range, Gallinas Springs and Ojo de Los Conchos. Other brand, A on left side. Horse brand, same as cut, on the left hip.



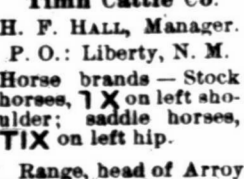
Frank W Dale. P. O.: Liberty, N. M. Range, on Red River, 12 miles above Fort Bascom. Ear mark, crop the right and sharpen the left ear.



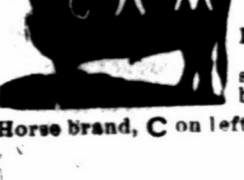
Simon Frankenthal. P. O.: La Cinta. Range: La Cinta Creek. Horse brands: S F on left shoulder.



Lewis Walker and Mary Walker. P. O.: La Canon Largo. Range, Canon Bonito and Canon Largo. Horse brand, cross on the left hip. A few cattle branded in three crosses only.



P. O.: Canon Largo, N. M. Range, Canon Bonito and Canon Largo. Horse brand on left hip. Both brands kept up.



Tiffin Cattle Co. H. F. HALL, Manager. P. O.: Liberty, N. M. Horse brands—Stock horses, X on left shoulder; saddle horses, TIX on left hip. Range, head of Arroyo Plaza Largo, and foot of Staked Plains, San Miguel county, New Mexico.



C. A. Martin, Manager. P. O.: Las Vegas. Range, Taalosa Canon, Los Conchos. Earmarks, crop and two slits in left. Also cattle all branded A under tail. Horse brand, C on left shoulder.

Harper's Illustrated Magazine for 1887.

Harper's Magazine during 1887 will contain a novel of intense political, social, and romantic interest, entitled "Narka"—a story of Russian life—by Kathleen O'Meara; a new novel, entitled "April Hopes," by W. D. Howells; "Southern Sketches," by Charles Dudley Warner and Rebecca Harding Davis, illustrated by William Hamilton Gibson; "Great American Industries"—continued; "Social Studies," by Dr. R. T. Ely; farther articles on the Railway Problem by competent writers; new series of illustrations by E. A. Abbey and Alfred Parsons; articles by E. P. Roe; and other attractions.

Harper's Periodicals. Harper's Magazine \$4 00 Harper's Weekly 4 00 Harper's Bazar 4 00 Harper's Young People 2 00 Harper's Franklin Square Library, one year (52 numbers) 10 00 Harper's Handy Series, one year (52 numbers) 15 00 Postage free to all subscribers in the United States or Canada.

The volumes of the Magazine begin with the numbers for June and December of each year. When no time is specified, subscriptions will begin with the number current at time of receipt of order. Bound volumes of Harper's Magazine, for three years back, in neat cloth binding, will be sent by mail, postpaid, on receipt of \$3.00 per volume. Cloth cases, for binding, 50 cents each—by mail, postpaid.

Index to Harper's Magazine, Alphabetical, Analytical, and Classified, for volumes 1 to 70, inclusive, from June, 1850, to June, 1885, one vol., 8vo, cloth, \$4.00. Remittances should be made by postoffice money order or draft, to avoid chance of loss. Newspapers are not to copy this advertisement without the express order of Harper & Brothers, Address HARPER & BROTHERS, New York.

Harper's Illustrated Young People for 1887.

Harper's Young People has been called "the model of what a periodical for young readers ought to be," and the justice of this commendation is amply sustained by the large circulation it has attained both at home and in Great Britain. This success has been reached by methods that must commend themselves to the judgment of parents, no less than to the tastes of children—namely, by an earnest and well sustained effort to provide the best and most attractive reading for young people at a low price. The illustrations are copious and of a conspicuously high standard of excellence.

An epitome of everything that is attractive and desirable in juvenile literature.—Boston Courier. A weekly feast of good things to the boys and girls in every family which it visits.—Brooklyn Union. It is wonderful in its wealth of pictures, information, and interest.—Christian Advocate, N. Y. Terms: Postage prepaid, \$2.00 per year. Vol. VIII commences November 2, 1886. Single numbers, five cents each. Remittances should be made by postoffice money order or draft, to avoid chance of loss. Newspapers are not to copy this advertisement without the express order of Harper & Brothers, Address HARPER & BROTHERS, New York.

ATTORNEY'S CARDS.

J. D. O'Bryan. W. L. Pierce. O'BRYAN & PIERCE, ATTORNEYS AT LAW LAS VEGAS, NEW MEXICO. Special attention given to all matters pertaining to real estate.

JOHN S. EDDY, ATTORNEY AT LAW, Pre-emption and all other land matters attended to with promptness. Office, in Abeytia Block, over Socorro County Bank, Socorro, N. M.

A. C. VOORHEES, ATTORNEY AT LAW, RATON, NEW MEXICO. Special attention given to the business of cattle-men and collecting.

Ira E. Leonard. H. B. Hamilton. Leonard & Hamilton, ATTORNEYS AT LAW SOCORRO, NEW MEXICO. Special attention given to cases before the U. S. land office.

JAMES H. PURDY, ATTORNEY AT LAW, SANTA FE, NEW MEXICO. Specialty: Land Titles.

THE PRAIRIE CATTLE CO. [LIMITED.]

W. J. TOD, General Manager. MURDO MACKENZIE, Sec. and Cashier. Trinidad, Colorado.

ARKANSAS RIVER DIVISION. Wm. Withers, Ranch Superintendent. Ranch postoffice, West Los Animas, Colo. Range, Bent and Las Animas Counties, Colorado.



Other Prominent Brands: JJ PJ JH N Δ C P J K A JJ U. CIMARRON RIVER DIVISION. W. J. Cartwright, Ranch Superintendent. Ranch postoffice, Catalpa, Colfax county, N. M. Range, Colfax, Mora and San Miguel counties, New Mexico.



Other Prominent Brands: T 7 7 J J L T T X T I X I T Horse Brand, on the left shoulder or hip. CANADIAN RIVER DIVISION. A. F. Mitchell, Ranch Superintendent. Ranch postoffice, Tascosa, Oldham Co., Texas. Range, Oldham county, Texas.



Other Prominent Brands: 7 A U L X A-L X III Horse brand, same as cattle. The Stock Grower Job Office Is Now The Most Complete in the Southwest

And can turn out every class of printing Cheaply and Promptly We have on hand a splendid line of live stock cuts of every description, and make a specialty of doing every class of work required by companies or individuals.

Stock Certificates, Letterheads, Prospectuses, Notehads, Brand Books, Envelopes, Billheads, Statements, By-Laws, Cards, Vouchers, Checks, Receipts, Tally Books, Etc., Etc. Etc., Etc.

WRITE FOR SAMPLES AND ESTIMATES. Address, THE STOCK GROWER, Las Vegas, New Mex. And at the same time SUBSCRIBE FOR THE STOCK GROWER Three Dollars Per Year.

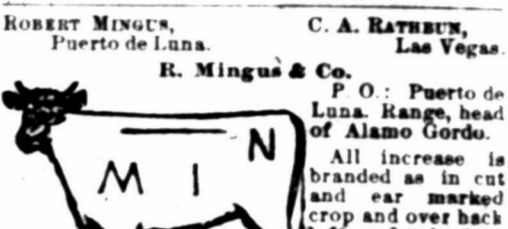
Acknowledged by all representative stock raisers to be the leading journal of the range country. Stop Writing On scraps of paper and shingles. Send \$5 to THE STOCK GROWER and receive by return of mail 250 envelopes and 250 letter heads, all neatly printed with your brand, range, name and post-office address.

San Miguel County. Bullard & Co. P. O.: Liberty, N. M. Range: Tierra Blanca and Pajarito Creeks, San Miguel County. Other Brands: G B C also on right side; BB also on right side. Ear mark: Underslope both ears. All increase branded Q I D right side. Horse Brand: V on left hip or neck.

SAN MIGUEL COUNTY.



ROBERT MINGUS, Puerto de Luna. C. A. Rathbun, Las Vegas. R. Mingus & Co. P. O.: Puerto de Luna. Range, head of Alamo Gordo. All increase is branded as in cut and ear marked crop and over hack left under hack in right. Other brands: For cattle put on both sides: + For cattle with side and horses: All horses tails bobbed.



Old brand. Brand on increase. A. Grzelachowski, Frank N. Page. Grzelachowski & Page. P. O.: Puerto de Luna. Range, at Alamo Gordo. Ear marks, swallow fork and split each ear. Also own on left side, and + IT.



Governor C. H. Moore. P. O.: Puerto de Luna. Range, Upper Yaso. Various ear marks. Horses branded same on shoulder.



Las Carretas Cattle Co. Wm. S. Washburn, Mgr. P. O.: Fort Sumner, N. M. Range, Las Carretas and Pecos river. Also claim cattle branded thus left hip or flank, not kept up or flank, not kept up. Ear marks, crop and underbit in left ear. Cattle branded on both sides. Horses branded with star on left hip.



T. Romero, Bro. & Son. P. O.: La Cinta. Range, Atarque Canon and Montoya Grant. Horse brand, same as cattle, on the left thigh. Other cattle brands: All increase marked hole in left and split right.



Silva & Dodge. P. O.: Puerto de Luna. Range, Alamo Gordo. Horse brand, on either side, on the shoulder. Ear marks, jinglebob in left upper half crop right. All calves branded as above. Also own. Mariano Hinojos. P. O.: Puerto de Luna. Range, Carriso. Horses and steers are branded thus: WH.



Fritz Eggert. P. O.: La Cinta, N. M. Range, Alamosas. Additional brands, F E under bar and F E over bar on left side. Horse brand, FE. Quincy & Las Vegas Cattle Co. W. S. Lyon, Manager. P. O.: Cabra Springs. Horse brand same on left shoulder. Ear marks, double jinglebob right; swallowfork left.

SAN



The Dutche TAY Po Ranch P. O. San Miguel co. Other brand left side. Horses brand.



Postoffice, La Also on Horse b



J Ranch P. O. 9th st., Kansas Pecos river,



Cattle in [Some D on 1] On left hip Cattle in V Some L R lota; some brands are branded and All horses



Also own brand, form All incre: Horse bri

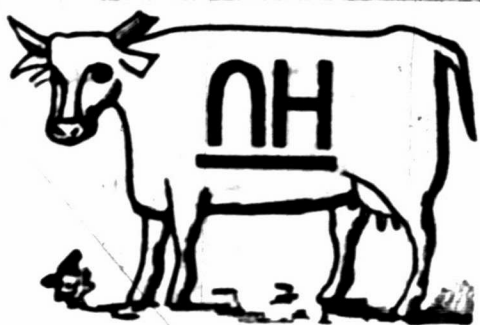


On est. Horse br Ear mar



On est. Horse br Ear mar

SAN MIGUEL COUNTY.



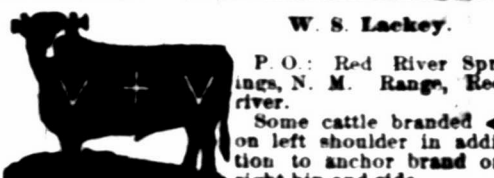
The Dutchess Cattle Co. of New Mexico.
TAYLOR MAULDIN, Manager,
Postoffice, Wagon Mound.
Ranch P. O.: Liberty, N. M. Range, Pajarito,
San Miguel county.
Other brands, HUT and 202 both on the
left side.
Horses branded same as above cut, on left hip.



Frank Huntington.
Postoffice, La Cinta, N. M.
Range, Rincon La Cinta.
Also own cattle in ZH on left side.
Horse brand, same as cut, on left thigh.



Sam Dosa.
JOHN PAWLEY, Foreman.
Ranch P. O.: Fort Sumner, Address, 608 East
9th st., Kansas City, and Trinidad, Colo. Range,
Pecos river, at Fort Sumner.
Additional Brands:
Cattle in DQ brand have also following brands:
Some D on left hip and left jaw; a few branded
on left hip, side and jaw.
Cattle in VQ brand have also following brands:
Some U right loin; some T right on
loin; some F right side. None of these left
brands are kept up. All increase is on side
brand and marked as in cut.
All horses branded DQ on right thigh.



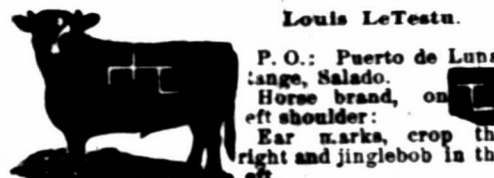
W. S. Lackey.
P. O.: Red River Springs, N. M. Range, Red
river.
Some cattle branded < on left shoulder in addition
to anchor brand on right hip and side.
Also owns one half interest in the anchor
brand, formerly owned by Lackey & McNamara.
All increase branded as shown in the cut.
Horse brand, V cross on the left hip.



G. S. Long & Bro.
P. O.: Cabra Springs, N. M. Range, La Garita and
Los Cochinos.
Other brands:
WHL on either side.
Also, on either side.
Increase branded as in cut.
Horse brands, same as cut.
Ear marks, slit right, overbit left.

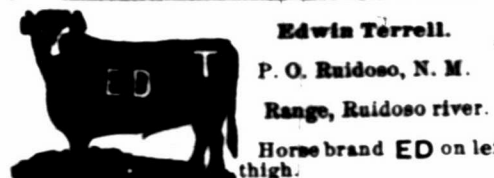


F. K. Houghton.
P. O.: Liberty, N. M. Range, Monte Ruelto, San
Miguel Co., N. M.
Horse brand, same as
cut, on the left hip.



Louis LeTestu.
P. O.: Puerto de Luna,
Range, Salado.
Horse brand, on
left shoulder.
Ear marks, crop the
right and jinglebob in the
left.

LINCOLN COUNTY.



Edwin Terrell.
P. O. Ruidoso, N. M.
Range, Ruidoso river.
Horse brand ED on left
thigh.

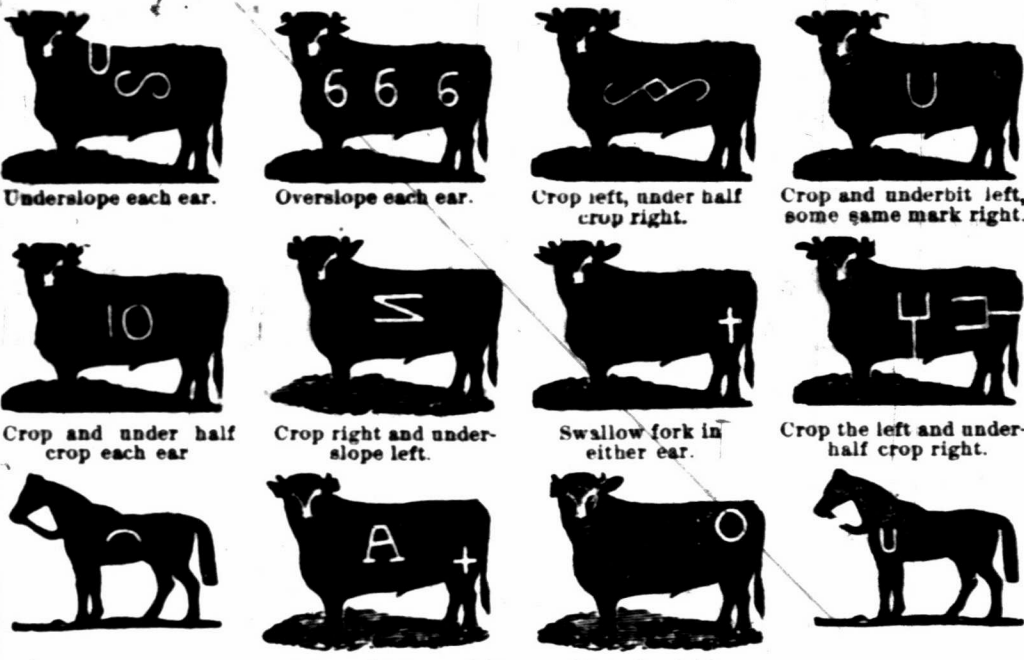


Hernandez Bros.
P. O.: Fort Sumner, N. M.
The range, California
Ranch, on Pecos river, and
the San Juan mesas.
Horse brand on left
hip.
Ear marks: Swallow
fork in the left ear.

This space belongs to
J. H. HUGHES,
New Mexico's Leading Saddler and
Harness Maker.
ALBUQUERQUE, N. M.

LINCOLN COUNTY.

WM. ROBERT,
Postoffice,
Roswell, Lincoln county,
New Mexico.
Breeding range, on the
Pecos river, New Mexico.
Steer range, on the San
Pedro river, in Cochise
county, Arizona.
Horse Brand,
U on the left shoulder.
Ear Marks,
Jinglebob in both ears.
Same brand and marks
kept up on both the steer
and breeding ranges.
All increase of follow-
ing brands, which I own,
marked and branded as in
main cut.



THE ANGUS V V RANCH.
KIRBY & CREE.

Postoffice, Fort Stanton, Lincoln county,
New Mexico.
Range, Rio Salado, Rio Bonito, Little
creek, Eagle creek, and Rio Ruidosa.
Ear marks, underbit in each ear.
Horse brand, V on the left shoulder.
Additional Brands:
on right side, un-
derbit both ears. on left side,
or either side.
on either hip. on the left side.
on left shoulder, side and hip. Mar-
ked, crop right and underslope left.

ANDERSON CATTLE COMPANY.
W. E. ANDERSON, Manager.

Postoffice, Roswell, Lincoln county, New Mexico.
Range, On the Hondo river, Lincoln county, west of Roswell.
Additional brands:
on left side and upper half crop. on left hip. Ear mark,
underbit left, crop right.
on left side, same as boot. on left hip. Ear mark,
bar cattle.
on left side and hip. Ear mark, crop and
split in left and underbit in right.
on left side. on left hip. Ear mark, up-
per half crop. on left, under half crop right.
on left side. Various ear marks.

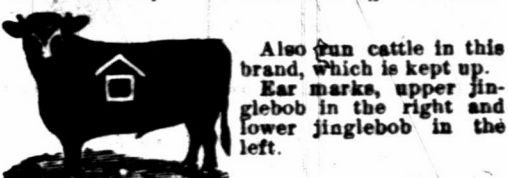
MILNE & BUSH.
Postoffice, Roswell, Lincoln county, N. M. Range, on the Berrendo and Pecos rivers.



Main brand. Grub Left. Grub left and underslope right. Grub left and crop right.
Additional Brands:
O X O on left shoulder, side and hip. Different ear marks. I X on left side. Ear marks, crop left under half right. Horse brand, V left thigh.

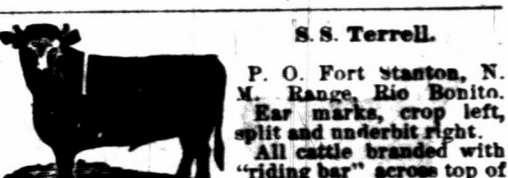
LINCOLN COUNTY.

L. M. Long.
P. O.: Roswell,
N. M. Range, Rio
Hondo.
Other brands:
Both on left side.
Horse brands, same as cattle on right shoulder.

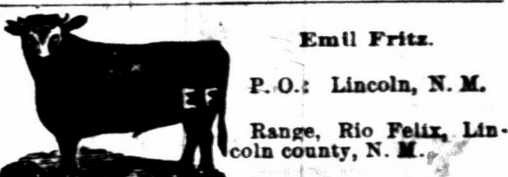


Also own cattle in this
brand, which is kept up.
Ear marks, upper jin-
glebob in the right and
lower jinglebob in the
left.

Lea Cattle Company.
J. C. LEA, Manager.
W. M. Atkinson, Range
Foreman.
P. O.: Roswell, Lincoln
county, N. M. Range, on
the Hondo, North Spring
and Pecos rivers, and on
the Aqua Azul, Blackwater and Baca Ranches,
all in Lincoln Co.
Ear marks, crop and split left, split right.
Brand as in cut on left side, but sometimes on
right side. Ear marks sometimes reversed.
Additional brands:
E side, and also some on side and hip. W side,
J B on hip or loin. LEA on side, or shoulder,
side and hip. Cross on side and hip. And vari-
ous other old brands and marks.
Horse brand:
on left shoulder and
left hip or thigh.
Part brand
ed only on
left shoulder
thus:

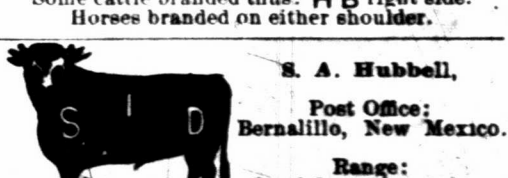


S. S. Terrell.
P. O. Fort Stanton, N.
M. Range, Rio Bonito.
Ear marks, crop left,
split and underbit right.
All cattle branded with
"riding bar" across top of
and extending down on
both shoulders.
Also some cattle branded
SS on right hip or
thigh.
Horse brand, SS on left thigh.

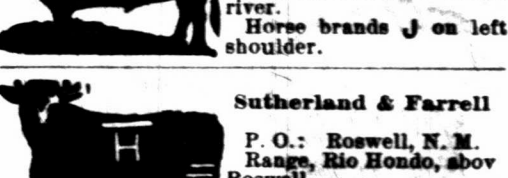


Emil Fritz.
P. O.: Lincoln, N. M.
Range, Rio Felix, Lin-
coln county, N. M.

Old stock on right
side, increase on left.
The Coyote Valley and Red Lake Cattle
Company.
J. D. GRUMBLES, Manager.
P. O.: White Oaks, N. M. Range, Carlizozo.
Some cattle branded thus: HB right side.
Horses branded on either shoulder.



S. A. Hubbell,
Post Office:
Bernalillo, New Mexico.
Range:
Guadalupe Mountains.



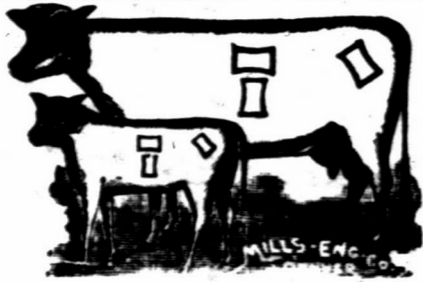
J. & J. S. Reynolds.
A. B. ALLEN, Foreman.
P. O.: Fort Sumner, N.
M. Range, 8 miles below
Cedar Canon on the Pecos
river.
Horse brands J on left
shoulder.



Sutherland & Farrell
P. O.: Roswell, N. M.
Range, Rio Hondo, above
Roswell.
Other brands: All cattle
have two bars across the
butt.
Eddy-Bissel Cattle Co.
EDDY BROS., Managers.
P. O.: Seven Rivers, N.
M. Range, on the Pecos
near Seven Rivers.
Horse brand on the
left sho-
ulder.

Seven Rivers Cattle Co.
JOHN HARRIS, Manager.
P. O.: Colorado City,
Texas. Range, east side
of Pecos river, 85 miles
above Pecos Station, Tex.
Horse brand, same as the
cut on the left hip.
A REWARD of \$250 is offered for the arrest
and conviction of all persons illegally handling
any cattle in this brand.

LINCOLN COUNTY.



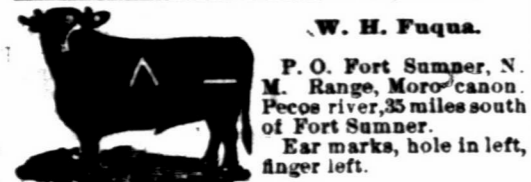
El Capitan Land and Cattle Company. P. O.: Fort Stanton, Lincoln county, New Mexico. Range, north of El Capitan mountains, Lincoln county.

Other brands. MEL left shoulder, side and hip. Ear marks slit and underbit in right. COM left shoulder, side and hip. Underbit left. OWL on left side. Mark ed crop right, underbit left. D left side and hip. Ear marks, split Horse brand, on both ears.

All increase marked as in cut and tails bobbed. When sold all horses are counterbranded with a small block on the left jaw.

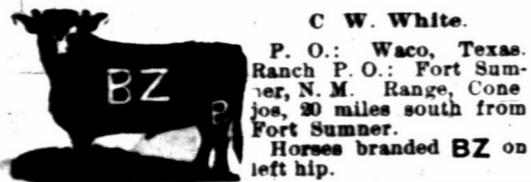


Carrizozo Cattle Ranch Co. (Limited). JAMES A. ALCOCK, Manager. P. O.: White Oaks, N. M. Range, Carrizozo. Horse brand, C with dot in center placed on left shoulder.

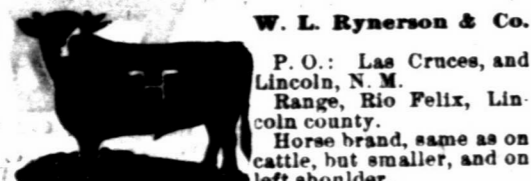


W. H. Fuqua. P. O. Fort Sumner, N. M. Range, Moro canon, Pecos river, 35 miles south of Fort Sumner. Ear marks, hole in left, finger left.

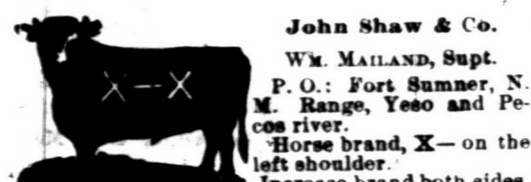
Old stock branded left side, increase both sides, on left side, kept up. Additional brands A+ Ear marks same as above. Ear marks, hole in left, quarter over and under crop right. Horse brand: A on left shoulder.



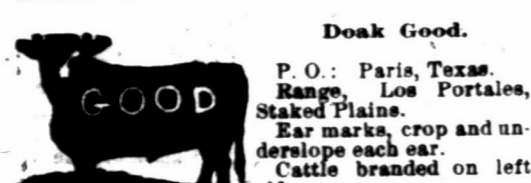
C. W. White. P. O.: Waco, Texas. Ranch P. O.: Fort Sumner, N. M. Range, Conejos, 30 miles south from Fort Sumner. Horses branded BZ on left hip.



W. L. Ryerson & Co. P. O.: Las Cruces, and Lincoln, N. M. Range, Rio Felix, Lincoln county. Horse brand, same as on cattle, but smaller, and on left shoulder.



John Shaw & Co. Wm. MAILAND, Supt. P. O.: Fort Sumner, N. M. Range, Yaso and Pecos river. Horse brand, X on the left shoulder. Increase brand both sides.

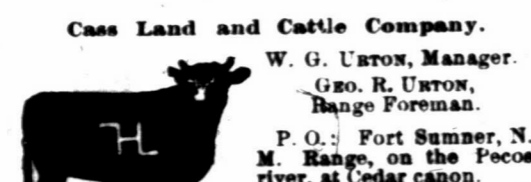


Doak Good. P. O.: Paris, Texas. Range, Los Portales, Staked Plains. Ear marks, crop and underbit left. Cattle branded on left side.



Charles O. Cole. P. O.: Fort Sumner, N. M. Range, Pecos river. The cattle are also under Texas brands as follows: ABK SAS

All increase branded as in cut and marked with underbit in right ear. Horse brand, VT on the right thigh.

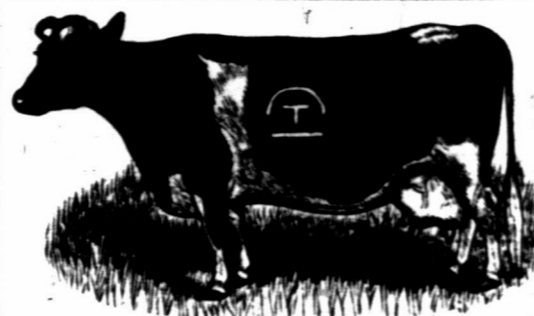


Cass Land and Cattle Company. W. G. URTON, Manager. Geo. R. URTON, Range Foreman. P. O.: Fort Sumner, N. M. Range, on the Pecos river, at Cedar canon. Horse brand, same as in cut, only on right hip.

All young stock branded as in cut on the right side, and also with a 7 on the left hip.

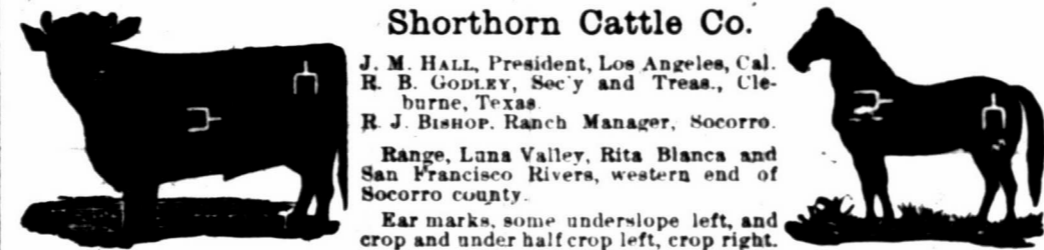
THE STOCK GROWER presents the best medium for advertising, because it is read by every stockman in the southwest.

SOCORRO COUNTY.



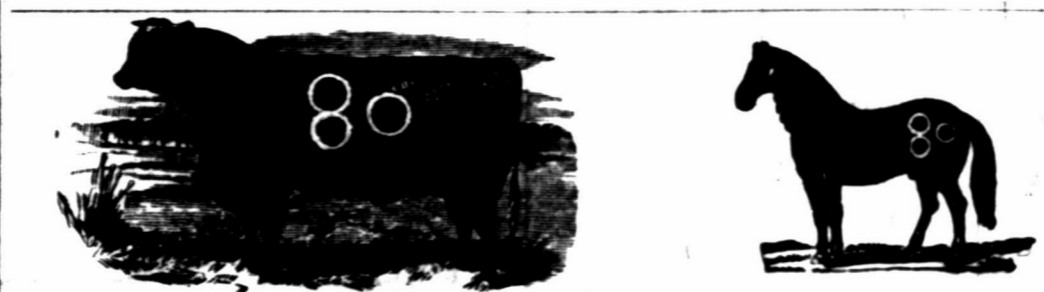
IRA E. LEONARD, President, Socorro, N. M. C. O. TIFFANY, Sec. & Treas., San Marcial. J. C. TIFFANY, Manager, San Marcial, N. M.

BOSQUE BONITA Land & Cattle Company SAN MARCIAL, SOCORRO COUNTY, NEW MEXICO.



Shorthorn Cattle Co. J. M. HALL, President, Los Angeles, Cal. R. B. GODLEY, Sec'y and Treas., Cleburne, Texas. R. J. BISHOP, Ranch Manager, Socorro. Range, Luna Valley, Rita Blanca and San Francisco Rivers, western end of Socorro county. Ear marks, some underslope left, and crop and under half crop left, crop right.

MEXICO, TEXAS AND WYOMING.



CLAY M. MANN, Postoffice Address, Colorado City, Texas. Ranges, Los Varas, State of Chihuahua, Mexico; Kent county, Texas, and Western Wyoming. Ear marks on all cattle, crop off left. All horse stock branded as in cut.

PLAZA HOTEL REOPENED August 1st, 1886.

Thoroughly Renovated and under the Management of the Las Vegas Hotel and Improvement Company.

First-class in all its appointments. Clean, airy rooms. Elegantly furnished. A No. 1 table and ever, thing possible done for the comfort of guests. Headquarters for Stockmen and Commercial men. Rates \$2.50 per day. Special rates to parties remaining a week or more.

The Hotel Capital, SANTA FE, NEW MEXICO.

Headquarters for Stockmen and all Travelers. Courteous Treatment to all. Rates Reasonable. WILLIAMS & SHADE, Proprietors.

The Armijo House, ALBUQUERQUE, N. M.

NEWLY FURNISHED THROUGHOUT.

Every modern convenience has been added, making it one of the best hotels in the southwest. Commercial travelers will find commodious sample rooms. The bar and billiard room are the finest in the territory. Its nearness to business, street car lines, opera house, depots, etc., make it desirable in every way. Requesting your patronage, respectfully,

CHAS. E. BONSALL, Manager. W. E. TALBOTT, Proprietor.

ST. NICHOLAS HOTEL, Sixth St. and Douglas ave., Las Vegas.

CATTLEMEN AND ALL WILL FIND HERE A PLEASANT STOPPING PLACE Centrally Located. Reading Room Connected. American and European Plans. MRS. M. A. HORNBERGER, Proprietor.

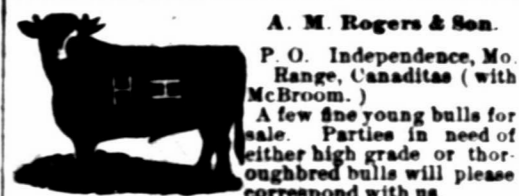
UNITED TRADING CO., COLORADO CITY, TEXAS.

Makes Contracts for delivery of Stock Cattle in any quantities and classes, to suit purchasers. Correspondence solicited. Refer to the First National Bank, Colorado, Texas. JOHN HARRIS, Manager.

INCO-7LN COUNTY.



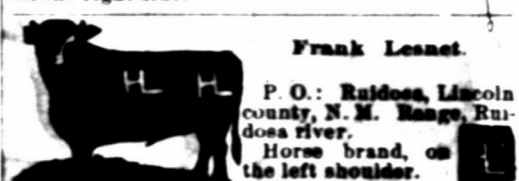
George B. Barber, Manager. P. O.: Lincoln, N. M. Range, Three Rivers, Lincoln county, N. M. Horse brand, one cross, same as cattle, on the left hip.



A. M. Rogers & Son. P. O. Independence, Mo. Range, Canaditas (with McBroom.) A few fine young bulls for sale. Parties in need of either high grade or thoroughbred bulls will please correspond with us.



L. L. Cattle Company. M. R. Lewis, Range Mgr. and Secretary. Postoffice, Fort Sumner, N. M. Lewis Lutz, Treasurer. Las Vegas. Range, Pecos river, 40 miles south of Ft. Sumner. Ear marks, underslope right, overslope left. Horse brands, L on shoulder, O on jaw, both on the right side.



Frank Leaset. P. O.: Ruidosa, Lincoln county, N. M. Range, Ruidosa river. Horse brand, on the left shoulder.



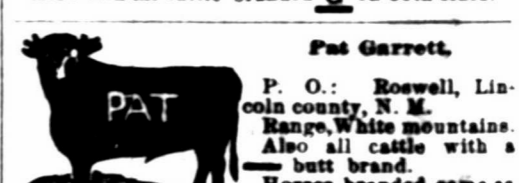
R. F. Segrest. P. O.: Seven Rivers, N. M. Range, head of Seven Rivers, South Prong. Ear mark, underbit and overslope left ear, overbit right ear. Horse brand on left side. Some cattle are branded with the S straight up. Additional brands: RRS Ear mark, overslope and underbit left, overbit right. OL Ear mark, overslope and underbit left; overslope right. HUB Ear mark, crop and under half-crop left; crop right. On shoulder and hip. Ear mark, swallow fork and underbit left; swallow fork right.



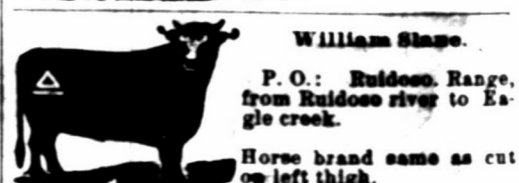
J. A. LaRue. P. O.: Las Vegas, N. M. Range, Rio Felix, Lincoln county, New Mexico.



George G. Gans. P. O.: South Fork, Lincoln county, N. M. Range, Pleasant valley, 9 miles north of Upper Pecos. Marked, crop both ears. Horses branded same as cattle, on left shoulder. Also own all cattle branded G on both sides.



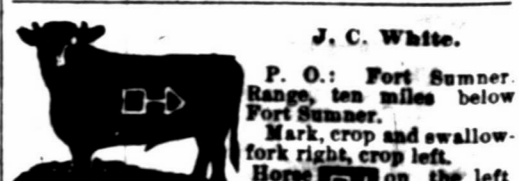
Pat Garrett. P. O.: Roswell, Lincoln county, N. M. Range, White mountains. Also all cattle with a butt brand. Horses branded same as cattle.



William Stage. P. O.: Ruidosa, Range, from Ruidosa river to Eagle creek. Horse brand same as cut on left thigh.



N. B. WINFREY. C. H. WINFREY. Winfrey Bros. P. O.: Fort Sumner, N. M. Range, Pecos river, 30 miles south of Fort Sumner. Ear marks, crop left, underbit right. Cattle also branded HAD right side, not kept sp. Horses branded on right hip thus H



J. C. White. P. O.: Fort Sumner, Range, ten miles below Fort Sumner. Mark, crop and swallow fork right, crop left. Horse brand G on the left hip.

HENRY G. COORS

WILLIAM F. COORS

COORS BROS.,

Successors to Lockhart & Co., Wholesale and Retail Dealers in

Furniture and Hardware

Tinware, Sporting Goods, Shotguns, Rifles, Pistols,
All Styles of Ranges, Cooking and Heating Stoves,
House Furnishing Goods of Every Description.

Lumber, Sash, Doors, Lath, Shingles and Blinds,
PAINTS, OILS AND GLASS.

All Orders by Mail Promptly Filled. Ranch Trade Especially Solicited.

LAS VEGAS, NEW MEXICO.



Turbine Windmill!

For Western Ranches.

Runs with lightest breeze and through severest gales steadily and evenly, being a SELF REGULATOR.

Irons sold and plans furnished. Any man with a little knowledge of tools can build the woodwork any place at small cost, and save freights.

This is the only windmill adapted to the RANGE COUNTRY. Its small cost, its great durability and power, and its strength to withstand any windstorm, makes the TURBINE WINDMILL the ranchman's favorite.

Satisfaction guaranteed. Send for circular and price list.

A. H. SOUTHWICK, Patentee.

604 East Locust Street, - - Des Moines, Iowa.

SOCORRO COUNTY.

AMERICAN VALLEY CO.

W. B. SLAUGHTER, President and Gen. Manager.
Postoffice address, Socorro, New Mexico.
Ranch, American Valley, Socorro county, N. M.

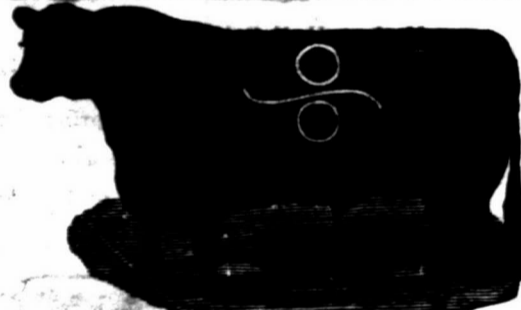
\$250 REWARD will be paid for the arrest and conviction of any person or persons illegally sending any stock in the following marks and brands:



Cattle brand kept up, S as in above cut, on both shoulders.
S on the left hip of horses.

Other Brands:

ANA side, @ hip. Underslope each ear.
CCO side, @ hip. Crop and underbit left ear.
P on side and loin, or side and hip.
Cross on a bought steer; used as a road brand.
V side, underslope each ear.
side, various marks and other brands.
side, various marks and other brands.
on side, underslope left, sawtooth fork right.

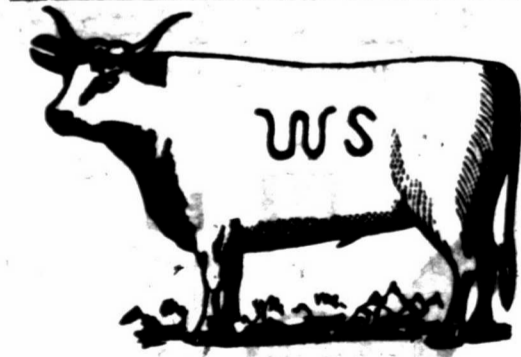


Deer Park Cattle Company.

FRANK H. WINSTON, Manager.

P. O.: Fairview, N. M. Ranches, at Elk mountain, Socorro county.

Also owns the following brands: [Logos] Horse brand, [Logo] on the left shoulder.



W S Ranch.

J. H. COOK, General Manager.

P. O.: Alma, Socorro county, New Mexico.
Range, San Francisco river, Socorro Co.
Horse brand, same as cattle, on left shoulder or thigh.

Detroit and Rio Grande Cattle Co.

P. MORRENSULL, Manager.



P. O.: Eagle, N. M. Range, Jornada and Caballo mountains.
Ear marks, underbit left.
Horse brand, left side, [Logo] left hip.
Other brands [Logos] left side, [Logo] left hip.

BROWNING, KING & CO.

Manufacturers and Retailers of Fine

CLOTHING

1101, 1103 and 1105 Main Street, Kansas City, Missouri.

HENRY L. PITCHER, Manager.

Clothing Specially Adapted to the Requirements of Cattlemen

OF THE RANGE COUNTRY, AND STOCKMEN GENERALLY.

Samples of Goods, Tape Lines, and Rules for Self Measurement, Sent to Any Address, Free of Cost, on Application.

FIRST-CLASS GOODS—REASONABLE PRICES

Money Cheerfully Refunded if Goods Do Not Suit.

THE FALL SEASON

With its charming new styles is here, and as usual

Charadeyfeld

Displays latest fashions of

Dry Goods, Millinery, Dressmaking.

Butterick's Fashion Book mailed free to any lady sending address. Call when in town.

Solon E. Rose & Bro.

JOBBER OF



MACHINERY

Horse Powers, Wind Mills, Well Drilling Outfits, and Augers.

RANCHMEN'S SUPPLIES.

Very Low Prices Guaranteed on all Sizes of Tanks.

Write for circulars and prices.

ABUQUERQUE, NEW MEXICO.

J. C. BERTRAM,

Breeder and Importer of

HEREFORD CATTLE

BRISTOL, ILLS.



Makes a specialty of importing representatives from best families and breeding only stock of superior excellence.

Am prepared also to furnish ranchmen first-class grades, which I will guarantee to be of superior breeding, well marked, and sired by bulls of acknowledged merit.

For quality of animals handled by me I refer all ranchmen to the Hereford bulls now on the ranch of Mr. William Robert, at Roswell.

CORRESPONDENCE SOLICITED.

WHEN you write to an advertiser mention the Stock Grower.

SOCORRO COUNTY.



H. E. HOLBROW. D. M. SMITH.
Postoffice, Magdalena, Socorro county, N. M.
Range, west of San Mateo mountains and San Augustine Plains.

Illinois Cattle Company.

S. P. JOHNS, Manager.

JULIUS M. ESTES, Foreman.

P. O.: San Marcial, Range, between Magdalena and San Mateo mountains, and on west side of Rio Grande river, between San Marcial and Cantaritas.



Other brand [Logo] on the left side and left hip. Ear marks, crop the right and underslope the left.

THIS IS THE COW WITH THE CRUMPLED HORN.



A. HARDCASTLE. C. MITFORD.

ADOBE RANCH.

Range, on headwaters of the Upper Gila, Sierra county. P. O.: Grafton, N. M.

Horse brand, HM (connected) on left hip or shoulder. Also 2 on the left hip.

C. S. Roberts.

P. O.: San Marcial, N. M.

Ranches, Los Burros, 20 miles west of San Marcial, Socorro county.

Ear marks, crop right and small crop and half circle above and below in left; also, skin cut on nose.

Horse brand, same as cat on left hip. Cattle branded either side and hip.