

Sweetwater Reporter *The Only Clouds He Can See On The Business Horizon*

Published each afternoon and Sunday morning, except Saturday and its weekly edition on Thursday by The Sweetwater Reporter, Inc. Entered as second class mail matter at the postoffice at Sweetwater, Texas.

MINOR SHUTT Editor

TELEPHONES
Business office 105
News Department 46

SUBSCRIPTION RATES
Daily, One Year \$5.00
Daily, Six Months 2.75
Daily, One Month .50
Weekly, One Year 2.00

ADVERTISING RATES
Classified advertising rates are 1c per word per insertion; minimum charge for first insertion 30c. Local readers 10c per line per insertion. Cards of thanks, resolutions of respect and in memoriam 5c per line. Display advertising rates on application to the office. Copy should be in the office of The Reporter not later than 6 p. m. on the day preceding publication.

Any erroneous reflection upon the character, standing or reputation of any person, firm or corporation which may appear in any of The Reporter's publications, will be cheerfully corrected upon being brought to the attention of the publisher.

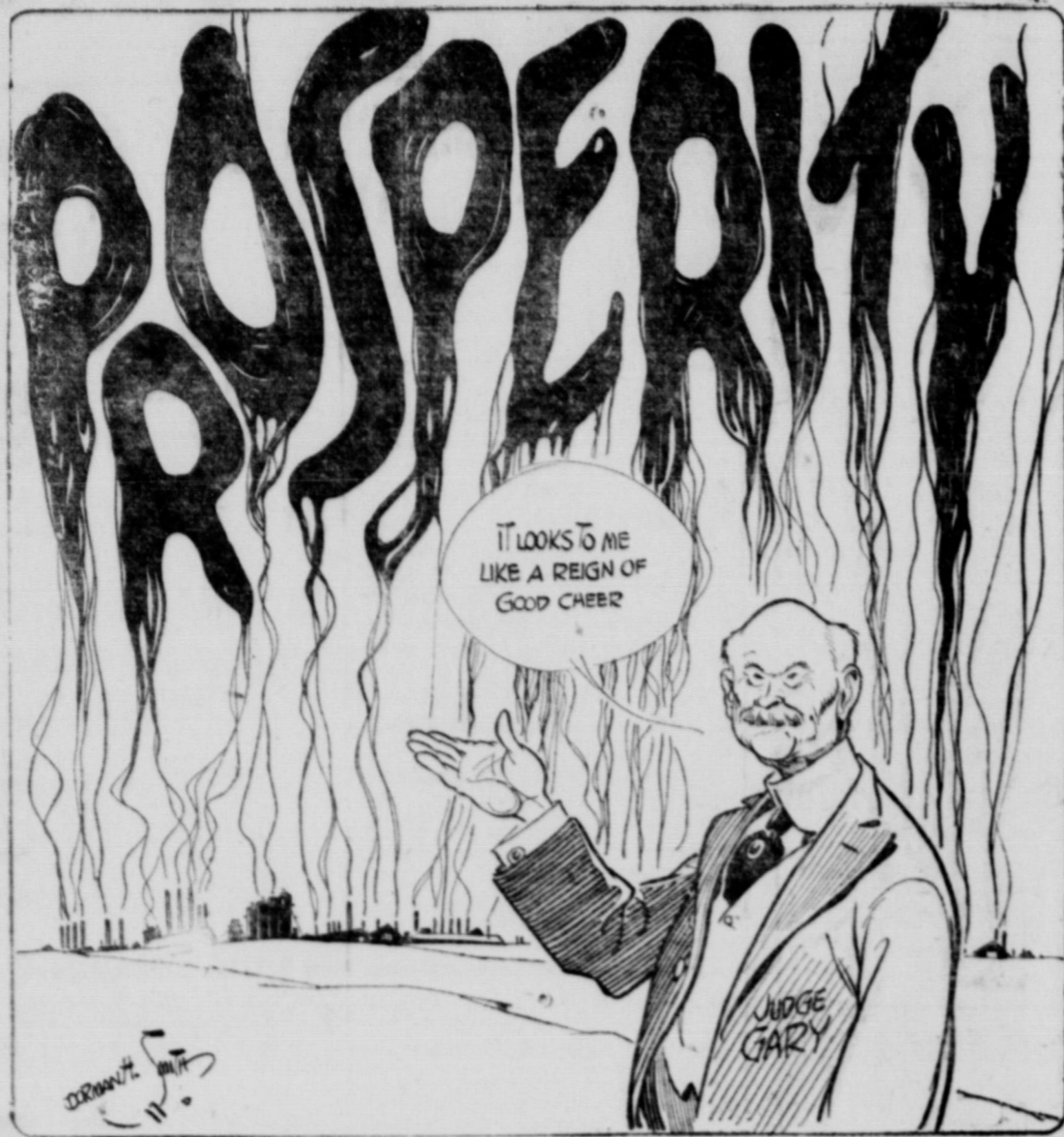
A GREAT SUCCESS

Viewed from all angles the Nolan County Fair of 1925 is a tremendous success. There was splendid co-operation from everybody except the weather man and the exhibits on display would have been a credit to any fair anywhere.

The main exhibition building proved ample for all demands made upon it.

The poultry building was inadequate to house all the birds shown but the cold weather prevented arrival of a number of fowls that were promised and doubtless would have taxed this part of the fair beyond its capacity. There were no turkeys show at all. Provision must be made another year for a large increase in the capacity of this department. For Sweetwater is poultry center.

The Hereford Show and Sale could not have been excelled. The same cold weather prevented the arrival of many promised pigs, sheep and milk cows. This section however, is notoriously weak on its dairy interests and too great encouragement cannot be given the exceptionally important pig and dairy interests in next years



The general farm exhibits, feed, cotton, vegetables, etc., were exceptionally good.

All in all it is a fair Nolan County can well be proud of.

EDITORIAL COMMENT

By Chester H. Rowell

It is a great country we live in; great in size and yet yearly smaller in accessibility; infinitely varied, and yet one, more uniform than any equal body of humanity on earth.

It is written in Reno, Nevada, an enterprising, wide-awake western town, which the outside world knows for only one thing, and that the thing which concerns the natives least of all.

It is only a night's ride away from California, and yet it is already a different world. Last night it was summer in California; this morning it was winter at Truckee, and to-

day it is crisp autumn in Reno, the sharp air and the coloring leaves speaking of the impending winter which in California we forget is a part of the normal year elsewhere. Tomorrow morning it will be summer in California again. Thus modern improvements defy the laws of space and time.

Reno, to its exotic colonists, who come here as to a hospital, for an operation of social surgery, is "out of the world"—that is, out of their world.

They are as provincial as the natives, and find the adjustment from New York to Reno much harder than the native of Reno would find it in the reverse direction. But to the true Nevadan, it is not out of the world.

It is the center of his world, and a good world it is. Even the vast uninhabited spaces, which constitute most of Nevada, are something of inspiring beauty.

In the mountains is gold and sil-

ver, and in the watered valleys is soil of unmatched richness. There is only a little of it, but what there is is good.

And to the natives, it is home. In empty space, Nevada is a great empire, nearly as large as France in people, it is a little town. The total population is perhaps seventy thousand—less than many a minor suburb of country county seat further east.

But it must have all the paraphernalia of a state. It has a governor, a Legislature, the usual complement of State officers, two United States Senators and a Congressman. The same number of people in an eastern town, would probably be governed by five commissioners and a few administrative employees appointed by them.

But, to counter this extravagance of administrative overhead, there is also a State University at Reno with a student population of over 1 per cent of the total population of the

State.
New York, to do as well, would have to have a great State university of a hundred thousand students. If the divorcees think their temporary exile a hardship by reason of the "lack of culture" of the woolly west, this is the answer.

The American Federation of Labor is opposed to the registration of aliens because the registers would be used to spy on the unions.

Doubtless the fears of the unionists are not unfounded. Our unionists in America are capable of a lot of things in what they imagine is their holy cause, and this may be among them.

And yet, precisely this system of registering and keeping track, not only of aliens, but of everybody, has always been the custom in many of the countries from which these immigrants come, and it has not had that effect there. It should not here, and will not, if our capitalists will once recognize that unionism is not only inevitable, but right and beneficial.

Warn the existence of unionism, or refusal to deal with unionized employees through the union is futile, short-sighted and wrong.

The defense of the rights of the employer should be against unjust demands of the unions, not against their right to be dealt with to make any demands or bargains.

Once let capital become enlightened enough for this, and labor should then be also enlightened enough to forego its opposition to the registration system. In fact, it may have to be enlightened itself without waiting for capital.

For this system, in the long run, is the only way to make the immigration act effective. And labor is the chief beneficiary of that act.

If any alien who can once smuggle in is safe ever after, the immigration act will be of little protection to American labor.

Gopher Prairie and Plymouth. They first buy clothes for themselves—a suit, a cloak, a dress or two, a hat, gloves and shoes. Then they buy articles of similar style for their stores.

Only a few years back manufacturers of women's wear put their product on sale in New York. After several months they banded up the faded articles and shipped them to other cities. The effect of this was that girls and women in smaller cities and in the rural districts often were months behind the styles. And they were very self-conscious about this if they visited New York or a few of the other big cities.

This has changed. The women who walk out of the depots here are just as neatly and fashionably garbed as any New York woman, and often more so. Manufacturers distribute their product over the country at one time. The smallest cross-roads store is generally as up-to-date in the wares it handles as the most pretentious shops on Fifth Avenue.

New Yorkers will soon have to change their shirts and collars daily, or oftener, just as Pittsburgers or Cincinnatians do. This has been a remarkably clean city due to the fact that no soft coal is burned here, but with a shortage of hard coal threatening the ban on bituminous has been lifted. This will banish homesickness among many of the boys from the midwest.

Sign on a social club in Delancey street: "Membership Drive On. Come in and witness our secret rites and then join."

Winter can not be far away. Reggars in shabby clothes are to be met on Manhattan streets, for the first time in months begging for the price of a bed. During the summer they can shift for themselves pretty well, there being several parks in which the downtrodden are allowed to sleep. I do not know whether the economic situation as it applies to the unskilled man is getting worse, but it seems to me there is more panhandling going on now than there has been in five years.

—JAMES W. DEAN.

NEW YORK DAY BY DAY

NEW YORK, Oct. 31.—The fashions of the country are not set by Broadway actresses or Parisian mannequins. They are established by the buyers from the hinterland to make annual or semi-annual pilgrimages to Gotham.

The buyers of women's apparel come here from Junction City, Colo., Colorado, Texas, 23516p.

Mrs. F. E. Feightner and little daughter Dorothy Jane and son Gene have returned to their home in Desdemonia after a weeks' visit with Mrs. W. S. Barcus 506 Elm.

Will deliver you Essex Coach \$895; Hudson Coach \$1320; Pierce Arrow Roadster, fully equipped, \$3195; Closed Pierce Arrow \$3650. Price Auto Co., Colorado, Texas, 23516p.

COUPLE INJURED

Mr. and Mrs. Frank Stephenson Recovering Saturday Following Auto Accident on Highway

Frank Stephenson was reported resting well Saturday and his bride of five weeks was reported fully recovered following an automobile accident on the Bankhead highway between Sweetwater and Roscoe Wednesday in which both were injured. Mr. and Mrs. Stephenson are a popular young couple and both of whom are well known here, are at the home of Mr. and Mrs. J. L. Stephenson.

Stephenson received injuries about the body and his wife sustained cuts and bruises when their car ran into a ditch on the highway. The impact threw Mrs. Stephenson through the top of the car and Mr. Stephenson was injured when his body flung against the steering wheel, it was reported.

The car was not badly damaged, and Stephenson drove on into Colorado, their destination, stopped the car at the house to which they were going, walked inside, and dropped unconscious. It was stated that Stephenson afterwards said he was in a daze during the remainder of the drive and did not remember taking the car from Roscoe to Colorado.

He was brought back to Sweetwater in an ambulance, and the couple was reported rapidly recovering Saturday. Stephenson is the son of Mr. and Mrs. J. L. Stephenson, and Mrs. Stephenson is the daughter of Louis Polk, all of Sweetwater.

EXHIBIT TIRES

Pior Rubber Company Has Federal Tires Displayed at Fair

The only exhibit of tires at the Nolan County Fair is shown by the Pior Rubber Co, wholesale distributor of the Federal tires for this section. A large number of the Federal tires are arranged in an interesting exhibit.

NEW ARRIVALS FOR HOLIDAY WEAR

1926 Model FROCKS



They're here—newest arrivals from the best makers—ready for your inspection. Featured are all of the newest materials, showing the new back trimmings and flares. Some have

the new long sleeve effect, attractively embellished. The gayer colors are shown largely, but there, too, are some of the more conservative shades. The prices are most reasonable.

COATS



Correct in line, correct in detail, correct in color, correct for you and at a really attractive price. We have just received a new shipment of these nice coats. Be sure to see them.

SWEATERS

We are showing a very attractive line of sweaters for those folks who are most active out of doors, and do not want to be hampered by a heavy coat. These are in a nice selection of colors well made and very reasonably priced.



May Peterson, Grand Opera Singer

Is Coming to Sweetwater

This rider of the "Old Gray Mare" of American Legion Fame

Will Be Heard in Concert at the

Palace Theatre, Nov. 21th.

She Will Sing The Songs You Love

Besides the heavy and light operas she will sing "Carry Me Back to Old Virginny," "Coming Thru the Rye," some of the old songs of army days, and any other special request.

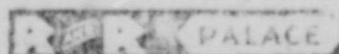
Some Things Recently Said of Her

"She is possessed of one of the loveliest voices on the concert stage and has acquired a vocal polish that is good to hear"—New York Herald.

"May Peterson could not leave the stage till she had shared in such an ovation as these bitter days have rarely witnessed"—Philadelphia Ledger.

"Miss Peterson sang three well-chosen groups of songs which were received with great applause. She has a lyric soprano voice of great beauty. Her courtesy in telling the audience what the songs in foreign languages were about set an example that might be widely imitated"—Boston Globe.

Form Your Theater Parties Early



November 12 at 8:30 O'clock

Tickets on sale at \$2.20, \$1.65 and \$1.10

War Tax Included

Tidwell-Pitzer Co.

Where the Price Is Right

TRIAL NEAR END

(Continued from Page One)

Stephens about the conversation. In the ruthless cross examination of Weatherby, the prosecution sought to bring out that Weatherby and Martin were comparatively strangers and had never met each other. "When he came to see you there it was the first time you ever declared your name to him or he to you, wasn't it?" Brooks asked. Weatherby hesitated briefly and finally answered "Nothing was said about names." In the cross examination Brooks attempted to bring out the date of the visit and conversation to which the witness replied, "I don't know." Finally Brooks, referring to the visit and conversation, shouted at the witness, "You know it didn't happen, don't you?" And the witness shouted in reply, "No, I don't know that it didn't happen." Roy Tipton, who followed Weatherby on the stand, also testified concerning threats he heard Martin make. Otha wanted him to go see the girl, the witness said, and added that he replied to Otha that he wouldn't go. He referred him to Weatherby, Tipton said. The defense rested following an argument over a request by the defense for two witnesses who were not present. The state objected to the delay of locating the missing witnesses and Judge Leslie sustained the objection.

Character Witnesses

Character witnesses called by the defense early Saturday, all of whom testified to Stephens' general reputation being a good as a law abiding citizen, included Fisher county Judge R. P. House, who is also a former sheriff and tax collector, H. J. Hadderton of Fisher county, J. W. Ezzell of Hamlin, Nath Terry, Fisher county sheriff Carly Greenway of Hamlin, John Rector of McCauley, John Dodds, Tom Lightfoot, W. L. Langford and D. J. Payne, Hamlin merchant. Rev. J. S. Hubbard, Jones county minister, went through a lengthy examination by the state and a more lengthy cross examination by the defense relative to the marriage of Martin and Lusan Stephens, and his presence in the court house when the couple Dan Stephens and Jasper Stephens and others were present.

Father Saw Shooting

The state placed G. W. Martin on the stand at the beginning of the afternoon hearing. The father of the slain man told of going to Roby with his sons, Wiley and Otha. They stopped at the court house, he said, and Otha and Wiley went up to the door of the court house. Dan Stephens appeared, emerging from the court house, and the two boys turned away. Otha ran, the father continued. He had gone but a short distance when Stephens fired.

Son Was Unarmed

The sheriff ran up and caught Stephens, Martin continued. The witness said he remained at the car. His son continued toward a store where a few minutes later he was found by the

sheriff and his father. The witness testified that he did not take a gun from the youth and declared that his son did not carry a gun to Roby. The witness also stated that his other son carried no gun that day.

E. T. Brooks, leader of the prosecution, next took the stand to be ques-

tioned by district attorney James T. Beal of the defense. It was brought out that the witness had a conversation with Lusan Stephens Martin, and if he asked her not to tell about a pistol carried by Otha Martin.

Opposing Lawyers Clash

The witness replied that he did not. In the vigorous cross examination of

the prosecution attorney by W. W. Beal of the defense, it was brought out that the witness had a conversation with the slain man's wife at the habeas corpus proceedings of Dan Stephens. The questioning and the answers staged a lively battle of words following other questions asked

and answers given. District attorney Brooks entered the argument, followed by other attorneys, and Judge Leslie rapped on his desk for order. He then addressed a few words to the attorneys requesting that proceedings be carried out with more decorum. Brooks denied having asked the girl

if she were going to testify about the pistol, but said he asked her if she knew anything about Otha having a pistol, to which she replied that she did not.

Following another argument between the seven attorneys in the trial the state rested its case.

THE NEW VICTOR

ORTHOPHONIC

Will Be Demonstrated at Our Store This Week

Rufus Wright

Home Furnisher and Funeral Director

408-409-410-411-412 North Oak St.

Day Phones 549 and 775

Night Phones 423 and 76

Sweetwater, Texas

Fair Continues

MONDAY And TUESDAY

Due to the bad weather which marked the opening days, we have decided to extend the Fair over to Monday and Tuesday, inclusive in order to give everyone an opportunity to see the largest exhibition ever staged in Nolan County.

The Grounds will positively be closed all day today, and no one will be admitted except those with stock to look after or other business.

Special entertainment features will be arranged and the Big Carnival will be in full swing for the last two days. If you have not yet visited the exhibits, do so either Monday or Tuesday. If you have been out once, come again!

THIS IS YOUR FAIR AND IT NEEDS YOUR SUPPORT

DON'T BE A PIKER

Nolan County Fair Ass'n

D. A. CLARK, President

JOHN A. McCURDY, Secretary

BAND IN CONCERT

Sylvester Musicians Furnish Splendid Program at Fair—Music Provided Each Evening

A splendid addition to the series of musical programs being staged each

evening at the Main Building at Fair Park was the concert Saturday evening by the Sylvester Band under the direction of C. Henderson. A large crowd heard the 17-piece organization in a much appreciated recital.

Only nine months old, the Sylvester band is one of the best in West Texas for its size. The organization is made up of Sylvester citizens, from

school boys to old men. Mrs. C. Henderson, wife of the director, is snare drummer of the band, and two youths in knee trousers, Monroe Hart and Truman Cabeness, operate the bass drum and trumpet, respectively.

The band gave a concert uptown Saturday afternoon, followed by the concert at the fair grounds in the evening. Fair officials expressed grateful appreciation for the concerts voluntarily furnished by the Sylvester musicians.

Musical numbers have been features of the evening program at the fair ground each evening since the opening of the fair. The daily programs have been varied to include piano numbers, vocal solos, band concerts and string orchestra selections. Miss Edith Moody and Velma Sheppard Henson are the pianists who have played in various concerts at the fair. Miss Stella Watson and Mrs. C. S. Boyles, Jr., have sung at various concerts. Misses Madeline Neblett, Edith Moody and Stella Watson were also

included in the string orchestra which played during the fair. The Sweetwater band has given numerous concerts which were heard by large crowds each time. Phonograph and radio concerts in many booths in the building have added to the entertainment of visitors.

More musical programs have been promised for the last two days of the fair Monday and Tuesday.

TECH TEAM WINS

Matadors Take Sul Ross Team Into Camp at All West Texas Exposition at San Angelo

Special to Reporter. SAN ANGELO, Oct. 31.—Texas Technological College of Lubbock defeated Sul Ross State Teachers College of Alpine, 21 to 7, in football at the All-West Texas Exposition here this afternoon.

Until the last period the score was tied, as the result of a touchdown by Alford for the Matadors and by Ford for the Lobos. In the second quarter, each followed by a goal.

Alford in the final quarter, circled end for another touchdown, and passed to Woolridge for the third, extra points being added by kicking.

Today's win was Tech's third straight, following ties in its first two games. The Matadors started poorly but strengthened steadily, their reserves proving capable as the first line-up.

FUNERAL HELD

R. L. Farrar Laid to Rest at Sweetwater Cemetery Following Services at M. E. Church

Funeral services were held Saturday afternoon at three o'clock at the First Methodist church for R. L. Farrar, following his death late Friday afternoon. Rev. J. R. Henson was in charge of the services with interment following in Sweetwater Cemetery. The church was filled with relatives, a large group of friends. The pall bearers were A. B. Chambers, E. B. Hull, James Henry Beall, Jr., R. D. Cox, Jr., John Focht and Jesse Robertson.

Mr. Farrar was born in Ellis county in 1855. In 1878 he married Miss Molly C. Schrock. In 1878 he moved to Palo Pinto county, coming to Nolan county in 1901, where he has since resided. He was the owner of extensive ranch property near Maryneal.

He was the father of Gus Farrar, Nolan county clerk and Mrs. S. F. Scunday, of Sweetwater; Mrs. J. B. McDonald, Tucson, Ariz.; Mrs. W. E. Ellis, Rising Star, who were here for the funeral. Two sons, Frank Farrar of Yuma; C. S. Farrar of Tucson and a daughter, Mrs. J. R. Walker of Yuma, Ariz., were unable to get here for the funeral. Two of Mrs. Molly C. Farrar's sisters and their husbands Mr. and Mrs. J. L. Randall of Brownfield, and Mr. and Mrs. Charley Reynolds of Seymour, were also here for the funeral services.

Mr. Farrar has been a member of the First Methodist Church since 1889 and with his family was one of the most respected members of the community wherein he resided with an exceptionally large circle of friends.

Movies

PALACE

The great shipwreck scene in Norma Talmadge's latest photodrama, "The Only Woman," showing at the Palace theatre Monday and Tuesday, nearly cost the lives of several film actors. The storm grew unexpectedly ferocious and it was necessary for the entire company of sixty to land in small boats. One boat, filled with men, capsized. However, all aboard were rescued.

"The Only Woman" is a story of a girl who surrenders herself upon the altar of matrimony to save her father from disgrace, then awakes to find she loves the man she married.

LYRIC

Pola Negri knocks a man unconscious because she loves him in "Flower of Night," her tempestuous new screen drama for Paramount, opening a two days' run at the Lyric Monday.

The blow, delivered with the heavy butt of a six-shooter, is the only means by which she can save his life.

And she makes the scene one of the most gripping emotional moments of her acting career.

The man she loves is John Basset (portrayed by Youcca Troubetzkoy), young assistant superintendent of the Flor de Noche gold mine. Barricaded in a mine shack, he attempts to fight off an attack by desperadoes after he has refused to yield possession of the mine.

BODY TO TEMPLE

Ship Remains Saturday of Mrs. E. J. Reagan, 90—Died Friday

The body of Mrs. E. J. (Grandma) Reagan, for many years a resident of this section, was shipped to Temple Saturday following her death at the home of her son, M. C. Reagan,

Friday. Mrs. Reagan was 90 years of age at the time of her death. Her son with whom she made her home, lives 10 miles north of Sweetwater.

The deceased is survived by four sons. They are M. C. Stephenson of Sweetwater, C. A. of Hale Center, D. V. and D. B. of Temple

FIX UP THAT

Breakfast Room

We have ready built tables and benches to give that "built-in" effect. These are especially nice, well made and attractive.

They come ready finished, but with the use of a little painting may be changed to conform with any decorative scheme.

There is nothing more pleasant than a bright attractive Breakfast Nook. Ask about these sets. Come in and see them. Our prices are—

\$25.00—\$20.00

Cheaper than you can buy furniture.

Burton-Lingo Co.

Pioneer Home Builders

OUR OWN



HOSIERY

The best all Silk Chiffon hose in town—

At \$1.95

Cowen's
QUALITY FOOTWEAR

The Last Week

To Our Friends and Customers

We wish to announce that the Great Carnival of Bargains will close on

Saturday, Nov. 7th

Giving the people of Sweetwater and vicinity one more week in which to take advantage of the

Great Savings In

Men's Clothing, Hats, Ladies' Dresses and Coats And Shoes for the Entire Family

Large selections in each and every department are still to be had, although our sales have been enormous.

We wish to thank our many customers and friends for their cooperation and patronage. We assure you that this is highly appreciated

Yours for Real Savings

H. Berman

WHERE YOUR \$ \$ COUNT THE MOST

P. S.—Be sure and be here this last week.

Pair of Aces



Meet Lewis Scott of the Hillcrest Country club, Los Angeles, who recently broke into the spotlight by getting a pair of holes-in-one the same day. For a golfer to get one ace in a lifetime is considered quite a feat. But to smack two in one day is something very much out of the ordinary, indeed.

Buy In BULK and Save



OUR PLAN SAVES YOU

SAVE YOUR MONEY

You can as easily keep many items (especially canned goods) at home in your pantry as we can keep them in our store. You always have them at hand then and do not have to be running to town for a little of this and a can of that. We save on the handling of them and we are glad to pass the saving on to you. Therefore we say to you—

Buy in Bulk and Save Your Money

CANNED FRUITS

Brookdale 6-10 Yellow Cling Peaches, per case	\$4.00
Brookdale 6-10 Apricots, per case	\$4.25
Libby Crushed Pineapple, per case	\$5.80
Libby De Lux Peaches 2 1/2 lbs., per case	\$7.00
Rosedale Yellow Cling Peaches 2 1/2 lbs., per case	\$6.50
Rosedale Sliced Peaches 2 1/2 lbs., per case	\$6.25
Rosedale Crushed Pineapple 2 1/2 lbs., per case	\$6.40

COMPOUND

Crisco, large size, per bucket	\$1.30
Flake White, large size, per bucket	\$1.30
Armstrongs Compound, large size, per bucket	\$1.30
Home Made Compound, large size, per bucket	\$1.30

TOMATOES

Western Star Brand Tomatoes, per case	\$2.25
---------------------------------------	--------

SYRUPS

King Komus brand, per case	\$5.00
Green Velve brand, per case	\$5.00
Br'er Rabbit brand, per case	\$5.00
White Karo, per case	\$4.00
Red Karo, per case	\$3.80
Mary Jane, per case	\$4.15

We Handle

WHITE CRUST FLOUR

LARGE SIZES — Milled in Fort Worth — SMALL SIZES

J. C. PRATT

West North 2nd Street

Sweetwater, Texas

REPORTER CLASSIFIED ADS GET RESULTS—TRY ONE

DAVIS'
Gift Boxes—Free!

As Long As They Last
With Every 50c PURCHASE Monday

Also
Tooth paste and Tooth brush, \$1 value . . . 50c
Cold Cream and Talcum powder, 75c value . . . 50c
Christy Razor and 6 blades both for . . . 35c
2 bars Palm Olive Soap, 1 bottle Palm

DAVIS DRUG CO.
"THE CAREFUL DRUGGISTS"
PHONE 711
SWEETWATER, TEXAS

REPORTER CLASSIFIED ADS GET RESULTS—TRY ONE



We Make Dinner
Doubly Delightful

Dinner is indeed a delightful meal at this popular Cafe. We have one of the best Chefs in West Texas—our food is always fresh—the very best that can be obtained—well cooked and nicely served at a most reasonable price.

We Serve the Best Coffee In Town

TEXAS HOTEL CAFE

Across from T-P Depot

WE THANK YOU

We want to thank those people who have made this sale a success, so far through their patronage—and we want to invite those who have not yet been here to come in. There are plenty of bargains for all.

NEW ARRIVALS IN

WOMENS COATS, HATS DRESSES AND SHOES
CHILDRENS COATS

Ladies Coats, Very Latest Styles—\$9.89,
\$19.79, \$38.95.
Childrens Coats \$5.48, \$8.98, \$14.98

Ladies' Dresses

A large variety of Wool or Silk Dresses in the wanted colors and styles.

\$5.95, \$9.98, \$11.98
\$25.48

Ladies' Shoes

In Patent, Black Kid, Satin and Colored Kid in Pumps, Straps, and Oxfords. Most of these are new arrivals and will go on sale at

\$3.49, \$4.19, \$5.48
\$5.98

Ladies' Hats

In the newest shapes and colors. Everyone of them is an individual dandy.

\$2.98, \$4.98, \$7.98

FREE! FREE!

With every pair of Ladies' Shoes Sold you Will Have Choice of **One pair High Heel Shoes or Oxfords** absolutely FREE as long as they last

REMEMBER WE ARE CLOSING OUT OUR MENS DEPARTMENT

Yamini Dry Goods Co., Inc.

East Side Square

Sweetwater, Texas

GIRL CLUB WORK IS FAIR FEATURE

Interesting Displays Form Basis of Girls' Club Work Exhibits at Nolan County Fair

MANY ARTICLES EXHIBITED

Canning, Sewing, and Other Items Shown—Products of Girls' Clubs of County

Awards for first year Girls' Home Demonstration Club work at the Fair follow:

Canned Products
Tomatoes, 1st Ella Hendricks, Roscoe; 2nd Mary Clark Sturdivant, Hylton; 3rd Grace Campbell, Hylton.

Chili Sauce, 1st, 2nd and 3rd, Ella Hendricks, Roscoe.

Green tomato pickles, 1st, 2nd and 3rd, Mary Clark Sturdivant, Hylton. Different canned fruits, 1st, Mary Clark Sturdivant, Hylton; 2nd and 3rd Ella Hendricks, Roscoe.

Fancy pack vegetables, 1st, Ella Hendricks, Roscoe; 2nd and 3rd Mary Clark Sturdivant, Hylton.

Sewing
Cuptown and holder, 1st, Willie Ila Powell and Annis Chapman, Blackwell (tie); 2 Mabree Craig, Blackwell and Ella Hendricks, Roscoe (tie); 3rd Annis Chapman, Blackwell.

Sewing bag, 1st Mabree Craig, Blackwell; 2nd, Ella Hendricks, Roscoe; 3rd, Ethel Chapman, Blackwell.

Uniform cap, 1st Ethel Chapman, Blackwell; 2nd Annis Chapman, Blackwell; 3rd, Mary Clark Sturdivant, Hylton.

Apron, 1st Ella Hendricks, Roscoe; 2nd, Ethel Chapman, Blackwell; 3rd, Mabree Craig, Blackwell.

Best history and complete record book, 1st Willie Ila Powell, Roscoe; 2nd, Mary Clark Sturdivant, Hylton; 3rd (same).

Best article for home improvement, 1st Mary Clark Sturdivant, Hylton; 2nd Ella Hendricks, Roscoe; 3rd Willie Ila Powell, Roscoe.

Second Year Work

Canned Products
Tomatoes, 1st, Gladys Smith, Hylton; 2nd and 3rd same.

Canned beans and peas, Gladys Smith, 1st, 2nd and 3rd.

Soup mixture, Gladys Smith, 1st, 2nd and 3rd.

Baby beets canned whole, Ella Hendricks, Roscoe, 1st, 2nd and 3rd.

Canned Okra, Ella Hendricks, 1st, 2nd and 3rd.

Fruit, tomato or watermelon preserves, Ella Hendricks, 1st, 2nd and 3rd.

Sewing
Hemmed patch, 1st, Annis Chapman, Blackwell; 2nd Jennie V. Lanier, Blackwell; 3rd, Gladys Smith, Hylton.

Gown, 1st, Gladys Smith, Hylton; Mabree Craig, Blackwell; 3rd Opal Craig, Blackwell.

Bungalow apron or wash dress, 1st, 2nd and 3rd, Gladys Smith, Hylton.

Best article for home improvement, 1st, Mabree Craig, Blackwell; 2nd Gladys Smith, Hylton.

Best history and complete record book, Gladys Smith, Hylton, 1st, 2nd and 3rd.

Third Year Work

Canned Products
Canned vegetables, 1st Norma Hackfeld, Roscoe, 2nd and 3rd same.

Tomato mince meat, Norma Hackfeld, Roscoe, 1st, 2nd and 3rd.

Cucumber pickles, Norma Hackfeld, Roscoe, 1st, 2nd and 3rd.

Dixie Relish, Norma Hackfeld, 1st, 2nd and 3rd.

Containers Jelly, Norma Hackfeld, Roscoe, 1st, 2nd and 3rd.

Preserves, Norma Hackfeld, Roscoe, 1st, 2nd and 3rd.

Sewing
Best stocking darn, Norma Hackfeld, 1, 2, and 3.

Wash dress, Norma Hackfeld, 1, 2 and 3.

Pillow cases, Opal Craig, Blackwell; 2 Ninnie Michaels, Hylton 3, Jennie Lanier, Blackwell.

Best Article for Home Improvement
Norma Hackfeld, Roscoe, 1, 2, and 3.

Best History and Complete Record Book
Norma Hackfeld, 1st, 2nd and 3rd.

Fourth Years Girls Demonstration Work
Canned fruits, Ninnie Michaels, Hylton, 2nd and 3rd, Maud Campbell, Hylton.

Jelly preserves, 1st, 2nd, and 3rd Ninnie Michaels.

Canned vegetables Ninnie Michaels 1st, 2nd, and 3rd.

Sewing lunch cloth and napkins, 1st, 2nd and 3rd Ninnie Michaels.

Teddlies, Ninnie Michaels, 1st, 2nd and 3rd.

Slip, Ninnie Michaels 1st, 2nd and 3rd.

Graduation dress, Ninnie Michaels 1st, 2nd and 3rd.

Best article for the home improvement, Ninnie Michaels 1st, 2nd and 3.

Best Complete Record Book and History for the four years work, Ninnie Michaels, 1st, 2nd and 3rd.

The Shadow Of The Turkey



Looms For Thanksgiving And Christmas Cheer

The Shadow of the Turkey is looming over most kitchens right now. Thanksgiving will be here before you know it and Christmas is just around the corner.

These holidays mean meals. The Thanksgiving and Christmas dinners are the biggest part of the day. Folks home for the holidays, guests, kinfolks.

Expensive materials are ordered and prepared. Why run the risk of ruining that costly fruit cake? Or pies with soggy crusts. Why have a turkey if part is overdone and part underdone.

Buy Your Hotpoint Now

There is no uncertainty about the Hotpoint's performance. It's rosy odorless, clean heat is always ready when you are. Just the amount you need—a slow controlled heat for roasting, a quick even heat where that is required. Under perfect control at all times—with the automatic temperature control to use if you desire.

Used in Finest Kitchens

The Hotpoint range is in use in the finest kitchens in Sweetwater as well as others where economy is a necessary factor. There is one in use in your neighborhood, probably several of them for that matter. Ask your neighbor what she thinks of her Hotpoint and of electrical cookery. In no case would they be willing to go back to other forms of fuel after once using the Electric Hotpoint.

Easy Terms

You can buy a Hotpoint any time you wish. Pay a small sum down and the balance will be billed you in monthly installments that you can pay as you pay your light bill. Special low rate for current for range use.

West Texas Electric Co.

PHONE 283

Classified Section

NOTICE

To Our Classified Ad Patrons

The Classified Advertising is now on a basis of **CASH ONLY**

CASH ONLY

The following simple rules govern, and we request our patrons to kindly keep them in mind and follow them

No advertisements accepted for less than 30c first insertion. Consecutive insertions 1c per word each insertion.

All advertisements must be accompanied by cash. No cuts or blackface type larger than eight point, accepted for the Classified Column.

Copy must be turned in not later than 11 a. m. on the day of insertion.

Out of town orders must be accompanied with cash. No advertisement accepted on an "until forbid" order. A specified number of insertions must be given.

The publishers are not responsible for copy omissions, typographical errors, or any unintentional error that may occur, further than correct in next issue after it is brought to their attention. All advertising orders are accepted on this basis only.

In order to avoid errors no copy will be accepted over the telephone.

Sweetwater Reporter

FOR RENT

FOR RENT: Two or three unfurnished rooms, phone 715-J after 3 p. m. 2354p.

FOR RENT—One six room house, modern conveniences in Highland Addition. Write R. Schantz, Rt. B., City. 230-18tdc.

FOR RENT Three room stucco apartment, garage, modern conveniences, apply J. T. Miller, 1003 Walnut st. 23512p.

FOR RENT: Four room bungalow. Phone 698. 23611p.

FOR RENT: Newly painted, newly finished bedroom, furnished or unfurnished. Phone 581. 2361fc.

FOR RENT: Two furnished rooms for light housekeeping, 12 block from post office, phone 418. 23641p.

FOR RENT: Three room furnished apartment, 611 E. N. 3rd. 23615c.

FOR RENT Three furnished rooms 904 Lamar street, phone 642. 23611p.

FOR RENT—Four room furnished apartment. Phone 4. 2361tdc.

FOR RENT: Furnished bedroom for one of two gentlemen, modern conveniences and garage. Close in. Call 24. 23615p.

FOR SALE

FOR SALE: Choice lot in Bradford addition. A good buy, priced, right. Kendrick-Thompson Agency. 2361tdc.

FOR SALE: Four room house, all modern conveniences on Elm Street. Kendrick-Thompson Agency. 201tdc.

FOR SALE: 320 acres of land six miles north of Roscoe, 150 acres in cultivation, 250 acres first class land, \$50.00 per acre. Will take reasonable priced house and lot or lots as part payment. Ross and Martin. 229tdc.

FOR SALE: Three room house, barn poultry house in Bradford Addition; a real bargain. See J. T. Box in Bradford Addition or Photograph Studio. 23613p.

MISCELLANEOUS

WANTED—To buy good milk cow O. Bosworth, Route A, Sweetwater, Texas. 2361tdc.

WANTED: All your used furniture Will buy or trade new furniture for it. J. I. Payne. 227tdc.

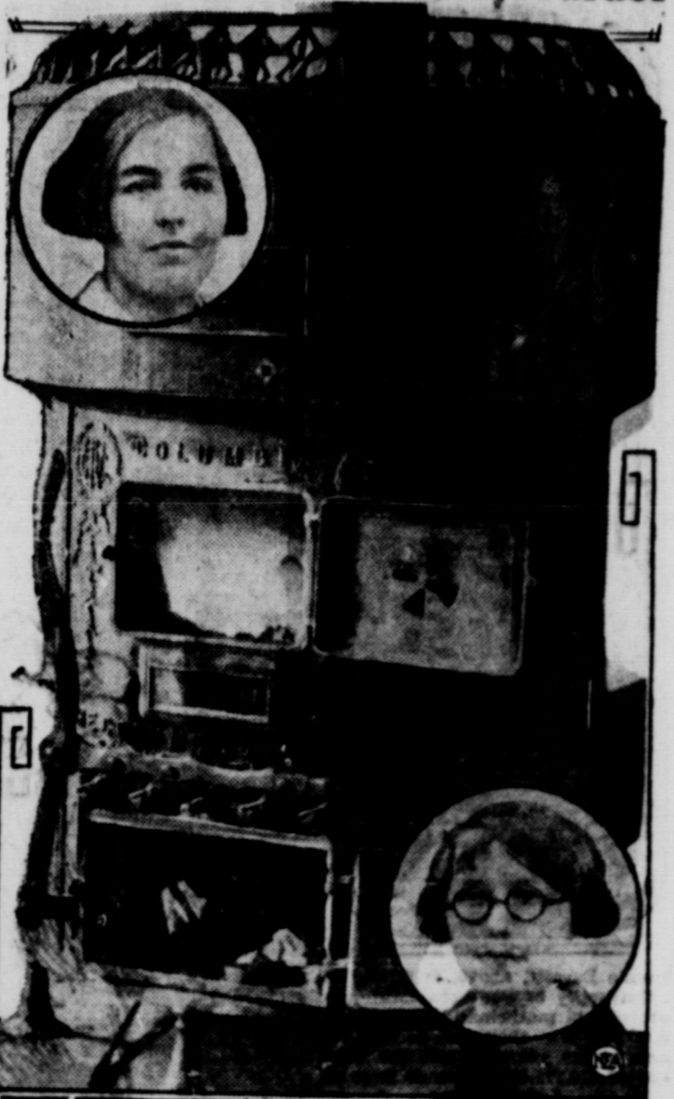
WANTED: All your used furniture Will buy or trade new furniture for it. J. I. Payne. 227tdc.

WANTED: Housework, permanent position preferred. See J. E. Greer, T and P. flagman for information. 23611p.

WANTED: Table boarders. 604 West North Third st., phone 205. 23616p.

AGENTS: \$1.50 an hour spare time \$12.00 a day full time. Light, easy work near home distributing groceries, ready prepared food products, home necessities. Capital or experience unnecessary if references good. Pay starts at once. Write or wire Harley Company, 5015 Harley Bldg., Dayton, Ohio. 23611p.

School Furnace Hides Murder



Askes believed those of a human being were found in this furnace in a rural school near Corning, O. The discovery was made by Mrs. Allison Lincoln, janitress, inset above. The lower photo is of Miss Beatrice Wright, teacher, who worked with Ohio authorities to solve the suspected murder.

Child With Measles May Infect 20 Others —Isolation Is Best

BY DR. RICH S. CUMMINGS, Surgeon General, United States Public Health Service.

From a public health standpoint, every parent should recognize the fact that measles is a disease of prime importance. A single child in the beginning stages of measles may easily infect fifteen or twenty other people and because of this fact it is highly important that anyone known or thought to be suffering from measles should not be allowed to come in contact with well persons who have not had the disease until the fever accompanying the disease has passed, and the patient released from quarantine at which time he should be free from nasal discharge and free from a cold.

The first symptoms of measles usually appear about ten days after exposure. At this time the eyes of the child usually becomes red and watery. The eyelids show signs of puffiness and the eyes themselves are sensitive.

In severe cases, the whole face is swollen and puffed, the throat is parched and dry and an irritating cough adds to the discomfort. The child is apt to come home from school feeling drowsy and irritable and complaining of chilly sensations. He may even have a chill. At night the irritation increases, the child is feverish, the whites of the eyeballs show little red lines upon them and the sufferer gives the appearance of a person about to cry. There may be a few little red spots on the hard palate and if you look closely on the membrane of the cheek inside the mouth you will probably see some small, white-tipped, reddish spots. These are called "Koplik's" spots and are one of the signs of measles.

Child Should Be Kept in Bed.

A child showing such signs should be kept in bed. At the end of the day the fever will be higher than it was at the night before. There will be great restlessness, rolling and tossing about the bed, frequent requests for a drink of water.

TAKE NO CHANCES! No Freeze or Damage With DENATURED ALCOHOL in the radiator of your car. Bring Your Car to George Massey at MAGNOLIA FILLING STATION

These manifestations will continue for three or four days and one morning when the child is having its bath some little dusky red spots will appear on the hair line.

Within twenty-four hours this rash will spread over the body and the child will look very much be-poepled and swollen. In from five to seven days the rash will be gone to fade and within three or four days thereafter will be entirely gone, leaving behind, perhaps, a faint mottling of the skin.

This is followed by the throwing off by the outer layer to the skin of a great many little bran-like flakes, although the skin does not actually peel as in scarlet fever.

Land Bargains

160 acres 5 miles from Sweetwater, 65 acres in cultivation, 3 room house. Bargain at \$25.00 on terms.

640 acres in Howard county, 600 acres good tillable land, 200 acres in cultivation, good frame house, well and windmill. \$30 per acre, will take some trade.

4 room house with bath, 3 blocks from Wright Hotel; 100x143 ft. lot. Snap at \$2750.

New stucco duplex apartment, corner lot on paved street. Attractive price for an investment. Good 9 room house with modern conveniences; three lots. Bargain at \$6500. Will take some trade.

Good town lots, 2 blocks from high school; 4 blocks from east ward. Priced from \$250 to \$500.

Good town lots in Bradford and Highland Additions. Priced from \$75 to \$300. Some special bargains.

I. LEE LUSK

Real Estate, Insurance & Loans

This process lasts about a week, and the fever will disappear. This is a description of a mild case of measles.

Some cases of measles are more malignant. The child may suffer from convulsions from high fever, and excessive development of all the ordinary symptoms, or the rash when it appears instead of being red may be a bluish-black discoloration, in appearance much like a recent bruise.

In all cases great care should be taken that bronchial pneumonia does not develop. Bronchial pneumonia is one of the most fatal of all the complications of measles. While all severe cases may not be grave, you should be constantly on the alert for bronchial pneumonia development.

Measles is a serious disease and spares very few exposed persons who have not had it.

The old idea, still prevalent among the un-informed, to the effect that children should be exposed to measles early in order that they may have the disease and get it over with is erroneous.

Chilling May Cause Pneumonia.

A child with measles should be put to bed and kept there as long as it has any fever or cough. The room should be airy but it should be darkened because children with measles are very sensitive to light.

The bed clothes should be thin because the child is apt to become too warm, kick off the coverlets and suffer from a chill. A chilling of this kind may predispose to pneumonia. Food should be light and should consist chiefly of nutritious broths, soft boiled eggs, and the like.

Milk, unless certified and of known purity, should be pasteurized. A little lemon juice will prove comforting to the inflamed throat and is usually well borne, particularly in older children.

The child's eyes should be kept clean and should the fever run high the comfort of the patient may be increased by sponging with tepid water and alcohol. Every child sick with measles should have skillful attention given by the family physician.

When the fever and cough have gone, the child may be allowed to be up and about the room, but should not be allowed to indulge in violent exercise because measles weakens the heart muscle to some extent.

The cause of measles is not known. We do know, however, that the infection of measles is found in the secretions from the nose and throat beginning with the first stage of the disease; therefore, a person suffering from measles should not be allowed to come in contact with well persons until the period of fever has passed.

Will deliver you Essex Coach \$895, Hudson Coach \$1320, Pierce Arrow Roadster fully equipped, \$3195. Closed Pierce Arrow \$3650. Price Auto Co., Colorado, Texas. 28566p.

THE BURNING QUESTION
If It's
INSURANCE
See Me, Strongest Companies —Best of Service.
D. A. CLARK
307 Oak Phone 103

Out Our Way



PARIS, France, Oct. 31.—Mex Lind will deliver you Essex Coach \$895; famous European motion picture Hudson Coach \$1320; Pierce Arrow producer is dying and his wife is dead Roadster, fully equipped, \$3195; Closed Pierce Arrow \$3650. Price Auto Co., Colorado, Texas. 28566p.

Will trade good retail business, modern home and other property, Cleburne, Texas, for first class farm or ranch. Will assume reasonable mortgage. Address Post Office Box 3, Cleburne, Texas.

START THE NEW MONTH RIGHT
By bringing the family here for Dinner today. A pleasantly warm dining room, Excellent Service, Better Food, and all for a most reasonable price.
ROBERTSON CAFE
West Side Square

YOU ARE CORDIALLY INVITED TO HEAR
Rev. F. J. Ledwig
At the Court House Auditorium
MONDAY NIGHT, NOVEMBER 2
8 O'clock
"What Is a Loyal American"
Rev. Ledwig is a native of Texas with a national reputation as a speaker. He is a life member of the National Speakers Bureau of the American Legion.
AMERICANISM
This lecture positively does not pertain to any creed, organization nor secret society.

We Try to Give
You more for Your Money Than the Other Fellows
Whitten's Shop

CHICHESTER'S PILLS
THE DIAMOND BRAND
SOLD BY DRUGGISTS EVERYWHERE

CEMENT CONTRACTOR LEE CHOATE
Let me figure on your concrete work
P. O. Box 793—City

CONTRACTING
Painting and Paperhanging
HUNTER'S
Phone 333

W.H. JOBE & SON
WAREHOUSE
DRAYAGE & TRANSFER
Household Goods and Merchandise
Phone 275

Professional Directory
LAWYERS

DOUTHETT, MAYS & PERKINS
ATTORNEYS AT LAW
Sweetwater, Texas

BEALL, BEALL & BEALL
Attorneys at Law
Lodge Bldg.

REVIVAL SERVICES
—at the—
CHURCH OF GOD
Beginning Sunday, Nov. 1, at 7:30 P. M.
EVANGELIST JAMES S. GLENNON
of Bristow, Okla., in charge
YOU ARE CORDIALLY INVITED
—C. S. McAlister, pastor.

GEE SOLVES MYSTERY

Local Plain Clothes Man's Brilliant Sleuthing Locates Stolen Car

Constable Goe Huff, plain clothes man de luxe, almost had a case to work on while sleuthing around the fair grounds late Friday.

Mrs. O. J. Blocker and a party of women informed him that their new Chrysler automobile was stolen from its parking place, at the fair grounds

and a frantic round of questioning, telephoning, detecting, trailing, disguising, shadowing and all other tricks of the trade ensued.

Goe finally cleared up the mystery when one of the women returned and informed him that she had found the car, that she just didn't look in the right place when she first went for it. "There was such a crowd, and so many cars, you know, and I was turned around," etc. etc.

TEXTILE AWARDS INTEREST WOMEN

Interesting Feature of Fair for Feminine Visitors Are Exhibits in Textile Department

MUCH FANCY WORK SHOWN
Many Handsome Exhibits in Various Forms of Needlework Shown at Nolan County Fair

Textile Awards

Awards in the Textile Department at the Fair follow:

Best crocheted bed bread, 1st Mrs. Emma Allen, city; 2nd, Mrs. H. H. [unclear]

Best crocheted spread, 1st Mrs. [unclear] city; 2nd, Mrs. Emma Allen, city; 3rd, Mrs. Ruby Elliott.

Embroidered bed spread, 1st Mrs. [unclear] city; 2nd, Mrs. C. H. Arledge Blackwell, city; 3rd, Lottie Mayhew, Nolan.

Embroidery luncheon set and 4 napkins, 1st Mrs. Roy Thompson; 2nd, Mrs. Roy Thompson, city; 3rd, Mrs. [unclear] city.

Crocheted lunch cloth and 4 napkins, 1st Mrs. Emma Allen, city.

Embroidery dress, 1st, Mrs. Odie Bosworth, city; 2nd and 3rd Mrs. C. A. McCook, city.

Embroidery vanity set, 1st, Mrs. I. N. Hall, city; 2nd Mrs. A. M. Turner, city; 3rd, Mrs. Tom Hughes, city.

Embroidery buffet set, 1st, Mrs. S. Z. Williams, city; 2nd, Mrs. K. L. Daugherty, Roscoe.

Embroidery table runner, 1st, Mrs. S. A. Farris, city; 2nd, Mrs. E. V. Grogan, city; 3rd, Mrs. W. J. Stewart, art.

Embroidery guest towel, 1st, Mrs. Roy Thompson, city; 2nd Mrs. Ludie Wilkins, city; 3rd Mrs. W. J. Stewart, art.

Best hand made baby dress, 1st, Mrs. Roy Rascoe, city; 2nd Mrs. E. H. Ruid, Maryneal; 3rd, Mrs. Roy Rascoe, city.

Best tatted baby cap, 1st, Mrs. A. M. Carmichel, city; 2nd Mrs. Joe Hollowell, Nolan; 3rd, Mrs. Carrie Burklow, city.

Best hand made gown, 1st and 2nd Mrs. Joe Bowen, city; 3rd Mrs. A. M. Murner, city.

'Wiz' at Figures



Jimmie Barrett, above, is 9, and in University of Southern California test of his mathematical genius it took him less than one second for each of his years to tell the cube root of 410,172,407. Jimmie lives in Los Angeles.

Best hand made teddies, 1st, Lora Hutchins, city; 2nd, Lottie Mayhew, city; 3rd, Mrs. Joe Bowen, city.

Best hand made handkerchiefs, 1, 2 and 3rd, Mrs. Roy Thompson, city.

Best pillow top, 1st, Mrs. Dan Ripley, city; 2nd, Mrs. E. V. Grogan, city; 3rd, Mrs. E. F. Lohmann, city.

Best ladies' dress, 1st, Mrs. R. A. Carter, city; 2nd, Mrs. Van Garrett, Maryneal.

Best kitchen apron, 1st Miss Pearl Costleman, city; 2nd, Mrs. G. S. Crulup, Blackwell; 3rd, Pearl Costleman, city.

Best child's dress (1 to 3 years), 1st, Mrs. Oscar Pate, city.

Best child's dress, (6 to 9 years), 1st and 2nd, Mrs. R. A. Carter, city.

Best plain night gown, 1st Mrs. J. F. Hughes, city.

Best child's slip, 1st Mrs. H. C. Young, city.

Fancy aprons, 1st Ruth Rutledge, city; 2nd, Mrs. Roy Thompson, city.

ATTEND HORSE RACES

interesting Races Run Saturday at Fair

A medium sized crowd reviewed the horse races course Saturday afternoon. The winning horses were as follows:

Quarter Mile Saddle Horse; Purse \$25
First—Lorraine, owned by Jim Hughey, time 27 4-5.

Second—Peacock, owned by Chas. Pennel.

Third—Dunny, owned by G. W. Neatherlin.

Quarter Mile Free For All; Purse \$25
First—Blanton, owned by Pete Pulher, time, 26.

Second—Tony, owned by John Speck

Third—Uncle Alf, owned by Chas. Star.

Three-eighths Free For All; Purse \$100
First—Eagle, owned by Chas. Pennel, time, 37 3-8.

Second—Winnie, owned by Chas. Pennel.

Third—Sleepy, owned by Lou Baker.

Walter Trammell was in charge of the races.

MIDNIGHT FROLIC PLEASES

R. & R. Palace Hallow'en Party is Lively Affair—Guests Make Merry

Joy, laughter and gaiety ran riot at the R. & R. Palace midnight Hallow'en frolic from 11 to 12 o'clock Saturday night when that theater was packed with celebrators for the special party. Ushers in the forms of witches, spooks, cats and pumpkins handed out confetti and serpentine and or 15 minutes uproar and confusion reigned while confetti and streamers were scattered over everything and everybody. The house was turned over to the guests and "the sky was the limit."

The feature picture was "Wizard of Oz" with Larry Seman. It was the funny boy's first feature picture, and was an especially "spooky" affair in addition to being a splendid, entertaining comedy.

The Palace was decorated perfectly to carry out the Hallow'en effect. Yellow and black streamers had been strung over the theater and small Jack'O'Lanterns, electrically lighted hung about the wall of the house. Two mammoth Jack'O' Lanterns were at each side the stage, and a third large one was in the lobby.

Fowler Anderson, popular R. & R. organist, furnished a special program

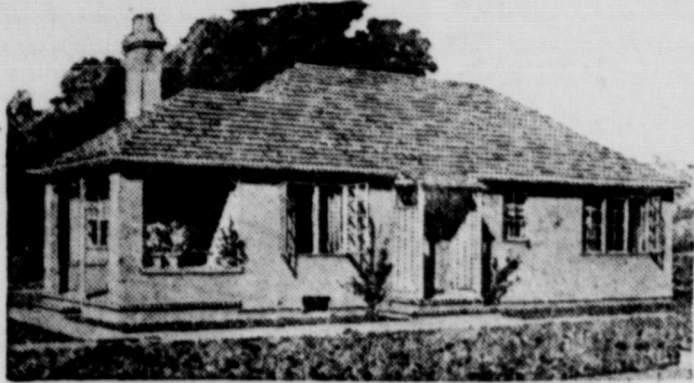
of music for the party, which was arranged by Manager Henry Rogers.

—Read the Classified Page—

Dies in Explosion
SHREVEPORT, Oct. 31.—An aged man was burned to death in a gas explosion here tonight.

LAUREL TRACK, Indianapolis Oct 31.—Joy Smoke captured the 12th running of the Washington handicap feature here today.

Make Her Happier—Build A Home First



When you build HER a home, you not only make her happy but you give yourself a feeling of security, contentment and satisfaction that you'll never know as long as you're living in a house rented from someone else.

In the long run it's cheaper to rent from yourself than for some one else and much more satisfactory.

Drop in here and let us tell you just how we can be of service to you in helping you to own your own home. Every available service, every effort of our experienced men is placed at your disposal when you do business at this yard, and all this is backed by quality materials, fair prices and fair treatment.

Call on us at any time, and be assured of every courtesy.

GRAY LUMBER COMPANY

QUALITY

SERVICE



ANNOUNCING THE ARRIVAL OF FIVE NEW PUMP STYLES STRAPLESS and ONE STRAP MODELS in Black

PATENT LEATHER, VELVET and SATIN

Be sure to call and see these beautiful numbers. Hosiery to match at reasonable prices.

TUCKER'S SHOE STORE

The New Styles First

WHAT'S IS AND

GOOD BETTER BEST

TO WEAR CLEAN WHEN

—Sent to—
Phone 33



The Stamp of the Globe Is the Stamp of Good Work

A FEW HUNDRED SUITS and O'COATS LEFT
Hart, Schaffner & Marx, Clothcraft and Middishape

Offer the leading numbers among our showing of the newest in Fall and Winter Suits and Overcoats. Offered at a deeper price.

We've had an unusually successful fall season and naturally there remains many broken lines. So we have taken the Suits and Overcoats from the better selections, and marked them at prices that every man reads this announcement will respond. You can't beat these values—that's our honest belief.

FREE! TO RADIO OWNERS
Ask for one of our Radio Log Books, FREE

Sweetwater Dry Goods Co.
LADIES AND MEN'S WEAR
THE STORE AHEAD

Hunting Supplies

On a crisp morning before the dawn out after ducks—or a little later this month going down where the deer are to be had—where's the sport to compare with Hunting?

USE WINCHESTER
Shotguns, Rifles and ammunition for best results

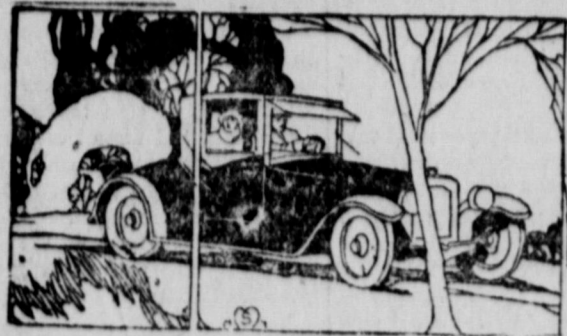
WINCHESTER HI VELOCITY

The ideal shotgun load, hard hitting, accurate, even pattern—the shell that gets the ducks every time. Favored by duck hunters everywhere who know by experience the best kind of shells.

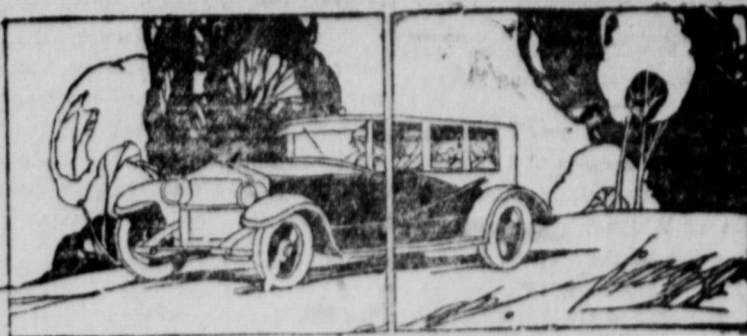
WINCHESTER SHOTGUNS

In your favorite gauge and in the automatic, double barrel or other type as you prefer. We have a good assortment. Come in and get yours while the hunting season is at its best.

COSTEPHENS HARDWARE CO.
SWEETWATER, TEXAS



FOR *The* AUTOIST



Motorist Warned Of Driving Habits

If you discover a leak in your gasoline tank, you have it stopped at once. The expense of the repair work does not deter you, because you realize that the leak is even more expensive.

But how about the unseen leaks that drain your pocketbook just as surely as a hole in your gas tank?

The fact is that many motorists are suffering from such leaks, and that the leaks could be prevented at slight expense compared with the loss they cause.

Anything that prevents the owner from obtaining the maximum mileage

from each gallon of gasoline is equivalent to a gasoline leak. Even if the owners are careful to the extent of having their carburetors properly adjusted and their valves correctly timed, few of them realize the loss they suffer by ignoring other factors of fuel efficiency.

If you would obtain the most miles per gallon, check the following items: Dash adjustment or choke rod improperly set.—Many choke valves are faulty set, so that when the control is in the forward or wide open position the choke valve will be at a slight angle, restricting the flow of air and increasing the quantity of fuel used. Be sure that when the choke is in the running position the valve is wide open.

Leaky connections from fuel tank.—Examine the lines to the vacuum tank and to the carburetor.

Fuel in float chamber.—Make certain that the level of the fuel in the float chamber is not too high.

Timing of distributor.—One prevalent cause of high fuel consumption is incorrectly timed distributors. In general, if the distributor is so set that with the spark in full advance position, a slight "ping" is noted upon sudden acceleration with wide open throttle this cause is eliminated.

Carburetor or manifold loose.—These conditions are quite often responsible for defective carburetion. Also gaskets at these two points are some times affected by the grade of fuel used and cause air leaks.

Under-inflation of tires.—This has an appreciable effect on gasoline mile age.

Operating temperature of motor.—When cold weather approaches it is well to provide a radiator cover or some other means to insure operating at high enough temperature so that reasonable efficiency will be obtained.

Brakes.—The effect of dragging brakes on fuel economy is much greater than the average owner would believe. Be sure that the brakes are free and the results will show up in improved performance, as well as better economy.

Speedometer reading.—Some cars claiming extremely high gasoline mileage will be found actually not to have as great economy as claimed, due to incorrect speedometers. Some speedometer drives are so proportioned that the indicated distance and speeds are in excess of facts.

Hereford Bull Tops Sale Here at \$725.

The bull, Super Anxiety 2nd, bred and consigned by B. L. McDonald, Hereford, and bought by W. T. Merriweather, Alpine, for \$725, topped the annual sale of the Texas Hereford Association here late Friday afternoon. The cow, Donna Anna 50th, also from Hereford, by T. C. Ivey, was bought by D. E. Hughes of Mertzon for \$610. These were the highest prices paid at the auction. Cold weather interfered with the attendance.

The average price for the 27 animals was \$275.00.

Cow, Miss Pauline, 2nd, consigned by A. Herbst, Hereford, Texas, bought by D. E. Hughes, Mertzon, \$275.

Bull, D Stanway, Jr., consigned by T. C. Ivey, Hereford, bought by W. T. Merriweather, Alpine, \$510.

Cow, Donna Anna 50th, consigned by T. C. Ivey, Hereford, bought by D. L. Hughes, Mertzon, \$610.

Bull, Super Anxiety 2nd, bred and consigned by D. L. McDonald, Hereford and bought by W. T. Merriweather, Alpine, \$725.

Queen Caldo, bred and consigned by D. L. McDonald, Hereford, bought by V. V. Latham, Eden, \$200.

Lucky Domino, bred and consigned by E. P. Neblett and Son, Sweetwater, bought by Arledge and Haney, Roscoe, \$140.

Cow, Eunice Domino 3rd, E. P. Neblett and son, bought by J. D. Pepper, Sweetwater, \$105.

Bull, Beau Anxiety, Henry Wilkinson, Hereford, Texas, bought by J. D. Pepper, \$225.

Cow, Miss Anita, consigned by Henry Wilkinson, Hereford, bought by Luke Crump, \$505.

Bull, Beau Perfect, consigned by Winston Bros., Snyder, bought by Bucher Whaley, Ropes, \$330.

Cow, Miss Stanway 12th, consigned by W. T. Womble, Hereford, bought by D. L. Hughes, Mertzon, \$425.

Cow, Lady Glasco 40th, W. T. Womble, Hereford, bought by D. E. Hughes, Mertzon, \$550.

Bull, Carlos Mischief, E. B. Black Co., Hereford, Texas, breeder and consignor, bought by E. Dougherty, Alpine, \$3.25.

Cow, Miss Carol 25th, E. B. Black and Co. Hereford, bought by V. V. Latham, Eden, \$225.

Bull, Boo Hoover, bred and consigned by Walter L. Boothe, Sweetwater, sold to J. D. Pepper, \$145.

Cow, Marietta Stanway, bred and consigned by Walter L. Boothe, Sweetwater, bought by Duwaine Hughes, Mertzon, \$300.

Cow, Miss Bessie, bred and consigned by Walter L. Boothe, Sweetwater, sold to D. L. Hughes, Mertzon, \$200.

Cow, Bangle 16th, bred and consigned by L. R. Bradley, Hereford, bought by Arledge and Haney, Roscoe, \$190.

Bull, Perfect Domino, bred and consigned by J. D. Dulaney, Sweetwater, bought by J. D. Pepper, Sweetwater, \$200.

Bull, Good Domino 2nd, bred and consigned by J. D. Dulaney, bought by C. R. Barber, Hereford, Texas, \$180.

Bull, Don Randolph, consigned by A. Herbst, Hereford, bought by Spencer Jewell, Midland, \$325.

Cow, Grace Stanway, consigned by A. Herbst, Hereford, bought by D. E. Hughes of Mertzon, \$250.

Cow, Miss Don, consigned by A. Herbst, Hereford, bought by D. E. Hughes, Mertzon, \$250.

MANY CARS SOLD

Total Fifteen Cars and Trucks Registered Here Past Week

A total of 15 cars and trucks were registered in Nolan County during the past week. They are as follows:
C. S. Boyles Motor Co., Chevrolet touring to V. R. Martin, Sweetwater.
Kelpatrick Motor Co., Ford touring to C. M. Rogers, Blackwell.
Roscoe Motor Co., Ford touring to J. H. Richey, Roscoe.
Dabney Motor Co., Ford coupe to Claude S. Southworth, Sweetwater.
Dabney Motor Co., Ford roadster to Tom Hloxom, Dora.
Dabney Motor Co., Ford Tudor Sedan to C. C. Carter, Sweetwater.
Dabney Motor Co., Ford touring to G. R. Gomez, Longworth.
Roscoe Motor Co., Ford touring to A. G. Faust, Roscoe.
Roscoe Motor Co., Ford touring to O. C. Barker, Roscoe.
Fullwiler Motor Co., Ford touring to Alexander Eccles & Co., Dallas.
Mutual Motor Co., Nash touring to Sunset Stage Line, Sweetwater.

DR. HODGES LEAVING

Sells Dental Equipment to Dr. Ben McCorkle of This City

Dr. K. M. Hodges announced the sale of his dental equipment to Dr. Ben McCorkle, son of Mr. and Mrs. C. A. McCorkle, effective November

1st. Dr. Hodges has not definitely decided on his plans for the future but says it is probable that he will return to his old home at Shreveport.

Mrs. Ham Hollman and Mrs. Less Cartwright of Post City were week end guests of Mr. and Mrs. Pete Bink

Trucks

Roscoe Motor Co., Ford to W. L. May, Roscoe.
Dabney Motor Co., to J. W. Horton, Sweetwater.

Dickenson Motor Co., Ford to N. J. King, Lawn.

Roscoe Motor Co., Ford to L. D. Cordwell, Roscoe.

TURKEYS FOR BREEDING

November, before the best birds have been sent to market, is the time to select next spring's flock of breeding turkeys.

Every season finds a few turkeys which are slow in reaching marketable size. Too often these are allowed to remain on the farm, where they naturally make up part of the breeding flock. The slow and backward birds may be kept over for the December market, but should never be used as breeders.

For the breeding flock, only well developed, vigorous and healthy individuals should be retained. The toms, especially, should be carefully chosen since the greatest opportunity for improvement lies in the use of superior males.

If the turkeys are fed with other poultry they are likely to lose in the competition. To prevent this, a trough too high for chickens to reach easily may be provided for the turkeys.

Little attention need be given to winter quarters for breeders. They will probably prefer to roost all winter in the open and can do so with little injury from exposure.

During especially severe spells, when the weather is particularly cold and damp, the flock should be driven indoors. A combination of cold and dampness is apt to be injurious, the latter one of these alone has little effect.

TEXACO GAS AND OILS

SERVICE: FIRST - LAST AND ALL THE TIME.

You'll get the most cheerful and most competent service here of anywhere in town. We are on our toes every instant to be of some service to you.

Let our expert VULCANIZE your casings
Remember We Sell Those Good
FEDERAL TIRES and TUBES

In Sweetwater its
Buck & Henry's
SERVICE STATION

Compare these Better BUICK Sedans with "Coaches"

These finer closed cars are built on the famous Buick chassis with the 21-year-proved, 60 and 75 horsepower Buick Valve-in-Head engines. Extra power!

And they have the famous "Sealed Chassis" and the new "Triple Sealed Engine." No other car, regardless of price, furnishes this completeness of protection for driving parts.

And these Buicks have the characteristic Buick charm of body profile. They are finished in Duco. They seat five full-grown people in roomy comfort. They have the Fisher VV one-piece, ventilating windshield, automatic windshield wiper, and a host of like necessities. Buick's exacting closed car standards prevail in their Fisher-built bodies.

Come in and see how much superior these Better Buick Sedans are to "Coaches", before you spend your money!

BUICK MOTOR COMPANY, FLINT, MICHIGAN
Division of General Motors Corporation

The Better BUICK

WESTERN MOTOR COMPANY

A Single Ride Explains Its Popularity!

A single ride proves why the Chrysler Four justly merits the tremendous popularity it has built up in a few short months. In sustained high speeds—in pliability of power—in economy—in durability and in freedom from mechanical attention which result from high quality of design, materials and workmanship—in ease of handling—and most emphatically in riding steadiness and comfort—the Chrysler Four gives results not found combined in cars of any type even beyond it in price.



CHRYSLER FOUR

TOLER MOTOR CO.

WHEN YOU WANT TIRES REMEMBER The Good Old DUNLOPS



More Miles of Satisfaction Per Dollar

They Are Not Made Any Better than Dunlops.

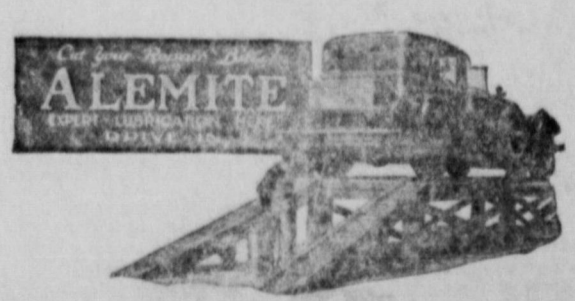
EVERYTHING FOR THE CAR

We carry a complete line of standard parts and accessories and maintain a full force of expert mechanics to work on all makes of cars.

We had rather prevent than to remedy. For that reason we recommend that you let us go over your car every now and then to see what it needs.—GREASE THE ALEMITE WAY

CHROMINE

For your radiators will be here shortly. We recommend and guarantee it to prevent freezing. One fill lasts all winter.



Sweetwater Motor Co.

OVERLAND—WILLYS KNIGHT Sales and Service

Always at Your Service

DEMAND INCREASES

Overland Factory Production Sets New Sales Records During Month

Some idea of how greatly this fall's motor business exceeds that of a year ago is seen in the sales and production figures of Willys-Overland, Inc., for October and for the period from January 1 to October 20, 1925.

For the year to October 20 Willys-Overland shipments totaled more than 174,840 cars as compared with 130,971 for the corresponding period of last year. In addition, company pro-

duction for the first twenty days of October totaled approximately 13,000 cars, indicating that between 20,500 and 21,000 cars will be built during this month, a figure that will break all production records for October shipments and production in company history. This figure compares with the October production of 1924 which totaled approximately 10,000 cars.

Orders for more than 15,000 cars for November delivery are now on hand and, after a very careful check-up with dealers and distributors, factory officials declared there will probably be produced and shipped be-

tween 17,000 and 18,000 cars during November, as compared with the 5,000 cars produced in November of 1924.

LIKE CLOSED CARS

Autoists Demand Comfort Ford Motor Company Says

Despite the growing general tendency toward the closed car type, the touring car is the biggest selling automobile in America. Severe weather gives closed cars great sales impetus and in the north sections of the country where the climate is rigorous, the preference for open cars of family size is sufficiently pronounced to turn the balance of the entire nation.

In this connection reports of the Ford Motor Co. show a demand for touring cars which is unusual for this season of the year and which calls for a production of 100,000 of these cars during October.

The touring car always has been the most popular in the Ford line. The exceptional demand at the present time, however, may be accounted for by the new features of comfort and convenience which have been incorporated in the improved types.

Audition of a door at the driver's left, storm curtains which afford complete protection and open with the doors, greater leg room and a more attractive appearance in the general lines of the car have all contributed to bringing increased popularity to the five passenger type of car.

WILL SING HERE



MAY PETERSON

Sweetwater will be given an opportunity to hear May Peterson, heralded as the Golden Girl of the Metropolitan Opera Company of New York, former member of the Opera Comique of Paris, and the rider of the Old Gray Mare of American Legion fame.

This announcement was made yesterday, when it was stated she will sing at the Palace Theater on the evening of November 12. The theater has been taken over for that purpose.

In the coming of this singer, it was pointed out that not only does this bring to Sweetwater one of the sweetest, if not the very sweetest of American sopranos, but a West Texas artist of world wide renown.

She has been named "Little Sister" by the Legion, and is the only woman concert singer to be made an honorary member of the Shrine.

The last named was conferred at Louisville and her fame as the rider of the Old Gray Mare started at the St. Paul national convention.

She became a West Texan a little more than two years ago by marrying Col. E. O. Thompson of Amarillo. Mrs. Thompson comes to Sweetwater direct from New York, where she sang in radio concert last Sunday night as the fourth to be selected from twenty-five artists in the United States.

Last summer she toured Norway, Sweden and Denmark. With the Metropolitan Opera Company, she sang opposite Caruso.

It is hoped by many here that the coming of this great artist will be the forerunner of a number of others of such caliber, coming to Sweetwater. Tickets will be placed on sale at an early date.

accompanied by her sister, Mrs. C. B. Beall. You are welcome.—J. T. McKissick, pastor

First Baptist

Sunday school at 9:45 a. m. preaching at 11 a. m. and 7:30 p. m. by Rev. W. D. Bond, associate professor of English in Simmons University, B. Y. P. U. at the regular hours. You are cordially invited.

Lamar Street Baptist

Sunday school at 9:45 a. m. Preaching at 11 a. m. and 7:30 p. m. by Rev. Anderson of Abilene. Junior B. Y. P. U. at 3 p. m. Senior B. Y. P. U. at 6:30 p. m. Everyone is cordially invited to attend the revival meeting which will be in progress throughout the week. State Evangelist Rev. Cone will arrive early in the week to conduct the revival. Rev. Anderson will have charge of the song services.—Rev. E. K. Daugherty, pastor.

Church of God

"The neighborly church" Bible school at 9:45 a. m. Missionary Rally Day. Preaching at 11 a. m. Text "Every Man in His Place." Young People's Assembly at 6 p. m. Mrs. C. S. McAlister, leader. Revival service 7:30 p. m. Evangelist James S. Glennon of Bristow, Okla. will speak. Revival services 7:30 p. m. each evening throughout the week.—C. S. McAlister, minister.

Episcopal Church

Saint Stephens Mission Church school at 10 a. m. Morning prayer at 11 a. m. All cordially invited.

Christian Science

Christian Science services are held every Sunday morning at the Odd Fellows Hall. The public is invited to attend these services. Sunday school is held at 10 o'clock. Children under 20 years invited.

Church of Christ

Bible study at 9:45 a. m. Communion at 10 a. m. Preaching at 11 a. m. and 7:30 p. m. Preaching at 3 p. m. at Gannon.

A friendly welcome extended to all.—W. D. Black, minister.

Epworth League

The Epworth League meets at the Methodist church at 6:30 Sunday evening. Gordon Webb will be the leader of the meeting. The following program will be given:

Hymn, "Jesus Calls Us." Scripture lesson, 20th Corinthians, 8:1-15, leader. What Does It Mean to Give Ourselves? Miss Sarah Steele. What Have We To Give? Wilson

Thank You

Effective November 1, I have sold my dental equipment to Dr. Ben W. McCorkle and am retiring from the practice of dentistry in Sweetwater. I cannot leave however, without expressing my sincere appreciation for the confidence and trust placed in me during the 16 years that I have been here. It is the good will and good words of my patrons that have brought me the measure of success that I have achieved. I want to urge the same consideration for my successor, Dr. McCorkle who you will find competent in every way. Again thanking you, and with best wishes for your success.

Very truly,

Dr. K. M. Hodges



TURKEYS

We are now in the Market for Turkeys. The Thanksgiving market has opened five cents higher than last year. We offer the following prices for Turkeys delivered Monday, Nov. 2nd at our plant at Sweetwater, Texas.

- Turkeys, hens, 8 lbs and up 20c
- Turkeys, young toms, 12 lbs. and up 20c
- Turkeys, old toms 17c
- Turkeys, No. 2 10c

We advise holding light weight turkeys for the Christmas market. After Monday, Nov. 2nd phone us for prices on turkeys before delivering.

Western Produce Co., Inc.

"The Old Reliable"

Phone 51

tine to milk its nutritive value is increased, and it is more easily assimilated than in its natural state. Gelatinated milk is prepared after the following formula:

Soak for ten minutes one level tablespoon of gelatine in one-half cup of cold milk, cover while soaking, then place the cup in boiling water stirring until gelatine is fully dissolved; add this dissolved gelatine to one quart of milk.

Cocoa is prepared in the usual way except that gelatinated milk is substituted for plain milk.

ROW IN JAIL

Drunks Arrested Attempt to Clean Up on Inmates

Police placed three men charged with being drunk in the County Jail Friday night. Directly thereafter

there was an excellent row in the making as the three drunks engaged to clean up on the inmates already incarcerated. The said inmates however, proved amply able to take care of themselves, and when Dr. Leach, county health officer, was called to patch up the wounds, he had to work on the drunks. A cut forehead was sewed up which proved to be about the extent of the damages. Thereafter peace and quiet reigned in the county bastille.

CARD OF THANKS

We wish to express our sincere appreciation to our many friends for the kindness and loving sympathy extended to us during the last illness and death of our mother, Mrs. W. P. Coleman, and also for the beautiful floral offerings.

The Children.

A Modern Roman Road

REACHING into her distant corners were the Roman Empire's military roads, built that the couriers or armies of Caesar might have highways that were dependable.

Through the industrial heart of America—from New York to Chicago—a highway for the voice has just been dedicated to service, likewise designed to afford dependability to its travelers. This is the world's longest telephone cable which, buried beneath the streets of crowded cities, and elsewhere held aloft on heavy poles, now offers communication facilities that are practically free from the hazards of storms and other dangers.

In affording rapid and dependable transit to thoughts voiced every minute between great cities, it serves a large territory both alone and as part of a national wire system that is being further extended through cables in response to the people's need.

SOUTHWESTERN BELL TELEPHONE COMPANY
THE BELL SYSTEM IN TEXAS

UNITED FOR THE NATION'S NEED

With Kindest Thoughts
and all Good Wishes
for Christmas and the
New Year

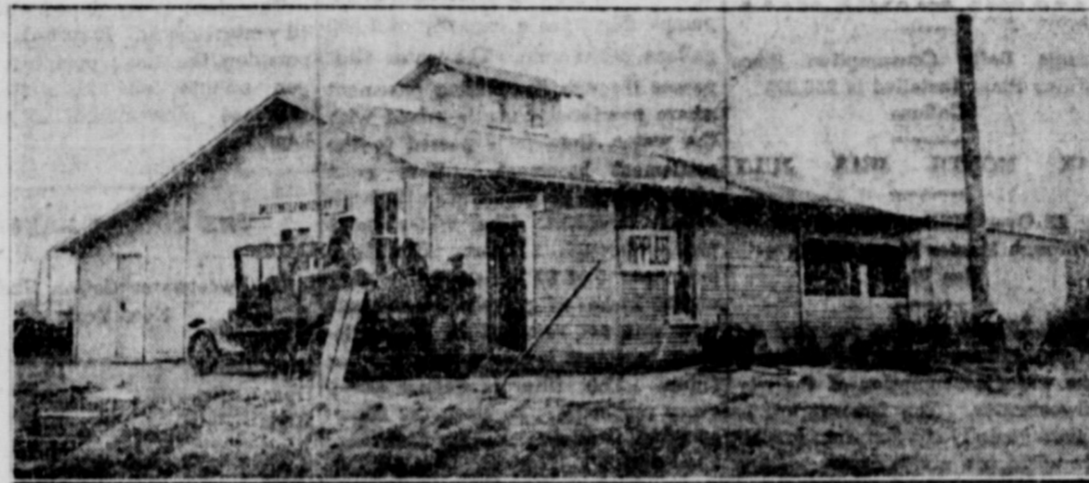
Greeting Cards

To carry a message of friendship and Christmas Cheer during the holiday season. Remember old friends this year in a personal way. Send them cards bearing your name.

PLACE YOUR ORDER NOW

Sweetwater Reporter
Commercial Printing Department

Sweetwater Serves You Better And So Does Sweetwater Hatchery



A more ideal location for poultry than West Texas has yet to be discovered. Like every other industry, however, folks had to learn of its possibilities but it is increasing by leaps and bounds.

Two years ago the Sweetwater Hatchery was started to give poultrymen something they had needed—commercial hatching easily available to the territory served by Sweetwater.

Last spring, the second season this hatchery was operated, over 70,000 eggs were hatched, after the capacity was increased.

This year the hatchery will begin operation about January 1. The charge to the poultrymen is only \$3 per case of 96 eggs which is much cheaper than they can be handled individually.

Baby chicks will also be available to those who prefer to get their young stock on the hoof rather than in the shell. The charge is from 15c to 20c per chick depending on quality of the breeding stock.

The Sweetwater Hatchery is operated by Merritt Mauzey. Well known local poultryman of long experience, G. A. Lackey, another experienced poultryman is interested in the hatchery and supervised construction and installation.

The famous Aermotor windmills are distributed in 16 West Texas counties by these men also the Oliver Farming Implements.

They buy produce and cream.

This is one of a series of pages devoted to the upbuilding of SWEETWATER and made possible through the co-operation of the following Progressive Business Men. Watch for the next one.

**WRIGHT FURNITURE & UNDER-
TAKING CO.**

WEST TEXAS ELECTRIC CO.
—Do it Electrically.

WADE BROTHERS

MANROE & MORRIS
Texaco

STAGES AND TUCKER BAKERY
The Home of Best Yet Bread

SWEETWATER COTTON OIL CO.
Sweetco Feed

S. EDWARDS GRAIN CO.
Purina Feeds

DABNEY MOTOR CO.
Fords—Lincolns—Fordsons

SWEETWATER SANITARIUM

MILLER & MIZZELL
One Day Auto Painters

**SWEETWATER MARBLE &
GRANITE WORKS**

GALBRAITHS
East Side Square Since 1913

ROBERTSON CAFE
A Fine Place to Eat

SWEETWATER VULCANIZING CO.
Service Corner

SIMPSON FUEL CO.
Domino Coal for Heat

OTTO CARTER
Your Plumber

SWEETWATER FLORAL CO.
Flowers for Every Occasion

BULLOCK IMPLEMENT CO.
The Farmer's Friend

BRYANT LUMBER CO.
Home Builders

SWEETWATER HATCHERY

CARTER HARDWARE
A Complete Line

SWEETWATER DRYGOODS CO.
The Store Ahead

SWEETWATER CANDY KITCHEN
Best Home Made Candies

M. D. WILLIS
Your Photographer

FIRST NATIONAL BANK
The Standard of Comparison

J. P. MAJORS
Jeweler and Optometrist

Our Every Monday Special



Living room and bridge Lamps reasonably priced. Will be sold at 50c down and \$1 a week payments.

On Monday We Will Make the Down Payment for You

SEE THESE LAMPS IN OUR WINDOW



Rufus Wright

Home Furnisher and Funeral Director
408-409-410-411-412 North Oak St.
Day Phones 549 and 775 Night Phones 423 and 76
Sweetwater, Texas



And Luggage for a Gift

Is one of the most sensible and practical gifts that can be made. The recipient is certain to appreciate your thought and choice in selecting one of these distinctive pieces of luggage. We are showing a nice line in

WEEK END BAGS — HAT BOXES—HAND BAGS — SUIT CASES — DRESSING CASES — ETC.

in composition materials, wicker and solid leather, in a range of prices that will make it easy for you to select yours.

\$3.95 up to \$16.50

Be Sure To Ask About Our Gift Goods



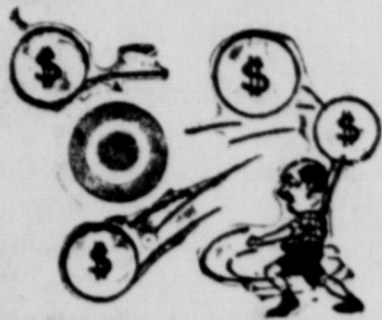
THE "SAVAGE"

— WASHING AND DRYING MACHINE —
— does not break buttons, nor does it flatten hooks and eyes or snap fasteners. — We sell it on easy payments. Your credit is good.

BOB WITHERS

at
SWEETWATER BATTERY CO.
Next Door Mart Hotel

REPORTER CLASSIFIED ADS GET RESULTS—TRY ONE



WATCHING IT GROW

It is interesting to see how often the DESIRE to make a savings bank fund grow gives to its owner the POWER to make it grow.

Every officer in a savings bank has observed this. Persons who have been able to save a cent in their lives frequently find it easy to do so, once they have opened a savings bank account.

Start the saving habit now. One dollar opens an account here.

First National Bank

The Standard of Comparison Since 1901

CITY USES MUCH WATER EACH DAY

Average Daily Consumption Since Filter Plant Installed is 836,095 Gallons

PEAK MONTH WAS JULY

July 27 Over Million Gallons Passed Through Master Meter at Filtration Plant

From 587,000 gallons per day to 1,121,000 gallons—that's the variation in the water consumption of the city of Sweetwater. The first figure is the average daily consumption for October while the million odd gallons represents the highest days consumption measured at the local filtration plant which was metered on July 27 of this year.

The average daily consumption of water since the filtration plant began operation on March 8 last year is 836,095 gallons. This of course represents the peak summer months when lawns and gardens are being attended to with great fervor. July was the largest month with 26,990,000 gallons being drawn from the Lake Trammell reservoir.

Since the plant was put in operation the eight of last March, 175,580,000 gallon have been passed through it. This month 26,15,773,000 have been filtered.

The plant uses 24 hour service. From 4 p. m. to 12 o'clock, B. H. Moore is in charge of the plant, from 12 to 8 a. m., E. R. Nolan is at the by gravity flow, and then is pumped

plant, and from 8 a. m. to 4 p. m. L. N. Gilbert.

The water passes through the plant to the stand pipe by three centrifugal pumps that have a capacity of 1,500 gallons per minute. The water first passes through the mixing basement where powdered alum is mixed with the water, then it is passed to the settlement basement. Here most of the insoluble particles in the water are deposited. The water next passes through a filter. The filter is composed of 30 inches of fine sand and 30 inches of gravel. All the salt that was not removed in the settlement basement is now removed in the filter. The filter is cleaned about every ten hours. To clean the filtered water is passed through the filter. The water used to clean the filter is carried into the sewer system. The filtered water runs into the 120,000 gallon clear well under the plant. About two pounds of chlorine is pumped through every million gallons of water that passes through the well. This destroys all bacteria life in the water. The water is pumped from the clear well to the stand pipe and thence to the city.

A bacteriological test is taken every 24 hours of the water, by L. N. Gilbert. A test of the raw water as well as the filtered water is taken. The sample of water is placed in a min-

ature incubator. From 24 to 48 hours are needed to hatch the bacteria. The bacteria count has been reduced from 8 counts to 2 counts.

The plant is equipped with a 12x16 venturi meter. It records the daily pumping, the yearly pumping, the rate per minute and the pressure. A standard pressure of 70 pounds is kept.

THE COTTON MARKET

By Sweetwater Cotton Exchange New York

	DEC.	JAN.
Prev. Close	18.27	18.57
Open	19.21	28.52
High	19.22	18.55
Low	18.75	18.11
Close	18.90	18.24

New Orleans

Prev. Close	18.40	18.41
Open	18.45	18.42
High	18.45	18.42
Low	17.90	17.90
Close	18.02	18.04

The Spot Market

	TODAY	YEST.
New York	19.40	19.75
New Orleans	18.05	18.47
Galveston	18.80	19.15
Houston	19.75	19.10
Dallas	18.35	18.65
Sweetwater	18.55	18.90

At The



MONDAY and TUESDAY



POLA NEGRI in *a Paramount Picture*
"FLOWER OF NIGHT"

Pola's fire and beauty inspired America's most colorful author to write this great story. The tale of a flaming Spanish belle who fought for honor and a sweetheart in the lawless days of '49. The screen's fiery empress of emotions was never better. Supporting company includes many big names.

Also Showing
"FOX NEWS"

and Comedy

"THE LION'S WHISKERS"

10c

25c



Music for All!

Will It Be in Your Home This Christmas?

It is none too early to be thinking about bringing entertainment and pleasure to the entire family for years to come.

What could be more appropriate within the family than a gift of a "mechanical musician"—a player-piano, or a Brunswick Phonograph?

A gift that lends enchantment all through the year—brings joy to everyone!

It's a gloom chaser that's ever at your command, ready to give you opera, or the most up to date songs and dance music.

When you list the names of the family, just bracket them—make this a gift to all!

Hear and see them at our booth at the fair or come into the store. Terms can be arranged.

GEO. ALLEN MUSIC HOUSE

36th Year

First Door East First Natl. Bank, Sweetwater, Texas



NORMA TALMADGE
in
"The Only Woman"

A drama of raging seas—fighting hearts and how a woman made a man of a man!

Also Showing

"PATHE NEWS"

and Comedy

"LION LOVE"

10c

40c