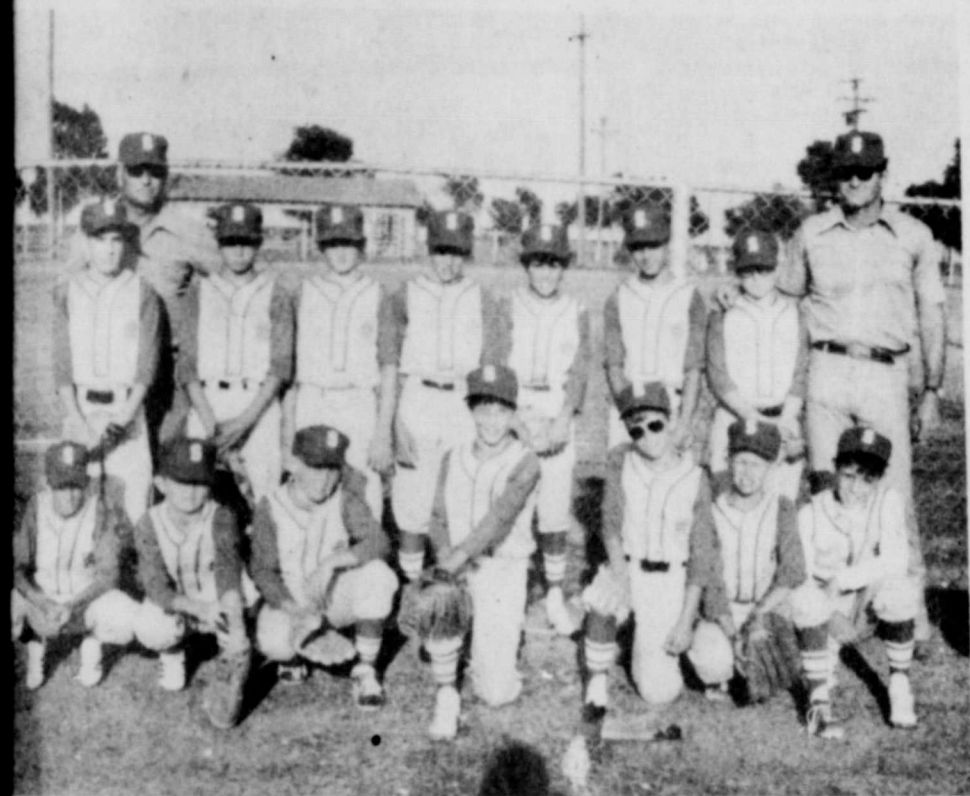


All-Stars Lose Thriller At Dumas Monday, 4-3!



ated to be a toss-up, but Sunray took an 8-0 lead in the first and Spearman jumped to take a 3-2 lead in the third. However, Sunray team made a comeback in the last inning, winning the championship 3-2 in one of the finest league All-star games

ever played in the Texas Panhandle. Our thanks to Coach Edward Dear and Coach James Kenney for their efforts in making this fine all-star team into one of the greatest teams in Spearman's history. Pictured above are the members of this year's all-star team. Front row - L to R,

Danny Dear, Billy Snider, Kirby Hargis, Chuck Eaton, Kyle Beedy, Pat McKay, Rex Freeman. Back Row L to R, Sam Boone, Coach Edward Dear, Randy Pool, Robin Keetch, Scot Martin, Joey Avila, Billy Sellers, John Mark Pearson and Coach James Kenney.



DATE	HI	LOW	PRECIP.
July 11	90	65	
July 12	90	61	
July 13	87	67	
July 14	87	61	
July 15	83	55	.13
July 16	90	55	
July 17	94	63	

Auction of DPS Surplus Set

AUSTIN--Texans will have a chance to bid on 100 surplus Department of Public Safety vehicles, office equipment and walk-talk radios in a public auction of State surplus property to be held here Saturday, July 21.

The auction will be conducted by DPS, in cooperation with the State Board of Control, on Department of Public Safety Property at the intersection of Guadalupe and Koenig Lane in Austin.

Items to be sold will be on display prior to the sale, and auction activities will begin at 10 a.m. DPS officials said many of the automobiles are air conditioned and fully equipped. Those which were formerly in Highway Patrol service have new paint jobs.

Office equipment items include desks, typewriters, adding machines, file cabinets, duplicating equipment, etc.

In the past, DPS surplus has been sold on sealed bid or at the combined State auctions held at the Austin City Coliseum. The upcoming sale marks the first time the department has scheduled an auction at its headquarters.

Auctioneers will be Nelson International, a Dallas-based firm.

Additional information prior to the sale is available by contacting Jim Morris or Walter Wood at the Texas Department of Public Safety in Austin, phone 512-452-0331.

Spearman Man Was Room-mate With Former Oklahoma Governor



Oklahoma recently paid its last respects to Roy L. Turner, Lincoln County farm boy who won the state's highest office and was perhaps the most popular governor in Oklahoma history. Claude Smith, of Spearman, Texas, graduated from Hill's Business College in Oklahoma City, with Roy Turner. Claude remembers those good old days, and what a great friend Gov. Turner was. Claude thinks that Turner will be remembered best for the Turner Turnpike, the toll road he fought for four years to build, the state's first super-highway and the cornerstone for what has since become one of the outstanding turnpike systems in the nation.

Claude remembers that while Turner attended Hill's Business College he worked as a bookkeeper for a packing company and a salesman for a tire company.

Corporal Love Receives Promotion

CAMP LE JEUNE, N.C. Marine Lance Corporal Bennett F. Love, son of Mr. and Mrs. James W. Love of 917 S. Harvard and husband of the former Miss Gwendolyn K. Lewis of 408 N.W. First, all of Perryton, Texas, was promoted to his present rank while serving at Marine Corps Base here.

Notice

The Nicky Cruz Crusade which is being planned for the Spearman area will be held later this fall, due to vacation and etc.

Thank you for your co-operation and donations. Bob Collier Harold Groves Bernard Barnes B. V. Bentley

Food Sales Hit \$3,840,000

Incomes were up in Hansford County in the past year and the rise was reflected in the amount of business done by local retail stores.

Sales of cars, food, wearing apparel, furniture and other merchandise were at a high level. To a considerable extent, however, inflation contributed to the increase in the dollar volume.

Just how well local merchants made out is detailed in a new report on consumer buying, released by the Standard Rate and Data Service. It shows how area residents, as well as those in other communities across the country, spent their money during the year.

In Hansford County, a large part of their dollar went for food. Some 12 cents of each dollar spent in local retail stores was for such purchases.

For supermarkets, grocery stores, bakeries, butcher shops, delicatessens and other food emporia in the area it added up to a sales volume of \$3,840,000, as against the prior year's \$3,629,000.

This was solely for take-home food. Not included is the amount spent in restaurants and other eating and drinking places.

If the outlay for take-home

food were divided equally among the local population, it would be equivalent to \$1,777 per family.

This compares with the United States average of \$1,400 and with \$1,335 in the State of Texas.

Stronger consumer buying was also in evidence in other local stores, the report shows.

Sales of automobiles, motorcycles, trailers, boats and other automotive equipment came to \$5,686,000 as against the previous year's \$4,990,000.

Variety stores and department stores carrying general merchandise recorded a total of \$538,000. Their 1971 figure was \$479,000.

Apparel shops and specialty stores, including those selling hats, dresses, coats, shoes, and other articles of clothing grossed \$506,000, compared with the prior \$478,000.

Furniture and home furnishings stores accounted for \$391,000. The previous total was \$341,000.

Nationally, the surge in consumer spending this year has been such that the experts are fearful of an overheating of the economy, which could be the groundwork for a letdown later on and a possible recession.

Hansford County Lodges Have Installation

The Hansford Lodge No. 1040, and 1326, combined for installation services Monday evening. Installing Marshal was Earl Taylor; Installing Chaplain, Walter M. Zenah; Installing Marshal from Gruver, C. L. Pierce; Installing Master, John R. Collard, Jr., Past Grand Master, Grand Lodge of Texas A. F. and A. M. Officers for the Hansford County Lodges are as follows: HANSFORD LODGE #1040 W. M. - Jerry Gee S. M. - Billy Britt Jarvis J. W. - Kenneth L. McKay Treas. - Tommy Russell Sec'y - Ceril E. Batton Chapl. - John R. Wilde S. D. - Loyall V. Turner J. D. - Gene Leatherman S. S. - Jack Whitson Tiler - George Young GRUVER LODGE #1326 W. M. - Van Handford S. W. - Kervin Roper J. W. - A. B. Besson Treas. - Ted Evans Sec'y - R. L. Thom Chapl. - Howard P. Henton S. D. - Richard Hintergardt J. D. - George W. Ford Tiler - Pat Sullivan

Guymon Tennis Tourney Slated

The Guymon Tennis Tournament will be held July 23-27 at the Guymon Tennis Courts located in North Park on Medical Drive.

There will be two categories for the tournament. Junior Division -- boys & girls; 18 years old and under. Senior Division -- boys & girls; 19 years old and over. They will have doubles and singles for both divisions.

Anyone interested in participating in the tournament may contact Tyler Latham at 402 N. Main. The entry deadline is July 21 and the entry fee is \$2 per person.

Everyone is invited to attend this tournament. Trophies will be awarded in both divisions.

PURPLE PRIDE-PURPLE PRIDE

Santa Fe Grain Cars Ease Storage Problem

Welcome news to grain men and farmers, came to Spearman this week, when Santa Fe brought in a large train of covered hopper cars to ship out the wheat in this area.

Most of the cars were late models with a capacity of 210,000 pounds or more than 3,000 bushels each. A total of 170 cars were distributed up and down the Santa Fe lines from Shattuck to Spearman.

Some of the giant grain-cars are so new that the signs painted on the side have a date of June, 1973 when they were built. These cars not only hold twice as much as the standard boxcar, but make much faster hauling because wheat is poured into them

from the top rather than inside a car where the doors have to be sealed and fastened.

It takes only three minutes to un-load one of these cars at terminal points.

Most of the wheat being shipped out is going to Amarillo or Enid, location of the giant Union Equity terminal elevator complex. A number of cars, however, were consigned to Houston, earmarked for export.

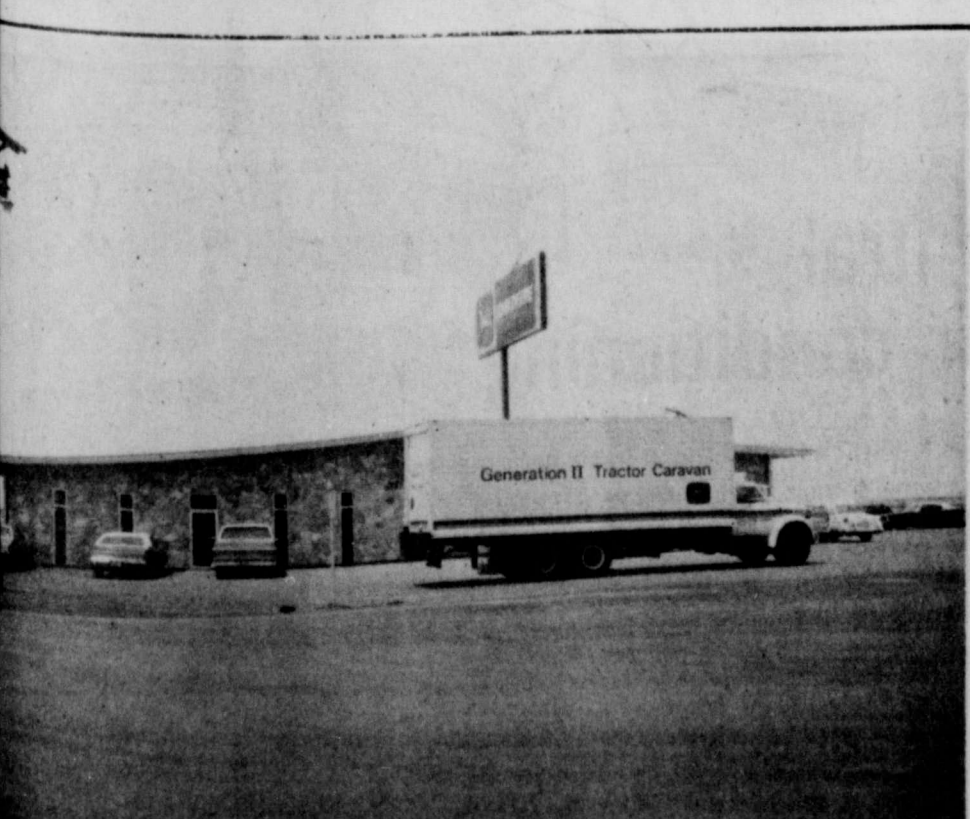
Santa Fe has done a great job in handling the wheat crop this year, and we extend congratulations to our local Depot agent, and the engineers and trainmen of the Santa Fe.

BULLETIN: Hansford and Libscomb counties have been designated as a redevelopment area under the Public Works and Economic development act of 1965. This was announced by the Economic Development Administration of the Department of Commerce this week.

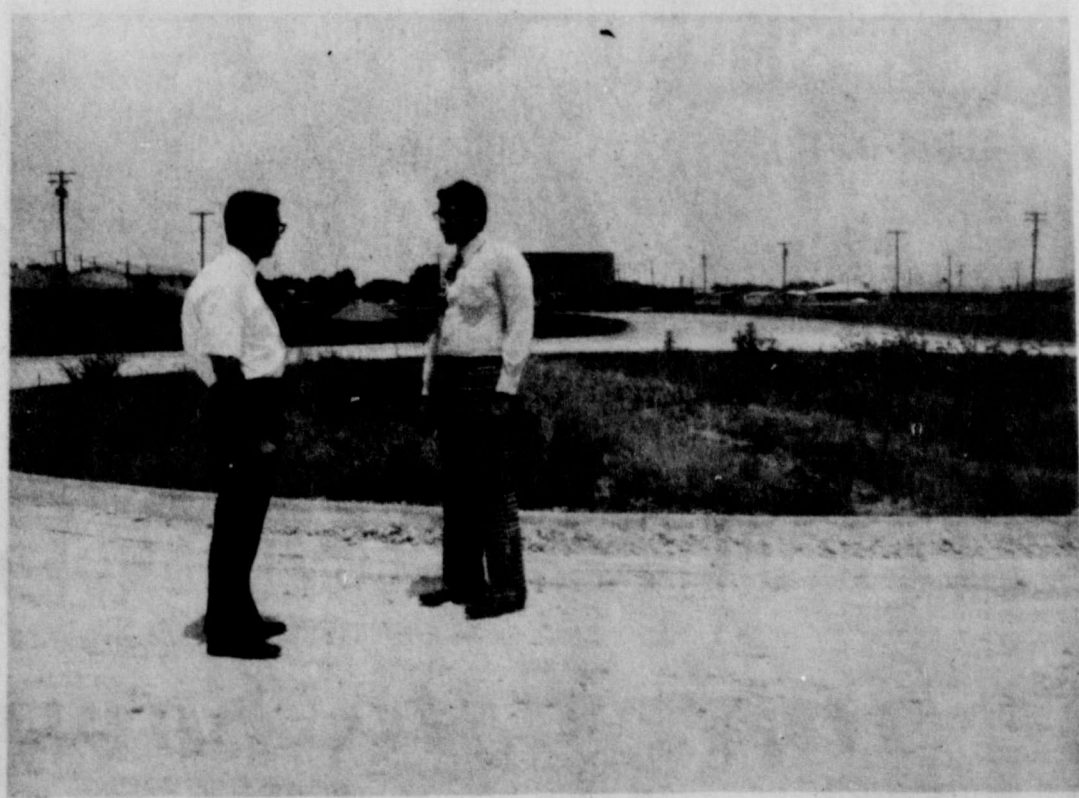
This will give federal assistance for economic and employment conditions to the Hansford County Area. This will also be a big help in building the Palo Duro Dam, according to local officials.



IN CASE you wondered... this is where you get your drivers license... at the H. D. building...



The Generation II tractor caravan was in Spearman at Hansford Implement, the first of this week...



Glover Terrace #4 Almost Complete

Work is well underway on the completion of Spearman's subdivision - Glover Terrace Unit #4, located south of Eleventh Street and east of Bernice Street. This subdivision will have

several outstanding features. First, there will be a beautifully landscaped cul-de-sac which will give several of the lots additional frontyard quietness and privacy. A paved alley will offer rear garage access for some of the lots. Adding to the attractiveness of the subdivisions will be partial underground utility lines. Further, the

street will have an asphalt hot-mix finish rather than the conventional penetration and loose gravel finish.

Completion of this final subdivision to the Marion Glover addition in Spearman is being done by Jack Oakes. This subdivision offers to Spearman one of the more unique and highly restricted residential areas.

Notice Of Election For Hospital District Here!

The notice of election for creation of the Hansford Hospital District, is being published in the Sunday's paper. It will be published again next Sunday, and an election to create the district will be held on August 18, 1973. Needless to say, your newspaper is behind this program 100%, as this will make the operation of our hospital and the financing of the hospital much more efficient. In a talk with S.M. Anderson, administrator of Hansford Hospital, we learned that we are going to need some replacement on some of the worn out machinery at the hospital, plus needing to buy some new and modern equipment that will save YOUR live when you are taken to the hospital.

And, never before has this hospital been such a great help to a community, as the hospital has been this harvest and this entire year.

Also, by creating our own hospital district, we can keep the control of the hospital on a local county basis, and this is very appealing to everyone including the Hansford County Commissioners Court, as well as the hospital board. The court has been very generous towards the hospital the past year, and their efforts have kept the hospital in operating condition.

By creating a hospital district, we will not have to raise taxes, unnecessarily, and the financing of the hospital will be on a much more even ratio

to the tax payer.

Presiding judges for the election are E.J. Copeland and Freeman Barkley at the courthouse; Mary Ellen Saltzman and Etta Beck at the Renner Ranch; Mrs. Elmo McClellan and Mrs. F.A. Shapley at the Gruver Elevator; Roy Riley and Alma Gruver at the Gruver High School; Jane Stedje and Burton Olsen at the Oslo Community; Willard McCloy and Mrs. Tom Dortch at Morse School; Roy Lee McClellan and Colleen Schaefer at Spearman Jr. High School. The special canvassing board will be composed of Paul Gurfory and Lola Reynolds.

Be sure and vote in this important election.

Memorial Service Set for War Victim

McLEAN — Memorial services are scheduled Sunday in McLean for Capt. James L. McCarty, 27, who has been declared dead by the U. S. Air Force a full year after he was declared missing in action.

Capt. McCarty, son of Mr. and Mrs. James H. McCarty of McLean, was declared missing in action after his F4 Phantom jet was downed June 24, 1972, over North Vietnam near Hanoi.

His plane was shot down with air-to-air missiles fired from a North Vietnamese MIG.

He had been in Vietnam only a short while when he was shot down. His body was not recovered.

The memorial service will be at 4 p.m. Sunday in McLean United Methodist Church with the Rev. Elton Wyatt officiating.

Capt. McCarty was a 1964 graduate of McLean High School, and he graduated in 1968 from Texas Tech University in Lubbock. He received his pilot training at Reese Air Force Base in Lubbock. He was a member of McLean United Methodist Church.

Survivors include his parents; his wife, Rebecca, of E. Paso; one son, Kevin, of E. Paso; and one brother, Joel McCarty of Lubbock.

A memorial fund for Capt. McCarty has been started at the McLean United Methodist Church.



CAPT. JAMES L. MCCARTY

EDITORS NOTE: James attended Spearman schools in 1930. He is the son of Naomi Gunn, and a niece of Elma Gunn, former

JESUS RALLY SET FOR SUNDAY

A gathering of God's people will be at the Swimming Pool Park this Sunday, July 22, at 3:00 P. M. Young people and adults are invited to attend this rally and enjoy singing and preaching for young people and old alike.

Plan to attend Sunday at 3:00 P. M. at the Swimming Pool Park.

Paul Gillispie Wins Partnership Tourney

Paul Gillispie and his brother, Walt of Phoenix, teamed to win the Hansford Golf Club Partnership with a five-under par 137, Sunday. The winners had a score of 70 Saturday and a low total of 67 for Sunday.

Chief Fagan and Tim Yarbrough of Borger tied with Larry Cole, also of Borger for second with a 139.

Winners in the other flights included: Barry Hayes & Roy Edgington, Borger, 145; Granville Boyd & Garland Head, Spearman, 149; Eck Harvey & Frosty Platt, Dumas and Harry Barkley & Ken Irwin of Gruver, 158.

Dr. D. E. Hackley made a hole in one on No. 4. He was playing in the third flight.

the Spearman REPORTER

Spearmen, Texas 79081
Box 458
213 Main
Published Weekly at 213 Main Street
Spearmen, Texas 79081
Owner-Publisher William M.
Second Class Postage Paid at Spearman, Texas

Any erroneous reflection upon the character of any person or firm appearing in these columns will be gladly and promptly corrected upon being brought to the attention of the management.
SUBSCRIPTION RATE--Hansford, adjoining counties, in combination with The Hansford Plainsman, \$7.00 yr. Other points in combination with The Hansford Plainsman, \$9.00 yr.

Mr. and Mrs. Darryl Ammons and children, Bruce, Gregg, Shanda and Shawn and his parents, Mr. and Mrs. C. O. Ammons from Pampa recently returned from a week's vacation at the Cabot Ranch at Stonewall, Colorado, while there they enjoyed trout fishing, camping and sight-seeing.

The price of almost everything the consumer buys has gone up faster than the cost of food. While food costs have increased 47% since 1962, the average worker enjoyed pay raises of more than 140%. During this period the cost of medical care has gone up 127% and housing now costs 64% more.

news from your HOME DEMONSTRATION AGENT

by Nellie Evans



I want each of you to reserve September 28 on your calendars. This is the date for the area heart seminar in Perryton. Included will be Hansford, Ochiltree, Hemp-hill and Lipscomb counties. It will be very similar to the seminar held in Amarillo last February, just nearer.

Dr. Mina Lamb, professor of food & nutrition at Texas Tech University is scheduled to discuss diet and heart disease. She was one of my favorite professors and when you hear her she'll be your favorite too.

One surgeon and one cardiologist from Amarillo are to attend. Dr. Bluford Johnson and Dr. E. E. Waide of Perryton have been instrumental in getting the doctors to come. They are wholeheartedly supporting this seminar.

Something different will

be having a doctor from Amarillo discuss early childhood heart disease. We probably know less about this area unless we've experienced it in friends or family.

As the date approaches you will hear more details, but just save the 28th of September to attend. Hours will be scheduled so children can be gotten off to school before you must leave.

Some other extension programs I hope you'll plan to attend include the Christmas Fair in September and the Quality Hand work Workshop in October. Both of these will be county-wide meetings in Spearman and Gruver on separate days. You'll get more details later.

We try to schedule our programs to include what you want to see, do and learn. Never hesitate to let us know if we can develop a program

for you or held you as an individual. Our purpose is to help families have a better life and we want to assist all of you regardless of race, creed or national origin.

Friday we will be returning from our county 4-H Camp. We all get tired but enjoy our week in the mountains.

Also returning Friday will be Gina Hutchison, Brad Hardesty and David Armes who represented Hansford County at District 4-H Camp. They received training in electricity and leadership at the camp held near Cloudfroft, New Mexico.

For a light and cool summer dessert you might enjoy company's comin' pie. Beat three egg whites until foamy. Add 1/2 t. cream of tartar, beat until stiff. Fold in 18 crushed soda crackers, 1 c. chopped nuts and 1 t. vanilla. Bake in greased pyrex dish (9 x 13 or so) 350 degrees for 35 minutes. When cool beat 1/2 pt. whipping cream (or use prepared topping) and add 2-3 T. favorite preserves. Spread on top and sprinkle with coconut. Chill until ready to serve.

PURPLE PRIDE

First Baptist Church of Morse Planning Dedicatory Services

MORSE — The First Baptist Church of Morse, organized in 1930, has scheduled a number of activities in a day of homecoming and dedication July 29.

Members of the 43-year-old church will open the day's activities at Sunday School service by holding a dedication ceremony for the church's newly remodeled auditorium.

Following the service of dedication at 10:45 a. m. and a noon fellowship luncheon at Community Hall, the service of remembrance and rejoicing will begin at 2 p. m. under

the direction of the Rev. E. M. Weathrs, former pastor of the church and now an Amarillo resident. The Rev. Winfred Walker, current pastor, will be in charge of the dedicatory service.

Those in charge of planning the observance for the 62-member church include the Rev. Walker, Mrs. Dora Womble, Mrs. Louella Jones, Mr. and Mrs. Robin Giblin, Mr. and Mrs. Thane McCloy, Mr. and Mrs. Jack Crowl and Mr. and Mrs. Willard McCloy.

What was to eventually become the First Baptist Church in Morse actually began in the spring of 1902 when a few families in the Leib community near Morse organized a Baptist church in a dugout and adopted the Articles of Faith and the Church Covenant.

The Rev. J. N. Marshall was the first pastor of the church, which met monthly in the Leib School for services. The church, which began receiving candidates a month later and baptized members in creeks, stocks and bath tubs, became the Hutchinson Missionary Baptist Church in May 1902.

The first rival meeting

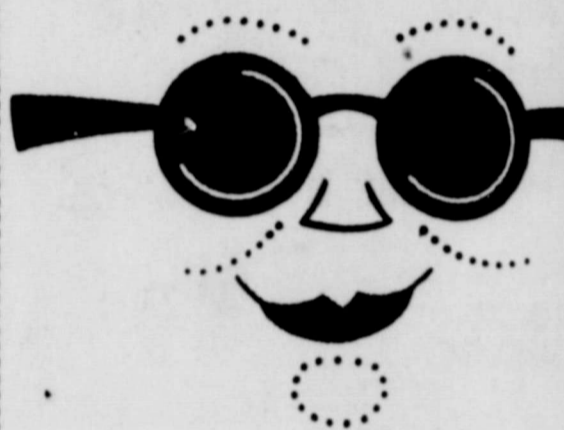
was held in 1904 and the Lord's Supper was observed for the first time on May 13, 1906.

When Morse was founded in 1930, the church began conducting Sunday School classes in a small building moved to the community for a regular school. Because the time was at the beginning of the depression, the Baptist and Methodist churches in Morse secured a half-time preacher. The church was reorganized in January 1941 and W. C. Womble donated acreage on which to construct a church building. The first service for the reorganized church was held in September of that year.

Members voted in September 1945 to construct a parsonage, and paving in front of the church building was completed in the summer of 1948. A sanctuary building program, at a cost of \$11,500, was completed in 1950, and Mrs. Walter Gillispie painted the Baptist scene for the new addition.

PURPLE PRIDE

GOING ON VACATION?



Sportsman's Lodge

JAMES A. AYRES
Red River,
New Mexico
505-754-2273

INTEREST PAID QUARTERLY—COMPOUNDED DAILY

PASSBOOKS: 5 3/4% paid day in to day out when funds remain 10 days or more and account balance is \$5 or more to end of quarter.

90 DAY PASSBOOKS: \$1,000 Minimum

5 3/4%

90 DAY CERTIFICATES: \$1,000 Minimum

5 3/4%

ONE YEAR CERTIFICATES: \$1,000 Minimum

6 1/2%

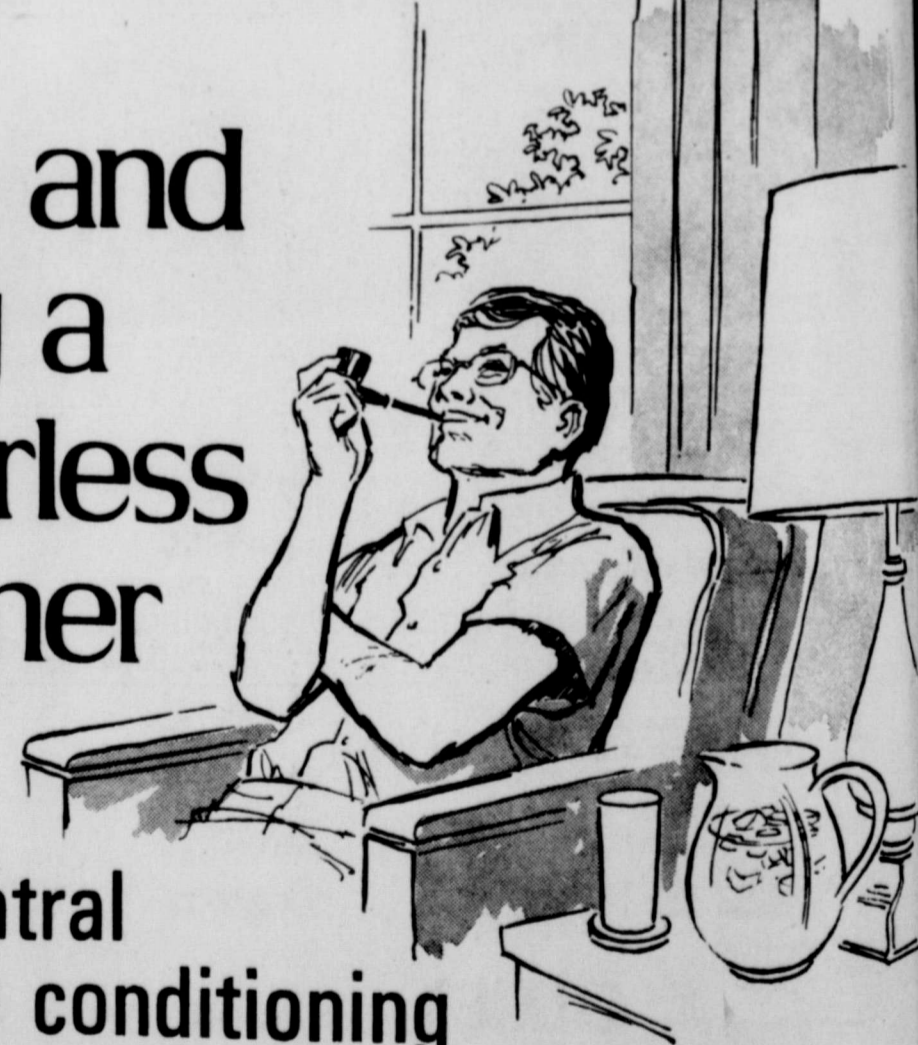
2 1/2 YEAR CERTIFICATES: \$5,000 Minimum

6 3/4%

INTEREST PAID QUARTERLY—COMPOUNDED DAILY Interstate Savings & Loan Association

SPEARMAN, TEXAS

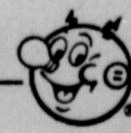
Relax and enjoy a simmerless summer



...with central electric air conditioning

Efficient central electric air conditioning can help put an end to uncomfortable hot summers inside your home. It keeps every room at the comfort level your family enjoys while it helps keep dust, pollen and noise outdoors. You live in a cleaner, cooler, more pleasant climate. Contact your air conditioning contractor or let our experts give you more facts on modern electric air conditioning.

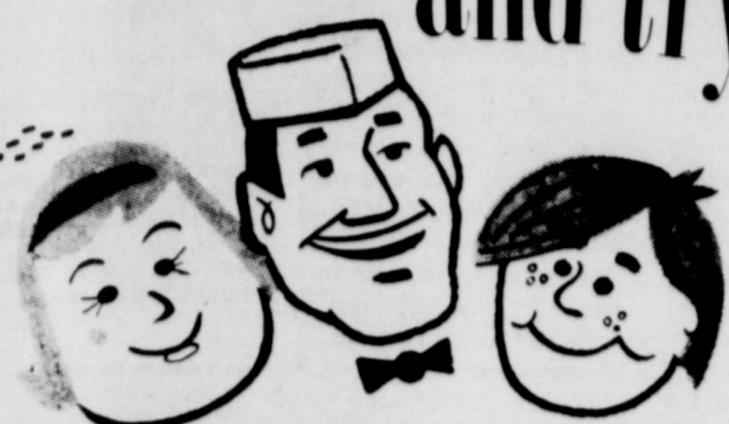
COMMUNITY PUBLIC SERVICE
Your Electric Light & Power Company
An Equal Opportunity Employer



if the people are friendly and put you at ease... and try very, very hard to please...



NOW OPEN ALL WEEK FOR YOUR CONVENIENCE!



PRICES EFFECTIVE THRU SAT., JULY 21, 1973. NONE SOLD TO DEALERS. LIMIT RIGHTS RESERVED.

it's Ideal!



QUART JAR 58¢

LIMIT 1 WITH \$5 OR MORE PURCH.

Apple Sauce 4 89¢

Wexford Crystal

10-OZ. SHERBET 49¢

SAVE \$1.00 ON GAME TABLE OR FOLDING CHAIR

VALUABLE COUPON \$1.00 OFF ON YOUR CHOICE OF

COUPON SAVINGS

VALUABLE COUPON 50¢ OFF ON 3-LB CAN OF

Folger's Coffee

VALUABLE COUPON 35¢ OFF ON 8-OZ FOLGER'S

Instant Coffee

VALUABLE COUPON 25¢ OFF ON 3 JUMBO ROLLS OF

Bounty Towels

Thrif-T Soaps & Cleaners

Downy & COMET

VALUABLE COUPON \$1.19

COMET 15¢

VALUABLE COUPON 15¢

COMET 15¢



RIB STEAKS \$1.29

MEAT-MASTER BEEF Thrif-T Priced

BURRITOS TACO-ETTES RELLENOS 59¢

Camelot Salads 69¢

Pick of the Chick 79¢ Braunschweiger 69¢ Super Dogs 59¢ Fish Fillets 1.29 Fish & Fries 1.49

Chuck Roasts 79¢

MEAT-MASTER BEEF BLADE CUTS Thrif-T Priced

Legs or Thighs 79¢ Family Steaks 1.29 Chunk Bologna 49¢ Sliced Bologna 59¢ Ham Slices 1.39

ONE-PRICE SALE! CHUCK STEAK 99¢ CHUCK ROAST 99¢ POT ROAST 99¢ Sliced Bacon 1.59



SUNSHINE HYDROX COOKIES 38¢

MEADOWDALE ASSORTED FRUIT DRINKS 4 \$1

Kraft Dinners 2 99¢

Barbecue Sauce 55¢

KRAFT'S PARKAY MARGARINE 32¢

Ice Milk 59¢ Sandwich Bars 79¢

Longhorn Cheese 68¢

Kraft Dips 2 88¢

Sour Cream 41¢

Chocolate Milk 59¢

Fairmont Yogurt 4 \$1

Biscuits 3 for 47¢

Half & Half 29¢

POT PIES 5 FOR \$1

SARA LEE Coffee Cake 89¢

ANACIN 1.18

ANACIN 76¢

Golden Corn 5 \$1

Sweet Peas 4 89¢

Bath Tissue 2 88¢

Facial Tissue 39¢

Dreher Pickles 51¢

Baked Beans 49¢

Green Beans 35¢

Beef Stew 83¢

Kraft Dinner 51¢

Dog Food 21¢

HUNT'S TOMATO KETCHUP 4 \$1

Whole Tomatoes 5 \$1

Tomato Sauce 5 \$1

Tomato Paste 39¢

Salad Dressing 68¢

Salad Dressing 52¢

MIX OR MATCH FRESH FRUIT SALE! NECTARINES 39¢ RED PLUMS 39¢ APRICOTS 39¢ GRAPES 39¢ Slicing Tomatoes 39¢

USE CLASSIFIED ADS TO BUY, SELL, SWAP, RENT OR HIRE

CALL 659-3434

WE SELL:



Office Supplies and Furniture



Business Machines also



Printing

Cleaned & Repaired
WE MAKE:
Magnetic Signs



PHONE: 659-3434

THE SPEARMAN REPORTER



106 E. Kenneth

Boxwell Bros.

Funeral Home and Flower Shop

Day-Night Phone 659-2212
Spearman, Texas

Cummings Refrigeration

And Air Conditioning

Phone 659-2721

GORDON CUMMINGS

Listen to HARVEST TIME

9:00 A.M. SUNDAY

KBMF

United Pentecostal Church

Sponsor

UNITED PENTECOSTAL CHURCH

106 S. Bernice

Services 10:00 a.m.

and 7:00 p.m.

Each Sunday

Spearman, Texas

HANSFORD LODGE

1040

A.F. & A.M.

Regular Communication
Master Mason Degree
Monday, July 23

Jerry Gee, W. M.
Cecil Batton, Secy.

Hansford County
Planned Parenthood
26 S. Haney
659-2483
Spearman
Mon. - Fri.
9-11 a.m. 1-3 p.m.
30S-rtm

SERVICES

RUTH'S CRAFT SHOP. Every-
thing for the artist. Tole,
China, Decoupage, Blank
China, Wooden Products, Pat-
terna. Open 9-5, Mon-Fri.
1107 Barkley, Spearman.
20T-rtm

Mary Kay Cosmetics. Call
659-2119. Malolah Full-
bright.
32S-rtm
Garmon's Canine Clip Joint
all breeds groomed and board-
ed. 118 N. James. For ap-
pointments call 659-2105.
33S-rtm

WANTED

Mechanic needed. Dodge,
Plymouth and Chrysler Deal-
ership, C&T Automotive,
Perryton, Texas. 435-3904.
Contact Les Thurman.
23T-rtm

WANTED TO BUY--Used air
conditioner in good shape, rea-
sonably priced. Call 2082.
33S-rtm

Experienced mill help wanted
at FMW Feedlot. Call 806-
733-2486.
33S-4tc

WANTED TO BUY--Good used
children's swing set. Call
3294.
35T-2nc

HELP WANTED--For inside and
outside workers, apply in per-
son at Rogers Sales and Ser-
vice, Waka, Texas.
19T-rtm

WANTED--Land to lease by
maximum yield producing
farmer. Call after 8:00 p.m.
659-3569.
26S-rtm

FOR RENT

FOR RENT--Furnished apt. 606
S. Bernice Street. Phone 659-
2652 or 2452.
28S-rtm

TO GIVE AWAY

PUPPIES TO GIVE AWAY--
659-2657 or come by 320 N.
Brandt.
33S-4tc

LOST & FOUND

LOST--Small turquoise bee
pin with diamond eyes, wings
are gold, with small diamonds
in body. Reward offered.
Mrs. Nolan Holt. 659-2447.
33S-rtm

LOST--German Pug, Light
cream with dark color mark-
ings. Lost Monday at 101
Coble St. Call 3529.
34S-rtm

LOST--Set of 3 keys on
Leather chain, with letter
"R". Reward. Call 659-
2317.
35T-2tc

CARD OF THANKS

We would like to thank
those people who sent flowers,
food and especially to Dr.
Thomas, at the recent death
of our loved one. The
thought was appreciated more
than words can say.
The family of Joyce
Phillips
Bill D. Phillips, Mrs. Judy
Everson, Mrs. Marilyn Har-
ris, Mrs. Donna Fallwell,
Carolyn, Joe Bob, and Nikki
Jones.

The family of Carl Edd Wil-
banks offer their deepest ap-
preciation for sympathy ex-
pressed in floral offerings,
food, memorial gifts donated
in memory of Carl Edd, and
for your personal expressions
of love.

LEGAL NOTICE

CITATION BY PUBLICATION
THE STATE OF TEXAS TO:
GARY STEVE BENGE Respond-
ent Greeting, YOU ARE HERE-
BY COMMANDED to appear
before the Honorable District
Court of Hansford County at
the Courthouse thereof, in
Spearman, Texas, by filing a
written answer at or before 10
o'clock A.M. of the first Mon-
day next after the expiration
of forty-two days from the date
of the issuance of this citation,
same being the 27th day of Au-
gust, A.D., 1973, to Plaintiff's
Petition filed in said court, on
the 21st day of May A.D.,
1973, in this cause, numbered
2021 on the docket of said
court and styled IN THE MAT-
TER OF THE MARRIAGE OF
CLOETTA KAYE BENGE Peti-
tioner, and GARY STEVE
BENGE, Respondent.

A brief statement of the na-
ture of this suit is as follows,
to-wit: Petition for Divorce, as
is more fully shown by Petition-
er's Petition on file in this suit.
If this citation is not served
within ninety days after the
date of its issuance, it shall be
returned unadvised.
The officer executing this
writ shall promptly serve the
same according to require-
ments of law, and the man-
dates hereof, and make due
return as the law directs.
Issued and given under my

hand and the seal of said court
at Spearman Texas, this the
10th day of July A.D. 1973.
Attest: Norma Jean Covell
Clerk, District Court, Hans-
ford County, Texas.
34-T4tc

NOTICE TO BIDDERS....
Bids proposed for Hansford
County Commissioners Court
to be taken until 9:00 a.m.
C.D.T. Thursday, July 30,
1973. General Construction
including all mechanical for
the construction of the Re-
creational-Agriculture Build-
ings located in Hansford Coun-
ty, Texas. Plans and Specifi-
cations can be obtained from
County Judge at Spearman,
Texas. A certified bid bond
of not less than 5% will be
required.
34S-3tc

NOTICE OF BOARD OF
EQUALIZATION MEETING
CITY OF SPEARMAN, TEXAS
Notice is hereby given that
the Board of Equalization for
the City of Spearman, Hans-
ford County, Texas, will hold
a meeting from 8:30 a.m.
until 10:30 a.m., July 21,
1973 at the City Hall, Spear-
man, Texas, for the purpose
of determining, fixing, and
equalizing the value of any
and all taxable property situ-
ated in the City of Spearman,
Texas. Any and all persons
having business with said
board are hereby notified to
be present.
s/ Janie Hand
Secretary
City of Spearman, Texas
34-2tc

**Pvt. Johnny Gage
Completes Training**

Army Private Johnny E.
Gage, 23, son of Mrs. Leona
Palmeze, 1113 Harvard, Perry-
ton, Texas, recently com-
pleted a seven-week perishing
missile crewman course at
the U. S. Army Field Art-
illery Training Center, Ft.
Sill, Okla.

During the course, he was
trained in the maintenance
and firing of the perishing,
a surface-to-surface, for-
ward area troop support mis-
sile. He also learned the
transportation skills required
for reliable weapons deploy-
ment and the ability to as-
semble and arm the weapon
for maximum tactical effect.
His father, Jerry T. Gage,
lives at 1210 35th, Lubbock,
Texas.

**CONGRESSMAN
BOB PRICE
18TH DISTRICT--TEXAS**

On August 13 in Amarillo
and August 15 in Wichita Falls
I am again sponsoring with
the assistance and cooperation
of the Department of Com-
merce and the Department of
Defense two all day confer-
ences on "how to sell to the
government".
The purpose of the two con-
ferences will be to enable
area businessmen to meet
firsthand with buyers of goods
and services for the Federal
Government, thereby locat-

ing new sources within our
area for products used by the
Federal Government, the
world's largest consumer.
All area citizens are cordi-
ally invited to attend either
or both of these conferen-
ces and details can be ob-
tained by calling or writing
directly to either of my dis-
trict offices in Amarillo or
Wichita Falls. I look for-
ward to being on hand to
discuss in person those issues
of concern to you and your
neighbors.
PRICE FREEZE INVESTIGA-
TION

July 12 I received notifica-
tion of the Cost of Living
Council's decision in response
to a meeting I sponsored in
the U. S. Capitol during which
the plight of our livestock
feeders and producing indus-
try was discussed by numer-
ous Members of Congress and
representatives of the Texas
cattle feeders, American Na-
tional Cattlemen's Associa-
tion and officials of the Cost
of Living Council. Although
the decision on our request
for a passthrough exemption
for all livestock, poultry,
and dairy feeders, as well as
our request to unfreeze meat,
poultry and dairy products
prices was unfavorable, I
believe our efforts have been
worthwhile since the decision
has been made by the Cost
of Living Council to speed
up plans for Phase IV of the
economic stabilization plan
shortening the present price
freeze which was originally
planned to last approximately
sixty days. The shortening
of the present freeze hope-
fully will allow those agri-
cultural producers and feeders
hurt by the freeze to again begin
to build up their supply of
products.
THE FARM BILL

During the week of July 9,
the House devoted itself to
general debate on the new
farm program legislation.
During the debate I firmly
opposed the removal of the
escalator clause which I had
gotten adopted in the Com-
mittee bill. We were able
to prevail in having this left
in the bill after heated de-
bate on the House floor. Be-
cause of numerous unsettled
problems, consideration of
this bill has been disconti-
nued until Monday, July 16.
Hopefully this time lag will
give members of Congress
time to think realistically
about the needs of our agri-
cultural community so that
we can vote out a sound farm
program.

MARKETS

WHEAT	\$2.45
CORN	2.00
MILO	3.40

**Young Men Must
Register With S.S.**

Colonel Melvin N. Glantz,
the State Director of Selective
Service for Texas, reminded
young men that they still
must register with Selective
Service even though there is
no draft.

Glantz urged those men
who have not registered to do
so promptly, saying: "Fail-
ure to register is a violation
of Federal Law and could re-
sult in prosecution by the De-
partment of Justice."

The President's authority
to induct men into the Arm-
ed Forces expired on July 1,
1973. The Nixon Adminis-
tration does not plan to seek
an extension of this authority,
and the Defense Department
is relying on volunteer enlist-

ments to supply military man-
power.
Glantz emphasized that
only the authority to induct
expired. All other provisions
of the Military Selective Ser-
vice Act remain in force.
The annual lottery will be
held, young men will contin-
ue to classify them as to their
availability for possible
military service should Con-
gress authorize the resump-
tion of inductions in the e-
vent of a national emergen-
cy.

The State Director said
the law requires all male per-
sons, except certain nonim-
migrant aliens, to register
with Selective Service with-
in 30 days before or after their
18th birthday. He said:
"Young men have three legal
obligations: (1) they must
register at age 18, (2) they

must notify their local draft
board when they change ad-
dress, and (3) they must carry
their draft cards with them
until their liability for service
expires, for most men this
is age 26."

The Colonel explained that
Selective Service is under-
going a major reorganization
and that as Selective Service
goes into a standby operation,
no inductions are taking place.
Many local board offices
are being relocated, with the
result of fewer draft board
offices in Texas. Glantz said
there are places of registra-
tion in each Texas
county for the convenience
of young men in registering.

The registrars for Local
Board No. 99 are: Johnny Ver-
non--Courthouse, Spearman;
Mary Waller-Wallers Plumb-
ing, Perryton; Noma Hulsey-
Courthouse, Perryton.

Mr. and Mrs. R. E. Lee
recently returned from a
week's trip to Colorado Spri-
ngs. While there they visit-
ed in the homes of their daugh-
ter, Mrs. R. J. Roberts, and
son and Mrs. W. R. Lee.
They attended the Diner
Theater where their grand-
daughter, Linda Roberts,
son played the lead in the
show "LUV".

Mr. Jim Thomas went to
Kansas City to meet her
husband who has been working
there for several weeks. They
enjoyed sight-seeing on their
way to Chicago, Ill., St.
Louis, Mo. and back to Kan-
sas City. Mrs. Thomas non-
ed home last weekend.

Tommy Rayzor from Men-
trose, California, who is
staying with and working for
his cousin, Don McLaughlin,
riding on the Steel Ranch
Sunday, when his horse threw
him into a pile of barbed
wire. It took sixty stitches
to close the cuts on his face
and chest.

NOTICE CONCERNING SPRAYING

I HAVE PLANTED SOYBEANS ON THE FOLLOWING DESCRIBED BLOCKS OF LAND:

BL 4T, T&NO RR SURVEY
SEC 112
N 1/2 SEC 102
N 1/2 SEC 128
S 1/2 SEC 153
BL 3, SA&MG RR SURVEY
SEC 14
BL R, B&B RR SURVEY
SEC 33

SOYBEANS ARE VERY SUSCEPTIBLE TO DAMAGE FROM SPRAY DRIFT. THEY ARE ALSO A VERY HIGH PRICE. IF YOU SPRAY ANYWHERE NEAR ANY OF THESE BLOCKS, PLEASE BE EXTREMELY CAUTIOUS AS TO POSSIBLE SPRAY DRIFT DAMAGE.

R. C. PORTER

HELP WANTED

Night Man And Janitor

Will Pay \$3.50 Per Hour

Baker & Taylor Drilling Co. needs reliable person to clean offices and mechanic's shop. Duties also include answering radio and telephone. Hours are 10 p. m. to 6 a. m. 6 days a week.

Apply at office in Spearman, Texas on the Gruver Highway or call 806-659-2504.

BAKER & TAYLOR DRILLING COMPANY

SPEARMAN, TEXAS

FMW Feedlot is now contracting for Corn Silage

Ph 733-2486 or stop by in person

Coffee Honors Cindy Gamblin

Miss Cindy Gamblin from Wills, Texas, bride-elect of Bill McClellan was honored with a coffee Monday, July 16 in the Fellowship Hall of the First United Methodist Church.

Guests were registered at a table covered with a yellow lace cloth by Miss Jeanie McClellan.

The serving table was covered with a blue cloth and was accented by a floral arrangement of mixed spring flowers in pastel colors in a crystal compote. The table was set with silver appointments and coffee, tea, juice, pie and fruit were served by her cousins, Mrs. Anita Lusby, and Miss Peggy Boyd.

Miss Gamblin was presented a corsage of pastel daisies and baby breath with pink trim by her hostesses, Mesdames: Garland Head, Richard Holton, P. A. Lyon, Jr., Glenn Day, Dick Klifore, Bill Strawn, Johnnie Lee, Monte Lusby and Verna Lee Schnell.

Miss Gamblin was assisted in opening her gifts by her sister, Mrs. Janie Giffin from Wills, Texas and his sister, Betty McClellan.

Out of town guests were Mrs. Howard Nash from Gruver and her granddaughter, Miss Betty Nash from Seattle, Washington, Mrs. Tim Meyer from Gruver and Mrs. W. F. Swett from Guyton, Okla.

floral arrangement of blue and white pom pom mums, blue baby's breath and tiny blue bows. Hostesses served cookies, punch, minis and nuts to guests.

Miss Edwards was assisted in opening gifts by her sister, Kathy Edwards, also from Lubbock.

Miss Edwards was presented a corsage of white pom pom mums, blue ribbon and blue net and accented by a tiny wedding ring.

Mothers, Mrs. Ralph Edwards and Mrs. Glenn Day were presented corsages of white pom pom mums, white net and white ribbon.

His grandmother, Mrs. Herman Hanks was presented a corsage of miniature white carnations with white net and ribbon.

Her sister, Kathy was presented a corsage of white pom pom mums with white ribbon and net.

Her hostesses were Mesdames: Everett Tracy, Jack Kemper, R. L. Uptergrove, Bill Cochran, Walter Woolley, Dwight Hutchison, Johnnie Lee, Roscoe Nelson, Everett Vanderburg, Marvin Jones, Roy Lee McClellan, and Mrs. Dorothy Chevalier.

Special out of town guests were her mother, Mrs. Ralph Edwards from Lubbock and his grandmother, Mrs. Herman Hanks from Pampa.

Other out of town guests were her sister, Kathy Edwards from Lubbock, his aunt, Mrs. Lamoine McGaughey and granddaughter, Melissa from Pampa and his great aunt, Mrs. M. G. Husted from Pampa.

Sunday nite with her. Mr. and Mrs. Larry Porter and family of Amarillo have moved to her parents farm home, Mr. and Mrs. Ray Moore of the Holt Community.

Altha Groves of Spearman was Thursday night guests of Mr. and Mrs. LeRoy Judd of Stratford.

Derek Phelps of Forgan visited from Wednesday to Sunday with his aunt and Uncle, Mr. and Mrs. Doyle Jackson, Tim and Terry.

Mrs. Grace Graham of Amarillo visited from Friday to Sunday with her brother Mr. and Mrs. Ray Phelps. Saturday nite dinner guests of the Ray Phelps of Forgan and Mrs. Graham.

Mr. and Mrs. Dan Jackson Saturday nite guests were their daughter, Mr. and Mrs. Bob Phelps of Forgan, Okla. Mr. and Mrs. Raymond Kirk Sunday nite dinner guests were Mr. and Mrs. Owen

Pendergraft. Mr. and Mrs. Ira Harbour Sunday dinner guests were Mr. and Mrs. Bob Phelps of Forgan, Mr. and Mrs. Dan Jackson.

PURPLE PRIDE

Ferrell's Enjoy Historic Vacation

Mr. and Mrs. Eldon Ferrell just returned from their vacation. They toured the Stephen Dorsey Mansion near Springer, New Mexico, and the Santa Fe Trail Museum. They stopped in Cimarron, New Mexico, and toured the St. James Hotel Museum, which was built in 1870. 26 men died within the 2 foot thick adobe walls of the Hotel, all victims of Judge Colt. Bullet holes may be seen in the fancy tin ceiling of the Hotel.

They also toured the Old

Mill Museum, which was built in 1864. This mill was built to supply flour to surrounding towns, forts, and nearby Indians. After it was no longer needed to supply flour it was turned into the museum.

The next stop for the Ferrell's was Red River, New Mexico, where they took a jeep tour of old mines in the vicinity. They saw Bunker Hill, Jay Hawk, Black Jack, Silver Treasure and Oroferno. There were five jeep loads of people that took the tour.

The Ferrell's then stopped at the Rio Grande High Bridge, on the Red River - Taos Highway. This is the second highest bridge on the National Highway System. The bridge stands 650 feet above the Rio Grande River which flows below. Construction was completed on the bridge on September 10, 1965.

On the way home from

their vacation, the Ferrell's stopped in Las Vegas, N. M. to spend the night with Eldon's sister, Mr. and Mrs. Elmer Headquest and boys.

As the last highlight of their trip, they went to Palo Duro Canyon on Friday, 13, saw the play, "Texas", at the amphitheatre, and camped in the Canyon. There were some 15,000 people who attended "Texas", Friday night.

Joy Dancers To Dance Thursday

The Joy Dancers Square Dance Club will dance Thursday night, July 19, at 8:00 p. m. The Community Building, Spearman is the site of the dance. J. D. Wilbanis will be the caller.

PURPLE PRIDE

You are cordially invited to a wedding shower honoring Patricia Schnell bride-elect of Bobby Smith on July 21, from 2:30 to 4 p. m. in Fellowship Hall First United Methodist Church Spearman, Texas

Charlotte Edwards is Shower Honoree

Miss Charlotte Edwards of Lubbock, bride-elect of Carl Day was honored Saturday, July 14 from 3:00 to 5:00 in the Fellowship Hall of the First Baptist Church with a bridal shower.

Guests were registered by hostesses at a table covered with a white lace cloth with an under lay of blue. The table was accented by a bud vase of white pom pom mums, blue baby's breath and blue bows.

The serving table, laid with a white cloth accented by a blue bow centered in front, was accented by a



There will be a Holt Community Clean-up day Friday, July 20. Glenda Louise Mayfield and Jan Barnett of Amarillo were Saturday afternoon callers of Mr. and Mrs. Owen Pendergraft and Freddie. Freddie returned home with his mother, Glenda to spend Saturday and



HIDE-A-BEDS			BEDDING		
	Regular	Sale		Regular	Sale
Traditional Gold Plaid	\$398.50	\$249.50	Twin Size mattress & boxspring	\$ 99.95 set	\$ 79.95 set
Green Tweed Modern	299.00	239.50	Regular size Maxipedic Mattress & Boxspring (designed for back problems)	199.90 set	159.50 set
Traditional Green Velvet	479.00	389.50	Regular size Vogue Mattress or Boxspring	79.50 ea	64.50 ea
Mediterranean Green Crushed Velvet	498.50	398.50	Regular size Posture Rest Mattress or Boxspring	89.50 ea	74.50 ea
Gold & Brown Stripe Loose Pillow (Nylon)	599.00	489.50	Regular size Beautyrest Normal or Backcare I	99.95 ea	84.50 ea
Green & Gold Stripe	598.50	489.50	Regular Size Beautyrest Supreme or Backcare II	239.50 set	198.50 set
Brown & Black Tweed (Herculon)	499.00	398.50	4 1/2 Rollaway Bed	78.50	59.95
Gold & Brown Print (Nylon)	484.00	389.50	4/6 Boxspring (one only)	69.95	49.95
Gold Corduroy Traditional	549.50	449.50			
Green Naugahyde Modern	299.00	239.50			
Green Tweed Traditional (Herculon)	379.50	298.50			
Early American Red Print	399.00	319.50			
Early American Green & Gold Tweed (Nylon)	399.00	319.50			

CHAIRS

	Regular	Sale		Regular	Sale
Gold Velvet Traditional Swivel Rocker	198.50	159.50	Gold Fur Modern Chaise Lounge	349.50	249.50
1 Pr Green Velvet Mediterranean Chairs	239.50 ea	189.50 ea	Green Tweed Spanish Hi Back Chair	179.50	98.50
Lemon Velvet Traditional Chair (green velvet welting)	179.95	98.50	Blue Modern Loose Pillow Back	129.95	69.95
Lemon Velvet Traditional Chair	198.50	139.50	1 Pr Quilted Blue Print	179.50 ea	98.50 ea
1 Pr Chocolate Velvet Traditional Chairs	239.50 ea	189.50 ea	Orange Loose Pillow Lounge Chair	179.50	98.50
1 Pr Mauve Velvet Mediterranean Chairs	269.50 ea	219.50 ea	Gold Loose Pillow Chair & Ottoman	298.50	198.50
1 Pr Early American Orange & Brown Print Rockers	119.95 ea	98.50 ea	1 Pr Cinnamon Velvet Chairs	219.50 ea	149.50 ea
1 Pr Early American Orange & Green Rockers	89.95 ea	74.50 ea	Spice Channel Back Traditional	129.50	69.95
1 Pr Early American Gold Tweed Rockers	149.50 ea	119.50 ea	1 Pr Gold & Green Hi Back Traditional	179.95 ea	98.50 ea
Orange Stripe Early American Chair & Ottoman (Herculon)	269.50	219.50	Gold Corduroy Chair & Ottoman	298.50	198.50
Green Tweed Early American Chair & Ottoman (Herculon)	269.50	219.50	Hi Back Green & Gold Stripe Velvet Chair	198.50	149.50
Early American Gold Tweed Rocker	149.95	119.50	1 Pr Orange Velvet Traditional Chairs	229.50 ea	159.50 ea
Early American Green Tweed Chair (Herculon)	159.50	129.50	1 Pr Green & Gold Stripe Velvet Chairs	249.95 ea	179.50 ea
Early American Green Tweed Pine Frame Ro	229.50	179.50	1 Pr Orange Velvet Swivel Rockers	209.50 ea	169.50 ea
Early American Blue Velvet Chair	179.50	129.50	1 Pr Gold Velvet Swivel Rockers	209.50 ea	169.50 ea
Early American Patchwork Swivel Rocker	229.50	189.50	1 Pr Green Velvet Swivel Rockers	209.50 ea	169.50 ea
Early American Gold & Green Tweed Swivel	219.50	179.50	1 Pr Hi Back Beige Velvet Mediterranean Chairs	239.50 ea	189.50 ea
Early American Gold Print Swivel Rocker	239.50	198.50	1 Pr Hi Back Green Velvet Mediterranean Chairs	239.50 ea	189.50 ea
1 Pr Early American Hi Back Print Chairs	229.50 ea	189.50 ea	1 Pr Hi Back Blue Velvet Mediterranean Chairs	239.50 ea	189.50 ea

LA-Z-BOYS

	Regular	Sale
Modern Gold, Black or Oxblood Naugahyde	209.50	169.95
Traditional Brown or Chestnut Naugahyde	237.00	189.50
Traditional Gold Naugahyde	239.50	198.50
Traditional Black Naugahyde	249.50	209.50
Spanish Brown Naugahyde	269.50	219.50
Traditional Green or Gold Sculptured Velvet	259.50	209.50
Traditional Green or Gold Sculptured Velvet (Hi Back)	269.50	219.50
1 Pr Early American Red Plaid	239.50 ea	198.50 ea
1 Pr Dark Brown Fur (Joe Namath Chair)	307.00 ea	249.50 ea
Traditional Orange or Green Velvet (Hi Back)	249.50 ea	209.50 ea
Traditional Orange or Brown Velvet	239.50 ea	198.50 ea
Traditional Red or Green Velvet (Nylon)	259.50 ea	209.50 ea
Traditional Gold Velvet Hi Back (Nylon)	269.50	219.50
1 Pr Early American Wood Arm Brown Plaid (Herculon)	279.50 ea	224.50 ea
Spanish Gold Velvet	269.50	219.50
Traditional Orange Print	239.50	198.50
Early American Orange Print	249.50	209.50
Early American Green Stripe or Brown Stripe (Herculon)	239.50	198.50
Early American Orange Tweed	239.50	198.50
Early American Green Print	239.50	198.50
Early American Green Tweed (Herculon)	239.50	198.50
Traditional Green Tweed (Herculon)	289.50	239.50

SOFAS

	Regular	Sale
Brown & Gold Tweed Traditional	369.95	198.50
Blue & Green Modern	349.95	198.50
Orange & Gold Traditional Loose Pillow Back	439.50	319.50
Beige & Gold Sculptured Velvet Traditional	549.50	349.50
Orange Tweed Early American	319.95	198.50
Orange Tweed Early American Loveseat	198.50	149.50
Green & Beige Sculptured Velvet Sofa	459.50	349.50
Sculptured Green Velvet Spanish Sofa	698.50	559.50
White Fur Modern	349.50	279.50
White Fur Chair & Ottoman (matches above sofa)	239.50	179.50
Blue & Green Modern Sofa	449.50	329.50
Quilted Green Velvet Traditional	559.50	398.50
Beige, Lemon, Green Stripe Traditional	629.50	479.50
Orange Velvet Traditional	439.50	349.50
Gold & Brown Tweed Traditional (Herculon)	449.50	349.50
Quilted Gold Velvet Spanish	349.50	289.50
Quilted Green Velvet Spanish Chair (matches above sofa)	189.50	149.50
Yellow & Green Print Traditional	498.50	398.50
Gold Tweed Early American	469.50	369.50
Brown Stripe Early American	349.50	269.50
Brown Stripe Early American Chair (matches above sofa)	159.50	129.50
Gold & Blue Print Early American	419.50	319.50
Green & Gold Print Pine Frame 3 Pc Sectional	849.50	598.50
Gold & Red Stripe Early American Pine Frame	459.50	369.50
Green Stripe Early American (Herculon)	359.50	289.50
Brown Stripe Early American	359.50	289.50
Blue Stripe Velvet Mediterranean	629.50	539.50
Orange & Gold Stripe	698.50	579.50
Beige, Gold, Blue, Mauve Sculptured Velvet	739.50	598.50
Modern Gold Naugahyde	398.50	319.50
Modern Gold Naugahyde Chair (matches above sofa)	179.50	139.50
Red Naugahyde Tufted Seat & Back Sofa	469.50	379.50
Brown Naugahyde Sofa	349.50	279.50

TERMS: ARRANGED TO FIT YOUR BUDGET

Lawn Furniture

25% OFF

NO APPROVALS, PLEASE.

Boody's FURNITURE CO.
PLAINS SHOPPING CENTER
659-3044

COW POKES By Ace Reid



"Yep, they're shore gentle—jist walk right up to 'em anywhere!"

Walk Right Up To The First State Bank And Open An Account. It Will Tame Your Financial Worries.

FDIC

FIRST STATE BANK

SPEARMAN, TEXAS



ENGINEER D. R. Falls, Trainmaster D. R. Warren, Road Foreman of Engineers, W. W. Gentry, and Spearman Depot Agent, M. W. Murrow are pictured above, in front of No. 2650. Mr. Murrow reports that as of this week, the Santa Fe has shipped a total of 240 cars of wheat out of the Spearman area. Our congratulations to Santa Fe and these fine men for doing such a great job with our wheat harvest this year.

North Captures Overtime Victory

By BILL ROBERTS
Reporter-News Sports Writer
BROWNWOOD — Hawley's Deanie Beasley stole the ball at midcourt and drove in for a layup with two seconds remaining in overtime to give the North a come-from-behind 82-81 victory over the South in the 1973 Texas High School Girls' Coaches Association

All-Star basketball game here Saturday night in Brownwood Coliseum.

In what should be called a "foul" game, the two teams went to the free throw line 81 times, with the South making the most of their 42 opportunities, connecting on 40 of 65 attempts. The North went there 39 times, hitting 34 of 45.

The South held the lead from the 7:23 mark of the third quarter until Debra Bradford of Klondike sank both ends of a one-and-one situation to tie the score at 72-all. Waco Midway's Carroll Auclair hit the first of two free throws to give the South the edge again, but Leann Shieldknight of Spearman

knotted it at the 48-second mark, tilting a free throw of her own.

That's the way regulation play ended, and even though the South owned the lead until 29 seconds remained in the overtime, the North rallied to keep the South from their third victory in the 17-year history of the THSGCA All-Star contest.

Again, it was the free throw that spelled knot-tying for the North as Bradford went to the line to sink two to give the North an 80-79 advantage with 29 seconds left.

Auclair missed a one-and-one with 28 seconds left, but Linda Branham of McCamey put up a jumper at 0:16 to put the South ahead.

The North lost the ball following the basket, but in the shuffle Beasley reached across the line to retrieve it and start her drive for the winning basket.

Debra Waddy of Angleton gained game scoring honors for the South, dropping in 22 points. Denise Ward of Calallen hit 19, Kathy Hart of Brazoswood 15 and Auclair 11 for the South.

For the North, it was Bradford and Donice Ross of Duncanville who led the way with 18 and 17, respectively, while Shieldknight had 15, Diane Law of Hale Center 14 and Beasley 12.

Beasley's high school coach, Edd Womack, said of Beasley's play, "We knew she could get the job done. It was just learning what the coach wanted her to do. We knew she could move down the court, and we knew she was going, just didn't know how many she would run over getting there."

The Big Country's other representative, Judy Welch of Comanche, played well on defense and made key plays in the closing moments of regulation play.

"She was right in there amongst them all," said South guard coach Dean Foshee of Sweeny. "We won it or lost it as a team. She did exactly what I told her to do and when I told her to do that's all you can expect."

Welch's high school coach, Leta Andrews, outgoing president of the Association, said, "Judy is pretty solid and a sound individual. I am real

proud of the way she played. I wanted a good spectator's game tonight and I got it — but I wanted us to win."

The South led by as many as seven points twice in the game, thanks to their free-throw shooting. During the final 1:18 of the third quarter and the first seven minutes of the fourth, the South did not score a basket, but the free-throw shooting of Ward came in handy as she sank 15 to 16 free throws.

NORTH (82) — Leann Shieldknight 23; Diane Law 14; Debra Bradford 18; Sharon Smith 10; 2; Denise Beasley 4; 4; Betty Gower 10; 2; Donice Ross 7; 3; 17; Carol Beasley 12.
TOTALS 24 34 87
SOUTH (81) — Carol Sims 12; 4; Debra French 23; 3; Debra Waddy 22; 22; Cathy Auclair 11; 11; Kathy Hart 19; 19; Denise Ward 19; 19; Linda Branham 15; 15; Diane Law 14; 14; Judy Welch 15; 15.
TOTALS 18 49 81
NORTH 22 23 10 9-82
SOUTH 15 27 15 8-81

Staying with the C. A. McLain this summer is his brother-in-law, Kenneth Razor from Santa Paula, California, Kenneth's grandson, Kenney Razor from Sun Valley and his nephew, Greg Jannasch from Texas City, Texas. They have been helping with the McLain farm work this summer.

Visiting in the home of Mr. and Mrs. Frank Davis last weekend were Mr. and Mrs. Ed Higginbotham from Warren, Ohio and Mr. and Mrs. Lloyd Batson, Mr. and Mrs. O.V. Batson and Miss Macie Batson from Pampa.

Mr. and Mrs. R. D. Busby, Jr. and their three children recently returned from a four day vacation. They went to South Fork, Colorado, over the Continental Divide and to Eagle Nest, New Mexico. While there they enjoyed fishing, sightseeing and playing in the snow.

If food had gone up in price at the same rate as wages in industry, a quart of milk today would cost 55¢ in the store, a dozen eggs would sell for \$1.61, and a whole, dressed frying chicken would cost \$1.46 a pound.

Mrs. Fontella Townsend and son Jack McKee have returned home from Wellington Kansas where they attended the funeral of her uncle, D. Hale, 65.

Locally County ACS Unit Names Aid For Patients

A number of regular services to cancer patients are available through the American Cancer Society according to Mrs. Blanche Taber, Hansford County Unit of the ACS, Texas Division.

Among the services available are those pieces of equipment which are available for loan including hospital beds, mattresses with mattress covers, hospital bed side rails, wheelchairs, walkers, crutches, bedside commodes (commodes (commode chairs)).

Included in the category of dressings and comfort items are dressings in the following

sizes, 4x4, 6x6, 8x8, 8x12, 12x12; rolled bandages, v-pads, bed pads, short hospital gowns, nylon comfort pillows, laryngectomy stoma bibs. No commercial dressings and no other dressings can be supplied at this time.

For those patients who are undergoing rehabilitation post large resection speech lessons are available.

Expendable items include tapes, adhesive, 1", 2" micropore, 1", 2", alcohol rubbing compound; baby lotion; baby powder, petroleum jelly, A & D ointment, lubricating jelly, room deodor-

ant, plastic bed pans, (bed and regular); urinals, and tics emesis basins.

If there is a need for any of these services please contact Mrs. Taber, ACS Unit Chairman for Hansford County, 305 Cluck, Cross, 806-733-2713. If further information is necessary, contact Mrs. Taber or write to Director of Service, American Cancer Society, Texas Division, Inc., Box 9893, Austin, Texas 78766. All services to patients must be in the written request of the patient.

Americans today spend a smaller percent of their take home pay on food than ever before.

Mr. and Mrs. L. F. Cook spent a week and a half at Lake Fryer camping and fishing.

Food eaten at home today costs the average American worker only 15.7% of his take-home pay. In 1952 he was spending 23% of his take-home pay on groceries.

Visiting in the home of Mr. and Mrs. L. F. Cook last weekend was their son, Mr. and Mrs. Don L. Starr and three daughters from Honolulu, Hawaii.

In 1972, the U.S. Department of Agriculture spent \$3.47 billion on programs for food distribution, food stamps, child nutrition and school milk. This was nearly one-third of the entire USDA budget.

Mrs. Rube Wilbanks had her 2 sisters, Mrs. Ruth Smith and Mrs. Opel Compton, of Odem, Texas, visit with her this week; Mrs. Horace Smith, of Raymondville, Texas, was also a visitor.

Purple Pride

NOW SHOWING THE NEW Betty Rose WINTER COATS

Douglas Duds

216 MAIN STREET SPEARMAN, TEXAS

BAKER & TAYLOR DRILLING COMPANY

Rates its employees No. 1



EARL MAYER, Mechanic



Your Baker and Taylor employee of the week, is Earl Mayer. Earl is a new man with Baker and Taylor, and works under "Doctor" Max Taylor. Earl, and his wife Kitty, and 10 year old son Kenny have only been with Baker and Taylor a short time, but already they like their new job, and their new town of Spearman. Earl has been an oil field mechanic all of his life, specializing in diesel mechanics. The Mayer's live at 521 South Archer. Earl has a very unusual hobby; he is an archeologist, and has enjoyed the studies of ancient cultures and peoples. Earl studied archeology at ENMU, in Portales, N. M. While working with Baker and Taylor, he hopes to have some time off to hunt arrow-heads, and delve into the Indian civilizations of the Spearman area. Earl's wife Kitty also shares his interest in archeology, and she is also a very good cook.

This newspaper joins in welcoming this fine family to Spearman.





DANNY DEAR



SCOT MARTIN



RANDY POOL



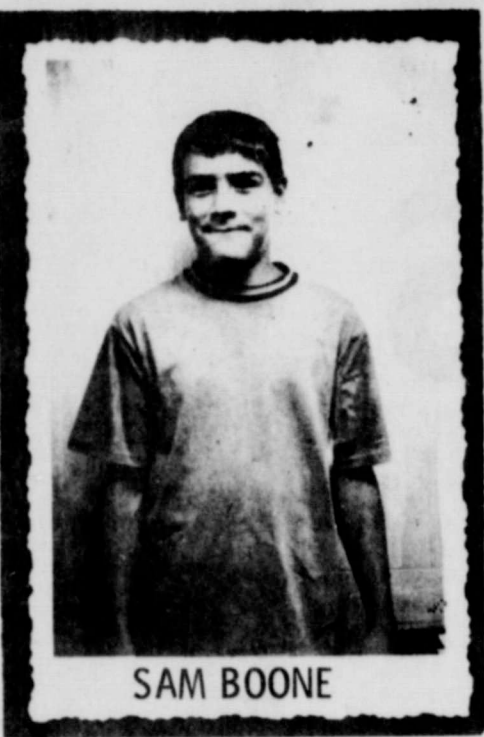
BILLY SNIDER



REX FREEMAN



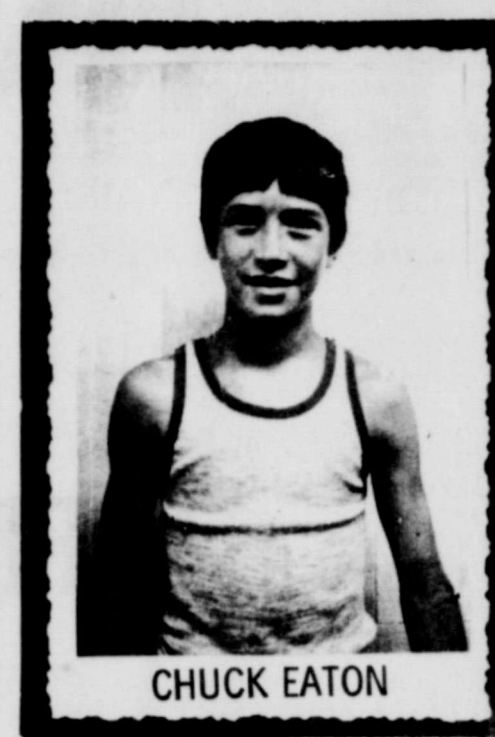
KIRBY HARGIS



SAM BOONE



KYLE BEEDY



CHUCK EATON



BILLY SELLERS



JOEY AVILA



JOHNNY KENNY



PAT MCKAY



JOHN PEARSON



ROBIN KEETCH

CONGRATULATIONS...

SPEARMAN ALL STARS

Golden Spread
Sales Co.



Hansford Feed
Yard

Consumers
Sales Co.

Crawford
MOLINE
Implement

Speartex Grain Co.

Location No. 1 - Gruver Highway
659-2549
Location No. 2 - 514 Collard St.
659-2521

Junior Lusby Cats

Nelson's
Builders Supply

EVANS-BLACK CARPETS ANCHOR PAINTS

Hansford
Implement



B&R Engine
Service

North Plains
Truck & Imp.



Booster Ag. Chem.
Inc.

Spearman 659-3159
Perryton 435-3546

Burl Buchanan



THE DAIRY QUEEN SAYS
GO LITTLE LEAGUERS....
WE ARE PROUD OF YOU

NEW INTEREST RATES

EFFECTIVE JULY 1, 1973

FIRST STATE BANK
SPEARMAN, TEXAS

Regular Savings Accounts	5%
C.D.'s 90 day to 1 year maturities	5½%
C.D.'s 1 year to 2½ year maturities	6%
C.D.'s 2½ year and over maturities	6½%

USE OUR CONVENIENT
BANKING SERVICES
MEMBER F.D.I.C.

For A Better View

Billboards Need State Permits Or Come Down

Several years of war-education, and the billboard industry is finally coming to the end of its road.

Once signs are licensed and the owners of record are established, the owners, either individuals or companies, will be paid a "fair market price" if their sign is listed among the ones to be removed.

It is highly likely that the sign owners are not always aware of the provisions of the law and it is even more likely that the property owners upon whose land the signs are erected do not know all about the new law, which is actually more than a year old and part of the federal Highway Beautification Act.

The Texas no-sign statute requires that billboards in open country be set back 660 feet from highway right-of-way. There is an exception in that signs are allowed within 800 feet either way of zoned commercial and industrial areas in recognition of business and industry needs to promote locations, services, and products.

Signs regarding motel accommodations are a case in point.

A special classification of signs are also permitted along roadsides. Among these are those which identify the person or company owning the property—for example a ranch; for sale or for lease signs; underground utility markers; signs by governmental agencies, and in some cases signs posted by churches and non-profit service organizations.

In addition to paying a \$25 license fee for a billboard, the sign owner must post a \$2,500 bond for each sign and pay a \$5

There is a grace period before individuals and companies owning "legal" signs, those erected with the landowners permission and licensed by the state, have to come down. It may be 60-90 days before the enforcement machinery is set up. But although the machinery moves slowly, it moves surely, and the day is not too far distant when billboards will be a thing of the past along most federal highways.

Week, July 25-31, is a good time to review farm safety and to take preventative action where necessary.

The National Safety Council, which sponsors National Farm Safety Week along with the U.S. Department of Agriculture, estimates that tractor accidents claim from 800 to 1,000 lives and cause thousands of injuries annually.

More than half of all tractor accident fatalities involve overturns. Roll-over protective cabs and frames could eliminate more than 90 percent of the fatalities. Many farmers don't have roll-over protection on their equipment due to the investment it requires. However, such protection is important and is being considered as a possible requirement under the Occupational Safety and Health Act.

To avoid hazards of farm machinery operation follow these rules:

- Stay clear of ditches, embankments and holes to avoid upset.
--Cut speed when turning, crossing slopes and rough, slick or muddy surfaces.
--Watch where you're going at row ends, on roads and near trees; watch for and avoid obstacles and be sure everyone is clear before moving.
--Stay off hills and slopes too steep for safe operation.
--Don't overload; engage the clutch slowly with a heavy load to avoid backward tip.
--Hitch loads only to the drawbar (if the drawbar is on a three-point hitch, set it no higher than the fixed drawbar); use front weights to balance the tractor.

500 Youth Attended AAU Meet In Borger - PURPLE PRIDE

More than 500 entries were gathered at Borger for the West Texas AAU Junior Olympics Track Meet. The meet, which is sponsored by the Borger Chamber of Commerce, had a good deal of work to be done to the record books after the competition was complete, because of the 15 new records that were set Saturday.

The rain delayed the meet for two hours, but finally as it ended, and the track meet began, several Spearman youngsters placed in the stiff competition. These young people are as follows: MIDGET DIVISION - Boys 440 yd. Relay - 61.3 Jamie Bulls, Karey Bodey, Danny Dear, and Kyle Beedy. BANTAM DIVISION - Girls Long Jump - first - Sherry Greene, 11'6". 440 yd. Relay 71.1 Mary Ann Martin, Shelly Friemel, Ginny Morris, Sherry Greene. JUNIOR DIVISION - Girls 100 yd dash - third - Sherry Greene, 14.9. Boys -- 220 yd. dash - second - Dale Reger, 26.5, Broad Jump - Twain Friemel - third.

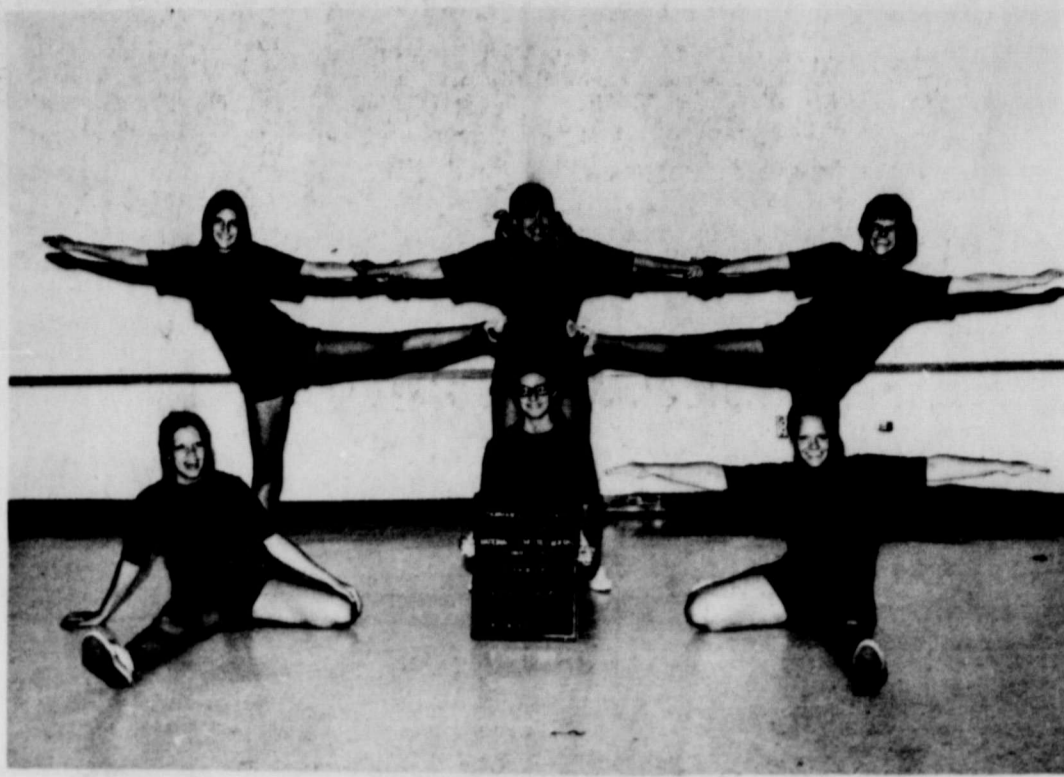
ROTC Opened For Women At WTSU

The Department of Military Science at WTSU has received final official authorization to allow women students to enroll in all ROTC courses and to receive regular and reserve commissions in the Women's Army Corps. LTC John O. Childs, PMS at WTSU, stated that all restrictions formerly placed by Department of the Army upon female participation in ROTC have now been lifted. In practical terms this means that women students can compete on equal footing with the male cadets for ROTC scholarships, leadership positions in the corps of cadets and the various awards for academic and military excellence.

The female cadets will be subject to the same screening tests and prerequisites for enrollment in ROTC as their male counterparts.

"The removal of restrictions on the enrollment is certainly progressive and is especially welcome to our program. In the past women students have been able to take our basic courses for university activity credits only. Now they may pursue their ROTC courses through graduation and commissioning. There are many women students who have expressed a desire to be commissioned. We are particularly pleased to be able to offer this opportunity to them", said Childs.

The Arts and crafts will meet Friday, July 20, in the home of Mrs. Joe Traylor.



Pictured above are the Spearman, Texas, cheerleaders who recently attended the Panhandle State College National Cheerleader Clinic, held on the campus of Panhandle State College. The cheerleaders participated in a week of activities under the direction of the National Cheerleaders Association Staff.

Perryton Chosen As Location For Testing

General Telephone Company has selected Perryton District as their location for testing a new repair procedure according to Paul Farrar, Perryton District Manager. The new repair procedure was implemented Monday, July 9, 1973, and customers reporting trouble during normal working hours will be asked additional questions by the repair clerk or service personnel of the Telephone Company, Farrar said. The District Manager said this new trouble reporting procedure will assist the Telephone Company Repair Service in determining that exact cause of the customer's problems and is designed to improve the time required to clear their trouble. The entire Perryton District, which covers Booker, Dalhart, Darrouzett, Follett, Higgins, Perryton, Spearman, and Stratford Exchanges will be included in this test, Farrar said.

County Agent Report

by Joe Van Zandt

According to a July 13 Crop Report Texas sorghum growers planted 8,100 acres for all purposes, 10 percent from the 1972 crop. 1,000 acres planted in Texas corn acreage for all purposes is estimated at 1,000,000 acres compared to 1,000,000 acres last year. Production is estimated at 44,000,000 bushels compared to 44,000,000 bushels in 1972. Yield is expected to average a record 28 bushels per acre. The United States total crop production in 1973 is forecast at 1,748,533,000 bushels, which is 13 percent above last year's production. The U.S. corn acreage is estimated at 432,000 acres in 1973, a 10 percent increase above last year's 393,000 acres. Corn acreage for the U.S. is estimated at 19,000 acres compared to 18,000 acres last year. An increase of 12 percent. August 9, USDA will release the first estimate of production for the 1973 corn and grain crop.

WINTER TAX TIPS--The next few months offer farmers an opportunity to save on income tax by paying their children farm work and combination and business.

Farmer can deduct wages paid to his children and claim them as dependents if he provides over half their support. The test is not hard to pass. If the children are living at home, as long as they are under 24, the farmer will not have to pay income tax. Also, dependent children working for parents do not have to pay social security taxes. The arrangement should be set up with regular hours and regular paychecks. The amount of pay must also be reasonable and for work actually done.

Farmer can also deduct business-related expenses such as business-vacation trips as business is the pri-

HOSPITAL Notes

Patients in Hansford Hospital are Minnie Nicholson, Joe Evans, Lillie Hacker, Don McLain, Frank Allen, Faye Fitter, C. T. West, H. E. Jenkins. Dismissed were Nelda McDade, Tom Jones, Edna Hays, Tommy Reyzor.

PURPLE PRIDE

Dere Vanse: Me and Mag has bin workin on room fer moar storage space in our silo.

We first of disided to dig a hole underneath of the silo sew we wood hav a pit where we could store taters and stuff like that. Ever thing went plum fine with the diggin until we sudden struck water. That wuz when we found out we could only go so low in the silo.

We wuz wunderin if yew and Merle could send us a tarp from Owens Sales sew the taters wouldnt rot in the water. If yew can take care of that, we will go ahead with our plans to bid an audition on top of the silo where we could store such things as unpayed bills and the like.

Mag sez she wood like to bid a pant house up on top of the silo. I never seen won but she says a pant house is like a parlor wher people can set and chew the fat over a cup of poke salad pot likker.

We are gonna be needin a new chane hoist sew that Mag can pull me up to the top whin I nede to work up their.

Now make shur yew send a chane hoist that has a break on it sew that Mag can stop and rest while she's pullin me up without lettin go and droppin me down like she done the time I fell on that brick pile.

Yores Trewly Chester L. Peabody the third-Hoist Spert SNIDER PEARSON CONOCO SERVICE STATION 659-3555



Our agents never stop studying. Slow learners? Wrong. Professionals. Southwestern Life Happiness is what we sell. DON R. KNOX 614 S. TOWNSEND 659-3294

PURPLE PRIDE

THE GOVERNMENT OF HANSFORD COUNTY DEPARTMENT OF THE TREASURY OFFICE OF REVENUE SHARING 1900 PENNSYLVANIA AVE N.W. WASHINGTON, D.C. 20226 HAS USED ITS REVENUE SHARING PAYMENT FOR THE PERIOD BEGINNING JAN 1, 1972 ENDING JUN 30, 1973 IN THE FOLLOWING MANNER BASED UPON A TOTAL PAYMENT OF \$108,801 ACCOUNT NO 44 1 098 898 HANSFORD COUNTY COUNTY TREASURER SPEARMAN TEXAS 79081

Rev. Phil Stallions Is Chairman of Breath of Life

Reverend Phil Stallions has been named chairman of the Breath of Life Campaign to fight children's lung diseases according to Frank Scott, president of the North Texas Chapter, National Cystic Fibrosis Foundation.

Rev. Stallions of Box 458, Gruver, Texas, will lead Gruver volunteers in raising funds to support research and care programs for children affected by lung-damaging diseases like cystic fibrosis, severe asthma, chronic bronchitis, bronchiectasis, and a condition called "childhood emphysema".

Cystic fibrosis, an incurable genetic disease, is inherited when both parents carry the recessive gene for C/F. It is believed that one in twenty persons or 10 million Americans may carry the C/F genes, usually without knowing it. Current research funded by the National Cystic Fibrosis Research Foundation is seeking a practical test to identify these carriers.

Because of improved therapy and constant research, many C/F patients are living beyond infancy to the teen and into young adulthood. That same kind of therapy is relieving and often curing children suffering from other respiratory afflictions whose symptoms resemble those of C/F.

"Most people don't realize that there are six million children in the U. S. affected by pulmonary illness," said Rev. Stallions. "For some of these children, breathing is not the natural function, we who are lucky, take for granted."

The Breath of Life Campaign supports not only research but over 100 C/F Centers for diagnosis and treatment across the country.

Miss WTSU Is Entry In Miss Texas

Deliah Roberts of Tullia, reigning Miss West Texas State University, competes with 62 other beauties this week for the title of Miss Texas.

Miss Roberts, 21, daughter of Mr. and Mrs. Leroy Roberts of Tullia, is a kindergarten education major and will be a varsity cheerleader during the coming school year. Mrs. B. Raymond Evans of Tullia, a WTSU graduate and the wife of a member of the University's Board of Regents, will be the official hostess for Miss Roberts during the Miss Texas Pageant in Fort Worth.

The week-long activities begin Sunday (July 15) with orientation and registration. The contestants will be the guests of the Coca-Cola Co. at a press party Monday and then undergo pageant and individual competition practice through Tuesday.

Preliminary competition in bathing suit, evening gown and talent judging starts Wednesday. The new Miss Texas will be named Saturday night.

Miss Roberts' talent skit will be a "chalk talk" of Richard Armour's Romeo and Juliet sketch from his "Twisted Tales of Shakespeare." Jim Holston, representing the franchise holder for Miss WTSU, which is the university's student body, will attend meetings of that group during pageant week.

Mr. and Mrs. Eugene Yar-brough and children, Jennifer and Timmy spent Sunday at Lake Schultz in Oklahoma. While there they enjoyed fishing and picnicking.

Visiting in the home of Mr. and Mrs. Harvey Whitefield Thursday was his sister, Mr. and Mrs. Pat Garrett who was in the process of moving to Perryton from near Boys Ranch.

Mr. and Mrs. Dalwayne Whitefield and daughter, Lynn visited over the weekend in the home of his parents, Mr. and Mrs. Harvey Whitefield and with her father, Mr. John Wilde.

Mrs. Frank Davis and her sister, Mrs. Estelle Britnell visited in Denver, Colo. last week in the home of Mrs. Davis's daughter, Mrs. A. J. Curtis.

Shop THRIFTWAY **FOR VALUE & SELECTION EVERY WEEK**

BAR-S SLICED BACON 1-LB. PKG. 98¢

FREE! KING BRIDGE TABLE FULL 34" DELUXE CUSHION TOP WOOD GRAIN FINISH. SILVER BRONZE METALIC FINISH. HERE'S HOW YOU GET YOUR FREE TABLE!

YOU MAY PURCHASE A CHAIR FOR THE LOW \$7.99 PRICE WITH EACH \$5.00 PURCHASE

BUY 4 CHAIRS at \$7.99 ea. AND GET YOUR TABLE FREE!

REG. \$17.95 VALUE **START YOUR SET TODAY**

BAR-S ALL MEAT FRANKS 12-oz. PKG. 69¢

STEAK \$1.49 lb. U.S.D.A. Choice Beef

STEAK \$1.69 lb. T-BONE U.S.D.A. Choice Beef

STEAK \$1.49 lb. SIRLOIN U.S.D.A. Choice Beef

Ground Beef 99¢ lb. U.S.D.A. Choice Beef

Check these food buys and Check out with savings!

VALUES GOOD THURS. THRU SATURDAY

PRODUCE SPECIALS

CALIFORNIA NECTARINES or PEACHES LB. 39¢

CALIFORNIA SUNKIST LEMONS LB. 29¢

CALIF. LONG GREEN SLICERS CUCUMBERS LB. 25¢

TEXAS EXTRA FANCY OKRA LB. 39¢

SQUASH ZUCCHINI LB. 37¢

Potato Chips 39¢ Shurfresh Twin-Pak

POP UPS 35¢ Post Toast-ems

BABY FOOD 10¢ Gerbers Strained Glass-Pak

Shasta Pop 10¢ Assorted Diet-12 oz.

Hydrox Cookies 49¢ Creme Filled - 15 oz.

Nestea 69¢ Instant Tea - 2oz.

FROZEN FOOD

LEMONADE 11¢ Shurfresh 6 oz.

CHEESE CAKE 69¢ Dresseis 15 oz.

ORANGE JUICE 19¢ Shurfresh 6 oz.

CREAM PIES 26¢ Mortons All Flavors

Folgers coffee 79¢ WITH 25¢ IN AD COUPON 1-LB. CAN

Family Scott 39¢ ASSORTED 4-ROLL PKG.

Schilling 39¢ 4-oz. CAN BLACK PEPPER

Gold Medal 59¢ WITH 7¢ IN AD COUPON 5-LB. BAG Enriched Flour

KoolAid 5¢ REG. PAK ASST. FLAVORS

Star-Kist 49¢ STARKIST GREEN LABEL CHUNK LIGHT TUNA FLAT CAN

CATSUP 23¢ Hunts 14 oz.

MELLORINE 35¢ Shurfresh Half Gallon

SALAD DRESSING 39¢ Food King Quart

HEALTH & BEAUTY AIDS

Jergens 99¢ Hand Lotion - Lemon Freshened Reg. \$1.49

Aspirin 29¢ Shurfresh 200 count Bottle

Aqua Net 39¢ Hair Spray 13 oz. Aerosol

Reynolds Wrap 49¢ 18"x25' ROLL Aluminum Foil

39¢ ASSORTED FLAVORS 18-oz. JAR

CREST 69¢ Family Size Tooth Paste

THRIFTWAY CUT RATE

Plains Shopping Center

"Home of Buccaneer Stamps"

OPEN Mon-Sat 7 to 8

CLOSED SUNDAYS

VALUABLE COUPON 25¢

DETERGENT **CASCADE... 79¢** FAMILY SIZE

WITH THIS COUPON THRIFTWAY FOOD STORES VOID AFTER JULY 21, 1973

VALUABLE COUPON 20¢

NO. 6317

TRASH BAGS 59¢ BOX OF 10'S

WITH THIS COUPON THRIFTWAY FOOD STORES VOID AFTER JULY 21, 1973

VALUABLE COUPON 20¢

NO. 6336

PRUF 39¢ 22-oz. CAN

WITH THIS COUPON THRIFTWAY FOOD STORES VOID AFTER JULY 21, 1973

VALUABLE COUPON 25¢

COFFEE 79¢ 1-LB. CAN

WITH THIS COUPON THRIFTWAY FOOD STORES VOID AFTER JULY 21, 1973

VALUABLE COUPON 7¢

NO. 34264

FLOUR 59¢ 5-LB. BAG

WITH THIS COUPON THRIFTWAY FOOD STORES VOID AFTER JULY 21, 1973