



THE GIANT SIGN board at the Baker-Taylor Drilling Company greets passers-by with these words and a traditional Christmas tree. Lighted at night, it adds much to the city's colorful decorations.



BAKER-TAYLER Drilling Company has up some very pretty Christmas decorations at its Spearman Yard, so drive out some evening and enjoy the sight. Scenes at the trailer homes looked especially beautiful early Tuesday morning with the ground covered with a 2-inch layer of sparkling ice and snow.

Council Denies Request for Utility Rate Hikes

At the regular meeting held Monday night the Spearman City Council denied requests from General Telephone Company and the High Plains Natural Gas company for rate increases on these utilities.

General Telephone officials were present for the meeting as were officials from the Gas company. City Council members did not feel either one of these utility companies presented enough pertinent information in making their rate increase requests.

The council asked the Telephone company for more pertinent information, and to meet with them again early in January in order that the request might be reconsidered.

Gas company officials presented the council with an amendment to the city's present gas purchase contract, but the Council denied this because "of the way in which it was presented" according to Manager Mike Struve. Struve said the council instructed city attorneys Dick

Countiss and Chunky Blackburn to write a letter to the Gas company asking for a meeting with its attorneys so legal authorities could get together and endeavor to work this out.

The council had been considering bids for new back-hoe equipment, but tables these bids Monday night until more information is available.

In a joint meeting with the Spearman School Board, during which the City Council asked the school for its idea on the best possible site for the proposed new swimming pool, the school officials agreed on the football field location. The school released to the City the 175 x 300 foot plot of land just south of the Lynx football stadium, saying this was a grand location for both the Junior High and High School pupils if and when a competitive swimming course would be included in the athletic program.

The City was pleased with this site, as is the general public. This location is more centrally located and the utility lines are already

available there." With this site in mind, council members can now begin a cost estimate investigation for the new swimming pool facility.

Other business before the Council Monday night was the departmental report for the month of November. Report follows:

Ambulance--12 runs made; 9 local, 1 to Amarillo and 2 in the county.

City court had 35 cases filed. Fines assessed \$427.00; suspended \$16.50; jail time laid out \$75.00; safety theme written by students \$16.50 for a total of \$319.00 paid.

The Animal Control picked up 24 animals in November. 11 had been held from October; 27 destroyed, 5 paid out, 1 escaped and 2 were held for December.

City police issued 31 traffic tickets, investigated 9 motor vehicle accidents and made 10 arrests.

The Fire Department had 2 regular drills, answered 3 city fires (2 were car motors, 1 a trash container) and one County fire--a truck on fire at Holt Elevator.

Weather

Low "zero" temperatures were a last week froze snow-mottled ground for combines to enter fields for at least three

weeks. The weather began here Wednesday, Dec. 6 and continued through Thursday & Friday before snow again halted planting.

Harvesting of grain elevators had a start on Dec. 7 and remained for maize trucks most of the night. Combines ran until

11 p.m. The tractor men said most of the maize tested wet--averaging around 17.60 and will have to be dried out in grain storage bins.

In the exception of a few fields, maize stalks remained "standing" in a better shape than farmers thought. There is a lot of good maize which has not been in the prolonged wet, cold

weather. The bigger threat than all the rain is the condition of the stock which are not faring well in the wet, frigid weather. Much sickness in cattle is reported, with losses higher among the recently shipped in from other climates.

After enjoying a day of sunshine Sunday, area farmers awoke Monday morning to another cold, cloudy day which saw moisture laden clouds increasing as the day wore on. Monday night, a wind-blown storm, complete with lightning, dumped a 2-inch layer of sleet and snow already ice covered

the ground. The past week's weather is recorded by U.S. weather observer Billy Haden as follows:

Dec 13 10
14 15 -3 .02
15 40 10
16 36 17
17 21 15
18 20 0 .03
19 23 4 .12
20 0 .25

On Tuesday Mr. Haden recorded 0.25 of an inch of ice, snow and sleet fell in the night time. The three below zero readings recorded here are the low for the season so far.

OFFICERS HAVE BUSY WEEK

Hansford County Texas Parks and Wildlife Department law enforcement officers in Kerr County pulled the plug on hunting activities when they found a Beaumont man and his family with a motel full of cut-up deer meat.

Two officers, Larry Brown and Dale Brown, found a man who was hunting at night. They went to the motel and found the family had been hunting with an earlier kill and had the meat in the

refrigerator. Kerr County judge fined the man \$205.50 for hunting at night.

Returned out, the bathhouse was just the start of a busy week for officers Brown and Brown.

Days of patrolling, officers arrested two men from Kerr County and charged them with hunting at night. They were fined \$105.50 each.

Arrested two North Texas men who were hunting at night. They were fined \$205.50 each.

Arrested a Utopia man for hunting at night. He was fined \$205.50.

Arrested five men from McKinney with three illegal deer. The men were charged with hunting at night and fined \$205.50 each.

Total fines for the six days totaled \$2,471.50.

DINNER SOCIAL

Pastor and Mrs. B.T. Shoemaker hosted the annual Christmas dinner social in their home Saturday night for deacons and their wives who serve the First Baptist Church.

The Shoemaker home was beautifully decorated throughout in the holiday motif with poinsettia plants, candles and greenery.

The buffet-style dinner was served from a table centered with a Christmas arrangement, to Messrs. and Mmes. Ray Moore, R.L. Uptergrove, James Cunningham, Glenn Day, Woodville Jarvis, Buddy Benton, Glen Hiller and Doug Connelly.

INTERNATIONAL DIRECTOR ON HAND TO PRESENT CHARTER TO LOCAL F.G.B.M.



More than 70 people were on hand Monday night when the Spearman Chapter, Full Gospel Business Men's Fellowship received its Charter. On hand to give the address and to present the charter was Sherwin B. McCurdy, International Director for the world-wide organization.

Charter presentation was made to George Colvard, Vice President for the local chapter, and Floyd Fite, Vice President from Perryton.

Meetings are scheduled the second Monday night of each month at 8 p.m. in the HD clubroom in Spearman. Everyone is welcome to attend these meetings.

The above picture will appear soon in VOICE INTERNATIONAL, a FGBM publication, which is sent all over the world.

The Spearman chapter, FGBM, was organized in February of last year.

Dear Santa,
I want a big doctor case for Christmas I don't want the dog and brush, I have been good and please bring my little brother. Some toys.
I love you,
Love,
Jodie and Josh

ing at night. They were fined \$205.50 each.

Arrested a Utopia man for hunting at night. He was fined \$205.50.

Arrested five men from McKinney with three illegal deer. The men were charged with hunting at night and fined \$205.50 each.

Total fines for the six days totaled \$2,471.50.

Dear Santa Claus
I want a bike and I want a doll and I want a ball.
Martha ***

1st Revenue-Sharing Checks to Local Entities

CITY OF SPEARMAN
HANSFORD COUNTY

The City of Spearman Monday received its first revenue-sharing check from the U.S. Treasury Department in the amount of \$9,301.00. States and local entities across the nation began to receive such checks this week.

These revenue-sharing checks launched the 5-year \$30 billion program signed by President Nixon and the Congress last October 20th.

The man in charge of this program, James E. Smith, said state and local governments checks mailed out this week would cover the period making up the first six months of 1972. The amount of money each government would receive was calculated from and based on

1971 tax information with the key formulas being tax effort, population and per capita income.

Data used to figure out the first checks will be published early in January, giving state and local governments their first chance to check their information against the Treasury's.

Spearman and all other cities--received this money with virtually no strings attached. However, generally it can not be used to match federal grants. The U.S. Treasury is not advising state and local governments how to spend it.

City Manager Mike Struve, said Spearman Aldermen have not determined what the mon-

ey will be used for. The next check is expected to arrive here around the first of January, and another one sometime in June.

This Bill was passed as a part of the Federal Government's plan to redistribute part of the federal income tax money back to local governments to be used in some way to "best benefit the City of Spearman according to Mr. Struve.

Weldon Greene, Hansford County Auditor, said the county's check, also received in the mail Monday, was in the amount of \$42,916.00. Mr. Greene said the County would use this money to purchase a larger, better and more mod-

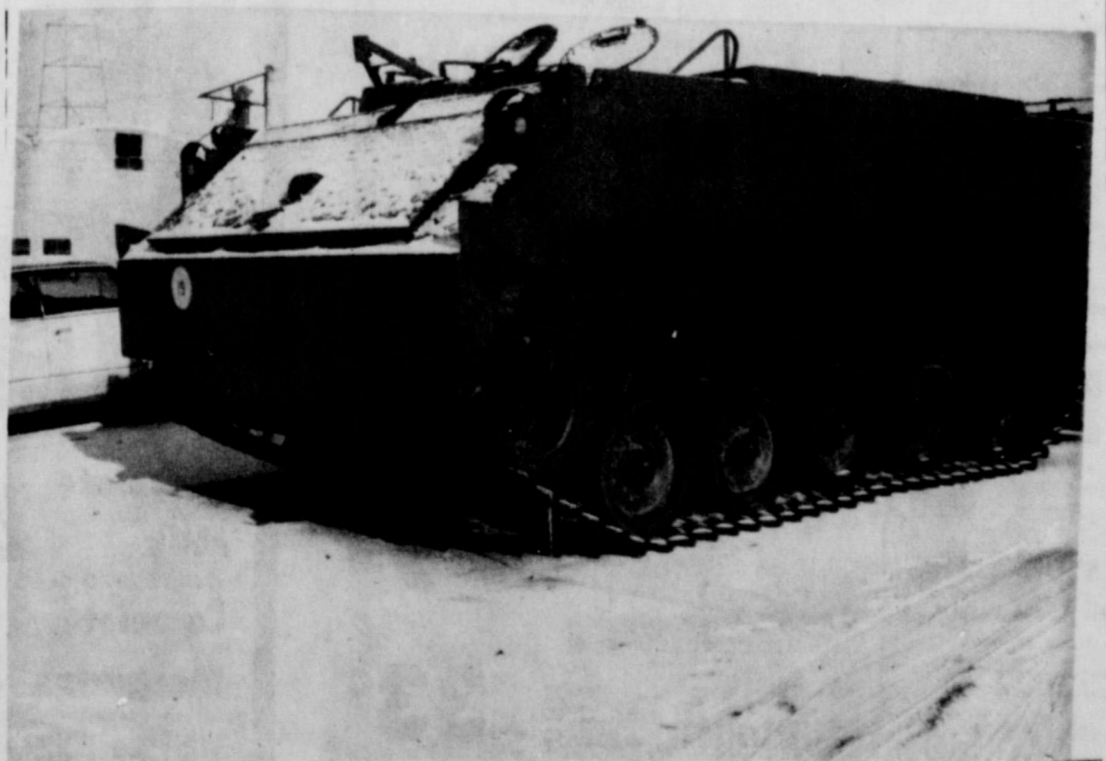
ern X-Ray machine for Hansford Hospital. This machine will cost approximately a thousand dollars more than this, but another revenue-sharing check will be in the county's hands before has to be paid for.

This check to Hansford County covers the first six months of 1972. Another check, expected in January, will cover the last 6 months of the year. Although officials do not know how much the January check will be, Mr. Greene said it "should at least be equal to this one."

Dear Santa Claus,
My name is Veri Darrell. I want a Book, and a bird cage and a doll and a red ball and a cradle and a carriage and a typewriter and a piano and a ring, play snake and a watch and a penny bank and rubbers and a cap and a slip, and a dress.
The End

Dear Santa Claus,
I want a pink stuffed dog, and I want a pallet case and I want a nek chocker, and I want some clothes.
Love,
Mitzi

Dear Santa Claus,
I want a pink stuffed dog, and I want a pallet case and I want a nek chocker, and I want some clothes.
Love,
Mitzi



THIS GIANT Half-Track, owned by Hansford County Civil Defense Unit for emergency purposes, has not been put in use as yet. But remember, Winter hasn't arrived until December 21. Bruce Motor Company mechanics, Tommy Bruce and his son Tommy Jack Bruce are waiting until the weather is warm enough to give the big tank a good "tune up." It's too big to get inside the garage, so the work will have to be done outside--where the weather is frosty, man frosty!

Spearman Boys And Girls Head For "No Mans Land"

In the old days the Oklahoma strip was known as "No man's land" but time has changed all of that, and not only do the men go into the Oklahoma Panhandle, but the ladies also! In fact, this weekend, the Spearman boys and girls will be on hand at Goodwell to defend their last year's efforts in the Panhandle State College high school tourney. The Lynxettes won the championship and the boys were runner-ups to Hooker in the boys finals.

Last Friday evening, the Lynx handed Hooker a 59-50 loss at Lynx gym, in their best game of the year. The Lynx scored 25 points in approximately 8 minutes, to come from 11 points deficit, to win the game. Coach Simpson switched to a "run and gun" full court press, and it sorta "shook up" Hooker!

The Spearman girls continue to improve. Coach Weese will get another big test of his Lynxettes, when he enters the tournament this weekend at Goodwell. The two Spearman teams will play Thursday evening, against the Yarbrough teams, we understand, and a bracket will be in this paper, if the school gets a tournament bracket in time for us to print it.

THE LYNX OPEN PLAY
AT 1 P. M. Thurs.



STEVE DONNELL, Freshman FFA member, won a \$50 gift certificate for selling more boxes of fruit than any other student. He sold 142 boxes, 2nd place salesman was David Dear, with Lillian Raiston running a close 3rd. The FFA department sold and delivered 800 boxes of Texas oranges and grapefruit this week. Steve's parents or Mr. and Mrs. Oscar Donnell.

You are cordially invited to a
miscellaneous bridal shower honoring
Cherryl Montgomery
Saturday, December 16, 1972 from 7 to 9 p.m.
Lutheran Church Parish Hall

10 New Families to City

The list of "newcomers" to Spearman, compiled by the Chamber of Commerce, contains the names of ten families which represents 46 new citizens in the city.

These families, who have moved here within the past few weeks are:

Mr. and Mrs. Tom Barber and 2 children, 120 S. Brandt Street. He is employed with Hansford Feedyards.

Mr. and Mrs. L. E. Ryan, who live at 32 N. James street, moved here from Sublett, Kansas. He is retired.

Mr. and Mrs. Charley Coleman, 1107 S. Dessen, have two children. Employed with Northern Natural, they moved here from Pampa.

Mr. and Mrs. James T. Ward and two children from Memphis, Texas reside at 221 N. Brandt. He is with the FMW Feed Yards.

Mrs. Donna Webb and three children, 220 N. Snider, came here from Cody, Wyo. She works at Hansford Feeders.

Mr. and Mrs. Joe Lopez, 202 N. Snider, have two children. Moving here from Gruver, he works with James Strawn.

Mr. and Mrs. Kenneth Dibern, and three children, from Topeka, Kansas, work with Baker & Taylor.

Mr. and Mrs. Daniel Fittler and 5 children, work for Dale Davis. They are from Oregon.

Mr. and Mrs. David Ochoa, and six children, originally are from Rio Hondo. They are employed by R. C. Porter Farms.

Mr. and Mrs. Vetela and 2 children, from Corpus Christi, reside at 516 S. Bernice. He is employed by Burl Buchanan.

Thel Daniel In Outreach Program at McMurry College

Christian Outreach is a new program initiated by the Department of Religious Life, Student Association, Government, and Student Recruitment Office of McMurry College of Abilene, Texas.

Thel Daniel went with a team of students recently to St. James United Methodist Church of Abilene.

Thel is the daughter of Rev. and Mrs. Wesley Daniel of Spearman. She is a Senior at McMurry College majoring in Business Education.

Christian Outreach is a volunteer program involving approximately sixty students on McMurry's campus. The goals of this program are to provide local churches in the New Mexico and Northwest Texas Conferences of the United Methodist church with various services, such as, worship services, encounter programs with the youth of the church involved, special weekend happenings, and weekend retreats. A glimpse of McMurry College academically, socially, and spiritually is provided in hopes that more people will become aware of all that McMurry has to offer. In general the program is designed to try to meet whatever needs the churches express.

Thel was team leader of the group that talked about ROLE PLAYING, FUN AND GAMES, AND PLANNING: group processes.

Thel was team leader of the group that talked about ROLE PLAYING, FUN AND GAMES, AND PLANNING: group processes.

Thel was team leader of the group that talked about ROLE PLAYING, FUN AND GAMES, AND PLANNING: group processes.

Thel was team leader of the group that talked about ROLE PLAYING, FUN AND GAMES, AND PLANNING: group processes.

Thel was team leader of the group that talked about ROLE PLAYING, FUN AND GAMES, AND PLANNING: group processes.

Thel was team leader of the group that talked about ROLE PLAYING, FUN AND GAMES, AND PLANNING: group processes.

Thel was team leader of the group that talked about ROLE PLAYING, FUN AND GAMES, AND PLANNING: group processes.

Thel was team leader of the group that talked about ROLE PLAYING, FUN AND GAMES, AND PLANNING: group processes.

Thel was team leader of the group that talked about ROLE PLAYING, FUN AND GAMES, AND PLANNING: group processes.

Thel was team leader of the group that talked about ROLE PLAYING, FUN AND GAMES, AND PLANNING: group processes.

Thel was team leader of the group that talked about ROLE PLAYING, FUN AND GAMES, AND PLANNING: group processes.

Thel was team leader of the group that talked about ROLE PLAYING, FUN AND GAMES, AND PLANNING: group processes.

Thel was team leader of the group that talked about ROLE PLAYING, FUN AND GAMES, AND PLANNING: group processes.

Thel was team leader of the group that talked about ROLE PLAYING, FUN AND GAMES, AND PLANNING: group processes.

Thel was team leader of the group that talked about ROLE PLAYING, FUN AND GAMES, AND PLANNING: group processes.

Thel was team leader of the group that talked about ROLE PLAYING, FUN AND GAMES, AND PLANNING: group processes.

Thel was team leader of the group that talked about ROLE PLAYING, FUN AND GAMES, AND PLANNING: group processes.

Thel was team leader of the group that talked about ROLE PLAYING, FUN AND GAMES, AND PLANNING: group processes.

Thel was team leader of the group that talked about ROLE PLAYING, FUN AND GAMES, AND PLANNING: group processes.

Thel was team leader of the group that talked about ROLE PLAYING, FUN AND GAMES, AND PLANNING: group processes.

Thel was team leader of the group that talked about ROLE PLAYING, FUN AND GAMES, AND PLANNING: group processes.

Thel was team leader of the group that talked about ROLE PLAYING, FUN AND GAMES, AND PLANNING: group processes.

Thel was team leader of the group that talked about ROLE PLAYING, FUN AND GAMES, AND PLANNING: group processes.

Thel was team leader of the group that talked about ROLE PLAYING, FUN AND GAMES, AND PLANNING: group processes.

Thel was team leader of the group that talked about ROLE PLAYING, FUN AND GAMES, AND PLANNING: group processes.

Thel was team leader of the group that talked about ROLE PLAYING, FUN AND GAMES, AND PLANNING: group processes.

Thel was team leader of the group that talked about ROLE PLAYING, FUN AND GAMES, AND PLANNING: group processes.

Thel was team leader of the group that talked about ROLE PLAYING, FUN AND GAMES, AND PLANNING: group processes.

Thel was team leader of the group that talked about ROLE PLAYING, FUN AND GAMES, AND PLANNING: group processes.



news from your HOME DEMONSTRATION AGENT

by Nelle Evans

It seems as if I have been neglecting the youngsters with the recipes we've used the past few weeks. To try to redeem myself here is a recipe especially for the youngsters.

Tree Trim Cookies-Mix 4 cups unsifted flour, 1 cup salt (plain or iodized) and 1 1/2 cups water together with your fingers. If the mixture is too stiff add a little more water. When thoroughly mixed, knead 4-5 minutes. (The recipe should not be doubled or halved.)

Roll out between sheets of wax paper and cut in desired shape using cookie cutters or knife. Or use balls of mixture to form figures. For hangers insert wire, paper clips or hooks into wet figure.

Bake in preheated 350F oven for 1 hour. If piece is still soft bake until hardened.

Pieces will brown. Remove from oven and cool. Paint as desired using poster paint, food colors, or felt tip markers. Coat completed pieces with a clear spray on front and back since salt draws moisture from the air.

Remember-do not eat the mixture or finished products.

Homemakers, here's a quick delicious low calorie version of that well loved pecan pie.

Melt 1 stick oleo. Add 3/4 cup sugar and 3/4 cup corn syrup and 2 beaten eggs then

mix well. Add 1 cup quick cooking oatmeal and 1 teaspoon vanilla. Mix well. Pour in unbaked pastry shell and bake at 325 F until filling is firm. This looks and tastes just like traditional pecan pie.

SS CLASSES HAD HOLIDAY DINNER

Forty-five persons from the Adult One Sunday school department of the First Baptist Church attended a Christmas dinner Friday night.

Held in the fellowship hall at the church, every class brought covered dishes for the sumptuous dinner. Tables, decorated by the men of the department, were covered in white and centered with candles and greenery.

Following the meal, Mr. Glen Harris, music director at the church, entertained with several musical selections. He played his guitar for accompaniment. Mrs. Wesley Garnett Jr. entertained the group with a reading "Twas The Night Before Christmas In Texas".

A very enjoyable time was had by all.



Let Me See by Sybil

If Spearman merchants fail to sell their Christmas merchandise because people cannot get out in all this snow-ice-cold, perhaps the tremendous sale of overshoes & boots they've had will help take up the slack. As of Friday, not one pair of overshoes was available (for men) in Spearman. Slim Cates said he ordered overshoes last summer. He forgot that he had, and ordered some more. When these all came in to his store he nearly died, wondering what to do with the oversupply of overshoes. Needless to say, every pair sold and he has had calls for more.

At least the frozen ground has allowed the farmers to cut maize.

Everyone has mentioned what a beautiful day Sunday was. Such a heavy coating of

ice on all the trees & shrubs, made the outside world look as if it were made of glass in the bright sunshine. It was so cold all day, even the bright sun didn't melt it. Monday was cloudy, cold & snowy again so the ice might be there a while.

WHILE THE ice and snow covers everything, consider our feathered friends who are having a difficult "hunt & Peck" time of it just now. You can entice birds to your yard by feeding them. You and your children will be entertained all day long with bird watching if you will place food in a tree directly outside a favorite window. Make a bird tree a project for your children. String bits of apple and orange peel (use needle & thread) and loop this around a tree limb. Scoop out an orange shell, fill it with peanut butter and bread crumbs and hang it from a branch with hairpins or paper clips. Birds need fat for body energy. String lumps of fat cut from table meat and place in a tree. Take a paper cup, cut off sides so that it is shallow. Loop a thread through it with a needle. Fill it with equal amounts of peanut butter & crumbs & hang it. If its too cold to go out, make a feeding station on a window sill and scatter maize or bird seed on it. Replenish it by raising the window. Birds are friendly, entertaining little things to have around. Your children won't get so bored with staying inside during all this bad weather if you'll fix a bird feeder for them to watch.

I am so surprised at the variety of birds we have here during the winter. We have more come to our feeder every day. But I can't identify them. Santa will have to bring me a bird book I guess. We have a beautiful woodpecker who comes every day. I do not know what

those are with the orange head & breast. They are small like sparrows. Then there is the large yellow one with black speckles. It is fun to watch them. And do they enjoy all the eats! Play Santa to the birds.

DID YOU EVER hear of Thomas Nast? He was an artist for a New York newspaper back in the early 1900's and came to be known as Santa Claus's father.

It is difficult to believe now, but there was a time when Americans had no idea what Santa Claus looked like. In 1823 Clement Moore wrote "A Visit From St. Nicholas". Everybody loved the poem but no one knew exactly what Santa looked like despite the poem's vivid word picture of the roly poly one, chubby & plump and when he laughed he shook "like a bowl full of jelly."

With such a splendid description available to all, it seems incredible that artists of the day were unable to draw an accurate Santa Claus sketch. Artists drew Kris Kringle to look more like a dried-up skinny looking fellow, or a tubby little dwarf. Then in 1863 Nast, who was only 23, decided to draw a Santa Claus sketch. Artists drew Kris Kringle to look more like a dried-up, skinny looking fellow, or a tubby little dwarf. Then in 1863 Nast, who was only 23, decided to draw a Santa Claus for a national magazine. Actually he drew 2 sketches. President Lincoln was quite fond of one that showed St. Nick visiting Union soldiers at camp. The other drawing featured a dwarfish fat little fellow sitting on a chimney. But neither of these satisfied Nast. He continued to draw a new Santa sketch every Christmas, and each year Santa was slightly different. Nast kept trying to come up with a more

magnificent portrait. By the time he turned out his last Santa drawing, Nast was a famous artist. His final Santa Claus was the jolly, hearty soul that the world loves today. His sketches still remain popular. A book of his cartooned "Christmas Drawings For Human Race" was recently used by Harper & Row.

Nast was probably America's first important political cartoonist also. Among other things, the Republican party elephant and the donkey of Democratic party both came from Nast's inkwell.

PLEASE DON'T forget to the newspaper office, phone 3434, and turn in your holiday news items. Christmas parties are happening thick & fast so please let us know about them for local news items which makes a country newspaper interesting to all. We do not have a regular society editor now so we depend on you--to us. Thanks for remembering to do this.

The Annual Christmas Party for Community Public Service Employees was held Friday evening Dec. 8 at the PCC Club. Attending from Spearman were Spearman Commercial Manager and Mrs. C. Riggins, Serviceman and Mrs. Vernon Thompson, Cashier Dorothy Chavallier and Mrs. Mr. and Mrs. W. E. Brantley, Mildred Chamberlain, The employees were honored of their retirement. Home Service Advisor Mrs. Florence Fiskin and Perryton service Mike Williams with 27 years of service respectively.

Holidays are just a STOCK UP NOW AT THRIF-T IDEAL



PRICES EFFECTIVE THRU SATURDAY, DEC. 16, 1972. NONE SOLD TO DEALERS. LIMIT RIGHTS RESERVED.

Store Hours
Mon. - Sat.
8:AM to 11PM

Sundays
9:AM to 9PM

GLAD PRODUCTS AT THRIF-T PRICES!

Wastebasket Bags.....	PKG. OF 20	79¢
Trash Bags.....	PKG. OF 10	93¢
Oven Bags.....	PKG. OF 10	59¢

SAVE \$1 ON THESE TWO FAMOUS COFFEES WITH COUPONS BELOW.

MAXWELL HOUSE
GOOD FOR 45¢ OFF ON 1.5 LB. CAN OF MAXWELL HOUSE COFFEE
LIMIT 1 WITH THIS COUPON EXPIRES 12-18-72
IDEAL FOODS!

MAXIM
GOOD FOR 55¢ OFF ON 8 OZ. JAR OF MAXIM FREEZE DRIED COFFEE
LIMIT 1 WITH THIS COUPON EXPIRES 12-18-72
IDEAL FOODS!

BET OR CANE SUGAR
5-LB. BAG **52¢**
LIMIT 1 BAG WITH \$5.00 OR MORE PURCHASE

MEADOWDALE WHOLE KERNEL OR CREAM STYLE Golden Corn..... 6 303 CANS \$1

VAN CAMP'S Pork & Beans..... 6 300 CANS \$1

SOFT-PLY WHITE OR ASSORTED COLORS BATH TISSUE..... 3 4-ROLL PKGS. \$1

DEL CERRO BRAND Pecan Halves..... 8-OZ. BAG 97¢

MEADOWDALE ENRICHED FLOUR 5-LB. BAG 42¢

MEADOWDALE CUT Green Beans..... 303 CAN 17

ROGER'S Whole Tomatoes..... 5 303 CANS \$1

CAMELOT Pear Halves..... 303 CAN 28

CAMELOT LAYER Cake Mixes..... 19-OZ. BOX 32

ALL FLAVORS Camelot Gelatin..... 3-OZ. PKG. 11

DESSERT TOPPING Dream Whip..... 4-OZ. PKG. 55

TOWIE Salad Olives..... 16-OZ. JAR 69

OCEAN SPRAY CRANBERRY Cocktail Juice..... GALLON \$2

FAIRMONT DAIRY FAIR Ice Milk 58¢
HALF GALLON CARTON

JENO'S HAMBURGER SAUSAGE OR CHEESE PIZZA 13-OZ. PKG. 79¢

MEADOWDALE Onion Rings 7-OZ. PKG. 33¢

BIRDS EYE Orange Plus 8-OZ. CAN 59¢

INTERNATIONAL ALL VARIETIES Birds Eye Vegetables 11-OZ. PKG. 53¢

FRESH DAIRY DELIGHTS!

IDEAL OR FAIRMONT Half & Half PINT CTN. 29¢

CAMELOT COLBY LONGHORN CHEESE 10-OZ. PKG. 58¢

IDEAL FRESH Chocolate Milk 2.49¢

QUARTERED OLEO Camelot Margarine 5.1¢

SELECT GRADE A Whipped Butter 48¢

FAIRMONT OLD-FASHIONED Egg Nog 59¢

CAMELOT, INDIVIDUALLY WRAPPED American Slices 12-OZ. PKG. 68¢

PHILADELPHIA, PLAIN OR WITH CHOCOLATE Cream Cheese 2.25¢

FAIRMONT Cream Topping 49¢

SOUTHERN PRIDE BUTTERMILK Biscuits 3.35¢

SALE 25% OFF

pictures, boxes, plaques, desks, harvest hutches, etc. all decoupage by Ruth Lackey Christmas gifts. Dec. 14 & 15 1107 S. Barkley Spearman

You can't get a good job without experience. We'll give you both.

There are plenty of jobs in the want ads. Unfortunately, almost all the good ones ask for experienced help. But, in today's Army, we'll hire you at \$288 a month to start. No experience necessary. We'll give you free meals, free medical and dental care, and 30 days paid vacation a year. And the training and experience in almost any job you want. A job you can make a career of. In the Army or out of it. To get complete details talk it over with your local Army Representative. Today's Army wants to join you. Call 405-338-8324 411 N. Main Street Guyton, Oklahoma 73942

Try our **Snow Free CABLE T.V.**

for as little as **23¢ Per Day** or **\$7.00 Per Month.**

No installation charge ON NEW CONNECT if hooked up the week of Dec. 26 through Dec. 30.

Just in time to watch the New Year Parades and Bowl Games. First payment due the 4th of January, 1973

SPEARMAN CABLE T.V.
Phone 3363



Booklet Soon On Sale

A merchandise certificate booklet is soon to be offered Spearman citizens with savings of nearly 85% over regular prices, stated the let's get acquainted representative, agent for eight Spearman businesses.

The purpose of the booklet which contains numerous service and merchandise offers, is to enable city residents to become better acquainted with merchants. If a person likes the service and merchandise offered, they will continue to trade with that merchant. As an advertising offer, it's good because it allows you to sample the various service and merchandise offered for yourself, the agent stated.

Various certificates in the booklet are redeemable for dry cleaning, beauty shop services, an automobile tune up, clothing, art and craft supplies, meals, photography and numerous other items.

The complete booklet, with over \$100 in merchandise and services will sell for \$16.95 with no other charges from the merchant. Local citizens will be called by phone for an opportunity to receive the booklet.

Merchants participating in the booklet include Berry Cleaners, Bill's Shamrock, Service, Chambers, Evelyn's Beauty Salon, LadyFair, Nelson Builders Supply, Owens Service Center, The Gift Box and several Perryton firms.

Several local charities including the Boy Scouts, Little League Baseball and the Library Fund will receive profits from the sale of the booklets.

CHRISTMAS PARTY FOR T-E-L CLASS

The annual Christmas party for members of the T. E. L. Sunday school class of the First Baptist Church, was hosted by Mrs. Billy Miller Saturday afternoon at her home.

This was a very special occasion as three class members had recently celebrated their 80th birthday. Mrs. Susan Wagon, Mrs. Hattie Mackie and Mrs. Lillie Hacker were the ones to receive special recognition. The hostess presented each one with a corsage made from Christmas holly, tied with red ribbons. Their names were listed on a birthday cake, decorated with red roses, gold numerals and green ribbon.

The Christmas story was read from Luke, chapter one and two, and Mrs. Hacker led the group in prayer.

Following an exchange of Christmas gifts, the following class members were served cake, hot punch and coffee: Mmes. Susan Wagon, Hattie Mackie, Lillie Hacker, Esther Stewart, Alma Kizzlar, Mary Cook and the hostess.

Mr. and Mrs. Eldon Ferrell visited No Mans Historical Museum at Goodwell, Okla. recently. They found the museum very interesting. They noticed skeletons that had been unearthed on the Virgil Mathews ranch near Spearman.

Radial Tire Owners Warned Against Mixing snow tires

Washington, D.C. --For many motorists, winter may be "just around the corner"; for others it's already here. Whatever the situation, the Tire Industry Safety Council issues an important reminder: if you have radial tires on the front axle, be sure you have radial tires on the rear.

This means radial snow tires, if you are going to put on snow tires at all. It was explained. Regular radials give considerable traction, but they do not meet the legal requirements for snow tires in many jurisdictions when "snow emergency" rules are in effect. In such areas, motorists who don't have snow tires, and block traffic, are given tickets.

"Winter weather calls for great preparation on the part of all motorists," says Ross R. Ormsby, Chairman of the Council. "It's mandatory that a car's tires receive as much attention as any other segment of the automobile."

Why is it unsafe to have radials on the front and another type tire on the rear? In a public advisory announcement, The U.S. Department of Transportation has explained it this way:

"In general, the hazard of mixing tire types relates to the erratic or dangerous vehicle performance which may result. Under various driving conditions requiring dependable vehicle control, especially in cornering, 'mixed-tire' performance has been compared to the effect of wearing a rubber soled shoe on one foot, a new leather sole on the other or a pair of ice skates of which only one is newly sharpened."

A radial tire is built in such a way that when the front wheels are turned the tires immediately assume the new direction. If the snow tires on the rear are of a different type, the risk of slipping and causing a skid is more likely.

"Mixing" does not refer to the use of different brands, or different cord materials, nor to the number of sidewall plies (such as two, four or six ply) on the same vehicle.

The Council also recommends drivers give new snow tires a "breaking-in" period. Speed should be held to no more than 60 miles per hour for the first 50 miles of driving.

CARE of VENISON IMPORTANT TO TASTE

AUSTIN--It's no wonder that so many people claim not to like venison, according to Texas Parks and Wildlife Department officials. They wouldn't like steak either if it was handled as badly as

some venison. "We still see hunters hauling their kill home on the hood of their car. This may be classical, but the heat from the engine spoils the meat," said one official.

According to experienced meat handlers, heat is the enemy of meat. It is so important to dissipate heat, even body heat, that a deer should be dressed as soon as the hunter is able to recover it.

The Texas Parks and Wildlife Department has a leaflet entitled "Now That You've Killed It," which tells how to field dress a deer. It is free upon request.

Field dressing a deer entails removing the internal organs and draining as much blood as possible from the animal. Care should be taken not to puncture the organs since this will taint the meat.

The skin of the deer should be removed as soon as possible since this holds in body heat. The deer should be hung head up for about twenty minutes immediately after field dressing to allow the blood to drain.

However, when allowing the carcass to cool, the deer should be hung head down since blood collecting in the hams spoils the meat. The carcass should always be hung in the shade and covered with a sheet or cheesecloth after it is skinned.

If the weather is cool, the carcass can be covered and transported for short distances on the trunk or roof of the car. In warm weather, it is best to cut up the carcass and ice it down.

Mrs. Earlene Chambers slipped and fell Saturday and sustained a broken wrist. Mrs. Chambers was hospitalized for a few days.



NEW ARRIVALS

Lieut. and Mrs. Pat Patterson of San Diego, Calif. have a new baby son, Scott Patrick was born November 12. Paternal grandparents are Mr. and Mrs. Clyde Yearry of Waka and maternal grandparents are Mr. and Mrs. Bill Green of Denver, Colo.

Stephen and Kathy Slater announce the arrival of a new baby boy named Christopher Scott, born at Ochiltree General Hospital, Dec. 8 at 6:30 p.m. Christopher weighed 7 lbs. 7 oz. Maternal grandparents are Mr. and Mrs. Bill Innis of Canadian and paternal grandparents are Mr. and Mrs. Cecil Slater of Spearman.

MRS FULLER TO HOST ART CLUB SOCIAL FRIDAY

Mrs. Ned Turner entertained members of the Arts and Crafts painting class in her home Friday. Those enjoying the afternoon china painting included Mmes. Bruce Sheets, Bill Russell, Pope Gibner, Annie Allen, P.A. Lyon, Bill Gandy, Clay Gibner and Joe Trayler.

Friday, Dec. 15 Mrs. Guy Fuller will host the annual Christmas party for this group at 3 p.m. An exchange of hand-painted china will be enjoyed at this time.

Gospel Singers To Perform In Gruver

The Gospel Singers "Victory and the Royalheirs" will sing in the Gruver United Methodist Church, Wednesday evening, December 20 at 7 p.m.

The Gruver United Methodist Church invites you to hear Victory and the Royalheirs and participate in this form of worship.

Yuletide Shoppers Warned

Christmas shoppers were warned today to "Lock them up or lose them."

"Every year hundreds of Christmas shoppers in Texas are victimized by thieves who steal Christmas packages from parked cars, and sometimes the car itself," said C.C. Benson, manager of the southwestern Division of the National Automobile Theft Bureau (NATB).

"Careless shoppers make it easy for the thieves by leaving their packages in clear view in the car, and often don't even bother to lock the car. They evidently believe that thieves take a holiday during the Christmas season, but soon find out that thieves instead are at their busiest."

Therefore, the NATB urges Texas motorists to always take these precautions while shopping:

- Don't leave packages or other possessions on the seats or the floor of your parked car. Put them in the trunk.
- Roll your windows up tight, and lock your car doors.
- Don't forget to remove your ignition key when you remove yourself from your parked car—even for a moment.
- Don't park your car in a remote or dimly lit spot.

20th Century and Santa Claus

In this twentieth century, many persons wonder whether Santa Claus and the giving of presents have become too commercialized. Small children are bewildered when they see more than one St. Nicholas on the street or in stores. When we consider the traditions with him, we are amazed at what has happened to him.

Several factors, including New York, and Hollywood, stage elaborate parades featuring Santa Claus, that draw thousands of spectators.

We have a town that glorifies St. Nicholas, not far from Evansville, Indiana, a small community called Santa Claus. It is said that in 1882 at a general store on Christmas Eve, residents were discussing what to name their town, when Santa Claus walked in. At once someone called out, "Let's call it Santa Claus!" and so it got its unusual name.

Nowadays, at Christmas time, this is one of the busiest places imaginable. Mail arrives from every state and even from other countries to be stamped with the postmark "Santa Claus"

TRIPLE F FEEDS

Try Our Wheat Pasture Mineral Beef, Dairy & Swine Feeds

Golden Pro Protein Blocks & Cubes & Granular Form also Palmine Cattle Equipment, Sprayers, Waterers, Cattle Oilers.

PVC Liquid Protein

Write or call Box 1349, Guymon, Okla., Tele 338-7417 or 338-3623. Contact L.W. or Brad Lowery.

st around the corner...

BEAL BEFORE THE BIG RUSH!

SWIFT'S PREMIUM OR BAR'S BRAND

CANNED HAM..... 5 -LB. CAN \$4.99

HICKORY SMOKED BUTT PORTION lb. 79¢

Hams SHANK PORTION LB. 69¢

MEADOWDALE FULLY COOKED BONELESS HAMS

WHOLE 7 to 9 LB. AVERAGE \$1.29

HALVES 3 to 4 LB. AVERAGE \$1.39

HICKORY SMOKED WHOLE HAMS 15 to 19 LB. AVG. LB. 79¢

Thrift-T Low Prices

SWIFT'S CREAM Marshmallow 7-OZ. JAR 27¢

CHOCOLATE CANDIES 1-LB. BAG 64¢

DIAMOND BRAND Hamburger 2 97¢

WALNUT Halves 10-OZ. PKG. 87¢

FISHER BRAND Raw Peanuts 12-OZ. BAG 43¢

JOHNSON & JOHNSON BABY SHAMPOO 12 1/2-OZ. BTL. \$1.18

Thrift-T Quality Products

DIAMOND BRAND Walnut Halves 10-OZ. PKG. 87¢

FISHER BRAND Raw Peanuts 12-OZ. BAG 43¢

JOHNSON & JOHNSON BABY SHAMPOO 12 1/2-OZ. BTL. \$1.18

STYLE REGULAR OR HARD-TO-HOLD Hair Spray 13-OZ. CAN 64¢

Bayer Aspirin 88¢

BUTTERBALL OR HONEYSUCKLE TURKEYS

Toms 18 TO 22 LB. AVG. 49¢

EMPIRE BRAND Tom Turkeys 14 TO 22 LB. AVG. 35¢

HONEYSUCKLE OR BUTTERBALL Hen Turkeys 12 TO 16 LB. AVG. 59¢

ONE-PRICE U.S.D.A. CHOICE BEEF SALE!

U.S.D.A. CHOICE BEEF... CENTER SLICES

ROUND STEAK 99¢

STANDING, BONE-IN RUMP ROAST EXCELLENT FOR BROILING

SWISS STEAKS

GROUND CHUCK CUT FROM THE CHUCK

BONELESS FAMILY STEAKS

MEADOWDALE HICKORY SMOKED Sliced Bacon 79¢

THIN Sliced Bacon 79¢

QUARTER SLICED Pork Loins 79¢

RODEO ALL MEAT Skinless Franks 59¢

MEADOWDALE Sliced Bologna 69¢

U.S.D.A. CHOICE BEEF Sirloin Steaks 59¢

U.S.D.A. CHOICE BEEF T-Bone Steaks 59¢

CHECK IDEAL SELECTION OF FRESH OYSTERS, DUCKS, GEESSE, CAPONS, ROASTERS

OUR ANNUAL PRE-CHRISTMAS MIX OR MATCH FRUIT SALE!

Canadian Fancy Red Delicious Apples, California Navel Oranges, Zipper-Skinned Tangerines and Texas Ruby Red Grapefruit.

YOUR CHOICE MIX OR MATCH 5 \$1 LBS.

See us today for a fine selection of Scotch Pine and Douglas Fir Christmas Trees at Low Thrift-T Prices!

SEE US FOR A COMPLETE SELECTION OF DECORATED FRUIT BASKETS... Quarter-Boxes, Half-Boxes and Full Christmas Boxes of APPLES and ORANGES at LOW THRIFT-T PRICES!

TAX COLLECTIONS APPROXIMATELY 75% COMPLETE

County, school and city tax collectors report at least 75% of the taxes have been paid.

The month of December is the last month citizens will receive discounts for paying County and City taxes. The entire amount must be paid if remitted in January and in February, penalty and interest will begin.

At the courthouse, Sheriff & Tax Assessor-Collector J. B. Cooke reports \$487,874.74 of the \$610,395.65 tax roll has been collected which is 80%.

At the School tax office, Mr. Orville Latham has collected \$739,036.93 of the \$952,012.92 on the tax rolls. This is 74%.

At City Hall, Spearman citizens have remitted \$88,164.88, or 74% of the \$115,081.76 tax roll.

C OF C WOMEN TO MEET THURSDAY

Members of the Women's Division of the Chamber of Commerce are reminded of the Thursday night meeting at 7:30 at the Chamber office.

Everyone is urged to be present and work on decorations for the banquet.

Hopper-McBirney Vows Read Dec. 5

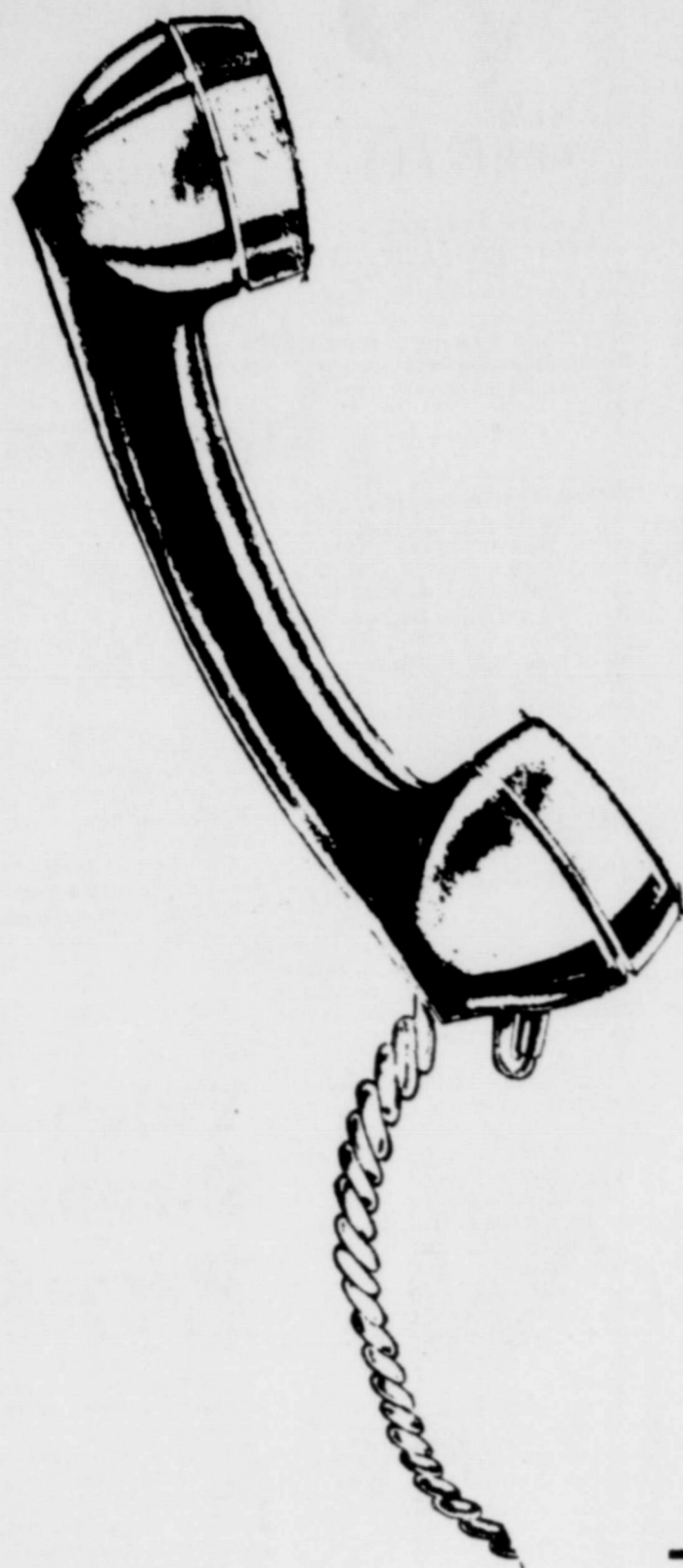
Mr. and Mrs. Wm. A. Hopper announces the marriage of their daughter Gail Ruth to Mr. Timothy E. McBirney on Dec. 5, 1972.

Tim is the son of Mr. and Mrs. Derrail McBirney of Fairbanks, Alaska.

The couple will make their home in Fairbanks.

CHRISTMAS PARTY PLANNED DEC. 22 AT NURSING HOME

The officials and nursing staff at Pioneer Manor Nursing Home will stage a Christmas Party for patients there from 6 to 6:30 p.m. December 22. Everybody is invited to come out and visit at this time.



PHONE
659-3434

with us before you buy that

OFFICE MACHINE

we are now offering several lines of office machines

New and Rebuilt Machines

—KEEPING PACE WITH PROGRESS—

- ★ Office Supplies
- ★ Office Furniture
- ★ Business Machines
- ★ Commercial Printing
- ★ Magnetic Signs
- ★ Business Machine Repair

Member 1971
TEXAS PRESS ASSOCIATION

the
Spearman

REPORTER

213 MAIN



TIMELY GIFTS FOR MEN AND BOYS
CATES MEN & BOYS

221 MAIN STREET SPEARMAN TEXAS 79081

Shopping Around The Town

It's time to shop late because it's too late to shop early. If you've delayed your Christmas shopping until this date, you'll have no problem in making a selective choice from GORDON'S well stocked gift department in GORDON'S DRUG. There you'll find gifts in every price range. Washers, dryers, dishwashers, refrigerators, freezers and ranges are among the many gift ideas at SPEARMAN APPLIANCE CENTER. Another well stocked shopping center, especially for men and boys, is CATES MEN AND BOYS WEAR, where there's still an adequate stock of gifts to please the most particular male. In case your festive table requires nothing short of the very best, you'll surely want one of those delicious fruit cakes now available at SPEARMAN REXALL DRUG. One of the most versatile power tools on the market is the electric drill. He will surely be pleased with an electric drill from WHITE HOUSE LUMBER COMPANY OF SPEARMAN. To delight the small fry, get him one of those little INDIAN motorcycles at JOE'S EXXON AND CYCLE SHOP. These little vehicles are equipped with trainer wheels for extra safety. LADY FAIR is your mecca for highly acceptable feminine fashions at reasonable prices. There's an abundant stock awaiting your selection. If you hurry, you can still get those personalized shirts on display at DOUGLAS DUDS. Shopping is going full tilt at TG&Y where you'll still find plenty of tree decorations as well as artificial Christmas trees and lights.

A Pre-Christmas Word From SANTA:

Make This Christmas A SAFE One—NOT A SAD One DRIVE CAREFULLY!



LET US GIVE YOUR CAR A CHRISTMAS CHECK-UP FOR SAFE HOLIDAY DRIVING.

Joes



659-9971

MASTERWORK
 A Product of COLUMBIA RECORDS

Stereo Tuner Amplifier with 2 speakers and Record Changer, with 8 track tape deck

\$ **139**⁹⁵

Gordon's Drug

The Spearman Reporter
 Box 458
 Spearman, Texas

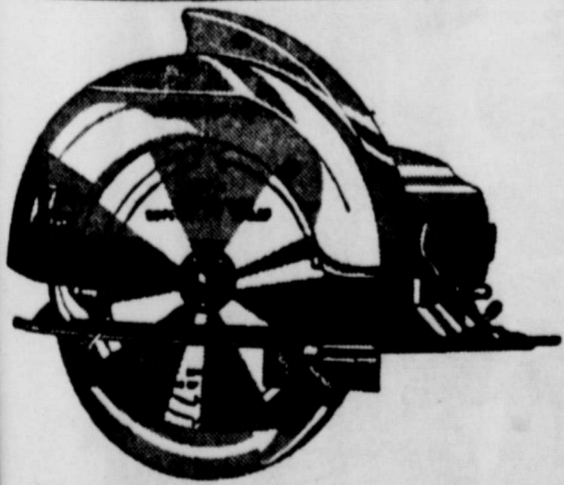
Job Printing Office Supplies

TG&Y

INDIVIDUALLY
Wrapped
Candy Canes

BAG OF 40
 ONLY **66¢**

Good Thursday, Friday & Saturday



A GIFT HE'LL LONG REMEMBER FROM

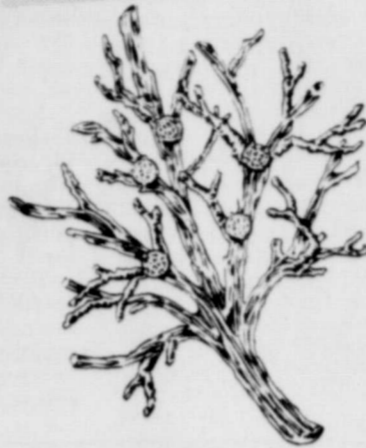
White House Lumber of Spearman

NOBODY PLAYS SANTA LIKE REXALL!

"Count Your Blessings" with this exquisite 14K Tree of Life Pin

Every Mother and Grandmother wants **Cornelia's Jewels**

Fine Gift for Fathers and Grandfather's Too!
Anson Family Album Jewelry
 tie tack \$7.50



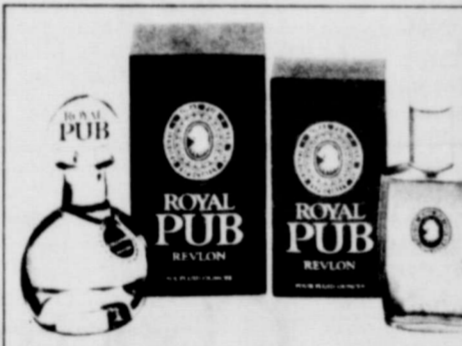
Symbol of a mother's pride; this exciting fashion creation in the new 14K Frost Green Gold, is set with genuine birthstones — one for each member of the family.

A BIRTHSTONE FOR EVERY CHILD or GRANDCHILD



AN ELEGANT SYMBOL OF PRIDE IN PARENTHOOD—DEEPLY MEANINGFUL—EACH BIRTHSTONE REPRESENTS A TREASURED CHILD OR GRANDCHILD. A GIFT THAT WILL BE TREASURED ALWAYS.

We are proud to present **Royal Pub**
 The crisp, savvy scent... with muscle. Stop by and sample this prestigious new fragrance blended especially for men by Revlon.



SHOP OUR House of Fragrance for "HIM" - for "HER"



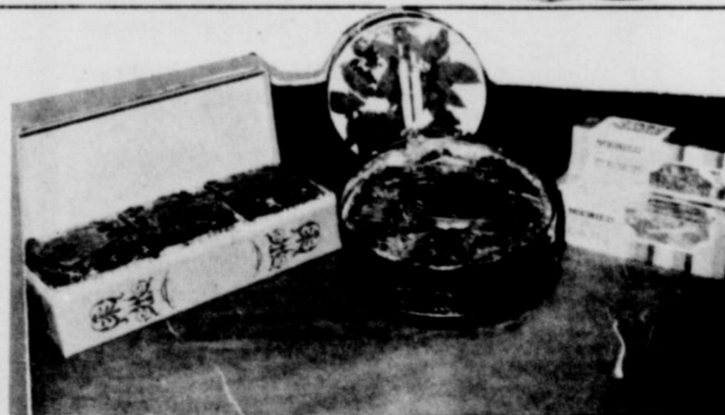
CHANEL SPRAY PERFUME • SPRAY COLOGNE

NORELL

The first great perfume born in America. Crisply elegant. Crackling with Norman Norell's fashion authority. And like everything Norell, its lasting power is marathon.



CUSTOM BAKED **GOURMEC PARTY CAKE**
 BY MERICO



We've custom-baked these cakes for Presidents, Ambassadors, Congressmen, Major Business Leaders, Hollywood Stars, Epicures, and Gourmets the world over... and just plain folks who know cheap cakes are not good, and good cakes are not cheap.

We take pride in our famous Texas recipe... the taste proves it. The Merico Masters select fancy pecan halves, red glace French cherries, fancy Hawaiian pineapple, golden California raisins... blend them into bubbling hot butter... add fresh whole eggs and just a pinch of flour... then time becomes our best friend... because we avoid any diced melon, citron, peelings, spices, cheap nuts, or other cheap fillers. From the Merico Masters, we say thanks for allowing us to custom-bake your Holiday desserts.

Leave your prescriptions with us while you shop! Fast, dependable service - your Rexall Pharmacist!

Spearman Rexall Drug

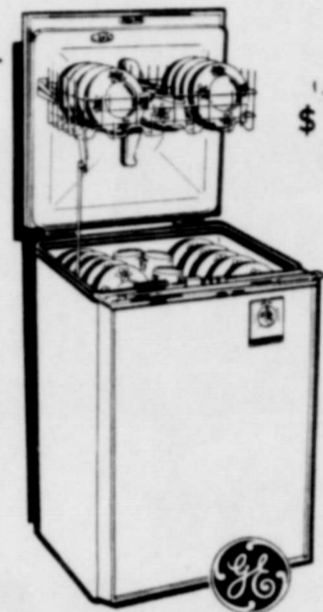
PHONE FOR FREE DELIVERY

Two Registered Pharmacists

659-2226

GRUVER NUMBER 733-2021

SPEARMAN APPLIANCE CENTER



\$189⁰⁰

MODEL SM330N



PANT SUITS FOR THE PETITE

Lady Fair

STILL TIME TO GET PERSONALIZED SHIRTS FOR MEN & BOYS BY MR. "B"



MENS QUILTED NYLON JACKETS \$9⁰⁰ SPECIAL

Douglas Dry Goods
 216 MAIN STREET
 SPEARMAN, TEXAS

With our help, you can be a Great Great

THE SPEARMAN REPORTER

213 Main Spearman, Texas 79081 Box 458 659-3434
 Published Weekly at 213 Main Street Spearman, Texas 79081
 Owner-Publisher, William M. Miller
 Second Class Postage Paid at Spearman, Texas

Any erroneous reflection upon the character of any person or firm appearing in these columns will be gladly and promptly corrected upon being brought to the attention of the management.

SUBSCRIPTION RATE--Hansford, adjoining counties, \$7.00 yr. Other points in combination with The Hansford Plainman, \$9.00 yr.

LET'S GET ACQUAINTED

WE INVITE YOU TO . . .

Be Our Guest AND Save!



Over **\$100** AS GOOD AS

CASH!

(Your Cost Only \$16.95)

THE FOLLOWING MERCHANTS

are cooperating to bring you over \$100 in merchandise and services as an advertising special. There are no tricks or gimmicks and there is absolutely nothing more to buy!

BERRY CLEANERS
 BILL'S SHAMROCK SERVICE CHAMBERS
 EVELYN'S BEAUTY SALON
 LADY FAIR
 NELSON BUILDERS SUPPLY
 OWENS SERVICE CENTER
 THE GIFT BOX

DAVIS BARBER SHOP
 FABRIC MART
 HERB'S SEWING CENTER
 LEO SHULER PHOTOGRAPHY
 McDONALD'S DEPARTMENT STORE
 MOM STONE'S DRIVE INN
 PERRYTON FURNITURE
 Y. M. C. A.



NO EXTRA CHARGE!

INCLUDED
 With your get acquainted offer (Value over \$100. — Your cost \$16.95) You will receive a SWISS mens or ladies watch valued at \$19.95. **AT NO EXTRA CHARGE.** Anti-Magnetic, shock proof, with jeweled movement. Great for yourself or gift giving.

A LIMITED NUMBER OF FAMILIES will be called by phone today. If one of our courteous operators calls, you may receive our special advertising offer for only \$16.95. She will arrange delivery to your home.



Tammy Donahue Is "Miss Midway U.S.A."

Eight-year old Tammy Donahue, 3rd grader in Spearman Elementary schools, continues to win trophies and medals with her twirling performances. Last weekend in a contest held in Oklahoma City, Little Miss Donahue was named "Miss Midway U.S.A." in a beauty pageant staged for youngsters from all over the nation. She also brought home the first place trophy for winning high point in the twirling division of the 7-10 year old group. Her first place trophy in the Beauty Pageant was presented to her on the basis of her modeling, strutting and twirling abilities.

This little blond-haired beauty, daughter of Mr. and Mrs. Ray H. Donahue, has entered many contests but this is the first time she has ever captured "high point" honors over all her competitors. She has just returned from Dallas where she picked up three 1st place trophies and 13 medals. In September she entered the Panhandle State Fair competition at Lubbock and brought home 7 trophies for her twirling. Tammy said her trophy collection is getting quite large--she now has 50 trophies and 58 medals which she has won in twirling performances the past two years.



Santa Letters

Dear Santa,

My name is Chance Patrick Jackson, my mommy and my daddy get gripy sometimes so bring them a dose of medicine to make them nice again. My sissie told me what to write so brang her a cherry coke and me a purple popcicle, a bottle, a lemon and a bunch of other stuff.
 Love,
 Chance

Dear Santa Claus,

I wish I had a sachel and a tee vee record player and a trampling so I could jump on and a bike so I could ride on and a little puppy.
 Merry Christmas
 Cathy

Dear Santa,

I want a stuffed animal and This is what it is a Lassie and a Crashum Bankum and some coke. Be sure and bring them.
 Love Tracy Van Bur:irk
 Goodby

Dear Santa Claus,
 My name is Greg Farr. I live on Roland street. Now 1st thing I want is a rock-um sock-um robots. Now 2nd thing I want is a guitar and I been a good boy.
 Love,
 Greg

Dear Santa Claus,
 My name is Jason, I would like you to bring me a walkie-talkie popgun and a ranch set. I have been good this year. We will leave you a piece of cake and a glass of milk in case you are hungry when you get to our house.
 Love,
 Jason

Dear Santa Claus,
 Please bring me a ten speeb bike, and bring me a T.V., please and bring my a baby puppy.
 Love
 Shanynn Nitschke

Dear Santa Claus,
 This is Oscar Bermea, I want a football and I want a wagon and I want a bike and I want a little train and I want a dog.

Dear Santa Claus,
 I want a 5 speed bike and a tape recorder.
 Love
 Jon

Dear Santa Claus,
 I want a red bike and I am wanting for it when Christmas comes.
 I wish you a Merry Christmas Santa Claus and I want a farm set.
 Daniel

Dear Santa Claus,
 I would like a minibike for Christmas, and a bike and Bing Bong Boing and a piano and some money and maybe some more stuff.
 Lea Ann Gibner

Dear Santa Claus,
 This is my list, I want a telescope and a Bee Bee gun and a BI-Plane and a GI Joe set.
 From Newell P.

Dear Santa Claus,
 I want a race track and a dd gun.
 Wayne Cook

Dear Santa Claus,
 How are you? I am doing fine. Is it still cold up there? When you come to my house if you have any black boots I will want a pair please. And I want a house coat please. And I want a baton please. And I want a barbie beauty center and make up set please. And my mother will want a toaster. And my father will want a Flip Wilson. Thank you very, very much.
 Love,
 Vonnie Gordon

Dear Santa Claus,
 I would like to have a Christy for Christmas.
 Thank you for last year and I have been good.
 Love,
 Lori White
 Grade 2

Dear Santa,
 I want a footbuilt suit and Johnnie West set. Thanks
 Mark Guthrie
 711 Lee Drive

Dear Santa,
 I want a cowgirl belt and shirt, I want a gown and house slippers.
 Carrie Guthrie
 711 Lee Dr.

Dear Santa Claus,
 I have been a good boy, I want a G.I. Joe set with a helicopter, and a teddy bear to keep me all nice and snugly, and a miniature motorcycle, and an army tent. That's all. Tell Mrs. Santa and your elves hello for me.
 Jamie McKay

Dear Santa Claus
 I would like to have a bike for Christmas.
 Thank you for last year and I have been good.
 Love
 Janet Reed
 Grade 2

Dear Santa Claus,
 I would like to have a trampoline for Christmas.
 Thank you for last year and I have been good.
 Love
 Steven Francis
 Grade 2

Dear Santa Claus,
 I would like to have a doll for Christmas.
 Thank you for last year and I been good.
 Love,
 Penny Cummings
 Grade 2

Dear Santa Claus,
 I would like to have a Christy for Christmas.
 Thank you for last year, and I have been good.
 Love,
 Lori White
 Grade 2

Dear Santa Claus
 I would like to have a trampoline and a TV for Christmas. Thank you for last year and I have been good.
 Love,
 Cindy Lee Burton.

Dear Santa Claus,
 I would like to have a B.B. gun and a B.B. pistol and a sleep bag for Christmas.
 Thank you for last year and I have been good.
 Love,
 Toby Phillips
 Grade 2
 Spearman, Texas

Dear Santa Claus,
 My name Rebecca Lynn Watts. I want Sweet Cookie for Christmas and a Big Wheel for Christmas and I want a doll, her name sweet April and a red bike for Christmas, and long red boots, and dollhouse with dolls.
 Love,
 Rebecca

Dear Santa Claus,
 I want these things. Tearful Baby Tender Love. Frosty Sno-Man Crunches Out such Super sno-cones and A play ice box, and a play stove with a clock, and a play dishwasher, and some dishes, and a pop corn popper, and a spinning Electric cotton candy maker, and some roller skates.
 Yvonda Scroggs

Dear Santa Claus,
 I have been a good boy, I want a electric train, and I want a Smashup Derby, and I want some BBS, and I want a BBpistol, and I want a new bike, and I want a piggy bank, and I want candles, and I want a football, and I want a sled, and I want a birdcage, and I want a top, and I want a teddy bear, and I want a tent.
 Love,
 Darren

Dear Santa,
 I am a little girl who will be 3 years old in January, I have tried to be good this year.
 I would like for you to bring me a stove and sink, a table and chairs, a cash register and a doll. I will be at Granddad and Granny Williams for Christmas, so will you please leave my toys under their Christmas tree?
 Thank you for the toys that you brought me last year. Please don't forget all of the other boys and girls.
 Your friend,
 Lynette Williams
 1120 S. Harey
 Spearman, Texas

Dear Santa Claus,
 I want Our best box, See-it-bake oven, Claudtte. I have been a good girl this year.
 From Lana Gail Paul

From Scott Turner to Santa Claus.
 Dear Santa, I want this 1. Helmet and jersey blue white. 2. N. F. L. sweat shirt Dolphins. 3. Headache. 4. pom pom Game. Will you please bring me these things? I like to play a lot.
 The End

Dear Santa Claus
 Will you bring me a sweet Coocky doll and a screech and will you bring me A elf doll and a stuff dog and please give me a ride on the slay and will you get my bird a toy.
 Name Sue Ellen Sheets

HELP NEEDY HAVE BETTER CHRISTMAS

STUDENTS at Spearman High School, along with faculty members also, are contributing to a fund which will be used to help some needy family in Spearman have a better Christmas.
 Principal Kenneth McKay, a member of the Spearman Welfare committee, asked everyone to contribute what they could. He suggested giving up one coke a day and putting this dime in the fund box.
 The Welfare committee met last week to discuss plans for

families in Spearman who be needing financial help during the Christmas season.
 The public is asked to help with this community wide project by donating money which will go to help those in need. You can call or see Mrs. Ma Reneau at the treasurer's office in the county courthouse.

Christmas Cantata At Gruver Church

The Chancel Choir of the Gruver United Methodist Church, under the direction of Mrs. Kenneth Irwin, will present the Christmas Cantata "The Story of Love" Sunday evening, December 17 at 8 p.m. in the sanctuary of the Gruver United Methodist Church. An invitation is extended to one and all to participate in this Christmas worship.

Mrs. Fronye Close accompanied Mrs. Alta Morse to nadian Wednesday to visit. Alta's mother, Mrs. Lizzie Benningfield, who is a resident of Abraham Memorial Home there. Mrs. Benningfield is doing too well at this time.

Farmers: Fill your oil and grease needs at discount prices.

FREE

Now you can buy Gulf oils and greases for the farm in any combination totaling 60 gallons and qualify for volume discounts.
 Buy Gulf Super Duty Motor Oil, Gulfube Motor Oil XHD, Gulf All Purpose Farm Grease, Gulflex Grease, and any other oil or grease.
 So long as your combination totals 60 gallons, you qualify for volume discounts.
 Come by soon and look over our selection of products. And if you're a Gulf Diesel Fuel customer, be sure to pick up your free Purolator filter unit.

Gulf

Alton Ellsworth
 Distributor
 500 COLLARD 659-3083

Christmas Gifts that speak for themselves.

An extension phone is a unique gift when you give it. And a practical one from then on. You can choose from a variety of colors and models including mod phones, delicate phones, plain phones and even elegant decorator phones. There's a style just right for your loved one. And, to make your shopping easier call our gift specialist. She'll reserve the phone you want. Then, just pick it up at our business office and put it under your tree. We'll install your gift right after the holiday is over. It will keep Christmas bells ringing throughout the year.



GENERAL TELEPHONE

The people you can talk to One-to-One.

PRE

Christmas SALE

up to 50% off

Friday & Saturday Only

1 rack Jack Winter, Londeen knits. Polyester, washable wool & acrylic. Pants & tops, jackets & blouses to match 20% off.
 1 rack long dresses--tops to match, pants, 30% off
 1 group Junior Petties 50% off
 Register for 3 \$20 gift certificates to be given away Saturday. Redeemable before Christmas.
 The area's most complete line of Pants-Pant Suits and coordinates, with blouses to match

Village Pant Parlor
 Village Shopping Center
 Guymon, Okla.

EVERYBODY READS THE WANT ADS 659-3434

Curton's TV
Phone 659-2121
106 E. Kenneth

FOR SALE: Price reduced on this lovely 3 BR, 2 bath re-decorated home, near high school. Includes quality carpets and drapes, self cleaning range, disposal, dishwasher, central heat and air. Ninety per cent loan available. Emmett R. Sanders, Broker 659-2516; nights 659-2601. 46T-rtm

FOR RENT
FOR RENT—Furnished apt. 606 S. Bernice Street. Phone 659-2652 or 2452. 28S-rtm

LOST
LOST—Black male cat, 2 1/2 years old. Reward offered. 659-2400 or 1108 Wilmeth. Mrs. Bob Collier. 4T-rtm

IRRIGATION EQUIPMENT
NEW: SideRoll Systems
Mover units w/clutches
Electric Center Pivots
USED: 2-180 Vermeers
1-210 Vermeer
Approximately 2,000 8" Flow line
19 joints Gated pipe—40" rows
3, 4, 5 & 6" Sprinkler pipe
WHEELER IRRIGATION
Kelton, Texas
806-926-5838
9 mi E. 3 mi S. of Wheeler, Texas
4T-6tc

Boxwell Bros.
General Home and Power Shop
Night Phone 659-2212
Spearman, Texas

Cummings
Refrigeration and Conditioning
Phone 659-2721
659-2441
EDON CUMMINGS

CLASSIFIED ADS GET RESULTS
Call 659-3434

NSFORD LODGE
1040 F. & A. M.
Regular Communication
2nd & 4th Monday of each month.
W.M., Secy.

WANTED
Local merchants need several telephone receptionists for a few days. No experience necessary, salary. Apply in person at upstairs library meeting room, Thursday evening 6-8 p.m. No phone calls. 4-Itc

WATER HAULING
Ask Kemper. 659-3475. 51T-rtm

Professional Dog Grooming
Boarding. Carmon 118 N. James. 659-3475. 46T-rtm 8p

HELP WANTED—Retired Couple
to operate Service Station in Spearman, Texas. Free trailer space and utilities. Contact Atex Oil Co. 2740 S. W. 45th St. Amarillo, Texas. 46T-rtm

WANTED—Custodian for First Baptist Church
Gruver, Tex. Call Pastor Bill Butts, 733-2152, or 733-2251, Gruver, Texas. 4T-rtm

OPPORTUNITY—One of the areas largest food distributors
has opening for an aggressive salesman willing to travel at least three times a week. Truck route type selling. Must be Man who wants \$1000.00 to \$1200.00 per month. Mail qualifications to Box No 1759 Wichita, Kansas 67201. You will be contacted for an interview. 4T-2tc

FOR SALE
Commercial building on Main. Good residential lots. 80 ft. highway frontage improved with 2 BR stucco house. Your listings appreciated. EMMETT R. SANDERS Broker 659-2516 nights 659-2601 46T-rtm

Listen to HARVEST TIME
9:00 A.M. SUNDAY
KBMF
United Pentecostal Church
Sponsor

UNITED PENTECOSTAL CHURCH
106 S. Bernice
Services 10:00 a.m. and 7:00 p.m. Each Sunday
Spearman, Texas

Good Used Color
General models to sell. Call 2871 or 2871 Goodheat. 52T-rtm

Clinic To Re-Open

The Spearman Clinic, 720 S. Roland, Spearman, Texas will be re-opened on December 12, 1972. It will be managed by Dr. R. D. Stephenson. The clinic will be operated Tuesday thru Friday afternoon on a regular basis.

Family mistakenly eats marijuana as spinach

A Croydon, England, family often used to eat leaves from 10 plants grown in the back garden from seeds sent to them from Jamaica thinking they were "some kind of spinach."
They found out different when police arrested the father, Cecil Samuels, for unlawfully growing marijuana. He was acquitted, but said, "This has really shocked me. My wife cooked the leaves all the time."

Pet lovers declare war on dog farms

Animal welfare associations and individual dog lovers are banding together to wipe out "puppy farms" that are springing up throughout the United States to meet the huge demand for pure-bred dogs.

The American Dog Owners Association reports scores of instances where puppies are confined in cramped, filthy quarters, shipped in flimsy vegetable crates and sold with false pedigrees.

Autumn days call for autumn drinks

By JOHN SINOR
Copley News Service

Clear, brisk autumn days. Cozy evenings by the fireplace. Hot toddies and warm intentions. The eyes glaze up from watching the dancing flames.

I steamed up a little German beer the other evening. An article I read said beer drinkers abroad consider American beer to be in the same category as soda pop.

The English and the Germans like their beer thick enough to almost float a penny. And the English swear it HAS to be warm to be tasted.

"You simply numb your taste buds with cold beer, you know," said an Englishman. Okay, I got some thick German beer and put it in on a pan on the stove. Pretty soon it was bubbling and turning into foam.

I poured it into a stein (the complete continental), let it settle back into beer, and sipped a bit.

It tasted absolutely awful. One of my sons said: "Maybe you have to acquire a taste for it."

I said: "You want a sip?" He took a little drink. He said: "Ugh!"

Back to the drawing board — or, rather, the wet bar. Someday I will concoct the perfect drink for the holidays.

(It's an interesting hobby. It's not the goal that's so important, but the experimenting is pretty interesting work.)

A New Mexico cowboy served me the strangest drink I have ever had. Old Max Evans, the cowboy turned movie producer.

At the end of a long day and a lot of interesting dealings he reached into his desk and said: "Boys, I've got a little something in here I have been saving for a special occasion. It was given to me by some Russians."

Common Market cuts off Norway

The summit conference of the enlarged Common Market opened recently in the 19th Century gilt splendor of the hall that has hitherto served for the Vietnam peace talks.

Two hundred delegates, headed by eight prime ministers, assembled around a beige table 192 feet long. It had hurriedly been shortened by seven feet when Norway voted not to join the Market.

Family mistakenly eats marijuana as spinach

They found out different when police arrested the father, Cecil Samuels, for unlawfully growing marijuana. He was acquitted, but said, "This has really shocked me. My wife cooked the leaves all the time."

Common Market cuts off Norway

The summit conference of the enlarged Common Market opened recently in the 19th Century gilt splendor of the hall that has hitherto served for the Vietnam peace talks.

Two hundred delegates, headed by eight prime ministers, assembled around a beige table 192 feet long. It had hurriedly been shortened by seven feet when Norway voted not to join the Market.

MAN AND MEDICINE

Diabetics, pot smokers have similar problems

By IRWIN J. POLK, M.D.
Copley News Service

Diabetics and pot smokers have similar problems. Some follow instructions and do quite well. Others don't do so well for one reason or another. But there is usually no argument from the patients or other doctors about the nature and seriousness of the problems which present.

Clinics are set up to treat specific medical problems rather than a whole patient. So working in a clinic for skin disease, a doctor gets to see all kinds of skin problems. In the chest clinic there are chest problems and in the heart clinic sick hearts. Even the sick hearts tend to group themselves into just a few kinds of diseases, the sick chests into just a few main chest problems.

Last Wednesday I worked in a diabetic clinic. The patients were mostly women, middle-aged, overweight, under-exercised. Their complaints were quite similar as a rule: excessive thirst, frequency of urination, increased appetite with weight loss nevertheless, itching and blurred vision.

A blood test usually showed an increase in the amount of sugar in the blood. Urine test showed sugar in the urine, and when they were very sick, acetone.

Treatment programs are generally similar. Each patient is encouraged to diet sensibly and lose weight. They are given medicines to lower the blood sugar or sometimes insulin. Progress

is slow for most patients and uncertain. Some follow instructions and do quite well. Others don't do so well for one reason or another. But there is usually no argument from the patients or other doctors about the nature and seriousness of the problems which present.

Clinics are set up to treat specific medical problems rather than a whole patient. So working in a clinic for skin disease, a doctor gets to see all kinds of skin problems. In the chest clinic there are chest problems and in the heart clinic sick hearts. Even the sick hearts tend to group themselves into just a few kinds of diseases, the sick chests into just a few main chest problems.

Last Wednesday I worked in a diabetic clinic. The patients were mostly women, middle-aged, overweight, under-exercised. Their complaints were quite similar as a rule: excessive thirst, frequency of urination, increased appetite with weight loss nevertheless, itching and blurred vision.

A blood test usually showed an increase in the amount of sugar in the blood. Urine test showed sugar in the urine, and when they were very sick, acetone.

Treatment programs are generally similar. Each patient is encouraged to diet sensibly and lose weight. They are given medicines to lower the blood sugar or sometimes insulin. Progress

TG&Y

Store Hours 8:30 A.M. TO 9 P.M. Thru Christmas
THRU SATURDAY—WHILE QUANTITIES LAST!

CHRISTMAS TREES

Douglas Fir

2-3 ft	\$1.77
3-4 ft	\$2.77
5-6 ft	\$3.66
7-8 ft	\$4.49

The Children's BIBLE

The world's greatest book, simply written and beautifully illustrated in full color. New Old Testament.

Approved by an editorial board consisting of the Protestant, Catholic and Jewish faiths.

\$4.95 EACH

Gentle Thoughts Boxed STATIONERY

4 Gentle Thought designs to choose from: Driftwood & Sea in yellow, Meadow Couple in green, Wagon Wheel in gold and Sand Dunes in orange. 22 Sheets, 16 envelopes.

99¢ BOX

Tiny Tonka CARS

Choose from Hot Trike, Sand Roamer, Smart Kart or Stinger.

\$1.37 EACH

NERFOOP

This sporty new version of the Nerf Ball lets you shoot baskets inside without damaging anything. Complete with four-inch ball and hoop.

\$2.44 EACH

SCRABBLE

Standard edition. 2, 3, or 4 Players. Complete with 14 1/2" square playing board, 4 finished racks, 100 polished hardwood playing tiles, full directions.

\$3.44 EACH

Reynolds Wrap

Jumbo Roll

18" x 25'

47¢

Garland

11-3/4" x 18 Ft. Tinsel

Assorted Colors

59¢ BOX

White Spray SNOW

13 Ounce Size

3-1/4" Diameter Self Stick

47¢ EA.

Men's & Ladies' BILLFOLDS

YOUR CHOICE

Top grain cowhide in assorted colors. Billfolds, french or clutch purses.

\$2.99 EACH

Styrofoam Cups

Hot or Cold

51 Count

27¢

Foil or Paper GIFT WRAP

The "makings" of a beautiful package. Two styles: 5-roll foil, 26" wide, 30 sq. ft. OR, 6-roll paper, 26" wide, 65 sq. ft.

77¢ PKG.

Fancy Tinsel ORNAMENTS

Dazzling beauty in 2 inch round or oval shapes. 12 Per box. Assorted hand painted designs to make your Christmas tree unforgettable.

87¢ BOX

ARJONA'S CAFE
Now Open
28 So. Haney st.
Spearman.
MEXICAN FOOD
at its best.
Phone 3613
we also prepare orders to go.
Stella Arjona

YAMAHA
From 60 and 80 Mini-enduros to TX750 Street
This Christmas we have for you the best selection of Yamaha models to be found and at the Best Prices
Price reduced up to 15% on 1972 models and used cycles
Layaways and Quick financing
Open Mondays through Saturday 9:00 to 8:00
Sundays 1 p.m. til 5 p.m. until Christmas
EAGLE CYCLE SHOP
10 S.W. 4th Box 363
PHONE 435-3594
PERRYTON, TEXAS 79070
2S-8tc

Listen to HARVEST TIME
9:00 A.M. SUNDAY
KBMF
United Pentecostal Church
Sponsor

UNITED PENTECOSTAL CHURCH
106 S. Bernice
Services 10:00 a.m. and 7:00 p.m. Each Sunday
Spearman, Texas

FOR SALE
Commercial building on Main. Good residential lots. 80 ft. highway frontage improved with 2 BR stucco house. Your listings appreciated. EMMETT R. SANDERS Broker 659-2516 nights 659-2601 46T-rtm

County Agent Report

by Joe Van Zandt

Copies of the Farmers Tax Guide, 1973 Edition are now available in our office in the Courthouse basement. This guide explains tax rules that are of particular interest to farmers and it should help you prepare your Federal income tax return for the 1972 year. If you are unable to get by the office to pick a copy up, call me at 659-2136 and I will mail a copy to you.

Now is a good time to see if you can save some money on your 1972 income taxes. Before the year comes to an end, a person interested in reducing taxes should figure out where he stands on income and expenses for the year-to-date. Then a person may have several alternatives of shifting either additional income or expenses over to next year.

With the weather being as severe as it has been on everything including livestock, I would like to remind cattlemen that cattle get more heat for their body from the digestion of roughage than the digestion of concentrates. Therefore in very cold weather cattle should certainly get a lot of roughage to eat as the digestion of roughage helps furnish body heat. Cattle also need some good source of energy and protein in their ration but these items are becoming scarce and almost impossible to find, especially the cake and cubes.

Christmas trees will soon be the center of attraction in many homes and the problem of keeping them safe becomes vital. Here are several suggestions which may help prevent dangerous problems.

The base of the tree should always be placed in water. A Christmas tree with its base immersed in water has far less potential to catch fire. Furthermore, this practice preserves the fresh greenness of the foliage. Check the water level frequently. The tree may require as much as a pint of water per day.

Adding aspirin, sugar or any other substances to the water does not increase the water uptake of the tree.

Keep the tree away from all sources of heat, such as fireplaces or heating units. Use a

fire screen to contain flying sparks which might ignite the tree.

The lighting system should be in good working order. Inspect and discard wires with frayed insulation, broken sockets and loose connections. Don't overload electrical circuits.

If needles on the tree touch a bulb, they dry out and a fire could start if the contact is for long periods. Keep the base of the tree free from combustibles. If the tree accidentally topples, make sure it won't block a passageway or touch something that could be ignited.

It's best not to leave tree or other lighted decorations on while no one is home. The longer the tree is left in the home, the more combustible it becomes.

By removing combustible Christmas wrappings as soon as possible, another potential cause of fire can be stopped.

By following these precautions, a fresh, attractive tree will provide a holiday season free from any dangerous mishaps.

County Agent Receives Award

According to a news item in the Kiowa County Signal newspaper, Greensburg, Kansas, County Agent Tom Whitson has received a cash award and certificate for writing the best column, "Tips From Tom" that appears weekly in the Kiowa County Signal won the "State Best" for the north central region. Whitson entered his column in the contest.

Tom is the son of Mr. and Mrs. Jack Whitson of Spearman.

Another of the Whitson's sons, Bob Whitson, is finishing up his PHD degree at Texas A&M in Agriculture.

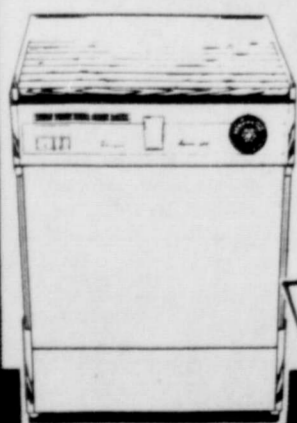
Both of these boys were very active in 4-H work at Spearman High School and are now actively engaged in this line of agriculture work. They both received this ground-work at Spearman High School.

Calling All Clubs

The holiday season is here, and this means that many clubs and women's organizations will be having teas, special club meetings and dinner parties in the near future. The Women's Department of this newspaper wants to help your organization get full recognition of activities. To further this, we have available special forms on which club news may be listed for publication in these newspapers. The club forms will be mailed to all club reporters on request... or they may be picked up at the news office.

We do want to give space to ALL organizations, and we urge you to report to us your news so we can get it in the paper. If you have any questions please call 659-3434.

Features 2-speed action and in-the-door silverware basket



• Two washing speeds: GENTLE and SUPER • Four automatic cycles with pushbutton control • Automatic rinse-conditioner dispenser • Reversible maple cutting board top • Two full-size revolving spray arms • Full-time self-cleaning filter • Hideaway separate hose and cord storage

\$299⁰⁰
Model SXF-500

Whirlpool IMPERIAL FRONT-LOAD PORTABLE DISHWASHER

B & B Sales Co.



SANTA'S HELPERS



The friendly Spearman merchants who accept BankAmericard are, indeed, helpful to Santa by letting you use your BankAmericard for purchasing just about anything and everything you need.

You receive only one statement for all your Christmas purchases, and convenient monthly payments keep the family budget in sound order.

These Merchants Welcome BankAmericard.

- | | |
|---------------------------------------|--|
| Burton's T.V. | Spearman Floral & Gifts |
| Reed's Family Shoes | Douglas Duds |
| Snider Pearson Conoco | DeAnnes - Gruver |
| PSA bernitics-Silva Mind Control Inc. | Cates Men & Boys Wear |
| J. L. Brock Agency | C. & B. Studio |
| Owens Sales Company | Neelys' |
| Ms. C | Altons Gulf Service- Spearman & Gruver |
| R. L. McClellan & Sons | Chambers Dry Goods |
| Massads | R. J. M. C. Inc. |
| Lady Fair | Western Auto Store |
| Gordons' Drug | Spearman Drug |
| Spearman Jewelry, | T. G. & Y. |

THE FIRST STATE BANK, SPEARMAN WILL BE CLOSED ON THE FOLLOWING DAYS, MONDAY DEC. 25th & MONDAY JANUARY 1st.

FIRST STATE BANK

SPEARMAN, TEXAS MEMBER F.D.I.C.

Car Ownership at Peak in Hansford County

It is apparent in Hansford County that the number of cars has been on an auto-buying spree in the two years. The number of shiny new cars in the area and in the registration figures. The latest published reports show that, at the beginning of the year, there were more automobiles locally, per 100 families, than in most counties.

As of January 1st, some 141 passenger cars were registered in the county, equating to 162 for every 100 families.

There was a bigger proportion of late-model cars in the United States, where the rate was 141 per 100 families.

In the State of Texas it was 149 per 100. As a result, the car density in the local area, as well as the number of two-car and three-car families, are now greater than ever.

The facts and figures on the car population, with respect to ownership and distribution, are from the latest consumer market reports released by the Standard Rate and Data Service and from the annual report of the Automobile Manufacturers Association.

The growing proportion of late-model cars in and around Hansford County is a sign of the rising purchasing power in the area. With local families moving higher on the income scale, they have become more expansive, buying bigger and

more luxurious cars than they had before.

Also, to a greater extent, they have been retaining their old cars instead of trading them in when getting new ones. As a consequence, the number of two-car families has been expanding rapidly.

The net result is that passenger car registrations in Hansford County have increased 6 percent in the last five years. The number in operation has grown from 3,150 to 3,340 in the period.

With more cars in use, more money is being spent annually for maintenance. The expenditures in the past year in local service stations for gas, oil, repairs and incidentals came to more than \$1,420,000.

At the end of the year. "In addition, purchases of needed glasses, dentures, drug supplies or other medical and health needs may be made before the end of the year to increase the deductible amount.

Providing the surgeon agrees, already prescribed surgery might be scheduled before the year's end enabling the patient to pay and include the costs as part of his medical expenses this year.

Turning to exemptions, Mrs. Myers noted that the dependent exemption is now \$750. "An extra exemption may cut the tax bill. Taxpayers already aiding a dependent parent or other close relative might want to increase their aid so that the 1972 contributions make up more than half of the dependent's total support--thus entitling the taxpayer to an extra exemption.

"Parents can claim an exemption for a supported child under 19 even though the child earns \$750 or more. This rule also applies to a supported child in school--regardless of age. Both parent and child may claim a tax exemption on their separate income tax returns.

"For 1972, a child may earn \$2,050 without paying any tax--however, a return must be filed by April 15 to get a refund of any taxes withheld from his earnings.

Mrs. Myers added that marital status may make a difference in tax liability. "Couples already planning a marriage in 1973 may want to consider moving the date to December, 1972, so both husband and wife can use income-splitting provisions of the tax law for both 1972 and 1973.

"For persons with larger incomes, tax savings can be con-

siderable. "Income splitting may not be profitable in all cases," she cautioned. For a couple with small income, this may increase the amount of taxes owed.

"In most cases, taxpayers find it advisable to keep income and deductions in about the same proportion from year to year," Mrs. Myers concluded.

spread through much of the West and Midwest. Many of the 2,000 to 12,000 pheasants annually harvested in the Texas Panhandle descended from birds which drifted in from Colorado, Oklahoma and Kansas.

The Texas Parks and Wildlife Department first released pheasants in the Panhandle 20 years ago.

The birds expanded their range as crop irrigation increased. The department determined that there were enough birds for a limited season in 1968.

Later, all Panhandle counties along the northern tier of counties had enough birds to interest hunters.

The department is also experimenting with ringnecks along the Gulf Coast with some promise of success.

left to watch over the first deer. The group of illicit hunters, gunshot victim included, walked a quarter of a mile back to the car and drove to the nearby town of La Pryor.

The victim was hospitalized and the entire group charged for trespassing and illegal hunting by Parks and Wildlife Department Game Management Officers Rep Moore and Jim Pond, both of Carrizo Springs, and Raymond Custer of Uvalde.

Mr. and Mrs. Fred Jones of South Fork, Colo. is here in Spearman for a few weeks. Mr. Jones is maintenance advisor for Baker & Taylor shops, incidentally they are former Spearmanites.

Recent guests in the home of Mr. and Mrs. W.H. Gandy were her brother, Mr. and Mrs. Lee Norman of Trenton, Texas, her niece Mr. and Mrs. Louis Amick of Plainview and another brother Mr. Clyde Norman of Walla Walla, Washington. Mr. Clyde Norman has been visiting in their home the past two weeks.

PANHANDLE PHEASANT SEASON OPEN

SAN ANGELO--More than 1,000 square miles of Panhandle pheasant range is now open to hunters as of Dec. 9.

Texas Parks and Wildlife biologist Jim Dillard of Dum-as reports a 30 percent increase in the gaudy birds since last year.

Dillard says that the best hunting prospects are south of the Canadian River with perhaps a slight decline in birds north of the river.

Biologists observed a 65 percent increase in pheasant hens with about four chicks per bird.

Only pheasant cocks, however, may be taken in the Dec. 9-Dec. 17 season, with a bag limit of two birds per day and four in possession.

The heads and feet must remain on the bird as proof of sex.

A mild winter, better habitat and a good survival of last year's birds has ballooned the ringneck population.

An Asian import, the first ringnecks came to the U.S. back in the late 1880s and

MAN WOUNDED DURING ILLEGAL HUNT

LA PRYOR--Five San Antonio men parked their car along a lonely South Texas road in mid-November and, unwittingly, slipped over a ranch fence to do a little hunting.

The hunters shot a doe which they recovered and wounded another deer.

Some of the men started off to trail the wounded animal. Darkness started to fall and the party headed back to the rest of the group.

The apprehensive hunters saw some movement back where the deer was killed and fired off a shot in its direction. The 30.06 slug landed in the stomach of one of the men



MIST-AIR HOT COMB
STYLER/DRYER

FROM REMINGTON

- Lightweight... easy to handle
- Tames unruly hair in seconds
- Built-in, controlled pre-dampener
- Increased air-heat flow

Spearman Rexall Drug
PHOTO-FREE DELIVERY

Two Registered Pharmacists
659-2226 CRUVER NUMBER 733-2021

Year-End Income Tax Savings

COLLEGE STATION--"It's not too late to save money on 1972 income taxes."

According to Mrs. Doris Myers, home management specialist with the Texas Agricultural Extension Service, Texas A&M University, "a few tax-cutting steps that can be taken before Dec. 31 may be worth considering.

"In general, if the taxpayer's income is considerably larger this year than it will be in 1973, he may want to arrange to pay as many deductible items as possible in 1972."

"On the other hand, if his income will be much larger in 1973, he may want to do exactly the opposite and plan to pay and include the deductions next year," she advised.

She outlined several tax-cutting steps for taxpayers who want to claim as many deductions and exemptions as possible for 1972.

"For instance, deductible items such as pledges to church and charity might be paid ahead of schedule, or larger contributions can be made before the end of the year, possibly cutting the amount for 1973.

"Also, interest on debts sometimes can be paid early.

"Persons planning to borrow money early in 1973 may want to borrow it now and arrange to pay part of the interest before the end of this year.

Mrs. Myers suggested paying real estate or personal property taxes before the year's end or even buying an already planned-for car to get the benefit of deducting the extra sales taxes.

"The tax law provides that medical expenses can be deducted if they exceed three per cent of the adjusted gross income.

"Medicine and drugs are included in deductions if they exceed one per cent of the adjusted gross income.

"It may be advantageous to pay as many medical expenses as possible for the years to carry the total into the deductible range," the specialist noted.

"For instance, the taxpayer may want to pay off all outstanding medical bills before

LETTERS from READERS

enjoy your column "Let's see" in the Spearman Reporter very much. Others do we clip them out to pass on to others to enjoy and then mail them to relatives. It's the good work.

Read with interest your recollection with a paragraph mentioning persons with ailments against the postman's mail in the wrong box. I wholeheartedly wish that our mail carriers do a job with all the they have to deliver. My wife is the people who mail in their box to either return it to us or to a post office so it is delivered to the right place.

Truly,
Linda Edwards

Oct. 20 and has been confined at home ever since. However the Doctor has said he can start back to work at the hospital here on December 17 for which we are very thankful. We appreciate our Spearman friends remembering us in their prayers. We miss the good people there and the "small town" closeness and atmosphere. Our years in Spearman were good years. The snow pictures in your paper look beautiful. He have had some here in Plainview, but nothing like those there! Merry Christmas to all.

Mr. and Mrs. R.E. Bradford
1612 W. 12th St.
Plainview, Tex. 79072



Hansford Hospital Report

Patients in Hansford Hospital are Margarita Jenkins, Lucy Terry, Margaret Goble, Gordon Parrish, Mary Nava, Mikie Richeson, Marietta Hughes, Maurine Erling, Anna Marie Stedje, Don Allen, Earlene Chambers, Oliver Barnes and Wonnice Walton.

Dismissed were Leone Jones, Gertrude Jones, Linda Thomas and daughter, Mike Close, Charlotte Saucedo and son and James Pierce.


APPLY NOW
Train You to Work As
LIVESTOCK BUYERS

You have some livestock experience we will train you to buy cattle, sheep and hogs.

In a local interview, write with your background. Provide your complete address and phone number.

LIVESTOCK BUYERS, INC.
Box 1181
Des Moines, Iowa 50311
Training Cattle and Livestock Buyers
4-22L

AS MOM WHIPS UP
HOLIDAY DISHES ...electricity whips through oven cleaning



Oven cleaning after baking, broiling and roasting doesn't need to be a problem for Mom.

Give her a new electric range with a self-cleaning oven... but give it early so she can enjoy the pleasure of holiday cooking without oven clean-up. Clean, dependable electricity does the work for her, cleaning the entire oven, even hard-to-reach corners.

See your electric appliance dealer soon.

COMMUNITY PUBLIC SERVICE
Your Electric Light & Power Company
An Equal Opportunity Employer

TG&Y

PRICES GOOD IN ALL 5¢ to \$1.00 STORES AND FAMILY CENTERS - WHILE QUANTITIES LAST!

These Prices Good Only from 7 to 9 p.m. Friday

MOONLIGHT SALE

Save 25% to 50% On Hundreds Of Items

Friday Nite SHOP 'TILL 7:00 to 10:00 P.M.

Save \$\$\$ - Look For Moonlight Sale Signs! Check all departments for Fantastic Values! Items will vary by stores.

ATC 90 RID'EM TOY

Plastic and metal construction. Perfect ride 'em toy for any small child. Scoots along the ground really fast! Pick one up today!

Reg. \$4.99
\$3.99 EA.

100% Polyester

Double Knit

Flat Fold
2-6 yd. pcs.
\$1.56
yd.

SUPER RACER RIDEM

Made from colorful plastic. Car is steerable, and comes completely assembled. A sure winner every time!

Reg. \$4.99
\$2.66

Ride-Um Worm

Durable Plastic Construction

\$1.99

Wonder

Rocking Horse

Reg. \$16.88
\$10.88

Color Pac Film

Polaroid Type 108

\$3.33

INDY RACER

Authentic Replica!

Reg. \$2.00
99¢

18" Long. Chrome trim, wide tires.
Our Low Price...

HOT COLUMN 1 ITEM ONLY

Padded Toy Box	Reg. \$17.99	\$13.88
Pool Table	Reg. \$16.88	\$12.88
4 Only Fisher Price Play Family AIRPORT	Reg. \$16.88	\$8.88
10 Speed BICYCLE	Reg. \$79.88	\$50.00
Maple Doll Bed	Reg. \$8.99	\$6.44
Ride-um Peddle Car	Reg. \$12.88	\$8.66
General Electric Show'n Tell	Reg. \$29.95	\$25.88
2 Only Gator-Bug Peddle Car	Reg. \$15.88	\$9.33

Sweet

Cookie Doll

She mixes pudding cookies, hair is easy to comb.

Complete with Jello and dish.

\$8.88

Reg. \$12.88

Empire ATV "Scrambler"

RID'EM TOY

All terrain vehicle ride 'em toy. Real rocking action. 20" x 12-1/2" x 12"

\$3.99

Reg. \$4.99

EMPIRE

FRING SOUND RIFLE

Makes big "POW" sound 27" x 8". Sturdy plastic construction. Every cowboy's favorite.

99¢

THRIFTWAY
Shurfine RSP PIE CHERRIES Tall Can 25¢
Del Monte PUMPKIN Tall Can 18¢
"None-Such" MINCE MEAT Large 28 oz. 69¢
Ocean Spray-Quart Cranberry Juice 69¢
Dromedary 8 oz. PITTED DATES 33¢
Liberty Whole 4 oz. Candied Cherries 4 for \$1
Fresh Orange Slice CANDY lb. 29¢
Alcoa Heavy Duty FOIL WRAP 18" x 25" Roll 39¢
TERI Jumbo Roll TOWELS 3 for \$1
Walach CLOROX Half Gallon 33¢
Detergent PUNCH Giant Box 59¢



BUY YOUR TREE FROM THE SCOUTS

PRE CHRISTMAS SALE

AT

THRIFTWAY

Food Makes A Perfect Gift

PRICES EFFECTIVE DECEMBER 14THRU 16, 1972. WE RESERVE THE RIGHT TO LIMIT QUANTITIES, NONE SOLD TO DEALERS.



SWIFT BUTTERBALL
TOM TURKEYS
16-LBS. AND LARGER
49¢
lb.

SWIFTS BUTTERBALL
HEN TURKEYS
10 to 14 LB. AVERAGE
59¢
lb.

"Texas Pride" Shelled
PECAN MEATS
10 oz. Bag **1.09**

SHURFINE FULLY COOKED
BONELESS HAM 3 Lb. CAN \$2.99

Wright's
SLICED BACON 2 LB. PKG. \$1.49

Shurfresh
FRANKS 12 oz. 59¢

Del Monte
TOMATO JUICE 46 Oz. Can **29¢**

Imperial Cane 10 lb.
SUGAR **99¢**

Eagle Brand
MILK **36¢**

WITH 20¢ IN AD COUPON BELOW
MAXWELL HOUSE
COFFEE **69¢**
1-LB. CAN

BAKERS ANGLE FLAKE
COCONUT **49¢**
14-oz. BAG.

Betty Crocker-Layer
Cake Mix **33¢**
Box

3 lb.
SHORTENING 66¢
48-oz. CAN

Shurfine Red-Tail
Kidney Beans 19¢
Can

Shurfine 2 lb.
Pinto Beans 33¢

Shurfine Yellow
Popcorn 25¢
2 lb. Bag

Uncle Ben's
Wild Rice 89¢
6 oz.

Fishers Raw
Peanuts 39¢
12 oz. Bag

Produce

Fresh Red Rome 3 lb. Bag
APPLES **39¢**

English Walnuts
lb. **59¢**

ARIZONA
TANGERINES **39¢**
3-LB. BAG

Fresh Roasted Portales lb.
PEANUTS **39¢**

Solid Crisp Heads Iceberg lb.
LETTUCE **17¢**

Frozen Foods

Dutch Ann
Pie Shells Pkg. of 2 **25¢**

Shurfine Sweet Halves
Strawberries lb. **59¢**

4 1/2 oz. Topping
Cool Whip **33¢**

Weichs 6 oz.
Grape Juice **22¢**

Krafts
MARSHMALLOW CREME Pint **33¢**

Hersheys
CHOCOLATE CHIPS 12-oz. BAG **39¢**

F & C French Fried
ONION RINGS Tall Can **33¢**

DAIRY SPECIALS

Shurfresh 8 oz. Can
Biscuits **7¢**

Food King Solids
OLEO lb. **15¢**

Borden's
Yogurt 8 oz. **33¢**

Shurfresh 10 oz. Coiby
Cheese **69¢**

Swanson's
CHICKEN BROTH Tall Can **19¢**

Shurfine FANCY
TOMATO SAUCE 8 oz. Can **9¢**

Campbell's Cream of
MUSHROOM SOUP **16¢**

Shurfine 4 oz.
CARNATION MILK Tall Can **19¢**

Mycos-Natural 8 oz.
OYSTERS **57¢**

Martineilli 1 Gal.
APPLE CIDER **99¢**

Gerbers Strained
BABY FOOD **9¢**

Shurfine 4 oz.
BLACK PEPPER **35¢**

COUPON
20¢ OFF MAXWELL HOUSE COFFEE
1-LB. CAN **69¢**
WITH THIS COUPON EXPIRES DEC. 16, 1972
THRIFTWAY

COUPON
15¢ OFF LIQUID SHAMPOO PRELL
LARGE SIZE **59¢**
WITH THIS COUPON EXPIRES DEC. 16, 1972
THRIFTWAY

COUPON
15¢ OFF DETERGENT BOLD
GIANT BOX **69¢**
WITH THIS COUPON EXPIRES DEC. 16, 1972
THRIFTWAY

Special Reduced Prices On Fresh Fruits By The Box

Assorted HI-C DRINKS 46 oz. Can 27¢
Hunts Cling PEACHES no. 2 can 25¢
Shurfine Cut GREEN BEANS 303 can 18¢



CUT RATE

THRIFTWAY

BUCCANEER STAMPS
Plains Shopping Center
Spearman, Texas