

## THANKSGIVING SERVICES

First Baptist Church  
 Monday, 7:00 p. m.

The public is invited to attend the community-wide Thanksgiving program, sponsored each year by the Spearman Ministerial Alliance. The program has been set for 7 p. m. Monday, Nov. 20 in the First Baptist Church. Music will be furnished by the host church. Bringing the special Thanksgiving message will be Rev. Wesley Daniel, pastor of the Methodist Church. The offering which will be taken at this gathering, will be used by the Ministerial Alliance to help with expenses of the community-wide revival which this group is sponsoring. The revival will be held in Spearman in January. Participating in the Monday night program will be Rev. Don Wisdorfer, First Christian Church; Rev. Ray Christenson, Union Church; Rev. B. T. Shoemaker, First Baptist Church; Rev. T. J. Taylor, Assembly of God; Donald Rusch, Sacred Heart Catholic Church and Rev. Walter Zenah, Presbyterian church pastor.



## New Building Signals Gruver Bank Growth

The Gruver State Bank opened for business on September 1, 1946 in the lobby of the Gruver Hotel. The bank had a working capital then of \$25,000. Sunday, November 19 huge bronze doors will swing open to an invitation for the area public to view a brand new banking facility representing an investment of over three hundred thousand dollars. It will be a far cry from 1946, when the first bank call only \$705, 883. This was a quarter-century ago. Today's bank's total resources are well over eight million dollars. The new Gruver State Bank building, located on the city's main street, will be open for public viewing between the hours of 2:00 to 5:00 p. m. Sunday, November 19. A. R. Bort, president of the Gruver State Bank, issues a special invitation to the general public to attend the opening festivities this Sunday. The opening of this new banking facility marks a fresh milestone in the career of its president, Ralph Bort. The new, modern building represents his realization of a long-standing desire to provide the Gruver area with physical facilities that match the bank's services and standing in the community. That the Gruver State Bank has provided outstanding services to the area is evidenced by its growth. Synonymous with the Gruver State Bank for the past quarter century have been three men: A. R. Bort, who was listed as Vice President when the bank opened; R. L. (Bob) Thom, cashier of the 1946 bank, and J. C. Harris, a board member. These are the three original directors, Mr. Thom, who served as vice president for many years, has retired but remains on the board of directors. Harris has served on the Board of Directors through all the years of growth. Serving as officers and directors of that first Gruver State Bank were Coy Holt, who served as President until 1954. When Mr. Holt died, Ralph Bort was elected president, a position he has held since. R. L. Thom was cashier and Directors were: Gay Fletcher, J. C. Harris, L. H. Gruver, William F. D. Etling and A. L. Thoreson. During ensuing years various other stockholders served as directors including D. G. Cluck, A. R. Henderson, P. H. Westerfield and B. F. Simms. Present directors besides Bort, Thom and Harris, include S. R. Cluck, Pat Holt, Bob Cluck and Nick Holt. Officers are A. R. Bort, president; Kenneth Irwin, Executive vice president; R. L. Thom, vice president; Robert Ewing, cashier, H. L. Curlee, assistant cashier and Richie Fletcher, assistant cashier. In 1948 the bank moved from its hotel lobby quarters, into a new building, just across the street from the Gruver Hotel. It has continued to serve from this location until this week when, once again, it relocated, into larger, grander and better equipped facilities. January of this year saw the actual physical beginning of the present building when groundbreaking ceremonies were held. Officers and directors issue a special invitation to the general public to attend opening at the new Gruver State Bank this Sunday between the hours of 2-5 p. m.

## Weather Continues To Make News

The weather continues to be the top news story around the county, for it is definitely hampering and dampening the harvesting of one of the largest milo crops on record. The past week has seen two severe windstorms, one last Thursday with wind velocities registering around the 50 MPH zone in gusts. Monday of this week, the area was again blasted with strong winds. The ice storm on the first of November which left maize stalks bending under its heavy coating... reportedly this has tested and tried the milo crop severely, but the sturdy stalks still stand. Worried farmers, anxious to get the crop of grain in the bin, are wondering how much more (and how much longer) the maize can stand! Several farmers and elevator men were asked Tuesday of this week to estimate the percentage of maize fields already harvested, and all estimated only 25% of the harvest was complete. This leaves the majority of the projected "bumper crop" still in the fields. October rainfall totaled 0.88 of an inch. This brought the year's total to 15.23 inches. November came in with the first real winter blast of the season with the first day of the month dumping 0.68 of an inch of moisture in the form of ice and sleet. Again on November 12, old man winter revealed himself, dropping temperatures to 21 degrees... the coldest yet for the season. Moisture--in the form of rain, mixed with snow, left 0.25 of an inch of moisture in the official gauge at the Billy Haden residence in Spearman Sunday night. The .68, and the .25 moisture recordings leave November with a total of 0.93 of an inch thus far, and "this is that" which is delaying harvesting maize. The week's weather chart follows:

date	hi	low	prec.
Nov. 8	68	42	
Nov. 9	58	39	
Nov. 10	60	28	
Nov. 11	62	33	
Nov. 12	54	41	0.25
Nov. 13	50	31	
months total			0.93



LITCH (JUNIOR) SPARKS, right, became Postmaster at the Morse postoffice in official swearing-in ceremonies held there Monday morning. C.T. Davis, left, Regional Manager from Amarillo, administered the oath of office. Sparks, a native of Spearman, has been employed with the Stinnett post office for several years. At Morse, he replaced Mrs. Jane Davis Reid who resigned her position as postmistress. On hand for the ceremony were Ray Robertson, Spearman Assistant Postmaster and L. H. Searcy, Stinnett Postmaster.



A TWO CAR COLLISION--about 8 a. m. Tuesday morning just west of the Horse Creek bridge on the Gruver highway, left Linda Morris suffering from severe neck injuries. The Morris woman, parked on the side of the road, according to Sheriff's officers, evidently did not see an on-coming pickup and made a U-turn onto the highway into the truck's path. Driver of the pickup, Jimmy Vanlandingham, was treated at the hospital and released. Linda Morris was transferred to an Amarillo hospital. Both vehicles were demolished.



## MR. & MRS. GEORGE COLLARD OPEN NEW BUSINESS HERE

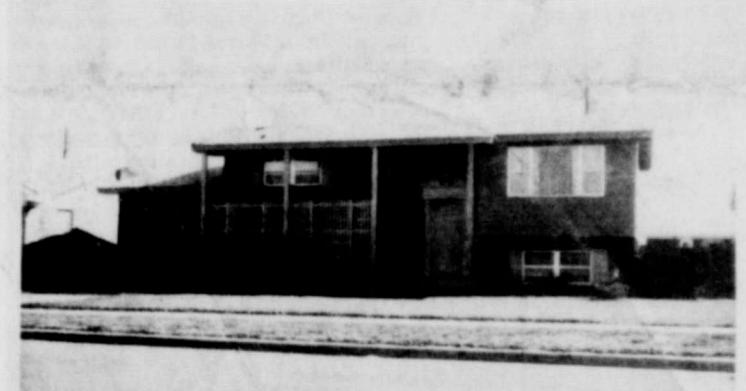
GOD'S CORNER--a unique new business opened in Spearman Wednesday. Located at 411 Davis Street, the store is owned and operated by Mr. and Mrs. George Collard. Besides religious books and Bibles, stock consists of top brands in tape recorders, cassette players, records, bumper stickers, Christian jewelry plus many other attractions. This newspaper joins all the Collard's many friends in welcoming this new business to our city.

## WYATT ADKINS FUNERAL RITES HERE, TODAY

Wyatt Adkins, 45, died early Tuesday morning in Hansford Hospital following a long illness. Funeral services will be held today, Thursday, Nov. 16 at 2 p. m. in the United First Methodist Church, Spearman. Officiating will be the pastor, Rev. Wesley Daniel, assisted by Bill Osborne, Church of Christ minister. Burial, by Boxwell Brothers Funeral Home of Spearman, will be in Hansford Cemetery. Mr. Adkins came to Spearman in 1948 from Clarendon. He operated the Humble Service Station, and other gas stations here, all these years. Survivors include his wife, Cleo, of the home; his parents, Mr. and Mrs. M. L. Adkins of Amarillo; four sisters, Estella Adkins of Amarillo; Mrs. Kathy Crawford, Sunray; Mrs. Sue Boggs, Choctaw, Okla.; Mrs. Elizabeth Baker, Dallas. Two brothers, Bill & Morris of Amarillo; his maternal grandmother, Mrs. J. H. Ashcraft of Clarendon.

## Ed Dear Pushing LS pills

A well known Spearman man, Ed Dear, is announcing in the advertising column of this newspaper a new business which is of most interest to livestock men and cowboys. Dear's new business venture, Livestock Specialties Co., will be dealing in livestock medicines as well as stock trailers, portable panels, loading chutes and assorted equipment cowboys need such as saddles, ropes, leather chaps, etc. Turn to the advertisement in this newspaper and become familiar with Edward Dear's products and services offered through the Livestock Specialties Company. Ed does not operate from an office building, but does have storage facilities located in Spearman suitable for maintaining his supply stock.



THE G. K. RUPPRECHT residence at 1111 S. Townsend is another one of the homes open to the public Sunday Nov. 19 during the annual home tour sponsored by the Spearman Study Club. The home was built by A. R. Macias, a Perryton builder, in 1964.



PERSONS MAKING THE tour of Spearman homes Sunday, November 19 from 2 to 5 o'clock will be shown through this lovely home of Mr. and Mrs. Roy Bulls, 725 Gibber Drive. The two-story home was constructed in 1962 by Ed Herlacher of Pampa. Other homes open to the public Sunday include these: Travis Davis, 1102 S. Bernice; Troy Sloan, 1008 Blodgett Drive and Britt Jarvis, 1110 Wilmet Drive.

## MR. CASH DIED AT REST HOME

Mr. Floyd Cash, 67, a resident of Pioneer Manor rest home in Spearman for the past several years, died Sunday morning at the home. Mr. Cash was a former Floydada resident and funeral rites were held in that city. He was born October 13, 1905. Survivors include four children and two sisters.

## LYNX TITLE AT STAKE FRIDAY

The Spearman Lynx will lay the district title on the line at Phillips Friday night. The Lynx will take a record of 8 wins and no losses and one tie into the rivalry game against the Blackhawks. The game last year was a 48-16 win for the Hawks and the Lynx want to even the score. The Lynx have never beaten the Blackhawks on their home field. This will be the deciding game for the Lynx and they must win this game in order to stayed tied with Panhandle if they beat Stratford Friday. The Lynx will be at their highest of spirits for the game because there is a lot riding on the game. The Lynx have a chance for the district Championship, the first undefeated season in the schools history, and the right to meet Childress after the toss of the coin this week. The Lynx have suffered a blow in their backfield this past week as half back Scott Latham suffered a knee injury in the Stratford game last week. Scott underwent surgery last Saturday to repair torn ligaments and cartilage damaged to his right knee. The Lynx will have the same men in the backfield except for Scott and it is not known at this time who the Lynx coach will replace Scott with. The Lynx still find that their team is sound and can beat the Hawks on their own field this time. The spirit is high at the school this week and the Lynx are ready for victory No. 9 and the chance to toss the coin to see who will meet the Bobcats of Childress who are ranked No. 1 in the State. The support of the fans Friday night will be the biggest factor in the game, so everybody try to attend the game and let's back our Lynx team all the way past Childress and maybe to the State finals. The coaches feel very confident in the Lynx about the game and the boys want the winning record to continue as much as anybody so we really need to back the boys in this game and hope for the best in the coin toss Friday night.



LOWELL THOMAS

**ONE NATION UNDER GOD**  
an editorial  
by Lowell Thomas

Young people in our own country and in other lands as well, often ask me, "Who are we, and where are we going?" I suppose they do this because they know I have spent my life roaming the globe, coming in contact with people of all types, nearly everywhere. Therefore, maybe, maybe in Tibet or somewhere I had found the answer to this age old question. Alas, I have to disappoint them. But sometimes I tell them I am sure a partial answer can be had if we look back and check on how, historically, we got to be the way we are--as a nation. To do this above all we must understand our own religious background, and the same for any other nation.

During more than six decades my travels have taken me to nearly every country on the planet. Everywhere religion plays a predominant role in the lives of all human beings. Our own religious background has and still does mean so much in American history that the United States Supreme Court has called attention to its importance in the field of education. In its rulings on religion and education our highest tribunal has specifically encouraged public schools to teach about religion, all religions.

The role of religion in history, art, literature, language, music, and other subjects, is emphasized by our Supreme Court. However, there has been a shortage of material available for use in schools. To help fill this void one of the most distinguished authors and pulp personalities of our time has written a booklet. His aim in it is to try and help all of us reach a better understanding not only of our American religious heritage but of the right--and need--for young people to begin learning about this in the classroom.

The title of the booklet is ONE NATION UNDER GOD. The author is Dr. Norman Vincent Peale, who in my global travels I have found is as well known in most other countries as he is here in America. Sitting next to me on a trans-Atlantic plane on one occasion was a six foot four Scot enroute to Australia. His objective was to buy up a large part of the Merino wool in the lands "down under," and ship it back to the woolen mills in Scotland. He told me how on his way across America his number one wish was to meet the legendary Dr. Peale.

This new booklet features the basic facts about the religious life of America right from the days of Columbus, who attributed his discoveries to "Divine Guidance," to the astronauts who read from the Bible as they made their historic first voyage around the moon.

Wanting to be sure his presentation was objective, Dr. Peale produced the booklet with the cooperation of others. That is, he obtained editorial advice from men and women of various religious traditions--Protestant, Roman Catholic and Jewish. The story he tells us is strictly non-sectarian. It emphasizes the part our religious heritage has contributed in the building and strengthening of this great country.

As a contribution to the cause of religious liberty, Dr. Peale has arranged for the booklet to be distributed at no cost to schools, from coast to coast. This is done by the non-sectarian, non-profit FOUNDATION FOR CHRISTIAN LIVING in Pawling, New York, which regularly makes his sermons and booklets and the writings of others available to hundreds of thousands of readers around the world.

Copies of ONE NATION UNDER GOD are available for the schools in your community. (Principals should write to Box X-5, Foundation for Christian Living, Pawling, N.Y. 12564.) What Dr. Peale has written, has helped me to a better understanding of my fellow countrymen. I feel sure it will be useful to your students, in fact to all who read it. As I mentioned at the outset, wherever I have gone, to visit the Eskimo in the Arctic, to unexplored areas of wild New Guinea, and even to highly civilized lands, it has been obvious to me that you can understand people only if you are familiar with their religious background.

Note: The name of Lowell Thomas has become a household word during the 42 years in which he has been the dean of radio commentators, also as father of Cinerama, noted world traveler, and author of a shelf of books of exploration, adventure and biography.

(Readers may receive free copies of the booklet ONE NATION UNDER GOD by writing to Box X-5, Foundation for Christian Living, Pawling, New York 12564.)

**Texas Farm Bureau Had Successful Year**

HOUSTON--Asserting that the year of 1972 "has been the most successful year in the history of the Texas Farm Bureau" TFB President J. T. (Red) Woodson reeled off a succession of outstanding accomplishments to document the claim in his annual president's address at the TFB convention being held here.

Woodson spoke at the general session on Monday, Nov. 13. The year was successful in membership growth, he pointed out. TFB gained 9,541 member families in 1972, the largest gain in 17 years.

It was a year of "dramatic growth and success" in service-to-member programs, he added. Farm Bureau members saved more than \$4 million in group purchases of tires and batteries alone, he explained.

"1972 has been the most successful year in the history of Texas Farm Bureau also because of our accomplishments in Austin," he declared. He

said because Farm Bureau was in Austin, "we fared well in agricultural appropriations." Farm Bureau was also active, he said, in the passage of a resolution asking for a constitutional convention to prohibit busing of school children to receive racial balance.

"We were able to defeat a bill that would have required land owners to have a fishing license to fish in their own lakes and ponds if they had been stocked with fish from the Texas Parks and Wildlife Department," he added.

"Two main issues that were before the last special session of the Legislature were competitive insurance rates and farm trailer regulations, he recalled. "Farm Bureau has a major stake in both," he declared. Farm Bureau policy favors competitive insurance rates, he pointed out, adding that "Texas Farm Bureau testified and was active on this issue." Many proposals set forth, according

to Woodson, would have raised the cost of insurance to Farm Bureau members. "Your organization was a factor in preventing unsatisfactory insurance legislation. This matter will be considered in 1973, and Farm Bureau will be there to represent your interests," he assured some 1,500 Farm Bureau leaders attending the convention.

"The other item that was vital to agriculture was trailer legislation," he said. "Farm Bureau was a major force in working with the Legislature in passing Senate Bills 20 and 21, giving us a workable trailer bill for farmers and ranchers, he declared.

Woodson also related some success in dealing with regulatory agencies. "You were represented many times formally and informally with the agencies that deal with agriculture," he declared. The TFB president cited as an example the organization's relationship with the Water Quality Board, explaining that TFB was able to prevent the imposition of "complex and impractical" proposals for controlling livestock, dairy, poultry, and feed lot operations. "We have developed a working relationship with this important regulatory agency," he declared.

There were successes in the area of national legislation, he added. "Farmers won a clear-cut victory in regard to the farm truck driver regulations

which went into effect last January 1," he said, adding that the American Farm Bureau Federation legislative department reported it had never seen such a response from the membership as that issue generated.

"The same thing happened in June when the cost of living Council was considering price controls on raw farm products," he related. "You county Farm Bureau leaders in Texas sent more than 500 telegrams to the President on that matter. We believe the decision not to impose controls resulted from similar response by the 2,800 organized county Farm Bureaus in 49 states and Puerto Rico."

Speaking at the same general session of the convention, TFB Executive Director Warren Newberry outlined some new programs being developed or already in effect by the Texas Farm Bureau for its members. These include the property protection program, bail bond card for members, financing vehicles on pilot basis, financing insurance premiums,

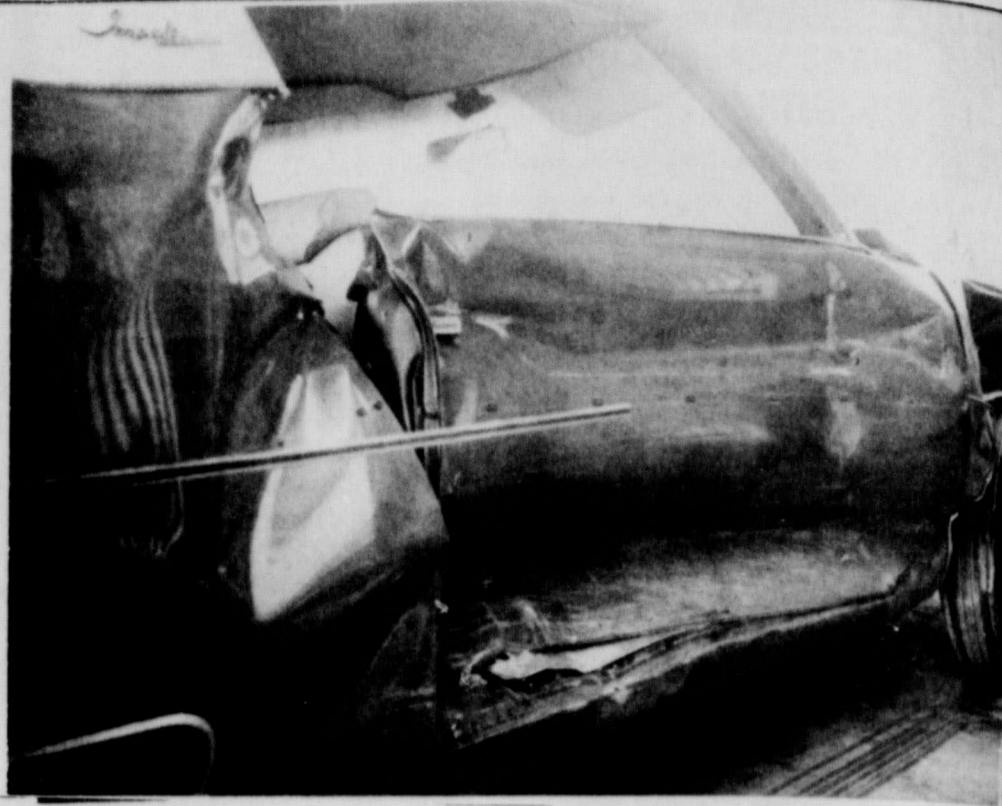
records system for county Farm Bureaus, public relations and information activities, and the commodities division concept in Farm Bureau.

"These activities are the results of your expanded program, voted at the special delegate session in Dallas in 1971," Newberry explained. "The dues increase to Texas Farm Bureau had made it possible to meet the needs of continued inflation (a good example--postage increase) to launch new programs and to add staff for the expanded programs," he added.

The editor of the poultry journal received a letter from a woman reader. It read: "How long should a hen remain on the eggs?"

The editor replied: "Three weeks for chickens and four weeks for ducks."

Three weeks passed, and the editor again received a letter from the reader. "Thank you very much for your kind advice," it said. "The hen remained on the eggs for three weeks, and there were no chickens hatched, and, as I did not care for ducks, I took her off the nest and sold the eggs."



YOUR FEARLESS editor met with quite a jolt at the intersection of 5th & Bernice streets last Thursday. He was on his way home from work when the collision occurred. A station wagon driven by Dwayne Booth, with two passengers, was the other vehicle involved. Editor Bill Miller and the boys miraculously escaped with only minor injuries. Miller's car was totally demolished and extensive damage was done to the station wagon. Editor Miller has been somewhat out of commission since then nursing pulled muscles & ligaments.



PRICES EFFECTIVE THRU SATURDAY, NOV. 18, 1972. NONE SOLD TO DEALERS. LIMIT RIGHTS RESERVED.

**STORE HOURS**  
MON - SAT  
8:AM - 11:PM  
SUNDAYS  
9:AM - 9:PM

- GREEN GIANT WHOLE OR CREAM Golden Corn 303 CAN 20¢
- GREEN GIANT KITCHEN SLICED Green Beans 303 CAN 23¢
- CAMELOT Pineapple Juice 46-OZ. CAN 33¢
- ROGER'S Whole Tomatoes 303 CAN 22¢

**SAVE 70¢**  
WHEN YOU REDEEM THE TWO COUPONS BELOW ON THE PURCHASE OF GOLD MEDAL FLOUR AND FOLGER'S COFFEE...

**VALUABLE COUPON**  
GOOD FOR 20¢ OFF ON 5-LB. BAG OF GOLD MEDAL FLOUR  
LIMIT 1 WITH THIS COUPON EXPIRES 11-18-72

**VALUABLE COUPON**  
GOOD FOR 50¢ OFF ON 3-LB. CAN OF FOLGER'S COFFEE  
LIMIT 1 WITH THIS COUPON EXPIRES 11-18-72

**The bigger your feast,**  
When you come to Ideal for the turkey, you

**PURE CRISCO**  
ALL-PURPOSE VEGETABLE SHORTENING

3-LB. CAN **78¢**

LIMIT 1 CAN WITH \$5.00 OR MORE PURCHASE

- C & H POWDERED OR BROWN SUGAR YOUR CHOICE 2-LB. BAG 36¢
- LIMIT 3 BAGS WITH \$5.00 OR MORE PURCHASE.
- CAMELOT Fruit Cocktail 303 CAN 26¢
- DEL MONTE SLICED, CRUSHED OR Chunk Pineapple 4 NO. 1 1/2 CANS \$1

- MEADOWDALE Ice Cream ALL YOUR FAVORITE FLAVORS 1/2 GALLON CTN. 58¢
- THRIFT-Frozen Foods BANQUET PIES PUMPKIN OR MINCE 39-OZ. PKGS. 4 \$1
- RHODES Dinner Rolls PKG. OF 24 35¢
- WHIPPED Pet Topping 10-OZ. CTN. 39¢
- SARA LEE Coffee Cake 12-OZ. PKG. 87¢
- PHILTZ 9-INCH Pie Shells PKG. OF 12 39¢

- LIBBY OR DEL MONTE PIE PUMPKIN HUNT'S HALVES OR SLICED 303 CANS 3 59¢
- CLING PEACHES OCEAN SPRAY STRAINED OR WHOLE NO. 2 1/2 CANS 3 \$1
- CRANBERRY SAUCE 300 CAN 29¢
- STRAWBERRY Ideal Preserves 18-OZ. JAR 43¢
- PILLSBURY, ALL FLAVORS Bundt Cakes 29-OZ. BOX 88¢
- 12-INCH WIDTH Squire Foil 25-FT. ROLLS 3 69¢
- AURORA ASSORTED Bath Tissue 2 2-ROLL PKGS. 43¢

**FEASTING FAVORITES**  
FROM OUR REFRIGERATED CASES...  
**Thrift-T Dairy Delights!**

- FAIRMONT FRESH WHIPPING CREAM 3 PINT CTNS. \$1
- LIMIT 3 CTNS. WITH \$5.00 OR MORE PURCHASE.
- FRESH GRADE A LARGE EGGS DOZ. 47¢
- IDEAL FRESH BUTTERMILK 1/2-GAL. CTN. 49¢
- IDEAL LARGE OR SMALL CURD Cottage Cheese 24-OZ. CTN. 47¢
- MEL-O-CRUST Canned Biscuits 6 8-OZ. CANS 49¢
- FAIRMONT OLD FASHIONED Egg Nog 1/2-GAL. CTN. 59¢
- GRADE A QUARTERED Camelot Butter 1-LB. CTN. 89¢
- KRAFT PHILADELPHIA Cream Cheese 8-OZ. PKG. 33¢
- PILLSBURY Crescent Rolls 8-OZ. CAN 35¢

### FARM & RANCH NEWS

By Joe Van Zandt

#### County Agricultural Agent

The Gray County Farm Management Committee has planned a short course on Estate Reduction and Tax Avoidance Considerations for Farm Ranch Operators. The program will be held Tuesday, November 21 at 7:30 p.m. in the Civic Auditorium at Pampa, Texas.

Several outstanding speakers are lined up for this program. If you are interested in attending, let me hear from you so we might make the trip together.

**WHEAT CONFAB SLATED**

AMARILLO—Topics ranging from wheat production and marketing to ecology will highlight a Wheat Symposium at Amarillo on Nov. 29. On the following day, several out-of-town speakers will discuss key issues related to the overall wheat situation, farm programs, and transportation during the annual meeting of the Texas Wheat Producers Association (TWPA).

The two-day program will be conducted at the Holiday Inn West and will begin each day at 9 a.m.

The first day's program will include discussions on ecology, current wheat situation, control of wheat insects, diseases and weeds, wheat varieties, feed wheat, wheat grazing, and health problems of animals on wheat pastures.

Among the keynote speakers will be Bill Nelson, executive vice president of the Texas Wheat Producers' Board, and Dr. L. S. (Bill) Pope, associate dean of agriculture at Texas A&M University. Also on hand will be specialists with the Texas Agricultural Extension Service and scientists with the Texas Agricultural Experiment Station. A consultant in feed wheat nutrition and a livestock and wheat producer will also be on the program.

The TWPA meeting on November 30 will feature several outstanding speakers on the

National scene. Among these are Joe Halow, executive vice president of Great Plains Wheat, Inc., Washington, D.C., who will discuss the world wheat situation. Gene Moos, president of the National Association of Wheat Growers, will talk on farm programs and how they affect wheat farmers.

Another speaker on wheat programs will be Victor A. Senchal with the Agricultural Stabilization and Conservation Service, Washington, D.C.

A panel discussion that afternoon will feature the topic "Transportation—The Key to Wheat Marketing."

The two-day program is being sponsored by the Texas Wheat Producers Association and the Texas Agricultural Extension Service and three of its area income programs—Panhandle Economic Program, South Plains Development Program, and Rolling Plains Development Program.

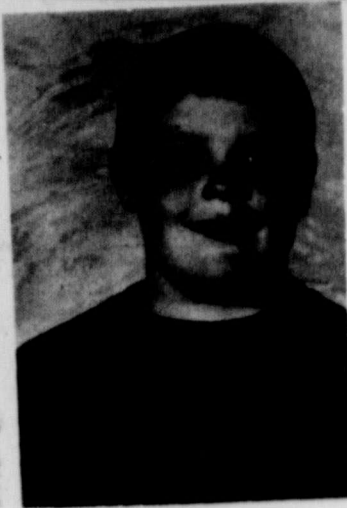
Leo Witkowski of Hereford is president of the TWPA.

All wheat producers, agribusinessmen and others in Hansford County interested in wheat production are invited to attend either or both of the programs.

Cattle on Feed—Number of cattle and calves on Feed—

November 1 in 7 States—Texas, Arizona, California, Colorado, Iowa, Nebraska and Kansas—totalled 9,578,000 head. This is a 9 percent increase from the 8,780,000 head on feed a month ago and 13 percent more than the 8,441,000 head on feed last year at this time.

Placements for these 7 states for October were 2,632,000 head, which is 39 percent above the 1,894,000 head placed the preceding month and 195,000 head more than a year ago. Marketings for these 7 states were 1,834,000 head for October compared with 1,795,000 head marketed the preceding month and 1,627,000 head marketed a year ago.



#### Jed Miesner Submits Article For Scout Badge

Jed Miesner, a Boy Scout of Troop 51, is working on a merit badge for Conservation of Natural Resources. The final requirement for this badge, is to write something and have the local newspaper publish it. So below is Jed's paper which he submitted this week. He titles it "Please keep lids closed on trash cans."

"These trash cans we now have is one of the best things the city has done for our town. They have help prevent flies, and most of litter in the alleys and yards caused by wind and dogs turning the trash barrels over. But these new trash cans are not going to last if people don't keep the lids shut. The rain and snow get in them and they rust out. So people please keep your lids closed so they will last. We the taxpayers help buy these cans so lets help the city keep our town clean."

—written by Jed Miesner



COOKS for the hunting party, Mrs. Reger and Mrs. Behne, pose with the 4-point buck deer. The other kill was a 6 pointer.

#### Hunters Had Luck

Mr. and Mrs. Tommy Reger and Mr. and Mrs. Verlin Behne spent about 8 days deer hunting in the New Mexico mountains, Nov. 3-Nov. 11.

The Spearman couples camped out on Big Horn mountain, some 50 miles north of Taos, N.M. Both men got their deer, which were pretty good sized, dressing out about 150 lbs. each. Their wives didn't get to hunt. They went along to do the cooking.

Mrs. Reger said there was snow on the ground when they pitched their tents, and it snowed most everyday they were there. With no wind blowing, the 10 degree temperature weather was not at all unpleasant.

The hunters packed up and broke camp early Saturday, just in time. They left there in front of the blizzard which left a great deal of snow in these mountains last weekend.

#### Post Office To Close Thanksgiving

The Spearman Post Office will be closed Thursday, November 23, in observance of THANSGIVING DAY. No deliveries will be made on city or rural routes.

Miss Lana Kemper from WTSU was home over the weekend. Terrie Shelley & Dana Shelley also visited in the Jack Kemper home.

# The more you need Thrif-T Ideal!

**BUTTERBALL OR HONEYSUCKLE**

## Tom Turkeys

PLUMP, TENDER BIRDS THAT ARE ABUNDANT WITH WHITE MEAT!

18 TO 22 LB. AVG. **49¢**

**EMPIRE BRAND**

16 TO 22 LB. AVG. **35¢**

**Tom Turkeys**

**BUTTERBALL OR HONEYSUCKLE**

18 TO 18 LB. AVG. **59¢**

**Hen Turkeys**

**BAKING HENS** SWIFT'S PREMIUM GRADE A 4 TO 6 LB. AVERAGE **49¢**

MEADOWDALE BONELESS

## HAMS

WHOLE ... 7 TO 9 lb. avg. **\$1.09**

Halves **\$1.19** FULLY COOKED

SWIFT'S PREMIUM BONELESS, FULLY COOKED

Canned Hams **\$4.99**

## ONE-PRICE BEEF SALE!

- SIX OF YOUR FAVORITE CUTS OF U.S.D.A. CHOICE BEEF AT ONE GREAT THRIF-T PRICE ... FOR FOOD BUDGET ECONOMIZING!
- ROUND STEAKS
  - SWISS STEAKS
  - RIB ROASTS
  - RUMP ROASTS
  - GROUND STEAK
  - CHUCK ROASTS
- U.S.D.A. CHOICE CENTER SLICES
- U.S.D.A. CHOICE ROUND BONE CUTS
- U.S.D.A. CHOICE 5TH & 6TH RIBS
- U.S.D.A. CHOICE STANDING BONE-IN
- U.S.D.A. CHOICE DIET-LEAN
- U.S.D.A. CHOICE IMPERIAL OR BONELESS
- YOUR CHOICE
- 99¢**
- U.S.D.A. CHOICE CENTER SLICES **\$1.09**
- U.S.D.A. CHOICE, KING OF STEAKS **\$1.39**
- FOR QUICK MEALS—LEAN
- Cube Steaks **\$1.39**
- ROBEE, ALL MEAT **59¢**
- Skinless Franks **59¢**
- MEADOWDALE, ALL MEAT **69¢**
- Sliced Bologna **69¢**
- CAMELOT FRESH **43¢**
- Waldorf Salad

#### Feasting Favorites

HERBERT TOPPING

Dream Whip **44¢**

UNISA MEDIUM PITTED

Ripe Olives **38¢**

ALL FLAVORS

Jell-O Gelatin **49¢**

VEGETABLE

Cocktail Juice **43¢**

#### Everyday Favorites

CHOCOLATE CHIPS

Hershey's Dainties **38¢**

KRAFT CREAM

Marshmallow **24¢**

TOM SCOTT

Mixed Nuts **63¢**

DIAMOND

Walnut Halves **\$1.09**

EAGLE BRAND

Condensed Milk **47¢**

REYNOLDS LARGE

Brown-In Bags **93¢**

DIXIE 3 OZ. BATHROOM

Cup Refills **\$1.25**

ASSORTED COLORS

Gala Towels **59¢**

NORTHERN ASSORTED

Paper Napkins **16¢**

WAXTEK BRAND

Wax Paper **31¢**

#### Thrif-T Low Prices

GREEN GIANT

LeSueur Peas **43¢**

ONE SUCH

Wince Meat **79¢**

ONE SUCH BUN

Wince Meat **89¢**

CRANBERRY

Cocktail Juice **99¢**

RECONSTITUTED

Chicken Broth **23¢**

CONCENTRATION

Orange Juice **73¢**

WHEAT WHOLE

Sweet Potatoes **33¢**

WHEAT WHOLE

Whole Oysters **73¢**

WHEAT WHOLE

Sweet Pickles **67¢**

ONE STUFFED

Salad Olives **69¢**

BEETRY BOWL

Maraschino Cherries **69¢**

PREPARED

Stuffing Croutetts **45¢**

PREPARED

Baker's Coconut **43¢**

#### Thrif-T Health & Beauty

AMPLON ... 2 SIZES FITS ALL

## Panty Hose

LIMIT 2 PRS. WITH \$5.00 OR MORE PURCHASE **44¢**

REG. \$1.19 ANTI-PERSPIRANT

5-OZ. CAN **88¢**

REG. \$1.09 McCLEAN'S

6 1/2-OZ. TUBE **68¢**

REG. \$1.79 BREACOL

7 1/2-OZ. **94¢**

CRISP, TENDER PASCAL

## CELERY

LARGE STALK **17¢**

U.S. NO. 1

## YAMS

2 LBS. **33¢**

U.S. NO. 1 RUSSET

## Potatoes

10 -LB. BAG **79¢**

FLORIDA RED ROSY

Radishes **19¢**

ROME BEAUTY

Apples **89¢**

ENGLISH WALNUTS **59¢**

OCEAN SPRAY

Cranberries **29¢**

RED EMPEROR

Grapes **39¢**

Fresh Roasted Peanuts **49¢**

#### MARY MARTHA CIRCLE MEETING

Mrs. George Buzzard presided over the November 8 meeting of the Mary Martha Circle of the Methodist WSCS when it met in the church parlor.

Mrs. Buzzard opened the meeting with prayer and a devotional. Following a short business session, she presented Mrs. Russell Townsend the continued study on "Faith and Justice".

The meeting closed with the benediction and Mrs. Buzzard served refreshments to Mrs. R. E. Lee, Harry Shedeck, P. A. Lyon, Bruce Sheets, L. W. Rosenbaum, Russell Townsend and Sid Beck.

#### SCHOOL BOARD MEETING MONDAY

The Spearman School board met in regular session Monday night at the high school.

The board adopted a pay schedule for custodians, cafeteria employees and office help to conform with the wage and hour law.

After a discussion with representatives from the speech and drama department, the board voted to limit this department to 13 tournament days, not more than 5 being school days, and allotted \$1,500 for those activities for the remainder of this school term.

### TEXHOMA LIVESTOCK COMMISSION COMPANY, INC.

Under Federal Supervision - Bonded For Your Protection

LIVESTOCK AUCTION EVERY FRIDAY

PHONES - (area 405) 423-2031 & 423-3251

November 10, 1972

Dear Customer and Producer:

The receipts here at the Texhoma Livestock Commission Co. Friday was 2229 cattle and calves. The sale started at 11:00 A.M. and was completed at 5:00 P.M.

As you all know this was a special cow sale and there was not many feeder cattle in the sale. Those that were found a good demand at fully steady prices with last week.

The stocker cow market was very active with lots of action. Packer cows and bulls were about steady. The calf market was fully steady with last week.

Some representative sales are as follows:

- 9 Blk WF Heifers - Avg. Wt. 396# @ \$45.10 per cwt.
- 48 WF Steers - Avg. Wt. 290# @ \$64.00 per cwt.
- 12 Blk WF Steers - Avg. Wt. 341# @ \$60.25 per cwt.
- 15 WF Heifers - Avg. Wt. 288# @ \$46.10 per cwt.
- 17 Blk WF Steers - Avg. Wt. 416# @ \$55.25 per cwt.
- 118 Mixed Steers - Avg. Wt. 755# @ \$42.86 per cwt.
- 141 WF Steers - Avg. Wt. 894# @ \$38.13 per cwt.
- 61 Mixed Steers - Avg. Wt. 741# @ \$41.25 per cwt.
- 24 WF Steers - Avg. Wt. 779# @ \$44.50 per cwt.
- 63 WF Cows - Avg. \$337.50 per head.
- 27 Black Cows - @ \$338.00 per head.
- 27 WF & Charlois Cows - @ \$336.00 per head.
- 27 Black Cows - @ \$333.00 per head.
- 21 Whiteface Cows - @ \$320.00 per head.
- 13 Whiteface Cows - @ \$323.00 per head.
- 34 Whiteface Cows - @ \$305.00 per head.
- 39 Whiteface Cows - @ \$277.50 per head.
- 18 Black Cows - @ \$295.00 per head.
- 25 Springer Heifers - @ \$305.00 per head.

Packer cows selling mostly from \$24.00 to \$26.00 per cwt. Packer Bulls steady from \$31.00 to \$32.00 per cwt.

Friday, November 17th - will be our next "SPECIAL CALF SALE". The auction will begin at 11:00 A.M. Selling mixed cattle until 1:00 P.M. At 1:00 P.M. we will start with calves, selling all the calves in the yards and available at that time. The calf sale will be followed with Feeder Steers and Feeder Heifers in the order consigned.

Friday, November 24th - will be our next "SPECIAL COW SALE" as outlined above, except starting to sell cows at 1:00 P.M.

Our aim with the "Special Sale" arrangement is to give every segment of the industry a turn.

For further information contact Sam Elliott - Phone (806) 383-4864, Amarillo, Texas, Raymond Choate, Drew Jensen or myself or Euline Smith here at the office.

"Your Cattle Auction with Action!"

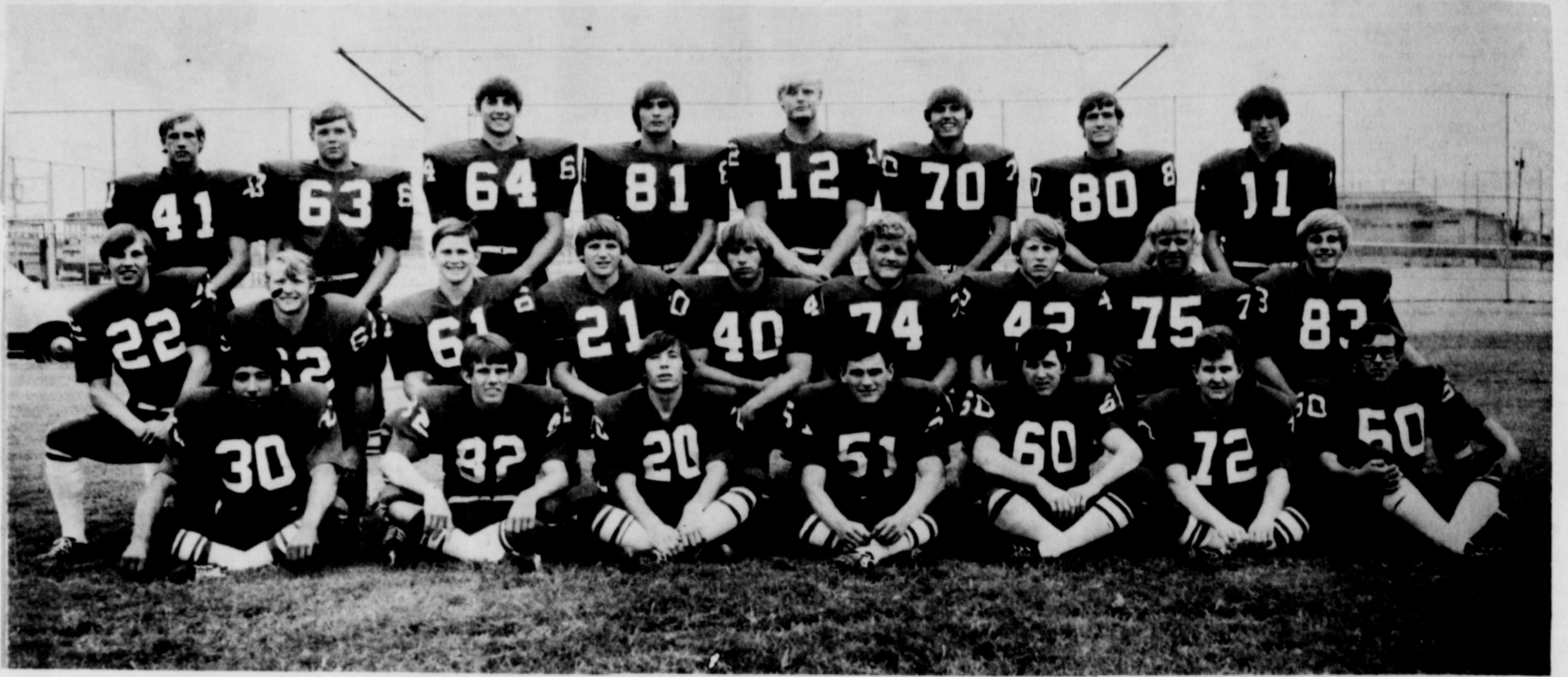
Sincerely, Clif Augustine

Cattle Office Cattle  
C. F. Augustine Euline Smith Raymond Choate

EXPERIENCED - BONDED - RELIABLE


"Added Value Thru Livestock Auction Market Service"

# GAME OF THE YEAR



## SPEARMAN LYNX VS PHILLIPS BLACKHAWKS AT PHILLIPS GAME TIME 7:30

BE SURE AND ATTEND THE GAME AND BACK THE LYNX ON TO VICTORY

<p>A&amp;W Root Beer</p>	<p><b>P.A. Lyon Insurance</b> Phone 659-2516</p>	<p>Spearman Jewelry</p>	<p>B&amp;B Farm Industries Inc.</p>
<p>Crawford Implement Co.</p>	<p><b>R.L. McClellan &amp; Sons, Inc.</b></p>	<p><b>Speartex Grain Co.</b> Location No. 1 - Gruver Highway 659-2549 Location No. 2 - 514 Collard St. 659-2521</p>	
<p>First State Bank</p>	<p>Equity</p>	<p><b>R.L. McClellan Grain Co., Inc.</b></p>	<p>Junior Lusby Cats</p>

THE SPEARMAN REPORTER

213 Main Spearman, Texas 79081 Box 458 659-3434
Published Weekly at 213 Main Street Spearman, Texas 79081
Owner-Publisher... William M. Miller
Second Class Postage Paid at Spearman, Texas

Any erroneous reflection upon the character of any person or firm appearing in these columns will be gladly and promptly corrected upon being brought to the attention of the management.

SUBSCRIPTION RATE--Hansford, adjoining counties, \$7.00 yr. Other points in combination with The Hansford Plainsman, \$9.00 yr.

ARTS & CRAFTS GUILD MEETING

Mmes. Sada Hoskins, Bruce Sheets, Guy Fuller, P.A. Lyon, Ned Turner, Pope Gibner, Annie Allen, Mildred Daily and Joe Traylor met in the home of Mrs. Bill Russell last Friday to spend the afternoon painting china.

These ladies, members of the Arts & Crafts Guild, will meet Nov. 17 in the home of Mrs. Bruce Sheets.

Quite a few people live in all-electric homes. Everything in them is charged.



Here is his paraphrasing of this verse: 'Even when we are too weak to have any faith left, He remains faithful to us and will help us, for He cannot disown us who are part of Himself, and He will always carry out His promises to us.'

I CAME ACROSS some interesting notes concerning printer's errors in the early, early editions of the Bible. In the earliest centuries when printers were hand-setting the type from manuscripts several typographical errors came about which made for amusing and provocative reading. Because of these oddities, early editions have become collector's items.

These peculiar copies have become known as "Breeches Bible" "Vinegar Bible" and the "Camels Bible" and etc.

The Breeches Bible pairs off Adam and Eve with matching pants. The 16th century edition says "they sewed fig leaves together and made themselves breeches" instead of aprons as our present day Bible says. "Breeches" was popularly accepted.

In 1832 a misprint came about in the Biblical romance between Isaac & Rebekah. The misprint had Rebekah leaving the family tent with her "camels" instead of "damsels." This edition became the Camels Bible.

Then there was a Wife Beater Bible, printed in 1549, which literally advised husbands "to beat the fear of God into her head, which was a footnote to 1 Pet. 3.

The first English Bible to be printed in Ireland (1716) encouraged its readers to "sin on more," rather than "sin no more." But 8,000 copies had already been distributed by the time the error was discovered. Thereafter this edition was called the "Sin On Bible."

The "wicked Bible" of 1631 caused a terrible furor when a London typesetter innocently misprinted the 7th commandment to read "thou shall commit adultery." King Charles ordered all copies destroyed and the printer heavily fined.

The Vinegar Bible got its name from an error in a parable called "The Parable of the Vinegar" instead of "Vineyard."

In fact there were so many printer's errors in the first English Bibles that all printing of the King James Bible finally came under control of the British crown. Only especially licensed printers were allowed to print the scriptures.

In 1702, another misprint sums up the whole problem of misprinted scriptures--where King David says "Printers (instead of Princes) have presented me without cause. This one is called the Printers Bible.

I got a bang out of reading about these printer's mistakes, because I can certainly identify with this "type of error."

After having labored for more than a quarter of a century in a print shop... I can tell you, it is certainly easy to do. I remember once when we did a story on a revival which was to be at a local church and we stated in big, bold type that there would be "plenty of congregational singing" (instead of singing.)

I AM SO glad that George & Dorcas Collard are opening a religious book store here. It will be a pleasure to spend all my pennies here at home instead of out of town. It seems some times I almost keep that store out on I-40 in business. The Collard's call it God's Corner, and it opened Wednesday at 411 Davis street, go by and see all their nice merchandise.

CITY GIRL IS HOMECOMING QUEEN NOMINEE

PLAINVIEW---Homecoming activities and College Preview Day at Wayland Baptist College are both slated as cooperative efforts on Nov. 18 with a full schedule of events planned.

Homecoming activities are billed around the theme, "It's a Small World After All," and College Preview Day will use the theme, "Have We Got A College For You?"

Registration for prospective students and their parents gets underway at 8:30 a.m. in Haral Memorial Auditorium and Homecoming registration at 9 a.m. in Gates Hall Foyer.

Homecoming Queen nominees are seniors Marla Shieldknight, Spearman, Nancy Hawkins, Seminole, Jackie Walker, Carrizo Springs, Robbie Biggerstaff, Lubbock, Sherry Stark, Quitaque, Deborah Evans, White Deer, Peggy Bates, Happy, and Mary Williams, Tulla, Juniors are Jan Jeter, Harlingen, Melanie Appton, Hobbs, N.M., Jean Leverett, Wylie, Tonya Austin, Colorado Springs, Colo., and sophomore Lynda Shelby, Ralls.

Miss Shieldknight is the daughter of Mr. and Mrs. Jimmy Shieldknight of Spearman.

CHRISTMAS MAIL BULLETIN

It is likely that fewer customers are sending cash or other items of intrinsic value in unregistered mail. This is a good trend. However, reports indicate some postal customers still cannot resist the temptation to slip some money into their Christmas greetings. Every effort is made to insure safe delivery even if the mail does contain money; however, it is a dangerous practice. It encourages mail box thieves, for example. Play it safe. When you send cash use money orders and use registered mail when sending valuables.

Mr. and Mrs. Lynn Kemper spent the weekend in Lubbock where they attended the TCU-Tech ball game and homecoming activities.



A CHRISTMAS TREE IS UP ALREADY, at the Jack Atchison residence, 902 Dresse street. Mrs. Atchison, above, made this one from discarded pieces of costume jewelry, sequins & ribbons. She completed it with electric Christmas bulbs and when its plugged in it literally sparkles. Mrs. Atchison is very talented, and does all sorts of delightful craft work, such as this large bottle which is decorated with jewel-like beads.

MARY KAY CHRISTMAS Open House

708 GARRETT, GRUVER

Tuesday



Come and Go

21 NOVEMBER

from 10:00 a.m. -6:00 p.m.

BE SURE TO REGISTER WITH YOUR "MARY KAY ANGEL" FOR VALUABLE DOOR PRIZES

KAY McCLELLAN, Mary Kay Consultant

OPENING

Wednesday, November 15th

Featuring..

- Bibles
•Christian Books
•Christian Pictures
•Christian Jewellery

Sound Equipment

Stereo's

- \*SONY SUPER SCOPE
\*HITACHI
\*CHANNEL MASTER
\*PACKARD BELL

Records And Tapes

- \*SPIRITUAL
\*GOSPEL
\*CHRISTMAS

Featuring SALES \*\*\* SERVICE

EIGHT TRACK---CASSETTE---ACCESSORIES

GOD'S CORNER

411 DAVIS

SPEARMAN, TEXAS

659-2135

PTA OFFICERS TO MEET MONDAY

All officers of the Spearman PTA are reminded that there will be an executive meeting at 9 a.m. on Monday, November 20 in the Junior High Cafeteria. This is a very important meeting and all officers are expected to be present.

PROGRAM TO BE SURPRISE

All members of the Waka PTA will want to be present Monday, Nov. 20 at 7:30 p.m. for this is the program when the women of the community present their annual "surprise program." A social hour will follow.

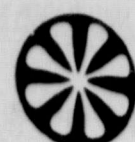
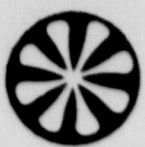
Mrs. Allen Jones will be the program leader. Mrs. Alvin Buschman will preside.

The committee in charge for the night's program include Mmes. David Wilson, Richard Ochoa, Guillermo Vela, B.J. Turner, and Neil Thompson.

Gym supervisors for the evening will be Mrs. David Wilson and Mrs. B.J. Turner. Waka residents are urged to attend.

T-E Liquid Wheat Pasture Supplement 16
FIGHTS WHEAT PASTURE POISONING (GRASS TETANY)
Don't take chances, give Grass Tetany the Knock-Out Blow with - TE LIQUID WHEAT PASTURE SUPPLEMENT 16.
Spearman Super Service
S. Highway 207

IF YOUR CROP IS DOWN FROM WEATHER, YOU NEED THE CROP-UP LONG SNORKEL PICK UP GUIDE
TURNS LOSSES INTO PROFITS!
Take a close look at the heavily weather-downed field above. It looks like a total loss in the before and after picture shown. However, with the use of "Crop Up" Long Snorkel Guides, the field yielded up to 6,000 pounds of grain sorghum per acre. "Crop Up" Guides, when used with a Hume or Pick Up Reel, work on row crops or broadcast crops with equal efficiency. There are no mechanical parts to break down, no machine strain and no power drain to slow you down in the field, which means even greater savings, because of less down time. They are so easy to install on any make of combine that you're ready to take to the field in a matter of minutes. Most important of all... your cost will be about 1/16th of the cost of other systems
TOMMIE WHITE, Spearman, Texas
CALL A/C 806 659-2208



PHYLISS BRADLEY  
Teller



HORACE CURLEE  
Asst. Cashier



ROBERT EWING  
Cashier



KENNETH IRWIN  
Executive Vice-President



RICHIE FLETCHER  
Asst. Cashier



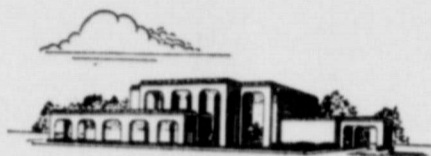
BERTIE FRAZIER  
Secretary



MARGARET RALSTON  
Teller



A. R. BORT  
President



The Officers, Directors and Employees  
of the  
Gruver State Bank  
cordially invite you to an  
Open House  
in their new banking facility  
on Sunday afternoon  
November 19th  
from 2 until 5 o'clock

# GRUVER STATE BANK

## STATEMENT OF CONDITION

JUNE 30, 1972

RESOURCES		LIABILITIES	
Loans and Discounts	\$4,363,257.07	Capital Stock	\$ 100,000.00
Banking House, Furniture and Fixtures	33,862.69	Surplus	300,000.00
United States Securities	543,849.48	Undivided Profits and Reserves	330,051.42
Municipal Bonds	421,379.72	Unearned Interest	29,972.37
Cash and due from Banks	2,753,080.74	Deposits	7,388,122.58
Other Real Estate	681.00		
Other Assets	32,035.67		
<b>TOTAL</b>	<b>8,148,146.37</b>	<b>TOTAL</b>	<b>8,148,146.37</b>

- OFFICERS**  
A. R. BORT, PRESIDENT  
KENNETH IRWIN, EXECUTIVE VICE PRESIDENT  
R. L. THOM, VICE PRESIDENT  
ROBERT EWING, CASHIER  
H. L. CURLEE, ASSISTANT CASHIER  
RICHIE FLETCHER, ASSISTANT CASHIER

- DIRECTORS**  
KENNETH IRWIN  
A. R. BORT  
S. R. CLUCK  
R. L. THOM  
J. C. HARRIS  
PAT HOLT  
BOB CLUCK  
NICK HOLT



JUDY ROPER  
Teller



JEANNIE AYRES  
Secretary



BARBARA MAYHEW  
Bookkeeper



BETTY MATHEWS  
Bookkeeper



LINDA SUE BROTHERTON  
Bookkeeper



JANACE ROSS  
Bookkeeper



BACA  
COLORADO



## Spearman Blasts Stratford 36-0

The Spearman Lynx played one of the most outstanding games in the year Friday night as they blasted the Elks 36-0. The Lynx had the ball in their hand after the first half with a half time lead of 30-0. The game gave the Lynx their eighth win of the year with no losses.

The Lynx lost the toss and had to kickoff in the opening period as Joel Woolley booted the ball to the Elks 19 yard line with the Elks returning only 7 yards before Joey Woolley booted the ball to the Elks 19 yard line with the Elks returning it only 7 yards before Joey Woolley nailed the ball at the 26. The Elks played four down and fail to gain the first and then were short on the punt was short and good for 30 yards. The Elks then took the ball and went 3 downs and were short on the punt and had to punt as Jerry Fat Davis did the honors and booted the 45 yard kick for no gain.

Two plays later the Elks booted the ball and the Lynx covered it at the 24 yard line of Stratford. On three consecutive tries Scott Beedy moved the ball to the Elks 4 yard line where the Lynx had a first down 4 yards to score. Mike Floyd on the end around was tight behind the line for a yard of 2 yards. With 2nd and again Floyd tried the end and this time he danced to the end zone for 6 points. Andy Schell carried the ball for the extra 2 pts. The Lynx for the Lynx came with 40 left in the first quarter. The Lynx then held Stratford the remaining quarter to force more punts for a 20 yarder and a 33 yard punt. Lynx led after one period 8-0.

The second period was the quarter for the Lynx as they punched 22 big points over the goal. The Lynx first scored in the period as Mike Floyd galloped 18 big yards to 9:12 left on the clock. Andy Schell again did the extra point honors. The Lynx kicked off to the Elks on a short kick the Lynx covered the ball at Stratford's yard line. Two plays later Floyd connected a pass with Jerry Fat Davis for 44 yards TD no. 3 for the Lynx but Andy Schell extra point try failed.

The Lynx kicked off this time down deep in the Elks and only a short return was made as the Elks could get as Denison stopped what could have been a long gain. The ball was handed back and forth for minutes before the Lynx took the ball on the 18 yard line after a long run by Jerry Latham good for 40 yards. Mike Floyd scored his touchdown of the evening as Andy Schell did the extra point honors. The Lynx went to the dressing room after one

half leading 30-0. The second half was the half for Clark Mires troops to relax as the backup squad came in to relieve the hard nosed defense of the mighty Lynx. The Lynx played the biggest part of the second half with their second team players.

The Lynx scored the final touchdown with 3:11 left in the third quarter as Mike Floyd ran 73 yards for the touchdown. Floyd was hit 5 or 6 times by the other team tacklers and bounced off like rubber. The extra point try by Donnie Davis fell short by 18 inches. The Lynx played the fourth quarter with mostly substitutes and Mires ran players in and out and kept the Elks so confused as to who was playing that they gave up on trying to block their own man and just blocked anyone around. They even began to block their own men. The Lynx pack will now be after the feathers of the Blackhaws from Phillips Friday night at Phillips. The Lynx will be fired up for this game and everyone should make plans to see the game at 7:30 Friday night.

### SPEARMAN:

First Downs--15  
Yards Passing--129  
Yards Rushing--322  
Net Yards--451  
Passes Attempted--12  
Passes Completed--4  
Passes Intercepted--1  
No. of Punts--4  
Yards of Punts--160  
Average Per Punt--40  
Fumbles--2--lost 1  
Penalties--8  
Yards Penalized--70

### STRATFORD:

First Downs--11  
Yards Passing--77  
Yards Rushing--173  
Net Yards--250  
Passes Attempted--23  
Passes Completed--7  
Passes Intercepted--0  
No. of Punts--7  
Yards of Punts--229  
Average Per Punt--33  
Fumbles--3--lost 3  
Penalties--3  
Yards Penalized--35

SCORE BY QUARTERS:  
Spearman, 1st, 8; 2nd, 22;  
3rd, 6; 4th 0; total 36.  
Stratford, 1st, 0; 2nd, 0;  
3rd, 0; 4th 0, total 0.  
TD SCORED BY  
Sp. Floyd 6 run (Schell Ex)  
Sp. Floyd 18 run (Schell Ex)  
Sp. Floyd to Davis 44 pass (Run Fall)  
Sp. Floyd 18 Run (Schell Ex)  
Sp. Floyd 70 run (Run Fall)

ORVILLE SCOTT LATHAM, speedy halfback on the Lynx squad suffered a severe knee injury in the Stratford game Friday night. Above, Latham receives a screen pass good for several yards. He underwent knee surgery at High Plains hospital in Amarillo Saturday afternoon.

## LYNX BACK OUT OF PLAY

Orville Scott Latham, 17 year old son of Mr. and Mrs. Orville Latham, had knee surgery late Saturday afternoon in High Plains Hospital, Amarillo.

The SHS senior, important "back" man for the Lynx football squad, sustained severe injuries to the knee in the game Friday night at Stratford. He is recuperating very well.

## LYNX MORN THE HAWKS

Today has been named as MORN THE BLACKHAWKS day and everyone is asked to wear black all day in order to be in morning for the Hawks of Phillips. The entire student body at the schools will be wearing black and they would like the Lynx fans to help in the sad day for the Hawks. The Lynx will be in deepest sorrow for the Hawks as they plan to bury them Friday on their own field. This will be the first time in the history of the two schools meeting that the Lynx will defeat them on the Hawks field. Thursday will be a sad day in Spearman and the students will be in the deepest sorrow for the Blackhaws from Phillips. REMEMBER THURSDAY MORN THE BLACKHAWKS.

The Lynx freshman B-Team will battle the B-team Hawks here at 7:00 in the Lynx stadium Thursday night. The Lynx will try to make it their 8th win to the one loss. The game is to be the rematch of the game earlier in which the Lynx lost to the Blackhaws at Phillips. This is the game that the Lynx want to win most of all because they said that Phillips ruined the chance for an undefeated

season. Plan to attend the game Thursday night. The Jr. High will travel to Phillips for their final game of the year.

The 7th grade will play at 5:00 and the 8th will play at 6:00 and everyone try to make the games if possible.

The Lynxettes suffered their first loss of the season last Saturday night at the Darrouzett Clinic. The Lynxettes lost by a 52-50 score as a last score was made with only 2 seconds left in the game. The Lynxettes had several errors and ball control problems which the Longhornettes made count in their favor. The high point girl for the evening was Joyce Gensmon of Darrouzett hitting 47 of the 52 points.

Lynxettes' Leanne Shield-knight hit 28 points while Khristi Gressett dunked in 13 points. Marilee Ooley hit 5 pts., and Michelle Schumman scored 4 pts. The Lynxettes hit 8 of 14 freethrows while the Longhornettes hit 16 of 26 free shots.

The Lynxettes will travel to Follett Saturday night for the game of the B-Team and the varsity will follow. The first game will be at 7:00 p.m. and the varsity will play as soon as the first game concludes.

The 9th and 11th grade students will be taking next Tuesday off to take ITED test in the high school Auditorium.

On December 5 the Senior girls will take the Betty Crocker test at the high school.

The ACT collegentrance will be given at the Spearman High Auditorium for All Area Seniors on December 9, 1972. The test will take all day.

A newlywed sought valiantly to console his little bride. "Darling, believe me, I never said you were a terrible cook. I merely pointed out that our garbage disposal has developed an ulcer."

GET A HAWK BIG LYNX

You can't get a good job without experience.

We'll give you both.

There are plenty of jobs in the want ads. Unfortunately, almost all the good ones ask for experienced help. But, in today's Army, we'll hire you at \$288 a month to start. No experience necessary. We'll give you free meals, free medical and dental care, and 30 days paid vacation a year. And the training and experience in almost any job you want. A job you can make a career of. In the Army, or out of it. To get complete details talk it over with your local Army Representative. Today's Army wants to join you. Call 405-338-8324 411 N. Main Street Guymon, Oklahoma 73942

## NOW SELLING BUMPER STICKERS

The Spearman high school student council now has on sale bumper stickers. These stickers proclaim "I'm a Lynx Fan" and cost 50 cents each.

The council urges local fans to call the high school and order several... but if its only one, it will be delivered to your house.

Help boost the Lynx spirit, and order several today.

## NHS GROUP ENJOYS TRIP TO LUBBOCK

Saturday, Nov. 11, Miss Dorothy Roden escorted 14 members of the SHS National Honor Society to the Texas Tech homecoming football game against TCU.

The group departed at 6 a.m. on a bus driven by Jerry Jackson. Members making the trip were: Kent Benton, Cindy Berber, Debbie Dudley, David Harbour, Delinda Head, Ken McClellan, Katina McCloy, David Pond, Doug Porter, Steve Reed, Debra Reimer, Marie Russell, Dixie Sheppard and Jeanne Thompson. Also accompanying the group were Beth Bourland and Judy Widener.

Upon arrival in Lubbock, students were freely allowed to visit the Texas Tech campus and dormitories. After exploring the University, members found their seats for the football game.

After the game, the group was permitted to shop until 4:00 p.m. when the bus left for the return home.

A stop was made in Amarillo at the Ponderosa Steakhouse for dinner.

The bus arrived back in Spearman around 9:30 p.m. with a lot of sleepy, tired people who had enjoyed the day very much.

## Driving Students take Test Friday.

The driving education students will take their driving examination for the Texas Department of Public Safety Drivers license. The Exams will be given on Friday morning at 9:15. All students who plan to take the test need to be present on their test day.

The Spearman Student Council will attend a work shop at Amarillo today. This is a Texas Association of Student Councils. The meeting will be held at the Stephen F. Austin Jr. High School.

The Spearman High School Spanish Club would like to thank everyone who had a part in the stew supper and those who helped to make the supper a big success. The club served some 212 people that night. Two boys in the club sold the most tickets to the supper, Terri Brummett sold 35 tickets and was presented with a record of his choice. Mike Tucker sold the second most tickets by selling 32 and was presented with a record of his choice.

The Spanish club also enjoyed a trip to Guymon for a skating party last Monday night. They ate after the party at the Pizza Hut and at the Pancake House in Guymon.

## GOOD LUCK FRIDAY LYNX

# More local families In upper brackets

According to a nationwide survey of incomes and income distribution, Hansford County families have been upgrading their financial position in the last few years.

Most of them have benefited from the rising scale of wages and salaries in the local area.

As a result, a larger proportion of them are now to be found in the middle and upper income brackets and a smaller proportion in the lower ranges than ever before.

The extent to which the upward shift has been taking place, from bracket to bracket, is detailed in a copyrighted report released by Sales Management.

The purpose of the survey, which covers all parts of the country, was to obtain a clearer financial picture of each community than was revealed by its "average income" figure.

It sheds light on what the average represents, whether it is based on a small number of families with big incomes compensating for a much larger number with small incomes, or whether earnings are well distributed.

In Hansford County, it is shown, the general level is higher than it was and the spread relatively good.

Some 43.5 percent of the households in the local area had net cash incomes, after payment of their taxes, of \$5,000 or more in the year.

It was a larger proportion than in most parts of the West South Central States, where it was 65.0 percent. In the State of Texas it was 68.2 percent.

Because only cash income was considered in the survey, full justice is not done to farm families, as no allowances are made for income-in-kind and lower living costs on the farm.

As to the various income groupings in Hansford County, the breakdown shows that 23.2 percent of local households have a net of \$5,000 to \$8,000, that 16.9 percent are at the \$8,000 to \$10,000 level and that 33.4 percent have \$10,000 or over. The others have \$5,000 or less left after taxes. Although take-home pay has been on the rise generally, not

all of the gain represents an improvement in real income. Inflation has been taking its toll along the way.

## Amarillo TV Man To Speak At PTA Meeting

The Spearman PTA will meet Monday November 20 at 8 p.m. in the Junior High cafeteria. The time has been changed to 8 because of the community Thanksgiving program set for 7 p.m. in the Spearman First Baptist Church.

The program will be given by Cliff Craig, manager of KGNC-TV in Amarillo. His subject will be "Television-Pro & Con" which discusses how "good or bad" television is for children.

The general public is urged to attend this PTA meeting and hear this very informative program by the Amarillo guest.

Girl Scout Troop 155 will present the flag ceremony and special music will be provided by the fourth grade. Room count will also be taken.

Come to the PTA meeting Monday night, immediately following the Thanksgiving worship service.

## BENNY GEORGE PROMOTED

Benny George has been promoted from assistant manager to manager of the ICG (Illinois California Express) Dallas terminal.

George attended public school in Spearman, Texas and West Texas State University, where he was a member of the '62 Sun Bowl team. Currently, George and his wife, Jane, live in Irving, Texas, with their two children.

# Congratulations to TED EVANS GRUVER, TEXAS for a Top Yield in

FUNK'S PROJECT:25 HIGH YIELD SORGHUM GROWING CONTEST

HYBRID -YIELD- ACRES  
G-522 7,402 35.97

This Funk's-G high-yield sorghum growing contest annually tests hybrids in their working clothes with a minimum of 25 acres machine harvested and yield corrected to 14 percent moisture. Project:25 is a realistic sorghum growing and yield measuring program that proves the high yielding capacity of Funk's G-Hybrids in this area.



Funk's is a Brand Name Numbers Identify Varieties FUNK SEEDS INTERNATIONAL, INC. International Headquarters Bloomington, Illinois 61701

See Your Local Funk's-G Dealer, Soon

BOOSTER AG CHEM.-SPEARMAN A. W. RASOR-GRUVER

IRVIN BOYD-GRUVER PHIL RODGERS-FARNSWORTH

The limitation of warranty on the tag attached to each bag of Funk's G-Hybrid sold is a part of the terms of sale thereof.

# ?? SICK LIVESTOCK ??

When you first detect sickness in your livestock, consult one of our good local Veterinarians. After they prescribe, let the Pill Man, Ed Dear sell you what medicine you need. Try him for quality products and service-for he can

# SAVE YOU MONEY

See me for these supplies also: Saddles, Horse & stock trailers, Cattle working chutes (manual & hydraulic), head-gates, Porta Desks, Portable calculators, Electric thermometers, Vaccinating guns & syringes, Leather chaps, Ropes, Portable panels & loading chutes, Automatic waterers, Branding irons (electric & stainless steel), Cattle whips (leather & plastic), Hot-shots, etc.

## ED DEAR

LIVESTOCK SPECIALTIES CO.

BOX 921 SPEARMAN

MOBILE PHONE 659-3230, NIGHT PHONE 659-3073

Use our lay-away;  
for your  
Christmas  
gifts.



**CATES  
MEN & BOYS**

221 MAIN STREET SPEARMAN, TEXAS 79081

# Shop Around The Town

There are lots of gifts to choose from at the disposal of the WEAR and you SPEARMAN RE... crinating re... stock a large... very latest in... LUMBER OF S... house, SPEAR... so widely adv... just in time f... attractive coa... of 8 gallons o...

Stop in and visit with any of the sponsors on this shopper page and you'll be convinced that you can do all your Christmas Shopping right here in Spearman. You'll save money, too.

10" Diagonal — 60 Sq. Inch  
Viewing Area  
MODEL JA 5304 WD

ACC (Automatic Chroma Control) — automatically maintains color intensity from program to program, channel to channel  
AFC — Automatic Fine Tune Control — seeks out and locks in a clear, sharp color picture  
Customatic Tint Lock — locks in skin tones and maintains them

## Spearman Appliance Center

Think Big with Doral Fall range of quality tires--passenger--truck--tractor--conventional--belted--radial polyester--fiberglass Rayon/polyster street/Polyester Free ice scrapers.



659-9971

Sun Beam Coffee Pot  
12 Cup Automatic  
Percolator  
\$9.99



**\$9.99**

**Gordon's Drug**

Office Supplies

The Spearman Reporter  
Box 458  
Spearman, Texas

Job Printing

# TG & Y

**R C S**

FINE QUALITY

Chocolate Covered

**CHERRIES**

12 Oz. Box



**2 \$1.00**  
BOXES FOR

Now showing long, velvet, backless dresses  
Velvet Pant Suits  
for girls and women



**Lady Fair**

# TG & Y

PRICES GOOD IN ALL 64 TO 67 STORES AND FAMILY CENTERS THRU SATURDAY — WHILE QUANTITIES LAST!

**EARLY SHOPPERS**

**SAVE MONEY**

STORE HOURS: MON. - FRI. 8:30-6:00  
SATURDAY 8:30-8:00

119 MAIN SPEARMAN

Reynolds Wrap  
**Aluminum  
Foil**

Jumbo Roll  
18"x25'  
Limit 3 **47¢**

Golden T  
**Paper  
Towels**

Limit 10  
**5 \$1**

**Facial  
Tissue**

200 Count  
Limit 10  
**5 \$1**

Regular of Super  
**Kotex**

12 Count  
Limit 6  
**33¢**

Polaroid  
**Color Pack  
Film**

Type 108  
Limit 2  
**\$3.77**

# WAGON MTD

35" Long, 8-1/2" tires. Bright red, heavy steel frame and body. A traditional gift for every boy and girl at Christmas! Unassembled.



**\$8.88** Ea. #651-500-035

# TABLE & CHAIR SET



Juvenile set. Folding legs & chrome finish. Rigid, plastic, easy to clean seats. Flowered designed table top.

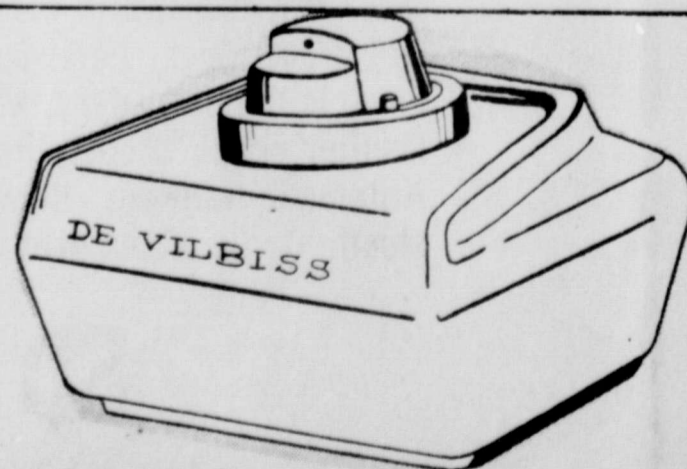
**\$9.88** Set

**Fantastic Value!**



**Empire Plastic BOWLING SET**

11-1/2 Poly pins.  
2 Plastic bowling balls. Carrying case for pins & balls.  
**\$2.66** Set



DeVilbiss®  
**VAPORIZER** #132

1 Gallon water capacity. For fast cold relief. All-night operation, easy to clean, automatic shut-off. UL Approved.

**\$3.99** Each



FROM REMINGTON

- Lightweight... easy to handle
- Tames unruly hair in seconds
- Built-in, controlled pre-dampener
- Increased air-heat flow

**\$19.95**

## Spearman Rexall Drug

PHONE FOR FREE DELIVERY  
Two Registered Pharmacists  
659-2226 GRUVER NUMBER 733-216

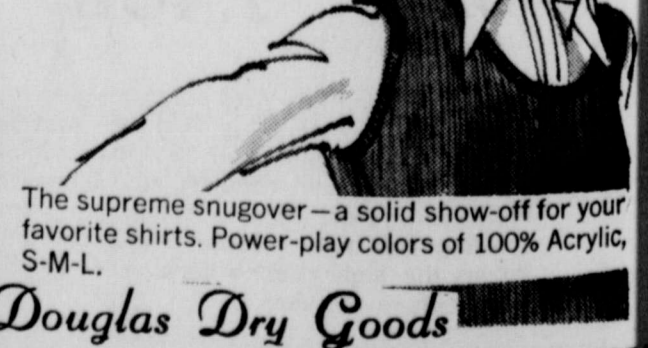
See Our large assortment of paneling for every decor



## White House Lumber of Spearman

**Ship'n Shore**

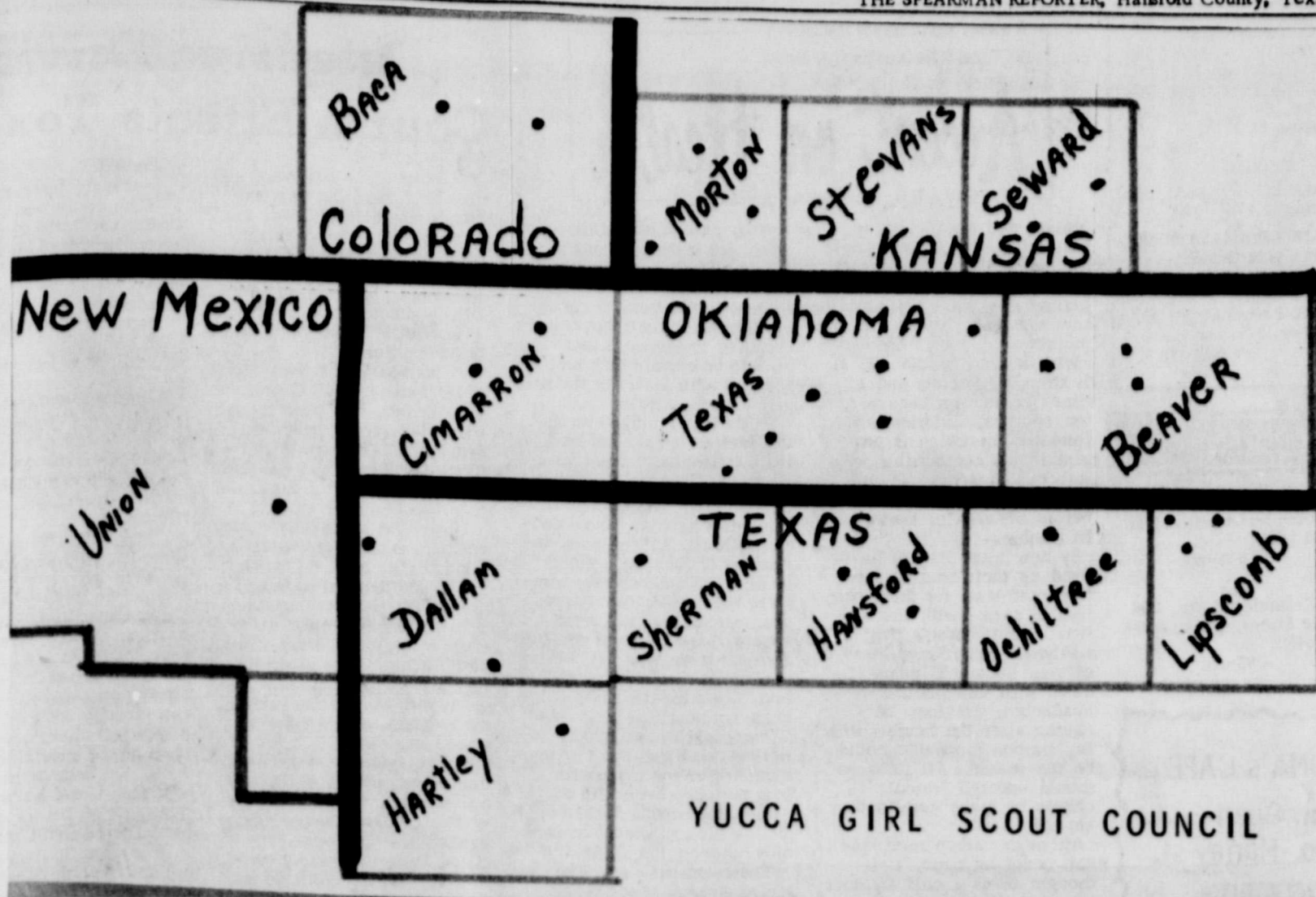
#1 on the Vest-Dressed list... It Had to Be U \$7



The supreme snugover—a solid show-off for your favorite shirts. Power-play colors of 100% Acrylic, S-M-L.  
**Douglas Dry Goods**  
216 MAIN STREET SPEARMAN, TEXAS

**With our help, you can be a Great**





**YUCCA COUNCIL, Girl Scouts of the U. S. A., is the biggest council in the U. S. covering 14 counties in five states. This council serves 1800 girls. One in every six girls in this area in grades 2 thru 12 is a member of Girl Scouts. 400 adults, men and women, are volunteer workers with these girls. Local neighborhoods are now in the process of collecting funds to support this program. Spearman Girl Scout Fund Drive will be held November 28, 29 and 30.**

Brock Ins.	1208
HIGH TEAM GAME	
Brock Ins.	464
Farm Bureau	458
Bowl Mor	443
HIGH INDIVIDUAL SERIES	
Patty Spoonmore	461
Peggy Shelton	444
Sheryl Meek	443
HIGH INDIVIDUAL GAME	
Patty Spoonmore	194
Peggy Shelton	177
Virginia Head	172
SCATTER PINS	
10-30-72	
TEAM	WON LOST
Equity	28 4
Lyons Ins.	21 10
Burton's TV	17 15
Gruver Plumbing	14 18
Anthony Elec.	13 19
Baker & Taylor	12 19
First State Bank	12 20
Snap On Tools	10 22
HIGH TEAM SERIES	
Equity	1785
Lyons Ins.	1687
Anthony Elec.	1664
HIGH TEAM GAME	
Equity	604
Equity	594
Lyons Ins.	591
HIGH INDIVIDUAL SERIES	
Jewel McCalman	524
Kate Farris	495
Tubby Hays	467
HIGH INDIVIDUAL GAME	
Jewel McCalman	179
Jewel McCalman	177
Tubby Hays	174
11-6-72	
Equity	31 5
Lyons Ins.	22 13
Burton's TV	21 15
Anthony Elec.	17 19
Gruver Plb.	17 19
First State Bank	13 23
Baker & Taylor	12 23
Snap On Tools	10 26
HIGH TEAM SERIES	
Equity	1821
Lyons Ins.	1718
Gruver Plumbing	1610
HIGH TEAM GAME	
Equity	663
Lyons Ins. & Equity	613
First State Bank	580
HIGH INDIVIDUAL SERIES	
Nancy Phillips	528
Jewel McCalman	516
Tubby Hays	483
HIGH INDIVIDUAL GAME	
Nancy Phillips	201
Tubby Hays	201
Jewel McCalman	192
Jewel McCalman	187



**BLUE CHEESE BURGERS ON ENGLISH MUFFINS**

A toasted English muffin is the very best possible base for a juicy hamburger. The S. B. Thomas' Specialty Bakers urge you to split an English muffin properly to make all those hills and valleys to hold the butter or meat juices or other topping. To split an English muffin score all around the muffin with the tines of a fork then gently pull apart. Toast any method you like and serve hot for that freshly baked flavor.

The Thomas' muffin people give this proportion for burgers. To 1 pound of ground beef add 1 teaspoon salt and 1/4 teaspoon black pepper and mix lightly and well. Shape in 4 patties... that is allowing 4 ounces of meat per serving. If you prefer a smaller portion make more patties. Cook the burgers as you prefer in a broiler or on a frypan. Toast the English muffins while the burgers cook, spread lightly with butter or margarine. Top with burger and then top with either a slice of blue cheese or some crumbled blue cheese. Other good toppings are onion slices, crisp pickle slices or relishes. And for a delicious Cheddar Burger, omit the salt from the ground beef mixture and add 1 cup grated sharp Cheddar cheese, 1 tablespoon grated onion and 2 teaspoons Worcestershire sauce to the meat mixture. Cook as desired and serve between hot toasted buttered English muffins.

**COUPLES ARE INVITED**  
to a linen shower honoring  
**MR. AND MRS. BILL HAND**  
Bill & Laura were married Oct. 28  
The shower will be  
November 18, from 7:30 to 9:30 p.m.  
Fellowship Hall  
First Baptist Church

**CANDLELIGHT CEREMONY IS IMPRESSIVE LITURGY**

Monday of this week, the Sacred Heart Women's Guild of Spearman held its meeting for the month of November. The President of the Guild, Mrs. N.F. (Clementine) Renner informed the ladies that on the 12th of October of this year, they received their chartered membership, from the Archconfraternity of Christian Mothers, St. Augustine, Pittsburgh, Pa.  
Before the meeting began, 30 ladies were solemnly received by their pastor, Father Donald P. Rusch, into the Confraternity of the Christian Mothers, in a moving candle-light liturgy celebration conducted in the church.  
The ladies had a busy evening making arrangements for their Thanksgiving Bake Sale, and preparing and discussing the 36th annual convention of the Amarillo Diocesan Council of Catholic Women, Nov. 14-15, at Christ the King Church, Lubbock.  
Father Rusch thanked the ladies for working so diligently and well with the other members of the parish, (Parish

Council, K of C Council, and C. Y. O.) in putting on a successful annual Mexican Dinner which was served to between 400 and 500 people of the Community.  
The ladies had a fruitful meeting, readying for their December Christmas party, and preparations of gifts for the Children's Home, Panhandle, Texas and the Aged Home in Spearman, as well as, gifts to the boys of the parish, now serving in the Armed Services.  
An explanation of the Advent Wreath and its use, was given by Father Rusch.  
Each lady was given a copy of the prayer-poem "Why Me, Lord" which was used for meditation on November 14, 15 during the Diocesan Women's Convention.  
A donation was sent again this month by the guild members to the Children's Home, Panhandle.  
The meeting concluding with a Thanksgiving Meditation, followed by the serving of refreshments to those present.

the next few weeks we'll give you several recipes for ingredients you will need for holiday baking.  
Candied Pineapple and Cherries: Drain 2 (1 lb. 14 oz.) cans sliced pineapple; reserve syrup. Combine 2 cups sugar, 1/2 cup light corn syrup and 1 2/3 cup pineapple syrup in a heavy 10" skillet. Cook over medium heat, stirring constantly, until mixture boils. Cook until temperature reaches 234 F.  
Add a third of the pineapple slices; bring to a boil. Reduce heat; simmer 25 minutes or until pineapple is transparent around edges. Remove; drain on wire rack. Repeat with remaining pineapple. Then add 3 (8 oz.) jars maraschino cherries, drained. Simmer for 25 minutes. Let dry 24 hours at room temperature.  
Since Thanksgiving is only a week away lets talk about cooking the traditional turkey. Turkeys may be purchased ready to roast, some with a gadget that pops out when the turkey is done. Most others give a timetable for roasting on the wrapper. In case the turkey you roast has neither here is the information.  
4-8 pounds, 3-4 1/4 hrs. stuffed, 2-2 3/4 hrs. unstuffed.  
8-12 pounds, 3 1/2-5, stuffed, 2 1/2-3 1/2 unstuffed.  
12-16 pounds, 5-6 hrs. stuffed, 3 1/2-4 1/2 hrs. unstuffed.  
16-20 lbs. 6-7 1/2 hrs. stuffed, 4 1/2-6 unstuffed.  
20-24 lbs. 7 1/2 - 9 stuffed, 6 - 7 unstuffed.

**HOSPITAL Notes**

Patients in Hansford Hospital are Emma Bruce, Frances Sims, W.L. Lawson, Jean Reed and daughter, Grace Bennett, Reba Bennett, Helen Calhoun, Edna Briley, Anna Belle Parrish, Virginia Young, Helen Truax, Pherba Phipps, Gertrude Neely, Ed Vernon, May Rupprecht, Grace Lawson.  
Dismissed were Glendon Etling, Jim Fowler, Jennie Masad, Irene Close, Lula Mitchell, Sandra Morris, Bill Henderson, Myrtle Bohanan, Barbara Duncan, O.R. Blount, Colleen Jeffries, Sheryl Thompson, Jim Fingelton, Irene Chriss, Lera Langston.  
One death-Wyatt Adkins on Tuesday, November 14.



**news from your HOME DEMONSTRATION AGENT**

by Nelle Evans

As we begin baking for the holidays we find that many recipes call for candied fruit.

This is more expensive than the regular fruit but you can save by making your own. In

Mr. and Mrs. Willard McCloy of Morse were in Lubbock Saturday to attend the Tech-TCU football game.

**CHANGING CULTURE, TOPIC FOR DELTA KAPPA GAMMA**

The Eta Alpha Chapter of Delta Kappa Gamma met November 11 at 2 p.m. at the Spearman, Texas school. Mrs. Don Clark presided over the business session during which the following items were discussed: Rosele Shelby transferred her membership to Georgetown, Texas. A leave of absence was granted Mrs. Betty Ellison of Gruver. As a sponsor, a teacher who instructs children with speech difficulties is accepted as a member from Eden. Projects for this year include: Emergency Fund, 1st Town and Satellite School, Perryton.  
Most interesting program "Culture" was brought by Mrs. Anna Marie Stedje, Program chairman. She was assisted by Charmaine Robertson, Irma Vaughn, Nell Lemons, Anna Champion, Wanda Scott, Anita Gustin, Helen Yeary, Betty Hollister, Donita Fiskin, and Mandy.  
Topics discussed included: Changing Culture, Australian Aborigines, the African Bushmen Nomads, Japan's 300 Aborigines, South India's four tribes Aborigines, (some of these are deep in the jungle, others are firm to original way of life) Tibet--a group of their aborigines fled to Switzerland

because they feared communism. Today they speak Swiss-German but hold on to Buddhism.  
In summarizing, it was pointed out that we are facing a changing culture--what will the people keep, what will change?  
Hostesses for the meeting were Mmes. Henry Bechthold, B.L. Hance, Irene Hollister, Ray Robinson, Fred Gustin.  
Refreshments were served from a table decorated for Thanksgiving, in the fall colors.  
Members present included Mmes. Henry Bechthold, J.W. Bookleman, Joe Champion, Don Clark, Theima Davis, Doug Fiskin, Fred Zachary, Fred Gustin, B.L. Hance, Irene Hollister, Violet Igou, A.M. Lemons, Lucy Mundy, O.W. Nowlin and Katie Price.  
Also, Mmes. Ray Robinson, Boyce Scott, Gordon Stedje, Zada Belle Walker, Clyde Yeary, Theima Vaughn, Floy Lee Stepp, Violeta Mahood and Jerry Robertson.  
The next meeting will be December 16 at 2 p.m. in the Darrout school lunch room. The highlight of this meeting is expected to be the annual auction of homemade articles for grants-in-aid.

PINBENDERS LEAGUE			
11-3-72			
TEAM	WON	LOST	
McClellan Grain	21	7	
Farm Bureau	20	7	
Golden Thimble	18	10	
J.L. Brock	17	11	
Bowlmor	16	2	
Vernon's	8	20	
B&V	6	21	
Caprock	5	23	
HIGH TEAM SERIES			
Farm Bureau	1319		
McClellan Grain	1304		
Bowlmor	1284		
HIGH TEAM GAME			
Farm Bureau	500		
McClellan Grain	458		
Caprock	451		
HIGH INDIVIDUAL SERIES			
Sheryl Meek	491		
Barbara Cook	460		
Virginia Head	459		
HIGH INDIVIDUAL GAME			
Sheryl Meek	192		
Patty Spoonmore	174		
Virginia Head	167		
11-10-72			
Farm Bureau	22	9	
McClellan Grain	22	10	
Golden Thimble	20	12	
Bowl Mor	20	12	
J.L. Brock	19	13	
B&V	8	23	
Vernons	8	20	
Caprock	6	26	
HIGH TEAM SERIES			
Bowl Mor	1249		
Farm Bureau	1241		

TUESDAY NIGHT MIXED LEAGUE -11-7-72			
TEAM	WON	LOST	
Bowl Mor Lanes	24	12	
Behne & Reger	21	15	
Gates & Baker	21	15	
Falkner & Hayes	20	16	
Western Auto	17	19	
Owens Sales	16	20	
Equity	13	23	
Reed Tool	12	24	
HIGH TEAM SERIES			
Behne & Reger	1743		
Western Auto	1699		
Gates & Baker	1615		
HIGH TEAM GAME			
Gates & Baker	648		
Behne & Reger	643		
Western Auto	633		
HIGH SERIES Men			
Eddie Gates	521		
Mac McKinzie	519		
Verlin Behne	497		
HIGH GAME MEN			
Eddie Gates	520		
Mac McKinzie	185		
Tommy Reger	183		
HIGH SERIES WOMEN			
Patsy Gates	503		
Barbara Reger	433		
Carolyn English	408		
HIGH GAME WOMEN			
Patsy Gates	244		
Barbara Reger	166		
Judy Black	156		
Carolyn English	156		

Mr. and Mrs. Carl Hutchison have returned from a 2 weeks vacation in Ft. Smith, Ark. visiting relatives of Mrs. Hutchison. They toured the Ozark Mountains and viewed the beautiful foliage. They came back by Enid, Okla., and spent the weekend with her son and his family, Mr. and Mrs. Mel Oldham and children.

**Live the Good Life...**

**with flameless, fumeless electric heating**

With dependable electric heating you and your family can enjoy springtime fresh warmth all winter. Efficient electric heating heats your home with no flame or fumes, therefore, it's clean and quiet. And there's no wasted heat. Contact your heating contractor or let our heating experts give you the facts on how a modern electric heating system can help you live better electrically.

**COMMUNITY PUBLIC SERVICE**  
Your Electric, Light & Power Company  
An Equal Opportunity Employer

**EARN UP TO \$750 PER MONTH**

**U.S. POSTAGE STAMP MACHINES**

- Highest Return on Your Capital
- No Selling
- Manage Your Own Business

We Obtain Your Locations. Minimum Cash Investment Of \$1,595.00 - up to \$5,000.00 Secured By Equipment

Planter's Peanut and Welch's Juice routes also available from \$495 up

- WOMEN OR MEN
- ANY AGE
- PART TIME, approximately 7 hrs. per month
- NO OVERHEAD
- DEPRESSION PROOF
- REPEAT INCOME

New Distributorships Still Available In Many Areas Throughout This State

Send References Name, Address and Phone No. to: **POSTAGE STAMPS, INC.**  
300 Interstate North, N.W. / Atlanta, Georgia 30339  
Interstate 1-75 and 1-285

**NOTICE TO BIDDERS**

Sealed proposals for furnishing a 1973 model, 2 ton capacity, flat-bed truck; a 1973 model 1/2 ton pickup; a 1973 model 4 door sedan police cruiser; and a 1973 model tractor equipped with a front-end loader and backhoe, will be received by the City of Spearman, Texas, at the office of the City Secretary, City Hall, Spearman, Texas, until 7:30 P. M., November 27, 1972, and then will be publicly opened and read. The City reserves the right to reject any and all bids, to waive informalities, and to accept the bid deemed to be most advantageous to the City. Any bid received after the above closing hour will be returned unopened. Copies of specifications on all items may be obtained at no charge from the Office of the City Secretary located in the City Hall at Spearman, Texas.

By order of the Mayor and City Council of the City of Spearman, Texas, this the 24th day of October, 1972.

/s/ Dr. D. E. Hackley  
Mayor

ATTEST:

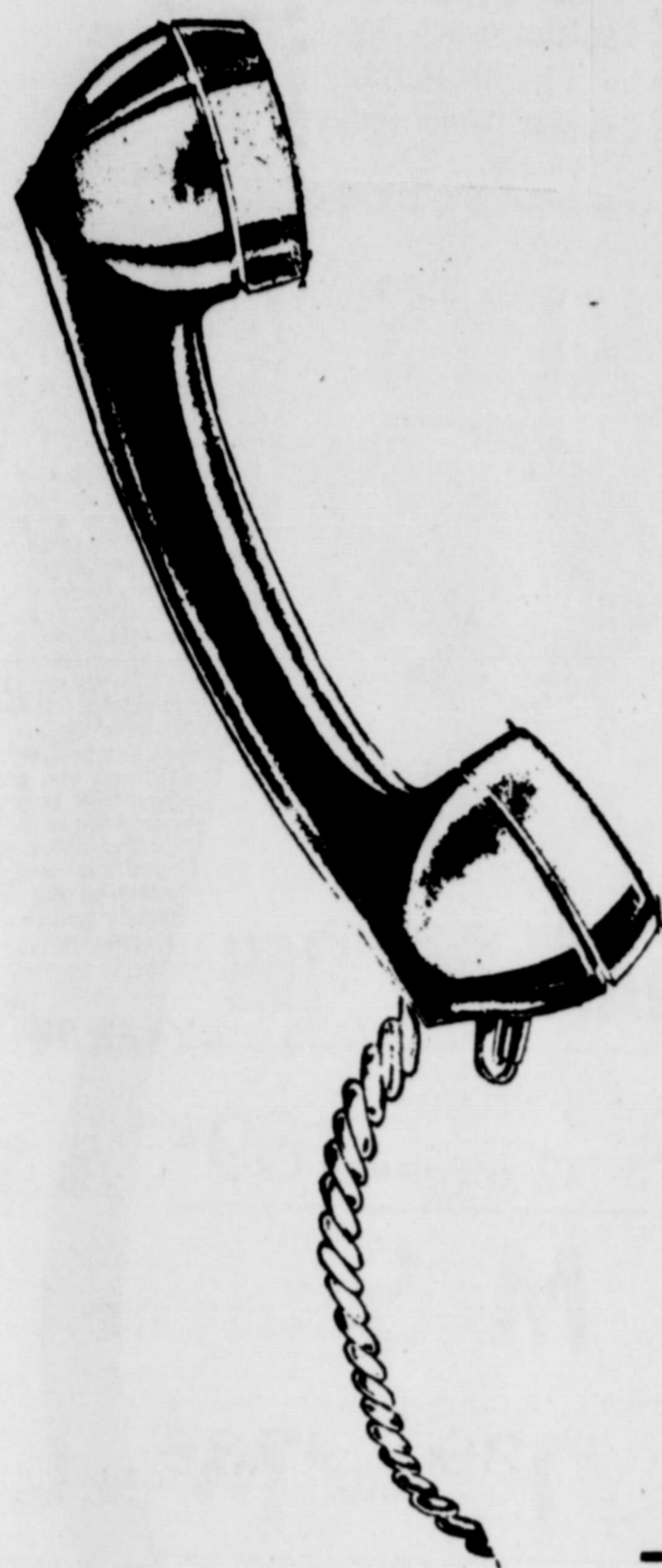
/s/ Terry Pittman  
City Secretary



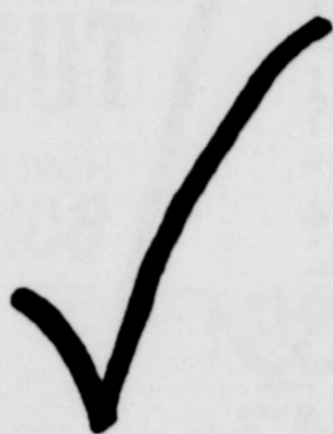
ving  
exan

THURSDAY, NOVEMBER 16, 1972

THE SPEARMAN REPORTER, Hartsford County, Texas 79081



PHONE  
**659-3434**



with us before you buy that

**OFFICE MACHINE**

we are now offering several lines of office machines

New and Rebuilt Machines

**—KEEPING PACE WITH PROGRESS—**

- ★ Office Supplies
- ★ Office Furniture
- ★ Business Machines
- ★ Commercial Printing
- ★ Magnetic Signs
- ★ Business Machine Repair



**I AM A  
LYNX FAN**

BUY A I AM A LYNX FAN STICKER FROM  
THE STUDENT COUNCIL TODAY.....

WINCRAFT WINONA, MINNESOTA

Member 1971  
TEXAS PRESS ASSOCIATION  
the **Spearman**

**REPORTER**

213 MAIN

owever, did  
was worth  
ed that the  
ed his wife  
own. TSA  
was aware  
idents felt  
led in them  
and gave the  
concept of  
others confes  
f dangerous  
as a result  
k the course  
mpulsory for  
used a driver  
ive Driving  
usly having  
r on Texans  
r drivers  
on," says  
al Manager  
designed to  
r defensive  
so that he  
deal with  
ardous situa  
sets and his  
ve the coun  
and so do  
xans who ha  
the program  
iving course  
n Spearman  
ryone interes  
P. A. Lyon,

is  
A

YER OF  
S, FOR  
course.

al pushed  
of 1,440 yards  
Floyd had  
or 1,440 yards  
ms. He ha  
18 passes la  
ur TDs, an  
nts. His com  
passing ya  
ses now

ety position  
in on a dose  
epted a pas  
best game  
against Cle  
as one of  
d Mires.  
pressive pe  
weekend we  
i's Scott Be  
and Lon  
s Randy Le  
an. Childre  
rry Compt  
nt Wood an  
tlefield's Te  
y Cook an  
rdada's Ma  
Heaton an  
kney's Lar  
Phillips.  
times for  
kies Watson  
praised  
fensive pl



FOODS FOR A FESTIVE-

# THANKSGIVING

"FREE TURKEYS"  
Register every day  
for 5 free turkeys.  
Drawing Wednesday  
November 22



**CRISCO** SHORTENING WITH COUPON AND \$7.50 PURCHASES **3 LB. CAN 77¢**

**CRANBERRY SAUCE** SHURFINE 16 OZ. CAN **25¢**

**PINEAPPLE** DEL MONTE CRUSHED - CHUNK SLICED 710 BITS **3 No. 1 1/2 CANS \$1.00**

**PIE SHELLS** DUTCH ANN PKG. OF 2 **27¢**

**SWEET PEAS** SHURFINE Early Harvest 17 OZ. CAN **25¢**

**MINCE MEAT** NONE SUCH 9 OZ. PKG. **39¢**

**DROMEDARY DATES** LOOSE PACK 8 OZ. PKG. **35¢**

**ASPARAGUS** SHURFINE CUT GREEN SPEARS 14 1/2 OZ. CAN **47¢**



**ICE CREAM**  
Shurfresh 1/2 Gal.  
**59¢**

**WHIPPING CREAM**  
Shurfresh 1/2 pt.  
**19¢**

**MORTONS PIES** MINCE OR PUMPKIN 20 OZ. **2 FOR 69¢**

**MIRACLE WHIP** KRAFTS 32 OZ. JAR WITH COUPON AND \$7.50 PURCHASES **49¢**

TENDER TIMED **NORBEST TURKEYS** TOMS

20 to 24 lb. 16 to 20 lb.  
**3 53 39¢**

U.S.D.A. GRADE A TENDER TIMED NORBEST **TURKEY HENS 45¢**

U.S.D.A. GRADE A TENDER TIMED NORBEST **TURKEY 49¢**

HORMEL'S "CURE 81" FULLY COOKED **BONELESS HAM** HALF OR WHOLE **\$1.69**

HORMEL "LITTLE SIZZLERS" **SAUSAGES** 12 OZ. PKG. **69¢**

BONELESS FULLY COOKED **HAMS**

WILSON TENDERMADE BAR S 9 to 11 lb. BAR S HALF 5 to 6 lb.  
**\$1.29** **\$1.29** **\$1.39**

WRIGHTS SLICED 2 Lb. Pkg. **Bacon \$1.39** Baking 4 lbs. up **Hens 49¢**

**PEACHES** HUNTS - CLING sliced or halves 3 29 OZ. CANS **1.00**

Tendercrust Brown-N-Serve **ROLLS** 3 for **89¢**

**PUMPKIN** LIBBY'S WITH COUPON AND \$7.50 PURCHASES No. 303 CAN **15¢**

**CRANBERRIES** OCEAN SPRAY 1 LB. CELLO PKG. **28¢**

**WALNUTS** LARGE EMERALD LB. **59¢**

**PASCAL CELERY** CALIF LB. **12¢**

**NAVEL ORANGES** SUNKIST LB. **19¢**

**APPLES** EXTRA FANCY ROMES LB. **19¢**

**ONIONS** YELLOW SWEET LB. **15¢**

**YAMS** PORTALES SWEETS LB. **15¢**

SHURFINE BLACK **PEPPER** 4 OZ. CAN **29¢**

SCHILLINGS **SAGE** 7/8 OZ. CAN **29¢**

Folgers **Coffee** 84¢ 2 lbs. **\$1.67** 3 lbs. **\$2.49**

Gladiola White **Cornmeal** 5 lb. Bag **59¢**

**Sugary Sam Yams** 30 oz. Can **29¢**

- MARSHMALLOWS . . . . . KRAFTS MINIATURE 10 1/2 OZ. BAG . . . . . 2 For 49¢
- DILL PICKLE CHIPS . . . . . ALABAM GIRL 22 OZ. JAR . . . . . 49¢
- PFEIFFER DRESSINGS . . . . . ASSORTED KINDS 8 OZ. . . . . 39¢
- CREAM CHEESE . . . . . KRAFTS PHILADELPHIA 8 OZS. . . . . 33¢
- DINNER NAPKINS . . . . . KLEENEX BOX OF 50 . . . . . 35¢
- SWEET PICKLES . . . . . ALABAM GIRL WHOLE 22 OZ. JAR . . . . . 59¢
- MARASCHINO CHERRIES . . . . . TOWIE 9 OZ. JAR . . . . . 39¢
- STUFFED OLIVES . . . . . HOLSUM THROWN MANZANILLA 7 OZ. JAR . . . . . 59¢
- MUSHROOMS . . . . . SHURFINE STEMS & PIECES 4 OZ. CAN . . . . . 39¢
- MIXED NUTS . . . . . FISHERS 13 OZ. CAN . . . . . 89¢
- BROWN IN BAG . . . . . REYNOLDS TURKEY SIZE . . . . . EACH 25¢
- ALUMINUM FOIL . . . . . ALCOA HEAVY DUTY 18 IN. x 25 FT. ROLL . . . . . 39¢
- ROASTING WRAP . . . . . REVEAL REGULAR ROLL . . . . . 33¢
- ALKA SELTZER . . . . . BOTTLE OF 25 . . . . . 59¢
- HAIR SPRAY . . . . . PROTEIN 21 REG. OR EXTRA HOLD 6 1/2 OZS. . . . . 79¢
- SHAMPOO . . . . . PROTEIN 21 NORMAL-OILY-DRY 4 OZS. . . . . 69¢
- SPRAY DEODORANT . . . . . DIAL 14 OZ. CAN . . . . . \$1.49
- TOOTHPASTE . . . . . CREST REG. OR MINT 7 OZ. TUBE . . . . . 77¢-79¢
- GOLDEN CORN . . . . . SHURFINE CS OR WK 17 OZ. CANS . . . . . 5 For \$1.00

**BROWN SUGAR** Imperial 2 LB. BAG **43¢**

**WESSON OIL** 48 OZ. BOTTLE **89¢**

**CHOCOLATE CHIPS** HERSHEY'S 12 OZ. PKG. **49¢**

**DREAM WHIP** TOPPING 4 OZ. PKG. **49¢**

**GREEN BEANS** DEL MONTE 2 No 303 WHOLE CANS **59¢**

**REVEAL ROASTING WRAP** REGULAR ROLL **33¢**

**COUPON**  
KRAFTS **MIRACLE WHIP SALAD DRESSING**  
32 OZ. JAR **49¢**  
For the first jar with this coupon and \$7.50 purchases in merchandise. (Regular price thereafter.)  
Coupon Expires Sat., November 25, 1972

**COUPON**  
CRISCO **SHORTENING**  
3 POUND CAN **77¢**  
For the first can with this coupon and \$7.50 purchases in merchandise. (Regular price thereafter.)  
Coupon Expires Sat., November 25, 1972

**COUPON**  
ELLIS **HALVES OR PIECES PECANS**  
SHELLED 10 OZ. PACKAGE **99¢**  
For the first package with this coupon and \$7.50 purchases in merchandise. (Regular price thereafter.)  
Coupon Expires Sat., November 25, 1972

**COUPON**  
LIBBY'S **PUMPKIN**  
NO. 303 CAN **15¢**  
For the first two cans with this coupon and \$7.50 purchases in merchandise. (Regular price thereafter.)  
Coupon Expires Sat., November 25, 1972

## CUT RATE THRIFTWAY

BUCCANEER STAMPS PLAINS SHOPPING CENTER SPEARMAN, TEXAS

**T  
H  
R  
I  
F  
T  
W  
A  
Y**