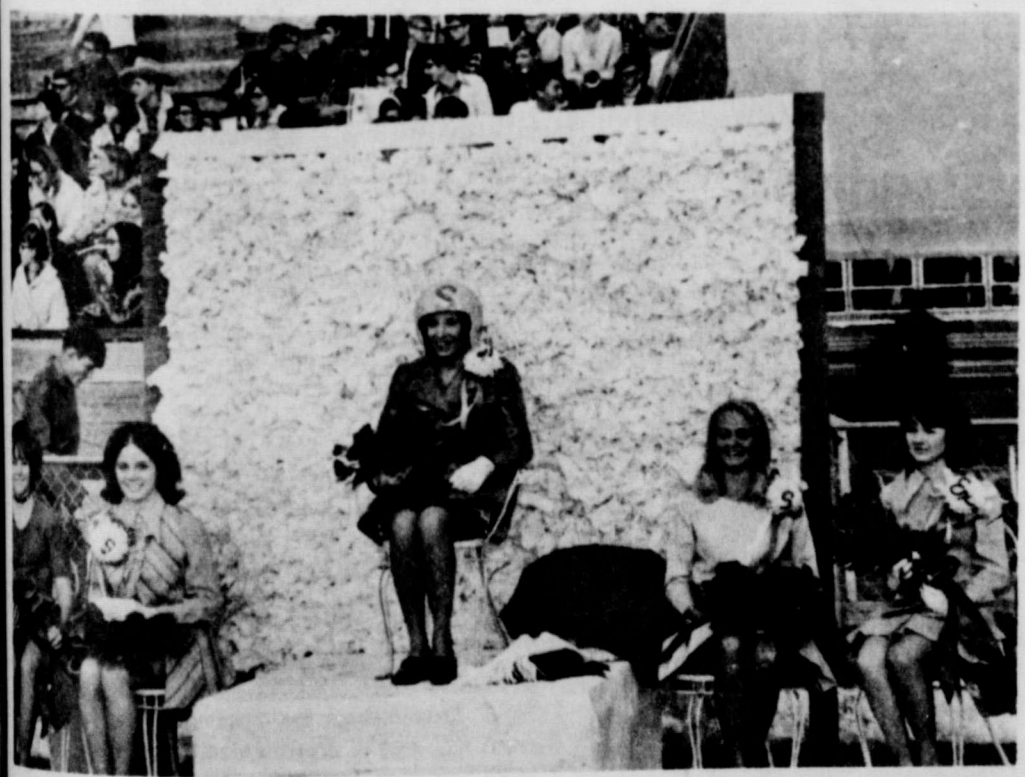


These cattle were enjoying their dinner, at Hansford Feedyards, during the blizzard of last week.



Frank Lemons kisses the Queen - Patty Buzzard



Queen Patty Buzzard and her attendants...

Observing 18th Business Year

Things were happening all over the world in 1952. It was during that year a four million dollar fire destroyed a major steel property in Atlantic City, N. J. U. S. seizure of the nation's steel mills was ordered by President Truman. The first jetliner passenger service opened in 1952 and a peace compact was signed between West Germany, the United States, Great Britain and France. Puerto Rico became the first commonwealth of the United States and the first hydrogen bomb was exploded. People in and around Spearman, in 1952, could turn on their radios and listen to such recently popular tunes as "Wheel of Fortune", "Takes Me to Tango", "Blue Tango", "High Noon" and "I Saw Mommy Kissing Santa Claus."

In the year 1952, Claude Owens opened a store in the building presently occupied by C&B Studios. The new business offered Maytag appliances and auto parts for sale. According to Claude, he opened with a staff of one person himself. The business grew over a period of six years and when the year 1958 rolled around, Owens Sales Company was suffering from growing pains. In 1958 the first earth satellite went into orbit. General Charles De Gaulle became Premier of France and the first, domestic, jet airliner passenger service across the Atlantic opened. Krushchev became Soviet Premier and, in the face of a national recession in progress, Claude Owens purchased the present home of Owens Sales Company from R. L. McClellan and moved into new quarters. At this point there were three employees on the payroll. In 1963, when Washington

and Moscow opened the hot line phone connection, Claude decided to do a little opening himself so he opened another auto supply store in Beaver, Okla. That store is still in operation. New lines were added to the years and are still being added after eighteen years in business. It now takes fourteen people to operate Owens Sales Company of Spearman and they all keep pretty busy. The sales force is noted for the friendly way they greet the customers and the speed in waiting on each person as quickly as possible. Each employee seems to be blessed with a deep sense of humor. One morning a mechanic came to the counter and requested a generator for a 1965 Ford. The clerk asked him for the color of the car. Employees of Owens Sales

Company remain for a long time. George Rook, parts manager, has been with the firm for fifteen years and Kenneth Burch remained for ten years. The company which became a corporation in 1966 has both a profit sharing and retirement plan for the entire staff. In reflecting over the years, Claude gives full credit to his employees for the success of the business. It may well be said: Claude Owens has four great loves aside from the business—His wife, Phyllis, his daughter, his bird dog and his grandson. To put them all in order the grandson is on top of the totem pole. Putting the other three in order is like trying to unscramble two eggs, so we'll just put all four at the top with the grandson standing just a little bit taller than the rest.

CATTLE DIE IN BLIZZARD

Lynx Slip By Greyhounds In Thriller

Cattlemen in the Hansford County area, are still finding dead cattle as a result of the blizzard that dumped more than 12 inches of snow in the area last Thursday. The raging blizzard paralyzed the area for several hours, leaving many stranded on the highways. Reliable information as of Tuesday of this week is that at least 750 head of cattle had died as a result of the blizzard and the count may reach over 1,000 head by the weekend. Many ranchers have cattle missing and they hope that they are in with other cattle, but many times the cattle are found in a ravine with one rancher losing over 100 head.

The feedlots in the area fared better than anyone, reporting very low losses. Many of the cattle that died in the blizzard had been here several months. Of course, this is very unusual, but the blizzard was possibly as severe as any we have had since the blizzard of 1957 when so many cattle were killed.

Farmers report that none of the corn suffered from the heavy snow and high winds. There was some damage to the maize, especially on the North ends of the fields where the snow piled in so deep. Other damage from the heavy snow has been reported. The airport behind Dr. Kleeburger's office was destroyed by the heavy snow. Several trees in the area were broke, and uprooted by the heavy snow and high winds. School officials stayed on the job Thursday until all of their students either were delivered to their parents or had a place to stay until the blizzard subsided.

The snow was the heaviest from Spearman North to the Panhandle Eastern Plant. Revised moisture report from U. S. Weatherman Pat Gates, brought a total of 1.18 inches of melt from the snow instead of the 1 inch previously reported.

Spearman celebrated their homecoming with another 7-6 thriller, as they came from behind to defeat the team "West of the Palo Duro" 7-6, for the county championship.

The Greyhounds scored in the first quarter of the game when Danny Henson pounded over from the one yard line for six points. The Hounds made the mistake of missing their extra point try and this proved the difference in the ballgame.

The Lynx came back and dominated the last half of the game, with Harper scoring a two-yard touchdown early in the 4th quarter, and automatic Womble kicked

the extra point to win the game 7-6.

The field was wet, but in excellent shape as the hot sun of Saturday melted all of the snow and the Saturday night game was played in perfect football weather. The Lynx crowned their new football queen just before the game started. She is Patty Buzzard and will reign as the new football queen for the undefeated Lynx team.

The Lynx played with several key men out of the game. And it was learned at game time that Mike Floyd was also unable to play because of a leg injury. The new Lynx backfield played well with Harper, Latham

and Lemons carrying the ball well on the muddy field. Womble was used in the quarterback spot alternating with Reedy. Both boys did a fine job.

Game Statistics:

	Greyhound	Spearman
First Downs	7	7
Net Yards Rushing	114	154
Net Yards Passing	14	19
Total Yards Gained	128	173
Passes Attempted	10	1
Passes Completed	2	1
Passes Intercepted	0	1
Number of Punts	8	4
Punting Average	28.0	37.5
Fumbles Recovered	4	3
Penalties	5-45	4-37
GRUVER	6	6
SPEARMAN	0	0
6 - Danny Henson 2 run, (run blocked)		
7 - Tony Harper 2 run, (Edgar Womble)		

Spearman B team plays at Lynx Stadium today at 7:00 p. m. when they meet the PHILLIPS-B Blackhawks.



Spearman Reporter

Spearhead of the North Plains

VOLUME 61, NO. 47 THE SPEARMAN REPORTER, Hansford County, Texas 79081 THURSDAY, OCTOBER 15, 1970

Lynx Open Conference Season At Phillips This Friday Night

Spearman's undefeated Lynx will meet the Phillips Blackhawks at Phillips Friday night, 7:30 p. m. This will be the first conference game for both teams. Spearman is undefeated this season and the Hawks are once-beaten. They lost to Guymon. However, last Friday night, the Hawks played the game of the year at Dumas, almost upsetting the AAA state ranked club, finally losing 21-20.

But past performance and statistics mean very little to these two clubs when they play football. The Lynx were favored to beat the Hawks earlier in the season but almost half of the Lynx starters have been out with serious injuries, and actually Coach Anthony doesn't know who will be ready by Friday night. It is not known whether Pool, Floyd, and Schroeder will be able to play Friday night or not.

Spearman and Dalhart are the only two undefeated teams in the district. And, Dalhart is still favored to win the district.

The Lynx still have not had to use any of their passing attack to win their ballgames this year. The Hawks, on the other hand, are expected to bombard the Lynx with aerials. The Lynx line has been improving the past few games but they know that the Hawks will be as tough as Canyon. Local fans who watched the Phillips-Dumas game think that the Phillips team has improved very much the past two weeks and should have won the Dumas game.

Kick-off Friday night will be 30 minutes earlier than the non-conference games. All conference games will begin at 7:30 p. m., including the one at Phillips.

Lions To Meet With Rotarians

The Spearman Lions Club voted 100% to meet with the Rotarians Monday at their regular noon luncheon to hear Ben Barnes, Lt. Governor of Texas. The Lions will not have their regular Tuesday noon meeting, and the Monday meeting with the Rotarians will count as their regular Tuesday noon luncheon.

In other business at the club Tuesday, Kandy Vaughn, Patty Buzzard and Jr. Salinas gave a report on their trips this summer to Girls State and Boys State. The three Spearman High School students reported having a wonderful time and that the experience

was very valuable to them. The committee to paint street numbers in front of all of the houses and places of business in Spearman met Tuesday and the Lions Club will start painting the numbers on all of the residential areas next week. A minimum of \$1.00 is being charged for this service, with all donations of over \$1.00 going to a local worthy Lions Club project. Lion Everett Tracy is in charge of this project and his committee is ready to get started soon. All Lions are reminded once again to attend the Rotarian noon luncheon on Monday.



Lt. Gov. Ben Barnes

Suffers Heart Attack

Mrs. Raymond Kirk is in North Plains Hospital in Borger this week being treated for a severe heart attack suffered Friday.

Mrs. Kirk was stricken while shoveling snow from the porch at her country home Friday morning. She was able to make it to the telephone and instruct the operator to call the Herbert Kirk home, the nearest country residence. Her husband, Raymond, was not at home at the time.

An ambulance was summoned and Mrs. Kirk was rushed to the Borger Hospital. Physicians report that Analee will be incapacitated for several weeks.

Lt. Governor Ben Barnes will be in Spearman on Monday, October 19, 1970 to speak to a joint meeting of the Spearman Rotary and Lions Clubs. The public is also invited and urged to attend.

Mr. Barnes will arrive in Spearman at 12:00 o'clock noon by helicopter and will land at the Courthouse. After speaking there he will then go directly to the Home Demonstration Club Room for a noon luncheon and address on State Government.

After the luncheon and address he will then depart by helicopter from the Spearman Courthouse. The general public is urged to attend and hear and meet the Lt. Governor.

Anyone wanting reservations for the luncheon should call Chunky Blackburn at 659-2566 before 3:00 o'clock p. m. Friday, October 16th. Reservations are limited.

ROY HOPKINS FUNERAL RITES SET FOR TODAY

Funeral services for A. L. "Roy" Hopkins, 58 year old Pampa resident who died Tuesday morning in Highland General Hospital, are scheduled today.

Funeral rites will be held at 1:30, Thursday October 15 at the Dunkle Funeral Home Chapel in Pampa. Following

this, graveside services will be held in Hansford Cemetery at approximately 3:15 p. m.

Mr. Hopkins, well known in this area, had lived in Pampa 8 years. He was employed by Transwestern Pipeline Co.

Survivors include his widow, Ann of the Pampa home; one son, Douglas of Mineral Wells, Texas; two daughters, Cathy Merrill of Amarillo and Mrs. Dick Countiss of Spearman and five grandchildren.

Kenneth Taylor On Duty Aboard Aircraft Carrier

USS FRANKLIN D. ROOSEVELT, Oct. 7-Navy Petty Officer Second Class Kenneth W. Taylor, son of Mr. and Mrs. Orville E. Taylor of 121 S. Endicott, Spearman, Tex., has reported for duty aboard the attack aircraft carrier USS Franklin D. Roosevelt at Mayport, Fla.

CLASSIFIED ADS WORK WONDERS

SERVICES



Fiddle-Free Color TV by RCA



Boxwell Bros. Funeral Home and Flower Shop

Cummings Refrigeration and Air Conditioning

White House Lumber Co.

Hansford Lodge

1040 A.F. & A.M.

Regular Communication 2nd and 4th Monday of each month

Daniel Faries, W.M. Cecil Patton, Secy.

FOR SALE

FOR SALE - Combine trailer and header trailer, 7 1/2 E. 2nd or call 659-3270

46T-6tp

FOR SALE-3 BR, 2 bath, brick-lange den- pay equity, assume 5 1/4 % loan. Phone 659-2349.

44T-rtn

LAND FOR SALE-1280 acres (Sections 70 and 71, Block 2, GH&H Ry. Co., Hansford County, Texas.) 924 acres in cultivation, balance in grass. Three irrigation wells, No minerals. Located 17 miles Southwest of Gruver. Wheat allotment 462 acres. Feed-Grain allotment 190 acres. Loans on land \$133,000.00 at 5 3/4 % and 7 % interest. For additional information call Porter R. Underwood, Jr. 304 Amarillo Building, Amarillo, Texas. Phone 372-3262. After 6 p.m. 352-5516.

43T-rtn

FOR SALE: 2 BR stucco, corner lot, 2 BR Extra nice, near school, 3 BR luxury home, see to appreciate. Choice lots in South Spearman.

EMMETT R. SANDERS BROKER 659-2516, nights AC 405-338-6878. 47T-48T-49T

FOR SALE-Used color & Black-white TV. 659-2871 Earl Goodheart. 43S-rtn

FOR SALE-Gas dryer & automatic washer. 659-3278 after 5 p.m. 47T-2tp

FOR SALE-1963 F-85 Oldsmobile, Nice. Blue with blue interior. Must sell before Saturday. Phone 659-3455. 47T-2tp

FOR SALE-Mod 1200 Winchester 20 Ga. Pump Shotgun Vent. Rib, Polyochoke Recoil Pad like New. 659-3314

HANNAH's husband Hector hates hard work so he cleans the rugs with Blue Lustre. Rent electric shampooer \$2. Gordon's Drug.

FOR SALE-Bestline Cleaning Products. Highly concentrated. A little goes a long way. Give it a try. Call Mrs. Orville Fullbright 659-2119. 41T-rtn

FOR SALE-240 acres of irrigated land in Hutchinson County. Call Ernest Wilmoth 659-2406 after 6 p.m. 46T-rtn

FOR SALE: Used 2 piece bedroom suite, \$25.00. Phone 3684. 4t-c

FOR SALE-2 channel amplifier and speaker. Call 2692 or see at 515 S. Archer. 40S-rtn

FOR SALE-Childcraft Encyclopedias. Call 3175 after 5:00. 40S-rtn

Fight fatigue with Zippies, the great iron pill. Only 1.98 Spearman Drug. 45S-7tp

FOR SALE-Good running Dune Buggy, Model A frame with 383 Plymouth motor. Automatic. 32 S. Endicott. 659-2915. 15T-rtn

Sears Kenmore Detergent a special this month only 45 lb., 20lb., 24lb., 100 lb. Sears Plains Shopping Center Spearman. 659-2573 44S-9tc

ATTENTION HUNTERS-English Pointer Male, 5 month old Pup for Sale. Subject to Register. Call 659-2058 after 8:00 p.m. for John Booth. 47T-4tp

SEARS-Special on 20 gauge shot gun shells. Plains Shopping Center. Spearman. 659-2573. 44S-9tc

Bultaco-Hodako Motorcycles. Sales & Service. The Cycle Shop, Stinnett, Texas. Phone 806-878-2298

FOR SALE-GE Automatic Defrost Refrigerator. 659-2871. 46S-rtn

FOR RENT

FOR RENT-Furnished, clean, air conditioned TV's available. Downtown Apts. Phone 2269. 10T-rtn

FOR RENT-Four room furnished apt. 821 S. Haney. 659-2084. 44S-rtn

FOR RENT-furnished Apt. 606 S. Bernice Street. Phone 659-2652. 28S-rtn

FOR RENT-One bedroom, newly furnished apartments. Carpeted. Phone 659-2566. 41T-rtn

FOR RENT--Furnished Bachelor Apt. Contact Jim McLain, 659-3418. 12T-rtn

ANNOUNCING

Miss Texas Beauty Shop, open 6 days a week. Mabel Edwards, Pat Waugh, Shirley McCoy. 659-2861 2nd and Snider 44S-rtn

CARD OF THANKS

I would like to express my thanks & appreciation to all my friends who called, sent flowers, cards and especially their prayers while I was in the hospital. May God bless you all. Mona Bynum

I wish to take this opportunity to express my sincere thanks to everyone who remembered me during my illness with prayers, cards, flowers and visits. Your thoughtfulness shall never be forgotten. May God bless each of you. Mrs. Veda Collins

LEGAL NOTICE

Hansford County Commissioners Court will receive bids on October 26, 1970 at 10 a.m. for a 125 hp, 638 cubic inch engine, cab, 2 unit heater, 14 ft. hydraulic side shift blade, oil clutch, accelerator-decelerator, fuel priming pump, battery compartment doors, 1400 x 24 tires, mechanical controls with shear Pin for overload protection, power steering cover and lights. Operating weight approximately 26,000 lbs. There will be a 1961 Caterpillar motor grader to trade in. 47T-48T

WANTED

WANTED-Good baled feed. Call 2946 or 3097 at night. 46S-2tc

School Lunch Menus

MONDAY OCT. 19
Chicken Pot Pie
Whole Potatoes/Cream Sauce
Buttered Leaf Spinach
Sweet Pickle Chips
Beach Huckle
Peanut-Butter Blend
Hot Rolls-Milk
High School Meat Choice
Barbecued sliced franks

TUESDAY OCT. 20
Pizza Western Beans
Buttered Corn
Congee Salad
Oatmeal Cake
Milk
High School Meat Choice
Lasagna-Cornbread

WEDNESDAY OCT. 21
Corn dogs-Mustard
Macroni and Cheese Casserole
Seasoned Green Beans
Carrot-sticks
Citrus Fruit Cup
Spicy Raisin Bread
Milk
High School Meat Choice
Beef and Bean Burritos

THURSDAY OCT. 22
Chicken Fried Beef Patties
Mashed Potatoes
Seasoned Green Peas
Combination Salad
Birthday cake for Oct. Birthdays
Bread-Milk
High School Meat Choice
Oven Fried Liver

FRIDAY OCT. 23
Hamburger-Mustard or Chicken Salad Sandwich
Potato Gems-Catsup
Lettuce-Tomato Salad
Dill Pickle Slices
Cherry Cobbler
Milk

For removal of DEAD STOCK Call day or nite Day 659-2128 Nite 659-2654 Spearman, Tex

Halloween Twisters Of Your Own

For an original touch to the Halloween festivities - why not make your own pretzels? Here's an easy and creative recipe - and fun too!

Mix the following together in a large mixing bowl: 1/2 cups of warm water, 1 cake of compressed yeast (or package dry powdered yeast), 1/2 teaspoon of sugar. Let stand for one hour. Then, mix in 1/2 cups of flour. Knead mixture for about 10 minutes. Pre-heat oven for 5 minutes to warm it, then turn OFF the heat. Place mixture in a greased bowl, cover it, and place in the warmed oven for about an hour until mixture doubles.

When it has doubled in size, make the twists as shown below. Place the twists on a greased cookie sheet—not too close together for they spread. Then—to make them look perfect: Dilute one egg yolk with one or two tablespoons of water or milk. Brush a thin coat of the liquid on each pretzel. Sprinkle with coarse salt.

Bake in a preheated oven at 475 degrees for 12-15 minutes until they are golden brown. Yields about 2 dozen. Eat them hot, right out of the oven, dipped in mustard, the way the professional pretzel bakers do, or dipped in a special Halloween dip. Your own homemade pretzels - delicious.

HOW TO TWIST

Step One: Take a chunk of dough about the size of a golf ball. Roll into a "rope" about 15" long. Be sure to work on a piece of wax paper so that the dough doesn't stick.

Step Two: Make a loop by carefully picking up the ends. Your pretzel is beginning to take shape.

Step Three: Bring the left end of the loop over to the right—and the right end under the left. A twist will be formed in the center.

Step Four: For the traditional three hole shape, bring the



ends over and down. Press them against the sides of the loop. Now you have a perfect twist pretzel.

YUMMY HALLOWEEN DIPS

A special treat to go along with your freshly baked pretzels is a delicious Halloween dip. Here are two that will delight your family or enhance any Halloween party.

Witch's Brew Dip

1/2 cup each, finely chopped onion and green pepper. Drop into heavy saucepan in which 2 tablespoons butter is bubbling and saute a minute or two. Don't brown. Add salt and pepper lightly.

Now add 1/2 pound grated cheddar cheese and let it melt over VERY LOW heat. Stir in one small can minced pimientos with their juice and mix well. Add 1 tablespoon frozen chives, 2 teaspoons good

chili powder, 1 teaspoon dry mustard and a dash of garlic salt. Serve hot with your hot pretzels. If it gets too thick add heated beer! Sounds queer? No argument, but it's delicious and will disappear like magic.

Green Goblin Dip Delight

Buy 4 very ripe avocados. Cut in halves, peel and place in small deep bowl. Cover with lemon juice, about 1 tablespoon. Using silver fork, mash and whip until smooth. Stir in 1/2 clove garlic finely minced, 1/2 teaspoon salt, 1/2 teaspoon tabasco with a tablespoon more lemon juice. Now add 2 teaspoons mayonnaise and 1/4 cup tomato juice, heating well. Top with a blur of sour cream. Unusual and perfect, with your freshly baked pretzels. The perfect Halloween snack.

TEL Class Had Montly Social

Mrs. Lera Langston hosted the October monthly social meeting of the TEL Sunday School class of the First Baptist Church.

Mrs. Alma Kizziar, president, conducted the business session and Mrs. Ethel Baley gave the devotional. The class presented birthday gifts to teacher, Mrs. Billy Miller.

The hostess served a delicious refreshment plate to one guest, Mrs. E. S. Uptergrove, and to members: Ethel Baley, Susan Wagnon, Lilly Hacker, Alma Kizziar, Hattie Mackie, Sybil Miller.

Neelys	608	Gifford Hill	13	7
HIGH INDIVIDUAL SERIES		Tucker WWS	11	9
Jane Meek	546	Neelys	10	10
Tubby Hays	496	Lyon Ins. (Pending)	9	7
Jackie Mathews	474	Anthony Elec.	9	11
HIGH INDIVIDUAL GAME		M&M Grocery	6	14
Jane Meek	224	Gruver Motors		15
Jackie Mathews	206	Pending	1	15
Tubby Hays	200	HIGH TEAM SERIES		
10-12-70		Equity	1903	
TEAM	WON	M&M Grocery	1691	
Equity	17	Neelys	1681	
	3			



Understanding The Bible

By DAVE LLEWELLYN

Some time in your life, undoubtedly, you have taken a reading test. The results of that test told you that you read at a rate of so many words per minute and comprehended a certain percentage of what you read. The curious evaluation often rendered by such testing is that your reading rate is very fast but you don't understand what you read.

It is like the student who flipped through Tolstoy's "War and Peace" at 10,000 words per minute but, when he finished and was asked what it was all about, could only reply, "It was about Russia."

Understanding is the purpose of reading, obviously.

Bible study suffers from the same problem as ordinary reading. Many people have trouble understanding the Bible when they read it. Not all of the Bible is hard to understand but many parts of it are — and to get a grasp of what the Bible says as a whole is generally difficult.

Helps to Understanding

Fortunately, there is help — a lot of help. There are now over 50 English translations of the New Testament available, and many translations of the Old Testament. There is no longer any need to be confused by archaic words and syntax.

But there is more. God has given readers of the Bible His Spirit to explain His Word to them. Jesus said, "The Holy Spirit, Whom the Father will send in My name — He will teach you all things."

But how, then, is it that there are many things we do not understand when we read?

Jesus said, "When He, the Spirit of Truth, is come, He

will guide you into all truth." But some of us, having preconceived ideas on many subjects, may need a good deal of leading by the Holy Spirit to get us to a knowledge of the truth.

Again, God has provided another way to be taught about His Word — people who have themselves been taught by the Spirit.

One of Jesus' disciples, Philip, was sent by the Holy Spirit to meet a man who was driving through the desert. When Philip met the man, he saw his Bible open to Isaiah, so he asked whether he understood what he was reading.

"How can I, unless someone guides me?" the man replied. Philip then explained to him the passage.

The church, as is pointed out in the letters of Paul, is intended to provide people who can explain the Scriptures to others. The Holy Spirit is still the teacher, but sometimes He chooses to teach through people.

Spiritual Wisdom
Also, Christians' studying together teaches them, through personal contact, what they would never have thought to ask otherwise.

Understanding the Bible is not like understanding any other book. The Bible requires more — and it has more to give. Paul told Timothy that the Scriptures were "able to make . . . wise unto salvation."

Unlike any other book, the Bible is able to make you spiritually wise. It is able to, but won't if you understand it only mentally.

God gives this definition: "To depart from evil is understanding." The Bible will make you spiritually wise only if you "take heed" to it.

Jesus said, "When He, the Spirit of Truth, is come, He Copyright Dave Llewellyn 1970

TEXAS PRESS ASSOCIATION
Member Since 1970
THE SPEARMAN REPORTER
213 Main Spearman, Texas 79081 659-3434
Box 458
Published Weekly at 213 Main Street, Spearman, Texas 79081
Owner-Publisher William M. Miller

Any erroneous reflection upon the character of any person or firm appearing in these columns will be gladly and promptly corrected upon being brought to the attention of the management.

SUBSCRIPTION RATE--Hansford, adjoining counties, \$7.00 yr. Other points in combination with The Hansford Plainsman, \$9.00 yr.

WHY ARE THERE HOLES IN SWISS CHEESE?
The holes in Swiss cheese are caused by bacteria that gives off a gas. The Roquefort type "blue" cheese has a mold planted in it.

THE LARGEST SINGLE CELL IN THE WORLD IS AN OSTRICH EGG!

Our Heritage of Faith . . .
Food for thought . . .

EVERY ONE IS NEEDED
Read 1 Corinthians 12:21-27

" . . . the parts of the body which seem to be weaker are indispensable." 1 Corinthians 12:22

Will Rogers, who made money by pretending to be a little stupid, used to say that all of us are dumb about different things.

This is undeniably true. Many who are sharp in literature do not know much about mathematics. And many people who are long on book learning are pretty short when it comes to practical matters.

Anyone who looks down on a person of limited education shows by that very attitude that he is not really educated himself, for it is not possible to have schools if it were not for unlettered men who dig down deep in dirty mines in order that iron may be made into type from which books are printed. Mark Hopkins might be able to hold school while sitting on the end of a log, but schools would be limited by such an arrangement to mild climates. This means that janitors and bus drivers are as essential to education as teachers are.

In fact, it is a humbling experience for those who teach to discover that a teachers' strike has much less immediate effect upon society than does the same protest on the part of bus drivers or even garbage collectors.

All of us need each other desperately. And the more lowly a person happens to be, the more essential, often, is his part in the church and society. This general principle is especially true in the field of education. Despite all the philosophers, most of us would be scratching pictures on cave walls today if it were not for some of the workaday pursuits by which many people earn their living.

Prayer

Keep us, O Lord, from the contempt for other people which is the mark of a mean man, rather than a child of God. Let each of us esteem the other person as important as himself. For Jesus' sake, Amen.

NEW CANADIAN BLITZ DIET

LOSE 5 POUNDS OVERNIGHT!
Learn the secret of incredible, No-Effort, No-Drug, ONE DAY reducing formula! Have your wholesome, yum "Blitz" (4 mystery meals)—Go to bed! Wake up!—you have lost 5 pounds. Unbelievable? Sure! But it works Every time. OR YOUR MONEY BACK! SPECIAL OFFER (limited period only). \$3.00

Yes I want to lose five pounds overnight. Please rush by mail CANADIAN BLITZ DIET. I enclose \$3.00 cash, money order, or cheque (Sorry no C.O.D.'s). If payment by cheque enclose \$3.50 to cover handling costs.

CANADIAN BLITZ DIET
203-15104 Stony Plain Road, EDMONTON, Alberta, Canada

Name
Address
City State Zip

SHA
S
H
BUTY PC
Hick
HERFORD
Shor
MEADOV
Slice
MEADOV
Skin
KRAFT
M
W
CAMEL
5
CAMEL
Clin
P
CAMELOT
Appl
CAMELOT
Gard
Savel
CAMELOT V
Sweet
CAMELOT V
Whiti

SAVE EVERY DAY WITH LOW THRIF-T PRICES ON

Ideal Meat Master Meats!



the home of THRIF-T-Prices
IDEAL
FOOD STORES



U.S.D.A. GRADE A

Whole Fryers

FRESH DRESSED!

28¢

LIMIT PLEASE

CUT UP Fryers LB. **32¢**

- BREASTS, LEGS AND THIGHS OF Pick THE Chick.....Lb. **59¢**
- RIBS ATTACHED Fresh Fryer Breasts...Lb. **69¢**
- PLUMP, JUICY Fresh Fryer Legs.....Lb. **55¢**
- TENDER MEATY Fresh Fryer Thighs....Lb. **59¢**
- FROZEN Fresh Water Catfish Lb. **89¢**

Prices Effective Thru Sat., Oct. 17, 1970. Limit Rights Reserved. NONE SOLD TO DEALERS

SAVE UP TO \$1.70 WITH IDEAL THRIF-T COUPONS!

WITH REQUIRED PURCHASE EXCLUDING BEER, CIGARETTES AND MINIMAL PRICED ITEMS.

VALUABLE COUPON
GOOD FOR **25¢ Off** ON PURCHASE OF A 16-OZ. PKG. APPIAN WAY **Cheese Pizza**
WITH \$5.00 OR MORE PURCHASE
LIMIT ONE COUPON. EXPIRES 10-17-70
IDEAL FOODS!

VALUABLE COUPON
GOOD FOR **30¢ Off** ON PURCHASE OF 16-OZ. BOTTLES 6-BOTTLE CARTON **Coca Cola**
WITH \$5.00 OR MORE PURCHASE
LIMIT ONE COUPON. EXPIRES 10-17-70
IDEAL FOODS!

VALUABLE COUPON
GOOD FOR **15¢ Off** ON PURCHASE OF 48-OZ. BOTTLE **Crisco Salad Oil**
FOR SALAD OR COOKING.
WITH \$5.00 OR MORE PURCHASE
LIMIT ONE COUPON. EXPIRES 10-17-70
IDEAL FOODS!

VALUABLE COUPON
GOOD FOR **\$50¢ Off** ON PURCHASE OF 7-OZ. CAN ANTI-PERSPIRANT **Dial Deodorant**
WITH \$5.00 OR MORE PURCHASE
LIMIT ONE COUPON. EXPIRES 10-17-70
IDEAL FOODS!

VALUABLE COUPON
GOOD FOR **50¢ Off** ON PURCHASE OF 5-LB. JAR. PURE **Bradshaw Honey**
WITH \$5.00 OR MORE PURCHASE
LIMIT ONE COUPON. EXPIRES 10-17-70
IDEAL FOODS!

THRIF-T SAVINGS!
SHANK PORTION **Smoked Ham** LB. **49¢**

THRIF-T SAVINGS!
QUARTER 9 TO 11 CHOPS **Sliced Pork Loin** LB. **79¢**

BUTT PORTION **Hickory Smoked Ham** Lb. **59¢**
HERFORD HEAVEN **Short Horn Steaks** 16-Oz. Pkg. **79¢**
MEADOWDALE **Sliced Bologna** 12-Oz. Pkg. **59¢**
MEADOWDALE OR BAR-S **Skinless Franks** 12-Oz. Pkg. **58¢**

U.S.D.A. CHOICE, BLADE CUT **Chunk Steaks** Lb. **69¢**
BITE-SIZE PIECES **Boneless Beef Stew** Lb. **79¢**
LEAN, MEATY **Beef Short Ribs** Lb. **29¢**
YOUNG, TENDER **Sliced Beef Liver** Lb. **59¢**

THRIF-T SAVINGS!
MEADOWDALE 2-LB. PKG. \$1.37 **Sliced Bacon** 1-LB. PKG. **69¢**

COLORADO EXTRA FANCY RED **Delicious Apples** 5 LBS. **\$1.00**
CRISP **Tender Celery** STALK **19¢**
CAMELOT **Orange Juice** 1/2-gal. btl. **89¢**
U.S. NO. 1 COLO. **Red Potatoes** 100-LB. BAG **\$3.59**
FLA. RED ROSY **Radishes** 2 8-OZ. BAGS **25¢**

THIS WEEK
2 ART PRINTS FREE
ONE 11" x 14" PLUS ONE 4" x 5" PRINT
SELECT FROM 348 DIFFERENT SUBJECTS
Bring together an elegant gallery. Select two FREE brush-stroke prints from the Coventry Fine Art Collection. Then choose from a wide array of hand-finished frames now on sale—adding "the total look" with a specially priced decorative accent.

THRIF-T SAVINGS!
KRAFT SALAD DRESSING QT. JAR **Miracle Whip** **44¢**

THRIF-T SAVINGS!
ASST. FLAVORS 1/2-GAL. CTN. **Ice Cream** **69¢**

THRIF-T SAVINGS!
WHITE OR COLORS JUMBO ROLLS **Scott Towels** 3 FOR **\$1**

IDEAL THRIF-T SAVINGS!
SAVE \$3.00 ON GOLD OR AVOCADO FINISH FLORAL SPRAY REG. \$7.95 ONLY \$4.95 WITH MAILER COUPON
THIS WEEK... BOOK NO. 12 THE ILLUSTRATED COLUMBIA ENCYCLOPEDIA ADD TO YOUR SET TODAY ONLY **\$1.99**

CAMELOT FALL FESTIVAL SALE!
CAMELOT WHOLE KERNEL OR CREAM STYLE **Golden Corn** 16-OZ. CANS **7 \$1**
CAMELOT SWEET PEAS OR ALL GRINDS **Cut Green Beans** 16-OZ. CANS **6 \$1**
Camelot Coffee 1-LB. CAN ENRICHED **77¢**
Camelot Flour 5-LB. BAG **33¢**

CAMELOT ALL FLAVORS **Cake Mixes** 19-OZ. PKGS. **5 \$1**
CAMELOT SLICED OR HALVES **Cling Peaches** 29-OZ. CANS **3 85¢**
CAMELOT **Apple Juice** 46-OZ. CAN **31¢**
CAMELOT **Garden Spinach** 16-OZ. CANS **7 \$1.00**
CAMELOT **Sauerkraut** 6 16-OZ. CANS **\$1.00**
CAMELOT WHOLE **Sweet Potatoes** 5 14-OZ. CANS **\$1.00**
CAMELOT WHOLE OR SLICED **White Potatoes** 3 16-OZ. CANS **43¢**

Quality Products AT LOW THRIF-T PRICES
CAMELOT 2-LB. PKG. **Pancake Mix** **33¢**
MEADOWDALE 32-OZ. BTL. **Waffle Syrup** **38¢**

Quality Products AT LOW THRIF-T PRICES
CHUN KING BEEF CHOP SUEY, SHRIMP OR **Chicken Chow Mein** 43-OZ. CAN **79¢**
CHUN KING 5-OZ. CANS **Chow Mein Noodles** 4 FOR **\$1**

THRIF-T LOW PRICE Frozen Foods **AT LOW THRIF-T PRICES**
ALL VARIETIES 11-OZ. PKG. **Banquet Dinners** **39¢**

THRIF-T SAVINGS!
MEADOWDALE 6-OZ. CAN **Orange Juice** LIMIT FOUR **10¢ EA.**

DESSERT TOPPING 9-OZ. CTN. **Birds Eye Cool Whip** **55¢**

THRIF-T LOW PRICE Health & Beauty Aids **AT LOW THRIF-T PRICES**
CREST-REG. 83¢ EX. 1GE. TUBE **Tooth Paste** **61¢**
SCOPE-REG. \$1.99 24-OZ. BTL. **Mouth Wash** **\$1.37**

THRIF-T LOW PRICE Fresh Dairy **AT LOW THRIF-T PRICES**
IDEAL OR FAIRMONT 24-OZ. CTN. **Cottage Cheese** **43¢**

THRIF-T SAVINGS!
GRADE A DOZEN **Medium Eggs** **38¢**

GRADE A DOZEN **Large Eggs** **45¢**

THRIF-T SAVINGS!
FAIRMONT **Dip 'n Snack** 3 8-OZ. CTNS. **99¢**
CAMELOT SII. COLBY OR **Pizza Cheese** 6-OZ. PKG. **33¢**
CAMELOT **Mild Longhorn** 16-OZ. PKG. **89¢**
THRIF-T SAVINGS!
SOFT 1-LB. CTN. **Parkay Oleo** **35¢**



Phyllis Owens, Sec. Treas.



Claude Owens, Pres.



George Rook, Mgr. Parts



Pat Sutterfield, Ofc.

**18TH.
ANNIVERSARY**

SATURDAY

OCT. 17TH

OPEN HOUSE

**7:00 AM
6:00 PM**



Wanda Widener, Ofc.



Don DeArmond, Counter



Jim Beeson, Counter



Ralph Rabe, Counter

WE'RE LOOKING FORWARD TO YOUR VISIT AND WE'LL ENJOY SHOWING YOU AROUND.

**SOUVENIRS
REFRESHMENTS
DOOR PRIZES**

LIVE BROADCAST FROM THE FLOOR OVER KBMF
9:05 to 11:30 A.M.
1:00 to 4:00 PM



Kenneth Burch, Mach. Shop Mgr.



Billy Wills, Mach. Shop



Bill Dillow, Ser. Center



Gee Wills, Ser. Center



Jim Morley, Mgr. Ser. Center



Darrell McCoy, Outside Sales

OWENS SALES CO.

The b
day & l
sidera
weekly
test. T
gleam
entries,
were dr
1 p.m
Once
ed in
and pla
Tennis
and Gar
Haney.
Both
and bot
the tie
Stagg
tween
would b
Tenn
Spearm
score be
Greyhou
cold an
night, e
out in fr
to 6.
Only o
to gue
score an
bramme

Me
M
r.

All m
the C of
beef in
an effort
rate son
er.
Ticket
at the Cl
\$1.00 ea
good for
half of a
salves w
8:30 p.m.
the Hall
The St
Spearm
ing to h
owen C
cation s
at a later

Football Contest Ends In Tie

The blizzard of last Thursday & Friday cut down considerably on entries in the weekly football guessing contest. The contest has been pleasing well over a hundred entries, but only 85 ballots were deposited by Friday by 1 p.m.

Once again the judging ended in a tie for first and second place between Calvin Tennison, 715 Collier Dr., and Gary Staggs, 1102 S. Haney.

Both missed only one game, and both were off 7 points on the tie-breaker score.

Staggs guessed the score between Spearman and Gruver would be Spearman 6, Gruver 6. The score between the Lynx and Greyhounds, struggling on a cold and wet turf Saturday night, ended with the Lynx out in front by one point, 7 to 6.

Only one person came close to guessing the tie-breaker score and that was Terril Brummett. However, he missed

ed six games. Terril said the score would be 7-7, only one point off.

The most missed games were Boys Ranch vs Sanford Fritch, Sunray vs Texhoma and Texas Tech vs Texas A&M.

Nine persons missed only 1 game; 19 missed two games, 22 missed three; 19 missed four; 9 missed on 5 game guesses; 14 missed 6 and four guessed wrong on seven.

Anyone may enter the weekly contest by picking up an entry form at any one of the sponsoring merchants listed on the football page. These must be deposited by 1 p.m. Friday.

This week's winners split first and second place money and will receive \$7.50 each. They may pick up their checks at the newspaper office.

Where Do We Stand

Some revealing facts and figures were brought to light in a recent release by the West Texas Chamber of Commerce. The release is a comparison of population and economic trends in the panhandle counties.

Fifty one counties are covered in the panhandle survey. The panhandle area is determined as west of the 100th meridian and north of interstate 20.

Six of the fifty one counties showed a decrease in retail sales from 1958 through 1969. Those counties were: Briscoe, Cochran, Dickens, Fisher, Hutchinson and Lynn.

All counties showed an increase in bank deposits between Jan. 1st 1959 and

December 31st 1969 except for the counties without banks. Those counties being: Borden, Hartley and King.

Population wise, 41 of the 51 panhandle counties showed a population loss in the recent preliminary census.

The average population loss was 6%. The greatest county population loss was Hutchinson County showing a drop of 30% followed by Dickens and King each showing a loss of 28%.

The highest population increase was in Randall county with a jump of 55%. Deaf Smith County increased 40%. Sherman showed an increase of 38%.

The highest percentage of increase in retail sales among all panhandle counties with banking facilities was Hansford county with an increase over the decade of 199%. Randall county showed an increase of 175% and Crosby showed a jump of 165%. Deaf Smith was next with an increase of 157%.

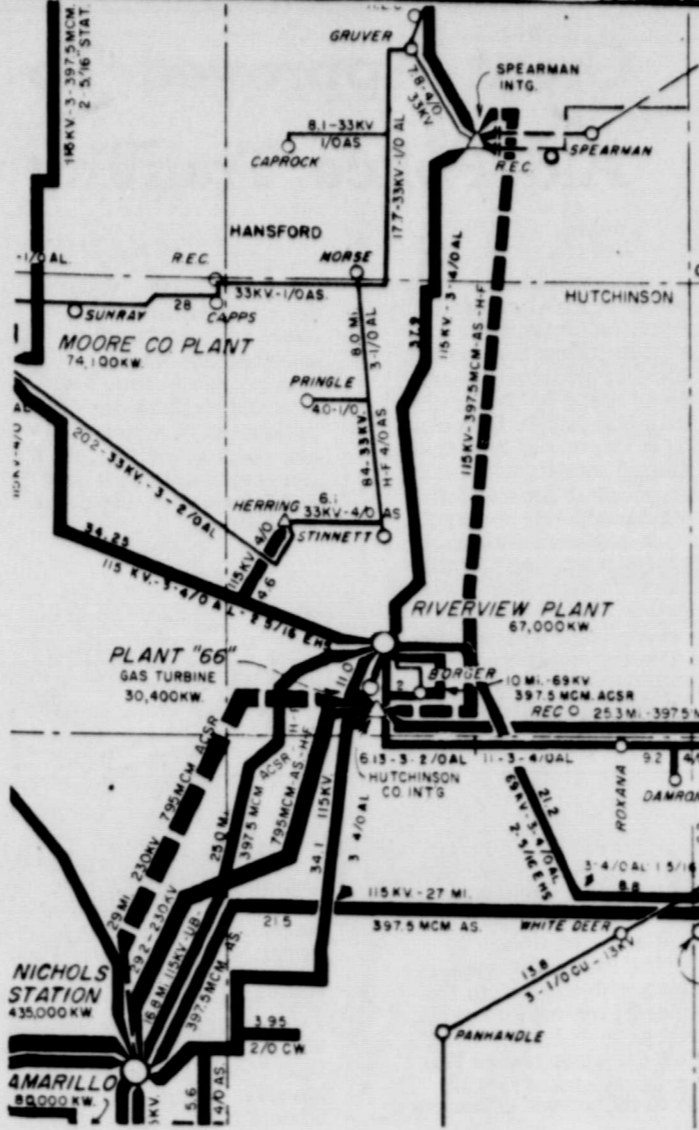
The largest increase in bank deposits was Randall County with 215% increase, Deaf Smith 170%, Lipscomb 166%, Castro 135% followed by Hansford with a jump of 123%.

Retail sales jumped from nine hundred ninety-three million, six hundred twenty thousand dollars in 1958 to one billion, four hundred thirty seven million, one hundred thirty one thousand dollars at the end of 1969. The average increase in retail sales was 45%.

Total bank deposits from Jan 1st 1959 to Jan 1st 1970 increased from nine hundred thirty five million, four hundred seventy five thousand dollars to one billion, six hundred one million, one hundred sixteen thousand dollars. The average increase was 71%.

Although the percentage change of bank deposits and retail sales are actual, during the time period the consumer price index increase 28.3% and the value of the dollar decreased 22.3 percent.

The inflation factor can be taken out of the change in bank deposits by reducing the 1969 bank deposits 22.3% the calculating the percent change. The inflation factor can be taken out of the change in retail sales by reducing the 1969 retail sales 28.3 percent the calculating the percent change.



The dotted lines indicate the location for 2 new transmission lines Southwestern Public Service Company proposes to build to assure adequate electric power for the North Plains area. In addition to the transmission lines, Southwestern proposes to increase the transformer capacity of the Spearman Interchange by more than 50%, which means the power supply of the region will increase by more than 50%. The construction program, which is scheduled to be completed before next summer's peak power usage, calls for a \$2,000,000 investment.

New Lines To Double Electric Power In Area

There'll be 50% more electric power available to meet the 1971 summer peak demands in the North Plains area as a result of a \$2,000,000 construction program being undertaken by Southwestern Public Service Company. Southwestern is the power supplier for North Plains Rural Electric Cooperative, Inc. and Community Public Service Company, principal electric utilities in the far North Plains region.

The Amarillo-based electric utility proposes to build a second 115,000 volt transmission line from its Hutchinson County Interchange, south of Borger, to the Spearman Interchange, which is located between Spearman and Gruver. A single 115,000 volt transmission line links the two interchanges at the present time.

In addition to adding a second transmission circuit, the capacity of the transformer at the Spearman station will be increased by more than 50%.

The present transformer at the Spearman Interchange was loaded near capacity last summer and growth in the North Plains region makes it imperative that the additional capacity be installed before the 1971 summer peak comes on.

Southwestern officials pointed out that it is probably that the outage which occurred as a result of the freak October blizzard last week could have been cut down to a matter of minutes if the second transmission line had been in service at this time. When there are two circuits in operation, the load can be switched in the event of failure on one.

Southwestern Public Service Company right-of-way men are now seeking right of way for the new construction. The proposed route of the line is east out of Borger and then north to the Spearman Interchange. There has been more than the normal difficulty encountered in attempting to purchase the necessary right-of-way. Southwestern officials described the project as still being on schedule, but said additional delays in right-of-way acquisition could make it difficult to meet the end of May completion schedule. It will take about three months to build the 50 miles of line.

They pointed out that during summer peak periods of electric power usage, the North Plains area load can't be carried on the alternate route from Dumas to Gaymon and back down to the Spearman Interchange; therefore, if there is only one Hutchinson County-Spearman circuit in operation this summer,

there'll be no way to carry the load if it is out.

As an additional backup for power supply in the North Plains region, and part of the overall \$2,000,000 construction program, is a second 230,000 volt transmission line from Amarillo to the Hutchinson County Interchange. This added capacity at the southern terminus of the main transmission lines serving the North Plains Electric Cooperative, Community Public Service and Southwestern's own customers in the Oklahoma Panhandle and on the North Plains will assure all of the region adequate power for future growth. In effect, this construction doubles the amount of power available to the region, although some additions in transformer capacity would be necessary to utilize all of it.

QUAIL SEASON OPENS NOV. 14

The Texas Parks and Wildlife Commission has adopted season and bag limits for quail in the State's regulatory districts.

In a regular quarterly meeting held Tuesday in the State Capitol, the Commission approved the bag limit in the Panhandle region to 12 birds per day and 36 in possession.

The commission voted to place the season's opening day on the "Saturday nearest Nov. 15" in the regulatory districts and to make the season consistent from year to year.

Quail season in the Panhandle area is from Nov. 14 through Jan. 31 except in Briscoe, Childress, Cottle, Hall, Hardeman, Motley and Wheeler counties where open season will be Dec. 1 through Jan. 31.

Mr. and Mrs. Sam Graves spent last weekend in Lubbock with their daughter Jeanine, Narrell, Kim and Keith Wilson. They celebrated the birthdays of Mrs. Graves, Jeanine and Kim.

Weekend visitors in the home of Mr. and Mrs. Leroy McCalman were Jewel's Mother, Rhoda Green and her sister's family Mr. and Mrs. James Mayo and two children all of Altus, Okla.

Washington Report

From Congressman
BOB PRICE 10TH DISTRICT, TEXAS

1223 LONGWORTH OFFICE BUILDING, WASHINGTON, D.C. • 205-3706

President Nixon has issued an additional set of clear and reasonable proposals to the Communists designed to facilitate a peaceful solution to the war in Southeast Asia. If the Communists do not show their desire to pursue a negotiated settlement by accepting some of the President's proposals, then they will have demonstrated to the world they do not desire to resolve the conflict peacefully. In this event, the Congress of the United States should by virtue of its constitutional authority consider issuing a declaration of war against North Vietnam.

At the present time, American and allied soldiers are dying on Asian battlefields and American and allied soldiers are rotting in Asian prisons. If the North Vietnamese do not at least agree to President Nixon's proposals for the immediate and

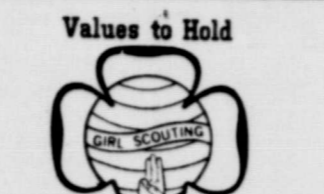
unconditional release of all prisoners of war and thereby continue to use the Paris negotiations as a cloak for their hostilities then the United States should strike through this sham with the full force of its military might.

If the Communists force us to declare war on North Vietnam, appropriate military actions should include day and night bombardment and total destruction of North Vietnam's military and industrial installations. Population centers after appropriate notices of intention have been disseminated, farm lands, dikes, and irrigation facilities. Transportation and communication links connecting North Vietnam to neighboring countries should be severed. Haiphong Harbor and other shore installations should be bombed and sealed off. Finally, a total air, land, and

sea embargo on commerce between North Vietnam and other nations should be established.

I plan to introduce a House Resolution to this effect next week. If the Communists do not accept President Nixon's proposals, particular regarding his proposal concerning the prisoners of war, they will have demonstrated, (in effect), that the only solution they will accept is a military one.

If this be the case then my Resolution will provide Congress with a means to declare war. We have been in a state of undeclared war in which Americans have been sent to fight in Southeast Asia without the full military or political backing of our country. My Resolution will give Congress an opportunity to lay our national commitment to preserving freedom on the line.



1st Year Brownie Girl Scouts Troop 3 met Monday, October 12 in the Little House with leader Mrs. Melvin Swann. The girls did crayon drawings of Fall leaves gathered last week checked dues and registration, practiced on the Flag Ceremony, did the "capers" and played games outside.

Kenda Burke served refreshments to Cassie Baker, Dana Bruce, Terry Bynum, D'Ann Cummings, Cammye Gee, Michelle Graham, Jennifer Keeton, Melanie Kenney, Jiny Morris, Jana McCoy, June Nichols, April Percy, Penny Perkins, Kimberly Reed, Laurie Swann and Lesa Thomas.

Pinochle Club Enjoys Meeting

The local Pinochle Club met Saturday evening in the home of Mr. and Mrs. Earl Goodheart with Mr. and Mrs. Fendorf Schubert as hosts. The Schuberts served ham as the main dish for the dinner.

Attending were guests Mr. and Mrs. Calvin Tennison and members, Mr. and Mrs. James Cummings, Mr. and Mrs. Gordon Cummings Mr. and Mrs. Burton Schubert and the hosts.

Arts & Craft Guild Met In White Home

Members of the Arts and Craft Guild met October 9 in the home of Mrs. Kiff White for an afternoon of

china painting and visiting. Refreshments were served to Mrs. Nolan Holt, Joe Trayler, P. A. Lyon, Sr., Clay Gibner, Bill Russell, Bruce Sheets, Fred Hoskins, Ned Turner and the hostess. Mrs. Della Dobbett will be hostess for the October 16 meeting.

Enjoyed Trip

Mr. and Mrs. Delon Kirk recently enjoyed a trip to Tennessee and Georgia. They visited relatives in Atlanta and attended the "Gr- and Old Opry". They made the trip with the Sovereign Oddfellows Lodge group.



Meanwhile...back at the range...her electric oven is cleaning itself

You, too, can spend more time enjoying fun with your family when you have a flameless electric range with a self-cleaning oven. No more scraping and scrubbing baked-on spill-overs. Just close and latch the oven door, set the controls and your electric oven cleans itself automatically. Even hard-to-reach corners sparkle bright as new. Do yourself (and your family) a favor. See your electric appliance dealer soon for a modern electric range with the self-cleaning oven.

COMMUNITY PUBLIC SERVICE

Your Electric Light & Power Company

An Equal Opportunity Employer



THE SHERMANS—HOLLY, GENE, ALICE, MAX AND LYNN RAY

Max SHERMAN

Wants the Things for Your Family That He Wants for His Own!

- EMPHASIS ON GOVERNMENT AT THE LOCAL LEVEL
- ECONOMY IN GOVERNMENT
- GOOD, LOCALLY-CONTROLLED SCHOOLS
- PROMPT, EFFECTIVE LAWS TO STOP DRUG TRAFFIC
- IMPROVED, FIRM CRIME PREVENTION LAWS

"I Promise I'll Work As Hard At Being Your State Senator As I Worked To Get Elected!"

I grew up on work. Starting with odd jobs while a youngster in Phillips. I continued by working my way through Baylor and the University of Texas Law School waiting tables selling Bibles and working in the oil fields. Since graduation I've been a practicing attorney.

At the beginning of this campaign I went to each county to file for the office of State Senator. Since then my wife and I have traveled over 16,000 miles meeting and talking with people throughout the district. Listen-

ing to what you want in government. It has been a privilege to visit with you in your homes, on your jobs and on the streets of your towns.

I have worked long hours as a candidate but I have enjoyed every minute of it. Elect me State Senator and I promise I won't let you down. I'll be back in your town just as often to listen to you and learn how you want to be represented in Austin.

I want to be your State Senator and will appreciate your vote.

Max Sherman

VOTE FOR **Max SHERMAN** DEMOCRAT

FOR STATE SENATOR

TUESDAY, NOVEMBER 3RD!

He Will Listen To You and He Will Be Listened to In Austin!

Pol. Adv. by Citizens for MAX SHERMAN, Don Ham, Chairman

Stores Plan Monster Sale October 31

On Saturday, October 31, all Spearman businesses will be staging a "Monster Sale" during regular hours, capitalizing on the Halloween theme, decorating stores and dressing in Halloween costume for the occasion.

A prize will be awarded by the Chamber of Commerce for the individual voted by the public to have the best costume. Voting boxes should be prominently placed in each

store and slips of paper for voting provided for customers. Customers are urged to shop Spearman Saturday October 31 and take advantage of sale-priced merchandise offered by local merchants.

These plans were made by the merchant's committee of the Chamber of Commerce at a meeting held recently. Other decisions were agreed on also. These include a pro-

gram for Veteran's Day and Christmas closing days were set.

Merchants voted to close their stores from 9:30 to 10:30 on Veteran's Day, November 11 for a patriotic ceremony and program to be held on the courthouse lawn.

Merchants agreed to close December 25, December 26 and New Years Day January 1.

Grant Approved To Aid Police Training

An action grant of \$17,850 to the Panhandle Regional Planning Commission to support its regional police training program was approved today by the Texas Criminal Justice Council.

It was one of 21 action grants, totaling \$436,399 approved at the Council's regular monthly meeting.

A comprehensive multi-year plan for upgrading law enforcement and criminal justice in the 24-county Panhandle Regional Planning Commission was received today by Governor Preston Smith's Criminal Justice Council.

Judge Joe Frazier Brown executive director of the Criminal Justice Council, said it was among the first such plans to be received from a regional council. Each of the state's 24 regional councils will submit similar documents.

The Panhandle plan, along with those from the other 24 regional councils, will provide input for the 1971 Criminal Justice Plan for Texas, scheduled to go to the printer in December.

Included in the Panhandle plan is an evaluation of the criminal justice system, including problems, needs, resources and priorities, of the entire region, which is made up of the counties of Collingsworth, Lipscomb, Potter, Randall, Armstrong, Briscoe, Carson, Castro, Dallam, Deaf Smith, Donley, Gray, Hall, Hansford, Hartley, Hemphill, Hutchinson, Moore, Ochiltree, Oldham, Parmer, Roberts, Sherman, Swisher and Wheeler.

The background data information provided by the cities and counties in the Panhandle Regional Planning Commission was prepared through the cooperative efforts of the Council and the Public Protection Committee.

In a proposed annual action program, the plan sets forth immediate goals while projecting long-range goals in a multi-year

(five year) plan. It calls for concentration on such areas as upgrading law enforcement personnel, prevention of crime and juvenile delinquency, improvement of prosecution and court activities, police-community relations and information and communications.



Patients in Hansford Hospital are Ruby Barkley, Jimmy Henry, Hiram Wilbanks, Noa Henry, Charles Eaton, Ella Cypert, Julie Gurnford, Lynette Clark, Dale McFarland, Jim Beeson, Charles Macke, Ervin Hester, Adalyn Barnes, Will Douglas, Mary Sullins, Opal Jones, Bill Jones, Leon Monday, Danny Hendricks, Lillie Sloan, Laura Ballard, Virginia Cates, Velvet Abar, Roscoe Parks, Blanche Taber.

Dismissed were Jett Mason, Ernest West, Faye Klutts, Jerry Moodie, L. D. Pierce, Jean Lyles.

BRIDGE PARTIES

Mrs. Bill Douglas was hostess in her home the evening of October 12 for the regular monthly meeting of the ladies dinner bridge club. A dinner was served with Chicken Huntington as the main dish.

High score winner for the evening was Ellie Douglas, Mary Jane DeArmond won the 2nd high score prize and Estelle Jackson won the traveling prize.

Attending were Jeralynn Simpson, Felma Evans, Frankie Sloan, Laquita Evans, Estelle Jackson, Norma Jean Mackie, Mary Jane DeArmond and the hostess.

The Blue Monday Bridge

Club met Oct. 12 in the home of Mrs. Deta Blodgett. Guest prize was awarded to Mrs. Herb Butt and high score prize to Mrs. Willie Seitz, low score prize went to Mrs. Lester McLain.

Attending were a guest, Mrs. Butt and regular members, Mmes. Bill Gandy, E. D. Clement, Sam Graves, L. S. McLain, Vester Hill, Gwenfred Lackey, Major Lackey, Willie Seitz, Deta Blodgett, Fred Daily and Pope Gibner.

Capacity Crowd At Waka PTA

A capacity crowd attended the September 21st meeting of the Waka PTA held in the school cafeteria. Rev. Herb Root opened the meeting with the invocation. Mrs. Carl Scroggs conducted group singing with Mrs. Ra-ford Clark at the piano.

Bill Shelby, local unit president, conducted a brief business meeting, during which time he asked Mrs. David Wilson to read the by-laws of the Waka P-TA as revised in 1968. Mrs. Wilson did so, to clarify some matters pertaining to business procedure.

James H. Jackson, Jr., superintendent introduced the eight faculty members. Mr. Jackson also reported that an eye check was being made of each student and that the Perryton school nurse would come out to check the student's head.

The meeting was adjourned so that parents and teachers could enjoy an informal social. Refreshments of homemade ice cream and cake were served.

Methodist Youth To Sponsor Car Wash Saturday

The junior high Sunday School Class of the United First Methodist Church are sponsoring a car wash Saturday Oct. 17 from 9 to 5 at Snider Pearson Conoco.

Price of the car wash is \$2.00 and there will be pick up and delivery available.

LEWIS LLEWELLYN



Can Science and Faith Coexist?

Are science and God enemies?

Some would try to make us think so. Some enemies of God have declared their allegiance to science and stated that, for this reason, they cannot believe in God. But is that the real reason for their antagonism to God?

Science has, indeed, made an impressive record of achievement in our lifetimes.

Many of us can remember when there was no television, when an airplane was a curiosity, when the idea of going to the moon was just a joke.

Our knowledge of the universe and the laws that govern it has been expanding rapidly.

Knowledge or Wisdom?

It is easy to confuse knowledge with wisdom. However, thinking people now realize that, though our knowledge has increased greatly in recent years, we are not wise enough to know how to use our knowledge to make this world a place where we can all live in peace and plenty — and safety.

It seems that now — just when we are so proud of our achievements in the realm of science—we need the help of God more desperately than ever before.

Perhaps we can learn something from a scientist.

Dr. Warren Weaver, distinguished mathematician who was selected in 1965 to receive the Arches of Science Award, says that he is "completely convinced that religion and science are not enemies."

Further, he says, "I believe that the Bible is the purest revelation we have of the nature and goodness of God."

"God is, to me," he adds, "the great mysterious mind

that has created the infinite detail and vast dimensions of the universe, including the crowning mysteries of you and me and our minds. It is He Who put order and beauty into all this.

"And yet, with these massive responsibilities, He nevertheless has the unimaginable capacity to be individually concerned with you and me."

Some others, in past generations, have not been as wise as this.

How wise were these men who defied God and derided the Bible?

Voltaire, who lived from 1694 to 1778, attacked the Bible with great skill and ferocity, declaring, "The Bible will be forgotten in 100 years."

The 100 years have passed, and it is Voltaire who is all but forgotten.

No Conflict

The Apostle Paul, writing to the Corinthians, said, "Where is the wise? . . . Where is the disputer of this world? Hath not God made foolish the wisdom of this world? . . . The foolishness of God is wiser than men."

There is no conflict between God and science.

Some scientists, because of their fanatical attachment to certain unproven theories, believe that there is such a conflict. Others, not blinded by their prejudices, see the truth that science is simply in the process of discovering what God has done in the vast universe in which we inhabit one of the smaller spheres.

The Bible warns us (in the Phillips translation), "Be careful that nobody spoils your minds through intellectualism or high-sounding nonsense."

Intelligent men must believe in science and in God.

Mrs. Louise Tyson and girls from Amarillo visited over the weekend with her parents, the M.W. Walkers.

Melba Rook, Deloris Kendrick, Jean Close, and Jo Biddle attended a Girl Scout Program workshop in Guymon, Monday, Oct. 12.

Local Clubs To Host TFWC Board Meeting

Top of Texas District Fall Board Meeting of Texas Federation of Women's Clubs will be held Tuesday, October 20 in Spearman, Texas at the United Methodist Church, registration starting 8:45-9:30.

District President Mrs. Kermit Lawson, Pampa and District Junior Director, Mrs. Don Max Vars, Canyon will bring highlights of the meeting. Theme of the meeting is "Enrichment Through Federation".

The two federated clubs of Spearman are hosting the affair, the Twentieth Century Club, Mrs. E.L. Garner, president, and the Spearman Study Club, Mrs. Kenneth Evans, president.

All plans are under the direction of Mrs. Frank Davis, Twentieth Century, and Mrs. Sandra Ladd, Spearman Study Club.

There will be an opportunity to attend only one Department Workshop, therefore seven women should attend to get complete information. All projects and standing committees will present information to the general body.

Monday, October 19 at 2 p.m. all committee chair-

men and workers for the district workshop will meet at the Methodist Church to prepare for Tuesday's events.

holt news

Mr. and Mrs. James Beck of Anadarko, Okla. were Saturday night guests of Mr. and Mrs. Owen Pendergraft and also visited the Richard Gaines.

Mrs. Mildred Chamberlain of Spearman spent a week visiting her brother, Mr. and Mrs. Royal Crawford of Tulsa.

Mr. and Mrs. Phil Jenkins spent a wee sight seeing in and around Alamosa, Durango and Silver, Colo. Ouray, Utah and spent one night visiting her aunt Mr. and Mrs. Monroe Owens of Salida, Colo.

Vernie Rosson of Spearman and Maude Rosson were Tuesday night guests of Mr. and Mrs. LeRoy Rosson of Erick

and also visited other relatives.

Mrs. Britt Jarvis and children of Spearman caught a flight October 8 in Amarillo for Honolulu, Hawaii. Her husband Britt, who is in service in Vietnam, will spend some time with his family in Hawaii.

Mrs. Raymond Kirk is in the North Plains Hospital in Berger. She is getting along as well as can be expected.

Mr. and Mrs. Medlin Patterson caught a flite Saturday from Amarillo to Houston to spend the weekend with Mr. and Mrs. John Patterson and Brenda.

Mr. and Mrs. Byron Carr of Duncan, Okla. were weekend guests of Mr. and Mrs. Richard Gaines and family.

Mr. and Mrs. Russell Baker of Cheyenne Wells, Colo. were Sunday night dinner guests of Mr. and Mrs. C.W. Kirk. The Bakers have come for the maize harvest.

Mr. and Mrs. Travis Reger and family were Sunday night dinner guests of Mr. and Mrs. Butch Baker and family of Spearman.

Larry Scroggs of Spearman was weekend guest of his great grandparents, Mr. and Mrs. John Campbell.

The Panhandle terrible blowing snow storm was October 8, which will be long remembered.

Light produced by fireflies is without any heat or loss of energy, an accomplishment that man, with all his forms of light, has not been able to achieve.

BEEDY FURNITURE CO.

8TH

ANNIVERSARY

Mattress Special

4/6 Mattress & Matching Boxsprings by Simmons Reg. Special \$119.50 79.95

DINING ROOM

	Reg.	Special
7 pc Walnut formica top round Table & 6 Chairs	\$189.95	\$149.95
7 pc Walnut formica top rect Table & 6 Chairs	179.95	139.95
7 pc Spanish Octagonal Table & 6 Chairs	240.00	198.50
5 pc Modern white Table & 4 black directors Chairs	260.00	209.50
7 pc Beige & green Table & 6 Chairs	240.00	198.50
5 pc Modern round table Table & 4 pedestal Chairs	164.50	129.95
5 pc Modern black & brown formica top Table & 4 black Chairs	199.95	159.95
5 pc Modern round white Table & 4 orange pedestal Chairs	240.00	198.50
Round Spanish Table & 4 Chairs	329.50	269.50
Octagonal Spanish Table & 4 Chairs	398.50	319.95
Early American Maple Table & 4 Chairs	329.50	259.50
Early American Maple Table & 6 Chairs	439.50	359.50
Early American round pedestal Table & 4 Chairs	437.50	359.50

LA-Z-BOY

Recliner Rockers

Orange or gold vinyl Reclina-rocker	\$204.50	\$169.50
Red & green Spanish " "	264.50	214.50
Early American Orange tweed Reclina-rocker	259.95	209.50
Green gold velvet Traditional Reclina-rocker	265.00	214.50
Green vinyl Traditional Reclina-rocker	239.50	198.50
Green velvet Traditional Reclina-rocker	269.50	219.50
Brown vinyl Traditional Reclina-rocker	264.50	214.50
Green & gold Traditional Reclina-rocker	234.00	189.50
Early American orange tweed Reclina-rocker	249.50	198.50
Early American green tweed Gold Velvet Traditional Reclina-rocker	215.00	169.95
Rust vinyl Spanish Reclina-rocker	245.00	198.50
Green vinyl modern Reclina-rocker	279.50	224.50
Orange Traditional Reclina-rocker	214.50	169.95
Black Vinyl Reclina-rocker	239.95	198.50
	259.50	209.50

HIDE-A-BEDS

Reg. Special

Early American Hide-A-Bed	\$465.00	\$379.95
Gold & green linen print traditional Hide-A-Bed	420.00	339.95
Brown tweed traditional Hide-A-Bed	449.50	359.95
Gold plaid traditional Hide-A-Bed	398.50	319.95

CELEBRATION

1/2 PRICE ITEMS

	Reg.	Special
French Provincial Chair	\$149.50	\$ 75.00
1 pr Turquoise traditional Chairs	169.50	85.00 ea
1 pr Green traditional Chairs	119.50	60.00 ea
1 White club Chair	136.50	68.50
1 Hiback tufted Chair	149.95	75.00
1 Barrell back Chair	129.50	65.00
1 Hiback Italian Provincial Chair	149.95	75.00
1 Orange Mediterrean Chair	159.95	80.00
1 Blue & green traditional Chair	119.50	60.00
1 Green traditional Chair	129.50	65.00
1 Modern chair 7 Ottoman	139.95	70.00
1 Modern print Chair	129.95	65.00
1 Modern green Chair	109.50	55.00
1 Italian Provincial Settee	159.50	80.00

SALE BEGINS THURSDAY





Groceries
Meats

Phone 659-2224
119 N. Bornice

Cates Grocery

Bounty
Paper Towels
by Procter & Gamble 4 Rolls 88¢

Toilet Tissue
Charmin 10 Rolls \$1

Day 659-2141
Night 659-3379
OR 659-2431



A COMPLETE LINE OF PHILLIPS
OILS, GAS, TIRES,
BATTERIES AND
FARM FERTILIZERS



**GOLDEN SPREAD
SALES CO**

**Headquarters
For All Your
Men & Boys
Clothing**



**Sacks & Sacks
Of Food Bargains**

Support the Lynx
Go to the Game

**CUT
RATE
GROCERY** AFFILIATED

FOOTBALL CONTEST

Big Prizes

1st Prize \$10
2nd Prize -\$5

In case of tie prize will be Divided



CONTEST RULES

Predict the winners in the football games of the week. Check your choices clearly, opposite team names, in official entry blank on this page. Fill in name and address. Deposit in contest boxes at sponsoring firms, or mail or bring to the offices of this newspaper. Entries must be received or postmarked before 1 p.m. Friday.

**West Texas State University
FOOTBALL SCHEDULE
1970**

Sept. 19	Lamar Tech	Beaumont	7:30
Sept. 26	Wichita U.	Canyon	8:00
Oct. 3	East Carolina U.	Canyon	8:00
Oct. 10	N. Illinois U.	Dekalb	7:30
Oct. 17	North Texas State	Canyon	8:00
Oct. 24	New Mex. State U.	Canyon	8:00
Oct. 31	U.T. Arlington	Arlington	7:30
Nov. 7	W. Michigan	Canyon	2:00
Nov. 14	Bowling Green U.	B. Green	1:30
Nov. 21	U. of So. Miss.	Canyon	2:00



FIRST STATE BANK

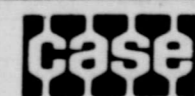
WE BACK THE LYNX ALL THE WAY

WE STAND READY
TO CLEAN
ALL OF YOUR
COLD WEATHER
CLOTHING

THOMAS CLEANERS

**Spearman
Varsity Schedule**

September 11	Sunray	Here	8:00
September 18	Canyon	There	8:00
September 25	Wheeler	Here	8:00
October 2	Stratford	There	8:00
October 9	Gruver	Here	8:00
October 16	Phillips	There	7:30
October 23	Stinnett	There	7:30
October 30	Dalhart	Here	7:30
November 7	Boys Ranch	Here	7:30
November 14	Panhandle	There	7:30



Let's Go Lynx

P.L. McCLELLAN & SONS, INC.
Spearman Texas

1971

**Olds-Chevys
And Jeeps**

**EXCEL
CHEVROLET-OLDS**

OFFICIAL ENTRY FORM

- | | |
|----------------|--------------------|
| CANADIAN () | STRATFORD () |
| GRUVER () | SANFORD FLETCH () |
| SUNRAY () | WHITE DEER () |
| DALHART () | STINNETT () |
| PANHANDLE () | BOYS RANCH () |
| WTSU () | NORTH TEXAS () |
| OU () | COLORADO () |
| RICE () | SMU () |
| TCU () | TEXAS A&M () |
| TEXAS TECH () | MISSISSIPPI () |
| DALLAS () | MINNESOTA () |

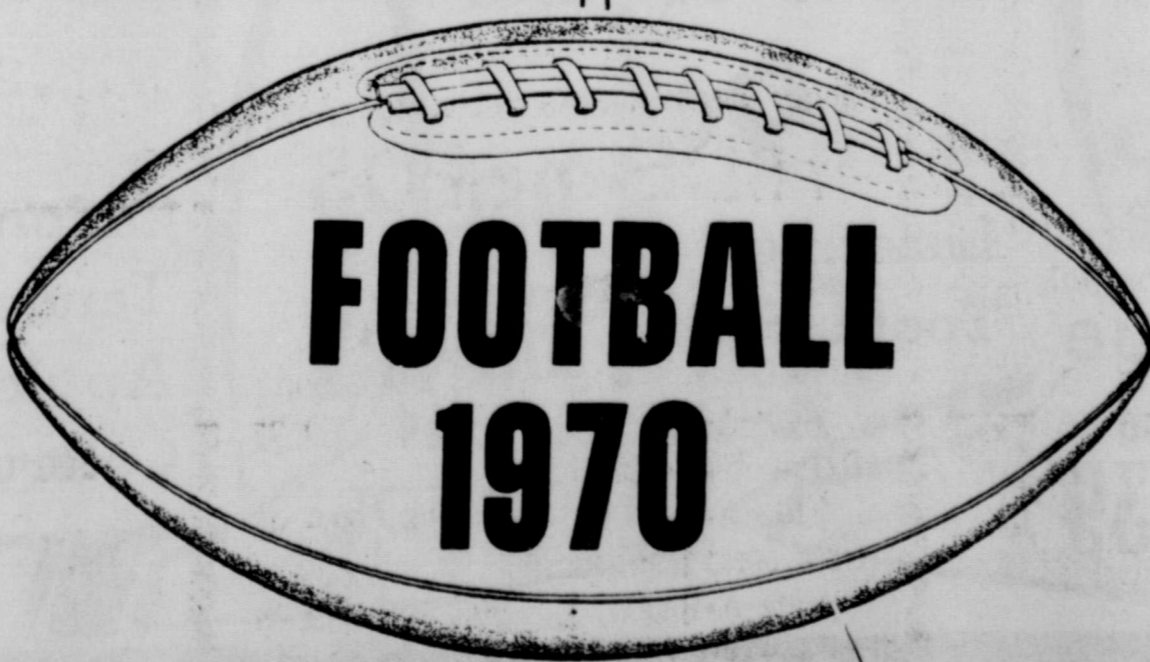
TIE BREAKER

Spearman _____ Phillips _____

PUT SCORE ON TIE BREAKER

NAME
CITY

ADDRESS
STATE



PANHANDLE STATE COLLEGE

Sept. 26	W. N. M. U.	T-7:30
*Oct. 3	East Central	T-6pm
*Oct. 10	Langston	H-8pm
*Oct. 17	Northwestern	T-2pm
*Oct. 24	Cameron(PN)	H-8pm
*Oct. 31	Central	T-2pm
Nov. 7	Ft. Hays(Hmc)	H-2pm
*Nov. 14	Southeastern	H-8pm
*Nov. 21	Northeastern	T-2:30

**DRILLING
BAKER & TAYLOR
COMPANY**

ROUND-UP SALE



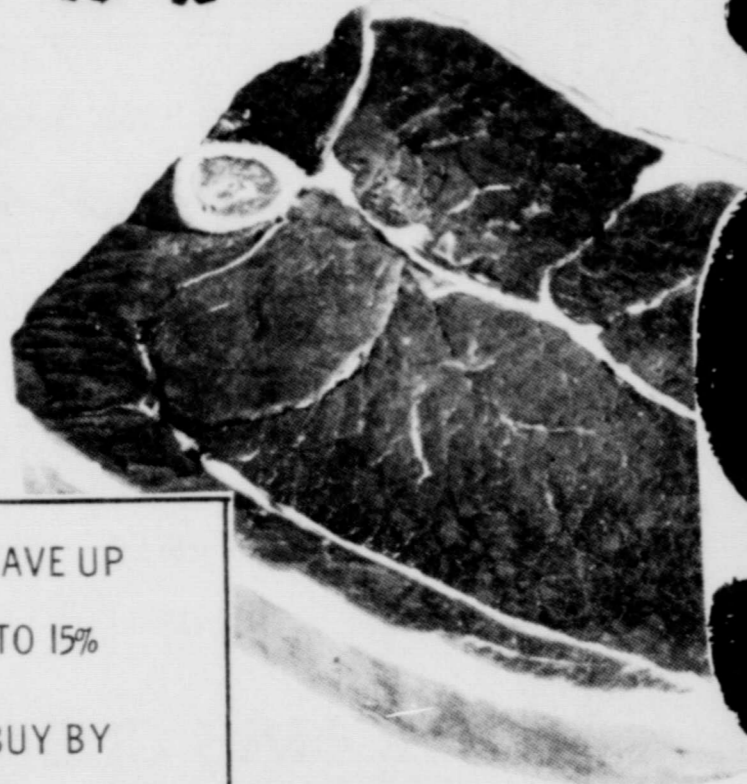
FOR THRIFTWAY SAVINGS SHOP

CUT RATE GROCERY

MEMBER AFFILIATED FOOD STORES

STORE HOURS 8 to 7

ROUND STEAK



99¢

SAVE UP TO 15% BUY BY THE CASE

USDA Choice Beef semi Boneless

Sirloin Steak lb. \$1.09

Fresh and Lean

Ground Chuck lb. 79¢

USDA Choice Beef

Rump Roast lb. 79¢

Baking Swifts Premium

Hens 4 to 7 lb. 39¢

Oscar Mayer All Meat or All Beef

Franks lb. 69¢

Checkerboard Farms

TURKEY & GRAVY 28 oz. \$1.69

Owens Country Style

Sausage #2 Bag \$1.39

CHECK OUR LOW PRICE ON FROZEN FOOD FOR FREEZER ORDER

Fresh Spanish Red Emperor

GRAPES

19¢

Listerine Reg. \$1.49 2 oz. Size 96¢

Colgate Reg. \$1.19 2 oz. Size 68¢

Bayer Inc's

ASPIRIN 84¢ 16 oz. bottle

ALCOHOL 12¢

Shurfresh Sweet or Buttermilk 10 oz. **BISCUITS** 7¢

Maryland Club lb. Can **COFFEE** 89¢

Shurfine Frozen-12 oz. Can **Orange Juice** 3 for \$1

Shurfresh Grade A Medium Dozen **Eggs** 38¢

Hersheys 8 oz. **Cocoa** 29¢

Campbells Chicken Noodle-10 oz. **Soup** 14¢

Sunshine Cookies lb. **Hydrox** 38¢

Kraft Grape-18 oz. **Jam** 32¢

At Cut Rate Grocery

Jackpot This Week **\$200** Free Cash on JACKPOT DAY

Shurfine Creamy Rich-Quart **SALAD DRESSING** 36¢

Shurfresh "Best Flavor" Half Gallon **ICE MILK** 46¢

Mortons Frozen **MEAT PIES** 3 for 49¢

Shurfine Crushed or Sliced-Flat Can **PINEAPPLE** 2 for 29¢

Comstock Sliced-no. 2 can **Apples** 25¢

Biltmore Sandwich-12 oz. Can **Loaf** 3 for \$1

Hawaiian Red-46 oz. **Punch** 32¢

Del Monte 1-oz. **Peas** 20¢

Del Monte 1-oz. **Spinach** 18¢

Pure Vegetable **CRISCO** Shortening-3 lb. 69¢

Shurfresh Pure Vegetable-48 oz. Decanter **SALAD OIL** 88¢

Blue Bonnet Yellow Quarters lb. **MARGARINE** 25¢

Gladiola-5 lb. **FLOUR** 38¢

Detergent Giant Box

OXYDOL

69¢

Charmin Bathroom 4 roll pak

TISSUE

35¢

Bleach Half Gallon

CLOROX

29¢

White Wax

Onions lb. 10¢

Fresh Florida

Tangelos lb. 29¢

Idaho Red-Rome

Apples lb. 29¢

Green Crisp Pascal

Celery lb. 15¢

Crisp Solid lb. **Cabbage** 7¢

Let by

Our st Thursday about. by the t day for day's e of-state some w away. 7 reach far weather that we I have lu stranded milk ma over 20 l Grover. sulted f to our hi and to m Our R man, I who ha for 25 y Monday felt th Smith w gers in Thursday Elmer's s Highway and he w Smith v man Inte also pick Black a their sno led there for the n said he l such hos the ele pumps Jack gat now an was Elr nd exp o't get o people strange beat the tally. We ir this all But it i ident to

100% SC

HIGH ST

TODD SLI



Let Me See
by Sybil...

Our snow blizzard of last Thursday is still being talked about. Many people came by the newspaper office Monday for extra copies of Sunday's edition to send to out-of-state friends... and to some who live not so far away. The snow storm didn't reach far, and even Amarillo weather men can't believe that we were "snowed in." I have heard stories of many stranded vehicles and the milk man said he counted over 20 between here and Gruver. But no tragedies resulted from the storm thanks to our highway department and to many good Samaritans. Our Robert's Paper salesman, Mr. Elmer McGahan, who has traveled this area for 25 years, called on us Monday and related his heart felt thanks to Jack and Jan Smith who housed five strangers in their home during Thursday afternoon and night. Elmer's car stalled on the highway east of Spearman and he was rescued by Jack Smith who kindly took this man into his home. Jack also picked up Mr. and Mrs. Black and 2 children from their snow-stalled auto. Jan fed them all and bedded them for the night. Mr. McGahan said he had never experienced such hospitality. Even when the electricity went off and pumps furnished no water, Jack gathered buckets of snow and made coffee. This was Elmer's first snow-bounded experience he just couldn't get over the kindness of people who would take utter strangers into their home and treat them with such hospitality. We in Hansford County knew this all along, didn't we? But it is nice for a non-resident to learn first hand ab-

out our Texas hospitality. During the quietness and beauty of Thursday's snow storm, I sat peacefully in front of my blazing fireplace and ran across this little "gem" and it said to me just what I needed for the moment... and I can't help but pass its message on to you. Amid the flurry and flourish of this tumultuous old world, these gentle words are heartening. These lines have remained, unchanged by time or human "updating" on the wall of Old Saint Paul's Church in Baltimore since 1699:

"Go placidly amid the noise & haste and remember what peace there may be in silence. As far as possible without surrender be on good terms with all persons. Speak your truth quietly & clearly; and listen to others, even the dull and ignorant; they too have their story--- Avoid loud and aggressive persons, they are vexations to the spirit. If you compare yourself with others, you may become vain & bitter; for always there will be greater and lesser persons than yourself. Enjoy your achievements as well as your plans--- Keep interested in your own career, however humble; it is a real possession in the changing fortunes of time. Exercise caution in your business affairs; for the world is full of trickery. But let this not blind you to what virtue there is; many persons strive for high ideals; and everywhere life is full of heroism---Be yourself. Especially, do not feign affection. Neither be cynical about love; for in the face of all aridity & disenchantment it is perennial as the grass--- Take kindly the counsel of the years, gracefully surrendering the things of youth. Nurture strength of spirit to shield you in sudden misfortune. But do not distress yourself with imaginings. Many fears are born of fatigue and loneliness. Beyond a wholesome discipline, be gentle with yourself. With all its sham, drudgery and broken dreams, it is still a beautiful world. Be careful. Strive to be happy!"

P-TA MEETING SET FOR OCT. 19

The regular monthly PTA meeting will be held Oct. 19 in the Grade School Cafeteria at 7:30 p.m. The program will be presented by those in charge of music in the Spearman school system.

Mrs. Kenneth Evans Presents Program

The Spearman Study Club met October 5 in the Girl Scout Little House with Mrs. Kenneth Evans and Mrs. Don DeArmond as hostesses.

Club president, Mrs. Kenneth Evans, presided over the business meeting. Reports were given on the Fire Prevention Contest; 196 entries were judged by Mrs. Wesley Garnett Jr., and Mrs. Max Baggerly. Prizes were given to each grade for 1st, 2nd and 3rd place.

Members discussed the Top of Texas District Board Meeting to be held October 20 in the Spearman First United Methodist Church with the Study Club and the Twentieth Century Club of Spearman as hosts. Members were urged to pre-register for the meeting. 150 "goodie bags" were filled for the meeting with gifts donated by Spearman merchants. A discussion was held concerning success for the Little House and it was decided to take care of it in the near future. The Study Club will assist in the mortgage burning for Hansford Library Nov. 15 during the open house and also furnish cookies and coffee for the occasion.

Mrs. Kenneth Evans presented the program entitled "Why Federate?"

Present were Mmes. Robert Adamson, Sid Biddle, Kenneth Evans, Sandra Ladd, Marcus Larson, Bert Sheppard, Jimmy Sheldknight, Dave Wilson and Edward Zschiesche.

HD Clubs Have Joint Meeting

The Spearman HD Club met in the home of Mrs. B. J. Garnett Monday afternoon. Nedra Hays and Tot Rosenbaum gave a report on the State HD meeting that they recently attended.

Those present from the Spearman HD Club were Mmes. H. H. Crooks, Claude Jackson, W. H. Tarbox, Frank Davis, A. D. Reed, Richard Shedeck, Virgil Hull and Joe Smith.

The Spearman HD Club entertained the Hansford HD Club during the afternoon meeting. Those present from the Hansford HD Club were Margaret Shedeck, Norma Mackie, Tot Rosenbaum, Charlotte Vanderburg, Mrs. Mobley, Stella Baumgardner and Nedra Hays.



Debbie Hazelwood Competing For Miss WTSU Title

CANYON, Tex.--Deborah Ann (Debbie) Hazelwood, 20, of Spearman was among 31 West Texas State University coeds competing for the title of Miss WTSU Friday night.

The Miss WTSU Pageant, using the format of the Miss America contest with judging in evening wear, swimsuit and talent competition, is being held for the first time.

The winner will serve as Homecoming queen at Saturday night's football game here with North Texas State and will be the official hostess for the university during the current school year.

Miss Hazelwood, daughter of Mr. and Mrs. Paul Hazelwood of 900 S. Haney, is a sophomore majoring in elementary education. She maintains a 2.6 scholastic average on a 3.0 system and is a member of the Mary E. Hudspeth Honor Society.

She is active in campus activities, being secretary of both the Student Senate and the House of Delegates this year, the Campus Crusade for Christ, a pledge of Tau Beta Sigma, national honorary band society, and a member of Chi Omega social sorority.

Miss Hazelwood plans to sing country and western style songs in the talent portion of the pageant.

Pair Of Golden Eagles Sighted By Mrs. Schubert

Mrs. John Schubert called at the newspaper office Monday to report the sighting of two very rare birds up near Hardesty, Okla. Sunday afternoon.

Mrs. Schubert said she saw this huge bird sitting on a fence post and the unusual size and beauty of the bird caused her to stop her automobile for a closer view. She said the bird did not fly at once and she gazed at it for quite a spell before it left its perch and landed just a short distance out in the pasture next to its mate. The mate was devouring a rabbit and both birds just sat there, unafraid, for some time before they soared up into the sky where they continued to circle.

Mrs. Schubert would like to know if anyone up around the Panhandle Eastern Plant, just south of Hardesty, sighted these birds. She got such a close examination of the beautiful birds, she was able to identify them in books she secured Monday at Hansford County library. They were golden eagles.

The golden eagle is found in ever diminishing numbers in Alaska and south to Mexico, and unless given strict protection, may well disappear from the American continent.

This is the largest American bird of prey, and has a wing spread measuring six to seven feet. The tail is partly white. Its name is derived from the golden wash on the back of the head and nape of the neck.

Stacey DeWitt Celebrates Birthday

Mr. and Mrs. Leroy McCalmon honored their daughter Stacey with a birthday party October 10. The theme was a Halloween setting. Cake, ice cream and punch were served to those attending.

Games were enjoyed by all with Stacey's brother Scotty and David Oakes helping with the games. Those attending were, Margaret Reed, Jeannie Close, D'Ann Cummings, Jan Oakes, Lesa Thomas, Kim Taylor, Jana McCoy and Christy Collier.

Verna Strawn Begins Study

Members of the Susannah Wesley Circle of the First United Methodist Church WSCS met Wednesday October 7 in the church parlor. Circle Chairman, Betty Healer, called the meeting to order, minutes were read and approved.

Members were told of the Spiritual Growth retreat in Roswell, N.M. and were asked to attend an hour of prayer at the Union Church in Spearman on Friday morning. They were also reminded they are to serve a salad luncheon for the Top of Texas District Federated Women's Club meeting at the church on Oct. 20.

Verna Strawn began the study of the book of Psalms as the days lesson.

The meeting closed with the WSCS benediction.

The hostess Wanda Reed served refreshments to Nellie Buchanan, Alva Garner, Carolyn Gressett, Virginia Head, Betty Healer, Linda Latta, Judy Nelson, Patty Sheppard, Verna Strawn, Virginia Trindle, Ruth Shaver and Betsy Miller.



Tommy Reger Cadet Private In ROT Corps

CANYON, TEXAS, Tommy C. Reger Jr., a freshman student at West Texas State University from Spearman, Texas is enrolled in the Reserve Officers Training Corps for the fall semester.

Reger, a cadet private, is among about 250 cadets in the Corps this year.

A Math major, Reger is a 1970 graduate of Spearman High School. He is the son of Mr. and Mrs. Tommy C. Reger Sr., of Spearman, Texas.

Reger was a member of the Future Teachers of America, Future Farmers of America, Spanish Club, Band and track team.

Upon successful completion of ROTC at West Texas State University, Reger will be commissioned as a second lieutenant in the United States Army.

CWF Plans Annual Bazaar

The Christian Women's Fellowship of the First Christian Church held the regular monthly meeting in the Fellowship Hall of the church Wednesday October 7.

The meeting was opened by Jean West, president, leading the CWF Prayer.

Women's Day will be November 1 at which time women of the church will be in charge, conducting Sunday morning worship service. Guest speaker will be Mrs. Dan Loving of Dumas.

The annual Bazaar and Bake Sale date was set for Dec. 12. Advance orders will be taken by Mrs. Jim Nicholson, Service Chairman.

Bobbie Novak gave an interesting and thought provoking program on the "Interpretation of the 23rd Psalm". Lucy Mundy gave the worship service and the meeting closed with prayer.

The Pheleo Circle served refreshments to Jean West, Eleanor Reed, Faye Wirsdorfer, Bobbie Novak, Jo Biddle, Lucy Mundy, Alta Morse, Nan Nicholson and Hazel Jackson.

Novice Artist Wins 1st Place

A picture painted by Mrs. Wayne Shook of Gruver won first place in the art exhibit at the Guymon Fair last week.

Floydcan, who has never had an art lesson, has been painting only six months.

She is the daughter of Mr. and Mrs. Ed Vernon.

Mary Martha Circle Met October 8

The Mary Martha Circle of the First United Methodist Church WSCS met October 8 in the church parlor for a regular meeting.

Mrs. P. A. Lyon opened the meeting with prayer and Mrs. J. B. Buchanan presided over the session. Mrs. Gayle Brown presented the devotional.

Mrs. Bill Strawn presented the Bible lesson from the book of Psalms.

Refreshments were served to Mmes. Harry Shedeck, George Colliard, P. A. Lyon, Bruce Sheets, T. D. Sansing, J. E. Taylor, Fendorf Schubert, J. B. Buchanan, John Trindle and Gayle Brown.

Brothers, Sisters Met In Canadian For Reunion

Brothers and sisters of the Ernest Sheets family gathered in Canadian Friday and Saturday for their annual reunion.

From the original family of 6 brothers and 6 sisters, eight are living and only two were unable to attend. They were sisters, Mrs. Cloyd Ricks of Sulphur, Okla. and Mrs. Frank Bynum of Fort Worth.

Those attending included Mr. and Mrs. Roy Sheets of Canadian, who hosted the reunion, and Mr. and Mrs. Dassel Sheets of Clayton, N. M.; Mr. and Mrs. Riley Sheets of Oklahoma City; Mr. and Mrs. Bob Cator of Sunray; Mrs. Ethel Hester and Mrs. R. B. Archer of Spearman; Mrs. Eldred Sheets and son Jess Will of Canyon; Mrs. Leonard Sheets of Texline; Mr. and Mrs. Sonny Session, Roy B. Session and Mrs. Kay Bridwell all of Canadian.

In the old days a youth did not know everything in the world until he was fourteen. In our accelerated age, this omniscience comes earlier.

Catholic Women Hear Dr. Gregg

The Catholic Women's Guild of Sacred Heart Parish held the regular monthly meeting Oct. 5 at 7:30 p.m. in the parish hall.

Dr. Damon Gregg gave a very informative talk on drug abuse in our country today.

Plans for attendance at the Diocesan Convention to be held in Pampa Oct. 27 were completed.

The president, Joan Farr, called for reports from the various Commission Chairmen. Barbara Moran gave a report on Organization Commission; Linda Venneman reported on International Affairs; Jean Rubano talked on Family Affairs.

Another sewing party for the completion of lap robes for wheel chair patients will be held at the home of Clementine Renner Oct. 15. All ladies are invited to attend.

Refreshments of punch, German chocolate cake and honey balls were served by Estella Arjona and Emma Lopez to Barbara Moran, Minda Nunez, Bette Morris, Adela Lopez, Frances Ortega, Nancy Garcia, Petra Lozano, Paula Avila, Caroline Billingsley, Jean Rubano, Maria Avila, Joan Farr, Faye Schmeier, Mrs. Kleebenger, Mary Torres, Lila West, Sandra Stout, Linda Venneman, Mary Lou Anchondo and Clementine Renner.

Albuquerque Artist Offering Painting Course

David Slade of Albuquerque, N.M., will be teaching a course in oil painting in Guymon, Okla. beginning October 19 thru Oct. 30.

Anyone interested in taking the course, or just a few lessons, may contact Mrs. Howard Nash, Box 667, Gruver, Texas.

Mr. Slade will teach three sessions a day; 9 until 12, 1 until 4 and 7 until 9 o'clock at \$5 per lesson.

There will be no classes on Saturday. An exhibit will be held in the evening of Friday, October 30.

TG & Y



STORE HOURS
Mon. - Fri. 8:30-6:00
Saturday 8:30-8:00
119 Main Spearman

PRICES GOOD IN ALL 5¢ TO \$1.00 STORES & FAMILY CENTERS THRU SATURDAY - WHILE QUANTITIES LAST!

OCTOBER FASHION SAVINGS

<p>Ladies' AGILON PANTY HOSE 100% Stretch Nylon. Fashion shades, proportioned sizes. \$1.47 EA. COMPARE AT \$2.00</p>	<p>Ladies' LONG SLEEVE PULL OVER 100% "Brite" nylon. Sizes S, M, L. \$1.99 EA. COMPARE AT \$2.99</p>
<p>Ladies' PANTY HOSE Sheer nylon, assorted shades and proportioned sizes. 99¢ EA. COMPARE AT \$1.25</p>	<p>LADIES' NYLON WALTZ GOWNS NOW ONLY \$2.99 EA.</p>
<p>100% NYLON SCARFS COMPARE AT \$1.00 57¢ EA.</p>	<p>12-CT. PKG. GAUZE DIAPERS COMPARE AT \$3.79 \$2.47 PKG.</p>
<p>HIGH HI STOCKINGS NOW ONLY \$1.34 PR.</p>	<p>MISSES' & LADIES' BOOTIES COMPARE AT 59¢ 47¢ PR.</p>

GIVE YOUR SOUL A TREAT COME & HEAR

<p>Preacher Spearman (1964-1968)</p>  <p>Charles Milner Ottawa, Illinois</p>	<p>Song Leader Teacher</p>  <p>Leon Reinschmiedt Cordell, Oklahoma</p>
<h1>BIBLE PREACHING</h1> <h2>OCT. 19th-25th</h2>	
<p>Time: 7:30 P.M. (Except Sunday 6:00 P.M.)</p>	
<p>Place: Church Of Christ Second & Haney SPEARMAN, TEXAS</p>	
<p>Leon Reinschmiedt will be giving lessons in singing and its place in worship each evening at 6:45 Oct. 20th-24th. All are invited.</p>	

National 4H Club Week



<p>CONTINENTAL GRAIN CO. Gruver, Texas</p>	<p>B & R ENGINE CO. Spearman, Texas</p>	<p>WHEATHEART FEEDERS Perryton, Texas</p>	<p>HANSFORD IMPLEMENT CO. Spearman, Texas</p>
<p>GIFT BOX</p>	<p>GRUVER STATE BANK</p>	<p>NORTH PLAINS TRUCK & IMP Spearman, Texas</p>	<p>CATES MENS & BOYS WEAR Spearman, Texas</p>
<p>MORSE OIL COMPANY Morse, Texas</p>	<p>CUMMINGS REFRIGERATION Spearman, Texas</p>	<p>LADY FAIR</p>	<p>R. L. McCLELLAN & SONS, CASE</p>



**To All 4-H'ers and Their Leaders,
Our Hearty Congratulations . . .
Keep Up the Good Work, and
May Success Always Be Yours!**

"Join 4-H: A World of Opportunity." As we pay homage to 4-H Club members, during National 4-H Week, October 10th thru 17th we believe that this official slogan appropriately expresses 4-H aims and advantages. "Join 4-H" . . . and a world of opportunity awaits young people, who gain training and experience in citizenship and community life, as well as acquiring valuable career and homemaking skills. "Join 4-H" . . . and young people find a world of opportunity to serve while they learn, to build for the future. "Join 4-H" . . . because 4-H has much to give, and much opportunity for giving . . . to family . . . community . . . country . . . and world!



FIRST STATE BANK Spearman, Texas	EQUITY Spearman, Texas	SNIDER-PEARSON CONOCO Spearman, Texas	NORTH PLAINS ELECTRIC Perryton, Texas
MARTIN TRUCKING CO. Spearman, Texas	JR. LUSBY CATS Spearman, Texas	D. G. C. FEEDERS Gruver, Texas	HANSFORD FEEDYARDS
THE HANSFORD PLAINSMAN	FOXWORTH GALBRAITH LUMBER CO. Spearman, Texas	THE SPEARMAN REPORTER	GOLDEN SPREAD SALES CO. Spearman, Texas

Weekly Paycheck Goes Further In Spearman

How has the average Hansford County family been making out in the nip and tuck race between rising incomes and rising living costs?

To what extent have higher prices and bigger taxes eaten into the income gains chalked up in the last five years?

The before and after figures show that although inflation has channeled off a considerable part of these gains, leaving some people with little to show for their increased earnings, the majority are better off than they were previously.

The yardstick by which this is determined is purchasing power—now as compared with 5 years ago.

As to how much the average Hansford County production worker can buy with the amount he earns in a day, some figures are available on the basis of data released by the Bureau of Labor Statistics, the Tax Foundation and others.

They show that he now earns enough, after 13 minutes on the job, to buy a pound of smoked ham or a pound of frozen filet of haddock.

To purchase two dozen eggs (grade A large) or two pounds of ground beef for hamburgers or a package of 96 tea bags takes approximately 23 minutes. They would have taken much longer in 1965.

To buy a pair of child's shoes, medium grade, or a woman's wool skirt involves 148 minutes of work.

The actual store prices of these and other goods and services are considerably higher than they were in 1965 but, when they are related to work time, they cost less.

The answer lies in the earning capacity of the average Hansford County family, which has risen in the past five years by 31 percent. By way of comparison, the cost of living has advanced 21.3 percent.

Just how the working day of the average American is budgeted to take care of his various obligations is revealed in a study made by the Tax Foundation.

It shows that taxes are the biggest item. They take 2 hours and 43 minutes of his 8

hour day. Next are food and tobacco, with 59 minutes, and housing 57 minutes.

The rest of the time goes to meet such other bills as transportation, 40 minutes, clothing 25 minutes, medical, 21 minutes, recreation, 18 minutes and all others, 1 hour and 37 minutes.

Probation Is Given

Bill Wardlaw was tried in an 84th judicial district criminal appearance session held here Wednesday afternoon, October 8.

Presiding Judge Max Boyer granted Wardlaw a four-year probation sentence.

Wardlaw was indicted by a grand jury for embezzlement of 56 head of cattle from feed pens near Gruver. The cattle belonged to Don Hart, a Gruver resident.

DEATH CLAIMS DARIEL HOLLAR

Funeral services for Dariel Wayne Hollar, 25, were conducted Tuesday at 2:30 p. m. from the First Christian Church in Spearman.

The Rev. Don Wirsdorfer, pastor, officiated. Burial was in Hansford Cemetery directed by Carmichael-Whately Funeral home of Pampa.

Mr. Hollar died at 11:55 p. m. Saturday in Worley Hospital. He was born in Pampa, lived in Spearman and attended schools here from 1954 to 1969. He had been living in Pampa where he was traffic director for KPND radio station.

He was a member of the First Christian Church in Spearman. Survivors include his mother Mrs. W. E. Sparks of Spearman; a sister, Mrs. Linda Gross of Spearman, and grandparents Mr. and Mrs. L. V. Hollar and Mr. and Mrs. J. R. Moore Sr., all of Pampa.

C of C Speaker

Mr. J. W. Sollis, Manager of Student Affairs at the Texas State Technical Institute's Mid-Continent Campus at

Amarillo, will be the guest speaker Thursday, October 22, at the Home Demonstration Club Room for the regular monthly noon meeting of the Spearman Chamber of Commerce.

State Tech at Amarillo, which was authorized by the Texas Legislature in August 1969, began enrolling its first students in September and has a total of 260 students enrolled at the present time. The Mid-Continent Campus of TSTI is designed to serve the needs of those Texas residents living in the Panhandle and South Plains counties of the state.

The Vocational-Technical School is funded by the State of Texas and is operated under the auspices of the Texas Education Agency and is a fully accredited state school.

Mr. Sollis will speak on the present structure of the school, its programs of instruction, plus the on-campus facilities now in operation such as housing and dining facilities, a gymnasium, student center, non-denominational church, 18-hole golf course, and other advantages.

Future plans of the TSTI Mid-Continent Campus and new course offerings will also be discussed by Mr. Sollis during the meeting.

Judge to Hippie: "Nothing personal, I'm just doing my thing."

Salvation Army Sets Date For Fund Drive

Have you ever known pain, hunger, or disaster in your life? Possibly not. But you need not have experienced them to understand how these hardships drain the light and warmth from life for millions of people throughout the world, and even right here in Spearman.

But here in Spearman, people who experience these needs can be helped through the services of The Salvation Army Service Unit. This organization has long been known for its helping hand to the destitute, derelict, and dependent of our city.

A fund raising campaign for The Salvation Army, is not often staged here, but this year Johnnie C. Lee, county chairman, has made it known that funds which help the needy are completely "gone."

Mrs. Virgil Mathews has accepted the responsibility of heading the campaign drive for the Salvation Army and has announced plans for a kick-off breakfast to be held at 7:30 p. m. Wednesday, October 21 at Gibson's restaurant in the shopping center.

After the breakfast, workers will fan out over the city to solicit funds and it is hoped

that everyone will be generous in their giving.

Funds received from this drive will be used to help the stranded; befriend the outcast; feed the hungry; house the homeless; clothe the ragged and help unwed mothers.

Judge Johnnie Lee said today that people in this community have no idea just how often the local Salvation Army unit is called upon to help persons falling into every one of these categories.

Beef To Be Given Oct. 31

Bill Walker, Chamber manager, said this week that the Chamber of Commerce has been requested to call a meeting of ALL Spearman merchants for the purpose of discussing the policy of credit sales and the use of "Bank Americard".

To assure every merchant an opportunity to attend, Walker has set up two meetings for Thursday, October 15 (today).

Meetings will be held in the Chamber office at 10 a. m. and at 7:30 p. m. Merchants may attend either time.

Gets DWI Sentence

Dennis Neil Hatle, giving his home address as Aberdeen, South Dakota, was tried Monday in Hansford County Court. Hatle was arrested early Sunday morning and charged with DWI following an accident one mile NE of Spearman on highway 215. The vehicle Hatle was driving collided with one driven by Bobby Parker of Spearman.

Judge Johnnie C. Lee sentenced Hatle to 3 days in jail, gave him one year probation and fined him \$100.80.

Revival Begins Monday

The public is cordially invited to a Bible preaching engagement scheduled at the Spearman Church of Christ October 18-25. Services are set for 7:30 p. m. nightly except Sunday when the time is set for 6 p. m.

Charles Milner of Ottawa, Illinois will be doing the preaching. He was the minister at the Spearman church from 1964 to 1968.

Leon Reinschmidt of Cordeiro, Okla. will be leading the singing for the services and will be giving lessons in singing and its place in worship each evening at 6:45 p. m. October 20 - 24th.

HARRIS SYSTEM NAMES TOP TEN

The top ten teams in the four classifications of Texas high school football this week according to the Harris Rating System are:

AAAA-Wichita Falls, Odessa Permian, Pajefferson, Killean, Abilene Cooper, Beaumont Hebert, Austin Reagan, Baytown Lee, Greenville, Lamarque.

AAA-Brownwood, Jasper, Plano, Ennis, Brenham, Monahans, Jacksonville, Silsbee, Lamesa, Dumas.

AA-Iowa Park, Floydada, Kirbyville, Eastland, Mart, Refugio, Haskell, Giddings, Granbury, McGregor, Dalhart is listed as 15, Phillips 28, Spearman, 55, Panhandle 67, Boys Ranch 169, Stinnett 190.

A-Poth, Albany, Sonora, White Oak, Pflugerville, White Deer, Petersburg, Seagraves, Barbers Hill, Jourdan, Stratford is 42, Gruver 48, Sanford Fritch 150.

Income Tax, Pay As You Go

A long time ago Congress decided to change the income tax law by adding the pay-as-you-go. Our employer gives us a very effective lesson every pay day. However, the self-employed tax-payer and the taxpayer with income other than his salary or wages, doesn't always seem to understand that Congress provided the benefits of pay-as-you-go for him as well as the rest of us.

Filing an estimated tax form 1040ES and paying taxes quarterly is a nuisance. However, it is less expensive than the tax and the penalty and the interest that Internal Revenue collects if you don't.

ACS Approves Department At West Texas-U

CANYON, Tex. -- The influential American Chemical Society (ACS) has approved the Department of Chemistry at West Texas State University, Dr. Gene Crowder, department chairman, said Thursday.

Such approval is beneficial to the department and its students, he said.

"Several chemical companies will not send representatives to interview at institutions which have not been approved by ACS," Crowder added.

"Graduates from ACS schools are given access to its employment services," he said. "Also college graduates can become members of the society three to four years sooner than those from non-approved schools."

Dr. Claude Boatman, who headed the department from 1960 until his retirement this fall, initiated steps leading to ACS approval four years ago.

"We had to change the level of some of our courses," Crowder said. "Our advanced courses had to meet certain standards and some prerequisites had to be included."

Crowder said the ACS seal will help West Texas State obtain chemistry students who in the past have gone to approved universities.

"Some foreign countries will not allow students to attend schools in the United States which have not received ACS approval he said.

Another advantage to ACS sanction, he added, is when fellowships are awarded to college graduates in chemistry those from approved schools are usually considered first.

Sliced Slab
BACON
69¢
lb.

M & M GROCERY AND MARKET
MEMBER AFFILIATED FOOD STORES
#1 Spearman
#2 Gruver

Swifts Mellorine Assorted Flavors
MELLORINE
49¢
1/2 gal.

Chuck
ROAST
65¢
lb.

FOOD BUYS Galore

Arm
ROAST
77¢
lb.

3 lb. Baz
APPLES
49¢

19 oz. Armour No Beans
CHILI 79¢

CARROTS
Cello Pac pkg. 10¢

American Beauty
Macaroni & Cheese
or Spaghetti Dinner
7 oz. 2 for 29¢

TACO TRAY \$2.98

TACO FRYER \$3.98

Shurfine Whole New
Irish Potatoes 6 Cans \$1

#303 Shurfine
Mixed Vegetables 19¢

HONEY
1/2 Gal Waxahachie Chief \$1.19

28 oz. Peter Pan
Peanut Butter \$1.15

10 lbs. White
POTATOES
10 lb. 59¢

Regular
PEPSIS
Carton plus deposit 25¢

Shurfine 12 oz. Vac Pac Whole Kernel
CORN 19¢