

# MERRY CHRISTMAS

## The Spearman Reporter MEMBER NATIONAL NEWSPAPER Association - Founded 1886

VOLUME 61, NO. 5 THE SPEARMAN REPORTER, Hansford County, Texas 79081 THURSDAY, DECEMBER 25, 1969 18

### Spirit of Christmas Spreads Good Will and Good Cheer

#### They Go Together—Feasting and Festivity

During the Christmas season, merry sounds ring out, pleasing sights greet the eye—and tantalizing aromas fill the air. Good food is as much a part of holiday tradition as bells and carols, greens and gifts.

At this festive time, people delight in serving their families and friends an abundance of choice foods. The custom probably began with the ancient winter festivals.

In the course of time, naturally each nation developed its own treasured customs in connection with the Christmas dinner, say the editors of The New Book of Knowledge.

#### Serving the "Bird"

On American tables, the center of attraction is usually the turkey. This custom has its origin in the English "Christmas bird"—usually a goose, capon or chicken, rather than a turkey.

In medieval times, a large bird was standard fare at English Christmas dinners among the common people. In castle and manor, however, a "bird" wasn't always the main dish.

To the tune of the old carol, "The Boar's Head in Hand I Bear," the boar's head was borne to the table in solemn procession. Then followed other courses—and what courses! The most lavish of dinners usually featured a boar's head.

For a medieval feast, a typical menu included 17 main dishes—everything from roasted swan to a kid with a pudding in its belly!

#### Breaking Bread

Everywhere, a widespread use of breads and pastries is customary for the Christmas feast.

This has its origin in pre-Christian and early-Christian

customs of the agricultural nations of Eastern Europe, where peasants offered thanksgiving for a good harvest, usually of grain, during the winter season.

Special holiday cakes were thought to bring good fortune and good health.

More directly connected with the religious meaning of the season is the "Christ-bread," traditional in many countries. This is a long cake, and its shape is meant to symbolize the Christ Child wrapped in swaddling clothes.

Both mince pie and plum pudding began as national Christmas dishes in England. Like the "Christ-bread," early mince pies were baked in symbolic shape—an oblong meant to represent the manger.

#### Toasting the Holiday

As today's punch or eggnog bowl attests, favorite beverages and friendly toasts go along with the good cheer and good feasting of the holiday.

It all began with the English "wassail" bowl. The wassail, a holiday beverage of medieval times, was served hot in a large bowl, and it was compounded of ale, apples, eggs, sugar and spices.

The name comes from "Was Halle," a Saxon greeting which means, "Your health." Gradually, the word "wassailing" began to mean any kind of Christmas revelry accompanied by a festive beverage.

#### LITTLE FOLK PRANCE

For Icelanders, Christmas Eve is the holiest night of the holiday season.

Tradition says, however, that many years ago elves, dwarfs and other little folks pranced and danced about the streets on the night before Christmas.

In churches and homes, in city streets and stores, across the countryside—the spirit of Christmas spreads its joy and its contentment. Soon now, the last-minute hustle and bustle will give way to the highest moments of holiday celebration. It's a time for fun and feasting, a time for light-hearted laughter and heartfelt prayer, a time when friendships are renewed and family ties are strengthened.

Throughout this community, and indeed throughout all the communities where Christmas is celebrated, the spirit of the season finds expression in innumerable ways—among them, the gladness of gift-giving, the merriment of parties, the happiness of hearth and home and, above all, the solemn hush of midnight, traditionally the symbolic time for heralding the Birth of Christ.

From the holly wreath on the door to the packages under the tree, from the gaily decorated windows of stores to the manger scenes in the churches, the customs of Christmas contribute to the meaning of the Day—just as early Christian leaders meant that holiday customs should.

When Christmas first began to be observed on December 25th, churchmen welcomed the idea of incorporating ceremonies and traditions from earlier beliefs into the celebration. They thought that people would feel closer to the new religion if former ways and rituals were not abolished, but instead united with the new rites to honor the birth of Christ.

Today, nearly everyone celebrates Christmas because Christmas belongs to everyone.

For the Christian believer, Christmas is cherished as a religious holiday of paramount importance, and as a time meant for joy and festivity, too.

For people of many different faiths, Christmas is beloved as a happy holiday, a secular celebration that gives meaningful expression to universal good will and good cheer.

#### Carol Can Be Tongue-Twister

"On the first day of Christmas, my true love sent to me a partridge in a pear tree."

So begins "The Twelve Days of Christmas," a traditional and favorite song of the holiday season. The ballad tells the story of the gifts a lover sends to his lady on each of the 12 days from Christmas to Epiphany.

The first gift, a partridge in a pear tree, may have been inspired by an old drinking song, "A Pie sat on a Pear Tree," say the editors of The New Book of Knowledge.

As a ballad, "The Twelve Days of Christmas" is an example of the "number chain formula" in folk songs. As a carol, it is of the type that marked the change from formal hymns in Latin to musical poems in the vernacular of the people.

The song can be sung in a variety of ways. In Great Britain and the United States, it often becomes a game song in which each person, following a leader in repetitions, must pay a forfeit if he misses a line. Sometimes the descriptions of the gifts turn into mouth-defying tongue twisters!

#### Giving Gifts

Since the Wise Men gave of their treasures to the Christ Child, giving has been part of the tradition of Christmas.

The idea of gifts as homage dates from even earlier times, when kings demanded special tribute from their subjects during holiday seasons. Thus the Wise Men, in offering precious gifts of gold, frankincense and myrrh, expressed their reverence for the newborn King of mankind.

Giving to celebrate a happy time was a familiar part of many pagan festivals.

The Romans honored Saturn, their god of agriculture, with a winter festival called the Saturnalia. During this joyous feast, they exchanged gifts—wax candles, clay dolls and various trinkets.

When these pagan customs of exchanging gifts were transferred to the celebration of the birth of Christ, church leaders added a new idea: selfless giving. Through the ages, giving to help the less fortunate has been a special tradition of Christmas.

#### Sending Greetings

Perhaps even more than the giving of gifts, the sending of Christmas greetings symbolizes the seasonal spirit of good will.

The personal exchange of good wishes at holiday time is a custom that's older, probably, than Christmas itself. In ancient winter festivals the renewal of spring was linked with the renewal of friendships.

Though greetings and Christmas have long been associated, the printed greeting card is a relative newcomer to the Yule scene—introduced little more than a century ago. Nowadays, Christmas greeting cards go out by the billions, carrying their messages of "happy holiday" and "best wishes."

In the glad tradition of sending greetings, today's edition of this newspaper presents the special greetings of local merchants, as they express their good wishes and gratitude to customers and friends.

#### Burning the Log

From a miraculous Star to a tiny candle, gleaming lights have cast a glow over holiday festivities for centuries.

Pagan sun-worshippers lit candles and kindled fires at winter festivals to help the returning sun gain strength.

Traditional for both light and warmth is the blazing Yule log. Like all "Christmas lights," it has both a religious and a festive significance in holiday lore.

Because legend says that the Christ Child was washed and dressed beside an ash wood fire, the people of early England always had Yule logs of ash wood. Ash had a practical aspect, too, because it was the only green wood which would burn.

The Yule log of England and continental Europe was often believed to have mystical powers to protect the home. To give this protection, the Yule log had to be kept burning all through the 12 days of Christmas.

Later, the "blazing Yule" was primarily associated with the feasting and festivity of the winter holidays.

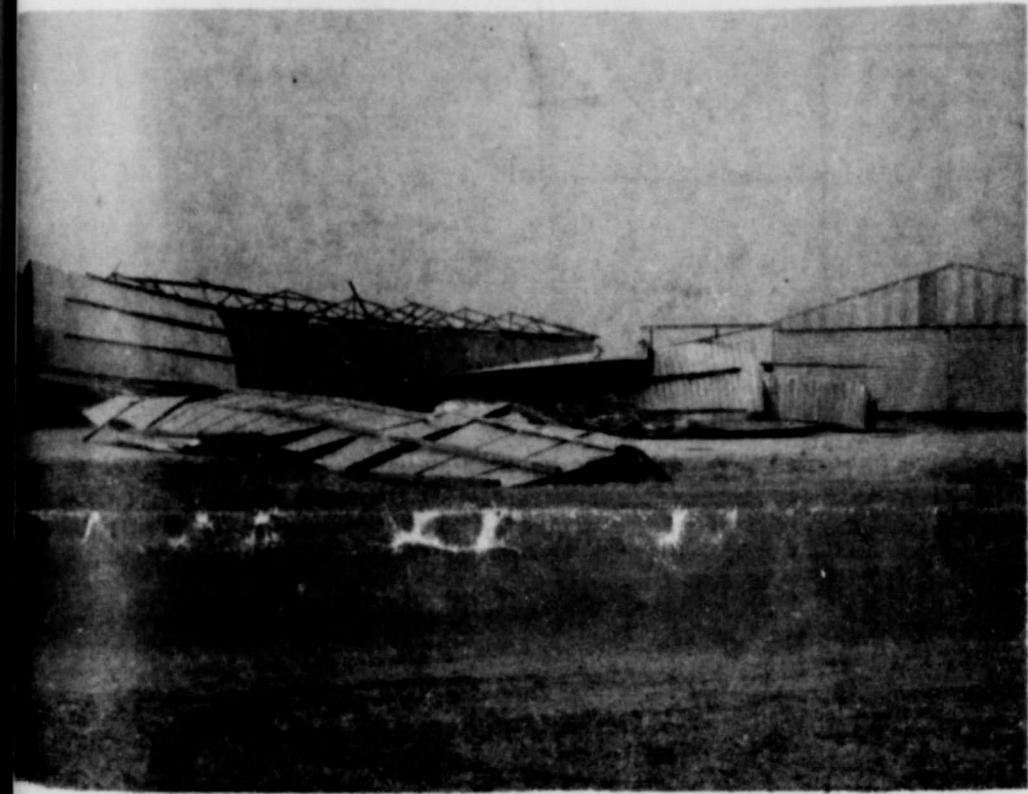
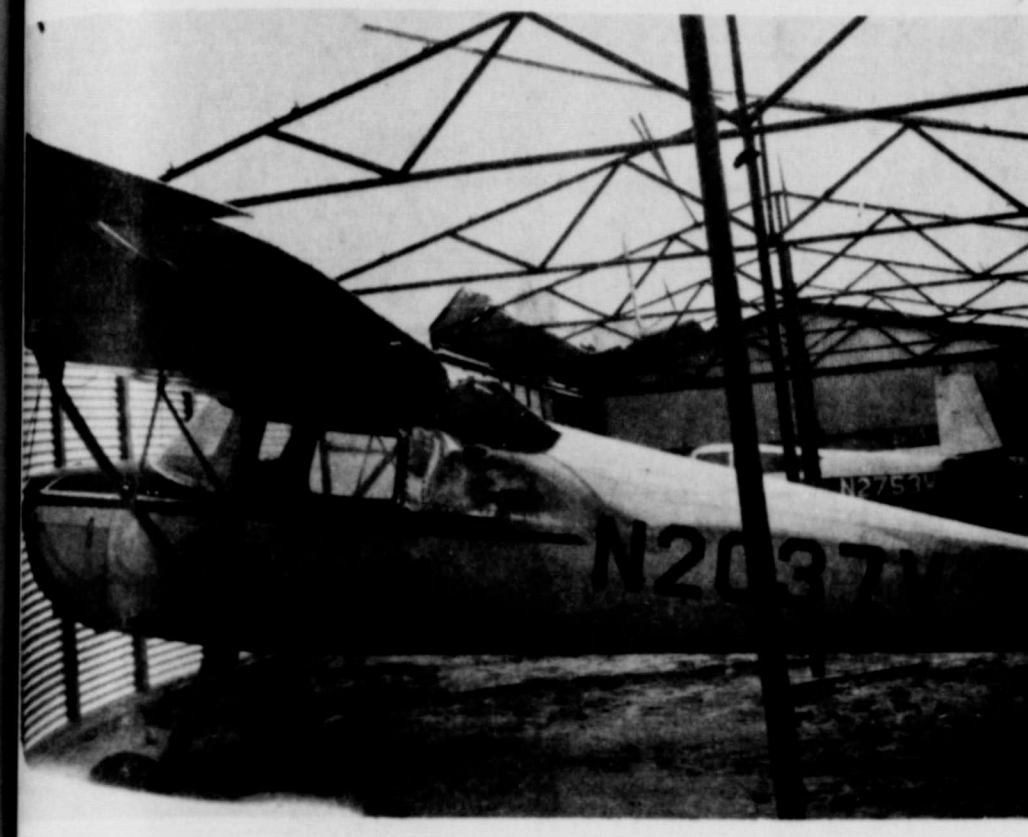
#### Ringling Bells

Among the merry sights and sounds of Christmas, none is merrier than the ringing of bells.

Since earliest times, the pealing of bells has announced important events, both happy and sad. The first use of bells to call Christians to worship took place, it's believed, at Christmas in Italy, about 400 A.D.

Tradition once held that Christ was born exactly at midnight. In medieval Britain, church bells tolled sadly during the hour before midnight on Christmas Eve. On the stroke of 12, a joyous pealing announced the Miracle of Christmas.

Today, church-spire bells and carillons ring out the glad tidings of Christmas.



Hansford county suffered the worst wind storm of the winter holiday of this week. This hangar, containing two airplanes at the Spearman airport was damaged during a heavy wind storm about 3 p. m., Monday. The strong North wind caused a grass fire to burn out of control south of the hangar. The Plate glass window was blown out of the Equity in Spearman, and John Brown reports that his trailer house on the B. Cooke farm was blown away. A man was killed at the Pioneer Feed Lot, near Hardesty and about \$100,000.00 worth of damage was done to the lot.

#### More and Legend Express Happy Mood of Season

From home to home, from country to country, Yule celebrations abound. The happy traditions of gift giving, home decorating, carol singing, card sending, candle lighting and the trimming express the spirit of the season.

Popular folk customs of nations after nation have been absorbed into the international legend and lore of the Yule. Yet virtually every nation—and every home and family—has its special way of celebrating Christmas, and its special memories of Christmas past.

**Carrying in Straw**  
Straw is a traditional part of Christmas celebrations in Sweden—in probable remembrance of the first Christmas when there was straw in the manger.

While "carrying in the straw" is a tradition rather than a modern custom, Swedish people still make straw and wooden figures to hang on their Christmas trees.

**San Tan Lou Yin**  
In Hong Kong, Santa Claus is known by the name of "San Tan Lou Yin."  
The Hong Kong department

### Artistic Views Reflect 'Winter Wonderland'

In Bethlehem, it's the rainy season.

In Hawaii, Santa Claus might arrive by boat, and Christmas could be celebrated on a sunny beach. In Australia, Christmas is a time for picnicking—it's summer "down under."

Even in Northern lands, December 25th does not always provide the pleasures of a "white Christmas."

In spite of the varying climates where Christmas is observed, and in spite of the frequent shortage of ice and snow at the appropriate time, the traditional image of Christmas is, and probably always will be, a wintry, snowy landscape—celebrated in song and story, pictured in countless paintings.

The countryside under a blanket of snow, the hillsides drifted deep in white, the trees bent down with snow or crystal-bright with ice, the lakes, rivers and streams gleaming in ice-covered magnificence—these are favorite themes in holiday lore, and favorite dreams for all those who spend Christmas cozily among the conveniences of modern centrally-heated buildings and modern transportation.

The "winter wonderland" of ice and snow has been a frequent source of inspiration for artists. There's a wealth of winter landscape paintings that, although not directly associated with Christmas, seem to set the mood and reflect the spirit of the season.

In 18th and 17th century Holland, for instance, a whole tradition of landscape painting was devoted solely to depicting winter scenes—something unusual since the winter weather of Holland is not especially cold.

#### THE CHRIST CHILD...

Here is a man who was born in an obscure village, the child of a peasant woman. He grew up in another obscure village. He worked in a carpenter shop until He was thirty, and then for three years He was an itinerant preacher. He never wrote a book. He never held an office. He never owned a home. He never had a family. He never went to college. He never traveled two hundred miles from the place where He was born. He never did one of the things that usually accompany greatness. He had no credential but Himself. He had nothing to do with this world except the power of His divine manhood. While still a young man the tide of popular opinion turned against Him. His friends ran away. One of them denied Him. He was turned over to His enemies. He went through the mockery of a trial. He was nailed upon a cross between two thieves. His executioners gambled for the only piece of property He had on earth, while He was dying—and that was his coat. When He was dead, He was taken down and laid in a borrowed grave through the pity of a friend.

Nineteen wide centuries have come and gone and today He is the centerpiece of the human race and the Leader of the column of progress.

I am far within the mark when I say that all the armies that ever marched, and all the navies that ever were built, and all the parliaments that ever sat, and all the kings that ever reigned, put together, have not affected the life of man upon this earth as powerfully as has that One solitary life.

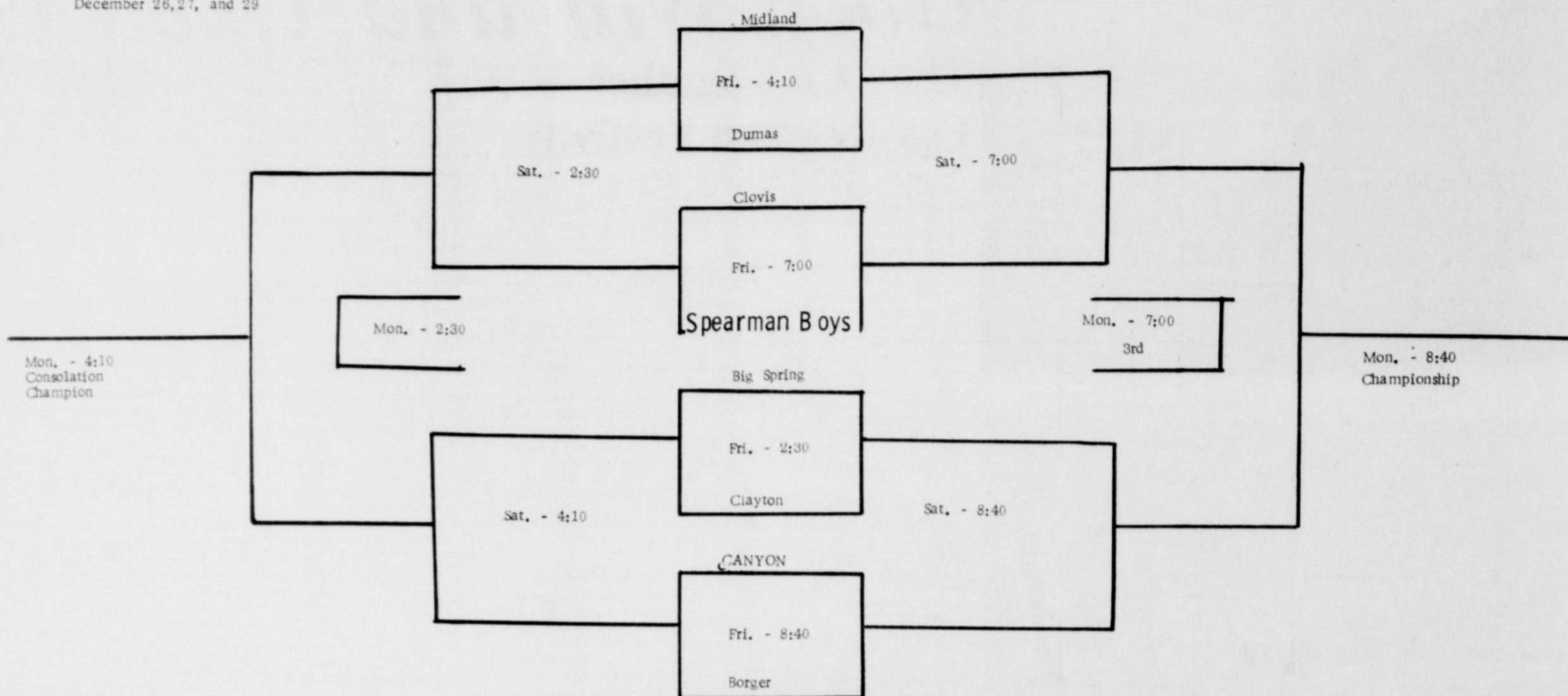
--Anonymous.

# DUNCANVILLE-BORGER CHRISTMAS

BORGER CHRISTMAS INVITATIONAL

North Middle School Fieldhouse

December 26, 27, and 29



Minimum warm-up is 15 minutes.  
Teams on the bottom are home teams  
and will wear light jerseys.

 <p>May the holy light of Christmas shine on you</p> <p><b>CALLAWAY LUMBER COMPANY</b></p>	 <p>Christmas... 1969 Best wishes from all of us...</p> <p><b>CORNER SERVICE STATION</b></p>	 <p><b>MERRY Christmas</b></p> <p><b>THE SPEARMAN REPORTER</b></p>	<p>Sending you our very best wishes...</p> <p><i>Cheer</i></p>  <p><b>SPARKS LAUNDRY</b></p>
 <p>True Christmas peace be with you in this Holy time.</p> <p><b>MORSE OIL CO.</b></p>	 <p>Seasons Greetings</p> <p><b>BOXWELL BROTHERS</b></p>	<p><b>GREETINGS</b></p> <p>Happy Yule to our many dear friends and customers. Merry, merry thanks to all of you for your patronage!</p>  <p><b>WYATT'S ENCO SERVICE STATION</b></p>	<p>We greet you with the wish that your season will be as full of joy as your stockings will be with holiday gifts!</p>  <p><b>THOMAS CLEANERS</b></p> <p><b>Happy Holiday</b></p>
<p><b>NOEL</b></p>  <p><b>B. &amp; R. ENGINE SERVICE</b></p>	<p>They're being good as gold 'cause Santa's on his way. We wish you and yours the most this Christmas Day!</p>  <p><b>SNIDER-PEARSON CONOCO</b></p>	<p><i>Yuletide Cheer</i></p> <p>May the Yuletide candle kindle your heart with the warmth of the season and add a special spark to your day!</p>  <p><b>PRESTON SMITH, Contractor</b></p>	<p><i>Christmas Greetings</i></p>  <p><b>PEOPLES NATURAL GAS</b></p>

# INVITATIONAL TOURNAMENT

NINETEENTH ANNUAL SWAAU HIGH SCHOOL GIRLS BASKETBALL TOURNAMENT  
 DUNCANVILLE HIGH SCHOOL GYMNASIUM (Dallas)  
 DECEMBER 26-31, 1969



 <p>All good wishes to our many patrons.</p> <p>LADY FAIR</p>	 <p>May the year be a happy and prosperous one for you.</p> <p>JR. LUSBY CATS</p>	 <p>Best Wishes</p> <p>A &amp; W ROOT BEER</p>	 <p>We're sending you a special wish to hope your holiday joys are many. Do have a really wonderful, happy season.</p> <p>BOBBY CONNER, SALESMAN, GIFFORD HILL WESTERN</p>
 <p>Christmas Joy</p> <p>Joyous holiday greetings. We hope your Yuletide glows with happiness and good cheer and all of your days are bright ones.</p> <p>MARTIN TRUCKING</p>	 <p>FIRST NATIONAL BANK</p> <p>Merry Christmas</p>	 <p>Christmas Greetings</p> <p>BAKER HOTEL MRS. &amp; MRS. SAM GRAVES</p>	 <p>Warmest wishes for a very merry Christmas. May you and your family be blessed with every holiday joy.</p> <p>ANTHONY ELECTRIC</p>
 <p>Greetings</p> <p>Bells, bows, mistletoe, holly... may everything that is Christmas to you, be yours on this most glorious day!</p> <p>NORTH PLAINS TRUCK &amp; IMPLEMENT</p>	 <p>Merry Christmas</p> <p>The Christmas tree... May yours be bright and gay and surrounded with gifts for and from all of your loved ones.</p> <p>EXCEL BODY SHOP</p>	 <p>Peace On Earth</p> <p>CANTRELL'S FLYING SERVICE</p> <p>May the resplendent joy of the shepherds, who heard the Heavenly message enter your hearts on this Christmas Day.</p>	 <p>The gifts are all wrapped and ready for the big day. In the spirit of giving, we'd like to wish you a merry holiday.</p> <p>SPEARTEX GRAIN</p>

**SANTA CLAUS SAW ME**  
 When I was but a tiny lad,  
 This thing was told to me;  
 The toys I wanted could be had  
 Beneath my Christmas tree.  
 They said if I saw Santa Claus,  
 When he came out our way,  
 To keep myself a silent pause-  
 As still as I could stay.  
 If I could see good old St. Nick,  
 Without him getting wise,  
 I could surely get my pick  
 Of toys and pumpkin pies,  
 But then they said another thing,  
 And I thought they were bluffing,  
 If he saw me, he'd surely bring  
 me absolutely nothing.  
 I hid beneath a table top,  
 And watched when he came in.  
 As he left to make another stop,  
 He made a silent little grin.  
 When I came on Christmas day  
 To search beneath the tree,  
 All my toys had gone away  
 With nothing there for me.  
 Then I knew the tale was true  
 As most anyone could see.  
 I'd caught Santa in my view  
 But Santa Claus saw me.

5 1/2% interest rate, with a maximum term of 25 years. The loan can be used for the purpose of acquisition of land, building, machinery and equipment to start a new manufacturing or commercial business or help modernize or expand an existing Small Business Concern. S.I.P. will be required to inject only 10% of the needed funds into the project.

In order to gain the funds necessary to receive S.B.A. funds stock is now being sold in S.I.P. The S.I.P. board of directors has recently appointed Alton Ellsworth and George Collard to head local sale of the stock. Stock shares will sell at \$25.00. Programs are being set up so shares may be purchased monthly or quarterly by the use of bank drafts. Purchasers then own stock which will be drawing interest from any business which receives a loan as well as having a personal interest in Spearman's growth.

President of S.I.P., Dr. Damon Gregg, has pointed out that it is necessary for as many local residents as possible to invest in S.I.P. to insure support by the S.B.A. If a broad base of local people are willing to show interest in bringing new businesses to Spearman then the S.B.A. is willing to supply the low interest loans.

S.I.P. encourages any local civic or social club which is interested in knowing the working details of S.B.A. loans to contact Dr. Gregg or Dr. Garnett. They will be able to supply information through a short talk at club meetings.

S.I.P. is trying to assure that economic development of the community, not individual profit, is the motivating force. This is possible if the people of Spearman support our community through S.I.P.



P.O. Box 458 213 Main Street Spearman, Texas 79081

**WILLIAM M. MILLER**  
 Editor and Publisher

THE SPEARMAN REPORTER  
 Published every Thursday at Spearman, Texas. Second class postage paid at Spearman Post Office, 79081

Any erroneous reflection upon the character of any person or firm appearing in these columns will be gladly and promptly corrected upon being brought to the attention of the management.

SUBSCRIPTION RATE--Hansford, adjoining counties, \$7.00 yr. Other points, \$5.00 or in combination with The Hansford Plainsman, \$9.00 yr.

Advertising rates on request.

**Record Number Train On GI Bill**

The Veterans Administration announced today a record number of veterans and servicemen are now in training programs under the new GI Bill.

An even larger enrollment is expected next month when many schools begin their second semesters.

Administrator of Veteran Affairs Donald E. Johnson said that as of November 30, there were more than 736,000 participants in training programs of all types. This includes trainees in programs at the college level, below college level, and on-the-job training.

According to Mr. Johnson, November's enrollment figure represents an increase of 36 percent over the same period last year when enrollees totaled 542,000.

So far, 1,551,000 trainees have taken advantage of educational benefits provided under the latest GI Bill since it went into effect June 1, 1966.

A breakdown of trainees by categories includes 65,000 pursuing on-the-job training, 239,000 in programs below college level, and 432,000 in programs at the college level.

The VA chief added that

the increased participation in training programs can be attributed in part to the agency's continuing "Total Outreach" program.

Under this program, veterans and servicemen are informed about benefits available to them, and are encouraged to apply.

VA contact representatives provide this service at military installations in Vietnam and the United States, as well as at VA hospitals, VA offices and Veterans Administration Centers throughout the United States. In addition to these personal contacts, VA letters are sent to all recently discharged veterans.

**Bridge Party In Knox Home**

Mr. and Mrs. Don Knox were hosts Friday evening December 19 for members of their couples bridge club. Mrs. Billy Miller served a delicious date pudding with whipped cream for dessert. Mrs. Billy Miller held high score for the ladies and Ray Robertson won high for the men.

Attending were Mr. and Mrs. Garland Head, Mr. and Mrs. Billy Miller, Mr. and Mrs. Bill Douglas, Mr. and Mrs. Ray Robertson, Mr. and Mrs. Chalmers Porter and the hosts.

**Arts & Craft Guild Christmas Party**

The country home of Mrs. Nolan Holt was the scene for the Christmas party of the Arts and Crafts Guild. Co-hostesses for the party were Mrs. Joe Trayler and Mrs. Bruce Sheets.

A short business meeting was held and officers for the coming year were elected. President will be Mrs. Bruce Sheets, secretary Mrs. Guy Fuller and reporter Mrs. Ned Turner.

Following the tradition of the club, hand painted china plates were exchanged as gifts between members. A delicious and festive refreshment plate was served to those attending. The home of Mrs. Holt was gaily decorated for the holiday season.

Present were Mmes. Deta Blodgett, Freeman Barkley, Joe Trayler, Fred Hoskins, Garrett Allen, P.A. Lyon, Guy Fuller, Bill Russell, Pope Gibner, Ned Turner, Bill Gandy, Jesse Womble, Clay Gibner, Fred Daily and the hostess, Mrs. Nolan Holt.

The Guild will meet next in the home of Mrs. Bill Russell January 9.

**'69 Texas Traffic Casualties To Top Quarter Million**

AUSTIN -- For the first time in the State's history, more than one quarter million persons will be killed and injured on Texas streets and highways during a single year, according to an estimate of 1969 traffic casualties issued today by the Texas Safety Association.

Basing their computations on preliminary crash records through December 12, TSA further predicted that 1969 traffic crashes will cost Texans at least \$900 million, thus exceeding earlier estimates by more than \$100 million.

TSA points out that no war has cost Texas as much in casualties and money as will 1969 traffic crashes.

Veterans whose service-connected disabilities are rated 50 per cent or more are entitled to additional allowances for dependents.

**Pianists Entertain For Rotary Club**

The Rotary Club of Spearman was delightfully entertained at their Monday luncheon by Verna Lee Schnell and the regular Rotary Club pianist, Mrs. John Berry.

Playing two pianos, the two ladies exhibited unique precision and timing as they played a number of well-known tunes in keeping with the Holiday Season.

A Christmas luncheon was served by the ladies of the Assembly of God Church. The luncheon featured turkey along with the traditional trimmings including cranberries and pumpkin pie.

Rotary clubs are allowed to skip two meetings a year and the local club voted to skip the meeting for December twenty ninth, due to the fact that a number of members expect to be out-of-town on that date.

Eugene Barkowsky was given a standing ovation for the fine programs he has provided for the club during its first six months after charter.

**Happy Homes Club Has Holiday Party**

The family Christmas party for members of the Happy Homes Club was held Friday evening December 19 in the club room.

A dinner of turkey, dressing and all the trimmings was served to those attending. Following dinner the

group sang Carols and Mrs. Kenneth Evans gave a reading on the meaning of Christmas, followed by a gift exchange.

Those attending were Mr. and Mrs. Gordon Cummings and children, Mr. and Mrs. J.W. Pipkin and children and one guest, Mr. and Mrs. Burton Schubert and children, Mr. and Mrs. Fendorf Schubert and Mrs. Lovett as their guest, Mr. and Mrs. Fred Groves, Mrs. Adelyn Barnes and daughter and one guest, Mr. and Mrs. Kenneth Evans and children, Mr. and Mrs. Jim Nicholson and children and Mr. and Mrs. Jessie Francis and children.

The Great Plains Conservation Program is now in use in 424 counties of the Great Plains states--Colorado, Kansas, Montana, Nebraska, New Mexico, North Dakota, Oklahoma, South Dakota, Texas and Wyoming. In its most recent summary, the Soil Conservation Service reported that 34,622 farmers and ranchers had entered the program since planning started in 1957. Their holdings cover 62,240,420 Plains acres. Cost share obligations total \$121,606,629, with about \$30 million of this still to be paid as owners proceed with work. Seeding unsuitable cropland back to permanent vegetation is the leading practice--nearly two million acres representing over one-fifth of the cropland involved.

Over 5,300 farmers and ranchers in the 424 designated counties have applications on file awaiting action.

**Industrial Plan Inc. Stock Now On Sale**

Spearman Industrial Plan Inc. received a boost in October, of this year when local stockholders voted to amend the articles and by-laws. The changes allow S.I.P. to apply for Small Business Administration Loan aid through the 502 Program of Community Development. Under Section 502, S.B.A. may lend up to \$350,000.00 (S.B.A. share) to a local Development Company at a

**IOOF TRAP SHOOT IS SCHEDULED**

The IOOF is continuing the trap shoot it has sponsored for the past several weeks. The shoot will be held for the next two Sundays at 2 p.m. weather permitting.

**CUSTOM FEEDING**  
 Pens now available

1500 HEAD CAPACITY  
 SMALL ENOUGH TO GIVE  
 INDIVIDUAL CARE  
 LARGE ENOUGH TO GIVE

**GOOD GAIN**  
 BARNES FEEDLOT  
 1 Mile North on Hwy. 15  
 Spearman, Texas  
 Phone 659-2434 A/C 806

**Merry Christmas**

The miracle of Christmas will live forever in the hearts of men. May this Yule be a source of great happiness for you.

**HITCH GRAIN CO**  
 Berstein 733-2239

**ANNOUNCING...**

WE'RE HERE TO SERVE YOU WITH OUR NEW MOBILE UNIT, THERE'S ONLY ONE OTHER UNIT IN THE STATE OF TEXAS. OUR UNIT PROVIDES FULL SERVICE FACILITIES ON THE SPOT WITH

- ★ LOAN PAYMENTS
- ★ NEW PURCHASE LOANS
- ★ NEW CONSTRUCTION LOANS
- ★ NEW SAVINGS ACCOUNTS
- ★ Withdrawals from savings accounts

**9:30 To 3 pm**

WE'RE ON THE LOT OF THE PLAINS SHOPPING CENTER IN SPEARMAN ON MONDAY, WEDNESDAY & FRIDAY FOR YOUR CONVENIENCE.

WE ARE IN CANADIAN ON TUESDAYS AND IN GRUVER ON THURSDAYS.

**Perryton Savings & LOAN ASSOCIATION**  
 Be sure and visit our mobile unit at the plains shopping center



Let Me See  
... by Sybil

some of the Christmas spirit in jars and open a jar of it every month? Wouldn't it be nice if we could?

To all of our friends who will not get Christmas cards from us, this is our wish for you:

We are wishing for you this day a happy Christmas. We would send you those gifts which are beyond price, outlast time, and bridge all space. We wish you all laughter and pure joy, a merry heart and a clear conscience, and love which thinks no evil, is not easily provoked, and seeks not its own; the fragrance of flowers, the sweet associations of holly and mistletoe and fir, and many happy memories. We wish that the spirit of Christmas may draw you into companionship with him who gives it all.

Come, let us adore Him.

### Tis' Season To Be Jolly, Not Drunk

AUSTIN, Dec. -- "A few carefree drinks can kill you" warns the Texas Safety Association.

Texans at Christmas can at least double their chances for survival and a happy holiday by not riding in the car with a drunk driver and by not being a drunk driver or walker themselves.

Records show that a driver is 25 times more apt to crash when he is drunk. Drinking drivers will easily cause half the holiday smashups, fatalities and injuries as predicted by national studies.

Furthermore, one out of two pedestrians killed by autos will be drunk, no matter if the fatal driver is sober.

How much is too much? Perhaps any or none, but medical authorities say it only takes three one-ounce shots of 80-proof whiskey, or three 12-ounce beers, to put a 150-pound individual into the fuzzy-brained alcoholic danger zone. Five shots in an hour definitely make him a dangerous drunk, for that amount causes a concentration of one-tenth of one percent by

blood-volume weight, and that's too much! Driver or pedestrian, the drinker is now an abnormal traffic hazard.

Attorney George Wm. Perry of Dallas, president of the Texas Safety Association, in a special Yule message states that "We are not encouraging people to drink and then drive. Quite the contrary, we must emphasize that driving in holiday traffic takes a person's full attention and even a small amount of alcohol in the bloodstream changes perceptions, attitudes and reactions to create a potentially dangerous situation that follows you like a shadow."

"There are no short cuts to sobriety as we've said before. Black coffee given to heavy drinkers can have the questionable effect of keeping wide-awake drunks on the road."

"However, we realize that some people will drink and drive during the holidays. To those so foolish I want to point out just how little alcohol is needed to reduce driving efficiency, how long it takes to eliminate alcohol from your system, and stress that you can choose to have a clear head."

Six ounces of 80-proof in an hour is a very dangerous overdose for a normal healthy adult weighing 180 pounds.

Four shots is too much for safe driving in a 120-pound adult, and two ounces impairs performance.

Authorities say tolerances may be much less for people in poor physical condition, and may vary in any case.

Mr. Perry cautions that "a little drink can go a long way". It takes over six hours to eliminate all alcohol from the bloodstream of a 150-pound drunk who had five quick drinks on an empty stomach.

"The Christmas holidays should be fun days and not days darkened by traffic tragedies. If all Texans will stay sober in public and drive friendly, Christmas 1969 can go on the record book as a time when Texans proved they really cared about their neighbors," Mr. Perry concluded.

## holt news

Mr. and Mrs. Britt Jarvis and family of El Paso have been visiting their parents, Mr. and Mrs. Billy Jarvis of Pringle and Mr. and Mrs. Nolan Holt and Larry.

Mrs. Fronye Close and Susan Harris of Spearman spent the weekend visiting Mr. and Mrs. Jerrell Harris and family of Olathe, Colo.

Mmes. Mildred Chamberlain of Spearman, Bertha Jenkins and Maude Rosson attended the fiftieth wedding anniversary Sunday afternoon December 22 of Mr. and Mrs. Harley Alexander in Gruver.

Mr. and Mrs. Tip Collingsworth and family of Perryton were host to a Sunday Christmas dinner for the Lamb family.

Guests were Mr. and Mrs. Charles Kollman, Mr. and Mrs. Leon Dabney and family of Wichita Falls, Mr. and Mrs. Bob Lamb and Gayle of Pringle, Mr. and Mrs. Ervin Lamb and boys of Springer, N.M., Mr. and Mrs. Bud Jackson and Robin of Wheeler, Mrs. Blanch Lamb of Spearman, Mr. and Mrs. Robert Janzen and boys.

Mr. and Mrs. H.D. Winkler and family of Stinnett were hosts to a Sunday night Reger Christmas dinner. Guests were Mr. and Mrs. Frank Reger, Mr. and Mrs. Lewis Williams and family, Mr. and Mrs. Roy Reger and family of Stinnett and Mr. and Mrs. Travis Reger, Debra and Dale.

Mr. and Mrs. Steve Jenkins and Kathy Jenkins of Amarillo were weekend guests of Mr. and Mrs. Phil Jenkins.



### Destroy Unwanted Credit Cards

COLLEGE STATION -- Cut and destroy unwanted credit cards, advises Linda Jacobsen, Extension home management specialist at Texas A&M University.

This eliminates keeping track of them and running the risk of a stolen card. By keeping the credit card, you have accepted the terms under which it was issued, even though no formal agreement was made.

Unsolicited credit cards may arrive through the mail from many sources: banks, oil companies or department stores.

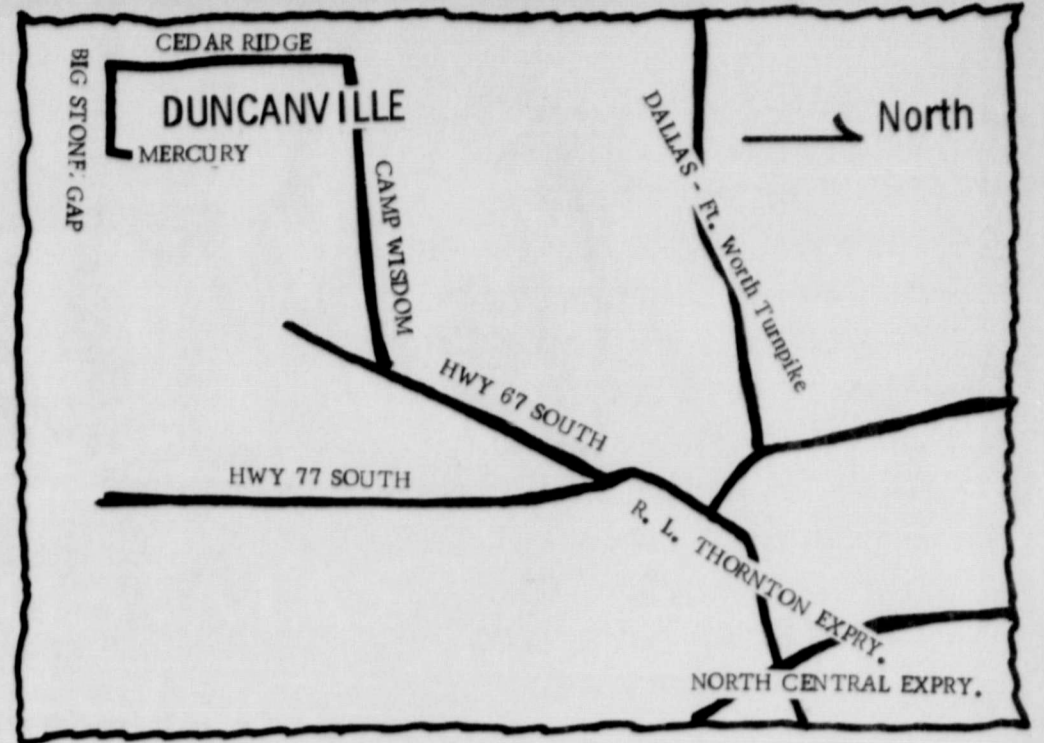
### Lackeys & Evans Host Party

Mr. and Mrs. Joel Lackey and Mr. and Mrs. Sid Evans were hosts Saturday evening December 20 to members of their bridge club and guests in the Lackey home. Hostesses served a delicious dinner of roast beef, baked potatoes, green bean casserole, salads, relishes and strawberry pie for dinner.

Prizes for the evening of bridge play went to the following: ladies high score prize--Mrs. Louis Schnell, mens high score prize--Troy Sloan, traveling prize for trumping with the deuce for men--Don McLain and for the ladies it went to Mrs. James Cunningham.

Members attending were Mr. and Mrs. J.L. Brock, Mr. and Mrs. James Cunningham, Mr. and Mrs. Don McLain, Mr. and Mrs. Troy Sloan, Mr. and Mrs. Joel Lackey and Mr. and Mrs. Sid Evans. Guests attending were Mr. and Mrs. Louis Schnell and Mr. and Mrs. Ray Robertson.

Michael Haag is in Spearman with his wife and her relatives, Bethany Donnell Haag for Christmas holidays. Michael is in Officers Training in Lawton, Oklahoma. They will leave Monday for Houston to be with his family on Christmas Day.



**GOOD LUCK LYNXETTES:** The map to Duncanville, is printed above. The suburb of Dallas, will be alive with championship talent this week-end, when the Cleveland Browns, and the Spearman Lynxettes arrive. The Browns will meet the Dallas Cowboys Sunday, and the Lynxettes will be playing in the Duncanville tourney. Take this map with you, and you can find Duncanville, rather easily

Mr. and Mrs. Jack Ritchie of Delta, Colorado were in Spearman for a long weekend visit in the home of her mother, Mrs. Lillie Bowling.

Mr. and Mrs. Bus Boxford were in Woodward, Okla. over the weekend for a Christmas get-together with Bus' relatives.

Mrs. Don Knox recently spent several days visiting in the home of her mother, Mrs. Hoggatt.

Mrs. Hazel Thomas of Green Forest, Ark. is spending Christmas in the home of her son and family in Spearman, Mr. and Mrs. J.E. Thomas.

Rev. and Mrs. C.R. Dale of Bentonville, Arkansas were in Spearman to attend the wedding of their granddaughter Miss Cheri Bollinger Saturday evening.

Kay Jackson, daughter of Mr. and Mrs. Bill K. Jackson, arrived home in Spearman from Houston, Thursday, for the holidays with her family. Kay attends dental hygienist school in Houston.

Mrs. A.H. Smith of Lamesa is visiting for Christmas in the home of her daughter and family, Mr. and Mrs. Richard Holton. Steve is home from Tech in Lubbock and Jerry is home from W.T. in Canyon for the holidays.

Rev. and Mrs. Berry, former residents of Spearman and their son and wife, Mr. and Mrs. Rennie Berry were in Spearman Saturday to attend the wedding of Wesley Jarvis and Cheri Bollinger. Rev. Berry officiated at the ceremony.

# OPEN

## TO SERVE YOU NOW

Washing - Greasing - Tire Repair

Texaco Credit Cards Honored

Texaco Gas

Havoline Oil Diesel Fuel

Stop By And Get Acquainted



**AL'S TEXACO SERVICE**  
Corner Bernice And Collard  
**SPEARMAN**



## Merry Christmas

May the true spirit of the First Christmas shine brightly in your heart today and every day.

## GIFFORD HILL WESTERN

# *the Christmas Season*



*He was born in an obscure village,  
the child of a peasant woman.  
He grew up in still another village, where he worked  
in a carpenter shop until he was thirty...*

*Then for three years he was an itinerant preacher. He never wrote a book. He never held an office. He never had a family or owned a house. He didn't go to college. He never visited a big city. He never traveled two hundred miles from the place where he was born. He did none of the things one usually associates with greatness. He had no credentials but himself. He was only thirty-three when the tide of public opinion turned against him. His friends ran away. He was turned over to his enemies and went through the mockery of a trial. He was nailed to a cross between two thieves. While he was dying, his executioners gambled for his clothing, the only property he had on earth. When he was dead, he was laid in a borrowed grave through the pity of a friend. Nineteen centuries have come and gone, and today he is the central figure of the human race and the leader of mankind's progress. All the armies that ever marched, all the navies that ever sailed, all the parliaments that ever sat, all the kings that ever reigned, put together, have not affected the life of man on this earth as much as that ONE SOLITARY LIFE.*

*To wish you all the joys of Christmas  
and happiness for the New Year.*

The Spearman Reporter, and The Hansford Plainsman Crew

## *The Merriest Christmas*

May the happiness of the season  
be yours in great abundance.

FAYE LYNCH  
SYLVIA ROBERTSON  
JODY WHITFORD  
VICKI SCHEDECK  
STEVE HICKS  
RICHARD TRACY

EUGENE YARBROUGH  
BILLY MILLER  
SYBIL MILLER  
CHET WISE  
SCOTT LATHAM



**Texas Farmers Subject To Self Employment Tax'**

Texas farmers are subject to self-employment tax for 1969 if their farm income is \$400 or more, Ellis Campbell, Jr., District Director of the Internal Revenue Service advised today.

The self-employment tax rate is 6.9 percent with a maximum of \$538.20, and is in addition to income tax.

A self-employed farmer is one who operates his own business or farm. A farmer is also considered self-employed if he employs others to operate or work his farm even though he does not live on it himself.

A farmer must file a Federal income tax return and pay the self-employment tax due if his net earnings from self-employment are \$400 or more, even if his gross income is less than \$600 and he owes no income tax.

The self-employment tax applies to a maximum of \$7800. But this figure is reduced by any wages from which Social Security taxes were withheld.

A special optional provision in the law enables farmers to acquire Social Security credits even if they have a loss after expenses are deducted.

"Farm" as used in the Federal tax law relating to Social Security and self-employment taxes, includes stock, dairy, poultry, fruit, fur-bearing animals, and truck farms, and also plantations, ranches and nurseries.

"Farmer's Tax Guide", IRS Publication 225, furnishes more detailed information on this subject. The booklet is available without charge by sending a post card to your county agent or IRS District Office.

LIONS CLUB SWEETHEART Jyniece Callaway stands by her "Sweetheart Tree" that she made for Christmas. The tree has a picture of all the Lions Club members from Spearman and is unique. Jyniece is also Miss Hansford County and a member of the Spearman Lynxette basketball team. She has been an all-state guard on the Lynxette team for two years in a row!



GIRLSTOWN girls from Borger are shown enjoying some games at the party Thursday night in the Fellowship Hall of the First United Methodist Church. The party was given by members of the C. E. Campbell Sunday School class who have chosen the girls as their project.



Christmas is the perfect time to count our many, many blessings. High on our list is the confidence and good will you've showed us. So to you, our patrons, we're extending a cheerful, hearty holiday "thanks."

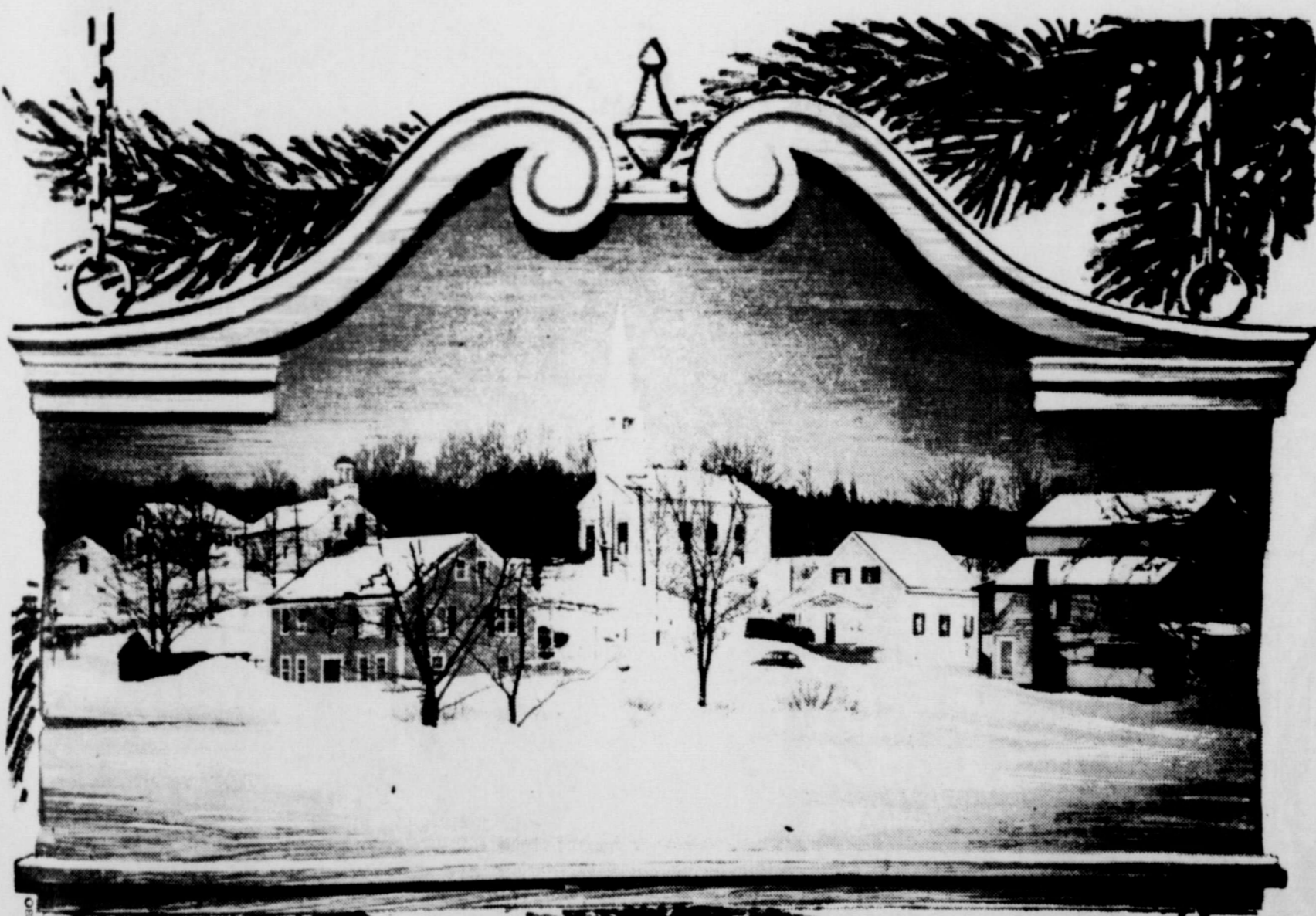
We hope there's lots of fun and joy  
In all the family meetings  
With goodies for each girl and boy

NORTH PLAINS ELECTRIC sends Holiday Greetings.

**North Plains Electric**

**'Serving the North Plains'**

PERRYTON, TEXAS



**GREETINGS**

*of the Christmas Season*



Christmas time is here again  
The arrival that never fails  
For sunshine snow and even rain  
Soft breezes or sometimes gales  
Merry Christmas is our refrain  
The best to you in Bales  
of happiness free from pain.  
From the gang at Consumers Sales

**Consumers Sales Co.**



3RD PLACE WINNER of the House Lighting Division was the home of Mr. and Mrs. C.E. Blackburn at 322 S. Dresden.

**Social Security Is Kind Of Insurance**

An area man lost several thousand dollars in social security benefits because he didn't want "government handouts" and failed to apply at age 65. H.L. Weatherly, manager of the Pampa social security office, reminds people that social security isn't "some benefit the government gives you if you live long enough." It's not charity; it's not welfare. The government doesn't give you any part of your social security benefits and unless some drastic changes are made in the program it never will. The only part the government plays in the social security program is to administer. Social security is a social insurance system. It's compulsory but aside from this it is based on the same philosophy as other insurance. One pays "premiums", (social security taxes on his wages); and his employer matches his payments. The total is kept in a special trust fund that can only be used for the payment of benefits and operating expenses. The worker buys four kinds of insurance in pay-

ing his social security taxes. These are survivors insurance, disability insurance, retirement insurance, and hospital insurance under Medicare. Of course the only kind of benefit one ever wishes to receive is retirement benefits but it is necessary in planning one's financial future to be aware of the full value of the other three benefits. If the worker dies he knows in advance that his wife, minor children, and dependent parents have social security protection. If he becomes totally disabled so that he is unable to work he can count on monthly benefits for himself, his wife, and children. At age 65, Medicare is there to use for his hospital and doctor bills. "Be sure your wife and family are fully informed on all aspects of your social security program," H.L. Weatherly said, adding that one should inquire at the social security office at Pampa for additional information.

**Holiday Season Prime Time For Accidents**

Accidents are always seeking a place to happen, so practice safety during the

Christmas and New Year season, advises the Texas State Department of Health. Today, accidents loom as the nation's number one threat to babies and children. Each year about 16,000 boys and girls under 15 are killed and about 17,000,000 are seriously injured in accidents. Surprisingly, about four million people receive disabling injuries and some 30,000 are killed in accidents in the home alone. The Christmas season is a prime time for one of the four million yearly home accidents to happen. A festive mood often dispels caution. One of the booby traps facing you may be the toys you purchase for your child. The Food and Drug Administration recently asked a distributor to call in a baby pacifier labeled as "one-piece nipple and child for extra safety." It actually came apart into three pieces--one small enough to choke a baby. In another case a baby rattler when broken produced a dagger-like spike. Other toys shoot potential deadly missiles, provide electrical shock hazards, burning hazards and other maiming hazards. Small children are particularly susceptible to burns and poisons since so many things handled automatically go to their mouths. Holly and mistletoe berries, widely used as Yule decorations, are poisonous, causing vomiting, diarrhea and disorders of the central nervous system. A few other Christmas-related products are considered poisonous. Subliming Christmas tree lights contain methylene chloride, which if swallowed could cause slight poisoning. It has happened. Use only tree decorations approved and bearing the Underwriter's Laboratories (UL) label. Fire salts produce beautiful colored flames, but they contain certain chemicals, including arsenic and various toxic salts--that can cause vomiting if eaten. Tree balls are made of glass and plastic, and in addition to causing cuts, could clog the windpipe of a child. The gas propellant in artificial snow is toxic if inhaled but leaves no residue when dried.



1969



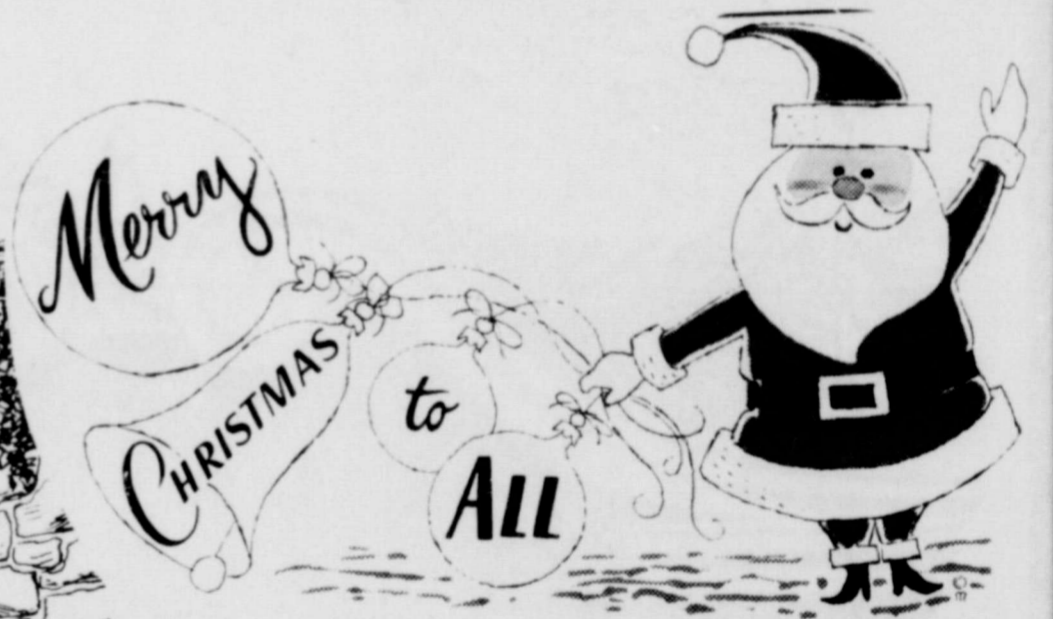
**MERRY CHRISTMAS**

'Tis the season for joy, thoughtfulness and thank yous. So we're taking time to say just that, and wish you a very Happy Holiday.

**Texhoma Livestock Auction**  
Texhoma, Oklahoma



**PEACE AT CHRISTMAS**



**Rejoice**  
May the true spirit of the first Christmas shine brightly in your heart today and everyday.

**SPEARMAN REDI MIX**

SPEARMAN, TEXAS  
PHONE 659-2323



Mr. and Mrs. Jodie A. Knudson  
request the honour of your presence  
at the marriage of their daughter  
Janice Marie  
to  
Mr. Charles Hicks Porter, Jr.  
Sunday, the twenty-eighth of December  
nineteen hundred and sixty-nine  
at five o'clock  
Faith Lutheran Church  
Spearman, Texas

*Reception in Parish Hall*

tal examination in January is 5,800 men.

In filling this call, in addition to available men 19 to 26 years of age, all available men who will be 18 years and 6 to 11 months of age in January 1970 may be ordered for examination, as necessary to fill the call, with the oldest first.

The State Selective Service director announced that officials of his Youth Advisory Committee had been elected in an initial meeting of the group in Austin. The committee is composed of 17 young people whose purpose is to evaluate the draft law and its administration and offer advice.

Officials elected are: William C. Sarpalius, presiding officer; Michael J. Shearn, vice-chairman; and Miss Karen K. Burk, secretary.

Sarpalius is a student at Clarendon Junior College, Shearn is at the University of Texas in Austin, and Miss Burk is at Texas Woman's University. Other members are Rodney E. Donaldson, University of Texas at Austin; Eddie C. Hill, F.D. Roosevelt High School, Dallas; Larry L. Long, University of Texas at Austin; Peter S. Cotham, Paris Junior College; Jose G. Guerra, Pan-American College.

Also, James H. Willinson, Milby High School, Houston; Robert L. Jones, Del Mar College; Robert J. Hodges, Austin apprentice electrician; Miss Sandra Coachman, Mary Hardin-Baylor College; Jay N. Miller, Odessa.

Also, Michael L. Riddle, Texas Tech University; George H. Gould, School of Vocations at Lamar State; Frank L. Sullivan, Stephen F. Austin State University; and Larry L. Freeman, Texas Southern University.

### Coyote Trapper Being Sought

A meeting on the coyote situation in Hansford County was held Monday, December 8, 1969. Several ranchers indicated they would contribute some money each month for three or four months if a trapper could be located locally. Robert Adamson, Hansford County Agent, stated he had contacted the Wildlife Services office in Lubbock concerning the coyote problem. The

office stated they would train a man for a short period of time if one could be found. He would probably spend some time with the trapper in Roberts County.

Any person who wants coyotes controlled on his place and will contribute money toward hiring a trapper is asked to contact Robert Adamson at the County Agent's office.

### JANUARY DRAFT CALL UP 117

AUSTIN, Texas.--The January draft call for Texas is 573, up from 456 for December. Colonel Morris S. Schwartz, State Selective Service director, said Friday.

Colonel Schwartz said he had been instructed officially to delay allocation of the call to the state's local boards pending receipt of official instruction on the procedures of random selection. The induction period will be January 15 through 31.

The state quota for pre-induction physical and men-

Mr. Fred Smith returned to his home east of Spearman Sunday after spending several days in the hospital in Amarillo, undergoing tests and surgery. He is doing fine and very glad to be home.



1969



A Merry Christmas we want you to know  
A Happy New Year wherever you go  
May Noel goodness on you glow  
From Snider-Pearson Conoco

## Snider-Pearson Conoco



# Joy and Peace

When it's so close to Christmas day  
We become a little nervous  
But it's Merry Christmas Anyway  
From Spearman Super Service

## Spearman Super Service

### Christmas



To wish the meaning of Christmas deeper, its friendships stronger and hopes brighter for you.

It's time to be happy, bright and gay  
It's sure not the time to weep  
Have a happy, Joyful Christmas day.  
Excel Chevrolet, Olds and Jeep

## Excel Chevy Olds Jeep



P.O. Box 458 213 Main Street Spearman, Texas 79081

**WILLIAM M. MILLER**  
Editor and Publisher

THE SPEARMAN REPORTER  
Published every Thursday at Spearman, Texas. Second class postage paid at Spearman Post Office, 79081

Any erroneous reflection upon the character of any person or firm appearing in these columns will be gladly and promptly corrected upon being brought to the attention of the management.

SUBSCRIPTION RATE--Hansford, adjoining counties, \$7.00 yr. Other points, \$9.00 or in combination with The Hansford Plainsman, \$9.00 yr.

Advertising rates on request.

### Post Office To Close Christmas

The Spearman Post Office will be closed Thursday, December 25, in observance of Christmas Day. No deliveries will be made on city or rural routes.

### Kindergarten Class Enjoys Party

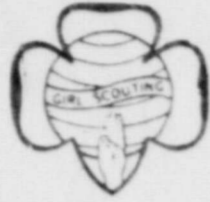
The kindergarten class of Mrs. Fred Hoskins enjoyed a combination birthday party and Christmas party ending the first term for the children, December 12.

The birthday boys for the day were Joe Ned Turner and Russell Anderson, celebrating their 9th birthdays. They chose as queens for their day, Robin Clement and Cynthia Arnold.

Birthday refreshments and Christmas treats were served to each child attending. Mothers of the children, Mmes. Bill Turner, Jesse Francis, Charles Arnold and Allen Alford served cup cakes, ice cream cups and Mrs. Hoskins presented the children with Christmas favors of candy canes and other favors.

A gift exchange was enjoyed by the following children: Scott Alford, Russell Ander-

son, Cynthia Arnold, Mariene Atcheson, Darrel Caldwell, Robin Clement, Roger Close, Denae Baker, Angela Francis, Sheryn Haefner, Jimmy Morley, Joe Ned Turner, Elizabeth McGowen and Tod Ware. Johnnie Eaton was unable to attend the party due to illness.



### Girl Scout News

Junior Girl Scout Troop 34 met Tuesday afternoon in the home of leader Mrs. Bob Crawford with Mrs. George Rook and Mrs. Wayne Ellsworth, leaders, also present.

The troop played party games and took the gifts they had made for their parents home for their Christmas trees. Each girl was presented gifts from the leaders of the troop for Christmas.

Members of the troop have been having a contest and the losing patrol led by Stephanie Reed served refreshments for the party to Susie Bowers, Kate Crawford, Valarie Ellsworth,

Brenda English, Tamara Farr, Debbie Fletcher, Stephanie Reed, Tammy Rook, Colette Smith and Colleen Smith.

### SHARON TOPE IS BICYCLE WINNER

Sharon Tope was the winner of the bicycle which was given away by the B&PW Club Saturday.

The drawing was held at 3 p.m. at Cummings Refrigeration. The winning ticket #248 was drawn by Janna McCoy.

The B&PW Club wishes to thank everyone that donated to the project.

### Farmers & Fishermen Get Tax Forms Early

(Dallas, Texas)--About three million 1969 Federal income tax forms for America's farmers and fishermen will be sent to them around December 1, a month earlier than usual, the Internal Revenue Service announced today. All other taxpayers will receive their packages about January 1.

A first for Internal Revenue, the early mailing is an attempt to assist the farmers and fishermen in taking advantage of options open to them in filing returns and paying their tax, IRS officials said.

Estimated Tax forms, in a separate package, will reach farmers and fishermen about the same date. In previous years, the estimated tax forms were included in the income tax packages.

Farmers and fishermen have a choice of filing dates: they may elect to file and pay in full an estimated tax declaration by January 15, 1970, and file an income tax return by the April 15 deadline; or they may elect to file only an income tax return by February 16 and pay the tax due with the return.

Like the other 77 million taxpayers expected to file tax returns for 1969, farmers and fishermen will be using the new income tax form 1040.

The form, which replaces both the old form 1040 and the 1040A, is a one-page, basic form to which separate schedules can be added to cover any tax situation.



Enjoy this Christmas as never before

May your day be sane and safe,

With a holly wreath upon your door

From The Gruver State Bank

# Gruver State Bank

Gruver, Texas



# Merry Christmas

### A CHILD WAS BORN

*The glad tidings of His birth live forever in the hearts of man. May the joys of this Christmas be many for you.*

## P. A. Lyon Insurance



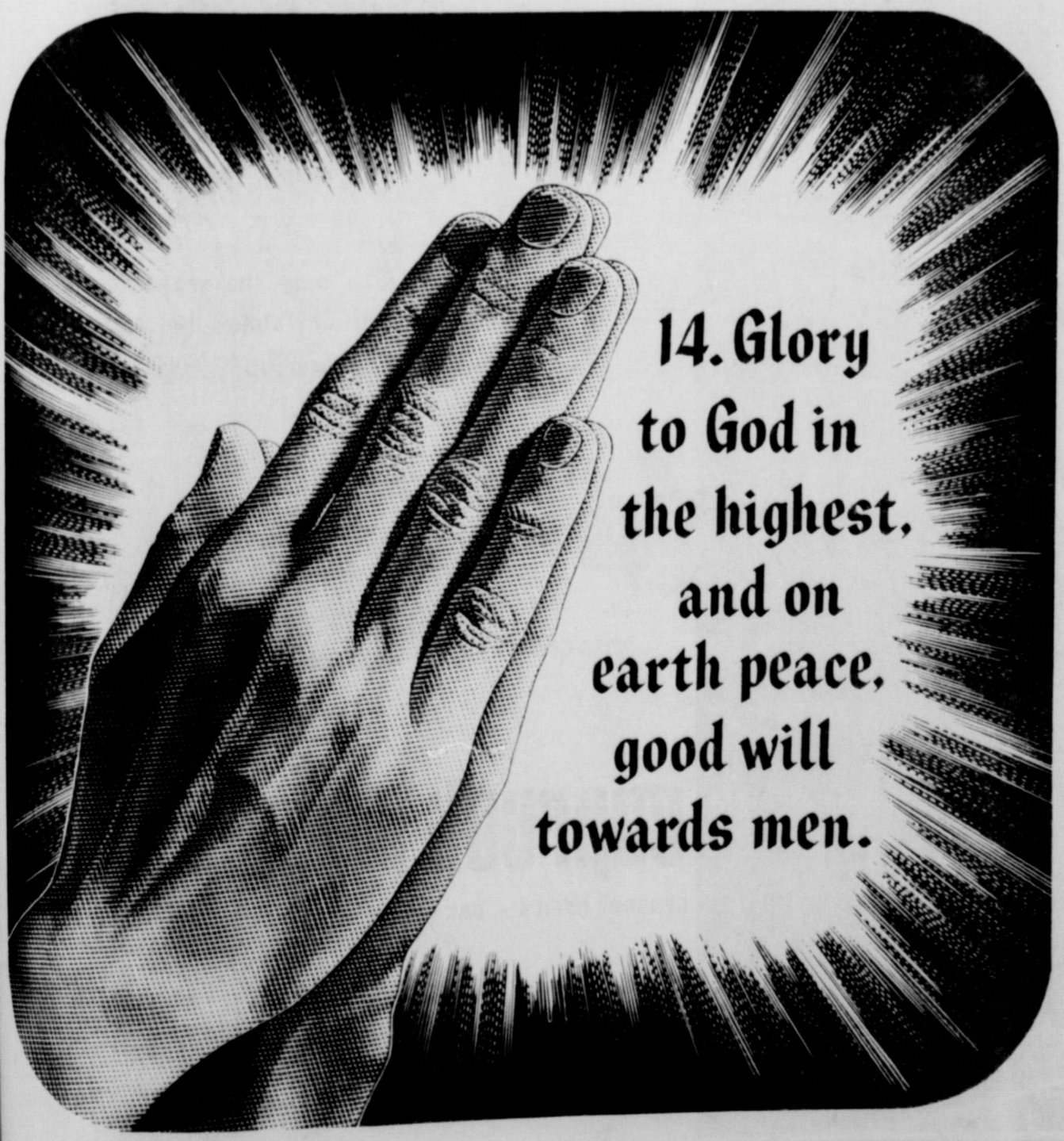
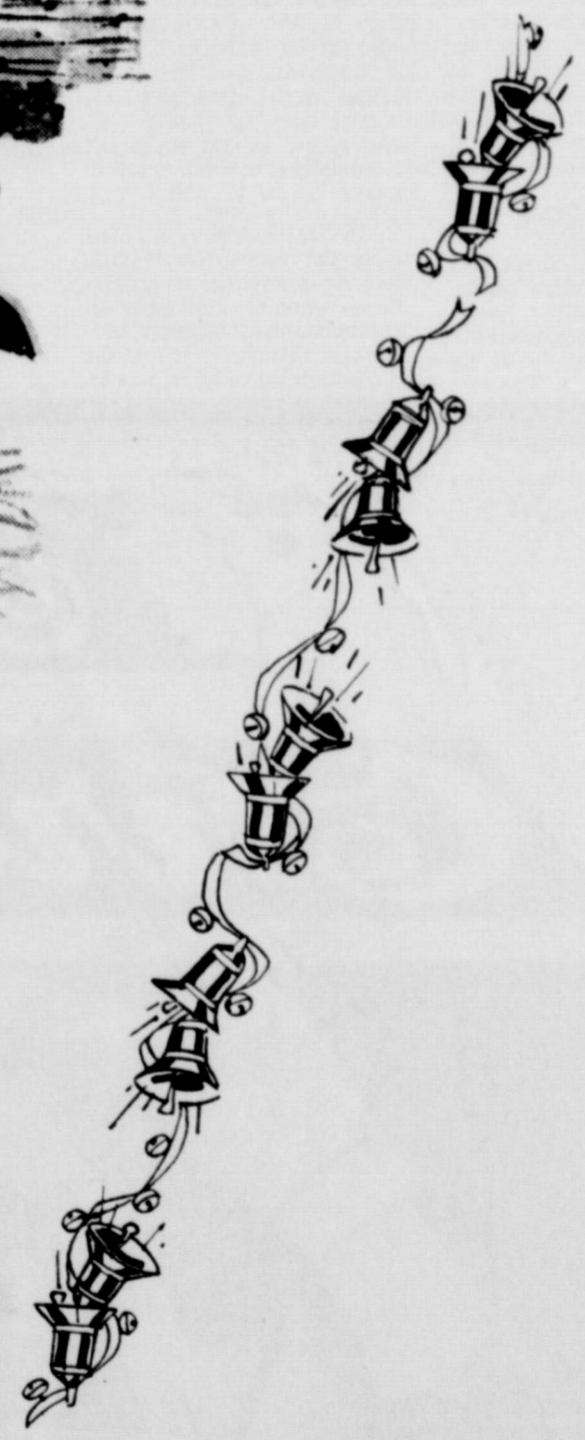
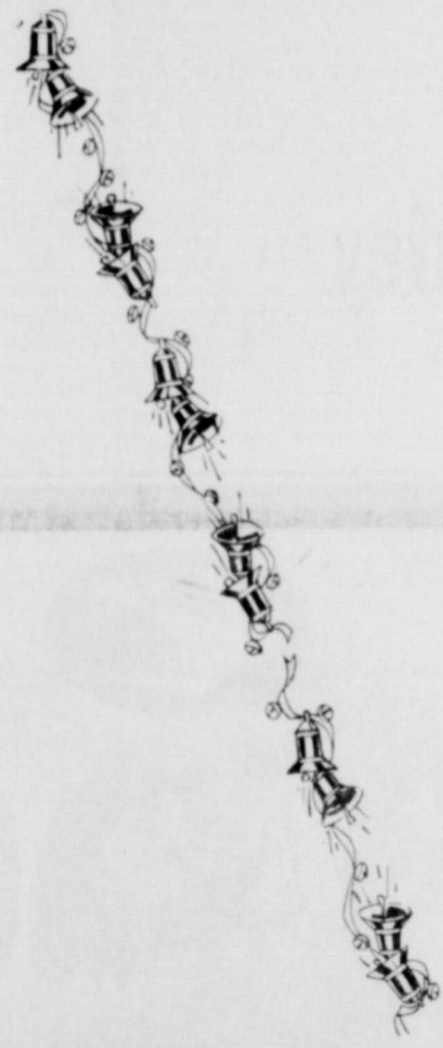
# Merry Christmas



## Palo Duro Feeders

Gruver, Texas

# SEASON'S GREETINGS



14. Glory to God in the highest, and on earth peace, good will towards men.

If last Christmas was a happy one  
We hope this one's even greater.  
A season filled with joy and fun  
From your Equity Elevator

# EQUITY

### INCOME TAX--WHAT IS DEDUCTIBLE? 1040A Eliminated For 1969 Returns

#### SURCHARGE TAX CONTINUED ADDITION 6 MONTHS

This is the first in a series on ways you can save on your income tax returns this year. The articles are written by Henry Block, President of H&R Block, Inc., America's largest tax service.

Prior to 1969, the Internal Revenue Service utilized two forms for the preparation of individual income tax returns Form 1040A, usually referred to as the "short form" or "card form," and Form 1040, commonly known as the "long form." Approximately 22 million American taxpayers who have been using the "card form" to file their income taxes each year will be surprised, and perhaps even dismayed, to learn that the 1040A has been discontinued this year. Instead, a brand new revised form 1040 (a combination of Form 1040 and Form 1040A) will be used by every individual required to file a return.

#### CONFUSION MAY RESULT

It is likely that this change will confuse many individuals who have grown accustomed to filing the "painless," "easy card form" through the years. However, for others, it may very well be a blessing somewhat strangely disguised. An individual filing the new Form 1040 will begin with basic page one, (still called Form 1040) and include, with his or her return, the additional schedules (Forms) required to file a complete return. Page two of the 1040 has been discontinued and new schedules replace it. Included is a Schedule "T" for tax computation. Taxpayers with income under \$5,000 who do not itemize will compute their tax from line 15C of the tax table, enter that tax on line 16, compute their surcharge on line 17, and then enter total tax on line 18. All taxpayers with income over \$5,000 must compute tax due on schedule "T".

#### EXTRA FILING WORK DISGUISED "BLESSING"

The possible benefit that former users of the "short form" might realize, now that they're being forced to compute the amount of their

tax through the few, simple new steps described above, is found in the tax savings it may produce. In other words, it has been the belief of many professionals in the tax preparation field for years that a large percentage of taxpayers who have been filing the 1040A (Card Form), have been "cheating" themselves by overpaying their taxes. The few added steps of involvement with the new Form 1040 for such individuals should eliminate much of this and result in lower taxes in a number of cases.

#### TAX SURCHARGE CONTINUED ADDITIONAL SIX MONTHS

The 10% surcharge tax, which was to have been in effect for a 15-month period ending June 30, 1969, has been extended an additional six months through December 31, 1969. In effect, therefore, individuals will pay 5% more in federal income taxes than most originally planned to pay at the beginning of the 1969 calendar year.

It should be noted that the surcharge is a tax upon a tax, rather than a tax directly upon taxable income. Example: an individual has taxable income of \$10,000 in 1969 on which he would normally pay an income tax of \$2,190. For 1969, the surcharge is 10% of the tax amount. Thus, the individual's full income tax liability for 1969 would be \$2,409 (\$2,190 plus \$219, 10% of \$2,190).

#### LOWEST BRACKETS NOT AFFECTED

The surcharge on individuals does not apply to the two lowest tax brackets, or up to \$1,000 of taxable income in the case of a single taxpayer, and up to \$2,000 in the case of a married couple. For a head of household there is no surcharge tax on taxable income up to \$1,500.

Although veterans covered under the World War II G.I. Bill were entitled to receive \$20-a-week readjustment allowances for 92 weeks, the average veteran received the allowance for only 19 weeks.

### PSC Announces Evening Classes

Seven night classes on the undergraduate level will be offered at Panhandle State College the second semester.

Courses scheduled are: Elements of Accounting, 6:30-8:00 p.m., T-Th.; News Reporting, 8:35-10:00 p.m., M-W.; Library Science, 5:30-8:30 p.m., M.; Physics, 7:00-10:00 p.m., M.; Stenography 6:30-8:15 p.m., M-W.; Religion, The Life and Teaching of Jesus, 7:00-8:40, T.; Religion, Marriage and Family Living, 7:00-8:40 p.m., M. Students wishing information about the requirements and eligibility for enrollment should write for a class schedule from the office of the registrar. Regular enrollment for the second semester has been set for January 19 and 20th.

### FLCW HAS MEETING

The FLCW of the Faith Lutheran Church met at 7:30 December 8 at the Fellowship Hall of the church.

Ginger Turner opened the meeting with devotion and prayer. Janice Ward conducted a lesson on the Christmas story. Dorothy Tackitt closed the meeting with the offering meditation.

The minutes of the November meeting were read and approved. A date to clean the church was set for December 11. Prayer partners for 1969 were revealed and names for 1970 were drawn.

Refreshments were served by the hostess Dorothy Tackitt to the following members: Janice Ward, Betsy Ward, Fern Welch, Ginger Turner, Josephine Schneider, Delphine Kopke, Nora Meyer, Elma Ward, Ruth Knudson and Selma Reneau.

# A Joyful Christmas

## Greetings



I wish you all the very best  
And not just matter of factly  
May happiness be your holiday guest  
Merry Christmas from Mayor Hackley

Our association has been  
pleasant during the past year-  
Thank You.

## Mayor D. E. Hackley

# Merry Christmas



**G**REETINGS... may the wonderful blessings of Christmas be yours this holiday season.

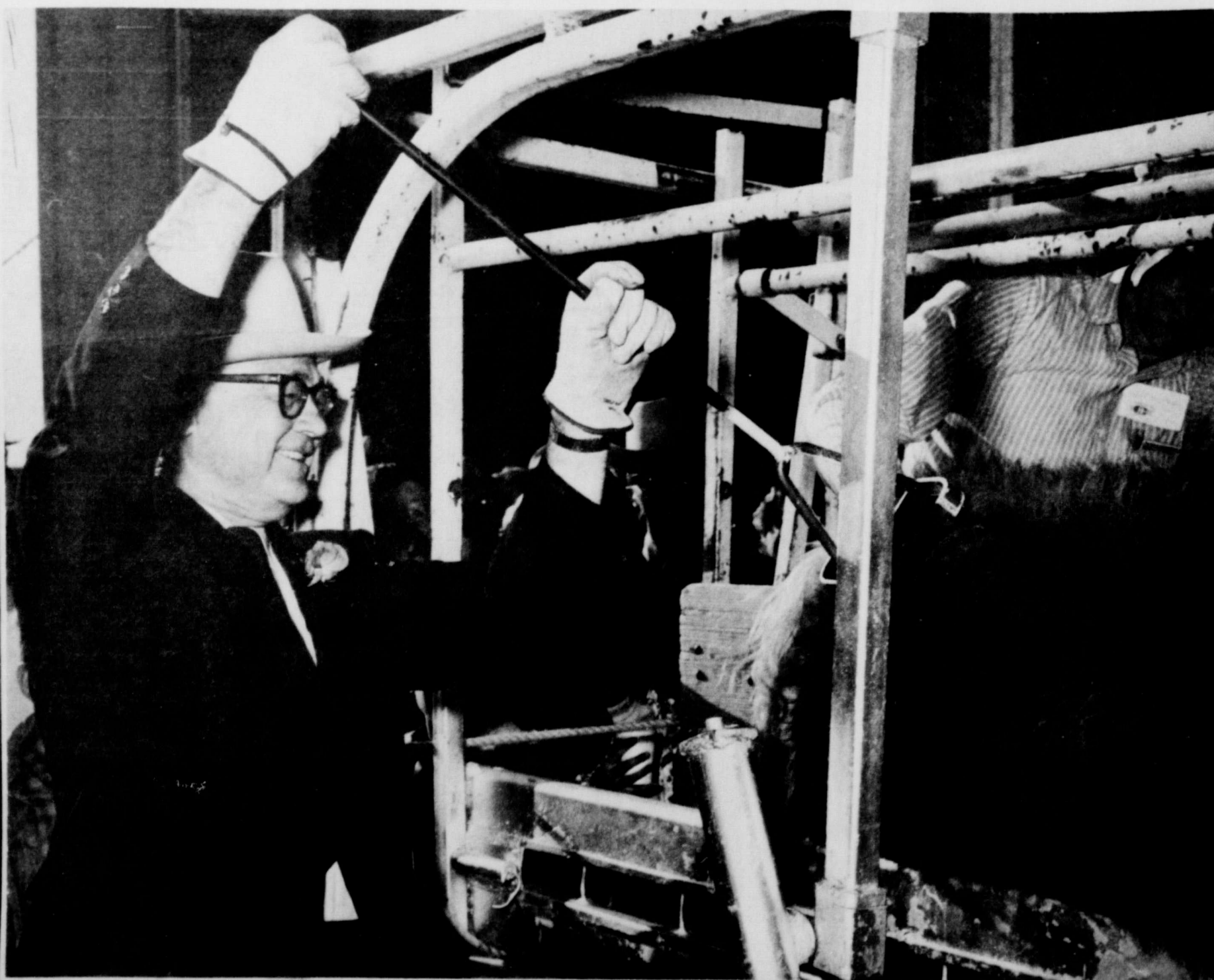


## caprock industries

GENERAL OFFICE - BOX 648 - GRUVER, TEXAS - 806/733-2483  
GEORGE ENLOE - GENERAL MANAGER

GRAIN DIVISION - BOX 638 - SPEARMAN, TEXAS - 806/659-2551  
C. RALPH BLODGETT - MANAGER

A WHOLLY OWNED SUBSIDIARY OF AMAREX, INC.





Another wreck at "Crazy Corner" in Spearman. Dallasene Reynolds was coming across the "no light" Baker-Taylor intersection, and received a smashed door Monday morning. Needless to say, Dallasene would like to see "Baker-Taylor" get their light!

## TOMMY GOOCH NAMED TO ADVISORY COUNCIL AT BAPTIST SEMINARY

FORT WORTH, Tex.--Two men Paul Cotulla and Tommy Gooch have been named to the Advisory Council of Southwestern Baptist Theological Seminary here. They will meet with the council during its annual meeting January 30. The council is composed of laymen from the Southwest. Tom Joseph, banker-lawyer from Round Rock, Tex., is chairman and will preside at the meetings. W. A. Baker, Denton, is vice chairman and seminary business manager Wayne Evans is secretary. Activities will begin with chapel at 10:00 a.m. and end with the group attending opening night at the Southwestern Exposition Rodeo. In between will be a luncheon and dinner, business sessions, a tour of the new Walsh Medical Center and other events. James Landes, pastor, First Baptist Church, Richardson, Tex., will be the speaker for chapel. Paul Cotulla is mayor of the city of Cotulla, Tex.,

where he is a rancher and partner with son Bill in Cotulla's Model Market. He is a graduate of the University of Texas with a B. B. A. degree. He is a deacon in the First Baptist Church, past president of the Cotulla Lions Club, Chamber of Commerce and is a Mason. General Robert Taylor, seminary director of development, describes Mr. Cotulla as "Courteous, cooperative, friendly, benevolent, creative and dedicated." His wife's name is Elizabeth. Tommy Gooch, formerly of Spearman, Tex., now lives in Waco where he is director of underwriting for the Texas Farm Bureau Insurance Agency. He is a 1955 graduate of Baylor University and teaches a young married men's Sunday School class at Columbus Avenue Baptist Church. He is also a Mason and a member of the Lions Club. He and his wife, Sarah Jane, have three sons. While a student at Baylor he was

president of the B. S. U., president of the senior class and a member of the Baylor Chamber of Commerce.

## REP. ABRAHAM NAMED TO COMMITTEE

AUSTIN--District 79's State Representative, Malouf Abraham of Canadian, has been tapped by House Speaker G. F. (Gus) Mutscher to serve on a committee to make an intensive study to determine the savings of tax dollars that could be made by having a state office building in Houston. The Committee to Study the Construction of a State Office Building in Harris County was authorized by HSR 186. The Resolution pointed out the need for a survey to ascertain the present use of office space in Houston and the anticipated future needs. Some 15 to 20

branch offices of Texas state departments and agencies are now located in Harris County, Mutscher said. "The present situation, with state offices scattered throughout the county, is neither convenient nor efficient," he said. "The Committee will study the need for and the feasibility of constructing a state office building in Harris County in the hope that such a move would contribute to the overall state economy as well as better state services for the people of Houston and Harris County."

The Committee to Study the Construction of a State Office Building in Harris County will report back to the 62nd Legislature with its recommendations when the Legislature convenes in January, 1971.

Other members of the committee are Representatives Bill Swanson of Houston, who will serve as chairman, Joe Allen of Baytown, Dean Cobb of Dumas and Harold Davis of Austin.

Mr. and Mrs. S. W. Robertson recently honored their daughter and her husband, Mr. and Mrs. Litch Sparks, Jr. of Stinnett with a dinner celebrating their 25th wedding anniversary, December 15. The dinner was held in the Robertson home in Spearman. Attending were the Lowell Robertsons of Perryton, Mr. and Mrs. Ray Robertson of Spearman, Mr. and Mrs. S. W. Robertson and Mr. and Mrs. Litch Sparks, Jr.

Extension of the Great Plains Conservation Program is another milestone in the renovation and conservation of lands in this region which are highly susceptible to erosion damage. Additionally, it confirms the merit of long-term contracting to assure the application needed conservation treatments. Various proposals have been made to apply the principle in watersheds, R&D projects, or economic development regions. The National Association of Conservation Districts favors adoption of the program everywhere in the U. S.



Americano - P7 Oven Range. Famous 30 inch Americano two-level styling with a self-cleaning tower oven. #5797E by GE.

# Anthony Electric

PLAINS SHOPPING CENTER

# Season's Greetings



Reddy Kilowatt joins with all the folks at Community Public Service Company in wishing you the merriest of Christmases.

Reddy will be on the job throughout the Yuletide season . . .

making your home glow with cheery light and lending a hand with your many household chores. And throughout the coming year, all of us wish for you the very best of everything.

**COMMUNITY PUBLIC SERVICE**

Your Electric Light & Power Company



E45-69



1969

May the true spirit of Christmas be with you and yours...

# RUSSELL'S



At Christmas

A Joyous Christmas

Our wish—that the meaning of Christmas be deeper, its friendships stronger and all hearts filled with its peace and good will.

# NORTH PLAINS TRUCK & IMP.

Hwy. 207 Ph. 659-2421

# A JOYOUS CHRISTMAS



*"Unto you is born this day  
in the city of David a Saviour,  
which is Christ the Lord"*

While humble shepherds watched their flocks, a heavenly glory shone upon them, as herald angels sang of a Holy Child. Far to the East a Star shone, guiding the wise men in their search for Him. Across the years the sacred message shines for us today, ever renewing in our hearts all the joy and wonder, the hope and promise of that Holy Night, so long ago.

As we worship in spirit at the blessed manger, we wish for all a truly joyous Christmas, rich in meaning, with faith ever deeper... with inspiration ever greater.

## First National Bank

Perryton Texas

Ar

Creative high  
arts in this ar  
have the opport  
ave public re  
the achievem  
through the No  
Abolistic Art  
ness to be he  
Texas. V  
ill serve as re  
of the 1970  
wards program  
nationally by S  
Magazines, Inc  
The rules bo  
let work may  
17 classific  
fields of pain  
mammaking  
art, crafts,  
Teach  
est the best w  
classes, a  
regional sp  
aged by arti  
sponsors reco  
Advisory C  
St. Floyd W  
Director  
announc  
selected

LYNKETT  
the player  
ment team  
Champion  
the Dallas

## Art Show For Area Students

Creative high school students in this area will again have the opportunity to receive public recognition for their achievement in art through the Northwest Texas Scholastic Art Awards Exhibition to be held in Amarillo, Texas. White & Kirk will serve as regional sponsor of the 1970 Scholastic Art Awards program, conducted nationally by Scholastic Magazines, Inc.

The rules book announces that work may be entered in 17 classifications in the fields of painting, drawing, printmaking, design, sculpture, crafts, and photography. Teachers will select the best work done in their classes, and send it to the regional sponsor to be judged by artists and art educators recommended by the Advisory Committee.

Mr. Floyd Wright, Managing Director of White & Kirk, announced today that work selected by the judges

will go on display at White & Kirk Downtown from February 21 until March 7. Entries must be submitted during the week of February 2 - 7. Gold achievements keys and certificates of merit will be awarded for outstanding work.

A quota of "blue ribbon" finalists selected by the judges from the key-winning pieces will be forwarded after the show to national headquarters at Scholastic Magazines, Inc. There will be judged along with finalists from other regions for the National High School Art Exhibition in New York.

National judges will select winners of about 420 gold medals mounted on plaques with winner's name engraved. 75 scholarships to art schools and colleges, and over 500 honor certificates. Special cash awards will be the Hallmark Honor Prizes of \$100 each for the best painting or drawing

from each region, and the Strathmore Awards of \$50 each for the best piece in each of the two-dimensional art classifications. In addition, the photography division offers 275 cash awards in black-and-white color photography, as well as two scholarship grants.

A Regional Advisory Committee guides the local Scholastic Art Awards program and is headed by an Honorary Committee consisting of: Robert T. Sakowitz, Executive Vice President of White & Kirk, Robert R. Ashworth, Superintendent of Amarillo Public Schools, and S.B. Whittenburg, Publisher of the Amarillo Globe News Publishing Company.

The Active Committee is under the chairmanship of Marjorie Gudgen, Director of Art Education of the Amarillo Public Schools and lists as members: Mr.

## RAILROAD PAYS \$17,849 FOR COUNTY TAXES

Current annual taxes paid to the various government agencies by Texas railroads in Hansford County totaled \$17,849, it is announced by the Texas Railroad Association.

That amount was the county's share of the nearly \$11,000,000 the railroads paid in Texas on their own right of way and other property.

The biggest railroad contribution was to the school systems throughout the state. Large sums were also distributed to city, village and county governments and for road and bridge funds.

In addition, of course, was the large total in taxes the more than 30,000 railroad employees in Texas contributed on their own property. The vast majority of rail workers, many of whom live in Hansford County, own their own homes.

"We are very pleased that nearly half of the taxes paid by the railroads in Texas go to support the schools," said Walter Caven, general counsel of the Texas Railroad Association. "The future of our country depends to a great extent upon the education of our youth," he said.

"Recognizing this need for education, many of the railroads operating in Texas also continue to make scholarships available to a large number of students every year."

Mr. George Buzzard is home now from the hospital in Amarillo where he underwent surgery recently. He is doing very well and glad to be home.

Floyd Wright, Katherine Kirk Wilson, Marjorie Urban, Zudie Edwards, Stefan Kramer, Robert Munday, Robert H. McKenzie and Edith Winchester of Amarillo; Mrs. Buster Kirk of Borger, Mrs. Floyd Sackett of Pampa and Mrs. Royal Brantley of Canyon.



LISA CURRY



LINNIE BOLLINGER



LARRY FRYER

... Winners in State Meet Debate.

... Champion Speaker.

## Spearman Speakers Capture Six Titles In Four Years

Spearman has recently established a notable record in speech competition. During the last four years, six state championships have been won.

Coached by Mrs. June Porter, the Spearman debate team, Lisa Curry and Linnie Bollinger, placed first at State Meet for the last two consecutive years. Miss Bollinger was also a member of the first-place team during her freshman and

sophomore years, while Miss Curry was alternate during her freshman year and won first place in informative speaking during her sophomore year. The team won several speech tournaments, including those at Midland and Lubbock, last year.

Larry Fryer, who is a freshman, won the championship in boy's informative speaking, while Lynn Brack placed second in prose read-

ing and Glynn Sanders placed third in persuasive speaking. The Speech Department is directed by Mrs. June Porter. Sheryl Curry was second in girls' informative speaking.

Miss Bollinger was also valedictorian of her class and a member of the Lynx band. She hopes to major in government in college, while Fryer plans to study law.

## WRECK VICTIMS BURIED MONDAY

### HENRY REMAINS IN SERIOUS CONDITION

Services were held Monday for the two young men killed in a wreck near Guyton Friday night. Another man, Noah Henry, remains in St. Anthony's Hospital in Amarillo in serious condition. He underwent surgery Saturday in Amarillo. He is the son of Mr. and Mrs. H.D. Henry of Spearman.

Killed in the wreck were Richard Wayne Pierce, 20, and Jimmy Frazier, 23, both of Spearman. Both young men were employed by Baker & Taylor.

Funeral services were held for Richard Wayne Pierce at 2 p.m. Monday in the First United Methodist Church. Rev. Wesley Daniel pastor officiated, assisted by Rev. Dayle Schelle of the First Christian Church. Burial was in Hansford Cemetery under the direction of Boxwell Brothers Funeral Directors.

Pierce was living in Spearman with his aunt, Mrs. Thelma Blevins.

Survivors include his parents, Mr. and Mrs. John A. Pierce of Quitman, Ark.;

one sister, Thelma Maureen of Spearman, one brother, John Michael of the home in Quitman; and a grandmother Mrs. Asbury Cookston of Tow.

Pallbearers Don Maize, Tommy Ferguson, Mike Cox, Billy Close, Jim Archer and James Ownbey.

Services for Jimmy Frazier were held at 2 p.m. Monday in the Kernode Funeral Chapel in Wynne, Ark. The Rev. Fred Witcher, pastor of the Assembly of God Church in Fair-oaks, Ark. will officiate.

assisted by the Rev. Jasper Whitt, pastor of the Assembly of God Church of Smith Center, Ark. Burial will be in Johnson Cemetery in Wynne.

Frazier was a Vietnam veteran having served in the U.S. Air Force from January 1966 until May 1969.

Survivors includes his parents, Mr. and Mrs. Odess Frazier of Quitman, Ark.; two sisters, Miss Sharon Frazier of Wynne and Miss Myla Frazier of Quitman; his paternal grandfather, Vance Frazier of Wynne; and his maternal grandparents, Mr. and Mrs. G.W. Goade of Wynne.



LYNXETTE COACH Dean Weese, smiles with his all-tournament players. Left to right, the players are Miss Patterson, Miss Kirkland and Miss Smith who made the all tournament team at the Gruver tournament. The Spearman girls defeated Stratford for the Championship of the Gruver tournament. Coach Weese and his Dollies will leave for the Dallas-Duncanville tourney Friday of this week.

**In spite of everything ... Christmas endures**

In spite of foreign troubles and domestic distress ... Christmas endures.

In spite of personal problems and individual anxieties ... Christmas endures.

In spite of everything some men have done to blunt its message ... Christmas endures.

Why?

Because mankind needs Christmas. Not for the revelry, the gift-giving, the outward displays. Mankind needs Christmas for inner solace.

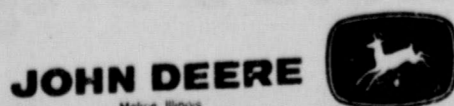
For far more than a thousand years, Christmas has fulfilled man's yearning for a season of sanity, love, and peace. Open your heart to the real meaning of Christmas. Christmas can endure only with your help.

# The Merriest Christmas

May this holiday be filled with gifts of happiness, peace and goodwill.

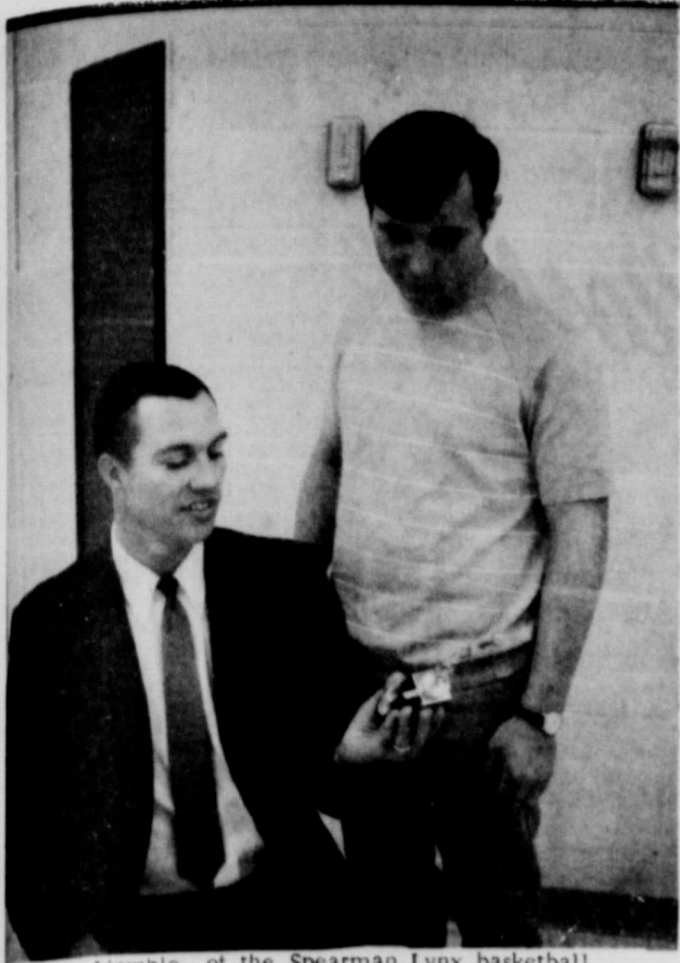
## HANSFORD FEEDYARDS

# Hansford Implement Co.









**Tech School Offers Evening Classes**

Enrollment is now being taken for Adult Evening Classes that will be held at the Liberal Area Vo-Tech School during the Second Semester. Classes will meet on the average of two hours per night, two nights per week for ten weeks. Anyone wishing to enroll in one of the Adult Evening Classes should contact Muriel Fuller at the Liberal Area Vo-Tech School, Box 949 or Phone 624-2551. Classes that are being offered the Second Semester are as follows: Agriculture Chemicals (Herbicides & Insecticides); Auto Tune-Up, Basic automotive air-conditioning, Book-keeping, Business Machines, Drafting (Basic), Drafting (Advanced), Machine Shop, Pneumatics (Advanced), Shorthand (Beginning), Typing, (Beginning MEN ONLY) Typing, (Refresher Course), Welding.

Classes are scheduled to begin the week of January 19, 1970.

Edgar Womble, of the Spearman Lynx basketball team, and Coach Alan Simpson, view the all-tournament trophy that Edgar won in the Gruver tournament. The Lynx team, and their coach will journey to the Berger tournament this Friday evening, where they will meet the Clovis Wildcats at 7:00 p.m.



**TOURNAMENT CHAMPIONS:** The Spearman Lynettes with their Championship trophy that they won rather easily at the Gruver tournament recently. This Lynette team, is possibly the greatest team in the schools history...but then, Spearman has had so many great girls teams, it would be hard to pick the best one.



*Merry Christmas*



Christmas comes but once a year — so let us now, wish you cheer.

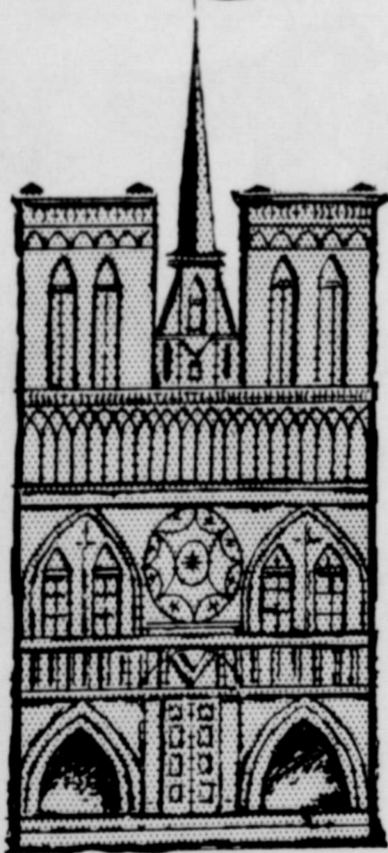


And a year of good luck - Our appreciation and our best wishes to everyone.

Hang the tinsel on the tree  
Ring the Christmas bell  
Merry may your Christmas be  
From H and H Water Well

**H & H Water Well Service**

*Holiday Greetings*



We know your Christmas will be great  
So you may as well expect it  
With chimes ringing early and late  
Merry Christmas from Anthony Electric

**Anthony Electric**

*Merry Christmas!*



Enjoy well your Christmas Day  
Then rest in peaceful slumber  
With pleasant dreams along the way  
From Foxworth-Galbraith Lumber

**Foxworth Galbraith Lumber**



HUNTING SEASON opened in this area in full swing last week. Many shooters have had excellent luck with pheasant limits but this 11-year old Nimrod shown above had better luck than most. Steve Donnell, son of Mr. and Mrs. Oscar Donnell, got his first deer, an eight point buck, and a large wild turkey. Steve shot them near Canadian on an expedition with his dad. Dad didn't shoot anything!

The two selected are in simplified Mediterranean design that mixes well with rural French or English. The price is a big attraction: \$40 each or about \$80 for the pair. They are in solid oak construction with book-matched oak veneer tops.

A round game table that accommodates eight and has snap-on molded plastic trays to hold refreshments, poker chips, ashtrays, etc., is a rare find on the market, Miss Lay says. It is available in green velvet or vinyl cover in either simulated Danish walnut grain or gold and blue.

The accessory will have many uses in a multitude of homes. The table retails for around \$45 and matching upholstered chairs for around \$14 each. Table and chairs fold for storage.

### CWF Enjoys Salad Luncheon

The Christian Women's Fellowship of the First Christian Church met Wednesday, December 3 at the home of Mrs. Earl Novak. Ladies meeting in the morning worked on articles for the upcoming Bazaar and Bake Sale held annually by the CWF. At noon a salad luncheon was served to those attending. The Pheo Circle hosted the meeting.

Following the noon meal a business meeting was held, presided over by Mrs. Alta Morse, in the absence of the president Mrs. Dick Boxwell. Mrs. Roy Gene Roy presented the worship service entitled "The Defense Rents". The program was given by Mrs. Sid Biddle, Lawrence Wilbanks, Kenneth Evans, Earl Novak, Tommy Russell, J. L. Brock, A. D. Reed and Charlie West.

Attending the business meeting were Mimes, Roy Gene Boyd, Alta Morse, Ed Mundy, Sid Biddle, Lawrence Wilbanks, Kenneth Evans, Earl Novak, Tommy Russell, J. L. Brock, A. D. Reed and Charlie West.

### Gifts Suitable For The Young 'Sideburn' Set

COLLEGE STATION-The youth market, especially 20 to 30 year olds, takes more consideration each year of furniture manufacturers and designers.

This year the National Association of Furniture Manufacturers chose their consumer panel from this group to select furniture items, priced under \$100, as Christmas gift suggestions.

Bonny Lay, Extension housing and home furnishings specialist, reports that a very modern stack chair, a low chat chair, a pair of hostess tables and a card table with snap-on trays were most popular.

The stack chairs are handsome enough for any living room in modern decor and are especially suited to the young "sideburn set", the Texas A&M University specialist says. They are available in chrome or white enamel finish in a construction that lends the resilience of a spring base.

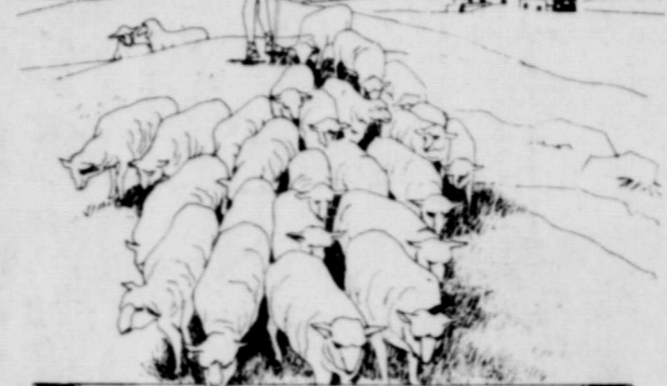
Upholstered seats are button-tufted and backs have trim slip-on covers. The chairs stack neatly and compactly for storage. In customer's own fabric, they sell for around \$89 each and in vinyl are about \$94 each.

Seats of the chat chairs are only 14 inches from the floor and are foam cushioned. A low back gives support. They are on ball casters, permitting the user to scoot about the room—visiting with groups or persons seated in different areas of the room during a party.

Young mothers like to use them when sitting with their children in the playroom and also find them comfortable to sit on when cleaning lower shelves. Each chair sells for about \$69.50.

Hostess tables become increasingly popular as an alternative for a long cocktail table in front of the sofa, since they permit more freedom of movement to those seated.

## a Christmas Message



From this Christmas 'til the next is due. here's hoping each day will be happy for you.



## Burton's TV

106 E. Kenneth

Phone 659-2121

# Season's Greetings



May the timeless beauty of the holiday season enrich your life and bring peace into your heart. To you and all your loved ones, we extend our very best wishes for a joyous and prosperous Christmas!



## CANTRELL'S FLYING SERVICE INC.

Aaron B. Cantrell, Jr.