



# The Spearman Reporter

## MARKETS

Wheat	\$1.26
Milo	\$1.73
Soybeans	\$2.25
Oats	\$.70
Corn	\$1.08
Barley	\$.85

VOLUME 60, NO. 14

THURSDAY, FEBRUARY 27, 1969

## Lynx Blast Bobcats 56-49 In Bi-District



The referees talk it over with the Lynx before starting the game Tuesday night!

Spearman's fine Lynx team blasted the Childress Bobcats 56-49, in a bi-district basketball contest played at Clarendon College gymnasium Tuesday evening. The Spearman boys lead in every stanza, but the game was much closer than the score indicated, and was a team effort, requiring precision basketball by every member of the fine 1-AA Champions!

Schell played the greatest game of his career, and netted 26 points, plus outstanding defensive playing. Big Mike Davis, who gets little publicity under the basket and a lot of banging around, played his usual outstanding game! But, the big difference in the game was the Lynx players controlling the back boards! The taller Childress bobcats played an excellent game, the Lynx just outscored them by 7 points.

Schell paced the Lynx team with 26 points, Davis hit 16, Shaver 8, Mosier 3, Hutchison 3. Fred Buck paced the Childress Bobcats with 21 points.

A large crowd of Lynx fans attended the bi-district game, and the college gym just wasn't big enough for the crowd, but no one was turned away from seeing the game!

If you haven't already heard, the Lynx will meet the Crane team, at 11:30 a. m., Saturday morning, in the Lubbock Coliseum. The Lynx team will leave Spearman Friday morning, and work out in a Lubbock Gym before their game with Crane Saturday morning. The team will be staying at the Country Inn, 4105 19th, S. W. side of the traffic circle.



A happy coach Simpson accepts the bi-district trophy from Mr. Selvige, former Spearman school teacher. Selvige is now with the Clarendon College. The Lynx will meet Crane at the Lubbock Coliseum, Saturday morning at 11:30 a. m. Coach Simpson has won two district championships, and one bi-district championship since he has been in Spearman!

## Lynettes Beat Oklahoma Team 64

### Ambulance Number - 52 At Lynx Gym Saturday

#### Bus Available For Fans Tues.

Mrs. Sam Graves announced Monday that there will be a charter bus available for Lynxette fans who wish to see the bi-district game between the Lynxette's and the Wellington Skyrockettes March 4.

The cost for the round trip to Pampa will be \$5. Anyone wishing further information may call Mrs. Graves at the Baker Hotel.

#### Funeral Services

Funeral services were held Tuesday, February 25, 1969 at 1:30 p. m. at the Apostolic Faith Church for Mrs. Ona May Byers. Mrs. Byers died Saturday afternoon at her home here.

Officiating at the services were Rev. Jacob Regier, Rev. Robert Grouard, and Mrs. E. A. Greever. Interment was in Hansford Cemetery under the direction of Boxwell Brothers Funeral Home.

#### Skinner Files For Re-election

Bob Skinner has filed for re-election as councilman for the City of Spearman, subject to the April 5 election.

Three positions are to be filled in this election. Deadline for filing is 5 p. m. March 5.

J. K. Hicks, incumbent, was the first person to file for office. He filed Feb. 10. E. J. Callaway, the other councilman whose term expires has not decided whether or not to seek re-election.

The city election will be held April 5 from 8-5 p. m. in conjunction with the school board election in the junior high building. Absentee balloting will be conducted at the City Hall March 16 through April 1.

Spearman's fine Lynxette basketball team won another easy victory at Lynx gym Saturday night, as they defeated the Boise City, Oklahoma team 64-52. The tall Oklahoma girls were no match for the speedy Lynxettes, with the Lynxettes leading 19-20 points at one time in the game.

Fans were treated to a real unusual game, as half of the game was played under Oklahoma rules, and the other half Texas rules. In Oklahoma, the ball is brought back to the center each time a two point goal is made. In Texas rules, the team is given the ball under the basket, where the score was made; the big difference is that the forwards do not have to play any defense in Oklahoma!

Airman Charles Gilliam arrived in Spearman this week for a months leave.

Naturally this was a big disadvantage to the Lynxettes, whose forwards are actually outstanding guards as well as forwards!

Marsha Shieldknight seems to be averaging 34 points per game lately, and she scored her usual 34 in the Boise City game Saturday night. Shufeldt hit 16 points, Patterson 10 and Brummett 4 points.

Lynxette fans will hit the trail to Sanford Fritch Thursday night as they meet the 1-AAA Canyon Eaglettes in a game which should give local fans a preview of the state tournament games.

This match between the Canyon and Spearman will be the outstanding game of the year, according to the local fans! Plan to attend the game at Fritch Thursday night!

Mmes. Bill Jackson, Bud Jackson, James Sparks and Hal Sampson were in Dallas last week attending market shows for the local Gift Box.

### Lynxettes Vs. Canyon Tonight

The Lynxettes, District 1-AA Champions, will play the Canyon girls in a practice game at Sanford-Fritch gym at 7:30 p. m. tonight.

The Lynxettes are scheduled to meet the Wellington Skyrockettes in Pampa Tuesday evening March 6. The game will get underway at 7:30. This is the bi-district game and the winner will go to regional at Lubbock.

Mrs. F. G. Rojas from Corpus Christi, Texas, spent last weekend here visiting her son, Mr. Oscar Rojas Sr., who is home recuperating from surgery.



Big Mike, Spearman's all-time leading scorer jumps against the tall Childress center Tuesday night!



Coach Simpson talks it over with his bi-district Champs!



Schell displays the form that helped win the bi-district game at Clarendon Tuesday night!



Happy Lions! This group is discussing the big Lions Club show, Virgil and Julie! The show will be presented this Friday night at 8 p. m. at the high school auditorium. Tickets are available from local Boy Scouts and Lions Club members.

### Moisture Recorded Sunday

Rain and wet snow Sunday morning boosted the February total of beneficial moisture by .50. The rain started falling in the early morning hours and turned to a wet snowfall about mid-morning. The snow melted almost as it fell and by late afternoon it was all gone.

More rain is forecast for Wednesday. This .50 brings the February total to 1.25 inches which will serve to revive the wheat crop and help the dry grassland.

Amounts over the country varied Sunday with reports of .70 coming in from north of Spearman. Greer recorded .85 and Mese .30. Longer rain-fall amount was .30.

Mrs. R. E. Lee and Iva Burnham were in Amarillo one day last week shopping.

### School Sets Visitation March 3rd

The annual observance of "Back to School" has been set for March 3rd when the public will have the opportunity to visit Spearman Public Schools.

The week of March 3-7 has been officially proclaimed by Texas Governor Preston Smith as Public Schools Week. During this period, parents are encouraged to visit the public schools and all citizens are urged through special programs to recognize the tremendous importance of the system of education.

In making the official proclamation, Gov. Smith said, "Never before in our history has there been a greater need for educated leadership. As we rush to train young people in science and technology to keep pace with world events, it is also important to remember that our public schools will furnish

our tomorrow's leaders with the basic human, moral and spiritual foundations necessary for more advanced training and knowledge."

Back to school night in Spearman will be observed at the regular meeting of the P-TA, March 3, when parents will be afforded the opportunity to visit their child's classroom.

The Shrine Club will be serving refreshments.

An upright broiler that operates like a toaster is new on the market, report Extension home economists. The broiler's two heating elements cook both sides of meat simultaneously. The broiler rack is self-adjusting to allow easy broiling of thick or thin meats. Grease drips to the pan at the bottom away from the heating unit.

## ALL BANDS CONCERT THURSDAY MARCH 6

All four bands of the Spearman School system will be featured in All Bands concert on Thursday, March 6th.

The annual affair will be held in the high school auditorium beginning at 7:30 p.m. The admission is \$1 for adults and 50¢ for students with pre-school children being admitted free.

The proceeds from the sale of tickets goes for awards to the senior band students.

The program will begin with the 5th grade beginners band which is directed by Mr. Jerry Toler. This band will be followed by the 6th grade band directed by Mr. Frank

Porter. The Junior high band under the direction of Mr. Toler will perform next and then the senior high band directed by Mr. Porter.

Entertaining music for all ages will be presented and all school patrons are invited to attend.

attend and enjoy the music of Eloy and his Troubadours, a well-known popular dance band from Clayton, N. M.

Advance tickets are on sale from members of the Rebekah Lodge at \$2.00 each. These may be purchased from members Jean Byrd, Mona Slater, Frankie Duryee, Deanna Kenney or Treva Cook. Admission charge the night of the dance will be \$2.50 each.

A newly marketed completely covered zipper features both nylon and metal parts. Extension clothing specialists say the metal teeth and nylon chain are covered front and back with fabric tape.



P.O. Box 456 213 Main Street Spearman, Texas

William M. Miller, Editor & Publisher

THE SPEARMAN REPORTER Published every Thursday at Spearman, Texas. Second class postage paid at Spearman Post Office, 79081.

Any erroneous reflection upon the character of any person or firm appearing in these columns will be gladly and promptly corrected upon being brought to the attention of the management.

SUBSCRIPTION RATE--Hansford, adjoining counties \$7.00 yr. Other points, \$5.00 or in combination with The Hansford Plainsman, \$9.00 yr.

Advertising rates on request.

### Preaching Mission Set

A preaching mission will be held in the First United Presbyterian Church of Spearman, beginning Sunday morning, March 2 at 11:00 a.m. and closing on Wednesday night, March 5. The public is cordially invited to attend these services.

Breakfast will be served by the men of the church on Monday, Tuesday and

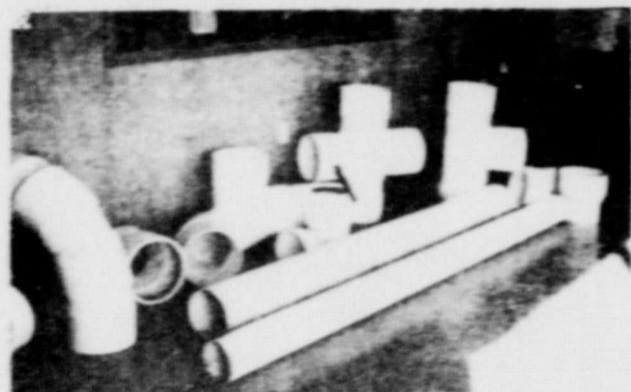
Wednesday morning at 7 a.m. and the evening service from Sunday through Wednesday night will be at seven-thirty p.m.

Our speaker will be the Rev. Houston Hodges, Campus Minister of The United Campus Christian Fellowship of Dallas, Texas. Recently, Mr. Hodges was the Presbyterian Campus Minister at Texas Tech at Lubbock.

His theme for the services will be "Real Life—True or False?"

NOW . . . We can install a complete Plastic irrigation distribution system NO STEEL USED IN SYSTEM

Except for pump stand & vent at well



Newly developed ends, tee's and caps, crosses & risers of all plastic (at left) manufactured in our plant. We use



Certainteed Plastic Pipe

Rogers Sales & Service

Waka, Texas

PH. 435-4140



## To Be On Stage Here Feb. 28

Would you like to take one step beyond reality and enter a plane of fantasy to experiment with ESP, telepathy, mind control, and hypnotic fascination? That is the question VIRGIL and JULIE ask as

they invite you to spend an evening of enchantment with them when they present their spectacular show "ONE FANTASTIC NIGHT" on the stage of the SHS auditorium on Feb. 28 under the sponsorship of Spearman Lions Club.

VIRGIL and JULIE have recently returned from a complete global tour of five continents and report that there is very little difference in the reaction of all nationalities to this strange and different type of entertainment. People have laughed from Mexico to Alaska and Hong Kong to London at the hilarious situations created during the performance of "One Fantastic Night."

You will meet such enchanting characters as The London Spirit Medium, The Psychic Enigma, and enjoy the hilarious hypnotic experiments of a modern Svengali during the many scenes to be presented with special costuming and an ever-changing background of scenic effects and music.

The curtain goes up at 8 p.m. and descends two hours later at the end of what promises to be a thrilling evening of suspense, laughter and fantasy.

### Dance Here March 8

The Spearman Rebekah Lodge is sponsoring a dance which is scheduled for March 8 from 9-1 p.m. in the Community Building.

The public is invited to

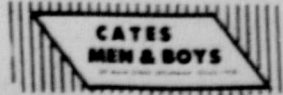
### Fashion Facts For Men and Boys.

The men and boys who follow the basketball teams are often caught in the position where there is little time left between quitting work and taking off for the ball game.

Cates Mens and Boys Wear is well stocked with the type of clothing to make that quick change before going to the game.

Casual jackets, slacks, turtle neck shirts and comfortable shoes are all in order for the man and boy who want to enjoy the game in the greatest comfort while maintaining the smart appearance of the well-dressed sports fan.

If there's enough time to really dress up, you'll find some mighty smart suits, dress shirts and ties to help you really step out in style.



221 Main, Spearman



USED TRUCK

## SPECIALS

- 62 Chev long wh base 4 speed good transportation \$650
- 64 Ford pick up extra clean \$850
- 65 chev pick up long wide \$1095
- 65 El Cameno 4 spd power & Air \$1495
- 66 Chev pick up good transp 6cyl 4 spd \$1095
- 67 Chev pick up V8 4 spd extra clean \$1695
- 67 Chev pick up ¾ ton big 6 4spd low milage \$1895
- 67 Chev pick up V8 3spd short wide Nice \$1595
- 68 El Camino SS-396 loaded low Mileage extra nice \$2695

Plus A wide selection of other good pickups suitable for irrigation use. Also a few good used trucks.

Excel Chevrolet-Olds. Jeep

HIWAY 207 SPEARMAN, TEXAS

## YOU'LL LIKE HOUSTON HODGES



We'd like to introduce him to you . . .

He is the Rev. Houston Hodges, who is Minister in Higher Education for Dallas County for the United Campus Christian Fellowship. But don't let that imposing title put you off. Houston Hodges is your kind of folks.

We extend to you a most warm and cordial invitation to come hear him

Houston Hodges will be speaking . . . and preaching . . . and visiting and counselling, along with Pastor Lewis Koerselman . . . in Spearman for four days

from Sunday morning March 2, thru Wednesday evening, March 5

We invite you to join us for breakfast each morning from 7 a.m. to 8 a.m. at the church . . . to attend worship services each evening at 7:30 in our sanctuary . . . We'd love to have you, whoever you are.

First Presbyterian Church 11th and Cotter

### Pheleo Circle

Mrs. Kenneth Evans was guest for the Wednesday evening 19 meeting of the Pheleo Circle of the Christian Church in Church parlor.

The devotional was given by Mrs. Irvin Davis from Psalms 95:1-7 on "The Tie That Binds". Discussions followed on the upcoming St. Patrick's Day Dinner to be held by the ladies of the church

and the World Day of Prayer to be held in Faith Lutheran Church March 7. Members present were Mrs. Ed Haner, Mrs. Irvin Davis, Mrs. Lloyd Buzzard and the hostess.

With people crackers, marketed by a prominent pet food company, a dog can take revenge on his people peevish by eating bite-sized mailmen, milkmen, burglars and dog catchers.

## Annual TSTA Meet March 7

Amarillo will host approximately 5,000 Panhandle Educators for the annual District XVI Convention of the Texas State Teachers Association on March 7, 1969. The House of Delegates will meet at Caprock High School Cafeteria, on March 6, at 6:30 p. m. to conduct the formal business of the convention.

"All Eyes Are On Education" is the convention theme. The general session will open in the New Civic Center Coliseum at 10:00 a. m. with Dr. W. M. (Fred) Stoker of West Texas State University presiding.

The convention is held annually to give teachers an opportunity to keep current with the new trends of education, as well as to evaluate those accomplishments of the past year.

Speakers for the convention will be Mr. E. L. Galyean from the headquarters staff of Texas State Teachers Association, Austin, Texas who will make a legislative report to the teachers. The main address of the morning will be given by Dr. M. Dale Baughman, Professor of Education and Psychology at Indiana State University, Terre Haute, Indiana.

Dr. Baughman is editor of CONTEMPORARY EDUCATION and has written numerous educational articles and a book on humor. The title of his address will be "Preception Beyond The Retina". For the first time, there will be over 50 commercial exhibitors displaying educational materials in the exhibit area of the coliseum.

The afternoon sectional

### Equity Team Ahead At Tournament

Two teams from Spearman competed in the Texas Women's State Championship Tournament at Lubbock last weekend.

The Equity team was no. 1 in Class D competition as of February 23. This team consists of Linda Beeson, Tommie Arslund, Tubby Hays, Monet Williams, Peggy Robinson. They had a score of 2268 total pins to lead the class.

Sheryl Meek was top in Class A Singles as of Feb. 23 with a 604 series. She is listed as third in Class A All Events.

Linda Beeson is listed as first in Class D All Events competition. The other team competing last week end was the First State Bank Team. Nelva White is captain with Carolyn Gressett, Bonnie Shrode, Mona Driscoll and Sheryl Meek. Their total pins were 2098 in Class D competition.

There are seven more weeks of competition in the tourney.

meetings will be devoted to programs presented for the various teaching fields and will meet in numerous restaurants and schools throughout Amarillo. Three new sectional meetings are being initiated this year. They will be information and discussion type meetings on Professional Negotiations; Professional Practices and Related Legislation; and a third group concerning Professional Rights and Responsibilities.

### School Lunch Menus

- MONDAY, MARCH 3
  - Chicken Fried Steaks
  - Mashed Potatoes-Gravy
  - Buttered Leaf Spinach
  - Combination Tossed Salad
  - Appleauce Cake
  - Break Milk
  - High School Meat Choice
  - Steak Fingers
- TUESDAY, MARCH 4
  - Stewed Chicken/Egg Nood.
  - Blackeyed Peas/Bacon
  - Buttered Corn
  - Carrot Sticks
  - Citrus Fruit Cup
  - Honey-Peanut Butter Sprd.
  - Hot Rolls-Butter-Milk
  - High School Meat Choice
  - Beef Pot Pie
- WEDNESDAY, MARCH 5
  - Cornedogs-Mustard
  - Scalloped Potatoes
  - Seasoned Green Peas
  - Cole Slaw
  - Birthday Cake for March Birthdays
  - Bread Milk
  - High School Meat Choice
  - Breaded Catfish Steaks
  - Tartar Sauce
- THURSDAY, MARCH 6
  - Baked Turkey with Gravy
  - Sage Dressing
  - Candied Sweet Potatoes
  - Green Beans with Bacon
  - Celery Sticks
  - Raspberry Gelatin with Whip Topping
  - Bread Milk
  - High School Meat Choice
  - Oven Fried Sausage
- FRIDAY, MARCH 7
  - T. S. T. A. Meeting

### Swine Program Scheduled

A county wide Swine Educational Program will be held Thursday, Feb. 27 at 7:30 p. m. in the Home Demonstration Clubroom in Spearman, according to Robert Adamson, Hansford County Agent.

Swine feeding, management and health will be discussed at the meeting. Heading the program will be Dr. Lowell Schake, Extension Area Livestock Specialist from Lubbock and Ed Garnett, Extension Area Farm Management Specialist from Amarillo.

Anyone interested in swine production in any capacity is invited to attend this meeting which is sponsored by the County Extension office.

### Grower Clinic Feb. 28

Charlie Thomas, sales representative for Geigy Chemical Co. of Amarillo, announced this week a very important Grower-Clinic for area farmers.

The clinic will be Friday, Feb. 28 at 7:30 p. m. in the HD Clubroom in Spearman.

A barbecue meal, catered by Dyers of Pampa, will be served at 7:30 free of charge.

The grower clinic will feature the latest information on the weed control program for 1969 and is co-sponsored by Geigy Agriculture Chemicals and Spearman Equity Elevators. All interested farmers are invited to attend.

### Surprise Party Honors Trin

A surprise birthday party honoring Ruth Caro, Colleen Jeffries and Frances Rhodes was held Monday evening, Feb. 24 in the home of Mrs. Leonard Jameson.

After the opening of gifts, refreshments were served to Judy Wilmeth, Jane Meek, Polly Hoobler, Gertrude Archer, Marian Upchurch, Carolyn Davidson, Joyce Crum, Janie White, Juanita Boxford, Freddie and Pam Largent, the honorees by the hostess.

### Easter Needs Listed For State Hospital

The Volunteer Services Council of Wichita Falls State Hospital has asked help in publicizing the Easter needs of their patients.

Special needs of patients include summer and spring hats, gloves, purses, hose, cosmetics for ladies; shirts, white or sport, ties, cuff links, toilet articles, socks for men; Easter flowers (real or artificial) for the Chapel and 36 wards; Easter cards (needed early)

for patients to mail to families; coffee, cookies, fresh fruits, kool-aid, sandwiches for patient parties. Anyone wishing to donate these needs or asked to have them at Volunteer Services Building by April 1.

Funds are also needed for therapy equipment, patient loans, rehabilitation purposes, educational supplies, refreshment parties and other special needs not provided by state.

Checks should be made payable to Volunteer Services Council for Wichita Falls State Hospital, Box 300, Wichita Falls, Texas 76307.

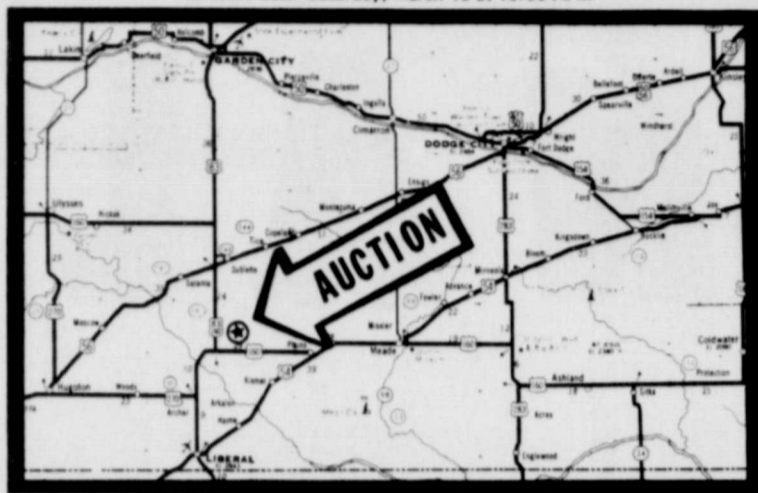
# PUBLIC AUCTION

## FARM MACHINERY

### SATURDAY/MARCH 8/ 10:00 AM

Located 18 miles North of Liberal, Kan. on Highway 83, 7 miles East on Highway 160 and 1 mile North. From Sublette 14 miles South on Highway 83, 7 miles East on Highway 60 and 1 mile North. From Plains, Kan. 10 miles West on Highway 160 and 1 mile North.

Blizzard date: Saturday, March 15 at 10:00 A. M.



#### TRACTORS

- 1967 Model 806 Int. diesel fully loaded with cab, low hours
- 2 - 1966 Model 806 Int. diesels with cabs
- 1965 Model 1206 Int. diesel with cab

#### TRUCKS

- 1968 Chevrolet truck, tandem axle, has 365 motor 5 speed and 2 speed transmission, 20 ft. bed, grain sides, twin hoist 20 ton capacity
- 1967 Int. truck 1700 series has 390 engine 4 speed Browning auxiliary transmission, tandem axle, 24 ft. bed, 24 ton hoist, grain sides and cattle racks. Truck in good condition.
- 1967 Int. truck series 1700 has 5 speed and 2 speed transmission, has 22 ft. Tradewind bed, 24 ton hoist. Good condition
- Subsidiary wrench truck
- Chevrolet pickup
- Ford pickup
- 1968 Model Rollline 884 irrigation motor. Like new
- 8 x 42 trailer house

#### COMBINES

- 2 - Model 95 J. D. combines with corn heads, have cabs and in excellent condition
- 4 row Hestons
- 19 ft. J. D. header
- 1966 Model Farm Hand beat digger (new type) in good condition
- Allis Chalmers 3 row (20") ensilage cutter PTO

#### FARM MACHINERY

- Int. 4" by 7" tool bar has flex planters and gandy boxes
- 16 ft. Miller disc, has 22 inch disc
- Lulliston 6 row cultivator. Loaded
- Casa 4 bottom 16 inch roll over plow
- 14 ft. J. D. tandem disc
- 21 ft. Taylor-Evans pull type fertilizer spreader with 500 gal. tank
- 9,000 lb. dry fertilizer spreader
- 180 inch side winder rotovator
- Big 12 14 ft. outpacker
- J. & J. 9 x 30" implement carrier, like new

- J. D. 8 row sprayer
- Big 12 bed shaper
- Holstrom 9 ft. dirt scoop
- 8 shank Hamby chisel
- Double tool bar with fertilizer attachment
- J. D. 6 section spring tooth harrow
- 30 ft. Mayrath auger with motor
- 16 ft. 3 pt. rotary hoe
- 4 disc plow
- 4 row rotary hoe
- Myers ditcher
- 12 ft. J. D. oneway
- J. D. bordering disc
- 1/2 mile of 10 inch flow line
- 1 lot of irrigation tubes
- Eversman ditcher

Terms: Cash

Owners: Mr. and Mrs. Buford Carter / Phone (AC 316) 563-4528

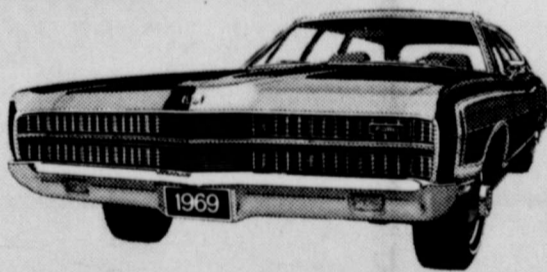
## QUINTON JENKINS & ASSOCIATES

### The AUCTIONEERS

PHONE (AC 806) 383-7733 / 616 RAMADA TRAIL / AMARILLO, TEXAS 79108

You are invited to watch our television program at 7:20 A.M. each Tuesday on channels 8, 10, and 12, and listen to our radio program at 12:00 noon each Friday on KGNC, 710.

### From Ford the Wagonmaster...



Ford's Country Squire has Better Ideas where some wagons don't even have ideas. Ford's new "Front Room" features instruments grouped together cockpit fashion for the driver and extra leg and knee room for his passengers. Top-of-the-line interiors like those in our luxury LTD's. Distinctive paneling, hidden headlamps and a 302 CID V-8, all standard. You also get Ford's exclusive one-two-three doorgate that: (1) swings down for cargo; (2) swings out for passengers, and (3) offers you extra convenience because it opens like a door with the window down or up.



1969 Ford Country Squire



The place you've got to go to see what's going on-your Ford Dealer! Save at his Pop-Option Sale

The place you've got to go to see what's going on-your Ford Dealer! Save at his Pop-Option Sale

## The first Magic Doorgate to open like a door with the window down or up.

# CONGRATULATIONS BI-DISTRICT CHAMPS WIN REGIONAL



A-BOYS L-R Randy Foshee Mgr., Rondal Schell, Bobby Mosier, Randy Weston, Joe Hutchison, Ronnie Lusby, Mike Davis, Coach Allen Simpson, Lee Shaver, Joe Vanderburg, David Holland, Jerry Adams, Edgar Womble, Ronnie Burke, Trainer.

Red Byrd Texaco	Owens Sales & Service		
Cates Men & Boys Wear	Spearman Hardware	B & B Grain	Cates Grocery And Market
A & W Root Beer	Alton's Gulf	B & R Engine Service	Baker Hotel
Baker & Taylor Drilling Co.	Boxwell Brothers	Burtons T.V.	Jr. Lusby Cats

**Spearman**

11:30 a. m.  
Saturday

Crane

Dimmitt

1:00 p.m.  
Saturday

Clyde

**FINALS**

8:  
Sat. Nite

**MAR**

69

REGIONAL TOURNAMENT:  
LUBBOCK COLISEUM  
SATURDAY, MARCH 1st  
11:30 A. m.  
Spearman vs. Crane  
AA Regional game:

S	M	T	W	T	F	S
						1
2	3	4	5	6	7	8
9	10	11	12	13	14	15
16	17	18	19	20	21	22
23 <sub>30</sub>	24 <sub>31</sub>	25	26	27	28	29



BEAT THOSE BOBCATS - And that is what the Lynx did Tuesday night - This is part of the Lynx cheering section



TIME - OUT - Coach Simpson talks to his champions - These Lynx will meet a strong Crane team, at the Regional, Lubbock Coliseum, Sat. morning at 11:30 a. m.

**CONGRATULATIONS**

to the **Spearman Lynx**

		<b>Anthony Electric</b>	<b>Consumers Sales Co.</b>
<b>Thomas Cleaners</b>	<b>R.L. McClellan &amp; Sons 'Case'</b>	<b>P.A. Lyon, Insurance</b>	<b>Berry Cleaners</b>
<b>Hackley Clinic</b>	<b>Gordon's Drug</b>	<b>Yancey Machine &amp; Welding</b>	<b>Spearman Super Service</b>
<b>Lynx Den</b>	<b>White House Lumber</b>	<b>Crawford Implement Co. Magneto Repair Schafer Offset Disc Plow</b>	<b>R.L. McClellan Grain Co. Inc.</b>

Mr. and Mrs. Joel Lackey and Mr. and Mrs. Don McLain recently enjoyed a weekend trip to Las Vegas, Nevada.

Mrs. Richard Shedeck has been admitted to Baptist Hospital in Oklahoma City for tests.

Mr. and Mrs. Mike Shedeck of Canyon visited in the home of his parents, the Richard She decks over the weekend.



Let Me See ... by Sybil

When you make a call on your telephone how many people are working for you?

ALMOST 5,000 OF US

Dialing friends, making a business or emergency call, your telephone is there by day and by night.

What makes this continuous service available?

People. Almost five thousand of us here at General Telephone. Linemen, installers, engineers, accountants, secretaries, managers, department heads, cashiers — an endless list.

Many of you seldom see any of us; but we are here, working for you in an unceasing effort to provide you with the best of service.

This is what goes on at our end of the line. This is why your telephone is ready for instant use around the clock — your personal contact with the whole world.

GENERAL TELEPHONE A Member of the GTE Family of Companies

weather being so terrible gave us the idea that there just might not be very many buyers. So we packed our blankets & jars of peanut butter (Dan True's blizzard provisions) and off we took! Neither rain nor sleet nor snow or any such thing--will keep women from an antique sale. Needless to say, many other people had the same idea for the sale barn was crowded.

We stayed—we looked—we bought. The Wilbanks' new Mercedes Benz wouldn't begin to hold our wares so J.D. took his truck back after it all Monday. We had a ball—and I ended up with the flu. Right now I can't even tell you what all I purchased. It's all still wrapped and packed in boxes and I don't intend to look at it until Spring. I've been trying to decide whether I would have gone to church if I had stayed home Sunday. Weather-wise it really was a terrible day, snow, sleet, rain--anyway, June Day got sick and she WENT to church.

I got exactly what I deserved—and it was all so pre-meditated too. I skipped SS and church Sunday and went to this antique auction in Pampa and picked up that flu bug we've all heard so much about. Nowhere I lay all piled up in the bed with as many heating pads as I could find plug-ins for and the blanket turned on high. For months I've listened to the advice of that TV commercial "stay in bed, drink plenty of liquids and take aspirin". Big deal! That's all you're ABLE to do. No aspirin for me though—I've had the Escordin flu. One good thing about it, I haven't had to worry about weeding the Doctor for some medicine because Billy's pill cabinet holds more prescription drugs than Jesse or Jim can stock in their pharmacy shelves! I've had quite a problem though deciding whether to "take one every 4 hours", "take one daily" "one or two with evening meals", or the "one tablet 3 times a day." I found another which warned that Federal law prohibits dispensing without prescription, so I tossed a coin and settled for an Allertan—that one sounded best to me. Heaven knows I need rest. I went immediately to sleep and dreamed I was a skeleton. That's one way of getting rid of that aching flesh I guess...

Like I say, this is what should happen to you—if you're stupid enough to drive through a blinding snowstorm all the way to Pampa to an antique auction. Rubyjo and J. D. Wilbanks had this sale bill which listed so many interesting things and the



MISS KATE KILGORE Miss Kate Kilgore, daughter of Mr. and Mrs. G. E. Kilgore of Spearman recently assumed the office and duties of treasurer for the Zeta Zeta Chapter of Delta Zeta National Social Sorority of West Texas State University. Miss Kilgore is a Junior student, majoring in Elementary Education.

4-H News

The Cloveretts 4-H Club met Friday, January 31, 1969, in the home of Cindy Patterson. The purpose of this meeting was election of officers and planning of future meetings. Kayleen Cooper was elected chairman and Cindy Patterson reporter. Others attending were: Beth Sheets, Donna Boatwright and Mrs. Sonny Patterson, the leader.



Hospital

Patients in Hansford Hospital this week are H. H. Chevalier, Georgia Cox, Catalina Estines, Dana Hazelwood, Valdene Maberry, Harry Lash, Hazel Morton, Ed Mundy, Gregoria Lopez, Mildred Sanders, Claude Smith, Elizabeth Swanson, Nan Prutzman, Galen Thompson, Gumerinda Reyes, Ella Thomas, Agnes Windom and Ronald Willis.

Card Parties

Mrs. Eck Lee was hostess for the Thursday, February 20 meeting of the Sid-a-bit Bridge Club in her home. High scorer for the evening of bridge play was Mrs. Lee and second high score was held by Mrs. Gwenfred Lackey. Guests attending were Mrs. Bill Gandy, Mrs. Preston Scott, and Mrs. Jesse Womble. Members present were Mrs. Leonard Jameson, Bill Russell, John Berry, Gwenfred Lackey and R. E. Lee.

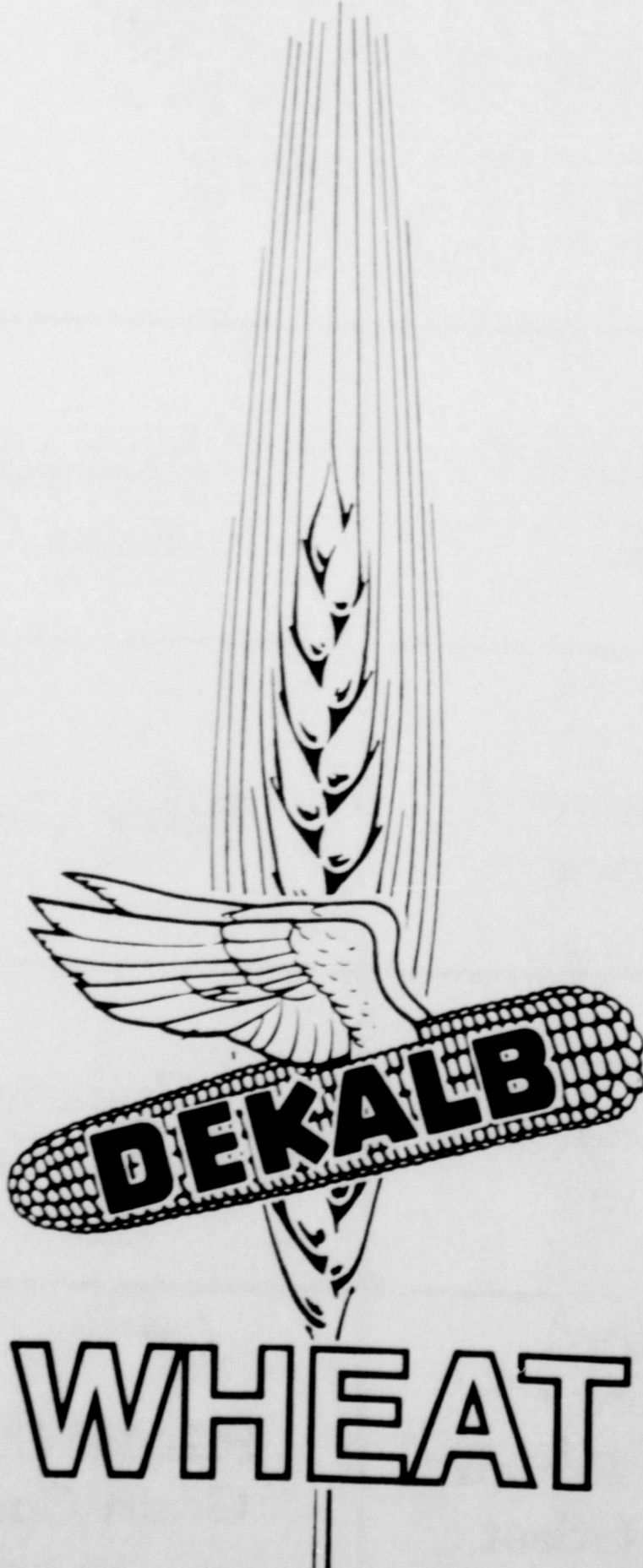
Jonquil Hostess

The Jonquil Flower Club will meet at 9:30 a.m. March 6 in the home of Mrs. Bill Masie.

PROTECT AND BEAUTIFY your home with STERLING 12 TROPHY OUTSIDE WHITE HOUSE PAINT SPECIAL \$5.25 Per Gallon "A Painter's Paint The Home Owner Like" WHITE HOUSE LUMBER CO.

New, higher-yield wheat variety!

DEKALB BRAND PALO DURO



From 9 years of DeKalb wheat research comes a better wheat... Palo Duro. And it can improve your wheat production efficiency. You make extra dollars on your wheat acres with Palo Duro. It's bred especially for the Texas and Oklahoma Panhandles and eastern New Mexico.

It's short and stiff-strawed... bred for maximum response to fertility and irrigation. It's the kind of wheat that fits modern production practices. And it delivers big yields of high test-weight grain with excellent milling and baking qualities. In fact, test yields are better than from wheat you now plant.

DeKalb tested Palo Duro with several popular wheat varieties in this area. The results show DeKalb Brand Palo Duro increasing yield by an

average of 6.3 bu. per acre... under varying growing conditions.

Table with 3 columns: Variety, Yield (Dumas, Texas), Yield (Vernon, Texas). Rows include DeKalb Palo Duro, Local varieties (avg.), and a note about the local varieties.

SAVE YOUR SEED—New, high-yielding Palo Duro wheat is breeder seed. Plant a portion of your acreage this year, and seed your entire acreage in 1970. You make an investment in bigger wheat profits with DeKalb. Now is the time to challenge your wheat acres to do more. Plant DeKalb Brand Palo Duro.

See your DEKALB dealer now!

ROY SLOAN Route 2, Box 7, Spearman, Texas 79081

GENE R REYNOLDS Box 386, Gruver, Texas 79040

CLIFFORD STEDJE Str. Rt., Gruver, Texas 79040

WHEAT

Delphinium Club Meeting  
 Country home  
 Patterson  
 place for  
 Flower Club  
 Feb. 24 at 8  
 club president  
 rson opened the  
 onducted the  
 s. John Bishop,  
 read the minutes  
 meeting and they  
 ved. The program  
 was given by  
 program was  
 W. V. Hull on  
 trip to Germany  
 slides of Germa  
 refreshments were  
 es. John Bishop  
 W. A. Ellwood  
 ed, Raymond  
 ill by the house  
 and Mrs. Orma  
 Perryton Mon  
 ending the me  
 ekah Lodge 22  
 degree work

**iddle-free  
 Color TV  
 by RCA**

**Wartons  
 TV**  
 Phone 659-2121

**WHITE HOUSE  
 LUMBER CO.**  
 Building & Plumbing  
 Supplies

**Boxwell  
 Bros.  
 Funeral Home  
 AND  
 Flower Shop**

**Gummings  
 Refrigeration  
 And Air  
 Conditioning**

**Insurance  
 Needs  
 See Your  
 Farm Bureau**

**PANHANDLE  
 VETERINARY  
 CLINIC**

**INTERESTING TOURS on  
 Continental Trailways &  
 Charter information call  
 Hotel 659-3446,  
 11S-rtm**

**COMMENTS  
 Loren Simmons**

People that criticize the  
 younger generation,  
 usually can't remember  
 WHO raised it.



Don't forget The Dames And  
 Go To

**Simmons  
 Chevron**

**Hansford Lodge**  
 1040  
**A.F. & A.M.**  
 Regular Communication  
 2nd and 4th Monday  
 of each month  
 Coy Palmer, W.M.  
 Ceril Batton, Secy.

**FOR SALE**  
 FOR SALE OR RENT--  
 2 bedroom home, 210 N.  
 Snider, one large walk-in  
 closet, one smaller, large  
 bath accommodates washer  
 & dryer, large storage  
 closet with new water  
 heater, new faucets, linen  
 closet, storm windows &  
 doors, fully grassed yard,  
 storage house, quiet  
 neighborhood. L. J.  
 Gilley, 1044 Washington,  
 Kermit, Texas, 79745.  
 13T-3tc

**FOR SALE: 1956 Ford Pick-**  
 up. LWB, 6 cylinder.  
 Contact Bob Ragsdale,  
 659-3686 or 2524 city.  
 13T-rtnc

**FOR SALE--Three bedroom**  
 brick home, living room,  
 kitchen and dining room  
 combination, garage, storage  
 room, built in cabinets and  
 clothes closets, one and one  
 half bath rooms, central  
 heating, furniture and fix-  
 ures goes with building.  
 Large cement driveway of-  
 fers ample parking room.  
 Size of building 46 feet by  
 35 feet and 9 inches, located  
 in Gruver, Texas, one block  
 north of the Gruver school  
 system at 302 Garrett Avenue  
 Three lots corner location,  
 possession immediately.  
 Clear and up to date title,  
 owner Lloyd Stavlo moving  
 to the sea coast because of  
 health. This is a real buy  
 and a real location. Price  
 \$20,000.00 Twenty Thousand  
 12T-8tp

**FOR SALE--Male Toy  
 Poodle Puppies. Priced  
 low. Call 2082.  
 13S-rtnc**

**CATERING & CAKES, Mrs.  
 Bubby Graver, 733-2514,  
 Gruver.  
 48T-rtm-3tp**

**FOR SALE-- 2 lots, 10'x  
 55', trailer space, rented.  
 Fenced. Small orchard,  
 117 N. Brandt.  
 14T-2tp**

**FOR SALE--Living room  
 sofa and chair. Reason-  
 able price. Call after  
 5:00 p.m. 659-3688  
 14T-2tc**

**FOR BACKHOE WORK  
 CONTACT  
 CLAUDE SHEETS, JR.,  
 659-2467  
 610 E. KENNETH  
 SPEARMAN, TEXAS**

**ROTARY  
 DRILLING CREWMAN**  
 Jobs located with crews in  
 Spearman, Perryton and  
 Pampa, Texas.  
**Drillers ... \$3.24 \*\$3.79**  
**Derrickmen \$2.68 \*\$3.23**  
**Motorman . \$2.48 \*\$3.03**  
**Floormen . \$2.36 \*\$2.91**

**30c to \$1.00 per hour Bot-**  
 tom Hole and Performance  
 Bonus.  
 \*Includes an average Bot-  
 tom Hole & Performance  
 Bonus of 55c per hour paid  
 for completion of well.  
**\$10.00 - \$15.00 Per Day**  
 paid to Driver of Crew to  
 and from Rig.  
 Will accept some inexperi-  
 enced men willing to work  
 and learn.

**CONTACT  
 PERSONNEL DIRECTOR  
 Baker & Taylor  
 Drilling Co.  
 CALL COLLECT  
 (AC/806) 659-2504  
 Spearman, Texas**

**Hospitalization**  
 POLICIES OF THE  
 WHITE CROSS PLAN  
**BANKERS LIFE &  
 CASUALTY COMPANY**  
 M. C. KUYKENDALL  
 PHONE: FL 6-3226  
 4712 CHEROKEE TRAIL  
 AMARILLO, TEXAS

**PERFORMANCE TESTED  
 BULL SALE--Saturday, March  
 8, 1969--Panhandle State  
 College, Goodwell, Okla.  
 80 to 100 head. Guaranteed  
 fertile--Ready to Work--  
 Soundly Conditioned--PRI  
 Certified with PRI Certifi-  
 cates on most, 900-1400  
 lb. Wts. "Buy With Con-  
 fident" Write or call M. W.  
 England, Panhandle State  
 College, Goodwell, Okla.  
 73939 Day: 405-349-2611  
 Extension 228; Night: 405-  
 349-2512.  
 14T-Itc**

**WANTED**  
**WANTED TO BUY--** A one  
 bedroom used trailer house.  
 Phone 659-2510.  
 13S-2tc

**WANTED--Custom deep  
 breaking and plowing.  
 Robert Carthel, call 3050,  
 10T-8tc**

**EXCITING - STIMULAT-  
 ING - PROFITABLE**  
 Career in Beauty Coun-  
 selor Cosmetics. Full  
 or part time work avail-  
 able now. No canvassing  
 or parties. Call 659-  
 2493.  
 14T-2tp

**RENTALS**  
**FOR RENT--one bedroom  
 trailer house. \$50 month or  
 \$15 week. Gas and water  
 furnished. Call 659-3517.  
 13T-rtm**

**FOR RENT--Furnished, clean  
 air condition. TV's avail-  
 able. Downtown Apts. Phone  
 2269.  
 10T-rtm**

**FOR RENT--Furnished apt.  
 606 S. Bernice St. Telephone  
 659-2652.  
 2-rtm**

**FOR RENT-- 4-room  
 furnished apartment. Phone  
 659-2084.  
 14T-rtnc**

**FOR RENT--Unfurnished  
 4 room house. Nice  
 location. Call 2082.  
 13S-rtnc**

**FOR SALE-- 2-1958 Jeeps,  
 low mileage, 117 N.  
 Brandt. Phone 2474.  
 14T-2tp**

**What's Going On In  
 HANSFORD County**

**THURSDAY, FEB. 27--Spearman Lynettes District 1-AA  
 Champions vs. Canyon girls in a practice game at  
 Sanford-Fritch gym at 7:30 p.m.**

**THURSDAY--Feb. 27--County Swine Educational Program  
 sponsored by the County Extension Office at 7:30 p.m.  
 in the HD Clubroom. All interested persons in swine  
 production are invited to attend.**

**FRIDAY--Feb. 28--"One Fantastic Night" featuring world  
 famous illusionist and hypnotist Virgil and his leading  
 lady Julie will present acts of Hypnotism and ESP  
 at the high school auditorium at 8 p.m. sponsored by  
 the Lions Club.**

**FRIDAY--Feb. 28--Gruver Teachers Appreciation Banquet  
 hosted by the Gruver Masonic Lodge at 6:30 p.m. in  
 the Gruver High School Cafeteria. Program will follow  
 banquet at 7:30 p.m. and is open to the public.**

**FRIDAY, Feb. 28--"Growers Clinic" co-sponsored by  
 Spearman Equity and Geigy Agriculture Chemical  
 Co. of Amarillo will be held at 7:30 p.m. in the HD  
 Clubroom. All interested farmers invited.**

**SATURDAY--March 1 thru April 6--EASTER SEAL CAM-  
 PAIGN**  
**SUNDAY--March 2--Preaching Mission at First United  
 Presbyterian Church begins at 11 a.m. Last service  
 will be held the evening of March 5.**

**What's Going On At  
 HANSFORD Implement Co.**

**NO 1  
 FOR  
 SERVICE**

**HANSFORD IMPLEMENT CO.**  
 Sales - JOHN DEERE - Service  
 Phone 659-2712  
 Larger Highway  
 Spearman, Texas

**CARD OF THANKS**  
 We wish to express our  
 sincere thanks for the  
 flowers, memorials,  
 cards, visits and food ex-  
 tended to us during the  
 illness and death of our  
 loved one.  
 The Ona May Byers  
 Family

**Card of thanks**  
 We wish to thank our  
 relatives, our neighbors  
 and friends for their kind-  
 ness and sympathy and for  
 the beautiful flowers,  
 cards and calls for the  
 donations to the heart  
 fund, the Hansford library  
 and to Boys Ranch. We  
 wish to thank Rev. Daniel  
 for his comforting words  
 and the musicians for the  
 beautiful songs, also the  
 pallbearers during our  
 recent sorrow in the death  
 of our beloved wife, moth-  
 er and grandmother.  
 Ray Skinner  
 Bob and Ruth Skinner  
 & sons

**Notice  
 NOTICE TO CONTRACTORS**

Sealed proposals address-  
 ed to the City of Spearman  
 will be received at the of-  
 fice of the City Manager,  
 City Hall, Spearman, Texas,  
 until 8:00 p.m. Monday,  
 March 10, 1969 and then  
 publicly opened and read  
 for furnishing all plant, la-  
 bor, material and equip-  
 ment, installing and per-  
 forming all work required  
 for the construction of a  
 sewage treatment plant  
 facilities and miscellaneous  
 items of work.

All proposals shall be ac-  
 companied by a cashier's or  
 certified check written up  
 on a national or state bank  
 in the amount of five (5%)  
 percent of the total maxi-  
 mum bid price payable  
 without recourse to the City  
 of Spearman, or a bid bond  
 in the same amount from a  
 reliable surety company as  
 a guarantee that bidder will  
 enter into a contract and  
 execute performance bond  
 within ten days after notice  
 of award of contract to him.  
 Bids without check or bid  
 bond will not be considered.  
 The successful bidder must  
 furnish performance and  
 payment bonds upon the

forms which are attached  
 hereto in the amount of  
 100% of the contract price  
 from an approved surety  
 company holding a permit  
 from the State of Texas to  
 act as surety or sureties ac-  
 ceptable to the Owner.  
 The right is reserved to  
 reject any and all bids and  
 to waive any informality in  
 bids received.  
**"NONDISCRIMINATION IN  
 EMPLOYMENT"**  
 Bidders on this work will be  
 required to comply with the  
 President's Executive Order  
 No. 11246. The require-  
 ments for bidders and con-  
 tractors under this order are  
 explained in the specifica-  
 tions.

**NOTICE OF REQUIREMENT  
 FOR CERTIFICATION OF  
 NON-SEGREGATED FACIL-  
 ITIES**  
 Bidders are cautioned as  
 follows: by signing the con-  
 tract for which these bids  
 are solicited, the bidder  
 will be deemed to have  
 signed and agreed to the  
 provisions of the "Certifica-  
 tion of Nonsegregated Facili-  
 ties" as contained in the  
 specifications for this pro-  
 ject.

**NOTICE TO PROSPECTIVE  
 FEDERALLY ASSISTED  
 CONSTRUCTION CON-  
 TRACTORS**  
 (a) A certification of Non-  
 segregated Facilities, as  
 required by the May 28,  
 1968 order (33 F.R. 7808,  
 May 28, 1968) on Elimina-  
 tion of Segregated Facilities,  
 by the Secretary of Labor,  
 must be submitted prior to  
 the award of a federally as-  
 sisted construction contract  
 exceeding \$10,000 which is  
 not exempt from the provi-  
 sions of the Equal Opportu-  
 nity clause.

(b) Contractors receiving  
 federally assisted construc-  
 tion contract awards exceed-  
 ing \$10,000 which are not  
 exempt from the provisions  
 of the Equal Opportunity  
 clause will be required to  
 provide for the forwarding of  
 this notice to prospective  
 subcontractors for supplies  
 and construction contracts  
 where the subcontracts ex-  
 ceed \$10,000 and are not  
 exempt from the provisions  
 of the Equal Opportunity  
 clause.

Plans, specifications and  
 bidding documents may be  
 secured from the City Man-  
 ager, City Hall, Spearman,  
 or at the Office of Mc-  
 Morris and Burns, Inc. P.  
 O. Box 142, Dumas, Texas  
 79029, on deposit of Twen-

ty-five (\$25.00) Dollars per  
 set, which sum so deposited  
 will be refunded, provided:  
 (1) All documents are re-  
 turned in good condition to  
 McMorris and Burns, Inc.  
 not later than 48 hours prior  
 to the time for receiving  
 bids; or (2) The Contractor  
 submits a bid and all docu-  
 ments are returned in good  
 condition to McMorris and  
 Burns, Inc. not later than  
 five days after the time that  
 bids are received.  
 City of Spearman, Texas  
 by Dr. D. E. Hackley, Mayor  
 12T-13T-14Tc

**NOTICE OF PUBLIC  
 HEARING**

The Zoning Board of  
 Adjustment of the City of  
 Spearman, Texas will hold  
 a Public Hearing on March  
 3, 1969, 6:30 p.m. at the  
 City Hall, Spearman, Tex-  
 as for the purpose of con-  
 sidering the application of  
 Mr. Wyatt L. Adkins to  
 locate a beauty shop in the  
 garage of his home lo-  
 cated at 416 S. Haney,  
 Outlot #30, City of Spear-  
 man, Texas. Also the ap-  
 plication of Jim Pingleton  
 to locate a trailer house at  
 515 S. Haney, Lot 4, Out-  
 lot # 31, City of Spearman,  
 Texas will be considered.

The Zoning Board of Ad-  
 justment will determine if  
 the request for a Non Con-  
 forming Use Permit will  
 be granted.  
 S/ Donald Denham  
 Chairman, Board of Adjust-  
 ment, Zoning Board of the  
 City of Spearman, Texas  
 13T-14T

**CARD OF THANKS**  
 We would like to thank  
 everyone for the flowers,  
 cards, memorials, food,  
 and a special thanks to  
 those who sat up at the  
 funeral home, and other  
 acts of kindness extended  
 to us at the death of our  
 loved one. May God  
 Bless each of you.  
 The Perry Hawkins  
 Family

**FIREWOOD FOR SALE--  
 Stock up now to cure out  
 for next winter. 659-3654.  
 14T-1tp**

**BEAT  
 CRANE**

**City  
 Accident  
 Report**

Three accidents have  
 been reported by city po-  
 lice officers. On Feb. 14  
 at Dressen & 3rd St. a  
 1968 Chevrolet 2-dr driv-  
 en by Monty Lesley was  
 in collision with a 1962  
 Olds driven by Dorothy  
 Quinn. Estimated damag-  
 es in this accident were  
 \$410.

On Feb. 19 in the 100  
 block of S. Bernice a 1964  
 Pontiac driven by Peggy  
 Boatwright of 701 Lee  
 Drive was involved in an  
 accident with a 1967  
 Dodge which was parked  
 and unoccupied. The  
 Dodge belonged to B. T.  
 Shoemaker. Damages were  
 estimated at \$190.

Friday evening, Feb.  
 21 in the 500 block of  
 Hwy 207 two cars were in  
 collision. Damages were  
 estimated at \$1000 in this  
 accident. A 1955 Chevy  
 driven by Francis Allen  
 VanBuskirk of 322 S. Ro-  
 land collided with a 1967  
 Ford driven by Richard  
 Larson of 1022 S. Dessen.  
 One injury resulted from  
 this accident. Joe Dean  
 Clement was treated for  
 lacerations and released.  
 He and Walter Windom  
 were passengers in the Lar-  
 son vehicle.

**Bureau  
 Sponsors  
 Contest**

Farm Bureau members  
 in Hansford County have  
 an opportunity to win ei-  
 ther cash prizes or valuable  
 items of merchandise if  
 there ideas for local af-  
 fairs projects are selected  
 in a state-wide contest for  
 such ideas, according to  
 Joe Dan Bryan of Spear-  
 man, president of the  
 local county Farm Bureau.

The Texas Farm Bureau  
 is sponsoring a contest to  
 bring in ideas for improv-  
 ing rural living and/or  
 agriculture. Cash prizes  
 total \$500 with another  
 \$500 worth of merchandise  
 being offered. This in-  
 cludes ten \$50 cash prizes  
 for the ten best ideas and  
 25 items of merchandise  
 (each worth at least \$20)  
 offered for the next best  
 25 ideas.

Mr. Bryan said the 35  
 winning ideas will be  
 printed in brochure form  
 and made available to  
 county and community  
 Farm Bureaus for their  
 consideration.

Deadline for getting the  
 ideas into the Hansford  
 County Farm Bureau office  
 is March 12. The address  
 is Box 578, Spearman,  
 Texas, 79081. The en-  
 tries will be forwarded on  
 to the Texas Farm Bureau  
 office in Waco for judg-  
 ing.

The rules specify that  
 only FarmBureau mem-  
 bers can enter. The idea  
 should be explained in  
 approximately 100 words  
 or less. Entries should be  
 typewritten.

The idea need not be  
 original, Mr. Bryan said.  
 It can be some project  
 or activity that is being  
 carried on in a commu-  
 nity or neighborhood now.  
 It can be something that  
 needs to be done. It can  
 apply to a local neigh-  
 borhood or even county-wide.  
 An example would be a  
 campaign to vaccinate  
 all dogs for rabies, or  
 perhaps to control rodents  
 or other predators. Any  
 idea might be a winner  
 Mr. Bryan said.

**BEAT  
 CRANE**

Mrs. Bruce Sheets has  
 recently returned from  
 a three weeks trip to  
 visit relatives in Cali-  
 fornia. She visited with  
 her sister and husband,  
 Col. and Mrs. Floyd  
 Hayes in Ontario, Calif.,  
 and with her brother and  
 wife, Mr. and Mrs.  
 Harold Newcomb in  
 Sacramento.

**CANTRELL'S  
 FLYING  
 SERVICE  
 Crop Dusting  
 Charter Service -Air Ambulance  
 200 M.P.H. Airplane**

**up to 6 Passengers  
 Airplane Rental  
 Student Instruction**

**Cantrell's Flying Service, Inc.**  
 Aaron B. Cantrell, Jr.  
 Box 833  
 Phone 659-3135 or 659-2437

# LOW

Week-end Specials for Friday & Saturday Feb. 23 & Mar. 1st.

## PRICES EVERY STEP of the WAY!



### Keebler Cookie Sale

The Keebler Clown Will Be in our Store All Day Saturday



13 oz. bag or over your choice

PECAN SANDIES  
CHOC-COCO DROPS  
PITTER PATTER  
SWEDISH KREMES  
GERMAN CHOC.

2 for 89¢

Keebler Club & Toast Party

### CRACKERS

39¢



Zesta Saltine 1 lb. box 29¢

### Cinnamon Rolls

2 for 49¢

Shurtfresh with Icing 9 1/2 oz. Can

Zestee All Fruit 15 oz. Tumbler

### Preserves

3 for \$1

### Margarine

Parkay Soft 2 1/2 lbs. 43¢

### CORN

3 for 49¢

Trellis Whole Kernel 1 1/2 oz. V.P.

### FRUIT COCKTAIL

25¢

Shurtfresh 30g Can

### APPLES

2 for 49¢

Comstock Sliced - no. 2 can

### GREEN BEANS

2 for 49¢

Del Monte Whole Bluelake-373 Can

### SOUP

3 for 49¢

Campbell's Chicken Noodle-Tall Can

### BAKERITE

Shortening 3 lb. Can 59¢

### GLADIOLA

Flour 5 lb. Bag 47¢

### MILK

Carnation Evap. Tall Can 2 for 29¢

### COCA COLAS

King Size Carton of 6 Plus Dep. 2 for 79¢

## ICE CREAM

All Flavors Half Gallon

# 49¢

### FRESH PRODUCE



### POTATOES

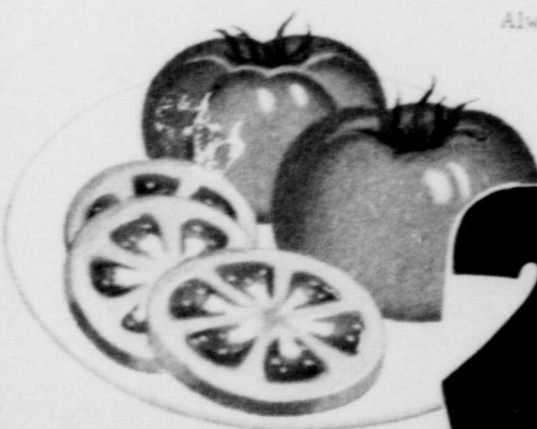
20 lb. Bag 78¢

### SQUASH

fresh Acorn lb. 15¢

## TOMATOES

Always Fresh Cello Pac



# 29¢

### Egg Plant

California Fresh Deep Purple lb.



# 39¢

### APPLES

Fancy Red Rome Beauty



# 4 59¢



## Cut Rate GROCERY

U.S.D.A. CHOICE BEEF

## SIRLOIN STEAK



# 98¢

### STEAK

\$1.09

### RIB STEAK

79¢

### CHUCK ROAST

59¢

### ARM ROAST

69¢

### GROUND CHUCK

69¢

### STEW MEAT

79¢

### CHUCK ROAST

53¢

### BACON

\$1.19

### FRANKS

59¢

### Cherry Pies

20 oz. Each

# 39¢

### Orange Drink

9 oz. Can

# 35¢

### TISSUE

Northern Bathroom

4 roll Pac 38¢

### TOWELS

Scotts Jumbo Roll

29¢

### Reynolds Wrap

Aluminum Foil

12 in. x 25 ft.

29¢

### DETERGENT

Energy 'All Purpose' Giant Box

49¢



## COFFEE

folgers lb. Can

# 69¢

## BREAD 25

Tendercrust 'Ranch Style' 1 1/2 lb. Poly Bag

### SALAD Dressing

Zestee 'Full Quart'

# 33¢



### ey Murrell urry Pledge

NE--Harley Mur-  
ver is a spring  
Ko Sari social  
McMurry College.  
n of Mr. and Mrs.  
R. Murrell, he  
more student at

the Abilene College.  
To pledge, student  
must have a grade point  
average of 2.00 or better  
for the fall semester.

### Marvin Tharp Promoted

VINH LONG, VIETNAM  
(AHTNC)--Marvin Tharp,  
21, son of Mr. and Mrs.  
James H. Tharp, Route 2,

Hardesty, Oklahoma, was  
promoted to Army special-  
ist five January 21 while  
assigned to the 36th Engi-  
neer Battalion near Vinh  
Long, Vietnam, as a  
mechanic.

Mr. and Mrs. Lowell  
Robertson and daughter  
Gina were in Spearman  
Sunday afternoon visiting  
with his parents, Mr. and  
Mrs. S. W. Robertson.



MARCIA SHIELDKNIGHT



BEN SHOEMAKE

### Boy & Girl Of The Month

Ben Shoemaker and  
Marcia Shieldknight have  
been selected as the boy  
and girl of the month ac-  
cording to announcements  
made this week by the  
Spearman Study Club.

Marcia, the 18 year old  
daughter of Mr. and Mrs.  
Jimmy Shieldknight, was  
named Miss SIS by her  
classmates. She was  
class favorite both her  
Freshman and Junior year.  
She has been an out-  
standing player of the

Lynxette basketball team  
all four years. She is a  
four year starter and was  
named to All-District  
Team two years and on  
the All-Regional team  
last year. She was chosen  
the Outstanding Lynxette  
in 1968 and she received  
the KBMF Fighting Heart  
Award.

Ben is the son of Rev.  
and Mrs. B. T. Shoemaker.  
He is a senior student  
and plans to attend Way-  
land Baptist College where

he will major in industrial  
arts.

He is president of the  
SIS choir, was class re-  
porter his junior year.

He was District I-AA Hi-  
Jump Champion in 1968.  
He is active in the Bat-  
tist Church and is vice  
president of the church  
youth council.

Ben's present hobby is  
woodworking and he is  
planning an occupation in  
woodworking.

### holt news

Mmes. Raymond Kirk  
and Maude Rosson attended  
the Phillips Regular Iris  
Club meeting in Phillips  
Tuesday, February 18. The  
hostess was Mrs. Vivian  
Balangee. The business  
was taken care of, then  
slides were shown of many  
kinds of Iris, also slides  
of the Rosedown Plantation  
in St. Francisville, La.  
Ten women were present  
for the meeting.

Mr. and Mrs. Dub Mor-  
ton and Karen, Mr. and  
Mrs. Gary Morton of  
Pringle were Friday night  
dinner guests of Mr. and  
Mrs. Phil Jenkins. Gary  
will soon be leaving for

of Mr. and Mrs. Dan Jack-  
son.  
Richard Gaines spent a  
week with his father, R.  
W. Gaines, who had been  
very ill in the hospital in  
Wichita, Kansas. He  
passed away Monday  
morning at 3:50 a. m.  
Services and burial were  
held Wednesday in Eureka,  
Kansas.

Mr. and Mrs. Russell  
Baker of Cheyenne Wells,  
Colo., Mr. and Mrs. Bob  
Tevebaugh of Claude and  
Mr. and Mrs. C. W. Kirk  
spent the weekend visit-  
ing relatives in and near  
Oklahoma City. The  
Tevebaugh family, which  
included three sisters and  
four brothers, had a  
family reunion Sunday,  
February 23 in the home  
of Mr. and Mrs. Harry  
Tevebaugh in Crescent,  
Oklahoma.

Mr. and Mrs. Ira Har-  
bour and Ted were Sunday  
guests of her sister, Mr.  
and Mrs. Bob Phelps and  
family of Fargan, Okla.  
Mr. and Mrs. Don  
Chisum of Stinnett were  
Sunday afternoon callers



The Do Si Do Square  
Dance Club met Saturday  
night with two squares.  
Visitors from Gruver were  
present.

The scheduled dance on  
March 8 has been canceled  
because of the jamboree  
in Guymon on that date.

The next dance will be  
March 22 with Aaron Love  
calling.

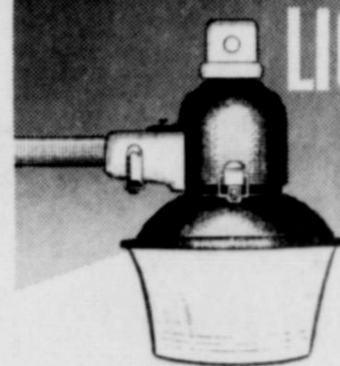
### BRIDGE

Mr. and Mrs. Bill Strawn  
were hosts to their couples  
bridge club Wednesday  
evening, Feb. 19.

High score winners for  
the evening were Mr. and  
Mrs. Jim McLain.

Members attending were  
Dr. and Mrs. Tom Latta,  
Mr. and Mrs. Eddie Healer,  
Mr. and Mrs. Ray Cressett,  
Mr. and Mrs. Mike Isbell,  
Mr. and Mrs. Jim McLain  
and the hosts.

### The OUTDOOR CONVENIENCE LIGHT



-with a bonus of  
safety and security

...The NITE-LITER

\$4 PER MONTH  
TOTAL CHARGE

The NITE-LITER is an efficient  
mercury vapor lighting unit  
that brightens an area up to  
100 yards in diameter . . . automatically from dusk to  
dawn. Thousands of businesses and homeowners already  
enjoy the convenience and safety of the economical, de-  
pendable NITE-LITER. No investment required . . . you pay  
less than 13¢ a night which includes installation on a  
tall wooden pole, year-round maintenance and the elec-  
tricity used by the unit. Call our office for your NITE-LITER  
soon.

COMMUNITY PUBLIC SERVICE

Your Electric Light & Power Company



## ALL MATERIALS FOR

### 6' RED CEDAR PICKET FENCE

(NO GATES)

# \$1.75

### PER LINEAL FOOT

4T-TC



Many Many Items For The Home And Office!

## "O.K. BARGAIN HUNTERS"

### THIS IS WHAT YOU HAVE BEEN WAITING FOR!

# Everything Goes

 Yes, We Are Quitting Business!

## And, We Are Selling Our Entire Stock Of - Furniture - Carpet Remnants Sample Squares - Art Supplies - Lamps - Wall Accessories - Drapery Materials &

## Remnants - Wood Burning Fireplace

Charlene Bulls' Interiors  
309 MAIN  
SPEARMAN, TEXAS

### SALE STARTS TODAY

### ALL SALES FINAL

### Texas Politics by Rep. Malouf Abraham

One of the real tough subjects facing us is the liquor situation. This is a most difficult problem to try to solve. Too many people have their minds made up and don't want to be confused by the facts.

Our problem down here is that we have to hear both sides of these questions and try to find a solution that seems satis-

factory to everyone. We must realize that most of the people in Texas are living in the larger cities and favor some sort of liquor-by-the-drink bill. Our present liquor laws are very unsatisfactory to both the "wets" and the "drys". We already have nearly 1400 licensed clubs of various types plus thousands of "brown bag" places. The present laws

are very confusing and so poor that they vary according to the interpretation of the LCB people in the different areas. This confusion helped cause the scandals last year in the Liquor Control Board.

Last session they attempted to pass the ill-fated Mini-Bottle Bill tied to a bunch of changes in the liquor laws. The mess they came up with didn't please anybody and fortunately didn't pass. It was probably unconstitutional anyhow.

Now they have come up with a Constitutional

Amendment wherein the Legislature would be authorized to present a liquor-by-the-drink bill on a Local Option basis. If this passes both houses by a 2/3 majority, the people of Texas would vote on it in November, 1970. If this passes, then in 1971 the Legislature would prepare a bill setting up the regulations. It would then take the vote of the people of each county to have liquor-by-the-drink in their county. The city boys tell us that they want it, and that if we don't want it we don't

have to have it in our county. They tell us that we shouldn't keep them from having it.

So, this is the fix I find myself in. Do I have the right to tell the Dallas people what they can or can't do? Certainly my first responsibility is to the people of my District but I am also responsible to all the people of Texas. Problems are not solved by pretending they don't exist. Now, go back and read this over again and do a little studying about it yourself. Put yourself

in my place, and if you have some suggestions, I will welcome them. Don't show me with a bunch of statistics, etc. Also, please don't put words in my mouth--I'm just trying to let you see the whole picture.

### COUNSELOR TO SPEAK ON DIVORCE

The last program in the Family Living Course will be presented tonight Feb. 27 at the Gravel High

School auditorium at 7:30 p.m. J. B. Brannen, Director of Family Counselor Service in Amarillo, will talk on "Divorces-Why?"--pertaining to husband-wife relations.

This concludes the short-course co-sponsored by Spearman FFA Girls, County P-TA and Commissioners Court.

The first program "Parents and Teenagers" was held Feb. 17, when Dan Barger, Amarillo's Chief Probation officer Juvenile Court spoke. On Feb. 20, Clark Woolridge, head of the Amarillo Psychiatric

Center, spoke to a group on "The Need for Family Unity. The third program Monday night was a discussion "Let's Listen to Youth," which was presented by members of the speech department led by Mrs. June Porter

# BEAT CRANE

Play Ideal's New Money Game Sensation . . .

# CARD PARTY

You may win up to **\$500** as each of these ladies did!



**CARD PARTY \$500 WINNERS . . .**  
From left to right are: DORIS FORD, 1515 6th, Woodward; MRS. J. WHITE, 109 Carter, Phillips, Tex.; MARY M. EATON, Box 621, Shattuck, Okla., and SHEILA ABBOTT, 2711 D 5th Ave., Canyon, Tex.

**YOU MAY BE NEXT! TRY YOUR LUCK!**  
Win \$5, \$25, \$100 or even \$500!  
Pick up your Card Party game cards now at IDEAL!

BETTER FOOD FOR LESS

# IDEAL FOOD STORES

**SATISFACTION GUARANTEED...**  
OR YOUR MONEY CHEERFULLY REFUNDED!  
*The Pledge of Ideal Food Stores!*

"Shopping Ideal Is Like Putting MONEY INTO THE BANK!"



THIS WEEK'S DINNERWARE SPECIAL...

# GRANADA DESSERT DISH

# 29¢

each with every \$3 purchase

ADD TO YOUR GRANADA COLLECTION WITH HANDSOME COMPLETE PRICES ON SALE NOW!

Bar-S Boneless, Fully Cooked, Half or Whole

# HAMS Lb. 99¢

Lea-S Skillet Saus, 13-Oz. Pkg.	59c	Cashley Deep-Frozen Bacon Squares	Lb. 39c
Dear Meyer, 13-Oz. Pkg. Smokies	79c	Oscar Meyer, 1-lb. Pkg. Skinless Franks	79c

Swifts Protein Boneless Steak Top Sirloin	Lb. \$1.49	Swifts Protein Table Trimmed Rib Steaks	Lb. 89c
Swifts Protein Center Blade Cuts Chuck Steak	Lb. 69c	Swifts Protein Round Bone Cuts Swiss Steak	Lb. 79c

COUNTRY KITCHEN Baked Beans or Potato Salad **39¢**

MEADOWDALE SLICED, ASSORTED LUNCHEON MEATS **3 6-Oz. Pkgs. \$1.00**

STOKELY, No. 303 Cans

CUT GREEN BEANS CREAM STYLE OR WHOLE KERNEL **5¢**

GOLDEN CORN WHOLE KERNEL **1.00**

HONEY POD PEAS **CANS (Mix or Match)**

ALASKA PEAS **1.00**

## STOKELY FABULOUS FOOD SALE!!

Stokely Sliced or Halves PEACHES No. 2 1/2 Can	29c	Stokely No. 303 Cans WHOLE GREEN BEANS 3 Cans	79c	Stokely Pure Tomato Juice 46-Oz. Can	29c
Stokely, 303 Can PEAR HALVES	29c	Stokely, 303 Cans FR. COCKTAIL 2 For	49c	Stokely Red, 300 Cans KIDNEY BEANS 2 For	29c
Stokely, 20-oz. Bl. CATSUP	29c				

MORTON HOUSE

★ BEEF & GRAVY ★ PORK & GRAVY ★ SALSURY STEAK

Baked Beans MORTON HOUSE

Detergent With Borax

# BREEZE

KING SIZE **\$1.00**

25c Off!

New! With Dermalin

# LUX LIQUID

BIG 32-OZ. PLASTIC BOTTLE **59¢**

COLD WATER

# ALL

96-Oz. BOX **\$1.89**

BEAUTY SOAP

# LUX

BATH SIZE BARS **39¢**

TENDER CRISP

# LETTUCE 2 HEADS 25¢

CALIFORNIA AVOCADOS 2 for 29¢

FRESH ROASTED PEANUTS lb. 29¢

PURPLE TOP TURNIPS 2 lbs. 25¢

IDEAL

# POTATO CHIPS Jumbo Bag 39¢

MECHINUT STRAINED

# BABY FOOD 12 Jars 1.00

Sara Lee German Chocolate

# CAKE 13 1/2 -Oz. Pkg. 69¢

Sara Lee All Flavors

# Turnovers 10-Oz. Pkg. 47c

KRAFT'S VELVEETA 2-Lb. Loaf **88c**

Melo Crust Biscuits 8-Oz. Cans **3 For 23c**

Ideal Old Fashioned, lb. COTTAGE CHEESE **49c**

Ideal Old Fashioned, lb. LONGHORN CHEESE **73c**

Amer or Pimento Singles, 12-Oz. KRAFT CHEESE **67c**

Kraft, 16-Oz. Jar CHEESE WHIZ **89c**

# COFFEE 69¢

MARYLAND CLUB

3-Lb. Can \$2.05

1-lb. Can **69¢**

Get Ready for Spring!

Men's & Boy's Short Sleeve SWEAT SHIRTS **\$1.88** REG. \$2.29

40 TABLETS OR 15-OZ. LIQUID GENTOL **\$1.88** REG. \$2.50

HY-GRADE VIENNA SAUSAGE **6 5-Oz. Cans \$1.00**

24 TABLETS IN FOIL ALKA-SELTZER **68c** REG. \$1.20

800. DRY OR OILY, 16-OZ. BRECK SHAMPOO **99c** REG. \$1.29

COUPON

# FINAL TOUCH

FABRIC SOFTENER

# 49¢

GIANT 33 OZ. SIZE WITH THIS COUPON

Limit 1 coupon per bottle purchased

Redeemable only at Ideal Food Stores.

Expires March 10, 1960.