

The Spearman Reporter

LYNX TEAMS WIN DOUBLE-HEADER
Spearman Lynx teams won a double-header dist. affair at Dalhart Tuesday night. The girls won by a 49-23 count, and the boys wrapped up their game with a 54-29 win. Marcia Shieldnight paced the Lynxettes with 26 pts. and Anita Smith had 12. Rondal Schell netted 20, and Mike Davis 15 for the boys.

THE SPEARMAN REPORTER, Hansford County, Texas 79081

THURSDAY, JANUARY 30, 1969

Archer Announces Plans For \$1 Million Feedlot

Plans for a \$1 million feedlot operation to be known as "Hansford Feedlot, Inc." were announced Tuesday. The announcement was made by Carl M. Archer, president of the new enterprise. Archer said that the feedlot will be located on 3 miles North-East Spearman, will start with a capacity of 30,000 head of cattle and both are designed for expansion as the demand requires. Construction will begin

immediately," Archer said, "and we expect to be ready to receive cattle next September."

The head of the corporation said all the stockholders are either residents of Hansford County or have land and farming interests in the County.

Stockholders include George Buzzard, Charles C. O'Loughlin, Mrs. J. R. Collard Sr., Dan Archer, Ella Marie O'Loughlin Carmody, Vance Collier, Carl M. Archer, Jack Hart and Lloyd Buzzard. Vice President of the en-

terprise is Jack Hart of Gruver. Lloyd Buzzard has been named Secretary-Treasurer. Other stockholders, named above, will serve as Directors. A spokesman for the Feedlot said "we are injecting the latest designs and the latest improvements and we are going to build a feedlot where the people here will be proud of."

Many of the firm's stockholders already are feeding or raising cattle and others have "a keen interest in this business."

... City's Housing Problem

PUBLIC MEETING CALLED IN SEARCH FOR ANSWER

Those closely connected with agribusiness in this area predict that within the next 3 years our community will be growing by leaps and bounds.

With the announcement in this newspaper of a new million dollar feedlot enterprise, the three lots already were under construction by Caprock Industries, and with those already in existence planning expansions--the growth of the cattle feeding industry is just beginning in Hansford County.

This is big business. Today it is measured in terms of millions of dollars, tomorrow it may be measured in even larger terms.

"It will not happen overnight, nor will the growth be easy, but it is coming, and this community must be ready for it," city and Chamber officials said.

The feedlot phase is already well advanced. Next, expansion of feed grain and silage crops to supply feedlot needs. Then, increases in farm-associated businesses such as production and distribution of agricultural chemicals, farm implement service, new chemical plants, etc. In the next to final phase, packing houses will locate in the county to be near the sources of slaughter-ready cattle. These plants will employ hundreds of new people.

With population growth, new service businesses at the retail level will be needed to care for the increased number of families; retail trade in all categories will show a healthy upswing. All this will not take place overnight, of course. Growth takes time, but the Spearman community is definitely going to grow and the trend will be steadily upward.

To meet this "sure to come" industrial growth, Spearman citizens must make some sort of plans to solve the current housing shortage.

The meeting Tuesday night, Feb. 3, is designed for this purpose. All interested citizens are urged to attend.

In its search for ways and means to work out the housing problem in the Spearman

area, the Chamber of Commerce has called an open meeting for February 3 at 7:30 p. m.

Mr. Glen Bailey, official from the Federal Housing Administration in Lubbock, will be present to provide information on the hundreds of FHA houses in Amarillo which are now available "to the highest bidder." These homes must be moved from Amarillo and Bailey will be able to present approximate "costs" and other pertinent information.

Chamber president Orville Brummett said today, "This might be an answer for the tight rental property situation here in Spearman."

Several persons have expressed an interest in moving

some rent houses to Spearman and the meeting Monday will provide an excellent opportunity to look into the Amarillo home situation.

"Rental property is a major problem in Spearman," Brummett said. "In the very near future this city will be asked to provide homes for some 50-100 families and we must be ready to meet the rental property situation or it will seriously affect our industrial growth," the president said.

Any other citizen interested in the housing situation is cordially invited to attend the meeting scheduled for Tuesday February 3 in the Hansford Court House.

Police Report

VEHICLE ACCIDENTS:
Jan. 16-at Collard & Andrews: Jerry Hawkins, driving a 1967 Chevy pickup (one vehicle accident.) Estimated damages \$175.00.

Jan. 18-at Brandt & 4th St. A 1959 Chevy Sedan, parked, owned by William Wilkerson, was hit by a 1955 Chevy driven by Robert DeArmond, 722 Cotter Drive. Estimated damages \$75.

Jan. 23-at 12 & Dessen, a 1965 Chevy pickup driven by Raymond C. Bentley, 1116 S. Haney, and a 1965 Chevy driven by Albert Mackie, 1115 S. Dessen. Estimated damages \$350.

Jan. 24-at Highway 207 & 7th street. A 1969 Pontiac driven by Virginia Trindle, rural Spearman, and a 1967 Chevy driven by Millie Powers, rural Spearman. Damages, \$140.

Jan. 26-At Collard & Main street intersection, a collision between a 1968 pickup driven by Charles Ray West and a Honda motorcycle carrying Murl Edwin Pearson and Rex Cook, resulted in injuries to both 16-year old boys who were admitted to Hansford Hospital. Estimated damages to cycle \$200.

City Dads Discuss Ambulance Problems

Members of the City Council, Mayor D. E. Hackley and Manager Darce Foshee met in regular session Monday night.

Main topic for discussion was the problem of ambulance service for Hansford County.

Ivan D. Boxwell, president of Boxwell Brothers, had previously notified city and county officials that the funeral home would terminate ambulance service for this area as of March 1. Boxwell offered his emergency ambulance, fully equipped, to Spearman free of charge.

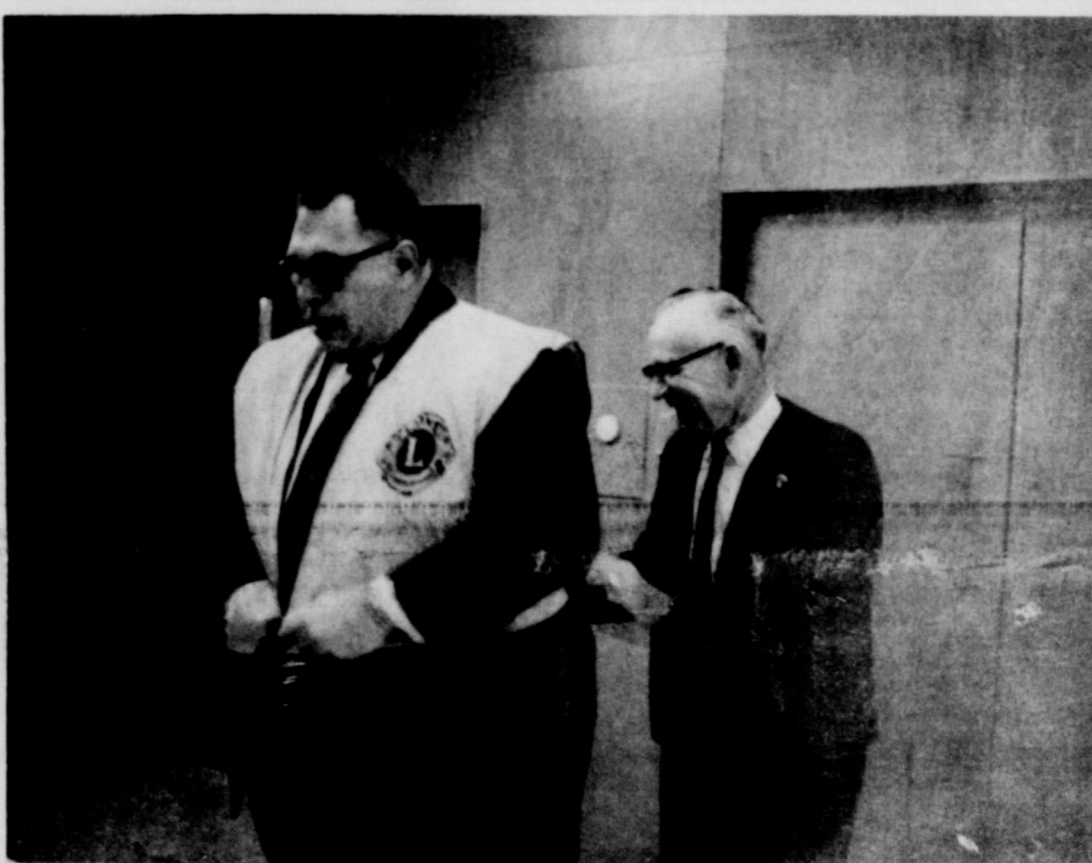
"City and county officials will come up with a solution to this problem soon," Foshee said, "but first we must look into requirements, as to licensing, vehicle & equipment specifications, etc."

General discussions as to how the ambulance will be operated, whether it will be a county, or a city project, will be held at a later date.

Other action taken by the board Monday night included the official acceptance of the \$46,830.00 sewer grant offered recently by the Texas Water Quality Board & Federal Water Pollution Control Authority.

It is hoped that the Council can begin receiving bids on the proposed new sewage plant within a month. Foshee said that much paper work must be disposed of and each step will have to be approved by the Federal authority before the actual construction is underway. The plant should be completed and in use by late summer.

The council passed a new ordinance Monday night making it unlawful to abandon refuse on private property or public property or to permit refuse to remain on a public right of way, prescribing a penalty for this violation. This ordinance can be read in full in this newspaper.



BIGGEST TO THE BEST-- Perhaps the biggest award ever presented to a member of Spearman Lions Club was made Tuesday night at the mid-winter banquet held in the Methodist Church Fellowship Hall. After many months of waiting for the made-to-order jacket, Dr. R. L. Kleeberger was presented with his official Lions International vest. Lion Roy Jones made him try it on for size. Perhaps the most active member of the local club, Dr. Kleeberger has not missed one single meeting in over 18 years.

Funeral Friday

Funeral services for Everett Crume Greene, 72, will be held at 2 p. m., Friday, January 31, in the church of Christ. The pastor, Bill Osborne, will officiate. Burial will be in Hansford Cemetery under the direction of Boxwell Brothers Funeral Home of Spearman.

Mr. Greene, a Spearman resident since 1927, had suffered a long illness. He died Tuesday morning in High Plains Baptist Hospital, Amarillo.

A member of the Odd Fellows Lodge, Spearman Lions Club and Church of Christ, he was very active

in other civic organizations and headed the E. C. Greene Real Estate firm, established in 1946, until his health forced him to retire. Mr. Greene was born in Oklahoma, Indian Territory, moving here in 1927 from Stinnett. He was a farmer-stockman with holdings in Oklahoma and Texas.

Survivors include his wife, Natalie; sons, Everett and Jimmy of Spearman; brothers Bill of Snyder and J. W. of Oakland, California; a sister, Mrs. Mamie Caton of Snyder; six grandchildren and one great grandchild.

5 Jobs Depend On City Vote

Two positions on the board of education, Spearman schools, and three seats on the City Council will be up for grabs in the April 1 elections here.

County residents have until 5 p. m. Friday January 31 to fill out registration forms which will make them eligible to vote in any election this year. These forms may be obtained at the office of Tax Assessor-Collector, J. B. Cooke, at the courthouse.

Three of the five positions on the city commission and two of the seven positions on the school board will be subject to election.

Terms expire this year for R. L. McClellan and Herschel Jones, school board members, and for Jimmy Hicks, E. J. Callaway and Bob Skinner city commissioners.

Friday is the deadline for voter registration.

Accident Injures 2 Boys

Two Spearman youths were admitted to Hansford Hospital following an accident January 26 at the intersection of Collard and Main Streets.

The accident involved a 1969 GMC pickup driven by Charles Ray West, and a 1966 Honda motorcycle driven by Murl Edwin Pearson.

Pearson, 16-year old son of Mr. and Mrs. Myrl Pearson, 521 S. Roland, received injuries to his left leg.

Rex Cook, 16-year old son of Mr. and Mrs. Ben Cook, was a passenger on the motorcycle. He was admitted to the hospital and immediately underwent surgery to close a large laceration and repair damaged muscles in his left leg. Neither boy received broken bones. Both are still in the hospital.

PTA Meeting

Panel Will Discuss 'Sex Education'

Members of the Spearman Parent-Teachers Association will present a panel discussion on "Sex Education" at the regular monthly meeting scheduled for 7:30 p. m. Monday, February 3 in the Junior High Auditorium.

The public is invited to attend. Ed Howk, P-TA program chairman, said the general topic to be discussed by the 6 member panel will be "Concerns About Sex Education".

Members to serve on the panel were selected by P-TA officials to represent parents, school, church and news media. They include James Cunningham, Supt. of Schools; Rev. B. T. Shoemaker, Baptist pastor; Dickie Robinson, School Nurse; Mrs. Bill Whitford and Mr. Jack McWhirter, you activities sponsors, and

Mrs. Billy Miller, news media representative.

This panel will present a general discussion on the issues and responsibilities facing parents in this day and age as to "proper" sex education.

How can parents help their children understand valid reasons why society has certain expectations & requirements? What are critical areas of teenage sexual behavior? How can parents prevent premature marriages? What are barriers between parents & children on the subject of sex? Are parents too permissive on everything including sex?

These and other issues will be generally discussed by members of the panel Monday night.

Interested persons are invited to attend.

BOARD MEMBER RESIGNS

County Commissioners met in regular session Monday. Business before the court included approving the bond for Sheriff and Tax Assessor J. B. Cooke, which is an annual, routine requirement of the State.

Commissioners appointed J. L. Brock to represent the County on the Board of Directors of Hansford County Library. He will replace Emmett Sanders who resigned recently.

The court was authorized to attend a 3-day school at Texas A&M held especially for County Judges and Commissioners.

GRUVER MEET RE-SCHEDULED

All irrigation farmers in Hansford, Ochiltree, Hutchinson, Moore & Sherman Counties are invited to attend a public meeting in Gruver at 7:30 p. m. Monday February 3 at the American Legion Hall.

The meeting, sponsored by Peoples Natural Gas Company, had formerly been scheduled for January 27, but a new date was set because of conflicting meetings to be held in Gruver on this date.

Peoples agri-engine and well-side gas programs will be presented by Melvin Semrad, supervisor of market development, Garland Ruthart, coordinator of engine operations, and Ray Martin, Peoples sales representative for this area.

Free coffee and donuts will be served at the meeting.

Irrigation Meet Set For Feb. 3

All irrigation farmers in Hansford, Ochiltree, Hutchinson, Moore and Sherman Counties are invited to attend a public irrigation meeting sponsored by Peoples Natural Gas Company, 7:30 p. m. Monday, Feb. 3, 1969 at the American Legion Hall in Gruver, Texas.

Peoples Agri-Engine and Well-Side gas programs will be presented by Melvin Semrad, supervisor of market development, Garland Ruthart, co-ordinator of engine operations and Ray Martin, Peoples Sales Representative for this area. Also on hand will be Bob Callan, sales manager for Peoples and Don Tanner local manager at Spearman. Peoples presently has 160 units in operation in the north plains of Texas and in the Oklahoma Panhandle and is expecting to set 400 engines in 1969.

Free coffee and donuts will be served at the meeting.

Corn Clinic Feb. 6

DeKalb Ag Research, Inc. is sponsoring a Corn Clinic for local irrigation farmers. The meeting is scheduled for 7 p. m. February 6 in the HD Club room. Everyone is invited to attend.

Alert area farmers attending the clinic will see and hear information about high-yield seed-bed preparation... planting... fertilization... moisture utilization and harvesting. There will be color slide film presentations of new agricultural products, practices and services will help the modern farmer produce more grain per acre and make greater profits after harvest.

There will be a panel of area farmers present to explain their experiences with growing of corn, and will answer questions farmers might have on the subject.

The purpose of the corn clinic is to bring the latest information direct to the farmers on the newest development and improvements in hybrid corn. A group of Moore county farmers will explain seeding rates, weed control and harvesting techniques both for ensilage and grain purposes.

Refreshments will be served.

Tournament

The 9th Annual Women's Association Championship Bowling Tournament of Hansford County will be held February 14, 15 and 16.

Entry forms are available at the Spearman Bowling Alley, or from the league secretaries.

Women are urged to get their entry fees in by February 1.

City Police Report On Violations

Failure to yield right-of-way to another vehicle was the major cause of accidents within the city of Spearman during 1968, according to a report issued this week from Chief of Police Leland Wood. Fifty-six such violations in 1968 are listed on the police records.

Twenty-two improper starts from a parked position was the next major cause for motor vehicle accidents here last year.

Other violations contributing to 1968 accidents included speeding 3; following too close 6; overtake & pass 2; unattended motor vehicles 2; improper lane usage 1 and defective brakes 2.

Nine persons were injured in city vehicle accidents last year, one fatally.

Estimated property loss due to the above violations amounted to \$27,967.00.

Mrs. Payne's Father Died

Funeral Services for Mr. Newt Giles, father of Mrs. Nellie Payne of Spearman, will be conducted at 2 p. m. Friday, January 31 in Carnegie, Okla. at the First Baptist Church.

Mr. Giles, 79, passed away January 27 in the Carnegie Hospital where he had been a patient for one week. A long time resident of that city, he was a retired farmer and a dairyman.

Besides the daughter, Mrs. Payne, a Spearman school teacher, two other daughters and three sons survive. They all reside in Carnegie.

Judge Appointed To State Committee



HANSFORD COUNTY JUDGE Johnnie C. Lee receives State Legislative appointment.

Judge Johnnie C. Lee was notified Tuesday that he had been appointed to the three-member board of the State Legislative Committee on County Government.

The appointment was made by W. D. Henson, president of the County Judges & Commissioners Association of Texas. Lee said the committee was concerned entirely with county government and would meet from time to time with the State Legislature to offer recommendations along this line. This 3-member committee will be representing the Texas Judges & Commissioners Association, a group 1270 members strong.

"I'm very honored to receive this appointment" Lee said Tuesday.

One of the things the County Judge is anxious about concerning his appointment, is the opportunity of meeting with the legislature on the school consolidation program which is being kicked around just now. He is definitely against the recommendations of the Governor's Committee on Public School Education, and will now be able to play a big part in fighting against it.

Judge Lee will fly to Dallas Monday for a 2 o'clock meeting with the Commission, it's President and Tax Lawyers.

DEATH RULED SUICIDE

Friends in Spearman were notified this week of the death of Buddy Chain, former resident.

Chain, 41, died at his home in El Monte, California Sunday January 26th, from a self inflicted gunshot wound. Investigating authorities ruled the death as suicide.

The Chain family lived in Spearman many years, moving here in 1948. Buddy was employed much of the time as a farm laborer and worked for Mr. George Buzzard.

Survivors include a wife and son.

County Leaders To Meet At A&M

The 11th annual Conference for County Judges and Commissioners will kick off February 5 at College Station, Texas, with programs design-

ed for all concerned with county government. It will be held at the Ramada Inn and attendance is expected to range from 150-200.

Hansford county government leaders planning to attend include Judge Johnnie C. Lee, and Commissioners Ed Vernon, B. W. Renner and George Lowe.

The Feb. 5-7 Conference is sponsored by the County Judges and Commissioners Association of Texas and the Agricultural Extension Service. In announcing the conference Extension Director John E. Hutchison said the program would feature speakers and panels on subjects of primary importance to the conferees.

Judge J. C. Davis, Jr., Assistant State Attorney General, will address the group along with Dr. Kenneth Wright, Commissioner of the Texas Department of Mental Retardation and Mental Health. Wright will present new information regarding the treatment centers and admission policies.

Hutchison also said that personnel from Texas A&M

University's Transportation Institute will discuss soil stabilizers, road base material and other topics of interest to members of County Commissioners' Courts.

County agricultural agents have been supplied with other information and registration material for those planning to attend the annual three-day meet.

WILBANKS' TO HEAD PSDA

At the mid-winter jam-boree held Saturday night in Buena Vista, J. D. and Rubyjo Wilbanks were elected presidents of the Panhandle Square Dancer's Association. The association comprises some 730 couples and 30 clubs.

N. T. & Aljean Harmon, Pampa, were named Secretary. Other officers included Red & Eulla Faye Stokes, Amarillo, Treasurer; James & Wanda Colston, Dumas, Dist. 1 VP; L. L. & Mary Wallace, Clarendon, Dist. 2 VP; Vince & Jessie Fave

Thomas, Amarillo, Dist. 3 VP; Galen & Pat Thompson, Amarillo, Dist. 4 VP; Dean & Nida Huckins, Guyton, Dist. 5 VP.

Mr. and Mrs. Wilbanks are members and callers of the Joy Dancers club of Spearman.

The PSDA is affiliated with the Texas State Federation of Square and Round dancers. The State Festival will be held in Amarillo in the new Civic Center June 6 and 7 and the PSDA will host the pre-festival dance on the evening of June 6.

WSCS Meets

Mary Martha and Susannah Wesley Circles of the Methodist Church of Spearman met in a joint session January 22 in the church to continue their study on "Christ and Crises", a study of Southeast Asia.

Mrs. Don Reed gave the devotional for the meeting. The study was directed by Mrs. Robert Adamson who was assisted by Mrs. Ed Garner, Mrs. Bruce Sheets and Mrs. George Buzzard. Hostesses for the day were

Mrs. Eddie Healer and Mrs. Sid Beck, Jr. WSCS members present were Mmes. Garland Head, Ed Garner, Kenneth Williams, Burl Buchanan, Ed Howk, Bert Sheppard, George Buzzard, Don Reed, George Buzzard, Winfred Lewis, J. B. Buchanan, Ben Colburn, Mike Isbell, Bill Strawn, Bruce Sheets, P. A. Lyon, Richard Baxter, Robert Adamson, R. E. Lee and the hostesses.

Arts & Craft Guild Meets

Mrs. Guy Fuller was hostess for the Friday, Jan. 24 meeting of the Arts and Craft Guild of Spearman.

Attending were Mmes. Pope Gibner, Ned Turner, Fred Dally, Bill Gandy, Joe Trayler, Garrett Allen, P. A. Lyon, C. A. Gibner, Deta Blodgett, Sada Hoskins, Bruce Sheets, Jesse Womble, the hostess and a guest, Mrs. David Stinson of Mount Vernon, Texas.

Mrs. Deta Blodgett will be hostess for the January 31 meeting of the Guild.

PANHANDLE AREA TALENT SHOW

The second annual talent show, sponsored by the Goodwell Lions Club, will be held on Feb. 6, at 7:30 p.m. in Hughes-Strong Auditorium on the Panhandle State College Campus.

Prizes will be awarded to the First, Second, and Third place winners. The first place winner will receive \$50, second place \$35, and third place \$15. Entry is open to everyone, but only the first 20 entries received will be accepted for the show. Deadline for entries is 5 p.m. February 1.

Entry blanks may be received by writing to Wayne Tyler, Box 537, Goodwell, Oklahoma. All entries will have a 5 minute time limit for their talent performance. Talent numbers are expected from all of the five surrounding state areas.

Sunday afternoon guests in the home of Mr. and Mrs. J. W. Brown were Mr. and Mrs. Ben Hand and Mrs. Loy Hiller and daughter Barbara from the Pringle community.



THE SPEARMAN REPORTER
P. O. Box 458, 213 Main Street, Spearman, Texas 79081

William M. Miller, Editor & Publisher

Successor to the Hansford Headlight, Published Thursday each week in Spearman, Texas 79081

THE SPEARMAN REPORTER
Published every Thursday at Spearman, Texas. Second class postage paid at Spearman Post Office, 79081

Any erroneous reflection upon the character of any person or firm appearing in these columns will be gladly and promptly corrected upon being brought to the attention of the management.

SUBSCRIPTION RATE--Hansford, adjoining counties \$7.00 yr. Other points, \$5.00 or in combination with The Hansford Plainsman, \$9.00 yr.

Advertising rates on request.

BETTER FOOD FOR LESS Prices good thru Feb. 1. Limit rights reserved.

IDEAL FOOD STORES

TWO \$500⁰⁰ WINNERS ALREADY IN IDEAL'S NEW FUN AND MONEY GAME...

CARD PARTY

\$500 CASH TO DORIS FORD WOODWARD, OKLAHOMA

\$500 CASH TO MRS. J.B. WHITE PHILLIPS, TEXAS

YOU COULD BE NEXT!

EXQUISITE GRANADA DINNERWARE!
THIS WEEK'S SPECIAL 89c SHEFFIELD "GRANADA"

BEAUTIFUL AVOCADO! Only 29c WITH \$3.00 PURCHASE

SEE OUR MATCHING COMPLETE PIECES ON SALE AT ALL IDEAL STORES AT UNMATCHED SAVINGS!

VALUABLE PRINCESS CHARM COUPON FREE! ONE PER PRINCESS CHARM With This Coupon and Purchase of One Charm at Regular Price of 50c

COUPON GOOD ONLY AT IDEAL STORES JANUARY 29 THRU SATURDAY FEBRUARY 8 1969 REDEEM YOUR COUPON AT IDEAL TODAY

U.S.D.A. GRADE A FRESH DRESSED

FRYERS 29c

WHOLE 2 To 3-Lb. Average Lb.

CUT-UP FRYERS Lb. 35c

U.S.D.A. GRADE A, 3 TO 4-LB. AVERAGE

FRESH DRESSED BAKERS 39c

BREASTS, LEGS, THIGHS Pick of the Chick Lb. 59c

ALL WHITE MEAT Fryer Breasts Lb. 69c

TENDER, MEATY Fryer Thighs Lb. 59c

PLUMP, TENDER Fryer Legs Lb. 59c

CAMELOT U.S.D.A. GRADE A

HEN TURKEYS 39c

18 TO 22-Lb. AVERAGE Lb.

Swifts Pro-Ten Beef Boneless

ARM ROASTS 89c

CENTER CUTS Lb.

BONELESS, BITE-SIZE PIECES

BEEF STEW 69c

Lb.

BAR S MEADOWDALE

Skinless Franks 1-Lb. 59c Pkg.

Sliced Bacon 1-Lb. 59c Pkg.

BAR S SURTENDA

Sliced Bologna 1-Lb. 69c Pkg.

Cooked Steaks Lb. 98c

IDEAL MID-WINTER DAIRY DELIGHTS!

KRAFT VELVEETA 2-Lb. Loaf 88c

SOUTHERN ROLL MARGARINE 1/2-Lb. Roll 8c

SWISS, MOZZARELLA, MILD CHEDDAR Kraft Natural Slices 6-Oz. Pkg. 43c

IDEAL Grade A Buttermilk 1/2-Gal. Ctn. 39c

FLEISCHMANN'S Margarine 1-Lb. Ctn. 39c

KRAFT SALAD DRESSING

MIRACLE WHIP Quart Jar 49c

CAMELOT CROWN QUALITY

CUT GREEN BEANS 5 303 Cans \$1.00

DESSERT TOPPING Dream Whip 8 1/2-Oz. Pkg. 89c

TOWIE Stuffed Olives 3-Oz. Jar 29c

U.S. NO. 1 RUSSET POTATOES 10-lb. BAG 59c

RED RIPE TOMATOES HARDEN APPLE CIDER GAL. \$1.19

LONG SLENDER CARROTS 1-lb. BAG 10c

LARGE SLICERS lb. 25c

GOLDEN DELICIOUS APPLES 4 lbs. \$1.00

WASHINGTON HOT HOUSE RHUBARB lb. 49c

ALL VARIETIES ALPO DOG FOOD 130% MEAT! MIX OR MATCH 4 No. 1 Cans \$1.00

GOOCH'S MACARONI or SPAGHETTI 32-Oz. Pkg. 39c

ALL FLAVORS FAIRMONT ICE CREAM 1/2-Gal. Ctn. 79c

HUNT'S MID-WINTER FOOD SALE! MADE WITH FIELD RIPE TOMATOES

Hunt's TOMATO JUICE 46-Oz. Can 29c

THOSE FAMOUS HEAVENLY Hunt's PEACHES 3 2 1/2 Cans 79c

YELLOW GLING SLICED, HALVES

ADD COLOR TO YOUR MEALS Hunt's FRUIT COCKTAIL 5 300 Cans \$1.00

HUNT'S WHOLE OR Stewed Tomatoes 5 300 Cans \$1.00

BIG TOMATO TASTE Hunt's Catsup 14-Oz. Btl. 19c

HUNTS Tomato Sauce 10 8-Oz. Cans \$1.00

VANITY FAIR PAPER SALE!

TOILET TISSUE 3 4-Roll Packs \$1.00

PACKAGES OF 100 Vanity Fair Napkins 3 Pkgs. \$1.00

REGAL PRINTED Paper Towels Large Roll 29c

PATIO FROZEN MEXICAN FOOD FIESTA!

- 15-oz. MEXICAN DINNER
- 12-oz. ENCHILADA DINNER
- 13 1/2-oz. BEEF TACOS

YOUR CHOICE Each 49c

DISCOUNT PRICES ON HEALTH & BEAUTY AIDS!

REGULAR \$1.49 Calm Spray Deodorant 7-Oz. Can 88c

REGULAR \$2.19 Dristan Cold Tablets Btl. Of 50 \$1.44

ALL GELATIN FLAVORS JELL-O DESSERT 6 3-Oz. Pkgs. 59c

TALL CANS CARNATION MILK 3 Cans 49c

Valuable Ideal Coupon GOLD MEDAL FLOUR 25-Lb. BAG \$1.99

LIMIT ONE PER COUPON EXPIRES SAT. FEB. 8, 1969 GOOD ONLY AT IDEAL

Enter Procter & Gamble's SNUGGLY BEAR SWEEPSTAKES See in display for details

DOWNY FABRIC SOFTENER 33-Oz. Plastic 69c

BIZ PRE-SOAK 25-Oz. Box 79c

THURSDAY, JAN...
Fidd...
Free...
Color...
by P...
Burton TV...
106 E. K...
WHITE LUMBE...
building & Supplies...
Phone 651...
Box Br...
Funera...
Flowe...
Day-Night P...
Spearman, T...
Cum...
Refrigi...
Anc...
Condi...
Phone...
Gordon...
For...
insuran...
See...
Farm...
TOM...
Phone...
Spear...
Hansfc...
G 1...
A.F...
Regular C...
2nd, and...
of each M...
Coy Pa...
Ceryl E...
COM...
Loren...
The stork...
the BIGG...
It All...
Wouldn't...
Sit...
C...
U. S...
PI...
PAN...
VET...
C...
Southw...
Phon...
8:30 a...
T. R...
H. B.

Fiddle-Free Color TV by RCA



106 E. Kenneth

WHITE HOUSE LUMBER CO

Building & Plumbing Supplies

Phone 659-2821

Boxwell Bros. Funeral Home and Flower Shop

Day-Night Phone 659-2212 Spearman, Texas

Cummings Refrigeration And Air Conditioning

Phone 659-2721 Phone 659-2441

Gordon Cummings

For Your

Insurance Needs Farm Bureau

TOMMY GOOCH Phone 659-3131 Spearman, Texas

Hansford Lodge

1040 A.F. & A.M.

Regular Communication 2nd and 4th Monday of each Month

Coy Palmer, W.M. Ceril Batton, Secy.

COMMENTS WANTED

Loren Simmons
The stork is the bird with the BIGGEST bill.



All Started When He Wouldn't Go To

Simmons Chevron

U. S. Highway 15, South Phone 659-9985

PANHANDLE VETERINARY CLINIC

Southwest of Spearman Phone 659-2100

8:30 a.m. to 5p.m.

T. R. LATTA, D.V.M. H. B. RINKER, D.V.M.

NOTICE--WE DON'T GUESS WE KNOW auto repairing, Boyd's Engine Service, 102 Kenneth. 659-3613 6T-rtm

FOR SALE

CATERING & CAKES, Mrs. Bubby Gruver, 733-2514, Gruver. 48T-rtm-3tp

FOR SALE--1959 White Diesel Tractor, 4400 series, 220 Cummings Diesel, good condition. Dale Davis, Spearman, phone 659-2489 8S-rtm

RESIDENCE FOR SALE--due to my wife's health, we must live with our children in La. We are offering our residence for sale. Located at 107 Barkley St. in choice neighborhood. For information write J. H. Nichols, 1441 Chateau Circle N., Lake Charles, La. 70601 2-rtn-nc

FOR SALE--3 bedroom, 903 S. Townsend, available in June, Contact Dr. R.H. Barker, 2408 Pruett, Austin, Texas 78703. 6T-18tc

FOR SALE--1961 Ford Pickup, V8 Long wheel base, 4-speed \$500, Call 2764. 10T-rtnc

FOR SALE--8-foot Pool Table, balls & cues. \$50. Slim Gates. 9S-rtm

FOR SALE--1968 Chevrolet Camero, 11,000 miles; 327 automatic, black vinyl top and interior. \$400 equity and take up payments on approximately \$1,850 balance. Call 659-3134 after 6:00. 10T-2to

FOR SALE--3-bedroom home. Bath & 3/4. Corner lot. Living room and hall carpeted. For appointment call 659-3670. If interested write: James Pendergraft, 106 Floresta, Gunnison, Colorado 81230. 710-rtm

FOR SALE--Good used swivel rocker, phone 3446 or inquire at Baker Hotel. 10T-rtm

FOR SALE--Purebred Beagle. Phone 659-2477. 9T-rtm

FOR SALE--Complete household of furniture, 526 S. Bernice. Phone 659-3505. 10T-2tc

FOR SALE--1956 Ford Four Door Clean \$200.00, also 1960 Plymouth Clean. Engine has 200 miles on it \$400.00. Bob's Engine Service 215 N. Bernice Phone 659-2124. 10T-1tc

RENTALS

FOR RENT--Furnished, clean, air conditioned. TV's available. Downtown Apts. Phone 2269. 10T-rtm

FOR RENT--Furnished apt. 606 S. Bernice St. Telephone 659-2652. 2-rtn

FOR RENT--2-bedroom furnished apartment. Call 659-2119. 8T-rtnc

FOR RENT--2-bedroom trailer. Call 3017 or 2776. 10T-4tc

CARD OF THANKS

I wish to express my sincere thanks for all the flowers, cards, gifts and visits while I was in the hospital, also since I have been home. Thanks to the nurses for their care and consideration. Mattie Davis

CARD OF THANKS

We would like to thank our friends for the flowers, cards, food and pleasant visits during our sickness. A special thanks to Dr. Greig and the staff at the hospital for their kindness and efficient care. Eddie and Ellen Babbs

Against 18-Yr. Old Voting

A movement to give the vote to 18-year-olds is just one step to lowering the drinking age, according to an article in the "Christian Crusader", published by Texas Alcohol Narcotics Education (TANE).

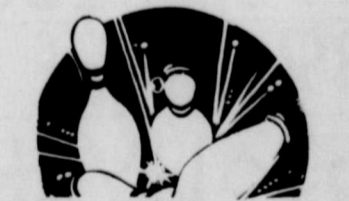
Legislation that would lower the voting age is often introduced by the same people that advocate loosening liquor laws, the article says. The money behind the 18-year-old suffrage movement comes indirectly from the alcohol beverage industry. It says.

"Their motivation is to sell more alcoholic beverages. They are in business to sell their product. The root of this evil is just below the surface--but it is the same root we've been having trouble with for millenniums, 'The love of money.'"

"One who at 18 might be a hedonist with no care for tomorrow, is often at 21 or 25 a responsible leader. Because he has the potential of being a responsible leader when he becomes of age, does not mean that he and all his contemporaries (soldiers, girls, draft dodgers and all) have the necessary maturity to make these vital decisions at age 18," the article says.

TANE is a non-profit, educational organization, supported financially by Texas churches and individuals. "Our goal is to prevent problems that arise from the use of alcohol, narcotics, and other dangerous drugs," said Albert F. Tucker, TANE Executive Director. Programs include publishing books, producing audiovisual aids, and presenting alcohol-narcotic education programs in public schools and churches. TANE has a speakers bureau of more than 100 men who speak in some 2,500 Texas churches each year and 500 schools. The organization also maintains a free film lending library for churches, schools, and other organizations.

"We are not interested in taking anyone's rights away from him. But some rights and privileges come simultaneously with maturity. If the age boys are allowed to drive were lowered two years, there would be many more accidents and many lives lost as a result. To lower the drinking age two or three years would be even more disastrous," Mr. Tucker said.



PINBENDERS LEAGUE 1-24-69

TEAM	WON	LOST
McClellan Gr.	45	23
Harveys Aerial	41	31
Brook Ins.	36	35
Bowl Mor	36	36
Thomas Clms.	35	32
Farm Bureau	29	42
Vermons	28	43
Beauty by M. K.	28	36

HIGH TEAM SERIES
McClellan Gr. 1271
Bowl Mor 1249
Harveys Aerial 1159

HIGH INDIVIDUAL SERIES
McClellan Gr. 464
Harveys Aerial 436
Bowl Mor 427

MARY CORNELIUS
Mary Cornelius 463
Virginia Head 454
Sheryl Meek 443

HIGH INDIVIDUAL GAME
Virginia Head 186
Sheryl Meek 183
Mary Cornelius 179

County Citizens May Lose Right To Vote

By your own actions, you may be about to deny yourself the right to vote in elections to be held from February 1, 1969 to January 31, 1970.

Registration was made easy this year through a new computerized program and with tax statements went a form which merely had to be signed and returned to the tax office for a validated receipt. Many have not returned these to the county tax office. Many more, who did not receive county tax statements, have yet to go in person to the office of county tax assessor-collector J. B. Cooke, and register to vote next year.

Registration deadline is January 31, and except under special circumstances for new residents, those who have not registered by that time will

not be permitted to cast ballots. About half of the eligible voters have failed to take this action, however, and unless there is a big rush in the last half of this month, the voter privilege is going to be lost by many in Hansford County.

For the information of those coming in from other states where different systems are used, Texas law requires an annual registration. J. B. Cooke, tax assessor-collector, said that if anyone had a question about whether or not they had registered a call to his office can be made and verification will be easy.

Don't be denied your right to vote. Too many fail to qualify by their own negligence.

Helpful Hints From Me To Thee

By Vivian Warminski
Hansford Co. Home Demonstration Agent

FIGHT FLU WITH FRESH CITRUS

Are you one of the lucky few who have not succumbed to the common cold or influenza during the holiday season? Don't relax your vigilance because the virus or "flu" bug is still in the air just looking for a victim. To stay well, physicians are advising plenty of rest, a well-balanced diet and the avoidance of crowds.

Physicians all agree that when you are overly tired you are more susceptible to colds and other infections. They say that these infections are spread from person to person through the air and also point out that holiday eating, with its excess of sweets and goodies may have crowded out other foods that are needed to insure a well-balanced adequate diet.

Your employer will agree with your doctor that if you get a cold or signs of influenza, stay home and keep your germs out of circulation. Follow the doctor's instructions as to bed rest, medication, and plenty of liquids. To vary your liquid intake, include fresh orange juice, lemonade, fruit punches and soup broths along with water. In this way, you are continually replenishing food nutrients. It is important to prevent the respiratory passages (nose, lung, and sinuses) from becoming dried out. Eating an orange breaks the monotony of drinking liquids. Did you know that oranges are 85% liquid and are high in vitamin C and minerals. The fibrous material around each segment provides excellent roughage to help promote regular elimination. Just peeling an

orange and eating it out of hand is relaxing to do. As you peel it, the oils from the skin emit a fragrance that perk up the appetite. Follow the orange with a big glass of cold water. You'll begin to feel better in no time. Have you tried eating grapefruit just like oranges? They're great. Why not give that unfortunate friend who has caught the "flu" bug a large basket of fresh citrus. Include oranges, lemons, grapefruit and tangerines. They're so plentiful and delicious right now. Attach a special set well card with your personal message: "Here's fresh citrus to brighten your day and shorten your stay in bed."

FOR YOUR HEART'S SAKE AND YOUR NAMESAKE TOO
February may be the shortest month of the year, but you can make this February the most important month of all the years by taking a tip from the American Heart Association. Their advice to homemakers is simple. "Preventive measures should be initiated early in life to have the best chance of preventing or retarding coronary heart disease. For example, correction of established adverse eating or smoking habits, while evidently beneficial, is certainly of less value than if the improper practice were never begun". Doctors have set up simple but effective dietary guidelines for the housewife to follow: one, that weight control must be taken seriously; two, that limits be put on the intake of saturated fats and simple sugars.

In past years, it was thought that obesity ran in families, that it was inherited, but that is no longer the case. The overweight family has an overloaded meal-time table--meat, time, too! Dependence on foods such as vegetables, cereals and fruits to supply most of the dietary carbohydrates is preferable to excessive use of sugar, including candy, soft drinks and other sweets. Here are four quick, easy ways using fresh citrus fruits to reduce the possibility of future heart disease:

1. Use a squeeze of fresh lemon instead of butter to season and perk up canned, frozen or fresh vegetables.

2. Substitute a glass of fresh lemonade for that extra glass of milk.

3. Oranges, fresh and juicy, are a satisfying ending to any meal and cut out pies, cakes, and cookies along with all their carbohydrates.

4. Change the children's cookie snack into a fresh fruit snack and you will be on your way to pleasing not only the doctor but the dentist too!

Doctors point out that dietary habits which are formed during your children's development years continue for a lifetime. So start giving your family a valentine that will go on living and loving the rest of their lives--good eating habits.

Pre schoolers

Listed below are students who will start school in the first grade next September, 1969. If you have a child starting to school whose name does not appear on this list, please call 2365, or go by the office of the elementary principal, Allen Alfred.

Ayler, Lester Samuel Jr.; Bera, Lorinda; Bell, Michael; Bentley, Raymond; Bodey, Carey; Bradshaw, Sybil Lee; Burke, Dana; Bolls, James; Burke, Kenda K.; Byrum, Terry; Carroll, Donald Joe; Casarez, Judy Ann; Clark, Nancy; Clemons, Eddie Annette; Close, Twyla Jean; Collins, Dorothy; Counts, Richard; Cummings, D'Ann; Davis, Maricela; De Wit, Stacey; Dry, Sandra; Farr, Julian; Farren, Denny; Ford, Kammy; Foster, James; Garton, Carola; Linda; Goff, Michael; Graham, Michelle; Greene, Sherry; Gregg, Davine; Jackson, Tal; Jackson, Tammy; Keeton, Jennifer; Kendrick, Tammi;

Kenny, Melanie; Lindsay, Mauri; Lopez, Jesus Jr.; Lush, Rebecca; McBride, Joe (Dwayne); McCoy, Jana; Meek, Patrick (Wayne); Meisner, Greg; Melton, Tilda Lyn; Morris, Virginia M.; Novak, Hunter; Odegaard, James Gregory; Olivarez, Salvador Jr.; Pacheco, Andra; Partridge, Charles; Pearson, David; Perkins, Penny; Phelps, Latonia; Reed, Jackie; Reed, Kimberly; Reed, Margaret; Rex, Donnie; Rhos, Maria Jovita; Russell, Kevin; Sanders, Alan; Sasser, Vicki; Scroggs, James; Scroggs, Tamara; Sheets, Lisa Jo; Smith, Tracie; Spennemore, Kurt; Stewart, Robert; Strawn, Shelly; Sutton, Sonja; Swain, Laurie; Tucker, Carla; Thomas, Lesa; Van Buskirk, Angela; Vardell, Alan; Walker, Cheryl; Watts, Michael; Weaver, Tammy; Williams, Johnny Lee; Wilson, Laura; Wood, Brian.

Blair, Jimmy S. Jr.; Brainard, Amy; Carroll, Donald Joe; Fernandez, Berna; Gee, Cammy; Hall, David Scott; McIntyre, Edward; Melton, Tilda Lyn; Ortiz, Sarah Louise; Parcy, April; Pond, Calvin; Pope, Kenneth Bradford; Rinker, Michael.

Dieters Club Meets Friday

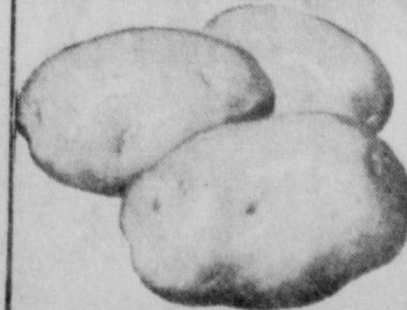
The Friendship Dieters Club is still meeting in the City Hall each Friday evening to weigh in and have a good time. The Club wishes to inform old members who have not been attending that they will start out with new weight charts and will not return to the records being used before Christmas. The old faithfuls who are now meeting urge old members to come back and join in losing weight the fun way each Friday.

Compare

...OUR HIGH QUALITY! OUR LOW PRICES!

FRYERS Whole Fryers Grade A	27¢	TOMATOES Cello Ctn. Shurline Coffee - all grinds	25¢
CHUCK ROAST lb.	53¢	COFFEE lb.	59¢
ARM ROAST Whole lb.	63¢	PEACHES 34 Shurline Half 2 for	53¢
ROUND & SIRLOIN STEAK	98¢	Shortening 3 Lb. Bakerite	53¢
Bacon Slab lb.	57¢	CORN 303 Shurline Cream Style	6¢
MELLORINE Lane's All Flavors 1/2 Gal.	33¢	PEAS 2 for	47¢
BANANAS	10¢	TIDE 16 Lb. 10 Oz. 75¢ off-label	329¢
WAFERS Tendercrust Vanilla Bag	27¢	KRAFT Miracle Whip Qt.	39¢
POTATOES White Russett U. S. # 1	10 lb.	Sweet Potatoes 23 oz. Shurline Can Hot Dog or Hamburger	3 for 1
		BUNS 2 for	49¢

M. & M. Grocery & Mkt.
Spearman 202 N. Bernice



POTATOES
White Russett U. S. # 1
10 lb. 49¢

Hospitalization

POLICIES OF THE WHITE CROSS PLAN
BANKERS LIFE & CASUALTY COMPANY
M. C. KUYKENDALL
PHONE: FL 6-3226
4712 CHEROKEE TRAIL
AMARILLO, TEXAS

Texas Politics

by Rep. Malouf Abraham

We have the second week of the session under our belts. This week we had the big inaugural celebrations, parades, dances and speeches. The town was really full of people, especially from the Lubbock area. We also had a big delegation of Farm Bureau people from over the State. They had us all to a banquet where Governor Smith made his first speech. Ochiltree and Hansford Counties were both well represented.

It looks like it is going to be next week before we get out committee assignments. This is a little later than last time but with new people in all three top offices it takes a little longer. Seems like everyone is giving everyone else the benefit of the doubt. Of course, this can't go on forever as we have too many real tough problems that aren't going to get solved without making some people unhappy.

Governor Smith's speech to our joint session this week

was well received. It actually covered a lot more territory than a lot of us expected. I think that he will probably surprise a lot of people in the job he will do as our Governor. He doesn't have the glamour etc. but he sure has the know-how and has assembled a top-notch staff of people. This will probably be the last West Texas Governor for many moons. By the time Preston leaves, we will have redistricted after the 1970 census.

Opposition to the consolidation provision of the Governor's Education Committee continues to bring an avalanche of mail. Actually there isn't any use of writing me because I am against it. Maybe if you know or trade with some people in Dallas, Houston, San Antonio and some of those big cities you might ought to be writing them. I don't think they have as many as 50 votes out of the 150 at this time. We want to be sure and not go to

sleep at the switch when the time comes. We are going to have to face up to the fact that things will get tougher before they get better. We will need to face up to the fact that our problems are not going to disappear. We either need to solve them ourselves or someone else will do it for us. I hope you have gotten some moisture by now.

Performing Arts Offers Programs To Area Cities

The High Plains Center for the Performing Arts was presented to a group of nearly 100 area supporters at a meeting held recently in the Estate Life Building in Amarillo. Eddie Thomas of Dallas, widely known for his portrayal of Calvin Armstrong in the pageant, TEXAS, made the presentation.

In concept, the Center will serve a two-fold purpose: to provide counselling, training, and performance in all the arts by profes-

sions, open to all regional towns that wish to apply for its services and facilities; and to serve as a headquarters from which programs of training and study as well as performances by professional groups will go out to the region, in support of local projects in the arts.

Present at the meeting was F. Donald Clark, Dean of the College of Fine Arts at the University of Oklahoma, who emphasized the regional value of the Center. "By supporting this project," Clark said, "the region would attract national recognition." He also pointed out that "this is the sort of thing industry is looking for when it seeks to relocate."

Eddie Melin, member of the Texas Fine Arts Commission, also spoke to the group. He said, "We have a need to encourage these things - drama, music, dance, art, writing. We should take the interest, the ability, the talent and the money of the 27 counties of the High Plains and make a cultural paradise that the United States can look to."

Offers of buildings to house the project, have come from a variety of sources. One,

the Estate Life Building on the Canyon Expressway, has sufficient floor-space to provide for future expansions. Built at a cost of \$600,000, it may be purchased for \$250,000.

A 61-member board of directors will provide guidance for the organization. Members are drawn from the area towns for the most part, but there are also members who are nationally known in the arts: Dr. Paul Baker of the Dallas Theatre Center; Norman Nadel, Cultural Arts Editor for the Scripps-Howard Newspapers; Dr. Lyle Hagen, Dean of Speech and Drama at Eastern New Mexico University at Portales; and F. Donald Clark, Dean of the School of Fine Arts at the University of Oklahoma.

According to the articles of incorporation, the Board is still open to expansion. All area citizens are welcome to submit additional names of others who would be interested and active in the organization.

Permanent officers were elected by the Board. Eddie Thomas was elected president; Marilyn Myers Pool of Amarillo, first vice presi-

dent; Dr. Marvin Hirsch of Amarillo, second vice president; Nell Mays of Tulla, third vice president; Hope McKenzie of Canyon, secretary; Margaret Glenn of Amarillo, treasurer; and Judge "Gene" Jordan, parliamentarian.

The finance committee, headed by co-chairman Dr. William Dunnagan and Mr. Russell Carver, were appointed. Suggestions, contributions and pledges from any area citizens are welcomed by the committee, whose mailing address is Post Office Box 7563, Amarillo, Texas 79109.

Visitors in the home of Mr. and Mrs. John Brinkley last week were their children, Mr. and Mrs. Wesley Brinkley of Lubbock and Carla Brinkley of Canyon. They were home from college for the semester break.

Mr. and Mrs. Del Taylor and daughters of Lakin, Kans. were in Spearman Sunday visiting in the home of her sister and husband, Mr. and Mrs. Bruce Sheets.

TAX MAN SAM SEZ:

In a few days--or certainly by the January 31 deadline--your employer will hand you, (probably with your regular pay check), a little W-2 Form. Now most of us understand that the W-2 Form has to be attached to the front of the Form 1040. We also know that we need to keep the copy marked Employee's Copy. What we don't know in many cases is that we need to check the amount of our withholding and our social security tax and the amount of wages we received during 1968 as shown on the W-2. A simple little clerical error on showing more pay than you earned, or failing to give you credit for all of the income tax withheld, could cost you several hundred dollars. On the other hand, if you are given credit for too much withholding, you'd better get this corrected, too. Don't be too hasty to argue over a few dollars difference with your pay office for they are usually right, however, if your W-2 looks clearly out of line, find out why.

Guests in the home of Mr. and Mrs. Howard Hartsell last weekend were Staff Sgt. and Mrs. Ross McClure from Caswell Air Force Base, Fort Worth; Mr. and Mrs. Royce McClure and children, Mr. and Mrs. Charles Croley and children from Perryton, Mrs. Reba Sasser and son, Mr. Pearl Quillen and Mrs. Jean Alsip from Liberal.

TAX MAN SAM SEZ RETIREMENT INCOME CREDIT

When Congress passed the change in the law giving Older Americans an additional tax credit called "retirement income credit," they wanted to help these older Americans by giving them more dollars to meet their living expenses. We have had a great deal of publicity on the retirement income credit and even on the possibility of getting double retirement income credit due to the community property law in Texas. However, there are still many eligible taxpayers who do not claim their retirement income credit. If you are retired and owe income tax, it will pay you to check Publication 554

FRYERS



Weekend Values for Friday January 31 and Saturday, February 1

Meaty, tender CHICKEN is the perfect cue for a Sunday barbecue, a Funday picnic or a super Holiday supper! And CUT RATE fine poultry will make a perfect feast because each TOP-QUALITY bird is just the right age and just the right size — and priced just right, too, for delicious SAVINGS! Better buy several. Enjoy lickin'-good CHICKEN this weekend — then freeze the rest for future FUN-day Feastings!



SUNDAYS FUNDAYS HOLIDAYS

Tomato Juice 46 oz. Can 33¢

COFFEE Maryland Club 1b. Can 69¢

POTATOES 20 lb. Bag 69¢

MIX or Match
Red Leaf LETTUCE Bunch
Red Leaf ENDIVE Bunch
SALAD BOWL 3 for \$1

GRAPEFRUIT

Ruby Reds 10¢ lb.

Texas Golden Cello Pac 10¢ CARROTS

California Fuerte 2 for 25¢ AVOCADOS

Fancy Reds Delicious 17¢ APPLES

Fresh Dressed U. S. D. A. Grade A 29¢ lb.

Fresh Dressed Pan Ready **FRYERS** 35¢ lb.

Dry Salt 39¢ BACON

Lean & Meaty Barbecue 89¢ Beef Ribs

Raths All Meat 53¢ FRANKS

4 for \$1 ORANGE DRINK Wagner's Grape or Quart

Big Top 18 oz. 49¢ Peanut Butter

Shurline Crushed 2 for 29¢ Pineapple Flat Can

3 for 89¢ CAKE MIXES Pillsbury Batter

Shurline Fresh Shelled Tall Can 2 for 29¢ Blackeye Peas

Honey Boy 59¢ SALMON Tall Can

Krafts Philadelphia 29¢ CREAM CHEESE 8 oz. Pkg.

CANNED PICNICS

Rath Fully Cooked 1b. can \$1.98

PORK STEAK

Lean & Tender 3 lb. 59¢

Leos Sliced Beef, Ham, Corned Beef, Salami, Dark Turkey 3 pkgs. 78¢ Sliced Meats

Extra Lean Ground 69¢ Beef Patties

Fresh Baby Beef 59¢ LIVER

Vermont Maid Maple 59¢ SYRUP 24 oz.

Hunts Solid Pac 23¢ Tomatoes Tall Can

Food King Solics 10¢ OLEO

Sunshine Krispy 33¢ Crackers 1b. Box

Hi-Vi 50% Horsemeat Large 6 for \$1 Dog Food 26 oz. Can

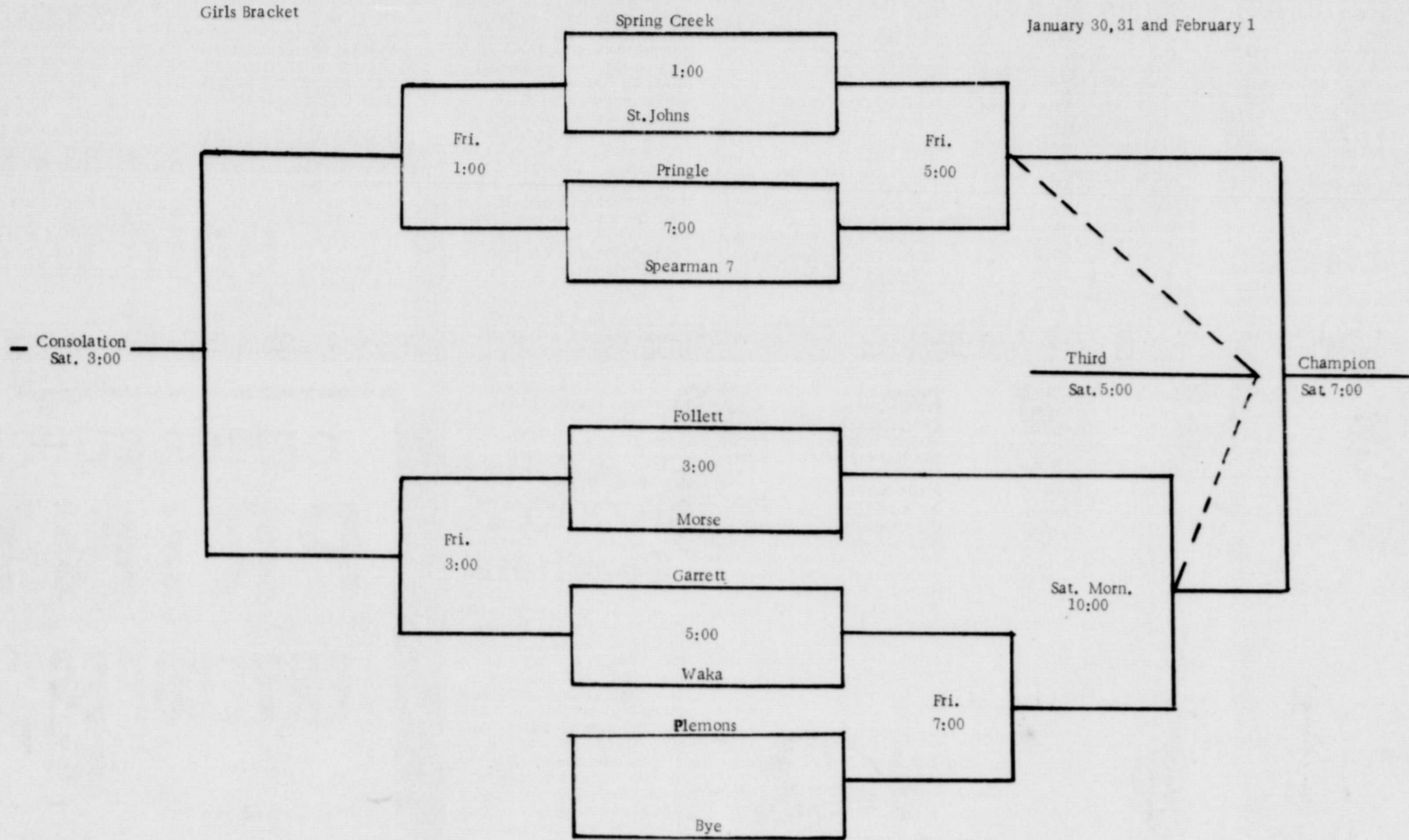
Hunts Family Size Tomato 20 oz. Bottle 3 for 89¢ CATSUP

Shurline Cut Spears Tall Can 33¢ Asparagus

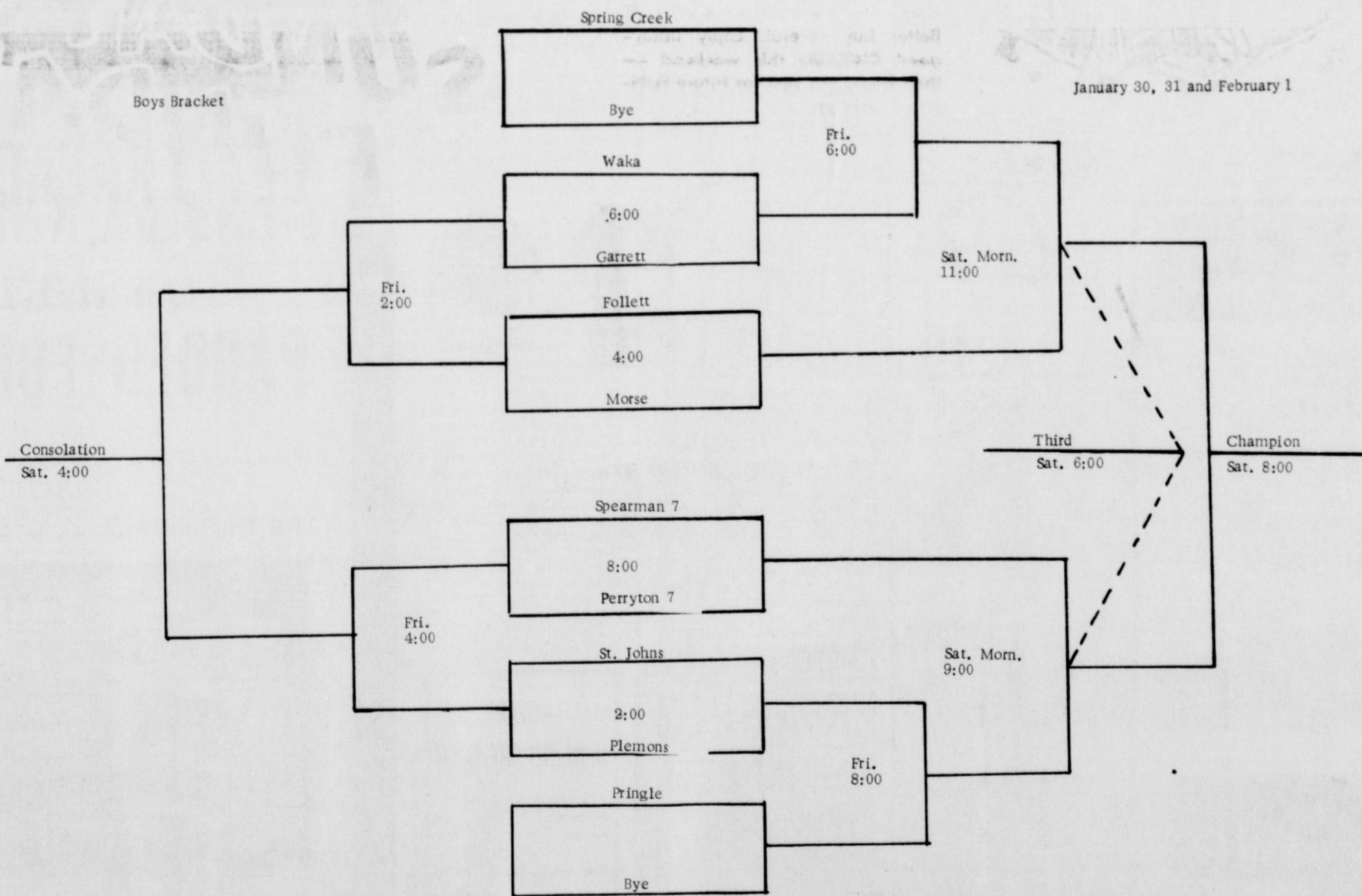
Cut Rate GROCERY

WAKA TOURNAMENT

THURSDAY



Thursday



First National Bank

Rogers Sales & Service

Wheatheart Feeders

Carters Grocery & Shamrock Service

North Plains Truck & Imp.

PONTIAC - BUICK - GMC - INTERNATIONAL TRACTORS



Let Me See ... by Sybil

I stirred up a little commotion via this column last week when I stated my opinion (plus a few facts) concerning the fifth we are subjected to nowadays if we read the best sellers and see the current movies.

One woman came by the office to talk with me about it and informed me that filthy literature was nothing NEW and she would like to see people quit down-grading our cur-

rent classics. According to her the books I mentioned here last week were very MILD compared to some written back in the 14th century. "The Canterbury Tales" by Chaucer and "The Decameron" by Boccaccio were on a list she brought to me. This interested patron was of the opinion that the general public was just off on a "puritan binge" so to speak, and was making a lot to do about nothing! The world has not changed, she said. What WAS, IS, and she doesn't see any harm in any of it. The only thing she is against, in reality, seems to be violence, but thinks the well-used phrase about the "moral decline of the human race" is a bunch of bunk.

On the other hand, one gentleman called me to say that he agreed our colleges had little to do to assign such literature to our students for book reports or just to get their personal views on "trash". He invited me to go through our own Spearman High School library and take note of the many such books on the shelves there!

To each his own, and the list of good books, bad books, good movies, bad movies... is endless.

HAVE YOU FELT any difference since January 20? That's when the new administration took over the responsibility for what will happen during the next four years. I have confidence in Richard Milhous Nixon. We knew instantly who they were talking about when newspaper headlines printed JFK or LBJ. How long do you suppose it'll take us to become familiar with RMN? I bet we don't see these initials used often. Not only is RMN hard to say, but there's no rhyme.

IN A NOTE this week from the James Pendergraft's up at Gunnison, Colo., Barbara said the entire family is enjoying ice skating. James, who had never had on a pair of skates of ANY kind, at first thought he would rather ice fish... but finally joined the family on skates. Mrs. P. says they had a mild winter until Jan. 23 when the snow measured one foot on the level.

I'M AFRAID West Texas U. is getting ready for some racial problems if someone doesn't change the bulletin board in the Student Union building. The board features a large poster showing the Statue of Liberty with her outstretched arm, along with a picture of a negro student and bears the caption: "Make America A Better Place, Leave The Country!" This was on page 2 of the January 24 issue of THE PRAIRIE.

AREA CITIZENS are very familiar with an Amarillo policeman named Stoney W. Jackson for he appears on practically every TV newscast.

I got a big kick out of a story in Saturday's Globe news about the 36-year old negro policeman being promoted to the rank of Sgt. In the story, the reporter described Mr. Jackson as "one of the most colorful lawmen in the area."

SOME VERY distinguished people from Hugoton, Kansas were in the office last week looking for an empty building or two. They were very interested in moving their jewelry shop and restaurant to Spearman. From all reports, these people are real restaurateurs who desire to move to Spearman---but alas! no building.

Pvt. Castor In Germany

(AHTNC)--Army Private First Class Ronald G. Castor, 19, son of Mr. and Mrs. Harry E. Castor, Gruver, Texas, is in Germany as a driver with the 24th Infantry Division taking part in the Military Exercise REFORGER I.

The exercise, to be conducted in Europe in January and February 1969, involves U.S. Army units based in the U.S. and Europe. It includes about 12,000 Army troops assigned to the 24th Infantry Division, based at Ft. Riley, Kan., and to combat service support units from across the country. These units were flown to Europe in January.

Exercise REFORGER I will evaluate and further develop techniques for the deployment of U.S. NATO forces to Europe, and is the first in a projected series of annual exercises for those units and for other units based in Germany.

The exercise is designed to maintain proficiency in operating procedures and to deal with special requirements pertaining to the European theatre. Emphasis will be on orderly disposition of forces rather than speed of deployment.

Army units sent overseas for REFORGER I will receive their prepositioned equipment, move to Grafenwohr, test the equipment, conduct an airborne demonstration, participate in a two-sided field training exercise in the vicinity of Grafenwohr-Hohenfels, process their equipment for return to prepositioned storage and return to the United States.

Patients in Hansford County Hospital are: Nelda Archer, Tommie Buchanan, Vance Collier, Rex Cook, Doris Holland, Ruth Lee, Bertie McNabb, John Miller, Linda Miller, Ed Mundy, Muri Pearson, Jr., Mary Skinner.

Dismissed were: Ellen Babbs, Betty Redwine, Nettie Phelps, Ray Prachar, Sandra Collier, Jimmy Faye Cooper, Patricia Butts, Paul Owen, Bert Hatch, Theresa Miesner, Billie Close, Lilly Sloan, Cecil Tucker, Jan Dunn & son, Linda Webb, Sandra Preston, Anson Ward, Evelyn Shrader, Margaret Womble, L. D. Pierce.

Members of the Hansford County Board of the American Cancer Society will meet February 4 at 7:30 in the A. R. Bort home in Gruver.

Cancer crusaders in Hansford county have accepted Darrell Royal's challenge to "concentrate on methods to speed the victory over cancer," Darrell Royal, Coach of the University of Texas Longhorns, is the 1969 Texas Crusade Chairman for the American Cancer Society.

When board members meet at the Bort home, 501 E. Broadway, in Gruver Tuesday night, they will learn what can be done locally to accelerate the Society's cancer control programs.

The annual April Crusade in Hansford County will be the third year the Society will be asking for people to complete a health survey during the house-to-house drive which will be conducted in Spearman, Gruver and Morse.

Mrs. Ken Burrell and children visited in Pampa Sunday with her mother, Mrs. I.E. Hutchison and her brother Doy Hutchison who is home on leave after finishing basic training in the Marines.

Members of the Hansford County Board of the American Cancer Society will meet February 4 at 7:30 in the A. R. Bort home in Gruver.

Cancer crusaders in Hansford county have accepted Darrell Royal's challenge to "concentrate on methods to speed the victory over cancer," Darrell Royal, Coach of the University of Texas Longhorns, is the 1969 Texas Crusade Chairman for the American Cancer Society.

When board members meet at the Bort home, 501 E. Broadway, in Gruver Tuesday night, they will learn what can be done locally to accelerate the Society's cancer control programs.

The annual April Crusade in Hansford County will be the third year the Society will be asking for people to complete a health survey during the house-to-house drive which will be conducted in Spearman, Gruver and Morse.

Mrs. Ken Burrell and children visited in Pampa Sunday with her mother, Mrs. I.E. Hutchison and her brother Doy Hutchison who is home on leave after finishing basic training in the Marines.

School Lunch Menus

- MONDAY, FEBRUARY 3
 - Deep Sea Doodles
 - Tartar Sauce
 - Buttered Potatoes
 - Green Peas with Carrots
 - Celery Sticks
 - Citrus Fruit Cup
 - Chocolate Cake
 - Bread - Milk
 - High School Meat Choice
 - Country Fried Steak
- TUESDAY, FEBRUARY 4
 - Frito Pie
 - Seasoned Pinto Beans
 - Cole Slaw-Sour Cream Dressing
 - Peach Halves
 - Honey - Peanut Butter
 - Hot Rolls - Milk
 - High School Meat Choice
 - Beef Ravioli in Sauce
- WEDNESDAY, FEBRUARY 5
 - Grilled Cheese Sandwich
 - Beef-Vegetable Stew
 - Buttered Corn
 - Dill Pickle Spears
 - Manadrin Orange Jello
 - Spice Cake - Milk
 - High School Meat Choice
 - Corndogs - Bread
- THURSDAY, FEBRUARY 6
 - Orange Juice
 - Pork Patties in Sauce
 - Mashed Potatoes
 - Blackeyed Peas with Bacon
 - Carrot Sticks
 - Apple Sauce Cake
 - Bread - Milk
 - High School Meat Choice
 - Beef and Bean Burritos
- FRIDAY, FEBRUARY 7
 - Hamburger-Mustard or Ham Salad Sandwich
 - Potato Cems - Catsup
 - Seasoned Lima Beans
 - Dill Pickle Slices
 - Lettuce - Tomato Salad
 - Coconut Bars - Milk

The Chamber of Commerce office is beginning to look like an office instead of a big empty building... Thanks to Orvil Brummett and Larry Campbell... They took time off from their busy schedule to build the petition that we have been talking about for the last three months... Looks real nice... If you are downtown stop by and see the handy work...

The Amarillo Better Business Bureau sends the Chamber of Commerce a copy of their monthly bulletin. These are kept on file in the Chamber office for future reference. In the November, 1968 issue they had a very interesting article concerning the "FREE" sewing machines that most of us received a letter on. Next time you receive such a letter it might be worth your time to read this article before making a decision... Seems some of these sewing machines aren't free after all...

In the January issue of TEXAS BUSINESS & INDUSTRY is an article entitled THE UNBIASED BUSINESSMAN'S GUIDE TO DINING IN TEXAS, PART II DALLAS... If you are planning a business trip to



Hospital

Patients in Hansford County Hospital are: Nelda Archer, Tommie Buchanan, Vance Collier, Rex Cook, Doris Holland, Ruth Lee, Bertie McNabb, John Miller, Linda Miller, Ed Mundy, Muri Pearson, Jr., Mary Skinner.

Dismissed were: Ellen Babbs, Betty Redwine, Nettie Phelps, Ray Prachar, Sandra Collier, Jimmy Faye Cooper, Patricia Butts, Paul Owen, Bert Hatch, Theresa Miesner, Billie Close, Lilly Sloan, Cecil Tucker, Jan Dunn & son, Linda Webb, Sandra Preston, Anson Ward, Evelyn Shrader, Margaret Womble, L. D. Pierce.

Agent Presents Club Program

The Spearman Home Demonstration Club met Friday, Jan. 24 in the home of Mrs. Joe Smith with vice president, Mrs. Virgil Hull presiding.

Mrs. A.D. Reed gave the devotional, taken from I Cor. 5:17.

"New Methods of Making Yeast Breads" was the topic for the very interesting and informative program given by Vivian Warminski, Home Demonstration agent.

Present were Mmes. Virgil Hull, W.H. Tarbox, A.D. Reed, Frank Davis, W.A. Schubert, Carl Hughes, W.A. Ellsworth, H.H. Crooks, Carl Hutchison, B.J. Garnett, John Kenney and the hostess.

The next meeting will be February 14 in the home of Mrs. A.D. Reed.

COMMUNITY PROFILE

...from your Chamber of Commerce

The Chamber of Commerce office is beginning to look like an office instead of a big empty building... Thanks to Orvil Brummett and Larry Campbell... They took time off from their busy schedule to build the petition that we have been talking about for the last three months... Looks real nice... If you are downtown stop by and see the handy work...

The Amarillo Better Business Bureau sends the Chamber of Commerce a copy of their monthly bulletin. These are kept on file in the Chamber office for future reference. In the November, 1968 issue they had a very interesting article concerning the "FREE" sewing machines that most of us received a letter on. Next time you receive such a letter it might be worth your time to read this article before making a decision... Seems some of these sewing machines aren't free after all...

In the January issue of TEXAS BUSINESS & INDUSTRY is an article entitled THE UNBIASED BUSINESSMAN'S GUIDE TO DINING IN TEXAS, PART II DALLAS... If you are planning a business trip to

Dallas in the near future you might like to check this guideline and commentary concerning which restaurant to avoid and why...

Don't forget the meeting with Mr. Glen Bailey of the Federal Housing Administration, Lubbock, Texas, Monday February 3 in the Court Room, 7:30 p.m. Mr. Bailey will provide information on the FHA houses in Amarillo which are now available to the highest bidder. These houses are to be moved from Amarillo and could be the answer to our rent house situation...

DON'T FORGET TO REGISTER TO VOTE TODAY!!!!

The Chamber is in need of bookcases or shelves... If you happen to have such around your house or business and do not have a use for them we would certainly appreciate the use of them...

Read this in the U.S. Chamber Newsletter: "You can't no more do something you don't know how to do than you can come back from someplace you ain't been." Angus Wynn.

Older people who enter the hospital under Medicare during this month or after will be responsible for an additional \$4 of their hospital bills. "Up to now," Howard L. Weatherly, social security officer-in-charge, said "Medicare has paid all but the first \$40 of a Medicare beneficiary's hospital bill in each spell of illness. Effective January 1, it covers all but the first \$44. The hospital bill for an average stay by Medicare beneficiaries now runs about \$600.

The increase of \$4 in the portion of the hospital bill for which a Medicare beneficiary is responsible is a result of the

PTA Offers \$6,000 To Teachers

AUSTIN--(SpL)--Scholarship grants totaling \$6,000 will be offered in 1969 by the Texas PTA in the association's continuing program to encourage summer study for career teachers, Mr. R. H. McKay, state president, has announced.

Fifteen teachers will each receive a scholarship grant of \$400 for study next summer in a college or university of the teacher's choice, Mr. McKay said. Recipients will agree to take a minimum of six semester hours, and study must be in a field to improve the applicant's teaching proficiency. Recipients also will agree to teach in Texas the following year or repay the amount of the grant.

In 1968 fourteen \$400 summer scholarship grants were sought by more than 500 applicants. The growth of the state PTA's Endowment Fund, principal source of funds for the program, has made possible an additional grant this year.

It is our hope that the teachers, administrators, and school boards of Texas will take this as tangible evidence of PTA's desire to cooperate for the benefit of Texas students," Mr. McKay said.

Any Texas teacher with at least three year's teaching experience in the state and who currently is teaching in a school with a local PTA in good standing with the Texas PTA and who is a member of a PTA in good standing is eligible for consideration. Previous grant recipients, as well as members of the immediate families of the PTA State Board of Managers, the State Office Staff, and the Board of Trustees of the Endowment Fund, are ineligible.

Teachers may obtain grant application blanks by

writing prior to March 1 to Scholarship Committee, Texas PTA, P.O. Box 2197, Austin, 78767. Completed applications must be received at the same address by March 31.

Each application may be accompanied by letters of recommendation from the teacher's immediate supervisors, but the cover letter must be from a school district official within the applicant's district.

ROTARY DRILLING CREWMAN

Jobs located with crews in Spearman, Perryton and Pampa, Texas.

Drillers ... \$3.24 *\$3.79
Derrickmen \$2.68 *\$3.23
Motorman . \$2.48 *\$3.03
Floorman . \$2.36 *\$2.91

30c to \$1.00 per hour Bottom Hole and Performance Bonus.

*Includes an average Bottom Hole & Performance Bonus of 55c per hour paid for completion of well.

\$10.00 - \$15.00 Per Day paid to Driver of Crew to and from Rig.

Will accept some inexperienced men willing to work and learn.

CONTACT PERSONNEL DIRECTOR Baker & Taylor Drilling Co.

CALL COLLECT (AC/806) 659-2504 Spearman, Texas

OFFICE SUPPLIES AND

PRINTING

ENVELOPES

FORM WORK

LETTERHEADS

PADDED FORMS

The Highside Desk Organizer

Printing as good as you'll let us make it.

PRINTING FROM THE TRADE WELCOMED

THE Plainsman

Phone 659-3434

STOP PATCHING... STOP PAINTING.

PANELING IS PERMANENT!

Real wood walls. Save you time and money on patching, painting, and re-painting. Patented baked-in the wood finish will not crack, chip, or peel. Your walls have permanent beauty.

4X8 SHEET

\$3.88

WHITE HOUSE LUMBER CO.

What's Going On In

HANSFORD County

Thursday, Jan. 30-Gruver Jr. High teams will play at Sunray at 4:00.
Spearman Freshman boys vs. Dalhart in Lynx Gym at 7:00.

Jan. 30-31 & Feb. 1-Morse Jr. High teams participating in Waka Tourney
Spearman B girls & B boys will participate in Sanford-Fritch tournament.
Spearman seventh grade girls & boys in Waka tourney.

Friday-Jan-31-Spearman A boys & B boys vs. Boys Ranch here in Lynx Gym at 6:15.
Spearman A girls and B girls will play at Tulla starting at 6:30.
Gruver A Teams and B Teams will play at Sunray starting at 4:00.

Friday-Jan. 31-Deadline for voter registration at county tax office.

Saturday, Feb. 1-Groundhog Supper at Methodist Church from 6:00 to 8:00 p.m.

Beady Furniture Art Exhibit-Ann Thom of Gruver
Gruver Library Art Exhibit-Students of Mildred Hintergardt

What's Going On At

HANSFORD Implement Co.

USED MACHINERY SPECIALS

1 1964 AC-D19 LP, RC Tractor, with cab	\$2150.00
1 1961 JD D4 RC Tractor with cab	\$3500.00
1 1966 Krause 14 1/2 Tandem, Clean	\$ 450.00
1 Krause 14 1/2 Tandem, New Disks	\$ 350.00

NEW MACHINERY SPECIAL

1 5020, RC Tractor, with Factory Cab	\$14,550.00
1968 Model Closeout Price	11,900.00

John Deere

HANSFORD IMPLEMENT CO.

Sales - JOHN DEERE - Service

Phone 659-2712

Borger Highway Spearman, Texas

THREE GREAT GASOLINES

Diesel Fuel Kerosene

WASHING GREASING TIRE BALANCING

BRAKE SERVICE MUFFLER SERVICE

ROAD SERVICE THE SIGN OF OILS and GREASES

FRIENDLY SERVICE, QUALITY PRODUCTS

WORLD'S FINEST MOTOR OIL

ALTON'S GULF SERVICE
Pho. 659-2422
Retail

ELLSWORTH OIL COMPANY
Pho. 659-3033
Wholesale

Washington Report

From Congressman
BOB PRICE 11TH DISTRICT, TEXAS
1001 LONGWORTH OFFICE BUILDING, WASHINGTON, D. C. • 205-3706



... prepared to leave the White House, President Nixon presented to Congress the most balanced budget in the history of the country. The proposed 1970 budget, which would begin July 1, in fact, contemplates a surplus of \$3.4 billion. There are, however, conditions such as the most important of which is an extension for the year of the 10 percent surtax which would expire on this year. Reduction in the Federal deficit would also be reflected in the surplus and the sharp reduction in net Federal

borrowing requirements. As encouraging as this is, there could be some slips between the cup and the lip. Extension of the 10 percent surtax is not a foregone conclusion, nor is extension of certain excise taxes which would otherwise be reduced under a prior law. The 10 percent surtax extension is estimated to produce \$9 billion in income tax receipts in 1970. There are a few other bitter pills in the budget prescription, such as proposed legislation for user charges in the field of transportation -- highways, airways, and waterways plus a proposed shift in the timing of collections of the

Federal unemployment tax from a lump-sum annual basis to a current quarterly basis. Most of these proposals including extension of the 10 percent surtax, are unlikely to be popular but may be necessary, along with continued efforts by the Congress to hold down appropriations, if a balanced budget or surplus is to be achieved.

The new Nixon Administration also has the tight rope of a balanced economy to walk -- maintain full or near-full employment and prosperity, slow down the present and alarming rate of inflation without slowing the economy into a recession -- all of this in the face of the uncertainties of the war in Vietnam and continued development and maintenance of an essential military and defense superiority. It is not an enviable position for

a new President to step into but I am confident that Richard M. Nixon is the most capable man in the United States to attempt to restore not only price stability, and order in the nation, but peace in the world. I believe he will have the full cooperation of Congress and all America in rallying the nation "Forward Together."

Of vital interest to the Panhandle and all of West Texas and Eastern New Mexico were proposals in the budget for funds to continue the water import study. An appropriation of \$555,000 for the Bureau of Reclamation and \$450,000 for the Corps of Engineers to continue their reconnaissance study of the West Texas and Eastern New Mexico water import project was included in the budget. If approved by Congress this will be an increase from the \$892,000 already funded to those two agencies for the water import study for fiscal 1969.

The scope and magnitude of the water import plan is well expressed in the forward of the summary of the Texas Water Plan, which was released in December, which states in part: "With the heavy demands on the Federal budget, it is completely unrealistic to expect that the United States would fully finance construction of all of the works needed to meet Texas' urgent water needs. The State of Texas, and its political subdivisions, must provide significant portions of the funds required."

Further, in order that Texas may have full control over the development and utilization of its water resources, it is essential that the State be a major participant in financing and directing the Texas Water Plan into actuality and in its management once construction is completed.

The magnitude of the job and the tremendous long-range commitment of State resources involved must not be underestimated, no: the tragic consequence of delay. There is not a water resource plan of this magnitude or complexity in existence in the world today or even in the planning state, yet Texas' water needs for the future can be met with nothing less sweeping"

As the 91st Congress went through its organizational processes, I was honored by the Republican Committee on Committees with an additional assignment -- The Science and Astronautics Committee. I will retain my seat on the House Agriculture Committee and move up three notches in seniority.

My membership on the Agriculture Committee is still my most important assignment and will undoubtedly mean much more to the Panhandle under a Republican Administration and Secretary of Agriculture. However, the Space Committee is also of major importance in view of the unlimited scope of the space program.

Last year I toured the Manned Space Flight Center in Houston where I visited with some of my Air Force friends now in the program with whom I had flown in Korea.

The magnitude of the U. S. space program and its accomplishments are difficult to visualize or realize. "The Independent Observer," a newsletter report on the significance of events at the United Nations, had this to say in a recent edition:

"During the United Nations General Assembly of 1957 the first earth satellite was orbited by the Soviet Union and 'Sputnik' began to circle the globe once every 97 minutes. Toward the end of the UN Assembly in 1968 three United States astronauts set off on a voyage which took them 10 times around the moon.

In the decade between these extra-terrestrial events, the U. S. and USSR have remained the only States with the competence and resources to explore Outer Space. Despite the nuclear weapons capabilities of Britain, China and France, the lead held by the United States and Russia is so great that those two nations can still preempt that military field. The same two Powers bid fair to have an equally exclusive advantage in the exploitation of the Sea-bed and Ocean floor.

Their superior technological positions in these three areas of human endeavor gives them superiority not only in war, but in the very numerous 'spin-off' benefits of space exploration, and potential control of the vast new resources to be derived from beneath the deep oceans which cover a major portion of the earth's surface.

So these so-called "spin-off" benefits will undoubtedly have significant effects on Texas where industry has



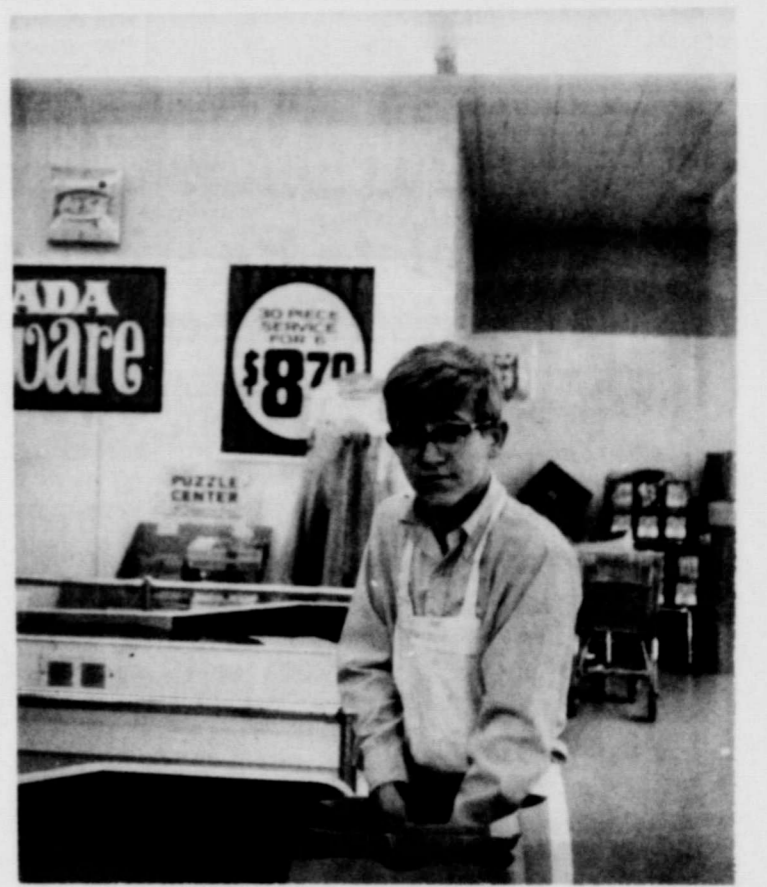
JUNIOR HIGH TOURNAMENT WINNERS -- The 8th grade girl's team captured first place here last weekend by beating a fine Gruver team. Pictured above: Kendra Brock, Phyllis Randall, Donna Sue Fryrear, Denise Standifer, Lee Ann Shildknight, Cathy Dear, Teresa Beck, Valorie Uptergrove, Linda Ricketts and Nanette McIntyre.

made giant strides in research, development, and production of the hardware and technology necessary for the space program.

An example is the James Connally Technical Institute at Waco which occupies the former Air Force Base there and is operated by Texas A&M University. Because of the Institute's industrially-oriented training curriculum, space-associated industries have located there to avail themselves of the skilled employees necessary to their highly technical operations.

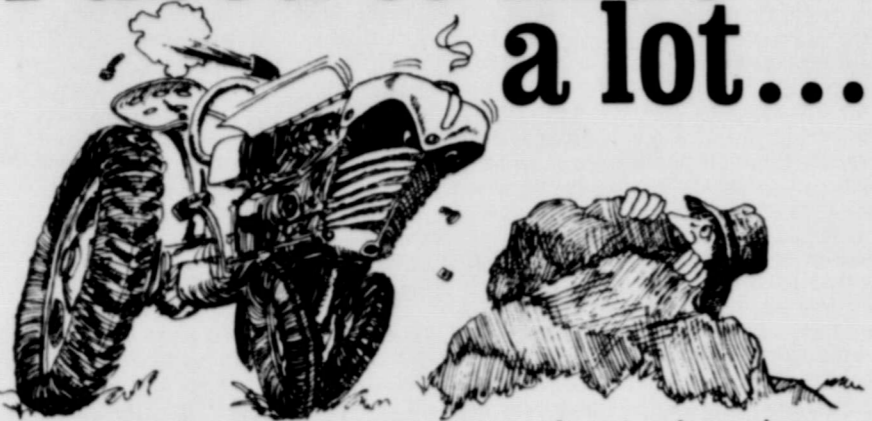
Amarillo now has the opportunity of a similar institute at Amarillo Air Force Base. A Technical Institute under the same Texas A&M plan has been in the making for more than two years and is now nearing the crucial stage of approval by the Texas Legislature and approval in Washington for acquisition by Texas A&M of the necessary facilities at the base.

The Institute could be of vast importance to a wide area of the Panhandle and adjacent states. While agriculture and agriculture-associated industry is still number one in the Panhandle, we need other industry to supplement our economy, especially some of our smaller communities.



STUDENT of the week is Wesley Brown, son of Mr. and Mrs. Milton Brown. This 16-year old Junior is employed at Ideal Grocery where he is learning the general business of a food store. Wesley would like to be a Highway Patrolman and plans to follow this career when he graduates from Spearman High School.

I used to hide a lot...



Every time I started my tractor, it made menacing noises . . . clattering and stuff. I couldn't stand it. I'd go hide. It got so I spent most of my time hiding. But, the farm really started falling apart and I got hungry. So, I got my tractor overhauled, then called my Conoco dealer. I don't have trouble any more. Quality Conoco products are delivered regularly. My Conoco dealer's advice has saved me quite a lot. My equipment is in first-class shape. Run it all the time. Plow anything. Tomorrow, I'm plowing the stone quarry.



SNIDER-PEARSON CONOCO 659-3555

PUBLIC AUCTION

Farm Machinery

Saturday February 1 1:30 P.M.

LOCATED FOUR MILES WEST OF GRUVER, TEXAS, ON HIGHWAY 15 AT THE STAVLO HOMESTEAD, 1/4 MILE SOUTH OF HIGHWAY, TALL WOOD BARN, AND TALL WOOD HOUSE FADED WHITE.

- THREE SETS DEMPSTER EIGHT HOLE DRILLS, WITH HITCHES AND MARKERS.
- THREE GASOLINE TRACTORS, W9 I. H. C. IN GOOD CONDITION.
- TWO GRAHAM HOEME PLOWS WITH HEAVY DUTY SHANKS, AND FOUR INCH WIDE CHISELS.
- TWO GRAHAM HOEME PLOWS WITH JOHN DEERE SHANKS, AND 32 INCH JOHN DEERE SWEEPS.
- TWO SCHAFFER ONE WAY PLOWS WITH LARGE DISCS.
- ONE KRAUSE ONE WAY PLOW, OLD STYLE.
- ONE SERVIS BLADE.
- CATTLE SQUEEZER, DEHORERS, CATTLE FEED TROUGHS
- CATTLE WATER TANKS, WOOD POSTS, IRON ELECTRIC POSTS, FENCE CHARGERS, BARB WIRE, OIL AND BARRELS,
- FUEL TANKS, FUEL BARRELS, GREASE GUNS, GASOLINE FUEL PUMPS, FIVE GALLON CANS, 16 FT. STEP LADDER,
- SHOVELS, LOG CHAINS, HYDRAULIC JACKS, IRRIGATION TUBES, KITCHEN TABLE AND CHAIRS, WRENCHES, ZEREX, W9 I. H. C. TRACTOR PARTS, DEMPSTER PARTS,
- PLOW AND PICKUP TIRES, GRAHAM HOEME PARTS, BOLTS AND EQUIPMENT.

TERMS CASH

OWNER LLOYD STAVLO

Auctioneers

J.C. Harris And Associates

PLEASE REMOVE ALL PURCHASED PROPERTY FROM PREMISES IN THIRTY DAYS, BECAUSE THERE IS A NEW OWNER OF THIS REAL ESTATE. THERE WILL BE NO BIDS IN, IF THERE IS A STAVLO BIDDING HE IS BIDDING TO BUY.

NOTICE

IRRIGATION FARMERS

MEETING



Ray Martin, Sales Representative

Gruver, Texas American Legion Hall

7:30 P.M., Monday, February 3, 1969



Peoples Natural Gas Division of Northern Natural Gas Company



WINNERS--The 8th grade boy's team won first place in the Junior High Tourney held here last weekend by Seating Perryton. Pictured above with their coach Perry Courtney: Kim Kulp, Doug Parker, Larry Hensley, Jerry Pat Davis, Joey Woodley, Randy Schell, Scott Seedy, Phil Lair, Mike Floyd and Scott Latham.

IMPORTANT GRAIN SORGHUM CONFERENCE IS SCHEDULED

The Grain Sorghum Producers Association announced this week the date for the 8th biennial information research and utilization conference and sorghum disease symposium.

The date is March 5-7 at the Fleming Hotel, Amarillo. This conference will be competing for facilities with an area-wide teachers' meeting, an early request to the hotel for personal accommodations is suggested. All private and public areas of this hotel have recently been completely renovated and promise to provide adequate and economical accommodations.

The conference is designed to provide a meeting place for an across-the-board exchange of information on research and development which may lead to even better production and wider use of grain sorghum.

There will be no fee or registration cost whatsoever. The conference is hosted as

a regular part of the balanced program of Research, Market Development and Service of the Grain Sorghum Producers Association.

Interested people are invited to attend all sessions of this conference which is an important to grain sorghum.

Game Violation Fines, Highest

AUSTIN--The \$50,000 fine received by the State of Texas in December for game fish and water safety violations is the most the State has ever received in any month, according to J. B. Phillips, law enforcement coordinator for the Texas Parks and Wildlife Department.

The 1,894 citations issued by game management officials in Dec. 1967, represents a 45 percent increase over the 1,304 citations issued for

the same period the year before.

Of the 1,894 hunting citations, 170 were for hunting at night, 121 were for possessing an untagged deer, 95 were for no hunting license, and 88 were for killing or possessing a deer in closed season.

There were 177 fishing violations in December, 159 of these being "no fishing license."

Commercial fishing violations totaled 15, water safety violations totaled 92, and miscellaneous violations totaled three.

Disposition of other cases included: juvenile, 34; dismissed, 74; served time in jail, one; fine suspended, seven; transferred to lower court, one; not guilty, seven.

Community Property Is IC Tax Factor

COLLEGE STATION, Jan. 29--Community property can affect taxpayers in a community property state such as Texas, according to James Mallett, Extension Farm Management Specialist at Texas A&M University.

Texas taxpayers may find it advantageous to file separate returns.

In Texas, all income received by married taxpayers is considered to be community income and each taxpayer is responsible for one-half of the total. Taxpayers who are divorced during the tax year must report one-half of the community property income acquired prior to the divorce and all the separate income received after the divorce. Taxpayers who married during the tax year may elect to file joint or separate returns, as can those married in a prior year.

Capital loss deductions are limited to the smaller of \$1,000 or the combined taxable income on joint returns in a community property

state. However, a husband and wife living in a community property state may file separate returns and both claim a capital loss deduction up to \$1,000 or their taxable income, whichever is smaller, Mallett noted.

Income in a community property state may work against the taxpayer in some cases such as retirement income credit. If one spouse is over 65, he is eligible for retirement income credit. If the other spouse is still earning income, half the earned income is taxable to each taxpayer and may cancel any retirement income credit.

If the individual has circumstances that may be affected by the Community Property laws, write the District Director of the Internal Revenue Service for an explanation or for a copy of IRS Document 1192, Community Property, suggests Mallett.

TAX BOOKLET FOR BUSINESSMEN PROVIDES VALUABLE ASSISTANCE

(Dallas, Texas)--Businessmen will find answers to a wide range of questions about Federal income, estate and employment taxes in the 1968 edition of "Tax Guide for Small Business."

Mr. Ellis Campbell, Jr., District Director of Internal Revenue for Northern Texas, said the new tax laws enacted last year are also fully explained in this latest edition of the guide.

This year's booklet contains a Tax Calendar for 1968 listing all dates on which the various tax and information returns and payments are due. An included checklist enables businessmen to identify quickly each tax for which they may be liable. Also, it tells where information on the type of tax may be located in the "Guide" and what forms are needed to report and pay the tax.

The "Guide" also explains how Federal tax laws apply to various forms of businesses such as the sole proprietor, partnership, or corporation.

Tax treatment of special problems, with examples, provided for manufacturers, retailers, and professional men.

The "Tax Guide for Small Business" booklet is available for 50 cents a copy from most Internal Revenue offices or from the Superintendent of Documents, U.S. Government Printing Office, Washington, D. C. 20402.

FRIDAY DEADLINE FOR W-2 FORMS

(Dallas, Texas)--Friday, January 31, 1968, is the deadline for employers to give employees their 1968 W-2 forms, showing the amount of earnings, income tax withheld and social security information, Ellis Campbell, Jr., District Director of Internal Revenue for Northern Texas, said today.

Forms W-2 have to be filed with income tax returns and those who had more than one job last year should make sure they have received all them when they file their returns.

Fashion Facts For Men and Boys

The shelves that emptied out during Cates big annual sale have now been restocked with bright new merchandise.

A lot of winter things have been replaced for men and boys still in need of clothing to see them through what days still remain.

For instance, a large stock of gloves along with warm socks has arrived.

There's a bountiful supply of stylish spring and summer wear for particular men and boys including shoes, boots, dress and work wear.

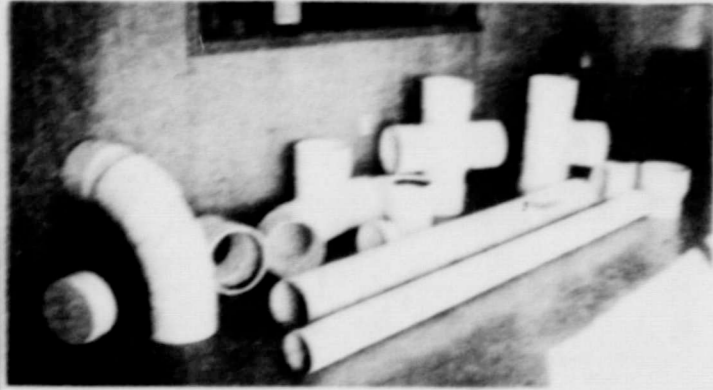
Summer sports call for special clothing and you'll find an ample supply of sports gear to fill the bill at Cates Men and Boys wear, where David crosses Main.



221 Main, Spearman

NOW . . . We can install a complete Plastic irrigation distribution system NO STEEL USED IN SYSTEM

Except for pump stand & vent at well



Newly developed pipe, tee's and caps, crosses & risers of all plastic (as left) manufactured in our plant! We use



Certainteed Plastic Pipe

Rogers Sales & Service

Waka, Texas

PH. 435-4140



ICT STUDENT for this week is 17-year old Ronnie Burch, son of Mr. and Mrs. Kenneth Burch. Ronnie, a Senior in SPS, is employed by Ayers Brake and Alignment and he enjoys his job very much. "I think working with motor parts and engines is very exciting," he said. Burch plans to attend United Electronic University in Dallas. His favorite teacher is Mr. Wilbur Hall, ICT class instructor.

A Sentimental Sale

For people who are sentimental about money. We're rolling back prices to celebrate RCA's 50th Anniversary.



RCA Space Age Circuitry
RCA solid copper circuits are used in a majority of potential chassis trouble spots. won't come loose.



Here's Portable Color at a low, low price!

RCA Color quality in a budget-priced portable! Luggage-type handle. Powerful Sportabout chassis.

The 1968 Model CL42 17" dia. 12.50 in. price



Colonial styling . . . "fiddle-free" color tuning.

Advanced Automatic "Locked-in" Fine Tuning (A.F.T.). Powerful chassis. Glare-proof tube.

The 1968 Model CL41 17" dia. 12.50 in. price

Budget-priced viewing pleasure . . . RCA quality



Personal portable pleasure at a low, low price!

Personal sized RCA Minikin® portable fits right in with on-the-go action. High performance, low price!

The 1968 Model A-32 17" dia. 19.50 in. price

Rx for Color

Burton's TV

106 E. Kenneth

Phone 659-2121

CAUTION: Watching RCA Color TV may prove habit forming. If condition persists, relax and enjoy it.

T.G. & Y.

STORE HOURS: MON-FRI 8:30-6:00

SATURDAY 8:30-5:00

5 TO 17 STORES

Prices Good Thru Sat. While Quantities Last

110 Main, Spearman, Texas

E. O. M. SPECIALS

SHAVING CREAM Gillette Foamy 11 oz. Regular or Menthol \$1.19 Value **47¢**

GILLETTE BLADES Super Stainless Steel Double Edge- Compare at 79¢ **47¢**

HOT'N COLD CUPS Foam 7 oz. 39¢ Value 24 count pkg. **23¢**

SAYELLE YARN Dawn Orton 4 oz. Skin-Beautiful Colors Compare at \$1.59 **88¢**

CANDY BARS Regular 5¢ Size All Kinds **2¢**

BAYER ASPIRIN 100 Ct. Bottle 89¢ Value **57¢**

REMNANT CLOSEOUT Remnants of Better Quality Fabrics Values to \$4.00 or more **67¢**

IRONING BOARD Steel Adjustable Reg. \$4.99 **\$2.99**

Flea Beet Fatal To LA RWTE--Eight months after their in Dan R Reser of Murpree Wildlife ment Area, flea b little insects reser ladybugs, have sc through on the mats of alligator t Alligator weed exotic water vine (bushy) to have c the United States

wit FLAN A whole conveni you sel sunshin your ho tem . . . by-room units at econorr remode an estr

COM Kx

Ch

Cor

Flea Beetle Bite Fatal To Weed

LA PORTE--Eighteen months after their release in Dam B Reservoir and the Murphree Wildlife Management Area, flea beetles, tiny insects resembling ladybugs, have scored an ecological triumph on the huge mats of alligator weed. Alligator weed is an aquatic water vine which is thought to have come to the United States from

South America in the late 1800's in the dirt ballast of sailing ships. Unfortunately, flea beetles, also natives of South America and one of approximately 40 insects which eat the alligator weed, missed the boat and were not introduced when the alligator weeds were introduced. Alligator weeds have been clogging the lakes and streams across the southern half of the United States ever since.

Chemical methods of controlling the weed have proven impractical and relatively ineffectual. So, with their success, the hungry little insects are moving their way into the hearts of sportsmen, conservationists and biologists.

Flea beetles were released in May 1967 by the U. S. Department of Agriculture and the Texas Parks and Wildlife Department on a more or less experimental basis in Dam B Reservoir and the Murphree Area.

The Dam B beetles formed a colony near the release site and have been under observation since then. But the Murphree Area beetles disappeared into the alligator weed, only to be recently discovered a considerable distance from the release site--consuming alligator weed with gay abandon.

The beautiful thing about the flea beetles is their utter dependence upon alligator weeds. They eat alligator weed for breakfast, lunch, dinner, and between meal snacks. It is a monotonous diet to be sure, but it is an important one for flea beetles and biologists.

Before releasing the beetles, biologists had to make sure the beetles wouldn't find nourishment elsewhere after the alligator weed is gone. Flea beetles spin everything but alligator weed. They even use it in their reproductive cycle, depositing their eggs within the hollow stems. Because they will always remain faithful to alligator weed, the beetles will disappear when the last of the alligator weed is gone.

Robert N. Hambric, aquatic biologist for the Texas Parks and Wildlife Department, recently surveyed the beetle damage to alligator weed in Dam B Reservoir.

"We observed extensive feeding damage on most of the alligator weed mats along the immediate shoreline and for considerable distance up Walnut Ridge Slough," said Hambric. "Many of the mats were brown, had lost most of their leaves, and harbored numerous larva as well as adult beetles. Extensive stem damage was observed in some areas."

Hambric said the flea beetles had apparently spread from one vegetative mat to an adjacent one, and through this sequence moved lateral-

ly several miles along the shoreline.

The beetles also migrated from the shore into mats out in the lake. There was usually less damage on the larger mats, but in general, the beetles were fairly well established on numerous alligator weed mats located some distance from the shoreline.

"Due to rapid propagation, extensive travel and impressive damage by the insect... since the initial release... I am very optimistic about their ability to adequately control the alligator weed on Dam B Reservoir in the foreseeable future," Hambric said.

"In view of the favorable results," he said "it appears that an alligator weed control program using herbicides may not be necessary. In fact, extensive chemical burn could reduce the normal propagation and spread of the beetles by interfering with their primary food supply."

Hambric said there were tentative plans to collect beetles during the major population peak next year and move them to distant weed sites.

GOOD RECORDS HELP SUPPORT DEPENDENCY EXEMPTIONS (Dallas, Texas)--If you claim as a dependent someone not living with you, you must keep good records of the support you provide, advises Ellis Campbell, Jr., District Director of Internal Revenue of Northern Texas.

Failure to keep these records caused some taxpayers to lose a dependency exemption they otherwise would have been entitled to last year. For others it meant the problem of assembling the needed records months after the expense was paid.

Mr. Campbell said that there are five tests that have to be met to satisfy the legal requirements for claiming another person as a dependent. The one that gives taxpayers the most trouble is the support test, he added. Substantiation of support is the most common problem arising on returns filed each year.

To satisfy the support test, the taxpayer must show what it cost to support the dependent for the year and how much of this he provided. To gather such records for a child who does not live at home or a parent in another city is naturally more difficult than it is for a dependent who

lives with the taxpayer.

Mr. Campbell said the four other dependency tests are the gross income test, member of household or relationship test, citizenship test and joint return test. All are explained in the Form 1040 instructions.

Color Trends 1969

COLLEGE STATION, Jan. ---Each year, some colors are "in" and widely used in home furnishings while others are used rarely.

Faber Birren, one of the world's leading authorities on color makes some predictions for 1969.

Off-white will continue to be the most popular color in paints and wall coverings and will continue to be used for contrast with bold, vivid colors.

Gold, avocado green and brilliant blue will continue to be used extensively in home furnishings. These colors will continue to become clearer and brighter.

"White walls, brilliant home furnishings, muted walls are the order or preference in '69," according to the color expert.

Mrs. Jane Berry, Extension housing and home furnishings specialist, explains what makes color fashion. The consumer establishes color trends through the selections he makes in the market place. Color trends are natural and spontaneous.

Color research experts establish and interpret color trends by analyzing retail purchases in various consum-

er areas from year to year. Computer analysis of sales records of consumer products including paints, carpeting, furniture, draperies, accessories, linens, appliances and automobiles also determine color trends.

TAX MAN SAM SEZ:

If you are in business for yourself, or you are fortunate enough to earn sufficient income so as to require an estimated income tax return each year, you will be getting an additional tax form package from Internal Revenue within the next few days.

The Internal Revenue Service Centers have gone through all the taxpayer accounts on the computer tape and are sending out a set of controlled vouchers to all the individual income taxpayers who must file an estimate. You will use these numbered vouchers to file your estimate and make your quarterly payments.

In the past, you waited for your bill from Internal Revenue and sometimes the taxpayer and the computer crossed in the mail or just plain got crossed--anyway the good tax folks hope that this will help you send your estimated tax payments through on time without any mix-ups.

Mrs. Fred Raney of Syracuse, Kans., Mr. and Mrs. Robert Crittenden and family, and Mr. and Mrs. Barton Ewers of Cheraw, Colorado spent the past weekend with the Richard Shedeck's and with Mrs. Richard Shedeck who is in the hospital in Perryton.

WHAT TO EXPECT IN FOOD PRICES FOR 1969

COLLEGE STATION, Jan. ---Retail food prices in the first half of 1969 are likely to average close to current levels.

According to Gwendolyne Clyatt, Extension consumer marketing specialist, prices will be lower on many fruit products, fresh and processed vegetables, fats and oil products and pork.

Eggs, turkey, dairy products, potatoes, candy and other chocolate products and soft drinks will be higher than in 1968, she says.

Prices will stay about the same for beef, cereal and bakery products, sugar, tea and coffee, says Mrs. Clyatt who works with Texas A&M University.

On the average, about 17.2 percent of after-tax income was spent for food in 1968, down fractionally from 1967. Americans will continue to eat more meat and other high protein foods and less carbohydrates such as potatoes and cereals, she predicts.

QUARANTINE INSPECTORS BUSY

Agricultural quarantine inspectors work with other Government agencies at the Nation's airports, seaports and border crossings to keep out destructive foreign plant and animal pests and diseases. Last year they stopped an inbound foreign plant pest an average of once every 12 minutes and seized nearly 125,000 pounds of foreign meat from countries known to have such dreaded animal diseases as foot-and-mouth and rinderpest.

Guests in the home of Mrs. Wiles Burges and Claude Sunday were Mr. and Mrs. Jack Vincent and Bynum from Odessa, Mr. and Mrs. Harold Witt and children from Perryton and Mary Sparks of Spearman.

Sunday dinner guests in the home of Mr. and Mrs. Glenn Bohanan were Mrs. Connie Pancake of Pioneer Manor in Spearman, Mr. and Mrs. Lawrence Guthrie of Larned, Kansas; Mrs. Edith McKinney and son John McKinney of Lewis, Kans. The Guthries and McKinneys are cousins of Mrs. Pancake.

Mrs. Bill Brown and Billy were hosts recently to members of the Mrs. Lora Vernon family. A chili and pie supper was served in honor of Mr. and Mrs. Dick Vernon and their friends, Mr. and Mrs. Everett Brumback of Springville, Calif.

Mrs. Jimmy Hicks, who has been in St. Anthony's Hospital in Amarillo for some time is expected to get to come home sometime this week.

Mr. Lee McClellan has returned home for several days from Galveston where he has been for some time with his wife who is hospitalized there. He expects to return in about a week.

Weekend guests in the home of Mr. and Mrs. G.L. Brown were Mrs. Duward Whitney and daughter Janice, Mrs. Steve Thompson of Haviland, Kans. and Mrs. Sam Brown and daughter Judy of Mullinville, Kans.

Discover A NEW WORLD OF COMFORT



with FLAMELESS ELECTRIC HEAT

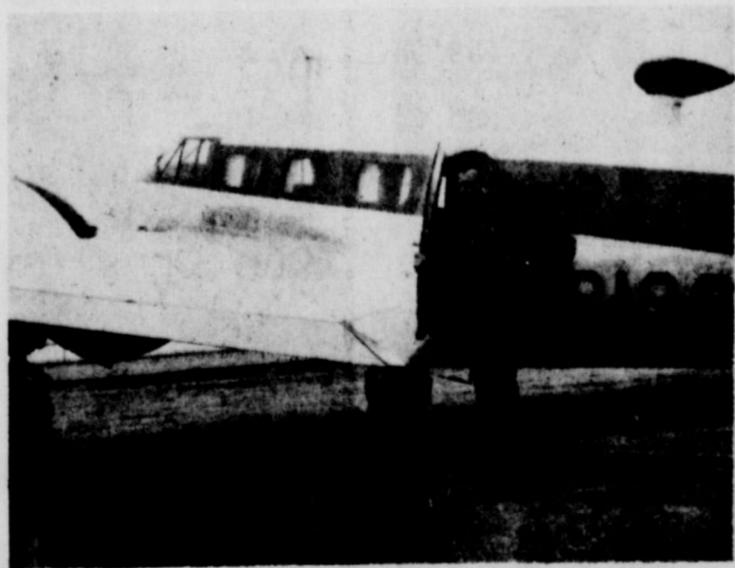
A whole new world of comfort, cleanliness and convenience awaits you and your family when you select modern electric heating. Enjoy sunshine-clean, gentle, even heat throughout your home with a central electric heating system... or choose individual units with room-by-room thermostat control. Electric heating units are compact, cost less to install and are economical to operate. Before you build or remodel, call us for a free heating survey and an estimate of operating cost.

COMMUNITY PUBLIC SERVICE
Your Electric Light & Power Company

CANTRELL'S FLYING SERVICE

Crop Dusting

Charter Service - Air Ambulance
200 M.P.H. Airplane



up to 6 Passengers
Airplane Rental
Student Instruction

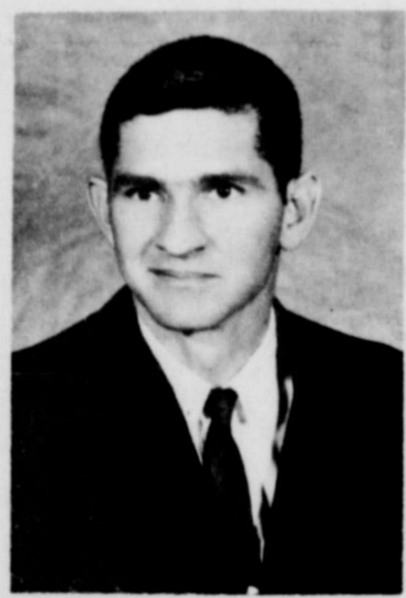
Cantrell's Flying Service, Inc.
SPEARMAN, TEXAS 79081

Aaron B. Cantrell, Jr.
Box 833
Phone 659-3135 or 659-2437

"WHERE YOU ALWAYS BUY THE BEST FOR LESS"

GIBSON'S DISCOUNT CENTER

PERRYTON, TEXAS



Come Over
And Visit
With
SAM WYSONG

HEAD OF OUR GROCERY DEPT.

OPEN
WEEKDAYS
9 A.M. TO 9 P.M.
•
OPEN
SUNDAYS
1 TO 6 P.M.
•
No Refunds or Exchanges without Cash Register Receipts

Root Beer	Triple "A"	39¢	Cheese	Kraft 10 oz. 1/2 moon longhorn	37¢
Margarine				Kraft 1 lb. Parkay	5 For \$1.00
Gibson Potato Chips				Gibson Potato Chips	Retail 59¢ 39¢
Shave Cream Bomb				Schick Lather	retail 98¢ 39¢
Bathroom Tissue				Delsey 4 Roll	39¢
Salmon	Honey Boy Tall Can	59¢	Oil	Champlain Transmission Motor 10W30 27 qt.	\$5.88cr
Corn	Kuners Whole Kernel #303	5 For	Bread	1 1/2 lb. Loaf	13¢
Fig Bars	Fireside			2 lb. Pkg.	33¢
Gibson Milk	Gibson Milk 1 gal.			Everyday Low Price	\$1.03
Western Shirts					\$2.47



MRS. DENNIS DARELL EDWARDS Nee Kathryn Smith

The First Presbyterian Church in Dumas, Texas was the scene January 26 for the wedding which united in marriage Miss Kathryn Ida Smith and Dennis Darell Edwards, United States Army Lieutenant. The bride is the daughter of Mr. and Mrs. Donald H. Smith of rural Dumas. The bridegroom is the son of Mr. and Mrs. Elvis Lee Edwards of Dumas, Okla. The bride's grandparents are Mr. and Mrs. Claude Smith of Spearman. The Reverend Lewis Koerselman, Presbyterian pastor from Spearman read the double ring vows at 2 p. m. The altar was decorated with baskets of white chrysanthemums with accents of blue. Mrs. Herschel Berry of Dumas, organist, played traditional wedding selections and accompanied Mrs. Larry Wicher of Goodwell as she sang "The Voice That Breather O'er Eden" and "May Thy Blessing Rest Upon Them." Mrs. Ray Deaton, Goodwell, Okla. was matron of honor. Miss Shirley Edwards, sister of the groom, served as bridesmaid. Attendants were dressed alike in long blue velvet dresses designed along princess lines. The brides featured low round necklines and short sleeves. Their headpieces were Dior bows of white velvet and they wore white accessories. Each carried a colonial bouquet of white baby breath with a touch of avocado green. Guests were registered by Miss Ellen Shields. Best man was Elvis Don Edwards, brother of the groom. Groomsman was Ray Deaton, the bridegroom's cousin. Larry Brewer and Garry Ray Bowen of Good-

well served as ushers and candlelighters.

Given in marriage by her father, the bride's formal wedding gown of white velvet featured an empire waistline and long fitted sleeves coming to points at her wrists. The bodice was decorated with white daisies with centers accented with seed pearls. Her wattleau train, also of white velvet, fell to chapel length. The tiered veil of illusion was edged with lace and attached to a noif of white velvet accented with the same daisy and pearl design. She carried out the tradition of something old, new, borrowed and blue. Her only jewelry was her engagement ring. She carried a cascade arrangement of white carnations interspersed with stephanotis and English ivy.

For her daughter's wedding Mrs. Smith chose a three piece beige knit suit with which she wore brown accessories. The bridegroom's mother wore a two piece pink suit with black accessories.

Reception guests were received immediately following the ceremony in the home of the bride's parents. The serving table was laid with a white lace cloth and centered with an arrangement of white gladioli with blue accents. The three tiered white wedding confection was decorated with blue flowers and topped with a pair of white swans.

For a wedding trip to Red River, N. M. the bride traveled in a two piece blue wool suit with rhinestone buttons. She wore a beige fur coat, beige gloves, black hat and shoes. Her shoulder corsage was lifted from the wedding bouquet.

The couple is at home at Ft. Wingate Army Depot, Gallup, N. M. where Lt. Edwards is currently stationed.

The bride is a 1965 graduate of Spearman High School and Panhandle State College, Goodwell, Oklahoma where she received a B. S. degree in Home Economics.

The bridegroom graduated from Davidson High School in 1963 and in 1967 received his B. S. degree in Business Administration from Panhandle State College, Goodwell. On June 14, 1968 he graduated from Officers Candidate School and was commissioned a Second Lieutenant.

Billy Brown had as a weekend guest in his home, Jay Holland.

holt news

Mr. and Mrs. James Beck and Dennis of Enid, Mr. and Mrs. Byron Carr of Duncan, Okla., were Saturday night guests of Mr. and Mrs. Owen Pendengraft.

Mr. and Mrs. Bob Gaines of Duncan, Okla., Mrs. Charles Thomas and daughter of Hugotian, Kansas, were Saturday night guests of Mr. and Mrs. Richard Gaines.

Dick Bynum of the Continental Trailway Bus of Amarillo was in Gruver Sunday afternoon January 28, showing a film that was taken in Europe. The group met in the American Legion Building. Dick says a number of tours are being planned for this year. Mmes. Mildred Chamberlain, Mabel Edwards, Carrie Clement, Addie Novak, Bertha Jenkins and Maude Rosson enjoyed seeing the Europe films and visiting the many friends.

Mr. and Mrs. Herbert Kirk recently visited friends and relatives in Whitney, Marble Falls, Austin, San Antonio and Lubbock.

Mr. and Mrs. Phil Jenkins visited Sunday afternoon with Mr. and Mrs. Steve Jenkins and Kathy Jenkins of Amarillo.

Sunday luncheon guests of the Ira Harbour's were Mr. and Mrs. Bob Phelps and family of Fargan, Okla., Mr. and Mrs. Donnie Jones and daughter of Morse, Mr. and Mrs. Aloa and family, and Mr. and Mrs. Dan Jackson.

Mr. and Mrs. Claude Jackson, Mr. and Mrs. George Jackson and family have been visiting the Danny Jacksons in Huntsville, Ark. Mr. and Mrs. Dan Jackson and Mr. and Mrs. Doyle Jackson transacted business Monday in Amarillo.

Among Spearmanites seen at the Buck Owens concert in Amarillo Saturday night were: Mr. and Mrs. Ken Burrell, Mr. and Mrs. J. D. McCoy, Mr. and Mrs. R. L. Rosser, Mr. and Mrs. Jack Hamilton, Mr. and Mrs. Chester Lambert, Mr. and Mrs. Sam Henderson, Mr. and Mrs. Bill Partridge, Kathy and Sharon Mauldin, Tommy Love-day, Freddie Largent.

Card Parties

Mrs. Elsie Mathews was hostess for the Tuesday January 21 meeting of the Short Club Bridge in her home. Luncheon was served to Barbara McClellan, Elizabeth Holton, Pat Donnell, Mary Cornelius, Virginia Head, Georgia Cox, Dorothy Baggerly, Lucille Lewis, Lois Gibner and guests Darlene Linn, Rosalee Butt and Carolyn Gressett. High score winners were Pat Donnell and Georgia Cox.

Mrs. Billy Weant was hostess to a bridge party in her home Wednesday January 22. High scorers for the afternoon of bridge were Gwen McLain and Frances Murrell. Those attending were Frances Murrell, Margaret Ralston, Ruth Crawford, Ben Nobles and Ola Florence Henson of Gruver, Gwen McLain, Norma Jean Mackie and June Weant of Spearman.

Trunk Decor Is Program Topic

Mrs. Flavil Ayers was hostess for the January 23 meeting of the Hansford Home Demonstration Club in the HD club-room.

Presiding over the business in the absence of the president was Mrs. Herb Howe. The devotional was presented by Mrs. Ayers.

Guest speaker was Mrs. Robert Novak who gave the program on decoration and finishing trunks. Present were Mmes. G. I. Brown, Herb Howe, H. M. She-deck, Daniel Sheets, Ayers and Mrs. Novak.

NOTICE Both departments of Twentieth Century Club of Spearman will meet in HD Club-room at 2:30 p. m. Feb. 6. The program will be given by the speech department of Spearman High School.

Mansel Bryan, son of Mr. and Mrs. Joe Dan Bryan, was home the past week from college in Stephenville.

SMITH - MOORE WEDDING SOLEMNIZED

The marriage of Miss Regina Smith, daughter of Mr. and Mrs. G. L. Smith of Mangum, Oklahoma, and Randy Moore, son of Mr. and Mrs. Ray Moore of Spearman, was solemnized January 17 in the Paramount Baptist Church of Amarillo.

Officiant for the informal, double ring ceremony, was the Reverend Chad Rue. Miss Glenda Ray of Amarillo attended the bride, and Roger Hager of Spearman was best man.

Only the immediate families of the couple attended the ceremony and reception which followed in the Howard Johnson Restaurant.

Following the wedding trip to Red River, New Mexico, the couple will be at home in Canyon where they are both students at West Texas State University.

A recent courtesy honoring the couple was a wedding shower held January 25 in the home of Mrs. L. L. Anthony. Guests called between the hours of 2-5 P. M. bringing many lovely and useful gifts.

Hostesses used the chosen colors of blue and white on the serving table which was covered in blue. A white compote arrangement of white stuff, pom poms and candy tuft centered the table and was flanked on either side by blue candles.

Mothers of the bride and groom and the honoree were presented shoulder corsages of white orchids tied with blue ribbons.

Debbie Hazelwood presided over the silver services pouring spiced tea and coffee. Miss Delphine Smith, sister of the bride, registered guests.

Hostesses for the occasion included Mmes: Fred Holt, Marvin Jones, Glenn Day, Everett Vanderburg, R. L. Uptergrove, Standley Garnett, Wesley Garnett, L. L. Anthony and Miss Debbie Hazelwood.

Danny Robertson and Paula Gussler of Amarillo were in Spearman visiting Saturday in the home of his parents, Mr. and Mrs. Ray Robertson.

Shooting for a better used car?



Jump on these Money St-r-e-t-c-h-i-n-g Buys

- 1967 98 Luxury Sedan, Full Power & Air. Local one owner car **\$2995.**
- 1967 Chevrolet Impala Cpe. Air & Power. Low Mileage **\$2495.**
- 1966 98 Oldsmobile, 4-door Sedan. Air & Power Nice **\$1995.**
- 1965 Oldsmobile Jetstar 4 Dr. Air & Power, Extra Low Mileage... Like New **\$1595.**
- 1966 Chev. Impala 4 Dr. Hardtop Air & Power Sharp **\$1795.**
- 1965 Pontiac Station Wagon Air & Power, Luggage Rack, An Extra Good Wagon... Only **\$1595.**

We have 16 used pickups to choose from--all models & styles. A lot of service left in these. **Excel Chevrolet-Olds Jeep** HIWAY 207 SPEARMAN, TEXAS

ANNUAL WINTER CLEARANCE CONTINUES

RECLINERS

	Regular	Sale
Brown vinyl recliner by Stratolounger	216.50	179.95
Early American orange tweed Stratorester	129.95	89.95
Brown vinyl recliner by Stratolounger	189.50	139.95
Blue & green traditional La-Z-Boy	229.50	184.50
Early American orange La-Z-Boy	219.95	179.95
Oak arm red tweed La-Z-Boy	239.95	198.50
Brown vinyl traditional La-Z-Boy	246.50	197.50
Green print traditional La-Z-Boy	229.95	179.95
Orange traditional La-Z-Boy	239.95	199.95
Gold fabric traditional La-Z-Boy	239.95	199.95
Oak Arm red vinyl La-Z-Boy	229.95	179.95

LIVING ROOM

	Regular	Sale
Olive velvet Contemporary Sofa	449.50	379.95
Traditional quilted orange, beige & brown Sofa	489.50	379.95
Gold tufted back traditional Sofa	298.50	239.95
Modern olive Sofa	259.95	179.95
Blue quilted 3 cushion Sofa	289.95	229.95
Three cushion loose pillow back turq. Sofa	269.95	219.95
Loose pillow back turq. loveseat (matches above Sofa)	179.95	139.95
Modern blue & green Sofa	349.95	279.95
Early American gold tweed Sofa	329.50	269.95
Early American pine frame loose cushion Sofa	389.50	298.50
Early American orange & brown tweed Sofa	299.50	249.95
Beige & brown quilted Traditional Sofa	489.50	379.95
Four pc gold Mediterrean Sectional	779.95	629.95
Crushed velvet gold Mediterrean Sofa	444.50	369.95
Crushed velvet green Mediterrean Sofa	469.50	398.50
Blue & Green quilted Mediterrean Sofa	389.95	298.50
One pair beige Traditional chairs	179.95 ea	129.95 ea
French provincial turq chair (shopworn)	149.50	98.50
Italian provincial gold & blue chair	129.50	89.95
One pair corduroy occasional chairs	129.50 ea	98.50 ea
One pair gold velvet occasional chairs	149.50 ea	119.95 ea
Blue & green traditional chair	119.50	89.95
One pair turq Traditional chairs (shopworn)	169.50 ea	119.95 ea
Modern turq Occasional chair	99.95	69.95
Modern green Occasional chair	109.50	79.95
Modern print occasional chair	129.95	79.95
Modern green & gold chair & ottoman	139.95	89.95
One pair green occasional chairs	119.50 ea	89.95 ea
Green velvet occasional chair	129.50	98.50
Gold Italian provincial loveseat (shopworn)	159.50	98.50
Early American orange occasional chair	149.95	98.50
One pair Early American orange & gold quilted chairs	139.95 ea	98.50 ea
Early American gold wing occasional chair	129.50	89.95
Early American pine frame Pheasant print chair	169.95	139.95
Early American pine frame patchwork rocker	176.50	139.95
Early American gold fireside chair	149.50	119.95

DINNING ROOM

	Regular	Sale
Mediterranean china, rectangle table & 4 green chairs	689.50	519.95
Mediterranean 42" round table & 4 chairs	557.95	447.95
Mediterranean buffet (matches above table & chairs)	339.95	274.50
Early American 48" round formica top table & 4 chairs	334.50	269.95
Early American harvest table	99.95	79.95
Early American table & 4 chairs	317.50	259.95
Early American 44" round pedestal table & 4 chairs	399.95	319.95
Seven pc bronzetone dinette	179.50	139.95
Five pc Mediterrean dinette	289.95	229.95

BEDROOM

	Regular	Sale
Spanish triple dresser, mirror, chest, full size bed and night stand	402.00	329.95
Mediterranean triple dresser, mirror, king size headboard and two night stands	719.80	559.95
Italian provincial triple dresser, mirror, king size headboard and two night stands	564.45	453.00
Oak & pecan triple dresser & mirror (discontinued)	249.95	179.95
Mediterranean triple dresser, mirror, chest, queen size bed & night stand	558.90	449.95
Mediterranean triple dresser, mirror, chest, queen size bed & two night stands	985.95	794.50
French provincial antique white powder table	129.95	89.95
Early American bunk beds	149.95	119.95
Early American triple dresser, mirror, full size bed & two night stands	404.90	323.95

BEDSPREADS

	Regular	Sale
Blue & green stripe quilted full size	42.00	32.50
Blue quilted full size	49.95	35.00
Yellow quilted full size	59.95	39.95
Green print quilted full size	37.50	29.95
Orange & yellow quilted full size	34.50	24.50
Multi-colored quilted full size	42.00	36.50
Green & gold stripe quilted full size	42.00	32.50
Gold quilted full size	39.00	29.95
Green quilted king size	59.00	47.50
Blue & green print quilted king size	64.50	49.95

ALL TABLE, FLOOR & HANGING LAMPS REDUCED FROM 20% TO 50%

ALL MATTRESSES & SPRINGS INCLUDING FAMOUS NAME BEAUTYREST REDUCED FOR THIS SALE.

ALL PICTURES AND WALL ACCESSORIES REDUCED 20% OR MORE

TERMS: NOTHING DOWN, 36 MONTHS TO PAY

BOB'S FURNITURE CO.
PLAINS SHOPPING CENTER
659-3044