

Only sidewindin' yellow coyoties go without a Rodeo beard

# Morton Tribune

VOLUME 33

THURSDAY, JUNE 14, 1973 MORTON, TEXAS

NUMBER 35

## 'Pot' arrests mark busy week



REPRESENTATIVES OF THE UNITED STATES COTTON INDUSTRY met recently with Japanese spinners and importers Osaka to discuss mutual problems. The U.S. Trade Team sponsored by Cotton Council International and the Foreign Agricultural Service of U.S. Department of Agriculture, was composed of Lloyd G. Miller, center background, of G.G. Slaughter Farms, Morton, Robert G. Gardner and Company, Memphis, Tennessee and Joseph H. Stevenson, Cotton Division-FAS, Washington. This team also visited Korea. Three other trade teams were sent to a total of 10 additional countries in Asia and Europe to meet with foreign customers of U.S. cotton. Sponsorship of trade teams is a key part of Cotton Council International's program to build export markets for American cotton. Exports of U.S. cotton this crop year are expected to reach about 4.7 million bales, highest since 1963-64.

### Deputies bag five in net

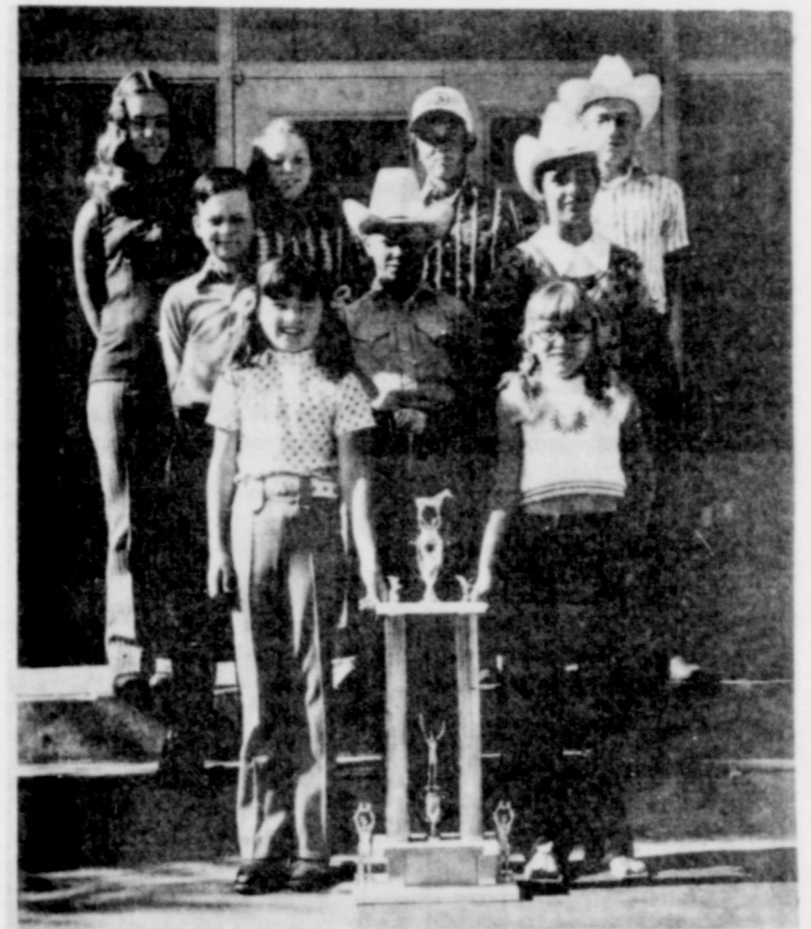
A total of five persons, in two separate cases, were arrested and charged with possession of Marijuana as a rash of offenses kept the Cochran county sheriff's office on the move over the past week.

Cases of DWI, speeding, possession of alcoholic beverages by minors, making alcohol available to minors, driving without a driver's license and one burglary rounded out a week of activities that kept the investigators hopping.

Wendel Bicket, 20, of 309 S.W. Third Street, was arrested Tuesday morning and charged with possession of a narcotic drug, Marijuana. According to sheriff's deputies, they searched Bicket's residence Saturday on a search warrant and found what appeared to be Marijuana growing in his yard and flower beds.

Samples of the plants have been sent to the Department of Public Safety lab in Lubbock

See 'POT' Page 4



THEY KNOW THEIR HOSSES--Members of the Cochran County 4-H Saddle Club were big winners in the Terry County Invitational Horse Show held in Brownfield June 9, coming home with the high point trophy of the show which is shown with the team above. See accompanying story inside for details. The winning contestants, left to right by rows include, Sara McClung and Stephanie Coleman; Trey McClung, Sandy Coleman and Susan Polvado; Debbie Polvado, Rusti Coleman, Randy Coleman and Steve Polvado.

### 4-H Saddle Club wins Terry meet

The 1973 Terry County 4-H Invitational Horse Show at Brownfield was held on June 9, 1973. Attending from Cochran County 4-H Saddle Club were Susan, Debbie and Steve Polvado, daughters and son of Mr. and Mrs. Bob Polvado; Stephanie, Sandy, Rusti and Randy Coleman, sons and daughters of Mr. and Mrs. Ronald Coleman; and Trey and Sara McClung, son and

daughter of Mr. and Mrs. Roy L. McClung.

Winners of the Hi-Point County Trophy of the entire show was Cochran County with the following riders: Sara McClung was overall high point PeeWee Rider; Debbie Polvado was overall high point Young Junior Rider; and Steve Polvado was overall high point Junior Rider. The three riders

See CLUB Page 4

### Woody Combs rites held here Wednesday

Services for Woodie Spencer Combs were held Wednesday at 10:30 a.m. in the First Baptist Church. The Rev. Floyd Bradley, pastor of the First Baptist Church in Floydada, the Rev. Wayne Perry, assistant chaplain at Methodist Hospital in Lubbock, and the Rev. Gene Hawkins, pastor of the Calvary Baptist Church in Lubbock, officiated.

Burial was in Morton

Memorial Cemetery under direction of Singleton Funeral Home.

Combs, 53, died at 6 p.m. Monday in Methodist Hospital

See COMBS Page 4



Woodie Spencer Combs

### Senior Citizens

The Senior Citizens of Cochran County will meet today, Thursday, June 14, at 2 p.m. in the County Activity Building.

All residents or visitors over 60 years of age are cordially invited to attend.

### Clayton seeks speakership

State Representative Bill Clayton ended Capitol speculation

Claims broad support

by announcing that he is officially a candidate for the office of Speaker of the Texas House of Representatives.

Clayton, a Democrat from the West Texas community of Springlake, is an acclaimed leader in the Texas House legislative chambers. Sponsor of more than forty bills in the past legislative session, Clayton today promised to streamline the bulky and often unworkable House Committee System to enable legislators to have the opportunity to deal

with more bills with less haste than has generally been true to past legislative terms.

While dedicating himself to the continuation of many needed reforms enacted in the 1973 session, Clayton spoke of the necessity for encouraging greater productivity during the session, a task which

See CLAYTON Page 4

### Western star will appear at Whiteface

The Tony Douglas Show during "Mr. Nice Guy" will be held June 21 at 8 p.m. at the Whiteface Ball Field. The two hour show will also feature Chuck

See STAR Page 4



Tony Douglas

### Grant to aid jobless youths

Disadvantaged youth between the ages of 14 and 22 may not be idle this summer due to a program being operated by the South Plains Association of Governments.

According to association president Giles C. McCrary, Mayor of Post, "The program can create 405 part-time temporary jobs in 75 local governments for disadvantaged youngsters between 14 and 22 within the 15 county South Plains Region".

SPAG received a grant of \$151,836 from the Texas Department of Community Affairs to cover the 15 counties, with the exception of the City of Lubbock that

See GRANT Page 4

### Nickle Movie

Attention all kids! We have some news for you:

The "Nickel Movie" which has been scheduled for 10 a.m. each Saturday for the past several weeks has now been changed to 2:30 p.m. Saturday.

This will allow you to see your Saturday morning TV cartoons and see the "Nickel Movie" also. It will probably make it more convenient for Mom to shop down town too.

So, Remember--It's Nickel Movie each Saturday at the Rose Theater at 2:30 p.m. And, Mom, be sure you take advantage of this shopping opportunity.



EXCEPTIONAL WINNERS in the International Piano Playing Auditions are pictured above holding plaques they received. Debbie Polvado and Tonya Hodge received a medal and plaque in the Bach division and Kellye Kennedy and Rayma Hall won for the Sonatinas. To become winners in these fields, the students must pass on a program of 15 Bach compositions or 15 Sonatinas.



# Morton Tribune

Published Every Thursday Morning at 106 N. Main St., Morton, Texas 79344

OFFICIAL NEWSPAPER OF COCHRAN COUNTY  
"TEXAS' LAST FRONTIER"

BILL SAYERS, Editor and Publisher

Entered as second class matter at the post office in Morton, Texas, under the Act of Congress on March 8, 1879.

Subscription rates—In Cochran County and adjoining counties: Per year, \$4.50, six months, \$3.00. Outside Cochran County: Per year \$6.00, six months, \$3.50. To insure proper service, subscribers will please notify us promptly of change of address.

## Classifieds

**CLASSIFIED RATES**  
5c per word first insertion  
4c per word thereafter  
75c Minimum

### 1-FOR SALE

FOR SALE: Traditional style couch, good condition. \$35. Call 266-5350 or see at 513 S. Garfield. 1-36-c

SAVE-SAVE-SAVE PVC Plastic Pipe and fittings in sizes from 1/4" to 12". All pipe meets or exceeds SCS specification. Save money by installing your own. See STATE LINE IRRIGATION in Littlefield, and Muleshoe. tfn-44-c

FOR SALE: 3 bedroom, 2 bath, house in Whiteface, 302 Polk. Take up payments. call 525-4478.

FOR SALE: two bedroom, 1 bath with outside guest room and bath on five lots with two apartments and trailer. Also business property located at 513 South Main. Phone 266-5454. tfn-35-c

### 2 FOR RENT

BE gentle, be kind, to that expensive carpet, clean it with Blue Lustre. Rent electric shampooer \$1. Taylor and Son Furniture.

### 3-BUSINESS SERVICES

COCKROACHES, rats, mice, termites, golphers, and other household pest exterminated. Guaranteed. 15 years experience. 894-3824, Levelland, Texas. Davidson Pest Control. Reasonable rates. rtfn-31-c

MATTRESSES RENOVATED also new King and Queen Size. Pick up Mondays. Call Morton Tribune 266-5576. tfn-31-c

### 5-CARD OF THANKS

CARD OF THANKS: We deeply appreciate the many acts of love and kindness shown us during the loss of our loved one. We thank each and every one of you. May God bless you all. The family of Eura Lee Brown

### NOTICE

NOTICE OF BOARD OF EQUALIZATION MEETING BLED SOE INDEPENDENT SCHOOL DISTRICT in obedience to an order of the Board of Equalization regularly convened and sitting, notice is hereby given that said Board of Equalization will be in session at its regular meeting place in the City of Bledsoe, Cochran County, Texas, at 9:00 o'clock A.M. until 10:30 A.M. on Thursday, the 28th day of June, 1973, for the purpose of determining, fixing and equalizing the value of any and all taxable property situated in the said Bledsoe Independent School District for the year 1973, and any and all persons interested, or having business with said Board, are hereby notified to be present.

Published in the Morton Tribune June 14, 21, 1973

### NOTICE OF BOARD OF EQUALIZATION MEETING

In obedience to the order of the Board of Equalization, regularly convened and sitting, notice is hereby given that said Board of Equalization will be in session at its regular meeting place in the Courthouse in the town of Morton, Cochran County, Texas on Wednesday, June 27, 1973 at 10:00 A.M. for the purpose of determining, fixing and equalizing the value of any and all taxable property situated in Cochran County, Texas for purposes of the year 1973, and on Thursday, June 28, 1973 at 10:00 A.M. for the local hearing.

All persons interested or having business with said Board are hereby notified to be present.

BY ORDER OF THE COMMISSIONER'S COURT, COCHRAN COUNTY, TEXAS. R.J. Vinson County Clerk

Cochran County Morton, Texas 11 day of June 1973

Published in the Morton Tribune June 14, 21, 1973

### LEGAL NOTICE

Board of Equalization Morton Independent School Dist. NOTICE is hereby given that the Board of Equalization for the Morton I.S.D. will be in regular session on Thursday, June 28, 1973 from 1:00 to 2:00 P.M. at the Administrative Offices of the Morton Public Schools at 500 West Buchanan, Morton, Texas for the purpose of hearing any and all complaints concerning the value of Oil Royalty, Minerals, Utilities and Pipe Lines situated in the Morton Ind. School Dist.

BY ORDER OF THE BOARD OF EQUALIZATION MORTON INDEPENDENT SCHOOL DISTRICT COUNTY OF COCHRAN STATE OF TEXAS

Wm Hodge, C.T.A. Assessor-Collector

Published in the Morton Tribune June 14, 21, 28, 1973

### LEGAL NOTICE

The Commissioner's Court of Cochran County hereby advertises for bids for repair work to be done on County Roads. This work consists of Fifty (50) gallons of paint, three thousand (3,000) yards of No. 5 and No. 6 rock, shooting asphalt, curbing rock, hauling and spreading rock and caliche.

Bidders may bid on any or all parts of the above named items. Said repairs are to be done on a road beginning at Star Route Gin, SH 116 and proceeding South five miles to SH 116.

Bids shall be sealed when submitted to the office of the County Judge. Bids will be opened on Thursday, June 21, 1973 at 10:00 A.M. in the Commissioner's Courtroom, Cochran County, Texas. The Court reserves the right to reject any and all bids. The above described repair work will be paid from Revenue Sharing Funds. Prevailing wage rates as affects this area under the Davis-Bacon Act will apply to all contract work.

BY ORDER OF THE COMMISSIONER'S COURT OF COCHRAN COUNTY, TEXAS. GLENN W. THOMPSON, COUNTY JUDGE

Published in the Morton Tribune June 7, 14, 1973

### NOTICE OF BOARD OF EQUALIZATION MEETING BLED SOE INDEPENDENT SCHOOL DISTRICT

In obedience to an order of the Board of Equalization regularly convened and sitting, notice is hereby given that said Board of Equalization will be in session at its regular meeting place in the City of Bledsoe, Cochran County, Texas, at 9:00 o'clock A.M. until 10:30 A.M. on Thursday, the 28th day of June, 1973, for the purpose of determining, fixing and equalizing the value of any and all taxable property situated in the said Bledsoe Independent School District for the year 1973, and any and all persons interested, or having business with said Board, are hereby notified to be present.

FOR—FULLER PRODUCTS phone Mrs. Byron Willis, 266-5284, 420 SE 1st, Morton, Texas. tfn-25-c



Each human eyelash lasts about 150 days.

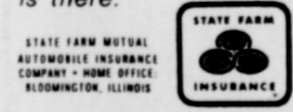
State Farm is now paying big 15% car insurance dividends.

to eligible Texas policy holders on expiring six-month policies.

CALL 894-7614

JERRY SANDERS AGENT

like a good neighbor, (JERRY SANDERS) is there.



REFRIGERATED AIR CONDITIONING Service Commercial - Industrial - Residential Serviceman in Morton Wednesdays

Call 266-8938 for appointment Emergencies call Muleshoe 272-3910

TOM'S ELECTRIC Muleshoe

## Highlights and sidelights from your State Capital

By Bill Boykin Texas Press Association

While the 1973 Legislature managed to avoid a tax bill, outlook for 1975 is "bleak" with new revenue needs ranging up to \$700 million according to Texas Research League.

Lt. Gov. Bill Hobby earlier came up with a similar gloomy estimate of a \$533 million tax boost during the next regular legislative session, but Gov. Dolph Briscoe declined to agree.

According to Texas Research League, state spending from key funds is expected to increase by \$550 million in 1976-77 and the increase could run as high as \$850 million to \$1 billion.

Revenues, meanwhile, are due to rise \$550 million to \$625 million over the present biennium.

However, TRL cautions these factors also be considered:

+ Federal revenue sharing funds (which accounted for \$316 million of 1974-75 income) will drop by at least \$100 million, because Texas received a three-year allocation to spend in a two-year period for the current budget.

+ An estimated \$156 million surplus at the beginning of the next biennium will decrease from \$75 million to \$100 million depending on bills signed up Governor Briscoe.

"With the highest projected spending increase (\$1.050 billion), the 1975 Legislature apparently would find itself faced with the need to find \$600-\$700 million in additional biennial revenues," said a new TRL report. "Even an \$850 million spending hike, means projecting a biennial revenue need of \$400-\$500 million."

If the next legislature decides to overhaul school finance formulas, a biennial cost increase of perhaps another \$300 million can be anticipated, TRL concluded.

Briscoe, at the national governors conference in Nevada, refused to be pessimistic and promised budgeting innovations and other economy moves which he feels can check a tax boost.

CLAYTON JOINS SPEAKER'S RACE—Rep. Bill Clayton of Springlake, veteran of a decade of service in the House of Representatives, made his candidacy for speaker official last week. Clayton is a conservative Democrat.

Other candidates include Reps. Fred Head of Troup, James Nages of Kerrville, Carl Parker of Port Arthur and Dave Finney of Fort Worth. Rep. DeWitt Hale of Corpus Christi is regarded as another strong possibility.

He cited three letters from county officials expressing a dim view toward tampering with their jobs. Calvert said the Commission is committed to no course on the subject.

The 37-member body is concluding its hearings over the state and will make recommendations to the legislature next November. Lawmakers will sit at a constitutional convention next year.

Calvert urged legislators to attend the hearings in eight cities this month. Committees will begin drafts on conclusion of the public discussions.

The remainder of the constitutional hearings are set as follows: Friday, June 15, Beaumont, Orange, and Port Arthur; Thursday, June 21, Abilene, and Fort Arthur; Wednesday, June 27, Wichita Falls; Thursday, June 28, Waco; and Friday, June 29, Austin.

COURTS SPEAK—Unsafe conditions in public housing units are grounds for suits where tenants are injured the State Supreme Court held in a case growing out of a death due to a defective heater.

In another case, the High Court upheld lower court judgments of \$197,500 in damages against Mobil Pipeline Company on behalf of the family of a Mobil Company employee who died in a Beaumont explosion.

The U.S. Supreme Court in Washington, meanwhile upheld a Texas law requiring immunization of school children against several diseases. The top court ruled that states cannot indirectly tax liquor sales on U.S. military bases.

AGOPIONS—County commissioners can spend county funds to provide for parking and a service building for county-owned vehicles and parking for the public having business in the courthouse, Hill Gen. John Hill held.

In other recent opinions, Hill concluded:

—In an election contest, on notice of appeal, district clerks should prepare a transcript and forward it to the court of civil appeals clerk before delivering it to the attorneys for the appellant.

—The Board of Chiropractic Examiners can adopt rules limiting the size of newspaper advertisements by chiropractors.

—County clerks are not authorized to set filing fees for discovery proceedings, if an action is still pending at the time the proceedings are instituted. If no action is pending, clerks are entitled to a fee of \$2 for each instrument issued by not for filing instruments prepared by others.

## BUSINESS and PROFESSIONAL DIRECTORY

### AUTOMOBILE DEALERS

**GWATNEY-WELLS**  
CHEVROLET-OLDSMOBILE CO.  
Your Home-Town Dealer  
Serving You With Full Line of Cars and Trucks

### SEED

**HARPOOL SEED-MORTON INC.**  
Specializing in High Quality Seed  
Wholesale and Processing Only  
See Us for Contract Production  
Sandy Asbill, Mgr. — 266-5742

### DIRT WORK

**ROYAL BERKGREN**  
504 E. Pierce  
Morton, Texas  
Earth Moving  
Motor Grader — Scraper Work  
Parrallel Terraces—Diversions—Waterways  
Phone 266-5144

### PUMP SERVICES

**CROCKET PUMP SERVICE**  
Irrigation Sales & Service & Domestic  
215 N.W. 1st, Morton  
Distributors of Simmons, HPC & Goulds  
Phone  
Mobile: 927-3820 Office: 266-8610

### JEWELRY

**ATCHISON JEWELRY**  
Levelland  
Phone 894-3450 817 Ave. G  
WATCH REPAIR  
DIAMOND SETTING  
CUSTOM MOUNTINGS

### DITCHING SERVICE

**SOUTH PLAINS DITCHING SERVICE**  
We install and repair natural gas lines. Give us a call for a competitive bid.  
Jearold and Larry Kelly  
Box 348, Levelland, Texas 79336  
Call 894-3629

### ANIMAL REMOVAL

**MORTON BI-PRODUCTS, INC.**  
Dead Cattle Removed  
Day or Night  
Phone 266-8021  
Nights 266-5052

### REAL ESTATE

**GLEN McDANIEL**  
Buying or selling farms or property  
Your Home-Town Dealer

### WESTERN ABSTRACT

Call 266-5185 nites 266-5103

REAL ESTATE, LIFE INSURANCE and HOSPITALIZATION FARM AND RANCH LOANS NOW AVAILABLE see Bob Cross Phone 266-5730

### TIRE SUPPLY

**LUPER TIRE & SUPPLY**  
COMPLETE TIRE SALES, SERVICE AND REPAIR  
Road & Farm Pit Stop Service  
108 East Washington  
P.O. Box 1074—Phone 266-5330  
Morton, Texas

### INSURANCE

**NATIONAL FARMERS UNION INSURANCE**

JOHN HUBBARD  
Agent for Bailey & Cochran Co.  
Life-Health-Casualty-Fire Real Estate  
108 SE 2nd, Morton-Ph. 266-5710  
Bula — office 933-2392  
Home 933-2321

### FARM BUREAU INSURANCE LIFE

Charles Palmer — Manager  
Jerry Steed — Special Agent  
**WHITEFACE**  
Fire & Casualty, Life, Health & Accident

### KIRBY VACUUM CLEANERS

We mail parts and supplies  
Call or Write  
Ralph Harvey  
KIRBY CO. OF PORTALES  
P.O. Box 518 Portales, N.M.  
Call (505) 356-3091

### OPTOMETRIST

**DR. WILLIAM R. GRUBBS**  
Optometrist  
Office hours in Morton  
Wednesday and Thursday  
9 a.m. to 5:30 p.m.  
Morton Professional Building  
Phone 266-5529

### ELECTRONICS

See Us For  
RCA Electronics  
Television, Radios, Etc.

### SALES AND SERVICE

**ROSE AUTO & APPLIANCES**  
Phone 266-5959 Morton

### APPLIANCES

**WHIRLPOOL APPLIANCES**  
Automatic Washers, Dryers, Refrigerators, Dishwashers

### ROSE AUTO & APPLIANCE

Phone 266-5959 Morton

### SEWING MACHINE SALES AND SERVICE

Factory authorized PFAFF dealer  
We service all makes machines all work GUARANTEED

### SEWING CENTER & FABRIC MART

Southwest corner of square  
Levelland, Texas Call 894-4250

### AUTO PARTS & SUPPLY

### MORTON AUTO SUPPLY

All the best brands in Auto Parts and Supplies  
Kim Hanlin, Owner-Operator  
120 W. Wilson-Phone 266-8877



MEMBER

### GEORGE W. AUTRY, SR. PUMP SALES & SERVICE

Domestic, Industrial, Agriculture Dealer for Goulds and Retco Pumps, Aeromotor Windmills and Aqua-Pure Home Water Filters. Repair on all makes pumps and windmills. Gearhead repair. Hydraulic Gravel Packing. "Continuous Service Assured" P.O. BOX 728, ENOCHS, TEXAS 79324 Phone AC 806-927-3511. Geo. Autry, Owner, AC 806-927-3940 Dennis Turney, Foreman.



HERE'S TO YOUR HEALTH

If you or members of your family are taking prescribed medicine, be sure you have an ample supply before leaving on your vacation trip. A long distance call to your doctor or pharmacist is expensive and awkward if you run out of medication away from home. It is wise to also pack an emergency first-aid kit for the car, and boat if you have one. We will be pleased to help you select the essential first-aid items.

**FRALIN'S PHARMACY**  
Cochran County's Exclusive Professional Prescription Shop  
DIAL 266-5521 MORTON, TEXAS  
R.C., Night 266-5148 A. A. Sr., Night 266-5847

**ASK YOUR ARMY REPRESENTATIVE ABOUT THE \$2500 ENLISTMENT BONUS.**

That's on top of the Army's new starting salary of \$507 a month. You must be a high school graduate, enlist for either Armor, Artillery, Infantry or a special skill area like Radio Teletype or Missile Repair, and successfully complete your Basic and Advanced Individual Training. Your local Army Representative has a complete list of bonus jobs and qualifications. Today's Army wants to join you.

This offer may change or be discontinued at any time depending on Army manpower requirements.

**806-747-3711 EXT. 617**  
**1205 TEXAS AVENUE**  
**LUBBOCK, TEXAS 79408**



# COTTON TALKS

FROM PLAINS COTTON GROWERS, INC.

purpose of the Agriculture and Conservation Act of 1973, passed on June 8, as stated by the Committee on Agriculture and Conservation from whence it came, is "to insure the production of adequate supplies of cotton at reasonable prices to consumers by insuring producers against losses if their expanded production results in prices below the target price."

"It is hard to find fault with this legislation," says Executive Vice President Johnson of Plains Cotton Growers of SLM-1-1-16 inch cotton with 3.5 to 4.9 micronaire during the first five months of the marketing year, August through December.

"This method of determining the per-pound payment rate, alone, is enough to inhibit the production of adequate cotton supplies," Johnson thinks. "Since spot market quotations do not accurately reflect prices paid to farmers for cotton, and since the price for SLM 1-1-16 inch cotton may or may not parallel prices for other cotton qualities, the formula doesn't insure producers against anything."

It is Johnson's contention that if this target-price system is to be used at all

produced.

"The key to the bill's chances for accomplishing its goals is in insuring producers against losses," Johnson believes, "because if this isn't done consumers can in no way be assured of adequate supplies at reasonable rates."

The bill, S-1888 sets a target price of 43 cents per pound for cotton and provides that producers should receive a payment equal to the difference between this figure and the average spot market quotations for SLM-1-1-16 inch cotton with 3.5 to 4.9 micronaire during the first five months of the marketing year, August through December.

"This method of determining the per-pound payment rate, alone, is enough to inhibit the production of adequate cotton supplies," Johnson thinks. "Since spot market quotations do not accurately reflect prices paid to farmers for cotton, and since the price for SLM 1-1-16 inch cotton may or may not parallel prices for other cotton qualities, the formula doesn't insure producers against anything."

It is Johnson's contention that if this target-price system is to be used at all

payments should be based on the difference between the target price and the prices actually paid to farmers for an average of the entire U.S. crop.

"Otherwise the chances for assuring production without producer losses are greatly reduced and some producers will benefit while others suffer."

The lower payment limitation simply means that whatever payment rate is decided upon would be made on only a portion of the production from larger operations. A farmer entitled to 10 cents per pound on 5 million pounds of production could receive 10 cents per pound on only 200,000 pounds his total return from cotton production. "In all likelihood this would bring his total return from cotton production to some point well below his cost of production," Johnson said, "and even the amount of this payment would be dependent on the producers' not having received payments on any other program crop."

The hope at PCG is that some of these inequities can be corrected in the version of a farm bill, on which the House Agriculture Committee is already at work. "And in all honesty I'd have to say our chances for relief on the payment issue in the House as of the moment don't look too bright," Johnson concluded.

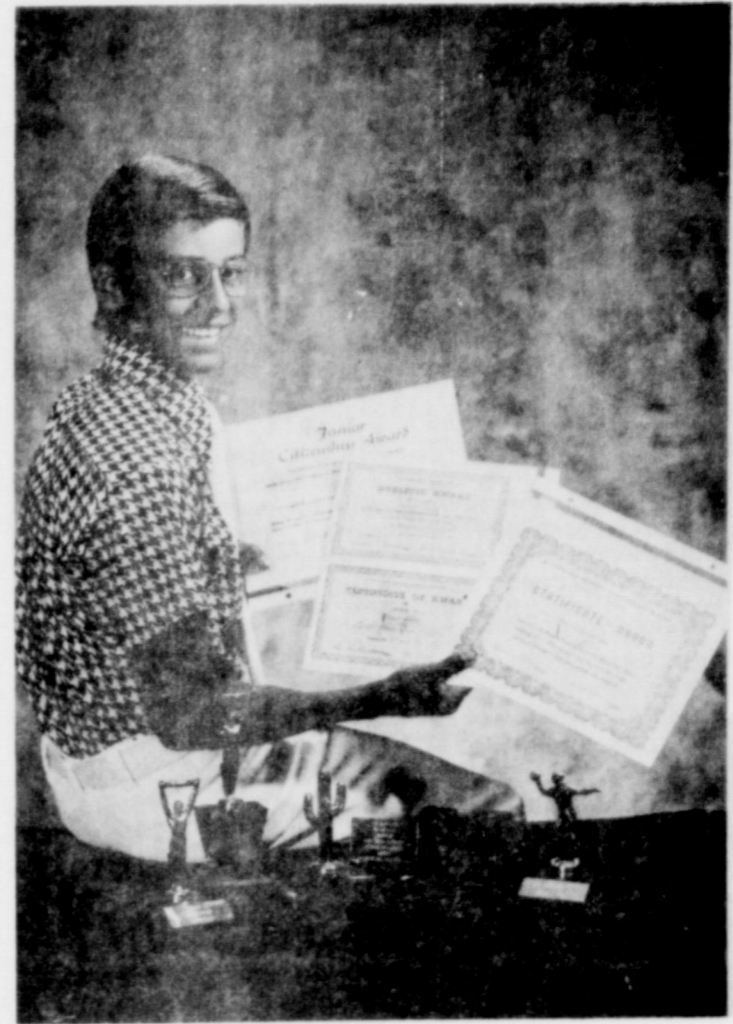
## 4-H sewing club elects officers

The New N. Go 4-H Sewing Club met Thursday, June 7, at 2 p.m. in the County Barn for an election of officers.

Suzanne Gillespie was named president. Serving with her will be Janet Gattis, vice president, Darlene Coffey, secretary, Sylvia Dutchover, treasurer and Rhonda Abbe, reporter.

Following the election, pattern directions were discussed and each member cut out a garment.

Others attending the meeting were: Cynthia Dutchover, Robin Joy and Kristi Rowland and leaders, Mrs. Frank Gillespie, Mrs. M.L. Abbe and Mrs. Ken Coffey.



## Resident's grandson wins Arizona honors

Bryan Ellis, grandson of Mr. and Mrs. Vernon Blackley, has won numerous awards in the ten months he has lived in Scottsdale, Arizona.

He was selected by a faculty committee to represent Mohave School in the Jaycees Jr. Citizenship Awards competition, which included all schools in Scottsdale. He was awarded 1st place, a \$50 savings bond and trophy.

Bryan also served as a member of the Mohave Student Council and designed the Mohave shirt emblem. In the area of sports, he earned a trophy for his participation in Pop Warner Football as an outstanding defensive left end, as well

as playing offense at the last of the season. He was a member of the District Championship Mohave Basketball team and played on the softball team as well.

Recently, at 8th grade graduation exercises, he was awarded the P.E.A. Outstanding All Around Student Award Trophy, along with an honor award trophy for academic achievement for second highest grades in his class of 175 students.

Bryan is the son of Mr. and Mrs. Cecil B. Ellis, who have recently been transferred from Arizona to Midland with Exxon Company. He is also the grandson of Mrs. Earl Ellis and the late Mr. Ellis of Dublin.

## Bible School

The Three Way Baptist Church will hold their Vacation Bible School June 18 thru June 22. Classes will be held from 3 until 5:30 p.m.

The School will be for children three years of age through 6th grade.

## HIGHWAY DEATHS

According to the Insurance Information Institute, highway deaths totaled 4,000 for January, a three per cent drop from the 1972 level, and traffic injuries dropped 10.6 per cent to a total of 308,752.

**CHECK! ... COMPARE! ... SAVE!**

You pay no more for **QUALITY FOODS!**

<b>FRANKS</b> WILSONS ALL MEAT 12 OZ. <b>79c</b>	<b>BUTTERMILK</b> BORDENS 1/2 GALLON <b>49c</b>
<b>RED RIND CHEESE</b> POUND <b>\$1.09</b>	<b>BORDENS COTTAGE CHEESE</b> 24 OZ. <b>49c</b>
<b>PORK SAUSAGE</b> GOOCH 2 LB. <b>\$1.59</b>	<b>COKE</b> 28 OZ. <b>5/\$1.00</b>
<b>PILLSBURY FLAKY BUTTERMILK BISCUITS</b> 9.5 OZ. <b>2/39c</b>	<b>ALCOA ALUMINUM FOIL</b> 37 1/2 SQ. FT.-18 IN. <b>49c</b>
<b>MINNERS</b> <b>79c</b>	<b>TEXIZE FANTASTIK SPRAY</b> 22 OZ. <b>79</b>
<b>TEXUN GRAPEFRUIT JUICE</b> 46 OZ. <b>2/83c</b>	<b>CAMAY BAR SOAP</b> BATH <b>2/37c</b>
<b>TOMATO SAUCE</b> DEL MONTE 8 OZ. <b>3/39c</b>	<b>COTTON MAID SPRAY STARCH</b> 22 OZ. <b>49c</b>
<b>WHITE SWAN CUT GREEN BEANS</b> NO. 303 CAN <b>4/\$1.00</b>	<b>IVORY LIQUID DETERGENT</b> 48 OZ. <b>99c</b>
<b>WHITE SWAN MIXED VEGETABLES</b> 300 CAN <b>4/89c</b>	<b>TOMATOES</b> CELLO <b>3 FOR \$1.00</b>
<b>DOG FOOD</b> 300 CAN <b>11/\$1.00</b>	<b>HAIR SPRAY</b> V05 2 OZ. <b>29c</b>
<b>ARRID EXTRA DRY DEODORANT</b> UNSCENTED <b>\$1.49</b>	<b>SHAVING LATHER</b> AQUA VELVA 6 1/4 OZ. <b>59c</b>
<b>CELERY</b> LB. <b>15c</b>	<b>PEARS</b> LB. <b>19c</b>

### WHERE TO FIND THE FOLLOWING:

BEE KNIVES	CULTIVATOR SWEEPS
GO-DEVIL KNIVES	IRRIGATION GASKETS
IRRIGATION BOOTS	BOLTS (Check our prices)
PIPE FITTINGS	ANSAR
SODIUM CHLORATE	TIRES
LAWN SUPPLIES	GARDENING SUPPLIES
VETERINARY PROD.	SEED-COMplete LINE
FEED ALL KINDS	CHEMICALS

IF WE DON'T HAVE IT AND YOU NEED IT WE'LL GET IT & IT WILL BE HERE FROM THEN ON.

## LEWIS FARM & RANCH

PHONE 266-5461

### FATHER'S DAY GIFTS FOR DAD

**OPEN EVERY DAY 8 AM-8PM**

at your Service!

<b>SCHICK HOT LATHER MACHINE</b> REG. \$17.95 NOW <b>\$14.88</b>	<b>BRUT LOTION</b> 3.2 FL. OZ. REG. \$6.40 <b>\$5.40</b>
<b>SCHICK HOT LATHER MACHINE REFILLS</b> REG. \$1.25 NOW <b>99c</b>	<b>KODAK POCKET INSTAMATIC 20 OUTFIT</b> REG. \$31.95 <b>\$26.88</b>
<b>HARTMAN STYLE SETTER ELECTRIC COMB &amp; BRUSH</b> <b>\$8.89</b>	<b>POLAROID SQUARE SHOOTER</b> REG. \$24.95 <b>\$21.44</b>

FAST, FRIENDLY SERVICE always.

PRICES GOOD THRU SAT., JUNE 16

## Neal Ellis PHARMACY AND GIFT SHOP

ONE THOUSAND COLLEGE 894-7315

# RAMSEY'S FOOD STORE



**CLUB**

**FROM PAGE ONE**

received trophy belt buckles for being all around in their groups.

Other winners were: Randy Coleman — 3rd in Halter Gelding, 4th in Reining, and 1st in Barrels; Sandy Coleman — 2nd in Barrels, 4th in Poles, 3rd in Flags, and 7th in Halter Mare; Stephanie Coleman — 4th in Flags; Trey McClung — 7th in Reining, 8th in Barrels, 2nd in Flag; Sara McClung — 2nd in Western Pleasure, — 1st in Reining, 3rd in Poles, 5th in Barrels, and 3rd in Flags; Debbie Polvado — 1st in Reining, Poles, Barrels and Flags; Susan Polvado, 10th in Reining, 6th in Barrels, and 5th in Flags; Steven Polvado — 2nd in Halter, 8th in Western Pleasure, 1st in Reining, 3rd in Barrels, and 1st in Flags.

**COMBS**

**FROM PAGE ONE**

in Lubbock.

He was a longtime resident of Cochran County and had been employed by Lewis Farm and Ranch Store for thirteen years. Prior to that he was manager of Cobb's Department Store. He was a member of the First Baptist Church and served with the Army Air Force during World War II.

Survivors include his wife, Helen; three sons, Tommy and Bobby both of Morton, and Larry of Muleshoe; a daughter, LaNita, of the home; his parents, Mr. and Mrs. J.O. Combs of Bovina; one sister, Mrs. Gene Guyer of Lubbock; two brothers, Harold of Portland, Oregon and Doug of Roswell, N.M. and three grandchildren.

**CLAYTON**

**FROM PAGE ONE**

traditionally has been the responsibility of the Speaker.

Clayton stated, "During the past session much needed legislation died in the log-jam created by what I consider to

be an unworkable committee system, but perhaps this was a blessing in disguise.

The legislature has finally met the challenge of trying to become less of a distant, untouchable entity, and has recognized the principal to which I have long subscribed: that hard work and effectiveness are directly proportional.

I believe that with this as the basis for all legislative activity, and under my leadership and administrative programs, the Texas House will become much more of a forum for rational, well-reasoned changes and actions than it has been in the past."

Clayton, a West Texas farmer, is married and has two children.

**'POT'**

**FROM PAGE ONE**

for analysis. Bicket was thought to be out of town at the time of the search and when he returned home, deputies arrested him early Tuesday. He was free Tuesday after posting a \$1,000 bond.

Lamonte Dewbre, 20, of Morton, and three juveniles — one reported to be 14 and the other two 15 years of age were apprehended in the act of smoking what is thought to be a marijuana cigarette Thursday night, according to sheriff's records. The four were said to have been sitting around a fire in a grove of trees near Morton and passing the alleged marijuana cigarette from mouth to mouth when they were apprehended.

Chief sheriff's deputy Darrell Denny stated that he and deputy Lynn Smith approached to within ten feet of the alleged smokers and watched them for several minutes before revealing themselves and making the arrests. The remainder of the cigarette that they all reportedly smoked was sent to the DPS lab for analysis.

Dewbre's bond was set at \$1,000 and was posted Tuesday morning. The three juveniles

were released in the custody of their parents. The charge against Dewbre will be under jurisdiction of district court and the other three will be handled in juvenile court.

Larry Bates, 22, Gerald Bates, 20, and Lamonte Dewbre, 20, were apprehended Saturday night and charged with liquor law violations. Larry Bates was charged with making alcoholic beverage available to a minor and the other two were charged with possession of alcohol by a minor.

Dewbre and the younger Bates brother pled guilty in Justice of the Peace Joe Gipson's court and were fined \$27.50 each. Larry Bates posted a \$50 bond pending further court action later.

Ben Mendoza, 28, of Rt. 5, Levelland, was picked up near Whiteface at 1 a.m. Sunday on three charges which netted him a total fine of \$226.50. He pled guilty to a charge of driving while intoxicated and was fined \$150 plus \$44 court costs and given six months probation. He was charged with speeding 110 miles per hour in a 65 mph zone, to which he pled guilty and was fined \$20; and was finally assessed a \$12.50 fine for driving without a license. All fines were paid and he is free on probation.

The Alvie Harris residence east of Bledsoe on SH125, was reported burglarized in what was thought to be a Sunday night break-in. The Harris' were away when the burglary took place and could not place the time with any accuracy. Harrah Rawls, sighted the smashed-in rear door to the Harris residence while working in a nearby field Monday and reported it to Sheriff C.G. Richards.

The intruder or intruders entered the house by smashing in the rear door and took five guns — rifles and shotguns — and one cigarette lighter. The sheriff's office had no definite leads in the case Tuesday.

**STAR**

**FROM PAGE ONE**

Jennings and "The Shrimpers", Whiteface Volunteer Fire Department is sponsoring the show.

Douglas is a recording artist for Dot Records. Among his best known recordings is "His and Hers" and his latest record is "Thank You For Touching My Life".

Tickets may be obtained from any Whiteface fireman. They are 50 cents for children, ages 6 through 14, and advance tickets for adults are \$1. Adult tickets purchased at the show will be \$1.25.

Due to an error in printing, some of the advance tickets

sold read Storewall Fire Department sponsoring the Joe Paul Nichols Show. Anyone having these tickets may present them at the door and they will be honored.

**GRANT**

**FROM PAGE ONE**

received a direct grant from the Department of Labor. The purpose of the program is to provide funds to local units of governments to pay wages of employees hired under the program for the summer.

On May 15th letters were sent to all cities, counties, soil and water conservation districts, hospital districts, and school districts inviting them to apply for funding under the program.

Then on May 29th the SPAG executive committee, composed of the seven officers of the association, using 1970 census data by county, allocated proportionately 75 jobs to 7 counties, 19 cities, 3 soil and water conservation districts, 41 independent school district and 5 hospital districts.

Jobs to be created range from maintenance and custodial work to library aids and clerk-typist. All positions will be paid the federal minimum wage of \$1.60 per hour. It was anticipated that the employing agencies selected would be hiring the first week of June.

**Radio query gets heavenly reply**

A Prince Rupert, Canada, radio station had just finished a radio talk show in which listeners took part by telephoning in when a bolt of lightning struck the transmitter, putting it out of action for 24 hours.

The subject under discussion was, "Is God dead?"

**Morton Lions Club**

**Sends girl Camping**

Miss Stephenie Gardner, 6 year old daughter of Mr. and Mrs. Larry Gardner of Tulia and granddaughter of Mr. and Mrs. Lloyd Miller of Morton is enjoying two weeks at Camp Manison in Friendswood. She is being sponsored at this unique camp by the Morton's Lions Club.

Camp Manison is Texas' Lions Camp for Diabetic Children. Purpose of the camp is to give diabetic children an opportunity to learn that they are not "sick" or "different" and to teach them that they are like other children and can live happy, normal lives by following good health practices. It also gives the children an opportunity to gain confidence in themselves whenever they have to be away from their parents.

The camp provides optimum medical care for the child and maintains adequate diabetic control by diet and individualized insulin dosage.

A typical day at Camp includes swimming, archery, horseback riding, games, arts and crafts, gymnastics and a variety of outdoor skills.

Stephenie will return home to Tulia June 22.

**Rev. J.R. Wood**

**services pending**

The Rev. Joel R. Wood of Lubbock Methodist Minister and father of Rev. Wood of Morton was dead on arrival at Methodist Hospital about 6:05 p.m. Tuesday following an apparent heart attack.

Services were pending Wednesday at the funeral home.

Rev. Wood, 78, was a member of the Northwest Texas Conference of the Methodist Church. He served churches in Shallowater, Anton, Lubbock, Stinnett, Earth, Kress, Hays, Wood and Cooper.

He had lived in Lubbock since his retirement from the ministry June 1961.

Rev. Wood was married to Hattie Wood in 1913 in Liberty. He was a member of the Oakwood United Methodist Church in Morton.

Survivors include his wife, three daughters, Mrs. Emmett of Alton, Mrs. W.J. of Morton, Emmett of Alton, and Mrs. Harrison of Lubbock; two sons, Mrs. Orelia Alley, Mrs. Edna Mason and Mrs. Ann Thompson all of Lubbock; two brothers, Walter of Lubbock and Newton of Slaton; a sister, Mrs. Stella Green of Garland; six grandchildren and four great-grandchildren.



"A celebrity is a person who works hard all his life to become well known, then wears dark glasses to avoid being recognized." (Fred Allen)

**NOW OPEN**  
**ANTIQUES, COLLECTOR ITEMS**  
 OLD CLOCKS, GLASS, BARBED-WIRE, DOLLS, ETC.  
 SOUTH SIDE OF SQUARE MORTON  
 OPEN DAILY 9 a.m. til 6 p.m.  
 CLOSED SUNDAY

**SPECIAL FACTORY PURCHASE**  
**STEEL BELTED—FIRST LINE FULLY GUARANTEED**

G78-14 or 15	\$27.50
H78-14 or 15	\$28.75
J78-15	\$30.50 PLUS TAX

IF YOU NEED TIRES THESE ARE A REAL BUY AND THEY ARE ABOUT 1/2 PRICE.

**LEWIS FARM & RANCH**  
 LOCALLY OWNED PHONE 266-5461 LOCALLY OPERATED

**FRALIN'S PHARMACY**  
 WE OFFER THESE SERVICES FOR OUR CUSTOMERS CONVENIENCE:

DRIVE IN WINDOW 24 HR. DELIVERY SERVICE WELFARE PRESCRIPTIONS  
 FAMILY RECORDS FOR INCOME PHOTO PROCESSING  
 TAX & INSURANCE PURPOSES 24 HR. PRESCRIPTION SERVICE

**MAKE THE MOST OF YOUR DOLLAR**

<b>METAMUCIL</b> 14 OZ. REG. \$3.33 NOW <b>\$2.27</b>	<b>MYLANTA LIQUID &amp; TABLETS</b> REG. \$2.00 NOW <b>\$1.32</b>
<b>SINUTAB 30's</b> REG. \$2.50 NOW <b>\$1.50</b>	<b>POLY-VI-SOL</b> REG. \$3.99 NOW <b>\$2.67</b>

DAYS 266-5521 NITES 266-5148 266-5847

**When we are Second in line to price your Prescriptions, We are Always the Lowest, TOO!**

**TO OUR MANY FARMER FRIENDS : WE THANK YOU**

YES, WEST TEXAS SEED WISHES TO THANK ITS MANY FRIENDS AND CUSTOMERS FOR YOUR LOYAL PATRONAGE AND FOR YOUR USE OF OUR PLANTERS' FIRST CHOICE

**GRAIN MAKER 200—GRAINMAKER 300**

THESE TWO HYBRIDS HAVE PROVEN OVER SEVERAL YEARS OF USE THAT THEY ACHIEVE EXCELLENT STANDABILITY AND DO WELL ON EITHER IRRIGATED OR DRY LAND.

THE PLANT HEIGHT OF THESE HYBRIDS MAKE IT MUCH EASIER TO MORE SPRINKLERS AND TO WORK THE CROP DUE TO THE AVERAGE MATURITY HEIGHT OF 40 to 44 INCHES.

THE SHORT HEIGHT, EXCEPTIONALLY STRONG STALK AND HIGH YIELD MAKE THESE HYBRIDS A COMBINATION HARD TO BEAT.

**WE HAVE ALMOST ANY POPULAR BRAND OF SORGHUM OR GRAZER YOU MIGHT NEED**

**WE AT WEST TEXAS SEED CO. GUARANTEE**

THAT WE WILL GIVE YOU MOST PROMPT AND COURTEOUS SERVICE AVAILABLE. WE APPRECIATE OUR CUSTOMERS, THEREFORE WE TRY TO GIVE THEM THE BEST PRICES ON THE SOUTH PLAINS. SO COME BY AND VISIT WITH US TODAY.

**YOU CAN GET GRAINMAKER 200 AND GRAINMAKER 300 AT THE FOLLOWING DEALERS:**

MORTON CO-OP GIN, in Morton  
 MAPLE FERTILIZER, in Maple  
 FARMERS CO-OP ELEVATOR in Levelland

CLAUNCH GIN in Bula  
 BLEDSOE SEED CO. in Bledsoe  
 BESEDA GRAIN in Whiteface

**WEST TEXAS SEED COMPANY**  
 DORA HIGHWAY MORTON, TEXAS

\*17.2 cu. ft  
 30" wide • B  
 by freezer • C  
 Free • Opt.  
 Ice-Maker fr  
 all the ice yo  
 Out Adjusta  
 wall design •  
 levered ad  
 7-day Fre  
 converts to  
 dispenser

ROPER GAS





## County non-working population growing



AND MRS. DAVID HATCHCOAT of Winnsboro announced the engagement of their daughter, Loretta Kay to H. Baker, son of Mr. and Mrs. H. Baker. Hatchcoat is a senior at East Texas State University and Baker is with the U.S. Army at Ft. Sill. The couple plan to be married on July 28 at 4 p.m. in the First Baptist Church in Winnsboro. Friends and relatives are invited to attend.

In Cochran County, a growing proportion of the male population over age 16 is, by choice, not going to school, not working and not choosing to work.

There are some 247 local residents in this non-work category, according to the latest figures from the Department of Commerce. Included are 131 who are between 16 and 65 and 116 who are above 65.

They represent 15.6 percent of the over-16 population. Nationally, the average is 14.9 percent.

The majority of them are retired persons who have sufficient financial assets or sources of income to enable them to lead lives of leisure.

There are others, of course, who are able-bodied but who are neither self-supporting nor interested in working. They represent a small portion of the total, however.

Throughout the country, in the over-16 male population, there are nearly 10 million in this non-school, non-work group, a big increase over the 6,800,000 reported in 1960.

Much of it is attributed to the fact that more men are quitting their jobs when they reach retirement age. Less than a fourth of them continue to work beyond 65.

Of Cochran County's male population over 65, approximately 42.3 percent are still on the active list, according to the Commerce Department. This compares with an average of 24.8 percent throughout the United States as a whole.

The major factor in enabling people to retire, in many instances before reaching 65, is the rapid expansion and scope of private and public pension programs in recent years.

In addition to pensions, there are other sources of income, such as interest on savings, dividends, life insurance annuities and the government's so-called "transfer payments."

These payments, which include social security, welfare, unemployment insurance and veterans benefits, provide them with a large part of their income.

In the past year, \$104 billion came from these transfer payments, the reports show. Related to the total personal income of Americans in 1972, which was \$936 billion, it appears that one dollar out of every nine is provided in that way.

### WHEAT FOR JORDAN

Jordan and the United States have signed a long-term loan agreement, under which America is to provide Jordan with 35,000 tons of wheat as drought relief.

## General Tel, CWA in wage agreement

General Telephone Company of the Southwest and Communications Workers of America reached tentative agreement Thursday night (June 7) on a wage agreement amounting to approximately \$2.5 million over the next 12 months.

The agreement, subject to union ratification, is within the 5.5 per cent Phase III guidelines set by the Cost of Living Council.

Negotiations between General Telephone and Communications Workers of America opened May 21 on a clause requiring a wage reopener in the third year of the current three-year contract.

Only wages, and classifications of jobs and towns were open for discussion in the talks between the union and company.

The union has two weeks to ratify the contract.

General serves 404 exchanges in Texas, Oklahoma, New Mexico and Arkansas. Communications Workers of America represents some 6,000 employees in the four states.



## HAPPY FATHER'S DAY! FATHER'S DAY GIFTS



NORELCO TRIPLEHEADER VIP \$2769

MISTER STYLING BRUSH & COMB SET \$1488

BILLFOLDS, GENUINE LEATHER PLAYS BY BATTERY, ELECTRICITY OR IN CAR \$350

PORTABLE 8 TRACK STEREO PLAYER \$5988



KODAK INSTAMATIC X-15 COLOR OUTFIT \$1688

KING STEEL TENNIS RACQUET \$1388

LARGE ASSORTMENT FISHING TACKEL 77c

WE HAVE A LARGE SELECTION OF RADIOS, COLOGNES, AND SMALL GIFTS FOR FATHER'S DAY. FREE GIFT WRAPPING ON PURCHASES OVER \$1.00

BEN FRANKLIN

## AUCTION SATURDAY!

THERE WILL BE A BIG AUCTION

AT 215 N. MAIN IN

MORTON SATURDAY

BEGINNING AT 7:30 P.M.

COME SEE US

You Might Find it Here

# GRAND OPENING SALE

BILL SMITH, NEW OWNER OF RAY'S FURNITURE & APPLIANCE IS HOLDING OPEN HOUSE

THURSDAY, FRIDAY & SATURDAY JUNE 14, 15 & 16

AND INVITES ALL OF HIS GOOD FRIENDS AND CUSTOMERS TO DROP IN AND HELP HIM CELEBRATE HIS NEW OWNERSHIP.

DRAWINGS FOR VALUABLE PRIZES EACH DAY!

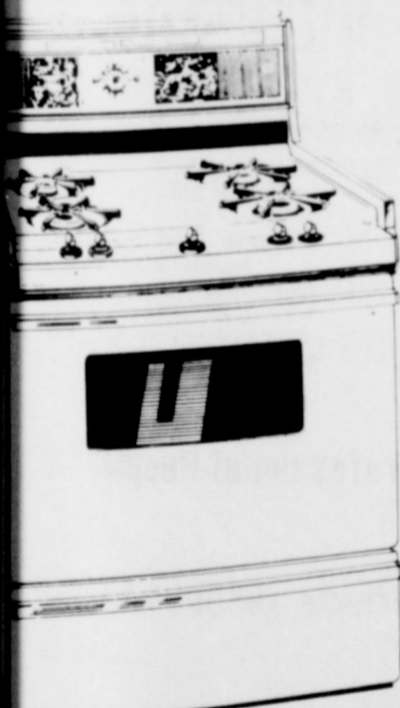
3 GRAND PRIZES JUNE 16

THE THREE DRAWINGS AT 5 P.M., SATURDAY JUNE 16, WILL BE FOR:

1. A DELL-PEOPLES MATTRESS AND BOX SPRINGS
2. A 27 INCH SPORTSMAN 10 SPEED BICYCLE
3. A ZENITH DIGITAL CLOCK-RADIO.

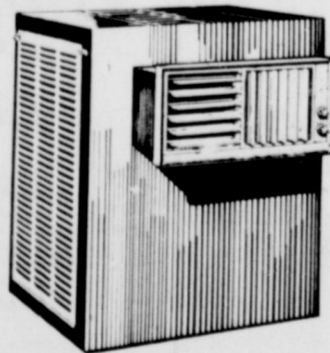
YOU MUST BE 18 OR OVER TO REGISTER FOR THE DRAWING

FABULOUS BARGAINS THROUGHOUT THE STORE DURING OUR OPEN HOUSE!



MODEL 1332 - Continuous-cleaning oven. Deluxe deep-profile back panel, fluorescent illumination, electric clock and four-hour timer, appliance outlet. Unitized lift up/off cook-top. Top-front CS-170 click-valve controls. Removable oven door, deepshade window, oven interior light. Separate roll-out smokeless broiler. Leg levelers.

**SPECIALS**



Westinghouse "Frost-Free 17" Refrigerator-Freezer with Optional Automatic Ice-Maker

17.2 cu. ft. capacity - only 30" wide • Big 163-lb. capacity freezer • Completely Frost-Free • Optional Automatic Ice-Maker freezes and stores all the ice you need • Glide-Out Adjustable Rollers • Slim design • Heavy-duty cantilevered adjustable shelves • 7-day Fresh Meat Keeper converts to moist-cold extra dispenser

ROPER GAS RANGES

ROPER



FOR A FULL FEATURED ZENITH SUPER CHROMACOLOR 23" GIANT-SCREEN CONSOLE



Compare these features!  
 ONE-BUTTON COLOR TUNING  
 OVER 90% SOLID-STATE CHASSIS  
 BRILLIANT COLOR PICTURE  
 FINE FURNITURE STYLING

The HILLSDALE • S2966W

23" diagonal giant-screen Modern styled lowboy console finished in grained Walnut color. Titan 101 Chassis. Chromatic One-button Tuning. Automatic Fine-tuning Control. Solid-State Super Video Range Tuner. 5" Round Speaker. VHF/UHF Spotlite Dials.

Don't delay! Stop in today!

ZENITH quality portable tv



The IBERT • D593W Built-in 8-Track tape cartridge player. FM/AM/Stereo FM tuner. Stereo Precision record changer. 100 Watt peak power output solid-state amplifier. Stereo headphone jack. Each air suspension enclosure contains one 6 1/2" round woofer and one 3" round tweeter.

# RAY'S FURNITURE & APPLIANCE

102 S.W. 1ST

MORTON



# Enochs-Bula News

Mr. and Mrs. J.C. Snitker and children, spent last Wednesday till Sunday at Locksburg, Arkansas visiting her brother, Mr. and Mrs. Curtis Green.

J.W. Layton was able to come home Tuesday from the Littlefield Hospital.

Mr. and Mrs. Frank Layton from near Cleburne arrived Tuesday afternoon for a visit with his brother, Mr. and Mrs. J.W. Layton.

Gordon McDaniel of Bryan came for his wife and baby who have been visiting with her parents, Mr. and Mrs. E.M. Autry and sister, Jo Ann.

Mr. and Mrs. Orbe Phillips and children, Mr. and Mrs. A.J. Blackman, Mr. and Mrs. Clyde Phillips, Mr. and Mrs. Gary Phillips fished at Ute Lake last week.

Mrs. J.C. Snitker is attending Tech this summer.

Bro. Charlie Shaw attended a conference for those going to the Korean and Japan Crusade at Denver City Thursday night.

Mrs. Douglas and daughters, Belina and Amanda attended the Campfire Camp at Camp Blue Haven last week.

Mr. and Mrs. J.D. Rowland visited with James Frie, who is a patient in the Leveland Hospital, last Sunday.

Mrs. Hazel House, Zed Robinson and Cathy Snitker attended the West Texas Methodist Conference June 5 through 7 held in Austin.

James Sinclair and children returned last Friday afternoon from a visit with his

sister, Mrs. Elizabeth Toone, in Bakersfield, Calif. and his brother, John Snitker, at Salina, Calif.

Barbara Black, bride elect of James Byron Carroll, was honored with a shower Friday in Fellowship Hall of the Bula Baptist Church. The table was covered with white net cloth over sheet. Yellow and green were used in decorations. Hostesses were: Mmes Robert Claunch, Dewitt Tiller, Larry Cain, Rowena Richardson, E.O. Battles, Fred Locker, Edward Crume, J.C. Wothrow, Raymond Austin, P.R. Pierce, Raymond Maxwell, John Latham, Nolan Harlan, Ashel Richardson, Clyde Hogue and C.A. Williams. Hostess giftware cookware.

Mrs. Terry Turner and children of Las Cruces, N.M. are spending a few days with her parents, Mr. and Mrs. Ray Seagler. Their other daughter Mr. and Mrs. Royce Lane and daughter of Sweetwater were guests over the weekend. Monday they all visited with another daughter and sister, Mrs. Wayne Harrington and family in Lubbock.

Mr. and Mrs. Bob Newton and Steve left for Rust Friday to see their new grandson, Patrick Wayne.

Mr. and Mrs. Charlie Byars visited with their son, Mr. and Mrs. Tom Byars, at Friona Sunday.

G.R. Newman is in Methodist Hospital in Lubbock.

Mr. and Mrs. Keith Fred and children from Illinois arrived Sunday for a visit

with his parents, Mr. and Mrs. L.G. Fred. Other guests in the Fred home Sunday were: Mr. and Mrs. Tom Newton of Lubbock, Mr. and Mrs. Bobbie Fred of Denver City, Mr. and Mrs. Benny Frey and daughter, Mr. and Mrs. Bill Rogers all of Levelland, Mr. and Mrs. James Hooper of Brownfield, Bob Newton and Steve of Enochs and Fred's brother and his wife of Morton.

Guests in the home of Mr. and Mrs. J.W. Layton Thursday were Dr. and Mrs. C.C. Martin of Freeport.

Mr. and Mrs. Johnny Cox returned home Wednesday afternoon from a visit with their daughter, Mr. and Mrs. Curtis Wilson and daughter, April, in Las Vegas, Nevada. They left Saturday for Fort Worth where they will make their home.

Cindy and Shelly Wall of Big Spring visited last week with their grandparents, Mr. and Mrs. W.L. Welch. Others visiting with their grandparents last week were Tammy Harrington of Lubbock with her grandparents Mr. and Mrs. Ray Seagler, Marthan George of Lubbock and Brent George visiting with the E.N. McCalls.

Mr. and Mrs. Gilbert Gilliam and children of Farwell, Vicie Gilbert and Palmer Hunker of Amarillo, Mr. and Mrs. Vester Gilliam, Mrs. Linda Butler and daughter all of Morton were guests in the home of the E.C. Gilliams Sunday.

The Colts won their game with the Sox 8-5 and the Cards beat the Giants 6-0 Monday night.

Mr. and Mrs. W.C. Risinger were honored on their 30th wedding anniversary with a reception Sunday May 27, in the home of her sister, Mrs. Ruby Reid, in Littlefield. Hosting the reception were their children Mr. and Mrs. Mike

## Farmcast

A Weekly Report Of Agri-Business News

Compiled From Sources  
Of The Texas Department of Agriculture  
John C. White, Commissioner

Texas Bats .333... Egg Production Below Earlier Levels... Cattle and Calves Marketed Show Declines.

Of nine selected categories of vegetable production, Texas is first in three of them, giving the state a .333 batting average. Texas is first in the nation in production of cabbage, spinach, and watermelons for the year 1972, according to the Texas Crop and Livestock Reporting Service.

Risinger of Lubbock, Mr. and Mrs. Gary Everett of Odessa, Mr. and Mrs. Pat Risinger of Bula and Ron, Jimmy and Lisa Risinger.

The former Zoy Froumberger and Risinger were married May 30, 1943. They moved to Bula from Clarendon in 1951.

Assisting in the houseparty were Jolen, Reid, Lisa Risinger, Rosa Risinger, and Jacque Everett.

In production of fresh market vegetables, Texas is third in the nation outranked by California and Florida. In total vegetable production, Texas is in fourth place; California, Wisconsin and Florida are ahead of the state in that category.

Watermelon production in Texas last year totaled 70,000 acres; spinach production totaled 5,500; and cabbage production totaled 19,000 acres.

On a county basis, Hidalgo County is Texas' leading vegetable producer with a total of 60,000 acres. Other counties in the top 10 in total vegetable production are Frio, Zavala, Cameron, Deaf Smith, Starr, Castro, La Salle, Willacy, and Duval.

Hidalgo County is the state's leader in production of cabbage, cantaloupes, carrots, onions. Frio County is the state's leader in production of watermelons.

Other rankings of the state show the importance of Texas to vegetable production for the nation.

Texas is second in production, second in carrot production, fourth in green peppers, second in total vegetable acreage.

Total vegetable acreage during 1972 amounted to 213,000 acres. Complete details on the vegetable industry in the state are included in the 1972 Texas Vegetable Statistics, which may be obtained by writing the Department of Agriculture, Austin, Texas 78711.

SALES of cattle calves, sheep and hogs showed moderate declines in auctions numbered 427,000 head, 100,000 head and 100,000 head, respectively below a month ago.

Sheep sales at 79,000 head were 25 percent below a year ago. Cattle sales at 30,000 head were 25 percent below a year ago.

Hogs sold at 34,000 head were 25 percent below a year ago and a month ago. Egg production in Texas during the year ago and one percent less than the previous month.

Texas hens are still not quite at national average on laying birds. Eggs laid daily per 100 hens averaged during April, nationwide, the average was 6.8 eggs laid daily per 100 hens.

Egg-type chicks hatched during April increased to 10 percent last year. The national total was the same as a year ago.

FUEL shortages are being felt from various parts of the agricultural producers. Farmers' short of fuel are requested to report to the Texas Department of Agriculture to their county Agricultural Station and Conservation Service office.

**ASSEMBLY OF GOD CHURCH, Whiteface**  
Pastor, Rev. Billy Pierson  
Sunday Services—  
Sunday School . . . . . 9:45 a.m.  
Morning Worship . . . . . 11 a.m.  
Evening Worship . . . . . 6 p.m.  
Midweek Bible Study . . . . . 6:30 p.m.

**ST. ANN'S CATHOLIC CHURCH**  
The Rev. Allen Tighe Administrator  
8th and Washington Streets  
Mass schedule—  
Sunday . . . . . 9:00 and 11:00 a.m.  
Tuesday . . . . . 8:30 a.m.  
Wednesday . . . . . 8:30 a.m.  
Thursday . . . . . 8:00 p.m.  
Friday . . . . . 8:30 a.m.  
Saturday . . . . . 8:30 a.m.  
Holy Day Mass—7:30 a.m. & 7:30 p.m.  
Sunday—Catechism Class  
10:00-11:00 a.m.

Confessions—Sunday  
20 minutes before Mass  
Baptisms—Funerals—Weddings  
By appointments—266-8693

**FIRST BAPTIST MEXICAN MISSION**  
Sundays—  
Sunday School . . . . . 10:00 a.m.  
Training Union . . . . . 6:30 p.m.  
Evening Worship . . . . . 7:30 p.m.  
Wednesdays—  
Prayer Service . . . . . 7:30 p.m.

**NEW TRINITY BAPTIST CHURCH**  
Rev. W.D. Anderson  
3rd and Jackson  
Sundays—  
Sunday School . . . . . 9:45 a.m.  
Morning Worship Second and Fourth Sundays . . . . . 11:00 a.m.  
H.M.S. . . . . 4:00 p.m.  
Wednesdays—  
Prayer Service . . . . . 7:00 p.m.

**FIRST BAPTIST CHURCH, ENOCHS**  
Rev. Charley Shaw  
Sunday School . . . . . 10 a.m.  
Morning Services . . . . . 11 a.m.  
Training Union . . . . . 7 p.m.  
Evening Services . . . . . 8 p.m.

"Thou wilt show me the path of life,  
in the presence is fulness of joy."  
PSALM 16:11

## HERE IS THE PATH



**BLED SOE BAPTIST CHURCH**  
Sunday Service . . . . . 9:45 a.m.  
Worship Service . . . . . 11 a.m.  
Training Union . . . . . 6 p.m.  
Evening Worship . . . . . 7 p.m.  
Wednesday Night Service . . . . . 8 p.m.


**CHURCH OF CHRIST**  
S.W. 2nd and Taylor  
C.R. Mansfield, Preacher  
Sundays—  
Bible Class . . . . . 10:00 a.m.  
Worship . . . . . 10:45 a.m.  
Evening Worship . . . . . 6:00 p.m.

Wednesdays—  
Midweek Bible Class . . . . . 8:00 p.m.

**FIRST METHODIST CHURCH**  
James E. Price, Pastor  
411 West Taylor  
Sundays—  
Church School Session . . . . . 9:45 a.m.  
Morning Worship Service . . . . . 11:55 a.m.  
Evening Fellowship Program . . . . . 5:00 p.m.  
Evening Worship . . . . . 6:00 p.m.

**WHITEFACE, CHURCH OF CHRIST**  
Dick Biggs, Minister  
300 Tyler Street  
Sunday—  
Bible Classes for all ages . . . . . 10:00 a.m.  
Worship and Communion . . . . . 10:55 a.m.  
Evening Bible Classes . . . . . 6:30 p.m.  
Evening Worship . . . . . 7:00 p.m.  
Wednesday—  
Bible Study & Prayer . . . . . 8:00 p.m.  
Sister Pearl's Gospel Singing House Purity Sunday School Class . . . . . 8:45 a.m.  
Teacher—Pearl Swindle Williams  
511 E. Jackson

**UNITED METHODIST CHURCH, ENOCHS**  
Rev. Hazel House  
Services held 1st and 3rd Sundays  
Sunday School . . . . . 10 a.m.  
Morning Services . . . . . 11 a.m.  
Evening Services . . . . . 7 p.m.  
4th Wednesday—Fellowship . . . . . 7 p.m.



"Thou shalt love the Lord thy God with all thy heart, and with all thy soul, and with all thy strength, and with all thy mind, and thy neighbor as thyself."  
Luke 10:27

The basis of God's first and greatest commandment is love. God gave man the freedom to choose . . . and therefore will not force his love on anyone. God took the first step and is always ready to receive any who would come to Him.

The Church is God's appointed agency in this world for spreading the knowledge of His love for man and of His demand for man to respond to that love by loving his neighbor. Without this grounding in the love of God, no government or society or way of life will long persevere and the freedoms which we hold so dear will inevitably perish. Therefore, even from a selfish point of view, one should support the Church for the sake of the welfare of himself and his family. Beyond that, however, every person should uphold and participate in the Church because it tells the truth about man's life, death and destiny, the truth which alone will set him free to live as a child of God.



**UNITED METHODIST CHURCH, BULA**  
Rev. Hazel House  
Services 2nd and 4th Sundays  
Sunday School . . . . . 10 a.m.  
Morning Service . . . . . 11 a.m.  
Evening Service . . . . . 7 p.m.

**THREE WAY BAPTIST CHURCH**  
Rev. Preston Harrison  
Sunday School . . . . . 10 a.m.  
Morning Worship . . . . . 11 a.m.  
Training Union . . . . . 6 p.m.  
Evening Services . . . . . 7 p.m.

**ASSEMBLY OF GOD CHURCH**  
G.A. Van Hoose  
Jefferson and Third  
Sundays—  
Sunday School . . . . . 9:45 a.m.  
Morning Worship . . . . . 11:00 a.m.  
Evening Evangelistic Service . . . . . 6:00 p.m.

Wednesdays—  
Night Prayer Meeting and Christ's Ambassadors Convene Together . . . . . 7:30 p.m.

Thursdays—  
Every 1st and 3rd, Women's Missionary Council . . . . . 2:30 p.m.  
Every 2nd and 4th, Girls' Missionette Club . . . . . 4:30 p.m.

**FIRST MISSIONARY BAPTIST CHURCH**  
Rois Standifer, Pastor  
Main and Taylor  
Sunday School . . . . . 9:45 a.m.  
Morning Worship . . . . . 10:45 a.m.  
Training Service . . . . . 6:00 p.m.  
Evening Worship . . . . . 6:45 p.m.

**WMA Circles**  
Monday—  
Night Circle . . . . . 7:30 p.m.  
Tuesday—  
W.M.A. . . . . 2:00 p.m.  
G.M.A. . . . . 4:00 p.m.  
Wednesday—  
Midweek Service . . . . . 7:30 p.m.  
Edna Bullard . . . . . 9:30 a.m.

**HICK'S CHAPEL BAPTIST CHURCH**  
Rev. H.O. Huff, Jr.  
Sunday School . . . . . 10:00 a.m.  
Morning Services . . . . . 11:00 a.m.  
Training Union . . . . . 6:00 p.m.  
Evening Services . . . . . 7:00 p.m.

**FIRST BAPTIST CHURCH, WASHINGTON**  
Harold Harrison, Pastor  
Sunday School . . . . . 10:00 a.m.  
Morning Worship . . . . . 11:00 a.m.  
Church Training . . . . . 6:00 p.m.  
Evening Worship . . . . . 7:00 p.m.  
Wednesday Prayer Meeting . . . . . 7:00 p.m.

**FIRST BAPTIST CHURCH**  
Paul McClung, Pastor  
202 S.E. First  
Sunday School . . . . . 10:00 a.m.  
Morning Worship . . . . . 11:00 a.m.  
Morning Service KRAN . . . . . 11:00 a.m.  
Training Union . . . . . 6:00 p.m.  
Evening Worship . . . . . 7:00 p.m.

Tuesdays—  
Helen Nixon W.M.U. . . . . 8:00 p.m.

Wednesdays—  
Graded Chorus . . . . . 7:30 p.m.  
Prayer Service . . . . . 8:00 p.m.  
Church Choir Rehearsal . . . . . 8:00 p.m.

**SPANISH ASSEMBLY OF GOD CHURCH**  
Rev. Ignacio Ruiz  
N.E. Fifth and Wiam  
Sundays—  
Sunday School . . . . . 10:00 a.m.  
Morning Worship . . . . . 11:00 a.m.  
Evening Evangelistic Service . . . . . 7:00 p.m.

Wednesdays—  
Young people service . . . . . 7:00 p.m.

**EAST SIDE CHURCH OF CHRIST**  
704 East Taylor  
Sundays—  
Bible Study . . . . . 10:00 a.m.  
Worship . . . . . 10:45 a.m.  
Worship . . . . . 11:00 a.m.

Wednesdays—  
Midweek Service . . . . . 8:00 p.m.

**CHURCH OF CHRIST, WASHINGTON**  
Dannie Mize, Preacher  
Bible Study . . . . . 10:00 a.m.  
Worship . . . . . 10:45 a.m.  
Worship . . . . . 11:00 a.m.  
Night Worship . . . . . 8:00 p.m.  
Wednesday Night Services . . . . . 8:00 p.m.

This Feature Is Published With The Hope of Getting More People To Church By The Undersigned City Business and Professional People:

<p><b>Beseda Grain Co.</b></p> <p><b>Mobil Oil Corp.</b> Mobil Products — 266-5108</p> <p><b>Bailey County Electric Co-op Association</b> Phone 266-8600 — Whiteface Hwy.</p> <p><b>Bedwell Implement</b> 219 E. Jefferson — 266-5306</p> <p><b>Rose Auto and Appliance</b> 107 E. Wilson — Phone 266-5959</p> <p><b>Star Route Co-op Gin</b> St. Rt. 1 — Phone 927-3416</p>	<p><b>Ramby Pharmacy</b> 104 W. Wilson Phone 266-509.</p> <p style="text-align: center; font-size: x-small;">Compliments of</p> <p><b>Carl Griffith Gin and G &amp; C Gin</b></p> <p><b>Judge Glenn Thompson</b></p> <p><b>L &amp; B Supply</b> N. Main — Phone 266-5110</p> <p><b>Cochran Electric Service &amp; Supply</b> 317 W. Washington Phone 266-5545</p> <p><b>Gwatney-Wells Chevrolet-Olds</b> 113 E. Washington — Phone 266-5532</p> <p><b>Farmer's Co-op Gin of Enochs</b> Enochs 927-3444</p> <p><b>Claunch Gin</b> Bula</p>	<p><b>First State Bank</b> 107 W. Taylor — 266-5511</p> <p><b>Griffith Equipment Company</b> 120 N. W. 3rd — Phone 266-5555</p> <p><b>Luper Tire and Supply</b> 108 E. Washington — 266-5330</p> <p><b>Allsup's 7 till 11</b> 602 Main — Phone 266-8001</p> <p><b>Ramsey's Food Store</b> Gerald Ramsey, Owner 210 South Main</p> <p><b>State Line Butane</b></p>	<p><b>Bledsoe Grain Market</b> Phone 927-3303</p> <p><b>Higginbotham-Bartlett</b> 201 W. Wilson Avenue — Phone 266-5255</p> <p><b>Tic Toc Restaurant</b> Loma and Rob Richards Levelland Highway — Phone 266-5223</p> <p><b>St. Clair Department Store</b> Maple, Texas — Phone 927-3191</p> <p><b>Maple Co-op Gin</b></p> <p><b>Design Studio</b></p> <p><b>Smith Seed and Implement</b> Maple, Texas</p>
--	---	---	--



## Triticale Foods sets Muleshoe open house

A review of West Texas agriculture's first attempts of market development for manmade grain is slated in Muleshoe June 15 when Triticale Foods Corporation conducts its first open house and field day.

Triticale Foods Corporation, officially chartered early this year, is the home of triticale grain food products — Triticakes, Tritibread and other products that will be marketed shortly. Triticquix, Tritikrux, Tritiflakes, Tritipizza and high protein extruded snacks.

The open house will begin at 10:30 a.m. with a program by Dr. S.P. Yang, Texas Tech University and Doug Bales, chairman of the board of Triticale Foods Corporation. Dr. Tom Longnecker, executive vice-president, High Plains Research Foundation, also will be on the program. Program topic will be "Food production and applied research for quality control for the gene to the consumer."

After the program tours of corporation manufacturing facilities will be conducted.

Available at the open house will be samples of food products that will be made from triticale.

The field day is set to coincide with harvest of several thousand acres of triticale being produced in the Muleshoe area. Tours of Triticale fields will be conducted throughout the day.

The manufacturing plant presently has the capacity to process approximately 40,000 pounds of triticale daily. Land west of Muleshoe recently has been purchased for future expansion.

Focus on triticale production shifts to the High Plains Research Foundation at Halfway from 2:00 p.m. until 5:00 p.m. that afternoon. The High Plains Research Foundation has been instrumental in triticale

**SHORT SNORTS--** U.S. Rural Electrification Administration has approved a \$3 million loan to Guadalupe Valley Telephone Cooperative Inc., in New Braunfels. Governor Briscoe set July 17 as the date for a special election to fill the vacancy created by resignation of Sen. Charles Herring of Austin to become Lower Colorado River Authority general manager. Farmers are having trouble getting diesel fuel for harvest vehicles, according to Agriculture Commissioner John C. White. The Office of Economic Opportunity approved nearly \$1.5 million in grants to nine Texas Cities...San Antonio, Amarillo, Corpus Christi, Austin, Dallas, El Paso, Fort Worth, Houston and Lubbock. Briscoe was named to the executive committee of the national governors conference at a recent meeting in Nevada. Cigarette taxes dropped off \$34,186 last month below 1972. Total take was still more than \$21 million. Reduced fire extended coverage and homeowner insurance rates were approved for 12 more companies operating in the state.

production and feeding trials in swine in this area. Triticale production practices and feeding demonstrations will be reviewed in activities at the Research Foundation.

Everyone is invited to attend open house and field day at both Muleshoe and Halfway, especially if triticale is "your piece of cake."

## Couple exchange vows in chapel

Patricia Ann McClure and William Priksyl were married in a double ring service at 7 P.M. April 28 in the chapel of St. Mary's University, San Antonio. Father Rochon officiated.

The bride, daughter of Mrs. Peggy McClure and the late James McClure, attended Morton High School and graduated from Texas Tech. She is now teaching at James Russell Lowell Junior High School in San Antonio.

Priksyl is the son of Mrs. Juanita Priksyl and the late Bernard Priksyl of Seguin. He is a graduate of Seguin High School and the University of Texas and is sales manager of KITY, San Antonio.

Diane Brown of San Antonio was maid of honor, and Bill Curtis of Austin, served as best man.

The bride, given in marriage by her uncle, McCall Sanders of Weimar, wore a formal gown of candlelight satin with a chapel length train.

The couple honeymooned in Puerto Vallarta, Mexico and are now at home at 611 South Point St., San Antonio.



MRS. WILLIAM PRIKRYL (nee: Patricia McClure)

## Hospital notes

Patients admitted to Cochran Memorial Hospital June 5 through June 12 were: John Reedy, Joyce Farmer, Lorcine Herlocker, Mrs. Glen Gladdy, L.B. Lindsey, Brenda Murphy, Bob Nunnally, Don Gomez, Carolyn Jones, Johnny Arnold, Clemmie Speck and D.C. Washington.

**YANK PREMIERE**  
A new U.S. Army newspaper, Yank, was published for the first time on June 13, 1942.

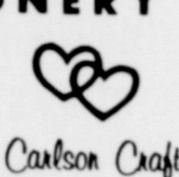


**MINNIE MARTIN** of Morton announces the engagement of her daughter, Darlene, to Richard Horton, son of Mr. and Mrs. R. Horton.

Minnie Martin is a 1972 graduate of Levelland and South Plains College. She is a 1971 graduate of Morton High School and also of South Plains College.

The couple is planning a wedding. Friends and relatives are invited to attend.

**SWISS SQUAD**  
Recruitment is under way by the Swiss government for a military aid corps of 1,000 men and women who would be sent to help in natural disasters, primarily earthquakes and floods, in other countries.


Distinctive  
*Wedding*  
STATIONERY  
By   
Carlson Craft

INVITATIONS and ANNOUNCEMENTS  
NAPKINS  
BRIDAL BOOKS  
ACCESSORIES

Fast Service,  
Beautiful Styles,  
Reasonably Priced!

**MORTON FLORAL & GIFT SHOP**  
605 E. LINCOLN 266-8816

**COW POKES** By Ace Reid



"Now, we couldn't have a family, we shot the stork for sumpin' to eat!"

The best investment to be made by youngsters of all ages is a Sound savings plan that is added to at regular intervals. Drop in and let the First set you up a Sound savings plan which will draw maximum interest and will provide steady growth in the future.

**First State Bank**  
MEMBER FDIC

**GIFTS FOR FATHER ON HIS DAY AT ST. CLAIR'S**

**DAD'S Day is June 17th**

Sleepware gifts dad won't yawn at...

For Him — belts, billfolds, ties, socks, underwear, pajamas, robes, straw hats, shoes — and a wide selection of novelty gifts — all wrapped free.

**Robes:**

**Pajamas:**

**Mens Double Knit SPORT COATS**

**10% OFF**

All For Dad

**Men's Knit Slacks**

Mens Double Knit Dress Pants in a good selection of patterns, colors and styles to pick from. For Dad

**10% OFF**

**SHIRTS**

Mens Dress and sport Shirts. Solids, fancies, stripes, checks and plaids in regulars and tails — in a wide selection of colors. Sizes small thru X-large. Dads Day Special

**SHIRTS 10% OFF**

Mens Knit Dress and Sports Shirts in a large choice of patterns and colors to choose from — all sizes. For Dad

**10% OFF** Reg. Price

**St. Clair's**  
DEPARTMENT STORE





**PATRICIA BELL** was crowned Queen of Sales for MaryKay Cosmetics, for the Month of May and the 1st week of June, Tuesday at a sales meeting held in the First State Bank Board Room.

Lou Ann Crowley won the door prize.

The next meeting will be a luncheon Tuesday, June 19, at 9:30 a.m. in the home of Mrs. Clara Williams.

## ABOUT LOCAL FOLKS

by Dutch Gipson

Mr. and Mrs. Roy Turney and family and Mrs. Thelma Turney left Saturday to visit with his parents in Oklahoma.

Mr. and Mrs. Art Wall had as their houseguests last week her sister from Lovell and a sister and her husband from Canyon. This week their two granddaughters, Cindy and Shelly Wall of Odessa are visiting with them.

Mr. and Mrs. Donnie Simpson, Scottie, Chris and Vickie have returned from a vacation in Spooner, Wis. with her father, Doyle Townsend.

Rev. and Mrs. Rois Standefer and daughters, Beck and Nelda Peters, and son, Eric, left Saturday for a vacation in Jacksonville and other parts of East Texas. They will be attending a family reunion while away.

Mr. and Mrs. Jerry Taylor and children, Glenn and Lisa, vacationed at Lake Stamford last week. While there Mr. and Mrs. Gary Welch of Maple joined them for a few days.

Guests in the Alta Corder home were Mrs. Carolyn Terry and children, Gary Jr. and Van and Chlenele of Cloud Croft, N.M., Mrs. Fannie Mann and son, Paul Dean Woolam and Mr. and Mrs. Barry Grant and daughter, Christy of Abilene. Others visiting were Mrs. Ethel Brown, Mrs. Marilyn Browder and Jana McKnight all of Lovell and Mrs. Mona Browley and children, Noia and Susan, of Portales, N.M.

Mrs. Rob Richards and Mrs. Thelma Collins left Monday for El Paso to visit with Mrs. Richards' daughter and family.

Mr. and Mrs. Marshall Leitzell were in El Paso last week. Mayor Leitzell attended the Mayor's Convention which was held in that city.

Rev. and Mrs. G.A. Van Hoose left Tuesday for a few days of rest and relaxation at Ute Lake in Logan, N.M.

Mr. and Mrs. Henry Bedwell attended the Spring Convocation of West Texas State University where their daughter, Henrietta Norris, received the Master of Business Administration degree. Mrs. Norris was among the 900 spring graduates of the university. She is presently a teacher at Plainview High School. Her husband, Vernon, is a dean and head of the social studies department.

The Norris' have one daughter, Kim, who finished the first grade this year.

Guests in the Bill Sayers' home over the weekend were his brother, Al, from Manhattan Beach, Calif. and their niece, Miss Jean Ann Barleson, from Texas Tech University.

Mr. and Mrs. John Coffman and Rex have returned from a visit with their son, Rush, who is stationed with the U.S. Navy in San Diego, Calif. While there they toured Hollywood, Knox Berry Farms, the Queen Mary and CBS TV. Rush accompanied them back to Morton for a short visit. Enroute home they spent a brief time in Las Vegas, Nevada seeing the sights.

### Former resident's services pending

Services for Harold Cartwright former Morton resident are pending with White's Funeral Home in Weatherford.

Held early Wednesday morning in a Fort Worth Hospital. He was the brother of Jack Cartwright and a former employee of the City of Morton.

### Bookmobile schedule

The High Plains Bookmobile Library will be in your area on the following dates:

Wednesday June 20 Circleback-9:00-10:00; Bula 10:30-11:45;

Tuesday June 19 Morton 9:30-11:45.

### Look who's new

Amy Michelle, daughter of Mr. and Mrs. Wayne Pardue of Hobbs, N.M. Amy arrived June 11 and weighed 6 pounds.

Grandparents are Mr. and Mrs. J.A. Mullinax of Morton and Mr. and Mrs. J.C. Pardue of Lubbock.

Patrick Wayne, son of Mr. and Mrs. Dennis Newton of Rust. He arrived June 6 at 1:50 a.m. and weighed 6 pounds and 10 ounces.

Grandparents are Mr. and Mrs. Bob Newton of Enochs and Mr. and Mrs. Donald G. Gusendorf of Plainview. Great-grandparents are Mr. and Mrs. L.G. Fred of Enochs and Mr. and Mrs. O.H. Gusendorf of Littlefield.

Timothy Lynn, son of Mr. and Mrs. Roy Strickland of Clovis, N.M. Timothy arrived June 2 at 4 p.m. and weighed 7 pounds.

Grandparents are Mrs. Laverne Blackman of Enochs and Mr. and Mrs. Orvil Strickland of Causey, N.M. He is the great-grandson of Mr. and Mrs. Orbe Phillips of Portales, N.M.

Lorene Marie, daughter of Mr. and Mrs. Billy Wayne Murphy, of Muleshoe, arrived June 9, at 7 a.m. and weighed 8 pounds and 15 ounces.

## County Agent News

By Roy L. McClung Jr.

Farmers can benefit by looking over new marketing techniques now that farm prices are well above loan levels and CCC-owned grain stocks are at near zero levels for the first time in years. This is the message that is now coming through loud and clear from Secretary of Agriculture Earl Butz.

At Memphis, Tennessee early in May, the Secretary stated: "We want to give farmers the chance to maximize their muscle in the marketplace." He pointed out that much of the perennial farm problem through the past four decades can be blamed on the fact that government—instead of farmers—has exerted leverage in the marketplace.

"As soon as Government influence in the soybean industry was diminished, soybean production and soybean sales skyrocketed," the Secretary said. "Continuation of Government domination would have killed the American cotton industry and prevented meaningful expansion of soybean production," he added.

The alternative? Muscle in the marketplace by farmers, the Secretary said. He added that farmers can now contract for future sale of their commodities and carry them under loan until delivery, without loss of loan eligibility. The Secretary also said that Government regulations have been changed to allow this practice. And he added: "This gives farmers greater leverage taking some of the risk out of price changes, while they maintain control and seek the best terms of sale."

Farmers can expect long-term beneficial effects from the sale of Commodity Credit Corporation (CCC) grain stocks, and they can plan their marketing operations with this new factor in mind, a local farm official said today.

"For the first time in a quarter of a century, producers no longer have huge government grain stocks hanging over the market," said Danny Key, Chairman of the Cochran County Agricultural Stabilization and Conservation (ASC) Committee. "This means that farm prices in the future will more faithfully reflect the pull of the market." With CCC grain stocks practically out of the picture, farmers may want to plan their overall marketing operations accordingly, he added.

Chairman Key said that the U.S. Department of Agriculture recently announced that CCC has sold or earmarked for special use all of its corn and wheat and has only small stocks of barley, rye and sorghums. The only grain being held in sizable quantity in CCC's uncommitted inventory is oats, he added.

Orderly movement of government-held grain stocks into commercial channels has been progressing since early January when USDA announced plans to expand sales of CCC grain, the chairman said. The department pointed out then that it

has a legal obligation to supplement short supplies of private grain, and since then over 250 million bushels of CCC grain have entered the market, he added.

This means that anyone who wants to buy grain or soybeans bids for these commodities on the open market," Chairman Key said. "Supply and demand now dominate prices which are no longer depressed by huge government-owned surpluses."

Looking ahead, this condition can be expected to continue as U.S. farmers continue to produce for markets at home and abroad, the state chairman added. Therefore, farmers everywhere can be looking ahead now to newer marketing methods — as many have already begun to do in many sections of the country.

Danny Key noted that interest in forward contracting, hedging, and other forms of marketing to lock in profits, often before crops are even planted, is increasing across the country. "One has only to notice the big increase in articles on the subject now appearing in the farm press to see this," he added.

Now is the time for farmers to get information and make their own decisions about whether, and in what way, to go about looking to the price they need to pay their expenses and make a profit, the County Executive Director suggested. Information is available from local and national cooperatives, other local and national grain dealers, land-grant colleges, and frequently from bankers and other sources of farmer financing, he pointed out.

"We can't tell a farmer when or at what price he should sell, because he is the one who takes the risk and stands to lose or gain," Key said. "However, farmers everywhere are looking at their various options, and this is the way it should be."

### FOOD STAMP COST

The food stamp program cost increased in three years from \$229 million to \$1.84 billion, more than 800 per cent.

**THE SEED FOR YOUR NEED  
STILL NEED TO PLANT SOME DRYLAND MAIZE?  
NOW IS THE TIME FOR C-42A DEKALB. SHORT  
STIFF STALKS, STANDS WELL.  
LEWIS FARM & RANCH**

## ASTROSTAR SPORTS SPECIAL

THURSDAY, FRIDAY, SATURDAY, JUNE 14, 15, 16

### ASTROSTAR SPORTS 60 TIRE

FEATURES: RAISED WHITE LETTERS SCIENTIFICALLY DESIGNED FOR THE NEW "MUSCLE" CARS

ASTRO STAR ULTRA-WIDE HP 70 SERIES TIRE FEATURES:  
RAISED WHITE LETTERS HIGH PERFORMANCE  
APPLIANCE UNI-CHROME OVAL WHEELS



ABOVE GROUP COMPLETE WITH MOUNT & BALANCE INCLUDES:

- 2-ASTROSTAR SPORTS '60' TIRES
- 2-ASTROSTAR ULTRA-WIDE '70' TIRES
- 2-15x6 APPLIANCE UNICHROME OVAL WHEELS
- 2-15x8 APPLIANCE UNICHROME OVAL WHEELS

**\$30000** 3 DAYS ONLY

**LUPER TIRE & SUPPLY**  
108 E. WASH. MORTON

**WE ARE IN A NEW LOCATION**  
601 HOUSTON ST.  
OUR NEW PHONE NO. IS 894-7424

**FREE** INSTALLATION OF BRAKE SHOES WHEN PURCHASED FROM US

**FREE** INSTALLATION OF SHOCK ABSORBERS WHEN PURCHASED FROM US  
FRONT WHEEL ALIGNMENT \$5.50

**HI PLAINS TRANSMISSION  
BRAKE & FRONT END**  
PASSENGER CARS AND LIGHT TRUCKS  
**BILLY WILLIAMS—Owner**

OUR NEW PHONE AGAIN IS 894-7424

601 HOUSTON ST. LEVELLAND, TEXAS

**The Symbol of Modern Living**

THE GOLD MEDALLION on a home is the hallmark of electrical excellence — awarded to homes designed with the highest standards of Total Electric Living. You, as proud owner, have every assurance that your family is experiencing the wonderful joys of modern living with step-saving, flameless appliances, climate controlled Electric Heat and Air Conditioning, adequate wiring for today and for future growth, and planned Light for Living. It symbolizes comfort and convenience...right at your fingertips!

Reddy says — whether you're planning to build, buy or remodel, look for the GOLD MEDALLION — your guarantee of better living electrically now and in the years to come.

**Cochran Power & Light**

## South Plains College Slates CLEP tests

Persons interested in receiving college credit through the College Examination Program (CLEP) may take exams on June 18, 19, 20, 21 and 22 at South Plains College, Don Melton, Director of Guidance at the college in charge of the testing program.

CLEP is a program which provides credit by examination for a number of college courses. This program allows students to obtain credit courses by providing the knowledge of the course material on an examination approved by the department under which the course is offered.

General Examinations objective tests that measure achievement in five basic areas of the liberal arts: English Composition, Humanities, Mathematics, Natural Sciences, and Social Sciences. Approximately 15 Subject Examinations are offered which measure achievement in specific college courses.

Students who study satisfactorily on one or more of these tests will be given credit for the course covered by the examination.

There is a charge of \$15 for each examination taken. The testing program is open to students who are currently enrolled in classes at South Plains College. High school graduates who wish to enter South Plains College. Results of the test will be administered in June and will be made available before the beginning of the 1973-74 term at SPC.

House  
white  
progr  
um Pro  
om the  
in the U  
lean Rep  
farm vo  
the U.S.  
haslave  
ommodi  
support  
a unity  
group  
the repe  
and the  
many oth  
ple of  
ed out  
of a prop  
on gove  
farmers to

SWI

If you a  
John

NAME—  
AGE—

Address:  
 Chv  
adult be

Po

wf

The seed  
your car  
liquid pol  
Painting  
grounding  
good car  
stone.

Du Pont  
Restores  
furniture  
surface of

Du Pont  
Restores  
weather  
film, surf

Du Pont  
Restores  
weather  
film, surf

W. WI

TOI

MR. NI  
TONY D

ADM  
ADULTS

DU TO PKH

RONWALL I

SE TICKET

WHITE FACI

TICKETS AV

SPONS







**Check Rated**  
  
**KRAFT**  
**VELVEETA**  
 CHEESE FOOD  
**\$1.39**  
 2-LB. LOAF

**TRY THESE SPECIALS!**

FULL CREAM SWEETENED BUTTER 2 8-oz. CANS	25¢
GRAND MIRACLE MARGARINE 1-LB.	49¢
SOFT PASTRY 8-1/2 TUBS	49¢
MARGARINE 1-LB.	49¢
LARGEST SOFT MARGARINE MAXI-CUP 1-LB.	49¢
SOFT PASTRY 8-1/2 TUBS MARGARINE 1-LB.	49¢
SWEETENED CONDENSED MILK 2 8-oz. CANS	29¢
SLICED CHEESE 5-oz. Pkg.	47¢
SWISS CHEESE 5-oz. Pkg.	69¢
SHARP WEDGE 5-oz. Pkg.	79¢
KRAFT CHEESE 12-oz. Pkg.	89¢
ONION DIP 8-oz. CONT.	49¢
SAFFLOWER OIL 24-oz. BTL.	59¢
DINNER 9-oz. BTL.	39¢
DINNER 9-oz. BTL.	29¢
DRESSING 9-oz. BTL.	49¢
DRESSING 16-oz. BTL.	59¢
CARAMELS 14-oz. BAG	49¢

**Check Rated**  
 WITH 25¢ IN AD COUPON  
 LIQUID DETERGENT  
**JOY**  
 32-oz. BTL.  
**74c**

**Check Rated**  
 WHITE DECORATED OR SOLID COLORS  
**BOUNTY TOWELS**  
 JUMBO ROLL  
**33¢**

**Check Rated**  
 WITH 50¢ IN AD COUPON  
 DETERGENT  
**CHEER**  
 10-LB. 11-oz. FAMILY SIZE  
**\$2.71**

**Check Rated**  
 WITH 15¢ IN AD COUPON  
 DETERGENT  
**BOLD**  
 GIANT BOX  
**78c**

# THRIFTWAY

IS *Check Rated* FOR

## Father's Day

PRICES EFFECTIVE JUNE 15th THRU JUNE 21st 1973 WE RESERVE THE RIGHT TO LIMIT QUANTITIES!

**FREE! KING SIZE BRIDGE TABLE**

REG. \$17.95 VALUE

FULL 34" DELUXE CUSHION TOP WOOD GRAIN FINISH, SILVER BRONZE METALIC FINISH. HERE'S HOW YOU GET YOUR FREE TABLE!

**BUY 4 CHAIRS at \$7.99 ea. (REG. \$11.95 VALUE) AND GET YOUR TABLE FREE!**

YOU MAY PURCHASE A CHAIR FOR THE LOW \$7.99 PRICE WITH EACH \$5.00 PURCHASE

THIS EXCLUSIVE OFFER WILL LAST THRU THE NEXT 8 WEEKS

**START YOUR SET TODAY**



We Wish All Fathers A Happy Day Sunday

**SHURFRESH FULLY COOKED BONELESS CANNED HAM** 3-LB. CAN **\$3.69**

WHITE OR ASSORTED

**CHARMIN BATHROOM TISSUE** 4 ROLL PAK **49¢**

FOR WEIGHT WATCHERS  
**FROZEN TURBOT FISH FILLETS**  
 LB. **79¢**

ARMOUR ROTISSERIE SELF-BASTING **TURKEYS**  
 5 TO 7-LB. AVERAGE  
 LB. **79¢**

**Check Rated** **PRODUCE SPECIALS**

FULL EARS **CORN** 6 FOR **49¢**

CALIFORNIA YELLOW MEAT **PEACHES** LB. **49c**

MIX OR MATCH COLORADO MOUNTAIN GROWN **GREEN ONIONS or RADISHES** 3 FOR **29¢**

CALIFORNIA RED BEAUTY **PLUMS** LB. **59¢**

SINKIST **LEMONS** LB. **29¢**

FRESH GREEN **OKRA** LB. **39¢**

**Check Rated**  
**YARD GUARD** RAID 16 1/2-oz. AEROSOL CAN **\$1.89**

**Check Rated**  
**MIXED NUTS** TOM SCOTT 1 1/2-oz. CAN **75c**

FOLGERS COFFEE WITH COUPON 1 LB. CAN	88c
DIAL SOAP BATH SIZE 4 BARS	99c
BABY SOFT SWEETHEART, 32-oz. BTL.	49c
FABRIC SOFTENER LEMON FLAVORED, 25" IN-AD COUPON	79c
NESTEA AMERICAN BEAUTY 4-oz. JAR	25c
ELBO RONI SHURFINE HALVES BARTLETT PEARS 2 16-oz. CAN	69c
SHURFINE CUT GREEN SPEARS ASPARAGUS 14 1/2-oz. CAN	49c
SUNSHINE CHEEZ-IT SHURFINE PIECES AND STEMS 10-oz. BOX	39c
MUSHROOMS 4-oz. CAN	39c
ALABAMA GIRL WHOLE SWEET PICKLES 22-oz. JAR	69c
OREO CREME SANDWICH NABISCO 19-oz. PKG.	59c
SHURFINE ALL VEGETABLE SHORTENING 48-oz. CAN	93c

**Check Rated** **HEALTH & BEAUTY AIDS**

MENNEN BABY MAGIC **LOTION** 4-oz. SIZE **59c**

HEAD & SHOULDERS LOTION **SHAMPOO** 4-oz. BTL. **89c**

SECRET ANTI-PERSPIRANT **DEODORANT** 8-oz. CAN **\$1.39**

**RIGHT GUARD** BUY 1 GET 1 FREE **99c**

ANTI-PERSPIRANT TWO 5-oz. CANS IN SPECIAL TWIN PACK

**Gillette** SUPER STAINLESS **VITALIS HAIR TONIC** 7-oz. BTL. **99c**

**FROZEN FOOD SPECIALS**

FOOD KING HASH BROWN **POTATOES** 32-oz. BAG **39¢**

**Check Rated** FENO'S FROZEN **PIZZA** CHEESE HAMBURGER SAUSAGE 13-oz. **79¢**

**Check Rated** SHURFINE FROZEN PRE COOKED **FISH STICKS** 8-oz. PKG. **49¢**

**DOSS THRIFTWAY**  
 DOUBLE GOLD BOND STAMPS  
 EVERY WEDNESDAY WITH \$2.50 PURCHASE OR MORE

50¢ **VALUABLE COUPON**  
 DETERGENT **CHEER** 10-LB. 11-oz. FAM. SIZE **\$2.71**  
 WITH THIS COUPON THRIFTWAY FOOD STORES VOID AFTER JUNE 21, 1973

15¢ **VALUABLE COUPON**  
 DETERGENT **BOLD** 32-oz. BTL. **78c**  
 WITH THIS COUPON THRIFTWAY FOOD STORES VOID AFTER JUNE 21, 1973

25¢ **VALUABLE COUPON**  
 LIQUID DETERGENT **JOY** 32-oz. BTL. **74c**  
 WITH THIS COUPON THRIFTWAY FOOD STORES VOID AFTER JUNE 21, 1973

50¢ **VALUABLE COUPON**  
 MAXWELL HOUSE INST. **COFFEE** 10-oz. JAR **\$1.89**  
 WITH THIS COUPON THRIFTWAY FOOD STORES VOID AFTER JUNE 21, 1973

20¢ **VALUABLE COUPON**  
 FOLGERS **COFFEE** 1-LB. CAN **88c**  
 WITH THIS COUPON THRIFTWAY FOOD STORES VOID AFTER JUNE 21, 1973

25¢ **VALUABLE COUPON**  
 LEMON FLAVORED **NESTEA** 4-oz. JAR **99c**  
 WITH THIS COUPON THRIFTWAY FOOD STORES VOID AFTER JUNE 21, 1973

7¢ **VALUABLE COUPON**  
 GOLD MEDAL **FLOUR** 5-LB. BAG **68c**  
 WITH THIS COUPON THRIFTWAY FOOD STORES VOID AFTER JUNE 21, 1973

ld  
 LUME  
 Sc  
 COCH  
 don't l  
 nning h  
 cond we  
 e first t  
 is week f  
 Thr  
 Three s  
 warded t  
 eniors b  
 lectric C  
 rea Telep  
 hese thr  
 ere made  
 e cooper  
 ate Bank  
 e \$400  
 ar were:  
 Starron  
 Cou  
 fec  
 To wh  
 vernment  
 ate and k  
 local  
 recei  
 Cochran  
 orton has  
 75 from  
 ervices an  
 ds adm  
 as State  
 188 libr  
 th loca  
 alified th  
 ants.  
 In discu  
 ogram,  
 nfrey, di  
 ate Libra  
 portance  
 sentive fr  
 port. In  
 raries  
 640,565.  
 837,191.  
 See LIBR