

# Morton Tribune

Volume 32 — 57

Morton, Texas, Thursday, Nov. 16, 1972

## Tribe plotting against Chiefs

The Morton Indians, after handing Dimmitt a 28-8 defeat last week, meet the Friona Chieftans in the season's final game tomorrow night in Indian Stadium. The Chieftans are in second place in district play, just behind Littlefield.

Friona has thirteen returning lettermen from last year's squad . . . eight offensive players and seven defensive starters. The Chiefs will be looking for a win over Morton Friday night to clinch second place in District 3-AA.

The Indians, however, never letting predictions and statistics upset them, will also be looking for a win over Friona, with a powerful line and some tremendous runners in the backfield. The Tribe has proven time and again how strong they really are when they put it all together. And after last week, Friona will be very careful with their passing game. Morton made two touchdowns against Dimmitt on intercepted passes.

The first quarter of the Indian - Bobcat clash last week was a warm up for both teams with no score put on the board. But the second quarter saw a tremendous display of awareness and agility on the part of Larry Thompson, Indian halfback. Morton couldn't get a drive started and had to punt. Ted Thomas kicked for 3 yards and Dimmitt took the ball on their own 27 yard line. Quarterback Terry Powell dropped back to pass and Larry Thompson was there to take the ball for Morton and ran 35 yards to put the Tribe on the board. Jerry Silhan kicked the extra point and the teams went to the dressing room at halftime with Morton leading 7-0.

Morton came back on the field more fired up and Dimmitt seemed to have lost some of its enthusiasm. With less than two seconds left in the third quarter, Terry Powell, Dimmitt quarterback, attempted to pass once again. Jimmy Harvey read the signals and was there to take the toss. He ran back 45 yards to give the Tribe six more points and excite the Morton fans. Silhan booted the extra point and Morton led, 14-0.

Just four minutes into the fourth quarter, Tony Soliz, sophomore fullback for the Tribe, took a hand-off from quarter-

See FOOTBALL, Page 3a

### Saundai Ford named Whiteface Lions queen

Miss Saundai Ford was named Whiteface Lions Club Queen at a meeting held November 6 in the community center.

Runners-up for the title were Christi Cade, Beth Powers, Yolanda Castillo, Lisa Orr and Pam Linder, all Whiteface High School Senior students.

Miss Ford will represent the Club for 1972-73 and will participate in competition for the District title.

Clarence Rogers, of the Texas Highway Department, presented the program for the Monday night meeting and showed film strips depicting improvements, beautification and planning of Texas Highways, commencing with the dirt roads of the 20's to present day super highways.

LARRY Beseda won the drawing for the Lion-sponsored "proud bird with the golden tail", or Turkus Whitefaceus.

### ★ Classing . . .

The Levelland cotton classing Office was opened to receive samples November 13, 1972. Mr. Clifford Wharton is in charge.

Mailing Address: P. O. Box 1389, Levelland, Tex. 79336.

Shipping Address: 500 Maple St., Levelland, Tex. 79336.

Early ginned cotton in the Levelland Office territory has been classed in Lubbock. Should a producer want a review of any of these classifications, the request for review and samples will be sent to Levelland.

### District Gold Star banquet will honor top county 4-Hers

The top 4-H boy and girl from each of the 20 South Plains counties in District 2 of the Texas Agricultural Extension Service will be honored at the 15th annual District 4-H Gold Star Banquet here at the Coronado High School Cafeteria on Monday, November 20, at 6.30 p. m.

These 40 4-H'ers have been selected to receive the Gold Star Award, the highest county award given by the extension Service, according to District Extension Agents Mrs. Catherine B. Crawford and Billy C. Gunter. Personal development, leadership, outstanding achievement in 4-H result demonstrations and activities plus contributions to the overall county 4-H program are factors considered in selecting the award winners.

Guest speaker at the annual event will be Dr. H. O. Kundel, Dean of Agriculture, Texas A&M University, College Station, Texas.

Ea Wilkes, Farm Director, KFYO Radio, will serve as master of ceremonies, and James Laney, State Representative-Elect, District 76, will be the narrator for the presentation of awards.

About 450 people are expected to attend the banquet which is sponsored each year by the 12 Rural Electric Cooperatives on the South Plains.

Gold Star winners from their respective counties are as follows:

Bailey—Lavern Carpenter and Bobby Henderson, both of Muleshoe.

Borden — Vickie Newton of Ftuvanna and Frank Farmer of O'Donnell.

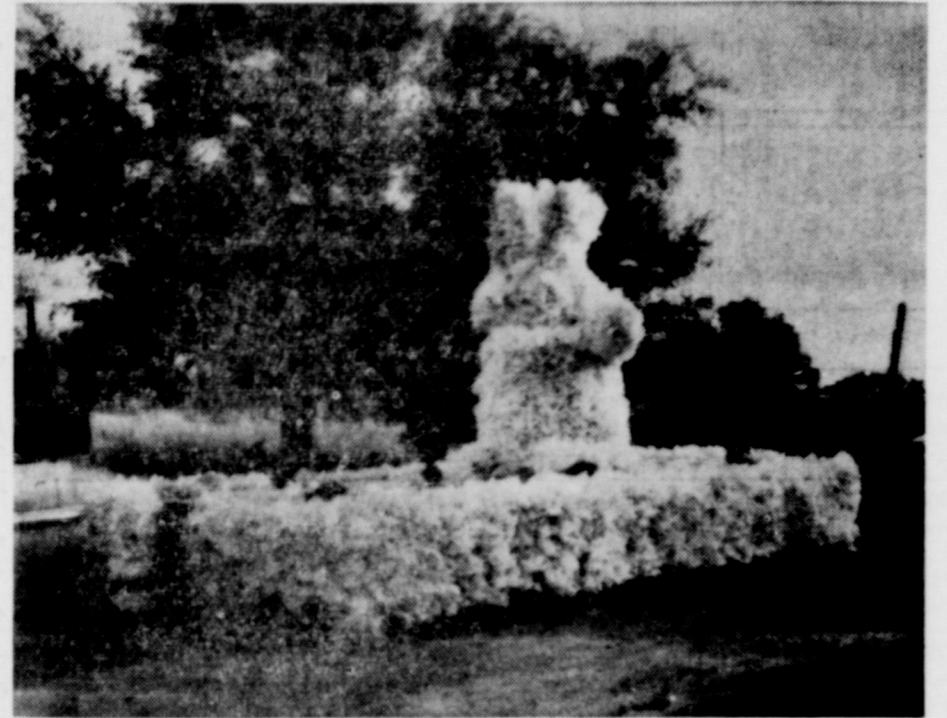
See GOLD STAR, Page 3a

## Area cotton harvest accelerates

Cotton harvest operations are increasing daily on the South Plains, according to W. K. Palmer, in charge of the U.S. D.A. cotton classing office in Lubbock.

This increase is reflected in the increasing number of cotton samples being received at the area U.S.D.A. Cotton Classing Offices.

Due to this increase in harvest activities, the seasonal U.S.D.A. Classing Offices at Brownfield and Levelland opened on Monday, November 13. The sea-



WINNING FLOAT AT HOMECOMING . . .

WOULD YOU BELIEVE the Easter Bunny in cold old November? Well, that's him and he made a nice enough appearance to win first place in the float division of the Bledsoe schools homecoming parade held Saturday afternoon. Theme of the parade was "Holidays", so the youngsters had a good deal of latitude in designing their entries. The parade, beginning at 4 p.m., was one in a long list of activities honoring ex-students and teachers that continued well into the night. Judging the floats was Randy Thomas, county attorney-elect of Morton.

## Indian state champ cagers begin hopeful trek Tuesday

After tomorrow night the Morton Indians put up the footballs, helmets, and pads and take to the basketball courts.

The Indians, class AA State Champions last year, meet the Lubbock Christian Eagles in their opening game here Tuesday night.

The Tribe lost three state team members in Keith Embry, Elton Patton, and Bryant Lewis, all Seniors last year.

Probable starters for Tuesday's cage match are Seniors Jimmy Harvey, Junior Larry Thompson, Jerry Silhan, Senior, Ted Thomas, senior, and Mike Gilham, also a senior. Other team members are Mike Hunter, Sr.; Darrell Smith, Jr.; David Barrera, Jr.; Mark Fluitt, Jr.; Billy Joyce, Jr.; and Reese Standmire, Jr. all of these players saw action with the varsity team last year. Three of the

probable starters may not play because of personal reasons.

Head coach Ted Whillock is very optimistic about the Indian team for the upcoming season, although he won't say the Tribe will go to state again this year.

The Lubbock Christian Eagles are coached by Gary Bove, who enters his 10th year at the school with a 224 win-88 loss record. The Eagles have three starters back among seven lettermen and a good crop of sophomores.

Dale Mansell, returning starter, was the 3rd leading scorer on the squad last year with 253 points. Matt Paul, another returning starter, had 144. Russ Paine, the third returning starter, had 112 points last year.

Besides these three, the starting line-up will include Paul Johnson and John Crisp.

### 1972 INDIAN FOOTBALL SQUAD . . .

LINING UP FOR A PORTRAIT just prior to the last game of the season are the 1972 version of the Morton Indians. Their record stands at 2-6-1 presently and they hope to improve on that Friday night. Front row, from left, Jerry Silhan, 30, Fullback; Eugene Hawkins, 31, Fullback; Jimmy Harvey, 21, Halfback; Tony Soliz, 32, Fullback; Rick Woods, 82, End; Leslie Carter, 63, Tackle; David Barrera, 11, Quarterback. Middle row from left, Reece Standmire, 80, End; Gilbert Ramos, 24, Halfback; Billy Joyce, 22, Halfback; Pete Soliz, 64, Tackle; Dubbie Bryan, 52, Center; Bob Greene, 61, Tackle; Ralph Mason, 10, Quarterback; and John Green, 44, Fullback. Third row from left, Head Coach Doug Reed; William Grant, 62, Tackle; Randy Kuehler, 51, Center; Gorry Corder, 75, Guard; David Palmer, 70, Guard; Ted Thomas, 81, Quarterback; Mike Grusendorf, 74, Guard; Rick Williams, 83, End; Junior Fitt, 73, Guard; and James Bell, 12, End.



### RY MIXED UP BLACKBERRIES . . .

HERE HAVE BEEN SEVERAL peculiar happenings connected with the weather around Morton this year, but probably none have been more peculiar than these mixed up blackberries that matured to their ripened best in the middle of October — several months after their normal growing cycle had passed. Mrs. Eva McHam displays the berries that she set out last spring in her yard at 506 E. Buchanan and which started blooming in late September and ripened well up into October. After sampling several of the very delicious berries, one has a tendency to forgive them their unusual life style.

## Mahon, Poage see trouble in farm program passage

Local cotton producers and businessmen were among a throng of about 500 who turned out for the Plains Cotton Growers meeting in Lubbock Wednesday. Lloyd Mil-

lerton, chairman of the House Appropriations Committee, and George Mahon, chairman of the House Agriculture Committee, were most farm legislation ori-

ginal speakers. Mahon, speaking first, told his highly attentive audience that he foresees a difficult and a hard fight ahead in the satisfactory farm program bill the Congress next year. He said the program, enacted in 1970, passed by a three vote margin—and it could be even closer this time. He stated that he and Poage, who was introduced by

### plans annual Thanksgiving feast

Pep Community has issued a general invitation:

Parish meeting, recently, it was decided to have the 27th Annual Thanksgiving Festival Thursday, November 23, at St. Philip Hall and Educational Center.

The feast will include famous sausage, turkey, dressings, and all the trimmings will be served—starting at 2 p.m. and 5 to 7 p.m. Adults will be \$2.25 and children under 10 will be \$1.00.

Arrangements are being made for car-pooling during the day for all general admission will begin at 6:30 p.m. A dance will be held starting at 9 p.m. with music by a western band.

Residents are urged to make your plans to come to Pep Thanksgiving on November 23, to enjoy the good food, fun, and fun.

Mahon, said that he considered the present program the best the farmer has ever had. He stated that he would like to have the same one adopted with a few modifications — or, if modifications were to encounter strong opposition, it would be acceptable as it is now.

"The development of a farm program to succeed the Agriculture Act of 1970 will begin in 1973," Donald Johnson, Executive Vice President of PCG, stated, "and it's hard to conceive of anything of greater importance."

See PCG DIRECTORS, Page 3a

### Gary Dale Burris takes pastor's post

Gary Dale Burris is the new pastor of Macedonia-Hix Baptist Church near Caldwell in Burleson county.

Burris, a Vietnam veteran, is a sophomore special education major at Baylor University.

A 1969 graduate of Whiteface High School, he has attended South Plains and Howard Payne Colleges.

Burris is the son of D. I. Burris of Morton. He and his wife, Kathy Ann, a Cisco native, are living in Waco while he attends Baylor.

The Service Center of the Baylor religion department assisted the church in calling Burris as its pastor. Dr. J. W. Ousley, professor of religion, is director of the center that aids local and area churches in securing interim leadership.

### ★ Recital . . .

An hour of pleasant listening-piano music will be presented by area students of Mrs. Norma McCarty Saturday, November 18 at 6 p.m. in the First Baptist Church.

Sixth graders, school level, will announce the program beginning with pre-school and progressing through sixth grade. Music will include duets, folk-songs, hymns, popular hits and a special series of Concerto-ettes by the sixth grade students.



# Morton Tribune



Published Every Thursday Morning at 106 N. Main St., Morton, Texas 79546

OFFICIAL NEWSPAPER OF COCHRAN COUNTY  
"TEXAS' LAST FRONTIER"

BILL SAYERS, Editor and Publisher

Entered as second class matter at the post office in Morton, Texas, under the Act of Congress of March 8, 1879.

Subscription rates — In Cochran County and adjoining counties: Per year, \$3.50, six months, \$2.00; three months, \$1.25. Outside Cochran County: Per year, \$4.50; six months, \$2.50; three months, \$1.75. To insure proper service, subscribers will please notify us promptly of change of address.

## Classifieds

### CLASSIFIED RATES

5c per word first insertion  
4c per word thereafter  
75c Minimum

### FOR SALE

FOR SALE: Wheel move sprinkler, good condition, 90 ft. move. Call Muleshoe, 272-4869. 8-42-c

FOR SALE: Antiques, cherry dresser, has secret lock box, round beveled mirror, square frame, \$125. Antique metal bed, brass knobs and insets, \$40. Call 266-8975. 2-42-p

FOR SALE: Nice 2 bedroom home, fenced, storage house, fruit trees. 203 E. Hayes, call 229-4347. tfn-43-c

FOR SALE: 1964 Plymouth Fury, 4 dr., hard top, radio, heater, air, power steering and brakes, clean. Call 266-5754. tfn-43-c

FOR SALE: Baled alfalfa, baled cane and baled hegar, ALBON RYE SEED and registered Angus bulls. J. W. McDermott, phone 266-5666. tfn-36-c

FOR SALE: 1970 Chev. pickup, LWB, 350 V8 automatic, power steering, air condition, radio, heater, low mileage, sharp color copper and white. Call days 266-5025, nights 266-5127. 4-41-c

FOR SALE: Stocker and feeder cattle. Call (806) 481-3852, A. D. Kirk, Farwell, Texas. tfn-28-c

FOR SALE: Peanut, candy & gum vending business in Morton. Good income 6 to 8 hours weekly. Total price \$1,138.00 cash. Write Texas Kandy Company, Inc. 1327 Basse Rr., San Antonio, Tex. 78212. Include your phone number. 4-40-p-ts

FOR SALE: 3 bedroom house on 3 1/2 lots, \$5,000. Call Raymond Hoffman 229-4343, Sundown. 4-40-p

CASH TALKS 1972 Model Automatic zig-zag delux sewing machine. Full price \$29.95. Twin needle, buttonholes, blind hems, fancy patterns. Free delivery and instructions within 100 miles. Lubbock Sewing Center, 1913 19th Street, Lubbock, Texas, Phone 762-3128. 22-tfn-c

FOR SALE: 3 bedroom house, 606 SE 1st. Call 266-5672. 4-40-p

### CARD OF THANKS

WE shall always be grateful to our friends for your expressions of sympathy through visits, flowers, food, and cards during the recent death of our husband and father, Howard O. (Hap) Rogers. Mrs. Lydarene Rogers Mr. and Mrs. Fred Danforth Mr. and Mrs. Kevin McDonnell

Phone Your News to 266-5376

### NOTICE

#### NOTICE TO BIDDERS

The Commissioners Court of Cochran County will receive bids until November 27, 1972 for the purchase of one new 1973 automobile for use by the Sheriff's Department, according to the following specifications:

Engine: Not less than 350 cubic inch V/8 - 175 horsepower; color: beige - four door sedan; windshield: tinted; seats: heavy duty - front and rear; floor mats: front and rear; rear view mirror: left and hand outside; spotlight: 6 inch on left hand side; windshield wipers: two speed with washer; transmission: automatic 3 speed heavy duty; battery: heavy duty 70 amp. hr.; alternator: 42 amp.; padded dash; brakes: heavy duty; axle gear ratio 3.1 heavy duty; 15" wheels; speedometer: calibrated to 2% accuracy, marked with 2 mph graduations; radiator: heavy duty; heater and defroster: fresh air; push button radio; carburetor: four barrel; factory air conditioner; wheel base: minimum 119"; stabilizer bar: heavy duty; heavy duty front and rear motor mounts.

Cochran County will offer in trade: Two (2) 1970 Chevrolet cars.

Bids on the above described equipment will be opened on November 27, 1972, in the Commissioners Courtroom, Cochran County, Texas. The Court Reserves the right to reject any or all bids. Specifications for this equipment may be seen in the office of the County Judge, Morton, Texas. Dated this 14 day of November, 1972.

GLENN W. THOMPSON, County Judge  
Published in the Morton Tribune November 16, 23, 1972.

### 2-FOR RENT

DON'T merely brighten your carpets . . . Blue Lustre them . . . eliminate rapid resoiling. Rent electric shampooer \$1. Taylor and Son Furniture. 1-43-c

### 3-BUSINESS SERVICES

COCKROACHES, rats, mice, termites, golfers, and other household pest exterminated. Guaranteed. 15 years experience. 894-3824, Levelland, Texas. Eavidson Pest Control. Reasonable rates. tfn-31-c

MATTRESSES RENOVATED also new King and Queen size. Pick up Mondays. Call Butler Body Shop 266-5925, nights 266-5127. tfn-20-c

### 4-WANTED

WANTED: Two winter type sleeping bags. Also a good used boys' bike. Call 525-4475 or contact Melvin Yarbrough. 2-42-p

## Cochran countians currently upgrading financial position

According to a nationwide survey of incomes and income distribution, Cochran County families have been upgrading their financial position in the last few years.

Most of them have benefited from the rising scale of wages and salaries in the local area.

As a result, a larger proportion of them are now to be found in the middle and upper income brackets and a smaller proportion in the lower ranges than ever before.

The extent to which the upward shift has been taking place, from bracket to bracket, is detailed in a copyrighted report released by Sales Management.

The purpose of the survey, which covers all parts of the country, was to obtain a clearer financial picture of each community than was revealed by its "average income" figure.

It sheds light on what the average represents whether it is based on a small number of families with big incomes com-

pensating for a much larger number with small incomes, or whether earnings are well distributed.

In Cochran County, it is shown, the general level is higher than it was and the spread relatively good.

Some 74.6 per cent of the households in the local area had net cash incomes, after payment of their taxes, of \$5,000 or more in the year.

It was a larger proportion than in most parts of the United States, where it was 73.6 per cent. In the West South Central States it was 65.0 per cent.

Because only cash income was considered in the survey, full justice is not done to farm families, as no allowances are made for income-in-kind and lower living costs on the farm.

As to the various income groupings in Cochran County, the breakdown shows that 21.9 per cent of local households have a net of \$5,000 to \$8,000, that 12.2 per cent are at the \$8,000 to \$10,000 level and that 4.5 per cent have \$10,000 or over.

## Field Day in Lubbock for FHA members

Sixty members of the Morton Chapter of the Future Homemakers of America and their sponsors, Mrs. Jeanette Young and Mrs. Helen Crone were entertained by Amy McCarty, fashion coordinator, at the Hob Nob Room at Hemphill Hotel in Lubbock November 6.

Marie Wilcox, Zera Swindle, Patricia Minor, Kathy Mason, Carolyn Gray, W. Crone and Yvonna Vanstory modeled the garments by using belts, scarves, hats, shoes, jewelry and shoulder bags. The latest in color, fabrics and styles were shown.

Refreshments were served to the guests followed by a tour of the store.

The others have \$5.00 or less left after taxes.

Although take-home pay has been on the rise generally, not all of the gains presents an improvement in real income. Inflation has been taking its toll along the way.

### NOTICE

#### NOTICE TO BIDDERS

The Commissioners Court of Cochran County will receive bids until November 27, 1972 for the purchase of one new 1973 automobile for use by the Probation Officer of Cochran County, according to the following specifications:

5 V/8 Engine, 2 Barrel Carburetor, 3 Speed Automatic Transmission, Tinted Glass, AM Radio, Factory Air Conditioning, Standard Blackwall Tires, Power Steering, Power Disc Brakes, 121.5" Wheel Base, Solid Color.

Bids on the above described equipment will be opened on November 27, 1972 in the Commissioners Courtroom, Cochran County, Texas. The Court reserves the right to reject any or all bids. Specifications for the above described equipment may be seen in the office of the county Judge, Morton, Texas. Dated this 14 day of November, 1972.

GLENN W. THOMPSON, County Judge  
Published in the Morton Tribune November 16, 23, 1972.

TEXAS REFINERY CORP. offers high income opportunity to mature man in Morton area. PLUS regular cash and vacation bonuses, abundant fringe benefits. Regardless of experience airmail A. N. Pate, Pres., Texas Refinery Corp., Box 711, Fort Worth, Texas 76101.

To the People of Cochran County:

# THANK YOU

for your vote of confidence in me as your new County Attorney. I certainly will do everything within my capability to warrant your support and to become a good public official. It is my hope that we can all cooperate together for the betterment of Cochran County.

Again, thank you very much for your vote and this opportunity to serve.

## RANDY THOMAS

## Business and Professional Directory

### AUTOMOBILE DEALERS—

**GWATNEY-WELLS**  
Chevrolet-Oldsmobile Co.  
Your Home-Town Dealer  
Serving You With Full Line of Cars and Trucks

Be A Professional  
This Space For Rent

### DIRT WORK—

**ROYAL BERKGREN**  
504 E. Pierce  
Morton, Texas  
Earth Moving  
Motor Grader — Scrapers Work  
Parrallel Terraces—Diversions—Waterways  
Phone 266-5144

### PUMP SERVICES —

**Crocket Pump Service**  
Irrigation Sales & Service & Domestic  
215 N.W. 1st, Morton  
Distributors of Simmons, HPC & Goulds  
Phone  
Mobile: 927-3820 Office: 266-8610

### JEWELRY—

**Atchison Jewelry**  
Levelland  
Phone 894-3450 617 Ave. G  
WATCH REPAIR  
DIAMOND SETTING  
CUSTOM MOUNTING

### ANIMAL REMOVAL —

**Morton Bi-Products, Inc.**  
Dead Cattle Removed  
Day or Night  
Phone 266-8621  
Nights 266-5052

### REAL ESTATE

#### GLEN MCDANIEL

Buying or selling farms or city property  
Call

**WESTERN ABSTRACT**  
Call 266-5185 nights 266-5103

REAL ESTATE, LIFE INSURANCE and HOSPITALIZATION  
unlimited Farm & Ranch loans

See  
**BOB CROSS**

Phone 266-5730

### SEED

**Harpool Seed-Morton Inc.**  
Specializing In High Quality Seed  
Wholesale and Processing Only  
See Us for Contract Production  
Sandy Asbill, Mgr. — 266-5742

### TIRE SUPPLY —

#### LUPER TIRE & SUPPLY

COMPLETE TIRE SALES, SERVICE AND REPAIR  
Road & Farm Pit Stop Service  
108 East Washington  
P.O. Box 1074—Phone 266-5330  
Morton, Texas

### INSURANCE

**National Farmers Union Insurance**  
JOHN HUBBARD  
Agent for Bailey & Cochran Co.  
Life-Health-Casualty-Fire  
Real Estate  
108 SE 2nd, Morton-Ph. 266-5710  
Bula — office 933-2397  
Home 933-2321

### OPTOMETRIST —

#### Dr. William R. Grubbs

Optometrist  
Office hours in Morton  
Wednesday and Thursday  
9 a.m. to 5:30 p.m.  
Morton Professional Building  
Phone 266-5529

### ELECTRONICS

See Us For

**RCA Electronics**  
Television, Radios, Etc.

SALES AND SERVICE

**Rose Auto & Appliance**  
Phone 266-5959 Morton

### APPLIANCES

**Whirlpool Appliances**  
Automatic Washers, Dryers, Refrigerators, Dishwashers

SALES AND SERVICE

**Rose Auto & Appliance**  
Phone 266-5959 Morton

SEWING MACHINE SALES AND SERVICE

Factory authorized PFAFF dealer  
We service all makes machines  
all work GUARANTEED

**Sewing Center & Fabric Mart**  
Southwest corner of square  
Levelland, Texas Call 894-4250

### Auto Parts & Supply —

#### Morton Auto Supply

All the best brands in Auto Parts and Supplies  
Kim Hanlin, Owner-Operator  
120 W. Wilson-Phone 266-8877

### SERVICE STATION—

**Charley Ellis Gulf**  
301 E. Washington Morton  
GULF PRODUCTS  
Pickup and Delivery  
SERVICE CALLS  
Phone 266-8813, Nights 266-5145

# Good . . . Better . . . Best . . .

Yes, when it comes to ginning service, there are different degrees of quality. Some are satisfied to give good service, some strive to do a little better . . . while some folk just aren't satisfied unless they are supplying their customers with the best service to be found anywhere.

We at the ALAMO hope you'll try our brand of service early this season and if you are pleased . . . tell others!

We have the Market from the biggest export Cotton buyer in Lubbock. We have contracts we can offer farmers on lint cotton — if interested.

# Alamo Cotton Co., Inc.

525-4181

WOODY DICKSON, MANAGER

Renee, daughter of Mr. and Mrs. Jeschke. Tammy arrived at Memorial Hospital in Levelland at 8:59 p. m. and weighed 8 pounds and 5 ounces.

Grandparents are Mr. and Mrs. Paul Vanhebbler and Mr. and Mrs. Bernhard Jeschke of Schleswig, Iowa.

Great-grandparents are Mr. and Mrs. Hoyt Bridges and Mrs. Martha Williams of Ryan, Oklahoma. Tammy's great-great grandmother is Mrs. Louise Whitecotton of Bowie.

Rhonda Lynn, daughter of Mr. and Mrs. Terry Pace. He arrived at Cochran Memorial Hospital November 10 at 6:45 p. m. and weighed 6 pounds and 8 ounces.

Gold star ...

from page one

Briscoe — Debbie Cantwell and John Burson, both of Silverton. Cochran — Mickie Dewbre and Steve Polvado, both of Morton.

Crosby—Martha Bruge of Post and Roger Neitsch of Lorenzo.

Dawson—Linda Moody of Lamesa and Ben Phipps of Welch.

Floyd—Karen Willis of Floydada and Sam Fortenberry of Lockney.

Gaines—Juhree Bobo and Pete Ballew, both of Seminole.

Garza—Marla Shelton and Tony Conner, both of Post.

Hale—Kathey McClendon of Abernathy and Mark Schumacher of Plainview.

Hockley—Cindy Caswell and Marlin Waldrop, both of Levelland.

Howard — Phyllis Wynn and Dennis Mays, both of Coahoma.

Lamb—Barbara Black of Sudan and Aubrey Pitts of Earth.

Lubbock—Geniese Grawunder of hallo-water and Max Thomas of Slaton.

Lynn—Jan Wilke of Wilson and Richard Taber of O'Donnell.

Mitchell—Susan Blassingame and Byron Byrne, both of Colorado City.

Scurry—Connie Byars of Ira and Johnny Eicke of Snyder.

Swisher—Deborah Gilleland and Bill Pearson, both of Tulia.

Terry—Pam Beck and Dale Eicke, both of Brownfield.

Yoakum—Kathleen McGinty and Dale Cleveland, both of Plains.

Cotton harvest ...

from page one

Cotton Exchange for the most predominant qualities were: Strict Low Middling (41) staple 31 - 22.30 cents per pound, Strict Low Middling (41) staple 32 - 23.50, Strict Low Middling (41) staple 33 - 24.15, Low Middling (51) staple 31 - 20.50, Low Middling (51) staple 32 - 21.45 and Low Middling (51) staple 33 - 21.85.

Prices paid farmers for cottonseed ranged from \$42 to \$52 per ton and averaged \$46.50 per ton.

Football ...

from page one

back Thomas and ran straight up the middle for 44 yards and third Indian touchdown of the night. Silhan's PAT was no good and the fighting Indians led 20-0.

Dimmitt just couldn't get a drive started against the Morton defense and had to give up the ball several times during the game. Halfway through the fourth quarter, on a drive of 29 yards the Indians found themselves on the 'Cats' one yard line. Jimmy Harvey slipped across for the TD and six points for the Tribe. Thomas passed to Rick Williams in the end zone for two points and the Indians dominated 28-0.

With just a minute left in the ballgame, Terry Powell, Dimmitt quarterback, slipped and slid and turned and squeezed across from 12 yards out to put Dimmitt on the scoreboard for the first time. Robert Ewing took a hand off and ran across for two and the game ended Morton 28, Dimmitt 8.

Morton led on the scoreboard and on paper too. Each team had ten first downs in the game. Morton had 175 yards rushing and 53 yards passing for 228 yards gained. Dimmitt had 107 rushing, 87 passing for a total of 194.

The Tribe attempted 7 passes with three completions and two interceptions. The Bobcats attempted 24 passes for 9 completions and two interceptions . . . two

costly interceptions. Both were run back for touchdowns for the Indians.

Ted Thomas punted 5 times for an average of 32 yards. Dimmitt punted 6 times for an average of 33 yards.

The Indians has six penalties for a loss of 66 yards. Dimmitt had six penalties for a loss of 37 yards.

Leading rusher for the Indians was Tony Soliz who gained 65 yards. Jimmy Harvey picked up 9 and Larry Thompson gained 10 yards for the Tribe. Terry Powell, Dimmitt quarterback, picked up 26 yards for the Bobcats.

Tau Kappa Epsilon, the largest college fraternity, has 17,500 student members in over 300 campus chapters and initiates 6,000 new members each year.

Child's 'One Person Tells Another' SMART-LOOKING WARM-UPS. Those nippy, cold days have arrived! At Child's you will find the most handsome, Comfortably Warm Coats. Whatever you need in the way of coats, see us... Try 'em on.

PCG director ...

from page one

ter importance to our producers on the High Plains.

PCG President Ray Joe Riley of Hart gave the President's annual report, followed by Johnson's yearly report to the membership.

Following the annual membership meeting, which included confirmation of Directors elected to represent each of 25 counties during 1972-73, the producer organization's Board met for election of 1972-73 officers.

Plains Cotton Growers adopted a \$173,500 budget for 1972-73.

Services in Friona for Mrs. Baker

Services for Mrs. Alpha Jane Baker, mother of Mrs. Opal Ware of Morton, were held at 2 p.m. Wednesday in the First Baptist Church in Friona. The Rev. Russell Pogue, pastor of the First Baptist Church in Cisco and the Rev. Charles Broadhurst, Friona pastor, officiated.

Burial was in the Friona Cemetery under the direction of Parsons-Ellis Funeral Home.

Mrs. Baker, 91, was dead on arrival about 10:15 p. m. Saturday at Methodist Hospital in Lubbock. A 45 year resident of Friona, she had lived in Lubbock 10 months. She was a native of Johnson County, Ill.

Survivors include three daughters, Mrs. Ware, Mrs. Florence Boyce of Lubbock and Mrs. Jean Kelly of Cleveland, Ohio; eight sons, George of Joplin, Mo., Elmer of Kennewick, Wash.; Arthur of Rosepine, La., Oliver of Cisco, Raymond of Amarillo, Gilbert of Chewelah, Wash., Duke of Big Spring and Charles of Portales, N. M.; a sister, Mrs. Lora Upp of Thousand Oaks, Calif.; 30 grandchildren; 35 great-grandchildren; and four great-great-grandchildren.

Phone Your News to 266-5376

Good News for Cotton Growers

We Now Have the Means For Getting Your Cotton To the Gin Quicker, Safer and At Lower Cost



Star Route Co-op Gin now has a substantial number of these 40' x 10' x 10' portable containers with which to haul your field-stored cotton to the gin or to park on your turnrow to store as you harvest and later pick up.

Our equipment includes a loader for transferring your ground-stored cotton into these containers for a quick trip to the gin.

Let Us Help You...

Eliminate high trailer costs. Eliminate the road hazards of trailer operation. Cut down on gin yard time by delivering much larger amounts per trip. These con-

tainers will store or haul up to eleven bales per load making it easier for you to schedule your crop through the gin.

● Cut down on time lost to weather due to less time waiting in the gin yard

For Information or Service Call Vic Jackson at 927-3416

STAR ROUTE CO-OP GIN

Vic Jackson, Manager

Phone 927-3416

Minnie's Shop. World-Famous GRAFF California wear Has Arrived. If you are thinking of giving Graff, now is the time to make your selections—Hundreds of new items just unpacked. Jacket, Blouses, Pant Suits, Jackets, Tops, Skirts. USE OUR LAY-AWAY.

BEN FRANKLIN'S PRE Thanksgiving SAVINGS. Roastwell OVAL ROASTER 2.88. 50-Piece Set FASHION DESIGNED TABLEWARE 13.88. 6-Piece STEAK KNIFE SET 4.88. 9-Lb. Fowl, 12-Lb. Roast Automatic Corn Popper 4.88. Club Aluminum Cookware 8-Piece Set 34.88. AM/FM Stereo Receiver System 59.95. Cassette Player-Recorder 26.88. Linden Black Forest Novelty Clocks 7.88. Waring 8-Button Blender 19.88. 200 Count 4 FOR 1.00 2-Ply Tissues 45-pc. Set China 37.88. Pkg. of 2 Blank Cassette Tapes 88c. Only \$1 Holds Any Layaway Until Christmas.

# Grand Opening

## of LINER'S PHARMACY

Phone — Day 266-8965

Your Home Town Prescription Pharmacy

Phone — Night 266-5007

### SATURDAY, November 18 — 8 a.m. 7 p.m.

### We Are Just So Proud To Be Here!

We wish to host all our new friends who have welcomed us so generously, so we are holding a Big Open House Saturday and hope you will all be there!

### Come and Bring the Family

Something For Everyone







- ★ Free Coffee and Cokes All Day
- ★ Free Bubble Gum for the Kids
- ★ Drawings for Valuable Door Prizes  
Each Hour From 12 Noon to 7 p.m.
- ★ Free Pair of Hose of Her Choice  
For Each Lady Bringing A Prescription
- ★ Drawing For 10 Free Prescriptions  
4 p.m. Saturday. Be sure to register for this drawing between now and Saturday.

### 2 for 1 SPECIALS

Each of these items will be two for the price of one during this sale

- |                                |                                                                 |
|--------------------------------|-----------------------------------------------------------------|
| Vitamin C, 250 mg & 100 mg     | Ungentine First Aid Spray                                       |
| Super B Complex, 100 count     | Cadence Laxative                                                |
| Zestabs, 130 count             | Rhinall 30-30 Nose Spray                                        |
| Vigran, 130 count              | Hand Cream, various sizes                                       |
| St. Joseph's Aspirin, 36 count | Chambly Milk Bath Bath Oil                                      |
| Phisohex, 5-oz.                | Alcohol, 16-oz.                                                 |
| Ultra-Brite Tooth Paste        | Timed Action Capsules<br><small>For Colds and Hay Fever</small> |

### Liner's Grand Opening SPECIALS

	Vitamin E, 100-count, reg. 6.69	3.98
	Vitamin C, 500 mg, reg. 4.39	1.98
	Myadec 135, reg. 6.95	3.98
	Theragram 100, reg. 7.50	3.19
	Super Aylinal Multiple Vitamins, reg. 9.67	5.98
	Norwich Children's Aspirin, reg. 59c	29c
	Worthmore Aspirin, 500 count	89c
	Cotton Balls, reg. 89c	39c
	Woodbury Soap, bath size	12 for 1.00
	Scope, 24-oz., reg. 2.09	1.39
	Maalox, 12-oz., reg. 1.89	1.09
	Coryban-D, reg. 1.25	89c
	Super Anahist Tablets, reg. 1.25	89c
	Cheracol-D, reg. 1.50	89c
	Dristan Room Vaporizer Spray, reg. 1.19	49c
	Alpha Keri Bath Oil, reg. 3.95	3.15
	Signature Cologne for Men, reg. 3.00	1.29
	Royal Regiment (Max Factor) reg. 3.50	1.49
	Amity Billfolds	20% off
	Cigarettes	41c pack — Longs 44c pack
	Winchester Little Cigars	22c pack
	Insulin	U-40 — 99c U-80 — 1.89
	Alka-Seltzer, reg. 79c	46c
	Insulin Syringes	12c each
	Many Toy Items	1/2 price
	Loving Care Hair Color, reg. 2.00	1.65
	Max Factor Hair Spray, reg. 89c	69c
	Gleem II Toothpaste, reg. 1.49	89c
	Johnson & Johnson Baby Shampoo, 12 1/2-oz., reg. 1.89	1.49
	Protein 21 Hair Spray, reg. 2.25	1.29
	Arid Extra Dry Deodorant, reg. 1.79	1.39
	Bayer Aspirin, reg. 1.17	79c
	Protein 21 Shampoo, reg. 2.49	1.49
	Pearl Drops Tooth Polish, reg. or mint, reg. 1.59	1.29

Many, Many More Specials  
Throughout the Store

# tips given on cooking turkey

**WILL O'NEAL**  
 Time to talk turkey for Thanksgiving. What is the right size turkey and what is the best way to cook it?

**SELECTING THE TURKEY**  
 Select birds having greatest depth of breast and bulging thighs and drumsticks. Buy a ready-to-cook turkey with 31 per cent of the ready-to-eat drumsticks and thighs on a tur-

ment to about 27 per cent of the to-  
 to-cook weight.  
 Birds with the heaviest fleshing over breast, thighs, and drumsticks and wide, long deep bodies, give the ratio of meat to bone. Amount to depends on the appetites of those eat-  
 following figures are for roasted and are amounts per serving, not person to be served.

3/4 to 1 pound for birds 12 pounds or less.  
 1/2 to 3/4 pound for birds 12 pounds or over.

If you plan to offer second servings, figure how many servings you need, not how many people to be fed.

Preparation of frozen whole turkey for cooking: Place frozen, wrapped poultry in freezer immediately after purchase and hold at 0 degree until time to thaw for cooking. Unstuffed frozen turkey and turkey parts, except boneless steaks, should be thawed until pliable before cooking. Do not thaw commercially frozen, stuffed birds before cooking.

Thaw whole birds and large parts in original wrappers in the refrigerator. Unwrap small parts and separate, so air can reach each piece. To shorten the time, turkeys sealed in water tight wrappers

may be thawed in cold water. Change the water often and allow 2 to 6 hours, depending on the size of the bird. Frozen turkey and parts need to be cooked soon after thawing.

**Time Guide For Thawing Turkey:**  
 Large whole bird - 2 to 3 days.  
 Small whole bird 1 to 2 days.  
 Parts of large bird 1 to 2 days.

**Preparation of Whole Bird**  
 Start with a clean, ready-to-cook bird. Salt body cavity. Stuff neck cavity loosely; stuffing expands during cooking. Pull neck skin to back over stuffing and fasten with skewer or a few stitches. Use clean white wrapping cord and a large needle. Lift one of the wings up and out, forcing tip back until it rests flat against neck skin; repeat with other wing. This holds the wings under back of bird without skewers, while providing a platform for the bird.

Next, stuff body cavity loosely to allow for expansion. Now truss body cavity. If band of skin is left at tail, tuck legs under it to close opening. If not, with four or five poultry pins or wooden picks, draw bird together at regular intervals along body opening. With long twine, lace cavity shut. Tie a knot, leaving ends on twine. Cross ends of twine on bird, wind around leg ends; tighten; bring down around tailpiece; then up again; tie

**TIMETABLE FOR ROASTING**  
 5 to 7 pounds at 325 degrees for 2 1/2 to 3 hours.  
 8 to 11 pounds, at 300 degrees for 3 1/2 to 4 1/2 hours.  
 12 to 15 pounds at 275 degrees for 5 to 6 hours.  
 16 to 20 pounds 250 - 275 degrees for 6 1/2 to 7 1/2 hours.  
 21 to 25 pounds at 250 degrees for 8 to 9 hours.  
 Poultry is done when thickest part of drumstick feels very soft when pressed between protected fingers.



## BLED SOE BEAUTIES . . .

THE HOMECOMING QUEEN AND PRINCESS are shown above as they were crowned in coronation ceremonies in the Bledsoe High School Gymnasium Saturday night. The coronation climaxed a full afternoon and evening of homecoming activities that began with the traditional parade and ended with a basketball game between Bledsoe and Spade High Schools. Seated at right and holding the bouquet symbolic of her office is Homecoming Queen 1972-73 Kay Row, a senior student. Seated at left is Shari Hale, sixth grader, who was chosen Homecoming Princess. Miss Row was escorted by Larry Langrill, right, and Miss Hale by Mat Rogers, at left.

## Bledsoe cagers top Elida, NM 58-48

Bledsoe's varsity team came out on the winning side of the basketball game Tuesday night with a 58 to 48 win over Elida, N. M.

Larry Langrill scored high for Bledsoe with 15 points and Elida's B. Lambirth was their high point man with 26 points.

In the first quarter Bledsoe scored 5 points, 2nd quarter 14 points, third quarter 22 points and 17 points in the final quarter. Elida made 8 points in the first quarter, 17 in the second and 5 and 15 in the last two quarters.

Elida's B team basketballers downed Bledsoe by a score of 39-37. Dale Hale and Gary Young led the scoring with 12 points each for Bledsoe and J. Gilmore made 19 of the 39 points for Elida.

Points for Bledsoe: 6 in the first quarter, 16 second quarter, 10 in the third quarter and 11 in the fourth quarter. Elida put 9 points on the board the first quarter, 6 in the second and 12 each in the third and fourth quarters.



AIRMAN MONTE HALL

## Airman Monte Hall assigned to Keesler

Airman Monte K. Hall, son of Mr. and Mrs. M. C. Hall of Bledsoe, Tex., has been assigned to Keesler AFB, Miss., after completing Air Force basic training.

During his six weeks at the Air Training Command's Lackland AFB, Tex., he studied the Air Force mission, organization and customs and received special instruction in human relations.

The airman has been assigned to the Technical Training Center at Keesler for specialized training in communications-electronics systems.

Airman Hall, a 1970 graduate of Bledsoe High School, attended South Plains Junior College, Levelland, Tex.

When you buy new tires make sure the seller records your name, address and the identification numbers on the sidewalls. This registration is required by government regulation. It enables the manufacturer to notify you personally if a safety defect is found in any of the tires from the same production run.

## News from Threeway

Mr. and Mrs. D. S. Fowler spent the week end in Lubbock visiting the James Fowlers and Troy Wilkersons.

Mrs. Bulah Toombs returned home Thursday from Austin where she visited relatives.

W. H. Eubanks underwent surgery in Methodist Hospital in Lubbock Wednesday.

The Three Way basketball teams played Cotton Center on the home court Tuesday night. The girls won and boys lost. The Three Way football team played their last game of the season Friday night losing the game to Cotton Center.

Mr. and Mrs. Dickie Wheeler from Lovington, N. M. spent the weekend with

their grandparents, the Johnnie Wheelers.

Mr. and Mrs. H. W. Garvin attended church in Lubbock Sunday and visited their daughter and family, the James Gillentines.

Mr. John Gunter is a medical patient in Cochran Memorial Hospital.

Mrs. Ray Fowler and children from Morton and Mrs. Jack Reeves and children from Maple were supper guests in the D. S. Fowler home Friday evening.

The gins in the community have started ginning cotton. Grain harvest is going good.

## HOSPITAL NOTES

Patients admitted to Cochran Memorial Hospital November 8 through November 14 were: Adolfo Morales, Charles Ray Roberts, Rickey Williams, Tom McAllister, Martha Reintera, Pricilla Lucera, Annie B. Moore, Canora Davis, James Lee Perez, Lillie Gentry, Diane Bickett, Goldie Sullivan, Linda Carter, Betty Akin, Henrietta Bihl, Rafael Domiguez, Ed Garrett, L. R. Hornsby, Innis Stewart, Edd Ary, Jim Cunningham, Jack Baker and Sammy Johnson.

College fraternities are growing more rapidly than ever in history. Over 185 new fraternity chapters were formed last year.



Loans to buy land . . . or for other needs

Sure, your Land Bank makes loans to buy farms and ranches. But most borrowers now use the Land Bank for other purposes: To refinance debt, build or remodel a home, improve buildings or land, even money for education. So whether you're buying land or need additional capital from present equity, investigate the Land Bank. With over 20 loan plans, we probably can meet your particular loan needs.



E. Side of Square  
 Levelland, Texas

Joe Breed, Mgr.

## THE MORTON GOURMET

The BEST in American and International Foods

Because YOU Deserve Only the BEST

OPENING SOON!

## GRAND OPENING

Register This Week for Prizes To Be Drawn Saturday, Nov. 18, 1972

1st Prize — Color TV (No Purchase Necessary To Register)

These Specials In Effect This Week Only at One Thousand College in Levelland

## ARTMAN STYLE SETTER

Dries, Gooms and Styles Hair

Ideal Family Grooming Aid . . . . .

8<sup>99</sup>

SUSPENSION  
**Maalox**  
  
 12 Fluid Ounces

99<sup>c</sup>

**NyQuil**  
  
 6-oz. Size

79<sup>c</sup>

**Mylanta** 1<sup>19</sup>  
 Liquid Antacid  
 12 Fl. Oz. . . . .

**Vaseline**  
 INTENSIVE CARE<sup>SM</sup>  
 Bath Beads  
*The Skin Softener*  
 Softens dry, even flaky skin  
  
 79<sup>c</sup>

**Teri Towels**  
  
 60 Count  
 4 Ply  
 49<sup>c</sup>

**Smokers Needs**  
 Headquarters for Tobacco, Pipes, Lighters,  
 Lighter Fluid, Pipe Cleaners, Cigars, Etc.  
**CIGARETTES**  
 Regular Size . . . . . Pack 43c — Carton 3.99  
 King Size . . . . . Pack 47c — Carton 4.09

**Kleenex Tissue**  
  
 Large Family Size — 280 Count  
 48<sup>c</sup>

**Intensive Care Lotion**  
  
 10-oz. Bottle  
 Reg. 1.19  
 79<sup>c</sup>

**WALT**  
  
 16-Fl. Oz.  
 89<sup>c</sup>

**Neal Ellis**  
  
 PHARMACY & GIFT SHOP

One  
 Thousand  
 College  
 CALL  
 894-7315  
 Levelland

## Need A 'Workhorse' Car?

We can't help but have just what you are looking for among our large selection of quality used cars.

THESE ARE NOT BEAUTIES . . .  
 But They're Not Wallflowers Either!

Check Them Out For Your Needs:

- 1965 Corvair Monza Coupe . . . . . \$179.00
- Chrysler 4-Door Sedan . . . . . \$179.00
- 1961 Volkswagen Camper . . . . . \$395.00
- 1965 Ford Fairlane 4-door . . . . . \$279.00
- 1967 Chevrolet Impala Coupe . . . . . \$499.00
- 1966 Pontiac Grand Prix Coupe . . . . . \$299.00
- 1961 Ford Falcon Station Wagon . . . . . \$299.00
- 1962 Ford 4-Door Sedan . . . . . \$299.00
- 1965 Ford Galaxie 500 4-Door Sedan . . . . . \$399.00
- 1967 Ford 4-Door Sedan . . . . . \$495.00

If you are looking for a rugged, functional car to fill that individual need, see these . . . at

## Gwatney-Wells Chev.-Olds.

113 E. Washington

Morton

EVERYTHING FOR A TRADITIONAL

# THANKS GIVING

PRICES EFFECTIVE NOV. 16 through 22

Norbest Grade A Tom

**TURKEYS**  
LB. **37<sup>c</sup>**



Norbest Grade A  
**HEN TURKEYS, lb. .... 43c**

HORMEL CURE 81 **HAM** LB. .... **\$1.69**  
Fully Cooked

Kraft Philadelphia  
**CREAM CHEESE, 8-oz. .... 33c**  
Hormel **LITTLE SIZZLERS, 12-oz. . 69c**

Shortening  
**CRISCO**

3-LB. CAN

**77<sup>c</sup>**

With Coupon From  
Our Circular



Sugary Sam Cut  
**SWEET POTATOES**  
No. 3 Squat Can

**29<sup>c</sup>**

Del Monte  
**GREEN BEANS**  
303 Cans

**2 FOR 59<sup>c</sup>**

Shurfine C.S. or W.K.  
**GOLDEN CORN**  
No. 303 Can

**5 FOR \$1.00**

Shurfine Early Harvest  
**SWEET PEAS**  
No. 303 Can

**25<sup>c</sup>**

**Mince Meat** None Such  
9-oz. Pkg. .... **39<sup>c</sup>**

Hunt's YC  
**PEACHES**  
No. 2 1/2 Can

**3 FOR \$1**

Shurfine Cut  
**ASPARAGUS**  
14 1/2-oz. Can

**47<sup>c</sup>**

Del Monte  
**PINEAPPLE**  
No. 1/2 Can

**3 FOR \$1**

Kleenex

**Dinner Napkins, 50's** ..... 35c

Heavy Duty 18" x 25' Roll  
**Alcoa Foil** ..... 39c

Reynold's Turkey Size  
**Brown-n-Bag** ..... box 19c

Emerald Large Size  
**Walnuts** ..... lb. 49c

Hershey's, 12-oz. Pkg.  
**Chocolate Chips** ..... 49c

Loose Pak, 8-oz. Pkg.  
**Dromedary Dates** ..... 35c

Shurfine Strained  
**Cranberry Sauce** 25<sup>c</sup>

Shurfine Strained  
**Cranberry Sauce** 25<sup>c</sup>

Shurfine Strained  
**Cranberry Sauce** 25<sup>c</sup>

Shurfine Strained  
**Cranberry Sauce** 25<sup>c</sup>

Shurfine Strained  
**Cranberry Sauce** 25<sup>c</sup>

Shurfine Strained  
**Cranberry Sauce** 25<sup>c</sup>

Shurfine Strained  
**Cranberry Sauce** 25<sup>c</sup>

Shurfine Strained  
**Cranberry Sauce** 25<sup>c</sup>

Shurfine Strained  
**Cranberry Sauce** 25<sup>c</sup>

Shurfine Strained  
**Cranberry Sauce** 25<sup>c</sup>

Shurfine Strained  
**Cranberry Sauce** 25<sup>c</sup>

Shurfine Strained  
**Cranberry Sauce** 25<sup>c</sup>

Shurfine Strained  
**Cranberry Sauce** 25<sup>c</sup>

Shurfine Strained  
**Cranberry Sauce** 25<sup>c</sup>

Shurfine Strained  
**Cranberry Sauce** 25<sup>c</sup>

Shurfine Strained  
**Cranberry Sauce** 25<sup>c</sup>

Shurfine Strained  
**Cranberry Sauce** 25<sup>c</sup>

Shurfine Strained  
**Cranberry Sauce** 25<sup>c</sup>

Shurfine Strained  
**Cranberry Sauce** 25<sup>c</sup>

Shurfine Strained  
**Cranberry Sauce** 25<sup>c</sup>

Shurfine Strained  
**Cranberry Sauce** 25<sup>c</sup>

Shurfine Strained  
**Cranberry Sauce** 25<sup>c</sup>

Shurfine Strained  
**Cranberry Sauce** 25<sup>c</sup>

Shurfine Strained  
**Cranberry Sauce** 25<sup>c</sup>

Shurfine Strained  
**Cranberry Sauce** 25<sup>c</sup>

Shurfine Strained  
**Cranberry Sauce** 25<sup>c</sup>

Morton's Frozen

**PUMPKIN**  
or **MINCE**

**PIES**

20-oz. Size

**2 for 69<sup>c</sup>**

16-oz. Can

Fisher, 13-oz. Can

**MIXED NUTS** ..... 89c

Gladiola White, lb. pkg.  
**CORN MEAL** ..... 59c

Schillings, 7/8-oz. Can  
**GROUND SAGE** .... 29c

Shurfine Ground, 4-oz. Can  
**BLACK PEPPER** .... 29c

Kraft Miniature, 10 1/2-oz. Pkg.  
**Marshmallows, 2 for 49c**

Alabama Girl, 22-oz. Jar  
**PICKLE CHIPS** ..... 49c

Alabama Girl Whole, 22-oz. Jar  
**SWEET PICKLES** .... 59c

Maraschino Salad, 9-oz. Jar  
**TOWIE CHERRIES** .. 39c

Holsum Thrown, 7-oz Jar  
**STUFFED OLIVES** ... 59c

Shurfine Pieces & Stems, 4-oz. Can  
**MUSHROOMS** ..... 39c

Shurfine Pieces & Stems, 4-oz. Can  
**MUSHROOMS** ..... 39c

Shurfine Pieces & Stems, 4-oz. Can  
**MUSHROOMS** ..... 39c

Shurfine Pieces & Stems, 4-oz. Can  
**MUSHROOMS** ..... 39c

Shurfine Pieces & Stems, 4-oz. Can  
**MUSHROOMS** ..... 39c

Shurfine Pieces & Stems, 4-oz. Can  
**MUSHROOMS** ..... 39c

Shurfine Pieces & Stems, 4-oz. Can  
**MUSHROOMS** ..... 39c

Shurfine Pieces & Stems, 4-oz. Can  
**MUSHROOMS** ..... 39c

Shurfine Pieces & Stems, 4-oz. Can  
**MUSHROOMS** ..... 39c

Shurfine Pieces & Stems, 4-oz. Can  
**MUSHROOMS** ..... 39c

Shurfine Pieces & Stems, 4-oz. Can  
**MUSHROOMS** ..... 39c

Shurfine Pieces & Stems, 4-oz. Can  
**MUSHROOMS** ..... 39c

Shurfine Pieces & Stems, 4-oz. Can  
**MUSHROOMS** ..... 39c

Shurfine Pieces & Stems, 4-oz. Can  
**MUSHROOMS** ..... 39c

Shurfine Pieces & Stems, 4-oz. Can  
**MUSHROOMS** ..... 39c

Shurfine Pieces & Stems, 4-oz. Can  
**MUSHROOMS** ..... 39c

Shurfine Pieces & Stems, 4-oz. Can  
**MUSHROOMS** ..... 39c

Shurfine Pieces & Stems, 4-oz. Can  
**MUSHROOMS** ..... 39c

Shurfine Pieces & Stems, 4-oz. Can  
**MUSHROOMS** ..... 39c

Shurfine Pieces & Stems, 4-oz. Can  
**MUSHROOMS** ..... 39c

Shurfine Pieces & Stems, 4-oz. Can  
**MUSHROOMS** ..... 39c

Shurfine Pieces & Stems, 4-oz. Can  
**MUSHROOMS** ..... 39c

Shurfine Pieces & Stems, 4-oz. Can  
**MUSHROOMS** ..... 39c

Shurfine Pieces & Stems, 4-oz. Can  
**MUSHROOMS** ..... 39c

Shurfine Pieces & Stems, 4-oz. Can  
**MUSHROOMS** ..... 39c

Shurfine Pieces & Stems, 4-oz. Can  
**MUSHROOMS** ..... 39c

Shurfine Pieces & Stems, 4-oz. Can  
**MUSHROOMS** ..... 39c

Shurfine Pieces & Stems, 4-oz. Can  
**MUSHROOMS** ..... 39c

Shurfine Pieces & Stems, 4-oz. Can  
**MUSHROOMS** ..... 39c

Shurfine Pieces & Stems, 4-oz. Can  
**MUSHROOMS** ..... 39c

Shurfine Pieces & Stems, 4-oz. Can  
**MUSHROOMS** ..... 39c

KRAFT'S  
**MIRACLE WHIP**

32-oz. JAR

**49<sup>c</sup>**

With Coupon From  
Our Circular



Libby's  
**PUMPKIN**

303 Can

**15<sup>c</sup>**

With Coupon  
From Our  
Circular

Ellis  
**PECANS**

Halves or Pieces  
10-oz. PKG.

**99<sup>c</sup>**

With Coupon From  
Our Circular

**CELERY** California Fresh

Pascal - LB. **12<sup>c</sup>**

Red Rome Extra Fancy  
**APPLES** ..... lb. 19c

California Sunkist Navel  
**ORANGES** ... lb. 19c

Portales Maryland  
**SWEET YAMS, lb. 15c**

Ocean Spray Fresh  
**Cranberries** . lb. bag 28c

Sweet  
**YELLOW ONIONS** .lb. 15c

Large Size  
**WALNUTS** ..... lb. 59c

Great For Cooking  
**WESSON OIL**  
48-oz. Bottle

**89<sup>c</sup>**

Dutch Ann Frozen  
**PIE SHELLS**  
Pkg. of 2

**27<sup>c</sup>**

4-oz. Tube  
**Protein 21 SHAMPOO** .. 69c

25's  
**ALKA-SELTZER** ..... 59c

Anti Perspirant Deodorant, 14-oz. Size  
**DIAL SPRAY** ..... 1.49

Reg. or Mint Family Size  
**Crest TOOTHPASTE** ... 79c

Protein 21 Reg. or Extra Hold 6 1/2-oz.  
**HAIR SPRAY** ..... 79c

Imperial Sta-Soft  
**BROWN SUGAR**

2-LB. BAG

**43<sup>c</sup>**

**T  
H  
A  
N  
K  
S  
G  
I  
V  
I  
N  
G**

# School menu

November 20, Frito pie, Cab...  
November 21, Turkey and...

dressing w/gravy, asparagus, cranberry salad, hot rolls, pumpkin custard and milk.

Wednesday, November 22, Corn dogs w/mustard, English peas, green salad, peaches, cookies and milk.  
Thanksgiving H olidays Thursday and Friday.

## Palmer-Stowe vows read in double ring ceremony at Hobbs

Miss Connie Ruth Stowe and Kenny Oliver Palmer exchanged double ring vows October 2 at 7:30 p. m. in Taylor Memorial Baptist Church in Hobbs, N. M. The Rev. James Harvey officiated.

Parents of the couple are Mr. and Mrs. David Stowe of Plains and Mr. and Mrs. Charles Palmer, Sr., of Morton.

The bride wore a floor length, two-piece green velvet suit with ivory blouse and black suede boots. She carried a Glammalia cascade.

Miss Paula Warren from Hobbs was maid of honor and Charles W. Palmer, Jr., of San Marcus served as his brother's best man.

Following the ceremony, a reception honored the couple in their home at 503 East Llano in Hobbs.

For a wedding trip to Ruidoso, N. M. the bride wore a navy and white hounds-tooth check pants suit with matching accessories.

Mrs. Palmer is a graduate of Morton High School and attended South Plains Junior College. She has been employed by SIC in Lovington, N. M. Palmer is a graduate of Morton High School and attended Ranger College in Ranger and South Plains Junior College. He is manager of Dial Finance in Hobbs, N. M.



Mr. and Mrs. Kenny Oliver Palmer

**HUNGRY PEOPLE**  
OF WEST TEXAS  
**DON'T DESPAIR**  
**THE MORTON GOURMET**  
Is Coming To Your Rescue  
(See Next Page)

## Morton Tribune

MORTON, TEXAS, 79346, THURSDAY, NOVEMBER 16, 1972

GOOD FOOD FOR A

**THANKFUL THANKSGIVING**

Good Friday, Nov. 17 thru Wed., Nov. 22

Double Stamps Tuesday and Wednesday

Swift's Premium

### BUTTERBALL TURKEYS LB. ... 59¢

Sunray Half or Whole <b>HAMS</b> LB. <b>71¢</b>	Center Cut <b>PORK CHOPS</b> LB. <b>89¢</b>	End Cut <b>PORK CHOPS</b> LB. <b>59¢</b>	Samy Pride <b>CHEESE</b> 12-oz. <b>69¢</b>
----------------------------------------------------------	------------------------------------------------------	---------------------------------------------------	-----------------------------------------------------

White Swan  
**INSTANT TEA**  
3-oz. Jar  
**89¢**

Ellis  
**PECAN HALVES**  
10-oz. Pkg.  
**\$1<sup>19</sup>**

Del Monte Midget  
**SWEET PICKLES**  
12-oz. Jar  
**49¢**

Del Monte  
**Pumpkin Pie Mix**  
No. 2 1/2 Can  
**3 FOR \$1<sup>00</sup>**

### Keebler Cookies 3 FOR \$1<sup>00</sup>

Kraft Miniature  
**MARSHMALLOWS**  
10.5-oz. Pkg.  
**2 FOR 45¢**

Towie  
**STUFFED OLIVES**  
5-oz. Jar  
**39¢**

Bama Purple  
**PLUM JELLY**  
18-oz. Glass  
**39¢**

### Brown & Serve Rolls 4 FOR \$1

Del Monte  
**WHOLE GREEN BEANS**  
3 No. 303 Cans  
**89¢**

**MAALOX ANTACID**  
12-oz. **\$1<sup>19</sup>**

**Intensive Care Lotion**  
Vaseline 15-oz. **\$1<sup>39</sup>**

**DIAMOND FOIL**  
18"x25' **49¢**

**LISTERINE**  
14-oz. Bottle **99¢**

— THANKSGIVING PRODUCE —

**Fresh Cranberries** Ocean Spray 1-Lb. Pkg. **29¢**

**CELERY** LB. 15¢ **YAMS** LB. 15¢

**Fresh COCONUTS** --- 3 FOR \$1<sup>00</sup>

Cloverlake  
**Whipping Cream**  
**Dip 'n Chip**  
**Sour Cream**  
**3 FOR \$1<sup>00</sup>**

Ocean Spray  
**Cranberry Sauce**  
11-oz. Can  
**25¢**

# RAMSEY'S FOOD STORE

## About local folks . . .

Miss Leila Petty of Tulia was a week end guest of Mrs. HESSIE B. Spotts, Miss Petty, former Home Demonstration Agent for Cochran County. She attended the Browne-Hudson wedding Saturday night and services at the First United Methodist Church Sunday.

Mrs. Truman Doss and Mrs. Van Greene spent a few days last week in South Texas. Helen visited with her mother, Mrs. May Cox, in Robstown and Betty visited with her daughter, Becky, who is a student in Corpus Christi.

Mrs. Tommy Rush and daughter, Tammy, spent several days last week visiting in the home of her sister and family, Mr. and Mrs. J. D. House, in Lamesa. They were joined on Saturday by husband Tommy.

Mrs. Dwain Hester and Scott are spending a few days with her parents in meadow.

Mr. and Mrs. Jack Baker attended the funeral services for Jack's aunt, in DUKE, Oklahoma Sunday.

Out of town guests attending the Browne-Hudson wedding Saturday were: Mrs. C. E. Terry, Roscoe; Mr. and Mrs. Sid Harrison, Lucritia and Robbie, Oklahoma City, Okla.; Mavis Bybee and Carey Franklin, Perryton; Mr. and Mrs. Bob Bybee and Shane, Lubbock; Mr. and Mrs. R. T. Truelock, Cassie and Tallett of Littlefield; Mr. and Mrs. Douglas Patton, Kevin, Shannon and Leslie, Mrs. Bobby Smith, Brian, and B. J. Smith from Burnet, ecky Lynn Miksch, Belton; Mr. and Mrs. enny Cadenhead Fort Worth, Robert Wiggins, Mr. and Mrs. Wayne Thompson, Mr. and Mrs. Millard Townsend, Karen Fred and Karen Rozell, all of Lubbock; Melva and Owen Brozles, Dallas; Karen Willis and Patricia Browne from Canyon; Mr. and Mrs. Marion Matthews, Post; Mr. and Mrs. Phil Matthews, Clovis; Mr. and Mrs. A. M. Cunningham, ANYON; Mr. and Mrs. Buel Wharton, Silver City, N. M.; Mr.

and Mrs. Cecil Gray, Lubbock; Mr. and Mrs. J. D. Browne, Jr., Seagraves, Mr. and Mrs. Chester Colvin, Fort Worth; Mrs. Stella Lee, Mr. and Mrs. Richard Persall, Mark, Karen, Tim and Gregg, Amarillo; Janice Browne and Dorothy Browne, Gail; Mr. and Mrs. Jerry Kincheloe, Mr. and Mrs. Earl Wooten, Mr. and Mrs. Ronnie Dulin and Mrs. Carolyn Groves and Le'Ann all of Lubbock; Mr. and Mrs. B. H. Browne of Plainview and Mr. and Mrs. L. C. Saunders of Brownfield.

**You can't get a good job without experience. We'll give you both.**

There are plenty of jobs in the want ads. Unfortunately, almost all the good ones ask for experienced help. But, in today's Army, we'll hire you at \$288 a month to start. No experience necessary. We'll give you free meals, free medical and dental care, and 30 days paid vacation a year. And the training and experience in almost any job you want. A job you can make a career of. In the Army, or out of it. To get complete details talk it over with your local Army Representative. Today's Army wants to join you. Call 806-747-3711, Ex 617 1205 Texas Avenue Lubbock, Texas 79408

"Welcome... We're Glad You're Here"



come with this bouquet of roses and our wish for success and happiness in your new business

LINER'S PHARMACY

## Morton Floral & Gift Shop

605 E. Lincoln

266-8816

# Farmcast: from state ag agency

Calf Prices Above Parity . . . Stalk Destruction Deadline Nears . . . SAD Help Is On The Way . . . Turkey Time Nears.

Calf prices, the Texas Crop and Live-



## ENGAGEMENT TOLD . . .

MR. AND MRS. ED BURNS of Bledsoe have announced the engagement and approaching marriage of their daughter, Debra Rose, to Monte Kel Hall, son of Mr. and Mrs. Lefty Hall of Bledsoe. Miss Burns is a graduate of Bledsoe High School and a student at South Plains College. Hall is a graduate of Bledsoe High School and is serving with the US Air Force at Sheppard A.F.B. The couple is planning a December 22 wedding at 7:30 p. m. in the Bledsoe Baptist Church. Friends are invited to attend.



## ENGAGED . . .

MR. C. G. RICHARDS has announced the engagement and approaching marriage of his daughter, Clara Jane Dawson, to Donald Ray Bales, son of Mr. and Mrs. M. F. Bales of Denver City. The bride-elect is a graduate of Morton High School. Bales is a graduate of Denver City High School, South Plains College and is employed by the Soil Conservation Service. The couple plans to be married November 30, at 8 p.m. in the First United Methodist Church. Friends and relatives are invited to attend.

## Mrs. Ola Smith rites Sunday

Services for Mrs. Ola Rebecca Smith were held at 3 p.m. Sunday in the Roosevelt Baptist Church. The Rev. Gayler Bartlett of Spring Valley, Calif., officiated.

Burial was in the Slaton Cemetery under direction of Singleton Funeral Home. Mrs. Smith, 33, a native of Frost and a long-time resident of the Acuff Community near Lubbock; died at 12:30 p. m. Friday in Cochran Memorial Hospital following a lengthy illness. She had lived here six years.

Survivors include four sons, George of Cresson, Martin of Fort Worth, Melvin of Weatherford and C. A. of Portland, Ore.; four daughters, Mrs. A. R. McCallister of Idalou, Mrs. C. R. Seagler of Enochs, Mrs. Flevoy Eubanks of Odessa and Mrs. Gayler Bartlett of Spring Valley, Calif.; a sister, Mrs. Cora Cagle of Kansas; three brothers, Ed Burton of Lawton, Okla., Joe Burton of Yuba City, Calif., and Benard Burton of Wauwate, Okla.; 2 grandchildren, 39 great-grandchildren and three great-great-grandchildren.

## Bookmobile

The High Plains Bookmobile will be in your area on the following dates. Wednesday, November 22: Circleback: 9:00 - 10:00, Bula No. 1: 10:15 - 11:15, Bula No. 2: 12:00 - 1:00. Thanksgiving Holiday, Tuesday: Morton: 9:30 - 12:00.

stock Reporting Service notes, are above parity by almost \$3 per hundredweight. Effective parity for calves is \$44.90; average market price in Texas is \$47.70. But only calves are above effective parity levels. All other farm prices remain below parity.

The all-products index of prices received by farmers and ranchers is 15 per cent above a year ago; the livestock index is 20 per cent above last year while the all crops index is four per cent above last year.

Cotton showed the biggest decline in price of all other crops. The average cotton price in the state is 21.6 cents per pound. This compared with 26 cents one year ago. Effective parity for cotton is 56.06 cents per pound.

In other crops, wheat showed a gain of 21 cents compared to a month ago with an average price now at \$1.96 per bushel. Corn was up five cents at \$1.42 per bushel compared to a month ago. Grain sorghum also showed a nickel increase at \$2.16 average per hundredweight.

Hog prices were down slightly in Texas compared to a month ago. Average now is \$26.80 per hundred pounds compared to \$27.70 a month ago. Effective parity

for hogs is \$31.10 per hundred pounds. Beef cattle averaged \$33.40 per hundredweight, still well below the effective parity of \$37.40 per hundred pounds.

Egg producers continue to have pricing problems with a 36 cent per dozen average to 38 cents a month ago. Effective parity for eggs is 56.8 cents per dozen.

COTTON stalk destruction deadline is not far off for 44 north central and east counties. Stalk destruction deadline is Nov. 30. Officials urge farmers in those counties to destroy stalks as soon as possible. Recent rains throughout most of the area will keep farmers from getting into fields in the immediate future.

But when a break in the weather does occur and fields are dry enough to work in, farmers can through early stalk destruction reduce carryover of pink bollworms and other cotton insects. In other areas of the state, regrowth of cotton stalks is a problem, and such regrowth should be destroyed.

SAD but true, help is on the way. SAD is St. Augustine Decline and it has been found in lawns throughout the state. It is a disease of the grass, and there is no cure for it.

A new variety of St. Augustine Grass—FLORI-TAM should be available to the public soon, perhaps next year. The Texas Department of Agriculture is in charge of seed certification in Texas and has cer-

tified 17 producers who are now growing out 42 acres of the new variety. The grass is also resistant to chinch bugs and brown patch.

FULL impact of the new pesticide legislation signed into law recently won't be felt for a few years yet, but it will affect every Texan. Rules and regulations as they will apply to states will have to be studied and implemented. States will have a great deal of power in controlling the use of pesticides.

THANKSGIVING time is getting close and Texans can be assured of plenty of supplies of the traditional turkey. Special programs promoting and featuring turkeys produced in Texas will be aimed at consumers.

The turkey industry in Texas is cooperating with the Texas Agricultural Experiment Station—TAPS program to acquaint Texans with the quality of Texas turkeys.

## About local folks

Mrs. Ray Griffith flew to Colorado Thursday to attend the funeral of her cousin.

Mrs. S. A. Ramsey and Miss Rhoda Lisenbee are visiting in San Antonio with Mrs. Ramsey's daughter and family, Mr. and Mrs. Waymon Marshall.

Mr. and Mrs. E. R. Fincher spent the weekend in Dallas with their daughter, Nelda Faye, and attended the Dallas-St. Louis football game.

Mr. and Mrs. Hubert Scifres of Denver, Colo. spent a few days recently visiting with relatives and friends. They were house guests of her sister and family, Mr. and Mrs. Gehome Holloway and her brother and family, Mr. and Mrs. A. R. Coleman. The Scifres lived here in the early forties.

Rev. and Mrs. Lois Sandefer attended the State Baptist Missionary Association of Texas which convened in Amarillo Monday through Wednesday.

## THE MORTON GOURMET

The BEST in American and International Foods

Because YOU Deserve Only the BEST

OPENING SOON!

## GET IN ON SOME COTTON PICKIN' VALUES

# HARVEST 57

IT'S OUR 57th ANNIVERSARY AND WE WANT YOU IN ON THE CELEBRATION!

MAN SIZE RECLINER — Heavy Black Vinyl — Comfortable — Limited Stock. Reg. 79.95, Now

\$59<sup>95</sup>

LA-Z-BOY ROCKER RECLINER — Over 600 chairs in stock. Choice of styles, colors, fabrics, and vinyls. Prices start at 129.95, Now

\$129<sup>95</sup>

BIG THREE POSITION RECLINERS — Choice of Black, Gold or Green Vinyl — Designed for comfort and styling. Reg. 149.95, Now

\$119<sup>95</sup>

SPANISH DEN FURNITURE — Covered in Black or Green Vinyl — Oak Wood construction and trim for long wearing thru heavy use.

Reg. 269.95 3 Cushion Sofa \$219.95

219.95 2 Cushion Love Seat \$169.95

159.95 Matching Recliner \$129.95

129.95 Swivel Rocker \$109.95

119.95 Matching Chair \$99.95

SPANISH TABLES — Dark Oak finish with or without Gold Velvet insert on front. Set of three tables: large cabinet cocktail table, octagon commode, and square commode. Reg. 209.85, Now

\$159<sup>95</sup> for all three

MASON-TYLER EARLY AMERICAN QUILTED PRINT SOFA — Practical Gold, Green and Orange Colors. Maple wood trim. Reg. 249.95, Now

\$199<sup>95</sup>

VELVET SOFA — Traditional Styling. Beautiful Gold Crush Velvet. Reg. \$349.95, Now

\$249<sup>95</sup>

COLONY ARTS EARLY AMERICAN SOFA — Quilted Bird Print linen fabric. Good practical colors for easy and comfortable living. Arm bolsters. Reg. 299.95, Sale

\$249<sup>95</sup>

OUR FINEST EARLY AMERICAN SOFA AND CHAIR — Made by Broyhill — 100 percent Nylon Quilted Print fabric. Gold and Green colors, Beautiful wood trim. Matching chair in Gold tweed. Both pieces have arm covers. A beautiful group designed to last. Reg. 699.90, Now

\$499<sup>95</sup>

SEALY MATTRESS & BOX SPRING — Choice of regular or twin size. Reg. 99.95 Set, Now

\$69<sup>95</sup>

SEALY ODDS & ENDS — Discontinued fabrics and styles. All quality bedding priced to save you money. The original Sealy Posturpedic in discontinued covering king size. Reg. 359.95, Now

\$288<sup>00</sup>

NOTE: BE SURE TO SEE THE MOST COMPLETE SELECTION OF MATTRESS AND BOX SPRINGS IN LVELLAND AT STACY-MASON'S SLEEP DEPARTMENT.

\$8<sup>95</sup>

Brownfield Levelland Littlefield  
**STACY-MASON, INC.**

HOME FURNISHINGS

SOUTHLAND SPANISH VELVET SOFA — Formal and fine. Reversible cushions — slightly damaged. Reg. 499.95, Now

\$199<sup>95</sup>

MAGNA CRAFT CLUB CHAIR — Antique Velvet in green or gold. 2 chairs only. Reg. 159.95, Now

\$89<sup>95</sup>

SMITH TRADITIONAL QUEEN SIZE SLEEPER — Quilted print fabric in green and gold colors. Zepel treated fabric to be soil resistant. Comfortable and stylish. Reg. 369.95, Now

\$299<sup>95</sup>

BROYHILL QUILT VELVET QUEEN SIZE SLEEPERS — Reversible cushion, choice of two styles and three colors. Makes a comfortable bed and sofa. Reg. 599.95, Now

\$499<sup>95</sup>

NOTE: TELL CITY EARLY AMERICAN DINING ROOM FURNITURE NOW IN STOCK AND ALL AT SALE PRICES.

THOMASVILLE "BRANDY WINE" BEDROOM SUITE — Hand finished Wormy maple — King triple dresser with Landscape mirror, king size bed, big chest on chest. Reg. 869.85, Sale

\$499<sup>95</sup>

STYLEHOME SPANISH BEDROOM SUITE — Beautiful dark finish. Triple dresser with twin vertical mirrors, chest on chest. Reg. 429.95, Now

\$349<sup>95</sup>

PULASKI SUNBUST SPANISH BEDROOM — Triple dresser, vertical mirror, panel bed, nite stand, chest on chest. Reg. 789.80, Sale

\$499<sup>95</sup>

BROYHILL EARLY AMERICAN — Large triple dresser with Landscape mirror, beautiful 4 poster bed. Reg. 379.90, Sale

\$299<sup>95</sup>

ANTIQUA WHITE FRENCH PROVINCIAL GOLD TRIM — Triple dresser, curved frames mirror, 4 drawer chest, panel bed, nite stand with drawer. Reg. 449.95, Sale

\$349<sup>95</sup>







*Every Purchase You Make  
In a Home-Town Store ... Is Just Like*

# Putting Money in the Bank

• • • a bank you can draw on for customers, a job, friends in time of trouble, schools for your children, churches for spiritual help ... and the good life in this community ... where everybody is Somebody

**Every time you spend a dollar in this community for goods and services, a substantial part of that dollar automatically becomes an investment in an enriched social and business life for YOU and your family and friends.**

**It's an investment you can draw on every day of your life ... an investment that pays big dividends in happiness and prosperity, as it strengthens and builds up the vitality of this area in which you live ... and in which YOU are important.**

**Contrast this with what the community-building and supporting part of your dollar does for you when you spend it away from home, send it to some mail order house, or surrender it to some migratory peddler.**

**It's gone. To support some other area ... to build up wealth that YOU can never draw on ... and to strengthen those who aggressively drain off the trade of your community ... to weaken your business, your schools and churches, to eliminate your job, and devalue your property.**

**Trade At Home Where Your Money Benefits You**

***It Pays to Buy  
where You Live***

*These Firms Are Genuinely interested in the Future Of Our  
Community And Your Welfare*

**Minnie's Shop-Child's Men Store**  
High Quality Clothing for Men and Women  
266-8602 266-8840

Headquarters For Your  
BUILDING NEEDS — PAINT — LUMBER

**FORREST LUMBER COMPANY**

311 NW 1st 266-5444

**New York Store**

Clothing and Shoes for the Whole Family  
Prices to Fit Your Budget

**Higginbotham-Bartlett Lbr. Co.**  
Your Local Jones-Blair Dealer

**MORTON INSURANCE AGENCY**  
INSURANCE  
Life Insurance — Bonds  
Fire — Auto — Liability

**ROSE AUTO & APPLIANCE**  
TV SALES & SERVICE

**St. Clair's Department Store**  
"Where All The Family Shops"

**Gwatney-Wells Chevrolet-Olds**  
Chevrolet & Olds Dealer for Cochran County

**Luper Tire & Supply**  
"A Tire for Every Purpose"

**Lewis Farm & Ranch Store**

Field & Garden Seed — Custom Grinding & Mixing  
Phone 266-5461 310 N.W. 1st

**MORTON PACKING CO.**  
Ralph Soliz  
YOUR BUSINESS APPRECIATED

**RAMSEY'S FOOD STORE**  
Featuring Your Favorite Foods ...  
At Budget Prices

For Twenty-five Years ...  
With Modern Banking Service  
**FIRST STATE BANK**  
Phone 266-4671 Box 1096

MORTON AREA  
**CHAMBER OF COMMERCE**

## Cagle rites in Whiteface

Rites for Penn Cagle were held at 3 p. m. in the First United Methodist Church in Whiteface. The Rev. Bratcher, retired pastor, officiated.

He was in Morton Memorial Cemetery under the direction of Singleton Funeral Home.

Graveside rites were conducted by the Whiteface American Legion No. 54 serving as pallbearers and by pallbearers.

He died about 7:15 p. m. Tuesday, Nov. 7 in Cochran Memorial Hospital.

Family requested that memorials be sent to the Fund for Diabetic Research in care of the Joslin Clinic in Boston.

Survivors include his wife; six daughters, Mrs. Jean Snodgrass and Mrs. Ida Adams, both of Lubbock, Mrs. Ann of Levelland, and Pam, Beth

## Ta wa ten ya elects officers

Miss Peggy Bennett was elected president of the Ta wa ten ya Campfire Girls at a meeting November 8 in the Tic Toc Restaurant.

Other officers elected were: Annette Willingham, vice president; Toni Norman, secretary; Vera Holland, treasurer; Suzanne Gillespie, reporter; Mary Kay Smith, telephone chairman and Jaye Linn Greer, refreshment chairman.

In the business meeting plans were made for the Ceremonial.

Others attending the meeting were: Rebecca Holladay, Trina Mayberry, Shelly Travis, Martie Dewbre and Carolyn Cobbs and Mrs. James Dewbre and Mrs. Gary Willingham, leaders.

and Leesa, all of the home; three sisters, Mrs. Edna Lewis and Mrs. Nancy Dewbre, both of Morton, and Mrs. Neva Huff of Dallas; his mother, Mrs. Ola Cagle of Morton; and three grandchildren.



### ENGAGEMENT ANNOUNCED . . .

MR. AND MRS. T. E. LYNCH of Morton have announced the engagement and approaching marriage of their daughter, Helen, to William Albus, son of Mr. and Mrs. Leonard Albus of Pep. Miss Lynch is a 1970 graduate of Morton High School and a student at Texas Tech University. Albus is a graduate of Pap High School, South Plains College and is employed at Redrain Manufacturing in Lubbock. The couple plans to be married December 29 at 3 p. m. in St. Phillip's Catholic Church in Pep. Friends are invited to attend.

Morton (Tex.) Tribune, Thursday, Nov. 16, 1972

Page 5b

## CONGRATULATIONS MIKE and DONNA

On the Opening of

## LINER'S PHARMACY

we extend a "big" West Texas welcome to both of you and wish you every success!

## FRANKIE'S SHOPPE

Flowers For All Occasions — Gifts

Gold Bond Stamp Headquarters

266-5615

113 W. Washington

## — Cotton Talks —

The problem of maintaining continuously adequate cotton supplies is not a blemish peculiar to the United States. And, now more than ever before, the world cotton industry is coming to recognize this fact.

This was one of the conclusions drawn from the recent International Cotton Advisory Committee meeting in MANAGUA, Nicaragua, at which delegates were in attendance from just about every nation in the world.

For many years the U. S. Government has shouldered the responsibility and assumed the cost of carrying cotton stocks at levels high enough to assure the world supply in any given year. But the U. S. Government has now stated, flatly, that it will no longer carry stocks at the high levels of the recent past.

THIS NEW U. S. position plus the wide price-supply fluctuations of the last few years has placed an inescapable spotlight on the world industry need for some manner of stabilizing both supplies and prices. Consequently the ICAC meeting saw



### TO WED . . .

MR. AND MRS. WAYNE B. MITCHELL of Shallowater, former residents of Morton, have announced the engagement of their daughter, Raquetta Karbra, to Danny Joe Wilson, of Wichita Falls. Miss Mitchell is a 1972 graduate of Coronado High School and a freshman student at Texas Tech University. She is employed by the House of Shades. Wilson is a 1971 graduate of Coronado High School and is employed by J & H Erection Co. at Wichita Falls. The couple plans to be married at 6 p. m. November 25 at Faith Assembly of God Church in Lubbock.

### Government payroll in Cochran county smaller than average

How many Cochran County residents are holding down government jobs? How does this compare, in relationship to population, with the number on government payrolls in other communities?

According to the latest figures, a smaller proportion of the working force to be found in public jobs, federal, state and local—than in most parts of the United States.

Approximately 1 out of every 7 employed persons in the area works for a government agency. This is exclusive of those in the armed forces.

The facts and figures on public employment, locally and elsewhere, comes from studies and surveys made by the Department of Commerce, the Tax Foundation and others.

They show that the number of persons so-employed has risen much faster in recent years than the number in private employment.

Since 1960 there has been a 59 percent increase in those on public payrolls, as compared with a 26 percent rise in the number in private industry.

In Cochran County, the reports indicate, some 14.2 percent of the working population are in government jobs.

This is below the proportion in the rest of the United States, where the average is 18.2 percent. In the West South Central States, it is 17.0 percent.

The figures show that there are now some 240 men and women in the local area on government payrolls.

Of this total, 170 are in state and local employ. The rest work for the Federal government.

In the last 20 years or so, according to a study made by the Tax Foundation, the number of civilians in public jobs rose from 6,400,000 to more than 13,300,000.

A relatively small part of that increase was at the Federal level. It went from 2,100,000 to the current 2,880,000.

The great bulk of the expansion was at the state and local level. These governments have more than 10,450,000 in their employ at the present time, as compared with 4,300,000 in 1950.

considerable time devoted to discussions of the problem of stocks and how they affect prices, marketing and production. On a world basis it was the consensus at the meeting that stocks equivalent to five months consumption would constitute a "reasonable" level.

From there the talk went to the difficulties in financing such stocks, the effect of carryover stocks on prices and subsequent effects on production.

According to Donald Johnson, Executive Vice President of Plains Cotton Growers, Inc., Lubbock, who attended the meeting as a producer-advisor to the official U. S. delegation, "the deliberations were a healthy sign that the supply-price dilemma may be about to get the attention it has long deserved from both cotton consuming and cotton producing countries."

"A SOLUTION TO the problem was not forthcoming," Johnson said, "but it was encouraging that the problem was clearly recognized and that a few suggestions were made as to how it might be faced."

Among these suggestions were the possibilities for arranging a "buffer stock system" for cotton, perhaps with World Bank financing, and the establishment of an international futures market.

Delegates to the meeting agreed that cotton prices must be stabilized at a level

sufficient to assure adequate remuneration to growers. The "Cotton Policy Statement" issued after the meeting stated "Otherwise they will be forced to shift to other crops, and this loss of supplies could, in the long run, have repercussions on the world cotton-economy."

OBVIOUSLY, A WIDELY acceptable plan to stabilize cotton prices and supplies will not be easy to come by. While both cotton producing countries and cotton importing countries agree that wild price fluctuations are detrimental to all cotton interests, producing countries will be reluctant to take action which might result in a ceiling on prices and importing countries may balk at anything that might put a floor under prices.

"But if we are to have a progressive cotton industry," Johnson stated, "there simply must be a way to assure the price stability necessary to continued production and the stability of both prices and supplies that is the key growth in consumption."

"And if this objective is to be reached," he concluded, "not only the U. S. but every other country with a stake in the world cotton economy will have to accept its responsibilities and meet those responsibilities with a high degree of world statesmanship."

### COW POKES

By Ace Reid



"I wuz told jist look around and you can find somebody worse off than your self — I think I'm goin' blind!"

That raw nip in the air lately reminds us that another year is almost gone and a long, cold winter lies ahead of us almost before we got used to summer. The time, which seems to fly by at an ever increasing rate, is a priceless commodity which cannot be accumulated. You can make that time work for you, however, with an interest-bearing savings account at the First — and the winters will seem shorter as you watch your interest and savings accumulate.

## First State Bank

MEMBER F.D.I.C.

## TRANSMISSIONS

INSTANT CREDIT — WE HONOR ALL APPROVED

## CREDIT CARDS

- TWA
- Hemphill Wells
- Texaco
- American Express
- Diners Club
- Humble
- Frank Brothers
- Braniff
- Sears Roebuck
- Montgomery Ward and All others



EXCHANGE or REPAIR

Free pickup within 50 miles

ALSO WHEEL ALIGNMENT BRAKE and FRONT END REPAIR

## HI PLAINS TIRE & TRANSMISSION

211 N. College

LEVELLAND

894-6323

EARN UP TO \$750 PER MONTH

## U. S. POSTAGE STAMP MACHINES

- Highest Return on Your Capital
- NO Selling
- Manage Your Own Business

We Obtain Your Locations. Minimum Cash Investment Of

\$1,595.00 — up to \$5,000.00 Secured By Equipment

Planter's Peanut and Welch's Juice routes also available from \$495 up

- WOMEN OR MEN
- ANY AGE
- PART TIME, approximately 7 hrs. per month
- NO OVERHEAD
- DEPRESSION PROOF
- REPEAT INCOME

New Distributorships Still Available In Many Areas Throughout This State

Send References Name, Address and Phone No. to:

POSTAGE STAMPS, INC.  
300 Interstate North, N.W./Atlanta, Georgia 30339  
Interstate 1-75 and 1-285

Phone Your News to 266-5576

# BACK THE INDIANS!

Friday, November 17 — 7:30 p. m.

INDIAN STADIUM — MORTON

## MORTON INDIANS

— vs. —

## FRIONA CHIEFS



1972  
Year  
Of  
The  
Indian

MORTON'S INDIAN  
**MARCHING BAND**  
WILL PERFORM  
AT ALL  
FOOTBALL GAMES

### 1972 SCHEDULE OF MORTON INDIANS

**SPRINGLAKE—EARTH**  
AT MORTON  
MORTON 0 .... SPRINGLAKE-EARTH 13

**TULIA**  
AT TULIA  
MORTON 0 ..... TULIA 21

**HART**  
AT MORTON  
MORTON 13 ..... HART 14

**FRENSHIP**  
AT FRENSHIP  
MORTON 14 ..... FRENSHIP 21

**STANTON**  
AT STANTON  
MORTON 0 ..... STANTON 14

**MULESHOE**  
AT MORTON  
MORTON 27 ..... MULESHOE 20

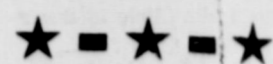
**OLTON**  
AT OLTON  
MORTON 10 ..... OLTON 13

**LITTLEFIELD**  
AT MORTON  
MORTON 7 ..... LITTLEFIELD 7

**DIMMITT**  
AT DIMMITT  
MORTON 28 ..... DIMMITT 8

NOVEMBER 17 —  
**FRIONA**  
AT MORTON

This Page Sponsored  
By The Following  
Indian Supporters



- Silvers Butane Co.
- The New York Store
- Bedwell Implement Co.
- John's Welding & Repair
- Griffith Equipment Co.
- Morton Bi-Products
- Cochran Power & Light
- Gwatney-Wells — Chev.-Olds.
- Morton Packing Co.
- Forrest Lumber Co.
- Bailey Co. — Electric Co-op Assoc.
- Morton Insurance Agency
- First State Bank
- Luper Tire & Supply
- St. Clair's Department Store
- Beseda & Son Elevators
- Morton Floral & Gift Shop
- Higginbotham-Bartlett Co.
- Cox Auto Supply
- Fralin Pharmacy
- Griffith Gin Co.
- McMaster Tractor Co.
- Star Rt. Co-op Gin
- Farm Bureau Insurance
- Taylor & Son Furniture
- G. & C. Gin
- Rose Auto & Appliance
- Great Plains Natural Gas Co.
- Minnie's Shop — Childs' Men Store
- Red Horse Service Station
- Tic Toc Restaurant
- Morton Tribune
- Cheek's Motor Machine Shop
- Nowell Gin Company
- L & B Supply