



COCHRAN COUNTY'S FIRST . . .

JERRY STEPHEN JOYCE, 6 lb. 12 1/2 ounce son of Mr. and Mrs. James Joyce of 320 W. Madison, Morton, arrived at 8:15 p.m. January 3 at Cochran Memorial Hospital to beat all the rest as the first child born in the county in 1971. Jerry won't have much chance to become lonesome as he is joining a family of seven older brothers and sisters including Jimmy, 23, presently home on leave from Vietnam Army duty; Charles, 21; Kathleen, 20; Darlene, 17; Billy, 14; Theresa, 10, and Pearly Ann, 5. The senior Joyce is employed by M. P. Coffman.

Cold shooting Tribe withstands 'Winds for second 3-AA win

Twenty-degree weather chilled the community of Floydada Tuesday night, and a twenty-nine per cent shooting average did the same to Morton's Indians as they fought back from a six-point half time deficit to take an important 63-59 district win over the host Whirlwinds.

The win, number 17 for the Tribe against only two losses, left Morton with a 2-0 district mark as conference play returned to full swing following the holiday break.

The Indians displayed their best brand of team play Tuesday but committed several turnovers and had trouble hitting the basket from underneath. To make matters worse, the 'Winds were hot from the field throughout the first half, banging in a sizzling 52 per cent during the first 16 minutes of play as they seized the lead during the second quarter and

built up a 35-29 lead at intermission. But, in spite of their cold shooting, the Indians never lost their poise as Terry Harvey scored 13 of his 16-point total during the first two quarters. Harvey hit 3 in the opening period.

As the third quarter opened, the Indians pulled within three as Stan Coffman and Harvey scored for the Tribe and the Whirlwinds began to cool off. Then M. C. Collins inspired a brief rally in the waning minutes of the period and the Indians pulled ahead, 44-43, as Collins hit three buckets in succession. Morton led, 47-46, going into the fourth period.

The Indians began to put the game away during the middle minutes of the final period as Whirlwind miscues and timely free throws by Elton Patton and Collins padded the Tribe's slim lead. Morton led, 59-53, with 2:13 left to play, and Keith Embry's layup a minute later made it 61-53 to ice the game. However, the Whirlwinds never gave up as they fed hot shooting Charles Jackson during the final minute and cut the lead to 63-59, getting their last basket with five seconds remaining.

Jackson, who averaged 24 points a game and was named to the Caprock all-tournament team last week, hit 22 against the Indians. Harvey's 16 points paced Indian scoring, but three others connected for double figures. Collins scored 14, George Pritchett hit 12, and Stan Coffman banged in 11. Patton hit six, including one very timely layup following a quick steal, and Embry had four to round out Morton scoring.

The Indians hit 46 per cent during the second half, and 37 per cent for the game. Floydada averaged 43 per cent. Morton's quintet hit 11 of 22 free throws.

Friday night the Tribe travels to Olton

See **COLD SHOOTING**, Page 4a

★ Farm meetings

Two additional farm meetings for the purpose of explaining to all those interested the provisions of the new farm bill have been scheduled by the Cochran County ASCS Committee. The first one, held in Morton Monday night drew a packed house to the county activities building.

The next one is scheduled Thursday, January 7, beginning at 7:30 p.m. at the high school auditorium in Whiteface. Another will take place in the Biedsoe school building beginning at 8 p.m. Monday, January 11.

All area farmers and others interested persons are urged by the committee to attend at least one of these programs.



EXPLAINS FARM PROGRAM . . .

PROVISIONS OF THE NEW FARM BILL recently passed by the Congress was explained to a large crowd of local farmers and other interested persons at a farm meeting held at the county activities building in Morton Monday night. John Hall, executive director of the ASCS office here,

conducted the meeting on behalf of the county ASCS committee. A series of these meetings are being held at various locations in the county to make certain that everyone interested thoroughly understands the provisions of the bill.

"Helping To Develop Industry

Morton Tribune

Volume 31 — Number 1



and Agriculture in West Texas"



Morton, Texas, Thursday, January 7, 1971

Biggest-ever chamber fete plans are set

Ticket sales are progressing at a brisk pace and all preparations have been completed for the Ninth Annual Morton Area Chamber of Commerce Banquet to be held January 16.

Plans for the annual fete were finalized at a meeting of the chamber board of directors last Monday. Melvin T. Munn, radio commentator and producer of the "Life Line" series from Dallas, will deliver the main address at the event which will begin at 7:30 p.m. in the Morton schools cafeteria.

A fast-paced program containing a little something for everyone and lacking the dead spots so often experienced at large and long banquets has been promised by the planning committee. The dinner will be catered by the women of the Assembly of God Church and there will be dinner music and other entertainment during the meal.

In addition to Munn's address, the program will be highlighted by the naming of Morton's "Outstanding Citizen of the Year," the "Cochran County Farm Family of the Year" and the "Cochran County Conservation Family of the Year."

In other business at last week's meeting, a new slate of officers was named by the board of directors to serve for the coming chamber year. The new directors officers traditionally take their seats at the time of the banquet as the old slate of officers retires.

Elected to serve as officers on the board for the 1971 chamber year were

See **CHAMBER BANQUET**, Page 4a

Local Baptist church dedicates new wing

The newly constructed Educational Wing of the First Missionary Baptist Church was opened with Dedication Services Sunday, January 3, at 2 p.m.

The Rev. Curtis Carroll, president of Jacksonville College and former pastor of the Morton church, gave the dedicatory address.

Services were opened with the hymn "To God Be The Glory" and Donnie Baler gave the opening prayer.

Visitors were welcomed by the pastor, The Rev. Mearl Moore. Special music was furnished by J. Wayne McDermott, Jimmy Waters and Rev. and Mrs. Kenny Coats.

Herman Bedwell recognized the building committee consisting of Truman Anglin, Chairman, R. H. Baker and William J. Hodge and the builder, James Seams, who presented the keys of the building to Anglin.

Fred Morrison read the service of recognition and Anglin gave the dedicatory prayer. Services were concluded with the congregation singing the Doxology and the benediction by Russell Hudson.

Approximately two hundred members and guests attended the services.



COUNTY OFFICIALS INSTALLED . . .

NEW YEARS DAY WAS the time for all newly elected county officials to take the oath of their respective offices and that is what the camera recorded in the photo above. Administering the oaths was 121st District Judge M. C. Ledbetter, far right, while those being sworn in include, from left, Bill Crone, county treasurer; R. J. (Bob) Vinson,

county clerk; Joe Gipson, justice of peace, Precinct One; U. F. (Ural) Wells, commissioner, Precinct Four; Roy Tilley, justice of the peace, Precinct Two; E. J. McKissack, commissioner, Precinct Two and Glenn W. Thompson, county judge and ex-officio school superintendent. The ceremony took place in the county courthouse January 1.

Man, woman injured in two-car crash east of Whiteface

A Two-car collision approximately two miles east of Whiteface on SH116 Tuesday morning resulted in serious injuries and hospitalization for two persons.

The accident occurred at 10:40 a.m., according to police reports, when one vehicle attempted to make a left turn off 116 onto a farm to market road as the other vehicle was attempting to pass.

The report states that Mrs. Ophelia Loa, 22, of Levelland, who was driving a 1964 El Camino Chevrolet, was leading and traveling east with Alton Kelly, 19, of Star Route, Morton, driving a 1963 Chevrolet sedan, overtaking and attempting to pass. As Kelly drew abreast, Mrs. Roa started her left turn and the two cars sideswiped.

Kelly's automobile reportedly traveled 160 feet in the ditch, turned over and came to rest on its top. The El Camino came to a halt in an upright position, also in the ditch.

Mrs. Loa was reported to have suffered chest and shoulder injuries and Kelly was said to have received injuries to his back. Both were taken to a hospital in Levelland, with Kelly later being transferred to Cochran Memorial Hospital in Morton.

Kelly was reportedly traveling alone while Mrs. Loa had as passengers her son, Steve, 3, a sister, Olga, 3, and another sister, Trina, 20, none of whom were reported injured.

Investigating the accident were locally-based DPS patrolmen T. A. Rowland and John Salter.

Boy Scout Council to confer high honors at annual banquet

The presentation of the Silver Beaver Award for "distinguished service to boyhood," an address by the Director of Field Operations of the Boy Scouts of America, and a special presentation of the Distinguished Eagle Scout Award, will highlight the 45th Annual Banquet of the South Plains Boy Scout Council at the Fair Park Coliseum Saturday night.

The Silver Beaver Award, highest that the local Scout council can present to a volunteer Scouter, is presented in limited number each year at the banquet. Traditionally, the names of the recipients are not announced before the presentation.

★ Adult classes

Typing and bookkeeping classes for adults are being offered this year by the Morton school system.

Registration for the adult classes will take place Monday night, January 11 at 8 p.m. in the Morton High School typing room. Classes will meet each Monday and Thursday night from 8 until 10 p.m. The typing fee will be \$1.00 per month.

Adults who have not finished high school will be given enrollment priority. Any other adult interested may enroll as long as space is available in typing room.

The Distinguished Eagle Scout Award will be presented for the first time in the South Plains Council to the Honorable Halbert O. Woodward, Lubbock, United States District Judge for the Northern District of Texas. Created in 1969, the Distinguished Eagle Scout Award is made by the National Court of Honor to men who have distinguished themselves in business, profession, or service to country, and who had earned the Eagle Scout Rank as Scouts a minimum of twenty-five years prior to the nomination. Judge Woodward, retiring president of the South Plains Council, earned the Eagle Award as a Boy Scout in Troop 3, Big Spring, Texas, in 1932.

Jack L. Rhea, Director of Field Operations of the 6 million member Scout movement, will be the featured speaker at the banquet. Rhea has held his present position since May 1, 1970. Prior to that he was the organization's Director of Personnel.

A special feature of the program will be the recognition of the "Honor Scouts" of the council. John P. Brand, Lubbock, will represent the South Plains Council in the Report to the Governor ceremonies in Austin in February, while Randy Veazy, Dennis Wisdom, Bill Oehler, Jr., all of Lubbock; John Willis, Plainview; and Steve Verrett, Ralls, will represent their districts.

The business meeting of the council will be held at 5:00 p.m. prior to the

See **BOY SCOUT**, Page 4a

Wheat program outlined by series

1971 WHEAT PROGRAM

Wheat growers under the net set-aside program for 1971, announced by Secretary of Agriculture Clifford M. Hardin, can plant more wheat and get larger marketing certificate payments than they could have under permanent legislation, which would have gone into effect if the Agricultural Act of 1970 had not been enacted.

In 1971 there will be no national wheat acreage allotment comparable to 1970 — only a domestic use allotment totaling 19.7 million acres, his is the acreage necessary to produce 535 million bushels of wheat on participating farms, for domestic use during 1971-72. However, the domestic wheat allotment will not limit the acreage of wheat a participant can plant, as did previous allotments. Wheat from the 1971 crop will be eligible for loans at a national average of \$1.25 per bushel.

The set-aside will be between 60 and 75 percent of the wheat allotment. The decision on the actual percentage will be made before the program sign-up period. A wheat farmer who set aside to conserving use an acreage of cropland equal to the required percentage of his domestic allotment and maintains his conserving base can plant all of the wheat

he wishes — or any other non-quota crop — on his farm and receive wheat certificates. Unlike previous programs he will receive wheat certificates even if he plants no wheat at all. Quota crops for which acreage restrictions will be in effect in 1971 are peanuts, rice, tobacco, extra long staple cotton, and sugarcane.

Loss of allotment due to failure to plant can be avoided, however. Acreage which is not planted due to a drought, flood, or other natural disaster or a condition beyond the control of the producer will be considered planted to wheat, and any producer who makes a set-aside but elects to receive no payment will not suffer allotment loss. In addition, the Secretary under the new legislation may consider acreage planted to feed grains or soybeans as planted to wheat to prevent loss of allotment history.

"Most significant feature of the new program," the Secretary declared "is the concept of giving farmers more freedom of choice in seeking improved crop production and marketing goals for his entire farm after setting aside an acreage of cropland representing his share of national land use adjustment goals."

Participating wheat farmers will receive 100 percent of parity on the production of their full domestic allotment. Face

value of the certificates will be the difference between 100 percent of parity on July 1, 1971, and the national average wheat price received by farmers during the first five months of the marketing year. Producers will get preliminary payments equal to 75 percent of the estimated face value of the certificate soon after July 1. The remainder will be paid after December 1, 1971. No producer refund will be required if the preliminary pay-

See **WHEAT PROGRAM**, Page 4a

★ Cage magic

There will be fun and magic for all attending the game Saturday night at 7 p.m. in the Morton High School Gym when the Morton coaches meet the Harlem Majestics in a rollicking game of basketball.

Admission will be \$1.50 for adults and \$1. for students. Proceeds from the game will go to the Morton Athletic fund.

Don't miss these world famous wizards of the hardwoods.

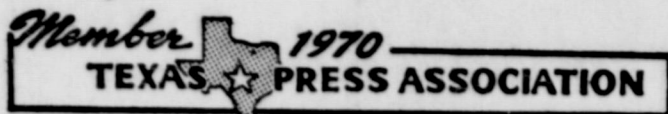
Morton Tribune

OFFICIAL NEWSPAPER OF COCHRAN COUNTY
"TEXAS' LAST FRONTIER"

Published Every Thursday Morning at 106 N. Main St., Morton, Texas 79546

BILL SAYERS, Editor and Publisher

Entered as second class matter at the post office in Morton, Texas, under the Act of Congress of March 3, 1879.



Subscription rates — In Cochran County and adjoining counties: Per year, \$3.50, six months, \$2.00; three months, \$1.25. Outside Cochran County: Per year, \$4.50; six months, \$2.50; three months, \$1.75. To insure proper service, subscribers will please notify us promptly of change of address.

Classifieds

CLASSIFIED RATES

5c per word first insertion
4c per word thereafter
75c Minimum

1—FOR SALE

FOR SALE: Antique clocks and phonographs, all restored and in perfect working condition. C. E. Buchanan, Rt. 1, Morton or call 525-4122. tfn-11-c

TAKE OVER payments on 1968 Singer sewing machine in walnut console. Will zig-zag, blind hem, fancy patterns, etc. Assume 3 payments at \$7.96. Write Credit Manager, 1114 19th Street, Lubbock, Texas. tfn-54-c

FOR SALE: 2 bedroom house at 207 E. Buchanan. Call 266-5725 after 4 p.m.

TREAT RUGS right, they'll be a delight if cleaned with Blue Lustré. Rent electric shampooer \$1. Taylor and Son Furniture. 1-52-c

FOR SALE: Large 3 bedroom home fully carpeted, built-in range, central heat, refrigerated air. Excellent neighborhood. For information call 266-5203. 52-tfn-c

FOR SALE: Used Trimatic, one fourth mile, like new with 2 drags. H. B. King, 927-3655 1-16-tfn-c

FOR SALE: Good used aluminum pipe in sizes from 4" through 8". Also a good assortment of all kinds of used fittings—New systems of all types. We will buy or trade for your used aluminum pipe. State Line Irrigation, Littlefield and Muleshoe. tfn-34-c

3—BUSINESS SERVICES

CUSTOM BALING and swathing. Call or contact Wayne Bracken 266-5958, 804 W. Garfield. 35-tfn-c

POODLE GROOMING: by appointment, 112 E. Pierce, call 266-5839 days or evenings. 4-50-c

Tribe freshmen put 10-0 record on line at Plainview today

Morton's talented freshmen remain as the only undefeated team among the school's basketball quintets following the holiday break, and the fish will swing back into action today along with the junior high teams.

Morton's seventh, eighth, and ninth grades travel to Plainview for three games today to challenge Estacado.

Monday the same three teams will host Friona for three games beginning at 5 p.m. in Indian gym.

The ninth grade boasts a perfect 10-0 record. The seventh grade currently is 7-1; the eighth grade is 3-6 for the season.

Morton's B team won their twelfth game against only one loss Tuesday by coming from behind to beat Floydada B, 44-43. The Indians trailed by as much as eight points during the second half before rally-

ing in the final minutes to pull out the Tribe B scoring with 20 points.

Prior to Tuesday's game, the B team had lost only to Three Way, and had won all their other games by decisive margins.

The B team will play Olton at 5 p.m. Friday, and will host Lockney Tuesday for a 6:30 p.m. game.

College students participate in Church services

College students of the First Baptist Church, home for the holidays, presented the program December 27 at the Church evening services.

Tommy Waters, student at Howard Payne University, read the scripture and gave the sermon. Larry Shaw, of Trinity University, gave the opening prayer.

Diane McCasland, Diane Avery and Danny McCasland, all students at Baylor University, gave personal testimonies of campus life as a Christian. Karen Fred gave an account of the Baptist Student Union activities at South Plains College.

Special music was presented by Peggy Thomas, student at Tyler Junior College, Karen Rozelle of South Plains College and Glorietta Gray, student at West Texas State University. Music was directed by Danny Williams of South Plains College.

The program was planned and directed by Roger Posey, Youth and Music Director of the Church.

COCKROACHES, rats, mice, termites, golphers, and other household pest exterminated. Guaranteed. 15 years experience. 894-3824, Levelland, Texas. Davidson Pest Control. Reasonable rates. rfn-31-c

CARD OF THANKS —

CARD OF THANKS

We would like to thank our many friends for the lovely cards, flowers and food and especially your prayers during the illness and loss of our loved one, Que Petree. May God bless each of you in a special way.

he Family of Que Petree

NOTICE —

THE STATE OF TEXAS COUNTY OF COCHRAN

Notice is hereby given that Cochran County Commissioners Court will receive bids for the purchase of a car to be used by the Sheriff's Department. Bids will be open at 10:00 o'clock a.m. January 25, 1971 in the Cochran County Commissioners Court Room.

The Court reserves the right to reject any and all bids.

Specifications can be picked up in the Sheriff's office or the office of the County Judge.

Published in the Morton Tribune January 7, 14, 21, 1971.

Carbon tetrachloride banned from sale

Carbon tetrachloride, a common ingredient in many cleaning fluids and fire extinguishers, has been banned from sale by the federal government as an extreme health hazard, announces Doris Myers, home management specialist at Texas A&M University.

The chemical has a high toxicity and may cause extensive damage to the liver, kidneys, lungs, heart and nervous system. It can be fatal if swallowed or inhaled.

Carbon tetrachloride is a nonflammable grease solvent, and has been used in cleaning fluids and fire extinguishers for many years.

USDA first warned consumers about the dangers of carbon tetrachloride for household chores in 1968. The present ban includes its use in fire extinguishers. When the chemical is exposed to a flame,

the solvent changes into phosgene gas, a deadly poison.

Check labels on cleaning supplies and fire extinguishers for carbon tetrachloride.

Look Who's New

Tara Sue, daughter of Mr. and Mrs. Mabelle Abbe of Lubbock. Tara arrived December 30 and weighed 7 pounds 6 1/2 ounces.

Grandparents are Mr. and Mrs. M. L. Abbe of Morton and Mr. and Mrs. W. B. Strieff of Levelland.

Great-grandparents are Mr. and Mrs. Tom Brown of Morton.

Michelle Diane, daughter of Mr. and Mrs. Tommy Morrison of Lubbock. She arrived December 18 and weighed 6 pounds 10 ounces.

Grandparents are Mr. and Mrs. Fred Morrison of Morton and Mr. and Mrs. Martin Ewer of Walla Walla, Washington.

COUGAR COUNTRY

IN COLOR



- A FILM FOR THE ENTIRE FAMILY
- FOLLOW "WHISKERS," an independent and curious young cougar, through two exciting years in a mountain wilderness known as "COUGAR COUNTRY"
- A true wildlife adventure story

One Day Only - Tues., Jan. 12

ROSE THEATRE

Show Times—4:30-6:30-8:30 p.m.
ADULTS: \$1.75 CHILDREN UNDER 12: 75c

A PRODUCT OF AMERICAN NATIONAL ENTERPRISES, INC.

Business and Professional Directory

AUTOMOBILE DEALERS—

GWATNEY-WELLS
Chevrolet-Oldmobile Co.

Your Home-Town Dealer
Serving You With Full
Line of Cars and Trucks

NOW OPEN
IN MORTON

DIRT WORK—

C. M. MOBLEY

Deep Breaking
Land Leveling
Grubbing & Dozing

P. O. Box 992
Phone 592-3090
Denver City, Texas

ROYAL BERKGREN

208 W. Lincoln
Morton, Texas

Earth Moving
Motor Grader — Scraper Work
Parallel Terraces—Diversion—Waterways
Phone 266-5144

UPHOLSTERY

Dooley's Upholstery & Carpet
701 Houston — Levelland

Everything for the home
In Upholstery & Carpet

PHONE 894-3321

ELECTRONICS

See Us For

RCA Electronics

Television, Radios, Etc.

SALES AND SERVICE

Rose Auto & Appliance
Phone 266-5959 Morton

APPLIANCES

Whirlpool Appliances

Automatic Washers, Dryers,
Refrigerators, Dishwashers

SALES AND SERVICE

Rose Auto & Appliance
Phone 266-5959 Morton

CHEMICALS—

SANDERS FERTILIZER & CHEMICALS

Fertilizers and
Farm Chemicals
Golden Uran

1971. You've changed. We've changed.

'Change. That's what it's all about this year. And that's what we mean by putting you first.

These are uneasy times. There are major concerns. About pollution. About safety. About the economy. About your hard-earned dollar. We know.

For the past 10 years Chevrolet research people have questioned thousands of people on every subject from rising taxes to the size of the glovebox in their cars.

We've found that price and maintenance costs, trade-in value and quality have become tremendously important.

Your car has to work. It has to last. And each new model must have more built-in value.

At Chevrolet, we understand. You want meaningful change. And our aim is to give that to you, as you'll see in the 1971 Chevrolets.

Caprice. The biggest, most luxurious Chevrolet ever. A complete change.

Bigness in itself is nothing. But if it allows you to lengthen the distance between the front and rear wheels (which we did), then you've got something.

You've got a smoother ride. The idea in the 1971 Caprice was to give you the looks and comfort of a six- or seven-thousand-dollar car, without asking you to pay anywhere near that much for it. And above all, to build in as much dependability and security as possible.

So we changed the body structure for 1971, too. We made it stronger. And we made it quieter by putting a double layer of steel in the roof.

Caprice, as you can see below, is a lot of luxury at a Chevrolet price.

Vega. The littlest Chevy ever. It wasn't changed from anything.

Before building Vega, we read everything we could get our hands on about little cars. We talked to owners. We studied little cars up one side and down the other and, literally, tore them apart. We found out what made them tick, or why they didn't tick.

What ticked were gas economy and dependability. What didn't were underpowered engines, cramped quarters and getting blown around in the wind.

In our little Vega, everything ticks. It's not just another little car. You didn't want that. It's one little car that does everything well.

Chevrolet

TV Special.

Chevrolet presents Changing Scene III with Engelbert Humperdinck • Don Adams • Barbara Eden • and a host of other stars • ABC-TV, Jan. 7. Consult local listings for time and channel.



Vega



Caprice

See what we mean by putting you first? Now at your Chevrolet dealer's.



Hospital notes

Mrs. Sue Cross, Timothy Thompson, Melinda Guillen, Harvey Zuber, Mrs. Sixto Hernandez, Harold Reynolds, Mrs. Alpha Fitzer, Raymond Escabal, E. G. Jones, Joe Drennan, Johnny Ray Arnold and Alton Kelly, from Morton. Also admitted was Mrs. R. L. Reeves from Goodland.

Patients admitted to Cochran Memorial Hospital December 28 through January 6 were: Edward Matta, Reynaldo Lucero,

Miss Galt, Clarence Albus wed in candlelight rites

Miss Frances Madalyn Galt became the bride of Clarence John Albus, Jr. Monday, December 28, at 5:30 p.m. in a double ring ceremony at the First United Methodist Church in Morton. The Rev. Rex Mauldin, pastor, and the Rev. Thomas McGovern of Lubbock officiated.

Parents of the couple are Mr. and Mrs. Tommy Galt of Goodland and Mr. and Mrs. Clarence Albus, Sr., of Pep.

The church was decorated with a large bouquet of purple carnations and purple plumes. A spiral candelabra and a single candelabra were on each side of the bouquet with decorated candles in each window. Pews were marked with orchid and purple bows.

Background music which included "More," "O Promise Me," "The Rosary" and the theme from "Romeo and Juliet" was presented by Mrs. Mickie Souder, organist. Miss Maralyn Kay Davis of Hale Center, cousin of the bride, sang "I Take Thee, My Dear" and "One Hand, One Heart." Rev. Mauldin sang "The Lord's Prayer" as the couple lit the Memory candle.

Given in marriage by her father, the bride wore a formal length gown of silk peau de soie featuring a chapel train, sabrina neckline and petal point buttoned sleeves. Her bodice was of Chantilly lace and applied pearl and sequins seeded motifs cascaded down the front of the skirt and around the hemline. She wore a Camelot hat attached with a full length veil of bridal illusion. The bride's gown was designed and made by her mother and aunt, Mrs. Cass Stegall. She carried a bouquet of white roses encircled with streamers of white carnations atop a white Bible. Carrying out the traditional something old, she carried a handkerchief of the groom's grandmother, which was 63 years old; something new was her gown and matched pearls, which was a gift of the groom; something borrowed were diamond earrings belonging to her grandmother, Mrs. Gaddy of Portales; something blue was her garter and she carried the traditional penny in her shoe.

Mrs. Frank Stegall II of Goodland, cousin of the bride, was matron of honor. She wore a formal length gown of purple chiffon with purple velvet bodice and full sleeves. The empire waistline was accented with a row of pearls. Her purple

velvet Juliet cap was trimmed in purple net bows attached to a waist length veil. She carried a purple velvet muff adorned with orchid spider mums and carnations.

Bridesmaids were Mrs. Billy Sokora of Lubbock, Miss Sharyn Wittner of Muleshoe and Junior bridesmaid, Miss Shannon Sowder of Goodland. They wore gowns of orchid chiffon fashioned in the design of the matron of honor and carried purple velvet muffs adorned with orchid spider mums and carnations.

Flower girls were Teresa Burnett of Olton, cousin of the bride, and Lori Ann Albus of Pep, cousin of the groom. They wore formal length gowns of orchid chiffon with purple bodices trimmed with pearls at the waistline and short butterfly sleeves edged in purple velvet. They carried white wicker baskets filled with rose petals.

Joseph and Lawrence Albus of Pep, brothers of the groom lit the candles. Ring bearers were Brad and Brett Stegall of Goodland, cousins of the bride.

James Albus of Pep, brother of the groom, served as best man. Groomsmen were Ricky Galt, brother of the bride, Thomas and Steven Albus, brothers of the groom. Samuel Albus and Leonard Albus, Jr., cousins of the groom, seated guests.

A reception was held immediately following the ceremony in Fellowship Hall of the Church. Miss Gail O'Neal of Leveland registered guests.

The bride's table was covered with a white net cloth scalloped in white felt over white linen. The bride's bouquet centered the table and a 4 tiered wedding cake, made by her aunt, Mrs. Cass Stegall, was at one end. The cake was decorated with doves and wedding rings with a miniature full wedding party on top. Purple rice bags and wedding scrolls tied with purple ribbon thru a wedding band were favors and raspberry punch was served.

The groom's table was covered in an orchid and purple satin cloth and featured a spice cake, made by the groom's mother, in the form of an open book. Those in the houseparty were: Miss Kay Pate, Mrs. Doug Samples and Miss Gwyn Jenkins of Lubbock, Miss Kay Summers of Dallas, Miss LaVon Stegall of Goodland, Mrs. Leonard Albus, Jr. of Littlefield, Miss Ann Albus, Miss Betty Jane Albus and Mrs. Ray Decker of Pep.

For a wedding trip to Ruidoso and El Paso, the bride wore a double knit purple tunic dress trimmed in buttons, purple shoes and black accessories.

Mrs. Albus is a 1966 graduate of Three Way High School, a 1968 graduate of South Plains College and a December graduate of Texas Tech University, where she was a member of the Major-Minor Club. While attending South Plains College she was listed in "Who's Who" and was Tex Ann of the year in 1968.

Albus is a 1965 graduate of Pep High School, 1967 honor graduate of South Plains College and graduated from Texas Tech University with a degree in chemical engineering. He is now doing graduate work there.

The couple will reside at 1612 Ave. Y in Lubbock.

Out of town guests were from Anchorage, Alaska, Albuquerque, N.M., El Paso, Corsicana, Hereford, Lubbock, Littlefield, Hale Center, Olton and Portales, N.M.

Three Way news

We wish to express our sympathy to Mr. and Mrs. Chester Petree on the death of his brother who was buried in Morton Thursday afternoon.

Mrs. R. L. Reeves is a patient in Cochran Memorial hospital in Morton.

Mr. and Mrs. Nelson Carlisle and girls visited in Lovington, N.M. Friday.

Mr. and Mrs. R. C. Benton, from Scotsdale, Arizona, spent the past week-end visiting his sister and family, the Rayford Mastens.

Mr. and Mrs. Leon Dupler and girls spent the past week-end visiting her sister and family, the J. W. Wartons in Dumas.

Mr. and Mrs. Billy Sokoro from Lubbock spent the week-end visiting her parents, the Rayford Mastens.

Mrs. E. T. Batteas spent the Christmas holidays in San Antonio visiting her daughter and husband, the Jonnie Harris family.

Mr. H. C. Nickols was in the Goodland community Monday on business, Mr. Nickols is from Littlefield.

Mr. B. T. Batteas spent Christmas in Pampa visiting his brother who is ill.



Mrs. Clarence John Albus, Jr.

Rites for Mrs. Jones held in San Angelo

Funeral services for Mrs. Hardy L. Jones of Fort Worth and mother of Mrs. C. H. Silvers, were held Monday at 10 a.m. in the Robert-Massie Funeral Home Chapel in San Angelo. The Rev. Raymond Wilson, minister from Dallas, officiated.

Burial was in Belvedere Memorial Park in San Angelo.

Mrs. Jones, 97, died at 5:45 a.m. Friday at her home in Fort Worth. She had lived in San Angelo before moving to Fort Worth in 1951 after the death of her husband.

Survivors include two daughters, Mrs. Silvers and Abby Belle Jones of Fort Worth; four sons, Sam of San Angelo, J. L. (Monk), Horace and Hurschell all of Fort Worth; a sister of Midland, one brother, Fisch Martin of San Angelo and six grandchildren.

Pall bearers were: Clayton Webster, Booth McQuire, Roy Gardner, Don Hofman, Murton West and Buster Mohler.

Phone Your News to 286-5576

Former resident's rites in McAllen

Funeral services for Desmond Monroe, 47, were held in the Catholic Church in McAllen Wednesday.

Monroe, a former resident of Morton and a Texas Tech graduate, died about 9 a.m. Monday at M. D. Anderson Hospital in Houston following a lengthy illness.

Survivors include his wife, Eva; a son, Jerry of Houston; a daughter, JoAnn of McAllen; his parents, Mr. and Mrs. C. P. Monroe of Lubbock; two brothers, Steve of Anton and Merrill of Lubbock; two sisters, Mrs. Bob Rhyne of Lubbock and Mrs. Paul Adams of Amarillo, and five grandchildren.

Bookmobile schedule

The Texas State Library High Plains Bookmobile will be in your area on the following dates.

Wednesday January 13, Needmore — 9:00-10:00; Stegall 10:30-11:30; Three-way — 12:00-1:00; Enochs — 1:30-2:30.

NEW YEAR SAVINGS

Entire Stock of
**Christmas Cards,
Decorations and
Wrapping**

1/2 PRICE

One Group of
TOYS

1/2 PRICE

One Large Group Ladies' Dresses,
Blouses & Children's Wear **2.00**

Just Arrived . . . Large Selection of

PLASTIC ITEMS

Trash Cans, Laundry Baskets, Etc.



Ben

Franklin

We Back Our LOWER PRICES
With **QUALITY FOODS** And **SERVICE!**

Specials God Friday, January 8 through Thursday, January 14

Market Made Sausage LB. 59¢	Kelly CHILI No. 1 Can
Market Made Chili LB. 69¢	55¢
Rolled Beef Roast LB. 89¢	Kim HOMINY No. 1 Can
Minute Steak LB. 98¢	10¢
Rolled Pork Roast LB. 69¢	

Kim Cut GREEN BEANS No. 303 Can
2 FOR 39¢

Franco-American SPAGHETTI No. 1 Can
5 FOR 1.00

Austex BEEF STEW 15-oz. Can
2 FOR 1.00

Our Darling CORN No. 303 Can
2 FOR 49¢

Kim DICED TURNIPS & GREENS No. 303 Can
2 FOR 37¢

Honey Boy SALMON No. 1 Can
79¢

Best Value TOILET TISSUE
4 ROLLS 39¢

Avocados - 2 FOR 35¢
Bananas LB. 10¢
Lettuce LB. 19¢

TRUETT'S Food Store

COTTON ACRE LEASES

See or Call

C. E. WILLIAMS
207 S. 5th St. 637-2422
Brownfield, Texas

WEDNESDAY, JAN. 13

8 99¢

KING SIZE
WALLET
CREATIVE
COLOR
PORTRAITS
FOR ONLY



PHOTO
HOURS
9 A.M. TO
CLOSING

NO
LIMIT

GET PICTURES MADE OF GRANDPA,
GRANDMA, DAD, MOM AND ALL THE
LITTLE ONES AT THESE SAME LOW PRICES!

**SHUGART
COLOR
PHOTOS**

Doss Thriftway

Wheat program . . .

from page one

ment proves to be higher than the full payment due the farmer.

Processors of wheat for domestic food use will continue to pay 75 cents per bushel towards the domestic certificate value. There will be no export marketing certificates issued during 1971-72 marketing year.

Although producers are not required to plant wheat to obtain certificates, failure to plant at least 90 percent of the farm's domestic allotment can result in a reduction in the 1972 allotment of as much as 20 percent. If no wheat is planted for 3 consecutive years, the entire allotment can be lost. All allotments removed from farms will be reallocated to other wheat farms.

Loss of allotment due to failure to plant can be avoided, however. Acreage which is not planted due to a drought, flood, or other natural disaster or a condition beyond the control of the producer will be considered planted to wheat, and any producer who makes a set-aside but elects to receive no payment will not suffer allotment loss. In addition, the Secretary under the new legislation may consider acreage planted to feed grains or soybeans as planted to wheat to prevent loss of allotment history.

In 1971, acreage planted to soybeans will not be considered planted to wheat, unless it is later determined that this action is needed to prevent a shortage of soybeans. Acreage planted to feed grain in 1971 will be considered planted to wheat to prevent loss of allotment.

The improved substitution offered by the 1971 program enables a farmer to plant all of his acreage to wheat or feed grain without loss of history or program benefits. In addition, he can plant wheat or feed grain on acreage previously devoted to low-return crops. There is no provision regarding excess wheat production in the 1971 program. However, excess wheat stored under prior programs may be released to the extent production is less than three times the domestic allotment multiplied by the farm yield.

Another feature of the set-aside program is that established summer fallow wheat farms which devote at least 55 percent of their cropland to that use will not be required to set-aside any additional acreage in order to qualify for program benefits.

As in 1970, producers may graze set-

aside acres except during the five principal months of the normal growing season, and set-aside acreage must be protected against erosion, weeds, insect damage and rodents. In 1971, sweet sorghums may be planted on the set-aside acreage and grazed, except during the five months of the growing season.

Producers who wish to qualify for program benefits must sign up to participate between March 1 and April 9, 1971. A producer may participate in the wheat program on any farm or all farms in which he has an interest, as he wishes.

The Agricultural Act of 1970 limits wheat payments to any person to \$55,000. This limitation will affect a small number of wheat producers. For instance, in the 1969 wheat program, only 47 out of around 2 million wheat producers received certificate payments in excess of \$55,000 each. The limitation of payments provision does not apply to loans nor to sales of eligible wheat to Commodity Credit Corporation. Neither does it apply to lands owned by states, political subdivision, or agencies of states or other political subdivisions as long as they are farmed primarily in the direct furtherance of a public function. However, the limitation applies to persons who lease and farm these lands.

ASCS county offices will notify wheat producers of their domestic allotments, conserving bases, program yields and set-aside requirements prior to sign-up.

Boy scout . . .

from page one

banquet in the First National-Pioneer Building. Highlighting that meeting will be the election of officers for the coming year and a review of the year's progress by Clarence Youngblood, Dallas, Deputy Regional Scout Executive. The newly elected officers will be installed at the banquet.

J. C. Chambers, Lubbock, will serve as master of ceremonies at the banquet that is expected to draw more than 600 Scout leaders and their wives from throughout the 20 county area. Each of the seven districts in the area will be competing for the attendance award or the man-mile award, presented to the district that travels the greatest number of man-miles to attend the meeting.

Col. Haynes M. Baumgardner, Lubbock, is chairman of the banquet committee. Also serving on the committee are John F. Lott, Rex Webster, and Dr. J. Davis



GIANT SYMBOL OF AUTHORITY . . .

GLENN W. THOMPSON, left, who took the oath of office as Cochran County Judge in ceremonies in the courthouse January 1, was presented this huge gavel with which to keep order in the courtroom as well as during county commissioners court sessions. Making the tongue-in-cheek presentation on behalf of the donor, Dr. William Dean, who was out of town, is 121st District Judge M. C. Ledbetter. Judge Thompson presided over a called session of the commissioners court directly after the ceremony, where (it is surmised), he introduced it into the court proceedings.

Thompson attending judges' workshop

County Judge Glenn Thompson is one of 60 Texas County Judges participating in a two day workshop in Odessa January 7 through 8, in a Regional, State and Federal government institute on the Role and Responsibility of the County Judge in Promoting and Supporting Local Programs for the Mentally Retarded.

Mental retardation is a significant problem since it affects 350,000 Texans. Unless the mentally retarded person can be taught to be self-supporting, the cost to the community can be very great. Texas has, over the years, led the nation in programs aimed at the rehabilitation of the retarded.

Judge Thompson is joined with 59 other Armistead, Mary Nell Strong is chairman of the ladies committee.

County Judges and a group of key state and national authorities in this field. Also attending is Dr. David Wade, Texas Commissioner of Mental Health and Mental Retardation; Dr. Phil Roos, Executive Director, National Association for Retarded Children; and the Honorable Vernon McGee, from the Governor's staff.

Cold shooting . . .

from page one

for their third conference outing. The B game will begin at 5 p.m., followed by the varsity contest at 6:30. Olton girls will play following the boys' games.

The Olton Mustangs are the dark horse team of the district 3-AA race, having lost only three games going into this week's action.

Next Tuesday, Morton hosts Lockney for a pair of games, the B game beginning at 6:30 p.m.

Chamber banquet . . .

from page one

Bill Wells, Gwatney Wells Chevrolet-Oldsmobile, President. He will continue in the office in which he has been serving since the resignation of the former president early last fall.

Wayne Wilcox, U.S. Soil Conservation Service, Morton office, Vice-President. Jimmy St. Clair, St. Clair's Variety Store, Secretary and Deryl Bennett, First State Bank of Morton, Treasurer.

In addition to the above slate of officers, the 1971 directors include Mike Doss, Doss Thriftway Supermarket; Carl Proctor, Proctor-Walker Insurance Agency; Don Lynskey, farmer; James Dewbre, First State Bank; L. T. Lemons, farmer and Lloyd Hiner, St. Clair's Department Store.

Admission tickets for the banquet may be obtained from any board member or at the chamber office, in the Professional Building, according to Tennie Wall, acting chamber of commerce secretary.

Phone Your News to 266-5576

COW POKES

By Ace Reid



"Oh me, these old critters seem to know I'm gettin' slower every year."

Let's welcome Prairie Land Packing Co. to Cochran County. We are happy that you chose to come our way. To everyone that helped in the establishment of this new Company, we are most grateful. We hope you have many years of pleasant and prosperous business!

First State Bank
MEMBER F.D.I.C.

ST. ANN'S CATHOLIC CHURCH
The Rev. David Greka, Pastor
5th and Washington Streets

Mass schedule—
Sunday 9:00 and 11:15 a.m.
Monday 7:30 p.m.
Tuesday 7:30 a.m.
Wednesday 7:30 p.m.
Thursday 7:30 a.m.
Friday (1st of month) 7:30 p.m.
Friday (2nd, 3rd, 4th) 7:30 a.m.
Saturday 8:00 a.m.

Sunday—Catechism Class,
10:00 - 11:00 a.m.
Confessions—Sunday
Half hour before Mass.
Baptisms 12 noon Sunday
and by appointment.

FIRST BAPTIST MEXICAN MISSION

Sundays—
Sunday School 10:00 a.m.
Training Union 6:30 p.m.
Evening Worship 7:30 p.m.
Wednesdays—
Prayer Service 7:30 p.m.

NEW TRINITY BAPTIST CHURCH
Rev. Willie Johnson
3rd and Jackson

Sundays—
Sunday School 9:45 a.m.
Morning Worship Second
and Fourth Sundays 11:00 a.m.
H.M.S. 4:00 p.m.
Wednesdays—
Prayer Service 7:00 p.m.

CHURCH OF CHRIST
F. J. Collins, Preacher
S.W. 2nd and Taylor

Sundays—
Bible Class 10:00 a.m.
Worship 10:45 a.m.
Evening Worship 7:00 p.m.
Wednesdays—
Midweek Bible Class 8:00 p.m.

FIRST METHODIST CHURCH
Rex Mauldin, Minister
411 West Taylor

Sundays—
Church School Session 9:45 a.m.
Morning Worship Service 10:55 a.m.
Evening Fellowship Program 5:00 p.m.
Evening Worship 6:00 p.m.
Second and Fourth Monday
Wesleyan Service Guild 7:30 p.m.
Tuesdays—
Women's Society of Christian
Service 9:30 a.m.
Each Second Saturday,
Methodist Men's Breakfast 7:00 a.m.



ASSEMBLY OF GOD CHURCH
G. A. Van Hoose
Jefferson and Third

Sundays—
Sunday School 9:45 a.m.
Morning Worship 11:00 a.m.
Evening Evangelistic Service 7:00 p.m.
Wednesdays—
Night Prayer Meeting and
Christ's Ambassadors
Convene Together 7:30 p.m.
Thursdays—
Every 1st and 3rd, Women's
Missionary Council 2:30 p.m.
Every 2nd and 4th, Girls'
Missionette Club 4:30 p.m.

FIRST MISSIONARY BAPTIST CHURCH
Rev. Merle Moore, Pastor
Main and Taylor

Sunday School 9:45 a.m.
Morning Worship 10:45 a.m.
Training Service 7:00 p.m.
Evening Worship 7:45 p.m.

WMA Circles
Monday—
Night Circle 7:30 p.m.
Tuesday—
Mary Martha 2:30 p.m.
G.M.A. 4:00 p.m.
Wednesday—
Midweek Service 7:30 p.m.
Edna Bullard 9:30 a.m.

FIRST BAPTIST CHURCH
Paul McClung, Pastor
202 S. E. First

Sundays—
Sunday School 9:45 a.m.
Morning Worship 10:55 a.m.
Morning Service KRAN 11:00 a.m.
Training Union 6:00 p.m.
Evening Worship 7:00 p.m.
Tuesdays—
Helen Nixon W.N.U. 9:30 a.m.
Wednesdays—
Graded Choirs 7:30 p.m.
Prayer Service 7:30 p.m.
Church Choir Rehearsal 8:30 p.m.

SPANISH ASSEMBLY OF GOD CHURCH
Gilbert Gonzales
N. E. Fifth and Wilson

Sundays—
Sunday School 10:00 a.m.
Morning Worship 11:00 a.m.
Evening Evangelistic Service 7:30 p.m.
Tuesdays—
Evening Bible Study 8:00 p.m.
Thursdays—
Evening Prayer Meeting 8:00 p.m.

EAST SIDE CHURCH OF CHRIST
Russell Dameron, Minister
704 East Taylor

Sundays—
Bible Study 10:00 a.m.
Worship 10:45 a.m.
Worship 6:30 p.m.
Tuesdays—
Ladies' Bible Class 4:15 p.m.
Wednesdays—
Midweek Service 7:30 p.m.

This Feature Is Published With The Hope of Getting More People To Church By The Undersigned City Business and Professional People:

Compliments of

Merritt Gas Company
Red Horse Service Station
Mobil Products — 266-5108

Truett's Food Store
Earl Stowe, Owner
210 South Main

Carl Griffith Gin and G & C Gin

Burleson Paint & Supply
Northside Square — 266-5888

First State Bank
107 W. Taylor — 266-5511

Luper Tire and Supply
108 E. Washington — 266-5330

Bedwell Implement
219 E. Jefferson — 266-5306

Morton Tribune
Printers — Publishers

Doss Thriftway
400 S. Main — 266-5375

St. Clair Department Store
115 N. W. 1st — Phone 266-5223

CLEARANCE

ANNUAL JANUARY

Starts Friday, Jan. 8 - 9 a.m.

For 3 Big Days

Friday - Saturday - Monday

CLOSED ALL DAY THURSDAY

Preparing For This Big Sale

ALL FALL AND WINTER MERCHANDISE REDUCED TO CLEAR

These listed items and many more throughout the Store mean **BIG SAVINGS FOR YOU**

ALL SALES FINAL

No Refunds, Exchanges or Alterations

BOYS' JACKETS

Reg. 5.00 Values	NOW 3.22
Reg. 6.00 Values	NOW 3.66
Reg. 7.00 Values	NOW 4.22
Reg. 8.00 Values	NOW 4.66
Reg. 9.00 Values	NOW 5.44
Reg. 10.00 Values	NOW 5.66
Reg. 11.00 Values	NOW 6.88
Reg. 12.00 Values	NOW 7.66
Reg. 13.00 Values	NOW 8.66
Reg. 14.00 Values	NOW 9.66
Reg. 15.00 Values	NOW 9.88
Reg. 16.00 Values	NOW 10.22
Reg. 17.00 Values	NOW 10.44
Reg. 18.00 Values	NOW 10.66
Reg. 20.00 Values	NOW 12.88
Reg. 25.00 Values	NOW 15.88

MEN'S JACKETS

Reg. 8.00 Values	NOW 4.66
Reg. 10.00 Values	NOW 5.66
Reg. 12.00 Values	NOW 7.66
Reg. 13.00 Values	NOW 8.66
Reg. 14.00 Values	NOW 9.66
Reg. 15.00 Values	NOW 9.88
Reg. 18.00 Values	NOW 10.66
Reg. 20.00 Values	NOW 12.88
Reg. 22.00 Values	NOW 14.88
Reg. 25.00 Values	NOW 15.88
Reg. 28.00 Values	NOW 18.88
Reg. 30.00 Values	NOW 20.88
Reg. 35.00 Values	NOW 25.88
Reg. 40.00 Values	NOW 28.88

MEN'S STA-PREST PANTS

Reg. 8.00 Values	NOW 5.22
Reg. 9.00 Values	NOW 6.22
Reg. 9.50 Values	NOW 6.44
Reg. 10.00 Values	NOW 7.22
Reg. 10.50 Values	NOW 7.33
Reg. 11.00 Values	NOW 7.88
Reg. 12.00 Values	NOW 8.22

BOYS' SWEATERS

Reg. 5.00 Values	NOW 3.22
Reg. 6.00 Values	NOW 3.66
Reg. 7.00 Values	NOW 4.22
Reg. 9.00 Values	NOW 5.44
Reg. 10.00 Values	NOW 6.22
Reg. 12.00 Values	NOW 6.77
Reg. 15.00 Values	NOW 9.77

MEN'S SWEATERS

Reg. 5.00 Values	NOW 3.22
Reg. 7.00 Values	NOW 4.22
Reg. 8.00 Values	NOW 5.22
Reg. 9.00 Values	NOW 5.88
Reg. 10.00 Values	NOW 6.88
Reg. 11.00 Values	NOW 7.44
Reg. 12.00 Values	NOW 7.88
Reg. 13.00 Values	NOW 8.22
Reg. 14.00 Values	NOW 8.44
Reg. 15.00 Values	NOW 9.22
Reg. 16.00 Values	NOW 9.44
Reg. 17.00 Values	NOW 9.88
Reg. 20.00 Values	NOW 12.88
Reg. 22.00 Values	NOW 15.88

LADIES' FALL COATS

Entire stock of coats all reduced to clear. Save today.

Reg. 16.00 Values	NOW 9.44
Reg. 18.00 Values	NOW 10.44
Reg. 20.00 Values	NOW 11.44
Reg. 24.00 Values	NOW 13.22
Reg. 25.00 Values	NOW 13.44
Reg. 26.00 Values	NOW 14.22
Reg. 28.00 Values	NOW 15.88
Reg. 30.00 Values	NOW 16.88
Reg. 33.00 Values	NOW 17.88
Reg. 35.00 Values	NOW 18.88
Reg. 36.00 Values	NOW 19.88
Reg. 40.00 Values	NOW 22.88
Reg. 45.00 Values	NOW 24.88
Reg. 50.00 Values	NOW 26.88
Reg. 55.00 Values	NOW 28.88
Reg. 60.00 Values	NOW 34.88
Reg. 70.00 Values	NOW 36.88

LADIES' SUITS

Reg. 20.00 Values	NOW 12.88
Reg. 22.00 Values	NOW 14.88
Reg. 35.00 Values	NOW 20.88
Reg. 40.00 Values	NOW 24.88
Reg. 46.00 Values	NOW 28.88
Reg. 50.00 Values	NOW 33.88
Reg. 55.00 Values	NOW 36.88
Reg. 60.00 Values	NOW 40.88
Reg. 65.00 Values	NOW 50.88
Reg. 70.00 Values	NOW 52.88
Reg. 90.00 Values	NOW 60.88
Reg. 100.00 Values	NOW 70.88

LADIES' SWEATERS

Entire stock - Shorts and Long Styles

Reg. 6.00 Values	NOW 3.25
Reg. 9.00 Values	NOW 5.25
Reg. 12.00 Values	NOW 6.66
Reg. 16.00 Values	NOW 9.66
Reg. 18.00 Values	NOW 10.66
Reg. 20.00 Values	NOW 12.66
Reg. 22.00 Values	NOW 14.44
Reg. 24.00 Values	NOW 16.44
Reg. 25.00 Values	NOW 17.44
Reg. 26.00 Values	NOW 17.88
Reg. 28.00 Values	NOW 18.88
Reg. 30.00 Values	NOW 19.88
Reg. 45.00 Values	NOW 26.88
Reg. 50.00 Values	NOW 32.88

CHILDREN'S PANTS

Reg. 3.00 Values	NOW 1.99
Reg. 3.50 Values	NOW 2.22
Reg. 3.75 Values	NOW 2.44
Reg. 4.00 Values	NOW 2.66
Reg. 5.00 Values	NOW 3.22
Reg. 6.00 Values	NOW 3.66

CHILDREN'S COATS

Reg. 5.00 Values	NOW 3.22
Reg. 7.00 Values	NOW 4.66
Reg. 9.00 Values	NOW 5.66
Reg. 10.00 Values	NOW 6.66
Reg. 12.00 Values	NOW 7.66
Reg. 15.00 Values	NOW 9.66
Reg. 18.00 Values	NOW 10.44
Reg. 20.00 Values	NOW 11.44
Reg. 22.00 Values	NOW 12.44
Reg. 25.00 Values	NOW 13.44

CHILDREN'S KNIT SHIRTS

Reg. 2.00 Values	NOW 1.22
Reg. 2.25 Values	NOW 1.26
Reg. 2.50 Values	NOW 1.46
Reg. 2.75 Values	NOW 1.66
Reg. 3.00 Values	NOW 2.12
Reg. 3.25 Values	NOW 2.22
Reg. 3.50 Values	NOW 2.33
Reg. 3.75 Values	NOW 2.44
Reg. 4.00 Values	NOW 2.66
Reg. 4.50 Values	NOW 2.77

CHILDREN'S PANT SETS

Reg. 5.00 Values	NOW 3.22
Reg. 6.00 Values	NOW 3.66
Reg. 8.00 Values	NOW 4.66
Reg. 9.00 Values	NOW 5.66
Reg. 10.00 Values	NOW 6.44
Reg. 12.00 Values	NOW 7.22
Reg. 18.00 Values	NOW 11.22

Ladies' & Children's DRESSES

Big reductions on all dresses. Several different groups to select from. See these big savings now.

Ladies' & Children's LINGERIE

One group of Gowns, Robes and Pajamas in close-out numbers priced to clear.

LADIES' BRAS

One group of discontinued numbers priced to clear. See these today.

LADIES' FALL SHOES

Reg. 10.00 Values	NOW 5.44
Reg. 11.00 Values	NOW 5.88
Reg. 12.00 Values	NOW 6.44
Reg. 13.00 Values	NOW 7.22
Reg. 14.00 Values	NOW 7.88
Reg. 15.00 Values	NOW 8.22
Reg. 16.00 Values	NOW 9.22
Reg. 18.00 Values	NOW 10.22
Reg. 20.00 Values	NOW 12.88

MEN'S KNIT SHIRTS

Reg. 2.00 Values	NOW 1.00
Reg. 3.00 Values	NOW 1.88
Reg. 3.25 Values	NOW 2.22
Reg. 3.50 Values	NOW 2.33
Reg. 4.00 Values	NOW 2.44
Reg. 4.50 Values	NOW 2.77
Reg. 5.00 Values	NOW 3.22
Reg. 6.00 Values	NOW 3.88
Reg. 6.50 Values	NOW 4.22
Reg. 7.00 Values	NOW 4.44
Reg. 7.50 Values	NOW 4.66
Reg. 8.00 Values	NOW 5.44
Reg. 9.00 Values	NOW 6.44

MEN'S and BOYS' PANTS

Wash-n-Wear

Reg. 2.00 Values	NOW 1.12
Reg. 4.00 Values	NOW 2.12
Reg. 4.50 Values	NOW 2.33
Reg. 5.00 Values	NOW 2.55
Reg. 5.50 Values	NOW 2.77
Reg. 6.00 Values	NOW 3.22
Reg. 6.50 Values	NOW 3.33
Reg. 7.00 Values	NOW 3.66
Reg. 7.50 Values	NOW 3.77
Reg. 8.00 Values	NOW 4.22
Reg. 8.50 Values	NOW 4.33
Reg. 9.00 Values	NOW 4.66
Reg. 10.00 Values	NOW 5.22
Reg. 11.00 Values	NOW 5.66

BOYS' KNIT SHIRTS

Reg. 2.50 Values	NOW 1.44
Reg. 3.00 Values	NOW 1.88
Reg. 4.00 Values	NOW 2.66
Reg. 4.50 Values	NOW 2.77
Reg. 5.00 Values	NOW 3.66
Reg. 8.00 Values	NOW 5.22

BOYS' SPORT SHIRTS

Reg. 2.00 Values	NOW 1.00
Reg. 3.00 Values	NOW 1.88
Reg. 3.50 Values	NOW 2.22
Reg. 4.00 Values	NOW 2.44
Reg. 4.50 Values	NOW 2.77
Reg. 5.00 Values	NOW 3.22
Reg. 6.00 Values	NOW 3.88

MEN'S DRESS SHIRTS

Reg. 5.00 Values	NOW 3.77
Reg. 5.50 Values	NOW 4.22
Reg. 6.50 Values	NOW 5.22
Reg. 9.00 Values	NOW 6.22
Reg. 10.00 Values	NOW 7.22

Men's Long Sleeve Sport Shirts

Reg. 4.00 Values	NOW 2.44
Reg. 4.25 Values	NOW 2.66
Reg. 4.50 Values	NOW 2.77
Reg. 5.00 Values	NOW 3.22
Reg. 5.50 Values	NOW 3.44
Reg. 6.00 Values	NOW 3.88
Reg. 7.00 Values	NOW 4.22
Reg. 8.00 Values	NOW 5.22

About local folks . . .

BY DUTCH GIPSON

Mr. and Mrs. Willie Taylor had as their guests during the holidays their son and family, Mr. and Mrs. Robert Taylor, Rob and Rhonda, from Lufkin; Mrs. Taylors sister and family, Mr. and Mrs. A. C. Washington, Sherri and Tammy of Crane; Mrs. Iris Lewis of Whiteface, mother of Mrs. Taylor and Mrs. Washington; and the Taylors' daughter and family, Mr. and Mrs. Hershel Tanner, Monty, Cindy and Brenda of Morton.

Mr. and Mrs. J. D. Packing of Houston visited in the home of Mr. and Mrs. Willie Taylor during the holidays.

Mrs. Evelyn Seagler hosted relatives and friends at her cabin in Ruidoso during the holidays. The group spent the days eating, skiing, and mountain climbing. Those attending were her son and family, Mr. and Mrs. Marlin Doug Rose, Mrs. Roses' mother, Mrs. Leo Moffatt, March and Mark, of Austin; and Mr. and Mrs. Donald Matthys (former Linda Rose). Also Donald's parents, Mr. and Mrs. H. C. Matthys and brother, Tom of Pasadena.

Mr. and Mrs. Jerry Iley and children visited briefly with each of their parents in De Leon during the holidays.

Mr. and Mrs. Lonnie Allsup of Clovis attended the Dedicatory Services of Edu-Baptist Church Sunday.

Recently Mr. and Mrs. Melvin Childs visited with his parents, Mr. and Mrs. W. E. Childs.

Mrs. Louise Tally and sons, Lewis and Lee, visited relatives in Lubbock during the holidays.

Mesdames Clara Williams and Bessie Angley visited briefly in Roswell Saturday.

Mr. and Mrs. Marian Mathews and Phil, their daughter, Mrs. Donnie Long and baby of Post attended the dedication service at Missionary Baptist Church Sunday.

Mr. and Mrs. Jerry Pool and children of Chattanooga, Tennessee enjoyed several days of enjoyable visiting with her parents, Mr. and Mrs. Aldon Mullinax recently.

Shelby Race was a recent visitor in Houston, returning to Morton on Saturday.

Mrs. W. L. Miller hosted her annual New Years Dinner honoring her children and grandchildren. Those attending the "All-day feed" were Mr. and Mrs. Ermon Miller and daughter from Tyler, Mr. and Mrs. E. L. Willis, Morton and Mr. and Mrs. Aldon Mullinax, Morton. Her grandchildren attending were Mr. and Mrs. W. J. Hodge, Tonya and Dwayne, Mr. and Mrs. Jerry Pool and children, Chattanooga, Tennessee, Mr. and Mrs. Jimmy Mullinax and girls and Mrs. Wayne Purdue and son. Mr. and Mrs. Aldon Mullinax were called to the bedside of his father, Lon Mullinax of Odessa Sunday. Mr. Mullinax is very ill at this time.

Other visitors attending Dedication Service Sunday at First Missionary Baptist Church were Rev. and Mrs. Kenny Coats of Lubbock, Mr. and Mrs. Jimmy Waters of Smyer and Miss Deanna Coats of Clovis, N.M.

Miss Nelda Faye Fincher has returned to Dallas after visiting with her parents, Mr. and Mrs. E. L. Fincher.

Mr. and Mrs. Earl Bowers and Patti spent the holidays with their daughter, Mrs. Glenn Campbell and family in Baytown.

Visiting in the home of Mr. and Mrs. Connie Gray over the holidays were Mr. and Mrs. Nolan Parker and three sons of Stanton, Glorietta Gray of West Texas State University, Mr. and Mrs. L. A. Parker of Benjamin, parents of Mrs. Gray and children. Mr. and Mrs. Gray and Glorietta also visited in Benjamin, Haskell and Sweetwater with friends and relatives and attended the Holiday Basketball Tournament in Lubbock.

Mr. and Mrs. George Trejo and family spent the holidays with their daughter, Delilah, and Mrs. Trejos' parents in Colorado Springs, Colorado. Later during the holidays Mrs. Trejos parents, brothers, sisters and their families got together and went to Denver, Colo. where they toured the Federal Buildings to view the Christmas displays.

Jr. and Patsy Vasquez, spent Christmas holidays in Colorado Springs, Colo. with Patsy's sister Delilah Trejo, grandparents and other relatives.

Pic Loyd W. Perdue, son of Mr. and Mrs. J. C. Perdue, Jr. of Lubbock is stationed at Cam Rahn Bay, Vietnam. He is serving with the 608 Transportation Company. His wife, Teresa, and son, Jeffery Wayne, are residing with her parents, Mr. and Mrs. J. A. Mullinax of Morton.

Mr. and Mrs. Amos Taylor visited with his sister in Spur who is gravely ill Sunday.

Mr. and Mrs. Bob Cook and Pamela visited with her parents, Mr. and Mrs. F. A. Benham, in Seymour during the holiday season. While in the area they attended the funeral of a cousin, G. A. Benham, Jr., on Tuesday, December 29, at Afton.

Mr. and Mrs. Buddy Cook, former residents of Morton now of Greenville, enjoyed visiting in Morton during the holidays. Young Michali, who has been visiting with his grandparents, returned home with them.

Pamela Newcomb visited with relatives, Mr. and Mrs. Jim Ratliff, Wade and Me-

lanie of Lubbock during the holidays. She returned to Morton Saturday.

Mr. and Mrs. Warren (Shorty) Ware visited with her parents, Mr. and Mrs. George Baker in Friona Saturday. They also visited with an uncle in Dimmitt who is hospitalized in that city.

Mr. and Mrs. Art Wall and Mrs. Wall's sister, Mrs. Hallie Brock of Levelland and formerly of Morton enjoyed visiting with another sister and family, Mr. and

Mrs. Charles Hunter of Canyon. Mr. and Mrs. Tommy Wall and family of Odessa joined his parents in Canyon for a brief vacation.

Mrs. Elsie Hesterlie of Tulsa visited with her parents, Mr. and Mrs. Gary Taylor of Lubbock and her grandparents, Mr. and Mrs. Carl Ray of Morton.

Mr. and Mrs. Kenneth Fyburn accompanied by Eddie Parsons visited with Eddie's parents and their daughter, Mr. and Mrs. Kenneth Parsons and family in Phoenix, Arizona during the holidays. Other

visitors in the Parson home were his parents, Mr. and Mrs. L. D. Parsons who live in Olney.

Bob Pyburn, son Mike of Dimmitt visited with the Kenneth Parsons on Saturday. Eddie Parsons accompanied them to Dimmitt after an extended visit with his grandparents, the Kenneth Pyburns.

Lyne T. Barret drilled first Texas oil well near Nacogdoches in 1886; Texas became nation's No. 1 oil producing state in 1928.



Mr. and Mrs. K. S. Head, Sr.

K. S. Head's to celebrate 50th wedding anniversary

Mr. and Mrs. K. S. Head, Sr., of Lovington, New Mexico, will celebrate their 50th Wedding Anniversary with a reception from 2 till 5 p.m. January 10 at their home on North Third Street in Lovington.

Hosting the event will be the couples son and daughters and their families. They are: K. S. Head, Jr., of Anthony, N.M., J. D. Head of Lamesa, Harvey Head of Corpus Christi, Bill Head of Caprock, Mrs. La Verna Clark of Odessa, Mrs. T. M. Clark of Joliet, Illinois, Mrs. J. T. Carlile, Jr. of Lamesa and Miss Joan Head of the home.

Head and the former Alice Mae Gee were married January 10, 1921 at Snyder. They moved to Seminole in 1923 and to Morton in 1927, where they farmed for 35 years. They moved to Lovington in 1962 where they have farming and ranching interests.

Mrs. Ron Cheney of Odessa, Miss Linde Head of Lamesa and Miss Patti Carlile of Lamesa, granddaughters of the couple, will serve.

Mrs. La Verna Clark of Odessa will greet guests and Mrs. Vic Gaskin of Odessa, granddaughters, will register guests. A three column cake decorated in gold

will be served with punch and coffee. The serving table will be covered with a gold satin cloth. The centerpiece will be a hand-blown glass nine-branch candelabra adorned with white and gold roses. Each gold candle will be a symbol of the couples nine children.

Mr. and Mrs. Head have 17 grandchildren and 5 great-grandchildren. Friends and relatives of the couple are invited to attend.

School menu

Monday, January 11 — Goulash, butter-bread, butter, milk.

Tuesday, January 12 — Pork roast, creamed potatoes, buttered green beans, banana pudding, rolls, milk.

Wednesday, January 13 — Bar-be-que chicken, buttered peas, potato salad, peach cobbler, hot rolls, butter, milk.

Thursday, January 14 — Frito pie, creamed potatoes, buttered green beans, Jellow with cookies, hot rolls, butter, milk.

Farm Machinery Auction

Wednesday, January 13, 1971 — 10 a.m.

Bozeman Machinery Lot — 122 Idalou Road, Lubbock

This will be our annual sale. Trucks available for pickup. Farmers, dealers, bankers, traders, turn your surplus machinery into cash. Sell or buy. Commission: 10% to \$150.00, then 5% with \$50.00 maximum on any one article.

TRACTORS WILL SELL AT 2:00 p.m.

Lunch Served by Big Red Catering Service

Terms: Cash

Tractors Plus Acres of Equipment Already Listed

4020 JD diesel and cab; 706 diesel with cab; 560 diesel; 460 LP; 2-M; 2-H; 2-4010 JD LP; 3010 JD LP; 630 JD LP; 530 JD LP; 720 JD LP; 2-70 JD LP; 60 JD LP; 3-G. JD; 2-A. JD; MM 670 LP with cab R. fair; MM Big Mo. 500 with loader and backhoe; UB MM; UTU MM; M&F 65 Diesel; M&F 65 LP; Feg. 30; 1800 Oliver LP; 900 Ford D; 801 Ford D; Ford Jublee; 3-8N Fords; 3-9N Fords; 2-Fordson Majors.

Winch truck; belt xerrishing machine; large 3 disk plow for 5200 or cat.; 14 Krouse offset disk; tandem stock trailer; J.D. implement trailer; 2-wheel stock trailer; 4-wheel nurse tank and trailer.

Cultivators 2-4-6 rows, 3 pt. and front mount; planter 2-4-6; 3 pt. Graham plows; Listers 3-5-7 rows; Crusibusters 2-4 rows; Tandems 12, 14, 16 ft. and 3 point Breaking Plows; 2-3-4 bottom spinners; Rolling cult; 4-6 row gang hoes; 2 Bottom Ford Plows and 2 Disk and 3 Disk drg; Oneways 3 pt. and large drag; Tractor Duals; 2-4 row Shredders; 3-4-5 Stalkcutters; Farm Hand Loader; Wheel Weights; Busters. Lots of items too numerous to mention.

Open 6 days a week to serve you. Used tractor and equipment parts

Bozeman Auction Service

122 Idalou Road, Lubbock

Phone PO 3-3949 (Nights PO 3-8960)

For
COLDS
take 666



Always Earn The Maximum Interest Rate By Saving At The Levelland Savings & Loan Association

6%
PER ANNUM

On 24 Month Certificates
\$10,000 Minimum

5 3/4%
PER ANNUM

On 12 Month Certificates
\$5,000 Minimum

5 1/4%
PER ANNUM

On 3 Month Certificates
\$1,000 Minimum

5%
PER ANNUM

On Passbook Savings,
No Minimum Deposit

Branch Office in Morton Professional Bldg.



News from Bula-Enochs area

Alma Altman was a dinner guest at the home of her daughter, Mr. and Mrs. H. Baker, at Morton, last Sunday. Laveta Jo and Carrol, Sue Black of Muleshoe spent Friday and Saturday with their parents, Mr. and Mrs. Joe Milsap. Mr. and Mrs. J. W. Layton, Mr. and Mrs. Harold Layton spent last Sunday with his nephew, Litt Newman, at the Fish Hatchery at Possum Kingdom. They went to the Duncan tournament Monday. Mr. and Mrs. Layton spent Monday and Tuesday night with his brother, and Mrs. Frank Layton at Cleburne. Harold Laytons visited Mr. and Mrs. Kendricks and family at Celina, Texas. They returned home Wednesday night. Christmas eve guests in the George Thomas home were her parents, Mr. and Mrs. Glenn Thompson of Morton, an aunt, the Hunt of Denver City, and her brother, Mr. and Mrs. R. E. Thompson of children of Roswell, N.M.

We wish to express our sympathy to Mrs. Chester Petree and all of her families in the loss of their one, Oue Petree, of Morton.

Mr. and Mrs. Mickey Rundell of New have a baby son, Robert Shay who was born at 4:30 a.m. Saturday, January 2. They have a daughter, RaiLynn who was three years old June 15. Mrs. is a niece of Mrs. J. D. Bayless, the daughter of Mr. and Mrs. Claud Muleshoe. This is the first son for the Coffmans. They have daughters.

Mr. and Mrs. Kenneth Cheatham of field, spent Friday night with her

Mr. and Mrs. J. E. Layton. Carl Hall, Mr. and Mrs. Bill Burris and family returned to Wellman Saturday from a 10 day trip to Ariz. to visit the Cleo Hall family and to Calif. to visit Mr. and Mrs. Lawrence Hall. He returned to Enochs Sunday morning.

Visiting in Lubbock, Idalou and Shallowater, last week with relatives were Mrs. L. E. Nichols, Mrs. Rose Nichols, Jerry, Donnie and Paula.

There was a going away party in the fellowship hall of the Enochs Baptist Church Sunday night following church services for Mr. and Mrs. Donald Grusen-dorf. They have been members of the Enochs church for 20 years. The Grusen-dorfs moved to Plainview Thursday. They were presented a bed spread, sheets and pillow cases. Refreshments of cookies, brownies, punch and coffee were served to the group.

Visiting in the E. C. Gilliam home during the week-end were their children, Mr. and Mrs. Jerry Gilliam and family of Anton, Mr. and Mrs. Wayne Gilliam and children of Morton, Mr. and Mrs. Vester Gilliam and Mrs. Linda Ogle all of Morton, Mr. and Mrs. Carlon Gilliam and family of Lubbock, Mr. and Mrs. Jimmie Gilliam and children from, Olathe, Colo. and Mrs. Gilliam's sister, Mr. and Mrs. ElRoy Kinson, of Dayton.

Mr. and Mrs. Dudley Cash and children of Portales, N.M. spent Thursday night and New Years day with her parents, Mr. and Mrs. John Blackman.

New Years guests in the home of Mr. and Mrs. T. A. Thomas were their child-

ren, Mr. and Mrs. Vergil Thomas and children from Houston, Mr. and Mrs. L. W. Richmond and children from Brown-wood, Jerry Thomas from Lubbock, also a granddaughter, Mr. and Mrs. Robert Crowley, from Midland.

Mr. and Mrs. W. M. Bryant left Thursday morning for Clayton, N.M. for a visit with their son, Mr. and Mrs. Duance Bryant and family.

Dinner guests in the C. C. Snitker home last Sunday were their son, Mr. and Mrs. Stanley Snitker and daughters, of Amarillo.

After the beautiful New Years day, the blizzard and snow that hit Saturday night really hurt. It is so dry everyone is wishing for moisture. The temperature was 4 above zero Monday morning.

Mr. and Mrs. Leland Finley and children, Donna, Larry and Linda of Odessa, spent New Years eve and New Years day with her parents, Mr. and Mrs. J. D. Bayless.

The McCall enjoyed a family get together at the Community Activity Building in Morton, Wednesday December 30. Those attending were Mr. and Mrs. R. P. McCall and Rony, Mr. and Mrs. Burley Roberts, Meloney, Brian and Timothy all of Enochs, Mr. and Mrs. LaDon McCall Kelley and Tonya of Muleshoe, Mr. and Mrs. Dennis Medlin Dwayne and Beckey of Brownfield, Mr. and Mrs. G. H. McCall Sr. and Mark of Harlingen, Miss Deborah McCall, Mr. and Mrs. J. C. McCall of Austin, Mr. and Mrs. G. H. McCall Jr. and Jenifer of Harlingen, Mr. and Mrs. Robert George, Brent and Mart-

Dr. Kennamer keynotes meeting of educators

Dr. Lorrin Kennamer, The University of Texas at Austin dean of education, was to keynote the Wednesday (January 6) opening session of the Administrators Advisory Conference on Education with a discussion of "The Agony and the Promise of Change" at 7:30 p.m. in Austin Municipal Auditorium.

More than 2,500 school administrators from across the state were expected to attend the three-day meeting to be held for the 22nd consecutive year.

Dr. Kennamer, a nationally known geographer who formerly served as Texas Tech University dean of arts and sciences, was to be introduced by Dr. J. W. Edgar, Texas commissioner of education, who was also to preside. The invocation was to be given by Irby Carruth, former superintendent of the Austin Independent School District.

Others on the program include Mrs. Jean Harris of Aqua Dulce, president of the Texas Congress of Parents and Teachers; Mrs. Jewell Harris of Abilene, president of the Texas State Teachers Association; and Mrs. Laura Doing of Wichita Falls, president of the Texas Association of School Boards.

Sponsored by the Texas Education Agency, this mid-winter conference also features a series of workshops designed to update the school administrators with the latest ideas now being put into action to improve schools throughout the state. It also gives local school administrators their best opportunity to exchange ideas on how to solve their problems.

The government is planning to set employment goals for women in some federal contract work to help eliminate discrimination because of sex, Secretary of Labor J. D. Hodgson has announced.



MORTON EDUCATORS ATTEND WAYLAND MEETING . . .

MRS. LENANE FREELAND, counselor at Morton High School, and Mrs. Mildred Ward, a teacher in the Morton School System, attended an area meeting for high school principals and counselors at Wayland Baptist College recently. Hosting the two for the evening was Miss Barbara Hudgins, left, junior from Hale Center, who points out a scale-model of the campus.

This Page Sponsored By The Following Indian Supporters

- Texaco Products — Ray Hudson
- Proctor-Walker Insurance Agency
- Morton Insurance Agency
- G & C Gin
- New York Store
- St. Clair's Department Store
- Shop-Rite Shoes
- First State Bank
- Coker's Gulf
- Malt Shop
- Silver's Butane
- Higginbotham-Barlett Co.
- Gwatney-Wells Chevrolet Olds.
- Bailey County Electric Co-op Assoc.
- Morton Packing Co.
- Sanders Fertilizer & Chemical
- Morton Delinting Co.
- Luper Tire & Supply
- Lackey's Grocery
- Great Plains Natural Gas
- Windom Oil & Butane Co.
- Ike's Farm Store
- Reynolds Texaco
- Forrest Lumber Co.
- Rose Auto & Appliance
- Bedwell Implement Co.
- Burleson Paint & Supply
- Strickland Cleaners
- Morton Tribune

BASKETBALL

MORTON INDIANS

1970-1971 BASKETBALL SCHEDULE

NOVEMBER 20 — LCHS	here
NOVEMBER 23 — Farwell	there
NOVEMBER 24 — Plains	here
NOVEMBER 30 — Farwell	here
DECEMBER 1 — Ralls	here
DECEMBER 3-5 — Friona Tournament	
DECEMBER 8 — Lovington	there
DECEMBER 11 — Dora	here
DECEMBER 15 — Abernathy	here
DECEMBER 17-19 — Denver City Tournament	
DECEMBER 22 — LCHS	there
DECEMBER 28-30 — Caprock Holiday Tournament	
JANUARY 2 — Open	
DISTRICT GAMES	
JANUARY 5 — Floydada	there
JANUARY 8 — Olton	there
JANUARY 12 — Lockney	here
JANUARY 15 — Dimmitt	there
JANUARY 19 — Littlefield	there
JANUARY 22 — Friona	here
JANUARY 26 — Abernathy	there
JANUARY 29 — Floydada	here
FEBRUARY 2 — Olton	here
FEBRUARY 5 — Lockney	there
FEBRUARY 9 — Dimmitt	here
FEBRUARY 12 — Littlefield	here
FEBRUARY 16 — Friona	there

Results This Week	
Morton 64	Ralls 66
Morton 63	Floydada 59

GO,
BIG
INDIANS
+
YOU
CAN
DO IT!



STOCK-UP NOW DURING OUR

Winter Wonderland of Savings

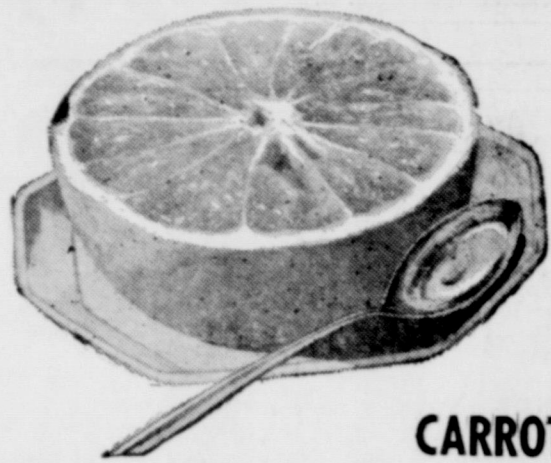
Specials Good Friday, January 8 through Thursday, January 14

Double Gold Bond Stamps Wednesday With Purchase of \$2.50 or More

Portales Maryland
SWEET YAMS
L **15¢**
B



Bulk WALNUTS LB. **49¢**



Texas Ruby Red
GRAPEFRUIT
L **10¢**
B

CARROTS, 1-lb. bag 10¢

Clip Top Turnips California LB. **17¢**

HAWAIIAN PUNCH
Wide Variety of Flavors
To Choose From
46-OZ. CAN **37¢**

COLLEGE INN
EGG NOODLES & BEEF
15-OZ. JAR

43¢

HERSHEY'S
INSTANT COCOA
2-LB. CAN

89¢

FIGHT HARD, INDIANS!
We're Behind You
All The Way

SHURFINE
FLOUR 10-LB. SACK **89¢**



LIBBY'S
PEACHES
NO. 2½ CAN

3 FOR \$1



SHURFINE
INSTANT COFFEE
6-OZ. JAR **98¢**

COMET REGULAR LONG GRAIN RICE
2-Lb. Box **43¢**

ELLIS JUMBO
TAMALES
NO. 2½ CAN
3 FOR \$1

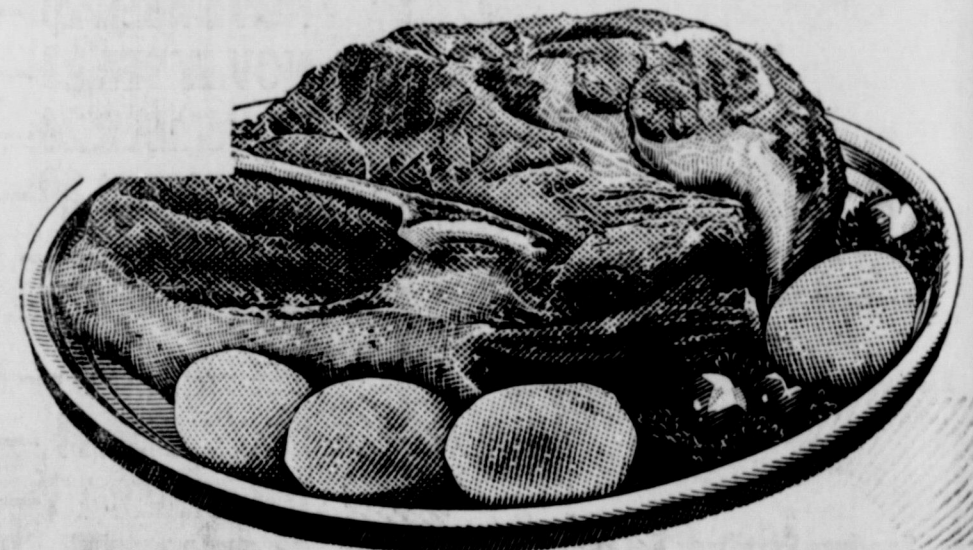
HUNT'S
APRICOTS
NO. 2½ CAN **37¢**



100 Count **1.29**
Reg. 1.59 Value

CHUCK ROAST
LB.

49¢

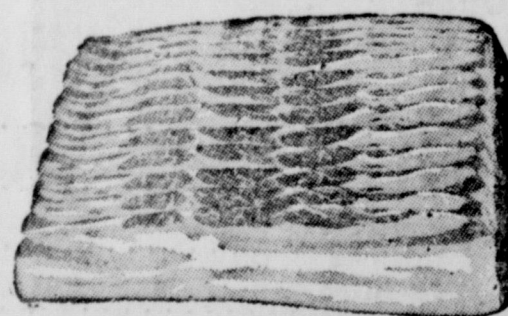


EAGLE BRAND MILK 15-OZ. CAN **39¢**



SHURFRESH
CRACKERS
1-LB. BOX **25¢**

7-Bone ROAST LB. **79¢**



Shurfresh
BACON
1-Lb. Pkg. **59¢**

BEEF RIBS
LB. **39¢**

FROZEN FOOD SPECIALS

Blue Plate
Breaded Shrimp
10-OZ. PKG. **89¢**

Tree Top
Apple Juice
12-OZ. CAN **39¢**

AN EXTRA BONUS
SHURFRESH COUPONS
SAVE SHURFRESH COUPONS

Save TenderCrust COUPONS FOR VALUABLE PRIZES ABSOLUTELY FREE

DOSS THRIFTWAY We Reserve The Right To Limit Quantities



SUPER MARKET
400 SO. MAIN - MORTON, TEXAS.