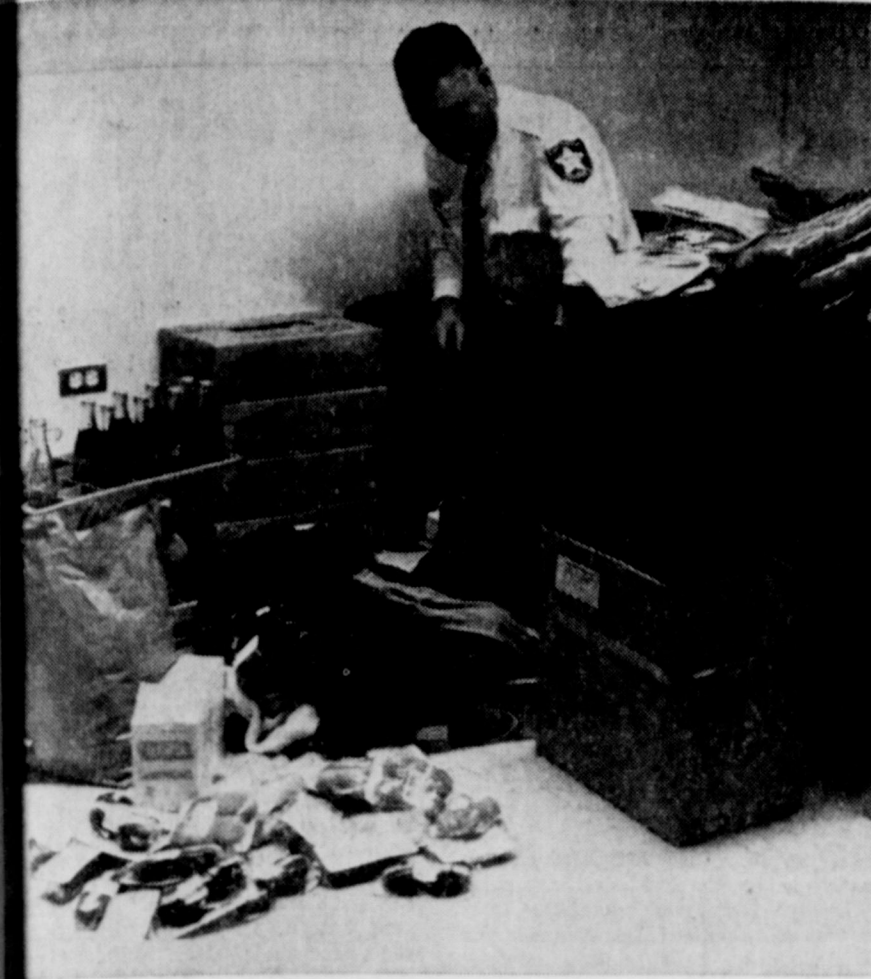


# Morton Tribune

Volume 29 — Number 7

Morton, Texas, Thursday, March 20, 1969



Burglary loot recovered . . .

SHERIFF HAZEL HANCOCK sits among a vast array of recovered items that were taken during a burglary of the Morton Country Club golf pro shop last Thursday night. Value of the recovered goods is estimated at several hundred dollars. Actual cash taken in the theft which was estimated at \$75-\$100, had not been recovered when the picture was taken. The stolen items were found by sheriff's personnel in a vacant house at 311 S. E. Third Street.

## Sheriff recovers loot in CC theft, arrests said imminent

Several hundred dollars worth of loot was recovered and an arrest or arrests are imminent in the Thursday burglary of the Morton Country Club golf pro shop, Sheriff Hazel Hancock announced Wednesday. The loot, recovered from a vacant house at 311 S. E. Third Street, ranged over a wide variety of items. Some of the items included, golfers hats, jackets, gloves, sweaters and shirts, two cases of soft drinks, four cases of beer, dozens of bars of candy, dozens of sacks of peanuts, a large number of individually wrapped bakery items, cash from the soft drink

and candy machines and the till containing an unknown amount of green fee receipts, and many other items.

Sheriff Hancock stated that the thief or thieves entered the club house by breaking a window and crawled through another window connecting the club house to the pro shop. An estimated \$75-100 cash was taken in the burglary.

Some of the stolen goods left on the porch of the vacant house was spotted by sheriff's personnel and led them to the remainder of the loot.

"We should have an arrest very soon in this case," Hancock said.

## Morton teachers receive tentative contract approval

Tentative approval for the renewal of contracts for 51 classroom teacher positions was given by the Morton Independent School District Board of Education in a regular session Monday night.

"We are highly pleased with the present contract teaching staff, it appears to me to be the strongest it has ever been," Morton school superintendent Bob Travis stated in an interview Tuesday. "As soon as the contracts have been firmed-up — and this should be by the next board meeting — we will release the names and positions for publication," he stated. In other business, the board appointed election officials to supervise the election scheduled for April 5 to elect three members to fill expiring terms.

Selection officials appointed included: Judge J. C. Reynolds; Assistant Judge, Dorothy Barker; Clerks, Mrs. Roy Hill and Ruby Goodman; Absentee Official, William J. Hodge and Absentee Clerks, Wanda Pierce and Opal Meeks.

Payment of bills for the month of February in the amount of \$47,687.05 was approved.

Appointment of Mrs. Lynn Kueler to the staff of teachers for the remainder of the 1968-69 school year in the vacancy caused by the resignation of Mrs. Phillip Vance was approved.

Resignation of Mrs. Jack Hale from the teaching staff effective May 30, 1969 was approved.

## Easter Seal Appeal

Glenn Thompson, Cochran County chairman for the Easter Seal appeal for crippled children and adults in Texas, has announced that the drive is now underway and contributions will be welcome.

Those wishing to contribute to this worthy cause may do so by contacting Mye Harris or Cora Coffman at the First State Bank in Morton.

Thompson stated that the 1968 Easter Seal Drive was the most successful in its 40-year history. He pointed out that 17,951 persons were provided with care, treatment and other services during the year. Of that total, 12,754 were children.

The annual Easter Seal appeal begins March 1 and will continue through April 6, Easter Sunday, Thompson said.

## 'Million dollar snow' hits Morton and area

The heavy, wet and altogether welcome snow that fell in the Cochran county area over the weekend could mean savings to local farmers amounting into the hundreds of thousands of dollars.

A highly placed farm official has estimated that the snow could save the farmers of the South Plains area a total of \$10 million dollars. This is the amount that it would cost to pump the pre-planting irrigation water from the underground formation to the fields under dried conditions.

No wonder the thick, white blanket is again and again referred to as a "million dollar snow" by local farmers.

It is estimated that 11-12 inches of snow fell in the local area and contributed a solid 1.8 inches of moisture to the soil. This will be invaluable to the making of crops, and depending upon future conditions, will eliminate the necessity for pre-planting irrigation in a large number of cases.

Reports indicate that the snow had saturated the top one foot in mixed soils and as deep as 1½ foot in sandy soils. This is moisture that won't be easily lost in a short period of time in the planting zone. A large proportion of it will remain

until absorbed by crop roots, agriculture officials say.

Overshadowing other aspects is the contribution the snow will make, through the cumulative buildup of winter moisture, to the conservation of water that otherwise would have been pumped from the Ogallala formation.

The opportunity to rest wells at this time of the year doesn't often present itself. The heavy use of small wells for pre-planting irrigation in many cases means that they will weaken quicker in the summer than if they had been rested earlier.

The snow, coming hard on the heels of the announcement that the local area had at last acquired a multi-million dollar feed lot complex gave cause for considerable optimism by Cochran county citizens.

It has been taken by many as a harbinger of better things to come. It was described by one as a winter gift that the fast approaching spring will find hard to match.

The inconveniences and possible damage from the snowstorm were vastly overshadowed by its beneficial results. Conversations with local residents revealed few who resented the few inconveniences experienced when balanced with the benefits the extra moisture will bring.

Inconveniences consisted mostly of cancelled meetings, appointments, community events, school classes and closed streets and roads.

Traffic was at a standstill and most of the businesses in downtown Morton were closed all day Saturday. In addition to the 10-12 inches of snow on the level ground, drifts up to five and six feet impaired movement throughout the city.

By Sunday afternoon a certain amount of snow had set in, but by that time, a large number of meetings, events and school classes had already been cancelled for Monday. There was considerably more

See SNOW, Page 2a

## Community action plan presented to Chamber

Ideas on community projects for lower income groups in Morton were presented to the board of directors of the Chamber of Commerce by Mrs. Evelyn Seagler at the regular meeting Tuesday morning.

Projects proposed by Mrs. Seagler included, a day care center, adult education classes, a well baby clinic and others. She pointed out that there are no such programs presently underway in Morton and that they are badly needed. She cited other communities where such projects had been of substantial benefit to the underprivileged.

Following Mrs. Seagler's presentation, Mr. Mattera of the Office of Economic Opportunity in Levelland outlined for the gathering what is being done there where there are three such programs underway at the present time.

In other business, a monthly trade day for Morton was again discussed and it was disclosed that so far 22 businesses have agreed to participate in the promotion. It is the intention of the Chamber to begin the day of special bargains the first Monday in April.



Victim of icy streets . . .

J. C. SHELTON, about 75, retired, lies where he took a severe fall on the icy street immediately in front of the county courthouse Monday morning. Bystanders provided a warm cushion and covering from the cold as he awaited the arrival of an ambulance. A later check with Cochran Memorial Hospital, where he was taken by a passing station wagon, indicated he had received multiple bruises, the most severe of which were concentrated around the rib cage. This was the only serious mishap due to the snow and ice that had been reported to the Tribune by press time Wednesday.

## Cotton, grain deadlines near

With the deadline for sign up in the cotton, feed grain and wheat programs rapidly approaching, activities at the Agricultural Stabilization and Conservation office in Morton was at a high pitch Wednesday.

Cotton signups are expected to reach the 100 percent mark and the feed grain

program to enroll something over 90 percent of the eligible farms, John Hall, ASCS office manager, told the Tribune that day.

Deadline for the signups is Friday, March 21.

Total signups in the county for the cotton program had reached 501 farms comprising 71,240 acres at that time, leaving only 42 farms still not in the program.

The grain sorghum program had received 437 farm signatures for a total of 135,460 acres with an unknown number still to be enrolled.

There were 152 wheat farmers signing on for the program for a total of 2,324 acres. An additional 1,093 acres had been designated as intended diversion for payment, according to Hall's report.

He said he fully expected to enroll all of the 42 cotton farms who have not already signed up before the deadline is reached. There are always a certain number of feed grain producers that don't enter the program, but we get most of them, he stated.

Those that have not filed an intention to participate before 5 p.m. Friday will not be eligible for payment of any kind and cannot join the program at a later date, Hall emphasized.

In order to comply with the provisions of the various crop programs and be eligible for payments the following must be strictly complied with, Hall states. Each farm operator will be required to

measure and report the acres he has in cotton, grain sorghum, corn, wheat and diverted acreage in 1969.

If you overstate your acreage by more than 10 percent or understate your acreage by more than 5 percent you are out of compliance and will be ineligible for any program payments, unless you can prove to the county committee, the state committee, and to the Washington office of ASCS that you made an honest effort to measure the land and just made an error in the measurements on the computation.

Measuring service will be available to anyone that would like to have their land measured and staked before the crops are planted, or you can request to have the crops measured after they are up and growing. The cost is the same as it was in 1968.

## Suspect in multiple breakins charged here

The seven burglaries that took place in Morton on the night of Jan. 19 appear to be solved, according to a report by Police Chief Charley Ellis.

Otha Ray Hightower, 17, of Morton, was arraigned before Justice of the Peace H. J. Knox of Whiteface last Wednesday and charged with one of the burglaries. Further investigation of the suspect is underway in connection with the other six burglaries.

Informal statements made by the suspect appear to implicate him in the other breakins, but sufficient evidence had not been obtained by Wednesday on which to file charges.

Blood stains were left at two of the burglary scenes and fresh cuts sighted on the suspects arm shortly afterward led to his investigation in connection with the thefts.

## Producers reminded cotton loan deadline date fast approaching

John Hall, manager of the ASCS office in Morton cautions producers that March 31 is the last day that they may put their cotton into government loan.

Before that date they may put it into loan at a base price of 20.20 cents for one inch staple, middling white cotton.

The cotton may be left in loan until the July 31, after which it will be taken over by the government for disposition. However, it may be taken out of loan at any time during the period from March 21 to July 31 and sold by its owner if a better price is forthcoming.

These are two important dates to remember — March 21 for program signups and March 31 for putting cotton into loan — Hall concluded.

## ★ 4-H Foods Show

The Cochran County 4-H Foods Show will be held today, Thursday, March 20, at 7 p.m. in the Banquet Room of the County Activities Building.

After the judging of the delicious entries, the public is invited to a food tasting party.



Yes, it did snow in Morton . . .

PROBABLY NONE of his pupils at Morton elementary school where he is principal have ever seen Harold Drennan so nearly snowed under as he was Saturday morning at his home at 801 E. Grant. The unique structure of his porch roof allowed the snow to build a truly unbelievable over-

hang during the storm. The stratified layers hanging from the roof are three to four feet thick and overhang eight to ten feet with no visible means of support. The snow on the shrubbery below was rapidly building up to meet it when the photo was taken.





**WELCOME TO MORTON...**

**Owen Bros. Livestock Commission Co.**  
**Cattle Feed Lot**

Dwayne Owen, President

*We're Proud You Selected Our City For Your Feed Lot*

**CONGRATULATIONS . . . to the**  
**Morton Industrial Foundation, Inc.**

**Serving ALL of Cochran County**

**for their excellent work in obtaining this new industry**

**BOARD OF DIRECTORS OF MORTON INDUSTRIAL FOUNDATION, INC.:**

D. E. Benham, President  
Roy Hickman, 1st Vice President  
J. W. McDermott, 2nd Vice President  
Mrs. J. C. Reynolds, Secretary

Tommy Hawkins, Asst. Secretary  
Jack Russell, Treasurer  
Ray Griffith, Asst. Treasurer  
C. E. Dolle

Leonard Coleman  
Elick Cox  
Van Greene  
E. L. Reeder

Mrs. Bob Richards  
Fred Payne  
O. L. Tilger  
James Walker

This advertisement sponsored by the following firms who are interested in the future of the Morton area:

The Chaparral, 212 Washington  
Griffith Equipment Co.  
Butler Body Shop  
Reynolds-Hamilton Ford  
Hawkins Oldsmobile  
Byron's Auto Supply  
McMaster Tractor Co.  
First State Bank

Bedwell Implement Co.  
Child's Men's Store and Minnie's Shop  
Luper Tire and Supply  
Rose Auto and Appliance  
Beseda and Son Grain  
Baker Feed and Seed, 402 W. Washington  
Morton Floral & Greenhouse, 605 E. Lincoln  
Red Horse Service Station - Merritt Gas Co.  
Sanders Fertilizer and Chemical  
Silvers Butane Co.  
New York Store  
Production Credit Association  
Jack Perry Seed Co.

Northern Propane Gas Co.  
Modern Motor Service  
City Flowers  
Singleton Funeral Home  
Wig Wam Cafe  
Forrest Lumber Company  
Ike's Farm Store  
Roy Weekes, Realtor - 106 East Filmore  
Morton Tribune  
St. Clair's Dept. and Variety Store  
Farm Bureau Insurance  
J. W. McDermott Liquefied Gas  
Russell Insurance Agency

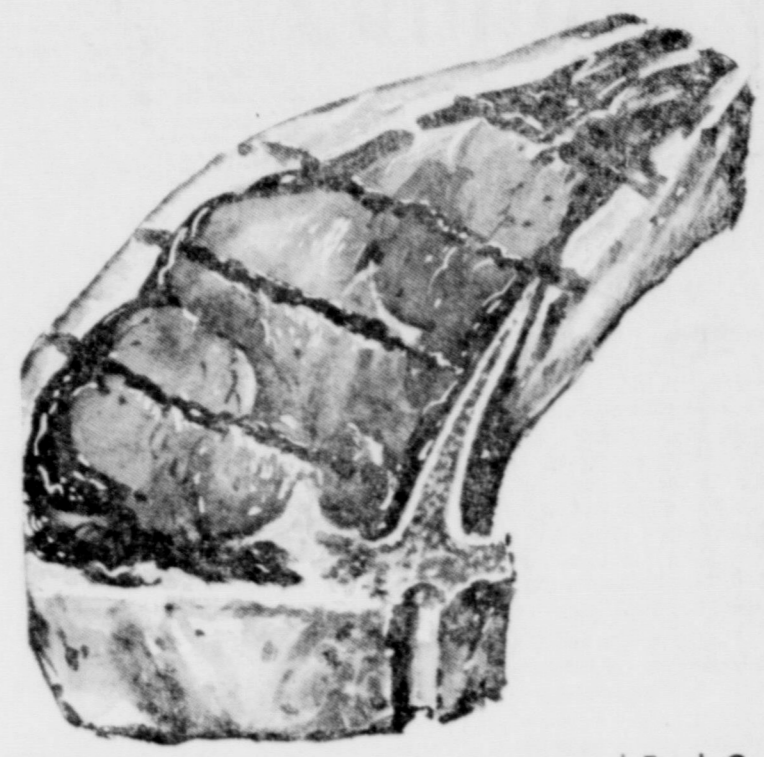






# SAVE BIG!

SPECIALS GOOD FRI., MARCH 21 THROUGH THURS., MARCH 28 DOUBLE GOLD BOND STAMPS WEDNESDAY WITH PURCHASE OF \$2.50 OR MORE



**T-BONE STEAK**  
LB. **89<sup>c</sup>**

Oscar Mayer **Hot Links** **55<sup>c</sup>** Fresh Ground **Hamburger Meat** **3<sup>lb</sup> \$1**

**PEACHES** LIBBY'S NO. 303 CAN ..... **19<sup>c</sup>**  
**BEEF STEW** AUSTEX 24-OZ. CAN ..... **59<sup>c</sup>**  
**CHILI with beans** ARMOUR'S 15½-OZ. CAN ..... **39<sup>c</sup>**

HONEY BOY **SALMON**  
Tail Can  
**69<sup>c</sup>**

SHURFRESH **POTATO CHIPS**  
Reg. 59c Size  
**49<sup>c</sup>**



Skinner's Short Cut **ELBO MACARONI**  
10-Oz. Package **23<sup>c</sup>**

River Brand **RICE**  
2-Lb. Bag **2 FOR 69<sup>c</sup>**

**CHIFFON**  
LIQUID 12-Oz. Bottle **2 FOR 49<sup>c</sup>**



**COKE** KING SIZE **6** Bottle Carton (plus deposit) **39<sup>c</sup>**

**SCOTCHGUARD**  
16-OZ CAN **1<sup>89</sup>**

CLOVERLAKE **BUTTERMILK**  
½ Gal. **39<sup>c</sup>**



**So Soft**  
Buy One Can and Get Another Can **FREE**

Shurfine Baby **Lima Beans in Butter Sauce**  
3 10-Oz. Packages **1<sup>00</sup>**

**LEMONADE** Shurfine 6-Oz. Can ..... **10<sup>c</sup>**

Shurfine Whole New **Potatoes** 20-Oz. Bag **33<sup>c</sup>** Sarah Lee Fresh Banana **Cake** Each ..... **73<sup>c</sup>**

**CARROTS**  
**2 19<sup>c</sup>**  
1-Lb. Cello Bags



**DOSS THRIFTWAY** We Reserve The Right To Limit Quantities

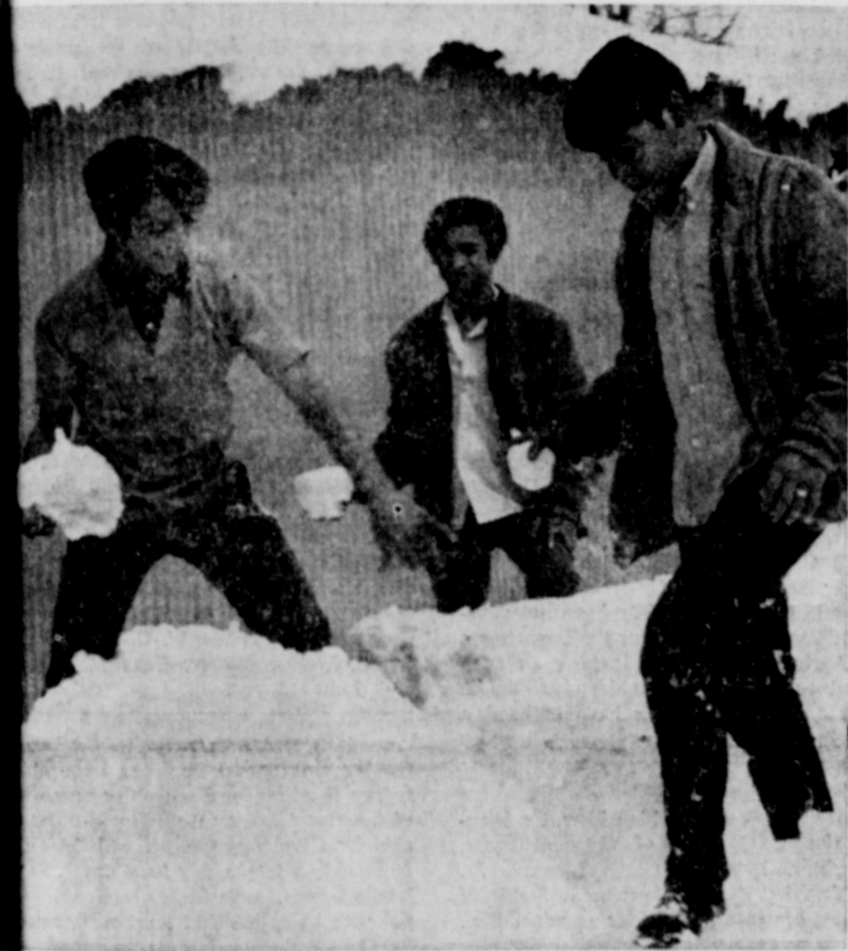
MEMBER **AFFILIATED** FOOD STORES  
**SUPER MARKET**  
 400 SO. MAIN - MORTON, TEXAS

## Snow blankets Morton over weekend



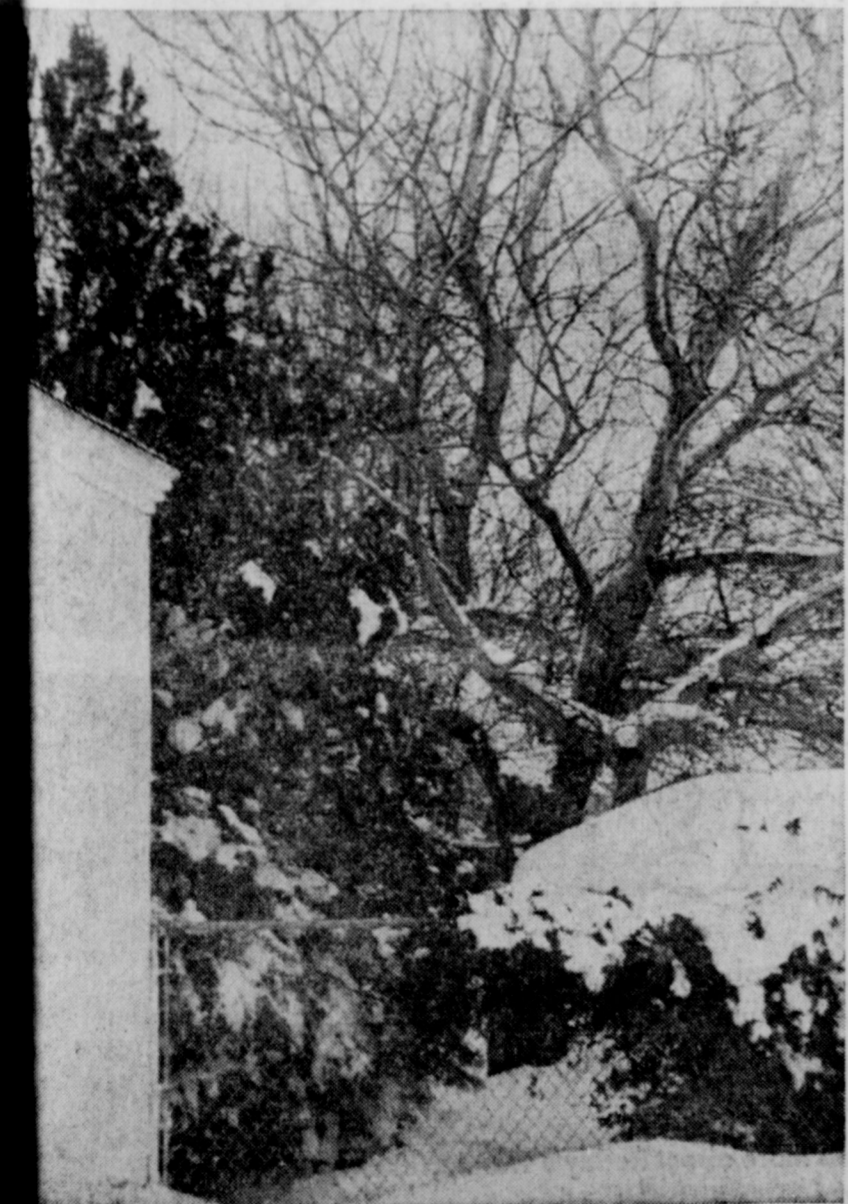
### A typical situation . . .

THIS SCENE COULD very well be in the Klindike—where they would be better prepared to cope with it—than on one of the main residential streets in Morton. It was a very typical scene all over town Saturday and Sunday with normally mobile vehicles clawing for traction where there was none to be had.



### A rare opportunity . . .

IT ISN'T OFTEN that youngsters in the Morton area have the opportunity to sport in a genuine snow bank and the three shown here were taking every advantage of this unusual occurrence. The friendly scuffle that it started out to be soon evolved into an all-out snow battle and lots of fun for all.



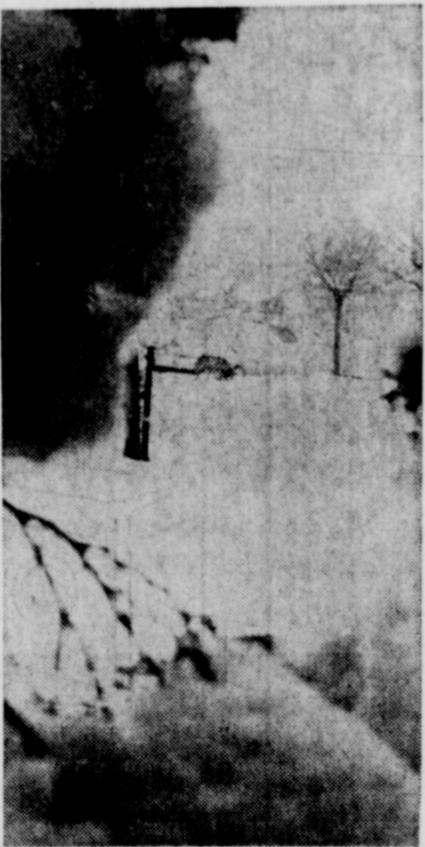
### In the artist's eye . . .

LACY BRANCHES, combined with the heavily laden evergreens and snow-pied shrubs combine here to present a scene that comes rarely to the eye of a Morton resident. Photographed for its artistic qualities, this scene may be remembered and cherished during the long, hot summer days ahead.



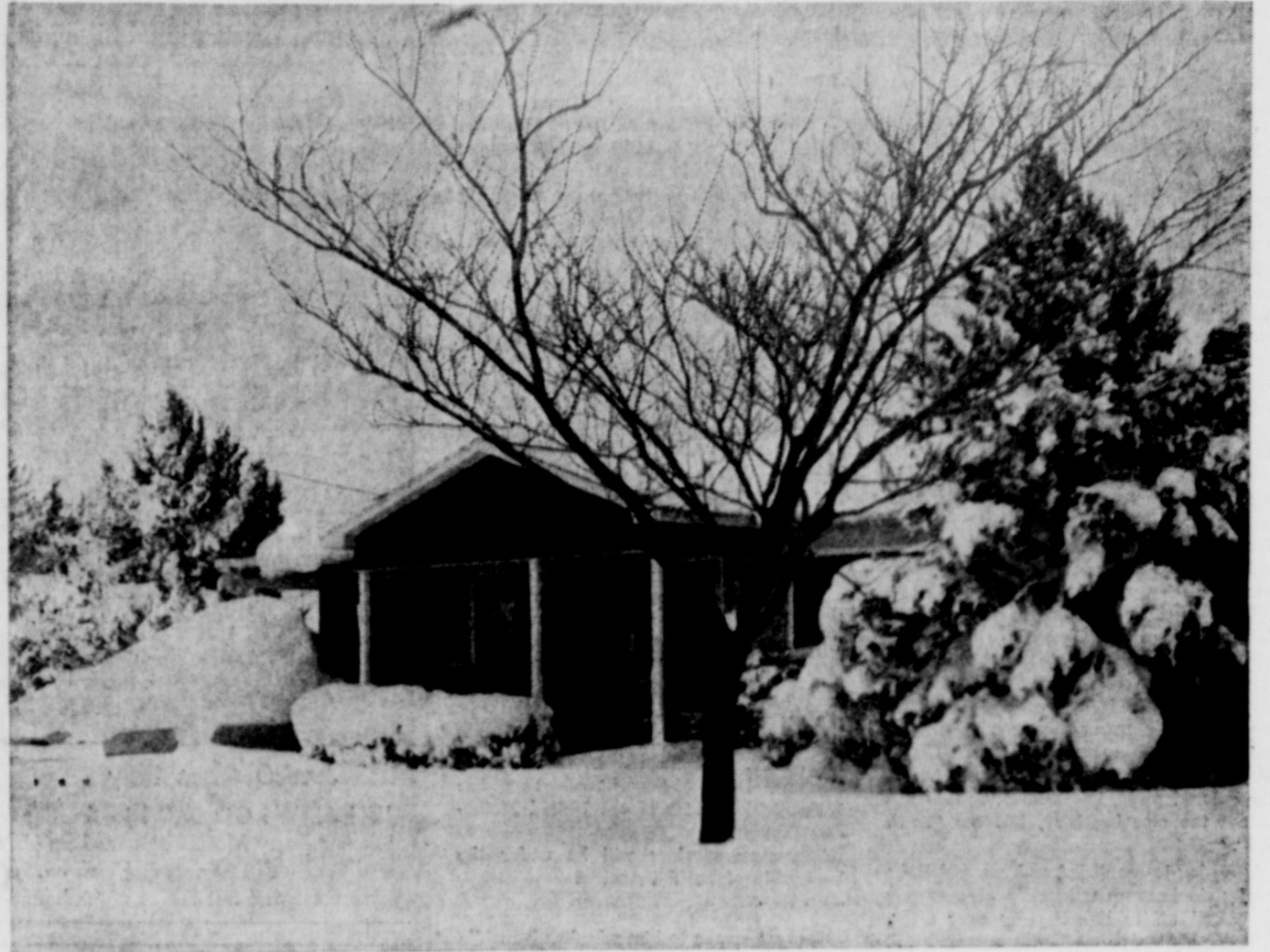
### A most welcome sight . . .

THE SNOW PLOWS (in most cases a road grader) that were out at first light Saturday morning to do what they could to clear the streets and assist motorists in getting to their various places of essential business, were a most welcome sight to the struggling public during the snow storm. Here one looms up doing his best to clear the path for those who need to move out.



### Giant puffs in white world . . .

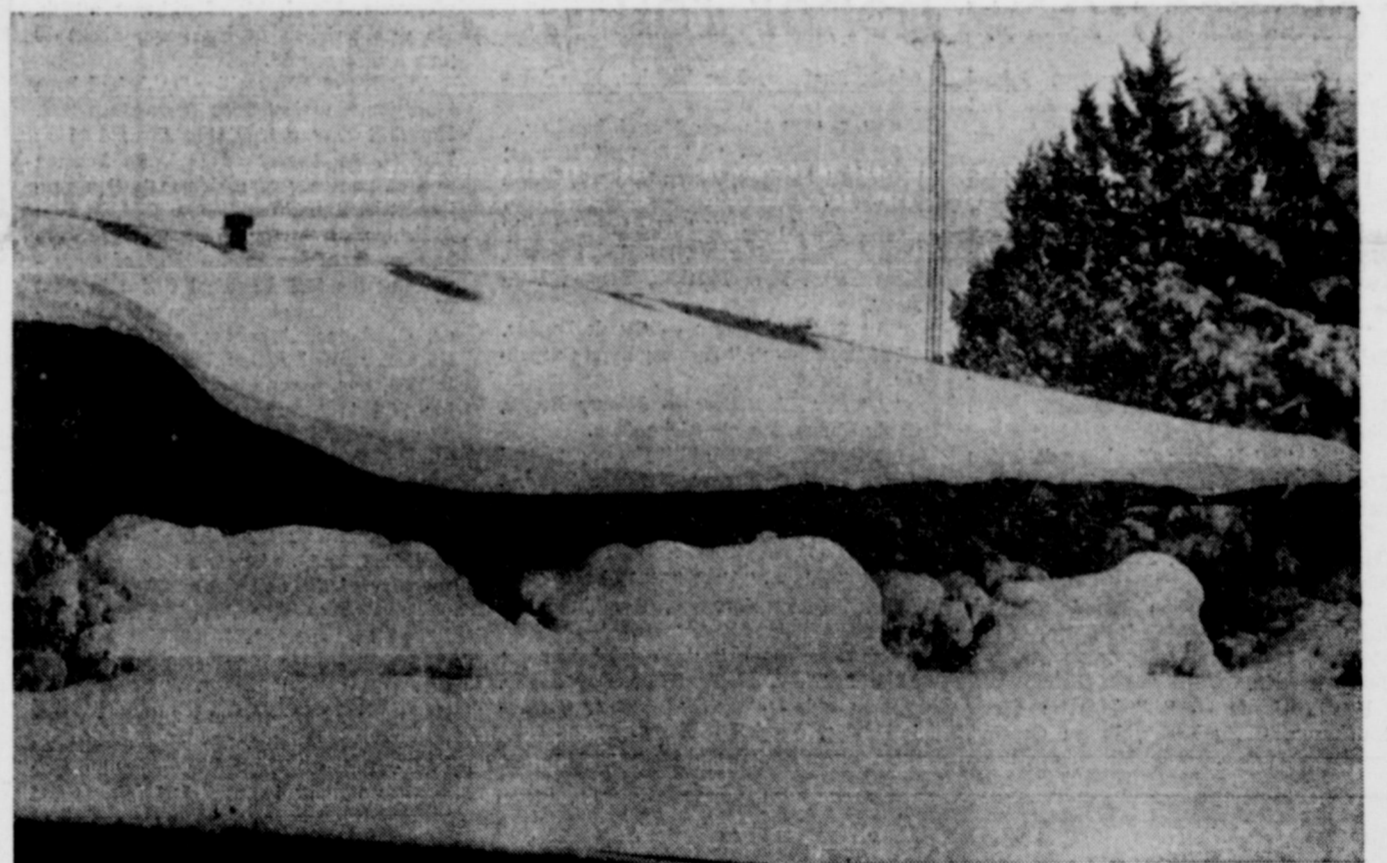
COTTON CANDY ANYONE? could be the theme of this snowy scene that would seem more in place in Vermont or even Switzerland than in Morton. It's another example given the local area during the recent snowstorm of what those little white flakes can fashion if there are enough of them at any one time.



### It should happen at Christmas . . .

THE WINTER WONDERLAND above was photographed on E. Grant Saturday morning. The snow had reached 8-10 inches and was still coming down in large quantities, though the flakes were very small. Whatever the style of the auto-

mobile at left was at purchase time, it certainly had a fastback shape when the snow finished its handiwork. The beautiful trees, shrubs and landscaping combine to provide a lovely winter scene.



### There's a house somewhere . . .

LOOKING MORE LIKE a giant clam about to close its jaws than a house in the Morton residential section is this home at 801 E. Grant. Accumulations of snow along the

roofline of the building-length porch have reached down until it almost touches the drifts building up to meet it. The snow-laden evergreens at right enhance the wintry scene.



### Beleaguered hospital . . .

IT WAS NO DAY for a hospital call unless absolutely necessary Saturday as the heavy snowfall all but isolated the building from the outside world. Inside things may have been

as normal as ever, but the same could not be said for the grounds which were a trap for any vehicle venturing near as is attested by the bogged-down car at the left. Just another crisis for an institution geared always for crisis.





# Whiteface HS athletes receive awards at all-sports banquet

Whiteface High School students received a variety of athletic awards and heard an address by Grant Teaff, head coach at Angelo State College, at its first Annual All-Sports Banquet Friday night.

The banquet, held in the school cafeteria beginning at 7 p.m., was sponsored by the Whiteface Young Farmers.

Wendell Dunlap opened the program with an introduction of L. S. Salser, high school principal who gave the welcome to the banquet.

After the dinner, the guest speaker, who is presently head coach at Angelo State and former assistant football coach at Texas Tech, spoke on "The Importance of God in Athletics." His efforts were rewarded with a standing ovation at the close of his speech.

Special awards were presented by Coaches Max Dickerson and Dale Read. First, Outstanding achievements were won first. Outstanding achievements were won by four of the girls.

Gwen Lewis, senior and four letter winner, received an All-District while Marilyn Cade, senior and four letter winner, won an honorable mention in All-District as a guard.

Kay Burris, a junior with three letters, received an All-District honorable mention as a guard and Cathy Swinney, freshman and one letter received an All-District as a forward.

The senior boys of Whiteface High School were presented with several special awards. Those receiving awards were Dean Sanders, Outstanding Guard; Ricky Swinney, who made the All-State Class B Football team and received the first L. S. Salser award as an Outstanding Athlete; Luis Alaniz, Outstanding Tackle and Joe Tienda, Basketball All-District player at SPC Invitational Tournament.

Also receiving an honorable mention for his accomplishments in basketball was junior Charlie Rector. All other members of the football and basketball teams were named as each stood and acknowledged applause for his efforts.

Coach Dickerson was given special recognition for being named Outstanding Basketball Coach in Class B on the South Plains.

Following the presentation of awards, Jimmy Waters of Morton provided musical entertainment for the guests and the event was closed with the cheerleaders leading all present in the school song.



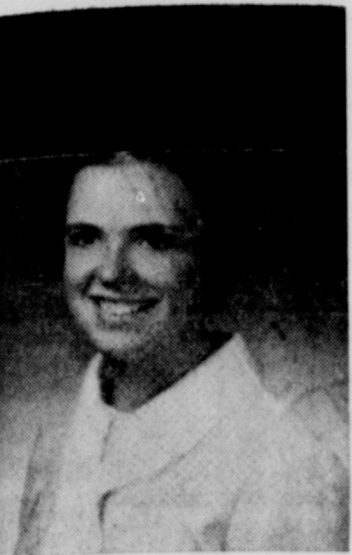
Grant Teaff Whiteface banquet speaker



Outstanding athletes . . .

SHOWN GATHERED before their mascot and holding the traditional "W" blanket are Whiteface High School athletes who received awards at the annual banquet Friday night. From left to right are Ronny Dupler, Dean Sanders, Rick Swinney, Geronomo Roma, Louis Alaniz, Joe

Tienda, Doug Berry, Wayne Legan, Stormy Goble, Mike Leer and Dale Burris. Each of these seniors received a "W" blanket which they preferred to the regular letter jacket award.



Lanya Dolle

## Dolle-Gentry wedding plans set for June 20

Mr. and Mrs. C. E. Dolle of 605 East 5th, proudly announce the engagement and approaching marriage of their daughter, Lanya, to David Gentry, son of Mr. and Mrs. Roy Gentry of 805 East 5th.

Miss Dolle is a 1968 graduate of Morton High School and is presently attending South Plains College.

The groom-elect is a 1967 graduate of Morton High School and is also attending South Plains College majoring in Mid-Management.

The couple have set their wedding date for June 20.

## News from Bula-Enochs area

by MRS. J. D. BAYLESS

Mr. and Mrs. Guy Sanders visited friends at Del Rio and Eagle Pass recently while on their vacation.

Mrs. E. N. McCall and Mrs. Fred Locker left Clovis, N. M. by train Friday to visit their sister and husband, Mr. and Mrs. R. T. Lytle at Riverside, Calif.

Edd Autry had been a patient in the Methodist Hospital in Lubbock for five days and was dismissed March 11.

Mr. and Mrs. Jerome Cash were dinner guests in the home of Mr. and Mrs. H. N. Snow last Sunday. In the afternoon the Cashes and the Snows drove to Hereford to visit relatives, Mr. and Mrs. James Cash and family.

Mrs. L. E. Nichols was released from the West Plains Hospital in Muleshoe last Monday where she had been a patient for 16 days with bronchitis.

Mr. and Mrs. Rusty Rowden and son Chris of Lubbock visited with her parents, the E. N. McCalls. Mrs. Rowden also visited in Morton, with her sister-in-law Mrs. Janetta Dowling and her new baby.

Mr. and Mrs. Andrew Petree from Purcell, Okla., arrived Friday from a visit with his brother and wife, Mr. and Mrs. Chester Petree.

Church at the Enochs Baptist Church was dismissed Sunday morning on account of the snow storm, that fell Friday night Saturday and Saturday night. There were drifts up to 5 and 6 feet in places.

Mrs. Mattie Dever of Lubbock, is visit-

ing her daughter, Mr. and Mrs. John Blackman at Bula.

Mrs. C. L. Cannon of Bula underwent surgery Friday in the Methodist hospital in Lubbock. She was reported to be doing fine.

Charles R. "Pete" Bryant, manager of Muleshoe National Wildlife Refuge 1948 through 1950, presented Edd Ary of Enochs, with a Special Acts Award check for \$150.00 and a letter from William T. Krummes, Regional Director. An excerpt from the letter reads as follows. "The award is made because you assumed the duties and responsibilities of acting Refuge Manager during that vacancy and as well as continuing to perform your own duties of maintenance man. The award is based on intangible savings, local application, and moderate benefits."

"Mr. Ary started his federal career under Pete Bryant in 1948 and will complete his 20th year with the department on May 2, 1969," said Bryant. "Mr. Ary has served under eleven managers during his career and has assumed the duties of Acting Refuge Manager during the time lapse between manager changes. It is felt that Ary has been instrumental in helping, maintain the excellent safety record the refuge now enjoys, which is almost nineteen years without lost-time accident."

Charles "Pete" Bryant is the manager of Monte Vista National Wildlife Refuge in southern Colorado.

The Muleshoe National Wildlife Refuge in the Enochs, community entertained twenty-five members of the Lubbock Audubon Society last Sunday when they visited the Refuge and were escorted around the Refuge by Manager Bert Blair.

Visiting there from 6:15 a.m. to 2:15 the members saw thousands of cranes leave on their morning flight and visited Prairie Dog Town, one of two sanctioned prairie dog towns in the state of Texas. Blair said many of the members enjoyed visiting the nests of the great horned owl in the southwest corner of the Refuge.

The Muleshoe National Wildlife Refuge is located 20 miles south of Muleshoe on Highway 214. The 5,809 acre site was the first Refuge established in Texas.

Society President Max Dodson said that new members are invited to join the Audubon Society and if interested may call him in Lubbock, at SH 4-1057 or SH 4-4385.

Mrs. Marion McDaniel school secretary released the Bula School honor-roll for the fourth six-weeks of 1968-1969.

First grade, Tony Hall and Mike Nichols. Second grade, Lyn Robertson and Jerrol Layton.

Third grade, A-Sherri Claunch, A and B Ronald Beasley, Cary Austin, Nanette Hall, Shonnye Autry, and Melony Roberts.

Fourth grade, A-Carolyn Stroud, A and B, Johnnie Thorp and Robie Blackstone. Fifth grade, B, Lisa Risinger. Sixth none. Seventh grade, A and B. Nancy Blackstone, Jerry Sowder, Craig McDaniel, and Gwen Pollard.

Eighth grade, A and B, Jimmy Risinger. Freshman none. Sophomore, A, Diane Crume. Juniors, A, Margaret Richardson, A and B, Donna Crume, Judy Snitker, and Iva Clawson.

Senior, A, Patricia Grusendorf. Bula was host to the Bailey County TSTA, last Monday evening, in the school lunchroom. Joel Parsons, principal of Three Way High School and president of the organization, had charge of the meeting.

Following a short business meeting, Lamb County School Superintendent, Roy Stevens was speaker for the evening, he spoke principally on the "Legislative proposed Amendments Concerning the Schools."

Refreshments of coffee, punch and sweet

rolls were served to the 25 teachers in attendance by the host.

Mrs. Maude Alexander of Sudan, mother of Mrs. Ethel Beals of Bula, underwent surgery, recently at the Methodist Hospital in Lubbock, and is still a patient.

The Bula junior and senior banquet was held in the Embers Cafe in Lubbock, Friday night with 31 students, teachers, their husbands and wives attending.

The speaker for the occasion was Odis Carr of Lubbock, he taught in the Bledsoe school for nine years before moving to Lubbock.

Their colors were red white and blue, decorations were flags and center pieces of red and white flowers.

The juniors were presented their senior rings.

Mr. and Mrs. H. B. King were in Dumas, Thursday till Saturday on business they also visited her mother, Mrs. Clara Childers.

Rev. and Mrs. Eddie Howard and family pastor of Bula Baptist Church visited Mrs. C. L. Cannon at the Methodist Hospital in Lubbock Friday and drove out to Tahoka to visit her parents, Mr. and Mrs. E. A. Howell and got snow-bound and weren't able to return home till Sunday afternoon.

There was all church salad supper at the Bula Baptist Church Wednesday night with approximately 40 in attendance.

Their revival began Monday night. The evangelist was Don Hancock of Carlisle, Jack Watson of Lubbock was in charge of the music.

Those attending the Youth Rally at the Parkview Baptist Church in Littlefield Monday night were Donna and Diane Crume, Elaine and Beverly Tiller, Barbara Black, Terry Claunch, Margaret Richardson and their sponsor, Mrs. Edward Crume.

The Enochs W.M.S. Bible Study group met in the fellowship hall of the Church at 2:30 p.m. Tuesday with Mrs. C. R. Seagler in charge of the study.

Those present were Mesdames, Carl Hall, Guy Sanders, J. E. Layton, Junior Austin, Glynn Price, J. D. Bayless, Keith Price and Mrs. Seagler. Mrs. C. H. Byars cared for the children, Jalesa and Jana Price, Greg Austin and Jackie Price.

## Area airman completes school in Air Force

Airman Crist R. Bowley, son of Young F. Bowley Jr., Bledsoe, Tex., has been graduated from a U.S. Air Force technical school at Lowry AFB, Colo.

He was trained as a materiel specialist and has been assigned to a unit of the Strategic Air Command at Little Rock AFB, Ark.

The airman, a 1967 graduate of Bledsoe High School, attended South Plains Junior College, Levelland, Tex.

His wife, Nancy, is the daughter of Mr. and Mrs. Joel Ruiz, 1503 Avenue G, Rosenberg, Tex.

## South Plains College slates 'Western Days'

Beards are much in evidence on the South Plains College campus in preparation for the Western Days scheduled for April 23 and 24.

Games and special western events are planned for both the inside and outside of the Student Union Building, along with a barbecue and a cowboy auction.

An Intramural Rodeo will highlight activities for the 24th, with beard judging and a dance scheduled for that night. An award will be made to the student judged the "Ugliest Man" during the activities.

## SBA announces relief plan for businesses

The Small Business Administration of the federal government recently announced plans for the relief of businesses which were hard hit as a result of crop damage in their area last year.

Many in the Cochran County area had substantial damage to 1968 crops as a result of various adverse weather conditions including severe drought, excessive rain fall, floods, hail and wind storm.

To give relief to businessmen which have suffered economic injury as a result of the adverse weather and to aid those businesses to continue in operation, the Small Business Administration is permitted to make economic injury disaster loans in Cochran county.

The administration has authority to make either direct loans or loans in participation with banks or other lending institutions. Any small business concern located in the county which desires this service should apply to the Lubbock Small Business Administration's regional office at 1616-19th Street, phone area code 806-7765-8541, extension 282.

## Look Who's New

Mr. and Mrs. Lynn Campbell of Baytown are the proud parents of a new baby girl, Randy Michelle. The baby was born March 6 at 4:02 a.m. weighing 7 lbs. and 11½ oz. in Gulf Coast Hospital in Baytown.

Grandparents are Mr. and Mrs. Erwin Campbell of Levelland and Mr. and Mrs. Earl Bowers of Goodland.

When people learn to pull together you don't have to push them. — Bob Pearcey, The Danville (Ind.) Gazette.



## WE APOLOGIZE . . .

for having omitted from the previous "thank you" ad, the following contributors to the Cochran County FFA and Livestock Show. Their contributions were extremely helpful and were appreciated.

- |                      |                   |
|----------------------|-------------------|
| Dan Keith            | J. Farris Burkett |
| Sandy Asbill         | Marvin Lasater    |
| Gonzales Welding     | F. O. Taylor      |
| S. J. Bills          | Whiteface Grain   |
| J. M. Rector         | Beebe Insurance   |
| W. A. McCutcheon     | Duane Cookston    |
| Larry Gaylon Baldwin | R. K. McCoy       |
| R. K. McCoy          | Wesley Blatley    |
| J. L. Schooler       | Dickerson Grocery |
| Jack Rae Fouch       | Leland Scifres    |
| J. W. Smith          | D. D. Marshall    |

Processing of the meat donated to Girlstown, U.S.A. was handled for by the following:

- |               |              |
|---------------|--------------|
| J. A. Love    | Bob Richards |
| Hazel Hancock | Mrs. Collins |
| L. T. Lemons  | Wig Wam      |

**FIRST STATE BANK**  
Member FDIC

**Transmission Troubles?**

HI-PLAINS AUTOMATIC TRANSMISSIONS  
ATRA COAST TO COAST

**HOW DID THEY START?**

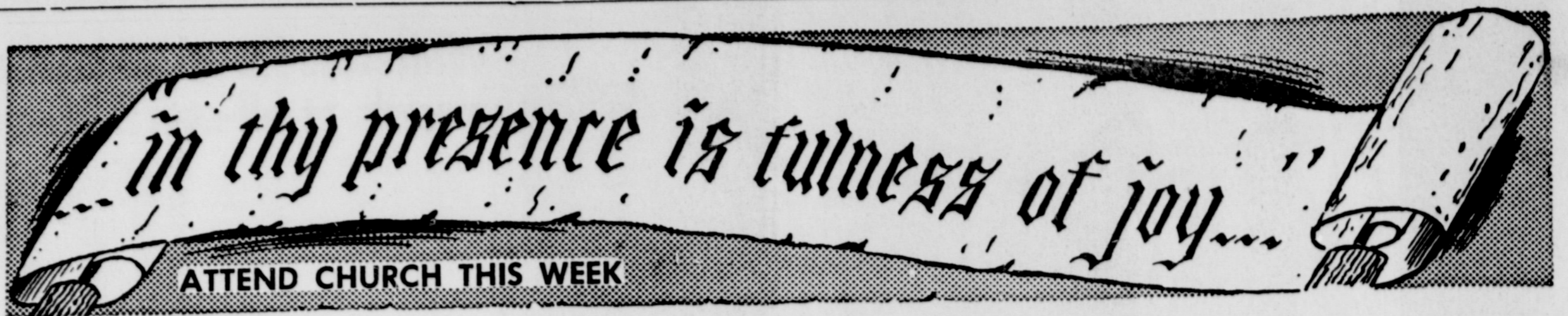
AND WHY, MANY REASONS . . . AGE, MILES, WEAK OIL PRES-SURE INSIDE, EXTERNAL OIL LEAKS, ROUGH USE, DRAGGING, OVER-LOADING, CLOGGED SCREENS OR FILTERS, AND MANY MORE.

**WHERE DO YOUR TRANSMISSION TROUBLES END?**

**AT HIGH PLAINS TRANSMISSION**

Instant Credit with your oil company credit card. Take up to twelve months to pay, or . . . 24 months to pay with approved Credit.

**HI-PLAINS TIRE & TRANSMISSION**  
211 N. COLLEGE — 894-6323 — LEVELLAND



**CHURCH OF CHRIST**  
**J. A. Woolley, Preacher**  
**S.W. 2nd and Taylor**

Sundays—  
 Bible Class ..... 10:00 a.m.  
 Worship ..... 10:45 a.m.  
 Evening Worship ..... 7:00 p.m.  
 Wednesdays—  
 Midweek Bible Class — 8:00 p.m.



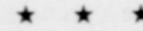
**FIRST METHODIST CHURCH**  
**Rex Mauldin, Minister**  
**411 West Taylor**

Sundays—  
 Church School Session .. 9:45 a.m.  
 Morning  
 Worship Service ..... 10:55 a.m.  
 Evening  
 Fellowship Program ..... 5:00 p.m.  
 Evangelism ..... 6:00 p.m.  
 Mondays—  
 Each First Monday  
 Board Meets ..... 8:00 p.m.  
 Each First Monday  
 Commission Membership on  
 Evangelism ..... 7:00 p.m.  
 Second and Fourth Monday  
 Wesleyan Service Guild 8:00 p.m.  
 Tuesdays—  
 Women's Society of  
 Christian Service ..... 9:30 a.m.  
 Each Second Saturday, Methodist  
 Men's Breakfast ..... 7:00 a.m.



**FIRST BAPTIST CHURCH**  
**Fred Thomas, Pastor**  
**202 S.E. First**

Sundays—  
 Sunday School ..... 9:45 a.m.  
 Morning Worship ..... 10:55 a.m.  
 Morning Service KRAN at 11:00  
 Youth Choir ..... 5:00 p.m.  
 Training Union ..... 6:00 p.m.  
 Evening Worship ..... 7:00 p.m.  
 Tuesdays—  
 Helen Nixon W.M.U. ... 9:30 a.m.  
 Wednesdays—  
 Graded Choirs ..... 7:30 p.m.  
 Prayer Service ..... 7:30 p.m.  
 Church Choir Rehearsal 8:30 p.m.



**SPANISH**  
**ASSEMBLY OF GOD CHURCH**  
**Gilbert Gonzales**  
**N.E. Fifth and Wilson**

Sundays—  
 Sunday School ..... 10:00 a.m.  
 Morning Worship ..... 11:00 a.m.  
 Evening  
 Evangelistic Service .. 7:30 p.m.  
 Tuesdays—  
 Evening Bible Study ..... 8 p.m.  
 Thursdays—  
 Evening Prayer Meet .. 8:00 p.m.



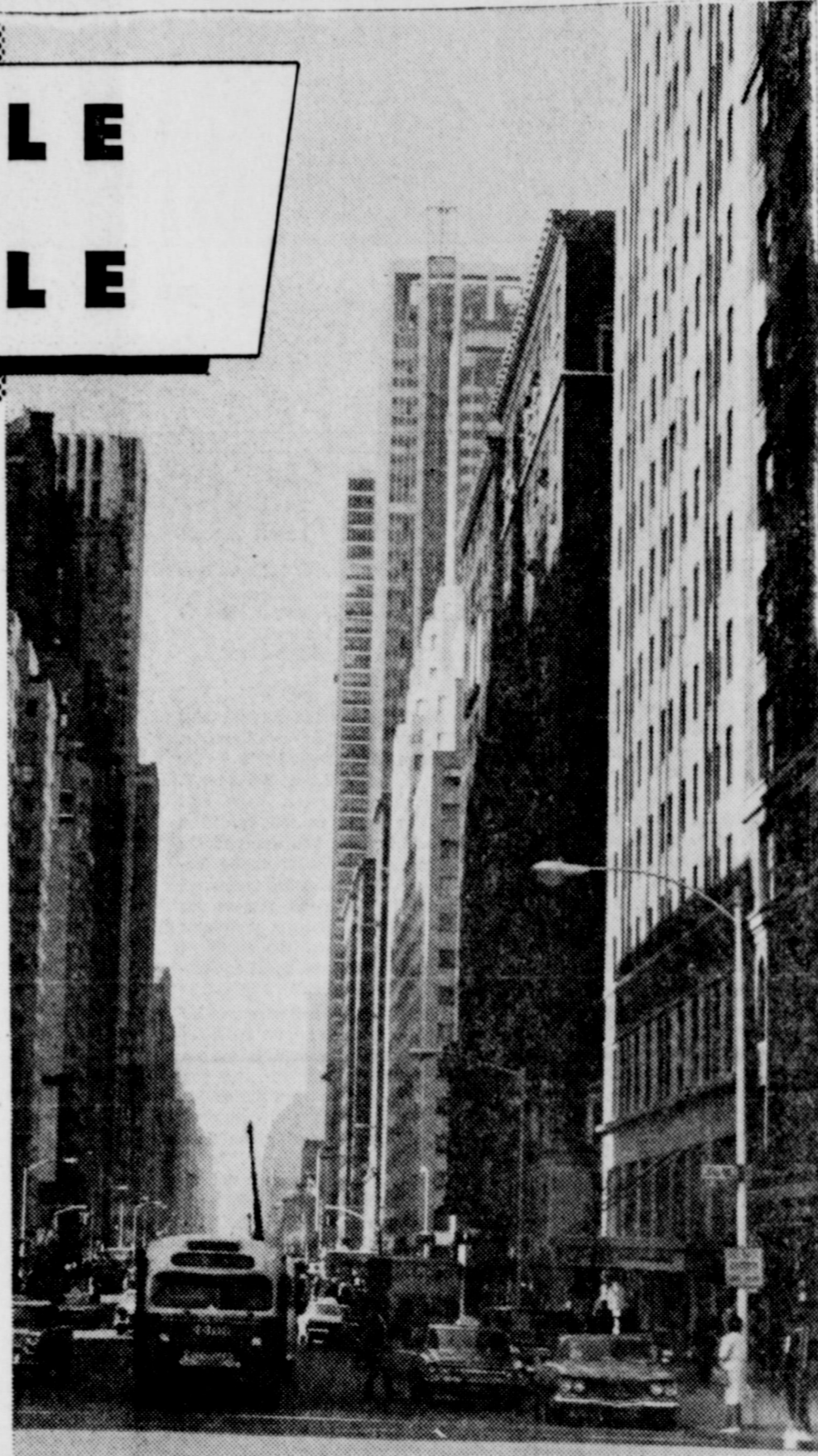
**EAST SIDE**  
**CHURCH OF CHRIST**  
**Cecil Williams, Minister**  
**704 East Taylor**

Sundays—  
 Bible Study ..... 10:00 a.m.  
 Worship ..... 10:45 a.m.  
 Song Practice ..... 6:30 p.m.  
 Worship ..... 7:00 p.m.  
 Mondays—  
 Ladies' Bible Class .... 4:15 p.m.  
 Wednesdays—  
 Midweek Service ..... 7:30 p.m.

# HUSTLE AND BUSTLE

The big city throbs with business life, heavy traffic, and the comings and goings and doings of many people. Whether you live in the city or you just come to town occasionally from the small town or farm, you have experienced this hustle and bustle. It reminds you that all life sometimes gets too hurried, too frantic with all we must do. We need a time to stop and somewhere to go to find peace and respite from all this. Have you thought of trying God? Job 22:21 says, "Acquaint now thyself with God and be at peace."

How sweet it is to be in God's house, to feel close to Him, to listen to His word. Tension leaves. Peace of soul arrives. Won't you attend God's house this week and see what he can do for you?



The Church is God's appointed agency in this world for spreading the knowledge of His love for man and of His demand for man to respond to that love by loving his neighbor. Without this grounding in the love of God, no government or society or way of life will long persevere and the freedoms which we hold so dear will inevitably perish. Therefore, even from a selfish point of view, one should support the Church for the sake of the welfare of himself and his family. Beyond that, however, every person should uphold and participate in the Church because it tells the truth about man's life, death and destiny; the truth which alone will set him free to live as a child of God.



**ASSEMBLY OF GOD CHURCH**  
**G. A. Van Hoose**  
**Jefferson and Third**

Sundays—  
 Sunday School ..... 9:45 a.m.  
 Morning Worship ..... 11:00 a.m.  
 Evening  
 Evangelistic Service ..... 7:00 p.m.  
 Wednesdays—  
 Night Prayer Meeting and  
 Christ's Ambassadors  
 Convene Together ..... 7:30 p.m.  
 Thursdays—  
 Every 1st and 3rd, Women's  
 Missionary Council .. 2:30 p.m.  
 Every 2nd and 4th, Girls'  
 Missionette Club ..... 4:30 p.m.



**FIRST MISSIONARY**  
**BAPTIST CHURCH**  
**Rev. Robert Evans, Pastor**  
**Main and Taylor**

Sunday School ..... 9:45 a.m.  
 Morning Worship ..... 10:45 a.m.  
 Training Service ..... 6:00 p.m.  
 Evening Worship ..... 6:45 p.m.  
**W.M.A. Circles**

Monday—  
 E. Elizabeth ..... 7:30 p.m.  
 Tuesday—  
 Mary Martha ..... 2:30 p.m.  
 G.M.A. .... 4:00 p.m.  
 Wednesday—  
 Midweek Service ..... 7:30 p.m.  
 Edna Bullard ..... 9:30 a.m.



**ST. ANN'S CATHOLIC CHURCH**  
**The Rev. David Greka, Pastor**  
**8th and Washington Sts.**

Mass Schedule—  
 Sunday ..... 9:00 and 11:15 a.m.  
 Monday ..... 7:30 p.m.  
 Tuesday ..... 7:30 a.m.  
 Wednesday ..... 7:30 p.m.  
 Thursday ..... 7:30 a.m.  
 Friday (1st of Month) 7:30 p.m.  
 Friday (2nd, 3rd, 4th) 7:30 a.m.  
 Saturday ..... 8:00 a.m.  
 Sunday—Catechism Class,  
 10:00 - 11:00 a.m.  
 Confessions—Sunday  
 Half hour before Mass.  
 Baptisms ..... 12 noon Sunday  
 and by appointment



**FIRST BAPTIST MEXICAN**  
**MISSION**  
**Moses Padilla**

Sundays—  
 Sunday School ..... 10:00 a.m.  
 Training Union ..... 6:30 p.m.  
 Evening Worship ..... 7:30 p.m.  
 Wednesdays ..... 7:30 p.m.



**NEW TRINITY BAPTIST**  
**CHURCH**  
**Rev. Willie Johnson**  
**3rd and Jackson**

Sundays—  
 Sunday School ..... 9:45 a.m.  
 Morning Worship Second  
 and Fourth Sundays .. 11:00 a.m.  
 H.M.S. .... 4:00 p.m.  
 Wednesdays—  
 Prayer Service ..... 7:00 p.m.

This Feature Is Published With The Hope of Getting More People To Church, and is Paid For By The Undersigned City Business and Professional People:

- |  |   |  |  |
|--|---|--|--|
| <p><b>Morton Co-op Gin</b></p> <p><b>Gifford-Hill Western Irrigation</b><br/>       N. Main — 266-5110</p> <p><b>Luper Tire and Supply</b><br/>       108 E. Washington — 266-5330</p> <p><b>Burleson Paint &amp; Supply</b><br/>       Northside Square — 266-5888</p> <p><b>The Trading Post</b><br/>       H. G. Pollard — Phone 266-5236</p> | <p>Compliments of<br/> <b>Carl Griffith Gin and G &amp; C Gin</b></p> <p><b>McMaster Tractor Company</b><br/>       306 N. Main — 266-5166</p> <p><b>Farm Equipment Company</b><br/>       "Your International Harvester Dealer"<br/>       266-5517 or 266-8812</p> <p><b>First State Bank</b><br/>       107 W. Taylor — 266-5511</p> | <p><b>Merritt Gas Company</b><br/>       Red Horse Service Station<br/>       Mobil Products — 266-5108</p> <p><b>Bedwell Implement</b><br/>       219 E. Jefferson — 266-5306</p> <p><b>Morton Insurance Agency</b><br/>       112 W. Taylor — 266-5071</p> <p><b>Morton Tribune</b><br/>       Printers — Publishers</p> | <p><b>Kate's Kitchen and Buffeteria</b><br/>       201 E. Washington — 266-8957</p> <p><b>Doss Thriftway</b><br/>       400 S. Main — 266-5375</p> <p><b>St. Clair Dept. &amp; Variety Store</b><br/>       115 N.W. 1st — Phone 266-5223</p> <p><b>Truett's Food Store</b><br/>       Earl Stowe, Owner<br/>       210 South Main</p> |
|--|---|--|--|