



# The Castro County News

81st year—No. 49

Dimmitt, Texas

Thursday, March 2, 2006

www.castrocountynews.com

75¢

## Commissioners back city in bid for prison

By DAVIE BROWDER  
Managing Editor

Castro County Commissioners are studying a proposal to form a rail district in an effort to upgrade and keep the rail system in place. They also approved a resolution giving Kent Hance's law-firm the go-ahead to lobby for a prison for this area. Dimmitt Mayor Wayne Collins presented the rail proposal to commissioners, saying there were two main reasons for the action.

First, we feel like we're very close to getting the plant (Cargill) converted to

## Study proposal for forming rail district

ethanol," he said. "We'd need an upgraded rail in order to allow 110-car trains and the big engines needed to carry corn in and transport the ethanol out. Right now, all we can accommodate is one-half unit train."

Secondly, he said, if the plant doesn't re-open, Castro County is close to losing the rail line. Forming a rail district would allow access to federal funds and make it

more difficult for the railroad to abandon the line.

"I've talked with officials at Burlington Northern," he said. "I think we could work with them. They're a main line carrier and it's a handicap to them to operate a short line like ours."

"It's absolutely essential for both Dimmitt and Hart that we have good rail. Hardly anyone would think of coming here without rail."

Currently there are 37 railroad districts in the state.

"The rail district gives you local control," Collins said. "Once you lose rail service, it's almost impossible to get it back. And if we don't do something with the rail district we'll probably lose the railroad within a number of years. If the county forms the district, there is no liability on its part. It's governed by a board appointed by the

commissioners. Board members serve two years."

The financial impact on the district, he said, would be once a rail district is formed, the rail line belongs to the county and the railroad would no longer pay taxes on it.

In other business, commissioners approved a resolution similar to one passed earlier by the Dimmitt City Council, supporting the efforts of Hance's firm and

"a team of professionals hired by that firm to advance the interests of the City in developing a proposal to build a prison in the City of Dimmitt and/or Castro County." Collins said this is the right time for Dimmitt and Castro County to pursue such a facility, "both in terms of jobs and economic development."

"Plus, there is no financial obligation required on the part of the city or county," he said. "It would be financed through non-recourse revenue bonds."

## Election day will see some changes

### Democrats, Republicans will vote at same locations

By DAVIE BROWDER  
Managing Editor

Voting machines, holding the Democrat and Republican primaries in the same locations and a hotly-contested county judge race in both parties may make for a big turnout on election day, Tuesday, March 7.

However, the chairmen of the county parties are taking a wait-and-see stance.

"I really don't know what kind of turnout we'll have," said Karron Smith, Republican County Chairman. "With the voting machines, it may be quite interesting. I don't think the prospect of voting by machine will keep people away."

Her biggest concern, she said, are the people who signed petitions - some perhaps for both Democrats and Republicans.

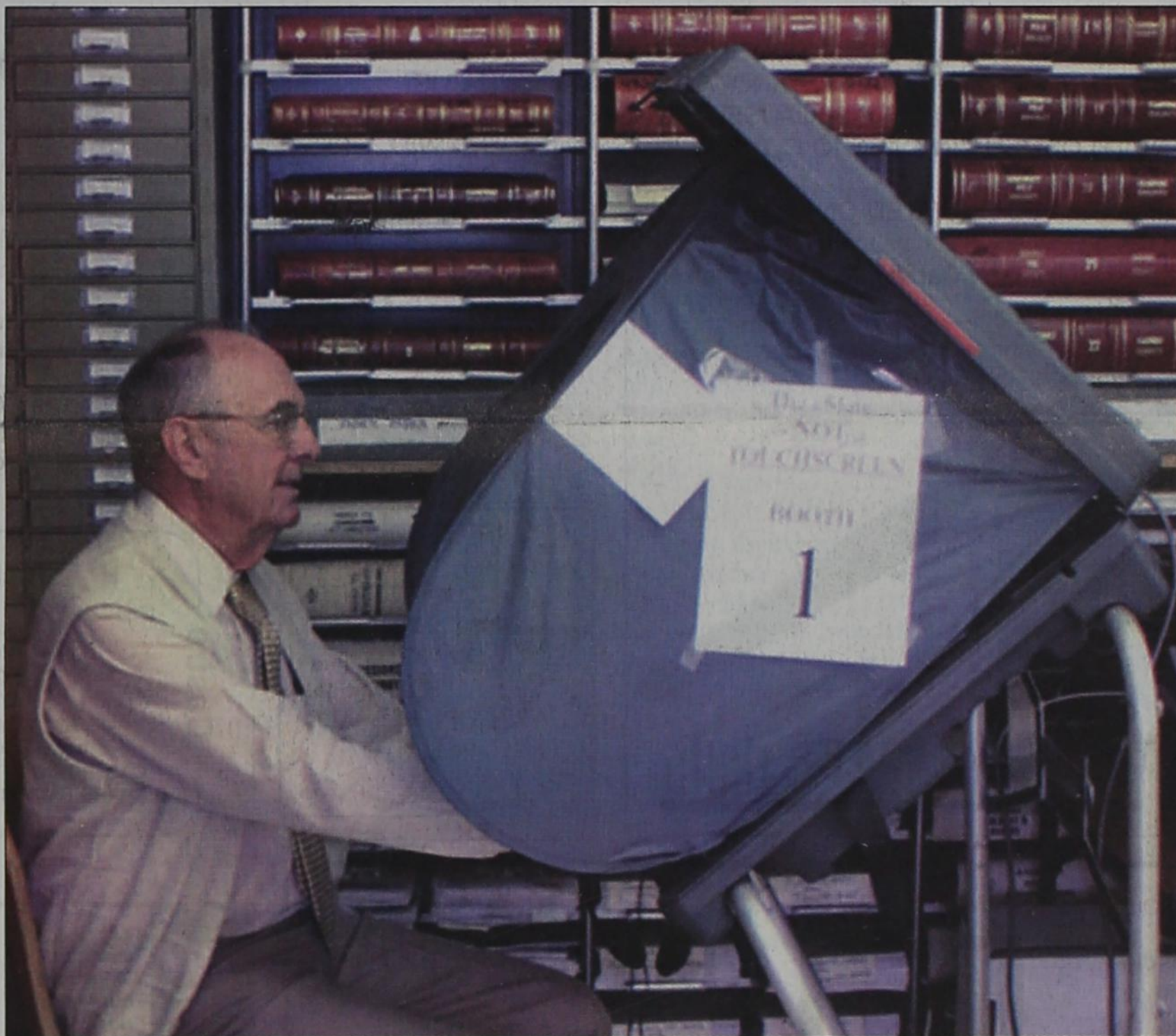
"They need to vote in the primary where they signed a petition," she said. "If they signed in both parties, they need to remember which one they signed first. Of course, I haven't thoroughly investigated yet."

Greg Odom, Chairman of the Democrat Party in Castro County, said it's going to be interesting.

"Anyone who signed a petition is obligated to vote in that primary," he said. "If someone votes Republican after signing a Democratic petition, the results in that box could be negated."

As far as the primaries being in the same physical location, he doesn't believe that will keep voters away.

"I think we'll have a pretty good turnout in our primary with two hometown guys running for county judge," he said. "There will be a lot of interest in that



**COUNTY TAX ASSESSOR COLLECTOR** Billy Hackleman cast the first vote of early voting on the county's new machines. As of Monday, 60 citizens had voted via machine; four had chosen to use paper ballots. Early voting closes at 5 p.m., Friday, March 3.

### List of Candidates A2

election."

However, he's not as sanguine about the voting machines as is Smith.

"I've never heard of an election where the machines worked right," Odom said.

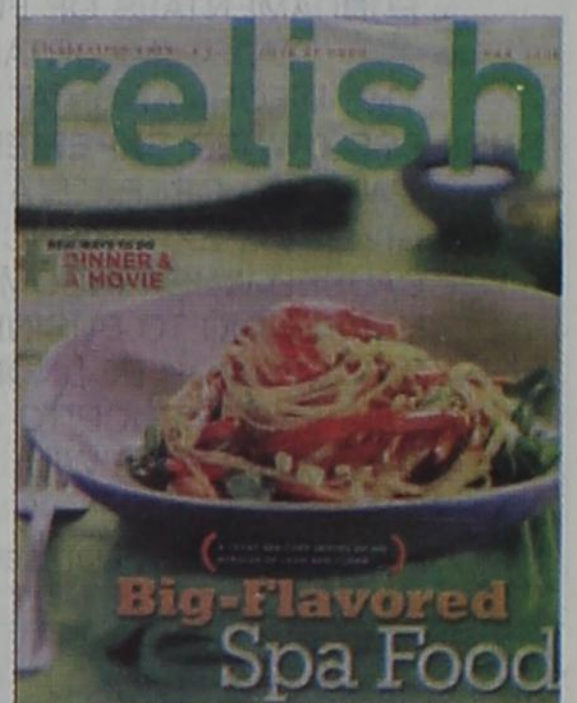
The Commissioners Court unanimously approved the acquisition of 10 voting machines - one for the County Clerk's office and one each for the precincts after the U.S. Congress, in 2002, passed the Help America Vote Act. The purpose of this act was to replace punch card and optical scan voting systems with electronic systems. Texas received \$181 million in federal matching funds. See ELECTION, Page 2

### Democratic and Republican Party Polling Places

Primary Election - March 7, 2006  
7 a.m. until 7 p.m.

Precinct No. 101	Hart Golden Group Hwy. 194 and Date Street
Precinct No. 105	Sunnyside Baptist Church 2797 US Hwy. 385
Precinct No. 109	Texas Highway Department 1544 S. US Hwy. 385
Precinct No. 201	Immaculate Conception Catholic Church 1001 W. Halsell
Precinct No. 206	Ag Supply Ltd. Office 2695 FM 1524
Precinct No. 301	First Baptist Church 1201 Western Circle Drive
Precinct No. 307	Easter Community Center Rt. 2 1055 FM 2397
Precinct No. 401	Castro County Courthouse (District Courtroom) 100 E. Bedford Rm. 208
Precinct No. 408	Nazareth Community Hall 209 N. 3 <sup>rd</sup> Ave.

### In this issue!



in this issue

### Hart trustees select Sanders as finalist for superintendent

Don Sanders, who is principal of Hart K through 12 has been named as the sole finalist for the superintendent's job, according to Superintendent Digger Elam.

"The job came open when I resigned in January," Elam said. "Don will replace me when I leave the last Friday in June."

There will be a 21-day wait before action can be taken named him the new superintendent in accordance with the state law, Elam said.

"He will be officially hired at the March school board meeting, to be held in the board room on March 20," Elam said. The meeting starts at 7 p.m.

### Two file in DISD races; none in city races yet

Robert Woolbright, the incumbent in Place 1 on the DISD Board of Trustees has filed to run for the spot in the upcoming elections.

In Place 5, currently held by David Schaeffer, only Kelby Bradley had filed as of this paper's deadline.

Thus far, no one has signed up to run for the Dimmitt City Council, according to the City Secretary. Deadline for signups in both elections is 5 p.m., March 13. In the hospital board race, only incumbent Henry Ramaekers has filed.

www.castrocountynews.com

www.castrocountynews.com

www.castrocountynews.com

**Most Common Misconceptions**  
Chain stores are less expensive than your local pharmacy.

**NOT TRUE!** Dimmitt Pharmacy will meet or beat any prescription price! Come by and compare our prices with those of your current provider.

Also keep in mind, if you use an insurance card, the price is the same regardless of where you fill your prescription.

**Dimmitt Pharmacy**  
201 NW 2nd St.  
Dimmitt, TX  
647-3151

**How's your cable looking now?**

After a public hearing on cable service in Dimmitt, we'd like to know if cable customers have experienced better service. E-mail us at editor@castrocountynews.com, call us at 647-3123 or fax us at 647-3112.

**ROOF REPAIR**  
JERRY JEFFRIES, OWNER  
Honest Professional Service  
**ALL TYPES ROOFING**

Residential and Commercial  
Wood • Shake • Composition • Asphalt • Metal  
**WORK GUARANTEED-COMPETITIVE PRICES**

1400 S. HWY. 385  
Dimmitt, TX 79027

806-647-0756  
Mobile 806-647-8272

**AUTO • HOME • LIFE**

HELPING YOU is what we do best!

Malcolm Sager, LUTCF  
Bob Anthony, LUTCF  
Kerry Winders

304 N. Broadway, Dimmitt  
647-5106

Texas Farm Bureau Mutual Insurance Co.  
Texas Farm Bureau Underwriters  
Southern Farm Bureau Casualty Insurance Co.  
Southern Farm Bureau Life Insurance Co.  
Farm Bureau County Mutual Insurance Company of Texas



# List of Candidates

## Democratic Primary All Precincts:

U.S. Senator: Darrel Reece Hunter, Barbara Ann Radnofsky, Gene Kelly.  
U.S. Representative, District 19: Robert Ricketts  
Governor: Chris Bell, Bob Gammage, Felix Alvarado, Rashad Jafer.  
Lieutenant Governor: Benjamin Z. Grant, Adrian DeLeon, Maria Luisa Alvarado.  
Attorney General: David Van Os.  
Comptroller of Public Accounts: Fred Head  
Commissioner of the General Land Office: VaLinda Hathcox

Commissioner of Agriculture: Hank Gilbert, Kocadee Melton Jr.  
Railroad Commissioner: Dale Henry.  
Justice Supreme Court, Place 2: William E. "Bill" Moody  
Presiding Judge, Court of Criminal Appeals: J.R. Molina  
County Judge: Jerry Cartwright, Lint Merritt.  
District and County Clerk: Joyce M. Thomas.  
County Treasurer: Janice Shelton  
Justice of the Peace: Tana Young

## PRECINCT 2 ONLY

County Commissioner, Precinct No. 2: Richard H. Rickett

## Republican Primary All Precincts:

U.S. Senator: Kay Bailey Hutchison  
U.S. Representative, District 19: Randy Neugebauer  
Governor: Rhett R. Smith, Rick Perry, Larry Kilgore, Star Locke  
Lieutenant Governor: Tom Kelly, David Dewhurst.  
Attorney General: Greg Abbott  
Comptroller of Public Accounts: Susan Combs  
Commissioner of the General Land Office: Jerry Patterson  
Commissioner of Agriculture: Todd Staples  
Railroad Commissioner: Elizabeth Amos Jones, Buck Werner.  
Chief Justice, Supreme Court - unexpired term - Wallace Jefferson  
Justice Supreme Court, Place 2: Don Willett, Steve Smith.  
Justice Supreme Court, Place 4: David M. Medina  
Justice Supreme Court, Place 6: Nathan Hecht.  
Justice Supreme Court, Place 6 - unexpired term - Phil Johnson  
Presiding Judge, Court of Criminal Appeals: Tom Price, Sharon Keller.  
Judge, Court of Criminal Appeals, Place 7: Barbara Parker Harvey  
Judge, Court of Criminal Appeals, Place 8: Tom Keel, Charles Holcomb, Robert W. Francis  
Member, Board of Education, District 15: Bob Craig  
State Representative, District 88: Warren Chisum  
Chief Justice, 7th Court of Appeals District, unexpired term - Brian Quinn  
Justice, 7th Court of Appeals District, Place 2: Mackey K. Hancock  
Justice, 7th Court of Appeals District, Place 3: Wall Weaver, Pat Pirtle  
District Judge, 64th Judicial District: Bob Kinkaid  
District Judge, 242nd Judicial District: Edward L. "Ed" Self  
County Judge: Michael Colley, Bill Sava, Melinda L. Timms  
County Judge:  
District and County Clerk:  
County Treasurer:  
Justice of the Peace:

## PRECINCT 2 ONLY

County Commissioner, Precinct No. 2: Bobby Jack Angeley

## PRECINCT 4 ONLY

County Commissioner, Precinct No. 4: Dan Schmucker

## QUALIFICATIONS AND EXPERIENCE THAT WILL ENABLE ME TO REPRESENT ALL THE PEOPLE OF CASTRO COUNTY:

WHEN I SAT DOWN AND STUDIED WHAT THE DUTIES OF THE COUNTY JUDGE WERE, I REALIZED THAT THE EDUCATION AND TRAINING THAT I RECEIVED AS OWNER OF A REAL ESTATE BUSINESS, A FARM AND AT THE SAME TIME WORKING FOR THE DIFFERENT CORPORATIONS AT THE CORN WET MILLING PLANT, HAD PREPARED ME FOR THIS CHANCE TO SERVE CASTRO COUNTY.

### EDUCATION:

BACHELORS DEGREE FROM WAYLAND BAPTIST UNIVERSITY, MAJORING IN BUSINESS ADMINISTRATION AND MINORING IN REAL ESTATE.

### CORPORATE EXPERIENCE:

THIRTY YEARS OF MANAGEMENT AND SUPERVISORY EXPERIENCE WITHIN AN ORGANIZATION THAT HAD MORE THAN 100 EMPLOYEES AND CONTRACTORS. THIS HAS ALLOWED ME TO GAIN EXPERIENCE IN DEALING WITH MULTIPLE DEPARTMENTS WITHIN AN ORGANIZATION. THIS INCLUDES DEALING WITH MANY TYPES OF EMPLOYEES AND HANDLING SITUATIONS THAT ARISE IN DEALING WITH LARGE NUMBERS OF EMPLOYEES, WORKING WITH PAYROLL, EMPLOYEE EVALUATIONS AND THE DOCUMENTATION THAT GOES ALONG WITH THESE AREAS.

WE WERE GIVEN TRAINING IN POSITIVE EMPLOYEE RELATIONS, MANAGING CHANGE, TEAM WORKING, PERFORMANCE MANAGEMENT PROCESS REVIEW, HAZARDOUS MATERIAL & INCIDENT COMMAND TRAINING, ON-THE-JOB TRAINING, TRAIN THE TRAINER, ENHANCING SUPERVISOR & LEADER EFFECTIVENESS AND FUNDAMENTALS OF FINANCE & ACCOUNTING FOR THE NON-FINANCIAL EXECUTIVE.

MOST IMPORTANTLY I WAS TAUGHT TO MAKE THE RIGHT DECISION BASED ON THE INFORMATION AT HAND AND COMMON SENSE.

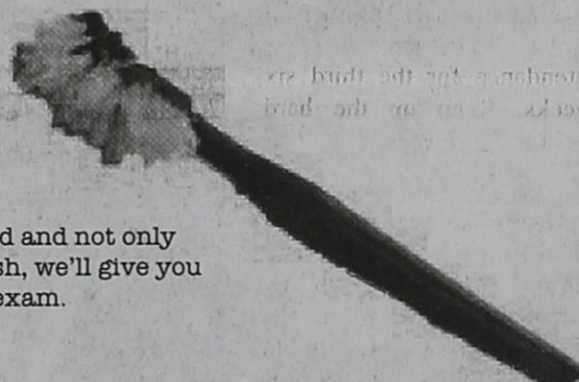
### BUSINESS OWNER EXPERIENCE:

OWN AND OPERATE A REAL ESTATE BROKERAGE BUSINESS FOR 25 YEARS. THIS HAS GIVEN ME EXPERIENCE IN DEALING WITH THE PUBLIC. I UNDERSTAND THE HARDSHIP CAUSED WHEN INCOME DOES NOT MEET EXPENSES. I KNOW FIRST HAND, WHAT IS HAPPENING TO BUSINESSES IN CASTRO COUNTY BECAUSE OF THE ECONOMY. I HAVE WORKED FOR ECONOMIC DEVELOPMENT IN CASTRO COUNTY IN THE PAST AND WILL USE THIS EXPERIENCE TO CONTINUE TO DO SO.

AGAIN, YOUR VOTE WILL BE GREATLY APPRECIATED ON MARCH 7<sup>TH</sup> IN THE DEMOCRATIC PRIMARY.

Political Advertisement paid for by Jerry Cartwright, 810 W. Halsell, Dimmitt, TX 79027

## Does this look familiar?



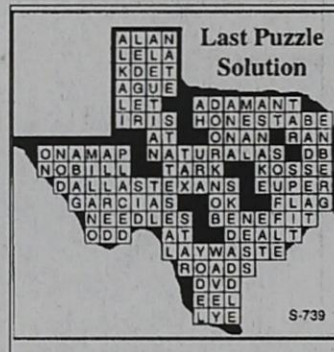
Come in to get your teeth cleaned and not only will we give you a new toothbrush, we'll give you two free bitewing xrays and an exam. Make an appointment today!

272-5004

Tom K. Bonds DDS P.A.

108 West Second • Muleshoe

www.muleshoedental.com



## ELECTION

Continued from Page 1 to implement the new requirements.

It's still not too late to vote early - the deadline is 5 p.m. Friday, March 3, according to County Clerk Joyce Thomas. Her office will be open all day Friday, including during the noon hours.

"Don't be afraid to try out the machines. Most of the people using the machines so far don't find them difficult to deal with. There are earphones for those who need help; the screen is larger than the paper ballot. I would urge everyone to get out and vote," Thomas said. "Whether you vote early or choose to vote on Tuesday exercise your right to vote."

To vote, you need your voter registration form or a form of identification, like a driver's license with your address on it.

Elect  
**Richard H. Rickett**  
or  
**Precinct 2 Commissioner**  
*Your Vote and Support Appreciated*  
Subject to Action of the Democratic Primary  
March 7, 2006  
PAID POLITICAL ADVERTISEMENT TO ELECT  
RICHARD H. RICKERT  
CASTRO COUNTY COMMISSIONER PRECINCT 2  
RICHARD RICKERT, TREASURER, BOX 965, DIMMITT,  
TEXAS 79027

### ACROSS

- 1 TXism: "right \_\_\_\_\_" (specific location)
- 5 football snap
- 6 actress Adams in '78 TV movie "Superdome"
- 7 TXism: "roosters crow, \_\_\_\_\_ deliver"
- 8 the "I" of "IQ"
- 17 sticky substance
- 18 TXism for "silverware"
- 21 Astro or Ranger four-bagger (abbr.)
- 22 you can catch some \_\_\_\_\_ on So. Padre Island
- 23 adjective for a nerve-cell process
- 24 human or horse start of a Cowboy game: coin \_\_\_\_\_
- 30 Vince Young at UT? (abbr.)
- 31 TX electronics co. (abbr.)
- 32 TX Scott Joplin musical composition: "\_\_\_\_\_ Crush"
- 34 type of hammer
- 35 TXism: "about as clear as Red River \_\_\_\_\_"
- 36 state of equilibrium
- 37 Dallas Stars objective
- 38 TX Brown who won Pulitzer for reporting in 1955
- 39 TX JoBeth Williams film: "\_\_\_\_\_ Species" ('82)

- 41 TX Orbison's "Oh Pretty \_\_\_\_\_"
- 42 TXism: "old as dirt"
- 43 TXism: "fast as \_\_\_\_\_ up a rafter"
- 44 a seasoning
- 45 neither's sidekick
- 46 singer Davis from Lubbock
- 47 this SS Jose ended career with Astros

- 48 infinite time
- 50 lifting apparatus
- 51 TX pianist Cliburn
- 52 Hobby or Love guess (abbr.)
- 53 it ain't country music

### DOWN

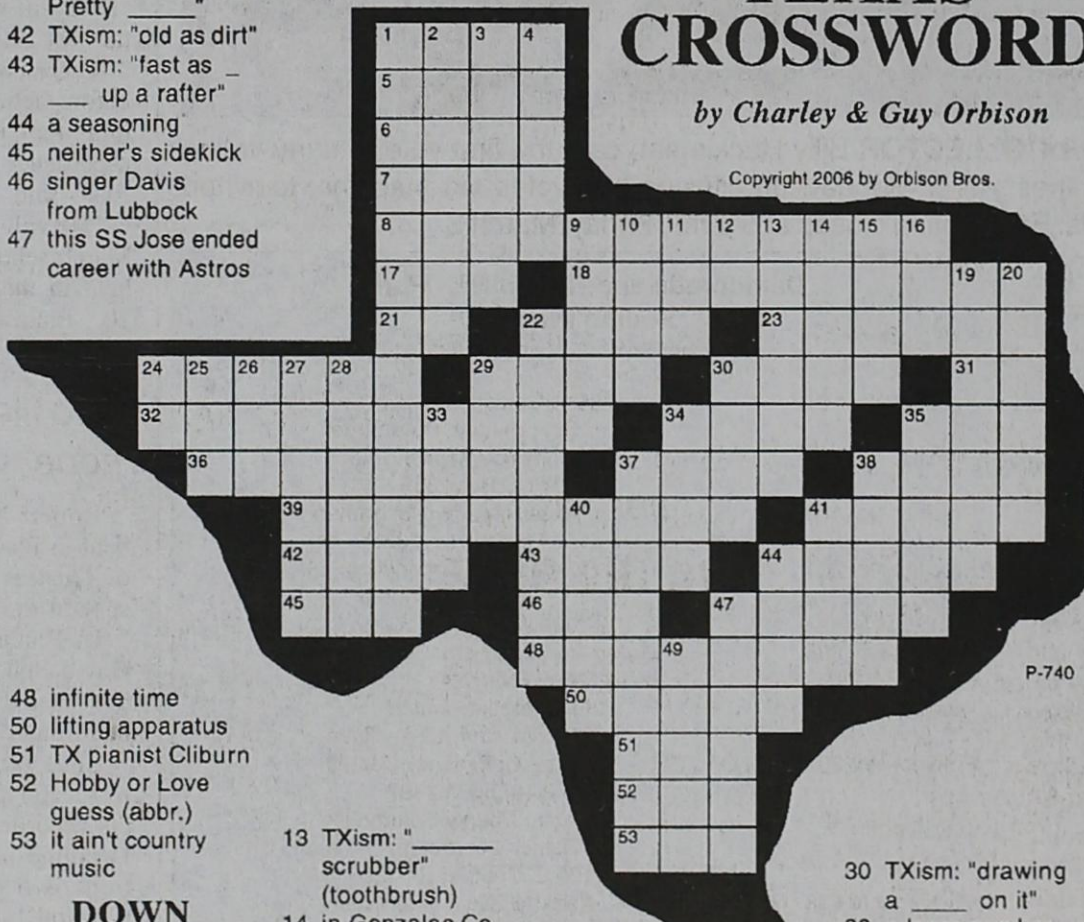
- 1 Marble Falls newspaper (2 wds.)
- 2 TXism: "couldn't find \_\_\_\_\_ hair of him"
- 3 TXism for "similar"
- 4 former Air Force Base near Lubbock
- 9 TXism: "not the \_\_\_\_\_ bit interested"
- 10 deposits eggs
- 11 TXism: "\_\_\_\_\_ Katy bar the door"
- 12 USA soldier (abbr.)

- 13 TXism: "\_\_\_\_\_ scrubber" (toothbrush)
- 14 in Gonzales Co. on hwy. 87
- 15 shortened name of east TX reptile
- 16 very long time
- 19 TX Joe Don Baker baseball film: "The \_\_\_\_\_"
- 20 TX Chad Hedrick \_\_\_\_\_ ice to win gold in Torino
- 22 playing in San Antonio for the Mavericks (2 wds.)
- 24 abbr. for an elevation

## The Original TEXAS CROSSWORD

by Charley & Guy Orbison

Copyright 2006 by Orbison Bros.



P-740

## WEATHER

	High	Low	Prec.	Snow
Tuesday	67	19		
Wednesday	57	25		
Thursday	55	24		
Friday	66	30		
Saturday	46	19		
Sunday	64	31		
Monday	79	19		

Feb. Rainfall 0.13  
2006 Rainfall 0.13  
2006 Snow

Readings taken every day at 7 a.m. at KDHN, official National Weather Service recording station for Dimmitt.

## The Castro County News

Office: 806-647-3123 FAX: 806-647-3112  
Mobile: 806-647-8316  
E-mail: cbradford@castrocountynews.com  
P.O. Box 67, Dimmitt, TX 79027

Published each Thursday in Dimmitt, Texas, 108 W. Bedford. Periodicals postage paid at Dimmitt, Texas. Publication Number 092980.

One Year Subscription Rates:  
\$21.00 (in Castro County) \$22.50 (out of Castro County but in Texas)  
\$25.00 (out of Texas)  
Foreign subscriptions-please call for rates

Member of the Texas Press Association, West Texas Press Association and Panhandle Press Association.



### DEADLINES

Display and Classified Advertising.....	Tuesday Noon
Agriculture, Business and Industry News.....	Tuesday Noon
Social and Church News.....	Tuesday Noon
Community Correspondence.....	Tuesday Noon
Personal Items.....	Tuesday Noon
General News, City and County.....	Tuesday Noon
Editor and Publisher.....	Chris and Joye Bradford
Advertising Department.....	Marlene Taylor
Managing Editor.....	Davie Ann Browder
Production Department.....	Chris Bradford
Bookkeeping.....	Marlene Taylor
Community Correspondents.....	Dorothy Hopson, Dimmitt Virgie Gerber, Nazareth Angie Arguijo, Hispanic Voice



## Naz News

with Vergie Gerber, 945-2669

After the Swiftettes won their State quarter final with Whitharral on Tuesday night in Levelland, we had high hopes of maybe going to state but - things do change! As Father Ken had in our bulletin's quote, "Know that we love you and appreciate you, as St. Paul said, 'In season and out of season.' Cold hopes are just potholes on the journey, where friendships, family, fun, sportsmanship and faith are real blessings!!"

Now, we hope Springlake-Earth can go ahead and bring the State title back home!

The Swifts won their Region I Conference A Area game with wheeler, 66-30, Thursday night at the Caprock Activity Center in Amarillo. They will play Monday at Frenship High School in Lubbock. Hopefully, we will play in the Regional games in Levelland this weekend!

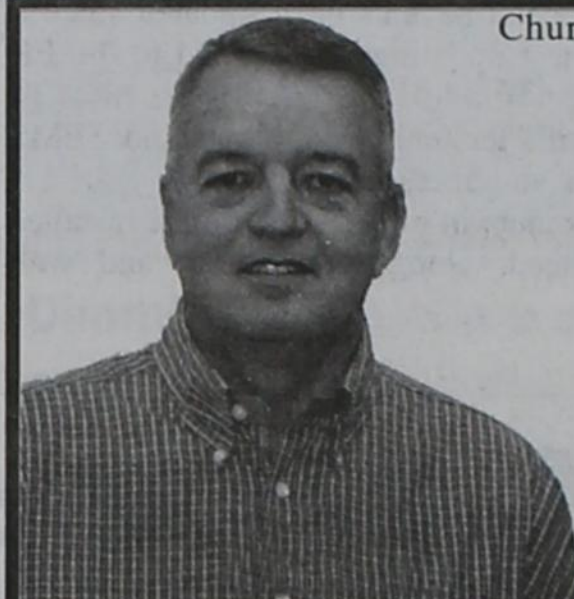
Congratulations to Marshall and Angie Harrison of Nazareth on the birth of a baby girl, Melanie, Feb. 15, 2006, at BSA Hospital in Amarillo. She has one brother, Matt, and one sister, Molly. Grandparents are Gary and Trudy Harrison of Andrews and Ray and Carol Yoakum of Midland. Great-grandparents are Marshall Yates of Lamesa and Joe and Lois Yoakum of Fort Worth.

A group of family and friends enjoyed a fish fry Sunday evening at the home of Jim and Sandee Hoelting.

Please pray for rain, snow, moisture of any kind, our Nazareth seminarian, Nick Gerber; for all of our sick people, as well as those who are serving in our Armed Forces. Ida Gibson is home to recuperate from having shoulder surgery and James Acker is home after three weeks of hospital care in Plainview.

During Lent, the Way of the Cross will be a special service in Holy Family Church each Friday at 7 p.m., followed by a talk "Close to Christ." Also, on each Sunday, at 4 p.m., the Youth will pray the Way of the Cross in Holy Family Church.

**A  
New  
Voice  
for  
Castro  
County**



**Vote!  
Lint Merritt  
Castro County Judge**

March 7, 2006  
Democratic Primary

Paid by Mark Welch, Treasurer,  
714 Maple, Dimmitt, Texas 79027

**A qualified  
surgeon right  
here at home.**



Dr. Greg Matos

For additional  
information or to  
schedule an  
appointment,  
please call  
(806) 647-2194.

Medical Center of  
Dimmitt  
112 West Jones  
Dimmitt, Texas 79027

Castro County  
Healthcare

- ◆ Certified by the American Board of Surgery.
- ◆ Completed training at the Puerto Rico School of Medicine.
- ◆ Trained in surgery at Winthrop Memorial Hospital in Long Island, NY.
- ◆ Completed a Fellowship in surgery at Mercy Hospital in Long Island, NY.
- ◆ Has been an assistant professor of surgery at the University of Puerto Rico and Texas Tech Department of Surgery.
- ◆ Interests include family practice, abdominal surgery, gynecological surgery and cancer of the breast, head and neck.
- ◆ Chief of Surgery for the Veteran's Administration of Amarillo for 11 years.
- ◆ Has been with Castro County Healthcare since October 2001.
- ◆ Dr. Matos and wife, Liz, have two children.

Se habla español.

**COW POKES®**

By Ace Reid



"Great news, Ma, we only lost half as much money this year as we did last year!"

We welcome the opportunity to visit with you about your farm loan needs in 2006.  
**A great bank in the people business!**  
Serving all of Castro County

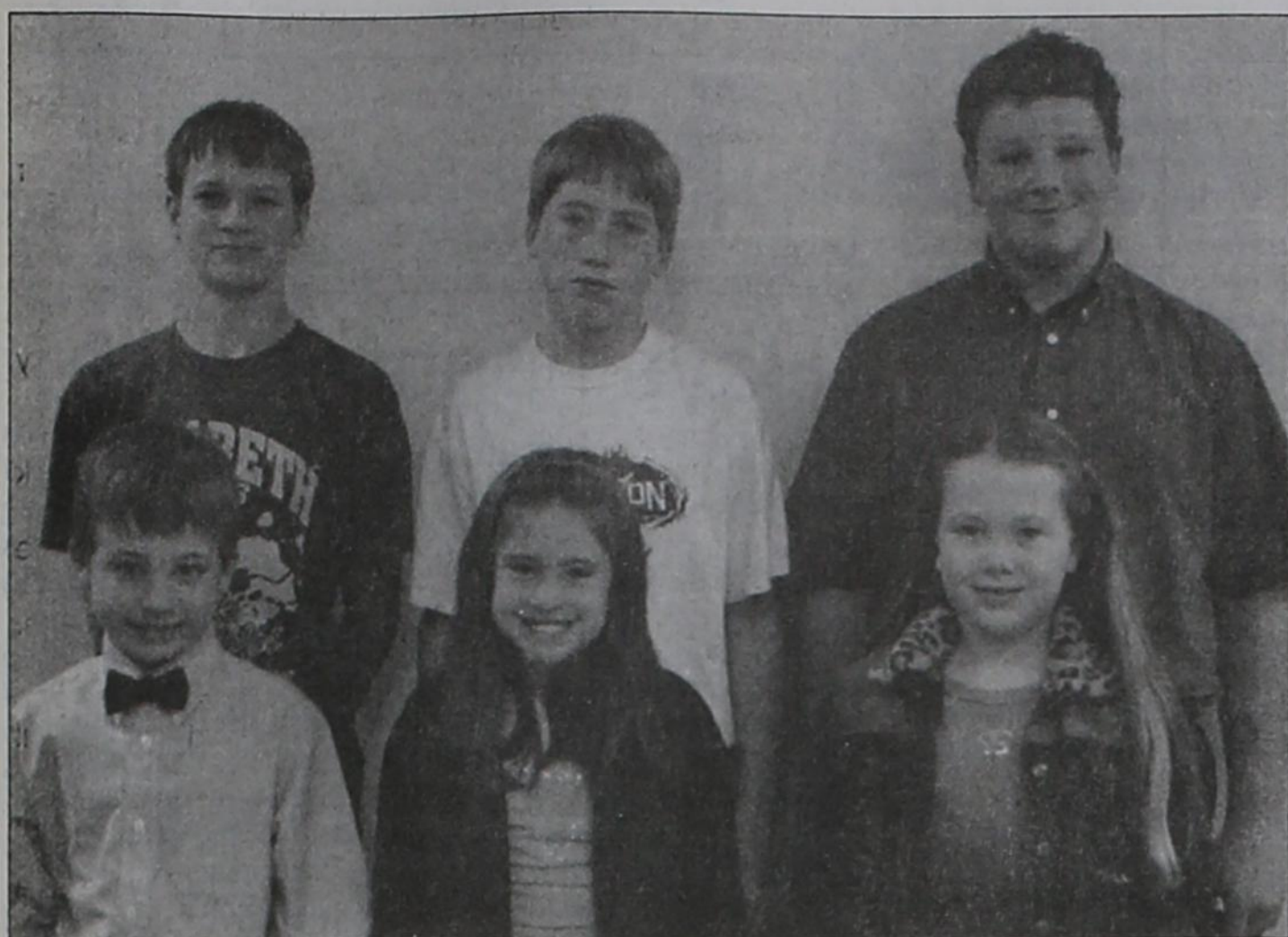
Hwy 86 and FM 168 Nazareth, Texas  
806-945-9504

Member FDIC

Equal Housing Lender



Tim Farris  
President



### Super Spellers

Competing at the Castro County Spelling Bee, held Friday at Rhoads Memorial Library were the Senior Group, grades 8 and below and the Junior Group, grades 5 and below. Top row, senior group from Nazareth, Ryan Birkenfeld, Anthony Hochstein and Jeremiah Fetsch. The junior group, from Hart, bottom row: Gage McCook, Kamber Higgins and Alyssa Davis. Birkenfeld, the senior winner, will advance to the regional spelling bee. He spelled "follicle" and "ordination" for the win. Winning for the Junior Group was Gage McCook, who spelled "mission" correctly.

## Hispanic Voice

with Angie Arguijo, 647-0106

Hola, todos. Hello, everyone. My goodness, there must really be nothing going on in our little town. I

haven't gotten any news in quite a while. I guess the burn ban has affected us all. I know my family is long

overdue for a good cook-out. It's been like torture to our friend Lino Perez. His specialty is grilling, and this

weather is just not working for him. Well, since no one has sent me any info, I'll just share what I know.

Mrs. Santos G. Perez recently returned from a trip to South Texas. She says she slept the majority of the way, but remembers going through San Antonio and other beautiful towns. She says the trip was nice and she enjoyed seeing her family.

Congrats to my beautiful niece Karina Dozal for making the A-B Honor Roll and having perfect attendance for the third six weeks. Keep up the hard work.

Happy Anniversary to my good friends Miguel and Chuy Medrano. They celebrated nine wonderful years together on Feb.18. May God bless you and your family.

Happy early birthday to my friend Dora Chavez. She will be celebrating her big day in March, and she's making big plans. Don't forget to fill me in.

A reminder to the DHS Class of 1996. This is our year. If anyone knows anything about a class reunion please let me know. I have had several people ask me about it, but no one seems to know anything. Hope to hear something soon.

Please, please, please pray

See HISPANIC, Page 9

### On the Go

Mrs. Hopson has decided to lay down her pen and take a well-deserved rest from her work here. So we're looking for someone who'd like to submit a weekly column on the goings-on in Dimmitt. Please call 647-3123 for more information. NOTE: You need to be able to submit your columns via e-mail.

LENOX®

Gifts That Celebrate Life.

**LENOX® - THE GOLD STANDARD IN CHINA**

### WHY CHOOSE LENOX®?

Among the world's oldest and most respected names in fine tableware and giftware

The only American porcelain in continuous service in the White House for more than 80 years (Wilson service); new services created for Roosevelt, Truman, Reagan and Clinton

Classic mix and match patterns including holiday patterns that coordinate with non seasonal patterns

Exclusive breakage policy - Lenox® will replace any broken piece in stock at half the suggested retail price.

Exclusive drop-ship service. Lenox® will drop ship your china or other items to your door - no need to worry about how you will get your order after your wedding.

Lenox® offers a wide array of products: china, casual dinnerware, crystal stemware and giftware, aluminum serveware, stainless and sterling flatware, and more.

Superior products and superior customer service.

Lenox® is available in Hereford exclusively through Detten's. Come in and see the Lenox® quality difference.

Free to couples who register a Lenox® china pattern with Detten's-Kirk Steiff Wedding Promises Crystal Flutes. A \$30 value.

Autumn - One of the oldest active Lenox® patterns (1918)

Join us every Saturday in March from 10 a.m. until 1 p.m. for our Bridal Registry Open House

**Detten's**

Furniture • Flooring • Gifts • Bridal Registry

209 E. Park Ave. • Hereford, TX • 364-4073 • www.dettens.com

## Re-elect Castro County Judge Bill Sava

Dimmitt Postmaster (24 years) \* Castro County Tax Payer Since 1967  
Centennial Committee (Co-Chairman) \* Fair Board \* 4-H Volunteer \* Follies Director  
Sunday School Teacher (17 years) \* Dimmitt's 1987 Citizen Through The Years  
O.M. Coach \* Kiwanis Club \* Sesquicentennial Wagon Train Entertainment Committee  
US Army 1961-1963 (Army Reserve through 1965) \* Scout Leader \* Kids Inc. Coach

### Castro County Judge 2003-2006

County Budget Down \$375,000 - County Reserve Funds Increased to \$1,200,000  
Cases on Docket Down 101 Cases (2003: 369; 2006: 258)

Acquired Ross Building and Annex  
Homeland Security Grants \* Emergency Management

**"One Good Term Deserves Another"**

Political Advertising - Paid For by William F. (Bill) Sava





# CCHD approves renovation plans

The Board of Directors for Castro County Hospital District on Thursday night called an election for May 13 for board members.

The only position on the five-person board open this time is that filled by Henry Ramaekers.

As of press time, only Ramaekers had filed for the position. Deadline to file at the hospital administration office is 5 p.m., March 13.

Earlier in February, the board met and approved a building project that includes a new Medical Office Building (Clinic), a new Administrative Office Wing and renovations throughout the hospital. The new clinic will be just east of the hospital and attached to it through a breezeway.

Many parts of the hospital haven't been updated since it was built in 1963. The last updating was limited to the ER and CT areas in 1992.

The new project will include lab, ultrasound, EMS services, nurse's station and medication room.

The original metal cabinets in the patient rooms, installed in 1963, will be replaced, along with carpet and wall coverings.

The new Administrative Office Wing will consolidate most of the administrative functions of the hospital and is necessary in order to bring Home Health, Hospice and DME onto the campus.

The District is also in the process of implementing complete electronic medical records, which will also help to increase efficiencies when completed.

The hospital is also optimistic about the possibility of an aquatic pool being added to the project for physical therapy patients.

Previously, the hospital had to refer patients to Amarillo and Hereford for aquatic rehab therapy.

The location of the new Clinic is allowing Physical Therapy to begin developing a cardiac rehab program. Both the aquatic and cardiac rehab programs will be new services.

Cost for the building and renovation is estimated at \$2.3 million. Financing is being provided by First United Bank and will be paid for out of operating revenues from the District.

The building is Cooper Medical out of Oklahoma City. The project is scheduled to begin in April and be finished by December, 2006.

# Hays honored with wedding shower

The charming home of Beth and Darrell Buckley was the setting for a wedding shower honoring Taryn Hays, bride-elect of Jess Owen from Corinth on the morning of February 18, 2006.

The serving table was covered with a lovely antique, ivory, crocheted, lace tablecloth and accented with Santa Rosa candles. Brass serving pieces, antique hand-painted china plates and cups adorned the exquisite table. Fresh fruit with dip, chocolate covered strawberries, miniature muffins and quiches were served to numerous guests.

There were 32 hostesses from Dimmitt who helped with the festivity. The wedding gift presented to the couple was a set of king-sized sheets and a set of Cuisinart pots and pans.

Honored guests included Taryn, her mother, Kim of Dimmitt, Taryn's grandmother, Murna Miller, from Horseshoe Bay, her aunts, Cara Shiu from Houston, Ann Hays and Yvonna Hays, and her cousin, Dondi Hays, all from Dimmitt.

Out-of-town guests included long-time friends Valerie Gonzales, Julie Merritt, and Jacy Roberson and her son, Brooks, all from Lubbock.

# Bridal shower honors McLean

A bridal shower was held in honor of Cassie McLean, bride-elect of John Lyon, on Saturday, Feb. 25, in the home of Kay Rogers. Special guests were Jill McLean, mother of the bride; Summer McLean, sister of the bride. Out-of-town guests were Joan Craig of Austin; Patricia Braafladt of Amarillo; Misty Howell of Houston; Carrie Rogers of Holdenville, Okla.; Shawna Schulte of Pampa; Stacy Davis of Hobbs, N.M.; and Rala Underwood and Jacy Roberson of Lubbock.

The centerpieces for the serving table were arrangements of red tulips with assorted greenery and topiaries. Guests were served finger sandwiches, chocolate-dipped strawberries, petit fours and almond tea.

The hostesses presented the couple with their bedding ensemble, including the comforter, shams, dust ruffle and accent pillows.

# DARSPA offers scholarships

The Dimmitt Area Retired School Personnel Association will award two educational scholarships this spring. Eligible to apply for the scholarships are graduating seniors from Dimmitt, Hart and Nazareth High Schools and current college or university students. All applicants must be pursuing a career in the field of education.

Application forms are available in each of the high school counselors' offices or from Mary Jo Brown at 1603 Sunset Circle in Dimmitt and by telephone at 647-3250. Deadline for application is April 10.

# Castro County Healthcare

NOW OFFERING

## MASSAGE THERAPY

MONDAY - THURSDAY

5:00PM TO 8:00PM

PLAINS MEMORIAL HOSPITAL

WELCH REHAB

647-8730

MASSAGE THERAPISTS

BEA ACKER AND BRENDA SIMMONS

Visit Lowe's for ALL your LENTEN needs!

Shurfine packed in water  
**Chunk Light Tuna**  
6 oz can  
**3 for \$1**

Select group including:  
Green Beans,  
Golden Corn or  
Mixed Vegetables  
**Shurfine Vegetables**  
14.5-15.25 oz can  
**3 for \$1**

Snack Size  
**Navel Oranges**  
**20 for \$1**

Single Serving  
Select varieties  
**Shurfine Frozen Fish Fillets**  
10 for \$10  
Mix or match  
4-6 oz pkg.

Family pack  
Boneless. Great for roast,  
chops, stir fry or tamales!  
**Pork Sirloin Roast** **\$1.39** lb.  
Small pack lb. \$1.59

Select group  
Half Moon or  
Chunk  
**Shurfine Cheese**  
16 oz package **\$1.99**

Spicy Hot  
**Jalapeño Peppers**  
**2 lbs \$1**

Shurfine original or no salt added  
**Tomato Sauce**  
6 for \$1  
8 oz can

Prices Good  
Wednesday Mar 1  
thru Tuesday Mar 7, 2006



103 W Belsher Dimmitt 647-

**Card of Thanks**

We thank all of you and appreciate all the love and concern shown to us during Houston's illness. The EMT and hospital staff were efficient, professional and caring. Thanks also for all the prayers, phone calls, visits and cards. We are blessed to live in Dimmitt. It is a wonderful place to live!

Love to everyone,  
Houston Lust and family

'Sewer-Water-Gas-Septic Systems  
Residential & Commercial

**Keith Acker Plumbing**  
Master Plumber  
Plumbing License #M-18834

501 E. Bedford  
(Formerly Castro Oil & Gas) Dimmitt, Texas 79027  
Home: 806-647-2130  
Mobile: 806-647-8223

**Bites from Beef-N-Bakin'**  
104 NW 2<sup>nd</sup>  
647-4377

Just wanted to share a little about our first month in business. We opened our doors on Feb. 2 to an eager crowd awaiting donuts. What a disappointment when we informed them we were not making donuts. See, for us 3 or 4 o'clock in the morning plus all day doesn't work with four kiddos. However, we introduced our chocolate and vanilla iced cinnamon rolls and they seem to be well-liked. I've even been told that Diet Dr. Pepper cancels any extra calories that a chocolate covered cinnamon roll may have. Another favorite is our streusel topped blueberry muffins. We have also added Jalapeño Cheese or Cheddar Cheese Smoked sausage rolls at breakfast.

We've managed to acquire a group of "rowdy" coffee drinkers in the mornings. Their presence makes us sit back and realize what we were missing before. Our mornings could not be more blessed.

As the morning hours passed and we moved into the lunch hour other things got hectic ... to our surprise our chairs were full, our phone was ringing off the wall and our drive up window stayed busy. Our days remain busy and we'd like to thank everyone for their patience with us those first days.

Valentine's night we had a good turn out and hope everyone enjoyed their steaks as much as we enjoyed making your night special. With our first month behind us we move forward and hope that those of you who joined us will come again and tell a friend, and those of you who haven't will come in and check us out. Our hours are 7:30 a.m. until 2 p.m. unless we offer a special, so keep your ears and eyes open for those special days. Until then may all your days Be Special!

Kasey and Stacie Whitley

**Great Savings on High-Speed Internet and Cable TV!**

Use the Internet like never before

- "Always on" connection
- No phone line needed
- Download photos, emails, and music faster and easier

Blazing Fast Internet only **\$24<sup>95</sup>** monthly for the first 3 months!

Enjoy all the benefits of Cable Television

- Local news, weather and sports
- Service to all rooms in your house
- All your local channels

Great Cable Television only **\$29<sup>95</sup>** monthly for the first 3 months!

30-day Money-Back Guarantee!

**Cebridge connections**

Order online at [cebridge.net](http://cebridge.net)  
**1.866.705.2701**

Cebridge Connections 2006. Cebridge and Cebridge High-Speed Internet are among the trademarks of Cebridge Connections. For new residential customers only and offer expires 03-31-06. Offer valid for 3 months and then rolls to current monthly pricing. Services may not be available in all areas. Prices and available speeds may vary by market. Download and upload speeds are maximum speeds. Actual speeds may vary and are not guaranteed. Installation fees may apply for complete installation and more than one outlet. Taxes, other fees and restrictions may apply, with the actual amount depending on location and service ordered. To be considered a new customer, customer's account must have been inactive for a minimum of 180 days, or customer must not have received Cebridge Connections service for a minimum of 180 days, and customer must have no outstanding obligation to Cebridge Connections. A cable modem, network card or cable set top box may be required at installation. If you are not satisfied with the service(s) ordered, you must contact us within 30 days to receive a full refund. Offer subject to change. CEN03639



# CHURCH NEWS

## Except the Lord build the house

*"Unless the Lord builds the house, they labor in vain who build it; unless the Lord guards the city, the watchman stays awake in vain." (Psalm 127:1).*

Various people have applied this passage to the building of a temple, such as that in the days of Solomon or Zerubbabel, or the building of a physical dwelling, such as a house.

But when we look at Psalm 127:1 along with the entire 127<sup>th</sup> Psalm, it is evident that these words are a reference to building a household, or family.

What are some of the parallels that can be drawn between the building of a construction project, such as a physical dwelling, and the building of a family as God intended?

First, when building a family as God intended we must first consider the



**BRETT PAGE**

design.

We learn of God's design for the family from Genesis 2:18-24. God's design for the family mandates that there be one man and one woman.

This man and this woman are to cleave to one another for life.

Perverted ideas of a family (such as same sex marriages, etc.) may be

promoted by man, but are never approved by God. Further, Genesis 4:1-2 teaches that children are to come after the marriage, not before.

Second, when building a family as God intended, we must consider the necessary materials.

That is, we must consider the qualities that God expects to be characteristic of our homes.

Our families ought to rest on the foundation of God's truth (John 6:68).

They are to be surrounded by walls of love (I Corinthians 13:4-7), resulting in the family members dealing with one another with kindness, patience, and unselfishness.

Our homes are to be filled with discipline (instructive, corrective, and self-discipline).

Our homes are to be

homes where family members respect one another. Our homes are to be insulated from outside threats by commitment.

Third, consider the workers.

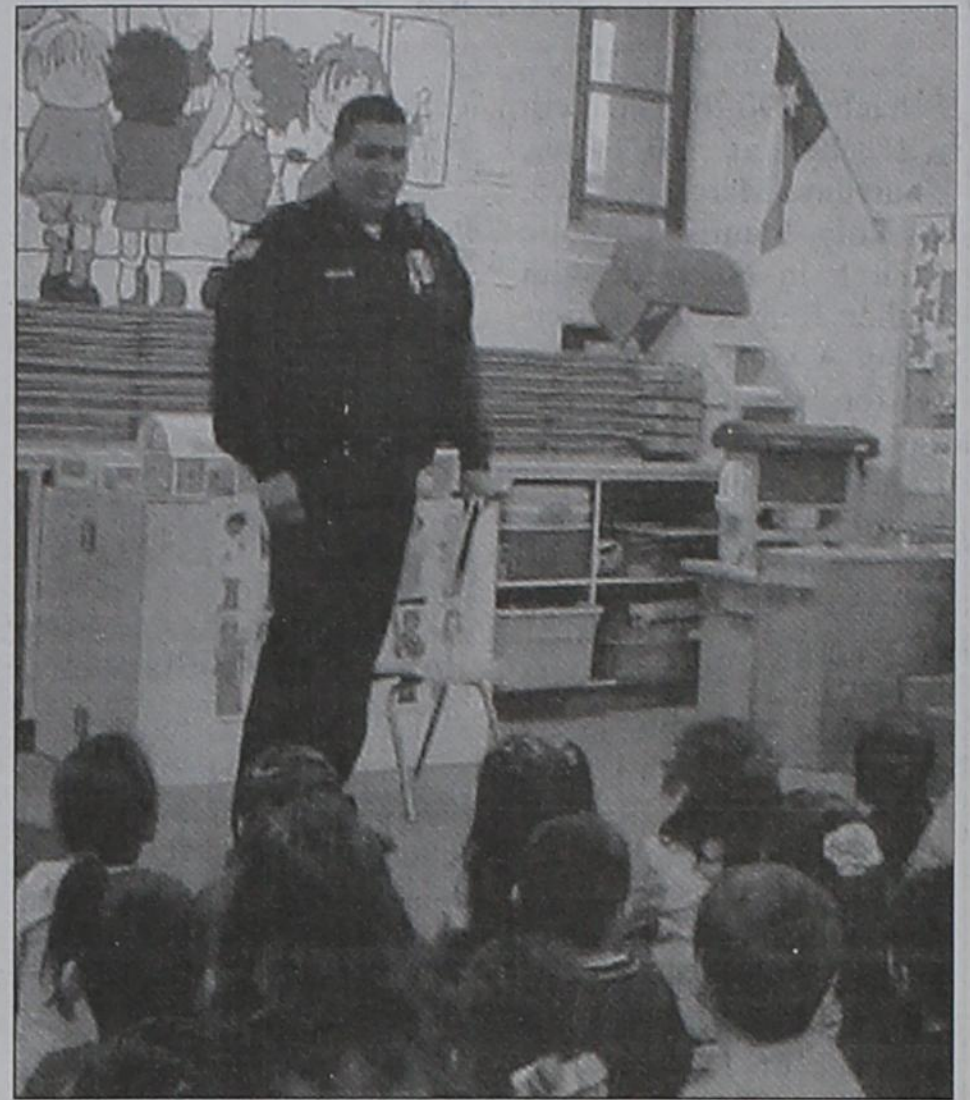
That is, those persons who are responsible for building families as God desires. While the church may be able to provide us with the help and influence we need, the responsibility is left up to the family members.

More specifically, the responsibility ultimately rests with the husbands/fathers.

As the head of the family, a father is obligated to ensure that Christ can be found in his home.

\*\*\*

*Brett Page is the preacher at Fourth and Bedford Church of Christ, Dimmitt.*



### Dimmitt Police office speaks at RES

Dimmitt Police Officer Miguel Ontiveros recently spoke to the Head Start classes at Richardson Elementary school.

# Castro County Devotional Page

**Great Plains Ag Credit**  
Mark Kleman  
Vice President  
112 E. Jones • P.O. Box 128  
Dimmitt, Texas 79027  
(806) 647-3169 • Fax (806) 647-2052

**DeBruce Grain**  
Hwy 385 North  
P.O. Box 758  
Dimmitt, TX 79027  
(806) 647-2802 Local  
(800) 657-2802 Mails  
E-Mail: rhunter@debruce.com

CONCRETE • DITCHING • BACKHOE • PLUMBING  
SEPTIC SYSTEM INSTALLATION  
**Dimmitt Ready Mix & Construction Co.**  
718 EAST BEDFORD - DIMMITT, TX 79027  
(806) 647-3171 - FAX (806) 647-3354  
DEAN KIRBY (806) 647-4594  
ANTHONY KIRBY (806) 647-5210  
LIC. #8154 Mobile (806) 647-7544

**Dimmitt Printing & Office Supply**  
Roger Malone  
Mickey Bishop  
200 E. Bedford  
(806) 647-3286

**Dimmitt Equipment Co.**  
Farm Equipment Repair & Irrigation Engines  
Carroll Webb  
Gary Webb  
411 SE 2nd •  
Dimmitt, Texas  
(806) 647-4197

**AG SUPPLY, LTD.**  
dba Flagg Fertilizer Co.  
FLAGG INTERSECTION  
(806) 647-2241

**B & W Aerial Spray, Inc.**  
Box 769 • Dimmitt, Texas 79027  
806-647-2550

**C & S BATTERY, INC.**  
301 S.E. 2nd  
Dimmitt, Texas 79027  
806-647-3531  
CARY JACKSON Mobile 647-6291  
JOE DEE JOHNSON Mobile 647-7924

N. Hwy. 385  
P.O. Box 79  
Dimmitt, TX 79027  
Tel: (806) 647-3138  
Fax: (806) 647-3712  
Home: (806) 647-2318  
Mobile: (806) 681-3813  
**FRED BRUEGEL**  
SALES MANAGER  
**Westway**  
www.westwayfeed.com

**Facts About The BIBLE BY JOHN LEHTI**  
Copyright © John A. Lehti, Distributor Linage-Plus, Middletown, NY NATIONAL REPRESENTATIVE: Daily Advertising Service, P.O. Box 10278, Goldsboro, NC 27532

**DID JESUS REALLY CURSE THE FIG TREE ?**

IT IS RECORDED THAT JESUS, ON HIS WAY FROM BETHANY TO JERUSALEM, AND BEING HUNGRY, STOPPED TO PICK FRUIT FROM A FIG TREE (MARK 11:12-14). BUT, ALTHOUGH THE TREE WAS IN LEAF, THERE WERE NO FIGS AND JESUS SAID, HEREAFTER, NO MAN WOULD EVER EAT FRUIT FROM THAT TREE! SOME AUTHORITIES SAY JESUS, FOLLOWING THE ORIENTAL CUSTOM OF HOLY MEN, PUT A CURSE ON THE TREE, FROM DISAPPOINTMENT AT NOT FINDING FRUIT. OTHER AUTHORITIES STATE THAT, BECAUSE THE TREE WAS IN LEAF AND THEREFORE SHOULD HAVE HAD FIGS, JESUS WAS POINTING OUT THAT, WHEN ONE OUTWARDLY SHOWS A GOOD CHARACTER WITHOUT THE FRUITS THEREOF, HE IS A HYPOCRITE, OF NO VALUE TO THE KINGDOM OF GOD, BUT....

...STILL FURTHER AUTHORITIES MAINTAIN THAT, FOR JESUS TO CONDEMN A TREE, FOR NOT GIVING FRUIT, DOES NOT SEEM COMPATIBLE WITH HIS GENTLE LOVING NATURE AND, SINCE JESUS WAS AT JERUSALEM FOR THE PASSOVER, THIS PLACES THE TIME OF YEAR AT EARLY APRIL WHEN THE FIG TREE HAS JUST BEGUN TO LEAF AND GROW FIGS, WHICH THEN MATURE IN LATE JUNE... THUS, ALL JESUS MERELY DID, WAS REMARK THAT, BECAUSE THE TREE HAD ALREADY BEGUN GROWING LEAVES, BUT NO FRUIT, IT WAS BARREN, AND NO ONE WOULD HARVEST FIGS FROM IT WHEN THE FRUIT SEASON ARRIVED!

EACH OF THESE THEORIES SEEM TO HAVE VALID POINTS, SO IT REMAINS FOR THE STUDENT TO MAKE HIS OWN CHOICE - WHICH DO YOU THINK ?

**NEXT WEEK : HOW ISRAEL REALLY MARCHED INTO THE PROMISED LAND !**

SAVE THIS FOR YOUR SUNDAY SCHOOL SCRAP-BOOK

<p><b>New Hope Memorial Baptist</b> 300 NE 7th, Dimmitt <b>Sunnyside Baptist</b> Sunnyside Willis Blair (Interim).....647-5712 <b>First United Methodist</b> 504 4th St PO Box 409 Hart 79043 Quita Junes.....938-2462 <b>La Asamblea Cristiana</b> 400 NW 5th, Dimmitt Noe G. Marquez.....647-4755 <b>First United Methodist</b> 110 SW 3rd, Dimmitt Virgil Ichtertz.....647-4106 <b>Iglesia De Cristo</b> E. Lee &amp; SE 3rd, Dimmitt Pedro A. Gonzalez <b>Church of the Immaculate Conception of Mary</b> 1001 W. Halsell, Dimmitt Father Ken Keller.....647-4219 Father Lupe Mayorga <b>It's Jesus and the Love of God Church</b> (Bilingual) 301 NE 7th, Dimmitt Felix Sanchez.....647-3668 <b>Hart Church of Christ</b> 416 Avenue H, Hart Aaron Lee.....938-2267</p>	<p><b>Church of God of the First Born</b> 611 E. Halsell, Dimmitt <b>Immanuel Baptist</b> 501 SE 3rd, Dimmitt <b>Rosa De Saron</b> 411 NE 6th, Dimmitt Abel Vargas.....647-4088 <b>First Baptist</b> Matthew Baird 302 Ave. G, Hart 938-2316 <b>Primeria Iglesia Bautista</b> 9th and Etter, Dimmitt Antonio Rocha <b>St. John's Catholic</b> Hart Father Lupe Mayorga.....938-2936 <b>Church of Christ</b> SW 4th at Bedford, Dimmitt Brett Page.....647-4435 <b>Rose of Sharon Temple</b> 407 NE 4th, Dimmitt <b>First Christian</b> 600 Western Circle Drive, Dimmitt 647-5478 Bruce Murphy</p>	<p><b>La Iglesia De Dios Del Promojenito</b> East Halsell Street, Dimmitt <b>Holy Family Catholic</b> Nazareth Fr. Ken Keller.....945-2616 <b>Abundant Life Family Church</b> 500 S. Hwy. 385, Dimmitt 647-5288 Tom and Kay Mullins <b>First Assembly of God</b> 300 SE 2nd, Dimmitt Doris Barnard.....647-5662 <b>First Baptist</b> 1201 Western Circle Drive, Dimmitt Howard Rhodes.....647-3115 <b>Lee Street Baptist</b> 401 SW 2nd, Dimmitt David Denman <b>Hear The First United Methodist Church</b> Morning Worship Service Sundays, 10:45 a.m. On KDHN 1470</p>
--	--	--

**Dale's Auto & Salvage**  
200 N. Hwy. 168, Nazareth  
(806) 945-2223  
Dale Acker

**Castro County News**  
Subscribe Today!  
Only \$21 per year!  
647-3123

**Tidwell Sprayers, Inc.**  
Todd Hatla  
North Hwy. 385, Dimmitt  
Aerial & Ground Application  
Custom Plowing  
806-647-5183

**Colonial Funeral Home**  
809 Butler Blvd PO Box 817  
Dimmitt, Texas 79027  
(806) 647-4444  
Eva Mendez-Mullins Owner/  
Funeral Director  
Se Habla Español  
Mike Mullins Owner/  
Funeral Director  
"Our Family Serving Your Family"  
Proud to be Dimmitt's ONLY Family Owned and Operated Funeral Home

Sunday Morning Bible Study-9:30 a.m.  
Sunday Morning Worship Service-10:30 a.m.  
Sunday Evening Worship Service-6:00 p.m.  
Wednesday Evening Bible Study-7:00 p.m.  
**Jesus**  
**Fourth and Bedford Church of Christ**  
647-4435

**DAYBREAK**  
DIMMITT NURSING & REHABILITATION, L.P.  
**Erin Crosson**  
Executive Director  
1621 Butler Blvd.  
Dimmitt, TX 79027  
Office: (806) 647-3117  
Fax: (806) 647-5212  
www.daybreakventure.com

IN CONTINUOUS OPERATION SINCE 1909  
**Hale County Abstract Company, Inc.**  
512 Ash Street  
Dimmitt, TX 79027  
Phone (806) 293-3674  
Fax (806) 293-7991  
100 W. Bedford Street  
Dimmitt, Texas 79027  
Phone (806) 647-3154  
Fax (806) 647-4558  
Swehear County Abstract Bldg.  
115 S. Maxwell  
Tulsa, Texas 78088  
Phone (806) 995-3554  
Fax (806) 995-3590  
Marsha Cobb  
Escrow Officer  
castro@halecountyabstract.com

**Castro County Healthcare**  
MEDICAL CENTER OF DIMMITT  
GENERAL GYNECOLOGICAL SURGERY  
**Gregorio Matos, MD**  
General Surgery  
112 West Jones • Dimmitt, TX 79027  
(806) 647-2194 • FAX (806) 647-0663

**North Gin of Dimmitt**  
North Highway 385  
Dimmitt, Texas  
806-647-5338

Machine Shop • Millwright  
Portable Welding  
**Dimmitt Welding & Electric**  
(806) 647-3128  
P.O. Box 589  
DIMMITT, TEXAS 79027  
J. D. Parker 647-4396  
Cell 647-6024

**Hart Producers Co-op Gin**  
Box 347  
Hart, Texas 79043  
Office: (806) 938-2189 • Fax (806) 938-2478  
**Troy Tolbert**  
Manager  
Mobile: (806) 647-7404  
**Nancy Mathis**  
Office Manager

**Rafter 3, LTD**  
FM 1055  
647-5103

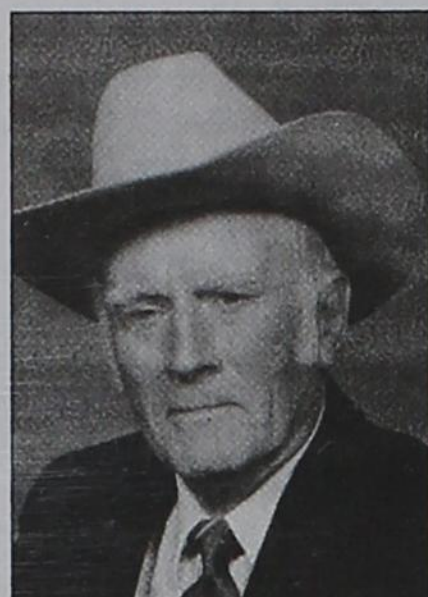
**LOWE'S**  
Jr. Vasquez 410 Broadway, Hart 938-2312  
Joe Murray 103 W. Belsher, Dimmitt 647-2488  
"Proud to Support the Community Churches"



# Obituaries

## JOHN HENRY SCHACHER 191-2006

Services for John Henry Schacher, 90, of Nazareth will be at 10 a.m., Thursday, March 2, 2006, at Holy Family Catholic Church in Nazareth with Father Ken Keller officiating. A vigil service was set for March 1, Wednesday, at 8 p.m. at Holy Family Church in Nazareth. Arrangements are being handled by Colonial Funeral Home of Dimmitt.



**John Henry Schacher**

Mr. Schacher died Monday, Feb. 27, 2006, at his home. He was born Aug. 3, 1915, in Cedar Rapids, Neb., and moved to Nazareth in 1917 from Nebraska. He married Norma Braddock on Sept. 19, 1949. He was a member of Holy Family Catholic Church, fourth degree Knight, and an honorary life member of the Knights of Columbus. He was a charter member of the American Legion and served 12 years on the Nazareth School Board. He served in the U.S. Army during World War II. He was drafted on Jan. 27, 1942, and served in the Fifth Army under General Patton in the 433 coast artillery battery. He was often used as an interpreter for Gen. Patton due to his fluent German and Italian dialect. While on duty in the three years he received six Bronze Stars and one Marksmanship medal. He was honorably discharged on Sept. 15, 1945. He was engaged in farming and ranching his whole life.

Survivors include his wife, Norma; four sons, Bill, Rusty and Ben, all of Nazareth and Ivan of

Stapleton, Neb.; three daughters, Mary Jo of Santa Fe, N.M., DeZane and Simona, both of Dallas; 16 grandchildren; and six great-grandchildren.

Mr. Schacher was preceded in death by one son, Thomas Schacher; and his parents, George and Mary.

Pallbearers include his grandchildren: Rusty Schacher, Jeff Schacher, Joey Schacher, Coby Schacher, Wes Pope, Derrick Schacher, Tyler Schacher and Tanner Schacher. Honorary pallbearers are: Lawrence Schmucker and former pastors, Neal Dee, Jerry Stein and Dennis Boylan.

Memorials may be made to Home Merc, P.O. Box 248, Nazareth, TX. 79063 and to Catholic Daughters of America Scholarship Fund, P.O. Box 91, Nazareth, TX. 79063.

Survivors include his wife, Norma; four sons, Bill, Rusty and Ben, all of Nazareth and Ivan of



Services for Mary Frances Williams, 78, of Ulysses, Kan. and formerly of Ruidoso, N.M., were Wednesday, March 1, 2006, at the Church of Christ, Ulysses, Kan., with Pastor Warren Baldwin officiating. Additional funeral services will be at 2 p.m., Thursday, March 2, at Colonial Funeral Home Chapel in Dimmitt with Jason Stone official. Burial will be at Castro Memorial Gardens Cemetery in Dimmitt.

Mrs. Williams died Sunday, Feb. 26, 2006, at Bob Wilson Memorial Grant County Hospital in Ulysses, Kan. She was born Jan. 19, 1928, to William Thomas "W.T." and Edith (Caddell) Autry in Hollister, Okla. She

married William "Judge" Baldrige; he preceded her in death on May 25, 2001. She was an RN and taught nursing and worked at West Texas Hospital, Lubbock, Dimmitt, Fort Worth and Plainview.

She was a member of the Church of Christ in Ulysses, Kan.

Survivors include her son, Jerry D. Baldrige and wife Norma of Ruidoso, N.M.; two daughters, Janice Metcalf and husband Garry of Ulysses, Kan. and Karen Newman and husband Max of Dimmitt; a brother, James Autry and wife Joyce of Rocky Ford, Colo.; eight grandchildren; 10 great-grandchildren; and one on the way.

She was preceded in

death by her parents; husband; two sisters, Jo (Hogue) Fowler and Marie (Hutton) Bowen; and one son-in-law, Kelton "Turk" Cates.

A memorial has been established for the Church of Christ,

Ulysses, Kan. Memorials may be mailed to Grand County Funeral Home, 218 S. Main, Ulysses, KS. 67880.



## MARY FRANCES WILLIAMS



Eva Mendez-Mullins  
Owner/  
Funeral Director  
Se Habla Español



809 Butler Blvd PO Box 817  
Dimmitt, Texas 79027  
(806) 647-4444



Mike Mullins  
Owner/  
Funeral Director

*"Our Family Serving Your Family"*  
Proud to be Dimmitt's **ONLY** Locally Owned  
and Family Operated Funeral Home

We accept ALL pre-paid funeral plans from other funeral homes.

## ALEENE MAYNARD

Services for Aleene Maynard, 89, of Dimmitt, were at 2 p.m., Tuesday, Feb. 28, 2006, at Colonial Funeral Home Chapel with Jason Stone, Youth Minister at First Baptist Church, officiating. Burial will be at West Lawn Memorial Park Cemetery in Dimmitt.

Mrs. Maynard died Saturday, Feb. 25, 2006, in Dimmitt. She was born Dec. 16, 1916 at DeQueen, Okla., to George Edward Ervan Phillips and Lena Perdue Phillips.

She attended Dimmitt schools and married Samuel Wade Maynard on Dec. 16, 1932, in Dimmitt. She was a member of First Baptist Church of Dimmitt.

Mrs. Maynard retired from the Dimmitt Independent School District and lived in Littlefield from 1978 to 2004, when she moved back to Dimmitt.



**Aleene Maynard**

Survivors include a son, Wade Maynard and wife Walter of Dimmitt; a daughter, Sharon Swaringin and husband Dave of Arlington; one grandson; and three great-grandsons.

Mrs. Maynard was preceded in death by her husband in 1967; and her brothers, Bob Phillips, Pete Phillips and Clinton Phillips.

## A GOOD CHOICE... Preneeds • Monuments • Home owned-NOT Canadian owned BARTLEY Funeral Home

293-2225 or 1-877-582-1866 Serving Plainview & Surrounding Areas 1200 South I-27, Plainview

## MEMORIALS OF DISTINCTION



Granites Georgia Marble Bronze

## PERCY PARSONS

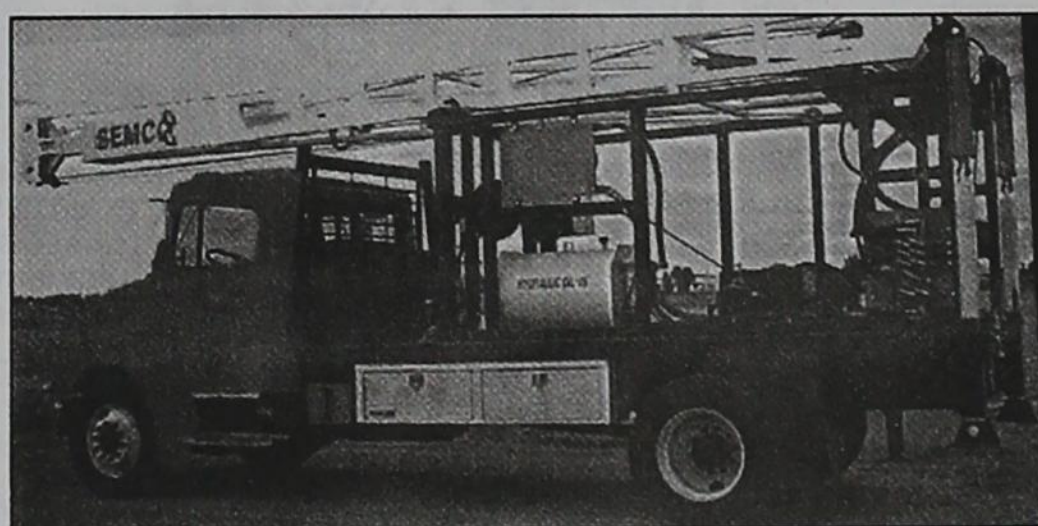
Office: 806-250-5544 • Home: 806-250-5100

PO Box 367, Friona, TX 79035

# Nelson Well Service

License No. 54758PKT

3 rigs standing  
by to meet your  
water well  
needs



Complete parts  
and service.  
Serringer parts  
Franklin Sub motors  
American Turbine

- 41 years serving Castro County
- Turbine
- Centrifugal
- Submergible
- Domestic Pumps
- Livestock pumps
- Hollowshaft electric motors (VHS)
- 24 hour service
- Gearhead sales and repairs

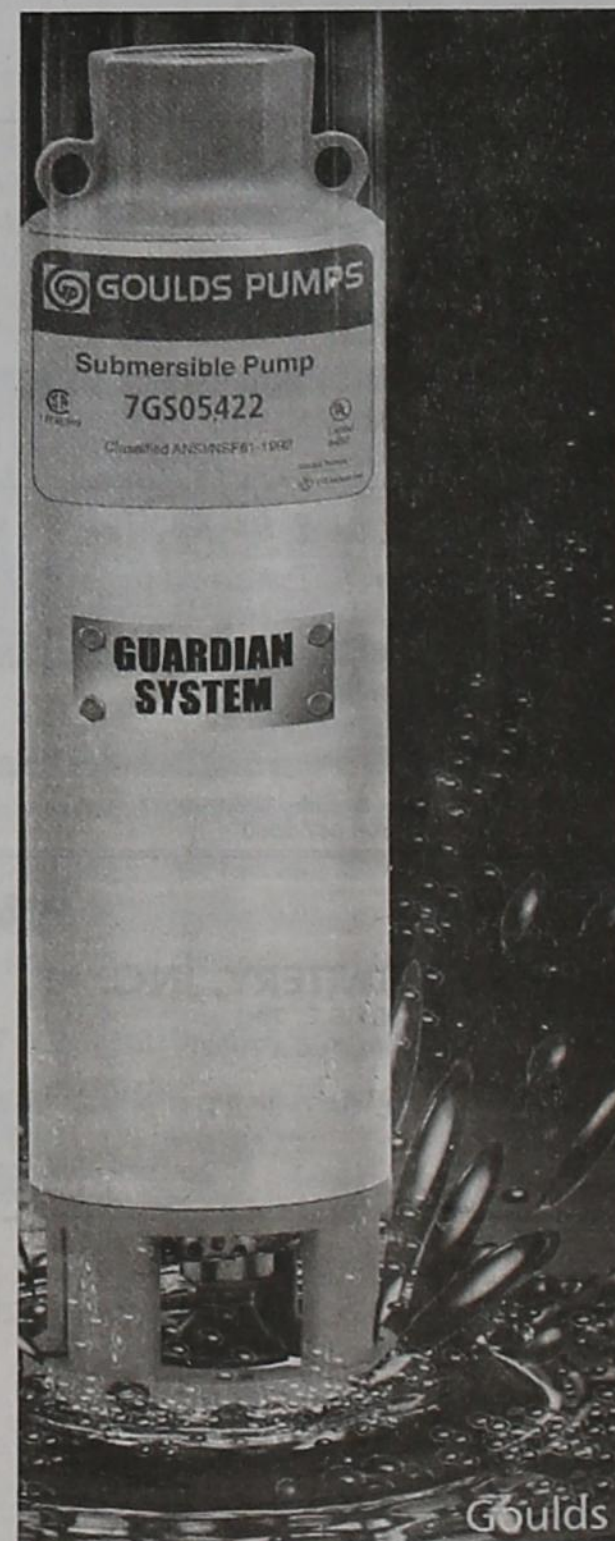
- Many pump brands available
- Simmons
- Peerless
- Flo-serve
- Worthington
- BJ
- Goulds
- Berkley

**Call Today!**

## Nelson Well Service

PO Box 205  
1150 Highway 86 East  
Dimmitt, Texas 79027

Dan Nelson cell 647-8175  
John Wait cell 346-1093  
Office 647-3300  
Robert Nelson





# Dimmitt downs Spearman, then falls to Childress in playoffs

By DAVIE BROWDER  
Managing Editor

The Dimmitt Bobcats stopped Spearman, 51-44, on Friday, Feb. 24, in the Class 2A playoffs in front of a full-house at Canyon High School Gym. However, on Tuesday night, Feb. 28, in the regional quarterfinals played at Lubbock, a more athletic Childress team got hot in the second quarter and amassed what proved to be an insurmountable lead as they defeated Dimmitt, 68-45, for the opportunity to advance.

In the game against Spearman, the Bobcats trailed 16-10 after one quarter and 25-22 at the half. At the end of the third quarter, Dimmitt was four points behind, as Spearman led, 36-32. But then the Bobcats quickness and perseverance started to pay off as Junior Limas got hot and led the team with 23 points, followed by Nick Ortiz with 14.

"My take is if it were a boxing match, the referee would have probably stopped the fight after the

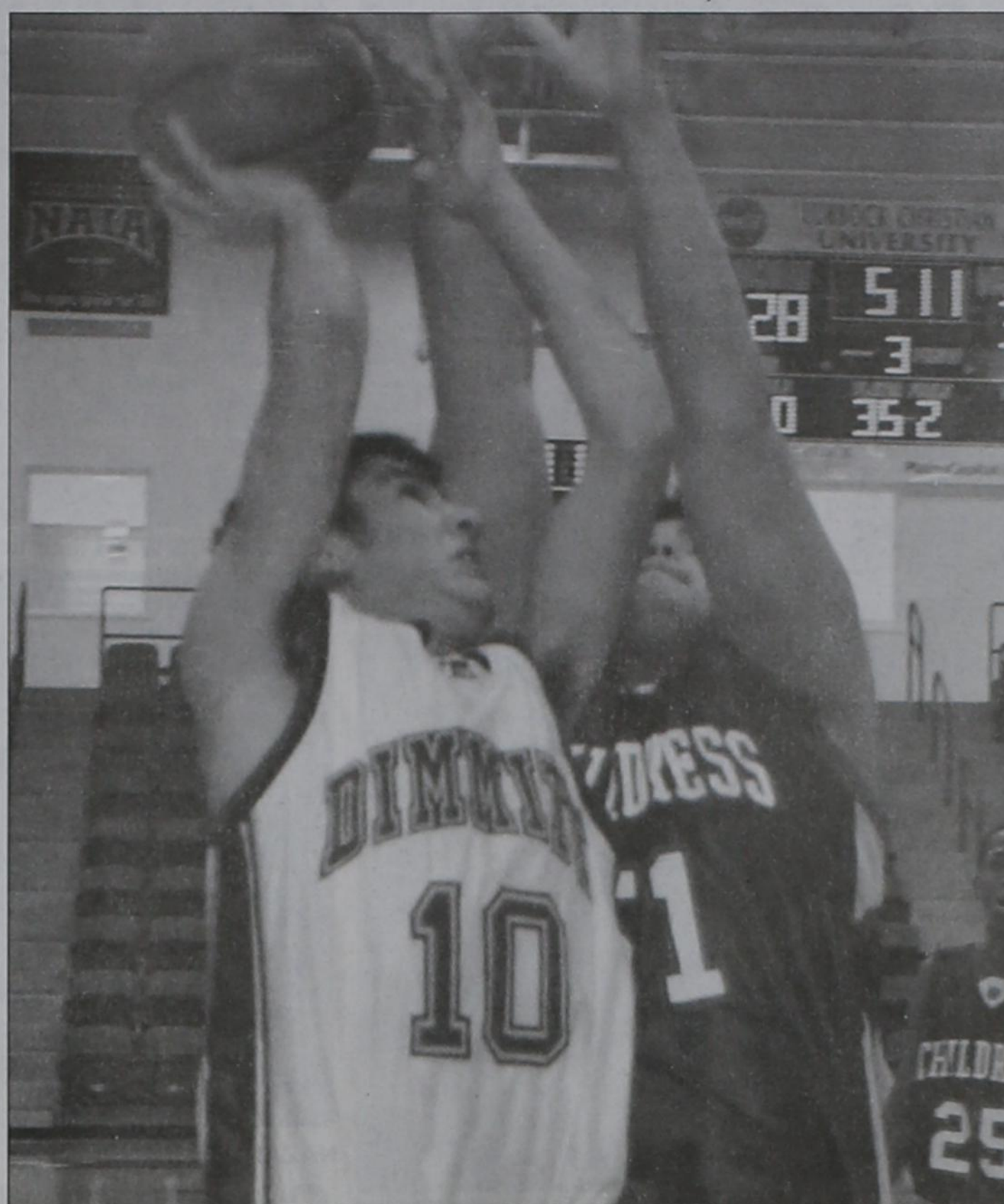
first three quarters," said head basketball coach Alan Steinle. "Then we kind of woke up and got it going in the fourth quarter. It felt like the first three quarters, we were on our heels. We were real tentative. When we did try to attack, we didn't get much done so we didn't try to attack the next time. They seemed more confident on both ends of the floor than we were."

However, he said, the Bobcats hung in there and stayed close all three quarters.

"Even though we weren't playing well, our kids battled and kept us close," Steinle said. "Then, when we got it going, we were able to get the lead. We were by far the smaller team and that's kind of the way it's been for 35 games now. You play the hand you're dealt."

Once the Bobcats got ahead in the final period, they regained their confidence.

"When you make a shot, you get comfortable and when you're comfortable, you're able to hit more

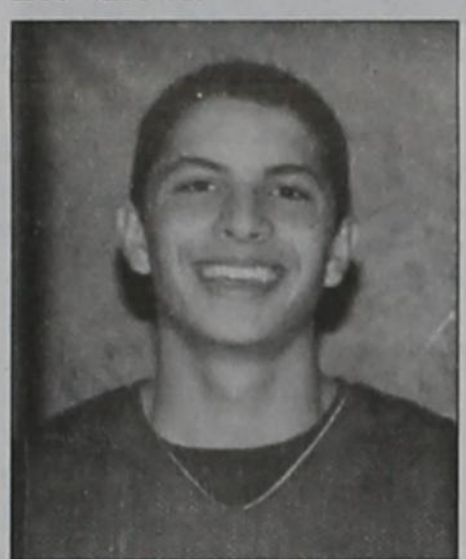


DIMMITT'S NICK ORTIZ, No. 10, goes up with a shot against Childress on Tuesday night at Lubbock.

shots," Steinle said. "We were able to get a basket or two, got the lead and that helped us relax. Things began to flow a little better."

Down the stretch, making the free throws, the team shot 75 percent, nine of 12.

"The team did an excellent job with free throws," he said. "We really didn't miss any of the free throws till the end of the (fourth) quarter. The ones we made early were certainly beneficial. Our kids did a good job at the foul line of making those free throws."



Alex Chavira  
No. 2

At Lubbock, against Childress, both teams came out cold. Dimmitt drew first blood, as Junior Limas hit a bucket with 4:50 remaining in the first quarter. At the end of the first period, Dimmitt led, 11-6. However, Childress got the hot hand in the second period, scoring 28 points, to take a 34-26 lead. In the third period, Dimmitt outscored Childress, 11-10, but it wasn't enough to get the lead again as Childress led, 44-37 going into the final period. Again, Childress got hot with a 24-point fourth-quarter, and Dimmitt was never able to get closer than seven points away from the lead throughout.

"We had a good bunch of kids," Steinle said. "We just weren't very good tonight. We let them come back on us in the second quarter."

The one thing the Bobcats could count on all year, Steinle said, has been fan support.

"We really appreciate the

fact that our fans have come out and shown their support for us all season," he said.

## Track results

The boys and girls track teams competed at Highland Park High School on Saturday, Feb. 25.

Boys Varsity:  
110-meter high hurdles: Michael Raser, first, 16.05; Ross Myatt, third, 16.34; Beau Gonzales, fourth, 17.59.

330-meter intermediate hurdles: Ross Myatt, second, 44.72; Beau Gonzales, sixth, 51.84.

Mile relay: Michael Raser, Gerardo Reyes, Beau Gonzales and Ross Myatt, fourth, 3:58.95.

Pole vault: Marshall Wills, first, 13-6; Edward Wait, fifth, 10-0.

Triple jump: Gerardo Reyes, third, 38-3.

Long jump: Gerardo Reyes, third, 19-3.

Shot put: Jerry Acevedo, sixth, 35-17.5

Discus: Josh Norman, fifth, 98-10.75

Girls Varsity:  
400-meter relay: Mayra Aguilar, Ashley Fleeks, Brandy Smith and Molly Bradford, fifth.

1600-meter relay: Kirsti Edwards, Molly Bradford, Mayra Aguilar and Dana Sandoval, fourth.

Boys JV:  
110-meter high hurdles: Sam Hazel, first, 18.18

300-meter intermediate hurdles: Sam Hazel, second, 45.53.

1600 meter run: Isidro Rodriguez, first, 5:44.88; Jake Ebeling, fourth, 5:49.06.

Shot put: Alex Salad, fifth, 30-11

Discus: Shawn Ryan, second, 98-3.5

Valor Telecom supports the Dimmitt Bobcats and Bobbies, The Nazareth Swifts and Swiftettes and the Hart Longhorns and Lady Horns!

## Good Luck!

Thanks again for your support in Dimmitt and Nazareth  
866-638-1100



**VALOR TELECOM**

Dimmitt Printing and Office Supply



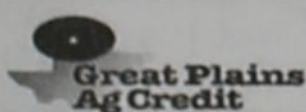
200 E Bedford  
Dimmitt, Texas  
806-647-3286



Castro County Feeders I, LTD  
Hart, Texas 806-938-2151

Dimmitt Feed Yard

Clovis Hwy West Dimmitt, Texas  
806-647-2108



Mark Klerman  
Vice President  
112 E. Jones • P.O. Box 128  
Dimmitt, Texas 79027  
(806) 647-3169 • Fax (806) 647-2052

Gary's Engine and Machine

207 SE 3rd Street  
Dimmitt, Texas  
806-647-4354



N Hwy 385  
Dimmitt, Texas  
806-647-4125



**KDHN**  
1470 AM

If your lights go out, so do we.  
Deaf Smith Electric Cooperative Inc.  
E. 1st & Whittier St. Hereford, TX 364-1166

A Touchstone Energy Cooperative  
The power of human connections

LUMBER - PAINTS - HARDWARE  
Higginbotham - Bartlett Co.  
DIMMITT, TEXAS  
CARPET - VINYL  
Professional Installation  
806/647-3161 FAX 806/647-4713

HBC

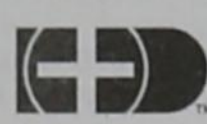
DWAYNE ACKER  
Manager

Res. 806/945-2632

Castro Co-Op Gin



714 S. Highway 385  
Dimmitt, Texas  
806-647-3546



Fertilizer and Industrial  
Chemical Sales

DIMMITT SULFUR PRODUCTS  
1600 Highway 194 Dimmitt 806-647-2123



Hereford Texas  
Federal Credit Union  
212 W Bedford Dimmitt, Texas



201 N Broadway

Dimmitt, Texas  
806-647-4151

Dimmitt Pharmacy

201 W 2nd Street Dimmitt, Texas  
806-647-3151



103 W Belscher Dimmitt, Texas  
806-647-2488

410 Broadway Hart, Texas  
806-938-2312

Rafter 3 Feedyard

Highway 86 and FM 1055 Dimmitt, Texas  
806-647-5103

8TH ANNUAL FOOD DRIVE



Join Now

\$0.00

Service Fee

Bring a bag of non-perishable food items between February 27th and March 11th to your local Curves and join with no service fee. All groceries will be donated to local food banks.

Curves

Over 9,000 locations worldwide. The power to amaze yourself!

806-647-3866

218 E Bedford Street  
Dimmitt, Texas  
curves.com

\*Offer based on first visit enrollment, minimum 12 mo. c.d. program. Not valid with any other offer. Valid only at participating locations. 105204

North Gin of Dimmitt

North Highway 385  
Dimmitt, Texas  
806-647-5338

Highway 86 and FM 168  
Nazareth, Texas  
806-945-9504



Member FDIC Equal Housing Lender



Muleshoe Bovina Dimmitt  
Member FDIC

215 W Bedford  
Dimmitt, Texas  
647-2265

B & W Aerial Spray, Inc.



Box 769 • Dimmitt, Texas 79027  
806-647-2550

Westway Feed Products

North Highway 385  
Dimmitt, Texas  
806-647-3138



C & S Battery, Inc.

301 SE 2nd • Dimmitt • 647-3531

ARCTIC CAT  
MORE TO GO ON!

Castro County News

Your local news source  
806-647-3123



Tidwell Spraying  
Service

N. Highway 385  
Dimmitt, Texas 806-647-5183



## Swiftettes fall to Springlake-Earth

The Nazareth Swiftettes were denied a return trip to state on Friday as they fell to district foe, Springlake-Earth, 48-37, in the semi-state game at SPC at Levelland.

The Swiftettes, who had defeated Springlake-Earth twice in district play shot a dismal 16 percent from the field, while the Lady Wolverines only shot 36 percent - not good, but good enough on this particular night.

At the end of the first quarter, Springlake-Earth led 9-6, and continued to pull away through. The closest Nazareth came again was with 3:40 left in the final period, as the Swiftettes got within three points, 36-33, but Springlake-Earth started holding the ball, forcing Nazareth to foul. And the Lady Wolverines hit their foul shots down the line to maintain their margin of victory.

Holly Kleman led Nazareth with 17 points.

Afterward, head girls basketball coach Amy Huseman said her team was disappointed.

"We really wanted to go back to state to defend our title," Huseman said. "But you have to hit the basket. I expected a closer game. We knew they'd have their post game going.

"I thought we'd play a better defense. It was a tough game. They were hot and we never were. We had lots of opportunities to score.

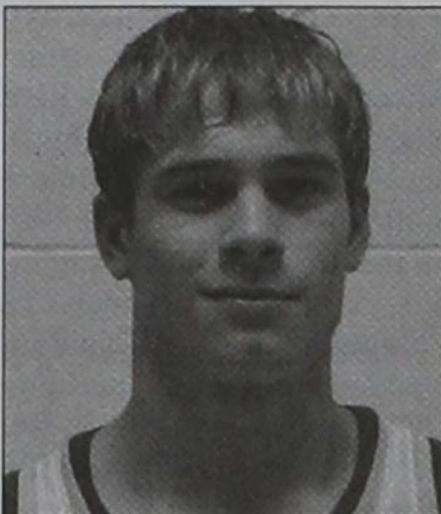
"At one point (in the four period) it looked like the tide was turning, but then it looked like we got tired."



**NAZARETH'S NO. 3, Caitlin Huseman** shoots against Springlake-Earth on Friday in Levelland.



**Heidi Ramaekers**  
No. 21



**Alan Gerber**  
No. 10

Photo by Stephen Henry



**NAZ SWIFTS WITH** their trophy after defeating Wheeler on Thursday.



**NAZARETH SWIFTS WITH** their trophy after the regional semifinal played Monday.

## Swifts advance to regionals

### Will take on Paducah at SPC on Friday

By **DAVIE BROWDER**  
Managing Editor

The Nazareth Swifts got off to a fast start in their game against Wheeler on Thursday night, leading 10-1 against Wheeler with 4:33 left in the first quarter, with Jake Hoelting scoring eight of those 10 points, including two 3-pointers.

By the end of the first quarter, the Swifts were

ahead 20-6.

In the second period, the Swifts held Wheeler to 4 points, while scoring 13 more to give them a 33-10 first-half lead.

The Swifts turned on the power in the third quarter, scoring 21 points, with Hoelting accounting for 10 more, including three treys.

The fourth quarter starter with Nazareth holding a commanding 54-15 lead. The Swifts' scoring slowed down a little as they recorded 10 points, while rested much of the starting lineup.

The leading scorer for the Swifts were Hoelting with 23 points and Zane Farris with 10. Hoelting, Dustin Schulte and Charlie Rundell all did a fine job rebounding on defense.

Afterwards, despite the 66-30 win, head coach Mike Scarbrough said he thought his team's play was "sloppy."

"We were sloppy on offense," he said. "I don't feel like we were as intense as we had been. We're going to have to play better down the stretch if we're going to go very far."

#### Nazareth 67, Whitharral 45

On Monday in their regional semifinal game against Whitharral, held at Frenship in Lubbock, the Nazareth Swifts put on a display of fine shooting, combined with teamwork, as Scarbrough assessed his team's win.

"I was pleased," he said.

"We shot the ball well in the first half," he said. "We have to execute better against Paducah if we want to win on Friday."

That first game is at 6 p.m. Friday at South Plains College. The winners of the 6 p.m. and 8 p.m. games will meet on Saturday for the opportunity to go to the state finals.

In Monday's game, Nazareth again jumped out to a pretty big lead, 10-3, with 3:04 left in the first quarter. After that, the Swifts' ball handling kept them in control, especially when Whitharral tried to press.

By the end of the first period, Nazareth led 17-6.

In the second period, the Swifts again turned up the heat on both ends, scoring 21 points, while holding Whitharral to eight, to take a 38-14 lead.

In the third quarter, the Swifts held on to their edge, leading 54-29 to start the final period, where, once again, Scarbrough rested many of his starting five.

Leading scorers for the Swifts were Hoelting with 23 points, including seven 3-pointers and Charlie Rundell with 15.

Rundell and Hoelting, along with Dustin Schulte and Berry Clinton, gave the Swifts a number of second chances with their rebounds, as well as helping with the fast break while rebounding on defense.

# KDHN 1470 AM

## Agricultural News

Monday through Friday: 6 a.m. to 7 a.m.

### Morning Show

Daily: 7 a.m. to 8 a.m.

*Weather forecast, local news, birthdays, anniversaries, American Folk Song, school lunch menus, Good Neighbor*

### Spotlight On Local Talent

Daily: 8 a.m.

### Market Reports

:40 past the hour

## Tune in

and hear what's happening in your neighborhood!

#### PEN-RIDERS

**Bartlett Cattle Company, L.P.**

Do you have previous cattle experience? Interested in a career opportunity with a national employer of choice?

We are currently hiring **pen-riders** for our **Tulia, TX-Bartlett 1 Feedyard.**

Must be able to effectively work in the outdoors. Previous feedlot experience strongly preferred. Horses must have previous experience with cattle.

Bartlett offers very competitive wages, benefits. This includes health, dental, vision, life, Rx card, 401k, profit sharing and more.

Apply in person at the address below.

**Bartlett Cattle Company, L.P.**  
6443 FM 928  
Tulia, TX 79088

EOE/AA/D/V/Drug Screen/  
Background screens

### & Dimmitt Flaking

N. Hwy 385 Dimmitt, Texas  
806-647-2802

### Hereford Texas Federal Credit Union

212 W Bedford Dimmitt, Texas

Highway 86 and FM 168  
Nazareth, Texas  
806-945-9504

Member FDIC Equal Housing Lender

*If your lights go out, so do we.*  
**Deaf Smith Electric Cooperative Inc.**  
E. 1st & Whittier St. Hereford, TX 364-1166

LUMBER - PAINTS - HARDWARE

### Higginbotham - Bartlett Co.

DIMMITT, TEXAS

CARPET - VINYL Professional Installation

806/647-3161 FAX 806/647-4713

DWAYNE ACKER Manager Res. 806/945-2632

### N Hwy 385 Dimmitt, Texas

806-647-4125

103 W Belscher Dimmitt, Texas  
806-647-2488

410 Broadway Hart, Texas  
806-938-2312

## 19th Hole

Highway 86 Nazareth, Texas  
806-945-2606

## Hoelting Supply

107 Leo Street Nazareth, Texas  
Your local farm supply!  
806-945-2211

## KDHN 1470 AM

### Dale's Auto and Salvage

200 N Highway 168  
Nazareth, Texas  
806-945-2223

### Castro Co-Op Gin

714 S. Highway 385  
Dimmitt, Texas  
806-647-3546

Mark Kleman Vice President

112 E. Jones • PO. Box 128  
Dimmitt, Texas 79027  
(806) 647-3163 • Fax (806) 647-2052

### North Gin of Dimmitt

North Highway 385  
Dimmitt, Texas  
806-647-5338

### Naz Stop

Highway 168 and 86  
Nazareth, Texas  
806-945-2535



# Community Calendar

## Dimmitt Book Club meets Wednesday

The Dimmitt Book Club will have its monthly meeting at 4 p.m., Wednesday, March 8, at Rhoads Memorial Library. The reviewer is Zetha Collins. Her book is "1776," by David McCullough story about the Revolutionary War.

## DARSPA offering two scholarships

The Dimmitt Area Retired School Personnel Association will award two educational scholarships this spring. Eligible to apply for the scholarships are graduating seniors from Dimmitt, Hart and Nazareth High Schools and current college or university students. All applicants must be pursuing a career in the field of education. Application forms are available in each of the high school counselors' offices or from Mary Jo Brown at 1603 Sunset Circle in Dimmitt and by telephone at 647-3250. Deadline for application is April 10.

## RES to host Book Fair March 6-10

Richardson Elementary will host a Scholastic Book Fair from Monday, March 6 through Friday, March 10, from 8:30 a.m. until 4 p.m. Families, teachers and the community are invited to attend the Fair, which will feature a special camping theme: Camp Read a Book - Let the Book Bugs Bite! On Thursday, March 9, from 6-7 p.m., the Book Fair will feature a special Family Night. The Book Fair will offer specially priced books and educational products, including new releases, award-winning titles, children's classics, interactive software, adult books and current bestsellers from more than 150 publishers.

Anyone who would be interested in helping with the Book Fair should contact Diann Leatherwood at Richardson Elementary Library at 647-4131. The public is invited to help build classroom libraries by purchasing books and donating them to your child's class through the Classroom Wish List program.

## Cotton warm-up meeting

Texas Cooperative Extension will sponsor a Cotton Warm-up Meeting on Friday March 3 for producers, private consultants and all other interested parties. This event will take place at the Dodd Gin and registration begins at 8:30 a.m. 3 CEU's will be available for private, commercial, and non-commercial pesticide applicators license. The program will conclude with a noon meal. Topics include thrips management, bollworm management, 2005 cotton variety trial results and variety selection for 2006, as well as managing Round-up Ready Flex Systems. For all persons who need special accommodations please contact the Castro County Extension Office to make arrangements at 806-647-4115 or 4116.

## Breast cancer screening

The Don and Sybil Harrington Cancer

Center Comprehensive Breast Center will conduct a Breast Cancer Screening Clinic at Plains Memorial Hospital, 310 W Halsell, in Dimmitt on March 9, 2006.

Breast cancer affects one in eight women. The key to winning the battle against cancer is early detection by having an annual breast exam, mammogram and performing a breast self-exam each month.

Funding is available through the Texas Department of Health for Texas residents age 50 to 64 who qualify for assistance. All exams are done by appointment only.

Call (806) 356-1905 or 1-800-377-4673 for more information or to schedule an appointment.

## Community Prayer Gathering

There will be a community prayer gathering the first Wednesday of every month at 6 a.m. at Dimmitt Methodist Church, 110 SW 3<sup>rd</sup> St. There will be fellowship, a free meal, prayer and a devotional guest speaker.

Everyone is welcome. Come and bring a friend.

Help lift the whole community in prayer. The dates are April 5, May 3 and June 7.

## Rotary selling flags

It's time to buy 2006 memorial flag contracts from the Dimmitt Rotary Club for a fee of \$30 per year. If you would like a flag flown at the courthouse on 8 holidays this year in memory or honor of some special person, please call Trish Elliott @647-4624. If no answer, please leave message and Trish will get back to you.

## New pick up schedule in effect at Richardson

Starting Jan. 16 Richardson Elementary began releasing students at staggered times in order to relieve traffic congestion.

Students in Headstart will be released at 3:30 p.m. Headstart parents are **Not** required to come into the building to pick-up their child.

Kindergarten and Grade 1 will be released at 3:30

Grades 2, 3, 4 will be released at 3:45

All bus students will stay until 3:45  
All students **not riding the bus** will be released in **front** of Richardson by the flagpole and the orange barrels.

Students will not be allowed to exit from the west doors (back doors).

The west doors will be locked. Parents should travel in the lane closest to the school on Stinson to pick-up students.

All students are **required to stay behind the orange barrels until they see their ride.**

Richardson Elementary is trying to make a safer environment for all students.

# What is 'adequate' financing to education students?

I have been asked many times what did Judge Dietz's decision mean for schools?

Judge Dietz's decision stated the present from of school finance was unconstitutional for three reasons.

First, the tax cap did not allow local school boards to adequately finance their schools.

Second, the state did not provide adequate funding for public schools.

Third, the state did not provide money to build new schools.

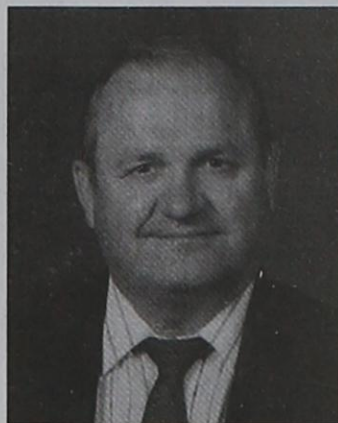
So the financial question is how much does general diffusion of knowledge cost?

The state says adequate financing only.

This means just enough to open doors and nothing for added expenses and inflation that school districts encounter daily.

Also, local discrepancies must play a part.

Local school boards must



Digger Elam

be able to raise taxes to meet the needs of their district. A tax cap inhibits this discrepancy for a district to meet its needs.

Now for good and the bad of Judge Dietz's decision.

The bad is that the court ruled that the state funding was adequate.

The good part is "Robin Hood" is still alive and kicking to help the 800 school districts.

Edgewood I stated the gap

between what rich districts spend can be no more than \$600 per student more than poor districts.

This has increased to \$1,600 per student. That is a sad way to be out of compliance.

If state funding is adequate, why do we have 25 per cent of seniors not able to pass all parts of TAKS?

If you recall the decision from Edgewood I stated the state's school funding formula was not adequate. Edgewood IV gave us the famous "Robin Hood" plan.

The state continues to argue that 600 school districts out of 1000 with enrollments less than 1000, the state can never adequately fund schools.

This means look for mass consolidation of many of those 600 school districts to take place within 6-8 years.

\*\*\*

Digger Elam is the superintendent of the Hart Independent School District.



# Satisfy your need for speed!

AMA•TECHTEL brings you high-speed fixed wireless Internet access. With speeds up to 50 times faster than dial-up and access that's always on, you'll connect to the world faster than ever.

AMA•TECHTEL is committed to providing the latest technology and the best customer service, so no matter who you're connecting with, you can count on us to get you there.

Now you can have the fastest, most reliable Internet service available. So act fast; contact your local distributor today!

**COMPUTER SOLUTIONS OF DIMMITT**

220 North Broadway

Dimmitt

647-4841

connect

## HISPANIC

Continued from Page 3

for rain. Or, do a little dance, whichever works for you. Just think, carnitas, carnitas, carnitas (cookout, cookout, cookout)!"

\*\*\*

Well, the Primary Elections are just around the corner and I'd like to remind everyone how important it is to vote. I've been reading all the recent letters to the editor and have both agreed and disagreed with some. I have only one thing to say, if you want to be involved in what happens in our community, get out and vote. We have several good choices on the ballot this year. If you don't know which to choose or what

they stand for, give them a call or have a chat with them next time you see them in town. I am sure they will be more than glad to share with you the ideas and plans they have in mind to better our community. Remember this date, March 7, it's your chance to make a difference.

\*\*\*

Bueno, todavia estoy esperando sus noticias. Well, I'm still waiting for your news. Hey, if nothing more, send me your birthday wishes. I know everyone likes to be wished a Happy Birthday in the newspaper. Send your info to [angie79027@hotmail.com](mailto:angie79027@hotmail.com), 647-0106 or 346-3882.

If your lights go out, so do we.  
Deaf Smith Electric Cooperative Inc.  
E. 1st & Whittier St. Hereford, TX 364-1166

A Touchstone Energy® Cooperative  
The power of human connections



103 W Belscher Dimmitt, Texas  
806-647-2488

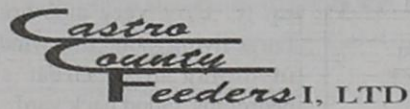
410 Broadway Hart, Texas  
806-938-2312

**KDHN**  
1470 AM



Mark Klemm  
Vice President

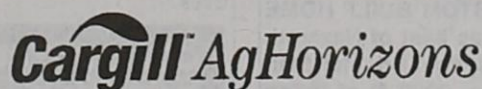
112 E. Jones • PO, Box 128  
Dimmitt, Texas 79027  
(806) 647-5103 • Fax: (806) 647-2052



Hart, Texas  
806-938-2151



N Hwy 385  
Dimmitt, Texas  
806-647-4125



Hwy 194 & 7th St, Hart  
938-2178

**Castro Co-Op Gin**

714 S. Highway 385  
Dimmitt, Texas  
806-647-3546



**Castro County News**

108 W Bedford  
Dimmitt, Texas  
806-647-3123



**Wilbur-Ellis**

1 E Highway 194 in Hart  
806-938-2191

**North Gin of Dimmitt**

North Highway 385  
Dimmitt, Texas  
806-647-5338



Highway 86 and FM 168  
Nazareth, Texas  
806-945-9504

Member FDIC Equal Housing Lender



"People That You Know"



# Castro County Classifieds

## Real Estate Homes & Land

### PUBLISHER'S NOTICE:

All real estate advertising in this newspaper is subject to the Fair Housing Act which makes it illegal to advertise "any preference, limitation or discrimination based on race, color, religion, sex, handicap, familial status or national origin, or an intention, to make any such preference, limitation or discrimination." Familial status includes children under the age of 18 living with parents or legal custodians, pregnant women and people securing custody of children under 18.

This newspaper will not knowingly accept any advertising for real estate which is in violation of the law. Our readers are hereby informed that all dwellings advertised in this newspaper are available on an equal opportunity basis. To complain of discrimination call HUD toll-free at 1-800-669-9777. The toll-free telephone number for the hearing impaired is 1-800-927-9275.

**BRICK HOME**-approx. 2,800 sq ft, 3 bedroom, 2 bath, living with fireplace, kitchen, sunroom, utility, garage, two car garage, three car garage, storage building. 24 X 40 building. Located in country with 1.8 acres.

**1850 sq. ft.**-3 bedroom, 2 bath, office, den with fireplace, kitchen, dining, utility, storage buildings, storm cellar, 30' X 40' shop. 1.8 acres.

**LARGE Country Home** 3/2 1/2, den, dining, kitchen, office and basement. Fenced yard with sprinkler system, 30 X 60 barn. 5 acres land.

**BRICK HOME**-3/2 living with wood burning fireplace, kitchen, sun room, fence, storage building and storm shelter, two car carport.

**EDGE OF TOWN**-2 acres, 14 X 70 trailer, water well, storage bldg., barn, boxcar, fenced.

**NICE**-3/1 living, kitchen, utility, single garage. Two lots.

**3/2/2 living**, kitchen, utility, storage building, cellar, fenced yard. 20' X 30' shop. Nice.

**BEAUTIFUL HOME**-3/2.75/2, den, living room, remodeled kitchen with new appliances, utility, storage building, basement, circle drive.

**2 acres**-3/2 den, living, kitchen, sun room, basement, single garage, two storage bldgs.. Building two rooms with bath.

**BUSINESS FOR SALE**-Springlake convenience store with coolers and equipment, gas station, deli, large shop on corner lot.

**INVESTMENT PROPERTY**-Mobile home trailer park-27 lots. Own 8 mobile homes and leases 9 spaces. Owner financing available.

**NICE** two bedroom, 1 bath, two living areas, kitchen, utility. Brick with metal roof. Central heat and air. Fenced yard with storage.

**LAND:** Two lots- great location to build home. Sunset Contract

**EDGE OF TOWN**-106 acres with 4" two electric irrigation wells...4" pumps.

### NEED YOUR LISTINGS! Make us YOUR Choice!

806-647-6517

## Choice Realty

315 E Bedford • Dimmitt  
Shirley Cornett-Agent

Don Cornett-Broker  
806-647-5642

**Tax Refund?** Don't Wait! We will do your returns FREE for your new home/business. 800-830-3515

**CHECK OUR WEBSITE** for data and pictures of many farms, ranches, feedyards, dairies and choice dairy locations with permits and acreages with homes.

**CASTRO COUNTY, TX**-choice 1/4 with modern sprinkler and one irr.well at pivot.

**COUNTRY HOME**-Just minutes from Dimmitt-20 acres with exceptional 4,500+ sq. ft. home, 4 bdrms, 4 1/2 baths, basement, 2 car garage, rock exterior, lovely landscaping, large Quonset barn, dual corral, historic grain elevator. MUST SEE!

**CASTRO CO., TX**-160 acres with 1/4 mile sprinkler & 2 wells. **IN YOUR BACKYARD**-two sections, mile of hwy, frontage plus county roads, wells & pivot for 1/2 mile sprinkler. **Permit in Process!**

**COUNTRY LIVING** - 7.5 acres +/- with lovely 3-4 bedroom, 1 3/4 bath brick home, basement, double car garage, central heat/air, nicely landscaped, metal barn, many amenities. Priced to sell!

**205 NW 11th**-Attractive 3 bdrm., 1 1/2 bath home, single car garage, central heat, new fence.

**600 MAPLE-DIMMITT**-Lovely 3 bedroom, 1 3/4 bath brick home, nicely landscaped, corner lot, double car garage, central heat/air, fireplace, new flooring, interior paint & appliances, workshop, many amenities. **PRICE REDUCED!** Let's Look!

**607 W LEE**-Charming 2 bedroom, 1 3/4 bath brick home, nicely landscaped, double car garage, central heat/air, workshop, sprinkler system.

**1009 FRONT**-Spacious 5 bdrm, 3 bath brick home, double car garage, central heat/air, storage building, nicely landscaped, edge of town.

**HILLTOP HOME & HORSE FACILITY**-approx. 7.63 acres, exceptional 3-4 bedroom, 2 bath, manufactured home (brick and rustic wood siding), beautiful landscaping, great horse facility w/ horse barns, stalls, training/riding pens & other out bldgs, pipe rail fence throughout.

www.scottlandcompany.com

Ben G. Scott - 647-4375 or  
Krystal M. Nelson - 647-6063



**607 W Lee** - Charming 2 bedroom, 1 3/4 bath brick home, nicely landscaped, corner lot, double car garage, central heat/air, workshop, sprinkler system. www.scottlandcompany.com  
Ben G. Scott - 647-4375 or  
Krystal M. Nelson - 647-6063

## Real Estate Homes & Land

**Make offer-4/2.75/2**-One of the nicest homes in Dimmitt, too many extras to list. Call today for details.

**\$125,000-REDUCED**-4/3/2-Large home, corner lot, fireplace, flagstone floor, sprinkler system. Seller helps with closing.

**\$86,000-REDUCED**-3/2/2-Owner has moved, fireplace, great location, hot tub, nice shop. Seller helps with closing.

**\$80,000**-Great home-3/2/2-lots of new paint and carpet, fireplace, corner lot, nice shop, close to schools.

**NEW-\$80,000**-3,100 sq ft home/store on 14 acres, includes large quonset barn, compressors, tools, tractor, farm equipment, livestock barns and many more treasures. Lots of potential. Owner financing available.

**\$69,900**-3/2/2-Great home, lots of new paint and tile, basement, large corner lot.

**NEW-\$70,000**-3/2 25/2-Large House-LOTS of extras! Mother-in-law house in back. Brick Bar-B-Q. Seller helps with closing.

**NEW-\$70,000**-3/2/2-Excellent home, country living with city amenities, large trees and nice storage building.

**NEW-\$55,000**-3/1/0 Extremely nice well kept home. close to schools.

**\$53,000**- 3/2/1- Nice well-kept home with extra lot to park your truck or build a shop.

**\$45,000**-3/1/0 Two homes for the price of one, large corner lot. Rented unit rents for \$400.

**\$40,000**-2/2/0-Great home that has been well-kept. Soft water. Corner lots, trees, storage building, etc.

**NEW-\$40,000**-3/1.5/1-Extremely nice well-kept home, close to schools, extra large fenced lot and storage building.

**\$37,000**-3/2/carport-excellent starter home, cellar, fenced yd., trees.

**Commercial:**

**\$80,000-Price reduced!** Mobile Home Park with large shop includes five permanent mobile home lots and two mobile homes, all rented. 18 overnight spaces. Lots of depreciation and income.

**\$50,000-PRICE REDUCED-Fully** equipped Dental office, call today for details.

Commercial and residential lots in Hart, TX.

Nice home and 50 X 100 shop with 15 ft walls, large doors in Bovina, Great buy, call for details.

## J-CROSS INVESTMENTS

647-1700 DAY OR NIGHT  
JERRY CARTWRIGHT/BROKER  
NORMA FRANCO 292-6043  
SALES Se Habla Espanol

## FINANCING AVAILABLE

CCL Southwest Funding  
Dianne Cartwright  
647-3312

We have buyers with loans approved. We need your listings!

I buy houses. Any price or condition. Ryan 806-223-5111 49-4tp

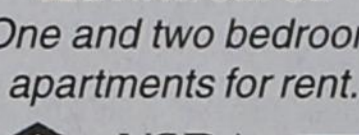
Electronic delivery available to out-of-county subscribers! Visit www.castrocountynews.com  
Same day delivery!

## Real Estate for Rent

### Dimmitt Senior Citizens Apartments

622 N.W. 5th St.

One and two bedroom apartments for rent.



For more information, call 806-647-2638

TDD 1-800-735-2989

Rhonda Powers, Manager

**FOR RENT**-2 bedroom, 1 bath-805 SW 5th Street-\$325.00 655-1273 45-tfc-min

## Ag Services

WANTED-Forage Harvesting. Home 785-398-2396 or cell 620-357-5116 49-2tp

## Forage Oat Seed

800-299-9273 47-4tc-min

HAY FOR SALE: 75 bales of seed milo stalks for sale. \$25 per bale. 627-4213

## Custom Swathing and Baling

Call Roy Schilling  
647-2401 home 240-1030 mobile

**CUSTOM PLOWING** Hamey-field cultivator, disk-Call Todd Hatla at 647-5183 office or 647-7999 mobile.

HAY FOR SALE- 250 round bales of Triticale and Rye. \$70 per ton. Contact Robert Hawkins. 938-2206. 45-4tc-min

## Real Estate

**FIRST TIME** home buyer or single parent program. EZ financing. 888-539-7780.

**GOOD JOB**, rental history, car note? Two out of three will put you in a home. We tote the note. 800-830-3515

**Call our 24 hour hotline** to see if you qualify for a home loan. 806-8945-3883 or 800-375-8739

## SERVING CASTRO COUNTY FOR 35 YEARS

**EXTRA NICE** well located 3 bedroom-1 bath, completely reworked inside. 1 car garage. \$64,000

**EXTRA NICE**-3/2/2-fireplace-\$79,000

**TWO STORY** house on Oak Street, 3/2/2, central H/A. \$82,500

**NICE LOCATION**-4 bedroom/2 bath or 3 bedroom/2 bath and an office, \$82,500

**UNIQUE**-Sunnyside 3 bedroom, two bath, 2 1/2 acres. Numerous outside buildings. Pecan and fruit trees. Large stocked fishing pond. \$110,000.

**COUNTRY LIVING** at its best-two story-3 bedroom/3 bath basement on 2 acres. Lovely home-\$140,000

**LOVELY** 3 bed/2 bath. Living-dining combination. Den with large fireplace. Large kitchen area and utility room. Basement, 2 car garage, landscaped yard with patio and sprinkler system. Ready to move into. See at 709 W Cleveland. \$150,000.

**WELL LOCATED** 3 bedroom, 1.75 baths, fireplace, central H/A, 2 car garage. \$75,000

**NICE** 3/2.75/2-carpet 2 years old, central H/A-\$75,000

**NEW**-Beautiful home Sunset Circle, 3 bedroom/2 bath. All the Extras

**FIXER-UPPER**-Sell as is. \$17,000

**EXTRA NICE**-3/2, basement, sprinkler system like new. Out of town owner says sell! \$75,000

**OUTSTANDING HOME**-3/2, finished basement, fireplace, many extras. Close to school. \$85,000

## HAVE BUYERS NEED YOUR LISTINGS, NOW!

**GEORGE REAL ESTATE**  
647-4174  
U.S. Hwy 385 • Dimmitt  
Jimmie R. George, Broker  
Mobile • 647-7942  
Mary Lou Schmucker  
945-2679

**NEW '06** 16 wide. 3 bedroom, 2 bath Just \$1,250 down. \$198.47 per month \* 800-539-7780. \*\$24,900 sale price-5% DP \$53, \$23,650 to finance 300 months 9% APR.

**Need a home now?** Don't wait, use your tax refund. We tote the note. 800-830-3515

## NEW CUSTOM BUILT HOME

1 1/2 miles east of Nazareth on Hwy 86. Four Bd, 3 full bath and office. 2209 ft of living space on 3.5 acres and fenced-in back yard located within the Nazareth Schools. Call Marshall Harrison. 325-884-3705 (Office) 806-945-2427 (Evening) 432-935-2919 (Cell) 48-tfc-48

## Employment

**LITTLEFIELD FEED YARD**, a division of FRIONA INDUSTRIES located three miles east of Amherst, Texas has one open position for a mechanic. The applicant must have a strong work ethic, communication skills and be very organized. The position's responsibilities include repair and maintenance of all vehicles and feed boxes on the yard. We offer competitive wages and excellent benefits including 401k, insurance and a monthly bonus. If interested, please call 806-385-5141 and ask for Trevor. 34-tfc-76

LVNs and MED Aides needed. Contact Jamie pruit for more information or apply in person at Park View HealthCare, Muleshoe. 806-272-7578 36-tfc-20

**Hereford Care Center** needs a Director of Nursing. Please fax your resume to 806-364-7276, call Lanet at 806-364-7113 or apply in person at 231 Kingwood, Hereford, TX 79045. We are an Equal Opportunity Employer. 48-2tc-35

## Now Hiring!

**minsA** MINSAS HAS SEVERAL POSITIONS AVAILABLE IN OUR PRODUCTION FACILITY. We are looking for hard-working individuals to fill several positions. Apply in person at Worksource 201 S Main St-Muleshoe or at MINSAS

## Now Hiring!

MINSAS IS ACCEPTING APPLICATIONS FOR POSITIONS IN THE MAINTENANCE DEPT. Some previous welding experience preferred. Apply in person at Worksource 201 S Main St-Muleshoe or at MINSAS

## Now Hiring!

MINSAS IS ACCEPTING APPLICATIONS FOR POSITIONS IN THE MAINTENANCE DEPT. Some previous welding experience preferred. Apply in person at Worksource 201 S Main St-Muleshoe or at MINSAS

## Now Hiring!

MINSAS IS ACCEPTING APPLICATIONS FOR POSITIONS IN THE MAINTENANCE DEPT. Some previous welding experience preferred. Apply in person at Worksource 201 S Main St-Muleshoe or at MINSAS

## Co.Drivers and Owner/Operators.

Regional runs. More home time. 2-26:Pay increase. Lease/purchase! CDL-A w/Hazmat, 1 yr. experience. 800-454-2887 www.arnoldjobs.com. 49-1tc-min

## Farm Machinery

**WANT TO BUY!** 35-37 ft J.D. or Sunflower Disk. 806-344-2951 48-4tc-min

**FOR SALE**-2004 1/2 7800 JD Forage Harvester. 450 hours. 2005 1/2 JD 688, 8 row head with 100 hours. Home-785-398-2396 or cell-620-357-5116. 49-2tp

## Subscribe

### Real Estate-Homes

\$19,000 will get two houses. One is 4 bed, 1 bath. The other is 1 bed, 1 bath. Large metal storage building, carport. Best cash offer. 647-6504

**NW 12th**-3 bed, 1 bath, brick. Fence, fireplace, ceiling fans. Was \$52,900-lowered to \$45,000. Make offer 647-6504.

**\$28,000**-2/1 unattached garage, large corner lot. Storm cellar, chain link fence. Owner financing possible. 647-6504 201 NW 6th St.

## Advantage Real Estate

Office: (806) 647-0896  
C.W. (Dub) George, Broker  
Johnny Vick, Agent  
(806) 647-6504

**FOR SALE OR LEASE:** Nice three bedroom, 2 bath house. Central H/A. Call 364-2613 or 676-6256. 49-4tc-min

Electronic delivery available to out-of-county subscribers! Visit www.castrocountynews.com  
Same day delivery!

217 NW 12th \$58,000.00 1416 sq. ft. 3/2/2 Very nice home. Large living room. Bay window in dining area. Great size bedrooms. Good back yard.

**605 W Stinson** \$54,500-1568 sq. ft. 3/2/1 Well kept warm and comfortable home. 3rd bedroom could be 2nd living area. Small office or work room. Pretty cabinets and tremendous storage. Corner lot. Beautiful trees.

## COLDWELL BANKER

FIRST EQUITY REALTORS  
Debbie Smith  
806-648-4829  
806-354-3500  
806-433-7194

## Employment

Electronic delivery available to out-of-county subscribers! Visit www.castro-countynews.com or call 806-647-3123

Wednesday afternoon delivery!

PO Box 371 Hart, TX 79043 Home: 806-938-2313

## Leslie Davis Custom Harvesting & Baling

Baler, Combine & Cotton Stripper  
You have a crop that needs out of the field, Give me a call!

Cell: 806-773-9139 / 806-773-9138

## Coupon

### One FREE Month!

(New subscribers only, please)  
Just send this coupon along with your check for \$21 for in-county, \$22.50 for out-of-county, but in Texas and \$25 for out-of-state to receive via US mail The Castro County for 13 months. You can also receive your subscription via e-mail for \$20 per year....no postal delay, delivered each Wednesday afternoon. This e-mail option does not work well with dial-up service.

**Castro County News**  
PO Box 67 Dimmitt, Texas 79027

## C&N Overhead Garage Door

706 SW 3rd St Dimmitt, TX 79027

**Genie Pro** Dimmitt, TX 79027 **Lift Master**

No one KNOWS Garage Doors like a Genie Pro **Repair service on all models Residential \* Commercial**

No mileage charge within 35 mile radius **BONDED**

**Carlos Triana** **Nicho Triana**  
806-647-3682 cell-(806) 240-0768

## 315 S. Broadway Dimmitt, Texas 647-5244

## Brooke Insurance & Financial Services

Todd Pebsworth, Agent  
Robin Pebsworth, Agent

## Marlene Taylor Escrow Officer

castro@halecountyabstract.com

## Hale County Abstract Company, Inc.

512 Ash Street Drawer 1149 Plainview, Texas 79073-1149 Phone (806) 293-3674 Fax (806) 293-7991

100 W. Bedford Street Dimmitt, Texas 79027 Phone (806) 647-3154 Fax (806) 647-4588

Swisher County Abstract Bldg. 116 S. Maxwell Tulla, Texas 79088 Phone (806) 995-3564 Fax (806) 995-3590

## Nelson Well Service

License # 54758PKT  
E. Hwy 86 & Jones (806) 647-3300

Servicing Irrigation, Domestic, & Cattle Wells for 39 years  
Simmons, Goulds, American Turbine, Worthington Bowls, Franklin Motors

## CONTRACTING SERVICE

Fencing Material Remodeling  
Plumbing Supplies Financing  
Decorator Supplies Insulation  
Electrical Supplies  
Armstrong Linoleum Building Material  
Designing Service Merchants  
Building All Types Roofing

## Ed Harris Lumber Co.

Hart, Texas Phone 938-2183



Shop these Hereford sponsors of the Fun Page!

309 N. Main  
Hereford, Texas  
364-4287  
9-6 Mon-Fri.  
**We loan**  
**\$100-\$1,080**  
subject to our usual credit policy

**SUN** COMPANY  
Need some fast money?  
We are now starting tax season!  
Come by 309 N. Main and visit with one of our staff  
or give us a call at 364-4287.

**NAPA**  
Napa Auto Parts of Hereford  
124 N. 25 Mile Avenue  
Hereford, Texas  
806-364-3463  
Get Profession advice  
From the people  
you know.  
Machine shop  
Services available  
**Get the  
Good Stuff®**

Menus

DISD

Friday: Breakfast - Pancake on a stick, cereal, apple cinnamon loaf. Lunch - Barbecued beef on a bun, chicken and dumplings, shepherd's pie, potato wedges, collard greens, broccoli with cheese sauce, tossed salad, cole slaw, pasta salad, fresh fruit, freshmelon, Danish, biscuits, cornbread.  
Monday: Breakfast - Sausage and biscuit, Honey Nut Cheerios cereal bar, apples. Lunch - Italian spaghetti, chicken taco, grilled cheese sandwich with bowl of chili, tomato and okra gumbo, peas, Mexipinto beans, arroz Mexicano, tossed salad, taco condiment salad, hay stack finger salad, fresh fruit, garlic bread, Kaiser rolls, crackers.  
Tuesday: Breakfast - Peanut butter and strawberry sandwich, cereal, blueberry muffins. Lunch - Falitas with onions and peppers, Chinese egg rolls, turkey and noodles, frijoles refrito, country rice dressing, peas, tossed salad, taco condiment salad, watermelon, fresh fruit, flour tortilla, crackers, rolls.  
Wednesday: Breakfast - Fresh donuts, peaches, cereal, Honey Bun. Lunch - Meat loaf with Creole sauce, fried chicken, burrito with chili, butter beans, parsley buttered potatoes, broccoli/cauliflower, Mexipinto beans, taco condiment salad, tossed salad, fresh fruit, wheat rolls, cowboy bread.  
Thursday: Breakfast - Grilled cheese sandwich, cereal, apple muffin. Lunch - Chicken fillet strips, enchilada casserole, pepperoni pizza, mashed potatoes, frijoles refrito, green beans, tossed salad, taco condiment salad, fresh fruit, carrot/celery raisin salad, golden nugget rolls, arroz Mexicano.

NISD

Friday: No School  
Monday: Breakfast - Banana mini loaf, cereal. Lunch - Pizza, stir fry, tossed salad, blackeyed peas, peaches, gingerbread.  
Tuesday: Breakfast - Waffles, sausage pattie, cereal. Lunch - Burritos, baked potatoes, chili, tossed salad, Spanish rice, corn, applesauce, Rice Krispie treats.  
Wednesday: Breakfast - Breakfast pockets, cereal. Lunch - Chicken fried steak and rolls, pizza, tossed salad, potatoes and gravy, fruit cocktail, Jell-O.  
Thursday: Breakfast - Cinnamon Tastries, cereal. Lunch - Chicken sandwich, hamburgers, french fries, lettuce, beans, apples, cookies.

HISD

Friday: Breakfast - Scrambled eggs, biscuits and sausage, cereal. Lunch - Pizza with pork topping, tuna salad sandwich, carrots, dill pickles, tossed salad, Jell-O.  
Monday: Breakfast - Sausage breakfast, cereal. Lunch - Chicken nuggets, steak fingers, mashed potatoes, gravy, carrots, dill pickles, tossed salad, green beans, wheat bread.  
Tuesday: Breakfast - Breakfast burrito. Lunch - Barbecue beef on bun, sub sandwich, dill pickles, carrot sticks, tossed salad.  
Wednesday: Breakfast - Breakfast sticks, cereal. Lunch - Spaghetti and meat sauce, lasagna with ground beef, tossed salad, dill pickles, carrot sticks, corn on the cob.  
Thursday: Breakfast - French toast sticks, cereal. Lunch - Salisbury steak, beef burrito, baked potatoes, carrot sticks, dill pickles, tossed salad, brown gravy, peaches.

Re-elect  
**Tana Young**  
Castro County  
Justice of the  
Peace.  
**Judge Tana Young**  
Tana Young has worked for Castro County since 1985 and has served as JP since 1999.  
"I do my best to treat everyone fair and impartial. I ask for your vote on Tuesday, March 7".  
Don't forget to vote in the Democratic Primary!  
Political advertising paid for by Tana Young.

**Compare Our CD Rates**  
Bank-issued, FDIC-insured to \$100,000  
6-month 4.60% APY\* Minimum deposit \$5,000  
1-year 4.85% APY\* Minimum deposit \$5,000  
3-year 4.95% APY\* Minimum deposit \$5,000  
5-year 5.00% APY\* Minimum deposit \$5,000  
\*Annual Percentage Yield (APY)-Interest cannot remain on deposit; periodic payout of interest is required. Early withdrawal is not permitted. Effective 2/27/06. Subject to availability and price change. The amount received from a sale of a CD at current market value may be less than the amount initially invested.  
Call or stop by today.  
**Tom Edwards, AAMS**  
Investment Representative  
508 South 25 Mile Ave.  
Hereford, TX 79045  
Bus 806-364-0041  
Toll free 800-755-4104  
Toll free Fax 888-215-4220  
www.edwardjones.com  
Member SIPC  
**Edward Jones**  
Serving Individual Investors Since 1871  
You may use the maturities of the CDs of your choice. You may use as few or as many maturities as you wish.

Auto Trucks Motorcycles Homes  
**Shackleford Agency**  
Mona Shackleford  
141 N. 25 Mile Ave.  
Hereford, Texas 79045  
Phone 806-364-8825  
Fax 806-364-2442

**Elaine's Shoppe**  
Ceramics, Home Decor, Blankets, Framed Art, Safari Misc., Clothes and Shoes  
409 Main Street  
Hereford, Texas  
806-276-5745 (home)  
806-676-1186 (cell)  
Tuesday through Saturday  
11:30 a.m. to 5:00 p.m.

Trust Your Friends At  
**DR. J.W. HALTOM**  
Family Denistry  
To Give You A Gorgeous Smile!  
Dr. J.W. Haltom, Jessica Haltom, Amber Garcia & Rhonda Griffin  
**TEETH WHITENING \$150.00**  
**\$25 OFF COMPLETE EXAM**  
RECEIVE \$50 OFF ANY CROWN, BRIDGE, PARTIAL OR COMPLETE DENTURE  
• Nitrous Oxide available  
• Emergencies seen promptly  
• Insurance and credit cards accepted  
OFFICE HOURS: Mon.-Thurs.: 8 am-5 pm; Friday: 8 am-noon  
320 E. 8th St. • Littlefield • 385-6935

Where's Pinch? Can you find him?  
**Newspaper Fun!**  
Created by Annimills © 2006 V3-N9

**Winter Fun and Food!**

So, what is your excuse for just sitting there like a lumpy pillow? Whaaaaaaat?  
It's cold outside? Yes, of course it is...it is wintertime.  
Although it rarely snows where I live, my friends and I find many things to do to keep physically active during the colder months. We play hide-and-seek in our tunnels.  
No excuses! Get up and move every day.  
Two of this week's puzzles will help you think of things to do that will get you up and keep you moving all winter long.

sleigh 2 snowmobiling 3  
1  
5 6 snowsuit snowshoeing  
4 7  
8 racing saucer  
9 10 snowballs skating sledding skiing  
11 snowmen tobogganing  
12

No Snow?!  
In the northern parts of our country (and once in a while down south) we have snow to play with, in or on! Sledding, building snowforts and igloos is a blast. Usually, we have nice thick layer of ice on the ponds and lakes. That can be great for skating and playing hockey.  
If it's cooler where you live, but there is no snow, there are lots of activities to keep you on the go! My friend in North Carolina rides his bike when the roads are dry and clear. My cousin in Texas plays basketball.  
If the weather is lousy, think about places that have indoor rinks, gyms or rooms to play sports and exercise. Your local recreation department might have a list of fun activities in which you can take part.

Read the clues below to fill in the crossword puzzle:

- gliding on ice using metal blades
- coasting down a snowy hill on a long, flat bottomed, wooden sled that's curved up in the front
- cheering and watching trained sled dogs \_\_\_\_\_
- warmly lined children's winter wear
- pressing snow together to form \_\_\_\_\_
- twirling down a snowy hill on a round \_\_\_\_\_
- putting special footwear on and walking across soft or deep snow without sinking
- sliding down snowy hills on a small steerable wooden and metal "coaster"
- sliding downhill, with a long curved board on each foot
- building and dressing \_\_\_\_\_
- riding a motorized vehicle on snow
- riding in a horse-drawn \_\_\_\_\_

The activities below have 2 of the same letter missing. Can you study the words to fill in the missing letters?

- basketba \_ \_ \_
- ex \_ rcis \_ tapes
- ro \_ \_ erskating
- vid \_ o danc \_ mats
- dance le \_ \_ ons
- vo \_ \_ eyball
- swi \_ \_ ing
- dru \_ \_ ing
- te \_ \_ is
- k \_ \_ r \_ te
- so \_ \_ er
- bowli \_ g ten pi \_

Visit our website: [www.newspaperfun.com](http://www.newspaperfun.com). to see the answers to the puzzles...or write to tell me what activities keep you moving during the winter months at: [Arid@newspaperfun.com](mailto:Arid@newspaperfun.com).

**Master of Disguise!**  
I'm always dropping in! I'm a master of disguise...with a little help from the temperature. Can you fill in the blanks below?

- When the air cools and I become a "cloud on the ground" I am  
O G \_ \_ \_
- The air warms and I disappear or  
E \_ A \_ O \_ A \_ E
- When I pass through very cold air and fall gently to the earth I am  
T P \_ \_ \_  
R \_ \_  
V \_ \_

**Hot, Hearty Food!**

Brrrrr! It's cold outside. Doesn't a hot, hearty meal sound good? Winter's a time for hot drinks and warm, nourishing foods. Can you find and circle these cold-weather favorites?

chicken broth meat loaf  
cheese fondue casserole  
hot chocolate muffins  
baked potato roast  
dumplings soup  
pancakes stew

**Soup's On!**

I H G B R D L M G P A D F A O L T A E M  
N C H I C K E N B R O T H T T Z B C T I B V W T A  
I Y T S A P M J Y P N B G B V T S O S L  
G F R T I I S E S A B A B W E R T A Q A  
S M E R I C A N F S A G N E N C E B H O M S  
S J N U S O T A T O P D E K A B T C N T J R O  
H O U I H U G T L A C B R T R W Q A S A C S  
L U O F L R R O H O T C H O C O L A T E K B  
I U P N F E S T U L N H T A S W O L N H G B E  
Q A H R U F V B N H E U D N O F E S E E H C B S  
J B D U M P L I N G S O P L K M H B M I O K L P



# NATIONAL FFA WEEK

**Triple A Pump Company, Inc.**  
Highway 194 and Highway 168  
806-938-2114

**1ST BANK**  
Muleshoe Bovina Dimmitt  
Member FDIC

**Deaf Smith Electric Cooperative, Inc.**  
Hereford  
806-364-1166  
A Touchstone Energy Cooperative  
The Power of Human Connections  
Touchstone Energy

Dimmitt, Texas  
Hart, Texas  
Earth, Texas  
**LOWE'S**

**Great Plains Ag Credit**  
Mark Klerman  
Vice President  
112 E. Jones • P.O. Box 128  
Dimmitt, Texas 79027  
(806) 647-3169 • Fax (806) 647-2052

**Dimmitt Feed Yard**  
Clovis Hwy West Dimmitt, Texas  
806-647-2108

**WILBUR-ELLIS**  
IDEAS TO GROW WITH  
Hart and Sunnyside

**Whiteface Ford**  
525 N. 25 MILE Ave.  
Hereford, Texas  
806-364-1919

**Westway Feed Products**  
647-3138 • N. Hwy. 385,  
Dimmitt

**AGRILANCE**  
2245 Hwy 86

**Gary's Engine and Machine**  
207 SE 3rd Street  
Dimmitt, Texas  
806-647-4354

**Dimmitt Sulphur Products**  
Hart Hwy  
Dimmitt, Texas  
806-647-2121

**Brown, Graham & Co. PC**  
308 W. Bedford  
Dimmitt • 647-3136

**Bar G Feedyard**  
Summerfield,  
806-357-2241

**Dewayne Brown Insurance**  
512 Broadway Hart, Texas  
806-938-2266

**C & S BATTERY, INC.**  
301 S.E. 2nd  
Dimmitt, Texas 79027  
806-647-3531  
CARY JACKSON Mobile 647-8291  
JOE DEE JOHNSON Mobile 647-7924

**AGRILANCE**  
2245 Hwy 86  
806-945-2259

**Dimmitt Welding & Electric**  
Machine Shop • Millwright  
Portable Welding  
(806) 647-3128  
P.O. Box 589 DIMMITT, TEXAS 79027  
J. D. Parker 647-4396

**AG SUPPLY, LTD.**  
dba Flagg Fertilizer Co.  
FLAGG INTERSECTION  
(806) 647-2241

**AUTO • HOME • LIFE**  
HELPING YOU is what we do best!  
Malcolm Sager, LUTCF  
Bob Anthony, LUTCF  
**FARM BUREAU**  
Castro County Farm Bureau  
304 N. Broadway, Dimmitt  
647-5106

**Dimmitt Veterinary Clinic**  
N Highway 385  
Dimmitt, Texas  
806-647-2149

**Dimmitt ISD**  
608 W Halsell  
806-647-3101

**B & W Aerial Spray, Inc.**  
Box 768 • Dimmitt, Texas 79027  
806-647-2556

**Hart Producers Co-Op Gin**  
Hart, Texas  
806-938-2189

**Stone's Motor Service**  
309 Main St  
Hart, Texas  
806-938-2207

**Nazareth Feed and Seed**  
S Highway 168  
Nazareth, Texas  
806-945-2291

**Roger's Repair**  
Nazareth, Texas  
806-945-2514

**TW's Electronics**  
103 E Bedford  
806-647-2197  
**RadioShack**

**Cargill Ag Horizons**  
Hwy 194 • Hart, Texas • 806-938-2178

**Subway**  
600 N Broadway Dimmitt, Texas  
806-647-0777



# **A Salute To The Beef Cattle Industry**



## **A Vital Part Of Our Local Economy**

Brought to you by:  
Muleshoe Journal  
Castro County News  
Olton Enterprise



## National beef totals are up by two percent

All cattle and calves in the United States as of Jan. 1, 2006, totaled 97.1 million head, two percent above the 95.4 million on Jan. 1, 2005.

All cows and heifers that have calved, at 42.3 million, were up one percent from the 41.9 million on Jan. 1, 2005.

Beef cows, at 33.3 million, were up one percent from Jan. 1, 2005.

Milk cows, at 9.06 million, were up one percent from Jan. 1, 2005.

Other class estimates on Jan. 1, 2006, and the change from Jan. 1, 2005, are as follows:

All heifers 500 pounds and over, 20.0 million, up two percent.

Beef replacement heifers, 5.90 million, up four percent.

Milk replacement heifers, 4.28 million, up four percent.

Other heifers, 9.80 million, up

slightly.

Steers weighing 500 pounds and over, 16.9 million, up three percent.

Bulls weighing 500 pounds and over, 2.26 million, up two percent.

Calves under 500 pounds, 15.6 million, up two percent.

Cattle and calves on feed for slaughter in all feedlots, 14 million, up three percent.

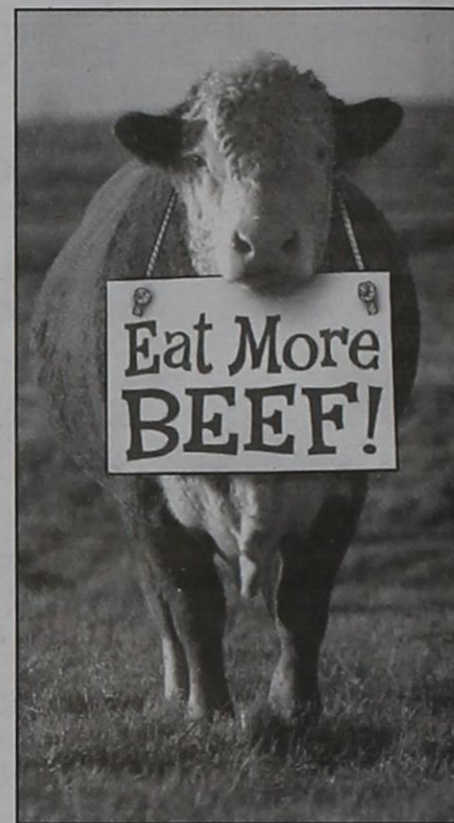
The combined total of calves under 500 pounds, and other heifers and steers over 500 pounds outside of feedlots was 28.2 million, up two percent.

The 2005 calf crop was estimated at 37.8 million head, up one percent from 2004. Calves born during the first half of the year are estimated at 27.4 million, up slightly from 2004.

All inventory and calf crop

estimates for July 1, 2004, Jan. 1, 2005, and July 1, 2005, were reviewed using calf crop, official slaughter, import and export data, and the relationship of new survey information to the prior surveys. Based on the findings of this review, small adjustments of less than one-half percent were made to previously released inventory estimates of all cattle, cows, steers, bulls, and calf crop. Revisions of less than one percent were made to heifers and calves. State level estimates were reviewed and changes were made to reallocate inventory and calf crop estimates to the U.S. total.

Cattle on Feed estimates for Jan. 1, 2005, were revised downward slightly based on the relationship of new survey information to the prior surveys.



*The sign says it all, according to the beef industry.*

# Proud Supporter of West Texas Agriculture



## Xcel Energy<sup>SM</sup>

Steve Deaton, Community Relations Manager, Texas South • Email: [steve.deaton@xcelenergy.com](mailto:steve.deaton@xcelenergy.com) • 806/765-2921



## 'Personal service' is the key to success at Muleshoe Livestock Auction

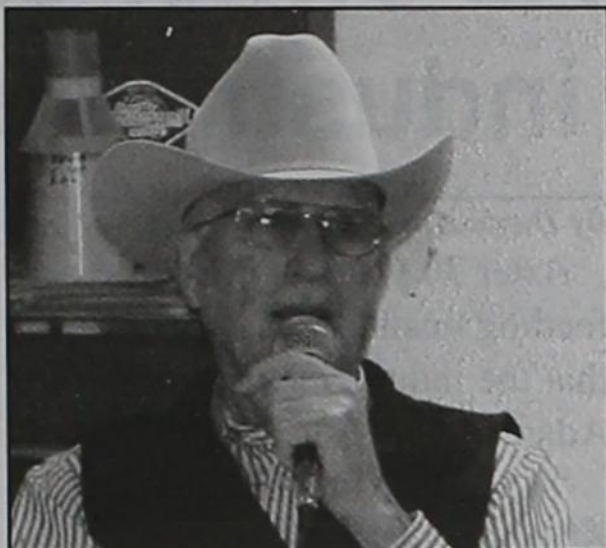
By Larry Thornton

In these days of televised cattle auctions, where the number of small cattle producers appears to be on the decline, it takes more than numbers to attract buyers and sellers to the county livestock auctions that were the mainstay of the beef industry for decades in West Texas.

And that "something extra" is personal service... the kind of personal service that Muleshoe Livestock Auction has provided since it first opened its doors in 1954 under Clayton and Gladys "Meme" Myers.

Since that time, there have been a lot of livestock that has passed through the MLA's sale ring, and there have been more than a few changes.

Probably the greatest change was the passing of the Gladys last year, but while she no longer heads up the auction's business office, Gladys and her husband have a legacy of values



Clayton Myers at work.

that continues to serve the Myers family and the community of Muleshoe.

"Gladys is a great example of a working woman who has raised her children in a family business and stood beside her husband in every circumstance," it said in the Muleshoe Journal after her death on April 2, 2005.

According to Thurman Myers, who along with his brother C.L., began

work at the livestock auction at a young age, there is an advantage to growing up and working in a family business because of the strong work ethics the children learn.

Thurman has two sons and a daughter, while C.L. has both a son and a daughter, all of whom have worked in the family business. On sale days, it takes about 25 employees to handle the work.

Currently, the live stock auction is averaging about 1,425 head of livestock a week, with the number of cattle running about 825 head per week.

"We're still small enough to give them personal service," Thurman said.

Although the cattle totals have declined in the last decade, due to the aforementioned decline in the number of small cattle producers, there's still enough activity to keep the family's four auctioneers — Clayton, C.L., Thurman, and C.L.'s son Clay — busy and the parking lot overflowing each Saturday with a combination of buyers and sellers.

However the enormous March feeder cattle sales from the latter 1980s, when the auctions' record sale 4,000 head of cattle was set, appear to be a thing of the past.

But that doesn't prevent the Myers from accomplishing their goal of satisfying their customers, both new and old.



Sellers line up to unload at Muleshoe Livestock Auction

# AVGP<sup>®</sup>

## Grain Marketing

Bovina • Lariat • Farwell • Lazbuddie

Toll Free

866-583-7362



BAILEY COUNTY ELECTRIC  
COOPERATIVE ASSOCIATION

Muleshoe 806-272-4504

Morton 806-266-8600

*Proud to support all  
aspects of agriculture  
in West Texas!*





# Dry & Ox

*True Value*  
Help Is Just Around The Corner.

401 S. 1st Street  
Muleshoe, Texas 79347  
806/272-4511

Complete line of  
Gallagher Power  
Fence Systems



*Forney*

Full line of Forney  
Welding Supplies  
Full line of Welding Gases

Great Selection of Water Valve Parts, P.V.C. Pipe,  
Galvanized Pipe, Black Pipe & Fittings

We Carry Country Vet Flying Insect  
& Air Freshening Kits

## A2 owner says the beef industry suits him well

By Davie Ann Browder

After 30 years in the cattle feeding business, it's obvious that the industry suits Mark Adams well.

"It's pretty much all I know," Adams said. "I can't think of anything better I'd like to do."

Adams admits he might have a bit of the gambler in him to be in the business. "It's high risk," he said. "But it can be lucrative."

After graduating from college, he got in the cattle feeding business in Arizona. In 1990, he bought a feed yard in this area and in 1994, he purchased A2 Cattle Feeding Inc., where he feeds 25,000 head, with about 65 percent being his own. The rest he's custom feeding for others.

The cattle are fed a ration that's about 90 percent corn or corn by-products like silage and gluten. Because of the physiology of cattle, they can eat a lot of by-products, like corn gluten and whey, Adams said.

Like other big operations, Adams has a nutritionist on call. 2A mills about 600,000 pounds — or 300 tons — of feed a day.

The mixture isn't all the same. Cattle can't be

put on as rich a mix when they first enter the operation as they can in the last days of feeding. They must be acclimated to it, Adams said.

"There's an

adjustment period," he said. "We feed different rations, depending on their length of stay. You can't take cattle off grass and rangelands and feed them what the cattle that have been here the longest get.

"The nutritionist tells us what to mix," he said. "Then it's mixed and we measure it out from trucks by weight. Everything is done with computers."

The cattle are fed twice a day by the trucks with electric scales.

But the heart of the operation, Adams said, is very human — it's the cowboys who ride the same section every day and get to know their cattle.

"They make sure their pens are okay, watered, they check for illness," Adams said. "They help with shipping and receiving the cattle. It's a seven-day-a-week job. Of course they rotate days off, but someone's got to see and feed those cattle every day.

"We have a great group of people working for us, some have been here 10 years or more. And it's really hard to find good help for this kind of work."

Continued on page 12.

We Salute the local cattle industry

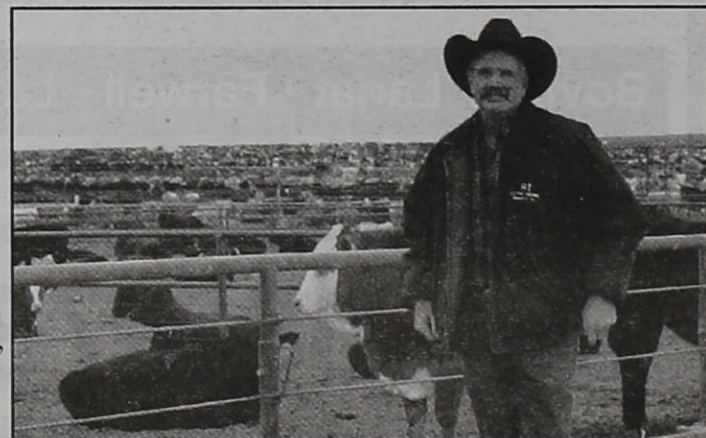
*At City Bank we talk farming.  
We're here to listen to your needs.  
Come in today and see why  
City Bank is what you want.*

612 Main  
Olton, TX  
285-2653



*City Bank*

118 Hwy 70  
Springlake, TX  
986-4300



Mark Adams at the A2 Cattle Feeding, Inc. pens.



## National Feeder and Stocker Cattle Summary

Compared to last week, yearling feeder cattle sold weak to 3.00 lower. Calves continue to trend unevenly with Southeastern states selling steady to 5.00 lower, while the Midwest from Missouri up through Nebraska and Iowa traded steady to 5.00 higher, it was reported for the week ending Feb. 24.

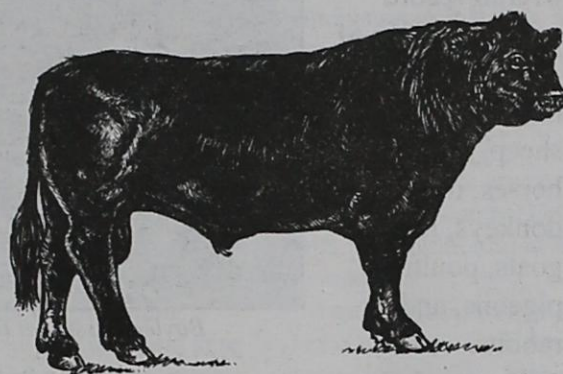
Across the Plains, where the dryness is bordering on dustbowl severity, buyers continue to demand the available stockers with prices mostly steady. Nationwide auction receipts were much lighter this week as a winter storm moved across Oklahoma, Arkansas, and southern Missouri.

The Oklahoma National Stockyards had reduced receipts of only 2,200 head, compared to over 11,000 the same week last year, and the Ozarks Regional Stockyard in West Plains, Missouri, was forced to completely cancel this week's auction. However, numbers would have been light this

week even if the weather would have been ideal in all regions.

Spring-calving producers have mostly sold last year's crop, as this year's calves are starting to hit the ground. Plus, the backgrounded cattle that we usually see coming off wheat from now through March 15th have mostly already made their way into a feedlot because of the drought.

Calf buyers are struggling to put grass calves together early, because of fear that the availability may be even tighter this spring. The cattle complex is very curious at this point with drought and export variables mixed in the equation.



Nothing seems to pencil out as light calves are at historic highs, yearlings can only be hedged to lock-in a 50.00-100.00 loss, and packers can't seem to raise cutout values high enough to increase slaughter rates.

Cow/calf producers have been reaping the rewards of high dollar cattle for several years but many

refuse to acknowledge the warning signs of rough waters ahead. Salebarns across the country reported an increase in demand for top quality heifers this week.

Nearly 1,000 head of open replacement heifers were bought this week in the Bassett and Valentine, Nebraska, auctions alone. These fancy girls weighed from 600-800 lbs and cost from 750.00-950.00

per head. By now, everyone in the cattle industry has seen the cyclical charts that show us to currently be at the point of the roller-coaster that makes you sick to your stomach.

Still, cow/calf men across the country are relying on their neighbors to not increase production. Friday's cattle-on-feed report set a new record since the current data set began in 1996 with 12.1 million head being fed in major feedlots on Feb. 1. This was seven percent more than last year and within the range of most guesses.

January marketings were much anticipated at 102 percent, while placements far exceeded most analysts' predictions with 16 percent more cattle put on feed than last January. However, many of these cattle went to the feedyard early and placements are expected to adjust over the next couple months. This week's reported auction volume included 56 percent over 600 lbs and 43 percent heifers.

## HEREFORD FEED INGREDIENTS, INC.

DAVID R. TIPPS, Representative



**Your Source For  
Cow Calcium  
Carbonate, Salt, &  
Ammonium Sulfate.**

(800) 687-4106 Toll Free  
(806) 272-5871 Muleshoe Office  
(806) 272-5048 Muleshoe Fax

232 Main Street, Muleshoe, Texas 79347

## Irrigation Pumps & Power, Inc.

West Highway 84  
Muleshoe, Texas 79347  
806/272-5597

Cell: 806/946-9222 Home: 806/272-7750

Submersible & Turbine Pumps  
Sales & Service  
Pump Panels Electric Motors Drip Irrigation  
Center Pivot Sales & Service

**ZIMMATIC**  
CENTER-PIVOTS



# Muleshoe student takes Reserve Championship at Southwestern Expo

Baylee Bessire, a 4-H member from Muleshoe, received Reserve Champion Hereford Steer at the 2006 Southwestern Exposition and Livestock Show in February.

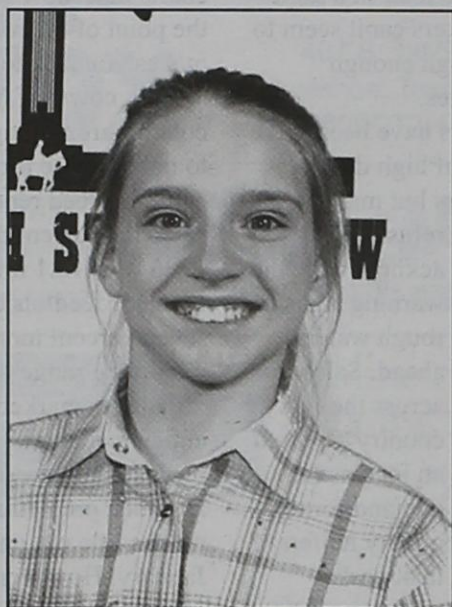
She also exhibited a first place Light Weight Polled Hereford in the Junior Steer Show on Feb. 2.

This year, the stock show's Junior Division hosted more than 10,000 entries by Texas 4-H and FFA youth as the culmination of yearlong

agricultural educational projects in various areas of livestock production.

Junior premiums will exceed \$81,836. The junior entry list is part of the overall record count this year of nearly 25,000 head of cattle, sheep, swine, horses, mules, donkeys, llamas, goats, poultry, pigeons, and rabbits.

The stock show provides educational opportunities for young people, and showcases the livestock industry in the growing



*Baylee Bessire*



*Baylee Bessire at the Southwestern Exposition and Livestock Show*

Metroplex.

The hundreds of thousands of visitors who attend the show will include many people from nations

outside the United States.

This marks the 110th year for the Fort Worth Stock Show and Rodeo.



**WES-TEX FEED YARDS, INC.**  
 Highway 1760 in Muleshoe, Texas  
 (806) 272-7555

WISHES TO THANK ALL OF OUR CUSTOMERS AND FRIENDS IN MULESHOE FOR YOUR SUPPORT AND FRIENDSHIP. WE WISH ALL OF YOU A GREAT YEAR AND ARE LOOKING FORWARD TO SERVING YOU IN 2006 AND FOR YEARS TO COME!

**PACO  
FEED YARD  
LTD.**

*Commercial Cattle Feeders*

**P.O. Box 956  
Friona, Texas  
265-3281  
Feller Hughs - Mgr.**



# Texas A&M reports on impact of dry weather in the Lone Star State

By Kathleen Phillips  
Texas A&M

Farmers and ranchers were hopeful that last weekend's weather would yield plentiful rain on land that is more than thirsty, but much of the state came up dry again, Texas Cooperative Extension officials reported on Feb. 22.

"King County reported no moisture and no rain, but they have had some heavy fog and dew over the past couple of nights that has put some moisture in the air and on the ground," noted Galen Chandler, Extension administrator in Vernon. "Clay County got some rain and sleet during the latter part of last week."

Still, Chandler said, the region around Vernon needs much more moisture to make a dent in the extended drought. Some of the area has received only half of its normal rainfall amount in the past year — the least since 1954, he said.

"The recent rains were insufficient for any positive impact on agriculture in the area," said Jose Pena, Extension

economist in Uvalde. "There has been just enough rain recently to settle the dust and marginally help in planting, but not for much more.

"I expect that irrigated crops such as cotton and corn will do well again this year, producing fairly respectable yields. However, forage continues to be sparse, and it will be difficult for dry-land crops to do well if the current soil (moisture) profile continues."

Cold, dry weather — temperatures in the upper teens to low 20s in fields near rivers — caused some problems in vegetable crops, according to Brenda Rue, Extension administrator in Fort Stockton.

"Cool season crops can develop cold hardness if periodic low temperatures and frosts occur, but the prevailing warm weather before this weekend kept vegetable plants tender and vulnerable to freeze injury," she said. "The worst affected fields had dryer soil at the time of the freeze and were in low lying areas."

Similar conditions may have harmed crops a little further north of there as

well.

"Extremely cold temperatures and dry conditions are hurting winter wheat and grass development," said Scott Durham, extension administrator in San Angelo.

Despite the cold snap, signs of spring are appearing in some areas, Extension officials noted.

Tony Douglas, Extension administrator in Dallas, said warm weather made some of the area's ryegrass perk up. Sweet potato farmers also started getting land ready this week, he noted.

"Spring babies are starting to be born in this area — lambs, kids, calves and colts," Chandler said of the region near Vernon.

East Texas is among the few parts of Texas that have seen weather normalizing lately, Extension officials there said, and that holds promise for the spring.

"Bermuda grass pastures may look bad now, but most should recover this spring with a little rain," said Dr. Joe Vendramini, Extension forage

specialist.

Vendramini said that many pastures may have bare spots caused by the drought, and these open areas tend to be filled in with cool-season weeds after rains.

This spring, the cool-season weeds should go dormant, and with a fertilization and weed control program, most pastures should eventually recover without having to be resprigged, he said.

The following conditions were reported by Extension districts this week:

## Panhandle

Temperatures were above average before plunging to the single digits by week's end. The arctic front brought no moisture. The poor-to-very-poor wheat crop continues to decline from lack of moisture. Some wheat is being irrigated. Rangelands are mostly poor to very poor. Some land preparation for spring crops is in progress. Cattle condition is fair to good with active supplemental feeding.

## South Plains

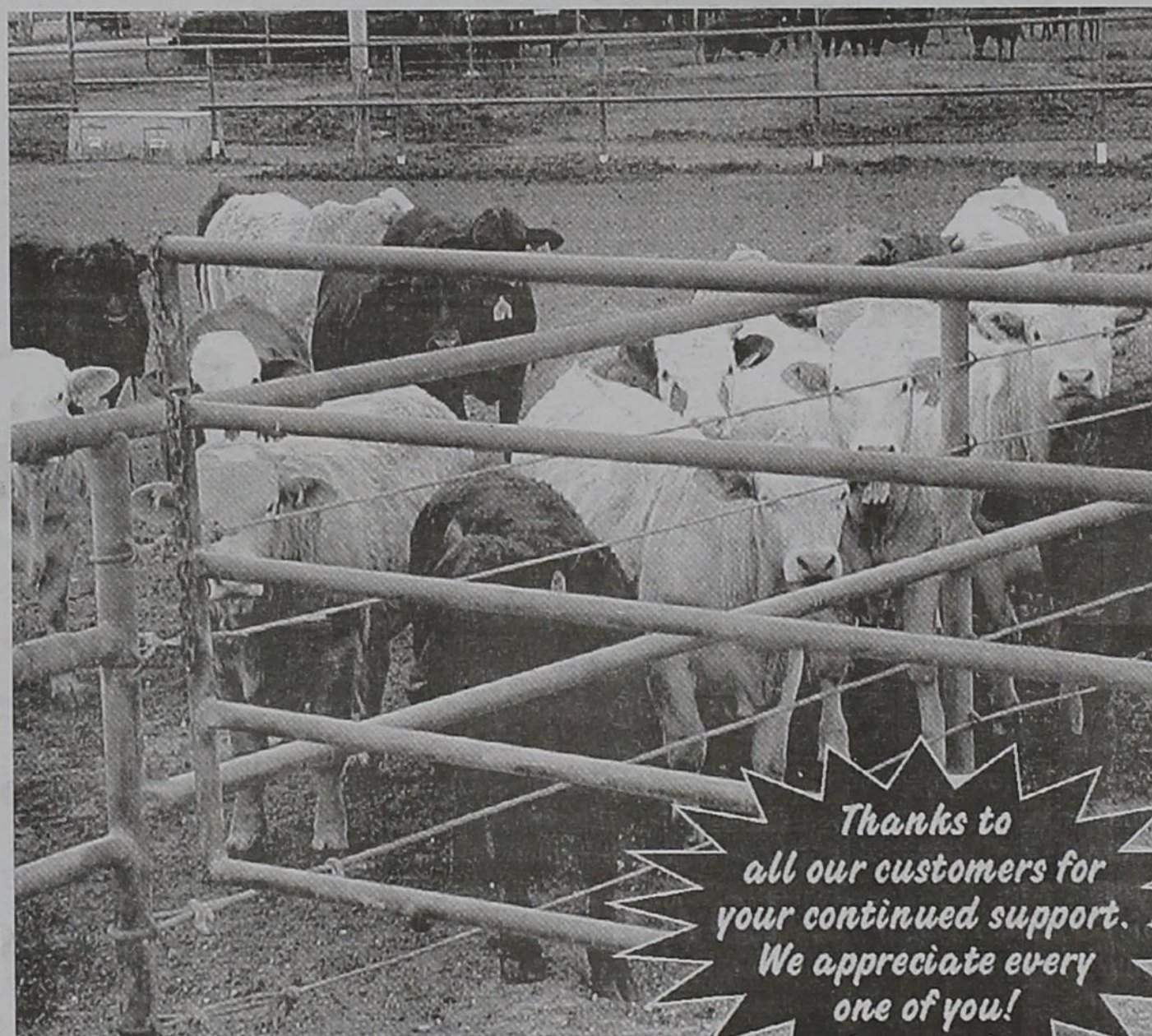
Continued on page 13



**Custom Cattle Feeders**  
**1287 FM 1731, Muleshoe**  
**946-3321 or TF 800-299-3321**

*Shuck Donnell, General Manager*

- Personalized Service
- Competitive Ration Pricing
- Modern Mill and Quality Silage
- Cattle and Feed Financing
- Professional Nutrition and Animal Health Care
- Feeder Cattle Procurement
- Wheat and Grass Pasture Programs
- Preconditioning and Grower Rations
- Retained Ownership Planning
- Ideal Climate and Location with Excellent Drainage



*Thanks to  
all our customers for  
your continued support.  
We appreciate every  
one of you!*



*"We're More Than A Bank...  
...We're Your Partners In Progress!"*



# Security State Bank

*Banking, Trust and Mortgage Partners*

Littlefield  
(806) 385-5134

Lubbock  
(806) 785-8500      (806) 791-0526

Olton  
(806) 285-2623

[www.security-state-bank.com](http://www.security-state-bank.com)

Member FDIC



# Custom feeding is taken to a higher notch at Lazbuddie Feeders

By Davie Ann Browder

Lazbuddie Feed Yards takes the idea of custom feeding one notch higher, according to office manager Kay Ramage. It's all natural feed — corn, including corn by-products, as well as some supplements.

At Lazbuddie, only Holstein cattle — about 16,000, are fed. "We get them in weighing about 200 pounds and ship them out weighing about 500 pounds," Ramage said. "When they leave our yard, they are clear of medicine."

The yard will finish its third year in operation in June. It is owned by Mark Quinn of Melissa and Stoney Agricorp Inc.

The steers are feed twice a day with corn that is cracked on site.

Two cowboys and four pen walkers handle the care and maintenance of the herd.

"We've got a really good crew here," Ramage said, noting that the cowboys and pen walkers are the first ones to note if something is wrong with a



Calves at Lazbuddie Feeders

certain animal.

"When we first get the cattle in, they're put in separate pens away from the other cattle and the pen walkers do their first walk-through — a very thorough one to make sure they're all healthy," she said.

The steers come to them directly

from the dairies. "Most heifer yards, they'll go back to the dairies, this is what they do with the steers," Ramage said. "They start the steers on a calf ranch on a bottle, wean them and then send them here. After the steers gain about 300 pounds, they're sent to another yard and are fattened some

more before being sent to the packers."

Like most of the other feeding operations, Lazbuddie Feeders relies on local operations for many of their products.

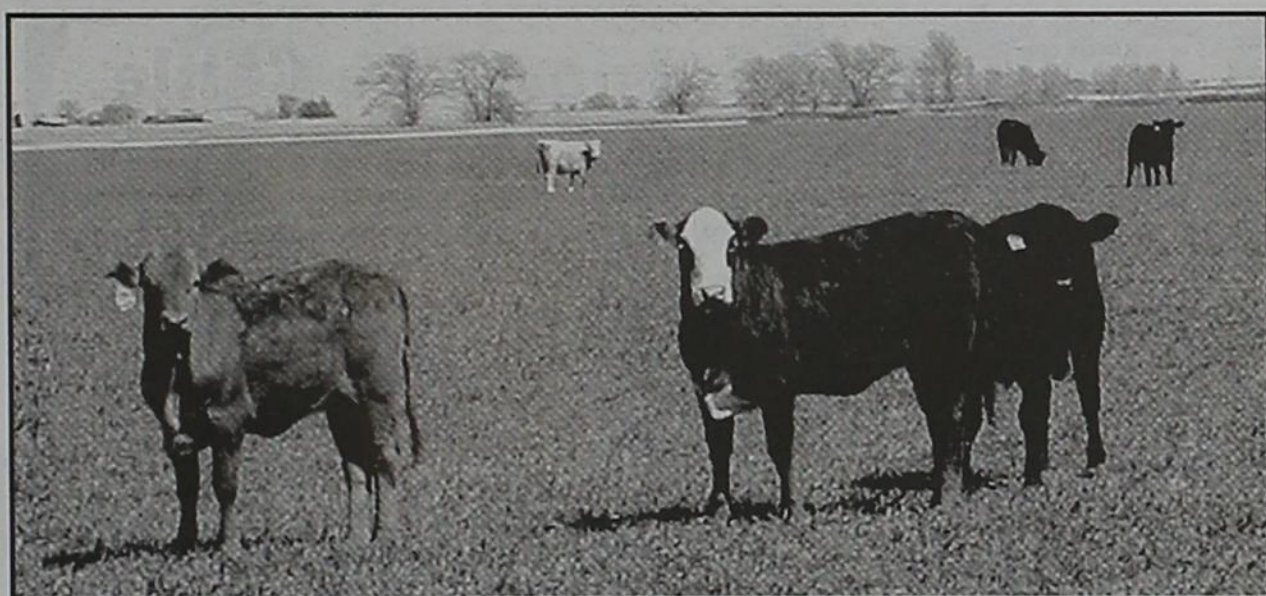
"We get our corn from the AGP, the elevator in Lazbuddie out of Bovina," she said.

With some countries, especially Japan, demanding to know the age and exactly where beef comes from, Ramage said that raising Holsteins fits right in.

"Each of the animals has an ID number, a source date and a tag with their birth date on it," she said. "The cattle ranch puts where they get them from. We record it all with hand scanners and have it on computers. "Of course this is just starting across the country, but it won't be so hard on us because we know so much about our Holsteins," she said.

Gary Ramage is the manager of

Continued on page 10.



**We salute the people who pour their hearts into the cattle industry and pledge our support to help keep this industry strong.**

Muleshoe State Bank is locally owned and operated. We are a full service institution, offering a 24-hour telephone information line, 24 hour automatic teller service, interest bearing checking accounts, CDs, savings accounts, safe deposit boxes, IRAs, direct deposit checking and student checking accounts — all handled with a smile and friendly greeting.

HOME OWNED AND HOME OPERATED

# MULESHOE STATE BANK

Muleshoe Branch: 101 W. American Blvd., • 272-4561

Farwell Branch: 801 Ave. A • 481-9580



Your feedlot, Farm and Ranch Friend!

Fuel and Oil  
Animal Health Supplies  
Feed  
Fencing Supplies  
Tires and Batteries  
Fertilizer

Olton  
Grain  
Coop

*"Farmer Owned, Farmer Oriented"*





Cattle at Rogers and Sons LTD

## Feedlot operation has changed

By Davie Ann Browder

Rogers and Sons LTD got its start in 1989, according to Andy Rogers, who has as partners his sons, Mark and Chad.

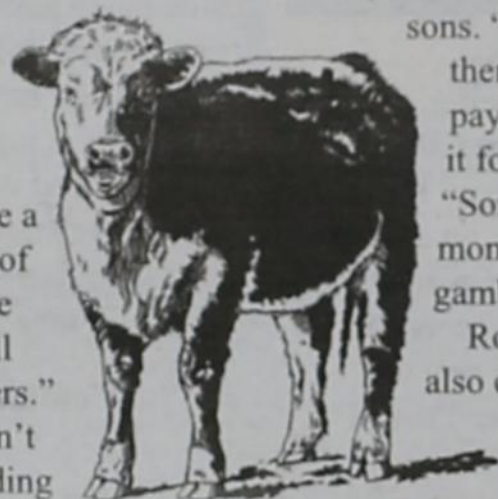
Now, they're feeding 10,000 cattle twice a day.

And as with most businesses, computers have changed the way things are done.

"Computers have made a difference in a whole lot of things," Rogers said. "We feed by weight and it's all figured out with computers."

The one thing that hasn't changed in the cattle feeding business is the cowboys, he said.

"They're the ones that see the cattle every day," he said, noting that his operation employees three that keep a vigilant eye on the cattle. "They know the cattle, so if doctoring needs doing, they'll do it."



As for the cattle feeding business, Rogers said, "It's all I've ever done in my adult life is cattle; it's what I like to do."

"It's a business that provides food for ourselves and other people."

Plus, it's a way to work with his sons. "We figured we'd feed them ourselves instead of paying someone else to do it for us," Rogers said. "Sometimes that's the only money you make. But it's a gamble."

Rogers said his feed yard also custom feeds for anyone needing their services.

The length of time he keeps a steer depends on how much they weigh when they come in.

"We've got to make sure they have enough days of being corn fed to make the beef tender and marbled," he said. "There's a lot of difference in a grass-bred steer and a corn-bred steer. It's in the taste and tenderness."

The base he feeds the steers is 65 percent corn, with vitamins in the supplement plus corn silage, ground alfalfa.

"The nutritionist has this figured out," he said. "They tell me what to put in the feed. It's a scientific formula." And that formula determines how the cattle perform in the feed yard.

"If you don't have a balanced ration, instead of gaining two pounds a day, they'll just gain one," Rogers said. "The shorter number of days you can feed an animal and get him to market, the better chance you have of making a profit."

As for risk, Rogers said feed yards make farming look risk-free. "Feeding cattle is probably the most risky agriculture thing there is," he said. "If we don't make it ourselves, we just don't make it."



Corn being stored at Rogers and Sons

## Lazbuddie Feeders... Continued from page 9



Lazbuddie Feeders Inc. and Dusty Ramage is the assistant manager.

The same company owns a similar operation in Muleshoe, Stoney Point, but at that one, Ramage said, they're also raising Holstein heifers. "They get the heifers from the dairies still in hutches, still babies," she said. "At Stoney Point, they bottle feed them, and then feed them out until they're ready to breed, breed them, and then before they calve, they go back to the dairies."

**We Proudly Support The Cattle Industry And Salute The Hardworking Men & Women Who Make Cattle Their Business.**



**LOWE'S MARKETPLACE**

401 W. American Blvd.  
Muleshoe, Texas  
272-4585



## Cattlemen's Feed lot: An important part of the Lamb County landscape

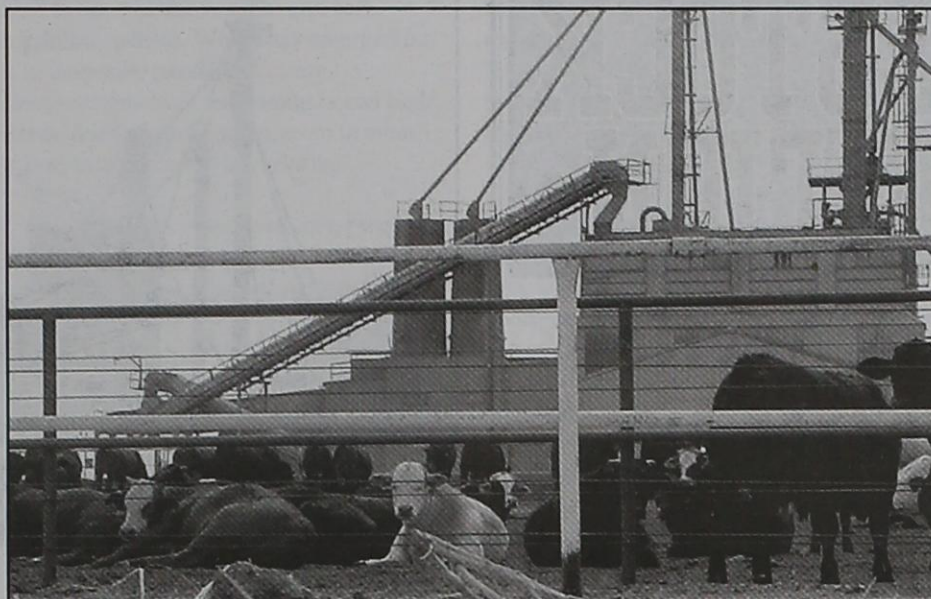
For more than 30 years, Cattlemen's Feed Lot has been part of the Lamb County landscape.

The name has changed many times over the years, but the purpose for which it was built is still the same — cattle.

In 1969 it was built, four miles west of Olton on Hwy. 70 and two miles south on the Fieldton highway. It was then the Olton Feedyards, Inc., which was established and privately owned by 20 local residents.

Built on a 320-acre tract of land, the location was selected because of its sloping land. It was an ideal location for the feedyard and mill.

Thirty-six years later and several name and owner changes later, Roy Heitschmidt feedyard manager, agrees with the original owners' decision for the feedyard location.



*Waiting for the next meal at Cattlemen's Feed Lot.*

"The yard drains well and its set on good soil," Heitschmidt said. "Building it in Olton was well thought out."

The climate as well as the Olton and West Texas Landscape, are

some of the factors that have swayed the feedyard and owners to settle in this area.

The most preferred conditions are the windy and dry ones. In order to produce the best possible cattle

performance these conditions are a must.

"The ever present West Texas wind and below average rainfall is a positive factor that draws many cattle feeders to the are," Heitschmidt said.

Although weather can not be predicted year to year, if its dry or wet weather, the cattle industry continues to be an important part of the areas economy.

"The economic impact (of the cattle business) is fairly substantial because of the money that is

**Continued on page 12.**



## We Salute the local Ranchers, Farmers and Cattlemen



**You provide us with  
one of the most  
valuable resources.**

**Springlake Cotton Growers**

106 S. Hwy 385  
986-4331



## SureWet Irrigation, Inc.

*"If it needs water, you need SureWet"*

*Agricultural • Commercial • Residential*

### PVC Pipeline

- Sales, service and installation
- Center Pivots and well tie-ins
- Trenching and backhoe service
- Underground pipeline repairs

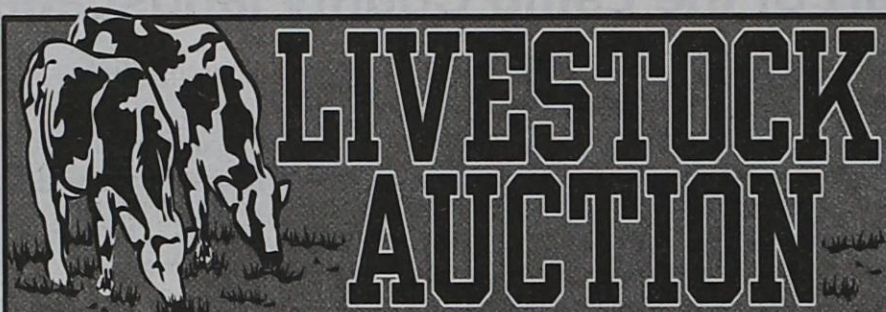
MARK GILLY, Tx. "LI7630"

Office: (806) 647-5574

Cell: (806) 647-7284

Four miles East of Dimmitt on Hwy. 194





Tulia Livestock Auction  
proudly supports our  
beef industry!

Tulia Livestock Auctions

Dimmitt Highway  
Tulia, Texas  
806-995-4184

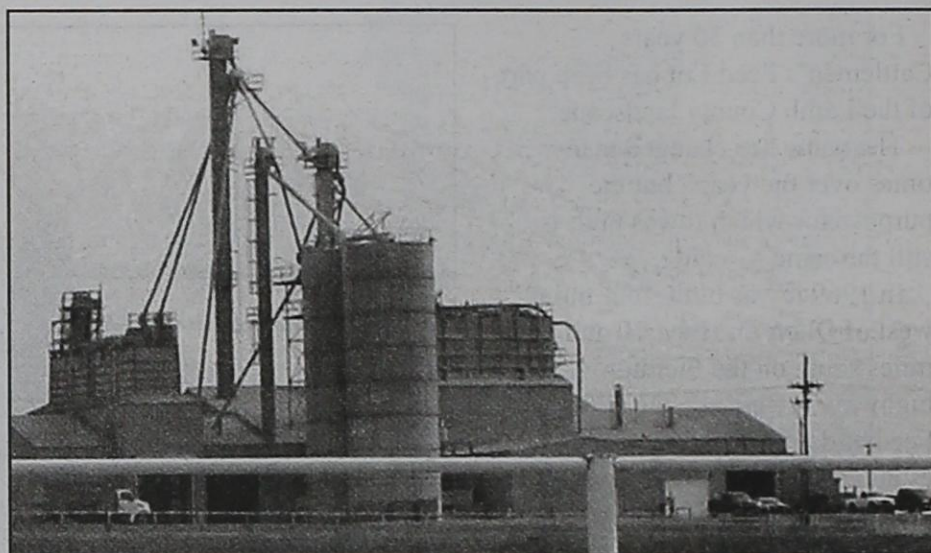


Bar G Feedyard

Summerfield

357-2241 or 357-2296

Cattlemen's... Continued from page 11

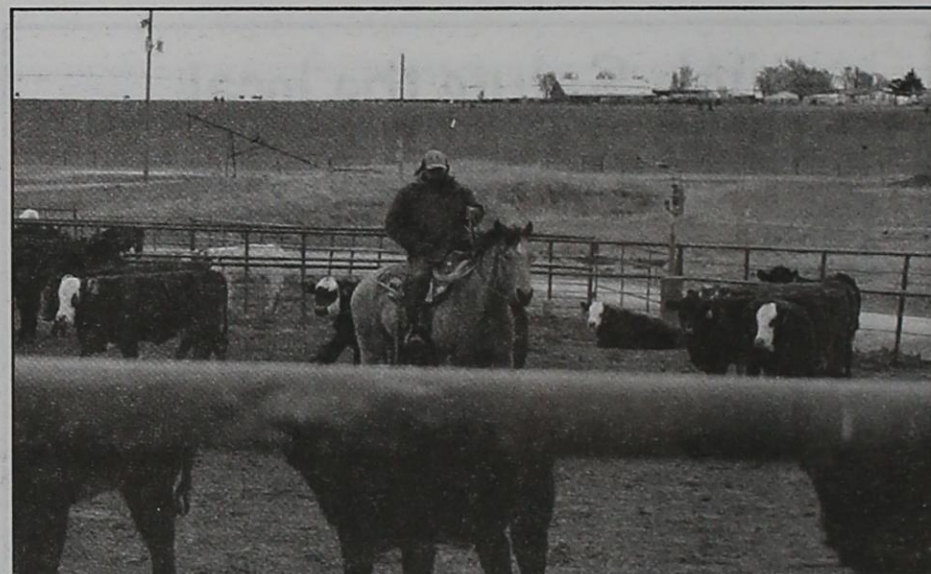


generated," Heitschmidt said.

In order to keep the feedyard working it has 43 employees, as well as employing the services of many local businesses.

In conclusion, the abundance of manure and the ability to sell it as a fertilizer generates additional economic viability to the feedlot and the community.

A2... Continued from page 4



Clifford Spencer riding the pens at the A2 yard.

All totaled, Adams employs about 25 people in his yard. His location, on CR 145 south of Dimmitt, has been a perfect fit, he said.

"Dimmitt's been a good place for have a feed yard," he said. "We buy a lot of corn and silage locally."

**FEEDER FACTS FROM THE TCFA:**

Feeder steers bring a higher price than heifers of the same weight and quality because they gain weight faster and more efficiently. This is because heifers generally mature at a lighter weight.

Bull calves generally sell for a slight discount to steers. However, in times of heavy feeder cattle demand, the price spread may decrease.



## Texas weather...Continued from page 7

Warm weather with temperatures in the 70s was followed by a cold front with daytime highs in the 30s and nighttime lows in the teens. Gins work toward completing the 2005 cotton crop. Wheat is in poor-to-very-poor condition as are pastures and ranges. Producers continue to prepare for spring planting. Supplemental feeding of livestock continues.

### Rolling Plains

Extremely dry, warm and windy weather continues. Most stock tanks are low to completely dry. With supplemental feeding, hay supplies are running low, but cattle look good. Range sites are dry with no visible greening in native, cool-season grasses. Land is being prepared for spring planting with hopes for rain. As much as three-fourths of the wheat is lost and likely will be planted to dryland cotton, sudan grass or guar, or left bare.

### North

Soil moisture varies widely from very short to surplus, and that means crops and pastures also are in very-poor-to-excellent condition. Overall, however, the area suffers from severe drought and high fire danger. A shortage of water for livestock is also critical. Farmers will start planting

corn as soon as the weather and soil conditions permit. Wheat has emerged but is in desperate need of moisture. Unseasonably high temperatures and high winds dried the area again, even in areas that received rains two weeks ago.

### East

Rains helped winter pastures, ryegrass and clover. Some producers fertilized pastures, hoping to take advantage of rainfall. Most stock pond levels have increased. Cattle conditions remain fair to good, though calves are experiencing some respiratory problems due to weather conditions. Vegetable growers are preparing land for planting, and some potatoes and onions have been planted. Peach growers hope for predicted rain and sleet, because their trees need a certain number of "chilling hours" to make a crop.

### Far West

Soil moisture ranges from very short to adequate. As a result, pastures and livestock are in very-poor-to-good condition. Winter wheat is in very-poor-to-good condition. The entire area is at high risk for wildfires.

### West Central

Unseasonably warm weather was

ushered out by a cold front that brought freezing temperatures through the weekend. Soil moisture remains very low. Cotton production continues without problems. Producers continue supplemental feeding of livestock.

### Central

Rain fell over the weekend, but more is needed. Much of the fall-planted grains has now emerged. Supplemental feeding continues. Hay supplies most likely will run out in March. Water supplies for livestock are still a concern, as are wildfires.

### Southeast

A couple days of rain sparked favorable for plant growth, though conditions were windy and cool. Ryegrass has not begun to grow.

### Southwest

Older cabbage fields have little visible damage because of the cold front. Young cabbage shows more injury, and may have some quality problems when plants in those fields mature in 30-40 days. Some onion plants likely were killed, and leaf dieback is commonly seen. Most fresh market spinach fields had minor superficial injury, and harvest continued. However, some fields of

spinach grown for the processing industry were cut, and the product dumped because quality was hurt. Spinach is often cut two or three times in a season. With the injured leaves out of the way, growers now hope for some quick regrowth. Potato plants were just emerging in Frio County when the freeze occurred, and injury was minor. Irrigation continues in preparation for corn planting.

### Coastal Bend

No measurable precipitation was received. Drought and fire hazard continue. Some corn was planted but only in isolated locations. Most farmers are waiting on rain before planting. Ranchers are still supplemental feeding livestock as very little forage is available.

### South

Soil moisture is very short. Harvest continues on sugarcane, citrus and vegetables such as cabbage and spinach. Land preparation and some planting is underway for spring row crops, but persisting severe drought conditions are straining producer's plans. There was a limited amount of moisture. Irrigation on all crops continues. Decreased hay yields have caused some ranchers to liquidate cattle herds.

We Beat Big City  
Prices!



The  
Best  
Never  
Rest

"Tradin' Your Way Every Day for Over 43 Years"

FORD

MERCURY

LINCOLN

TOYOTA

Make The Short  
Drive To Plainview!

Friendly  
Service.

Low, Low  
Prices.

FINANCING  
TO FIT YOUR  
NEEDS

293-2511 (1-800-498-FORD)

**JACK  
MORRIS**

New & Used Cars and Trucks  
Program Vehicles  
Renting & Leasing

Service-Parts-Body Shop

"If You Trade Somewhere Else, We Both Lose...  
Come See Us-It's Worth The Drive"

OLTON HIGHWAY & INTERSTATE 27 IN PLAINVIEW



# NCBA Cattle Fax: Strong profits lead to herd expansion

Cow-calf producers responded to another year of record-high calf prices and continued to expand beef cow and replacement heifer numbers during 2005.

Major beef export markets remained closed to U.S. beef during 2005; however, both Japan and South Korea are expected to resume at least limited beef imports from the U.S. during 2006. Despite the limited beef exports and one of the largest net beef supplies on record, prices for fed cattle, feeder cattle and calves were record-high during 2005.

During 2005, the U.S. exported about 700 million pounds of beef cuts compared to 415 million pounds a year earlier and 2.5 billion pounds in 2003. Mexico accounted for about two-thirds of beef exports that occurred during 2005.

Beef imports during 2005 were near record large and totaled about 3.6 billion pounds. The largest increases in imports came from Canada and Uruguay.

Cattlemen should expect slightly lower prices for fed cattle during 2006, averaging \$85 to \$87. Fed cattle prices are expected to range from the mid-\$90s at the spring highs and have risk back into the upper \$70s at the summer lows. Feeder cattle prices are expected to average between \$106 and \$108 during 2006, which is \$2 to \$4 lower than 2005 levels.

Prices are likely to trade in a fairly normal seasonal pattern and range from around \$105 at the spring lows to near \$115 or better at the highs. Calf prices are projected to trade in a range of \$115 to \$135 during the course of the

year and average about \$125 during 2006.

Larger net beef supplies, increased cattle slaughter and larger beef production will force prices lower during the year, compared to the records set during 2005.

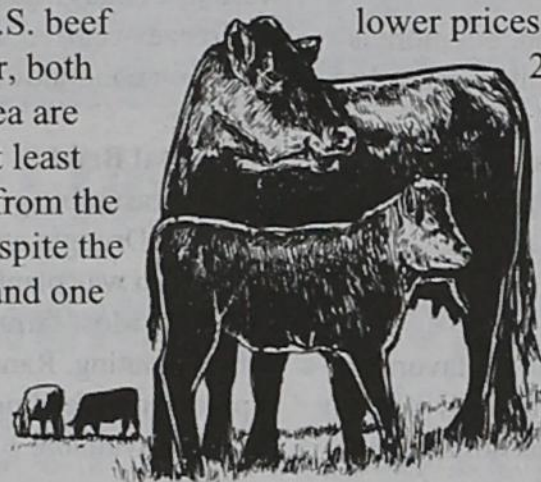
Cattle feeders, stocker operators, backgrounders, and cow-calf producers should all experience slimmer operating

margins during 2006 due to the larger available supplies. Market cow and breeding cattle prices are expected to be mostly steady during 2006.

However, conditions could change if the drought persists in the Southern Plains.

Total cattle numbers increased nearly two percent during 2005 and

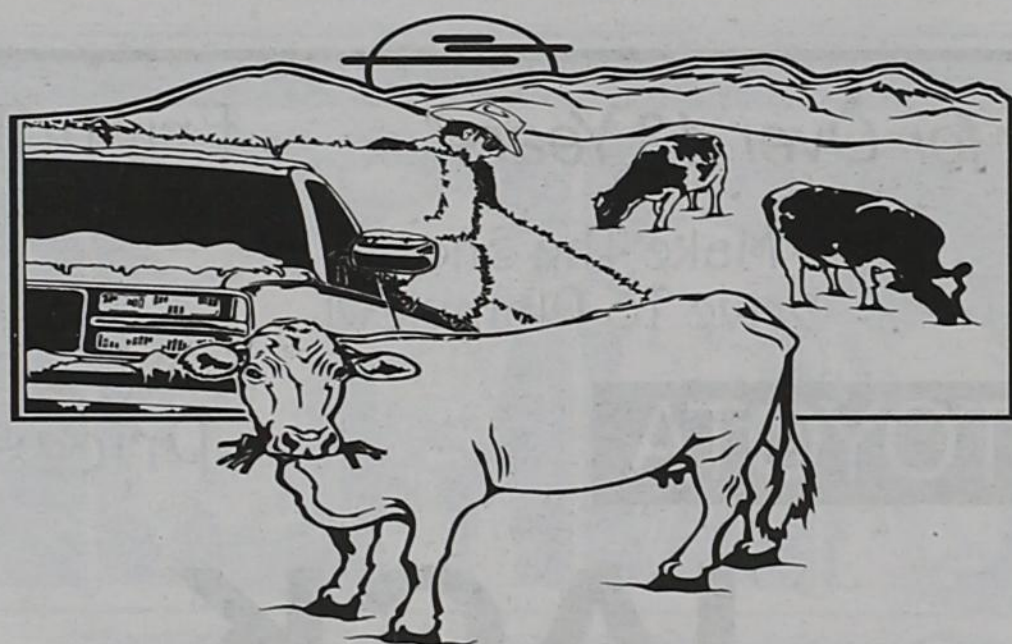
**Continued on page 15.**



# EAT BEEF, IT'S BETTER!

## Hi-Plains Oil

206 SE 2nd St  
Dimmitt, Texas  
806-47-4549



**Peoples Bank...**  
**Backing the beef industry!**

We welcome the opportunity to visit with you about your farm loan needs in 2006.

**A great bank in the people business!**  
**Serving all of Castro County**

Hwy 86 and FM 168 Nazareth, Texas  
806-945-9504

Member FDIC

  
Equal Housing Lender



Tim Farris  
President

*We proudly support  
West Texas Agriculture!*

**Deaf Smith  
Electric  
Cooperative, Inc.**



Touchstone Energy®  
The Power of Human Connections



## NCBA Cattle Fax... Continued from page 14

totaled 97.1 million head on Jan. 1, 2006. Beef cow numbers increased for the second consecutive year and totaled 33.25 million head on Jan. 1, 2006 — up 330,000 head from a year earlier.

Cattle slaughter and beef production were about even with levels from a year ago. Steer and heifer slaughter totaled 27.0 million head in 2005 while beef production totaled 24.6 billion pounds and was one of the smallest totals in the past 15 years.

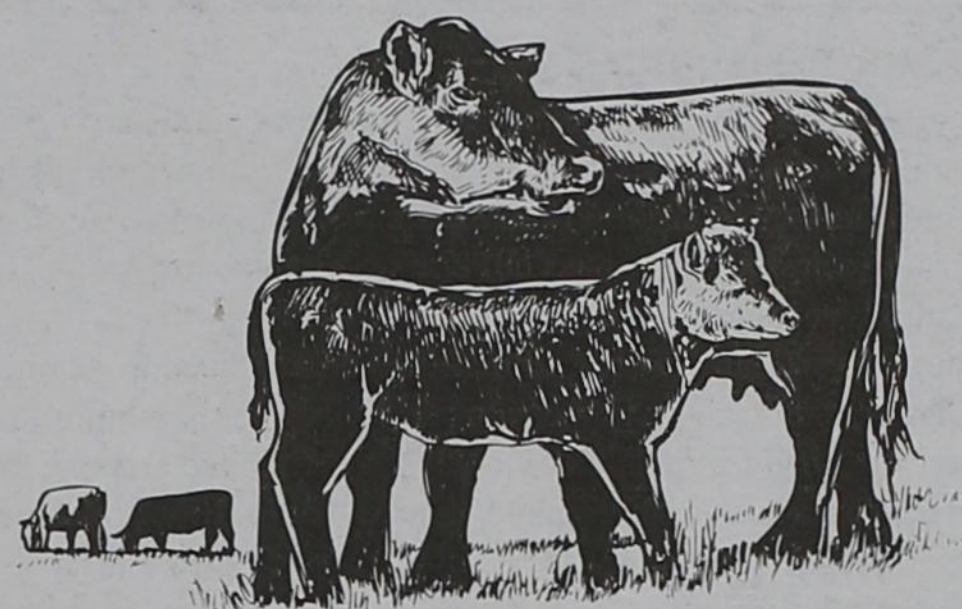
Fed cattle slaughter during 2006 is expected to increase about 850,000 head due to larger on-feed totals and slightly larger inventory levels. Beef production for the year is expected to increase by about 1 billion pounds in 2006.

Net beef supplies for the year are expected to increase during the year and be near record large as increased market access and larger beef exports are expected to offset about one-half of the increase in domestic beef production.

### NCBA: Assumptions for private animal ID systems

In the considering a private animal ID system, several key assumptions were made. In some cases the assumptions used were expectations that NCBA's Animal ID Commission identified to guide development. In other cases the assumptions were merely a recognition of circumstances or conditions that must or should be met. The primary assumptions used in the development of the industry National Animal Identification System were:

Enhancement of the animal health surveillance system; need for financial incentives, both private and government; official unique individual animal identification; reasonable timeline — marketplace dictates adoption; oversight for the system should be provided by the industry; a privately held, recognized, multi-species, centralized database that meets USDA needs for disease surveillance, marketplace and industry requirements; the program will become mandatory at some point (time or participation rate); a private system for animal health surveillance can provide the framework for value movement within the beef system



Proudly standing behind  
our beef industry!

**Westway Trading Corp.**

N. Highway 385  
Dimmitt, Texas  
(806) 647-3138

## Full Circle Custom



Now serving  
Dalhart,  
Dumas &  
Sunray!

**Contact Brian Ramaekers:**  
806-655-5238 home or  
806-647-7372 mobile.  
Canyon, Texas

## Full Circle Custom: serving the area since 1997

- Brian Ramaekers has been in business since 1997
- Brian operates in four counties:  
Castro, Lamb, Swisher and Parmer  
*Now serving Dalhart, Dumas & Sunray!*
- Specializing in:  
DMI Plowing  
Strip-til  
No-til and Convention planting & sowing  
Cotton Stripping  
Silage Packing

**Give Brian a call today and let  
Full Circle Custom handle  
your custom farming needs!**



## TDA, Hay and CRP News...

### Disaster assistance available

Assistance for producers in primary disaster counties is available through the Texas Department of Agriculture's Linked Deposit program. Eligible producers must have a loan approved by an eligible lender who then will submit the completed application to the Texas Agricultural Finance Authority for approval.

If approved, the bank's loan rate would be reduced to an interest rate that is established at the time of closing. The maximum loan amount financed for disaster relief under the Linked Deposit Program is \$250,000 per applicant. Linked Deposit loans under the natural disaster category are eligible for the lower interest rate for a maximum of 15 months.

Applications are subject to the availability of funds in the program. For more information call (512) 936-0273 or visit TDA's Web site at [www.agr.state.tx.us](http://www.agr.state.tx.us) under the "Finance, Agribusiness and Rural Economic Development" section.

### Hay hotline

The Texas Department of Agriculture is updating its list of hay suppliers daily. The list is available online at [www.agr.state.tx.us](http://www.agr.state.tx.us) or by calling (877)429-1988. TDA will fax, e-mail or mail the lists of suppliers and/or hay transporters. Individuals who have hay, feed grain or pasture for lease or who transport hay may call the same number to be included on the list.

### Natural Resources Conservation Service approves emergency Grazing of Texas CRP land

According to the Natural Resources Conservation Service, emergency haying and grazing of Texas CRP land has been approved by the U.S. Department of Agriculture in response to continuing drought and devastating wildfires throughout the state.

Emergency haying is authorized until May 1, and emergency grazing is authorized until June 1, 2006. CRP participants in every Texas county are eligible to take part in emergency haying and grazing, but they must visit their local Farm Service Agency to get approval.

They must also visit the Natural Resources Conservation Service office to obtain a modified conservation plan, which will list specific requirements. Your local USDA-NRCS office is listed under "USDA" in the phone book or on the Texas NRCS Web site at [www.tx.nrcs.usda.gov/](http://www.tx.nrcs.usda.gov/).

[www.muleshoemotor.com](http://www.muleshoemotor.com)

# IT'S A STAMPEDE OF SAVINGS!

FORD WILL MATCH YOUR DOWN PAYMENT UP TO \$1,000\*



2006 EXPLORER XLT

**\$2,000** CASH BACK  
**\$1,000** CUSTOMER DOWN PAYMENT  
**\$1,000** MATCHING DOWN PAYMENT  
**\$4,000** TOTAL DOWN PAYMENT

We Discount Every Car... Every Day.



2006 RANGER

**\$2,000** CASH BACK  
**\$1,000** CUSTOMER DOWN PAYMENT  
**\$1,000** MATCHING DOWN PAYMENT  
**\$4,000** TOTAL DOWN PAYMENT



2006 F-150 TEXAS EDITION

**\$3,000** CASH BACK  
**\$1,000** CUSTOMER DOWN PAYMENT  
**\$1,000** MATCHING DOWN PAYMENT  
**\$5,000** TOTAL DOWN PAYMENT



Factory Trained & Certified Service Technicians

**MULESHOE MOTOR CO.**

1125 W. AMERICAN BLVD., MULESHOE  
 272-4251 OR TF 800-432-7617

### SERVICE SPECIALS

Specials expire 3/15/06

- Oil Change Special..... \$19.95  
(5 qts. oil & filter, 21-pt. inspection. Diesels excluded. Sales tax extra.)
- Diesel Engine Oil Change..... \$69.95  
(5 qts. oil & filter, 21-pt. inspection. Domestic 250 & 350s. Sales tax/supplies not included.)
- Any Repair ..... 15% Off  
(Collision repairs excluded. Not valid with any other offer/special.)
- FREE Tire Rotation ..... With Any Service
- Front End Alignment..... \$24.95  
(Cars and light duty trucks only.)

\* Matching down payment of up to \$1,000 must be financed through Ford Credit and is available on Super Duty® (excluding Harley-Davidson™), Ranger, Escape, Explorer and Expedition only.

FORD F-SERIES — BEST-SELLING TRUCK IN THE WORLD 29 YEARS IN A ROW!