

Bezo Lockbinding
P.O. Box 2550
Amarillo, Tex. 79105

Congressional re-districting is likely

BY PATRICK CLARK

For the second time in less than a decade, Floyd County may wind up in a new congressional district.

As a result of the 1980 census results, it seems possible, if not likely, that Floyd County will move from the 17th congressional district of Charles Stenholm (D-Stamford) to the 19th congressional district of Kent Hance of Lubbock.

However, it is possible Floyd County could join the 13th congressional district of Jack Hightower which now stretches from Amarillo to Wichita Falls.

According to preliminary census figures:

Stenholm's 17th district had 503,563 people. That's 20,597 short of the so-called ideal congressional district.

Hance's 19th district had 541,883 people, 17,673 more than the ideal number.

Hightower's 13th district had 504,266 people, 19,894 short of the ideal number.

One solution could be to move the 13th district south into the 17th and the 17th south into the 21st district which, preliminary census figures show, has a population of 677,041, which is 152,881 people over the ideal size.

The Texas Legislature has begun holding hearings in Austin on re-districting. The Texas Constitution requires that re-districting be completed in the first regular session after the decennial census.

However, the re-districting cannot be completed until the census figures are final and President Reagan has until April 1 to report the final census totals to Congress.

Stenholm aide, Dale King, says he expects to see the 17th district extended to the south to take in all of Coleman

and Comanche Counties which are now partially in the 17th. He says the lines may also be redrawn to include part or all of Brown and Rannels Counties in the 17th.

When the boundaries of the 13th and 19th districts are redrawn, King says, it seems likely Floyd County will be included in Hance's 19th district because Floyd County has more identification with Lubbock than it does with Amarillo in Hightower's district.

Floyd County was in the 19th district until the 1972 redistricting when it was moved to the 17th.

Lockney Mayor Claude Brown says he agrees with King's assessment that Floyd County more appropriately belongs in Hance's 19th district than Hightower's 13th.

"That's more where we belong," Brown says of the 19th. "We have more identification with Lubbock than we do

with Amarillo. If we change, that's (the 19th district) more where we belong."

There could be changes in the state's representation in the state legislature.

Because the number of senatorial districts will remain unchanged at 31, the South Plain-Panhandle districts will apparently have to be expanded significantly, to take into consideration the state's 27 percent, or three million, increase in population over the last decade, much of it in West Texas.

Because of the increase in state population, the ideal size for a state senatorial district has increased from 361,247 to 458,980.

Floyd County is in the 30th state senatorial district represented by Democrat Ray Farabee of Wichita Falls.

According to the preliminary census results, district 30 is now 84,000 short of the ideal population. The district's total

population, according to those preliminary figures, rose by only 4,778 people, a change of just 1.3 percent over the last census.

Farabee's district is immediately west of the 22nd senatorial district which is now more than 42,000 over the ideal population.

To even out the population in the districts, Farabee's district could be extended into the 22nd district, the 31st district, now represented by Bill Sarapalius of Hereford, could be extended south into the 30th and possibly the 28th districts. Sen. E.L. Short's 28th district could be expanded south into Snelson's district or east into Farabee's.

It seems likely, at this time, that Floyd County will remain in the state legislative district of Rep. Foster Whaley (D-Pampa), although a determination will have to await completion of the final census report.

The Lockney Beacon

Volume 85 Number 6

Lockney, Floyd County, Texas, 79241

Thursday February 5, 1981

20 Pages In Two Sections

25¢

Carol Lea Clark's

It's Not Easy

Think an American male with very long legs invented the standard American bathtub. It couldn't have been a woman.

A woman would have designed one comfortable and certainly prettier than a man's. The man must have had very long legs, because no man with long legs could possibly stretch into an American bathtub unless there were in proportion to a 4 foot body. There must have been the same man who designed all the kitchen cabinets in an apartment or house I have lived in. I have never had a kitchen cabinet with a second shelf I could reach out a step stool.

Usually I can barely see the tops of glasses on the bottom shelf, and never I try to get something out of a top shelf without the step stool, a pan or a cookie cutter falls on my head once about a house that had been especially built for a family of six and had everything where it could be easily reached. The architect probably didn't have to change the bathtub at all, but he may have had his nose revolved for designing kitchen cabinets that could be reached with feet from the ground.

Maybe someone would think of designing a house with kitchen cabinets with a bathtub to suit a woman. First of all, he would have to make the bathtub longer, wider and deeper and

add some sort of contraption so you could reach your shampoo and bath oil without getting out.

I always have a bottle in every corner of my bathtub, so that one always falls in whenever I move, and it is always the bottle that doesn't have the lid on properly.

Then of course, you would have to add a larger water heater so the hot water wouldn't run out just as you were getting comfortable. Whenever we have over-night guests I have to give up bathing, or take cold showers, until they leave because there is never enough hot water.

I have thought about buying one of those hot tubs that are such a rage in California. If I had one I might never be seen again. I would spend all my time getting wrinkled and red-skinned from staying in too long. No wonder Californians call themselves mellow and laid back. They are weak from all those hot baths.

As far as kitchen cabinets, I'm not sure what to suggest. I could just wear elevator shoes. Or I could put a little rail around the bottom of the cabinets to step on, like the ones that they once had in western saloons.

Maybe I could find that architect without a license to design a new kitchen for me.

Or maybe I should just move in with the midgets.

Perspectives

THE REV. MICHAEL O'CONNOR
LOCKNEY FIRST UNITED
METHODIST CHURCH

Charleston, West Virginia, the Rev. Michael Curry went to his office and found a butcher knife stuck back of his chair. A note was reading: "You will be dead..."

It seems that Curry incurred the wrath of the Klan after refusing to allow to hold a recruiting rally during services.

One is really sure why the Klan tried to pick on this particular pastor. They made life so miserable and dangerous for his family, that the Klan over his area decided to move to an undisclosed pastorate.

I am always amazed when I encounter the kinds of stories, not so much because they happen, as because I can't always find people I know fairly well who would think the Klan should be allowed to hold their rally. There are those who would deplore the Klan, and then cheerfully run down blacks and Hispanics in the next breath.

How in the world did the Klan ever get the impression that they represent Christian values? How in the world did Christians ever get the idea that a judge was compatible with Christian belief?

The Jews had the concept that they were God's chosen people, regardless of what they did, and they tended to feel superior to other groups of people. The maritans were considered racial miscreants, not to be associated with, and the Catholics (that would be us folks) were considered contempt, considered unclean. Yet, Jesus associated with the Sama-

ritans, used one as an example over the religious wonders of the day, and Peter was privy to a revelation from God that the Gentiles were not to be considered unclean. Unfortunately, Peter did not learn his lesson too well. Neither, it seems, have Christians.

If God so loved the world; if He is no respecter of persons; if in Christ there is neither male nor female, east or west; if we Christians were grafted onto the branch; and no one has a reason to boast before God; then we must cease to try to justify prejudice in any form, or cease to name the name of Christ.

Filing open for Lockney school board

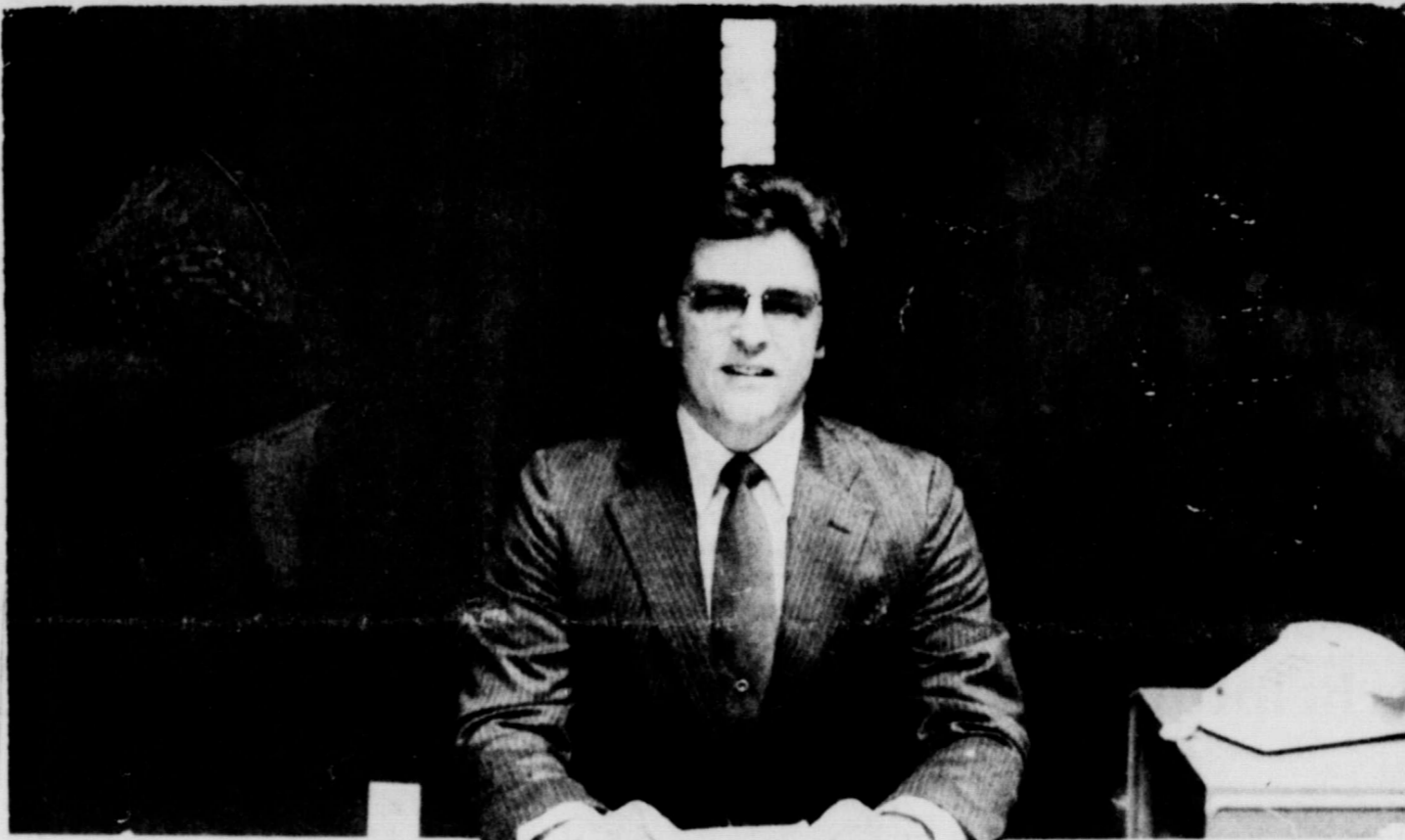
Two seats on the Lockney School Board will be open in the April elections.

The terms of board members Kenneth Brosch and Kelton Shaw are expiring.

Those interested in filing for election to the school board for a three year term may do so between 8 a.m. and 4:30 p.m. Monday through Friday at the office of the superintendent of schools.

The filing deadline is March 4.

The school board is expected to schedule the election for Saturday, April 4, at its meeting next week. That's the same day as Lockney municipal elections.



Don Morrison: new Floyd County farm bureau manager

Morrison new bureau manager

Don E. Morrison is the new Farm Bureau office manager. He assumed duties on Monday, February 2.

Morrison has been with the Hale County Farm Bureau since January 1978. He was a career agent.

"The first thing we will be doing is going through all of the members files to make sure that their coverage is correct and is the way they want it to be," Morrison said.

The office is now in the process of reviewing these policies and "it will just take a little time," he said.

The bureau will be looking for two

more additional agents for the county Morrison said. There are no other personnel changes anticipated.

Career agent Pat Green has been covering the Floyd County office along with his three county territory this past week.

"I certainly appreciate the work Pat has done and also Mitzi Hale's," Morrison said.

Mitzi Hale is the agency secretary.

Before working for Farm Bureau, Morrison was a Texaco Cosignee in Spur for eight years. Spur is his home.

Before that he was with the rural electric co-op in Livingston and in Tulia.

Since he has been with Farm Bureau he has been awarded membership in the "million dollar round-table" in life insurance production. He was made a member his first year and has reported the performance for the last three consecutive years.

Morrison's wife is Glenna and the couple have three children. The oldest daughter, Janet, is a sophomore at West Texas State. Two other children are Jamie, 11, and Jodi, 9.

The family belongs to the Baptist Church.

Morrison has been involved in 4-H and little league activities. He is a member of the Masonic Lodge.



JERRY FORD, far right, watches as cement is poured for the foundation for his equipment building and microwave dish sections of the system by mid-April, with service through the new Lockney cable television system. Ford says if the good weather continues, he may be able to start turning out most of the city planned by mid-May.

Hail hearing scheduled

The Texas Department of Water Resources will hold a hearing on a hail reduction-rain enhancement project for Floyd and three surrounding counties next month.

The hearing is scheduled for 10 a.m. Wednesday, March 11, at the American Legion Post, 111 Ash, in Plainview.

In June of last year, voters in Floyd, Hale, Castro and Lamb Counties approved the controversial weather modification program by a vote of 2,260-1,873, a 387 vote margin.

However, the program carried only one of five precincts in Floyd County, the Sandhill area. It was defeated in Hale County but carried by large margins in both Lamb and Castro Counties.

Last week the water commission approved a weather modification license for the Plainview-based Plains Water Improvement Association. That group wants to conduct hail suppression activities over the High Plains.

The license issued to the Plains Association does not authorize any specific project. A permit will be required for any actual hail suppression work. That permit will be the topic of next month's public hearing.

Association president Royce Carthel says it is up to the group now to prove its activities will not negatively affect the project area or any areas adjacent to it.

The Association last Spring proposed conducting its hail reduction-rain enhancement activities over portions of the four counties. But the water commission, if it approves the permit, could modify the project area to reflect the program's strongest support as indicated by the election results.

To accurately reflect the results of that election, the water commission could redraw the project area borders to run from Plainview to the west, leaving out western Floyd County and eastern Hale County.

According to the hail suppression election law, the opposing precincts along the outside border of the project can be excluded from the permit area.

However, the law indicates that opposing precincts located completely in the target area are to be left in the permit area.

The Association operated its hail suppression program from 1970 through 1977. But in 1978, Citizens for Natural Weather, which opposes the suppression program, were successful in a series of elections throughout the area in voting down the Associations request for an operating permit that year.

The Association was not eligible to apply for another permit for two years, until 1980.

Merchants hold meeting tonight

The Lockney Retail Merchants Association will meet tonight at 7:30 at Strickland's Restaurant.

They will discuss business promotions for February and March.

STAMP PRICE SPECIAL

18 oz Layer Duncan Hines

Cake Mix

9¢

With One Filled S&H Special Saver Book Without Book

69¢

If You Do Not Receive Our Mail Out Add By Saturday Please Come By Our Store For A Free Copy

15 oz Rug Deodorizer Rug Fresh

99¢



15 oz Liquid Cleaner Pine-Sol 89¢

2 lb Banquet Fried Chicken \$2.69

\$1.89 lb

Gary's "From Our Deli"

Corn Dogs 3/\$1.00

I.C. Cards

THE RIGHT QUANTITIES

February 4, 1981



Oldy's MARKET

STAMP PRICE SPECIALS

Remember what a penny could buy in the good old days? Well, take a good look at our good old thrifty Stamp-Price Specials! For just a few pennies... and a 1-4 Saver Book of Green Stamps (30 Day 10¢... it's happy days are here again... every day! Stamp-Price Specials are just one more way we help you save money through Green Stamps. Every time you shop... Hurry in for your Stamp-Price Specials Saver Book! The more you shop... the more you save. Through prices on these four Stamp-Price Specials effective through 1/4/81

More savings!

STAMP PRICE SPECIAL

Cassarele 2 lb Bag

Pinto Beans

19¢

With One Filled S&H Special Saver Book

Without Book **79¢**

STAMP PRICE SPECIAL

Gallon Jug Bleach

Clorox

29¢

With One Filled S&H Special Saver Book

Without Book **89¢**

STAMP PRICE SPECIAL

Sunny Fresh Farm Grade A Large

Eggs

19¢

With One Filled S&H Special Saver Book

Without Book **79¢**

STAMP PRICE SPECIAL

18 oz Layer Duncan Hines

Cake Mix

9¢

With One Filled S&H Special Saver Book

Without Book **69¢**

If You Do Not Receive Our Mail Out Add By Saturday Please Come By Our Store For A Free Copy

STAMP GREEN STAMPS

Double

S&H Green Stamps

Thursday, Friday Or Saturday

Garden Fresh Produce

Snow White **Cauliflower** **79¢** Head

Red Delicious **Apples** 3 lb Bag **99¢**

Texas Ruby Red **Gradefruit** **4 / \$1.00** lb

32 oz Quart Kraft **Miracle Whip** **\$1.37**

16 oz White House **Applesauce** **2 / 79¢**

15 oz Rug Deodorizer **Rug Fresh** **99¢**

15 oz Liquid Cleaner **Pine-Sol** **89¢**

Gallon Grade A Buddy's **Milk** **\$1.99**

Owens Country Style Sausage Straight from the farm

2 lb Owens **Sausage** **\$3.29**

2 lb Banquet **Fried Chicken** **\$2.69**

USDA **Ground Chuck** **\$1.89** lb

1 lb Deckers **Bacon** **\$1.69**

6-32 oz **Tab Or Coke** **\$1.49** Plus Deposit

3 lb Farmland Can **Ham** **\$6.89**

County Style Spare **Ribs** **\$1.69** lb

Gary's "From Our Deli" **Corn Dogs** **3 / \$1.00**

10 lb 11 oz Family Size **Oxydol** **\$5.19**

1 lb All Grinds Folgers **Coffee** **\$2.19**

220 South 2nd 983-3149
8 am - 9 pm Weekdays
9 am - 9 pm Sundays

We Take W.I.C. Cards

WE RESERVE THE RIGHT TO LIMIT QUANTITIES

Prices Expire February 4, 1981

FOOD STAMPS

32 oz Liquid King Size **Ivory** **\$2.29**

Schilling Brown Gravy, Spaghetti Sauce, Chili Or Taco Seasoning **Mix** **3 / \$1.00**

10 oz Folgers Instant **Coffee** **\$4.49**

All Flavors 1 1/2" Size **Doritos** **\$1.19**

Buddy's SUPERMARKET

Cong

BY PATRICK C

For the second time in a decade, Floyd County may have a new congressional district. As a result of the 1980 census, it seems possible, if not probable, that Floyd County will move from its current congressional district of 10th (D-Stamford) to the 11th congressional district of Kent Ham.

However, it is possible that Floyd County could join the 13th congressional district of Jack Hightower which runs from Amarillo to Wichita Falls.

According to preliminary figures: --Stenholm's 17th district has 20,597 people. That's 20,597 more people than Hance's 19th district which has 17,673 more people.

Volume 85 N

Carol Lea Clark

It's

think an American male with legs invented the standard American bathtub. It couldn't have been a woman. A woman would have designed a more comfortable and certainly prettier bathtub. The man must have had a problem with his legs, because no man with normal-sized legs could possibly step into an American bathtub unless he were in proportion to a 4 foot baby. I must have been the same man who designed all the kitchen cabinets in my apartment or house. I have never had a kitchen cabinet with a second shelf I could reach without a step stool. Usually I can barely see the top of the glasses on the bottom shelf. I never try to get something off the top shelf without the step stool. I read once about a house that was especially built for a family of dwarfs and had everything wheelchair accessible. The architect probably didn't have to change a thing at all, but he may have had a sense revolved for designing kitchen cabinets that could be reached without the ground. I wish someone would think about designing a house with kitchen cabinets and a bathtub to suit a woman. First of all, he would have to make the bathtub longer, wider and deeper.

Persp

THE REV. MICHAEL O'CONNOR, LOCKNEY FIRST UNITED METHODIST CHURCH, Charleston, West Virginia, told Michael Curry went to his office and found a butcher knife stuck in the back of his chair. A note was pinned to the chair with the words: "You will be dead, K."

seems that Curry incurred the wrath of the Klan after refusing to allow a march to hold a recruiting rally during services.

no one is really sure why the Klan decided to pick on this particular pastor, they made life so miserable and dangerous for his family, that Curry had to hop over his area decided to move to an undisclosed pastorate.

I am always amazed when I encounter these kinds of stories, not so much because they happen, as because I rarely always find people I know far from home who would think the Klan should be allowed to hold their rallies. Or, there are those who would deplore the Klan, and then cheerfully run down blacks and Hispanics in the next breath.

How in the world did the Klan get the impression that they represent Christian values? How in the world did Christians ever get the idea that prejudice was compatible with Christianity?

The Jews had the concept that they were God's chosen people, regardless of what they did, and they tended to be superior to other groups of people. Samaritans were considered racial inferiors, not to be associated with, and Gentiles (that would be us folks) were beneath contempt, considered unclean. Yet, Jesus associated with the Sa

Farm News

Amarillo conference set on crop production

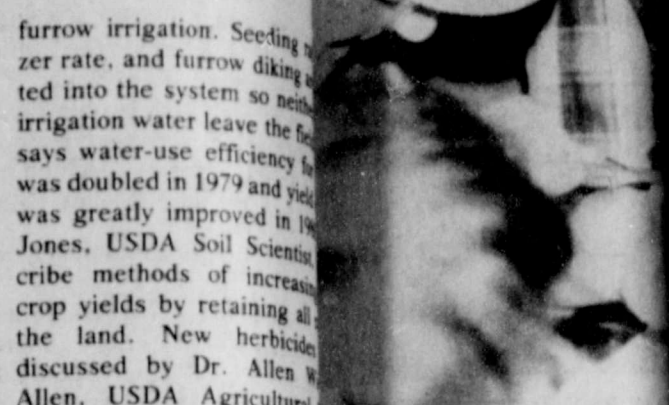
The Fifth Annual Crop Production and Utilization Symposium will be held February 12 at the Texas A&M Research and Extension Center in Amarillo. All persons interested in the latest agricultural research are invited. "What's Ahead in Crops and Production Practices?" is the theme for the event.

The outlook for new farm implements, improved irrigation, dryland water conservation techniques, and a new greenbug biotype are program features. Alfalfa varieties, sunflowers, perennial grasses, minimum tillage, wheat grazing, and new herbicides also will be discussed by scientists from Bushland and Amarillo.

Registration starts at 9:30, and the morning session entitled "Alternative Crops" begins at 10:00. Dr. Charlie Rogers, lead-off speaker, will discuss the potential of sunflowers in the Southern High Plains. Dr. H.V. Eck will detail his research with irrigated perennial grasses, and Dr. Dan Undersander will discuss alfalfa varieties. Undersander says selecting the proper variety can increase alfalfa production several tons annually.

The keynote address, "Farm Implements - A Look Into the Future," will be presented by William W. Jackson, who is in charge of planning for tillage and planting equipment, Deere and Company, Moline, Illinois.

After a Dutch treat lunch, Dr. Frank Petr, Area Agronomist with the Texas Agricultural Extension Service, will moderate a session on "Alternative Production Practices." Dr. B.A. Stewart, USDA Research Director at Bushland, will discuss a new system of



LOCKNEY CARE CENTER MEIMR in Plainview.

Lockn

BY VICKIE HUTTON
...there again, hope had an enjoyable week, you don't think our bingo game is filled

LOCKNEY BEACON

(USPS 317-220)
Published weekly each Thursday by Floyd County Publishing Co., 220 South Main St. Lockney, Texas 7241. Second class postage paid at Lockney, Texas. Subscription rates: local \$10.50 per year, out of trade area \$15.00 per year. POSTMASTER: send address changes to Lockney Beacon, P.O. Box 187, Lockney, Texas 7241.

Shelley Harris
Publisher
Patrick Clark
Managing Editor
Tom Burns
Advertising Manager



YIELD CHAMPIONS — The three top soybean producers in the 1980 state test, sponsored by the Texas Soybean Association, include, from left, L.B. "Bert" Elam of Lockney with 60.3 bushels per acre, Mike Carthel of Lockney with 62.7 bushels and Donald Lee Terrell of Plainview with 72.8 bushels. Making the award presentation on Friday, during the TSA annual convention in Plainview, are Dr. Arlen Klosterboer of Beaumont, area extension agronomist, and Lou Buice representing Elanco Products.

Area men tops in soybean production

By DOUG McDONOUGH
Herald Farm Editor

For the fifth time in as many years, a Hale County farmer has been recognized as the top soybean producer in the state in the annual yield contest sponsored by the Texas Soybean Association, in cooperation with Texas Agricultural Extension Service and Elanco Products Co. Donald Lee Terrell of 210 Yucca Terrace, Plainview, was named the state soybean yield champion on Friday at the 14th annual meeting of the Texas Soybean Association in Plainview. For his winning yield of 72.8 bushels per acre he received the state champion's plaque and a trip for two to Acapulco.

Last year the state soybean yield crown went to Joe Schwartz of Hale Center, for producing 72.9 bushels per acre. The 1978-crop crown went to Dale Arthur, Petersburg, for producing 71.6 bushels per acre, with the 1977 crop contest being awarded to Bill John Hegl of Petersburg for 71.4 bushels and the 1976 crop award to Neal Burnett of Plainview with 72.3 bushels per acre.

Two area men also took second and third place in the state contest, Mike Carthel of Lockney, who farms north of Akin, produced 62.7 bushels per acre and L.B. "Bert" Elam, from Lockney but who's soybean test plot was in eastern Hale County with 60.3 bushels per acre.

BOTH CARTEL and Elam received special plaques along with amounts of either Treflan or Surflan by virtue of also placing second and third, respectively, in the contest for irrigated soybean production areas. Terrell captured the top spot among irrigated producers.

During the two-day convention, held Thursday and Friday at the Hale County Agriculture Center, LaMarr Ramsey of Plainview was re-elected to his second one-year term as president of the Texas Soybean Association. Also re-elected were Roy Seaberg, first vice president, of Dayton; Tom Henderson, second vice president, of El Campo, and Robert Ledbetter, third vice president, of Paris. Terrell was elected as secretary-treasurer, replacing Bill SoRelle of Plainview, who did not run for re-election.

A farmer since 1955, Terrell currently produces cotton, wheat, corn, soybeans, potatoes and onions and approximately 2,300 acres west and northwest of Plainview. All of the cropland is irrigated.

The winning 72.8 bushel production was from an eight-acre measured

contest plot, planted in Ring Around Mitchell variety on May 26. It was watered six times, planted double row on 40-inch beds with nine seeds per foot. Treflan was used for weed control and the crop was harvested Oct. 8.

FOR THE 1980 crop year, Terrell raised some 420 acres of soybeans with an overall yield of 52 to 53 bushels. Some 100 acres of soybeans were produced on the same farm as the yield test with an overall yield for that farm of 62 bushels per acre. In last year's contest, Terrell produced 61.61 bushels per acre.

Carthel captured second place with Ring Around 450 variety while Elam took third with Mitchell variety.

Top producer in the Coast Prairie area was Reynolds Farm of Wharton in Wharton County with a yield of 55.6 bushels from the Hutton variety. Abney and Sons Farm of Nome in

Jefferson County captured second at 47.4 bushels with Coker 338 variety while Mike N. Burnside of Bay City in Matagorda County came in third with 46.7 bushels, also from Coker 338.

Glen Nichols of Clarksville in Red River County was the top producer in the Northeast Texas region with 43.3 bushels per acre.

Terrell was the only producer initiated into the Texas 70 Bushel Club for 1980. Carthel and Elam were both initiated into the Texas 60 Bushel Club, along with High Plains grower Emmet Pittman of Kress in Swisher County. Pittman's Mitchell soybeans yielded 60.2 bushels per acre.

The annual contest is designed to recognize producers in each of the major soybean growing areas of the state — irrigated areas (High Plains and Southwest Texas), Northeast Texas and Coast Prairie. Its purpose is to stimulate soybean production by providing useful cultural information to increase cooperation within the

industry to improve production efficiency.

CONTEST WINNERS were announced by Dr. Arlen Klosterboer of Beaumont, extension area agronomist.

This year's convention attracted about 100 soybean producers from throughout Texas. It is traditionally hosted annually, in rotation, by producers in each of the three major Texas production areas.

Prior to the awards presentation, Denny Blankenship, director of market development of the American Soybean Association in St. Louis, Mo., explained that during the next 10 years, soybean demand is expected to reach 3 billion bushels, or 50 percent more than the present crop. Currently, U.S. soybean exports account for about \$10 billion, with only \$16 million spent in export marketing development through producer check-offs and USDA funding.

Hay test is helpful

Hay is now being fed in many areas of the state, yet most producers don't know the quality of hay they have. Since much of the 1980 hay crop was of low quality due to dry conditions, producers should consider having their hay tested for protein content.

A hay test to determine the protein content is helpful in several respects points out Don Dorsett, forage specialist with the Texas Agricultural Extension Service, Texas A&M University System. Protein content relates to production practices which influence quality, such as maturity and fertilization, and also provides a guide as to feeding such hay according to its nutritional value.

Different classes or types of beef cattle have different nutritional requirements, emphasizes Dorsett. Animal nutritionists say that beef cattle cannot meet their requirements for protein when hay is 7 percent crude protein or below. Yet a recent summary of hay test conducted for producers by the Forage Testing Service at Texas A&M University revealed that 32 percent of the Coastal bermudagrass hay tested 7 percent or below. The summary also indicated that more than 69 percent of such hay as Bahiagrass, sudan, sorghum, bluestems and Johnsongrass tested 7 percent crude protein or below.

It's Time to Plant Pecan Trees

We Have Bare Root Pecan Trees

Kept Dormant In A Controlled Atmosphere Of 32 to 40 Degrees

Ready To Plant

Tejas, Mahan, Mohawk, Western
Schley, Desirable, Stuart & Burkett

\$16⁹⁵ To \$23⁹⁵

Emert's

Nursery And Tree Service

652-3116 Lockney Call Kieth Emert After 6:00 p.m.



Building Materials Cost

more today, so repairs and construction after a fire or tornado cost more. Be sure your coverages are up to date. Fire, Homeowners, Farm and Ranch Owners insurance are just a few of the Farm Bureau Members' insurance needs served at low net cost.

For this valuable protection or service call your agent.

Floyd County Farm Bureau
101 S Wall St. 983-3777 Floydada
652-2242 Lockney

TEXAS FARM BUREAU INSURANCE COS. **FB**

Sponsored by the following interested firms:

- First National Bank, Floydada
- Russell's Equipment & Supply, Floydada
- Consumers Fuel Association, Lockney
- Case Power & Equipment, Floydada
- The Floyd County Hesperian
- The Lockney Beacon
- Floydada Cooperative Gins
- Martin and Company
- Floyd County Farm Bureau
- Federal Land Bank Association of Floydada
- Ansley & Son, Lockney
- Floydada Implement Co.
- Plainview Savings & Loan Association, Floydada

The Land Bank

Need a better balance between short and long-term debts?

See us about the long-term.

Federal Land Bank Assn

103 S. WALL, 983-2871

agri-facts

Jerry Perry

Cotton will do a tight-rope act in 1981 according to U. S. Department of Agriculture figures which estimate that 1980-81 world cotton demand will outstrip production by about a million bales. The U. S. D. A.'s probability people identify last season's drought as the reason for the projected tight supply/demand balancing act. Post-drought production was nearly 25 percent below that of the previous 1979-80 season. Increased foreign production - which has been pushed up to 52.5 million bales, will do little, if anything, to offset the U. S. decrease. That decrease, over 11 million bales, is reflected in all cotton producing regions of the U. S. World carry-over stocks are placed at 2.8 billion for the same period due to the reduced harvest.

Floyd County Implement, Floydada

HOU

Farm News

Amarillo conference on crop production

Annual Crop Production Symposium will be held at the Texas A&M Research Center in Amarillo interested in the latest research are invited. The theme for the

book for new farm improved irrigation, dryland irrigation techniques, and a bug biotype are program alfalfa varieties, sunflowers, grasses, minimum tillage, and new herbicides also discussed by scientists from Amarillo.

starts at 9:30, and the session entitled "Alternative" at 10:00. Dr. Charlie Hoff speaker, will discuss of sunflowers in the Plains. Dr. H.V. Eck will march with irrigated perennials. Dr. Dan Undersander alfalfa varieties. Under- selecting the proper variety alfalfa production several

address. "Farm Imple- Into the Future." will be William W. Jackson, who of planning for tillage and ment. Deere and Com- Illinois.

ch treat lunch. Dr. Frank nomist with the Texas Extension Service, will session on "Alternative atics." Dr. B.A. Stew- search Director at Bush- discuss a new system of



Building Materials Cost
are today, so repairs and construction after a fire or mado cost more. Be sure your coverages are up to date. Homeowners, Farm and Ranch Owners insurance are a few of the Farm Bureau Members' insurance needs ed at low net cost.
this valuable protection or service call your agent.
Floyd County Farm Bureau
Wall St. 983-3777 Floydada
52-2242 Lockney
FARM BUREAU INSURANCE COS.

Interested firms:

Consumers Fuel Association
Lockney

The Lockney Beacon

Floyd County Farm Bureau

Floydada Implement Co.

ation



LOCKNEY CARE CENTER residents receive instruction in ceramics every Thursday in a class taught by Chuck Shockley of MHR in Plainview.

Lockney Care Center news

VICKIE HUTTON
to there again, hope and an enjoyable week, he did.
you don't think our bingo game is filled

LOCKNEY BEACON
(USPS 317-220)

ublished weekly each sday by Floyd County shing Co., 220 South n St. Lockney, Texas 1. Second class postage at Lockney, Texas. Sub- tion rates: local \$10.50 year, out of trade area, 50 per year. POSTMAS- e send address changes the Lockney Beacon, P.O. 187, Lockney, Texas 75841.

ly Harris
Publisher
rick Clark
Managing Editor
m Burns
Advertising Manager

with competition, you are mistaken. We had 3 blackout winners. Myrtle Payne, Albert Poole, and Richard Lahan. The gentlemen were good sports though. They gave Mrs. Payne the prize.

Wednesday we were transported to Hawaii with the help of the Floyd County Library and Deputy Sheriff Olan Potteet. If you haven't guessed by now we saw a lovely film on the history of Hawaii.

We all enjoyed watching Lisa Blanco open her gifts during the bridal shower the staff and residents gave her.

We hate to say goodbye to Lisa but we hope she has a lovely life with her new husband.

We thank all the nice people who have been bringing us all the firewood. On a cold day it is nice to sit by the fire and daydream. A special thanks goes to Jim Price for the delicious green onions he

brought. This is very much appreciated.
The residents are having a Tupperware party Thursday, February 19, at 2:30 p.m. Everyone is invited to come. To place outside orders call the Care Center.

We are really tapping our feet during music therapy with Lisa Payne from MHR, this has surely put extra joy in our Fridays. Mr. Hart played his fiddle along with Lisa on the guitar. They did a fairly good job of it too!

Lockney
LUNCH MENU
February 2-6

Monday:
Breakfast — Orange juice, corn flakes, blueberry muffins, milk
Lunch — Chicken salad on bun, buttered confetti corn, green beans, peaches, milk, chocolate cake
Tuesday:
Breakfast — Orange sections, pancakes, syrup, butter, milk
Lunch — Grilled cheese sandwich, pinto beans, cole slaw, milk, plain cake with frosting
Wednesday:
Breakfast — Grape juice,

Lockney
raisin bran, toast with peanut butter, milk
Lunch — Pig in a blanket, peanut butter and cracker, breaded squash, milk, June peas, brownie
Thursday:
Breakfast — Banana, rice krispies, milk
Lunch — Fried chicken, creamed potatoes, boiled cabbage, cornbread, milk
Friday:
Breakfast — Sliced peaches, fruit loops, apple turnovers, milk
Lunch — Hamburger, vegetable soup, hamburger salad, pineapple cobbler, milk

Constitutional seminar planned

The Freeman Institute will conduct a Constitutional seminar on "The Miracle of America" for all area residents on Feb. 13 and 14 in the Plainview High School auditorium.
The course specifically is designed to restore confidence in the founding fathers' unique formula for Constitutional government and free enterprise economics.

Petersburg, Abernathy, Hale Center, Cotton Center and Plainview public school districts.

While the program is not just for teachers, Plainview Superintendent Lamont Veatch said local teachers will be given one hour of in-service credit for attending the seminar. It will be held from 6-10 p.m. on Feb. 13 and 8-4 p.m. on Feb. 14. All five high schools in Hale County are to be represented at the seminar, Veatch said.

ACCORDING TO literature by Skousen, the institute is conducting the Constitutional seminars for four reasons:

— There is an urgent need to help Americans realize that almost every major problem currently facing the nation is the direct result of abandoning or perverting

some important principle laid down by the founding fathers.

— Americans need to know that corrosive inflation, abusive taxation, federal meddling in local affairs, the loss of states' rights, corruption in high places, government waste, foreign wars, subversion of our currency, a high national debt, a troubled Social Security system, increasing hospital costs and other problems that cause anxiety for Americans are unnecessary and can be eliminated.

— There is a need to know the founding fathers discovered the answers to those problems and how they formulated the original formula for success.

demonstrated that they can inspire people of different political parties to unite to resist attacks on the American way of life and to combine their strengths toward a complete restoration of Constitutional principles.

The seminar, which costs \$35 per family, covers the American heritage from the days of the Anglo-Saxons to the 1787 Constitutional Convention. The entire text of the Constitution is then discussed phrase by phrase to learn the original intent of the founding fathers, resulting distortions that have since occurred and what needs to be done to restore it.

The price of the seminar includes seven cassette tapes and course workbooks for the entire family.

The Floyd County Farm Bureau is among the sponsor of the seminar.

Tickets, which are \$35 per family, can be purchased by calling Mrs. Wayne Bramlet at 652-3441 in Lockney. Tickets will also be available at the door but advanced registration is advised.

For more information contact Mrs. Bramlet or the Floyd County Farm Bureau.

The Freeman Institute is a national non-profit educational foundation founded by Dr. W. Cleon Skousen and launched July 4, 1971. The national headquarters is in Salt Lake City, Utah.

PURPOSE OF the institute is to develop and produce programs which each Constitutional principles in the tradition of America's founding fathers. According to the institute's founder, the people who formed the United States referred to themselves as "Freemen" long before they called themselves Americans.

The Freeman Institute is not affiliated with any civic, political or religious organization. Its rating with the Better Business Bureau is excellent, according to local sponsors.

Texas Farm Bureau has supported and endorsed the Freeman Institute throughout the state. In support of the local seminar, Hale County Farm Bureau has purchased 10 scholarships for teachers from

COME OVER & SAVE

1" Size Round Tortilla Chips

Tostitos

99¢

Buddy's Food

Good Thru Feb. 11, 1981

Fall & Winter Merchandise Marked Down From 50 to 80%

New Shipment of Household Items 25% Off

Closed Thursday to prepare for sale!
Sale Starts 9:30 a.m. Friday!
No Refunds, Exchanges or Lay-Aways

Outlet Store
103 S. Main, Lockney, 652-2557

Is a savings account a dull investment?

Basically, yes. It doesn't give you much to talk about at parties. People don't quote their passbooks.

Your savings account just sits there quietly. Insured. With interest guaranteed. Earning you money, day in and day out.

Now that's not glamorous. But it is sensible. And it should definitely be a substantial part of what you do with your money.

Investments are fine when you can afford them. But remember, the money you save at A Full Service Bank™ is always available when you need it. And it will continue to earn a guaranteed rate until the day you do.

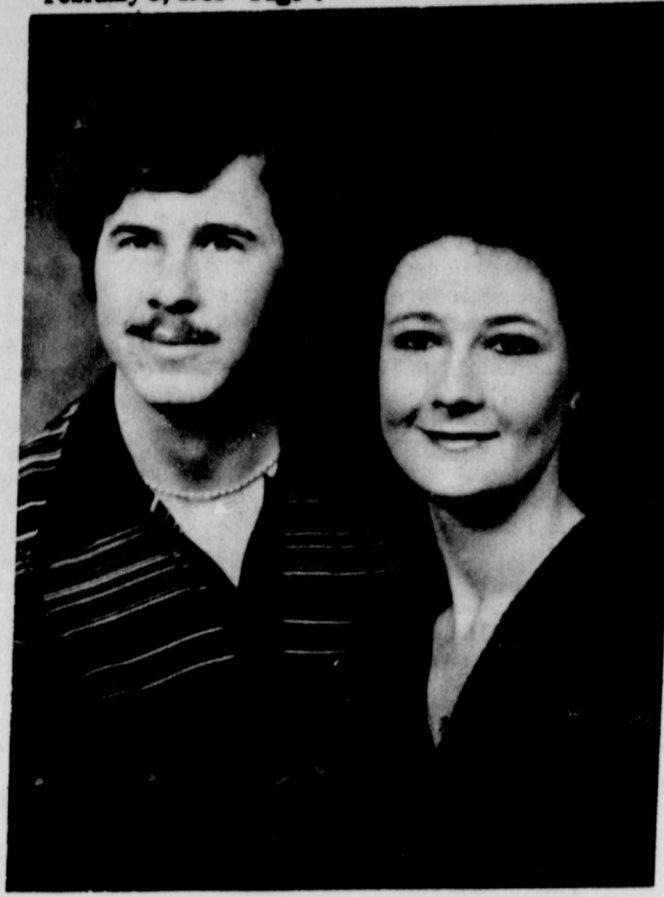
Keep your savings with us, A Full Service Bank. For party talk, read up on sports or fashion.

The Floyd County Progressive Bank

The First National Bank In Lockney

Look for this symbol. We've got the answers.





ENGAGEMENT ANNOUNCED — Mr. and Mrs. Richard M. Hale announce the engagement and approaching marriage of their daughter, Mitzi Carol, to Daniel Ray Nixon, son of Margaret Nixon and Gerald Nixon. The wedding will be an event of March 14, 1981, in the First Baptist Church of Floydada.

BIRTHS

BETHEL

Mr. and Mrs. Vernon Rogene Bethel of South Plains are proud to announce the arrival of a son, Robert Vernon Bethel.

Born January 29, Robert weighed 10 lbs., two ounces and was 23 inches long. He has a sister, Amy.

SANDERS

Mark, Dec and Shea Sanders announce the arrival of a baby boy, born on January 29. His name is Dane Andrew.

Dane weighed 10 lbs., 15 ounces and was 21 inches long. He has a four year old sister, Shea.

Great-grandparents are Mr. and Mrs. Sterling Cummings and Mr. and Mrs. Hansel Sanders, all of South Plains.

Great-grandparents are Andrew Sanders, Oma Cummings and Mr. and Mrs. Elmo Reeves, all of Lockney, and Mr. Earl Norman of Hereford.

SMITH

Mr. and Mrs. Victor Smith are proud to announce the birth of a daughter, Shonda Ann.



She weighed 9 lbs., 1 1/2 oz. and was 20 inches long.

Shonda Ann born January 25, at 8:15 a.m. in Central Plains Hospital in Plainview.

Shonda has an older sister, Joni, who is 3 years old.

Great-grandparents are Mr. and Mrs. Connie Beaden and Mr. and Mrs. Billy Joe Smith, all of Floydada.

Great-grandparents are Mrs. R.E. Irby, Mrs. O.L. Bearden and Mrs. Bob Ratten, all of Floydada, and Leonard Smith of Lubbock.

VANDERWELL

Don and Sheryl Vanderwell of Dumas are the parents of a daughter, Jacqueline Leah, born Saturday, January 24, at 11:15 a.m. in Dumas Memorial Hospital.

Great-grandparents are Kay Johnson, formerly of Floydada, Herman Donald Vanderwell of Dumas and Jane Vanderwell of LeMars, Iowa.

Great-grandparents are Mr. and Mrs. Bill Darden of Lockney, Mrs. Zela Johnson of Lufkin, Texas, Madeline Callas and Herman Vanderwell of LeMars, Iowa.

Great-great-grandmother is Mrs. Icy Biggs of Floydada.

Today's Lifestyles

By Marilyn Tate
County Extension Agent



HEARING DEVICE HELPS TV VIEWERS

Television's value to the hearing impaired has been enhanced by the use of a special decoder that displays otherwise invisible captions on selected TV programs. The decoders allow users to see the captions without irritating other viewers who don't want words flashing across their TV screens.

The decoders which are sold at cost (about \$250) by a national department store use a small portion of the standard TV signal to transmit the captions.

Currently there are more than 24,000 decoders in use. Two of the three major networks offer 5 hours apiece of captioned programming each week. The Public Broadcasting Service will have raised its captioned programming to 11 1/2 hours each week by mid-September.

The captioning and encoding is done by the National Captioning Institute (NCI). NCI is a non-profit organization funded last year with money from the federal government. NCI plans to become self supporting through the fees it charges for captioning and encoding TV programs and commercials by 1982 when the federal grant money runs out. However, before the networks and advertisers will expand their number of such programs they want to know that the hearing-impaired com-

munity is going to continue its support by using more decoders.

Educational programs conducted by the Texas Agricultural Extension Service serve people of all ages regardless of socio-economic level, race, color, sex, religion or national origin.



RODNEY RODRIGUEZ, BLANCA BALDERAS

Rodriguez-Balderas to pledge vows

Rodney Rodriguez, of Floydada, and Blanca Balderas of Lockney, wish to announce their engagement and approaching marriage on

February 28, 1981. Miss Balderas, a 1980 graduate of Lockney High School, is the daughter of Mr. and Mrs. David Balderas

of Lockney. Mr. Rodriguez, a 1980 graduate of Floydada High School, is the son of Mr. and Mrs. E.T. Rodriguez.

Society and Features

Double-ring, candlelight ceremony unites Edwards-Russel

A double-ring, candlelight ceremony Saturday, January 24, united in marriage Kristi D'Laine Edwards of Lockney and Alton Ray Russel of Plainview. The 7 p.m. ceremony at the Lone Star Baptist Church was performed by Rev. Frank Lorillard, of Burleson, Texas.

Escorted and presented in marriage by her father, Kenneth Edwards, the bride wore a white gown of organza with point d'esprit. Venise and Chantilly laces, designed by Mi Deb. The moulded bodice, embellished in beaded Venise Lace, featured a modified Queen Anne neckline. Sheer point d'esprit inserts on the shoulders and upper sleeves were edged in scalloped Venise lace with Venise lace appliques delicately scattered throughout. Sheer organza Bishop sleeves were shirred to wide point d'esprit cuffs, edged in scalloped Venise lace and an organza crystal pleated ruffle, with a Venise lace motif centered on the cuffs.

The A-line accordion pleated skirt swept to back fullness forming a chapel length train. The entire hemline and train was encircled with a crystal pleated flounce edged in re-embroidered Chantilly lace.

To complete her ensemble, the bride wore a silk illusion veiling caught to a Chantilly lace Juliet capulet. The double layered scalloped veil was finished in petal edging with Chantilly lace motifs centered in the scallops on the bottom layer of the fingertip veiling.

Following tradition, the bride wore a heart shaped stone belonging to her grandfather, C.J. Townsend of Brownwood. Something new was her wedding attire, something borrowed were diamond earrings belonging to Kim Smith and something blue was the garter.

She carried a bouquet of pink and burgundy roses, baby's breath, white streamers and love knots.

Kim Smith served as maid of honor. Paula Edwards, Lockney, sister-in-law of the bride, and Kay Sherman, Levelland, were bridesmaids. Flower girl was Amy Reed, Plainview.

Brides attendants wore long pink polyester dresses with long sleeved matching lace jackets. A long stemmed burgundy rose with pink bows was carried. Arriving guests were ushered by Darell and Rodney Edwards, brothers of the bride.

Serving as best man was Lynn Greenhill of Plainview. Tommy Noel and Fred Bechtold of Plainview were groomsmen and Jeremy Bechtold, Plainview, was ring bearer.

Music was provided by Mrs. C.L. Record, organist, of Lockney, Chris Huffman, pianist, of Abilene, and soloist Roxanne Ford, Lockney. Music selections were "We've Only Just Begun," "Follow Me" and the "Wedding Song."

The bride is the daughter of Mr. and Mrs. Kenneth Edwards of Lockney. She is a graduate of Lockney High School.

The groom, son of Mrs. Lonnie Russel of Koskia, Idaho, is a graduate of Grangeville High in Idaho and is presently employed by Ebling Manufacturing Corp.

Following the ceremony, a reception was held in the church Fellowship Hall.

The serving table was laid with a white pleated skirt, pink top cloth and scalloped with greenery and pink bows. It held a silver candleabra and a crystal serving set.

A tiered cake with pink icing, burgundy roses and doves on top was served by attendants, Ronda and Tina Hooten, Mrs. Charles Huffman, Mrs. Archie Jones, Mrs. Gale McPherson, Mrs. Willie Jones, all of Lockney, and Mrs. Steve Reed of Plainview.

Following a wedding trip to Carlsbad, New Mexico the couple is residing in Plainview.



MRS. ALTON RAY RUSSEL

Close Out Sale Prices Slashed On All Western Wear



Shirts Boots Jackets
Vests Pants & Jeans Belts

Ladies And Men's
Making Room For Expanded
Irrigation Supplies And Parts
Four-R-Western Wear

102 1/2 Bryant 652-2121

Thacker Jewelry

Roaring Springs, Texas
Invites You To Our Annual
FEBRUARY SALE

All Diamond and Precious Stone Jewelry -- 2/3 OFF
All 14K Gold Jewelry and Chains -- 1/2 OFF

In Celebration of our new location we are giving away a
.53 carat DIAMOND DROP -- Retail value \$1,500.00

So come by any time during the month of February and sign up
the drawing to be held Saturday, February 28th.

SALE STARTS 10:00 a.m. February 5th

SALE SPECIALS

- 16" 14K Serpentine necklace on sale for \$16.95 -- Retail \$40.00
- 7" 14K Serpentine bracelet on sale for \$9.95 -- Retail \$24.00
- 24" 14K Serpentine necklace on sale for \$27.95 -- Retail \$60.00
- .09 Ct. yellow gold diamond studs on sale for \$69.95 -- Retail \$220.00
- .05 Ct. yellow gold diamond drop on sale for \$44.95 -- Retail \$140.00
- 1/5 Ct. yellow gold wedding set on sale for \$250.00 -- Retail \$760.00

Many other specials too numerous to list, so come see us at our new location across the street from the hotel in beautiful downtown Roaring Springs.

As we are primarily wholesalers to the jewelry trade our selection is better on the weekends or phone for an appointment during the week.

TOLL FREE NO. 800-692-4249 or 806-348-3971

Auxiliary ala Olio

hospital auxiliary met in dining room of Cap... hospital Monday, Feb... at 2:30.

members present Mrs. Hong, Mrs. Beth Moore, Wanda Jo Bryant, Nell Mc... and new member Wilson.

Beth Tye opened the giving the amount from the Grand Olio Saturday and expressed appreciation to the Chamber of Commerce and all who gave to...

reading of the minutes read by Jo Bryant and... was later discussed that of the amount taken in donated to the "Jaws of It was approved by all bers to give that a...

Holland is Club Pres.

this in That Hobby Club in the home of Mrs. White January 27.

business meeting was and new officers for the year were elected. Officers are president, Holland; vice presi- Margie Sue; secretary, Leona Campbell; Betty Baker; and the Committee consists

Leona Campbell, Thelma Baker and Mamie Bunch. Refreshments were served Dorothy Holland, Queen Le Lawson, Thelma Baker, Mamie Bunch, Margie Sue, Leona Campbell, Mildred Jackson and the stess, Mrs. Glenn White. Next meeting will be on February 13 in the home of Mamie Bunch.

Gilliland Lodge birth

Floydada Rebekah Lodge in regular session on Tuesday night, January 27.

After lodge closed a birthday party was given by Barbara Gilliland, Noble rand, honoring all the birthday people through her firm.

The dining table was decorated with a white table cloth and a bouquet of yellow roses in the center, the Noble rand's chosen flower. Above the table was sign saying "Happy Birthday Gilliland."

Mens Wrangler JEANS Cowboy Cut, Re

Boys & Stud
JEAN

Values to

1/2 Pr
3 Days

A

Auxiliary praises Gilliland Olio Show

Hospital auxiliary met in dining room of Capitol Monday, Feb. 2 at 2:30.

Members present were Mrs. Hong, Mrs. Beth Moore, Wanda Jo Bryant, Nell McElroy and new member Wilson.

Beth Tye opened the meeting by giving the amount from the Grand Olio Saturday and expressing appreciation to the Chamber of Commerce and all who gave to it.

Reading of the minutes was done by Jo Bryant and Mrs. Hong.

Later discussed that the amount taken in January was approved by all members to give that amount to the hospital.

The Hobby Club met at the home of Mrs. White January 27.

Business meeting was held and new officers for the year were elected. Officers are president, Mrs. Holland; vice president, Margie Sue; secretary, Leona Campbell; treasurer, Ila White; scrap booker, Betty Baker; and the fine committee consists of Mrs. Campbell, Thelma Ford and Mamie Bunch.

Refreshments were served by Mrs. Holland, Queen of the Year.

Lawson, Thelma Ford, Mamie Bunch, Baker, Margie Sue, Campbell, Mildred Fay Jackson and the Mrs. Glenn White. Next meeting will be on February 13 in the home of Mrs. Bunch.

Gilliland honors Rebekah Lodge birthdays

Rebekah Lodge met in regular session on Monday night, January 27. After lodge closed a birthday party was given by Mrs. Gilliland, Noble and, honoring all the birthday people through her.

The dining table was decorated with a white tablecloth and a bouquet of yellow flowers in the center, the Noble's chosen flower. The table was signed "Happy Birthday."

Mrs. Nell McClung will check on ordering the Pulmonary functional machine which is needed for the hospital, and it was agreed by all members to purchase the machine in the future.

The members who had family sick were acknowledged. They were Cager Carmick, Roberta Russell and the death of Mrs. Emma Lou Whitaker's brother.

Harmony hosts county meeting

Homebuilders Extension Club met January 27 in the home of Lillian Smith.

The meeting was opened with the hostess giving the club prayer. Roll call was answered by twelve members on "My Pet Peeve About Other Drivers."

Ruth Trapp had charge of the program on "Families and The Law." A series of true and false questions were asked followed by thorough explanations.

Announcement was made of the county wide meeting for February 9 at 11:30 at Lighthouse Electric. Each person is to bring a salad. Harmony Club is to host the meeting.

Refreshments were served to members Mattie Norrell, Ruth Trapp, Muri Mayfield, Lela Mae Burns, Gladys Widener, Eunice Hong, Frances McClure, Wilma Colston, Barbara Willis, Inez Walker, Blanche Williams and guest Marilyn Tate and Esther Hong.

Lockney Singles meet Saturday

The Lockney Adult Singles Club will host a meeting Saturday at 6 p.m. for a salad supper at the Rebekah Hall, 210 W. Washington.

Amanda Hart played while the group sang the birthday song.

Refreshments of cake, muffins, peach cobbler, chips, hot spiced apple juice, and pineapple juice was enjoyed by all.

Hubert Davis gave the invocation.

Visitors for the party were Bob Gilliland and boys, Michael, and Brandon and Ruth Gilliland.

An hour of fellowship was enjoyed by all.



LOCKNEY CARE CENTER VOLUNTEER of the month, John Francis, has been bringing a group from Silverton each Monday since 1976 to lead devotionals and singing for residents of the Care Center. Mrs. Allena Francis, a Care Center resident, is the mother of John Francis, who is a Silverton farmer the rest of the week.

Medicare coverage extended

BY VIRGINIA DEWITT
CLAIMS
REPRESENTATIVE

If you're nearing 65 and will soon be eligible for Medicare, you should know about recent changes in the law.

People can now apply for Medicare at age 65 without also being required to apply for social security benefits. In the past, people had to apply for social security to get Medicare protection. Now people can have Medicare protection without having to retire.

Also, people who previously applied for social security benefits just to get Medicare hospital insurance protection can now withdraw their benefit application and still keep the Medicare protection.

FLOYD DATA

Mr. and Mrs. Laure Dade will be celebrating their 54th Wedding Anniversary, February 8.

No special occasion is planned.

Want more information about these and other changes in the Medicare program, call or write any social security office. The people there will be glad to help you.

A representative will be at the courthouse in Floydada from 9:30 a.m. until noon the second and fourth Wednesday of each month. To file a claim for social security or supplemental security income payments call collect, station to station 806-293-4371.

Under another change, the spouse of a worker can get

Quilters hold sack luncheon

The Plainview and the Lubbock Quilters Guild, will meet with Joy Denton, 1304 Holiday Next Wednesday. They will have an all day meeting, and are asked to bring a sack lunch.

The program will be on quilting jackets and vests.

Shower honors Edwards

Saturday January 17, Kristi Edwards was honored with a bridal shower, in the country home of Mrs. Wiley D. Nance, Jr.

The honoree, Kristi, her mother Mrs. Kenneth Edwards and Mrs. Nance received guests.

Colors of burgandy and pink were carried out in the corsages and the table decorations. The table was laid with a floor length white lace cloth, overlaying pink, centered by a gorgeous burgandy and pink silk arrangement.

Pink punch was served from a crystal bowl by Vera King and coffee and tea from Ironstone by Maudie Lawson.

The hostess gift was a stainless steel mixer. Those serving in the gift rooms were Lorene King, Ruth Noland and Jean Murdock.

Hostesses were Jean Murdock, Molly Huffman, Ruth Noland, Wiletta Isom, Lorraine Nance, Ruby Hartman, Vera King, Felicia Applewhite, Mary Jo Sherman, Lorene King, Sybil Teeple, Gay McPherson and Maudie Lawson.

Sr. Citizens' lunch changed

Senior Citizens luncheon for the month of February, only, will be on Wednesday, February 18, instead of on Thursday's when the luncheons are normally held.

A representative from SPAG of Lubbock will be presenting the program.

Sr. Citizens will be having an exercise program at 9:45 Mondays through Fridays.

WE REPAIR ALL MAKES & MODELS OF SEWING MACHINES AND VAC'S.

RICHARDSON SEWING CENTER

300 Broadway
293-3958
Plainview

IF YOUR VALENTINE IS 1 or 80 years old,



we have a gift that is just right.

Figurines, Jewelry, Lead crystal, Silver, Flower arrangements, Corsages, or Plants in fresh or silk

SCHACHT
Flowers, Jewelry & Gifts
"Our Pleasure Is To Serve You"



REMEMBER

Valentine's Day

FEB. 14th

Remember that special person with

Pangburn's Candy and a

Valentine Card!

We have a wide selection of both.



Phone 652-3353
LOCKNEY



Anderson's Week-End SPECIALS

3 Days Only (Thurs., Fri., & Sat.)

Mens Wrangler
JEANS Reg. \$19.00 each NOW ONLY **\$14.88**
Cowboy Cut, Regular Fit & Slim Fit 3 Days only

Boys & Student Fashion
JEANS Values to \$18.00
1/2 Price
3 Days only

One Rack of Boys
KNIT SHIRTS Sizes 4-20
1/2 Price
3 Days Only

Girls
JEANS Sizes 2-14 **1/3 Off** Regular Price

ANDERSON'S
DEPARTMENT STORE
120 West California Floydada

Close Out Sale Prices Slashed On All Western Wear

Shirts Boots Jackets
Vests Pants & Jeans Belts

Ladies And Men's
Making Room For Expanded
Irrigation Supplies And Parts
R-R-Western Wear
102 1/2 Bryant 652-2121

Jewelry Spring, Texas To Our Annual BRY SALES

Stone Jewelry -- 2/3 OFF
and Chains -- 1/2 OFF

we are giving away a
Retail value \$1,500.00

month of February and sign up
Saturday, February 28th.

0:00 a.m. February 5th

SPECIALS

sale for \$16.95 -- Retail \$40.00
sale for \$9.95 -- Retail \$24.00
sale for \$27.95 -- Retail \$60.00
sale for \$69.95 -- Retail \$220.00
sale for \$44.95 -- Retail \$140.00
sale for \$250.00 -- Retail \$760.00

to list, so come see us at our new
in beautiful downtown Roaring Springs.

Jewelry trade our selection is better
appointment during the week.

249 or 806-348-3971

Lockney local news

BY DOTTIE STANSELL

Marvin Wells of Denton, came a week ago Thursday to take his mother Mrs. Mildred Wells to Lubbock for a check up. She was given a good report, but still has to exercise her leg and foot.

While in Lubbock, they visited with Marvin's daughter, Kim. Marvin returned home on Saturday.

Pat and Dottie Stansell, visited in Snyder this past weekend with her mother and sister.

Out of town guest attending the golden anniversary celebration of Herman and Helen Huffman were: Joe Huffman, Plainview; Janet Huffman, Plainview; Christine Huffman, Abilene; Mr. and Mrs. Lynn Shoemaker, Plains; Mr. and Mrs. Ronnie Huffman and Heath, Lubbock; Mrs. Walter Griffith and Daniel, Lubbock; Valarie Wright and Phedrea Boothe, Lubbock; Barbara Huffman, Lubbock; Mr. and Mrs. L.G. Elkins, Olton; Mr. and Mrs. Allan Angel, Mr. and Mrs. David Walker, Angela, Kathy and Monty, Mr. and Mrs. Herbert Walker, Mrs. Claude (Jamie) Lokey, Mrs. Lola Tipps, Mr. and Mrs. Buddy Walker, Donna and Brenda, Mr. and Mrs. Lester White and Mr. and Mrs. Kenneth Griffith, all of Plainview; Mr. and Mrs. Lewis Walker, Judson, Janna and Lynette, of Kress; Ruth Trapp, Floydada; Mrs. Lena Schmidt, Plainview; Mr. and Mrs. Ewald Quebe, Mr. and Mrs. Cye Davis and Mrs. Lois Sammann, of Plainview.

A sandwich and green salad supper was held after the celebration for the family who attended from out of town in the Charles Huffman home.

Bridge day planned for Heart fund

The Floyd County Heart Association will be holding their annual Bridge Day on February 17, at the Massie Activity Center in Floydada, from 1:00 p.m. till 5:00 p.m.

Anyone who likes to play bridge is invited to bring a partner and join in an afternoon of dessert, bridge, prizes and fun.

Tickets are \$5.00 per player and can be purchased at the door.

All proceeds will go to the American Heart Association.

Firemen's Auxiliary holds meeting

The Lockney Fireman's Auxiliary met in the home of Mrs. Charlie Carthel. New officers were elected: president, Vicky Schaeffer; vice president, Tammy Zachery; and secretary-treasurer, Glenda Jones.

After the business meeting, the members were given an informative talk on nail care by Janie Carter.

LOCKNEY LOCAL

Hans and Denisa Nicholson of Billingham, Alaska, and Denisa's parents, Herbert and Jean Watson of Albuquerque visited recently with the John Lee Carthels of Lockney. The Nicholsons also brought their children, Mark and Jennifer.

Neatness is important on tax returns

Remember in school when teachers used to say, "neatness counts." It certainly is true about Federal income tax returns.

Granted the Internal Revenue Service won't send you a larger refund because they like your handwriting. However, it is true that a neat, accurate carefully prepared return can be processed faster, a resulting refund issued sooner, and all with fewer surprises for the taxpayer.

On the other hand, something as easily avoided as an incorrect or illegible social security number can take weeks to get straightened out. An addition or subtraction error will not cause a long delay but could inconvenience the taxpayer if he or she were counting on having a particular size tax refund or bill.



Thurman Davis

Still looking for ways to cut down the monthly gas and electric bill? Take a look in the utility room at that hard working, energy consuming water heater. It provides the hot water for clean dishes, clean clothes and a clean you. It takes a lot of energy to keep your water hot but there is something you can do to help your hot water heater do its job more efficiently and cost less... give your hot water heater an overcoat. Water heater insulation kits are available or you can use insulating blankets. Virtually a simple cut and tape job, this project is cost effective. A few hints: If your heater is gas, don't insulate the top of the unit, you'll block the draft diverter. Cover only the top three-fourths of the tank to prevent getting too close to the burner or pilot access. If you have the type of heater with the flue pipe coming out the side - model, don't insulate at all. Also, remember not to insulate over the safety valve on any unit.

DAVIS Lumber Company LOCKNEY



FARM BUREAU BOARD MEMBERS standing (l to r) are - Delmas McCormick, Kenneth Pitts, and Dan Smith. Seated is Floyd County Judge Choise Smith as he signs the proclamation designating February 9-14 as Farm Bureau Week.

Proclamation!

OFFICIAL PROCLAMATION BY CHOISE SMITH, COUNTY JUDGE FLOYD COUNTY FLOYDADA, TEXAS

Greetings:

An adequate supply of food and natural fibers is essential to our Nation. Many of the citizens of Floyd County are dependent, directly or indirectly, upon agriculture for their livelihood. All of our citizens benefit from the continuing advancements in agriculture.

Farmers and ranchers have learned the value of improving agriculture and rural life in America through organization. Four out of five agricultural producers in this Nation are voluntary members of Farm Bureau, an independent farm organization striving to build a better social and economic life for farms and ranch families and all Americans.

Therefore, I, Choise Smith, County Judge of Floyd County, do hereby designate February 9-14, 1981, as FARM BUREAU WEEK in Floyd County and urge our citizens to give due recognition to this observance honoring the Floyd County Farm Bureau.

Signed Choise Smith
Floyd County Judge

Consumers warn check 'inspectors'

Area consumers are advised to be on the lookout for individuals that are impersonating utility company inspectors. We have received reports that there have been phone calls and door-to-door appearances by these "phony" inspectors. They may pass themselves off as inspectors for the state government or from one of the local South Plains utility companies.

Consumers have found that after the alleged inspection, there were valuables missing from their home. Consumers should note that no utility company or state agency will contact you to make an inspection. Inspectors are only on the request of the consumers who are contacted by the inspectors immediately.

Also, South Plains consumers are receiving calls from a company called Eastern Travel. The company offers travel to Las Vegas for \$89.00. Consumers they have seen which is not true. Consumers should be cautious in purchasing. Consumers should be buying and when further information is needed, contact the BBB office.

Shop Floyd County First

Pheasant Is In Season

Pheasant Hat Bands Including The New Crown Lei Also Tony Lama Exclusive Buckle Collets Stop In For The Latest In Fashion For Men & Women

THE LOFF

517 East Houston

ANNOUNCING
Stitchin Pretty
has been purchased by Sue Williams
We will maintain the high standard of quality merchandise and service you have been accustomed to getting
STOP IN
Stacy Reeves will assist you in selecting the newest patterns, notions and top quality material for the latest in fashion.



Stitchin Pretty
983-3809
118 West California,
Floydada

COOKED FOOD SPECIAL OF THE WEEK

Chicken Strips 5/\$1.00	Allsup's Bread 3/\$1.00
----------------------------	----------------------------

Borden's Chocolate Milk 69¢	Green Giant Corn Sweet Peas or Green Beans 4/\$1.00
--------------------------------	--

PRICES EFFECTIVE FEBRUARY 5-7, 1981 SUPPLIES LIMITED

ALLSUP'S CONVENIENCE STORES

"THERE'S ONE NEAR YOU"

MORTON DINNERS PER 89¢	SHURFINE KROPPY CRACKERS 1 LB. 89¢
Shurfine Fruit COCKTAIL Buy 2 Get 1 FREE	Shurfine COFFEE 1 lb can \$1.99
Borden's STRAINED PEAS AND VEGETABLES 4 \$1.00	Shurfine PEACHES Buy 2 Get 1 FREE

Shurfine corn, tomatoes, potatoes, blackeye peas 5/\$1.00	Bushes SPINICH, GREEN BEANS 5/\$1.00
---	--------------------------------------

Borden's ASSORTED FLAVORS ICE CREAM 1/2 GAL. 1.59

Shop Floyd County First

Lopes lo

hoping of the Lockney Horns for a third consecutive district 3-3A title after a 48-43 loss to front-running Abernathy HS. The defeat dropped the Horns to a 4-2 record in district play, while Abernathy improved its perfect record to 6-0. The Horns' coach Marsha says it'll take a miracle for Lockney to have a chance at a third consecutive district crown. Abernathy would have to win two of its last four games, which isn't likely. The Lady Horns would like to win all four of its remaining games, which is possible but would mean without the Abernathy tests. The defeat could never be



AS HANDS UP EVENT would go up for a shot during the Lady Horns. From left to right, Rebecca Evans (25) and

Allstate rate 35%* low Texas state Homeowners Text Allstate help of li prot agat and m Just call or drop in. Bring your present Homeowner's policy. 231 W. Calif Across From near Natural Gas Co.

Consumers warned check 'inspectors'

Area consumers are advised to be on the lookout for individuals that are impersonating utility company inspectors. We have received reports that there have been phone calls and door-to-door appearances by these "phony" inspectors. They may pass themselves off as inspectors for the state government or from one of the local South Plains utility companies.

Consumers have found that after the alleged inspection, there were valuables missing from their home. Consumers should note that no utility company or state agency will contact you to make an inspection. Inspectors are only contacted on the request of the consumer. Consumers who are contacted by the imposters should contact the BBB immediately.

Also, South Plains consumers are receiving calls from a company offering vacation packages to Las Vegas for \$89.00. Consumers should be cautious in purchasing these packages which is not true. Consumers should be buying and what is included in the package. Further information is available from the BBB office.

Consumers are only contacted on the request of the consumer. Consumers who are contacted by the imposters should contact the BBB immediately.

Shop Floyd County First!

Pheasant Is In Season

Pheasant Hat Bands
Including
The New Crown Lei

Also
Tony Lama
Exclusive Buckle Collection

Stop In For The
Latest In Fashion For
Men & Women

THE LOFT

517 East Houston 983-2222

SPECIAL OF THE WEEK

Allsup's Bread
3/\$1.00

Green Giant
Corn Sweet Peas or
Green Beans
4/\$1.00

SUP'S
ICE STORES
OPEN 24 HOURS A DAY
365 DAYS A YEAR
WE ACCEPT
FOOD STAMPS

SHURFINE
CRACKERS 1 lb. 89¢
SHURFINE
COFFEE 1 lb can \$1.99
SHURFINE
PEACHES Buy 2 Get 1 FREE

DOBBER'S ASSORTED FLAVORS
ICE CREAM \$1.59
1/2 GAL. 10. CTZ.



LYNTHY'S LORI OSWALD was shaken up on a play late in the second quarter against Lockney. She was helped from the court and was back in the game at the start of the third quarter.

Lopes lasso Lockney, 48-43

Lopes of the Lockney Longhorns won a third consecutive district 3-3A title after a 48-43 loss to Lockney.

The victory over Lockney dropped the Lopes to a 4-2 record in the district. The win improved its perfect record to 6-0.

Coach Marsha Sharp says it'll take a miracle for Lockney to have a third consecutive win.

Lockney would have to win two of its last four games, which is unlikely. The Lady Horns would have to win all four of its remaining games, which is also unlikely without the Abernathy girls.



EVERYBODY WAS HANDS UP as Abernathy's Lori Oswald goes up for a shot during Lockney's 48 to 43 win over the Lady Horns. From left to right for Lockney are Julie Zell, Rebecca Evans [25] and Penny Sterling [33].

blamed on a lack of desire. It was a game filled with not just second efforts by the Lady Horns but third and fourth efforts.

It was Rebecca Evans pulling down rebound after rebound, shrugging off the Abernathy girls and still managing to be Lockney's high scorer with 14 points.

It was Penny Sterling struggling against the swarming Antelopes to take in a loose ball. It was Penny Sterling going two for two at the foul line with less than six minutes left in the game to put the Lady Horns ahead 35-34.

And in the disappointing end it was Tammy Hayes recovering a rebound with 4:30 left in the game and putting the ball in to give the Lopes their last lead at 44-41.

Sterling hit the basket again with three seconds left for the game final score, but by then it was all over but the tears.

39-38 before Abernathy surged ahead to stay. There was one more brief glimmer of hope with 3:18 left in the fourth quarter when Evans was fouled and sank two free throws to narrow the Abernathy lead to 42-41.

With a little over three minutes left in the game, Abernathy scored again to open its lead to 44-41. More than two minutes passed before either team could find the basket again, and it was Abernathy that found it first with just 20 seconds left in the game opening it lead to an overwhelming 46-41.

Sterling hit the basket again with three seconds left for the game final score, but by then it was all over but the tears.

BOYS LOSE

If the Abernathy girls' team is impressive, the boys' team is down-right frightening.

The Antelopes are the ninth-ranked district 3-3A team in the state out of some 220 teams in that classification and they put another notch in their victory belt with a 70-47 win over the Lockney Longhorns.

The Longhorns played the Lopes even in the second half, actually out-scoring Abernathy 32-31. But unfortunately, the Longhorns hadn't started playing until the second half.

'Horns stop Idalou 83-69

The Lockney Longhorns picked their first win of the district 3-3A season with an 83-69 triumph over Idalou at LHS.

The Longhorns jumped out to a 24-8 first quarter lead led 43-26 at halftime.

The first half was excellent," according to coach Mike Leiby. "We could have taken on anybody in the district the way we played in the first half. We played up to our potential capabilities through most of the ball game."

John Cummings was high scorer for the Longhorns with 26 points while Jeff McCormick had 21.

GIRLS WIN

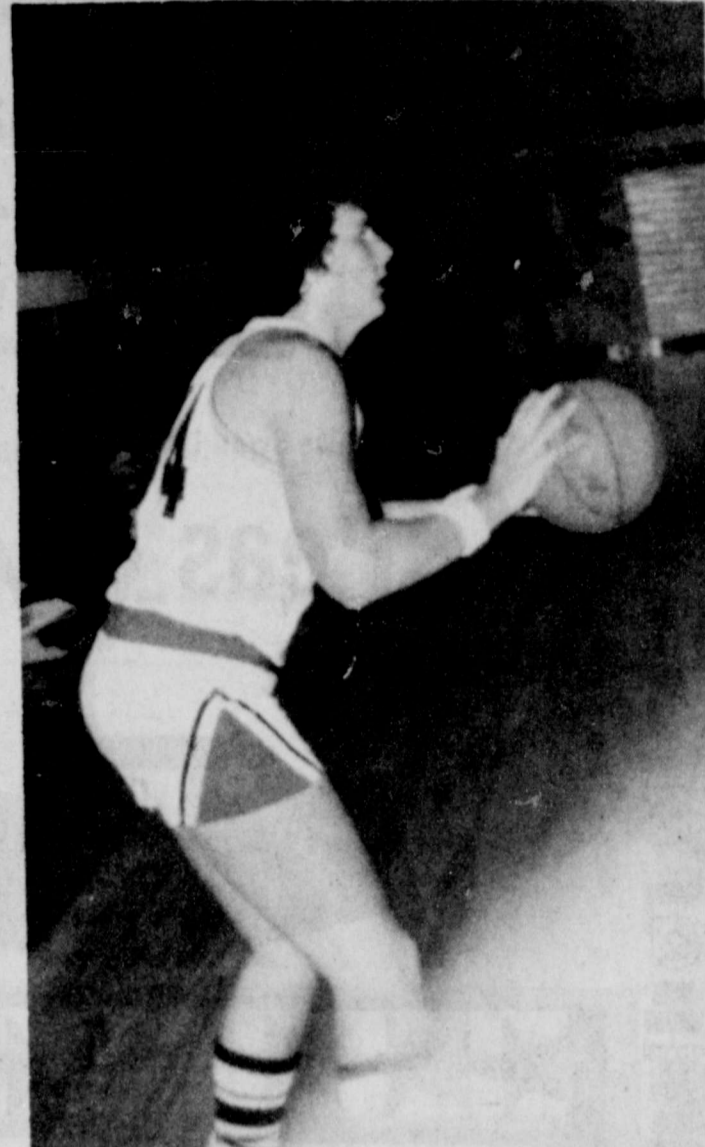
The Lockney Lady Horns rolled to a 50-22 victory over Idalou.

The first quarter was a mind-bending bore as neither team could get the ball in the basket. The Lady Horns led 4-1 after the first quarter.

A dose of Gatorade must have put some life back in

the Lockney Ladies as they put in 18 second quarter points and embarrassed Idalou with a 22-3 halftime lead.

Penny Sterling was high scorer for the Lady Horns with 14 points while Rebecca Evans had eight.



NICK CHRISTIAN SETS FOR A SHOT during the Longhorns' game with Idalou. Lockney won 83 to 69 to pick up their first win in district competition.

LOCKNEY 83, IDALOU 69
Idalou 8 18 22 21 - 69
Lockney 24 19 17 21 - 83
Leading Scorers: Idalou - Rate Forman 17, James Sherman 17, Lockney - John Cummings 26, Jeff McCormick 21, Records: Lockney (1-4), Idalou (1-4).

LOCKNEY 50, IDALOU 22
Idalou 1 2 11 8 - 22
Lockney 4 18 11 17 - 50
Leading Scorers: Idalou - D. Bednaric 6, Lockney - Penny Sterling 14, Rebecca Evans 8, Records: Lockney 20-4 (4-1), Idalou (1-4).

ABERNATHY 48, LOCKNEY 43
Abernathy 10 8 14 18 - 48
Lockney 10 8 8 17 - 43
Leading Scorers: Abernathy - Wanda Johnson 16, Lori Oswald 16, Dana Ford 10, Lockney - Rebecca Evans 14, Penny Sterling 11, Connie Coulman 11, Records: Lockney 12.

ABERNATHY 70, LOCKNEY 47
Abernathy 30 19 14 17 - 70
Lockney 6 9 18 14 - 47
Leading Scorers: Abernathy - Rodney Emmons 26, Joe Garcia 20, Lockney - John Cummings 23, Records: Lockney 0-6.



LOCKNEY COACH MARSHA SHARP shouts encouragement to her team from the sidelines during the Lady Horns' game with Abernathy. Lockney lost 48 to 43.

Round Em Up And Move Em Out . . .

Save \$1,255²² Below Dealer Cost

On These 1980 Cars

1980 Camaro Berlinetta Cpe.

1980 Cutlass Supreme Cpe.

1980 Monza 2 plus 2

1980 Monte Carlo

Also Great Savings on 1980 Luv Pickups, plus good selection of '81 Models to choose from.

Oden Chevrolet-Olds, Inc.

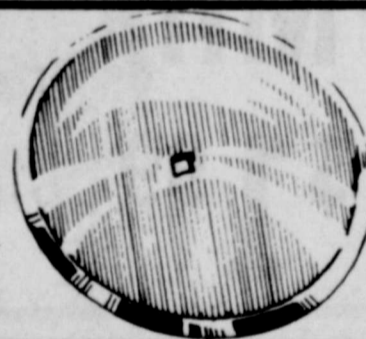
"Keep That Great GM Feeling With Genuine GM Parts!"



983-3787

FLOYDADA

221 S. Main



DESCRIPTION	STYLE	PART #	TRUCK LOAD SALE PRICE
22" 7 Ga. Disk	IH	472218R1	\$19.85
24" 6 Ga. Disk	IH	543437R1	23.80
18" 7 Ga. Disk	Bedder	1131022R1	15.61
22" 7 Ga. Disk	Krause, etc.	998814R1	20.84
22" 7 Ga. Disk	JD, Kewanee	998813R1	20.84
22" 7 Ga. Disk	Miller	998816R1	20.84
24" 6 Ga. Disk	Krause, etc.	998825R1	24.99

MANY OTHER SIZES ALSO AVAILABLE. CALL

BROWN-MCMURTRY IMPLEMENT CO. WE CAN SAVE YOU MONEY

Chisel	IH Clear	219200916D	10.87
Wheatland Sweep	6" Hi Clear	544060847D	8.65
Wheatland Sweep	16" Hi Clear	544160847D	13.33
Springtooth	7" Sweep	533054725	3.18
Cult Sweep	10" Dura F	523100754D	7.71
Cult Sweep	14" Dura F	523140754D	8.56
Cult Sweep	26" Dura F	524260754D	23.00

PLUS MANY MORE SIZES AND TYPES AVAILABLE

WE CAN ALSO SAVE YOU MONEY ON YOUR TANDEM DISK AND DISK BEDDER BEARINGS.

Brown-McMurtry
INTERNATIONAL AGRICULTURAL EQUIPMENT
Implement Company
Your IH Dealer
Phone 823-2441 Silverton, Texas

Allstate rates now 35%* lower than Texas state rates for Homeowners insurance.

Texas Homeowners: Allstate Homeowners Dwelling insurance helps you fight the cost of living—as we protect your home against loss from fire and many other hazards.

Just call or drop in, and compare. Bring your present Homeowners policy.

231 W. Calif
Across Front
Allstate
You're in good hands.
Pioneer Natural Gas Co.



8 oz White Swan
Tomato Sauce
 5/\$1⁰⁰

17 oz White Swan Luncheon
Peas 3/\$1⁰⁰

S&H GREEN STAMPS

STAMP PRICE SPECIAL

Casseroles 2 lb Bag
Pinto Beans
 19¢

With One Filled S&H Special Saver Book
 Without Book 79¢

STAMP PRICE SPECIAL

Gallon Jug Bleach
Clorox
 29¢

With One Filled S&H Special Saver Book
 Without Book 89¢


4 oz White Swan Stems & Pieces
Mushrooms
 49¢

8 oz White Swan Sweet Or Buttermilk
Biscuits 6/\$1⁰⁰

S&H GREEN STAMPS

USDA Choice Beef

12 oz Kraft American Cheese Singles \$2 ¹⁹	Family Pack Ground Beef \$1 ²⁹ lb
12 oz Wilson Certified Franks 89¢	
USDA Chuck Roast \$1 ⁸⁹ lb	USDA Boneless Sirloin Steak \$2 ⁹⁹ lb
	Family Pack Pork Chops \$1 ³⁹ lb
	Ham Slices \$1 ⁹⁹ lb

Buddy's Grade A Homo Or Lowfat Gallon

Milk
 \$1⁹⁹

15 oz White Swan Cut Green
Beans 3/\$1⁰⁰

24 oz White Swan
Catsup
 69¢

S&H GREEN STAMPS

16 oz White Swan Whole Or Sliced New
Potatoes 3/\$1⁰⁰

13 oz Folgers Flaked
Coffee \$1⁸⁹

4 Roll White Swan
Bathroom Tissue

15 oz White Swan
Pork & Beans

We Give

S&H GREEN STAMPS

Buddy's
SUPER MARKET

We Take W.I.C. Cards

46 oz White S
Tomato
 15 oz White Sw
Pineapp
 1 lb White Sw
Cracke
 15 oz Ranch St
Chili
 46 oz White Swan
Juic
 16 oz White Sw
Spina



Mor
 u e

South Plains News

by Mrs. Murray Julian

South Plains, February 2: The new year has been ushered in at South Plains with very special events. During the last week of January two baby boys were born on the same day to parents who now live in South Plains or who grew up here. Robert Vernon Bethel was born Thursday, January 29, at Hale Center, in the High Plains Hospital to Mr. and Mrs. Rogene and Laura Bethel of South Plains. Robert weighed 10 pounds and 2 ounces and he has an older sister, Amy La Jean, who is 5 and has started to kindergarten this January here at South Plains. Maternal grandmother is Mrs. Dorothy Mitchell of Plainview, and paternal grandparents are Mr. and Mrs. A.V. Bethel of Floydada.

Mr. and Mrs. Dee and Mark Sanders grew up in the South Plains area, went to school, and started married life together here where they still farm, but live in Floydada. This Thursday, January 29, at 2:37 a.m. at the Central Plains Hospital in Plainview a baby boy came to bless their lives. Dane Andrew Sanders, weighed 10 pounds and 15 ounces also has an older sister, Shea, who is 3, and a host of relatives. Grandparents are Mr. and Mrs. Hansel Sanders of South Plains, and maternal grandparents are Mr. and Mrs. Sterling Cummings of South Plains. Great-grandparents in Lockney are Mrs. Oma Cummings, and Mr. and Mrs. G.E. Reeves, and in Hereford Mr. Earl Norman. Congratulations to the new baby boys and to their parents.

Mrs. J.P. Taylor (Trudie) went to the Health Science Center in Lubbock this Monday, where she will spend the next two weeks taking some health treatments. We hope she comes home feeling wonderful after going through the exercises and therapy.

Mrs. Letha Mulder left here Sunday morning to go to Littlefield where she will visit the next few days with her sister, Mrs. Inez Minyard. Mr. and Mrs. Nathan Mulder and Mrs. Letha Mulder spent Friday in Amarillo on business and found their folks, Mrs. Jerry Taylor and some of the children ill with the flu as they visited there in Canyon. They also visited Deral Young who is recuperating from surgery in Amarillo at St. Anthony's Hospital.

Dr. Fred and Mrs. Howard from Wayland College in Plainview were at the South Plains Baptist Church Sunday, February 1, where Dr. Howard preached the morning and evening sermons during the absence of Rev. and Mrs. Cecil Osborne, who are in Mineral Wells this week, where Rev. Osborne is teaching a WIN session there at the church of their son-in-law, Rev. Ron Somers. Mr. and Mrs. Sylvan Kin-nibrough accompanied by their daughter, Mrs. Teddy Horne and Melissa, spent the past week-end in Ruidoso, New Mexico returning home Sunday evening. It snowed Saturday morning there in Ruidoso, but it was so warm that none remained on the ground by afternoon.

We are glad to report that Mrs. Mamie Wood's sister, Mrs. Buster Dunham of Amarillo, has made a rapid change for the better this past week. She has only a short cast on her right leg where it was broken, and she is responding to treatment with the doctors very hopeful of her recovery now. Mrs. James Teague visited with her aunt last Wednesday and she found her doing so much better.

Deral Young of South Plains entered the St. Anthony's Hospital in Amarillo last Tuesday and underwent surgery. He got along just fine, although he has been in much pain. Several from here have gone up to visit him, and we hope that it won't be too long before he is able to come home, we are

so glad to report that he is doing well.

Visitors Sunday at the South Plains Baptist Church were Mr. and Mrs. Bobby Craddock of Sundown, who spent the week-end here with her parents, Mr. and Mrs. Richard Sanders, and Mr. and Mrs. Jerry Chappell of Duncan, Oklahoma, who came for the weekend, and Darla remained here with her parents, Mr. and Mrs. Griggs Milton, Jr., for the next two weeks, while Jerry returned to Duncan.

Rev. Nathan Mulder will be speaker at the Wednesday evening prayer service at the South Plains Baptist Church.

Sgt. 1st Class Kenneth Wayne Powell and Mrs. Powell left here January 9th after spending the holidays with his parents, Mr. and Mrs. Fletcher Powell. They arrived in Germany on January 19th, and are getting settled at Gissen, which is 35 miles north of Frankfurt. The Powell's have two children, Jennifer 2, and Phillip, 5 months. They will be stationed at Gissen for the next three years with the United States Armed Services.

Mr. and Mrs. Phil Kinslow of Dallas were visitors here with his folks, Mr. and Mrs. E.J. Kinslow from Sunday evening to Tuesday of last week.

There will be a Caprock Associational meeting at the First Baptist Church in Matador on Tuesday, February 10, beginning at 6:00 p.m. Remember also the Baptist Women's meeting at the South Plains Baptist Church on Tuesday afternoon, 2:00 p.m. February 10th.

Mrs. Louzila Nichols arrived home from Sweetwater, Texas on Thursday. She had gone down there last Tuesday to visit with her children, Mr. and Mrs. Glen Whitfill and remained to spend the week-end with them.

Hobby Club members will meet at the home of Mrs. Leighton Teeple for their first club meeting of the new year on Wednesday, February 11, at 2:00 p.m. There will be a program on Handwork. Roll call will be, "A Game I've Recently Learned." Dorothy Cummings will bring the Thought for the Day.

James Russell Thornton, son of Mr. and Mrs. Herman Thornton of South Plains, will be opening his law office in Plainview on February 8, with Open House at his office, 929 Broadway. His sign will read, (R.J.) Rusty Thornton, Defense Attorney. Open House will be 2-5 p.m. Sunday afternoon. We wish him the best as he begins this new phase of his life.

We extend congratulations and best wishes to neighbors Mr. and Mrs. Harry and Mamie Hartman on their 50th Wedding Anniversary Sunday, February 8, with the event being held in Floydada at the Massie Activity Center from 2:00 to 4:00 p.m. Harry and Mamie have lived in South Plains for over sixty years. Hosts for the reception are their children, Mr. and Mrs. Bob Hartman of Lubbock, Mr. and Mrs. Charles Hartman of Amarillo, Mr. and Mrs. Vernon and Winnie Youngquist of Abilene, Mr. and Mrs. James Hartman of Dallas, Roy Hartman, and Mr. and Mrs. Edward Hartman of South Plains.

Got Heating Or Plumbing Problems?
Call **Holmes Plumbing**
Austin Or Steve
983-2251
Call Day Or Night



THE JAWS OF LIFE fund-raising project received a boost this week when the Women's Division of the Floydada Chamber of Commerce donated half of its proceeds from the recent Gala Olio. Susan Garmis, co-chairwoman of the event, presents a check for \$680.20 to Lions Club president David T. Seay. The gift brought the Jaws fund to \$6,963.49. A total of \$7800 is needed to purchase the unit.



HOSPITAL AUXILIARY President Edna Beth Tye, left, receives a check for \$680.20 from Nancy Willson. The donation to the auxiliary represents half of the proceeds from Gala Olio which was sponsored by the Women's Division of the Floydada Chamber of Commerce. Willson served as co-chairwoman of the event.

"The greatest of faults, I should say, is to be conscious of none."
Thomas Carlyle



Basketball is the only major sport that is completely American in origin.

Floydada Independent School Dist.
Income Poverty Guidelines
Jan. 1, 1981 - Sept. 30, 1981

Annual		
Family Size	Free Meals	Reduced - Price Meal
1	\$0 - 5,700	\$ 5,700 - 8,350
2	0 - 7,220	7,220 - 10,730
3	0 - 8,750	8,750 - 13,110
4	0 - 10,270	10,270 - 15,490
5	0 - 11,800	11,800 - 17,870
6	0 - 13,320	13,320 - 20,250
7	0 - 14,850	14,850 - 22,620
8	0 - 16,370	16,370 - 25,000
Each Additional Family Member	\$1,530	\$2,380

Monthly		
Family Size	Free Meals	Reduced - Price Meal
1	\$0 - 475	\$ 475 - 696
2	0 - 602	602 - 894
3	0 - 729	729 - 1,093
4	0 - 856	856 - 1,291
5	0 - 983	983 - 1,489
6	0 - 1,110	1,110 - 1,688
7	0 - 1,238	1,238 - 1,885
8	0 - 1,364	1,364 - 2,083
Each Additional Family Member	\$128	\$198

Weekly		
Family Size	Free Meals	Reduced - Price Meal
1	\$0 - 110	\$110 - 161
2	0 - 139	139 - 206
3	0 - 168	168 - 252
4	0 - 198	198 - 298
5	0 - 227	227 - 344
6	0 - 256	256 - 389
7	0 - 286	286 - 435
8	0 - 315	315 - 481
Each Additional Family Member	\$29	\$46

Center News

By Mrs. J.E. Green

February 2, 1981: How time flies! Here it is Ground Hog Day. More cold weather ahead.

Well, it is good to be home again after five weeks down state at Margaret's and Doc's home while I entertained an attack of the flu, the first I've had in 8 or 9 years. (Not as bad as the 1918 flu.) It was good to be in the Ryman home where everybody was so nice to me and helped me so well to overcome that malady. Thanks again and again.

And thanks again to my granddaughter, Donna, for bringing me home Saturday. We enjoyed being in Calvary Baptist Church Sunday, and enjoyed dining at a local cafe where we also enjoyed the company of Mr. and Mrs. Anthony Latta.

Well, it sure has been cold outside today, clear and a strong west wind. But inside all is well.

Mrs. Leo Frizzell spent last week in Plainview with her daughter, Mrs. Jane Beedy, and Mitzy who was recovering from surgery.

Mr. and Mrs. Hal Thomas went to Lubbock Friday for a visit with their children, Sue and Milton Mensch, and son, David, who have recovered from the flu. The Thomas' returned home Saturday afternoon.

Mrs. Edna Patton visited Miss Vera Meredith Sunday afternoon. Mrs. Clay Muncy came Monday afternoon. Bro. Clay Muncy has been in the Lockney Hospital about a week. Mrs. Muncy, too, has been bothered with arthritis.

Mrs. Ola Warren has been shut in with a severe cold.

Mrs. Vida Cook of Amarillo visited Mrs. Fred Battey last Monday. Mrs. Battey has been "under the weather," too.

Mrs. W.C. Plumlee, who spent eight days in a Plainview hospital recently, has returned home and was able

to be in church Sunday. Bobby Plumlee of Amarillo visited Wednesday with his parents, Mr. and Mrs. W.C. Plumlee.

Wiley Rogers has also been hospitalized recently but was at church Sunday at Calvary Baptist.

Visitors at the O.G. Mayfields last week were Mrs. Gene Mayfield of Henrietta, and brother and wife, Mr. and Mrs. Andy Moreman of Villa Vista, Arkansas, also Mr. and Mrs. Merten Myers of Canyon.

Brothers of Mrs. Henry Brewer and their wives, the Guy Foreman's of Ft. Worth, and the Herbert Foreman's of Wichita Falls were Saturday night, January 24, guests of the Henry Brewers. Sun-

day morning, the 25th, these and the Brewers and Mr. and Mrs. Millard Watson left for a Littlefield Rest Home to help their oldest brother, Buren Foreman and family, celebrate his 87th birthday anniversary. A good day!

Mrs. Brewer has been in with the flu all last week.

Today Glenn Watson spent the day with her parents, the Tomite the party for the Jamie. All there even 7 months adorable great miss him!

Case 15% Discount
on all
Tandem Disks
and
Disk Bedders

Case Power and Equipment
Lubbock 3302 Station Hwy
Lamesa 902 S. Dallas
Floydada 101 South 12th

COME OVER & SAVE

Giant 49 oz
Bold 3
\$1.59
Buddy's Food

Good Thru Feb. 11, 1981

Agriculture

Loans

Let Us Help You Set Up Your Line Of Credit

"Helping You Change Things For The Better"

THE FIRST NATIONAL BANK OF FLOYDADA
FLOYDADA, TEXAS 79235 MEMBER F.D.I.C.

Nurse's Aid Course offered

Plains College at (180 hour) Nurse Aide for individuals who go to work as Nurse The class is 5 weeks and meets Monday through Friday. The first two (60 hours) of the will be taught in the om at South Plains e. 708 Yonkers, Plain- The last three weeks (60 hours) will be taught at Plains Regional Hos-

Participants should be high graduates and must an appointment for an ew before enrolling in

Lockney Births

- 29 - Dovie Davis, Green, Bertha Marries, Hazel Jones, Tommy Burt, Graves, Hazel Jones, Jill Golden, Dewanda Blenders, Delbur Rose, Bob Joey Adams, Violet Cindy Cook, Johnny Peralez, Martha Garcia, Early
- 30 - Peggy Wiley, Brittin, Larry Gold, Duvall, Libby Del-Sidney Gibson, Chris Gary Sherman, Josephy Marks, Lee Wright, Bill, Loveta Rose, Whittington, Angel Gon-dred Gammage, John David, Johnny Wisdon, Isidro Galvan, McCarty, Phyllis, A.O. Foster, Landtroop, Archie Bybee, Eddie For-Edward Marks, Wright, Cat Taack, Thornton
- 31 - David Mariscal, Collins, Ricardo Luna, Adrian, Romualdo Sr., Juan Hernandez, Hernandez, Sherre

Bell 1/2 Gal. Carton
Ice Cream
5 lb. Bag Gladiola
Flour 99
Pack 32 oz. Bottle
Pepsi Cola
Bananas 2
10 lb. Bag All Purpose
Potatoes

day morning, the 25th, these and the Brewers and Mr. and Mrs. Millard Watson left for a Littlefield Rest Home to help their oldest brother, Buren Foreman and family, celebrate his 87th birthday anniversary. A good day!

Mrs. Brewer has been in with the flu all last week.

Today Glenna and Watson spent the day with her parents, the Brewers. Tonite the Ryans are having a family party for the 11th anniversary of the death of Jamie. All there if even 7 months old (adorable great grand miss him!)

Nurse's Aide course offered

Plains College at Plainview is offering a (180 hour) Nurse Aide course for individuals who wish to work as Nurse Aides. The course meets Monday through Friday. The first two (90 hours) of the course will be taught in the classroom at South Plains College at Plainview. The last three weeks (90 hours) will be taught at the Plains Regional Hospital. Applicants should be high school graduates and must have an appointment for an interview before enrolling in the course.

Students are required to buy uniforms to wear in the hospital. Fees for the course must be paid by the first day of class.

Students who complete the course with a satisfactory recommendation from their instructor will be interviewed by local hospitals.

The class will begin February 16, at 8:30 a.m. and will meet from 8:30 to 4:00 p.m. each day. The cost of the course is \$98.00, plus a nursing book.

Persons interested in enrolling should contact South Plains College at Plainview, 293-3605.



DR. GARY MANGOLD spoke to the regular meeting of the Lockney Rotary Club. He said a third doctor may possibly be added to the staff of the Lockney General Hospital in late 1981 or early 1982.

Lockney Birthdays

- Jan. 29 — Dovie Davis, Green, Bertha Marges Jones
- Feb. 1 — Tommy Burt, Jones, Hazel Jones, Jill Golden
- Feb. 2 — Dewanda Blendur Rose, Bob Boyd Adams, Violet Cindy Cook
- Feb. 3 — Johnny Peralez, Martha Garcia, Early
- Feb. 4 — Peggy Wiley, Brittin, Larry Gold-Duval, Libby Delaney Gibson, Chris Sherman
- Feb. 5 — Joseph Marks, Gus, Lee Wright, Bill Loveta Rose, Whittington
- Feb. 6 — Joe Angel Gonder Gammage
- Feb. 7 — John David Johnny Wisdon, Isidro Galvan, Phyllis McCarty, Mrs. A.O. Foster, Landtroop
- Feb. 8 — Archie Bybee, Sherman, Eddie For-Edward Marks, Wright, Cat Taack, Thornton
- Feb. 9 — David Mariscal, Collins, Ricardo Luna, Adrian, Romualdo Sr., Juan Hernandez, Hernandez, Sherre
- Feb. 8 — Belinda Mariscal, Micheal Hill, Clint Farries, John Brotherton, Kelton Shaw, Andy Murdock, Danny Lambert
- Feb. 9 — Shane Douglas, Tom Moore
- Feb. 10 — Juan Angel Ceja Jr., Irene Medina, Guillermo Luna, Jimmie Dee Whitlock, Rubye Terrell, Flo Barnes, J.H. Lane
- Feb. 11 — Ubaldo Ochoa Jr., Mary Vela, Leo Montandon, D'Lyn Morris

Photography taught at Tech

A five-week beginning photography course will be offered February 16 through March 16 by the Texas Tech University Division of Continuing Education.

The course emphasis is on composition, backgrounds, lighting, focusing and subject selection. Students enrolling should have access to

a 35 mm camera but no experience is necessary.

Classes will be held 6:30-9:30 p.m. Mondays in Room 110 of the Mass Communications Building and enrollment applications may be picked up in Room 107. The registration fee is \$30.

Mass Communications Prof. Ralph L. Sellmeyer will

teach the class. Sellmeyer, who has conducted photography workshops for 20 years, said the course will benefit persons unfamiliar with a camera's capabilities.

For more information, contact Teresa Katsufakis, (806) 742-2354.

Foster chosen 4-H Sweetheart

A Lockney 4-H meeting was held Monday, January 26, at 7:30 p.m. in the ag building. We discussed the upcoming stockshows and elected a 4-H sweetheart. Melanie Foster will represent our club as 4-H Sweetheart this year.

Ronnie Ainsworth was our guest speaker. He is a native of Vernon, Texas. Ronnie is the game warden in our area

and has been for the past seven years. He spoke on the laws of hunting and on the safety of guns. He also answered many questions on hunting pertaining to this county.

Those present were: Earl Brosch, Wyman Rexrode, Libby Williams, Matt Williams, Joel Mitchell, Keith Hight, Monty Teeter, Rusty Teeter, Wesley Teeter, Phil

lip Glasson, Jolie Diepenhorst, Lisa Terrell, Christy Coffman, Sherri Kinard, Melanie Foster.

Karyn Foster, Heath Rexrode, Scott McCarty, Ruth Wilson, Tony Saucedo, Anna Cautli, Patricia Cautli, Gwen Lane, Jill Whitfill, Matt Mitchell, Donna Vernon, Clay Harrison and Heather Holt.

Adults present: Buster and Linda Terrell, Eddie and Ann Foster, Charlotte Mitchell, Kenneth and Juanita Broseh, Paul Glasson, Adalia Hight, Sharon Kinard, Jerry Rexrode and Merlene Whitfill.

Hospital Report

FLOYDADA

Maria Vallejo, Floydada, adm. 1-18, dis. 1-26, Jordan. E.A. Noland, Floydada, adm. 1-24, dis. 1-27, Jordan. Jessie Reeves, Floydada, adm. 1-25, dis. 1-26, Jordan. Yolanda Martinez, Floydada, adm. 1-26, dis. 1-28, Hong.

Blanca Acuna, Floydada, adm. 1-27, dis. 1-29, Hong. Baby Girl Acuna, "Blanca", Floydada, adm. 1-28, dis. 1-29, Hong.

Helen Salas, Ralls, adm. 1-28, dis. 1-30, Hong.

Baby Boy Salas, "Jason", Ralls, adm. 1-29, dis. 1-30, Hong.

Don Shurbet, Floydada, adm. 1-29, dis. 1-31, Jordan. John Kincheloe, Floydada, adm. 1-30, continues care, Jordan.

Maggie King, Floydada, adm. 1-30, continues care, Hong.

Lucielle Bass, Floydada, adm. 1-31, continues care, Jordan.

Maria Antonia Falcon, Floydada, adm. 2-1, continues care, Hong.

Baby Boy Falcon, "Fabian", Floydada, adm. 2-1, continues care, Hong.

Auxiliary hosts guest night

The Lockney Hospital Auxiliary is having a guest night tonight in the hospital lobby at 7 p.m. All regular and associated members are invited to bring a guest.

Dr. Gary Mangold will be the speaker and refreshments will be served following the meeting.

Case 15% Discount
on all
Tandum Disks
and
Disk Bedders

Case Power and Equipment
Lubbock 3302 Slaton Hwy
Lamesa 902 S. Dallas
Floydada 101 South 12th

ME OVER & SAVE

Giant 49 oz
Bold 3
\$1.59
Buddy's Food
Good Thru Feb. 11, 1981

Agricultural Loans
Help You
our Line
redit
Things For The Better™
FIRST NATIONAL BANK
FLOYDADA
AS 79235 MEMBER F.D.I.C.

FLOYDADA SCHOOL LUNCH MENU

- Monday:**
Breakfast — Juice, French toast, jelly, milk
Lunch — Ham, sweet potatoes, green beans, fruit, hot roll, milk
- Tuesday:**
Breakfast — Juice, hot rolls, butter, jelly, milk
Lunch — Char burgers on bun, French fries, tomato, lettuce, dill pickles, cobbler (manager choice), milk
- Wednesday:**
Breakfast — Juice, cinnamon toast, milk
Lunch — Enchiladas with
- cheese, pinto beans, tossed salad, cornbread, pear slices, milk
- Thursday:**
Breakfast — Juice or fruit, toast, eggs, jelly, milk
Lunch — Chicken pot pie, fluffy potatoes, tossed salad, peanut butter cookie, hot rolls, milk
- Friday:**
Breakfast — Juice, hot rolls, sausage, milk
Lunch — Chili cheese burrito, tossed salad, French fries, jello, milk

Coming
Bill's Locksmithing From Plainview
Will Be In Floydada To Make Keys
And Do Any Kind Of Lock Work
Needed On Friday February 6 th From
10:00 To 4:00 Parked On
The Court House Square

WARM UP TO THESE COLD WEATHER FOOD SPECIALS

1 1/2 Gal. Carton Cream \$1.59	Van Camps 3-303 Cans Pork & Beans \$1.00	Bacon 79¢ lb
1 lb. Bag Gladiola Flour 99¢	2lb. Tub Velvet Oleo 89¢	Grade A Fryers 59¢ lb
1 pack 32 oz. Bottle Pepsi Cola \$1.49	Delsey 4 Roll Toilet Tissue 99¢	Family Pack Pork Chops \$1.29 lb
Mortons Frozen Asst. Flavors Dinners 59¢		Hamburger \$1.29 lb

PRODUCE

Bananas 29¢ lb	Nice Firm Heads Lettuce 29¢ lb
1 lb. Bag All Purpose Potatoes \$1.59	Grapefruit 25¢ lb

KEETERS GROCERY

652-2191 7 a.m. - 8 p.m.

GOLD BOND STAMPS

We Redeem Food Stamps & WIC Cards
We Reserve The Right
We Give Gold Bond Stamps Double On Wed.
To Limit Quantities

Lawyer camp in the Greek island. (Rated PG) (101 mins.) 1:00

WESTBROOK HOSPITAL (ABC NEWS) 1:30

NIGHTBEAT (NEWS) 1:37

THE LESSON (NEWS) 2:00

MOVIE (DRAMA) *** "Secret Ways" 1961 Richard Widmark, Sonya Zensky. American adventurer goes into Hungary, behind Iron Curtain, to bring out leader (2 hrs., 8 mins.)

REX HUMBARD (MOVIE (DRAMA) **** "The Pawnbroker" 1965 Rod Steiger, Geraldine Fitzgerald. A pawnbroker who lost his family in the Nazi regime, isolates himself in his Spanish Harlem pawnshop, but finds new love and awakens emotions he sought to bury. (2 hrs.) 2:15

MOVIE (DRAMA) *** "Sweet Smell of Success" 1957 Bob Lancaster, Tony Curtis. A gossip columnist and his scheming press agent (2 hrs.)

ORAL ROBERTS (ALL NIGHT PROGRAMMING) 3:45

JERRY FALWELL (ALL NIGHT PROGRAMMING) 4:00

WORLD AT LARGE (AG-U.S.A.) 4:30

CHRISTOPHER CLOSE-UP (BETWEEN THE LINES) (CHRISTOPHER CLOSE-UP) (THE HARVESTER HOUR) (HARVESTER HOUR)

SUNDAY FEB. 8, 1981

MORNING 6:00

JAMES ROBINSON (JIM BAKKER) (SUPERMAN) (NEWS) 6:30

DAWSON MEMORIAL BAPTIST CHURCH (IT IS WRITTEN) (NEWS) (CHRISTOPHER CLOSE-UP) (LASSIE) 6:45

SACRED HEART (THE LESSON) (THREE STOOGES AND FRIENDS) (JERRY FALWELL) (FAITH 20) (JAMES ROBINSON PRESENTS) (BIBLE ANSWERS) (AMAZING GRACE) (BUYER'S REMORSE) (CHAPEL HOUR) (DAY OF DISCOVERY) (JAMES ROBINSON PRESENTS) (WHAT'S NU) 7:45

8:00 (HOUR OF POWER) (LOST IN SPACE) (FELLOWSHIP HOUR) (LARRY JONES EVANGELIST) (MASS FOR SHUT-INS) (ORAL ROBERTS) (SUNDAY MORNING) (PROPHCY IN THE NEWS) (CHICAGOLAND CHURCH) (NEWARK AND REALITY) (CHANGED LIVES) (HAMEL) (JIMMY SWAGGART) (PAULINO BERNAL) (EVANGELIST) (ROBERT SCHULLER FROM CRYSTAL CATHEDRAL) (SPIRITUAL AWAKENING) (MOVIE (COMEDY) *** "Call Me Madam" 1953 Ethel Merman, Donald O'Connor. A robust, uninhibited Washington hostess finds love more effective than diamond jewelry in cementing a relationship. (2 hrs., 30 mins.)

KENNETH COPELAND (SGT. PRESTON) (POINT OF VIEW) (THIS IS THE LIFE) (INTERNATIONAL SUNDAY SCHOOL) 10:00

ROBERT SCHULLER FROM CRYSTAL CATHEDRAL (SPACE 1999) (LIFE OF RILEY) (ROBERT SCHULLER FROM CRYSTAL CATHEDRAL) (ANIMALS, ANIMALS, ANIMALS) (REX HUMBARD) (JIMMY SWAGGART) (TIME OF DELIVERANCE) (FIRST BAPTIST CHURCH) (CISCO) (ROBERT SCHULLER FROM CRYSTAL CATHEDRAL) (FACE THE NATION) (LARRY JONES) (LONE RANGER) (MEET THE PRESS) (CAPITAL EYE)

AFTERNOON 12:00

JAMES KENNEDY (MOVIE (MYSTERY) ***

"Boomerang" Dana Andrews, Lee Remick. A man's search for a woman who has disappeared. (101 mins.) 1:00

WESTBROOK HOSPITAL (ABC NEWS) 1:30

NIGHTBEAT (NEWS) 1:37

THE LESSON (NEWS) 2:00

MOVIE (DRAMA) *** "Secret Ways" 1961 Richard Widmark, Sonya Zensky. American adventurer goes into Hungary, behind Iron Curtain, to bring out leader (2 hrs., 8 mins.)

REX HUMBARD (MOVIE (DRAMA) **** "The Pawnbroker" 1965 Rod Steiger, Geraldine Fitzgerald. A pawnbroker who lost his family in the Nazi regime, isolates himself in his Spanish Harlem pawnshop, but finds new love and awakens emotions he sought to bury. (2 hrs.) 2:15

MOVIE (DRAMA) *** "Sweet Smell of Success" 1957 Bob Lancaster, Tony Curtis. A gossip columnist and his scheming press agent (2 hrs.)

ORAL ROBERTS (ALL NIGHT PROGRAMMING) 3:45

JERRY FALWELL (ALL NIGHT PROGRAMMING) 4:00

WORLD AT LARGE (AG-U.S.A.) 4:30

CHRISTOPHER CLOSE-UP (BETWEEN THE LINES) (CHRISTOPHER CLOSE-UP) (THE HARVESTER HOUR) (HARVESTER HOUR)

SUNDAY FEB. 8, 1981

MORNING 6:00

JAMES ROBINSON (JIM BAKKER) (SUPERMAN) (NEWS) 6:30

DAWSON MEMORIAL BAPTIST CHURCH (IT IS WRITTEN) (NEWS) (CHRISTOPHER CLOSE-UP) (LASSIE) 6:45

SACRED HEART (THE LESSON) (THREE STOOGES AND FRIENDS) (JERRY FALWELL) (FAITH 20) (JAMES ROBINSON PRESENTS) (BIBLE ANSWERS) (AMAZING GRACE) (BUYER'S REMORSE) (CHAPEL HOUR) (DAY OF DISCOVERY) (JAMES ROBINSON PRESENTS) (WHAT'S NU) 7:45

8:00 (HOUR OF POWER) (LOST IN SPACE) (FELLOWSHIP HOUR) (LARRY JONES EVANGELIST) (MASS FOR SHUT-INS) (ORAL ROBERTS) (SUNDAY MORNING) (PROPHCY IN THE NEWS) (CHICAGOLAND CHURCH) (NEWARK AND REALITY) (CHANGED LIVES) (HAMEL) (JIMMY SWAGGART) (PAULINO BERNAL) (EVANGELIST) (ROBERT SCHULLER FROM CRYSTAL CATHEDRAL) (SPIRITUAL AWAKENING) (MOVIE (COMEDY) *** "Call Me Madam" 1953 Ethel Merman, Donald O'Connor. A robust, uninhibited Washington hostess finds love more effective than diamond jewelry in cementing a relationship. (2 hrs., 30 mins.)

KENNETH COPELAND (SGT. PRESTON) (POINT OF VIEW) (THIS IS THE LIFE) (INTERNATIONAL SUNDAY SCHOOL) 10:00

ROBERT SCHULLER FROM CRYSTAL CATHEDRAL (SPACE 1999) (LIFE OF RILEY) (ROBERT SCHULLER FROM CRYSTAL CATHEDRAL) (ANIMALS, ANIMALS, ANIMALS) (REX HUMBARD) (JIMMY SWAGGART) (TIME OF DELIVERANCE) (FIRST BAPTIST CHURCH) (CISCO) (ROBERT SCHULLER FROM CRYSTAL CATHEDRAL) (FACE THE NATION) (LARRY JONES) (LONE RANGER) (MEET THE PRESS) (CAPITAL EYE)

AFTERNOON 12:00

JAMES KENNEDY (MOVIE (MYSTERY) ***

PEACOCK The Big Bird Show. A live-action musical comedy. (101 mins.) 1:00

WESTBROOK HOSPITAL (ABC NEWS) 1:30

NIGHTBEAT (NEWS) 1:37

THE LESSON (NEWS) 2:00

MOVIE (DRAMA) *** "Secret Ways" 1961 Richard Widmark, Sonya Zensky. American adventurer goes into Hungary, behind Iron Curtain, to bring out leader (2 hrs., 8 mins.)

REX HUMBARD (MOVIE (DRAMA) **** "The Pawnbroker" 1965 Rod Steiger, Geraldine Fitzgerald. A pawnbroker who lost his family in the Nazi regime, isolates himself in his Spanish Harlem pawnshop, but finds new love and awakens emotions he sought to bury. (2 hrs.) 2:15

MOVIE (DRAMA) *** "Sweet Smell of Success" 1957 Bob Lancaster, Tony Curtis. A gossip columnist and his scheming press agent (2 hrs.)

ORAL ROBERTS (ALL NIGHT PROGRAMMING) 3:45

JERRY FALWELL (ALL NIGHT PROGRAMMING) 4:00

WORLD AT LARGE (AG-U.S.A.) 4:30

CHRISTOPHER CLOSE-UP (BETWEEN THE LINES) (CHRISTOPHER CLOSE-UP) (THE HARVESTER HOUR) (HARVESTER HOUR)

SUNDAY FEB. 8, 1981

MORNING 6:00

JAMES ROBINSON (JIM BAKKER) (SUPERMAN) (NEWS) 6:30

DAWSON MEMORIAL BAPTIST CHURCH (IT IS WRITTEN) (NEWS) (CHRISTOPHER CLOSE-UP) (LASSIE) 6:45

SACRED HEART (THE LESSON) (THREE STOOGES AND FRIENDS) (JERRY FALWELL) (FAITH 20) (JAMES ROBINSON PRESENTS) (BIBLE ANSWERS) (AMAZING GRACE) (BUYER'S REMORSE) (CHAPEL HOUR) (DAY OF DISCOVERY) (JAMES ROBINSON PRESENTS) (WHAT'S NU) 7:45

8:00 (HOUR OF POWER) (LOST IN SPACE) (FELLOWSHIP HOUR) (LARRY JONES EVANGELIST) (MASS FOR SHUT-INS) (ORAL ROBERTS) (SUNDAY MORNING) (PROPHCY IN THE NEWS) (CHICAGOLAND CHURCH) (NEWARK AND REALITY) (CHANGED LIVES) (HAMEL) (JIMMY SWAGGART) (PAULINO BERNAL) (EVANGELIST) (ROBERT SCHULLER FROM CRYSTAL CATHEDRAL) (SPIRITUAL AWAKENING) (MOVIE (COMEDY) *** "Call Me Madam" 1953 Ethel Merman, Donald O'Connor. A robust, uninhibited Washington hostess finds love more effective than diamond jewelry in cementing a relationship. (2 hrs., 30 mins.)

KENNETH COPELAND (SGT. PRESTON) (POINT OF VIEW) (THIS IS THE LIFE) (INTERNATIONAL SUNDAY SCHOOL) 10:00

ROBERT SCHULLER FROM CRYSTAL CATHEDRAL (SPACE 1999) (LIFE OF RILEY) (ROBERT SCHULLER FROM CRYSTAL CATHEDRAL) (ANIMALS, ANIMALS, ANIMALS) (REX HUMBARD) (JIMMY SWAGGART) (TIME OF DELIVERANCE) (FIRST BAPTIST CHURCH) (CISCO) (ROBERT SCHULLER FROM CRYSTAL CATHEDRAL) (FACE THE NATION) (LARRY JONES) (LONE RANGER) (MEET THE PRESS) (CAPITAL EYE)

AFTERNOON 12:00

JAMES KENNEDY (MOVIE (MYSTERY) ***

PEALE In the Family. A comedy. (101 mins.) 1:00

WESTBROOK HOSPITAL (ABC NEWS) 1:30

NIGHTBEAT (NEWS) 1:37

THE LESSON (NEWS) 2:00

MOVIE (DRAMA) *** "Secret Ways" 1961 Richard Widmark, Sonya Zensky. American adventurer goes into Hungary, behind Iron Curtain, to bring out leader (2 hrs., 8 mins.)

REX HUMBARD (MOVIE (DRAMA) **** "The Pawnbroker" 1965 Rod Steiger, Geraldine Fitzgerald. A pawnbroker who lost his family in the Nazi regime, isolates himself in his Spanish Harlem pawnshop, but finds new love and awakens emotions he sought to bury. (2 hrs.) 2:15

MOVIE (DRAMA) *** "Sweet Smell of Success" 1957 Bob Lancaster, Tony Curtis. A gossip columnist and his scheming press agent (2 hrs.)

ORAL ROBERTS (ALL NIGHT PROGRAMMING) 3:45

JERRY FALWELL (ALL NIGHT PROGRAMMING) 4:00

WORLD AT LARGE (AG-U.S.A.) 4:30

CHRISTOPHER CLOSE-UP (BETWEEN THE LINES) (CHRISTOPHER CLOSE-UP) (THE HARVESTER HOUR) (HARVESTER HOUR)

SUNDAY FEB. 8, 1981

MORNING 6:00

JAMES ROBINSON (JIM BAKKER) (SUPERMAN) (NEWS) 6:30

DAWSON MEMORIAL BAPTIST CHURCH (IT IS WRITTEN) (NEWS) (CHRISTOPHER CLOSE-UP) (LASSIE) 6:45

SACRED HEART (THE LESSON) (THREE STOOGES AND FRIENDS) (JERRY FALWELL) (FAITH 20) (JAMES ROBINSON PRESENTS) (BIBLE ANSWERS) (AMAZING GRACE) (BUYER'S REMORSE) (CHAPEL HOUR) (DAY OF DISCOVERY) (JAMES ROBINSON PRESENTS) (WHAT'S NU) 7:45

8:00 (HOUR OF POWER) (LOST IN SPACE) (FELLOWSHIP HOUR) (LARRY JONES EVANGELIST) (MASS FOR SHUT-INS) (ORAL ROBERTS) (SUNDAY MORNING) (PROPHCY IN THE NEWS) (CHICAGOLAND CHURCH) (NEWARK AND REALITY) (CHANGED LIVES) (HAMEL) (JIMMY SWAGGART) (PAULINO BERNAL) (EVANGELIST) (ROBERT SCHULLER FROM CRYSTAL CATHEDRAL) (SPIRITUAL AWAKENING) (MOVIE (COMEDY) *** "Call Me Madam" 1953 Ethel Merman, Donald O'Connor. A robust, uninhibited Washington hostess finds love more effective than diamond jewelry in cementing a relationship. (2 hrs., 30 mins.)

KENNETH COPELAND (SGT. PRESTON) (POINT OF VIEW) (THIS IS THE LIFE) (INTERNATIONAL SUNDAY SCHOOL) 10:00

ROBERT SCHULLER FROM CRYSTAL CATHEDRAL (SPACE 1999) (LIFE OF RILEY) (ROBERT SCHULLER FROM CRYSTAL CATHEDRAL) (ANIMALS, ANIMALS, ANIMALS) (REX HUMBARD) (JIMMY SWAGGART) (TIME OF DELIVERANCE) (FIRST BAPTIST CHURCH) (CISCO) (ROBERT SCHULLER FROM CRYSTAL CATHEDRAL) (FACE THE NATION) (LARRY JONES) (LONE RANGER) (MEET THE PRESS) (CAPITAL EYE)

AFTERNOON 12:00

JAMES KENNEDY (MOVIE (MYSTERY) ***

PHILOSOPHY Introduction to Philosophy. (101 mins.) 1:00

WESTBROOK HOSPITAL (ABC NEWS) 1:30

NIGHTBEAT (NEWS) 1:37

THE LESSON (NEWS) 2:00

MOVIE (DRAMA) *** "Secret Ways" 1961 Richard Widmark, Sonya Zensky. American adventurer goes into Hungary, behind Iron Curtain, to bring out leader (2 hrs., 8 mins.)

REX HUMBARD (MOVIE (DRAMA) **** "The Pawnbroker" 1965 Rod Steiger, Geraldine Fitzgerald. A pawnbroker who lost his family in the Nazi regime, isolates himself in his Spanish Harlem pawnshop, but finds new love and awakens emotions he sought to bury. (2 hrs.) 2:15

MOVIE (DRAMA) *** "Sweet Smell of Success" 1957 Bob Lancaster, Tony Curtis. A gossip columnist and his scheming press agent (2 hrs.)

ORAL ROBERTS (ALL NIGHT PROGRAMMING) 3:45

JERRY FALWELL (ALL NIGHT PROGRAMMING) 4:00

WORLD AT LARGE (AG-U.S.A.) 4:30

CHRISTOPHER CLOSE-UP (BETWEEN THE LINES) (CHRISTOPHER CLOSE-UP) (THE HARVESTER HOUR) (HARVESTER HOUR)

SUNDAY FEB. 8, 1981

MORNING 6:00

JAMES ROBINSON (JIM BAKKER) (SUPERMAN) (NEWS) 6:30

DAWSON MEMORIAL BAPTIST CHURCH (IT IS WRITTEN) (NEWS) (CHRISTOPHER CLOSE-UP) (LASSIE) 6:45

SACRED HEART (THE LESSON) (THREE STOOGES AND FRIENDS) (JERRY FALWELL) (FAITH 20) (JAMES ROBINSON PRESENTS) (BIBLE ANSWERS) (AMAZING GRACE) (BUYER'S REMORSE) (CHAPEL HOUR) (DAY OF DISCOVERY) (JAMES ROBINSON PRESENTS) (WHAT'S NU) 7:45

8:00 (HOUR OF POWER) (LOST IN SPACE) (FELLOWSHIP HOUR) (LARRY JONES EVANGELIST) (MASS FOR SHUT-INS) (ORAL ROBERTS) (SUNDAY MORNING) (PROPHCY IN THE NEWS) (CHICAGOLAND CHURCH) (NEWARK AND REALITY) (CHANGED LIVES) (HAMEL) (JIMMY SWAGGART) (PAULINO BERNAL) (EVANGELIST) (ROBERT SCHULLER FROM CRYSTAL CATHEDRAL) (SPIRITUAL AWAKENING) (MOVIE (COMEDY) *** "Call Me Madam" 1953 Ethel Merman, Donald O'Connor. A robust, uninhibited Washington hostess finds love more effective than diamond jewelry in cementing a relationship. (2 hrs., 30 mins.)

KENNETH COPELAND (SGT. PRESTON) (POINT OF VIEW) (THIS IS THE LIFE) (INTERNATIONAL SUNDAY SCHOOL) 10:00

ROBERT SCHULLER FROM CRYSTAL CATHEDRAL (SPACE 1999) (LIFE OF RILEY) (ROBERT SCHULLER FROM CRYSTAL CATHEDRAL) (ANIMALS, ANIMALS, ANIMALS) (REX HUMBARD) (JIMMY SWAGGART) (TIME OF DELIVERANCE) (FIRST BAPTIST CHURCH) (CISCO) (ROBERT SCHULLER FROM CRYSTAL CATHEDRAL) (FACE THE NATION) (LARRY JONES) (LONE RANGER) (MEET THE PRESS) (CAPITAL EYE)

AFTERNOON 12:00

JAMES KENNEDY (MOVIE (MYSTERY) ***

INTRODUCTION TO PHILOSOPHY (101 mins.) 1:00

WESTBROOK HOSPITAL (ABC NEWS) 1:30

NIGHTBEAT (NEWS) 1:37

THE LESSON (NEWS) 2:00

MOVIE (DRAMA) *** "Secret Ways" 1961 Richard Widmark, Sonya Zensky. American adventurer goes into Hungary, behind Iron Curtain, to bring out leader (2 hrs., 8 mins.)

REX HUMBARD (MOVIE (DRAMA) **** "The Pawnbroker" 1965 Rod Steiger, Geraldine Fitzgerald. A pawnbroker who lost his family in the Nazi regime, isolates himself in his Spanish Harlem pawnshop, but finds new love and awakens emotions he sought to bury. (2 hrs.) 2:15

MOVIE (DRAMA) *** "Sweet Smell of Success" 1957 Bob Lancaster, Tony Curtis. A gossip columnist and his scheming press agent (2 hrs.)

ORAL ROBERTS (ALL NIGHT PROGRAMMING) 3:45

JERRY FALWELL (ALL NIGHT PROGRAMMING) 4:00

WORLD AT LARGE (AG-U.S.A.) 4:30

CHRISTOPHER CLOSE-UP (BETWEEN THE LINES) (CHRISTOPHER CLOSE-UP) (THE HARVESTER HOUR) (HARVESTER HOUR)

SUNDAY FEB. 8, 1981

MORNING 6:00

JAMES ROBINSON (JIM BAKKER) (SUPERMAN) (NEWS) 6:30

DAWSON MEMORIAL BAPTIST CHURCH (IT IS WRITTEN) (NEWS) (CHRISTOPHER CLOSE-UP) (LASSIE) 6:45

SACRED HEART (THE LESSON) (THREE STOOGES AND FRIENDS) (JERRY FALWELL) (FAITH 20) (JAMES ROBINSON PRESENTS) (BIBLE ANSWERS) (AMAZING GRACE) (BUYER'S REMORSE) (CHAPEL HOUR) (DAY OF DISCOVERY) (JAMES ROBINSON PRESENTS) (WHAT'S NU) 7:45

8:00 (HOUR OF POWER) (LOST IN SPACE) (FELLOWSHIP HOUR) (LARRY JONES EVANGELIST) (MASS FOR SHUT-INS) (ORAL ROBERTS) (SUNDAY MORNING) (PROPHCY IN THE NEWS) (CHICAGOLAND CHURCH) (NEWARK AND REALITY) (CHANGED LIVES) (HAMEL) (JIMMY SWAGGART) (PAULINO BERNAL) (EVANGELIST) (ROBERT SCHULLER FROM CRYSTAL CATHEDRAL) (SPIRITUAL AWAKENING) (MOVIE (COMEDY) *** "Call Me Madam" 1953 Ethel Merman, Donald O'Connor. A robust, uninhibited Washington hostess finds love more effective than diamond jewelry in cementing a relationship. (2 hrs., 30 mins.)

KENNETH COPELAND (SGT. PRESTON) (POINT OF VIEW) (THIS IS THE LIFE) (INTERNATIONAL SUNDAY SCHOOL) 10:00

ROBERT SCHULLER FROM CRYSTAL CATHEDRAL (SPACE 1999) (LIFE OF RILEY) (ROBERT SCHULLER FROM CRYSTAL CATHEDRAL) (ANIMALS, ANIMALS, ANIMALS) (REX HUMBARD) (JIMMY SWAGGART) (TIME OF DELIVERANCE) (FIRST BAPTIST CHURCH) (CISCO) (ROBERT SCHULLER FROM CRYSTAL CATHEDRAL) (FACE THE NATION) (LARRY JONES) (LONE RANGER) (MEET THE PRESS) (CAPITAL EYE)

AFTERNOON 12:00

JAMES KENNEDY (MOVIE (MYSTERY) ***

MOVIE (DRAMA) *** "Secret Ways" 1961 Richard Widmark, Sonya Zensky. American adventurer goes into Hungary, behind Iron Curtain, to bring out leader (2 hrs., 8 mins.)

REX HUMBARD (MOVIE (DRAMA) **** "The Pawnbroker" 1965 Rod Steiger, Geraldine Fitzgerald. A pawnbroker who lost his family in the Nazi regime, isolates himself in his Spanish Harlem pawnshop, but finds new love and awakens emotions he sought to bury. (2 hrs.) 2:15

MOVIE (DRAMA) *** "Sweet Smell of Success" 1957 Bob Lancaster, Tony Curtis. A gossip columnist and his scheming press agent (2 hrs.)

ORAL ROBERTS (ALL NIGHT PROGRAMMING) 3:45

JERRY FALWELL (ALL NIGHT PROGRAMMING) 4:00

WORLD AT LARGE (AG-U.S.A.) 4:30

CHRISTOPHER CLOSE-UP (BETWEEN THE LINES) (CHRISTOPHER CLOSE-UP) (THE HARVESTER HOUR) (HARVESTER HOUR)

SUNDAY FEB. 8, 1981

MORNING 6:00

JAMES ROBINSON (JIM BAKKER) (SUPERMAN) (NEWS) 6:30

DAWSON MEMORIAL BAPTIST CHURCH (IT IS WRITTEN) (NEWS) (CHRISTOPHER CLOSE-UP) (LASSIE) 6:45

SACRED HEART (THE LESSON) (THREE STOOGES AND FRIENDS) (JERRY FALWELL) (FAITH 20) (JAMES ROBINSON PRESENTS) (BIBLE ANSWERS) (AMAZING GRACE) (BUYER'S REMORSE) (CHAPEL HOUR) (DAY OF DISCOVERY) (JAMES ROBINSON PRESENTS) (WHAT'S NU) 7:45

8:00 (HOUR OF POWER) (LOST IN SPACE) (FELLOWSHIP HOUR) (LARRY JONES EVANGELIST) (MASS FOR SHUT-INS) (ORAL ROBERTS) (SUNDAY MORNING) (PROPHCY IN THE NEWS) (CHICAGOLAND CHURCH) (NEWARK AND REALITY) (CHANGED LIVES) (HAMEL) (JIMMY SWAGGART) (PAULINO BERNAL) (EVANGELIST) (ROBERT SCHULLER FROM CRYSTAL CATHEDRAL) (SPIRITUAL AWAKENING) (MOVIE (COMEDY) *** "Call Me Madam" 1953 Ethel Merman, Donald O'Connor. A robust, uninhibited Washington hostess finds love more effective than diamond jewelry in cementing a relationship. (2 hrs., 30 mins.)

KENNETH COPELAND (SGT. PRESTON) (POINT OF VIEW) (THIS IS THE LIFE) (INTERNATIONAL SUNDAY SCHOOL) 10:00

ROBERT SCHULLER FROM CRYSTAL CATHEDRAL (SPACE 1999) (LIFE OF RILEY) (ROBERT SCHULLER FROM CRYSTAL CATHEDRAL) (ANIMALS, ANIMALS, ANIMALS) (REX HUMBARD) (JIMMY SWAGGART) (TIME OF DELIVERANCE) (FIRST BAPTIST CHURCH) (CISCO) (ROBERT SCHULLER FROM CRYSTAL CATHEDRAL) (FACE THE NATION) (LARRY JONES) (LONE RANGER) (MEET THE PRESS) (CAPITAL EYE)

AFTERNOON 12:00

JAMES KENNEDY (MOVIE (MYSTERY) ***

MOVIE (DRAMA) *** "Secret Ways" 1961 Richard Widmark, Sonya Zensky. American adventurer goes into Hungary, behind Iron Curtain, to bring out leader (2 hrs., 8 mins.)

REX HUMBARD (MOVIE (DRAMA) **** "The Pawnbroker" 1965 Rod Steiger, Geraldine Fitzgerald. A pawnbroker who lost his family in the Nazi regime, isolates himself in his Spanish Harlem pawnshop, but finds new love and awakens emotions he sought to bury. (2 hrs.) 2:15

MOVIE (DRAMA) *** "Sweet Smell of Success" 1957 Bob Lancaster, Tony Curtis. A gossip columnist and his scheming press agent (2 hrs.)

ORAL ROBERTS (ALL NIGHT PROGRAMMING) 3:45

JERRY FALWELL (ALL NIGHT PROGRAMMING) 4:00

WORLD AT LARGE (AG-U.S.A.) 4:30

CHRISTOPHER CLOSE-UP (BETWEEN THE LINES) (CHRISTOPHER CLOSE-UP) (THE HARVESTER HOUR) (HARVESTER HOUR)

SUNDAY FEB. 8, 1981

MORNING 6:00

JAMES ROBINSON (JIM BAKKER) (SUPERMAN) (NEWS) 6:30

DAWSON MEMORIAL BAPTIST CHURCH (IT IS WRITTEN) (NEWS) (CHRISTOPHER CLOSE-UP) (LASSIE) 6:45

SACRED HEART (THE LESSON) (THREE STOOGES AND FRIENDS) (JERRY FALWELL) (FAITH 20) (JAMES ROBINSON PRESENTS) (BIBLE ANSWERS) (AMAZING GRACE) (BUYER'S REMORSE) (CHAPEL HOUR) (DAY OF DISCOVERY) (JAMES ROBINSON PRESENTS) (WHAT'S NU) 7:45

8:00 (HOUR OF POWER) (LOST IN SPACE) (FELLOWSHIP HOUR) (LARRY JONES EVANGELIST) (MASS FOR SHUT-INS) (ORAL ROBERTS) (SUNDAY MORNING) (PROPHCY IN THE NEWS) (CHICAGOLAND CHURCH) (NEWARK AND REALITY) (CHANGED LIVES) (HAMEL) (JIMMY SWAGGART) (PAULINO BERNAL) (EVANGELIST) (ROBERT SCHULLER FROM CRYSTAL CATHEDRAL) (SPIRITUAL AWAKENING) (MOVIE (COMEDY) *** "Call Me Madam" 1953 Ethel Merman, Donald O'Connor. A robust, uninhibited Washington hostess finds love more effective than diamond jewelry in cementing a relationship. (2 hrs., 30 mins.)

KENNETH COPELAND (SGT. PRESTON) (POINT OF VIEW) (THIS IS THE LIFE) (INTERNATIONAL SUNDAY SCHOOL) 10:00

ROBERT SCHULLER FROM CRYSTAL CATHEDRAL (SPACE 1999) (LIFE OF RILEY) (ROBERT SCHULLER FROM CRYSTAL CATHEDRAL) (ANIMALS, ANIMALS, ANIMALS) (REX HUMBARD) (JIMMY SWAGGART) (TIME OF DELIVERANCE) (FIRST BAPTIST CHURCH) (CISCO) (ROBERT SCHULLER FROM CRYSTAL CATHEDRAL) (FACE THE NATION) (LARRY JONES) (LONE RANGER) (MEET THE PRESS) (CAPITAL EYE)

AFTERNOON 12:00

JAMES KENNEDY (MOVIE (MYSTERY) ***

Script Printing & Office Supply

Up To 20% OFF

On Furniture Order

108 S. Main 983-5131

Script Printing & Office Supply

Up To 20% OFF

On Furniture Order

108 S. Main 983-5131

Script Printing & Office Supply

Up To 20% OFF

On Furniture Order

108 S. Main 983-5131

H&R BLOCK TAX TEST

Question No. 9

Income averaging can save you money. But only if you make more than \$30,000 a year.

True False

What you don't know about income averaging could cost you money.

H&R Block knows that no matter how much you make, if your income went up substantially last year you may be able to income average. We'll take advantage of this if it's to your benefit. The answer is FALSE, since there is no minimum amount of income required to qualify.

WE'LL MAKE THE TAX LAWS WORK FOR YOU

H&R BLOCK

THE INCOME TAX PEOPLE

106 W. Missouri

983-5233

Weekdays 9-6, Saturday 9-5

COME OVER & SAVE

32 oz Kraft

Miracle Whip

\$1.29

Buddy's Food

Good Thru Feb. 11, 1981

H&R BLOCK

THE INCOME TAX PEOPLE

106 W. Missouri

983-5233

Weekdays 9-6, Saturday 9-5

Grandparents:

Here's a chance to make your children & grandchildren happy!

A Big VALENTINE

Send or bring us a cute photo of YOUR GRANDCHILD

Ages: 1 day to 6 years (We promise to return it unharmed)

We'll place it in a heart (like the one on the left) including name, and on Thursday, February 11 (the last paper before)

Valentine's Day, YOUR LITTLE VALENTINE WILL APPEAR IN OUR PAPER!

HURRY, NOW! DEADLINE IS February 6, 11 A.M.

the cost is only \$10.00 per heart

FLOYD COUNTY HESPERIAN THE LOCKNEY BEACON

OBITUARIES

Hazel Barnard

Hazel Barnard, 62, who died Saturday, January 24, was the mother of Mrs. Vance Mitchell of Lockney. Services were conducted Monday, January 26, in Eakly Cemetery by R.L. Lockstone Funeral Home Inc. of Weatherford, Oklahoma. Mrs. Barnard was born in Grapevine, Texas. She was reared in the Florence Community and attended school there. She married the Rev. H.E. Barnard in 1936 in Justin, Texas. They lived in Texas, California and Arizona before moving to Hollis in 1970. They came to Eakly in 1970. She was a member of the Eakly Assembly of God Church. Survivors also include her husband, three other daughters, two sisters, six brothers and eight grandchildren.

Lewis Blum

Services for Lewis Herman Blum, 75, of Floydada, are set for 2 p.m. Friday in City Park Church of Christ with Perry Zumwalt, minister, officiating. Burial will be in Floyd County Memorial Park under the direction of Moore-Rose Funeral Home. Blum died at 7:30 a.m. Tuesday at Lockney General Hospital after a lengthy illness. Born July 3, 1905 in Hillsboro, Blum was a retired farmer. He married Elva Glee Lucado on June 10, 1923, in Clarendon. He moved to Floydada in 1928 from Memphis. He was a member of City Park Church of Christ. Survivors include his wife; a daughter, Mrs. Ronnie Upton of Los Alamos, New Mexico; a sister, Emma Lee Jones of Whitaker, California; and three grandchildren.

Hazel Witt Ginn

Hazel Witt Ginn, 83, died at 8:15 p.m. Tuesday, January 27, in Floydada Nursing Home. Services were at 2:30 p.m. Thursday in New Salem Primitive Baptist Church with Elder Joe Jackson officiating. Burial followed in Floyd County Memorial Park by Moore-Rose Funeral Home of Floydada. Mrs. Ginn was born June 30, 1897 in Dale, Oklahoma and married Charles Wesley Ginn November 9, 1914 in Oklahoma. She moved from there to Floyd County in 1922. Mrs. Ginn was a homemaker and member of New Salem Primitive Baptist Church. Her husband died March 27, 1976. Survivors are one son, Guy W. Ginn of Floydada; two daughters, Norma Wood of

Hurst and Nelda Whitfill of Nederland; eight grandchildren and 13 great-grandchildren.

Virginia Johnson

Services for Virginia Johnson, 53, of Lubbock were at 3 p.m. Saturday in Hale Center Baptist Church with the Rev. Ron Mooney, pastor, officiating. Burial was in Plainview Memorial Park under direction of Freeman Funeral Home at Hale Center. Mrs. Johnson died at 5 p.m. Thursday in St. Mary's Hospital in Lubbock following a sudden illness. The former Virginia Jones was a native of Lockney. She married Donald Johnson in 1946 in Plainview. She was a bookkeeper with Hackel's Ladies Wear and was a member of Abernathy's Rebekah Number 170 and the Golden Spread Chapter of the American Businesswomen's Association.

Survivors include her husband; a son, Doyle Ray of Wichita, Kansas; two daughters, Linda June McKee and Debra Sue Walters of Las Cruces, New Mexico; her parents, Mr. and Mrs. R.L. Jones of Hale Center; two brothers, Marvin Jones of Fort Worth and Dr. Melvin Jones of Houston; two sisters, Lanell Garrett of Plainview and Wanda Johnson of Hale Center; and six grandchildren.

Pallbearers were Adron Johnson, P.S. Johnson, Will Johnson, Ed Johnson, Wayne Johnson and James Stout.

Jack McKinney

Services for Jack A. McKinney, 64, of Clovis were at 2 p.m. MST Monday in Kingswood United Methodist Church in Clovis, New Mexico with the Rev. Hardin Atkins, pastor, and the Rev. E.K. Shepherd, assistant pastor, officiating.

Burial was in Lawn Haven Cemetery in Clovis under direction of Steed-Todd Funeral Home.

He died Friday in a Clovis hospital. The Floydada native was a conductor for Sante Fe Railway and a member of the United Transportation Union. He also was a member of Kingswood United Methodist Church, Clovis-Portales Elks Lodge 1244, Clovis Masonic Lodge 40 AF&AM, the Scottish Rite and Shrine. McKinney married Benja Johnson on November 28, 1937.

Survivors include his wife, Benja; two sons, Billy Jack of Chattanooga, Tennessee, and Robert Ben of Clovis; a daughter, Debbie Vandiver

of Clovis; a brother, John of Floydada; seven sisters, Emma Whitaker, Dove Rushing, Helen Solomon and Elizabeth Armstrong, all of Floydada, Peggy McKinney of Plainview and Margaret Rodgers and Virginia Snell, both of Lubbock; a brother-in-law of Ralph Johnson of Floydada; and five grandchildren.

Essie Wiggins

Essie Wiggins, 86, sister of Jewel Norman of Floydada, died at 3 a.m. Wednesday in Memorial Hospital in North Little Rock, Arkansas after a brief illness. Services were with Hammons Funeral Home in Littlefield.

A Foard County native, Mrs. Wiggins lived in the Littlefield area about 50 years. She was a nurse at the old Littlefield Hospital many years until her retirement. She was a member of First United Methodist Church in Littlefield.

Also surviving are a son, Austin Wiggins of North Little Rock; another sister, Mrs. Dale Kirkham of Montgomery; three grandchildren and two great-grandchildren.

Arthur Womack

Arthur Virgil Womack, 80, died at 4:20 p.m. Tuesday, January 27, in Methodist Hospital in Lubbock after a brief illness.

Services were at 10 a.m. Friday in City Park Church of Christ in Floydada with the minister, Perry Zumwalt, officiating. Burial was in Floyd County Memorial Park by Moore-Rose Funeral Home of Floydada.

Mr. Womack was born December 6, 1900 in Cooke County and moved from there to Floyd County in 1910. He married Ida Belle Hollingsworth July 26, 1919 in Lockney. She died February 25, 1980.

A retired farmer, Mr. Womack was a veteran of World War I and a member of City Park Church of Christ.

He is survived by six sons, J.W. Womack of Dallas, Arthur Womack Jr. of Hot Springs, Arkansas, Ralph Womack of Houston, Bill Womack of Floydada, and Mack and Jim Womack, both of California; four daughters, LaJuana Harmon of Lubbock, Elfa Turner of Abernathy, Joyce Cotham of Brownfield and Shirley Teague of Hurst; one sister, Hattie Thomas of Hurst; 35 grandchildren and 24 great-grandchildren.

Survivors include his wife, Benja; two sons, Billy Jack of Chattanooga, Tennessee, and Robert Ben of Clovis; a daughter, Debbie Vandiver

of Clovis; a brother, John of Floydada; seven sisters, Emma Whitaker, Dove Rushing, Helen Solomon and Elizabeth Armstrong, all of Floydada, Peggy McKinney of Plainview and Margaret Rodgers and Virginia Snell, both of Lubbock; a brother-in-law of Ralph Johnson of Floydada; and five grandchildren.

Survivors include her husband, three other daughters, two sisters, six brothers and eight grandchildren.

Survivors include his wife; a daughter, Mrs. Ronnie Upton of Los Alamos, New Mexico; a sister, Emma Lee Jones of Whitaker, California; and three grandchildren.

Survivors include his wife; a daughter, Mrs. Ronnie Upton of Los Alamos, New Mexico; a sister, Emma Lee Jones of Whitaker, California; and three grandchildren.

Survivors include his wife; a daughter, Mrs. Ronnie Upton of Los Alamos, New Mexico; a sister, Emma Lee Jones of Whitaker, California; and three grandchildren.

Survivors include his wife; a daughter, Mrs. Ronnie Upton of Los Alamos, New Mexico; a sister, Emma Lee Jones of Whitaker, California; and three grandchildren.

Survivors include his wife; a daughter, Mrs. Ronnie Upton of Los Alamos, New Mexico; a sister, Emma Lee Jones of Whitaker, California; and three grandchildren.

Survivors include his wife; a daughter, Mrs. Ronnie Upton of Los Alamos, New Mexico; a sister, Emma Lee Jones of Whitaker, California; and three grandchildren.

Survivors include his wife; a daughter, Mrs. Ronnie Upton of Los Alamos, New Mexico; a sister, Emma Lee Jones of Whitaker, California; and three grandchildren.

Survivors include his wife; a daughter, Mrs. Ronnie Upton of Los Alamos, New Mexico; a sister, Emma Lee Jones of Whitaker, California; and three grandchildren.

Survivors include his wife; a daughter, Mrs. Ronnie Upton of Los Alamos, New Mexico; a sister, Emma Lee Jones of Whitaker, California; and three grandchildren.

Survivors include his wife; a daughter, Mrs. Ronnie Upton of Los Alamos, New Mexico; a sister, Emma Lee Jones of Whitaker, California; and three grandchildren.

Survivors include his wife; a daughter, Mrs. Ronnie Upton of Los Alamos, New Mexico; a sister, Emma Lee Jones of Whitaker, California; and three grandchildren.

Survivors include his wife; a daughter, Mrs. Ronnie Upton of Los Alamos, New Mexico; a sister, Emma Lee Jones of Whitaker, California; and three grandchildren.

Survivors include his wife; a daughter, Mrs. Ronnie Upton of Los Alamos, New Mexico; a sister, Emma Lee Jones of Whitaker, California; and three grandchildren.

Survivors include his wife; a daughter, Mrs. Ronnie Upton of Los Alamos, New Mexico; a sister, Emma Lee Jones of Whitaker, California; and three grandchildren.

Lakeview News

By Joyce Williams

Missouri. Her little son, Josh, has had the flu and been out of school a week. Their other daughter, Norma, reports the Los Angeles, California area where she lives is getting lots of rain every day.

Faye Hart has had the flu the past few weeks, and is recovering. Mrs. Randy Bertrand is Girl Scout cookie chairman. Angie has cookies to sell to everyone in Lakeview, just stop by their house on the way to town.

Mrs. Q.D. Williams attended the wedding of her former student, Simona Maldonado, Saturday afternoon, at the First Baptist Church in Floydada.

Mr. and Mrs. W.M. Hambricht are staying close to home these cold days to avoid catching the flu.

Mr. and Mrs. Blanton Hartsell met his brother, Mr.

and Mrs. Roger Hartsell of Lamesa, in Lubbock for supper Saturday night.

Mr. and Mrs. William Bertrand were in Tahoka Saturday for supper with their daughter and family, Mr. and Mrs. Martin Warren, Lezie and Will.

Mrs. J.C. Odam was visited Sunday afternoon by her granddaughter and husband, Mr. and Mrs. Terry Siewert of Crowell. The Siewert's had been visiting her parents, Mr. and Mrs. Stanley Waits in Hale Center, and were on their way back to Crowell.

Mrs. Odam's grandson and family, Mr. and Mrs. Gary Hill of Lubbock, visited her Sunday afternoon with their little son.

Mr. and Mrs. William Bertrand were present at the Gala Olio talent show in the high school auditorium Saturday night.

Bilingual education labeled "totally unrealistic"

The Association of Texas Professional Educators (ATPE) representing nearly 30,000 educators, has labeled the federal judge's order that would require public schools to provide bilingual education for Spanish-speaking students through the twelfth grade as "totally unrealistic."

ATPE's Executive Director, Mike Morrow, said that U.S. District Judge William Wayne Justice's ruling is "not only educationally unrealistic, but will also perpetuate segregation of Hispanics and Anglos."

ATPE, whose state president teaches at Santa Rosa in the Rio Grande Valley, supports the bilingual program currently in effect which provides for classes to be taught in Spanish from kindergarten through the third grade. Students are then mainstreamed into regular classes.

"The unkindest thing that we can do to our Spanish-speaking students is to create an atmosphere that is totally unrealistic to the world they must face upon graduation. The fact is that

for individuals in this state and country to succeed, they must be proficient in English, both written and spoken. One of our main objectives, therefore, is to teach English," Alafair Hammett, ATPE state president and a veteran teacher of 30 years, said.

She maintains that most children who are in the current bilingual program and are encouraged to learn English, are proficient enough by the fourth year of instruction which is the end of the third grade, to perform in English-speaking classes.

"Learning a language is a challenge and when classes are continued in Spanish, it lessens the incentive to learn English thereby perpetuating the segregation while at the same time fostering an unrealistic environment for students who must ultimately enter a predominantly English-speaking society," Hammett said.

Morrow added that it would be impossible to im-

plement the plan at this time, since there is a tremendous shortage of qualified bilingual teachers.

"In addition to the tremendous expense to taxpayers of such a program, it is just not feasible without qualified teachers to carry it out," Morrow said.

"If such a plan is mandated, an inherent danger would be that the few bilingual teachers available would be expected to teach subjects for which they do not have the proper training and certification," Morrow said.

"This year, heart disease and stroke will kill another 200,000 Americans before age 65."



INSUR-MATION

Floyd County Insurance Agency Jerry Cooper

Using life insurance in the fair settlement of a business partnership dissolution is something I've heard about but don't understand. How is this accomplished? Your attorney should draw up and execute a binding "buy and sell" agreement which stipulates a definite price, agreed upon by both partners in the business, for each half of the business. This agreement should also spell out how much each partner owns in the business and the amount he agrees to sell it for, under proper conditions. The agreement is then implemented by buying the "agreed upon" amount of life insurance, making it possible for the surviving partner to buy the interest from the estate of the other partner.

REBUILDING COMPLETED

We're Ready To Start Serving Your Needs Again.

Watch February 12 Newspaper For Warehouse Clearance & Fire Sale Starting February 12

Ruckers OK Tire Store

308 South Main 983-3370

COME OVER & SAVE

King Size 48 oz Liquid Detergent

Ivory

\$1.99

Buddy's Food

Good Thru Feb. 11, 1981

Public Notice

January 22, 1981

NOTICE TO BIDDERS

STATE OF TEXAS COUNTY OF FLOYD

Notice is hereby given that the Commissioners of Floyd County, Texas will receive sealed bids for the following described equipment until 10:00 a.m. Monday, February 9, 1981, being the regular February Court; at which time all bids will be opened and read aloud; said bids for purchase of the following:

(1) Diesel Four-Wheel drive articulated steering (production) not less than 95 H.P. net, electrically equipped with enclosed POPS cab, Heater, defroster and rear Windshield wipers, 2 cubic yd. capacity teeth. Breakout Force 16,000 lbs or more. Torque converter with 3 speed minimum power shift drive planetary gear type, front axle "no spin" locking brake. Brakes hydraulic wet disc or equivalent. Tires 17.5 x 25-12 Ply Loaders. Adjustable cushion seat, engine side shields, all gauges necessary for operator. Cold-weather Air Pre-cleaner, front and rear working lights. Turn signals. Manufacturer to provide one year Warranty.

The Commissioners Court offers as trade in one used gas loader, which can be seen at County Barn, Texas.

Payment will be made in cash upon approval of bids.

All bids shall be sealed when presented and will be opened at the above time and date. The Court reserves the right to reject any and all bids, and waive all formalities.

This the 22nd day of January, 1981.

Choise Smith, Floyd County Clerk

NOTICE TO ANY BANKING CORPORATION, ASSOCIATION, OR INDIVIDUAL BANKER

FLOYD COUNTY, TEXAS.

NOTICE is hereby given that the Commissioners of Floyd County, Texas will enter into a contract to depositing of public funds of Floyd County in a bank of Floyd County for the years 1981-82, in accordance with Articles 2544 to 2550, Vernon's Civil Statutes of Texas, as revised.

ANY Banking Corporation, Association, or Individual Banker in Floyd County desiring to be designated as the depository shall make and deliver to the County Auditor an application for such funds. Said application shall state the amount of paid up capital stock and surplus of said bank and shall show the financial condition of said bank at the date of said application as delivered to the County Auditor on or before February 10, 1981 at 10:00 o'clock a.m. Said application shall be accompanied by a certified check for not less than one percent of the County's revenue of the preceding year, the amount of which may be obtained from the Auditor prior to the date designated for the opening of bids.

DATED this 15 day of January, A.D. 1981.

Choise Smith, Floyd County Clerk

NOTICE TO BIDDERS

STATE OF TEXAS COUNTY OF FLOYD

Notice is hereby given that the Commissioners of Floyd County, Texas will receive bids for the following described equipment until 10:00 a.m. February 9, 1981, being the regular February Court; at which time all bids will be opened and read aloud; said bids for purchase of the equipment:

New 1981 truck - Chevrolet, Ford, or GMC with the following equipment: Advance price sheet, fletside bed pickup, Rear axle 2.73 ratio, Heavy springs, Vacuum power brakes, 4.1 liter (250 CC) Engine, 4-Speed manual transmission, Standard system, Power Steering, Cigarette lighter, AM/FM radio, P225/75R15 TBLS HWY S/B RAD, Voltmeter, Oil, and Temp. Rear bumper Heater.

Payment will be made in cash upon approval of bids.

All bids shall be sealed when presented and will be opened at the above time and date. The Court reserves the right to reject any and all bids and waive all formalities.

This the 5 day of January 1981.

Choise Smith, Floyd County Clerk

NOTICE TO BIDDERS

STATE OF TEXAS COUNTY OF FLOYD

Notice is hereby given that the Commissioners of Floyd County, Texas will receive sealed bids for the following described equipment until 10:00 a.m. Monday, February 9, 1981, being the regular February Court; at which time all bids will be opened and read aloud; said bids for purchase of the following:

(1) Diesel Four-Wheel drive articulated steering (production) not less than 95 H.P. net, electrically equipped with enclosed POPS cab, Heater, defroster and rear Windshield wipers, 2 cubic yd. capacity teeth. Breakout Force 16,000 lbs or more. Torque converter with 3 speed minimum power shift drive planetary gear type, front axle "no spin" locking brake. Brakes hydraulic wet disc or equivalent. Tires 17.5 x 25-12 Ply Loaders. Adjustable cushion seat, engine side shields, all gauges necessary for operator. Cold-weather Air Pre-cleaner, front and rear working lights. Turn signals. Manufacturer to provide one year Warranty.

The Commissioners Court offers as trade in one used gas loader, which can be seen at County Barn, Texas.

Payment will be made in cash upon approval of bids.

All bids shall be sealed when presented and will be opened at the above time and date. The Court reserves the right to reject any and all bids, and waive all formalities.

This the 22nd day of January, 1981.

Choise Smith, Floyd County Clerk

IF It's REAL

BEDROOM. 1 bath, single garage with opener. Central heat. W.N. Anderson. TFC

SALE: Three bedroom, living area. 983-3767. tfc

SALE: Several good two bedroom houses. Call Vernie Bond. 983-2151 or 983-573. tfc

Bedroom, brick home rental unit on large capped lot. Call The First National Bank of Floydada, 717. tfc

Store and 3 bedroom on 1/2 acre land for sale. Call Vernie Bond. 983-2151 or 983-573. tfc

DRROOM HOUSE. 104 Avenue. Call Vernie Bond. 983-3805 or 983-5312. tfc

room house. Central air heat. Good location. Elmer Swaffar. 983-2051. night. 983-2051. day. tfc

DRROOM. 2 bath home moved. 1900 square feet. Make an offer. (806) 2-12c

WARD OF HANKS

We cannot express the gratitude we wish to all our dear friends and assistance they have given us in our time of need. We are eternally grateful for the lovely flowers, food, cards and words of sympathy we are grateful for. Kindness and neighborly helpfulness can never be forgotten. The Leonard King Family 2-5c

We would like to express our appreciation to all you wonderful friends and neighbors who showed a kindness during the loss of our dear one, A.V. Womack. Thank you from the bottom of our hearts for the prayers, flowers, food, cards, calls, and the donations to the Heart and Jaws Association. Bill & Margie Tracy & Jay Joe & Juli Ricky & Lana and Jody 2-5p

BUSINESS OPPORTUNITIES

Own your own Jean Shop; go direct - no middle man, no salesman's fee. Offering all the nationally known brands such as Jordache, Vanderbilt, Calvin Klein, Sedgewick, Levi and over 70 other brands. \$15,500.00 includes spinning inventory, airfare to our national warehouse, training, fixtures and grand Opening Promotions. Call Mr. Loughlin at Madeleine Fashions 612-835-0304. The client has

Public Notices

January 22, 1981

NOTICE TO BIDDERS

**STATE OF TEXAS
COUNTY OF FLOYD**
Notice is hereby given that the Commissioners of Floyd County, Texas will receive sealed bids for the following described equipment until 10:00 A.M. Monday, February 9, 1981, being the regular February 1981, of said bids for the sale of the equipment as follows:
(1) 1961 Ford dump Truck motor No. F60CK1823 seen at County Barn, Floydada, Texas

(1) D-705 MM Wheatland (standard) Tractor 23900137. Can be seen at Commissioners house 6 miles west of Floydada, Texas.

Payment will be made in cash upon approval of truck.

All bids shall be sealed when presented and will be opened at the above time and date. The Court reserves the right to reject any and all bids, and waive all formalities.

This the 22nd day of January, 1981.
Choise Smith, Floyd County Clerk

NOTICE TO ANY BANKING CORPORATION, ASSOCIATION, OR INDIVIDUAL BANKER, FLOYD COUNTY, TEXAS:

NOTICE is hereby given that the Commissioners of Floyd County, Texas will enter into a contract or depositing of public funds of Floyd County in a bank of Floyd County for the years 1981-82, in accordance with Articles 2544 to 2550, Vernon's Civil Statutes of Texas, as revised.

ANY Banking Corporation, Association, or Banker in Floyd County desiring to be designated as Depository shall make and deliver to the County Auditor the amount of paid up capital stock and surplus of said bank and shall show the financial statement of said bank at the date of said application which shall be delivered to the County Judge on or before February 10, 1981 at 10:00 o'clock a.m. Said application shall be accompanied by a certified check for not less than one per cent of the County's revenue of the preceding year, the amount of which may be obtained from the County Auditor prior to the date designated for applications.

DATED this 15 day of January, A.D. 1981.

Choise Smith, County Clerk

NOTICE TO BIDDERS

**STATE OF TEXAS
COUNTY OF FLOYD**
Notice is hereby given that the Commissioners of Floyd County, Texas will receive bids for the purchase of the following described equipment until 10:00 A.M. Monday, February 9, 1981, being the regular February Term said Court; at which time all bids will be opened and said bids for purchase of the equipment as follows:

New 1981 truck - Chevrolet, Ford, or GMC equipped with the following equipment: Advance price sheet, fenderside bed pickup, Rear axle 2.73 ratio, Heavy duty springs, Vacuum power brakes, 4.1 liter (250 CID) Diesel Engine, 4-Speed manual transmission, Standard power steering, Cigarette lighter, AM radio, dual radiator, P225/75R15 TBL5 HWY S/B RAD B-10, Voltmeter, Oil, and Temp. Rear bumper Heavy Duty.

Payment will be made in cash upon approval of truck.

All bids shall be sealed when presented and will be opened at the above time and date. The Court reserves the right to reject any and all bids and waive all formalities.

This the 5 day of January 1981.

Floyd County Clerk

NOTICE TO BIDDERS

**STATE OF TEXAS
COUNTY OF FLOYD**
Notice is hereby given that the Commissioners of Floyd County, Texas will receive sealed bids for the purchase of the following described equipment until 10:00 A.M. Monday, February 9, 1981, being the regular February Term said Court; at which time all bids will be opened and said bids for purchase of the equipment as follows:

(1) Diesel Four-Wheel drive articulated steering production) not less than 95 H.P. net, electric equipped with enclosed POPS cab, Heater, defroster and rear windshield wipers, 2 cubic yd. capacity bucket, Breakout Force 16,000 lbs or more. Torque converter with 3 speed minimum power shift drive planetary gear type, front axle "no spin" or equivalent. Power steering. Brakes hydraulic wet disc or equivalent. Tires 17.5 x 25-12 Ply Loader Tire. Adjustable cushion seat, engine side shields, front and rear gauges necessary for operator. Cold-weather Air Pre-cleaner, front and rear working lights. Flasher Turn signals. Manufacturer to provide one-year Warranty.

The Commissioners Court offers as trade in one Ford gas loader, which can be seen at County Barn, Floydada, Texas.

Payment will be made in cash upon approval of vehicle.

All bids shall be sealed when presented and will be opened at the above time and date. The Court reserves the right to reject any and all bids, and waive all formalities.

This the 22nd day of January, 1981.

Choise Smith, Floyd County Clerk

IF It's Results You Want-It's CLASSIFIED ADS You Need

REAL ESTATE

Farms & Acre
IRRIGATED FARM. 10 miles west Floydada. Call Doris McLain after 4:00 P.M. or weekends. 983-3994. TFC

LE: Three bedroom, ing area. 983-3767. tfc

LE: Several good two bedroom houses, legal Estate. Contact Bond. 983-2151 or tfc

LE: bedroom, brick home, mental unit on large ped lot. Call The First Bank of Floydada. tfc

LE: Store and 3 bedroom 1/2 acre land for sale for house in town. TFC

ROOM HOUSE. 104 venue. Call Vernie 983-3805 or 983-5312 tfc

LE: home. Central air eat. Good location. Elmer Swaffar. 983-2151. tfc

ROOM. 2 bath home moved. 1900 square eds repair. near Floydake an offer. (806) 2-12c

LE: are eternally grateful lovely flowers, food, als, love and prayers. yer is that God may ach of you.

LE: The families of C.W. Jones

LE: wish to express our thanks for the many kindness shown us at ssing of our loved one. floral offerings, food, cards and words of thy we are grateful. indness and neighbor-htfulness can never gotten.

LE: Leonard King Family 2-5c

LE: Caprock Hospital Aux- would like to thank ne for the supporting ons for the Gala Olio Saturday night.

LE: thanks to the people ade donations and did tend.

LE: The Women's Auxiliary of Caprock Hospital 2-5c

LE: would like to express appreciation to all you erful friends and neigh- who showed a kind-ness during the loss of our r. A.V. Womack.

LE: Thank you from the bottom of hearts for the prayers, rs, food, cards, calls, and the donations to heart and Jaws Associa- 2-5p

LE: Bill & Margie Tracy & Jay Joe & Juli Riky & Lana and Jody 2-5p

LE: your own Jean Shop; go et - no middle man, no man's fee. Offering all nationally known brands as Jordache, Vander- Calvin Klein, Sedge- Levi and over 70 other ds. \$15,500.00 includes nning inventory. airfare 1 to our national ware- se, training, fixtures and Opening Promotions. Mr. Loughlin at Made- selle Fashions 612-835- 2-5p

BUSINESS SERVICES

Adams Well Service Com- plete Irrigation Service. All sizes submergible pumps in stock. One day service. 983-5003. tfc

INTERIOR PAINTING WALL PAPERING Call Rena Turner or Nancy Mayo, 983-5130 or 983-2667. tfc

JACKSON ELECTRIC Residential & Commercial Serving Rural Communities At 652-2737 tfc

"Carpet Need Cleaning?" Let me do the work for you. Dry foam, 10 cents sq. foot. Also home and auto upholstery. Call Jack Moore 983-3033, after 5 p.m. tfc

POOLE WELL SERVICE AND RADIATOR SHOP Irrigation, domestic, and windmill service. 407 E. Houston, 983-5610 or 983-2285. tfc

Income Tax Service Mitchell Tax Service 983-3692 tfc

FARM SERVICES Land Leveling, terraces, bench leveling, and pump pits, all types of dirt work for soil and water conservation. Dewie Parson 983-2646. Fred Parson 983-2074. tfc

CUSTOM Application of Herbicides. Bill Wisdom 652-3541. John Wisdom 652-3544. tfc

Portable disc rolling Lawson Farm Supply and Equipment Floydada, 983-3940 tfc

Carthel and Dudley Custom plowing and herbicide application A.C. Carthel 983-3200 Darrell Dudley 983-5320 2-19p

Check with us for LIQUID FERTILIZER ANHYDROUS HERBICIDES Rigs available for application LONE STAR CHEMICAL INC. Office: 652-2761 Deanie Henderson: 652-4334 tfc

Custom Herbicide Application Johnny Dunlap 983-3561 2-5p

FOR RENT: Apartment. Call 983-3437 after hours. Satur- day after 12. tfc

FOR RENT: 60'x24' building. Partial partition and counter optional. Next door to Hesperian. Call 983-3737. tfc

FOR RENT: One bedroom apartment. 108 N. Main, call 652-3813. tfc

Grains of gold, platinum and gem stones are often mixed with certain shore and river sands.

REAL ESTATE FOR SALE

GATHER 'ROUND THE FIRE for popping corn and watching T.V. Extra nice, 3 bedroom, 2 bath, beautiful yard. CONVENIENT LOCATION TO DOWNTOWN...Small 2 bedroom. tfc

PRESTIGIOUS OLDER HOME...3 bedroom, 2 bath, guest house or rental property in back will help make payments. GOOD STARTER HOME...2 bedroom, good location. tfc

WANT TO GET AWAY FROM THE HUSTLE & BUSTLE OF CITY LIVING? Let me show you how much home you money can buy just a hop and skip outside the city limits. 3 bedroom, 2 bath. INVESTMENT PROPERTY...7 apartments plus house for manager. Good monthly income. Call Sam Hale at 983-3261 Hale Insurance & Real Estate, Floydada tfc

Diamond Industrial Supply Co., Inc. Phone Days 296-7418 Nights 296-1200 or 296-7828 1014 Broadway Plainview, Texas U joints Oil Seals O rings Wisconsin SKF BCA Timken Bower Cotton Stripper Brushes & Bats "We Appreciate Your Business More"

Hollis R. Bond Real Estate PHONE 983-2151 107 S. 5th FLOYDADA

Look These 1980 Cars Less Than Dealer Cost Would You Like To Have A New Car Priced Not Much More Than Used Cars?

New - Pinto 3 dr. Hatchback. Automatic Transmission. Power Steering and Brakes. Air Conditioner. Exterior Decor Group. Radio. Your Cost Only..... \$4971⁰⁰

New - Mustang 3 dr. Hatchback. Automatic Transmission. Power Brakes, Air Conditioner. Interior Accent Group, and More Your Cost Only..... \$5999⁰⁰

New - Granada 4 dr. Sedan. Power, Air and much much more. This Beautiful Car At Only... \$6672⁰⁰

New - Fiesta 3 dr. Hatchback, Air Conditioner, and more. This Front Wheel Drive has an EPA Rating of 44 MPG Your Cost Only..... \$5360⁰⁰

New - Mercury Zephyr 2 dr. 6 cyl. Power, Air and many other extras Your Cost Only..... \$5772⁰⁰

New - Thunderbird It Has Everything. Your Cost Only..... \$7900⁰⁰ 13.69% Financing We Need Your Clean Trade In. Reed Ford - Mercury 983-3761 Ralls Highway Floydada

TURNER REAL ESTATE 983-2635 Farms - Ranches Floydada, Texas

STOP PAINTING Cover all outside walls and overhang with U.S. Steel Products FREE ESTIMATES Stan-By-Steel Siding 200 S. Broadway Plainview, Texas Phone: 293-9330 tfc

Can You Use Some Extra Money Let Us Help!!!! WE BUY SCRAP IRON OLD JUNKERS, AND FREE PICKUP Call 983-5277 tfc

Starting at around 30 years old, most people begin to lose their ability to hear high pitched sounds.

For Sale

22 ft. Coachman travel trailer for sale. 1979, like new. Call 983-2285, after 6 call 983-5610. tfc

"WE SELL SLEEP" Direct Mattress Co. New or renovated, for appointment call City Trim Shop, 983-2332, Floydada. tfc

HAVE IN STOCK: 18 oz. Window Cleaner, 12 oz. Buff up, 16 oz. Drain Mate, 32 fl. oz. Mop Mate, 4.5 oz. Never Stick, 32 oz. L.O.C., 18 oz. Silicane Glaze, 48 oz. Bleach, 18 oz. Oven Cleaner, 6 lb. Laundry Compound. Call Melissa Gleason at 983-5750 after 5 p.m. tfp

USED electric cookstove. After 5:00 p.m. 117 Mae Ave. tfc

23 channel Sharp C.B., underdash mounting bracket and antenna. \$50.00. 983-5348. 2-5c

AUTOMATIC GARAGE door opener for single or double doors with mounting hardware and 3 operators \$100. Call Ray Reed, Res. 983-3998, office 983-3761. 2-5c

24 FT. CAMPER trailer, self contained. Excellent condition. Jim's Trailer Park, Floydada, 983-3848. 2-5c

1 USED PORTABLE washer, dryer. Excellent condition. Collins Appliance, 111 W. California. 2-5c

Oak \$120 Mesquite \$75 Call 652-3810 Don McCready L2-12p

Rince-N-Vac Steam Carpet Cleaners For Rent \$12.00 - \$15.00 per day 3 available Davis Lumber Co. 102 E. College Lockney 652-3385

Barker's Jewel Box now renting MINI-WAREHOUSE STORAGE Your Lock-Your Key 652-2642 Lockney. tfc

LOST & FOUND A red w/f full calf. 550 lbs. Last seen at Mrs. Guy Sams place. 652-3732. L2-5c

LOST: White male poodle with red collar on. Answers to the name of Shea. He belongs to children and they miss him very much. Please phone 983-3312. 2-5p

CLASSIFIED ADVERTISING RATES: 20 CENTS PER WORD FIRST INSERTION: 15 CENTS PER WORD EACH SUBSEQUENT INSERTION. MINIMUM CHARGE \$2.50 FIRST INSERTION. MINIMUM CHARGE \$1.50 SECOND INSERTION. CLASSIFIED DISPLAY RATE: \$1.68 PER COLUMN INCH. CARD OF THANKS: \$3.00.

WEST TEXAS MINI STORAGE 983-1573 OR 983-2151

REAL ESTATE AUCTION Mike Smith, Owner Saturday, February 21, 1981 Sale Time: 2:30 p.m. 507 East Missouri Floydada, Texas

LEGAL DESCRIPTION: Lots 5-6-12-13-14 in Block 76 of the Original Town of Floydada, in Floyd County, Texas.

PARCEL NO. 1: Large All Metal Shop Building-74 ft.x80 ft. (app. 5920 sq. ft.) with Inside 23x25 (App. 575 sq. ft.) paneled office and parts area. Restroom and coffee bar. Several feet of I-beam trackage on both sides for hoists. One air over hydraulic two piston floor lift. Six large fluorescent lights over work area. Wired for 110 or 220 in conduit. Water lines, elec. lines - app. two years old (overhead). Two 12 ft.x12 ft. over head doors. All of the above on Lots 5-6.

PARCEL NO. 2: Large Sheet Iron and 2x6 Construction Barn - 40 ft.x60 ft. (App. 2400 sq. ft.) with sliding door - needs some repair on Lots 12-13-14.

TERMS OF SALE: 10% Escrow on Sale Day, Balance 60 Days or Sooner on Closing. Owner has right to accept or reject any or all bids. All Announcements Made Sale Day Take Precedence Over All Advertising Material. Please Make Your Own Inspections. MERVIN EVANS, Auctioneer & Realtor/TXE 111-0678-279634 Keith Billington, Broker/Lic. 209609/Billing Real Estate/Plainview, Texas/(806) 293-8195 Note: Real Estate will sell at approximately 2:30 p.m. 2-19

AUTOMOTIVE

1966-Delta 88, 4 door, good tires, electric seat, clean. 1970-Olds 98, 4 door, cruise, all electric, air, excellent condition. 520 W. Missouri, 983-3430. 2-12p

2-1977 Chevrolet pickups; 1976 Chevrolet pickup; 1974 Malibu, 2-door; 1974 Oldsmobile, 2-door. Priced to sell. Steve's Used Cars and Pickups 414 E. Houston Floydada, Texas 983-8127 2-5p

ONE AND TWO bedroom used mobile homes for sale. Lockney Motel. Call (806) 652-3341. L2-12c

14'x80' Graham Mobile Home. 3 bedroom, 2 bath. Central heating and cooling with refrigerated air. New refrigerator. 983-5300. tfc

4 shocks for the price of 3. Free installation. 123 W. California. tfc

DAN'S AUTO SERVICE DAN TELTON, Owner Specializing in Automatic Transmission, Motor Tune-Ups, Auto Air Conditioning, General Repair We Have A BRAKE LATHE to handle all passenger car brake drums. See us for complete brake service. Phone 652-2462

CUSTOM EXHAUST WORK Bruce Williams Specializing in Glass Packs And Turbo Mufflers At DAN'S AUTO SERVICE Lockney 652-7457

LET FX BACTERIA help clean your Septic Tank the Easy Way -\$6.98. Tree Roots Removed from Sewer Lines. Sinks opened. Kirk & Sons Hardware 119 W. Missouri Floydada, Texas

AIRELOOM Ceiling fans. 3 speed 5 yr. warranty. 10 to 15% discount. Grady Dunavan 983-3609

PETS FREE: Half black labrador puppies. Will deliver. 652-3580 after 3:00. L2-12c

Auto Accidents DO Happen... If one happens to you, be protected. Our car insurance offers coverage to meet your special needs - repairs to personal liability. BAKER Insurance Agency /W. Calif Ph. 983-3270

STORAGE SPACE BOATS, FURNITURE, ANYTHING, ETC. BY THE MONTH OR SIX MONTH 10% DISCOUNT. WEST TEXAS MINI STORAGE 983-1573 OR 983-2151

Lockney Library features new juvenile books

BY GAYLE JACKSON
A shipment of books to the Lockney Branch Library includes mostly non-fiction titles and a good group of titles for juvenile readers.

The Burning Bed by Faith McNulty is the true story of Francine Hughes, a beaten wife who rebelled.

The Terrors of Justice by Maurice H. Stans, a former Cabinet officer who shared a guilt by association with those involved in the Watergate scandal.

The Search For Amelia Earhart by Fred Goerner is the story of a struggle begun in 1960 to unlock the secrets of a fantastic 30-year-old mystery.

The Health Robbers or How to protect your money and your life from medical quackery; edited by Stephen Barrett, M.D.

Aspects of the Present by Margaret Mead and Rhoda Metraux brings together the outstanding essays of the past 10 years from Dr. Mead's Redbook columns.

The Joy of Photography, a guide to the tools and techniques of better photography, by the editors of Eastman Kodak Company.

The 100, a ranking of the most influential persons in history by Michael H. Hart, is thought-provoking but not everyone will agree with his choices.

Lyndon, an oral biography by Merle Miller is told in

large by the people who knew him and shows the former president, "warts and all."

Helen And Teacher, the story of Helen Keller and Anne Sullivan Macy, is written by Joseph P. Lash, author of **Eleanor and Franklin**.

The Court Years, 1939-1975, the autobiography of Justice William O. Douglas, is the second volume of his memoirs. Justice Douglas died in 1980.

Free To Be Herself is written by psychologist Eugene Kennedy and is said to explore inner barricades which we all erect.

Being Here, poetry 1977-1980, by Robert Penn Warren follows by two years the volume for which Warren was awarded the Pulitzer Prize for Poetry.

Signs of Spring by Laurel Lee is the author's account of what has happened to her in the two years since she passed through the critical stages of her illness described in **Walking Through The Fire**. She tells of her life as a divorced, single parent.

Arnold's Bodyshaping For Women, a complete program for a lifetime of fitness and beauty by Arnold Schwarzenegger with Douglas Kent Hall (illustrated).

Rites Of Passage, a novel by William Golding, is set on a ship in the Napoleonic era that is making its way from England to the Antipodes, carrying seamen, soldiers, immigrants, cargo, and a few ladies and gentlemen.

Answer As A Man by Taylor Caldwell is said to be the crowning achievement of America's most beloved storyteller as she relates the odyssey of a man of passionate principles in a decadent age.

Open Family Books for parents and children together are written by Sara Bonnett Stein. The three just received are **The Adopted One, Making Babies and On Divorce**.

And other juvenile books are **Gandhi** by Olivia Coolidge; **Frontiers of Dance**, the Life of Martha Graham by Walter Terry; **Frank Lloyd Wright** by Charlotte Willard; **Escape King**, the story of Harry Houdini by John Ernst; **Deborah Sampson**,

Arizona, The Battle For Two Jims, and **The Story of D-Day**, all written by R. Conrad Stein. Another series is on pet care and includes **How To Raise Mice, Rats, Hamsters and Gerbils**, also **Goldfish and Guppies**, and **A Puppy**.

Several other titles new to the library are **Preparation For Childbirth**, a Lamaze Guide by Donna and Rodger Ewy; **Growing Up With Sex**, a guide for the early teens by Richard Hettlinger; **Civil Service Handbook and Children's Repair & Tune-up Guide For Small Engines**.

A Way Side Tavern by Norah Lofts is a historical novel by a well-known writer.

Charlie Brown fans will want to read **Charlie Brown's Super Book of Questions And Answers**. The library also has the second, third and fourth books of questions and answers.

Open Family Books for parents and children together are written by Sara Bonnett Stein. The three just received are **The Adopted One, Making Babies and On Divorce**.

And other juvenile books are **Gandhi** by Olivia Coolidge; **Frontiers of Dance**, the Life of Martha Graham by Walter Terry; **Frank Lloyd Wright** by Charlotte Willard; **Escape King**, the story of Harry Houdini by John Ernst; **Deborah Sampson**,

JUVENILE
A series of books for juveniles includes **The Story of Arlington National Cemetery**, **The Battle of the Bulge**, **The Story of the U.S.S.**

REFERENCE
New reference books which have been received

soldier of the Revolution by Harold W. Felton; **Susanna Dickinson**, Messenger of the Alamo by C. Richard King; **Woman Against Slavery** (Harriet Beecher Stowe) by John Anthony Scott; **She Never Looked Back** (Margaret Mead in Samoa) by Sam and Beryl Epstein, and **The Jimmy Carter Story** by Margaret Poynter.

Floydada JHS Honor Roll
SECOND NINE WEEKS
7A
Teresa Gentry
7B
Sandy Carr and Jana Larson
7C
Althea Campbell, Jeff Matsler, Lynn Mulder, Pam Richardson
7D
*Jamie Thayer
8A
Scott Smith
8C
Misti Orman
8D
Anna Leta Bradshaw,
Greg Thompson
* 4.0 Grade Point

TEXAS FARM BUREAU
OFFICIAL MEMBERSHIP CARD

THIS CERTIFIES THAT

John O. Farmer
Route 1
Farmville, Texas 76703
IS A MEMBER OF
Your
County Farm Bureau

MO DAY YR TO MO DAY YR

OFFICIAL MEMBERSHIP CARD

THIS CARD

ENTITLES YOU TO PURCHASE
SAFEMARK
tires and batteries.

Another service-to-member program offering a quality product at low cost.

FOR ADDITIONAL INFORMATION CONTACT:

Floyd County Farm Bureau
101 South Wall St Floydada TX
983-3777 Floydada 652-2338 Lockney

(BE SURE TO HAVE YOUR MEMBERSHIP CARD WITH YOU)



MEMBERS in the tacky dress category. Valva Pricer at the Floydada JHS.

Younger nominator Force Academy

Congressman Charles W. Younger, 827 W. ... Floydada, has been ... to the United States Air Academy in Colorado Springs, Colorado.

Barthel on WT ... can's Honor

more than 700 students at Texas State University ... on the honor roll ... 1980 fall semester. ... List names 651 ... To be eligible for ... List, a student ... been enrolled in at ... semester credit ... ended the semester ... grade point average ... 3.25 and higher on a

Wayland name ... Honor Roll

1980 Dean's Honor Roll ... at Wayland Baptist ... includes three students from the Floydada

named to the Honor Roll for the first full term of 1980-81 academic year. ... their averages, are ... Nanette Soto (4.00), a ... and June Ross Ware ... a senior. ... Hart resides at Col ... Hall #7, and is the ... of Mrs. Ted Bell ... Soto, the daughter of ... and Mrs. Newell Burk.

THOMASON

VENTURE GROCERY & MARKET

PHONE 652-3346 220 South Main Lockney

Specials Good 7 Days A Week - Monday thru Sunday

Open Monday - Saturday 8:00 a.m. - 8:00 p.m.
Sunday 8:00 a.m. - 5:00 p.m.
We Accept Food Stamps and WIC Cards

We Reserve The Right To Limit Quantity.
Double Stamps On Wed.

BLUE STAMP COUPON BOOK

WORTH 5000

EXTRA BLUE STAMPS

YOUR COUPON BOOK CONTAINS 64 COUPONS REDEEMABLE OVER A PERIOD OF 4 WEEKS - A DIFFERENT COLOR FOR EACH WEEK.

100 (\$10.00 WORTH) EXTRA BLUE STAMPS
This coupon good for 100 EXTRA BLUE STAMPS with purchase of \$10.00 worth of groceries. Valid thru 2/28/81. See Coupon Book for details.

TAKE ADVANTAGE OF ALL THE COUPONS AND RECEIVE 5000 EXTRA BLUE STAMPS

6 Pak 32 oz.

PEPSI OR DIET PEPSI

\$1.59

plus tax

Play Pepsi-Payoff win free prizes

Look For Prize Winner Inside Pepsi Caps

Super Select Lean Trim Fresh Pork Quarters Loins or Family Pak

PORK CHOPS

\$1.39

lb

Center Cut PORK CHOPS

\$1.59

lb

Wilson's BACON

\$1.39

lb

PRODUCE

Vine Ripened TOMATOES

59¢

lb

Red Delicious APPLES

98¢

3 lb bag

RADISHES

19¢

Cello Pkg

Example

100 (\$10.00 worth) Extra Blue Stamps with Purchase of 1 Box 24's

PAMPERS

Example

100 (\$10.00 worth) Extra Blue Stamps with Purchase of 5 8-oz cans

HUNTS TOMATO SAUCE

Example

50 (\$5.00 worth) Extra Blue Stamps with purchase of 1 46-oz can

Tessun Unsweetened GRAPEFRUIT JUICE

Example

100 (\$10.00 worth) Extra Blue Stamps with Purchase of 1 1lb can

FOLGERS COFFEE

Borden Old Fashion Rd Crtn

ICE MILK

\$1.59

Borden 1/2 gal

BUTTERMILK

\$1.19

Example

100 (\$10.00 worth) Extra Blue Stamps with Purchase of 1 10lb bag

POTATOES

Example

100 (\$10.00 worth) Extra Blue Stamps with Purchase of 1 Box 25's

ALKA SELTZER

HOW TO GET THE MOST FOR YOUR HOME HEATING DOLLAR

- Change or clean your furnace filters regularly
- Follow manufacturer's lubrication instructions
- Check fan belts periodically
- Have your furnace cleaned and the burners checked regularly
- Set your thermostat lower
- Close off and turn off heat in unused rooms
- Keep doors and windows closed
- Close fireplace damper when not in use
- Add attic insulation
- Weather strip or caulk around windows and doors
- Install storm doors and windows

And use a new natural gas heating system. In the long run ... initial cost, cost of operation, energy efficiency, maintenance, dependability and satisfaction ... no other heating system can even come close to the electric heat pump.

To get the most from your home heating system, make sure your home and heating equipment are in good shape ... To get the most for your home heating dollar ... turn to natural gas! For more information about new, energy efficient gas heating systems, call us, or your local heating contractor. You'll be glad you did.

PIONEER NATURAL GAS COMPANY

... to ... fr ... ef ... he ... us

File books

FARM BUREAU
MEMBERSHIP CARD

THIS CERTIFIES THAT

Farmer
Route 1
Texas 76703
MEMBER OF
Your
Farm Bureau

TO MO DAY TR WE
IAL MEMBERSHIP CA

CARD
TO PURCHASE
MARK

to-member program
product at low cost.

INFORMATION CONTACT:
County Farm Bureau
Wall St Floydada TX
da 652-2338 Lockney

TO HAVE YOUR MEMBERSHIP CARD WITH YOU



TO GET THE MOST FOR YOUR HEATING DOLLAR

- Change or clean your furnace filters regularly
- Follow manufacturer's lubrication instructions
- Check fan belts periodically
- Have your furnace cleaned and the burners checked regularly
- Set your thermostat lower
- Close off and turn off heat in unused rooms
- Keep doors and windows closed
- Close fireplace damper when not in use
- Add attic insulation
- Weather strip or caulk around windows and doors
- Install storm doors and windows

a new natural gas heating system. In overall cost, cost of operation, energy maintenance, dependability and satisfaction, a natural gas heating system can even come close to electric heat pump.

the most from your home heating system, your home and heating equipment are in good condition. To get the most for your home heating system, switch to natural gas. For more information on energy efficient gas heating systems, call your local heating contractor. You'll be glad you did.

PIONEER NATURAL GAS COMPANY



ES in the tacky dress category were Emmitt Lawrence and Val Pricer at the Floydada Rest Home party.

Tacky Party held at the Floydada Nursing Home

The big event at the home this week was a Tacky Party Wednesday. Best dressed lady resident was Velva Pricer, best dressed male resident was Emmitt Lawrence. Val Darden was best dressed visitor. We didn't select a best dressed employee. However everyone was dressed tacky.

We served cream pie, tea and coffee as refreshments. Ladies responsible for the pies were: Leona and Ona Ruth Neff, Val Darden, Billie Ruth Lackey, Evelyn Huggins, Lois Guffee, Ina Hammonds, Ruth McIntosh, Emma Lou Whitaker, Laurita Bertrand, Mable Redwine and Mary Adams.

Thirty-five residents attended the party. Everyone had a blast.

Mrs. Hazel Ginn passed away this past week in our home. Mrs. Ginn had been a resident since last September. She was a very dear sweet lady and we will all miss her alot. We extend our deepest sympathy to her family.

We want to thank our county library for their continued support in furnishing us in beautiful movies every Friday.



VAL DARDEN won the prize as the tackiest dressed visitor.

Pvt. Stone completes recruit training

Marine Pvt. James D. Stone, son of Rose L. Enslow of 514 W. Mississippi, Floydada, has completed recruit training at the Marine Corps Recruit Depot, Parris Island, South Carolina.

During the 11-week training cycle, he learned the basics of battlefield survival. He was introduced to the typical daily routine that he will experience during his enlistment and studied the personal and professional standards traditionally exhibited by Marines.

He participated in an active physical conditioning program and gained proficiency in a variety of military skills, including first aid, rifle marksmanship and close order drill. Teamwork and self-discipline were emphasized throughout the training cycle.

Pvt. Stone joined the Marine Corps in April 1979.

Floydada Nursing Home Happenings

We would like to thank the Sunshine S.S. Class of the First Baptist Church for the bananas and donuts.

Mrs. Artie Muncy and Merl Mayfield visited with several of the residents during our movie Friday.

Mr. Emmitt Lawrence, Iva Simpson, Velva Pricer, Juanita Bailey, Victoria Asher and Geneda Roberts enjoyed a short trip to Lockney and back through the country Wednesday afternoon.

Mr. W.C. Cates and Mr. A.G. Eubanks won two games each in bingo Thursday. Velva Pricer, Iva Simpson, Geneda Roberts, Clara McNeely won one game each. Mamie Gray tried one

game but had to quit because of bad eye sight.

Mr. and Mrs. E.H. Childs of Farwell, Texas visited this week with their mother, Mrs. Francis Childs.

Mr. Emmitt Lawrence and Mrs. Eithel New enjoyed a visit with their niece and nephew, Mr. and Mrs. Garry Calahan of Phoenix, Arizona and Mr. Clyde Lancaster of Hobbs, New Mexico this week.

Mrs. Orla Furrow died in our home this week after a lengthy illness.

We would not call her back for anything but her passing will surely leave an empty spot in our hearts and our home.

The residents enjoyed a visit with the homemaking children Wednesday afternoon.

We all appreciate our visitors and welcome everyone to come out and visit with our residents.

Visitors included: Murl Mayfield, Artie Muncy, Eula Bramlet, Hazel Baker, Joyce Foster, Mrs. J.D. Hart, Marie Baxter, Ethel Warren, Flo Ella Jarboe, Mary Wilson, T.S. Brown, Mr. and Mrs. T.L. Callaway, Corene and Murry Stewart, O.J. Lawrence, Elsa Garza, Mr. and Mrs. P.L. Hart, Mr. and Mrs. E.H. Childs, Goldie Cypert, T.S. Brown, Jose-

phine Bursiago, Vonceil Colston, Grady Freeman, 'Babe' Kimble, Cindy (Whizzie) Marble, Vicki Powell, Teresa Holbert, Lori Beckham, Mitzu Julian, Kamala Ford, DeLyn Ramsey, Clara McNeely.

Lois Jones, Leola Lemons, Otis, Dana, Kim and Jo Lee Ellis, Steve Jonson, Lois Guffee, Ina Hammonds, Maurice Ella Goodwin, Bernice Carey, Cora Hartline, Mr. and Mrs. L.D. Hill, Larry Furrow, R.T. and Sammie Furrow.

Sherry Colston and Zane, Joe E. Wilson, Elaine Wilson, Eunice Hardy, Lillie Kirby and Charley L. Berry.

Younger nominated to Force Academy

Representative Charles W. Younger, 827 W. Floydada, has been nominated to a slate of nominees for the United States Air Force Academy in Colorado, Colorado.

The Academy will now examine and appraise the nominees and select a Principal for admission, with Qualified Alternates. Alternates may be given further consideration, depending upon available vacancies.

Save The Children announces 1981 children's letters campaign

Children will explore the problems facing children and their families for Save the Children's fourth annual letter-writing campaign sponsored in honor of Save the Children Day.

Save the Children, the international child-assistance agency, is inviting children from across the country to voice their opinions in letters to the President of the United States. The letters will be presented, along with oral testimony from children, at a special hearing with government leaders in Washington, D.C., on Save the Children Day, May 1st.

Children participating in this national campaign are being asked to write on the theme: Dear President Reagan: "This is the biggest problem facing families today, and here's what should be done about it..." The letters are to be mailed to Save the Children Day '81, Westport, CT so that the leading concerns can be tallied and summarized into the 1981 Children's Agenda for Action.

This is the fourth consecutive year Save the Children has invited children to join a national letter-writing campaign as part of the Save the Children Day observance. Last year, more than 20,000 letters from children in almost every state were presented to the U.S. Senate Subcommittee on Child and Human Development during a special hearing for children.

Save the Children conducts programs assisting impoverished children in 25 countries around the world including the United States. It is anticipated that govern-

Carthel on WTSU

Dean's Honor Roll

More than 700 students at WTSU have been named to the Dean's Honor Roll for the 1980-81 academic year.

The President's List includes 140 students who have maintained grade point averages between 3.85 and a perfect 4.0 for 12 semester credit hours at WTSU.

Listed on the President's honor roll from Floydada is Darla Assiter Carthel.

WTSU's fall enrollment totaled 6,559 students.

Wayland names

Honor Roll students

Three students from the Wayland Baptist Church were named to the Dean's Honor Roll for the 1980-81 academic year.

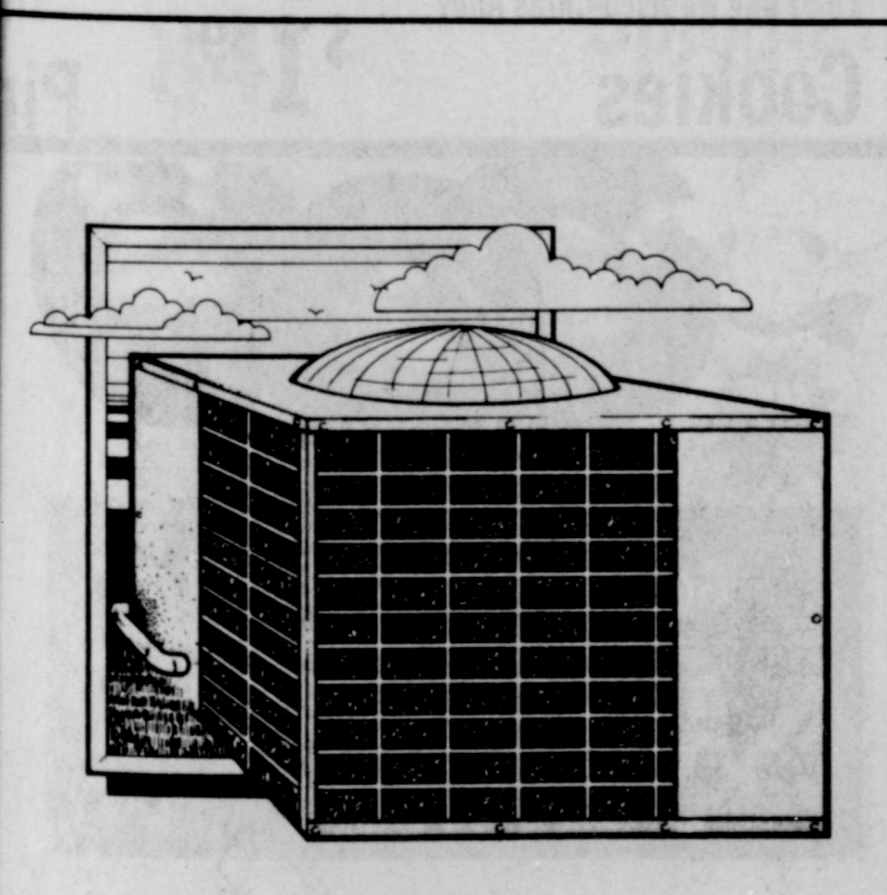
The Dean's Honor Roll is announced at the end of each semester by Dr. Dan McLallen, dean of the college, and lists the names of students who carried at least 12 semester hours during the term and whose grade point average was 3.50 or above on a 4.00 scale.

A total of 111 students from 17 states and one foreign country were named to the Honor Roll for the recently completed semester.

resides at Goodpasture Hall #8; and Mrs. Ware resides in Floydada.

The Dean's Honor Roll is announced at the end of each semester by Dr. Dan McLallen, dean of the college, and lists the names of students who carried at least 12 semester hours during the term and whose grade point average was 3.50 or above on a 4.00 scale.

A total of 111 students from 17 states and one foreign country were named to the Honor Roll for the recently completed semester.



ENERGY SQUEEZER

The Electric Heat Pump

The heat pump... all heating and cooling to keep you comfortable year 'round from one system. And, it's energy efficient. Because even on cold days, the heat pump delivers more heat than energy used to produce it.



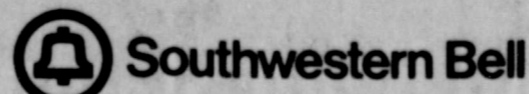
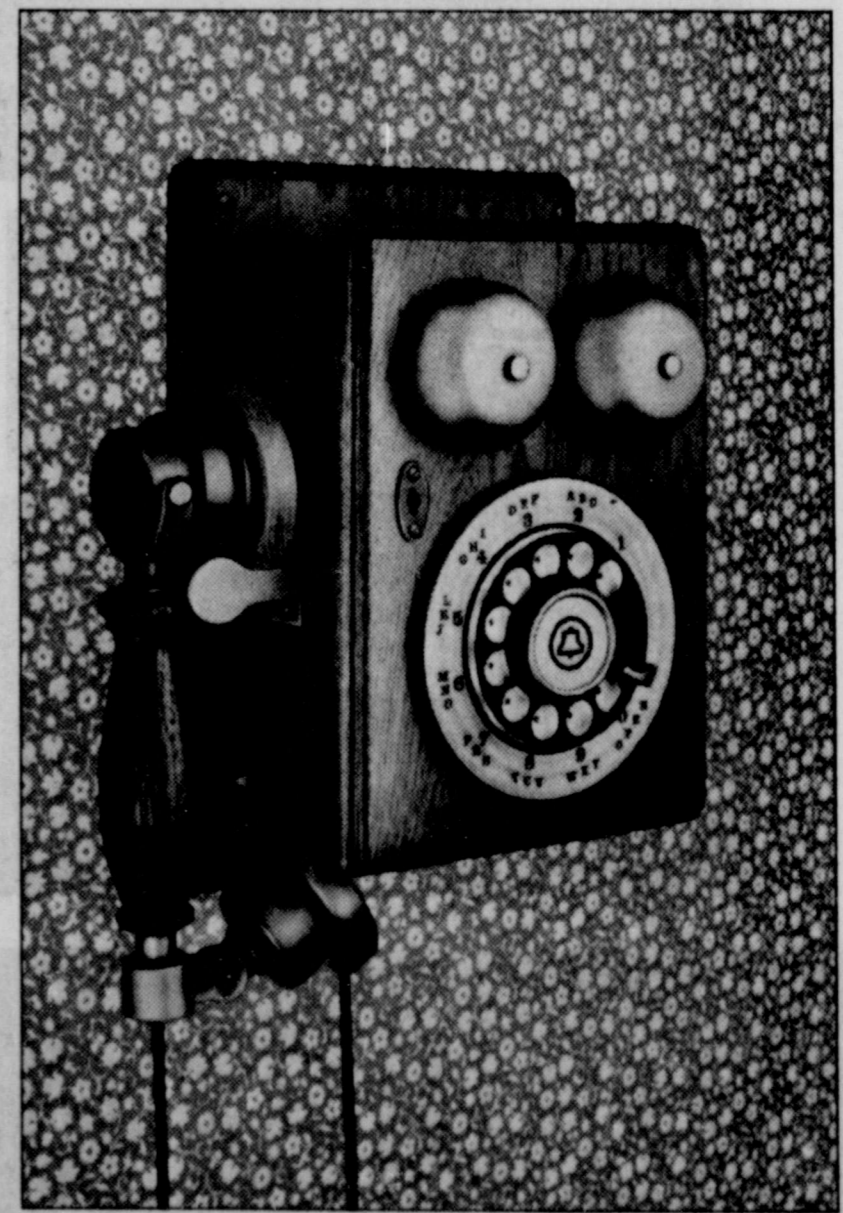
Woodrow Wilson. Ragtime. The Great Houdini. The year is 1913 and a new Bell telephone begins ringing throughout the land. Ah, those were the days...

Now you can relive those days with Southwestern Bell's new Country Junction* telephone — a happy blend of yesterday's spirit with today's technology.

Lovingly handcrafted in natural oak and antiqued nickel trim, the Country Junction phone is a classic that blends with period settings and makes an attractive statement with the crisp, cool lines of contemporary taste.

No matter where the telephone is placed — kitchen, den, family room, living area — this is a phone that will be seen and admired. Because it has modular components, installing it is as easy as hanging a picture.

In a busy, bustling world, the Country Junction telephone is a pleasant reminder of those times when all phone conversations began with the voice that smiled.



*Trademark of AT&T Co.

"Know How for the 80's" theme for FHA/HERO Week

"Know-How for the 80's" is the theme for National FHA/HERO Week, celebrated by Future Homemakers of America as part of National Vocational Education Week, February 8-14.

The purpose of the week is to show how vocational education and Future Homemakers of America, a part of home economics education,

prepare students for the future. Over 12,000 chapters and 400,000 members nationwide will focus on the leadership skills they have developed through projects focusing on concerns for family life, community living and personal growth.

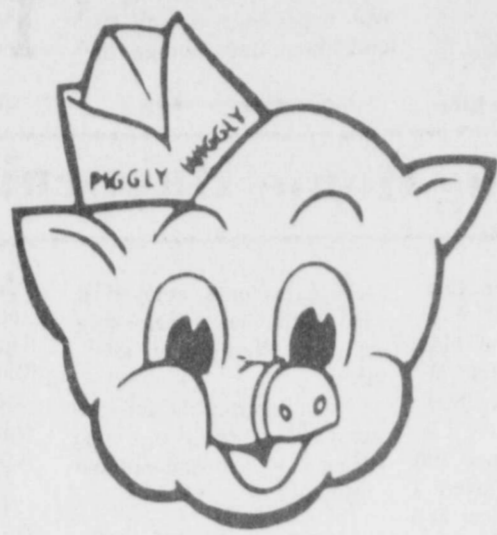
FHA/HERO members, who are junior and senior

high school students in home economics or home economics related classes, do not represent the outdated image of homemaking as cooking and sewing only. Members work on local and national projects related to child care services, clothing and textiles, foods and nutrition, family life education, home management, and career preparation.

One such project is Future Homemakers of America's "Healthy Babies: Chance or Choice" nationwide peer education project. In its fifth year, FHA/HERO members have reached over three million other teens with the important message of making responsible decision concerning teenage pregnancy.

Future Homemakers of America is a national vocational student organization with two kinds of chapters, FHA and HERO. FHA chapters emphasize consumer education, homemaking, and family life education combined with exploration of jobs and careers. HERO (Home Economics Related Occupations) chapters emphasize preparation for jobs and careers.

Celebrating its 35th anniversary during the school year, the organization has served 13 million students since it was founded in 1945. Young women between the ages of 13 and 18 help to run the national organization. This year, four nationally recognized school officers were elected.



Prices Good Thursday, Feb. 5
Thru Wednesday, Feb. 11

309 S. Wall

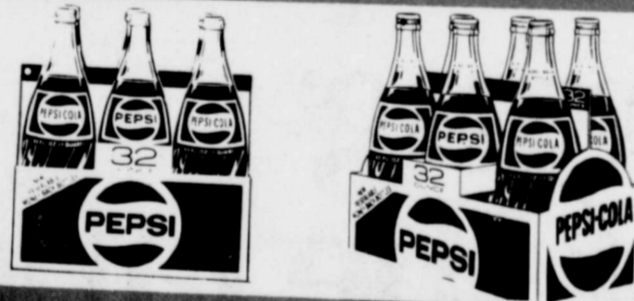
Open Daily 8 To 8 Sunday 9 To 7

Each of these advertised items is required to be readily available for sale at or below the advertised price in each store, except as specifically noted in this ad. We reserve the right to limit quantities. None sold to dealers.



32 oz Box Banquet

Fried Chicken
\$2³⁹



6-32 oz

Pepsi

\$1⁵⁹

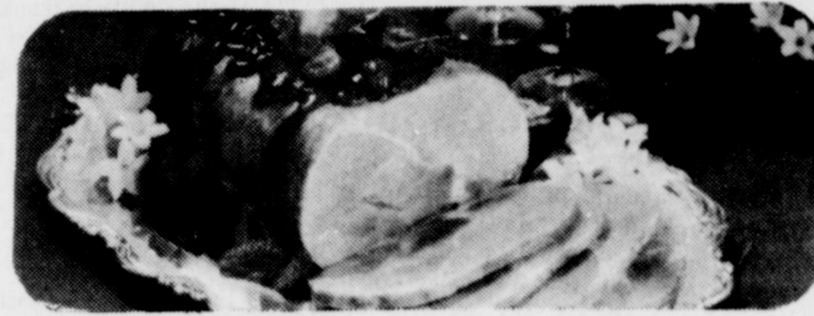
Plus Deposit



16 oz Can Del Monte Yellow Cling, Sliced Or Halves

Peaches
2/99¢

PIGGLY



Whole Or Shank Glovers

Smoked Ham

\$1⁰⁹



USDA Grade A Fryer

Legs Or Thigh

99¢

Fryer Breasts \$1⁰⁹

Beef Center Cut 7-Bone
Roast \$1⁴⁹

Glover's Fully Cooked, Butt Portion
Smoked Ham \$1¹⁹

Glover's Smoked
Ham Center Slices \$1⁶⁹

2 lb Owens Country
Sausage \$3⁵⁷

15 oz pkg Kellogg's
Fruit Loops \$1⁴⁹

12 oz pkg Nabisco
Nilla Wafers 88¢

11 oz pkg Kellogg's
Apple Jacks \$1²⁹

16 oz pkg Ritz
Crackers \$1⁰⁹

6 Roll Charmin
Bathroom Tissue \$1⁶⁹

19 oz pkg Nabisco Chips Ahoy
Cookies \$1⁵⁹

5 oz. Can La Choy Chow Mein
Noodles 59¢

10 oz. btl. LaChoy Soy
Sauce 69¢

11 oz. Can LaChoy Fried
Rice 69¢

4 1/2 oz. Jar Green Giant Whole Or Sliced
Mushrooms \$1⁰⁹

32 oz. pkg. Log Cabin, Complete
Pancake Mix \$1¹⁹

30 ct. pkg. Panty Shield, Regular Or
Deodorant Carefree \$2⁰⁹

30 ct. pkg. Sure & Natural
Maxishield \$3²⁹

10 ct. pkg. Glad
Trash Bags \$1³⁹

14 oz. Jar Swift Derby
Tamales 79¢



Golden Delicious Fancy
Apples 29¢

Yellow
Onions 3/87¢

Jalapeno
Peppers 88¢

DOUBLE

Gold Bond Stamps

WEDNESDAY

ood stamp
ecipients
earch for

Beef Chuck

R

\$

\$1⁷⁹

\$1⁶⁹

Mac
C-Dee

69¢

84¢

Radishes

Redeem

Food stamps recipients must search for jobs

Able-bodied food stamp recipients must actively search for jobs or be dropped from the program under new rules announced recently by the U.S. Departments of Agriculture and Labor.

"Under the new regulations, people who fail to look for a job on their own or who don't report for the interviews at their state employment office will find their

households dropped from the food stamp program for two months," said Assistant Secretary of Agriculture Carol Tucker Foreman.

Those who are exempt from the work registration requirement are primarily the elderly and disabled, those already working, those responsible for the care of dependents or those already subject to work requirements

under the unemployment insurance or work incentive programs.

The rules also require recipients who register for work to be called in to their state employment service—now identified as the job search in many states—for an interview and job classification.

State job service agencies will continue to refer regist-

rants to potential employers, but now food stamp job seekers will also have to supplement this service with their own eight-week job search.

The new rules will establish as a standard that work registrants contact up to 24 potential employers within the eight week period, and also report back twice to their employment counselors on

progress made. Foreman said. Requirements for each person's job search will depend on their individual circumstances and the availability of jobs in the community, as assessed by the job service counselor.

The state job service will report to state welfare agencies the names of food stamp job seekers who refuse to comply with the interviews or

job search requirements, as well as those who find jobs.

The regulations will be published in the January 16 Federal Register and become effective June 1.

PIGGLY

WIGGLY



USDA Grade A Fryer
Legs Or Thighs
99¢ Fryer Breasts \$1.09



Beef Chuck Blade Cut
Roast
\$1.39



Pork Chop End Cuts
Center Rib Or Loin Pork Chops \$1.89

Fully Cooked, Butt Portion
Smoked Ham \$1.19

Dowens Country
Sausage \$3.57

\$1.79 Eckrich All Meat Or Beef
Bologna \$1.69

\$1.69 10 oz pkg Mrs. Paul's Butter
Fish Fillets \$1.85

10 oz pkg Kraft Longhorn
Half Moon Cheddar Or Colby
Cheese \$1.99

Wafers 88¢
\$1.09
\$1.59

Dee 66¢
69¢
84¢

Shrimp, Pepper Oriented, Chicken & Pork
Lachoy Chow Mein \$1.99

8 oz btl Wishbone, Deluxe French Or Thousand Island
Salad Dressing 69¢

15 1/2 oz Jar Ragu Plain, W/Meat, W/Mushrooms
Spaghetti Sauce 79¢

24 oz Bell
Cottage Cheese \$1.49

Crisp & Crunchy Carrots
27¢

16 oz. Tub Chiffon Whipped Margarine 89¢
16 oz. pkg. Chiffon Soft Stick Margarine 66¢
46 oz. Can Libby's Tomato Juice 89¢
3 oz. Jar Lipton Instant Tea \$2.69
10 oz. Jar Hills Bros. Instant Coffee \$3.99
4 oz. Can Green Del Monte, Whole Or Diced Chilies 2/83¢
10 1/2 oz. Can Enchilada Del Monte, Hot Or Mild Sauce 39¢
14 1/2 oz. Can Showboat Pork & Beans 3/99¢

Jalapeno Peppers 88¢

For Fresh Coconut Cream Pie
Coconuts 69¢

A Chance To Win \$1,000!

Win \$1,000, \$100, \$10, \$5, \$2, \$1 or \$25 in Groceries!

PRIZE VALUE	NUMBER OF PRIZES	ODDS FOR ONE GAME TICKET	ODDS FOR 7 GAME TICKETS	ODDS FOR 14 GAME TICKETS
\$1,000	1	1 in 597665	1 in 85318	1 in 42690
\$100	57	1 in 10485	1 in 1498	1 in 749
\$25	151	1 in 3958	1 in 565	1 in 283
Groceries	270	1 in 2214	1 in 316	1 in 158
\$10	575	1 in 1073	1 in 153	1 in 77
\$5	1793	1 in 333	1 in 48	1 in 24
\$2	10664	1 in 56	1 in 8	1 in 4
\$1	13493	1 in 44	1 in 6.3	1 in 3.1
TOTAL NO. PRIZES				

ODDS TO WIN

Odds vary depending on the number of Game Tickets you obtain. The more tickets you collect the better your chances of winning.

WINNING DEAL Series #WD15 is being played in 5 participating Shop Rite Food Stores located in Baton Rouge, Louisiana; Dallas, Texas; Houston, Texas; and in Piggly Wiggly Stores located in Alamo, Texas; El Paso, Texas; Fort Worth, Texas; Houston, Texas; Mexico and Florida; and Seminole, Texas.

Scheduled termination date of this promotion is February 18, 1981, however WINNING DEAL officially ends when all Game Tickets are distributed.

Copyright 1980 Wallace Games, Inc.

Game program may be repeated by popular demand. The total number and worth of prizes to be awarded will depend upon the number of winning tickets actually redeemed.



5 lb Bag Gold Medal Enriched
Flour
99¢



6 1/2 oz Can Chicken Of The Sea Chuck Lite In Water
Tuna
89¢



12 oz Can Green Giant Niblet
Corn
2/77¢

ESDAY

Redeem Filled Bonus Booklets For **50¢ OFF** Any Grocery Items

Cedar Hill News

BY GRACE LEMONS

Mary Coats of Nacogdoches was a visitor at the Assembly of God Church Sunday. She will stay another week with her sister Martha and Jr. Taylor before returning home.

Rev. and Mrs. Vance Mitchell returned home from Eakly, Oklahoma Sunday where they had been for the funeral of her mother, Mrs. H.E. Barnard. Sandra and Virginia Mitchell spent most of the week in Floydada with Mr. and Mrs. John D. VanHoose so they could attend school.

Edna Gilly attended the Gala Olio Saturday at the High School auditorium. The benefits of the program were for Jaws of Life.

Mrs. Ruthie Clark of Plainview visited Edna Gilly Saturday evening. Janette Lackey visited her Sunday.

Janette Lackey entered the Methodist Hospital Wednesday to have some tests made. We trust that her condition is not serious. Janette has been ill for some time.

Clara Mize underwent eye surgery in St. Mary's Hospital last Thursday morning. She is improving satisfactorily and returned for a check up Monday.

Bruce and Melessa Conner returned from their honeymoon Sunday afternoon. Let us give them a warm welcome in their new life together.

Drawing Nitely
Wednesday-Saturday
Free Carnival Admission
at the 1981 Floyd County Fair
PRIDE OF TEXAS CARNIVAL

Bruce and Melessa Conner visited Norma Welch Sunday afternoon. Mrs. Peat Kelley and Grace Lemons were also present.

Funeral services for Clarence Jones, 65, were held Monday at the First United Methodist Church in Floydada. Burial was in the Floydada Cemetery under the direction of Moore-Rose. He died suddenly in his home. He is survived by three daughters, Doris Hinkle and Janice Potet of Ruidoso, one son, Randall of Connecticut, three sisters, Georgia Finley, Billy Long of Floydada and Ireta Shelley of Amarillo, two brothers, Harold and Noel of Amarillo, and 13 grandchildren and 9 great grandchildren. He is the father of Mrs. Billie Hinkle and the grandfather of Vicki Yeary.

Norma Welch and Mrs. Peat Kelley visited Martha

and Jr. Taylor Friday evening. Mary Coats was also present.

Grace Lemons visited Edna Lackey in Lockney Thursday.

Mrs. Belle Lemons was honored with a birthday dinner for her 84th birthday in the home of her son, Mr. and Mrs. Carl F. Lemons, Tuesday evening. Others present were Mr. and Mrs. Marvin Lemons and family of Lockney and Mr. and Mrs. Phil Lemons and family.

Mrs. Belle Lemons received word that her niece, Mozelle Lemons of Fullerton, California, was attending to her flowers just before Christmas and fell and broke her neck. A bone from her hip was replaced in her neck and she is in a cast which will remain until March. She still remains in the hospital.

Lockney Jr. High Honor Roll

A
6th Grade
Steve Cates, Julie Davis, Melissa Gaylean, Matt Mitchell, Lisa Terrell

7th Grade
Shandra Bybee, Crissy Carthel, Jessie Castro, Karen Ford, Rachelle Ford, Ronnie Ford, Coy Holly, Heather Holt, Stacy Manley, Gary Prisk, Daniel Ramirez, Monica Torrez

8th Grade
Betty Kay Cates, Tammy Clark, Andy Murdock, Ritchie Thornton

A&B
6th Grade
Guy Carthel, Daniel Clymer, Christy Coffman, Inez

Gibson, David Lemon, Benjamin Moya, Wyman Rexrode, Sylvia Reyna, Henry Reyna, Allen Stallings, Rusty Teeter

7th Grade
Jacob Charles, Analila Cuautli, Gabriel Elias, Trent Gant, Brenda Jackson, Ricky Key, Teresa Perez, Cassie Probasco, Linda Stephan, David Sutterfield, Michael Villa

8th Grade
Mary Ester Cortez, Grace DeLeon, Pedro DelToro, Evelia Elias, Sarah Fitzgerald, Margaret Holladay, Paul Moats, Teri Sparkman, Monty Teeter, and Terri Hill.

Southwestern Public Service elects directors at annual stockholders meeting

Southwestern Public Service Company's board of directors elected Sam R. Hunter and Larry S. Milner as vice presidents, and Mary L. Pullum as assistant secretary, in action following the company's annual stockholders meeting.

The three also were elected officers of the company. Hunter, who becomes vice president, rates and economic research, was director, rates and economic research. He joined the company as a groundsman in 1948, and holds a master's degree in business administration from Texas Tech.

Milner, promoted to vice president, communication and public affairs, formerly served as director, communication and public affairs. He was first employed by SPS as manager of industrial development in 1966, and earned a bachelor of arts degree at the University of Texas.

Pullum moves to her new position as assistant secretary from duties as secretary in the corporate financial office. She began her career with the electric utility as a clerk-typist during 1963, and attended Amarillo College.

In other board action, the present corporate officers

were re-elected. At the annual meeting, stockholders voted to amend the company's articles of incorporation to increase the total authorized capital stock from \$180 million to \$330 million. This increases the number of common stock shares from 30 million to 55 million and the preferred shares from 3 million to 5 million. This amendment was necessary to allow the company to continue financing its ongoing construction program.

Also, the board declared a regular quarterly dividend of 34 1/2 cents per share of

common stock. The record at the meeting was on February 2, 1981. Regular dividends declared on preferred stock payable May 1, 1981. The number of common stock shares of business on April 30, 1981, was 55,000,000.

February 5, 1981

Beas Lock
P.O. Box
Amarillo

COME OVER & SAVE



COFFEE

1 lb Maryland Club
all grinds

\$1.99



Buddy's SUPERMARKET

220 South 983-3149
Mon. Thru Sat. 8 am - 9 pm Sunday 9 am - 9 pm

Welcome To The New Teachers

Please Get Acquainted
With These Fine Merchants...

Sue's Gifts & Accessories
Phone 983-5312
126 W. California Floydada

CITY AUTO INC.
Buick-Pontiac-GMC
Floydada

Cornelius Conoco
FLOYDADA, TEXAS

Char-Lee's Cakes Candles & Flowers
315 South 2nd 983-5141

Consumers Fuel Assn.

THOMPSON
Rexall PHARMACY
200 SO. MAIN FLOYDADA, TEXAS
Phone 983-5111



BRUCE KENNER

Bruce Kenner taught Jr. High band for four years in Snyder before coming to Floydada.

Snyder was Bruce's home but he was looking for a high school and chose Floydada because, "it is a good sized school and has had an established band program for quite awhile." "I thought it would be a good move for me," Kenner said.

"I have enjoyed working with the kids here. They have worked hard and tried hard....I am looking forward to the years to come."

Bruce and his wife, Kay, both graduated from Stephen F. Austin State University. His Bachelor of Music degree was on the secondary level and concentrated in instrumental music. Kay, on the other hand, concentrated on vocal music.

Kay is not teaching this year. The couple have one child, Robyn, who is two years old, and are expecting another child.

Piggly Wiggly
983-2184

Oden
CHEVROLET - OLDS., INC.
983-3787 221 S. Main Floydada

Ponderosa Meat Company
807 East Missouri Floydada, Texas

Martin And Co.
216 S. Main - Floydada - 983-3713

Gene's Cleaners
103 North Main Floydada

Brown's Implement Inc.
Ralls Highway Floydada

Floyd County Hesperian

Quality Body Shop
121 East Missouri 983-5032 Floydada

Floyd County Imp
Ralls Highway - Floydada

Hale Ins. & Real Estate
983-3261 106 S. MAIN FLOYDADA

Evelyn's Beauty Salon
424 West Lee 983-2355
Floydada

Reed Ford-Mercury Sales
983-3761

The

Lockney

Lockney Board of Education held school board election today, April 4.

Terms of board members Brose and Kelton Shaw are expiring.

The board named G.B. Johnson judge and Billy Huggins clerk. Absentee ballots are available in the superintendent's office.

The only voting place for the election will be in the high school.

The board also voted to increase reduced-price lunches for students from ten to 20-cent.

In addition new income tax lines for free and reduced-price lunches through September 30 have been issued.

There are about 820 students in the Independent School District about 500 qualify for free lunch, with most of the remainder for free lunches.

In other action the board renewed the contracts of school principal James Poole, and school principal Raymond

Carol Lea Cla

It

"I'd never believed in love at first sight. I met the man who was to be my husband. I got this little shiver spine the first time I spoke to

Maybe since it's almost Valentine's Day I can admit I still get that tingle when I look at him at unexpected moments, like when he is trying to get his shoes on our squirming toddler when he comes home from work in those are moments when I think I got myself into the crazy ad.

Then there are other moments I thought that I knew him fairly well before we married, but I didn't realize it was too late how he liked to get up at six o'clock every morning and drive to work every morning. I'd much rather get up at that time than at that possible moment, but how can I refuse someone who wants you any?

I manage. Every morning when I hear

LISA PAYNE, an employee of the program of musical therapy with the program features singing, r

tamborine.