

The Lockney Beacon

SERVING THE RICH IRRIGATED SECTION OF FLOYD COUNTY

VOLUME 56

LOCKNEY, FLOYD COUNTY, TEXAS, THURSDAY OCTOBER 31, 1957

NUMBER 30

VOTERS WILL PASS ON BOND ISSUE, AMENDMENTS TUESDAY

Floyd County voters will be faced with decisions on a county road bond issue as well as three state constitutional amendments when they go to the polls next Tuesday, General Election Day.

The road bond issue election was set at the same time of the amendment election in order to save the county money. The same set of election officials will hold both elections, Judge J. D. McBrien said this week. Polls will open at 8 a. m. and close at 7 p. m.

Although the elections will be held together, qualifications to vote in the two are different, County Judge J. D. McBrien pointed out this week. In the road bond election only qualified voters who own taxable property in the county and have rendered the same for taxation may vote. Taxable property includes any kind of property, real estate or personal property and the tax payer does not necessarily have to own a farm or a home to vote but must have some property rendered for taxation.

In the amendment election any qualified voter is eligible to vote, regardless of whether he owns taxable property or not.

The proposed road bond issue is in the amount of \$294,000. This will pay for one-half of the right-of-way costs for the road improvement program in the county, including a four-lane highway from Floydada to the Hale County line on Highway 70, a widened road east from Floydada to the Motley County line on Highway 70, and a widened road south of Floydada on Highway 62 to the Crosby County line.

Also included in the plans are four-lane sections out of Floydada east on Highway 70 to the Lakeview farm-to-market road, a distance of about four miles, and out of Floydada south on Highway 62 to where Farm Highway No. 579 cuts off to the west, also a distance of about four miles. This totals about 45 miles of road improvements.

The State Highway Department will pay for the other half of the right-of-way plus all the cost of the paving. Their expenditure in this county, provided the bond issue is approved, will total more than a million and a half dollars, State Highway Commission Chairman Marshall Formby told The Beacon recently.

The route of the present highways through Lockney and Floydada will not be changed under the improvement program. Not a part of the bond issue or the highway improvement program is the proposal by the Highway Department to improve a cutoff in Lockney from the Plains Hotel west on Locust Street to intersect Highway 70 west of town. The Highway Department will do this work themselves, Mr. Formby said, if the larger road program is approved.

Information from the County Judge's office shows that the \$294,000 bond issue will require 12 cents per \$100 valuation to retire. The Commissioners Court plan to sell the bonds with a 20-year maturity date at 4 1/2% interest, which makes the cost of the bonds amount to about 1 1/2 cents per acre per year.

Highway Commission Chairman Formby has repeatedly stated that the issuance of road bonds and the building of cardinal highways will in no way affect the county's farm-to-market road program. "The two programs come from separate funds and neither affects the other," he said recently.

Width requirement on the four-lane road will be 280 feet except where the road parallels the railroad in which cases it will require 230 feet of right-of-way. For the two-lane widened road, the right-of-way must be 130 feet wide.

West of Lockney, plans call for moving a gas line and taking in 38 feet of land between the railroad and the present highway from a point on Highway 70 where the old Lockney road intersects west to Aiken. This will, of course, lessen the amount of right-of-way needed from the south side of the county.

The first section to be built will be the four-lane section from Floydada through Lockney to the Hale County line. Mr. Formby told a group recently. The Highway Commission has \$800,000 set up for this road with more than \$500,000

of that amount having been designated two or three years ago.

Proponents of the road program point out that delay in the building of the highways only serve to increase the cost to the county. With the county paying only half of the right-of-way cost, it will spend almost as much money as it would have several years ago in paying for all the right-of-way. A further delay will only bring an increase in the cost of the right-of-way as well as the paving. A four-lane highway is also much safer than two-lane roads, it was pointed out.

The county has voted on a highway bond issue in two previous elections. Both times the voters approved the issue by good majorities but neither gave it the required two-thirds majority.

Constitutional Amendments
Voters will be asked to consider three constitutional amendments Tuesday.

The first of these is House Joint Resolution No. 37 which would make the present five percent contribution rate to the state employees' retirement system applicable to an employee's whole salary, and add additional employees who may be included in the retirement system.

Proponents of the amendment say that the present retirement plan to antiquated and the amendment will make for a more equitable and realistic approach to the problem. It will also aid in recruiting more competent personnel in the various state departments and create a greater incentive for promotion and tenure of service.

The second amendment is (Continued on back page)

Band Parents Pay \$2,000 On New Uniforms

At a meeting of the Lockney Band Parents Club Tuesday evening, the group voted to pay \$2,000 on the new High School Band uniforms which were received at the beginning of this school year.

A treasurer's report, given by Mrs. Frank Hawkins in the absence of Treasurer Kenneth Wofford, showed the club with a balance of \$2,077.50. After President Mrs. F. O. Schacht discussed money raising projects which the club will have the remainder of this school year, it was decided to make the large payment. Only \$1,000 is actually due on the uniforms at this time according to the contract with the company. Total cost of the uniforms, gloves and suspenders was \$5,850.00.

Paul Epps, local Church of Christ minister, entertained the group with vocal numbers to start the program. He was accompanied by Mrs. Fred Huggins.

Band Director Clyde Seaman discussed some band problems, and asked the help of the parents. Mrs. Schacht appointed John Lee Carthei as chairman of a committee to investigate the securing of a practice field for the band.

A committee headed by Mrs. Elmer Lee Stapp served refreshments to the group at the close of the meeting.

Extra Officers On Duty For Hallowe'en

The City will have extra men on duty to assist local officers in preventing vandalism on Hallowe'en night, Mayor J. E. Cox said Wednesday. Some 20 members of the Lockney Volunteer Fire Department will be used to patrol streets and keep mischief at a minimum, he said.

No special event is planned here with the exception of some private parties.

HOME FROM HOSPITAL

Mrs. Grace Byars was returned to her home here Wednesday afternoon from West Texas Hospital, Lubbock where she underwent major surgery.

Farmers Put Fewer Acres In Soil Bank

About 20,000 acres of Floyd County wheat land have been put into the 1958 conservation reserve acreage, Thos. J. Hutchins, County ASC office manager said Monday. Definite figures will not be available until time has elapsed for all parties to be heard from and the completion of wheat land measurements.

The acreage taken out of production is represented by about 180 or 190 contracts.

Measurements were well under way when the rainy weather put a stop to activities, said Mr. Hutchins. This 20,000 acres in the wheat soil bank is slightly less than half of 1956. This county is running about the same percentage as the rest of the state for 1958. Nation-wide the wheat land put into the soil bank is about one-third of last year, the county ASC committee has been advised.

Floyd County has left for production in 1958 about 120,000 acres of wheat land.

Moore Arraigned, Pleas Not Guilty

At his arraignment in District Court Monday morning William Lennis Moore, charged with crimes against a step-daughter, pled not guilty before District Judge L. D. Katliff in a brief appearance in court.

Moore, 42, was accompanied by a Lubbock attorney, Byron Chappell, who appeared as his attorney of record.

Soon after his indictment and arrest the defendant had requested to the court that he be represented by a lawyer who was "indigent and had no funds or property which would enable him to employ counsel." The record indicates, The court appointed Richard F. Stovall, local attorney, to defend Moore against the charges.

Employment of the Lubbock lawyer, soon after Moore was taken to the Lubbock County jail for safe keeping, followed for the sale of a 1953 Mercury, for which Moore remarked to local officials he had received \$750.

The district judge entered an order Monday releasing from Floydada attorney, Stovall, from "further duty or responsibility of representing Wm. Lennis Moore as an attorney."

Bond was not sought for the defendant and he was returned to the Lubbock County jail the same morning.

Longhorns Meet Spur Friday In Crucial Tilt

Next Monday Is Dollar Day Here

In spite of the Fall business rush, local merchants still appreciate the patronage of their regular customers. To show this appreciation they are again offering many outstanding values for First Monday, which is Dollar Day in Lockney.

Look through this issue of The Beacon and see for yourself what bargains are being offered for next Monday, November 4th.

Nine Are Called For Induction

Nine men from the jurisdictional area of Selective Service Board No. 45 have been called for induction into the armed forces. They are to report to the local board, at the third floor, Courthouse, Plainview at 5 a. m. November 6th.

Called for induction are: Floyd County—Arvana Monroe West, Freddie Joe Taylor, Motley County — Ivory Hall Jr.

Hale County — Archie Doyle Clanton, Billy Ray Cartwright, Rex Gale Redies, Lester Durant Williams.

Swisher County — Ulys Kirby, Paul Rae Pogue. Also going will be Paul Young, transferred from an Oklahoma Board.

No pre-induction examination has been scheduled for November.

E. H. Boling Is New Deputy Sheriff

E. H. Boling is the new deputy sheriff stationed here to assist Deputy Ray Hardin. Mr. and Mrs. Boling moved here last week and are living in one of the Handley apartments on East Locust Street. Mr. Boling has served as a city officer at Floydada previously. He went to work here October 15.

Plat Recorded Of SE Lockney

A plat of an area of south-east Lockney which has not heretofore been on file has been made up by County Surveyor W. D. Newell at the request of the County of Floyd, the City of Lockney and the Lockney Independent School district.

The Commissioners Court gave its approval to the plat and it is being recorded this week.

The area covered lies south of Locust Street (Highway 135), west of the Lone Star Cut off and north of the Highway 70 loop. It covers about 80 acres of the W. E. Brogden Survey and about 40 acres of the N. B. Davis Survey.

Newell has on the boards now a plat which will soon be completed covering an area about 1000 feet wide north and south and about three-fourths of a mile east and west in the city limits of Lockney, which is due to be approved by the Commissioners Court and recorded when finished. This is the J. D. Burleson Homestead Survey in the north and east part of the city.

Local Boys Receive ROTC Promotions

Two Lockney young men have recently received Army ROTC promotions at Texas Tech, according to announcement by Lt. Col. James Carby, Army ROTC commanding officer and professor of military science and training.

The cadet corps was re-organized this year to fit into the Army's new peacetime concept that replaces the Army's traditional triangular battle organization.

Fred Lee Gloyna, a senior in engineering, was promoted to cadet first lieutenant. He is the son of Mr. and Mrs. C. A. Gloyna of Lockney.

Eddie Joe Foster, a senior in business administration, was named operations officer with the rank of lieutenant colonel. He is the son of Mr. and Mrs. Joe Foster.

Businessmen To Feed Longhorns After Game

Raymond Rhodes and Claude Brown, local businessmen, will sponsor a meal for members of the Lockney Longhorn football squad following the Spur game Friday night. The meal, T-bone steak and all the trimmings, will be served in high school cafeteria.

Misses Janice Hays and Elaine Cooper will present special music for the group. Lunchroom workers will prepare the meal. Rhodes is owner of Rhodes Super Market and Brown is proprietor of Brown's Cleaners & Clothiers and Brown's Department Store.

American Legion Collects Clothing

The local American Legion Post is collecting good used clothing for children and they ask that anyone who has articles they'd like distributed to needy children leave the things at Hammond & Co., or contact any of the Legionnaires.

The clothing will be delivered to the grade school to be distributed when and where there is a need, according to Commander Jimmy Hodel.

Whitfill And Crank Will Open Garage

James Whitfill and Gene Crank will open a new garage at the Cooper Conoco Station on South Main Street next Monday, according to announcement made this week. The men are both mechanics and have been employed at another garage here.

The new place of business will be known as the Conoco Service Station Garage and they will do general repair work on automobiles, irrigation engines, trucks, etc.

GO TO CHURCH SUNDAY.

The Lockney Longhorn's undefeated and untied record will be at stake this week as the Horns face possibly their toughest test to date Friday night when they tangle with the rugged Spur Bulldogs on Mitchell-Zimmerman field at 8 p. m.

Spur's towering line averages 184 pounds per man and outweighs the Longhorn offensive forward wall 17 pounds per man, although Spur is probably much slower than Lockney. The Bulldogs are reported to have six starting linemen back from their 1956 team which toppled Lockney from the undefeated ranks, 26-0, although one of the ends has been switched to half-back.

Scouting reports indicate that Spur has a bruising ground attack and their quarterback, returning from last year, is a good passer. The huge Bulldog defensive unit has allowed an average of only 6.6 points per game.

Lockney Coach Rudy Haile stated Tuesday that the spirit was very high this week and that the boys will remember last year's loss to Spur which cost them the district championship. Haile said the Horns were improving on fumbling, a problem which has plagued the team all season. "Lockney's defense will face their stiffest test to date," added the Longhorn mentor.

The Longhorns should be in good shape for the encounter, according to coaches.

Spur has won four games, lost two, and tied two going into the battle with a three win, one lost record in district play. The Bulldogs loss in district 2-AA came as a result of a forfeit to Slaton due to illness, and their only actual defeat came at the hands of a strong Matador club, 7-13. The strong Longhorn squad sports a seven win, no loss record going into the contest, with three district wins to their credit.

Coach Haile said that some people were looking ahead to the Floydada game but the Horns must clash with Spur this week and worry about the Whirlwinds next week.

Probable starting lineups include:

SPUR	Position	Name	Weight
RE	R. Cloude	175	
RT	R. Gilcrease	205	
RG	J. Holder	165	
C	R. Bilberry	205	
	or D. Kidd	200	
LG	L. Albin	160	
LT	D. Morgan	205	
LE	H. Wilson	155	
QB	R. Powell	150	
LHB	K. Suttis	140	
RHB	A. Kissingner	150	
FB	T. Watson	170	
LOCKNEY			
RE	Coy Kidd	160	
RT	John Hanst	185	
RG	Ronnie Harris	145	
C	Duane Griffith	170	
LG	Byron Brock	170	
LT	Kelly Harrison	180	
LE	Larry Hammit	160	
QB	Bill Race	180	
	or Jimmy Minter	150	
LHB	Jerry Williams	150	
RHB	Kenneth Calloway	165	
	or Cliff Hardy	150	
FB	Dickie Barton	165	
Defense			
LB	Bill Musser	150	
T	Lane Crank	220	
E	David Howell	165	

Lockney Auto Will Show New Car

Lockney Auto Company is showing several models of the new 1958 Chevrolet today and this weekend. The new cars are changed considerably and the local firm invites the public to come in and see them.

Coffee and doughnuts will be served and in addition the Silver Bells, a girls quartet composed of Hope Cox, Kay Golden, Gayle Rucker and Loy O'Brien, will sing at intervals during the day.

Favors will be given to the kiddies and perfume to the women also today.

The local Chevrolet dealers expect to have a station wagon, a sport coupe, a 2-door Biscayne and a 4-door Belair on display.

T. J. Dodson of Cache, Okla., has been here this week attending to business matters. Mr. Dodson is a former resident of Lockney and still owns a small place southwest of town.

The Lockney Beacon

Established 1902
PUBLISHED EVERY THURSDAY

HAYS & REYNOLDS
Publishers

Edgar R. Hays Editor
Wallis Reynolds

Mechanical Superintendent

SUBSCRIPTION RATES

In Floyd County, per year — \$2.00
Outside Floyd County, per year — \$2.50
Either new or renewal Subscriptions

Entered April 14, 1902, as second class mail matter at the Postoffice at Lockney, Texas, under the act of Congress of March 3, 1879.

Any erroneous reflection upon the character, standing or reputation of any person, firm or corporation which may appear in the columns of The Beacon will be corrected gladly upon being brought to the attention of the editor.

TEXAS PRESS ASSOCIATION
Member 1957

MEMBER OF
NATIONAL PRESS ASSOCIATION

Minute Editorials

For what is man profited if he shall gain the whole world, and lose his own soul? — Matthew 16:26.

—oOo—
NEXT TUESDAY is election day in Floyd County with citizens of this county expressing their opinion on a road bond issue as well as three proposed constitutional amendments. We are hoping that everyone will give the road bond issue serious consideration. None of us like to pay more taxes, of course, but the tax will be small on each individual and will not cost anyone a great deal. The increase in safety will much more than offset the cost to the citizens of the county. It seems that nowadays when a person starts out on an automobile trip, he is fortunate if he returns home safely. So many times we can see where we would have been involved in a serious accident if circumstances had been only slightly different. Anything we can do within reason to make auto travel safer is worthwhile, we believe. The proposed four-lane road from Floydada to the Hale County line will certainly make for safer traveling. We believe it deserves the support

of everyone.
—oOo—
WE ALSO would favor the approval of all three constitutional amendments. Of course, it is only patchwork on the already patched up Texas State Constitution but it is probably in places where it needs patching. Someday maybe the politicians will get things set to where we can have an entirely new constitution. It is long past due.

—oOo—
NO DOUBT but that late cotton was seriously damaged by the freeze. Just how much, is questionable and there are many different opinions, even by the experts. Floyd County's cotton production has been estimated at 74,000 bales but this circumstance probably may cut it back to the low mark of 1955 when only 62,000 bales were ginned. That is approximately 66% of the 1956 yield. As a coincidence, the 1955 first freeze came on October 24th.

—oOo—
NEW CAR MODELS are being shown all over the place this week and next. They all are very beautiful, very efficient, very attractive. You should go by and see what the automobile manufacturers have for you whether or not you plan to buy a new car.

—oOo—
IS THERE ANYONE left among the so-called statesmen who are controlling the affairs of this nation interested in limiting the powers of the federal government and retaining some rights of the states? At this point it appears that states rights is a lost cause. President Eisenhower won many votes in the South because he came out favoring the decentralization of the national government, the reduction of big government and the return of some rights to the state. But along with some other promises, he has forgotten that one and government is bigger now than ever before. Is there no hope that the federal government can be salvaged from the politicians and the desires of the common people heard? Unless the common man rebels against government controls, unless he yells so loud that his voice cannot be drowned out by the cries of the special privilege groups and the minorities, he will continue to have less and less to say about what the government does and will be told more and more what he must do. It's time for the rebellion.

—oOo—
CURRENT FORECASTS say that the free world oil industry must spend \$115 billion on exploration and development if it is to adequately meet the expected demand of the next 10 years.

OUR PROUD SYMBOL



With Our EXCHANGES

WHY PEOPLE SHOP AWAY FROM HOME

No one can be blamed for stretching a dollar as far as it will go. However, it is difficult to understand the person who spends two dollars to stretch one.
Every community has a sizable number of penny-conscious shoppers who will travel from twenty to fifty miles in search of a bargain. Such buying is usually unwise and wasteful. The cost of the trip is likely to run higher than any fancied savings. Also, a careful check of local stores would reveal that a better price could be obtained here at home.

We can not question the loyalty or good intentions of local citizens who rush off to larger cities to make major purchases. They believe that they are practicing sound economics. And they may have some reason for their actions.

For, quite often our local people know more about the goods available in the metropolitan stores than they do about the goods in the stores here at home because of the extensive advertising originating in the larger trade centers. Retail advertising from lar-

ger cities is constantly coming into every community in the form of catalogs, circulars and in regional newspapers. When local merchants do not counter the out-of-town advertising, it is natural for some shoppers to believe that the goods and services they seek can not be obtained locally.

Despite the aggressiveness of distant competition, the local merchant has a distinct advantage — the local newspaper. No advertising medium used by non-local retailers covers our trade area so thoroughly and at such low cost as your local newspaper.

Thus, before the local retailer becomes too critical of out-of-town shopping, he should ask himself if he has given his potential customers enough shopping information to keep them at home.—Quitague Post.

MUCH IN EVIDENCE

Reports we have and which we verily believe, are that the FBI, despite Mr. Hoover's desires, was much in evidence at Little Rock in pre occupation days and still are. Whether they tapped Gov. Faubus' tele-

phone lines may be questionable but it is correct that they pushed local officials aside and went into the school affairs in Arkansas' capitol city busily. The thing has become highly political. A presidency and political ascendancy for ambitious men are involved. Apparently Attorney General Brownell is the man who is master minding the palace guard. — Floyd County Hesperian.

HARD TO EXPLAIN

It is disconcerting to learn that the number of employees administering foreign aid has almost doubled since 1953, although Congress has cut appropriations almost in half during that period.

Since 1953, Congress has chopped foreign aid outlays from \$6,011,000,000 to \$3,435,000,000. Yet there are 18,819 persons on the foreign assistance payroll today, as against 9,792 in 1953.

It is hard to understand why it is necessary to have almost twice as many people administering, in 1957, approximately half as much aid as was available in 1953. But then, there are a great many things about Federal employment figures that are hard to understand. — Lubbock Avalanche.



Dear Editor:
I see where a helpful federal judge from North Dakota was sent to Arkansas here a while back to show the backward Southern judges how to get a job done.

Seems that a judge can keep his docket clear and have time for travel, too, if he keeps a good assortment of pre-hatched decisions on hand at all times, so he don't have to waste time hearing evidence and arguments.

Which is sort of a new idea for judges, but not for lots of us common folks who don't like to have our opinions disturbed and our minds confused either by listening to the other side of an argument.

D. E. SCOTT
Crossroads, U. S. A.

Long Ago In Lockney

Items of interest from the files of The Lockney Beacon.

November 3, 1927

Retail merchants here state that the first ten months of 1927 have been far above the average from a business standpoint and prospects for a good trade during November and December were never better.

Lockney Longhorns won over Tullia Hornets 18-7 Friday night at Tullia.

Someone has dug up the records of the Lancaster, Ohio, school board back in 1828. In these records is an account of a proposed debate as to whether railroads were practical or not. Permission was asked to hold the debate in the school house and the minutes of the school board meeting ran as follows: "You are welcome to use the school room to debate all proper questions in, but such things as railroads and telegraphs are impossibilities and rank infidelity. There is nothing in the word of God about them. If God had designed that His intelligent creatures should travel at the frightful speed of fifteen miles an hour by steam, He would have foretold it through His holy prophets. It is a device of Satan to lead immortal souls down to hell."

November 2, 1945

Honorable discharges have been granted to a number of men from this section recently. Some of them are: J. B. Teaff who spent two years in England, France and Germany; Paul Teuton, who spent 2½ years and saw much action in Italy; Horace Baxter who spent 10 months and made 47 missions as a nose gunner; Mace McPherson who served 18 months in the European Theatre; Sgt. Jay McPherson who served 10 months in the European theatre; Sgt. Wiley McPherson who spent six months in the same theatre of war; Pvt. Charles Pritchett who spent four years overseas; Floyd T. Jamigan who served in Europe; James C. Bourland after 3½ years in Europe; Raymon

Thornton after service in Pacific theatre; Josh D. Edwards after 2½ years service in the Pacific theatre; J. P. Thornton after four years in the Pacific; Robert B. M. who served three years in China - Burma - India theatre; Thomas L. Marr who served the Philippine campaign; Johnny C. Moody who served 38 months overseas in the Pacific area; Charles Record and C. A. Stevens.

Miss Minnie Lois McLeod, daughter of Mr. and Mrs. Eugene Bowley of Plains last Sunday.

Nothing new in the World!



See it Nov. 7 at your Ford Dealer

LONGHORNS, WHIRLWINDS LEAD AA POWERS, LOCKNEY CRASH IN IMPORT

Lockney's rugged Longhorns were again picked by the Lubbock Avalanche-Journal as the best AA outfit in the state but the Avalanche-Journal placed McCamey only second behind Lockney. The Fort Worth Star-Telegram chose the Horns as the best AA unit in Texas. Floydada was placed third in the area listings by the Daily News and fourth by the Lubbock-Journal. The Lubbock paper put Spur in the number seven spot in their

one loss record against the fence. Spur's only setback was a forfeit to the A. A. loss would about eliminate either team from the race.

Powerful Floydada, the third in the running for the district championship, should have an easy time knocking off the Post and the Slaton boys will probably come out on top of Tahoma in other district clashes. Cellar-dwelling Gemathy has an open date.

Floydada's Whirlwinds blew a tie with Lockney for the district lead last week when they capitalized on breaks to post a hard-hitting Slaton 26-13.

Spur stayed in reach of the district paces last week by topping Post, 28-13, and Tullia turned in a slight upset of the Bulldogs outscored Abilene, 24-14, in a game between last place squads. Rugged Lockney had an open gate.

Other area scores:
Fido Duro (Amarillo) 27, Slaton 13
Oton 13, Tullia 7

We Still Have A Few Lots in the
McDonald Addition
Available for residential building. See us today.
Lockney Real Estate Co.
Phone OL 4-3371 Lockney

Authorized Dealer
FRANK
VACCINES
and Supplies
for Livestock
BYRD PHARMACY
Dial OL 4-3353 FRED

Floyd County

ASSETS	
CURRENT ASSETS:	
Cash in Bank
Rentals Receivable
Custom Work Receivable
FIXED ASSETS—SCHEDULE	
Rental Equipment
Visual Aid Equipment
Office Equipment
Less—Reserve for Depreciat
LIABILITIES AND NET WORTH	
CURRENT LIABILITIES:	
Custodian Fees Payable
Custom Work Machine Oper
Fees Payable
Accrued Salaries
Accounts Payable
NET WORTH

ELECTRIC LIVING IS FUN!



"WE'RE IN LOVE WITH OUR Electric Range!"

say: Mr. and Mrs. M. C. Wolgamott,
REDDY KILOWATT CUSTOMERS

YOUR REDDY KILOWATT APPLIANCE DEALER •



SOUTHWESTERN
PUBLIC SERVICE
COMPANY

MR. GRAIN SORGHUM PRODUCER!

A serious problem for grain sorghum producers has developed. A declining market with a continuously expanding production far exceeding the present demand, makes it imperative that the farmer himself take some action to rectify the situation. You will agree that for a more prosperous agricultural area, the market for grain sorghum must be expanded and more favorable legislation enacted.

The Grain Sorghum Producers Association is attempting to improve the "picture" for grain sorghum producers through an expanding program of RESEARCH, MARKET DEVELOPMENT and LEGISLATION. There is now an agricultural economist experienced in grain marketing on the Association's staff to develop these activities.

We urge you to support this program by requesting your local elevator to deduct TWO POUNDS OF GRAIN out of each 1,000 pounds you deliver and deposit it to the account of the Grain Producers Association in your name.

Every grain elevator in Floyd County has agreed to deduct the grain with your permission as their contribution to this program.

JOIN YOUR NEIGHBOR! SUPPORT THE GRAIN SORGHUM PRODUCERS ASSOCIATION!

Following are the Floyd County elevators who are co-operating in this program:

- Smith-Bowden Grain Co., Providence
- Cereal Elevator, Cereal
- Aiken Elevator, Aiken
- Baxter & Smith Grain Co., Lockney
- Patterson Grain Co., Lockney-Sterley
- Barwise Elevator, Barwise
- McCoy Grain Storage, Inc., McCoy
- Dial & Clubb Grain Co., South Plains

- Harvest Queen Elevator, South Plains
- Allman Grain Co., Allman
- Lon Davis Grain Co., Floydada
- Dempsey Grain Co., Floydada
- Henry Edwards Elevator, Dougherty
- Farmers Elevator, Floydada
- Kimbell Milling Co., Floydada
- Leonard Elevator, Boothe spur
- Poole Grain Co., Dougherty
- Producers Co-Op Elevator, Floydada and Dougherty
- Muncy Elevator, Muncy

This advertisement paid for by —

FLOYD COUNTY GRAIN PRODUCERS ASSOCIATION

E. M. QUEBE, President

Tom Porter, Vice-President;
Forrest Mickey, Delegate

R. C. Mitchell, Sec.-Treas.
John Key West, Alternate

LONGHORNS, WHIRLWINDS LEAD DISTRICT AA POWERS, LOCKNEY-SPUR CLASH IN IMPORTANT GAME

District 2-AA teams enter the season drive with three teams in contention for the conference title.

The Lockney Longhorns and the Bulldoggs, two of the top teams, collide at Lockney in this week's highlight 2-AA contest. The Longhorns go into the battle with three district titles to their credit against no other team. Lockney and Spur has a three game lead.

Lockney's rugged Longhorns were again picked by the Amarillo Daily News as the best AA outfit in the district. The Bulldoggs, however, placed McCamey only one vote behind Lockney.

The Fort Worth Star-Telegraph chose the Horns as the best AA unit in Texas. Floydada was placed third in the area listings by the Daily News and fourth by the Amarillo-Journal. The Lubbock paper put Spur in the number seven spot in their list.

Lockney's one loss record against conference foes. Spur's only setback was a forfeit to the Bulldoggs. A loss would eliminate either team from the race.

Floydada, the third in the running for the district championship, should have an easy time knocking off Lockney and the Slaton Bulldogs. Cellar-dwelling Longhorns has an open date.

Floydada's Whirlwinds blew a tie with Lockney for the conference lead last week when they capitalized on breaks to get past a hard-hitting Slaton team.

Spur stayed in reach of the district paces last week by dropping Post, 28-13, and Tahoka turned in a slight upset of the Bulldoggs, outscoring Abert, 21-14, in a game between last place squads. Rugged Lockney had an open gate.

Other area scores:
Palo Duro (Amarillo) 27, Abert 13
Tulia 13, 7

We Still Have A Few Lots in the

McDonald Addition
Available for residential building. See us today.
Lockney Real Estate Co.
Phone OL 4-3371 Lockney

Authorized Dealer
CHECK YOUR NEEDS WITH US TODAY



FRANKLIN VACCINES and Supplies for Livestock

BYRD PHARMACY
Dial OL 4-3353 FRED D. BYRD, Pharmacist

Floyd County Soil Conservation District No. 104
Floydada, Texas

BALANCE SHEET — August 31, 1957

ASSETS	Total	State Fund	Local Fund	Trust Fund
CURRENT ASSETS:				
Cash in Bank	\$ 6,125.25	\$ —	\$ 5,570.20	\$555.05
Rentals Receivable	305.00	—	305.00	—
Custom Work Receivable	285.00	—	285.00	—
	\$ 6,715.25	\$ —	\$ 6,160.20	\$555.05
FIXED ASSETS—SCHEDULE "2"				
Rental Equipment	\$24,479.25	\$13,739.34	\$10,739.91	—
Visual Aid Equipment	1,001.03	1,001.03	—	—
Office Equipment	151.70	151.70	—	—
	\$25,631.98	\$14,892.07	\$10,739.91	\$ —
Less—Reserve for Depreciation	15,719.11	12,929.37	2,789.74	—
	\$ 9,912.87	\$ 1,962.70	\$ 7,950.17	—
	\$16,628.12	\$ 1,962.70	\$14,110.37	\$555.05
LIABILITIES AND NET WORTH				
CURRENT LIABILITIES:				
Custodian Fees Payable	\$ 92.95	\$ —	\$ 92.95	\$ —
Custom Work Machine Operator Fees Payable	13.42	—	13.42	—
Accrued Salaries	40.00	—	53.15	—
Accounts Payable	53.15	—	—	—
	\$ 199.52	\$ —	\$ 199.52	\$ —
	\$16,428.60	\$ 1,962.70	\$13,910.85	\$555.05
NET WORTH	\$16,628.12	\$ 1,962.70	\$14,110.37	\$555.05

SPORTS

JIM BOB REYNOLDS
Sports Editor

WIN OVER SPUR 20-13 Rugged Shorthorns Travel To Post

Lockney Jr. High's Shorthorns will travel to Post Thursday for a game with Post Jr. High, a team they downed 24-7 earlier in the year. The contest will start at 5 p. m. rather than 6:30 because of a hallowe'en carnival at Post.

The Shorthorns will be trying for their third win in a row and their sixth win of the season against two losses. Only three games, Post, Spur, and Dimmitt, remain to be played by the Jr. High eleven.

A flu-riddled Shorthorn team last week showed spirit in dropping Spur Jr. High, 20-13. Although three key players, halfback Kenny Clark, tackle Ricky Collis, and guard Jimmy Rushing, missed the game, Lockney was hitting hard and showed much determination to win.

Quarterback Johnnie Belt accounted for two touchdowns as he passed to Audrey McCormick for one six-pointer and scored on a keeper play. Halfback Doyle Thurman punched across the double-stripe for Lockney's other touchdown, according to Jr. High coach Weldon Dodson. Thurman and Terry Mosley, fullback, drove across the extra points.

Coach Dodson said early this week that most of the boys would probably recover from the flu and be ready for the Post game although Collis is a doubtful starter.

Probable starting lineup for this week's battle includes: center, Jerry Willis; guards, Donnie Hanst and Rushing; tackles, Jimmy Whitfill and Collis or Russell Davis; ends, McCormick and Robert Holland; quarterback, Belt; halfbacks, Clark and Thurman; fullback, Mosley.

Horn Statistics

Following are the statistics compiled by the Longhorns and their opponents in the Horns seven games this season:

	Lky.	Op's
First Downs (average)	147 21	47 6.7
Rushing (average)	135 19.3	36 5.1
Passing (average)	8 1.1	9 1.3
Penalties (average)	4 .6	3 .3
Net Yds. gained (average)	2745 392.1	910 130
Rushing (average)	2533 361.7	642 91.7
Passing (average)	212 30.3	268 38.3
Passes (average)	14-23 60.9%	21-74 28.4%
Passes Inter.	4	2
By	14-31.3	42-31.6
Punts	22-254	19-167
Penalties	22	6
Fumbles		

DIMMITT IN 1-AA; RALLS, HALE CENTER IN 4-A

THREE 'HORN NON-DISTRICT FOES SET PACE IN CONFERENCES

Three of the rugged Lockney Longhorn's non-conference foes are in contention for the championship in their districts.

Dimmitt, which Lockney trounced 32-0, is in a battle with Muleshoe for 1-AA honors. The rugged Boebats have already downed Dalhart and Canyon, a pair of 1-AA toughies, and are in the favorites role for the title. Winner in 1-AA will meet the champion 2-AA squad for bi-district hon-

ors, therefore the Boebats and Longhorns could tangle again this season.

Ralls and Hale Center are in a battle for the 4-A title. The Horns whalloped Hale Center 32-7 and downed Ralls 13-0.

Tulia, beaten 39-13 by Lockney in a non-district contest, is in District 1-AA. The Hornets are out of the running for conference honors but whipped Canyon, one of the district's pre-season favorites.

Mr. and Mrs. Frank Perkins plan to leave today (Thursday) for a visit with relatives at Ruidoso, Capitan and Albuquerque, N. M.

Mr. and Mrs. W. F. Tucker of Moorpark, California have returned home after visiting her sister, Mrs. V. H. Kellison, Mr. Kellison and family. Tuesday night the Tuckers were guest speakers for the 1956 Study Club in Floydada for a program on Mental Health.

OFFICE SUPPLIES at The BEACON OFFICE.

TRAVEL TO POST

Horn "B" Suffers First Loss At Hands Of Spur

The Longhorn "B" squad will travel to Post tonight (Thursday) to battle the Post "B" eleven. The "B" contest will follow the Jr. High game which starts at 5 p. m.

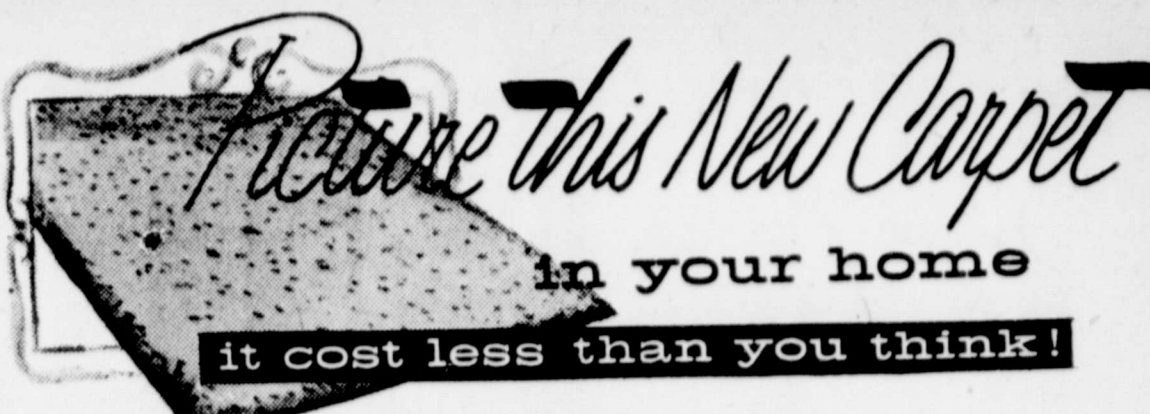
Last week Lockney "B" suffered their first loss of the season to Spur "B" squad, after running their win skein to six straight.

The Longhorn "B" club has three contests remaining on its schedule, games at Post and Spur, and the final game on Mitchell Zimmerman field against Dimmitt.

Mr. and Mrs. Fred Anderson of Amarillo spent last weekend visiting with his parents, Mr. and Mrs. C. L. Anderson.

Mrs. A. L. McDaniel of Amarillo is here visiting in the home of her daughter, Mrs. Melvin Cooper and family.

Miss Jean Trentham of Spring City, Tenn., is here visiting her sister, Mrs. F. L. Brown and Mr. Brown.



BRAND NEW TWEEDS
Better quality, new patterns at the same old price —
\$6.95 per square yard
Installed with 40 oz. padding. Terms to suit your budget.

PARKER'S

Dial OL 4-3315 HOME FURNISHINGS Lockney



TEAMED FOR

Action!

Like a well-balanced football team, Cosden

products are at their best when they're working together.

Cosden gasolines — Premium Ethyl or Higher Octane Regular — are skillfully processed through one of the world's most modern refineries to deliver all the horsepower in your engine. They offer new bonus power to span the miles economically... reserve strength for fast get-away or quick passing... and instant response to your accelerator.

Cosden lubricants — 10w30 or Heavy Duty Motor Oils — keep engine parts working smoothly and freely in any weather.

Get the most from your car. Use Cosden gasolines and lubricants... together.

They're teamed for action.



District 2-AA Schedule November 1
Spur at Lockney
Floydada at Post
Tahoka at Slaton

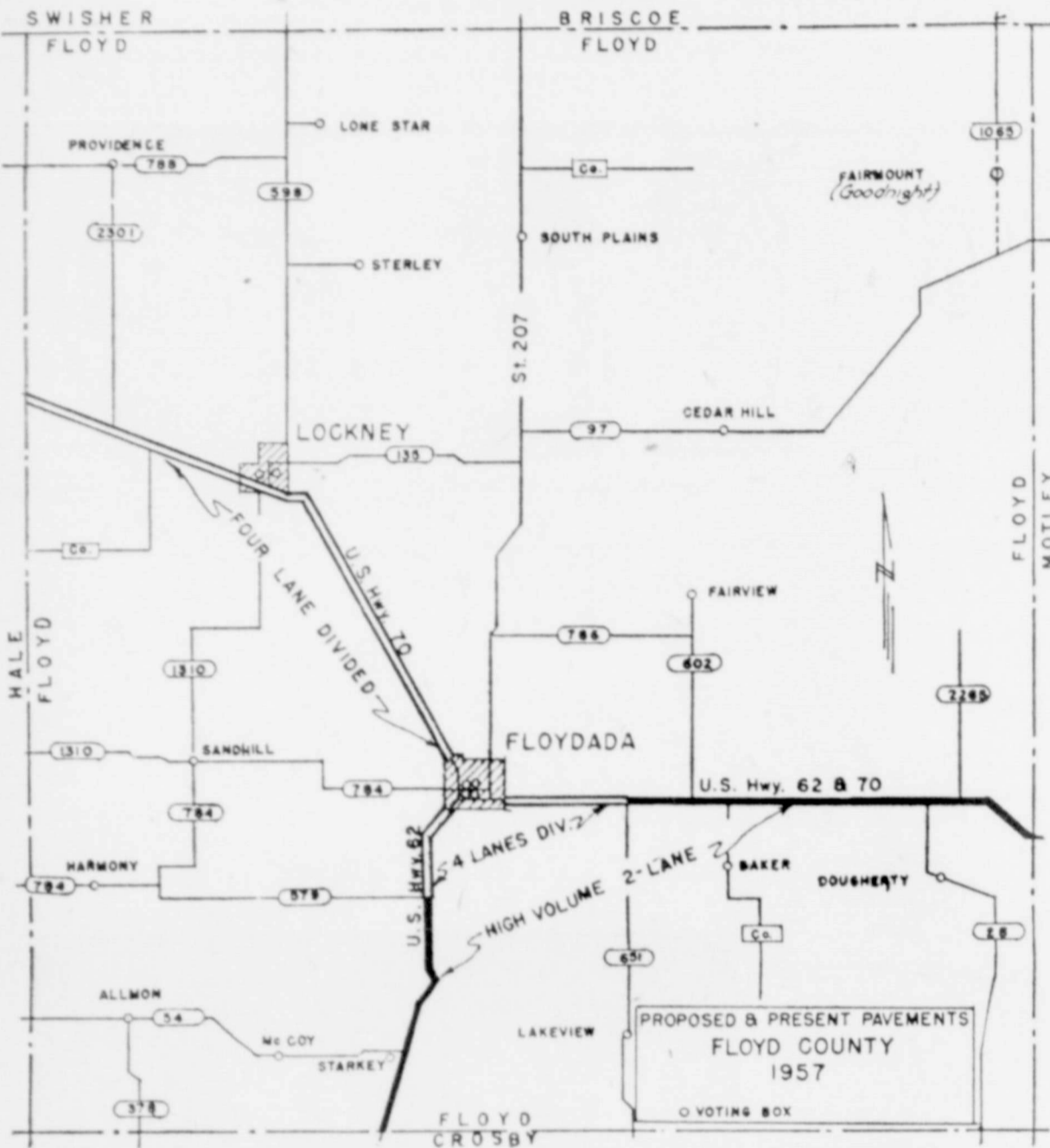
COSDEN
PETROLEUM CORPORATION
Big Spring, Texas

See Us For Those Fine Quality Cosden Products

Henry Hodel Oil Company
Wholesale
Phone OL 4-2244

Webster Service Station
Retail
Phone OL 4-2244

1 1/2 Million Dollars For Floyd County



PROPOSED HIGHWAY MODERNIZATION PROGRAM

1. A Four Lane Divided Highway On U. S. Highway 70 From Floydada Through Lockney and Aiken to The Hale County Line. (See map above).
2. 3.1 Miles of Four Lane Divided Highway on U. S. Highway 62 From Floydada South To Farm To Market Road 579 And A Widened Highway The Remaining Distance to the Crosby County Line. (See map above).
3. 4 Miles Of Four Lane Divided Highway From Floydada East on U. S. Highway 70 To Farm To Market Road 651 and A Widened Highway East to The Motley County Line. (See map above).

COST: If You Live in Town, Not More Than 1 2c Per \$100.00 Valuation on your home or property. If You Own Farm Land, The Cost Will be less than 1 1/2c Per Acre per Year On Land Valued at \$12.00 Per Acre For Taxes. On Land Valued at \$3.00 Per Acre For Taxes The Bill Will be Less Than 1/2c Per Acre.

Let's Cooperate With The State Highway Department On This Highway Program, and Thus IMPROVE Our Chances For Additional Farm To Market Roads we Are Battling For and need so Badly.

Can We Afford To Pass Up This Outstanding Opportunity For Progress In Floyd County?

You Vote For Progress On Tuesday When You vote "Yes" For Modern Floyd County Highways.

Edgar R. Hays
Claude Holley
Joe Wilson
Charles Duran
H. E. Frizzell
R. C. Mitchell
A. T. Moore
J. H. Cooper
Jerry Cooper
Le Roy Durham
J. M. Willson Sr.

J. M. Willson Jr.
Fred Battey
A. H. Kreis
B. A. Robertson
Conner Oden
Cecil Hagood
Dr. A. E. Guthrie
J. C. Wester
Wallace King
N. W. Williams
Fred Martin

Walton Hale
Mitchell Parrish
J. A. Arwine
E. C. Carter
L. L. Clark
Aldine Williams
George Bickley
Bill Hale
O. M. Watson Sr.
Jim Word
C. O. Spence

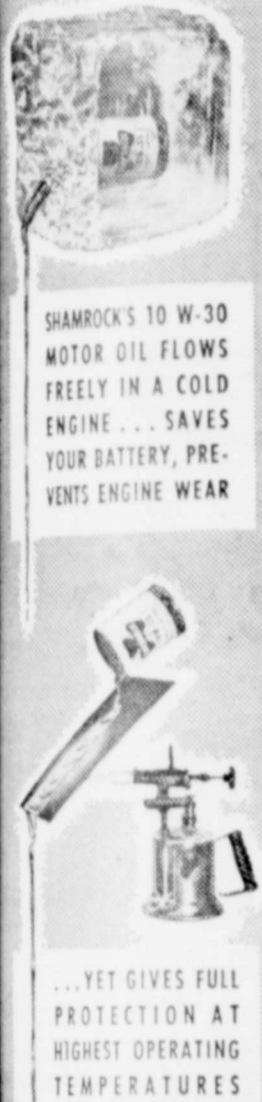
Doyle Walls
Clinton Fyffe
Dan Hagood
Lon M. Davis Jr.
T. P. Collins
C. N. Battey
Henry Willis
C. W. Burton
D. S. Battey
Mrs. Dorris Jones
R. G. Dunlap
John Reue

Floyd County Citizens . . .
A Vote **FOR** Modern
Highways On November 5
Is A Vote **FOR** Floyd
County Progress

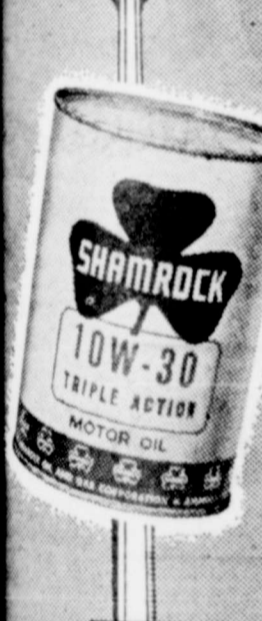
WE SPEND: \$294,000.00

WE RECEIVE: OVER ONE AND A HALF MILLION DOLLARS
SPENT IN FLOYD COUNTY ON

New Ford Features
Changes And Eff
The new 1958 Ford, to be
displayed at "Whitey" Bacc
Company here, ne
Monday, November 7th, fe
major style changes, th
efficient engines in hi
a new automatic tran
and new optional a
according to a
Division general mana
At a cost of \$185,000,000 v
developed a new Fo
incorporates some of th
extensive changes ev
in the car." Mr. Wrig
Historically, auto compa
made basic changes
ours every three years
ted out.
But in its 1958 models, Fo
actually created fund
mental design and engineeri
changes just one year after



SHAMROCK'S 10 W-30
MOTOR OIL FLOWS
FREELY IN A COLD
ENGINE . . . SAVES
YOUR BATTERY, PRE-
VENTS ENGINE WEAR
... YET GIVES FULL
PROTECTION AT
HIGHEST OPERATING
TEMPERATURES



QUALITY YOU CAN
MEASURE BY YOUR
CAR'S PERFORMANCE

See us for
SHAMROCK
GASOLINE and
OILS
You'll like these
Products — and
you'll like our
service.
Jackson Tire
Company
Dial OL 4-3366 Local

New Ford Features Major Style Changes And Efficient Engines

The new 1958 Ford, to be displayed at "Whitey" Baccus Motor Company here next Thursday, November 7th, features major style changes, the most efficient engines in his line, a new automatic transmission and new optional air suspension, according to announcement by J. O. Wright, Division general manager.

At a cost of \$185,000,000 we developed a new Ford which incorporates some of the most extensive changes ever made in the car," Mr. Wright said.

Historically, auto companies have made basic changes in their cars every three years, he pointed out.

But in its 1958 models, Ford actually created fundamental design and engineering changes just one year after its

completely new 1957 model," he said.

Demonstrating this change are twenty-one models on two separate wheel-bases; the Fairlane and Fairlane 500, with an overall length of 207 inches, and the Custom, Custom 300 and the station wagon, measuring 202 inches.

The new distinctive styling is emphasized in a front view of the massive wrap-around one-piece bumper with anodized aluminum "jet intake" grille, dual headlights, and Power Flow hood. New sheet metal treatment incorporates redesigned front fenders, new roof with seven front-to-rear flutes or grooves, and trunk lid and rear quarter panel innovations. From the rear, the 1958 Ford is distinctive with a "V" sculptured trunk lid flaring into twin safety oval taillights.

Ford introduces the newest and most modern V-8 overhead valve engines in its 1958 line — the 332 and 352 cubic inch displacement engines.

The new 332 cubic inch engine, which will be standard on the Fairlane, Fairlane 500 and station wagon series, is available as an extra cost option in the Custom and Custom 300 series. The 352 cubic inch engine is an extra high performance option on the Fairlane, Fairlane 500 and the station wagon series. The economical "Mileage Maker" six is available for most models and



SWEEPING STYLE CHANGES are evident in the 1958 Fords. These new models will be on display at "Whitey" Baccus Motor Co. showrooms here on Thursday, November 7th. At right is the Fairlane 500 Town Victoria and at left the Fairlane Club Victoria.

the 292 cubic inch V-8 engine is standard on the Custom and Custom 300 series.

Cruise-O-Matic, an automatic transmission combining instantaneous "solid" response with nearly imperceptible up-shift. It is new for 1958. Coupled with the four-Venturi 332 and 352 cubic inch engines and a low rear axle ratio, Cruise-O-Matic provides a new power train that combines overdrive economy with automatic transmission convenience, first such combination in the industry. The new transmission introduces a new drive position for solid feel take-off or all-out acceleration through all three gear ranges. An improved Fordomatic transmission also is available.

Also new will be air suspension, optional for Ford Fairlane, Fairlane 500's and station wagons with V-8 engines and automatic transmissions in 1958.

Ford also continues its policy of improving safety packaging for driver and passengers, which it pioneered in its 1956 models. The deep center steering wheel, shatter-proof rear view mirror and safety door locks, standard in all models, and the optional seat belts and padded instrument panel and sun visors all have been improved for 1958.

Exterior trim and interior fabrics and color treatments will be new for 1958 as will distinctive two-tone combinations of new colors. Optional equipment includes a full line of power assists, two models of transistorized radios, two models of air conditioning units, and two types of heaters.

In one year the U. S. output of chocolate candy alone totaled more than 297 million pounds.

Sterley News

By Mrs. Virgil Adams (Delayed)

Mr. and Mrs. William Wood of Bentonville, Arkansas were guests Sunday and Sunday night of Mr. and Mrs. B. A. Howell.

Little Dwan Wright, son of Mr. and Mrs. Charley Wright underwent surgery at John Sealy Hospital, Galveston, Tuesday, October 22. He will remain in the hospital 10 days and remain another 10 days in Galveston for treatment. Latest report is that he came through the operation fine. We hope he continues to improve.

Mr. and Mrs. John Kerns are proud parents of a baby girl born in a Plainview hospital. Baby weighed 6 lbs., 2 ozs., and has been named Linda Kay. Mother and daughter came home Monday.

Mr. and Mrs. W. B. Mullin attended funeral rites for a friend, Mrs. Ella Lee of Idalou Tuesday.

Eldora Boone of North Texas State College, Denton, spent last weekend with her parents, Mr. and Mrs. M. A. Boone.

Nancy Henderson, daughter of Mr. and Mrs. C. L. Henderson was honored with a birthday party at her home Thursday, Oct. 10 at 4 o'clock. The honoree is three years old. Birthday cake, ice cream and pink lemonade were served to Janet McCormick, Susan Bobbitt, Danny Smith, Julia Henderson, Tomy Deborah, Ginger Nance, Richard Rogers of Plainview

and Dianne Smith, Los Angeles, California.

Huey Davidson and Paul of Prescott, Arkansas, were recent visitors of this community. They the former residents.

TRY BEACON CLASSIFIEDS.

Providence

By Mrs. Wilfred Stoerner (Delayed)

Many of the people in the community and adjoining communities enjoyed a barbecue at the new Tomlin and Flamin Gin in the Providence community. Two hundred were served Thursday night at the gin when open house was held.

Many in the community have been hit by the flu bug. Families we know of are the Helmut Quebe family, Albert Scheele family and Gladys Matthews.

Rev. and Mrs. Windecker and family returned from San Antonio, Texas, where Mrs. Windecker's mother underwent serious surgery. We wish for her a speedy recovery.

At a recent meeting of the Candle Light Circle new officers elected were president, Mrs. Ted Boedecker; vice president, Mrs. A. D. Schaffner; Treasurer, Mrs. Ben Quebe;

secretary, Mrs. Wilfred Stoerner.

Shorty MaGaugh and family of this community have moved to Amarillo where he will work as a plumber's helper with his brother.



Plains Floral Shop
Phone OL 4-2385

If your wife wants to learn to drive the car, don't stand in her way.

WE SELL

U. S. and STAPLETON TURBINE PUMPS

We service ALL makes of Pumps.
We drill and repair irrigation and house wells.

We keep a large stock of all sizes Bolts, V-Belts, Shovels, Hoes, Rakes and other Hand Tools.

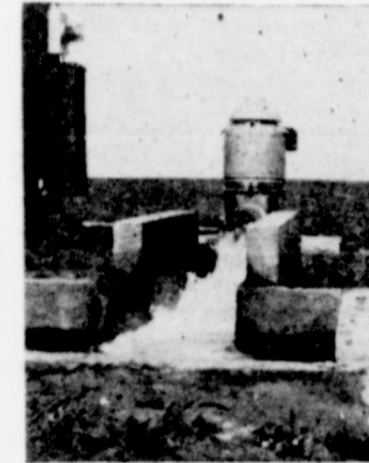
"DON'T LET WELL TROUBLE TROUBLE YOU—CALL US."

Handley Shop & Pump Co.

JOE HANDLEY, Prop.

Dial OL 4-2265

Night Phone OL 4-3868



SHAMROCK'S 10W-30 MOTOR OIL FLOWS FREELY IN A COLD ENGINE... SAVES YOUR BATTERY, PREVENTS ENGINE WEAR



...YET GIVES FULL PROTECTION AT HIGHEST OPERATING TEMPERATURES



SEE YOUR DEALER



QUALITY YOU CAN MEASURE BY YOUR CAR'S PERFORMANCE

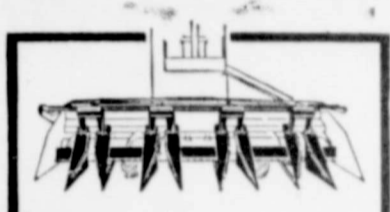
See us for SHAMROCK GASOLINE and OILS

You'll like these Products — and you'll like our service.

Jackson Tire Company

Dial OL 4-3366 Lockney

HESSTON ROW CROP SAVER



SAVE UP TO 80%

BRAND NEW PRINCIPLE picks up to 80% down maize — by actual field tests! For harvesting maize and other row crops. No reel "slobber" or shattered heads. Fits most combines.



SEE YOUR DEALER

Tye & Ansley Oliver Company

Phone OL 4-3597 Hwy. 70

We Are Ready to Take Care of Your PLUMBING PROBLEMS
Large or small

Our goal is to help build and maintain a more sanitary and healthful community. When we can help you call

Day OL 4-2451
Night OL 4-3181

We invite you to come in and get acquainted.

MUSSER'S PLUMBING SHOP
Ambulance Service for Sick Plumbing

GENERAL AUCTIONEERING

Would appreciate your business.

TOM WORD
Phone OL 4-3761, Lockney

or see me at my home in the Lone Star community.

Kimble Optometric Clinic
8:30 to 5:30 Monday through Saturday
Appointment Not Necessary but for your Convenience
Dial YUKON 3-2496, Floydada

58 FORD COMING NOV. 7 Nothing newer

AROUND THE WORLD



The 58 Ford has been proved around the world. This is the most dramatic and most grueling test ever given a new car before its public announcement.

The whole world was used as a test track for the 58 Ford. The car drove through England, France, Switzerland, Italy, Yugoslavia, Greece, Turkey, Iran, Afghanistan, Pakistan, India, Malaya, Thailand, Cambodia, Vietnam, and finally back to the place it started—Detroit, Michigan, U.S.A.

The Ford powered over the great mountain ranges of three continents: from the Alps to the Himalayas and the Rockies. It crossed the great rivers of history: the Thames, the Seine, the Tiber, the Arno, the Tigris, the Euphrates, the Indus, the Ganges.

This car stood at Buckingham Palace, rolled up the Champs Elysees to the Arc de Triomphe, and paused at the Eiffel Tower. It was greeted by the great Paris couturiers at the famous fashion salons where its "sculptured in steel" styling was applauded by the most style-conscious audience in the world.

The 58 Ford rode smoothly down the rugged, beautiful seacoast of Tito's country, to a festival in Dubrovnik, and into Greece to Athens, where this newest classic met such ancient classics as the Parthenon and the Temple of Poseidon.

Into Turkey; and the 58 Ford passed the great white lacework palaces of the Sultans along the Bosphorus and the Golden Horn. Then the Ford went where few but nomads travel, up into the hot days and chill nights of the ancient mountains of Afghanistan. And thence along the route Alexander the Great followed with his chariots to cross the historic Indus river.

On and on the Ford moved, down into the heat of mysterious India, through New Delhi to the Taj Mahal, and to the great pink palace of the Maharajah of Jaipur.

This great new car met the challenge of the monsoons—rains that for centuries have stopped all road movement throughout Indo-China, but didn't stop the 58 Ford. It drove on to Penang in Malaya, and then north to Bangkok.

Further on came Saigon, the Paris of the Orient, at the farthest tip of Southeast Asia. Finally, it powered across the great Rockies and plains of North America and back, at long last, to Detroit, Michigan.

The 58 Ford... has been proved and approved around the world. A natural question arises. Why did Ford go to such great lengths with its 1958 model? Why spend so much money and time and go through all the problems of negotiations, customs, border transit, diplomacy in so many countries?

The answer: in the competitive automobile market of today, only the best in all-around value can survive. And this round-the-world test is the most decisive possible demonstration of the best.

The 1958 Ford is value: hard-dollar value. It is also style, power, performance, and a dozen great new features. But above all, it is value.

This is the car you've been waiting for. See it November 7—there's nothing newer in the world than the 58 Ford!

proved and approved around the world **58 FORD**

"WHITEY" BACCUS MOTOR COMPANY
YOUR AUTHORIZED FORD DEALER

Dial 3395

Lockney

Newcomers Club Entertains B&PW

Lockney New Comers Club entertained the B&PW Club with a party Monday night in the home of Mrs. Troy Lemley. Refreshments were served to Mes. M. E. Shipp, Wayne Bybee, Raymond Rhodes, Gerald Sams, R. L. Knox, C. E. Blair, Earl Minter, Marvin Cox, Jesse Cox, L. K. Sherman, Raymond Meriwether, Raymond Smith, Wilson Kermickel, Jimmy Stennett, Floyd Neal, Claude Holley, A. J. Jester, Dick Whiteley and Carroll Minor.

ARE WED HERE

Miss Sue Cannon of Plainview and William Johnson, Plainview were united in marriage Wednesday, October 16, in the home of Paul Epps, minister of Main Street Church of Christ, Lockney.

Aiken "66" Station

Washing and Greasing
GAS and OIL
TIRES AND TUBES
We Fix FLATS
Come to see us!
GEORGE THOMPSON,
Mgr.

Eastern Star Schedules Dinner

Lockney Chapter of Eastern Star will have a dinner at the Masonic Hall next Monday night at 6 o'clock in honor of Mrs. E. M. Quebe who was recently appointed Deputy Grand Matron. The dinner precedes a regular meeting scheduled for 7:30. All members are urged to attend.

School Menu

November 4-8
Monday — Pimento cheese sandwich, vegetable soup, potato chips, pickle sticks, crackers, milk, peanut butter cookies.
Tuesday — Baked Spaghetti and ham with cheese, green beans, pineapple jello salad, w. w. muffins, butter, milk, cherry cobbler.
Wednesday — Chiliburger on bun, baked potato with cheese, milk, carrot and coconut salad, cracker and peanut butter, peach pie.
Thursday — Fish stick, tartar sauce, blackeyed peas, pear salad with cheese, milk, hot rolls, butter, jelly.
Friday — Roast beef with gravy, creamed potatoes, buttered carrots, lettuce wedge, milk, w. w. rolls, butter, mixed fruit.
English cities are generally called boroughs.

Lockney General Hospital News

November 23 - 30
Mrs. Marcia Meriwether, Lockney, continues to receive medical care.
Mrs. Zeb Reed, Lockney, continues to receive medical care.
Mrs. Mildred Sandlin, Lockney, continues to receive orthopedic care.
Mr. Floyd Reagan, Lockney, continues to receive medical care.
Mrs. Jack Dollar, Lockney, continues to receive medical care.
Miss Brenda Cornett, Silverton, was dismissed 10-24 following medical care.
Mrs. Shirley Reagan, Lockney, was dismissed 10-28 following surgical care.
Mrs. Travis Maynard, Silverton, was dismissed 10-25 following medical care.
Mr. Salome Gonzales was dismissed 10-24 following medical care.
Miss Peggy Young, Floydada, was dismissed 10-28 following medical care.
Mr. R. E. Young, Floydada, was dismissed 10-28 following medical care.
Mr. Geronimo Ramirez was dismissed 10-26 following medical care.
Mr. Yeario Murillo was admitted 10-23 for medical care and was dismissed 10-25.
Mr. T. L. Tiffin, Quitaque, was admitted 10-24 for medical care and was dismissed 10-29.
Miss Judy Elliott, Lockney, was admitted 10-27 for medical care and was dismissed 10-29.

Mrs. Ben Whitfill, Silverton, was admitted 10-27 for surgical care and was dismissed 10-29.
Mrs. J. E. Starkey, Floydada, was admitted 10-28 for medical care.
Mr. Manuel Gomez was admitted 10-28 for medical care.
Miss Joyce White, Floydada, was admitted 10-28 for medical care.
Mrs. Verna Newton, Lockney, was admitted 10-29 for medical care.
Mrs. Cleon Wylie, Lockney, was admitted 10-28 for medical care.
New Arrivals
Mr. and Mrs. Arturo Mata, Lockney, are the parents of a baby girl born 10-24. She weighed 6 lbs. 6 ozs. and was named Elma Perez.
Mr. and Mrs. Juan Contreras, Plainview, are the parents of a baby boy born 10-24. He weighed 8 lbs. 15 ozs. and was named Antonio.
Mr. and Mrs. Sandy Juarez, Lockney, are the parents of a baby boy born 10-25. He weighed 8 lbs. 4 ozs. and was named Mike.
Mr. and Mrs. David Joe Lambert, Plainview, are the parents of a baby girl born 10-26. She weighed 6 lbs. 8 ozs. and was named Jacquelyn.
Mr. and Mrs. Pat Nuncio, Lockney, are the parents of a baby boy born 10-25. He weighed 5 lbs. 8 ozs. and was named Juan Guadalupe.
Mr. and Mrs. Wilbur Adams, Lockney, are the parents of a baby girl born 10-27. She weighed 8 lbs. 1 ozs. and was named Sonja Ladean.

Medical-Surgical Hospital News

Mrs. Ray Pinner, Bentonville, Ark., was dismissed 10-27 after major surgery.
Frank Yeary, Rt. 1, Silverton, continues to receive medical care but is doing nicely.
Miss Emma Waller, Lockney, continues to receive medical care.
Tollie Jones, Plainview, continues to receive medical care.
Ben Reece, Lockney, was admitted 10-28.
Felipe Richarda Tamez, surgery patient, was dismissed 10-23.
Gloria Martinez, Rt. M, Lockney, was admitted 10-24 for medical care and dismissed 10-27.
Mrs. Josephine Sanchez, Lockney, was admitted 10-24 and dismissed 10-25.
Mrs. Cecil Collins, Lockney, was admitted 10-24 and dismissed 10-25.
Mrs. Fay Pinner, Dimmitt, was admitted for medical care 10-25 and dismissed 10-27.
Albert Stewart, South Plains, was admitted 10-26, dismissed 10-27, and readmitted 10-29.
Israel Rocha, Lockney, was admitted 10-27 for medical care and dismissed 10-29.
T. T. Threet, Lockney, was admitted 10-29 for medical care.
Mrs. M. D. Conklin, Lockney, was admitted for medical care.
Mrs. Alice Baker, Lockney, was dismissed 10-25 after several days medical care.

Births
Born to Mr. and Mrs. Joe Garza, Silverton, are the parents of a daughter born 10-20 and weighing 5 lbs. 15 ozs. She was named Cirilda.
Born to Mr. and Mrs. David O. Campos, Rt. 2, Lockney, on 10-21 a daughter weighing 6 lbs. 4 ozs. and named Elvia.
Born to Mr. and Mrs. Arvel Gwen Boling, Lockney, on 10-24 a son weighing 7 lbs. 8 ozs. and named Arvel Gwen Boling Jr. Maternal grandparents are Mr. and Mrs. E. T. Thurman, Lockney.
Born to Mr. and Mrs. Damacio Gonzales on 10-26 a son weighing 6 lbs. 12 ozs. and named Juan Ozziel.
Born to Mr. and Mrs. Florentino Patina, Rt. 1, Plainview, on 10-27 a daughter weighing 6 lbs. 11 ozs. and named Felipa Patina.

Sterley H. D. Club To Meet Thursday

The Sterley Home Demonstration Club will meet Thursday of next week, November 7th, at the home of Mrs. R. H. Tinsley at 2:30 p. m. Mrs. Nancy Morckel, home economist for the Lighthouse Electric will present a demonstration on candy, cookies and cakes. Every member is urged to be present.
Chowchow is a Chinese or yiddin English word meaning chopped or broken and mixed.
Only the male cicada is capable of making a noise.

Sterley News

By Mrs. Virgil Adams
Sterley HD Club members make planters. Mrs. Ben Reed, Lockney, gave the demonstration.
Mrs. Elmo Schaffner, Brownie Troop 2 with leaders, Mrs. L. B. Brand, Mrs. Raymond Smith and Mrs. Brownies and guests at Chocolate cake, orange sherbet and candy were served.
Mr. and Mrs. M. A. Eldora spent last week visiting the M. L. Boone family in Childress. Mrs. Boone has been ill about two weeks, but is improved.
Mrs. Ben Korns, consultant in Lubbock Friday will have an operation on mouth Tuesday in Lubbock.
Mr. and Mrs. Jack Kerp, Kay, born Oct. 18 in Plainview. Grandparents are Mr. and Mrs. Ben Korns and Mr. and Mrs. Raymond Warren, Sterley.

FOR SALE
WHOLESALE BEEHIVES
Ready for Lockney government grade
RALPH MCGHEE
Phone OL 4-3428



Load up neighbor, during our big DEL MONTE ROUND-UP

Pineapple	Del-Monte No. 2 Can Crushed	25c
Peaches	Del-Monte No. 2 1/2 Cans 3 for	\$1.00
PEAS	Del-Monte 303 Cans 4 for	89c
CORN	Del-Monte Whole Kernel 303 Cans—7 for	\$1.00
FRUIT COCKTAIL	Del-Monte 303 Cans 2 for	45c
KETCHUP	Del-Monte 14 oz. bottle	20c
FLOUR, Kimbells, 25 lbs.		\$1.69
BATH ROOM TISSUE, 4 rolls		29c
SUGAR, 10 lbs.		99c
CHILI, No. 2 cans, 2 for		99c
WOODBURY LOTION	\$1.00 SIZE	50c
EXTRA FANCY APPLES, Delicious, lb.		15c
BANANAS, lb.		12 1/2c
ORANGES, 5 lb. bag		37c
BACON, Roundup Sliced, 2 lbs.		79c
OLEO, Kimbells, 5 lbs.		\$1.00

Double Stamps Every Tuesday with \$2.50 Cash Purchase
PYLANT'S GROCERY AND MARKET
Call for Pylant's Trading Stamps at Lena Fae Store and Pylant's Grocery

USE THE
For Sale
SALE — New springs mattress, also used springs mattress, 24-inch kitchen beaters, one gas, one electric and one coal; small cook and one coal; Dial OL Mrs. T. B. Hill, Dial OL 30-1tc
SALE — Hair cuts and see Howard McClendon, Buster Epperson for the work in town, at Buster's Shop.
PIANO BARGAIN
Spinet Piano to reliable size. Small payments. Family size, full keyboard. Immediate disposal desired. Write Grand Piano Music Co., 722 W. Grand, Oklahoma City, Okla.
or call us for Christmas and Fruit Cakes. We will try to serve you. Senior
SALE — Floor furnace size Mrs. W. A. Taylor, at Drug.
SALE — 18-inch two row tandem, 7-foot Harris combine with roller-planter for Ford knife attachment, 120 h p. motor, well motor, Jame phone OL 4-3681.
TRADE — Our equity 2-bedroom home at Plainview for a lot or equity in west Lockney. Jimmie contact, dial OL 4-2252. 28-1tc
SALE — Manure spreader for livestock scales. Do Baker.
SALE — Drive wa See C. W. Starkey, west, 1/2 mile south of 28-41
SALE — By owner, nice home south of Hig. Immediate possession. Contact Martin Anderson, OL 4-2322. 28-5
SALE — 5-bedroom brick home. Call OL 4-2225. 25-4tp-t
IRIGATED FARMLAND
MER & BAILEY COUNTY
of water — Productive land.
to suit the most selective buyers.
WAGNESS REAL ESTATE
Phone 8-62
Farwell, Texas 26-1
For Sale
Seed Wheat
Several good local varieties.
Seed Oats
Alfalfa Seed
Vetch Seed
Austrian Winter Peas
Baxter & Smith Grain Co.
OL 4-3377 Lockney
SALE — Storm Wind doors, Humphrey tensile, Rusco or Willis, A Kraft awnings. We them L. L. Reece, Ph 4-2292.
SALE — Town lots in Lockney, excellent for large lots. Have some unpaved. E. Hollans, Arthur Abstract Co., Floyd 20
SALES — I bake and de for all occasions. I La Rowell, phone 3303. 4
SALE — One 14-ft with trailer. Also sr mixer and wheel J. H. Cooper Agency. 9
SALE — Knapp B tented area-tred cushion sole shoes. For comfort and style. With or w catch support for men, 1 2 ladies. H. P. Coleman, Box. Phone 3834, Lock 9.
KEYS MADE — One mi Fowler Hardware. 13
See me for
Washed Sand and Gravel
Delivered to your job
C. L. CALLOWAY
Phone 2224 Lock

USE THE WANT ADS

For Sale
 For Sale — New springs mattress, also used springs mattress, 24-inch kitchen heaters, one gas, one electric, one coal; small cook and one coal; Dial OL Mrs. T. B. Hill, Dial OL 30-1tc

For Sale
 For Sale — Hair cuts and manicures. See Howard McClendon at Buster Eperson for the work in town, at Buster's shop. 30-1tc

NET PIANO BARGAIN
 Spinet Piano to reliable. Small payments. Family, full keyboard. Immediate disposal desired. Write to Music Co., 722 W. Main St., Okla. 11p

For Sale
 For call us for Christmas Fruit Cakes. We will deliver to your door. Senior 25-tc

For Sale
 For Sale — Floor furnace, gas. Mrs. W. A. Taylor, at Drug. 29-2tc

For Sale
 For Sale — 18-inch two-wheelboard plow for Ford 2-row tandem, 7-foot Harris combine with 12-horse planter for Ford, knife attachment, 120 h.p. gas engine well motor. James Hill, phone OL 4-3681. 29-tfc

TRADE
 Our equity 2-bedroom home at Plainview for a lot or equity in west Lockney. Jimmie Hill, dial OL 4-2252. 28-tfc

For Sale
 For Sale — Manure spreader for livestock scales. Dor Baker. 28-4tc

For Sale
 For Sale — Drive way. See C. W. Starkey, 2 West, 1/2 mile south of town. 28-4tc

For Sale
 For Sale — By owner, nice home. Extra large 1/2 blocks south of High St. Immediate possession. Contact Marlin Anderson, OL 4-2322. 28-5tc

For Sale
 For Sale — 5-bedroom brick home. Call OL 4-2225. 25-4tp-tfc

IRIGATED FARMLAND
 BAKER & BAILEY COUNTIES. Irrigated water — Productive land. Best to suit the most select buyers. MAGNESS REAL ESTATE. Phone 8-6298. Farwell, Texas. 26-tfc

For Rent
 FOR RENT — Unfurnished apartment, 3 rooms and bath. Mrs. S. H. Logan, phone OL 4-2358. 30-2tc

For Rent
 FOR RENT — Furnished room with private bath. Mrs. J. B. Allen, dial OL 4-2208. 29-tfc

For Rent
 FOR RENT — 3-rooms and bath. Mrs. T. J. Jarboe. 23-tfc

For Rent
 FOR RENT — Nice office space. J. H. Cooper Insurance, Lockney. Dial 4-2131. 22-tfc

Lost and Found
 LOST — 5-months-old black cocker spaniel. Registered. Named Skipper. Disappeared Sunday night from our home. Donice Casey. 27-tfc

Keystone-Fleming Gets Safety Award
 National honors for outstanding driver safety performance were won by the Keystone-Fleming as a result of participation in the 26th annual National Fleet Safety Contest conducted by the National Safety Council.

The KeyStone-Fleming fleet of 19 vehicles and 17 drivers was awarded 2nd place in the Petroleum division of the contest at ceremonies in the La Salle Hotel in Chicago, October 24.

The award was based on the company's performance from July, 1956, through June, 1957, a period during which it operated 408,892 miles and achieved the outstanding accident rate of only 244 accidents per 100,000 miles of operation.

Under contest rules, all accidents except those occurring when the company vehicle is properly parked, must be counted. Before winners are finally determined, their records are personally inspected by an auditor appointed by the National Safety Council.

Winners were also honored at a Victory Luncheon sponsored by General Motors Corporation in the hotel's grand ballroom. Principal speaker was the Rev. Dr. Carl S. Winters, minister for the First Baptist Church, Oak Park, Illinois, and a nationally known lecturer.

More than 2,000 fleets operating in excess of 237,000 vehicles and travelling 5,078,743,000 miles competed in the contest, largest of its kind in the world. The combined average rate of 1.51 accidents per 100,000 vehicle miles — down 4 per cent over the previous year, was achieved despite an increase of half a billion vehicle miles. Contestants experienced 200 fewer accidents along with the increase in mileage to produce the rate reduction.

FOR SALE:
 A few brand new No. 16 John Deere Cotton Harvesters

Also—
 A few used No. 15 John Deere Cotton Strippers

One self-propelled Oliver Stripper

A few John Deere Trailer Chassis with springs

Heavy duty 8 and 10-foot John Deere Tandems with or without wheel carriers

Lockney Implement Company
 Dial OL 4-3825 Lockney

COTTON & GRAIN HARVEST SUPPLIES
 Hot plates, oil stoves, rollers, cotton scales, belting, and webbing, taps, bolts and rivets, pots and pans. 25-2tc. FOWLER HARDWARE CO.

FINISH HIGH SCHOOL
 or grade school at home spare time. Books furnished. Diploma awarded. Start where you left school. Write Columbia School, Box 5061, Lubbock, 23-52tc.

LET ME put down your Anhydrous Ammonia. Call 3746 after 7 p. m. J. W. Smith. 42-tfc

ALUMA - KRAFT AWNINGS. Humphreys tension - sealed storm windows and doors. Cyclone fence. See L. L. Reece, phone 2262 or 2277. 2-tfc.

Wanted
 WE WANT your farm listings. Also need listings on houses and lots in Lockney. Bob Miller Insurance Agency, phone OL 4-3329. 30-4tc.

REPRESENTATIVE for Avon Cosmetics for Sterley, Lone Star and South Plains. Mrs. Emmett Tierce, Phone OL 4-3545. 29-2tp

WANTED — Ironing to do in my home. Short-sleeved shirts, 10c; long-sleeved shirts, pants and dresses, 15c. Call OL 4-3324. 21-tfc.

NOTICE — Portable disc rolling. Call Weldon Graves, dial 3483, Lockney. 43-tfc.

WANTED TO BUY — 500 and 1000 gallon propane tanks. Flash-O-Gas, Lockney. Phone OL 4-2331. 29-tfc.

INCLUDE in your "fall cleaning" your Rugs and Upholstery. Call Miller Rug Cleaning Service collect. Phone CA 4-7470, Plainview. Free estimates. Bonded and insured. 25-tfc.

Buy It—Sell It PHILLIPS PLAINVIEW AUCTION
 608 East 5th St. Saturday, 8 P. M.

I. O. O. F. LODGE NO. 93
 Lockney, Texas
 Meets each Thursday at 8 p. m. TRUETT BILBREY, N. G.

Mahon Says Rivalry Between Services Has Slowed Missiles

Congressman George Mahon, speaking to the Lockney Rotary Club last Friday, said that rivalry between the branches of the armed forces had slowed down the development of a long range ballistic missile and that Russia had gained ground on the United States in the arms race, partially because of that condition.

"We are stronger in some phases of warfare than Russia," he said "but they are stronger in others than we are."

The next war will be largely fought with missiles, the Congressman said, and the branch of service that gets the long-range missile developed, will naturally be the predominant branch. That is the reason for the intense rivalry between services, he said.

The Army has been ordered not to work on a missile with more than 200 miles range, and for that reason morale in higher echelons of the Army is very low. They wonder about the future of their branch of service.

The Air Force is trying to develop a missile with a 1500 mile range using industrial plants for production. All three branches, the Army, Navy and Air Force, are fighting each other and even working against each other in the development of the missile, he said.

The President must take command of the situation if order is to come out of the present chaotic situation, Mr. Mahon said.

Turning to the defense budget, Congressman Mahon said that they had cut the budget two billion dollars, because they felt that the job of building up the defense of the nation could be done with that amount. "We feel the job can be done better and with less money," Mahon said. "Some people have the idea that the solution to every problem is to appropriate more money but we don't think so."

He said that Congress gave the armed forces 36 billion dollars this year and that they had 34 billions left from previous appropriations. The Administration has slowed defense spending and is trying to stay within the budget.

"It would embarrass the President to have to ask for an increase in the debt limit," Mr. Mahon said.

Turning to the segregation issue, Mahon said that the use of federal troops at Little Rock was a very unfortunate thing indeed. He favored freedom of the local authorities to work out solutions to the problem he said.

Speaking of the farm problem, Mr. Mahon said that the soil bank is not getting the job done in the reduction of surpluses. "We subsidize the laboring man and industry and it seems only right that we should also help the farmer," Mahon said. "But the soil bank is not very beneficial and is more or less a racket," he said.

Mahon criticized Secretary of Agriculture Benson for putting the farmer in a bad light. "Mr. Benson has been crusading against the farmer and has convinced some people that the farmer is a racketeer," he said.

In talking of the national budget Mr. Mahon said that it was difficult to keep it in check because of the desires of the Administration to tack on new aid bills. "Take federal aid to education," he said. "Mr. Eisenhower says that it will be only a temporary measure, but no one in Washington ever heard of a program that was temporary. We have had to keep the Korean War emergency taxes in effect in order to keep the bud-

Joel B. McCray In Firing Tests

Fort Baker, Calif. — Army PFC Joel B. McCray, son of Mr. and Mrs. Lloyd P. McCray, Route 1, Floydada, recently took part in annual firing tests with the 9th Antiaircraft Artillery Battalion at the Red Canyon Firing Range in New Mexico.

McCray is regularly assigned to the battalion's Battery C, San Rafael, Calif.

The 18-year-old soldier entered the Army in May 1956 and received basic training at Fort Bliss, Tex. He attended Lockney High School.

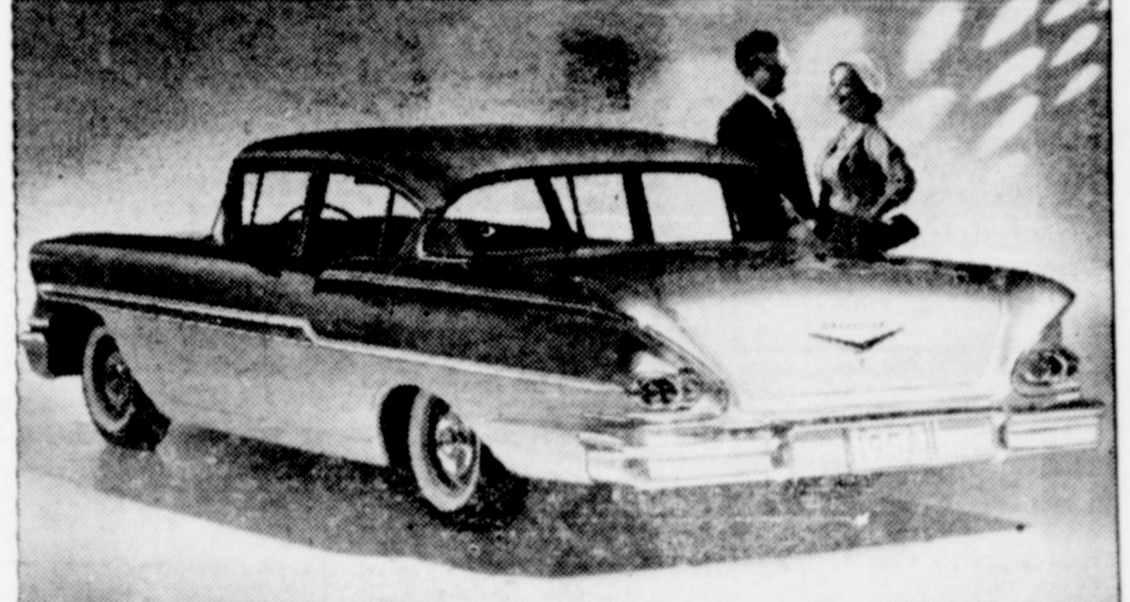
Economically, the coconut palm is one of the most important trees in the world.

The United States has 45 per cent of the total coal reserves of the world.

Mr. and Mrs. M. D. Lynn returned home Monday after a ten-day visit with Mr. Lynn's daughter, Mrs. A. D. Wilson and family and his son, J. B. Lynn and family of Los Alamos, New Mexico. They also visited in Santa Fe and Grants before returning home.

Individualized
 Cosmetic Service
Luzier's Fine Cosmetics and Perfumes
 Distributed by:
MRS. JESSIE TYE
 Route 2, Lockney
 Phone CA 4-2013, Plainview
 Phone OL 4-3597, Lockney

YOU ARE INVITED . . . to see the BEAUTIFUL NEW CHEVROLET



On display in our showrooms
TODAY — THURSDAY, OCTOBER 31
 and all this week end.

FREE COFFEE and DOUGHNUTS
 Perfume for the Ladies—Favors for the Kiddies

Everybody is invited to come in and see these beautiful new cars. We will have at least three models, perhaps four to show you. We want you to see the new Chevrolet.

Entertainment by the **SILVER BELLS**
 Loy O'Brien, Hope Cox, Gayle Rucker and Kay Golden

Lockney Auto Company
 Your Chevrolet Dealer
 Dial OL 4-3368 Lockney

Home Protection At A Very Low Cost!

Heavy aluminum combination storm and screen door with sliding panels, extra frame of aluminum to keep your door air tight when closed, pneumatic check and closer and heavy duty lock set. This door must be seen to realize its actual value.

We will install these doors up to three feet wide at our very special price of —

\$57.25

Why pay double this price for a door that is no better than the door we have to offer.

Red and Green TRAILER PAINT at \$2.95 per gallon.
 LINSEED OIL at \$2.39 per gallon.

Brunnier Lumber Company
 Your Home-Owned Lumber Yard
 Dial OL 4-3385 Lockney

USED CARS

We can save you money on good used cars. See these cars we have in stock now —

1955 Plymouth 4-door Sedan
 1950 Chevrolet 1/2 ton Pickup
 1955 Chevrolet 4-door Sedan
 1953 Mercury 2-door Sedan
 1957 Ford 2-door Sedan
 1953 Ford 2-door Sedan
 1952 Pontiac Catalina
 1950 Oldsmobile 2-door Sedan

See us for new 1958 PLYMOUTHs.

HARRIS MOTOR COMPANY
 E. R. HARRIS Phone OL 4-3371 REVIS HARRIS
 Plains Hotel Building

See me for Washed Sand and Gravel
 Delivered to your job.
C. L. CALLOWAY
 Phone 2224 Lockney

New Chevrolet, On Display Today, Is Completely New, Dealers Say

The 1958 Chevrolet, on display today (Thursday) at Lockney Auto Company here and at dealer showrooms throughout the country, features dramatic new styling and outstanding engine advances. It has been labeled the "car of the year" by newsmen and technical writers who have attended private showings.

Also on public display for the first time will be the rakish 1958 Corvette and the latest in the Chevrolet truck line.

The 1958 Chevrolet is new from bumper-to-bumper and from frame to roof line. The all-new features include: A completely re-styled car

which is longer, lower and wider and emphasizes flowing sculptured lines from the dual headlamps to softly flared rear fenders.

An X-shaped frame which allows a lower silhouette but retains ample head room and increases leg room and luggage space.

Two suspension systems for a more luxurious ride along with remarkable handling, stability and durability. Sturdy coil springs, front and rear, are standard. A new "Level Air" system which automatically adjusts to all load weights is optional.

A 348-cubic inch engine which is new from fan to flywheel. Designed primarily around a new combustion chamber, the optional Turbo-Thrust V8 offers greater torque for improved mid-range performance.

Chassis-body design integration to supply exceptional structural strength and greater rigidity.

Forward-mounted steering linkage which provides more responsive action and reduces road vibration to the steering wheel.

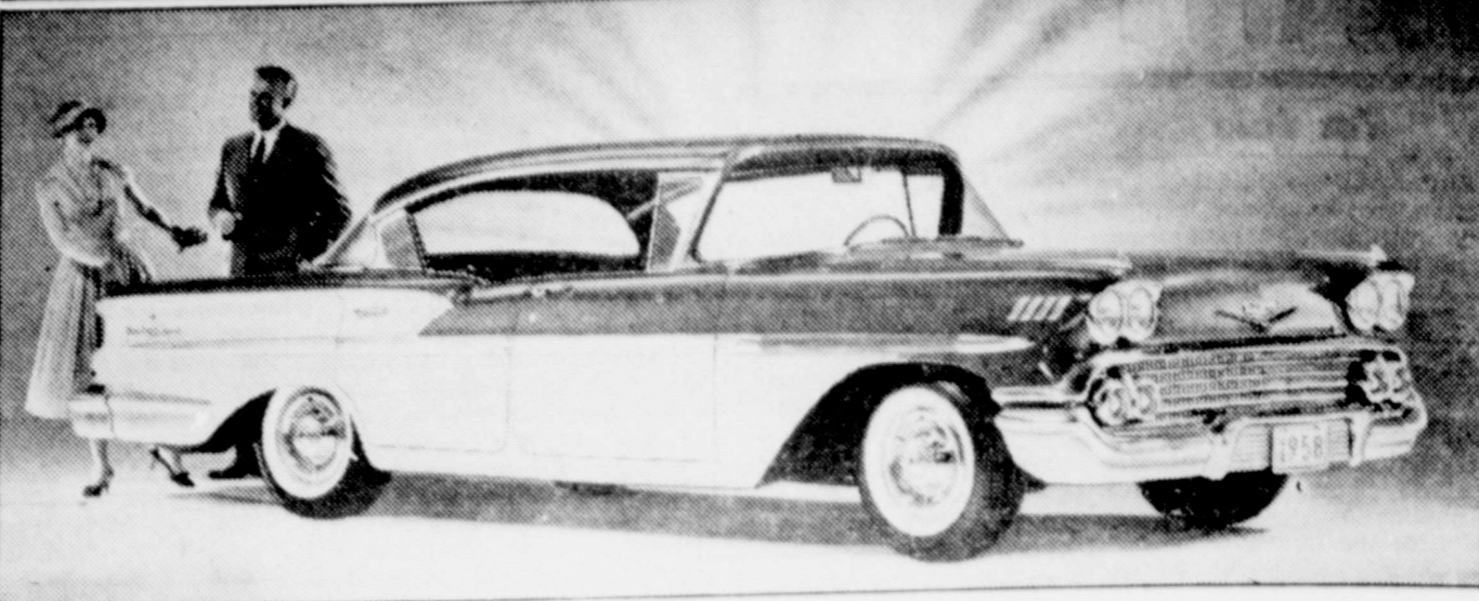
Some idea of the fresh newness of the Chevrolet line is suggested by the new body groupings and identification.

In recognition of the growing popularity of station wagons, an exclusive five-unit series of this body type has been established.

The Bel Air series is continued, but adds among its six models a sumptuous sport coupe and convertible under the Impala nameplate, introduced on a "dream car" at the General Motors Motorama in 1956.

In the middle range of the low-priced car bracket is a Biscayne series, with two sedans. The bottom end of the

LEAN, LOW LINES SPARK CHEVROLET BEAUTY



HERE IS the new Chevrolet Bel Air Sport Sedan. Several models of the 1958 Chevrolet will be on display at Lockney Auto Company showrooms here today (Thursday) and through the week end.

price spread will be occupied by three models making up the Delray series. In 1957 comparable series were known as Two-Ten and One-Fifty, respectively.

Over-all lengths have been extended a full nine inches to a new measurement of 209 inches. The wheelbase is up two and one-half inches to 117½. Roof lines have been lowered up to 2½ inches, yet design skill has retained ample passenger headroom.

Dual headlamps, a grille with grid concave ribs and a low, flat hood unbroken by ornamentation, distinguish the front view. Varied two-tone color patterns, a judicious use of chrome moldings and decorative panels give each series an

individuality. The rearward treatment also is unique. A voiding sharp fin protrusion, rear fender lines sweep outward from the body, then curl around the tail light ensemble to form a shape which stylists likened to a graceful gull-wing in flight.

Important in the broad gains along the mechanical front is the adoption of coil springs at the rear wheels as a standard fixture. Long a front-end feature on Chevrolets, the coils cushion shocks far better than previous suspension systems.

As optional equipment, the company additionally pioneers in its field a new "Level Air" suspension, employing for the first time rubber bellows at all four wheels. Through an

inter-connected air supply and exhaust system with leveling valves, this suspension assures precisely the same resistance to shock regardless of car load.

The new Turbo-Thrust engine is still another highspot that illustrates the magnitude of the engineering job behind the 1958 Chevrolets. Predominant is a completely new combustion chamber design which assures uniform combustion.

The new engine is one of five V8's and a six-cylinder carried in the new line. Ramjet fuel injection which Chevrolet introduced last year, is again offered as an option on the 283 cubic inch V8. Automatic Turboglide, Powerglide, an improved three-speed Synchro-Mesh and the overdrive are a-

gain available.

Here is the body lineup of 1958 Chevrolet passenger cars:

Station Wagons — Nomad (4-door, six passenger), Brookwood (4-door six and nine-passengers), Yeoman (2 and 4-door six passengers).

Bel Air — Impala (convertible and sport coupe), 2-door sport coupe, 4-door sport sedan, 2-door sedan.

Biscayne — 2-door sedan, 4-door sedan.
Delray — 2-door sedan, 4-door sedan, 2-door utility sedan.

Neither House of Congress can adjourn during a session for more than three days without the consent of the other.

BENEFITS OF LAND BANK LOAN

Low costs, long terms, doing business with home folks, sound lending policies. See or write—

FLOYDADA N. F. L. A.
319 S. Main Phone YU 3-2480
Jake B. Watson, Sec.-Treas.

ROY BELK
CONTRACTOR

Interior and Exterior Painting

House Levelling

Phone CA 4-6401
1602 West 16th Street
Plainview, Texas

John B. Stapleton
LAWYER

General Practice of Civil Law

Courthouse Floydada
Telephone No. 14

42 Years of Land Title Service

FLOYD COUNTY ABSTRACT CO.
Stovall Building
217 W. California St.
Phone YUkon 3-3304
Floydada, Texas

USE ANHYDROUS AMMONIA

on your crop land this fall

Apply ANHYDROUS AMMONIA this fall—it won't leach out of the soil. It will turn to available nitrogen in the spring when the soil warms up—in time to give your spring-planted crops the nitrogen vital to their growth. Here's what it does! ANHYDROUS AMMONIA—82% nitrogen—helps your crop develop stronger roots with more resistance to drought, crops that have higher protein content for feeding—helps your yields go up!

We have the know-how on application and equipment. See us for DOW ANHYDROUS AMMONIA.

BARBER'S FARM STORE

Dial OL 4-2109 S. F. BARBER, Prop. Lockney

SUPPLIERS OF DOW ANHYDROUS AMMONIA

you can depend on
DOW AGRICULTURAL CHEMICALS **DOW**

MR. FARMER . . .

Let us overhaul your Cotton Stripper NOW

and you may pay us when you pick it up. Don't wait until you need it to start repairs.

Tye & Ansley Oliver Company

Phone OL 4-3597 Highway 70 Lockney

DR. O. R. McINTOSH
OPTOMETRIST

211 South Main St. Phone Yukon 3-3460
Floydada, Texas



Bel Air Impala Sport Coupe—new luxury in the low-price field

ALMOST TOO NEW TO BE TRUE! '58 CHEVROLET!

The biggest, boldest move any car ever made!

Meet the '58 Chevrolet . . . panther-quick, silk-smooth . . . with a V8 unlike any other, a Full Coil suspension, a real air ride . . . two new super models! Here today!

Look at Chevrolet's airy new styling. That's how new Chevrolet is all over! It's lower, wider—nine inches longer.

There's an all-new Turbo-Thrust V8* engine. Pair it up with Turboglide*, and you'll command the quickest combination on the

road. There are two new rides—Full Coil suspension and a real air ride*. The body-frame design is new, the wheelbase is longer.

There's a new 4-headlight system, new 6 and V8 power, foot-operated parking brake. And two new super models—the Bel Air Impala Sport Coupe and Convertible, most luxurious and distinctive Chevrolets of all. See all that's new at your Chevrolet dealer's soon!

*Optional at extra cost.



Bel Air 4-Door Sedan—bold new beauty and Fisher Body quality.

Only franchised Chevrolet dealers display this famous trademark **CHEVROLET** See Your Local Authorized Chevrolet Dealer

Military conscription measure for self-protection is believed older than itself.

You're Sure With Southwest

SOUTHWEST PLASTIC

Manufactured by

Southwestern Plastic

P. O. BOX 117 - MARIETTA, GA.

ARTHUR B. DUNN
ABSTRACT COMPANY

MAUD E. HOLLAND
Owner and Manager

South East corner
Floydada, Texas

Oldest and most complete abstract plant in Floydada. Prepared to render efficient service on anything in the line of titles.

For the BEST in Television let us show you the

1958 RCA TELEVISION is first in television and best any kind of set you want

TV and RADIO have the equipment to do your repair and efficient

See us if you're having

Modern Radios
4-3345 J. MARVIN C.

GET THE MOST
See us at

Washing and
car now. It needs the job right

Cooper Garage &
4-3633 M. E. COOPER

FIRST MONDAY

Food Mixer, \$18.00
Electric Toaster, \$18.00
Electric Percolator, \$11.00
Electric Wall Clock, \$7.00
Pop-On Can, \$2.75
Washes Hamper, \$8.95

Maker Hard
Lockney

SPECIAL

For F

"HIS" \$1.00

C \$1.00

LANO \$1.35

LUS \$1.2

SE \$1

\$9

ST. 1 ye

COLOR
Only one

COLORAM
Only one

COLORAM
Only two

Only 3 \$

\$1.00

"HIS" \$1.00

50c

Byrd
FR
Dial OL 4-3353

For the BEST in Television . . .
let us show you the new
1958 RCA TELEVISION SETS
A is first in television and we can supply you
with any kind of set you want. See us today.

TV and RADIO REPAIR
We have the equipment and know-
how to do your repair work quickly
and efficiently.

See us if you're having trouble.

Modern Radio & TV
OL 4-3345 J. MARVIN COX, Prop. Lockney

GET THE MUD OFF!
See us about
Washing and Greasing
your car now. It needs it and we can do
the job right.

Cooper Garage & Service Sta.
OL 4-3633 M. E. COOPER, Prop. Lockney

FIRST MONDAY SPECIALS

Food Mixer, \$18.00 value for \$14.95
Electric Toaster, \$18.00 value for \$14.95
Electric Percolator, \$12.95 value \$8.95
Electric Wall Clock, \$7.65 value \$5.95
Pop-On Can, \$2.75 value \$2.10
Wash Hamper, \$8.95 value \$6.95

Walker Hardware Co.
Lockney

SPECIAL PRICES
For First Monday in Lockney

"HIS" AFTER-SHAVE LOTION
\$1.00 value, 2 for \$1.00 plus tax

CASCADE COLOGNE
\$1.00 value, 2 for \$1.00 plus tax

LANOLIN PLUS SPRAY BOMB
\$1.35 value for \$1.00 plus tax

LUSTER NET SPRAY BOMB
\$1.25 value for 79c plus tax

SET OF 8 STEAK KNIVES
\$12.95 value for only \$8.95

CARVING SET
\$9.95 value for only \$6.95

ST. REGIS HEATING PADS
1 year guarantee, only \$3.98

KIDDIE TOWEL SET
\$2.50 value for 98c

COLOR GLO ALUMINUM TUMBLERS
Only one set of 8, \$3.95 value for — \$1.98

COLORAMA TUMBLER AND ASH TRAY SET
Only one set, \$6.98 value for only \$3.49

COLORAMA COASTER AND ASH TRAY SET
Only two sets, \$2.98 value, each — 98c

BERTLYN SANDALS
Only 3 pair, 2 small, 1 medium size,
\$2.98 value for only 98c

"HIS" DEODORANT
\$1.00 value, 2 for \$1.00 plus tax

"HIS" LANOLATED HAIR SHEEN
\$1.00 value, 2 for \$1.00 plus tax

"HIS" FINE HAIR OIL
50c value, 2 for 50c plus tax

Byrd Pharmacy
FRED D. BYRD, Pharmacist
Dial OL 4-3353 Lockney



LOCKNEY JR. HIGH twirlers, cheerleaders, acrobat, and mascot are pictured above. Members of the group include, top row, left to right: Paulette Kropp, head twirler; Joe Readhimer, cheerleader; Lynda Harris, head cheerleader; Cheryl Rucker, cheerleader; Jane Reynolds, acrobat. Seated: Sue Gilbert, cheerleader; Mary Ann Byrd, mascot; Jan Thornton, cheerleader. Rita Dollar, twirler, is not shown.

SOIL CONSERVATION DISTRICT NEWS

Cooperation in the Floyd County Soil Conservation District who have land in the wheat acreage reserve have an excellent opportunity to put a cover crop on their land.

With the moisture we have received recently now is the time to seed such cover crops as vetch, Austrian winter peas, Madrid clover or a combination of vetch and rye. These legumes are adapted to all soils within the district and do an excellent job in conditioning the soil, and preventing damage from wind and water erosion.

Farmers who have a hard crop in their soil can eliminate this problem effectively with Madrid clover. This clover is a deep fibrous rooted legume that readily opens up the sub soil to allow water to penetrate to a lower depth than a shallow rooted legume. This method of breaking up a hard pan is much more effective than any type

of mechanical operation known today. SCS technicians point out that mechanical methods cost the farmer whereas by using a growing crop will make the farmer money. While it is not required to put any type of cover on acreage reserve land it is a practice that is strongly recommended to conserve moisture and to prevent erosion. Cover crops help build up the humus content in the soil. Without humus the ability of the soil to take water is greatly reduced which is twin accounts for decreased yields and crops suffering from water during their critical growing period. Originally our soil had approximately three per cent humus in it. It has been estimated that 0.25 percent is taken out from the production of one crop. It takes about 20 tons of green weight per acre to increase the humus content of soil 0.15 per cent. It is very important to include a cover crop in your crop rotation at least one year out of six on dry land and more often on irrigated land.

The following farmers have indicated that they intend to plant a cover crop this year: Arnold Dietrich, Orville Newberry, Carl Smith, J. D. Colston and B. C. Cates.

Recent work has been completed in the district on the following farms: J. T. Huckabay 90 acres of land leveling, Mal Jarboe, 40 acres of land leveling, Lane Decker, 75 acres land leveling, Carl Lemons 12 acres bench leveling, Dorsey Baker, shaping 3 waterways, 5 acres. Other jobs are in the process of completion on underground pipeline construction and diversion terrace construction.

ATTEND CONCERT
A number of local people attended the Community Concerts presentation of Joseph Batista, concert pianist, at Plainview High School Auditorium Saturday night at 8 o'clock.

Among those in attendance were Miss Barbara Carruth, Miss Bobbie Lu Casey, Mrs. Edgar Hays, Mrs. John T. Carthel, Mrs. Joyce Wilson, Mr. and Mrs. L. G. Rhine, Mrs. Aubrey L. Holt, Janice Hays, Bill Musser, Janice Carthel, Sandra Smith, Frances Fowler, Carolyn Belt, Cheryl Rucker, Judy Holt, Joe Durham and Shirey Lewis.

Local members of the Order of Eastern Star were guests of the Muleshoe Chapter at a Friendship meeting last Thursday night at Muleshoe. Guests attended from the chapters of this section of District Two.

Enjoying the dinner and fellowship were Mr. and Mrs. Jim Bert Bobbitt, Mrs. R. V. Webster, Mrs. Jo Childers, Mrs. F. M. Smith, Mrs. R. L. Knoz Jr., Mrs. Howard Cooper, Mr. and Mrs. Ewald Quebe.

CARL McADAMS
GENERAL INSURANCE
Fire — Hail — Polio —
Windstorm—Auto — Bonds
Phone OL 4-2141
First National Bank
Building

Have in stock
400 NEW RADIATORS
Old models closing out at
50% and 75% discount.
STOVALL-BOOHER
RADIATOR SALES &
SERVICE
1019-25 N. Broadway
Phone CA 4-2865
Plainview, Texas

TO CAMP WOLTERS
Mr. and Mrs. Ernest Paul Rodgers and children, Louana, four years of age and Paul Jr., five months have recently returned from Japan and have been visiting in the home of his parents, Mr. and Mrs. E. J. Rodgers and her parents in Plainview. They left Wednesday of this week for Camp Wolters, near Mineral Wells, where he will be stationed.

ANNOUNCING . . .
We will open the
Conoco Service Station Garage
on South Main Street
Next Monday morning, November 4th
We will do
General Repair Work
on Automobiles, Irrigation Motors,
Trucks, etc.

We will certainly appreciate your patronage and will do our best to please you in every way.

CONOCO SERVICE STATION GARAGE
Gene Crank Phone OL 4-2406 James Whitfill
OL 4-3745 Residence Phones OL 4-3681

BEACON WANT ADS GET RESULTS

Cassel Bros. Gin
Lone Star, Texas
Where Service and Quality Meet

Production & Price Record Of Lint Cotton For 118 Years

Crop Season	Crop	N. Y. High	Spot Price Low	Crop Season	Crop	N. Y. High	Spot Price Low
1828-29	680,000	13	9	1890-91	8,562,000	11.00	7.94
1829-30	764,000	11	8	1891-92	8,941,000	8.81	6.69
1830-31	732,000	13	8	1892-93	6,658,000	10.00	7.06
1831-32	805,000	11	7	1893-94	7,433,000	8.56	6.88
1832-33	816,000	12	7	1894-95	10,026,000	8.19	5.56
1833-34	931,000	17	9	1895-96	7,147,000	9.38	7.06
1834-35	962,000	16	10	1896-97	8,516,000	8.88	7.00
1835-36	1,062,000	20	15	1897-98	10,985,000	7.81	5.75
1836-37	1,129,000	20	12	1898-99	11,435,000	6.63	5.31
1837-38	1,428,000	17	7	1899-1900	9,345,000	10.25	6.25
1838-39	1,093,000	12	9	1900-01	10,123,000	12.00	8.00
1839-40	1,654,000	16	11	1901-02	9,510,000	9.88	7.81
1840-41	1,348,000	10	8	1902-03	10,631,000	13.50	8.30
1841-42	1,398,000	11	9	1903-04	9,851,000	17.25	9.50
1842-43	2,035,000	9	7	1904-05	13,438,000	11.50	6.85
1843-44	1,750,000	8	5	1905-06	10,575,000	12.60	9.80
1844-45	2,079,000	9	5	1906-07	13,274,000	13.55	9.60
1845-46	1,806,000	8 3-8	5	1907-08	11,107,000	13.55	9.50
1846-47	1,604,000	10	6	1908-09	13,242,000	13.15	9.00
1847-48	2,128,000	12	7	1909-10	10,005,000	19.75	12.40
1848-49	2,615,000	8	5	1910-11	11,609,000	16.15	11.60
1849-50	1,975,000	11	6	1911-12	15,693,000	13.40	9.20
1850-51	2,136,000	14	11	1912-13	13,703,000	13.40	10.75
1851-52	2,799,000	14	8	1913-14	14,156,000	14.50	11.00
1852-53	3,130,000	10	8	1914-15	16,135,000	11.00	7.25
1853-54	2,766,000	11	10	1915-16	11,192,000	13.45	9.20
1854-55	2,708,000	10	8	1916-17	11,192,000	27.65	13.25
1855-56	3,221,000	12	8	1917-18	11,302,000	36.00	21.20
1856-57	2,874,000	13	9	1918-19	12,041,000	38.20	23.00
1857-58	3,012,000	15 7-8	9	1919-20	11,421,000	43.75	28.85
1858-59	3,758,000	13 1-2	8 7-8	1920-21	13,440,000	40.00	10.85
1859-60	4,310,000	12 3-4	10 5-8	1921-22	7,954,000	23.75	12.80
1860-61	3,841,000	11 5-8	10	1922-23	9,762,000	31.30	20.35
1861-62	4,491,000	38	11 1-2	1923-24	10,140,000	37.65	23.50
1862-63	1,597,000	69 1-2	20	1924-25	13,628,000	31.50	22.15
1863-64	449,000	93	51	1925-26	16,104,000	24.75	17.85
1864-65	299,000	190	72	1926-27	17,977,000	19.20	12.15
1865-66	2,094,000	120	35	1927-28	12,956,000	23.90	17.00
1866-67	1,948,000	52	32	1928-29	14,478,000	21.65	17.65
1867-68	2,346,000	36	15 1-2	1929-30	14,825,000	19.55	12.45
1868-69	2,198,000	33	16	1930-31	13,932,000	13.15	8.25
1869-70	2,410,000	35	25	1931-32	17,097,000	8.15	5.00
1870-71	4,025,000	21.25	14.75	1932-33	13,003,000	11.75	5.70
1871-72	2,757,000	27.38	18.38	1933-34	13,049,000	13.35	8.65
1872-73	3,651,000	22.25	18.63	1934-35	9,636,000	13.95	10.65
1873-74	3,874,000	20.63	13.63	1935-36	10,638,000	13.65	10.65
1874-75	3,528,000	16.88	14.13	1936-37	12,399,000	15.25	11.18
1875-76	4,303,000	14.63	11.69	1937-38	18,946,000	11.35	7.71
1876-77	4,118,000	13.31	10.81	1938-39	11,943,000	10.02	7.88
1877-78	4,494,000	12.19	10.50	1939-40	11,817,000	11.66	8.82
1878-79	4,745,000	13.75	8.81	1940-41	12,566,000	17.91	9.68
1879-80	5,466,000	13.50	10.63	1941-42	10,744,000	21.39	16.35
1880-81	6,357,000	13.00	10.44	1942-43	12,817,000	22.24	19.12
1881-82	5,136,000	13.06	11.50	1943-44	11,427,000	22.81	19.80
1882-83	6,833,000	12.94	10.00	1944-45	12,230,000	23.59	21.76
1883-84	5,522,000	11.94	10.13	1945-46	9,015,000	36.47	22.80
1884-85	5,477,000	11.50	9.75	1946-47	8,640,000	40.18	28.70
1885-86	6,369,000	10.25	8.81	1947-48	11,860,000	39.63	31.10
1886-87	6,315,000	11.44	9.13	1948-49	14,877,000	34.31	31.52
1887-88	6,885,000	11.38	9.44	1949-50	16,128,000	40.00	30.22
1888-89	6,924,000	11.50	9.63	1950-51	10,014,000	46.06	36.75
1889-90	7,473,000	12.75	10.25	1951-52	15,149,000	44.65	35.05
				1952-53	15,139,000	41.90	32.40
				1953-54	16,465,000	35.60	33.20

Did You Know That The Oldest Bale Of Cotton In Existence

—was produced in 1862 and is now preserved in a glass case on the floor of the New Orleans Cotton Exchange? A brief historical sketch follows:

John Peden, a rather eccentric farmer of northern Oktibbeha County, Mississippi, owning a number of slaves, had, about 1860, a disagreeable experience in lending money, and declared his intention not to have any more money to lend. Thereafter he sold such part of each cotton crop as was necessary to buy his yearly supplies. The remainder of the crop was placed on the long and spacious veranda in front of his residence. In the course of time the veranda was fully occupied except an opening for entrance to the house. After Mr. Peden's death the cotton

was gradually sold off, the last of it in the later 1880's. The present bale along with several others came into possession of the First National Bank of West Point, Miss., and was exhibited at the World's Fairs—Chicago in 1893 and St. Louis in 1904. It subsequently came into the possession of Lesser Goldman Cotton Company of St. Louis, who purchased it about that time. It was preserved by the latter in a glass case until 1945, when the case and the bale were donated to the New Orleans Cotton Exchange.

Except that the bale was picked and ginned by slave labor, we have no information in connection with this part of the record. So far as we know the original bagging which is the ordinary type jute bagging, is still on the bale.

Society

Rebekah Lodge Plans School

Plans were made by Rebekah Lodge for a School of Instruction to be held at the IOOF hall next Monday night during a regular meeting Monday night.

Fifteen members were present. C. L. Taylor was initiated as a new member. The lodge expresses thanks to the Odd Fellows for the new kitchen. Members are asked to come early next Monday night to the school of instruction and bring articles that can be used in the new kitchen and a large salad for the supper.

A practice meeting will be held at the hall Sunday afternoon from 3 to 5 o'clock. A clean-up meeting will be held at 9:30 Monday morning in preparation for the school.

Refreshments of cake and coffee were served by hostesses Mrs. Connie Reed and Mrs. Truett Bilbrey.

Miss Gardys Forsyth of Plainview was a guest in the R. W. Johnson home Sunday.

El Progreso Meets In Duran Home

Mrs. Charles Duran was hostess for a meeting of El Progreso Study Club Wednesday, October 23 at 4 o'clock.

A discussion of Child Psychology and Personality was given by Mrs. J. D. Copeland.

Refreshments were served to Meses. Clyde Applewhite, Milton Ashton, Clyde Briley, J. D. Copeland, Chester Mitchell, L. M. Honea, Henry Hodel, C. J. Taylor, Henry Schacht, Guy Sams, Bill Hodel, Leslie Ferguson, Barry Barker, T. B. Mitchell, Howard Smith, E. M. Quebe and Chas. Duran.

The club will observe Guest Day at the next meeting Wednesday, November 16, with a book review to be given at the Methodist Church beginning at 2:30 p. m.

NEW ARRIVAL

Mr. and Mrs. Wilbur Adams are proud parents of a baby girl, Sonja Ladean, born Sunday night, October 27, at Lockney General Hospital weighing 8 lbs., 1 oz. at birth. Mrs. Adams is the former Frankie Dean Hardy. Grandparents are Mr. and Mrs. Frank Hardy, Mr. and Mrs. D. E. Adams, all of Aiken.



Mrs. Albert King Is HD Hostess

Mrs. Albert King was hostess Tuesday, Oct. 15, for a meeting of Lone Star Home Demonstration Club.

Program theme was on crafts with roll call answered by "Crafts I'd Like to Make." An interesting display of sewing included handwork, machine work and weaving, old and new versions.

Mrs. E. O. Barrett, president, presided and Mrs. Nancy Morckel of Lighthouse Electric, Floydada, gave a profitable demonstration on the use of apples. She included apple cake, baked apples topped with crumbs of cinnamon rolls, whipped cream, cherries, marshmallows or glazed.

An attractive centerpiece of dahlias was sent to the meeting by Mrs. Lucien Wheeler of Lubbock, an early-day Home Demonstration woman who has a number of friends in this area. Mrs. Wheeler is now in West Texas Hospital, Lubbock, recuperating from a broken knee cap suffered in a fall a few days ago.

Guests included Mrs. J. H. Buchanan of Floydada, Mrs. Raymond Martin and Mrs. C. B. Jones, Providence, Mrs. Gene Crank and Mrs. Warren Graham, Lockney.

Next meeting will be Monday, Nov. 5 in the home of Mrs. Ruby Merrick.

TO WED — Mr. and Mrs. R. C. Forsyth of Plainview are announcing the engagement and approaching marriage of their daughter, Gardys, to Bobby Johnson, son of Mr. and Mrs. R. W. Johnson of Lockney. The wedding will be an event of November 2 in St. John's Methodist Church, Plainview.

Baptist WMU Has Business, Social

Members of the various circles of Women's Missionary Union met at the Baptist Church for a business and social meeting Monday afternoon at 3 o'clock.

Mrs. Fred Cooper, president, presided and Mrs. Forest Smith brought the devotional. An outline of the year's work was given. Several members discussed plans for attending the State W. M. U. Convention at Fort Worth next week.

Hostesses Mrs. Fred Cooper and Mrs. B. B. Moody served refreshments to Meses. Bill Hodel, Guy Sams, Harmon Handley, T. S. Fox, Edd Whitfill, Chester Mitchell, Leslie Ferguson, Buck Kellison, Hilburn Casey, Forest Smith, C. E. Johnson, Albert Waldroupe, J. D. Wood, T. B. Mitchell, E. J. Rogers, B. B. Vernon, Ross Cooper.

Thomas Home Is Scene Of Meeting

The home of Mrs. Sid Thomas was the scene of a meeting of the Van Earl Hughes Circle of the Baptist WMU Monday evening at 7:30. A shower of kitchen gifts was brought for Mrs. Randall Collis.

Mrs. Walter Merrell, circle chairman, presided and Mrs. Sid Thomas was in charge of a program on "Open Doors." Following the program and business session special guests were recognized. They were Mrs. A. N. Weldroupe, Mrs. Joe Wilson, Mrs. Paul Teuton, Mrs. Colbert Falls, Mrs. J. F. Nix.

and Mrs. Hilburn Casey. Members present were Mrs. B. B. Vernon, Mrs. Walter Merrell, Mrs. Howard Cooper, Mrs. Sid Thomas, Mrs. Claude Brown and Mrs. Edgar Hays.

The Van Earl Hughes Circle has previously been the Business Women's Circle but the name was changed to include any woman who could attend a missionary circle at night more conveniently than during the day. Anyone interested is extended a cordial invitation.

Next meeting will be Monday night, November 11, at 7:30 in the home of Mrs. Edgar Hays.

Mr. and Mrs. Duane Harris and daughter, Marylan of Dodge City, Kansas are here visiting Mrs. Harris' parents, Mr. and Mrs. R. C. Kellison.

Spencer Individually Designed Foundations

Brasieres, Surgical, Orthopedic and Maternity Supports

Mrs. Bill Strickland

Registered Spencer Corsetier
Phone OL 4-3647
Box 758 — Lockney

For Good Safe Crop Hail Insurance

Prompt adjustments and payments see
Lockney Real Estate Company
E. R. HARRIS



Bob Miller Insurance Agency

Dial OL 4-3329 Crager Building Lockney

We STAND Between You and Loss

Representing —

GREAT AMERICAN
AMERICAN GENERAL
FIREMAN'S FUND

NORTH AMERICAN
GREAT SOUTHERN
EMPLOYER'S FIRE



Star of the Forward Look



Announcing the car that's

AHEAD FOR KEEPS!

Here is newness . . . unchallenged by any other car in the low-price field. Simple comparison proves that no car measures up to the one car that began with a three-year lead: the triumphant new Plymouth. The dramatic debut of this greatest of low-price cars takes place at your Plymouth dealer's today. One look, one ride will convince you . . . this is your car . . . the car that's ahead for keeps!

Improved Torsion-Aire Ride Silver Dart Styling Golden Commando V-8* Directional Stabilizer Fins Push-Button TorqueFlite* Total-Contact Brakes Luxury-Line Interiors
True, big-car riding comfort Long, low sweep of beauty The years-ahead engine Assure safer highway travel Smoothest, easiest driving yet Sure, safe, non-fade Beauty-blended fabrics

*optional, at low extra cost

There's no catching *Plymouth*

BILBREY MOTOR COMPANY

205 S. Main Street

Lockney, Texas

SEALE DRIVE-IN THEATRE

Located 2 1/2 miles west of Lockney on Highway 101

THURSDAY NIGHT, OCTOBER 31st

FUN NIGHT

"SCANDAL, INC."

starring Robert Hutton, Paul Richards, Patricia
There's always somebody who knows something someone — if the price is right — are the "Scandal Magazine" stories true?

Plus CARTOON

LATE SHOW HALLOWEEN NIGHT
Starting at 11 p. m.

Greatest DOUBLE-HORROR SHOW of



Produced & Directed by ROGER CORMAN • An ALLIED ARTISTS Production

Mystery, thrills, adventure and excitement as you battle strange creatures — escape from reality in intriguing horror story — could it really happen? Mutation caused by nuclear fall-out.

FRIDAY and SATURDAY, November 1 and 2

Double Feature

COME AND GET ME... but come soon



"Nothing will stop me — all I need is a man and a gun," so says the Outlaw Queen, luscious, shapely, drea King stars as the Outlaw Queen. You'll enjoy every James too.

—Plus—



Desire for this girl brought terror to the jungle — she brought the Jungle Boy to her side.

Also CARTOON

SUNDAY and MONDAY, November 3 and 4



A distinguished film from the pages of John Steinbeck's greatest novel — the Steinbeck people, the Steinbeck passions, the Steinbeck power, blaze to life on screen.

Also CARTOON

TUESDAY and WEDNESDAY, November 5 and 6



With a past to live down he faced a lightning fast hired to kill him — the hate-hot story of a gun-fight they called yellow — boiling with barrel-hot savagery.

Also CARTOON

- CITY LUTHERAN CHURCH**
Providence 10:00
School 11:00
Worship 11:00
Worship 7:30
- SEMBLY OF GOD CHURCH**
Danah Jobe, Pastor
School 10:00
Worship 11:00
People's Meeting 7:00
Worship 7:45
Service Wednesday 7:45
Missionary Council 2:30
- BAPTIST CHURCH**
School 10:00
Worship 11:00
Union 7:00
Worship 8:00
Service Wednesday 8:00
W. M. U. and 8:30
Services Wednesday 8:30
- METHODIST CHURCH**
Brewster, Pastor
School 10:00
Worship 11:00
Worship 8:00
- LEY METH. DIST CHURCH**
Bex Newkirk, Pastor
School 10:00
Worship 11:00
Worship 8:00
- STREET CHURCH OF CHRIST**
Epps, Minister
School 9:45
Worship 10:45
Worship 6:00
Bible Class
Worship at 9:30 a. m.
Worship 7:30
- CKNEY METH. DIST CHURCH**
E. Lee Stanford, Pastor
School 9:45
Worship and Prayer 11:00
Worship 6:30
Worship 7:00
Prayer Services
Worship at 7:00

These Rel

- Knox Grocery & We Try To Plea**
- Plains Electri Electrical Irrigation Ins**
- Baker Hardware (Home Appliances — Home**
- Lockney Drug We Feature Service fo**
- Handley Shop & F Blacksmithing and Irrigatio**
- Pylant Grocery & Phone OL 4-2134 — Fr**
- rown's Cleaners & Men's Wear — Quality**
- Brunnier Lumber Your Home-Owned Lu**
- "Whitey" Baccus Ford Sales & Se**
- Hammond & Co International-Har**
- Rhodes Grocery (We Give S&H Green**

IN HARMONY



The house lights dimmed, the director raised his baton, and the music of Brahms flooded the auditorium. Suddenly I was lifted into a world of sheer beauty and harmony. When the last notes of the symphony died away spontaneous applause greeted the director and the musicians.

What a thrill it would be to play in a great orchestra, I thought. Each instrument must be perfectly in tune, but until they play together there can never be the harmony or the volume of a symphony.

That's the way it is with life. We may strive to find joy and beauty alone. But only when we tune our lives with our Creator do we discover the abundant life.

Then united with fellow Christians in the Church, with Jesus Christ the Leader, we discover beauty and harmony, not only in this life but for all eternity.

THE CHURCH FOR ALL . . . ALL FOR THE CHURCH

The Church is the greatest factor on earth for the building of character and good citizenship. It is a storehouse of spiritual values. Without a strong Church, neither democracy nor civilization can survive. There are four sound reasons why every person should attend services regularly and support the Church. They are: (1) For his own sake (2) For his children's sake. (3) For the sake of his community and nation. (4) For the sake of the Church itself, which needs his moral and material support. Plan to go to church regularly and read your Bible daily.

Day	Book	Chapter	Verses
Sunday	Psalms	15	1-5
Monday	Psalms	30	1-12
Tuesday	Matthew	4	1-11
Wednesday	John	3	22-30
Thursday	John	15	1-11
Friday	John	17	1-13
Saturday	Ephesians	4	20-32

Copyright 1957, Keltner Adv. Service, Strasburg, Va.

FIRST BAPTIST CHURCH
 Sunday School 10:00
 Morning Worship 11:00
 Training Union 6:30
 Evening Worship 7:30
 W. M. U. Monday
 at 4:00 to 8:00
 Sunbeams Monday at 3:00
 Auxiliaries Monday at 4:00
 Y. W. A. Wednesday at 6:00
 Choir practice Wednesday
 at 7:00
 Prayer Service Wednesday
 at 8:00
 Brotherhood first Tuesday
 night in month.

WEST SIDE CHURCH OF CHRIST
 Sunday Morning Worship
 Services 10:30
 Sunday Evening Worship
 Services 7:00
 Wednesday Evening Prayer
 Services 8:00

FAIRIE CHAPEL CHURCH OF CHRIST
 Sunday Morning Worship
 Services 10:30
 Sunday Evening Worship
 Services 7:30
 Herbert Setliff preaches
 each first Sunday.
 Arthur B. Watkins preaches
 each second Sunday.
 Local men in charge of third
 Sunday services.
 W. Watkins preaches each
 fourth Sunday.

LONE STAR BAPTIST CHURCH
 Rev. H. H. Sego, Pastor
 Sunday School 10:00
 Morning Worship 11:00
 Training Union 6:45
 Evening Worship 8:00
 Prayer Service Wednesday
 Evening 7:30
 Brotherhood on second Mon-
 day night.
 W. M. U. 1st and 3rd Wednes-
 days at 2:30 p. m.

BELLVIEW BAPTIST CHURCH
 Your church in the Bellview
 community.
 Meeting in the old Bellview
 School.
 Wilber E. Sheppard, Pastor
 Sunday School 10:00
 Worship Services 11:00
 Training Union 7:30
 Worship Services 8:30
 Prayer Meeting, Wednes-
 day 8:00
 WMU Thursday 3:00
 G. A.'s 2nd and 4th
 Thursday 4:00

These Religious Messages are Being Sponsored by the Following Interested Individuals and Business Establishments

Knox Grocery & Market
 We Try To Please

Lockney Auto Company
 Chevrolet Sales & Service

Lockney Lumber & Supply
 We Appreciate Your Business

Lockney Frozen Foods & Market
 Processing for Deep Freeze

Plains Electric
 Electrical Irrigation Installation

Johnson & Johnson
 General Repair and Parts

Barber's Farm Store
 Feed and Fertilizer

Parker Furniture
 Home Furnishings and Appliances

Baker Hardware Company
 Home Appliances — Home Furnishings

Taylor's Help-Ur-Self Laundry
 Complete Laundry Service

V. L. Webster Service Station
 Goodyear Tires and Batteries

Darnell Grocery
 A Good Place To Trade

Lockney Drug Co.
 We Feature Service for the Sick

Lockney Implement Company
 Your John Deere Dealer

Plains Floral Shop
 Phone OL 4-2385 — Say It With Flowers

Luke's Blacksmith Shop
 Blacksmithing — Portable Welding

Handley Shop & Pump Co.
 Blacksmithing and Irrigation Well Repair

Baxter & Smith Grain Co.
 Grain, Feed, Seed and Fertilizer

First National Bank
 Member FDIC

Jackson Tire Company
 Dunlop Tires

Pylant Grocery & Market
 Phone OL 4-2134 — Free Delivery

Lockney Gin
 Ginning and Seed Cleaning

Lockney Variety
 Notions and Stationery

White Auto Store
 Arvin TV Sales and Service

Brown's Cleaners & Clothiers
 Men's Wear — Quality Cleaning

Jack And June Shop
 Ladies' and Misses' Ready-to-Wear

Byrd Pharmacy
 Fred D. Byrd, Pharmacist

J. C. Jones Co.
 The Family Store

Brunner Lumber Company
 Your Home-Owned Lumber Yard

Lockney Real Estate Co.
 Loans—Real Estate—Insurance

Carter Mortuary
 Phone OL 4-2211

Cooper Garage & Service Station
 Conoco Products — Phone OL 4-2372

"Whitey" Baccus Motor Co.
 Ford Sales & Service

Seale Drive-In Theatre
 PLAINS THEATRE

Patterson Grain Co.
 Lockney and Sterley

Bilbrey Motor Company
 Chrysler-Plymouth Sales & Service

Hammond & Company
 International Harvester

Reecer's Master Cleaners
 Phone OL 4-2262

Rowland-Gordon Oil Co., Inc.
 Phillips 66 — Fertilizer — Insecticides

Graves Welding Shop
 LONE STAR

Rhodes Grocery & Market
 We Give S&H Green Stamps

-IN THEAT
 of Lockney on Highw
 T. OCTOBER 31st
NIGHT
AL, INC."
 ul Richards, Patricia
 who knows something
 s right — are the
 is true?
ARTOON
LOWE'EN NIGHT
 at 11 p. m.
HORROR SHOW of
NOT OF THIS EARTH
 KMAN • An ALLIED ARTISTS PRO
 and excitement as s
 escape from reality
 ould it really happen
 or fall-out.
 Y. November 1 and
Feature
 but come sho
 Dangerous a
 was desirable
 all I need is a man
 Queen. Lucious, shape
 aw Queen. You'll en
 —
 NOY N. HOUCK present
BU
ACK
HER
 GA BYRON KEITH
 EY
 error to the jungle —
 er side.
ARTOON
 Y. November 3 and
INBECK'S
WARD BUS
 D. DAN DAILEY - FOX
 from 20th CENTURY-FOX
 e pages of John Stead
 beck people, the Stead
 wer, blaze to life on
ARTOON
 DAY, November 5 and
EREK
OWN
 Research by
 UNITED ARTISTS
 faced a lightning fast
 -hot story of a gun-f
 y with barrel-hot sarv
ARTOON

UNITY LUTHERAN CHURCH
 Providence
 School 10:00
 Worship 11:00
 Worship 7:50

SEMBLY OF GOD CHURCH
 Hannah Jobe, Pastor
 School 10:00
 Worship 11:00
 People's Meeting 7:00
 Worship 7:45
 Service Wednesday
 at 7:45
 Missionary Council
 day at 2:30

BAPTIST CHURCH
 School 10:00
 Worship 11:00
 Union 7:00
 Worship 8:00
 Service Wednesday
 at 8:00
 W. M. U. and
 Services Wednesday
 at 8:30

METHODIST CHURCH
 and Brewster, Pastor
 School 10:00
 Worship 11:00
 Worship 8:00

LEY METHO DIST CHURCH
 Rex Newkirk, Pastor
 School 10:00
 Worship 11:00
 Worship 8:00
 Worship 7:30

STREET CHURCH OF CHRIST
 Paul Epps, Minister
 School 9:45
 Worship 10:45
 Worship 6:00
 Bible Class
 Tuesday at 9:30 a. m.
 Week Worship
 Tuesday at 7:30

CKNEY METHODIST CHURCH
 E. Lee Stanford, Pastor
 School 9:45
 Worship and Prayer
 at 11:00
 at 6:30
 at 7:00
 Week Prayer Services
 Tuesday at 7:00

Bailey County Lass Will Represent Dist. In Queen Contest

Pretty Miss LaVon Copley of Bailey County will represent 17 counties in this area in the finals of the Texas Farm Bureau queen contest Nov. 18 at the Baker Hotel in Dallas. She will compete against 12 other lovely Farm Bureau district queens.

LaVon was chosen District 2 queen in a contest held Sept. 19 at Lubbock.

A striking brunette with blue-green eyes and olive complexion, she is the daughter of Mr. and Mrs. A. W. Copley of Muleshoe. LaVon is now a freshman at North Texas State College, Denton, where she is majoring in music with religious education as her minor. An able musician, she plays the organ, both pipe and electric, and the piano. She plans to teach both organ and piano when she graduates.

In high school, LaVon compiled an outstanding record of accomplishments in school activities. In March of this year, the District 7 chapter of the Texas Federation of Women's Clubs gave her a bronze plaque after selecting her the "most outstanding senior girl" in the district. Active in 4-H Club work, LaVon has won prize money and ribbons at district and state fairs with swine she has raised.

All queen contestants will receive expense-paid trips to the state contest which will be held in connection with the TFB annual convention. In addition, they will receive beautiful wrist watches. The state winner will receive \$500 in expenses to attend the American Farm Bureau Federation convention Dec. 8-12 in Chicago.

It's an I for an I when two egotists get together.

Cows have four stomachs. There is more water than land on the earth's surface.

RETURNS INCOME TAX

Wilson Kermickel
Attorney-at-Law
Ferguson Building
107 North Main Street
Phone OL 4-3804

Mrs. Fulkerson's Sister Dies Tuesday

Mrs. F. C. Harcrow, 70, died suddenly at her home in Albany, Calif., Tuesday at 8:30 a. m. She was a sister to Mrs. M. P. Fulkerson of Lockney and had visited here with her sister in early September.

Death was due to a heart attack, relatives were notified. Funeral services will be held today (Thursday) at 3 p. m. in Berkeley, Calif. None of the local relatives were able to attend.

Visiting Mrs. Fulkerson here at this time is another sister, Mrs. H. S. Watson of Matador. A niece, Mrs. Bill McCaghren of Matador, visited her Monday.

LHS Band Chooses King And Queen

Miss Loy O'Brien was chosen as Band Queen and L. T. Cooper was chosen as Band King recently by a vote by members of the Longhorn Band. Miss O'Brien, a senior, is the daughter of Mr. and Mrs. Connie O'Brien and L. T. is the son of Mr. and Mrs. W. T. Cooper.

Attendants will be Barbara Wilson and her brother, Dwayne, who were runners-up for the honor. Other candidates were Jean Wofford, Gayle Rucker, Elaine Cooper and Janice Hays for queen; Don Schacht, Glen McCandless and Barry Paul Epps for king.

Public Invited To Sunday Services

Rev. and Mrs. J. E. Nix moved into the Baptist parsonage from their home in Lubbock Thursday of last week. Rev. Nix, interim pastor of the First Baptist Church, extends a cordial invitation to the public to attend services both morning and evening.

Sunday School begins at 10 o'clock and worship services at 11 o'clock Sunday morning. Training Union begins at 6:30 and evening worship at 7:30 p. m.

Seniors Will Have Parking Lot Friday

The Senior Class will operate their parking lot at the Lockney - Spur football game Friday night. Parking will be 25 cents and everyone is invited to patronize them.

Corsages are still available today (Thursday) and anyone wishing one for the game should contact a member of the class immediately. The corsages sell for \$2.25 instead of \$1.25 as quoted in The Beacon last week.



FORD TRUCKS which led the industry in retail sales for 1957 will offer in 1958 the widest coverage of any manufacturer in the volume truck market. The wide range of utility and work capacity is demonstrated by the powerful tilt-cab (left), and the spectacularly successful Styleside pickup. Mechanical and design advances include new grilles and safety dual headlights, customized interiors and modern styling, and increased horsepower and payload capacity in many models.

Voters Will —

(Continued from page 1)
House Joint Resolution No. 2 which would increase authorized state expenditures for old age assistance, aid to the blind and aid to dependent children from \$12,000,000 to \$47,000,000 per year, and would increase the limit on payments from state funds per person for old age assistance.

The maximum payment out of state funds, under the amendment, would be as much as \$25 per month to each needy aged person, a \$5 increase over the present \$20 limit but state payments could not be above \$21 per month unless matched by Federal Funds.

Governor Price Daniel said this week that the amendment would provide a \$2.00 per month increase in all old aged pensions beginning in December. Of this amount \$1.00 would come from the state and the other \$1.00 from the federal government.

There is no individual limit on amounts paid to needy blind or needy children under our present constitutional provisions or under the proposed amendments.

The third amendment would authorize the issuance of two hundred million dollars in bonds by the State of Texas to provide assistance in local de-

velopment of water resources. Proponents of the water amendment say that the measure will benefit the state because it will help develop water storage projects, is self-supporting and will not increase taxes, it will give Texas local control of its water resources, no single project can gobble up the State assistance, it will not disturb vested rights in surface and ground water and it will aid in the development of dams and other water conservation measures.

Voting places and election judges and clerks as named by the Commissioners Court for this part of the county are as follows:

Sandhill — Schoolhouse, T. C. Hollums, presiding judge; W. M. Knight, judge; John Miller, clerk; Leroy Durham, clerk.
East Lockney — City Auditorium, J. D. Copeland, presiding judge; H. P. Coleman, judge; Mrs. Guy Sams, Mrs. J. D. Copeland, Mrs. E. A. McLeod, clerks.

Providence — School, Charlie Boedeker, presiding judge; Wyatt McLaughlin, judge; Mrs. Ewald Quebe, Mrs. Ted Boedeker, clerks.

Lone Star — Schoolhouse, H. E. Frizzell, presiding judge; A. O. Foster, judge; Mrs. Clyde Farish, Mrs. Harold Griffith, clerks.

South Plains — Schoolhouse,

E. P. Smitherman, presiding judge; Bill Beedy, judge; Mrs. L. T. Wood, Mrs. I. H. Parks, clerks.

Cedar Hill — Freeman Love garage, Jack Stansell, presiding judge; Charlie Purnell, judge; Eugene Gilley, C. V. Judge; Eugene Gilley, C. V. West Lockney — Methodist Church basement, Henry Schacht, presiding judge; Chester Carthel, judge; Mrs. Austin Meriwether, Mrs. Marvin Cox, Jack Dollar, clerks.

Sterley — Schoolhouse, Bert Bobbitt, presiding judge; Robert Lee Smith, judge; Horton Howell, clerk.

NEW BUTCHER AT RHODES

Odie Smith is the new butcher at Rhodes Super Market. He will move his family here as soon as housing is available. He and his wife have a four-year-old daughter. Mr. Smith is a brother to Mrs. Clyde Wood and has been employed in Amarillo.

Betty Foster Active In College Sports

Miss Betty Jean Foster, freshman student at Colorado Women's College, Denver, placed third high in archery last week during a contest among students of the college.

Betty had received some instruction in archery during the summer of 1951 while attending V. I. Ranch camp near Bristol, Virginia. She has also been selected on the CWC bowling team.

GO TO CHURCH SUNDAY.

BREAKS ANKLE

Mrs. Arthur Brown said when she fell off a cart leaving a beauty shop, she broke her ankle. She was treated at Lockney Hospital and released home. The broken ankle and the break in her foot were healed in about ten days, Mrs. Brown said. Mrs. Brown, an employe of Oliver Jewelry, will be in the hospital until the foot is better.

The Chisholm Trail named for Jesse Chisholm, a Texas-born pioneer se-

Don "Greatly Turbed" Over Age Change

George Mahon of the district said this week he was "greatly disturbed" over a proposed change in the method of allotment of cotton acreage which is now pending before officials of the Department of Agriculture.

Mahon said in a statement that he is in California, where he is on an emergency inventory of the nation's cotton program in his capacity as chairman of the Defense Cotton Subcommittee, which had been alerted to the situation about two weeks ago.

USDA officials in the program to eliminate the acreage which would be displaced toward West Texas growers," Mahon said.

Mahon said he was wired officials in Texas and Texas once again to eliminate the whole acreage which would be displaced toward West Texas growers," Mahon said.

Mahon said he was wired officials in Texas and Texas once again to eliminate the whole acreage which would be displaced toward West Texas growers," Mahon said.

Mahon said he was wired officials in Texas and Texas once again to eliminate the whole acreage which would be displaced toward West Texas growers," Mahon said.

Mahon said he was wired officials in Texas and Texas once again to eliminate the whole acreage which would be displaced toward West Texas growers," Mahon said.

Mahon said he was wired officials in Texas and Texas once again to eliminate the whole acreage which would be displaced toward West Texas growers," Mahon said.

Mahon said he was wired officials in Texas and Texas once again to eliminate the whole acreage which would be displaced toward West Texas growers," Mahon said.

Mahon said he was wired officials in Texas and Texas once again to eliminate the whole acreage which would be displaced toward West Texas growers," Mahon said.

Mahon said he was wired officials in Texas and Texas once again to eliminate the whole acreage which would be displaced toward West Texas growers," Mahon said.

Mahon said he was wired officials in Texas and Texas once again to eliminate the whole acreage which would be displaced toward West Texas growers," Mahon said.

Mahon said he was wired officials in Texas and Texas once again to eliminate the whole acreage which would be displaced toward West Texas growers," Mahon said.

Mahon said he was wired officials in Texas and Texas once again to eliminate the whole acreage which would be displaced toward West Texas growers," Mahon said.

Mahon said he was wired officials in Texas and Texas once again to eliminate the whole acreage which would be displaced toward West Texas growers," Mahon said.

Mahon said he was wired officials in Texas and Texas once again to eliminate the whole acreage which would be displaced toward West Texas growers," Mahon said.

FARM SUPPLIES

ANTI-FREEZE
Co-op, Preston, Zerex — take your choice

High Top Rubber Boots
STALK SHREDDERS
TRAILER WHEELS
Will fit any make trailer or chassis

Hoeme Plows and Parts
CO-OP BATTERIES
4-year guarantee

MOTOR OILS of all kinds
Co-op Premium, Amalie, Havolind
Diamond DX, Conoco

CO-OP TIRES AND TUBES
24 and 30-month road hazard guarantee

Consumers Fuel Association
Lockney

FIRST MONDAY SPECIALS

Here's your opportunity to save!
Special prices good next Monday, November 4th

LADIES AND GIRLS
PIXIE SHOES
For play or house wear. Regular \$3.95 and \$4.95, only
\$2.99

One large rack of
MEN'S and BOYS' JACKETS
Values from \$7.95 to \$16.95
All specially priced from —
\$5.99 to \$16.95

KNIT SPORT SHIRTS
One group, values to \$2.98 for only —
\$1.98
Another group, values to \$3.95, for only —
\$2.98

LOOK LADIES!
Nylon Panties by Berkshire

Choice of colors and styles. All sizes, Monday only —

\$1.00 values	79c
\$1.35 values	99c
\$1.65 values	\$1.29
\$1.95 values	\$1.59

Chenile Bedspreads

Full size, choice of colors: aqua, rose, green, white, gold, pink, on Dollar Day only —

\$3.98

Brown's Department Store
Lockney
Dial OL 4-3530

LENA FAE STORE

Dollar Days

Friday, Saturday and Monday are Dollar Days at Lena Fae Store in Lockney

LADIES!

Counter No. 1 — **\$1.00**
Jewelry, Hose, Happy Toe Shoes, Shirts, Blouses, Underwear, etc., for only \$1.00

Counter No. 2 — **\$2.00**
Blouses, Purses, Underwear, Sweaters, etc., for only \$2.00 each

Counter No. 3 — **\$3.00**
Slips, Blouses, Pajamas, Gowns, Sweaters and many other items for only \$3.00 each

DRESSES ON SALE
Huge assortment of Dresses on sale for **\$3.95 to \$9.95**

MEN'S WEAR

Davis Hats — \$3.95, \$5.95, \$7.50 and \$10.00
Davis Western Hats — \$8.50, \$10.95, \$15.00

TUF-NUT WORK CLOTHES

Khaki, Brown or Grey Suits
Jeans, Jackets, Overalls, Coveralls
Tuf-Nut "Ivies" for men and boys.

LIVE AND LET LIVE
Dial OL 4-2217 LENA FAE SWEATT

SAVE on Family Needs
AT OUR **Rexall DRUG STORE**
FEATURING PRODUCTS ADVERTISED IN LOOK • POST FARM JOURNAL • PROGRESSIVE FARMER

LOCKS the Wave in!
See MICKEY ROONEY, WALTER SLEZAK in PINOCCHIO
Check your paper for time and stations.

Take America's Largest Selling Multi-Vitamins!
Rexall SUPER PLENAMINS
11 vitamins and 12 minerals in one daily tablet.
BOTTLE OF 36 TABLETS
\$2.59
Also 72's and 144's

CARA NOME fast PERMANENTS
GENTLE • REGULAR • SUPER
With exclusive Neutrallock Neutralizer—locks the wave in at the exact softness you want.
OUR PRESCRIPTION DEPARTMENT IS THE HEART OF OUR BUSINESS

BUFFERIN TABLETS 12's 25¢
VICKS VA-TRO-NOL 1 oz. 59¢

CARA NOME COLOR SHAMPOO 15 shades	Each 1.25
CARA NOME RADIANCE FACE POWDER 8 shades	3 ounces 1.25
TAYLOR'S COTTAGE CHOCOLATES	1-pound box 1.35
REXALL ALCO-MIST Aerosol body spray	7 ounces .98
SYMPHONY OAKGRAIN STATIONERY 24 sheets, 24 envelopes to box	1.39
CASCADE LINEN FINISH WRITING PAPER (Cello Pack)	.25
STAG MEN'S STATIONERY 90 sheets, 50 envelopes	1.29
FLETCHER'S CASTORIA	2½ ounces .39
EASTMAN DUO-PAK FILM V620 or V120	.85

YOU CAN DEPEND ON ANY DRUG PRODUCT THAT BEARS THE NAME Rexall

LAY-AWAY FOR CHRISTMAS NOW!
Come in and select your Christmas gift items early and use our lay-away plan to hold them. Only 10% down will hold any item for you.

LOCKNEY DRUG COMPANY
THE **Rexall** STORE
CLYDE BRILEY, Pharmacist
Day Phone 3333 Night Phone 3328 or 2296
WE FEATURE SERVICE FOR THE SICK