

**PICKRELL**  
Insurance Agency  
**647-3582**  
**RANGER**  
Presents the Weather

CONTINUED hot today with  
temperatures near 100. Low  
tonight near 70.

# RANGER TIMES



VOLUME 50 — PRICE 10 Cents

RANGER, TEXAS 76470 — THURSDAY, JULY 17, 1969

NUMBER 106



CHAMBER OF COMMERCE PRESIDENT, Dr. John Foster, receives certificate from Burl B. Hulsey, President of Texas Electric Service Company in connection with the Industrial Development Program the electric company sponsored recently. Also shown is Pat Collins, editor of the Ranger Times, and Pete Tibbels, of Bell Telephone Company.

## 28 Freight Cars Derailed Here Wednesday Morning

### No Injuries Reported In Train Wreck

Twenty-eight to 96 cars of the Texas Pacific Railway were derailed in Ranger Wednesday morning shortly after midnight.

The freight was traveling east when a hot-box caused an axle on one of the cars to break into and causing the derailment.

An eye-witness said he was stopped at the crossing on Main Street when the train was moving through Ranger and noticed the wheels on one of the cars begin to buckle. The axle broke into causing several of the cars to be knocked off the track near the Hou-Tex Peanut Company east of the Main Street.

It was reported by the Ranger Police Department the train was moving through Ranger at a speed of approximately 60 miles per hour when the wreck occurred.

Shortly after the wreck a fire broke out and the Ranger Volunteer Fire Department was called to the scene and quickly extinguished the blaze. About 2:30 the fire broke out again and again the firemen were summoned to the scene.

A number of box-cars, auto transport cars and flatbed rail cars were derailed.

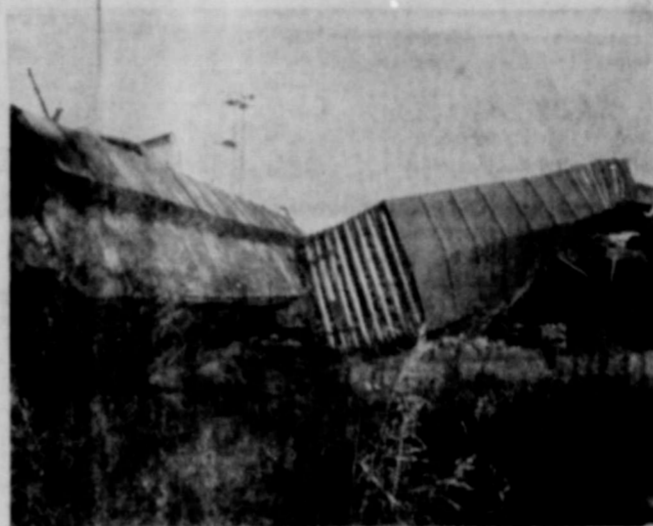
Fire Chief Charlie Isabell said there was enough gas in the automobiles in the wreck that could cause an explosion. Several spectators were on hand to see the train wreck and because of the large number of people the firemen were hampered in getting the fire under control.

Engineer of the train was A. B. Winder. His address was not known at the time of the accident. No one was injured in the wreck nor in the fire.

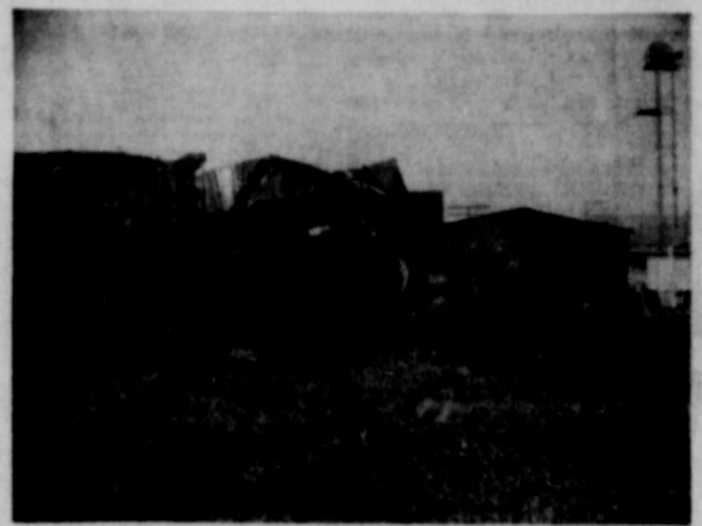
Two Mexican transits were apprehended by the Ranger Police and taken to the Ranger City Jail. They were to be picked up by Emigrant officials later Wednesday according to the Ranger Police.

A bride crew, which had been working and staying in Ranger for the past several days had left noon Tuesday for Weatherford. It was reported, and had the workmen been here the cars in which they were staying would have been in the wreck.

A crew from Ft. Worth and Weatherford were in Ranger early Wednesday clearing the wreckage. It was not known just when the tracks would be cleared for thru train service.



SHOWN ABOVE is the results of an early morning train wreck in Ranger. The Texas-Pacific freight was derailed due to a broken axle Wednesday morning. No



one was injured in the accident. Twenty-eight of the ninety-six cars on the track were derailed.



In this corner, with **COLLINS**

HAD A TALK with Tony Lewis Tuesday morning and the conversation got around to the hot-dry weather we are now experiencing. Tony stated that June 19 was the last day we had received a rain, a total of .2 to be exact.

WERE YOU at the rodeo on Friday night? What amazed us was the way the spectators expressed their feelings when a bull suddenly broke his leg and the way the people were shouting 'Get him out of the arena!' But on Thursday night, the opening night of the rodeo, a cowboy was stomped by a wild bull and the rodeo-fans applauded. It makes us wonder, just what do the people want to see at a rodeo?

SUNDAY AFTERNOON we took the family on a ride into the country north of Ranger. The local Cycle Center held a Lime Race that afternoon in that vicinity so we got to following the lime marks. The racers must have had a grand time in the race. We first noticed a lime mark in the Necessity Community and began looking for another sack. We kept riding along the roads and seeing the sacks, and by the way, that was the only way we found our way back to the highway, where we knew exactly where we were.

CONGRATULATIONS to 'Skipper' Hartman on winning the Beard Growing Contest Saturday night at the Jaycee Rodeo. Other winners in the contest were Dave Pickrell and Red Veale.

REAL TREAT — the Ranger Rodeo — especially for S-Sgt. and Mrs. William R. Reed of Fort Knox, Kentucky, who are visiting his father, I. T. Reed and family. The Sargeant's wife and three daughters are natives of Germany and this was their first opportunity to attend a rodeo.

REPORT COMES that Buster Higdon of Pampa, formerly of Ranger, is improving following a heart attack suffered on July 3rd. He has been removed from Intensive Care and is in Room No. 639, Northwest Texas Hospital in Amarillo. His mother, Mrs. Higdon, is at his bedside.

**AUTO LOANS**  
At Low Bank Rates  
**FIRST STATE BANK**

### Funeral Services Held Monday for C. A. Campbell

Charles Arthur (Art) Campbell, 70, died at 5:30 p.m. Saturday in Ranger General Hospital.

Rosary was recited at 7:30 p.m. Sunday in Killingsworth Funeral Chapel with the Rev. Sebastian Beshoner officiating. Funeral mass was held at 10 a.m. Monday at St. Rita's Catholic Church.

Burial was in Evergreen Cemetery with Richard Jolly, Stuart Campbell, Patrick Hinkson, Frank Nadolney, Arthur Camacho and Francis Frazier serving as pallbearers.

Born Dec. 30, 1898 in Bay City, Mich., he married the former Marie Louise Bunch Aug. 23, 1921 in Ranger. He was an employee of the original Ford Motor Plant in Dallas prior to moving to Ranger in 1935 where he was a Ford dealer until retirement in 1963.



CHARLES A. CAMPBELL

Mr. Campbell was a member of St. Rita's Catholic Church, St. Rita's Mens Club, Knights of Columbus and Rotary and Lions Club.

Survivors include his wife of the home; three sons, Charles D. of Houston, Morris A. and Steven A., both of Ranger; one daughter, Mrs. Dorothy Jolly of Abilene; one sister, Mrs. Russell Berger of Detroit, Mich.; eight grandchildren and one great-grandchild.

Materials in the form of contributions to the study of emphysema may be left at First State Bank in Ranger.

### Funeral Services Held Tuesday for Simmie Kellum

Simmie Kellum, 61, resident of Eastland for 11 months, died at 11:15 p.m. Saturday in Ranger General Hospital.

Funeral services were held at 2:30 p.m. Tuesday in Arrington Hamner Funeral Home. Burial was in the Eastland Cemetery.

Born September 22, 1907 in Marlin, he was a former resident of Amarillo. He was custodian at Ranger High School and lived at 305 East Patterson in Eastland.

He was married to Mattie Stephens in Amarillo. She died in 1967.

Survivors include one son, Simeon Kellum, Jr. of Dallas; one sister, Mrs. Jessie Lee Freeman of Eastland; and four grandchildren.

### Barry Franklin Wins Cycle Race Here Sunday

Barry Franklin was first place winner in the second annual Lime Race held in Ranger on Sunday afternoon.

Rosary was recited at 7:30 p.m. Sunday in Killingsworth Funeral Chapel with the Rev. Sebastian Beshoner officiating. Funeral mass was held at 10 a.m. Monday at St. Rita's Catholic Church.

Chesnut's Cycle Center would like to thank all who participated, both contestants and spectators, for the success of the event. A special thanks to Ray Williams for his help in setting up the refreshment stands at Bullock.

### World War I Veterans Will Convene July 24

The veterans of World War I is an organization which was formed on a national basis in 1952. It is now the fastest growing veterans group in the United States with membership of approximately 200,000 composed of men who served in the first World War.

This organization is the third largest veterans group in the country with organized departments in 47 states, Ireland, Canada, Hawaii, and over 2500 barracks throughout the nation.

The department of Texas, Veterans of World War I U.S.A. Inc. will convene July 24-27, 1969, headquarters in the Gunter Hotel, San Antonio, Texas for their 16th annual convention. All veterans who served the Armed Forces in WWI are invited to attend and hear reports on national legislation affecting the WWI veteran, his spouse, widow or dependents as reported by Mr. Oliver E. Meadows, Staff Director, Veterans Affairs Committee, Washington D. C. Other dignitaries with Mr. Meadows will address the convention starting Sunday July 27, 1969.

### Local Soldier Wounded In Vietnam Action

Pvt. David H. Dunson, serving with the U. S. Army in Viet Nam, was wounded on July 4th when the patrol of which he is point man, stepped into an enemy booby trap.

The soldier underwent surgery in a Tam Ky hospital where, in a letter to his parents, Mrs. and Mrs. Hale Dunson, he stated that he is making progress toward recovery and transfer to Japan.

### --NOTICE--

Persons wishing to use water at Evergreen Cemetery are notified to do so before 5 p.m. each day as the water will be cut off at that time. Water Commission City of Ranger

### Frank Champion Honored On 90th Birthday July 12

A tribute to Frank Champion of Ranger on the occasion of his 90th birthday was given on Saturday at Lone Cedar Country Club by four generations of grateful descendants.

Those attending were his son, Don Champion and wife, Alberta of Houston; a daughter, Vivian Hughes and husband, Fred of Houston, grandson Tommy Thompson and wife, Lacy, also of Houston; granddaughters, Clarice Mercer of Weatherford and Jane Stubbsfield and husband, Clarence of San Angelo; great grandchildren, Bob Layne and Terry Stubbsfield, Champ and Tanya Thompson and Robin Mercer; great-great-grand daughter, Lorie Stubbsfield.

### FB QUEEN DEADLINE SET FOR AUG. 15

August 1 has been set as the deadline for entering the Eastland County Farm Bureau Contest. Girls who will be 16 to 22 on September 1, 1969 and who are daughters or sisters of Farm Bureau members are eligible to enter.

The contest will be held at Eastland City Park August 8. Girls interested in entering are asked to contact the Farm East in Eastland, or write Box 470, Eastland. The phone number is Eastland 629-1704.

### D. O. Hartsfield Named To Dean's List at Tech

Dowell O. Hartsfield was named to the Deans Honor List for the second semester, 1968-69, Texas Tech College in Lubbock. Hartsfield, who is working in Georgia during the summer, will return to school in Lubbock in September.

### Eastland Masons To Install New Officers Tonight

Officers for the ensuing Masonic year will be installed in Eastland Lodge No. 467, A. F. & A. M. on Thursday night, July 17th. Several Master Masons are invited to attend the installation at 8:00 p.m.

A Master Mason's degree will be conferred on Friday night, July 18th in the Eastland Lodge. The Lodge will open at 7:30 p.m.

### Rites Pending For Curtis Blackwell

Curtis E. Blackwell, 59, a native of Eastland County, died at 7 a.m. Wednesday in Ranger General Hospital where he had been a patient for one week.

Funeral arrangements were pending at press time and will be announced by Killingsworth Funeral Home.

Mr. Blackwell is survived by his wife; one son, Jack Edward Blackwell, two brothers, O. E. (Jack) of Ranger and Tom of Weymouth, Mass.

### Baptist VBS To Start Monday

Vacation Bible School will be conducted at First Baptist Church Monday through Friday, July 21-25, according to announcement of the pastor, Rev. Avery Sullivan.

Classes for children ages three through twelve will be conducted from 8:30-11:30 a.m. on above dates and will include Bible study, mission study, handicrafts and recreation. The pastor will serve as general superintendent and asst. of the Junior department with Mrs. L. G. Kennedy directing the Primary dept., Mrs. Bill Ellis, Beginners and Mrs. Joe Weeks, Nursery. Children of this age group are cordially invited to attend these classes. Rev. Sullivan will.



MISS RANGER JAYCEE RODEO of 1969 is Miss Suzanne Harbin, 15, daughter of Mr. and Mrs. Jeff Harbin of Eastland. Suzanne is a sophomore in Eastland High School and is president and sweetheart of the Eastland County 4-H Clover Cloppers, a riding group which she helped to organize. Suzanne was selected during the final performance of the rodeo Saturday night.

**Ranger Times**

WISHES  
Mr. and Mrs. Raymond Hart to be our guest to see

Richard Widmark - Lena Horne  
**'Death of a Gunfighter'**  
A UNIVERSAL PICTURE TECHNICOLOR

FRIDAY — SATURDAY  
Present this ticket at  
Box Office  
**Ranger Drive-In Theatre**

# RANGER TIMES

Street, Ranger, Texas 76470 — Established June 1, 1919  
Entered as second class matter at the post office at Ranger,  
Texas under the act of Congress of March 3, 1879.

Published Semi-Weekly — Sundays and Thursdays  
By Eastland County Newspapers, Inc.  
PAT COLLINS, Editor

**SUBSCRIPTION RATES** — By carrier in city, \$7.80 per year, 65c per month, 15c per week; one year by mail on rural routes, \$4 per year; one year by mail in Ranger or elsewhere in Texas, \$6 per year; one year by mail outside Texas, \$7 per year.

**NOTICE TO PUBLIC** — Any erroneous reflection upon the character, standing or reputation of any person, firm or corporation which may appear in the column of this newspaper will be gladly corrected upon being brought to the attention of the publishers.

## CLASSIFIED

### For Sale

**FOR SALE:** Ford tractor and equipment. Will sell cheap. Need to sell this week. Call 1711 Olden, 653-2432.

**FOR SALE** — 1968 Cadillac Coupe DeVille, excellent condition, still in warranty. See or call Glyn Gilliam, First State Bank, 647-3242 or 647-1711 after 6:00 p.m.

**BIDS ARE** now being accepted for a four-room house and lot at 731 Pine St. in Ranger. Submit bids to City Hall in Ranger by Aug. 4, 1969.

**FOR SALE:** Nice lake cabin. Completely paneled, modern cabinets, Armstrong inlaid floors, picture windows, sidewalk, patio, 220 wiring, new fixtures, roof and plumbing; one and a half baths; barn red with new white roof, sidewalk and patio overlooking lake. Over dam, turn first right and keep right. Price \$7950 with terms. Key available brick house next door. Inspection invited. Owner, Carl Garrett, Eastland, 629-2031, weekends only.

**FOR SALE:** Three peanut farms, good allotments. Good water for irrigation. Phone RE 4-5883.

**FOR SALE:** Flexi-Lite signs for car or truck, block letters for building signs. Expert workmanship, reasonable prices. Inquire at Times office.

**FOR SALE:** Small business, Peanut & Candy Supply. Route in Ranger, Past Time. Income starts first week. Must have car and 40 hours each week to restock dispensers. Required \$888.00 Cash Investment, write Texas Kandy Company Inc., 1135 Base Rd. in San Antonio, Tex., include a phone number.

**FOR SALE:** Large oak flat top desk with plenty of drawer space; one swivel chair; 1 armed office chair and hat rack. Priced reasonable. Call Charles Bobo, Tel. 647-1671.

**THREE FAMILY Garage** Sale in progress, 1000 Hwy. 80 W. Bedroom furniture, table and many other items. Come out and browse. 647-1711.

### Wanted

**HELP WANTED:** Maid for El Rancho Motel, Hwy 80 in Ranger. Apply in person.

**WANTED:** Waitress, Ranger Hill Cafe. Tel. 647-3177.

**WANTED:** Painting, taping, beading and texture, by hour or contract. Call Wells Brothers, 647-1778 or 647-3049.

**WANT TO BUY** drag-type mower. Call 647-1638 in Ranger.

**WANTED:** Ironing. Call 647-1485.

**THIS MINI-BILLBOARD FOR RENT \$3. A MONTH**

**Eastland Steam Laundry FREE PICKUP AND DELIVERY**  
Ph. 629-2613 Collect  
210 N. Lamar

**FOR YOUR Ceiling Tile, Painting, Remodeling, Panelling, Composition Shingles, Built-up Roofs and General Home Repair**  
Call  
**R. D. OTT**  
672-5300 Strawn, Tex.

**WANTED:** Truck Driver; one year minimum experience, truck and trailer. Equal opportunity to all. Apply in person. T. E. Mercer Trucking, East Hwy. 80, Odessa, Texas, 106

**WANTED: CUSTOM H A Y BAILING.** Will cut and bale hay. Call J. D. Griffin, Jr., Carbon, 639-2442.

**EXPERT PROFESSIONAL Barbering**  
**BILL'S Barber Shop**  
S&H Green Stamps

**M. L. TERRELL REAL ESTATE**  
Farm Bureau Bldg.  
Hi Way 80 East  
Tel. 629-1725 Day  
Night Call 629-2447  
Eastland, Texas

### Rentals

**FOR PAINTING, paper hanging and decorating,** call Geo. L. Minnick, 647-3851.

**WATSON UPHOLSTERERS**  
Ranger Deedema (after 5)  
647-1078 758-2597  
Custom Drapes & Upholstery  
Drapes & Upholstery Fabric  
Free Estimates and  
Pickup and Delivery

**FOR RENT:** Newly-decorated furnished apartment, 401 Pine St., Tel. 647-1321.

### Notice

**NOTICE:** Custom chair caning. Rich bottom seats restored. Custom picture framing. Antique restoring, refinishing. Call 917-672-7671, Colonial Corner, Barro Alley, Abilene.

**NOTICE:** For Athlete's Foot Use Keratolytic Action because it sloughs off and dissolves affected skin. Exposes deepest infection to its killing action. Get quick-drying T-4-L, a keratolytic, at any drug counter. Fast relief on your 48 hours. Buy at Swasey's Pharmacy.

**MASONIC LODGE NO. 738**  
Ranger Masonic Lodge A F & A M meets at 7:30 p.m. on first Thursday in each month. Call Wayne Simpson, W. M., 647-1391, or Doyle Gentry, Sec'y, 647-1566 for information.

**NOTICE:** Car stereo and home tape player owners — we custom record your favorite records on 8 track cartridges. RANGER ELECTRONIC CENTER.

**TRADING POST:** 311 Main St. buys used furniture, radio, misc. items. We sell furniture, antiques, misc., some old, some good, some junk; also 55-gal. oil drums; scissors sharpened, repair service on furniture and appliances. Arnold Gohlke, 647-3183.

**NOTICE:** Learn a profession in just a few short months. Complete training. Low tuition, easy terms. Part time students welcome. Texas Barber College, 450 Pine, Abilene. Phone OR 4-5891.

**WESTERN MADE HOMES:** Lots for sale — Bludell and Skylark, Meadowbrook Addition, \$100.00 down. New homes for sale, \$12,500.00 up. All brick construction. Call J. B. Foshee in Abilene, 673-6221 or 692-8631 for appointment.

**Western Mattress Co.**  
Mattress, Box Springs,  
Custom bills.  
Renovated or exchange.  
New Guarantee. Save 30%  
CALL 647-3122 RANGER

### The Week Ahead In Ranger

**TUESDAY**  
9:00 a.m. — LWBB Church of God.  
1:45 p.m. — Boy Scout Troop No. 10, First Methodist Church.  
3:00 p.m. — WMU, Second Baptist Church.  
5:30 p.m. — Boy Scout Troop No. 10, First Methodist Church.  
6:30 p.m. — World War I

**WEDNESDAY**  
7:00 a.m. — Methodist Mens Prayer Group.  
12:05 p.m. — Rotary Club, Bryan's Steak and Coffee Shop.  
7:30 p.m. — Elks Club.  
**THURSDAY**  
12:05 p.m. — Lions C 1 u b, Bryan's Steak House.

**WELLS BROTHERS**  
Paint & Contract  
Job or Hour  
647-1778 or 647-3049

**ELECTROLUX**  
Factory Authorized  
Sales & Service  
Free Home Demonstrations — No charge for service calls  
**JACK BEDFORD**  
Box 72, Cottonwood, Texas 79504

**MOBILE HOME MOVING**  
M. E. Goodman  
General Construction and Oilfield Welding Blacksmith  
647-1353—Box 202  
Tiffin Rd., Ranger

**HOMES FOR SALE**  
3 Bd Rm Home lots of Floor space good Loan, low interest, S. Hillcrest.  
3 Bd Rm Home 2 Bath Cent Air and Heat Carpeted Built-ins' Madera.  
3 Bd Rm Home 1 Bath Double Carport 2 nice Lots Reasonably Priced.  
3 Bd Rm Home 2 Bath reasonably close in needs repairs S. Daughtery.  
2 Bd Rm Home 2 Bath need some repair priced to sell W. Patterson.  
3 Bd Rm Home 1 Bath front on Interstate 20 approx 2 Acres Olden, Texas.  
3 Bd Rm 2 Bath Brick Home 3 1/2 Acres Olden, Texas.  
4 Bd Rm 1 Bath Native Rock Home 3 Acres Olden, Texas.  
1 Bd Rm Home with Furniture \$2450.00 Olden, Texas. Have some good building Lots priced reasonably.  
Contact us for Lake Leon Homes and Cabins.

**FARMS AND RANCHES**  
80 Acres good Sand plenty Water Native Bermuda on Pavement.  
80 Acres Sandy Land no improvement no Allotments.  
340 Acres 138 cult good grass 3 Bd Rm House.  
500 Acres Ranch on pavement Net Fences \$100.00 Acre. 480 Acres improved Grass good Fences will consider trade.  
900 Acres Sandy Land some Coastal and Love Grass consider trade.  
1300 Acre Ranch good Deer Hunting Terms.  
1500 Acre Ranch well improved on pavement. Terms.  
2800 Acre Ranch well improved Lampuses area.  
12,000 Acre Ranch West Texas with valuable Mineral interest \$40.00 Acre Terms.  
We have many other good Ranches this area and other parts of Texas, Okla., and Colo.  
Long Term Farm and Ranch Loans contact us.

**KINCAID REAL ESTATE**  
100 S. Seaman — 629-1788  
J. W. Elder, Robert Kincaid  
647-1321 — 629-2721  
Ranger Eastland

**PROFESSIONAL HORSESHOEING**  
Having recently attended the well known North Texas Farriers School, I feel I am well qualified to meet all horse shoeing needs. Particularly those most difficult jobs requiring corrective shoeing.  
**VAN H. RIGBY, JR.**  
Graduate Master Farrier  
Ph. 817-647-1597 Rt. 3  
Ranger, Texas 78470

### Mrs. Armando Renteria Honored With Gift Tea Saturday Afternoon

A gift tea on Saturday afternoon in the home of Mrs. Mary McGee, 531 Pine St., honored Mrs. Armando Renteria, the former Donna Johnston. Co-hostesses were Nancy Newnam, Jane Pearson, Teresa Huling, Vickie Summers and Alice Porter. Receiving guests with the hostess were the honoree and her mother, Mrs. Norman Lawler. The refreshment table was

laid with a white linen cloth and centered with a floral arrangement in shades of yellow and orange. Hostess alternated in serving white cake squares crowned with yellow confection flowers, orange punch, salted nuts and minis. A large and attractive display of household gifts were admired by friends who called during the appointed hours of three to five p.m.

### New Birth

Dr. and Mrs. Walt L. Shaffer of Metairie, La., announce the arrival of a daughter, Jennifer Ann, weight five pounds, four ounces, born at 3:15 a. m. Sunday, July 13, in a Metairie hospital. Maternal grandparents are Mr. and Mrs. Paul Mackey of Lafayette, La.; paternal grandparents are Mr. and Mrs. C. L. Shaffer of Ranger. This is the couple's first child.

### Hospital Patients

Patients in Ranger General Hospital Wednesday morning were:  
Mrs. Avis Ingram  
Mrs. Alice Roper  
Mrs. Ben Patterson  
Mrs. Patsy Patterson  
Mrs. Kay Tibbels  
Mrs. Alice Woodard  
Mrs. R. L. Edwards  
Mrs. Raymond Boyd  
Mrs. Linda Hatcher  
Mrs. Barbara Wells and baby boy.  
Mrs. J. D. Ridling  
Mrs. Lonnie Russell  
Mrs. Alice Pruitt  
Debbie Gilbert  
O. R. Gafner  
Ben Patterson  
Arthur Bridges  
Marion Goforth  
Jesse Segar  
Raymond Boyd  
Joshua Ridling  
T. I. Collins  
Carl Bynstead  
W. E. Woods  
James Simms  
R. E. Crayen  
Purl Huns  
Bob Schwesig  
Roy McCoy

### MRS. BROWNING RETURNS FROM 12-DAY VACATION

Mrs. Gene Browning has returned from a most enjoyable vacation trip. Mr. and Mrs. Paul Greenhaw of San Diego, Calif., came to Texas and accompanied his father, Mrs. Browning and Ruby Price on the tour which included points of interest in New Mexico and a tour of Las Vegas, Nev. On to California, where sights in San Francisco and Los Angeles included a drive over Golden Gate Bridge and a tour of Hollywood. During a visit with a sister in San Bernardino, Mrs. Browning was honored with a surprise birthday dinner. They visited another sister in Gloray, Calif. The trip home by plane afforded opportunity for a visit with relatives in Dallas and Fort Worth. The 12-day vacation will be a long-remembered experience for Mrs. Browning and Price.

**Tibbels Hardware and Gifts**  
Open 8-5:30, Mon.-Sat.  
Air Conditioner Accessories, General Hardware  
Gifts for all Occasions  
Ranger, Texas

Mrs. H. X. Wallace and P. T. Smith have returned from Palestine where they visited Mrs. Wallace's son, Jack Wallace.

**WANTED:** Water plant operator, experienced or willing to learn. Good working conditions, fringe benefits and reasonable salary. Call, write or apply in person to R. L. Crossley, Secretary, Eastland County Water Supply District, P. O. Box 117, 120 Main Street, Ranger, Texas, in the First Federal Savings and Loan building. Applications will be accepted until 1:00 p.m. Friday, July 18, 1969.

**LONE STAR GAS COMPANY**, proposes to sell its Cottages No. 191 and 192 situated at the Pueblo Plant, between Cisco and MORAN, TEXAS and also Cottages No. 127 and 128, situated at the Gordon Plant at Gordon, Texas. Sale will be made to the highest bidder on and as is bidder will be required to pay 3% sales tax in addition to the bid price and further shall have 90 days to move his cottage, tear up, clean off or otherwise remove all foundation materials including underpinning, leaving said site in a good and workmanlike manner, after he receives a bill of sale. All of the above listed cottages will be available after September 1, 1969. Submit written bids to LONE STAR GAS COMPANY, 301 South Harwood Street, Dallas, Texas 75201, Attention, Mr. Joe M. Scott. All bids must be received by August 3, 1969 to be considered. Lone Star Gas Company reserves the right to refuse any and all bids. (July 31, 1969 - E R C)

**Ranger Air Service**  
is now the Authorized Evinrude Motor Dealer  
in the Ranger area  
Also Specializing in Parts and Repair Service

**FOR SALE**  
Drive In Restaurant  
And all equipment — Located adjacent to Ranger Jr. College on Hiway 80 in Ranger. Good condition. Seating for 58.  
This is a money maker and can be bought very reasonable. Some financing available for right party. See or call Glyn Gilliam at 647-3242 or 647-1711 after 6:00 p.m.

**GOING-OUT-OF-BUSINESS SALE**  
Beginning July 15  
10% Off on Everything in The Store — Groceries and Beverages of All Kinds.  
**CRAIG'S GRO.**  
Hwy 80 East Ranger

**10,000 GOLD BOND STAMPS TO BE GIVEN AWAY**  
At drawing to be held Saturday, July 19, at Quality Food Mart, Ranger, Texas  
Register each visit to our store. Winners do not have to be present at drawing to win.  
—No Purchase Necessary—

### NOTICE

Eastland Memorial Hospital, Inc., offers for sale the improvements situated on Lots 7 and 9 in Block 25 of Daugherty's Addition to the City of Eastland in Eastland County, Texas, consisting of a frame house, a two-car garage and storage and a carport.

Sealed bids will be accepted until 12:00 o'clock noon on August 1, 1969. Bids should be mailed or delivered to Leon A. Musgrove, Jr., Administrator, at P. O. Box 392, Eastland, Texas, or at Eastland Memorial Hospital.

The property is subject to inspection between 8:00 a.m. and 5:00 p.m. Mondays through Fridays. Terms of the sale are cash in advance; the property and all debris of every character to be removed from said lots within 60 days from the date of acceptance of bid. Each bid must be accompanied by a deposit of \$250.00 in the form of a cashier's check payable Eastland Memorial Hospital. The deposit is to insure the removal of said property within 60 days and the leaving of the lots clean. Upon proper compliance by the purchaser, said deposit will be refunded.

Bids will be publicly opened on August 1, 1969, at 2:00 p.m. in the conference room of Eastland Memorial Hospital. Eastland Memorial Hospital, Inc., reserves the right to reject any and all bids.

LEON A. MUSGROVE, JR., Administrator  
EASTLAND MEMORIAL HOSPITAL

**RANGER DRIVE-IN THEATRE**  
ADULTS 75c — KIDDIES UNDER 11 FREE  
SHOW STARTS AT DUSK

**BARGAIN NIGHT**  
FILL UP YOUR CAR WITH FRIENDS AND NEIGHBORS — HAVE FUN  
**\$1.00 CAR LOAD**

What sets up a man for an assignment to kill? How about finding your girl in the bathtub... dead?  
**ASSIGNMENT TO KILL**  
PARAVISION TECHNICAL COLOR

**FRIDAY — SATURDAY**  
July 18-19  
MARSHAL PATCH... HE DIDN'T HAVE AN ENEMY IN THE WORLD... BUT ALL HIS FRIENDS PLOTTED TO KILL HIM!  
Richard Widmark • Lena Horne  
**'Death of a Gunfighter'**  
Carol O'Connor and John Saxon  
TECHNICOLOR A UNIVERSAL PICTURE

**MAJESTIC**  
EASTLAND NOW thru SATURDAY PH. 629-1120  
Thur.-Fri.: open 4:45 — Show 5:7:20 9:40  
Sat.: open 1:45 — Show 2:05 4:25 6:45 9:05  
**JOHN WAYNE • GLEN CAMPBELL • KIM DARBY**  
HAL WALLIS' PRODUCTION  
**TRUE GRIT**  
The strangest trio ever to track a killer. A fearless, one-eyed U.S. marshal who never knew a dry day in his life... a Texas ranger thirsty for bounty money... and a girl still wet behind the ears who didn't care what they were or who they were as long as they had live unit.  
A BRAND NEW BRAND OF AMERICAN FRONTIER STORY  
HENRY HATHAWAY MARGUERITE ROBERTS CHARLES PERIS

## Close Contest In Rodeo At Rising Star July 11

One of the ropers in the Rising Star rodeo performance Friday night, July 11, broke the 8-second mark, but the exciting close competition with only 4-tenths of a second separating the first and fourth

place winners. Jimmy Green of Mullins, took first in this event with an even 10-second time. Pete Jones of Breckenridge was only 2-10ths of a second behind him and James Ray Lee of Gatesville was third with 10.4 seconds.

### V. Q. SAYS . . .



**BOSS SEZ FER US TO GET ALL OUR LOAFIN' CROWDED IN TO OUR DAY OFF.**

**PIPKIN MOTOR CO. OLDS CADILLAC RAMBLER GMC PICKUP Eastland 629-2636**

Both the bull riding and the bareback bronc events were close contests, the bull riding particularly so. In the latter Roy McAdams of Barid captured first with a score of 61, only one point better than Cooter Moore of May with a 60.

Bob Golson, veteran Cross Plains rider, stayed aboard his bronc for a score of 61 to best Butch Winstead of Wichita Falls for first place. Winstead scored 57.

Results of other events were: Show calf roping — Pete Jones, Breckenridge, 10.8 seconds; Tom Dudley, Comanche, 11, and Larry Fry, Gatesville, 11.4.

Steer riding — Sam Koenig, Cross Plains; Professional barrels — Donna Fay Hanks, Comanche, 19.2 seconds; Berva Hanks, Comanche, 19.8; Barrel racing (over 12 years of age) — Barbara Richter, Rising Star, 21.1; Susie Koenig, Cross Plains, 21.3; Drucilla Ratliff, Cross Plains, 21.4; Barrel racing (Under 12 years) — Sam Koenig, Cross Plains, 21; Penny Berry, Cisco, 21.8, and Gwen Dale Winfrey, Rising Star, 25.2.



**Franciscan earthenware**  
Eye Appeal you can Almost Taste

A favorite now for three decades is Franciscan Earthenware's rich, ripe APPLE. Its deep, deep colors are forever safe in your oven and dishwasher. A world of beautiful accessories are available for purchase at any time. A 16-piece starter set can be yours for a mere \$21.95. Enjoy the rich flavor of California dinnerware in your home... come in today and see lovely Apple and other distinctive Franciscan Earthenware patterns.

**EASTLAND DRUG**  
PRESCRIPTIONS & GIFTS

**AUCTION SALE**  
Saturday, July 19th — 1:00 p.m.

507 SOUTH MADERA STREET, EASTLAND, TEXAS  
THE ENTIRE HOUSE HOLD FURNISHINGS OF THE  
**W. M. BAGLEY ESTATE**

Will Be Sold Piece by Piece to The Highest Bidder

**Items to be Auctioned Include:**

Antique China Cabinet	Refrigerators
Antique Buffet	Books
Antique Desk	Lawn Furniture
Antique Beds	Yard Tools
Antique Tables	Tile Cutter
Antique Stove	Carpenter Tools
Antique Dressers	Chest of Drawers
Antique Rocking Chairs	Bed Room Suites
Upright Piano	Living Room Suites
Power Lawnmower	Divans — Carpets
Sewing Machine	Dinnette Suites
Coffee Tables	Automatic Washer
Lamps	Gas Range
Tables	Vacuum Cleaners
TV Sets	Mirrors
Electric Fans	Dishes
Mattresses and Springs	Pots and Pans

PLUS HUNDREDS OF OTHER ITEMS

**PLAN NOW TO ATTEND!**  
Don't Miss This One!

JAMES T. WRIGHT, LICENSED AUCTIONEER

# Hurry! GET YOUR... GOLD DIVIDEND CARD

EVERY CARD IS A ... **WINNER!!**



Start your "GOLD DIVIDEND" today!

JRB MEATS are U.S. Government Inspected and Graded. If for any reason you are not satisfied, we will cheerfully refund your money.

<b>TOP ROUND</b> USDA Choice	lb.	1.19	<b>SLICE BACON</b> Decker's Ranch Style	2 lb. pkg.	1.59
<b>BOTTOM ROUND</b> Boneless, Tenderized	lb.	1.29	<b>FRANKS</b> Gooch Blue Ribbon	12-oz. pkg.	55c
<b>I OF ROUND</b> USDA Choice	lb.	1.49	Regular 39c		
<b>RUMP ROAST</b> Boneless	lb.	1.09	<b>SMOKED SLICE MEAT</b> Land-O-Frost	3 for	\$1
<b>GROUND ROUND</b> Flavor Fresh	lb.	99c	<b>HOT LINKS</b> Decker's	lb.	69c
<b>STEW MEAT</b> Lean, Boneless Cubes	lb.	89c	Neuhoff Smokies		
			<b>BREAKFAST LINYS</b>	12-oz. pkg.	79c
			<b>CERVELOT</b> Decker Texas Style	lb.	69c

**SALADS ..... 50 FREE STAMPS with purchase of any 2 PKGS.**

**MORTON'S FROZEN CREAM PIES**  
EACH **29c**

Sugary Sam Whole No. 3  
**CUT YAMS** can **3 FOR \$1**  
Surefire Sliced or Halves 2 1/2  
**PEACHES** can  
Van Camp 2 1/2  
**PORK & BEANS** can

Lucky Leaf 303  
**APPLE SAUCE** can  
Shurline Cut 303  
**GREEN BEANS** can  
Sweetfrost Crushed 303  
**PINEAPPLE** can  
Toscan No. 2  
**ORANGE JUICE** can  
Homefoks with Snaps No. 2  
**BLACKEYE PEAS** can  
Del Monte No. 2  
**GRAPEFRUIT JUICE** can

Shurline Cr. Style Golden 303  
**CORN** can  
Del Monte No. 2  
**PINEAPPLE JUICE** can  
Shurline No. 2  
**SLICED BEETS** can  
Argo 303  
**PEAS** can  
Del Monte Whole 303  
**NEW POTATOES** can  
Ranch Style 15-oz.  
**BEANS** can

Snow Drift

**SHORTENING** 3-lb. can **59c**

Lipton's Family Size	12 count	39c
<b>TEA BAGS</b> Krafts Jet Puff		
<b>MARSHMALLOWS</b> Armour's	16 oz.	19c
<b>VIENNA SAUSAGE</b> 5-oz. cans	5 cans	\$1
Trollis		
<b>ENGLISH PEAS</b> 303 cans	2 cans	29c
Arrow		
<b>CHARCOAL</b> Del Monte Pineapple-Grapefruit	10 lb. bag	59c
<b>FRUIT DRINK</b> 46-oz. cans	4 cans	\$1
Maryland Club		
<b>COFFEE</b> all grinds	1 lb. can	69c
Del Monte		
<b>TOMATO SAUCE</b> 8-oz. cans	10 cans	\$1
Del Monte Sliced or Crushed		
<b>PINEAPPLE</b> No. 2 Cans	3 cans	89c

**FROZEN FOODS AND DAIRY**

Morton's Beef-Turkey-Chicken		
<b>POT PIES</b> 8-oz.	5 for	\$1
Patio Mexican—15-oz.		
<b>DINNERS</b>	39c	
Shurline Frozen Cr. Style—10-oz.		
<b>CORN</b>	5 for	\$1
Shurfrost Beef-Turkey—11-oz.		
<b>DINNERS</b>	49c	
A.F. Frozen		
<b>ROLLS</b>	3 for	59c
Shurfresh—quarters		
<b>OLEO</b>	2 lbs.	43c
A.F. — 8-can		
<b>BISCUITS</b>	3 for	25c
JRB		
<b>ICE CREAM</b>	1/2-gal.	59c
All Flavors Yami — 8-oz. ctns.		
<b>YOGURT</b>	4 for	\$1

**HEALTH AND BEAUTY AID**

Medi-Quik		
<b>FIRST AID SPRAY</b>	reg. 1.50	99c
Coppertone		
<b>SUNTAN LOTION</b>	reg. 1.60	\$1.19
<b>O.J. BEAUTY LOTION</b>	reg. 1.00	89c
Cashmere Bouquet		
<b>BATH POWDER</b>	reg. \$1.00	79c

Shurline  
**PURE CANE SUGAR**  
5-lb. Bag  
**49c**

Clear Sailing  
**PORK & BEANS**  
10 <sup>300</sup> cans **\$1**

Lipton  
**TEA**  
1/4-lb. pkg. **37c**

Also... Exciting Offer On  
**SWIRL TABLEWARE**  
4 Pk. Place Setting  
**99c**



*Garden Fresh Produce Features!*

**LETTUCE** . . . . . large head **19c**  
**TOMATOES** Texasvine ripe . . . . . lb. **29c**  
**AVOCADOS** nice size . . . . . 2 for **29c**  
**ORANGES** Calif. Velencia . . . . . lb. **15c**  
**CANTALOUPE** DeLeon crop . . . . . 4 for **\$1**

MEMBER  
**AFFILIATED**  
1000 STORES

**DOUBLE S&H GREEN STAMPS**  
with purchase of \$2.50 or more every Wednesday

**JRB SUPERMARKETS**  
**S & H GREEN STAMPS**  
WITH EVERY PURCHASE

PRICES GOOD IN RANGER  
Quantity Rights Reserved — No Sales to Dealers  
PRICES GOOD THRU SATURDAY, JULY 19th

## County Joins With Eastland In New Base Radio Station

The Eastland County Commissioners Court, meeting Monday, agreed to join with the City of Eastland in the purchase and maintenance of a modern police radio base station to replace the present which is obsolete and incapable of repair, it was announced.

Cost of the new equipment, which will increase the range and efficiency of the radio communications system, will be about \$2,200 and the station will be installed by an Abilene firm.

The Eastland City Police and the county peace officers have been using the old equipment installed on the fifth floor of the courthouse, and which is owned by the county. The county and the City of Eastland will own and maintain the new station jointly.

The commissioners also voted to buy a new radio for one of the sheriff's department automobiles, as requested by Sheriff L. E. Sublett. The sheriff will get bids from various firms on the installation.

The commissioners discussed but took no action on proposition for putting all constables in the county on a full-time salary basis as a move toward better law enforcement.

Some of the programs are yet to be worked out, it was explained. Action on the proposal was expected to be taken about August 1.

### REPORT OF CONDITION

#### FIRST STATE BANK

RANGER, TEXAS  
of Ranger, Eastland County in the State of Texas at close of business on June 30, 1969.

#### ASSETS

Cash, balances with other banks, and cash items in process of collection	557,977.71
United States Government obligations	992,890.63
Obligations of States and political subdivisions	64,015.53
Other loans and discounts	2,985,488.62
Bank premises, furniture and fixtures and other assets representing bank premises	139,649.07
Real estate owned other than bank premises	2.00
Other assets	1,071.12
<b>TOTAL ASSETS</b>	<b>4,441,094.68</b>

#### LIABILITIES

Demand deposits of individuals, partnerships, and corporations	2,601,138.82
Time and savings deposits of individuals, partnerships, and corporations	1,067,557.30
Deposits of United States Government	19,983.54
Deposits of States and political subdivisions	197,629.98
Deposits of Commercial Banks	67,483.83
Certified and officers' checks, etc.	23,834.91
<b>TOTAL DEPOSITS</b>	<b>\$3,997,628.38</b>
(a) Total demand deposits	2,862,571.08
(b) Total time and savings deposits	1,135,057.30
Other liabilities (including \$ NONE, mortgages and other liens on bank premises and other real estate)	75,764.64
<b>TOTAL LIABILITIES</b>	<b>4,073,393.02</b>

#### RESERVE ON LOANS AND SECURITIES

Reserve for bad debt losses on loans (set up pursuant to Internal Revenue Service ruling)	60,313.47
<b>Total Reserves on Loans and Securities</b>	<b>60,313.47</b>

#### CAPITAL ACCOUNTS

(c) Common stock — total par value	307,388.19
No. shares authorized	10,000
No. shares outstanding	10,000
Surplus	100,000.00
Undivided profits	107,388.19
<b>TOTAL CAPITAL ACCOUNTS</b>	<b>307,388.19</b>
<b>TOTAL LIABILITIES AND CAPITAL ACCOUNTS</b>	<b>4,441,094.68</b>

#### MEMORANDA

Average of total deposits for the 15 calendar days ending with call date	3,958,314.64
Average of total loans for the 15 calendar days ending with call date	2,690,745.05

I, B. W. Parnell, Vice President and Cashier, of the above-named bank, do solemnly affirm that the report of condition is true and correct, to the best of my knowledge and belief.

Correct—Attest: B. W. PARNELL

Glyn Gilliam  
Morris Newnham  
James Ratliff  
Directors

State of Texas, County of Eastland, ss:  
Sworn to and subscribed before me this 11th day of July, 1969, and I hereby certify that I am not an officer or director of this bank.

My commission expires June 1, 1970.  
**AUDREY ROSE**  
Notary Public, Eastland County, Texas

## MOORE'S SANITATION SERVICE



We Pump Sand Traps  
Grease Traps and  
Septic Tanks

965-3535

578 Minter St.

Stephenville, Texas

# Dependable Quality Foods



MAURICE HAZARD, MKT. MGR.

- BEEF  
**ROUND STEAK . . . . . lb. 99c**
- GOOCH'S RIDER  
**SLICED BACON . . . . . lb. 59c**
- GROUND CHUCK . . . . . lb. 69c**
- FAMILY STEAK . . . . . lb. 69c**
- MARKET SLICED  
**PRESSED HAM . . . . . lb. 59c**

- Shurfine  
**SUGAR . . . . . 5 lb. bag 49c**
- Assorted — 3-oz. Box  
**JELLO . . . . . 3-oz. box 10c**

- Colgates — Reg. 69c  
**TOOTHBRUSHES . . . . . ea. 39c**

- Hi-C Assorted — 46-oz. Cans  
**DRINKS . . . . . 29c**

- Giant Size  
**GAIN DETERGENT . . . . . 69c**

- 1000 Sheet Roll  
**SCOT TISSUE . . . . . 2 for 25c**

- Folgers  
**COFFEE . . . . . lb. 69c**

- FOOD KING — 6-oz. Can  
**GRATED TUNA . . . . . 25c**

- MORTON'S  
**SALAD DRESSING . . . . . qt. jar 39c**

- 2-Roll Pack  
**SCOT TOWELS . . . . . 39c**

—DOUBLE GOLD BOND STAMPS ON WEDNESDAY—  
with purchase of \$2.50 or more



- NECTARINES . . . . . lb. 29c**
- WHITE  
**POTATOES . . . . . 10 lb. bag 69c**
- WHITE ONIONS . . . . . lb. 10c**
- FRESH CORN . . . . . 3 ears 21c**

## DAIRY FOODS

- SHURFINE — 6-oz. Cans  
**LEMONADE . . . . . 2 for 25c**
- MORTON'S — 14-oz.  
**CREAM PIES . . . . . ea 29c**
- BORDEN'S — 8-oz.  
**YOGURT . . . . . 29c**

- SKY WAY — 40-oz. Jar  
**PEANUT BUTTER . . . . . 99c**

- 14-oz. Can  
**AJAX CLEANSER . . . . . 2 for 29c**

- Van Camp  
**PORK & BEANS . . . . . 2 for 29c**

- HEINZ — 14-oz. Bottle  
**KETCHUP . . . . . 4 for \$1**

COME IN AND SHOP AND YOU WILL FIND  
OTHER FOOD BARGAINS GALORE

*When Quality Counts—Count on Us!*  
GET MORE FOR YOUR FOOD MONEY

Sale Prices Good Monday Through Saturday



301 WEST MAIN — Phone 647-3206 — RANGER  
WE RESERVE THE RIGHT TO LIMIT QUANTITIES

COMPARE PRICES—TOTAL BILL  
IS WHAT COUNTS

**Texas is running out of water  
... and out of time**

**VOTE WATER FOR TEXAS**  
AUGUST 5 AMENDMENT 2

**Away August 5th? Vote Absentee  
Between July 16 and August 1**

Pd. Pd. Adv. The Governors Committee of 508  
Alan Rogers, Vice Director, John B. Conalty, Co-Chairman  
William E. Berger, Campaign Director

### Smith Promises Probe Of Car Insurance Rates In Texas

Governor Preston Smith has announced he will launch a "full-scale" investigation into the spiraling private passenger automobile insurance rates in Texas.

"The announcement that the Insurance Commission has recommended an 11.4 per cent increase in private auto rates borders on catastrophe and has become intolerable for many of our citizens," the Governor said.

One of the first steps the Governor plans is to call a meeting in Austin "as soon as possible" of a representative group of presidents of insurance firms in the state.

He also said he is exploring the possibility of naming a small select panel of lay citizens outside the insurance industry to make a thorough study and recommendations.

"There also is pending in both the House and Senate appointment of interim study committees of Legislators to look into auto insurance rates," the Governor added.

He said he is hopeful combined efforts on all fronts can "come up with some solid recommendations and steps which the Legislature can take at its next regular session."

"We must face the fact," Smith said, "that Texas is one of the few states in the nation which still maintains a controlled rate system on auto insurance."

The vast majority of states are under a competitive system or utilize some form of the merit system which Texas

once had, the Governor said. Governor Smith pointed out Texas' controlled-rate system originally was set up to make sure insurance companies received a fair and equitable rate of return and citizens were not charged exorbitant rates.

"We are not going to 'pick on' the insurance companies," Smith said.

"We all realize the companies must make reasonable profits to stay in business, but," the Governor continued, "it is up to the elected officials of our state to do everything in our power to see that Texans are not being overcharged and that profits are not excessive to companies writing insurance."

But, the Governor stressed, "this will not be an attempt to drive insurance companies out of our state or to make it impossible to buy insurance."

The Governor continued "there has been some talk that the federal government might move into certain segments of the insurance industry."

"This would be detrimental to our society. I have never been in favor, nor am I in favor now, of federal intervention into private or states' rights," said Smith.

"But," he warned, "unless state officials assume our responsibilities now we might not have a choice late on."

#### New 1969 Nomad and Shasta TRAVEL TRAILERS

Now in stock. Used mobile homes and parts, Ezy-Lift Hitches and accessories.

#### Kelly Kar Co.

HS-4003 - Breckenridge

#### HAY BAILING PLOWING

Experienced Operators

Heulon Perrin, 647-1028  
Dwight Squires, 647-1397  
In Ranger

#### NEW MATTRESSES BOX SPRINGS WE REBUILD INNERSPRING'S COTTON MATTRESSES AND BOX SPRINGS JONES

Mattress Co.  
106 E. 8th - 442-3959  
CISCO

#### FREE ESTIMATES ON new roofs only

Repair of Your Old Roofs

Residential and Commercial "ALL NEW WORK GUARANTEED" TRICITIES ROOFING CO.

Call Noble Scuters 629-2370 EASTLAND

- Complete Front-End Service wheel alignment toe-in, cam & caster
- Brake Service
  - Retread Service
- First-Class Carcass  
• No. 1 Dixie-Cap Tread Rubber

### HORTON TIRE CO.

EASTLAND

# 50th ANNIVERSARY SALE

Thursday - Friday - Saturday, July 17-18-19  
Special — AS LOW AS

SET OF 4 \$70<sup>00</sup>  
FULL 4-PLY NYLON CORD  
DUNLOP GOLD CUPS

Plus \$8.80 F.E.T. (\$2.20x4)  
White Nylon  
Sizes 775x14  
All Other Sizes  
Sale Priced

## 1/2 PRICE

the GENUINELY PREMIUM 78 SERIES DUNLOP ELITE

- NO FIRST TIRE TO BUY
- NO GIMMICKS
- ALL SIZES 1/2 PRICE plus F.E.T.
- DESIGNED FOR SUSTAINED SPEEDS TO 110 M.P.H.
- GUARANTEED BY GOOD HOUSEKEEPING

HURRY — THIS PRICE GOOD THREE DAYS ONLY  
To Introduce you to America's Finest Premium Tire

## HORTON TIRE CO.

YOUR COMPLETE TIRE HEADQUARTERS  
403 E. MAIN ST. EASTLAND 629-1420

**MONTGOMERY WARD** Pre-Season Lay-Away SALE  
\$1 deposit, holds until Nov. 15th



### BOYS' HEAVYWEIGHT WESTERN JEANS NOW AT A FABULOUS LOW SPECIAL PRICE

Round up Wards western jeans three at a time and corral a sensational value! You get the lean, low-riding look boys want. Plus easy care, long wear! Super tough cotton denims have reinforced seams, are Sanforized and yarn-dyed so washing can't fade them. 6 to 16

**3 : \$6**

Wards In Ranger — Back-to-School Headquarters

## FEDERAL SAVINGS & LOAN Association

RANGER, TEXAS

STATEMENT OF CONDITION AS OF JUNE 30, 1969

#### ASSETS

First Mortgage Loans	\$4,408,424.41
FHA Home Improvement Loans	78,472.90
Loans on Savings Accounts	79,582.77
Real Estate Sold on Contract	6,838.24
Real Estate Owned	13,347.78
Stock in Federal Home Loan Bank	36,600.00
Cash on Hand and in Banks	230,432.09
U. S. Treasury Bills and Notes Owned	124,921.88
Office Building	124,145.01
Furniture, Fixtures & Equipment	26,017.28
Prepayment of Federal Savings and Loan Insurance Premiums	57,917.79
Other Assets	5,206.82
	<b>\$5,186,907.03</b>

#### LIABILITIES

Savings Capital	\$4,611,623.67
Advances by Borrowers for Taxes & Insurance	57,031.79
Advances from Federal Home Loan Bank	200,000.00
Other Borrowed Money	None
Other Liabilities	2,672.39
Specific Reserves	44,555.89
General Reserves and Surplus	271,023.29
	<b>\$5,186,907.03</b>

#### OFFICERS



FELTON P. BRASHIER, President  
WILLARD SWANEY, Vice President  
LESTER CROSSLEY, Exec. V. P., Sec'y.  
REBA C. RAWLS, Treas.-Ass't. Sec'y.  
DEWEY C. COX, Jr., General Counsel

#### DIRECTORS

F. P. Brashier  
Dewey C. Cox, Jr.  
Willard Swaney  
Lester Crossley  
Dr. W. P. Watkins  
M.D.  
Col. B. Mills

UP TO \$15,000

# \$1,800 In Prizes Offered At Baird FFA Junior Rodeo

BAIRD — A total of \$1,800 in prizes will be awarded to young cowboys and cowgirls at the 1969 Annual Baird Junior Rodeo, scheduled to open July 30 at the Sheriff's Posse Arena in Baird.

FFA Chapter and Callahan Co. Sheriff's Posse, the sixth annual Junior show will open its first four-night run Wednesday, July 30, and continue through Saturday, August 2. Also, for the first time, the street parade will be on Saturday, instead of on opening day of the show. Parade time will be 5 p.m. on August 2nd. Performances will begin each night at 8 p.m.

Howard Heath of Grosvener will again produce the show, which drew entries from 185 boys and girls from Texas, Oklahoma, New Mexico and Arizona last year. Saddles will be awarded to the best all-round cowboy and cowgirl of the show. First place winners in each event will receive buckles. Spurs and blankets will be awarded to 2nd and 3rd place winners.

There will be eight different events for boys and five events for girls, with three age divisions in each event. Age groups are 12 years and under, 13-15 years of age, and 16-19 years. Entry fee will be \$5.00 for each event.

Boys events will be Barrel Race, Pole Bending, Flag Race, Breakaway Roping and Goat Tying. There will also be a Boot Race at each performance for cowboys and cowgirls eight years of age and under. There is no entry fee for this event and awards will be presented each night.

Entry blanks may be obtained by contacting Sarah Berry, Star Route 1, Baird, Texas, 79504. For telephone entries - call area code 915-854-1430. Telephone entries will be accepted July 21-26, from 1 p.m. to 6 p.m. Entry deadline will be Monday, July 28 at 6 p.m.

RAWLINS SINCE 1884  
**Monuments**  
WEATHERFORD PHONE 4-2725  
IF WE MAY ASSIST YOU, CALL US COLLECT OR MAIL THIS AD  
NAME \_\_\_\_\_ PHONE \_\_\_\_\_  
ADDRESS \_\_\_\_\_ CITY \_\_\_\_\_



## LOW PRICES EVERY DAY Plus SPECIALS!

### SAFEWAY

YOU CAN'T FEED YOUR FAMILY ON SPECIALS ALONE...  
You Need Low, Low Everyday Prices!...PLUS Specials!  
Remember...IT'S THE TOTAL FOOD BILL THAT COUNTS!

- Safeway Dollar Values!**
- ★ Pork & Beans Highway, 16-oz. Can
  - ★ Dry Blackeye Peas Highway, 15-oz. Can
  - ★ Mexican Style Beans Highway, 15-oz. Can
  - ★ Red Kidney Beans Highway, 15-oz. Can
  - ★ Pinto Beans Highway, 15-oz. Can
  - ★ Navy Beans Almo, 16-oz. Can
  - ★ New Potatoes Almo, Whole Small—8-oz. Can
- Mix or Match **8 for \$1**

- Sea Food Values!**
- Fish Sticks Captain's Choice, Pre-Cooked, Spiced! 3 8-oz. Pkgs. **\$1**
  - Perch Fillets Captain's Choice, Ocean Perch, Spiced! 3 16-oz. Pkgs. **39¢**
  - Cooked Shrimp Sea-Pak, 8 Pkgs. & 4 Deviled 10-oz. Pkg. **\$2.09**
  - Crab Miniatures Sea-Pak, Deviled 7-oz. Pkg. **63¢**

- Safeway Dollar Specials!**
- ★ Hi-C Drinks 8-oz. or 4-oz. Cans—12-oz. Can
  - ★ Butter Beans Almo, Cooked, Spiced—13-oz. Can
  - ★ Hominy Van Camp, 8 White or 8 Golden—14-oz. Can
  - ★ Sliced Beets Team Brand—8-oz. Can
  - ★ Blackeye Peas Kialaka, With Beans—11-oz. Can
  - ★ Crest Top Peas Early June—13-oz. Can
  - ★ Kobay's Potatoes Sherrington—2 1/2-oz. Can
- Mix or Match **10 for \$1**

- Safeway Dollar Specials!**
- Tomatoes Gardenside 7 16-oz. Cans **\$1**
  - Cake Mixes Mrs. Wright's, Assorted 4 18 1/2-oz. Boxes **\$1**
  - Zippy Pickles ★ Sour or ★ Dill, Whole 3 22-oz. Jars **\$1**
  - Razz-Ma-Tazz Glazed Popcorn with Peanuts 3 8-oz. Pkgs. **\$1**
  - Corn Flakes Safeway 4 12-oz. Pkgs. **\$1**
  - Dog Food Twin Pet, Dogs Love It 15 15-oz. Cans **\$1**

- Compare... Why Pay More?**
- Cane Sugar Condi Cond. Pure Cane 5-Lb. Bag **49¢** Why Pay 59¢
  - Detergent Parade 49-oz. Box **49¢** Why Pay 59¢
  - Enriched Flour Harvest Blossom 5-Lb. Bag **38¢** Why Pay 43¢
  - Liquid Bleach White Magic Gallon Plastic **38¢** Why Pay 45¢
  - Shortening Valkey 3-Lb. Can **49¢** Why Pay 53¢
  - Salad Dressing Padmont Quart Jar **37¢** Why Pay 41¢

**Safeway Special!**

**Cling Peaches**  
Highway, ★ Sliced or ★ Halves 4 29-oz. Cans **\$1**

**Safeway Special!**

**Gala Towels**  
2-Ply Paper, Assorted Colors 3 Big Rolls **\$1**

**Safeway Special!**

**Chunk Tuna**  
Sea Trader, Light Meat 4 6 1/2-oz. Cans **\$1**

**Safeway Special!**

**Scot Tissue**  
★ White or ★ Assorted Colors 8 Rolls **\$1**

**Safeway Unconditionally Guaranteed**

## Round Steak

Full Cut, USDA Choice Heavy Beef **-Lb. 98¢**  
(Boneless Round Full Cut—Lb. \$1.09)

## Rump Roast

USDA Choice Grade Heavy Beef. —Lb. **98¢**

Loir Tip Steak Boneless, USDA Choice Grade Heavy Beef	—Lb.	\$1.59	Top Sirloin Steak Boneless, USDA Choice Heavy Beef	—Lb.	\$1.65
Loir Tip Roast Boneless, USDA Choice Heavy Beef	—Lb.	\$1.39	New York Steak Boneless Strip, USDA Choice Grade Heavy Beef	—Lb.	\$2.29
Rib Steaks USDA Choice Heavy Beef	—Lb.	\$1.19	Semi-Boneless Hams ★ Whole	—Lb.	79¢
Boneless Roast ★ Chuck or ★ Shoulder USDA Choice Heavy Beef	—Lb.	98¢	Pork Chops Quarter Sliced Loin	—Lb.	75¢
Arm Roast Full Cut, USDA Choice Heavy Beef	—Lb.	89¢	Pork Spareribs Fresh-Frozen, 3 to 5-Lb. Average	—Lb.	65¢
Ground Chuck Lean Beef	—Lb.	79¢	Pork Neckbones Fresh-Frozen	—Lb.	25¢
Ground Round Extra Lean	—Lb.	99¢	Sliced Bacon ★ Safeway or ★ Armour MicroCare	1-Lb. Pkg.	75¢
Ground Beef	—Lb.	79¢	Smok-Y-Links Eckrich	10-oz. Pkg.	75¢
Hamburger Steaks Ready for the Grill	—Lb.	69¢	Armour Franks ★ Armour Star or ★ Safeway, All Meat	1-Lb. Pkg.	65¢
Short Ribs USDA Choice Grade Heavy Beef	—Lb.	43¢	All Meat Franks Safeway (12-oz. Pkg. 53¢)	12-oz. Pkg.	49¢
Sliced Beef Liver Skinned & Deviled Fresh-Frozen	—Lb.	55¢	Sliced Bologna Safeway, Jumbo	—Lb.	69¢

**Finest Fresh Fruit and Vegetables**

## Watermelons 77¢

Charleston Grey, Texas Finest. 20 to 28-Lb. Size, —Each

## Bananas 10¢

Golden Ripe, Special! —Lb.

## Tomatoes 29¢

Vine Ripened, Large —Lb.

- Check These Low Prices!**
- Romaine Lettuce, Large Heads 2 for **49¢**
  - Avocados Hass, The Salad Fruit —Each **25¢**
  - Cucumbers Nice For Nibbling —Each **10¢**
  - Bell Peppers Salad Favorite —Each **10¢**
  - Nectarines Sun Grand —Lb. **35¢**
  - Valencia Oranges Fresh and Juicy —Lb. **19¢**
  - Green Onions Crisp, Tasty, Beach, Each 2 for **25¢**
  - Red Radishes For Colorful Salads, Beach Each 2 for **25¢**
  - Banana Squash Nutritious —Lb. **10¢**
  - Red Potatoes Premium 2 Lbs. **25¢**
  - Yellow Onions US No. 1 2 Lbs. **25¢**
  - Raisins Sun-Maid 14 1/2-oz. Pkgs. **37¢**

**Frozen Food Values**

**Dinners 39¢**  
Banquet, Assorted Reg. Pkg. Safeway Big Buy!

- Lemonade Scotch Treat, Regular —4-oz. Can **10¢**
- Ice Cream Snow Star, Assorted —1 1/2-Gal. Ctn. **63¢**
- Baby Limas Bel-air **27¢**
- Onion Rings Bel-air, French Fried —7-oz. Pkg. **35¢**

**Mexican Food Values!**

- Tortillas Lucerne, 15-Ct. Pkg. Special! 2 9-oz. Pkgs. **29¢**
- Refried Beans Mountain Pass Special! 2 15-oz. Cans **25¢**
- Taco Sauce Mountain Pass 7 1/2-oz. Cans **25¢**

**Bakery & Dairy Specials!**

- Wheat Bread Skylark, 1-lb. Crushed Loaf **19¢**
- Chocolate Milk Lucerne, 1/2-Gal. Carton **59¢**

**THIS WEEK'S FEATURE**

## MELAMINE DINNERWARE

DESSERT DISH 2 patterns **33¢**

Only with 43 purchase  
A Texas Made Product... On Demand!

**Safeway Big Buy!**

## Fruit Drinks

Cragmont, ★ Grape ★ Orange ★ Tropical Punch 4 46-oz. Cans **\$1**

**Safeway Special!**

## Stokely Foods

★ Fruit Cocktail  
★ Cream Style Corn  
★ Whole Kernel Corn  
★ Cut Green Beans 5 303 Cans **\$1**

**Finger Lickin' Good!**

## CUT-UP FRYERS

Cut from USDA Inspected Grade "A" Fryers. Fresh or Frozen. Safeway Special!

**Lb. 39¢**

- 4-Legged Fryers Cut-Up, USDA Inspected —Lb. **43¢**
- Double-Breasted Cut-Up, USDA Inspected —Lb. **49¢**
- Drumsticks USDA Inspected —Lb. **69¢**

**Deodorant**

## Right Guard

4-oz. **59¢**

Prices Effective Thurs., Fri. and Sat., July 17, 18 and 19, in Eastland. We Reserve the Right to Limit Quantities. No Sales to Dealers.

# SAFEWAY