

Insurance FIRE-WINDSTORM-HAIL LIFE-ACCIDENT-AUTOMOBILE See Anderson & Garrithers, Agts., Phone 275

BRADY PUBLIC SCHOOLS WILL OPEN MONDAY, SEPTEMBER 6TH

DAY WELL NO. 4 DRILLING WITH 15-INCH HOLE

Thad O. Day well No. 4, which was spudded in on Wednesday of last

week, was yesterday reported making 15-inch hole at 120 ft. Progress on the well has been retarded by the rainy weather, so far, but every indication now points to a rapid completion of the hole. The engine shipped in for pumping No. 2 was found to be too light, and a heavier engine has been ordered, which will delay testing out of this hole until the new engine is received.

SELVIDGE & LAWSON TO OPERATE STEAM LAUNDRY

Messrs. Dan Selvidge and D. Lawson were here Wednesday from Brownwood completing arrangements for the opening of a new steam laundry in Brady and announce that they expect to have the new plant in operation by the middle of September. The new enterprise will be operated as the City Steam Laundry, and quarters have been secured at the building north of the bottling works, formerly occupied by Bungardner's flour mill. Shipment of the machinery is to be made at once, and no time will be lost in making installation and getting the plant in operation. Both Messrs. Selvidge and Lawson have for a number of years been associated with the laundry conducted by Ed Selvidge, father of the first-named, at Brownwood, and are experienced laundrymen. They announce first-class work and the best of service, and will run a delivery in connection with their business. Brady citizens will be glad to welcome this new enterprise, especially since the destruction of the Stobaugh laundry the early part of the year has made Brady dependent upon out-of-town laundries for service.

SEPTEMBER 6TH OPENING DAY OF BRADY SCHOOLS

Arrival of Prof. N. A. Cleveland and family from Falfurrias has been expected this week. Mr. Cleveland coming here to take up his new duties as superintendent of the Brady schools. Mr. Cleveland recently advised of the shipping of his household effects, and upon their arrival here, the family will take up their residence in the Paul Willoughby home on North Bridge street. The opening day for the Brady public schools has been set for Monday, September 6th, and the Brady school board is congratulating itself upon the fact that they will be enabled to open the schools with a complete faculty. Members of the faculty for the coming school year are announced as follows: High School—N. A. Cleveland, superintendent; Mrs. W. B. Anderson, P. P. Moss, Miss Tempa Davis, Miss Cornelia Gayden, Mrs. Mary H. Pence. Central School—Miss Elzora Cunningham, Miss Dora Rawlings, Miss Ruby Grainger, Miss Lucille Puckett, Miss Julia Cherry, Miss May Stobaugh, Miss Irma Davenport, Miss Lela Kirkman, Miss Maxine Williams, Miss Bertha Heinitz.

H. E. McBride, one of the commissioners of McCulloch county was a Brownwood visitor today, having come up to see Commissioner Soc Martin in regard to having the bridge on the lower Brady road painted. It is probable that arrangements will be completed whereby the structure will be painted by joint agreement of Brown and McCulloch counties.—Brownwood Bulletin.

FREIGHT RATE INCREASE EFFECTIVE YESTERDAY

Austin, Aug. 23—General attorneys and traffic managers of Texas railroads at a conference here today decided to put into effect on August 25 the 35 per cent increase authorized by the interstate commerce commission of freight rates established under authority of the so-called Shreveport rate case. As to freight traffic not governed by the Shreveport case the railroads will apply the 23 1-3 per cent increase fixed by the Texas railroad commission, but will file with the interstate commerce commission an application to make the increase 35 per cent. The Texas railroads will continue to apply the 3 cents fare on passengers but will apply to the interstate commerce commission for an increase of 20 per cent and at the same time apply for a sur-charge of 50 per cent on passengers traveling in Pullman and parlor cars. Both cases applicable to Texas business. The Texas commission's order on advanced rates was signed by Commissioners Earl B. Mayfield and Clarence E. Gilmore, Chairman Allison Mayfield, who did not sign the order, advocated an advance of 35 per cent instead of 33 1-3 per cent. The order is effective Aug. 25. Letter Files. The Brady Standard.



If you are interested in buying a PIANO or PHONOGRAPH we will save you money on an instrument of any kind, as we are EXCLUSIVE Music dealers. We buy our goods in large quantities and get them cheaper and you get the benefit of it. We handle the best guaranteed lines of PIANOS and PHONOGRAPHS. Easy terms if you want them. A big shipment of Columbia Records just received. Come and see them.

Davis & Gartman

PHONE 104

COMMUNITY EXHIBIT FARM PRODUCTS TO BE HELD IN BRADY OCTOBER 5-6TH

ENTHUSIASTIC MEETING OF CITIZENS FROM ALL PARTS OF COUNTY HELD LAST FRIDAY—\$5,000 IN PRIZES TO BE AWARDED SCHOOL DISTRICTS.

Jas. T. Mann presided over an enthusiastic meeting of McCulloch county citizens last Friday morning, at which it was definitely decided to hold a big agricultural and livestock exhibit in Brady on Tuesday and Wednesday, October 5-6th. At the meeting it was further decided to have all exhibits entered as community exhibits, each exhibitor placing his live stock or farm products in the exhibit of the school district in which he lives. It is proposed to raise a fund of about \$5,000 to be used as premium offers for the best exhibits, all prizes being awarded to the school district showing the best products. Individual exhibits will receive ribbons designating first, second or third award.

The meeting was a gathering of representative citizens from all parts of the county, who evinced the greatest of interest in the matter of holding an exhibit this fall, and who gave assurance that the citizens of their respective communities would take part in the same. In order to be enabled to offer prizes that would prove most attractive, the plan of community exhibits was endorsed and adopted, after being thoroughly discussed. This plan embodies the placing of all individual exhibits in the general exhibit of the school district in which the exhibitor resides. Prizes for such community exhibits are to be ten in number for each class, and will range from \$50 for first prize, down to \$5.00 for tenth prize, intermediate prizes being in multiples of \$5.00.

The awarding of community prizes, however, will not in any way interfere with the making of class awards to individuals, such awards being designated by blue ribbon for first place, red ribbon for second and white ribbon for third. The plan of making community awards enables the giving of substantial prizes, and will prove a great incentive to all progressive citizens of a community to bring forth their best products. The awarding of ribbons to individuals will give the winner the distinction of knowing that his products rank among the best in the land, which, after all, is better than any monetary reward, great or small though it may be.

The plan of holding the exhibit was endorsed by the Brady Chamber of Commerce, both Messrs. W. D. Crothers, ex-president, and Thos. P. Grant, secretary of that organization commending the plan highly and assuring the meeting that the Chamber of Commerce would be glad to not only endorse but give active assistance to the exhibit.

The new method of offering prizes was evolved by B. D. Black, demonstration agent, who was brought to a realization in his conversations with citizens in various parts of the county, that the offering of small prizes ranging from 50c upward, to individuals, proved of but little inducement to such individuals to place their products on exhibit. Everywhere, however, in the county, he found the community spirit running strong, and the citizens ready and anxious to take advantage of any opportunity that might bring credit or advancement to the community interests. Quite naturally it then followed that the citizens would be interested in winning prizes for their community in an exhibit to be made by the various communities as a whole.

While details of the exhibit are yet to be worked out, it is thought that the exhibit will be staged in the E. J. Broad building, which affords ample floor space for the proper display of all products. It is also planned to stage a great parade on the opening day of the exhibit, in which the school children will take part, each of the schools of the county marching under their own banner. The merchants and

Old Folks' Eyes

The long, winter nights—Dark, cloudy days—Are fast approaching, when old folks and younger folks' eyes naturally fail them. Now is the time to have your eyes examined, and fitted with glasses, if needed. Our reading glasses make the eyes young again. Drop in at your convenience—we'll be glad to serve or advise you.

MALONE & RAGSDALE

JEWELERS AND OPTICIANS

Pacific Mutual Life Insurance Co.

OF CALIFORNIA

Assets \$50,641,694.27
Surplus \$5,983,367.00

Founded 1868

Fifty-Two Years of Success
Issues the Popular
FIVE-IN-ONE POLICY
Low Premium Rates

SEE **Benj. Anderson**
Of Firm of **ANDERSON & CARRITHERS**
Brady National Bank Building, Brady, Texas

Painless Dentistry

By Modern Methods.
Pyorrhea Successfully Treated.
Crown and Bridge Work by Latest and Most Approved methods.
Consultation Free—All Work Guaranteed

A cordial invitation Extended to Visit Our New Quarters Over Broad Mercantile Co.

DR. H. W. LINDLEY

LADY IN ATTENDANCE

Phone 81 Brady, Texas

MATTRESSES

PILLOWS, PADS, CUSHIONS ETC.

Workmanship and material guaranteed to be the very best and up-to-date. Renovating a specialty. Satisfaction guaranteed.

E. R. CANTWELL

MATTRESS MAKER
Brady, Texas
Located 3 Doors North Moffett Bros. & Jones

Garden Court Line for Brady

We have made another permanent addition to our many extensive lines by taking over the full and complete Garden Court Line of TOILET ARTICLES. Garden Court is another strong link in our chain of High-Class Toilet Requisites.

Garden Court Toilet Water	\$2.00
Garden Court Face Powder	65c
Garden Court Rouge Powder	65c
Garden Court Talcum Powder	35c
Garden Court Complexion Cream	65c
Garden Court Pre-Shopping Cream	65c

See Our Garden Court Window This Week

TRIGG DRUG CO.

REXALL STORE

YOUR MONEY BACK IF YOU WANT IT.

Millinery

A most charming display of beautiful hats now ready for your inspection. A wide range of prices, from the inexpensive to the more elaborate models. New and latest-styled hats arriving every day.

A cordial invitation to inspect our showing--we know you'll find just the hat you want here

Mrs. W. M. Bauhof
Up Stairs at I. G. Abney Store

O. D. MANN & SONS
BRADY, TEXAS

Funeral Directors
UNDERTAKERS AND EMBALMERS

MODERN AUTO HEARSE IN CONNECTION

Day Phone No. 4 Night Phones 82 and 195

The High clearance, light-weight and rugged construction makes the Essex the ideal car for the farmer and cattleman. F. R. WULFF.

New shipment ink pads, pad stamps, etc. The Brady Standard.

Apply a cotton cloth wet with BALLARD'S SNOW LINIMENT to all wounds, cuts, burns, sores or blisters, and note its wonderful healing power. It is prompt and very effective. Sold by Trigg Drug Store and Central Drug Store.

Good stock Hay Ties. We want your business. O. D. Mann & Sons.



Send the kiddies

You can depend on our giving you just as good service as if you came yourself.

We suggest that you try Belle of Wichita Flour, unexcelled for baking quality.

Moffatt Bros.
& Jones

Quality Grocers

Phone 50 Brady, Texas

DR. LINDLEY RETURNS AFTER TWO MONTHS AT VANDERBILT CLINIC, NEW YORK

Dr. H. W. Lindley is expected to return this morning from New York City, where he has been spending the past two months taking an advanced course in dentistry at the Columbia university, held at the Vanderbilt Clinic, at which place the dental school is located. A recent letter from the doctor advised that he was receiving some wonderful instruction from the best dental surgeons in the East, and that by reason of the modern methods now taught, he will be able to perform all operations upon the mouth, including fillings, crowns, removing nerves, etc., absolutely without pain. In addition the doctor took a special course in oral surgery and X-Ray work, which will enable him to perform oral surgical operations.

Dr. Lindley writes that he and Mrs. Lindley, and little Miss Alice Lucille, as well, have taken great pleasure in reading The Standard and in keeping informed about their friends back in Texas.

Heartburn after a hearty meal means weakness in the digestive organs. Prickly Ash Bitters gives them strength and tones up the stomach and purifies the bowels. It is the remedy that men use for such disorders. Price \$1.50 per bottle. Trigg Drug Co., Special Agents.

SAN ANGELO PROPHET PREDICTS FORTY RAINS FOR THE DOG DAYS

T. P. Cole, the weather prognosticator of San Angelo, is out with a forecast in which he says that there will be forty rains before the end of the dog days. Of course he counts every shower a rain, and if a half dozen showers fall during the day he counts that as a half dozen rains. Mr. Cole also says that thirty inches of rain will fall in this country between May and Christmas of this year. Cole keeps a record of events, and studies certain conditions which he claims helps him to guess at the weather, and sometimes he guesses right and some times he guesses wrong, like all weather prophets.—Ballinger Banner-Ledger.

TEXAS FREIGHT RATES INCREASED ONE-THIRD BY COMMISSION ACTION

Austin, Aug. 21. — The Railroad Commission today granted an increase of all interstate freight rates of 33 1/3 percent and a twenty percent increase in excess baggage rates was granted. The new rates will be effective Aug. 26th. An application for a 20 percent in interstate passenger rates was dismissed for want of jurisdiction.

The advanced freight rates will add over \$22,000,000 to the Texas freight bill.

Can You Beat It?

Where can a man buy a cap for his knee?

Or a key for a lock of his hair? Can your eyes be called an academy? Because there are pupils there? In the crown of your head what jewels are found?

Who travels the bridge of your nose? Could you use in shingling the roof of your mouth?

The nails on the end of your toes? Could the crook in your elbow be sent to jail?

If so, what did he do? How can you sharpen your shoulder blades?

I'll be darned if I know, do you? Could you sit in the shade of the palm of your hand?

Or beat on the drum of your ear? Does the calf on your leg eat the corn on your toe?

Then why grow corn on the ear?—New York Central Magazine.

He Loomed So Large.

Just as the train was about to start, a very stout man struggled into a carriage and sank into a seat, breathing heavily.

A small boy who sat opposite appeared to be fascinated. His ardent gaze eventually began to annoy the fat man, who demanded angrily:

"What are you staring at me for?" "Please, sir," replied the lad, "there is no other place to look."—London Answers.

Sectional Book Cases — add them to your library as you add your books. O. D. MANN & SONS.

ECZEMA!
MONEY BACK
without question! Hunt's Salve fails in the treatment of Eczema, Tetter, Ringworm, Itch, etc. Don't become discouraged because other treatments failed. Hunt's Salve has relieved hundreds of such cases. You can't lose on our Money Back Guarantee. Try it at our risk TODAY. Price 75c at TRIGG DRUG COMPANY

TIRES

34 x 4

FABRIC and CORDS

20% Off

F. R. WULFF

Brady Texas

WONDER WORDS.

How to Get a Start on Large Hogs. Related Here.

Wonder, Ore., Aug. 15. Editor Brady Standard:

A man came along not long since, a would-be Orthopedist, who was great to criticize others in their pronunciation of words, but who himself, called ants "aunts." He remarked: "Why do people generally say au! to-mo-bile" instead of pronouncing it au-to-mo-bile? "Why do they accent the first syllable instead of the third,—au to mo' bile?" An Irishman spoke up and said, "Yes, they ought to mow hay, but they don't!"

Now I will tell you how I got the initial start of my large hogs. Several years ago I was driving past a farm house and saw by the roadside a large framed big boned black sow with very large flop ears, similar to an elephant's ears. Thus I soliloquized: That is a good hog! The sow had ten little pigs following her and they were nice shaped pigs. I stopped at the house and asked the man who owned the property if he would sell me two or three of those pigs. He said he would, I asked him what stock they were and he having always

lived in a city knew nothing about farm life replied that he didn't know; but thought the sow was Berkshire. I told him that the Berkshire hog had straight upright ears; and that those flop ears indicated Poland China. At any rate I bought three and made my own selections. The first time I bred to a Berkshire. The next cross was to a red Duroc or Jersey. Next was to an O. I. C. (Ohio Improved Chester). Next was to a Poland China, and now my male is a full blood Red Duroc. I call him the "Red Dragon." He is about two years old and looks as though he would weigh about six or eight hundred pounds live weight.

Now, my dear swine raiser, I will let you ponder over the results of my own experience as heretofore related and some time in the near future I will recapitulate, touching upon the most salient and pertinent features of the business.

Mr. Editor, in my article of the first inst. you left out the ice and it read "can keep from melting by wrapping in sawdust." Ice is a very pertinent factor these hot days and should not be left out. For the last three days the thermometer has registered 102 degrees. Only 80 miles from here on the Pacific coast it is so cold one is

uncomfortable without an over coat on. I was just talking with a man from there today.

"O. I. C. U. R. RIGHT."

Obeying Orders.

The foreman swore at Cassidy for not taking a full load of bricks up the ladder every trip.

One morning the supply of bricks ran out and Cassidy, after gathering every one in sight, found he was still short the proper number. He yelled to a workman on the fifth floor.

"What do you want?" asked the man.

"Throw me down wan brick," shouted Cassidy, "to make good me load!"

Not the Arabian Nights Burton.

We understand that Sir Thomas has been heard to refer jokingly to the Shamrock's skipper as "Sinbad the Sailor." Possibly after the first two races he felt more like calling him "Sailbad the Sinner."—Boston Transcript.

Qualified.

Cantrell—"I think I'll go to prom as a stag."

Cochran—"Why do that?" Cantrell—"I haven't any doe."

Our Styles are Authentic



Our Prices are Most Reasonable

Opening the Season

We wish to announce that we are showing the latest creations in fall Millinery and are ready to fit you with your new hat.

Mrs. Ben Anderson has returned from St. Louis and will again have charge of our millinery department. Mrs. Anderson is well known here and is one of the most accomplished milliners in this section. She will be glad to assist you in selecting your hat.

Gingham and Shoe Week

Next week is Gingham and Shoe week at our store. We have a large stock of the newest and most attractive Gingham especially suitable for Fall wear.

Our stock of shoes is large and complete. Let us fit up the children with their school shoes. Shoes for the whole family at prices that will please.

POPULAR DRY GOODS CO.

We Want Your Business, Your Friendship and Your Influence

S. J. Striegler, Mgr. North Side Square

THE BRADY STANDARD

H. F. Schwenker, Editor

Entered as second class matter May 17, 1910, at postoffice at Brady, Tex., under Act of March 3, 1879.

Absorbed the Brady Enterprise and the McCulloch County Star May 2nd, 1910

OFFICE IN STANDARD BUILDING North Side Square, Brady, Texas

ADVERTISING RATES
Local Readers, 7 1/2c per line per issue
Classified Ads, 1 1/4c per word per issue
Display Rates Given upon Application

Any erroneous reflection upon the character of any person or firm appearing in these columns will be gladly and promptly corrected upon calling the attention of the management to the article in question.

The management assumes no responsibility for any indebtedness incurred by any employee, unless upon the written order of the editor.

BRADY, TEXAS, Aug. 27, 1920

***** SNAP SHOTS *****

A West Dallas widow says that although she collected a good sum in life insurance after the death of her last husband, she would have had twice as much if she had taken out fire insurance, too.—Dallas News.

Sugar in Windsor, Canada, is selling for ten cents per pound; in Detroit, just across the international line the price of sugar is thirty cents per pound. The Canadians, probably, did not have a college professor expert on their war board.—Memphis Democrat

FILTER PLANT IS PLACED IN OPERATION MONDAY

The Standard is pleased to be able to report that the Brady filter plant was placed in operation at 5:00 o'clock Monday evening, and the management of the water and light company hopes soon to be supplying the entire city with pure water, such as Brady has, in former years, been noted for.

Superintendent W. O. Kirchner advises that all the sand and gravel in the filter beds was removed, the gravel thoroughly washed and replaced and new sand put into the filtering beds. For the present, powdered alum is being used for filtration purposes, pending arrival of a shipment of alum promised from Brownwood a couple weeks ago. Inability to get teams for hauling is stated as the cause of the delay. There is some doubt as to the efficiency of the powdered alum, although it is understood that Brownwood is now using the same.

With the arrival of the alum from Brownwood, Mr. Kirchner hopes to be able to continue filtering service uninterrupted.

Don't sell your Poultry or Eggs before trying BRADY BROKERAGE CO.—Across the street from Mann-Ricks Garage. H. P. C. EVERS KNEE PADS. Bath Room Rugs—a choice selection of new designs and styles. O. D. MANN & SONS.

ALWAYS ACCEPTABLE. Engraved Calling Cards are the most acceptable of remembrances for any occasion or anniversary. See the late styles of engraving at this office. THE BRADY STANDARD.

CLASSIFIED ADS

The Standard's Classy-Fi-Ad rate is 1 1/4c per word for each insertion, with a minimum charge of 25c. Count the words in your ad and remit accordingly. Terms cash, unless you have a ledger account with us.

LOST—

LOST—During carnival, Laval-hiere set with small diamond. Finder please return to Helen Benson, Brady.

WANTED

WANTED—All People to use Classy-Fi-Ads.

WANTED—Pasture for about 50 head of horses. Galbreath & Schaeg.

FOR RENT

FOR RENT—Three up-stairs rooms. Apply Broad Mercantile Co.

FOR RENT—Two furnished rooms for light housekeeping, one block south of Central school building. E. B. Ramsay, Brady.

FOR SALE

FOR SALE—The W. L. Hughes residence. See S. S. Graham, Brady.

FOR SALE—One mare and one motorcycle. See W. D. WILLBANKS, Brady.

FOR SALE—8-room house, well located; property well-improved. Bargain for quick sale. S. J. HOWARD, Brady.

FOR SALE—Red Rust-Proof Seed Oats, free from all seeds and Johnson grass; loose at my barn. R. B. HUFFMAN, four miles north Brady on Brownwood road.

FOR SALE—My home place, 2 blocks South of Central school building. See HENRY MILLER, Brady.

FOR SALE—Auto Player Piano in first-class condition. Price \$750.00 For further information apply at Brady Standard office, Brady.

FOR SALE—Five passenger FORD car, A1 condition; for information apply Brady Standard office.

FOR SALE—Modern 5-room house, with bath and two porches, located close in, desirable neighborhood. For further particulars see W. B. PENCE, Brady.

GOOD HOME FOR SALE. West Brady high and dry. Frame bungalow, 6 rooms, reception hall, bath room and sleeping porch. Inquire at Brady Standard office.

IF YOU WANT a home, located not too far out, convenient to pasturage, 4-room house, barn, horse and cow lots, chicken sheds, pig pens, fenced in garden spot, large lot fenced in, call at The Brady Standard office.

FOR SALE—Place known as the Mrs. Emma Merwin residence in South Brady. For further particulars see CHAS. BRYSON, Brady.

FOR SALE—17 1/4 acres one-half mile of Menard depot; available to two schools; has very good house. One well and windmill with water pumped to the house; 12 acres under irrigation; 1 engine and centrifugal pump; quarter mile of San Saba river front. Also fine pecan grove. I will sell cheap for cash. For further particulars write or see AUTRY C. BUMGUARDNER, (Owner) Menard, Texas.

FOR SALE—A Ford roadster in fine mechanical condition; good tires, new top and new paint; looks good and is good. \$400 cash; also a new Ford sedan, just been run 3 weeks; first-class in every respect. This is a dandy winter car as there are no curtains to put up or take down. In bad weather you can be as comfortable in this car as in the house. Will take cost price for this car, \$1061. Should you want a Ford car, you could not get one for several months, as the dealers are sold far in advance. Should you be fortunate enough to find someone who would dispose of his new car, it would be at a premium of \$75.00. For quick sale and cash, I will take the above prices. JEFF MEERS, Brady, Texas.

MISCELLANEOUS

FOR QUICK and perfect work, send your Hemstitching and Picotting to Mrs. J. T. Hughes, Junction, Texas.

Have good Johnson grass pasture for some cows. C. P. EKLUND, 3 miles from Brady on Brownwood road.

BUY TREES NOW. This is the right time to buy trees, vines, shrubs and bushes. Get the best. See June Coopneder at the courthouse.

TAKEN UP—Brown horse mule with collar marks, 5 or 6 years old. Owner may recover mule by paying for this ad, and pasturage. W. F. DUTTON, Brady.

STRAYED—From the Burton ranch, blazed faced sorrel horse, 15 1/2 hands; also brown mare mule 14 hands high. Last seen between Mercury and Placid, August 10. Liberal reward for information. Burton Bros., Winchell, Texas.

***** LOCAL BRIEFS *****

Mr. and Mrs. C. H. Longley, daughter, Ruth, and son, Edgar, were business visitors yesterday from Fredonia. They report a splendid run of business at their hotel. However the citizens of that community are very much concerned over the depredations of the boll weevils, which have assumed alarming proportions.

The many friends of the family will regret to learn of the removal from our midst of Mr. and Mrs. O. D. Mann, Sr., who have gone to Los Angeles, Calif., to spend the winter and spring, and the change being made in the hopes of benefiting Mr. Mann's health. They were accompanied by Ralph and Raymond Plummer, who will attend school there. L. B. Reeves has leased and will occupy the Mann place south of town.

If you want to see some fine farm products, note the display of cotton, maize and corn in The Standard's show window. They come from the farm of J. F. Brock at Lohn, and are not a select bunch of products, but the average run. The maize heads are large and well-filled, while the corn is as good as has ever been exhibited here. The cotton stalk stands about waist high, and has 29 grown bolls, besides numerous smaller bolls and squares. It is known as the Miller Acme cotton.

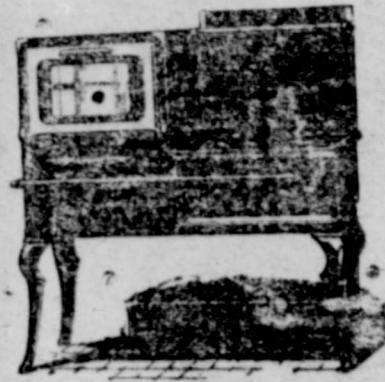
Mrs. I. G. Abney returned yesterday morning from Dallas and other markets where she had been on a purchasing trip for the I. G. Abney store. Mrs. Abney reports having purchased splendidly assorted line of goods, and says their stock this fall will be more elaborate and more attractive than ever. Enroute she stopped over in Denison for a visit with her sister, and her nephew, J. B., and niece, Mary Lyle Vincent, who had been spending some three weeks visiting an aunt there accompanied her upon the return to Brady.

Installation of the second power

Wonderful No-Wick "Double-Ring" Flame Burner

The Secret of Astonishing Records in Critical Cooking Tests Before Countless Housewives

In fact, each gallon of kerosene gives an average of 19 hours of perfect cooking and baking heat.



This famous oil burning range brings to country and town home the efficiency of the finest city gas range for the first time. Lights as easily. Heats as quickly. Operates as cleanly as city gas ranges, yet the fuel cost is far less. That's because it uses cheapest kerosene, Gasoline or Distillate. Automatically makes its own gas. Ends, for all time, the limitations of the ordinary oil stove.

ASK FOR DEMONSTRATION

"We Appreciate Your Good Will as Well as Your Trade"

O. D. Mann & Sons

PUBLIC FORUM.

"I voted for Neff in July, but am going to vote for Bailey next Saturday." This is the expression of thousands of Democrats in Texas now.

The straight-forward manner in which Senator Bailey has conducted his campaign since the first primary, meeting every issue squarely, and answering every essential question propounded to him has won him thousands of friends. His opponent by his campaign of abuse, misrepresentation and hate against the Senator personally has lowered himself with all self-respecting voters and many who for various reasons can still not vote for Bailey, have announced that they would not participate in the runoff primary. Had Mr. Neff been big enough he could have been governor, but he has shown himself too small and will be defeated next Saturday as sure as the day comes. We make this statement because we have never known of any man who has been elected to office in Texas who has confined his speeches to abuse and slander of his opponent. Mr. Neff has done this for weeks. His friends have watched the report of his speeches to try to get something to talk about, but alas! they are disappointed. His charge of Bailey's disloyalty proved a boomerang! his age is questioned; and even if he was born in 1871 as he now claims, had he been the patriot he seemed to think Bailey should have been, he should have volunteered his services when his country called in 1917.

Neff is defeated and they know it! XXXX

MR. BLANTON EXPLAINS POSITION. Albany, Texas, Aug. 17, 1920. To The Brady Standard.

Have just returned from a ranch and read Sunday's Dallas News, which misconstrued my introduction of Senator Bailey. I am fighting only for certain principles and have taken no sides in this campaign.

In my short introduction I distinctly stated: That the local Committee had called on me to introduce the Speaker, and that whenever my old home County of Shackelford called on me I always responded; that if so requested I would as readily introduce Mr. Neff; that I had differed with

WITH THE CHURCHES

Presbyterian Church. There will be no preaching service at Presbyterian church on Sunday, August 29th.

Sunday school at regular hour. S. H. JONES, Pastor.

At the Methodist Church. Sunday school at 9:30 a. m., W. D. Jordan, superintendent.

Preaching at 11 a. m. and 8 p. m. Baptism at the morning service. All are cordially invited. J. W. COWAN, Pastor.


Mr. Bailey in the past, differed with him now on some question, and would probably differ with him in the future but we all had to admit that both when a Congressman and a Senator he was a distinguished leader in Washington; that I had differed with him on National Prohibition and National Woman Suffrage but was thankful that both were now practically a part of the Constitution, and as the fundamental law of the land were not live issues, as no Governor could change the Constitution; and that I was in hearty accord with his plank on the industrial situation.

Had I been introducing Mr. Neff, I would have found something nice to say about him, as well as to mention some points of difference. In the July 24 Primary I did not vote either for Mr. Bailey or for Mr. Neff. THOMAS L. BLANTON.

NOTICE, CITIZENS. We have purchased the building known as the W. S. Mathews store to be used as a church house for the St. James (colored) Baptist congregation. Members of the tribes composing our soliciting committee will call on all subscribers to our building fund within the next few days. Kindly be ready to pay your subscription. H. B. Curtis, Pastor. R. A. Andrews, Trustee.

Watch the advertisements of the Essex, then come and ask for a demonstration. F. R. WULFF.

We have our stock ready for fall—Harness, Saddles, Collars, Bridles, Lines—everything you need in Leather Goods. H. P. C. EVERS.



—Said the City Builder

"I am proud of my town," said the City Builder, "and I want to see it grow."

"I don't 'knock' its public utility companies; I want to see them prosper, because the town can't grow unless they can grow, too."

"I try to be as reasonable when dealing with a public service company as I would be with any other business institution in town, and I don't expect their operation to be 100% perfect all the time, because I have never yet found any human or any machinery, in any line of business, that was absolutely infallible."

"And when I have a complaint to make, for instance, about the telephone service—I do my complaining to the telephone company."

"At Your Service"

WEST TEXAS TELEPHONE COMPANY



The Editor Will Appreciate Items for this Column. Phone 163.

Family Reunion.

A most enjoyable family event was the reunion on last Friday at the Fred Ellis home above Menard...

Slumber Party.

A jolly crowd of young folks made up a party for the show last Saturday night, following which ice cream and cake was enjoyed...

Surprise Birthday Party.

Mrs. M. E. Shore was treated to a most pleasant surprise last Friday night, when her son, Mr. Will Shore...

Cream and cake was served the guests, and punch was enjoyed through the evening. As tokens of their esteem...

Dance.

A most enjoyable evening was spent by a crowd of young folks in dancing at the K. P. hall, music for the occasion being furnished by the Mexican orchestra...

Death of Miss Floy Haygood.

Mr. and Mrs. John Mayse have the sincere sympathy of a host of friends in the death of Mrs. Mayse's step-sister, Miss Floy Haygood...

Miss Haygood came here from her home in Burk Burnett about two months ago, accompanying Mrs. Mayse's sister, Miss Ollie Weeks...

The habit of "putting it off" has caused the loss of many lives. A dose of Prickly Ash Bitters at the first sign of indigestion, constipation and kidney trouble wards off sickness and saves money...

An out-of-the-county customer writes: "Please send me the price of your best sheep skin lined knee pads as soon as possible, as I want them this fall..."

CARY KENNEDY, WALDRIP YOUTH, WHO LOST LIFE IN SEAMAN SERVICE

The above is the most recent likeness of Cary Kennedy, son of E. B. Kennedy of Waldrip, who lost his life at the Great Lakes Training station recently...



CARY KENNEDY

all his life up to two years ago, when he went to Oklahoma, where he made his home with a sister for a time. He volunteered for seaman service about eighteen months ago...

DRS. ANDERSON & McCALL INSTALL NEW X-RAY MACHINE AT SANITARIUM

Drs. Anderson & McCall now have in operation at the Brady Sanitarium one of the most modern and complete X-Ray machines extant...

PROGRAM OF LADIES MEETING BRADY ASSOCIATION SEPTEMBER 3

The following is the program of the ladies meeting of the Brady association to be held on Friday afternoon, September 3rd, 1920:

- Song. Prayer—Mrs. Taylor. Devotional—Mrs. Neal—Brady. Song. "Our Duty in Our Local Work and How to Accomplish It."—Mrs. Gage, Rochelle. Solo—Mrs. Highsmith, Menard.

Don't forget to come and see C. H. Amispiger at the Second Hand store—the old postoffice building.

Cedar Chests—an ornament in any home—entire year round. O. D. MANN & SONS.

JURY PANELS FOR SEPTEMBER TERM DISTRICT COURT

The following are the jury panels drawn for the September term of district court, which will convene on Monday, September 20th, at 1:00 o'clock...

Grand Jury.

J. E. Brown, T. Gray, Marvin McMillan, W. I. Myers, W. I. Moore, J. A. Harkrider, Arthur Neal, E. H. Beakley, E. D. Rivenburg, Lee Vaughn, Henry Davis, Clarence Trott, Theo. Lyckman, M. M. Shafer, Lon Downs, A. J. Sheppard, J. A. Maxwell.

Petit Jury, 1st Week, Sept. 20th. H. H. Sessions, Jno. Cotton, Howard Campbell, Curtis Benson, Lon Locklear, W. F. Dutton, J. H. Blackwell, Clyde Eubanks, C. J. Parson, H. B. Murphy, L. J. Abernathy, A. D. Turner, F. W. Otte, E. T. Williams, W. O. Westerman, Gus Ziriux, L. A. Doran, Arthur Moseley, S. H. Gainer, Joe Carroll, Archie Lee, T. J. Powell, J. W. Cummins, E. W. Woods, L. O. Marshall, C. N. Richie, W. E. Campbell, J. R. Taylor, J. N. Holland, Luther Stevens, A. E. Cochran, L. A. Watkins, J. W. Millsap, H. Harkrider, A. L. Holloway.

Petit Jury, 2nd Week, Sept. 27th. R. B. Elliot, J. F. Kyzar, A. M. George, T. H. Alexander, T. J. Horn, B. F. Morrison, M. T. Haywood, J. A. Liverman, R. K. Finlay Jr., W. F. Cawyer, Floyd Sansom, Alex White, R. D. Ferguson, W. L. Cain, T. C. Ward, F. W. Barton, N. C. McShan, H. L. Winstead, P. C. Dutton, R. A. Pennington, R. D. Dillard, Ed Hoile, J. J. Farris, E. E. Polk, O. J. Scoggins, Leslie Sansom, Lewis Birk, W. D. Fleming, C. W. Freeman, S. W. Espy, Ed Jacoby, N. T. Cook, Frank Wilhelm, Frank Hurd, S. J. Howard, N. A. Collier.

PERSONAL MENTION

Dr. and Mrs. Leslie Smith are here from Marlin, guests of the lady's mother, Mrs. T. J. Wood.

H. N. Cook of Sweetwater was a visitor here this week, a guest of his daughter, Mrs. Herbert Wood.

Mr. and Mrs. Duke Mann are at Sabinal as guests of the lady's parents, the Rev. and Mrs. I. T. Morris. C. P. Gray returned Wednesday from a month's stay at Hot Springs, Ark., where he had been accompanied by his father of Llano.

Miss Mable Doty Stone is spending the week here from Brownwood as a guest of Miss Rachel Wilkerson, and also her grandfather, W. P. Doty. Mr. and Mrs. A. B. Johnson and little daughter of Marlin are guests of Miss Vivian Jordan this week.

Guy Walker, who has been spending the summer at the Quinn Walker ranch at Sterling City, returned the first of the week and will again attend the Brady schools.

Mr. and Mrs. A. B. Johnson and little daughter, and Dr. and Mrs. Leslie Smith of Marlin formed a party spending the week end in camping and fishing at Peg Leg ranch.

Julian H. Behrens returned yesterday from Marlin, where he has been since the 3rd, taking treatment at the wells. Friends will be glad to know that he is greatly improved in health. Dave Doole has been spending several days here from Austin, while out in this section on a business trip. Dave still wears the same old cheery smile, and his friends were all glad to greet him once more.

H. P. C. Evers returned Monday from San Antonio, where he had been a guest of the family of Albert Rose, while incidentally on a purchasing trip. He reports Mr. Rose as well pleased with San Antonio, although he says there is no better place and no better people than Brady and the Brady folks, and he often longs to be back here with us.

Mrs. M. E. Cummins of London, accompanied by her sister, Mrs. S. C. Scence of Wevoka, Okla., are visiting here this week, guests of Mr. and Mrs. H. C. Cummins. Mrs. Scence has been spending the past two months visiting her sister and relatives at London. She expects to return to her home in Oklahoma Saturday. Mrs. Scence's son-in-law, Frank Crall, is sheriff of Seminole county, and one of the prominent citizens of that state.

Mrs. W. B. McKenzie has been a guest of Mr. and Mrs. H. R. Hodges this week, while Mr. McKenzie is in St. Louis at the wholesale market.

WAS IN BED FOR SIX LONG MONTHS

Was Able To Be Up In Three Weeks After Taking Tanlac—Gains Twenty Pounds.

"I was in bed for six long months with stomach trouble and rheumatism and Tanlac alone deserves the credit for my recovery," said George Gregoire, popular longshoreman, of 2718 3rd avenue, Seattle, Wash.

"My trouble started a year ago. My appetite left me and what I forced myself to eat would cause a severe pain in my stomach and shortness of breath. Meats were almost like poison to my system; I got as weak as a kitten and the rheumatism laid hold of me so bad I could hardly drag myself about. My kidneys seemed to give way, too, and my back hurt so I couldn't stoop over. My head ached like it would split and I would get so dizzy I had to hold to something to keep from falling. I lost sleep and weight and was completely down and out.

"Tanlac helped me so much that I was out of bed in three weeks and now I am like a different man. All my troubles are entirely gone, I am back at work every day and do my work so easily I surprise the men who work with me. I never felt better in my life and I give Tanlac all the credit for my splendid health."

Tanlac is sold in Brady by Trigg Drug Co., in Mercury by J. T. Matlock and in Rochelle by C. W. Carr.

Mr. McKenzie is traveling representative for the Ely-Walker dry goods company, and has been assisting in caring for the retail trade at the company's St. Louis headquarters. Mrs. McKenzie left last night for Monroe, La., where she will be joined by Mr. McKenzie, and where they will make their home.

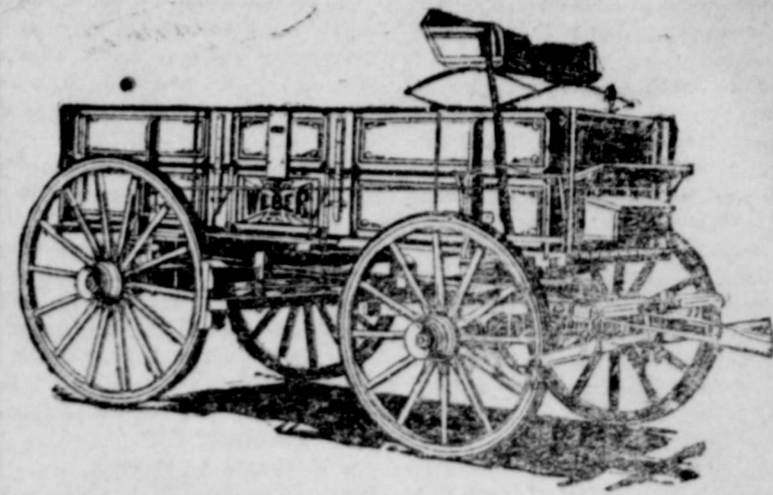
Habitual Constipation Cured in 14 to 21 Days

"LAX-FOS WITH PEPSIN" is a specially-prepared Syrup Tonic-Laxative for Habitual Constipation. It relieves promptly but should be taken regularly for 14 to 21 days to induce regular action. It Stimulates and Regulates. Very Pleasant to Take. 60c per bottle.

WILLIAM PIERSON

Remember Judge William Pierson of Hunt County for Associate Justice of the Supreme Court. He won first primary by large plurality of 24,853. Assist him August 28th. (Adv.)

BUY YOUR WAGON NOW!



We have a large stock of WEBER and SPRINGFIELD WAGONS on hand. When you price wagons you will find we are making the right price. In fact, we have a cheaper price now than we will have as soon as our next car wagons arrives. We are bound to get more.

When we offer the SPRINGFIELD and WEBER there is nothing better made in a Wagon, both old reliable, standard makes.

Come in today and let us fix you up. Better buy now than to wish you had in a month from now. The new freight rate will absolutely raise the price of wagons.

BROAD Mercantile Co.

Dress Up for Fall



We have just received our lines of samples for Fall and Winter Suits and are now ready to take your measure for a real tailored to order Suit.

We handle only the well known lines, among them being the—

ED V. PRICE LINE

which we have handled for a number of years. Our customers are still coming back for repeat orders on the Price line.

In the medium priced line we represent Rose & Company and can fit you up with a Suit to fit your taste and pocket book.

It is not too early to place your order for a Fall Suit. You may have it come out any time you please, and remember—it takes longer to get a Suit than formerly.

Ready-to-Wear Tailored Suits

We have just received our first shipment of Tailored Ready-to-Wear Suits, and can fit you up with any of a number of very handsome patterns, ready to wear home.

Come in and see these Suits and our new samples for made-to-measure clothes.

We Are Headquarters For Silk Shirts and All Kinds of Men's Furnishings.

MANN BROS.

"Always First With the Newest."

PROFESSIONAL CARDS.
ADVERTISING RATE FOR CARDS.
One Inch Card, per month.....\$1.00
One Inch Card, per year.....\$7.50

J. E. SHROPSHIRE J. E. BROWN
SHROPSHIRE & BROWN
LAWYERS
General Practice, Civil and Criminal
Special Attention to Land Titles
Office Over Broad Merc. Co.
South Side Square, Brady, Texas

DR. WM. C. JONES
DENTIST
Office: Front Suite Rooms Over New
Brady National Bank Building
PHONES: Office 79 Residence 202
BRADY, TEXAS

S. W. HUGHES
Lawyer
BRADY, TEXAS
Special attention to land titles. General
practice in all the courts. Office
over Brady Nat'l Bank, Brady, Texas

F. M. NEWMAN SAM McCOLLUM
Newman & McCollum
LAWYERS
Brady, Texas

EVANS J. ADKINS
ATTORNEY-AT-LAW
Practice in District Court of McCulloch
County, Texas
Office in Court House

W. W. WILDER
CONTRACTOR AND BUILDER
Estimates on All Classes of
Building and Repair Work
Phone 151 BRADY, TEXAS

G. B. AWALT
Breeder of
Red Poll Cattle
CAMP SAN SABA, TEXAS

W. H. BALLOU & CO.
General
Insurance
Office Over Commercial National
Bank

AWALT & BENSON
Draying and Heavy Hauling
of All Kinds

Will appreciate your draying
and hauling business. Your
freight and packages handled
by careful and painstaking em-
ployees.

AWALT & BENSON

BURNS
HUNT'S
LIGHTNING OIL
TRIGG DRUG COMPANY

You can add many months of
service to those old shoes by
having them repaired by our
expert shoemaker. EVERS-
KNOX SHOE REPAIR SHOP.

Further Information Desired.
"You rickety young Rufe Rack-
daffer, that left yer about two years
ago and went to Oklahoma?" said a
citizen of Sandy Mush, Ariz. "Well,
he got back yesterday, and brung a
wife with him."
"Put!—whose?" interestedly in-
quired an acquaintance.—Kansas City
Star.

\$100 Reward, \$100
The readers of this paper will be
pleased to learn that there is at least
one dreaded disease that science has
been able to cure in all its stages and
that is catarrh. Catarrh being greatly
influenced by constitutional conditions
requires constitutional treatment. Hall's
Catarrh Medicine is taken internally and
acts thro' the Blood on the Mucous Sur-
faces of the System thereby destroying
the foundation of the disease, giving the
patient strength by building up the con-
stitution and assisting nature in doing its
work. The proprietors have so much
faith in the curative power of Hall's
Catarrh Medicine that they offer One
Hundred Dollars for any case that it fails
to cure. Send for list of testimonials.
Address F. J. CURENY & CO., Toledo,
Ohio. Sold by all Druggists, etc.

SAN SABA FAIR
AND ENCAMPMENT
A BIG SUCCESS

The Seventeenth Annual Fair and
Encampment is now history. The war,
the drouth and the rain had interfered
with this popular event for a number
of years and the people were ready
for another old-time gettogether and
the fair of 1920 was the happy occasion
to realize their hopes. Secretary
Bell's records show that 22,000 people
passed the admission gates for this
fair. The people came from far and
near. The old timers of other counties
and states came as they had not done
since before the war. At least five
states were represented, one man com-
ing from the Pacific coast to be at the
fair. It was a hand-shaking four
days. The ups and downs of the past
few years were forgotten. The war,
politics and everything that might de-
tract was tabooed and the people en-
joyed the days to the fullest.

The ladies fine arts, poultry and
hog shows this year were better than
in any of the past years of the fair.
The livestock exhibit was short. The
agricultural department was not as
well patronized as in the olden days,
but the quality of the corn and other
farm products was above the stand-
ard. Neal community was the only
community exhibit. This was a good
one and should have made other com-
munities in the county ashamed for
not showing what they could do. This
community has won premiums for its
exhibits for a number of years, and it
goes without saying that others may
as well begin right now to preparing
if Neal does not carry off the blue rib-
bon again next year.

Poultry Show.
R. J. Edwards is superintendent of
this department. He has been in
charge of this show for a number of
years, in fact ever since it was put
on its feet. He had some good and
very good shows in former years.
However, he is prouder of the poultry
show for 1920 than ever before. There
were some 400 birds entered. They
represented registered stuff in nearly
all the standard breeds of chickens and
turkeys. People who have been mak-
ing the poultry shows of other fairs
are loud in their praise of the treat-
ment at the San Saba fair and of the
manner in which Mr. Edwards takes
care of their birds. The judge was F.
F. Ashbacher of Brady, an expert
poultry man.—San Saba News.

Why People Buy Rat-Snap in Prefer-
ence to Rat Poison.
(1) RAT-SNAP absolutely kills
rats and mice. (2) What it doesn't
kill it scares away. (3) Rats killed
with RAT-SNAP leave no smell, they
dry up inside. (4) Made in cakes, no
mixing with other food. (5) Cats or
dogs won't touch it. Three sizes, 35c,
65c, \$1.25. Sold and guaranteed by
O. D. Mann & Sons and Trigg Drug
Co.

STOP-LOOK-LISTEN! See
the swell Dining Room suite in
our show window. O. D. MANN
& SONS.

JOHN TARLETON AGRICULTUR-
AL COLLEGE.

A Branch of the Agricultural and Me-
chanical College of Texas,
Stephenville, Texas.

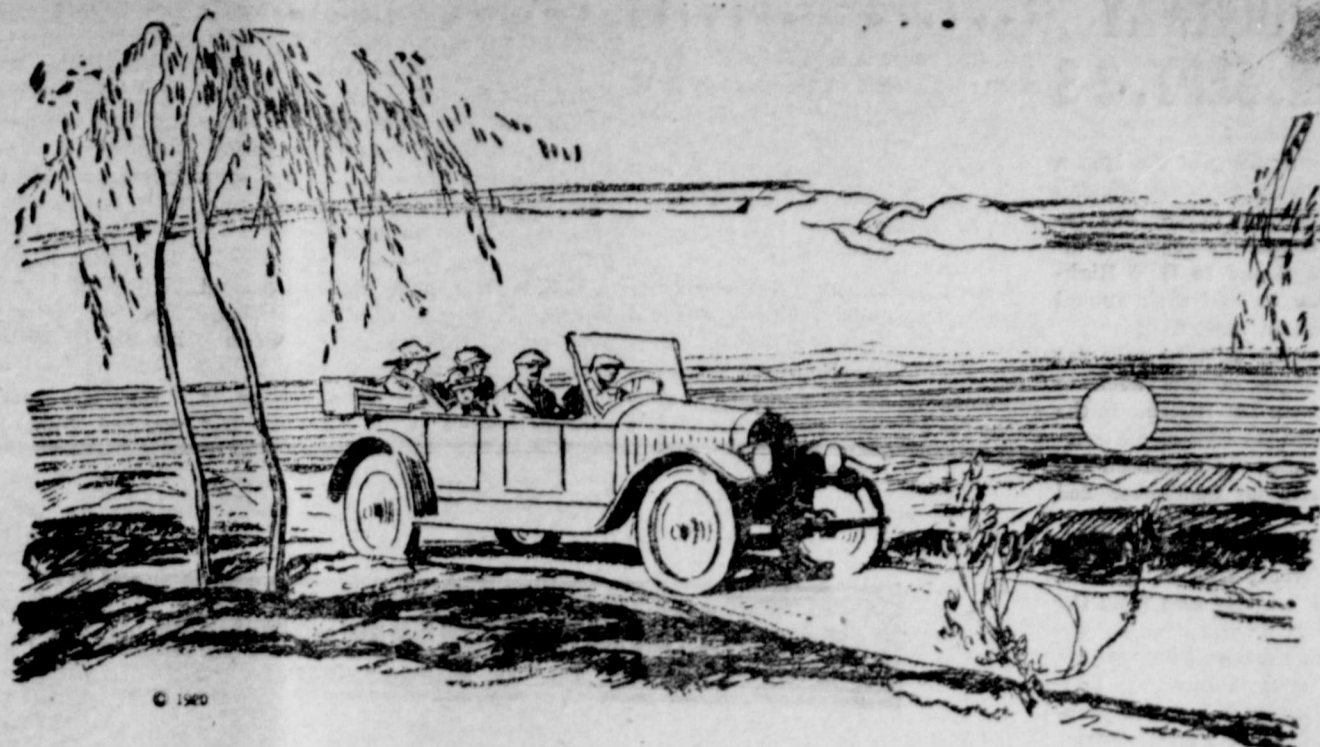
A coeducational, class A Junior
college, offering the most practical
courses in all branches of Agricul-
ture, Home Economics, Manual Arts,
Fine Arts, Business Administration,
Physical Training and all Academic
subjects. Graduates receive junior
standing at the Agricultural and Me-
chanical College of Texas and at the
State University, as well as in all
other leading colleges and universi-
ties.

Tuition FREE; \$75,000.00 student
loan fund, and a student labor fund.
Enrollment, 1919-20, 534.

The equipment is exceptional; 13
buildings, including a new \$150,000.00
Agricultural building; \$25,000 dairy
barn; a \$50,000 heating plant; 500
acre farm; 40 acre campus and dor-
mitories for men and women. All
buildings are modernly equipped and
the laboratories are entirely adequate.
The various music clubs, including
military band, orchestra, and glee
club, and the student publications and
literary societies as well as the many
forms of athletics, offer exceptional
training in student activities. The
College holds the State Junior Col-
lege championship in football, base-
ball and basketball.

This being a state institution, hence
YOUR INSTITUTION, every effort
is put forth to develop practical, ef-
ficient and worthy young men and
women who will make citizens of the
highest type. Investigate this school
before going elsewhere. Ask for cat-
alogue and literature.

J. Thomas Davis, Dean.
Geo. O. Ferguson, Asso. Dean
and Registrar.



Now the whole family can go
out on a Summer evening

THE women should cer-
tainly be thankful for the
automobile. It has given
them a chance to see a lot
more of their husbands.

they're beginning to insist
on knowing what they are
getting.

And the more they insist,
the better it will be for us.

But it has done a great
deal more than that.

We want our customers
to know what they are
getting.

It has brought people closer
together, given them new
interests, swept away old
prejudices.

That's why we represent
U. S. Tires—so there will be
no doubt about it.

What affects one man now
generally affects a good many
of his neighbors in the same
way. And they have a better
chance to get together and
talk things over.

Whatever the size of your
car, you know that the U. S.
Tire you put on it is the best
kind of tire its makers know
how to make.

It's had its effect on the
tire business.

U. S. Tires are guaranteed
for life, without any limi-
tation of mileage.

When automobiles were
new people were willing to
buy any kind of a tire. Now

That ought to mean some-
thing to the man who has
thought about tires.

United States Tires

Broad Mercantile Co.
F. R. Wulff

Select your tires ac-
cording to the roads
they have to travel:

In sandy or hilly coun-
try, wherever the going
is apt to be heavy—The
U. S. Nobby.

For ordinary country
roads—The U. S. Chain
or Usco.

For front wheels—
The U. S. Plain.

For best results—
everywhere—U. S.
Royal Cords.



ROYAL CORD—NOBBY-CHAIN-USCO-PLAIN

Revised Version.
The shirts I sent to thee, dear heart,
Are of no further use to me;
The collars are all torn—apart;
My Laund-ery! My Laund-ery!

In vain my underwear I seek;
My socks in shreds appear to be;
And still I send you more each week;
Oh Laund-ery, you'll ruin me!
—Yale Record.

RESULTS TELL.

There Can Be No Doubt About the
Results in Brady.

Results tell the tale.
All doubt is removed.
The testimony of a Brady citizen
can be easily investigated.
What better proof can be had?

B. Strickland, Brady, gave the fol-
lowing statement April 30, 1915:
"About the only indication of kidney
complaint I endured was getting down
with my back. This came on every
so often and I suffered badly with
it. I have found Doan's Kidney Pills
relieve me of this trouble. I always
keep them on hand and use them if
needed."

On May 15, 1919, Mr. Strickland
said: "The recommendation I gave
in 1915 holds good for I think Doan's
Kidney Pills are just the thing for
kidney trouble. Occasionally I take
a few doses and with good results."

Price 25c. at all dealers. Don't
simply take for a kidney remedy—get
Doan's Kidney Pills—the same that
Mr. Strickland had. Foster-Milburn
Co., Mfrs., Buffalo, N. Y.

RURAL CARRIER EXAMI-
NATION TO BE HELD AT
BRADY, SEPTEMBER 25TH

The United States Civil Service
Commission has announced an exam-
ination for the County of McCulloch,
Texas, to be held at Brady on Sep-
tember 25, 1920, to fill the position of
rural carrier at Brady and vacancies
that may later occur on rural routes
from other post offices in the above-
mentioned county. The salary of a
rural carrier on a standard daily route
of 24 miles is \$1,800. per annum, with
an additional \$30 per mile per annum
for each mile or major fraction there-
of in excess of 24 miles. The exam-
ination will be open only to citizens
who are actually domiciled in the ter-
ritory of a post office in the county
and who meet the other requirements
set forth in Form No. 1977. Both
men and women, if qualified, may en-
ter this examination, but appointing
officers have the legal right to spec-
ify the sex desired in requesting cer-
tification of eligibles. Women will
not be considered for rural carrier ap-
pointment unless they are the widows
of U. S. soldiers, sailors, or marines,
or the wives of U. S. soldiers, sailors,
or marines who are physically dis-
qualified for examination by reason of
injuries received in the line of mili-
tary duty. Form No. 1977 and appli-

cation blanks may be obtained from
the offices mentioned above or from
the United States Civil Service Com-
mission at Washington, D. C. Ap-
plications should be forwarded to the
Commission at Washington at the
earliest practicable date.

Stamp Pad Ink—in sizes from
25c to \$1.00. Brady Standard.

Constipation is the starting point
for many serious diseases. To be
healthy, keep the bowels active and
regular. HERBINE will remove all
accumulations in the bowels and put
the system in prime condition. Sold
by Central Drug Store and Trigg
Drug Store.

Desert Water Bags—a com-
panion for every trip of every
kind. O. D. MANN & SONS.

Become a Nurse

THE TEMPLE SANITARIUM TRAINING SCHOOL
offers to young women a course in nursing second to
none.

Are you a young woman of average intelligence, physi-
cally strong, and of good moral character? Do you
wish to earn your own livelihood? Do you care to re-
ceive a training that leads to a profession much in de-
mand? The nursing field is broad, and the demand is
far greater than the supply.

When you are a graduate of THE TEMPLE SANI-
TARIUM TRAINING SCHOOL you are assured of a
place in the nursing profession. Board and tuition
free with a monthly allowance while you are receiving
your training. Write today for full particulars to
MISS WILMA CARLTON, R. N., Superintendent of
Nurses, Temple, Texas.

MASON TO ENTERTAIN HIGHWAY ASSN. SEPT. 2-3

At a regular meeting of the Mason commercial club on the first Monday in August, Mr. Carl Runge was instructed as a committee of one to invite the Puget Sound to Gulf Highway Association to hold their annual business session in Mason.

A called session of the club was held Monday night of this week to hear a report from Mr. Runge. In the report Mr. Runge stated that the association had accepted the invitation and would meet here on September 2nd and 3rd.

The delegation will consist of approximately seventy-five in number, and will be made up by men from the various counties through which the Puget Sound to Gulf Highway passes.

After hearing the report, the commercial club immediately began preparations for the entertainment of the delegates while in our city. Various committeemen were appointed to assist the club in making arrangements and providing entertainment.

One question arose that brought forth quite a lengthy discussion and that was in regard to hotel accommodations for these guests while in Mason. It was decided that after the hotels had been filled to their capacity that the remaining delegates would be given lodging in private homes, and that they would secure their meals at hotels or cafes, according to their own choice. A committee of five ladies was appointed to make arrangements for the lodging of the delegates.

It is planned that the business men of Mason entertain the delegation with a watermelon feast on the court house lawn, and on the second day the guests are to be served a barbecued dinner.

A committee of three has been appointed to arrange for the Boys' Pig club to give a pig show during the two days of the delegation's stay here. It was stated that pens would be furnished for the boys to put their pigs in.

In view of the fact that a stock show is to be held on a later date, it was voted not to award any prizes on pigs to be exhibited during the two days, and that furnishing of pens should offer sufficient inducement to the club boys to bring their pigs for exhibit. Following is the committee in charge of the pig show: E. J. Lemburg, Roscoe Runge and C. D. McMullan.

FRED CONNER AND G. C. BLACK HAVE AUTO SMASH-UP ON COLEMAN ROAD

Fred Conner's Buick car is a mass of wreckage, and G. C. Black's car, also a Buick, is in the shop for repairs as the result of a collision between the two on the Coleman road, near the J. M. Page residence, about a mile from town.

Conner, accompanied by Frank Champion and a negro, were coming to town and were making fast time, when Black, accompanied by his son-in-law, Rube Willman, suddenly emerged on the Coleman road, coming out of the lane just south of the Page home. After making a wide turn, which put him on the left hand side of the Coleman road, Black sought to cross over and get on the right hand side before passing Conner. Conner, in the meantime, had crossed over to his left-hand side, thinking Black intended staying on the left-hand side. The result was that Black's car caught the Conner car just about midway, lifted it clear off the ground and set it over against the fence about ten foot distant.

The Conner car was virtually wrecked beyond repair, while Black's car suffered a broken frame, fender, wheel, radiator and considerable other damage. The negro was thrown or jumped from the Conner car and was quite severely bruised, but the other occupants fortunately escaped with only a bad shaking up and minor bruises.

If you feel bad; if you are "blue", tired and discouraged, without apparent reason, you need Prickly Ash Bitters, the system purifier. It restores action in the torpid liver, cleanses the stomach, helps digestion, drives out gas and fermented matter in the bowels, and brings back that fine feeling of strength, vim and cheerfulness which only men in perfect health enjoy. Price \$1.50 per bottle. Trigg Drug Co., Special Agents.

If you have anything to sell, or if you want to buy anything in the way of household goods, don't overlook the fact that C. H. ARNSPIGER wants a chance to trade with you. Old Postoffice building.

The Essex is no experiment—twenty thousand sold last year and those did not fill the demand. F. R. WULFF.

LOCAL BRIEFS

F. R. Shaver is here from Red River county on a visit to his brother, D. H. Shaver. The former is so favorably impressed with the Brady country that he expects to locate here as soon as he can dispose of his property in Detroit, Texas.

Wilson Jordan left last Thursday on a trip to Comanche and other northern points. We have the solemn assurance of J. C. Mayhew that Wilson is presumed to be on a speaking campaign for the Hon. Pat Neff, but that

he will be back in time to vote for that gentleman Saturday.

Carl Salter is here from Brownwood doing some high class window sign writing, for which he is noted. Carl for a number of years was in bad health and was compelled to retire from active work. His many friends are pleased to know that he has fully recovered, and is again actively pursuing his chosen vocation.

Mrs. W. S. Proctor suffered painful injuries Saturday when she tripped over an obstruction at the Proctor grocery store, falling heavily to the floor. Examination showed some of the small bones in the left elbow had

been fractured, and the injury will require some weeks to heal. Mrs. Proctor's mother, Mrs. W. J. Willis, is here from Voca attending her.

More rain is to be reported this week, the precipitation in Brady having been one-third of an inch Tuesday evening. A heavy rail fell up Brady creek, causing that stream to come down on a rise. The McCulloch county rains have already passed the billion dollar mark, and the citizenship in general is willing to let it go at that until after the present bountiful harvest is gathered.

Here is a cheery letter The Standard received from Mrs. Elizabeth Burt,

who now lives at Lyon, Miss. It will be read with interest by friends of the writer here. "Please find enclosed \$2.50, renewal to your paper one year. It is like getting a letter from home, even though I did live in your county only about eight months. Am glad that your million dollar rains have been so plentiful this year, for I well remember the scarcity of the million dollar rains in 1917."

S. A. Benham returned Tuesday from his marketing trip to St. Louis and Chicago, and returns very enthusiastic over the prospects for a good business this fall and winter. Mr. Benham was fortunate in securing a large and splendidly selected

stock of goods, and states his store will be filled this season with one of the most elaborate showings of dry goods, dress goods, ready-to-wear and millinery that has ever been had. Mr. Benham's familiarity with the markets, and close touch with the big buyers, has enabled him to make especially advantageous purchases, all of which will redound to the benefit of his patrons. His new goods are already arriving, and visitors to the Benham store will find the displays of especial and increasing interest.

Have good stock of one-gallon Syrup Cans on hand. Supply your wants now. O. D. MANN & SONS.



ESSEX

San Francisco to New York 3347 Miles **4** Days 14 Hours 43 Minutes

Lowers Transcontinental Record by 12 Hours 48 Min. Another Essex Going From New York to San Francisco Broke the Record For That Direction by 22 Hours 13 Min., Completing the Trip In 4 Days 19 Hours 17 Minutes

So Essex Holds the Transcontinental Record Both Ways

Two Essex touring cars, carrying U. S. Mail, each one making the entire trip between San Francisco and New York, have set the time records for their respective directions across the American continent.

And thus comes to Essex another distinction for reliability and endurance.

Except for one airplane record, these two Essex cars have crossed the continent in less time than was ever recorded by any travelling machine. The fastest time possible between San Francisco and New York by train is slightly less than the time taken by the light weight economical Essex. But in the case of the railroad train, many different locomotives are used, each pulling the train only a few hundred miles.

From Cheyenne to Omaha the route taken by the Essex was 43 miles longer than the 550 mile route of the famous Overland Limited yet the Essex time was but one hour longer than the express train time.

The World's Most Coveted Records

From the days of the Prairie Schooner, the Pony Express and the completion of the railroads men have sought to establish new transcontinental time records between the Atlantic and Pacific oceans.

It has called for the highest development of skill and courage. And it has, as in the case of the motor car, blazed the way to mechanical reliability.

The purpose of this Essex test was to prove its reliability. In the period of 114 hours was crowded more strains, more calls for endurance and mechanical strength than the average owner demands in a life time.

Every requirement of motor car performance was met by these two cars. And the fact that they so consistently met their tasks proves Essex uniformity.

The speeds at which they traveled were not so unusual, for another Essex stock car had on a speedway track gone 3037 miles in 50 hours. But in the transcontinental runs, some 350 cities and towns had to be crossed. Crowded traffic imposed its obstacles to consistent going. Mountain ranges in the East and West with grades such as the average driver never encounters, called for the utmost of hill climbing ability.

Few will ever motor all the way across America and therefore cannot know the extreme varieties of conditions encountered. But let each reader apply to his consideration of what Essex has done, every experience he has ever met in his own driving. It will give some appreciation of Essex reliability.

Light Weight Now Establishes Reliability

How gradual have men come to a realization that a light weight car can also offer reliance and performance.

Essex has led the way for that was its purpose from the very first. Economy is of growing importance. Men want to save in fuel and in first costs. But they want no sacrifice in performance and they demand unquestioned reliability.

Essex offered itself to the public without claim. Now more than 40,000 owners know and praise its worth.

Owner cars that had been driven upwards of 25,000 miles were used in the recent nation wide Essex week to establish reliability, economy, speed and hill climbing records.

To Essex owners the winning of the transcontinental records is not a surprise. But those who do not know Essex performance and reliability must regard that these two trips across the continent are as important in marking mechanical advancement as any similar event in the history of the motor car.

F. R. WULFF, Dealer

Phone 30

Brady, Texas



WATCH the ESSEX

