



The Merkel 4th grade students were mad minute winners in math. They were required to answer 50 questions correctly in a minute. After they proved they could do this with their teacher, they were required to achieve this with Merkel elementary principal David Casey. Ryan Holmes was a double winner in multiplication and division. They are listed in the order they qualified.

Students are Jeremy Burt, Lanae

Baker, Tabi Reed, Rendi Meeks, Mike Deatherage, Mandy Fuller, Tessa Fudge, Brandon Linzy, Brian Hunt, Rhett Buntin, Bubba Jackson, Chris Bolinger, Joe Hankins, Natha Byers, T. J. Dohogue, Shelli Leamon, Oscar Cano, Nancy Stephens, Rebecca Hobbs, Andy Miller, Rachel Buddin, Elizabeth Acuna, Brandy Casper, Beth McClintock, Michael Minor, Molly Griffith, Shera Hammond, Junior Garza, Scooter Harris, Wendy Elliott. (Staff photo)



These Merkel 5th grade students were named students of the month during the school year. They are (top row from left) Cole Manahan, Juan Gonzales, Kevin Graham, Anthony Paden, James McFadden, Martin Hernandez, Joe Ben Roberts, Marcus Malone, Roberto Cano,

Adolfo Hernandez, Scott Walsh (bottom row) Lisa Biera, Laurie Hellums, Brandi Tarpley, Crystal Boone, Hope Maxwell, Amanda Myers, Aimee Robertson, Erin Folkes, Traci Smith and Lori Pirraglia. (Staff photo)

Rain, trips, Fun Day music, golf . . . more

by Cloy A. Richards

It was a wonderful rain we had here Tuesday, unless you were trying to finish planting cotton, harvest wheat or get in a baseball or softball game.

It rained hard for about 45 minutes and we even had a little hail thrown in.

You can't complain about the wet stuff in this part of the state.

Plans for Fun Day are moving right along.

The entertainment this year will be the best since Fun Day first started.

Ray Pack and his band will return after a two year absence. A band known as the "La Garage" band will perform and they play music from the 1960s and 70s and then a band they tell me is very popular these days, Canyon will play from 8 until Midnight.

Marilyn has been taking a few reservations for food and game booths at the Chamber Office and there are still some spaces and ideas left.

We are looking for a rebirth of the event but with more and better musical entertainment, plenty of locally famous fajitas and activities for the young and old alike, it looks like Fun Day '88 will be a good one.

Donation tickets this year have also been changed. Tickets are 50 cents each and the grand prize winner will receive \$300, second place is a VCR and third in four tickets to Sea World in San Antonio.

If you would like more information about Fun Day, or want to reserve a booth, call Marilyn Tittle at 928-5722. After all, its only a month away.

I didn't have space in last week's paper for this column (I know some of you were relieved) but a couple of things need mentioning.

Melanie and I traveled to Washington

D.C. for my niece's wedding and we got a chance to get in some sight seeing with my brother and his wife. It was a wonderful trip.

This past weekend Joey, Melanie and I went to Lake Texoma and spent three days with Melanie's sisters and their families. It was nice and peaceful (except when all the kids wanted in the cabin) and we had fun playing games and watching the kids play.

Just wanted you to know where we have been in case you have been trying to find me lately.

They have started working on the forms for the foundation of the new City Hall building here.

I am sure Tuesday's rain will delay that activity a little but I can't wait to see that building start going up.

With that type of construction, you should see a lot of progress over the next month.

I spoke with a couple of recent MHS graduates about the Project Graduation event held Friday and they say it came off real well.

It was Merkel's first attempt at the event which is designed to provide good clean fun for graduating seniors and their dates, in an environment free of alcohol or drugs.

Many local business and individuals supported that effort by donating money and it was money well spent.

The Merkel Country Club is sponsoring a junior golf tournament Monday.

If you have a child, through high school age, that wants to play, give the clubhouse a call. While we are on that subject, a youth tournament is also being held in Stamford June 16th. More information on that event is available by calling 773-5001.

Chamber names Fun Day entertainers

The Merkel Chamber of Commerce has signed the band Canyon to play from 8 until midnight at the Fun Day celebration July 4th at Merkel's South Park.

Canyon is a Dallas based band and has a couple of singles playing on area radio stations.

Also, Ray Pack and his band are set to open the day's music and the La Garage Band, made up of some Abilene disc jockeys are set to play the mid day shift.

The Chamber has also decided to get away from periodic prize drawing throughout the day. The Chamber will be offering a grand prize of \$300 in cash, 2nd place a VCR and third is

four tickets to the new Sea World Amusement Park in San Antonio. Donation tickets are 50 cents each this year.

Thirteen booth reservations have already been made and chamber Manager Marilyn Tittle told the Chamber's Board of Directors Monday she had received a lot of calls lately expressing interest.

Other entertainment already scheduled includes the Sweet Adelines of Abilene who will provide the music for the grand opening ceremonies.

More information about booths are available by calling Marilyn Tittle at 928-5722.

Chapter will install officers Saturday

Merkel Chapter 212, Order of the Eastern Star will hold their installation of officers Saturday at 8 p.m. in the Masonic Hall here.

Being installed are: Hazel Pargament- Worth Matron; Ted Pargament-Worthy Patron; Margaret Hunter- Associate Patron; Roy Mashburn- Associate Patron; Mildred Starbuck- Secretary; Buddy Hunter- Treasurer; Mary Sue Eager- Conductress; Marilyn Baker- Associate Conductress; Doris Summers-Chaplain; Fern Windham- Marshall;

Yvonne Sloan- Organist; Aileen Knight- Adah; Susan Detrich- Ruth; Anazell Bright- Esther; Una Mae Hays- Martha; Martha Allison- Electa; Curtis Summers- Warden; Lem Allison- Sentinel.

The Installing Officer will be Ruth Hill, Installing Marshall Ethel Pratt, Tommie McWilliams Installing Secretary, and Lou Dominy Installing Chaplain, Annabelle Shouse Installing Organist and Charles Eager will give the closing prayer.

FmHA sets local election June 30th

Farmers in Taylor County and Runnels County will have an opportunity to choose one person from among two candidates running for the Farmers Home Administration county committee in the June 30 election, FmHA County Supervisor Don M. Newhouse said.

Any person who has an interest in a farm in the county as owner, tenant or sharecropper is considered a farmer and is eligible to vote, Newhouse said. Spouses of eligible farmers also are considered farmers for voting eligibility.

Ballots for the election are published in the local newspapers and also are available at the FmHA county office at 2203 Federal Building, Abilene, Texas. If they cannot be returned to the county office in person, ballots may be mailed in, Mr. Newhouse said.

Among other duties, county committees help determine whether an applicant is eligible for a FmHA farm loan. Two of the three members are elected by county farmer, and the third is appointed by FmHA.

Stenholm's cotton bill before House

Congressman Charles W. Stenholm sponsored and successfully moved a provision through the U. S. House Agriculture Committee that will aid drought stricken cotton farmers.

Congressman Stenholm introduced in Ag Committee his bill, H. R. 4615, which extends the "Zero 92" program to cotton. Zero 92 allows farmers to set aside amounts of the crop base and protects deficiency payments. With allowances made for 1988, this option allows cotton farmers to sign up for

program participation and avoid soil erosion by plating on drought stricken land. In order to comply with government programs in place now, farmers must plant or risk losing some of the crop base.

"This bill will allow cotton farmers who experience drought problems to have an option," Congressman Stenholm said. "The same kind of program is applicable for wheat and feed grains. It just seems fair and makes sense to apply the same standards toward cotton."



These Merkel Elementary 4th grade students qualified for the Gone to Texas Club this year. In order to qualify, the students had to listen to discussions, read intently, look up answer correctly, remember what they learned and had to earn 25 stars. Their names are listed in the order they became members: Tabi reed, Bubba Jackson, Rina Rister, Wendy Elliott, Jessica McKee, Rendi Meeks, Lanae Baker, Sandra Juarez, Chrystal Beard,

Paul King, Rebecca Hobbs, Ryan Reynolds, Rhett Buntin, T. J. Dohogue, Tessa Fudge, Andy Miller, Rachel Buddin, James Hester, Christina Danielski, Jessica Martin, Brandy Casper, Michelle Reyna, Holly Browning, Shelli Leamon, Michael Minor, Beth McClintock, Mandy Fuller, Cole Dempsey, Clint Doan, Ryan Holmes, Tabitha Sumrall, Oscar Cano, Quincy Hines, Jennifer Folkes and Molly Griffith (Staff photo)

Texas Public Schools: There Is a Better Way

Commentary by State Comptroller Bob Bullock

State District Court Judge Harley Clark in the *Edgewood v. Kirby* lawsuit held that the Texas system of financing public schools is unconstitutional because it does not ensure all school districts equal access to the money needed to provide equality in education.

Allegations have been made that Judge Clark's decision took the issue out of the hands of the Legislature.

After a careful reading of the decision, I beg to differ. Judge Clark simply said that the "hands" in the Legislature have until September 1, 1989, to solve the problem. It has always been in their hands--and rightfully so.

Critics have also said the only way to solve the problem is by amending the Texas Constitution. Again, I beg to differ. Why put the state's seal of approval on an admittedly unjust system?

Judge Clark's decision has created a new set of challenges for Texas lawmakers, educators and taxpayers.

I say there is a better way to solve the problem, without amending the Constitution, and without consolidating the local districts or taking local funds from wealthy school districts.

Judge Clark's decision reveals that two fundamental issues must be addressed by the Legislature for any new system to meet the tests of fairness and equality.

- All students must have substantially equal opportunity to access the funds needed to provide a solid, quality education. Equal access is the key--not equal dollars.

- The state must recognize that school facilities are an essential part of any educational program and must begin sharing the cost of facilities with local school districts.

In 1984 the Comptroller's research staff was called on by the Perot Committee to design a new public school finance mechanism that would ensure equality and excellence throughout Texas' public school system. We designed such a system and our proposal was adopted by the Perot Committee and the Legislature--but the Legislature failed to adequately fund it.

Based on our experience, we have designed a new finance system in light of the Edgewood decision. This new plan, designed to be phased in over a five-year period, is

v. Kirby found the cost of a quality education to be \$3,600 (excluding facilities) per student per year. The state's present school finance system has a goal of "equalizing" minimum spending per student at about \$2,700 per year. But as a practical matter this is not the actual result. Some poor districts spend as little as \$2,112 per student despite excessive local tax rates. Wealthier districts spend as much as \$19,000 per year per student. Actual average spending per student statewide is between these two figures--around \$3,300 per year per student. The difference between the "equalized" \$2,700 and the actual \$3,300 comes from local property taxes in those districts wealthy enough to supplement state funds with local tax dollars.

These cost figures do not include any state money for facilities even though some state money will have to go toward facilities, according to the court decision.

Under this proposal, the state would equalize each student's access to funds--either from local or state sources--at the level established by the accountable costs study--estimated to be \$3,600.

Of the 1,062 school districts in Texas, 68 percent or 730 school districts, representing 1.8 million of our three million students, had below-average property wealth in 1986. Students in all 730 of these districts could benefit from this proposal by gaining equal access to enough money--state and/or local--to spend what the Committee on Accountable Costs says is a realistic and affordable blueprint for a lasting solution to financing Texas' public schools.

There are two elements in the plan:

- Part I** addresses the cost of a quality education and the means for ensuring that all students have equal access to funds.
- Part II** addresses the need for the state to participate with local school districts in providing adequate facilities, such as classrooms, to meet the needs of students and teachers alike.

One of the results of the Perot Committee in 1984 was the creation of an Advisory Committee on Accountable Costs. This committee is charged with determining how much it costs school districts to provide a quality education for students.

Based on this committee's initial studies, the court in *Edgewood*

necessary. The equal access would be based on:

- the level of tax effort local taxpayers are willing to make, and
- the level of tax effort local taxpayers are able to make, based on the size of their tax base.

If a school district is willing and able to raise local funds at a tax rate considered by the Legislature to be appropriate, the state will make up any difference between the amount it can raise on its own and the full cost of a quality education--estimated to be \$3,600.

If a school district is not willing to raise local funds at the legislative target rate, the state will still provide funds, but will reduce the amount of state aid proportionally.

Assuming a five-year phase-in of this plan beginning in 1991, the additional cost to the state can be estimated for the first biennium (two years) at around \$600 million.

- \$400 million to fund the initial target cost of a quality education (about \$3,200 per student in the first year with an ultimate goal of \$3,600 per student in the fifth year plus whatever amount is included on top of that for basic facilities aid).
- \$200 million in transition aid for wealthier school districts, to minimize budget disruptions that might result from switching to the new system.

As an example, to meet the costs of the plan, the Legislature might set a target tax effort of something like 74 cents per \$100 valuation in the first year. To put this in context, last year 611 school districts in Texas had a tax rate of 74 cents or higher. Another 217 school districts were within 10 cents of this rate.

As property values and the Texas economy continue their recovery, it is reasonable to expect that much of the added funding in later years could be realized without local property tax increases and without a mushrooming state contribution.

Texas is one of 10 states that does not participate in the cost of local school facilities. To address this problem, the plan suggests two compatible approaches, neither of

which requires any constitutional or statutory changes.

First, in line with the Permanent School Fund's current policy of guaranteeing certain school district bonds, the Fund could also invest in local school bonds, at interest rates more favorable than districts can get on the open market.

Prior to 1975, the Permanent School Fund bought local school district bonds. This former practice is still permitted under current law, and there is no compelling reason why they could not and should not do so today.

Also, in 1983 the voters approved a constitutional amendment guaranteeing local school district bonds with the full faith and credit of the state's Permanent School Fund. It only follows that, if these bonds are a good enough for the State of Texas to guarantee, they are a good enough investment for the Permanent School Fund.

This purchase of school bonds by PSF could result in substantially lower interest rates than some districts are now paying, and the savings could be used to:

- enrich some local school programs for the first time, or
- lower property tax rates.

State Board of Education's investments in local school district bonds would recognize that a direct investment in our state's schools represents prudent management of the fund for its beneficiaries--Texas' three million school children.

Using a small part of the monies from the Permanent School Fund, as described above, would save local school districts as much as \$50 million a year in interest payments.

The second approach calls for using \$660 million of existing state revenue bond proceeds in a similar manner for the purpose of lowering the burden school districts now bear for the cost of facilities.

These bond funds are administered by the Texas Public Facilities Capital Access Program (TEXCAP), and were intended for use as low interest loans to local governments for economic development.

These bond funds, now sitting

idle, must be loaned out by July of 1989 to avoid running afoul of IRS tax exemption guidelines.

No constitutional or statutory change is required, and use of these TEXCAP funds for loans to school districts, in lieu of bond issues, could save school districts as much as \$35 million per year in interest payments. (TEXCAP's loan rate is now at 5.05 percent).

This plan in its basic form not only meets the two main tests of the *Edgewood v. Kirby* decision, but also:

- does not require consolidation of our local school districts;
- preserves the existing structure of the state's system of education;
- does not take away local funds from wealthy school districts;
- preserves and promotes local control by local school districts;

- allows the Legislature to address the problem;
- does not require an amendment to the Constitution;
- recognizes that the goal of a quality education requires a partnership between the state and local school districts, and that such a partnership is essential;
- meets the test of fiscal responsibility, the only plan to do so.

Poor school districts are not a political issue--unless we want to make them so. And poor school districts are not primarily social problems.

Poor school districts are an economic problem. This plan lays a foundation for a system of quality education that future Texans will need if they are to compete and contribute tomorrow.

Without question, what we provide our young Texans today in the form of an education will determine what they provide us tomorrow in the form of an economy.

NOTICE OF ELECTION

The Farmers Home Administration (FmHA) county committee election this year will be held on June 30th. The ballot below must be filed out, detached and mailed and received or returned in person to Abilene county office not later than June 30th. If you do not vote in person you should mail your ballot inside a blank envelope marked ballot to ensure a secret ballot. This blank envelope should be placed inside the envelope you use to mail your ballot. Your name and address must be legible on the outer envelope. Failure to provide this information will render your ballot invalid. Only one ballot may be voted in person or by mail by any voter. Votes in envelopes containing more than one absentee ballot will not be counted. Ballots and envelopes may also be obtained from your local FmHA office.

The state of nominees for Taylor County are listed in the ballot below. The qualifications of persons voting are described in the "Voter Certification Statement." For further information regarding voting and voter eligibility, see the County Office listed above. FmHA elections are open to all eligible voters without regard to race, color, religion, national origin, age, political affiliation, marital status, sex, and/or handicap.

U.S. DEPARTMENT OF AGRICULTURE
FARMERS HOME ADMINISTRATION
BALLOT FOR COUNTY COMMITTEE MEMBER(S)

State Texas County Taylor

*Candidate(s) Billy W. Hamner

*ONLY VOTE FOR 1 CANDIDATE(S)

Please detach this notice before voting ballot

VOTER CERTIFICATION STATEMENT

Subpart W of Part 2054 of Title 7, Code of Federal Regulations requires that all eligible voters for FmHA county or area committee elections meet the following eligibility requirements: (a) be farmers or spouses of farmers; and (b) have their principal farming operation within the county or area for which the election is being held.

By submitting this ballot, I attest that I meet the criteria to vote.

Cloy A. Richards - Editor - Co-Publisher
Melanie Richards - Business Manager - Co-Publisher
Published at 916 N. 2nd Street, Merkel, Texas
Entered as Second Class Mail at the U.S. Post Office, Merkel, Texas 79536 County Delivery on Thursday
DEADLINE FOR NEWS AND ADS: Noon Each Tuesday
SUBSCRIPTION RATES:
\$11 per year in Taylor County
\$13 per year in Texas
\$14 per year Out of State
Professional Affiliations:
The Texas Press Association
National Press Photographers Association

NOTICE: Typographical or other errors must be brought to our attention before the second insertion before any claims for a refund will be recognized.
CLASSIFIED RATES: Classified ads are \$3 for the first 18 words and 15 cents for each additional word. A 75 cent billing fee will be added to all charged ads. Charged ads that are not paid for within 30 days after billing will receive an additional \$1.50 billing charge.
PUBLIC AND LEGAL NOTICE RATES: Notices to the public are 70 cents for each printed line.
BUSINESS PHONE: (915)928-5712 or Home 928-4072. Recorder used after hours or when no one is in the office.
CORRESPONDENCE TO: Box 428, Merkel, Texas 79536
WE ARE MERKEL'S OLDEST BUSINESS PUBLISHING EACH WEEK SINCE 1889
"Congress Shall Make No Law Abridging the Freedom of the Press"
The Publisher reserves the right to refuse or cancel any advertisement at any time.
"WE WANT YOU TO READ OUR MAIL"

To Start Your Subscription
Complete this form and mail to
The Merkel Mail
P.O. Box 428, Merkel, Texas 79536

NAME _____
ADDRESS _____
STATE _____ ZIP _____

Keep your summer utility bills by following these tips

Temperatures are beginning to rise toward their summer peak and without some energy saving steps your utility bills will rise right along with them. "No matter what kind of system you have, carefully set thermostats can hold down utility bills," according to Dr. Peggy Owens, a housing specialist with the Texas A & M University System.

"Many of us are in the habit of over-cooling our homes. In the winter, we set our thermostats at 78 degrees to stay comfortably warm and then in the summer we put them all the way down to 68 degrees," she said.

"For every degree below 75 degrees that you set your thermostat, your operating cost goes up six to ten percent," said Owens. "So, in a 1600 square foot home, setting a thermostat at 76 degrees rather than 72 degrees will save about \$220 during a cooling season."

"When you're going to be gone during the day, turn the thermostat up to 83 degrees. You can save about 25 percent of your energy by cooling the house once you get home, instead of keeping it cool all day," said the specialist.

Owens advised turning the air conditioner off entirely when you will be gone for more than 24 hours.

"Thermostat control won't have much of an impact on your utility bills unless you clean or replace the air conditioner filter regularly," Owens said.

"A clogged air filter causing a 10 percent reduction in air flow will increase your operating costs by 11 percent," she said. "The air conditioner has to work harder to reach the thermostat setting, so you are paying for energy that doesn't make the house feel any cooler."

Also, check the ductwork in the attic for air leaks," said the specialist. "Use duct tape to seal any leaking joints so you are not paying to cool the attic."

Owens said a fireplace can pull cool air out of the house and increase cooling costs by up to 20 percent. A tight-fitting damper will reduce any cool air loss.

Fannie Keith will celebrate 90 years

Everyone is invited to celebrate the 90th birthday of Fannie Keith from 2 until 5 p.m. June 5th at the Senior Citizens Center on Edwards Street. No gifts are required at cake and punch will be served.

THE PUBLIC IS CORDIALLY INVITED TO COME HEAR A 54 VOICE CHOIR FROM GREATER ATLANTA CHRISTIAN SCHOOLS ATLANTA, GEORGIA IN CONCERT AT THE MERKEL CHURCH OF CHRIST 700 ASH STREET TUESDAY, JUNE 7, AT 7:30 P.M. THE PROGRAM WILL CONSIST OF GOSPEL MUSIC AND WILL LAST ABOUT AN HOUR PLEASE FEEL WELCOME TO COME AND BE ENRICHED BY THESE TEEN-AGE VOICES IN PRAISE OF GOD

OPEN HOUSE
Sweetwater Country Club
June 7, 1988-4:00-8:00 PM
The Board of Directors at the Sweetwater C.C. Invites you to attend the open house of the newly remodeled Club House.
Food & Refreshments Served

PRESCHOOL SCREENING TO IDENTIFY HANDICAPPED CHILDREN
for 3, 4, & 5 Year olds
Locust Elem. Cafeteria 625 S. 8th Abilene, Texas
June 9, 10, 11, 1988 10:00 A.M. - 5:00 P.M.
Call For Appointment 915-677-8623 Ext. 211 915-676-8201 Ext. 123
Screening for Handicaps in Motor • Language & Speech • Concepts
Sponsored by Region 14 Education Service Center & Special Education Department of AISD



Manage cattle for drought before it gets dry

Texas cattlemen facing drought conditions need to assess their options quickly in cases needed rains don't come in the next few weeks.

"Many ranchers have already been hurt financially by drought condition, particularly in south and southwestern Texas," said Dr. Barron Rector, a range specialist with the Texas A & M University Agricultural Extension Service. "Most of them have been feeding their herds since last winter because there has been no rainfall to boost forage growth on pastures and ranges. Many also have culled their herds to relieve some of the pressure on feeding."

Although some good rains between now and the middle of June would do wonders for the Texas livestock industry, the opportunity for forage production in the spring has been lost, Rector said. Grass and other forage plants in the drought areas have suffered from the lack of rain, and rains won't provide a "quick fix".

So, what's a cattleman to do at this point?

Evaluate Forage, Cull Herds

"The main thing to do is constantly evaluate forage supplies and try to balance livestock numbers with available forage or feed," said the range specialist. "That process must continue even if rains come. A good rain will improve grazing conditions in two weeks to a month, but for more long-term range improvement, grazing should be delayed up to two months. Grazing perennial plants too quickly and too heavily after a rain can damage plants as well as the soil."

According to Rector, the best step for cattlemen to take in the face of a drought is to reduce stocking rates so as to reduce forage demand. This reduces damage to range plants from overgrazing allows for more rapid recovery of plants once the drought is broken, reduces supplemental feed costs and reduces livestock losses to toxic plants which often are grazed when desirable plants are lacking.

"Often it's best to sell part of the herd, particularly cows that are older, late calving and generally less productive," Rector said. "To feed cows during a severe drought is to mortgage them; if you lose, you have spent the cow."

In addition to heavy culling of the cow herd, other alternatives are to wean calves early to reduce the stress on cows, to sell yearlings early

and to skip one year of keeping replacement heifers. Also, look for alternative sources of good quality feed for calves and make sure that cows are kept in good condition during calving and breeding. Making sure that bulls are fertile is another key management practice.

"Current conditions aside, cattlemen should always manage their operations as if a drought is just around the corner," Rector said. "That means doing everything possible to preserve range resources. Perennial grasses with a good root system will stay in production longer when a drought hits and will recover more quickly once rains come. Litter and stubble on ranges also allow for more efficient use of rainfall and reduce runoff."

Prepare Drought Plan

Since droughts are inevitable, every rancher should have a drought plan that deals with flexibility in forage use, livestock numbers, livestock classes, marketing strategies and other matters that will allow for improved decision making. Such a plan should include a timetable for decisions on stock numbers, improvement practices, supplementation and marketing in relation to seasonal forage production and quality. Cattlemen need to realize, Rector said, that forage growth initiated at the mid-point of the growing season will go mostly to a plant's reproductive processes while leaf growth for livestock consumption will be reduced. Future forage production is dependent on rain and current management practices.

"Keeping a part of the livestock herd in a readily marketable state such as stocker animals is a good drought management practice," said the range specialist. "If no more than 60 percent of the grazing livestock units are in the reproducing herd, a cattleman has much greater flexibility in

his marketing scheme in event of a drought.

"By all means, have a destocking policy and adjust the stocking rate to meet usable forage on hand," Rector said. "Also, be sure to allow for adequate stock water in the drought management plan."

Use of a drylot all-concentrate feeding operation to maintain livestock during a drought will reduce needless exercise and energy expenditure in search of food and water and also allow forage to recover more rapidly once rain does come, the specialist said.

Borrego's services held here

Salvador "Apa" Borrego, 81, died May 23 after a long illness at a local hospital.

Memorial services were held May 25 at the Starbuck Funeral Home Chapel here. Funeral services were held May 26 at the funeral home's chapel with the Rev. Benjamin Gonzales officiating. Burial followed at Rose Hill Cemetery here under the direction of the Starbuck Funeral Home.

Born in Encinal August 18, 1906, he married Veronica Castillo in Cotulla in 1930. He moved to Trent from Laredo in 1963. He was preceded in

death by a son, Santiago Borrego.

He was a retired carpenter and a member of the Templo Las Buenas Nuevas.

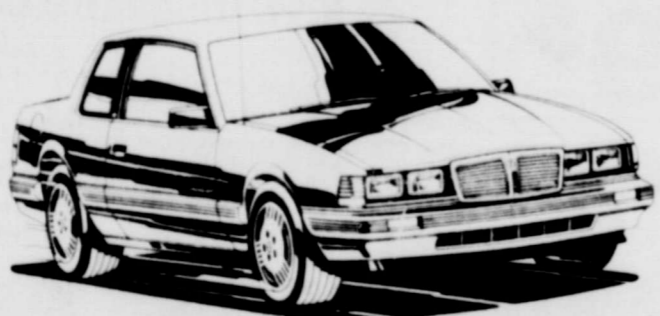
He is survived by his wife, Veronica Borrego of Trent; four sons, Joe Borrego and Salvador Borrego, Jr. both of Abilene and Gabriel Borrego and Julian Borrego, both of Trent; two brothers, Pabb Borrego of Laredo and Ignacio Villareal of Casa Grande, Az; two sisters, Santos Ramos of Encinal and Julia Ramos of Laredo; 13 grandchildren and one great-grandchild.

Shelle Doan is recent MHS grad



SHELLE DOAN
Band 1-3, flags 1-3, color guard 1-3, drill team 4, FHA 1,3, Spanish club 1,3, book markers club 3, outstanding band award 1,3, AWBA scholarship 3, Western Horizon scholarship 3, Who's Who 4, homecoming princess 2, Weinberger trophy 2-3, sweepstakes drill team award 4, nominee for superstar dancer 4, best dancer nominee 4, most improved drill team 4, top pom performer 4, Exchange Club student of the month 4, Who's Who Among American Fine Arts Students.

88 PONTIAC LEMANS AERO COUPE



\$186⁰⁸ MO.

- ★NO PAYMENT DUE FOR 90 DAYS
- ★\$600 DOWN PAYMENT ALLOWANCE FOR FIRST TIME BUYERS
- ★\$500 CASH REBATE

Air, automatic, power steering, brakes, AM/FM stereo, rear window defroster, front & rear floor mats, much more. 60 month financing with \$500 down, cash or trade, including tax, title & license. APR 11.25%. Cash Price \$9430 with approved credit.

PALMER PONTIAC/GMC

"Your Little Country Dealer"
DRIVE OUT OUR WAY TO DEAL YOUR WAY!
I-20 & LOOP 39 "IN MERKEL"
Abilene Merkel
673-1182 928-5113

Church Services Schedule

This Worship Schedule Sponsored by:

STARBUCK FURNITURE
WYLIE TRUCK TERMINAL
MERKEL DRUG
FIRST BAPTIST CHURCH

FIRST UNITED METHODIST CHURCH
CALVARY BAPTIST CHURCH
DUBOSE TEXACO

First United Methodist Church

S. 3rd and Locust
Pastor - John Wagener
928-5333

Sunday
Early Worship 8:30 A.M.
Church School 9:45 A.M.
Evening Worship 10:50 A.M.
Very Important Kids
1st thru 5th Grade 5:30 P.M.
Jr. High UMY 5:30 P.M.
Sr. High UMY 6:15 P.M.

Wednesday
Children's Choir
Pre-School thru 2nd Grade 5:30 P.M.
3rd thru 5th Grade 6:30 P.M.

Grace Presbyterian Church

South 2nd and Ash
Pastor - Robert Christian

Sunday
Sunday School 10:00 A.M.
Morning Worship 11:00 A.M.

New Testament Church

S. 5th and Trundy
Prayer Line 928-3394
Pastor - Bro. Bill Dickson
Minister of Music Bro. Joe Malcuit

Sunday
Praise and Worship 10:00 A.M.
Preaching 11:00 A.M.
Bible Study 6:00 P.M.

Tuesday
Women's Prayer 9:30 A.M.

Bible Study
Wednesday
Prayer Service 7:00 P.M.

Calvary Baptist Church

506 Runnels
928-5120
Pastor - David Strange

Sunday
Sunday School 10:00 A.M.
Morning Worship 11:00 A.M.
Children's Church 11:00 A.M.
Children's Choir Practice 5:00 P.M.
Financial Seminar 5:00 P.M.
Evening Services 6:00 P.M.

Wednesday
Prayer Meeting 7:00 P.M.

St. Mark's Episcopal Church

3150 Vogel
677-1471
Pastor - Charles Chatham

Sunday
Church School 9:00 A.M.
Service 10:30 A.M.
Wednesday
Service 7:00 P.M.

First Assembly of God Church

2nd and Runnels
928-5154
Pastor - Richard Sessions

Sunday
Early Worship 9:45 A.M.
Morning Worship 11:00 A.M.
Evening Worship 6:00 P.M.

Wednesday
Family Night 7:00 P.M.

Our Mother of Mercy Catholic Church

1300 Locust
928-5239
Father Frank Zimmermann
Father Lee Zimmermann

Saturday
Mass 5:30 P.M.

Sunday
Confessions 10:15 A.M.-11:00 A.M.
Mass 11:00 A.M.

CCD Classes 9:15 A.M.
Mon-Tues-Thurs-Fri-Sat
Mass 7:30 A.M.

Wednesday
Mass 7:00 P.M.

First Baptist Church

S. 3rd and Locust
928-5351
Pastor - Wayne Keller
Education Minister - Johnny Warren
Music Minister - Roy Davis

Sunday
Sunday School 9:30 A.M.
Morning Worship 10:45 A.M.

Children's Choir 5:30 P.M.
Church Training 6:00 P.M.
Sanctuary Choir 6:00 P.M.
Evening Worship 7:00 P.M.

Wednesday
Prayer Meeting 6:30 P.M.

Acteans, G.A.'s, R.A.'s, Mission Friends 6:30 P.M.

Merkel Church of Christ

S. 7th and Ash
928-5024
Minister - Bob Brandon

Sunday
Bible Class 9:45 A.M.
Morning Worship 10:30 A.M.
Evening Worship 6:00 P.M.

Wednesday
Evening Bible Class 7:30 P.M.

Call 928-5712 if you would like to be a church page sponsor.

BIGGER and BETTER FOOD SALE



PRICES GOOD
WED THRU TUES
JUNE 1 THRU 7
STORE HOURS
8 AM TO 7 PM
MON THRU SAT
CLOSED SUNDAY

HAIR SPRAY
EX-HOLD-PUMP 7 OZ
RAVE \$1.09

NORTHERN
140 COUNT EA
NAPKINS 79¢

LUCKY LEAF 32 OZ JAR
APPLE JUICE 89¢

DEL MONTE
PEARS HALVES 303 89¢

Save Bigger... Eat Better

DUNCAN HINES
CHEWY-FUDGE
BROWNIE 19 OZ \$1.39

POP SECRET
MICROWAVE
POPCORN 10 OZ BOX 3 PACK \$1.69

PLANTERS
CHEESE BALLS
OR CORN CHIPS
SNACKS 7 OZ CAN 93¢

DEL MONTE 303 C S
CORN 2/79¢

DEL MONTE 303
PEAS 2/79¢

PARADE 303
MIXED VEGETABLES 2/69¢

RANCH
BEANS 300 2/79¢

VAN CAMP
BEENEE BAR B Q OR WEENEE 7.5 OZ CAN 59¢

BEST MAID
BREAD & BUTTER
PICKLES 32 OZ JAR \$1.39

WOLF 10 OZ
SAUCE 2/83¢

PARKAY SPREAD 2 LB TUB 99¢

KRAFTS VELVEETA CHEESE 2 LB BOX \$3.69

FROZEN FOODS

PARADE 10 OZ
PIZZA ASST 69¢

GREEN GIANT
CORN ON COB 6 PK \$1.09

BIRDSEYE
COOLWHIP 8 OZ TUB 83¢

PARADE 12 OZ CAN
ORANGE JUICE \$1.09

PARADE

SUGAR

5 LB BAG **\$1.19** 2ND
LIMIT 1 \$1.39

WITH \$10 IN TRADE OR MORE
EXCLUSIVE OF CIGARETTES

7 UP OR
COCA COLA 16 OZ BOT OR 12 OZ CAN 6/\$1.49

MAXWELL HOUSE
COFFEE 1 LB CAN \$2.49
LIMIT 1

JIF
PEANUT
BUTTER 18 OZ JAR \$1.98

INSTANT TEA

LIPTON

3 OZ JAR **\$1.98** 2ND
LIMIT 1 \$2.69

WITH \$10 IN TRADE OR MORE
EXCLUSIVE OF CIGARETTES

DETERGENT BOLD
FAMILY SIZE
147 OZ BOX **\$4.99**



KELLOGGS FROSTED FLAKES 20 OZ BOX \$2.59

PIONEER
BUTTERMILK
BISCUIT MIX 40 OZ BOX \$1.59

COOKING OIL CRISCO 48 OZ JUG \$1.98




DOG-GONE GOOD!

OSCAR MAYER
FRANKS OR WEINERS

BORDEN
ICE CREAM 1/2 GAL CRTN \$1.79

KRAFTS
BAR-B-Q
SAUCE 18 OZ JUG 98¢



CANTALOUPE TEXAS VINE RIPE SWEET 39¢ LB

PARADE
BOLOGNA 12 OZ PKG \$1.09

OSCAR MAYER
FRANKS OR WEINERS 16 OZ PKG 89¢

LIQUID
IVORY CATSUP 32 OZ BOTTLE \$1.59

PARADE
32 OZ JUG 89¢

CALIFORNIA
PLUMS BEAUTY POUND 59¢

FRESH
BROCCOLI GREEN LB 49¢

LOUIS RICH
GROUND TURKEY 1 LB CHUB \$1.39

AUTO DISHWASHER REG OR LEMON
CASCADE 65 OZ BOX \$2.39

FRESH CELLO LB
CARROTS LB 39¢

CHOICE BEEF ROUND
STEAK BONELESS LEAN LB \$1.89

CHOICE BEEF CHUCK
ROAST BONELESS LEAN LB \$1.69

DIAMOND
DELUXE PLATES 40 CT PKG \$2.19

BETTER VALUE
SHORTENING 42 OZ CAN 99¢

CALIFORNIA
ORANGES NEW CROP POUND 49¢

FRESH
TOMATOES RED LB 49¢

ARMOUR STAR HEAT & EAT CHICKEN
FRIED BREADED
BEEF PATTIES LB \$1.79

KRAFTS MINIATURE
MARSHMALLOWS 10 OZ PKG 59¢

RUSSET
SPUDS 10 LB BAG 99¢

WRIGHTS
BACON BULK SLAB LB \$1.29

GOOCH B R
GERMAN STYLE
SAUSAGE 12 OZ PKG \$1.49

CHICKEN OF SEA
TUNA 6 OZ CAN 69¢

BETTY CROCKER
SUDDENLY
SALADS ASST BOX \$1.49

PARADE
MILK 12 OZ CAN 2/83¢

GANDYS
BUTTER
MILK 1/2 GAL CRTN 99¢

BORDEN
SOUR
CREAM 16 OZ CRTN 93¢

Freezer Pack 1
5 LBS GROUND BEEF
5 LBS PORK CHOPS
5 LBS CHUCK ROAST
5 LBS FRYERS
TOTAL WEIGHT 20 LBS
\$30.99

Freezer Pack 3
5 LBS GROUND BEEF
5 LBS CHUCK ROAST
5 LBS CHUCK STEAK
5 LBS FRESH FRYERS
TOTAL WEIGHT 20 LBS
\$28.98

Freezer Pack 8
5 LBS GROUND CHUCK
5 LBS CUBE STEAK
5 LBS CHUCK STEAK
5 LBS SIRLOIN STEAK
TOTAL WEIGHT 20 LBS
\$42.99

MARS
M & M CANDYS 4/99¢

WE WELCOME FOOD STAMPS

CARSON'S SUPER MARKET

Fresh Vegetables
Best Meats in Town



Merkel, Texas

WE RESERVE THE RIGHT TO LIMIT QUANTITY